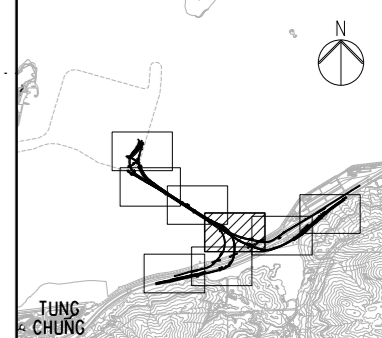
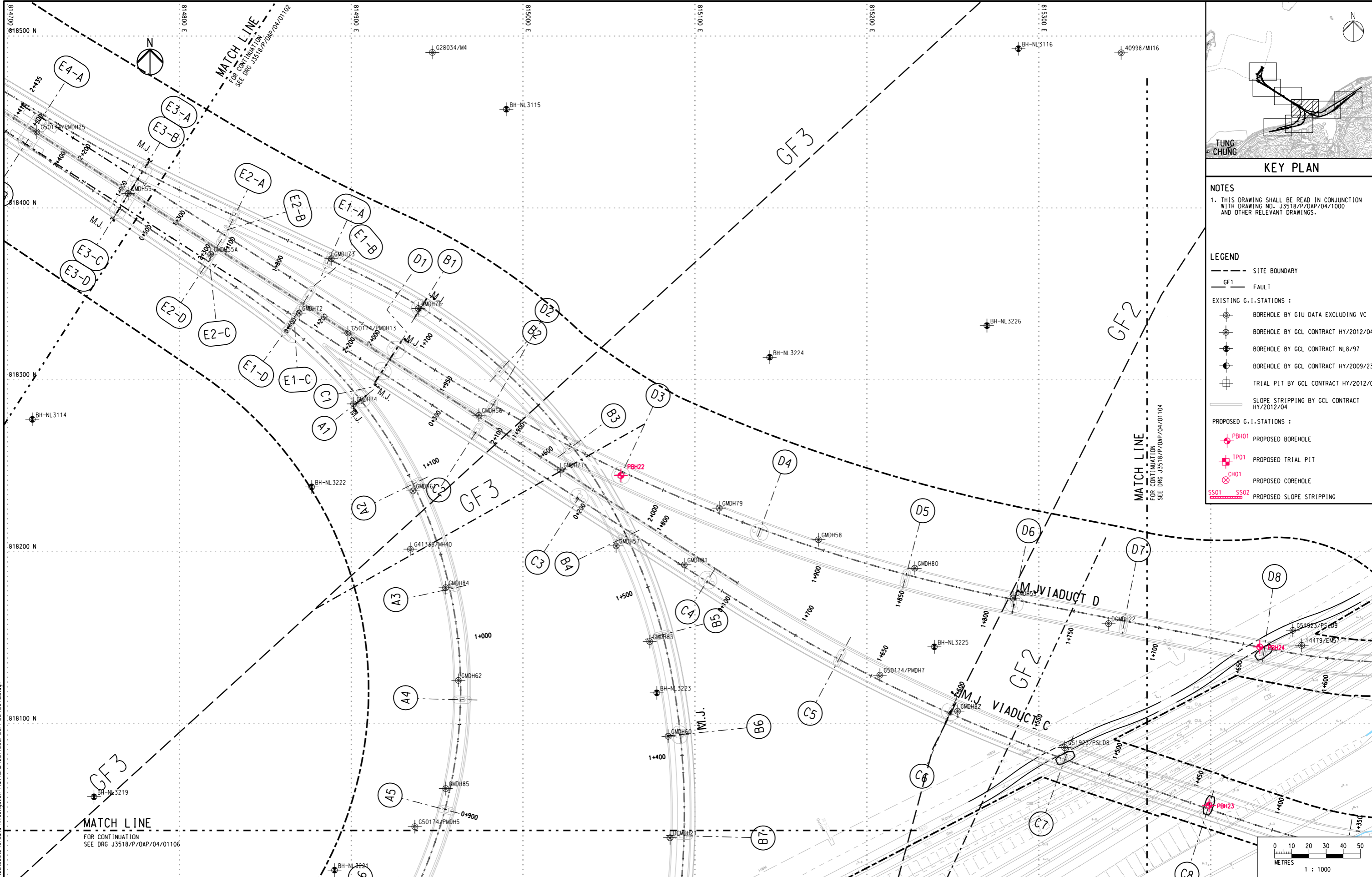


DO NOT SCALE DRAWING. CHECK ALL DIMENSIONS ON SITE.



KEY PLAN

NOTES

1. THIS DRAWING SHALL BE READ IN CONJUNCTION WITH DRAWING NO. J3518/P/OAP/04/1000 AND OTHER RELEVANT DRAWINGS.

LEGEND

--- SITE BOUNDARY

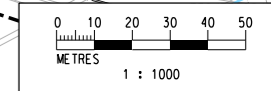
GF1 FAULT

EXISTING G.I. STATIONS :

- ⊕ BOREHOLE BY GIU DATA EXCLUDING VC
- ⊕ BOREHOLE BY GCL CONTRACT HY/2012/04
- ⊕ BOREHOLE BY GCL CONTRACT NL8/97
- ⊕ BOREHOLE BY GCL CONTRACT HY/2009/23
- ⊕ TRIAL PIT BY GCL CONTRACT HY/2012/04
- SLOPE STRIPPING BY GCL CONTRACT HY/2012/04

PROPOSED G.I. STATIONS :

- ⊕ PBH01 PROPOSED BOREHOLE
- ⊕ TP01 PROPOSED TRIAL PIT
- ⊕ CH01 PROPOSED COREHOLE
- SS01 SS02 PROPOSED SLOPE STRIPPING



Printed by : 13/9/2013
 Filename : J:\231499\RECORD\20130912\Ground Investigation Plan\CAOV\231499_P_OAP_04_01103.dgn

Rev	Description	By	Date	Rev	Description	By	Date	Drawn	Date	Client
A	SUBMISSION	RC	07/13					RL	07/13	路政署 HIGHWAYS DEPARTMENT 港珠澳大橋香港工程管理局 Hong Kong - Zhuhai - Macao Bridge Hong Kong Project Management Office
B	SUBMISSION	RC	07/13					Checked	Approved	
C	SUBMISSION	RC	09/13					DS	DOP	
								Scale	1:1000 @ A1 / 1:2000 @ A3	

Client

路政署
HIGHWAYS DEPARTMENT
港珠澳大橋香港工程管理局
Hong Kong - Zhuhai - Macao Bridge
Hong Kong Project Management Office

Supervising Officer

AECOM

Project Title

Contract No. HY/2012/07
Tuen Mun - Chek Lap Kok Link
Southern Connection Viaduct Section

Contractor

Gammon

Drawing title

PROPOSED GROUND INVESTIGATION PLAN
(SHEET 4 OF 8)

Fig 1.7

Originator

ARUP

Drawing no. J3518/P/OAP/04/01103 Rev. C