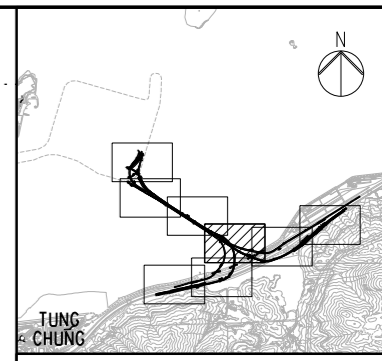
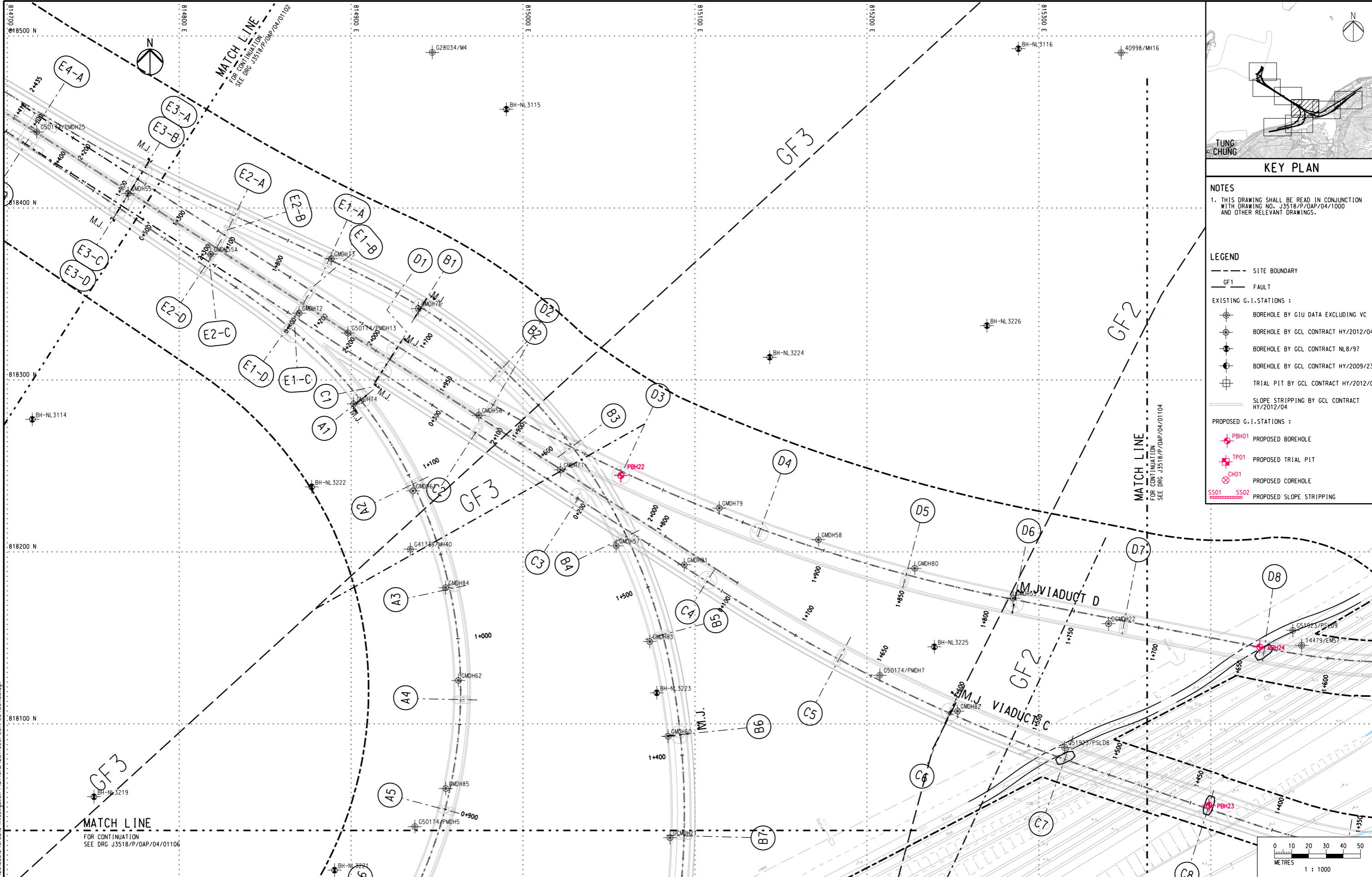
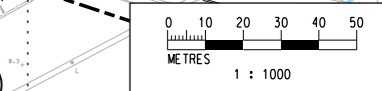


DO NOT SCALE DRAWING. CHECK ALL DIMENSIONS ON SITE.



- NOTES**
- THIS DRAWING SHALL BE READ IN CONJUNCTION WITH DRAWING NO. J3518/P/OAP/04/1000 AND OTHER RELEVANT DRAWINGS.
- LEGEND**
- SITE BOUNDARY
 - GF1 FAULT
- EXISTING G.I. STATIONS :**
- ⊕ BOREHOLE BY GIU DATA EXCLUDING VC
 - ⊕ BOREHOLE BY GCL CONTRACT HY/2012/04
 - ⊕ BOREHOLE BY GCL CONTRACT NL8/97
 - ⊕ BOREHOLE BY GCL CONTRACT HY/2009/23
 - ⊕ TRIAL PIT BY GCL CONTRACT HY/2012/04
 - SLOPE STRIPPING BY GCL CONTRACT HY/2012/04
- PROPOSED G.I. STATIONS :**
- ⊕ PBH01 PROPOSED BOREHOLE
 - ⊕ TP01 PROPOSED TRIAL PIT
 - ⊕ CH01 PROPOSED COREHOLE
 - SS01 SS02 PROPOSED SLOPE STRIPPING



Printed by : 13/9/2013
 File name : J:\231499\RECORD\20130912\Ground Investigation Plan\CAO\231499_P_OAP_04_01103.dgn

Rev	Description	By	Date	Rev	Description	By	Date
A	SUBMISSION	RC	07/13				
B	SUBMISSION	RC	07/13				
C	SUBMISSION	RC	09/13				

Drawn	Date	Client
RL	07/13	路政署 HIGHWAYS DEPARTMENT 港珠澳大橋香港工程管理局 Hong Kong - Zhuhai - Macao Bridge Hong Kong Project Management Office
Checked	Approved	
DS	DOP	

Scale	Supervising Officer	Contractor	Originator
1:1000 @ A1 / 1:2000 @ A3	AECOM	Gammon	ARUP

Client 路政署 HIGHWAYS DEPARTMENT 港珠澳大橋香港工程管理局 Hong Kong - Zhuhai - Macao Bridge Hong Kong Project Management Office	Project Title Contract No. HY/2012/07 Tuen Mun - Chek Lap Kok Link Southern Connection Viaduct Section	Drawing title PROPOSED GROUND INVESTIGATION PLAN (4) Fig 1.7 Drawing no. J3518/P/OAP/04/01103 Rev. C
--	--	---