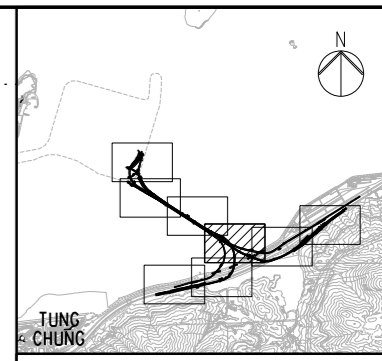
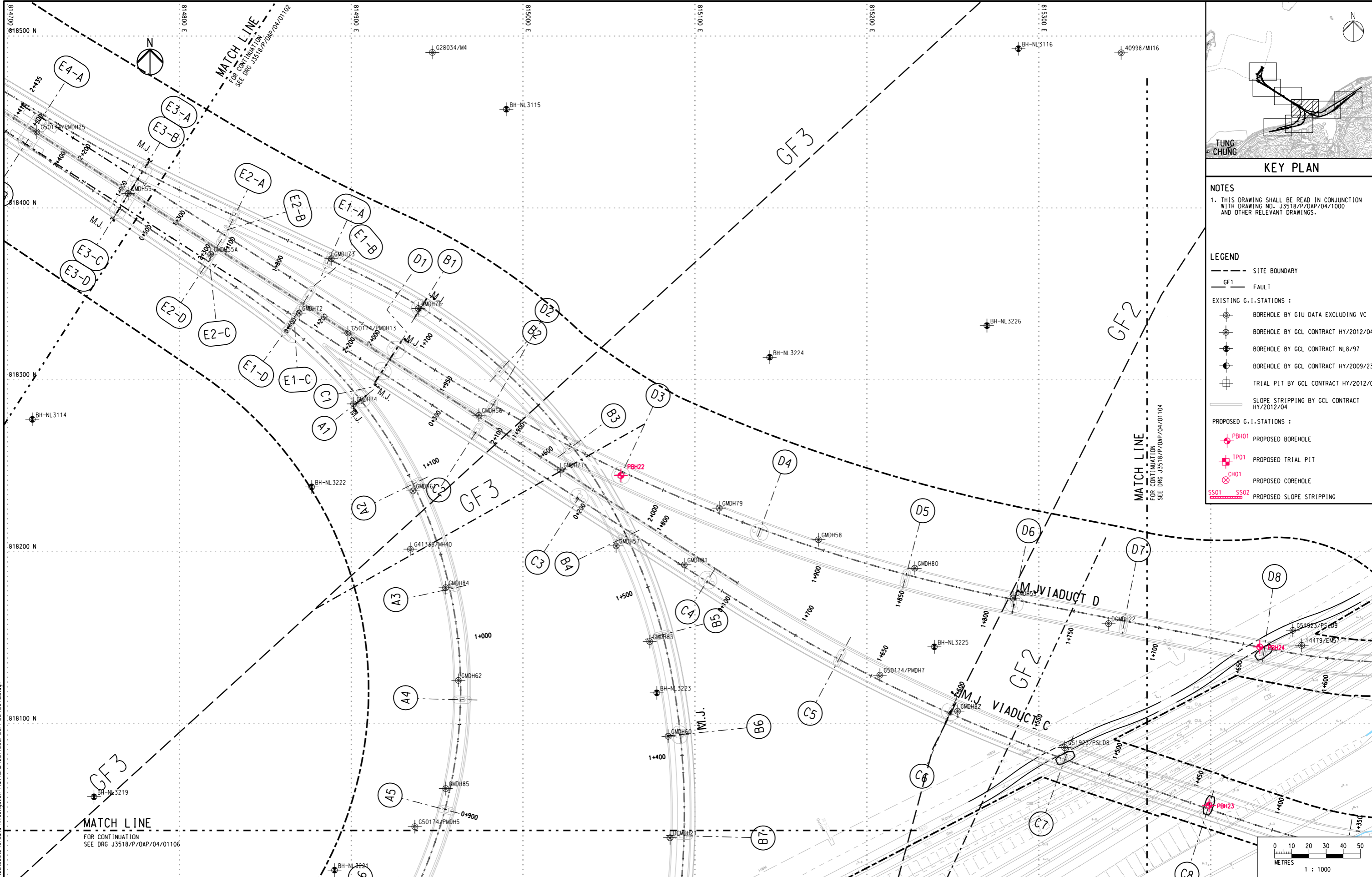


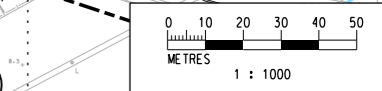
DO NOT SCALE DRAWING. CHECK ALL DIMENSIONS ON SITE.



KEY PLAN

NOTES  
 1. THIS DRAWING SHALL BE READ IN CONJUNCTION WITH DRAWING NO. J3518/P/OAP/04/1000 AND OTHER RELEVANT DRAWINGS.

- LEGEND
- SITE BOUNDARY
  - GF1 FAULT
  - EXISTING G.I. STATIONS:
    - ⊕ BOREHOLE BY GIU DATA EXCLUDING VC
    - ⊕ BOREHOLE BY GCL CONTRACT HY/2012/04
    - ⊕ BOREHOLE BY GCL CONTRACT NL8/97
    - ⊕ BOREHOLE BY GCL CONTRACT HY/2009/23
    - ⊕ TRIAL PIT BY GCL CONTRACT HY/2012/04
    - SLOPE STRIPPING BY GCL CONTRACT HY/2012/04
  - PROPOSED G.I. STATIONS:
    - ⊕ PBH01 PROPOSED BOREHOLE
    - ⊕ TP01 PROPOSED TRIAL PIT
    - ⊕ CH01 PROPOSED COREHOLE
    - SS01 SS02 PROPOSED SLOPE STRIPPING



Printed by : 13/9/2013  
 File name : J:\231499\RECORD\20130912\Ground Investigation Plan\CAO\231499\_P\_OAP\_04\_01103.dgn

Rev	Description	By	Date	Rev	Description	By	Date
A	SUBMISSION	RC	07/13				
B	SUBMISSION	RC	07/13				
C	SUBMISSION	RC	09/13				

Drawn	Date	Client
RL	07/13	路政署 HIGHWAYS DEPARTMENT
Checked	Date	Project Title
DS	Approved	Contract No. HY/2012/07 Tuen Mun - Chek Lap Kok Link Southern Connection Viaduct Section
Scale	1:1000 @ A1 / 1:2000 @ A3	Supervising Officer
		AECOM
		Contractor
		Gammon
		Originator
		ARUP

Drawing title <b>PROPOSED GROUND INVESTIGATION PLAN (4)</b> <b>Fig 1.7</b> Drawing no. J3518/P/OAP/04/01103	Rev. C
--	--------