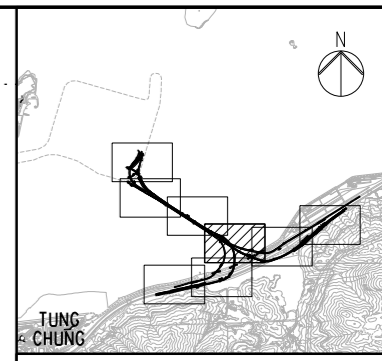
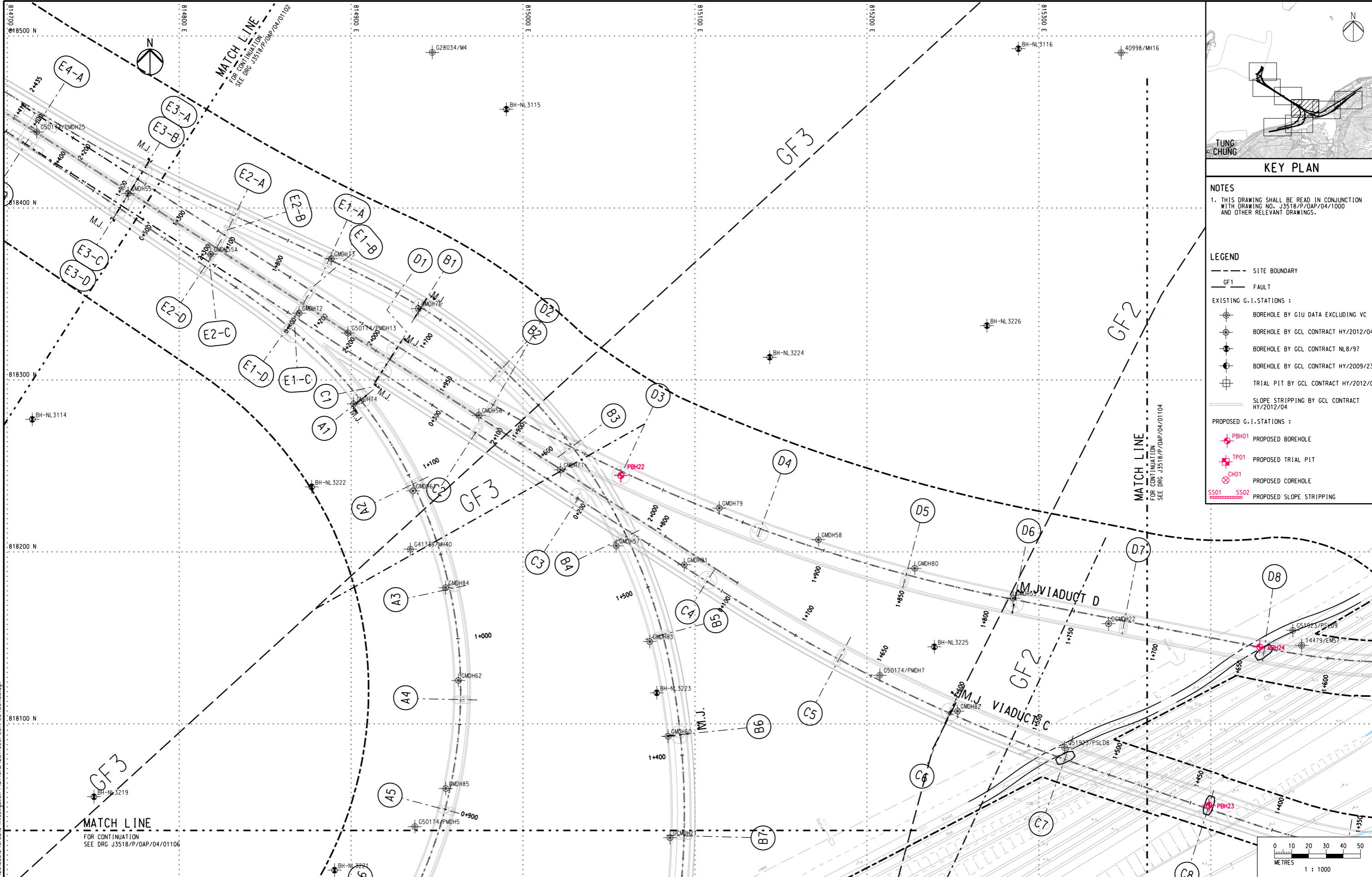


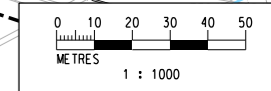
DO NOT SCALE DRAWING. CHECK ALL DIMENSIONS ON SITE.



KEY PLAN

NOTES
 1. THIS DRAWING SHALL BE READ IN CONJUNCTION WITH DRAWING NO. J3518/P/OAP/04/1000 AND OTHER RELEVANT DRAWINGS.

- LEGEND**
- SITE BOUNDARY
 - GF1 FAULT
 - EXISTING G.I. STATIONS :
 - ⊕ BOREHOLE BY GIU DATA EXCLUDING VC
 - ⊕ BOREHOLE BY GCL CONTRACT HY/2012/04
 - ⊕ BOREHOLE BY GCL CONTRACT NL8/97
 - ⊕ BOREHOLE BY GCL CONTRACT HY/2009/23
 - ⊕ TRIAL PIT BY GCL CONTRACT HY/2012/04
 - SLOPE STRIPPING BY GCL CONTRACT HY/2012/04
 - PROPOSED G.I. STATIONS :
 - ⊕ PBH01 PROPOSED BOREHOLE
 - ⊕ TP01 PROPOSED TRIAL PIT
 - ⊕ CH01 PROPOSED COREHOLE
 - SS01 SS02 PROPOSED SLOPE STRIPPING



Printed by : 13/9/2013
 File name : J:\231499\RECORD\20130912\Ground Investigation Plan\CAO\231499_P_OAP_04_01103.dgn

Rev	Description	By	Date	Rev	Description	By	Date	Drawn	Date
A	SUBMISSION	RC	07/13					RL	07/13
B	SUBMISSION	RC	07/13					Checked	Approved
C	SUBMISSION	RC	09/13					DS	DOP
								Scale	1:1000 @ A1 / 1:2000 @ A3

Client
路政署
HIGHWAYS DEPARTMENT
 港珠澳大橋香港工程管理局
 Hong Kong - Zhuhai - Macao Bridge
 Hong Kong Project Management Office

Project Title
Contract No. HY/2012/07
Tuen Mun - Chek Lap Kok Link
Southern Connection Viaduct Section

Drawing title
PROPOSED GROUND INVESTIGATION PLAN
(4)
Fig 1.7
 Drawing no. **J3518/P/OAP/04/01103** Rev. **C**

Supervising Officer **AECOM** Contractor **Gammon** Originator **ARUP**