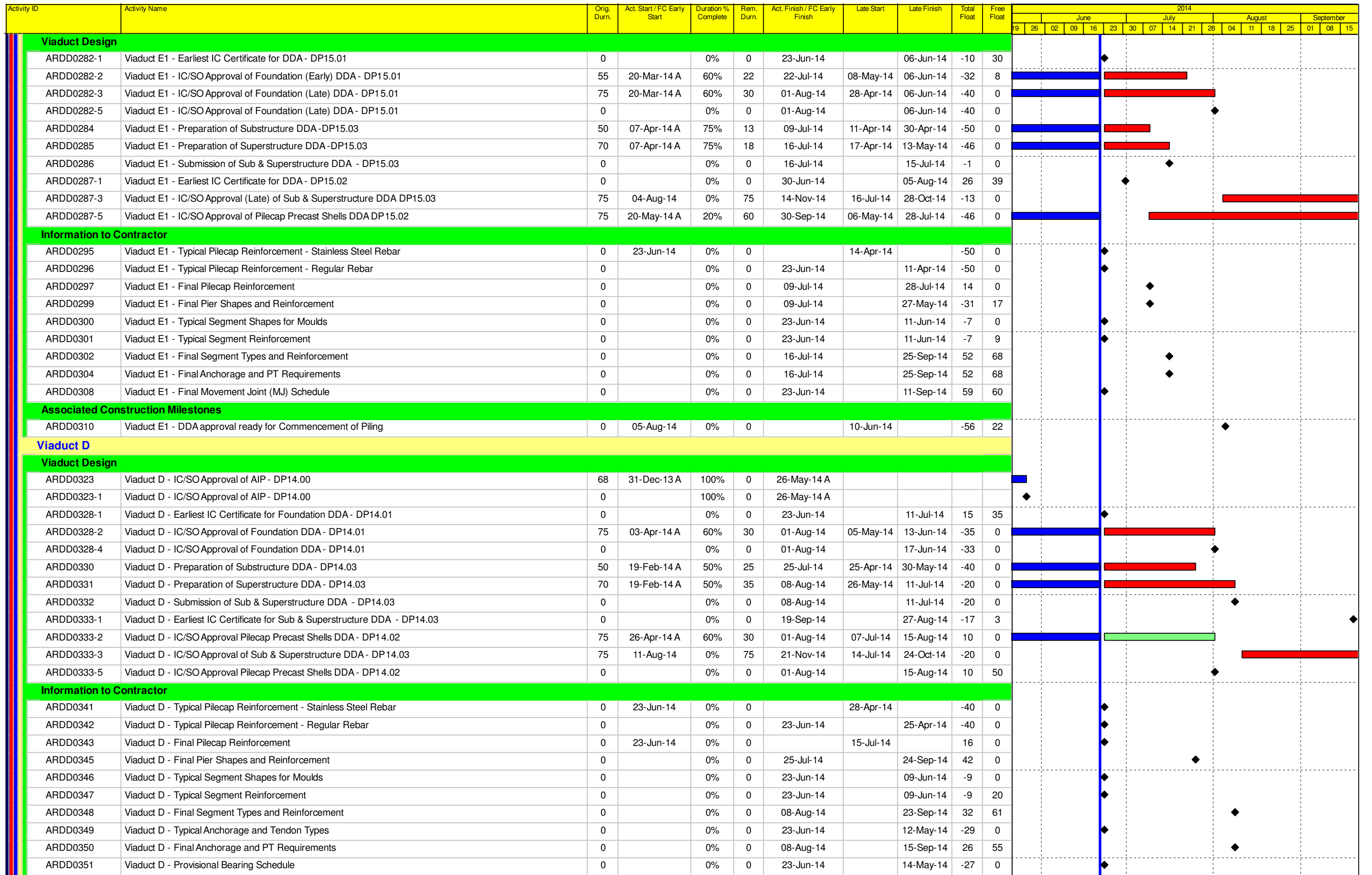


Activity ID	Activity Name	Orig. Durn.	Act. Start / FC Early Start	Duration % Complete	Rem. Durn.	Act. Finish / FC Early Finish	Late Start	Late Finish	Total Float	Free Float	2014																																					
											June					July					August					September																						
											19	26	02	09	16	23	30	07	14	21	28	04	11	18	25	01	08	15																				
Additional Marine GI																																																
PR02162	PBH17C (Pier E13B)	12	15-May-14 A	100%	0	26-May-14 A																																										
PR02163	PBH18A (Pier E13A)	12	27-May-14 A	100%	0	03-Jun-14 A																																										
PR02164	PBH17B (Pier E13B)	12	04-Jun-14 A	100%	0	12-Jun-14 A																																										
Design Submissions																																																
Detailed Design (v17)																																																
Ground Investigation																																																
ARDD0009	Consultation with GEO	20	13-Aug-13 A	85%	3	25-Jun-14	01-Jul-14	03-Jul-14	6	57																																						
ARDD0010	IC/SO Approval of Ground Investigation Interpretative Report - AP03.00	75	13-Aug-13 A	20%	60	12-Sep-14	11-Apr-14	03-Jul-14	-51	0																																						
ARDD0010-1	IC/SO Approval of Ground Investigation Interpretative Report - AP03.00	0		0%	0	12-Sep-14		03-Jul-14	-51	0																																						
ARDD0013-1	Additional GI Fieldwork, Lab Testing and Permitting E5-E8	45	16-Jul-13 A	90%	5	27-Jun-14	27-Jun-14	03-Jul-14	5	86																																						
ARDD0013-2	Additional GI Fieldwork, Lab Testing and Permitting - Other areas	60	16-Jul-13 A	80%	12	08-Jul-14	18-Jun-14	03-Jul-14	-3	78																																						
ARDD0015-1	E5-E8 Interpretation	15	17-Sep-13 A	85%	2	25-Jun-14	01-Jul-14	03-Jul-14	7	103																																						
ARDD0015-2	Additional GI Interpretative Report - AP03.00	15	23-Jun-14	0%	15	11-Jul-14	28-Feb-14	20-Mar-14	-81	0																																						
ARDD0017-1	Earliest IC certificate for DDA-AP03.00	0		0%	0	22-Aug-14		03-Jul-14	-36	45																																						
ARDD0017-2	IC/SO Approval of Additional GI Interpretative Report - AP03.00	75	14-Jul-14	0%	75	24-Oct-14	21-Mar-14	03-Jul-14	-81	0																																						
Surveys and Investigations																																																
ARDD0025	IC/SO Approval of Utility Report - AP04.00	75	22-Oct-13 A	40%	45	22-Aug-14	30-Jan-17	31-Mar-17	680	0																																						
ARDD0025-1	IC/SO Approval of Utility Report - AP04.00	0		0%	0	22-Aug-14		31-Mar-17	680	0																																						
General Submissions																																																
ARDD0039	IC/SO Approval of Maintenance Matrix - AP07.00	75	08-May-14 A	20%	60	12-Sep-14	17-Jun-15	08-Sep-15	257	0																																						
ARDD0039-1	IC/SO Approval of Maintenance Matrix - AP07.00	0		0%	0	12-Sep-14		08-Sep-15	257	203																																						
ARDD0041-1	Preparation of O&M Facility Provisions AIP - BP11.00	50	30-May-14 A	100%	0	20-Jun-14 A																																										
ARDD0041-2	IC/SO Approval of O&M Facility Provisions AIP - BP11.00	75	23-Jun-14	0%	75	03-Oct-14	17-Dec-14	31-Mar-15	127	0																																						
GCL Erection Sequence and Method																																																
ARDD0060-2	Receipt of Final Erection Sequence and Loads - Bridge A	0		0%	0	23-Jun-14		24-Sep-14	68	26																																						
ARDD0060-4	Receipt of Final Erection Sequence and Loads - Bridge C	0		0%	0	23-Jun-14		09-Jun-14	-10	2																																						
ARDD0060-5	Receipt of Final Erection Sequence and Loads - Bridge D	0		100%	0	21-May-14 A																																										
ARDD0060-7	Receipt of Final Erection Sequence and Loads - Bridge F	0		0%	0	23-Jun-14		06-Aug-14	33	10																																						
Gazette and Alignment (assume no gazette change)																																																
ARDD0071	IC/SO Approval of Alignment DDA - BP01.01	75	24-Jan-14 A	60%	30	01-Aug-14	07-Feb-14	20-Mar-14	-96	0																																						
ARDD0071-1	Earliest IC Cert for Alignment DDA - BP01.01	0		0%	0	23-Jun-14		20-Mar-14	-66	30																																						
ARDD0071-2	IC/SO Approval of Alignment DDA - BP01.01	0		0%	0	01-Aug-14		20-Mar-14	-96	0																																						
General Viaduct Submission																																																
ARDD0076	IC/SO Approval of Viaduct E&M Works AIP - BP21.00	68	15-Mar-14 A	20%	54	05-Sep-14	13-May-15	28-Jul-15	233	0																																						
ARDD0076-1	IC/SO Approval of Viaduct E&M Works AIP - BP21.00	0		0%	0	05-Sep-14		28-Jul-15	233	0																																						
ARDD0077	Preparation of Viaduct E&M Works DDA - BP21.01	30	01-Apr-14 A	100%	0	16-Jun-14 A																																										
ARDD0078	IC/SO Approval of Viaduct E&M Works DDA BP21.01	75	17-Jun-14 A	0%	75	03-Oct-14	15-Apr-15	28-Jul-15	212	0																																						
Viaduct B																																																
Viaduct Design																																																
ARDD0099-1	Viaduct B - Earliest IC Certificate for DP12.03	0		0%	0	23-Jun-14		27-May-14	-18	18																																						
ARDD0099-3	Viaduct B - IC/SO Approval of Sub & Superstructure DDA - DP12.03	75	04-Mar-14 A	20%	60	12-Sep-14	02-May-14	24-Jul-14	-36	0																																						
ARDD0099-5	Viaduct B - IC/SO Approval of Sub & Superstructure DDA - DP12.03	0		0%	0	12-Sep-14		24-Jul-14	-36	0																																						
Associated Construction Milestones																																																
ARDD0128	Viaduct B - DDA approval ready for Commencement of Pilecaps (Marine)	0	13-Sep-14	0%	0			25-Jul-14	-50	0																																						
ARDD0128-1	Viaduct B - DDA approval ready for Commencement of Pilecaps (Land)	0	13-Sep-14	0%	0			28-Oct-14	45	10																																						
ARDD0129	Viaduct B - DDA approval ready for Initial Segment Casting	0	13-Sep-14	0%	0			01-Aug-14	-43	69																																						
Viaduct E5 and E6																																																

<ul style="list-style-type: none"> ■ Actual Work ■ Planned Bar ■ Critical Bar ◆ Milestone 	Project ID: J3518DWPrD1-M13 Layout: J3518-DWP-3MRP submission - M13 Filter: TASK filters: 3-Month Lookahead, No Level of Effort.	Tuen Mun - Chek Lap Kok Link - Southern Connection 3-Month Rolling Programme (Page 5 of 27 Pages) (Progress as of 21-Jun-14)	Date 28-Jun-14	Revision	Checked FZ	Approved	DWG. No.: J3518/GCL/PGM/3MRP-M13
--	--	---	-------------------	----------	---------------	----------	---

Activity ID	Activity Name	Orig. Durn.	Act. Start / FC Early Start	Duration % Complete	Rem. Durn.	Act. Finish / FC Early Finish	Late Start	Late Finish	Total Float	Free Float	2014															
											June				July				August				September			
											19	26	02	09	16	23	30	07	14	21	28	04	11	18	25	01
Viaduct Design																										
ARDD0147	Viaduct E5 & E6 - Preparation of Substructure DDA - DP15.09	60	29-Oct-13 A	85%	9	03-Jul-14	31-Jan-14	12-Feb-14	-101	0																
ARDD0148	Viaduct E5 & E6 - Preparation of Superstructure DDA - DP15.09	90	29-Oct-13 A	85%	14	10-Jul-14	03-Mar-14	20-Mar-14	-80	0																
ARDD0149	Viaduct E5 & E6 - Submission of DDA for Viaduct Sub & Superstructure E5 & E6 - DP15.09	0		0%	0	10-Jul-14		20-Mar-14	-80	0																
ARDD0150-1	Viaduct E5 & E6 - Earliest IC certificate for DDA for Viaduct E5 & E6 - DP15.09	0		0%	0	23-Jun-14		22-May-14	-21	75																
ARDD0150-3	Viaduct E5 & E6 - IC/SO Approval of Pile Cap Precast Shells DDA DP15.05	75	15-Apr-14 A	20%	60	12-Sep-14	11-Apr-14	03-Jul-14	-51	0																
ARDD0150-4	Viaduct E5 & E6 - IC/SO Approval (late) of Sub & Superstructure DDA DP15.09	75	04-Aug-14	0%	75	14-Nov-14	21-Mar-14	03-Jul-14	-96	0																
ARDD0150-6	Viaduct E5 & E6 - IC/SO Approval of Pile Cap Precast Shells DDA DP15.05	0		0%	0	12-Sep-14		03-Jul-14	-51	45																
Information to Contractor																										
ARDD0160	Viaduct E5 & E6 - Final Pilecap Reinforcement	0		0%	0	03-Jul-14		12-Feb-14	-101	12																
ARDD0162	Viaduct E5 & E6 - Final Pier Shapes and Reinforcement	0		0%	0	03-Jul-14		19-Jun-14	-10	18																
ARDD0165	Viaduct E5 & E6 - Final Segment Types and Reinforcement	0		0%	0	10-Jul-14		22-Apr-14	-57	0																
ARDD0167	Viaduct E5 & E6 - Final Anchorage and PT Requirements	0		0%	0	10-Jul-14		22-Apr-14	-57	0																
Associated Construction Milestones																										
ARDD0173	Viaduct E5 & E6 - DDA approval ready for Commencement of Piling	0	28-Jul-14	0%	0		17-Mar-14		-133	0																
Viaduct E7 & E8																										
Viaduct Design																										
ARDD0192	Viaduct E7 & E8 - Preparation of Substructure DDA - 15.09	60	29-Oct-13 A	85%	9	03-Jul-14	11-Apr-14	23-Apr-14	-51	0																
ARDD0193	Viaduct E7 & E8 - Preparation of Superstructure DDA - DP15.09	90	29-Oct-13 A	85%	14	10-Jul-14	03-Mar-14	20-Mar-14	-80	0																
ARDD0194	Viaduct E7 & E8 - Submission of Sub & Superstructure DDA - DP15.09	0		0%	0	10-Jul-14		20-Mar-14	-80	0																
ARDD0195-1	Viaduct E7 & E8 - Earliest IC certificate for Pilecap Precast Shells DDA - DP15.08	0		0%	0	23-Jun-14		20-Mar-14	-66	14																
ARDD0195-3	Viaduct E7 & E8 - IC/SO Approval of Pilecap Precast Shells DDA - DP15.08	75	15-Apr-14 A	20%	60	12-Sep-14	11-Apr-14	03-Jul-14	-51	0																
ARDD0195-4	Viaduct E7 & E8 - IC/SO Approval of Sub & Superstructure DDA - DP15.09	75	04-Aug-14	0%	75	14-Nov-14	21-Mar-14	03-Jul-14	-96	0																
ARDD0195-6	Viaduct E7 & E8 - IC/SO Approval of Pilecap Precast Shells DDA - DP15.08	0		0%	0	12-Sep-14		03-Jul-14	-51	45																
Information to Contractor																										
ARDD0205	Viaduct E7 & E8 - Final Pilecap Reinforcement	0		0%	0	03-Jul-14		23-Apr-14	-51	12																
ARDD0207	Viaduct E7 & E8 - Final Pier Shapes and Reinforcement	0		0%	0	03-Jul-14		01-Oct-14	64	0																
ARDD0210	Viaduct E7 & E8 - Final Segment Types and Reinforcement	0		0%	0	10-Jul-14		22-Apr-14	-57	0																
ARDD0212	Viaduct E7 & E8 - Final Anchorage and PT Requirements	0		0%	0	10-Jul-14		22-Apr-14	-57	0																
Associated Construction Milestones																										
ARDD0218	Viaduct E7 & E8 - DDA approval ready for Commencement of Piling	0	28-Jul-14	0%	0		17-Mar-14		-133	0																
Viaduct E2																										
Viaduct Design																										
ARDD0238	Viaduct E2 - Preparation of Substructure DDA - DP15.06	60	29-Oct-13 A	85%	9	03-Jul-14	14-Mar-14	26-Mar-14	-71	0																
ARDD0239	Viaduct E2 - Preparation of Superstructure DDA - DP15.06	90	29-Oct-13 A	85%	14	10-Jul-14	14-Apr-14	01-May-14	-50	0																
ARDD0240	Viaduct E2 - Submission of Sub & Superstructure DDA - DP15.06	0		0%	0	10-Jul-14		01-May-14	-50	0																
ARDD0241-1	Viaduct E2 - Earliest IC certificate for Pilecap Precast Shells DDA - DP15.05	0		0%	0	23-Jun-14		17-Jun-14	-3	63																
ARDD0241-3	Viaduct E2 - IC/SO Approval (Late) of Sub & Superstructure DDA - DP15.06	75	04-Aug-14	0%	75	14-Nov-14	02-May-14	14-Aug-14	-66	0																
ARDD0241-4	Viaduct E2 - IC/SO Approval Pilecap Precast Shells DDA - DP15.05	75	15-Apr-14 A	20%	60	12-Sep-14	03-Mar-14	23-May-14	-80	0																
ARDD0241-5	Viaduct E2 - IC/SO Approval Pilecap Precast Shells DDA - DP15.05	0		0%	0	12-Sep-14		23-May-14	-80	0																
Information to Contractor																										
ARDD0251	Viaduct E2 - Final Pilecap Reinforcement	0		0%	0	03-Jul-14		26-Mar-14	-71	0																
ARDD0253	Viaduct E2 - Final Pier Shapes and Reinforcement	0		0%	0	03-Jul-14		25-Apr-14	-49	18																
ARDD0256	Viaduct E2 - Final Segment Types and Reinforcement	0		0%	0	10-Jul-14		23-May-14	-34	36																
ARDD0258	Viaduct E2 - Final Anchorage and PT Requirements	0		0%	0	10-Jul-14		23-May-14	-34	36																
Associated Construction Milestones																										
ARDD0266-1	Viaduct E2 - DDA approval ready for Pile Cap Shell Casting	0	13-Sep-14	0%	0		25-May-14		-110	0																
Viaduct E1																										

	Project ID: J3518DWPrD1-M13 Layout: J3518-DWP-3MRP submission - M13 Filter: TASK filters: 3-Month Lookahead, No Level of Effort.	Tuen Mun - Chek Lap Kok Link - Southern Connection 3-Month Rolling Programme (Page 6 of 27 Pages) (Progress as of 21-Jun-14)	Date 28-Jun-14	Revision	Checked FZ	Approved	DWG. No.: J3518/GCL/PGM/3MRP-M13
--	--	---	-------------------	----------	---------------	----------	---



- Actual Work
- Planned Bar
- Critical Bar
- ◆ Milestone

Project ID: J3518DWP1-M13
 Layout: J3518-DWP-3MRP submission - M13
 Filter: TASK filters: 3-Month Lookahead, No Level of Effort.

Tuen Mun - Chek Lap Kok Link - Southern Connection
3-Month Rolling Programme (Page 7 of 27 Pages)
 (Progress as of 21-Jun-14)





Date	Revision	Checked	Approved
28-Jun-14		FZ	

DWG. No.:
J3518/GCL/PGM/3MRP-M13

Activity ID	Activity Name	Orig. Durn.	Act. Start / FC Early Start	Duration % Complete	Rem. Durn.	Act. Finish / FC Early Finish	Late Start	Late Finish	Total Float	Free Float	2014															
											June				July				August				September			
											19	26	02	09	16	23	30	07	14	21	28	04	11	18	25	01
ARDD0713	Viaduct B - Target Geometry Analysis	20	06-Feb-14 A	90%	2	24-Jun-14	25-Apr-14	28-Apr-14	-41	0	[Gantt bar: 25-Apr-14 to 28-Apr-14]															
ARDD0714	Viaduct B - Segment Geometry Schedules	10	06-Mar-14 A	90%	1	23-Jun-14	28-Apr-14	28-Apr-14	-40	1	[Gantt bar: 28-Apr-14 to 28-Apr-14]															
ARDD0714-1	Viaduct B - Final Erection Geometry (Bridge B3)	0		0%	0	24-Jun-14		28-Apr-14	-41	0	[Milestone: 28-Apr-14]															
ARDD0714-2	Viaduct B - Final Erection Geometry (Bridge B2 & B1)	0		0%	0	05-Aug-14		09-Jun-14	-41	0	[Milestone: 09-Jun-14]															
Viaduct D																										
ARDD0726	Viaduct D - Confirmation of Erection Sequence from Freyssinet	0		0%	0	23-Jun-14		02-Jun-14	-14	0	[Milestone: 02-Jun-14]															
ARDD0727	Viaduct D - Erection Sequence Analysis	20	23-Jun-14	0%	20	18-Jul-14	03-Jun-14	30-Jun-14	-14	0	[Gantt bar: 03-Jun-14 to 30-Jun-14]															
ARDD0728	Viaduct D - Target Geometry Analysis	20	21-Jul-14	0%	20	15-Aug-14	01-Jul-14	28-Jul-14	-14	0	[Gantt bar: 01-Jul-14 to 28-Jul-14]															
ARDD0729	Viaduct D - Segment Geometry Schedules	10	18-Aug-14	0%	10	29-Aug-14	29-Jul-14	11-Aug-14	-14	0	[Gantt bar: 29-Jul-14 to 11-Aug-14]															
ARDD0729-1	Viaduct D - Final Erection Geometry (Bridge D3)	0		0%	0	29-Aug-14		11-Aug-14	-14	0	[Milestone: 11-Aug-14]															
Viaduct E5 and E6																										
ARDD0731	Viaduct E5 & E6 - Confirmation of Erection Sequence from Freyssinet	0		0%	0	23-Jun-14		09-Jun-14	-9	23	[Milestone: 09-Jun-14]															
ARDD0732	Viaduct E5 & E6 - Erection Sequence Analysis	30	24-Dec-13 A	25%	23	23-Jul-14	08-May-14	09-Jun-14	-32	0	[Gantt bar: 08-May-14 to 09-Jun-14]															
ARDD0733	Viaduct E5 & E6 - Target Geometry Analysis	30	04-Feb-14 A	25%	23	23-Jul-14	08-May-14	09-Jun-14	-32	0	[Gantt bar: 08-May-14 to 09-Jun-14]															
ARDD0734	Viaduct E5 & E6 - Segment Geometry Schedules	10	18-Mar-14 A	25%	8	02-Jul-14	29-May-14	09-Jun-14	-17	15	[Gantt bar: 29-May-14 to 09-Jun-14]															
ARDD0734-1	Viaduct E5 & E6 - Final Erection Geometry	0		0%	0	23-Jul-14		09-Jun-14	-32	25	[Milestone: 09-Jun-14]															
Viaduct E7 & E8																										
ARDD0736	Viaduct E7 & E8 - Confirmation of Erection Sequence from Freyssinet	0		0%	0	23-Jun-14		30-May-14	-15	23	[Milestone: 30-May-14]															
ARDD0737	Viaduct E7 & E8 - Erection Sequence Analysis	30	24-Dec-13 A	25%	23	23-Jul-14	30-Apr-14	30-May-14	-38	0	[Gantt bar: 30-Apr-14 to 30-May-14]															
ARDD0738	Viaduct E7 & E8 - Target Geometry Analysis	30	04-Feb-14 A	25%	23	23-Jul-14	30-Apr-14	30-May-14	-38	0	[Gantt bar: 30-Apr-14 to 30-May-14]															
ARDD0739	Viaduct E7 & E8 - Segment Geometry Schedules	10	18-Mar-14 A	25%	8	02-Jul-14	21-May-14	30-May-14	-23	15	[Gantt bar: 21-May-14 to 30-May-14]															
ARDD0739-1	Viaduct E7 & E8 - Final Erection Geometry	0		0%	0	23-Jul-14		30-May-14	-38	25	[Milestone: 30-May-14]															
Viaduct E1																										
ARDD0741	Viaduct E1 - Confirmation of Erection Sequence from Freyssinet	0		0%	0	23-Jun-14		17-Apr-14	-46	0	[Milestone: 17-Apr-14]															
ARDD0742	Viaduct E1 - Erection Sequence Analysis	30	23-Jun-14	0%	30	01-Aug-14	18-Apr-14	29-May-14	-46	0	[Gantt bar: 18-Apr-14 to 29-May-14]															
ARDD0743	Viaduct E1 - Target Geometry Analysis	30	04-Aug-14	0%	30	12-Sep-14	30-May-14	10-Jul-14	-46	0	[Gantt bar: 30-May-14 to 10-Jul-14]															
ARDD0744	Viaduct E1 - Segment Geometry Schedules	10	15-Sep-14	0%	10	26-Sep-14	11-Jul-14	24-Jul-14	-46	0	[Gantt bar: 11-Jul-14 to 24-Jul-14]															
Viaduct E2																										
ARDD0746	Viaduct E2 - Confirmation of Erection Sequence from Freyssinet	0		0%	0	23-Jun-14		15-May-14	-26	23	[Milestone: 15-May-14]															
ARDD0747	Viaduct E2 - Erection Sequence Analysis	30	24-Dec-13 A	25%	23	23-Jul-14	15-Apr-14	15-May-14	-49	0	[Gantt bar: 15-Apr-14 to 15-May-14]															
ARDD0748	Viaduct E2 - Target Geometry Analysis	30	04-Feb-14 A	25%	23	23-Jul-14	15-Apr-14	15-May-14	-49	0	[Gantt bar: 15-Apr-14 to 15-May-14]															
ARDD0749	Viaduct E2 - Segment Geometry Schedules	10	18-Mar-14 A	25%	8	23-Jul-14	06-May-14	15-May-14	-49	0	[Gantt bar: 06-May-14 to 15-May-14]															
ARDD0749-1	Viaduct E2 - Final Erection Geometry	0		0%	0	23-Jul-14		15-May-14	-49	21	[Milestone: 15-May-14]															
Reprovisioning Works																										
Chung Tung Road Realignment Viaduct B																										
ARDD0804	Viaduct B - IC/SO Approval of AIP of CTR Reprovisioning Works AIP - BP33.00	68	31-Dec-13 A	40%	41	18-Aug-14	19-Dec-13	13-Feb-14	-132	0	[Gantt bar: 19-Dec-13 to 13-Feb-14]															
ARDD0804-1	Viaduct B - IC/SO Approval of AIP of CTR Reprovisioning Works AIP - BP33.00	0		0%	0	18-Aug-14		13-Feb-14	-132	0	[Milestone: 13-Feb-14]															
ARDD0805	Viaduct B - Preparation of CTR Reprovisioning Works DDA - BP33.01	30	25-Nov-13 A	100%	0	09-Jun-14 A					[Gantt bar: 09-Jun-14 A to 09-Jun-14 A]															
ARDD0806	Viaduct B - Submission of CTR Reprovisioning Works DDA - BP33.01	0		100%	0	10-Jun-14 A					[Milestone: 10-Jun-14 A]															
ARDD0807	Viaduct B - IC/SO Approval of CTR Reprovisioning Works DDA - BP33.01	75	11-Jun-14 A	0%	75	03-Oct-14	27-Jan-14	09-May-14	-105	26	[Gantt bar: 27-Jan-14 to 09-May-14]															
Chung Tung Road Realignment Viaduct C																										
ARDD0881	Viaduct C - IC/SO Approval of AIP of CTR Reprovisioning Works AIP - BP34.00	68	04-Apr-14 A	20%	54	05-Sep-14	30-Dec-13	14-Mar-14	-124	0	[Gantt bar: 30-Dec-13 to 14-Mar-14]															
ARDD0881-1	Viaduct C - IC/SO Approval of AIP of CTR Reprovisioning Works AIP - BP34.00	0		0%	0	05-Sep-14		14-Mar-14	-124	0	[Milestone: 14-Mar-14]															
ARDD0883	Viaduct C - Preparation of CTR Reprovisioning Works DDA - BP34.01	30	06-Mar-14 A	100%	0	19-Jun-14 A					[Gantt bar: 19-Jun-14 A to 19-Jun-14 A]															
ARDD0885	Viaduct C - Submission of CTR Reprovisioning Works DDA - BP34.01	0		100%	0	19-Jun-14 A					[Milestone: 19-Jun-14 A]															
ARDD0887	Viaduct C - IC/SO Approval of CTR Reprovisioning Works DDA - BP34.01	75	20-Jun-14 A	0%	75	03-Oct-14	24-Feb-14	06-Jun-14	-85	39	[Gantt bar: 24-Feb-14 to 06-Jun-14]															
Remaining Reprovisioning Works (Viaduct A&D)																										
ARDD0813	Viaduct A&D - IC/SO Approval of AIP for Remaining Reprovisioning Works V-A&D BP35.00	68	30-Apr-14 A	20%	54	05-Sep-14	28-Apr-15	13-Jul-15	222	0	[Gantt bar: 28-Apr-15 to 13-Jul-15]															

<ul style="list-style-type: none"> █ Actual Work █ Planned Bar █ Critical Bar ◆ Milestone 	Project ID: J3518DWPrD1-M13 Layout: J3518-DWP-3MRP submission - M13 Filter: TASK filters: 3-Month Lookahead, No Level of Effort.	Tuen Mun - Chek Lap Kok Link - Southern Connection 3-Month Rolling Programme (Page 12 of 27 Pages) (Progress as of 21-Jun-14)	Date: 28-Jun-14 Revision: Checked: FZ Approved:	DWG. No.: J3518/GCL/PGM/3MRP-M13
---	--	--	--	---

Activity ID	Activity Name	Orig. Durn.	Act. Start / FC Early Start	Duration % Complete	Rem. Durn.	Act. Finish / FC Early Finish	Late Start	Late Finish	Total Float	Free Float	2014															
											June				July				August				September			
											19	26	02	09	16	23	30	07	14	21	28	04	11	18	25	01
ARDD0813-1	Viaduct A&D - IC/SO Approval of AIP for Remaining Reprovisioning Works V-A&D BP35.00	0		0%	0	05-Sep-14		13-Jul-15	222	0																
ARDD0814	Viaduct A&D - Preparation of DDA of Remaining Reprovisioning Works V-A&D BP35.01	20	28-May-14 A	90%	2	24-Jun-14	18-Jun-14	19-Jun-14	-3	0																
ARDD0815	Viaduct A&D - IC/SO Approval of DDA of Remaining Reprovisioning Works BP35.01	75	01-Aug-14	0%	75	14-Nov-14	09-Jun-15	21-Sep-15	222	0																
ESS Substation																										
ARDD0819	IC/SO Approval of Combined AIP/DDA for ESS Substation - BP31.01	75	12-Nov-13 A	60%	30	01-Aug-14	03-Jan-14	13-Feb-14	-121	0																
ARDD0821	IC/SO Approval of Combined AIP/DDA for ESS Substation - BP31.01	0		0%	0	01-Aug-14		13-Feb-14	-121	0																
CEDD Access Track																										
ARDD0808	Preparation of Combined AIP/DDA for CEDD Access Track - BP32.01	30	09-Sep-13 A	80%	6	30-Jun-14	19-Feb-16	26-Feb-16	434	0																
ARDD0809	IC/SO Approval of Combined AIP/DDA for CEDD Access Track - BP32.01	75	01-Jul-14	0%	75	13-Oct-14	29-Feb-16	10-Jun-16	434	0																
Construction Traffic Impact Assessment																										
ARDD0811	IC/SO Approval of CTIA - AP05.00	75	25-Feb-14 A	20%	60	12-Sep-14	09-Jan-17	31-Mar-17	665	0																
ARDD0816	IC/SO Approval of CTIA - AP05.00	0		0%	0	12-Sep-14		31-Mar-17	665	0																
Other Design																										
Marine Permanent Navigation Aids																										
BMT0110	IC/SO Approval of MPNA AIP - BP36.00	68	30-Jan-14 A	100%	0	10-Jun-14 A																				
BMT0120	IC/SO Approval of MPNA AIP - BP36.00	0		100%	0	10-Jun-14 A																				
BMT0135	Preparation of MPNA DDA - BP36.01	46	11-Jun-14 A	10%	41	19-Aug-14	28-Nov-13	24-Jan-14	-146	0																
BMT0140	IC/SO Approval of MPNA DDA BP36.01	75	19-Aug-14	0%	75	02-Dec-14	27-Jan-14	09-May-14	-146	0																
Major Procurement																										
Tower Cranes																										
PR66010	Procure Tower Crane Supplier	96	23-Jun-14	0%	96	16-Oct-14	09-Jun-14	30-Sep-14	-12	0																
Equipment Platforms for Tower Cranes																										
PR66025	Inst.Temp.Eqpt.Platform (piles & deck) @ E3	18	10-Jul-14	0%	18	07-Aug-14	27-Nov-14	17-Dec-14	100	47																
PR66026	Inst.Temp.Eqpt.Platform (piles & deck) @ E4	18	15-Sep-14	0%	18	11-Oct-14	05-Sep-14	30-Sep-14	-6	4																
PR66031	Inst.Temp.Eqpt.Platform (piles & deck) @ E9	18	16-Sep-14	0%	18	13-Oct-14	11-May-15	08-Jun-15	179	3																
Deck Segment Installation Equipment																										
Launching Gantry 1																										
PR67040	Launching Gantry Design	95	05-Feb-14 A	94%	6	28-Jun-14	29-Aug-14	04-Sep-14	57	59																
PR67041	Launching Gantry 1 Fabrication	95	15-May-14 A	32%	65	06-Sep-14	20-Jun-14	04-Sep-14	-2	0																
PR67042	Launching Gantry 1 Delivery	20	06-Sep-14	0%	20	03-Oct-14	05-Sep-14	29-Sep-14	-2	80																
Launching Gantry 2																										
PR67043	Launching Gantry 2 Fabrication	105	06-Sep-14	0%	105	14-Jan-15	05-Sep-14	12-Jan-15	-2	50																
Lifting Frames																										
PR68010	Lifting Frame Technical Specs, Tender & Place Order	63	15-Jan-14 A	85%	9	04-Jul-14	16-Apr-14	30-Apr-14	-51	0																
Lifting Frames 1 & 2																										
PR68011	Lifting Frame 1&2 Design	70	04-Jul-14	0%	70	25-Sep-14	03-Jun-14	23-Aug-14	-26	0																
PR68012	Lifting Frame 1&2 Approval	60	13-Sep-14	0%	60	25-Nov-14	05-Sep-14	17-Nov-14	-6	20																
PR68013	Lifting Frame 1&2 Fabrication	140	13-Sep-14	0%	140	05-Mar-15	13-Aug-14	29-Jan-15	-26	0																
Lifting Frames 3 & 4																										
PR68015	Lifting Frame 3&4 Design	70	04-Jul-14	0%	70	25-Sep-14	02-May-14	25-Jul-14	-51	0																
PR68016	Lifting Frame 3&4 Approval	60	13-Sep-14	0%	60	25-Nov-14	07-Aug-14	18-Oct-14	-31	20																
PR68017	Lifting Frame 3&4 Fabrication	140	13-Sep-14	0%	140	05-Mar-15	15-Jul-14	30-Dec-14	-51	0																
Lifting Frames 5 & 6																										
PR68019	Lifting Frame 5&6 Design	70	04-Jul-14	0%	70	25-Sep-14	08-Nov-14	31-Jan-15	106	0																
PR68020	Lifting Frame 5&6 Approval	60	13-Sep-14	0%	60	25-Nov-14	13-Feb-15	02-May-15	126	20																
PR68021	Lifting Frame 5&6 Fabrication	140	13-Sep-14	0%	140	05-Mar-15	21-Jan-15	15-Jul-15	106	0																
Unloading Frames																										
Type 1																										

	Actual Work
	Planned Bar
	Critical Bar
	Milestone

Project ID: J3518DWPrD1-M13
Layout: J3518-DWP-3MRP submission - M13
Filter: TASK filters: 3-Month Lookahead, No Level of Effort.

Tuen Mun - Chek Lap Kok Link - Southern Connection
3-Month Rolling Programme (Page 13 of 27 Pages)
(Progress as of 21-Jun-14)

Date	Revision	Checked	Approved
28-Jun-14		FZ	

DWG. No.:
J3518/GCL/PGM/3MRP-M13

Activity ID	Activity Name	Orig. Durn.	Act. Start / FC Early Start	Duration % Complete	Rem. Durn.	Act. Finish / FC Early Finish	Late Start	Late Finish	Total Float	Free Float	2014																			
											June					July					August					September				
											19	26	02	09	16	23	30	07	14	21	28	04	11	18	25	01	08	15		
PR69100	Unloading Frame Type 1 Design	50	05-May-14 A	40%	30	28-Jul-14	10-Oct-14	13-Nov-14	90	17	[Gantt Bar: Green, June 19-26]																			
PR69110	Unloading Frame Type 1 Fabrication	95	23-Jun-14	0%	95	15-Oct-14	10-Oct-14	31-Jan-15	90	0	[Gantt Bar: Green, June 26-30]																			
Type 2																														
PR69170	Unloading Frame Type 2 Design	50	05-May-14 A	40%	30	28-Jul-14	18-May-15	23-Jun-15	267	17	[Gantt Bar: Green, July 07-14]																			
PR69180	Unloading Frame Type 2 Fabrication	95	23-Jun-14	0%	95	15-Oct-14	18-May-15	08-Sep-15	267	0	[Gantt Bar: Green, July 14-21]																			
Type 3																														
PR69220	Unloading Frame Type 3 Design	50	05-May-14 A	40%	30	28-Jul-14	17-Apr-14	27-May-14	-51	17	[Gantt Bar: Red, June 19-26]																			
PR69230	Unloading Frame Type 3 (Lantau) Fabrication	95	23-Jun-14	0%	95	15-Oct-14	17-Apr-14	13-Aug-14	-51	0	[Gantt Bar: Red, June 26-30]																			
Type 4																														
PR69250	Unloading Frame Type 4 Design	50	05-May-14 A	40%	30	28-Jul-14	29-Oct-14	02-Dec-14	106	17	[Gantt Bar: Green, July 07-14]																			
PR69260	Unloading Frame Type 4 (BCF) Fabrication	95	23-Jun-14	0%	95	15-Oct-14	29-Oct-14	23-Feb-15	106	0	[Gantt Bar: Green, July 14-21]																			
Deck Segments & Precast Pile Cap Shells																														
Preliminaries																														
MBBC0014	Pile Cap Shell Mould Fabrication & Erection (M1 & M2)	50	07-Apr-14 A	95%	3	25-Jun-14	16-Jun-14	18-Jun-14	-6	85	[Gantt Bar: Blue, June 19-26]																			
MBBE0010	Set Up Precast Segment Casting Yard & Beds etc	176	15-Oct-13 A	80%	35	04-Aug-14	19-Jun-14	31-Jul-14	-2	91	[Gantt Bar: Red, July 07-14]																			
MBBE0012	Precast Segment Mould Design (Viaduct B)	42	15-Oct-13 A	30%	29	28-Jul-14	25-Feb-14	31-Mar-14	-93	0	[Gantt Bar: Red, July 14-21]																			
MBBE0014	Precast Segment Mould Fabrication & Assembly (Viaduct B)	52	28-Jul-14	0%	52	27-Sep-14	01-Apr-14	07-Jun-14	-93	0	[Gantt Bar: Red, July 21-28]																			
MBBE0018	Precast Segment Mould Design (Viaduct E5, E6, E7 & E8)	42	15-Oct-13 A	60%	17	12-Jul-14	19-Jun-14	09-Jul-14	-3	0	[Gantt Bar: Red, July 28-Aug 04]																			
MBBE0020	Precast Segment Mould Fabrication & Assembly (Viaduct E5, E6, E7 & E8)	52	12-Jul-14	0%	52	12-Sep-14	10-Jul-14	08-Sep-14	-3	63	[Gantt Bar: Red, August 04-11]																			
MBBE0024	Precast Segment Mould Design (Viaduct E2)	42	15-Oct-13 A	60%	17	12-Jul-14	26-May-14	14-Jun-14	-23	0	[Gantt Bar: Red, August 11-18]																			
MBBE0026	Precast Segment Mould Fabrication & Assembly (Viaduct E2)	52	12-Jul-14	0%	52	12-Sep-14	16-Jun-14	15-Aug-14	-23	58	[Gantt Bar: Red, August 18-25]																			
MBBE0030	Precast Segment Mould Design (Viaduct E1)	42	23-Jun-14	0%	42	11-Aug-14	09-Jul-14	26-Aug-14	13	0	[Gantt Bar: Green, August 25-31]																			
MBBE0032	Precast Segment Mould Fabrication & Assembly (Viaduct E1)	52	12-Aug-14	0%	52	14-Oct-14	27-Aug-14	29-Oct-14	13	32	[Gantt Bar: Green, September 01-08]																			
MBBE0036	Precast Segment Mould Design (Viaduct D)	42	23-Jun-14	0%	42	11-Aug-14	07-Jul-14	23-Aug-14	11	0	[Gantt Bar: Green, September 08-15]																			
MBBE0038	Precast Segment Mould Fabrication & Assembly (Viaduct D)	52	12-Aug-14	0%	52	14-Oct-14	25-Aug-14	27-Oct-14	11	45	[Gantt Bar: Green, September 15-22]																			
MBBE0042	Precast Segment Mould Design (Viaduct C)	42	30-Aug-14	0%	42	21-Oct-14	06-Dec-14	27-Jan-15	81	0	[Gantt Bar: Green, September 22-29]																			
MBBE0054	Precast Segment Mould Design (Viaduct F1 to F5)	42	17-Sep-14	0%	42	06-Nov-14	16-Jan-15	09-Mar-15	99	0	[Gantt Bar: Green, September 29-30]																			
Viaduct B																														
Precast Pile Caps																														
MBBC0120	B: Commence Pile Cap Shell Casting on Approval of DDA	0	10-Jun-14 A	100%	0						[Milestone: Diamond, June 19]																			
MBBC0130	B: Commence Pile Cap Shell Delivery	0	06-Aug-14	0%	0		10-Jun-14		-48	1	[Milestone: Diamond, June 26]																			
MBBC0130-1	B: Progressive Pile Cap Shell Manufacture & Delivery remaining shells (7 Nr)	81	06-Aug-14	0%	81	11-Nov-14	06-Jun-14	10-Sep-14	-51	0	[Gantt Bar: Red, July 28-Aug 04]																			
PP7050	Production of initial Viaduct B Marine Precast Pile Cap Shells	55	10-Jun-14 A	100%	0	21-Jun-14 A					[Gantt Bar: Blue, June 19-26]																			
Materials																														
H-Piles																														
PP7390	Procurement of Viaduct D Socketted H-Piles	70	21-Feb-14 A	60%	28	25-Jul-14	15-May-14	17-Jun-14	-32	6	[Gantt Bar: Red, July 07-14]																			
PP7470	Procurement of Viaduct C Socketted H-Piles	70	13-Aug-14	0%	70	05-Nov-14	09-Jul-14	29-Sep-14	-30	17	[Gantt Bar: Red, August 11-18]																			
Reinforcement																														
Bored Piles																														
PP7020	Rebar - Cut, Bend & Fabricate Pile Cage for Viaduct B Piles	24	28-Feb-14 A	28%	17	14-Jul-14	21-May-14	11-Jun-14	-26	0	[Gantt Bar: Red, July 07-14]																			
PP7100	Rebar - Cut, Bend & Fabricate Pile Cage for Viaduct E5 & E6 Piles	185	28-Jul-14	0%	185	11-Mar-15	19-Feb-14	04-Oct-14	-128	0	[Gantt Bar: Red, August 11-18]																			
PP7170	Rebar - Cut, Bend & Fabricate Pile Cage for Viaduct E7 & E8 Piles	185	28-Jul-14	0%	185	11-Mar-15	17-Mar-14	30-Oct-14	-106	0	[Gantt Bar: Red, August 18-25]																			
PP7240	Rebar - Cut, Bend & Fabricate Pile Cage for Viaduct E2 Piles	106	15-Apr-14 A	20%	85	03-Oct-14	30-Apr-14	11-Aug-14	-43	138	[Gantt Bar: Red, August 25-31]																			
PP7310	Rebar - Cut, Bend & Fabricate Pile Cage for Viaduct E1 Piles	36	23-Jun-14	0%	36	04-Aug-14	25-Apr-14	10-Jun-14	-47	0	[Gantt Bar: Red, September 01-08]																			
PP7380	Rebar - Cut, Bend & Fabricate Pile Cage for Viaduct D Piles	25	23-Jun-14	0%	25	22-Jul-14	19-May-14	17-Jun-14	-29	2	[Gantt Bar: Red, September 08-15]																			
PP7460	Rebar - Cut, Bend & Fabricate Pile Cage for Viaduct C Piles	35	16-Sep-14	0%	35	28-Oct-14	25-Aug-14	07-Oct-14	-18	14	[Gantt Bar: Red, September 15-22]																			
PP7620	Rebar - Cut, Bend & Fabricate Pile Cage for Viaduct F1 & F3 Piles	61	19-Sep-14	0%	61	01-Dec-14	27-Sep-14	09-Dec-14	7	0	[Gantt Bar: Red, September 22-29]																			
PP7690	Rebar - Cut, Bend & Fabricate Pile Cage for Viaduct F2, F4 & F5 Piles	73	19-Sep-14	0%	73	15-Dec-14	04-Dec-14	06-Mar-15	63	0	[Gantt Bar: Red, September 29-30]																			

<ul style="list-style-type: none"> █ Actual Work █ Planned Bar █ Critical Bar ◆ Milestone 	Project ID: J3518DWPPrD1-M13 Layout: J3518-DWP-3MRP submission - M13 Filter: TASK filters: 3-Month Lookahead, No Level of Effort.	Tuen Mun - Chek Lap Kok Link - Southern Connection 3-Month Rolling Programme (Page 14 of 27 Pages) (Progress as of 21-Jun-14)				Date	Revision	Checked	Approved	DWG. No.: J3518/GCL/PGM/3MRP-M13
		28-Jun-14		FZ						

Activity ID	Activity Name	Orig. Dur.	Act. Start / FC Early Start	Duration % Complete	Rem. Dur.	Act. Finish / FC Early Finish	Late Start	Late Finish	Total Float	Free Float	2014												
											June			July			August			September			
											19	26	02	09	16	23	30	07	14	21	28	04	11
Marine Pile Caps																							
PP7040	Rebar - Cut, Bend & Fabricate for Viaduct B Marine Pile Caps	36	14-Jul-14	0%	36	25-Aug-14	12-Jun-14	24-Jul-14	-26	16													
PP7110	Rebar - Cut, Bend & Fabricate for Viaduct E5 & E6 Pile Caps	245	25-Aug-14	0%	245	25-Jun-15	19-Mar-14	14-Jan-15	-128	0													
PP7180	Rebar - Cut, Bend & Fabricate for Viaduct E7 & E8 Pile Caps	102	25-Aug-14	0%	102	27-Dec-14	28-May-14	26-Sep-14	-74	0													
PP7250	Rebar - Cut, Bend & Fabricate for Viaduct E2 Pile Caps	185	07-Aug-14	0%	185	20-Mar-15	30-Apr-14	09-Dec-14	-81	0													
PP7320	Rebar - Cut, Bend & Fabricate for Viaduct E1 Pile Caps	67	12-Aug-14	0%	67	01-Nov-14	11-Sep-14	01-Dec-14	25	0													
PP7400	Rebar - Cut, Bend & Fabricate for Viaduct D Marine Pile Caps	47	25-Jul-14	0%	47	18-Sep-14	29-Aug-14	25-Oct-14	30	53													
Marine Piers - Viaduct E																							
PP7270	Rebar - Cut, Bend & Fabricate for Viaduct E2 Piers	180	04-Sep-14	0%	180	16-Apr-15	30-May-14	03-Jan-15	-81	2													
Land Pile Caps																							
PP7752	Rebar - Cut, Bend & Fabricate for Viaduct B Land Pile Caps	26	14-Jul-14	0%	26	13-Aug-14	02-Aug-14	01-Sep-14	17	0													
PP7754	Rebar - Cut, Bend & Fabricate for Viaduct D Land Pile Caps	29	25-Jul-14	0%	29	27-Aug-14	20-Sep-14	25-Oct-14	48	1													
Land / Marine Piers - Viaduct A, B, C, D & F																							
PP7060	Bending of Rebar for Viaduct B Piers	64	13-Aug-14	0%	64	30-Oct-14	02-Sep-14	18-Nov-14	17	61													
PP7420	Bending of Rebar for Viaduct D Piers	71	29-Aug-14	0%	71	22-Nov-14	14-Mar-15	11-Jun-15	160	197													
In-Situ Formworks / Falseworks																							
PP7070	On-Site Preparation & Assembly of Pier Formwork for Viaduct B Piers	70	02-Sep-14	0%	70	25-Nov-14	30-Aug-14	22-Nov-14	-2	20													
PP7140	On-Site Preparation & Assembly of Pier Formwork for Viaduct E5 & E6 Piers	90	02-Sep-14	0%	90	18-Dec-14	15-Sep-14	02-Jan-15	10	136													
PP7280	On-Site Preparation & Assembly of Pier Formwork for Viaduct E2 Piers	90	02-Sep-14	0%	90	18-Dec-14	27-Jun-14	14-Oct-14	-56	0													
PP7430	On-Site Preparation & Assembly of Pier Formwork for Viaduct D Piers	90	02-Sep-14	0%	90	18-Dec-14	20-Oct-14	05-Feb-15	38	0													
PPPF02	Design & Fabrication of Falsework / Formwork & Delivery	120	20-Feb-14 A	50%	60	01-Sep-14	11-Apr-14	26-Jun-14	-56	0													
Bearings																							
Viaduct B																							
PPBRB3	Bearing design and submission - Viaduct B	12	07-Feb-14 A	85%	2	24-Jun-14	07-May-14	08-May-14	-39	0													
PPBRB4	Design check by ICE - Viaduct B	24	24-Jun-14	0%	24	23-Jul-14	09-May-14	06-Jun-14	-39	0													
PPBRB5	SO review & comment on design submission - Viaduct B	36	23-Jul-14	0%	36	03-Sep-14	07-Jun-14	19-Jul-14	-39	0													
PPBRB6	Bearing Design Amendment & re-issue - Viaduct B	12	03-Sep-14	0%	12	18-Sep-14	28-Jul-14	09-Aug-14	-33	6													
PPBRB7	Manufacture of Bearing - Viaduct B	54	23-Jul-14	0%	54	25-Sep-14	07-Jun-14	09-Aug-14	-39	0													
Viaduct D																							
PPBRD1	Preliminary Design of Bearings - Viaduct D	50	16-Aug-14	0%	50	16-Oct-14	10-Jul-14	05-Sep-14	-32	0													
Viaduct E																							
PPBRE2	Confirmation of bearing assumption - Viaduct E (E1, E2, E5, E6, E7 & E8)	0		0%	0	21-Jun-14		31-Jul-14	33	4													
PPBRE3	Bearing design and submission - Viaduct E (E1, E2, E5, E6, E7 & E8)	12	06-Jan-14 A	70%	4	26-Jun-14	28-Jul-14	31-Jul-14	29	0													
PPBRE4	Design check by ICE - Viaduct E (E1, E2, E5, E6, E7 & E8)	24	26-Jun-14	0%	24	25-Jul-14	01-Aug-14	28-Aug-14	29	0													
PPBRE5	SO review & comment on design submission - Viaduct E (E1, E2, E5, E6, E7 & E8)	36	25-Jul-14	0%	36	05-Sep-14	29-Aug-14	13-Oct-14	29	0													
PPBRE6	Bearing Design Amendment & re-issue - Viaduct E (E1, E2, E5, E6, E7 & E8)	12	05-Sep-14	0%	12	20-Sep-14	21-Oct-14	03-Nov-14	35	6													
PPBRE7	Manufacture of Bearing - Viaduct E (E1, E2, E5, E6, E7 & E8)	54	25-Jul-14	0%	54	27-Sep-14	29-Aug-14	03-Nov-14	29	0													
Movement Joints																							
PPMJ01	Design & Submission of MJ	138	08-Feb-14 A	30%	97	15-Dec-14	30-Oct-14	26-Feb-15	57	58													
Other Sub-Contract Procurement																							
Structural Health Monitoring System (SHMS)																							
PP7770	Procure SHMS Sub-Contractor	42	11-Nov-13 A	67%	14	09-Jul-14	19-Feb-14	06-Mar-14	-99	0													
PP7772	SHMS - Prepare & Submit Preliminary System Proposal	30	09-Jul-14	0%	30	13-Aug-14	07-Mar-14	11-Apr-14	-99	0													
PP7774	SHMS - So approval of Preliminary System Proposal	30	13-Aug-14	0%	30	18-Sep-14	09-May-14	13-Jun-14	-81	18													
PP7776	SHMS - Prepare & Submit Final System Proposal	48	13-Aug-14	0%	48	11-Oct-14	12-Apr-14	13-Jun-14	-99	0													
PP7780	SHMS - Prepare Civil Work Provision	90	13-Aug-14	0%	90	29-Nov-14	14-May-14	28-Aug-14	-77	0													
PP7782	SHMS - Submit Precast Pile Cap Shell SHMS details for E5-E6-E7-E8	0	11-Sep-14	0%	0		25-Jun-14		-66	46													
Site Preparation / Mobilisations																							

Activity ID	Activity Name	Orig. Durn.	Act. Start / FC Early Start	Duration % Complete	Rem. Durn.	Act. Finish / FC Early Finish	Late Start	Late Finish	Total Float	Free Float	2014																																					
											June					July					August					September																						
											19	26	02	09	16	23	30	07	14	21	28	04	11	18	25	01	08	15																				
Temp Traffic Mgt Submission & Approval																																																
TTM00380	Send TTMs to SO & Govt Depts for TMLG Meeting No. 10	0		100%	0	26-May-14 A						◆																																				
TTM00390	TMLG Meeting No. 10	0		100%	0	05-Jun-14 A							◆																																			
TTM00400	Earliest Implementation of TTM after TMLG Meeting No. 10	0	23-Jun-14	0%	0		05-Nov-14		97	60																																						
TTM00410	Send TTMs to SO & Govt Depts for TMLG Meeting No. 11	0		0%	0	23-Jun-14		07-Aug-14	34	0			◆																																			
TTM00420	TMLG Meeting No. 11	0		0%	0	04-Jul-14*		21-Aug-14	34	0				◆																																		
TTM00430	Earliest Implementation of TTM after TMLG Meeting No. 11	0	21-Jul-14	0%	0		05-Sep-14		34	0																																						
TTM00440	Send TTMs to SO & Govt Depts for TMLG Meeting No. 12	0		0%	0	18-Jul-14		12-Sep-14	40	4				◆																																		
TTM00450	TMLG Meeting No. 12	0		0%	0	07-Aug-14*		26-Sep-14	36	0					◆																																	
TTM00460	Earliest Implementation of TTM after TMLG Meeting No. 12	0	22-Aug-14	0%	0		22-Sep-15		282	20																																						
TTM00470	Send TTMs to SO & Govt Depts for TMLG Meeting No. 13	0		0%	0	21-Aug-14		10-Oct-14	36	0					◆																																	
TTM00480	TMLG Meeting No. 13	0		0%	0	04-Sep-14*		24-Oct-14	36	0						◆																																
TTM00490	Earliest Implementation of TTM after TMLG Meeting No. 13	0	19-Sep-14	0%	0		22-Sep-15		262	20																																						
TTM00500	Send TTMs to SO & Govt Depts for TMLG Meeting No. 14	0		0%	0	18-Sep-14		07-Nov-14	36	0						◆																																
Tree Felling / Transplant																																																
Approved Trees in Contract																																																
TR00140	SO Approval of Base Tree Survey Report	30	14-Oct-13 A	90%	3	25-Jun-14	20-Aug-18	23-Aug-18	1085	1085																																						
TR00200	Tree transplant for Viaduct B - affecting Piers B11 to B17	90	17-Feb-14 A	98%	2	25-Jun-14	15-Feb-16	16-Feb-16	442	1108																																						
TR00220	Tree transplant for Viaduct B - affecting Pier B18 & Abutment B	90	17-Feb-14 A	98%	2	25-Jun-14	28-Feb-14	01-Mar-14	-73	203																																						
TR00240	Tree transplant for Viaduct B - affecting realigned CTR	90	17-Feb-14 A	98%	2	25-Jun-14	28-Feb-14	01-Mar-14	-73	119																																						
TR00250	Tree felling for Viaduct B - affecting Slopes 9SE-B/F9, C8 & C9	48	05-May-14 A	13%	42	22-Aug-14	24-Mar-14	29-May-14	-53	52																																						
TR00260	Tree felling for Viaduct C - affecting Piers C9 to Abutment C	24	30-Jan-14 A	35%	16	15-Jul-14	17-Oct-14	04-Nov-14	81	56																																						
TR00270	Tree transplant for Viaduct C - affecting Piers C9 to Abutment C	90	17-Feb-14 A	20%	72	03-Oct-14	29-Jul-14	04-Nov-14	25	0																																						
TR00280	Tree felling for Viaduct C - affecting realigned CTR	30	30-Jan-14 A	35%	20	21-Jul-14	25-Apr-14	26-May-14	-33	53																																						
TR00290	Tree transplant for Viaduct C - affecting realigned CTR	90	17-Feb-14 A	20%	72	03-Oct-14	14-Feb-14	26-May-14	-85	0																																						
Additional Trees																																																
TR01010	Additional tree felling for Viaduct B along CTR	48	19-May-14 A	42%	28	01-Aug-14	22-Feb-14	26-Mar-14	-78	88																																						
Site Set Up for Works Area 3 and Site Offices along CEDD Access Road																																																
PR30030	Works Area 3-A1/3-A2 - Construct 1.5m steel access bridge	30	24-Jun-14	0%	30	05-Aug-14	16-Jul-18	23-Aug-18	1079	1079																																						
PR30040	Set up container site offices at crest of CEDD Seawall	60	16-Oct-13 A	100%	0	21-May-14 A																																										
Temporary Working Platform at North Lantau																																																
PR08020	Temp. Working Platform at N.Lantau - Install boundary fence	22	24-Jun-14	0%	22	24-Jul-14	11-Aug-14	11-Sep-14	33	82																																						
PR08030	Temp. Working Platform at N.Lantau - Modify top of existing seawall	24	25-Nov-13 A	71%	7	03-Jul-14	24-Jan-14	04-Feb-14	-100	5																																						
PR08050	Temp. Working Platform at N.Lantau - Temp. rockfill & paving between existing & Temp.Seawalls	42	17-Feb-13 A	71%	12	11-Jul-14	17-Jan-14	04-Feb-14	-105	0																																						
PR08070	Temp. Working Platform at N.Lantau - Construct steel deck / bollards / fenders	24	02-May-14 A	30%	17	28-Jul-14	27-Jan-14	18-Feb-14	-105	0																																						
CONSTRUCTION																																																
PILING AND SUBSTRUCTURE																																																
Viaduct A																																																
Milestones - Marine Foundation																																																
GFXX111	Viaduct A - ARUP issues Pile Spacing & Diameter for Temporary Platform Design	0	28-Jun-14	0%	0		27-Dec-14		150	109																																						
General																																																
ZA00060	Prepare/submit/approval of MTR Protective Fence submission for Viaduct A	60	23-Jun-14	0%	60	12-Sep-14	27-Jun-14	18-Sep-14	4	0																																						
Bridge A2																																																
Pier A1 (A2e)																																																
Foundation Works																																																
GFXX142	A1 (A2e) - Inst.Temp.Working Platform (Common Platform with Pier A1,C1,D1)	23	21-May-14 A	90%	2	25-Jun-14	25-Mar-15	27-Mar-15	227	0																																						
GFXX143	A1 (A2e) - Pre-drilling (3 nos)	14	25-Jun-14	0%	14	12-Jul-14	28-Mar-15	17-Apr-15	227	0																																						
GFXX143-2	A1 (A2e) - Confirm Rockhead Levels	8	12-Jul-14	0%	8	22-Jul-14	25-Apr-15	05-May-15	233	137																																						

<ul style="list-style-type: none"> ■ Actual Work ■ Planned Bar ■ Critical Bar ◆ Milestone 	Project ID: J3518DWPPrD1-M13 Layout: J3518-DWP-3MRP submission - M13 Filter: TASK filters: 3-Month Lookahead, No Level of Effort.	Tuen Mun - Chek Lap Kok Link - Southern Connection 3-Month Rolling Programme (Page 16 of 27 Pages) (Progress as of 21-Jun-14)	Date 28-Jun-14	Revision	Checked FZ	Approved	DWG. No.: J3518/GCL/PGM/3MRP-M13
--	---	--	-------------------	----------	---------------	----------	---

Activity ID	Activity Name	Orig. Durn.	Act. Start / FC Early Start	Duration % Complete	Rem. Durn.	Act. Finish / FC Early Finish	Late Start	Late Finish	Total Float	Free Float	2014																																						
											June				July				August				September																										
											19	26	02	09	16	23	30	07	14	21	28	04	11	18	25	01	08	15																					
Bridge A1																																																	
Pier A8 (A1d)																																																	
Preliminary Works for Land Piling																																																	
PA080020	A08 (A1d) - Erect MTR protective fence / Remove existing fence	12	13-Sep-14	0%	12	26-Sep-14	19-Sep-14	04-Oct-14	5	0																																							
PA080030	A08 (A1d) - Install Geo. Instru. & Baseline Monitoring	36	13-Sep-14	0%	36	27-Oct-14	19-Sep-14	01-Nov-14	5	0																																							
Pier A9 (A1c)																																																	
Preliminary Works for Land Piling																																																	
PA090010	A09 (A1c) - Implement TTMS along north side of NLH E/B	2	13-Sep-14	0%	2	15-Sep-14	24-Oct-14	25-Oct-14	31	0																																							
PA090020	A09 (A1c) - Erect boundary fence, site clearance & set up site ingress	4	16-Sep-14	0%	4	19-Sep-14	27-Oct-14	30-Oct-14	31	6																																							
Pier A10 (A1b)																																																	
Preliminary Works for Land Piling																																																	
PA100010	A10 (A1b) - Implement TTMS along north side of NLH E/B	2	13-Sep-14	0%	2	15-Sep-14	05-Nov-14	06-Nov-14	41	0																																							
Pier A11 (A1a) & Abutment A																																																	
Preliminary Works for Land Piling																																																	
PA110010	A11 (A1a) to Abutment A - Implement TTMS along north side of NLH E/B	2	13-Sep-14	0%	2	15-Sep-14	05-Nov-14	06-Nov-14	41	0																																							
PA110020	A11 (A1a) to Approach Ramp A - Erect boundary fence / water filled barrier & set up site ingress	14	16-Sep-14	0%	14	03-Oct-14	07-Nov-14	22-Nov-14	41	0																																							
Viaduct B																																																	
Milestones - Marine Foundation																																																	
GFXX152-1	B7 (B2f) - Start date for piling	0	17-Jul-14	0%	0		26-May-14		-43	0																																							
GFXX157-1	B6 (B3a) - Start date for piling	0	23-Jun-14	0%	0		22-May-14		-26	0																																							
GFXX162-1	B5 (B3b) - Start date for piling	0	21-May-14 A	100%	0																																												
GFXX165-1	B5 (B3b) - Completion of piling works	0		0%	0	26-Jul-14		01-Sep-14	31	10																																							
GFXX170-1	B4 (B3c) - Completion of piling works	0		0%	0	29-Jul-14		01-Sep-14	30	57																																							
GFXX175-1	B3 (B3d) - Completion of piling works	0		0%	0	11-Sep-14		15-Aug-14	-22	8																																							
GFXX180-1	B2 (B3e) - Completion of piling works	0		0%	0	26-Jun-14		05-Jun-14	-18	12																																							
GFXX185-1	B1 (B3f) - Completion of piling works	0		0%	0	26-Jun-14		17-Jun-14	-8	12																																							
Milestones - Land Foundation																																																	
ZB00100	B14 (B1f) - Start date for piling	0	23-Jun-14	0%	0		29-Jul-14		30	0																																							
ZB00101	B14 (B1f) - Completion of piling works	0		0%	0	22-Aug-14		27-Sep-14	30	0																																							
ZB00110	B13 (B1g) - Start date for piling	0	23-Jun-14	0%	0		13-Sep-14		69	0																																							
ZB00111	B13 (B1g) - Completion of piling works	0		0%	0	22-Aug-14		14-Nov-14	69	0																																							
ZB00121	B12 (B2a) - Completion of piling works	0		0%	0	11-Jul-14		22-Aug-14	36	0																																							
ZB00131	B11 (B2b) - Completion of piling works	0		0%	0	14-Jul-14		03-Nov-14	94	0																																							
ZB00150	B9 (B2d) - Start date for piling	0	03-Jul-14	0%	0		23-Jul-14		17	0																																							
ZB00160	B8 (B2e) - Start date for piling	0	30-Jun-14	0%	0		15-May-14		-38	1																																							
ZB00161	B8 (B2e) - Completion of piling works	0		0%	0	08-Sep-14		25-Jul-14	-38	1																																							
ZB15011	B15 (B1e) - Completion of piling works	0		0%	0	21-Jun-14		18-Nov-14	124	1																																							
ZB16011	B16 (B1d) - Completion of piling works	0		0%	0	21-Jun-14		27-Nov-14	131	7																																							
Bridge B3																																																	
Pier B1 (B3f)																																																	
Foundation Works																																																	
GFXX185	B1 (B3f) - Dismantle removable panels of temp. platform	4	23-Jun-14	0%	4	26-Jun-14	27-May-14	30-May-14	-22	0																																							
Pile Cap Works																																																	
SB3F0070	B1 (B3f) - Marine Pile Cap M2 - Inst.Floating Seal & Casing Head Steelwork	7	28-Jun-14	0%	7	11-Jul-14	31-May-14	17-Jun-14	-11	16																																							
SB3F0080	B1 (B3f) - Marine Pile Cap M2 - Install precast shell in position	1	07-Aug-14	0%	1	07-Aug-14	19-Jun-14	19-Jun-14	-27	0																																							
SB3F0090	B1 (B3f) - Marine Pile Cap M2 - Inst.Access & make Watertight	3	08-Aug-14	0%	3	12-Aug-14	21-Jun-14	26-Jun-14	-27	0																																							
SB3F0100	B1 (B3f) - Marine Pile Cap M2 - Weld Fin plates/Plug Rebar & Concrete	9	14-Aug-14	0%	9	26-Aug-14	28-Jun-14	15-Jul-14	-27	0																																							
SB3F0110	B1 (B3f) - Marine Pile Cap M2 - Dewater precast shell / Remove Lifting Frame	2	28-Aug-14	0%	2	29-Aug-14	17-Jul-14	18-Jul-14	-27	0																																							

Activity ID	Activity Name	Orig. Durn.	Act. Start / FC Early Start	Duration % Complete	Rem. Durn.	Act. Finish / FC Early Finish	Late Start	Late Finish	Total Float	Free Float	2014															
											June				July				August				September			
											19	26	02	09	16	23	30	07	14	21	28	04	11	18	25	01
SB3F0120	B1 (B3f) - Marine Pile Cap M2 - Pile cut down	12	30-Aug-14	0%	12	16-Sep-14	19-Jul-14	05-Aug-14	-27	0																
SB3F0130	B1 (B3f) - Marine Pile Cap M2 - Rebar fixing, inst.inserts etc	12	18-Sep-14	0%	12	04-Oct-14	07-Aug-14	25-Aug-14	-27	0																
Pier B2 (B3e)																										
Foundation Works																										
GFXX179	B2 (B3e) - Sonic & Interface Coring	12	19-May-14 A	100%	0	21-May-14 A																				
GFXX180	B2 (B3e) - Dismantle removable panels of temp. platform	4	23-Jun-14	0%	4	26-Jun-14	21-May-14	24-May-14	-27	0																
Pile Cap Works																										
SB3E0070	B2 (B3e) - Marine Pile Cap M1 - Inst.Floating Seal & Casing Head Steelwork	7	28-Jun-14	0%	7	11-Jul-14	26-May-14	05-Jun-14	-15	16																
SB3E0080	B2 (B3e) - Marine Pile Cap M1 - Install precast shell in position	1	07-Aug-14	0%	1	07-Aug-14	10-Jun-14	10-Jun-14	-31	0																
SB3E0090	B2 (B3e) - Marine Pile Cap M1 - Inst.Access & make Watertight	3	08-Aug-14	0%	3	12-Aug-14	12-Jun-14	17-Jun-14	-31	0																
SB3E0100	B2 (B3e) - Marine Pile Cap M1 - Weld Fin plates/Plug Rebar & Concrete	9	14-Aug-14	0%	9	26-Aug-14	19-Jun-14	08-Jul-14	-31	0																
SB3E0120	B2 (B3e) - Marine Pile Cap M1 - Dewater precast shell / Remove Lifting Frame	2	28-Aug-14	0%	2	29-Aug-14	10-Jul-14	11-Jul-14	-31	0																
SB3E0130	B2 (B3e) - Marine Pile Cap M1 - Pile cut down	8	30-Aug-14	0%	8	11-Sep-14	12-Jul-14	24-Jul-14	-31	1																
SB3E0140	B2 (B3e) - Marine Pile Cap M1 - Rebar fixing, inst.inserts etc	12	13-Sep-14	0%	12	29-Sep-14	25-Jul-14	12-Aug-14	-32	0																
Pier B3 (B3d)																										
Foundation Works																										
GFXX172-2	B3 (B3d) - Confirm Rockhead Levels	8	16-Apr-14 A	100%	0	23-May-14 A																				
GFXX173	B3 (B3d) - Bored Piles (2.20m dia. x 2 nos)	56	10-Apr-14 A	72%	16	11-Jul-14	12-Apr-14	05-May-14	-55	0																
GFXX174	B3 (B3d) - Sonic & Interface Coring	12	11-Jul-14	0%	12	25-Jul-14	18-Jun-14	02-Jul-14	-20	12																
GFXX174-1	B3 (B3d) - Selection of bored pile for Full Depth Coring	24	11-Jul-14	0%	24	08-Aug-14	04-Jun-14	02-Jul-14	-32	0																
GFXX174-2	B3 (B3d) - Bored Pile Full Depth Coring & Testing	24	08-Aug-14	0%	24	05-Sep-14	03-Jul-14	30-Jul-14	-32	0																
GFXX175	B3 (B3d) - Dismantle removable panels of temp. platform	4	05-Sep-14	0%	4	11-Sep-14	31-Jul-14	04-Aug-14	-32	0																
Pile Cap Works																										
SB3D0070	B3 (B3d) - Marine Pile Cap M1 - Inst.Floating Seal & Casing Head Steelwork	7	11-Sep-14	0%	7	20-Sep-14	05-Aug-14	15-Aug-14	-24	0																
SB3D0080	B3 (B3d) - Marine Pile Cap M1 - Install precast shell in position	1	20-Sep-14	0%	1	22-Sep-14	16-Aug-14	16-Aug-14	-24	0																
Pier B4 (B3c)																										
Foundation Works																										
GFXX167-2	B4 (B3c) - Confirm Rockhead Levels	8	29-Apr-14 A	90%	1	23-Jun-14	30-May-14	30-May-14	-19	14																
GFXX168	B4 (B3c) - Bored Piles (2.20m dia. x 2 nos)	72	13-May-14 A	80%	14	10-Jul-14	14-May-14	30-May-14	-32	0																
GFXX169	B4 (B3c) - Sonic & Interface Coring	12	10-Jul-14	0%	12	24-Jul-14	05-Aug-14	18-Aug-14	22	0																
GFXX170	B4 (B3c) - Dismantle removable panels of temp. platform	4	24-Jul-14	0%	4	29-Jul-14	19-Aug-14	22-Aug-14	22	0																
Pier B5 (B3b)																										
Foundation Works																										
GFXX162-2	B5 (B3b) - Confirm Rockhead Levels	8	10-May-14 A	100%	0	17-Jun-14 A																				
GFXX163	B5 (B3b) - Bored Piles (2.20m dia. x 2 nos)	72	21-May-14 A	83%	12	08-Jul-14	26-May-14	10-Jun-14	-22	0																
GFXX164	B5 (B3b) - Sonic & Interface Coring	12	08-Jul-14	0%	12	22-Jul-14	04-Aug-14	18-Aug-14	23	0																
GFXX165	B5 (B3b) - Dismantle removable panels of temp. platform	4	22-Jul-14	0%	4	26-Jul-14	18-Aug-14	22-Aug-14	23	0																
Pile Cap Works																										
SB3B0070	B5 (B3b) - Marine Pile Cap M1 - Inst.Floating Seal & Casing Head Steelwork	7	26-Jul-14	0%	7	07-Aug-14	22-Aug-14	01-Sep-14	16	0																
SB3B0080	B5 (B3b) - Marine Pile Cap M1 - Install precast shell in position	1	07-Aug-14	0%	1	08-Aug-14	01-Sep-14	02-Sep-14	16	0																
SB3B0090	B5 (B3b) - Marine Pile Cap M1 - Inst.Access & make Watertight	3	08-Aug-14	0%	3	14-Aug-14	02-Sep-14	08-Sep-14	17	0																
SB3B0100	B5 (B3b) - Marine Pile Cap M1 - Weld Fin plates/Plug Rebar & Concrete	9	14-Aug-14	0%	9	28-Aug-14	08-Sep-14	22-Sep-14	17	0																
SB3B0120	B5 (B3b) - Marine Pile Cap M1 - Dewater precast shell / Remove Lifting Frame	2	28-Aug-14	0%	2	30-Aug-14	22-Sep-14	25-Sep-14	17	0																
SB3B0130	B5 (B3b) - Marine Pile Cap M1 - Pile cut down	8	30-Aug-14	0%	8	12-Sep-14	25-Sep-14	07-Oct-14	17	1																
SB3B0140	B5 (B3b) - Marine Pile Cap M1 - Rebar fixing, inst.inserts etc	12	13-Sep-14	0%	12	29-Sep-14	07-Oct-14	23-Oct-14	16	0																
Pier B6 (B3a)																										
Foundation Works																										
GFXX156	B6 (B3a) - Inst.Temp.Working Platform	6	30-Apr-14 A	100%	0	10-Jun-14 A																				

- Actual Work
- Planned Bar
- Critical Bar
- ◆ Milestone

Project ID: J3518DWPrD1-M13
 Layout: J3518-DWP-3MRP submission - M13
 Filter: TASK filters: 3-Month Lookahead, No Level of Effort.

Tuen Mun - Chek Lap Kok Link - Southern Connection
3-Month Rolling Programme (Page 18 of 27 Pages)
(Progress as of 21-Jun-14)

Date	Revision	Checked	Approved
28-Jun-14		FZ	

DWG. No.:
J3518/GCL/PGM/3MRP-M13

Activity ID	Activity Name	Orig. Durn.	Act. Start / FC Early Start	Duration % Complete	Rem. Durn.	Act. Finish / FC Early Finish	Late Start	Late Finish	Total Float	Free Float	2014															
											June				July				August				September			
											19	26	02	09	16	23	30	07	14	21	28	04	11	18	25	01
GFXX157	B6 (B3a) - Predrilling for Piles (3 nos)	12	11-Jun-14 A	67%	4	26-Jun-14	07-May-14	10-May-14	-39	3																
GFXX157-2	B6 (B3a) - Confirm Rockhead Levels	8	21-Jun-14 A	12.5%	7	30-Jun-14	02-May-14	10-May-14	-42	0																
GFXX158	B6 (B3a) - Bored Piles (1.80m dia. x 3 nos)	72	21-Jun-14 A	1%	71	16-Sep-14	30-Apr-14	26-Jul-14	-42	0																
GFXX159	B6 (B3a) - Sonic & Interface Coring	12	17-Sep-14	0%	12	30-Sep-14	16-Aug-14	29-Aug-14	-26	0																
Bridge B2																										
Pier B7 (B2f)																										
Foundation Works																										
GFXX151	B7 (B2f) - Inst.Temp.Working Platform	6	29-May-14 A	100%	0	20-Jun-14 A																				
GFXX152	B7 (B2f) - Predrilling (2 nos)	12	23-Jun-14	0%	12	07-Jul-14	08-Apr-14	24-Apr-14	-59	0																
GFXX152-2	B7 (B2f) - Confirm Rockhead Levels	8	08-Jul-14	0%	8	16-Jul-14	25-Apr-14	05-May-14	-59	0																
GFXX153	B7 (B2f) - Bored Piles (2.20m dia. x 2 nos)	66	17-Jul-14	0%	66	04-Oct-14	07-May-14	24-Jul-14	-59	0																
Pier B8 (B2e)																										
Preliminary Works for Land Piling																										
GFXX310-2	B8 (B2e) - Pre-grouting Works	12	28-May-14 A	100%	0	21-Jun-14 A																				
PB080030	B8 (B2e) - Install Geo. Instru. & Baseline Monitoring	36	23-Jun-14	0%	36	04-Aug-14	27-Mar-14	14-May-14	-68	0																
PB080040	B8 (B2e) - Set up piling platform	10	05-May-14 A	100%	0	18-Jun-14 A																				
PB080050	B8 (B2e) - Complete Civil Preparation Works for Piling	0		100%	0	21-Jun-14 A																				
Socketted H-Pile Installation																										
GFXX352-1	B8 (B2e) - Confirm Rockhead Levels	8	08-Mar-14 A	100%	0	17-Jun-14 A																				
GFXX353	B8 (B2e) - Install SH Pile (14 nr)	60	30-Jun-14	0%	60	08-Sep-14	03-Apr-14	19-Jun-14	-68	0																
Pile Cap Works																										
SB2E0088	B8 (B2e) - Pile cap - Pipe Pile Wall for ELS	24	11-Sep-14	0%	24	11-Oct-14	26-Jul-14	30-Aug-14	-30	0																
Pier B9 (B2d)																										
Preliminary Works for Land Piling																										
PB090050	B9 (B2d) - Set up concrete blocks / piling platform	36	22-Mar-14 A	91.67%	3	26-Jun-14	15-Aug-14	18-Aug-14	36	0																
PB090070	B9 (B2d) - Install Geo. Instru. & Baseline Monitoring	36	27-Jun-14	0%	36	08-Aug-14	19-Aug-14	30-Sep-14	44	0																
PB090120	B9 (B2d) - Erect platform for pregrouting	6	24-Jun-14	0%	6	30-Jun-14	24-Sep-14	30-Sep-14	65	26																
PB090150	B9 (B2d) - Pre-grouting Works B9	12	09-Aug-14	0%	12	22-Aug-14	03-Oct-14	16-Oct-14	44	0																
PB090190	B9 (B2d) - Complete civil preparation works	0		0%	0	22-Aug-14		16-Oct-14	39	24																
Socketted H-Pile Installation																										
GFXX347	B9 (B2d) - Predrilling	16	31-May-14 A	100%	0	06-Jun-14 A																				
GFXX347-1	B9 (B2d) - Confirm Rockhead Levels	8	07-Jun-14 A	0%	8	02-Jul-14	17-May-14	26-May-14	-30	0																
GFXX348	B9 (B2d) - Install SH Pile (14 nr)	71	03-Jul-14	0%	71	24-Sep-14	27-May-14	19-Aug-14	-30	0																
Pier B10 (B2c)																										
Preliminary Works for Land Piling																										
PB100020	B10 (B2c) - Trial trench	14	24-Jun-14	0%	14	12-Jul-14	19-Feb-14	06-Mar-14	-81	24																
PB100022	B10 (B2c) - Install Geo. Instru. & Baseline Monitoring	36	04-Apr-14 A	100%	0	22-May-14 A																				
PB100040	B10 (B2c) - TTM Review/Approval new Emergency Access Gates G8 & G9	36	24-Jun-14	0%	36	14-Aug-14	18-Jan-14	04-Mar-14	-105	0																
PB100050	B10 (B2c) - Implement TTM for constructing new Emergency Access Gates G8 & G9	2	15-Aug-14	0%	2	16-Aug-14	05-Mar-14	06-Mar-14	-105	0																
PB100060	B10 (B2c) - Construct fencing / roadside beam barriers between new Gates G8 & G9	20	18-Aug-14	0%	20	15-Sep-14	07-Mar-14	29-Mar-14	-105	0																
PB100070	B10 (B2c) - Construct new Gate G8	20	16-Sep-14	0%	20	11-Oct-14	31-Mar-14	03-May-14	-105	0																
PB100080	B10 (B2c) - Construct new Gate G9	20	16-Sep-14	0%	20	11-Oct-14	31-Mar-14	03-May-14	-105	0																
Pier B11 (B2b)																										
Socketted H-Pile Installation																										
GFXX334-1	B11 (B2b) - Install SH Pile (12 nr)	52	22-Apr-14 A	67%	17	14-Jul-14	14-Oct-14	03-Nov-14	94	0																
Pile Cap Works																										
SB2B0090	B11 (B2b) - Utility diversion & Cut Slope	36	14-Jul-14	0%	36	04-Sep-14	04-Nov-14	15-Dec-14	82	0																
SB2B0091	B11 (B2b) - Pile cap Excavation / ELS	24	04-Sep-14	0%	24	07-Oct-14	16-Dec-14	15-Jan-15	82	0																

<ul style="list-style-type: none"> █ Actual Work █ Planned Bar █ Critical Bar ◆ Milestone 	Project ID: J3518DWPPrD1-M13 Layout: J3518-DWP-3MRP submission - M13 Filter: TASK filters: 3-Month Lookahead, No Level of Effort.	Tuen Mun - Chek Lap Kok Link - Southern Connection 3-Month Rolling Programme (Page 19 of 27 Pages) (Progress as of 21-Jun-14)	Date 28-Jun-14	Revision	Checked FZ	Approved	DWG. No.: J3518/GCL/PGM/3MRP-M13
---	---	--	-------------------	----------	---------------	----------	---

Activity ID	Activity Name	Orig. Durn.	Act. Start / FC Early Start	Duration % Complete	Rem. Durn.	Act. Finish / FC Early Finish	Late Start	Late Finish	Total Float	Free Float	2014																			
											June					July					August					September				
											19	26	02	09	16	23	30	07	14	21	28	04	11	18	25	01	08	15		
Pier B12 (B2a)																														
Socketted H-Pile Installation																														
GFXX334-2	B12 (B2a) - Install SH Pile (10 nr)	52	08-May-14 A	70%	16	11-Jul-14	05-Aug-14	22-Aug-14	36	0																				
GFXX354-5	B12 (B2a) - Selection of pile for loading test	24	11-Jul-14	0%	24	08-Aug-14	23-Aug-14	20-Sep-14	36	0																				
GFXX354-7	B12 (B2a) - Loading Test for pre-bored H-pile	36	08-Aug-14	0%	36	20-Sep-14	22-Sep-14	04-Nov-14	36	0																				
Pile Cap Works																														
SB2A0090	B12 (B2a) - Utility diversion & Cut Slope	36	20-Sep-14	0%	36	06-Nov-14	05-Nov-14	16-Dec-14	34	0																				
Bridge B1																														
Pier B13 (B1g)																														
Socketted H-Pile Installation																														
GFXX334-3	B13 (B1g) - Install SH Pile (13 nr)	52	23-Jun-14	0%	52	22-Aug-14	13-Sep-14	14-Nov-14	69	0																				
Pile Cap Works																														
SB1G0090	B13 (B1g) - Utility diversion & Cut slope	36	23-Aug-14	0%	36	11-Oct-14	15-Nov-14	29-Dec-14	64	0																				
Pier B14 (B1f)																														
Socketted H-Pile Installation																														
GFXX334-4	B14 (B1f) - Install SH Pile (13 nr)	52	23-Jun-14	0%	52	22-Aug-14	29-Jul-14	27-Sep-14	30	0																				
Pile Cap Works																														
SB1F0090	B14 (B1f) - Utility diversion & Cut slope	36	23-Aug-14	0%	36	11-Oct-14	29-Sep-14	13-Nov-14	27	0																				
Pier B15 (B1e)																														
Pile Cap Works																														
SB1E0094	B15 (B1e) - Utility diversion & cut slope	36	24-Jun-14	0%	36	14-Aug-14	19-Nov-14	02-Jan-15	109	0																				
SB1E0095	B15 (B1e) - Pile cap Excavation / ELS (incl. sheet piling)	24	15-Aug-14	0%	24	17-Sep-14	03-Jan-15	30-Jan-15	109	0																				
SB1E0096	B15 (B1e) - Pile Breakdown to cut-off etc.	4	18-Sep-14	0%	4	22-Sep-14	31-Jan-15	04-Feb-15	109	0																				
Pier B16 (B1d)																														
Socketted H-Pile Installation																														
GFXX317-4	B16 (B1d) - Confirm Rockhead Levels	8	15-Feb-14 A	100%	0	14-Jun-14 A																								
GFXX318-2	B16 (B1d) - Install SH Pile (10 nr)	35	20-May-14 A	100%	0	14-Jun-14 A																								
GFXX326-2	B16 (B1d) - Selection of pile for loading test	24	02-Jul-14	0%	24	29-Jul-14	27-Nov-14	27-Dec-14	124	0																				
GFXX326-4	B16 (B1d) - Loading Test for pre-bored H-pile	36	30-Jul-14	0%	36	10-Sep-14	27-Dec-14	09-Feb-15	124	0																				
Pile Cap Works																														
SB1D0090	B16 (B1d) - Pile cap Excavation / ELS (incl. sheet piling)	24	11-Sep-14	0%	24	11-Oct-14	09-Feb-15	12-Mar-15	122	0																				
Pier B18 (B1b) & Abutment B																														
Preliminary Works for Land Piling																														
PB180030	B18 (B1b) - Install Geo. Instru. & Baseline Monitoring	36	23-Jun-14	0%	36	04-Aug-14	03-Nov-15	14-Dec-15	406	569																				
Viaduct C																														
Milestones - Marine Foundation																														
GFXX192	Viaduct C - ARUP issues Pile Spacing & Diameter for Temporary Platform Design	0		0%	0	21-Jun-14		31-Oct-14	109	109																				
General - Preliminary Works for Land Piling																														
ZC80040	Prepare/submit/approval of MTR Protective Fence submission for Viaduct C	60	13-May-14 A	100%	0	18-Jun-14 A																								
ZC80050	Implement TTMS for C9 to C20 for land piling preliminary works	12	21-Jul-14	0%	12	07-Aug-14	05-Sep-14	20-Sep-14	32	0																				
Bridge C4																														
Pier C1 (C4e)																														
Foundation Works																														
GFXX218	C1 (C4e) - Inst.Temp.Working Platform (Common Platform with Pier A1,C1,D1)	23	21-May-14 A	90%	2	25-Jun-14	10-Sep-14	12-Sep-14	67	0																				
GFXX219	C1 (C4e) - Predrilling (3 nos)	14	25-Jun-14	0%	14	12-Jul-14	13-Sep-14	29-Sep-14	67	0																				
GFXX219-2	C1 (C4e) - Confirm Rockhead Levels	8	12-Jul-14	0%	8	22-Jul-14	02-Jan-15	10-Jan-15	143	190																				
Bridge C3																														
Pier C7 (C3e)																														

	Project ID: J3518DWPrD1-M13 Layout: J3518-DWP-3MRP submission - M13 Filter: TASK filters: 3-Month Lookahead, No Level of Effort.	Tuen Mun - Chek Lap Kok Link - Southern Connection 3-Month Rolling Programme (Page 20 of 27 Pages) (Progress as of 21-Jun-14)				Date	Revision	Checked	Approved	DWG. No.: J3518/GCL/PGM/3MRP-M13
		28-Jun-14		FZ						

Activity ID	Activity Name	Orig. Durn.	Act. Start / FC Early Start	Duration % Complete	Rem. Durn.	Act. Finish / FC Early Finish	Late Start	Late Finish	Total Float	Free Float	2014																						
											June					July					August					September							
											19	26	02	09	16	23	30	07	14	21	28	04	11	18	25	01	08	15					
Preliminary Works for Land Piling																																	
PD180010	D18 (D1c) - Erect boundary fence / water filled barrier / remove existing fence	12	24-Apr-14 A	100%	0	29-May-14 A																											
PD180012	D18 (D1c) - Install Geo. Instru. & Baseline Monitoring	36	23-Jun-14	0%	36	04-Aug-14	29-Aug-14	13-Oct-14	57	0																							
PD180020	D18 (D1c) - Set up piling platform	20	05-Aug-14	0%	20	01-Sep-14	14-Oct-14	06-Nov-14	50	0																							
PD180030	D18 (D1c) - Complete Civil Preparation Works for piling to commence	0		0%	0	01-Sep-14		06-Nov-14	50	0																							
Socketted H-Pile Installation																																	
GFXX438-2	D18 (D1c) - Predrilling	17	17-Jun-14 A	29.41%	12	07-Jul-14	15-Oct-14	28-Oct-14	94	0																							
GFXX438-7	D18 (D1c) - Confirm Rockhead Levels	8	08-Jul-14	0%	8	16-Jul-14	29-Oct-14	06-Nov-14	94	40																							
GFXX439-2	D18 (D1c) - Installation of SH Pile (10 nr)	70	02-Sep-14	0%	70	25-Nov-14	07-Nov-14	30-Jan-15	54	0																							
Pier D19 (D1b) & Abutment D																																	
Preliminary Works for Land Piling																																	
PD190010	D19 (D1b) & Abut D- Erect MTR boundary fence / water filled barrier / remove existing fence	12	24-Apr-14 A	100%	0	29-May-14 A																											
PD190012	D19 (D1b) - Install Geo. Instru. & Baseline Monitoring	36	23-Jun-14	0%	36	04-Aug-14	01-Sep-14	15-Oct-14	59	0																							
PD190020	D19 (D1b) - Set up piling platform	20	05-Aug-14	0%	20	01-Sep-14	16-Oct-14	07-Nov-14	51	0																							
PD190030	D19 (D1b) - Complete Civil Preparation Works for piling to commence	0		0%	0	01-Sep-14		07-Nov-14	51	0																							
Socketted H-Pile Installation																																	
GFXX438-3	D19 (D1b) - Predrilling	19	11-Aug-14	0%	19	01-Sep-14	17-Oct-14	07-Nov-14	55	0																							
GFXX438-8	D19 (D1b) - Confirm Rockhead Levels	8	02-Sep-14	0%	8	11-Sep-14	08-Nov-14	17-Nov-14	55	0																							
GFXX439-3	D19 (D1b) - Installation of SH Pile (6 nr)	70	12-Sep-14	0%	70	04-Dec-14	18-Nov-14	10-Feb-15	55	0																							
Viaduct E																																	
Viaduct E1																																	
Bridge E1 - Piling & Substructure																																	
Milestones																																	
GFXX023A-1	E1D (E1a1) - Start date for piling	0	03-Sep-14	0%	0		10-Jun-14		-72	0																							
GFXX023A-2	E1C (E1a2) - Start date for piling	0	03-Sep-14	0%	0		10-Jun-14		-72	0																							
GFXX023A-3	E1B (E1a3) - Start date for piling	0	03-Sep-14	0%	0		10-Jun-14		-72	0																							
GFXX023A-4	E1A (E1a4) - Start date for piling	0	03-Sep-14	0%	0		10-Jun-14		-72	0																							
GFXX028A-1	E2C/E2D (E1b2/E1b1) - Start date for piling	0	27-Aug-14	0%	0		17-Jul-14		-35	0																							
GFXX028A-2	E2B (E1b3) - Start date for piling	0	27-Aug-14	0%	0		17-Jul-14		-35	0																							
GFXX028A-3	E2A (E1b4) - Start date for piling	0	27-Aug-14	0%	0		17-Jul-14		-35	0																							
E1A, E1B, E1C & E1D (E1a1-2-3-4)																																	
Foundation Works E1A, E1B, E1C & E1D																																	
Foundation Works																																	
GFXX021	E1A/E1B/E1C/E1D (E1a4/3/2/1) - Inst.Temp.Working Platforms (Heavy & Light)	38	21-May-14 A	4%	36	05-Aug-14	19-Mar-14	07-May-14	-74	0																							
GFXX022-1	E1A/E1B/E1C/E1D (E1a4/3/2/1) - Predrilling (8 nos)	17	05-Aug-14	0%	17	25-Aug-14	08-May-14	27-May-14	-74	0																							
GFXX022-2	E1A/E1B/E1C/E1D (E1a4/3/2/1) - Confirm Rockhead levels	8	25-Aug-14	0%	8	03-Sep-14	28-May-14	06-Jun-14	-74	0																							
GFXX023-1	E1A/E1B/E1C/E1D (E1a4/3/2/1) - Bored Piles (2.00m dia. x 8 nos)	125	03-Sep-14	0%	125	03-Feb-15	07-Jun-14	04-Nov-14	-74	0																							
E2A, E2B, E2C & E2D (E1b1-2-3-4)																																	
Foundation Works - E2A, E2B, E2C & E2D																																	
Foundation Works																																	
GFXX026-1	E2A/E2B/E2C/E2D (E1b4/3/2/1) - Inst.Temp.Working Platforms (Heavy & Light)	34	23-Jun-14	0%	34	01-Aug-14	12-May-14	20-Jun-14	-35	0																							
GFXX027-1	E2A/E2B/E2C/E2D (E1b4/3/2/1) - Predrilling (7 nos)	21	02-Aug-14	0%	21	26-Aug-14	21-Jun-14	16-Jul-14	-35	0																							
GFXX027-4	E2A/E2B/E2C/E2D (E1b4/3/2/1) - Confirm Rockhead levels	8	27-Aug-14	0%	8	04-Sep-14	22-Oct-14	30-Oct-14	45	80																							
GFXX028-1	E2A/E2B/E2C/E2D (E1b4/3/2/1) - Bored Piles (2.00m dia. x 7 nr)	88	27-Aug-14	0%	88	10-Dec-14	17-Jul-14	30-Oct-14	-35	0																							
Viaduct E2																																	
Bridge E2 - Piling & Substructure																																	
Milestones																																	
GFXX042-1	E4 (E2b) - Start date for piling	0	19-Jun-14 A	100%	0																												

Activity ID	Activity Name	Orig. Durn.	Act. Start / FC Early Start	Duration % Complete	Rem. Durn.	Act. Finish / FC Early Finish	Late Start	Late Finish	Total Float	Free Float	2014															
											June				July				August				September			
											19	26	02	09	16	23	30	07	14	21	28	04	11	18	25	01
E3A, E3B, E3C & E3D (E2a - 1/2/3/4)																										
Foundation Works - E3A, E3B, E3C & E3D																										
Foundation Works																										
GFXX036-1	E3 (E2a) - Confirm Rockhead levels	8	24-Apr-14 A	50%	4	26-Jun-14	12-Jul-14	16-Jul-14	16	10																
GFXX037	E3 (E2a) - Bored Piles (2.00m dia. x 6 nos)	90	15-Apr-14 A	84%	14	10-Jul-14	28-Jun-14	16-Jul-14	6	0																
GFXX038	E3 (E2a) - Sonic & Interface Coring x6no.	20	06-Aug-14	0%	20	28-Aug-14	04-Sep-14	27-Sep-14	25	0																
GFXX038-1	E3 (E2a) - Selection of bored pile for Full Depth Coring	24	01-Aug-14	0%	24	28-Aug-14	30-Aug-14	27-Sep-14	25	0																
GFXX038-2	E3 (E2a) - Bored Pile Full Depth Coring & Testing	24	29-Aug-14	0%	24	26-Sep-14	29-Sep-14	28-Oct-14	25	0																
E4A & E4B (E2b - 1/2)																										
Foundation Works - E4A & E4B																										
Foundation Works																										
GFXX040-1	E4 (E2b) - Inst.Temp.Working Platform (Light)	18	23-May-14 A	100%	0	04-Jun-14 A																				
GFXX041	E4 (E2b) - Predrilling (4 nos)	13	07-Jun-14 A	100%	0	18-Jun-14 A																				
GFXX041-1	E4 (E2b) - Confirm Rockhead levels	8	19-Jun-14 A	10%	7	02-Jul-14	13-Jun-14	21-Jun-14	-8	63																
GFXX042	E4 (E2b) - Bored Piles (2.20m dia. x 4 nos)	90	19-Jun-14 A	22%	70	15-Sep-14	24-Mar-14	21-Jun-14	-71	0																
GFXX043	E4 (E2b) - Sonic & Interface Coring x 4no.	12	15-Sep-14	0%	12	29-Sep-14	11-Jul-14	25-Jul-14	-54	0																
E5A & E5B (E2c - 1/2)																										
Foundation Works - E5A & E5B																										
Foundation Works																										
GFXX045-1	E5 (E2c) - Inst.Temp.Working Platform (Light)	7	23-Jun-14	0%	7	30-Jun-14	15-Apr-14	25-Apr-14	-53	0																
GFXX046	E5 (E2c) - Predrilling (4 nos)	22	02-Jul-14	0%	22	26-Jul-14	13-Oct-14	06-Nov-14	85	0																
GFXX046-1	E5 (E2c) - Confirm Rockhead levels	8	28-Jul-14	0%	8	05-Aug-14	07-Nov-14	15-Nov-14	85	120																
E6A & E6B (E2d - 1/2)																										
Foundation Works - E6A & E6B																										
Foundation Works																										
GFXX050	E6 (E2d) - Inst.Temp.Working Platform (Heavy)	18	23-Jun-14	0%	18	14-Jul-14	01-Apr-14	25-Apr-14	-64	0																
GFXX050-1	E6 (E2d) - Inst.Temp.Working Platform (Light)	7	15-Jul-14	0%	7	22-Jul-14	26-Apr-14	05-May-14	-64	0																
GFXX051	E6 (E2d) - Predrilling (4 nos)	18	23-Jul-14	0%	18	12-Aug-14	27-Nov-14	17-Dec-14	106	0																
GFXX051-1	E6 (E2d) - Confirm Rockhead levels	8	13-Aug-14	0%	8	21-Aug-14	18-Dec-14	29-Dec-14	106	217																
E7A & E7B (E2e - 1/2)																										
Foundation Works - E7A & E7B																										
Foundation Works																										
GFXX055	E7 (E2e) - Inst.Temp.Working Platforms (Heavy)	19	23-Jul-14	0%	19	13-Aug-14	07-May-14	28-May-14	-64	0																
GFXX055-1	E7 (E2e) - Inst.Temp.Working Platforms (Light)	7	14-Aug-14	0%	7	21-Aug-14	29-May-14	06-Jun-14	-64	0																
GFXX056	E7 (E2e) - Predrilling (5 nos)	26	22-Aug-14	0%	26	22-Sep-14	18-Oct-14	17-Nov-14	46	0																
E8A & E8B (E2f - 1/2)																										
Foundation Works - E8A & E8B																										
Foundation Works																										
GFXX060	E8 (E2f) - Inst.Temp.Working Platforms (Heavy)	32	22-Aug-14	0%	32	29-Sep-14	07-Jun-14	15-Jul-14	-64	0																
E9A & E9B (E2g - 1/2)																										
Foundation Works - E9A & E9B																										
Foundation Works																										
GFXX066	E9 (E2g) - Predrilling (6 nos)	22	12-Mar-14 A	100%	0	05-Jun-14 A																				
GFXX066-1	E9 (E2g) - Confirm Rockhead levels	8	06-Jun-14 A	50%	4	26-Jun-14	28-Feb-15	04-Mar-15	205	67																
GFXX067	E9 (E2g) - Bored Piles (2.00m dia. x 6 nr)	105	17-May-14 A	32%	71	16-Sep-14	04-Dec-14	04-Mar-15	138	0																
GFXX068	E9 (E2g) - Sonic & Interface Coring	12	16-Sep-14	0%	12	30-Sep-14	05-Mar-15	18-Mar-15	138	0																
E10A & E10B (E2h - 1/2)																										
Foundation Works - E10A & E10B																										

