

Activity ID	Activity Name	Orig. Durn.	Act. Start / FC Early Start	Duration% Complete	Rem. Durn.	Act. Finish / FC Early Finish	Late Start	Late Finish	Total Float	Free Float	Physical % Complete	2014																			
												September					October					November					December				
												25	01	08	15	22	29	06	13	20	27	03	10	17	24	01	08	15			

HY/2012/07 - TM-CLK Link-SC [DWP rD1] - Status Update 21-09-2014

Contract Key Dates

Possession Dates / Access Period

POS02	Portion A (Commencement of Works+499 days)	0.00	03-Nov-14*	0%	0.00		03-Nov-14		0.00	0.00	0%
-------	--	------	------------	----	------	--	-----------	--	------	------	----

IPS Milestones

Cost Centre IPS Milestones

CC 2 - Design and Design Checking of the Works

MS2.006	Accept construction traffic impact assessment by the Supervising Officer	0.00		100%	0.00	25-Aug-14 A					100%
MS2.008	Accept ground investigation reports by the Supervising Officer	0.00		0%	0.00	12-Dec-14		02-Apr-17	842.00	308.00	0%
MS2.014	Approve AIP for Structure F1, excl Structure F1 between Pier F1c and Pier F1d, by the S.O.	0.00		100%	0.00	01-Sep-14 A					100%
MS2.015	Submit DDA for Structure F1, excluding Structure F1 between Pier F1c and Pier F1d	0.00		0%	0.00	18-Nov-14		02-Apr-17	866.00	156.00	0%
MS2.018	Approve AIP for Structure F1 between Pier F1c and Pier F1d by the Supervising Officer	0.00		100%	0.00	01-Sep-14 A					100%
MS2.019	Submit DDA for Structure F1 between Pier F1c and Pier F1d	0.00		0%	0.00	18-Nov-14		02-Apr-17	866.00	156.00	0%
MS2.030	Approve AIP for Structure F3 betw Pier F3c and Pier F3d by Supervising Officer	0.00		100%	0.00	01-Sep-14 A					100%
MS2.031	Submit DDA for Structure F3 between Pier F3c and Pier F3d	0.00		0%	0.00	18-Nov-14		02-Apr-17	866.00	156.00	0%
MS2.038	Approve AIP for Structure F5, excl Structure F5 betw Pier F5c & Pier F5d, by S.O.	0.00		100%	0.00	01-Sep-14 A					100%
MS2.039	Submit DDA for Structure F5, excluding Structure F5 between Pier F5c and Pier F5d	0.00		0%	0.00	18-Nov-14		02-Apr-17	866.00	142.00	0%
MS2.042	Approve AIP for Structure F5 betw Pier F5c and Pier F5d by the Supervising Officer	0.00		100%	0.00	01-Sep-14 A					100%
MS2.043	Submit DDA for Structure F5 between Pier F5c and Pier F5d	0.00		0%	0.00	18-Nov-14		02-Apr-17	866.00	142.00	0%
MS2.052	Approve DDA for Structure E2 by the Supervising Officer	0.00		0%	0.00	17-Dec-14		02-Apr-17	837.00	303.00	0%
MS2.056	Approve DDA for Structure E5, excl Structure E5 betw Pier E5c & Pier E5d, by S.O.	0.00		0%	0.00	12-Dec-14		02-Apr-17	842.00	308.00	0%
MS2.060	Approve DDA for Structure E5 betw Pier E5c & Pier E5d by Supervising Officer	0.00		0%	0.00	12-Dec-14		02-Apr-17	842.00	308.00	0%
MS2.064	Approve DDA for Structure E6 by the Supervising Officer	0.00		0%	0.00	12-Dec-14		02-Apr-17	842.00	308.00	0%
MS2.068	Approve DDA for Structure E7 by the Supervising Officer	0.00		0%	0.00	12-Dec-14		02-Apr-17	842.00	308.00	0%
MS2.072	Approve DDA for Structure E8 by the Supervising Officer	0.00		0%	0.00	12-Dec-14		02-Apr-17	842.00	308.00	0%
MS2.074	Approve AIP for Structure A by the Supervising Officer	0.00		0%	0.00	28-Oct-14		02-Apr-17	887.00	162.00	0%
MS2.075	Submit DDA for Structure A	0.00		0%	0.00	17-Dec-14		02-Apr-17	837.00	112.00	0%
MS2.080	Approve DDA for Structure B by the Supervising Officer	0.00		0%	0.00	03-Oct-14		02-Apr-17	912.00	378.00	0%
MS2.083	Submit DDA for Structure C	0.00		0%	0.00	29-Oct-14		02-Apr-17	886.00	120.00	0%
MS2.087	Submit DDA for Structure D	0.00		100%	0.00	01-Sep-14 A					100%
MS2.090	Approve AIP for At grade Roadworks and Other Works along NLH by the S.O.	0.00		100%	0.00	27-Aug-14 A					100%
MS2.091	Submit DDA for At grade Roadworks and Other Works along NLH	0.00		0%	0.00	17-Oct-14		02-Apr-17	898.00	105.00	0%
MS2.094	Approve AIP for At grade Roadworks & Other Works along Cheung Tung Road by S.O.	0.00		100%	0.00	27-Aug-14 A					100%
MS2.095	Submit DDA for At grade Roadworks and Other Works along Cheung Tung Road	0.00		0%	0.00	17-Oct-14		02-Apr-17	898.00	105.00	0%
MS2.097	Submit AIP for At grade Roadworks and Other Works at Southern Landfall	0.00		0%	0.00	21-Sep-14		02-Apr-17	924.00	0.00	0%
MS2.098	Approve AIP for At grade Roadwrks & Other Wrks at Southern Landfall by S.O.	0.00		0%	0.00	21-Sep-14		02-Apr-17	924.00	82.00	0%
MS2.099	Submit DDA for At grade Roadworks and Other Works at Southern Landfall	0.00		0%	0.00	21-Sep-14		02-Apr-17	924.00	82.00	0%
MS2.100	Approve DDA for At grade Roadwrks & Other Wrks at Southern Landfall by S.O.	0.00		0%	0.00	12-Dec-14		02-Apr-17	842.00	308.00	0%
MS2.102	Approve AIP for Watermains & All Assoc Wrks frm Tung Chung to South Landfall by S.O.	0.00		100%	0.00	27-Aug-14 A					100%
MS2.104	Approve DDA for Watermains & All Assoc Wrks frm Tung Chung to South Landfall by S.O.	0.00		0%	0.00	12-Dec-14		02-Apr-17	842.00	308.00	0%
MS2.107	Submit DDA for Irrigation System for Soft Landscape Works	0.00		0%	0.00	06-Nov-14		02-Apr-17	878.00	105.00	0%
MS2.108-3	Submit DDA for Fac Prov for TCSS Wrks for At grade Rds at Southern Landfall	0.00		0%	0.00	24-Sep-14		02-Apr-17	921.00	105.00	0%
MS2.111	Submit DDA for Facilities Provision for TCSS Works for Viaducts	0.00		0%	0.00	24-Sep-14		02-Apr-17	921.00	105.00	0%
MS2.115	Submit DDA for Fac Prov for TCSS Wrks for At grade Rds along NLH	0.00		0%	0.00	24-Sep-14		21-Mar-17	909.00	105.00	0%
MS2.120	Approve DDA for Facilities Provision for E&M Works by the Supervising Officer	0.00		0%	0.00	31-Oct-14		02-Apr-17	884.00	350.00	0%
MS2.121	Submit AIP for remaining works	0.00		0%	0.00	31-Oct-14		02-Apr-17	884.00	56.00	0%

CC 4.1 - Structure E2 and All Associated Works

MS4.1.10	Complete piles of 50% of total pile length for Structure E2	0.00		100%	0.00	21-Aug-14 A					100%
----------	---	------	--	------	------	-------------	--	--	--	--	------

■ Actual Work
■ Planned Bar
■ Critical Bar
◆ Milestone

Project ID: J3518DWP rD1-M16
 Layout: J3518-DWP-3MRP Submission - M16
 Filter: TASK filters: 3-Month Lookahead, No Level of Effort.

Tuen Mun - Chek Lap Kok Link - Southern Connection
3-Month Rolling Programme (Page 1 of 35 Pages)
(Progress as of 21-Sep-14)

Date	Revision	Checked	Approved
29-Jul-14		FZ	
29-Aug-14		FZ	
07-Oct-14			

DWG. No.:
J3518/GCL/PGM/3MRP-M16

Activity ID	Activity Name	Orig. Durn.	Act. Start / FC Early Start	Duration % Complete	Rem. Durn.	Act. Finish / FC Early Finish	Late Start	Late Finish	Total Float	Free Float	Physical % Complete	2014																
												September				October				November				December				
												25	01	08	15	22	29	06	13	20	27	03	10	17	24	01	08	15
MS4.1.11	Complete piles of 55% of total pile length for Structure E2	0.00		0%	0.00	30-Sep-14*		02-Apr-17	916.00	141.00	0%																	
CC 4.2 - Structure E5, excl structure E5 betw Pier E5c & Pier E5d, & All Assoc Works																												
MS4.2.03	Compl piles of 15% of total pile length for part of structure E5 under this CC No.	0.00		100%	0.00	23-Aug-14 A					100%																	
MS4.2.04	Compl piles of 20% of total pile length for part of structure E5 under this CC No.	0.00		100%	0.00	28-Aug-14 A					100%																	
MS4.2.05	Compl piles of 25% of total pile length for part of structure E5 under this CC No.	0.00		100%	0.00	02-Sep-14 A					100%																	
MS4.2.06	Compl piles of 30% of total pile length for part of structure E5 under this CC No.	0.00		100%	0.00	08-Sep-14 A					100%																	
MS4.2.07	Compl piles of 35% of total pile length for part of structure E5 under this CC No.	0.00		100%	0.00	13-Sep-14 A					100%																	
MS4.2.08	Compl piles of 40% of total pile length for part of structure E5 under this CC No.	0.00		100%	0.00	19-Sep-14 A					100%																	
MS4.2.09	Compl piles of 45% of total pile length for part of structure E5 under this CC No.	0.00		0%	0.00	26-Sep-14*		02-Apr-17	920.00	13.00	0%																	
MS4.2.10	Compl piles of 50% of total pile length for part of structure E5 under this CC No.	0.00		0%	0.00	09-Oct-14*		02-Apr-17	907.00	12.00	0%																	
MS4.2.11	Compl piles of 55% of total pile length for part of structure E5 under this CC No.	0.00		0%	0.00	21-Oct-14*		02-Apr-17	895.00	10.00	0%																	
MS4.2.12	Compl piles of 60% of total pile length for part of structure E5 under this CC No.	0.00		0%	0.00	31-Oct-14*		02-Apr-17	885.00	11.00	0%																	
MS4.2.13	Compl piles of 65% of total pile length for part of structure E5 under this CC No.	0.00		0%	0.00	11-Nov-14*		02-Apr-17	874.00	10.00	0%																	
MS4.2.14	Compl piles of 70% of total pile length for part of structure E5 under this CC No.	0.00		0%	0.00	21-Nov-14*		02-Apr-17	864.00	15.00	0%																	
MS4.2.15	Compl piles of 75% of total pile length for part of structure E5 under this CC No.	0.00		0%	0.00	06-Dec-14*		02-Apr-17	849.00	18.00	0%																	
CC 4.2A - Structure E5 between Pier E5c & Pier E5d, & All Assoc Works																												
MS4.2A.01	Compl piles of 5% of total pile length for part of structure E5 under this CC No.	0.00		100%	0.00	17-Sep-14 A					100%																	
MS4.2A.02	Compl piles of 10% of total pile length for part of structure E5 under this CC No.	0.00		0%	0.00	03-Oct-14*		02-Apr-17	913.00	13.00	0%																	
MS4.2A.03	Compl piles of 15% of total pile length for part of structure E5 under this CC No.	0.00		0%	0.00	16-Oct-14*		02-Apr-17	900.00	12.00	0%																	
MS4.2A.04	Compl piles of 20% of total pile length for part of structure E5 under this CC No.	0.00		0%	0.00	28-Oct-14*		02-Apr-17	888.00	11.00	0%																	
MS4.2A.05	Compl piles of 25% of total pile length for part of structure E5 under this CC No.	0.00		0%	0.00	08-Nov-14*		02-Apr-17	877.00	12.00	0%																	
MS4.2A.06	Compl piles of 30% of total pile length for part of structure E5 under this CC No.	0.00		0%	0.00	20-Nov-14*		02-Apr-17	865.00	12.00	0%																	
MS4.2A.07	Compl piles of 35% of total pile length for part of structure E5 under this CC No.	0.00		0%	0.00	02-Dec-14*		02-Apr-17	853.00	11.00	0%																	
MS4.2A.08	Compl piles of 40% of total pile length for part of structure E5 under this CC No.	0.00		0%	0.00	13-Dec-14*		02-Apr-17	842.00	14.00	0%																	
CC 4.3 - Structure E6 and All Associated Works																												
MS4.3.02	Complete piles of 10% of total pile length for Structure E6	0.00		100%	0.00	22-Aug-14 A					100%																	
MS4.3.03	Complete piles of 15% of total pile length for Structure E6	0.00		100%	0.00	01-Sep-14 A					100%																	
MS4.3.04	Complete piles of 20% of total pile length for Structure E6	0.00		100%	0.00	12-Sep-14 A					100%																	
MS4.3.05	Complete piles of 25% of total pile length for Structure E6	0.00		0%	0.00	23-Sep-14*		02-Apr-17	923.00	14.00	0%																	
MS4.3.06	Complete piles of 30% of total pile length for Structure E6	0.00		0%	0.00	07-Oct-14*		02-Apr-17	909.00	11.00	0%																	
MS4.3.07	Complete piles of 35% of total pile length for Structure E6	0.00		0%	0.00	18-Oct-14*		02-Apr-17	898.00	12.00	0%																	
MS4.3.08	Complete piles of 40% of total pile length for Structure E6	0.00		0%	0.00	30-Oct-14*		02-Apr-17	886.00	12.00	0%																	
MS4.3.09	Complete piles of 45% of total pile length for Structure E6	0.00		0%	0.00	11-Nov-14*		02-Apr-17	874.00	10.00	0%																	
MS4.3.10	Complete piles of 50% of total pile length for Structure E6	0.00		0%	0.00	21-Nov-14*		02-Apr-17	864.00	18.00	0%																	
MS4.3.11	Complete piles of 55% of total pile length for Structure E6	0.00		0%	0.00	09-Dec-14*		02-Apr-17	846.00	20.00	0%																	
CC 4.4 - Structure E7 and All Associated Works																												
MS4.4.02	Complete piles of 10% of total pile length for Structure E7	0.00		100%	0.00	25-Aug-14 A					100%																	
MS4.4.03	Complete piles of 15% of total pile length for Structure E7	0.00		100%	0.00	05-Sep-14 A					100%																	
MS4.4.04	Complete piles of 20% of total pile length for Structure E7	0.00		100%	0.00	19-Sep-14 A					100%																	
MS4.4.05	Complete piles of 25% of total pile length for Structure E7	0.00		0%	0.00	11-Oct-14*		02-Apr-17	905.00	23.00	0%																	
MS4.4.06	Complete piles of 30% of total pile length for Structure E7	0.00		0%	0.00	03-Nov-14*		02-Apr-17	882.00	21.00	0%																	
MS4.4.07	Complete piles of 35% of total pile length for Structure E7	0.00		0%	0.00	24-Nov-14*		02-Apr-17	861.00	52.00	0%																	
CC 4.5 - Structure E8 and All Associated Works																												
MS4.5.02	Complete piles of 10% of total pile length for Structure E8	0.00		100%	0.00	30-Aug-14 A					100%																	
MS4.5.03	Complete piles of 15% of total pile length for Structure E8	0.00		100%	0.00	12-Sep-14 A					100%																	
MS4.5.04	Complete piles of 20% of total pile length for Structure E8	0.00		0%	0.00	26-Sep-14*		02-Apr-17	920.00	26.00	0%																	
MS4.5.05	Complete piles of 25% of total pile length for Structure E8	0.00		0%	0.00	22-Oct-14*		02-Apr-17	894.00	24.00	0%																	
MS4.5.06	Complete piles of 30% of total pile length for Structure E8	0.00		0%	0.00	15-Nov-14*		02-Apr-17	870.00	34.00	0%																	

<ul style="list-style-type: none"> ■ Actual Work ■ Planned Bar ■ Critical Bar ◆ Milestone 	Project ID: J3518DWPPrD1-M16 Layout: J3518-DWP-3MRP Submission - M16 Filter: TASK filters: 3-Month Lookahead, No Level of Effort.	Tuen Mun - Chek Lap Kok Link - Southern Connection 3-Month Rolling Programme (Page 2 of 35 Pages) (Progress as of 21-Sep-14)	<table border="1"> <thead> <tr> <th>Date</th> <th>Revision</th> <th>Checked</th> <th>Approved</th> </tr> </thead> <tbody> <tr> <td>29-Jul-14</td> <td></td> <td>FZ</td> <td></td> </tr> <tr> <td>29-Aug-14</td> <td></td> <td>FZ</td> <td></td> </tr> <tr> <td>07-Oct-14</td> <td></td> <td></td> <td></td> </tr> </tbody> </table>	Date	Revision	Checked	Approved	29-Jul-14		FZ		29-Aug-14		FZ		07-Oct-14				DWG. No.: J3518/GCL/PGM/3MRP-M16
Date	Revision	Checked	Approved																	
29-Jul-14		FZ																		
29-Aug-14		FZ																		
07-Oct-14																				

Activity ID	Activity Name	Orig. Durn.	Act. Start / FC Early Start	Duration % Complete	Rem. Durn.	Act. Finish / FC Early Finish	Late Start	Late Finish	Total Float	Free Float	Physical % Complete	2014																			
												September					October					November					December				
												25	01	08	15	22	29	06	13	20	27	03	10	17	24	01	08	15			
General Viaduct Submission																															
ARDD0078	IC/SO Approval of Viaduct E&M Works DDA BP21.01	75.00	17-Jun-14 A	60%	30.00	31-Oct-14	17-Jun-15	28-Jul-15	192.00	0.00	60%																				
ARDD0078-1	IC/SO Approval of Viaduct E&M Works DDA BP21.01	0.00		0%	0.00	31-Oct-14		28-Jul-15	192.00	115.00	0%																				
Viaduct B																															
Viaduct Design																															
ARDD0099-1	Viaduct B - Earliest IC Certificate for DP12.03	0.00		0%	0.00	22-Sep-14		31-Jul-14	-36.00	10.00	0%																				
ARDD0099-3	Viaduct B - IC/SO Approval of Sub & Superstructure DDA - DP12.03	75.00	04-Mar-14 A	96%	3.00	03-Oct-14	29-Jul-14	31-Jul-14	-46.00	0.00	60%																				
ARDD0099-5	Viaduct B - IC/SO Approval of Sub & Superstructure DDA - DP12.03	0.00		0%	0.00	03-Oct-14		31-Jul-14	-46.00	0.00	0%																				
Associated Construction Milestones																															
ARDD0129	Viaduct B - DDA approval ready for Initial Segment Casting	0.00	16-Sep-14 A	100%	0.00						100%																				
Viaduct E5 and E6																															
Viaduct Design																															
ARDD0150-1	Viaduct E5 & E6 - Earliest IC certificate for DDA for Viaduct E5 & E6 - DP15.09	0.00		0%	0.00	22-Sep-14		22-May-14	-86.00	30.00	0%																				
ARDD0150-3	Viaduct E5 & E6 - IC/SO Approval of Pile Cap Precast Shells DDA DP15.05	75.00	15-Apr-14 A	40%	45.00	21-Nov-14	02-May-14	03-Jul-14	101.00	0.00	40%																				
ARDD0150-4	Viaduct E5 & E6 - IC/SO Approval (late) of Sub & Superstructure DDA DP15.09	75.00	09-Jul-14 A	20%	60.00	12-Dec-14	11-Apr-14	03-Jul-14	-116.00	0.00	20%																				
ARDD0150-6	Viaduct E5 & E6 - IC/SO Approval of Pile Cap Precast Shells DDA DP15.05	0.00		0%	0.00	21-Nov-14		03-Jul-14	101.00	15.00	0%																				
ARDD0150-8	Viaduct E5 & E6 - IC/SO Approval (late) of Sub & Superstructure DDA DP15.09	0.00		0%	0.00	12-Dec-14		03-Jul-14	-116.00	0.00	0%																				
Associated Construction Milestones																															
ARDD0175	Viaduct E5 & E6 - DDA approval ready for Initial Segment Casting	0.00	13-Dec-14	0%	0.00		09-Sep-14		-95.00	40.00	0%																				
Viaduct E7 & E8																															
Viaduct Design																															
ARDD0195-1	Viaduct E7 & E8 - Earliest IC certificate for Pilecap Precast Shells DDA - DP15.08	0.00		0%	0.00	22-Sep-14		06-May-14	-98.00	18.00	0%																				
ARDD0195-3	Viaduct E7 & E8 - IC/SO Approval of Pilecap Precast Shells DDA - DP15.08	75.00	15-Apr-14 A	40%	45.00	21-Nov-14	02-May-14	03-Jul-14	101.00	0.00	40%																				
ARDD0195-4	Viaduct E7 & E8 - IC/SO Approval of Sub & Superstructure DDA - DP15.09	75.00	09-Jul-14 A	20%	60.00	12-Dec-14	11-Apr-14	03-Jul-14	-116.00	0.00	20%																				
ARDD0195-5	Viaduct E7 & E8 - IC/SO Approval of Sub & Superstructure DDA - DP15.09	0.00		0%	0.00	12-Dec-14		03-Jul-14	-116.00	0.00	0%																				
ARDD0195-6	Viaduct E7 & E8 - IC/SO Approval of Pilecap Precast Shells DDA - DP15.08	0.00		0%	0.00	21-Nov-14		03-Jul-14	101.00	15.00	0%																				
Associated Construction Milestones																															
ARDD0220	Viaduct E7 & E8 - DDA approval ready for Initial Segment Casting	0.00	13-Dec-14	0%	0.00		10-Sep-14		-94.00	41.00	0%																				
Viaduct E2																															
Viaduct Design																															
ARDD0241-1	Viaduct E2 - Earliest IC certificate for Pilecap Precast Shells DDA - DP15.05	0.00		0%	0.00	22-Sep-14		17-Jun-14	-68.00	21.00	0%																				
ARDD0241-3	Viaduct E2 - IC/SO Approval (Late) of Sub & Superstructure DDA - DP15.06	75.00	04-Jul-14 A	20%	60.00	17-Dec-14	23-May-14	14-Aug-14	-89.00	0.00	20%																				
ARDD0241-4	Viaduct E2 - IC/SO Approval Pilecap Precast Shells DDA - DP15.05	75.00	15-Apr-14 A	90.67%	7.00	30-Sep-14	15-May-14	23-May-14	-92.00	0.00	90%																				
ARDD0241-5	Viaduct E2 - IC/SO Approval Pilecap Precast Shells DDA - DP15.05	0.00		0%	0.00	30-Sep-14		23-May-14	-92.00	0.00	0%																				
ARDD0241-6	Viaduct E2 - IC/SO Approval (Late) of Sub & Superstructure DDA - DP15.06	0.00		0%	0.00	17-Dec-14		14-Aug-14	-89.00	0.00	0%																				
Associated Construction Milestones																															
ARDD0265	Viaduct E2 - DDA approval ready for Commencement of Pilecaps	0.00	14-Dec-14	0%	0.00		31-Jul-14		135.13	1.00	0%																				
ARDD0266	Viaduct E2 - DDA approval ready for Initial Segment Casting	0.00	18-Dec-14	0%	0.00		15-Aug-14		125.00	35.00	0%																				
ARDD0266-1	Viaduct E2 - DDA approval ready for Pile Cap Shell Casting	0.00	01-Oct-14	0%	0.00		25-May-14		128.13	0.00	0%																				
Viaduct E1																															
Viaduct Design																															
ARDD0287-1	Viaduct E1 - Earliest IC Certificate for DDA - DP15.02	0.00		0%	0.00	22-Sep-14		05-Aug-14	-33.00	10.00	0%																				
ARDD0287-3	Viaduct E1 - IC/SO Approval (Late) of Sub & Superstructure DDA DP15.03	75.00	30-Jul-14 A	20%	60.00	26-Dec-14	06-Aug-14	28-Oct-14	-43.00	0.00	20%																				
ARDD0287-5	Viaduct E1 - IC/SO Approval of Pilecap Precast Shells DDA DP15.02	75.00	20-May-14 A	60%	30.00	31-Oct-14	17-Jun-14	28-Jul-14	-69.00	0.00	60%																				
ARDD0287-6	Viaduct E1 - IC/SO Approval of Pilecap Precast Shells DDA DP15.02	0.00		0%	0.00	31-Oct-14		28-Jul-14	-69.00	0.00	0%																				
Associated Construction Milestones																															
ARDD0311	Viaduct E1 - DDA approval ready for Commencement of Pilecaps	0.00	01-Nov-14	0%	0.00		30-Aug-14		-62.88	13.00	0%																				
Viaduct D																															

Actual Work
 Planned Bar
 Critical Bar
 Milestone

Project ID: J3518DWPPrD1-M16
 Layout: J3518-DWP-3MRP Submission - M16
 Filter: TASK filters: 3-Month Lookahead, No Level of Effort.

Tuen Mun - Chek Lap Kok Link - Southern Connection
3-Month Rolling Programme (Page 5 of 35 Pages)
(Progress as of 21-Sep-14)

Date	Revision	Checked	Approved
29-Jul-14		FZ	
29-Aug-14		FZ	
07-Oct-14			

DWG. No.:
J3518/GCL/PGM/3MRP-M16

Activity ID	Activity Name	Orig. Durn.	Act. Start / FC Early Start	Duration % Complete	Rem. Durn.	Act. Finish / FC Early Finish	Late Start	Late Finish	Total Float	Free Float	Physical % Complete	2014															
												September				October				November				December			
												25	01	08	15	22	29	06	13	20	27	03	10	17	24	01	08
ARDD0425	Viaduct A - IC/SO Approval of Viaduct AIP - DP11.00	68.00	19-Jul-14 A	60.29%	27.00	28-Oct-14	11-Sep-14	17-Oct-14	-7.00	0.00	60%																
ARDD0425-1	Viaduct A - IC/SO Approval of Viaduct AIP - DP11.00	0.00		0%	0.00	28-Oct-14		17-Oct-14	-7.00	0.00	0%																
ARDD0428	Viaduct A - Final Pile Loads and Global Analysis	15.00	18-Jul-14 A	100%	0.00	28-Aug-14 A					100%																
ARDD0429	Viaduct A - Foundation DDA - DP11.01	45.00	18-Jul-14 A	84.44%	7.00	30-Sep-14	09-Dec-14	17-Dec-14	56.00	0.00	85%																
ARDD0430-1	Viaduct A - Earliest IC Certificate for Foundation DDA DP11.01	0.00		0%	0.00	28-Oct-14		04-Mar-15	91.00	35.00	0%																
ARDD0430-2	Viaduct A - IC/SO Approval of Foundation DDA - DP11.01	55.00	01-Oct-14	0%	55.00	16-Dec-14	18-Dec-14	04-Mar-15	56.00	0.00	0%																
ARDD0430-4	Viaduct A - IC/SO Approval of Foundation DDA - DP11.01	0.00		0%	0.00	16-Dec-14		04-Mar-15	56.00	0.00	0%																
ARDD0431	Viaduct A - Preparation of Pilecap Precast Shells DDA - DP11.02	40.00	19-Sep-14 A	90%	4.00	28-Oct-14	14-Oct-14	17-Oct-14	-7.00	0.00	90%																
ARDD0432	Viaduct A - Preparation of Substructure DDA - DP11.03	50.00	19-Sep-14 A	10%	45.00	21-Nov-14	30-Oct-14	31-Dec-14	28.00	0.00	10%																
ARDD0433	Viaduct A - Preparation of Superstructure DDA-DP11.03	70.00	19-Sep-14 A	10%	63.00	17-Dec-14	23-Jul-14	17-Oct-14	-43.00	0.00	10%																
ARDD0434-1	Viaduct A - Submission of DDA - DP11.02	0.00		0%	0.00	21-Nov-14		04-Mar-15	73.00	17.00	0%																
ARDD0434-2	Viaduct A - Submission of DDA - DP11.03	0.00		0%	0.00	17-Dec-14		17-Oct-14	-43.00	0.00	0%																
ARDD0435-2	Viaduct A - IC/SO Approval of DDA DP11.02	75.00	17-Dec-14	0%	75.00	31-Mar-15	05-Mar-15	17-Jun-15	56.00	0.00	0%																
Information to Contractor																											
ARDD0439	Viaduct A - Typical Pile Reinforcement - Stainless Rebar	0.00	22-Sep-14	0%	0.00		08-Jan-15		78.00	0.00	0%																
ARDD0440	Viaduct A - Final Pile Reinforcement and Socket H Pile Details	0.00		0%	0.00	23-Oct-14		10-Feb-15	78.00	0.00	0%																
ARDD0441	Viaduct A - Precast Pilecap Shell Shape and Reinforcement	0.00		0%	0.00	28-Oct-14		28-Jan-15	66.00	38.00	0%																
ARDD0443	Viaduct A - Typical Pilecap Reinforcement - Stainless Steel Rebar	0.00	23-Oct-14	0%	0.00		01-Jan-15		50.00	22.00	0%																
ARDD0444	Viaduct A - Typical Pilecap Reinforcement - Regular Rebar	0.00		0%	0.00	16-Oct-14		31-Dec-14	54.00	26.00	0%																
ARDD0445	Viaduct A - Final Pilecap Reinforcement	0.00		0%	0.00	21-Nov-14		31-Dec-14	28.00	0.00	0%																
ARDD0447	Viaduct A - Final Pier Shapes and Reinforcement	0.00		0%	0.00	21-Nov-14		21-May-15	129.00	11.00	0%																
ARDD0448	Viaduct A - Typical Segment Shapes for Moulds	0.00		0%	0.00	16-Oct-14		28-May-15	160.00	0.00	0%																
ARDD0449	Viaduct A - Typical Segment Reinforcement	0.00		0%	0.00	13-Nov-14		28-May-15	140.00	24.00	0%																
ARDD0450	Viaduct A - Final Segment Types and Reinforcement	0.00		0%	0.00	17-Dec-14		09-Jul-15	146.00	30.00	0%																
ARDD0451	Viaduct A - Typical Anchorage and Tendon Types	0.00		0%	0.00	17-Dec-14		28-May-15	116.00	0.00	0%																
ARDD0452	Viaduct A - Final Anchorage and PT Requirements	0.00		0%	0.00	17-Dec-14		09-Jul-15	146.00	30.00	0%																
ARDD0453	Viaduct A - Provisional Bearing Schedule	0.00		0%	0.00	17-Dec-14		17-Oct-14	-43.00	0.00	0%																
ARDD0454	Viaduct A - Final Bearing Schedule	0.00		0%	0.00	17-Dec-14		06-Jul-15	143.00	50.00	0%																
ARDD0455	Viaduct A - Provisional Movement Joint (MJ) Schedule	0.00		0%	0.00	17-Dec-14		15-Jan-15	21.00	0.00	0%																
ARDD0456	Viaduct A - Final Movement Joint (MJ) Schedule	0.00		0%	0.00	17-Dec-14		15-Jan-15	21.00	0.00	0%																
Viaduct F1 & F3																											
Viaduct Design																											
ARDD0476	Viaduct F1 & F3 - IC/SO Approval of Viaduct AIP - DP16.00	68.00	03-Jun-14 A	100%	0.00	01-Sep-14 A					100%																
ARDD0476-1	Viaduct F1 & F3 - IC/SO Approval of Viaduct AIP - DP16.00	0.00		100%	0.00	01-Sep-14 A					100%																
ARDD0477	Viaduct F1 & F3 - Receipt of Data for Final Analysis	0.00		0%	0.00	22-Sep-14		29-Aug-18	028.00	1028.00	0%																
ARDD0481	Viaduct F1 & F3 - IC/SO Approval of Foundation DDA - DP16.01	75.00	16-Aug-14 A	20%	60.00	12-Dec-14	28-Aug-14	19-Nov-14	-17.00	0.00	20%																
ARDD0481-1	Viaduct F1 & F3 - Earliest IC Certificate for DDA - DP16.01 DP16.07	0.00		0%	0.00	26-Sep-14		19-Nov-14	38.00	55.00	0%																
ARDD0481-2	Viaduct F1 & F3 - IC/SO Approval of Foundation DDA - DP16.07	75.00	16-Aug-14 A	20%	60.00	12-Dec-14	28-Aug-14	19-Nov-14	-17.00	0.00	20%																
ARDD0481-3	Viaduct F1 & F3 - IC/SO Approval of Foundation DDA - DP16.07	0.00		0%	0.00	12-Dec-14		19-Nov-14	-17.00	0.00	0%																
ARDD0481-4	Viaduct F1 & F3 - IC/SO Approval of Foundation DDA - DP16.01	0.00		0%	0.00	12-Dec-14		19-Nov-14	-17.00	0.00	0%																
ARDD0482	Viaduct F1 & F3 - Preparation of Substructure DDA - DP16.02	50.00	15-Aug-14 A	40%	30.00	31-Oct-14	08-Sep-14	17-Oct-14	-10.00	0.00	40%																
ARDD0482-2	Viaduct F1 & F3 - Preparation of Substructure DDA - DP16.08	50.00	15-Aug-14 A	40%	30.00	31-Oct-14	08-Sep-14	17-Oct-14	-10.00	0.00	40%																
ARDD0483	Viaduct F1 & F3 - Preparation of Superstructure DDA - DP16.03	70.00	15-Aug-14 A	40%	42.00	18-Nov-14	21-Aug-14	17-Oct-14	-22.00	0.00	40%																
ARDD0483-2	Viaduct F1 & F3 - Preparation of Superstructure DDA - DP16.09	70.00	15-Aug-14 A	40%	42.00	18-Nov-14	21-Aug-14	17-Oct-14	-22.00	0.00	40%																
ARDD0484-1	Viaduct F1 & F3 - Submission of DDA - DP16.02	0.00		0%	0.00	31-Oct-14		17-Oct-14	-10.00	9.00	0%																
ARDD0484-2	Viaduct F1 & F3 - Submission of DDA - DP16.03	0.00		0%	0.00	18-Nov-14		17-Oct-14	-22.00	0.00	0%																
ARDD0484-3	Viaduct F1 & F3 - Submission of DDA - DP16.08	0.00		0%	0.00	31-Oct-14		17-Oct-14	-10.00	9.00	0%																
ARDD0484-4	Viaduct F1 & F3 - Submission of DDA - DP16.09	0.00		0%	0.00	18-Nov-14		17-Oct-14	-22.00	0.00	0%																

Actual Work
 Planned Bar
 Critical Bar
 Milestone

Project ID: J3518DWPPrD1-M16
 Layout: J3518-DWP-3MRP Submission - M16
 Filter: TASK filters: 3-Month Lookahead, No Level of Effort.

Tuen Mun - Chek Lap Kok Link - Southern Connection
3-Month Rolling Programme (Page 7 of 35 Pages)
(Progress as of 21-Sep-14)

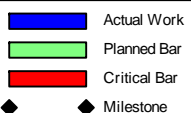
Date	Revision	Checked	Approved
29-Jul-14		FZ	
29-Aug-14		FZ	
07-Oct-14			

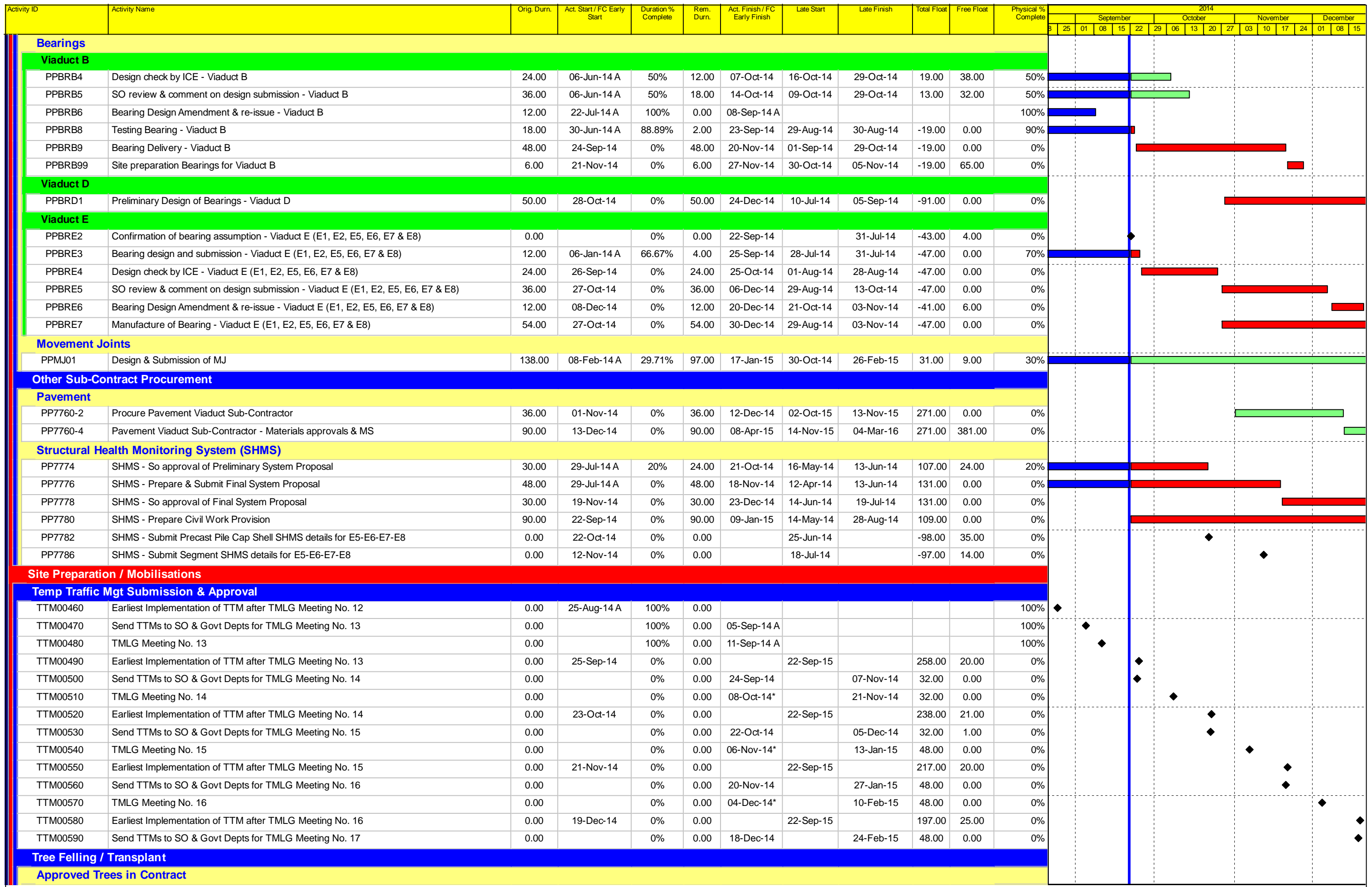
DWG. No.:
J3518/GCL/PGM/3MRP-M16

Activity ID	Activity Name	Orig. Durn.	Act. Start / FC Early Start	Duration % Complete	Rem. Durn.	Act. Finish / FC Early Finish	Late Start	Late Finish	Total Float	Free Float	Physical % Complete	2014																
												September			October			November			December							
												25	01	08	15	22	29	06	13	20	27	03	10	17	24	01	08	15
ARDD0811	IC/SO Approval of CTIA - AP05.00	75.00	25-Feb-14 A	100%	0.00	25-Aug-14 A					100%	[Gantt Bar: Blue, 25-Feb-14 to 25-Aug-14]																
ARDD0816	IC/SO Approval of CTIA - AP05.00	0.00		100%	0.00	25-Aug-14 A					100%	[Gantt Bar: Blue, Milestone 25-Aug-14]																
Other Design																												
Marine Permanent Navigation Aids																												
BMT0135	Preparation of MPNA DDA - BP36.01	46.00	11-Jun-14 A	10.87%	41.00	17-Nov-14	20-Feb-15	17-Apr-15	109.00	0.00	10%	[Gantt Bar: Green, 11-Jun-14 to 17-Nov-14]																
BMT0140	IC/SO Approval of MPNA DDA BP36.01	75.00	18-Nov-14	0%	75.00	02-Mar-15	20-Apr-15	31-Jul-15	109.00	0.00	0%	[Gantt Bar: Green, 18-Nov-14 to 31-Jul-15]																
Major Procurement																												
Marine Permanent Navigaion Aids																												
PR65011	Design & Approvals for Marine Navigation Aids	150.00	16-Dec-13 A	52%	72.00	02-Mar-15	06-May-15	31-Jul-15	122.00	0.00	52%	[Gantt Bar: Blue, 16-Dec-13 to 31-Jul-15]																
Tower Cranes																												
PR66010	Procure Tower Crane Supplier	96.00	23-Jun-14 A	79.17%	20.00	16-Oct-14	06-Sep-14	30-Sep-14	-12.00	0.00	0%	[Gantt Bar: Red, 23-Jun-14 to 30-Sep-14]																
PR66011	Procure & Deliver Tower Cranes	325.00	17-Oct-14	0%	325.00	19-Nov-15	03-Oct-14	05-Nov-15	-12.00	1.00	0%	[Gantt Bar: Red, 17-Oct-14 to 05-Nov-15]																
PR66012	Erect & Commission Tower Crane @ E3	24.00	18-Oct-14	0%	24.00	14-Nov-14	18-Dec-14	17-Jan-15	52.00	116.00	0%	[Gantt Bar: Green, 18-Oct-14 to 17-Jan-15]																
PR66013	Erect & Commission Tower Crane @ E4	24.00	18-Oct-14	0%	24.00	14-Nov-14	03-Oct-14	01-Nov-14	-11.00	89.00	0%	[Gantt Bar: Green, 18-Oct-14 to 01-Nov-14]																
PR66018	Erect & Commission Tower Crane @ E9	24.00	29-Oct-14	0%	24.00	25-Nov-14	10-Jun-15	27-Jul-15	166.00	82.00	0%	[Gantt Bar: Green, 29-Oct-14 to 27-Jul-15]																
PR66019	Erect & Commission Tower Crane @ E10	24.00	10-Nov-14	0%	24.00	06-Dec-14	16-Jan-15	12-Feb-15	55.00	70.00	0%	[Gantt Bar: Green, 10-Nov-14 to 12-Feb-15]																
PR66020	Erect & Commission Tower Crane @ E11	24.00	16-Dec-14	0%	24.00	15-Jan-15	17-Nov-14	13-Dec-14	-25.00	122.00	0%	[Gantt Bar: Red, 16-Dec-14 to 13-Dec-14]																
Equipment Platforms for Tower Cranes																												
PR66025	Inst.Temp.Eqpt.Platform (piles & deck) @ E3	18.00	22-Sep-14	0%	18.00	17-Oct-14	27-Nov-14	17-Dec-14	52.00	0.00	0%	[Gantt Bar: Green, 22-Sep-14 to 17-Dec-14]																
PR66026	Inst.Temp.Eqpt.Platform (piles & deck) @ E4	18.00	22-Sep-14	0%	18.00	17-Oct-14	05-Sep-14	30-Sep-14	-11.00	0.00	0%	[Gantt Bar: Red, 22-Sep-14 to 30-Sep-14]																
PR66031	Inst.Temp.Eqpt.Platform (piles & deck) @ E9	18.00	06-Oct-14	0%	18.00	28-Oct-14	11-May-15	08-Jun-15	166.00	0.00	0%	[Gantt Bar: Green, 06-Oct-14 to 08-Jun-15]																
PR66032	Inst.Temp.Eqpt.Platform (piles & deck) @ E10	18.00	20-Oct-14	0%	18.00	08-Nov-14	23-Dec-14	15-Jan-15	55.00	0.00	0%	[Gantt Bar: Green, 20-Oct-14 to 15-Jan-15]																
PR66033	Inst.Temp.Eqpt.Platform (piles & deck) @ E11	18.00	25-Nov-14	0%	18.00	15-Dec-14	27-Oct-14	15-Nov-14	-25.00	0.00	0%	[Gantt Bar: Red, 25-Nov-14 to 15-Nov-14]																
Deck Segment Installation Equipment																												
Launching Gantry 1																												
PR67040	Launching Gantry Design	95.00	05-Feb-14 A	94.74%	5.00	26-Sep-14	08-Nov-14	13-Nov-14	39.00	31.00	95%	[Gantt Bar: Blue, 05-Feb-14 to 13-Nov-14]																
PR67041	Launching Gantry 1 Fabrication	95.00	15-May-14 A	94.74%	5.00	26-Sep-14	24-Aug-18	29-Aug-18	161.00	1161.00	95%	[Gantt Bar: Blue, 15-May-14 to 29-Aug-18]																
PR67042	Launching Gantry 1 Delivery	20.00	28-Aug-14 A	30%	14.00	09-Oct-14	13-Sep-14	29-Sep-14	-7.00	79.00	30%	[Gantt Bar: Red, 28-Aug-14 to 29-Sep-14]																
Launching Gantry 2																												
PR67043	Launching Gantry 2 Fabrication	105.00	16-Jun-14 A	20%	84.00	02-Jan-15	03-Oct-14	12-Jan-15	8.00	56.00	20%	[Gantt Bar: Green, 16-Jun-14 to 12-Jan-15]																
Lifting Frames																												
Lifting Frames 1 & 2																												
PR68011	Lifting Frame 1&2 Design	70.00	02-Jun-14 A	50%	35.00	03-Nov-14	13-Aug-14	23-Sep-14	-33.00	0.00	50%	[Gantt Bar: Red, 02-Jun-14 to 23-Sep-14]																
PR68012	Lifting Frame 1&2 Approval	60.00	27-Sep-14	0%	60.00	08-Dec-14	05-Sep-14	17-Nov-14	-18.00	15.00	0%	[Gantt Bar: Red, 27-Sep-14 to 17-Nov-14]																
PR68013	Lifting Frame 1&2 Fabrication	140.00	22-Sep-14	0%	140.00	12-Mar-15	13-Aug-14	29-Jan-15	-33.00	0.00	0%	[Gantt Bar: Red, 22-Sep-14 to 29-Jan-15]																
Lifting Frames 3 & 4																												
PR68015	Lifting Frame 3&4 Design	70.00	02-Jun-14 A	60%	28.00	25-Oct-14	26-Jul-14	27-Aug-14	-48.00	2.00	60%	[Gantt Bar: Red, 02-Jun-14 to 27-Aug-14]																
PR68016	Lifting Frame 3&4 Approval	60.00	22-Sep-14	0%	60.00	02-Dec-14	19-Aug-14	30-Oct-14	-28.00	20.00	0%	[Gantt Bar: Red, 22-Sep-14 to 30-Oct-14]																
PR68017	Lifting Frame 3&4 Fabrication	140.00	22-Sep-14	0%	140.00	12-Mar-15	26-Jul-14	12-Jan-15	-48.00	0.00	0%	[Gantt Bar: Red, 22-Sep-14 to 12-Jan-15]																
Lifting Frames 5 & 6																												
PR68019	Lifting Frame 5&6 Design	70.00	22-Sep-14	0%	70.00	13-Dec-14	08-Nov-14	31-Jan-15	39.00	0.00	0%	[Gantt Bar: Green, 22-Sep-14 to 31-Jan-15]																
PR68020	Lifting Frame 5&6 Approval	60.00	03-Dec-14	0%	60.00	13-Feb-15	13-Feb-15	02-May-15	59.00	20.00	0%	[Gantt Bar: Green, 03-Dec-14 to 02-May-15]																
PR68021	Lifting Frame 5&6 Fabrication	140.00	03-Dec-14	0%	140.00	28-May-15	21-Jan-15	15-Jul-15	39.00	0.00	0%	[Gantt Bar: Green, 03-Dec-14 to 15-Jul-15]																
Unloading Frames																												
Type 1																												
PR69100	Unloading Frame Type 1 Design	50.00	05-May-14 A	40%	30.00	28-Oct-14	10-Oct-14	13-Nov-14	14.00	17.00	40%	[Gantt Bar: Green, 05-May-14 to 13-Nov-14]																
PR69110	Unloading Frame Type 1 Fabrication	95.00	22-Sep-14	0%	95.00	15-Jan-15	10-Oct-14	31-Jan-15	14.00	0.00	0%	[Gantt Bar: Green, 22-Sep-14 to 31-Jan-15]																
Type 2																												

<ul style="list-style-type: none"> Actual Work Planned Bar Critical Bar ◆ Milestone 	Project ID: J3518DWP-PrD1-M16 Layout: J3518-DWP-3MRP Submission - M16 Filter: TASK filters: 3-Month Lookahead, No Level of Effort.	Tuen Mun - Chek Lap Kok Link - Southern Connection 3-Month Rolling Programme (Page 12 of 35 Pages) (Progress as of 21-Sep-14)				Date	Revision	Checked	Approved	DWG. No.: J3518/GCL/PGM/3MRP-M16
						29-Jul-14		FZ		
						29-Aug-14		FZ		
						07-Oct-14				

Activity ID	Activity Name	Orig. Durn.	Act. Start / FC Early Start	Duration % Complete	Rem. Durn.	Act. Finish / FC Early Finish	Late Start	Late Finish	Total Float	Free Float	Physical % Complete	2014															
												September				October				November				December			
												25	01	08	15	22	29	06	13	20	27	03	10	17	24	01	08
MBDC0130-8	D: Progressive Pile Cap Shell Manufacture & Delivery remaining shells	90.00	04-Nov-14	0%	90.00	23-Feb-15	27-Sep-14	15-Jan-15	-30.00	25.00	0%																
PP7410	Production of initial Viaduct D Marine Precast Pile Cap Shells	35.00	22-Sep-14	0%	35.00	03-Nov-14	16-Aug-14	26-Sep-14	-30.00	0.00	0%																
Viaduct C																											
Precast Pile Caps																											
MBCC0120	C: Commence Pile Cap Shell Casting on Approval of DDA	0.00	14-Nov-14	0%	0.00		27-Nov-14		11.00	101.00	0%																
Parapets																											
PP6010	Procure Sub-Contractor for Precast Parapets/Barriers	40.00	08-Nov-14	0%	40.00	24-Dec-14	07-Oct-14	21-Nov-14	-28.00	9.00	0%																
Materials																											
H-Piles																											
PP7470	Procurement of Viaduct C Socketted H-Piles	70.00	21-Jul-14 A	75.71%	17.00	13-Oct-14	22-Oct-14	10-Nov-14	24.00	16.00	40%																
PP7550	Procurement of Viaduct A Socketted H-Piles	70.00	24-Oct-14	0%	70.00	16-Jan-15	11-Feb-15	12-May-15	91.00	0.00	0%																
Reinforcement																											
Bored Piles																											
PP7100	Rebar - Cut, Bend & Fabricate Pile Cage for Viaduct E5 & E6 Piles	185.00	24-Oct-14	0%	185.00	10-Jun-15	19-Feb-14	04-Oct-14	201.00	0.00	0%																
PP7170	Rebar - Cut, Bend & Fabricate Pile Cage for Viaduct E7 & E8 Piles	185.00	24-Oct-14	0%	185.00	10-Jun-15	28-Apr-14	06-Dec-14	147.00	0.00	0%																
PP7240	Rebar - Cut, Bend & Fabricate Pile Cage for Viaduct E2 Piles	106.00	15-Apr-14 A	19.81%	85.00	03-Jan-15	30-Apr-14	11-Aug-14	119.00	100.00	20%																
PP7310	Rebar - Cut, Bend & Fabricate Pile Cage for Viaduct E1 Piles	36.00	09-Jul-14 A	77.78%	8.00	30-Sep-14	30-Sep-14	10-Oct-14	7.00	0.00	0%																
PP7380	Rebar - Cut, Bend & Fabricate Pile Cage for Viaduct D Piles	25.00	08-Aug-14 A	4%	24.00	21-Oct-14	01-Aug-14	28-Aug-14	-43.00	0.00	0%																
PP7460	Rebar - Cut, Bend & Fabricate Pile Cage for Viaduct C Piles	35.00	18-Aug-14 A	5.71%	33.00	31-Oct-14	01-Nov-14	09-Dec-14	33.00	0.00	0%																
PP7540	Rebar - Cut, Bend & Fabricate Pile Cage for Viaduct A Piles	21.00	12-Aug-14 A	4.76%	20.00	16-Oct-14	18-Apr-15	12-May-15	167.00	59.00	0%																
PP7620	Rebar - Cut, Bend & Fabricate Pile Cage for Viaduct F1 & F3 Piles	61.00	22-Sep-14	0%	61.00	03-Dec-14	27-Sep-14	09-Dec-14	5.00	1.00	0%																
PP7690	Rebar - Cut, Bend & Fabricate Pile Cage for Viaduct F2, F4 & F5 Piles	73.00	22-Sep-14	0%	73.00	17-Dec-14	04-Dec-14	06-Mar-15	61.13	0.00	0%																
Marine Pile Caps																											
PP7110	Rebar - Cut, Bend & Fabricate for Viaduct E5 & E6 Pile Caps	245.00	21-Nov-14	0%	245.00	18-Sep-15	19-Mar-14	14-Jan-15	201.00	0.00	0%																
PP7180	Rebar - Cut, Bend & Fabricate for Viaduct E7 & E8 Pile Caps	102.00	21-Nov-14	0%	102.00	26-Mar-15	28-May-14	26-Sep-14	147.00	0.00	0%																
PP7250	Rebar - Cut, Bend & Fabricate for Viaduct E2 Pile Caps	185.00	22-Sep-14	0%	185.00	09-May-15	30-Apr-14	09-Dec-14	119.00	0.00	0%																
PP7320	Rebar - Cut, Bend & Fabricate for Viaduct E1 Pile Caps	67.00	03-Oct-14	0%	67.00	19-Dec-14	11-Oct-14	30-Dec-14	7.00	0.00	0%																
PP7400	Rebar - Cut, Bend & Fabricate for Viaduct D Marine Pile Caps	47.00	22-Oct-14	0%	47.00	15-Dec-14	29-Aug-14	25-Oct-14	-43.00	8.00	0%																
PP7480	Rebar - Cut, Bend & Fabricate for Viaduct C Marine Pile Caps	42.00	21-Nov-14	0%	42.00	12-Jan-15	16-Jan-15	09-Mar-15	45.00	101.00	0%																
Marine Piers - Viaduct E																											
PP7270	Rebar - Cut, Bend & Fabricate for Viaduct E2 Piers	180.00	22-Oct-14	0%	180.00	02-Jun-15	30-May-14	03-Jan-15	119.00	0.00	0%																
PP7340	Rebar - Cut, Bend & Fabricate for Viaduct E1 Piers	31.00	20-Dec-14	0%	31.00	28-Jan-15	31-Dec-14	05-Feb-15	7.00	89.00	0%																
Land Pile Caps																											
PP7630	Rebar - Cut, Bend & Fabricate for Viaduct F1 & F3 Pile Caps	47.00	05-Dec-14	0%	47.00	31-Jan-15	09-Jan-15	07-Mar-15	27.00	0.00	0%																
PP7700	Rebar - Cut, Bend & Fabricate for Viaduct F2, F4 & F5 Pile Caps	24.00	18-Dec-14	0%	24.00	17-Jan-15	04-May-15	02-Jun-15	106.13	0.00	0%																
PP7752	Rebar - Cut, Bend & Fabricate for Viaduct B Land Pile Caps	26.00	16-Jul-14 A	11.54%	23.00	20-Oct-14	06-Aug-14	01-Sep-14	-39.00	0.00	10%																
PP7754	Rebar - Cut, Bend & Fabricate for Viaduct D Land Pile Caps	29.00	22-Oct-14	0%	29.00	24-Nov-14	20-Sep-14	25-Oct-14	-25.00	0.00	0%																
PP7756	Rebar - Cut, Bend & Fabricate for Viaduct C Land Pile Caps	34.00	21-Nov-14	0%	34.00	02-Jan-15	26-Jan-15	09-Mar-15	53.00	0.00	0%																
Land / Marine Piers - Viaduct A, B, C, D & F																											
PP7060	Bending of Rebar for Viaduct B Piers	64.00	21-Oct-14	0%	64.00	06-Jan-15	02-Sep-14	18-Nov-14	-39.00	0.00	0%																
PP7420	Bending of Rebar for Viaduct D Piers	71.00	25-Nov-14	0%	71.00	18-Feb-15	14-Mar-15	11-Jun-15	88.00	136.50	0%																
In-Situ Formworks / Falseworks																											
PP7070	On-Site Preparation & Assembly of Pier Formwork for Viaduct B Piers	70.00	03-Dec-14	0%	70.00	28-Feb-15	30-Aug-14	22-Nov-14	-78.00	0.00	0%																
PP7140	On-Site Preparation & Assembly of Pier Formwork for Viaduct E5 & E6 Piers	90.00	03-Dec-14	0%	90.00	24-Mar-15	15-Sep-14	02-Jan-15	-66.00	96.00	0%																
PP7280	On-Site Preparation & Assembly of Pier Formwork for Viaduct E2 Piers	90.00	03-Dec-14	0%	90.00	24-Mar-15	27-Jun-14	14-Oct-14	132.00	0.00	0%																
PP7430	On-Site Preparation & Assembly of Pier Formwork for Viaduct D Piers	90.00	03-Dec-14	0%	90.00	24-Mar-15	20-Oct-14	05-Feb-15	-37.88	0.00	0%																
PP7510	On-Site Preparation & Assembly of Pier Formwork for Viaduct C Piers	90.00	03-Dec-14	0%	90.00	24-Mar-15	26-Mar-15	17-Jul-15	91.00	135.00	0%																
PPPF02	Design & Fabrication of Falsework / Formwork & Delivery	120.00	20-Feb-14 A	50%	60.00	02-Dec-14	11-Apr-14	26-Jun-14	132.00	0.00	50%																

	Project ID: J3518DWPPrD1-M16	Tuen Mun - Chek Lap Kok Link - Southern Connection 3-Month Rolling Programme (Page 14 of 35 Pages) (Progress as of 21-Sep-14)	Date	Revision	Checked	Approved	DWG. No.: J3518/GCL/PGM/3MRP-M16
	Layout: J3518-DWP-3MRP Submission - M16		29-Jul-14		FZ		
	Filter: TASK filters: 3-Month Lookahead, No Level of Effort.		29-Aug-14		FZ		
			07-Oct-14				



█ Actual Work
 █ Planned Bar
 █ Critical Bar
 ◆ Milestone





Project ID: J3518DWPPrD1-M16
 Layout: J3518-DWP-3MRP Submission - M16
 Filter: TASK filters: 3-Month Lookahead, No Level of Effort.

Tuen Mun - Chek Lap Kok Link - Southern Connection
3-Month Rolling Programme (Page 15 of 35 Pages)
(Progress as of 21-Sep-14)

Date	Revision	Checked	Approved
29-Jul-14		FZ	
29-Aug-14		FZ	
07-Oct-14			

DWG. No.:
J3518/GCL/PGM/3MRP-M16

Activity ID	Activity Name	Orig. Durn.	Act. Start / FC Early Start	Duration % Complete	Rem. Durn.	Act. Finish / FC Early Finish	Late Start	Late Finish	Total Float	Free Float	Physical % Complete	2014															
												September				October				November				December			
												25	01	08	15	22	29	06	13	20	27	03	10	17	24	01	08
TR00140	SO Approval of Base Tree Survey Report	30.00	14-Oct-13 A	90%	3.00	24-Sep-14	27-Aug-18	29-Aug-18	025.00	1025.00	90%																
TR00200	Tree transplant for Viaduct B - affecting Piers B11 to B17	90.00	17-Feb-14 A	97.78%	2.00	23-Sep-14	15-Feb-16	16-Feb-16	379.00	1050.00	98%																
TR00220	Tree transplant for Viaduct B - affecting Pier B18 & Abutment B	90.00	17-Feb-14 A	97.78%	2.00	23-Sep-14	01-Nov-14	03-Nov-14	31.00	16.00	98%																
TR00240	Tree transplant for Viaduct B - affecting realigned CTR	90.00	17-Feb-14 A	97.78%	2.00	23-Sep-14	24-Oct-14	25-Oct-14	24.00	65.00	98%																
TR00250	Tree felling for Viaduct B - affecting Slopes 9SE-B/F9, C8 & C9	48.00	05-May-14 A	77.08%	11.00	06-Oct-14	05-Jul-14	19-Jul-14	-55.00	1.00	13%																
TR00260	Tree felling for Viaduct C - affecting Piers C9 to Abutment C	24.00	30-Jan-14 A	83.33%	4.00	25-Sep-14	31-Oct-14	04-Nov-14	30.00	64.00	35%																
TR00270	Tree transplant for Viaduct C - affecting Piers C9 to Abutment C	90.00	17-Feb-14 A	24.44%	68.00	13-Dec-14	05-Aug-14	04-Nov-14	-34.00	0.00	20%																
TR00280	Tree felling for Viaduct C - affecting realigned CTR	30.00	30-Jan-14 A	56.67%	13.00	09-Oct-14	14-Jun-14	05-Jul-14	-67.00	55.00	35%																
TR00290	Tree transplant for Viaduct C - affecting realigned CTR	90.00	17-Feb-14 A	24.44%	68.00	13-Dec-14	17-Mar-14	05-Jul-14	122.00	0.00	20%																
Additional Trees																											
TR01010	Additional tree felling for Viaduct B along CTR	48.00	19-May-14 A	77.08%	11.00	06-Oct-14	13-Oct-14	25-Oct-14	15.00	56.00	42%																
Site Set Up for Works Area 3 and Site Offices along CEDD Access Road																											
PR30030	Works Area 3-A1/3-A2 - Construct 1.5m steel access bridge	30.00	22-Sep-14	0%	30.00	30-Oct-14	24-Jul-18	29-Aug-18	022.00	1022.00	0%																
Temporary Working Platform at North Lantau																											
PR08020	Temp. Working Platform at N.Lantau - Install boundary fence	22.00	22-Sep-14	0%	22.00	21-Oct-14	11-Aug-14	11-Sep-14	-30.00	23.00	0%																
PR08030	Temp. Working Platform at N.Lantau - Modify top of existing seawall	24.00	25-Nov-13 A	70.83%	7.00	29-Sep-14	24-Jan-14	04-Feb-14	163.00	5.00	71%																
PR08050	Temp. Working Platform at N.Lantau - Temp. rockfill & paving between existing & Temp.Seav	42.00	17-Feb-13 A	71.43%	12.00	07-Oct-14	18-Jan-14	04-Feb-14	168.00	0.00	71%																
PR08070	Temp. Working Platform at N.Lantau - Construct steel deck / bollards / fenders	24.00	02-May-14 A	29.17%	17.00	23-Oct-14	27-Jan-14	18-Feb-14	168.00	0.00	30%																
PR08080	Inst.Unloading Frame incl. T&C for seg.lift (incl. Load Test)	15.00	18-Nov-14	0%	15.00	04-Dec-14	12-Sep-14	29-Sep-14	-53.00	31.00	0%																
CONSTRUCTION																											
PILING AND SUBSTRUCTURE																											
Viaduct A																											
General																											
ZA00010	Viaduct A - Approval of Foundation DDA DP11.01	0.00		0%	0.00	16-Dec-14		12-May-15	105.00	51.00	0%																
ZA00060	Prepare/submit/approval of MTR Protective Fence submission for Viaduct A	60.00	22-Sep-14	0%	60.00	12-Dec-14	27-Jun-14	18-Sep-14	-61.00	0.00	0%																
Bridge A2																											
Pier A1 (A2e)																											
Foundation Works																											
GFXX144	A1 (A2e) - Bored Piles (1.80m dia. x 3 nos)	88.00	12-Aug-14 A	5.68%	83.00	31-Dec-14	24-Apr-15	03-Aug-15	172.00	0.00	6%																
Bridge A1																											
Pier A8 (A1d)																											
Preliminary Works for Land Piling																											
PA080020	A08 (A1d) - Erect MTR protective fence / Remove existing fence	12.00	13-Dec-14	0%	12.00	29-Dec-14	19-Sep-14	04-Oct-14	-69.00	0.00	0%																
PA080030	A8 (A1d) - Install Geo. Instru. & Baseline Monitoring	36.00	13-Dec-14	0%	36.00	27-Jan-15	19-Sep-14	01-Nov-14	-71.00	0.00	0%																
Pier A9 (A1c)																											
Preliminary Works for Land Piling																											
PA090010	A9 (A1c) - Implement TTMS along north side of NLH E/B	2.00	13-Dec-14	0%	2.00	15-Dec-14	24-Oct-14	25-Oct-14	-43.00	0.00	0%																
PA090020	A9 (A1c) - Erect boundary fence, site clearance & set up site ingress	4.00	16-Dec-14	0%	4.00	19-Dec-14	27-Oct-14	30-Oct-14	-43.00	6.00	0%																
Pier A10 (A1b)																											
Preliminary Works for Land Piling																											
PA100010	A10 (A1b) - Implement TTMS along north side of NLH E/B	2.00	13-Dec-14	0%	2.00	15-Dec-14	05-Nov-14	06-Nov-14	-33.00	0.00	0%																
Pier A11 (A1a) & Abutment A																											
Preliminary Works for Land Piling																											
PA110010	A11 (A1a) to Abutment A - Implement TTMS along north side of NLH E/B	2.00	13-Dec-14	0%	2.00	15-Dec-14	05-Nov-14	06-Nov-14	-33.00	0.00	0%																
PA110020	A11 (A1a) to Approach Ramp A - Erect boundary fence / water filled barrier & set up site ingr	14.00	16-Dec-14	0%	14.00	03-Jan-15	07-Nov-14	22-Nov-14	-33.00	0.00	0%																
Viaduct B																											
Milestones - Marine Foundation																											
GFXX155-1	B7 (B2f) - Completion of piling works	0.00		0%	0.00	22-Sep-14		08-Sep-14	-10.00	7.00	0%																

 Actual Work
 Planned Bar
 Critical Bar
 Milestone

Project ID: J3518DWPPrD1-M16
 Layout: J3518-DWP-3MRP Submission - M16
 Filter: TASK filters: 3-Month Lookahead, No Level of Effort.

Tuen Mun - Chek Lap Kok Link - Southern Connection
3-Month Rolling Programme (Page 16 of 35 Pages)
(Progress as of 21-Sep-14)

Date	Revision	Checked	Approved
29-Jul-14		FZ	
29-Aug-14		FZ	
07-Oct-14			

DWG. No.:
J3518/GCL/PGM/3MRP-M16

Activity ID	Activity Name	Orig. Durn.	Act. Start / FC Early Start	Duration % Complete	Rem. Durn.	Act. Finish / FC Early Finish	Late Start	Late Finish	Total Float	Free Float	Physical % Complete	2014															
												September				October				November				December			
												25	01	08	15	22	29	06	13	20	27	03	10	17	24	01	08

Socketted H-Pile Installation

GFX335	B11 (B2b) - Loading Test for pre-bored H-pile	12.00	25-Aug-14 A	100%	0.00	05-Sep-14 A						100%
--------	---	-------	-------------	------	------	-------------	--	--	--	--	--	------

Pile Cap Works

SB2B0091	B11 (B2b) - Pile cap Excavation / ELS	24.00	19-Jul-14 A	75%	6.00	27-Sep-14	09-Jan-15	15-Jan-15	87.00	0.00	75%
SB2B0092	B11 (B2b) - Pile Breakdown to cut-off etc.	4.00	29-Sep-14	0%	4.00	04-Oct-14	16-Jan-15	20-Jan-15	87.00	0.00	0%
SB2B0100	B11 (B2b) - Pile cap Blinding	1.00	06-Oct-14	0%	1.00	06-Oct-14	21-Jan-15	21-Jan-15	87.00	0.00	0%
SB2B0110	B11 (B2b) - Pile cap Formwork	3.00	07-Oct-14	0%	3.00	10-Oct-14	22-Jan-15	24-Jan-15	87.00	0.00	0%
SB2B0120	B11 (B2b) - Pile cap Rebarwork	4.00	11-Oct-14	0%	4.00	16-Oct-14	26-Jan-15	29-Jan-15	87.00	0.00	0%
SB2B0122	B11 (B2b) - Pile cap Kicker Formwork	2.00	17-Oct-14	0%	2.00	18-Oct-14	30-Jan-15	31-Jan-15	87.00	0.00	0%
SB2B0130	B11 (B2b) - Pile cap Concreting	1.00	20-Oct-14	0%	1.00	20-Oct-14	02-Feb-15	02-Feb-15	87.00	0.00	0%
SB2B0140	B11 (B2b) - Pile cap Curing & Striking of Forms incl. CJ prep	6.00	21-Oct-14	0%	6.00	27-Oct-14	03-Feb-15	09-Feb-15	87.00	0.00	0%

Pier Works

SB2B0150	B11 (B2b) - Type 5B-B Pier Scaffolding (1st Lift)	4.00	28-Oct-14	0%	4.00	31-Oct-14	10-Feb-15	13-Feb-15	87.00	0.00	0%
SB2B0160	B11 (B2b) - Type 5B-B Pier Rebarwork (1st Lift)	4.00	01-Nov-14	0%	4.00	05-Nov-14	14-Feb-15	18-Feb-15	87.00	0.00	0%
SB2B0170	B11 (B2b) - Type 5B-B Pier Formwork & Prep for Concreting (1st Lift)	4.00	06-Nov-14	0%	4.00	10-Nov-14	23-Feb-15	26-Feb-15	87.00	0.00	0%
SB2B0180	B11 (B2b) - Type 5B-B Pier Concreting (1st Lift)	1.00	11-Nov-14	0%	1.00	11-Nov-14	27-Feb-15	27-Feb-15	87.00	0.00	0%
SB2B0182	B11 (B2b) - Type 5B-B Pier Curing & Striking of Forms incl. CJ prep (1st Lift)	2.00	12-Nov-14	0%	2.00	13-Nov-14	28-Feb-15	02-Mar-15	87.00	0.00	0%
SB2B0190	B11 (B2b) - Type 5B-B Pier Scaffolding (2nd Lift)	4.00	14-Nov-14	0%	4.00	18-Nov-14	03-Mar-15	07-Mar-15	88.00	0.00	0%
SB2B0200	B11 (B2b) - Type 5B-B Pier Rebarwork (2nd Lift)	4.00	19-Nov-14	0%	4.00	22-Nov-14	09-Mar-15	12-Mar-15	88.00	0.00	0%
SB2B0210	B11 (B2b) - Type 5B-B Pier Formwork & Prep for Concreting (2nd Lift)	4.00	24-Nov-14	0%	4.00	27-Nov-14	13-Mar-15	17-Mar-15	88.00	0.00	0%
SB2B0220	B11 (B2b) - Type 5B-B Pier Concreting (2nd Lift)	1.00	28-Nov-14	0%	1.00	28-Nov-14	18-Mar-15	18-Mar-15	88.00	0.00	0%
SB2B0222	B11 (B2b) - Type 5B-B Pier Curing & Striking of Forms incl. CJ prep (2nd Lift)	2.00	29-Nov-14	0%	2.00	01-Dec-14	19-Mar-15	20-Mar-15	88.00	0.00	0%
SB2B0230	B11 (B2b) - Type 5B-B Pier Head Scaffolding	4.00	02-Dec-14	0%	4.00	05-Dec-14	21-Mar-15	25-Mar-15	88.00	0.00	0%
SB2B0240	B11 (B2b) - Type 5B-B Pier Head Rebarwork	4.00	06-Dec-14	0%	4.00	10-Dec-14	26-Mar-15	30-Mar-15	88.00	0.00	0%
SB2B0250	B11 (B2b) - Type 5B-B Pier Head Formwork & Prep for Concreting	4.00	11-Dec-14	0%	4.00	15-Dec-14	31-Mar-15	10-Apr-15	88.00	0.00	0%
SB2B0260	B11 (B2b) - Type 5B-B Pier Head Concreting	1.00	16-Dec-14	0%	1.00	16-Dec-14	11-Apr-15	11-Apr-15	88.00	0.00	0%
SB2B0270	B11 (B2b) - Type 5B-B Pier Head Curing & Striking of Forms & Remove Scaffolding	6.00	17-Dec-14	0%	6.00	23-Dec-14	13-Apr-15	21-Apr-15	89.00	0.00	0%
SB2B0280	B11 (B2b) - Type 5B-B Pier Backfilling Works	4.00	20-Dec-14	0%	4.00	24-Dec-14	18-Apr-15	22-Apr-15	89.00	0.00	0%

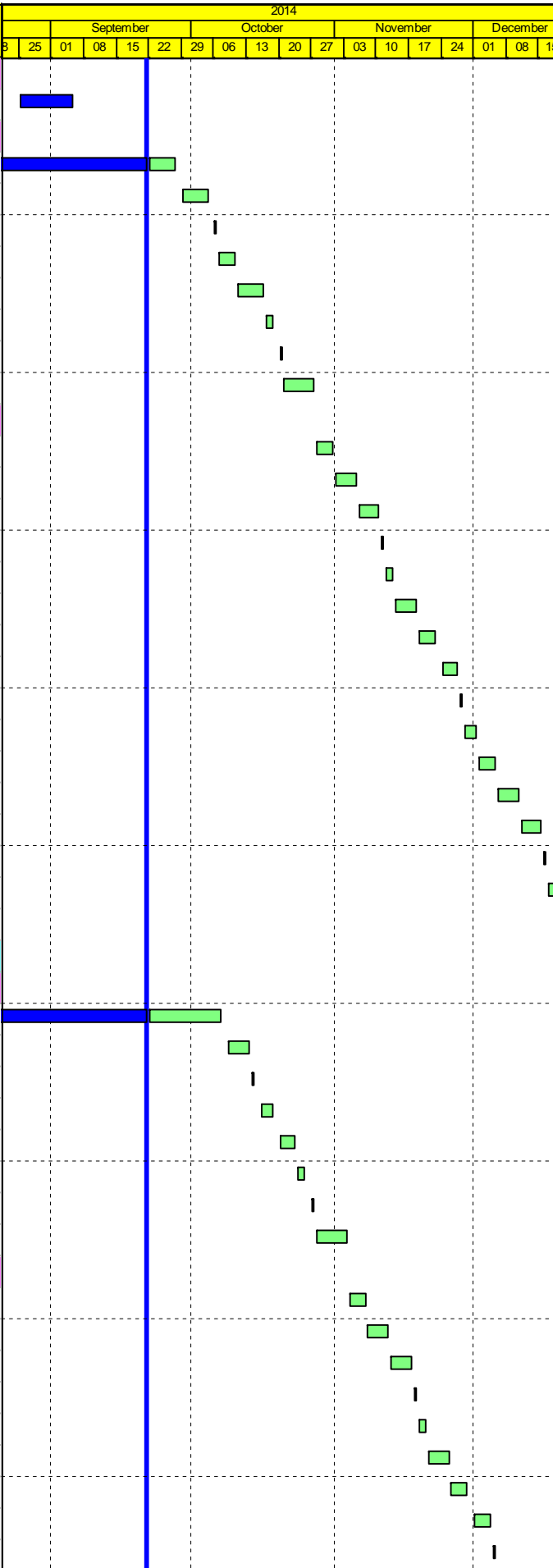
Pier B12 (B2a)

Pile Cap Works

SB2A0091	B12 (B2a) - Pile cap Excavation / ELS (incl. sheet piling)	24.00	13-Aug-14 A	50%	12.00	07-Oct-14	03-Jan-15	16-Jan-15	82.00	0.00	50%
SB2A0092	B12 (B2a) - Pile Breakdown to cut-off etc.	4.00	09-Oct-14	0%	4.00	13-Oct-14	17-Jan-15	21-Jan-15	82.00	0.00	0%
SB2A0100	B12 (B2a) - Pile cap Blinding	1.00	14-Oct-14	0%	1.00	14-Oct-14	22-Jan-15	22-Jan-15	82.00	0.00	0%
SB2A0110	B12 (B2a) - Pile cap Formwork	3.00	16-Oct-14	0%	3.00	18-Oct-14	23-Jan-15	27-Jan-15	83.00	0.00	0%
SB2A0120	B12 (B2a) - Pile cap Rebarwork	4.00	20-Oct-14	0%	4.00	23-Oct-14	28-Jan-15	31-Jan-15	83.00	0.00	0%
SB2A0122	B12 (B2a) - Pile cap Kicker Formwork	2.00	24-Oct-14	0%	2.00	25-Oct-14	02-Feb-15	03-Feb-15	83.00	0.00	0%
SB2A0130	B12 (B2a) - Pile cap Concreting	1.00	27-Oct-14	0%	1.00	27-Oct-14	04-Feb-15	04-Feb-15	83.00	0.00	0%
SB2A0140	B12 (B2a) - Pile cap Curing & Striking of Forms incl. CJ prep	6.00	28-Oct-14	0%	6.00	03-Nov-14	05-Feb-15	11-Feb-15	83.00	0.00	0%

Pier Works

SB2A0150	B12 (B2a) - Type 5B-MJ Pier Scaffolding (1st Lift)	4.00	04-Nov-14	0%	4.00	07-Nov-14	12-Feb-15	16-Feb-15	83.00	0.00	0%
SB2A0160	B12 (B2a) - Type 5B-MJ Pier Rebarwork (1st Lift)	4.00	08-Nov-14	0%	4.00	12-Nov-14	17-Feb-15	24-Feb-15	83.00	0.00	0%
SB2A0170	B12 (B2a) - Type 5B-MJ Pier Formwork & Prep for Concreting (1st Lift)	4.00	13-Nov-14	0%	4.00	17-Nov-14	25-Feb-15	28-Feb-15	83.00	0.00	0%
SB2A0180	B12 (B2a) - Type 5B-MJ Pier Concreting (1st Lift)	1.00	18-Nov-14	0%	1.00	18-Nov-14	02-Mar-15	02-Mar-15	83.00	0.00	0%
SB2A0182	B12 (B2a) - Type 5B-MJ Pier Curing & Striking of Forms incl. CJ prep (1st Lift)	2.00	19-Nov-14	0%	2.00	20-Nov-14	03-Mar-15	04-Mar-15	83.00	0.00	0%
SB2A0190	B12 (B2a) - Type 5B-MJ Pier Scaffolding (2nd Lift)	4.00	21-Nov-14	0%	4.00	25-Nov-14	05-Mar-15	10-Mar-15	84.00	0.00	0%
SB2A0200	B12 (B2a) - Type 5B-MJ Pier Rebarwork (2nd Lift)	4.00	26-Nov-14	0%	4.00	29-Nov-14	11-Mar-15	14-Mar-15	84.00	0.00	0%
SB2A0210	B12 (B2a) - Type 5B-MJ Pier Formwork & Prep for Concreting (2nd Lift)	4.00	01-Dec-14	0%	4.00	04-Dec-14	16-Mar-15	19-Mar-15	84.00	0.00	0%
SB2A0220	B12 (B2a) - Type 5B-MJ Pier Concreting (2nd Lift)	1.00	05-Dec-14	0%	1.00	05-Dec-14	20-Mar-15	20-Mar-15	84.00	0.00	0%



█ Actual Work
█ Planned Bar
█ Critical Bar
◆ Milestone

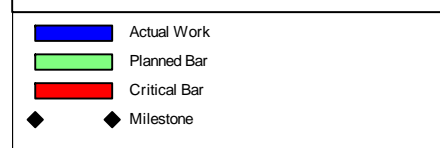
Project ID: J3518DWP-PrD1-M16
 Layout: J3518-DWP-3MRP Submission - M16
 Filter: TASK filters: 3-Month Lookahead, No Level of Effort.

Tuen Mun - Chek Lap Kok Link - Southern Connection
3-Month Rolling Programme (Page 21 of 35 Pages)
(Progress as of 21-Sep-14)

Date	Revision	Checked	Approved
29-Jul-14		FZ	
29-Aug-14		FZ	
07-Oct-14			

DWG. No.:
J3518/GCL/PGM/3MRP-M16

Activity ID	Activity Name	Orig. Durn.	Act. Start / FC Early Start	Duration % Complete	Rem. Durn.	Act. Finish / FC Early Finish	Late Start	Late Finish	Total Float	Free Float	Physical % Complete	2014															
												September				October				November				December			
												25	01	08	15	22	29	06	13	20	27	03	10	17	24	01	08
GFXX214	C2 (C4d) - Predrilling (2 nos)	12.00	10-Sep-14 A	91.67%	1.00	23-Sep-14	29-Nov-14	29-Nov-14	57.00	0.00	91.67%																
GFXX214-2	C2 (C4d) - Confirm Rockhead Levels	8.00	23-Sep-14	0%	8.00	03-Oct-14	14-Feb-15	26-Feb-15	119.00	94.00	0%																
GFXX215	C2 (C4d) - Bored Piles (2.20m dia. x 2 nos)	70.00	01-Nov-14	0%	70.00	24-Jan-15	01-Dec-14	26-Feb-15	25.00	0.00	0%																
Pier C4 (C4b)																											
Foundation Works																											
GFXX203	C4 (C4b) - Inst.Temp.Working Platform	12.00	08-Sep-14 A	33.33%	8.00	30-Sep-14	03-Dec-14	11-Dec-14	60.00	0.00	40%																
GFXX204	C4 (C4b) - Predrilling (3 nos)	12.00	03-Oct-14	0%	12.00	16-Oct-14	12-Dec-14	27-Dec-14	60.00	0.00	0%																
GFXX204-2	C4 (C4b) - Confirm Rockhead Levels	8.00	17-Oct-14	0%	8.00	25-Oct-14	03-Jan-15	12-Jan-15	64.00	17.00	0%																
GFXX205	C4 (C4b) - Bored Piles (2.00m dia. x 3 nos)	76.00	01-Nov-14	0%	76.00	31-Jan-15	29-Dec-14	31-Mar-15	47.00	0.00	0%																
Pier C5 (C4a)																											
Foundation Works																											
GFXX198	C5 (C4a) - Inst.Temp.Working Platform	12.00	18-Dec-14	0%	12.00	03-Jan-15	19-Nov-14	02-Dec-14	-25.00	0.00	0%																
Bridge C3																											
Pier C7 (C3e)																											
Preliminary Works for Land Piling																											
GFXX360	C7 (C3e) - Set up for PregROUTING	5.00	28-Nov-14	0%	5.00	03-Dec-14	21-Oct-14	25-Oct-14	-33.00	0.00	0%																
GFXX361-1	C7 (C3e) - Pre-grouting Works	30.00	04-Dec-14	0%	30.00	10-Jan-15	27-Oct-14	29-Nov-14	-33.00	0.00	0%																
PC070030	C7 (C3e) - Erect MTR protective fence / Remove existing fence	12.00	07-Aug-14 A	16.67%	10.00	04-Oct-14	08-Aug-14	21-Aug-14	-32.00	0.00	0%																
PC070040	C7 (C3e) - Install Geo. Instru. & Baseline Monitoring	36.00	06-Oct-14	0%	36.00	15-Nov-14	22-Aug-14	06-Oct-14	-35.00	0.00	0%																
PC070050	C7 (C3e) - Set up piling platform	10.00	17-Nov-14	0%	10.00	27-Nov-14	07-Oct-14	20-Oct-14	-33.00	0.00	0%																
Socketted H-Pile Installation																											
GFXX397	C7 (C3e) - Predrilling	17.00	19-Dec-14*	0%	17.00	10-Jan-15	11-Nov-14	29-Nov-14	-33.00	0.00	0%																
Pier C8 (C3d)																											
Preliminary Works for Land Piling																											
GFXX361-3	C8 (C3d) - Pre-grouting Works	30.00	07-Nov-14	0%	30.00	11-Dec-14	26-Jul-18	29-Aug-18	098.00	0.00	0%																
PC080040	C8 (C3d) - Erect boundary fence / water filled barrier	12.00	21-Jul-14 A	41.67%	7.00	29-Sep-14	12-Jun-18	22-Jun-18	994.00	1045.00	40%																
PC080050	C8 (C3d) - Install Geo. Instru. & Baseline Monitoring	36.00	22-Sep-14	0%	36.00	04-Nov-14	12-Jun-18	25-Jul-18	100.00	2.00	0%																
PC080060	C8 (C3d) - Set up piling platform	36.00	22-Sep-14	0%	36.00	06-Nov-14	02-Jun-18	25-Jul-18	988.00	0.00	0%																
PC080070	C8 (C3d) - Complete Civil Preparation Works for piling to commence	0.00		0%	0.00	11-Dec-14		29-Aug-18	986.00	986.00	0%																
Socketted H-Pile Installation																											
GFXX392-1	C8 (C3d) - Confirm Rockhead Levels	8.00	20-Aug-14 A	0%	8.00	30-Sep-14	31-Jan-15	09-Feb-15	108.00	25.00	0%																
GFXX393	C8 (C3d) - Install SH Pile (16 no.)	108.00	01-Nov-14	0%	108.00	13-Mar-15	10-Feb-15	26-Jun-15	83.00	0.00	0%																
Pier C9 (C3c)																											
Preliminary Works for Land Piling																											
PC090010	C9 (C3c) - Install Geo. Instru. & Baseline Monitoring	36.00	08-Oct-14	0%	36.00	18-Nov-14	22-Sep-14	04-Nov-14	-12.00	0.00	0%																
PC090020	C9 (C3c) - Erect fencing, site clearance & form piling platform	12.00	15-Dec-14	0%	12.00	30-Dec-14	05-Nov-14	18-Nov-14	-34.00	0.00	0%																
Pier C10 (C3b)																											
Preliminary Works for Land Piling																											
PC100010	C10 (C3c) - Install Geo. Instru. & Baseline Monitoring	36.00	08-Oct-14	0%	36.00	18-Nov-14	16-Feb-15	01-Apr-15	109.00	0.00	0%																
PC100020	C10 (C3c) - Erect fencing, site clearance & form piling platform	8.00	15-Dec-14	0%	8.00	23-Dec-14	20-Aug-18	29-Aug-18	976.00	0.00	0%																
Foundation Works																											
GFXX414-2	C10 (C3b) - Predrilling (2 nos)	13.00	05-Sep-14 A	61.54%	5.00	26-Sep-14	03-Jan-15	08-Jan-15	84.00	0.00	67%																
GFXX414-5	C10 (C3b) - Confirm Rockhead Levels	8.00	27-Sep-14	0%	8.00	08-Oct-14	09-Jan-15	17-Jan-15	84.00	20.00	0%																
GFXX418	C10 (C3b) - Bored Pile (2.20m dia. x 2 nos)	110.00	01-Nov-14	0%	110.00	16-Mar-15	19-Jan-15	05-Jun-15	64.00	0.00	0%																
Pier C11 (C3a)																											
Preliminary Works for Land Piling																											
PC110010	C11 (C3a) - Install Geo. Instru. & Baseline Monitoring	36.00	11-Oct-14	0%	36.00	21-Nov-14	23-Feb-15	09-Apr-15	109.00	0.00	0%																
PC110020	C11 (C3a) - Erect fencing, site clearance & form piling platform	8.00	15-Dec-14	0%	8.00	23-Dec-14	20-Aug-18	29-Aug-18	976.00	0.00	0%																



Project ID: J3518DWPPrD1-M16
Layout: J3518-DWP-3MRP Submission - M16
Filter: TASK filters: 3-Month Lookahead, No Level of Effort.

Tuen Mun - Chek Lap Kok Link - Southern Connection
3-Month Rolling Programme (Page 24 of 35 Pages)
(Progress as of 21-Sep-14)

Date	Revision	Checked	Approved
29-Jul-14		FZ	
29-Aug-14		FZ	
07-Oct-14			

DWG. No.:
J3518/GCL/PGM/3MRP-M16

Activity ID	Activity Name	Orig. Durn.	Act. Start / FC Early Start	Duration % Complete	Rem. Durn.	Act. Finish / FC Early Finish	Late Start	Late Finish	Total Float	Free Float	Physical % Complete	2014																
												September			October			November			December							
												25	01	08	15	22	29	06	13	20	27	03	10	17	24	01	08	15
Foundation Works																												
GFXX414-3	C11 (C3a) - Predrilling (2 nos)	13.00	22-Aug-14 A	100%	0.00	03-Sep-14 A					100%																	
GFXX414-6	C11 (C3a) - Confirm Rockhead Levels	8.00	22-Sep-14	0%	8.00	30-Sep-14	04-Feb-15	12-Feb-15	111.00	25.00	0%																	
GFXX416	C11 (C3a) - Bored Pile (2.00m dia. x 2 nos)	110.00	01-Nov-14	0%	110.00	16-Mar-15	13-Feb-15	03-Jul-15	86.00	0.00	0%																	
Bridge C2																												
Pier C12 (C2f)																												
Preliminary Works for Land Piling																												
PC120010	C12 (C2f) - Install Geo. Instru. & Baseline Monitoring	36.00	18-Oct-14	0%	36.00	28-Nov-14	02-Mar-15	16-Apr-15	109.00	0.00	0%																	
Foundation Works																												
GFXX410	C12 (C2f) - Predrilling (2 nos)	13.00	19-Aug-14 A	100%	0.00	28-Aug-14 A					100%																	
GFXX411	C12 (C2f) - Confirm Rockhead Levels	8.00	22-Sep-14	0%	8.00	30-Sep-14	17-Apr-15	25-Apr-15	166.00	118.00	0%																	
Pier C13 (C2e) Portal																												
Preliminary Works for Land Piling																												
PC130010	C13 (C2e) - Install Geo. Instru. & Baseline Monitoring	36.00	29-Nov-14	0%	36.00	13-Jan-15	17-Apr-15	30-May-15	109.00	0.00	0%																	
Socketted H-Pile Installation																												
GFXX387	C13 (C2e) - Predrilling (2 Nr)	14.00	11-Aug-14 A	50%	7.00	29-Sep-14	27-Apr-15	05-May-15	174.00	0.00	50%																	
GFXX387-1	C13 (C2e) - Confirm Rockhead Levels	8.00	30-Sep-14	0%	8.00	10-Oct-14	06-May-15	14-May-15	174.00	64.00	0%																	
Pier C15 (C2c)																												
Preliminary Works for Land Piling																												
PC150010	C15 (C2c) - Install Geo. Instru. & Baseline Monitoring	36.00	16-Aug-14 A	0%	36.00	04-Nov-14	23-Jun-15	04-Aug-15	220.00	34.00	0%																	
PC150020	C15 (C2c) - Erect fencing & site clearance	5.00	15-Dec-14	0%	5.00	19-Dec-14	05-Aug-15	11-Aug-15	162.00	74.00	0%																	
Pier C16 (C2b)																												
Preliminary Works for Land Piling																												
PC160010	C16 (C2b) - Install Geo. Instru. & Baseline Monitoring	36.00	08-Oct-14	0%	36.00	18-Nov-14	22-Jan-15	07-Mar-15	88.00	0.00	0%																	
PC160020	C16 (C2b) - Erect fencing & site clearance	5.00	15-Dec-14	0%	5.00	19-Dec-14	20-Apr-15	25-Apr-15	95.00	0.00	0%																	
PC160030	C16(C2b) - Set up piling platform	15.00	20-Dec-14	0%	15.00	09-Jan-15	27-Apr-15	19-May-15	95.00	0.00	0%																	
Bridge C1																												
Pier C17 (C2a)																												
Preliminary Works for Land Piling																												
PC170010	C17 (C2a) - Install Geo. Instru. & Baseline Monitoring	36.00	15-Oct-14	0%	36.00	25-Nov-14	29-Jan-15	14-Mar-15	88.00	0.00	0%																	
PC170020	C17 (C2a) - Erect fencing & site clearance	5.00	15-Dec-14	0%	5.00	19-Dec-14	16-Mar-15	20-Mar-15	72.00	0.00	0%																	
PC170030	C17(C2a) - Set up piling platform	15.00	20-Dec-14	0%	15.00	09-Jan-15	21-Mar-15	14-Apr-15	72.00	0.00	0%																	
Pier C18 (C3d) Portal																												
Preliminary Works for Land Piling																												
PC180010	C18 (C1e) - Install Geo. Instru. & Baseline Monitoring	36.00	22-Oct-14	0%	36.00	02-Dec-14	29-May-18	11-Jul-18	064.00	0.00	0%																	
Socketted H-Pile Installation																												
GFXX368-1	C18 (C1e) - Predrilling (2 Nr)	18.00	07-Aug-14 A	50%	9.00	03-Oct-14	27-Mar-15	10-Apr-15	152.00	0.00	50%																	
GFXX368-4	C18 (C1e) - Confirm Rockhead Levels	8.00	04-Oct-14	0%	8.00	13-Oct-14	11-Apr-15	20-Apr-15	152.00	31.00	0%																	
GFXX374	C18 (C1e) - Install SH Pile (10 nr)	56.00	19-Nov-14	0%	56.00	26-Jan-15	21-Apr-15	27-Jun-15	121.00	0.00	0%																	
Pier C19 (C1d)																												
Preliminary Works for Land Piling																												
PC190010	C19 (C1d) - Install Geo. Instru. & Baseline Monitoring	36.00	03-Dec-14	0%	36.00	16-Jan-15	12-Jul-18	22-Aug-18	064.00	0.00	0%																	
Socketted H-Pile Installation																												
GFXX368-5	C19 (C1d) - Confirm Rockhead Levels	8.00	08-Aug-14 A	0%	8.00	30-Sep-14	16-Apr-15	24-Apr-15	165.00	40.00	0%																	
GFXX369-2	C19 (C1d) - Install SH Pile (9 nr)	56.00	19-Nov-14	0%	56.00	26-Jan-15	25-Apr-15	03-Jul-15	125.00	0.00	0%																	
Pier C20 (C1c) & Abutment C																												
Preliminary Works for Land Piling																												
PC200010	C20 (C1c) - Install Geo. Instru. & Baseline Monitoring	36.00	10-Dec-14	0%	36.00	23-Jan-15	19-Jul-18	29-Aug-18	064.00	1064.00	0%																	

Actual Work
 Planned Bar
 Critical Bar
 Milestone

Project ID: J3518DWPPrD1-M16
 Layout: J3518-DWP-3MRP Submission - M16
 Filter: TASK filters: 3-Month Lookahead, No Level of Effort.

Tuen Mun - Chek Lap Kok Link - Southern Connection
3-Month Rolling Programme (Page 25 of 35 Pages)
(Progress as of 21-Sep-14)

Date	Revision	Checked	Approved
29-Jul-14		FZ	
29-Aug-14		FZ	
07-Oct-14			

DWG. No.:
J3518/GCL/PGM/3MRP-M16

Activity ID	Activity Name	Orig. Durn.	Act. Start / FC Early Start	Duration % Complete	Rem. Durn.	Act. Finish / FC Early Finish	Late Start	Late Finish	Total Float	Free Float	Physical % Complete	2014															
												September				October				November				December			
												25	01	08	15	22	29	06	13	20	27	03	10	17	24	01	08
GFXX251	D3 (D4d) - Bored Piles (2.00m dia. x 3 nos)	65.00	13-Oct-14	0%	65.00	29-Dec-14	19-Jul-14	06-Oct-14	-70.00	0.00	0%																
Pier D4 (D4c)																											
Foundation Works																											
GFXX244	D4 (D4c) - Inst.Temp.Working Platform	14.00	22-Sep-14	0%	14.00	09-Oct-14	28-Jul-14	12-Aug-14	-47.00	0.00	0%																
GFXX245	D4 (D4c) - Predrilling (3 nos)	11.00	10-Oct-14	0%	11.00	22-Oct-14	13-Aug-14	25-Aug-14	-47.00	0.00	0%																
GFXX245-2	D4 (D4c) - Confirm Rockhead Levels	8.00	23-Oct-14	0%	8.00	31-Oct-14	26-Aug-14	03-Sep-14	-47.00	0.00	0%																
GFXX246	D4 (D4c) - Bored Piles (2.00m dia. x 3 nos)	70.00	23-Oct-14	0%	70.00	15-Jan-15	26-Aug-14	18-Nov-14	-47.00	0.00	0%																
Pier D5 (D4b)																											
Foundation Works																											
GFXX239	D5 (D4b) - Inst.Temp.Working Platform	15.00	22-Sep-14	0%	15.00	10-Oct-14	12-Aug-14	28-Aug-14	-34.00	0.00	0%																
GFXX240	D5 (D4b) - Predrilling (2 nos)	12.00	11-Oct-14	0%	12.00	24-Oct-14	29-Aug-14	12-Sep-14	-34.00	0.00	0%																
GFXX240-2	D5 (D4b) - Confirm Rockhead Levels	8.00	25-Oct-14	0%	8.00	03-Nov-14	13-Sep-14	22-Sep-14	-34.00	0.00	0%																
GFXX241	D5 (D4b) - Bored Piles (2.35m dia. x 2 nos)	78.00	25-Oct-14	0%	78.00	27-Jan-15	13-Sep-14	15-Dec-14	-34.00	0.00	0%																
Pier D6 (D4a)																											
Foundation Works																											
GFXX234	D6 (D4a) - Inst.Temp.Working Platform	10.00	03-Oct-14	0%	10.00	14-Oct-14	23-Aug-14	03-Sep-14	-32.00	0.00	0%																
GFXX235	D6 (D4a) - Predrilling (3 nos)	10.00	15-Oct-14	0%	10.00	25-Oct-14	04-Sep-14	16-Sep-14	-32.00	0.00	0%																
GFXX235-2	D6 (D4a) - Confirm Rockhead Levels	8.00	27-Oct-14	0%	8.00	04-Nov-14	17-Sep-14	25-Sep-14	-32.00	0.00	0%																
GFXX236	D6 (D4a) - Bored Piles (2.00m dia. x 3 nos)	62.00	27-Oct-14	0%	62.00	09-Jan-15	17-Sep-14	29-Nov-14	-32.00	0.00	0%																
Bridge D2																											
Pier D7 (D3e)																											
Foundation Works																											
GFXX229	D7 (D3e) - Inst.Temp.Working Platform	10.00	12-Nov-14	0%	10.00	22-Nov-14	13-Sep-14	24-Sep-14	-49.00	0.00	0%																
GFXX230	D7 (D3e) - Predrilling (2 nos)	12.00	24-Nov-14	0%	12.00	06-Dec-14	25-Sep-14	10-Oct-14	-49.00	0.00	0%																
GFXX230-2	D7 (D3e) - Confirm Rockhead Levels	8.00	08-Dec-14	0%	8.00	16-Dec-14	11-Oct-14	20-Oct-14	-49.00	0.00	0%																
GFXX231	D7 (D3e) - Bored Piles (2.35m dia. x 2 nos)	67.00	08-Dec-14	0%	67.00	02-Mar-15	11-Oct-14	30-Dec-14	-49.00	0.00	0%																
Pier D8 (D3d)																											
Preliminary Works for Land Piling																											
GFXX432	D8 (D3d) - Set up for Pregrouting	5.00	22-Aug-14 A	100%	0.00	28-Aug-14 A					100%																
GFXX433-1	D8 (D3d) - Pregrouting Works	30.00	29-Aug-14 A	0%	30.00	28-Oct-14	26-Jul-18	29-Aug-18	136.00	16.00	0%																
PD080030	D8 (D3d) - Erect MTR protective fence / remove existing fence	12.00	07-Aug-14 A	100%	0.00	21-Aug-14 A					100%																
PD080032	D8 (D3d) - Install Geo. Instru. & Baseline Monitoring	36.00	22-Sep-14	0%	36.00	04-Nov-14	06-Jul-18	16-Aug-18	119.00	0.00	0%																
PD080040	D8 (D3d) - Set up piling platform	10.00	05-Nov-14	0%	10.00	15-Nov-14	17-Aug-18	29-Aug-18	008.00	0.00	0%																
PD080050	D8 (D3d) - Complete Civil Preparation Works for piling to commence	0.00		0%	0.00	15-Nov-14		29-Aug-18	008.00	1008.00	0%																
Socketted H-Pile Installation																											
GFXX470	D8 (D3d) - Predrilling (2 Nr)	17.00	25-Jul-14 A	47.06%	9.00	03-Oct-14	31-Jul-14	09-Aug-14	-44.00	0.00	50%																
GFXX470-1	D8 (D3d) - Confirm Rockhead Levels	8.00	04-Oct-14	0%	8.00	13-Oct-14	11-Aug-14	19-Aug-14	-44.00	0.00	0%																
GFXX471	D8 (D3d) - Installation of SH Pile (16 nr)	122.00	14-Oct-14	0%	122.00	11-Mar-15	20-Aug-14	15-Jan-15	-44.00	0.00	0%																
Pier D9 (D3c)																											
Preliminary Works for Land Piling																											
PD090010	D9 (D3c) - Erect MTR boundary fence / remove existing fence	12.00	26-Sep-14	0%	12.00	13-Oct-14	15-Aug-18	29-Aug-18	036.00	1036.00	0%																
Socketted H-Pile Installation																											
GFXX465-1	D9 (D3c) - Confirm Rockhead Levels	8.00	22-Sep-14	0%	8.00	30-Sep-14	24-Jul-14	01-Aug-14	-50.00	68.00	0%																
Pier D10 (D3b)																											
Preliminary Works for Land Piling																											
PD100020	D10 (D3b) - Set up piling platform	10.00	23-Jul-14 A	0%	10.00	04-Oct-14	17-Aug-18	29-Aug-18	042.00	0.00	0%																
PD100030	D10 (D3b) - Complete Civil Preparation Works for piling to commence	0.00		0%	0.00	04-Oct-14		29-Aug-18	042.00	1042.00	0%																
Socketted H-Pile Installation																											

	Project ID: J3518DWPPrD1-M16 Layout: J3518-DWP-3MRP Submission - M16 Filter: TASK filters: 3-Month Lookahead, No Level of Effort.	Tuen Mun - Chek Lap Kok Link - Southern Connection 3-Month Rolling Programme (Page 27 of 35 Pages) (Progress as of 21-Sep-14)	<table border="1"> <tr> <th>Date</th> <th>Revision</th> <th>Checked</th> <th>Approved</th> </tr> <tr> <td>29-Jul-14</td> <td></td> <td>FZ</td> <td></td> </tr> <tr> <td>29-Aug-14</td> <td></td> <td>FZ</td> <td></td> </tr> <tr> <td>07-Oct-14</td> <td></td> <td></td> <td></td> </tr> </table>	Date	Revision	Checked	Approved	29-Jul-14		FZ		29-Aug-14		FZ		07-Oct-14				DWG. No.: J3518/GCL/PGM/3MRP-M16
Date	Revision	Checked	Approved																	
29-Jul-14		FZ																		
29-Aug-14		FZ																		
07-Oct-14																				

Activity ID	Activity Name	Orig. Durn.	Act. Start / FC Early Start	Duration % Complete	Rem. Durn.	Act. Finish / FC Early Finish	Late Start	Late Finish	Total Float	Free Float	Physical % Complete	2014																
												September				October				November				December				
												25	01	08	15	22	29	06	13	20	27	03	10	17	24	01	08	15
GFXX460-1	D10 (D3b) - Predrilling (2 Nr)	17.00	14-Aug-14 A	50%	8.50	03-Oct-14	19-May-14	28-May-14	105.00	0.00	50%																	
GFXX460-4	D10 (D3b) - Confirm Rockhead Levels	8.00	03-Oct-14	0%	8.00	13-Oct-14	22-Jul-14	30-Jul-14	-60.50	0.00	0%																	
GFXX461-1	D10 (D3b) - Installation of SH Pile (12 nr)	153.00	13-Oct-14	0%	153.00	21-Apr-15	31-Jul-14	31-Jan-15	-60.50	0.00	0%																	
Pier D11 (D3a)																												
Preliminary Works for Land Piling																												
PD110020	D11 (D3a) - Set up piling platform	10.00	23-Jul-14 A	0%	10.00	04-Oct-14	02-May-14	17-May-14	-92.00	0.00	0%																	
PD110030	D11(D3a) - Complete Civil Preparation Works for piling to commence	0.00		0%	0.00	04-Oct-14		17-May-14	-92.00	0.00	0%																	
Socketted H-Pile Installation																												
GFXX460-2	D11 (D3a) - Predrilling	17.00	06-Oct-14	0%	17.00	24-Oct-14	19-May-14	07-Jun-14	-115.00	0.00	0%																	
GFXX460-5	D11 (D3a) - Confirm Rockhead Levels	8.00	25-Oct-14	0%	8.00	03-Nov-14	09-Jun-14	17-Jun-14	-115.00	0.00	0%																	
GFXX461-2	D11 (D3a) - Installation of SH Pile (14 nr)	153.00	04-Nov-14	0%	153.00	13-May-15	18-Jun-14	17-Dec-14	-115.00	0.00	0%																	
Pier D12 (D2e)																												
Preliminary Works for Land Piling																												
PD120012	D12 (D2e) - Install Geo. Instru. & Baseline Monitoring	36.00	22-Sep-14	0%	36.00	04-Nov-14	19-Jul-18	29-Aug-18	130.00	1130.00	0%																	
PD120030	D12 (D2e) - Complete Civil Preparation Works for piling to commence	0.00		0%	0.00	22-Sep-14		15-Aug-14	-26.00	10.00	0%																	
Socketted H-Pile Installation																												
GFXX460-3	D12 (D2e) - Predrilling	17.00	06-Oct-14	0%	17.00	24-Oct-14	16-Aug-14	04-Sep-14	-40.00	0.00	0%																	
GFXX460-6	D12 (D2e) - Confirm Rockhead Levels	8.00	25-Oct-14	0%	8.00	03-Nov-14	05-Sep-14	15-Sep-14	-40.00	0.00	0%																	
GFXX461-3	D12 (D2e) - Installation of SH Pile (16 nr)	153.00	04-Nov-14	0%	153.00	13-May-15	16-Sep-14	21-Mar-15	-40.00	0.00	0%																	
Pier D13 (D2d)																												
Socketted H-Pile Installation																												
GFXX452-8	D13 (D2d) - Confirm Rockhead Levels	8.00	31-May-14 A	0%	8.00	30-Sep-14	03-Feb-15	11-Feb-15	110.00	0.00	0%																	
GFXX454	D13 (D2d) - Installation of SH Pile (16 nos)	71.00	03-Oct-14	0%	71.00	24-Dec-14	12-Feb-15	14-May-15	110.00	0.00	0%																	
Bridge D1																												
Pier D14 (D2c)																												
Socketted H-Pile Installation																												
GFXX445-	D14 (D2c) - Confirm Rockhead Levels	8.00	17-Jun-14 A	0%	8.00	30-Sep-14	08-Jul-14	16-Jul-14	-64.00	0.00	0%																	
GFXX446-	D14 (D2c) - Installation of SH Pile (10 nr)	121.00	03-Oct-14	0%	121.00	27-Feb-15	17-Jul-14	08-Dec-14	-64.00	0.00	0%																	
Pier D15 (D2b)																												
Preliminary Works for Land Piling																												
PD150012	D15 (D2b) - Install Geo. Instru. & Baseline Monitoring	36.00	26-Jul-14 A	0%	36.00	04-Nov-14	14-Apr-14	30-May-14	130.00	0.00	0%																	
PD150020	D15 (D2b) - Set up piling platform	20.00	05-Nov-14	0%	20.00	27-Nov-14	31-May-14	07-Jul-14	107.00	0.00	0%																	
PD150030	D15 (D2b) - Complete Civil Preparation Works for piling to commence	0.00		0%	0.00	27-Nov-14		07-Jul-14	107.00	0.00	0%																	
Socketted H-Pile Installation																												
GFXX445-2	D15 (D2b) - Predrilling	18.00	28-Nov-14	0%	18.00	18-Dec-14	08-Jul-14	28-Jul-14	120.00	0.00	0%																	
GFXX445-4	D15 (D2b) - Confirm Rockhead Levels	8.00	19-Dec-14	0%	8.00	30-Dec-14	29-Jul-14	06-Aug-14	120.00	0.00	0%																	
Pier D16 (D2a)																												
Preliminary Works for Land Piling																												
PD160012	D16 (D2a) - Install Geo. Instru. & Baseline Monitoring	36.00	26-Jul-14 A	0%	36.00	04-Nov-14	22-Jun-18	03-Aug-18	108.00	20.00	0%																	
PD160020	D16 (D2a) - Set up piling platform	20.00	28-Nov-14	0%	20.00	20-Dec-14	04-Aug-18	29-Aug-18	978.00	978.00	0%																	
Socketted H-Pile Installation																												
GFXX445-5	D16 (D2a) - Confirm Rockhead Levels	8.00	23-Jul-14 A	100%	0.00	01-Sep-14 A					100%																	
GFXX446-3	D16 (D2a) - Installation of SH Pile (13 nr)	121.00	02-Sep-14 A	6.61%	113.00	06-Feb-15	15-Jul-14	27-Nov-14	-58.00	0.00	6.61%																	
Pier D17 (D1d)																												
Socketted H-Pile Installation																												
GFXX439-1	D17 (D1d) - Installation of SH Pile (10 nr)	70.00	14-Aug-14 A	17.14%	58.00	01-Dec-14	04-Dec-14	13-Feb-15	61.00	0.00	17.14%																	
Pier D18 (D1c)																												
Socketted H-Pile Installation																												

■ Actual Work
■ Planned Bar
■ Critical Bar
◆ Milestone

Project ID: J3518DWPPrD1-M16
 Layout: J3518-DWP-3MRP Submission - M16
 Filter: TASK filters: 3-Month Lookahead, No Level of Effort.

Tuen Mun - Chek Lap Kok Link - Southern Connection
3-Month Rolling Programme (Page 28 of 35 Pages)
(Progress as of 21-Sep-14)

Date	Revision	Checked	Approved
29-Jul-14		FZ	
29-Aug-14		FZ	
07-Oct-14			

DWG. No.:
J3518/GCL/PGM/3MRP-M16

Activity ID	Activity Name	Orig. Durn.	Act. Start / FC Early Start	Duration % Complete	Rem. Durn.	Act. Finish / FC Early Finish	Late Start	Late Finish	Total Float	Free Float	Physical % Complete	2014															
												September				October				November				December			
												25	01	08	15	22	29	06	13	20	27	03	10	17	24	01	08
GFXX439-2	D18 (D1c) - Installation of SH Pile (10 nr)	70.00	09-Aug-14 A	31.43%	48.00	18-Nov-14	07-Nov-14	05-Jan-15	38.00	0.00	32.28%	[Gantt bar: 09-Aug-14 to 05-Jan-15]															
GFXX439-5	D18 (D1c) - Selction of pile for Loading test	24.00	15-Dec-14	0%	24.00	14-Jan-15	31-Jan-15	03-Mar-15	38.00	0.00	0%	[Gantt bar: 14-Jan-15 to 03-Mar-15]															
Pier D19 (D1b) & Abutment D																											
Socketted H-Pile Installation																											
GFXX439-3	D19 (D1b) - Installation of SH Pile (6 nr)	70.00	29-Jul-14 A	42.86%	40.00	08-Nov-14	18-Nov-14	06-Jan-15	47.00	0.00	44.13%	[Gantt bar: 29-Jul-14 to 06-Jan-15]															
Viaduct E																											
Viaduct E1																											
Bridge E1 - Piling & Substructure																											
Milestones																											
GFXX023A	E1D (E1a1) - Start date for piling	0.00	22-Sep-14	0%	0.00		10-Oct-14		14.13	0.00	0%	[Milestone: 10-Oct-14]															
GFXX023A	E1C (E1a2) - Start date for piling	0.00	22-Sep-14	0%	0.00		10-Oct-14		14.13	0.00	0%	[Milestone: 10-Oct-14]															
GFXX023A	E1B (E1a3) - Start date for piling	0.00	22-Sep-14	0%	0.00		10-Oct-14		14.13	0.00	0%	[Milestone: 10-Oct-14]															
GFXX023A	E1A (E1a4) - Start date for piling	0.00	22-Sep-14	0%	0.00		10-Oct-14		14.13	0.00	0%	[Milestone: 10-Oct-14]															
GFXX028A	E2C/E2D (E1b2/E1b1) - Start date for piling	0.00	22-Sep-14	0%	0.00		17-Jul-14		-56.00	0.00	0%	[Milestone: 17-Jul-14]															
GFXX028A	E2B (E1b3) - Start date for piling	0.00	22-Sep-14	0%	0.00		17-Jul-14		-56.00	0.00	0%	[Milestone: 17-Jul-14]															
GFXX028A	E2A (E1b4) - Start date for piling	0.00	22-Sep-14	0%	0.00		17-Jul-14		-56.00	0.00	0%	[Milestone: 17-Jul-14]															
GFXX031-1	E1D (E1a1) - Piling Works Completion	0.00		0%	0.00	13-Nov-14		20-Jan-16	350.75	257.00	0%	[Milestone: 20-Jan-16]															
GFXX031-2	E1C (E1a2) - Piling Works Completion	0.00		0%	0.00	13-Nov-14		17-Mar-15	99.88	118.00	0%	[Milestone: 17-Mar-15]															
GFXX031-3	E1B (E1a3) - Piling Works Completion	0.00		0%	0.00	13-Nov-14		09-Jan-15	46.00	105.00	0%	[Milestone: 09-Jan-15]															
GFXX031-4	E1A (E1a4) - Piling Works Completion	0.00		0%	0.00	13-Nov-14		01-Dec-14	14.13	0.00	0%	[Milestone: 01-Dec-14]															
E1A, E1B, E1C & E1D (E1a1-2-3-4)																											
Foundation Works E1A, E1B, E1C & E1D																											
Foundation Works																											
GFXX02	E1A/E1B/E1C/E1D (E1a4/3/2/1) - Confirm Rockhead levels	8.00	05-Jul-14 A	75%	2.00	23-Sep-14	28-Aug-18	29-Aug-18	164.00	1164.00	79%	[Gantt bar: 05-Jul-14 to 29-Aug-18]															
GFXX02	E1A/E1B/E1C/E1D (E1a4/3/2/1) - Bored Piles (2.00m dia. x 8 nos)	125.00	09-Jul-14 A	91.2%	11.00	06-Oct-14	10-Oct-14	23-Oct-14	14.13	0.00	90.99%	[Gantt bar: 09-Jul-14 to 23-Oct-14]															
GFXX02	E1A/E1B/E1C/E1D (E1a4/3/2/1) - Sonic & Interface Coring	44.00	22-Sep-14	0%	44.00	13-Nov-14	10-Oct-14	01-Dec-14	14.13	0.00	0%	[Gantt bar: 22-Sep-14 to 01-Dec-14]															
GFXX02	E1A/E1B/E1C/E1D (E1a4/3/2/1) - Dismantle Temporary Piling Platform in Pier E1	7.00	06-Nov-14	0%	7.00	13-Nov-14	22-Nov-14	01-Dec-14	14.13	0.00	0%	[Gantt bar: 06-Nov-14 to 01-Dec-14]															
Pile Cap Works - E1A, E1B, E1C & E1D																											
Pile Cap Works - E1A (E1a4)																											
SE1A4070	E1A (E1a4) - Marine Pile Cap - Inst.prefab.collar frame to perm.casing of Bored pile	4.00	14-Nov-14	0%	4.00	18-Nov-14	01-Dec-14	05-Dec-14	14.13	94.00	0%	[Gantt bar: 14-Nov-14 to 05-Dec-14]															
E2A, E2B, E2C & E2D (E1b1-2-3-4)																											
Foundation Works - E2A, E2B, E2C & E2D																											
Foundation Works																											
GFXX02	E2A/E2B/E2C/E2D (E1b4/3/2/1) - Inst.Temp.Working Platforms (Heavy & Light)	34.00	28-Jun-14 A	100%	0.00	12-Sep-14 A					100%	[Gantt bar: 28-Jun-14 to 12-Sep-14]															
GFXX02	E2A/E2B/E2C/E2D (E1b4/3/2/1) - Predrilling (7 nos)	21.00	25-Aug-14 A	71.42%	6.00	29-Sep-14	25-Mar-17	01-Apr-17	744.00	79.00	71.42%	[Gantt bar: 25-Aug-14 to 01-Apr-17]															
GFXX02	E2A/E2B/E2C/E2D (E1b4/3/2/1) - Confirm Rockhead levels	8.00	28-Aug-14 A	12.5%	7.00	29-Sep-14	20-Oct-14	27-Oct-14	22.00	78.00	12%	[Gantt bar: 28-Aug-14 to 27-Oct-14]															
GFXX02	E2A/E2B/E2C/E2D (E1b4/3/2/1) - Bored Piles (2.00m dia. x 7 nr)	88.00	05-Sep-14 A	3.41%	85.00	03-Jan-15	17-Jul-14	27-Oct-14	-56.00	0.00	4.25%	[Gantt bar: 05-Sep-14 to 27-Oct-14]															
GFXX02	E2A/E2B/E2C/E2D (E1b4/3/2/1) - Sonic & Interface Coring	34.00	20-Dec-14	0%	34.00	31-Jan-15	16-Oct-14	24-Nov-14	-56.00	0.00	0%	[Gantt bar: 20-Dec-14 to 24-Nov-14]															
Viaduct E2																											
Bridge E2 - Piling & Substructure																											
Milestones																											
GFXX075	E3 (E2a) - Completion of piling works	0.00		0%	0.00	18-Nov-14		03-Nov-14	-13.00	22.00	0%	[Milestone: 03-Nov-14]															
GFXX076	E4 (E2b) - Completion of piling works	0.00		0%	0.00	26-Sep-14		14-Aug-14	-36.13	73.00	0%	[Milestone: 14-Aug-14]															
GFXX077-5	E9 (E2g) - Completion of piling works	0.00		0%	0.00	27-Oct-14		26-Mar-15	123.00	41.00	0%	[Milestone: 26-Mar-15]															
GFXX078	E10 (E2h) - Completion of piling works	0.00		0%	0.00	12-Nov-14		26-Nov-14	12.00	27.00	0%	[Milestone: 26-Nov-14]															
E3A, E3B, E3C & E3D (E2a - 1/2/3/4)																											
Foundation Works - E3A, E3B, E3C & E3D																											
Foundation Works																											

<ul style="list-style-type: none"> █ Actual Work █ Planned Bar █ Critical Bar ◆ Milestone 	Project ID: J3518DWPPrD1-M16 Layout: J3518-DWP-3MRP Submission - M16 Filter: TASK filters: 3-Month Lookahead, No Level of Effort.	Tuen Mun - Chek Lap Kok Link - Southern Connection 3-Month Rolling Programme (Page 29 of 35 Pages) (Progress as of 21-Sep-14)	<table border="1"> <tr> <th>Date</th> <th>Revision</th> <th>Checked</th> <th>Approved</th> </tr> <tr> <td>29-Jul-14</td> <td></td> <td>FZ</td> <td></td> </tr> <tr> <td>29-Aug-14</td> <td></td> <td>FZ</td> <td></td> </tr> <tr> <td>07-Oct-14</td> <td></td> <td></td> <td></td> </tr> </table>	Date	Revision	Checked	Approved	29-Jul-14		FZ		29-Aug-14		FZ		07-Oct-14				DWG. No.: J3518/GCL/PGM/3MRP-M16
Date	Revision	Checked	Approved																	
29-Jul-14		FZ																		
29-Aug-14		FZ																		
07-Oct-14																				

Activity ID	Activity Name	Orig. Durn.	Act. Start / FC Early Start	Duration% Complete	Rem. Durn.	Act. Finish / FC Early Finish	Late Start	Late Finish	Total Float	Free Float	Physical % Complete	2014															
												September				October				November				December			
												25	01	08	15	22	29	06	13	20	27	03	10	17	24	01	08
GFXX038	E3 (E2a) - Sonic & Interface Coring x6no.	20.00	03-Aug-14 A	100%	0.00	30-Aug-14 A					100%	[Gantt Bar: 03-Aug-14 to 30-Aug-14, 100% complete]															
GFXX03	E3 (E2a) - Selection of bored pile for Full Depth Coring	24.00	22-Sep-14	0%	24.00	21-Oct-14	05-Sep-14	06-Oct-14	-13.00	0.00	0%	[Gantt Bar: 05-Sep-14 to 06-Oct-14, 0% complete]															
GFXX03	E3 (E2a) - Bored Pile Full Depth Coring & Testing	24.00	22-Oct-14	0%	24.00	18-Nov-14	07-Oct-14	03-Nov-14	-13.00	0.00	0%	[Gantt Bar: 07-Oct-14 to 03-Nov-14, 0% complete]															
GFXX039	E3 (E2a) - Dismantle Temporary Removable Piling Platform	5.00	10-Sep-14 A	100%	0.00	13-Sep-14 A					100%	[Gantt Bar: 10-Sep-14 to 13-Sep-14, 100% complete]															
Pile Cap Works - E3A, E3B, E3C & E3D																											
Pile Cap Works																											
SE2A1070	E3 (E2a1/2/3/4)- Marine Pile Cap - Inst.Floating Seal & Casing Head Steelwork	8.00	15-Dec-14	0%	8.00	23-Dec-14	04-Nov-14	12-Nov-14	-35.00	29.00	0%	[Gantt Bar: 04-Nov-14 to 12-Nov-14, 0% complete]															
E4A & E4B (E2b - 1/2)																											
Foundation Works - E4A & E4B																											
Foundation Works																											
GFXX042	E4 (E2b) - Bored Piles (2.20m dia. x 4 nos)	90.00	19-Jun-14 A	100%	0.00	23-Aug-14 A					100%	[Gantt Bar: 19-Jun-14 to 23-Aug-14, 100% complete]															
GFXX043	E4 (E2b) - Sonic & Interface Coring x 4no.	12.00	30-Aug-14 A	100%	0.00	11-Sep-14 A					100%	[Gantt Bar: 30-Aug-14 to 11-Sep-14, 100% complete]															
GFXX044	E4 (E2b) - Dismantle Temporary Removable Piling Platform	5.00	22-Sep-14	0%	5.00	26-Sep-14	25-Jul-14	31-Jul-14	-48.13	0.00	0%	[Gantt Bar: 25-Jul-14 to 31-Jul-14, 0% complete]															
Pile Cap Works - E4A & E4B																											
Pile Cap Works																											
SE2B0070	E4 (E2b1/2) - Marine Pile Cap - Inst.Floating Seal & Casing Head Steelwork	8.00	15-Dec-14	0%	8.00	23-Dec-14	31-Jul-14	14-Aug-14	100.13	0.00	0%	[Gantt Bar: 31-Jul-14 to 14-Aug-14, 0% complete]															
E5A & E5B (E2c - 1/2)																											
Foundation Works - E5A & E5B																											
Foundation Works																											
GFXX04	E5 (E2c) - Inst.Temp.Working Platform (Light)	7.00	22-Sep-14	0%	7.00	29-Sep-14	17-Jul-14	24-Jul-14	-56.00	0.00	0%	[Gantt Bar: 17-Jul-14 to 24-Jul-14, 0% complete]															
GFXX046	E5 (E2c) - Predrilling (4 nos)	22.00	30-Sep-14	0%	22.00	27-Oct-14	13-Oct-14	06-Nov-14	9.00	0.00	0%	[Gantt Bar: 13-Oct-14 to 06-Nov-14, 0% complete]															
GFXX04	E5 (E2c) - Confirm Rockhead levels	8.00	28-Oct-14	0%	8.00	05-Nov-14	07-Nov-14	15-Nov-14	9.00	65.00	0%	[Gantt Bar: 07-Nov-14 to 15-Nov-14, 65% complete]															
E6A & E6B (E2d - 1/2)																											
Foundation Works - E6A & E6B																											
Foundation Works																											
GFXX050	E6 (E2d) - Inst.Temp.Working Platform (Heavy)	18.00	22-Sep-14	0%	18.00	14-Oct-14	04-Jul-14	24-Jul-14	-67.00	0.00	0%	[Gantt Bar: 04-Jul-14 to 24-Jul-14, 0% complete]															
GFXX05	E6 (E2d) - Inst.Temp.Working Platform (Light)	7.00	15-Oct-14	0%	7.00	22-Oct-14	25-Jul-14	01-Aug-14	-67.00	0.00	0%	[Gantt Bar: 25-Jul-14 to 01-Aug-14, 0% complete]															
GFXX051	E6 (E2d) - Predrilling (4 nos)	18.00	23-Oct-14	0%	18.00	12-Nov-14	27-Nov-14	17-Dec-14	30.00	0.00	0%	[Gantt Bar: 27-Nov-14 to 17-Dec-14, 0% complete]															
GFXX05	E6 (E2d) - Confirm Rockhead levels	8.00	13-Nov-14	0%	8.00	21-Nov-14	18-Dec-14	29-Dec-14	30.00	183.00	0%	[Gantt Bar: 18-Dec-14 to 29-Dec-14, 0% complete]															
E7A & E7B (E2e - 1/2)																											
Foundation Works - E7A & E7B																											
Foundation Works																											
GFXX055	E7 (E2e) - Inst.Temp.Working Platforms (Heavy)	19.00	23-Oct-14	0%	19.00	13-Nov-14	02-Aug-14	23-Aug-14	-67.00	0.00	0%	[Gantt Bar: 02-Aug-14 to 23-Aug-14, 0% complete]															
GFXX05	E7 (E2e) - Inst.Temp.Working Platforms (Light)	7.00	14-Nov-14	0%	7.00	21-Nov-14	25-Aug-14	01-Sep-14	-67.00	0.00	0%	[Gantt Bar: 25-Aug-14 to 01-Sep-14, 0% complete]															
GFXX056	E7 (E2e) - Predrilling (5 nos)	26.00	22-Nov-14	0%	26.00	22-Dec-14	18-Oct-14	17-Nov-14	-30.00	0.00	0%	[Gantt Bar: 18-Oct-14 to 17-Nov-14, 0% complete]															
E8A & E8B (E2f - 1/2)																											
Foundation Works - E8A & E8B																											
Foundation Works																											
GFXX060	E8 (E2f) - Inst.Temp.Working Platforms (Heavy)	32.00	22-Nov-14	0%	32.00	31-Dec-14	02-Sep-14	11-Oct-14	-67.00	0.00	0%	[Gantt Bar: 02-Sep-14 to 11-Oct-14, 0% complete]															
GFXX06	E8 (E2f) - Relocation & Install Temporary Removable Platform from E3, Plant & Equipment fr	7.00	14-Oct-14	0%	7.00	21-Oct-14	12-Nov-14	19-Nov-14	25.00	92.00	0%	[Gantt Bar: 12-Nov-14 to 19-Nov-14, 0% complete]															
E9A & E9B (E2g - 1/2)																											
Foundation Works - E9A & E9B																											
Foundation Works																											
GFXX067	E9 (E2g) - Bored Piles (2.00m dia. x 6 nr)	105.00	17-May-14 A	90.48%	10.00	04-Oct-14	18-Feb-15	04-Mar-15	123.00	0.00	91.01%	[Gantt Bar: 18-Feb-15 to 04-Mar-15, 91.01% complete]															
GFXX068	E9 (E2g) - Sonic & Interface Coring	12.00	06-Oct-14	0%	12.00	18-Oct-14	05-Mar-15	18-Mar-15	123.00	0.00	0%	[Gantt Bar: 05-Mar-15 to 18-Mar-15, 0% complete]															
GFXX069	E9 (E2g) - Dismantle temp. removable piling platform	7.00	20-Oct-14	0%	7.00	27-Oct-14	19-Mar-15	26-Mar-15	123.00	0.00	0%	[Gantt Bar: 19-Mar-15 to 26-Mar-15, 0% complete]															
Pile Cap Works - E9A & E9B																											
Pile Cap Works																											

■ Actual Work
■ Planned Bar
■ Critical Bar
◆ Milestone

Project ID: J3518DWPPrD1-M16
 Layout: J3518-DWP-3MRP Submission - M16
 Filter: TASK filters: 3-Month Lookahead, No Level of Effort.

Tuen Mun - Chek Lap Kok Link - Southern Connection
3-Month Rolling Programme (Page 30 of 35 Pages)
(Progress as of 21-Sep-14)

Date	Revision	Checked	Approved
29-Jul-14		FZ	
29-Aug-14		FZ	
07-Oct-14			

DWG. No.:
J3518/GCL/PGM/3MRP-M16

Activity ID	Activity Name	Orig. Durn.	Act. Start / FC Early Start	Duration % Complete	Rem. Durn.	Act. Finish / FC Early Finish	Late Start	Late Finish	Total Float	Free Float	Physical % Complete	2014																			
												September					October					November					December				
												25	01	08	15	22	29	06	13	20	27	03	10	17	24	01	08	15			
Foundation Works																															
GFXX579-3	F18 (F4c) - Pre-drilling for Piles (2 nos)	12.00	17-Nov-14	0%	12.00	29-Nov-14	10-Sep-15	23-Sep-15	241.00	0.00	0%																				
GFXX579-7	F18 (F4c) - Confirm Rockhead Levels	8.00	01-Dec-14	0%	8.00	09-Dec-14	24-Sep-15	05-Oct-15	241.00	89.00	0%																				
Approach Ramp F																															
Approach Ramp Land Foundation - HKBCF																															
Approach Ramp F Piling																															
GFXX593	AR-F - Pre-drilling for Piles (28 nos)	24.00	03-Nov-14	0%	24.00	29-Nov-14	13-Dec-14	13-Jan-15	35.00	0.00	0%																				
GFXX594	AR-F - Confirm Rockhead Levels	8.00	01-Dec-14	0%	8.00	09-Dec-14	14-Jan-15	22-Jan-15	35.00	106.00	0%																				
SUPERSTRUCTURE																															
Viaduct B Superstructure																															
Bridge B3 Superstructure																															
Milestones																															
Milestones Ready for PH Segment Erection																															
B300050-1	Pier B2 (B3e) ready for Viaduct B3 PH segment erection	0.00		0%	0.00	29-Nov-14		18-Oct-14	-36.00	57.00	0%																				
B300060-1	Pier B1 (B3f) ready for Viaduct B3 PH segment erection	0.00		0%	0.00	25-Nov-14		29-Oct-14	-23.00	61.00	0%																				
Bridge B1 Superstructure																															
Milestones																															
Milestones Ready for PH Segment Erection																															
B100030-1	Pier B16 (B1d) ready for Viaduct B1 PH segment erection	0.00		0%	0.00	25-Oct-14		10-Jun-15	182.13	0.00	0%																				
B100040-1	Pier B15 (B1e) ready for Viaduct B1 PH segment erection	0.00		0%	0.00	10-Dec-14		11-May-15	119.00	0.00	0%																				
Viaduct E																															
Bridge E1 Superstructure																															
Milestones																															
Milestones Ready for PH Segment Erection																															
E100040-1	Pier B1 (B3f) ready for Viaduct E1 PH segment erection	0.00		0%	0.00	25-Nov-14		29-Oct-14	-23.00	61.00	0%																				
At-Grade Roadworks & Other Works along NLH																															
Viaduct D Slope Works																															
Slope 10NW-C/F10																															
M201215	10NW-C/F10 - Install Geo. Instru. & Baseline Monitoring	30.00	26-Jul-14 A	0%	30.00	30-Oct-14	28-Jul-16	08-Sep-16	489.00	418.00	0%																				
At-Grade Roadworks and Other Works along Cheung Tung Road																															
Re-alignment of Cheung Tung Road adjacent to Viaduct B																															
RP00020	Construct new ESS adjacent to Viaduct B	60.00	15-Sep-14 A	16.67%	50.00	22-Nov-14	12-Mar-14	26-May-14	126.00	0.00	15%																				
RP00030	Inst. new equip. & testing / commissioning of new ESS	60.00	24-Nov-14	0%	60.00	04-Feb-15	27-May-14	29-Aug-14	126.00	0.00	0%																				
Box Culvert Extension																															
BCE0010	Excavate to expose existing culvert / cascade	18.00	13-Dec-14*	0%	18.00	06-Jan-15	26-Nov-14	16-Dec-14	-15.00	0.00	0%																				
BCE0020	Construct temporary drainage diversion	18.00	13-Dec-14	0%	18.00	06-Jan-15	26-Nov-14	16-Dec-14	-15.00	0.00	0%																				
Viaduct B Slope Works																															
Slope 9SE-B/C9																															
Zone A																															
SWVB1090	9SE-B/C9 Zone A - Excav. to +21.00	5.00	04-Aug-14 A	80%	1.00	22-Sep-14	01-Apr-17	01-Apr-17	682.00	169.00	80%																				
SWVB1110	9SE-B/C9 Zone A - Excav. to +19.00 Zone A/B	5.00	04-Aug-14 A	100%	0.00	29-Aug-14 A					100%																				
SWVB1120	9SE-B/C9 Zone A - Soil nail 32 nr. @ +20.5	11.00	01-Sep-14 A	90.91%	1.00	22-Sep-14	29-Aug-18	29-Aug-18	051.00	1051.00	90%																				
SWVB1140	9SE-B/C9 Zone A - Soil nail 37 nr. @ +18.5	12.00	01-Aug-14 A	66.67%	4.00	25-Sep-14	25-Aug-18	29-Aug-18	048.00	1048.00	66%																				
SWVB1160	9SE-B/C9 Zone A - Soil nail 29 nr. @ +16.5	11.00	18-Aug-14 A	27.27%	8.00	30-Sep-14	13-Oct-14	22-Oct-14	15.00	0.00	30%																				
SWVB1170	9SE-B/C9 Zone A - Inst. 300UC @ +15.0	10.00	03-Oct-14	0%	10.00	16-Oct-14	23-Oct-14	03-Nov-14	15.00	0.00	0%																				
SWVB1180	9SE-B/C9 Zone A - Excav. to +14.5	5.00	17-Oct-14	0%	5.00	22-Oct-14	04-Nov-14	08-Nov-14	15.00	0.00	0%																				
SWVB1190	9SE-B/C9 Zone A - Raking Drain 14 nr @ +16.0	5.00	23-Oct-14	0%	5.00	28-Oct-14	10-Nov-14	14-Nov-14	15.00	0.00	0%																				
SWVB1200	9SE-B/C9 Zone A - Excav. to +11.5	5.00	29-Oct-14	0%	5.00	03-Nov-14	15-Nov-14	20-Nov-14	15.00	0.00	0%																				

	Project ID: J3518DWPPrD1-M16 Layout: J3518-DWP-3MRP Submission - M16 Filter: TASK filters: 3-Month Lookahead, No Level of Effort.	Tuen Mun - Chek Lap Kok Link - Southern Connection 3-Month Rolling Programme (Page 33 of 35 Pages) (Progress as of 21-Sep-14)	<table border="1"> <thead> <tr> <th>Date</th> <th>Revision</th> <th>Checked</th> <th>Approved</th> </tr> </thead> <tbody> <tr> <td>29-Jul-14</td> <td></td> <td>FZ</td> <td></td> </tr> <tr> <td>29-Aug-14</td> <td></td> <td>FZ</td> <td></td> </tr> <tr> <td>07-Oct-14</td> <td></td> <td></td> <td></td> </tr> </tbody> </table>	Date	Revision	Checked	Approved	29-Jul-14		FZ		29-Aug-14		FZ		07-Oct-14				DWG. No.: J3518/GCL/PGM/3MRP-M16
Date	Revision	Checked	Approved																	
29-Jul-14		FZ																		
29-Aug-14		FZ																		
07-Oct-14																				

Activity ID	Activity Name	Orig. Durn.	Act. Start / FC Early Start	Duration % Complete	Rem. Durn.	Act. Finish / FC Early Finish	Late Start	Late Finish	Total Float	Free Float	Physical % Complete	2014																
												September			October			November			December							
												25	01	08	15	22	29	06	13	20	27	03	10	17	24	01	08	15
RP10020	Construct new ESS-C Sub.Stn. adjacent to Viaduct C	48.00	13-Aug-14 A	20.83%	38.00	08-Nov-14	22-Sep-14	08-Nov-14	0.00	0.00	20%																	
RP10030	Inst.Eqpt. & Testing / commissioning of new ESS	60.00	10-Nov-14	0%	60.00	21-Jan-15	10-Nov-14	21-Jan-15	0.00	0.00	0%																	
Viaduct C Slope Works																												
Slope 10NW-C/C22																												
SWVC1000	10NW-C/C22 - Slope works	18.00	15-Dec-14	0%	18.00	07-Jan-15	27-Oct-14	15-Nov-14	-42.00	0.00	0%																	
Natural Terrain Hazard Mitigation Works																												
NTHM Works - West Portion																												
NTW0010	DDA Approval for Natural Terrain Hazard Mitigation Measures	0.00		0%	0.00	21-Nov-14		20-Mar-15	85.00	0.00	0%																	
Check Dam no. 1 (CD1)																												
GFXX497	Predrilling Works for Check Dams	25.00	22-Nov-14	0%	25.00	20-Dec-14	23-Mar-15	29-Apr-15	97.00	0.00	0%																	
GFXX499	CD1 - Mobilization of rig for MiniPile	6.00	15-Dec-14	0%	6.00	20-Dec-14	22-Apr-15	29-Apr-15	97.00	0.00	0%																	
Watermains & All Assoc Works from Tung Chung to Southern Landfall																												
WM00100	Prepare / submit TTMS for watermain laying along realigned CTR	72.00	22-Sep-14	0%	72.00	18-Dec-14	08-Sep-14	06-Dec-14	-10.00	0.00	0%																	
WM00110	TTMS approval for watermain laying along realigned CTR	48.00	19-Dec-14	0%	48.00	16-Feb-15	08-Dec-14	04-Feb-15	-10.00	0.00	0%																	

Actual Work
 Planned Bar
 Critical Bar
 Milestone

Project ID: J3518DWPrD1-M16
 Layout: J3518-DWP-3MRP Submission - M16
 Filter: TASK filters: 3-Month Lookahead, No Level of Effort.

Tuen Mun - Chek Lap Kok Link - Southern Connection
3-Month Rolling Programme (Page 35 of 35 Pages)
(Progress as of 21-Sep-14)

Date	Revision	Checked	Approved
29-Jul-14		FZ	
29-Aug-14		FZ	
07-Oct-14			

DWG. No.:
J3518/GCL/PGM/3MRP-M16