

Figure 1. Transect Line Layout in Northwest and Northeast Lantau Survey Areas

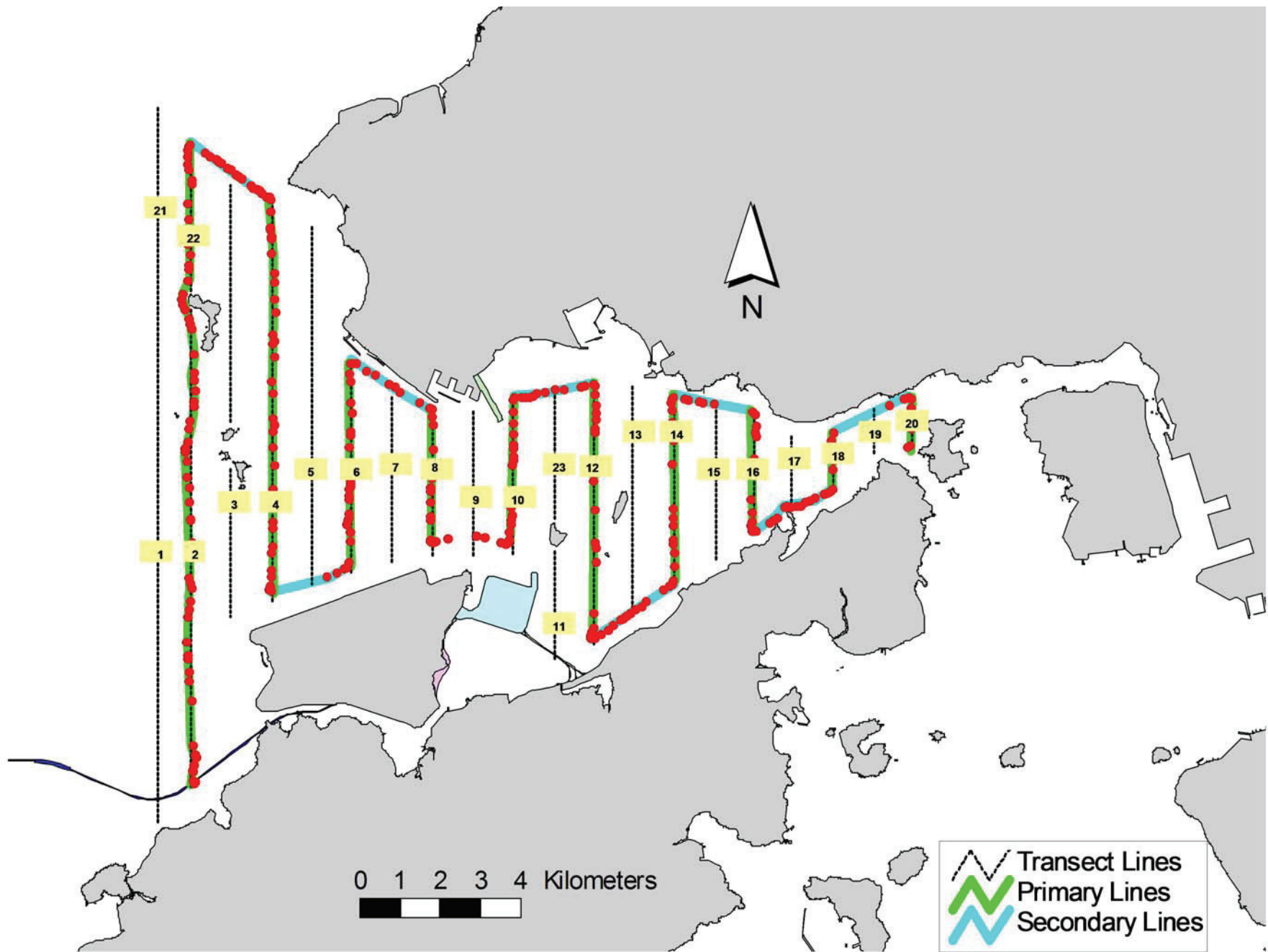


Figure 2. Survey Route on April 8th, 2015 (from HKLR03 project)

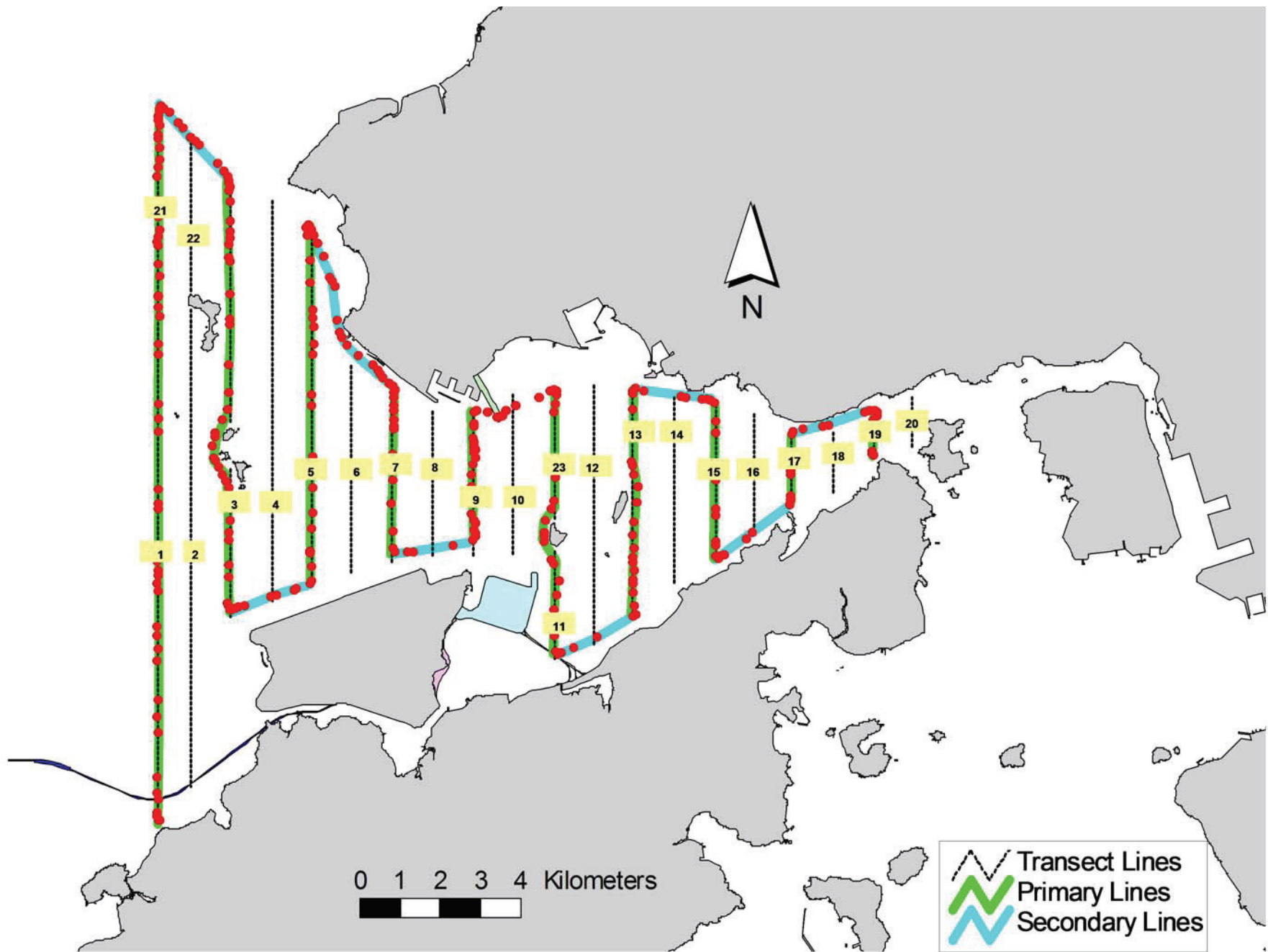


Figure 3. Survey Route on April 10th, 2015 (from HKLR03 project)

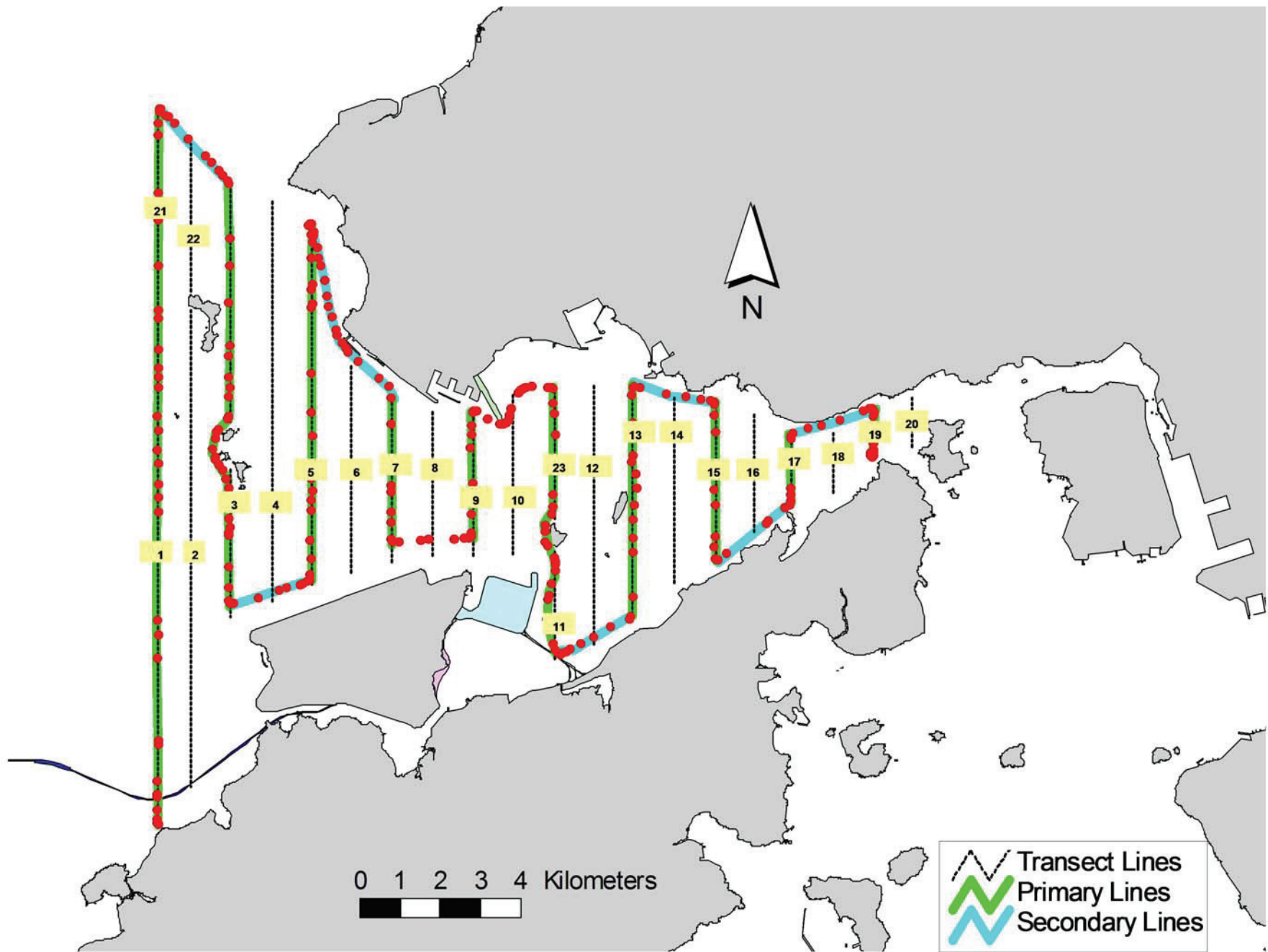


Figure 4. Survey Route on April 17th, 2015 (from HKLR03 project)

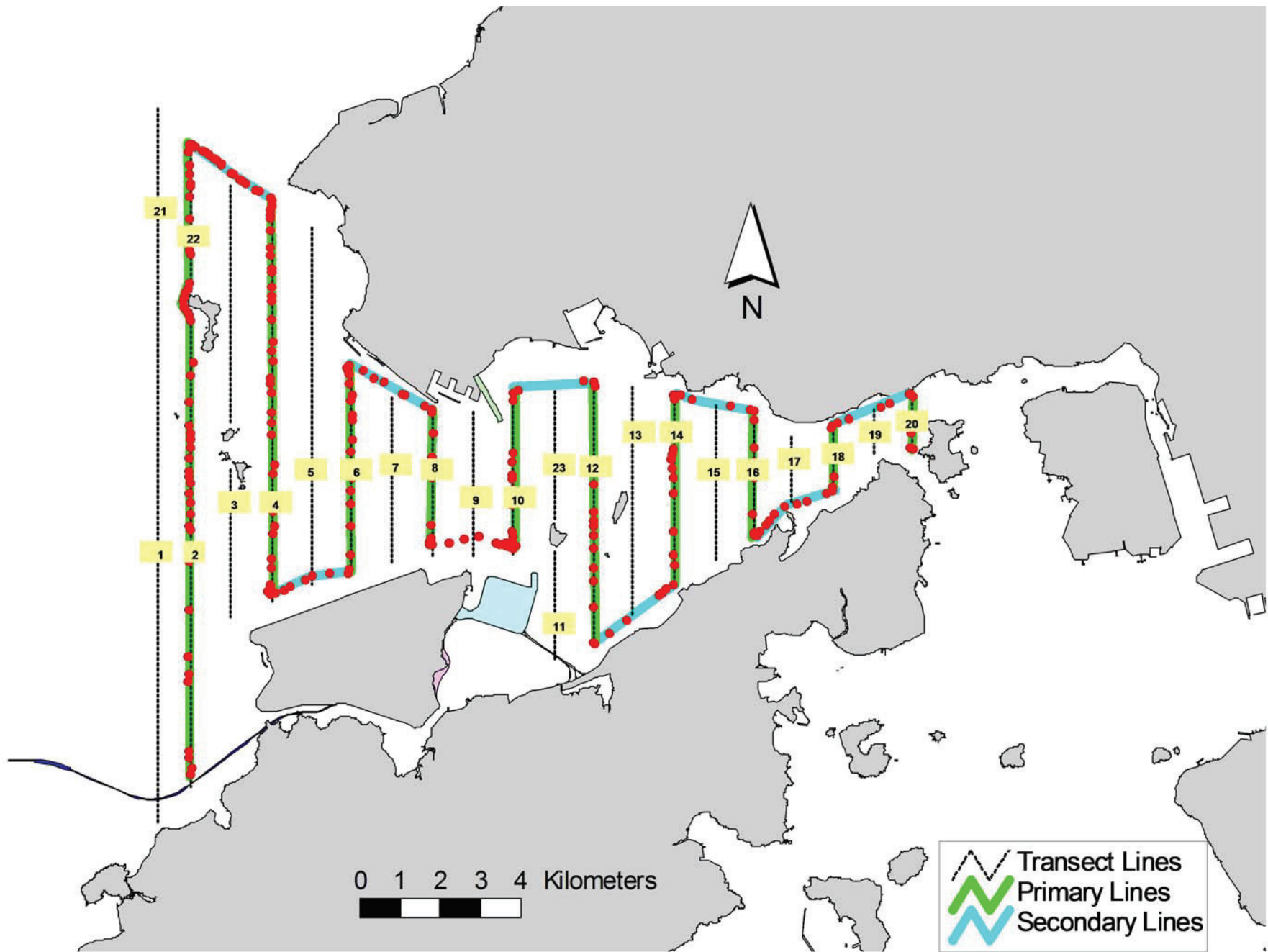


Figure 5. Survey Route on April 22nd, 2015 (from HKLR03 project)

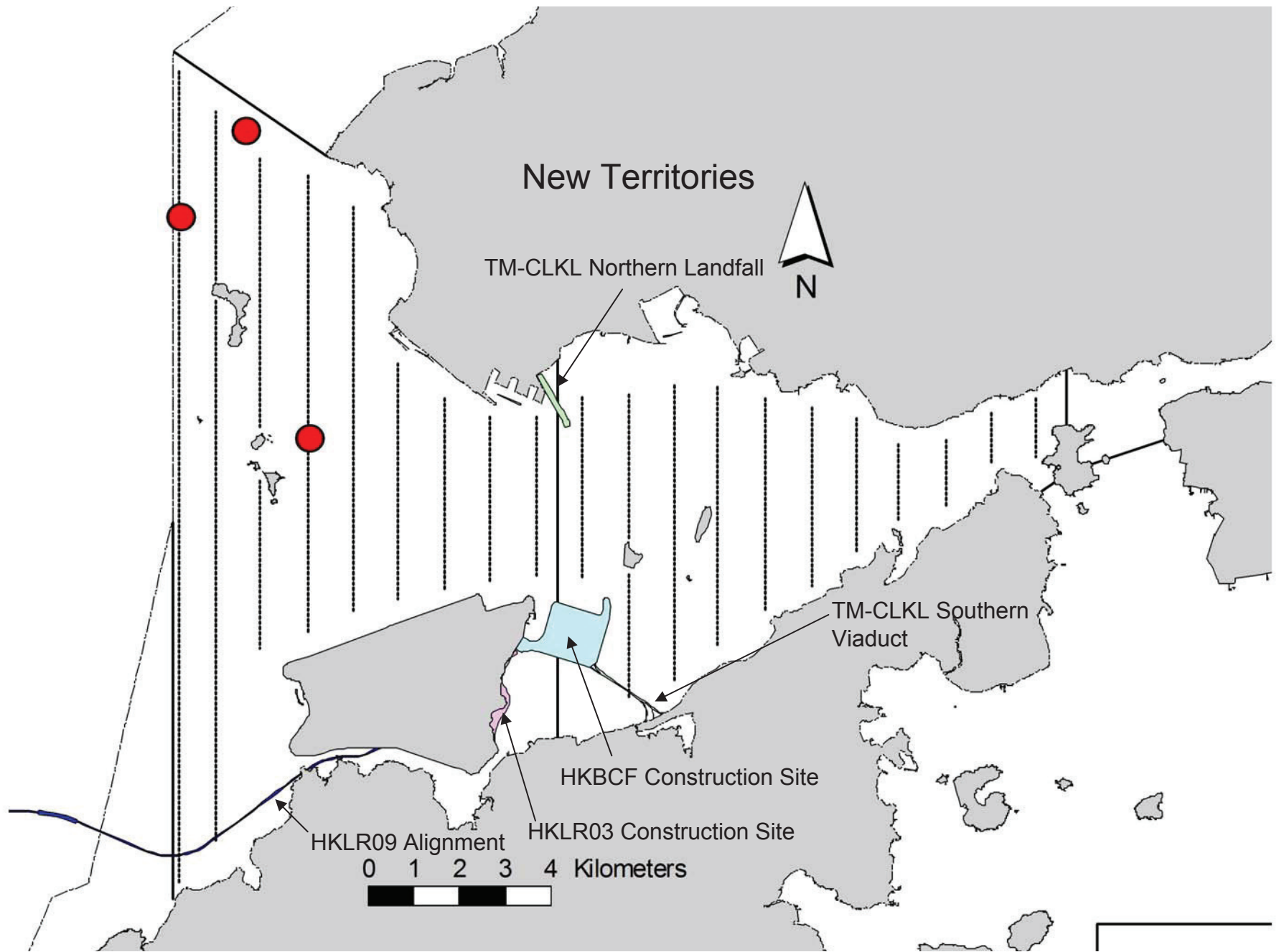


Figure 6. Distribution of Chinese White Dolphin Sightings During April 2015 HKLR03 Monitoring Surveys

Appendix I. HKLR03 Survey Effort Database (April 2015)

(Abbreviations: BEAU = Beaufort Sea State; P = Primary Line Effort; S = Secondary Line Effort)

DATE	AREA	BEAU	EFFORT	SEASON	VESSEL	TYPE	P/S
8-Apr-15	NE LANTAU	2	14.22	SPRING	STANDARD31516	HKLR	P
8-Apr-15	NE LANTAU	3	5.10	SPRING	STANDARD31516	HKLR	P
8-Apr-15	NE LANTAU	1	0.50	SPRING	STANDARD31516	HKLR	S
8-Apr-15	NE LANTAU	2	9.09	SPRING	STANDARD31516	HKLR	S
8-Apr-15	NE LANTAU	3	0.99	SPRING	STANDARD31516	HKLR	S
8-Apr-15	NW LANTAU	2	4.96	SPRING	STANDARD31516	HKLR	P
8-Apr-15	NW LANTAU	3	25.95	SPRING	STANDARD31516	HKLR	P
8-Apr-15	NW LANTAU	4	0.84	SPRING	STANDARD31516	HKLR	P
8-Apr-15	NW LANTAU	2	2.29	SPRING	STANDARD31516	HKLR	S
8-Apr-15	NW LANTAU	3	5.26	SPRING	STANDARD31516	HKLR	S
10-Apr-15	NW LANTAU	2	14.40	SPRING	STANDARD31516	HKLR	P
10-Apr-15	NW LANTAU	3	26.10	SPRING	STANDARD31516	HKLR	P
10-Apr-15	NW LANTAU	2	9.40	SPRING	STANDARD31516	HKLR	S
10-Apr-15	NW LANTAU	3	4.20	SPRING	STANDARD31516	HKLR	S
10-Apr-15	NE LANTAU	2	15.44	SPRING	STANDARD31516	HKLR	P
10-Apr-15	NE LANTAU	3	1.30	SPRING	STANDARD31516	HKLR	P
10-Apr-15	NE LANTAU	2	10.06	SPRING	STANDARD31516	HKLR	S
17-Apr-15	NW LANTAU	2	4.84	SPRING	STANDARD31516	HKLR	P
17-Apr-15	NW LANTAU	3	29.76	SPRING	STANDARD31516	HKLR	P
17-Apr-15	NW LANTAU	4	5.80	SPRING	STANDARD31516	HKLR	P
17-Apr-15	NW LANTAU	2	0.30	SPRING	STANDARD31516	HKLR	S
17-Apr-15	NW LANTAU	3	7.60	SPRING	STANDARD31516	HKLR	S
17-Apr-15	NW LANTAU	4	4.80	SPRING	STANDARD31516	HKLR	S
17-Apr-15	NE LANTAU	2	3.60	SPRING	STANDARD31516	HKLR	P
17-Apr-15	NE LANTAU	3	11.51	SPRING	STANDARD31516	HKLR	P
17-Apr-15	NE LANTAU	4	2.21	SPRING	STANDARD31516	HKLR	P
17-Apr-15	NE LANTAU	2	4.41	SPRING	STANDARD31516	HKLR	S
17-Apr-15	NE LANTAU	3	5.07	SPRING	STANDARD31516	HKLR	S
22-Apr-15	NE LANTAU	2	20.00	SPRING	STANDARD31516	HKLR	P
22-Apr-15	NE LANTAU	2	10.90	SPRING	STANDARD31516	HKLR	S
22-Apr-15	NW LANTAU	1	3.24	SPRING	STANDARD31516	HKLR	P
22-Apr-15	NW LANTAU	2	25.27	SPRING	STANDARD31516	HKLR	P
22-Apr-15	NW LANTAU	3	3.37	SPRING	STANDARD31516	HKLR	P
22-Apr-15	NW LANTAU	2	7.07	SPRING	STANDARD31516	HKLR	S
22-Apr-15	NW LANTAU	3	0.85	SPRING	STANDARD31516	HKLR	S

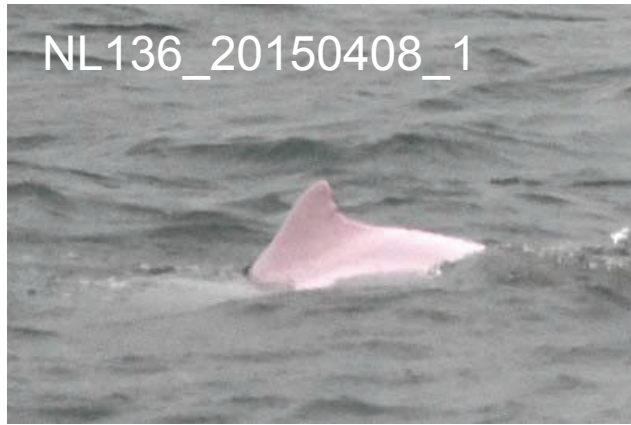
Appendix II. HKLR03 Chinese White Dolphin Sighting Database (April 2015)

(Abberviations: STG# = Sighting Number; HRD SZ = Dolphin Herd Size; BEAU = Beaufort Sea State; PSD = Perpendicular Distance;
BOAT ASSOC. = Fishing Boat Association; P/S: Sighting Made on Primary/Secondary Line\$

DATE	STG #	TIME	HRD SZ	AREA	BEAU	PSD	EFFORT	TYPE	NORTHING	EASTING	SEASON	BOAT ASSOC.	P/S
08-Apr-15	1	1309	3	NW LANTAU	3	142	ON	HKLR	823791	807532	SPRING	NONE	P
10-Apr-15	1	1103	2	NW LANTAU	2	ND	OFF	HKLR	828359	804688	SPRING	NONE	
22-Apr-15	1	1432	8	NW LANTAU	2	354	ON	HKLR	830139	806113	SPRING	NONE	S

Appendix III. Individual dolphins identified during HKLR03 monitoring surveys in April 2015

ID#	DATE	STG#	AREA
NL104	22/04/15	1	NW LANTAU
NL136	08/04/15	1	NW LANTAU
NL153	22/04/15	1	NW LANTAU
NL202	22/04/15	1	NW LANTAU
NL236	22/04/15	1	NW LANTAU
NL286	22/04/15	1	NW LANTAU
NL307	22/04/15	1	NW LANTAU



Appendix IV. Photographs of Identified Individual Dolphins in April 2015 (HKLR03)