

Activity ID	Activity Name	Orig. Durn.	Act. Start / FC Early Start	Duration % Complete	Rem. Durn.	Act. Finish / FC Early Finish	Late Start	Late Finish	Total Float	Free Float	Physical % Complete	2015															
												April				May				June				July			
												23	30	06	13	20	27	04	11	18	25	01	08	15	22	29	06

HY/2012/07 - TM-CLK Link-SC [DWP rE] - Status Update 21-04-2015

Contract Key Dates

Possession Dates / Access Period

POS02	Portion A (Commencement of Works+499 days)	0	21-Apr-15*	0%	0		01-Nov-14		-170	0	0%
POS03	Portion B (Commencement of Works+619 days)	0	21-Apr-15*	0%	0		03-Mar-15		-49	303	0%

Section Completion Dates

Vacate Works Area

VAC05	Vacate Works Area WA5 (Zone 5C) (Commencement of Works+758 days)	0		0%	0	19-Jul-15*		19-Jul-15	0	1032	0%
-------	--	---	--	----	---	------------	--	-----------	---	------	----

General Submissions

General Requirements

Temporary Works Design

PR00130	Unloading Jetty at HKBCF - Working Platform design and approval	90	02-Jun-14 A	60%	36	03-Jun-15	12-Nov-14	23-Dec-14	-127	61	60%
---------	---	----	-------------	-----	----	-----------	-----------	-----------	------	----	-----

Land Works

PR00160	Propose/submit a performance review for piled fnds in accordance w/ ETWB TCW No. 4/200	101	26-May-14 A	80.2%	20	14-May-15	11-Jan-16	02-Feb-16	217	353	80%
---------	--	-----	-------------	-------	----	-----------	-----------	-----------	-----	-----	-----

Land GI Works

PR02204	SQR Sampling & Testing and Approval	110	14-Aug-14 A	68.18%	35	02-Jun-15	27-Nov-14	09-Jan-15	-114	2	68%
PR03110	Trial Pits along Cheung Tung Road	20	21-Oct-13 A	85%	3	23-Apr-15	14-May-18	16-May-18	908	5	85%

Additional Land GI

PR03200	PBH25, 29, 30, 31 (Piers D9, C14, C16, C17)	33	11-Jan-14 A	75.76%	8	29-Apr-15	08-May-18	16-May-18	903	903	75%
---------	---	----	-------------	--------	---	-----------	-----------	-----------	-----	-----	-----

Design Submissions

Detailed Design (v18.8 18-08-14)

General Submissions

ARDD0037-1	Preparation of Seismic Performance Report Viaduct A,B,C,D - AP12.01	20	08-May-15	0%	20	04-Jun-15	23-Sep-15	20-Oct-15	98	0	0%
ARDD0037-2	IC/SO Approval of Seismic Performance Report Viaduct A,B,C,D - AP12.01	75	05-Jun-15	0%	75	17-Sep-15	21-Oct-15	02-Feb-16	98	221	0%
ARDD0037-4	Preparation of Seismic Performance Report Viaduct E - AP12.02	20	25-May-15	0%	20	19-Jun-15	23-Sep-15	20-Oct-15	87	0	0%
ARDD0037-5	IC/SO Approval of Seismic Performance Report Viaduct E - AP12.02	75	22-Jun-15	0%	75	02-Oct-15	21-Oct-15	02-Feb-16	87	0	0%
ARDD0037-7	Preparation of Seismic Performance Report Viaduct F - AP12.03	20	21-Apr-15	0%	20	18-May-15	23-Sep-15	20-Oct-15	111	0	0%
ARDD0037-8	IC/SO Approval of Seismic Performance Report Viaduct F - AP12.03	75	19-May-15	0%	75	31-Aug-15	21-Oct-15	02-Feb-16	111	0	0%
ARDD0042-2	IC/SO Approval of O&M Facility Provisions DDA - BP11.01	75	14-Jan-15 A	40%	45	22-Jun-15	19-Aug-15	20-Oct-15	86	0	50%
ARDD0042-4	IC/SO Approval of O&M Facility Provisions DDA - BP11.01	0		0%	0	22-Jun-15		20-Oct-15	86	65	0%

Viaduct E5 and E6

Viaduct Design

Viaduct E5 E6 Superstructure Optimisation

TGP0540	Viaduct E5 & E6 - Preparation of Optimised Bearing Schedule	15	13-Feb-15 A	0%	15	11-May-15	12-Apr-18	02-May-18	777	15	50%
TGP0550	Viaduct E5 & E6 - Preparation of Optimised Movement Joint Schedule	15	13-Feb-15 A	0%	15	11-May-15	26-Apr-18	16-May-18	787	787	50%

Associated Construction Milestones

ARDD0175	Viaduct E5 & E6 - DDA approval ready for Initial Segment Casting	0	19-May-15	0%	0		21-Apr-15		-28	77	0%
----------	--	---	-----------	----	---	--	-----------	--	-----	----	----

Viaduct E7 & E8

Viaduct Design

Viaduct E7 E8 Superstructure Optimisation

TGP0740	Viaduct E7 & E8 - Preparation of Optimised Bearing Schedule	15	21-Apr-15	0%	15	11-May-15	12-Apr-18	02-May-18	777	15	0%
TGP0750	Viaduct E7 & E8 - Preparation of Optimised Movement Joint Schedule	15	21-Apr-15	0%	15	11-May-15	26-Apr-18	16-May-18	787	787	0%

Associated Construction Milestones

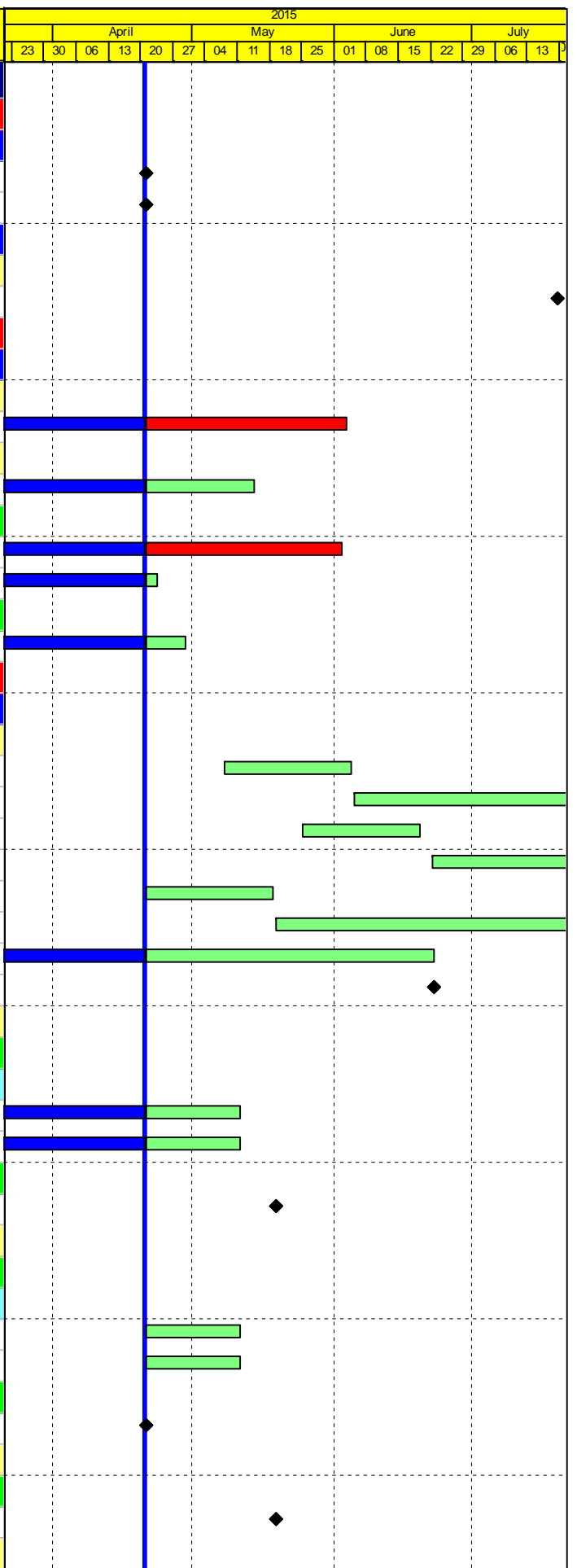
ARDD0220	Viaduct E7 & E8 - DDA approval ready for Initial Segment Casting	0	21-Apr-15	0%	0		22-Apr-15		2	106	0%
----------	--	---	-----------	----	---	--	-----------	--	---	-----	----

Viaduct E2

Associated Construction Milestones

ARDD0266	Viaduct E2 - DDA approval ready for Initial Segment Casting	0	19-May-15	0%	0		06-Feb-15		-102	0	0%
----------	---	---	-----------	----	---	--	-----------	--	------	---	----

Viaduct E1



<ul style="list-style-type: none"> ■ Actual Work ■ Planned Bar ■ Critical Bar ◆ Milestone 	Project ID: J3518DWPRe-M23 Layout: J3518-DWP-3MRP Submission - M23 Filter: TASK filters: 3-Month Lookahead, No CC Milestones, No Level of Effort.	Tuen Mun - Chek Lap Kok Link - Southern Connection 3-Month Rolling Programme (Page 1 of 43 Pages) (Progress as of 21-Apr-15)				Date	Revision	Checked	Approved	DWG. No.: J3518/GCL/PGM/3MRP-M23
		04-May-15		WY						

Activity ID	Activity Name	Orig. Durn.	Act. Start / FC Early Start	Duration % Complete	Rem. Durn.	Act. Finish / FC Early Finish	Late Start	Late Finish	Total Float	Free Float	Physical % Complete	2015																							
												April				May				June				July											
												23	30	06	13	20	27	04	11	18	25	01	08	15	22	29	06	13							
Viaduct Design																																			
ARDD0287-3	Viaduct E1 - Coordination and Further Issue of Construction Method and Temporary Works I	60	30-Jul-14 A	100%	0	01-Apr-15 A					100%																								
ARDD0287-4	Viaduct E1 - Preparation of Draft Working Drawing Set	60	30-Jul-14 A	100%	0	01-Apr-15 A					100%																								
ARDD0287-5	Viaduct E1 - GCL/FRE Final Coordinated Construction Method/Temporary Work Details	0		100%	0	01-Apr-15 A					100%																								
ARDD0287-8	Viaduct E1 - IC/SO Consent of Supplemental Working Drawings Viaduct E1	10	19-Mar-15 A	100%	0	01-Apr-15 A					100%																								
ARDD0287-9	Viaduct E1 - IC/SO Consent of Supplemental Working Drawings Viaduct E1	0		100%	0	01-Apr-15 A					100%																								
Viaduct D																																			
Viaduct Design																																			
ARDD0333-5	Viaduct D - GCL/FRE Final Coordinated Construction Method/Temporary Work Details	0		0%	0	21-Apr-15		16-May-18	802	802	0%																								
ARDD0333-6	Viaduct D - Preparation and Coordination of Working Drawing Set	10	17-Feb-15 A	100%	0	30-Mar-15 A					100%																								
ARDD0333-7	Viaduct D - Issue of Revised DDA Submission - DP14.03	0		100%	0	30-Mar-15 A					100%																								
ARDD0333-8	Viaduct D - IC/SO Consent of Supplemental Working Drawings Viaduct D	10	21-Apr-15	0%	10	04-May-15	10-Mar-15	23-Mar-15	-30	0	0%																								
ARDD0333-9	Viaduct D - IC/SO Consent of Supplemental Working Drawings Viaduct D	0		0%	0	04-May-15		23-Mar-15	-30	17	0%																								
Information to Contractor																																			
ARDD0348	Viaduct D - Final Segment Types and Reinforcement	0		100%	0	30-Mar-15 A					100%																								
ARDD0350	Viaduct D - Final Anchorage and PT Requirements	0		100%	0	30-Mar-15 A					100%																								
ARDD0352	Viaduct D - Final Bearing Schedule	0		0%	0	04-May-15		16-May-18	792	792	0%																								
ARDD0354	Viaduct D - Final Movement Joint (MJ) Schedule	0		0%	0	04-May-15		20-Oct-15	121	48	0%																								
Viaduct C																																			
Viaduct Design																																			
ARDD0384	Viaduct C - IC/SO Approval of Sub & Superstructure DDA - DP13.03	75	22-Dec-14 A	80%	15	11-May-15	17-Feb-15	10-Mar-15	-45	0	90%																								
ARDD0384-1	Viaduct C - IC/SO Approval of Sub & Superstructure DDA - DP13.03	0		0%	0	11-May-15		10-Mar-15	-45	0	0%																								
ARDD0384-3	Viaduct C - Coordination and Further Issue of Construction Method and Temporary Works D	60	02-Mar-15 A	25%	45	22-Jun-15	09-Apr-15	11-Jun-15	-8	0	25%																								
ARDD0384-4	Viaduct C - Preparation of Draft DDA Working Drawing Set	60	02-Mar-15 A	25%	45	22-Jun-15	09-Apr-15	11-Jun-15	-8	0	25%																								
ARDD0384-5	Viaduct C - GCL/FRE Final Coordinated Construction Method/Temporary Work Details	0		0%	0	22-Jun-15		11-Jun-15	-8	0	0%																								
ARDD0384-6	Viaduct C - Preparation and Coordination of Working Drawing Set	10	23-Jun-15	0%	10	06-Jul-15	11-Jun-15	25-Jun-15	-8	0	0%																								
ARDD0384-7	Viaduct C - Submission of Working DDA Drawings for Viaduct C DP13.03	0		0%	0	06-Jul-15		25-Jun-15	-8	0	0%																								
ARDD0384-8	Viaduct C - IC/SO Consent of Supplemental Working Drawings Viaduct C	10	07-Jul-15	0%	10	20-Jul-15	25-Jun-15	09-Jul-15	-8	0	0%																								
ARDD0384-9	Viaduct C - IC/SO Consent of Supplemental Working Drawings Viaduct C	0		0%	0	20-Jul-15		09-Jul-15	-8	0	0%																								
Associated Construction Milestones																																			
ARDD0413	Viaduct C - DDA approval ready for Commencement of Pilecaps C1-C17	0	16-May-15	0%	0		10-Mar-15		-67	0	0%																								
ARDD0414	Viaduct C - DDA approval ready for Initial Segment Casting	0	07-Jul-15	0%	0		08-Jul-15		1	13	0%																								
Viaduct A																																			
Viaduct Design																																			
ARDD0430-2	Viaduct A - IC/SO Approval of Foundation DDA - DP11.01	75	04-Oct-14 A	100%	0	14-Apr-15 A					100%																								
ARDD0430-4	Viaduct A - IC/SO Approval of Foundation DDA - DP11.01	0		100%	0	14-Apr-15 A					100%																								
ARDD0433-1	Viaduct A - GCL Review of Draft DDA Rev A1 - DP11.03	5	19-Feb-15 A	40%	3	23-Apr-15	23-Dec-14	25-Dec-14	-85	0	0%																								
ARDD0433-2	Viaduct A - Update to Incorporate GCL Comments	10	24-Apr-15	0%	10	07-May-15	26-Dec-14	08-Jan-15	-85	0	0%																								
ARDD0434	Viaduct A - Submission of DDA - DP11.03	0		0%	0	07-May-15		08-Jan-15	-85	0	0%																								
ARDD0434-1	Viaduct A - Earliest IC Certificate for DDA DP11.02, DP11.03	0		0%	0	18-Jun-15		24-Aug-15	47	3	0%																								
ARDD0435	Viaduct A - IC/SO Approval of DDA DP11.03	75	08-May-15	0%	75	20-Aug-15	09-Jul-15	21-Oct-15	44	0	0%																								
ARDD0435-2	Viaduct A - GCL/FRE Issue of Construction Method/Temporary Work Data	0		0%	0	07-May-15		08-Jan-15	-85	0	0%																								
ARDD0435-3	Viaduct A - Coordination and Further Issue of Construction Method and Temporary Works D:	60	08-May-15	0%	60	30-Jul-15	09-Jan-15	02-Apr-15	-85	0	0%																								
ARDD0435-4	Viaduct A - Preparation of Draft DDA Working Drawing Set	60	08-May-15	0%	60	30-Jul-15	09-Jan-15	02-Apr-15	-85	0	0%																								
Information to Contractor																																			
ARDD0445	Viaduct A - Final Pilecap Reinforcement	0		0%	0	07-May-15		13-Feb-15	-59	0	0%																								
ARDD0447	Viaduct A - Final Pier Shapes and Reinforcement	0		0%	0	07-May-15		27-Feb-15	-49	11	0%																								
ARDD0450	Viaduct A - Final Segment Types and Reinforcement	0		0%	0	07-May-15		22-Jan-16	186	80	0%																								

■ Actual Work
■ Planned Bar
■ Critical Bar
◆ Milestone

Project ID: J3518DWP-Pre-M23
 Layout: J3518-DWP-3MRP Submission - M23
 Filter: TASK filters: 3-Month Lookahead, No CC Milestones, No Level of Effort.

Tuen Mun - Chek Lap Kok Link - Southern Connection
3-Month Rolling Programme (Page 2 of 43 Pages)
(Progress as of 21-Apr-15)

Date	Revision	Checked	Approved
04-May-15		WY	

DWG. No.:
J3518/GCL/PGM/3MRP-M23

Activity ID	Activity Name	Orig. Durn.	Act. Start / FC Early Start	Duration% Complete	Rem. Durn.	Act. Finish / FC Early Finish	Late Start	Late Finish	Total Float	Free Float	Physical % Complete	2015												
												April			May				June			July		
												23	30	06	13	20	27	04	11	18	25	01	08	15
Viaduct Approach Ramp Retaining Walls																								
Approach Ramp D																								
ARDD0652	Approach D - IC/SO Approval of Approach Ramp D DDA - DP23.01	75	25-Sep-14 A	89.33%	8	30-Apr-15	14-Oct-15	23-Oct-15	126	0	90%													
ARDD0652-1	Approach D - IC/SO Approval of Approach Ramp D DDA - DP23.01	0		0%	0	30-Apr-15		23-Oct-15	126	62	0%													
Approach Ramp C																								
ARDD0658	Approach C - IC/SO Approval of Approach Ramp C DDA-DP20.01	75	03-Oct-14 A	89.33%	8	30-Apr-15	29-Jun-15	09-Jul-15	49	0	90%													
ARDD0658-1	Approach C - IC/SO Approval of Approach Ramp C DDA-DP20.01	0		0%	0	30-Apr-15		09-Jul-15	49	1	0%													
Approach Ramp B																								
ARDD0664	Approach B - IC/SO Approval of Approach Ramp B DDA-DP21.01	75	14-Oct-14 A	89.33%	8	30-Apr-15	30-Dec-15	08-Jan-16	181	0	90%													
ARDD0664-1	Approach B - IC/SO Approval of Approach Ramp B DDA-DP21.01	0		0%	0	30-Apr-15		08-Jan-16	181	213	0%													
Approach A																								
ARDD0670	Approach A - IC/SO Approval of Approach Ramp A DDA - DP20.01	75	03-Oct-14 A	89.33%	8	30-Apr-15	30-Jul-15	10-Aug-15	72	0	90%													
ARDD0670-1	Approach A - IC/SO Approval of Approach Ramp A DDA - DP20.01	0		0%	0	30-Apr-15		10-Aug-15	72	31	0%													
Approach F																								
ARDD0676	Approach F - IC/SO Approval of Approach Ramp F DDA-DP24.01	75	23-Dec-14 A	49.33%	38	11-Jun-15	31-Mar-15	21-May-15	-15	0	50%													
ARDD0676-1	Approach F - IC/SO Approval of Approach Ramp F DDA-DP24.01	0		0%	0	11-Jun-15		08-Dec-15	128	32	0%													
Landscape																								
ARDD0700	IC/SO Approval of DDA for landscape works - BP22.01	75	15-Oct-14 A	89.33%	8	30-Apr-15	23-Dec-15	01-Jan-16	176	0	90%													
ARDD0700-1	IC/SO Approval of DDA for landscape works - BP22.01	0		0%	0	30-Apr-15		01-Jan-16	176	0	0%													
ARDD0701	Water Supply Application to WSD	0		0%	0	30-Apr-15		01-Jan-16	176	0	0%													
ARDD0702	Gov't Approval of LVIA	40	01-May-15	0%	40	25-Jun-15	04-Jan-16	26-Feb-16	176	185	0%													
Remaining Works																								
ARDD0704	Preparation of Remaining Works AIP - ZP01.00	30	21-Apr-15	0%	30	01-Jun-15	29-Aug-16	07-Oct-16	354	0	0%													
ARDD0705	IC/SO Approval of Remaining Works AIP - ZP01.00	40	02-Jun-15	0%	40	27-Jul-15	10-Oct-16	02-Dec-16	354	0	0%													
Segment Target Geometry And Erection Engineering																								
Viaduct A																								
ARDD0716	Viaduct A - Confirmation of Erection Sequence from Freyssinet	0		0%	0	21-Apr-15		05-Feb-15	-52	0	0%													
ARDD0717	Viaduct A - Erection Sequence Analysis	20	21-Apr-15	0%	20	18-May-15	06-Feb-15	05-Mar-15	-52	0	0%													
ARDD0718	Viaduct A - Target Geometry Analysis	20	19-May-15	0%	20	15-Jun-15	06-Mar-15	02-Apr-15	-52	0	0%													
ARDD0719	Viaduct A - Segment Geometry Schedules	10	16-Jun-15	0%	10	29-Jun-15	03-Apr-15	16-Apr-15	-52	33	0%													
Viaduct C																								
ARDD0721	Viaduct C - Confirmation of Erection Sequence from Freyssinet	0		0%	0	21-Apr-15		29-Apr-15	6	0	0%													
ARDD0722	Viaduct C - Erection Sequence Analysis	20	21-Apr-15	0%	20	18-May-15	29-Apr-15	27-May-15	6	0	0%													
ARDD0723	Viaduct C - Target Geometry Analysis	20	19-May-15	0%	20	15-Jun-15	27-May-15	24-Jun-15	6	0	0%													
ARDD0724	Viaduct C - Segment Geometry Schedules	10	16-Jun-15	0%	10	29-Jun-15	24-Jun-15	08-Jul-15	6	5	0%													
ARDD0724-1	Viaduct C - Issue of Pierhead Segments Bridge C1, C2, C3, C4	0		0%	0	06-Jul-15		08-Jul-15	1	0	0%													
ARDD0724-3	Viaduct C - Issue of Casting Data and Segment Catalogue Bridge C4, C3 (Final)	0		0%	0	06-Jul-15		08-Jul-15	1	0	0%													
ARDD0724-4	Viaduct C - Issue of Casting Data and Segment Catalogue Bridge C2, C1 (Final)	0		0%	0	20-Jul-15		09-Jul-15	-8	0	0%													
Viaduct D																								
ARDD0728	Viaduct D - Target Geometry Analysis	20	11-Dec-14 A	30%	14	08-May-15	27-Apr-18	16-May-18	788	788	30%													
ARDD0729	Viaduct D - Segment Geometry Schedules	10	11-Dec-14 A	30%	7	29-Apr-15	04-May-15	12-May-15	9	0	30%													
ARDD0729-3	Viaduct D - Issue of Casting Data and Segment Catalogue Bridge D2, D3 (Final)	0		100%	0	02-Apr-15 A					100%													
ARDD0729-4	Viaduct D - Issue of Casting Data and Segment Catalogue Bridge D1 (Final)	0		100%	0	26-Mar-15 A					100%													
ARDD0729-5	Viaduct D - Issue Erection Manual	30	30-Apr-15	0%	30	10-Jun-15	13-May-15	23-Jun-15	9	1	0%													
Viaduct E5 and E6																								
ARDD0734	Viaduct E5 & E6 - Segment Geometry Schedules	10	05-May-14 A	20%	8	30-Apr-15	28-Oct-14	07-Nov-14	-124	1	20%													
TGP0560	Viaduct E5 & E6 - Issue of Optimised Casting Data and Segment Catalogue Bridge E5	20	21-Apr-15	0%	20	18-May-15	16-Dec-14	13-Jan-15	-90	0	0%													
TGP0570	Viaduct E5 & E6 - Issue of Optimised Casting Data and Segment Catalogue Bridge E6	40	19-May-15	0%	40	13-Jul-15	13-Jan-15	10-Mar-15	-90	0	0%													

■ Actual Work
■ Planned Bar
■ Critical Bar
◆ Milestone

Project ID: J3518DWPrE-M23
 Layout: J3518-DWP-3MRP Submission - M23
 Filter: TASK filters: 3-Month Lookahead, No CC Milestones, No Level of Effort.

Tuen Mun - Chek Lap Kok Link - Southern Connection
3-Month Rolling Programme (Page 4 of 43 Pages)
(Progress as of 21-Apr-15)

Date	Revision	Checked	Approved
04-May-15		WY	

DWG. No.:
J3518/GCL/PGM/3MRP-M23

Activity ID	Activity Name	Orig. Durn.	Act. Start / FC Early Start	Duration% Complete	Rem. Durn.	Act. Finish / FC Early Finish	Late Start	Late Finish	Total Float	Free Float	Physical % Complete	2015																
												April			May			June			July							
												23	30	06	13	20	27	04	11	18	25	01	08	15	22	29	06	13
MBBE0056	Precast Segment Mould Fabrication & Erection (Viaduct F1 to F5)	52	04-May-15	0%	52	06-Jul-15	27-Jun-15	27-Aug-15	45	62	0%																	
Viaduct B																												
Precast Deck Segments																												
MBBE0130-1	B: Progressive Pier Head Segment Manufacture & Delivery remaining segments	54	02-Dec-14 A	0%	67	11-Jul-15	07-Mar-15	30-May-15	-34	844	16.7%																	
MBBE130-1	B: Progressive Match Cast Segment Manufacture & Delivery remaining segments (334 Nr)	96	24-Oct-14 A	0%	443	15-Oct-16	27-Jan-15	29-Jul-16	-65	468	10.48%																	
Viaduct E																												
Precast Pile Caps																												
Viaduct E2																												
PP7260	Production of Viaduct E2 Marine Precast Pile Cap Shells	80	27-Oct-14 A	0%	131	24-Sep-15	21-Mar-15	31-Aug-15	-22	780	33%																	
Viaduct E5, E6, E7 & E8																												
MBEC0120-5	E5-6-7-8: Commence Pile Cap Shell Casting on Approval of DDA	0	04-Jul-15	0%	0		15-Dec-14		-159	0	0%																	
PP7120	Production of Viaduct E5 & E6 Marine Precast Pile Cap Shells	60	04-Jul-15	0%	60	11-Sep-15	15-Dec-14	02-Mar-15	-159	0	0%																	
PP7190	Production of Viaduct E7 & E8 Marine Precast Pile Cap Shells	60	04-Jul-15	0%	60	11-Sep-15	15-Dec-14	02-Mar-15	-159	0	0%																	
Precast Deck Segments																												
MBE00014	Viaduct E2 - Pier Head Segment Casting	0	19-May-15	0%	0		06-Feb-15		-79	0	0%																	
Viaduct E1																												
MBEE0130-5	E1: Progressive Segment Manufacture & Delivery remaining segments (189 Nr)	120	02-Feb-15 A	0%	256	27-Feb-16	04-Mar-15	13-Jan-16	-37	655	0%																	
Viaduct E2																												
MBEE0120-2	E2: Commence Segment Casting on Approval of DDA	0	19-May-15	0%	0		06-Feb-15		-79	0	0%																	
MBEE0130-2	E2: Commence Segment Delivery	0	03-Jul-15	0%	0		24-Mar-15		-79	0	0%																	
MBEE0130-7	E2: Progressive Segment Manufacture & Delivery remaining segments (358 Nr)	349	03-Jul-15	0%	349	01-Sep-16	24-Mar-15	30-May-16	-79	30	0%																	
Viaduct D																												
Precast Pile Caps																												
MBDC0130-8	D: Progressive Pile Cap Shell Manufacture & Delivery remaining shells	90	07-Dec-14 A	62.22%	34	01-Jun-15	09-Feb-15	23-Mar-15	-54	877	42.8%																	
Precast Deck Segments																												
MBDE0120	D: Commence Segment Casting on Approval of DDA	0	28-May-15	0%	0		24-Mar-15		-50	0	0%																	
MBDE0130-1	D: Commence Pier Head Segment Delivery	0	04-Jul-15	0%	0		03-Jul-15		-1	0	0%																	
MBDE0130-5	D: Progressive Pier Head Segment Manufacture & Delivery	72	04-Jul-15	0%	72	25-Sep-15	03-Jul-15	24-Sep-15	-1	8	0%																	
Viaduct C																												
Precast Pile Caps																												
MBCC0120	C: Commence Pile Cap Shell Casting on Approval of DDA	0	21-Apr-15	0%	0		17-Jan-15		-73	0	0%																	
MBCC0130	C: Commence Pile Cap Shell Delivery	0	18-Jun-15	0%	0		18-Mar-15		-73	0	0%																	
MBCC0130-1	C: Progressive Pile Cap Shell Manufacture & Delivery remaining shells	80	18-Jun-15	0%	80	21-Sep-15	18-Mar-15	27-Jun-15	-73	0	0%																	
PP7490	Production of initial Viaduct C Marine Precast Pile Cap Shells	38	27-Jan-15 A	68.42%	12	05-May-15	24-Feb-15	10-Mar-15	-44	0	0%																	
Viaduct A																												
Precast Pile Caps																												
MBAC0120	A: Commence Pile Cap Shell Casting on Approval of DDA	0	21-Apr-15	0%	0		02-Sep-15		111	0	0%																	
MBAC0130	A: Commence Pile Cap Shell Delivery	0	18-Jun-15	0%	0		11-Dec-15		146	4	0%																	
MBAC0130-1	A: Progressive Pile Cap Shell Manufacture & Delivery remaining shells	30	24-Jun-15	0%	30	29-Jul-15	11-Dec-15	18-Jan-16	142	75	0%																	
PP7570	Production of initial Viaduct A Marine Precast Pile Cap Shells	40	06-May-15	0%	40	23-Jun-15	02-Sep-15	20-Oct-15	99	0	0%																	
Parapets																												
MBEE0090	Approval of DDA to start Precast Parapets/Barriers Casting	0	30-Apr-15	0%	0		16-Oct-15		139	32	0%																	
PP6010	Procure Sub-Contractor for Precast Parapets/Barriers	40	21-Apr-15	0%	40	08-Jun-15	28-Aug-15	15-Oct-15	107	0	0%																	
PP6011	Precast Parapets/Barriers Detail Design & Procure Moulds	120	09-Jun-15	0%	120	31-Oct-15	16-Oct-15	11-Mar-16	107	0	0%																	
PP6011-02	Viaduct B - Precast Parapets/Barriers Production & Delivery	120	09-Jun-15	0%	120	31-Oct-15	12-Feb-16	09-Jul-16	202	34	0%																	
PP6011-03	Viaduct C - Precast Parapets/Barriers Production & Delivery	120	09-Jun-15	0%	120	31-Oct-15	16-Dec-15	17-May-16	158	0	0%																	
PP6011-04	Viaduct D - Precast Parapets/Barriers Production & Delivery	120	09-Jun-15	0%	120	31-Oct-15	10-Dec-15	10-May-16	153	0	0%																	
PP6011-05	Viaduct E - Precast Parapets/Barriers Production & Delivery	180	09-Jun-15	0%	180	13-Jan-16	16-Oct-15	27-May-16	107	127	0%																	

<ul style="list-style-type: none"> ■ Actual Work ■ Planned Bar ■ Critical Bar ◆ Milestone 	Project ID: J3518DWPRe-M23 Layout: J3518-DWP-3MRP Submission - M23 Filter: TASK filters: 3-Month Lookahead, No CC Milestones, No Level of Effort.	Tuen Mun - Chek Lap Kok Link - Southern Connection 3-Month Rolling Programme (Page 7 of 43 Pages) (Progress as of 21-Apr-15)	<table border="1"> <tr> <th>Date</th> <th>Revision</th> <th>Checked</th> <th>Approved</th> </tr> <tr> <td>04-May-15</td> <td></td> <td>WY</td> <td></td> </tr> </table>	Date	Revision	Checked	Approved	04-May-15		WY		DWG. No.: J3518/GCL/PGM/3MRP-M23
Date	Revision	Checked	Approved									
04-May-15		WY										

Activity ID	Activity Name	Orig. Durn.	Act. Start / FC Early Start	Duration% Complete	Rem. Durn.	Act. Finish / FC Early Finish	Late Start	Late Finish	Total Float	Free Float	Physical % Complete	2015																																								
												April				May				June				July																												
												23	30	06	13	20	27	04	11	18	25	01	08	15	22	29	06	13																								
Viaduct A																																																				
PPBRA1	Preliminary Design of Bearings - Viaduct A	50	23-Mar-15 A	50%	25	20-May-15	25-Nov-15	23-Dec-15	180	0	0%																																									
PPBRA2	Confirmation of bearing assumption - Viaduct A	0		0%	0	20-May-15		23-Dec-15	180	0	0%																																									
PPBRA3	Bearing design and submission - Viaduct A	12	21-May-15	0%	12	04-Jun-15	24-Dec-15	09-Jan-16	180	0	0%																																									
PPBRA4	Design check by ICE - Viaduct A	24	05-Jun-15	0%	24	04-Jul-15	11-Jan-16	06-Feb-16	180	0	0%																																									
PPBRA5	SO review & comment on design submission - Viaduct A	36	06-Jul-15	0%	36	15-Aug-15	11-Feb-16	23-Mar-16	180	0	0%																																									
PPBRA7	Manufacture of Bearing - Viaduct A	54	06-Jul-15	0%	54	05-Sep-15	11-Feb-16	18-Apr-16	180	0	0%																																									
Viaduct C																																																				
PPBRC3	Bearing design and submission - Viaduct C	12	09-Mar-15 A	100%	0	21-Mar-15 A					100%																																									
PPBRC4	Design check by ICE - Viaduct C	24	23-Mar-15 A	87.5%	3	23-Apr-15	06-Mar-15	09-Mar-15	-35	0	0%																																									
PPBRC5	SO review & comment on design submission - Viaduct C	36	24-Apr-15	0%	36	06-Jun-15	10-Mar-15	24-Apr-15	-35	0	0%																																									
PPBRC6	Bearing Design Ammendment & re-issue - Viaduct C	12	08-Jun-15	0%	12	22-Jun-15	04-May-15	16-May-15	-29	6	0%																																									
PPBRC7	Manufacture of Bearing - Viaduct C	54	24-Apr-15	0%	54	29-Jun-15	10-Mar-15	16-May-15	-35	0	0%																																									
PPBRC8	Testing Bearing - Viaduct C	18	30-Jun-15	0%	18	21-Jul-15	18-May-15	08-Jun-15	-35	0	0%																																									
Viaduct D																																																				
PPBRD4	Design check by ICE - Viaduct D	24	20-Dec-14 A	100%	0	28-Mar-15 A					100%																																									
PPBRD5	SO review & comment on design submission - Viaduct D	36	30-Mar-15 A	41.67%	21	15-May-15	26-Feb-15	13-Apr-15	-42	0	0%																																									
PPBRD6	Bearing Design Amendment & re-issue - Viaduct D	12	04-Jun-15	0%	12	17-Jun-15	21-Apr-15	05-May-15	-36	6	0%																																									
PPBRD7	Manufacture of Bearing - Viaduct D	54	21-Apr-15	0%	54	25-Jun-15	26-Feb-15	05-May-15	-42	0	0%																																									
PPBRD8	Testing Bearing - Viaduct D	18	26-Jun-15	0%	18	17-Jul-15	06-May-15	27-May-15	-42	0	0%																																									
PPBRD9	Bearing Delivery - Viaduct D	48	18-Jul-15	0%	48	11-Sep-15	28-May-15	24-Jul-15	-42	0	0%																																									
Viaduct E																																																				
PPBRE2	Confirmation of bearing assumption - Viaduct E (E1, E2, E5, E6, E7 & E8)	0		0%	0	21-Apr-15		16-May-18	911	911	0%																																									
PPBRE3	Bearing design and submission - Viaduct E (E1, E2, E5, E6, E7 & E8)	12	06-Jan-14 A	66.67%	4	24-Apr-15	12-May-18	16-May-18	907	907	65%																																									
PPBRE4	Design check by ICE - Viaduct E (E1, E2, E5, E6, E7 & E8)	24	06-Jun-14 A	16.67%	20	14-May-15	23-Apr-18	16-May-18	891	891	16%																																									
PPBRE5	SO review & comment on design submission - Viaduct E (E1, E2, E5, E6, E7 & E8)	36	10-Oct-14 A	5.56%	34	01-Jun-15	19-Mar-18	02-May-18	865	0	5%																																									
PPBRE6	Bearing Design Amendment & re-issue - Viaduct E (E1, E2, E5, E6, E7 & E8)	12	02-Jun-15	0%	12	15-Jun-15	03-May-18	16-May-18	865	0	0%																																									
PPBRE7	Manufacture of Bearing - Viaduct E (E1, E2, E5, E6, E7 & E8)	54	02-Jun-14 A	5.56%	51	22-Jun-15	13-Mar-18	16-May-18	860	860	5%																																									
PPBRE8	Testing Bearing - Viaduct E (E1, E2, E5, E6, E7 & E8)	24	30-Jun-14 A	4.17%	23	15-Jun-15	19-Apr-18	16-May-18	865	865	5%																																									
PPBRE9	Bearing Delivery - Viaduct E (E1, E2, E5, E6, E7 & E8)	48	18-Oct-14 A	4.17%	46	15-Jun-15	09-Dec-14	03-Feb-15	-104	0	5%																																									
Bridge E1																																																				
PP7360	Site preparation Bearings for Viaduct E1	18	16-Jun-15	0%	18	11-Jul-15	04-Feb-15	27-Feb-15	-97	0	0%																																									
Bridge E2																																																				
PP7290	Site preparation Bearings for Viaduct E2	18	13-Jul-15	0%	18	04-Aug-15	28-Feb-15	20-Mar-15	-97	0	0%																																									
Viaduct F																																																				
PPBRF1	Preliminary Design of Bearings - Viaduct F	70	21-Apr-15	0%	70	15-Jul-15	17-Apr-15	11-Jul-15	-3	0	0%																																									
PPBRF2	Confirmation of bearing assumption - Viaduct F	0		0%	0	15-Jul-15		11-Jul-15	-3	0	0%																																									
PPBRF3	Bearing design and submission - Viaduct F	12	16-Jul-15	0%	12	29-Jul-15	13-Jul-15	25-Jul-15	-3	0	0%																																									
Movement Joints																																																				
PPMJ01	Design & Submission of MJ	138	08-Feb-14 A	52.9%	65	09-Jul-15	04-Aug-15	20-Oct-15	86	846	30%																																									
PPMJ02-1	MJ Design Approval	96	26-May-14 A	39.58%	58	30-Jun-15	04-Aug-15	12-Oct-15	86	130	40%																																									
PPMJ02-2	Manufacture & delivery of MJ	188	21-Apr-15	0%	188	03-Dec-15	04-Aug-15	19-Mar-16	86	0	0%																																									
Other Sub-Contract Procurement																																																				
Pavement																																																				
PP7760-2	Procure Pavement Viaduct Sub-Contractor	36	21-Apr-15	0%	36	03-Jun-15	08-Oct-15	19-Nov-15	140	0	0%																																									
PP7760-4	Pavement Viaduct Sub-Contractor - Materials approvals & MS	90	04-Jun-15	0%	90	18-Sep-15	20-Nov-15	10-Mar-16	140	73	0%																																									
Structural Health Monitoring System (SHMS)																																																				
PP7778	SHMS - So approval of Final System Proposal	30	16-Dec-14 A	0%	30	27-May-15	10-Nov-14	15-Dec-14	-129	30	0%																																									

■ Actual Work
■ Planned Bar
■ Critical Bar
◆ Milestone

Project ID: J3518DWPRe-M23
 Layout: J3518-DWP-3MRP Submission - M23
 Filter: TASK filters: 3-Month Lookahead, No CC Milestones, No Level of Effort.

Tuen Mun - Chek Lap Kok Link - Southern Connection
3-Month Rolling Programme (Page 9 of 43 Pages)
(Progress as of 21-Apr-15)

Date	Revision	Checked	Approved
04-May-15		WY	

DWG. No.:
J3518/GCL/PGM/3MRP-M23

Activity ID	Activity Name	Orig. Durn.	Act. Start / FC Early Start	Duration % Complete	Rem. Durn.	Act. Finish / FC Early Finish	Late Start	Late Finish	Total Float	Free Float	Physical % Complete	2015																
												April			May			June			July							
												23	30	06	13	20	27	04	11	18	25	01	08	15	22	29	06	13
PP7780	SHMS - Prepare Civil Work Provision	66	21-Apr-15	0%	66	10-Jul-15	06-Oct-14	22-Dec-14	-159	0	0%																	
PP7782	SHMS - Submit Precast Pile Cap Shell SHMS details for E5-E6-E7-E8	0	20-May-15	0%	0		03-Nov-14		-159	0	0%																	
PP7786	SHMS - Submit Segment SHMS details for E5-E6-E7-E8	0	11-Jun-15	0%	0		24-Feb-15		-86	0	0%																	
PP7788	SHMS - FAT & Delivery for Bridge E5-E6-E7-E8 equipment	54	20-May-15	0%	54	24-Jul-15	01-Dec-14	05-Feb-15	-135	14	0%																	
Site Preparation / Mobilisations																												
Temp Traffic Mgt Submission & Approval																												
TTM00670	Earliest Implementation of TTM after TMLG Meeting No. 19	0	15-Apr-15 A	100%	0						100%																	
TTM00680	Send TTMs to SO & Govt Depts for TMLG Meeting No. 20	0		100%	0	08-Apr-15 A					100%																	
TTM00690	TMLG Meeting No. 20	0		100%	0	14-Apr-15 A					100%																	
TTM00700	Earliest Implementation of TTM after TMLG Meeting No. 20	0	28-Apr-15	0%	0		08-Dec-15		160	20	0%																	
TTM00710	Send TTMs to SO & Govt Depts for TMLG Meeting No. 21	0		0%	0	27-Apr-15		09-Jul-15	53	0	0%																	
TTM00720	TMLG Meeting No. 21	0		0%	0	11-May-15*		23-Jul-15	53	0	0%																	
TTM00730	Earliest Implementation of TTM after TMLG Meeting No. 21	0	26-May-15	0%	0		08-Dec-15		140	20	0%																	
TTM00740	Send TTMs to SO & Govt Depts for TMLG Meeting No. 22	0		0%	0	25-May-15		06-Aug-15	53	0	0%																	
TTM00750	TMLG Meeting No. 22	0		0%	0	08-Jun-15*		20-Aug-15	53	0	0%																	
TTM00760	Earliest Implementation of TTM after TMLG Meeting No. 22	0	23-Jun-15	0%	0		08-Dec-15		120	20	0%																	
TTM00770	Send TTMs to SO & Govt Depts for TMLG Meeting No. 23	0		0%	0	22-Jun-15		03-Sep-15	53	0	0%																	
TTM00780	TMLG Meeting No. 23	0		0%	0	06-Jul-15*		17-Sep-15	53	0	0%																	
TTM00800	Send TTMs to SO & Govt Depts for TMLG Meeting No. 24	0		0%	0	20-Jul-15		01-Oct-15	53	3	0%																	
Tree Felling / Transplant																												
Approved Trees in Contract																												
TR00200	Tree transplant for Viaduct B - affecting Piers B11 to B17	90	17-Feb-14 A	97.78%	2	22-Apr-15	09-May-16	10-May-16	292	852	95%																	
TR00220	Tree transplant for Viaduct B - affecting Pier B18 & Abutment B	90	17-Feb-14 A	97.78%	2	22-Apr-15	09-Jan-16	11-Jan-16	199	852	95%																	
TR00240	Tree transplant for Viaduct B - affecting realigned CTR	90	17-Feb-14 A	97.78%	2	22-Apr-15	15-May-18	16-May-18	852	852	95%																	
TR00250	Tree felling for Viaduct B - affecting Slopes 9SE-B/F9, C8 & C9	48	05-May-14 A	91.67%	4	25-Apr-15	12-May-18	16-May-18	850	850	90%																	
TR00260	Tree felling for Viaduct C - affecting Piers C9 to Abutment C	24	30-Jan-14 A	83.33%	4	25-Apr-15	12-May-18	16-May-18	850	850	70%																	
TR00270	Tree transplant for Viaduct C - affecting Piers C9 to Abutment C	90	17-Feb-14 A	35.56%	58	11-Jul-15	01-Mar-18	16-May-18	796	796	35%																	
TR00280	Tree felling for Viaduct C - affecting realigned CTR	30	30-Jan-14 A	70%	9	02-May-15	05-May-18	16-May-18	845	845	70%																	
TR00290	Tree transplant for Viaduct C - affecting realigned CTR	90	17-Feb-14 A	35.56%	58	11-Jul-15	01-Mar-18	16-May-18	796	796	35%																	
Site Set Up for Works Area 3 and Site Offices along CEDD Access Road																												
PR30030	Works Area 3-A1/3-A2 - Construct 1.5m steel access bridge	30	21-Apr-15	0%	30	30-May-15	07-Apr-18	16-May-18	824	824	0%																	
Temporary Working Platform at North Lantau																												
PR08080	Inst.Unloading Frame incl. T&C for seg.lift (incl. Load Test)	15	24-Oct-14 A	20%	12	06-May-15	28-Jan-15	10-Feb-15	-63	0	20%																	
Unloading Jetty at HKBCF																												
PR09010	Unloading Jetty at HKBCF - Procurement of materials and lifting gantry	85	21-Apr-15	0%	85	15-Aug-15	12-Nov-14	25-Feb-15	-126	0	0%																	
CONSTRUCTION																												
PILING AND SUBSTRUCTURE																												
Viaduct A																												
Milestones - Marine Foundation																												
GFXX113-1	A7 (A1e) - Start date for piling	0	16-Jul-15	0%	0		14-Dec-15		126	0	0%																	
GFXX118-1	A6 (A1f) - Start date for piling	0	16-Jul-15	0%	0		31-Oct-15		89	7	0%																	
GFXX123-1	A5 (A2a) - Start date for piling	0	16-Jul-15	0%	0		13-Nov-15		100	43	0%																	
GFXX128-1	A4 (A2b) - Start date for piling	0	16-Jul-15	0%	0		15-Mar-16		199	28	0%																	
GFXX133-1	A3 (A2c) - Start date for piling	0	16-Jul-15	0%	0		14-Jan-16		150	11	0%																	
GFXX138-1	A2 (A2d) - Start date for piling	0	16-Jul-15	0%	0		14-Nov-15		101	32	0%																	
Milestones - Land Foundation																												
ZA00020	A8 (A1d) - Start date for piling	0	16-Jul-15	0%	0		22-Dec-15		133	32	0%																	
ZA00030	A9 (A1c) - Start date for piling	0	16-Jul-15	0%	0		12-Feb-16		172	68	0%																	

■ Actual Work
■ Planned Bar
■ Critical Bar
◆ Milestone

Project ID: J3518DWPRe-M23
 Layout: J3518-DWP-3MRP Submission - M23
 Filter: TASK filters: 3-Month Lookahead, No CC Milestones, No Level of Effort.

Tuen Mun - Chek Lap Kok Link - Southern Connection
3-Month Rolling Programme (Page 10 of 43 Pages)
(Progress as of 21-Apr-15)

Date	Revision	Checked	Approved
04-May-15		WY	

DWG. No.:
J3518/GCL/PGM/3MRP-M23

Activity ID	Activity Name	Orig. Durn.	Act. Start / FC Early Start	Duration % Complete	Rem. Durn.	Act. Finish / FC Early Finish	Late Start	Late Finish	Total Float	Free Float	Physical % Complete	2015																
												April				May				June				July				
												23	30	06	13	20	27	04	11	18	25	01	08	15	22	29	06	13
SB1D0376	B16 (B1d) - Pier Head Segment Diaphragm - Formwork & Prep for Concreting	8	09-Apr-15 A	50%	4	25-Apr-15	12-May-18	16-May-18	850	850	50%																	
SB1D0378	B16 (B1d) - Pier Head Segment Diaphragm - Concreting	2	08-Apr-15 A	50%	1	21-Apr-15	18-Feb-17	18-Feb-17	509	0	50%																	
SB1D0380	B16 (B1d) - Pier Head Segment Diaphragm - Curing & Striking of Forms	6	22-Apr-15	0%	6	29-Apr-15	27-Feb-17	04-Mar-17	515	0	0%																	
Pier B18 (B1b) & Abutment B																												
Preliminary Works for Land Piling																												
PB180030	B18 (B1b) - Install Geo. Instru. & Baseline Monitoring	36	21-Apr-15	0%	36	03-Jun-15	18-Nov-15	31-Dec-15	174	210	0%																	
Viaduct C																												
Milestones - Marine Foundation																												
GFX197-1	C6 (C3f) - Completion of piling works	0		0%	0	07-May-15		21-Apr-15	-13	15	0%																	
GFX202-1	C5 (C4a) - Completion of piling works	0		0%	0	10-Jun-15		18-Mar-15	-66	9	0%																	
GFX207-1	C4 (C4b) - Completion of piling works	0		0%	0	21-Apr-15		23-Mar-15	-20	29	0%																	
GFX212-1	C3 (C4c) - Completion of piling works	0		0%	0	25-Apr-15		17-Jul-15	67	97	0%																	
Milestones - Land Foundation																												
ZC00050	C17 (C2a) - Start date for piling	0	21-Apr-15	0%	0		10-Nov-15		167	52	0%																	
ZC00051	C17 (C2a) - Completion of piling works	0		0%	0	08-Jul-15		23-Nov-15	115	0	0%																	
ZC00060	C16 (C2b) - Start date for piling	0	21-Apr-15	0%	0		03-Nov-15		161	49	0%																	
ZC00071	C15 (C2c) - Completion of piling works	0		100%	0	21-Mar-15 A					100%																	
ZC00091-1	C12 (C2f) - Completion of piling works	0		0%	0	17-Jun-15		04-Dec-15	141	16	0%																	
ZC00093-1	C10 (C3b) - Completion of piling works	0		100%	0	01-Apr-15 A					100%																	
ZC00095-1	C8 (C3d) - Completion of piling works	0		0%	0	21-Apr-15		16-May-18	911	911	0%																	
ZC00096	C7 (C3e) - Start date for piling	0	21-Apr-15	0%	0		16-May-18		911	911	0%																	
ZC00096-1	C7 (C3e) - Completion of piling works	0		0%	0	12-May-15		16-May-18	893	893	0%																	
Bridge C4																												
Pier C1 (C4e)																												
Pile Cap Works																												
SC4E0120	C1 (C4e) - Marine Pile Cap M2 - Pile cut down	12	09-Mar-15 A	100%	0	21-Mar-15 A					100%																	
SC4E0130	C1 (C4e) - Marine Pile Cap M2 - Rebar fixing, inst.inserts etc	12	13-May-15	0%	12	28-May-15	29-Aug-15	15-Sep-15	81	0	0%																	
SC4E0140	C1 (C4e) - Marine Pile Cap M2 - Concreting	1	29-May-15	0%	1	29-May-15	16-Sep-15	16-Sep-15	81	0	0%																	
SC4E0164	C1 (C4e) - Marine Pile Cap M2 - Curing incl. CJ preparation	6	30-May-15	0%	6	06-Jun-15	18-Sep-15	24-Sep-15	81	0	0%																	
Pier Works																												
SC4E0170	C1 (C4e) - Type 4B-MJ Pier Temp. Support Platform (Erect Working Platform)	6	18-Apr-15 A	60%	2	06-Jun-15	22-Sep-15	24-Sep-15	81	0	60%																	
SC4E0172	C1 (C4e) - Type 4B-MJ Pier Scaffolding (1st Lift)	1	08-Jun-15	0%	1	08-Jun-15	25-Sep-15	25-Sep-15	81	0	0%																	
SC4E0180	C1 (C4e) - Type 4B-MJ Pier Rebarwork (1st Lift)	3	10-Jun-15	0%	3	13-Jun-15	26-Sep-15	30-Sep-15	81	0	0%																	
SC4E0190	C1 (C4e) - Type 4B-MJ Pier Formwork & Prep for Concreting (1st Lift)	2	15-Jun-15	0%	2	16-Jun-15	02-Oct-15	03-Oct-15	81	0	0%																	
SC4E0200	C1 (C4e) - Type 4B-MJ Pier Concreting (1st Lift)	1	18-Jun-15	0%	1	18-Jun-15	05-Oct-15	05-Oct-15	81	0	0%																	
SC4E0202	C1 (C4e) - Type 4B-MJ Pier Curing & Striking of Forms incl. CJ prep (1st Lift)	2	19-Jun-15	0%	2	22-Jun-15	06-Oct-15	07-Oct-15	81	0	0%																	
SC4E0210	C1 (C4e) - Type 4B-MJ Pier Scaffolding (2nd Lift)	2	24-Jun-15	0%	2	26-Jun-15	08-Oct-15	09-Oct-15	81	0	0%																	
SC4E0220	C1 (C4e) - Type 4B-MJ Pier Rebarwork (2nd Lift)	3	27-Jun-15	0%	3	30-Jun-15	10-Oct-15	13-Oct-15	81	0	0%																	
SC4E0230	C1 (C4e) - Type 4B-MJ Pier Formwork & Prep for Concreting (2nd Lift)	3	02-Jul-15	0%	3	04-Jul-15	15-Oct-15	17-Oct-15	81	0	0%																	
SC4E0240	C1 (C4e) - Type 4B-MJ Pier Concreting (2nd Lift)	1	06-Jul-15	0%	1	06-Jul-15	19-Oct-15	19-Oct-15	81	0	0%																	
SC4E0242	C1 (C4e) - Type 4B-MJ Pier Curing & Striking of Forms incl. CJ prep (2nd Lift)	2	07-Jul-15	0%	2	08-Jul-15	20-Oct-15	22-Oct-15	81	0	0%																	
SC4E0300	C1 (C4e) - Type 4B-MJ Pier Head Scaffolding (F/W from Pier D6)	4	09-Jul-15	0%	4	13-Jul-15	23-Oct-15	27-Oct-15	81	0	0%																	
SC4E0310	C1 (C4e) - Type 4B-MJ Pier Head Rebarwork	5	14-Jul-15	0%	5	20-Jul-15	28-Oct-15	03-Nov-15	81	0	0%																	
Pier C2 (C4d)																												
Pile Cap Works																												
SC4D0070	C2 (C4d) - Marine Pile Cap M2b - Inst.Floating Seal & Casing Head Steelwork	7	18-Mar-15 A	0%	7	29-Apr-15	30-Apr-15	08-May-15	7	34	10%																	
SC4D0080	C2 (C4d) - Marine Pile Cap M2b - Install precast shell in position	1	18-Jun-15	0%	1	18-Jun-15	09-May-15	09-May-15	-27	0	0%																	
SC4D0090	C2 (C4d) - Marine Pile Cap M2b - Inst.Access & make Watertight	3	19-Jun-15	0%	3	24-Jun-15	11-May-15	14-May-15	-27	0	0%																	

	Project ID: J3518DWP-RE-M23 Layout: J3518-DWP-3MRP Submission - M23 Filter: TASK filters: 3-Month Lookahead, No CC Milestones, No Level of Effort.	Tuen Mun - Chek Lap Kok Link - Southern Connection 3-Month Rolling Programme (Page 16 of 43 Pages) (Progress as of 21-Apr-15)	Date: 04-May-15 Revision: Checked: WY Approved:	DWG. No.: J3518/GCL/PGM/3MRP-M23
--	--	--	--	---

Activity ID	Activity Name	Orig. Durn.	Act. Start / FC Early Start	Duration % Complete	Rem. Durn.	Act. Finish / FC Early Finish	Late Start	Late Finish	Total Float	Free Float	Physical % Complete	2015																							
												April				May				June				July											
												23	30	06	13	20	27	04	11	18	25	01	08	15	22	29	06								
Foundation Works																																			
GFXX412	C12 (C2f) - Bored Pile (2.00m dia. x 2 nos)	66	21-Jan-15 A	100%	0	13-Apr-15 A					100%																								
GFXX413	C12 (C2f) - Sonic & Interface Coring Tests	12	21-Apr-15	0%	12	05-May-15	24-Oct-15	06-Nov-15	153	12	0%																								
GFXX422-4	C12 (C2f) - Selection of bored pile for Full Depth Coring	24	21-Apr-15	0%	24	19-May-15	09-Oct-15	06-Nov-15	141	0	0%																								
GFXX422-8	C12 (C2f) - Bored Pile Full Depth Coring & Testing	24	20-May-15	0%	24	17-Jun-15	07-Nov-15	04-Dec-15	141	0	0%																								
Pile Cap Works																																			
SC2F0090	C12 (C2f) - Pile cap Excavation / ELS (incl. sheet piling)	18	09-Jul-15	0%	18	31-Jul-15	05-Dec-15	28-Dec-15	117	0	0%																								
Pier C13 (C2e) Portal																																			
Pile Cap Works																																			
SC2EL090	C13A (C2e-L) - Pile cap Excavation / ELS	18	16-May-15	0%	18	10-Jun-15	25-Nov-15	15-Dec-15	144	0	0%																								
SC2EL092	C13A (C2e-L) - Pile cap Pile breakdown to cut-off etc	4	12-Jun-15	0%	4	16-Jun-15	16-Dec-15	19-Dec-15	144	0	0%																								
SC2EL100	C13A (C2e-L) - Pile cap Blinding	1	18-Jun-15	0%	1	18-Jun-15	21-Dec-15	21-Dec-15	144	0	0%																								
SC2EL110	C13A (C2e-L) - Pile cap Formwork	3	27-Jun-15	0%	3	30-Jun-15	29-Dec-15	31-Dec-15	144	0	0%																								
SC2EL120	C13A (C2e-L) - Pile cap Rebarwork	4	19-Jun-15	0%	4	26-Jun-15	22-Dec-15	28-Dec-15	144	0	0%																								
SC2EL122	C13A (C2e-L) - Pile cap Kicker Formwork	2	03-Jul-15	0%	2	04-Jul-15	08-Jan-16	09-Jan-16	148	4	0%																								
SC2EL130	C13A (C2e-L) - Pile cap Concreting	1	02-Jul-15	0%	1	02-Jul-15	02-Jan-16	02-Jan-16	144	0	0%																								
SC2EL140	C13A (C2e-L) - Pile cap Curing & Striking of Forms incl. CJ prep	6	03-Jul-15	0%	6	09-Jul-15	04-Jan-16	09-Jan-16	144	0	0%																								
SC2ER090	C13B (C2e-R) - Pile cap Excavation / ELS	18	04-Apr-15 A	30%	13	07-May-15	10-Nov-15	24-Nov-15	150	0	30%																								
SC2ER092	C13B (C2e-R) - Pile cap Pile breakdown to cut-off etc	4	07-May-15	0%	4	13-May-15	16-Dec-15	19-Dec-15	168	0	0%																								
SC2ER100	C13B (C2e-R) - Pile cap Blinding	1	13-May-15	0%	1	14-May-15	21-Dec-15	21-Dec-15	168	0	0%																								
SC2ER110	C13B (C2e-R) - Pile cap Formwork	3	19-May-15	0%	3	23-May-15	29-Dec-15	31-Dec-15	168	0	0%																								
SC2ER120	C13B (C2e-R) - Pile cap Rebarwork	4	14-May-15	0%	4	19-May-15	22-Dec-15	28-Dec-15	168	0	0%																								
SC2ER122	C13B (C2e-R) - Pile cap Kicker Formwork	2	26-May-15	0%	2	28-May-15	08-Jan-16	09-Jan-16	172	4	0%																								
SC2ER130	C13B (C2e-R) - Pile cap Concreting	1	23-May-15	0%	1	26-May-15	02-Jan-16	02-Jan-16	168	0	0%																								
SC2ER140	C13B (C2e-R) - Pile cap Curing & Striking of Forms incl. CJ prep	6	26-May-15	0%	6	02-Jun-15	04-Jan-16	09-Jan-16	168	0	0%																								
Pier Works																																			
SC2EL150	C13A (C2e-N) - Pier Scaffolding (1st Lift)	2	10-Jul-15	0%	2	11-Jul-15	11-Jan-16	12-Jan-16	144	11	0%																								
SC2ER150	C13B (C2e-R) - Pier Scaffolding (1st Lift)	2	02-Jun-15	0%	2	05-Jun-15	11-Jan-16	12-Jan-16	168	0	0%																								
SC2ER160	C13B (C2e-R) - Pier Rebarwork (1st Lift)	3	05-Jun-15	0%	3	10-Jun-15	13-Jan-16	15-Jan-16	168	0	0%																								
SC2ER170	C13B (C2e-R) - Pier Formwork & Prep for Concreting (1st Lift)	2	10-Jun-15	0%	2	13-Jun-15	16-Jan-16	18-Jan-16	168	0	0%																								
SC2ER180	C13B (C2e-R) - Pier Concreting (1st Lift)	1	13-Jun-15	0%	1	15-Jun-15	19-Jan-16	19-Jan-16	168	0	0%																								
SC2ER182	C13B (C2e-R) - Pier Curing & Striking of Forms incl. CJ prep (1st Lift)	2	15-Jun-15	0%	2	18-Jun-15	20-Jan-16	21-Jan-16	168	0	0%																								
SC2ER190	C13B (C2e-R) - Pier Scaffolding (2nd Lift)	2	18-Jun-15	0%	2	22-Jun-15	22-Jan-16	23-Jan-16	168	0	0%																								
SC2ER200	C13B (C2e-R) - Pier Rebarwork (2nd Lift)	3	22-Jun-15	0%	3	27-Jun-15	25-Jan-16	27-Jan-16	168	0	0%																								
SC2ER210	C13B (C2e-R) - Pier Formwork & Prep for Concreting (2nd Lift)	3	27-Jun-15	0%	3	02-Jul-15	28-Jan-16	30-Jan-16	168	0	0%																								
SC2ER220	C13B (C2e-R) - Pier Concreting (2nd Lift)	1	02-Jul-15	0%	1	03-Jul-15	01-Feb-16	01-Feb-16	168	0	0%																								
SC2ER222	C13B (C2e-R) - Pier Curing & Striking of Forms incl. CJ prep (2nd Lift)	2	03-Jul-15	0%	2	06-Jul-15	02-Feb-16	03-Feb-16	168	0	0%																								
SC2ER230	C13B (C2e-R) - Pier Scaffolding (3rd Lift)	2	06-Jul-15	0%	2	08-Jul-15	04-Feb-16	05-Feb-16	168	0	0%																								
SC2ER240	C13B (C2e-R) - Pier Rebarwork (3rd Lift)	3	08-Jul-15	0%	3	11-Jul-15	06-Feb-16	12-Feb-16	168	0	0%																								
SC2ER250	C13B (C2e-R) - Pier Formwork & Prep for Concreting (3rd Lift)	3	11-Jul-15	0%	3	15-Jul-15	13-Feb-16	16-Feb-16	168	0	0%																								
SC2ER260	C13B (C2e-R) - Pier Concreting (3rd Lift)	1	15-Jul-15	0%	1	17-Jul-15	17-Feb-16	17-Feb-16	168	0	0%																								
SC2ER262	C13B (C2e-R) - Pier Curing & Striking of Forms incl. CJ prep (3rd Lift)	2	17-Jul-15	0%	2	20-Jul-15	18-Feb-16	19-Feb-16	168	60	0%																								
Pier C14 (C2d)																																			
Pile Cap Works																																			
SC2D0090	C14 (C2d) - Pile cap Excavation / ELS (incl. sheet piling)	18	16-May-15	0%	18	10-Jun-15	23-Dec-15	15-Jan-16	168	0	0%																								
SC2D0092	C14 (C2d) - Pile cap Pile breakdown to cut-off etc.	4	12-Jun-15	0%	4	16-Jun-15	16-Jan-16	20-Jan-16	168	0	0%																								
SC2D0100	C14 (C2d) - Pile cap Blinding	1	18-Jun-15	0%	1	18-Jun-15	21-Jan-16	21-Jan-16	168	0	0%																								
SC2D0110	C14 (C2d) - Pile cap Formwork	3	27-Jun-15	0%	3	30-Jun-15	27-Jan-16	29-Jan-16	168	0	0%																								

■ Actual Work
■ Planned Bar
■ Critical Bar
◆ Milestone

Project ID: J3518DWPRe-M23
 Layout: J3518-DWP-3MRP Submission - M23
 Filter: TASK filters: 3-Month Lookahead, No CC Milestones, No Level of Effort.

Tuen Mun - Chek Lap Kok Link - Southern Connection
3-Month Rolling Programme (Page 20 of 43 Pages)
(Progress as of 21-Apr-15)

Date	Revision	Checked	Approved
04-May-15		WY	

DWG. No.:
J3518/GCL/PGM/3MRP-M23

Activity ID	Activity Name	Orig. Durn.	Act. Start / FC Early Start	Duration% Complete	Rem. Durn.	Act. Finish / FC Early Finish	Late Start	Late Finish	Total Float	Free Float	Physical % Complete	2015															
												April				May				June				July			
												23	30	06	13	20	27	04	11	18	25	01	08	15	22	29	06
Assembling, relocation and dismantle of lifting equipment																											
Launching Gantry 1																											
NS11170	Assembly of Launching Gantry LG1 onto Pier B1/B2 (incl. Load Test)	19	13-Mar-15 A	26.32%	14	08-May-15	15-Dec-14	03-Jan-15	-98	0	0%																
NS11180	Viaduct B3 - Learning Curve Gantry LG1	20	09-May-15	0%	20	02-Jun-15	03-Jan-15	27-Jan-15	-100	1	0%																
NS11210	Viaduct B3 - Launching LG1 Over Piers to B07 (B2f) - LG1	5	25-Jun-15	0%	5	30-Jun-15	11-Feb-15	17-Feb-15	-105	0	0%																
Launching Gantry 2																											
FR000099	Assembly of Launching Gantry LG2 on Temp. Loading Platform	30	16-May-15	0%	30	22-Jun-15	20-Jan-15	26-Feb-15	-92	7	0%																
NS11620	Assembly Launching Gantry LG2 onto Pier B1/ B2 (incl. Load Test)	20	02-Jul-15	0%	20	25-Jul-15	27-Feb-15	21-Mar-15	-89	0	0%																
Adjustable Lifting Frame 1&2																											
NS10140	Viaduct B3 - Pier B4 - Assemble / Load Test Lifting Frame ALF 1/2	25	02-Jul-15	0%	25	30-Jul-15	17-Feb-15	21-Mar-15	-105	0	0%																
Wide Lifting Frame 3&4																											
NS10520	Viaduct E2 - Pier E4A - Assemble / Load Test Lifting Frame WLF 3/4	25	02-Jul-15*	0%	25	30-Jul-15	31-Mar-15	05-May-15	-72	0	0%																
Viaduct B Superstructure																											
Bridge B3 Superstructure																											
Milestones																											
Milestones Ready for PH Segment Erection																											
B300010-1	Pier B6 (B3a) ready for Viaduct B3 PH segment erection	0		0%	0	24-Apr-15		16-May-18	851	851	0%																
B300020-1	Pier B5 (B3b) ready for Viaduct B3 PH segment erection	0		0%	0	21-Apr-15		18-May-15	21	113	0%																
B300030-1	Pier B4 (B3c) ready for Viaduct B3 PH segment erection	0		0%	0	21-Apr-15		16-May-18	854	854	0%																
Milestones Ready for Deck Segment Erection																											
B300010	Pier B6 (B3a) ready for Viaduct B3 deck segment erection	0		0%	0	02-May-15		17-Mar-15	-33	50	0%																
B300020	Pier B5 (B3b) ready for Viaduct B3 deck segment erection	0		0%	0	28-May-15		09-May-15	-14	6	0%																
B300030	Pier B4 (B3c) ready for Viaduct B3 deck segment erection	0		0%	0	21-Apr-15		16-Apr-15	-4	10	0%																
B300040	Pier B3 (B3d) ready for Viaduct B3 deck segment erection	0		0%	0	21-Apr-15		28-Apr-15	6	0	0%																
B300050	Pier B2 (B3e) ready for Viaduct B3 deck segment erection	0		0%	0	21-Apr-15		27-Jan-15	-64	32	0%																
Deck installation																											
NS10155	Viaduct B3 - Pier B4 (B3c) (2 seg)	6	05-May-15	0%	6	11-May-15	16-Apr-15	24-Apr-15	-14	79	0%																
NS10185	Viaduct B3 - Pier B3 (B3d) (2 seg)	6	21-Apr-15	0%	6	28-Apr-15	28-Apr-15	06-May-15	6	98	0%																
NS10205	Viaduct B3 - Pier B5 (B3b) (2 seg)	6	06-Jun-15	0%	6	15-Jun-15	09-May-15	18-May-15	-20	73	0%																
NS11190	Viaduct B3 - Cantilever at Pier B2 (B3e) (14 seg) - LG1	7	04-Jun-15	0%	7	13-Jun-15	27-Jan-15	04-Feb-15	-96	0	0%																
NS11200	Viaduct B3 - End Span at Pier B1 (B3f) (up) (7 seg) - LG1	6	15-Jun-15	0%	6	24-Jun-15	04-Feb-15	11-Feb-15	-96	0	0%																
Bridge B2 Superstructure																											
Milestones																											
Milestones Ready for PH Segment Erection																											
B200010-1	Pier B12 (B2a) ready for Viaduct B2 PH segment erection	0		0%	0	11-May-15		04-Jul-15	36	4	0%																
B200020-1	Pier B11 (B2b) ready for Viaduct B2 PH segment erection	0		0%	0	24-Apr-15		16-May-18	851	851	0%																
B200030-1	Pier B10 (B2c) ready for Viaduct B2 PH segment erection	0		0%	0	05-May-15		09-Apr-15	-19	1	0%																
B200040-1	Pier B9 (B2d) ready for Viaduct B2 PH segment erection	0		0%	0	02-May-15		06-Mar-15	-42	1	0%																
B200050-1	Pier B8 (B2e) ready for Viaduct B2 PH segment erection	0		0%	0	21-Apr-15		16-May-18	854	854	0%																
B200060-1	Pier B7 (B2f) ready for Viaduct B2 PH segment erection	0		0%	0	21-Apr-15		16-May-18	854	854	0%																
B200070-1	Pier B6 (B3a) ready for Viaduct B2 PH segment erection	0		0%	0	24-Apr-15		16-May-18	851	851	0%																
Milestones Ready for Deck Segment Erection																											
B200010	Pier B12 (B2a) ready for Viaduct B2 deck segment erection	0		0%	0	19-Jun-15		23-Jul-15	24	107	0%																
B200020	Pier B11 (B2b) ready for Viaduct B2 deck segment erection	0		0%	0	04-Jun-15		07-Jul-15	21	104	0%																
B200050	Pier B8 (B2e) ready for Viaduct B2 deck segment erection	0		0%	0	28-May-15		26-Mar-15	-43	40	0%																
B200060	Pier B7 (B2f) ready for Viaduct B2 deck segment erection	0		0%	0	02-Jun-15		05-Mar-15	-65	18	0%																
B200070	Pier B6 (B3a) ready for Viaduct B2 deck segment erection	0		0%	0	02-May-15		17-Mar-15	-33	50	0%																
Deck installation																											

	Project ID: J3518DWPPrE-M23 Layout: J3518-DWP-3MRP Submission - M23 Filter: TASK filters: 3-Month Lookahead, No CC Milestones, No Level of Effort.	Tuen Mun - Chek Lap Kok Link - Southern Connection 3-Month Rolling Programme (Page 40 of 43 Pages) (Progress as of 21-Apr-15)				Date	Revision	Checked	Approved	DWG. No.: J3518/GCL/PGM/3MRP-M23
						04-May-15		WY		

