

Activity ID	Activity Name	Orig. Durn.	Act. Start / FC Early Start	Duration % Complete	Rem. Durn.	Act. Finish / FC Early Finish	Late Start	Late Finish	Total Float	Free Float	Physical % Complete	2015													
												May					June				July			August	
												20	27	04	11	18	25	01	08	15	22	29	06	13	20

## HY/2012/07 - TM-CLK Link-SC [DWP rE1] - Status Update 21-05-2015

### Contract Key Dates

#### Possession Dates / Access Period

POS02	Portion A (Commencement of Works+499 days)	0	03-Jun-15*	0%	0		03-Jun-15		0	0	0%
POS03	Portion B (Commencement of Works+619 days)	0	03-Jun-15*	0%	0		03-Jun-15		0	0	0%

#### Section Completion Dates

##### Vacate Works Area

VAC05	Vacate Works Area WA5 (Zone 5C) (Commencement of Works+758 days)	0		0%	0	19-Jul-15*		19-Jul-15	0	1230	0%
-------	--	---	--	----	---	------------	--	-----------	---	------	----

### General Submissions

#### General Requirements

##### Temporary Works Design

PR00130	Unloading Jetty at HKBCF - Working Platform design and approval	90	02-Jun-14 A	60%	36	04-Jul-15	14-May-15	26-Jun-15	-6	1014	10%
---------	---	----	-------------	-----	----	-----------	-----------	-----------	----	------	-----

##### Land Works

PR00160	Propose/submit a performance review for piled fnds in accordance w/ ETWB TCW No. 4/20(	101	26-May-14 A	80.2%	20	13-Jun-15	13-Jan-16	04-Feb-16	194	366	80%
---------	--	-----	-------------	-------	----	-----------	-----------	-----------	-----	-----	-----

##### Land GI Works

PR02204	SQR Sampling & Testing and Approval	110	14-Aug-14 A	68.18%	35	03-Jul-15	24-Sep-14	05-Nov-14	-192	0	68%
PR03110	Trial Pits along Cheung Tung Road	20	21-Oct-13 A	85%	3	23-May-15	03-Nov-14	05-Nov-14	-160	44	85%

### Design Submissions

#### Detailed Design (v18.8 18-08-14)

##### General Submissions

ARDD0037-1	Preparation of Seismic Performance Report Viaduct A,B,C,D - AP12.01	20	21-May-15	0%	20	17-Jun-15	25-Sep-15	22-Oct-15	91	0	0%
ARDD0037-2	IC/SO Approval of Seismic Performance Report Viaduct A,B,C,D - AP12.01	75	18-Jun-15	0%	75	30-Sep-15	23-Oct-15	04-Feb-16	91	243	0%
ARDD0037-4	Preparation of Seismic Performance Report Viaduct E - AP12.02	20	25-May-15	0%	20	19-Jun-15	25-Sep-15	22-Oct-15	89	0	0%
ARDD0037-5	IC/SO Approval of Seismic Performance Report Viaduct E - AP12.02	75	22-Jun-15	0%	75	02-Oct-15	23-Oct-15	04-Feb-16	89	0	0%
ARDD0037-7	Preparation of Seismic Performance Report Viaduct F - AP12.03	20	21-May-15	0%	20	17-Jun-15	25-Sep-15	22-Oct-15	91	0	0%
ARDD0037-8	IC/SO Approval of Seismic Performance Report Viaduct F - AP12.03	75	18-Jun-15	0%	75	30-Sep-15	23-Oct-15	04-Feb-16	91	0	0%
ARDD0042-2	IC/SO Approval of O&M Facility Provisions DDA - BP11.01	75	14-Jan-15 A	40%	45	22-Jul-15	21-Aug-15	22-Oct-15	66	0	50%
ARDD0042-4	IC/SO Approval of O&M Facility Provisions DDA - BP11.01	0		0%	0	22-Jul-15		22-Oct-15	66	65	0%

#### Viaduct E5 and E6

##### Viaduct Design

###### Viaduct E5 E6 Superstructure Optimisation

TGP0550	Viaduct E5 & E6 - Preparation of Optimised Movement Joint Schedule	15	03-Feb-15 A	40%	9	02-Jun-15	24-Nov-15	04-Dec-15	133	74	40%
---------	--	----	-------------	-----	---	-----------	-----------	-----------	-----	----	-----

###### Associated Construction Milestones

ARDD0175	Viaduct E5 & E6 - DDA approval ready for Initial Segment Casting	0	25-Apr-15 A	100%	0						100%
----------	--	---	-------------	------	---	--	--	--	--	--	------

#### Viaduct E7 & E8

##### Viaduct Design

###### Viaduct E7 E8 Superstructure Optimisation

TGP0750	Viaduct E7 & E8 - Preparation of Optimised Movement Joint Schedule	15	03-Feb-15 A	40%	9	02-Jun-15	24-Nov-15	04-Dec-15	133	74	40%
---------	--	----	-------------	-----	---	-----------	-----------	-----------	-----	----	-----

###### Associated Construction Milestones

ARDD0220	Viaduct E7 & E8 - DDA approval ready for Initial Segment Casting	0	21-May-15	0%	0		26-May-15		5	105	0%
----------	--	---	-----------	----	---	--	-----------	--	---	-----	----

#### Viaduct E2

##### Associated Construction Milestones

ARDD0266	Viaduct E2 - DDA approval ready for Initial Segment Casting	0	25-Apr-15 A	100%	0						100%
----------	---	---	-------------	------	---	--	--	--	--	--	------

#### Viaduct D

##### Viaduct Design

ARDD0333-8	Viaduct D - IC/SO Consent of Supplemental Working Drawings Viaduct D	10	28-Apr-15 A	40%	6	28-May-15	07-Nov-14	14-Nov-14	-139	0	40%
ARDD0333-9	Viaduct D - IC/SO Consent of Supplemental Working Drawings Viaduct D	0		0%	0	28-May-15		14-Nov-14	-139	0	0%

#### Viaduct C

■ Actual Work  
■ Planned Bar  
■ Critical Bar  
◆ Milestone

Project ID: J3518DWP rE1-M24  
 Layout: J3518-DWP-3MRP Submission - M24  
 Filter: TASK filters: 3-Month Lookahead, No CC Milestones, No Level of Effort.

**Tuen Mun - Chek Lap Kok Link - Southern Connection**  
**3-Month Rolling Programme (Page 1 of 44 Pages)**  
**(Progress as of 21-May-15)**

Date	Revision	Checked	Approved
29-May-15		WY	

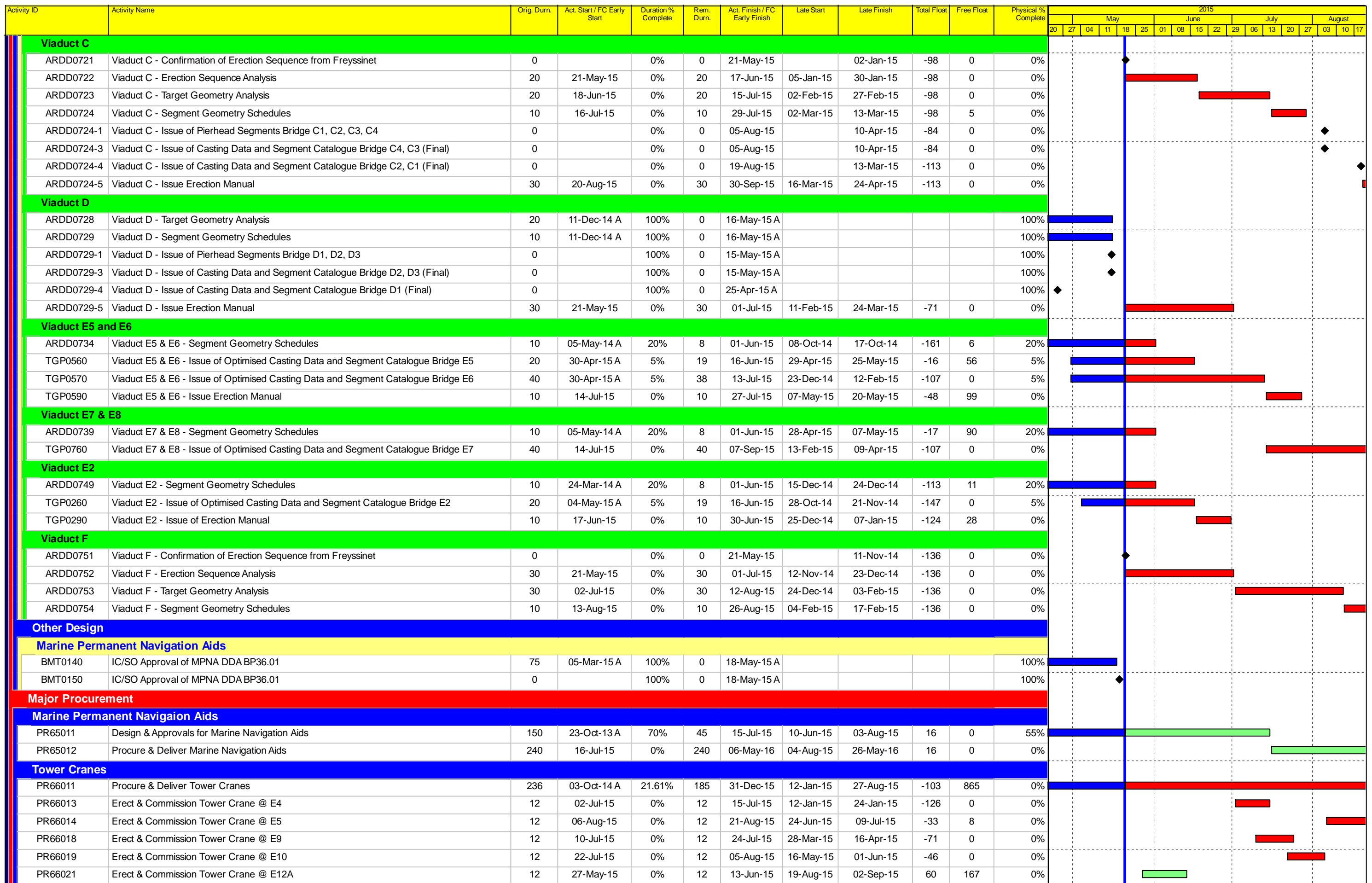
**DWG. No.:**  
**J3518/GCL/PGM/3MRP-M24**

Activity ID	Activity Name	Orig. Durn.	Act. Start / FC Early Start	Duration % Complete	Rem. Durn.	Act. Finish / FC Early Finish	Late Start	Late Finish	Total Float	Free Float	Physical % Complete	2015																						
												May				June				July				August										
												20	27	04	11	18	25	01	08	15	22	29	06	13	20	27	03	10	17					
<b>Viaduct Design</b>																																		
ARDD0384	Viaduct C - IC/SO Approval of Sub & Superstructure DDA - DP13.03	75	22-Dec-14 A	80%	15	10-Jun-15	28-Nov-14	19-Dec-14	-124	0	20%																							
ARDD0384-1	Viaduct C - IC/SO Approval of Sub & Superstructure DDA - DP13.03	0		100%	0	08-May-15 A					100%																							
ARDD0384-3	Viaduct C - Coordination and Further Issue of Construction Method and Temporary Works D	60	02-Mar-15 A	25%	45	22-Jul-15	15-Dec-14	13-Feb-15	-113	0	0%																							
ARDD0384-4	Viaduct C - Preparation of Draft DDA Working Drawing Set	60	02-Mar-15 A	100%	0	08-May-15 A					100%																							
ARDD0384-5	Viaduct C - GCL/FRE Final Coordinated Construction Method/Temporary Work Details	0		0%	0	22-Jul-15		13-Feb-15	-113	0	0%																							
ARDD0384-6	Viaduct C - Preparation and Coordination of Working Drawing Set	10	23-Jul-15	0%	10	05-Aug-15	16-Feb-15	27-Feb-15	-113	0	0%																							
ARDD0384-7	Viaduct C - Submission of Working DDA Drawings for Viaduct C DP13.03	0		0%	0	05-Aug-15		27-Mar-15	-93	0	0%																							
ARDD0384-8	Viaduct C - IC/SO Consent of Supplemental Working Drawings Viaduct C	10	06-Aug-15	0%	10	19-Aug-15	30-Mar-15	10-Apr-15	-93	0	0%																							
ARDD0384-9	Viaduct C - IC/SO Consent of Supplemental Working Drawings Viaduct C	0		0%	0	19-Aug-15		10-Apr-15	-93	0	0%																							
<b>Associated Construction Milestones</b>																																		
ARDD0413	Viaduct C - DDA approval ready for Commencement of Pilecaps C1-C17	0	11-Jun-15	0%	0		19-Dec-14		-174	1	0%																							
ARDD0414	Viaduct C - DDA approval ready for Initial Segment Casting	0	06-Aug-15	0%	0		10-Apr-15		-118	13	0%																							
<b>Viaduct A</b>																																		
<b>Viaduct Design</b>																																		
ARDD0433-1	Viaduct A - Review and Update of Draft DDA Rev A1 - DP11.03	15	19-Feb-15 A	80%	3	25-May-15	28-Nov-18	30-Nov-18	919	919	30%																							
ARDD0434-1	Viaduct A - Earliest IC Certificate for DDA DP11.02, DP11.03	0		0%	0	21-May-15		14-Jan-16	171	3	0%																							
ARDD0435	Viaduct A - IC/SO Approval of DDA DP11.03	75	23-Feb-15 A	40%	45	22-Jul-15	12-Jan-16	14-Mar-16	168	0	40%																							
ARDD0435-1	Viaduct A - IC/SO Approval of DDA DP11.03	0		0%	0	22-Jul-15		14-Mar-16	168	35	0%																							
ARDD0435-2	Viaduct A - GCL/FRE Issue of Construction Method/Temporary Work Data	0		0%	0	21-May-15		18-Nov-15	130	0	0%																							
ARDD0435-3	Viaduct A - Coordination and Further Issue of Construction Method and Temporary Works D:	60	21-May-15	0%	60	12-Aug-15	19-Nov-15	10-Feb-16	130	0	0%																							
ARDD0435-4	Viaduct A - Preparation of Draft DDA Working Drawing Set	60	21-May-15	0%	60	12-Aug-15	19-Nov-15	10-Feb-16	130	0	0%																							
ARDD0435-5	Viaduct A - GCL/FRE Final Coordinated Construction Method/Temporary Work Details	0		0%	0	12-Aug-15		10-Feb-16	130	0	0%																							
ARDD0435-6	Viaduct A - Preparation and Coordination of Working Drawing Set	10	13-Aug-15	0%	10	26-Aug-15	11-Feb-16	24-Feb-16	130	0	0%																							
<b>Viaduct F1 &amp; F3</b>																																		
<b>Viaduct Design</b>																																		
ARDD0485	Viaduct F1 & F3 - IC/SO Approval of DDA - DP16.02, 16.03, 16.08, 16.09	75	25-Nov-14 A	40%	45	22-Jul-15	17-Dec-14	17-Feb-15	-111	25	20%																							
ARDD0486-2	Viaduct F1 & F3 - Coordination and Further Issue of Construction Method and Temporary W	60	02-Mar-15 A	25%	45	22-Jul-15	03-Dec-14	03-Feb-15	-121	0	0%																							
ARDD0486-3	Viaduct F1 & F3 - Preparation of Draft Working Drawing Set	60	02-Mar-15 A	25%	45	22-Jul-15	03-Dec-14	03-Feb-15	-121	0	0%																							
ARDD0486-4	Viaduct F1 & F3 - GCL/FRE Final Coordinated Construction Method/Temporary Work Detail:	0		0%	0	22-Jul-15		03-Feb-15	-121	0	0%																							
ARDD0486-5	Viaduct F1 & F3 - Preparation and Coordination of DDA/Working Drawing Set	10	23-Jul-15	0%	10	05-Aug-15	04-Feb-15	17-Feb-15	-121	0	0%																							
ARDD0486-6	Viaduct F1 & F3 - Submission of Working DDA Drawings Viaduct F1,F3 DP16.03, DP16.09	0		0%	0	05-Aug-15		10-Jul-15	-18	0	0%																							
ARDD0486-7	Viaduct F1 & F3 - IC/SO Consent of Supplemental Working Drawings Viaduct F1,F3	10	06-Aug-15	0%	10	19-Aug-15	13-Jul-15	24-Jul-15	-18	5	0%																							
<b>Viaduct F2, F4 and F5</b>																																		
<b>Viaduct Design</b>																																		
ARDD0529	Viaduct F2, F4 & F5 - IC/SO Approval of DDA - DP16.05, 06, 11, 12, 14, 15	75	25-Nov-14 A	20%	60	12-Aug-15	09-Feb-15	04-May-15	-73	10	20%																							
ARDD0530-2	Viaduct F2, F4 & F5 - GCL/FRE Issue of Construction Method/Temporary Work Data	0		0%	0	21-May-15		11-Nov-14	-136	0	0%																							
ARDD0530-3	Viaduct F2, F4 & F5 - Coordination and Further Issue of Construction Method and Temporar	60	21-May-15	0%	60	12-Aug-15	12-Nov-14	03-Feb-15	-136	0	0%																							
ARDD0530-4	Viaduct F2, F4 & F5 - Preparation of Draft Working Drawing Set	60	21-May-15	0%	60	12-Aug-15	12-Nov-14	03-Feb-15	-136	0	0%																							
ARDD0530-5	Viaduct F2, F4 & F5 - GCL/FRE Final Coordination Construction Method/Temporary Work D	0		0%	0	12-Aug-15		03-Feb-15	-136	0	0%																							
ARDD0530-6	Viaduct F2, F4 & F5 - Preparation and Coordination of DDA/Working Drawing Set	10	13-Aug-15	0%	10	26-Aug-15	04-Feb-15	17-Feb-15	-136	0	0%																							
<b>Parapet and Utility Trough</b>																																		
ARDD0562-4	IC/SO Approval of DDA -DP30.01	75	31-Jul-14 A	90.67%	7	29-May-15	05-Feb-15	13-Feb-15	-75	0	90%																							
ARDD0562-5	IC/SO Approval of DDA -DP30.01	0		0%	0	29-May-15		13-Feb-15	-75	0	0%																							
ARDD0566	IC/SO Approval of DDA -DP31.01	75	24-Oct-14 A	80%	15	10-Jun-15	04-Sep-15	24-Sep-15	76	0	80%																							
ARDD0566-1	IC/SO Approval of DDA -DP31.01	0		0%	0	10-Jun-15		24-Sep-15	76	123	0%																							
<b>Slopeworks for Viaduct B: 9SE- B/C8, B/C9, B/F9, B/F85+ 10SW-A/F52, A/F53</b>																																		
ARDD0580-5	Preparation of Slope A/F52 Submission - CP12.03	20	10-Feb-15 A	0%	27	26-Jun-15	19-Mar-15	24-Apr-15	-45	0	30%																							

<ul style="list-style-type: none"> <li><span style="color:blue">■</span> Actual Work</li> <li><span style="color:green">■</span> Planned Bar</li> <li><span style="color:red">■</span> Critical Bar</li> <li>◆ Milestone</li> </ul>	Project ID: J3518DWPRe1-M24 Layout: J3518-DWP-3MRP Submission - M24 Filter: TASK filters: 3-Month Lookahead, No CC Milestones, No Level of Effort.	<b>Tuen Mun - Chek Lap Kok Link - Southern Connection</b> <b>3-Month Rolling Programme (Page 2 of 44 Pages)</b> <b>(Progress as of 21-May-15)</b>	<table border="1"> <tr> <th>Date</th> <th>Revision</th> <th>Checked</th> <th>Approved</th> </tr> <tr> <td>29-May-15</td> <td></td> <td>WY</td> <td></td> </tr> </table>	Date	Revision	Checked	Approved	29-May-15		WY		<b>DWG. No.:</b> <b>J3518/GCL/PGM/3MRP-M24</b>
Date	Revision	Checked	Approved									
29-May-15		WY										

Activity ID	Activity Name	Orig. Durn.	Act. Start / FC Early Start	Duration % Complete	Rem. Durn.	Act. Finish / FC Early Finish	Late Start	Late Finish	Total Float	Free Float	Physical % Complete	2015																	
												May				June				July				August					
												20	27	04	11	18	25	01	08	15	22	29	06	13	20	27	03	10	17
ARDD0580-6	IC/SO Approval of Slope - CP12.03	75	29-Jun-15	0%	75	09-Oct-15	27-Apr-15	07-Aug-15	-45	0	0%																		
<b>Slopeworks for Viaduct C: 10NW -C/C22, C/C26, C/C27, C/F13, C/F14, C/F15</b>																													
ARDD0587	IC/SO Approval of Slope Combined AIP/DDA -CP13.01	190	19-Nov-13 A	93.68%	12	05-Jun-15	04-Jul-16	19-Jul-16	292	0	90%																		
ARDD0587-1	IC/SO Approval of Slope Combined AIP/DDA -CP13.01	0		0%	0	05-Jun-15		19-Jul-16	292	135	0%																		
ARDD0588-2	IC/SO Approval of Combined AIP/DDA -CP13.02	75	25-Feb-15 A	40%	45	22-Jul-15	18-May-16	19-Jul-16	259	0	40%																		
ARDD0588-3	IC/SO Approval of Combined AIP/DDA -CP13.02	0		0%	0	22-Jul-15		19-Jul-16	259	102	0%																		
<b>Slopeworks for Viaduct A: 9SE-B/FR8, B/R1, B/R2</b>																													
ARDD0595	IC/SO Approval of Slope Combined AIP/DDA -CP11.01	75	31-Jul-14 A	84%	12	05-Jun-15	23-Oct-15	09-Nov-15	111	0	90%																		
ARDD0595-1	IC/SO Approval of Slope Combined AIP/DDA -CP11.01	0		0%	0	05-Jun-15		09-Nov-15	111	35	0%																		
<b>Slopeworks for Viaduct D: 10NW -C/R4, C/F9, C/F10, C/F11, C/F17, C/F50</b>																													
ARDD0603	IC/SO Approval of Slope Combined AIP/DDA -CP14.01	75	16-Dec-14 A	70.67%	22	19-Jun-15	06-May-15	04-Jun-15	-11	0	80%																		
ARDD0603-1	IC/SO Approval of Slope Combined AIP/DDA -CP14.01	0		0%	0	19-Jun-15		04-Jun-15	-11	6	0%																		
ARDD0604-1	Further Update of Combined AIP/DDA - CP14.02	20	20-Apr-15 A	100%	0	15-May-15 A					100%																		
ARDD0604-2	IC/SO Approval of Slope Combined AIP/DDA -CP14.02	75	18-May-15 A	40%	45	22-Jul-15	07-Aug-15	08-Oct-15	56	0	40%																		
ARDD0604-3	IC/SO Approval of Revised Slope Combined AIP/DDA -CP14.02	0		0%	0	22-Jul-15		08-Oct-15	56	73	0%																		
<b>Waterworks, Drainage &amp; Utility Diversions</b>																													
ARDD0629	IC/SO Approval of Waterworks, Drainage & Utility DDA - BP20.01	75	22-Jul-14 A	90.67%	7	29-May-15	17-Jun-15	25-Jun-15	19	0	90%																		
ARDD0629-1	IC/SO Approval of Waterworks, Drainage & Utility DDA - BP20.01	0		0%	0	29-May-15		25-Jun-15	19	0	0%																		
ARDD0629-2	Gov't Approval of Submissions for Waterworks, Drainage & Utility Diversions	75	02-Jan-14 A	90.67%	7	29-May-15	17-Jun-15	25-Jun-15	19	0	90%																		
ARDD0630-3	IC/SO Approval of Deck Drainage DDA - BP20.02	75	30-Jun-14 A	90.67%	7	29-May-15	24-Dec-15	01-Jan-16	155	0	90%																		
ARDD0630-4	IC/SO Approval of Deck Drainage DDA - BP20.02	0		0%	0	29-May-15		01-Jan-16	155	301	0%																		
<b>Viaduct Approach Ramp Retaining Walls</b>																													
<b>Approach Ramp D</b>																													
ARDD0652	Approach D - IC/SO Approval of Approach Ramp D DDA - DP23.01	75	25-Sep-14 A	89.33%	8	01-Jun-15	22-Apr-15	01-May-15	-21	0	80%																		
ARDD0652-1	Approach D - IC/SO Approval of Approach Ramp D DDA - DP23.01	0		0%	0	01-Jun-15		01-May-15	-21	0	0%																		
<b>Approach Ramp C</b>																													
ARDD0658	Approach C - IC/SO Approval of Approach Ramp C DDA -DP20.01	75	03-Oct-14 A	84%	12	05-Jun-15	26-Mar-15	10-Apr-15	-40	0	90%																		
ARDD0658-1	Approach C - IC/SO Approval of Approach Ramp C DDA -DP20.01	0		0%	0	05-Jun-15		10-Apr-15	-40	53	0%																		
<b>Approach Ramp B</b>																													
ARDD0664	Approach B - IC/SO Approval of Approach Ramp B DDA -DP21.01	75	14-Oct-14 A	64%	27	26-Jun-15	03-Dec-15	08-Jan-16	140	0	90%																		
ARDD0664-1	Approach B - IC/SO Approval of Approach Ramp B DDA -DP21.01	0		0%	0	26-Jun-15		08-Jan-16	140	219	0%																		
<b>Approach A</b>																													
ARDD0670	Approach A - IC/SO Approval of Approach Ramp A DDA - DP20.01	75	03-Oct-14 A	84%	12	05-Jun-15	31-Aug-15	15-Sep-15	72	0	90%																		
ARDD0670-1	Approach A - IC/SO Approval of Approach Ramp A DDA - DP20.01	0		0%	0	05-Jun-15		15-Sep-15	72	0	0%																		
<b>Approach F</b>																													
ARDD0676	Approach F - IC/SO Approval of Approach Ramp F DDA -DP24.01	75	23-Dec-14 A	57.33%	32	03-Jul-15	26-Mar-15	08-May-15	-40	0	60%																		
ARDD0676-1	Approach F - IC/SO Approval of Approach Ramp F DDA -DP24.01	0		0%	0	03-Jul-15		26-Nov-15	104	208	0%																		
<b>Landscape</b>																													
ARDD0700	IC/SO Approval of DDA for landscape works - BP22.01	75	15-Oct-14 A	84%	12	05-Jun-15	17-Dec-15	01-Jan-16	150	0	90%																		
ARDD0700-1	IC/SO Approval of DDA for landscape works - BP22.01	0		0%	0	05-Jun-15		01-Jan-16	150	0	0%																		
ARDD0701	Water Supply Application to WSD	0		0%	0	05-Jun-15		01-Jan-16	150	0	0%																		
ARDD0702	Gov't Approval of LVIA	40	08-Jun-15	0%	40	31-Jul-15	04-Jan-16	26-Feb-16	150	193	0%																		
<b>Segment Target Geometry And Erection Engineering</b>																													
<b>Viaduct A</b>																													
ARDD0716	Viaduct A - Confirmation of Erection Sequence from Freyssinet	0		0%	0	21-May-15		16-Dec-15	150	0	0%																		
ARDD0717	Viaduct A - Erection Sequence Analysis	20	21-May-15	0%	20	17-Jun-15	17-Dec-15	13-Jan-16	150	0	0%																		
ARDD0718	Viaduct A - Target Geometry Analysis	20	18-Jun-15	0%	20	15-Jul-15	14-Jan-16	10-Feb-16	150	0	0%																		
ARDD0719	Viaduct A - Segment Geometry Schedules	10	16-Jul-15	0%	10	29-Jul-15	11-Feb-16	24-Feb-16	150	20	0%																		

<ul style="list-style-type: none"> <li><span style="display: inline-block; width: 15px; height: 10px; background-color: blue; border: 1px solid black;"></span> Actual Work</li> <li><span style="display: inline-block; width: 15px; height: 10px; background-color: green; border: 1px solid black;"></span> Planned Bar</li> <li><span style="display: inline-block; width: 15px; height: 10px; background-color: red; border: 1px solid black;"></span> Critical Bar</li> <li><span style="display: inline-block; width: 0; height: 0; border-left: 5px solid transparent; border-right: 5px solid transparent; border-bottom: 8px solid black;"></span> Milestone</li> </ul>	Project ID: J3518DWPrE1-M24 Layout: J3518-DWP-3MRP Submission - M24 Filter: TASK filters: 3-Month Lookahead, No CC Milestones, No Level of Effort.	<b>Tuen Mun - Chek Lap Kok Link - Southern Connection</b> <b>3-Month Rolling Programme (Page 3 of 44 Pages)</b> <b>(Progress as of 21-May-15)</b>				Date	Revision	Checked	Approved	<b>DWG. No.:</b>  <b>J3518/GCL/PGM/3MRP-M24</b>
		29-May-15		WY						





Activity ID	Activity Name	Orig. Durn.	Act. Start / FC Early Start	Duration % Complete	Rem. Durn.	Act. Finish / FC Early Finish	Late Start	Late Finish	Total Float	Free Float	Physical % Complete	2015															
												May				June				July				August			
												20	27	04	11	18	25	01	08	15	22	29	06	13	20	27	03
<b>Precast Pile Caps</b>																											
MBDC0130-8	D: Progressive Pile Cap Shell Manufacture & Delivery remaining shells	143	29-Sep-14 A	85.31%	21	15-Jun-15	07-Nov-18	30-Nov-18	1029	1029	42.8%																
<b>Precast Deck Segments</b>																											
MBDE0120	D: Commence Segment Casting on Approval of DDA	0	29-May-15	0%	0		17-Nov-14		-154	0	0%																
MBDE0130-7	D: Progressive Match Cast Segment Manufacture & Delivery (311 Nr)	315	27-Jul-15	0%	315	16-Aug-16	15-Jan-15	05-Feb-16	-154	0	0%																
<b>Viaduct C</b>																											
<b>Precast Pile Caps</b>																											
MBCC0130-1	C: Progressive Pile Cap Shell Manufacture & Delivery remaining shells	117	01-Dec-14 A	96.58%	4	26-May-15	30-Dec-14	05-Jan-15	-113	1046	0%																
<b>Precast Deck Segments</b>																											
MBCE0120	C: Commence Segment Casting on Approval of DDA	0	20-Aug-15	0%	0		11-Apr-15		-108	0	0%																
MBCE0130-1	C: Progressive Segment Manufacture & Delivery remaining segments (388 Nr)	265	20-Aug-15	0%	265	13-Jul-16	11-Apr-15	01-Mar-16	-108	1	0%																
<b>Viaduct A</b>																											
<b>Precast Pile Caps</b>																											
MBAC0130-1	A: Progressive Pile Cap Shell Manufacture & Delivery remaining shells	274	22-May-15	0%	274	23-Apr-16	24-Dec-15	26-Nov-16	179	12	0%																
<b>Parapets</b>																											
MBEE0090	Approval of DDA to start Precast Parapets/Barriers Casting	0	30-May-15	0%	0		14-Feb-15		-81	33	0%																
PP6010	Procure Sub-Contractor for Precast Parapets/Barriers	40	21-May-15	0%	40	09-Jul-15	29-Dec-14	13-Feb-15	-114	0	0%																
PP6011	Precast Parapets/Barriers Detail Design & Procure Moulds	120	10-Jul-15	0%	120	30-Nov-15	14-Feb-15	16-Jul-15	-114	0	0%																
<b>Materials</b>																											
PP7010	Procure Sub-contractor for Signs & Street Furniture	90	21-May-15	0%	90	05-Sep-15	15-Aug-15	01-Dec-15	71	0	0%																
<b>In-Situ Formworks / Falseworks</b>																											
PPPF02	Design & Fabrication of Falsework / Formwork & Delivery	120	20-Feb-14 A	75%	30	26-Jun-15	20-Jun-16	25-Jul-16	320	431	75%																
<b>Bearings</b>																											
<b>Viaduct A</b>																											
PPBRA1	Preliminary Design of Bearings - Viaduct A	50	10-Jun-15	0%	50	08-Aug-15	06-Oct-15	03-Dec-15	97	0	0%																
PPBRA2	Confirmation of bearing assumption - Viaduct A	0		0%	0	08-Aug-15		03-Dec-15	97	0	0%																
PPBRA3	Bearing design and submission - Viaduct A	12	10-Aug-15	0%	12	22-Aug-15	04-Dec-15	17-Dec-15	97	0	0%																
<b>Viaduct C</b>																											
PPBRC1	Preliminary Design of Bearings - Viaduct C	50	22-Dec-14 A	64%	18	11-Jun-15	30-Aug-14	20-Sep-14	-212	0	65%																
PPBRC2	Confirmation of bearing assumption - Viaduct C	0		0%	0	11-Jun-15		20-Sep-14	-212	0	0%																
PPBRC3	Bearing design and submission - Viaduct C	12	12-Jun-15	0%	12	26-Jun-15	22-Sep-14	07-Oct-14	-212	0	0%																
PPBRC4	Design check by ICE - Viaduct C	24	27-Jun-15	0%	24	25-Jul-15	08-Oct-14	04-Nov-14	-212	0	0%																
PPBRC5	SO review & comment on design submission - Viaduct C	36	27-Jul-15	0%	36	05-Sep-15	05-Nov-14	16-Dec-14	-212	0	0%																
PPBRC7	Manufacture of Bearing - Viaduct C	54	27-Jul-15	0%	54	26-Sep-15	05-Nov-14	09-Jan-15	-212	0	0%																
<b>Viaduct D</b>																											
PPBRD4	Design check by ICE - Viaduct D	24	20-Dec-14 A	20.83%	19	12-Jun-15	01-Nov-14	22-Nov-14	-161	0	20%																
PPBRD5	SO review & comment on design submission - Viaduct D	36	13-Jun-15	0%	36	27-Jul-15	24-Nov-14	07-Jan-15	-161	0	0%																
PPBRD6	Bearing Design Amendment & re-issue - Viaduct D	12	28-Jul-15	0%	12	10-Aug-15	15-Jan-15	28-Jan-15	-155	6	0%																
PPBRD7	Manufacture of Bearing - Viaduct D	54	13-Jun-15	0%	54	17-Aug-15	24-Nov-14	28-Jan-15	-161	0	0%																
PPBRD8	Testing Bearing - Viaduct D	18	18-Aug-15	0%	18	07-Sep-15	29-Jan-15	18-Feb-15	-161	0	0%																
<b>Viaduct E</b>																											
PPBRE3	Bearing design and submission - Viaduct E (E1, E2, E5, E6, E7 & E8)	12	06-Jan-14 A	66.67%	4	26-May-15	02-Sep-14	05-Sep-14	-210	4	65%																
PPBRE4	Design check by ICE - Viaduct E (E1, E2, E5, E6, E7 & E8)	24	06-Jun-14 A	16.67%	20	13-Jun-15	28-Aug-14	20-Sep-14	-214	2	16%																
PPBRE5	SO review & comment on design submission - Viaduct E (E1, E2, E5, E6, E7 & E8)	36	10-Oct-14 A	5.56%	34	02-Jul-15	26-Aug-14	07-Oct-14	-216	0	5%																
PPBRE6	Bearing Design Amendment & re-issue - Viaduct E (E1, E2, E5, E6, E7 & E8)	12	03-Jul-15	0%	12	16-Jul-15	08-Oct-14	21-Oct-14	-216	0	0%																
PPBRE7	Manufacture of Bearing - Viaduct E (E1, E2, E5, E6, E7 & E8)	54	02-Jun-14 A	25.93%	40	16-Jul-15	02-Sep-14	21-Oct-14	-216	0	5%																
PPBRE8	Testing Bearing - Viaduct E (E1, E2, E5, E6, E7 & E8)	24	30-Jun-14 A	0%	46	30-Jul-15	10-Sep-14	04-Nov-14	-216	0	5%																
PPBRE9	Bearing Delivery - Viaduct E (E1, E2, E5, E6, E7 & E8)	48	18-Oct-14 A	4.17%	46	10-Sep-15	24-Oct-14	16-Dec-14	-216	0	5%																

<ul style="list-style-type: none"> <li><span style="display: inline-block; width: 10px; height: 10px; background-color: blue; border: 1px solid black;"></span> Actual Work</li> <li><span style="display: inline-block; width: 10px; height: 10px; background-color: green; border: 1px solid black;"></span> Planned Bar</li> <li><span style="display: inline-block; width: 10px; height: 10px; background-color: red; border: 1px solid black;"></span> Critical Bar</li> <li><span style="display: inline-block; width: 0; height: 0; border-left: 5px solid transparent; border-right: 5px solid transparent; border-bottom: 8px solid black;"></span> Milestone</li> </ul>	Project ID: J3518DWPPrE1-M24 Layout: J3518-DWP-3MRP Submission - M24 Filter: TASK filters: 3-Month Lookahead, No CC Milestones, No Level of Effort.	<b>Tuen Mun - Chek Lap Kok Link - Southern Connection</b> <b>3-Month Rolling Programme (Page 6 of 44 Pages)</b> <b>(Progress as of 21-May-15)</b>	<table border="1" style="width: 100%;"> <tr> <td>Date</td> <td>Revision</td> <td>Checked</td> <td>Approved</td> </tr> <tr> <td>29-May-15</td> <td></td> <td>WY</td> <td></td> </tr> </table>	Date	Revision	Checked	Approved	29-May-15		WY		<b>DWG. No.:</b>  <b>J3518/GCL/PGM/3MRP-M24</b>
Date	Revision	Checked	Approved									
29-May-15		WY										

Activity ID	Activity Name	Orig. Durn.	Act. Start / FC Early Start	Duration % Complete	Rem. Durn.	Act. Finish / FC Early Finish	Late Start	Late Finish	Total Float	Free Float	Physical % Complete	2015																						
												May				June				July				August										
												20	27	04	11	18	25	01	08	15	22	29	06	13	20	27	03	10	17					
<b>Bridge E1</b>																																		
PP7360	Site preparation Bearings for Viaduct E1	18	22-Jun-15	0%	18	17-Jul-15	26-Nov-14	16-Dec-14	-157	44	0%																							
<b>Viaduct F</b>																																		
PPBRF1	Preliminary Design of Bearings - Viaduct F	70	23-May-15	0%	70	15-Aug-15	13-Feb-15	14-May-15	-77	0	0%																							
PPBRF2	Confirmation of bearing assumption - Viaduct F	0		0%	0	15-Aug-15		14-May-15	-77	0	0%																							
PPBRF3	Bearing design and submission - Viaduct F	12	17-Aug-15	0%	12	29-Aug-15	15-May-15	29-May-15	-77	0	0%																							
<b>Movement Joints</b>																																		
PPMJ01	Design & Submission of MJ	138	08-Feb-14 A	29.71%	97	14-Sep-15	12-Aug-15	05-Dec-15	68	953	30%																							
PPMJ02-1	MJ Design Approval	96	26-May-14 A	39.58%	58	30-Jul-15	12-Aug-15	20-Oct-15	68	130	40%																							
PPMJ02-2	Manufacture & delivery of MJ	188	21-May-15	0%	188	05-Jan-16	12-Aug-15	31-Mar-16	68	0	0%																							
<b>Other Sub-Contract Procurement</b>																																		
<b>Pavement</b>																																		
PP7760-2	Procure Pavement Viaduct Sub-Contractor	36	21-May-15	0%	36	04-Jul-15	19-Feb-16	05-Apr-16	223	0	0%																							
PP7760-4	Pavement Viaduct Sub-Contractor - Materials approvals & MS	90	06-Jul-15	0%	90	20-Oct-15	06-Apr-16	23-Jul-16	223	169	0%																							
<b>Structural Health Monitoring System (SHMS)</b>																																		
PP7778	SHMS - So approval of Final System Proposal	30	16-Dec-14 A	73.33%	8	30-May-15	15-Nov-14	24-Nov-14	-149	52	75%																							
PP7780	SHMS - Prepare Civil Work Provision	66	21-May-15	0%	66	08-Aug-15	07-Oct-14	22-Dec-14	-183	0	0%																							
PP7782	SHMS - Submit Precast Pile Cap Shell SHMS details for E5-E6-E7-E8	0	19-Jun-15	0%	0		11-Dec-14		-151	32	0%																							
PP7786	SHMS - Submit Segment SHMS details for E5-E6-E7-E8	0	13-Jul-15	0%	0		27-Mar-15		-84	0	0%																							
PP7788	SHMS - FAT & Delivery for Bridge E5-E6-E7-E8 equipment	54	19-Jun-15	0%	54	22-Aug-15	15-Nov-14	20-Jan-15	-173	2	0%																							
<b>Site Preparation / Mobilisations</b>																																		
<b>Tree Felling / Transplant</b>																																		
<b>Approved Trees in Contract</b>																																		
TR00220	Tree transplant for Viaduct B - affecting Pier B18 & Abutment B	90	17-Feb-14 A	97.78%	2	23-May-15	11-Jan-16	12-Jan-16	177	978	95%																							
<b>Temporary Working Platform at North Lantau</b>																																		
PR08080	Inst.Unloading Frame incl. T&C for seg.lift (incl. Load Test)	15	22-May-15	0%	15	12-Jun-15	03-Dec-14	19-Dec-14	-131	0	0%																							
<b>Unloading Jetty at HKBCF</b>																																		
PR09060	Unloading Jetty at HKBCF - Conditional survey & finalize jetty design modification	15	04-Jun-15	0%	15	27-Jun-15	24-Apr-15	13-May-15	-30	0	0%																							
PR09070	Unloading Jetty at HKBCF - Install Unloading Frame incl. testing/commissioning for segment I	52	29-Jun-15	0%	52	02-Sep-15	14-May-15	25-Jul-15	-30	138	0%																							
<b>CONSTRUCTION</b>																																		
<b>PILING AND SUBSTRUCTURE</b>																																		
<b>Viaduct A</b>																																		
<b>Milestones - Marine Foundation</b>																																		
GFX116-1	A7 (A1e) - Completion of piling works	0		0%	0	27-May-15		15-Dec-15	168	0	0%																							
GFX121-1	A6 (A1f) - Completion of piling works	0		0%	0	07-Aug-15		30-Jan-16	145	0	0%																							
GFX123-1	A5 (A2a) - Start date for piling	0	21-May-15	0%	0		07-Mar-16		238	80	0%																							
GFX128-1	A4 (A2b) - Start date for piling	0	21-May-15	0%	0		05-Mar-16		237	64	0%																							
GFX138-1	A2 (A2d) - Start date for piling	0	21-May-15	0%	0		02-Feb-16		211	120	0%																							
<b>Milestones - Land Foundation</b>																																		
ZA00030	A9 (A1c) - Start date for piling	0	21-May-15	0%	0		14-Jan-16		195	82	0%																							
ZA00041	A10 (A1b) - Completion of piling works	0		100%	0	21-Apr-15 A					100%																							
ZA00051	A11 (A1a) - Completion of piling works	0	21-May-15	0%	0		20-Jan-16		200	117	0%																							
<b>General</b>																																		
ZA00010	Viaduct A - Approval of Foundation DDA DP11.01	0		0%	0	21-May-15		30-Nov-18	922	922	0%																							
<b>Bridge A2</b>																																		
<b>Pier A1 (A2e)</b>																																		
<b>Pile Cap Works</b>																																		
SA2E0100	A1 (A2e) - Marine Pile Cap M2 - Weld Fin plates/Plug Rebar & Concrete	9	20-Apr-15 A	100%	0	09-May-15 A					100%																							

■ Actual Work  
■ Planned Bar  
■ Critical Bar  
◆ Milestone

Project ID: J3518DWPPrE1-M24  
 Layout: J3518-DWP-3MRP Submission - M24  
 Filter: TASK filters: 3-Month Lookahead, No CC Milestones, No Level of Effort.

**Tuen Mun - Chek Lap Kok Link - Southern Connection**  
**3-Month Rolling Programme (Page 7 of 44 Pages)**  
**(Progress as of 21-May-15)**

Date	Revision	Checked	Approved
29-May-15		WY	

**DWG. No.:**  
**J3518/GCL/PGM/3MRP-M24**

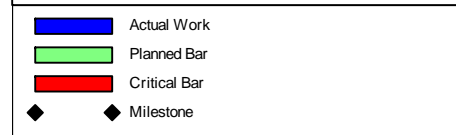




Activity ID	Activity Name	Orig. Durn.	Act. Start / FC Early Start	Duration % Complete	Rem. Durn.	Act. Finish / FC Early Finish	Late Start	Late Finish	Total Float	Free Float	Physical % Complete	2015																	
												May				June				July				August					
												20	27	04	11	18	25	01	08	15	22	29	06	13	20	27	03	10	17
GFXX114	A7 (A1e) - Bored Piles (2.20m dia. x 3 nos)	95	26-Feb-15 A	100%	0	09-May-15 A					100%	[Gantt Bar: 26-Feb-15 to 09-May-15]																	
GFXX115	A7 (A1e) - Sonic & Interface Coring	12	11-May-15 A	100%	0	20-May-15 A					100%	[Gantt Bar: 11-May-15 to 20-May-15]																	
GFXX116	A7 (A1e) - Dismantle removable panels of temp. platform	5	21-May-15	0%	5	27-May-15	10-Dec-15	15-Dec-15	168	0	0%	[Gantt Bar: 21-May-15 to 15-Dec-15]																	
<b>Pile Cap Works</b>																													
SA1E0070	A7 (A1e) - Marine Pile Cap M2b - Inst.Floating Seal & Casing Head Steelwork	7	28-May-15	0%	7	05-Jun-15	16-Dec-15	23-Dec-15	154	0	0%	[Gantt Bar: 28-May-15 to 23-Dec-15]																	
SA1E0080	A7 (A1e) - Marine Pile Cap M2b - Install precast shell in position	1	06-Jun-15	0%	1	06-Jun-15	24-Dec-15	24-Dec-15	154	0	0%	[Gantt Bar: 06-Jun-15 to 24-Dec-15]																	
SA1E0090	A7 (A1e) - Marine Pile Cap M2b - Inst.Access & make Watertight	3	08-Jun-15	0%	3	12-Jun-15	28-Dec-15	30-Dec-15	154	0	0%	[Gantt Bar: 08-Jun-15 to 30-Dec-15]																	
SA1E0100	A7 (A1e) - Marine Pile Cap M2b - Weld Fin plates/Plug Rebar & Concrete	9	13-Jun-15	0%	9	27-Jun-15	31-Dec-15	11-Jan-16	154	0	0%	[Gantt Bar: 13-Jun-15 to 11-Jan-16]																	
SA1E0120	A7 (A1e) - Marine Pile Cap M2b - Dewater precast shell / Remove Lifting Frame	2	29-Jun-15	0%	2	30-Jun-15	12-Jan-16	13-Jan-16	154	0	0%	[Gantt Bar: 29-Jun-15 to 13-Jan-16]																	
SA1E0130	A7 (A1e) - Marine Pile Cap M2b - Pile cut down	8	02-Jul-15	0%	8	10-Jul-15	14-Jan-16	22-Jan-16	154	0	0%	[Gantt Bar: 02-Jul-15 to 22-Jan-16]																	
SA1E0140	A7 (A1e) - Marine Pile Cap M2b - Rebar fixing, inst.inserts etc	12	11-Jul-15	0%	12	25-Jul-15	23-Jan-16	05-Feb-16	154	0	0%	[Gantt Bar: 11-Jul-15 to 05-Feb-16]																	
SA1E0150	A7 (A1e) - Marine Pile Cap M2b - Concreting	1	27-Jul-15	0%	1	27-Jul-15	06-Feb-16	06-Feb-16	154	0	0%	[Gantt Bar: 27-Jul-15 to 06-Feb-16]																	
SA1E0160	A7 (A1e) - Marine Pile Cap M2b - Curing incl. CJ Preparation	6	28-Jul-15	0%	6	04-Aug-15	11-Feb-16	17-Feb-16	154	0	0%	[Gantt Bar: 28-Jul-15 to 17-Feb-16]																	
<b>Pier Works</b>																													
SA1E0170	A7 (A1e) - Type 5B Pier Temp. Support Platform & Scaffold (1st Lift)	6	28-Jul-15	0%	6	04-Aug-15	11-Feb-16	17-Feb-16	154	0	0%	[Gantt Bar: 28-Jul-15 to 17-Feb-16]																	
SA1E0180	A7 (A1e) - Type 5B Pier Rebarwork, Formwork & Prep (1st Lift)	5	05-Aug-15	0%	5	10-Aug-15	18-Feb-16	23-Feb-16	154	0	0%	[Gantt Bar: 05-Aug-15 to 23-Feb-16]																	
SA1E0200	A7 (A1e) - Type 5B Pier Concreting, Curing & Striking, CJ prep (1st Lift)	3	12-Aug-15	0%	3	14-Aug-15	24-Feb-16	26-Feb-16	154	0	0%	[Gantt Bar: 12-Aug-15 to 26-Feb-16]																	
SA1E0210	A7 (A1e) - Type 5B Pier Scaffolding (2nd Lift)	2	15-Aug-15	0%	2	17-Aug-15	27-Feb-16	29-Feb-16	154	0	0%	[Gantt Bar: 15-Aug-15 to 29-Feb-16]																	
SA1E0220	A7 (A1e) - Type 5B Pier Rebarwork, Formwork & Prep (2nd Lift)	5	18-Aug-15	0%	5	24-Aug-15	01-Mar-16	05-Mar-16	154	0	0%	[Gantt Bar: 18-Aug-15 to 05-Mar-16]																	
<b>Pier A8 (A1d)</b>																													
<b>Socketted H-Pile installation</b>																													
GFXX298	A8 (A1d) - Install SH Pile (21 no.)	120	15-Apr-15 A	15%	102	19-Sep-15	09-Sep-15	12-Jan-16	92	0	0%	[Gantt Bar: 15-Apr-15 to 12-Jan-16]																	
<b>Pier A9 (A1c)</b>																													
<b>Preliminary Works for Land Piling</b>																													
GFXX281-2	A9 (A1c) - Pre-grouting Works	24	21-Mar-15 A	100%	0	29-Apr-15 A					100%	[Gantt Bar: 21-Mar-15 to 29-Apr-15]																	
PA090060	A9 (A1c) - Complete civil preparation works for piling to commence	0		0%	0	22-May-15		30-Nov-18	980	980	0%	[Gantt Bar: 22-May-15 to 30-Nov-18]																	
<b>Socketted H-Pile installation</b>																													
GFXX293	A9 (A1c) - Install SH Pile (21 no.)	90	08-May-15 A	8.89%	82	27-Aug-15	06-Oct-15	13-Jan-16	113	0	5%	[Gantt Bar: 08-May-15 to 13-Jan-16]																	
<b>Pier A10 (A1b)</b>																													
<b>Socketted H-Pile installation</b>																													
GFXX288	A10 (A1b) - Install SH Pile (12 no.)	60	11-Mar-15 A	100%	0	21-Apr-15 A					100%	[Gantt Bar: 11-Mar-15 to 21-Apr-15]																	
<b>Pile Cap Works</b>																													
SA1B0090	A10 (A1b) - Pile cap Excavation / ELS	45	22-May-15	0%	45	24-Jul-15	25-Nov-15	19-Jan-16	140	0	0%	[Gantt Bar: 22-May-15 to 19-Jan-16]																	
SA1B0092	A10 (A1b) - Pile Breakdown to cut-off etc.	4	25-Jul-15	0%	4	30-Jul-15	28-May-16	03-Jun-16	238	0	0%	[Gantt Bar: 25-Jul-15 to 03-Jun-16]																	
SA1B0100	A10 (A1b) - Pile cap Blinding	1	31-Jul-15	0%	1	31-Jul-15	03-Jun-16	04-Jun-16	238	0	0%	[Gantt Bar: 31-Jul-15 to 04-Jun-16]																	
SA1B0110	A10 (A1b) - Pile cap Formwork	3	06-Aug-15	0%	3	08-Aug-15	11-Jun-16	16-Jun-16	238	0	0%	[Gantt Bar: 06-Aug-15 to 16-Jun-16]																	
SA1B0120	A10 (A1b) - Pile cap Rebarwork	4	01-Aug-15	0%	4	05-Aug-15	04-Jun-16	11-Jun-16	238	0	0%	[Gantt Bar: 01-Aug-15 to 11-Jun-16]																	
SA1B0122	A10 (A1b) - Pile cap Kicker Formwork	2	12-Aug-15	0%	2	13-Aug-15	23-Jun-16	27-Jun-16	242	58	0%	[Gantt Bar: 12-Aug-15 to 27-Jun-16]																	
SA1B0130	A10 (A1b) - Pile cap Concreting	1	10-Aug-15	0%	1	10-Aug-15	16-Jun-16	18-Jun-16	238	0	0%	[Gantt Bar: 10-Aug-15 to 18-Jun-16]																	
SA1B0140	A10 (A1b) - Pile cap Curing & Striking of Forms incl. CJ prep	6	12-Aug-15	0%	6	18-Aug-15	18-Jun-16	27-Jun-16	238	54	0%	[Gantt Bar: 12-Aug-15 to 27-Jun-16]																	
<b>Pier A11 (A1a) &amp; Abutment A</b>																													
<b>Socketted H-Pile installation</b>																													
GFXX287	A11 (A1a) - Install SH Pile (9 no.)	100	20-Apr-15 A	100%	0	07-May-15 A					100%	[Gantt Bar: 20-Apr-15 to 07-May-15]																	
<b>Viaduct B</b>																													
<b>Bridge B3</b>																													
<b>Pier B4 (B3c)</b>																													
<b>Pier Head Segments</b>																													
SB3C0374	B4 (B3c) - Pier Head Segment Diaphragm - Rebar	12	30-Mar-15 A	100%	0	23-Apr-15 A					100%	[Gantt Bar: 30-Mar-15 to 23-Apr-15]																	

	Project ID: J3518DWPPrE1-M24 Layout: J3518-DWP-3MRP Submission - M24 Filter: TASK filters: 3-Month Lookahead, No CC Milestones, No Level of Effort.	<b>Tuen Mun - Chek Lap Kok Link - Southern Connection</b> <b>3-Month Rolling Programme (Page 9 of 44 Pages)</b> <b>(Progress as of 21-May-15)</b>	<table border="1"> <tr> <th>Date</th> <th>Revision</th> <th>Checked</th> <th>Approved</th> </tr> <tr> <td>29-May-15</td> <td></td> <td>WY</td> <td></td> </tr> </table>	Date	Revision	Checked	Approved	29-May-15		WY		<b>DWG. No.:</b> <b>J3518/GCL/PGM/3MRP-M24</b>
Date	Revision	Checked	Approved									
29-May-15		WY										

Activity ID	Activity Name	Orig. Durn.	Act. Start / FC Early Start	Duration% Complete	Rem. Durn.	Act. Finish / FC Early Finish	Late Start	Late Finish	Total Float	Free Float	Physical % Complete	2015																	
												May					June				July				August				
												20	27	04	11	18	25	01	08	15	22	29	06	13	20	27	03	10	17
SB3C0376	B4 (B3c) - Pier Head Segment Diaphragm - Formwork & Prep for Concreting	8	03-Apr-15 A	100%	0	23-Apr-15 A					100%																		
SB3C0378	B4 (B3c) - Pier Head Segment Diaphragm - Concreting	2	04-Apr-15 A	100%	0	24-Apr-15 A					100%																		
SB3C0380	B4 (B3c) - Pier Head Segment Diaphragm - Curing & Striking of Forms	6	25-Apr-15 A	100%	0	30-Apr-15 A					100%																		
<b>Pier B5 (B3b)</b>																													
<b>Pier Head Segments</b>																													
SB3B0380	B5 (B3b) - Pier Head Segment Diaphragm - Curing & Striking of Forms	6	19-Apr-15 A	100%	0	22-Apr-15 A					100%																		
<b>Pier B6 (B3a)</b>																													
<b>Pier Head Segments</b>																													
SB3A0371	B6 (B3a) - Pier Head Segment bearings	2	07-May-15 A	100%	0	22-May-15 A					100%																		
SB3A0372	B6 (B3a) - Pier Head Segment Lift & Temp Support (2 seg)	7	22-May-15	0%	7	30-May-15	05-Feb-15	12-Feb-15	-79	0	0%																		
<b>Bridge B2</b>																													
<b>Pier B7 (B2f)</b>																													
<b>Pier Head Segments</b>																													
SB2F0370	B7 (B2f) - Pier Head Segment - Temporary Platform	6	18-Mar-15 A	100%	0	22-Apr-15 A					100%																		
SB2F0372	B7 (B2f) - Pier Head Segment Lift & Fix (1 seg)	2	23-Apr-15 A	100%	0	25-Apr-15 A					100%																		
SB2F0374	B7 (B2f) - Pier Head Segment Diaphragm - Rebar	12	04-May-15 A	75%	3	26-May-15	28-Nov-18	30-Nov-18	977	977	80%																		
SB2F0376	B7 (B2f) - Pier Head Segment Diaphragm - Formwork & Prep for Concreting	8	08-May-15 A	50%	4	27-May-15	27-Nov-18	30-Nov-18	976	976	0%																		
SB2F0378	B7 (B2f) - Pier Head Segment Diaphragm - Concreting	2	12-May-15 A	0%	4	27-May-15	29-Dec-14	02-Jan-15	-111	0	50%																		
SB2F0380	B7 (B2f) - Pier Head Segment Diaphragm - Curing & Striking of Forms	6	28-May-15	0%	6	04-Jun-15	03-Jan-15	09-Jan-15	-111	0	0%																		
<b>Pier B8 (B2e)</b>																													
<b>Pier Head Segments</b>																													
SB2E0374	B8 (B2e) - Pier Head Segment Diaphragm - Rebar	12	21-Apr-15 A	83.33%	2	23-May-15	30-Dec-14	31-Dec-14	-110	0	90%																		
SB2E0376	B8 (B2e) - Pier Head Segment Diaphragm - Formwork & Prep for Concreting	8	26-May-15	0%	8	04-Jun-15	02-Jan-15	10-Jan-15	-110	0	0%																		
SB2E0378	B8 (B2e) - Pier Head Segment Diaphragm - Concreting	2	05-Jun-15	0%	2	06-Jun-15	12-Jan-15	13-Jan-15	-110	0	0%																		
SB2E0380	B8 (B2e) - Pier Head Segment Diaphragm - Curing & Striking of Forms	6	08-Jun-15	0%	6	16-Jun-15	14-Jan-15	21-Jan-15	-109	0	0%																		
<b>Pier B9 (B2d)</b>																													
<b>Pier Works</b>																													
SB2D0250	B9 (B2d) - Type 5B Pier Head Formwork & Prep for Concreting	4	20-Apr-15 A	100%	0	27-Apr-15 A					100%																		
SB2D0260	B9 (B2d) - Type 5B Pier Head Concreting	1	28-Apr-15 A	100%	0	28-Apr-15 A					100%																		
SB2D0270	B9 (B2d) - Type 5B Pier Head Curing & Striking of Forms & Remove Scaffolding	6	29-Apr-15 A	100%	0	06-May-15 A					100%																		
SB2D0280	B9 (B2d) - Type 5B Pier Backfilling Works	4	07-May-15 A	100%	0	12-May-15 A					100%																		
<b>Pier Head Segments</b>																													
SB2D0370	B9 (B2d) - Pier Head Segment - Temporary Platform	6	05-May-15 A	100%	0	11-May-15 A					100%																		
SB2D0372	B9 (B2d) - Pier Head Segment Lift & Fix (1 seg)	2	18-Jul-15	0%	2	20-Jul-15	21-Jan-15	22-Jan-15	-131	0	0%																		
SB2D0374	B9 (B2d) - Pier Head Segment Diaphragm - Rebar	12	21-Jul-15	0%	12	04-Aug-15	23-Jan-15	05-Feb-15	-131	0	0%																		
SB2D0376	B9 (B2d) - Pier Head Segment Diaphragm - Formwork & Prep for Concreting	8	05-Aug-15	0%	8	14-Aug-15	06-Feb-15	14-Feb-15	-131	0	0%																		
SB2D0378	B9 (B2d) - Pier Head Segment Diaphragm - Concreting	2	15-Aug-15	0%	2	17-Aug-15	16-Feb-15	17-Feb-15	-131	0	0%																		
SB2D0380	B9 (B2d) - Pier Head Segment Diaphragm - Curing & Striking of Forms	6	18-Aug-15	0%	6	25-Aug-15	18-Feb-15	27-Feb-15	-131	0	0%																		
<b>Pier B10 (B2c)</b>																													
<b>Pier Works</b>																													
SB2C0250	B10 (B2c) - Type 5B Pier Head Formwork & Prep for Concreting	4	30-Apr-15 A	100%	0	05-May-15 A					100%																		
SB2C0260	B10 (B2c) - Type 5B Pier Head Concreting	1	13-May-15 A	100%	0	13-May-15 A					100%																		
SB2C0270	B10 (B2c) - Type 5B Pier Head Curing & Striking of Forms & Remove Scaffolding	6	22-May-15	0%	6	29-May-15	30-Jan-15	05-Feb-15	-84	0	0%																		
SB2C0280	B10 (B2c) - Type 5B Pier Backfilling Works	4	27-May-15	0%	4	30-May-15	03-Feb-15	06-Feb-15	-84	0	0%																		
<b>Pier Head Segments</b>																													
SB2C0370	B10 (B2c) - Pier Head Segment - Temporary Platform	6	01-Jun-15	0%	6	08-Jun-15	07-Feb-15	13-Feb-15	-84	26	0%																		
SB2C0372	B10 (B2c) - Pier Head Segment Lift & Fix (1 seg)	2	18-Jul-15	0%	2	20-Jul-15	14-Feb-15	16-Feb-15	-110	0	0%																		
SB2C0374	B10 (B2c) - Pier Head Segment Diaphragm - Rebar	12	21-Jul-15	0%	12	04-Aug-15	17-Feb-15	05-Mar-15	-110	0	0%																		



Project ID: J3518DWPPrE1-M24  
 Layout: J3518-DWP-3MRP Submission - M24  
 Filter: TASK filters: 3-Month Lookahead, No CC Milestones, No Level of Effort.

**Tuen Mun - Chek Lap Kok Link - Southern Connection**  
**3-Month Rolling Programme (Page 10 of 44 Pages)**  
**(Progress as of 21-May-15)**

Date	Revision	Checked	Approved
29-May-15		WY	

**DWG. No.:**  
**J3518/GCL/PGM/3MRP-M24**

Activity ID	Activity Name	Orig. Durn.	Act. Start / FC Early Start	Duration % Complete	Rem. Durn.	Act. Finish / FC Early Finish	Late Start	Late Finish	Total Float	Free Float	Physical % Complete	2015																	
												May				June				July				August					
												20	27	04	11	18	25	01	08	15	22	29	06	13	20	27	03	10	17
SB2C0376	B10 (B2c) - Pier Head Segment Diaphragm - Formwork & Prep for Concreting	8	05-Aug-15	0%	8	14-Aug-15	06-Mar-15	14-Mar-15	-110	0	0%																		
SB2C0378	B10 (B2c) - Pier Head Segment Diaphragm - Concreting	2	15-Aug-15	0%	2	17-Aug-15	16-Mar-15	17-Mar-15	-110	0	0%																		
SB2C0380	B10 (B2c) - Pier Head Segment Diaphragm - Curing & Striking of Forms	6	18-Aug-15	0%	6	25-Aug-15	18-Mar-15	24-Mar-15	-110	0	0%																		
<b>Pier B11 (B2b)</b>																													
<b>Pier Works</b>																													
SB2B0280	B11 (B2b) - Type 5B-B Pier Backfilling Works	4	20-Apr-15 A	100%	0	24-Apr-15 A					100%																		
<b>Pier Head Segments</b>																													
SB2B0372	B11 (B2b) - Pier Head Segment Lift & Fix (1 seg)	2	29-Apr-15 A	100%	0	29-Apr-15 A					100%																		
SB2B0374	B11 (B2b) - Pier Head Segment Diaphragm - Rebar	12	22-May-15	0%	12	06-Jun-15	13-Mar-15	26-Mar-15	-51	0	0%																		
SB2B0376	B11 (B2b) - Pier Head Segment Diaphragm - Formwork & Prep for Concreting	8	08-Jun-15	0%	8	19-Jun-15	27-Mar-15	09-Apr-15	-51	0	0%																		
SB2B0378	B11 (B2b) - Pier Head Segment Diaphragm - Concreting	2	22-Jun-15	0%	2	24-Jun-15	10-Apr-15	11-Apr-15	-51	0	0%																		
SB2B0380	B11 (B2b) - Pier Head Segment Diaphragm - Curing & Striking of Forms	6	26-Jun-15	0%	6	03-Jul-15	13-Apr-15	20-Apr-15	-51	0	0%																		
<b>Pier B12 (B2a)</b>																													
<b>Pier Works</b>																													
SB2A0310	B12 (B2a) - Type 5B-MJ Pier Head Rebarwork	5	17-Apr-15 A	100%	0	25-Apr-15 A					100%																		
SB2A0320	B12 (B2a) - Type 5B-MJ Pier Head Formwork & Prep for Concreting	5	29-Apr-15 A	100%	0	07-May-15 A					100%																		
SB2A0330	B12 (B2a) - Type 5B-MJ Pier Head Concreting	1	11-May-15 A	100%	0	11-May-15 A					100%																		
SB2A0340	B12 (B2a) - Type 5B-MJ Pier Head Curing/Striking of Forms/Remove Scaffolding	6	12-May-15 A	100%	0	18-May-15 A					100%																		
SB2A0360	B12 (B2a) - Type 5B-MJ Pier Backfilling Works	4	28-May-15	0%	4	01-Jun-15	09-Apr-15	13-Apr-15	-36	0	0%																		
SB2A0380	B12 (B2a) - Type 5B-Bearing Plinth	4	22-May-15	0%	4	27-May-15	31-Mar-15	08-Apr-15	-36	0	0%																		
<b>Pier Head Segments</b>																													
SB2A0370	B12 (B2a) - Pier Head Segment - Temporary Platform	6	02-Jun-15	0%	6	10-Jun-15	14-Apr-15	21-Apr-15	-36	0	0%																		
SB2A0371	B12 (B2a) - Pier Head Segment Bearings	2	12-Jun-15	0%	2	13-Jun-15	22-Apr-15	24-Apr-15	-36	23	0%																		
SB2A0372	B12 (B2a) - Pier Head Segment Lift & Temp Support (2 seg)	7	18-Jul-15	0%	7	25-Jul-15	25-Apr-15	04-May-15	-59	0	0%																		
<b>Bridge B1</b>																													
<b>Pier B13 (B1g)</b>																													
<b>Pier Works</b>																													
SB1G0260	B13 (B1g) - Type 5B-B Pier Head Concreting	1	23-Apr-15 A	100%	0	23-Apr-15 A					100%																		
SB1G0270	B13 (B1g) - Type 5B-B Pier Head Curing & Striking of Forms & Remove Scaffolding	6	24-Apr-15 A	100%	0	30-Apr-15 A					100%																		
SB1G0280	B13 (B1g) - Type 5B-B Pier Backfilling Works	4	02-May-15 A	100%	0	09-May-15 A					100%																		
SB1G0290	B13 (B1g) - Type 5B-B Bearing Plinth	6	24-Apr-15 A	100%	0	30-Apr-15 A					100%																		
<b>Pier Head Segments</b>																													
SB1G0370	B13 (B1g) - Pier Head Segment - Temporary Platform	6	19-May-15 A	10%	5	29-May-15	25-Mar-15	31-Mar-15	-40	0	10%																		
SB1G0372	B13 (B1g) - Pier Head Segment Lift & Fix (1 seg)	2	29-May-15	0%	2	01-Jun-15	01-Apr-15	02-Apr-15	-40	0	0%																		
SB1G0374	B13 (B1g) - Pier Head Segment Diaphragm - Rebar	12	01-Jun-15	0%	12	19-Jun-15	08-Apr-15	22-Apr-15	-40	0	0%																		
SB1G0376	B13 (B1g) - Pier Head Segment Diaphragm - Formwork & Prep for Concreting	8	19-Jun-15	0%	8	03-Jul-15	24-Apr-15	04-May-15	-40	0	0%																		
SB1G0378	B13 (B1g) - Pier Head Segment Diaphragm - Concreting	2	03-Jul-15	0%	2	06-Jul-15	05-May-15	06-May-15	-40	0	0%																		
SB1G0380	B13 (B1g) - Pier Head Segment Diaphragm - Curing & Striking of Forms	6	06-Jul-15	0%	6	13-Jul-15	07-May-15	14-May-15	-40	0	0%																		
<b>Pier B14 (B1f)</b>																													
<b>Pier Works</b>																													
SB1F0280	B14 (B1f) - Type 5B Pier Backfilling Works	4	19-May-15 A	80%	1	22-May-15	28-Apr-15	28-Apr-15	-18	0	80%																		
<b>Pier Head Segments</b>																													
SB1F0370	B14 (B1f) - Pier Head Segment - Temporary Platform	6	22-May-15	0%	6	30-May-15	29-Apr-15	06-May-15	-18	0	0%																		
SB1F0372	B14 (B1f) - Pier Head Segment Lift & Fix (1 seg)	2	30-May-15	0%	2	02-Jun-15	07-May-15	08-May-15	-18	0	0%																		
SB1F0374	B14 (B1f) - Pier Head Segment Diaphragm - Rebar	12	02-Jun-15	0%	12	22-Jun-15	09-May-15	26-May-15	-18	0	0%																		
SB1F0376	B14 (B1f) - Pier Head Segment Diaphragm - Formwork & Prep for Concreting	8	22-Jun-15	0%	8	04-Jul-15	27-May-15	05-Jun-15	-18	0	0%																		
SB1F0378	B14 (B1f) - Pier Head Segment Diaphragm - Concreting	2	04-Jul-15	0%	2	07-Jul-15	06-Jun-15	08-Jun-15	-18	0	0%																		
SB1F0380	B14 (B1f) - Pier Head Segment Diaphragm - Curing & Striking of Forms	6	07-Jul-15	0%	6	14-Jul-15	10-Jun-15	18-Jun-15	-18	0	0%																		

- Actual Work
- Planned Bar
- Critical Bar
- Milestone

Project ID: J3518DWP-E1-M24  
 Layout: J3518-DWP-3MRP Submission - M24  
 Filter: TASK filters: 3-Month Lookahead, No CC  
 Milestones, No Level of Effort.

**Tuen Mun - Chek Lap Kok Link - Southern Connection**  
**3-Month Rolling Programme (Page 11 of 44 Pages)**  
**(Progress as of 21-May-15)**

Date	Revision	Checked	Approved
29-May-15		WY	

**DWG. No.:**  
**J3518/GCL/PGM/3MRP-M24**

Activity ID	Activity Name	Orig. Durn.	Act. Start / FC Early Start	Duration % Complete	Rem. Durn.	Act. Finish / FC Early Finish	Late Start	Late Finish	Total Float	Free Float	Physical % Complete	2015																					
												May				June				July				August									
												20	27	04	11	18	25	01	08	15	22	29	06	13	20	27	03	10	17				
<b>Pier B15 (B1e)</b>																																	
<b>Pier Works</b>																																	
SB1E0280	B15 (B1e) - Type 5B Pier Backfilling Works	4	16-Mar-15 A	20%	3	27-May-15	15-May-15	19-May-15	-4	0	20%																						
<b>Pier Head Segments</b>																																	
SB1E0370	B15 (B1e) - Pier Head Segment - Temporary Platform	6	27-May-15	0%	6	04-Jun-15	20-May-15	28-May-15	-4	6	0%																						
SB1E0372	B15 (B1e) - Pier Head Segment Lift & Fix (1 seg)	2	13-Jun-15	0%	2	15-Jun-15	29-May-15	30-May-15	-10	0	0%																						
SB1E0374	B15 (B1e) - Pier Head Segment Diaphragm - Rebar	12	16-Jun-15	0%	12	04-Jul-15	01-Jun-15	18-Jun-15	-10	0	0%																						
SB1E0376	B15 (B1e) - Pier Head Segment Diaphragm - Formwork & Prep for Concreting	8	06-Jul-15	0%	8	14-Jul-15	19-Jun-15	02-Jul-15	-10	0	0%																						
SB1E0378	B15 (B1e) - Pier Head Segment Diaphragm - Concreting	2	15-Jul-15	0%	2	17-Jul-15	03-Jul-15	04-Jul-15	-10	0	0%																						
SB1E0380	B15 (B1e) - Pier Head Segment Diaphragm - Curing & Striking of Forms	6	18-Jul-15	0%	6	24-Jul-15	06-Jul-15	13-Jul-15	-9	0	0%																						
<b>Pier B16 (B1d)</b>																																	
<b>Pier Head Segments</b>																																	
SB1D0374	B16 (B1d) - Pier Head Segment Diaphragm - Rebar	14	21-Mar-15 A	100%	0	11-May-15 A					100%																						
SB1D0376	B16 (B1d) - Pier Head Segment Diaphragm - Formwork & Prep for Concreting	8	12-May-15 A	30%	6	29-May-15	31-Aug-16	07-Sep-16	352	0	0%																						
SB1D0378	B16 (B1d) - Pier Head Segment Diaphragm - Concreting	2	29-May-15	0%	2	01-Jun-15	08-Sep-16	09-Sep-16	352	0	0%																						
SB1D0380	B16 (B1d) - Pier Head Segment Diaphragm - Curing & Striking of Forms	6	01-Jun-15	0%	6	10-Jun-15	10-Sep-16	17-Sep-16	352	0	0%																						
<b>Viaduct C</b>																																	
<b>Milestones - Marine Foundation</b>																																	
GFXX197-1	C6 (C3f) - Completion of piling works	0		0%	0	21-May-15		22-Jan-15	-93	26	0%																						
GFXX202-1	C5 (C4a) - Completion of piling works	0		0%	0	21-May-15		30-Dec-14	-113	26	0%																						
GFXX212-1	C3 (C4c) - Completion of piling works	0		0%	0	21-May-15		08-Jul-15	39	1	0%																						
<b>Milestones - Land Foundation</b>																																	
ZC00050	C17 (C2a) - Start date for piling	0	21-Apr-15 A	100%	0						100%																						
ZC00051	C17 (C2a) - Completion of piling works	0		0%	0	04-Jun-15		15-Dec-15	160	6	0%																						
ZC00061	C16 (C2b) - Completion of piling works	0		0%	0	18-Jul-15		04-Feb-16	166	0	0%																						
ZC00091-1	C12 (C2f) - Completion of piling works	0		0%	0	21-May-15		30-Nov-18	1050	1050	0%																						
ZC00092-1	C11 (C3a) - Completion of piling works	0		0%	0	21-May-15		30-Nov-18	1050	1050	0%																						
ZC00096-1	C7 (C3e) - Completion of piling works	0		0%	0	21-May-15		30-Jul-15	57	0	0%																						
<b>Bridge C4</b>																																	
<b>Pier C1 (C4e)</b>																																	
<b>Pile Cap Works</b>																																	
SC4E0164	C1 (C4e) - Marine Pile Cap M2 - Curing incl. CJ preparation	6	16-Apr-15 A	100%	0	22-Apr-15 A					100%																						
<b>Pier Works</b>																																	
SC4E0180	C1 (C4e) - Type 4B-MJ Pier Rebarwork, Formwork & Prep (1st Lift)	5	21-Apr-15 A	100%	0	22-Apr-15 A					100%																						
SC4E0200	C1 (C4e) - Type 4B-MJ Pier Concreting, Curing & Striking, CJ prep (1st Lift)	3	23-Apr-15 A	100%	0	27-Apr-15 A					100%																						
SC4E0210	C1 (C4e) - Type 4B-MJ Pier Scaffolding (2nd Lift)	2	18-Apr-15 A	100%	0	27-Apr-15 A					100%																						
SC4E0220	C1 (C4e) - Type 4B-MJ Pier Rebarwork, Formwork & Prep (2nd Lift)	6	04-May-15 A	100%	0	14-May-15 A					100%																						
SC4E0240	C1 (C4e) - Type 4B-MJ Pier Concreting, Curing & Striking, CJ prep (2nd Lift)	3	15-May-15 A	100%	0	20-May-15 A					100%																						
SC4E0300	C1 (C4e) - Type 4B-MJ Pier Head Scaffolding	4	22-May-15	0%	4	27-May-15	07-Mar-15	11-Mar-15	-56	0	0%																						
SC4E0310	C1 (C4e) - Type 4B-MJ Pier Head Rebarwork, Formwork & Prep	10	28-May-15	0%	10	10-Jun-15	12-Mar-15	23-Mar-15	-56	0	0%																						
SC4E0330	C1 (C4e) - Type 4B-MJ Pier Head Concreting	1	12-Jun-15	0%	1	12-Jun-15	24-Mar-15	24-Mar-15	-56	0	0%																						
SC4E0340	C1 (C4e) - Type 4B-MJ Pier Head Curing/Striking of Forms/Remove Scaffolding	6	13-Jun-15	0%	6	22-Jun-15	25-Mar-15	31-Mar-15	-56	0	0%																						
SC4E0360	C1 (C4e) - Type 4B-Bearing Plinth	6	13-Jun-15	0%	6	22-Jun-15	25-Mar-15	31-Mar-15	-56	0	0%																						
<b>Pier Head Segments</b>																																	
SC4E0370	C1 (C4e) - Pier Head Segment - Temporary Platform	6	24-Jun-15	0%	6	02-Jul-15	01-Apr-15	11-Apr-15	-56	138	0%																						
<b>Pier C2 (C4d)</b>																																	
<b>Pile Cap Works</b>																																	
SC4D0100	C2 (C4d) - Marine Pile Cap M2b - Weld Fin plates/Plug Rebar & Concrete	10	15-Apr-15 A	100%	0	25-Apr-15 A					100%																						

	Project ID: J3518DWPPrE1-M24 Layout: J3518-DWP-3MRP Submission - M24 Filter: TASK filters: 3-Month Lookahead, No CC Milestones, No Level of Effort.	<b>Tuen Mun - Chek Lap Kok Link - Southern Connection</b> <b>3-Month Rolling Programme (Page 12 of 44 Pages)</b> <b>(Progress as of 21-May-15)</b>	Date: 29-May-15 Revision: Checked: WY Approved:	<b>DWG. No.:</b>  <b>J3518/GCL/PGM/3MRP-M24</b>
--	---	--	--	---











Activity ID	Activity Name	Orig. Durn.	Act. Start / FC Early Start	Duration % Complete	Rem. Durn.	Act. Finish / FC Early Finish	Late Start	Late Finish	Total Float	Free Float	Physical % Complete	2015																												
												May					June					July					August													
												20	27	04	11	18	25	01	08	15	22	29	06	13	20	27	03	10	17											
SC3B0130	C10 (C3b) - Pile cap Concreting	1	04-Jun-15	0%	1	05-Jun-15	05-Dec-15	07-Dec-15	140	0	0%																													
SC3B0140	C10 (C3b) - Pile cap Curing & Striking of Forms incl. CJ prep	6	05-Jun-15	0%	6	15-Jun-15	07-Dec-15	14-Dec-15	140	0	0%																													
<b>Pier Works</b>																																								
SC3B0150	C10 (C3b) - Type 5B Pier Scaffolding (1st Lift)	2	15-Jun-15	0%	2	18-Jun-15	14-Dec-15	16-Dec-15	140	0	0%																													
SC3B0160	C10 (C3b) - Type 5B Pier Rebarwork (1st Lift)	3	18-Jun-15	0%	3	24-Jun-15	16-Dec-15	19-Dec-15	140	0	0%																													
SC3B0170	C10 (C3b) - Type 5B Pier Formwork & Prep for Concreting (1st Lift)	2	24-Jun-15	0%	2	27-Jun-15	19-Dec-15	22-Dec-15	140	0	0%																													
SC3B0180	C10 (C3b) - Type 5B Pier Concreting (1st Lift)	1	27-Jun-15	0%	1	29-Jun-15	22-Dec-15	23-Dec-15	140	0	0%																													
SC3B0182	C10 (C3b) - Type 5B Pier Curing & Striking of Forms incl. CJ prep (1st Lift)	2	29-Jun-15	0%	2	02-Jul-15	23-Dec-15	29-Dec-15	141	0	0%																													
SC3B0190	C10 (C3b) - Type 5B Pier Scaffolding (2nd Lift)	2	02-Jul-15	0%	2	04-Jul-15	29-Dec-15	31-Dec-15	141	0	0%																													
SC3B0200	C10 (C3b) - Type 5B Pier Rebarwork (2nd Lift)	3	04-Jul-15	0%	3	08-Jul-15	31-Dec-15	05-Jan-16	141	0	0%																													
SC3B0210	C10 (C3b) - Type 5B Pier Formwork & Prep for Concreting (2nd Lift)	3	08-Jul-15	0%	3	11-Jul-15	05-Jan-16	08-Jan-16	141	0	0%																													
SC3B0220	C10 (C3b) - Type 5B Pier Concreting (2nd Lift)	1	11-Jul-15	0%	1	13-Jul-15	08-Jan-16	09-Jan-16	141	0	0%																													
SC3B0222	C10 (C3b) - Type 5B Pier Curing & Striking of Forms incl. CJ prep (2nd Lift)	2	13-Jul-15	0%	2	15-Jul-15	09-Jan-16	13-Jan-16	142	0	0%																													
SC3B0230	C10 (C3b) - Type 5B Pier Scaffolding (3rd Lift)	2	15-Jul-15	0%	2	18-Jul-15	13-Jan-16	15-Jan-16	142	0	0%																													
SC3B0240	C10 (C3b) - Type 5B Pier Rebarwork (3rd Lift)	2	18-Jul-15	0%	2	21-Jul-15	15-Jan-16	18-Jan-16	142	0	0%																													
SC3B0250	C10 (C3b) - Type 5B Pier Formwork & Prep for Concreting (3rd Lift)	2	21-Jul-15	0%	2	23-Jul-15	18-Jan-16	20-Jan-16	142	0	0%																													
SC3B0260	C10 (C3b) - Type 5B Pier Concreting (3rd Lift)	1	23-Jul-15	0%	1	24-Jul-15	20-Jan-16	21-Jan-16	142	0	0%																													
SC3B0262	C10 (C3b) - Type 5B Pier Curing & Striking of Forms incl. CJ prep (3rd Lift)	2	24-Jul-15	0%	2	27-Jul-15	21-Jan-16	25-Jan-16	143	0	0%																													
SC3B0270	C10 (C3b) - Type 5B Pier Head Scaffolding	3	27-Jul-15	0%	3	31-Jul-15	25-Jan-16	28-Jan-16	143	0	0%																													
SC3B0280	C10 (C3b) - Type 5B Pier Head Rebarwork	4	31-Jul-15	0%	4	05-Aug-15	28-Jan-16	02-Feb-16	143	0	0%																													
SC3B0290	C10 (C3b) - Type 5B Pier Head Formwork & Prep for Concreting	4	05-Aug-15	0%	4	10-Aug-15	02-Feb-16	11-Feb-16	144	0	0%																													
SC3B0300	C10 (C3b) - Type 5B Pier Head Concreting	1	10-Aug-15	0%	1	12-Aug-15	11-Feb-16	12-Feb-16	144	0	0%																													
SC3B0310	C10 (C3b) - Type 5B Pier Head Curing/Striking of Forms/Remove Scaffolding	6	12-Aug-15	0%	6	19-Aug-15	12-Feb-16	19-Feb-16	144	0	0%																													
SC3B0320	C10 (C3b) - Type 5B Pier Backfilling Works	4	19-Aug-15	0%	4	25-Aug-15	19-Feb-16	24-Feb-16	144	0	0%																													
<b>Pier C11 (C3a)</b>																																								
<b>Foundation Works</b>																																								
GFXX421-3	C11 (C3a) - Sonic & Interface Coring Tests	12	13-Apr-15 A	100%	0	25-Apr-15 A					100%																													
<b>Pile Cap Works</b>																																								
SC3A0090	C11 (C3a) - Pile cap Excavation / ELS (incl. sheet piling)	18	06-May-15 A	100%	0	18-May-15 A					100%																													
SC3A0092	C11 (C3a) - Pile cap Pile breakdown to cut-off etc.	4	13-May-15 A	40%	2	26-May-15	02-Jan-16	05-Jan-16	171	0	40%																													
SC3A0100	C11 (C3a) - Pile cap Blinding	1	26-May-15	0%	1	27-May-15	06-Jan-16	06-Jan-16	171	0	0%																													
SC3A0110	C11 (C3a) - Pile cap Formwork	3	01-Jun-15	0%	3	05-Jun-15	12-Jan-16	14-Jan-16	171	0	0%																													
SC3A0120	C11 (C3a) - Pile cap Rebarwork	4	27-May-15	0%	4	01-Jun-15	07-Jan-16	11-Jan-16	171	0	0%																													
SC3A0122	C11 (C3a) - Pile cap Kicker Formwork	2	06-Jun-15	0%	2	10-Jun-15	21-Jan-16	22-Jan-16	175	4	0%																													
SC3A0130	C11 (C3a) - Pile cap Concreting	1	05-Jun-15	0%	1	06-Jun-15	15-Jan-16	15-Jan-16	171	0	0%																													
SC3A0140	C11 (C3a) - Pile cap Curing & Striking of Forms incl. CJ prep	6	06-Jun-15	0%	6	16-Jun-15	16-Jan-16	22-Jan-16	171	0	0%																													
<b>Pier Works</b>																																								
SC3A0150	C11 (C3a) - Type 5B-MJ Pier Scaffolding (1st Lift)	2	16-Jun-15	0%	2	19-Jun-15	23-Jan-16	25-Jan-16	171	0	0%																													
SC3A0160	C11 (C3a) - Type 5B-MJ Pier Rebarwork (1st Lift)	3	19-Jun-15	0%	3	26-Jun-15	26-Jan-16	28-Jan-16	171	0	0%																													
SC3A0170	C11 (C3a) - Type 5B-MJ Pier Formwork & Prep for Concreting (1st Lift)	2	26-Jun-15	0%	2	29-Jun-15	29-Jan-16	30-Jan-16	171	0	0%																													
SC3A0180	C11 (C3a) - Type 5B-MJ Pier Concreting (1st Lift)	1	29-Jun-15	0%	1	30-Jun-15	01-Feb-16	01-Feb-16	171	0	0%																													
SC3A0182	C11 (C3a) - Type 5B-MJ Pier Curing & Striking of Forms incl. CJ prep (1st Lift)	2	30-Jun-15	0%	2	03-Jul-15	02-Feb-16	03-Feb-16	171	0	0%																													
SC3A0190	C11 (C3a) - Type 5B-MJ Pier Scaffolding (2nd Lift)	2	03-Jul-15	0%	2	06-Jul-15	04-Feb-16	05-Feb-16	171	0	0%																													
SC3A0200	C11 (C3a) - Type 5B-MJ Pier Rebarwork (2nd Lift)	3	06-Jul-15	0%	3	09-Jul-15	06-Feb-16	12-Feb-16	171	0	0%																													
SC3A0210	C11 (C3a) - Type 5B-MJ Pier Formwork & Prep for Concreting (2nd Lift)	3	09-Jul-15	0%	3	13-Jul-15	13-Feb-16	16-Feb-16	171	0	0%																													
SC3A0220	C11 (C3a) - Type 5B-MJ Pier Concreting (2nd Lift)	1	13-Jul-15	0%	1	14-Jul-15	17-Feb-16	17-Feb-16	171	0	0%																													
SC3A0222	C11 (C3a) - Type 5B-MJ Pier Curing & Striking of Forms incl. CJ prep (2nd Lift)	2	14-Jul-15	0%	2	17-Jul-15	18-Feb-16	19-Feb-16	171	0	0%																													
SC3A0230	C11 (C3a) - Type 5B-MJ Pier Scaffolding (3rd Lift)	2	17-Jul-15	0%	2	20-Jul-15	20-Feb-16	22-Feb-16	171	0	0%																													

<ul style="list-style-type: none"> <li><span style="display: inline-block; width: 15px; height: 10px; background-color: blue; border: 1px solid black;"></span> Actual Work</li> <li><span style="display: inline-block; width: 15px; height: 10px; background-color: lightgreen; border: 1px solid black;"></span> Planned Bar</li> <li><span style="display: inline-block; width: 15px; height: 10px; background-color: red; border: 1px solid black;"></span> Critical Bar</li> <li><span style="display: inline-block; width: 10px; height: 10px; border: 1px solid black; position: relative;"> <div style="position: absolute; top: 50%; left: 50%; transform: translate(-50%, -50%); font-size: 6px;">◆</div> </span> Milestone</li> </ul>	<p>Project ID: J3518DWP-E1-M24  Layout: J3518-DWP-3MRP Submission - M24  Filter: TASK filters: 3-Month Lookahead, No CC Milestones, No Level of Effort.</p>	<p><b>Tuen Mun - Chek Lap Kok Link - Southern Connection</b>  <b>3-Month Rolling Programme (Page 17 of 44 Pages)</b>  <b>(Progress as of 21-May-15)</b></p>	<table border="1" style="width: 100%; border-collapse: collapse;"> <thead> <tr> <th>Date</th> <th>Revision</th> <th>Checked</th> <th>Approved</th> </tr> </thead> <tbody> <tr> <td>29-May-15</td> <td></td> <td>WY</td> <td></td> </tr> </tbody> </table>	Date	Revision	Checked	Approved	29-May-15		WY		<p><b>DWG. No.:</b>   <b>J3518/GCL/PGM/3MRP-M24</b></p>
Date	Revision	Checked	Approved									
29-May-15		WY										

Activity ID	Activity Name	Orig. Dur.	Act. Start / FC Early Start	Duration% Complete	Rem. Dur.	Act. Finish / FC Early Finish	Late Start	Late Finish	Total Float	Free Float	Physical % Complete	2015													
												May					June				July			August	
												20	27	04	11	18	25	01	08	15	22	29	06	13	20
SC3A0240	C11 (C3a) - Type 5B-MJ Pier Rebarwork (3rd Lift)	2	20-Jul-15	0%	2	22-Jul-15	23-Feb-16	24-Feb-16	171	0	0%														
SC3A0250	C11 (C3a) - Type 5B-MJ Pier Formwork & Prep for Concreting (3rd Lift)	2	22-Jul-15	0%	2	24-Jul-15	25-Feb-16	26-Feb-16	171	0	0%														
SC3A0260	C11 (C3a) - Type 5B-MJ Pier Concreting (3rd Lift)	1	24-Jul-15	0%	1	25-Jul-15	27-Feb-16	27-Feb-16	171	0	0%														
SC3A0262	C11 (C3a) - Type 5B-MJ Pier Curing & Striking of Forms incl. CJ prep (3rd Lift)	2	25-Jul-15	0%	2	28-Jul-15	29-Feb-16	01-Mar-16	171	0	0%														
SC3A0300	C11 (C3a) - Type 5B-MJ Pier Head Scaffolding	3	28-Jul-15	0%	3	01-Aug-15	02-Mar-16	04-Mar-16	171	0	0%														
SC3A0310	C11 (C3a) - Type 5B-MJ Pier Head Rebarwork	5	01-Aug-15	0%	5	07-Aug-15	05-Mar-16	10-Mar-16	171	0	0%														
SC3A0320	C11 (C3a) - Type 5B-MJ Pier Head Formwork & Prep for Concreting	5	07-Aug-15	0%	5	14-Aug-15	11-Mar-16	16-Mar-16	171	0	0%														
SC3A0330	C11 (C3a) - Type 5B-MJ Pier Head Concreting	1	14-Aug-15	0%	1	15-Aug-15	17-Mar-16	17-Mar-16	171	0	0%														
SC3A0340	C11 (C3a) - Type 5B-MJ Pier Head Curing/Striking of Forms/Remove Scaffolding	6	15-Aug-15	0%	6	24-Aug-15	18-Mar-16	24-Mar-16	171	0	0%														
SC3A0380	C11 (C3a) - Type 5B-Bearing Plinth	6	15-Aug-15	0%	6	24-Aug-15	18-Mar-16	24-Mar-16	171	0	0%														
<b>Bridge C2</b>																									
<b>Pier C12 (C2f)</b>																									
<b>Foundation Works</b>																									
GFXX413	C12 (C2f) - Sonic & Interface Coring Tests	12	22-Apr-15 A	100%	0	06-May-15 A					100%														
GFXX422-4	C12 (C2f) - Selection of bored pile for Full Depth Coring	24	15-Apr-15 A	100%	0	13-May-15 A					100%														
GFXX422-8	C12 (C2f) - Bored Pile Full Depth Coring & Testing	24	20-Apr-15 A	100%	0	18-May-15 A					100%														
<b>Pile Cap Works</b>																									
SC2F0090	C12 (C2f) - Pile cap Excavation / ELS (incl. sheet piling)	18	19-May-15 A	50%	9	02-Jun-15	07-Dec-15	16-Dec-15	150	0	0%														
SC2F0092	C12 (C2f) - Pile cap Pile breakdown to cut-off etc.	4	04-Jun-15	0%	4	08-Jun-15	17-Dec-15	21-Dec-15	150	1	0%														
SC2F0100	C12 (C2f) - Pile cap Blinding	1	12-Jun-15	0%	1	12-Jun-15	22-Dec-15	22-Dec-15	149	0	0%														
SC2F0110	C12 (C2f) - Pile cap Formwork	3	19-Jun-15	0%	3	24-Jun-15	30-Dec-15	02-Jan-16	149	0	0%														
SC2F0120	C12 (C2f) - Pile cap Rebarwork	4	13-Jun-15	0%	4	18-Jun-15	23-Dec-15	29-Dec-15	149	0	0%														
SC2F0122	C12 (C2f) - Pile cap Kicker Formwork	2	27-Jun-15	0%	2	29-Jun-15	08-Jan-16	11-Jan-16	153	4	0%														
SC2F0130	C12 (C2f) - Pile cap Concreting	1	26-Jun-15	0%	1	26-Jun-15	04-Jan-16	04-Jan-16	149	0	0%														
SC2F0140	C12 (C2f) - Pile cap Curing & Striking of Forms incl. CJ prep	6	27-Jun-15	0%	6	04-Jul-15	05-Jan-16	11-Jan-16	149	0	0%														
<b>Pier Works</b>																									
SC2F0150	C12 (C2f) - Pier Scaffolding (1st Lift)	2	06-Jul-15	0%	2	07-Jul-15	12-Jan-16	13-Jan-16	149	0	0%														
SC2F0160	C12 (C2f) - Pier Rebarwork (1st Lift)	3	08-Jul-15	0%	3	10-Jul-15	14-Jan-16	16-Jan-16	149	0	0%														
SC2F0170	C12 (C2f) - Pier Formwork & Prep for Concreting (1st Lift)	2	11-Jul-15	0%	2	13-Jul-15	18-Jan-16	19-Jan-16	149	0	0%														
SC2F0180	C12 (C2f) - Pier Concreting (1st Lift)	1	14-Jul-15	0%	1	14-Jul-15	20-Jan-16	20-Jan-16	149	0	0%														
SC2F0182	C12 (C2f) - Pier Curing & Striking of Forms incl. CJ prep (1st Lift)	2	15-Jul-15	0%	2	17-Jul-15	21-Jan-16	22-Jan-16	149	0	0%														
SC2F0190	C12 (C2f) - Pier Scaffolding (2nd Lift)	2	18-Jul-15	0%	2	20-Jul-15	23-Jan-16	25-Jan-16	149	0	0%														
SC2F0200	C12 (C2f) - Pier Rebarwork (2nd Lift)	3	21-Jul-15	0%	3	23-Jul-15	26-Jan-16	28-Jan-16	149	0	0%														
SC2F0210	C12 (C2f) - Pier Formwork & Prep for Concreting (2nd Lift)	3	24-Jul-15	0%	3	27-Jul-15	29-Jan-16	01-Feb-16	149	0	0%														
SC2F0220	C12 (C2f) - Pier Concreting (2nd Lift)	1	28-Jul-15	0%	1	28-Jul-15	02-Feb-16	02-Feb-16	149	0	0%														
SC2F0222	C12 (C2f) - Pier Curing & Striking of Forms incl. CJ prep (2nd Lift)	2	30-Jul-15	0%	2	31-Jul-15	03-Feb-16	04-Feb-16	149	0	0%														
SC2F0230	C12 (C2f) - Pier Head Scaffolding	4	01-Aug-15	0%	4	05-Aug-15	05-Feb-16	12-Feb-16	149	0	0%														
SC2F0240	C12 (C2f) - Pier Head Rebarwork	5	06-Aug-15	0%	5	12-Aug-15	13-Feb-16	18-Feb-16	149	0	0%														
SC2F0250	C12 (C2f) - Pier Head Formwork & Prep for Concreting	5	13-Aug-15	0%	5	18-Aug-15	19-Feb-16	24-Feb-16	149	0	0%														
SC2F0260	C12 (C2f) - Pier Head Concreting	1	19-Aug-15	0%	1	19-Aug-15	25-Feb-16	25-Feb-16	149	0	0%														
<b>Pier C13 (C2e) Portal</b>																									
<b>Pile Cap Works</b>																									
SC2EL090	C13A (C2e-L) - Pile cap Excavation / ELS	18	12-Jun-15	0%	18	08-Jul-15	10-Nov-15	30-Nov-15	113	0	0%														
SC2EL092	C13A (C2e-L) - Pile cap Pile breakdown to cut-off etc	4	09-Jul-15	0%	4	13-Jul-15	01-Dec-15	04-Dec-15	113	0	0%														
SC2EL100	C13A (C2e-L) - Pile cap Blinding	1	14-Jul-15	0%	1	14-Jul-15	05-Dec-15	05-Dec-15	113	0	0%														
SC2EL110	C13A (C2e-L) - Pile cap Formwork	3	21-Jul-15	0%	3	23-Jul-15	11-Dec-15	14-Dec-15	113	0	0%														
SC2EL120	C13A (C2e-L) - Pile cap Rebarwork	4	15-Jul-15	0%	4	20-Jul-15	07-Dec-15	10-Dec-15	113	0	0%														
SC2EL122	C13A (C2e-L) - Pile cap Kicker Formwork	2	25-Jul-15	0%	2	27-Jul-15	21-Dec-15	22-Dec-15	117	4	0%														

<ul style="list-style-type: none"> <li> Actual Work</li> <li> Planned Bar</li> <li> Critical Bar</li> <li> Milestone</li> </ul>	Project ID: J3518DWPrE1-M24 Layout: J3518-DWP-3MRP Submission - M24 Filter: TASK filters: 3-Month Lookahead, No CC Milestones, No Level of Effort.	<b>Tuen Mun - Chek Lap Kok Link - Southern Connection</b> <b>3-Month Rolling Programme (Page 18 of 44 Pages)</b> <b>(Progress as of 21-May-15)</b>				Date	Revision	Checked	Approved	<b>DWG. No.:</b> <b>J3518/GCL/PGM/3MRP-M24</b>
						29-May-15		WY		





Activity ID	Activity Name	Orig. Durn.	Act. Start / FC Early Start	Duration% Complete	Rem. Durn.	Act. Finish / FC Early Finish	Late Start	Late Finish	Total Float	Free Float	Physical % Complete	2015																	
												May				June				July				August					
												20	27	04	11	18	25	01	08	15	22	29	06	13	20	27	03	10	17
SC2B0120	C16 (C2b) - Pile cap Rebarwork	4	18-Aug-15	0%	4	22-Aug-15	07-Mar-16	10-Mar-16	159	0	0%																		
<b>Bridge C1</b>																													
<b>Pier C17 (C2a)</b>																													
<b>Foundation Works</b>																													
GFXX406	C17 (C2a) - Bored Pile (2.00m dia. x 2 nos)	24	21-Apr-15 A	100%	0	20-May-15 A					100%																		
GFXX409-2	C17 (C2a) - Sonic & Interface Coring Tests	12	21-May-15	0%	12	04-Jun-15	01-Dec-15	15-Dec-15	160	0	0%																		
<b>Pile Cap Works</b>																													
SC2A0090	C17 (C2a) - Pile cap Excavation / ELS	18	12-Jun-15	0%	18	08-Jul-15	15-Dec-15	08-Jan-16	143	0	0%																		
SC2A0092	C17 (C2a) - Pile cap Pile breakdown to cut-off etc.	4	09-Jul-15	0%	4	13-Jul-15	08-Jan-16	13-Jan-16	143	0	0%																		
SC2A0100	C17 (C2a) - Pile cap Blinding	1	14-Jul-15	0%	1	14-Jul-15	13-Jan-16	14-Jan-16	143	0	0%																		
SC2A0110	C17 (C2a) - Pile cap Formwork	3	21-Jul-15	0%	3	23-Jul-15	19-Jan-16	22-Jan-16	143	0	0%																		
SC2A0120	C17 (C2a) - Pile cap Rebarwork	4	15-Jul-15	0%	4	20-Jul-15	14-Jan-16	19-Jan-16	143	0	0%																		
SC2A0122	C17 (C2a) - Pile cap Kicker Formwork	2	25-Jul-15	0%	2	27-Jul-15	29-Jan-16	30-Jan-16	148	4	0%																		
SC2A0130	C17 (C2a) - Pile cap Concreting	1	24-Jul-15	0%	1	24-Jul-15	22-Jan-16	23-Jan-16	143	0	0%																		
SC2A0140	C17 (C2a) - Pile cap Curing & Striking of Forms incl. CJ prep	6	25-Jul-15	0%	6	01-Aug-15	23-Jan-16	30-Jan-16	144	0	0%																		
<b>Pier Works</b>																													
SC2A0150	C17 (C2a) - Type 5B Pier Scaffolding (1st Lift)	2	03-Aug-15	0%	2	04-Aug-15	01-Feb-16	02-Feb-16	144	0	0%																		
SC2A0160	C17 (C2a) - Type 5B Pier Rebarwork (1st Lift)	3	05-Aug-15	0%	3	07-Aug-15	03-Feb-16	05-Feb-16	144	0	0%																		
SC2A0170	C17 (C2a) - Type 5B Pier Formwork & Prep for Concreting (1st Lift)	2	08-Aug-15	0%	2	10-Aug-15	06-Feb-16	11-Feb-16	144	0	0%																		
SC2A0180	C17 (C2a) - Type 5B Pier Concreting (1st Lift)	1	12-Aug-15	0%	1	12-Aug-15	12-Feb-16	12-Feb-16	144	0	0%																		
SC2A0182	C17 (C2a) - Type 5B Pier Curing & Striking of Forms incl. CJ prep (1st Lift)	2	13-Aug-15	0%	2	14-Aug-15	13-Feb-16	15-Feb-16	144	0	0%																		
SC2A0230	C17 (C2a) - Type 5B Pier Head Scaffolding	4	15-Aug-15	0%	4	19-Aug-15	16-Feb-16	19-Feb-16	144	0	0%																		
<b>Pier C18 (C3d) Portal</b>																													
<b>Pile Cap Works</b>																													
SC1ER140	C18B (C1e-R) - Pile cap Curing & Striking of Forms incl. CJ prep	7	20-Apr-15 A	100%	0	28-Apr-15 A					100%																		
<b>Pier Works</b>																													
SC1EL150	C18A (C1e-L) - Pier Scaffolding (1st Lift)	3	29-Apr-15 A	100%	0	02-May-15 A					100%																		
SC1EL160	C18A (C1e-L) - Pier Rebarwork (1st Lift)	3	04-May-15 A	100%	0	06-May-15 A					100%																		
SC1EL170	C18A (C1e-L) - Pier Formwork & Prep for Concreting (1st Lift)	4	07-May-15 A	100%	0	15-May-15 A					100%																		
SC1EL180	C18A (C1e-L) - Pier Concreting (1st Lift)	1	19-May-15 A	100%	0	19-May-15 A					100%																		
SC1EL182	C18A (C1e-L) - Pier Curing & Striking of Forms incl. CJ prep (1st Lift)	2	20-May-15 A	50%	1	22-May-15	02-Jan-16	02-Jan-16	170	13	0%																		
SC1ER150	C18B (C1e-R) - Pier Scaffolding (1st Lift)	3	22-May-15	0%	3	26-May-15	15-Dec-15	18-Dec-15	157	0	0%																		
SC1ER160	C18B (C1e-R) - Pier Rebarwork (1st Lift)	4	27-May-15	0%	4	30-May-15	18-Dec-15	22-Dec-15	157	0	0%																		
SC1ER170	C18B (C1e-R) - Pier Formwork & Prep for Concreting (1st Lift)	4	30-May-15	0%	4	05-Jun-15	23-Dec-15	29-Dec-15	157	0	0%																		
SC1ER180	C18B (C1e-R) - Pier Concreting (1st Lift)	1	05-Jun-15	0%	1	06-Jun-15	30-Dec-15	30-Dec-15	157	0	0%																		
SC1ER182	C18B (C1e-R) - Pier Curing & Striking of Forms incl. CJ prep (1st Lift)	2	06-Jun-15	0%	2	10-Jun-15	31-Dec-15	02-Jan-16	157	0	0%																		
<b>Portal</b>																													
SC1ER280	C18 (C1e) - Portal Beam Scaffolding	12	10-Jun-15	0%	12	30-Jun-15	04-Jan-16	16-Jan-16	157	0	0%																		
SC1ER290	C18 (C1e) - Portal Beam Soffit Formwork	12	30-Jun-15	0%	12	15-Jul-15	18-Jan-16	30-Jan-16	157	0	0%																		
SC1ER300	C18 (C1e) - Portal Beam Rebarwork & Inserts	16	15-Jul-15	0%	16	05-Aug-15	01-Feb-16	22-Feb-16	157	0	0%																		
SC1ER302	C18 (C1e) - Portal Beam Side Formwork & Prep for Concreting	16	05-Aug-15	0%	16	26-Aug-15	23-Feb-16	12-Mar-16	158	0	0%																		
<b>Pier C19 (C1d)</b>																													
<b>Pier Works</b>																													
SC1D0150	C19 (C1d) - Type 5B-B Pier/Pier Head Scaffolding	4	22-May-15	0%	4	27-May-15	07-Dec-15	10-Dec-15	150	0	0%																		
SC1D0160	C19 (C1d) - Type 5B-B Pier/Pier Head Head Rebarwork	4	28-May-15	0%	4	01-Jun-15	11-Dec-15	15-Dec-15	150	0	0%																		
SC1D0170	C19 (C1d) - Type 5B-B Pier/Pier Head Formwork & Prep for Concreting	4	02-Jun-15	0%	4	06-Jun-15	16-Dec-15	19-Dec-15	150	0	0%																		
SC1D0180	C19 (C1d) - Type 5B-B Pier/Pier Head Concreting	1	08-Jun-15	0%	1	08-Jun-15	21-Dec-15	21-Dec-15	150	0	0%																		
SC1D0190	C19 (C1d) - Type 5B-B Pier/Pier Head Curing/Striking of Forms/Remove Scaffolding	6	10-Jun-15	0%	6	18-Jun-15	22-Dec-15	30-Dec-15	150	0	0%																		

<ul style="list-style-type: none"> <li><span style="color: blue;">■</span> Actual Work</li> <li><span style="color: green;">■</span> Planned Bar</li> <li><span style="color: red;">■</span> Critical Bar</li> <li><span style="color: black;">◆</span> Milestone</li> </ul>	Project ID: J3518DWPPrE1-M24 Layout: J3518-DWP-3MRP Submission - M24 Filter: TASK filters: 3-Month Lookahead, No CC Milestones, No Level of Effort.	<b>Tuen Mun - Chek Lap Kok Link - Southern Connection</b> <b>3-Month Rolling Programme (Page 21 of 44 Pages)</b> <b>(Progress as of 21-May-15)</b>	<table border="1"> <tr> <th>Date</th> <th>Revision</th> <th>Checked</th> <th>Approved</th> </tr> <tr> <td>29-May-15</td> <td></td> <td>WY</td> <td></td> </tr> </table>	Date	Revision	Checked	Approved	29-May-15		WY		<b>DWG. No.:</b>  <b>J3518/GCL/PGM/3MRP-M24</b>
Date	Revision	Checked	Approved									
29-May-15		WY										

Activity ID	Activity Name	Orig. Durn.	Act. Start / FC Early Start	Duration % Complete	Rem. Durn.	Act. Finish / FC Early Finish	Late Start	Late Finish	Total Float	Free Float	Physical % Complete	2015																	
												May					June				July				August				
												20	27	04	11	18	25	01	08	15	22	29	06	13	20	27	03	10	17
SC1D0195	C19 (C1d) - Type 5B-B Pier/Pier Head Backfilling Works	4	19-Jun-15	0%	4	26-Jun-15	31-Dec-15	05-Jan-16	150	0	0%																		
<b>Pier Head Segments</b>																													
SC1D0370	C19 (C1d) - Pier Head Segment - Temporary Platform	6	27-Jun-15	0%	6	04-Jul-15	06-Jan-16	12-Jan-16	150	0	0%																		
SC1D0372	C19 (C1d) - Pier Head Segment Lift & Fix (1 seg)	2	06-Jul-15	0%	2	07-Jul-15	13-Jan-16	15-Jan-16	151	0	0%																		
SC1D0374	C19 (C1d) - Pier Head Segment Diaphragm - Rebar	13	08-Jul-15	0%	13	23-Jul-15	16-Jan-16	30-Jan-16	151	0	0%																		
SC1D0376	C19 (C1d) - Pier Head Segment Diaphragm - Formwork	8	24-Jul-15	0%	8	03-Aug-15	01-Feb-16	13-Feb-16	152	0	0%																		
SC1D0378	C19 (C1d) - Pier Head Segment Diaphragm - Concreting	2	04-Aug-15	0%	2	05-Aug-15	15-Feb-16	16-Feb-16	152	0	0%																		
SC1D0380	C19 (C1d) - Pier Head Segment Diaphragm - Curing & Striking of Forms	6	06-Aug-15	0%	6	13-Aug-15	17-Feb-16	23-Feb-16	152	63	0%																		
<b>Pier C20 (C1c) &amp; Abutment C</b>																													
<b>Pier Works</b>																													
SC1C0180	C20 (C1c) - Pier/Pier Head Concreting	1	22-May-15	0%	1	22-May-15	27-Feb-16	27-Feb-16	215	0	0%																		
SC1C0190	C20 (C1c) - Pier/Pier Head Curing & Striking of Forms incl. CJ prep	6	23-May-15	0%	6	30-May-15	29-Feb-16	05-Mar-16	215	0	0%																		
<b>Pier Head Segments</b>																													
SC1C0370	C20 (C1c) - Pier Head Segment - Temporary Platform	6	01-Jun-15	0%	6	08-Jun-15	07-Mar-16	12-Mar-16	215	146	0%																		
<b>Abutment &amp; Approach Ramp C</b>																													
SC1C0200	Abutment C - Walls & Staircase	48	22-May-15	0%	48	28-Jul-15	20-Jan-16	18-Mar-16	185	18	0%																		
SC1C0250	AR-C - RE Walls - Erect fencing, Excavation/formation/ drainage filter & bottom layer to grd l	12	22-Apr-15 A	90%	1	23-May-15	18-Dec-15	19-Dec-15	160	0	90%																		
SC1C0251	AR-C - RE Walls - Upper layers with backfill in stages	48	23-May-15	0%	48	31-Jul-15	19-Dec-15	20-Feb-16	160	0	0%																		
SC1C0252	AR-C - RC Walls - Base Slabs	50	08-Apr-15 A	50%	25	31-Jul-15	19-Jan-16	20-Feb-16	160	0	50%																		
SC1C0253	AR-C - RC Walls - Side Walls	48	18-Jun-15	0%	48	22-Aug-15	19-Jan-16	18-Mar-16	167	0	0%																		
<b>Viaduct D</b>																													
<b>Milestones - Land Foundation</b>																													
GFXX454A1	D13 (D2d) - Completion of piling works	0		0%	0	21-May-15		13-May-15	-7	0	0%																		
GFXX461A1	D10 (D3b) - Completion of piling works	0		0%	0	23-Jul-15		21-Mar-15	-98	0	0%																		
GFXX461C1	D12 (D2e) - Completion of piling works	0		0%	0	23-Jul-15		15-Apr-15	-81	0	0%																		
<b>Bridge D3</b>																													
<b>Pier D1 (D4f)</b>																													
<b>Pier Works</b>																													
SD4F0240	D1 (D4f) - Type 4B-MJ Pier Concreting, Curing & Striking, CJ prep (2nd Lift)	3	20-Apr-15 A	100%	0	24-Apr-15 A					100%																		
SD4F0300	D1 (D4f) - Type 4B-MJ Pier Head Scaffolding	4	25-Apr-15 A	100%	0	02-May-15 A					100%																		
SD4F0310	D1 (D4f) - Type 4B-MJ Pier Head Rebarwork, Formwork & Prep	10	04-May-15 A	40%	6	29-May-15	02-Apr-15	13-Apr-15	-34	0	60%																		
SD4F0330	D1 (D4f) - Type 4B-MJ Pier Head Concreting	1	30-May-15	0%	1	30-May-15	14-Apr-15	14-Apr-15	-34	0	0%																		
SD4F0340	D1 (D4f) - Type 4B-MJ Pier Head Curing/Striking of Forms/Remove Scaffolding	6	01-Jun-15	0%	6	08-Jun-15	16-Apr-15	22-Apr-15	-34	0	0%																		
SD4F372	D1 (D4f) - Type 4B-Bearing Plinth	6	01-Jun-15	0%	6	08-Jun-15	16-Apr-15	22-Apr-15	-34	0	0%																		
<b>Pier Head Segments</b>																													
SD4F0370	D1 (D4f) - Pier Head Segment - Temporary Platform	6	02-Jul-15	0%	6	08-Jul-15	24-Apr-15	30-Apr-15	-47	98	0%																		
<b>Pier D2 (D4e)</b>																													
<b>Pile Cap Works</b>																													
SD4E0100	D2 (D4e) - Marine Pile Cap M2b - Weld Fin plates/Plug Rebar & Concrete	9	17-Mar-15 A	100%	0	21-Apr-15 A					100%																		
SD4E0120	D2 (D4e) - Marine Pile Cap M2b - Dewater precast shell / Remove Lifting Frame	2	22-Apr-15 A	100%	0	24-Apr-15 A					100%																		
SD4E0130	D2 (D4e) - Marine Pile Cap M2b - Pile cut down	8	25-Apr-15 A	100%	0	02-May-15 A					100%																		
SD4E0140	D2 (D4e) - Marine Pile Cap M2b - Rebar fixing, inst.inserts etc	12	04-May-15 A	100%	0	12-May-15 A					100%																		
SD4E0150	D2 (D4e) - Marine Pile Cap M2b - Concreting	1	13-May-15 A	100%	0	13-May-15 A					100%																		
SD4E0160	D2 (D4e) - Marine Pile Cap M2b - Curing incl. CJ Preparation	6	14-May-15 A	100%	0	20-May-15 A					100%																		
<b>Pier Works</b>																													
SD4E0170	D2 (D4e) - Type 4B Pier Temp. Support Platform & Scaffold (1st Lift)	6	19-May-15 A	16.67%	5	28-May-15	03-Oct-15	08-Oct-15	98	0	30%																		
SD4E0180	D2 (D4e) - Type 4B Pier Rebarwork, Formwork & Prep (1st Lift)	5	29-May-15	0%	5	04-Jun-15	09-Oct-15	15-Oct-15	98	0	0%																		
SD4E0200	D2 (D4e) - Type 4B Pier Concreting, Curing & Striking, CJ prep (1st Lift)	3	05-Jun-15	0%	3	08-Jun-15	16-Oct-15	19-Oct-15	98	0	0%																		

<ul style="list-style-type: none"> <li><span style="display: inline-block; width: 15px; height: 10px; background-color: blue; border: 1px solid black;"></span> Actual Work</li> <li><span style="display: inline-block; width: 15px; height: 10px; background-color: lightgreen; border: 1px solid black;"></span> Planned Bar</li> <li><span style="display: inline-block; width: 15px; height: 10px; background-color: red; border: 1px solid black;"></span> Critical Bar</li> <li><span style="display: inline-block; width: 0; height: 0; border-left: 5px solid transparent; border-right: 5px solid transparent; border-bottom: 8px solid black;"></span> Milestone</li> </ul>	Project ID: J3518DWPPrE1-M24 Layout: J3518-DWP-3MRP Submission - M24 Filter: TASK filters: 3-Month Lookahead, No CC Milestones, No Level of Effort.	<b>Tuen Mun - Chek Lap Kok Link - Southern Connection</b> <b>3-Month Rolling Programme (Page 22 of 44 Pages)</b> <b>(Progress as of 21-May-15)</b>	Date: 29-May-15 Revision: Checked: WY Approved: 	<b>DWG. No.:</b> <b>J3518/GCL/PGM/3MRP-M24</b>
--	---	--	--	---







Activity ID	Activity Name	Orig. Durn.	Act. Start / FC Early Start	Duration % Complete	Rem. Durn.	Act. Finish / FC Early Finish	Late Start	Late Finish	Total Float	Free Float	Physical % Complete	2015																	
												May				June				July				August					
												20	27	04	11	18	25	01	08	15	22	29	06	13	20	27	03	10	17
<b>Pile Cap Works</b>																													
SD3E0090	D7 (D3e) - Marine Pile Cap M2b - Inst.Access & make Watertight	3	17-Apr-15 A	100%	0	23-Apr-15 A					100%	■																	
SD3E0100	D7 (D3e) - Marine Pile Cap M2b - Weld Fin plates/Plug Rebar & Concrete	9	24-Apr-15 A	100%	0	02-May-15 A					100%	■																	
SD3E0120	D7 (D3e) - Marine Pile Cap M2b - Dewater precast shell / Remove Lifting Frame	2	04-May-15 A	0%	2	23-May-15	22-Jan-15	23-Jan-15	-91	0	90%	■																	
SD3E0130	D7 (D3e) - Marine Pile Cap M2b - Pile cut down	8	26-May-15	0%	8	04-Jun-15	24-Jan-15	02-Feb-15	-91	0	0%	■																	
SD3E0140	D7 (D3e) - Marine Pile Cap M2b - Rebar fixing, inst.inserts etc	12	05-Jun-15	0%	12	24-Jun-15	03-Feb-15	16-Feb-15	-91	0	0%	■																	
SD3E0150	D7 (D3e) - Marine Pile Cap M2b - Concreting	1	26-Jun-15	0%	1	26-Jun-15	17-Feb-15	17-Feb-15	-91	0	0%	■																	
SD3E0160	D7 (D3e) - Marine Pile Cap M2b - Curing incl. CJ Preparation	6	27-Jun-15	0%	6	04-Jul-15	18-Feb-15	27-Feb-15	-91	0	0%	■																	
<b>Pier Works</b>																													
SD3E0170	D7 (D3e) - Type 4B Pier Temp. Support Platform & Scaffold (1st Lift)	6	27-Jun-15	0%	6	04-Jul-15	18-Feb-15	27-Feb-15	-91	0	0%	■																	
SD3E0180	D7 (D3e) - Type 4B Pier Rebarwork, Formwork & Prep (1st Lift)	5	06-Jul-15	0%	5	10-Jul-15	28-Feb-15	05-Mar-15	-91	0	0%	■																	
SD3E0200	D7 (D3e) - Type 4B Pier Concreting, Curing & Striking, CJ prep (1st Lift)	3	11-Jul-15	0%	3	14-Jul-15	06-Mar-15	09-Mar-15	-91	0	0%	■																	
SD3E0210	D7 (D3e) - Type 4B Pier Scaffolding (2nd Lift)	1	15-Jul-15	0%	1	15-Jul-15	10-Mar-15	10-Mar-15	-91	0	0%	■																	
SD3E0220	D7 (D3e) - Type 4B Pier Rebarwork, Formwork & Prep (2nd Lift)	5	17-Jul-15	0%	5	22-Jul-15	11-Mar-15	16-Mar-15	-91	0	0%	■																	
SD3E0240	D7 (D3e) - Type 4B Pier Concreting, Curing & Striking, CJ prep (2nd Lift)	3	23-Jul-15	0%	3	25-Jul-15	17-Mar-15	19-Mar-15	-91	0	0%	■																	
SD3E0250	D7 (D3e) - Type 4B Pier Scaffolding (3rd Lift)	2	27-Jul-15	0%	2	28-Jul-15	20-Mar-15	21-Mar-15	-91	0	0%	■																	
SD3E0260	D7 (D3e) - Type 4B Pier Rebarwork, Formwork & Prep (3rd Lift)	5	30-Jul-15	0%	5	04-Aug-15	23-Mar-15	27-Mar-15	-91	0	0%	■																	
SD3E0280	D7 (D3e) - Type 4B Pier Concreting, Curing & Striking, CJ prep (3rd Lift)	3	05-Aug-15	0%	3	07-Aug-15	28-Mar-15	31-Mar-15	-91	0	0%	■																	
SD3E0300	D7 (D3e) - Type 4B Pier Head Scaffolding	4	08-Aug-15	0%	4	13-Aug-15	01-Apr-15	09-Apr-15	-91	0	0%	■																	
SD3E0310	D7 (D3e) - Type 4B Pier Head Rebarwork, Formwork & Prep	9	14-Aug-15	0%	9	25-Aug-15	10-Apr-15	21-Apr-15	-91	0	0%	■																	
<b>Pier D8 (D3d)</b>																													
<b>Pile Cap Works</b>																													
SD3D0090	D8 (D3d) - Pile cap Excavation / ELS	18	05-Mar-15 A	100%	0	23-Apr-15 A					100%	■																	
SD3D0092	D8 (D3d) - Pile cap Pile breakdown to cut-off etc.	4	25-Apr-15 A	100%	0	16-May-15 A					100%	■																	
SD3D0100	D8 (D3d) - Pile cap Blinding	1	24-Apr-15 A	100%	0	24-Apr-15 A					100%	■																	
SD3D0110	D8 (D3d) - Pile cap Formwork	3	18-May-15 A	100%	0	19-May-15 A					100%	■																	
SD3D0120	D8 (D3d) - Pile cap Rebarwork	4	22-May-15	0%	4	27-May-15	27-Nov-18	30-Nov-18	1000	1000	0%	■																	
SD3D0122	D8 (D3d) - Pile cap Kicker Formwork	2	23-May-15	0%	2	26-May-15	07-Mar-15	09-Mar-15	-57	4	0%	■																	
SD3D0130	D8 (D3d) - Pile cap Concreting	1	22-May-15	0%	1	22-May-15	28-Feb-15	02-Mar-15	-62	0	0%	■																	
SD3D0140	D8 (D3d) - Pile cap Curing & Striking of Forms incl. CJ prep	6	23-May-15	0%	6	30-May-15	02-Mar-15	09-Mar-15	-61	0	0%	■																	
<b>Pier Works</b>																													
SD3D0150	D8 (D3d) - Type 5B Pier Scaffolding (1st Lift)	2	01-Jun-15	0%	2	02-Jun-15	10-Mar-15	11-Mar-15	-61	0	0%	■																	
SD3D0160	D8 (D3d) - Type 5B Pier Rebarwork (1st Lift)	2	04-Jun-15	0%	2	05-Jun-15	12-Mar-15	13-Mar-15	-61	0	0%	■																	
SD3D0170	D8 (D3d) - Type 5B Pier Formwork & Prep for Concreting (1st Lift)	2	06-Jun-15	0%	2	08-Jun-15	14-Mar-15	16-Mar-15	-61	0	0%	■																	
SD3D0180	D8 (D3d) - Type 5B Pier Concreting (1st Lift)	1	10-Jun-15	0%	1	10-Jun-15	17-Mar-15	17-Mar-15	-61	0	0%	■																	
SD3D0182	D8 (D3d) - Type 5B Pier Curing & Striking of Forms incl. CJ prep (1st Lift)	2	12-Jun-15	0%	2	13-Jun-15	18-Mar-15	19-Mar-15	-61	0	0%	■																	
SD3D0190	D8 (D3d) - Type 5B Pier Scaffolding (2nd Lift)	2	15-Jun-15	0%	2	16-Jun-15	20-Mar-15	21-Mar-15	-61	0	0%	■																	
SD3D0200	D8 (D3d) - Type 5B Pier Rebarwork (2nd Lift)	2	18-Jun-15	0%	2	19-Jun-15	23-Mar-15	24-Mar-15	-61	0	0%	■																	
SD3D0210	D8 (D3d) - Type 5B Pier Formwork & Prep for Concreting (2nd Lift)	2	22-Jun-15	0%	2	24-Jun-15	25-Mar-15	26-Mar-15	-61	0	0%	■																	
SD3D0220	D8 (D3d) - Type 5B Pier Concreting (2nd Lift)	1	26-Jun-15	0%	1	26-Jun-15	27-Mar-15	27-Mar-15	-61	0	0%	■																	
SD3D0222	D8 (D3d) - Type 5B Pier Curing & Striking of Forms incl. CJ prep (2nd Lift)	2	27-Jun-15	0%	2	29-Jun-15	28-Mar-15	30-Mar-15	-61	0	0%	■																	
SD3D0230	D8 (D3d) - Type 5B Pier Scaffolding (3rd Lift)	2	30-Jun-15	0%	2	02-Jul-15	31-Mar-15	01-Apr-15	-61	0	0%	■																	
SD3D0240	D8 (D3d) - Type 5B Pier Rebarwork (3rd Lift)	3	03-Jul-15	0%	3	06-Jul-15	02-Apr-15	09-Apr-15	-61	0	0%	■																	
SD3D0250	D8 (D3d) - Type 5B Pier Formwork & Prep for Concreting (3rd Lift)	3	07-Jul-15	0%	3	09-Jul-15	10-Apr-15	13-Apr-15	-61	0	0%	■																	
SD3D0260	D8 (D3d) - Type 5B Pier Concreting (3rd Lift)	1	10-Jul-15	0%	1	10-Jul-15	14-Apr-15	14-Apr-15	-61	0	0%	■																	
SD3D0262	D8 (D3d) - Type 5B Pier Curing & Striking of Forms incl. CJ prep (3rd Lift)	2	11-Jul-15	0%	2	13-Jul-15	16-Apr-15	17-Apr-15	-61	0	0%	■																	
SD3D0270	D8 (D3d) - Type 5B Pier Head Scaffolding	3	14-Jul-15	0%	3	17-Jul-15	18-Apr-15	21-Apr-15	-61	0	0%	■																	
SD3D0280	D8 (D3d) - Type 5B Pier Head Rebarwork	4	18-Jul-15	0%	4	22-Jul-15	22-Apr-15	27-Apr-15	-61	0	0%	■																	

	Project ID: J3518DWPPrE1-M24 Layout: J3518-DWP-3MRP Submission - M24 Filter: TASK filters: 3-Month Lookahead, No CC Milestones, No Level of Effort.	<b>Tuen Mun - Chek Lap Kok Link - Southern Connection</b> <b>3-Month Rolling Programme (Page 25 of 44 Pages)</b> <b>(Progress as of 21-May-15)</b>	Date	Revision	Checked	Approved	<b>DWG. No.:</b>  <b>J3518/GCL/PGM/3MRP-M24</b>
			29-May-15		WY		







Activity ID	Activity Name	Orig. Durn.	Act. Start / FC Early Start	Duration % Complete	Rem. Durn.	Act. Finish / FC Early Finish	Late Start	Late Finish	Total Float	Free Float	Physical % Complete	2015																						
												May				June				July				August										
												20	27	04	11	18	25	01	08	15	22	29	06	13	20	27	03	10	17					
<b>Pier Head Segments</b>																																		
SD2B0370	D15 (D2b) - Pier Head Segment - Temporary Platform	6	05-Aug-15	0%	6	12-Aug-15	22-Oct-15	28-Oct-15	59	0	0%																							
SD2B0372	D15 (D2b) - Pier Head Segment Lift & Fix (1 seg)	2	13-Aug-15	0%	2	14-Aug-15	30-Oct-15	31-Oct-15	59	0	0%																							
SD2B0374	D15 (D2b) - Pier Head Segment Diaphragm - Rebar	12	15-Aug-15	0%	12	29-Aug-15	02-Nov-15	14-Nov-15	59	0	0%																							
<b>Pier D16 (D2a)</b>																																		
<b>Pile Cap Works</b>																																		
SD2A0090	D16 (D2a) - Pile cap Excavation / ELS (incl. sheet piling)	22	22-May-15	0%	22	24-Jun-15	28-Apr-15	27-May-15	-18	0	0%																							
SD2A0092	D16 (D2a) - Pile cap Pile breakdown to cut-off etc.	4	26-Jun-15	0%	4	30-Jun-15	28-May-15	01-Jun-15	-18	0	0%																							
SD2A0100	D16 (D2a) - Pile cap Blinding	1	02-Jul-15	0%	1	02-Jul-15	02-Jun-15	02-Jun-15	-18	0	0%																							
SD2A0110	D16 (D2a) - Pile cap Formwork	3	08-Jul-15	0%	3	10-Jul-15	10-Jun-15	13-Jun-15	-18	0	0%																							
SD2A0120	D16 (D2a) - Pile cap Rebarwork	4	03-Jul-15	0%	4	07-Jul-15	04-Jun-15	08-Jun-15	-18	0	0%																							
SD2A0122	D16 (D2a) - Pile cap Kicker Formwork	2	13-Jul-15	0%	2	14-Jul-15	24-Jun-15	26-Jun-15	-14	4	0%																							
SD2A0130	D16 (D2a) - Pile cap Concreting	1	11-Jul-15	0%	1	11-Jul-15	15-Jun-15	15-Jun-15	-18	0	0%																							
SD2A0140	D16 (D2a) - Pile cap Curing & Striking of Forms incl. CJ prep	6	13-Jul-15	0%	6	20-Jul-15	16-Jun-15	26-Jun-15	-18	0	0%																							
<b>Pier Works</b>																																		
SD2A0150	D16 (D2a) - Type 5B Pier Scaffolding (1st Lift)	2	21-Jul-15	0%	2	22-Jul-15	27-Jun-15	29-Jun-15	-18	0	0%																							
SD2A0160	D16 (D2a) - Type 5B Pier Rebarwork (1st Lift)	3	23-Jul-15	0%	3	25-Jul-15	30-Jun-15	03-Jul-15	-18	0	0%																							
SD2A0170	D16 (D2a) - Type 5B Pier Formwork & Prep for Concreting (1st Lift)	2	27-Jul-15	0%	2	28-Jul-15	04-Jul-15	06-Jul-15	-18	0	0%																							
SD2A0180	D16 (D2a) - Type 5B Pier Concreting (1st Lift)	1	30-Jul-15	0%	1	30-Jul-15	07-Jul-15	07-Jul-15	-18	0	0%																							
SD2A0182	D16 (D2a) - Type 5B Pier Curing & Striking of Forms incl. CJ prep (1st Lift)	2	31-Jul-15	0%	2	01-Aug-15	08-Jul-15	09-Jul-15	-18	0	0%																							
SD2A0190	D16 (D2a) - Type 5B Pier Scaffolding (2nd Lift)	2	03-Aug-15	0%	2	04-Aug-15	10-Jul-15	11-Jul-15	-18	0	0%																							
SD2A0200	D16 (D2a) - Type 5B Pier Rebarwork (2nd Lift)	3	05-Aug-15	0%	3	07-Aug-15	13-Jul-15	15-Jul-15	-18	0	0%																							
SD2A0210	D16 (D2a) - Type 5B Pier Formwork & Prep for Concreting (2nd Lift)	3	08-Aug-15	0%	3	12-Aug-15	17-Jul-15	20-Jul-15	-18	0	0%																							
SD2A0220	D16 (D2a) - Type 5B Pier Concreting (2nd Lift)	1	13-Aug-15	0%	1	13-Aug-15	21-Jul-15	21-Jul-15	-18	0	0%																							
SD2A0222	D16 (D2a) - Type 5B Pier Curing & Striking of Forms incl. CJ prep (2nd Lift)	2	14-Aug-15	0%	2	15-Aug-15	22-Jul-15	23-Jul-15	-18	0	0%																							
SD2A0230	D16 (D2a) - Type 5B Pier Head Scaffolding	3	17-Aug-15	0%	3	19-Aug-15	24-Jul-15	27-Jul-15	-18	0	0%																							
<b>Pier D17 (D1d)</b>																																		
<b>Pier Works</b>																																		
SD1D0180	D17 (D1d) - Type 5B-B Pier Concreting (1st Lift)	1	22-Apr-15 A	100%	0	22-Apr-15 A					100%																							
SD1D0182	D17 (D1d) - Type 5B-B Pier Curing & Striking of Forms incl. CJ prep (1st Lift)	2	23-Apr-15 A	100%	0	24-Apr-15 A					100%																							
SD1D0190	D17 (D1d) - Type 5B-B Pier Head Scaffolding	3	07-May-15 A	100%	0	12-May-15 A					100%																							
SD1D0200	D17 (D1d) - Type 5B-B Pier Head Rebarwork	4	22-May-15	0%	4	27-May-15	28-Jul-15	01-Aug-15	47	0	0%																							
SD1D0210	D17 (D1d) - Type 5B-B Pier Head Formwork & Prep for Concreting	4	28-May-15	0%	4	01-Jun-15	03-Aug-15	06-Aug-15	47	0	0%																							
SD1D0220	D17 (D1d) - Type 5B-B Pier Head Concreting	1	02-Jun-15	0%	1	02-Jun-15	07-Aug-15	07-Aug-15	47	0	0%																							
SD1D0310	D17 (D1d) - Type 5B-B Pier Head Curing/Striking of Forms/Remove Scaffolding	6	04-Jun-15	0%	6	12-Jun-15	08-Aug-15	15-Aug-15	47	0	0%																							
SD1D0320	D17 (D1d) - Type 5B-B Pier Backfilling Works	4	13-Jun-15	0%	4	18-Jun-15	17-Aug-15	21-Aug-15	47	7	0%																							
<b>Pier Head Segments</b>																																		
SD1D0370	D17 (D1d) - Pier Head Segment - Temporary Platform	6	02-Jul-15	0%	6	08-Jul-15	22-Aug-15	28-Aug-15	40	14	0%																							
SD1D0372	D17 (D1d) - Pier Head Segment Lift & Fix (1 seg)	2	27-Jul-15	0%	2	28-Jul-15	29-Aug-15	31-Aug-15	26	0	0%																							
SD1D0374	D17 (D1d) - Pier Head Segment Diaphragm - Rebar	13	30-Jul-15	0%	13	14-Aug-15	01-Sep-15	16-Sep-15	26	0	0%																							
SD1D0376	D17 (D1d) - Pier Head Segment Diaphragm - Formwork	8	15-Aug-15	0%	8	25-Aug-15	18-Sep-15	26-Sep-15	26	0	0%																							
<b>Pier D18 (D1c)</b>																																		
<b>Pier Works</b>																																		
SD1C0190	D18 (D1c) - Type 5B-B Pier Head Scaffolding	3	16-Apr-15 A	100%	0	21-Apr-15 A					100%																							
SD1C0200	D18 (D1c) - Type 5B-B Pier Head Rebarwork	4	29-Apr-15 A	0%	4	27-May-15	27-Nov-18	30-Nov-18	1000	1000	0%																							
SD1C0210	D18 (D1c) - Type 5B-B Pier Head Formwork & Prep for Concreting	4	18-May-15 A	100%	0	20-May-15 A					100%																							
SD1C0220	D18 (D1c) - Type 5B-B Pier Head Concreting	1	22-May-15	0%	1	22-May-15	31-Oct-15	31-Oct-15	119	0	0%																							
SD1C0310	D18 (D1c) - Type 5B-B Pier Head Curing/Striking of Forms/Remove Scaffolding	6	23-May-15	0%	6	30-May-15	02-Nov-15	07-Nov-15	119	0	0%																							

<ul style="list-style-type: none"> <li><span style="color: blue;">■</span> Actual Work</li> <li><span style="color: green;">■</span> Planned Bar</li> <li><span style="color: red;">■</span> Critical Bar</li> <li><span style="color: black;">◆</span> Milestone</li> </ul>	Project ID: J3518DWPPrE1-M24 Layout: J3518-DWP-3MRP Submission - M24 Filter: TASK filters: 3-Month Lookahead, No CC Milestones, No Level of Effort.	<b>Tuen Mun - Chek Lap Kok Link - Southern Connection</b> <b>3-Month Rolling Programme (Page 29 of 44 Pages)</b> <b>(Progress as of 21-May-15)</b>	Date: 29-May-15 Revision: Checked: WY Approved:	<b>DWG. No.:</b> <b>J3518/GCL/PGM/3MRP-M24</b>
--	---	--	--	---



Activity ID	Activity Name	Orig. Durn.	Act. Start / FC Early Start	Duration % Complete	Rem. Durn.	Act. Finish / FC Early Finish	Late Start	Late Finish	Total Float	Free Float	Physical % Complete	2015																
												May				June				July				August				
												20	27	04	11	18	25	01	08	15	22	29	06	13	20	27	03	10
<b>Pier Works - E1C (E1a2)</b>																												
SE1A2170	E1C (E1a2) - Type 4B Pier Temp. Support Platform & Scaffold (1st Lift)	6	15-Jul-15	0%	6	22-Jul-15	06-Jan-15	13-Jan-15	-142	0	0%																	
SE1A2180	E1C (E1a2) - Type 4B Pier Rebarwork, Formwork & Prep (1st Lift)	4	23-Jul-15	0%	4	27-Jul-15	13-Jan-15	17-Jan-15	-142	0	0%																	
SE1A2200	E1C (E1a2) - Type 4B Pier Concreting, Curing & Striking, CJ prep (1st Lift)	3	28-Jul-15	0%	3	31-Jul-15	17-Jan-15	21-Jan-15	-142	0	0%																	
SE1A2210	E1C (E1a2) - Type 4B Pier Scaffolding (2nd Lift)	2	01-Aug-15	0%	2	03-Aug-15	21-Jan-15	23-Jan-15	-142	0	0%																	
SE1A2220	E1C (E1a2) - Type 4B Pier Rebarwork, Formwork & Prep (2nd Lift)	5	04-Aug-15	0%	5	08-Aug-15	23-Jan-15	29-Jan-15	-142	0	0%																	
SE1A2240	E1C (E1a2) - Type 4B Pier Concreting, Curing & Striking, CJ prep (2nd Lift)	3	10-Aug-15	0%	3	13-Aug-15	29-Jan-15	02-Feb-15	-142	0	0%																	
SE1A2300	E1C (E1a2) - Type 4B Pier Head Scaffolding	4	14-Aug-15	0%	4	18-Aug-15	02-Feb-15	06-Feb-15	-142	0	0%																	
SE1A2310	E1C (E1a2) - Type 4B Pier Head Rebarwork, Formwork & Prep	10	19-Aug-15	0%	10	31-Aug-15	06-Feb-15	18-Feb-15	-142	0	0%																	
<b>Pier Works - E1D (E1a1)</b>																												
SE1A1170	E1D (E1a1) - Type 4B Pier Temp. Support Platform & Scaffold (1st Lift)	6	15-Jul-15	0%	6	22-Jul-15	19-Jan-16	26-Jan-16	147	0	0%																	
SE1A1180	E1D (E1a1) - Type 4B Pier Rebarwork, Formwork & Prep (1st Lift)	3	23-Jul-15	0%	3	25-Jul-15	26-Jan-16	29-Jan-16	147	0	0%																	
SE1A1200	E1D (E1a1) - Type 4B Pier Concreting, Curing & Striking, CJ prep (1st Lift)	3	27-Jul-15	0%	3	30-Jul-15	29-Jan-16	02-Feb-16	147	0	0%																	
SE1A1210	E1D (E1a1) - Type 4B Pier Scaffolding (2nd Lift)	2	31-Jul-15	0%	2	01-Aug-15	02-Feb-16	04-Feb-16	147	0	0%																	
SE1A1220	E1D (E1a1) - Type 4B Pier Rebarwork, Formwork & Prep (2nd Lift)	5	03-Aug-15	0%	5	07-Aug-15	04-Feb-16	13-Feb-16	147	0	0%																	
SE1A1240	E1D (E1a1) - Type 4B Pier Concreting, Curing & Striking, CJ prep (2nd Lift)	3	08-Aug-15	0%	3	12-Aug-15	13-Feb-16	17-Feb-16	147	0	0%																	
SE1A1300	E1D (E1a1) - Type 4B Pier Head Scaffolding	4	13-Aug-15	0%	4	17-Aug-15	17-Feb-16	22-Feb-16	147	0	0%																	
SE1A1310	E1D (E1a1) - Type 4B Pier Head Rebarwork, Formwork & Prep	10	18-Aug-15	0%	10	29-Aug-15	22-Feb-16	04-Mar-16	147	0	0%																	
<b>Pier Head Segments - E1A, E1B, E1C &amp; E1D</b>																												
<b>Pier Head Segments - E1A (E1a4)</b>																												
SE1A4370	E1A (E1a4) - Pier Head Segment - Temporary Platform	2	04-Jun-15	0%	2	05-Jun-15	22-Nov-14	25-Nov-14	-149	0	0%																	
SE1A4372	E1A (E1a4) - Pier Head Segment Lift & Fix (1 seg)	2	06-Jun-15	0%	2	08-Jun-15	25-Nov-14	27-Nov-14	-149	0	0%																	
SE1A4374	E1A (E1a4) - Pier Head Segment Diaphragm - Rebar	13	10-Jun-15	0%	13	30-Jun-15	27-Nov-14	11-Dec-14	-149	0	0%																	
SE1A4376	E1A (E1a4) - Pier Head Segment Diaphragm - Formwork & Prep for Concreting	8	30-Jun-15	0%	8	10-Jul-15	12-Dec-14	20-Dec-14	-149	0	0%																	
SE1A4378	E1A (E1a4) - Pier Head Segment Diaphragm - Concreting	2	10-Jul-15	0%	2	13-Jul-15	22-Dec-14	23-Dec-14	-149	0	0%																	
SE1A4380	E1A (E1a4) - Pier Head Segment Diaphragm - Curing & Striking of Forms	6	13-Jul-15	0%	6	21-Jul-15	24-Dec-14	02-Jan-15	-149	0	0%																	
<b>Pier Head Segments - E1B (E1a3)</b>																												
SE1A3370	E1B (E1a3) - Pier Head Segment - Temporary Platform	2	15-Jun-15	0%	2	16-Jun-15	19-Mar-15	21-Mar-15	-62	0	0%																	
SE1A3372	E1B (E1a3) - Pier Head Segment Lift & Fix (1 seg)	2	18-Jun-15	0%	2	19-Jun-15	21-Mar-15	24-Mar-15	-62	0	0%																	
SE1A3374	E1B (E1a3) - Pier Head Segment Diaphragm - Rebar	12	22-Jun-15	0%	12	08-Jul-15	24-Mar-15	11-Apr-15	-62	0	0%																	
SE1A3376	E1B (E1a3) - Pier Head Segment Diaphragm - Formwork & Prep for Concreting	8	09-Jul-15	0%	8	18-Jul-15	11-Apr-15	22-Apr-15	-62	0	0%																	
SE1A3378	E1B (E1a3) - Pier Head Segment Diaphragm - Concreting	3	20-Jul-15	0%	3	22-Jul-15	22-Apr-15	25-Apr-15	-62	0	0%																	
SE1A3380	E1B (E1a3) - Pier Head Segment Diaphragm - Curing & Striking of Forms	6	22-Jul-15	0%	6	30-Jul-15	27-Apr-15	04-May-15	-62	0	0%																	
<b>E2A, E2B, E2C &amp; E2D (E1b1-2-3-4)</b>																												
<b>Pile Cap Works - E2A, E2B, E2C &amp; E2D</b>																												
<b>Pile Cap Works - E2A (E1b4)</b>																												
SE1B4130	E2A (E1b4) - Marine Pile Cap M1 - Pile cut down	8	22-May-15	0%	8	01-Jun-15	11-Oct-14	21-Oct-14	-174	0	0%																	
SE1B4140	E2A (E1b4) - Marine Pile Cap M1 - Rebar fixing, inst.inserts etc	10	02-Jun-15	0%	10	16-Jun-15	22-Oct-14	03-Nov-14	-174	0	0%																	
SE1B4150	E2A (E1b4) - Marine Pile Cap M1 - Concreting	1	18-Jun-15	0%	1	18-Jun-15	04-Nov-14	04-Nov-14	-174	0	0%																	
SE1B4160	E2A (E1b4) - Marine Pile Cap M1 - Curing incl. CJ Preparation	6	19-Jun-15	0%	6	29-Jun-15	05-Nov-14	11-Nov-14	-174	0	0%																	
<b>Pile Cap Works - E2B (E1b3)</b>																												
SE1B3090	E2B (E1b3) - Marine Pile Cap M1 - Inst.Access & make Watertight	3	17-Mar-15 A	100%	0	24-Apr-15 A					100%																	
SE1B3100	E2B (E1b3) - Marine Pile Cap M1 - Weld Fin Plates/Plug Rebar & Concrete	9	25-Apr-15 A	100%	0	09-May-15 A					100%																	
SE1B3120	E2B (E1b3) - Marine Pile Cap M1 - Dewater precast shell / Remove Lifting Frame	2	11-May-15 A	100%	0	16-May-15 A					100%																	
SE1B3130	E2B (E1b3) - Marine Pile Cap M1 - Pile cut down	8	18-May-15 A	25%	6	29-May-15	21-Oct-14	28-Oct-14	-167	0	20%																	
SE1B3140	E2B (E1b3) - Marine Pile Cap M1 - Rebar fixing, inst.inserts etc	18	30-May-15	0%	18	27-Jun-15	28-Oct-14	19-Nov-14	-167	0	0%																	
SE1B3150	E2B (E1b3) - Marine Pile Cap M1 - Concreting	1	29-Jun-15	0%	1	29-Jun-15	19-Nov-14	20-Nov-14	-167	0	0%																	
SE1B3160	E2B (E1b3) - Marine Pile Cap M1 - Curing incl. CJ Preparation	6	30-Jun-15	0%	6	07-Jul-15	20-Nov-14	27-Nov-14	-167	0	0%																	

	Project ID: J3518DWP-E1-M24 Layout: J3518-DWP-3MRP Submission - M24 Filter: TASK filters: 3-Month Lookahead, No CC Milestones, No Level of Effort.	<b>Tuen Mun - Chek Lap Kok Link - Southern Connection</b> <b>3-Month Rolling Programme (Page 31 of 44 Pages)</b> <b>(Progress as of 21-May-15)</b>	Date	Revision	Checked	Approved	<b>DWG. No.:</b> <b>J3518/GCL/PGM/3MRP-M24</b>
			29-May-15		WY		

Activity ID	Activity Name	Orig. Durn.	Act. Start / FC Early Start	Duration% Complete	Rem. Durn.	Act. Finish / FC Early Finish	Late Start	Late Finish	Total Float	Free Float	Physical % Complete	2015																							
												May					June				July				August										
												20	27	04	11	18	25	01	08	15	22	29	06	13	20	27	03	10	17						
<b>Pier Works - E2A, E2B, E2C &amp; E2D</b>																																			
<b>Pier Works - E2A (E1b4)</b>																																			
SE1B4170	E2A (E1b4) - Type 4B Pier Temp. Support Platform & Scaffold (1st Lift)	6	19-Jun-15	0%	6	29-Jun-15	05-Nov-14	11-Nov-14	-174	0	0%																								
SE1B4180	E2A (E1b4) - Type 4B Pier Rebarwork, Formwork & Prep (1st Lift)	4	30-Jun-15	0%	4	04-Jul-15	12-Nov-14	15-Nov-14	-174	0	0%																								
SE1B4200	E2A (E1b4) - Type 4B Pier Concreting, Curing & Striking, CJ prep (1st Lift)	3	06-Jul-15	0%	3	08-Jul-15	17-Nov-14	19-Nov-14	-174	0	0%																								
SE1B4300	E2A (E1b4) - Type 4B Pier Head Scaffolding	4	09-Jul-15	0%	4	13-Jul-15	20-Nov-14	24-Nov-14	-174	0	0%																								
SE1B4310	E2A (E1b4) - Type 4B Pier Head Rebarwork, Formwork & Prep	10	14-Jul-15	0%	10	25-Jul-15	25-Nov-14	05-Dec-14	-174	0	0%																								
SE1B4330	E2A (E1b4) - Type 4B Pier Head Concreting	1	27-Jul-15	0%	1	27-Jul-15	06-Dec-14	06-Dec-14	-174	0	0%																								
SE1B4340	E2A (E1b4) - Type 4B Pier Head Curing/Striking of Forms/Remove Scaffolding	6	28-Jul-15	0%	6	04-Aug-15	08-Dec-14	13-Dec-14	-174	0	0%																								
<b>Pier Works - E2B (E1b3)</b>																																			
SE1B3170	E2B (E1b3) - Type 4B Pier Temp. Support Platform & Scaffold (1st Lift)	6	30-Jun-15	0%	6	07-Jul-15	20-Nov-14	27-Nov-14	-167	0	0%																								
SE1B3180	E2B (E1b3) - Type 4B Pier Rebarwork, Formwork & Prep (1st Lift)	2	08-Jul-15	0%	2	09-Jul-15	27-Nov-14	29-Nov-14	-167	0	0%																								
SE1B3200	E2B (E1b3) - Type 4B Pier Concreting, Curing & Striking, CJ prep (1st Lift)	3	10-Jul-15	0%	3	13-Jul-15	29-Nov-14	03-Dec-14	-167	0	0%																								
SE1B3210	E2B (E1b3) - Type 4B Pier Scaffolding (2nd Lift)	1	14-Jul-15	0%	1	14-Jul-15	03-Dec-14	04-Dec-14	-167	0	0%																								
SE1B3220	E2B (E1b3) - Type 4B Pier Rebarwork, Formwork & Prep (2nd Lift)	4	15-Jul-15	0%	4	20-Jul-15	04-Dec-14	09-Dec-14	-167	0	0%																								
SE1B3240	E2B (E1b3) - Type 4B Pier Concreting, Curing & Striking, CJ prep (2nd Lift)	3	21-Jul-15	0%	3	23-Jul-15	09-Dec-14	12-Dec-14	-167	0	0%																								
SE1B3300	E2B (E1b3) - Type 4B Pier Head Scaffolding	3	24-Jul-15	0%	3	27-Jul-15	12-Dec-14	16-Dec-14	-167	0	0%																								
SE1B3310	E2B (E1b3) - Type 4B Pier Head Rebarwork, Formwork & Prep	10	28-Jul-15	0%	10	08-Aug-15	16-Dec-14	30-Dec-14	-167	0	0%																								
SE1B3330	E2B (E1b3) - Type 4B Pier Head Concreting	1	10-Aug-15	0%	1	10-Aug-15	30-Dec-14	31-Dec-14	-167	0	0%																								
SE1B3340	E2B (E1b3) - Type 4B Pier Head Curing/Striking of Forms/Remove Scaffolding	6	12-Aug-15	0%	6	18-Aug-15	31-Dec-14	08-Jan-15	-167	0	0%																								
<b>Pier Works - E2C (E1b1)</b>																																			
SE1B1170	E2C (E1b1) - Type 4B Pier Temp. Support Platform & Scaffold (1st Lift)	6	30-Jun-15	0%	6	07-Jul-15	15-Dec-14	20-Dec-14	-146	0	0%																								
SE1B1180	E2C (E1b1) - Type 4B Pier Rebarwork, Formwork & Prep (1st Lift)	2	08-Jul-15	0%	2	09-Jul-15	22-Dec-14	23-Dec-14	-146	0	0%																								
SE1B1200	E2C (E1b1) - Type 4B Pier Concreting, Curing & Striking, CJ prep (1st Lift)	3	10-Jul-15	0%	3	13-Jul-15	24-Dec-14	29-Dec-14	-146	0	0%																								
SE1B1212	E2C (E1b1) - Type 4B Pier Scaffolding (2nd Lift)	1	14-Jul-15	0%	1	14-Jul-15	30-Dec-14	30-Dec-14	-146	0	0%																								
SE1B1220	E2C (E1b1) - Type 4B Pier Rebarwork, Formwork & Prep (2nd Lift)	4	15-Jul-15	0%	4	20-Jul-15	31-Dec-14	05-Jan-15	-146	0	0%																								
SE1B1240	E2C (E1b1) - Type 4B Pier Concreting, Curing & Striking, CJ prep (2nd Lift)	3	21-Jul-15	0%	3	23-Jul-15	06-Jan-15	08-Jan-15	-146	0	0%																								
SE1B1300	E2C (E1b1) - Type 4B Pier Head Scaffolding	3	24-Jul-15	0%	3	27-Jul-15	09-Jan-15	12-Jan-15	-146	0	0%																								
SE1B1310	E2C (E1b1) - Type 4B Pier Head Rebarwork, Formwork & Prep	10	28-Jul-15	0%	10	08-Aug-15	13-Jan-15	23-Jan-15	-146	0	0%																								
SE1B1330	E2C (E1b1) - Type 4B Pier Head Concreting	1	10-Aug-15	0%	1	10-Aug-15	24-Jan-15	24-Jan-15	-146	0	0%																								
SE1B1340	E2C (E1b1) - Type 4B Pier Head Curing/Striking of Forms/Remove Scaffolding	6	12-Aug-15	0%	6	18-Aug-15	26-Jan-15	31-Jan-15	-146	0	0%																								
<b>Pier Works - E2D (E1b2)</b>																																			
SE1B2170	E2D (E1b2) - Type 4B Pier Temp. Support Platform & Scaffold (1st Lift)	6	30-Jun-15	0%	6	07-Jul-15	02-Feb-15	07-Feb-15	-107	0	0%																								
SE1B2180	E2D (E1b2) - Type 4B Pier Rebarwork, Formwork & Prep (1st Lift)	4	08-Jul-15	0%	4	11-Jul-15	09-Feb-15	12-Feb-15	-107	0	0%																								
SE1B2200	E2D (E1b2) - Type 4B Pier Concreting, Curing & Striking, CJ prep (1st Lift)	3	13-Jul-15	0%	3	15-Jul-15	13-Feb-15	16-Feb-15	-107	0	0%																								
SE1B2300	E2D (E1b2) - Type 4B Pier Head Scaffolding	4	17-Jul-15	0%	4	21-Jul-15	17-Feb-15	24-Feb-15	-107	0	0%																								
SE1B2310	E2D (E1b2) - Type 4B Pier Head Rebarwork, Formwork & Prep	10	22-Jul-15	0%	10	03-Aug-15	25-Feb-15	07-Mar-15	-107	0	0%																								
SE1B2330	E2D (E1b2) - Type 4B Pier Head Concreting	1	04-Aug-15	0%	1	04-Aug-15	09-Mar-15	09-Mar-15	-107	0	0%																								
SE1B2340	E2D (E1b2) - Type 4B Pier Head Curing/Striking of Forms/Remove Scaffolding	6	05-Aug-15	0%	6	12-Aug-15	10-Mar-15	16-Mar-15	-107	0	0%																								
<b>Pier Head Segments - E2A, E2B, E2C &amp; E2D</b>																																			
<b>Pier Head Segments - E2A (E1b4)</b>																																			
SE1B4370	E2A (E1b4) - Pier Head Segment - Temporary Platform	2	05-Aug-15	0%	2	06-Aug-15	15-Dec-14	16-Dec-14	-174	0	0%																								
SE1B4372	E2A (E1b4) - Pier Head Segment Lift & Fix (1 seg)	2	07-Aug-15	0%	2	08-Aug-15	17-Dec-14	18-Dec-14	-174	0	0%																								
SE1B4374	E2A (E1b4) - Pier Head Segment Diaphragm - Rebar	12	10-Aug-15	0%	12	25-Aug-15	19-Dec-14	05-Jan-15	-174	0	0%																								
<b>Pier Head Segments - E2B (E1b3)</b>																																			
SE1B3370	E2B (E1b3) - Pier Head Segment - Temporary Platform	2	19-Aug-15	0%	2	21-Aug-15	08-Jan-15	10-Jan-15	-167	0	0%																								
<b>Pier Head Segments - E2C (E1b2)</b>																																			
SE1B2370	E2C (E1b2) - Pier Head Segment - Temporary Platform	2	19-Aug-15	0%	2	21-Aug-15	02-Feb-15	03-Feb-15	-146	0	0%																								

<ul style="list-style-type: none"> <li><span style="color: blue;">■</span> Actual Work</li> <li><span style="color: green;">■</span> Planned Bar</li> <li><span style="color: red;">■</span> Critical Bar</li> <li><span style="color: black;">◆</span> Milestone</li> </ul>	Project ID: J3518DWPPrE1-M24 Layout: J3518-DWP-3MRP Submission - M24 Filter: TASK filters: 3-Month Lookahead, No CC Milestones, No Level of Effort.	<b>Tuen Mun - Chek Lap Kok Link - Southern Connection</b> <b>3-Month Rolling Programme (Page 32 of 44 Pages)</b> <b>(Progress as of 21-May-15)</b>	<table border="1"> <tr> <th>Date</th> <th>Revision</th> <th>Checked</th> <th>Approved</th> </tr> <tr> <td>29-May-15</td> <td></td> <td>WY</td> <td></td> </tr> </table>	Date	Revision	Checked	Approved	29-May-15		WY		<b>DWG. No.:</b>  <b>J3518/GCL/PGM/3MRP-M24</b>
Date	Revision	Checked	Approved									
29-May-15		WY										



Activity ID	Activity Name	Orig. Durn.	Act. Start / FC Early Start	Duration % Complete	Rem. Durn.	Act. Finish / FC Early Finish	Late Start	Late Finish	Total Float	Free Float	Physical % Complete	2015																	
												May				June				July				August					
												20	27	04	11	18	25	01	08	15	22	29	06	13	20	27	03	10	17
<b>Pier Head Segments - E2D (E1b1)</b>																													
SE1B1370	E2D (E1b1) - Pier Head Segment - Temporary Platform	2	13-Aug-15	0%	2	14-Aug-15	23-Feb-16	24-Feb-16	152	0	0%																		
SE1B1372	E2D (E1b1) - Pier Head Segment Lift & Fix (1 seg)	2	15-Aug-15	0%	2	17-Aug-15	25-Feb-16	27-Feb-16	153	0	0%																		
SE1B1374	E2D (E1b1) - Pier Head Segment Diaphragm - Rebar	12	18-Aug-15	0%	12	01-Sep-15	29-Feb-16	12-Mar-16	153	0	0%																		
<b>Viaduct E2</b>																													
<b>Bridge E2 - Piling &amp; Substructure</b>																													
<b>Milestones</b>																													
GFXX077-1	E5 (E2c) - Completion of piling works	0		0%	0	21-May-15		24-Mar-15	-44	1	0%																		
GFXX077-2	E6 (E2d) - Completion of piling works	0		0%	0	10-Aug-15		27-Jun-15	-36	1	0%																		
GFXX077-3	E7 (E2e) - Completion of piling works	0		0%	0	15-Aug-15		03-Jun-15	-60	0	0%																		
GFXX077-4	E8 (E2f) - Completion of piling works	0		0%	0	21-May-15		07-Jul-15	38	88	0%																		
<b>E3A,E3B, E3C &amp; E3D (E2a - 1/2/3/4)</b>																													
<b>Pile Cap Works - E3A,E3B, E3C &amp; E3D</b>																													
<b>Pile Cap Works</b>																													
SE2A1090	E3 (E2a1/2/3/4)- Marine Pile Cap - Inst.Access & make Watertight	6	29-Jan-15 A	100%	0	28-Apr-15 A					100%																		
SE2A1100	E3 (E2a1/2/3/4)- Marine Pile Cap - Weld Fin Plates / Plug Rebar & Concrete	2	29-Apr-15 A	100%	0	02-May-15 A					100%																		
SE2A1110	E3 (E2a1/2/3/4)- Marine Pile Cap - Dewater precast shell / Remove Lifting Frame	2	04-May-15 A	100%	0	09-May-15 A					100%																		
SE2A1120	E3 (E2a1/2/3/4)- Marine Pile Cap - Pile cut down 6nr	9	11-May-15 A	55.56%	4	27-May-15	30-Oct-14	03-Nov-14	-160	0	95%																		
SE2A1130	E3 (E2a1/2/3/4)- Marine Pile Cap - Rebar fixing (1st pour)	8	28-May-15	0%	8	06-Jun-15	04-Nov-14	12-Nov-14	-160	0	0%																		
SE2A1140	E3 (E2a1/2/3/4)- Marine Pile Cap - Concreting (First pour)	1	08-Jun-15	0%	1	08-Jun-15	13-Nov-14	13-Nov-14	-160	0	0%																		
SE2A1150	E3 (E2a1/2/3/4)- Marine Pile Cap - CJ preparation	3	10-Jun-15	0%	3	13-Jun-15	14-Nov-14	17-Nov-14	-160	0	0%																		
SE2A1160	E3 (E2a1/2/3/4)- Marine Pile Cap - Rebar fixing (Final pour)	6	15-Jun-15	0%	6	24-Jun-15	18-Nov-14	24-Nov-14	-160	0	0%																		
SE2A1162	E3 (E2a1/2/3/4)- Marine Pile Cap - Concreting (Final pour)	1	26-Jun-15	0%	1	26-Jun-15	25-Nov-14	25-Nov-14	-160	0	0%																		
SE2A1164	E3 (E2a1/2/3/4)- Marine Pile Cap - Curing incl. CJ preparation	6	27-Jun-15	0%	6	04-Jul-15	26-Nov-14	02-Dec-14	-160	0	0%																		
<b>Pier Works - E3A,E3B, E3C &amp; E3D</b>																													
<b>Pier Works - E3A (E2a4)</b>																													
SE2A4170	E3A (E2a4) - Type 4B-MJ Pier Temp. Support Platform & Scaffold (1st Lift)	5	29-Jun-15	0%	5	04-Jul-15	27-Nov-14	02-Dec-14	-160	0	0%																		
SE2A4180	E3A (E2a4) - Type 4B-MJ Pier Rebarwork, Formwork & Prep (1st Lift)	4	06-Jul-15	0%	4	09-Jul-15	03-Dec-14	06-Dec-14	-160	0	0%																		
SE2A4200	E3A (E2a4) - Type 4B-MJ Pier Concreting, Curing & Striking, CJ prep (1st Lift)	3	10-Jul-15	0%	3	13-Jul-15	08-Dec-14	10-Dec-14	-160	0	0%																		
SE2A4300	E3A (E2a4) - Type 4B-MJ Pier Head Scaffolding	4	14-Jul-15	0%	4	18-Jul-15	11-Dec-14	15-Dec-14	-160	0	0%																		
SE2A4310	E3A (E2a4) - Type 4B-MJ Pier Head Rebarwork, Formwork & Prep	10	20-Jul-15	0%	10	31-Jul-15	16-Dec-14	29-Dec-14	-160	0	0%																		
SE2A4330	E3A (E2a4) - Type 4B-MJ Pier Head Concreting	1	01-Aug-15	0%	1	01-Aug-15	30-Dec-14	30-Dec-14	-160	0	0%																		
SE2A4340	E3A (E2a4) - Type 4B-MJ Pier Head Curing/Striking of Forms/Remove Scaffolding	6	03-Aug-15	0%	6	08-Aug-15	31-Dec-14	07-Jan-15	-160	0	0%																		
<b>Pier Works - E3B (E2a3)</b>																													
SE2A3170	E3B (E2a3) - Type 4B-MJ Pier Temp. Support Platform & Scaffold (1st Lift)	5	29-Jun-15	0%	5	04-Jul-15	20-Dec-14	27-Dec-14	-140	0	0%																		
SE2A3180	E3B (E2a3) - Type 4B-MJ Pier Rebarwork, Formwork & Prep (1st Lift)	4	06-Jul-15	0%	4	09-Jul-15	29-Dec-14	02-Jan-15	-140	0	0%																		
SE2A3200	E3B (E2a3) - Type 4B-MJ Pier Concreting, Curing & Striking, CJ prep (1st Lift)	3	10-Jul-15	0%	3	13-Jul-15	03-Jan-15	06-Jan-15	-140	0	0%																		
SE2A3300	E3B (E2a3) - Type 4B-MJ Pier Head Scaffolding	4	14-Jul-15	0%	4	18-Jul-15	07-Jan-15	10-Jan-15	-140	0	0%																		
SE2A3310	E3B (E2a3) - Type 4B-MJ Pier Head Rebarwork, Formwork & Prep	10	20-Jul-15	0%	10	31-Jul-15	12-Jan-15	22-Jan-15	-140	0	0%																		
SE2A3330	E3B (E2a3) - Type 4B-MJ Pier Head Concreting	1	01-Aug-15	0%	1	01-Aug-15	23-Jan-15	23-Jan-15	-140	0	0%																		
SE2A3340	E3B (E2a3) - Type 4B-MJ Pier Head Curing/Striking of Forms/Remove Scaffolding	6	03-Aug-15	0%	6	08-Aug-15	24-Jan-15	30-Jan-15	-140	0	0%																		
<b>Pier Works - E3C (E2a2)</b>																													
SE2A2170	E3C (E2a2) - Type 4B-MJ Pier Temp. Support Platform & Scaffold (1st Lift)	6	06-Jul-15	0%	6	11-Jul-15	10-Jan-15	16-Jan-15	-130	0	0%																		
SE2A2180	E3C (E2a2) - Type 4B-MJ Pier Rebarwork, Formwork & Prep (1st Lift)	6	13-Jul-15	0%	6	20-Jul-15	17-Jan-15	23-Jan-15	-130	0	0%																		
SE2A2200	E3C (E2a2) - Type 4B-MJ Pier Concreting, Curing & Striking, CJ prep (1st Lift)	3	21-Jul-15	0%	3	23-Jul-15	24-Jan-15	27-Jan-15	-130	0	0%																		
SE2A2300	E3C (E2a2) - Type 4B-MJ Pier Head Scaffolding	4	24-Jul-15	0%	4	28-Jul-15	28-Jan-15	31-Jan-15	-130	0	0%																		
SE2A2310	E3C (E2a2) - Type 4B-MJ Pier Head Rebarwork, Formwork & Prep	10	30-Jul-15	0%	10	10-Aug-15	02-Feb-15	12-Feb-15	-130	0	0%																		
SE2A2330	E3C (E2a2) - Type 4B-MJ Pier Head Concreting	1	12-Aug-15	0%	1	12-Aug-15	13-Feb-15	13-Feb-15	-130	0	0%																		

<ul style="list-style-type: none"> <li><span style="color: blue;">■</span> Actual Work</li> <li><span style="color: green;">■</span> Planned Bar</li> <li><span style="color: red;">■</span> Critical Bar</li> <li><span style="color: black;">◆</span> Milestone</li> </ul>	Project ID: J3518DWP-E1-M24 Layout: J3518-DWP-3MRP Submission - M24 Filter: TASK filters: 3-Month Lookahead, No CC Milestones, No Level of Effort.	<b>Tuen Mun - Chek Lap Kok Link - Southern Connection</b> <b>3-Month Rolling Programme (Page 33 of 44 Pages)</b> <b>(Progress as of 21-May-15)</b>				Date	Revision	Checked	Approved	<b>DWG. No.:</b>  <b>J3518/GCL/PGM/3MRP-M24</b>
		29-May-15		WY						

Activity ID	Activity Name	Orig. Durn.	Act. Start / FC Early Start	Duration% Complete	Rem. Durn.	Act. Finish / FC Early Finish	Late Start	Late Finish	Total Float	Free Float	Physical % Complete	2015																	
												May			June			July			August								
												20	27	04	11	18	25	01	08	15	22	29	06	13	20	27	03	10	17
SE2A2340	E3C (E2a2) - Type 4B-MJ Pier Head Curing/Striking of Forms/Remove Scaffolding	6	13-Aug-15	0%	6	19-Aug-15	14-Feb-15	24-Feb-15	-130	0	0%																		
<b>Pier Works - E3D (E2a1)</b>																													
SE2A1170	E3D (E2a1) - Type 4B-MJ Pier Temp. Support Platform & Scaffold (1st Lift)	6	06-Jul-15	0%	6	11-Jul-15	14-Jan-16	20-Jan-16	151	0	0%																		
SE2A1180	E3D (E2a1) - Type 4B-MJ Pier Rebarwork, Formwork & Prep (1st Lift)	6	13-Jul-15	0%	6	20-Jul-15	21-Jan-16	27-Jan-16	151	0	0%																		
SE2A1200	E3D (E2a1) - Type 4B-MJ Pier Concreting, Curing & Striking, CJ prep (1st Lift)	3	21-Jul-15	0%	3	23-Jul-15	28-Jan-16	30-Jan-16	151	0	0%																		
SE2A1300	E3D (E2a1) - Type 4B-MJ Pier Head Scaffolding	4	24-Jul-15	0%	4	28-Jul-15	01-Feb-16	04-Feb-16	151	0	0%																		
SE2A1310	E3D (E2a1) - Type 4B-MJ Pier Head Rebarwork, Formwork & Prep	10	30-Jul-15	0%	10	10-Aug-15	05-Feb-16	19-Feb-16	151	0	0%																		
SE2A1330	E3D (E2a1) - Type 4B-MJ Pier Head Concreting	1	12-Aug-15	0%	1	12-Aug-15	20-Feb-16	20-Feb-16	151	0	0%																		
SE2A1340	E3D (E2a1) - Type 4B-MJ Pier Head Curing/Striking of Forms/Remove Scaffolding	6	13-Aug-15	0%	6	19-Aug-15	22-Feb-16	27-Feb-16	151	0	0%																		
<b>Pier Head Segements - E3A,E3B, E3C &amp; E3D</b>																													
<b>Pier Head Segment - E3A (E2a4)</b>																													
SE2A4370	E3A (E2a4) - Pier Head Segment - Temporary Platform	2	10-Aug-15	0%	2	12-Aug-15	08-Jan-15	09-Jan-15	-160	41	0%																		
<b>E4A &amp; E4B (E2b - 1/2)</b>																													
<b>Pile Cap Works - E4A &amp; E4B</b>																													
<b>Pile Cap Works</b>																													
SE2B0090	E4 (E2b1/2) - Marine Pile Cap - Inst.Access & make Watertight	6	16-Mar-15 A	100%	0	28-Apr-15 A					100%																		
SE2B0100	E4 (E2b1/2) - Marine Pile Cap - Weld Fin Plates / Plug Rebar & Concrete	2	29-Apr-15 A	100%	0	09-May-15 A					100%																		
SE2B0110	E4 (E2b1/2) - Marine Pile Cap - Dewater precast shell / Remove Lifting Frame	2	11-May-15 A	0%	2	23-May-15	12-Nov-14	13-Nov-14	-149	0	95%																		
SE2B0120	E4 (E2b1/2) - Marine Pile Cap - Pile cut down 4nr	6	26-May-15	0%	6	01-Jun-15	14-Nov-14	20-Nov-14	-149	0	0%																		
SE2B0130	E4 (E2b1/2) - Marine Pile Cap - Rebar fixing (1st pour)	6	02-Jun-15	0%	6	10-Jun-15	21-Nov-14	27-Nov-14	-149	0	0%																		
SE2B0140	E4 (E2b1/2) - Marine Pile Cap - Concreting (First pour)	1	12-Jun-15	0%	1	12-Jun-15	28-Nov-14	28-Nov-14	-149	0	0%																		
SE2B0150	E4 (E2b1/2) - Marine Pile Cap - CJ preparation	2	13-Jun-15	0%	2	15-Jun-15	29-Nov-14	01-Dec-14	-149	0	0%																		
SE2B0160	E4 (E2b1/2) - Marine Pile Cap - Rebar fixing (Final pour)	4	16-Jun-15	0%	4	22-Jun-15	02-Dec-14	05-Dec-14	-149	0	0%																		
SE2B0162	E4 (E2b1/2) - Marine Pile Cap - Concreting (Final pour)	1	24-Jun-15	0%	1	24-Jun-15	06-Dec-14	06-Dec-14	-149	0	0%																		
SE2B0164	E4 (E2b1/2) - Marine Pile Cap - Curing incl. CJ preparation	4	26-Jun-15	0%	4	30-Jun-15	08-Dec-14	11-Dec-14	-149	0	0%																		
<b>Pier Works - E4A &amp; E4B</b>																													
<b>Pier Works - E4A (E2b2)</b>																													
SE2B2020	E4A (E2b2) - Seagull Pier Falsework & Scaffolding (1st wall pour)	2	02-Jul-15	0%	2	03-Jul-15	12-Dec-14	13-Dec-14	-149	0	0%																		
SE2B2030	E4A (E2b2) - Seagull Pier Rebar Fixing, Formwork & Prep (1st wall pour)	6	04-Jul-15	0%	6	10-Jul-15	15-Dec-14	20-Dec-14	-149	0	0%																		
SE2B2050	E4A (E2b2) - Seagull Pier Concreting, Curing & Striking, CJ Prep (1st wall pour)	3	11-Jul-15	0%	3	14-Jul-15	22-Dec-14	24-Dec-14	-149	0	0%																		
SE2B2070	E4A (E2b2) - Seagull Pier Falsework & Scaffolding (diaphragm slab, 2nd pour)	1	15-Jul-15	0%	1	15-Jul-15	27-Dec-14	27-Dec-14	-149	0	0%																		
SE2B2080	E4A (E2b2) - Seagull Pier Rebar Fixing, Formwork & Prep (diaphragm slab, 2nd pour)	6	17-Jul-15	0%	6	23-Jul-15	29-Dec-14	05-Jan-15	-149	0	0%																		
SE2B2100	E4A (E2b2) - Seagull Pier Concreting, Curing & Striking, CJ Prep (diaphragm, 2nd pour)	3	24-Jul-15	0%	3	27-Jul-15	06-Jan-15	08-Jan-15	-149	0	0%																		
SE2B2120	E4A (E2b2) - Seagull Pier Falsework & Scaffolding (3rd wall pour)	2	28-Jul-15	0%	2	30-Jul-15	09-Jan-15	10-Jan-15	-149	0	0%																		
SE2B2140	E4A (E2b2) - Seagull Pier Rebar Fixing, Formwork & Prep (3rd wall pour)	6	31-Jul-15	0%	6	06-Aug-15	12-Jan-15	17-Jan-15	-149	0	0%																		
SE2B2160	E4A (E2b2) - Seagull Pier Concreting, Curing & Striking, CJ Prep (3rd wall pour)	3	07-Aug-15	0%	3	10-Aug-15	19-Jan-15	21-Jan-15	-149	0	0%																		
SE2B2300	E4A (E2b2) - Seagull Pier Falsework & Scaffolding (top slab, 4th pour)	2	08-Aug-15	0%	2	10-Aug-15	20-Jan-15	21-Jan-15	-149	0	0%																		
SE2B2320	E4A (E2b2) - Seagull Pier Rebar Fixing, Formwork & Prep (top slab, 4th pour)	6	12-Aug-15	0%	6	18-Aug-15	22-Jan-15	28-Jan-15	-149	0	0%																		
SE2B2340	E4A (E2b2) - Seagull Pier Concreting, Curing & Striking, CJ Prep (top slab, 4th pour)	4	19-Aug-15	0%	4	24-Aug-15	29-Jan-15	02-Feb-15	-149	0	0%																		
<b>Pier Works - E4B (E2b1)</b>																													
SE2B1020	E4B (E2b1) - Seagull Pier Falsework & Scaffolding (1st wall pour)	3	17-Jul-15	0%	3	20-Jul-15	26-Jan-15	28-Jan-15	-126	0	0%																		
SE2B1030	E4B (E2b1) - Seagull Pier Rebar Fixing, Formwork & Prep (1st wall pour)	6	21-Jul-15	0%	6	27-Jul-15	29-Jan-15	04-Feb-15	-126	0	0%																		
SE2B1050	E4B (E2b1) - Seagull Pier Concreting, Curing & Striking, CJ Prep (1st wall pour)	3	28-Jul-15	0%	3	31-Jul-15	05-Feb-15	07-Feb-15	-126	0	0%																		
SE2B1180	E4B (E2b1) - Seagull Pier Falsework & Scaffolding (diaphragm slab, 2nd pour)	2	01-Aug-15	0%	2	03-Aug-15	09-Feb-15	10-Feb-15	-126	0	0%																		
SE2B1200	E4B (E2b1) - Seagull Pier Rebar Fixing, Formwork & Prep (diaphragm slab, 2nd pour)	6	04-Aug-15	0%	6	10-Aug-15	11-Feb-15	17-Feb-15	-126	0	0%																		
SE2B1220	E4B (E2b1) - Seagull Pier Concreting, Curing & Striking, CJ Prep (diaphragm, 2nd pour)	3	12-Aug-15	0%	3	14-Aug-15	18-Feb-15	24-Feb-15	-126	0	0%																		
SE2B1240	E4B (E2b1) - Seagull Pier Falsework & Scaffolding (3rd wall pour)	2	15-Aug-15	0%	2	17-Aug-15	25-Feb-15	26-Feb-15	-126	0	0%																		
SE2B1260	E4B (E2b1) - Seagull Pier Rebar Fixing, Formwork & Prep (3rd wall pour)	6	18-Aug-15	0%	6	25-Aug-15	27-Feb-15	05-Mar-15	-126	0	0%																		

Activity ID	Activity Name	Orig. Durn.	Act. Start / FC Early Start	Duration % Complete	Rem. Durn.	Act. Finish / FC Early Finish	Late Start	Late Finish	Total Float	Free Float	Physical % Complete	2015																					
												May				June				July				August									
												20	27	04	11	18	25	01	08	15	22	29	06	13	20	27	03	10	17				
<b>E5A &amp; E5B (E2c - 1/2)</b>																																	
<b>Foundation Works - E5A &amp; E5B</b>																																	
<b>Foundation Works</b>																																	
GFX049	E5 (E2c) - Dismantle Temporary Removable Piling Platform	9	18-Apr-15 A	100%	0	28-Apr-15 A					100%																						
<b>Pile Cap Works - E5A &amp; E5B</b>																																	
<b>Pile Cap Works</b>																																	
SE2C007	E5 (E2c1/2) - Marine Pile Cap - Inst.Floating Seal & Casing Head Steelwork	6	22-May-15	0%	6	29-May-15	25-Mar-15	31-Mar-15	-41	0	0%																						
SE2C008	E5 (E2c1/2) - Marine Pile Cap - Install precast shell in position (3 units)	4	30-May-15	0%	4	04-Jun-15	01-Apr-15	09-Apr-15	-41	0	0%																						
SE2C009	E5 (E2c1/2) - Marine Pile Cap - Inst.Access & make Watertight	6	05-Jun-15	0%	6	13-Jun-15	10-Apr-15	17-Apr-15	-41	0	0%																						
SE2C010	E5 (E2c1/2) - Marine Pile Cap - Weld Fin Plates / Plug Rebar & Concrete	2	15-Jun-15	0%	2	16-Jun-15	18-Apr-15	20-Apr-15	-41	0	0%																						
SE2C011	E5 (E2c1/2) - Marine Pile Cap - Dewater precast shell / Remove Lifting Frame	2	18-Jun-15	0%	2	19-Jun-15	21-Apr-15	22-Apr-15	-41	0	0%																						
SE2C012	E5 (E2c1/2) - Marine Pile Cap - Pile cut down 4nr	9	22-Jun-15	0%	9	04-Jul-15	24-Apr-15	05-May-15	-41	0	0%																						
SE2C013	E5 (E2c1/2) - Marine Pile Cap - Rebar fixing (1st pour)	8	06-Jul-15	0%	8	14-Jul-15	06-May-15	15-May-15	-41	0	0%																						
SE2C014	E5 (E2c1/2) - Marine Pile Cap - Concreting (First pour)	1	15-Jul-15	0%	1	15-Jul-15	16-May-15	16-May-15	-41	0	0%																						
SE2C015	E5 (E2c1/2) - Marine Pile Cap - CJ preparation	3	17-Jul-15	0%	3	20-Jul-15	18-May-15	20-May-15	-41	0	0%																						
SE2C016	E5 (E2c1/2) - Marine Pile Cap - Rebar fixing (Final pour)	6	21-Jul-15	0%	6	27-Jul-15	22-May-15	29-May-15	-41	0	0%																						
SE2C017	E5 (E2c1/2) - Marine Pile Cap - Concreting (Final pour)	1	28-Jul-15	0%	1	28-Jul-15	30-May-15	30-May-15	-41	0	0%																						
SE2C018	E5 (E2c1/2) - Marine Pile Cap - Curing incl. CJ preparation	6	30-Jul-15	0%	6	05-Aug-15	01-Jun-15	08-Jun-15	-41	0	0%																						
<b>Pier Works - E5A &amp; E5B</b>																																	
<b>Pier Works - E5A (E2c2)</b>																																	
SE2C202	E5A (E2c2) - Seagull Pier Falsework & Scaffolding (1st wall pour)	3	03-Aug-15	0%	3	05-Aug-15	05-Jun-15	08-Jun-15	-41	0	0%																						
SE2C203	E5A (E2c2) - Seagull Pier Rebar Fixing, Formwork & Prep (1st wall pour)	7	06-Aug-15	0%	7	14-Aug-15	10-Jun-15	19-Jun-15	-41	0	0%																						
SE2C204	E5A (E2c2) - Seagull Pier Concreting, Curing & Striking, CJ Prep (1st wall pour)	3	15-Aug-15	0%	3	18-Aug-15	26-Jun-15	29-Jun-15	-39	0	0%																						
SE2C207	E5A (E2c2) - Seagull Pier Falsework & Scaffolding (diaphragm slab, 2nd pour)	2	19-Aug-15	0%	2	21-Aug-15	30-Jun-15	02-Jul-15	-39	0	0%																						
<b>Pier Works - E5B (E2c1)</b>																																	
SE2C102	E5B (E2c1) - Seagull Pier Falsework & Scaffolding (1st wall pour)	3	15-Aug-15	0%	3	18-Aug-15	22-Jun-15	26-Jun-15	-41	0	0%																						
SE2C103	E5B (E2c1) - Seagull Pier Rebar Fixing, Formwork & Prep (1st wall pour)	7	19-Aug-15	0%	7	27-Aug-15	27-Jun-15	06-Jul-15	-41	0	0%																						
<b>E6A &amp; E6B (E2d - 1/2)</b>																																	
<b>Foundation Works - E6A &amp; E6B</b>																																	
<b>Foundation Works</b>																																	
GFX052	E6 (E2d) - Bored Piles (2.50m dia. x 4 nr)	72	10-Feb-15 A	75%	18	11-Jun-15	08-Apr-15	28-Apr-15	-36	0	75%																						
GFX053	E6 (E2d) - Sonic & Interface Coring	19	12-Jun-15	0%	19	06-Jul-15	29-Apr-15	21-May-15	-36	0	0%																						
GFX054	E6 (E2d) - Selection of bored pile for Full Depth Coring	6	29-Jun-15	0%	6	06-Jul-15	15-May-15	21-May-15	-36	0	0%																						
GFX055	E6 (E2d) - Bored Pile Full Depth Coring & Testing	24	07-Jul-15	0%	24	03-Aug-15	22-May-15	19-Jun-15	-36	0	0%																						
GFX054	E6 (E2d) - Dismantle Temporary Removable Piling Platform	6	04-Aug-15	0%	6	10-Aug-15	22-Jun-15	27-Jun-15	-36	0	0%																						
<b>Pile Cap Works - E6A &amp; E6B</b>																																	
<b>Pile Cap Works</b>																																	
SE2D007	E6 (E2d1/2) - Marine Pile Cap - Inst.Floating Seal & Casing Head Steelwork	6	12-Aug-15	0%	6	18-Aug-15	29-Jun-15	06-Jul-15	-34	0	0%																						
SE2D008	E6 (E2d1/2) - Marine Pile Cap - Install precast shell in position (3 units)	4	19-Aug-15	0%	4	24-Aug-15	07-Jul-15	10-Jul-15	-34	0	0%																						
<b>E7A &amp; E7B (E2e - 1/2)</b>																																	
<b>Foundation Works - E7A &amp; E7B</b>																																	
<b>Foundation Works</b>																																	
GFX057	E7 (E2e) - Bored Piles (2.50m dia. x 4 nr)	78	10-Feb-15 A	60%	31	29-Jun-15	05-Mar-15	15-Apr-15	-60	0	0%																						
GFX058	E7 (E2e) - Sonic & Interface Coring	12	29-Jun-15	0%	12	14-Jul-15	16-Apr-15	29-Apr-15	-60	0	0%																						
GFX059	E7 (E2e) - Selection of bored pile for Full Depth Coring	4	09-Jul-15	0%	4	14-Jul-15	25-Apr-15	29-Apr-15	-60	0	0%																						
GFX055	E7 (E2e) - Bored Pile Full Depth Coring & Testing	22	14-Jul-15	0%	22	08-Aug-15	30-Apr-15	27-May-15	-60	0	0%																						
GFX059	E7 (E2e) - Dismantle Temporary Removable Piling Platform	6	08-Aug-15	0%	6	15-Aug-15	28-May-15	03-Jun-15	-60	0	0%																						
<b>Pile Cap Works - E7A &amp; E7B</b>																																	

<ul style="list-style-type: none"> <li><span style="color: blue;">■</span> Actual Work</li> <li><span style="color: green;">■</span> Planned Bar</li> <li><span style="color: red;">■</span> Critical Bar</li> <li><span style="color: black;">◆</span> Milestone</li> </ul>	Project ID: J3518DWPPrE1-M24 Layout: J3518-DWP-3MRP Submission - M24 Filter: TASK filters: 3-Month Lookahead, No CC Milestones, No Level of Effort.	<b>Tuen Mun - Chek Lap Kok Link - Southern Connection</b> <b>3-Month Rolling Programme (Page 35 of 44 Pages)</b> <b>(Progress as of 21-May-15)</b>	<table border="1"> <tr> <th>Date</th> <th>Revision</th> <th>Checked</th> <th>Approved</th> </tr> <tr> <td>29-May-15</td> <td></td> <td>WY</td> <td></td> </tr> </table>	Date	Revision	Checked	Approved	29-May-15		WY		<b>DWG. No.:</b> <b>J3518/GCL/PGM/3MRP-M24</b>
Date	Revision	Checked	Approved									
29-May-15		WY										

Activity ID	Activity Name	Orig. Durn.	Act. Start / FC Early Start	Duration % Complete	Rem. Durn.	Act. Finish / FC Early Finish	Late Start	Late Finish	Total Float	Free Float	Physical % Complete	2015																
												May				June				July				August				
												20	27	04	11	18	25	01	08	15	22	29	06	13	20	27	03	10
<b>Pile Cap Works</b>																												
SE2E0070	E7 (E2e1/2) - Marine Pile Cap - Inst.Floating Seal & Casing Head Steelwork	6	15-Aug-15	0%	6	24-Aug-15	04-Jun-15	12-Jun-15	-52	0	0%																	
<b>E8A &amp; E8B (E2f - 1/2)</b>																												
<b>Foundation Works - E8A &amp; E8B</b>																												
<b>Foundation Works</b>																												
GFX064	E8 (E2f) - Dismantle Temporary Removable Piling Platform	7	13-Apr-15 A	100%	0	24-Apr-15 A					100%																	
<b>E9A &amp; E9B (E2g - 1/2)</b>																												
<b>Pile Cap Works - E9A &amp; E9B</b>																												
<b>Pile Cap Works</b>																												
SE2G00	E9 (E2g1/2) - Marine Pile Cap - Inst.Access & make Watertight	6	23-Mar-15 A	100%	0	28-Apr-15 A					100%																	
SE2G01	E9 (E2g1/2) - Marine Pile Cap - Weld Fin Plates / Plug Rebar & Concrete	2	29-Apr-15 A	100%	0	06-May-15 A					100%																	
SE2G011	E9 (E2g1/2) - Marine Pile Cap - Dewater precast shell / Remove Lifting Frame	2	07-May-15 A	100%	0	13-May-15 A					100%																	
SE2G012	E9 (E2g1/2) - Marine Pile Cap - Pile cut down 6nr	9	14-May-15 A	11.11%	8	01-Jun-15	12-Dec-14	20-Dec-14	-123	0	10%																	
SE2G013	E9 (E2g1/2) - Marine Pile Cap - Rebar fixing (1st pour)	8	02-Jun-15	0%	8	13-Jun-15	22-Dec-14	02-Jan-15	-123	0	0%																	
SE2G014	E9 (E2g1/2) - Marine Pile Cap - Concreting (First pour)	1	15-Jun-15	0%	1	15-Jun-15	03-Jan-15	03-Jan-15	-123	0	0%																	
SE2G015	E9 (E2g1/2) - Marine Pile Cap - CJ preparation	3	16-Jun-15	0%	3	19-Jun-15	05-Jan-15	07-Jan-15	-123	0	0%																	
SE2G016	E9 (E2g1/2) - Marine Pile Cap - Rebar fixing (Final pour)	6	22-Jun-15	0%	6	30-Jun-15	08-Jan-15	14-Jan-15	-123	0	0%																	
SE2G017	E9 (E2g1/2) - Marine Pile Cap - Concreting (Final pour)	1	02-Jul-15	0%	1	02-Jul-15	15-Jan-15	15-Jan-15	-123	0	0%																	
SE2G018	E9 (E2g1/2) - Marine Pile Cap - Curing incl. CJ preparation	6	03-Jul-15	0%	6	09-Jul-15	16-Jan-15	22-Jan-15	-123	0	0%																	
<b>Pier Works - E9A &amp; E9B</b>																												
<b>Pier Works - E9A (E2g2)</b>																												
SE2G20	E9A (E2g2) - Seagull Pier Falsework & Scaffolding (1st wall pour)	4	25-Jul-15	0%	4	30-Jul-15	17-Apr-15	21-Apr-15	-71	0	0%																	
SE2G20	E9A (E2g2) - Seagull Pier Rebar Fixing, Formwork & Prep (1st wall pour)	6	31-Jul-15	0%	6	06-Aug-15	22-Apr-15	29-Apr-15	-71	0	0%																	
SE2G20	E9A (E2g2) - Seagull Pier Concreting, Curing & Striking, CJ Prep (1st wall pour)	3	07-Aug-15	0%	3	10-Aug-15	30-Apr-15	04-May-15	-71	0	0%																	
SE2G20	E9A (E2g2) - Seagull Pier Falsework & Scaffolding (2nd wall pour)	2	12-Aug-15	0%	2	13-Aug-15	05-May-15	06-May-15	-71	0	0%																	
SE2G20	E9A (E2g2) - Seagull Pier Rebar Fixing, Formwork & Prep (2nd wall pour)	6	14-Aug-15	0%	6	21-Aug-15	07-May-15	14-May-15	-71	0	0%																	
<b>Pier Works - E9B (E2g1)</b>																												
SE2G10	E9B (E2g1) - Seagull Pier Falsework & Scaffolding (1st wall pour)	4	03-Jul-15	0%	4	07-Jul-15	16-Jan-15	20-Jan-15	-123	0	0%																	
SE2G10	E9B (E2g1) - Seagull Pier Rebar Fixing, Formwork & Prep (1st wall pour)	6	08-Jul-15	0%	6	14-Jul-15	21-Jan-15	27-Jan-15	-123	0	0%																	
SE2G10	E9B (E2g1) - Seagull Pier Concreting, Curing & Striking, CJ Prep (1st wall pour)	3	15-Jul-15	0%	3	18-Jul-15	28-Jan-15	30-Jan-15	-123	0	0%																	
SE2G10	E9B (E2g1) - Seagull Pier Falsework & Scaffolding (2nd wall pour)	2	20-Jul-15	0%	2	21-Jul-15	31-Jan-15	02-Feb-15	-123	0	0%																	
SE2G10	E9B (E2g1) - Seagull Pier Rebar Fixing, Formwork & Prep (2nd wall pour)	6	22-Jul-15	0%	6	28-Jul-15	03-Feb-15	09-Feb-15	-123	0	0%																	
SE2G11	E9B (E2g1) - Seagull Pier Concreting, Curing & Striking, CJ Prep (2nd wall pour)	3	30-Jul-15	0%	3	01-Aug-15	10-Feb-15	12-Feb-15	-123	0	0%																	
SE2G11	E9B (E2g1) - Seagull Pier Falsework & Scaffolding (diaphragm slab, 3rd pour)	2	03-Aug-15	0%	2	04-Aug-15	13-Feb-15	14-Feb-15	-123	0	0%																	
SE2G11	E9B (E2g1) - Seagull Pier Rebar Fixing, Formwork & Prep (diaphragm slab, 3rd pour)	6	05-Aug-15	0%	6	12-Aug-15	16-Feb-15	25-Feb-15	-123	0	0%																	
SE2G11	E9B (E2g1) - Seagull Pier Concreting, Curing & Striking, CJ Prep (diaphragm, 3rd pour)	3	13-Aug-15	0%	3	15-Aug-15	26-Feb-15	28-Feb-15	-123	0	0%																	
SE2G11	E9B (E2g1) - Seagull Pier Falsework & Scaffolding (4th wall pour)	3	17-Aug-15	0%	3	19-Aug-15	02-Mar-15	04-Mar-15	-123	0	0%																	
<b>E10A &amp; E10B (E2h - 1/2)</b>																												
<b>Pile Cap Works - E10A &amp; E10B</b>																												
<b>Pile Cap Works</b>																												
SE2H00	E10 (E2h1/2) - Marine Pile Cap - Inst.Floating Seal & Casing Head Steelwork	6	30-Apr-15 A	100%	0	02-May-15 A					100%																	
SE2H00	E10 (E2h1/2) - Marine Pile Cap - Install precast shell in position (3 units)	4	02-May-15 A	100%	0	05-May-15 A					100%																	
SE2H00	E10 (E2h1/2) - Marine Pile Cap - Inst.Access & make Watertight	6	06-May-15 A	33.33%	4	27-May-15	19-Mar-15	23-Mar-15	-46	0	50%																	
SE2H01	E10 (E2h1/2) - Marine Pile Cap - Weld Fin Plates / Plug Rebar & Concrete	2	28-May-15	0%	2	29-May-15	24-Mar-15	25-Mar-15	-46	0	0%																	
SE2H01	E10 (E2h1/2) - Marine Pile Cap - Dewater precast shell / Remove Lifting Frame	2	30-May-15	0%	2	01-Jun-15	26-Mar-15	27-Mar-15	-46	0	0%																	
SE2H01	E10 (E2h1/2) - Marine Pile Cap - Pile cut down 6nr	9	02-Jun-15	0%	9	15-Jun-15	28-Mar-15	11-Apr-15	-46	0	0%																	
SE2H01	E10 (E2h1/2) - Marine Pile Cap - Rebar fixing (1st pour)	8	16-Jun-15	0%	8	29-Jun-15	13-Apr-15	22-Apr-15	-46	0	0%																	
SE2H01	E10 (E2h1/2) - Marine Pile Cap - Concreting (First pour)	1	30-Jun-15	0%	1	30-Jun-15	24-Apr-15	24-Apr-15	-46	0	0%																	

<ul style="list-style-type: none"> <li><span style="color: blue;">■</span> Actual Work</li> <li><span style="color: green;">■</span> Planned Bar</li> <li><span style="color: red;">■</span> Critical Bar</li> <li><span style="color: black;">◆</span> Milestone</li> </ul>	Project ID: J3518DWPPrE1-M24 Layout: J3518-DWP-3MRP Submission - M24 Filter: TASK filters: 3-Month Lookahead, No CC Milestones, No Level of Effort.	<b>Tuen Mun - Chek Lap Kok Link - Southern Connection</b> <b>3-Month Rolling Programme (Page 36 of 44 Pages)</b> <b>(Progress as of 21-May-15)</b>	<table border="1"> <tr> <th>Date</th> <th>Revision</th> <th>Checked</th> <th>Approved</th> </tr> <tr> <td>29-May-15</td> <td></td> <td>WY</td> <td></td> </tr> </table>	Date	Revision	Checked	Approved	29-May-15		WY		<b>DWG. No.:</b>  <b>J3518/GCL/PGM/3MRP-M24</b>
Date	Revision	Checked	Approved									
29-May-15		WY										

Activity ID	Activity Name	Orig. Durn.	Act. Start / FC Early Start	Duration % Complete	Rem. Durn.	Act. Finish / FC Early Finish	Late Start	Late Finish	Total Float	Free Float	Physical % Complete	2015																	
												May				June				July				August					
												20	27	04	11	18	25	01	08	15	22	29	06	13	20	27	03	10	17
SE2H01E	E10 (E2h1/2) - Marine Pile Cap - CJ preparation	3	02-Jul-15	0%	3	04-Jul-15	25-Apr-15	28-Apr-15	-46	0	0%																		
SE2H01E	E10 (E2h1/2) - Marine Pile Cap - Rebar fixing (Final pour)	6	06-Jul-15	0%	6	11-Jul-15	29-Apr-15	06-May-15	-46	0	0%																		
SE2H01E	E10 (E2h1/2) - Marine Pile Cap - Concreting (Final pour)	1	13-Jul-15	0%	1	13-Jul-15	07-May-15	07-May-15	-46	0	0%																		
SE2H01E	E10 (E2h1/2) - Marine Pile Cap - Curing incl. CJ preparation	6	14-Jul-15	0%	6	21-Jul-15	08-May-15	15-May-15	-46	0	0%																		
<b>Pier Works - E10A &amp; E10B</b>																													
<b>Pier Works - E10A (E2h2)</b>																													
SE2H20Z	E10A (E2h2) - Seagull Pier Falsework & Scaffolding (1st wall pour)	4	22-Jul-15	0%	4	25-Jul-15	19-May-15	23-May-15	-44	0	0%																		
SE2H20Z	E10A (E2h2) - Seagull Pier Rebar Fixing, Formwork & Prep (1st wall pour)	6	27-Jul-15	0%	6	03-Aug-15	26-May-15	01-Jun-15	-44	0	0%																		
SE2H20E	E10A (E2h2) - Seagull Pier Concreting, Curing & Striking, CJ Prep (1st wall pour)	3	04-Aug-15	0%	3	06-Aug-15	02-Jun-15	05-Jun-15	-44	0	0%																		
SE2H20Z	E10A (E2h2) - Seagull Pier Falsework & Scaffolding (2nd wall pour)	2	07-Aug-15	0%	2	08-Aug-15	20-Jul-15	21-Jul-15	-15	0	0%																		
SE2H20E	E10A (E2h2) - Seagull Pier Rebar Fixing, Formwork & Prep (2nd wall pour)	6	10-Aug-15	0%	6	17-Aug-15	22-Jul-15	28-Jul-15	-15	0	0%																		
SE2H21C	E10A (E2h2) - Seagull Pier Concreting, Curing & Striking, CJ Prep (2nd wall pour)	3	18-Aug-15	0%	3	21-Aug-15	30-Jul-15	01-Aug-15	-15	0	0%																		
<b>Pier Works - E10B (E2h1)</b>																													
SE2H10Z	E10B (E2h1) - Seagull Pier Falsework & Scaffolding (1st wall pour)	4	06-Aug-15	0%	4	10-Aug-15	02-Jun-15	06-Jun-15	-46	0	0%																		
SE2H10Z	E10B (E2h1) - Seagull Pier Rebar Fixing, Formwork & Prep (1st wall pour)	6	12-Aug-15	0%	6	18-Aug-15	08-Jun-15	16-Jun-15	-46	0	0%																		
SE2H10E	E10B (E2h1) - Seagull Pier Concreting, Curing & Striking, CJ Prep (1st wall pour)	3	19-Aug-15	0%	3	22-Aug-15	18-Jun-15	22-Jun-15	-46	0	0%																		
<b>Viaduct E5, E6, E7 &amp; E8</b>																													
<b>Milestones - Marine Foundation</b>																													
GFXX105	Piling Works Completion of E5E6a/E7E8a in Bridge E5 - E8	0		0%	0	21-May-15		30-Nov-18	1050	1050	0%																		
GFXX106	Piling Works Completion of E5b/E6b, E7b/E8b, Dolphin E5b & E8b in Bridge E5 - E8	0		0%	0	27-May-15		29-Apr-15	-22	3	0%																		
GFXX107	Piling Works Completion of E5c/E6c, Dolphin E5c in Bridge E5 - E8	0		0%	0	13-Aug-15		07-Feb-15	-148	35	0%																		
GFXX108	Piling Works Completion of E7c/E8c, Dolphin E8c in Bridge E7 - E8	0		0%	0	16-Jun-15		06-Aug-15	42	82	0%																		
<b>Milestones - Land Foundation</b>																													
GFXX012	Land Access to BCF (Available in Month 23)	0	03-Jun-15	0%	0		22-Sep-14		-254	0	0%																		
GFXX546-1	E14D (E5d) - Start date for piling	0	03-Aug-15	0%	0		29-Apr-15		-78	112	0%																		
GFXX547-1	E14C (E6d) - Start date for piling	0	03-Aug-15	0%	0		10-Aug-15		6	99	0%																		
<b>E11A &amp; E11B (E5E6a/E7E8a)</b>																													
<b>Foundation Works - E11A &amp; E11B</b>																													
<b>Foundation Works</b>																													
GFXX086	E11 (E5E6a/E7E8a) - Dismantle Temporary Removable Piling Platform in Pier E11	6	20-Apr-15 A	100%	0	14-May-15 A					100%																		
<b>Pile Cap Works - E11A &amp; E11B</b>																													
<b>Pile Cap Works</b>																													
SE5A0070	E11 (E5E6/E7E8a) - Marine Pile Cap - Inst.Floating Seal & Casing Head Steelwork	6	15-May-15 A	66.67%	2	23-May-15	05-Jan-15	06-Jan-15	-106	0	30%																		
SE5A0080	E11 (E5E6/E7E8a) - Marine Pile Cap - Install precast shell in position (4 units)	4	26-May-15	0%	4	29-May-15	07-Jan-15	10-Jan-15	-106	0	0%																		
SE5A0090	E11 (E5E6/E7E8a) - Marine Pile Cap - Inst.Access & make Watertight	4	30-May-15	0%	4	04-Jun-15	12-Jan-15	15-Jan-15	-106	0	0%																		
SE5A0100	E11 (E5E6/E7E8a) - Marine Pile Cap - Weld Fin Plates / Plug Rebar & Concrete	2	05-Jun-15	0%	2	06-Jun-15	16-Jan-15	17-Jan-15	-106	0	0%																		
SE5A0110	E11 (E5E6/E7E8a) - Marine Pile Cap - Dewater precast shell / Remove Lifting Frame	2	08-Jun-15	0%	2	10-Jun-15	19-Jan-15	20-Jan-15	-106	55	0%																		
<b>E12A, E12B, E12C &amp; E12D (E8b/E7b/E6b/E5b)</b>																													
<b>Foundation Works - E12</b>																													
<b>Foundation Works</b>																													
GFXX092	E12 (E5b/E6b/E7b/E8b) - Dismantle Removable Piling Platform in Pier E12	6	09-Apr-15 A	20%	5	27-May-15	24-Apr-15	29-Apr-15	-22	0	20%																		
GFXX621	E12 (E5bE8b) - Dismantle Removable Piling Platform in Pier E12 for Dolphins	6	09-Apr-15 A	20%	5	27-May-15	24-Aug-16	29-Aug-16	375	0	20%																		
<b>Pile Cap Works - E12A, E12B, E12C &amp; E12D</b>																													
<b>Pile Cap Works - Dolphin E12A (E8b)</b>																													
SE8BD070	E12A (E8b) Dolphin - Marine Pile Cap - Inst.precast.collar frame to perm.casing of Bored pile	3	30-May-15	0%	3	04-Jun-15	02-Sep-16	05-Sep-16	347	85	0%																		
<b>Pile Cap Works - Dolphin E12B (E5b)</b>																													
SE5BD070	E12B (E5b) Dolphin - Marine Pile Cap - Inst.precast.collar frame to permanent casing of Bore	3	27-May-15	0%	3	30-May-15	30-Aug-16	01-Sep-16	347	0	0%																		
SE5BD080	E12B (E5b) Dolphin - Marine Pile Cap - Install precast shell in position	2	12-Aug-15	0%	2	13-Aug-15	07-Sep-16	08-Sep-16	299	0	0%																		

■ Actual Work  
■ Planned Bar  
■ Critical Bar  
◆ Milestone

Project ID: J3518DWPrE1-M24  
 Layout: J3518-DWP-3MRP Submission - M24  
 Filter: TASK filters: 3-Month Lookahead, No CC Milestones, No Level of Effort.

**Tuen Mun - Chek Lap Kok Link - Southern Connection**  
**3-Month Rolling Programme (Page 37 of 44 Pages)**  
**(Progress as of 21-May-15)**

Date	Revision	Checked	Approved
29-May-15		WY	

**DWG. No.:**  
**J3518/GCL/PGM/3MRP-M24**

Activity ID	Activity Name	Orig. Durn.	Act. Start / FC Early Start	Duration % Complete	Rem. Durn.	Act. Finish / FC Early Finish	Late Start	Late Finish	Total Float	Free Float	Physical % Complete	2015																	
												May				June				July				August					
												20	27	04	11	18	25	01	08	15	22	29	06	13	20	27	03	10	17
SE5BD090	E12B (E5b) Dolphin - Marine Pile Cap - Temp fixings to casings	6	14-Aug-15	0%	6	21-Aug-15	09-Sep-16	15-Sep-16	299	0	0%																		
<b>E13A, E13B, E13C &amp; E13D (E8c/E7c/E6c/E5c)</b>																													
<b>Foundation Works - E13</b>																													
<b>Foundation Works - E13A (E8c) &amp; E13B (E7c)</b>																													
GFXX101	E13A/B (E8c/E7c) - Bored Piles (2.5m dia. x 10 nr)	172	27-Dec-14 A	100%	0	16-May-15 A					100%																		
GFXX103	E13A/B (E8c/E7c) - Sonic & Interface Coring	12	21-May-15	0%	12	04-Jun-15	13-Jul-15	25-Jul-15	42	0	0%																		
GFXX104	E13A/B (E8c/E7c) - Dismantle Temporary Removable Piling Platform	10	05-Jun-15	0%	10	16-Jun-15	27-Jul-15	06-Aug-15	42	0	0%																		
GFXX627	E13A/B (E8c/E7c) - Dolphin - Bored Piles (2.20m dia x 3nr)	40	27-Dec-14 A	50%	20	13-Jun-15	15-Jul-16	06-Aug-16	341	0	50%																		
GFXX629	E13A/B (E8c/E7c) - Dolphin - Sonic & Interface Coring	12	15-Jun-15	0%	12	29-Jun-15	08-Aug-16	20-Aug-16	341	0	0%																		
GFXX631	E13A/B (E8c/E7c) - Dolphin - Dismantle Temporary Removable Piling Platform	10	30-Jun-15	0%	10	11-Jul-15	22-Aug-16	01-Sep-16	341	68	0%																		
<b>Foundation Works - E13C (E6c) &amp; E13D (E5c)</b>																													
GFXX095	E13C/D (E6c/E5c) - Bored Piles (2.50m dia. x 10 nr)	128	23-Aug-14 A	60%	51	23-Jul-15	15-Nov-14	17-Jan-15	-148	0	60%																		
GFXX097	E13C/D (E6c/E5c) - Sonic & Interface Coring	12	23-Jul-15	0%	12	06-Aug-15	19-Jan-15	31-Jan-15	-148	0	0%																		
GFXX098	E13C/D (E6c/E5c) - Dismantle Temporary Removable Piling Platform	6	06-Aug-15	0%	6	13-Aug-15	02-Feb-15	07-Feb-15	-148	0	0%																		
GFXX637	E13C/D (E6c/E5c) - Dolphin - Bored Piles (2.20m dia x 3nr)	40	23-Aug-14 A	66%	14	06-Jun-15	22-Jul-16	06-Aug-16	347	0	66%																		
GFXX639	E13C/D (E6c/E5c) - Dolphin - Sonic & Interface Coring	12	06-Jun-15	0%	12	22-Jun-15	08-Aug-16	20-Aug-16	347	0	0%																		
GFXX641	E13C/D (E6c/E5c) - Dolphin - Dismantle Temporary Removable Piling Platform	10	22-Jun-15	0%	10	04-Jul-15	22-Aug-16	01-Sep-16	347	74	0%																		
<b>E14A, E14B, E14C &amp; E14D (E8d/E7d/E6d/E5d)</b>																													
<b>Foundation Works - E14</b>																													
GFXX545	Mobilization & Assembling Bored Pile Plant & Equipment for Viaducts in HKBCF	5	03-Jun-15	0%	5	08-Jun-15	22-Sep-14	26-Sep-14	-204	0	0%																		
<b>Foundation Works - E14A (E8d)</b>																													
GFXX544	E14A (E8d) - Pre-drilling for Piles (3 nos)	24	06-Jul-15	0%	24	04-Aug-15	06-Mar-15	02-Apr-15	-86	0	0%																		
GFXX544	E14A (E8d) - Confirm Rockhead levels	8	05-Aug-15	0%	8	14-Aug-15	08-Apr-15	17-Apr-15	-86	96	0%																		
<b>Foundation Works - E14B (E7d)</b>																													
GFXX544	E14B (E7d) - Pre-drilling for Piles (3 nos)	24	06-Aug-15	0%	24	04-Sep-15	02-Mar-15	28-Mar-15	-115	0	0%																		
<b>Foundation Works - E14C (E6d)</b>																													
GFXX544	E14C (E6d) - Pre-drilling for Piles (3 nos)	30	10-Jun-15	0%	30	22-Jul-15	30-Oct-14	03-Dec-14	-173	0	0%																		
GFXX544	E14C (E6d) - Confirm Rockhead levels	8	23-Jul-15	0%	8	01-Aug-15	04-Dec-14	12-Dec-14	-173	0	0%																		
GFXX547	E14C (E6d) - Bored Piles (2.20m dia. x 3 nos)	93	03-Aug-15	0%	93	28-Nov-15	13-Dec-14	11-Apr-15	-173	0	0%																		
<b>Foundation Works - E14D (E5d)</b>																													
GFXX544	E14D (E5d) - Pre-drilling for Piles (4 nos)	30	10-Jun-15	0%	30	22-Jul-15	18-Oct-14	22-Nov-14	-182	0	0%																		
GFXX544	E14D (E5d) - Confirm Rockhead levels	8	23-Jul-15	0%	8	01-Aug-15	24-Nov-14	02-Dec-14	-182	0	0%																		
GFXX546	E14D (E5d) - Bored Piles (2.20m dia. x 4 nos)	106	03-Aug-15	0%	106	14-Dec-15	03-Dec-14	17-Apr-15	-182	0	0%																		
<b>Viaduct F</b>																													
<b>Viaduct F1</b>																													
<b>General F1</b>																													
<b>Milestones</b>																													
GFXX553-8	F2 (F1c) - Start date for piling	0	18-Jul-15	0%	0		04-Feb-15		-130	74	0%																		
GFXX553-9	F3 (F1d) - Start date for piling	0	04-Jul-15	0%	0		26-Jun-15		-6	84	0%																		
<b>F1 (F1b)</b>																													
<b>Foundation Works</b>																													
GFXX553-1	F1 (F1b) - Pre-drilling for Piles (3 nos)	24	09-Jul-15	0%	24	05-Aug-15	29-Jan-15	28-Feb-15	-127	0	0%																		
GFXX553-4	F1 (F1b) - Confirm Rockhead Levels	8	06-Aug-15	0%	8	14-Aug-15	02-May-15	11-May-15	-79	48	0%																		
<b>F2 (F1c)</b>																													
<b>Foundation Works</b>																													
GFXX553-2	F2 (F1c) - Pre-drilling for Piles (3 nos)	24	09-Jun-15	0%	24	08-Jul-15	27-Sep-14	27-Oct-14	-204	0	0%																		
GFXX553-5	F2 (F1c) - Confirm Rockhead Levels	8	09-Jul-15	0%	8	17-Jul-15	28-Oct-14	05-Nov-14	-204	0	0%																		
GFXX556	F2 (F1c) - Bored Piles (1.80m dia. x 3 nos)	74	18-Jul-15	0%	74	14-Oct-15	06-Nov-14	03-Feb-15	-204	0	0%																		

<ul style="list-style-type: none"> <li><span style="color: blue;">█</span> Actual Work</li> <li><span style="color: green;">█</span> Planned Bar</li> <li><span style="color: red;">█</span> Critical Bar</li> <li>◆ Milestone</li> </ul>	Project ID: J3518DWPPrE1-M24 Layout: J3518-DWP-3MRP Submission - M24 Filter: TASK filters: 3-Month Lookahead, No CC Milestones, No Level of Effort.	<b>Tuen Mun - Chek Lap Kok Link - Southern Connection</b> <b>3-Month Rolling Programme (Page 38 of 44 Pages)</b> <b>(Progress as of 21-May-15)</b>	Date: 29-May-15 Revision: Checked: WY Approved:	<b>DWG. No.:</b> <b>J3518/GCL/PGM/3MRP-M24</b>
---	---	--	--	---

Activity ID	Activity Name	Orig. Durn.	Act. Start / FC Early Start	Duration% Complete	Rem. Durn.	Act. Finish / FC Early Finish	Late Start	Late Finish	Total Float	Free Float	Physical % Complete	2015																					
												May				June				July				August									
												20	27	04	11	18	25	01	08	15	22	29	06	13	20	27	03	10	17				
<b>F3 (F1d)</b>																																	
<b>Foundation Works</b>																																	
GFXX553-3	F3 (F1d) - Pre-drilling for Piles (3 nos)	24	02-Mar-15 A	45.83%	13	05-Jun-15	16-Dec-14	02-Jan-15	-123	0	0%	[Gantt bar: 02-Jan-15 to 02-Jan-15]																					
GFXX553-6	F3 (F1d) - Confirm Rockhead Levels	8	06-Jun-15	0%	8	15-Jun-15	15-Jan-15	23-Jan-15	-113	14	0%	[Gantt bar: 23-Jan-15 to 23-Jan-15]																					
GFXX557	F3 (F1d) - Bored Piles (1.80m dia. x 3 nos)	84	04-Jul-15	0%	84	12-Oct-15	24-Jan-15	11-May-15	-127	0	0%	[Gantt bar: 11-May-15 to 11-May-15]																					
<b>Viaduct F2</b>																																	
<b>General F2</b>																																	
<b>Milestones</b>																																	
GFXX561-	F6 (F2d) - Start date for piling	0	04-Jul-15	0%	0		18-Apr-15		-62	72	0%	[Milestone diamond: 18-Apr-15]																					
GFXX561-9	F5 (F2c) - Start date for piling	0	04-Jul-15	0%	0		06-Jul-15		1	72	0%	[Milestone diamond: 06-Jul-15]																					
<b>F4 (F2b)</b>																																	
<b>Foundation Works</b>																																	
GFXX561-1	F4 (F2b) - Pre-drilling for piles (3 nos)	24	09-Jun-15	0%	24	08-Jul-15	03-Jan-15	30-Jan-15	-125	0	0%	[Gantt bar: 30-Jan-15 to 30-Jan-15]																					
GFXX561-6	F4 (F2b) - Confirm Rockhead Levels	8	09-Jul-15	0%	8	17-Jul-15	01-Apr-15	14-Apr-15	-77	60	0%	[Gantt bar: 14-Apr-15 to 14-Apr-15]																					
<b>F5 (F2c)</b>																																	
<b>Foundation Works</b>																																	
GFXX561-2	F5 (F2c) - Pre-drilling for Piles (3 nos)	24	31-Mar-15 A	83.33%	4	26-May-15	29-Dec-14	02-Jan-15	-114	0	0%	[Gantt bar: 02-Jan-15 to 02-Jan-15]																					
GFXX561-8	F5 (F2c) - Confirm Rockhead Levels	8	27-May-15	0%	8	04-Jun-15	03-Jan-15	12-Jan-15	-114	23	0%	[Gantt bar: 12-Jan-15 to 12-Jan-15]																					
GFXX564	F5 (F2c) - Bored Piles (1.80m dia. x 3 nos)	72	04-Jul-15	0%	72	25-Sep-15	13-Jan-15	14-Apr-15	-137	0	0%	[Gantt bar: 14-Apr-15 to 14-Apr-15]																					
<b>F6 (F2d)</b>																																	
<b>Foundation Works</b>																																	
GFXX561-	F6 (F2d) - Confirm Rockhead Levels	8	15-Apr-15 A	62.5%	3	23-May-15	13-Jan-15	16-Jan-15	-102	32	0%	[Gantt bar: 16-Jan-15 to 16-Jan-15]																					
GFXX565	F6 (F2d) - Bored Piles (1.80m dia. x 3 nos)	72	04-Jul-15	0%	72	25-Sep-15	16-Jan-15	18-Apr-15	-134	0	0%	[Gantt bar: 18-Apr-15 to 18-Apr-15]																					
<b>Viaduct F3</b>																																	
<b>General F3</b>																																	
<b>Milestones</b>																																	
GFXX571-6	F9 (F3d) - Start date for piling	0	04-Jul-15	0%	0		15-Jun-15		-15	84	0%	[Milestone diamond: 15-Jun-15]																					
GFXX571-8	F10 (F3c) - Start date for piling	0	15-Jul-15	0%	0		18-Aug-15		29	72	0%	[Milestone diamond: 18-Aug-15]																					
<b>F9 (F3d-1/F3d-2)</b>																																	
<b>Foundation Works - F9 (F3d-1/F3d-2)</b>																																	
<b>Foundation Works</b>																																	
GFXX571	F9 (F3d) - Pre-drilling for Piles (4 nos)	24	09-Mar-15 A	83.33%	4	26-May-15	14-Nov-14	18-Nov-14	-150	0	0%	[Gantt bar: 18-Nov-14 to 18-Nov-14]																					
GFXX571	F9 (F3d) - Confirm Rockhead Levels	8	27-May-15	0%	8	04-Jun-15	19-Nov-14	27-Nov-14	-150	23	0%	[Gantt bar: 27-Nov-14 to 27-Nov-14]																					
GFXX575	F9 (F3d) - Bored Piles (1.80m dia. x 4 nos)	84	04-Jul-15	0%	84	12-Oct-15	28-Nov-14	12-Mar-15	-173	0	0%	[Gantt bar: 12-Mar-15 to 12-Mar-15]																					
<b>F10 (F3c-1/F3c-2)</b>																																	
<b>Foundation Works - Pier F10</b>																																	
<b>Foundation Works</b>																																	
GFXX571	F10 (F3c) - Pre-drilling for Piles (4 nos)	24	05-Jun-15	0%	24	04-Jul-15	03-Feb-15	05-Mar-15	-96	0	0%	[Gantt bar: 05-Mar-15 to 05-Mar-15]																					
GFXX571	F10 (F3c) - Confirm Rockhead Levels	8	06-Jul-15	0%	8	14-Jul-15	13-May-15	22-May-15	-43	0	0%	[Gantt bar: 22-May-15 to 22-May-15]																					
GFXX574	F10 (F3c) - Bored Piles (1.80m dia. x 4 nos)	72	15-Jul-15	0%	72	08-Oct-15	22-May-15	18-Aug-15	-43	0	0%	[Gantt bar: 18-Aug-15 to 18-Aug-15]																					
<b>Viaduct F5</b>																																	
<b>General F5</b>																																	
<b>Milestones</b>																																	
GFXX586-5	F13 (F5d) - Start date for piling	0	18-Jul-15	0%	0		11-Nov-15		96	84	0%	[Milestone diamond: 11-Nov-15]																					
<b>F13 (F5d)</b>																																	
<b>Foundation Works</b>																																	
GFXX586-1	F13 (F5d) - Pre-drilling for Piles (3 nos)	24	09-Jun-15	0%	24	08-Jul-15	05-Jan-15	31-Jan-15	-124	0	0%	[Gantt bar: 31-Jan-15 to 31-Jan-15]																					
GFXX586-4	F13 (F5d) - Confirm Rockhead Levels	8	09-Jul-15	0%	8	17-Jul-15	02-Feb-15	10-Feb-15	-124	0	0%	[Gantt bar: 10-Feb-15 to 10-Feb-15]																					

█ Actual Work  
█ Planned Bar  
█ Critical Bar  
◆ Milestone

Project ID: J3518DWPPrE1-M24  
 Layout: J3518-DWP-3MRP Submission - M24  
 Filter: TASK filters: 3-Month Lookahead, No CC Milestones, No Level of Effort.

**Tuen Mun - Chek Lap Kok Link - Southern Connection**  
**3-Month Rolling Programme (Page 39 of 44 Pages)**  
**(Progress as of 21-May-15)**

Date	Revision	Checked	Approved
29-May-15		WY	

**DWG. No.:**  
**J3518/GCL/PGM/3MRP-M24**







Activity ID	Activity Name	Orig. Durn.	Act. Start / FC Early Start	Duration% Complete	Rem. Durn.	Act. Finish / FC Early Finish	Late Start	Late Finish	Total Float	Free Float	Physical % Complete	2015																	
												May				June				July				August					
												20	27	04	11	18	25	01	08	15	22	29	06	13	20	27	03	10	17
C200030-1	Pier C14 (C2d) ready for Viaduct C2 PH segment erection	0		0%	0	04-Aug-15		19-Mar-16	181	0	0%	◆																	
<b>Bridge C1 Superstructure</b>																													
<b>Milestones</b>																													
<b>Milestones Ready for PH Segment Erection</b>																													
C100010-1	Pier C20 (C1c) ready for Viaduct C1 PH segment erection	0		0%	0	30-May-15		05-Mar-16	215	0	0%	◆																	
C100020-1	Pier C19 (C1d) ready for Viaduct C1 PH segment erection	0		0%	0	18-Jun-15		30-Dec-15	150	0	0%	◆																	
<b>Viaduct D Superstructure</b>																													
<b>Bridge D3 Superstructure</b>																													
<b>Milestones</b>																													
<b>Milestones Ready for PH Segment Erection</b>																													
D300040-1	Pier D3 (D4d) ready for Viaduct D3 PH segment erection	0		0%	0	14-Jul-15		12-Nov-15	92	0	0%	◆																	
D300050-1	Pier D2 (D4e) ready for Viaduct D3 PH segment erection	0		0%	0	24-Jul-15		27-Nov-15	98	94	0%	◆																	
D300060-1	Pier D1 (D4f) ready for Viaduct D3 PH segment erection	0		0%	0	08-Jun-15		22-Apr-15	-34	13	0%	◆																	
<b>Bridge D2 Superstructure</b>																													
<b>Milestones</b>																													
<b>Milestones Ready for PH Segment Erection</b>																													
D200050-1	Pier D9 (D3c) ready for Viaduct D2 PH segment erection	0		0%	0	21-Jul-15		10-Jun-15	-28	0	0%	◆																	
D200060-1	Pier D8 (D3d) ready for Viaduct D2 PH segment erection	0		0%	0	05-Aug-15		11-May-15	-61	0	0%	◆																	
<b>Bridge D1 Superstructure</b>																													
<b>Milestones</b>																													
<b>Milestones Ready for PH Segment Erection</b>																													
D100010-1	Pier D19 (D1b) ready for Viaduct D1 PH segment erection	0		0%	0	07-Jul-15		12-Oct-15	75	0	0%	◆																	
D100020-1	Pier D18 (D1c) ready for Viaduct D1 PH segment erection	0		0%	0	30-May-15		12-Nov-15	123	19	0%	◆																	
D100030-1	Pier D17 (D1d) ready for Viaduct D1 PH segment erection	0		0%	0	12-Jun-15		15-Aug-15	47	0	0%	◆																	
D100050-1	Pier D15 (D2b) ready for Viaduct D1 PH segment erection	0		0%	0	30-Jul-15		03-Oct-15	50	0	0%	◆																	
<b>Viaduct E</b>																													
<b>Bridge E1 Superstructure</b>																													
<b>Milestones</b>																													
<b>Milestones Ready for PH Segment Erection</b>																													
E100020-1	Pier C1 (C4e) ready for Viaduct E1 PH segment erection	0		0%	0	22-Jun-15		31-Mar-15	-56	0	0%	◆																	
E100030-1	Pier D1 (D4f) ready for Viaduct E1 PH segment erection	0		0%	0	08-Jun-15		22-Apr-15	-34	13	0%	◆																	
E100050-1	Pier E1D (E1a1) ready for Viaduct E1 PH segment erection	0		0%	0	12-Aug-15		17-Feb-16	147	0	0%	◆																	
E100070-1	Pier E1B (E1a3) ready for Viaduct E1 PH segment erection	0		0%	0	13-Jun-15		19-Mar-15	-62	0	0%	◆																	
E100080-1	Pier E1A (E1a4) ready for Viaduct E1 PH segment erection	0		0%	0	02-Jun-15		22-Nov-14	-149	0	0%	◆																	
E100090-1	Pier E2D (E1b1) ready for Viaduct E1 PH segment erection	0		0%	0	12-Aug-15		22-Feb-16	152	0	0%	◆																	
E100100-1	Pier E2C (E1b2) ready for Viaduct E1 PH segment erection	0		0%	0	12-Aug-15		16-Mar-15	-107	92	0%	◆																	
E100110-1	Pier E2B (E1b3) ready for Viaduct E1 PH segment erection	0		0%	0	18-Aug-15		08-Jan-15	-167	0	0%	◆																	
E100120-1	Pier E2A (E1b4) ready for Viaduct E1 PH segment erection	0		0%	0	04-Aug-15		13-Dec-14	-174	0	0%	◆																	
E100130-1	Pier E3D (E2a1) ready for Viaduct E1 PH segment erection	0		0%	0	19-Aug-15		27-Feb-16	151	66	0%	◆																	
E100140-1	Pier E3C (E2a2) ready for Viaduct E1 PH segment erection	0		0%	0	19-Aug-15		24-Feb-15	-130	55	0%	◆																	
E100150-1	Pier E3B (E2a3) ready for Viaduct E1 PH segment erection	0		0%	0	08-Aug-15		30-Jan-15	-140	52	0%	◆																	
E100160-1	Pier E3A (E2a4) ready for Viaduct E1 PH segment erection	0		0%	0	08-Aug-15		07-Jan-15	-160	0	0%	◆																	
<b>Milestones Ready for Deck Segment Erection</b>																													
E100070	Pier E1B (E1a3) ready for Viaduct E1 deck segment erection	0		0%	0	30-Jul-15		04-May-15	-62	137	0%	◆																	
E100080	Pier E1A (E1a4) ready for Viaduct E1 deck segment erection	0		0%	0	21-Jul-15		02-Jan-15	-149	41	0%	◆																	
<b>Bridge E2 Superstructure</b>																													
<b>Milestones</b>																													
<b>Milestones Ready for PH Segment Erection</b>																													

■ Actual Work  
■ Planned Bar  
■ Critical Bar  
◆ Milestone

Project ID: J3518DWP-E1-M24  
 Layout: J3518-DWP-3MRP Submission - M24  
 Filter: TASK filters: 3-Month Lookahead, No CC  
 Milestones, No Level of Effort.

**Tuen Mun - Chek Lap Kok Link - Southern Connection**  
**3-Month Rolling Programme (Page 42 of 44 Pages)**  
**(Progress as of 21-May-15)**

Date	Revision	Checked	Approved
29-May-15		WY	

**DWG. No.:**  
**J3518/GCL/PGM/3MRP-M24**



Activity ID	Activity Name	Orig. Durn.	Act. Start / FC Early Start	Duration % Complete	Rem. Durn.	Act. Finish / FC Early Finish	Late Start	Late Finish	Total Float	Free Float	Physical % Complete	2015																	
												May				June				July				August					
												20	27	04	11	18	25	01	08	15	22	29	06	13	20	27	03	10	17
RW60010	Realign CTR (East of Abut. C) - Road drainage works	60	31-Jul-15	0%	60	16-Oct-15	06-Jun-15	27-Aug-15	-38	0	0%																		
<b>ESS Sub-Station</b>																													
RP10030	Inst.Eqpt. & Testing / commissioning of new ESS	42	05-Mar-15 A	100%	0	21-May-15 A					100%																		
RP10040	Removal of equipment in existing ESS	10	22-May-15	0%	10	04-Jun-15	08-Jul-15	20-Jul-15	31	0	0%																		
RP10050	Demolish the existing ESS	6	05-Jun-15	0%	6	13-Jun-15	21-Jul-15	27-Jul-15	31	69	0%																		
<b>Natural Terrain Hazard Mitigation Works</b>																													
<b>NTHM Works - West Portion</b>																													
<b>Check Dam no. 1 (CD1)</b>																													
GFX501	CD1 - Mobilization of rig for Tie Back	6	22-May-15	0%	6	29-May-15	01-Sep-15	07-Sep-15	74	0	0%																		
GFX502	CD1 - Installation of Tie Back (20nos.)	44	30-May-15	0%	44	31-Jul-15	08-Sep-15	05-Nov-15	74	0	0%																		
GFX503	CD1 - Selection of load test	12	01-Aug-15	0%	12	15-Aug-15	09-Dec-15	22-Dec-15	102	0	0%																		
GFX504	CD1 - Loading Test	12	17-Aug-15	0%	12	31-Aug-15	23-Dec-15	08-Jan-16	102	28	0%																		
<b>Check Dam no. 2 (CD2)</b>																													
GFX506	CD2 - Mobilization of rig for MiniPile	6	22-May-15	0%	6	29-May-15	21-Aug-15	27-Aug-15	65	0	0%																		
GFX507	CD2 - Installation of MiniPile (10nos.)	35	30-May-15	0%	35	20-Jul-15	28-Aug-15	12-Oct-15	65	0	0%																		
GFX508	CD2 - Mobilization of rig for Tie Back	6	01-Aug-15	0%	6	07-Aug-15	06-Nov-15	12-Nov-15	74	0	0%																		
GFX509	CD2 - Installation of Tie Back (14nos.)	22	08-Aug-15	0%	22	04-Sep-15	13-Nov-15	08-Dec-15	74	0	0%																		
<b>Check Dam no. 3 (CD3)</b>																													
GFX513	CD3 - Mobilization of rig for MiniPile	6	21-Jul-15	0%	6	27-Jul-15	13-Oct-15	20-Oct-15	65	0	0%																		
GFX514	CD3 - Installation of MiniPile (15nos.)	59	28-Jul-15	0%	59	12-Oct-15	22-Oct-15	02-Jan-16	65	0	0%																		
<b>At grade Roadworks and Other Works at Southern Landfall</b>																													
RW30005	South Landfall - Initial record survey	12	04-Jun-15	0%	12	22-Jun-15	23-Jul-15	06-Aug-15	34	13	0%																		
RW30010	South Landfall - Mobilisation for Portion B Works	24	11-Jul-15	0%	24	10-Aug-15	07-Aug-15	05-Sep-15	21	0	0%																		
RW30014	South Landfall - DN300 Fresh water main works installation & connection (Portion A & B)	60	12-Aug-15	0%	60	28-Oct-15	28-Jan-16	15-Apr-16	134	0	0%																		
<b>Watermains &amp; All Assoc Works from Tung Chung to Southern Landfall</b>																													
WM00030	Trial trench works for watermains along existing CTR	157	26-May-14 A	100%	0	20-May-15 A					100%																		
WM00120	Lay DN450 Fresh Water Main along re-aligned CTR (app. 500 m at 12m/day)	48	22-Apr-15 A	19%	39	17-Jul-15	11-Mar-15	02-May-15	-53	0	19%																		
WM00150	Lay DN450 watermain from Tung Chung to realigned CTR (1st 500m - 2 workfronts)	50	17-Jul-15	0%	50	19-Sep-15	18-May-16	27-Jul-16	236	0	0%																		
<b>Pressure Testing</b>																													
TC00010	Pressure Test DN450 Fresh Water Main along re-aligned CTR (app. 520 m)	12	17-Jul-15	0%	12	01-Aug-15	04-May-15	18-May-15	-53	49	0%																		

<ul style="list-style-type: none"> <li><span style="display: inline-block; width: 15px; height: 10px; background-color: blue; border: 1px solid black;"></span> Actual Work</li> <li><span style="display: inline-block; width: 15px; height: 10px; background-color: green; border: 1px solid black;"></span> Planned Bar</li> <li><span style="display: inline-block; width: 15px; height: 10px; background-color: red; border: 1px solid black;"></span> Critical Bar</li> <li><span style="display: inline-block; width: 10px; height: 10px; background-color: black; border: 1px solid black;"></span> Milestone</li> </ul>	Project ID: J3518DWPrE1-M24 Layout: J3518-DWP-3MRP Submission - M24 Filter: TASK filters: 3-Month Lookahead, No CC Milestones, No Level of Effort.	<p style="text-align: center;"><b>Tuen Mun - Chek Lap Kok Link - Southern Connection</b>  <b>3-Month Rolling Programme (Page 44 of 44 Pages)</b>  <b>(Progress as of 21-May-15)</b></p>	<table border="1"> <tr> <th>Date</th> <th>Revision</th> <th>Checked</th> <th>Approved</th> </tr> <tr> <td>29-May-15</td> <td></td> <td>WY</td> <td></td> </tr> </table>	Date	Revision	Checked	Approved	29-May-15		WY		<b>DWG. No.:</b>  <b>J3518/GCL/PGM/3MRP-M24</b>
Date	Revision	Checked	Approved									
29-May-15		WY										