

Figure 1. Transect Line Layout in Northwest and Northeast Lantau Survey Areas

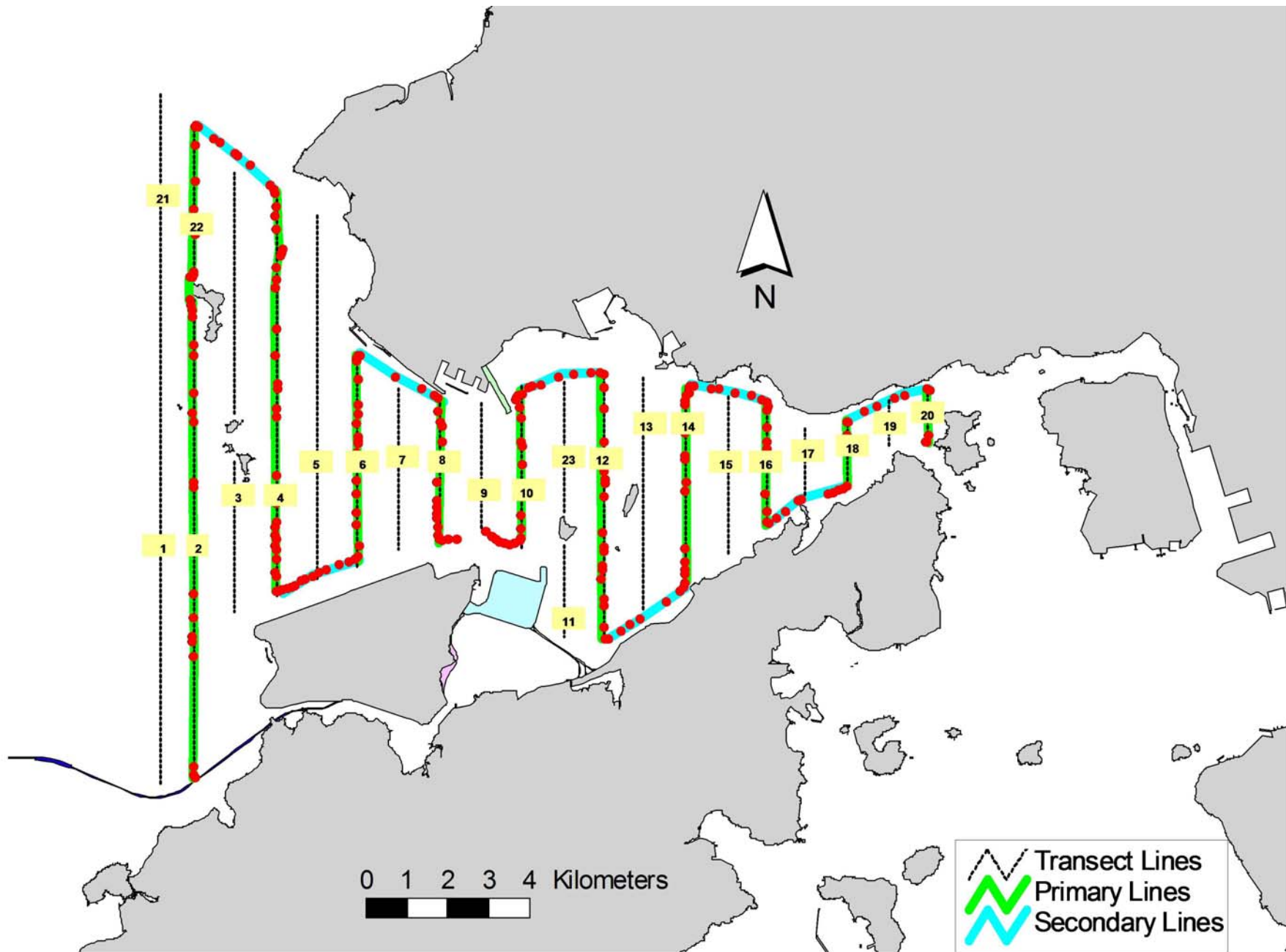


Figure 2. Survey Route on September 2nd, 2015 (from HKLR03 project)

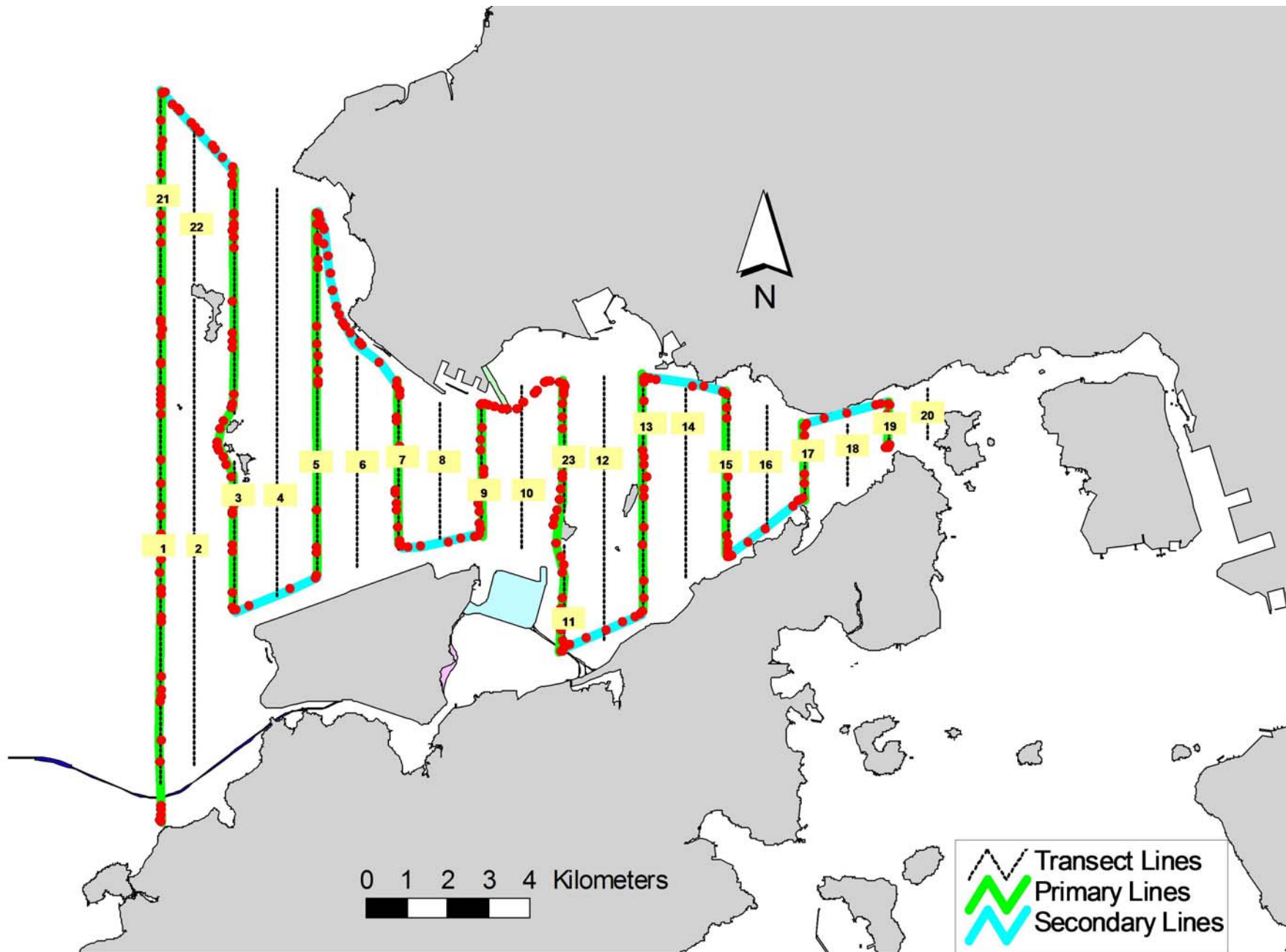


Figure 3. Survey Route on September 11th, 2015 (from HKLR03 project)

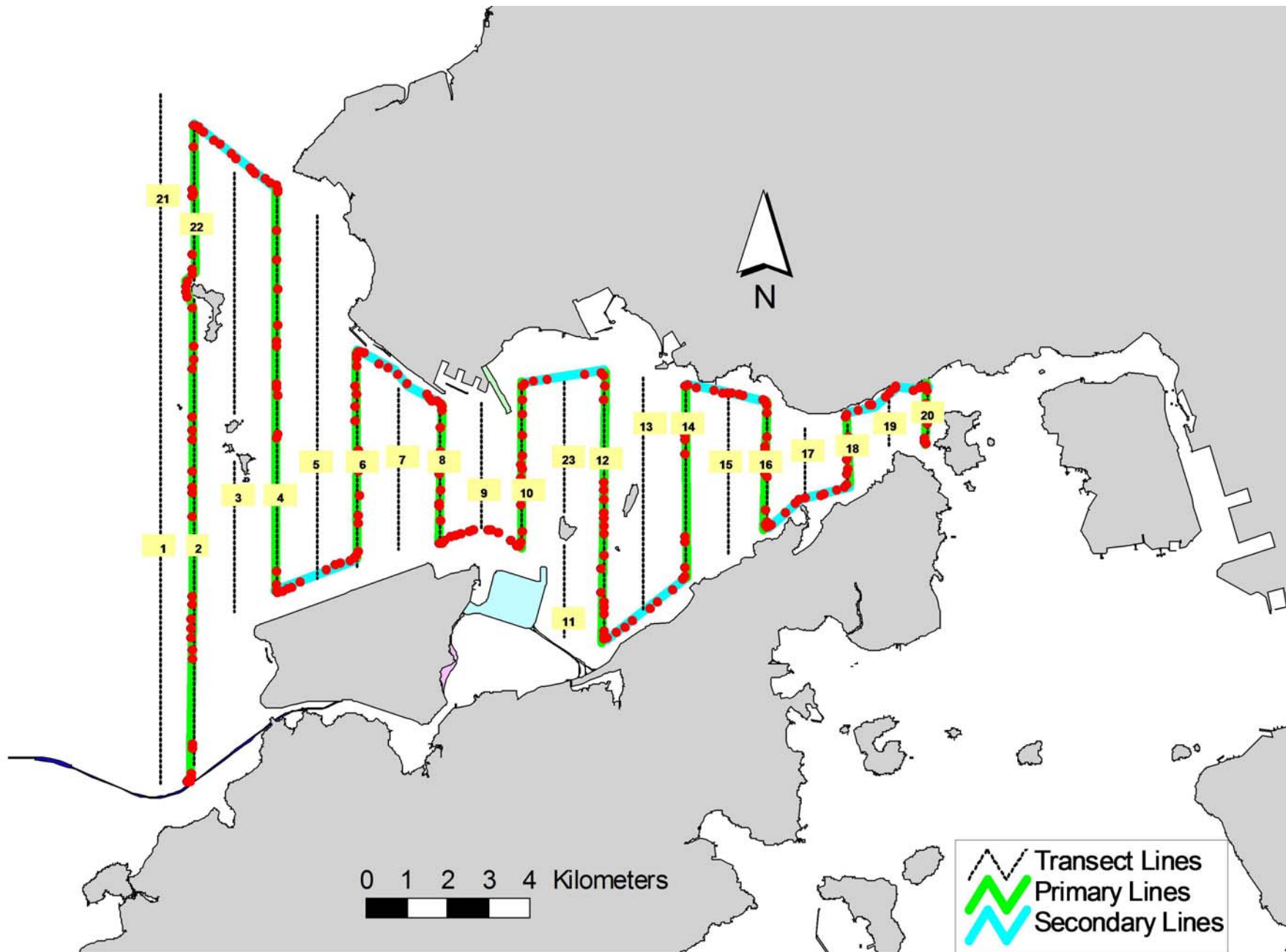


Figure 4. Survey Route on September 17th, 2015 (from HKLR03 project)

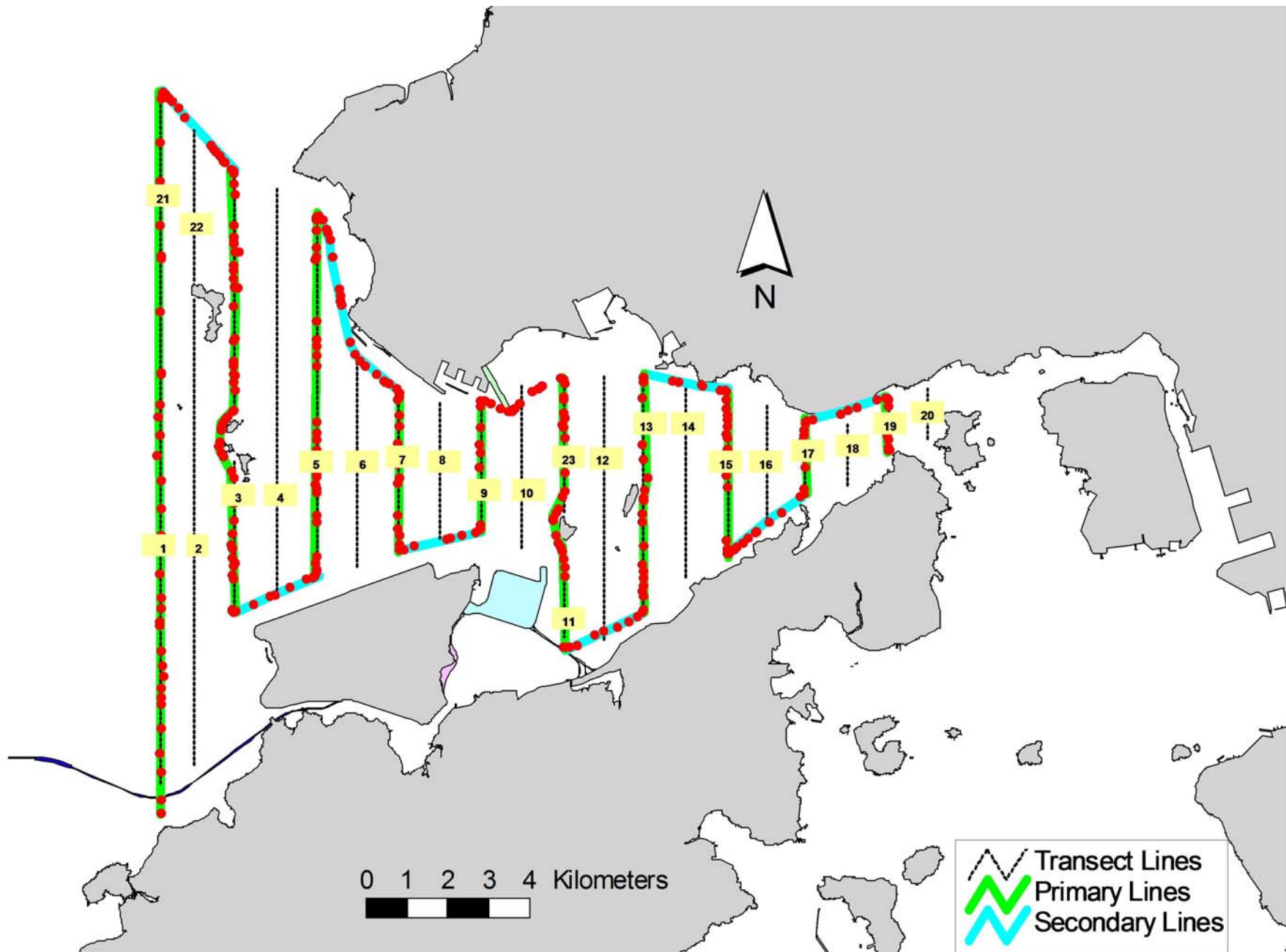


Figure 5. Survey Route on September 29th, 2015 (from HKLR03 project)

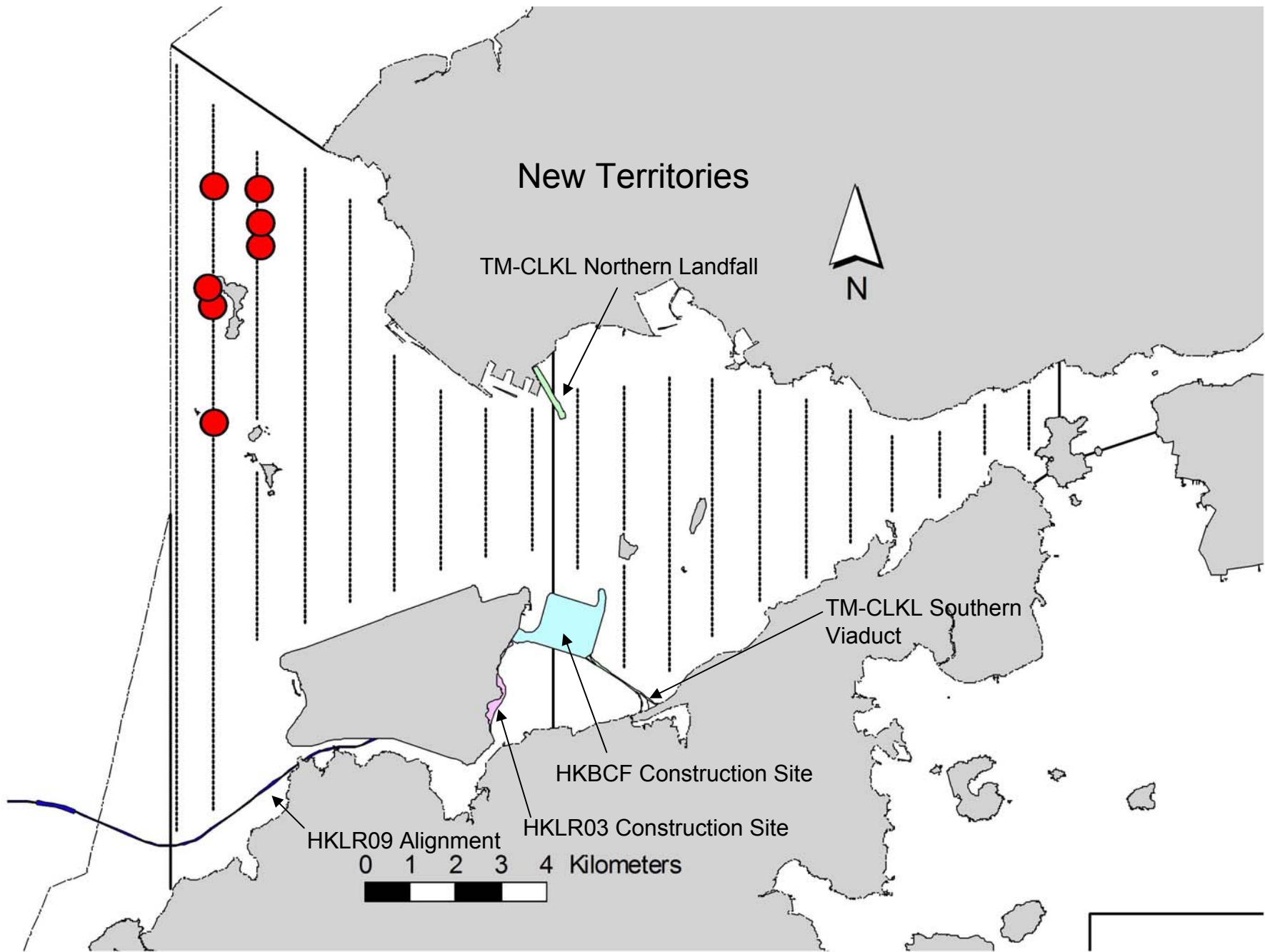


Figure 6. Distribution of Chinese White Dolphin Sightings During September 2015 HKLR03 Monitoring Surveys

Appendix I. HKLR03 Survey Effort Database (September 2015)

(Abbreviations: BEAU = Beaufort Sea State; P = Primary Line Effort; S = Secondary Line Effort)

DATE	AREA	BEAU	EFFORT	SEASON	VESSEL	TYPE	P/S
2-Sep-15	NW LANTAU	2	1.92	AUTUMN	STANDARD31516	HKLR	P
2-Sep-15	NW LANTAU	3	30.24	AUTUMN	STANDARD31516	HKLR	P
2-Sep-15	NW LANTAU	3	6.89	AUTUMN	STANDARD31516	HKLR	S
2-Sep-15	NE LANTAU	2	11.59	AUTUMN	STANDARD31516	HKLR	P
2-Sep-15	NE LANTAU	3	7.98	AUTUMN	STANDARD31516	HKLR	P
2-Sep-15	NE LANTAU	2	8.83	AUTUMN	STANDARD31516	HKLR	S
2-Sep-15	NE LANTAU	3	2.00	AUTUMN	STANDARD31516	HKLR	S
11-Sep-15	NW LANTAU	2	30.26	AUTUMN	STANDARD31516	HKLR	P
11-Sep-15	NW LANTAU	3	10.73	AUTUMN	STANDARD31516	HKLR	P
11-Sep-15	NW LANTAU	2	4.41	AUTUMN	STANDARD31516	HKLR	S
11-Sep-15	NW LANTAU	3	8.40	AUTUMN	STANDARD31516	HKLR	S
11-Sep-15	NE LANTAU	2	7.75	AUTUMN	STANDARD31516	HKLR	P
11-Sep-15	NE LANTAU	3	8.95	AUTUMN	STANDARD31516	HKLR	P
11-Sep-15	NE LANTAU	2	7.97	AUTUMN	STANDARD31516	HKLR	S
11-Sep-15	NE LANTAU	3	2.11	AUTUMN	STANDARD31516	HKLR	S
17-Sep-15	NE LANTAU	2	9.43	AUTUMN	STANDARD31516	HKLR	P
17-Sep-15	NE LANTAU	3	10.80	AUTUMN	STANDARD31516	HKLR	P
17-Sep-15	NE LANTAU	2	5.51	AUTUMN	STANDARD31516	HKLR	S
17-Sep-15	NE LANTAU	3	5.22	AUTUMN	STANDARD31516	HKLR	S
17-Sep-15	NW LANTAU	2	4.70	AUTUMN	STANDARD31516	HKLR	P
17-Sep-15	NW LANTAU	3	28.06	AUTUMN	STANDARD31516	HKLR	P
17-Sep-15	NW LANTAU	3	7.34	AUTUMN	STANDARD31516	HKLR	S
29-Sep-15	NE LANTAU	2	3.00	AUTUMN	STANDARD31517	HKLR	P
29-Sep-15	NE LANTAU	3	12.12	AUTUMN	STANDARD31518	HKLR	P
29-Sep-15	NE LANTAU	4	1.90	AUTUMN	STANDARD31519	HKLR	P
29-Sep-15	NE LANTAU	2	3.06	AUTUMN	STANDARD31520	HKLR	S
29-Sep-15	NE LANTAU	3	6.02	AUTUMN	STANDARD31521	HKLR	S
29-Sep-15	NE LANTAU	4	1.10	AUTUMN	STANDARD31522	HKLR	S
29-Sep-15	NW LANTAU	2	25.66	AUTUMN	STANDARD31523	HKLR	P
29-Sep-15	NW LANTAU	3	16.42	AUTUMN	STANDARD31524	HKLR	P
29-Sep-15	NW LANTAU	2	1.60	AUTUMN	STANDARD31525	HKLR	S
29-Sep-15	NW LANTAU	3	11.49	AUTUMN	STANDARD31526	HKLR	S

Appendix II. HKLR03 Chinese White Dolphin Sighting Database (September 2015)

(Abbreviations: STG# = Sighting Number; HRD SZ = Dolphin Herd Size; BEAU = Beaufort Sea State; PSD = Perpendicular Distance; BOAT ASSOC. = Fishing Boat Association; P/S: Sighting Made on Primary/Secondary Line)

DATE	STG #	TIME	HRD SZ	AREA	BEAU	PSD	EFFORT	TYPE	NORTHING	EASTING	SEASON	BOAT ASSOC.	P/S
2-Sep-15	1	1045	8	NW LANTAU	3	629	ON	HKLR	823950	805482	AUTUMN	NONE	P
2-Sep-15	2	1122	12	NW LANTAU	2	240	ON	HKLR	826365	805436	AUTUMN	NONE	P
2-Sep-15	3	1143	12	NW LANTAU	2	75	ON	HKLR	826741	805344	AUTUMN	NONE	P
11-Sep-15	1	1155	6	NW LANTAU	2	349	ON	HKLR	828788	806460	AUTUMN	NONE	P
17-Sep-15	1	1411	7	NW LANTAU	3	134	ON	HKLR	828867	805462	AUTUMN	PURSE-SEINE	P
29-Sep-15	1	1445	5	NW LANTAU	2	430	ON	HKLR	827625	806489	AUTUMN	NONE	P
29-Sep-15	2	1512	4	NW LANTAU	2	281	ON	HKLR	828090	806500	AUTUMN	NONE	P

Appendix III. Individual dolphins identified during HKLR03 monitoring surveys in September 2015

ID#	DATE	STG#	AREA
CH34	29/09/15	1	NW LANTAU
CH84	02/09/15	3	NW LANTAU
NL46	02/09/15	2	NW LANTAU
	17/09/15	1	NW LANTAU
NL48	02/09/15	1	NW LANTAU
	11/09/15	1	NW LANTAU
	17/09/15	1	NW LANTAU
NL80	02/09/15	2	NW LANTAU
NL123	17/09/15	1	NW LANTAU
NL136	29/09/15	1	NW LANTAU
NL150	02/09/15	2	NW LANTAU
NL165	02/09/15	1	NW LANTAU
NL182	17/09/15	1	NW LANTAU
NL202	02/09/15	2	NW LANTAU
	17/09/15	1	NW LANTAU
	29/09/15	2	NW LANTAU
NL203	02/09/15	3	NW LANTAU
NL210	02/09/15	2	NW LANTAU
NL233	02/09/15	2	NW LANTAU
NL261	02/09/15	1	NW LANTAU
NL285	02/09/15	1	NW LANTAU
	11/09/15	1	NW LANTAU
NL286	02/09/15	2	NW LANTAU
	17/09/15	1	NW LANTAU
NL297	02/09/15	3	NW LANTAU
NL302	02/09/15	3	NW LANTAU
	11/09/15	1	NW LANTAU
NL308	02/09/15	2	NW LANTAU
NL319	29/09/15	2	NW LANTAU
WL05	02/09/15	1	NW LANTAU
	29/09/15	2	NW LANTAU
WL17	02/09/15	2	NW LANTAU
	17/09/15	1	NW LANTAU

NL48_20150902_1



NL165_20150902_1



NL261_20150902_1



NL285_20150902_1



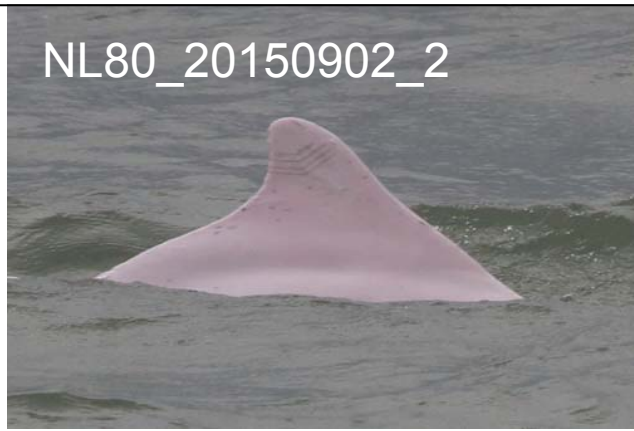
WL05_20150902_1



NL46_20150902_2



NL80_20150902_2



NL150_20150902_2



NL202_20150902_2



NL210_20150902_2



NL233_20150902_2



NL286_20150902_2



NL308_20150902_2



WL17_20150902_2



CH84_20150902_3



NL203_20150902_3



NL297_20150902_3



NL302_20150902_3



NL48_20150911_1



NL285_20150911_1



NL302_20150911_1



NL46_20150917_1



NL48_20150917_1



NL123_20150917_1



NL182_20150917_1



NL202_20150917_1



NL286_20150917_1



WL17_20150917_1



CH34_20150929_1



NL136_20150929_1



NL202_20150929_2



NL319_20150929_2



WL05_20150929_2



Appendix IV. (cont'd)