

Activity ID	Activity Name	Orig. Durn.	Act. Start / FC Early Start	Duration % Complete	Rem. Durn.	Act. Finish / FC Early Finish	Late Start	Late Finish	Total Float	Free Float	Physical % Complete	2016																							
												May					June					July					August								
												25	02	09	16	23	30	06	13	20	27	04	11	18	25	01	08	15	22						
HY/2012/07 - TM-CLK Link-SC [DWP Revision G] - Status Update 21-05-2016																																			
Contract Key Dates																																			
Possession Dates / Access Period																																			
POS02-3	Portion A - Area 3	0	25-Jun-16*	0%	0		25-Jun-16		0	0	0%													◆											
POS02-4	Portion A - Area 4	0	25-Jun-16*	0%	0		25-Jun-16		0	0	0%													◆											
POS02-5	Portion A - Area 5	0	21-May-16*	0%	0		17-May-16		-4	0	0%													◆											
POS02-6	Portion A - Area 6	0	25-Jun-16*	0%	0		25-Jun-16		0	0	0%													◆											
POS03-7	Portion B - Area 7	0	25-Jun-16*	0%	0		25-Jun-16		0	0	0%													◆											
POS03-8	Portion B - Area 8	0	21-May-16*	0%	0		17-May-16		-4	0	0%													◆											
Section Completion Dates																																			
Vacate Works Area																																			
VAC05	Vacate Works Area WA5 (Zone 5C) (CoW + 758 days) - Letter D06850	0		0%	0	30-Jun-16*		29-Jun-16	0	1281	0%													◆											
General Submissions																																			
General Requirements																																			
Temporary Works Design																																			
PR00130	Unloading Jetty at HKBCF - Working Platform design and approval	90	02-Jun-14 A	93.33%	6	27-May-16	18-Jan-16	23-Jan-16	-98	8	75%													[Bar: Blue to 23-Jan-16, Red to 23-Jan-16]											
Land Works																																			
Land GI Works																																			
PR02204	SQR Sampling & Testing and Approval	110	14-Aug-14 A	94.55%	6	27-May-16	30-Mar-15	09-Apr-15	-336	75	95%													[Bar: Blue to 09-Apr-15, Red to 09-Apr-15]											
PR03110	Trial Pits along Cheung Tung Road	20	21-Oct-13 A	70%	6	27-May-16	09-Jul-15	15-Jul-15	-257	100	95%													[Bar: Blue to 15-Jul-15, Red to 15-Jul-15]											
Design Submissions																																			
Detailed Design (v18.8 18-08-14)																																			
General Submissions																																			
ARDD0037-1	Preparation of Seismic Performance Report Viaduct A,B,C,D - AP12.01	50	21-Aug-15 A	100%	0	23-May-16 A					100%													[Bar: Blue to 23-May-16]											
ARDD0037-2	IC/SO Approval of Seismic Performance Report Viaduct A,B,C,D - AP12.01	75	22-Feb-16 A	60%	30	05-Jul-16	25-May-16	07-Jul-16	2	361	60%													[Bar: Blue to 07-Jul-16, Red to 07-Jul-16]											
ARDD0037-5	IC/SO Approval of Seismic Performance Report Viaduct E - AP12.02	75	22-Feb-16 A	80%	15	13-Jun-16	16-Jun-16	07-Jul-16	17	376	80%													[Bar: Blue to 07-Jul-16, Red to 07-Jul-16]											
ARDD0037-7	Preparation of Seismic Performance Report Viaduct F - AP12.03	160	21-Aug-15 A	5%	152	28-Dec-16	06-Aug-15	16-Mar-16	-195	0	5%													[Bar: Blue to 16-Mar-16, Red to 16-Mar-16]											
ARDD0040-1	Preparation of Operation and Maintenance Manual - AP08.00	30	01-Sep-15 A	0%	34	11-Jul-16	26-Jan-16	16-Mar-16	-77	0	0%													[Bar: Blue to 16-Mar-16, Red to 16-Mar-16]											
ARDD0040-2	IC/SO Approval of Operation and Maintenance Manual - AP08.00	75	12-Jul-16	0%	75	26-Oct-16	17-Mar-16	07-Jul-16	-77	282	0%													[Bar: Blue to 07-Jul-16, Red to 07-Jul-16]											
ARDD0042-2	IC/SO Approval of O&M Facility Provisions DDA - BP11.01	75	14-Jan-15 A	54.67%	34	11-Jul-16	26-Jan-16	16-Mar-16	-77	0	50%													[Bar: Blue to 16-Mar-16, Red to 16-Mar-16]											
Viaduct A																																			
Viaduct Design																																			
ARDD0435-8	Viaduct A - IC/SO Consent of Supplemental Working Drawings Viaduct A	10	10-Sep-15 A	98%	0	28-Jul-16	30-May-16	30-May-16	-41	0	98%													[Bar: Blue to 30-May-16, Red to 30-May-16]											
ARDD0435-9	Viaduct A - IC/SO Consent of Supplemental Working Drawings Viaduct A	0		0%	0	28-Jul-16		30-May-16	-41	0	0%													◆											
Viaduct F1 & F3																																			
Viaduct Design																																			
ARDD0486-2	Viaduct F1 & F3 - Coordination and Further Issue of Construction Method	60	02-Mar-15 A	16.67%	50	02-Aug-16	22-Dec-15	07-Mar-16	-100	0	16.7%													[Bar: Blue to 07-Mar-16, Red to 07-Mar-16]											
ARDD0486-3	Viaduct F1 & F3 - Preparation of Draft Working Drawing Set	60	02-Mar-15 A	16.67%	50	02-Aug-16	22-Dec-15	07-Mar-16	-100	0	16.7%													[Bar: Blue to 07-Mar-16, Red to 07-Mar-16]											
ARDD0486-5	Viaduct F1 & F3 - Preparation and Coordination of DDA/Working Drawing	10	03-Aug-16	0%	10	16-Aug-16	08-Mar-16	21-Mar-16	-100	0	0%													[Bar: Blue to 21-Mar-16, Red to 21-Mar-16]											
ARDD0486-7	Viaduct F1 & F3 - IC/SO Consent of Supplemental Working Drawings Viad	10	17-Aug-16	0%	10	30-Aug-16	22-Mar-16	07-Apr-16	-100	0	0%													[Bar: Blue to 07-Apr-16, Red to 07-Apr-16]											
Viaduct F2, F4 and F5																																			
Viaduct Design																																			
ARDD0530-2	Viaduct F2, F4 & F5 - GCL/FRE Issue of Construction Method/Temporary	0		0%	0	23-May-16		05-Nov-15	-132	0	0%													◆											
ARDD0530-3	Viaduct F2, F4 & F5 - Coordination and Further Issue of Construction Mett	60	23-May-16	0%	60	16-Aug-16	06-Nov-15	01-Feb-16	-132	0	0%													[Bar: Blue to 01-Feb-16, Red to 01-Feb-16]											
ARDD0530-4	Viaduct F2, F4 & F5 - Preparation of Draft Working Drawing Set	60	23-May-16	0%	60	16-Aug-16	06-Nov-15	01-Feb-16	-132	0	0%													[Bar: Blue to 01-Feb-16, Red to 01-Feb-16]											
ARDD0530-6	Viaduct F2, F4 & F5 - Preparation and Coordination of DDA/Working Draw	10	17-Aug-16	0%	10	30-Aug-16	02-Feb-16	18-Feb-16	-132	0	0%													[Bar: Blue to 18-Feb-16, Red to 18-Feb-16]											
ARDD0530-ε	Viaduct F2, F4 & F5 - IC/SO Consent of Supplemental Drawings of Viaduc	10	17-Aug-16	0%	10	30-Aug-16	22-Mar-16	07-Apr-16	-100	0	0%													[Bar: Blue to 07-Apr-16, Red to 07-Apr-16]											
Parapet and Utility Trough																																			
ARDD0562-4	IC/SO Approval of DDA -DP30.01	75	31-Jul-14 A	98%	2	24-May-16	15-Feb-16	16-Feb-16	-66	32	98%													[Bar: Blue to 16-Feb-16, Red to 16-Feb-16]											
ARDD0566	IC/SO Approval of DDA -DP31.01	75	24-Oct-14 A	89.33%	8	01-Jun-16	02-Feb-16	16-Feb-16	-72	0	80%													[Bar: Blue to 16-Feb-16, Red to 16-Feb-16]											
ARDD0566-1	IC/SO Approval of DDA -DP31.01	0		0%	0	01-Jun-16		16-Feb-16	-72	92	0%													◆											
Slopeworks for Viaduct B: 9SE- B/C8, B/C9, B/F9, B/F85+ 10SW-A/F52, A/F53																																			
ARDD0580-5	Preparation of Slope A/F52 Submission - CP12.03	20	10-Feb-15 A	80%	4	26-May-16	02-Oct-15	07-Oct-15	-156	0	100%													[Bar: Blue to 07-Oct-15, Red to 07-Oct-15]											
ARDD0580-6	IC/SO Approval of Slope - CP12.03	75	21-Sep-15 A	95%	4	26-May-16	02-Oct-15	07-Oct-15	-156	0	95%													[Bar: Blue to 07-Oct-15, Red to 07-Oct-15]											
Slopeworks for Viaduct D: 10NW -C/R4, C/F9, C/F10, C/F11, C/F17, C/F50																																			
ARDD0603	IC/SO Approval of Slope Combined AIP/DDA -CP14.01	75	16-Dec-14 A	92%	6	30-May-16	18-Jun-15	25-Jun-15	-229	0	95%													[Bar: Blue to 25-Jun-15, Red to 25-Jun-15]											
ARDD0603-1	IC/SO Approval of Slope Combined AIP/DDA -CP14.01	0		0%	0	30-May-16		25-Jun-15	-229	0	0%													◆											

<ul style="list-style-type: none"> █ Actual Work █ Planned Bar █ Critical Bar ◆ Milestone 	Project ID: J3518DWPrG-M36 Layout: J3518-DWP-3MRP Submission - M36 Filter: TASK filters: 3-Month Lookahead, No CC Milestones, No Level of Effort.	Tuen Mun - Chek Lap Kok Link - Southern Connection 3-Month Rolling Programme (Page 1 of 13 Pages) (Progress as of 21-May-16)	<table border="1"> <thead> <tr> <th>Date</th> <th>Revision</th> <th>Checked</th> <th>Approved</th> </tr> </thead> <tbody> <tr> <td>29-Mar-16</td> <td></td> <td>PKN</td> <td>HF</td> </tr> <tr> <td>29-Apr-16</td> <td></td> <td>PKN</td> <td>HF</td> </tr> <tr> <td>31-May-...</td> <td></td> <td>PKN</td> <td>HF</td> </tr> </tbody> </table>	Date	Revision	Checked	Approved	29-Mar-16		PKN	HF	29-Apr-16		PKN	HF	31-May-...		PKN	HF	DWG. No.: J3518/GCL/PGM/3MRP-M36
Date	Revision	Checked	Approved																	
29-Mar-16		PKN	HF																	
29-Apr-16		PKN	HF																	
31-May-...		PKN	HF																	

Activity ID	Activity Name	Orig. Durn.	Act. Start / FC Early Start	Duration % Complete	Rem. Durn.	Act. Finish / FC Early Finish	Late Start	Late Finish	Total Float	Free Float	Physical % Complete	2016																												
												May							June							July							August							
												25	02	09	16	23	30	06	13	20	27	04	11	18	25	01	08	15	22											
ARDD0604-2	IC/SO Approval of Slope Combined AIP/DDA -CP14.02	75	23-May-15 A	78.67%	16	14-Jun-16	13-Oct-15	04-Nov-15	-149	0	75%																													
ARDD0604-3	IC/SO Approval of Revised Slope Combined AIP/DDA -CP14.02	0		0%	0	14-Jun-16		04-Nov-15	-149	80	0%																													
Waterworks, Drainage & Utility Diversions																																								
ARDD0629	IC/SO Approval of Waterworks, Drainage & Utility DDA - BP20.01	75	22-Jul-14 A	92%	6	30-May-16	26-Jan-16	02-Feb-16	-77	0	95%																													
ARDD0629-1	IC/SO Approval of Waterworks, Drainage & Utility DDA - BP20.01	0		0%	0	30-May-16		02-Feb-16	-77	295	0%																													
ARDD0629-2	Gov't Approval of Submissions for Waterworks, Drainage & Utility Diversior	75	02-Jan-14 A	92%	6	30-May-16	26-Jan-16	02-Feb-16	-77	0	95%																													
Viaduct Approach Ramp Retaining Walls																																								
Approach Ramp B																																								
ARDD0664	Approach B - IC/SO Approval of Approach Ramp B DDA -DP21.01	75	14-Oct-14 A	84%	12	07-Jun-16	15-Jan-16	01-Feb-16	-84	0	80%																													
ARDD0664-1	Approach B - IC/SO Approval of Approach Ramp B DDA -DP21.01	0		0%	0	07-Jun-16		01-Feb-16	-84	25	0%																													
Approach A																																								
ARDD0670	Approach A - IC/SO Approval of Approach Ramp A DDA - DP20.01	75	03-Oct-14 A	92%	6	30-May-16	20-Dec-19	31-Dec-19	887	0	95%																													
ARDD0670-1	Approach A - IC/SO Approval of Approach Ramp A DDA - DP20.01	0		0%	0	30-May-16		31-Dec-19	887	887	0%																													
Approach F																																								
ARDD0676	Approach F - IC/SO Approval of Approach Ramp F DDA -DP24.01	75	23-Dec-14 A	34.67%	49	01-Aug-16	16-Jan-15	27-Mar-15	-331	0	70%																													
ARDD0676-1	Approach F - IC/SO Approval of Approach Ramp F DDA -DP24.01	0		0%	0	01-Aug-16		17-Mar-16	-91	189	0%																													
Landscape																																								
ARDD0701	Water Supply Application to WSD	0		0%	0	23-May-16		17-Dec-15	-102	0	0%																													
ARDD0702	Gov't Approval of LVIA	40	23-May-16	0%	40	19-Jul-16	18-Dec-15	18-Feb-16	-102	126	0%																													
Segment Target Geometry And Erection Engineering																																								
Viaduct A																																								
ARDD0716	Viaduct A - Confirmation of Erection Sequence from Freyssinet	0		0%	0	23-May-16		31-Dec-19	893	893	0%																													
ARDD0717	Viaduct A - Erection Sequence Analysis	31	23-Jan-16 A	45.16%	17	15-Jun-16	15-Feb-16	08-Mar-16	-66	0	40%																													
ARDD0718	Viaduct A - Target Geometry Analysis	20	16-Jun-16	0%	20	14-Jul-16	09-Mar-16	08-Apr-16	-66	0	0%																													
ARDD0719	Viaduct A - Segment Geometry Schedules	10	15-Jul-16	0%	10	28-Jul-16	11-Apr-16	22-Apr-16	-66	0	0%																													
ARDD0719-1	Viaduct A - Issue of Pierhead Segments Bridge A1, A2	0		0%	0	28-Jul-16		30-May-16	-41	0	0%																													
ARDD0719-3	Viaduct A - Issue of Casting Data and Segment Catalogue Bridge A2 (Final	0		0%	0	28-Jul-16		30-May-16	-41	0	0%																													
ARDD0719-4	Viaduct A - Issue of Casting Data and Segment Catalogue Bridge A1 (Final	0		0%	0	28-Jul-16		22-Apr-16	-66	0	0%																													
ARDD0719-5	Viaduct A - Issue Erection Manual	20	29-Jul-16	0%	20	25-Aug-16	25-Apr-16	23-May-16	-66	0	0%																													
Viaduct E5 and E6																																								
ARDD0734	Viaduct E5 & E6 - Segment Geometry Schedules	10	05-May-14 A	60%	4	26-May-16	22-Mar-16	29-Mar-16	-40	3	90%																													
TGP0570	Viaduct E5 & E6 - Issue of Optimised Casting Data and Segment Catalogue	40	30-Apr-15 A	82.5%	7	31-May-16	17-Mar-16	29-Mar-16	-43	0	90%																													
TGP0590	Viaduct E5 & E6 - Issue Erection Manual	10	01-Jun-16	0%	10	15-Jun-16	30-Mar-16	13-Apr-16	-43	221	0%																													
Viaduct E7 & E8																																								
ARDD0739	Viaduct E7 & E8 - Segment Geometry Schedules	10	05-May-14 A	60%	4	26-May-16	22-Mar-16	29-Mar-16	-40	3	90%																													
TGP0760	Viaduct E7 & E8 - Issue of Optimised Casting Data and Segment Catalogue	40	31-Jul-15 A	82.5%	7	31-May-16	17-Mar-16	29-Mar-16	-43	0	90%																													
TGP0790	Viaduct E7 & E8 - Issue Erection Manual	10	01-Jun-16	0%	10	15-Jun-16	30-Mar-16	13-Apr-16	-43	221	0%																													
Viaduct F																																								
ARDD0752	Viaduct F - Erection Sequence Analysis	30	23-May-16	0%	30	05-Jul-16	06-Nov-15	17-Dec-15	-132	0	0%																													
ARDD0753	Viaduct F - Target Geometry Analysis	30	06-Jul-16	0%	30	16-Aug-16	18-Dec-15	01-Feb-16	-132	0	0%																													
ARDD0754	Viaduct F - Segment Geometry Schedules	10	17-Aug-16	0%	10	30-Aug-16	02-Feb-16	18-Feb-16	-132	0	0%																													
Major Procurement																																								
Marine Permanent Navigaion Aids																																								
PR65011	Design & Approvals for Marine Navigation Aids	150	23-Oct-13 A	90%	15	07-Jun-16	30-Nov-15	16-Dec-15	-137	0	90%																													
PR65012	Procure & Deliver Marine Navigation Aids	240	08-Jun-16	0%	240	27-Mar-17	17-Dec-15	11-Oct-16	-137	0	0%																													
Deck Segment Installation Equipment																																								
Lifting Frames																																								
Lifting Frames 3 & 4																																								
PR68017	Lifting Frame 3&4 Fabrication	85	29-Sep-14 A	65.88%	29	24-Jun-16	06-Aug-15	08-Sep-15	-233	0	67%																													
PR68018	Lifting Frame 3&4 Delivery	30	25-Jun-16	0%	30	30-Jul-16	09-Sep-15	15-Oct-15	-233	41	0%																													
Unloading Frames																																								
Type 1 (at B6 and D6)																																								
PR69110	Unloading Frame Type 1 Fabrication	80	23-Feb-15 A	27.5%	58	29-Jul-16	25-Nov-16	07-Feb-17	156	0	28%																													
PR69120	Unloading Frame Type 1 Delivery (UF-1A & UF-1B)	24	30-Jul-16	0%	24	26-Aug-16	08-Feb-17	07-Mar-17	156	0	0%																													
Type 2 (at Bridge E1)																																								
PR69170	Unloading Frame Type 2 Design	50	21-May-16	0%	50	20-Jul-16	11-Jul-19	06-Sep-19	929	0	0%																													
PR69180	Unloading Frame Type 2 Fabrication	80	27-Jun-16	0%	80	29-Sep-16	15-Aug-19	19-Nov-19	929	0	0%																													
Deck Segments & Precast Pile Cap Shells																																								

■ Actual Work
■ Planned Bar
■ Critical Bar
◆ ◆ Milestone

Project ID: J3518DWPrG-M36
 Layout: J3518-DWP-3MRP Submission - M36
 Filter: TASK filters: 3-Month Lookahead, No CC
 Milestones, No Level of Effort.

Tuen Mun - Chek Lap Kok Link - Southern Connection
3-Month Rolling Programme (Page 2 of 13 Pages)
(Progress as of 21-May-16)

Date	Revision	Checked	Approved
29-Mar-16		PKN	HF
29-Apr-16		PKN	HF
31-May-...		PKN	HF

DWG. No.:
J3518/GCL/PGM/3MRP-M36

Activity ID	Activity Name	Orig. Durn.	Act. Start / FC Early Start	Duration % Complete	Rem. Durn.	Act. Finish / FC Early Finish	Late Start	Late Finish	Total Float	Free Float	Physical % Complete	2016																										
												May					June				July				August													
												25	02	09	16	23	30	06	13	20	27	04	11	18	25	01	08	15	22									
Preliminaries																																						
MBBE0050	Precast Segment Mould Fabrication & Erection (Viaduct A)	52	24-Dec-14 A	92.31%	4	25-May-16	31-May-16	03-Jun-16	8	1069	100%																											
MBBE0054	Precast Segment Mould Design (Viaduct F1 to F5)	42	21-May-16*	0%	42	11-Jul-16	29-Feb-16	21-Apr-16	-65	0	0%																											
MBBE0056	Precast Segment Mould Fabrication & Erection (Viaduct F1 to F5)	52	02-Jun-16	0%	52	03-Aug-16	11-Mar-16	17-May-16	-65	55	0%																											
Viaduct B																																						
Precast Deck Segments																																						
MBBE130-1	B: Progressive Match Cast Segment Manufacture & Delivery remaining se	597	24-Oct-14 A	98.83%	7	28-May-16	18-Mar-16	29-Mar-16	-49	225	99.4%																											
Viaduct E																																						
Precast Deck Segments																																						
MBE00014	Viaduct E2 - Pier Head Segment Casting	0	21-May-16	0%	0		31-Dec-19		1073	1073	0%																											
Viaduct E1																																						
MBEE0130-5	E1: Progressive Segment Manufacture & Delivery remaining segments (18	456	08-Apr-15 A	95.2%	22	16-Jun-16	04-Jul-15	29-Jul-15	-261	1051	95.2%																											
Viaduct E2																																						
MBEE0130-7	E2: Progressive Segment Manufacture & Delivery remaining segments (41	376	06-May-15 A	34.57%	246	16-Mar-17	17-Nov-15	14-Sep-16	-148	827	34.8%																											
Viaduct E5, E6, E7 & E8																																						
MBEE0130-9	E5-6-7-8: Progressive Segment Manufacture & Delivery remaining segmer	360	06-May-15 A	11.2%	320	19-Jun-17	06-Feb-16	08-Mar-17	-81	753	11.2%																											
Viaduct D																																						
Precast Deck Segments																																						
MBDE0130-7	D: Progressive Match Cast Segment Manufacture & Delivery (311 Nr)	315	05-May-15 A	56.9%	136	01-Nov-16	23-Oct-15	09-Apr-16	-169	204	56.9%																											
Viaduct C																																						
Precast Deck Segments																																						
MBCE0130-1	C: Progressive Segment Manufacture & Delivery remaining segments (388	265	19-May-15 A	41%	156	25-Nov-16	11-Sep-15	22-Mar-16	-202	77	41%																											
Viaduct A																																						
Precast Deck Segments																																						
MBAA1100	Viaduct A - Pier Head Segment Casting	0	29-Jul-16	0%	0		31-May-16		-49	0	0%																											
MBAE0120	A: Commence Segment Casting on Approval of DDA	0	29-Jul-16	0%	0		31-May-16		-49	0	0%																											
MBAE0130-1	A: Progressive Segment Manufacture & Delivery remaining segments (179	122	29-Jul-16	0%	122	21-Dec-16	31-May-16	25-Oct-16	-49	30	0%																											
Parapets																																						
PP6010	Procure Sub-Contractor for Precast Parapets/Barriers	40	21-Aug-15 A	0%	40	08-Jul-16	28-Dec-15	16-Feb-16	-115	80	37.5%																											
PP6011	Precast Parapets/Barriers Detail Design & Procure Moulds	120	06-Oct-15 A	0%	120	13-Oct-16	29-Jul-15	18-Dec-15	-240	0	37.5%																											
Materials																																						
Bearings																																						
Viaduct A																																						
PPBRA5	SO review & comment on design submission - Viaduct A	36	21-May-16	0%	36	04-Jul-16	22-Apr-16	04-Jun-16	-23	0	0%																											
PPBRA6	Bearing Design Amendment & re-issue - Viaduct A	12	05-Jul-16	0%	12	18-Jul-16	14-Jun-16	27-Jun-16	-17	6	0%																											
PPBRA7	Manufacture of Bearing - Viaduct A	54	21-May-16	0%	54	25-Jul-16	22-Apr-16	27-Jun-16	-23	0	0%																											
PPBRA8	Testing Bearing - Viaduct A	18	26-Jul-16	0%	18	15-Aug-16	28-Jun-16	19-Jul-16	-23	0	0%																											
PPBRA9	Bearing Delivery - Viaduct A	48	16-Aug-16	0%	48	13-Oct-16	20-Jul-16	13-Sep-16	-23	0	0%																											
Viaduct C																																						
PPBRC6	Bearing Design Ammendment & re-issue - Viaduct C	12	30-May-16 A	100%	0	11-Jun-16 A					100%																											
PPBRC99	Site preparation Bearings for Viaduct C	6	21-May-16	0%	6	27-May-16	16-Sep-15	22-Sep-15	-198	0	0%																											
Viaduct D																																						
PPBRD99	Site preparation Bearings for Viaduct D	38	21-May-16	0%	38	06-Jul-16	26-Oct-15	08-Dec-15	-167	0	0%																											
Viaduct E																																						
PPBRE3	Bearing design and submission - Viaduct E (E1, E2, E5, E6, E7 & E8)	12	28-Nov-13 A	75%	3	24-May-16	04-Jan-16	06-Jan-16	-110	0	100%																											
PPBRE4	Design check by ICE - Viaduct E (E1, E2, E5, E6, E7 & E8)	24	04-Apr-14 A	37.5%	15	07-Jun-16	04-Jan-16	20-Jan-16	-110	0	100%																											
PPBRE5	SO review & comment on design submission - Viaduct E (E1, E2, E5, E6, E	36	26-Sep-14 A	25%	27	22-Jun-16	04-Jan-16	03-Feb-16	-110	0	100%																											
PPBRE6	Bearing Design Amendment & re-issue - Viaduct E (E1, E2, E5, E6, E7 & E	12	23-Jun-16	0%	12	07-Jul-16	04-Feb-16	20-Feb-16	-110	0	0%																											
PPBRE7	Manufacture of Bearing - Viaduct E (E1, E2, E5, E6, E7 & E8)	54	02-Jun-14 A	27.78%	39	07-Jul-16	04-Jan-16	20-Feb-16	-110	0	100%																											
PPBRE8	Testing Bearing - Viaduct E (E1, E2, E5, E6, E7 & E8)	24	03-Aug-15 A	0%	51	21-Jul-16	04-Jan-16	05-Mar-16	-110	0	100%																											
PPBRE9	Bearing Delivery - Viaduct E (E1, E2, E5, E6, E7 & E8)	48	19-Nov-14 A	0%	87	01-Sep-16	04-Jan-16	21-Apr-16	-110	0	100%																											
Bridge E1																																						
PP7360	Site preparation Bearings for Viaduct E1	18	01-Jun-16	0%	18	23-Jun-16	23-Mar-16	16-Apr-16	-54	8	0%																											
Bridge E2																																						
PP7290	Site preparation Bearings for Viaduct E2	18	16-Jun-16	0%	18	07-Jul-16	31-Mar-16	21-Apr-16	-62	48	0%																											
Viaduct F																																						
PPBRF1	Preliminary Design of Bearings - Viaduct F	70	21-May-16	0%	70	12-Aug-16	07-Aug-15	30-Oct-15	-232	0	0%																											
PPBRF3	Bearing design and submission - Viaduct F	12	13-Aug-16	0%	12	26-Aug-16	31-Oct-15	13-Nov-15	-232	0	0%																											

- Actual Work
- Planned Bar
- Critical Bar
- Milestone

Project ID: J3518DWPrg-M36
Layout: J3518-DWP-3MRP Submission - M36
Filter: TASK filters: 3-Month Lookahead, No CC
Milestones, No Level of Effort.

Tuen Mun - Chek Lap Kok Link - Southern Connection
3-Month Rolling Programme (Page 3 of 13 Pages)
(Progress as of 21-May-16)

Date	Revision	Checked	Approved
29-Mar-16		PKN	HF
29-Apr-16		PKN	HF
31-May-...		PKN	HF

DWG. No.:

J3518/GCL/PGM/3MRP-M36

Activity ID	Activity Name	Orig. Durn.	Act. Start / FC Early Start	Duration % Complete	Rem. Durn.	Act. Finish / FC Early Finish	Late Start	Late Finish	Total Float	Free Float	Physical % Complete	2016																							
												May					June					July					August								
												25	02	09	16	23	30	06	13	20	27	04	11	18	25	01	08	15	22						
Movement Joints																																			
PPMJ01	Design & Submission of MJ	138	08-Feb-14 A	75.36%	34	30-Jun-16	19-Oct-15	27-Nov-15	-172	1039	30%	[Gantt Bar]																							
PPMJ02-1	MJ Design Approval	96	26-May-14 A	39.58%	58	29-Jul-16	19-Oct-15	28-Dec-15	-172	0	40%	[Gantt Bar]																							
PPMJ02-2	Manufacture & delivery of MJ	188	21-May-16	0%	188	04-Jan-17	19-Oct-15	08-Jun-16	-172	0	0%	[Gantt Bar]																							
Other Sub-Contract Procurement																																			
Structural Health Monitoring System (SHMS)																																			
PP7778	SHMS - So approval of Final System Proposal	30	16-Dec-14 A	73.33%	8	30-May-16	30-Jul-15	07-Aug-15	-239	0	75%	[Gantt Bar]																							
PP7780	SHMS - Prepare Civil Work Provision	66	21-May-16	0%	66	08-Aug-16	30-Jul-15	16-Oct-15	-239	0	0%	[Gantt Bar]																							
PP7788	SHMS - FAT & Delivery for Bridge E5-E6-E7-E8 equipment	54	20-Jun-16	0%	54	22-Aug-16	27-Aug-15	31-Oct-15	-239	100	0%	[Gantt Bar]																							
Site Preparation / Mobilisations																																			
Tree Felling / Transplant																																			
Approved Trees in Contract																																			
TR00220	Tree transplant for Viaduct B - affecting Pier B18 & Abutment B	90	17-Feb-14 A	92.22%	7	28-May-16	02-Feb-16	12-Feb-16	-85	1066	96%	[Gantt Bar]																							
Unloading Jetty at HKBCF																																			
PR09060	Unloading Jetty at HKBCF - Conditional survey & temp jetty formation	15	21-May-16	0%	15	07-Jun-16	08-Jan-16	25-Jan-16	-106	0	0%	[Gantt Bar]																							
PR09070	Unloading Jetty at HKBCF - Install Unloading Frame incl. testing/commissio	56	08-Jun-16	0%	56	13-Aug-16	26-Jan-16	07-Apr-16	-106	215	0%	[Gantt Bar]																							
CONSTRUCTION																																			
PILING AND SUBSTRUCTURE																																			
Viaduct A																																			
Bridge A2																																			
Pier A1 (A2e)																																			
Pier Head Segments																																			
SA2E0380	A1 (A2e) - Pier Head Segment - Temporary Platform	6	28-Jul-16*	0%	6	03-Aug-16	09-Jul-16	15-Jul-16	-16	0	0%	[Gantt Bar]																							
SA2E0381	A1 (A2e) - Pier Head Segment Bearings	2	04-Aug-16	0%	2	05-Aug-16	16-Jul-16	18-Jul-16	-16	0	0%	[Gantt Bar]																							
SA2E0382	A1 (A2e) - Pier Head Segment Lift & Temp Support (2 seg)	7	06-Aug-16	0%	7	13-Aug-16	19-Jul-16	26-Jul-16	-16	63	0%	[Gantt Bar]																							
Pier A2 (A2d)																																			
Pier Works																																			
SA2D0310	A2 (A2d) - Type 4B Pier Head Rebarwork, Formwork & Prep	10	29-Mar-16 A	100%	0	21-Apr-16 A					100%	[Gantt Bar]																							
SA2D0330	A2 (A2d) - Type 4B Pier Head Concreting	1	22-Apr-16 A	100%	0	22-Apr-16 A					100%	[Gantt Bar]																							
SA2D0340	A2 (A2d) - Type 4B Pier Head Curing/Striking of Forms/Remove Scaffoldin	6	23-Apr-16 A	0%	17	10-Jun-16	06-Jun-16	27-Jun-16	13	80	80%	[Gantt Bar]																							
Pier A4 (A2b)																																			
Pier Works																																			
SA2B0300	A4 (A2b) - Type 4B Pier Head Scaffolding	4	19-Apr-16 A	100%	0	22-Apr-16 A					100%	[Gantt Bar]																							
SA2B0310	A4 (A2b) - Type 4B Pier Head Rebarwork, Formwork & Prep	10	23-Apr-16 A	100%	0	12-May-16 A					100%	[Gantt Bar]																							
SA2B0330	A4 (A2b) - Type 4B Pier Head Concreting	1	13-May-16 A	100%	0	13-May-16 A					100%	[Gantt Bar]																							
SA2B0340	A4 (A2b) - Type 4B Pier Head Curing/Striking of Forms/Remove Scaffoldin	6	14-May-16 A	0%	6	27-May-16	08-Jul-16	15-Jul-16	40	147	80%	[Gantt Bar]																							
Pier A5 (A2a)																																			
Pier Works																																			
SA2A0220	A5 (A2a) - Type 4B Pier Rebarwork, Formwork & Prep (2nd Lift)	6	18-Apr-16 A	100%	0	29-Apr-16 A					100%	[Gantt Bar]																							
SA2A0240	A5 (A2a) - Type 4B Pier Concreting, Curing & Striking, CJ prep (2nd Lift)	3	30-Apr-16 A	100%	0	04-May-16 A					100%	[Gantt Bar]																							
SA2A0300	A5 (A2a) - Type 4B Pier Head Scaffolding	4	05-May-16 A	100%	0	09-May-16 A					100%	[Gantt Bar]																							
SA2A0310	A5 (A2a) - Type 4B Pier Head Rebarwork, Formwork & Prep	10	10-May-16 A	20%	8	30-May-16	14-Jul-16	23-Jul-16	45	0	60%	[Gantt Bar]																							
SA2A0330	A5 (A2a) - Type 4B Pier Head Concreting	1	31-May-16	0%	1	31-May-16	23-Jul-16	25-Jul-16	45	0	0%	[Gantt Bar]																							
SA2A0340	A5 (A2a) - Type 4B Pier Head Curing/Striking of Forms/Remove Scaffoldin	6	01-Jun-16	0%	6	07-Jun-16	25-Jul-16	01-Aug-16	45	108	0%	[Gantt Bar]																							
Pier A6 (A1f)																																			
Pier Works																																			
SA1F0310	A6 (A1f) - Type 4B-MJ Pier Head Rebarwork, Formwork & Prep	9	08-Apr-16 A	11.11%	8	30-May-16	27-Aug-16	05-Sep-16	82	0	90%	[Gantt Bar]																							
SA1F0330	A6 (A1f) - Type 4B-MJ Pier Head Concreting	1	31-May-16	0%	1	31-May-16	06-Sep-16	06-Sep-16	82	0	0%	[Gantt Bar]																							
SA1F0340	A6 (A1f) - Type 4B-MJ Pier Head Curing/Striking of Forms/Remove Scaffo	6	01-Jun-16	0%	6	07-Jun-16	07-Sep-16	13-Sep-16	82	80	0%	[Gantt Bar]																							
SA1F0350	A6 (A1f) - Type 4B-Bearing Plinth	6	01-Jun-16	0%	6	07-Jun-16	07-Sep-16	13-Sep-16	82	80	0%	[Gantt Bar]																							
Bridge A1																																			
Pier A7 (A1e)																																			
Pier Works																																			
SA1E0340	A7 (A1e) - Type 5B Pier Head Curing/Striking of Forms/Remove Scaffoldin	6	08-Apr-16 A	100%	0	29-Apr-16 A					100%	[Gantt Bar]																							
Pier A9 (A1c)																																			
Pier Works																																			
SA1C0190	A9 (A1c) - Type 5B Pier Head Scaffolding	3	18-Apr-16 A	100%	0	21-Apr-16 A					100%	[Gantt Bar]																							
SA1C0200	A9 (A1c) - Type 5B Pier Head Rebarwork	4	21-May-16	0%	4	25-May-16	01-Jun-16	04-Jun-16	9	0	0%	[Gantt Bar]																							
SA1C0210	A9 (A1c) - Type 5B Pier Head Formwork & Prep for Concreting	3	26-May-16	0%	3	28-May-16	06-Jun-16	08-Jun-16	9	0	0%	[Gantt Bar]																							

■ Actual Work
■ Planned Bar
■ Critical Bar
◆ Milestone

Project ID: J3518DWPrg-M36
 Layout: J3518-DWP-3MRP Submission - M36
 Filter: TASK filters: 3-Month Lookahead, No CC
 Milestones, No Level of Effort.

Tuen Mun - Chek Lap Kok Link - Southern Connection
3-Month Rolling Programme (Page 4 of 13 Pages)
(Progress as of 21-May-16)

Date	Revision	Checked	Approved
29-Mar-16		PKN	HF
29-Apr-16		PKN	HF
31-May-...		PKN	HF

DWG. No.:
J3518/GCL/PGM/3MRP-M36

Activity ID		Activity Name	Orig. Durn.	Act. Start / FC Early Start	Duration % Complete	Rem. Durn.	Act. Finish / FC Early Finish	Late Start	Late Finish	Total Float	Free Float	Physical % Complete	2016																					
													May				June				July				August									
													25	02	09	16	23	30	06	13	20	27	04	11	18	25	01	08	15	22				
Portal																																		
SC2ER310	C13 (C2e) - Portal Beam Concreting		1	17-Mar-16 A	0%	17	10-Jun-16	10-Dec-19	31-Dec-19	1056	1056	70%	[Gantt bar: 17-Mar-16 to 10-Jun-16]																					
SC2ER320	C13 (C2e) - Portal Beam Curing/Striking of Forms/Remove Scaffolding		14	18-Mar-16 A	66%	5	26-May-16	10-Mar-16	15-Mar-16	-56	16	66%	[Gantt bar: 18-Mar-16 to 15-Mar-16]																					
Pier C15 (C2c)																																		
Pier Head Segments																																		
SC2C0372	C15 (C2c) - Pier Head Segment Lift & Fix (1 seg)		2	03-May-16 A	100%	0	04-May-16 A					100%	[Milestone: 03-May-16]																					
SC2C0378	C15 (C2c) - Pier Head Segment Diaphragm - Rebar, Formwork, Concreting		22	21-May-16	0%	22	16-Jun-16	14-Apr-16	10-May-16	-30	0	0%	[Gantt bar: 16-Jun-16 to 10-May-16]																					
SC2C0380	C15 (C2c) - Pier Head Segment Diaphragm - Curing & Striking of Forms		6	17-Jun-16	0%	6	23-Jun-16	11-May-16	18-May-16	-30	43	0%	[Gantt bar: 23-Jun-16 to 18-May-16]																					
Pier C12 (C2f)																																		
Pier Head Segments																																		
SC2F0372	C12 (C2f) - Pier Head Segment Lift & Fix (1 seg)		2	05-May-16 A	100%	0	07-May-16 A					100%	[Milestone: 05-May-16]																					
SC2F0378	C12 (C2f) - Pier Head Segment Diaphragm - Rebar, Formwork, Concreting		22	18-May-16 A	40.91%	13	04-Jun-16	05-May-16	20-May-16	-13	0	40%	[Gantt bar: 04-Jun-16 to 20-May-16]																					
SC2F0380	C12 (C2f) - Pier Head Segment Diaphragm - Curing & Striking of Forms		6	06-Jun-16	0%	6	13-Jun-16	21-May-16	27-May-16	-13	0	0%	[Gantt bar: 13-Jun-16 to 27-May-16]																					
Pier C14 (C2d)																																		
Pier Head Segments																																		
SC2D0374	C14 (C2d) - Pier Head Segment Diaphragm - Rebar		8	09-Mar-16 A	100%	0	23-Apr-16 A					100%	[Milestone: 09-Mar-16]																					
SC2D0376	C14 (C2d) - Pier Head Segment Diaphragm - Formwork & Prep for Concr		8	15-Mar-16 A	100%	0	17-May-16 A					100%	[Milestone: 15-Mar-16]																					
SC2D0378	C14 (C2d) - Pier Head Segment Diaphragm - Concreting		2	16-Mar-16 A	0%	2	23-May-16	30-Dec-19	31-Dec-19	1071	1071	50%	[Gantt bar: 23-May-16 to 31-Dec-19]																					
SC2D0380	C14 (C2d) - Pier Head Segment Diaphragm - Curing & Striking of Forms		6	17-Mar-16 A	0%	6	27-May-16	12-Apr-16	18-Apr-16	-32	12	50%	[Gantt bar: 27-May-16 to 18-Apr-16]																					
Pier C16 (C2b)																																		
Pier Head Segments																																		
SC2B0372	C16 (C2b) - Pier Head Segment Lift & Fix (2 seg)		7	15-Apr-16 A	100%	0	22-Apr-16 A					100%	[Milestone: 15-Apr-16]																					
SC2B380	C16 (C2b) - C16A Diaphragm		24	21-May-16	0%	24	18-Jun-16	15-Feb-16	12-Mar-16	-77	0	0%	[Gantt bar: 18-Jun-16 to 12-Mar-16]																					
SC2B382	C16 (C2b) - C16B Diaphragm		24	20-Jun-16	0%	24	18-Jul-16	14-Mar-16	14-Apr-16	-77	23	0%	[Gantt bar: 18-Jul-16 to 14-Apr-16]																					
Bridge C1																																		
Pier C18 (C3d) Portal																																		
Portal																																		
SC1ER280	C18 (C1e) - Portal Beam Scaffolding		12	21-May-16*	0%	12	03-Jun-16	11-Dec-15	24-Dec-15	-127	0	0%	[Gantt bar: 03-Jun-16 to 24-Dec-15]																					
SC1ER310	C18 (C1e) - Portal Beam Rebar, Formwork, Concreting		45	04-Jun-16	0%	45	28-Jul-16	28-Dec-15	22-Feb-16	-127	0	0%	[Gantt bar: 28-Jul-16 to 22-Feb-16]																					
SC1ER320	C18 (C1e) - Pier Head Curing/Striking of Forms/Remove Scaffolding		14	29-Jul-16	0%	14	13-Aug-16	23-Feb-16	09-Mar-16	-127	0	0%	[Gantt bar: 13-Aug-16 to 09-Mar-16]																					
Pier C17 (C2a)																																		
Pier Head Segments																																		
SC2A0370	C17 (C2a) - Pier Head Segment - Temporary Platform		6	13-Jun-16*	0%	6	18-Jun-16	15-Dec-15	21-Dec-15	-142	0	0%	[Gantt bar: 18-Jun-16 to 21-Dec-15]																					
SC2A0372	C17 (C2a) - Pier Head Segment Lift & Fix (1 seg)		2	20-Jun-16	0%	2	21-Jun-16	22-Dec-15	23-Dec-15	-142	0	0%	[Gantt bar: 21-Jun-16 to 23-Dec-15]																					
SC2A0378	C17 (C2a) - Pier Head Segment Diaphragm - Rebar, Formwork, Concreting		23	22-Jun-16	0%	23	19-Jul-16	24-Dec-15	22-Jan-16	-142	0	0%	[Gantt bar: 19-Jul-16 to 22-Jan-16]																					
SC2A0380	C17 (C2a) - Pier Head Segment Diaphragm - Curing & Striking of Forms		6	20-Jul-16	0%	6	26-Jul-16	23-Jan-16	29-Jan-16	-142	0	0%	[Gantt bar: 26-Jul-16 to 29-Jan-16]																					
Pier C19 (C1d)																																		
Pier Head Segments																																		
SC1D0380	C19 (C1d) - Pier Head Segment Diaphragm - Curing & Striking of Forms		6	19-Mar-16 A	16.67%	5	26-May-16	03-May-16	07-May-16	-15	0	16%	[Gantt bar: 19-Mar-16 to 07-May-16]																					
Abutment & Approach Ramp C																																		
SC1C0250	AR-C - RE Walls - Erect fencing, Excavation/formation/ drainage filter & bo		12	22-Apr-15 A	83.33%	2	23-May-16	01-Nov-19	02-Nov-19	1023	0	90%	[Gantt bar: 23-May-16 to 02-Nov-19]																					
SC1C0251	AR-C - RE Walls - Upper layers with backfill in stages (exclude 800dia Tcc		48	24-May-16	0%	48	20-Jul-16	04-Nov-19	31-Dec-19	1023	1023	0%	[Gantt bar: 20-Jul-16 to 31-Dec-19]																					
SC1C0253	AR-C - RC Walls - Side Walls		48	14-Mar-16 A	100%	0	16-May-16 A					100%	[Milestone: 14-Mar-16]																					
SC1C0254	AR-C - RC Walls - Backfill		12	16-May-16 A	0%	12	03-Jun-16	25-Apr-16	09-May-16	-21	0	0%	[Gantt bar: 03-Jun-16 to 09-May-16]																					
SC1C0256	AR-C - RC Walls - Concrete Parapets		26	04-Jun-16	0%	26	06-Jul-16	10-May-16	10-Jun-16	-21	77	0%	[Gantt bar: 06-Jul-16 to 10-Jun-16]																					
SC1C0257	ARC - Utility work - Termination of 800 dia Tcc		1	17-Jun-16*	0%	1	17-Jun-16	16-Feb-16	16-Feb-16	-98	0	0%	[Milestone: 17-Jun-16]																					
SC1C0258	ARC - Utility work - Remove 800 dia Tcc and backfill		18	18-Jun-16	0%	18	09-Jul-16	17-Feb-16	08-Mar-16	-98	0	0%	[Gantt bar: 09-Jul-16 to 08-Mar-16]																					
SC1C0259	ARC - RE Walls - Remaining bay @800 Tcc		38	11-Jul-16	0%	38	23-Aug-16	09-Mar-16	26-Apr-16	-98	0	0%	[Gantt bar: 23-Aug-16 to 26-Apr-16]																					
Viaduct D																																		
Bridge D3																																		
Pier D6 (D4a)																																		
Pier Head Segments																																		
SD4A0370	D6 (D4a) - Pier Head Segment - Temporary Platform		6	06-Jun-16*	0%	6	13-Jun-16	02-Dec-15	08-Dec-15	-148	19	0%	[Gantt bar: 13-Jun-16 to 08-Dec-15]																					
SD4A0371	D6 (D4a) - Pier Head Segment Bearings		2	07-Jul-16	0%	2	08-Jul-16	09-Dec-15	10-Dec-15	-167	0	0%	[Gantt bar: 08-Jul-16 to 10-Dec-15]																					
SD4A0372	D6 (D4a) - Pier Head Segment Lift & Temp Support (2 seg)		7	09-Jul-16	0%	7	16-Jul-16	11-Dec-15	18-Dec-15	-167	96	0%	[Gantt bar: 16-Jul-16 to 18-Dec-15]																					
Pier D5 (D4b)																																		
Pier Head Segments																																		
SD4B0378	D5 (D4b) - Pier Head Segment Diaphragm - Rebar, Formwork, Concreting		22	06-Apr-16 A	100%	0	13-May-16 A					100%	[Milestone: 06-Apr-16]																					
SD4B0380	D5 (D4b) - Pier Head Segment Diaphragm - Curing & Striking of Forms		6	14-May-16 A	100%	0	17-May-16 A					100%	[Milestone: 14-May-16]																					
Pier D1 (D4f)																																		
Pier Head Segments																																		
SD4F0372	D1 (D4f) - Pier Head Segment Lift & Temp Support (2 seg)		7	28-Mar-16 A	100%	0	29-Apr-16 A					100%	[Milestone: 28-Mar-16]																					

<ul style="list-style-type: none"> █ Actual Work █ Planned Bar █ Critical Bar ◆ Milestone 	<p>Project ID: J3518DWPrG-M36 Layout: J3518-DWP-3MRP Submission - M36 Filter: TASK filters: 3-Month Lookahead, No CC Milestones, No Level of Effort.</p>	<p>Tuen Mun - Chek Lap Kok Link - Southern Connection 3-Month Rolling Programme (Page 6 of 13 Pages) (Progress as of 21-May-16)</p>	<table border="1" style="width: 100%;"> <thead> <tr><th>Date</th><th>Revision</th><th>Checked</th><th>Approved</th></tr> </thead> <tbody> <tr><td>29-Mar-16</td><td></td><td>PKN</td><td>HF</td></tr> <tr><td>29-Apr-16</td><td></td><td>PKN</td><td>HF</td></tr> <tr><td>31-May-...</td><td></td><td>PKN</td><td>HF</td></tr> </tbody> </table>	Date	Revision	Checked	Approved	29-Mar-16		PKN	HF	29-Apr-16		PKN	HF	31-May-...		PKN	HF	<p>DWG. No.:</p> <p style="font-size: 1.2em;">J3518/GCL/PGM/3MRP-M36</p>
Date	Revision	Checked	Approved																	
29-Mar-16		PKN	HF																	
29-Apr-16		PKN	HF																	
31-May-...		PKN	HF																	

Activity ID	Activity Name	Orig. Durn.	Act. Start / FC Early Start	Duration % Complete	Rem. Durn.	Act. Finish / FC Early Finish	Late Start	Late Finish	Total Float	Free Float	Physical % Complete	2016																			
												May					June					July					August				
												25	02	09	16	23	30	06	13	20	27	04	11	18	25	01	08	15	22		
Bridge D2																															
Pier D8 (D3d)																															
Pier Head Segments																															
SD3D0372	D8 (D3d) - Pier Head Segment Lift & Fix (1 seg)	2	20-May-16 A	100%	0	20-May-16 A					100%																				
SD3D0378	D8 (D3d) - Pier Head Segment Diaphragm - Rebar, Formwork, Concreting	23	21-May-16	0%	23	17-Jun-16	30-Nov-15	28-Dec-15	-137	0	0%																				
SD3D0380	D8 (D3d) - Pier Head Segment Diaphragm - Curing & Striking of Forms	6	18-Jun-16	0%	6	24-Jun-16	29-Dec-15	06-Jan-16	-136	127	0%																				
Pier D12 (D2e)																															
Portal																															
SD2ER300	D12 (D2e) - Portal Beam Rebarwork & Inserts	22	05-Mar-16 A	100%	0	07-May-16 A					100%																				
SD2ER310	D12 (D2e) - Portal Beam Concreting	1	07-May-16 A	100%	0	07-May-16 A					100%																				
SD2ER320	D12 (D2e) - Pier Head Curing/Striking of Forms/Remove Scaffolding	14	09-May-16 A	0%	14	06-Jun-16	12-Apr-16	27-Apr-16	-32	0	0%																				
SD2ER325	D12 (D2e) - Pier Backfilling Works	4	07-Jun-16	0%	4	11-Jun-16	13-Jun-16	16-Jun-16	4	207	0%																				
Pier D9 (D3c)																															
Pier Head Segments																															
SD3C0370	D9 (D3c) - Pier Head Segment - Temporary Platform	6	04-May-16 A	100%	0	11-May-16 A					100%																				
SD3C0372	D9 (D3c) - Pier Head Segment Lift & Fix (1 seg)	2	21-May-16	0%	2	23-May-16	31-Dec-15	02-Jan-16	-112	0	0%																				
SD3C0378	D9 (D3c) - Pier Head Segment Diaphragm - Rebar, Formwork, Concreting	22	24-May-16	0%	22	18-Jun-16	04-Jan-16	28-Jan-16	-112	0	0%																				
SD3C0380	D9 (D3c) - Pier Head Segment Diaphragm - Curing & Striking of Forms	6	20-Jun-16	0%	6	25-Jun-16	29-Jan-16	04-Feb-16	-112	0	0%																				
Pier D10 (D3b)																															
Portal																															
SD3BR300	D10 (D3b) - Portal Beam Rebarwork & Inserts	16	29-Apr-16 A	0%	16	08-Jun-16	28-Dec-15	15-Jan-16	-115	0	0%																				
SD3BR305	D10 (D3b) - Portal Beam Side Formwork & Prep for Concreting	16	10-Jun-16	0%	16	28-Jun-16	16-Jan-16	03-Feb-16	-115	0	0%																				
SD3BR310	D10 (D3b) - Portal Beam Concreting	1	29-Jun-16	0%	1	29-Jun-16	04-Feb-16	04-Feb-16	-115	0	0%																				
SD3BR320	D10 (D3b) - Pier Head Curing/Striking of Forms/Remove Scaffolding	14	30-Jun-16	0%	14	16-Jul-16	05-Feb-16	24-Feb-16	-115	0	0%																				
Pier D13 (D2d)																															
Pier Works																															
SD2D0360	D13 (D2d) - Type 5B-MJ Pier Backfilling Works	4	21-May-16	0%	4	25-May-16	19-Feb-16	23-Feb-16	-73	0	0%																				
Pier Head Segments																															
SD2D0370	D13 (D2d) - Pier Head Segment - Temporary Platform	6	26-May-16*	0%	6	01-Jun-16	24-Feb-16	01-Mar-16	-73	0	0%																				
SD2D0371	D13 (D2d) - Pier Head Segment Bearings	2	02-Jun-16	0%	2	03-Jun-16	02-Mar-16	03-Mar-16	-73	0	0%																				
SD2D0372	D13 (D2d) - D13A - Pier Head Segment Lift & Fix (1 seg)	1	04-Jun-16	0%	1	04-Jun-16	04-Mar-16	04-Mar-16	-73	0	0%																				
SD2D380	D13 (D2d) - D13B - Pier Head Segment Lift & Fix (1 seg)	1	02-Jul-16	0%	1	02-Jul-16	02-Apr-16	02-Apr-16	-73	0	0%																				
SD2D382	D13 (D2d) - D13A - Diaphragm	24	06-Jun-16	0%	24	05-Jul-16	05-Mar-16	06-Apr-16	-73	0	0%																				
SD2D384	D13 (D2d) - D13B - Diaphragm	24	06-Jul-16	0%	24	02-Aug-16	07-Apr-16	05-May-16	-73	69	0%																				
Pier D11 (D3a)																															
Portal																															
SD3AR310	D11 (D3a) - Portal Beam Rebar, Formwork, Concreting	45	08-Apr-16 A	27%	33	29-Jun-16	15-Apr-16	25-May-16	-29	0	27%																				
SD3AR320	D11 (D3a) - Pier Head Curing/Striking of Forms/Remove Scaffolding	14	29-Jun-16	0%	14	16-Jul-16	26-May-16	11-Jun-16	-29	83	0%																				
Bridge D1																															
Pier D15 (D2b)																															
Pier Head Segments																															
SD2B0378	D15 (D2b) - Pier Head Segment Diaphragm - Rebar, Formwork, Concretir	22	12-Apr-16 A	100%	0	20-May-16 A					100%																				
SD2B0380	D15 (D2b) - Pier Head Segment Diaphragm - Curing & Striking of Forms	3	21-May-16 A	0%	3	24-May-16	23-May-16	25-May-16	1	72	0%																				
Abutment & Approach Ramp D																															
SD1B0252	AR-D - Box structure - Bay 1 & Bay 8	55	21-May-16*	0%	55	26-Jul-16	24-Mar-16	02-Jun-16	-44	0	0%																				
SD1B0290	AR-D - Backfill embankment	90	02-Nov-15 A	33.33%	60	01-Aug-16	08-Oct-16	17-Dec-16	116	0	0%																				
SD1B0300	AR-D - RC Walls - Concrete parapets / Profile barriers	24	27-Jul-16	0%	24	23-Aug-16	11-Aug-16	07-Sep-16	13	0	0%																				
SD1B0400	AR-D - Drainage	45	26-Jul-16	0%	45	15-Sep-16	12-Dec-16	08-Feb-17	116	0	0%																				
SD1B0402	AR-D - Subbase	6	10-Aug-16	0%	6	16-Aug-16	18-Jun-16	24-Jun-16	-44	6	0%																				
SD1B0420	AR-D - Ductings for TCSS civil work provisions (for KD4)	12	27-Jul-16	0%	12	09-Aug-16	03-Jun-16	17-Jun-16	-44	0	0%																				
Viaduct E																															
Viaduct E1																															
Bridge E1 - Piling & Substructure																															
E1A, E1B, E1C & E1D (E1a1-2-3-4)																															
Pier Head Segments - E1A, E1B, E1C & E1D																															
Pier Head Segments - E1D (E1a1)																															
SE1A1372	E1D (E1a1) - Pier Head Segment Lift & Fix (1 seg)	2	23-May-16 A	100%	0	23-May-16 A					100%																				
SE1A1378	E1D (E1a1) - Pier Head Segment Diaphragm - Rebar, Formwork, Concretir	25	21-May-16	0%	25	20-Jun-16	27-Apr-16	27-May-16	-19	0	0%																				
SE1A1380	E1D (E1a1) - Pier Head Segment Diaphragm - Curing & Striking of Forms	6	21-Jun-16	0%	6	27-Jun-16	28-May-16	03-Jun-16	-19	82	0%																				
E2A, E2B, E2C & E2D (E1b1-2-3-4)																															
Pier Head Segments - E2A, E2B, E2C & E2D																															
Pier Head Segments - E2D (E1b1)																															

- Actual Work
- Planned Bar
- Critical Bar
- Milestone

Project ID: J3518DWPrG-M36
Layout: J3518-DWP-3MRP Submission - M36
Filter: TASK filters: 3-Month Lookahead, No CC
Milestones, No Level of Effort.

Tuen Mun - Chek Lap Kok Link - Southern Connection
3-Month Rolling Programme (Page 7 of 13 Pages)
(Progress as of 21-May-16)

Date	Revision	Checked	Approved
29-Mar-16		PKN	HF
29-Apr-16		PKN	HF
31-May-...		PKN	HF

DWG. No.:
J3518/GCL/PGM/3MRP-M36

Activity ID	Activity Name	Orig. Durr.	Act. Start / FC Early Start	Duration % Complete	Rem. Durr.	Act. Finish / FC Early Finish	Late Start	Late Finish	Total Float	Free Float	Physical % Complete	2016																							
												May					June				July					August									
												25	02	09	16	23	30	06	13	20	27	04	11	18	25	01	08	15	22						
SE1B1378	E2D (E1b1) - Pier Head Segment Diaphragm - Rebar, Formwork, Concret	22	03-May-16 A	13.64%	19	13-Jun-16	23-Apr-16	17-May-16	-22	0	50%	[Gantt Bar: 23-Apr to 17-May]																							
SE1B1380	E2D (E1b1) - Pier Head Segment Diaphragm - Curing & Striking of Forms	6	14-Jun-16	0%	6	20-Jun-16	18-May-16	24-May-16	-22	50	0%	[Gantt Bar: 18-May to 24-May]																							
Viaduct E2																																			
Bridge E2 - Piling & Substructure																																			
E3A,E3B, E3C & E3D (E2a - 1/2/3/4)																																			
Pier Head Segements - E3A,E3B, E3C & E3D																																			
Pier Head Segment - E3C (E2a2)																																			
SE2A2372	E3C (E2a2) - Pier Head Segment Lift & Temp Support (2 seg)	10	31-Mar-16 A	100%	0	06-May-16 A					100%	[Gantt Bar: 31-Mar to 06-May]																							
Pier Head Segment - E3D (E2a1)																																			
SE2A1372	E3D (E2a1) - Pier Head Segment Lift & Temp Support (2 seg)	7	23-Jun-16*	0%	7	30-Jun-16	16-May-16	24-May-16	-31	97	0%	[Gantt Bar: 16-May to 24-May]																							
E4A & E4B (E2b - 1/2)																																			
Pier Works - E4A & E4B																																			
Pier Works - E4B (E2b1)																																			
E4B2020	E4B - Seagull Pier Temp. Work, Rebar, Formwork,Concreting - Arm (Hollo	41	02-Mar-16 A	100%	0	07-May-16 A					100%	[Gantt Bar: 02-Mar to 07-May]																							
E4B2030	E4B - Seagull Pier Temp. Work, Rebar, Formwork,Concreting - Upper Dia	24	09-May-16 A	0%	24	18-Jun-16	03-Jul-15	30-Jul-15	-262	0	10%	[Gantt Bar: 03-Jul to 30-Jul]																							
E4B2040	E4B - Seagull Pier Curing, CJ, Remove Formwork & Falsework	20	20-Jun-16	0%	20	13-Jul-16	31-Jul-15	22-Aug-15	-262	0	0%	[Gantt Bar: 31-Jul to 22-Aug]																							
Pier Head Segements - E4A & E4B																																			
Pier head Segment - E4A (E2b2)																																			
E4A3110	E4A - Temp. Work, Grillages, Megashore Towers, Rail Beams	22	11-Mar-16 A	100%	0	24-May-16 A					100%	[Gantt Bar: 11-Mar to 24-May]																							
E4A3120	E4A - Install Pierhead Segments (4 nr)	6	29-Apr-16 A	0%	14	06-Jun-16	17-Jun-15	04-Jul-15	-274	0	50%	[Gantt Bar: 17-Jun to 04-Jul]																							
E4A3130	E4A - Diaphragm of PHS - Formwork, Rebar, Concreting	52	07-Jun-16	0%	52	08-Aug-16	06-Jul-15	03-Sep-15	-274	0	0%	[Gantt Bar: 06-Jul to 03-Sep]																							
E4A3140	E4A - Remove Rail Beams, Megashore Towers	13	09-Aug-16	0%	13	23-Aug-16	04-Sep-15	18-Sep-15	-274	0	0%	[Gantt Bar: 04-Sep to 18-Sep]																							
Pier head Segment - E4B (E2b1)																																			
E4B3110	E4B - Temp. Work, Grillages, Megashore Towers, Rail Beams	19	14-Jul-16	0%	19	04-Aug-16	24-Aug-15	14-Sep-15	-262	0	0%	[Gantt Bar: 24-Aug to 14-Sep]																							
E4B3120	E4B - Install Pierhead Segments (4 nr)	6	05-Aug-16	0%	6	11-Aug-16	15-Sep-15	21-Sep-15	-262	0	0%	[Gantt Bar: 15-Sep to 21-Sep]																							
E4B3130	E4B - Diaphragm of PHS - Formwork, Rebar, Concreting	53	12-Aug-16	0%	53	15-Oct-16	22-Sep-15	25-Nov-15	-262	0	0%	[Gantt Bar: 22-Sep to 25-Nov]																							
E5A & E5B (E2c - 1/2)																																			
Pier Works - E5A & E5B																																			
Pier Works - E5A (E2c2)																																			
E5A2020	E5A - Seagull Pier Temp. Work, Rebar, Formwork,Concreting - Arm (Solic	38	23-Feb-16 A	76.32%	9	31-May-16	10-Dec-15	19-Dec-15	-128	0	70%	[Gantt Bar: 10-Dec to 19-Dec]																							
E5A2030	E5A - Seagull Pier Curing, CJ, Remove Formwork & Falsework	14	01-Jun-16	0%	14	17-Jun-16	21-Dec-15	08-Jan-16	-128	0	0%	[Gantt Bar: 21-Dec to 08-Jan]																							
Pier Works - E5B (E2c1)																																			
E5B2020	E5B - Seagull Pier Temp. Work, Rebar, Formwork,Concreting - Arm (Solid	73	19-Mar-16 A	53.42%	34	30-Jun-16	16-Mar-16	28-Apr-16	-51	0	50%	[Gantt Bar: 16-Mar to 28-Apr]																							
E5B2030	E5B - Seagull Pier Curing, CJ, Remove Formwork & Falsework	21	02-Jul-16	0%	21	26-Jul-16	29-Apr-16	25-May-16	-51	0	0%	[Gantt Bar: 29-Apr to 25-May]																							
Pier Head Segements - E5A & E5B																																			
Pier head Segment - E5A (E2c2)																																			
E5A3110	E5A - Temp. Work, Rail Beams	21	18-Jun-16	0%	21	13-Jul-16	09-Jan-16	02-Feb-16	-128	0	0%	[Gantt Bar: 09-Jan to 02-Feb]																							
E5A3120	E5A - Install Pierhead Segments (4 nr)	6	14-Jul-16	0%	6	20-Jul-16	03-Feb-16	12-Feb-16	-128	0	0%	[Gantt Bar: 03-Feb to 12-Feb]																							
E5A3130	E5A - Diaphragm of PHS - Formwork, Rebar, Concreting	41	21-Jul-16	0%	41	06-Sep-16	13-Feb-16	05-Apr-16	-128	0	0%	[Gantt Bar: 13-Feb to 05-Apr]																							
Pier head Segment - E5B (E2c1)																																			
E5B3110	E5B - Temp. Work, Rail Beams	20	27-Jul-16	0%	20	18-Aug-16	26-May-16	18-Jun-16	-51	0	0%	[Gantt Bar: 26-May to 18-Jun]																							
E5B3120	E5B - Install Pierhead Segments (4 nr)	6	19-Aug-16	0%	6	25-Aug-16	20-Jun-16	25-Jun-16	-51	0	0%	[Gantt Bar: 20-Jun to 25-Jun]																							
E6A & E6B (E2d - 1/2)																																			
Pier Works - E6A & E6B																																			
Pier Works - E6A (E2d2)																																			
E6A2020	E6A - Seagull Pier Temp. Work, Rebar, Formwork,Concreting - Arm (Solid	59	27-Feb-16 A	22.03%	46	15-Jul-16	15-May-15	10-Jul-15	-301	0	60%	[Gantt Bar: 15-May to 10-Jul]																							
E6A2030	E6A - Seagull Pier Curing, CJ, Remove Formwork & Falsework	21	16-Jul-16	0%	21	09-Aug-16	11-Jul-15	04-Aug-15	-301	0	0%	[Gantt Bar: 11-Jul to 04-Aug]																							
Pier Works - E6B (E2d1)																																			
E6B2020	E6B - Seagull Pier Temp. Work, Rebar, Formwork,Concreting - Arm (Solid	68	25-May-16 A	0%	68	10-Aug-16	28-Jan-16	23-Apr-16	-89	0	30%	[Gantt Bar: 28-Jan to 23-Apr]																							
E6B2030	E6B - Seagull Pier Curing, CJ, Remove Formwork & Falsework	21	11-Aug-16	0%	21	03-Sep-16	25-Apr-16	20-May-16	-89	0	0%	[Gantt Bar: 25-Apr to 20-May]																							
Pier head Segment - E6A & E6B																																			
Pier head Segment - E6A (E2d2)																																			
E6A3110	E6A - Temp. Work, Rail Beams	20	10-Aug-16	0%	20	01-Sep-16	05-Aug-15	27-Aug-15	-301	0	0%	[Gantt Bar: 05-Aug to 27-Aug]																							
E7A & E7B (E2e - 1/2)																																			
Pier Works - E7A & E7B																																			
Pier Works - E7A (E2e2)																																			
E7A2020	E7A - Seagull Pier Temp. Work, Rebar, Formwork,Concreting - Arm (Hollo	44	29-Mar-16 A	0%	44	13-Jul-16	03-Nov-15	23-Dec-15	-160	0	50%	[Gantt Bar: 03-Nov to 23-Dec]																							
E7A2030	E7A - Seagull Pier Temp. Work, Rebar, Formwork,Concreting - Upper Dia	24	14-Jul-16	0%	24	10-Aug-16	24-Dec-15	23-Jan-16	-160	0	0%	[Gantt Bar: 24-Dec to 23-Jan]																							
E7A2040	E7A - Seagull Pier Curing, CJ, Remove Formwork & Falsework	20	11-Aug-16	0%	20	02-Sep-16	25-Jan-16	19-Feb-16	-160	0	0%	[Gantt Bar: 25-Jan to 19-Feb]																							
Pier Works - E7B (E2e1)																																			
E7B2020	E7B - Seagull Pier Temp. Work, Rebar, Formwork,Concreting - Arm (Hollo	66	12-Apr-16 A	15.15%	56	27-Jul-16	04-Jun-15	10-Aug-15	-285	0	30%	[Gantt Bar: 04-Jun to 10-Aug]																							
E7B2030	E7B - Seagull Pier Temp. Work, Rebar, Formwork,Concreting - Upper Dia	24	28-Jul-16	0%	24	24-Aug-16	11-Aug-15	07-Sep-15	-285	0	0%	[Gantt Bar: 11-Aug to 07-Sep]																							

<ul style="list-style-type: none"> █ Actual Work █ Planned Bar █ Critical Bar ◆ Milestone 	Project ID: J3518DWPrg-M36 Layout: J3518-DWP-3MRP Submission - M36 Filter: TASK filters: 3-Month Lookahead, No CC Milestones, No Level of Effort.	Tuen Mun - Chek Lap Kok Link - Southern Connection 3-Month Rolling Programme (Page 8 of 13 Pages) (Progress as of 21-May-16)	<table border="1"> <thead> <tr> <th>Date</th> <th>Revision</th> <th>Checked</th> <th>Approved</th> </tr> </thead> <tbody> <tr> <td>29-Mar-16</td> <td></td> <td>PKN</td> <td>HF</td> </tr> <tr> <td>29-Apr-16</td> <td></td> <td>PKN</td> <td>HF</td> </tr> <tr> <td>31-May-...</td> <td></td> <td>PKN</td> <td>HF</td> </tr> </tbody> </table>	Date	Revision	Checked	Approved	29-Mar-16		PKN	HF	29-Apr-16		PKN	HF	31-May-...		PKN	HF	DWG. No.: J3518/GCL/PGM/3MRP-M36
Date	Revision	Checked	Approved																	
29-Mar-16		PKN	HF																	
29-Apr-16		PKN	HF																	
31-May-...		PKN	HF																	

Activity ID	Activity Name	Orig. Durn.	Act. Start / FC Early Start	Duration % Complete	Rem. Durn.	Act. Finish / FC Early Finish	Late Start	Late Finish	Total Float	Free Float	Physical % Complete	2016																					
												May					June					July					August						
												25	02	09	16	23	30	06	13	20	27	04	11	18	25	01	08	15	22				
E8A & E8B (E2f - 1/2)																																	
Pier Works - E8A & E8B																																	
Pier Works - E8A (E2f2)																																	
E8A2020	E8A - Seagull Pier Temp. Work, Rebar, Formwork, Concreting - Arm (Solid)	50	26-Apr-16 A	20%	40	08-Jul-16	26-Feb-16	16-Apr-16	-67	0	70%	[Gantt Bar: Blue from 26-Feb-16 to 16-Apr-16, Red from 16-Apr-16 to 08-Jul-16]																					
E8A2030	E8A - Seagull Pier Temp. Work, Curing, CJ, Remove Formwork & Falsework	21	09-Jul-16	0%	21	02-Aug-16	18-Apr-16	12-May-16	-67	0	0%	[Gantt Bar: Red from 18-Apr-16 to 12-May-16]																					
Pier Works - E8B (E2f1)																																	
E8B2020	E8B - Seagull Pier Temp. Work, Rebar, Formwork, Concreting - Arm (Solid)	70	27-Apr-16 A	0%	70	12-Aug-16	09-Dec-15	05-Mar-16	-129	0	10%	[Gantt Bar: Blue from 09-Dec-15 to 05-Mar-16, Red from 05-Mar-16 to 12-Aug-16]																					
E8B2030	E8B - Seagull Pier Curing, CJ, Remove Formwork & Falsework	21	13-Aug-16	0%	21	06-Sep-16	07-Mar-16	02-Apr-16	-129	0	0%	[Gantt Bar: Red from 07-Mar-16 to 02-Apr-16]																					
Pier head Segment - E8A & E8B																																	
Pier head Segment - E8A (E2f2)																																	
E8A3110	E8A - Temp. Work, Rail Beams	21	03-Aug-16	0%	21	26-Aug-16	13-May-16	07-Jun-16	-67	0	0%	[Gantt Bar: Red from 13-May-16 to 07-Jun-16]																					
E9A & E9B (E2g - 1/2)																																	
Pier Works - E9A & E9B																																	
Pier Works - E9A (E2g2)																																	
E9A2040	E9A - Seagull Pier Temp. Work, Rebar, Formwork, Concreting - Upper Dia	24	09-May-16 A	0%	24	18-Jun-16	11-Feb-16	09-Mar-16	-80	0	5%	[Gantt Bar: Blue from 11-Feb-16 to 09-Mar-16, Red from 09-Mar-16 to 18-Jun-16]																					
E9A2050	E9A - Seagull Pier Curing, CJ, Remove Formwork & Falsework	20	20-Jun-16	0%	20	13-Jul-16	10-Mar-16	06-Apr-16	-80	0	0%	[Gantt Bar: Red from 10-Mar-16 to 06-Apr-16]																					
Pier Works - E9B (E2g1)																																	
E9B2030	E9B - Seagull Pier Temp. Work, Rebar, Formwork, Concreting - Arm (Holc	62	19-Feb-16 A	96.77%	2	23-May-16	07-Mar-16	08-Mar-16	-59	0	100%	[Gantt Bar: Blue from 07-Mar-16 to 08-Mar-16, Red from 08-Mar-16 to 23-May-16]																					
E9B2040	E9B - Seagull Pier Temp. Work, Rebar, Formwork, Concreting - Upper Dia	24	24-May-16	0%	24	21-Jun-16	09-Mar-16	09-Apr-16	-59	0	0%	[Gantt Bar: Red from 09-Mar-16 to 09-Apr-16]																					
E9B2050	E9B - Seagull Pier Curing, CJ, Remove Formwork & Falsework	20	22-Jun-16	0%	20	15-Jul-16	11-Apr-16	04-May-16	-59	0	0%	[Gantt Bar: Red from 11-Apr-16 to 04-May-16]																					
Pier head Segment - E9A & E9B																																	
Pier head Segment - E9A (E2g2)																																	
E9A3110	E9A - Temp. Work, Rail Beams	21	14-Jul-16	0%	21	06-Aug-16	07-Apr-16	30-Apr-16	-80	0	0%	[Gantt Bar: Red from 07-Apr-16 to 30-Apr-16]																					
E9A3120	E9A - Install Pierhead Segments (4 nr)	6	08-Aug-16	0%	6	13-Aug-16	03-May-16	09-May-16	-80	0	0%	[Gantt Bar: Red from 03-May-16 to 09-May-16]																					
E9A3130	E9A - Diaphragm of PHS - Formwork, Rebar, Concreting	48	15-Aug-16	0%	48	12-Oct-16	10-May-16	07-Jul-16	-80	0	0%	[Gantt Bar: Red from 10-May-16 to 07-Jul-16]																					
Pier head Segment - E9B (E2g1)																																	
E9B3110	E9B - Temp. Work, Rail Beams	20	16-Jul-16	0%	20	08-Aug-16	05-May-16	28-May-16	-59	0	0%	[Gantt Bar: Red from 05-May-16 to 28-May-16]																					
E9B3120	E9B - Install Pierhead Segments (4 nr)	6	09-Aug-16	0%	6	15-Aug-16	30-May-16	04-Jun-16	-59	0	0%	[Gantt Bar: Red from 30-May-16 to 04-Jun-16]																					
E9B3130	E9B - Diaphragm of PHS - Formwork, Rebar, Concreting	48	16-Aug-16	0%	48	13-Oct-16	06-Jun-16	02-Aug-16	-59	0	0%	[Gantt Bar: Red from 06-Jun-16 to 02-Aug-16]																					
E10A & E10B (E2h - 1/2)																																	
Pier Works - E10A & E10B																																	
Pier Works - E10A (E2h2)																																	
E10A2030	E10A - Seagull Pier Temp. Work, Rebar, Formwork, Concreting - Arm (Hol	44	23-Mar-16 A	59.09%	18	11-Jun-16	17-Feb-16	08-Mar-16	-75	0	50%	[Gantt Bar: Blue from 17-Feb-16 to 08-Mar-16, Red from 08-Mar-16 to 11-Jun-16]																					
E10A2040	E10A - Seagull Pier Temp. Work, Rebar, Formwork, Concreting - Upper Di	24	13-Jun-16	0%	24	11-Jul-16	09-Mar-16	09-Apr-16	-75	0	0%	[Gantt Bar: Red from 09-Mar-16 to 09-Apr-16]																					
E10A2050	E10A - Seagull Pier Curing, CJ, Remove Formwork & Falsework	20	12-Jul-16	0%	20	03-Aug-16	11-Apr-16	04-May-16	-75	0	0%	[Gantt Bar: Red from 11-Apr-16 to 04-May-16]																					
Pier Works - E10B (E2h1)																																	
E10B2020	E10B - Seagull Pier Temp. Work, Rebar, Formwork, Concreting - Lower D	19	11-Mar-16 A	73.68%	5	26-May-16	09-Oct-15	14-Oct-15	-180	0	0%	[Gantt Bar: Blue from 09-Oct-15 to 14-Oct-15, Red from 14-Oct-15 to 26-May-16]																					
E10B2030	E10B - Seagull Pier Temp. Work, Rebar, Formwork, Concreting - Arm (Hol	68	27-May-16	0%	68	16-Aug-16	15-Oct-15	06-Jan-16	-180	0	0%	[Gantt Bar: Red from 15-Oct-15 to 06-Jan-16]																					
E10B2040	E10B - Seagull Pier Temp. Work, Rebar, Formwork, Concreting - Upper D	24	17-Aug-16	0%	24	13-Sep-16	07-Jan-16	03-Feb-16	-180	0	0%	[Gantt Bar: Red from 07-Jan-16 to 03-Feb-16]																					
Pier head Segments - E10A & E10B																																	
Pier head Segments - E10A (E2h2)																																	
E10A3110	E10A - Temp. Work, Rail Beams	20	04-Aug-16	0%	20	26-Aug-16	05-May-16	28-May-16	-75	0	0%	[Gantt Bar: Red from 05-May-16 to 28-May-16]																					
Viaduct E5, E6, E7 & E8																																	
E11A & E11B (E5E6a/E7E8a)																																	
Pier Works - E11A & E11B																																	
Pier Works - E11A (E7E8a)																																	
E11A2020	E11A - Seagull Pier Temp. Work, Rebar, Formwork, Concreting - Lower Di	24	22-Mar-16 A	100%	0	26-Apr-16 A					100%	[Gantt Bar: Blue from 26-Apr-16 to 26-Apr-16]																					
E11A2030	E11A - Seagull Pier Temp. Work, Rebar, Formwork, Concreting - Lower Ar	30	27-Apr-16 A	0%	30	25-Jun-16	28-Apr-15	03-Jun-15	-315	0	15%	[Gantt Bar: Blue from 28-Apr-15 to 03-Jun-15, Red from 03-Jun-15 to 25-Jun-16]																					
E11A2040	E11A - Seagull Pier Temp. Work, Rebar, Formwork, Concreting - Upper Ar	44	27-Jun-16	0%	44	17-Aug-16	04-Jun-15	27-Jul-15	-315	0	0%	[Gantt Bar: Red from 04-Jun-15 to 27-Jul-15]																					
E11A2050	E11A - Seagull Pier Curing, CJ, Remove Formwork & Falsework	21	18-Aug-16	0%	21	10-Sep-16	28-Jul-15	20-Aug-15	-315	0	0%	[Gantt Bar: Red from 28-Jul-15 to 20-Aug-15]																					
Pier Works - E11B (E5E6a)																																	
E11B2020	E11B - Seagull Pier Temp. Work, Rebar, Formwork, Concreting - Lower Di	19	14-Apr-16 A	100%	0	12-May-16 A					100%	[Gantt Bar: Blue from 12-May-16 to 12-May-16]																					
E11B2030	E11B - Seagull Pier Temp. Work, Rebar, Formwork, Concreting - Lower Ar	30	13-May-16 A	0%	30	25-Jun-16	06-May-15	10-Jun-15	-309	0	5%	[Gantt Bar: Blue from 06-May-15 to 10-Jun-15, Red from 10-Jun-15 to 25-Jun-16]																					
E11B2040	E11B - Seagull Pier Temp. Work, Rebar, Formwork, Concreting - Upper Ar	64	27-Jun-16	0%	64	09-Sep-16	11-Jun-15	26-Aug-15	-309	0	0%	[Gantt Bar: Red from 11-Jun-15 to 26-Aug-15]																					
E12A, E12B, E12C & E12D (E8b/E7b/E6b/E5b)																																	
Pile Cap Works - E12A, E12B, E12C & E12D																																	
Pile Cap Works - Dolphin E12A (E8b)																																	
SE8BD070	E12A (E8b) Dolphin - Marine Pile Cap - Collar frame to perm. casing of Boi	3	28-Apr-16 A	100%	0	16-May-16 A					100%	[Gantt Bar: Blue from 16-May-16 to 16-May-16]																					
SE8BD080	E12A (E8b) Dolphin - Marine Pile Cap - Install precast shell in position	24	17-May-16 A	100%	0	24-May-16 A					100%	[Gantt Bar: Blue from 24-May-16 to 24-May-16]																					
SE8BD130	E12A (E8b) - Dolphin - Marine Pile Cap - Fixings, Dewatering & Trimming o	11	21-May-16	0%	11	02-Jun-16	10-Feb-17	22-Feb-17	216	0	0%	[Gantt Bar: Green from 10-Feb-17 to 22-Feb-17]																					
SE8BD150	E12A (E8b) - Dolphin - Marine Pile Cap - Rebar, Concreting	5	03-Jun-16	0%	5	08-Jun-16	23-Feb-17	28-Feb-17	216	319	0%	[Gantt Bar: Green from 23-Feb-17 to 28-Feb-17]																					
Bridge E8 - Pier E12A (E8b)																																	

■ Actual Work
■ Planned Bar
■ Critical Bar
◆ Milestone

Project ID: J3518DWPrg-M36
 Layout: J3518-DWP-3MRP Submission - M36
 Filter: TASK filters: 3-Month Lookahead, No CC
 Milestones, No Level of Effort.

Tuen Mun - Chek Lap Kok Link - Southern Connection
3-Month Rolling Programme (Page 9 of 13 Pages)
(Progress as of 21-May-16)

Date	Revision	Checked	Approved
29-Mar-16		PKN	HF
29-Apr-16		PKN	HF
31-May-...		PKN	HF

DWG. No.:
J3518/GCL/PGM/3MRP-M36

Activity ID	Activity Name	Orig. Durn.	Act. Start / FC Early Start	Duration % Complete	Rem. Durn.	Act. Finish / FC Early Finish	Late Start	Late Finish	Total Float	Free Float	Physical % Complete	2016																							
												May					June					July					August								
												25	02	09	16	23	30	06	13	20	27	04	11	18	25	01	08	15	22						
Pier Works - E12A																																			
Pier Works																																			
E12A2010	E12A - Seagull Pier Temp. Work, Rebar, Formwork, Concreting - Upper St	31	02-Apr-16 A	77.42%	7	28-May-16	11-Apr-15	18-Apr-15	-329	0	80%																								
E12A2020	E12A - Seagull Pier Temp. Work, Rebar, Formwork, Concreting - Lower Di	21	30-May-16	0%	21	23-Jun-16	20-Apr-15	14-May-15	-329	0	0%																								
E12A2030	E12A - Seagull Pier Temp. Work, Rebar, Formwork, Concreting - Lower Ar	30	24-Jun-16	0%	30	29-Jul-16	15-May-15	19-Jun-15	-329	0	0%																								
E12A2040	E12A - Seagull Pier Temp. Work, Rebar, Formwork, Concreting - Upper Ar	44	30-Jul-16	0%	44	20-Sep-16	22-Jun-15	12-Aug-15	-329	0	0%																								
Bridge E7 - Pier E12B (E7b)																																			
Pier Works - E12B																																			
Pier Works																																			
E12B2010	E12B - Seagull Pier Temp. Work, Rebar, Formwork, Concreting - Upper St	31	17-Mar-16 A	100%	0	02-May-16 A					100%																								
E12B2030	E12B - Seagull Pier Temp. Work, Rebar, Formwork, Concreting - Lower D	21	03-May-16 A	0%	21	15-Jun-16	28-Feb-15	24-Mar-15	-361	0	80%																								
E12B2040	E12B - Seagull Pier Temp. Work, Rebar, Formwork, Concreting - Lower Ar	30	16-Jun-16	0%	30	21-Jul-16	25-Mar-15	04-May-15	-361	0	0%																								
E12B2050	E12B - Seagull Pier Temp. Work, Rebar, Formwork, Concreting - Upper Ar	44	22-Jul-16	0%	44	10-Sep-16	05-May-15	26-Jun-15	-361	0	0%																								
Bridge E6 - Pier E12C (E6b)																																			
Pier Works - E12C																																			
Pier Works																																			
E12C2010	E12C - Seagull Pier Temp. Work, Rebar, Formwork, Concreting - Upper S	28	25-Mar-16 A	100%	0	17-May-16 A					100%																								
E12C2020	E12C - Seagull Pier Temp. Work, Rebar, Formwork, Concreting - Lower D	21	18-May-16 A	0%	21	15-Jun-16	18-Jul-15	11-Aug-15	-249	0	20%																								
E12C2030	E12C - Seagull Pier Temp. Work, Rebar, Formwork, Concreting - Lower Ar	30	16-Jun-16	0%	30	21-Jul-16	12-Aug-15	15-Sep-15	-249	0	0%																								
E12C2040	E12C - Seagull Pier Temp. Work, Rebar, Formwork, Concreting - Upper Ar	44	22-Jul-16	0%	44	10-Sep-16	16-Sep-15	09-Nov-15	-249	0	0%																								
Bridge E5 - Pier E12D (E5b)																																			
Pier Works - E12D																																			
Pier Works																																			
E12D2010	E12D - Seagull Pier Temp. Work, Rebar, Formwork, Concreting - Upper S	30	18-Apr-16 A	0%	30	25-Jun-16	28-Jul-15	31-Aug-15	-241	0	30%																								
E12D2020	E12D - Seagull Pier Temp. Work, Rebar, Formwork, Concreting - Lower D	21	27-Jun-16	0%	21	21-Jul-16	01-Sep-15	24-Sep-15	-241	0	0%																								
E12D2030	E12D - Seagull Pier Temp. Work, Rebar, Formwork, Concreting - Lower Ar	30	22-Jul-16	0%	30	25-Aug-16	25-Sep-15	02-Nov-15	-241	0	0%																								
E13A, E13B, E13C & E13D (E8c/E7c/E6c/E5c)																																			
Pile Cap Works - E13C & E13D																																			
Pile Cap Works																																			
SE5C0140	E13C/D (E6c/E5c) - Marine Pile Cap - Rebar, Concreting (1st pour)	15	11-Apr-16 A	100%	0	03-May-16 A					100%																								
SE5C0150	E13C/D (E6c/E5c) - Marine Pile Cap - CJ preparation	4	04-May-16 A	100%	0	11-May-16 A					100%																								
SE5C0152	E13C/D (E6c/E5c) - Marine Pile Cap - Rebar, Concreting (2nd pour)	15	12-May-16 A	46.67%	8	30-May-16	06-Mar-15	14-Mar-15	-356	0	80%																								
SE5C0154	E13C/D (E6c/E5c) - Marine Pile Cap - CJ preparation	4	31-May-16	0%	4	03-Jun-16	16-Mar-15	19-Mar-15	-356	0	0%																								
SE5C0162	E13C/D (E6c/E5c) - Marine Pile Cap - Rebar, Concreting (Final pour)	7	04-Jun-16	0%	7	13-Jun-16	20-Mar-15	27-Mar-15	-356	0	0%																								
SE5C0164	E13C/D (E6c/E5c) - Marine Pile Cap - Curing incl. CJ preparation	4	14-Jun-16	0%	4	17-Jun-16	28-Mar-15	01-Apr-15	-356	0	0%																								
Bridge E8 - Pier E13A (E8c)																																			
Pier Works - E13A																																			
Pier Works																																			
E13A2010	E13A - Seagull Pier Temp. Work, Rebar, Formwork, Concreting - Upper St	30	13-Apr-16 A	83.33%	5	26-May-16	20-Mar-15	25-Mar-15	-344	0	50%																								
E13A2020	E13A - Seagull Pier Temp. Work, Rebar, Formwork, Concreting - Lower Di	19	27-May-16	0%	19	18-Jun-16	26-Mar-15	21-Apr-15	-344	0	0%																								
E13A2030	E13A - Seagull Pier Temp. Work, Rebar, Formwork, Concreting - Lower Ar	31	20-Jun-16	0%	31	26-Jul-16	22-Apr-15	29-May-15	-344	0	0%																								
E13A2040	E13A - Seagull Pier Temp. Work, Rebar, Formwork, Concreting - Upper Ar	44	27-Jul-16	0%	44	15-Sep-16	30-May-15	22-Jul-15	-344	0	0%																								
Bridge E7 - Pier E13B (E7c)																																			
Pier Works - E13B																																			
Pier Works																																			
E13B2000	E13B - Seagull Pier Temp. Work, Rebar, Formwork, Concreting - Stem	19	05-Mar-16 A	0%	27	22-Jun-16	26-Jan-15	28-Feb-15	-387	0	70%																								
E13B2010	E13B - Seagull Pier Temp. Work, Rebar, Formwork, Concreting - Lower D	18	23-Jun-16	0%	18	14-Jul-16	02-Mar-15	21-Mar-15	-387	0	0%																								
E13B2020	E13B - Seagull Pier Temp. Work, Rebar, Formwork, Concreting - Lower Ar	28	15-Jul-16	0%	28	16-Aug-16	23-Mar-15	28-Apr-15	-387	0	0%																								
E13B2030	E13B - Seagull Pier Temp. Work, Rebar, Formwork, Concreting - Upper Ar	40	17-Aug-16	0%	40	04-Oct-16	29-Apr-15	16-Jun-15	-387	0	0%																								
Bridge E6 - Pier E13C (E6c)																																			
Pier Works - E13C																																			
Pier Works																																			
E13C2000	E13C - Seagull Pier Temp. Work, Rebar, Formwork, Concreting - Stem	19	27-Jun-16	0%	19	19-Jul-16	15-Apr-15	07-May-15	-356	0	0%																								
E13C2010	E13C - Seagull Pier Temp. Work, Rebar, Formwork, Concreting - Lower D	21	20-Jul-16	0%	21	12-Aug-16	08-May-15	02-Jun-15	-356	0	0%																								
E13C2020	E13C - Seagull Pier Temp. Work, Rebar, Formwork, Concreting - Lower Ar	30	13-Aug-16	0%	30	17-Sep-16	03-Jun-15	09-Jul-15	-356	0	0%																								
Bridge E5 - Pier E13D (E5c)																																			
Pier Works - E13D																																			
Pier Works																																			
E13D2000	E13D - Seagull Pier Temp. Work, Rebar, Formwork, Concreting - Stem	30	04-Jul-16	0%	30	06-Aug-16	08-May-15	12-Jun-15	-342	0	0%																								
E13D2010	E13D - Seagull Pier Temp. Work, Rebar, Formwork, Concreting - Lower D	21	08-Aug-16	0%	21	31-Aug-16	13-Jun-15	09-Jul-15	-342	0	0%																								
E14A, E14B, E14C & E14D (E8d/E7d/E6d/E5d)																																			
Foundation Works - E14																																			

Actual Work
 Planned Bar
 Critical Bar
 Milestone

Project ID: J3518DWPrg-M36
 Layout: J3518-DWP-3MRP Submission - M36
 Filter: TASK filters: 3-Month Lookahead, No CC
 Milestones, No Level of Effort.

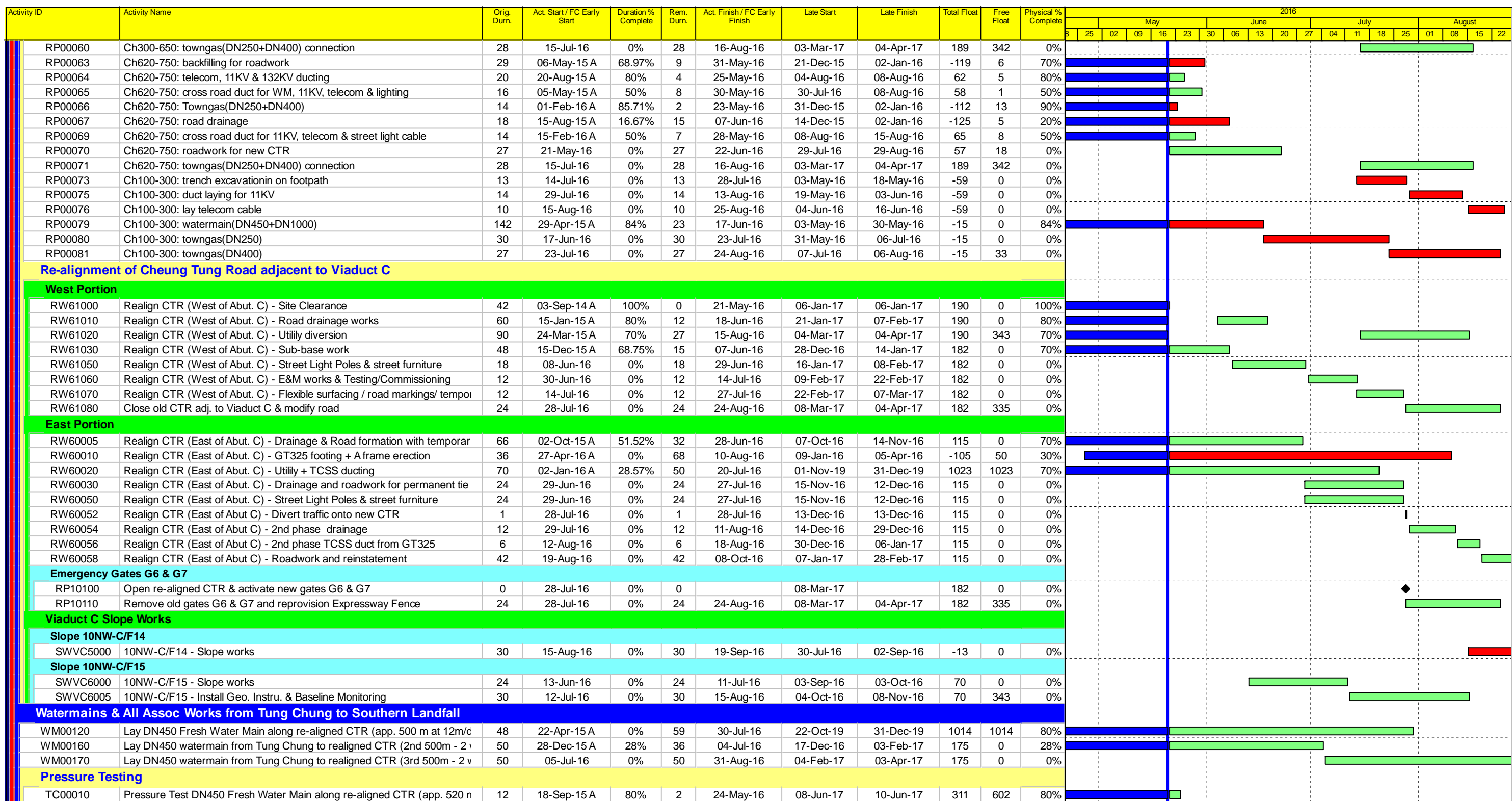
Tuen Mun - Chek Lap Kok Link - Southern Connection
3-Month Rolling Programme (Page 10 of 13 Pages)
(Progress as of 21-May-16)

Date	Revision	Checked	Approved
29-Mar-16		PKN	HF
29-Apr-16		PKN	HF
31-May-...		PKN	HF

DWG. No.:
J3518/GCL/PGM/3MRP-M36

Activity ID	Activity Name	Orig. Durn.	Act. Start / FC Early Start	Duration % Complete	Rem. Durn.	Act. Finish / FC Early Finish	Late Start	Late Finish	Total Float	Free Float	Physical % Complete	2016																								
												May					June					July					August									
												25	02	09	16	23	30	06	13	20	27	04	11	18	25	01	08	15	22							
GFX540	Review BCF Foundation Design, Pile Test & Finalize Design	67	21-May-16	0%	67	09-Aug-16	17-Sep-14	05-Dec-14	-494	0	0%																									
GFX545	Mobilization & Assembling Bored Pile Plant & Equipment for Viaducts in HKI	14	10-Aug-16	0%	14	25-Aug-16	06-Dec-14	22-Dec-14	-494	0	0%																									
Viaduct F																																				
Approach Ramp F																																				
Approach Ramp Land Foundation - HKBCF																																				
Approach Ramp F Piling																																				
GFX593	AR-F - Pre-drilling for Piles (25 nos)	24	10-Aug-16	0%	24	06-Sep-16	17-Feb-15	19-Mar-15	-435	0	0%																									
SUPERSTRUCTURE																																				
Assembling, relocation and dismantle of lifting equipment																																				
Launching Gantry 2																																				
FR00099	Assembly of Launching Gantry LG2 on Temp.Loading Platform	12	06-May-15 A	0%	12	03-Jun-16	16-Dec-19	31-Dec-19	1061	1061	0%																									
Viaduct B Superstructure																																				
Bridge B2 Superstructure																																				
Deck installation																																				
FR00011	Viaduct B2 - Cantilever at Pier B10 (B2c) 1st pair by crane	10	09-Mar-16 A	0%	21	15-Jun-16	23-Apr-16	19-May-16	-22	50	0%																									
FR00011B	Viaduct B2 - Cantilever at Pier B10 (B2c) (16 seg) - by crane	17	20-Jul-16*	0%	17	08-Aug-16	20-Jun-16	09-Jul-16	-25	1007	0%																									
FR00011C	Viaduct B2 - Complete stitches and launch to B11	22	20-Jul-16	0%	22	13-Aug-16	22-Apr-16	19-May-16	-72	0	0%																									
FR00012	Viaduct B2 - Cantilever at Pier B9 (B2d) (20 seg) - MTR Crossing - LG1	26	18-Jun-16	0%	26	19-Jul-16	18-Mar-16	21-Apr-16	-72	0	0%																									
FR00014	Viaduct B2 - Cantilever at Pier B11 (B2b) (16 seg) - LG1 (2 shifts)	4	15-Aug-16	0%	4	18-Aug-16	20-May-16	24-May-16	-72	0	0%																									
FR00014A	Viaduct B2 - Launching LG1 B11 to B12 - 2 shifts	1	19-Aug-16	0%	1	19-Aug-16	25-May-16	25-May-16	-72	0	0%																									
FR00015	Viaduct B2 - End Span at Pier B12 (B2a) (6 seg) - LG1 (2 shifts)	6	20-Aug-16	0%	6	26-Aug-16	26-May-16	01-Jun-16	-72	0	0%																									
FR000211	Viaduct B2 - Complete B6/B7/B8 stitches & stressing & transport segments	49	13-Jan-16 A	52.58%	23	17-Jun-16	20-Feb-16	17-Mar-16	-72	0	100%																									
Viaduct C Superstructure																																				
Bridge C4 Superstructure																																				
Deck installation																																				
FR00041B	Viaduct C4 - Launching LG2 E3C to C1 - 2 shifts	3	30-Jul-16	0%	3	02-Aug-16	08-Sep-15	10-Sep-15	-263	0	0%																									
FR00049	Viaduct C4 - End Span at Pier C1 (C4e) (8 seg) - LG2	6	03-Aug-16	0%	6	09-Aug-16	11-Sep-15	17-Sep-15	-263	0	0%																									
FR00050	Viaduct C4 - Cantilever at Pier C2 (C4d) (12 seg) - ALF 1/2	12	25-Jun-16	0%	12	09-Jul-16	19-Sep-15	05-Oct-15	-224	0	0%																									
FR00050A	Viaduct C4 - Relocate ALF 1/2 C2 to C5	2	11-Jul-16	0%	2	12-Jul-16	06-Oct-15	07-Oct-15	-224	0	0%																									
FR00051-1	Viaduct C4 - Launching LG2 C1 to C2	1	17-Aug-16	0%	1	17-Aug-16	25-Sep-15	25-Sep-15	-263	0	0%																									
FR00051-2	Viaduct C4 - Cantilever at C2 remaining (4 seg) -2 shifts	1	18-Aug-16	0%	1	18-Aug-16	26-Sep-15	26-Sep-15	-263	0	0%																									
FR00051-3	Viaduct C4 - Launching C2 to C5 - 2 shifts	3	19-Aug-16	0%	3	22-Aug-16	29-Sep-15	02-Oct-15	-263	0	0%																									
FR00053	Viaduct C4 - Cantilever at Pier C4 (C4b) (18 seg) - THB	18	21-Jul-16	0%	18	10-Aug-16	26-May-16	16-Jun-16	-46	136	0%																									
FR00053-1	Viaduct C4 - Relocate ALF 1/2 pier D4 to pier C2	2	23-Jun-16	0%	2	24-Jun-16	17-Sep-15	18-Sep-15	-224	0	0%																									
FR00054	Viaduct C4 - Cantilever at Pier C5 (C4a) (16 seg) - ALF 1/2	16	13-Jul-16	0%	16	30-Jul-16	08-Oct-15	27-Oct-15	-224	0	0%																									
FR00054-1	Viaduct C4 - Relocate ALF 1/2 pier C5 to pier D5	2	01-Aug-16	0%	2	02-Aug-16	28-Oct-15	29-Oct-15	-224	0	0%																									
Bridge C2 Superstructure																																				
Deck installation																																				
FR00061	Viaduct C2 - End Span at Pier C11 (C3a) (up) (6 seg) - Crane	6	04-Jul-16	0%	6	09-Jul-16	12-Jul-16	18-Jul-16	7	165	0%																									
FR00062	Viaduct C2 - Cantilever at Pier C12 (C2f) (16 seg) - crane	16	14-Jun-16*	0%	16	02-Jul-16	28-May-16	16-Jun-16	-13	0	0%																									
FR00064	Viaduct C2 - Cantilever at Pier C13 (C2e) (17 seg) - Crane	25	21-Jul-16*	0%	25	18-Aug-16	16-Mar-16	18-Apr-16	-101	0	0%																									
FR00065	Viaduct C2 - Cantilever at Pier C14 (C2d) (16 seg) - Crane	24	19-Aug-16	0%	24	15-Sep-16	19-Apr-16	18-May-16	-101	0	0%																									
Bridge C1 Superstructure																																				
Deck installation																																				
FR00068	Viaduct C1 - Cantilever at Pier C17 (C2a) (24 seg) - Crane	25	03-Aug-16*	0%	25	31-Aug-16	06-Feb-16	09-Mar-16	-142	0	0%																									
FR00071	Viaduct C1 - Cantilever at Pier C19 (C1d) (20 seg) - Crane	26	27-May-16	0%	26	27-Jun-16	09-May-16	08-Jun-16	-15	0	0%																									
FR00072	Viaduct C1 - Abutment End Span at Pier C20 (C1c) (7 seg) - Crane	6	28-Jun-16	0%	6	05-Jul-16	10-Jun-16	16-Jun-16	-15	143	0%																									
Viaduct D Superstructure																																				
Bridge D3 Superstructure																																				
Deck installation																																				
FR001212	Viaduct D3 - Cantilever at Pier D5 (D4b) (14 seg) - ALF 1/2	14	03-Aug-16	0%	14	18-Aug-16	30-Oct-15	16-Nov-15	-223	51	0%																									
FR001234	Viaduct D3 - Cantilever at Pier D4 (D4c) (14 seg) - ALF 1/2	18	04-Mar-16 A	0%	27	22-Jun-16	17-Aug-15	16-Sep-15	-224	0	85%																									
FR100058	Viaduct D3 - Pier D3 (D4d) (2 seg)	6	21-May-16	0%	6	27-May-16	11-Apr-16	16-Apr-16	-33	230	0%																									
FR100059	Viaduct D3 - Pier D4 (D4c) (2 seg)	6	21-May-16	0%	6	27-May-16	23-Dec-19	31-Dec-19	1067	1067	0%																									
FR100059-1	Viaduct D3 - Pier D5 (D4b) (2 seg)	6	21-May-16	0%	6	27-May-16	23-Oct-15	29-Oct-15	-169	55	0%																									
FR100070	Viaduct D3 - Pier D2 (D4e) (2 seg)	6	21-May-16	0%	6	27-May-16	20-Apr-16	26-Apr-16	-25	238	0%																									
Bridge D2 Superstructure																																				
Deck installation																																				
FR00103	Viaduct D2 - Cantilever at Pier D7 (D3e) (14 seg) - K Frame	33	26-Feb-16 A	0%	78	22-Aug-16	20-Aug-15	21-Nov-15	-221	0	20%																									
FR00108	Viaduct D2 - Cantilever at Pier D10 (D3b) (14 seg) - THB	22	18-Jul-16*	0%	22	11-Aug-16	25-Feb-16	21-Mar-16	-115	0	0%																									

<ul style="list-style-type: none"> ■ Actual Work ■ Planned Bar ■ Critical Bar ◆ Milestone 	Project ID: J3518DWPrg-M36 Layout: J3518-DWP-3MRP Submission - M36 Filter: TASK filters: 3-Month Lookahead, No CC Milestones, No Level of Effort.	Tuen Mun - Chek Lap Kok Link - Southern Connection 3-Month Rolling Programme (Page 11 of 13 Pages) (Progress as of 21-May-16)	<table border="1"> <thead> <tr> <th>Date</th> <th>Revision</th> <th>Checked</th> <th>Approved</th> </tr> </thead> <tbody> <tr> <td>29-Mar-16</td> <td></td> <td>PKN</td> <td>HF</td> </tr> <tr> <td>29-Apr-16</td> <td></td> <td>PKN</td> <td>HF</td> </tr> <tr> <td>31-May-...</td> <td></td> <td>PKN</td> <td>HF</td> </tr> </tbody> </table>	Date	Revision	Checked	Approved	29-Mar-16		PKN	HF	29-Apr-16		PKN	HF	31-May-...		PKN	HF	DWG. No.: J3518/GCL/PGM/3MRP-M36
Date	Revision	Checked	Approved																	
29-Mar-16		PKN	HF																	
29-Apr-16		PKN	HF																	
31-May-...		PKN	HF																	



Actual Work Planned Bar Critical Bar Milestone	<p>Project ID: J3518DWPrG-M36 Layout: J3518-DWP-3MRP Submission - M36 Filter: TASK filters: 3-Month Lookahead, No CC Milestones, No Level of Effort.</p> <p style="text-align:center;">Tuen Mun - Chek Lap Kok Link - Southern Connection 3-Month Rolling Programme (Page 13 of 13 Pages) (Progress as of 21-May-16)</p>	<table border="1" style="width:100%; border-collapse: collapse;"> <tr><th>Date</th><th>Revision</th><th>Checked</th><th>Approved</th></tr> <tr><td>29-Mar-16</td><td></td><td>PKN</td><td>HF</td></tr> <tr><td>29-Apr-16</td><td></td><td>PKN</td><td>HF</td></tr> <tr><td>31-May-...</td><td></td><td>PKN</td><td>HF</td></tr> </table>	Date	Revision	Checked	Approved	29-Mar-16		PKN	HF	29-Apr-16		PKN	HF	31-May-...		PKN	HF	<p>DWG. No.: J3518/GCL/PGM/3MRP-M36</p>
Date	Revision	Checked	Approved																
29-Mar-16		PKN	HF																
29-Apr-16		PKN	HF																
31-May-...		PKN	HF																