

Actual Work  
 Planned Bar  
 Critical Bar  
 Milestone

Project ID: TMCLK-DWPH-M42  
 Layout: J3518-DWP-3MRP Submission - M42  
 Filter: TASK filters: 3-Month Lookahead, No CC  
 Milestones, No Level of Effort.

**Tuen Mun - Chek Lap Kok Link - Southern Connection**  
**3-Month Rolling Programme (Page 2 of 13 Pages)**  
**(Progress as of 21-Nov-16)**

Date	Revision	Checked	Approved
03-Oct-16		PKN	HF
31-Oct-16		PKN	GL
30-Nov-...		PKN	GL

**DWG. No.:**  
**J3518/GCL/PGM/3MRP-M42**

Activity ID	Activity Name	Orig. Durn.	Act. Start / FC Early Start	Rem. Durn.	Act. Finish / FC Early Finish	Late Start	Late Finish	Total Float	Physical % Complete	2016												2017															
										November						December						January			February												
										24	31	07	14	21	28	05	12	19	26	02	09	16	23	30	06	13	20										
<b>Preliminaries</b>																																					
<b>Viaduct F</b>																																					
<b>General</b>																																					
MBBE0054	Precast Segment Mould Design (Viaduct F1 to F5)	42	01-Sep-16 A	16	08-Dec-16	11-Apr-16	28-Apr-16	-185	0%																												
MBBE0056	Precast Segment Mould Fabrication & Erection (Viaduct F1 to F5)	52	25-Nov-16	52	27-Jan-17	15-Apr-16	17-Jun-16	-185	0%																												
<b>Viaduct A - Bridge A2-A1</b>																																					
<b>Segment Manufacture</b>																																					
<b>General</b>																																					
MBAE0130-1	A: Progressive Segment Manufacture (179 Nr)	180	13-Jun-16 A	144	20-May-17	08-Dec-15	06-Jun-16	-282	10%																												
<b>Viaduct C - Bridge C4-C1</b>																																					
<b>Segment Manufacture</b>																																					
<b>General</b>																																					
MBCE0130-1	C: Progressive Segment Manufacture (385 Nr)	265	19-May-15 A	9	30-Nov-16	27-Aug-15	07-Sep-15	-366	41%																												
<b>Viaduct D - Bridge D3-D1</b>																																					
<b>Segment Manufacture</b>																																					
<b>General</b>																																					
MBDE0130-7	D: Progressive Segment Manufacture (305 Nr)	315	05-May-15 A	0	26-Oct-16 A				100%																												
<b>Viaduct E - Bridge E1</b>																																					
<b>Segment Manufacture</b>																																					
<b>General</b>																																					
MBEE0130-5	E1: Progressive Segment Manufacture (188 Nr)	456	08-Apr-15 A	30	24-Dec-16	19-Dec-15	26-Jan-16	-272	95.2%																												
<b>Viaduct E - Bridge E2</b>																																					
<b>Segment Manufacture</b>																																					
<b>General</b>																																					
MBEE0130-7	E2: Progressive Segment Manufacture (404 Nr)	376	06-May-15 A	126	27-Apr-17	21-Dec-15	28-May-16	-271	34.8%																												
<b>Viaduct E - Bridge E5, E6, E7, E8</b>																																					
<b>Segment Manufacture</b>																																					
<b>General</b>																																					
MBEE0130-9	E5-6-7-8: Progressive Segment Manufacture (544Nr)	360	06-May-15 A	245	18-Sep-17	15-Oct-15	12-Aug-16	-327	11.2%																												
<b>Viaduct F - Bridge F1-F5</b>																																					
<b>Segment Manufacture</b>																																					
<b>General</b>																																					
MBFE0130-1	F: Progressive Segment Manufacture (300 Nr)	252	25-Nov-16	252	30-Sep-17	15-Apr-16	17-Feb-17	-185	0%																												
<b>Precast Parapets &amp; Barriers</b>																																					
<b>Viaduct A to F</b>																																					
<b>Precast Parapet Manufacture</b>																																					
<b>General</b>																																					
PP6011-01	Viaduct A - Precast Parapets/Barriers Production	90	01-Sep-16 A	178	30-Jun-17	02-Feb-16	08-Sep-16	-237	0%																												
PP6011-02	Viaduct B - Precast Parapets/Barriers Production	120	03-May-16 A	152	31-May-17	15-Feb-16	18-Aug-16	-229	0%																												
PP6011-03	Viaduct C - Precast Parapets/Barriers Production	120	01-Apr-16 A	128	29-Apr-17	03-Dec-15	12-May-16	-286	0%																												
PP6011-04	Viaduct D - Precast Parapets/Barriers Production	120	01-Mar-16 A	128	29-Apr-17	03-Dec-15	12-May-16	-286	0%																												
PP6011-05	Viaduct E - Precast Parapets/Barriers Production	180	02-Jul-16 A	256	30-Sep-17	08-Dec-15	20-Oct-16	-282	0%																												
<b>Bearings</b>																																					
<b>Viaduct A</b>																																					
<b>Bearing Design &amp; Manufacture</b>																																					
<b>General</b>																																					
PPBRA5	SO review & comment on design submission - Viaduct A	36	21-Oct-16 A	10	01-Dec-16	21-Jan-16	01-Feb-16	-247	0%																												
PPBRA6	Bearing Design Amendment & re-issue - Viaduct A	12	02-Dec-16	12	15-Dec-16	02-Feb-16	18-Feb-16	-247	0%																												
PPBRA7	Manufacture of Bearing - Viaduct A	54	21-Oct-16 A	28	22-Dec-16	14-Jan-16	18-Feb-16	-253	0%																												
PPBRA8	Testing Bearing - Viaduct A	18	23-Dec-16	18	16-Jan-17	19-Feb-16	10-Mar-16	-253	0%																												
PPBRA9	Bearing Delivery - Viaduct A	48	17-Jan-17	48	16-Mar-17	11-Mar-16	11-May-16	-253	0%																												
<b>Viaduct C</b>																																					
<b>Bearing Design &amp; Manufacture</b>																																					
<b>General</b>																																					

■ Actual Work  
■ Planned Bar  
■ Critical Bar  
◆ Milestone

Project ID: TMCLK-DWPH-M42  
 Layout: J3518-DWP-3MRP Submission - M42  
 Filter: TASK filters: 3-Month Lookahead, No CC  
 Milestones, No Level of Effort.

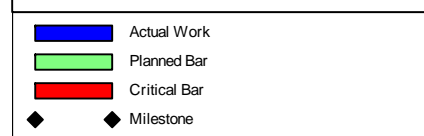
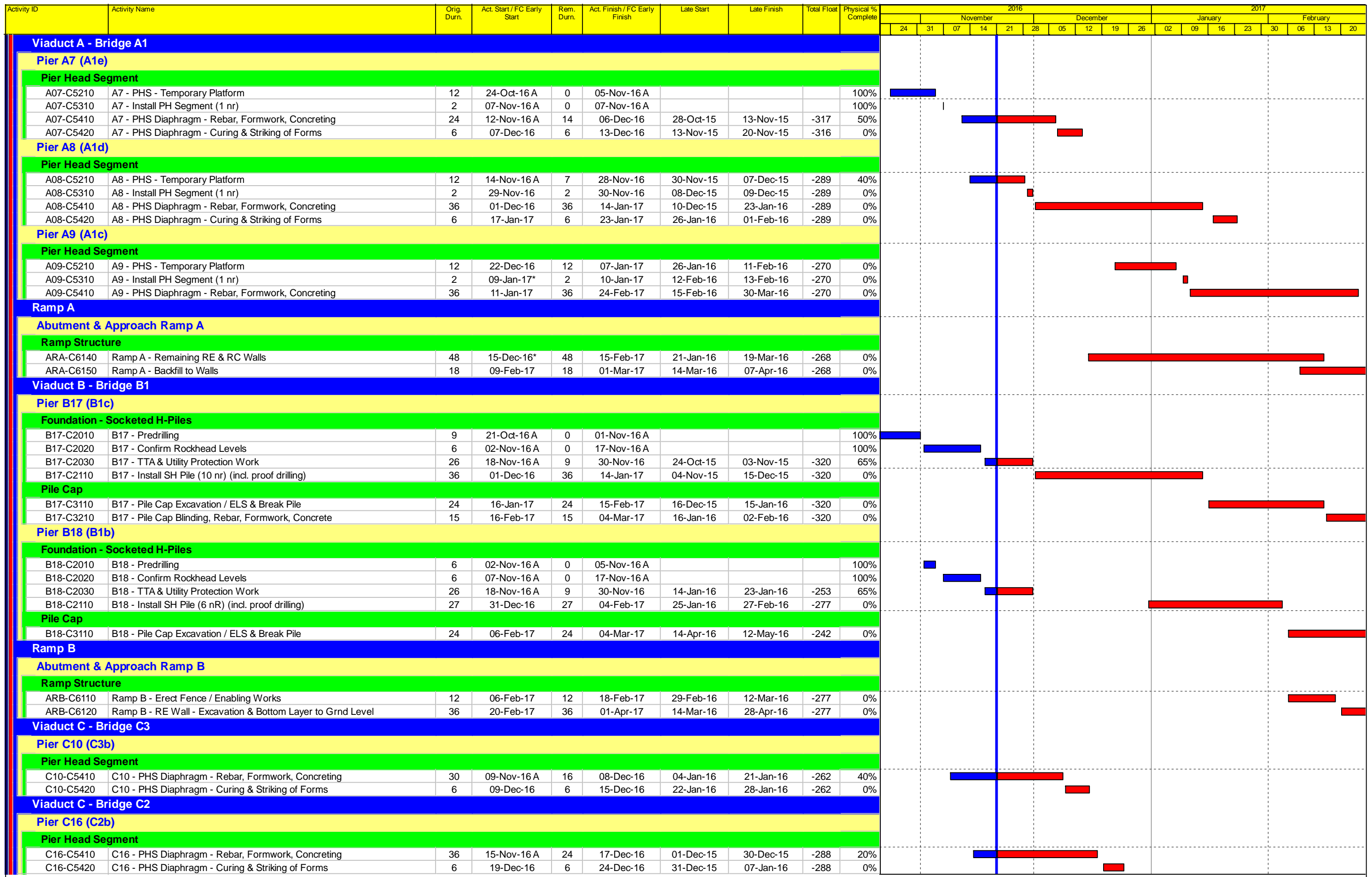
**Tuen Mun - Chek Lap Kok Link - Southern Connection**  
**3-Month Rolling Programme (Page 3 of 13 Pages)**  
**(Progress as of 21-Nov-16)**

Date	Revision	Checked	Approved
03-Oct-16		PKN	HF
31-Oct-16		PKN	GL
30-Nov-...		PKN	GL

**DWG. No.:**  
**J3518/GCL/PGM/3MRP-M42**







Project ID: TMCLK-DWPH-M42  
 Layout: J3518-DWP-3MRP Submission - M42  
 Filter: TASK filters: 3-Month Lookahead, No CC  
 Milestones, No Level of Effort.

**Tuen Mun - Chek Lap Kok Link - Southern Connection**  
**3-Month Rolling Programme (Page 5 of 13 Pages)**  
**(Progress as of 21-Nov-16)**

Date	Revision	Checked	Approved
03-Oct-16		PKN	HF
31-Oct-16		PKN	GL
30-Nov-...		PKN	GL

**DWG. No.:**  
**J3518/GCL/PGM/3MRP-M42**

Activity ID	Activity Name	Orig. Durn.	Act. Start / FC Early Start	Rem. Durn.	Act. Finish / FC Early Finish	Late Start	Late Finish	Total Float	Physical % Complete	2016												2017															
										November						December						January			February												
										24	31	07	14	21	28	05	12	19	26	02	09	16	23	30	06	13	20										
<b>Viaduct C - Bridge C1</b>																																					
<b>Pier C17 (C2a)</b>																																					
<b>Pier Head Segment</b>																																					
C17-C5410	C17 - PHS & Diaphragm - Rebar, Formwork, Concreting	42	26-Aug-16 A	0	31-Oct-16 A				100%																												
C17-C5420	C17 - PHS Diaphragm - Curing & Striking of Forms	6	01-Nov-16 A	0	07-Nov-16 A				100%																												
<b>Ramp C</b>																																					
<b>Abutment &amp; Approach Ramp C</b>																																					
<b>Ramp Structure</b>																																					
ARC-C6140	Ramp C - RC Wall - Backfill	12	16-May-16 A	22	15-Dec-16	15-Jan-16	12-Feb-16	-252	90%																												
ARC-C6150	Ramp C - Utility - Termination of 800 Tee	72	21-Sep-16 A	22	15-Dec-16	15-Jan-16	12-Feb-16	-252	0%																												
ARC-C6160	Ramp C - Utility - Remove 800 Tee & Backfill	12	16-Dec-16	12	31-Dec-16	13-Feb-16	26-Feb-16	-252	0%																												
ARC-C6170	Ramp C - RE Wall - Remaining Bays at 800 Tee	36	03-Jan-17	36	16-Feb-17	27-Feb-16	13-Apr-16	-252	0%																												
ARC-C6180	Ramp C - RC Wall - Remaining Bays at 800 Tee	36	17-Feb-17	36	30-Mar-17	14-Apr-16	27-May-16	-252	0%																												
<b>Ramp Finishes, E&amp;M &amp; Roadworks</b>																																					
ARC-C7710	Ramp C - Parapet Panels (Initial)	24	26-Sep-16 A	30	24-Dec-16	21-Apr-16	27-May-16	-176	0%																												
<b>Viaduct D - Bridge D2</b>																																					
<b>Pier D9 (D3c)</b>																																					
<b>Pier Head Segment</b>																																					
D09-C5410	D9 - PHS Diaphragm - Rebar, Formwork, Concreting	36	29-Aug-16 A	0	09-Nov-16 A				100%																												
D09-C5420	D9 - PHS Diaphragm - Curing & Striking of Forms	6	10-Nov-16 A	0	17-Nov-16 A				100%																												
<b>Pier D13 (D2d)</b>																																					
<b>Pier Head Segment</b>																																					
D13-C5410	D13 - PHS Diaphragm - Rebar, Formwork, Concreting	42	12-Sep-16 A	27	21-Dec-16	13-Jan-16	16-Feb-16	-254	40%																												
D13-C5420	D13 - PHS Diaphragm - Curing, Striking of Forms, Remove Scaffold	15	22-Dec-16	15	11-Jan-17	17-Feb-16	04-Mar-16	-254	0%																												
<b>Ramp D</b>																																					
<b>Abutment &amp; Approach Ramp D</b>																																					
<b>Ramp Structure</b>																																					
ARD-C6140	Ramp D - Box Structure Bay 1 & Bay 8	55	07-Mar-16 A	9	30-Nov-16	16-Mar-16	29-Mar-16	-203	80%																												
ARD-C6150	Ramp D - Backfill Embankment	90	02-Nov-15 A	22	15-Dec-16	16-Mar-16	14-Apr-16	-203	70%																												
<b>Ramp Finishes, E&amp;M &amp; Roadworks</b>																																					
ARD-C7710	Ramp D - Parapet Panels	42	15-Oct-16 A	46	16-Jan-17	16-Mar-16	13-May-16	-203	0%																												
ARD-C7720	Ramp D - Ducting, Gantry & TCSS Provisions (KD4)	36	03-Jan-17	36	16-Feb-17	29-Apr-16	13-Jun-16	-203	0%																												
ARD-C7810	Ramp D - Drainage, Fire Main & E&M Services	54	24-Jan-17	54	30-Mar-17	23-May-16	26-Jul-16	-203	0%																												
ARD-C7820	Ramp D - Railings, Light Poles, Signs & Street Furniture	30	17-Feb-17	30	23-Mar-17	09-Aug-16	12-Sep-16	-156	0%																												
<b>Viaduct E - Bridge E2</b>																																					
<b>Pier E4A (E2b2)</b>																																					
<b>Pier Head Segment</b>																																					
E04A-C5130	E4A - Diaphragm of PHS - Formwork, Rebar, Concreting	77	04-Jun-16 A	9	01-Dec-16	09-Mar-16	19-Mar-16	-208	85%																												
E04A-C5140	E4A - Remove Rail Beams, Megashore Towers. Crane	17	13-Oct-16 A	16	08-Dec-16	09-Mar-16	30-Mar-16	-209	50%																												
E04A-C5145	E4A - Install Infill Segments (4 nr) - THB	26	14-Nov-16 A	26	20-Dec-16	04-Mar-16	07-Apr-16	-213	25%																												
E04A-C5150	E4A - IFS Stitch & Remove Equipment	9	21-Dec-16	9	03-Jan-17	08-Apr-16	18-Apr-16	-213	0%																												
<b>Pier E4B (E2b1)</b>																																					
<b>Pier Head Segment</b>																																					
E04B-C5130	E4B - Diaphragm of PHS - Formwork, Rebar, Concreting	125	14-Sep-16 A	40	09-Jan-17	25-May-16	12-Jul-16	-149	60%																												
E04B-C5140	E4B - Remove Rail Beams, Megashore Towers	8	10-Jan-17	8	18-Jan-17	13-Jul-16	21-Jul-16	-149	0%																												
E04B-C5145	E4B - Install Infill Segments (4 nr) - THB	21	19-Jan-17	21	15-Feb-17	22-Jul-16	15-Aug-16	-149	0%																												
E04B-C5150	E4B - IFS Stitch & Remove Equipment	10	16-Feb-17	10	27-Feb-17	16-Aug-16	26-Aug-16	-149	0%																												
<b>Pier E5A (E2c2)</b>																																					
<b>Pier Head Segment</b>																																					
E05A-C5130	E5A - Diaphragm of PHS - Formwork, Rebar, Concreting	88	23-Aug-16 A	0	19-Nov-16 A				100%																												
E05A-C5140	E5A - Remove Rail Beams, Crane	14	01-Nov-16 A	15	07-Dec-16	25-Nov-15	11-Dec-15	-293	30%																												
E05A-C5145	E5A - Install Infill Segments (4 nr) - THB	23	12-Nov-16 A	24	17-Dec-16	21-Nov-15	18-Dec-15	-296	25%																												
E05A-C5150	E5A - IFS Stitch & Remove Equipment	12	19-Dec-16	12	04-Jan-17	19-Dec-15	05-Jan-16	-296	0%																												
<b>Pier E5B (E2c1)</b>																																					
<b>Pier Head Segment</b>																																					
E05B-C5130	E5B - Diaphragm of PHS - Formwork, Rebar, Concreting	73	08-Sep-16 A	6	26-Nov-16	22-Dec-15	30-Dec-15	-270	85%																												
E05B-C5140	E5B - Remove Rail Beams	8	17-Nov-16 A	14	06-Dec-16	19-Dec-15	07-Jan-16	-272	30%																												

■ Actual Work  
■ Planned Bar  
■ Critical Bar  
◆ Milestone

Project ID: TMCLK-DWPH-M42  
 Layout: J3518-DWP-3MRP Submission - M42  
 Filter: TASK filters: 3-Month Lookahead, No CC  
 Milestones, No Level of Effort.

**Tuen Mun - Chek Lap Kok Link - Southern Connection**  
**3-Month Rolling Programme (Page 6 of 13 Pages)**  
**(Progress as of 21-Nov-16)**

Date	Revision	Checked	Approved
03-Oct-16		PKN	HF
31-Oct-16		PKN	GL
30-Nov-...		PKN	GL

**DWG. No.:**  
**J3518/GCL/PGM/3MRP-M42**



Activity ID	Activity Name	Orig. Durn.	Act. Start / FC Early Start	Rem. Durn.	Act. Finish / FC Early Finish	Late Start	Late Finish	Total Float	Physical % Complete	2016												2017					
										November						December						January			February		
										24	31	07	14	21	28	05	12	19	26	02	09	16	23	30	06	13	20
<b>Viaduct E - Bridge E5, E6, E7, E8</b>																											
<b>Pier E11A (E7E8a)</b>																											
<b>Pier</b>																											
E11A-C4050	E11A Pier - Curing, CJ, Remove Formwork & Falsework	12	15-Oct-16 A	0	05-Nov-16 A				100%																		
<b>Pier Head Segment</b>																											
E11A-C5110	E11A - Temp. Work, Grillages, Spreader Beams, Rail Beams	21	28-Oct-16 A	5	25-Nov-16	21-Sep-15	25-Sep-15	-346	80%																		
E11A-C5120	E11A - Install PH Segment (4 nr)	9	26-Nov-16	9	06-Dec-16	26-Sep-15	08-Oct-15	-346	0%																		
E11A-C5130	E11A - Diaphragm of PHS - Formwork, Rebar, Concreting	80	07-Dec-16	80	16-Mar-17	09-Oct-15	14-Jan-16	-346	0%																		
<b>Pier E11B (E5e6a)</b>																											
<b>Pier</b>																											
E11B-C4040	E11B Pier - TW, Rebar, Formwork, Concreting - Upper Arm (Solid)	50	26-Aug-16 A	0	04-Nov-16 A				100%																		
E11B-C4050	E11B Pier - Curing, CJ, Remove Formwork & Falsework	12	05-Nov-16 A	0	18-Nov-16 A				100%																		
<b>Pier Head Segment</b>																											
E11B-C5110	E11B - Temp. Work, Spreader Beams, Rail Beams	21	21-Nov-16	21	14-Dec-16	11-Apr-15	06-May-15	-480	0%																		
E11B-C5120	E11B - Install PH Segment (4 nr)	7	15-Dec-16	7	22-Dec-16	07-May-15	14-May-15	-480	0%																		
E11B-C5130	E11B - Diaphragm of PHS - Formwork, Rebar, Concreting	81	23-Dec-16	81	03-Apr-17	15-May-15	20-Aug-15	-480	0%																		
<b>Pier E12A (E8b)</b>																											
<b>Pile Cap Dolphin</b>																											
E12A-C3130	E12A - Dolphin - Marine Pile Cap - Fixings, Dewatering & Trim Pile	11	03-Jan-17*	11	14-Jan-17	07-Nov-16	18-Nov-16	-46	0%																		
E12A-C3150	E12A - Dolphin - Marine Pile Cap - Rebar, Concreting	5	16-Jan-17	5	20-Jan-17	19-Nov-16	24-Nov-16	-46	0%																		
E12A-C3160	E12A - Dolphin - Marine Pile Cap - CJ preparation & Curing	3	21-Jan-17	3	24-Jan-17	25-Nov-16	28-Nov-16	-46	0%																		
<b>Pier</b>																											
E12A-C4040	E12A Pier - TW, Rebar, Formwork, Concreting - Upper Arm (Solid)	47	10-Oct-16 A	9	30-Nov-16	22-Apr-15	02-May-15	-471	70%																		
E12A-C4050	E12A Pier - Curing, CJ, Remove Formwork & Falsework	12	01-Dec-16	12	14-Dec-16	04-May-15	16-May-15	-471	0%																		
<b>Pier Head Segment / Infill Segment</b>																											
E12A-C5110	E12A - Temp. Work, Grillages, Megashore Towers, Rail Beams	28	15-Dec-16	28	19-Jan-17	18-May-15	19-Jun-15	-471	0%																		
E12A-C5120	E12A - Install PH Segment (4 nr)	10	20-Jan-17	10	03-Feb-17	22-Jun-15	03-Jul-15	-471	0%																		
E12A-C5130	E12A - Diaphragm of PHS - Formwork, Rebar, Concreting	78	04-Feb-17	78	12-May-17	04-Jul-15	06-Oct-15	-471	0%																		
<b>Pier E12B (E7b)</b>																											
<b>Pier</b>																											
E12B-C4050	E12B Pier - TW, Rebar, Formwork, Concreting - Upper Arm (Solid)	52	31-Aug-16 A	0	16-Nov-16 A				100%																		
E12B-C4060	E12B Pier - Curing, CJ, Remove Formwork & Falsework	12	17-Nov-16 A	9	30-Nov-16	30-Oct-15	09-Nov-15	-315	30%																		
<b>Pier Head Segment / Infill Segment</b>																											
E12B-C5110	E12B - Temp. Work, Grillages, Megashore Towers, Rail Beams	29	01-Dec-16	29	06-Jan-17	10-Nov-15	12-Dec-15	-315	0%																		
E12B-C5120	E12B - Install PH Segment (4 nr)	8	07-Jan-17	8	16-Jan-17	14-Dec-15	22-Dec-15	-315	0%																		
E12B-C5130	E12B - Diaphragm of PHS - Formwork, Rebar, Concreting	81	17-Jan-17	81	28-Apr-17	23-Dec-15	06-Apr-16	-315	0%																		
<b>Pier E12C (E6b)</b>																											
<b>Pier</b>																											
E12C-C4040	E12C Pier - TW, Rebar, Formwork, Concreting - Upper Arm (Solid)	47	22-Sep-16 A	0	20-Nov-16 A				100%																		
E12C-C4050	E12C Pier - Curing, CJ, Remove Formwork & Falsework	12	21-Nov-16	12	03-Dec-16	22-Oct-15	04-Nov-15	-322	0%																		
<b>Pier Head Segment / Infill Segment</b>																											
E12C-C5110	E12C - Temp. Work, Grillages, Megashore Towers, Rail Beams	28	05-Dec-16	28	09-Jan-17	05-Nov-15	07-Dec-15	-322	0%																		
E12C-C5120	E12C - Install PH Segment (4 nr)	10	10-Jan-17	10	20-Jan-17	08-Dec-15	18-Dec-15	-322	0%																		
E12C-C5130	E12C - Diaphragm of PHS - Formwork, Rebar, Concreting	79	21-Jan-17	79	02-May-17	19-Dec-15	30-Mar-16	-322	0%																		
<b>Pier E12D (E5b)</b>																											
<b>Pier</b>																											
E12D-C4030	E12D Pier - TW, Rebar, Formwork, Concreting - Lower Arm (Solid)	28	19-Jul-16 A	0	29-Oct-16 A				100%																		
E12D-C4040	E12D Pier - TW, Rebar, Formwork, Concreting - Upper Arm (Solid)	36	31-Oct-16 A	18	10-Dec-16	09-Apr-15	29-Apr-15	-482	50%																		
E12D-C4050	E12D Pier - Curing, CJ, Remove Formwork & Falsework	12	12-Dec-16	12	24-Dec-16	30-Apr-15	14-May-15	-482	0%																		
<b>Pier Head Segment / Infill Segment</b>																											
E12D-C5110	E12D - Temp. Work, Grillages, Megashore Towers, Rail Beams	28	28-Dec-16	28	02-Feb-17	15-May-15	17-Jun-15	-482	0%																		
E12D-C5120	E12D - Install PH Segment (4 nr)	10	03-Feb-17	10	14-Feb-17	18-Jun-15	30-Jun-15	-482	0%																		
E12D-C5130	E12D - Diaphragm of PHS - Formwork, Rebar, Concreting	77	15-Feb-17	77	22-May-17	02-Jul-15	02-Oct-15	-482	0%																		
<b>Pier E13A (E8c)</b>																											
<b>Pier</b>																											
E13A-C4040	E13A Pier - TW, Rebar, Formwork, Concreting - Upper Arm (Solid)	44	17-Oct-16 A	30	24-Dec-16	19-Mar-15	27-Apr-15	-496	20%																		
E13A-C4050	E13A Pier - Curing, CJ, Remove Formwork & Falsework	12	28-Dec-16	12	11-Jan-17	28-Apr-15	12-May-15	-496	0%																		
<b>Pier Head Segment / Infill Segment</b>																											

■ Actual Work  
■ Planned Bar  
■ Critical Bar  
◆ Milestone

Project ID: TMCLK-DWPH-M42  
 Layout: J3518-DWP-3MRP Submission - M42  
 Filter: TASK filters: 3-Month Lookahead, No CC  
 Milestones, No Level of Effort.

**Tuen Mun - Chek Lap Kok Link - Southern Connection**  
**3-Month Rolling Programme (Page 8 of 13 Pages)**  
**(Progress as of 21-Nov-16)**

Date	Revision	Checked	Approved
03-Oct-16		PKN	HF
31-Oct-16		PKN	GL
30-Nov-...		PKN	GL

**DWG. No.:**  
**J3518/GCL/PGM/3MRP-M42**







Activity ID	Activity Name	Orig. Durn.	Act. Start / FC Early Start	Rem. Durn.	Act. Finish / FC Early Finish	Late Start	Late Finish	Total Float	Physical % Complete	2016												2017								
										November						December						January			February					
										24	31	07	14	21	28	05	12	19	26	02	09	16	23	30	06	13	20			
<b>Bridge A2</b>																														
<b>Deck Span Segment</b>																														
A01-C6210	A1 - Install THB	3	13-Feb-17	3	15-Feb-17	02-Mar-16	04-Mar-16	-281	0%																					
A01-C6310	A1 - End Span to A2 (6 nr) - THB	21	16-Feb-17	21	11-Mar-17	05-Mar-16	01-Apr-16	-281	0%																					
A06-C6210	A6 - Install THB	3	12-Jan-17	3	14-Jan-17	30-Jan-16	02-Feb-16	-281	0%																					
A06-C6310	A6 - End Span to A5 (6 nr) - THB	21	16-Jan-17	21	11-Feb-17	03-Feb-16	01-Mar-16	-281	0%																					
<b>Bridge A1</b>																														
<b>Deck Span Segment</b>																														
A06-C6320	A6 - End Span to A7 (8 nr) - THB	21	16-Jan-17	21	11-Feb-17	03-Feb-16	01-Mar-16	-281	0%																					
A07-C6210	A7 - Install THB	3	14-Dec-16	3	16-Dec-16	21-Nov-15	24-Nov-15	-316	0%																					
A07-C6310	A7 - Cantilever Span (Initial 4 nr) - THB	9	17-Dec-16	9	29-Dec-16	25-Nov-15	04-Dec-15	-316	0%																					
A07-C6320	A7 - Install KF	6	30-Dec-16	6	06-Jan-17	05-Dec-15	11-Dec-15	-316	0%																					
A07-C6330	A7 - Cantilever Span (Remaining 12 nr) - KF	18	07-Jan-17	18	27-Jan-17	12-Dec-15	05-Jan-16	-316	0%																					
A08-C6310	A8 - Cantilever Span (Initial 4 nr) - Crane	12	24-Jan-17	12	09-Feb-17	02-Feb-16	18-Feb-16	-289	0%																					
<b>Viaduct B</b>																														
<b>Bridge B3</b>																														
<b>Deck Finishes, E&amp;M and Roadworks</b>																														
VB3-C7710	Viaduct B3 - Parapet Panels	48	03-Jan-17*	48	02-Mar-17	16-Jun-16	11-Aug-16	-165	0%																					
VB3-C7720	Viaduct B3 - Gantry & TCSS Provisions (KD5)	36	17-Feb-17	36	30-Mar-17	29-Jul-16	08-Sep-16	-165	0%																					
<b>Bridge B2</b>																														
<b>Deck Span Segment</b>																														
B10-C6410	B10 - Cantilever Span (Remaining 9 nr) (NLH) - Crane	14	06-Nov-16 A	0	20-Nov-16 A				100%																					
<b>Bridge B1</b>																														
<b>Deck Span Segment</b>																														
B12-C6210	B12 - Falsework for End Span to B13	24	16-Dec-16	24	16-Jan-17	25-Apr-16	24-May-16	-195	0%																					
B12-C6310	B12 - End Span to B13 (7 nr) - Crane	14	17-Jan-17	14	04-Feb-17	25-May-16	10-Jun-16	-195	0%																					
B13-C6320	B13 - Cantilever Span (Remaining 20 nr) - Crane	30	08-Sep-16 A	0	26-Oct-16 A				100%																					
B14-C6310	B14 - Cantilever Span (24 nr) - Crane	48	12-Nov-16 A	34	31-Dec-16	18-Jan-16	29-Feb-16	-250	17%																					
B15-C6310	B15 - Cantilever Span (Initial 10 nr) - Crane	20	19-Dec-16	20	13-Jan-17	03-Feb-16	29-Feb-16	-260	0%																					
B15-C6320	B15 - Cantilever Span (Remaining 16 nr) - Crane	32	14-Jan-17	32	23-Feb-17	01-Mar-16	11-Apr-16	-260	0%																					
B16-C6310	B16 - Cantilever Span (24 nr) - Crane	28	13-Oct-16 A	24	17-Dec-16	06-Jan-16	02-Feb-16	-260	71%																					
<b>Viaduct C</b>																														
<b>Bridge C4</b>																														
<b>Deck Span Segment</b>																														
C03-C6510	C3 - Cantilever Span (22 nr) - LG2	10	20-Oct-16 A	0	31-Oct-16 A				100%																					
C04-C6210	C4 - Launch LG2 from C3 to C4	3	01-Nov-16 A	0	03-Nov-16 A				100%																					
C04-C6310	C4 - Cantilever Span (24 nr) - LG2	8	04-Nov-16 A	0	12-Nov-16 A				100%																					
C05-C6410	C5 - Launch LG2 from C4 to C5	3	14-Nov-16 A	0	15-Nov-16 A				100%																					
C05-C6510	C5 - Cantilever Span (Remaining 6 nr) - LG2	4	16-Nov-16 A	0	17-Nov-16 A				100%																					
<b>Bridge C3</b>																														
<b>Deck Span Segment</b>																														
C06-C6310	C6 - End Span to C7 (7 nr) - LG2	6	22-Dec-16	6	30-Dec-16	21-Sep-15	26-Sep-15	-373	0%																					
C07-C6410	C7 - Launch LG2 from C5 to C7 (MTR)	6	19-Nov-16 A	7	28-Nov-16	19-Aug-15	26-Aug-15	-373	15%																					
C07-C6510	C7 - Cantilever Span (24 nr) (MTR) - LG2	20	29-Nov-16	20	21-Dec-16	27-Aug-15	19-Sep-15	-373	0%																					
C08-C6210	C8 - Launch LG2 from C6 to C8 (MTR/NLH)	9	31-Dec-16	9	11-Jan-17	29-Sep-15	09-Oct-15	-373	0%																					
C08-C6310	C8 - Cantilever Span (24 nr) (MTR/NLH) - LG2	58	12-Jan-17	58	23-Mar-17	10-Oct-15	17-Dec-15	-373	0%																					
C09-C6310	C9 - Cantilever Span (Initial 12 nr) (NLH) - Crane	24	01-Nov-16 A	2	22-Nov-16	27-Jan-16	28-Jan-16	-242	92%																					
<b>Bridge C2</b>																														
<b>Deck Span Segment</b>																														
C11-C6210	C11 - Falsework for End Span to C12	24	10-Feb-17	24	09-Mar-17	18-Jan-16	17-Feb-16	-314	0%																					
C14-C6310	C14 - Cantilever Span (16 nr) - Crane	32	11-Oct-16 A	0	08-Nov-16 A				100%																					
C15-C6310	C15 - Cantilever Span (16 nr) - Crane & THB	36	16-Nov-16 A	32	29-Dec-16	31-Oct-15	07-Dec-15	-314	19%																					
C16-C6410	C16 - Falsework for End Span to C15	24	30-Dec-16	24	27-Jan-17	08-Dec-15	07-Jan-16	-314	0%																					
C16-C6510	C16 - End Span to C15 (4 nr) - Crane	8	01-Feb-17	8	09-Feb-17	08-Jan-16	16-Jan-16	-314	0%																					
<b>Bridge C1</b>																														
<b>Deck Span Segment</b>																														
C16-C6210	C16 - Falsework for End Span to C17	24	04-Feb-17	24	03-Mar-17	20-Feb-16	18-Mar-16	-283	0%																					
C17-C6310	C17 - Cantilever Span (Initial 2 nr) - Crane	8	14-Dec-16*	8	22-Dec-16	14-Jan-16	22-Jan-16	-273	0%																					
C17-C6320	C17 - Cantilever Span (Remaining 22 nr) - Crane	27	07-Jan-17	27	10-Feb-17	23-Jan-16	26-Feb-16	-283	0%																					

■ Actual Work  
■ Planned Bar  
■ Critical Bar  
◆ Milestone

Project ID: TMCLK-DWPH-M42  
 Layout: J3518-DWP-3MRP Submission - M42  
 Filter: TASK filters: 3-Month Lookahead, No CC  
 Milestones, No Level of Effort.

**Tuen Mun - Chek Lap Kok Link - Southern Connection**  
**3-Month Rolling Programme (Page 11 of 13 Pages)**  
**(Progress as of 21-Nov-16)**

Date	Revision	Checked	Approved
03-Oct-16		PKN	HF
31-Oct-16		PKN	GL
30-Nov-...		PKN	GL

**DWG. No.:**  
**J3518/GCL/PGM/3MRP-M42**





