



Figure 1. Transect Line Layout in Northwest and Northeast Lantau Survey Areas

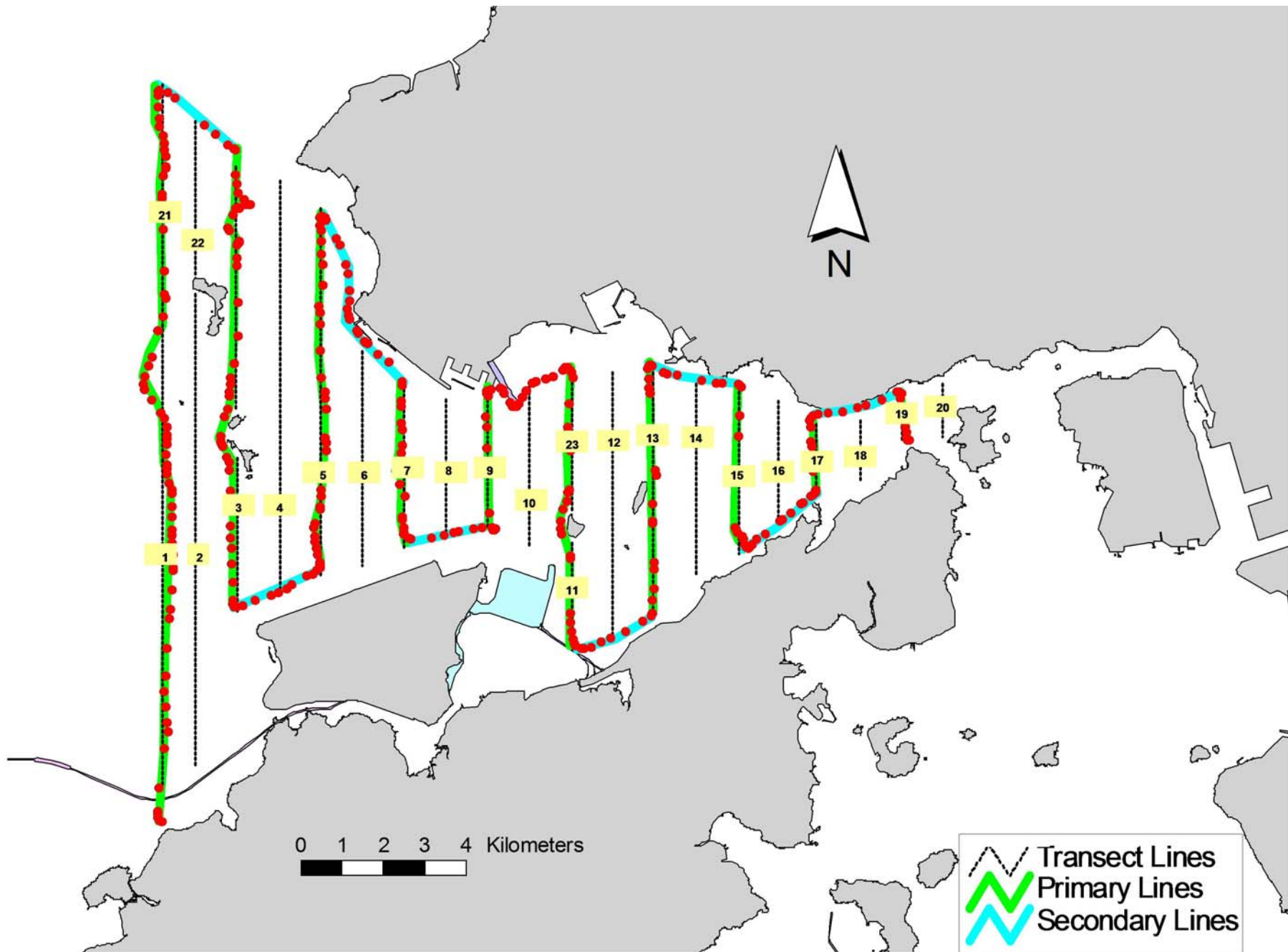


Figure 2. Survey Route on December 1<sup>st</sup>, 2016 (from HKLR03 project)

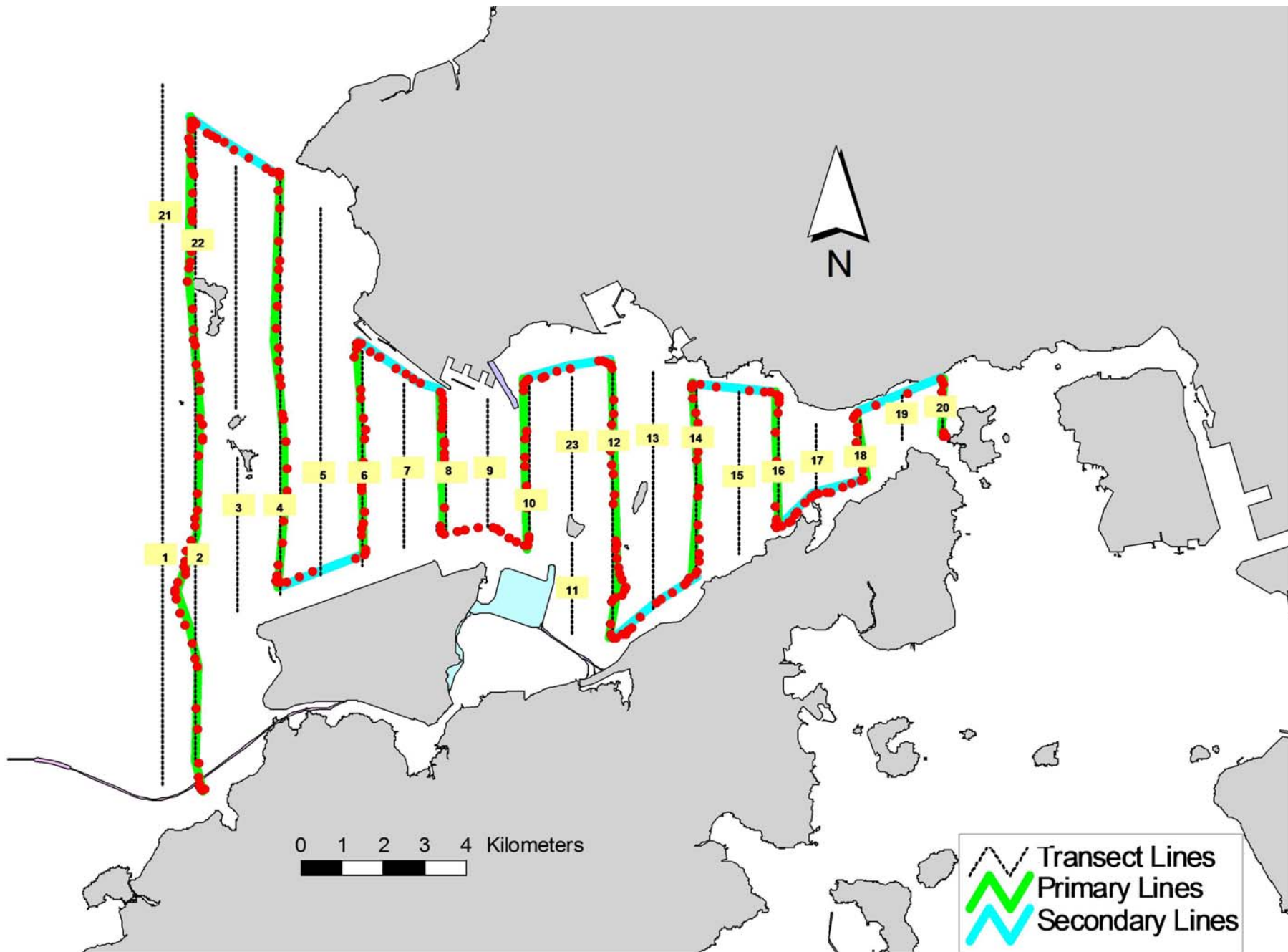


Figure 3. Survey Route on December 6<sup>th</sup>, 2016 (from HKLR03 project)

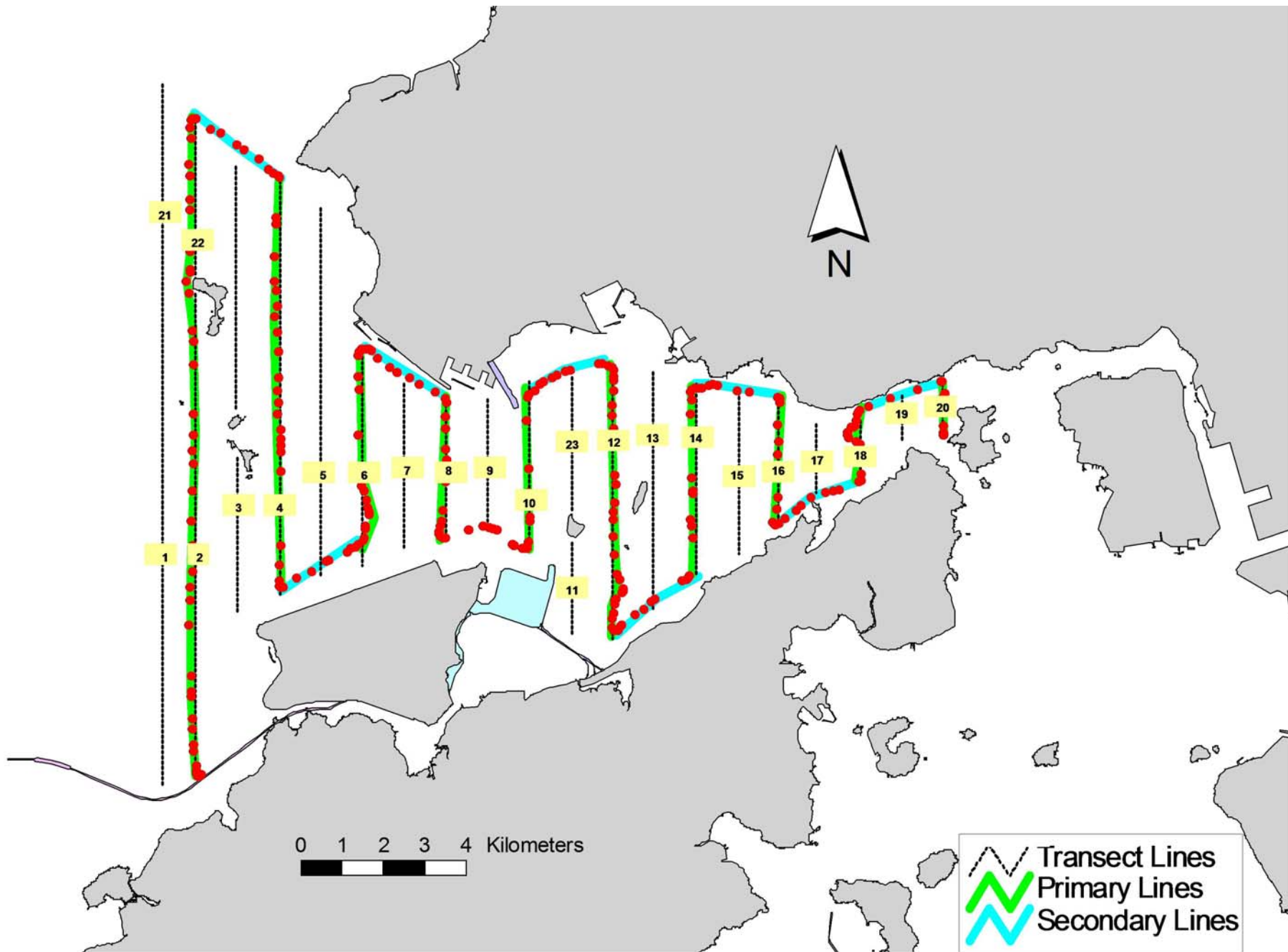


Figure 4. Survey Route on December 16<sup>th</sup>, 2016 (from HKLR03 project)

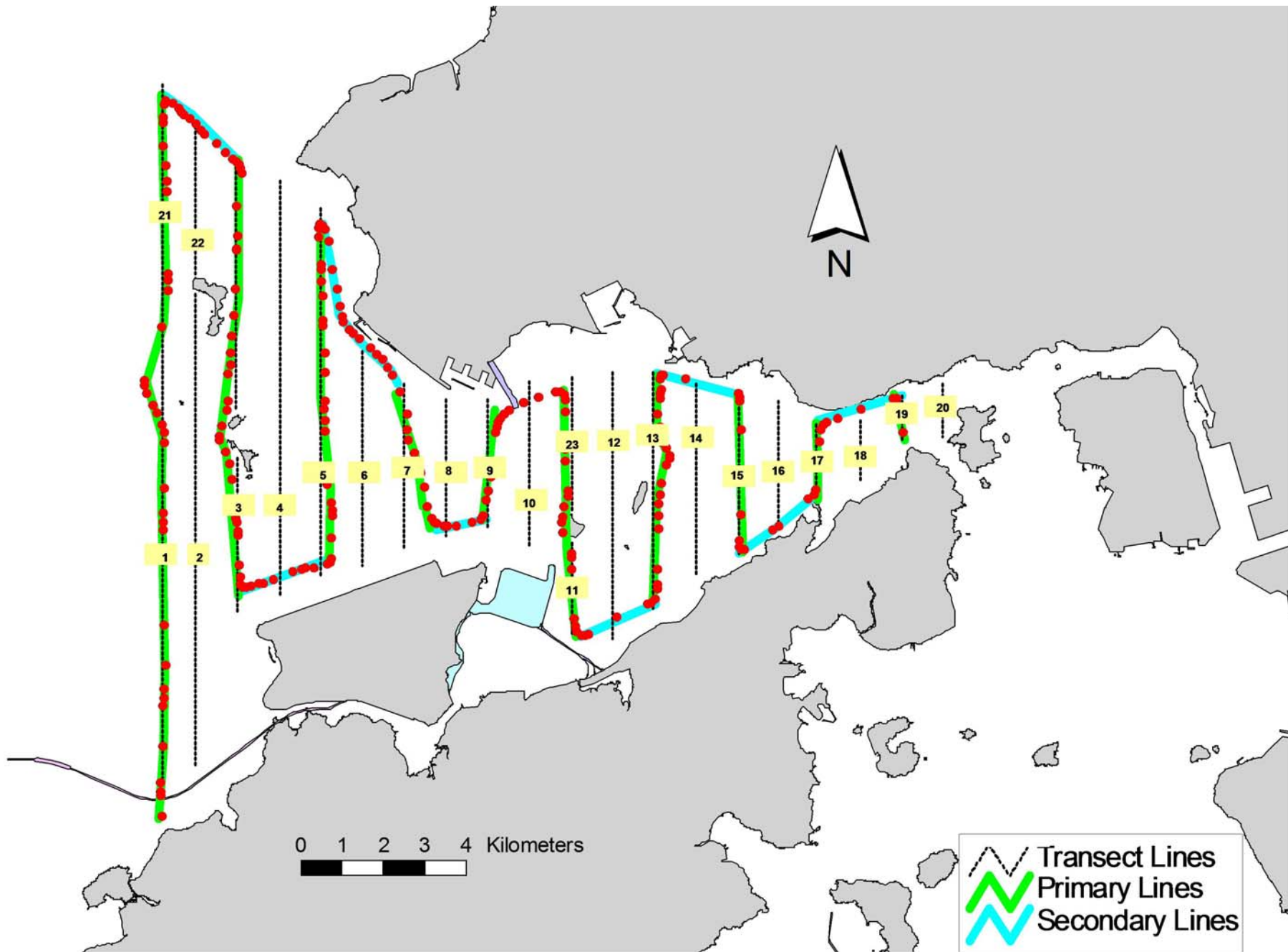


Figure 5. Survey Route on December 19<sup>th</sup>, 2016 (from HKLR03 project)

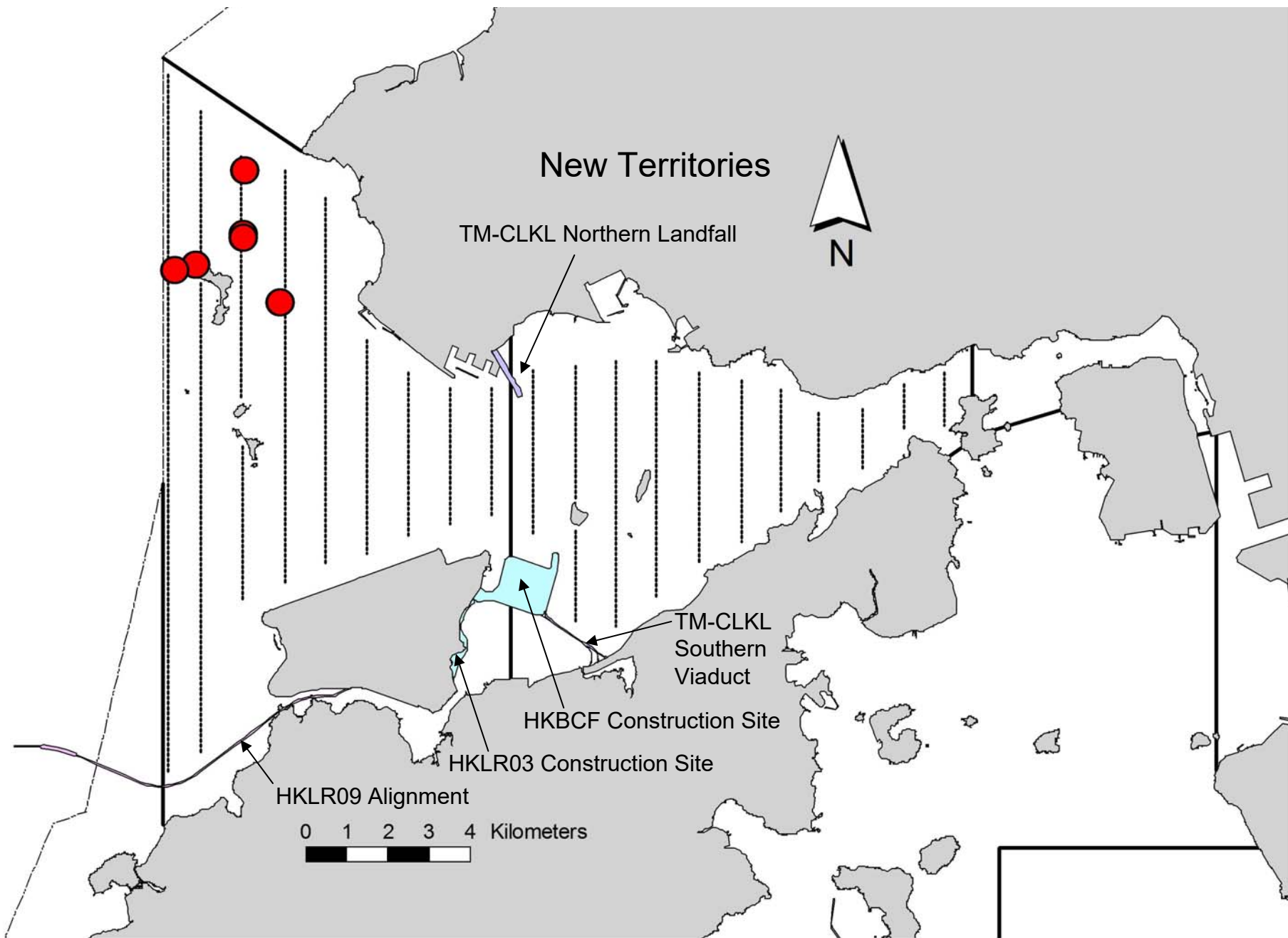


Figure 6. Distribution of Chinese White Dolphin Sightings during December 2016 HKLR03 Monitoring Surveys

## Appendix I. HKLR03 Survey Effort Database (December 2016)

(Abbreviations: BEAU = Beaufort Sea State; P = Primary Line Effort; S = Secondary Line Effort)

DATE	AREA	BEAU	EFFORT	SEASON	VESSEL	TYPE	P/S
1-Dec-16	NE LANTAU	1	1.10	WINTER	STANDARD36826	HKLR	P
1-Dec-16	NE LANTAU	2	14.04	WINTER	STANDARD36826	HKLR	P
1-Dec-16	NE LANTAU	3	2.70	WINTER	STANDARD36826	HKLR	P
1-Dec-16	NE LANTAU	2	6.99	WINTER	STANDARD36826	HKLR	S
1-Dec-16	NE LANTAU	3	2.87	WINTER	STANDARD36826	HKLR	S
1-Dec-16	NW LANTAU	2	7.78	WINTER	STANDARD36826	HKLR	P
1-Dec-16	NW LANTAU	3	30.29	WINTER	STANDARD36826	HKLR	P
1-Dec-16	NW LANTAU	4	2.10	WINTER	STANDARD36826	HKLR	P
1-Dec-16	NW LANTAU	2	0.10	WINTER	STANDARD36826	HKLR	S
1-Dec-16	NW LANTAU	3	12.43	WINTER	STANDARD36826	HKLR	S
6-Dec-16	NE LANTAU	2	8.24	WINTER	STANDARD36826	HKLR	P
6-Dec-16	NE LANTAU	3	12.45	WINTER	STANDARD36826	HKLR	P
6-Dec-16	NE LANTAU	2	5.56	WINTER	STANDARD36826	HKLR	S
6-Dec-16	NE LANTAU	3	5.85	WINTER	STANDARD36826	HKLR	S
6-Dec-16	NW LANTAU	2	3.30	WINTER	STANDARD36826	HKLR	P
6-Dec-16	NW LANTAU	3	21.96	WINTER	STANDARD36826	HKLR	P
6-Dec-16	NW LANTAU	4	6.80	WINTER	STANDARD36826	HKLR	P
6-Dec-16	NW LANTAU	2	2.34	WINTER	STANDARD36826	HKLR	S
6-Dec-16	NW LANTAU	3	5.60	WINTER	STANDARD36826	HKLR	S
16-Dec-16	NE LANTAU	2	1.84	WINTER	STANDARD36826	HKLR	P
16-Dec-16	NE LANTAU	3	15.94	WINTER	STANDARD36826	HKLR	P
16-Dec-16	NE LANTAU	4	2.10	WINTER	STANDARD36826	HKLR	P
16-Dec-16	NE LANTAU	2	2.56	WINTER	STANDARD36826	HKLR	S
16-Dec-16	NE LANTAU	3	8.66	WINTER	STANDARD36826	HKLR	S
16-Dec-16	NW LANTAU	2	8.49	WINTER	STANDARD36826	HKLR	P
16-Dec-16	NW LANTAU	3	22.63	WINTER	STANDARD36826	HKLR	P
16-Dec-16	NW LANTAU	2	3.41	WINTER	STANDARD36826	HKLR	S
16-Dec-16	NW LANTAU	3	4.41	WINTER	STANDARD36826	HKLR	S
19-Dec-16	NW LANTAU	2	25.43	WINTER	STANDARD36826	HKLR	P
19-Dec-16	NW LANTAU	3	10.26	WINTER	STANDARD36826	HKLR	P
19-Dec-16	NW LANTAU	2	6.14	WINTER	STANDARD36826	HKLR	S
19-Dec-16	NW LANTAU	3	5.93	WINTER	STANDARD36826	HKLR	S
19-Dec-16	NE LANTAU	2	2.66	WINTER	STANDARD36826	HKLR	P
19-Dec-16	NE LANTAU	3	12.82	WINTER	STANDARD36826	HKLR	P
19-Dec-16	NE LANTAU	2	4.15	WINTER	STANDARD36826	HKLR	S
19-Dec-16	NE LANTAU	3	5.57	WINTER	STANDARD36826	HKLR	S

## Appendix II. HKLR03 Chinese White Dolphin Sighting Database (December 2016)

(Abbreviations: STG# = Sighting Number; HRD SZ = Dolphin Herd Size; BEAU = Beaufort Sea State; PSD = Perpendicular Distance; BOAT ASSOC. = Fishing Boat Association; P/S: Sighting Made on Primary/Secondary Line)

DATE	STG #	TIME	HRD SZ	AREA	BEAU	PSD	EFFORT	TYPE	NORTHING	EASTING	SEASON	BOAT ASSOC.	P/S
1-Dec-16	1	1337	1	NW LANTAU	3	233	ON	HKLR	827758	806489	WINTER	NONE	P
16-Dec-16	1	1308	3	NW LANTAU	3	74	ON	HKLR	826206	807351	WINTER	NONE	P
16-Dec-16	2	1359	8	NW LANTAU	3	ND	OFF	HKLR	827051	805334	WINTER	NONE	
19-Dec-16	1	1105	6	NW LANTAU	2	17	ON	HKLR	826942	804829	WINTER	NONE	P
19-Dec-16	2	1204	4	NW LANTAU	2	272	ON	HKLR	829219	806502	WINTER	NONE	P
19-Dec-16	3	1222	2	NW LANTAU	2	26	ON	HKLR	827680	806489	WINTER	NONE	P

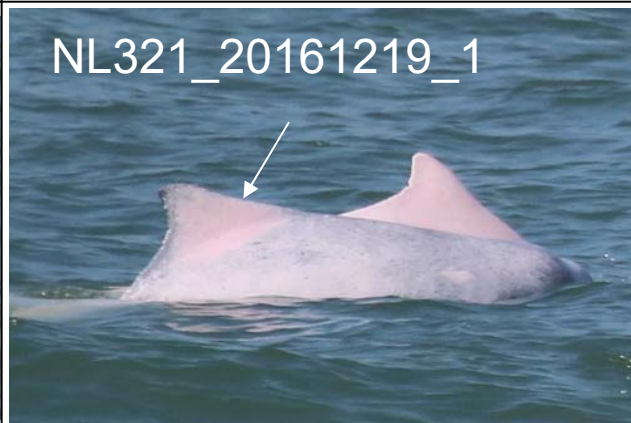


**Appendix III. Individual dolphins identified during HKLR03 monitoring surveys in December 2016**

<b>ID#</b>	<b>DATE</b>	<b>STG#</b>	<b>AREA</b>
CH34	19/12/16	1	NW LANTAU
NL46	16/12/16	2	NW LANTAU
NL98	16/12/16	2	NW LANTAU
NL104	19/12/16	1	NW LANTAU
NL120	16/12/16	1	NW LANTAU
NL136	16/12/16	2	NW LANTAU
NL182	01/12/16	1	NW LANTAU
	16/12/16	2	NW LANTAU
NL202	16/12/16	2	NW LANTAU
	19/12/16	1	NW LANTAU
	19/12/16	3	NW LANTAU
NL203	19/12/16	2	NW LANTAU
NL226	16/12/16	1	NW LANTAU
NL286	16/12/16	2	NW LANTAU
	19/12/16	1	NW LANTAU
	19/12/16	3	NW LANTAU
NL296	16/12/16	1	NW LANTAU
NL321	19/12/16	1	NW LANTAU
WL17	19/12/16	2	NW LANTAU



Appendix IV. Photographs of Identified Individual Dolphins in December 2016 (HKLR03)



Appendix IV. (cont'd)



Appendix IV. (cont'd)