

Activity ID	Activity Name	Orig. Durn.	Act. Start / FC Early Start	Rem. Durn.	Act. Finish / FC Early Finish	Late Start	Late Finish	Total Float	Physical % Complete	2017																								
										April				May				June				July												
											20	27	03	10	17	24	01	08	15	22	29	05	12	19	26	03	10	17	24					
Contract Milestones																																		
Key Dates for Completion																																		
Stage of the Works																																		
Completion Date																																		
General																																		
KD03	KD3 - Stage 3: TCSS Along NLH Near Viaduct C, D (EoT 8-Apr-16)		0		0	21-Apr-17*		08-Apr-16	-377	0%																								
Portion Handover Dates																																		
Possession of the Works Area																																		
Access Dates																																		
General																																		
POS02-6B	Portion A - Area 6B (To be confirmed)		0		0	21-Apr-17*		20-Dec-16	-122	0%																								
Design																																		
Detailed Design																																		
General Submissions																																		
Reports & Manuals																																		
General																																		
ARDD0037-7	Preparation of Seismic Performance Report Viaduct F - AP12.03		160	21-Aug-15 A	16	11-May-17	22-Mar-17	10-Apr-17	-22	90%																								
ARDD0037-8	IC/SO Approval of Seismic Performance Report Viaduct F - AP12.03		75	12-May-17	75	09-Aug-17	11-Apr-17	14-Jul-17	-22	0%																								
ARDD0040-2	IC/SO Approval of Operation and Maintenance Manual - AP08.00		75	20-Oct-15 A	16	11-May-17	26-Jun-17	14-Jul-17	53	75%																								
ARDD0042-2	IC/SO Approval of O&M Facility Provisions DDA - BP11.01		75	14-Jan-15 A	16	11-May-17	26-Jun-17	14-Jul-17	53	75%																								
Slope Works Near Viaduct A																																		
Feature 9SE-B/FR8, B/R1, B/R2																																		
Slope Works Design																																		
ARDD0596	Preparation of remaining portion of Slope FR8 Combined AIP/DDA - CP11.		35	21-Apr-17	35	03-Jun-17	21-Mar-16	05-May-16	-319	0%																								
ARDD0596-1	IC/SO Approval of Slope Combined AIP/DDA - CP11.01		60	05-Jun-17	60	14-Aug-17	06-May-16	18-Jul-16	-319	0%																								
Slope Works Near Viaduct C																																		
Feature 10NW-C/C22, C/C26, C/C27, C/F13, C/F14, C/F15																																		
Slope Works Design																																		
ARDD0589-1	Preparation of Slope Combined AIP/DDA - CP13.01		60	21-Jan-17 A	8	29-Apr-17	07-Jul-16	15-Jul-16	-234	90%																								
ARDD0589-2	IC/SO Approval of Combined AIP/DDA - CP13.01		28	02-May-17	28	05-Jun-17	16-Jul-16	17-Aug-16	-234	0%																								
ARDD0590	Newfill slopes PF1 & PF2 Preparation of Combined AIP/DDA - CP13.01		60	21-Jan-17 A	0	05-Apr-17 A				100%																								
ARDD0590-1	New fill slopes PF1 & PF2 IC/SO Approval of combined AIP/DDA - CP13.0		28	06-Apr-17 A	18	13-May-17	05-Jul-16	25-Jul-16	-236	35%																								
Slope Works Near Viaduct D																																		
Feature 10NW-C/R4, C/F9, C/F10, C/F11, C/F17, C/F50																																		
Slope Works Design																																		
ARDD0603	IC/SO Approval of Slope Combined AIP/DDA -CP14.01		75	16-Dec-14 A	0	31-Mar-17 A				100%																								
ARDD0603-1	IC/SO Approval of Slope Combined AIP/DDA -CP14.01		0		0	31-Mar-17 A				100%																								
Watermain, Drainage & Utility Diversions																																		
General																																		
Design																																		
ARDD0629	IC/SO Approval of Waterworks, Drainage & Utility DDA - BP20.01		75	22-Jul-14 A	22	18-May-17	31-Aug-17	25-Sep-17	109	70%																								
ARDD0629-1	IC/SO Approval of Waterworks, Drainage & Utility DDA - BP20.01		0		0	18-May-17		25-Sep-17	109	0%																								
ARDD0629-2	Gov't Approval of Submissions for Waterworks, Drainage & Utility Diversior		75	02-Jan-14 A	22	18-May-17	31-Aug-17	25-Sep-17	109	70%																								
Viaduct Approach Ramp Retaining Walls																																		
Abutment & Approach Ramp B																																		
Design																																		
ARDD0664	Approach B - IC/SO Approval of Approach Ramp B DDA -DP21.01		75	14-Oct-14 A	4	25-Apr-17	26-Jun-20	30-Jun-20	942	95%																								
ARDD0664-1	Approach B - IC/SO Approval of Approach Ramp B DDA -DP21.01		0		0	25-Apr-17		30-Jun-20	942	0%																								
Abutment & Approach Ramp F																																		
Design																																		
ARDD0676	Approach F - IC/SO Approval of Approach Ramp F DDA -DP24.01		75	23-Dec-14 A	34	02-Jun-17	19-Apr-17	31-May-17	-2	50%																								
ARDD0676-1	Approach F - IC/SO Approval of Approach Ramp F DDA -DP24.01		0		0	02-Jun-17		31-May-17	-2	0%																								
Segment Target Geometry & Erection Engineering																																		
Viaduct A																																		

■ Actual Work
■ Planned Bar
■ Critical Bar
◆ Milestone

Project ID: TMCLK-DWPI-1-M47
 Layout: J3518-DWP-3MRP Submission - M47
 Filter: TASK filters: 3-Month Lookahead, No CC
 Milestones, No Level of Effort.

Tuen Mun - Chek Lap Kok Link - Southern Connection
3-Month Rolling Programme (Page 1 of 13 Pages)
(Progress as of 21-Apr-17)

Date	Revision	Checked	Approved
30-Nov-...		PKN	GL
31-Mar-17		PKN	GL
28-Apr-17		PKN	GL

DWG. No.:
J3518/GCL/PGM/3MRP-M47

Activity ID	Activity Name	Orig. Durn.	Act. Start / FC Early Start	Rem. Durn.	Act. Finish / FC Early Finish	Late Start	Late Finish	Total Float	Physical % Complete	2017																								
										April						May						June						July						
										20	27	03	10	17	24	01	08	15	22	29	05	12	19	26	03	10	17	24						
Design																																		
ARDD0718	Viaduct A - Target Geometry Analysis	20	21-Mar-17 A	0	13-Apr-17 A				100%	[Gantt Bar]																								
ARDD0719-5	Viaduct A - Issue Erection Manual	20	21-Mar-17 A	0	13-Apr-17 A				100%	[Gantt Bar]																								
Viaduct E5 & E6																																		
Design																																		
ARDD0734	Viaduct E5 & E6 - Segment Geometry Schedules	10	05-May-14 A	34	02-Jun-17	06-Aug-16	14-Sep-16	-208	75%	[Gantt Bar]																								
TGP0570	Viaduct E5 & E6 - Issue of Optimised Casting Data and Segment Catalogue	40	30-Apr-15 A	34	02-Jun-17	06-Aug-16	14-Sep-16	-208	75%	[Gantt Bar]																								
TGP0590	Viaduct E5 & E6 - Issue Erection Manual	10	03-Jun-17	10	14-Jun-17	15-Sep-16	27-Sep-16	-208	0%	[Gantt Bar]																								
Viaduct E7 & E8																																		
Design																																		
ARDD0739	Viaduct E7 & E8 - Segment Geometry Schedules	10	05-May-14 A	34	02-Jun-17	06-Aug-16	14-Sep-16	-208	75%	[Gantt Bar]																								
TGP0760	Viaduct E7 & E8 - Issue of Optimised Casting Data and Segment Catalogue	40	31-Jul-15 A	34	02-Jun-17	06-Aug-16	14-Sep-16	-208	75%	[Gantt Bar]																								
TGP0790	Viaduct E7 & E8 - Issue Erection Manual	10	03-Jun-17	10	14-Jun-17	15-Sep-16	27-Sep-16	-208	0%	[Gantt Bar]																								
Viaduct F																																		
Design																																		
ARDD0752	Viaduct F - Erection Sequence Analysis	13	21-Apr-17	13	08-May-17	16-Jul-16	30-Jul-16	-226	0%	[Gantt Bar]																								
ARDD0753	Viaduct F - Target Geometry Analysis	30	09-May-17	30	13-Jun-17	01-Aug-16	03-Sep-16	-226	0%	[Gantt Bar]																								
ARDD0754	Viaduct F - Segment Geometry Schedules	10	14-Jun-17	10	24-Jun-17	05-Sep-16	15-Sep-16	-226	0%	[Gantt Bar]																								
ARDD0754-1	Viaduct F - Issue of Pierhead Segments Bridge F1, F2, F3, F4 & F5	0		0	24-Jun-17		30-Jun-20	893	0%	[Milestone]																								
ARDD0754-3	Viaduct F - Issue of Casting Data and Segment Catalogue Bridge F1, F3 (f	0		0	24-Jun-17		30-Jun-20	893	0%	[Milestone]																								
ARDD0754-4	Viaduct F - Issue of Casting Data and Segment Catalogue Bridge F2, F4, F	0		0	24-Jun-17		15-Sep-16	-226	0%	[Milestone]																								
ARDD0754-5	Viaduct F - Issue Erection Manual	30	26-Jun-17	30	31-Jul-17	17-Sep-16	24-Oct-16	-226	0%	[Gantt Bar]																								
Procurement																																		
Deck Segment Installation Equipment																																		
Travelling Hanging Beams (Self-Launch)																																		
Viaduct A to F																																		
Equipment Delivery																																		
PR67080	Steelworks for Self-Launching System - Batch 2	0		0	31-Mar-17 A				100%	[Milestone]																								
PR67090	Steelworks for Self-Launching System - Batch 3	0		0	18-Apr-17 A				100%	[Milestone]																								
PR67100	2 nos. Hydraulic Cylinder & Associated Accessories for Spare	0		0	18-Apr-17 A				100%	[Milestone]																								
PR67110	Power Pack for Hydraulic System for Self-Launching System	0		0	18-Apr-17 A				100%	[Milestone]																								
Precast Deck Segments																																		
Preliminaries																																		
Viaduct F																																		
General																																		
MBBE0056	Precast Segment Mould Fabrication & Erection (Viaduct F1 to F5)	52	13-Feb-17 A	0	18-Apr-17 A				100%	[Gantt Bar]																								
Viaduct A - Bridge A2-A1																																		
Segment Manufacture																																		
General																																		
MBAE0130-1	A: Progressive Segment Manufacture (179 Nr)	180	13-Jun-16 A	31	29-May-17	03-May-16	08-Jun-16	-287	90%	[Gantt Bar]																								
Viaduct E - Bridge E2																																		
Segment Manufacture																																		
General																																		
MBEE0130-7	E2: Progressive Segment Manufacture (404 Nr)	376	06-May-15 A	28	25-May-17	04-Jan-16	04-Feb-16	-382	95%	[Gantt Bar]																								
Viaduct E - Bridge E5, E6, E7, E8																																		
Segment Manufacture																																		
General																																		
MBEE0130-9	E5-6-7-8: Progressive Segment Manufacture (544Nr)	360	06-May-15 A	120	12-Sep-17	17-Sep-16	13-Feb-17	-173	70%	[Gantt Bar]																								
Viaduct F - Bridge F1-F5																																		
Segment Manufacture																																		
General																																		
MBFE0130-1	F: Progressive Segment Manufacture (300 Nr)	252	27-Oct-16 A	150	19-Oct-17	16-Jan-17	21-Jul-17	-75	50%	[Gantt Bar]																								
Precast Parapets & Barriers																																		
Viaduct A to F																																		
Precast Parapet Manufacture																																		

■ Actual Work
■ Planned Bar
■ Critical Bar
◆ Milestone

Project ID: TMCLK-DWPI-1-M47
 Layout: J3518-DWP-3MRP Submission - M47
 Filter: TASK filters: 3-Month Lookahead, No CC
 Milestones, No Level of Effort.

Tuen Mun - Chek Lap Kok Link - Southern Connection
3-Month Rolling Programme (Page 2 of 13 Pages)
(Progress as of 21-Apr-17)

Date	Revision	Checked	Approved
30-Nov-...		PKN	GL
31-Mar-17		PKN	GL
28-Apr-17		PKN	GL

DWG. No.:
J3518/GCL/PGM/3MRP-M47

Activity ID	Activity Name	Orig. Durn.	Act. Start / FC Early Start	Rem. Durn.	Act. Finish / FC Early Finish	Late Start	Late Finish	Total Float	Physical % Complete	2017																								
										April					May					June					July									
											20	27	03	10	17	24	01	08	15	22	29	05	12	19	26	03	10	17	24					
General																																		
PP6011-01	Viaduct A - Precast Parapets/Barriers Production	90	01-Sep-16 A	83	31-Jul-17	04-Jun-16	10-Sep-16	-260	50%	[Gantt bar: 04-Jun-16 to 10-Sep-16, 50% complete]																								
PP6011-02	Viaduct B - Precast Parapets/Barriers Production	120	03-May-16 A	32	31-May-17	05-Aug-16	10-Sep-16	-209	75%	[Gantt bar: 05-Aug-16 to 10-Sep-16, 75% complete]																								
PP6011-03	Viaduct C - Precast Parapets/Barriers Production	120	01-Apr-16 A	12	06-May-17	29-Apr-16	13-May-16	-289	85%	[Gantt bar: 29-Apr-16 to 13-May-16, 85% complete]																								
PP6011-04	Viaduct D - Precast Parapets/Barriers Production	120	01-Mar-16 A	12	06-May-17	29-Apr-16	13-May-16	-289	85%	[Gantt bar: 29-Apr-16 to 13-May-16, 85% complete]																								
PP6011-05	Viaduct E - Precast Parapets/Barriers Production	180	02-Jul-16 A	136	30-Sep-17	16-May-16	26-Oct-16	-277	40%	[Gantt bar: 16-May-16 to 26-Oct-16, 40% complete]																								
PP6011-06	Viaduct F - Precast Parapets/Barriers Production	198	03-Jul-17*	198	28-Feb-18	18-Feb-17	18-Oct-17	-107	0%	[Gantt bar: 18-Feb-17 to 18-Oct-17, 0% complete]																								
Bearings																																		
Viaduct A																																		
Bearing Design & Manufacture																																		
General																																		
PPBRA5	SO review & comment on design submission - Viaduct A	36	21-Oct-16 A	0	25-Mar-17 A				100%	[Gantt bar: 21-Oct-16 to 25-Mar-17, 100% complete]																								
PPBRA6	Bearing Design Amendment & re-issue - Viaduct A	12	27-Mar-17 A	0	10-Apr-17 A				100%	[Gantt bar: 27-Mar-17 to 10-Apr-17, 100% complete]																								
PPBRA7	Manufacture of Bearing - Viaduct A	54	21-Oct-16 A	0	20-Apr-17 A				100%	[Gantt bar: 21-Oct-16 to 20-Apr-17, 100% complete]																								
PPBRA8	Testing Bearing - Viaduct A	18	21-Apr-17	18	13-May-17	27-Jul-16	16-Aug-16	-217	0%	[Gantt bar: 27-Jul-16 to 16-Aug-16, 0% complete]																								
PPBRA9	Bearing Delivery - Viaduct A	48	15-May-17	48	11-Jul-17	17-Aug-16	14-Oct-16	-217	0%	[Gantt bar: 17-Aug-16 to 14-Oct-16, 0% complete]																								
PPBRA99	Site preparation Bearings for Viaduct A	6	12-Jul-17	6	18-Jul-17	15-Oct-16	21-Oct-16	-217	0%	[Gantt bar: 15-Oct-16 to 21-Oct-16, 0% complete]																								
Viaduct C																																		
Bearing Design & Manufacture																																		
General																																		
PPBRC6	Bearing Design Ammendment & re-issue - Viaduct C	11	21-Apr-17	11	05-May-17	10-Jun-20	22-Jun-20	929	0%	[Gantt bar: 10-Jun-20 to 22-Jun-20, 0% complete]																								
PPBRC99	Site preparation Bearings for Viaduct C	6	06-May-17	6	12-May-17	23-Jun-20	30-Jun-20	929	0%	[Gantt bar: 23-Jun-20 to 30-Jun-20, 0% complete]																								
Viaduct D																																		
Bearing Design & Manufacture																																		
General																																		
PPBRD99	Site preparation Bearings for Viaduct D	38	21-Apr-17	38	07-Jun-17	16-May-20	30-Jun-20	908	0%	[Gantt bar: 16-May-20 to 30-Jun-20, 0% complete]																								
Viaduct E																																		
Bearing Design & Manufacture																																		
General																																		
PP7290	Site preparation Bearings for Viaduct E2	18	27-Apr-16 A	13	08-May-17	12-Nov-16	26-Nov-16	-127	90%	[Gantt bar: 12-Nov-16 to 26-Nov-16, 90% complete]																								
PP7360	Site preparation Bearings for Viaduct E1	18	10-Feb-15 A	3	24-Apr-17	17-Nov-16	19-Nov-16	-123	95%	[Gantt bar: 17-Nov-16 to 19-Nov-16, 95% complete]																								
PPBRE6	Bearing Design Amendment & re-issue - Viaduct E (E1, E2, E5, E6, E7 & E8)	12	15-Nov-16 A	9	02-May-17	15-Aug-16	24-Aug-16	-201	80%	[Gantt bar: 15-Aug-16 to 24-Aug-16, 80% complete]																								
PPBRE7	Manufacture of Bearing - Viaduct E (E1, E2, E5, E6, E7 & E8)	54	02-Jun-14 A	13	08-Jun-17	14-Sep-16	29-Sep-16	-201	75%	[Gantt bar: 14-Sep-16 to 29-Sep-16, 75% complete]																								
PPBRE8	Testing Bearing - Viaduct E (E1, E2, E5, E6, E7 & E8)	24	03-Aug-15 A	1	22-Jun-17	15-Oct-16	15-Oct-16	-201	65%	[Gantt bar: 15-Oct-16 to 15-Oct-16, 65% complete]																								
PPBRE9	Bearing Delivery - Viaduct E (E1, E2, E5, E6, E7 & E8)	48	19-Nov-14 A	59	04-Aug-17	17-Sep-16	26-Nov-16	-201	55%	[Gantt bar: 17-Sep-16 to 26-Nov-16, 55% complete]																								
Viaduct F																																		
Bearing Design & Manufacture																																		
General																																		
PPBRF6	Bearing Design Amendment & re-issue - Viaduct F	12	09-Mar-17 A	0	05-Apr-17 A				100%	[Gantt bar: 09-Mar-17 to 05-Apr-17, 100% complete]																								
PPBRF7	Manufacture of Bearing - Viaduct F	60	28-Mar-17 A	42	12-Jun-17	25-Jul-16	10-Sep-16	-219	15%	[Gantt bar: 25-Jul-16 to 10-Sep-16, 15% complete]																								
PPBRF8	Testing Bearing - Viaduct F	12	13-Jun-17	12	26-Jun-17	12-Sep-16	26-Sep-16	-219	0%	[Gantt bar: 12-Sep-16 to 26-Sep-16, 0% complete]																								
PPBRF9	Bearing Delivery - Viaduct F	34	27-Jun-17	34	05-Aug-17	27-Sep-16	07-Nov-16	-219	0%	[Gantt bar: 27-Sep-16 to 07-Nov-16, 0% complete]																								
Movement Joints																																		
Viaduct A to F																																		
MJ Design & Manufacture																																		
General																																		
PP6MJ02-1	MJ Design Approval	96	26-May-14 A	0	31-Mar-17 A				100%	[Gantt bar: 26-May-14 to 31-Mar-17, 100% complete]																								
PP6MJ02-2	Manufacture & delivery of MJ	180	01-Apr-17 A	159	31-Oct-17	11-Jan-16	26-Jul-16	-376	10%	[Gantt bar: 11-Jan-16 to 26-Jul-16, 10% complete]																								
Construction																																		
Foundation & Substructure Works																																		
Viaduct A - Bridge A2																																		
Pier A2 (A2d)																																		
Pier Head Segment																																		
A02-C5210	A2 - PHS - Temporary Platform	12	08-Mar-17 A	0	21-Mar-17 A				100%	[Gantt bar: 08-Mar-17 to 21-Mar-17, 100% complete]																								
A02-C5310	A2 - Install PH Segment (1 nr)	2	22-Mar-17 A	0	23-Mar-17 A				100%	[Gantt bar: 22-Mar-17 to 23-Mar-17, 100% complete]																								
A02-C5410	A2 - PHS Diaphragm - Rebar, Formwork, Concreting	30	24-Mar-17 A	10	04-May-17	10-May-16	21-May-16	-281	65%	[Gantt bar: 10-May-16 to 21-May-16, 65% complete]																								

■ Actual Work
■ Planned Bar
■ Critical Bar
◆ Milestone

Project ID: TMCLK-DWPI-1-M47
 Layout: J3518-DWP-3MRP Submission - M47
 Filter: TASK filters: 3-Month Lookahead, No CC
 Milestones, No Level of Effort.

Tuen Mun - Chek Lap Kok Link - Southern Connection
3-Month Rolling Programme (Page 3 of 13 Pages)
(Progress as of 21-Apr-17)

Date	Revision	Checked	Approved
30-Nov-...		PKN	GL
31-Mar-17		PKN	GL
28-Apr-17		PKN	GL

DWG. No.:
J3518/GCL/PGM/3MRP-M47

Activity ID	Activity Name	Orig. Durn.	Act. Start / FC Early Start	Rem. Durn.	Act. Finish / FC Early Finish	Late Start	Late Finish	Total Float	Physical % Complete	2017																								
										April						May						June						July						
											20	27	03	10	17	24	01	08	15	22	29	05	12	19	26	03	10	17	24					
A02-C5420	A2 - PHS Diaphragm - Curing & Striking of Forms	12	05-May-17	12	18-May-17	23-May-16	04-Jun-16	-281	0%																									
Pier A3 (A2c)																																		
Pier Head Segment																																		
A03-C5210	A3 - PHS - Temporary Platform	12	08-Mar-17 A	0	21-Mar-17 A				100%																									
A03-C5310	A3 - Install PH Segment (1 nr)	2	22-Mar-17 A	0	23-Mar-17 A				100%																									
A03-C5410	A3 - PHS Diaphragm - Rebar, Formwork, Concreting	30	31-Mar-17 A	16	11-May-17	07-Jun-16	25-Jun-16	-258	45%																									
A03-C5420	A3 - PHS Diaphragm - Curing & Striking of Forms	12	12-May-17	12	25-May-17	27-Jun-16	11-Jul-16	-258	0%																									
Pier A5 (A2a)																																		
Pier Head Segment																																		
A05-C5410	A5 - PHS Diaphragm - Rebar, Formwork, Concreting	30	01-Feb-17 A	0	23-Mar-17 A				100%																									
A05-C5420	A5 - PHS Diaphragm - Curing & Striking of Forms	12	24-Mar-17 A	0	06-Apr-17 A				100%																									
Viaduct A - Bridge A1																																		
Pier A9 (A1c)																																		
Pier Head Segment																																		
A09-C5210	A9 - PHS - Temporary Platform	12	22-Mar-17 A	0	05-Apr-17 A				100%																									
A09-C5310	A9 - Install PH Segment (1 nr)	2	06-Apr-17 A	0	07-Apr-17 A				100%																									
A09-C5410	A9 - PHS Diaphragm - Rebar, Formwork, Concreting	36	21-Apr-17	36	05-Jun-17	23-Feb-16	08-Apr-16	-342	0%																									
A09-C5420	A9 - PHS Diaphragm - Curing & Striking of Forms	10	06-Jun-17	10	16-Jun-17	09-Apr-16	20-Apr-16	-342	0%																									
Pier A10 (A1b)																																		
Pier Head Segment																																		
A10-C5210	A10 - PHS - Temporary Platform	12	21-Apr-17	12	06-May-17	16-Apr-16	29-Apr-16	-300	0%																									
A10-C5310	A10 - Install PH Segment (1 nr)	2	09-May-17*	2	10-May-17	03-May-16	04-May-16	-300	0%																									
A10-C5410	A10 - PHS Diaphragm - Rebar, Formwork, Concreting	36	11-May-17	36	22-Jun-17	05-May-16	17-Jun-16	-300	0%																									
A10-C5420	A10 - PHS Diaphragm - Curing & Striking of Forms	12	23-Jun-17	12	07-Jul-17	18-Jun-16	02-Jul-16	-300	0%																									
Pier A11 (A1a)																																		
Pier Head Segment																																		
A11-C5210	A11 - PHS - Temporary Platform	12	08-May-17	12	20-May-17	21-Jun-16	05-Jul-16	-259	0%																									
A11-C5310	A11 - Install PH Segment (1nr)	2	22-May-17*	2	23-May-17	06-Jul-16	07-Jul-16	-259	0%																									
Ramp A																																		
Abutment & Approach Ramp A																																		
Ramp Structure																																		
ARA-C6140	Ramp A - Remaining RE Wall (Bay 7 to 11) with Backfill	111	02-Mar-17 A	72	18-Jul-17	18-Feb-16	18-May-16	-346	35%																									
ARA-C6142	Ramp A - Remaining RC Wall (Bay Wa2-Wa5 & Bay 9-12) with Backfill	120	19-Jul-17	120	08-Dec-17	24-May-16	15-Oct-16	-342	0%																									
Viaduct B - Bridge B1																																		
Pier B17 (B1c)																																		
Pile Cap																																		
B17-C3120	B17/B18 - Pile Cap Excavation/ELS Incl. Watermain/Gasmain Diversion	65	23-Feb-17 A	20	16-May-17	15-Feb-16	08-Mar-16	-349	65%																									
B17-C3130	B17 - Pile Cap Break Pile Head & Weld Steel Plate	4	17-May-17	4	20-May-17	09-Mar-16	12-Mar-16	-349	0%																									
B17-C3210	B17 - Pile Cap Blinding, Rebar, Formwork, Concrete	10	22-May-17	10	02-Jun-17	14-Mar-16	24-Mar-16	-349	0%																									
B17-C3310	B17 - Pile Cap Curing, Strike Formwork, CJ Prep	3	03-Jun-17	3	06-Jun-17	29-Mar-16	31-Mar-16	-349	0%																									
Pier																																		
B17-C4110	B17 - Pier Scaffold, Rebar, Formwork, Concrete (1st Lift)	7	07-Jun-17	7	14-Jun-17	01-Apr-16	09-Apr-16	-349	0%																									
B17-C4210	B17 - Pier Scaffold, Rebar, Formwork, Concrete (2nd Lift)	10	15-Jun-17	10	26-Jun-17	11-Apr-16	21-Apr-16	-349	0%																									
B17-C4310	B17 - Pier Curing, Remove Formwork	3	27-Jun-17	3	29-Jun-17	22-Apr-16	25-Apr-16	-349	0%																									
Pier Head Segment																																		
B17-C5210	B17 - PHS - Temporary Platform	3	30-Jun-17	3	04-Jul-17	26-Apr-16	28-Apr-16	-349	0%																									
B17-C5310	B17 - Install PH Segment & Fix (1 nr)	2	05-Jul-17	2	06-Jul-17	29-Apr-16	30-Apr-16	-349	0%																									
B17-C5410	B17 - PHS Diaphragm - Rebar, Formwork, Concreting	22	07-Jul-17	22	01-Aug-17	03-May-16	28-May-16	-349	0%																									
Pier B18 (B1b)																																		
Pile Cap																																		
B18-C3110	B18 - Pile Cap Break Pile Head & Weld Steel Plate	4	03-Jun-17	4	07-Jun-17	26-Apr-16	29-Apr-16	-326	0%																									
B18-C3210	B18 - Pile Cap Blinding, Rebar, Formwork, Concrete	10	08-Jun-17	10	19-Jun-17	30-Apr-16	12-May-16	-326	0%																									
B18-C3310	B18 - Pile Cap Curing, Strike Formwork, CJ Prep	3	20-Jun-17	3	22-Jun-17	13-May-16	17-May-16	-326	0%																									
Pier																																		
B18-C4110	B18 - Pier Scaffold, Rebar, Formwork, Concrete	7	23-Jun-17	7	30-Jun-17	18-May-16	25-May-16	-326	0%																									
B18-C4210	B18 - Pier Curing, Remove Formwork	3	03-Jul-17	3	05-Jul-17	26-May-16	28-May-16	-326	0%																									
Pier Head Segment																																		
B18-C5210	B18 - PHS - Construct Abutment Wall	24	06-Jul-17	24	02-Aug-17	30-May-16	27-Jun-16	-326	0%																									

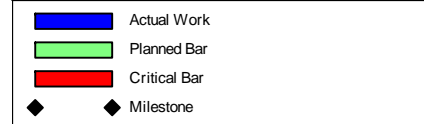
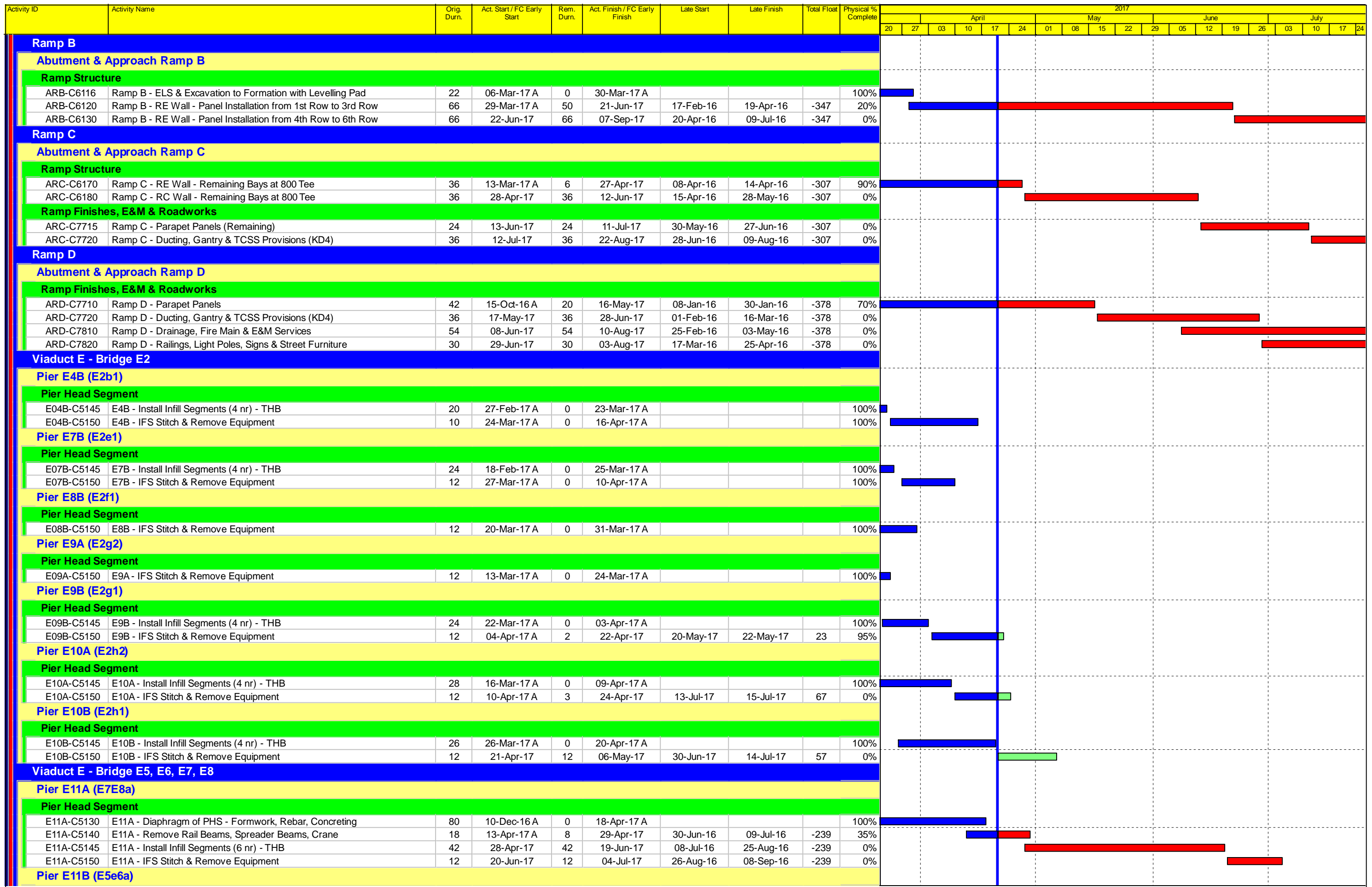
■ Actual Work
■ Planned Bar
■ Critical Bar
◆ Milestone

Project ID: TMCLK-DWPI-1-M47
 Layout: J3518-DWP-3MRP Submission - M47
 Filter: TASK filters: 3-Month Lookahead, No CC
 Milestones, No Level of Effort.

Tuen Mun - Chek Lap Kok Link - Southern Connection
3-Month Rolling Programme (Page 4 of 13 Pages)
(Progress as of 21-Apr-17)

Date	Revision	Checked	Approved
30-Nov-...		PKN	GL
31-Mar-17		PKN	GL
28-Apr-17		PKN	GL

DWG. No.:
J3518/GCL/PGM/3MRP-M47



Project ID: TMCLK-DWPI-1-M47
 Layout: J3518-DWP-3MRP Submission - M47
 Filter: TASK filters: 3-Month Lookahead, No CC
 Milestones, No Level of Effort.

Tuen Mun - Chek Lap Kok Link - Southern Connection
3-Month Rolling Programme (Page 5 of 13 Pages)
(Progress as of 21-Apr-17)

Date	Revision	Checked	Approved
30-Nov-...		PKN	GL
31-Mar-17		PKN	GL
28-Apr-17		PKN	GL

DWG. No.:
J3518/GCL/PGM/3MRP-M47

Activity ID	Activity Name	Orig. Durn.	Act. Start / FC Early Start	Rem. Durn.	Act. Finish / FC Early Finish	Late Start	Late Finish	Total Float	Physical % Complete	2017																								
										April					May				June				July											
										20	27	03	10	17	24	01	08	15	22	29	05	12	19	26	03	10	17	24						
Pier Head Segment																																		
E11B-C5130	E11B - Diaphragm of PHS - Formwork, Rebar, Concreting	81	19-Dec-16 A	7	28-Apr-17	23-Aug-16	30-Aug-16	-194	85%																									
E11B-C5140	E11B - Remove Rail Beams, Spreader Beams, etc	12	29-Apr-17	12	15-May-17	31-Aug-16	13-Sep-16	-194	0%																									
E11B-C5145	E11B - Install Infill Segments (6 nr) - THB	29	16-May-17	29	19-Jun-17	14-Sep-16	20-Oct-16	-194	0%																									
E11B-C5150	E11B - IFS Stitch & Remove Equipment	12	20-Jun-17	12	04-Jul-17	21-Oct-16	03-Nov-16	-194	0%																									
Pier E12A (E8b)																																		
Pier Head Segment / Infill Segment																																		
E12A-C5130	E12A - Diaphragm of PHS - Formwork, Rebar, Concreting	74	28-Feb-17 A	33	01-Jun-17	21-Jul-16	27-Aug-16	-222	50%																									
E12A-C5140	E12A - Remove Rail Beams, Spreader Beams, Brackets	15	02-Jun-17	15	19-Jun-17	29-Aug-16	14-Sep-16	-222	0%																									
E12A-C5145	E12A - Install Infill Segments (6 nr) - THB	36	19-Jun-17	36	31-Jul-17	14-Sep-16	28-Oct-16	-222	0%																									
Pier E12B (E7b)																																		
Pier Head Segment / Infill Segment																																		
E12B-C5130	E12B - Diaphragm of PHS - Formwork, Rebar, Concreting	76	10-Feb-17 A	20	16-May-17	15-Dec-16	10-Jan-17	-99	60%																									
E12B-C5140	E12B - Remove Rail Beams, Spreader Beams, Brackets	15	17-May-17	15	03-Jun-17	11-Jan-17	27-Jan-17	-99	0%																									
E12B-C5145	E12B - Install Infill Segments (6 nr) - THB	48	05-Jun-17	48	31-Jul-17	01-Feb-17	28-Mar-17	-99	0%																									
Pier E12C (E6b)																																		
Pier Head Segment / Infill Segment																																		
E12C-C5130	E12C - Diaphragm of PHS - Formwork, Rebar, Concreting	76	24-Jan-17 A	10	04-May-17	22-Feb-17	04-Mar-17	-46	80%																									
E12C-C5140	E12C - Remove Rail Beams, Spreader Beams, Brackets, Crane	15	05-May-17	15	22-May-17	06-Mar-17	22-Mar-17	-46	0%																									
E12C-C5145	E12C - Install Infill Segments (6 nr) - THB	46	23-May-17	46	17-Jul-17	23-Mar-17	22-May-17	-46	0%																									
E12C-C5150	E12C - IFS Stitch & Remove Equipment	12	18-Jul-17	12	31-Jul-17	23-May-17	06-Jun-17	-46	0%																									
Pier E12D (E5b)																																		
Pier Head Segment / Infill Segment																																		
E12D-C5130	E12D - Diaphragm of PHS - Formwork, Rebar, Concreting	76	07-Mar-17 A	43	13-Jun-17	30-Aug-16	21-Oct-16	-188	40%																									
E12D-C5140	E12D - Remove Rail Beams, Spreader Beams, Brackets	15	14-Jun-17	15	30-Jun-17	22-Oct-16	08-Nov-16	-188	0%																									
E12D-C5145	E12D - Install Infill Segments (6 nr) - THB	38	30-Jun-17	38	14-Aug-17	08-Nov-16	21-Dec-16	-188	0%																									
Pier E13A (E8c)																																		
Pier Head Segment / Infill Segment																																		
E13A-C5120	E13A - Install PH Segment (4 nr)	9	23-Mar-17 A	0	31-Mar-17 A				100%																									
E13A-C5130	E13A - Diaphragm of PHS - Formwork, Rebar, Concreting	76	01-Apr-17 A	63	07-Jul-17	16-Dec-16	06-Mar-17	-98	20%																									
E13A-C5140	E13A - Remove Rail Beams, Spreader Beams, Brackets, Crane	30	08-Jul-17	30	11-Aug-17	07-Mar-17	11-Apr-17	-98	0%																									
Pier E13B (E7c)																																		
Pier Head Segment / Infill Segment																																		
E13B-C5130	E13B - Diaphragm of PHS - Formwork, Rebar, Concreting	76	21-Mar-17 A	53	24-Jun-17	21-Jul-16	21-Sep-16	-222	30%																									
E13B-C5140	E13B - Remove Rail Beams, Spreader Beams, Brackets	16	26-Jun-17	16	14-Jul-17	22-Sep-16	12-Oct-16	-222	0%																									
Pier E13C (E6c)																																		
Pier Head Segment / Infill Segment																																		
E13C-C5120	E13C - Install PH Segment (4 nr)	9	20-Mar-17 A	0	27-Mar-17 A				100%																									
E13C-C5130	E13C - Diaphragm of PHS - Formwork, Rebar, Concreting	76	28-Mar-17 A	59	03-Jul-17	08-Aug-16	18-Oct-16	-207	25%																									
E13C-C5140	E13C - Remove Rail Beams, Spreader Beams, Brackets	16	04-Jul-17	16	21-Jul-17	19-Oct-16	05-Nov-16	-207	0%																									
Pier E13D (E5c)																																		
Pier Head Segment / Infill Segment																																		
E13D-C5120	E13D - Install PH Segment (4 nr)	9	09-Mar-17 A	0	03-Apr-17 A				100%																									
E13D-C5130	E13D - Diaphragm of PHS - Formwork, Rebar, Concreting	76	04-Apr-17 A	65	10-Jul-17	17-Aug-16	03-Nov-16	-199	15%																									
E13D-C5140	E13D - Remove Rail Beams, Spreader Beams, Brackets, Crane	16	11-Jul-17	16	28-Jul-17	04-Nov-16	22-Nov-16	-199	0%																									
Pier E14A (E8d)																																		
Pile Cap																																		
E14A-C3210	E14A Pile Cap - Blinding, Formwork, Rebar, Concrete	19	18-Mar-17 A	1	21-Apr-17	10-Jun-16	10-Jun-16	-256	95%																									
E14A-C3310	E14A Pile Cap - Curing, Remove Formwork, Backfill	12	22-Apr-17	12	08-May-17	11-Jun-16	24-Jun-16	-256	0%																									
Pier																																		
E14A-C4110	E14A Pier - Scaffold, Rebar, Formwork, Concrete (1st Lift)	13	29-Apr-17	13	16-May-17	18-Jun-16	04-Jul-16	-256	0%																									
E14A-C4210	E14A Pier - Scaffold, Rebar, Formwork, Concrete (2nd Lift)	18	17-May-17	18	07-Jun-17	05-Jul-16	25-Jul-16	-256	0%																									
E14A-C4310	E14A Pier - Scaffold, Rebar, Formwork, Concrete (3rd Lift)	18	08-Jun-17	18	28-Jun-17	26-Jul-16	15-Aug-16	-256	0%																									
E14A-C4410	E14A Pier - Scaffold, Rebar, Formwork, Concrete (4th Lift)	18	29-Jun-17	18	20-Jul-17	16-Aug-16	05-Sep-16	-256	0%																									
Pier E14B (E7d)																																		
Pile Cap																																		
E14B-C3210	E14B Pile Cap - Blinding, Formwork, Rebar, Concrete	19	18-Mar-17 A	7	28-Apr-17	14-Jul-16	21-Jul-16	-228	60%																									
E14B-C3310	E14B Pile Cap - Curing, Remove Formwork, Backfill	12	29-Apr-17	12	15-May-17	22-Jul-16	04-Aug-16	-228	0%																									

Actual Work
 Planned Bar
 Critical Bar
 Milestone

Project ID: TMCLK-DWPI-1-M47
 Layout: J3518-DWP-3MRP Submission - M47
 Filter: TASK filters: 3-Month Lookahead, No CC
 Milestones, No Level of Effort.

Tuen Mun - Chek Lap Kok Link - Southern Connection
3-Month Rolling Programme (Page 6 of 13 Pages)
(Progress as of 21-Apr-17)

Date	Revision	Checked	Approved
30-Nov-...		PKN	GL
31-Mar-17		PKN	GL
28-Apr-17		PKN	GL

DWG. No.:
J3518/GCL/PGM/3MRP-M47

Activity ID	Activity Name	Orig. Durn.	Act. Start / FC Early Start	Rem. Durn.	Act. Finish / FC Early Finish	Late Start	Late Finish	Total Float	Physical % Complete	2017																								
										April						May						June						July						
										20	27	03	10	17	24	01	08	15	22	29	05	12	19	26	03	10	17	24						
Pier																																		
E14B-C4110	E14B Pier - Scaffold, Rebar, Formwork, Concrete (1st Lift)	13	16-May-17	13	31-May-17	05-Aug-16	19-Aug-16	-228	0%																									
E14B-C4210	E14B Pier - Scaffold, Rebar, Formwork, Concrete (2nd Lift)	18	01-Jun-17	18	21-Jun-17	20-Aug-16	09-Sep-16	-228	0%																									
E14B-C4310	E14B Pier - Scaffold, Rebar, Formwork, Concrete (3rd Lift)	18	22-Jun-17	18	13-Jul-17	10-Sep-16	03-Oct-16	-228	0%																									
E14B-C4410	E14B Pier - Curing, Remove Formwork	5	14-Jul-17	5	19-Jul-17	04-Oct-16	08-Oct-16	-228	0%																									
Pier Head Segment																																		
E14B-C5110	E14B Pier Head - Scaffold, Temp Works	17	20-Jul-17	17	08-Aug-17	11-Oct-16	29-Oct-16	-228	0%																									
Pier E14C (E6d)																																		
Pile Cap																																		
E14C-C3210	E14C Pile Cap - Blinding, Formwork, Rebar, Concrete	19	06-Mar-17 A	0	19-Apr-17 A				100%																									
E14C-C3310	E14C Pile Cap - Curing, Remove Formwork, Backfill	12	20-Apr-17 A	11	05-May-17	02-Dec-16	14-Dec-16	-110	5%																									
Pier																																		
E14C-C4110	E14C Pier - Scaffold, Rebar, Formwork, Concrete (1st Lift)	13	06-May-17	13	20-May-17	15-Dec-16	31-Dec-16	-110	0%																									
E14C-C4210	E14C Pier - Scaffold, Rebar, Formwork, Concrete (2nd Lift)	18	22-May-17	18	12-Jun-17	03-Jan-17	23-Jan-17	-110	0%																									
E14C-C4310	E14C Pier - Scaffold, Rebar, Formwork, Concrete (3rd Lift)	18	13-Jun-17	18	04-Jul-17	24-Jan-17	16-Feb-17	-110	0%																									
E14C-C4410	E14C Pier - Scaffold, Rebar, Formwork, Concrete (4th Lift)	18	05-Jul-17	18	25-Jul-17	17-Feb-17	09-Mar-17	-110	0%																									
Pier E14D (E5d)																																		
Foundation - Bored Piles																																		
E14D-C2210	E14D EB Pile - Curing & Sonic Test + Full Core	18	29-Nov-16 A	0	10-Apr-17 A				100%																									
Pile Cap																																		
E14D-C3110	E14D Pile Cap - Excavate, Break Pile Head	15	11-Apr-17 A	9	02-May-17	08-Jun-16	18-Jun-16	-257	0%																									
E14D-C3210	E14D Pile Cap - Blinding, Formwork, Rebar, Concrete	19	04-May-17	19	25-May-17	20-Jun-16	12-Jul-16	-257	0%																									
E14D-C3310	E14D Pile Cap - Curing, Remove Formwork, Backfill	12	26-May-17	12	09-Jun-17	13-Jul-16	26-Jul-16	-257	0%																									
Pier																																		
E14D-C4110	E14D Pier - Scaffold, Rebar, Formwork, Concrete (1st Lift)	13	03-Jun-17	13	17-Jun-17	20-Jul-16	03-Aug-16	-257	0%																									
E14D-C4210	E14D Pier - Scaffold, Rebar, Formwork, Concrete (2nd Lift)	18	19-Jun-17	18	10-Jul-17	04-Aug-16	24-Aug-16	-257	0%																									
E14D-C4310	E14D Pier - Scaffold, Rebar, Formwork, Concrete (3rd Lift)	18	11-Jul-17	18	31-Jul-17	25-Aug-16	14-Sep-16	-257	0%																									
Temporary Tower Between Pier E14D & E13D																																		
E14D-C5710	E14D-E13D Temp Tower - Remove Rock Armour	18	23-May-17	18	13-Jun-17	18-Jul-16	06-Aug-16	-250	0%																									
E14D-C5720	E14D-E13D Temp Tower - Install Pipe Piles (8 nr)	45	14-Jun-17	45	05-Aug-17	08-Aug-16	29-Sep-16	-250	0%																									
Viaduct F - Bridge F1																																		
Pier F1 (F1b)																																		
Pile Cap																																		
F01-C3210	F1 Pile Cap - Blinding, Formwork, Rebar, Concrete	19	11-Mar-17 A	0	11-Apr-17 A				100%																									
F01-C3310	F1 Pile Cap - Curing, Remove Formwork, Backfill	12	12-Apr-17 A	7	28-Apr-17	29-Jun-16	07-Jul-16	-240	40%																									
Pier																																		
F01-C4110	F1 Pier - Scaffold, Rebar, Formwork, Concrete (1st Lift)	13	29-Apr-17	13	16-May-17	08-Jul-16	22-Jul-16	-240	0%																									
F01-C4210	F1 Pier - Scaffold, Rebar, Formwork, Concrete (2nd Lift)	18	17-May-17	18	07-Jun-17	23-Jul-16	12-Aug-16	-240	0%																									
F01-C4310	F1 Pier - Scaffold, Rebar, Formwork, Concrete (3rd Lift)	18	08-Jun-17	18	28-Jun-17	13-Aug-16	02-Sep-16	-240	0%																									
F01-C4410	F1 Pier - Scaffold, Rebar, Formwork, Concrete (4th Lift)	18	29-Jun-17	18	20-Jul-17	03-Sep-16	24-Sep-16	-240	0%																									
Pier F2 (F1c)																																		
Foundation - Bored Piles																																		
F02-C2130	F2 Fr Pile - Sleeve, Casing, Excavate, Rebar, Concrete (2nd) P1	16	28-Feb-17 A	0	24-Mar-17 A				100%																									
F02-C2140	F2 Fr Pile - Sleeve, Casing, Excavate, Rebar, Concrete (3rd) P3	15	30-Mar-17 A	9	02-May-17	03-Jun-16	14-Jun-16	-261	0%																									
F02-C2210	F2 Fr Pile - Curing & Sonic Test	18	04-May-17	18	24-May-17	15-Jun-16	06-Jul-16	-261	0%																									
F02-C2220	F2 Fr Pile - Full Depth Core & Test	12	18-May-17	12	01-Jun-17	29-Jun-16	13-Jul-16	-261	0%																									
Pile Cap																																		
F02-C3110	F2 Pile Cap - Excavate, Break Pile Head	15	02-Jun-17*	15	19-Jun-17	14-Jul-16	30-Jul-16	-261	0%																									
F02-C3210	F2 Pile Cap - Blinding, Formwork, Rebar, Concrete	19	20-Jun-17	19	12-Jul-17	01-Aug-16	22-Aug-16	-261	0%																									
F02-C3310	F2 Pile Cap - Curing, Remove Formwork, Backfill	12	13-Jul-17	12	26-Jul-17	23-Aug-16	05-Sep-16	-261	0%																									
Pier																																		
F02-C4110	F2 Pier - Scaffold, Rebar, Formwork, Concrete (1st Lift)	13	20-Jul-17	13	03-Aug-17	30-Aug-16	13-Sep-16	-261	0%																									
Pier F3 (F1d)																																		
Foundation - Bored Piles																																		
F03-C2180	F3 Fr Pile - Sleeve, Casing, Excavate, Rebar, Concrete (3rd) P3	15	16-Mar-17 A	0	07-Apr-17 A				100%																									
F03-C2190	F3 Fr Pile - Sleeve, Casing, Excavate, Rebar, Concrete (1st) P1 -Replacer	18	10-Apr-17 A	12	06-May-17	18-Aug-16	31-Aug-16	-198	30%																									
F03-C2210	F3 Fr Pile - Curing & Sonic Test	18	08-May-17	18	27-May-17	01-Sep-16	22-Sep-16	-198	0%																									
F03-C2220	F3 Fr Pile - Full Depth Core & Test	12	22-May-17	12	05-Jun-17	15-Sep-16	29-Sep-16	-198	0%																									
Pile Cap																																		

■ Actual Work
■ Planned Bar
■ Critical Bar
◆ Milestone

Project ID: TMCLK-DWPI-1-M47
 Layout: J3518-DWP-3MRP Submission - M47
 Filter: TASK filters: 3-Month Lookahead, No CC
 Milestones, No Level of Effort.

Tuen Mun - Chek Lap Kok Link - Southern Connection
3-Month Rolling Programme (Page 7 of 13 Pages)
(Progress as of 21-Apr-17)

Date	Revision	Checked	Approved
30-Nov-...		PKN	GL
31-Mar-17		PKN	GL
28-Apr-17		PKN	GL

DWG. No.:
J3518/GCL/PGM/3MRP-M47

Activity ID	Activity Name	Orig. Durn.	Act. Start / FC Early Start	Rem. Durn.	Act. Finish / FC Early Finish	Late Start	Late Finish	Total Float	Physical % Complete	2017																							
										April				May				June				July											
										20	27	03	10	17	24	01	08	15	22	29	05	12	19	26	03	10	17	24					
F03-C3110	F3 Pile Cap - Excavate, Break Pile Head	15	07-Jun-17*	15	23-Jun-17	30-Sep-16	19-Oct-16	-199	0%																								
F03-C3210	F3 Pile Cap - Blinding, Formwork, Rebar, Concrete	19	24-Jun-17	19	17-Jul-17	20-Oct-16	10-Nov-16	-199	0%																								
F03-C3310	F3 Pile Cap - Curing, Remove Formwork, Backfill	12	18-Jul-17	12	31-Jul-17	11-Nov-16	24-Nov-16	-199	0%																								
Viaduct F - Bridge F2																																	
Pier F4 (F2b)																																	
Foundation - Bored Piles																																	
F04-C2130	F4 Fr Pile - Sleeve, Casing, Excavate, Rebar, Concrete (2nd) P1	16	17-Mar-17 A	0	10-Apr-17 A				100%																								
F04-C2140	F4 Fr Pile - Sleeve, Casing, Excavate, Rebar, Concrete (3rd) P2	16	28-Apr-17*	16	18-May-17	13-May-17	01-Jun-17	11	0%																								
F04-C2210	F4 Fr Pile - Curing & Sonic Test	18	19-May-17	18	09-Jun-17	02-Jun-17	22-Jun-17	11	0%																								
F04-C2220	F4 Fr Pile - Full Depth Core & Test	12	10-Jun-17	12	23-Jun-17	23-Jun-17	07-Jul-17	11	0%																								
Pile Cap																																	
F04-C3110	F4 Pile Cap - Excavate, Break Pile Head	15	10-Jul-17*	15	26-Jul-17	08-Jul-17	25-Jul-17	-1	0%																								
Pier F5 (F2c)																																	
Pile Cap																																	
F05-C3110	F5 Pile Cap - Excavate, Break Pile Head	15	15-May-17*	15	01-Jun-17	25-Jun-16	13-Jul-16	-261	0%																								
F05-C3210	F5 Pile Cap - Blinding, Formwork, Rebar, Concrete	19	02-Jun-17	19	23-Jun-17	14-Jul-16	04-Aug-16	-261	0%																								
F05-C3310	F5 Pile Cap - Curing, Remove Formwork, Backfill	12	24-Jun-17	12	08-Jul-17	05-Aug-16	18-Aug-16	-261	0%																								
Pier																																	
F05-C4110	F5 Pier - Scaffold, Rebar, Formwork, Concrete (1st Lift)	13	10-Jul-17	13	24-Jul-17	19-Aug-16	02-Sep-16	-261	0%																								
Pier F6 (F2d)																																	
Pile Cap																																	
F06-C3110	F6 Pile Cap - Excavate, Break Pile Head	15	10-Mar-17 A	0	01-Apr-17 A				100%																								
F06-C3210	F6 Pile Cap - Blinding, Formwork, Rebar, Concrete	19	03-Apr-17 A	15	10-May-17	27-Mar-17	13-Apr-17	-18	20%																								
F06-C3310	F6 Pile Cap - Curing, Remove Formwork, Backfill	12	11-May-17	12	24-May-17	18-Apr-17	02-May-17	-18	0%																								
Pier F7 (F2e)																																	
Pile Cap																																	
F07-C3310	F7 Pile Cap - Curing, Remove Formwork, Backfill	12	16-Mar-17 A	0	28-Mar-17 A				100%																								
Pier																																	
F07-C4110	F7 Pier - Scaffold, Rebar, Formwork, Concrete (1st Lift)	13	07-Apr-17 A	8	29-Apr-17	10-Oct-17	18-Oct-17	141	35%																								
F07-C4210	F7 Pier - Scaffold, Rebar, Formwork, Concrete (2nd Lift)	18	02-May-17	18	23-May-17	19-Oct-17	09-Nov-17	141	0%																								
F07-C4310	F7 Pier - Curing, Remove Formwork	5	24-May-17	5	29-May-17	10-Nov-17	15-Nov-17	141	0%																								
Pier F8 (F2f)																																	
Foundation - Bored Piles																																	
F08-C2120	F8 Fr Pile - Sleeve, Casing, Excavate, Rebar, Concrete (1st) P1	18	08-May-17*	18	27-May-17	09-May-17	29-May-17	1	0%																								
F08-C2130	F8 Fr Pile - Sleeve, Casing, Excavate, Rebar, Concrete (2nd) P2	18	02-Jun-17*	18	22-Jun-17	31-May-17	20-Jun-17	-2	0%																								
F08-C2140	F8 Fr Pile - Sleeve, Casing, Excavate, Rebar, Concrete (3rd) P3	18	30-Jun-17*	18	21-Jul-17	21-Jun-17	12-Jul-17	-8	0%																								
Viaduct F - Bridge F3																																	
Pier F9 (F3d)																																	
Foundation - Bored Piles																																	
F09-C2140	F9 Fr Pile - Sleeve, Casing, Excavate, Rebar, Concrete (3rd) P3	17	21-Mar-17 A	0	12-Apr-17 A				100%																								
F09-C2150	F9 Fr Pile - Sleeve, Casing, Excavate, Rebar, Concrete (4th) P1	17	05-Apr-17 A	8	29-Apr-17	16-Jun-16	24-Jun-16	-251	50%																								
F09-C2210	F9 Fr Pile - Curing & Sonic Test	18	02-May-17	18	23-May-17	21-Apr-17	13-May-17	-8	0%																								
F09-C2220	F9 Fr Pile - Full Depth Core & Test	12	24-May-17	12	07-Jun-17	15-May-17	27-May-17	-8	0%																								
Pile Cap																																	
F09-C3110	F9 Pile Cap - Excavate, Break Pile Head	24	18-Jul-17*	24	14-Aug-17	29-May-17	26-Jun-17	-41	0%																								
Pier F10 (F3c)																																	
Pile Cap																																	
F10-C3110	F10 Pile Cap - Excavate, Break Pile Head	24	17-Mar-17 A	0	13-Apr-17 A				100%																								
F10-C3210	F10 Pile Cap - Blinding, Formwork, Rebar, Concrete	22	18-Apr-17 A	19	15-May-17	30-Jun-17	22-Jul-17	57	10%																								
F10-C3310	F10 Pile Cap - Curing, Remove Formwork, Backfill	14	16-May-17	14	01-Jun-17	24-Jul-17	08-Aug-17	57	0%																								
Pier																																	
F10-C4110	F10 Pier - Scaffold, Rebar, Formwork, Concrete (Pier A)	13	07-Jul-17*	13	21-Jul-17	09-Aug-17	23-Aug-17	28	0%																								
Pier F11 (F3b)																																	
Foundation - Bored Piles																																	
F11-C2140	F11 EB Pile - Sleeve, Casing, Excavate, Rebar, Concrete (3rd) P1	17	11-Jan-17 A	0	30-Mar-17 A				100%																								
F11-C2210	F11 EB Pile - Curing & Sonic Test	18	25-Mar-17 A	0	13-Apr-17 A				100%																								
F11-C2220	F11 Fr Pile - Full Depth Core & Test (N/A)	12	13-Apr-17 A	0	13-Apr-17 A				100%																								
Pier F12 (F3a)																																	



Project ID: TMCLK-DWPI-1-M47
 Layout: J3518-DWP-3MRP Submission - M47
 Filter: TASK filters: 3-Month Lookahead, No CC
 Milestones, No Level of Effort.

Tuen Mun - Chek Lap Kok Link - Southern Connection
3-Month Rolling Programme (Page 8 of 13 Pages)
(Progress as of 21-Apr-17)

Date	Revision	Checked	Approved
30-Nov-...		PKN	GL
31-Mar-17		PKN	GL
28-Apr-17		PKN	GL

DWG. No.:
J3518/GCL/PGM/3MRP-M47

Activity ID	Activity Name	Orig. Durn.	Act. Start / FC Early Start	Rem. Durn.	Act. Finish / FC Early Finish	Late Start	Late Finish	Total Float	Physical % Complete	2017																								
										April						May						June						July						
										20	27	03	10	17	24	01	08	15	22	29	05	12	19	26	03	10	17	24						
Foundation - Bored Piles																																		
F12-C2120	F12 Fr Pile - Sleeve, Casing, Excavate, Rebar, Concrete (1st) P1	16	28-Feb-17 A	1	21-Apr-17	30-Jun-20	30-Jun-20	945	95%																									
F12-C2130	F12 Fr Pile - Sleeve, Casing, Excavate, Rebar, Concrete (2nd) P3	16	21-Mar-17 A	6	27-Apr-17	14-Nov-16	19-Nov-16	-126	65%																									
F12-C2140	F12 Fr Pile - Sleeve, Casing, Excavate, Rebar, Concrete (3rd) P2	16	15-May-17*	16	02-Jun-17	21-Nov-16	08-Dec-16	-138	0%																									
F12-C2150	F12 Fr Pile - Sleeve, Casing, Excavate, Rebar, Concrete (3rd) P4	17	13-Jun-17*	17	03-Jul-17	27-Jun-17	17-Jul-17	12	0%																									
F12-C2210	F12 Fr Pile - Curing & Sonic Test	18	04-Jul-17	18	24-Jul-17	18-Jul-17	07-Aug-17	12	0%																									
Viaduct F - Bridge F4																																		
Pier F16 (F5a/F4a)																																		
Foundation - Bored Piles																																		
F16-C2130	F16 EB Pile - Sleeve, Casing, Excavate, Rebar, Concrete (2nd) P2	30	03-Mar-17 A	4	25-Apr-17	09-Jan-17	12-Jan-17	-81	85%																									
F16-C2140	F16 EB Pile - Sleeve, Casing, Excavate, Rebar, Concrete (3rd) P1	24	26-Apr-17*	24	25-May-17	13-Jan-17	13-Feb-17	-81	0%																									
F16-C2150	F16 EB Pile - Sleeve, Casing, Excavate, Rebar, Concrete (3rd) P4	20	22-May-17	20	14-Jun-17	09-Feb-17	03-Mar-17	-81	0%																									
F16-C2210	F16 EB Pile - Curing & Sonic Test	18	15-Jun-17	18	06-Jul-17	04-Mar-17	24-Mar-17	-81	0%																									
Pile Cap																																		
F16-C3110	F16 Pile Cap - Excavate, Break Pile Head	15	07-Jul-17*	15	24-Jul-17	25-Mar-17	12-Apr-17	-81	0%																									
Pier F17 (F4b)																																		
Foundation - Bored Piles																																		
F17-C2140	F17 EB Pile - Sleeve, Casing, Excavate, Rebar, Concrete (3rd) P3	30	10-Apr-17 A	14	09-May-17	04-Mar-17	20-Mar-17	-37	50%																									
F17-C2210	F17 EB Pile - Curing & Sonic Test	18	10-May-17	18	31-May-17	21-Mar-17	11-Apr-17	-37	0%																									
Pier F18 (F4c)																																		
Foundation - Bored Piles																																		
F18-C2120	F18 Fr Pile - Sleeve, Casing, Excavate, Rebar, Concrete (1st) P1	15	24-May-17*	15	10-Jun-17	31-Dec-16	18-Jan-17	-113	0%																									
F18-C2130	F18 Fr Pile - Sleeve, Casing, Excavate, Rebar, Concrete (2nd) P2	18	16-Jun-17*	18	07-Jul-17	19-Jan-17	11-Feb-17	-117	0%																									
F18-C2140	F18 Fr Pile - Sleeve, Casing, Excavate, Rebar, Concrete (3rd) P3	15	15-Jul-17*	15	01-Aug-17	13-Feb-17	01-Mar-17	-123	0%																									
Viaduct F - Bridge F5																																		
Pier F13 (F5d)																																		
Pile Cap																																		
F13-C3105	F13 Pile Cap - ELS to Maintain Access for E14D & Jetty	24	09-Mar-17 A	8	29-Apr-17	01-Dec-16	09-Dec-16	-111	65%																									
F13-C3110	F13 Pile Cap - ELS/Excavate, Break Pile Head	15	02-May-17*	15	19-May-17	10-Dec-16	29-Dec-16	-111	0%																									
F13-C3210	F13 Pile Cap - Blinding, Formwork, Rebar, Concrete	19	20-May-17	19	12-Jun-17	30-Dec-16	21-Jan-17	-111	0%																									
F13-C3310	F13 Pile Cap - Curing, Remove Formwork, Backfill	12	13-Jun-17	12	26-Jun-17	23-Jan-17	08-Feb-17	-111	0%																									
Pier																																		
F13-C4110	F13 Pier - Scaffold, Rebar, Formwork, Concrete (1st Lift)	13	20-Jun-17	13	05-Jul-17	02-Feb-17	16-Feb-17	-111	0%																									
F13-C4210	F13 Pier - Scaffold, Rebar, Formwork, Concrete (2nd Lift)	18	06-Jul-17	18	26-Jul-17	17-Feb-17	09-Mar-17	-111	0%																									
Pier F14 (F5c)																																		
Foundation - Bored Piles																																		
F14-C2130	F14 Fr Pile - Sleeve, Casing, Excavate, Rebar, Concrete (2nd) P3	16	08-Mar-17 A	0	08-Apr-17 A				100%																									
F14-C2140	F14 Fr Pile - Sleeve, Casing, Excavate, Rebar, Concrete (3rd) P1	16	17-Apr-17 A	18	13-May-17	12-Jun-17	03-Jul-17	41	10%																									
F14-C2210	F14 Fr Pile - Curing & Sonic Test	18	15-May-17	18	05-Jun-17	04-Jul-17	24-Jul-17	41	0%																									
F14-C2220	F14 EB Pile - Full Depth Core & Test	12	29-May-17	12	12-Jun-17	18-Jul-17	31-Jul-17	41	0%																									
Pile Cap																																		
F14-C3110	F14 Pile Cap - Excavate, Break Pile Head	15	13-Jun-17	15	29-Jun-17	01-Aug-17	17-Aug-17	41	0%																									
F14-C3210	F14 Pile Cap - Blinding, Formwork, Rebar, Concrete	19	30-Jun-17	19	22-Jul-17	18-Aug-17	08-Sep-17	41	0%																									
Pier F15 (F5b)																																		
Foundation - Bored Piles																																		
F15-C2130	F15 Fr Pile - Sleeve, Casing, Excavate, Rebar, Concrete (2nd) P1	17	31-Mar-17 A	12	06-May-17	04-Nov-16	17-Nov-16	-134	40%																									
F15-C2140	F15 Fr Pile - Sleeve, Casing, Excavate, Rebar, Concrete (3rd) P3	16	12-May-17*	16	31-May-17	18-Nov-16	06-Dec-16	-138	0%																									
F15-C2210	F15 Fr Pile - Curing & Sonic Test	18	01-Jun-17	18	21-Jun-17	10-Aug-17	30-Aug-17	59	0%																									
Ramp F																																		
Abutment & Approach Ramp F																																		
Foundation - Bored Piles																																		
ARF-C2120	Ramp F Fr Pile - Sleeve, Casing, Excavate, Rebar, Concrete (20 nr)	126	24-May-17	126	21-Oct-17	30-Nov-16	09-May-17	-138	0%																									
Superstructure & Associated Works																																		
Viaduct A																																		
Bridge A2																																		
Deck Span Segment																																		
A01-C6310	A1 - End Span to A2 (6 nr) - THB	23	10-Mar-17 A	4	25-Apr-17	01-Jun-16	04-Jun-16	-263	85%																									

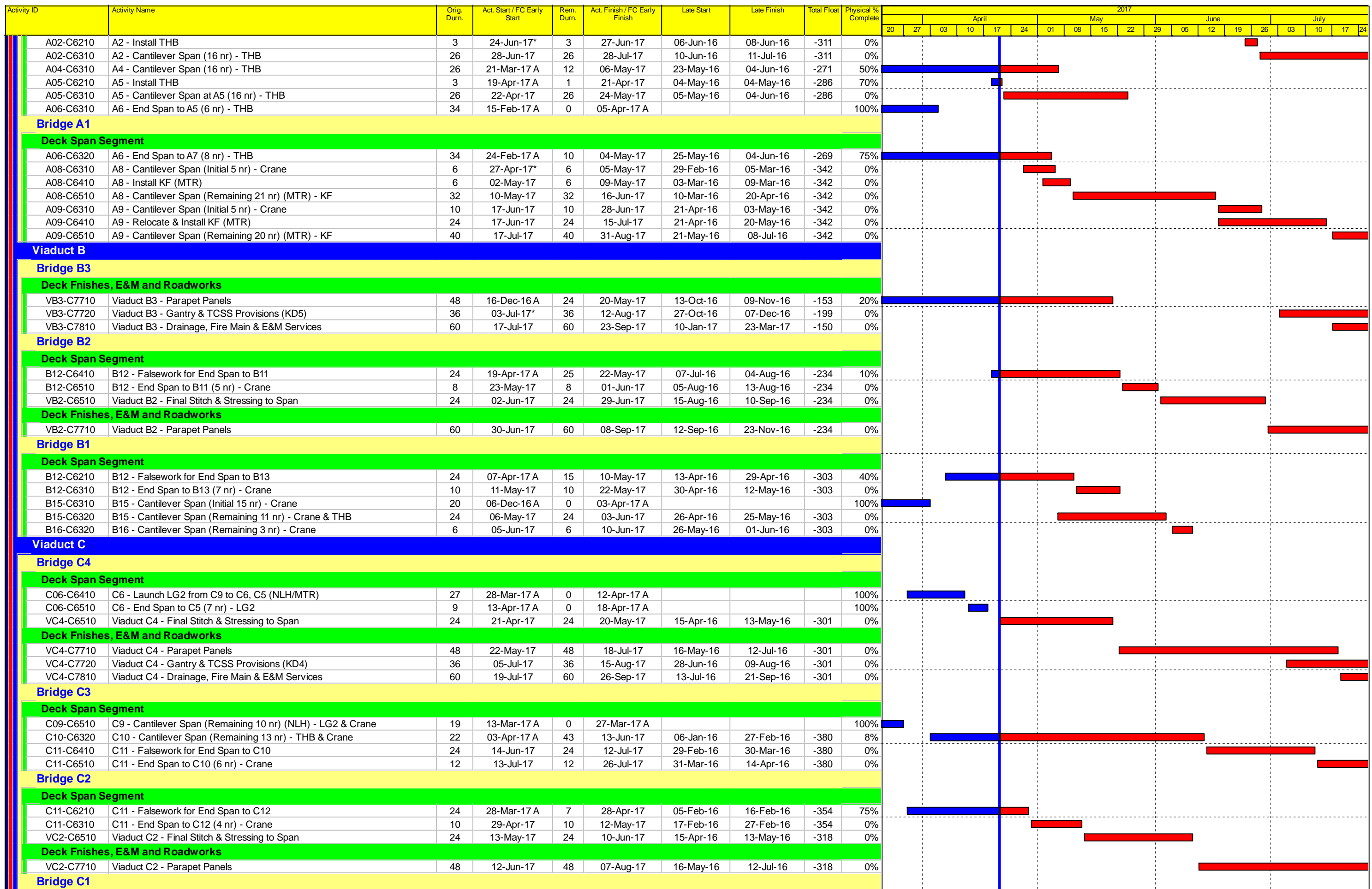
Actual Work
 Planned Bar
 Critical Bar
 Milestone

Project ID: TMCLK-DWPI-1-M47
 Layout: J3518-DWP-3MRP Submission - M47
 Filter: TASK filters: 3-Month Lookahead, No CC
 Milestones, No Level of Effort.

Tuen Mun - Chek Lap Kok Link - Southern Connection
3-Month Rolling Programme (Page 9 of 13 Pages)
(Progress as of 21-Apr-17)

Date	Revision	Checked	Approved
30-Nov-...		PKN	GL
31-Mar-17		PKN	GL
28-Apr-17		PKN	GL

DWG. No.:
J3518/GCL/PGM/3MRP-M47



Project ID: TMCLK-DWPI-1-M47
 Layout: J3518-DWP-3MRP Submission - M47
 Filter: TASK filters: 3-Month Lookahead, No CC Milestones, No Level of Effort.

Tuen Mun - Chek Lap Kok Link - Southern Connection
3-Month Rolling Programme (Page 10 of 13 Pages)
(Progress as of 21-Apr-17)

Date	Revision	Checked	Approved
30-Nov-...		PKN	GL
31-Mar-17		PKN	GL
28-Apr-17		PKN	GL

DWG. No.:
J3518/GCL/PGM/3MRP-M47

Activity ID	Activity Name	Orig. Durn.	Act. Start / FC Early Start	Rem. Durn.	Act. Finish / FC Early Finish	Late Start	Late Finish	Total Float	Physical % Complete	2017																								
										April						May						June						July						
										20	27	03	10	17	24	01	08	15	22	29	05	12	19	26	03	10	17	24						
Deck Span Segment																																		
C16-C6210	C16 - Falsework for End Span to C17	24	14-Mar-17 A	0	12-Apr-17 A				100%	[Gantt bar: 14-Mar-17 to 12-Apr-17]																								
C16-C6310	C16 - End Span to C17 (9 nr) - Crane	20	13-Apr-17 A	7	28-Apr-17	07-Apr-16	14-Apr-16	-308	70%	[Gantt bar: 13-Apr-17 to 28-Apr-17]																								
VC1-C6510	Viaduct C1 - Final Stitch & Stressing to Span	24	29-Apr-17	24	29-May-17	15-Apr-16	13-May-16	-308	0%	[Gantt bar: 29-Apr-17 to 29-May-17]																								
Deck Fnishes, E&M and Roadworks																																		
VC1-C7710	Viaduct C1 - Parapet Panels	48	31-May-17	48	26-Jul-17	16-May-16	12-Jul-16	-308	0%	[Gantt bar: 31-May-17 to 26-Jul-17]																								
VC1-C7720	Viaduct C1 - Gantry & TCSS Provisions (KD4)	36	13-Jul-17	36	23-Aug-17	28-Jun-16	09-Aug-16	-308	0%	[Gantt bar: 13-Jul-17 to 23-Aug-17]																								
Viaduct D																																		
Bridge D3																																		
Deck Span Segment																																		
D06-C6410	D6 - Launch LG1 from D9 to D6	25	07-Jul-17	25	04-Aug-17	29-Feb-16	31-Mar-16	-399	0%	[Gantt bar: 07-Jul-17 to 04-Aug-17]																								
Bridge D2																																		
Deck Span Segment																																		
D06-C6310	D6 - End Span to D7 (8 nr) - LG1	9	20-Mar-17 A	0	22-Mar-17 A				100%	[Gantt bar: 20-Mar-17 to 22-Mar-17]																								
D09-C6210	D9 - Launch LG1 from D7 to D8 (MTR/NLH)	4	03-Apr-17 A	0	08-Apr-17 A				100%	[Gantt bar: 03-Apr-17 to 08-Apr-17]																								
D09-C6215	D9 - Launch LG1 from D8 to D9 (MTR/NLH)	9	10-Apr-17 A	2	22-Apr-17	22-Dec-15	23-Dec-15	-390	80%	[Gantt bar: 10-Apr-17 to 22-Apr-17]																								
D09-C6310	D9 - Cantilever Span (Remaining 14 nr) (MTR/NLH) - LG1	28	24-Apr-17	28	27-May-17	24-Dec-15	28-Jan-16	-390	0%	[Gantt bar: 24-Apr-17 to 27-May-17]																								
D09-C6410	D9 - Drop in Segments D8-D9 (3 nr) (MTR) - LG1	23	09-Jun-17*	23	06-Jul-17	29-Jan-16	27-Feb-16	-399	0%	[Gantt bar: 09-Jun-17 to 06-Jul-17]																								
D12-C6310	D12 - Cantilever Span (Remaining 18 nr) - Crane & THB	38	13-Mar-17 A	8	29-Apr-17	22-Feb-16	01-Mar-16	-343	90%	[Gantt bar: 13-Mar-17 to 29-Apr-17]																								
D13-C6610	D13 - Falsework for End Span to D12	24	02-May-17	24	31-May-17	02-Mar-16	01-Apr-16	-343	0%	[Gantt bar: 02-May-17 to 31-May-17]																								
D13-C6710	D13 - End Span to D12 (4 nr) - Crane	10	01-Jun-17	10	12-Jun-17	02-Apr-16	14-Apr-16	-343	0%	[Gantt bar: 01-Jun-17 to 12-Jun-17]																								
VD2-C6510	Viaduct D2 - Final Stitch & Stressing to Span	24	07-Jul-17	24	03-Aug-17	15-Apr-16	13-May-16	-363	0%	[Gantt bar: 07-Jul-17 to 03-Aug-17]																								
Bridge D1																																		
Deck Span Segment																																		
D13-C6210	D13 - Falsework for End Span to D14	24	17-Mar-17 A	0	15-Apr-17 A				100%	[Gantt bar: 17-Mar-17 to 15-Apr-17]																								
D13-C6310	D13 - End Span to D14 (4 nr) - Crane	10	16-Apr-17 A	8	29-Apr-17	06-Apr-16	14-Apr-16	-309	0%	[Gantt bar: 16-Apr-17 to 29-Apr-17]																								
VD1-C6510	Viaduct D1 - Final Stitch & Stressing to Span	24	02-May-17	24	31-May-17	15-Apr-16	13-May-16	-309	0%	[Gantt bar: 02-May-17 to 31-May-17]																								
Deck Fnishes, E&M and Roadworks																																		
VD1-C7710	Viaduct D1 - Parapet Panels	48	01-Jun-17	48	27-Jul-17	16-May-16	12-Jul-16	-309	0%	[Gantt bar: 01-Jun-17 to 27-Jul-17]																								
VD1-C7720	Viaduct D1 - Gantry & TCSS Provisions (KD4)	36	14-Jul-17	36	24-Aug-17	28-Jun-16	09-Aug-16	-309	0%	[Gantt bar: 14-Jul-17 to 24-Aug-17]																								
Viaduct E																																		
Bridge E1																																		
Deck Span Segment																																		
A01-C6320	A1 - End Span to E1D (7 nr) - THB	23	17-Mar-17 A	10	04-May-17	18-Apr-16	28-Apr-16	-299	75%	[Gantt bar: 17-Mar-17 to 04-May-17]																								
Bridge E2																																		
Deck Span Segment																																		
E03C-C6410	E3C - Launch LG2 from C6 to E3C - LG2	16	30-Jun-17*	16	19-Jul-17	12-Mar-16	02-Apr-16	-383	0%	[Gantt bar: 30-Jun-17 to 19-Jul-17]																								
E03C-C6510	E3C - End Span to E4B (7 nr) - LG2	7	20-Jul-17	7	27-Jul-17	05-Apr-16	12-Apr-16	-383	0%	[Gantt bar: 20-Jul-17 to 27-Jul-17]																								
E04A-C6310	E4A - Bifurcation Span to E3A (12 nr) with 1st Stitch - THB	28	09-Mar-17 A	21	12-May-17	21-Jan-16	13-Feb-16	-400	20%	[Gantt bar: 09-Mar-17 to 12-May-17]																								
E04A-C6410	E4A - Bifurcation Span to E5A (6 nr) with 1st Stitch - THB	28	01-Mar-17 A	21	12-May-17	21-Jan-16	13-Feb-16	-400	20%	[Gantt bar: 01-Mar-17 to 12-May-17]																								
E04B-C6210	E4B - Install THB	6	17-Apr-17 A	0	19-Apr-17 A				100%	[Gantt bar: 17-Apr-17 to 19-Apr-17]																								
E04B-C6310	E4B - Bifurcation Span to E3B (12 nr) with 1st Stitch - THB	28	21-Apr-17	28	19-May-17	04-Jan-16	04-Feb-16	-415	0%	[Gantt bar: 21-Apr-17 to 19-May-17]																								
E04B-C6410	E4B - Bifurcation Span to E5B (6 nr) with 1st Stitch - THB	28	20-Apr-17 A	28	19-May-17	04-Jan-16	04-Feb-16	-415	20%	[Gantt bar: 20-Apr-17 to 19-May-17]																								
E04B-C6420	E4B - E3D/E4B Stitch	8	20-May-17	8	27-May-17	05-Feb-16	13-Feb-16	-415	0%	[Gantt bar: 20-May-17 to 27-May-17]																								
E04B-C6430	E4A & E4B - E4A/E5A & E4B/E5B Stitches	8	28-May-17	8	05-Jun-17	15-Feb-16	23-Feb-16	-415	0%	[Gantt bar: 28-May-17 to 05-Jun-17]																								
E05A-C6510	E5A - Cantilever Span (10 nr) - K Frame	17	20-Mar-17 A	0	13-Apr-17 A				100%	[Gantt bar: 20-Mar-17 to 13-Apr-17]																								
E05A-C6610	E5A - Stitch between E4A and E5A	12	13-May-17	12	26-May-17	08-Aug-17	21-Aug-17	72	0%	[Gantt bar: 13-May-17 to 26-May-17]																								
E05B-C6510	E5B - Cantilever Span (14 nr) with 1st Stitch - WLF	34	14-Feb-17 A	0	11-Apr-17 A				100%	[Gantt bar: 14-Feb-17 to 11-Apr-17]																								
E05B-C6610	E5B - Stitch between E4B and E5B	12	20-May-17	12	01-Jun-17	10-Aug-17	21-Aug-17	80	0%	[Gantt bar: 20-May-17 to 01-Jun-17]																								
E06A-C6410	E6A - Drop in (E6A-E5A) - THB	30	08-Jun-17	30	08-Jul-17	26-Feb-16	31-Mar-16	-415	0%	[Gantt bar: 08-Jun-17 to 08-Jul-17]																								
E06A-C6510	E6A & E6B - Quarter Span (E6-E7) - TLB	30	08-Jun-17	30	08-Jul-17	26-Feb-16	31-Mar-16	-415	0%	[Gantt bar: 08-Jun-17 to 08-Jul-17]																								
E06A-C6520	E6A & E6B - E5A/E6A & E5B/E6B Stitches	8	09-Jul-17	8	16-Jul-17	01-Apr-16	09-Apr-16	-415	0%	[Gantt bar: 09-Jul-17 to 16-Jul-17]																								
E06B-C6310	E6B - Cantilever Span (6 nr) with 1st Stitch - THB	19	18-Mar-17 A	0	14-Apr-17 A				100%	[Gantt bar: 18-Mar-17 to 14-Apr-17]																								
E06B-C6510	E6B - Drop in (E6B-E5B) - THB	30	08-Jun-17	30	08-Jul-17	26-Feb-16	31-Mar-16	-415	0%	[Gantt bar: 08-Jun-17 to 08-Jul-17]																								
E07A-C6204	E7A - Cantiliver span (2 nr) with 1st stitch - THB	12	16-Mar-17 A	0	23-Mar-17 A				100%	[Gantt bar: 16-Mar-17 to 23-Mar-17]																								
E07A-C6210	E7A - Install WLF	4	24-Mar-17 A	0	28-Mar-17 A				100%	[Gantt bar: 24-Mar-17 to 28-Mar-17]																								
E07A-C6310	E7A - Cantilever Span (16 nr) with 1st Stitch - WLF	26	29-Mar-17 A	0	15-Apr-17 A				100%	[Gantt bar: 29-Mar-17 to 15-Apr-17]																								
E07B-C6210	E7B - Install THB	6	11-Apr-17 A	0	15-Apr-17 A				100%	[Gantt bar: 11-Apr-17 to 15-Apr-17]																								
E07B-C6310	E7B - Cantilever Span (18 nr) with 1st Stitch - THB	37	17-Apr-17 A	30	21-May-17	22-Jan-16	25-Feb-16	-399	12%	[Gantt bar: 17-Apr-17 to 21-May-17]																								
E08A-C6200	E8A - Install THB	6	20-Mar-17 A	0	23-Mar-17 A				100%	[Gantt bar: 20-Mar-17 to 23-Mar-17]																								

■ Actual Work
■ Planned Bar
■ Critical Bar
◆ Milestone

Project ID: TMCLK-DWPI-1-M47
 Layout: J3518-DWP-3MRP Submission - M47
 Filter: TASK filters: 3-Month Lookahead, No CC
 Milestones, No Level of Effort.

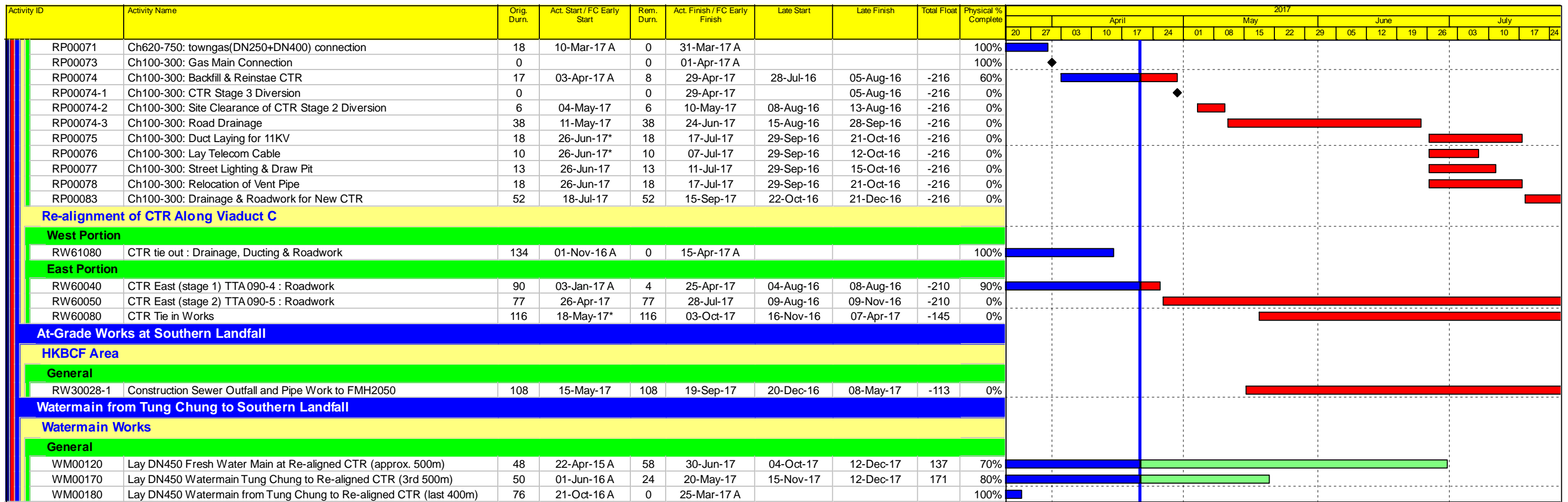
Tuen Mun - Chek Lap Kok Link - Southern Connection
3-Month Rolling Programme (Page 11 of 13 Pages)
(Progress as of 21-Apr-17)

Date	Revision	Checked	Approved
30-Nov-...		PKN	GL
31-Mar-17		PKN	GL
28-Apr-17		PKN	GL

DWG. No.:
J3518/GCL/PGM/3MRP-M47

Activity ID	Activity Name	Orig. Durn.	Act. Start / FC Early Start	Rem. Durn.	Act. Finish / FC Early Finish	Late Start	Late Finish	Total Float	Physical % Complete	2017																							
										April						May						June						July					
											20	27	03	10	17	24	01	08	15	22	29	05	12	19	26	03	10	17	24				
E08A-C6310	E8A - Cantilever Span (2 nr) with 1st stitch - THB	12	24-Mar-17 A	0	14-Apr-17 A				100%																								
E08A-C6320	E8A - Install WLF	4	15-Apr-17 A	0	18-Apr-17 A				100%																								
E08A-C6330	E8A - Cantilver span (8 nr) - WLF	14	19-Apr-17 A	10	30-Apr-17	06-Jul-17	15-Jul-17	73	25%																								
E08B-C6210	E8B - Install THB	4	01-Apr-17 A	0	05-Apr-17 A				100%																								
E08B-C6310	E8B - Cantilever Span (10 nr) with 1st Stitch - THB	25	06-Apr-17 A	15	06-May-17	03-Jul-17	17-Jul-17	70	40%																								
E09A-C6210	E9A - Install THB	6	25-Mar-17 A	0	28-Mar-17 A				100%																								
E09A-C6310	E9A - Cantilever Span (4 nr) with 1st Stitch - THB	16	29-Mar-17 A	6	26-Apr-17	07-May-17	12-May-17	15	50%																								
E09A-C6320	E9A - Install K-Frame with T & C	10	27-Apr-17	10	07-May-17	13-May-17	22-May-17	15	0%																								
E09A-C6330	E9A - Cantilever span (20 nr) - K Frame	22	08-May-17	22	29-May-17	23-May-17	14-Jun-17	15	0%																								
E09B-C6210	E9B - Install THB	6	27-Apr-17	6	03-May-17	23-May-17	28-May-17	25	0%																								
E09B-C6310	E9B - Cantilever Span (4 nr) with 1st Stitch - THB	16	04-May-17	16	19-May-17	29-May-17	14-Jun-17	25	0%																								
E09B-C6320	E9B - Install K-Frame with T & C	10	31-May-17	10	09-Jun-17	15-Jun-17	24-Jun-17	15	0%																								
E09B-C6330	E9B - Cantilever span (20 nr) - K Frame	22	10-Jun-17	22	02-Jul-17	25-Jun-17	17-Jul-17	15	0%																								
E10A-C6210	E10A - Install WLF	7	25-Apr-17	7	02-May-17	17-Jul-17	23-Jul-17	80	0%																								
E10A-C6310	E10A - Cantilever Span (16 nr) with 1st Stitch - WLF	24	03-May-17	24	26-May-17	24-Jul-17	16-Aug-17	80	0%																								
E10B-C6210	E10B - Install WLF	6	09-May-17	6	14-May-17	16-Jul-17	21-Jul-17	66	0%																								
E10B-C6310	E10B - Cantilever Span (16 nr) with 1st Stitch - WLF	26	15-May-17	26	10-Jun-17	22-Jul-17	16-Aug-17	66	0%																								
E11A-C6210	E11A - Install THB	5	07-Jul-17	5	11-Jul-17	12-Sep-16	16-Sep-16	-273	0%																								
E11A-C6410	E11A - Bifurcation Span to E10A (12 nr) with 1st Stitch - THB	48	12-Jul-17	48	28-Aug-17	17-Sep-16	11-Nov-16	-273	0%																								
E11B-C6210	E11B - Install THB	5	07-Jul-17	5	11-Jul-17	07-Nov-16	11-Nov-16	-225	0%																								
E11B-C6410	E11B - Bifurcation Span to E10B (12 nr) with 1st Stitch - THB	48	12-Jul-17	48	28-Aug-17	12-Nov-16	07-Jan-17	-225	0%																								
Bridge E5																																	
Deck Span Segment																																	
E11B-C6310	E11B Deck - Bifurcation Span to E12B (18 nr) with 1st Stitch - THB	48	12-Jul-17	48	28-Aug-17	12-Nov-16	07-Jan-17	-225	0%																								
Bridge E8																																	
Deck Span Segment																																	
E11A-C6310	E11A Deck - Bifurcation Span to E12A (18 nr) w/ 1st Stitch - THB	48	12-Jul-17	48	28-Aug-17	17-Sep-16	11-Nov-16	-273	0%																								
At-Grade Works & Miscellaneous Works																																	
At-Grade Works Along North Lantau Highway																																	
Slope Works Near Viaduct D																																	
Slope 10NW-C/F9																																	
M201200	10NW-C/F9 - Slope works (incl. L-Shape Ret. Walls)	110	09-Jun-17*	110	18-Oct-17	19-Sep-16	02-Feb-17	-211	0%																								
Slope 10NW-C/F10																																	
M201160	10NW-C/F10 - Slope works (incl. L-Shape Ret. Walls)	110	01-Apr-17 A	97	16-Aug-17	18-Jul-16	10-Nov-16	-225	10%																								
Slope 10NW-C/R4																																	
M201170	10NW-C/R4 - Slope works	80	01-Apr-17 A	67	12-Jul-17	22-Aug-16	10-Nov-16	-195	15%																								
Slope 10NW-C/F50																																	
M201150	10NW-C/F50 - Slope works	165	11-Jan-17 A	86	03-Aug-17	30-Jul-16	10-Nov-16	-214	5%																								
Road Works Along NLH Westbound																																	
General																																	
RW10020	NLH W/B (Viaduct C) - Road Drainage Works for tie-in	104	18-May-17	104	18-Sep-17	30-Nov-16	07-Apr-17	-133	0%																								
Road Works Along NLH Eastbound																																	
General																																	
RW20080-1	Ch650 - 800 Portion 4 (viaduct D area): Roadwork	81	11-Jan-17 A	12	06-May-17	24-Mar-17	07-Apr-17	-20	80%																								
RW20080-2	Ch475 - 650 Portion 5 (viaduct D area): Roadwork	81	11-Jan-17 A	12	06-May-17	24-Mar-17	07-Apr-17	-20	80%																								
RW20080-3	Ch275 - 475 Portion 6 (viaduct D area): Roadwork	162	11-Jan-17 A	83	31-Jul-17	24-Dec-16	07-Apr-17	-91	50%																								
RW20080-4	Ch157 - 275 Portion 7 (Viaduct D area): Roadwork	98	11-Jan-17 A	24	20-May-17	10-Mar-17	07-Apr-17	-32	70%																								
RW20084	NLH E/B Viaduct A - Ch200-388 Roadwork (SL & HS) & Reinstate NLH	127	17-Dec-16 A	32	31-May-17	01-Mar-17	07-Apr-17	-40	75%																								
At-Grade Works Along Cheung Tung Road																																	
Slope Works Near Viaduct C																																	
Slope 10NW-C/C26																																	
SWVC1995	TTA for closure of NLH HS	2	06-Jun-17*	2	07-Jun-17	16-Aug-16	17-Aug-16	-236	0%																								
SWVC2000	10NW-C/C26 - Slope works	166	08-Jun-17	166	22-Dec-17	18-Aug-16	09-Mar-17	-236	0%																								
Slope PF1 & PF2																																	
SWVC7000	PF1 & PF2 slope works	18	15-May-17	18	05-Jun-17	26-Jul-16	15-Aug-16	-236	0%																								
Re-alignment of CTR Along Viaduct B																																	
General																																	
RP00064	Ch620-750: Telecom, 11KV & 132KV Ducting	20	20-Aug-15 A	8	29-Apr-17	28-Jul-16	05-Aug-16	-216	90%																								

<ul style="list-style-type: none"> ■ Actual Work ■ Planned Bar ■ Critical Bar ◆ Milestone 	Project ID: TMCLK-DWPI-1-M47 Layout: J3518-DWP-3MRP Submission - M47 Filter: TASK filters: 3-Month Lookahead, No CC Milestones, No Level of Effort.	Tuen Mun - Chek Lap Kok Link - Southern Connection 3-Month Rolling Programme (Page 12 of 13 Pages) (Progress as of 21-Apr-17)	<table border="1"> <tr><th>Date</th><th>Revision</th><th>Checked</th><th>Approved</th></tr> <tr><td>30-Nov-...</td><td></td><td>PKN</td><td>GL</td></tr> <tr><td>31-Mar-17</td><td></td><td>PKN</td><td>GL</td></tr> <tr><td>28-Apr-17</td><td></td><td>PKN</td><td>GL</td></tr> </table>	Date	Revision	Checked	Approved	30-Nov-...		PKN	GL	31-Mar-17		PKN	GL	28-Apr-17		PKN	GL	DWG. No.: J3518/GCL/PGM/3MRP-M47
	Date	Revision	Checked	Approved																
	30-Nov-...		PKN	GL																
31-Mar-17		PKN	GL																	
28-Apr-17		PKN	GL																	



- Actual Work
- Planned Bar
- Critical Bar
- ◆ Milestone

Project ID: TMCLK-DWPI-1-M47
 Layout: J3518-DWP-3MRP Submission - M47
 Filter: TASK filters: 3-Month Lookahead, No CC
 Milestones, No Level of Effort.

Tuen Mun - Chek Lap Kok Link - Southern Connection
3-Month Rolling Programme (Page 13 of 13 Pages)
(Progress as of 21-Apr-17)

Date	Revision	Checked	Approved
30-Nov-...		PKN	GL
31-Mar-17		PKN	GL
28-Apr-17		PKN	GL

DWG. No.:
J3518/GCL/PGM/3MRP-M47