

Activity ID	Activity Name	Orig. Durn.	Act. Start / FC Early Start	Rem. Durn.	Act. Finish / FC Early Finish	Late Start	Late Finish	Total Float	Physical % Complete	2017																						
										May					June				July				August									
										24	01	08	15	22	29	05	12	19	26	03	10	17	24	31	07	14	21					
Contract Milestones																																
Key Dates for Completion																																
Stage of the Works																																
Completion Date																																
General																																
KD03	KD3 - Stage 3: TCSS Along NLH Near Viaduct C, D (EoT 8-Apr-16)	0		0	21-May-17*		08-Apr-16	-407	0%																							
Portion Handover Dates																																
Possession of the Works Area																																
Access Dates																																
General																																
POS02-6B	Portion A - Area 6B (To be confirmed)	0	21-May-17*	0		30-Jun-20		1137	0%																							
Design																																
Detailed Design																																
General Submissions																																
Reports & Manuals																																
General																																
ARDD0040-2	IC/SO Approval of Operation and Maintenance Manual - AP08.00	75	20-Oct-15 A	10	02-Jun-17	04-Jul-17	14-Jul-17	35	75%																							
ARDD0042-2	IC/SO Approval of O&M Facility Provisions DDA - BP11.01	75	14-Jan-15 A	10	02-Jun-17	04-Jul-17	14-Jul-17	35	75%																							
Slope Works Near Viaduct A																																
Feature 9SE-B/FR8, B/R1, B/R2																																
Slope Works Design																																
ARDD0596	Preparation of remaining portion of Slope FR8 Combined AIP/DDA - CP11.	35	01-Apr-17 A	18	12-Jun-17	14-Apr-16	05-May-16	-326	50%																							
ARDD0596-1	IC/SO Approval of Slope Combined AIP/DDA - CP11.01	60	13-Jun-17	60	22-Aug-17	06-May-16	18-Jul-16	-326	0%																							
Slope Works Near Viaduct C																																
Feature 10NW-C/C22, C/C26, C/C27, C/F13, C/F14, C/F15																																
Slope Works Design																																
ARDD0589-1	Preparation of Slope Combined AIP/DDA - CP13.01	60	21-Jan-17 A	8	31-May-17	16-Jul-16	25-Jul-16	-250	90%																							
ARDD0589-2	IC/SO Approval of Combined AIP/DDA - CP13.01	28	22-May-17	28	23-Jun-17	16-Jul-16	17-Aug-16	-250	0%																							
ARDD0590-1	New fill slopes PF1 & PF2 IC/SO Approval of combined AIP/DDA - CP13.0	28	06-Apr-17 A	8	31-May-17	16-Jul-16	25-Jul-16	-250	50%																							
Watermain, Drainage & Utility Diversions																																
General																																
Design																																
ARDD0629	IC/SO Approval of Waterworks, Drainage & Utility DDA - BP20.01	75	22-Jul-14 A	15	08-Jun-17	08-Sep-17	25-Sep-17	92	80%																							
ARDD0629-1	IC/SO Approval of Waterworks, Drainage & Utility DDA - BP20.01	0		0	08-Jun-17		25-Sep-17	92	0%																							
ARDD0629-2	Gov't Approval of Submissions for Waterworks, Drainage & Utility Diversior	75	02-Jan-14 A	15	08-Jun-17	08-Sep-17	25-Sep-17	92	80%																							
Viaduct Approach Ramp Retaining Walls																																
Abutment & Approach Ramp B																																
Design																																
ARDD0664	Approach B - IC/SO Approval of Approach Ramp B DDA-DP21.01	75	14-Oct-14 A	6	27-May-17	23-Jun-20	30-Jun-20	916	95%																							
ARDD0664-1	Approach B - IC/SO Approval of Approach Ramp B DDA-DP21.01	0		0	27-May-17		30-Jun-20	916	0%																							
Abutment & Approach Ramp F																																
Design																																
ARDD0676	Approach F - IC/SO Approval of Approach Ramp F DDA-DP24.01	75	23-Dec-14 A	24	19-Jun-17	02-May-17	31-May-17	-16	60%																							
ARDD0676-1	Approach F - IC/SO Approval of Approach Ramp F DDA-DP24.01	0		0	19-Jun-17		31-May-17	-16	0%																							
Segment Target Geometry & Erection Engineering																																
Viaduct E5 & E6																																
Design																																
ARDD0734	Viaduct E5 & E6 - Segment Geometry Schedules	10	05-May-14 A	10	02-Jun-17	03-Sep-16	14-Sep-16	-208	90%																							
TGP0570	Viaduct E5 & E6 - Issue of Optimised Casting Data and Segment Catalogue	40	30-Apr-15 A	10	02-Jun-17	03-Sep-16	14-Sep-16	-208	90%																							
TGP0590	Viaduct E5 & E6 - Issue Erection Manual	10	03-Jun-17	10	14-Jun-17	15-Sep-16	27-Sep-16	-208	0%																							
Viaduct E7 & E8																																
Design																																
ARDD0739	Viaduct E7 & E8 - Segment Geometry Schedules	10	05-May-14 A	10	02-Jun-17	03-Sep-16	14-Sep-16	-208	90%																							
TGP0760	Viaduct E7 & E8 - Issue of Optimised Casting Data and Segment Catalogue	40	31-Jul-15 A	10	02-Jun-17	03-Sep-16	14-Sep-16	-208	90%																							

■ Actual Work
■ Planned Bar
■ Critical Bar
◆ Milestone

Project ID: TMCLK-DWPI-1-M48
 Layout: J3518-DWP-3MRP Submission - M47
 Filter: TASK filters: 3-Month Lookahead, No CC
 Milestones, No Level of Effort.

Tuen Mun - Chek Lap Kok Link - Southern Connection
3-Month Rolling Programme (Page 1 of 13 Pages)
(Progress as of 21-May-17)

Date	Revision	Checked	Approved
31-Mar-17		PKN	GL
28-Apr-17		PKN	GL
31-May-...		PKN	GL

DWG. No.:
J3518/GCL/PGM/3MRP-M48

Activity ID	Activity Name	Orig. Durn.	Act. Start / FC Early Start	Rem. Durn.	Act. Finish / FC Early Finish	Late Start	Late Finish	Total Float	Physical % Complete	2017																								
										May					June					July					August									
											24	01	08	15	22	29	05	12	19	26	03	10	17	24	31	07	14	21						
TGP0790	Viaduct E7 & E8 - Issue Erection Manual	10	03-Jun-17	10	14-Jun-17	15-Sep-16	27-Sep-16	-208	0%	[Gantt Bar]																								
Viaduct F																																		
Design																																		
ARDD0752	Viaduct F - Erection Sequence Analysis	13	01-Mar-17 A	19	13-Jun-17	13-Aug-16	03-Sep-16	-226	20%	[Gantt Bar]																								
ARDD0753	Viaduct F - Target Geometry Analysis	30	01-Apr-17 A	19	13-Jun-17	13-Aug-16	03-Sep-16	-226	70%	[Gantt Bar]																								
ARDD0754	Viaduct F - Segment Geometry Schedules	10	14-Jun-17	10	24-Jun-17	05-Sep-16	15-Sep-16	-226	0%	[Gantt Bar]																								
ARDD0754-1	Viaduct F - Issue of Pierhead Segments Bridge F1, F2, F3, F4 & F5	0		0	24-Jun-17		15-Sep-16	-226	0%	[Gantt Bar]																								
ARDD0754-3	Viaduct F - Issue of Casting Data and Segment Catalogue Bridge F1, F3 (f	0		0	24-Jun-17		15-Sep-16	-226	0%	[Gantt Bar]																								
ARDD0754-4	Viaduct F - Issue of Casting Data and Segment Catalogue Bridge F2, F4, F	0		0	24-Jun-17		15-Sep-16	-226	0%	[Gantt Bar]																								
ARDD0754-5	Viaduct F - Issue Erection Manual	30	26-Jun-17	30	31-Jul-17	17-Sep-16	24-Oct-16	-226	0%	[Gantt Bar]																								
Procurement																																		
Precast Deck Segments																																		
Viaduct A - Bridge A2-A1																																		
Segment Manufacture																																		
General																																		
MBAE0130-1	A: Progressive Segment Manufacture (179 Nr)	180	13-Jun-16 A	7	29-May-17	03-May-16	10-May-16	-311	90%	[Gantt Bar]																								
Viaduct E - Bridge E2																																		
Segment Manufacture																																		
General																																		
MBEE0130-7	E2: Progressive Segment Manufacture (404 Nr)	376	06-May-15 A	0	29-Apr-17 A				100%	[Gantt Bar]																								
Viaduct E - Bridge E5, E6, E7, E8																																		
Segment Manufacture																																		
General																																		
MBEE0130-9	E5-6-7-8: Progressive Segment Manufacture (544Nr)	360	06-May-15 A	96	12-Sep-17	17-Sep-16	12-Jan-17	-197	70%	[Gantt Bar]																								
Viaduct F - Bridge F1-F5																																		
Segment Manufacture																																		
General																																		
MBFE0130-1	F: Progressive Segment Manufacture (300 Nr)	252	27-Oct-16 A	126	19-Oct-17	16-Jan-17	22-Jun-17	-99	50%	[Gantt Bar]																								
Precast Parapets & Barriers																																		
Viaduct A to F																																		
Precast Parapet Manufacture																																		
General																																		
PP6011-01	Viaduct A - Precast Parapets/Barriers Production	90	01-Sep-16 A	120	12-Oct-17	12-Sep-16	08-Feb-17	-201	50%	[Gantt Bar]																								
PP6011-02	Viaduct B - Precast Parapets/Barriers Production	120	03-May-16 A	42	11-Jul-17	12-Sep-16	02-Nov-16	-201	75%	[Gantt Bar]																								
PP6011-03	Viaduct C - Precast Parapets/Barriers Production	120	01-Apr-16 A	24	19-Jun-17	16-May-16	13-Jun-16	-301	85%	[Gantt Bar]																								
PP6011-04	Viaduct D - Precast Parapets/Barriers Production	120	01-Mar-16 A	24	19-Jun-17	16-May-16	13-Jun-16	-301	85%	[Gantt Bar]																								
PP6011-05	Viaduct E - Precast Parapets/Barriers Production	180	02-Jul-16 A	180	22-Dec-17	16-May-16	16-Dec-16	-301	40%	[Gantt Bar]																								
PP6011-06	Viaduct F - Precast Parapets/Barriers Production	198	03-Jul-17*	198	28-Feb-18	18-Feb-17	18-Oct-17	-107	0%	[Gantt Bar]																								
Bearings																																		
Viaduct A																																		
Bearing Design & Manufacture																																		
General																																		
PPBRA8	Testing Bearing - Viaduct A	18	21-Apr-17 A	0	29-Apr-17 A				100%	[Gantt Bar]																								
PPBRA9	Bearing Delivery - Viaduct A	48	11-Apr-17 A	0	13-May-17 A				100%	[Gantt Bar]																								
PPBRA99	Site preparation Bearings for Viaduct A	6	15-May-17 A	0	20-May-17 A				100%	[Gantt Bar]																								
Viaduct E																																		
Bearing Design & Manufacture																																		
General																																		
PP7150	Site preparation Bearings for Viaduct E5 & E6	18	09-Aug-17	18	29-Aug-17	19-Dec-16	11-Jan-17	-186	0%	[Gantt Bar]																								
PPBRE6	Bearing Design Amendment & re-issue - Viaduct E (E1, E2, E5, E6, E7 & E	12	15-Nov-16 A	6	27-May-17	30-Sep-16	07-Oct-16	-186	95%	[Gantt Bar]																								
PPBRE7	Manufacture of Bearing - Viaduct E (E1, E2, E5, E6, E7 & E8)	54	02-Jun-14 A	24	26-Jun-17	08-Oct-16	05-Nov-16	-186	80%	[Gantt Bar]																								
PPBRE8	Testing Bearing - Viaduct E (E1, E2, E5, E6, E7 & E8)	24	03-Aug-15 A	12	11-Jul-17	07-Nov-16	19-Nov-16	-186	70%	[Gantt Bar]																								
PPBRE9	Bearing Delivery - Viaduct E (E1, E2, E5, E6, E7 & E8)	48	19-Nov-14 A	24	08-Aug-17	21-Nov-16	17-Dec-16	-186	60%	[Gantt Bar]																								
Viaduct F																																		
Bearing Design & Manufacture																																		

■ Actual Work
■ Planned Bar
■ Critical Bar
◆ Milestone

Project ID: TMCLK-DWPI-1-M48
 Layout: J3518-DWP-3MRP Submission - M47
 Filter: TASK filters: 3-Month Lookahead, No CC
 Milestones, No Level of Effort.

Tuen Mun - Chek Lap Kok Link - Southern Connection
3-Month Rolling Programme (Page 2 of 13 Pages)
(Progress as of 21-May-17)

Date	Revision	Checked	Approved
31-Mar-17		PKN	GL
28-Apr-17		PKN	GL
31-May-...		PKN	GL

DWG. No.:
J3518/GCL/PGM/3MRP-M48

Activity ID	Activity Name	Orig. Durn.	Act. Start / FC Early Start	Rem. Durn.	Act. Finish / FC Early Finish	Late Start	Late Finish	Total Float	Physical % Complete	2017															
										May					June				July				August		
										24	01	08	15	22	29	05	12	19	26	03	10	17	24	31	07
General																									
PPBRF7	Manufacture of Bearing - Viaduct F	60	28-Mar-17 A	40	08-Jul-17	22-Aug-16	08-Oct-16	-219	50%	[Gantt bar: 28-Mar-17 to 08-Jul-17]															
PPBRF8	Testing Bearing - Viaduct F	12	10-Jul-17	12	22-Jul-17	11-Oct-16	24-Oct-16	-219	0%	[Gantt bar: 10-Jul-17 to 22-Jul-17]															
PPBRF9	Bearing Delivery - Viaduct F	34	24-Jul-17	34	31-Aug-17	25-Oct-16	02-Dec-16	-219	0%	[Gantt bar: 24-Jul-17 to 31-Aug-17]															
Movement Joints																									
Viaduct A to F																									
MJ Design & Manufacture																									
General																									
PP6MJ02-2	Manufacture & delivery of MJ	180	01-Apr-17 A	123	16-Oct-17	10-Mar-16	09-Aug-16	-352	25%	[Gantt bar: 01-Apr-17 to 16-Oct-17]															
Construction																									
Foundation & Substructure Works																									
Viaduct A - Bridge A2																									
Pier A2 (A2d)																									
Pier Head Segment																									
A02-C5410	A2 - PHS Diaphragm - Rebar, Formwork, Concreting	30	24-Mar-17 A	0	16-May-17 A				100%	[Gantt bar: 24-Mar-17 to 16-May-17]															
A02-C5420	A2 - PHS Diaphragm - Curing & Striking of Forms	12	17-May-17 A	8	31-May-17	27-May-16	04-Jun-16	-291	30%	[Gantt bar: 17-May-17 to 31-May-17]															
Pier A3 (A2c)																									
Pier Head Segment																									
A03-C5410	A3 - PHS Diaphragm - Rebar, Formwork, Concreting	30	31-Mar-17 A	3	24-May-17	23-Jun-16	25-Jun-16	-269	90%	[Gantt bar: 31-Mar-17 to 24-May-17]															
A03-C5420	A3 - PHS Diaphragm - Curing & Striking of Forms	12	25-May-17	12	08-Jun-17	27-Jun-16	11-Jul-16	-269	0%	[Gantt bar: 25-May-17 to 08-Jun-17]															
Viaduct A - Bridge A1																									
Pier A9 (A1c)																									
Pier Head Segment																									
A09-C5410	A9 - PHS Diaphragm - Rebar, Formwork, Concreting	36	26-Apr-17 A	26	21-Jun-17	12-Mar-16	15-Apr-16	-350	50%	[Gantt bar: 26-Apr-17 to 21-Jun-17]															
A09-C5420	A9 - PHS Diaphragm - Curing & Striking of Forms	12	22-Jun-17	12	06-Jul-17	16-Apr-16	29-Apr-16	-350	0%	[Gantt bar: 22-Jun-17 to 06-Jul-17]															
Pier A10 (A1b)																									
Pier Head Segment																									
A10-C5210	A10 - PHS - Temporary Platform	12	22-May-17	12	05-Jun-17	18-Apr-16	30-Apr-16	-323	0%	[Gantt bar: 22-May-17 to 05-Jun-17]															
A10-C5310	A10 - Install PH Segment (1 nr)	2	06-Jun-17*	2	07-Jun-17	03-May-16	04-May-16	-323	0%	[Gantt bar: 06-Jun-17 to 07-Jun-17]															
A10-C5410	A10 - PHS Diaphragm - Rebar, Formwork, Concreting	36	08-Jun-17	36	20-Jul-17	05-May-16	17-Jun-16	-323	0%	[Gantt bar: 08-Jun-17 to 20-Jul-17]															
A10-C5420	A10 - PHS Diaphragm - Curing & Striking of Forms	12	21-Jul-17	12	03-Aug-17	18-Jun-16	02-Jul-16	-323	0%	[Gantt bar: 21-Jul-17 to 03-Aug-17]															
Pier A11 (A1a)																									
Pier Head Segment																									
A11-C5210	A11 - PHS - Temporary Platform	12	24-May-17	12	07-Jun-17	21-Jun-16	05-Jul-16	-273	0%	[Gantt bar: 24-May-17 to 07-Jun-17]															
A11-C5310	A11 - Install PH Segment (1nr)	2	08-Jun-17*	2	09-Jun-17	06-Jul-16	07-Jul-16	-273	0%	[Gantt bar: 08-Jun-17 to 09-Jun-17]															
Ramp A																									
Abutment & Approach Ramp A																									
Ramp Structure																									
ARA-C6140	Ramp A - Remaining RE Wall (Bay 7 to 11) with Backfill	111	02-Mar-17 A	48	18-Jul-17	17-Mar-16	18-May-16	-346	60%	[Gantt bar: 02-Mar-17 to 18-Jul-17]															
ARA-C6142	Ramp A - Remaining RC Wall (Bay Wa2-Wa5 & Bay 9-12) with Backfill	120	19-Jul-17	120	08-Dec-17	24-May-16	15-Oct-16	-342	0%	[Gantt bar: 19-Jul-17 to 08-Dec-17]															
ARA-C6150	Ramp A - Backfill to Walls	111	02-Aug-17	111	12-Dec-17	07-Jun-16	19-Oct-16	-342	0%	[Gantt bar: 02-Aug-17 to 12-Dec-17]															
Viaduct B - Bridge B1																									
Pier B17 (B1c)																									
Pile Cap																									
B17-C3120	B17/B18 - Pile Cap Excavation/ELS Incl. Watermain/Gasmain Diversion	65	23-Feb-17 A	0	16-May-17 A				100%	[Gantt bar: 23-Feb-17 to 16-May-17]															
B17-C3130	B17 - Pile Cap Break Pile Head & Weld Steel Plate	4	17-May-17 A	0	20-May-17 A				100%	[Gantt bar: 17-May-17 to 20-May-17]															
B17-C3210	B17 - Pile Cap Blinding, Rebar, Formwork, Concrete	10	22-May-17	10	02-Jun-17	14-Mar-16	24-Mar-16	-349	0%	[Gantt bar: 22-May-17 to 02-Jun-17]															
B17-C3310	B17 - Pile Cap Curing, Strike Formwork, CJ Prep	3	03-Jun-17	3	06-Jun-17	29-Mar-16	31-Mar-16	-349	0%	[Gantt bar: 03-Jun-17 to 06-Jun-17]															
Pier																									
B17-C4110	B17 - Pier Scaffold, Rebar, Formwork, Concrete (1st Lift)	7	07-Jun-17	7	14-Jun-17	01-Apr-16	09-Apr-16	-349	0%	[Gantt bar: 07-Jun-17 to 14-Jun-17]															
B17-C4210	B17 - Pier Scaffold, Rebar, Formwork, Concrete (2nd Lift)	10	15-Jun-17	10	26-Jun-17	11-Apr-16	21-Apr-16	-349	0%	[Gantt bar: 15-Jun-17 to 26-Jun-17]															
B17-C4310	B17 - Pier Curing, Remove Formwork	3	27-Jun-17	3	29-Jun-17	22-Apr-16	25-Apr-16	-349	0%	[Gantt bar: 27-Jun-17 to 29-Jun-17]															
Pier Head Segment																									
B17-C5210	B17 - PHS - Temporary Platform	3	30-Jun-17	3	04-Jul-17	26-Apr-16	28-Apr-16	-349	0%	[Gantt bar: 30-Jun-17 to 04-Jul-17]															
B17-C5310	B17 - Install PH Segment & Fix (1 nr)	2	05-Jul-17	2	06-Jul-17	29-Apr-16	30-Apr-16	-349	0%	[Gantt bar: 05-Jul-17 to 06-Jul-17]															
B17-C5410	B17 - PHS Diaphragm - Rebar, Formwork, Concreting	22	07-Jul-17	22	01-Aug-17	03-May-16	28-May-16	-349	0%	[Gantt bar: 07-Jul-17 to 01-Aug-17]															

■ Actual Work
■ Planned Bar
■ Critical Bar
◆ Milestone

Project ID: TMCLK-DWPI-1-M48
 Layout: J3518-DWP-3MRP Submission - M47
 Filter: TASK filters: 3-Month Lookahead, No CC
 Milestones, No Level of Effort.

Tuen Mun - Chek Lap Kok Link - Southern Connection
3-Month Rolling Programme (Page 3 of 13 Pages)
(Progress as of 21-May-17)

Date	Revision	Checked	Approved
31-Mar-17		PKN	GL
28-Apr-17		PKN	GL
31-May-...		PKN	GL

DWG. No.:
J3518/GCL/PGM/3MRP-M48

Activity ID	Activity Name	Orig. Durn.	Act. Start / FC Early Start	Rem. Durn.	Act. Finish / FC Early Finish	Late Start	Late Finish	Total Float	Physical % Complete	2017																
										May					June				July				August			
										24	01	08	15	22	29	05	12	19	26	03	10	17	24	31	07	14
Pier Head Segment / Infill Segment																										
E12A-C5130	E12A - Diaphragm of PHS - Formwork, Rebar, Concreting	74	28-Feb-17 A	19	13-Jun-17	18-Aug-16	08-Sep-16	-222	80%	[Gantt bar: 28-Feb-17 to 08-Sep-16, 80% complete]																
E12A-C5140	E12A - Remove Rail Beams, Spreader Beams, Brackets	15	14-Jun-17	15	30-Jun-17	09-Sep-16	27-Sep-16	-222	0%	[Gantt bar: 14-Jun-17 to 27-Sep-16, 0% complete]																
E12A-C5145	E12A - Install Infill Segments (6 nr) - THB	26	30-Jun-17	26	31-Jul-17	27-Sep-16	28-Oct-16	-222	0%	[Gantt bar: 30-Jun-17 to 28-Oct-16, 0% complete]																
E12A-C5150	E12A - IFS Stitch & Remove Equipment	12	01-Aug-17	12	14-Aug-17	29-Oct-16	11-Nov-16	-222	0%	[Gantt bar: 01-Aug-17 to 11-Nov-16, 0% complete]																
Pier E12B (E7b)																										
Pier Head Segment / Infill Segment																										
E12B-C5130	E12B - Diaphragm of PHS - Formwork, Rebar, Concreting	76	10-Feb-17 A	11	03-Jun-17	17-Jan-17	01-Feb-17	-98	85%	[Gantt bar: 10-Feb-17 to 01-Feb-17, 85% complete]																
E12B-C5140	E12B - Remove Rail Beams, Spreader Beams, Brackets	15	05-Jun-17	15	21-Jun-17	02-Feb-17	18-Feb-17	-98	0%	[Gantt bar: 05-Jun-17 to 18-Feb-17, 0% complete]																
E12B-C5145	E12B - Install Infill Segments (6 nr) - THB	32	22-Jun-17	32	29-Jul-17	20-Feb-17	28-Mar-17	-98	0%	[Gantt bar: 22-Jun-17 to 28-Mar-17, 0% complete]																
E12B-C5150	E12B - IFS Stitch & Remove Equipment	12	31-Jul-17	12	12-Aug-17	29-Mar-17	12-Apr-17	-98	0%	[Gantt bar: 31-Jul-17 to 12-Apr-17, 0% complete]																
Pier E12C (E6b)																										
Pier Head Segment / Infill Segment																										
E12C-C5130	E12C - Diaphragm of PHS - Formwork, Rebar, Concreting	76	24-Jan-17 A	8	31-May-17	17-Mar-17	25-Mar-17	-50	90%	[Gantt bar: 24-Jan-17 to 25-Mar-17, 90% complete]																
E12C-C5140	E12C - Remove Rail Beams, Spreader Beams, Brackets, Crane	15	01-Jun-17	15	17-Jun-17	27-Mar-17	13-Apr-17	-50	0%	[Gantt bar: 01-Jun-17 to 13-Apr-17, 0% complete]																
E12C-C5145	E12C - Install Infill Segments (6 nr) - THB	28	19-Jun-17	28	21-Jul-17	18-Apr-17	22-May-17	-50	0%	[Gantt bar: 19-Jun-17 to 22-May-17, 0% complete]																
E12C-C5150	E12C - IFS Stitch & Remove Equipment	12	22-Jul-17	12	04-Aug-17	23-May-17	06-Jun-17	-50	0%	[Gantt bar: 22-Jul-17 to 06-Jun-17, 0% complete]																
Pier E12D (E5b)																										
Pier Head Segment / Infill Segment																										
E12D-C5130	E12D - Diaphragm of PHS - Formwork, Rebar, Concreting	76	07-Mar-17 A	28	23-Jun-17	29-Sep-16	02-Nov-16	-187	70%	[Gantt bar: 07-Mar-17 to 02-Nov-16, 70% complete]																
E12D-C5140	E12D - Remove Rail Beams, Spreader Beams, Brackets	15	24-Jun-17	15	12-Jul-17	03-Nov-16	19-Nov-16	-187	0%	[Gantt bar: 24-Jun-17 to 19-Nov-16, 0% complete]																
E12D-C5145	E12D - Install Infill Segments (6 nr) - THB	28	12-Jul-17	28	12-Aug-17	19-Nov-16	21-Dec-16	-187	0%	[Gantt bar: 12-Jul-17 to 21-Dec-16, 0% complete]																
E12D-C5150	E12D - IFS Stitch & Remove Equipment	12	14-Aug-17	12	26-Aug-17	22-Dec-16	07-Jan-17	-187	0%	[Gantt bar: 14-Aug-17 to 07-Jan-17, 0% complete]																
Pier E13A (E8c)																										
Pier Head Segment / Infill Segment																										
E13A-C5130	E13A - Diaphragm of PHS - Formwork, Rebar, Concreting	76	01-Apr-17 A	60	01-Aug-17	11-Jan-17	24-Mar-17	-103	40%	[Gantt bar: 01-Apr-17 to 24-Mar-17, 40% complete]																
E13A-C5140	E13A - Remove Rail Beams, Spreader Beams, Brackets, Crane	30	02-Aug-17	30	05-Sep-17	25-Mar-17	05-May-17	-103	0%	[Gantt bar: 02-Aug-17 to 05-May-17, 0% complete]																
Pier E13B (E7c)																										
Pier Head Segment / Infill Segment																										
E13B-C5130	E13B - Diaphragm of PHS - Formwork, Rebar, Concreting	76	21-Mar-17 A	46	15-Jul-17	24-Aug-16	19-Oct-16	-217	50%	[Gantt bar: 21-Mar-17 to 19-Oct-16, 50% complete]																
E13B-C5140	E13B - Remove Rail Beams, Spreader Beams, Brackets	16	17-Jul-17	16	03-Aug-17	20-Oct-16	07-Nov-16	-217	0%	[Gantt bar: 17-Jul-17 to 07-Nov-16, 0% complete]																
E13B-C5145	E13B - Install Infill Segments (6 nr) - THB	42	04-Aug-17	42	21-Sep-17	08-Nov-16	28-Dec-16	-217	0%	[Gantt bar: 04-Aug-17 to 28-Dec-16, 0% complete]																
Pier E13C (E6c)																										
Pier Head Segment / Infill Segment																										
E13C-C5130	E13C - Diaphragm of PHS - Formwork, Rebar, Concreting	76	28-Mar-17 A	49	19-Jul-17	07-Sep-16	05-Nov-16	-205	45%	[Gantt bar: 28-Mar-17 to 05-Nov-16, 45% complete]																
E13C-C5140	E13C - Remove Rail Beams, Spreader Beams, Brackets	16	20-Jul-17	16	07-Aug-17	07-Nov-16	24-Nov-16	-205	0%	[Gantt bar: 20-Jul-17 to 24-Nov-16, 0% complete]																
E13C-C5145	E13C - Install Infill Segments (6 nr) - THB	42	08-Aug-17	42	25-Sep-17	25-Nov-16	16-Jan-17	-205	0%	[Gantt bar: 08-Aug-17 to 16-Jan-17, 0% complete]																
Pier E13D (E5c)																										
Pier Head Segment / Infill Segment																										
E13D-C5130	E13D - Diaphragm of PHS - Formwork, Rebar, Concreting	76	04-Apr-17 A	58	29-Jul-17	21-Sep-16	29-Nov-16	-194	40%	[Gantt bar: 04-Apr-17 to 29-Nov-16, 40% complete]																
E13D-C5140	E13D - Remove Rail Beams, Spreader Beams, Brackets, Crane	16	31-Jul-17	16	17-Aug-17	30-Nov-16	17-Dec-16	-194	0%	[Gantt bar: 31-Jul-17 to 17-Dec-16, 0% complete]																
E13D-C5145	E13D - Install Infill Segments (6 nr) - THB	28	18-Aug-17	28	19-Sep-17	19-Dec-16	23-Jan-17	-194	0%	[Gantt bar: 18-Aug-17 to 23-Jan-17, 0% complete]																
Pier E14A (E8d)																										
Pile Cap																										
E14A-C3210	E14A Pile Cap - Blinding, Formwork, Rebar, Concrete	19	18-Mar-17 A	0	21-Apr-17 A				100%	[Gantt bar: 18-Mar-17 to 21-Apr-17, 100% complete]																
E14A-C3310	E14A Pile Cap - Curing, Remove Formwork, Backfill	12	22-Apr-17 A	0	13-May-17 A				100%	[Gantt bar: 22-Apr-17 to 13-May-17, 100% complete]																
Pier																										
E14A-C4110	E14A Pier - Scaffold, Rebar, Formwork, Concrete (1st Lift)	13	15-May-17 A	6	27-May-17	09-Jul-16	15-Jul-16	-256	50%	[Gantt bar: 15-May-17 to 15-Jul-16, 50% complete]																
E14A-C4210	E14A Pier - Scaffold, Rebar, Formwork, Concrete (2nd Lift)	15	29-May-17	15	15-Jun-17	16-Jul-16	02-Aug-16	-256	0%	[Gantt bar: 29-May-17 to 02-Aug-16, 0% complete]																
E14A-C4310	E14A Pier - Scaffold, Rebar, Formwork, Concrete (3rd Lift)	15	16-Jun-17	15	04-Jul-17	03-Aug-16	19-Aug-16	-256	0%	[Gantt bar: 16-Jun-17 to 19-Aug-16, 0% complete]																
E14A-C4410	E14A Pier - Scaffold, Rebar, Formwork, Concrete (4th Lift)	16	05-Jul-17	16	22-Jul-17	20-Aug-16	07-Sep-16	-256	0%	[Gantt bar: 05-Jul-17 to 07-Sep-16, 0% complete]																
E14A-C4510	E14A Pier - Scaffold, Rebar, Formwork, Concrete (5th Lift)	16	24-Jul-17	16	10-Aug-17	08-Sep-16	27-Sep-16	-256	0%	[Gantt bar: 24-Jul-17 to 27-Sep-16, 0% complete]																
E14A-C4610	E14A Pier - Curing, Remove Formwork	5	11-Aug-17	5	16-Aug-17	28-Sep-16	04-Oct-16	-256	0%	[Gantt bar: 11-Aug-17 to 04-Oct-16, 0% complete]																
Pier Head Segment																										
E14A-C5110	E14A Pier Head - Scaffold, Temp Works	17	11-Aug-17	17	30-Aug-17	28-Sep-16	19-Oct-16	-256	0%	[Gantt bar: 11-Aug-17 to 19-Oct-16, 0% complete]																
Pier E14B (E7d)																										
Pile Cap																										
E14B-C3210	E14B Pile Cap - Blinding, Formwork, Rebar, Concrete	19	18-Mar-17 A	0	28-Apr-17 A				100%	[Gantt bar: 18-Mar-17 to 28-Apr-17, 100% complete]																
E14B-C3310	E14B Pile Cap - Curing, Remove Formwork, Backfill	12	29-Apr-17 A	0	12-May-17 A				100%	[Gantt bar: 29-Apr-17 to 12-May-17, 100% complete]																

■ Actual Work
■ Planned Bar
■ Critical Bar
◆ Milestone

Project ID: TMCLK-DWPI-1-M48
 Layout: J3518-DWP-3MRP Submission - M47
 Filter: TASK filters: 3-Month Lookahead, No CC
 Milestones, No Level of Effort.

Tuen Mun - Chek Lap Kok Link - Southern Connection
3-Month Rolling Programme (Page 5 of 13 Pages)
(Progress as of 21-May-17)

Date	Revision	Checked	Approved
31-Mar-17		PKN	GL
28-Apr-17		PKN	GL
31-May-...		PKN	GL

DWG. No.:
J3518/GCL/PGM/3MRP-M48

Activity ID	Activity Name	Orig. Durn.	Act. Start / FC Early Start	Rem. Durn.	Act. Finish / FC Early Finish	Late Start	Late Finish	Total Float	Physical % Complete	2017																
										May					June				July				August			
										24	01	08	15	22	29	05	12	19	26	03	10	17	24	31	07	14
Pier																										
E14B-C4110	E14B Pier - Scaffold, Rebar, Formwork, Concrete (1st Lift)	13	13-May-17 A	5	26-May-17	15-Aug-16	19-Aug-16	-225	60%																	
E14B-C4210	E14B Pier - Scaffold, Rebar, Formwork, Concrete (2nd Lift)	18	27-May-17	18	17-Jun-17	20-Aug-16	09-Sep-16	-225	0%																	
E14B-C4310	E14B Pier - Scaffold, Rebar, Formwork, Concrete (3rd Lift)	18	19-Jun-17	18	10-Jul-17	10-Sep-16	03-Oct-16	-225	0%																	
E14B-C4410	E14B Pier - Curing, Remove Formwork	5	11-Jul-17	5	15-Jul-17	04-Oct-16	08-Oct-16	-225	0%																	
Pier Head Segment																										
E14B-C5110	E14B Pier Head - Scaffold, Temp Works	17	17-Jul-17	17	04-Aug-17	11-Oct-16	29-Oct-16	-225	0%																	
E14B-C5210	E14B Pier Head - Erect PH Segment (2 nr)	4	05-Aug-17	4	09-Aug-17	31-Oct-16	03-Nov-16	-225	0%																	
E14B-C5310	E14B Pier Head - Construct Diaphragm (2nd Cast) in PHS	65	10-Aug-17	65	26-Oct-17	04-Nov-16	21-Jan-17	-225	0%																	
Pier E14C (E6d)																										
Pile Cap																										
E14C-C3310	E14C Pile Cap - Curing, Remove Formwork, Backfill	12	20-Apr-17 A	0	29-Apr-17 A				100%																	
Pier																										
E14C-C4110	E14C Pier - Scaffold, Rebar, Formwork, Concrete (1st Lift)	13	02-May-17 A	0	15-May-17 A				100%																	
E14C-C4210	E14C Pier - Scaffold, Rebar, Formwork, Concrete (2nd Lift)	18	16-May-17 A	13	06-Jun-17	09-Jan-17	23-Jan-17	-105	30%																	
E14C-C4310	E14C Pier - Scaffold, Rebar, Formwork, Concrete (3rd Lift)	18	07-Jun-17	18	27-Jun-17	24-Jan-17	16-Feb-17	-105	0%																	
E14C-C4410	E14C Pier - Scaffold, Rebar, Formwork, Concrete (4th Lift)	18	28-Jun-17	18	19-Jul-17	17-Feb-17	09-Mar-17	-105	0%																	
E14C-C4510	E14C Pier - Curing, Remove Formwork	5	20-Jul-17	5	25-Jul-17	10-Mar-17	15-Mar-17	-105	0%																	
Pier Head Segment																										
E14C-C5110	E14C Pier Head - Scaffold, Temp Works	17	26-Jul-17	17	14-Aug-17	16-Mar-17	05-Apr-17	-105	0%																	
E14C-C5210	E14C Pier Head - Erect PH Segment (2 nr)	4	15-Aug-17	4	18-Aug-17	06-Apr-17	10-Apr-17	-105	0%																	
E14C-C5310	E14C Pier Head - Construct Diaphragm (2nd Cast) in PHS	65	19-Aug-17	65	06-Nov-17	11-Apr-17	03-Jul-17	-105	0%																	
Pier E14D (E5d)																										
Pile Cap																										
E14D-C3110	E14D Pile Cap - Excavate, Break Pile Head	15	11-Apr-17 A	0	04-May-17 A				100%																	
E14D-C3210	E14D Pile Cap - Blinding, Formwork, Rebar, Concrete	19	04-May-17 A	10	02-Jun-17	08-Jul-16	19-Jul-16	-257	60%																	
E14D-C3310	E14D Pile Cap - Curing, Remove Formwork, Backfill	12	03-Jun-17	12	16-Jun-17	20-Jul-16	02-Aug-16	-257	0%																	
Pier																										
E14D-C4110	E14D Pier - Scaffold, Rebar, Formwork, Concrete (1st Lift)	13	10-Jun-17	13	24-Jun-17	27-Jul-16	10-Aug-16	-257	0%																	
E14D-C4210	E14D Pier - Scaffold, Rebar, Formwork, Concrete (2nd Lift)	16	26-Jun-17	16	14-Jul-17	11-Aug-16	29-Aug-16	-257	0%																	
E14D-C4310	E14D Pier - Scaffold, Rebar, Formwork, Concrete (3rd Lift)	16	15-Jul-17	16	02-Aug-17	30-Aug-16	17-Sep-16	-257	0%																	
E14D-C4410	E14D Pier - Scaffold, Rebar, Formwork, Concrete (4th Lift)	16	03-Aug-17	16	21-Aug-17	19-Sep-16	07-Oct-16	-257	0%																	
Temporary Tower Between Pier E14D & E13D																										
E14D-C5710	E14D-E13D Temp Tower - Remove Rock Armour	18	15-May-17 A	19	13-Jun-17	16-Jul-16	06-Aug-16	-250	20%																	
E14D-C5720	E14D-E13D Temp Tower - Install Pipe Piles (8 nr)	45	14-Jun-17	45	05-Aug-17	08-Aug-16	29-Sep-16	-250	0%																	
E14D-C5730	E14D-E13D Temp Tower - Reinstate Rock Armour	18	07-Aug-17	18	26-Aug-17	30-Sep-16	22-Oct-16	-250	0%																	
Viaduct F - Bridge F1																										
Pier F1 (F1b)																										
Pile Cap																										
F01-C3310	F1 Pile Cap - Curing, Remove Formwork, Backfill	12	12-Apr-17 A	0	29-Apr-17 A				100%																	
Pier																										
F01-C4110	F1 Pier - Scaffold, Rebar, Formwork, Concrete (1st Lift)	13	02-May-17 A	0	20-May-17 A				100%																	
F01-C4210	F1 Pier - Scaffold, Rebar, Formwork, Concrete (2nd Lift)	18	22-May-17	18	12-Jun-17	23-Jul-16	12-Aug-16	-244	0%																	
F01-C4310	F1 Pier - Scaffold, Rebar, Formwork, Concrete (3rd Lift)	18	13-Jun-17	18	04-Jul-17	13-Aug-16	02-Sep-16	-244	0%																	
F01-C4410	F1 Pier - Scaffold, Rebar, Formwork, Concrete (4th Lift)	18	05-Jul-17	18	25-Jul-17	03-Sep-16	24-Sep-16	-244	0%																	
F01-C4510	F1 Pier - Scaffold, Rebar, Formwork, Concrete (5th Lift)	18	26-Jul-17	18	15-Aug-17	26-Sep-16	18-Oct-16	-244	0%																	
F01-C4610	F1 Pier - Curing, Remove Formwork	5	16-Aug-17	5	21-Aug-17	19-Oct-16	24-Oct-16	-244	0%																	
Pier F2 (F1c)																										
Foundation - Bored Piles																										
F02-C2140	F2 Fr Pile - Sleeve, Casing, Excavate, Rebar, Concrete (3rd) P3	15	30-Mar-17 A	0	12-May-17 A				100%																	
F02-C2210	F2 Fr Pile - Curing & Sonic Test	18	26-Apr-17 A	8	31-May-17	05-Jul-16	13-Jul-16	-260	75%																	
F02-C2220	F2 Fr Pile - Full Depth Core & Test (N/A)	0	01-Jun-17	0	01-Jun-17	13-Jul-16	13-Jul-16	-260	0%																	
Pile Cap																										
F02-C3110	F2 Pile Cap - Excavate, Break Pile Head	15	01-Jun-17*	15	17-Jun-17	14-Jul-16	30-Jul-16	-260	0%																	
F02-C3210	F2 Pile Cap - Blinding, Formwork, Rebar, Concrete	19	19-Jun-17	19	11-Jul-17	01-Aug-16	22-Aug-16	-260	0%																	
F02-C3310	F2 Pile Cap - Curing, Remove Formwork, Backfill	12	12-Jul-17	12	25-Jul-17	23-Aug-16	05-Sep-16	-260	0%																	
Pier																										
F02-C4110	F2 Pier - Scaffold, Rebar, Formwork, Concrete (1st Lift)	13	19-Jul-17	13	02-Aug-17	30-Aug-16	13-Sep-16	-260	0%																	
F02-C4210	F2 Pier - Scaffold, Rebar, Formwork, Concrete (2nd Lift)	18	03-Aug-17	18	23-Aug-17	14-Sep-16	06-Oct-16	-260	0%																	

- Actual Work
- Planned Bar
- Critical Bar
- Milestone

Project ID: TMCLK-DWPI-1-M48
 Layout: J3518-DWP-3MRP Submission - M47
 Filter: TASK filters: 3-Month Lookahead, No CC
 Milestones, No Level of Effort.

Tuen Mun - Chek Lap Kok Link - Southern Connection
3-Month Rolling Programme (Page 6 of 13 Pages)
(Progress as of 21-May-17)

Date	Revision	Checked	Approved
31-Mar-17		PKN	GL
28-Apr-17		PKN	GL
31-May-17		PKN	GL

DWG. No.:
J3518/GCL/PGM/3MRP-M48

Activity ID	Activity Name	Orig. Durn.	Act. Start / FC Early Start	Rem. Durn.	Act. Finish / FC Early Finish	Late Start	Late Finish	Total Float	Physical % Complete	2017															
										May					June				July				August		
										24	01	08	15	22	29	05	12	19	26	03	10	17	24	31	07
Pier F3 (F1d)																									
Foundation - Bored Piles																									
F03-C2190	F3 Fr Pile - Sleeve, Casing, Excavate, Rebar, Concrete (1st) P1 -Replacer	18	10-Apr-17 A	0	06-May-17 A				100%	[Gantt bar: 100% complete]															
F03-C2210	F3 Fr Pile - Curing & Sonic Test	18	28-Apr-17 A	7	29-May-17	14-Sep-16	22-Sep-16	-199	70%	[Gantt bar: 70% complete]															
F03-C2220	F3 Fr Pile - Full Depth Core & Test	12	23-May-17	12	06-Jun-17	15-Sep-16	29-Sep-16	-199	0%	[Gantt bar: 0% complete]															
Pile Cap																									
F03-C3110	F3 Pile Cap - Excavate, Break Pile Head	15	07-Jun-17	15	23-Jun-17	30-Sep-16	19-Oct-16	-199	0%	[Gantt bar: 0% complete]															
F03-C3210	F3 Pile Cap - Blinding, Formwork, Rebar, Concrete	19	24-Jun-17	19	17-Jul-17	20-Oct-16	10-Nov-16	-199	0%	[Gantt bar: 0% complete]															
F03-C3310	F3 Pile Cap - Curing, Remove Formwork, Backfill	12	18-Jul-17	12	31-Jul-17	11-Nov-16	24-Nov-16	-199	0%	[Gantt bar: 0% complete]															
Pier																									
F03-C4110	F3 Pier - Scaffold, Rebar, Formwork, Concrete (1st Lift)	13	01-Aug-17	13	15-Aug-17	25-Nov-16	09-Dec-16	-199	0%	[Gantt bar: 0% complete]															
F03-C4210	F3 Pier - Scaffold, Rebar, Formwork, Concrete (2nd Lift)	18	16-Aug-17	18	05-Sep-17	10-Dec-16	03-Jan-17	-199	0%	[Gantt bar: 0% complete]															
Viaduct F - Bridge F2																									
Pier F4 (F2b)																									
Foundation - Bored Piles																									
F04-C2140	F4 Fr Pile - Sleeve, Casing, Excavate, Rebar, Concrete (3rd) P2	16	24-Apr-17 A	8	31-May-17	31-May-17	08-Jun-17	7	0%	[Gantt bar: 0% complete]															
F04-C2210	F4 Fr Pile - Curing & Sonic Test	18	18-Apr-17 A	20	14-Jun-17	31-May-17	22-Jun-17	7	0%	[Gantt bar: 0% complete]															
F04-C2220	F4 Fr Pile - Full Depth Core & Test	12	15-Jun-17	12	28-Jun-17	23-Jun-17	07-Jul-17	7	0%	[Gantt bar: 0% complete]															
Pile Cap																									
F04-C3110	F4 Pile Cap - Excavate, Break Pile Head	15	10-Jul-17*	15	26-Jul-17	08-Jul-17	25-Jul-17	-1	0%	[Gantt bar: 0% complete]															
F04-C3210	F4 Pile Cap - Blinding, Formwork, Rebar, Concrete	19	27-Jul-17	19	17-Aug-17	26-Jul-17	16-Aug-17	-1	0%	[Gantt bar: 0% complete]															
F04-C3310	F4 Pile Cap - Curing, Remove Formwork, Backfill	12	18-Aug-17	12	31-Aug-17	17-Aug-17	30-Aug-17	-1	0%	[Gantt bar: 0% complete]															
Pier F5 (F2c)																									
Pile Cap																									
F05-C3110	F5 Pile Cap - Excavate, Break Pile Head	15	15-May-17 A	9	01-Jun-17	04-Jul-16	13-Jul-16	-261	0%	[Gantt bar: 0% complete]															
F05-C3210	F5 Pile Cap - Blinding, Formwork, Rebar, Concrete	19	02-Jun-17	19	23-Jun-17	14-Jul-16	04-Aug-16	-261	0%	[Gantt bar: 0% complete]															
F05-C3310	F5 Pile Cap - Curing, Remove Formwork, Backfill	12	24-Jun-17	12	08-Jul-17	05-Aug-16	18-Aug-16	-261	0%	[Gantt bar: 0% complete]															
Pier																									
F05-C4110	F5 Pier - Scaffold, Rebar, Formwork, Concrete (1st Lift)	13	10-Jul-17	13	24-Jul-17	19-Aug-16	02-Sep-16	-261	0%	[Gantt bar: 0% complete]															
F05-C4210	F5 Pier - Scaffold, Rebar, Formwork, Concrete (2nd Lift)	18	25-Jul-17	18	14-Aug-17	03-Sep-16	24-Sep-16	-261	0%	[Gantt bar: 0% complete]															
F05-C4310	F5 Pier - Scaffold, Rebar, Formwork, Concrete (3rd Lift)	18	15-Aug-17	18	04-Sep-17	26-Sep-16	18-Oct-16	-261	0%	[Gantt bar: 0% complete]															
Pier F6 (F2d)																									
Pile Cap																									
F06-C3210	F6 Pile Cap - Blinding, Formwork, Rebar, Concrete	19	03-Apr-17 A	0	05-May-17 A				100%	[Gantt bar: 100% complete]															
F06-C3310	F6 Pile Cap - Curing, Remove Formwork, Backfill	12	06-May-17 A	4	25-May-17	27-Apr-17	02-May-17	-19	80%	[Gantt bar: 80% complete]															
Pier																									
F06-C4110	F6 Pier - Scaffold, Rebar, Formwork, Concrete (1st Lift)	13	26-May-17	13	10-Jun-17	04-May-17	18-May-17	-19	0%	[Gantt bar: 0% complete]															
F06-C4210	F6 Pier - Scaffold, Rebar, Formwork, Concrete (2nd Lift)	18	12-Jun-17	18	03-Jul-17	19-May-17	09-Jun-17	-19	0%	[Gantt bar: 0% complete]															
F06-C4310	F6 Pier - Curing, Remove Formwork	5	04-Jul-17	5	08-Jul-17	10-Jun-17	15-Jun-17	-19	0%	[Gantt bar: 0% complete]															
Pier F7 (F2e)																									
Pier																									
F07-C4210	F7 Pier - Scaffold, Rebar, Formwork, Concrete (2nd Lift)	18	18-May-17 A	15	08-Jun-17	23-Oct-17	09-Nov-17	128	15%	[Gantt bar: 15% complete]															
F07-C4310	F7 Pier - Curing, Remove Formwork	5	09-Jun-17	5	14-Jun-17	10-Nov-17	15-Nov-17	128	0%	[Gantt bar: 0% complete]															
Pier F8 (F2f)																									
Foundation - Bored Piles																									
F08-C2120	F8 Fr Pile - Sleeve, Casing, Excavate, Rebar, Concrete (1st) P2	18	29-Apr-17 A	0	20-May-17 A				100%	[Gantt bar: 100% complete]															
F08-C2130	F8 Fr Pile - Sleeve, Casing, Excavate, Rebar, Concrete (2nd) P1	18	02-Jun-17*	18	22-Jun-17	31-May-17	20-Jun-17	-2	0%	[Gantt bar: 0% complete]															
F08-C2140	F8 Fr Pile - Sleeve, Casing, Excavate, Rebar, Concrete (3rd) P3	18	30-Jun-17*	18	21-Jul-17	21-Jun-17	12-Jul-17	-8	0%	[Gantt bar: 0% complete]															
F08-C2150	F8 Fr Pile - Sleeve, Casing, Excavate, Rebar, Concrete (3rd) P4	18	26-Jul-17*	18	15-Aug-17	13-Jul-17	02-Aug-17	-11	0%	[Gantt bar: 0% complete]															
F08-C2210	F8 Fr Pile - Curing & Sonic Test	18	16-Aug-17	18	05-Sep-17	03-Aug-17	23-Aug-17	-11	0%	[Gantt bar: 0% complete]															
Viaduct F - Bridge F3																									
Pier F9 (F3d)																									
Foundation - Bored Piles																									
F09-C2150	F9 Fr Pile - Sleeve, Casing, Excavate, Rebar, Concrete (4th) P1	17	05-Apr-17 A	0	29-Apr-17 A				100%	[Gantt bar: 100% complete]															
F09-C2210	F9 Fr Pile - Curing & Sonic Test	18	18-Apr-17 A	8	31-May-17	05-May-17	13-May-17	-14	0%	[Gantt bar: 0% complete]															
F09-C2220	F9 Fr Pile - Full Depth Core & Test	12	01-Jun-17	12	14-Jun-17	15-May-17	27-May-17	-14	0%	[Gantt bar: 0% complete]															
Pile Cap																									
F09-C3110	F9 Pile Cap - Excavate, Break Pile Head	24	18-Jul-17*	24	14-Aug-17	29-May-17	26-Jun-17	-41	0%	[Gantt bar: 0% complete]															

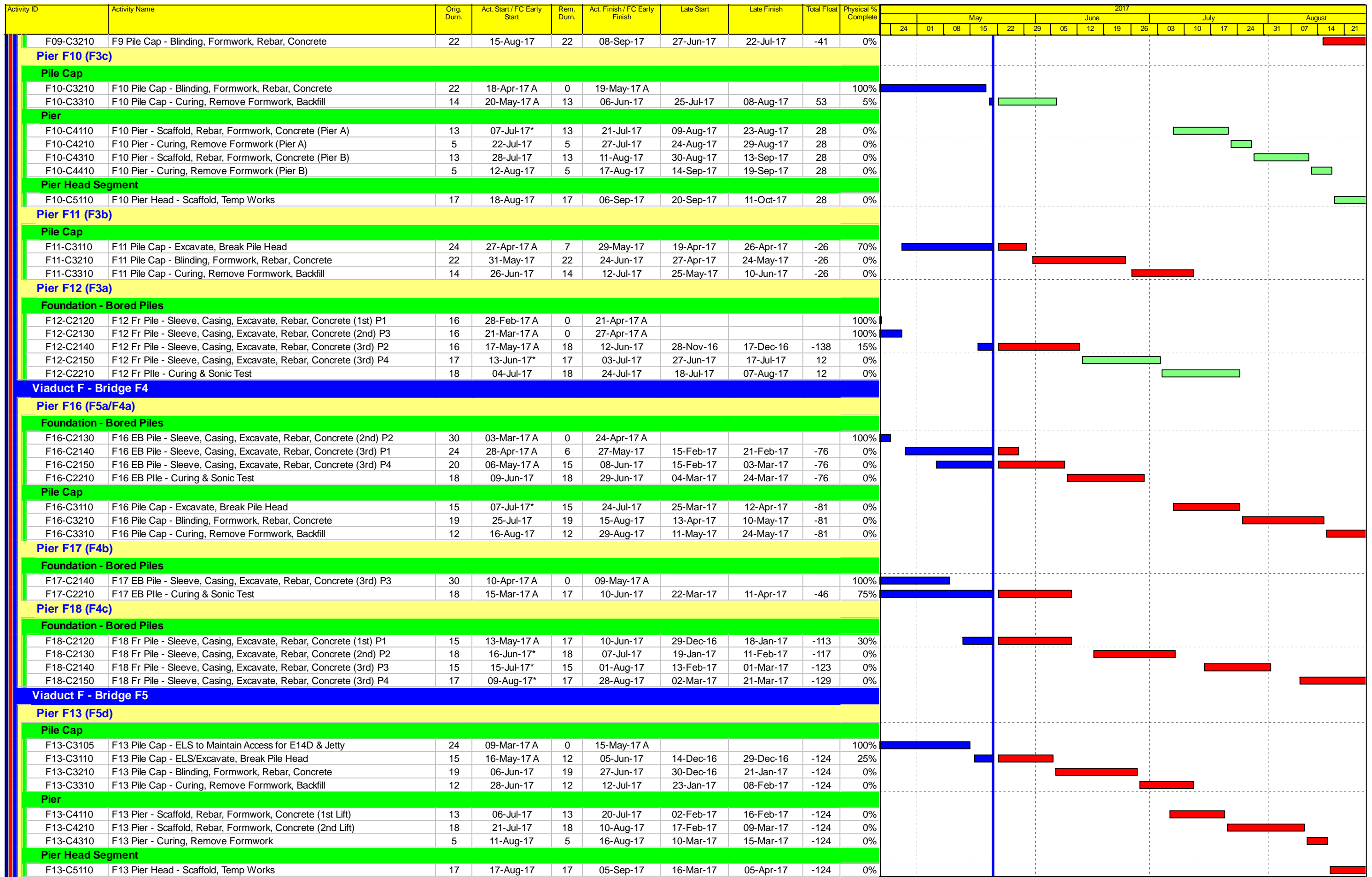
■ Actual Work
■ Planned Bar
■ Critical Bar
◆ Milestone

Project ID: TMCLK-DWPI-1-M48
 Layout: J3518-DWP-3MRP Submission - M47
 Filter: TASK filters: 3-Month Lookahead, No CC
 Milestones, No Level of Effort.

Tuen Mun - Chek Lap Kok Link - Southern Connection
3-Month Rolling Programme (Page 7 of 13 Pages)
(Progress as of 21-May-17)

Date	Revision	Checked	Approved
31-Mar-17		PKN	GL
28-Apr-17		PKN	GL
31-May-...		PKN	GL

DWG. No.:
J3518/GCL/PGM/3MRP-M48



■ Actual Work
■ Planned Bar
■ Critical Bar
◆ Milestone

Project ID: TMCLK-DWPI-1-M48
 Layout: J3518-DWP-3MRP Submission - M47
 Filter: TASK filters: 3-Month Lookahead, No CC
 Milestones, No Level of Effort.

Tuen Mun - Chek Lap Kok Link - Southern Connection
3-Month Rolling Programme (Page 8 of 13 Pages)
(Progress as of 21-May-17)

Date	Revision	Checked	Approved
31-Mar-17		PKN	GL
28-Apr-17		PKN	GL
31-May-...		PKN	GL

DWG. No.:
J3518/GCL/PGM/3MRP-M48

Activity ID	Activity Name	Orig. Durn.	Act. Start / FC Early Start	Rem. Durn.	Act. Finish / FC Early Finish	Late Start	Late Finish	Total Float	Physical % Complete	2017																			
										May					June					July					August				
										24	01	08	15	22	29	05	12	19	26	03	10	17	24	31	07	14	21		
Pier F14 (F5c)																													
Foundation - Bored Piles																													
F14-C2140	F14 Fr Pile - Sleeve, Casing, Excavate, Rebar, Concrete (3rd) P1	16	17-Apr-17 A	0	15-May-17 A				100%																				
F14-C2210	F14 Fr Pile - Curing & Sonic Test	18	30-Mar-17 A	12	05-Jun-17	11-Jul-17	24-Jul-17	41	75%																				
F14-C2220	F14 EB Pile - Full Depth Core & Test	12	29-May-17	12	12-Jun-17	18-Jul-17	31-Jul-17	41	0%																				
Pile Cap																													
F14-C3110	F14 Pile Cap - Excavate, Break Pile Head	15	13-Jun-17	15	29-Jun-17	01-Aug-17	17-Aug-17	41	0%																				
F14-C3210	F14 Pile Cap - Blinding, Formwork, Rebar, Concrete	19	30-Jun-17	19	22-Jul-17	18-Aug-17	08-Sep-17	41	0%																				
F14-C3310	F14 Pile Cap - Curing, Remove Formwork, Backfill	12	24-Jul-17	12	05-Aug-17	09-Sep-17	22-Sep-17	41	0%																				
Pier																													
F14-C4110	F14 Pier - Scaffold, Rebar, Formwork, Concrete (1st Lift)	13	11-Aug-17*	13	25-Aug-17	23-Sep-17	10-Oct-17	37	0%																				
Pier F15 (F5b)																													
Foundation - Bored Piles																													
F15-C2130	F15 Fr Pile - Sleeve, Casing, Excavate, Rebar, Concrete (2nd) P1	17	31-Mar-17 A	4	25-May-17	30-Nov-16	03-Dec-16	-136	90%																				
F15-C2140	F15 Fr Pile - Sleeve, Casing, Excavate, Rebar, Concrete (3rd) P2	16	26-May-17*	16	14-Jun-17	22-Jul-17	09-Aug-17	47	0%																				
F15-C2210	F15 Fr Pile - Curing & Sonic Test	18	15-Jun-17	18	06-Jul-17	10-Aug-17	30-Aug-17	47	0%																				
Pile Cap																													
F15-C3110	F15 Pile Cap - Excavate, Break Pile Head	15	07-Aug-17*	15	23-Aug-17	31-Aug-17	16-Sep-17	21	0%																				
Ramp F																													
Abutment & Approach Ramp F																													
Foundation - Bored Piles																													
ARF-C2120	Ramp F Fr Pile - Sleeve, Casing, Excavate, Rebar, Concrete (20 nr)	126	24-May-17*	126	21-Oct-17	30-Nov-16	09-May-17	-138	0%																				
Superstructure & Associated Works																													
Viaduct A																													
Bridge A2																													
Deck Span Segment																													
A01-C6310	A1 - End Span to A2 (6 nr) - THB	23	10-Mar-17 A	0	24-Apr-17 A				100%																				
A02-C6210	A2 - Install THB	3	24-Jun-17*	3	27-Jun-17	06-Jun-16	08-Jun-16	-311	0%																				
A02-C6310	A2 - Cantilever Span (16 nr) - THB	26	28-Jun-17	26	28-Jul-17	10-Jun-16	11-Jul-16	-311	0%																				
A03-C6210	A3 - Install THB	3	29-Jul-17	3	01-Aug-17	12-Jul-16	14-Jul-16	-311	0%																				
A03-C6310	A3 - Cantilever Span (16 nr) - THB	26	02-Aug-17	26	31-Aug-17	15-Jul-16	13-Aug-16	-311	0%																				
A04-C6310	A4 - Cantilever Span (16 nr) - THB	26	21-Mar-17 A	0	05-May-17 A				100%																				
A05-C6210	A5 - Install THB	3	19-Apr-17 A	0	21-Apr-17 A				100%																				
A05-C6310	A5 - Cantilever Span at A5 (16 nr) - THB	26	22-Apr-17 A	12	05-Jun-17	23-May-16	04-Jun-16	-295	65%																				
Bridge A1																													
Deck Span Segment																													
A06-C6320	A6 - End Span to A7 (8 nr) - THB	34	24-Feb-17 A	18	12-Jun-17	16-May-16	04-Jun-16	-301	75%																				
A08-C6310	A8 - Cantilever Span (Initial 5 nr) - Crane	6	07-May-17 A	14	07-Jun-17	29-Feb-16	15-Mar-16	-361	40%																				
A08-C6410	A8 - Install KF (MTR)	6	05-Jun-17	6	10-Jun-17	12-Mar-16	18-Mar-16	-361	0%																				
A08-C6510	A8 - Cantilever Span (Remaining 21 nr) (MTR) - KF	32	12-Jun-17	32	19-Jul-17	19-Mar-16	29-Apr-16	-361	0%																				
A09-C6310	A9 - Cantilever Span (Initial 5 nr) - Crane	10	20-Jul-17	10	31-Jul-17	30-Apr-16	12-May-16	-361	0%																				
A09-C6410	A9 - Relocate & Install KF (MTR)	24	20-Jul-17	24	16-Aug-17	30-Apr-16	30-May-16	-361	0%																				
A09-C6510	A9 - Cantilever Span (Remaining 20 nr) (MTR) - KF	32	17-Aug-17	32	22-Sep-17	31-May-16	08-Jul-16	-361	0%																				
Viaduct B																													
Bridge B3																													
Deck Finishes, E&M and Roadworks																													
VB3-C7710	Viaduct B3 - Parapet Panels	48	16-Dec-16 A	12	05-Jun-17	27-Oct-16	09-Nov-16	-165	95%																				
VB3-C7720	Viaduct B3 - Gantry & TCSS Provisions (KD5)	36	03-Jul-17*	36	12-Aug-17	27-Oct-16	07-Dec-16	-199	0%																				
VB3-C7810	Viaduct B3 - Drainage, Fire Main & E&M Services	60	17-Jul-17	60	23-Sep-17	10-Jan-17	23-Mar-17	-150	0%																				
VB3-C7820	Viaduct B3 - Railings, Light Poles, Signs & Street Furniture	30	14-Aug-17	30	16-Sep-17	10-Feb-17	16-Mar-17	-150	0%																				
Bridge B2																													
Deck Span Segment																													
B12-C6410	B12 - Falsework for End Span to B11	24	19-Apr-17 A	1	22-May-17	04-Aug-16	04-Aug-16	-234	95%																				
B12-C6510	B12 - End Span to B11 (5 nr) - Crane	8	23-May-17	8	01-Jun-17	05-Aug-16	13-Aug-16	-234	0%																				
VB2-C6510	Viaduct B2 - Final Stitch & Stressing to Span	24	02-Jun-17	24	29-Jun-17	15-Aug-16	10-Sep-16	-234	0%																				
Deck Finishes, E&M and Roadworks																													
VB2-C7710	Viaduct B2 - Parapet Panels	60	30-Jun-17	60	08-Sep-17	12-Sep-16	23-Nov-16	-234	0%																				
VB2-C7720	Viaduct B2 - Gantry & TCSS Provisions (KD5)	36	12-Aug-17	36	22-Sep-17	27-Oct-16	07-Dec-16	-234	0%																				

	Project ID: TMCLK-DWPI-1-M48 Layout: J3518-DWP-3MRP Submission - M47 Filter: TASK filters: 3-Month Lookahead, No CC Milestones, No Level of Effort.	Tuen Mun - Chek Lap Kok Link - Southern Connection 3-Month Rolling Programme (Page 9 of 13 Pages) (Progress as of 21-May-17)	<table border="1"> <tr> <th>Date</th> <th>Revision</th> <th>Checked</th> <th>Approved</th> </tr> <tr> <td>31-Mar-17</td> <td></td> <td>PKN</td> <td>GL</td> </tr> <tr> <td>28-Apr-17</td> <td></td> <td>PKN</td> <td>GL</td> </tr> <tr> <td>31-May-...</td> <td></td> <td>PKN</td> <td>GL</td> </tr> </table>	Date	Revision	Checked	Approved	31-Mar-17		PKN	GL	28-Apr-17		PKN	GL	31-May-...		PKN	GL	DWG. No.: J3518/GCL/PGM/3MRP-M48
Date	Revision	Checked	Approved																	
31-Mar-17		PKN	GL																	
28-Apr-17		PKN	GL																	
31-May-...		PKN	GL																	

Activity ID	Activity Name	Orig. Durn.	Act. Start / FC Early Start	Rem. Durn.	Act. Finish / FC Early Finish	Late Start	Late Finish	Total Float	Physical % Complete	2017															
										May					June				July				August		
										24	01	08	15	22	29	05	12	19	26	03	10	17	24	31	07
Bridge B1																									
Deck Span Segment																									
B12-C6210	B12 - Falsework for End Span to B13	24	07-Apr-17 A	0	08-May-17 A				100%	[Gantt Bar: 07-Apr-17 to 08-May-17]															
B12-C6310	B12 - End Span to B13 (7 nr) - Crane	10	09-May-17 A	0	16-May-17 A				100%	[Gantt Bar: 09-May-17 to 16-May-17]															
B15-C6320	B15 - Cantilever Span (Remaining 11 nr) - Crane & THB	24	15-May-17 A	15	08-Jun-17	07-May-16	25-May-16	-307	50%	[Gantt Bar: 07-May-16 to 08-Jun-17]															
B16-C6320	B16 - Cantilever Span (Remaining 3 nr) - Crane	6	09-Jun-17	6	15-Jun-17	26-May-16	01-Jun-16	-307	0%	[Gantt Bar: 26-May-16 to 15-Jun-17]															
B17-C6310	B17 - Cantilever Span (26 nr) - Crane	35	05-Aug-17	35	14-Sep-17	02-Jun-16	14-Jul-16	-349	0%	[Gantt Bar: 02-Jun-16 to 14-Sep-17]															
Viaduct C																									
Bridge C4																									
Deck Span Segment																									
VC4-C6510	Viaduct C4 - Final Stitch & Stressing to Span	24	08-May-17 A	12	05-Jun-17	29-Apr-16	13-May-16	-313	50%	[Gantt Bar: 29-Apr-16 to 05-Jun-17]															
Deck Finishes, E&M and Roadworks																									
VC4-C7710	Viaduct C4 - Parapet Panels	48	06-Jun-17	48	01-Aug-17	16-May-16	12-Jul-16	-313	0%	[Gantt Bar: 16-May-16 to 01-Aug-17]															
VC4-C7720	Viaduct C4 - Gantry & TCSS Provisions (KD4)	36	19-Jul-17	36	29-Aug-17	28-Jun-16	09-Aug-16	-313	0%	[Gantt Bar: 28-Jun-16 to 29-Aug-17]															
VC4-C7810	Viaduct C4 - Drainage, Fire Main & E&M Services	60	02-Aug-17	60	12-Oct-17	13-Jul-16	21-Sep-16	-313	0%	[Gantt Bar: 13-Jul-16 to 12-Oct-17]															
Bridge C3																									
Deck Span Segment																									
C10-C6320	C10 - Cantilever Span (Remaining 12 nr) - THB & Crane	22	27-Jun-17	22	22-Jul-17	16-Mar-16	14-Apr-16	-377	0%	[Gantt Bar: 16-Mar-16 to 22-Jul-17]															
C11-C6410	C11 - Falsework for End Span to C10	24	15-May-17 A	18	12-Jun-17	06-Feb-16	01-Mar-16	-377	0%	[Gantt Bar: 06-Feb-16 to 12-Jun-17]															
C11-C6510	C11 - End Span to C10 (6 nr) - Crane	12	13-Jun-17	12	26-Jun-17	02-Mar-16	15-Mar-16	-377	0%	[Gantt Bar: 02-Mar-16 to 26-Jun-17]															
VC3-C6510	Viaduct C3 - Final Stitch & Stressing to Span	24	24-Jul-17	24	19-Aug-17	15-Apr-16	13-May-16	-377	0%	[Gantt Bar: 15-Apr-16 to 19-Aug-17]															
Bridge C2																									
Deck Span Segment																									
C11-C6210	C11 - Falsework for End Span to C12	24	28-Mar-17 A	0	28-Apr-17 A				100%	[Gantt Bar: 28-Mar-17 to 28-Apr-17]															
C11-C6310	C11 - End Span to C12 (4 nr) - Crane	10	29-Apr-17 A	0	05-May-17 A				100%	[Gantt Bar: 29-Apr-17 to 05-May-17]															
VC2-C6510	Viaduct C2 - Final Stitch & Stressing to Span	24	15-May-17 A	18	12-Jun-17	22-Apr-16	13-May-16	-319	25%	[Gantt Bar: 22-Apr-16 to 12-Jun-17]															
Deck Finishes, E&M and Roadworks																									
VC2-C7710	Viaduct C2 - Parapet Panels	48	13-Jun-17	48	08-Aug-17	16-May-16	12-Jul-16	-319	0%	[Gantt Bar: 16-May-16 to 08-Aug-17]															
VC2-C7720	Viaduct C2 - Gantry & TCSS Provisions (KD4)	36	26-Jul-17	36	05-Sep-17	28-Jun-16	09-Aug-16	-319	0%	[Gantt Bar: 28-Jun-16 to 05-Sep-17]															
VC2-C7810	Viaduct C2 - Drainage, Fire Main & E&M Services	60	09-Aug-17	60	19-Oct-17	13-Jul-16	21-Sep-16	-319	0%	[Gantt Bar: 13-Jul-16 to 19-Oct-17]															
Bridge C1																									
Deck Span Segment																									
C16-C6310	C16 - End Span to C17 (9 nr) - Crane	20	13-Apr-17 A	0	26-Apr-17 A				100%	[Gantt Bar: 13-Apr-17 to 26-Apr-17]															
VC1-C6510	Viaduct C1 - Final Stitch & Stressing to Span	24	29-Apr-17 A	7	29-May-17	06-May-16	13-May-16	-308	70%	[Gantt Bar: 06-May-16 to 29-May-17]															
Deck Finishes, E&M and Roadworks																									
VC1-C7710	Viaduct C1 - Parapet Panels	48	31-May-17	48	26-Jul-17	16-May-16	12-Jul-16	-308	0%	[Gantt Bar: 16-May-16 to 26-Jul-17]															
VC1-C7720	Viaduct C1 - Gantry & TCSS Provisions (KD4)	36	13-Jul-17	36	23-Aug-17	28-Jun-16	09-Aug-16	-308	0%	[Gantt Bar: 28-Jun-16 to 23-Aug-17]															
VC1-C7810	Viaduct C1 - Drainage, Fire Main & E&M Services	60	27-Jul-17	60	06-Oct-17	13-Jul-16	21-Sep-16	-308	0%	[Gantt Bar: 13-Jul-16 to 06-Oct-17]															
Viaduct D																									
Bridge D3																									
Deck Span Segment																									
D06-C6410	D6 - Launch LG1 from D9 to D6	25	07-Jul-17	25	04-Aug-17	29-Feb-16	31-Mar-16	-399	0%	[Gantt Bar: 29-Feb-16 to 04-Aug-17]															
D06-C6415	D6 - Launch LG1 from D6 to D5	4	05-Aug-17	4	09-Aug-17	01-Apr-16	06-Apr-16	-399	0%	[Gantt Bar: 01-Apr-16 to 09-Aug-17]															
D06-C6510	D6 - End Span to D5 (6 nr) - LG1	7	10-Aug-17	7	17-Aug-17	07-Apr-16	14-Apr-16	-399	0%	[Gantt Bar: 07-Apr-16 to 17-Aug-17]															
D06-C6610	D6 - Launch LG1 from D6 to E4A/E5A for Dismantling	18	18-Aug-17	18	07-Sep-17	07-Sep-16	06-May-16	-399	0%	[Gantt Bar: 07-Sep-16 to 07-Sep-17]															
VD3-C6510	Viaduct D3 - Final Stitch & Stressing to Span	24	18-Aug-17	24	14-Sep-17	15-Apr-16	13-May-16	-399	0%	[Gantt Bar: 15-Apr-16 to 14-Sep-17]															
Bridge D2																									
Deck Span Segment																									
D09-C6215	D9 - Launch LG1 from D8 to D9 (MTR/NLH)	9	10-Apr-17 A	0	22-Apr-17 A				100%	[Gantt Bar: 10-Apr-17 to 22-Apr-17]															
D09-C6310	D9 - Cantilever Span (Remaining 14 nr) (MTR/NLH) - LG1	28	23-Apr-17 A	15	08-Jun-17	12-Jan-16	28-Jan-16	-399	60%	[Gantt Bar: 12-Jan-16 to 08-Jun-17]															
D09-C6410	D9 - Drop in Segments D8-D9 (3 nr) (MTR) - LG1	23	09-Jun-17	23	06-Jul-17	29-Jan-16	27-Feb-16	-399	0%	[Gantt Bar: 29-Jan-16 to 06-Jul-17]															
D12-C6310	D12 - Cantilever Span (Remaining 18 nr) - Crane & THB	38	13-Mar-17 A	0	29-Apr-17 A				100%	[Gantt Bar: 13-Mar-17 to 29-Apr-17]															
D13-C6610	D13 - Falsework for End Span to D12	24	15-May-17 A	18	12-Jun-17	09-Mar-16	01-Apr-16	-353	0%	[Gantt Bar: 09-Mar-16 to 12-Jun-17]															
D13-C6710	D13 - End Span to D12 (4 nr) - Crane	10	13-Jun-17	10	23-Jun-17	02-Apr-16	14-Apr-16	-353	0%	[Gantt Bar: 02-Apr-16 to 23-Jun-17]															
VD2-C6510	Viaduct D2 - Final Stitch & Stressing to Span	24	07-Jul-17	24	03-Aug-17	15-Apr-16	13-May-16	-363	0%	[Gantt Bar: 15-Apr-16 to 03-Aug-17]															
Deck Finishes, E&M and Roadworks																									
VD2-C7710	Viaduct D2 - Parapet Panels	60	04-Aug-17	60	14-Oct-17	16-May-16	26-Jul-16	-363	0%	[Gantt Bar: 16-May-16 to 14-Oct-17]															
Bridge D1																									

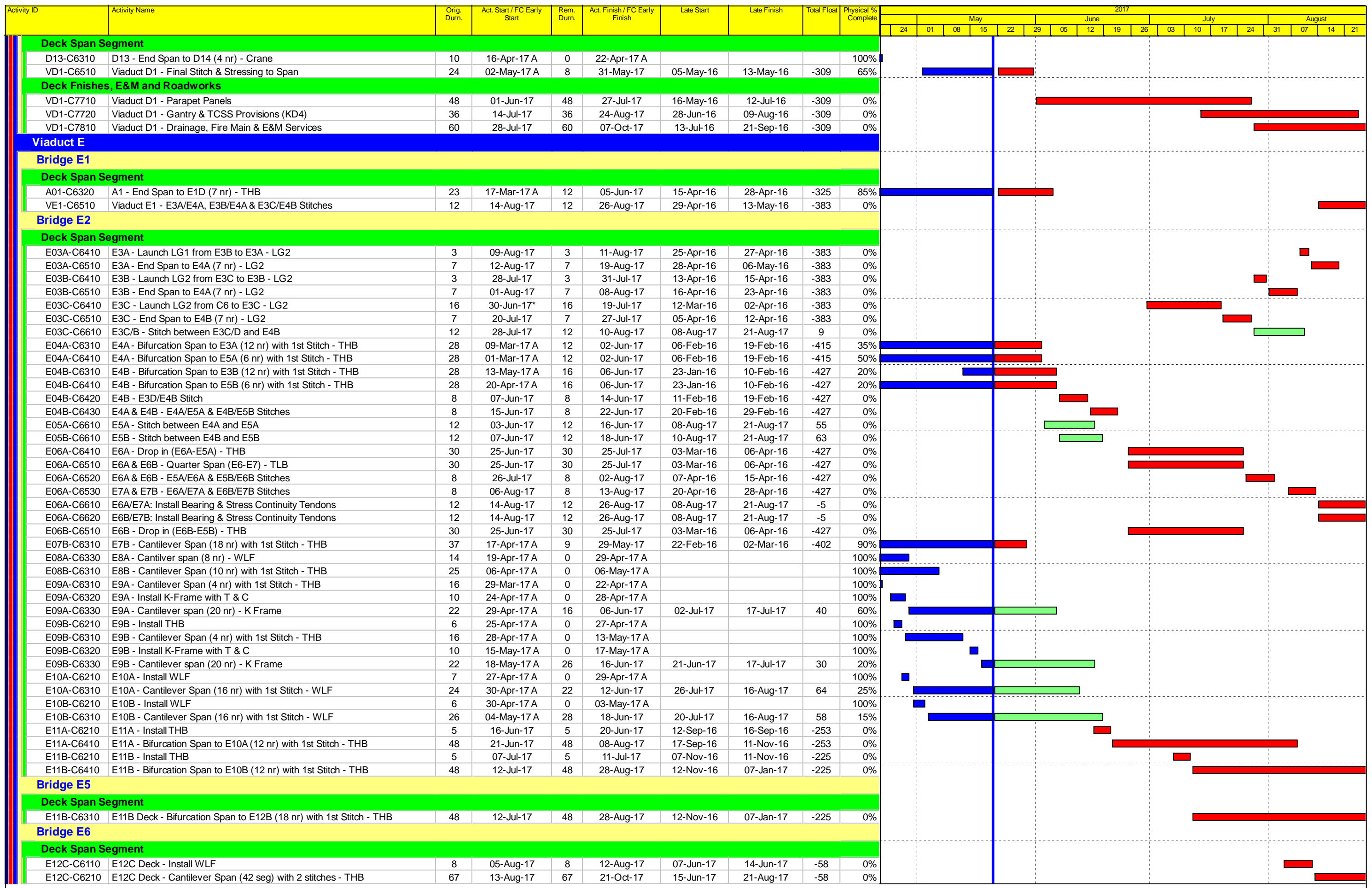
■ Actual Work
■ Planned Bar
■ Critical Bar
◆ Milestone

Project ID: TMCLK-DWPI-1-M48
 Layout: J3518-DWP-3MRP Submission - M47
 Filter: TASK filters: 3-Month Lookahead, No CC
 Milestones, No Level of Effort.

Tuen Mun - Chek Lap Kok Link - Southern Connection
3-Month Rolling Programme (Page 10 of 13 Pages)
(Progress as of 21-May-17)

Date	Revision	Checked	Approved
31-Mar-17		PKN	GL
28-Apr-17		PKN	GL
31-May-...		PKN	GL

DWG. No.:
J3518/GCL/PGM/3MRP-M48



<ul style="list-style-type: none"> █ Actual Work █ Planned Bar █ Critical Bar ◆ Milestone 	Project ID: TMCLK-DWPI-1-M48 Layout: J3518-DWP-3MRP Submission - M47 Filter: TASK filters: 3-Month Lookahead, No CC Milestones, No Level of Effort.	Tuen Mun - Chek Lap Kok Link - Southern Connection 3-Month Rolling Programme (Page 11 of 13 Pages) (Progress as of 21-May-17)	<table border="1"> <thead> <tr> <th>Date</th> <th>Revision</th> <th>Checked</th> <th>Approved</th> </tr> </thead> <tbody> <tr> <td>31-Mar-17</td> <td></td> <td>PKN</td> <td>GL</td> </tr> <tr> <td>28-Apr-17</td> <td></td> <td>PKN</td> <td>GL</td> </tr> <tr> <td>31-May-...</td> <td></td> <td>PKN</td> <td>GL</td> </tr> </tbody> </table>	Date	Revision	Checked	Approved	31-Mar-17		PKN	GL	28-Apr-17		PKN	GL	31-May-...		PKN	GL	DWG. No.: J3518/GCL/PGM/3MRP-M48
Date	Revision	Checked	Approved																	
31-Mar-17		PKN	GL																	
28-Apr-17		PKN	GL																	
31-May-...		PKN	GL																	

Activity ID	Activity Name	Orig. Durn.	Act. Start / FC Early Start	Rem. Durn.	Act. Finish / FC Early Finish	Late Start	Late Finish	Total Float	Physical % Complete	2017																				
										May					June				July				August							
										24	01	08	15	22	29	05	12	19	26	03	10	17	24	31	07	14	21			
Bridge E7																														
Deck Span Segment																														
E12B-C6110	E12B Deck - Install WLF	8	15-Aug-17*	8	22-Aug-17	13-Apr-17	20-Apr-17	-121	0%																					
Bridge E8																														
Deck Span Segment																														
E11A-C6310	E11A Deck - Bifurcation Span to E12A (18 nr) w/ 1st Stitch - THB	48	12-Jul-17*	48	28-Aug-17	17-Sep-16	11-Nov-16	-273	0%																					
At-Grade Works & Miscellaneous Works																														
At-Grade Works Along North Lantau Highway																														
Slope Works Near Viaduct D																														
Slope 10NW-C/F9																														
M201200	10NW-C/F9 - Slope works (incl. L-Shape Ret. Walls)	110	09-Jun-17	110	18-Oct-17	19-Sep-16	02-Feb-17	-211	0%																					
Slope 10NW-C/F10																														
M201160	10NW-C/F10 - Slope works (incl. L-Shape Ret. Walls)	110	22-May-17	110	28-Sep-17	02-Jul-16	10-Nov-16	-262	0%																					
Slope 10NW-C/R4																														
M201170	10NW-C/R4 - Slope works	80	22-May-17	80	24-Aug-17	06-Aug-16	10-Nov-16	-232	0%																					
Slope 10NW-C/F50																														
M201150	10NW-C/F50 - Slope works	165	11-Jan-17 A	62	03-Aug-17	27-Aug-16	10-Nov-16	-214	5%																					
Road Works Along NLH Westbound																														
General																														
RW10020	NLH W/B (Viaduct C) - Road Drainage Works for tie-in	104	18-May-17 A	101	18-Sep-17	03-Dec-16	07-Apr-17	-133	1%																					
Road Works Along NLH Eastbound																														
General																														
RW20080-1	Ch650 - 800 Portion 4 (viaduct D area) : Roadwork	81	11-Jan-17 A	12	05-Jun-17	24-Mar-17	07-Apr-17	-44	85%																					
RW20080-2	Ch475 - 650 Portion 5 (viaduct D area) : Roadwork	81	11-Jan-17 A	12	05-Jun-17	24-Mar-17	07-Apr-17	-44	85%																					
RW20080-3	Ch275 - 475 Portion 6 (viaduct D area) : Roadwork	162	11-Jan-17 A	59	31-Jul-17	25-Jan-17	07-Apr-17	-91	70%																					
RW20080-4	Ch157 - 275 Portion 7 (Viaduct D area) : Roadwork	98	11-Jan-17 A	24	19-Jun-17	10-Mar-17	07-Apr-17	-56	75%																					
RW20084	NLH E/B Viaduct A - Ch200-388 Roadwork (SL & HS) & Reinstate NLH	127	17-Dec-16 A	24	19-Jun-17	10-Mar-17	07-Apr-17	-56	75%																					
At-Grade Works Along Cheung Tung Road																														
Slope Works Near Viaduct C																														
Slope 10NW-C/C26																														
SWVC1995	TTA for closure of NLH HS	2	22-Jun-17	2	23-Jun-17	16-Aug-16	17-Aug-16	-250	0%																					
SWVC2000	10NW-C/C26 - Slope works	166	24-Jun-17	166	11-Jan-18	18-Aug-16	09-Mar-17	-250	0%																					
Slope PF1 & PF2																														
SWVC7000	PF1 & PF2 slope works	18	01-Jun-17	18	21-Jun-17	26-Jul-16	15-Aug-16	-250	0%																					
Slope 10NW-C/F13																														
SWVC4000	10NW-C/F13 - Slope works	100	27-Jul-17*	100	23-Nov-17	14-Jul-16	10-Nov-16	-307	0%																					
Slope 10NW-C/F14																														
SWVC5000	10NW-C/F14 - Slope works	100	27-Jul-17*	100	23-Nov-17	07-Jun-16	05-Oct-16	-337	0%																					
Slope 10NW-C/F15																														
SWVC6000	10NW-C/F15 - Slope works	108	27-Jul-17*	108	02-Dec-17	28-May-16	05-Oct-16	-345	0%																					
Re-alignment of CTR Along Viaduct B																														
General																														
RP00064	Ch620-750: Telecom, 11KV & 132KV Ducting	20	20-Aug-15 A	8	31-May-17	05-Sep-16	13-Sep-16	-207	90%																					
RP00074	Ch100-300: Backfill & Reinstae CTR	17	03-Apr-17 A	0	25-Apr-17 A				100%																					
RP00074-1	Ch100-300: CTR Stage 3 Diversion	0		0	26-Apr-17 A				100%																					
RP00074-2	Ch100-300: Site Clearance of CTR Stage 2 Diversion	6	27-Apr-17 A	0	05-May-17 A				100%																					
RP00074-3	Ch100-300: Road Drainage	38	06-May-17 A	32	28-Jun-17	22-Aug-16	28-Sep-16	-219	15%																					
RP00075	Ch100-300: Duct Laying for 11KV	18	29-Jun-17	18	20-Jul-17	29-Sep-16	21-Oct-16	-219	0%																					
RP00076	Ch100-300: Lay Telecom Cable	10	29-Jun-17	10	11-Jul-17	29-Sep-16	12-Oct-16	-219	0%																					
RP00077	Ch100-300: Street Lighting & Draw Pit	13	29-Jun-17	13	14-Jul-17	29-Sep-16	15-Oct-16	-219	0%																					
RP00078	Ch100-300: Relocation of Vent Pipe	18	29-Jun-17	18	20-Jul-17	29-Sep-16	21-Oct-16	-219	0%																					
RP00083	Ch100-300: Drainage & Roadwork for New CTR	52	21-Jul-17	52	19-Sep-17	22-Oct-16	21-Dec-16	-219	0%																					
Re-alignment of CTR Along Viaduct C																														
East Portion																														
RW60040	CTR East (stage 1) TTA 090-4 : Roadwork	90	03-Jan-17 A	0	25-Apr-17 A				100%																					
RW60050	CTR East (stage 2) TTA 090-5 : Roadwork	77	26-Apr-17 A	57	28-Jul-17	01-Sep-16	09-Nov-16	-210	10%																					
RW60060	CTR East (stage 3) TTA 090-6 : Roadwork	66	29-Jul-17	66	16-Oct-17	10-Nov-16	01-Feb-17	-210	0%																					

■ Actual Work
■ Planned Bar
■ Critical Bar
◆ Milestone

Project ID: TMCLK-DWPI-1-M48
 Layout: J3518-DWP-3MRP Submission - M47
 Filter: TASK filters: 3-Month Lookahead, No CC
 Milestones, No Level of Effort.

Tuen Mun - Chek Lap Kok Link - Southern Connection
3-Month Rolling Programme (Page 12 of 13 Pages)
(Progress as of 21-May-17)

Date	Revision	Checked	Approved
31-Mar-17		PKN	GL
28-Apr-17		PKN	GL
31-May-...		PKN	GL

DWG. No.:
J3518/GCL/PGM/3MRP-M48

Activity ID	Activity Name	Orig. Durn.	Act. Start / FC Early Start	Rem. Durn.	Act. Finish / FC Early Finish	Late Start	Late Finish	Total Float	Physical % Complete	2017																			
										May					June					July					August				
										24	01	08	15	22	29	05	12	19	26	03	10	17	24	31	07	14	21		
RW60080	CTR Tie in Works	116	18-May-17 A	113	03-Oct-17	19-Nov-16	07-Apr-17	-145	1%	[Gantt chart showing a red critical bar from May 18 to Oct 03, 2017]																			
Watermain from Tung Chung to Southern Landfall																													
Watermain Works																													
General																													
WM00120	Lay DN450 Fresh Water Main at Re-aligned CTR (approx. 500m)	48	22-Apr-15 A	30	26-Jun-17	08-Nov-17	12-Dec-17	141	75%	[Gantt chart showing a blue actual work bar from Apr 22 to Jun 26, 2017]																			
WM00170	Lay DN450 Watermain Tung Chung to Re-aligned CTR (3rd 500m)	50	01-Jun-16 A	0	06-May-17 A				100%	[Gantt chart showing a blue actual work bar from Jun 01 to May 06, 2017]																			

- Actual Work
- Planned Bar
- Critical Bar
- Milestone

Project ID: TMCLK-DWPI-1-M48
 Layout: J3518-DWP-3MRP Submission - M47
 Filter: TASK filters: 3-Month Lookahead, No CC
 Milestones, No Level of Effort.

Tuen Mun - Chek Lap Kok Link - Southern Connection
3-Month Rolling Programme (Page 13 of 13 Pages)
(Progress as of 21-May-17)

Date	Revision	Checked	Approved
31-Mar-17		PKN	GL
28-Apr-17		PKN	GL
31-May-...		PKN	GL

DWG. No.:
J3518/GCL/PGM/3MRP-M48