

Figure 1. Transect Line Layout in Northwest and Northeast Lantau Survey Areas

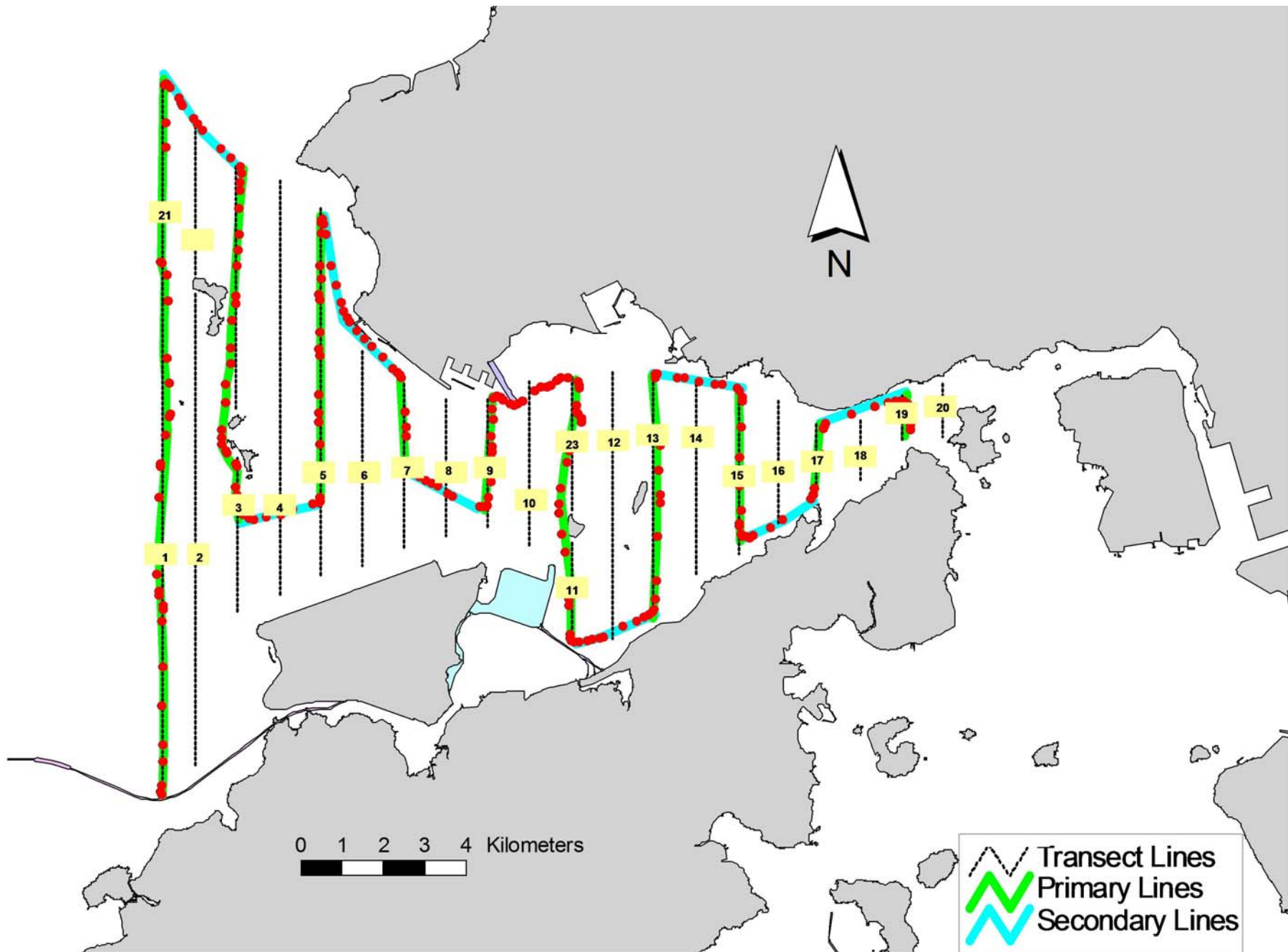


Figure 2. Survey Route on May 18th, 2017 (from HKLR03 project)

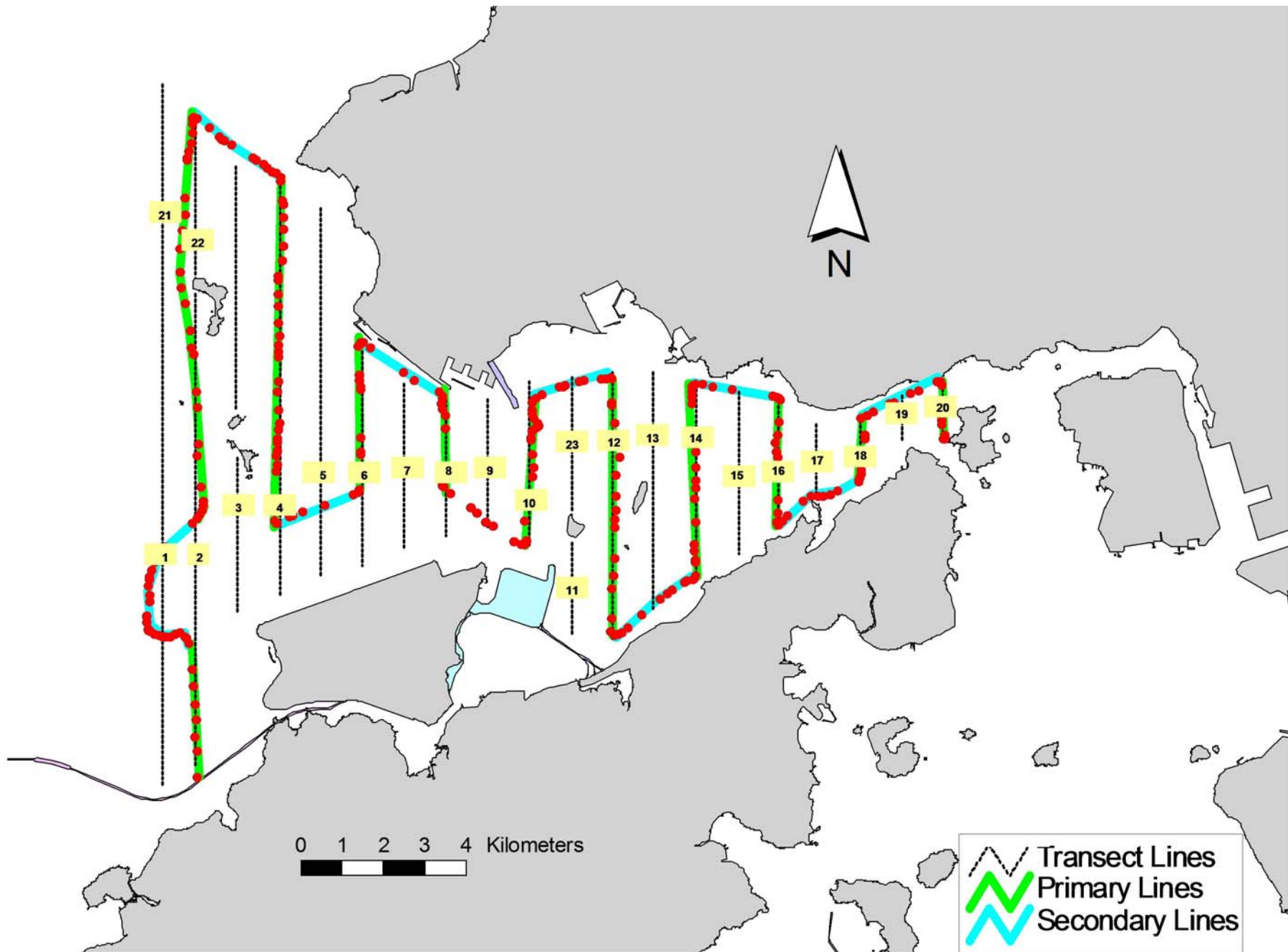


Figure 3. Survey Route on May 22nd, 2017 (from HKLR03 project)

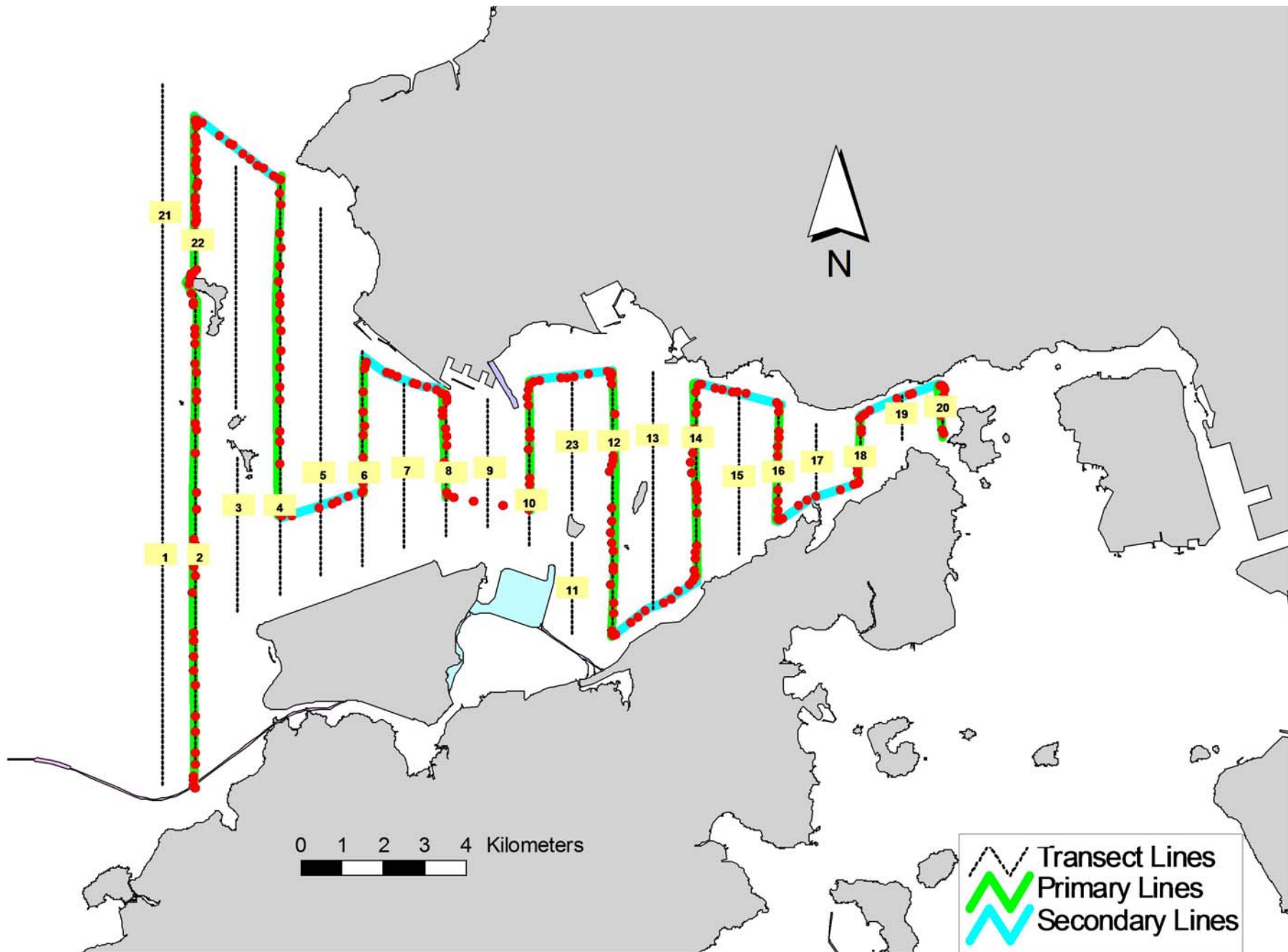


Figure 4. Survey Route on May 24th, 2017 (from HKLR03 project)

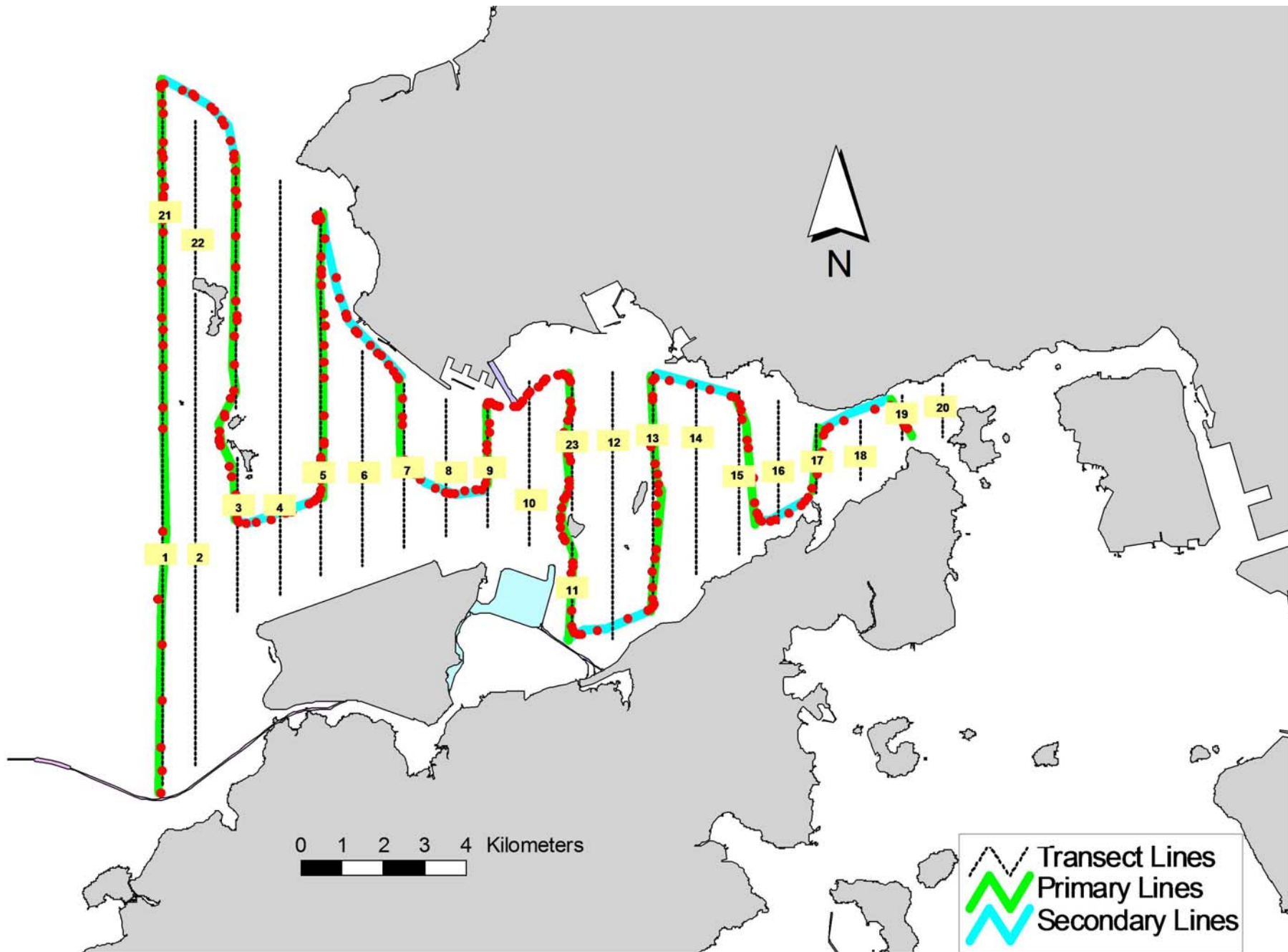


Figure 5. Survey Route on May 26th, 2017 (from HKLR03 project)

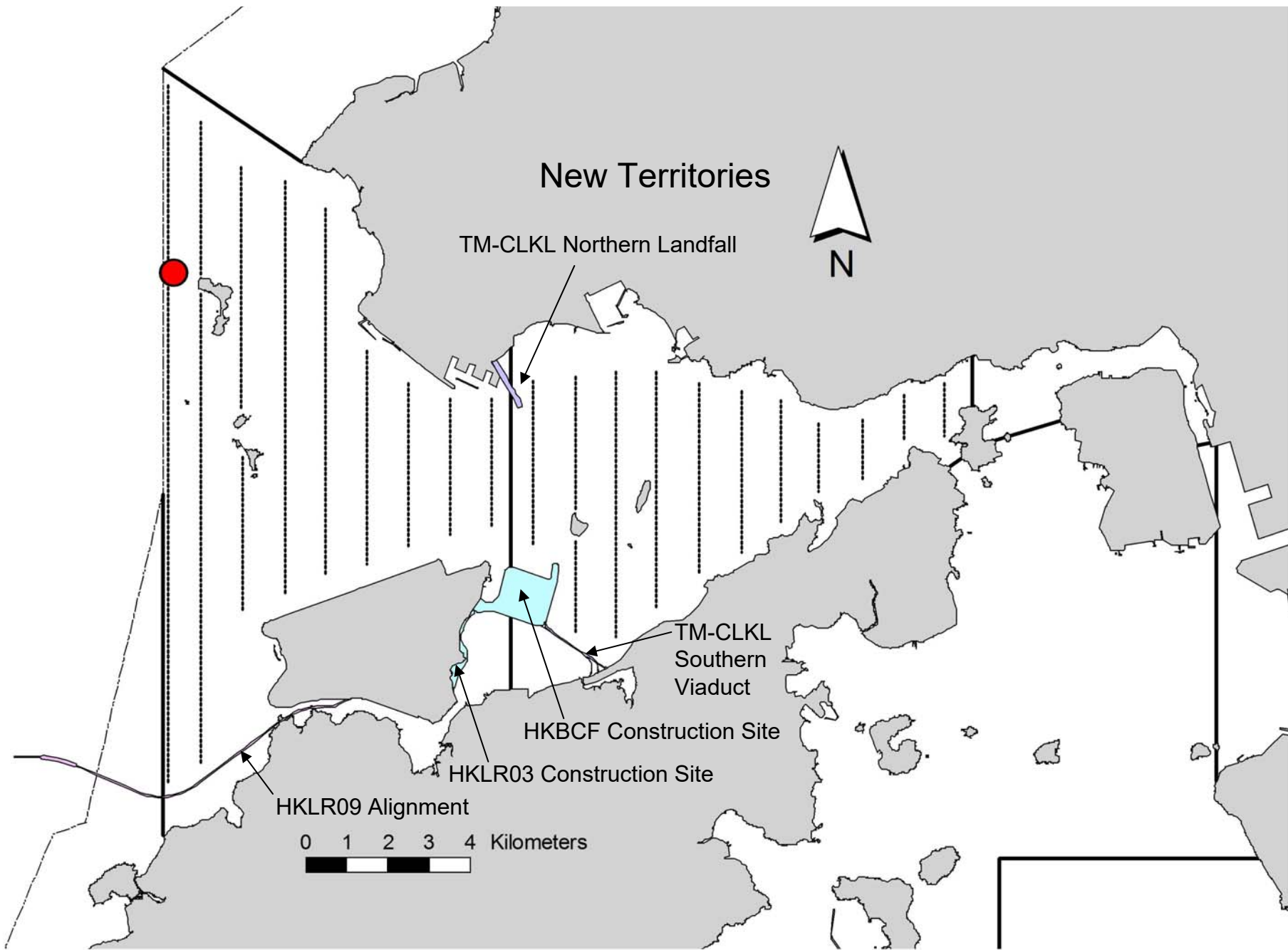


Figure 6. Distribution of Chinese White Dolphin Sightings during May 2017 HKLR03 Monitoring Surveys

Appendix I. HKLR03 Survey Effort Database (May 2017)

(Abbreviations: BEAU = Beaufort Sea State; P = Primary Line Effort; S = Secondary Line Effort)

DATE	AREA	BEAU	EFFORT	SEASON	VESSEL	TYPE	P/S
18-May-17	NW LANTAU	2	9.22	SPRING	STANDARD36826	HKLR	P
18-May-17	NW LANTAU	3	24.53	SPRING	STANDARD36826	HKLR	P
18-May-17	NW LANTAU	2	6.90	SPRING	STANDARD36826	HKLR	S
18-May-17	NW LANTAU	3	5.55	SPRING	STANDARD36826	HKLR	S
18-May-17	NE LANTAU	2	2.50	SPRING	STANDARD36826	HKLR	P
18-May-17	NE LANTAU	3	14.14	SPRING	STANDARD36826	HKLR	P
18-May-17	NE LANTAU	2	4.76	SPRING	STANDARD36826	HKLR	S
18-May-17	NE LANTAU	3	4.10	SPRING	STANDARD36826	HKLR	S
22-May-17	NE LANTAU	2	2.29	SPRING	STANDARD36826	HKLR	P
22-May-17	NE LANTAU	3	16.57	SPRING	STANDARD36826	HKLR	P
22-May-17	NE LANTAU	4	0.89	SPRING	STANDARD36826	HKLR	P
22-May-17	NE LANTAU	2	4.37	SPRING	STANDARD36826	HKLR	S
22-May-17	NE LANTAU	3	7.08	SPRING	STANDARD36826	HKLR	S
22-May-17	NW LANTAU	2	1.70	SPRING	STANDARD36826	HKLR	P
22-May-17	NW LANTAU	3	18.57	SPRING	STANDARD36826	HKLR	P
22-May-17	NW LANTAU	4	5.37	SPRING	STANDARD36826	HKLR	P
22-May-17	NW LANTAU	2	4.94	SPRING	STANDARD36826	HKLR	S
22-May-17	NW LANTAU	3	6.42	SPRING	STANDARD36826	HKLR	S
24-May-17	NW LANTAU	2	13.73	SPRING	STANDARD33706	HKLR	P
24-May-17	NW LANTAU	3	12.79	SPRING	STANDARD33706	HKLR	P
24-May-17	NW LANTAU	2	5.14	SPRING	STANDARD33706	HKLR	S
24-May-17	NW LANTAU	3	2.48	SPRING	STANDARD33706	HKLR	S
24-May-17	NE LANTAU	2	18.50	SPRING	STANDARD33706	HKLR	P
24-May-17	NE LANTAU	2	10.90	SPRING	STANDARD33706	HKLR	S
26-May-17	NW LANTAU	1	1.90	SPRING	STANDARD36826	HKLR	P
26-May-17	NW LANTAU	2	30.88	SPRING	STANDARD36826	HKLR	P
26-May-17	NW LANTAU	3	0.82	SPRING	STANDARD36826	HKLR	P
26-May-17	NW LANTAU	1	0.80	SPRING	STANDARD36826	HKLR	S
26-May-17	NW LANTAU	2	12.00	SPRING	STANDARD36826	HKLR	S
26-May-17	NE LANTAU	1	5.55	SPRING	STANDARD36826	HKLR	P
26-May-17	NE LANTAU	2	7.88	SPRING	STANDARD36826	HKLR	P
26-May-17	NE LANTAU	3	1.60	SPRING	STANDARD36826	HKLR	P
26-May-17	NE LANTAU	1	3.47	SPRING	STANDARD36826	HKLR	S
26-May-17	NE LANTAU	2	5.00	SPRING	STANDARD36826	HKLR	S

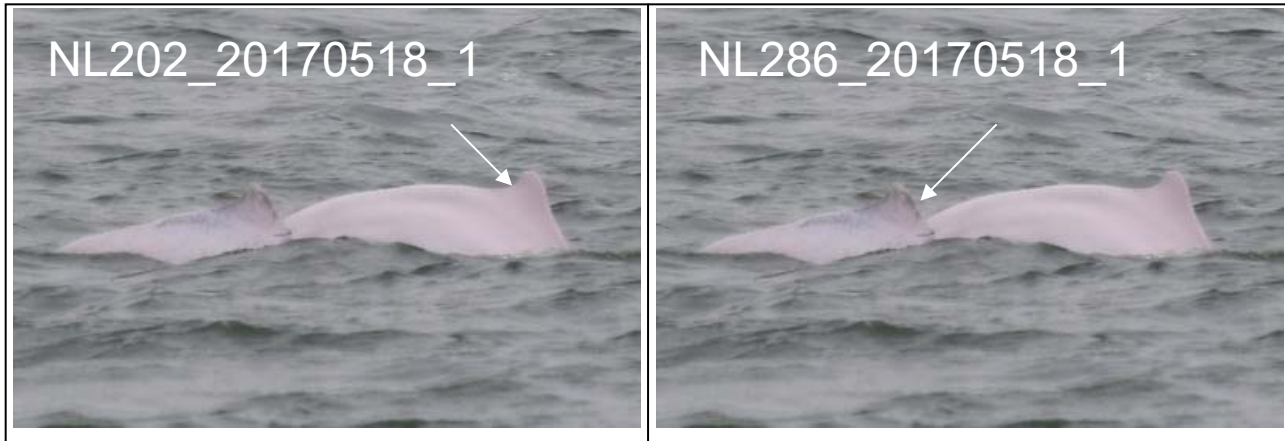
Appendix II. HKLR03 Chinese White Dolphin Sighting Database (May 2017)

(Abbreviations: STG# = Sighting Number; HRD SZ = Dolphin Herd Size; BEAU = Beaufort Sea State; PSD = Perpendicular Distance; BOAT ASSOC. = Fishing Boat Association; P/S: Sighting Made on Primary/Secondary Line)

DATE	STG #	TIME	HRD SZ	AREA	BEAU	PSD	EFFORT	TYPE	NORTHING	EASTING	SEASON	BOAT ASSOC.	P/S
18-May-17	1	1057	2	NW LANTAU	3	265	ON	HKLR	827119	804799	SPRING	NONE	P

Appendix III. Individual dolphins identified during HKLR03 monitoring surveys in May 2017

ID#	DATE	STG#	AREA
NL202	18/05/17	1	NW LANTAU
NL286	18/05/17	1	NW LANTAU



Appendix IV. Photographs of Identified Individual Dolphins in May 2017 (HKLR03)