

Activity ID	Activity Name	Orig. Durn.	Act. Start / FC Early Start	Rem. Durn.	Act. Finish / FC Early Finish	Late Start	Late Finish	Total Float	Physical % Complete	2017																			
										June					July					August					September				
										22	29	05	12	19	26	03	10	17	24	31	07	14	21	28	04	11	18	25	
<b>Contract Milestones</b>																													
<b>Key Dates for Completion</b>																													
<b>Stage of the Works</b>																													
<b>Completion Date</b>																													
<b>General</b>																													
KD03	KD3 - Stage 3: TCSS Along NLH Near Viaduct C, D (EoT 8-Apr-16)	0		0	21-Jun-17*		08-Apr-16	-438	0%																				
<b>Portion Handover Dates</b>																													
<b>Possession of the Works Area</b>																													
<b>Access Dates</b>																													
<b>General</b>																													
<b>Design</b>																													
<b>Detailed Design</b>																													
<b>General Submissions</b>																													
<b>Reports &amp; Manuals</b>																													
<b>General</b>																													
ARDD0040-2	IC/SO Approval of Operation and Maintenance Manual - AP08.00	75	20-Oct-15 A	0	02-Jun-17 A				100%																				
ARDD0042-2	IC/SO Approval of O&M Facility Provisions DDA - BP11.01	75	14-Jan-15 A	0	02-Jun-17 A				100%																				
<b>Slope Works Near Viaduct A</b>																													
<b>Feature 9SE-B/FR8, B/R1, B/R2</b>																													
<b>Slope Works Design</b>																													
ARDD0596	Preparation of remaining portion of Slope FR8 Combined AIP/DDA - CP11.	35	01-Apr-17 A	0	12-Jun-17 A				100%																				
ARDD0596-1	IC/SO Approval of Slope Combined AIP/DDA - CP11.01	60	13-Jun-17 A	53	22-Aug-17	16-May-16	18-Jul-16	-326	10%																				
<b>Slope Works Near Viaduct C</b>																													
<b>Feature 10NW-C/C22, C/C26, C/C27, C/F13, C/F14, C/F15</b>																													
<b>Slope Works Design</b>																													
ARDD0589-1	Preparation of Slope Combined AIP/DDA - CP13.01	60	21-Jan-17 A	0	31-May-17 A				100%																				
ARDD0589-2	IC/SO Approval of Combined AIP/DDA - CP13.01	28	01-Jun-17 A	9	30-Jun-17	08-Aug-16	17-Aug-16	-256	70%																				
ARDD0590-1	New fill slopes PF1 & PF2 IC/SO Approval of combined AIP/DDA - CP13.0	28	06-Apr-17 A	0	31-May-17 A				100%																				
<b>Watermain, Drainage &amp; Utility Diversions</b>																													
<b>General</b>																													
<b>Design</b>																													
ARDD0629	IC/SO Approval of Waterworks, Drainage & Utility DDA - BP20.01	75	22-Jul-14 A	0	08-Jun-17 A				100%																				
ARDD0629-1	IC/SO Approval of Waterworks, Drainage & Utility DDA - BP20.01	0		0	08-Jun-17 A				100%																				
ARDD0629-2	Gov't Approval of Submissions for Waterworks, Drainage & Utility Diversior	75	02-Jan-14 A	0	08-Jun-17 A				100%																				
<b>Viaduct Approach Ramp Retaining Walls</b>																													
<b>Abutment &amp; Approach Ramp B</b>																													
<b>Design</b>																													
ARDD0664	Approach B - IC/SO Approval of Approach Ramp B DDA -DP21.01	75	14-Oct-14 A	0	27-May-17 A				100%																				
ARDD0664-1	Approach B - IC/SO Approval of Approach Ramp B DDA -DP21.01	0		0	27-May-17 A				100%																				
<b>Abutment &amp; Approach Ramp F</b>																													
<b>Design</b>																													
ARDD0676	Approach F - IC/SO Approval of Approach Ramp F DDA -DP24.01	75	23-Dec-14 A	0	19-Jun-17 A				100%																				
ARDD0676-1	Approach F - IC/SO Approval of Approach Ramp F DDA -DP24.01	0		0	19-Jun-17 A				100%																				
<b>Segment Target Geometry &amp; Erection Engineering</b>																													
<b>Viaduct E5 &amp; E6</b>																													
<b>Design</b>																													
ARDD0734	Viaduct E5 & E6 - Segment Geometry Schedules	10	05-May-14 A	0	02-Jun-17 A				100%																				
TGP0570	Viaduct E5 & E6 - Issue of Optimised Casting Data and Segment Catalogue	40	30-Apr-15 A	0	02-Jun-17 A				100%																				
TGP0590	Viaduct E5 & E6 - Issue Erection Manual	10	03-Jun-17 A	0	14-Jun-17 A				100%																				
<b>Viaduct E7 &amp; E8</b>																													
<b>Design</b>																													
ARDD0739	Viaduct E7 & E8 - Segment Geometry Schedules	10	05-May-14 A	0	02-Jun-17 A				100%																				
TGP0760	Viaduct E7 & E8 - Issue of Optimised Casting Data and Segment Catalogue	40	31-Jul-15 A	0	02-Jun-17 A				100%																				
TGP0790	Viaduct E7 & E8 - Issue Erection Manual	10	03-Jun-17 A	0	14-Jun-17 A				100%																				

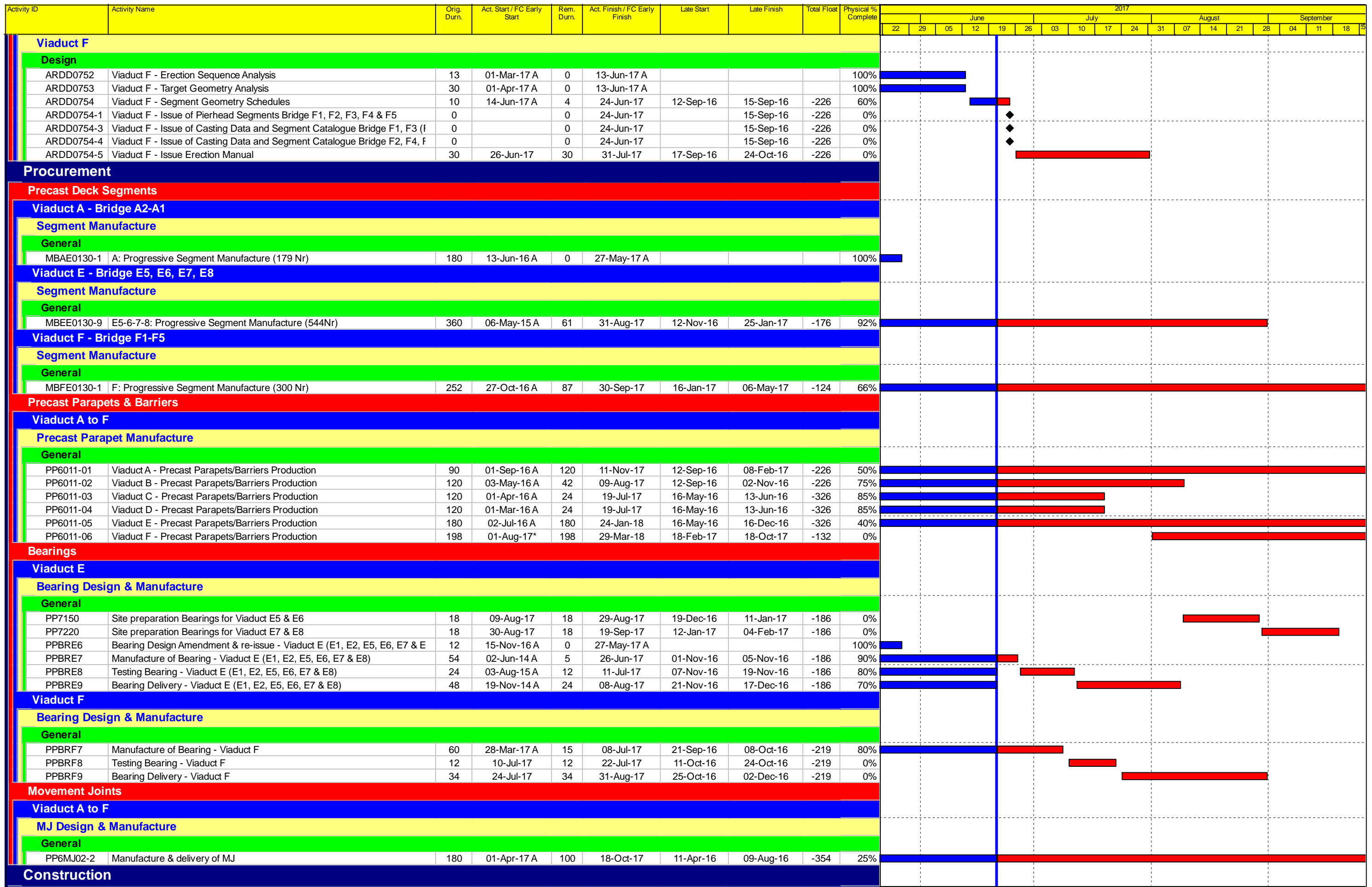
■ Actual Work  
■ Planned Bar  
■ Critical Bar  
◆ Milestone

Project ID: TMCLK-DWPI-1-M49  
 Layout: J3518-DWP-3MRP Submission - M49  
 Filter: TASK filters: 3-Month Lookahead, No CC  
 Milestones, No Level of Effort.

**Tuen Mun - Chek Lap Kok Link - Southern Connection**  
**3-Month Rolling Programme (Page 1 of 12 Pages)**  
**(Progress as of 21-Jun-17)**

Date	Revision	Checked	Approved
28-Apr-17		PKN	GL
31-May-...		PKN	GL
04-Jul-17		PKN	GL

**DWG. No.:**  
**J3518/GCL/PGM/3MRP-M49**



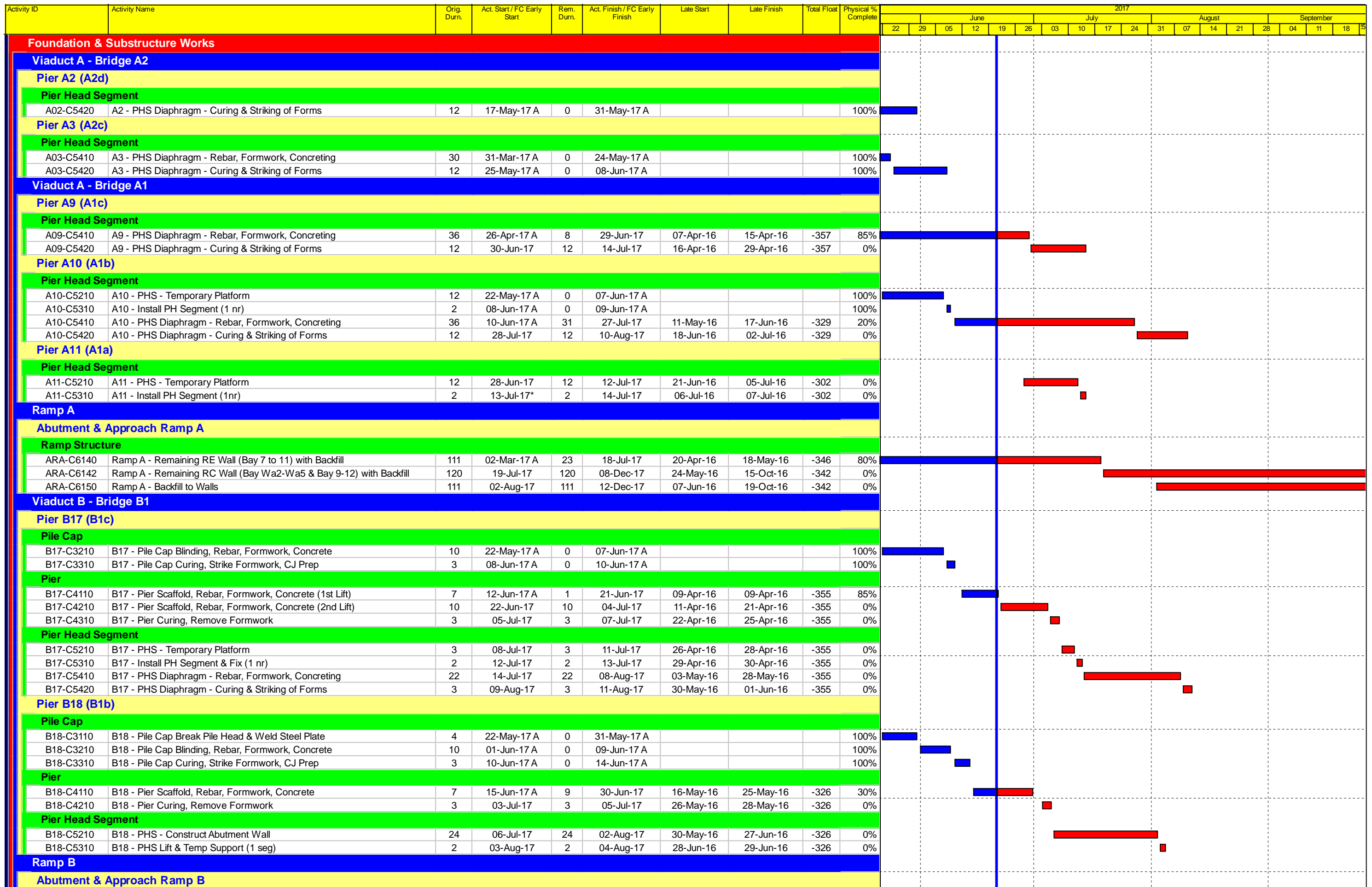
■ Actual Work  
■ Planned Bar  
■ Critical Bar  
◆ Milestone

Project ID: TMCLK-DWPI-1-M49  
 Layout: J3518-DWP-3MRP Submission - M49  
 Filter: TASK filters: 3-Month Lookahead, No CC  
 Milestones, No Level of Effort.

**Tuen Mun - Chek Lap Kok Link - Southern Connection**  
**3-Month Rolling Programme (Page 2 of 12 Pages)**  
**(Progress as of 21-Jun-17)**

Date	Revision	Checked	Approved
28-Apr-17		PKN	GL
31-May-...		PKN	GL
04-Jul-17		PKN	GL

**DWG. No.:**  
**J3518/GCL/PGM/3MRP-M49**



Actual Work  
 Planned Bar  
 Critical Bar  
 Milestone

Project ID: TMCLK-DWPI-1-M49  
 Layout: J3518-DWP-3MRP Submission - M49  
 Filter: TASK filters: 3-Month Lookahead, No CC  
 Milestones, No Level of Effort.

**Tuen Mun - Chek Lap Kok Link - Southern Connection**  
**3-Month Rolling Programme (Page 3 of 12 Pages)**  
**(Progress as of 21-Jun-17)**

Date	Revision	Checked	Approved
28-Apr-17		PKN	GL
31-May-...		PKN	GL
04-Jul-17		PKN	GL

**DWG. No.:**  
**J3518/GCL/PGM/3MRP-M49**





Activity ID	Activity Name	Orig. Durn.	Act. Start / FC Early Start	Rem. Durn.	Act. Finish / FC Early Finish	Late Start	Late Finish	Total Float	Physical % Complete	2017															
										June				July				August				September			
										22	29	05	12	19	26	03	10	17	24	31	07	14	21	28	04
E14D-C3310	E14D Pile Cap - Curing, Remove Formwork, Backfill	12	10-Jun-17 A	0	20-Jun-17 A				100%																
<b>Pier</b>																									
E14D-C4110	E14D Pier - Scaffold, Rebar, Formwork, Concrete (1st Lift)	13	21-Jun-17	13	06-Jul-17	27-Jul-16	10-Aug-16	-266	0%																
E14D-C4210	E14D Pier - Scaffold, Rebar, Formwork, Concrete (2nd Lift)	16	07-Jul-17	16	25-Jul-17	11-Aug-16	29-Aug-16	-266	0%																
E14D-C4310	E14D Pier - Scaffold, Rebar, Formwork, Concrete (3rd Lift)	16	26-Jul-17	16	12-Aug-17	30-Aug-16	17-Sep-16	-266	0%																
E14D-C4410	E14D Pier - Scaffold, Rebar, Formwork, Concrete (4th Lift)	16	14-Aug-17	16	31-Aug-17	19-Sep-16	07-Oct-16	-266	0%																
E14D-C4510	E14D Pier - Curing, Remove Formwork	5	01-Sep-17	5	06-Sep-17	08-Oct-16	14-Oct-16	-266	0%																
<b>Pier Head Segment</b>																									
E14D-C5110	E14D Pier Head - Erect Steel Temp Tower on E14D	26	07-Sep-17	26	09-Oct-17	15-Oct-16	14-Nov-16	-266	0%																
<b>Temporary Tower Between Pier E14D &amp; E13D</b>																									
E14D-C5710	E14D-E13D Temp Tower - Remove Rock Armour	18	15-May-17 A	0	14-Jun-17 A				100%																
E14D-C5720	E14D-E13D Temp Tower - Install Pipe Piles (8 nr)	45	15-Jun-17 A	39	05-Aug-17	15-Aug-16	29-Sep-16	-250	10%																
E14D-C5730	E14D-E13D Temp Tower - Reinstall Rock Armour	18	07-Aug-17	18	26-Aug-17	30-Sep-16	22-Oct-16	-250	0%																
E14D-C5740	E14D-E13D Temp Tower - Erect Steel Tower	28	28-Aug-17	28	28-Sep-17	24-Oct-16	24-Nov-16	-250	0%																
<b>Viaduct F - Bridge F1</b>																									
<b>Pier F1 (F1b)</b>																									
<b>Pier</b>																									
F01-C4210	F1 Pier - Scaffold, Rebar, Formwork, Concrete (2nd Lift)	18	22-May-17 A	0	08-Jun-17 A				100%																
F01-C4310	F1 Pier - Scaffold, Rebar, Formwork, Concrete (3rd Lift)	18	09-Jun-17 A	8	29-Jun-17	25-Aug-16	02-Sep-16	-241	60%																
F01-C4410	F1 Pier - Scaffold, Rebar, Formwork, Concrete (4th Lift)	18	30-Jun-17	18	21-Jul-17	03-Sep-16	24-Sep-16	-241	0%																
F01-C4510	F1 Pier - Scaffold, Rebar, Formwork, Concrete (5th Lift)	18	22-Jul-17	18	11-Aug-17	26-Sep-16	18-Oct-16	-241	0%																
F01-C4610	F1 Pier - Curing, Remove Formwork	5	12-Aug-17	5	17-Aug-17	19-Oct-16	24-Oct-16	-241	0%																
<b>Pier Head Segment</b>																									
F01-C5110	F1 Pier Head - Scaffold, Temp Works	17	18-Aug-17	17	06-Sep-17	25-Oct-16	12-Nov-16	-241	0%																
F01-C5210	F1 Pier Head - Erect PH Segment (1 nr)	2	07-Sep-17	2	08-Sep-17	14-Nov-16	15-Nov-16	-241	0%																
F01-C5310	F1 Pier Head - Construct Diaphragm (2nd Cast) in PHS	41	09-Sep-17	41	30-Oct-17	16-Nov-16	05-Jan-17	-241	0%																
<b>Pier F2 (F1c)</b>																									
<b>Foundation - Bored Piles</b>																									
F02-C2210	F2 Fr Pile - Curing & Sonic Test	18	26-Apr-17 A	0	31-May-17 A				100%																
F02-C2220	F2 Fr Pile - Full Depth Core & Test (N/A)	0	31-May-17 A	0	31-May-17 A				100%																
<b>Pile Cap</b>																									
F02-C3110	F2 Pile Cap - Excavate, Break Pile Head	15	17-Jun-17 A	12	05-Jul-17	18-Jul-16	30-Jul-16	-274	0%																
F02-C3210	F2 Pile Cap - Blinding, Formwork, Rebar, Concrete	19	06-Jul-17	19	27-Jul-17	01-Aug-16	22-Aug-16	-274	0%																
F02-C3310	F2 Pile Cap - Curing, Remove Formwork, Backfill	12	28-Jul-17	12	10-Aug-17	23-Aug-16	05-Sep-16	-274	0%																
<b>Pier</b>																									
F02-C4110	F2 Pier - Scaffold, Rebar, Formwork, Concrete (1st Lift)	13	04-Aug-17	13	18-Aug-17	30-Aug-16	13-Sep-16	-274	0%																
F02-C4210	F2 Pier - Scaffold, Rebar, Formwork, Concrete (2nd Lift)	18	19-Aug-17	18	08-Sep-17	14-Sep-16	06-Oct-16	-274	0%																
F02-C4310	F2 Pier - Scaffold, Rebar, Formwork, Concrete (3rd Lift)	18	09-Sep-17	18	29-Sep-17	07-Oct-16	28-Oct-16	-274	0%																
<b>Pier F3 (F1d)</b>																									
<b>Foundation - Bored Piles</b>																									
F03-C2210	F3 Fr Pile - Curing & Sonic Test	18	28-Apr-17 A	0	03-Jun-17 A				100%																
F03-C2220	F3 Fr Pile - Full Depth Core & Test (N/A)	0	03-Jun-17 A	0	03-Jun-17 A				100%																
<b>Pile Cap</b>																									
F03-C3110	F3 Pile Cap - Excavate, Break Pile Head	15	06-Jun-17 A	3	23-Jun-17	17-Oct-16	19-Oct-16	-199	85%																
F03-C3210	F3 Pile Cap - Blinding, Formwork, Rebar, Concrete	19	24-Jun-17	19	17-Jul-17	20-Oct-16	10-Nov-16	-199	0%																
F03-C3310	F3 Pile Cap - Curing, Remove Formwork, Backfill	12	18-Jul-17	12	31-Jul-17	11-Nov-16	24-Nov-16	-199	0%																
<b>Pier</b>																									
F03-C4110	F3 Pier - Scaffold, Rebar, Formwork, Concrete (1st Lift)	13	01-Aug-17	13	15-Aug-17	25-Nov-16	09-Dec-16	-199	0%																
F03-C4210	F3 Pier - Scaffold, Rebar, Formwork, Concrete (2nd Lift)	18	16-Aug-17	18	05-Sep-17	10-Dec-16	03-Jan-17	-199	0%																
F03-C4310	F3 Pier - Scaffold, Rebar, Formwork, Concrete (3rd Lift)	18	06-Sep-17	18	26-Sep-17	04-Jan-17	24-Jan-17	-199	0%																
<b>Viaduct F - Bridge F2</b>																									
<b>Pier F4 (F2b)</b>																									
<b>Foundation - Bored Piles</b>																									
F04-C2140	F4 Fr Pile - Sleeve, Casing, Excavate, Rebar, Concrete (3rd) P2	16	24-Apr-17 A	0	31-May-17 A				100%																
F04-C2210	F4 Fr Pile - Curing & Sonic Test	18	18-Apr-17 A	6	27-Jun-17	30-Jun-17	07-Jul-17	8	70%																
F04-C2220	F4 Fr Pile - Full Depth Core & Test (N/A)	0	28-Jun-17	0	28-Jun-17	07-Jul-17	07-Jul-17	8	0%																
<b>Pile Cap</b>																									
F04-C3110	F4 Pile Cap - Excavate, Break Pile Head	15	10-Jul-17*	15	26-Jul-17	08-Jul-17	25-Jul-17	-1	0%																
F04-C3210	F4 Pile Cap - Blinding, Formwork, Rebar, Concrete	19	27-Jul-17	19	17-Aug-17	26-Jul-17	16-Aug-17	-1	0%																

■ Actual Work  
■ Planned Bar  
■ Critical Bar  
◆ Milestone

Project ID: TMCLK-DWPI-1-M49  
 Layout: J3518-DWP-3MRP Submission - M49  
 Filter: TASK filters: 3-Month Lookahead, No CC  
 Milestones, No Level of Effort.

**Tuen Mun - Chek Lap Kok Link - Southern Connection**  
**3-Month Rolling Programme (Page 6 of 12 Pages)**  
**(Progress as of 21-Jun-17)**

Date	Revision	Checked	Approved
28-Apr-17		PKN	GL
31-May-...		PKN	GL
04-Jul-17		PKN	GL

**DWG. No.:**  
**J3518/GCL/PGM/3MRP-M49**

Activity ID	Activity Name	Orig. Durn.	Act. Start / FC Early Start	Rem. Durn.	Act. Finish / FC Early Finish	Late Start	Late Finish	Total Float	Physical % Complete	2017															
										June				July				August				September			
										22	29	05	12	19	26	03	10	17	24	31	07	14	21	28	04
F04-C3310	F4 Pile Cap - Curing, Remove Formwork, Backfill	12	18-Aug-17	12	31-Aug-17	17-Aug-17	30-Aug-17	-1	0%																
<b>Pier</b>																									
F04-C4110	F4 Pier - Scaffold, Rebar, Formwork, Concrete (1st Lift)	13	11-Sep-17*	13	25-Sep-17	09-Sep-17	23-Sep-17	-1	0%																
<b>Pier F5 (F2c)</b>																									
<b>Pile Cap</b>																									
F05-C3110	F5 Pile Cap - Excavate, Break Pile Head	15	15-May-17 A	0	03-Jun-17 A				100%																
F05-C3210	F5 Pile Cap - Blinding, Formwork, Rebar, Concrete	19	05-Jun-17 A	5	26-Jun-17	02-Aug-16	06-Aug-16	-261	70%																
F05-C3310	F5 Pile Cap - Curing, Remove Formwork, Backfill	12	27-Jun-17	12	11-Jul-17	08-Aug-16	20-Aug-16	-261	0%																
<b>Pier</b>																									
F05-C4110	F5 Pier - Scaffold, Rebar, Formwork, Concrete (1st Lift)	13	10-Jul-17	13	24-Jul-17	19-Aug-16	02-Sep-16	-261	0%																
F05-C4210	F5 Pier - Scaffold, Rebar, Formwork, Concrete (2nd Lift)	18	25-Jul-17	18	14-Aug-17	03-Sep-16	24-Sep-16	-261	0%																
F05-C4310	F5 Pier - Scaffold, Rebar, Formwork, Concrete (3rd Lift)	18	15-Aug-17	18	04-Sep-17	26-Sep-16	18-Oct-16	-261	0%																
F05-C4410	F5 Pier - Curing, Remove Formwork	5	05-Sep-17	5	09-Sep-17	19-Oct-16	24-Oct-16	-261	0%																
<b>Pier Head Segment</b>																									
F05-C5110	F5 Pier Head - Scaffold, Temp Works	17	11-Sep-17	17	29-Sep-17	25-Oct-16	12-Nov-16	-261	0%																
<b>Pier F6 (F2d)</b>																									
<b>Pile Cap</b>																									
F06-C3310	F6 Pile Cap - Curing, Remove Formwork, Backfill	12	06-May-17 A	0	20-Jun-17 A				100%																
<b>Pier</b>																									
F06-C4110	F6 Pier - Scaffold, Rebar, Formwork, Concrete (1st Lift)	13	21-Jun-17	13	06-Jul-17	04-May-17	18-May-17	-40	0%																
F06-C4210	F6 Pier - Scaffold, Rebar, Formwork, Concrete (2nd Lift)	18	07-Jul-17	18	27-Jul-17	19-May-17	09-Jun-17	-40	0%																
F06-C4310	F6 Pier - Curing, Remove Formwork	5	28-Jul-17	5	02-Aug-17	10-Jun-17	15-Jun-17	-40	0%																
<b>Pier F7 (F2e)</b>																									
<b>Pier</b>																									
F07-C4210	F7 Pier - Scaffold, Rebar, Formwork, Concrete (2nd Lift)	18	18-May-17 A	9	30-Jun-17	31-Oct-17	09-Nov-17	109	75%																
F07-C4310	F7 Pier - Curing, Remove Formwork	5	03-Jul-17	5	07-Jul-17	10-Nov-17	15-Nov-17	109	0%																
<b>Pier F8 (F2f)</b>																									
<b>Foundation - Bored Piles</b>																									
F08-C2130	F8 Fr Pile - Sleeve, Casing, Excavate, Rebar, Concrete (2nd) P1	18	29-May-17 A	0	16-Jun-17 A				100%																
F08-C2140	F8 Fr Pile - Sleeve, Casing, Excavate, Rebar, Concrete (3rd) P3	18	30-Jun-17*	18	21-Jul-17	21-Jun-17	12-Jul-17	-8	0%																
F08-C2150	F8 Fr Pile - Sleeve, Casing, Excavate, Rebar, Concrete (3rd) P4	18	26-Jul-17*	18	15-Aug-17	13-Jul-17	02-Aug-17	-11	0%																
F08-C2210	F8 Fr Pile - Curing & Sonic Test	18	16-Aug-17	18	05-Sep-17	03-Aug-17	23-Aug-17	-11	0%																
<b>Pile Cap</b>																									
F08-C3110	F8 Pile Cap - Excavate, Break Pile Head	15	06-Sep-17*	15	22-Sep-17	24-Aug-17	09-Sep-17	-11	0%																
<b>Viaduct F - Bridge F3</b>																									
<b>Pier F9 (F3d)</b>																									
<b>Foundation - Bored Piles</b>																									
F09-C2210	F9 Fr Pile - Curing & Sonic Test	18	18-Apr-17 A	0	01-Jun-17 A				100%																
F09-C2220	F9 Fr Pile - Full Depth Core & Test (N/A)	0	01-Jun-17 A	0	01-Jun-17 A				100%																
<b>Pile Cap</b>																									
F09-C3110	F9 Pile Cap - Excavate, Break Pile Head	24	18-Jul-17*	24	14-Aug-17	29-May-17	26-Jun-17	-41	0%																
F09-C3210	F9 Pile Cap - Blinding, Formwork, Rebar, Concrete	22	15-Aug-17	22	08-Sep-17	27-Jun-17	22-Jul-17	-41	0%																
F09-C3310	F9 Pile Cap - Curing, Remove Formwork, Backfill	14	09-Sep-17	14	25-Sep-17	24-Jul-17	08-Aug-17	-41	0%																
<b>Pier F10 (F3c)</b>																									
<b>Pile Cap</b>																									
F10-C3310	F10 Pile Cap - Curing, Remove Formwork, Backfill	14	20-May-17 A	0	15-Jun-17 A				100%																
<b>Pier</b>																									
F10-C4110	F10 Pier - Scaffold, Rebar, Formwork, Concrete (Pier A)	13	16-Jun-17 A	9	30-Jun-17	14-Aug-17	23-Aug-17	45	30%																
F10-C4210	F10 Pier - Curing, Remove Formwork (Pier A)	5	03-Jul-17	5	07-Jul-17	24-Aug-17	29-Aug-17	45	0%																
F10-C4310	F10 Pier - Scaffold, Rebar, Formwork, Concrete (Pier B)	13	08-Jul-17	13	22-Jul-17	30-Aug-17	13-Sep-17	45	0%																
F10-C4410	F10 Pier - Curing, Remove Formwork (Pier B)	5	24-Jul-17	5	28-Jul-17	14-Sep-17	19-Sep-17	45	0%																
<b>Pier Head Segment</b>																									
F10-C5110	F10 Pier Head - Scaffold, Temp Works	17	18-Aug-17*	17	06-Sep-17	20-Sep-17	11-Oct-17	28	0%																
F10-C5210	F10 Pier Head - Erect PH Segment (2 nr)	2	07-Sep-17	2	08-Sep-17	12-Oct-17	13-Oct-17	28	0%																
F10-C5310	F10 Pier Head - Construct Diaphragm (2nd Cast) in PHS	41	09-Sep-17	41	30-Oct-17	14-Oct-17	01-Dec-17	28	0%																
<b>Pier F11 (F3b)</b>																									
<b>Pile Cap</b>																									
F11-C3210	F11 Pile Cap - Blinding, Formwork, Rebar, Concrete	22	18-May-17 A	0	12-Jun-17 A				100%																

■ Actual Work  
■ Planned Bar  
■ Critical Bar  
◆ Milestone

Project ID: TMCLK-DWPI-1-M49  
 Layout: J3518-DWP-3MRP Submission - M49  
 Filter: TASK filters: 3-Month Lookahead, No CC  
 Milestones, No Level of Effort.

**Tuen Mun - Chek Lap Kok Link - Southern Connection**  
**3-Month Rolling Programme (Page 7 of 12 Pages)**  
**(Progress as of 21-Jun-17)**

Date	Revision	Checked	Approved
28-Apr-17		PKN	GL
31-May-...		PKN	GL
04-Jul-17		PKN	GL

**DWG. No.:**  
**J3518/GCL/PGM/3MRP-M49**





Activity ID	Activity Name	Orig. Durn.	Act. Start / FC Early Start	Rem. Durn.	Act. Finish / FC Early Finish	Late Start	Late Finish	Total Float	Physical % Complete	2017																			
										June					July					August					September				
										22	29	05	12	19	26	03	10	17	24	31	07	14	21	28	04	11	18	25	
<b>Pier F15 (F5b)</b>																													
<b>Foundation - Bored Piles</b>																													
F15-C2130	F15 Fr Pile - Sleeve, Casing, Excavate, Rebar, Concrete (2nd) P1	17	31-Mar-17 A	0	24-May-17 A				100%																				
F15-C2140	F15 Fr Pile - Sleeve, Casing, Excavate, Rebar, Concrete (3rd) P2	16	26-May-17 A	7	28-Jun-17	02-Aug-17	09-Aug-17	35	60%																				
F15-C2210	F15 Fr Pile - Curing & Sonic Test	18	29-Jun-17	18	20-Jul-17	10-Aug-17	30-Aug-17	35	0%																				
<b>Pile Cap</b>																													
F15-C3110	F15 Pile Cap - Excavate, Break Pile Head	15	07-Aug-17*	15	23-Aug-17	31-Aug-17	16-Sep-17	21	0%																				
F15-C3210	F15 Pile Cap - Blinding, Formwork, Rebar, Concrete	19	24-Aug-17	19	14-Sep-17	18-Sep-17	11-Oct-17	21	0%																				
F15-C3310	F15 Pile Cap - Curing, Remove Formwork, Backfill	12	15-Sep-17	12	28-Sep-17	12-Oct-17	25-Oct-17	21	0%																				
<b>Ramp F</b>																													
<b>Abutment &amp; Approach Ramp F</b>																													
<b>Foundation - Bored Piles</b>																													
ARF-C2120	Ramp F Fr Pile - Sleeve, Casing, Excavate, Rebar, Concrete (20 nr)	126	19-May-17 A	103	21-Oct-17	29-Dec-16	09-May-17	-138	10%																				
<b>Superstructure &amp; Associated Works</b>																													
<b>Viaduct A</b>																													
<b>Bridge A2</b>																													
<b>Deck Span Segment</b>																													
A02-C6210	A2 - Install (*Launch LG2 from E3C)	3	06-Jun-17 A	0	20-Jun-17 A				100%																				
A02-C6310	A2 - Cantilever Span (16 nr) - *LG2	26	21-Jun-17	26	21-Jul-17	10-Jun-16	11-Jul-16	-305	0%																				
A03-C6210	A3 - Install (*Launch LG2 from A2)	3	22-Jul-17	3	25-Jul-17	12-Jul-16	14-Jul-16	-305	0%																				
A03-C6310	A3 - Cantilever Span (16 nr) - *LG2	26	26-Jul-17	26	24-Aug-17	15-Jul-16	13-Aug-16	-305	0%																				
A05-C6310	A5 - Cantilever Span at A5 (16 nr) - THB	26	22-Apr-17 A	0	09-Jun-17 A				100%																				
VA2-C6510	Viaduct A2 - Final Stitch & Stressing to Span	24	25-Aug-17	24	21-Sep-17	15-Aug-16	10-Sep-16	-305	0%																				
<b>Bridge A1</b>																													
<b>Deck Span Segment</b>																													
A06-C6320	A6 - End Span to A7 (8 nr) - THB	34	24-Feb-17 A	10	03-Jul-17	03-Aug-16	13-Aug-16	-260	75%																				
A08-C6310	A8 - Cantilever Span (Initial 5 nr) - Crane	6	07-May-17 A	14	07-Jul-17	29-Feb-16	15-Mar-16	-386	40%																				
A08-C6410	A8 - Install KF (MTR)	6	05-Jul-17	6	11-Jul-17	12-Mar-16	18-Mar-16	-386	0%																				
A08-C6510	A8 - Cantilever Span (Remaining 21 nr) (MTR) - KF	32	12-Jul-17	32	17-Aug-17	19-Mar-16	29-Apr-16	-386	0%																				
A09-C6310	A9 - Cantilever Span (Initial 5 nr) - Crane	10	18-Aug-17	10	29-Aug-17	30-Apr-16	12-May-16	-386	0%																				
A09-C6410	A9 - Relocate & Install KF (MTR)	24	18-Aug-17	24	14-Sep-17	30-Apr-16	30-May-16	-386	0%																				
A09-C6510	A9 - Cantilever Span (Remaining 20 nr) (MTR) - KF	32	15-Sep-17	32	24-Oct-17	31-May-16	08-Jul-16	-386	0%																				
<b>Viaduct B</b>																													
<b>Bridge B3</b>																													
<b>Deck Finishes, E&amp;M and Roadworks</b>																													
VB3-C7710	Viaduct B3 - Parapet Panels	48	16-Dec-16 A	12	05-Jul-17	13-Oct-16	26-Oct-16	-202	95%																				
VB3-C7720	Viaduct B3 - Gantry & TCSS Provisions (KD5)	36	06-Jul-17*	36	16-Aug-17	27-Oct-16	07-Dec-16	-202	0%																				
VB3-C7810	Viaduct B3 - Drainage, Fire Main & E&M Services	60	20-Jul-17	60	27-Sep-17	10-Jan-17	23-Mar-17	-153	0%																				
VB3-C7820	Viaduct B3 - Railings, Light Poles, Signs & Street Furniture	30	17-Aug-17	30	20-Sep-17	10-Feb-17	16-Mar-17	-153	0%																				
<b>Bridge B2</b>																													
<b>Deck Span Segment</b>																													
B12-C6410	B12 - Falsework for End Span to B11	24	19-Apr-17 A	0	22-May-17 A				100%																				
B12-C6510	B12 - End Span to B11 (5 nr) - Crane	8	23-May-17 A	0	10-Jun-17 A				100%																				
VB2-C6510	Viaduct B2 - Final Stitch & Stressing to Span	24	12-Jun-17 A	16	10-Jul-17	24-Aug-16	10-Sep-16	-242	30%																				
<b>Deck Finishes, E&amp;M and Roadworks</b>																													
VB2-C7710	Viaduct B2 - Parapet Panels	60	11-Jul-17	60	18-Sep-17	12-Sep-16	23-Nov-16	-242	0%																				
VB2-C7720	Viaduct B2 - Gantry & TCSS Provisions (KD5)	36	22-Aug-17	36	03-Oct-17	27-Oct-16	07-Dec-16	-242	0%																				
VB2-C7810	Viaduct B2 - Drainage, Fire Main & E&M Services	48	19-Sep-17	48	16-Nov-17	24-Jan-17	23-Mar-17	-193	0%																				
<b>Bridge B1</b>																													
<b>Deck Span Segment</b>																													
B15-C6320	B15 - Cantilever Span (Remaining 11 nr) - Crane & THB	24	15-May-17 A	0	01-Jun-17 A				100%																				
B16-C6320	B16 - Cantilever Span (Remaining 3 nr) - Crane	6	10-Jun-17 A	0	14-Jun-17 A				100%																				
B17-C6310	B17 - Cantilever Span (26 nr) - Crane	35	12-Aug-17	35	21-Sep-17	02-Jun-16	14-Jul-16	-355	0%																				
B18-C6210	B18 - Falsework for End Span to B11	24	08-Sep-17	24	07-Oct-17	30-Jun-16	28-Jul-16	-355	0%																				
<b>Viaduct C</b>																													
<b>Bridge C4</b>																													
<b>Deck Span Segment</b>																													
VC4-C6510	Viaduct C4 - Final Stitch & Stressing to Span	24	08-May-17 A	0	10-Jun-17 A				100%																				

■ Actual Work  
■ Planned Bar  
■ Critical Bar  
◆ Milestone

Project ID: TMCLK-DWPI-1-M49  
 Layout: J3518-DWP-3MRP Submission - M49  
 Filter: TASK filters: 3-Month Lookahead, No CC  
 Milestones, No Level of Effort.

**Tuen Mun - Chek Lap Kok Link - Southern Connection**  
**3-Month Rolling Programme (Page 9 of 12 Pages)**  
**(Progress as of 21-Jun-17)**

Date	Revision	Checked	Approved
28-Apr-17		PKN	GL
31-May-...		PKN	GL
04-Jul-17		PKN	GL

**DWG. No.:**  
**J3518/GCL/PGM/3MRP-M49**

Activity ID	Activity Name	Orig. Durn.	Act. Start / FC Early Start	Rem. Durn.	Act. Finish / FC Early Finish	Late Start	Late Finish	Total Float	Physical % Complete	2017															
										June				July				August				September			
										22	29	05	12	19	26	03	10	17	24	31	07	14	21	28	04
<b>Deck Fnishes, E&amp;M and Roadworks</b>																									
VC4-C7710	Viaduct C4 - Parapet Panels	48	12-Jun-17 A	72	13-Sep-17	15-Apr-16	12-Jul-16	-350	10%																
VC4-C7720	Viaduct C4 - Gantry & TCSS Provisions (KD4)	36	31-Aug-17	36	13-Oct-17	28-Jun-16	09-Aug-16	-350	0%																
VC4-C7810	Viaduct C4 - Drainage, Fire Main & E&M Services	60	14-Sep-17	60	25-Nov-17	13-Jul-16	21-Sep-16	-350	0%																
<b>Bridge C3</b>																									
<b>Deck Span Segment</b>																									
C10-C6320	C10 - Cantilever Span (Remaining 12 nr) - THB & Crane	22	09-Jun-17 A	27	22-Jul-17	10-Mar-16	14-Apr-16	-377	25%																
C11-C6410	C11 - Falsework for End Span to C10	24	15-May-17 A	6	27-Jun-17	10-Mar-16	16-Mar-16	-377	85%																
C11-C6510	C11 - End Span to C10 (6 nr) - Crane	12	28-Jun-17	12	12-Jul-17	17-Mar-16	02-Apr-16	-377	0%																
VC3-C6510	Viaduct C3 - Final Stitch & Stressing to Span	24	24-Jul-17	24	19-Aug-17	15-Apr-16	13-May-16	-377	0%																
<b>Deck Fnishes, E&amp;M and Roadworks</b>																									
VC3-C7710	Viaduct C3 - Parapet Panels	60	21-Aug-17	60	01-Nov-17	16-May-16	26-Jul-16	-377	0%																
<b>Bridge C2</b>																									
<b>Deck Span Segment</b>																									
VC2-C6510	Viaduct C2 - Final Stitch & Stressing to Span	24	15-May-17 A	0	12-Jun-17 A				100%																
<b>Deck Fnishes, E&amp;M and Roadworks</b>																									
VC2-C7710	Viaduct C2 - Parapet Panels	48	13-Jun-17 A	61	31-Aug-17	28-Apr-16	12-Jul-16	-339	10%																
VC2-C7720	Viaduct C2 - Gantry & TCSS Provisions (KD4)	36	18-Aug-17	36	28-Sep-17	28-Jun-16	09-Aug-16	-339	0%																
VC2-C7810	Viaduct C2 - Drainage, Fire Main & E&M Services	60	01-Sep-17	60	13-Nov-17	13-Jul-16	21-Sep-16	-339	0%																
<b>Bridge C1</b>																									
<b>Deck Span Segment</b>																									
VC1-C6510	Viaduct C1 - Final Stitch & Stressing to Span	24	29-Apr-17 A	0	29-May-17 A				100%																
<b>Deck Fnishes, E&amp;M and Roadworks</b>																									
VC1-C7710	Viaduct C1 - Parapet Panels	48	31-May-17 A	36	02-Aug-17	30-May-16	12-Jul-16	-314	0%																
VC1-C7720	Viaduct C1 - Gantry & TCSS Provisions (KD4)	36	20-Jul-17	36	30-Aug-17	28-Jun-16	09-Aug-16	-314	0%																
VC1-C7810	Viaduct C1 - Drainage, Fire Main & E&M Services	60	03-Aug-17	60	13-Oct-17	13-Jul-16	21-Sep-16	-314	0%																
VC1-C7820	Viaduct C1 - Railings, Light Poles, Signs & Street Furniture	30	31-Aug-17	30	06-Oct-17	10-Aug-16	13-Sep-16	-314	0%																
<b>Viaduct D</b>																									
<b>Bridge D3</b>																									
<b>Deck Span Segment</b>																									
D06-C6410	D6 - Launch LG1 from D9 to D6	18	27-Jun-17	18	18-Jul-17	13-Feb-16	04-Mar-16	-404	0%																
D06-C6415	D6 - Launch LG1 from D6 to D5	4	19-Jul-17	4	22-Jul-17	05-Mar-16	09-Mar-16	-404	0%																
D06-C6510	D6 - End Span to D5 (6 nr) - LG1	7	24-Jul-17	7	31-Jul-17	10-Mar-16	17-Mar-16	-404	0%																
D06-C6610	D6 - Launch LG1 from D6 to E2B for Dismantling	18	01-Aug-17	18	21-Aug-17	18-Mar-16	12-Apr-16	-404	0%																
VD3-C6510	Viaduct D3 - Final Stitch & Stressing to Span	24	11-Aug-17	24	07-Sep-17	15-Apr-16	13-May-16	-393	0%																
<b>Deck Fnishes, E&amp;M and Roadworks</b>																									
VD3-C7710	Viaduct D3 - Parapet Panels	48	08-Sep-17	48	06-Nov-17	16-May-16	12-Jul-16	-393	0%																
<b>Bridge D2</b>																									
<b>Deck Span Segment</b>																									
D09-C6310	D9 - Cantilever Span (Remaining 14 nr) (MTR/NLH) - LG1	28	23-Apr-17 A	0	02-Jun-17 A				100%																
D09-C6410	D9 - Preparation & Drop in Segments D8-D9 (3 nr) (MTR) - LG1	23	03-Jun-17 A	5	26-Jun-17	04-Feb-16	12-Feb-16	-404	70%																
D13-C6610	D13 - Falsework for End Span to D12	24	15-May-17 A	0	13-Jun-17 A				100%																
D13-C6710	D13 - End Span to D12 (4 nr) - Crane	10	14-Jun-17 A	5	26-Jun-17	09-Apr-16	14-Apr-16	-355	75%																
VD2-C6510	Viaduct D2 - Final Stitch & Stressing to Span	24	27-Jun-17	24	25-Jul-17	15-Apr-16	13-May-16	-355	0%																
<b>Deck Fnishes, E&amp;M and Roadworks</b>																									
VD2-C7710	Viaduct D2 - Parapet Panels	60	26-Jul-17	60	04-Oct-17	16-May-16	26-Jul-16	-355	0%																
VD2-C7720	Viaduct D2 - Gantry & TCSS Provisions (KD4)	36	06-Sep-17	36	19-Oct-17	28-Jun-16	09-Aug-16	-355	0%																
<b>Bridge D1</b>																									
<b>Deck Span Segment</b>																									
VD1-C6510	Viaduct D1 - Final Stitch & Stressing to Span	24	02-May-17 A	0	31-May-17 A				100%																
<b>Deck Fnishes, E&amp;M and Roadworks</b>																									
VD1-C7710	Viaduct D1 - Parapet Panels	48	01-Jun-17 A	36	02-Aug-17	30-May-16	12-Jul-16	-314	0%																
VD1-C7720	Viaduct D1 - Gantry & TCSS Provisions (KD4)	36	20-Jul-17	36	30-Aug-17	28-Jun-16	09-Aug-16	-314	0%																
VD1-C7810	Viaduct D1 - Drainage, Fire Main & E&M Services	60	03-Aug-17	60	13-Oct-17	13-Jul-16	21-Sep-16	-314	0%																
VD1-C7820	Viaduct D1 - Railings, Light Poles, Signs & Street Furniture	30	31-Aug-17	30	06-Oct-17	10-Aug-16	13-Sep-16	-314	0%																
<b>Viaduct E</b>																									
<b>Bridge E1</b>																									
<b>Deck Span Segment</b>																									

Actual Work  
 Planned Bar  
 Critical Bar  
 Milestone

Project ID: TMCLK-DWPI-1-M49  
 Layout: J3518-DWP-3MRP Submission - M49  
 Filter: TASK filters: 3-Month Lookahead, No CC  
 Milestones, No Level of Effort.

**Tuen Mun - Chek Lap Kok Link - Southern Connection**  
**3-Month Rolling Programme (Page 10 of 12 Pages)**  
**(Progress as of 21-Jun-17)**

Date	Revision	Checked	Approved
28-Apr-17		PKN	GL
31-May-...		PKN	GL
04-Jul-17		PKN	GL

**DWG. No.:**  
**J3518/GCL/PGM/3MRP-M49**



Activity ID	Activity Name	Orig. Durn.	Act. Start / FC Early Start	Rem. Durn.	Act. Finish / FC Early Finish	Late Start	Late Finish	Total Float	Physical % Complete	2017																			
										June					July					August					September				
										22	29	05	12	19	26	03	10	17	24	31	07	14	21	28	04	11	18	25	
<b>At-Grade Works Along North Lantau Highway</b>																													
<b>Slope Works Near Viaduct D</b>																													
<b>Slope 10NW-C/F9</b>																													
M201200	10NW-C/F9 - Slope works (incl. L-Shape Ret. Walls)	110	21-Jun-17	110	31-Oct-17	19-Sep-16	02-Feb-17	-221	0%																				
<b>Slope 10NW-C/F10</b>																													
M201160	10NW-C/F10 - Slope works (incl. L-Shape Ret. Walls)	110	21-Jun-17	110	31-Oct-17	02-Jul-16	10-Nov-16	-287	0%																				
<b>Slope 10NW-C/R4</b>																													
M201170	10NW-C/R4 - Slope works	80	21-Jun-17	80	22-Sep-17	06-Aug-16	10-Nov-16	-257	0%																				
<b>Slope 10NW-C/F50</b>																													
M201150	10NW-C/F50 - Slope works	165	11-Jan-17 A	62	01-Sep-17	27-Aug-16	10-Nov-16	-239	5%																				
<b>Road Works Along NLH Westbound</b>																													
<b>General</b>																													
RW10020	NLH W/B (Viaduct C) - Road Drainage Works for tie-in	104	18-May-17 A	101	19-Oct-17	03-Dec-16	07-Apr-17	-158	1%																				
<b>Road Works Along NLH Eastbound</b>																													
<b>General</b>																													
RW20080-1	Ch650 - 800 Portion 4 (viaduct D area) : Roadwork	81	11-Jan-17 A	12	05-Jul-17	24-Mar-17	07-Apr-17	-69	85%																				
RW20080-2	Ch475 - 650 Portion 5 (viaduct D area) : Roadwork	81	11-Jan-17 A	12	05-Jul-17	24-Mar-17	07-Apr-17	-69	85%																				
RW20080-3	Ch275 - 475 Portion 6 (viaduct D area) : Roadwork	162	11-Jan-17 A	59	29-Aug-17	25-Jan-17	07-Apr-17	-116	70%																				
RW20080-4	Ch157 - 275 Portion 7 (Viaduct D area) : Roadwork	98	11-Jan-17 A	24	19-Jul-17	10-Mar-17	07-Apr-17	-81	75%																				
RW20084	NLH E/B Viaduct A - Ch200-388 Roadwork (SL & HS) & Reinstate NLH	127	17-Dec-16 A	24	19-Jul-17	10-Mar-17	07-Apr-17	-81	75%																				
<b>At-Grade Works Along Cheung Tung Road</b>																													
<b>Slope Works Near Viaduct C</b>																													
<b>Slope 10NW-C/C26</b>																													
SWVC1995	TTA for closure of NLH HS	2	13-Jul-17	2	14-Jul-17	16-Aug-16	17-Aug-16	-267	0%																				
SWVC2000	10NW-C/C26 - Slope works	166	15-Jul-17	166	31-Jan-18	18-Aug-16	09-Mar-17	-267	0%																				
<b>Slope PF1 &amp; PF2</b>																													
SWVC7000	PF1 & PF2 slope works	18	21-Jun-17	18	12-Jul-17	26-Jul-16	15-Aug-16	-267	0%																				
<b>Slope 10NW-C/F13</b>																													
SWVC4000	10NW-C/F13 - Slope works	100	27-Jul-17*	100	23-Nov-17	14-Jul-16	10-Nov-16	-307	0%																				
<b>Slope 10NW-C/F14</b>																													
SWVC5000	10NW-C/F14 - Slope works	100	27-Jul-17*	100	23-Nov-17	07-Jun-16	05-Oct-16	-337	0%																				
<b>Slope 10NW-C/F15</b>																													
SWVC6000	10NW-C/F15 - Slope works	108	27-Jul-17*	108	02-Dec-17	28-May-16	05-Oct-16	-345	0%																				
<b>Re-alignment of CTR Along Viaduct B</b>																													
<b>General</b>																													
RP00064	Ch620-750: Telecom, 11KV & 132KV Ducting	20	20-Aug-15 A	0	31-May-17 A				100%																				
RP00074-3	Ch100-300: Road Drainage	38	06-May-17 A	7	28-Jun-17	21-Sep-16	28-Sep-16	-219	85%																				
RP00075	Ch100-300: Duct Laying for 11KV	18	29-Jun-17	18	20-Jul-17	29-Sep-16	21-Oct-16	-219	0%																				
RP00076	Ch100-300: Lay Telecom Cable	10	29-Jun-17	10	11-Jul-17	29-Sep-16	12-Oct-16	-219	0%																				
RP00077	Ch100-300: Street Lighting & Draw Pit	13	29-Jun-17	13	14-Jul-17	29-Sep-16	15-Oct-16	-219	0%																				
RP00078	Ch100-300: Relocation of Vent Pipe	18	29-Jun-17	18	20-Jul-17	29-Sep-16	21-Oct-16	-219	0%																				
RP00083	Ch100-300: Drainage & Roadwork for New CTR	52	21-Jul-17	52	19-Sep-17	22-Oct-16	21-Dec-16	-219	0%																				
RP00084	Ch100-300: TTA to New CTR	1	20-Sep-17	1	20-Sep-17	22-Dec-16	22-Dec-16	-219	0%																				
<b>Re-alignment of CTR Along Viaduct C</b>																													
<b>East Portion</b>																													
RW60050	CTR East (stage 2) TTA 090-5 : Roadwork	77	26-Apr-17 A	32	28-Jul-17	03-Oct-16	09-Nov-16	-210	60%																				
RW60060	CTR East (stage 3) TTA 090-6 : Roadwork	66	29-Jul-17	66	16-Oct-17	10-Nov-16	01-Feb-17	-210	0%																				
RW60080	CTR Tie in Works	116	18-May-17 A	88	03-Oct-17	19-Dec-16	07-Apr-17	-145	20%																				
<b>At-Grade Works at Southern Landfall</b>																													
<b>HKBCF Area</b>																													
<b>General</b>																													
RW30028-2	Construct FMH2046 and Lay Pipe Work	14	20-Sep-17*	14	07-Oct-17	09-May-17	24-May-17	-113	0%																				
<b>Watermain from Tung Chung to Southern Landfall</b>																													
<b>Watermain Works</b>																													
<b>General</b>																													
WM00120	Lay DN450 Fresh Water Main at Re-aligned CTR (approx. 500m)	48	22-Apr-15 A	12	05-Jul-17	29-Nov-17	12-Dec-17	134	90%																				

■ Actual Work  
■ Planned Bar  
■ Critical Bar  
◆ Milestone

Project ID: TMCLK-DWPI-1-M49  
 Layout: J3518-DWP-3MRP Submission - M49  
 Filter: TASK filters: 3-Month Lookahead, No CC  
 Milestones, No Level of Effort.

**Tuen Mun - Chek Lap Kok Link - Southern Connection**  
**3-Month Rolling Programme (Page 12 of 12 Pages)**  
**(Progress as of 21-Jun-17)**

Date	Revision	Checked	Approved
28-Apr-17		PKN	GL
31-May-...		PKN	GL
04-Jul-17		PKN	GL

**DWG. No.:**  
**J3518/GCL/PGM/3MRP-M49**