

■ Actual Work
■ Planned Bar
■ Critical Bar
◆ Milestone

Project ID: TMCLK-DWPI-1-M50
 Layout: J3518-DWP-3MRP Submission - M50
 Filter: TASK filters: 3-Month Lookahead, No CC
 Milestones, No Level of Effort.

Tuen Mun - Chek Lap Kok Link - Southern Connection
3-Month Rolling Programme (Page 1 of 11 Pages)
(Progress as of 21-Jul-17)

Date	Revision	Checked	Approved
31-May-...		PKN	GL
04-Jul-17		PKN	GL
01-Aug-17		PKN	HF

DWG. No.:
J3518/GCL/PGM/3MRP-M50

Activity ID	Activity Name	Orig. Durn.	Act. Start / FC Early Start	Rem. Durn.	Act. Finish / FC Early Finish	Late Start	Late Finish	Total Float	Physical % Complete	2017																								
										July					August					September					October									
										19	26	03	10	17	24	31	07	14	21	28	04	11	18	25	02	09	16	23						
General																																		
PP7150	Site preparation Bearings for Viaduct E5 & E6	18	21-Jul-17	18	10-Aug-17	19-Dec-16	11-Jan-17	-170	0%																									
PP7220	Site preparation Bearings for Viaduct E7 & E8	18	11-Aug-17	18	31-Aug-17	12-Jan-17	04-Feb-17	-170	0%																									
PPBRE7	Manufacture of Bearing - Viaduct E (E1, E2, E5, E6, E7 & E8)	54	02-Jun-14 A	0	26-Jun-17 A				100%																									
PPBRE8	Testing Bearing - Viaduct E (E1, E2, E5, E6, E7 & E8)	24	03-Aug-15 A	0	26-Jun-17 A				100%																									
PPBRE9	Bearing Delivery - Viaduct E (E1, E2, E5, E6, E7 & E8)	48	19-Nov-14 A	0	26-Jun-17 A				100%																									
Viaduct F																																		
Bearing Design & Manufacture																																		
General																																		
PPBRF7	Manufacture of Bearing - Viaduct F	60	28-Mar-17 A	15	07-Aug-17	21-Sep-16	08-Oct-16	-244	80%																									
PPBRF8	Testing Bearing - Viaduct F	12	08-Aug-17	12	21-Aug-17	11-Oct-16	24-Oct-16	-244	0%																									
PPBRF9	Bearing Delivery - Viaduct F	34	22-Aug-17	34	29-Sep-17	25-Oct-16	02-Dec-16	-244	0%																									
Movement Joints																																		
Viaduct A to F																																		
MJ Design & Manufacture																																		
General																																		
PP6MJ02-2	Manufacture & delivery of MJ	180	01-Apr-17 A	100	17-Nov-17	11-Apr-16	09-Aug-16	-379	25%																									
Construction																																		
Foundation & Substructure Works																																		
Viaduct A - Bridge A1																																		
Pier A9 (A1c)																																		
Pier Head Segment																																		
A09-C5410	A9 - PHS Diaphragm - Rebar, Formwork, Concreting	36	26-Apr-17 A	0	27-Jun-17 A				100%																									
A09-C5420	A9 - PHS Diaphragm - Curing & Striking of Forms	12	28-Jun-17 A	0	08-Jul-17 A				100%																									
Pier A10 (A1b)																																		
Pier Head Segment																																		
A10-C5410	A10 - PHS Diaphragm - Rebar, Formwork, Concreting	36	10-Jun-17 A	5	26-Jul-17	13-Jun-16	17-Jun-16	-328	90%																									
A10-C5420	A10 - PHS Diaphragm - Curing & Striking of Forms	12	27-Jul-17	12	09-Aug-17	18-Jun-16	02-Jul-16	-328	0%																									
Pier A11 (A1a)																																		
Pier Head Segment																																		
A11-C5210	A11 - PHS - Temporary Platform	12	28-Jun-17 A	0	12-Jul-17 A				100%																									
A11-C5310	A11 - Install PH Segment (1nr)	2	13-Jul-17 A	0	14-Jul-17 A				100%																									
Ramp A																																		
Abutment & Approach Ramp A																																		
Ramp Structure																																		
ARA-C6140	Ramp A - Remaining RE Wall (Bay 7 to 11) with Backfill	111	02-Mar-17 A	22	15-Aug-17	21-Apr-16	18-May-16	-370	85%																									
ARA-C6142	Ramp A - Remaining RC Wall (Bay Wa2-Wa5 & Bay 9-12) with Backfill	120	16-Aug-17	120	09-Jan-18	24-May-16	15-Oct-16	-366	0%																									
ARA-C6150	Ramp A - Backfill to Walls	111	30-Aug-17	111	12-Jan-18	07-Jun-16	19-Oct-16	-366	0%																									
Viaduct B - Bridge B1																																		
Pier B17 (B1c)																																		
Pier																																		
B17-C4110	B17 - Pier Scaffold, Rebar, Formwork, Concrete (1st Lift)	7	17-Jun-17 A	15	07-Aug-17	02-Jul-20	18-Jul-20	872	85%																									
B17-C4210	B17 - Pier Scaffold, Rebar, Formwork, Concrete (2nd Lift)	10	17-Jun-17 A	15	07-Aug-17	12-Apr-16	28-Apr-16	-378	85%																									
B17-C4310	B17 - Pier Curing, Remove Formwork	3	08-Aug-17	3	10-Aug-17	29-Apr-16	03-May-16	-378	0%																									
Pier Head Segment																																		
B17-C5210	B17 - PHS - Temporary Platform	3	11-Aug-17	3	14-Aug-17	04-May-16	06-May-16	-378	0%																									
B17-C5310	B17 - Install PH Segment & Fix (1 nr)	2	15-Aug-17	2	16-Aug-17	07-May-16	09-May-16	-378	0%																									
B17-C5410	B17 - PHS Diaphragm - Rebar, Formwork, Concreting	22	17-Aug-17	22	11-Sep-17	10-May-16	04-Jun-16	-378	0%																									
B17-C5420	B17 - PHS Diaphragm - Curing & Striking of Forms	3	12-Sep-17	3	14-Sep-17	06-Jun-16	08-Jun-16	-378	0%																									
Pier B18 (B1b)																																		
Pier																																		
B18-C4110	B18 - Pier Scaffold, Rebar, Formwork, Concrete	7	15-Jun-17 A	26	19-Aug-17	13-Jun-20	15-Jul-20	858	35%																									
B18-C4210	B18 - Pier Curing, Remove Formwork	3	21-Aug-17	3	23-Aug-17	16-Jul-20	18-Jul-20	858	0%																									
Pier Head Segment																																		
B18-C5210	B18 - PHS - Construct Abutment Wall	24	15-Jun-17 A	26	19-Aug-17	03-Jun-16	05-Jul-16	-335	35%																									
B18-C5310	B18 - PHS Lift & Temp Support (1 seg)	2	21-Aug-17	2	22-Aug-17	06-Jul-16	07-Jul-16	-335	0%																									

■ Actual Work
■ Planned Bar
■ Critical Bar
◆ Milestone

Project ID: TMCLK-DWPI-1-M50
 Layout: J3518-DWP-3MRP Submission - M50
 Filter: TASK filters: 3-Month Lookahead, No CC
 Milestones, No Level of Effort.

Tuen Mun - Chek Lap Kok Link - Southern Connection
3-Month Rolling Programme (Page 2 of 11 Pages)
(Progress as of 21-Jul-17)

Date	Revision	Checked	Approved
31-May-...		PKN	GL
04-Jul-17		PKN	GL
01-Aug-17		PKN	HF

DWG. No.:
J3518/GCL/PGM/3MRP-M50

Activity ID	Activity Name	Orig. Durn.	Act. Start / FC Early Start	Rem. Durn.	Act. Finish / FC Early Finish	Late Start	Late Finish	Total Float	Physical % Complete	2017																							
										July					August					September					October								
										19	26	03	10	17	24	31	07	14	21	28	04	11	18	25	02	09	16	23					
Ramp B																																	
Abutment & Approach Ramp B																																	
Ramp Structure																																	
ARB-C6120	Ramp B - RE Wall - Panel Installation from 1st Row to 2nd Row	66	12-Jun-17 A	18	10-Aug-17	29-Mar-16	19-Apr-16	-389	95%	[Gantt Bar]																							
ARB-C6130	Ramp B - RE Wall - Panel Installation from 3rd Row to 6th Row	66	11-Aug-17	66	30-Oct-17	20-Apr-16	09-Jul-16	-389	0%	[Gantt Bar]																							
ARB-C6140	Ramp B - RC Wall - Base Slab	92	23-Sep-17	92	15-Jan-18	04-Jun-16	22-Sep-16	-389	0%	[Gantt Bar]																							
ARB-C6150	Ramp B - RC Wall - Side Wall	92	10-Oct-17	92	29-Jan-18	20-Jun-16	07-Oct-16	-389	0%	[Gantt Bar]																							
Ramp C																																	
Abutment & Approach Ramp C																																	
Ramp Structure																																	
ARC-C6180	Ramp C - RC Wall - Remaining Bays at 800 Tee	36	29-May-17 A	17	09-Aug-17	09-May-16	28-May-16	-356	50%	[Gantt Bar]																							
Ramp Finishes, E&M & Roadworks																																	
ARC-C7715	Ramp C - Parapet Panels (Remaining)	24	10-Aug-17	24	06-Sep-17	30-May-16	27-Jun-16	-356	0%	[Gantt Bar]																							
ARC-C7720	Ramp C - Ducting, Gantry & TCSS Provisions (KD4)	36	07-Sep-17	36	20-Oct-17	28-Jun-16	09-Aug-16	-356	0%	[Gantt Bar]																							
ARC-C7810	Ramp C - Drainage, Fire Main & E&M Services	54	28-Sep-17	54	02-Dec-17	20-Jul-16	21-Sep-16	-356	0%	[Gantt Bar]																							
Ramp D																																	
Abutment & Approach Ramp D																																	
Ramp Finishes, E&M & Roadworks																																	
ARD-C7710	Ramp D - Parapet Panels	42	15-Oct-16 A	10	01-Aug-17	20-Jan-16	30-Jan-16	-442	90%	[Gantt Bar]																							
ARD-C7720	Ramp D - Ducting, Gantry & TCSS Provisions (KD4)	36	02-Aug-17	36	12-Sep-17	01-Feb-16	16-Mar-16	-442	0%	[Gantt Bar]																							
ARD-C7810	Ramp D - Drainage, Fire Main & E&M Services	54	23-Aug-17	54	26-Oct-17	25-Feb-16	03-May-16	-442	0%	[Gantt Bar]																							
ARD-C7820	Ramp D - Railings, Light Poles, Signs & Street Furniture	30	13-Sep-17	30	19-Oct-17	17-Mar-16	25-Apr-16	-442	0%	[Gantt Bar]																							
ARD-C7830	Ramp D - Deck Paving & Roadmarking (KD14)	18	20-Oct-17	18	10-Nov-17	26-Apr-16	18-May-16	-442	0%	[Gantt Bar]																							
Viaduct E - Bridge E5, E6, E7, E8																																	
Pier E11B (E5e6a)																																	
Pier Head Segment																																	
E11B-C5145	E11B - Install Infill Segments (6 nr) - THB	24	22-May-17 A	0	29-Jun-17 A				100%	[Gantt Bar]																							
E11B-C5150	E11B - IFS Stitch & Remove Equipment	10	30-Jun-17 A	0	12-Jul-17 A				100%	[Gantt Bar]																							
Pier E12A (E8b)																																	
Pile Cap Dolphin																																	
E12A-C3130	E12A - Dolphin - Marine Pile Cap - Fixings, Dewatering & Trim Pile	11	01-Sep-17*	11	13-Sep-17	18-Sep-17	29-Sep-17	14	0%	[Gantt Bar]																							
E12A-C3150	E12A - Dolphin - Marine Pile Cap - Rebar, Concreting	5	14-Sep-17	5	19-Sep-17	30-Sep-17	07-Oct-17	14	0%	[Gantt Bar]																							
E12A-C3160	E12A - Dolphin - Marine Pile Cap - CJ preparation & Curing	3	20-Sep-17	3	22-Sep-17	09-Oct-17	11-Oct-17	14	0%	[Gantt Bar]																							
Pier Head Segment / Infill Segment																																	
E12A-C5140	E12A - Remove Rail Beams, Spreader Beams, Brackets	15	21-Jun-17 A	0	07-Jul-17 A				100%	[Gantt Bar]																							
E12A-C5145	E12A - Install Infill Segments (6 nr) - THB	26	07-Jul-17 A	18	11-Aug-17	06-Oct-16	28-Oct-16	-231	0%	[Gantt Bar]																							
E12A-C5150	E12A - IFS Stitch & Remove Equipment	12	11-Aug-17	12	25-Aug-17	29-Oct-16	11-Nov-16	-231	0%	[Gantt Bar]																							
Pier E12B (E7b)																																	
Pier Head Segment / Infill Segment																																	
E12B-C5140	E12B - Remove Rail Beams, Spreader Beams, Brackets	15	15-Jun-17 A	0	23-Jun-17 A				100%	[Gantt Bar]																							
E12B-C5145	E12B - Install Infill Segments (6 nr) - THB	32	23-Jun-17 A	14	05-Aug-17	13-Mar-17	28-Mar-17	-104	0%	[Gantt Bar]																							
E12B-C5150	E12B - IFS Stitch & Remove Equipment	12	07-Aug-17	12	19-Aug-17	29-Mar-17	12-Apr-17	-104	0%	[Gantt Bar]																							
Pier E12C (E6b)																																	
Pier Head Segment / Infill Segment																																	
E12C-C5140	E12C - Remove Rail Beams, Spreader Beams, Brackets, Crane	5	06-Jun-17 A	0	03-Jul-17 A				100%	[Gantt Bar]																							
E12C-C5145	E12C - Install Infill Segments (6 nr) - THB	28	03-Jul-17 A	9	31-Jul-17	12-May-17	22-May-17	-58	0%	[Gantt Bar]																							
E12C-C5150	E12C - IFS Stitch & Remove Equipment	12	01-Aug-17	12	14-Aug-17	23-May-17	06-Jun-17	-58	0%	[Gantt Bar]																							
Pier E12D (E5b)																																	
Pile Cap Dolphin																																	
E12D-C3070	E12D Dolphin - Marine Pile Cap - Collar frame to perm. casing of pile	3	23-Sep-17*	3	26-Sep-17	12-Oct-17	14-Oct-17	14	0%	[Gantt Bar]																							
E12D-C3080	E12D Dolphin - Marine Pile Cap - Install precast shell in position	24	27-Sep-17	24	26-Oct-17	16-Oct-17	13-Nov-17	14	0%	[Gantt Bar]																							
Pier Head Segment / Infill Segment																																	
E12D-C5130	E12D - Diaphragm of PHS - Formwork, Rebar, Concreting	76	07-Mar-17 A	0	22-Jun-17 A				100%	[Gantt Bar]																							
E12D-C5140	E12D - Remove Rail Beams, Spreader Beams, Brackets	15	23-Jun-17 A	7	28-Jul-17	12-Nov-16	19-Nov-16	-201	0%	[Gantt Bar]																							
E12D-C5145	E12D - Install Infill Segments (6 nr) - THB	28	28-Jul-17	28	29-Aug-17	19-Nov-16	21-Dec-16	-201	0%	[Gantt Bar]																							
E12D-C5150	E12D - IFS Stitch & Remove Equipment	12	30-Aug-17	12	12-Sep-17	22-Dec-16	07-Jan-17	-201	0%	[Gantt Bar]																							
Pier E13A (E8c)																																	

■ Actual Work
■ Planned Bar
■ Critical Bar
◆ Milestone

Project ID: TMCLK-DWPI-1-M50
 Layout: J3518-DWP-3MRP Submission - M50
 Filter: TASK filters: 3-Month Lookahead, No CC
 Milestones, No Level of Effort.

Tuen Mun - Chek Lap Kok Link - Southern Connection
3-Month Rolling Programme (Page 3 of 11 Pages)
(Progress as of 21-Jul-17)

Date	Revision	Checked	Approved
31-May-...		PKN	GL
04-Jul-17		PKN	GL
01-Aug-17		PKN	HF

DWG. No.:
J3518/GCL/PGM/3MRP-M50

Activity ID	Activity Name	Orig. Durn.	Act. Start / FC Early Start	Rem. Durn.	Act. Finish / FC Early Finish	Late Start	Late Finish	Total Float	Physical % Complete	2017																								
										July					August					September					October									
											19	26	03	10	17	24	31	07	14	21	28	04	11	18	25	02	09	16	23					
Pier Head Segment / Infill Segment																																		
E13A-C5130	E13A - Diaphragm of PHS - Formwork, Rebar, Concreting	76	01-Apr-17 A	16	08-Aug-17	07-Mar-17	24-Mar-17	-109	80%																									
E13A-C5140	E13A - Remove Rail Beams, Spreader Beams, Brackets, Crane	30	09-Aug-17	30	12-Sep-17	25-Mar-17	05-May-17	-109	0%																									
E13A-C5145	E13A - Install Infill Segments (6 nr) - THB	28	13-Sep-17	28	17-Oct-17	06-May-17	08-Jun-17	-109	0%																									
E13A-C5150	E13A - IFS Stitch & Remove Equipment	12	18-Oct-17	12	01-Nov-17	09-Jun-17	22-Jun-17	-109	0%																									
Pier E13B (E7c)																																		
Pier Head Segment / Infill Segment																																		
E13B-C5130	E13B - Diaphragm of PHS - Formwork, Rebar, Concreting	76	21-Mar-17 A	5	26-Jul-17	14-Oct-16	19-Oct-16	-226	90%																									
E13B-C5140	E13B - Remove Rail Beams, Spreader Beams, Brackets	16	27-Jul-17	16	14-Aug-17	20-Oct-16	07-Nov-16	-226	0%																									
E13B-C5145	E13B - Install Infill Segments (6 nr) - THB	42	15-Aug-17	42	03-Oct-17	08-Nov-16	28-Dec-16	-226	0%																									
E13B-C5150	E13B - IFS Stitch & Remove Equipment	12	04-Oct-17	12	18-Oct-17	29-Dec-16	12-Jan-17	-226	0%																									
Pier E13C (E6c)																																		
Pier Head Segment / Infill Segment																																		
E13C-C5130	E13C - Diaphragm of PHS - Formwork, Rebar, Concreting	76	28-Mar-17 A	11	02-Aug-17	27-Oct-16	08-Nov-16	-215	85%																									
E13C-C5140	E13C - Remove Rail Beams, Spreader Beams, Brackets	16	03-Aug-17	16	21-Aug-17	09-Nov-16	26-Nov-16	-215	0%																									
E13C-C5145	E13C - Install Infill Segments (6 nr) - THB	42	22-Aug-17	42	11-Oct-17	28-Nov-16	18-Jan-17	-215	0%																									
E13C-C5150	E13C - IFS Stitch & Remove Equipment	12	12-Oct-17	12	25-Oct-17	19-Jan-17	04-Feb-17	-215	0%																									
Pier E13D (E5c)																																		
Pier Head Segment / Infill Segment																																		
E13D-C5130	E13D - Diaphragm of PHS - Formwork, Rebar, Concreting	76	04-Apr-17 A	8	29-Jul-17	21-Nov-16	29-Nov-16	-194	95%																									
E13D-C5140	E13D - Remove Rail Beams, Spreader Beams, Brackets, Crane	16	31-Jul-17	16	17-Aug-17	30-Nov-16	17-Dec-16	-194	0%																									
E13D-C5145	E13D - Install Infill Segments (6 nr) - THB	28	18-Aug-17	28	19-Sep-17	19-Dec-16	23-Jan-17	-194	0%																									
E13D-C5150	E13D - IFS Stitch & Remove Equipment	12	20-Sep-17	12	04-Oct-17	24-Jan-17	09-Feb-17	-194	0%																									
Pier E14A (E8d)																																		
Pier																																		
E14A-C4310	E14A Pier - Scaffold, Rebar, Formwork, Concrete (3rd Lift)	15	16-Jun-17 A	0	29-Jun-17 A				100%																									
E14A-C4410	E14A Pier - Scaffold, Rebar, Formwork, Concrete (4th Lift)	16	30-Jun-17 A	0	12-Jul-17 A				100%																									
E14A-C4510	E14A Pier - Scaffold, Rebar, Formwork, Concrete (5th Lift)	16	13-Jul-17 A	9	31-Jul-17	17-Sep-16	27-Sep-16	-247	40%																									
E14A-C4610	E14A Pier - Curing, Remove Formwork	5	01-Aug-17	5	05-Aug-17	28-Sep-16	04-Oct-16	-247	0%																									
Pier Head Segment																																		
E14A-C5110	E14A Pier Head - Scaffold, Temp Works	17	01-Aug-17	17	19-Aug-17	28-Sep-16	19-Oct-16	-247	0%																									
E14A-C5210	E14A Pier Head - Erect PH Segment (2 nr)	4	21-Aug-17	4	24-Aug-17	20-Oct-16	24-Oct-16	-247	0%																									
E14A-C5310	E14A Pier Head - Construct Diaphragm (2nd Cast) in PHS	65	25-Aug-17	65	11-Nov-17	25-Oct-16	11-Jan-17	-247	0%																									
Pier E14B (E7d)																																		
Pier																																		
E14B-C4310	E14B Pier - Scaffold, Rebar, Formwork, Concrete (3rd Lift)	18	14-Jun-17 A	10	01-Aug-17	21-Sep-16	03-Oct-16	-244	85%																									
E14B-C4410	E14B Pier - Curing, Remove Formwork	5	02-Aug-17	5	07-Aug-17	04-Oct-16	08-Oct-16	-244	0%																									
Pier Head Segment																																		
E14B-C5110	E14B Pier Head - Scaffold, Temp Works	17	08-Aug-17	17	26-Aug-17	11-Oct-16	29-Oct-16	-244	0%																									
E14B-C5210	E14B Pier Head - Erect PH Segment (2 nr)	4	28-Aug-17	4	31-Aug-17	31-Oct-16	03-Nov-16	-244	0%																									
E14B-C5310	E14B Pier Head - Construct Diaphragm (2nd Cast) in PHS	65	01-Sep-17	65	18-Nov-17	04-Nov-16	21-Jan-17	-244	0%																									
Pier E14C (E6d)																																		
Pier																																		
E14C-C4310	E14C Pier - Scaffold, Rebar, Formwork, Concrete (3rd Lift)	18	06-Jun-17 A	0	21-Jun-17 A				100%																									
E14C-C4410	E14C Pier - Scaffold, Rebar, Formwork, Concrete (4th Lift)	18	27-Jun-17 A	15	07-Aug-17	21-Feb-17	09-Mar-17	-121	15%																									
E14C-C4510	E14C Pier - Curing, Remove Formwork	5	08-Aug-17	5	12-Aug-17	10-Mar-17	15-Mar-17	-121	0%																									
Pier Head Segment																																		
E14C-C5110	E14C Pier Head - Scaffold, Temp Works	17	22-Aug-17	17	09-Sep-17	16-Mar-17	05-Apr-17	-128	0%																									
E14C-C5210	E14C Pier Head - Erect PH Segment (2 nr)	4	11-Sep-17	4	14-Sep-17	06-Apr-17	10-Apr-17	-128	0%																									
E14C-C5310	E14C Pier Head - Construct Diaphragm (2nd Cast) in PHS	65	15-Sep-17	65	02-Dec-17	11-Apr-17	03-Jul-17	-128	0%																									
Pier E14D (E5d)																																		
Pier																																		
E14D-C4110	E14D Pier - Scaffold, Rebar, Formwork, Concrete (1st Lift)	13	29-Jun-17 A	0	08-Jul-17 A				100%																									
E14D-C4210	E14D Pier - Scaffold, Rebar, Formwork, Concrete (2nd Lift)	16	09-Jul-17 A	0	15-Jul-17 A				100%																									
E14D-C4310	E14D Pier - Scaffold, Rebar, Formwork, Concrete (3rd Lift)	16	18-Jul-17 A	19	11-Aug-17	26-Aug-16	17-Sep-16	-265	15%																									
E14D-C4410	E14D Pier - Scaffold, Rebar, Formwork, Concrete (4th Lift)	16	12-Aug-17	16	30-Aug-17	19-Sep-16	07-Oct-16	-265	0%																									
E14D-C4510	E14D Pier - Curing, Remove Formwork	5	31-Aug-17	5	05-Sep-17	08-Oct-16	14-Oct-16	-265	0%																									
Pier Head Segment																																		
E14D-C5110	E14D Pier Head - Erect Steel Temp Tower on E14D	26	06-Sep-17	26	07-Oct-17	15-Oct-16	14-Nov-16	-265	0%																									

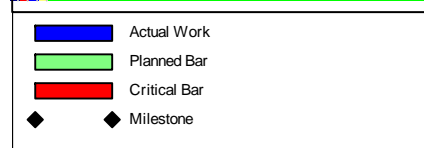
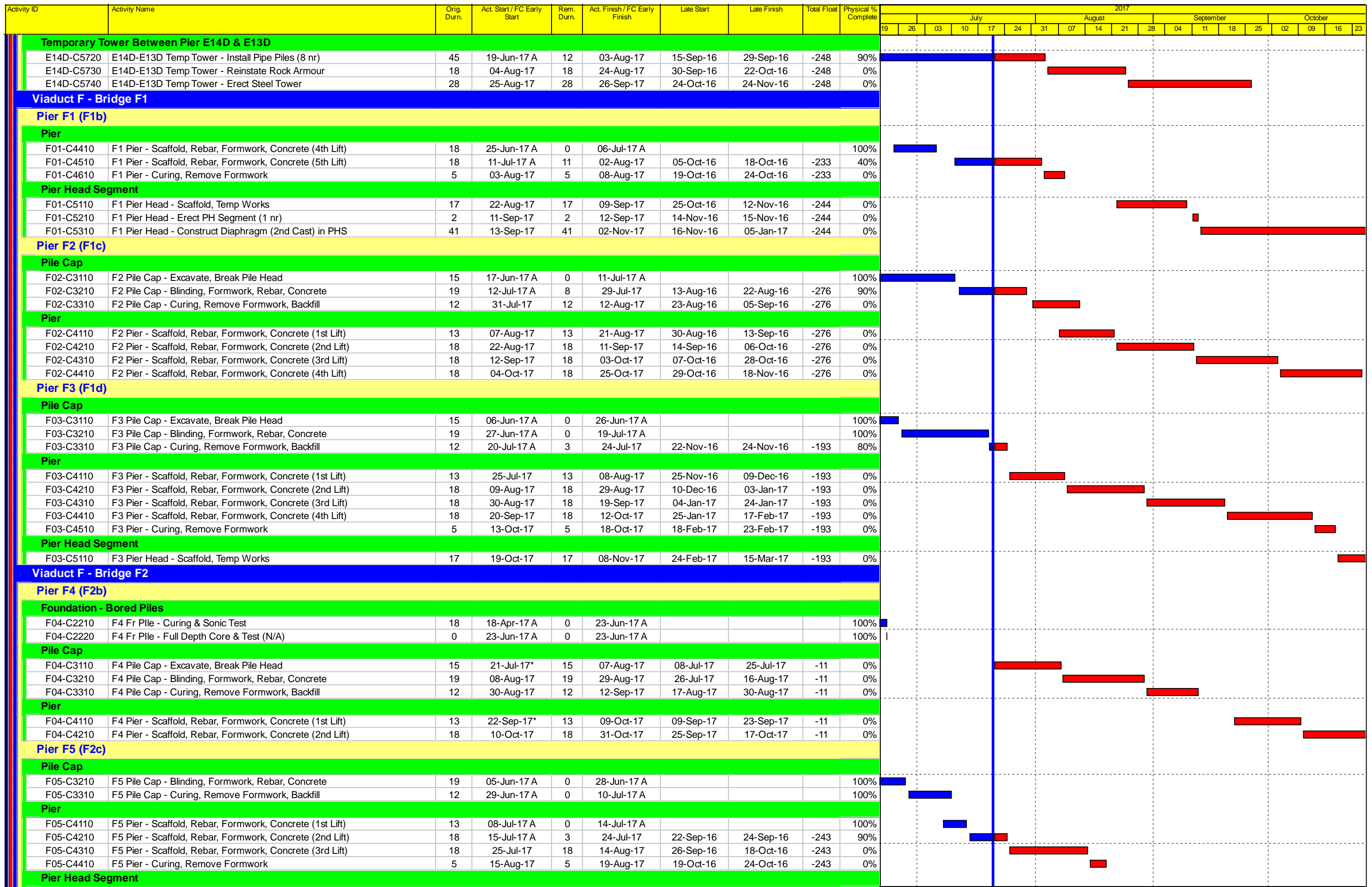
■ Actual Work
■ Planned Bar
■ Critical Bar
◆ Milestone

Project ID: TMCLK-DWPI-1-M50
 Layout: J3518-DWP-3MRP Submission - M50
 Filter: TASK filters: 3-Month Lookahead, No CC
 Milestones, No Level of Effort.

Tuen Mun - Chek Lap Kok Link - Southern Connection
3-Month Rolling Programme (Page 4 of 11 Pages)
(Progress as of 21-Jul-17)

Date	Revision	Checked	Approved
31-May-...		PKN	GL
04-Jul-17		PKN	GL
01-Aug-17		PKN	HF

DWG. No.:
J3518/GCL/PGM/3MRP-M50



Project ID: TMCLK-DWPI-1-M50
 Layout: J3518-DWP-3MRP Submission - M50
 Filter: TASK filters: 3-Month Lookahead, No CC
 Milestones, No Level of Effort.

Tuen Mun - Chek Lap Kok Link - Southern Connection
3-Month Rolling Programme (Page 5 of 11 Pages)
(Progress as of 21-Jul-17)

Date	Revision	Checked	Approved
31-May-...		PKN	GL
04-Jul-17		PKN	GL
01-Aug-17		PKN	HF

DWG. No.:
J3518/GCL/PGM/3MRP-M50

Activity ID	Activity Name	Orig. Durn.	Act. Start / FC Early Start	Rem. Durn.	Act. Finish / FC Early Finish	Late Start	Late Finish	Total Float	Physical % Complete	2017																								
										July					August				September					October										
											19	26	03	10	17	24	31	07	14	21	28	04	11	18	25	02	09	16	23					
F05-C5110	F5 Pier Head - Scaffold, Temp Works	17	30-Aug-17	17	18-Sep-17	25-Oct-16	12-Nov-16	-251	0%																									
F05-C5210	F5 Pier Head - Erect PH Segment (1 nr)	2	19-Sep-17	2	20-Sep-17	14-Nov-16	15-Nov-16	-251	0%																									
F05-C5310	F5 Pier Head - Construct Diaphragm (2nd Cast) in PHS	41	21-Sep-17	41	10-Nov-17	16-Nov-16	05-Jan-17	-251	0%																									
Pier F6 (F2d)																																		
Pier																																		
F06-C4110	F6 Pier - Scaffold, Rebar, Formwork, Concrete (1st Lift)	13	15-Jun-17 A	0	06-Jul-17 A				100%																									
F06-C4210	F6 Pier - Scaffold, Rebar, Formwork, Concrete (2nd Lift)	18	21-Jul-17	18	10-Aug-17	19-May-17	09-Jun-17	-52	0%																									
F06-C4310	F6 Pier - Curing, Remove Formwork	5	11-Aug-17	5	16-Aug-17	10-Jun-17	15-Jun-17	-52	0%																									
Pier Head Segment																																		
F06-C5110	F6 Pier Head - Scaffold, Temp Works	17	28-Sep-17*	17	19-Oct-17	16-Jun-17	06-Jul-17	-88	0%																									
F06-C5210	F6 Pier Head - Erect PH Segment (1 nr)	2	20-Oct-17	2	21-Oct-17	07-Jul-17	08-Jul-17	-88	0%																									
Pier F7 (F2e)																																		
Pier																																		
F07-C4210	F7 Pier - Scaffold, Rebar, Formwork, Concrete (2nd Lift)	18	18-May-17 A	0	30-Jun-17 A				100%																									
F07-C4310	F7 Pier - Curing, Remove Formwork	5	01-Jul-17 A	0	18-Jul-17 A				100%																									
Pier F8 (F2f)																																		
Foundation - Bored Piles																																		
F08-C2140	F8 Fr Pile - Sleeve, Casing, Excavate, Rebar, Concrete (3rd) P3	18	21-Jun-17 A	0	08-Jul-17 A				100%																									
F08-C2150	F8 Fr Pile - Sleeve, Casing, Excavate, Rebar, Concrete (3rd) P4	18	15-Jul-17 A	10	01-Aug-17	22-Jul-17	02-Aug-17	1	75%																									
F08-C2210	F8 Fr Pile - Curing & Sonic Test	18	02-Aug-17	18	22-Aug-17	03-Aug-17	23-Aug-17	1	0%																									
Pile Cap																																		
F08-C3110	F8 Pile Cap - Excavate, Break Pile Head	15	06-Sep-17*	15	22-Sep-17	24-Aug-17	09-Sep-17	-11	0%																									
F08-C3210	F8 Pile Cap - Blinding, Formwork, Rebar, Concrete	19	23-Sep-17	19	17-Oct-17	11-Sep-17	03-Oct-17	-11	0%																									
F08-C3310	F8 Pile Cap - Curing, Remove Formwork, Backfill	12	18-Oct-17	12	01-Nov-17	04-Oct-17	18-Oct-17	-11	0%																									
Viaduct F - Bridge F3																																		
Pier F9 (F3d)																																		
Pile Cap																																		
F09-C3110	F9 Pile Cap - Excavate, Break Pile Head	24	15-Jul-17 A	19	11-Aug-17	05-Jun-17	26-Jun-17	-39	20%																									
F09-C3210	F9 Pile Cap - Blinding, Formwork, Rebar, Concrete	22	12-Aug-17	22	06-Sep-17	27-Jun-17	22-Jul-17	-39	0%																									
F09-C3310	F9 Pile Cap - Curing, Remove Formwork, Backfill	14	07-Sep-17	14	22-Sep-17	24-Jul-17	08-Aug-17	-39	0%																									
Pier																																		
F09-C4110	F9 Pier - Scaffold, Rebar, Formwork, Concrete (Pier A)	13	26-Sep-17*	13	12-Oct-17	09-Aug-17	23-Aug-17	-41	0%																									
F09-C4210	F9 Pier - Curing, Remove Formwork (Pier A)	5	13-Oct-17	5	18-Oct-17	24-Aug-17	29-Aug-17	-41	0%																									
F09-C4310	F9 Pier - Scaffold, Rebar, Formwork, Concrete (Pier B)	13	19-Oct-17	13	03-Nov-17	30-Aug-17	13-Sep-17	-41	0%																									
Pier F10 (F3c)																																		
Pier																																		
F10-C4110	F10 Pier - Scaffold, Rebar, Formwork, Concrete (Pier A)	13	16-Jun-17 A	9	31-Jul-17	03-Jul-20	13-Jul-20	873	90%																									
F10-C4210	F10 Pier - Curing, Remove Formwork (Pier A)	5	01-Aug-17	5	05-Aug-17	14-Jul-20	18-Jul-20	873	0%																									
F10-C4310	F10 Pier - Scaffold, Rebar, Formwork, Concrete (Pier B)	13	15-Jun-17 A	0	04-Jul-17 A				100%																									
F10-C4410	F10 Pier - Curing, Remove Formwork (Pier B)	5	05-Jul-17 A	0	07-Jul-17 A				100%																									
Pier Head Segment																																		
F10-C5110	F10 Pier Head - Scaffold, Temp Works	17	18-Aug-17*	17	06-Sep-17	20-Sep-17	11-Oct-17	28	0%																									
F10-C5210	F10 Pier Head - Erect PH Segment (2 nr)	2	07-Sep-17	2	08-Sep-17	12-Oct-17	13-Oct-17	28	0%																									
F10-C5310	F10 Pier Head - Construct Diaphragm (2nd Cast) in PHS	41	09-Sep-17	41	30-Oct-17	14-Oct-17	01-Dec-17	28	0%																									
Pier F11 (F3b)																																		
Pile Cap																																		
F11-C3310	F11 Pile Cap - Curing, Remove Formwork, Backfill	14	13-Jun-17 A	0	15-Jul-17 A				100%																									
Pier F12 (F3a)																																		
Foundation - Bored Piles																																		
F12-C2150	F12 Fr Pile - Sleeve, Casing, Excavate, Rebar, Concrete (3rd) P4	17	08-Jun-17 A	0	05-Jul-17 A				100%																									
F12-C2210	F12 Fr Pile - Curing & Sonic Test	18	04-Jul-17 A	0	18-Jul-17 A				100%																									
Pile Cap																																		
F12-C3110	F12 Pile Cap - Excavate, Break Pile Head	24	12-Oct-17*	24	09-Nov-17	08-Aug-17	04-Sep-17	-54	0%																									
Viaduct F - Bridge F4																																		
Pier F16 (F5a/F4a)																																		
Foundation - Bored Piles																																		
F16-C2210	F16 EB Pile - Curing & Sonic Test	18	12-Jun-17 A	0	30-Jun-17 A				100%																									
Pile Cap																																		

- █ Actual Work
- █ Planned Bar
- █ Critical Bar
- ◆ Milestone

Project ID: TMCLK-DWPI-1-M50
 Layout: J3518-DWP-3MRP Submission - M50
 Filter: TASK filters: 3-Month Lookahead, No CC
 Milestones, No Level of Effort.

Tuen Mun - Chek Lap Kok Link - Southern Connection
3-Month Rolling Programme (Page 6 of 11 Pages)
(Progress as of 21-Jul-17)

Date	Revision	Checked	Approved
31-May-...		PKN	GL
04-Jul-17		PKN	GL
01-Aug-17		PKN	HF

DWG. No.:
J3518/GCL/PGM/3MRP-M50

Activity ID	Activity Name	Orig. Durn.	Act. Start / FC Early Start	Rem. Durn.	Act. Finish / FC Early Finish	Late Start	Late Finish	Total Float	Physical % Complete	2017																							
										July					August					September					October								
										19	26	03	10	17	24	31	07	14	21	28	04	11	18	25	02	09	16	23					
Superstructure & Associated Works																																	
Viaduct A																																	
Bridge A2																																	
Deck Span Segment																																	
A02-C6310	A2 - Cantilever Span (16 nr) - *LG2	26	21-Jun-17 A	0	29-Jun-17 A				100%	[Gantt bar: 21-Jun-17 to 29-Jun-17]																							
A03-C6210	A3 - Install (*Launch LG2 from A2)	3	29-Jun-17 A	0	02-Jul-17 A				100%	[Gantt bar: 29-Jun-17 to 02-Jul-17]																							
A03-C6310	A3 - Cantilever Span (16 nr) - *LG2	26	26-Jun-17 A	0	12-Jul-17 A				100%	[Gantt bar: 26-Jun-17 to 12-Jul-17]																							
VA2-C6510	Viaduct A2 - Final Stitch & Stressing to Span	24	21-Jul-17	24	17-Aug-17	15-Aug-16	10-Sep-16	-275	0%	[Gantt bar: 15-Aug-16 to 10-Sep-16]																							
Deck Finales, E&M and Roadworks																																	
VA2-C7710	Viaduct A2 - Parapet Panels	48	18-Aug-17	48	14-Oct-17	12-Sep-16	09-Nov-16	-275	0%	[Gantt bar: 12-Sep-16 to 09-Nov-16]																							
VA2-C7720	Viaduct A2 - Gantry & TCSS Provisions (KD5)	36	29-Sep-17	36	13-Nov-17	27-Oct-16	07-Dec-16	-275	0%	[Gantt bar: 27-Oct-16 to 07-Dec-16]																							
VA2-C7810	Viaduct A2 - Drainage, Fire Main & E&M Services	60	16-Oct-17	60	27-Dec-17	10-Jan-17	23-Mar-17	-226	0%	[Gantt bar: 10-Jan-17 to 23-Mar-17]																							
Bridge A1																																	
Deck Span Segment																																	
A06-C6320	A6 - End Span to A7 (8 nr) - THB	34	24-Feb-17 A	10	01-Aug-17	03-Aug-16	13-Aug-16	-285	75%	[Gantt bar: 03-Aug-16 to 13-Aug-16]																							
A08-C6510	A8 - Cantilever Span (Remaining 21 nr) (MTR) - KF	32	21-Jul-17	32	26-Aug-17	19-Mar-16	29-Apr-16	-394	0%	[Gantt bar: 19-Mar-16 to 29-Apr-16]																							
A09-C6310	A9 - Cantilever Span (Initial 5 nr) - Crane	10	28-Aug-17	10	07-Sep-17	30-Apr-16	12-May-16	-394	0%	[Gantt bar: 30-Apr-16 to 12-May-16]																							
A09-C6410	A9 - Relocate & Install KF (MTR)	24	28-Aug-17	24	23-Sep-17	30-Apr-16	30-May-16	-394	0%	[Gantt bar: 30-Apr-16 to 30-May-16]																							
A09-C6510	A9 - Cantilever Span (Remaining 20 nr) (MTR) - KF	32	25-Sep-17	32	03-Nov-17	31-May-16	08-Jul-16	-394	0%	[Gantt bar: 31-May-16 to 08-Jul-16]																							
Viaduct B																																	
Bridge B3																																	
Deck Finales, E&M and Roadworks																																	
VB3-C7710	Viaduct B3 - Parapet Panels	48	16-Dec-16 A	12	03-Aug-17	13-Oct-16	26-Oct-16	-227	95%	[Gantt bar: 13-Oct-16 to 26-Oct-16]																							
VB3-C7720	Viaduct B3 - Gantry & TCSS Provisions (KD5)	36	04-Aug-17*	36	14-Sep-17	27-Oct-16	07-Dec-16	-227	0%	[Gantt bar: 27-Oct-16 to 07-Dec-16]																							
VB3-C7810	Viaduct B3 - Drainage, Fire Main & E&M Services	60	18-Aug-17	60	30-Oct-17	10-Jan-17	23-Mar-17	-178	0%	[Gantt bar: 10-Jan-17 to 23-Mar-17]																							
VB3-C7820	Viaduct B3 - Railings, Light Poles, Signs & Street Furniture	30	15-Sep-17	30	21-Oct-17	10-Feb-17	16-Mar-17	-178	0%	[Gantt bar: 10-Feb-17 to 16-Mar-17]																							
Bridge B2																																	
Deck Span Segment																																	
VB2-C6510	Viaduct B2 - Final Stitch & Stressing to Span	24	12-Jun-17 A	0	20-Jul-17 A				100%	[Gantt bar: 12-Jun-17 to 20-Jul-17]																							
Deck Finales, E&M and Roadworks																																	
VB2-C7710	Viaduct B2 - Parapet Panels	60	21-Jul-17	60	28-Sep-17	12-Sep-16	23-Nov-16	-251	0%	[Gantt bar: 12-Sep-16 to 23-Nov-16]																							
VB2-C7720	Viaduct B2 - Gantry & TCSS Provisions (KD5)	36	01-Sep-17	36	14-Oct-17	27-Oct-16	07-Dec-16	-251	0%	[Gantt bar: 27-Oct-16 to 07-Dec-16]																							
VB2-C7810	Viaduct B2 - Drainage, Fire Main & E&M Services	48	29-Sep-17	48	27-Nov-17	24-Jan-17	23-Mar-17	-202	0%	[Gantt bar: 24-Jan-17 to 23-Mar-17]																							
VB2-C7820	Viaduct B2 - Railings, Light Poles, Signs & Street Furniture	30	16-Oct-17	30	20-Nov-17	10-Feb-17	16-Mar-17	-202	0%	[Gantt bar: 10-Feb-17 to 16-Mar-17]																							
Bridge B1																																	
Deck Span Segment																																	
B17-C6310	B17 - Cantilever Span (26 nr) - Crane	35	15-Sep-17	35	27-Oct-17	10-Jun-16	21-Jul-16	-378	0%	[Gantt bar: 10-Jun-16 to 21-Jul-16]																							
B18-C6210	B18 - Falsework for End Span to B11	24	14-Oct-17	24	11-Nov-17	08-Jul-16	04-Aug-16	-378	0%	[Gantt bar: 08-Jul-16 to 04-Aug-16]																							
Viaduct C																																	
Bridge C4																																	
Deck Finales, E&M and Roadworks																																	
VC4-C7710	Viaduct C4 - Parapet Panels	48	12-Jun-17 A	72	14-Oct-17	15-Apr-16	12-Jul-16	-375	10%	[Gantt bar: 15-Apr-16 to 12-Jul-16]																							
VC4-C7720	Viaduct C4 - Gantry & TCSS Provisions (KD4)	36	29-Sep-17	36	13-Nov-17	28-Jun-16	09-Aug-16	-375	0%	[Gantt bar: 28-Jun-16 to 09-Aug-16]																							
VC4-C7810	Viaduct C4 - Drainage, Fire Main & E&M Services	60	16-Oct-17	60	27-Dec-17	13-Jul-16	21-Sep-16	-375	0%	[Gantt bar: 13-Jul-16 to 21-Sep-16]																							
Bridge C3																																	
Deck Span Segment																																	
C10-C6320	C10 - Cantilever Span (Remaining 12 nr) - THB & Crane	22	09-Jun-17 A	0	07-Jul-17 A				100%	[Gantt bar: 09-Jun-17 to 07-Jul-17]																							
C11-C6410	C11 - Falsework for End Span to C10	24	15-May-17 A	0	24-Jun-17 A				100%	[Gantt bar: 15-May-17 to 24-Jun-17]																							
C11-C6510	C11 - End Span to C10 (6 nr) - Crane	12	26-Jun-17 A	0	28-Jun-17 A				100%	[Gantt bar: 26-Jun-17 to 28-Jun-17]																							
VC3-C6510	Viaduct C3 - Final Stitch & Stressing to Span	24	21-Jul-17	24	17-Aug-17	15-Apr-16	13-May-16	-375	0%	[Gantt bar: 15-Apr-16 to 13-May-16]																							
Deck Finales, E&M and Roadworks																																	
VC3-C7710	Viaduct C3 - Parapet Panels	60	18-Aug-17	60	30-Oct-17	16-May-16	26-Jul-16	-375	0%	[Gantt bar: 16-May-16 to 26-Jul-16]																							
VC3-C7720	Viaduct C3 - Gantry & TCSS Provisions (KD4)	36	29-Sep-17	36	13-Nov-17	28-Jun-16	09-Aug-16	-375	0%	[Gantt bar: 28-Jun-16 to 09-Aug-16]																							
Bridge C2																																	
Deck Finales, E&M and Roadworks																																	
VC2-C7710	Viaduct C2 - Parapet Panels	48	13-Jun-17 A	61	29-Sep-17	28-Apr-16	12-Jul-16	-364	10%	[Gantt bar: 28-Apr-16 to 12-Jul-16]																							
VC2-C7720	Viaduct C2 - Gantry & TCSS Provisions (KD4)	36	16-Sep-17	36	31-Oct-17	28-Jun-16	09-Aug-16	-364	0%	[Gantt bar: 28-Jun-16 to 09-Aug-16]																							
VC2-C7810	Viaduct C2 - Drainage, Fire Main & E&M Services	60	30-Sep-17	60	12-Dec-17	13-Jul-16	21-Sep-16	-364	0%	[Gantt bar: 13-Jul-16 to 21-Sep-16]																							

■ Actual Work
■ Planned Bar
■ Critical Bar
◆ Milestone

Project ID: TMCLK-DWPI-1-M50
 Layout: J3518-DWP-3MRP Submission - M50
 Filter: TASK filters: 3-Month Lookahead, No CC
 Milestones, No Level of Effort.

Tuen Mun - Chek Lap Kok Link - Southern Connection
3-Month Rolling Programme (Page 8 of 11 Pages)
(Progress as of 21-Jul-17)

Date	Revision	Checked	Approved
31-May-17		PKN	GL
04-Jul-17		PKN	GL
01-Aug-17		PKN	HF

DWG. No.:
J3518/GCL/PGM/3MRP-M50

Activity ID	Activity Name	Orig. Durn.	Act. Start / FC Early Start	Rem. Durn.	Act. Finish / FC Early Finish	Late Start	Late Finish	Total Float	Physical % Complete	2017																							
										July					August					September					October								
										19	26	03	10	17	24	31	07	14	21	28	04	11	18	25	02	09	16	23					
Bridge C1																																	
Deck Finales, E&M and Roadworks																																	
VC1-C7710	Viaduct C1 - Parapet Panels	48	31-May-17 A	36	31-Aug-17	30-May-16	12-Jul-16	-339	0%	[Gantt Bar]																							
VC1-C7720	Viaduct C1 - Gantry & TCSS Provisions (KD4)	36	18-Aug-17	36	28-Sep-17	28-Jun-16	09-Aug-16	-339	0%	[Gantt Bar]																							
VC1-C7810	Viaduct C1 - Drainage, Fire Main & E&M Services	60	01-Sep-17	60	13-Nov-17	13-Jul-16	21-Sep-16	-339	0%	[Gantt Bar]																							
VC1-C7820	Viaduct C1 - Railings, Light Poles, Signs & Street Furniture	30	29-Sep-17	30	06-Nov-17	10-Aug-16	13-Sep-16	-339	0%	[Gantt Bar]																							
Viaduct D																																	
Bridge D3																																	
Deck Span Segment																																	
D06-C6410	D6 - Launch LG1 from D9 to D6	18	27-Jun-17 A	0	18-Jul-17 A				100%	[Gantt Bar]																							
D06-C6415	D6 - Launch LG1 from D6 to D5	4	19-Jul-17 A	4	25-Jul-17	08-Mar-16	11-Mar-16	-404	100%	[Gantt Bar]																							
D06-C6510	D6 - End Span to D5 (6 nr) - LG1	5	26-Jul-17	5	31-Jul-17	12-Mar-16	17-Mar-16	-404	0%	[Gantt Bar]																							
D06-C6610	D6 - Launch LG1 from D6 to E2B for Dismantling	18	01-Aug-17	18	21-Aug-17	18-Mar-16	12-Apr-16	-404	0%	[Gantt Bar]																							
VD3-C6510	Viaduct D3 - Final Stitch & Stressing to Span	24	11-Aug-17	24	07-Sep-17	15-Apr-16	13-May-16	-393	0%	[Gantt Bar]																							
Deck Finales, E&M and Roadworks																																	
VD3-C7710	Viaduct D3 - Parapet Panels	48	08-Sep-17	48	06-Nov-17	16-May-16	12-Jul-16	-393	0%	[Gantt Bar]																							
Bridge D2																																	
Deck Span Segment																																	
D09-C6410	D9 - Preparation & Drop in Segments D8-D9 (3 nr) (MTR) - LG1	23	03-Jun-17 A	0	22-Jun-17 A				100%	[Gantt Bar]																							
D13-C6710	D13 - End Span to D12 (4 nr) - Crane	10	14-Jun-17 A	0	22-Jun-17 A				100%	[Gantt Bar]																							
VD2-C6510	Viaduct D2 - Final Stitch & Stressing to Span	24	21-Jul-17	24	17-Aug-17	15-Apr-16	13-May-16	-375	0%	[Gantt Bar]																							
Deck Finales, E&M and Roadworks																																	
VD2-C7710	Viaduct D2 - Parapet Panels	60	18-Aug-17	60	30-Oct-17	16-May-16	26-Jul-16	-375	0%	[Gantt Bar]																							
VD2-C7720	Viaduct D2 - Gantry & TCSS Provisions (KD4)	36	29-Sep-17	36	13-Nov-17	28-Jun-16	09-Aug-16	-375	0%	[Gantt Bar]																							
Bridge D1																																	
Deck Finales, E&M and Roadworks																																	
VD1-C7710	Viaduct D1 - Parapet Panels	48	01-Jun-17 A	36	31-Aug-17	30-May-16	12-Jul-16	-339	0%	[Gantt Bar]																							
VD1-C7720	Viaduct D1 - Gantry & TCSS Provisions (KD4)	36	18-Aug-17	36	28-Sep-17	28-Jun-16	09-Aug-16	-339	0%	[Gantt Bar]																							
VD1-C7810	Viaduct D1 - Drainage, Fire Main & E&M Services	60	01-Sep-17	60	13-Nov-17	13-Jul-16	21-Sep-16	-339	0%	[Gantt Bar]																							
VD1-C7820	Viaduct D1 - Railings, Light Poles, Signs & Street Furniture	30	29-Sep-17	30	06-Nov-17	10-Aug-16	13-Sep-16	-339	0%	[Gantt Bar]																							
Viaduct E																																	
Bridge E1																																	
Deck Span Segment																																	
VE1-C6510	Viaduct E1 - E3A/E4A, E3B/E4A & E3C/E4B Stitches	12	28-Sep-17	12	13-Oct-17	29-Apr-16	13-May-16	-422	0%	[Gantt Bar]																							
Deck Finales, E&M and Roadworks																																	
VE1AB-C7710	Viaduct E1A/B - Parapet Panels	48	14-Oct-17	48	09-Dec-17	16-May-16	12-Jul-16	-422	0%	[Gantt Bar]																							
VE1CD-C7710	Viaduct E1C/D - Parapet Panels	48	14-Oct-17	48	09-Dec-17	16-May-16	12-Jul-16	-422	0%	[Gantt Bar]																							
Bridge E2																																	
Deck Span Segment																																	
E03A-C6410	E3A - Launch LG1 from E3B to E3A - *LG1	3	02-Sep-17	3	05-Sep-17	25-Apr-16	27-Apr-16	-404	0%	[Gantt Bar]																							
E03A-C6510	E3A - End Span to E4A (7 nr) - *LG1	7	06-Sep-17	7	13-Sep-17	28-Apr-16	06-May-16	-404	0%	[Gantt Bar]																							
E03A-C6610	E3A/B - Stitch between E3A/B and E4A	12	14-Sep-17	12	27-Sep-17	08-Aug-17	21-Aug-17	-32	0%	[Gantt Bar]																							
E03A-C6710	E3A - Launch LG1 from E3A to E4/E5 for Dismantling	6	14-Sep-17	6	20-Sep-17	07-May-16	13-May-16	-404	0%	[Gantt Bar]																							
E03B-C6410	E3B - Launch LG1 from E2B to E3B - *LG1	3	22-Aug-17*	3	24-Aug-17	13-Apr-16	15-Apr-16	-404	0%	[Gantt Bar]																							
E03B-C6510	E3B - End Span to E4A (7 nr) - *LG1	7	25-Aug-17	7	01-Sep-17	16-Apr-16	23-Apr-16	-404	0%	[Gantt Bar]																							
E03C-C6610	E3C/B - Stitch between E3C/D and E4B	12	21-Jul-17	12	03-Aug-17	08-Aug-17	21-Aug-17	15	0%	[Gantt Bar]																							
E04A-C6310	E4A - Bifurcation Span to E3A (12 nr) with 1st Stitch - THB	28	09-Mar-17 A	0	19-Jul-17 A				100%	[Gantt Bar]																							
E04A-C6410	E4A - Bifurcation Span to E5A (6 nr) with 1st Stitch - THB	28	01-Mar-17 A	12	01-Aug-17	09-Feb-16	22-Feb-16	-472	70%	[Gantt Bar]																							
E04B-C6420	E4B - E3D/E4B Stitch	8	21-Jul-17	8	28-Jul-17	13-Feb-16	22-Feb-16	-468	0%	[Gantt Bar]																							
E04B-C6430	E4A & E4B - E4A/E5A & E4B/E5B Stitches	8	02-Aug-17	8	09-Aug-17	23-Feb-16	02-Mar-16	-472	0%	[Gantt Bar]																							
E05A-C6610	E5A - Stitch between E4A and E5A	12	02-Aug-17	12	15-Aug-17	08-Aug-17	21-Aug-17	5	0%	[Gantt Bar]																							
E05B-C6610	E5B - Stitch between E4B and E5B	12	21-Jul-17	12	01-Aug-17	10-Aug-17	21-Aug-17	20	0%	[Gantt Bar]																							
E06A-C6410	E6A - Drop in (E6A-E5A) - THB	30	13-Jul-17 A	25	14-Aug-17	09-Mar-16	06-Apr-16	-447	25%	[Gantt Bar]																							
E06A-C6510	E6A & E6B - Quarter Span (E6-E7) - TLB	30	04-Jul-17 A	22	11-Aug-17	03-Mar-16	28-Mar-16	-452	50%	[Gantt Bar]																							
E06A-C6520	E6A & E6B - E5A/E6A & E5B/E6B Stitches	8	09-Sep-17	8	16-Sep-17	07-Apr-16	15-Apr-16	-472	0%	[Gantt Bar]																							
E06A-C6530	E7A & E7B - E6A/E7A & E6B/E7B Stitches	8	20-Sep-17	8	27-Sep-17	20-Apr-16	28-Apr-16	-472	0%	[Gantt Bar]																							
E06A-C6610	E6A/E7A: Install Bearing & Stress Continuity Tendons	12	28-Sep-17	12	13-Oct-17	08-Aug-17	21-Aug-17	-44	0%	[Gantt Bar]																							
E06A-C6620	E6B/E7B: Install Bearing & Stress Continuity Tendons	12	28-Sep-17	12	13-Oct-17	08-Aug-17	21-Aug-17	-44	0%	[Gantt Bar]																							
E06B-C6510	E6B - Drop in (E6B-E5B) - THB	30	10-Aug-17	30	08-Sep-17	03-Mar-16	06-Apr-16	-472	0%	[Gantt Bar]																							
E08A-C6410	E8A - Drop in (E8A-E7A) - THB	30	07-Sep-17	30	10-Oct-17	17-Aug-17	15-Sep-17	-21	0%	[Gantt Bar]																							

■ Actual Work
■ Planned Bar
■ Critical Bar
◆ Milestone

Project ID: TMCLK-DWPI-1-M50
 Layout: J3518-DWP-3MRP Submission - M50
 Filter: TASK filters: 3-Month Lookahead, No CC
 Milestones, No Level of Effort.

Tuen Mun - Chek Lap Kok Link - Southern Connection
3-Month Rolling Programme (Page 9 of 11 Pages)
(Progress as of 21-Jul-17)

Date	Revision	Checked	Approved
31-May-...		PKN	GL
04-Jul-17		PKN	GL
01-Aug-17		PKN	HF

DWG. No.:
J3518/GCL/PGM/3MRP-M50

Activity ID	Activity Name	Orig. Durn.	Act. Start / FC Early Start	Rem. Durn.	Act. Finish / FC Early Finish	Late Start	Late Finish	Total Float	Physical % Complete	2017																								
										July					August					September					October									
											19	26	03	10	17	24	31	07	14	21	28	04	11	18	25	02	09	16	23					
E08A-C6510	E8A & E8B - Quarter Span (E8-E9) - TLB	30	07-Sep-17	30	10-Oct-17	18-Jul-17	16-Aug-17	-51	0%																									
E08A-C6520	E8A & E8B - E7A/E8A & E7B/E8B Stitches	8	12-Oct-17	8	19-Oct-17	15-Sep-17	22-Sep-17	-24	0%																									
E08B-C6510	E8B - Drop in (E8B-E7B) - THB	30	09-Sep-17	30	11-Oct-17	16-Aug-17	14-Sep-17	-24	0%																									
E10A-C6310	E10A - Cantilever Span (16 nr) with 1st Stitch - WLF	24	30-Apr-17 A	0	23-Jun-17 A				100%																									
E10B-C6310	E10B - Cantilever Span (16 nr) with 1st Stitch - WLF	26	04-May-17 A	0	04-Jul-17 A				100%																									
E11A-C6410	E11A - Bifurcation Span to E10A (12 nr) with 1st Stitch - THB	48	08-Jun-17 A	30	19-Aug-17	17-Jun-17	17-Jul-17	-33	16%																									
E11B-C6210	E11B - Install THB	2	13-Jul-17 A	0	21-Jul-17	11-Nov-16	11-Nov-16	-234	0%																									
E11B-C6410	E11B - Bifurcation Span to E10B (12 nr) with 1st Stitch - THB	48	21-Jul-17	48	07-Sep-17	12-Nov-16	07-Jan-17	-234	0%																									
VE2-C6610	Viaduct E2 - Dismantle LG1	48	21-Sep-17	48	18-Nov-17	11-Jul-17	04-Sep-17	-62	0%																									
VE2-C6620	Viaduct E2 - Dismantle LG2	48	21-Jul-17	48	14-Sep-17	26-Jun-17	21-Aug-17	-21	0%																									
Bridge E5																																		
Deck Span Segment																																		
E11B-C6310	E11B Deck - Bifurcation Span to E12B (18 nr) with 1st Stitch - THB	48	21-Jul-17	48	07-Sep-17	12-Nov-16	07-Jan-17	-234	0%																									
E12D-C6110	E12D Deck - Install THB	8	13-Sep-17	8	20-Sep-17	08-Jan-17	15-Jan-17	-240	0%																									
E12D-C6210	E12D Deck - Cantilever Span (16 seg) with 2 stitches - THB	45	21-Sep-17	45	08-Nov-17	16-Jan-17	05-Mar-17	-240	0%																									
E13D-C6110	E13D Deck - Install KF and THB	6	06-Oct-17	6	11-Oct-17	10-Feb-17	15-Feb-17	-231	0%																									
E13D-C6210	E13D Deck - Cantilever Span (22 seg) with 2 stitches - KF and THB	49	12-Oct-17	49	30-Nov-17	16-Feb-17	06-Apr-17	-231	0%																									
E14D-C6110	E14D Deck - Preparation Works & Deliver Underslung Truss to Site	18	26-Sep-17	18	18-Oct-17	04-Nov-16	24-Nov-16	-265	0%																									
E14D-C6115	E14D Deck - Install Truss/Fixings & Initial ICE Check	15	19-Oct-17	15	06-Nov-17	25-Nov-16	12-Dec-16	-265	0%																									
Bridge E6																																		
Deck Span Segment																																		
E12C-C6110	E12C Deck - Install WLF	8	15-Aug-17	8	22-Aug-17	07-Jun-17	14-Jun-17	-68	0%																									
E12C-C6210	E12C Deck - Cantilever Span (42 seg) with 2 stitches - THB	67	23-Aug-17	67	01-Nov-17	15-Jun-17	21-Aug-17	-68	0%																									
Bridge E7																																		
Deck Span Segment																																		
E12B-C6110	E12B Deck - Install WLF	8	20-Aug-17*	8	27-Aug-17	13-Apr-17	20-Apr-17	-126	0%																									
E12B-C6210	E12B Deck - Cantilever Span (40 seg) with 3 stitches - WLF	66	28-Aug-17	66	05-Nov-17	21-Apr-17	27-Jun-17	-126	0%																									
Bridge E8																																		
Deck Span Segment																																		
E11A-C6310	E11A Deck - Bifurcation Span to E12A (18 nr) w/ 1st Stitch - THB	48	09-Jun-17 A	23	12-Aug-17	17-Oct-16	11-Nov-16	-257	20%																									
E12A-C6210	E12A Deck - Install THB	8	25-Aug-17	8	02-Sep-17	12-Nov-16	21-Nov-16	-269	0%																									
E12A-C6410	E12A Deck - Cantilever Span (22 nr) with 1st stitch - THB	45	02-Sep-17	45	20-Oct-17	22-Nov-16	12-Jan-17	-269	0%																									
At-Grade Works & Miscellaneous Works																																		
At-Grade Works Along North Lantau Highway																																		
Slope Works Near Viaduct D																																		
Slope 10NW-C/F9																																		
M201200	10NW-C/F9 - Slope works (incl. L-Shape Ret. Walls)	110	21-Jul-17	110	29-Nov-17	19-Sep-16	02-Feb-17	-246	0%																									
Slope 10NW-C/F10																																		
M201160	10NW-C/F10 - Slope works (incl. L-Shape Ret. Walls)	110	21-Jul-17	110	29-Nov-17	02-Jul-16	10-Nov-16	-312	0%																									
Slope 10NW-C/R4																																		
M201170	10NW-C/R4 - Slope works	80	21-Jul-17	80	24-Oct-17	06-Aug-16	10-Nov-16	-282	0%																									
Slope 10NW-C/F50																																		
M201150	10NW-C/F50 - Slope works	165	11-Jan-17 A	62	30-Sep-17	27-Aug-16	10-Nov-16	-264	5%																									
Road Works Along NLH Westbound																																		
General																																		
RW10020	NLH W/B (Viaduct C) - Road Drainage Works for tie-in	104	26-Jun-17 A	127	19-Dec-17	03-Nov-16	07-Apr-17	-209	5%																									
Road Works Along NLH Eastbound																																		
General																																		
RW20080-1	Ch650 - 800 Portion 4 (viaduct D area) : Roadwork	81	11-Jan-17 A	12	03-Aug-17	24-Mar-17	07-Apr-17	-94	85%																									
RW20080-2	Ch475 - 650 Portion 5 (viaduct D area) : Roadwork	81	11-Jan-17 A	12	03-Aug-17	24-Mar-17	07-Apr-17	-94	85%																									
RW20080-3	Ch275 - 475 Portion 6 (viaduct D area) : Roadwork	162	11-Jan-17 A	59	27-Sep-17	25-Jan-17	07-Apr-17	-141	70%																									
RW20080-4	Ch157 - 275 Portion 7 (Viaduct D area) : Roadwork	98	11-Jan-17 A	24	17-Aug-17	10-Mar-17	07-Apr-17	-106	75%																									
RW20084	NLH E/B Viaduct A - Ch200-388 Roadwork (SL & HS) & Reinstate NLH	127	17-Dec-16 A	24	17-Aug-17	10-Mar-17	07-Apr-17	-106	75%																									
At-Grade Works Along Cheung Tung Road																																		
Slope Works Near Viaduct C																																		
Slope 10NW-C/C26																																		
SWVC1995	TTA for closure of NLH HS	2	11-Aug-17	2	12-Aug-17	16-Aug-16	17-Aug-16	-292	0%																									
SWVC2000	10NW-C/C26 - Slope works	166	14-Aug-17	166	05-Mar-18	18-Aug-16	09-Mar-17	-292	0%																									

■ Actual Work
■ Planned Bar
■ Critical Bar
◆ Milestone

Project ID: TMCLK-DWPI-1-M50
 Layout: J3518-DWP-3MRP Submission - M50
 Filter: TASK filters: 3-Month Lookahead, No CC
 Milestones, No Level of Effort.

Tuen Mun - Chek Lap Kok Link - Southern Connection
3-Month Rolling Programme (Page 10 of 11 Pages)
 (Progress as of 21-Jul-17)

Date	Revision	Checked	Approved
31-May-17		PKN	GL
04-Jul-17		PKN	GL
01-Aug-17		PKN	HF

DWG. No.:
J3518/GCL/PGM/3MRP-M50

Activity ID	Activity Name	Orig. Durn.	Act. Start / FC Early Start	Rem. Durn.	Act. Finish / FC Early Finish	Late Start	Late Finish	Total Float	Physical % Complete	2017																							
										July					August					September					October								
										19	26	03	10	17	24	31	07	14	21	28	04	11	18	25	02	09	16	23					
Slope PF1 & PF2																																	
SWVC7000	PF1 & PF2 slope works	18	21-Jul-17	18	10-Aug-17	26-Jul-16	15-Aug-16	-292	0%																								
Slope 10NW-C/F13																																	
SWVC4000	10NW-C/F13 - Slope works	100	27-Jul-17*	100	23-Nov-17	14-Jul-16	10-Nov-16	-307	0%																								
Slope 10NW-C/F14																																	
SWVC5000	10NW-C/F14 - Slope works	100	27-Jul-17*	100	23-Nov-17	07-Jun-16	05-Oct-16	-337	0%																								
Slope 10NW-C/F15																																	
SWVC6000	10NW-C/F15 - Slope works	108	27-Jul-17*	108	02-Dec-17	28-May-16	05-Oct-16	-345	0%																								
Re-alignment of CTR Along Viaduct B																																	
General																																	
RP00074-3	Ch100-300: Road Drainage	38	06-May-17 A	7	28-Jul-17	11-Jul-20	18-Jul-20	880	85%																								
RP00075	Ch100-300: Duct Laying for 11KV	18	22-May-17 A	0	20-Jul-17 A				100%																								
RP00076	Ch100-300: Lay Telecom Cable	10	22-May-17 A	135	30-Dec-17	04-Feb-20	18-Jul-20	752	80%																								
RP00077	Ch100-300: Street Lighting & Draw Pit	13	27-Jun-17 A	135	30-Dec-17	04-Feb-20	18-Jul-20	752	20%																								
RP00078	Ch100-300: Relocation of Vent Pipe	18	13-May-17 A	135	30-Dec-17	04-Feb-20	18-Jul-20	752	50%																								
RP00083	Ch100-300: Drainage & Roadwork for New CTR	52	13-May-17 A	52	19-Sep-17	22-Oct-16	21-Dec-16	-219	30%																								
RP00084	Ch100-300: TTA to New CTR	1	20-Sep-17	1	20-Sep-17	22-Dec-16	22-Dec-16	-219	0%																								
Re-alignment of CTR Along Viaduct C																																	
East Portion																																	
RW60050	CTR East (stage 2) TTA 090-5 : Roadwork	77	26-Apr-17 A	32	26-Aug-17	03-Oct-16	09-Nov-16	-235	60%																								
RW60060	CTR East (stage 3) TTA 090-6 : Roadwork	66	28-Aug-17	66	15-Nov-17	10-Nov-16	01-Feb-17	-235	0%																								
RW60080	CTR Tie in Works	116	18-May-17 A	88	03-Nov-17	19-Dec-16	07-Apr-17	-170	20%																								
At-Grade Works at Southern Landfall																																	
HKBCF Area																																	
General																																	
RW30028-2	Construct FMH2046 and Lay Pipe Work	14	27-Jun-17 A	10	01-Aug-17	08-Jul-20	18-Jul-20	877	50%																								
RW30028-3	Construct FMH2047 and Lay Pipe Work	14	27-Jun-17 A	10	01-Aug-17	31-May-17	10-Jun-17	-43	50%																								
RW30028-4	Construct FMH2048 and Lay Pipe Work	14	13-Sep-17	14	28-Sep-17	12-Jun-17	27-Jun-17	-79	0%																								
RW30028-5	Construct FMH2049 and Lay Pipe Work	14	29-Sep-17	14	17-Oct-17	28-Jun-17	14-Jul-17	-79	0%																								
Watermain from Tung Chung to Southern Landfall																																	
Watermain Works																																	
General																																	
WM00120	Lay DN450 Fresh Water Main at Re-aligned CTR (approx. 500m)	48	22-Apr-15 A	12	03-Aug-17	29-Nov-17	12-Dec-17	109	90%																								

■ Actual Work
■ Planned Bar
■ Critical Bar
◆ Milestone

Project ID: TMCLK-DWPI-1-M50
 Layout: J3518-DWP-3MRP Submission - M50
 Filter: TASK filters: 3-Month Lookahead, No CC
 Milestones, No Level of Effort.

Tuen Mun - Chek Lap Kok Link - Southern Connection
3-Month Rolling Programme (Page 11 of 11 Pages)
(Progress as of 21-Jul-17)

Date	Revision	Checked	Approved
31-May-...		PKN	GL
04-Jul-17		PKN	GL
01-Aug-17		PKN	HF

DWG. No.:
J3518/GCL/PGM/3MRP-M50