

■ Actual Work  
■ Planned Bar  
■ Critical Bar  
◆ Milestone

Project ID: TMCLK-DWPI-1-M51  
 Layout: J3518-DWP-3MRP Submission - M51  
 Filter: TASK filters: 3-Month Lookahead, No CC  
 Milestones, No Level of Effort.

**Tuen Mun - Chek Lap Kok Link - Southern Connection**  
**3-Month Rolling Programme (Page 1 of 11 Pages)**  
**(Progress as of 21-Aug-17)**

Date	Revision	Checked	Approved
04-Jul-17		PKN	GL
01-Aug-17		PKN	HF
29-Aug-17		PKN	HF

**DWG. No.:**  
**J3518/GCL/PGM/3MRP-M51**

Activity ID	Activity Name	Orig. Durn.	Act. Start / FC Early Start	Rem. Durn.	Act. Finish / FC Early Finish	Late Start	Late Finish	Total Float	Physical % Complete	2017																								
										August					September					October					November									
										24	31	07	14	21	28	04	11	18	25	02	09	16	23	30	06	13	20							
<b>General</b>																																		
PP7150	Site preparation Bearings for Viaduct E5 & E6	18	20-Jul-17 A	0	09-Aug-17 A				100%	[Gantt Bar: 20-Jul-17 to 09-Aug-17]																								
PP7220	Site preparation Bearings for Viaduct E7 & E8	18	11-Aug-17 A	0	19-Aug-17 A				100%	[Gantt Bar: 11-Aug-17 to 19-Aug-17]																								
<b>Viaduct F</b>																																		
<b>Bearing Design &amp; Manufacture</b>																																		
<b>General</b>																																		
PPBRF7	Manufacture of Bearing - Viaduct F	60	28-Mar-17 A	0	20-Aug-17 A				100%	[Gantt Bar: 28-Mar-17 to 20-Aug-17]																								
PPBRF9	Bearing Delivery - Viaduct F	34	18-Jul-17 A	41	09-Oct-17	25-Oct-16	10-Dec-16	-243	3%	[Gantt Bar: 18-Jul-17 to 09-Oct-17]																								
<b>Movement Joints</b>																																		
<b>Viaduct A to F</b>																																		
<b>MJ Design &amp; Manufacture</b>																																		
<b>General</b>																																		
PP6MJ02-2	Manufacture & delivery of MJ	180	01-Apr-17 A	100	18-Dec-17	11-Apr-16	09-Aug-16	-405	25%	[Gantt Bar: 01-Apr-17 to 18-Dec-17]																								
<b>Construction</b>																																		
<b>Foundation &amp; Substructure Works</b>																																		
<b>Viaduct A - Bridge A1</b>																																		
<b>Pier A10 (A1b)</b>																																		
<b>Pier Head Segment</b>																																		
A10-C5410	A10 - PHS Diaphragm - Rebar, Formwork, Concreting	36	10-Jun-17 A	0	25-Jul-17 A				100%	[Gantt Bar: 10-Jun-17 to 25-Jul-17]																								
A10-C5420	A10 - PHS Diaphragm - Curing & Striking of Forms	12	26-Jul-17 A	0	07-Aug-17 A				100%	[Gantt Bar: 26-Jul-17 to 07-Aug-17]																								
<b>Ramp A</b>																																		
<b>Abutment &amp; Approach Ramp A</b>																																		
<b>Ramp Structure</b>																																		
ARA-C6140	Ramp A - Remaining RE Wall (Bay 7 to 11) with Backfill	111	02-Mar-17 A	0	03-Aug-17 A				100%	[Gantt Bar: 02-Mar-17 to 03-Aug-17]																								
ARA-C6142	Ramp A - Remaining RC Wall (Bay Wa2-Wa5 & Bay 9-12) with Backfill	120	21-Aug-17	120	13-Jan-18	24-May-16	15-Oct-16	-370	0%	[Gantt Bar: 21-Aug-17 to 13-Jan-18]																								
ARA-C6150	Ramp A - Backfill to Walls	111	04-Sep-17	111	17-Jan-18	07-Jun-16	19-Oct-16	-370	0%	[Gantt Bar: 04-Sep-17 to 17-Jan-18]																								
<b>Viaduct B - Bridge B1</b>																																		
<b>Pier B17 (B1c)</b>																																		
<b>Pier</b>																																		
B17-C4110	B17 - Pier Scaffold, Rebar, Formwork, Concrete (1st Lift)	7	17-Jun-17 A	0	04-Aug-17 A				100%	[Gantt Bar: 17-Jun-17 to 04-Aug-17]																								
B17-C4210	B17 - Pier Scaffold, Rebar, Formwork, Concrete (2nd Lift)	10	17-Jun-17 A	0	04-Aug-17 A				100%	[Gantt Bar: 17-Jun-17 to 04-Aug-17]																								
B17-C4310	B17 - Pier Curing, Remove Formwork	3	05-Aug-17 A	0	07-Aug-17 A				100%	[Gantt Bar: 05-Aug-17 to 07-Aug-17]																								
<b>Pier Head Segment</b>																																		
B17-C5210	B17 - PHS - Temporary Platform	3	17-Aug-17 A	0	19-Aug-17 A				100%	[Gantt Bar: 17-Aug-17 to 19-Aug-17]																								
B17-C5310	B17 - Install PH Segment & Fix (1 nr)	2	20-Aug-17 A	0	20-Aug-17 A				100%	[Gantt Bar: 20-Aug-17 to 20-Aug-17]																								
B17-C5410	B17 - PHS Diaphragm - Rebar, Formwork, Concreting	22	21-Aug-17	22	14-Sep-17	10-May-16	04-Jun-16	-381	0%	[Gantt Bar: 21-Aug-17 to 14-Sep-17]																								
B17-C5420	B17 - PHS Diaphragm - Curing & Striking of Forms	3	15-Sep-17	3	18-Sep-17	06-Jun-16	08-Jun-16	-381	0%	[Gantt Bar: 15-Sep-17 to 18-Sep-17]																								
<b>Pier B18 (B1b)</b>																																		
<b>Pier</b>																																		
B18-C4110	B18 - Pier Scaffold, Rebar, Formwork, Concrete	7	15-Jun-17 A	0	19-Aug-17 A				100%	[Gantt Bar: 15-Jun-17 to 19-Aug-17]																								
B18-C4210	B18 - Pier Curing, Remove Formwork	3	21-Aug-17	3	23-Aug-17	07-Jul-20	09-Jul-20	850	0%	[Gantt Bar: 21-Aug-17 to 23-Aug-17]																								
<b>Pier Head Segment</b>																																		
B18-C5210	B18 - PHS - Construct Abutment Wall	24	15-Jun-17 A	0	19-Aug-17 A				100%	[Gantt Bar: 15-Jun-17 to 19-Aug-17]																								
B18-C5310	B18 - PHS Lift & Temp Support (1 seg)	2	21-Aug-17	2	22-Aug-17	06-Jul-16	07-Jul-16	-335	0%	[Gantt Bar: 21-Aug-17 to 22-Aug-17]																								
<b>Ramp B</b>																																		
<b>Abutment &amp; Approach Ramp B</b>																																		
<b>Ramp Structure</b>																																		
ARB-C6120	Ramp B - RE Wall - Panel Installation from 1st Row to 2nd Row	66	12-Jun-17 A	17	08-Sep-17	30-Mar-16	19-Apr-16	-414	95%	[Gantt Bar: 12-Jun-17 to 08-Sep-17]																								
ARB-C6130	Ramp B - RE Wall - Panel Installation from 3rd Row to 6th Row	66	09-Sep-17	66	28-Nov-17	20-Apr-16	09-Jul-16	-414	0%	[Gantt Bar: 09-Sep-17 to 28-Nov-17]																								
ARB-C6140	Ramp B - RC Wall - Base Slab	92	25-Oct-17	92	13-Feb-18	04-Jun-16	22-Sep-16	-414	0%	[Gantt Bar: 25-Oct-17 to 13-Feb-18]																								
ARB-C6150	Ramp B - RC Wall - Side Wall	92	09-Nov-17	92	02-Mar-18	20-Jun-16	07-Oct-16	-414	0%	[Gantt Bar: 09-Nov-17 to 02-Mar-18]																								
<b>Ramp C</b>																																		
<b>Abutment &amp; Approach Ramp C</b>																																		
<b>Ramp Structure</b>																																		
ARC-C6180	Ramp C - RC Wall - Remaining Bays at 800 Tee	36	29-May-17 A	0	09-Aug-17 A				100%	[Gantt Bar: 29-May-17 to 09-Aug-17]																								

■ Actual Work  
■ Planned Bar  
■ Critical Bar  
◆ Milestone

Project ID: TMCLK-DWPI-1-M51  
 Layout: J3518-DWP-3MRP Submission - M51  
 Filter: TASK filters: 3-Month Lookahead, No CC  
 Milestones, No Level of Effort.

**Tuen Mun - Chek Lap Kok Link - Southern Connection**  
**3-Month Rolling Programme (Page 2 of 11 Pages)**  
**(Progress as of 21-Aug-17)**

Date	Revision	Checked	Approved
04-Jul-17		PKN	GL
01-Aug-17		PKN	HF
29-Aug-17		PKN	HF

**DWG. No.:**  
**J3518/GCL/PGM/3MRP-M51**

Activity ID	Activity Name	Orig. Durn.	Act. Start / FC Early Start	Rem. Durn.	Act. Finish / FC Early Finish	Late Start	Late Finish	Total Float	Physical % Complete	2017																				
										August					September					October					November					
										24	31	07	14	21	28	04	11	18	25	02	09	16	23	30	06	13	20			
<b>Ramp Finishes, E&amp;M &amp; Roadworks</b>																														
ARC-C7715	Ramp C - Parapet Panels (Remaining)	24	25-Apr-17 A	56	26-Oct-17	20-Apr-16	27-Jun-16	-397	75%	[Gantt bar: 20-Apr-16 to 27-Jun-16, 75% complete]																				
ARC-C7720	Ramp C - Ducting, Gantry & TCSS Provisions (KD4)	36	27-Oct-17	36	08-Dec-17	28-Jun-16	09-Aug-16	-397	0%	[Gantt bar: 28-Jun-16 to 09-Aug-16, 0% complete]																				
ARC-C7810	Ramp C - Drainage, Fire Main & E&M Services	54	18-Nov-17	54	23-Jan-18	20-Jul-16	21-Sep-16	-397	0%	[Gantt bar: 20-Jul-16 to 21-Sep-16, 0% complete]																				
<b>Ramp D</b>																														
<b>Abutment &amp; Approach Ramp D</b>																														
<b>Ramp Finishes, E&amp;M &amp; Roadworks</b>																														
ARD-C7710	Ramp D - Parapet Panels	42	15-Oct-16 A	10	31-Aug-17	21-Jan-16	01-Feb-16	-467	90%	[Gantt bar: 21-Jan-16 to 01-Feb-16, 90% complete]																				
ARD-C7720	Ramp D - Ducting, Gantry & TCSS Provisions (KD4)	36	01-Sep-17	36	14-Oct-17	02-Feb-16	17-Mar-16	-467	0%	[Gantt bar: 02-Feb-16 to 17-Mar-16, 0% complete]																				
ARD-C7810	Ramp D - Drainage, Fire Main & E&M Services	54	22-Sep-17	54	27-Nov-17	26-Feb-16	04-May-16	-467	0%	[Gantt bar: 26-Feb-16 to 04-May-16, 0% complete]																				
ARD-C7820	Ramp D - Railings, Light Poles, Signs & Street Furniture	30	16-Oct-17	30	20-Nov-17	18-Mar-16	26-Apr-16	-467	0%	[Gantt bar: 18-Mar-16 to 26-Apr-16, 0% complete]																				
<b>Viaduct E - Bridge E5, E6, E7, E8</b>																														
<b>Pier E12A (E8b)</b>																														
<b>Pile Cap Dolphin</b>																														
E12A-C3130	E12A - Dolphin - Marine Pile Cap - Fixings, Dewatering & Trim Pile	11	01-Sep-17*	11	13-Sep-17	18-Sep-17	29-Sep-17	14	0%	[Gantt bar: 18-Sep-17 to 29-Sep-17, 0% complete]																				
E12A-C3150	E12A - Dolphin - Marine Pile Cap - Rebar, Concreting	5	14-Sep-17	5	19-Sep-17	30-Sep-17	07-Oct-17	14	0%	[Gantt bar: 30-Sep-17 to 07-Oct-17, 0% complete]																				
E12A-C3160	E12A - Dolphin - Marine Pile Cap - CJ preparation & Curing	3	20-Sep-17	3	22-Sep-17	09-Oct-17	11-Oct-17	14	0%	[Gantt bar: 09-Oct-17 to 11-Oct-17, 0% complete]																				
<b>Pier Head Segment / Infill Segment</b>																														
E12A-C5145	E12A - Install Infill Segments (6 nr) - THB	26	07-Jul-17 A	7	28-Aug-17	21-Oct-16	28-Oct-16	-246	66%	[Gantt bar: 21-Oct-16 to 28-Oct-16, 66% complete]																				
E12A-C5150	E12A - IFS Stitch & Remove Equipment	12	29-Aug-17	12	11-Sep-17	29-Oct-16	11-Nov-16	-246	0%	[Gantt bar: 29-Oct-16 to 11-Nov-16, 0% complete]																				
<b>Pier E12B (E7b)</b>																														
<b>Pier Head Segment / Infill Segment</b>																														
E12B-C5145	E12B - Install Infill Segments (6 nr) - THB	32	23-Jun-17 A	0	12-Aug-17 A				100%	[Gantt bar: 23-Jun-17 to 12-Aug-17, 100% complete]																				
E12B-C5150	E12B - IFS Stitch & Remove Equipment	12	14-Aug-17 A	6	26-Aug-17	06-Apr-17	12-Apr-17	-110	0%	[Gantt bar: 06-Apr-17 to 12-Apr-17, 0% complete]																				
<b>Pier E12C (E6b)</b>																														
<b>Pier Head Segment / Infill Segment</b>																														
E12C-C5145	E12C - Install Infill Segments (6 nr) - THB	28	03-Jul-17 A	0	20-Aug-17 A				100%	[Gantt bar: 03-Jul-17 to 20-Aug-17, 100% complete]																				
E12C-C5150	E12C - IFS Stitch & Remove Equipment	12	21-Aug-17	12	02-Sep-17	23-May-17	06-Jun-17	-75	0%	[Gantt bar: 23-May-17 to 06-Jun-17, 0% complete]																				
<b>Pier E12D (E5b)</b>																														
<b>Pile Cap Dolphin</b>																														
E12D-C3070	E12D Dolphin - Marine Pile Cap - Collar frame to perm. casing of pile	3	23-Sep-17*	3	26-Sep-17	12-Oct-17	14-Oct-17	14	0%	[Gantt bar: 12-Oct-17 to 14-Oct-17, 0% complete]																				
E12D-C3080	E12D Dolphin - Marine Pile Cap - Install precast shell in position	24	27-Sep-17	24	26-Oct-17	16-Oct-17	13-Nov-17	14	0%	[Gantt bar: 16-Oct-17 to 13-Nov-17, 0% complete]																				
E12D-C3130	E12D Dolphin - Marine Pile Cap - Fixings, Dewatering & Trim Pile	11	27-Oct-17	11	09-Nov-17	14-Nov-17	25-Nov-17	14	0%	[Gantt bar: 14-Nov-17 to 25-Nov-17, 0% complete]																				
E12D-C3150	E12D Dolphin - Marine Pile Cap - Rebar, Concreting	5	10-Nov-17	5	15-Nov-17	27-Nov-17	01-Dec-17	14	0%	[Gantt bar: 27-Nov-17 to 01-Dec-17, 0% complete]																				
E12D-C3160	E12D Dolphin - Marine Pile Cap - CJ preparation & Curing	3	16-Nov-17	3	18-Nov-17	02-Dec-17	05-Dec-17	14	0%	[Gantt bar: 02-Dec-17 to 05-Dec-17, 0% complete]																				
<b>Pier Head Segment / Infill Segment</b>																														
E12D-C5145	E12D - Install Infill Segments (6 nr) - THB	28	21-Aug-17	28	21-Sep-17	19-Nov-16	21-Dec-16	-221	0%	[Gantt bar: 19-Nov-16 to 21-Dec-16, 0% complete]																				
E12D-C5150	E12D - IFS Stitch & Remove Equipment	12	22-Sep-17	12	07-Oct-17	22-Dec-16	07-Jan-17	-221	0%	[Gantt bar: 22-Dec-16 to 07-Jan-17, 0% complete]																				
<b>Pier E13A (E8c)</b>																														
<b>Pile Cap Dolphin</b>																														
E13A-C3070	E13A Dolphin - Marine Pile Cap - Floating Seal & Casing Head Steelwork	3	20-Nov-17	3	22-Nov-17	06-Dec-17	08-Dec-17	14	0%	[Gantt bar: 06-Dec-17 to 08-Dec-17, 0% complete]																				
<b>Pier Head Segment / Infill Segment</b>																														
E13A-C5130	E13A - Diaphragm of PHS - Formwork, Rebar, Concreting	76	01-Apr-17 A	0	12-Aug-17 A				100%	[Gantt bar: 01-Apr-17 to 12-Aug-17, 100% complete]																				
E13A-C5140	E13A - Remove Rail Beams, Spreader Beams, Brackets, Crane	30	14-Aug-17 A	30	23-Sep-17	25-Mar-17	05-May-17	-119	0%	[Gantt bar: 25-Mar-17 to 05-May-17, 0% complete]																				
E13A-C5145	E13A - Install Infill Segments (6 nr) - THB	28	25-Sep-17	28	30-Oct-17	06-May-17	08-Jun-17	-119	0%	[Gantt bar: 06-May-17 to 08-Jun-17, 0% complete]																				
E13A-C5150	E13A - IFS Stitch & Remove Equipment	12	31-Oct-17	12	13-Nov-17	09-Jun-17	22-Jun-17	-119	0%	[Gantt bar: 09-Jun-17 to 22-Jun-17, 0% complete]																				
<b>Pier E13B (E7c)</b>																														
<b>Pier Head Segment / Infill Segment</b>																														
E13B-C5130	E13B - Diaphragm of PHS - Formwork, Rebar, Concreting	76	21-Mar-17 A	0	27-Jul-17 A				100%	[Gantt bar: 21-Mar-17 to 27-Jul-17, 100% complete]																				
E13B-C5140	E13B - Remove Rail Beams, Spreader Beams, Brackets	16	28-Jul-17 A	21	13-Sep-17	14-Oct-16	07-Nov-16	-252	0%	[Gantt bar: 14-Oct-16 to 07-Nov-16, 0% complete]																				
E13B-C5145	E13B - Install Infill Segments (6 nr) - THB	42	14-Sep-17	42	04-Nov-17	08-Nov-16	28-Dec-16	-252	0%	[Gantt bar: 08-Nov-16 to 28-Dec-16, 0% complete]																				
E13B-C5150	E13B - IFS Stitch & Remove Equipment	12	06-Nov-17	12	18-Nov-17	29-Dec-16	12-Jan-17	-252	0%	[Gantt bar: 29-Dec-16 to 12-Jan-17, 0% complete]																				
<b>Pier E13C (E6c)</b>																														
<b>Pier Head Segment / Infill Segment</b>																														
E13C-C5130	E13C - Diaphragm of PHS - Formwork, Rebar, Concreting	76	28-Mar-17 A	0	07-Aug-17 A				100%	[Gantt bar: 28-Mar-17 to 07-Aug-17, 100% complete]																				
E13C-C5140	E13C - Remove Rail Beams, Spreader Beams, Brackets	16	08-Aug-17 A	12	02-Sep-17	14-Nov-16	26-Nov-16	-226	0%	[Gantt bar: 14-Nov-16 to 26-Nov-16, 0% complete]																				
E13C-C5145	E13C - Install Infill Segments (6 nr) - THB	42	04-Sep-17	42	24-Oct-17	28-Nov-16	18-Jan-17	-226	0%	[Gantt bar: 28-Nov-16 to 18-Jan-17, 0% complete]																				
E13C-C5150	E13C - IFS Stitch & Remove Equipment	12	25-Oct-17	12	08-Nov-17	19-Jan-17	04-Feb-17	-226	0%	[Gantt bar: 19-Jan-17 to 04-Feb-17, 0% complete]																				

■ Actual Work  
■ Planned Bar  
■ Critical Bar  
◆ Milestone

Project ID: TMCLK-DWPI-1-M51  
 Layout: J3518-DWP-3MRP Submission - M51  
 Filter: TASK filters: 3-Month Lookahead, No CC  
 Milestones, No Level of Effort.

**Tuen Mun - Chek Lap Kok Link - Southern Connection**  
**3-Month Rolling Programme (Page 3 of 11 Pages)**  
**(Progress as of 21-Aug-17)**

Date	Revision	Checked	Approved
04-Jul-17		PKN	GL
01-Aug-17		PKN	HF
29-Aug-17		PKN	HF

**DWG. No.:**  
**J3518/GCL/PGM/3MRP-M51**

Activity ID	Activity Name	Orig. Durn.	Act. Start / FC Early Start	Rem. Durn.	Act. Finish / FC Early Finish	Late Start	Late Finish	Total Float	Physical % Complete	2017																		
										August					September					October				November				
										24	31	07	14	21	28	04	11	18	25	02	09	16	23	30	06	13	20	
<b>Pier E13D (E5c)</b>																												
<b>Pier Head Segment / Infill Segment</b>																												
E13D-C5130	E13D - Diaphragm of PHS - Formwork, Rebar, Concreting	76	04-Apr-17 A	0	11-Aug-17 A				100%	[Gantt bar: 04-Apr-17 to 11-Aug-17, 100% complete]																		
E13D-C5140	E13D - Remove Rail Beams, Spreader Beams, Brackets, Crane	16	12-Aug-17 A	17	08-Sep-17	29-Nov-16	17-Dec-16	-213	0%	[Gantt bar: 12-Aug-17 to 08-Sep-17, 0% complete]																		
E13D-C5145	E13D - Install Infill Segments (6 nr) - THB	28	09-Sep-17	28	13-Oct-17	19-Dec-16	23-Jan-17	-213	0%	[Gantt bar: 09-Sep-17 to 13-Oct-17, 0% complete]																		
E13D-C5150	E13D - IFS Stitch & Remove Equipment	12	14-Oct-17	12	27-Oct-17	24-Jan-17	09-Feb-17	-213	0%	[Gantt bar: 14-Oct-17 to 27-Oct-17, 0% complete]																		
<b>Pier E14A (E8d)</b>																												
<b>Pier</b>																												
E14A-C4510	E14A Pier - Scaffold, Rebar, Formwork, Concrete (5th Lift)	16	24-Jul-17 A	14	05-Sep-17	10-Sep-16	27-Sep-16	-278	40%	[Gantt bar: 24-Jul-17 to 05-Sep-17, 40% complete]																		
E14A-C4610	E14A Pier - Curing, Remove Formwork	5	06-Sep-17	5	11-Sep-17	28-Sep-16	04-Oct-16	-278	0%	[Gantt bar: 06-Sep-17 to 11-Sep-17, 0% complete]																		
<b>Pier Head Segment</b>																												
E14A-C5110	E14A Pier Head - Scaffold, Temp Works	17	06-Sep-17	17	25-Sep-17	28-Sep-16	19-Oct-16	-278	0%	[Gantt bar: 06-Sep-17 to 25-Sep-17, 0% complete]																		
E14A-C5210	E14A Pier Head - Erect PH Segment (2 nr)	4	26-Sep-17	4	29-Sep-17	20-Oct-16	24-Oct-16	-278	0%	[Gantt bar: 26-Sep-17 to 29-Sep-17, 0% complete]																		
E14A-C5310	E14A Pier Head - Construct Diaphragm (2nd Cast) in PHS	65	30-Sep-17	65	18-Dec-17	25-Oct-16	11-Jan-17	-278	0%	[Gantt bar: 30-Sep-17 to 18-Dec-17, 0% complete]																		
<b>Pier E14B (E7d)</b>																												
<b>Pier</b>																												
E14B-C4310	E14B Pier - Scaffold, Rebar, Formwork, Concrete (3rd Lift)	18	14-Jun-17 A	0	05-Aug-17 A				100%	[Gantt bar: 14-Jun-17 to 05-Aug-17, 100% complete]																		
E14B-C4410	E14B Pier - Curing, Remove Formwork	5	06-Aug-17 A	0	11-Aug-17 A				100%	[Gantt bar: 06-Aug-17 to 11-Aug-17, 100% complete]																		
<b>Pier Head Segment</b>																												
E14B-C5110	E14B Pier Head - Scaffold, Temp Works	17	09-Aug-17 A	6	26-Aug-17	24-Oct-16	29-Oct-16	-244	0%	[Gantt bar: 09-Aug-17 to 26-Aug-17, 0% complete]																		
E14B-C5210	E14B Pier Head - Erect PH Segment (2 nr)	4	28-Aug-17	4	31-Aug-17	31-Oct-16	03-Nov-16	-244	0%	[Gantt bar: 28-Aug-17 to 31-Aug-17, 0% complete]																		
E14B-C5310	E14B Pier Head - Construct Diaphragm (2nd Cast) in PHS	65	01-Sep-17	65	18-Nov-17	04-Nov-16	21-Jan-17	-244	0%	[Gantt bar: 01-Sep-17 to 18-Nov-17, 0% complete]																		
E14B-C5410	E14B Pier Head - Curing, Stitching, Remove Temp Works	17	20-Nov-17	17	08-Dec-17	23-Jan-17	14-Feb-17	-244	0%	[Gantt bar: 20-Nov-17 to 08-Dec-17, 0% complete]																		
<b>Pier E14C (E6d)</b>																												
<b>Pier</b>																												
E14C-C4410	E14C Pier - Scaffold, Rebar, Formwork, Concrete (4th Lift)	18	27-Jun-17 A	38	04-Oct-17	21-Jan-17	09-Mar-17	-170	50%	[Gantt bar: 27-Jun-17 to 04-Oct-17, 50% complete]																		
E14C-C4510	E14C Pier - Curing, Remove Formwork	5	06-Oct-17	5	11-Oct-17	10-Mar-17	15-Mar-17	-170	0%	[Gantt bar: 06-Oct-17 to 11-Oct-17, 0% complete]																		
<b>Pier Head Segment</b>																												
E14C-C5110	E14C Pier Head - Scaffold, Temp Works	17	12-Oct-17	17	01-Nov-17	16-Mar-17	05-Apr-17	-170	0%	[Gantt bar: 12-Oct-17 to 01-Nov-17, 0% complete]																		
E14C-C5210	E14C Pier Head - Erect PH Segment (2 nr)	4	02-Nov-17	4	06-Nov-17	06-Apr-17	10-Apr-17	-170	0%	[Gantt bar: 02-Nov-17 to 06-Nov-17, 0% complete]																		
E14C-C5310	E14C Pier Head - Construct Diaphragm (2nd Cast) in PHS	65	07-Nov-17	65	24-Jan-18	11-Apr-17	03-Jul-17	-170	0%	[Gantt bar: 07-Nov-17 to 24-Jan-18, 0% complete]																		
<b>Pier E14D (E5d)</b>																												
<b>Pier</b>																												
E14D-C4310	E14D Pier - Scaffold, Rebar, Formwork, Concrete (3rd Lift)	16	18-Jul-17 A	18	09-Sep-17	27-Aug-16	17-Sep-16	-290	45%	[Gantt bar: 18-Jul-17 to 09-Sep-17, 45% complete]																		
E14D-C4410	E14D Pier - Scaffold, Rebar, Formwork, Concrete (4th Lift)	16	11-Sep-17	16	28-Sep-17	19-Sep-16	07-Oct-16	-290	0%	[Gantt bar: 11-Sep-17 to 28-Sep-17, 0% complete]																		
E14D-C4510	E14D Pier - Curing, Remove Formwork	5	29-Sep-17	5	06-Oct-17	08-Oct-16	14-Oct-16	-290	0%	[Gantt bar: 29-Sep-17 to 06-Oct-17, 0% complete]																		
<b>Pier Head Segment</b>																												
E14D-C5110	E14D Pier Head - Erect Steel Temp Tower on E14D	26	07-Oct-17	26	07-Nov-17	15-Oct-16	14-Nov-16	-290	0%	[Gantt bar: 07-Oct-17 to 07-Nov-17, 0% complete]																		
<b>Temporary Tower Between Pier E14D &amp; E13D</b>																												
E14D-C5720	E14D-E13D Temp Tower - Install Pipe Piles (8 nr)	45	19-Jun-17 A	0	01-Aug-17 A				100%	[Gantt bar: 19-Jun-17 to 01-Aug-17, 100% complete]																		
E14D-C5730	E14D-E13D Temp Tower - Reinstate Rock Armour	18	03-Aug-17 A	1	21-Aug-17	22-Oct-16	22-Oct-16	-245	0%	[Gantt bar: 03-Aug-17 to 21-Aug-17, 0% complete]																		
E14D-C5740	E14D-E13D Temp Tower - Erect Steel Tower	28	22-Aug-17	28	22-Sep-17	24-Oct-16	24-Nov-16	-245	0%	[Gantt bar: 22-Aug-17 to 22-Sep-17, 0% complete]																		
<b>Viaduct F - Bridge F1</b>																												
<b>Pier F1 (F1b)</b>																												
<b>Pier</b>																												
F01-C4510	F1 Pier - Scaffold, Rebar, Formwork, Concrete (5th Lift)	18	11-Jul-17 A	0	15-Aug-17 A				100%	[Gantt bar: 11-Jul-17 to 15-Aug-17, 100% complete]																		
F01-C4610	F1 Pier - Curing, Remove Formwork	5	16-Aug-17 A	0	19-Aug-17 A				100%	[Gantt bar: 16-Aug-17 to 19-Aug-17, 100% complete]																		
<b>Pier Head Segment</b>																												
F01-C5110	F1 Pier Head - Scaffold, Temp Works	17	21-Aug-17	17	08-Sep-17	25-Oct-16	12-Nov-16	-243	0%	[Gantt bar: 21-Aug-17 to 08-Sep-17, 0% complete]																		
F01-C5210	F1 Pier Head - Erect PH Segment (1 nr)	2	09-Sep-17	2	11-Sep-17	14-Nov-16	15-Nov-16	-243	0%	[Gantt bar: 09-Sep-17 to 11-Sep-17, 0% complete]																		
F01-C5310	F1 Pier Head - Construct Diaphragm (2nd Cast) in PHS	41	12-Sep-17	41	01-Nov-17	16-Nov-16	05-Jan-17	-243	0%	[Gantt bar: 12-Sep-17 to 01-Nov-17, 0% complete]																		
F01-C5410	F1 Pier Head - Curing, Remove Temp Works	5	02-Nov-17	5	07-Nov-17	06-Jan-17	11-Jan-17	-243	0%	[Gantt bar: 02-Nov-17 to 07-Nov-17, 0% complete]																		
<b>Pier F2 (F1c)</b>																												
<b>Pile Cap</b>																												
F02-C3210	F2 Pile Cap - Blinding, Formwork, Rebar, Concrete	19	12-Jul-17 A	0	31-Jul-17 A				100%	[Gantt bar: 12-Jul-17 to 31-Jul-17, 100% complete]																		
F02-C3310	F2 Pile Cap - Curing, Remove Formwork, Backfill	12	01-Aug-17 A	0	15-Aug-17 A				100%	[Gantt bar: 01-Aug-17 to 15-Aug-17, 100% complete]																		
<b>Pier</b>																												
F02-C4110	F2 Pier - Scaffold, Rebar, Formwork, Concrete (1st Lift)	13	07-Aug-17 A	0	12-Aug-17 A				100%	[Gantt bar: 07-Aug-17 to 12-Aug-17, 100% complete]																		
F02-C4210	F2 Pier - Scaffold, Rebar, Formwork, Concrete (2nd Lift)	18	16-Aug-17 A	6	26-Aug-17	29-Sep-16	06-Oct-16	-263	0%	[Gantt bar: 16-Aug-17 to 26-Aug-17, 0% complete]																		

■ Actual Work  
■ Planned Bar  
■ Critical Bar  
◆ Milestone

Project ID: TMCLK-DWPI-1-M51  
 Layout: J3518-DWP-3MRP Submission - M51  
 Filter: TASK filters: 3-Month Lookahead, No CC  
 Milestones, No Level of Effort.

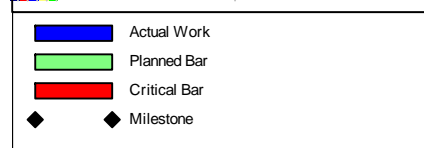
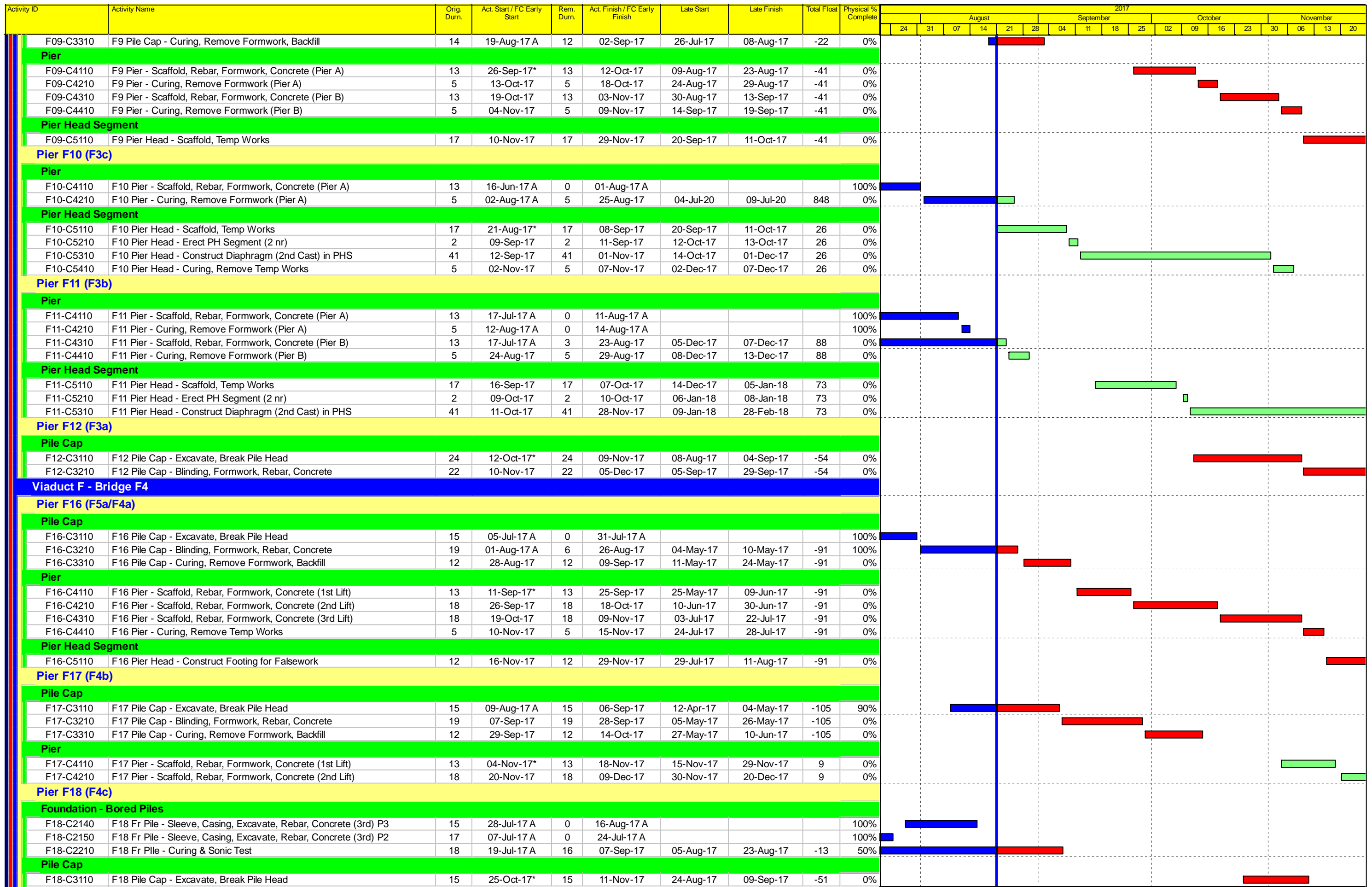
**Tuen Mun - Chek Lap Kok Link - Southern Connection**  
**3-Month Rolling Programme (Page 4 of 11 Pages)**  
**(Progress as of 21-Aug-17)**

Date	Revision	Checked	Approved
04-Jul-17		PKN	GL
01-Aug-17		PKN	HF
29-Aug-17		PKN	HF

**DWG. No.:**  
**J3518/GCL/PGM/3MRP-M51**







Project ID: TMCLK-DWPI-1-M51  
 Layout: J3518-DWP-3MRP Submission - M51  
 Filter: TASK filters: 3-Month Lookahead, No CC  
 Milestones, No Level of Effort.

**Tuen Mun - Chek Lap Kok Link - Southern Connection**  
**3-Month Rolling Programme (Page 6 of 11 Pages)**  
**(Progress as of 21-Aug-17)**

Date	Revision	Checked	Approved
04-Jul-17		PKN	GL
01-Aug-17		PKN	HF
29-Aug-17		PKN	HF

**DWG. No.:**  
**J3518/GCL/PGM/3MRP-M51**

Activity ID	Activity Name	Orig. Durn.	Act. Start / FC Early Start	Rem. Durn.	Act. Finish / FC Early Finish	Late Start	Late Finish	Total Float	Physical % Complete	2017																		
										August			September			October			November									
											24	31	07	14	21	28	04	11	18	25	02	09	16	23	30	06	13	20
F18-C3210	F18 Pile Cap - Blinding, Formwork, Rebar, Concrete	19	13-Nov-17	19	04-Dec-17	11-Sep-17	03-Oct-17	-51	0%																			
<b>Viaduct F - Bridge F5</b>																												
<b>Pier F13 (F5d)</b>																												
<b>Pier</b>																												
F13-C4110	F13 Pier - Scaffold, Rebar, Formwork, Concrete (1st Lift)	13	13-Jul-17 A	0	21-Jul-17 A				100%																			
F13-C4210	F13 Pier - Scaffold, Rebar, Formwork, Concrete (2nd Lift)	18	10-Aug-17 A	10	31-Aug-17	27-Feb-17	09-Mar-17	-142	0%																			
F13-C4310	F13 Pier - Curing, Remove Formwork	5	01-Sep-17	5	06-Sep-17	10-Mar-17	15-Mar-17	-142	0%																			
<b>Pier Head Segment</b>																												
F13-C5110	F13 Pier Head - Scaffold, Temp Works	17	07-Sep-17	17	26-Sep-17	16-Mar-17	05-Apr-17	-142	0%																			
F13-C5210	F13 Pier Head - Erect PH Segment (1 nr)	2	27-Sep-17	2	28-Sep-17	06-Apr-17	07-Apr-17	-142	0%																			
F13-C5310	F13 Pier Head - Construct Diaphragm (2nd Cast) in PHS	41	29-Sep-17	41	18-Nov-17	08-Apr-17	01-Jun-17	-142	0%																			
F13-C5410	F13 Pier Head - Curing, Remove Temp Works	5	20-Nov-17	5	24-Nov-17	02-Jun-17	07-Jun-17	-142	0%																			
<b>Pier F14 (F5c)</b>																												
<b>Pile Cap</b>																												
F14-C3210	F14 Pile Cap - Blinding, Formwork, Rebar, Concrete	19	06-Jul-17 A	0	09-Aug-17 A				100%																			
F14-C3310	F14 Pile Cap - Curing, Remove Formwork, Backfill	12	10-Aug-17 A	1	21-Aug-17	09-Jul-20	09-Jul-20	852	100%																			
<b>Pier</b>																												
F14-C4110	F14 Pier - Scaffold, Rebar, Formwork, Concrete (1st Lift)	13	18-Aug-17 A	10	31-Aug-17	27-Sep-17	10-Oct-17	32	0%																			
F14-C4210	F14 Pier - Scaffold, Rebar, Formwork, Concrete (2nd Lift)	18	01-Sep-17	18	21-Sep-17	11-Oct-17	01-Nov-17	32	0%																			
F14-C4310	F14 Pier - Scaffold, Rebar, Formwork, Concrete (3rd Lift)	18	22-Sep-17	18	14-Oct-17	02-Nov-17	22-Nov-17	32	0%																			
F14-C4410	F14 Pier - Curing, Remove Formwork	5	16-Oct-17	5	20-Oct-17	23-Nov-17	28-Nov-17	32	0%																			
<b>Pier Head Segment</b>																												
F14-C5110	F14 Pier Head - Scaffold, Temp Works	17	21-Oct-17	17	10-Nov-17	29-Nov-17	18-Dec-17	32	0%																			
F14-C5210	F14 Pier Head - Erect PH Segment (1 nr)	2	11-Nov-17	2	13-Nov-17	19-Dec-17	20-Dec-17	32	0%																			
F14-C5310	F14 Pier Head - Construct Diaphragm (2nd Cast) in PHS	41	14-Nov-17	41	03-Jan-18	21-Dec-17	09-Feb-18	32	0%																			
<b>Pier F15 (F5b)</b>																												
<b>Pile Cap</b>																												
F15-C3110	F15 Pile Cap - Excavate, Break Pile Head	15	21-Aug-17*	15	06-Sep-17	31-Aug-17	16-Sep-17	9	0%																			
F15-C3210	F15 Pile Cap - Blinding, Formwork, Rebar, Concrete	19	07-Sep-17	19	28-Sep-17	18-Sep-17	11-Oct-17	9	0%																			
F15-C3310	F15 Pile Cap - Curing, Remove Formwork, Backfill	12	29-Sep-17	12	14-Oct-17	12-Oct-17	25-Oct-17	9	0%																			
<b>Pier</b>																												
F15-C4110	F15 Pier - Scaffold, Rebar, Formwork, Concrete (1st Lift)	13	16-Oct-17*	13	31-Oct-17	26-Oct-17	10-Nov-17	9	0%																			
F15-C4210	F15 Pier - Scaffold, Rebar, Formwork, Concrete (2nd Lift)	18	01-Nov-17	18	21-Nov-17	11-Nov-17	01-Dec-17	9	0%																			
<b>Ramp F</b>																												
<b>Abutment &amp; Approach Ramp F</b>																												
<b>Foundation - Bored Piles</b>																												
ARF-C2120	Ramp F Fr Pile - Sleeve, Casing, Excavate, Rebar, Concrete (20 nr)	126	19-May-17 A	52	21-Oct-17	03-Mar-17	09-May-17	-138	50%																			
ARF-C2210	Ramp F Fr Pile - Curing & Sonic Test	18	23-Oct-17	18	13-Nov-17	10-May-17	31-May-17	-138	0%																			
<b>Ramp Structure</b>																												
ARF-C6110	Ramp F - Strip Beams	24	14-Nov-17	24	11-Dec-17	01-Jun-17	28-Jun-17	-138	0%																			
<b>Superstructure &amp; Associated Works</b>																												
<b>Viaduct A</b>																												
<b>Bridge A2</b>																												
<b>Deck Span Segment</b>																												
VA2-C6510	Viaduct A2 - Final Stitch & Stressing to Span	24	21-Aug-17	24	16-Sep-17	15-Aug-16	10-Sep-16	-301	0%																			
<b>Deck Finishes, E&amp;M and Roadworks</b>																												
VA2-C7710	Viaduct A2 - Parapet Panels	48	18-Sep-17	48	15-Nov-17	12-Sep-16	09-Nov-16	-301	0%																			
VA2-C7720	Viaduct A2 - Gantry & TCSS Provisions (KD5)	36	02-Nov-17	36	13-Dec-17	27-Oct-16	07-Dec-16	-301	0%																			
VA2-C7810	Viaduct A2 - Drainage, Fire Main & E&M Services	60	16-Nov-17	60	27-Jan-18	10-Jan-17	23-Mar-17	-252	0%																			
<b>Bridge A1</b>																												
<b>Deck Span Segment</b>																												
A06-C6320	A6 - End Span to A7 (8 nr) - THB	34	24-Feb-17 A	10	31-Aug-17	03-Aug-16	13-Aug-16	-311	75%																			
A08-C6510	A8 - Cantilever Span (Remaining 21 nr) (MTR) - KF	32	28-Jul-17 A	10	31-Aug-17	19-Apr-16	29-Apr-16	-398	50%																			
A09-C6310	A9 - Cantilever Span (Initial 5 nr) - Crane	10	01-Sep-17	10	12-Sep-17	30-Apr-16	12-May-16	-398	0%																			
A09-C6410	A9 - Relocate & Install KF (MTR)	24	01-Sep-17	24	28-Sep-17	30-Apr-16	30-May-16	-398	0%																			
A09-C6510	A9 - Cantilever Span (Remaining 20 nr) (MTR) - KF	32	29-Sep-17	32	08-Nov-17	31-May-16	08-Jul-16	-398	0%																			
A10-C6310	A10 - Cantilever Span (Initial 5 nr) - Crane	10	03-Nov-17	10	14-Nov-17	04-Jul-16	14-Jul-16	-398	0%																			
A10-C6410	A10 - Relocate & Install KF	9	09-Nov-17	9	18-Nov-17	09-Jul-16	19-Jul-16	-398	0%																			

- Actual Work
- Planned Bar
- Critical Bar
- ◆ Milestone

Project ID: TMCLK-DWPI-1-M51  
Layout: J3518-DWP-3MRP Submission - M51  
Filter: TASK filters: 3-Month Lookahead, No CC  
Milestones, No Level of Effort.

**Tuen Mun - Chek Lap Kok Link - Southern Connection**  
**3-Month Rolling Programme (Page 7 of 11 Pages)**  
**(Progress as of 21-Aug-17)**

Date	Revision	Checked	Approved
04-Jul-17		PKN	GL
01-Aug-17		PKN	HF
29-Aug-17		PKN	HF

DWG. No.:  
**J3518/GCL/PGM/3MRP-M51**





Activity ID	Activity Name	Orig. Durn.	Act. Start / FC Early Start	Rem. Durn.	Act. Finish / FC Early Finish	Late Start	Late Finish	Total Float	Physical % Complete	2017																				
										August					September					October					November					
										24	31	07	14	21	28	04	11	18	25	02	09	16	23	30	06	13	20			
<b>Deck Fnishes, E&amp;M and Roadworks</b>																														
VD2-C7710	Viaduct D2 - Parapet Panels	60	18-Sep-17	60	29-Nov-17	16-May-16	26-Jul-16	-401	0%																					
VD2-C7720	Viaduct D2 - Gantry & TCSS Provisions (KD4)	36	02-Nov-17	36	13-Dec-17	28-Jun-16	09-Aug-16	-401	0%																					
<b>Bridge D1</b>																														
<b>Deck Fnishes, E&amp;M and Roadworks</b>																														
VD1-C7710	Viaduct D1 - Parapet Panels	48	01-Jun-17 A	36	30-Sep-17	30-May-16	12-Jul-16	-365	0%																					
VD1-C7720	Viaduct D1 - Gantry & TCSS Provisions (KD4)	36	18-Sep-17	36	01-Nov-17	28-Jun-16	09-Aug-16	-365	0%																					
VD1-C7810	Viaduct D1 - Drainage, Fire Main & E&M Services	60	03-Oct-17	60	13-Dec-17	13-Jul-16	21-Sep-16	-365	0%																					
VD1-C7820	Viaduct D1 - Railings, Light Poles, Signs & Street Furniture	30	02-Nov-17	30	06-Dec-17	10-Aug-16	13-Sep-16	-365	0%																					
<b>Viaduct E</b>																														
<b>Bridge E1</b>																														
<b>Deck Span Segment</b>																														
VE1-C6510	Viaduct E1 - E3A/E4A, E3B/E4A & E3C/E4B Stitches	12	26-Oct-17	12	09-Nov-17	29-Apr-16	13-May-16	-444	0%																					
<b>Deck Fnishes, E&amp;M and Roadworks</b>																														
VE1AB-C7710	Viaduct E1A/B - Parapet Panels	48	10-Nov-17	48	08-Jan-18	16-May-16	12-Jul-16	-444	0%																					
VE1CD-C7710	Viaduct E1C/D - Parapet Panels	48	10-Nov-17	48	08-Jan-18	16-May-16	12-Jul-16	-444	0%																					
<b>Bridge E2</b>																														
<b>Deck Span Segment</b>																														
E03A-C6410	E3A - Launch LG1 from E3B to E3A - *LG1	3	13-Sep-17	3	15-Sep-17	25-Apr-16	27-Apr-16	-413	0%																					
E03A-C6510	E3A - End Span to E4A (7 nr) - *LG1	7	16-Sep-17	7	23-Sep-17	28-Apr-16	06-May-16	-413	0%																					
E03A-C6610	E3A/B - Stitch between E3A/B and E4A	12	25-Sep-17	12	10-Oct-17	08-Aug-17	21-Aug-17	-41	0%																					
E03A-C6710	E3A - Launch LG1 from E3A to E4/E5 for Dismantling	6	25-Sep-17	6	30-Sep-17	07-May-16	13-May-16	-413	0%																					
E03B-C6410	E3B - Launch LG1 from E2B to E3B - *LG1	3	01-Sep-17*	3	04-Sep-17	13-Apr-16	15-Apr-16	-413	0%																					
E03B-C6510	E3B - End Span to E4A (7 nr) - *LG1	7	05-Sep-17	7	12-Sep-17	16-Apr-16	23-Apr-16	-413	0%																					
E03C-C6610	E3C/B - Stitch between E3C/D and E4B	12	21-Aug-17	12	02-Sep-17	08-Aug-17	21-Aug-17	-11	0%																					
E04A-C6410	E4A - Bifurcation Span to E5A (6 nr) with 1st Stitch - THB	28	01-Mar-17 A	0	25-Jul-17 A				100%																					
E04B-C6420	E4B - E3D/E4B Stitch	8	21-Aug-17	8	28-Aug-17	16-Feb-16	24-Feb-16	-497	0%																					
E04B-C6430	E4A & E4B - E4A/E5A & E4B/E5B Stitches	8	29-Aug-17	8	05-Sep-17	25-Feb-16	04-Mar-16	-497	0%																					
E05A-C6610	E5A - Stitch between E4A and E5A	12	21-Aug-17	12	02-Sep-17	08-Aug-17	21-Aug-17	-11	0%																					
E05B-C6610	E5B - Stitch between E4B and E5B	12	21-Aug-17	12	01-Sep-17	10-Aug-17	21-Aug-17	-11	0%																					
E06A-C6410	E6A - Drop in (E6A-E5A) - THB	30	13-Jul-17 A	25	14-Sep-17	10-Mar-16	07-Apr-16	-477	25%																					
E06A-C6510	E6A & E6B - Quarter Span (E6-E7) - TLB	30	04-Jul-17 A	22	11-Sep-17	05-Mar-16	30-Mar-16	-481	50%																					
E06A-C6520	E6A & E6B - E5A/E6A & E5B/E6B Stitches	8	08-Oct-17	8	15-Oct-17	08-Apr-16	16-Apr-16	-497	0%																					
E06A-C6530	E7A & E7B - E6A/E7A & E6B/E7B Stitches	8	18-Oct-17	8	25-Oct-17	20-Apr-16	28-Apr-16	-497	0%																					
E06A-C6610	E6A/E7A: Install Bearing & Stress Continuity Tendons	12	26-Oct-17	12	09-Nov-17	08-Aug-17	21-Aug-17	-66	0%																					
E06A-C6620	E6B/E7B: Install Bearing & Stress Continuity Tendons	12	26-Oct-17	12	09-Nov-17	08-Aug-17	21-Aug-17	-66	0%																					
E06B-C6510	E6B - Drop in (E6B-E5B) - THB	30	06-Sep-17	30	08-Oct-17	05-Mar-16	08-Apr-16	-497	0%																					
E08A-C6410	E8A - Drop in (E8A-E7A) - THB	30	11-Oct-17	30	11-Nov-17	17-Aug-17	15-Sep-17	-52	0%																					
E08A-C6510	E8A & E8B - Quarter Span (E8-E9) - TLB	30	11-Oct-17	30	11-Nov-17	18-Jul-17	16-Aug-17	-82	0%																					
E08A-C6520	E8A & E8B - E7A/E8A & E7B/E8B Stitches	8	11-Nov-17	8	19-Nov-17	15-Sep-17	22-Sep-17	-53	0%																					
E08B-C6510	E8B - Drop in (E8B-E7B) - THB	30	11-Oct-17	30	11-Nov-17	16-Aug-17	14-Sep-17	-53	0%																					
E11A-C6410	E11A - Bifurcation Span to E10A (12 nr) with 1st Stitch - THB	48	08-Jun-17 A	30	19-Sep-17	17-Jun-17	17-Jul-17	-64	16%																					
E11B-C6210	E11B - Install THB	2	13-Jul-17 A	0	21-Aug-17	11-Nov-16	11-Nov-16	-265	0%																					
E11B-C6410	E11B - Bifurcation Span to E10B (12 nr) with 1st Stitch - THB	48	21-Aug-17	48	11-Oct-17	12-Nov-16	07-Jan-17	-265	0%																					
VE2-C6610	Viaduct E2 - Dismantle LG1	48	03-Oct-17	48	29-Nov-17	11-Jul-17	04-Sep-17	-71	0%																					
VE2-C6620	Viaduct E2 - Dismantle LG2	48	21-Aug-17	48	17-Oct-17	26-Jun-17	21-Aug-17	-47	0%																					
<b>Deck Fnishes, E&amp;M and Roadworks</b>																														
VE21-C7710	Viaduct E2-1 (E3-E6) - Parapet Panels	48	16-Nov-17	48	13-Jan-18	22-Aug-17	18-Oct-17	-71	0%																					
<b>Bridge E5</b>																														
<b>Deck Span Segment</b>																														
E11B-C6310	E11B Deck - Bifurcation Span to E12B (18 nr) with 1st Stitch - THB	48	21-Aug-17	48	11-Oct-17	12-Nov-16	07-Jan-17	-265	0%																					
E12D-C6110	E12D Deck - Install THB	8	11-Oct-17	8	19-Oct-17	08-Jan-17	15-Jan-17	-265	0%																					
E12D-C6210	E12D Deck - Cantilever Span (16 seg) with 2 stitches - THB	45	19-Oct-17	45	04-Dec-17	16-Jan-17	05-Mar-17	-265	0%																					
E13D-C6110	E13D Deck - Install KF and THB	6	29-Oct-17	6	03-Nov-17	10-Feb-17	15-Feb-17	-253	0%																					
E13D-C6210	E13D Deck - Cantilever Span (22 seg) with 2 stitches - KF and THB	49	04-Nov-17	49	22-Dec-17	16-Feb-17	06-Apr-17	-253	0%																					
E14D-C6110	E14D Deck - Preparation Works & Deliver Underslung Truss to Site	18	27-Oct-17	18	17-Nov-17	04-Nov-16	24-Nov-16	-290	0%																					
E14D-C6115	E14D Deck - Install Truss/Fixings & Initial ICE Check	15	18-Nov-17	15	05-Dec-17	25-Nov-16	12-Dec-16	-290	0%																					
<b>Bridge E6</b>																														
<b>Deck Span Segment</b>																														
E12C-C6110	E12C Deck - Install WLF	8	03-Sep-17	8	10-Sep-17	07-Jun-17	14-Jun-17	-87	0%																					

■ Actual Work  
■ Planned Bar  
■ Critical Bar  
◆ Milestone

Project ID: TMCLK-DWPI-1-M51  
 Layout: J3518-DWP-3MRP Submission - M51  
 Filter: TASK filters: 3-Month Lookahead, No CC  
 Milestones, No Level of Effort.

**Tuen Mun - Chek Lap Kok Link - Southern Connection**  
**3-Month Rolling Programme (Page 9 of 11 Pages)**  
**(Progress as of 21-Aug-17)**

Date	Revision	Checked	Approved
04-Jul-17		PKN	GL
01-Aug-17		PKN	HF
29-Aug-17		PKN	HF

**DWG. No.:**  
**J3518/GCL/PGM/3MRP-M51**



Activity ID	Activity Name	Orig. Durn.	Act. Start / FC Early Start	Rem. Durn.	Act. Finish / FC Early Finish	Late Start	Late Finish	Total Float	Physical % Complete	2017															
										August				September				October				November			
										24	31	07	14	21	28	04	11	18	25	02	09	16	23	30	06
RP00077	Ch100-300: Street Lighting & Draw Pit	13	27-Jun-17 A	135	31-Jan-18	22-Jan-20	09-Jul-20	718	20%																
RP00078	Ch100-300: Relocation of Vent Pipe	18	13-May-17 A	135	31-Jan-18	22-Jan-20	09-Jul-20	718	50%																
RP00083	Ch100-300: Drainage & Roadwork for New CTR	52	13-May-17 A	52	21-Oct-17	22-Oct-16	21-Dec-16	-245	30%																
RP00084	Ch100-300: TTA to New CTR	1	23-Oct-17	1	23-Oct-17	22-Dec-16	22-Dec-16	-245	0%																
<b>Re-alignment of CTR Along Viaduct C</b>																									
<b>East Portion</b>																									
RW60050	CTR East (stage 2) TTA 090-5 : Roadwork	77	26-Apr-17 A	32	26-Sep-17	03-Oct-16	09-Nov-16	-261	60%																
RW60060	CTR East (stage 3) TTA 090-6 : Roadwork	66	27-Sep-17	66	15-Dec-17	10-Nov-16	01-Feb-17	-261	0%																
RW60080	CTR Tie in Works	116	18-May-17 A	88	04-Dec-17	19-Dec-16	07-Apr-17	-196	20%																
<b>At-Grade Works at Southern Landfall</b>																									
<b>HKBCF Area</b>																									
<b>General</b>																									
RW30028-2	Construct FMH2046 and Lay Pipe Work	14	27-Jun-17 A	10	31-Aug-17	27-Jun-20	09-Jul-20	843	50%																
RW30028-3	Construct FMH2047 and Lay Pipe Work	14	27-Jun-17 A	10	31-Aug-17	31-May-17	10-Jun-17	-69	50%																
RW30028-4	Construct FMH2048 and Lay Pipe Work	14	16-Oct-17	14	01-Nov-17	12-Jun-17	27-Jun-17	-105	0%																
RW30028-5	Construct FMH2049 and Lay Pipe Work	14	02-Nov-17	14	17-Nov-17	28-Jun-17	14-Jul-17	-105	0%																
<b>Watermain from Tung Chung to Southern Landfall</b>																									
<b>Watermain Works</b>																									
<b>General</b>																									
WM00120	Lay DN450 Fresh Water Main at Re-aligned CTR (approx. 500m)	48	22-Apr-15 A	12	02-Sep-17	29-Nov-17	12-Dec-17	83	90%																

■ Actual Work  
■ Planned Bar  
■ Critical Bar  
◆ Milestone

Project ID: TMCLK-DWPI-1-M51  
 Layout: J3518-DWP-3MRP Submission - M51  
 Filter: TASK filters: 3-Month Lookahead, No CC  
 Milestones, No Level of Effort.

**Tuen Mun - Chek Lap Kok Link - Southern Connection**  
**3-Month Rolling Programme (Page 11 of 11 Pages)**  
**(Progress as of 21-Aug-17)**

Date	Revision	Checked	Approved
04-Jul-17		PKN	GL
01-Aug-17		PKN	HF
29-Aug-17		PKN	HF

**DWG. No.:**  
**J3518/GCL/PGM/3MRP-M51**