

Activity ID	Activity Name	Orig. Durn.	Act. Start / FC Early Start	Rem. Durn.	Act. Finish / FC Early Finish	Late Start	Late Finish	Total Float	Physical % Complete	2017										2018							
										November					December					January			February				
										23	30	06	13	20	27	04	11	18	25	01	08	15	22	29	05	12	19
HY/2012/07 Tuen Mun-Chek Lap Kok Link - Southern Connection																											
Contract Milestones																											
Key Dates for Completion																											
Stage of the Works																											
Completion Date																											
General																											
KD03	KD3 - Stage 3: TCSS Along NLH Near Viaduct C, D (EoT 8-Apr-16)		0		0	21-Nov-17*		08-Apr-16	-591	0%																	
Portion Handover Dates																											
Possession of the Works Area																											
Access Dates																											
General																											
POS02-6B	Portion A - Area 6B (To be confirmed)		0	21-Nov-17*	0		16-Aug-20		1000	0%																	
Design																											
Detailed Design																											
Slope Works Near Viaduct A																											
Feature 9SE-B/FR8, B/R1, B/R2																											
Slope Works Design																											
ARDD0596-1	IC/SO Approval of Slope Combined AIP/DDA - CP11.01		60	13-Jun-17 A	30	27-Dec-17	13-Jun-16	18-Jul-16	-430	70%																	
Slope Works Near Viaduct C																											
Feature 10NW-C/C22, C/C26, C/C27, C/F13, C/F14, C/F15																											
Slope Works Design																											
ARDD0589-2	IC/SO Approval of Combined AIP/DDA - CP13.01		28	01-Jun-17 A	20	13-Dec-17	26-Jul-16	17-Aug-16	-394	90%																	
Procurement																											
Precast Parapets & Barriers																											
Viaduct A to F																											
Precast Parapet Manufacture																											
General																											
PP6011-01	Viaduct A - Precast Parapets/Barriers Production		90	01-Sep-16 A	90	12-Mar-18	12-Sep-16	30-Dec-16	-353	55%																	
PP6011-02	Viaduct B - Precast Parapets/Barriers Production		120	03-May-16 A	30	27-Dec-17	20-Sep-16	26-Oct-16	-347	80%																	
PP6011-05	Viaduct E - Precast Parapets/Barriers Production		180	02-Jul-16 A	156	04-Jun-18	16-May-16	18-Nov-16	-453	40%																	
PP6011-06	Viaduct F - Precast Parapets/Barriers Production		198	21-Nov-17*	198	25-Jul-18	18-Feb-17	18-Oct-17	-225	0%																	
Bearings																											
Viaduct F																											
Bearing Design & Manufacture																											
General																											
PPBRF9	Bearing Delivery - Viaduct F		34	18-Jul-17 A	66	08-Feb-18	29-May-20	15-Aug-20	743	30%																	
Movement Joints																											
Viaduct A to F																											
MJ Design & Manufacture																											
General																											
PP6MJ02-2	Manufacture & delivery of MJ		180	01-Apr-17 A	90	12-Mar-18	07-May-16	23-Aug-16	-459	80%																	
PP7450	Site preparation of MJ for Viaduct D		12	19-Jan-18	12	01-Feb-18	10-Aug-16	23-Aug-16	-429	0%																	
PP7530	Site preparation of MJ for Viaduct C		12	01-Feb-18	12	14-Feb-18	07-Sep-16	21-Sep-16	-416	0%																	
Construction																											
Foundation & Substructure Works																											
Ramp A																											
Abutment & Approach Ramp A																											
Ramp Finishes, E&M & Roadworks																											
ARA-C7710	Ramp A - Parapet Panels		30	21-Nov-17	30	27-Dec-17	20-Oct-16	23-Nov-16	-323	0%																	
ARA-C7720	Ramp A - Ducting, Gantry & TCSS Provisions (KD5)		30	05-Dec-17	30	11-Jan-18	03-Nov-16	07-Dec-16	-323	0%																	
ARA-C7810	Ramp A - Drainage, Fire Main & E&M Services		42	28-Dec-17	42	15-Feb-18	23-Dec-16	16-Feb-17	-298	0%																	
ARA-C7820	Ramp A - Railings, Light Poles, Signs & Street Furniture		24	12-Jan-18	24	08-Feb-18	10-Feb-17	09-Mar-17	-274	0%																	
ARA-C7830	Ramp A - Deck Paving & Roadmarking (KD11)		18	09-Feb-18	18	05-Mar-18	10-Mar-17	30-Mar-17	-274	0%																	
Ramp B																											

■ Actual Work
■ Planned Bar
■ Critical Bar
◆ Milestone

Project ID: TMCLK-DWPI-1-M54
 Layout: J3518-DWP-3MRP Submission - M54
 Filter: TASK filters: 3-Month Lookahead, No CC
 Milestones, No Level of Effort.

Tuen Mun - Chek Lap Kok Link - Southern Connection
3-Month Rolling Programme (Page 1 of 9 Pages)
(Progress as of 21-Nov-17)

Date	Revision	Checked	Approved
29-Sep-17		PKN	HF
30-Oct-17		PKN	HF
28-Nov-...		PKN	HF

DWG. No.:
J3518/GCL/PGM/3MRP-M54

Activity ID	Activity Name	Orig. Durn.	Act. Start / FC Early Start	Rem. Durn.	Act. Finish / FC Early Finish	Late Start	Late Finish	Total Float	Physical % Complete	2017												2018								
										November						December						January			February					
										23	30	06	13	20	27	04	11	18	25	01	08	15	22	29	05	12	19			
Abutment & Approach Ramp B																														
Ramp Structure																														
ARB-C6130	Ramp B - RE Wall - Panel Installation from 3rd Row to 6th Row	66	30-Aug-17 A	28	22-Dec-17	06-Jun-16	09-Jul-16	-435	0%	[Gantt Bar: 30-Aug-17 to 09-Jul-16]																				
ARB-C6135	Ramp B - RE Wall - Panel installation from 7th Row to 11th Row	72	23-Dec-17	72	23-Mar-18	11-Jul-16	04-Oct-16	-435	0%	[Gantt Bar: 23-Dec-17 to 04-Oct-16]																				
ARB-C6140	Ramp B - RC Wall - Base Slab	92	21-Nov-17	92	14-Mar-18	04-Jun-16	22-Sep-16	-436	0%	[Gantt Bar: 21-Nov-17 to 22-Sep-16]																				
ARB-C6150	Ramp B - RC Wall - Side Wall	92	05-Dec-17	92	28-Mar-18	20-Jun-16	07-Oct-16	-436	0%	[Gantt Bar: 05-Dec-17 to 07-Oct-16]																				
Ramp C																														
Abutment & Approach Ramp C																														
Ramp Finishes, E&M & Roadworks																														
ARC-C7715	Ramp C - Parapet Panels (Remaining)	24	25-Apr-17 A	26	20-Dec-17	03-Jun-16	05-Jul-16	-437	95%	[Gantt Bar: 25-Apr-17 to 05-Jul-16]																				
ARC-C7720	Ramp C - Ducting, Gantry & TCSS Provisions (KD4)	36	21-Dec-17	36	03-Feb-18	06-Jul-16	16-Aug-16	-437	0%	[Gantt Bar: 21-Dec-17 to 16-Aug-16]																				
ARC-C7810	Ramp C - Drainage, Fire Main & E&M Services	54	15-Jan-18	54	21-Mar-18	27-Jul-16	28-Sep-16	-437	0%	[Gantt Bar: 15-Jan-18 to 28-Sep-16]																				
ARC-C7820	Ramp C - Railings, Light Poles, Signs & Street Furniture	30	29-Jan-18	30	07-Mar-18	10-Aug-16	13-Sep-16	-437	0%	[Gantt Bar: 29-Jan-18 to 13-Sep-16]																				
Ramp D																														
Abutment & Approach Ramp D																														
Ramp Finishes, E&M & Roadworks																														
ARD-C7720	Ramp D - Ducting, Gantry & TCSS Provisions (KD4)	36	21-Nov-17	36	04-Jan-18	02-Feb-16	17-Mar-16	-533	0%	[Gantt Bar: 21-Nov-17 to 17-Mar-16]																				
ARD-C7810	Ramp D - Drainage, Fire Main & E&M Services	54	12-Dec-17	54	15-Feb-18	26-Feb-16	04-May-16	-533	0%	[Gantt Bar: 12-Dec-17 to 04-May-16]																				
ARD-C7820	Ramp D - Railings, Light Poles, Signs & Street Furniture	30	05-Jan-18	30	08-Feb-18	18-Mar-16	26-Apr-16	-533	0%	[Gantt Bar: 05-Jan-18 to 26-Apr-16]																				
ARD-C7830	Ramp D - Deck Paving & Roadmarking (KD14)	18	09-Feb-18	18	05-Mar-18	27-Apr-16	19-May-16	-533	0%	[Gantt Bar: 09-Feb-18 to 19-May-16]																				
Viaduct E - Bridge E5, E6, E7, E8																														
Pier E12D (E5b)																														
Pile Cap Dolphin																														
E12D-C3070	E12D Dolphin - Marine Pile Cap - Collar frame to perm. casing of pile	3	21-Nov-17*	3	23-Nov-17	12-Oct-17	14-Oct-17	-33	0%	[Gantt Bar: 21-Nov-17 to 14-Oct-17]																				
E12D-C3080	E12D Dolphin - Marine Pile Cap - Install precast shell in position	24	24-Nov-17	24	21-Dec-17	16-Oct-17	13-Nov-17	-33	0%	[Gantt Bar: 24-Nov-17 to 13-Nov-17]																				
E12D-C3130	E12D Dolphin - Marine Pile Cap - Fixings, Dewatering & Trim Pile	11	22-Dec-17	11	06-Jan-18	14-Nov-17	25-Nov-17	-33	0%	[Gantt Bar: 22-Dec-17 to 25-Nov-17]																				
E12D-C3150	E12D Dolphin - Marine Pile Cap - Rebar, Concreting	5	08-Jan-18	5	12-Jan-18	27-Nov-17	01-Dec-17	-33	0%	[Gantt Bar: 08-Jan-18 to 01-Dec-17]																				
E12D-C3160	E12D Dolphin - Marine Pile Cap - CJ preparation & Curing	3	13-Jan-18	3	16-Jan-18	02-Dec-17	05-Dec-17	-33	0%	[Gantt Bar: 13-Jan-18 to 05-Dec-17]																				
Pier E13A (E8c)																														
Pile Cap Dolphin																														
E13A-C3070	E13A Dolphin - Marine Pile Cap - Floating Seal & Casing Head Steelwork	3	17-Jan-18	3	19-Jan-18	06-Dec-17	08-Dec-17	-33	0%	[Gantt Bar: 17-Jan-18 to 08-Dec-17]																				
E13A-C3080	E13A Dolphin - Marine Pile Cap - Install precast shell in position	24	20-Jan-18	24	20-Feb-18	09-Dec-17	09-Jan-18	-33	0%	[Gantt Bar: 20-Jan-18 to 09-Jan-18]																				
Pier Head Segment / Infill Segment																														
E13A-C5145	E13A - Install Infill Segments (6 nr) - THB	28	09-Oct-17 A	0	29-Oct-17 A				100%	[Gantt Bar: 09-Oct-17 A to 29-Oct-17 A]																				
E13A-C5150	E13A - IFS Stitch & Remove Equipment	12	30-Oct-17 A	0	09-Nov-17 A				100%	[Gantt Bar: 30-Oct-17 A to 09-Nov-17 A]																				
Pier E13C (E6c)																														
Pier Head Segment / Infill Segment																														
E13C-C5150	E13C - IFS Stitch & Remove Equipment	12	17-Oct-17 A	0	26-Oct-17 A				100%	[Gantt Bar: 17-Oct-17 A to 26-Oct-17 A]																				
Pier E13D (E5c)																														
Pier Head Segment / Infill Segment																														
E13D-C5145	E13D - Install Infill Segments (6 nr) - THB	28	21-Sep-17 A	0	22-Oct-17 A				100%	[Gantt Bar: 21-Sep-17 A to 22-Oct-17 A]																				
E13D-C5150	E13D - IFS Stitch & Remove Equipment	12	23-Oct-17 A	0	29-Oct-17 A				100%	[Gantt Bar: 23-Oct-17 A to 29-Oct-17 A]																				
Pier E14A (E8d)																														
Pier Head Segment																														
E14A-C5310	E14A Pier Head - Construct Diaphragm (2nd Cast) in PHS	65	30-Sep-17 A	0	06-Nov-17 A				100%	[Gantt Bar: 30-Sep-17 A to 06-Nov-17 A]																				
E14A-C5410	E14A Pier Head - Curing, Stitching, Remove Temp Works	17	07-Nov-17 A	9	30-Nov-17	20-Jul-17	29-Jul-17	-103	0%	[Gantt Bar: 07-Nov-17 A to 29-Jul-17]																				
Pier E14C (E6d)																														
Pier Head Segment																														
E14C-C5110	E14C Pier Head - Scaffold, Temp Works	17	20-Oct-17 A	0	06-Nov-17 A				100%	[Gantt Bar: 20-Oct-17 A to 06-Nov-17 A]																				
E14C-C5210	E14C Pier Head - Erect PH Segment (2 nr)	4	07-Nov-17 A	0	08-Nov-17 A				100%	[Gantt Bar: 07-Nov-17 A to 08-Nov-17 A]																				
E14C-C5310	E14C Pier Head - Construct Diaphragm (2nd Cast) in PHS	65	21-Nov-17	65	07-Feb-18	11-Apr-17	03-Jul-17	-182	0%	[Gantt Bar: 21-Nov-17 to 03-Jul-17]																				
E14C-C5410	E14C Pier Head - Curing, Stitching, Remove Temp Works	17	08-Feb-18	17	02-Mar-18	04-Jul-17	22-Jul-17	-182	0%	[Gantt Bar: 08-Feb-18 to 22-Jul-17]																				
Pier E14D (E5d)																														
Pier Head Segment																														
E14D-C5210	E14D Pier Head - Erect PH Segment (1 nr)	2	09-Jan-18	2	10-Jan-18	24-Jan-17	25-Jan-17	-283	0%	[Gantt Bar: 09-Jan-18 to 25-Jan-17]																				
E14D-C5310	E14D Pier Head - Construct Diaphragm (2nd Cast) in PHS	50	11-Jan-18	50	13-Mar-18	26-Jan-17	28-Mar-17	-283	0%	[Gantt Bar: 11-Jan-18 to 28-Mar-17]																				
Viaduct F - Bridge F1																														
Pier F2 (F1c)																														
Pier																														
F02-C4510	F2 Pier - Scaffold, Rebar, Formwork, Concrete (5th Lift)	18	28-Sep-17 A	0	30-Oct-17 A				100%	[Gantt Bar: 28-Sep-17 A to 30-Oct-17 A]																				

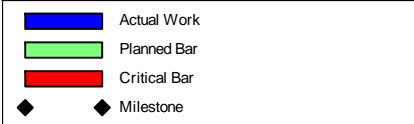
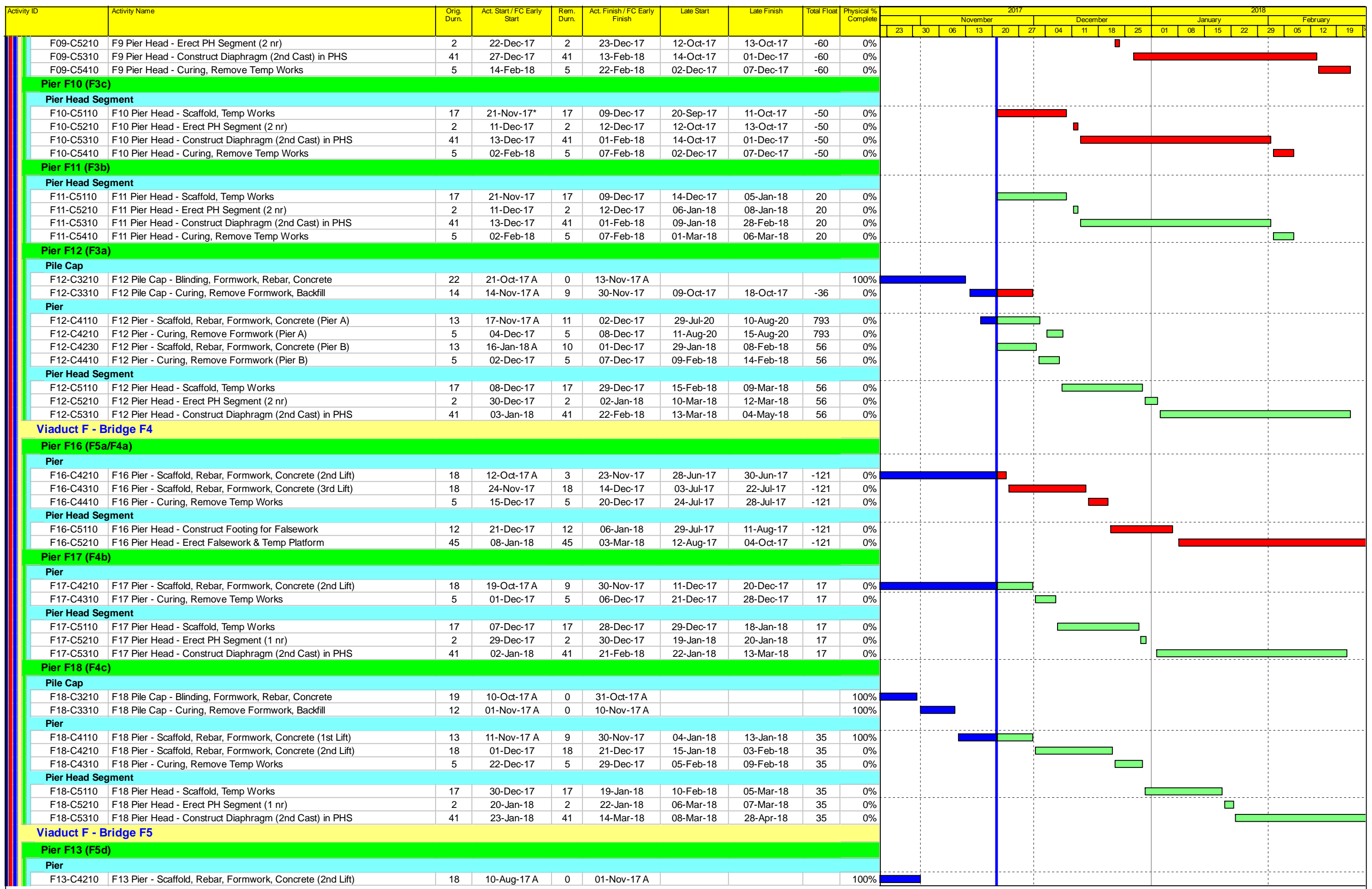
■ Actual Work
■ Planned Bar
■ Critical Bar
◆ Milestone

Project ID: TMCLK-DWPI-1-M54
 Layout: J3518-DWP-3MRP Submission - M54
 Filter: TASK filters: 3-Month Lookahead, No CC
 Milestones, No Level of Effort.

Tuen Mun - Chek Lap Kok Link - Southern Connection
3-Month Rolling Programme (Page 2 of 9 Pages)
(Progress as of 21-Nov-17)

Date	Revision	Checked	Approved
29-Sep-17		PKN	HF
30-Oct-17		PKN	HF
28-Nov-...		PKN	HF

DWG. No.:
J3518/GCL/PGM/3MRP-M54



Project ID: TMCLK-DWPI-1-M54
 Layout: J3518-DWP-3MRP Submission - M54
 Filter: TASK filters: 3-Month Lookahead, No CC
 Milestones, No Level of Effort.

**Tuen Mun - Chek Lap Kok Link - Southern Connection
 3-Month Rolling Programme (Page 4 of 9 Pages)
 (Progress as of 21-Nov-17)**

Date	Revision	Checked	Approved
29-Sep-17		PKN	HF
30-Oct-17		PKN	HF
28-Nov-...		PKN	HF

DWG. No.:
J3518/GCL/PGM/3MRP-M54

Activity ID	Activity Name	Orig. Durn.	Act. Start / FC Early Start	Rem. Durn.	Act. Finish / FC Early Finish	Late Start	Late Finish	Total Float	Physical % Complete	2017												2018														
										November						December						January			February											
										23	30	06	13	20	27	04	11	18	25	01	08	15	22	29	05	12	19									
F13-C4310	F13 Pier - Curing, Remove Formwork	5	02-Nov-17 A	0	07-Nov-17 A				100%																											
Pier Head Segment																																				
F13-C5110	F13 Pier Head - Scaffold, Temp Works	17	08-Nov-17 A	9	30-Nov-17	25-Mar-17	05-Apr-17	-195	0%																											
F13-C5210	F13 Pier Head - Erect PH Segment (1 nr)	2	01-Dec-17	2	02-Dec-17	06-Apr-17	07-Apr-17	-195	0%																											
F13-C5310	F13 Pier Head - Construct Diaphragm (2nd Cast) in PHS	41	04-Dec-17	41	23-Jan-18	08-Apr-17	01-Jun-17	-195	0%																											
F13-C5410	F13 Pier Head - Curing, Remove Temp Works	5	24-Jan-18	5	29-Jan-18	02-Jun-17	07-Jun-17	-195	0%																											
Pier F14 (F5c)																																				
Pier Head Segment																																				
F14-C5110	F14 Pier Head - Scaffold, Temp Works	17	21-Nov-17	17	09-Dec-17	29-Nov-17	18-Dec-17	7	0%																											
F14-C5210	F14 Pier Head - Erect PH Segment (1 nr)	2	11-Dec-17	2	12-Dec-17	19-Dec-17	20-Dec-17	7	0%																											
F14-C5310	F14 Pier Head - Construct Diaphragm (2nd Cast) in PHS	41	13-Dec-17	41	01-Feb-18	21-Dec-17	09-Feb-18	7	0%																											
F14-C5410	F14 Pier Head - Curing, Remove Temp Works	5	02-Feb-18	5	07-Feb-18	10-Feb-18	15-Feb-18	7	0%																											
Pier F15 (F5b)																																				
Pile Cap																																				
F15-C3110	F15 Pile Cap - Excavate, Break Pile Head	15	02-Nov-17 A	0	19-Nov-17 A				100%																											
F15-C3210	F15 Pile Cap - Blinding, Formwork, Rebar, Concrete	19	20-Nov-17 A	16	08-Dec-17	21-Sep-17	11-Oct-17	-49	0%																											
F15-C3310	F15 Pile Cap - Curing, Remove Formwork, Backfill	12	09-Dec-17	12	22-Dec-17	12-Oct-17	25-Oct-17	-49	0%																											
Pier																																				
F15-C4110	F15 Pier - Scaffold, Rebar, Formwork, Concrete (1st Lift)	13	23-Dec-17*	13	10-Jan-18	26-Oct-17	10-Nov-17	-49	0%																											
F15-C4210	F15 Pier - Scaffold, Rebar, Formwork, Concrete (2nd Lift)	18	11-Jan-18	18	31-Jan-18	11-Nov-17	01-Dec-17	-49	0%																											
F15-C4310	F15 Pier - Scaffold, Rebar, Formwork, Concrete (3rd Lift)	18	01-Feb-18	18	24-Feb-18	02-Dec-17	22-Dec-17	-49	0%																											
Ramp F																																				
Abutment & Approach Ramp F																																				
Foundation - Bored Piles																																				
ARF-C2210	Ramp F Fr Pile - Curing & Sonic Test	18	15-Oct-17 A	0	09-Nov-17 A				100%																											
Ramp Structure																																				
ARF-C6110	Ramp F - Strip Beams	24	21-Nov-17	24	18-Dec-17	01-Jun-17	28-Jun-17	-144	0%																											
ARF-C6120	Ramp F - Ground Beams	54	19-Dec-17	54	26-Feb-18	29-Jun-17	31-Aug-17	-144	0%																											
ARF-C6130	Ramp F - RC Columns	54	02-Feb-18	54	13-Apr-18	11-Aug-17	14-Oct-17	-144	0%																											
Superstructure & Associated Works																																				
Viaduct A																																				
Bridge A2																																				
Deck Span Segment																																				
VA2-C6510	Viaduct A2 - Final Stitch & Stressing to Span	24	30-Oct-17 A	0	13-Nov-17 A				100%																											
Deck Finishes, E&M and Roadworks																																				
VA2-C7710	Viaduct A2 - Parapet Panels	48	21-Nov-17	48	18-Jan-18	12-Sep-16	09-Nov-16	-353	0%																											
VA2-C7720	Viaduct A2 - Gantry & TCSS Provisions (KD5)	36	05-Jan-18	36	15-Feb-18	27-Oct-16	07-Dec-16	-353	0%																											
VA2-C7810	Viaduct A2 - Drainage, Fire Main & E&M Services	60	19-Jan-18	60	06-Apr-18	10-Jan-17	23-Mar-17	-304	0%																											
VA2-C7820	Viaduct A2 - Railings, Light Poles, Signs & Street Furniture	30	20-Feb-18	30	26-Mar-18	10-Feb-17	16-Mar-17	-304	0%																											
Bridge A1																																				
Deck Span Segment																																				
A06-C6320	A6 - End Span to A7 (8 nr) - THB	34	24-Feb-17 A	0	10-Nov-17 A				100%																											
A10-C6310	A10 - Cantilever Span (Initial 5 nr) - Crane	10	18-Oct-17 A	0	31-Oct-17 A				100%																											
A10-C6410	A10 - Relocate & Install KF	9	31-Oct-17 A	0	31-Oct-17 A				100%																											
A10-C6510	A10 - Cantilever Span (Remaining 7 nr) - KF	14	01-Nov-17 A	1	21-Nov-17	04-Aug-16	04-Aug-16	-386	0%																											
A11-C6210	A11 - Falsework for End Span to A10	24	24-Oct-17 A	2	22-Nov-17	03-Aug-16	04-Aug-16	-387	0%																											
A11-C6310	A11 - End Span to A10 (4 nr) - Crane	8	23-Nov-17	8	01-Dec-17	05-Aug-16	13-Aug-16	-387	0%																											
VA1-C6510	Viaduct A1 - Final Stitch & Stressing to Span	24	02-Dec-17	24	02-Jan-18	15-Aug-16	10-Sep-16	-387	0%																											
Deck Finishes, E&M and Roadworks																																				
VA1-C7710	Viaduct A1 - Parapet Panels	60	03-Jan-18	60	16-Mar-18	12-Sep-16	23-Nov-16	-387	0%																											
VA1-C7720	Viaduct A1 - Gantry & TCSS Provisions (KD5)	36	14-Feb-18	36	03-Apr-18	27-Oct-16	07-Dec-16	-387	0%																											
Viaduct B																																				
Bridge B3																																				
Deck Finishes, E&M and Roadworks																																				
VB3-C7720	Viaduct B3 - Gantry & TCSS Provisions (KD5)	36	21-Nov-17*	36	04-Jan-18	27-Oct-16	07-Dec-16	-317	0%																											
VB3-C7810	Viaduct B3 - Drainage, Fire Main & E&M Services	60	05-Dec-17	60	15-Feb-18	10-Jan-17	23-Mar-17	-268	0%																											
VB3-C7820	Viaduct B3 - Railings, Light Poles, Signs & Street Furniture	30	05-Jan-18	30	08-Feb-18	10-Feb-17	16-Mar-17	-268	0%																											
VB3-C7830	Viaduct B3 - Deck Paving & Roadmarking (KD12)	18	09-Feb-18	18	05-Mar-18	17-Mar-17	07-Apr-17	-268	0%																											
Bridge B2																																				
Deck Finishes, E&M and Roadworks																																				

	<p>Project ID: TMCLK-DWPI-1-M54 Layout: J3518-DWP-3MRP Submission - M54 Filter: TASK filters: 3-Month Lookahead, No CC Milestones, No Level of Effort.</p>	Tuen Mun - Chek Lap Kok Link - Southern Connection 3-Month Rolling Programme (Page 5 of 9 Pages) (Progress as of 21-Nov-17)	<table border="1"> <thead> <tr> <th>Date</th> <th>Revision</th> <th>Checked</th> <th>Approved</th> </tr> </thead> <tbody> <tr> <td>29-Sep-17</td> <td></td> <td>PKN</td> <td>HF</td> </tr> <tr> <td>30-Oct-17</td> <td></td> <td>PKN</td> <td>HF</td> </tr> <tr> <td>28-Nov-...</td> <td></td> <td>PKN</td> <td>HF</td> </tr> </tbody> </table>	Date	Revision	Checked	Approved	29-Sep-17		PKN	HF	30-Oct-17		PKN	HF	28-Nov-...		PKN	HF	DWG. No.: J3518/GCL/PGM/3MRP-M54
Date	Revision	Checked	Approved																	
29-Sep-17		PKN	HF																	
30-Oct-17		PKN	HF																	
28-Nov-...		PKN	HF																	

Activity ID	Activity Name	Orig. Durn.	Act. Start / FC Early Start	Rem. Durn.	Act. Finish / FC Early Finish	Late Start	Late Finish	Total Float	Physical % Complete	2017												2018					
										November						December						January			February		
										23	30	06	13	20	27	04	11	18	25	01	08	15	22	29	05	12	19
VB2-C7710	Viaduct B2 - Parapet Panels	60	21-Aug-17 A	42	11-Jan-18	05-Oct-16	23-Nov-16	-335	30%	[Gantt Bar]																	
VB2-C7720	Viaduct B2 - Gantry & TCSS Provisions (KD5)	36	12-Dec-17	36	25-Jan-18	27-Oct-16	07-Dec-16	-335	0%	[Gantt Bar]																	
VB2-C7810	Viaduct B2 - Drainage, Fire Main & E&M Services	48	12-Jan-18	48	12-Mar-18	24-Jan-17	23-Mar-17	-286	0%	[Gantt Bar]																	
VB2-C7820	Viaduct B2 - Railings, Light Poles, Signs & Street Furniture	30	26-Jan-18	30	05-Mar-18	10-Feb-17	16-Mar-17	-286	0%	[Gantt Bar]																	
Bridge B1																											
Deck Span Segment																											
B17-C6310	B17 - Cantilever Span (26 nr) - Crane	35	22-Sep-17 A	5	25-Nov-17	11-Aug-20	15-Aug-20	804	0%	[Gantt Bar]																	
B18-C6310	B18 - End Span to B17 (8 nr) - Crane	14	28-Sep-17 A	9	30-Nov-17	11-Aug-16	20-Aug-16	-380	0%	[Gantt Bar]																	
VB1-C6510	Viaduct B1 - Final Stitch & Stressing to Span	24	01-Dec-17	24	30-Dec-17	22-Aug-16	19-Sep-16	-380	0%	[Gantt Bar]																	
Deck Finishes, E&M and Roadworks																											
VB1-C7710	Viaduct B1 - Parapet Panels	48	02-Jan-18	48	01-Mar-18	20-Sep-16	16-Nov-16	-380	0%	[Gantt Bar]																	
VB1-C7720	Viaduct B1 - Gantry & TCSS Provisions (KD5)	36	06-Feb-18	36	22-Mar-18	27-Oct-16	07-Dec-16	-380	0%	[Gantt Bar]																	
VB1-C7810	Viaduct B1 - Drainage, Fire Main & E&M Services	60	13-Feb-18	60	02-May-18	10-Jan-17	23-Mar-17	-325	0%	[Gantt Bar]																	
Viaduct C																											
Bridge C4																											
Deck Finishes, E&M and Roadworks																											
VC4-C7710	Viaduct C4 - Parapet Panels	48	12-Jun-17 A	48	18-Jan-18	16-May-16	12-Jul-16	-453	70%	[Gantt Bar]																	
VC4-C7720	Viaduct C4 - Gantry & TCSS Provisions (KD4)	36	05-Jan-18	36	15-Feb-18	28-Jun-16	09-Aug-16	-453	0%	[Gantt Bar]																	
VC4-C7810	Viaduct C4 - Drainage, Fire Main & E&M Services	60	19-Jan-18	60	06-Apr-18	13-Jul-16	21-Sep-16	-453	0%	[Gantt Bar]																	
VC4-C7820	Viaduct C4 - Railings, Light Poles, Signs & Street Furniture	30	20-Feb-18	30	26-Mar-18	10-Aug-16	13-Sep-16	-453	0%	[Gantt Bar]																	
Bridge C3																											
Deck Finishes, E&M and Roadworks																											
VC3-C7710	Viaduct C3 - Parapet Panels	60	16-Aug-17 A	48	18-Jan-18	30-May-16	26-Jul-16	-441	0%	[Gantt Bar]																	
VC3-C7720	Viaduct C3 - Gantry & TCSS Provisions (KD4)	36	19-Dec-17	36	01-Feb-18	28-Jun-16	09-Aug-16	-441	0%	[Gantt Bar]																	
VC3-C7810	Viaduct C3 - Drainage, Fire Main & E&M Services	48	19-Jan-18	48	19-Mar-18	27-Jul-16	21-Sep-16	-441	0%	[Gantt Bar]																	
VC3-C7820	Viaduct C3 - Railings, Light Poles, Signs & Street Furniture	30	02-Feb-18	30	12-Mar-18	10-Aug-16	13-Sep-16	-441	0%	[Gantt Bar]																	
Bridge C2																											
Deck Finishes, E&M and Roadworks																											
VC2-C7710	Viaduct C2 - Parapet Panels	48	13-Jun-17 A	54	25-Jan-18	07-May-16	12-Jul-16	-459	15%	[Gantt Bar]																	
VC2-C7720	Viaduct C2 - Gantry & TCSS Provisions (KD4)	36	12-Jan-18	36	26-Feb-18	28-Jun-16	09-Aug-16	-459	0%	[Gantt Bar]																	
VC2-C7810	Viaduct C2 - Drainage, Fire Main & E&M Services	60	26-Jan-18	60	13-Apr-18	13-Jul-16	21-Sep-16	-459	0%	[Gantt Bar]																	
Bridge C1																											
Deck Finishes, E&M and Roadworks																											
VC1-C7710	Viaduct C1 - Parapet Panels	48	31-May-17 A	30	27-Dec-17	06-Jun-16	12-Jul-16	-435	0%	[Gantt Bar]																	
VC1-C7720	Viaduct C1 - Gantry & TCSS Provisions (KD4)	36	12-Dec-17	36	25-Jan-18	28-Jun-16	09-Aug-16	-435	0%	[Gantt Bar]																	
VC1-C7810	Viaduct C1 - Drainage, Fire Main & E&M Services	60	28-Dec-17	60	12-Mar-18	13-Jul-16	21-Sep-16	-435	0%	[Gantt Bar]																	
VC1-C7820	Viaduct C1 - Railings, Light Poles, Signs & Street Furniture	30	26-Jan-18	30	05-Mar-18	10-Aug-16	13-Sep-16	-435	0%	[Gantt Bar]																	
Viaduct D																											
Bridge D3																											
Deck Span Segment																											
D06-C6610	D6 - Launch LG1 from D6 to E2B for Dismantling	18	07-Aug-17 A	6	27-Nov-17	07-May-16	13-May-16	-459	100%	[Gantt Bar]																	
Deck Finishes, E&M and Roadworks																											
VD3-C7710	Viaduct D3 - Parapet Panels	48	18-Sep-17 A	40	09-Jan-18	25-May-16	12-Jul-16	-445	0%	[Gantt Bar]																	
VD3-C7720	Viaduct D3 - Gantry & TCSS Provisions (KD4)	36	23-Dec-17	36	06-Feb-18	28-Jun-16	09-Aug-16	-445	0%	[Gantt Bar]																	
VD3-C7810	Viaduct D3 - Drainage, Fire Main & E&M Services	60	10-Jan-18	60	23-Mar-18	13-Jul-16	21-Sep-16	-445	0%	[Gantt Bar]																	
VD3-C7820	Viaduct D3 - Railings, Light Poles, Signs & Street Furniture	30	07-Feb-18	30	16-Mar-18	10-Aug-16	13-Sep-16	-445	0%	[Gantt Bar]																	
Bridge D2																											
Deck Finishes, E&M and Roadworks																											
VD2-C7710	Viaduct D2 - Parapet Panels	60	01-Sep-17 A	51	22-Jan-18	26-May-16	26-Jul-16	-444	0%	[Gantt Bar]																	
VD2-C7720	Viaduct D2 - Gantry & TCSS Provisions (KD4)	36	22-Dec-17	36	05-Feb-18	28-Jun-16	09-Aug-16	-444	0%	[Gantt Bar]																	
VD2-C7810	Viaduct D2 - Drainage, Fire Main & E&M Services	48	23-Jan-18	48	22-Mar-18	27-Jul-16	21-Sep-16	-444	0%	[Gantt Bar]																	
VD2-C7820	Viaduct D2 - Railings, Light Poles, Signs & Street Furniture	30	06-Feb-18	30	15-Mar-18	10-Aug-16	13-Sep-16	-444	0%	[Gantt Bar]																	
Bridge D1																											
Deck Finishes, E&M and Roadworks																											
VD1-C7710	Viaduct D1 - Parapet Panels	48	01-Jun-17 A	12	04-Dec-17	28-Jun-16	12-Jul-16	-417	0%	[Gantt Bar]																	
VD1-C7720	Viaduct D1 - Gantry & TCSS Provisions (KD4)	36	21-Nov-17	36	04-Jan-18	28-Jun-16	09-Aug-16	-417	0%	[Gantt Bar]																	
VD1-C7810	Viaduct D1 - Drainage, Fire Main & E&M Services	60	05-Dec-17	60	15-Feb-18	13-Jul-16	21-Sep-16	-417	0%	[Gantt Bar]																	
VD1-C7820	Viaduct D1 - Railings, Light Poles, Signs & Street Furniture	30	05-Jan-18	30	08-Feb-18	10-Aug-16	13-Sep-16	-417	0%	[Gantt Bar]																	
VD1-C7830	Viaduct D1 - Deck Paving & Roadmarking (KD14)	18	09-Feb-18	18	05-Mar-18	14-Sep-16	06-Oct-16	-417	0%	[Gantt Bar]																	
Viaduct E																											
Bridge E1																											

■ Actual Work
■ Planned Bar
■ Critical Bar
◆ Milestone

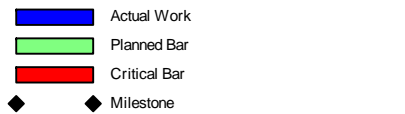
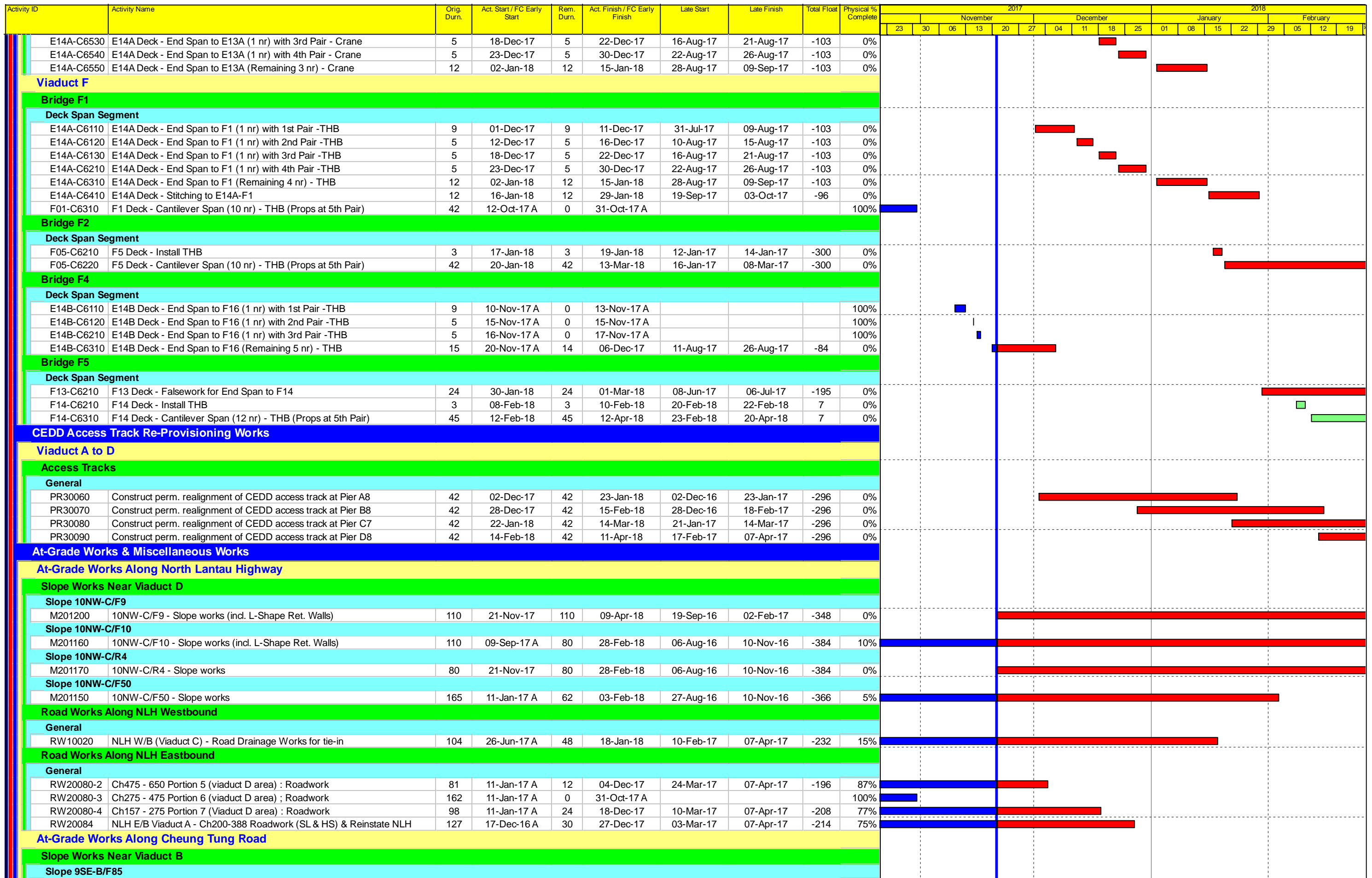
Project ID: TMCLK-DWPI-1-M54
 Layout: J3518-DWP-3MRP Submission - M54
 Filter: TASK filters: 3-Month Lookahead, No CC
 Milestones, No Level of Effort.

Tuen Mun - Chek Lap Kok Link - Southern Connection
3-Month Rolling Programme (Page 6 of 9 Pages)
(Progress as of 21-Nov-17)

Date	Revision	Checked	Approved
29-Sep-17		PKN	HF
30-Oct-17		PKN	HF
28-Nov-...		PKN	HF

DWG. No.:
J3518/GCL/PGM/3MRP-M54

Activity ID	Activity Name	Orig. Durn.	Act. Start / FC Early Start	Rem. Durn.	Act. Finish / FC Early Finish	Late Start	Late Finish	Total Float	Physical % Complete	2017														2018											
										November					December					January				February											
										23	30	06	13	20	27	04	11	18	25	01	08	15	22	29	05	12	19								
Deck Finishes, E&M and Roadworks																																			
VE1AB-C77	Viaduct E1A/B - Parapet Panels	48	21-Nov-17	48	18-Jan-18	16-May-16	12-Jul-16	-453	0%																										
VE1AB-C77	Viaduct E1A/B - Gantry & TCSS Provisions (KD4)	36	05-Jan-18	36	15-Feb-18	28-Jun-16	09-Aug-16	-453	0%																										
VE1AB-C78	Viaduct E1A/B - Drainage, Fire Main & E&M Services	60	19-Jan-18	60	06-Apr-18	13-Jul-16	21-Sep-16	-453	0%																										
VE1AB-C78	Viaduct E1A/B - Railings, Light Poles, Signs & Street Furniture	30	20-Feb-18	30	26-Mar-18	10-Aug-16	13-Sep-16	-453	0%																										
VE1CD-C77	Viaduct E1C/D - Parapet Panels	48	28-Nov-17	48	25-Jan-18	16-May-16	12-Jul-16	-459	0%																										
VE1CD-C77	Viaduct E1C/D - Gantry & TCSS Provisions (KD4)	36	12-Jan-18	36	26-Feb-18	28-Jun-16	09-Aug-16	-459	0%																										
VE1CD-C7E	Viaduct E1C/D - Drainage, Fire Main & E&M Services	60	26-Jan-18	60	13-Apr-18	13-Jul-16	21-Sep-16	-459	0%																										
Bridge E2																																			
Deck Span Segment																																			
E06A-C6510	E6A & E6B - Quarter Span (E6-E7) - TLB	30	04-Jul-17 A	12	02-Dec-17	09-Jul-17	20-Jul-17	-131	50%																										
E06A-C6520	E6A & E6B - E5A/E6A & E5B/E6B Stitches	8	03-Dec-17	8	10-Dec-17	21-Jul-17	28-Jul-17	-131	0%																										
E06A-C6530	E7A & E7B - E6A/E7A & E6B/E7B Stitches	8	13-Dec-17	8	20-Dec-17	31-Jul-17	07-Aug-17	-131	0%																										
E06A-C6610	E6A/E7A: Install Bearing & Stress Continuity Tendons	12	21-Dec-17	12	06-Jan-18	08-Aug-17	21-Aug-17	-113	0%																										
E06A-C6620	E6B/E7B: Install Bearing & Stress Continuity Tendons	12	21-Dec-17	12	06-Jan-18	08-Aug-17	21-Aug-17	-113	0%																										
E06B-C6510	E6B - Drop in (E6B-E5B) - THB	30	30-Sep-17 A	0	11-Nov-17 A				100%																										
E08A-C6410	E8A - Drop in (E8A-E7A) - THB	30	30-Sep-17 A	18	08-Dec-17	27-Jul-20	15-Aug-20	882	0%																										
E08A-C6510	E8A & E8B - Quarter Span (E8-E9) - TLB	30	16-Sep-17 A	30	20-Dec-17	16-Aug-17	14-Sep-17	-93	0%																										
E08A-C6520	E8A & E8B - E7A/E8A & E7B/E8B Stitches	8	21-Dec-17	8	29-Dec-17	15-Sep-17	22-Sep-17	-93	0%																										
E08A-C6530	E9A & E9B - E8A/E9A & E8B/E9B Stitches	8	03-Jan-18	8	10-Jan-18	26-Sep-17	06-Oct-17	-93	0%																										
E08A-C6610	E8A/E9A: Install Bearing & Stress Continuity Tendons	12	11-Jan-18	12	22-Jan-18	07-Oct-17	18-Oct-17	-93	0%																										
E08A-C6620	E8B/E9B: Install Bearing & Stress Continuity Tendons	12	11-Jan-18	12	22-Jan-18	07-Oct-17	18-Oct-17	-93	0%																										
E08B-C6510	E8B - Drop in (E8B-E7B) - THB	30	11-Oct-17 A	20	10-Dec-17	26-Aug-17	14-Sep-17	-83	0%																										
E10A-C6410	E10A - Drop in (E10A-E9A) - THB	30	09-Sep-17 A	77	07-Feb-18	31-Jul-17	18-Oct-17	-109	0%																										
E11B-C6510	E10A & E10B - Quarter span (E10-E11) - TLB	30	30-Aug-17 A	140	16-Apr-18	26-Apr-17	15-Sep-17	-202	0%																										
VE2-C6610	Viaduct E2 - Dismantle LG1	48	28-Nov-17	48	25-Jan-18	11-Jul-17	04-Sep-17	-117	0%																										
VE2-C6620	Viaduct E2 - Dismantle LG2	48	21-Nov-17	48	18-Jan-18	26-Jun-17	21-Aug-17	-123	0%																										
Deck Finishes, E&M and Roadworks																																			
VE21-C7710	Viaduct E2-1 (E3-E6) - Parapet Panels	48	19-Jan-18	48	19-Mar-18	22-Aug-17	18-Oct-17	-123	0%																										
Bridge E5																																			
Deck Span Segment																																			
E12D-C6210	E12D Deck - Cantilever Span (16 seg) with 2 stitches - THB	45	05-Oct-17 A	12	02-Dec-17	22-Feb-17	05-Mar-17	-264	0%																										
E12D-C6220	E12D Deck - Install WLF	7	03-Dec-17	7	09-Dec-17	06-Mar-17	12-Mar-17	-264	0%																										
E12D-C6230	E12D Deck - Cantilever span (26 seg) with 1 stitch - WLF	53	12-Dec-17	53	04-Feb-18	15-Mar-17	08-May-17	-264	0%																										
E13D-C6110	E13D Deck - Install KF and THB	6	23-Oct-17 A	0	29-Oct-17 A				100%																										
E13D-C6210	E13D Deck - Cantilever Span (22 seg) with 2 stitches - KF and THB	26	21-Nov-17	26	16-Dec-17	11-Mar-17	06-Apr-17	-247	0%																										
E13D-C6220	E13D Deck Cantilever span (20 seg) with 1 stitch - KF and THB	43	05-Jan-18	43	20-Feb-18	07-Apr-17	20-May-17	-264	0%																										
E14D-C6120	E14D Deck - Install Sliding System, T&C & Final ICE Check	15	28-Nov-17*	15	14-Dec-17	13-Dec-16	31-Dec-16	-283	0%																										
E14D-C6210	E14D Deck - End Span to E13D Segment '7' to '2' (6 nr) - Crane	18	15-Dec-17	18	08-Jan-18	03-Jan-17	23-Jan-17	-283	0%																										
Bridge E6																																			
Deck Span Segment																																			
E12C-C6210	E12C Deck - Cantilever Span (42 seg) with 2 stitches - THB	67	10-Sep-17 A	54	15-Jan-18	28-Jun-17	21-Aug-17	-141	5%																										
E13C-C6110	E13C Deck - Install KF and THB	6	21-Oct-17 A	0	26-Oct-17 A				100%																										
E13C-C6210	E13C Deck - Cantilever Span (18 seg) with 1 stitch - KF and THB	36	27-Nov-17 A	26	16-Dec-17	22-Feb-17	19-Mar-17	-264	0%																										
E13C-C6220	E13C Deck - Install TLB with T&C	19	15-Dec-17	19	04-Jan-18	18-Mar-17	06-Apr-17	-264	0%																										
E13C-C6230	E13C Deck - Cantilever span (26 seg) with 1 stitch - KF and THB	51	05-Jan-18	51	28-Feb-18	14-Jul-17	02-Sep-17	-169	0%																										
Bridge E7																																			
Deck Span Segment																																			
E12B-C6210	E12B Deck - Cantilever Span (40 seg) with 3 stitches - WLF	66	04-Sep-17 A	32	22-Dec-17	26-May-17	27-Jun-17	-173	5%																										
E13B-C6210	E13B Deck - Cantilever Span (44 seg) with 3 stitches - KF	82	16-Oct-17 A	68	29-Jan-18	07-Feb-17	16-Apr-17	-279	0%																										
E14B-C6510	E14B Deck - End Span to E13B (1 nr) with 1st Pair - Crane	9	10-Nov-17 A	0	13-Nov-17 A				100%																										
E14B-C6520	E14B Deck - End Span to E13B (1 nr) with 2nd Pair - Crane	5	15-Nov-17 A	0	15-Nov-17 A				100%																										
E14B-C6530	E14B Deck - End Span to E13B (1 nr) with 3rd Pair - Crane	5	16-Nov-17 A	0	17-Nov-17 A				100%																										
E14B-C6540	E14B Deck - End Span to E13B (Remaining 4 nr) - Crane	15	20-Nov-17 A	14	06-Dec-17	28-Mar-17	13-Apr-17	-193	0%																										
Bridge E8																																			
Deck Span Segment																																			
E12A-C6410	E12A Deck - Cantilever Span (22 nr) with 1st stitch - THB	45	01-Oct-17 A	16	06-Dec-17	14-Jun-17	29-Jun-17	-155	0%																										
E12A-C6420	E12A deck - Install WLF & install (18nr) - WLF	52	26-Dec-17	52	20-Feb-18	30-Jun-17	21-Aug-17	-173	0%																										
E13A-C6210	E13A Deck - Install KF	7	02-Nov-17 A	0	09-Nov-17 A				100%																										
E13A-C6410	E13A Deck - Cantilever Span(32 nr) with 3 stitches - KF	72	10-Nov-17 A	71	01-Feb-18	02-Jul-17	10-Sep-17	-138	0%																										
E13A-C6610	E13A Deck - Cantilever Span (Remaining 12 nr) - KF	21	30-Jan-18	21	23-Feb-18	17-Apr-17	08-May-17	-279	0%																										
E14A-C6510	E14A Deck - End Span to E13A (1 nr) with 1st Pair - Crane	9	01-Dec-17	9	11-Dec-17	31-Jul-17	09-Aug-17	-103	0%																										
E14A-C6520	E14A Deck - End Span to E13A (1 nr) with 2nd Pair - Crane	5	12-Dec-17	5</																															

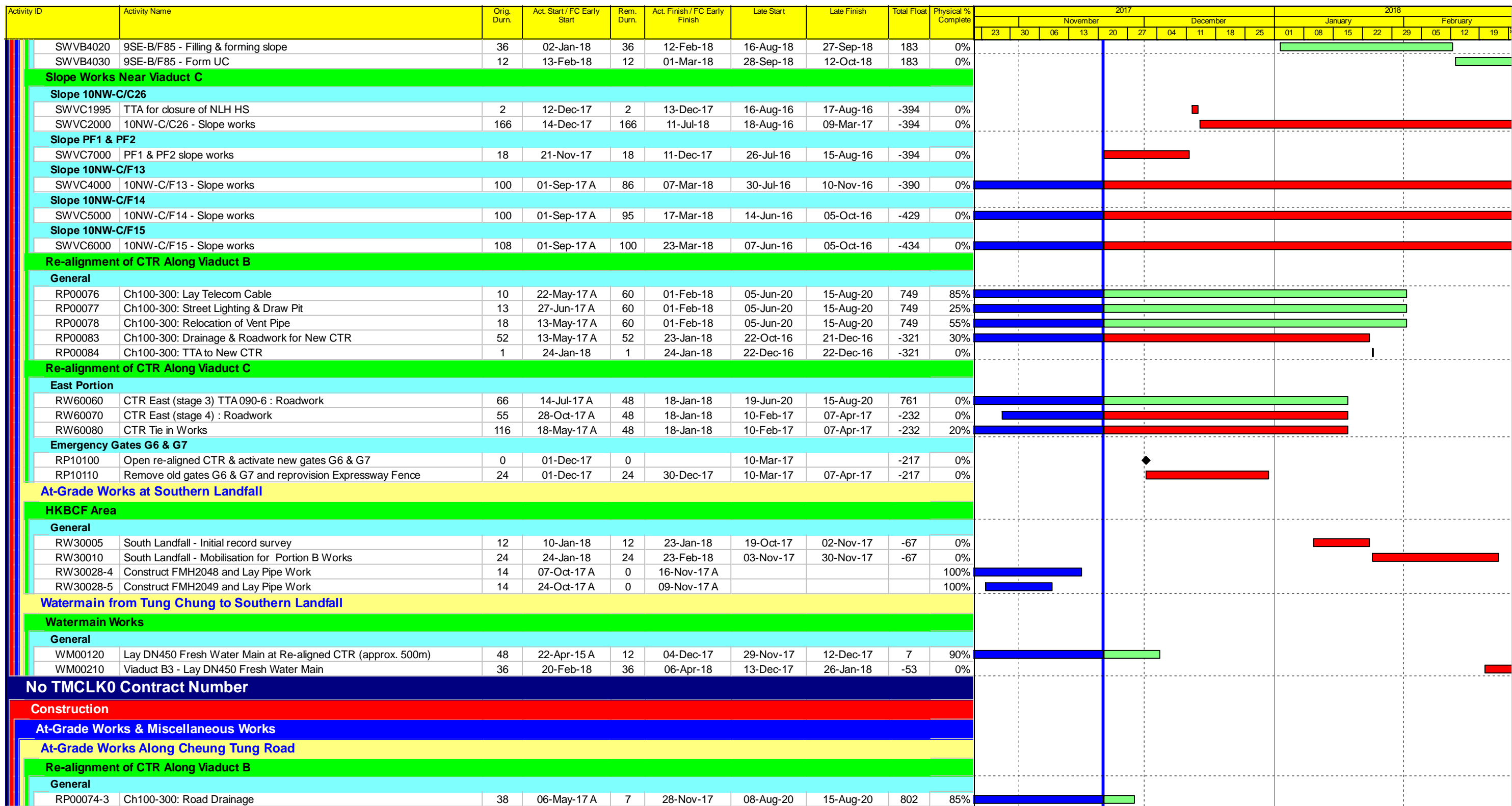


Project ID: TMCLK-DWPI-1-M54
 Layout: J3518-DWP-3MRP Submission - M54
 Filter: TASK filters: 3-Month Lookahead, No CC
 Milestones, No Level of Effort.

Tuen Mun - Chek Lap Kok Link - Southern Connection
3-Month Rolling Programme (Page 8 of 9 Pages)
(Progress as of 21-Nov-17)

Date	Revision	Checked	Approved
29-Sep-17		PKN	HF
30-Oct-17		PKN	HF
28-Nov-...		PKN	HF

DWG. No.:
J3518/GCL/PGM/3MRP-M54



- Actual Work
- Planned Bar
- Critical Bar
- ◆ Milestone

Project ID: TMCLK-DWPI-1-M54
Layout: J3518-DWP-3MRP Submission - M54
Filter: TASK filters: 3-Month Lookahead, No CC
Milestones, No Level of Effort.

Tuen Mun - Chek Lap Kok Link - Southern Connection
3-Month Rolling Programme (Page 9 of 9 Pages)
(Progress as of 21-Nov-17)

Date	Revision	Checked	Approved
29-Sep-17		PKN	HF
30-Oct-17		PKN	HF
28-Nov-17		PKN	HF

DWG. No.:
J3518/GCL/PGM/3MRP-M54