

Activity ID	Activity Name	Orig. Durn.	Act. Start / FC Early Start	Rem. Durn.	Act. Finish / FC Early Finish	Late Start	Late Finish	Total Float	Physical % Complete	2018																												
										August					September					October					November					December								
										30	06	13	20	27	03	10	17	24	01	08	15	22	29	05	12	19	26	03										
HY/2012/07 Tuen Mun-Chek Lap Kok Link - Southern Connection																																						
Contract Milestones																																						
Key Dates for Completion																																						
Section of the Works																																						
Completion Date																																						
General																																						
KD07	KD7 - Section 1: All Works at Viaduct F1 (EoT 7-Aug-18)		0		0	04-Oct-18*		07-Aug-18	-58	0%																												
KD15	KD15 - Section 9: Watermains Tung Chung-HKBCF (EoT 27-Feb-19)		0		0	17-Dec-18*		27-Feb-19	72	0%																												
Design																																						
Detailed Design																																						
Slope Works Near Viaduct A																																						
Feature 9SE-B/FR8, B/R1, B/R2																																						
Slope Works Design																																						
ARDD0596-1	IC/SO Approval of Slope Combined AIP/DDA - CP11.01		60	13-Jun-17 A	22	19-Oct-18	04-Oct-16	29-Oct-16	-583	95%																												
Procurement																																						
Precast Parapets & Barriers																																						
Viaduct A to F																																						
Precast Parapet Manufacture																																						
General																																						
PP6011-06	Viaduct F - Precast Parapets/Barriers Production		198	05-Mar-18 A	54	26-Nov-18	11-May-18	16-Jul-18	-111	90%																												
Construction																																						
Foundation & Substructure Works																																						
Ramp A																																						
Abutment & Approach Ramp A																																						
Ramp Finishes, E&M & Roadworks																																						
ARA-C7840	Ramp A - outstanding works		83	23-Jun-18 A	34	02-Nov-18	11-May-19	21-Jun-19	185	90%																												
Ramp B																																						
Abutment & Approach Ramp B																																						
Ramp Finishes, E&M & Roadworks																																						
ARB-C7840	Ramp B - Outstanding works		83	23-Jun-18 A	34	02-Nov-18	11-May-19	21-Jun-19	185	90%																												
Ramp C																																						
Abutment & Approach Ramp C																																						
Ramp Finishes, E&M & Roadworks																																						
ARC-C7840	Ramp C - outstanding works		124	12-Feb-18 A	9	03-Oct-18	28-Jan-19	09-Feb-19	104	98%																												
Ramp D																																						
Abutment & Approach Ramp D																																						
Ramp Finishes, E&M & Roadworks																																						
ARD-C7840	Ramp D - Outstanding works		66	28-Apr-18 A	9	03-Oct-18	13-Apr-19	26-Apr-19	165	98%																												
Ramp F																																						
Abutment & Approach Ramp F																																						
Ramp Structure																																						
ARF-C6130	Ramp F - Abutment wall (RF-6)		14	09-Jun-18 A	5	27-Sep-18	03-Feb-18	08-Feb-18	-186	100%																												
ARF-C6140	Ramp F - Column and beam (FB2 & FB3)		54	14-Feb-18 A	5	27-Sep-18	14-Apr-18	19-Apr-18	-133	100%																												
ARF-C6150	Ramp F - Column and beam (FB1 & FB3)		86	26-Mar-18 A	30	29-Oct-18	24-Mar-18	03-May-18	-147	100%																												
ARF-C6160	Ramp F - Ramp deck		71	25-Jun-18 A	69	13-Dec-18	21-Mar-18	15-Jun-18	-150	75%																												
Ramp Finishes, E&M & Roadworks																																						
ARF-C7710	Ramp F -Parapet Panels		60	14-Dec-18	60	28-Feb-19	16-Jun-18	27-Aug-18	-150	0%																												
Superstructure & Associated Works																																						
Viaduct A																																						
Bridge A2																																						
Deck Finishes, E&M and Roadworks																																						
VA2-C7840	Viaduct A2 - Outstanding Work		83	23-Jun-18 A	34	02-Nov-18	11-May-19	21-Jun-19	185	90%																												
Bridge A1																																						
Deck Finishes, E&M and Roadworks																																						

■ Actual Work
■ Planned Bar
■ Critical Bar
◆ Milestone

Project ID: TMCLK-DWPM-M64
 Layout: J3518-DWP-3MRP Submission - M64
 Filter: TASK filters: 3-Month Lookahead, No CC Milestones, No Level of Effort.

Tuen Mun - Chek Lap Kok Link - Southern Connection
3-Month Rolling Programme (Page 1 of 4 Pages)
(Progress as of 21-09-18)

Date	Revision	Check...	Approved
2-Jul-18			HF
21-Aug-...			HF
21-09-18			HF

DWG. No.:
J3518/GCL/PGM/3MRP-M64

Activity ID	Activity Name	Orig. Durn.	Act. Start / FC Early Start	Rem. Durn.	Act. Finish / FC Early Finish	Late Start	Late Finish	Total Float	Physical % Complete	2018																												
										August					September					October					November					December								
										30	06	13	20	27	03	10	17	24	01	08	15	22	29	05	12	19	26	03										
VA1-C7840	Viaduct A1 - Outstanding works	83	23-Jun-18 A	34	02-Nov-18	11-May-19	21-Jun-19	185	90%	[Gantt bar for VA1-C7840]																												
Viaduct B																																						
Bridge B3																																						
Deck Finales, E&M and Roadworks																																						
VB3-C7820	Viaduct B3 - Railings, Light Poles, Signs & Street Furniture (substantial part)	30	21-May-18 A	2	22-Sep-18	10-May-19	11-May-19	184	97%	[Gantt bar for VB3-C7820]																												
VB3-C7840	Viaduct B3 - Outstanding works	83	23-Jun-18 A	34	02-Nov-18	10-May-19	20-Jun-19	184	90%	[Gantt bar for VB3-C7840]																												
Bridge B2																																						
Deck Finales, E&M and Roadworks																																						
VB2-C7840	Viaduct B2 - Outstanding works	83	23-Jun-18 A	34	02-Nov-18	10-May-19	20-Jun-19	184	90%	[Gantt bar for VB2-C7840]																												
Bridge B1																																						
Deck Finales, E&M and Roadworks																																						
VB1-C7840	Viaduct B1 - Outstanding works	83	23-Jun-18 A	34	02-Nov-18	10-May-19	20-Jun-19	184	90%	[Gantt bar for VB1-C7840]																												
Viaduct C																																						
Bridge C4																																						
Deck Finales, E&M and Roadworks																																						
VC4-C7840	Viaduct C4 - Outstanding works	124	12-Feb-18 A	0	01-Sep-18 A				100%	[Gantt bar for VC4-C7840]																												
Bridge C3																																						
Deck Finales, E&M and Roadworks																																						
VC3-C7840	Viaduct C3 - Outstanding works	124	12-Feb-18 A	0	01-Sep-18 A				100%	[Gantt bar for VC3-C7840]																												
Bridge C2																																						
Deck Finales, E&M and Roadworks																																						
VC2-C7840	Viaduct C2 - Outstanding works	124	12-Feb-18 A	0	01-Sep-18 A				100%	[Gantt bar for VC2-C7840]																												
Bridge C1																																						
Deck Finales, E&M and Roadworks																																						
VC1-C7840	Viaduct C1 - outstanding works	124	12-Feb-18 A	9	03-Oct-18	28-Jan-19	09-Feb-19	104	99%	[Gantt bar for VC1-C7840]																												
Viaduct D																																						
Bridge D3																																						
Deck Finales, E&M and Roadworks																																						
VD3-C7840	Viaduct D3 - Outstanding works	66	28-Apr-18 A	0	01-Sep-18 A				100%	[Gantt bar for VD3-C7840]																												
Bridge D2																																						
Deck Finales, E&M and Roadworks																																						
VD2-C7840	Viaduct D2 - Outstanding works	66	28-Apr-18 A	0	01-Sep-18 A				100%	[Gantt bar for VD2-C7840]																												
Bridge D1																																						
Deck Finales, E&M and Roadworks																																						
VD1-C7840	Viaduct D1 - Outstanding works	66	28-Apr-18 A	9	03-Oct-18	13-Apr-19	26-Apr-19	165	99%	[Gantt bar for VD1-C7840]																												
Viaduct E																																						
Bridge E1																																						
Deck Finales, E&M and Roadworks																																						
VE1CD-C7840	Viaduct E1 - Outstanding works	60	23-Jun-18 A	0	01-Sep-18 A				100%	[Gantt bar for VE1CD-C7840]																												
Bridge E2																																						
Deck Finales, E&M and Roadworks																																						
VE23-C7840	Viaduct E2 - Outstanding works	60	21-Jun-18 A	0	01-Sep-18 A				100%	[Gantt bar for VE23-C7840]																												
Bridge E5																																						
Deck Finales, E&M and Roadworks																																						
VE5-C7820	Viaduct E5 - Railings, Light Poles, Signs & Street Furniture	18	19-Jul-18 A	0	21-Sep-18	28-Aug-20	28-Aug-20	573	100%	[Gantt bar for VE5-C7820]																												
VE5-C7830	Viaduct E5 - Deck Paving & Roadmarking (KD9)	18	14-Jul-18 A	0	01-Sep-18 A				100%	[Gantt bar for VE5-C7830]																												
Bridge E6																																						
Deck Finales, E&M and Roadworks																																						
VE6-C7710	Viaduct E6 - Parapet Panels	48	21-May-18 A	10	04-Oct-18	07-Apr-18	18-Apr-18	-139	100%	[Gantt bar for VE6-C7710]																												
VE6-C7720	Viaduct E6 - Gantry & TCSS Provisions (KD4)	36	21-Sep-18	36	05-Nov-18	04-Apr-18	17-May-18	-141	0%	[Gantt bar for VE6-C7720]																												
VE6-C7810	Viaduct E6 - Drainage, Fire Main & E&M Services	60	08-Oct-18	60	17-Dec-18	17-May-18	28-Jul-18	-118	0%	[Gantt bar for VE6-C7810]																												
VE6-C7820	Viaduct E6 - Railings, Light Poles, Signs & Street Furniture	30	06-Nov-18	30	10-Dec-18	15-Jun-18	21-Jul-18	-118	0%	[Gantt bar for VE6-C7820]																												
VE6-C7830	Viaduct E6 - Deck Paving & Roadmarking (KD9)	18	11-Dec-18	18	03-Jan-19	23-Jul-18	11-Aug-18	-118	0%	[Gantt bar for VE6-C7830]																												
Bridge E7																																						
Deck Span Segment																																						
VE7-C6910	Viaduct E7 - Final Stressing to Span	12	21-Apr-18 A	25	23-Oct-18	02-Feb-18	06-Mar-18	-187	98%	[Gantt bar for VE7-C6910]																												
VE7-C6920	Viaduct E7 - Install, grout permanent bearing and load transfer to E14B	7	24-Oct-18	7	31-Oct-18	07-Mar-18	14-Mar-18	-187	0%	[Gantt bar for VE7-C6920]																												
Deck Finales, E&M and Roadworks																																						
VE7-C7710	Viaduct E7 - Parapet Panels (E11 - E13B)	48	12-May-18 A	54	26-Nov-18	08-Jan-18	14-Mar-18	-209	100%	[Gantt bar for VE7-C7710]																												

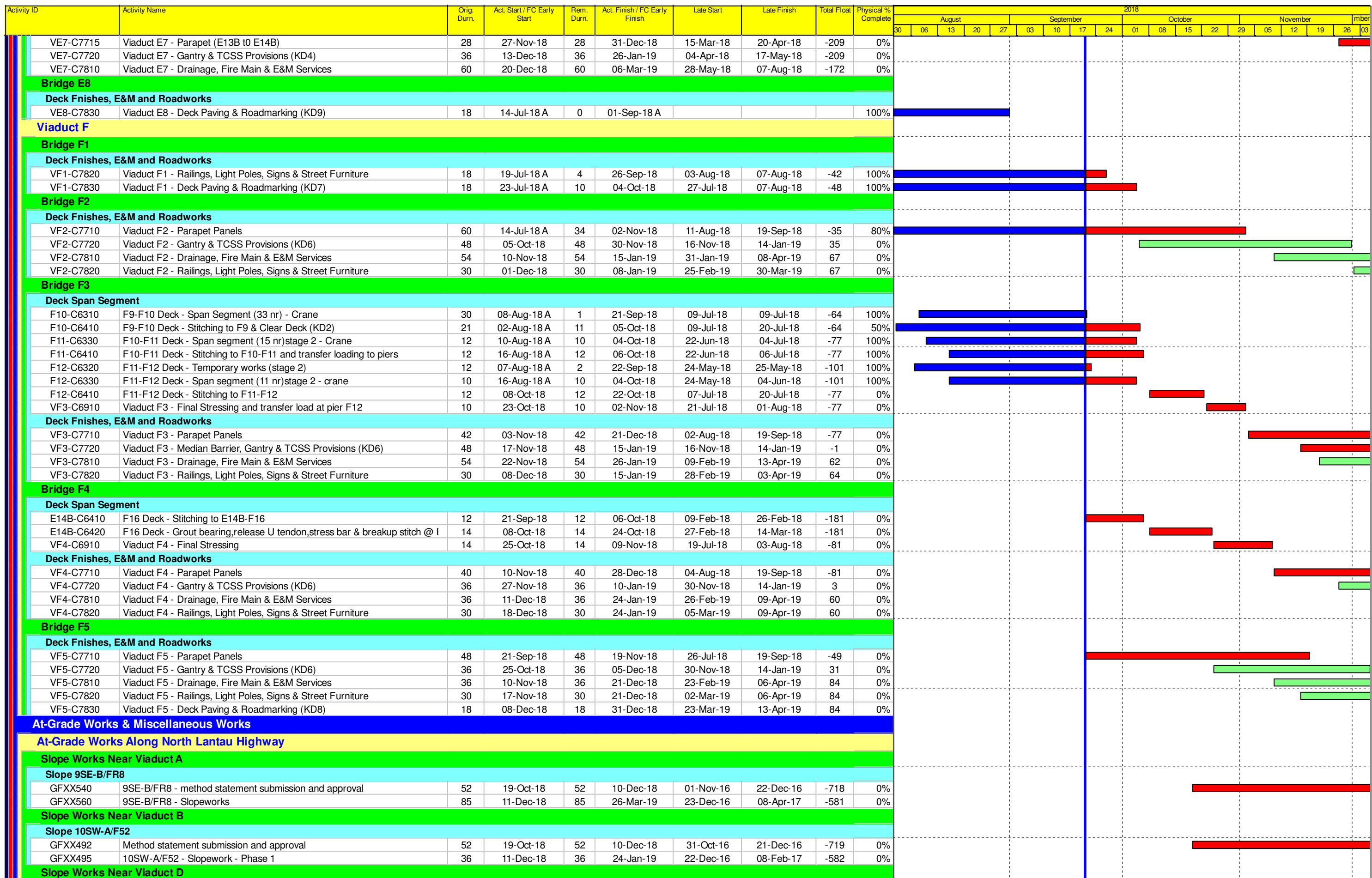
■ Actual Work
■ Planned Bar
■ Critical Bar
◆ Milestone

Project ID: TMCLK-DWPM-M64
 Layout: J3518-DWP-3MRP Submission - M64
 Filter: TASK filters: 3-Month Lookahead, No CC Milestones, No Level of Effort.

Tuen Mun - Chek Lap Kok Link - Southern Connection
3-Month Rolling Programme (Page 2 of 4 Pages)
(Progress as of 21-09-18)

Date	Revision	Check...	Approved
2-Jul-18			HF
21-Aug-...			HF
21-09-18			HF

DWG. No.:
J3518/GCL/PGM/3MRP-M64



Actual Work

 Planned Bar

 Critical Bar

 Milestone

Project ID: TMCLK-DWPM-M64

 Layout: J3518-DWP-3MRP Submission - M64

 Filter: TASK filters: 3-Month Lookahead, No CC

 Milestones, No Level of Effort.

Tuen Mun - Chek Lap Kok Link - Southern Connection

3-Month Rolling Programme (Page 3 of 4 Pages)

(Progress as of 21-09-18)

Date	Revision	Check...	Approved
2-Jul-18			HF
21-Aug-...			HF
21-09-18			HF

DWG. No.:
J3518/GCL/PGM/3MRP-M64

Activity ID	Activity Name	Orig. Durn.	Act. Start / FC Early Start	Rem. Durn.	Act. Finish / FC Early Finish	Late Start	Late Finish	Total Float	Physical % Complete	2018																												
										August					September					October					November					December								
										30	06	13	20	27	03	10	17	24	01	08	15	22	29	05	12	19	26	03										
Slope 10NW-C/F9																																						
M201205	10NW-C/F9 - Fill and compact filled material	52	03-Apr-18 A	46	16-Nov-18	14-Feb-17	08-Apr-17	-476	60%																													
Slope 10NW-C/F10																																						
M201230	10NW-C/F10 - Fill and compact filled material	160	16-Oct-17 A	16	11-Oct-18	16-Mar-17	03-Apr-17	-450	100%																													
M201300	10NW-C/F10 - Slope drainage	12	05-Oct-18	12	16-Oct-18	27-Mar-17	08-Apr-17	-556	0%																													
Slope 10NW-C/F17																																						
M201197	10NW-C/F17 - Fill and compact filled material	60	07-May-18 A	64	07-Dec-18	20-Jan-17	08-Apr-17	-494	70%																													
Road Works Along NLH Westbound																																						
General																																						
RW11020	NLH W/B (Viaduct B) - Profile Barrier and roadwork	36	23-Apr-18 A	0	25-Aug-18 A				100%																													
Road Works Along NLH Eastbound																																						
General																																						
RW20084	NLH E/B Viaduct A - Ch200-388 Roadwork (SL & HS) & Reinstate NLH	127	17-Dec-16 A	58	30-Nov-18	27-Jan-17	08-Apr-17	-488	95%																													
At-Grade Works Along Cheung Tung Road																																						
Slope Works Near Viaduct C																																						
Slope 10NW-C/C26																																						
SWVC1950	10NW-C/C26 - method statement submission and approval	45	12-Nov-18	45	27-Dec-18	27-Nov-16	10-Jan-17	-716	0%																													
Slope PF1 & PF2																																						
SWVC6990	10NW-PF1 & PF2 complete site site clearance	0	26-Sep-18*	0		09-May-18		-140	0%																													
SWVC7000	10NW - PF1 slope works	40	26-Sep-18	40	13-Nov-18	09-May-18	26-Jun-18	-116	0%																													
SWVC7010	10NW - PF2 slope works	40	31-Oct-18	40	15-Dec-18	14-Jun-18	01-Aug-18	-114	0%																													
Re-alignment of CTR Along Viaduct B																																						
General																																						
RP00077-1	Ch100-300: Street Lighting, thrie beam, bus stop & water point, etc	48	08-Dec-17 A	34	02-Nov-18	06-May-17	15-Jun-17	-412	90%																													
At-Grade Works at Southern Landfall																																						
HKBCF Area																																						
General																																						
RW30014	South Landfall - DN300 Fresh water main works installation & connection (I	60	23-Jul-18 A	34	02-Nov-18	07-Mar-18	19-Apr-18	-162	30%																													
RW30016	South Landfall - Stormwater drainage works (Portion B)	60	03-Dec-18	60	16-Feb-19	20-Apr-18	03-Jul-18	-187	0%																													
RW30024	South Landfall - Embankment fill slope)Portion B)	60	21-Sep-18	60	03-Dec-18	02-Feb-18	20-Apr-18	-187	0%																													
RW30030	South Landfall - Stormwater drainage works	60	03-Dec-18	60	16-Feb-19	20-Apr-18	03-Jul-18	-187	0%																													
RW30032	South Landfall - Fire mains	60	19-Mar-18 A	2	22-Sep-18	26-Oct-18	27-Oct-18	27	98%																													
RW30100	South Landfall - New proposed maintenance access	90	05-Oct-18	90	22-Jan-19	05-Jun-18	19-Sep-18	-101	0%																													
Watermain from Tung Chung to Southern Landfall																																						
Watermain Works																																						
General																																						
TC00070	Sterilisation of Pipes & Testing of Whole DN450 Fresh Watermain	48	21-Sep-18	48	19-Nov-18	29-Nov-18	26-Jan-19	56	0%																													
TC00080	WSD inspection / Final Connection of Whole DN450 Watermain	24	20-Nov-18	24	17-Dec-18	28-Jan-19	27-Feb-19	56	0%																													
Landscaping Works & Establishment Works																																						
Landscape Softworks																																						
General																																						
LW00010	Landscaping Works at NLH/CTR (Slope Areas)	120	31-Oct-18	120	26-Mar-19	06-Mar-18	01-Aug-18	-194	0%																													
LW00012	Deliver & Stockpile Top Soil (29,000 cu.m) to BCF Near Ramp F	120	11-Dec-18	120	11-May-19	20-Apr-18	11-Sep-18	-194	0%																													

	Project ID: TMCLK-DWPM-M64	Tuen Mun - Chek Lap Kok Link - Southern Connection 3-Month Rolling Programme (Page 4 of 4 Pages) (Progress as of 21-09-18)	Date	Revision	Check...	Approved	DWG. No.: J3518/GCL/PGM/3MRP-M64
	Layout: J3518-DWP-3MRP Submission - M64		2-Jul-18			HF	
	Filter: TASK filters: 3-Month Lookahead, No CC		21-Aug-...			HF	
	Milestones, No Level of Effort.		21-09-18			HF	