

Figure 1. Transect Line Layout in Northwest and Northeast Lantau Survey Areas

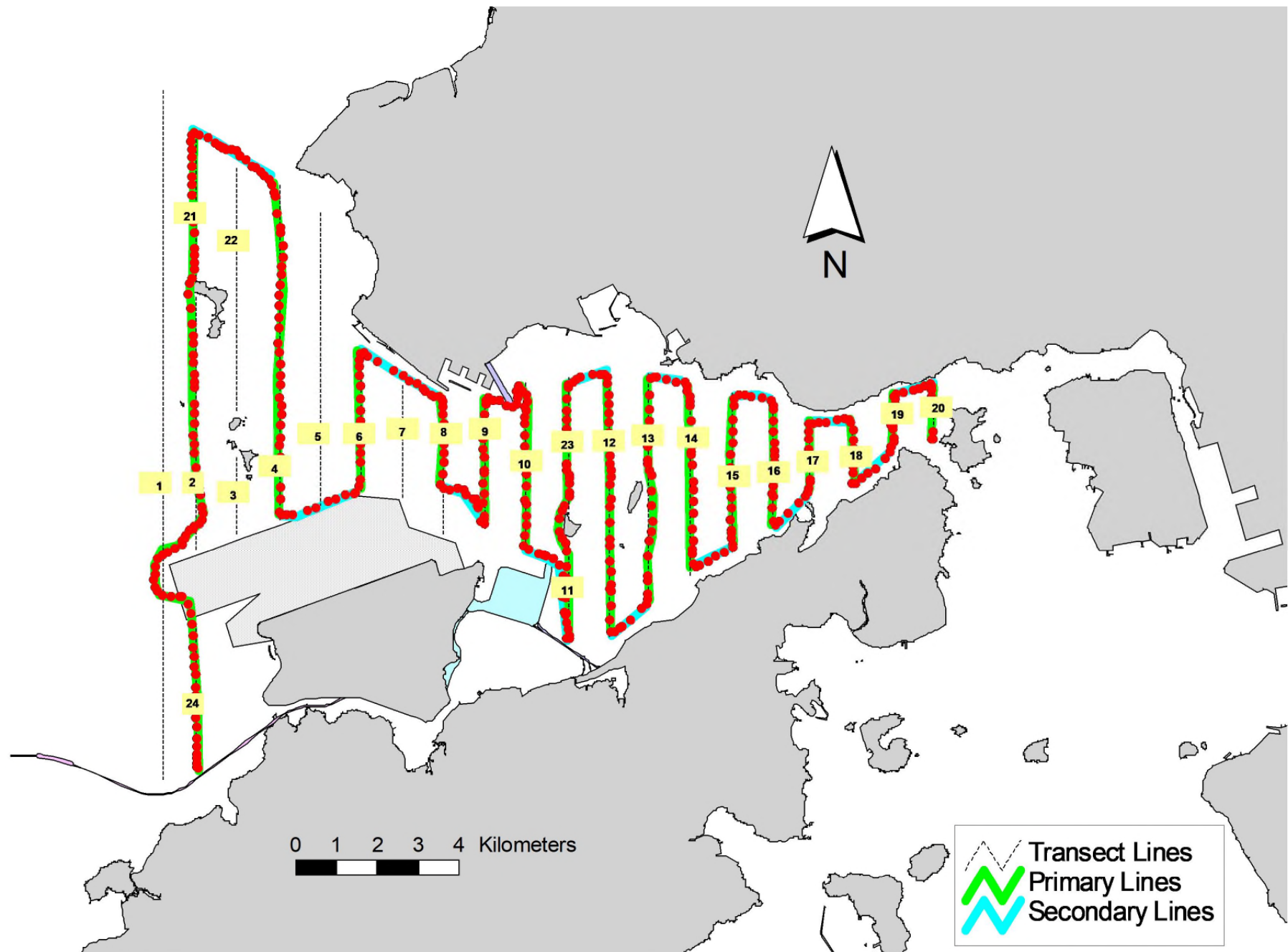


Figure 2. Survey Route on January 2nd, 2019 (from HKLR03 project)

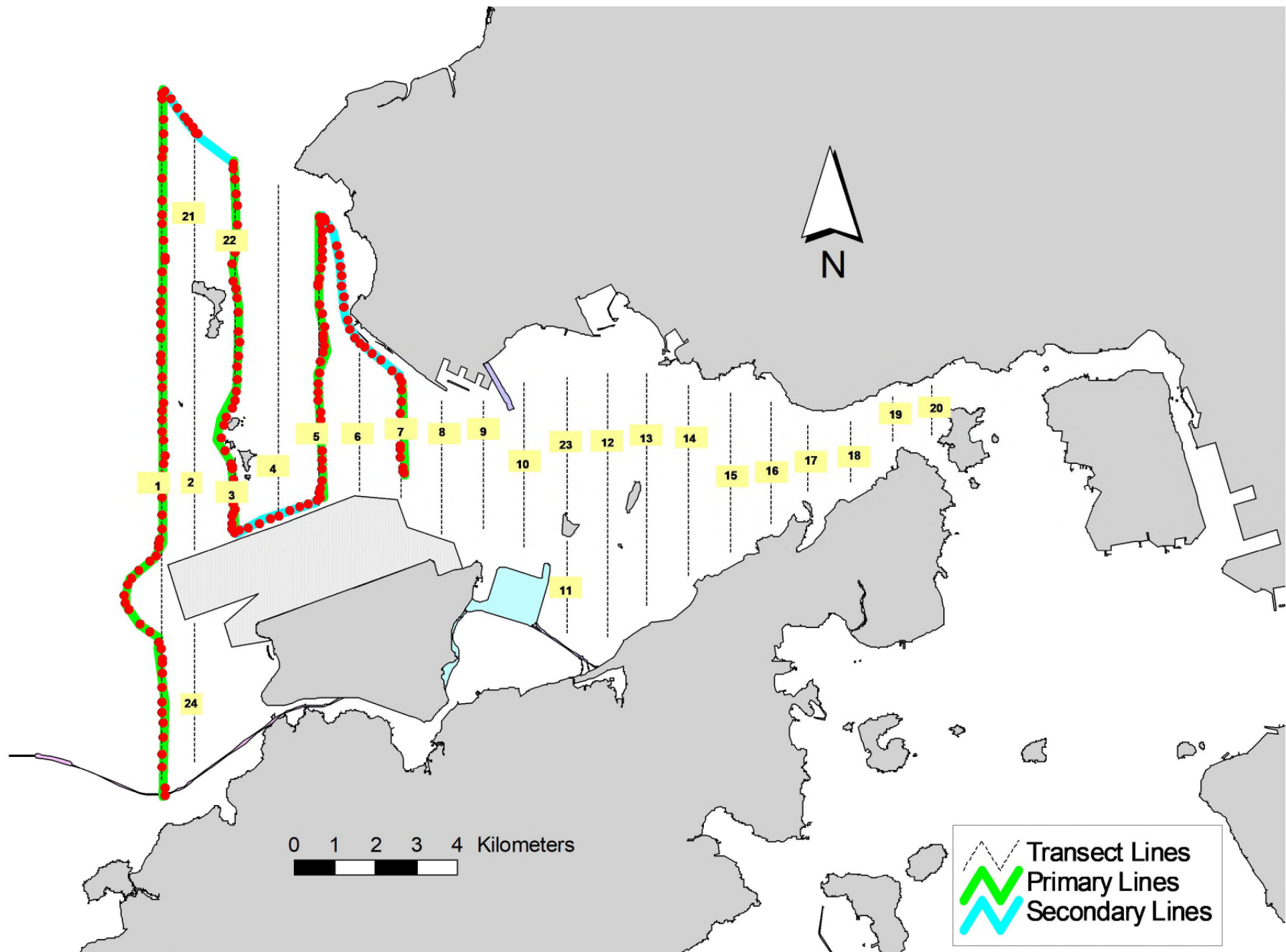


Figure 3. Survey Route on January 3rd, 2019 (from HKLR03 project)

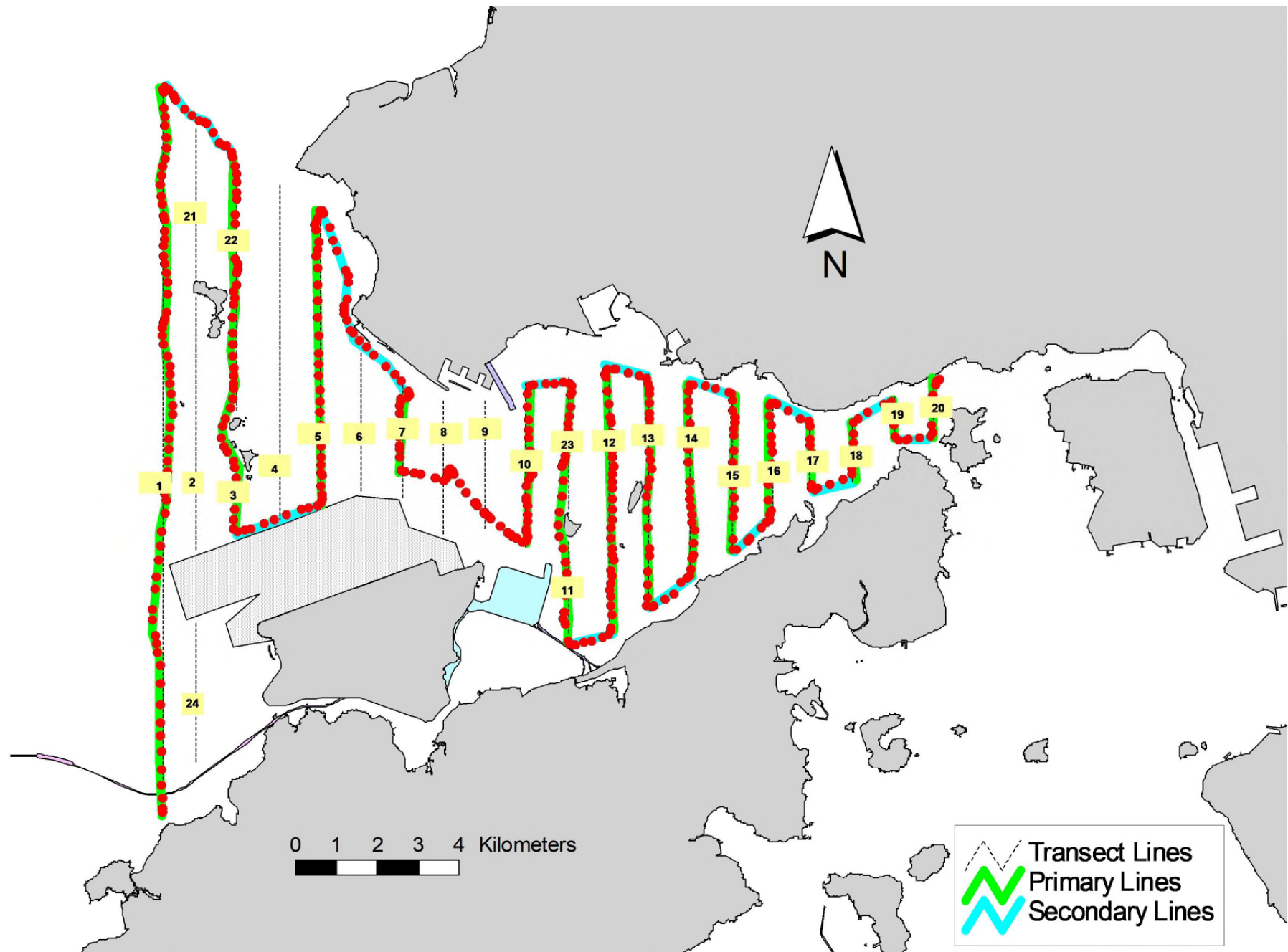


Figure 4. Survey Route on January 7th, 2019 (from HKLR03 project)

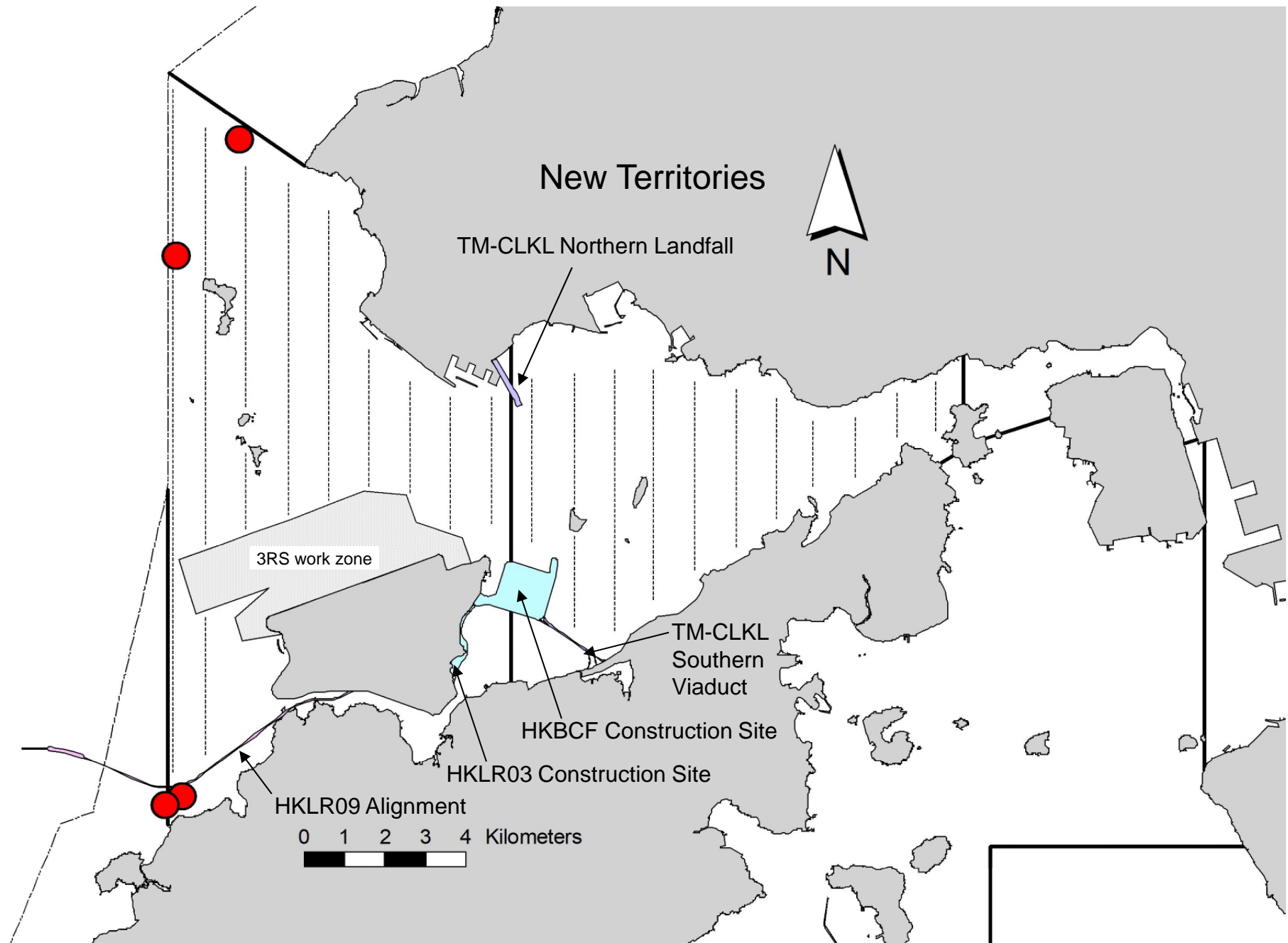


Figure 6. Distribution of Chinese White Dolphin Sightings during January 2019 HKLR03 Monitoring Surveys

Appendix I. HKLR03 Survey Effort Database (January 2019)

(Abbreviations: BEAU = Beaufort Sea State; P = Primary Line Effort; S = Secondary Line Effort)

DATE	AREA	BEAU	EFFORT	SEASON	VESSEL	TYPE	P/S
2-Jan-19	NW LANTAU	2	5.20	WINTER	STANDARD36826	HKLR	P
2-Jan-19	NW LANTAU	3	23.70	WINTER	STANDARD36826	HKLR	P
2-Jan-19	NW LANTAU	2	5.40	WINTER	STANDARD36826	HKLR	S
2-Jan-19	NW LANTAU	3	3.96	WINTER	STANDARD36826	HKLR	S
2-Jan-19	NW LANTAU	4	2.14	WINTER	STANDARD36826	HKLR	S
2-Jan-19	NE LANTAU	2	17.54	WINTER	STANDARD36826	HKLR	P
2-Jan-19	NE LANTAU	3	17.80	WINTER	STANDARD36826	HKLR	P
2-Jan-19	NE LANTAU	2	8.76	WINTER	STANDARD36826	HKLR	S
2-Jan-19	NE LANTAU	3	5.80	WINTER	STANDARD36826	HKLR	S
3-Jan-19	NW LANTAU	2	31.36	WINTER	STANDARD36826	HKLR	P
3-Jan-19	NW LANTAU	2	11.88	WINTER	STANDARD36826	HKLR	S
7-Jan-19	NW LANTAU	2	21.80	WINTER	STANDARD36826	HKLR	P
7-Jan-19	NW LANTAU	3	10.90	WINTER	STANDARD36826	HKLR	P
7-Jan-19	NW LANTAU	2	2.20	WINTER	STANDARD36826	HKLR	S
7-Jan-19	NW LANTAU	3	9.60	WINTER	STANDARD36826	HKLR	S
7-Jan-19	NE LANTAU	2	35.83	WINTER	STANDARD36826	HKLR	P
7-Jan-19	NE LANTAU	2	12.07	WINTER	STANDARD36826	HKLR	S
14-Jan-19	NW LANTAU	2	26.88	WINTER	STANDARD36826	HKLR	P
14-Jan-19	NW LANTAU	2	13.92	WINTER	STANDARD36826	HKLR	S

Appendix II. HKLR03 Chinese White Dolphin Sighting Database (January 2019)

(Abbreviations: STG# = Sighting Number; HRD SZ = Dolphin Herd Size; BEAU = Beaufort Sea State; PSD = Perpendicular Distance; BOAT ASSOC. = Fishing Boat Association; P/S: Sighting Made on Primary/Secondary Lines)

DATE	STG #	TIME	HRD SZ	AREA	BEAU	PSD	EFFORT	TYPE	NORTHING	EASTING	SEASON	BOAT ASSOC.	P/S
3-Jan-19	1	1151	7	NW LANTAU	2	614	ON	HKLR	830239	806267	WINTER	NONE	P
3-Jan-19	2	1234	2	NW LANTAU	2	71	ON	HKLR	827529	804728	WINTER	NONE	P
14-Jan-19	1	1319	2	NW LANTAU	2	ND	OFF	HKLR	814949	804866	WINTER	NONE	
14-Jan-19	2	1336	3	NW LANTAU	2	ND	OFF	HKLR	814739	804443	WINTER	NONE	

Appendix III. Individual dolphins identified during HKLR03 monitoring surveys in (January 2019)

ID#	DATE	STG#	AREA
CH34	03/01/19	1	NW LANTAU
NL33	03/01/19	1	NW LANTAU
	14/01/19	2	NW LANTAU
NL98	03/01/19	2	NW LANTAU
NL136	03/01/19	1	NW LANTAU
NL182	03/01/19	1	NW LANTAU
NL202	03/01/19	1	NW LANTAU
NL259	14/01/19	2	NW LANTAU
NL322	03/01/19	1	NW LANTAU
	14/01/19	2	NW LANTAU
WL98	14/01/19	1	NW LANTAU
WL273	03/01/19	1	NW LANTAU



Appendix IV. Photographs of Identified Individual Dolphins in January 2019 (HKLR03)



Appendix IV. (cont'd)