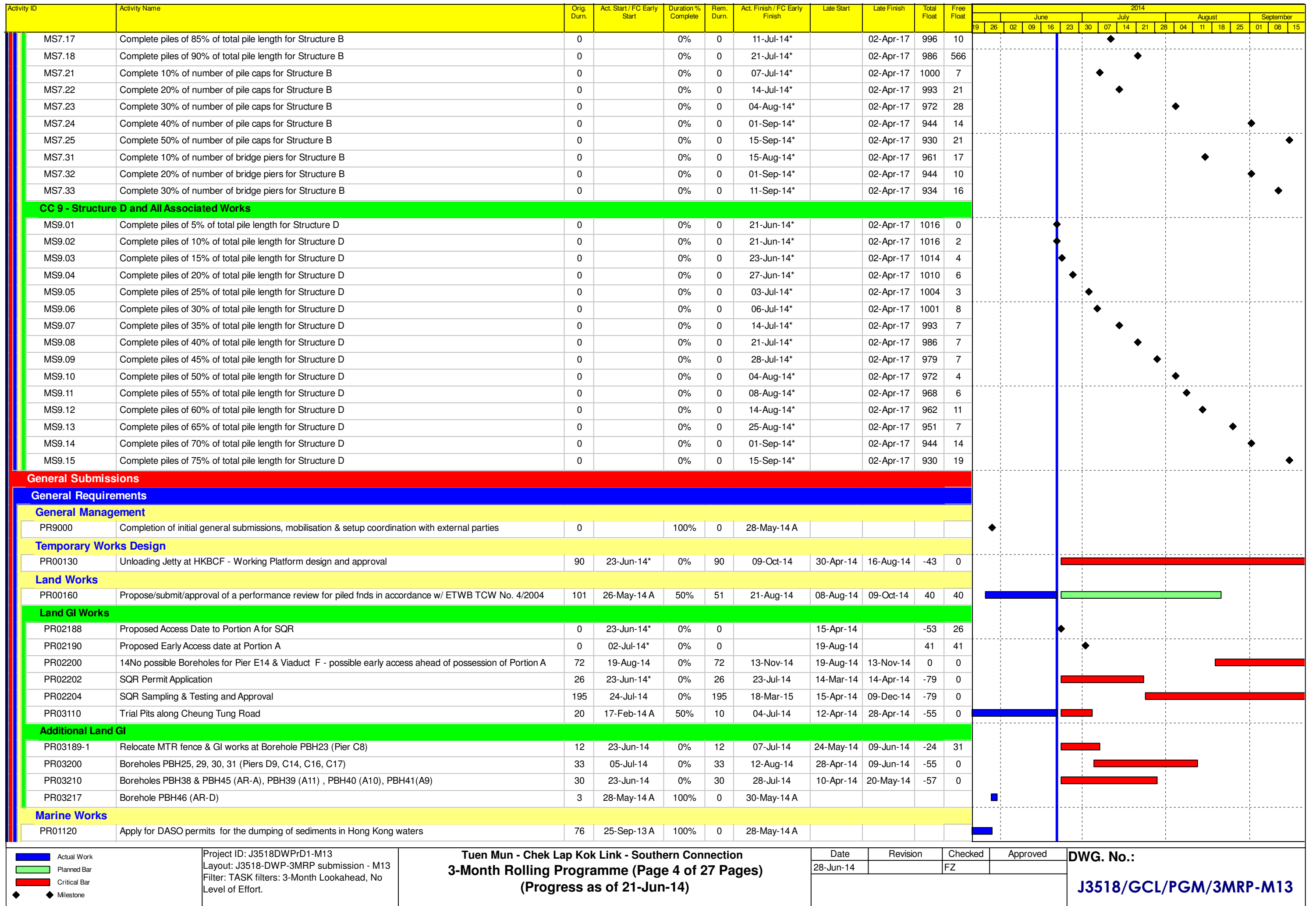


Activity ID	Activity Name	Orig. Durn.	Act. Start / FC Early Start	Duration % Complete	Rem. Durn.	Act. Finish / FC Early Finish	Late Start	Late Finish	Total Float	Free Float	2014																				
											June				July				August				September								
											19	26	02	09	16	23	30	07	14	21	28	04	11	18	25	01	08	15			
HY/2012/07 - TM-CLK Link-SC [DWP rD1] - Status Update 21-06-2014																															
Contract Key Dates																															
IPS Milestones																															
Cost Centre IPS Milestones																															
CC 2 - Design and Design Checking of the Works																															
MS2.006	Accept construction traffic impact assessment by the Supervising Officer	0		0%	0	12-Sep-14*		02-Apr-17	933	432																					
MS2.008	Accept ground investigation reports by the Supervising Officer	0		0%	0	12-Sep-14		02-Apr-17	933	432																					
MS2.012	Accept report for utilities by the Supervising Officer	0		0%	0	22-Aug-14		02-Apr-17	954	453																					
MS2.013	Submit AIP for Structure F1, excluding Structure F1 between Pier F1c and Pier F1d	0		100%	0	03-Jun-14 A																									
MS2.017	Submit AIP for Structure F1 between Pier F1c and Pier F1d	0		100%	0	03-Jun-14 A																									
MS2.021	Submit AIP for Structure F2	0		100%	0	03-Jun-14 A																									
MS2.025	Submit AIP for Structure F3, excluding Structure F3 between Pier F3c and Pier F3d	0		100%	0	03-Jun-14 A																									
MS2.029	Submit AIP for Structure F3 between Pier F3c and Pier F3d	0		100%	0	03-Jun-14 A																									
MS2.033	Submit AIP for Structure F4	0		100%	0	03-Jun-14 A																									
MS2.037	Submit AIP for Structure F5, excluding Structure F5 between Pier F5c and Pier F5d	0		100%	0	03-Jun-14 A																									
MS2.041	Submit AIP for Structure F5 between Pier F5c and Pier F5d	0		100%	0	03-Jun-14 A																									
MS2.047	Submit DDA for Structure E1	0		0%	0	16-Jul-14		02-Apr-17	992	122																					
MS2.051	Submit DDA for Structure E2	0		0%	0	10-Jul-14		02-Apr-17	998	128																					
MS2.055	Submit DDA for Structure E5, excluding Structure E5 between Pier E5c and Pier E5d	0		0%	0	10-Jul-14		02-Apr-17	998	128																					
MS2.059	Submit DDA for Structure E5 between Pier E5c and Pier E5d	0		0%	0	10-Jul-14		02-Apr-17	998	128																					
MS2.063	Submit DDA for Structure E6	0		0%	0	10-Jul-14		02-Apr-17	998	128																					
MS2.067	Submit DDA for Structure E7	0		0%	0	10-Jul-14		02-Apr-17	998	128																					
MS2.071	Submit DDA for Structure E8	0		0%	0	10-Jul-14		02-Apr-17	998	128																					
MS2.073	Submit AIP for Structure A	0		0%	0	04-Jul-14		02-Apr-17	1003	96																					
MS2.080	Approve DDA for Structure B by the Supervising Officer	0		0%	0	12-Sep-14		02-Apr-17	933	432																					
MS2.082	Approve AIP for Structure C by the Supervising Officer	0		0%	0	05-Sep-14		02-Apr-17	941	169																					
MS2.086	Approve AIP for Structure D by the Supervising Officer	0		0%	0	21-Jun-14		02-Apr-17	1016	153																					
MS2.087	Submit DDA for Structure D	0		0%	0	08-Aug-14		02-Apr-17	968	105																					
MS2.090	Approve AIP for At grade Roadworks and Other Works along NLH by the S.O.	0		0%	0	05-Sep-14		02-Apr-17	941	155																					
MS2.094	Approve AIP for At grade Roadworks & Other Works along Cheung Tung Road by S.O.	0		0%	0	05-Sep-14		02-Apr-17	941	155																					
MS2.097	Submit AIP for At grade Roadworks and Other Works at Southern Landfall	0		0%	0	21-Jun-14		02-Apr-17	1016	58																					
MS2.098	Approve AIP for At grade Roadwrks & Other Wrks at Southern Landfall by S.O.	0		0%	0	18-Aug-14		02-Apr-17	958	64																					
MS2.099	Submit DDA for At grade Roadworks and Other Works at Southern Landfall	0		0%	0	08-Jul-14		02-Apr-17	999	105																					
MS2.102	Approve AIP for Watermains & All Assoc Wrks frm Tung Chung to South Landfall by S.O.	0		0%	0	18-Aug-14		02-Apr-17	958	64																					
MS2.103	Submit DDA for Watermains & All Assoc Wrks frm Tung Chung to South Landfall	0		0%	0	08-Jul-14		02-Apr-17	999	105																					
MS2.106	Approve AIP for Irrigation System for Soft Landscape Works by the Supervising Officer	0		0%	0	18-Aug-14		02-Apr-17	958	161																					
MS2.108-2	Approve AIP for Fac Prov for TCSS Wrks for At grade Rds at South Landfall by S.O.	0		0%	0	18-Aug-14		02-Apr-17	958	119																					
MS2.108-3	Submit DDA for Fac Prov for TCSS Wrks for At grade Rds at Southern Landfall	0		0%	0	01-Sep-14		02-Apr-17	944	105																					
MS2.110	Approve AIP for Facilities Provision for TCSS Works for Viaducts by S.O.	0		0%	0	18-Aug-14		02-Apr-17	958	119																					
MS2.111	Submit DDA for Facilities Provision for TCSS Works for Viaducts	0		0%	0	01-Sep-14		02-Apr-17	944	105																					
MS2.114	Approve AIP for Fac Prov for TCSS Wrks for At grade Rds along NLH by S.O.	0		0%	0	18-Aug-14		21-Mar-17	946	119																					
MS2.115	Submit DDA for Fac Prov for TCSS Wrks for At grade Rds along NLH	0		0%	0	01-Sep-14		21-Mar-17	932	105																					
MS2.118	Approve AIP for Facilities Provision for E&M Works by the Supervising Officer	0		0%	0	05-Sep-14		02-Apr-17	941	29																					
MS2.119	Submit DDA for Facilities Provision for E&M Works	0		0%	0	21-Jun-14		02-Apr-17	1016	104																					
MS2.121	Submit AIP for remaining works	0		0%	0	05-Aug-14		02-Apr-17	971	56																					
CC 4.1 - Structure E2 and All Associated Works																															
MS4.1.02	Complete piles of 10% of total pile length for Structure E2	0		100%	0	26-May-14 A																									
MS4.1.03	Complete piles of 15% of total pile length for Structure E2	0		100%	0	09-Jun-14 A																									

Activity ID	Activity Name	Orig. Durn.	Act. Start / FC Early Start	Duration % Complete	Rem. Durn.	Act. Finish / FC Early Finish	Late Start	Late Finish	Total Float	Free Float	2014																				
											June					July					August					September					
											19	26	02	09	16	23	30	07	14	21	28	04	11	18	25	01	08	15			
MS4.1.04	Complete piles of 20% of total pile length for Structure E2	0		0%	0	21-Jun-14*		02-Apr-17	1016	0																					
MS4.1.05	Complete piles of 25% of total pile length for Structure E2	0		0%	0	21-Jun-14*		02-Apr-17	1016	0																					
MS4.1.06	Complete piles of 30% of total pile length for Structure E2	0		0%	0	21-Jun-14*		02-Apr-17	1016	0																					
MS4.1.07	Complete piles of 35% of total pile length for Structure E2	0		0%	0	21-Jun-14*		02-Apr-17	1016	16																					
MS4.1.08	Complete piles of 40% of total pile length for Structure E2	0		0%	0	07-Jul-14*		02-Apr-17	1000	70																					
MS4.1.09	Complete piles of 45% of total pile length for Structure E2	0		0%	0	15-Sep-14*		02-Apr-17	930	49																					
CC 4.2 - Structure E5, excl structure E5 betw Pier E5c & Pier E5d, & All Assoc Works																															
MS4.2.01	Compl piles of 5% of total pile length for part of structure E5 under this CC No.	0		0%	0	21-Jun-14*		02-Apr-17	1016	0																					
MS4.2.02	Compl piles of 10% of total pile length for part of structure E5 under this CC No.	0		0%	0	21-Jun-14*		02-Apr-17	1016	0																					
MS4.2.03	Compl piles of 15% of total pile length for part of structure E5 under this CC No.	0		0%	0	21-Jun-14*		02-Apr-17	1016	0																					
MS4.2.04	Compl piles of 20% of total pile length for part of structure E5 under this CC No.	0		0%	0	21-Jun-14*		02-Apr-17	1016	0																					
MS4.2.05	Compl piles of 25% of total pile length for part of structure E5 under this CC No.	0		0%	0	21-Jun-14*		02-Apr-17	1016	0																					
MS4.2.06	Compl piles of 30% of total pile length for part of structure E5 under this CC No.	0		0%	0	21-Jun-14*		02-Apr-17	1016	2																					
MS4.2.07	Compl piles of 35% of total pile length for part of structure E5 under this CC No.	0		0%	0	23-Jun-14*		02-Apr-17	1014	7																					
MS4.2.08	Compl piles of 40% of total pile length for part of structure E5 under this CC No.	0		0%	0	30-Jun-14*		02-Apr-17	1007	7																					
MS4.2.09	Compl piles of 45% of total pile length for part of structure E5 under this CC No.	0		0%	0	07-Jul-14*		02-Apr-17	1000	7																					
MS4.2.10	Compl piles of 50% of total pile length for part of structure E5 under this CC No.	0		0%	0	14-Jul-14*		02-Apr-17	993	7																					
MS4.2.11	Compl piles of 55% of total pile length for part of structure E5 under this CC No.	0		0%	0	21-Jul-14*		02-Apr-17	986	7																					
MS4.2.12	Compl piles of 60% of total pile length for part of structure E5 under this CC No.	0		0%	0	28-Jul-14*		02-Apr-17	979	7																					
MS4.2.13	Compl piles of 65% of total pile length for part of structure E5 under this CC No.	0		0%	0	04-Aug-14*		02-Apr-17	972	7																					
MS4.2.14	Compl piles of 70% of total pile length for part of structure E5 under this CC No.	0		0%	0	11-Aug-14*		02-Apr-17	965	7																					
MS4.2.15	Compl piles of 75% of total pile length for part of structure E5 under this CC No.	0		0%	0	18-Aug-14*		02-Apr-17	958	7																					
MS4.2.16	Compl piles of 80% of total pile length for part of structure E5 under this CC No.	0		0%	0	25-Aug-14*		02-Apr-17	951	7																					
MS4.2.17	Compl piles of 85% of total pile length for part of structure E5 under this CC No.	0		0%	0	01-Sep-14*		02-Apr-17	944	7																					
MS4.2.18	Compl piles of 90% of total pile length for part of structure E5 under this CC No.	0		0%	0	08-Sep-14*		02-Apr-17	937	11																					
MS4.2.19	Compl piles of 95% of total pile length for part of structure E5 under this CC No.	0		0%	0	19-Sep-14*		02-Apr-17	926	218																					
CC 4.2A - Structure E5 between Pier E5c & Pier E5d, & All Assoc Works																															
MS4.2A.01	Compl piles of 5% of total pile length for part of structure E5 under this CC No.	0		0%	0	21-Jun-14*		02-Apr-17	1016	0																					
MS4.2A.02	Compl piles of 10% of total pile length for part of structure E5 under this CC No.	0		0%	0	21-Jun-14*		02-Apr-17	1016	0																					
MS4.2A.03	Compl piles of 15% of total pile length for part of structure E5 under this CC No.	0		0%	0	21-Jun-14*		02-Apr-17	1016	0																					
MS4.2A.04	Compl piles of 20% of total pile length for part of structure E5 under this CC No.	0		0%	0	21-Jun-14*		02-Apr-17	1016	0																					
MS4.2A.05	Compl piles of 25% of total pile length for part of structure E5 under this CC No.	0		0%	0	21-Jun-14*		02-Apr-17	1016	0																					
MS4.2A.06	Compl piles of 30% of total pile length for part of structure E5 under this CC No.	0		0%	0	21-Jun-14*		02-Apr-17	1016	2																					
MS4.2A.07	Compl piles of 35% of total pile length for part of structure E5 under this CC No.	0		0%	0	23-Jun-14*		02-Apr-17	1014	14																					
MS4.2A.08	Compl piles of 40% of total pile length for part of structure E5 under this CC No.	0		0%	0	07-Jul-14*		02-Apr-17	1000	14																					
MS4.2A.09	Compl piles of 45% of total pile length for part of structure E5 under this CC No.	0		0%	0	21-Jul-14*		02-Apr-17	986	14																					
MS4.2A.10	Compl piles of 50% of total pile length for part of structure E5 under this CC No.	0		0%	0	04-Aug-14*		02-Apr-17	972	7																					
MS4.2A.11	Compl piles of 55% of total pile length for part of structure E5 under this CC No.	0		0%	0	11-Aug-14*		02-Apr-17	965	14																					
MS4.2A.12	Compl piles of 60% of total pile length for part of structure E5 under this CC No.	0		0%	0	25-Aug-14*		02-Apr-17	951	191																					
CC 4.3 - Structure E6 and All Associated Works																															
MS4.3.01	Complete piles of 5% of total pile length for Structure E6	0		0%	0	21-Jun-14*		02-Apr-17	1016	0																					
MS4.3.02	Complete piles of 10% of total pile length for Structure E6	0		0%	0	21-Jun-14*		02-Apr-17	1016	0																					
MS4.3.03	Complete piles of 15% of total pile length for Structure E6	0		0%	0	21-Jun-14*		02-Apr-17	1016	0																					
MS4.3.04	Complete piles of 20% of total pile length for Structure E6	0		0%	0	21-Jun-14*		02-Apr-17	1016	0																					
MS4.3.05	Complete piles of 25% of total pile length for Structure E6	0		0%	0	21-Jun-14*		02-Apr-17	1016	0																					
MS4.3.06	Complete piles of 30% of total pile length for Structure E6	0		0%	0	21-Jun-14*		02-Apr-17	1016	2																					
MS4.3.07	Complete piles of 35% of total pile length for Structure E6	0		0%	0	23-Jun-14*		02-Apr-17	1014	14																					
MS4.3.08	Complete piles of 40% of total pile length for Structure E6	0		0%	0	07-Jul-14*		02-Apr-17	1000	14																					

<ul style="list-style-type: none"> Actual Work Planned Bar Critical Bar Milestone 	Project ID: J3518DWPDrD1-M13 Layout: J3518-DWP-3MRP submission - M13 Filter: TASK filters: 3-Month Lookahead, No Level of Effort.	Tuen Mun - Chek Lap Kok Link - Southern Connection 3-Month Rolling Programme (Page 2 of 27 Pages) (Progress as of 21-Jun-14)	Date 28-Jun-14	Revision	Checked FZ	Approved	DWG. No.: J3518/GCL/PGM/3MRP-M13
---	---	--	-------------------	----------	---------------	----------	---



Activity ID	Activity Name	Orig. Durn.	Act. Start / FC Early Start	Duration % Complete	Rem. Durn.	Act. Finish / FC Early Finish	Late Start	Late Finish	Total Float	Free Float	2014																				
											June					July					August					September					
											19	26	02	09	16	23	30	07	14	21	28	04	11	18	25	01	08	15			
Additional Marine GI																															
PR02162	PBH17C (Pier E13B)	12	15-May-14 A	100%	0	26-May-14 A																									
PR02163	PBH18A (Pier E13A)	12	27-May-14 A	100%	0	03-Jun-14 A																									
PR02164	PBH17B (Pier E13B)	12	04-Jun-14 A	100%	0	12-Jun-14 A																									
Design Submissions																															
Detailed Design (v17)																															
Ground Investigation																															
ARDD0009	Consultation with GEO	20	13-Aug-13 A	85%	3	25-Jun-14	01-Jul-14	03-Jul-14	6	57																					
ARDD0010	IC/SO Approval of Ground Investigation Interpretative Report - AP03.00	75	13-Aug-13 A	20%	60	12-Sep-14	11-Apr-14	03-Jul-14	-51	0																					
ARDD0010-1	IC/SO Approval of Ground Investigation Interpretative Report - AP03.00	0		0%	0	12-Sep-14		03-Jul-14	-51	0																					
ARDD0013-1	Additional GI Fieldwork, Lab Testing and Permitting E5-E8	45	16-Jul-13 A	90%	5	27-Jun-14	27-Jun-14	03-Jul-14	5	86																					
ARDD0013-2	Additional GI Fieldwork, Lab Testing and Permitting - Other areas	60	16-Jul-13 A	80%	12	08-Jul-14	18-Jun-14	03-Jul-14	-3	78																					
ARDD0015-1	E5-E8 Interpretation	15	17-Sep-13 A	85%	2	25-Jun-14	01-Jul-14	03-Jul-14	7	103																					
ARDD0015-2	Additional GI Interpretative Report - AP03.00	15	23-Jun-14	0%	15	11-Jul-14	28-Feb-14	20-Mar-14	-81	0																					
ARDD0017-1	Earliest IC certificate for DDA-AP03.00	0		0%	0	22-Aug-14		03-Jul-14	-36	45																					
ARDD0017-2	IC/SO Approval of Additional GI Interpretative Report - AP03.00	75	14-Jul-14	0%	75	24-Oct-14	21-Mar-14	03-Jul-14	-81	0																					
Surveys and Investigations																															
ARDD0025	IC/SO Approval of Utility Report - AP04.00	75	22-Oct-13 A	40%	45	22-Aug-14	30-Jan-17	31-Mar-17	680	0																					
ARDD0025-1	IC/SO Approval of Utility Report - AP04.00	0		0%	0	22-Aug-14		31-Mar-17	680	0																					
General Submissions																															
ARDD0039	IC/SO Approval of Maintenance Matrix - AP07.00	75	08-May-14 A	20%	60	12-Sep-14	17-Jun-15	08-Sep-15	257	0																					
ARDD0039-1	IC/SO Approval of Maintenance Matrix - AP07.00	0		0%	0	12-Sep-14		08-Sep-15	257	203																					
ARDD0041-1	Preparation of O&M Facility Provisions AIP - BP11.00	50	30-May-14 A	100%	0	20-Jun-14 A																									
ARDD0041-2	IC/SO Approval of O&M Facility Provisions AIP - BP11.00	75	23-Jun-14	0%	75	03-Oct-14	17-Dec-14	31-Mar-15	127	0																					
GCL Erection Sequence and Method																															
ARDD0060-2	Receipt of Final Erection Sequence and Loads - Bridge A	0		0%	0	23-Jun-14		24-Sep-14	68	26																					
ARDD0060-4	Receipt of Final Erection Sequence and Loads - Bridge C	0		0%	0	23-Jun-14		09-Jun-14	-10	2																					
ARDD0060-5	Receipt of Final Erection Sequence and Loads - Bridge D	0		100%	0	21-May-14 A																									
ARDD0060-7	Receipt of Final Erection Sequence and Loads - Bridge F	0		0%	0	23-Jun-14		06-Aug-14	33	10																					
Gazette and Alignment (assume no gazette change)																															
ARDD0071	IC/SO Approval of Alignment DDA - BP01.01	75	24-Jan-14 A	60%	30	01-Aug-14	07-Feb-14	20-Mar-14	-96	0																					
ARDD0071-1	Earliest IC Cert for Alignment DDA - BP01.01	0		0%	0	23-Jun-14		20-Mar-14	-66	30																					
ARDD0071-2	IC/SO Approval of Alignment DDA - BP01.01	0		0%	0	01-Aug-14		20-Mar-14	-96	0																					
General Viaduct Submission																															
ARDD0076	IC/SO Approval of Viaduct E&M Works AIP - BP21.00	68	15-Mar-14 A	20%	54	05-Sep-14	13-May-15	28-Jul-15	233	0																					
ARDD0076-1	IC/SO Approval of Viaduct E&M Works AIP - BP21.00	0		0%	0	05-Sep-14		28-Jul-15	233	0																					
ARDD0077	Preparation of Viaduct E&M Works DDA - BP21.01	30	01-Apr-14 A	100%	0	16-Jun-14 A																									
ARDD0078	IC/SO Approval of Viaduct E&M Works DDA BP21.01	75	17-Jun-14 A	0%	75	03-Oct-14	15-Apr-15	28-Jul-15	212	0																					
Viaduct B																															
Viaduct Design																															
ARDD0099-1	Viaduct B - Earliest IC Certificate for DP12.03	0		0%	0	23-Jun-14		27-May-14	-18	18																					
ARDD0099-3	Viaduct B - IC/SO Approval of Sub & Superstructure DDA - DP12.03	75	04-Mar-14 A	20%	60	12-Sep-14	02-May-14	24-Jul-14	-36	0																					
ARDD0099-5	Viaduct B - IC/SO Approval of Sub & Superstructure DDA - DP12.03	0		0%	0	12-Sep-14		24-Jul-14	-36	0																					
Associated Construction Milestones																															
ARDD0128	Viaduct B - DDA approval ready for Commencement of Pilecaps (Marine)	0	13-Sep-14	0%	0		25-Jul-14		-50	0																					
ARDD0128-1	Viaduct B - DDA approval ready for Commencement of Pilecaps (Land)	0	13-Sep-14	0%	0		28-Oct-14		45	10																					
ARDD0129	Viaduct B - DDA approval ready for Initial Segment Casting	0	13-Sep-14	0%	0		01-Aug-14		-43	69																					
Viaduct E5 and E6																															

	Project ID: J3518DWPPrD1-M13 Layout: J3518-DWP-3MRP submission - M13 Filter: TASK filters: 3-Month Lookahead, No Level of Effort.	Tuen Mun - Chek Lap Kok Link - Southern Connection 3-Month Rolling Programme (Page 5 of 27 Pages) (Progress as of 21-Jun-14)				Date	Revision	Checked	Approved	DWG. No.: J3518/GCL/PGM/3MRP-M13
		28-Jun-14		FZ						

Activity ID	Activity Name	Orig. Durn.	Act. Start / FC Early Start	Duration % Complete	Rem. Durn.	Act. Finish / FC Early Finish	Late Start	Late Finish	Total Float	Free Float	2014																
											June				July				August				September				
											19	26	02	09	16	23	30	07	14	21	28	04	11	18	25	01	08
Viaduct Design																											
ARDD0147	Viaduct E5 & E6 - Preparation of Substructure DDA - DP15.09	60	29-Oct-13 A	85%	9	03-Jul-14	31-Jan-14	12-Feb-14	-101	0	[Gantt bar: Blue from 03-Jul-14 to 12-Feb-14, Red from 03-Jul-14 to 31-Jan-14]																
ARDD0148	Viaduct E5 & E6 - Preparation of Superstructure DDA - DP15.09	90	29-Oct-13 A	85%	14	10-Jul-14	03-Mar-14	20-Mar-14	-80	0	[Gantt bar: Blue from 10-Jul-14 to 20-Mar-14, Red from 10-Jul-14 to 03-Mar-14]																
ARDD0149	Viaduct E5 & E6 - Submission of DDA for Viaduct Sub & Superstructure E5 & E6 - DP15.09	0		0%	0	10-Jul-14		20-Mar-14	-80	0	[Milestone diamond at 20-Mar-14]																
ARDD0150-1	Viaduct E5 & E6 - Earliest IC certificate for DDA for Viaduct E5 & E6 - DP15.09	0		0%	0	23-Jun-14		22-May-14	-21	75	[Milestone diamond at 22-May-14]																
ARDD0150-3	Viaduct E5 & E6 - IC/SO Approval of Pile Cap Precast Shells DDA DP15.05	75	15-Apr-14 A	20%	60	12-Sep-14	11-Apr-14	03-Jul-14	-51	0	[Gantt bar: Blue from 12-Sep-14 to 03-Jul-14, Red from 11-Apr-14 to 03-Jul-14]																
ARDD0150-4	Viaduct E5 & E6 - IC/SO Approval (late) of Sub & Superstructure DDA DP15.09	75	04-Aug-14	0%	75	14-Nov-14	21-Mar-14	03-Jul-14	-96	0	[Gantt bar: Red from 21-Mar-14 to 03-Jul-14]																
ARDD0150-6	Viaduct E5 & E6 - IC/SO Approval of Pile Cap Precast Shells DDA DP15.05	0		0%	0	12-Sep-14		03-Jul-14	-51	45	[Milestone diamond at 03-Jul-14]																
Information to Contractor																											
ARDD0160	Viaduct E5 & E6 - Final Pilecap Reinforcement	0		0%	0	03-Jul-14		12-Feb-14	-101	12	[Milestone diamond at 12-Feb-14]																
ARDD0162	Viaduct E5 & E6 - Final Pier Shapes and Reinforcement	0		0%	0	03-Jul-14		19-Jun-14	-10	18	[Milestone diamond at 19-Jun-14]																
ARDD0165	Viaduct E5 & E6 - Final Segment Types and Reinforcement	0		0%	0	10-Jul-14		22-Apr-14	-57	0	[Milestone diamond at 22-Apr-14]																
ARDD0167	Viaduct E5 & E6 - Final Anchorage and PT Requirements	0		0%	0	10-Jul-14		22-Apr-14	-57	0	[Milestone diamond at 22-Apr-14]																
Associated Construction Milestones																											
ARDD0173	Viaduct E5 & E6 - DDA approval ready for Commencement of Piling	0	28-Jul-14	0%	0		17-Mar-14		-133	0	[Milestone diamond at 17-Mar-14]																
Viaduct E7 & E8																											
Viaduct Design																											
ARDD0192	Viaduct E7 & E8 - Preparation of Substructure DDA - 15.09	60	29-Oct-13 A	85%	9	03-Jul-14	11-Apr-14	23-Apr-14	-51	0	[Gantt bar: Blue from 03-Jul-14 to 23-Apr-14, Red from 03-Jul-14 to 11-Apr-14]																
ARDD0193	Viaduct E7 & E8 - Preparation of Superstructure DDA - DP15.09	90	29-Oct-13 A	85%	14	10-Jul-14	03-Mar-14	20-Mar-14	-80	0	[Gantt bar: Blue from 10-Jul-14 to 20-Mar-14, Red from 10-Jul-14 to 03-Mar-14]																
ARDD0194	Viaduct E7 & E8 - Submission of Sub & Superstructure DDA - DP15.09	0		0%	0	10-Jul-14		20-Mar-14	-80	0	[Milestone diamond at 20-Mar-14]																
ARDD0195-1	Viaduct E7 & E8 - Earliest IC certificate for Pilecap Precast Shells DDA - DP15.08	0		0%	0	23-Jun-14		20-Mar-14	-66	14	[Milestone diamond at 20-Mar-14]																
ARDD0195-3	Viaduct E7 & E8 - IC/SO Approval of Pilecap Precast Shells DDA - DP15.08	75	15-Apr-14 A	20%	60	12-Sep-14	11-Apr-14	03-Jul-14	-51	0	[Gantt bar: Blue from 12-Sep-14 to 03-Jul-14, Red from 11-Apr-14 to 03-Jul-14]																
ARDD0195-4	Viaduct E7 & E8 - IC/SO Approval of Sub & Superstructure DDA - DP15.09	75	04-Aug-14	0%	75	14-Nov-14	21-Mar-14	03-Jul-14	-96	0	[Gantt bar: Red from 21-Mar-14 to 03-Jul-14]																
ARDD0195-6	Viaduct E7 & E8 - IC/SO Approval of Pilecap Precast Shells DDA - DP15.08	0		0%	0	12-Sep-14		03-Jul-14	-51	45	[Milestone diamond at 03-Jul-14]																
Information to Contractor																											
ARDD0205	Viaduct E7 & E8 - Final Pilecap Reinforcement	0		0%	0	03-Jul-14		23-Apr-14	-51	12	[Milestone diamond at 23-Apr-14]																
ARDD0207	Viaduct E7 & E8 - Final Pier Shapes and Reinforcement	0		0%	0	03-Jul-14		01-Oct-14	64	0	[Milestone diamond at 01-Oct-14]																
ARDD0210	Viaduct E7 & E8 - Final Segment Types and Reinforcement	0		0%	0	10-Jul-14		22-Apr-14	-57	0	[Milestone diamond at 22-Apr-14]																
ARDD0212	Viaduct E7 & E8 - Final Anchorage and PT Requirements	0		0%	0	10-Jul-14		22-Apr-14	-57	0	[Milestone diamond at 22-Apr-14]																
Associated Construction Milestones																											
ARDD0218	Viaduct E7 & E8 - DDA approval ready for Commencement of Piling	0	28-Jul-14	0%	0		17-Mar-14		-133	0	[Milestone diamond at 17-Mar-14]																
Viaduct E2																											
Viaduct Design																											
ARDD0238	Viaduct E2 - Preparation of Substructure DDA - DP15.06	60	29-Oct-13 A	85%	9	03-Jul-14	14-Mar-14	26-Mar-14	-71	0	[Gantt bar: Blue from 03-Jul-14 to 26-Mar-14, Red from 03-Jul-14 to 14-Mar-14]																
ARDD0239	Viaduct E2 - Preparation of Superstructure DDA - DP15.06	90	29-Oct-13 A	85%	14	10-Jul-14	14-Apr-14	01-May-14	-50	0	[Gantt bar: Blue from 10-Jul-14 to 01-May-14, Red from 10-Jul-14 to 14-Apr-14]																
ARDD0240	Viaduct E2 - Submission of Sub & Superstructure DDA - DP15.06	0		0%	0	10-Jul-14		01-May-14	-50	0	[Milestone diamond at 01-May-14]																
ARDD0241-1	Viaduct E2 - Earliest IC certificate for Pilecap Precast Shells DDA - DP15.05	0		0%	0	23-Jun-14		17-Jun-14	-3	63	[Milestone diamond at 17-Jun-14]																
ARDD0241-3	Viaduct E2 - IC/SO Approval (Late) of Sub & Superstructure DDA - DP15.06	75	04-Aug-14	0%	75	14-Nov-14	02-May-14	14-Aug-14	-66	0	[Gantt bar: Red from 02-May-14 to 14-Aug-14]																
ARDD0241-4	Viaduct E2 - IC/SO Approval Pilecap Precast Shells DDA - DP15.05	75	15-Apr-14 A	20%	60	12-Sep-14	03-Mar-14	23-May-14	-80	0	[Gantt bar: Blue from 12-Sep-14 to 23-May-14, Red from 03-Mar-14 to 23-May-14]																
ARDD0241-5	Viaduct E2 - IC/SO Approval Pilecap Precast Shells DDA - DP15.05	0		0%	0	12-Sep-14		23-May-14	-80	0	[Milestone diamond at 23-May-14]																
Information to Contractor																											
ARDD0251	Viaduct E2 - Final Pilecap Reinforcement	0		0%	0	03-Jul-14		26-Mar-14	-71	0	[Milestone diamond at 26-Mar-14]																
ARDD0253	Viaduct E2 - Final Pier Shapes and Reinforcement	0		0%	0	03-Jul-14		25-Apr-14	-49	18	[Milestone diamond at 25-Apr-14]																
ARDD0256	Viaduct E2 - Final Segment Types and Reinforcement	0		0%	0	10-Jul-14		23-May-14	-34	36	[Milestone diamond at 23-May-14]																
ARDD0258	Viaduct E2 - Final Anchorage and PT Requirements	0		0%	0	10-Jul-14		23-May-14	-34	36	[Milestone diamond at 23-May-14]																
Associated Construction Milestones																											
ARDD0266-1	Viaduct E2 - DDA approval ready for Pile Cap Shell Casting	0	13-Sep-14	0%	0		25-May-14		-110	0	[Milestone diamond at 25-May-14]																
Viaduct E1																											

	Actual Work
	Planned Bar
	Critical Bar
	Milestone

Project ID: J3518DWPrD1-M13
 Layout: J3518-DWP-3MRP submission - M13
 Filter: TASK filters: 3-Month Lookahead, No Level of Effort.

Tuen Mun - Chek Lap Kok Link - Southern Connection
3-Month Rolling Programme (Page 6 of 27 Pages)
(Progress as of 21-Jun-14)

Date	Revision	Checked	Approved
28-Jun-14		FZ	

DWG. No.: **J3518/GCL/PGM/3MRP-M13**

Activity ID	Activity Name	Orig. Durn.	Act. Start / FC Early Start	Duration % Complete	Rem. Durn.	Act. Finish / FC Early Finish	Late Start	Late Finish	Total Float	Free Float	2014																							
											June					July					August													
											19	26	02	09	16	23	30	07	14	21	28	04	11	18	25									
Viaduct Design																																		
ARDD0282-1	Viaduct E1 - Earliest IC Certificate for DDA - DP15.01	0		0%	0	23-Jun-14		06-Jun-14	-10	30																								
ARDD0282-2	Viaduct E1 - IC/SO Approval of Foundation (Early) DDA - DP15.01	55	20-Mar-14 A	60%	22	22-Jul-14	08-May-14	06-Jun-14	-32	8																								
ARDD0282-3	Viaduct E1 - IC/SO Approval of Foundation (Late) DDA - DP15.01	75	20-Mar-14 A	60%	30	01-Aug-14	28-Apr-14	06-Jun-14	-40	0																								
ARDD0282-5	Viaduct E1 - IC/SO Approval of Foundation (Late) DDA - DP15.01	0		0%	0	01-Aug-14		06-Jun-14	-40	0																								
ARDD0284	Viaduct E1 - Preparation of Substructure DDA - DP15.03	50	07-Apr-14 A	75%	13	09-Jul-14	11-Apr-14	30-Apr-14	-50	0																								
ARDD0285	Viaduct E1 - Preparation of Superstructure DDA - DP15.03	70	07-Apr-14 A	75%	18	16-Jul-14	17-Apr-14	13-May-14	-46	0																								
ARDD0286	Viaduct E1 - Submission of Sub & Superstructure DDA - DP15.03	0		0%	0	16-Jul-14		15-Jul-14	-1	0																								
ARDD0287-1	Viaduct E1 - Earliest IC Certificate for DDA - DP15.02	0		0%	0	30-Jun-14		05-Aug-14	26	39																								
ARDD0287-3	Viaduct E1 - IC/SO Approval (Late) of Sub & Superstructure DDA DP15.03	75	04-Aug-14	0%	75	14-Nov-14	16-Jul-14	28-Oct-14	-13	0																								
ARDD0287-5	Viaduct E1 - IC/SO Approval of Pilecap Precast Shells DDA DP15.02	75	20-May-14 A	20%	60	30-Sep-14	06-May-14	28-Jul-14	-46	0																								
Information to Contractor																																		
ARDD0295	Viaduct E1 - Typical Pilecap Reinforcement - Stainless Steel Rebar	0	23-Jun-14	0%	0		14-Apr-14		-50	0																								
ARDD0296	Viaduct E1 - Typical Pilecap Reinforcement - Regular Rebar	0		0%	0	23-Jun-14		11-Apr-14	-50	0																								
ARDD0297	Viaduct E1 - Final Pilecap Reinforcement	0		0%	0	09-Jul-14		28-Jul-14	14	0																								
ARDD0299	Viaduct E1 - Final Pier Shapes and Reinforcement	0		0%	0	09-Jul-14		27-May-14	-31	17																								
ARDD0300	Viaduct E1 - Typical Segment Shapes for Moulds	0		0%	0	23-Jun-14		11-Jun-14	-7	0																								
ARDD0301	Viaduct E1 - Typical Segment Reinforcement	0		0%	0	23-Jun-14		11-Jun-14	-7	9																								
ARDD0302	Viaduct E1 - Final Segment Types and Reinforcement	0		0%	0	16-Jul-14		25-Sep-14	52	68																								
ARDD0304	Viaduct E1 - Final Anchorage and PT Requirements	0		0%	0	16-Jul-14		25-Sep-14	52	68																								
ARDD0308	Viaduct E1 - Final Movement Joint (MJ) Schedule	0		0%	0	23-Jun-14		11-Sep-14	59	60																								
Associated Construction Milestones																																		
ARDD0310	Viaduct E1 - DDA approval ready for Commencement of Piling	0	05-Aug-14	0%	0		10-Jun-14		-56	22																								
Viaduct D																																		
Viaduct Design																																		
ARDD0323	Viaduct D - IC/SO Approval of AIP - DP14.00	68	31-Dec-13 A	100%	0	26-May-14 A																												
ARDD0323-1	Viaduct D - IC/SO Approval of AIP - DP14.00	0		100%	0	26-May-14 A																												
ARDD0328-1	Viaduct D - Earliest IC Certificate for Foundation DDA - DP14.01	0		0%	0	23-Jun-14		11-Jul-14	15	35																								
ARDD0328-2	Viaduct D - IC/SO Approval of Foundation DDA - DP14.01	75	03-Apr-14 A	60%	30	01-Aug-14	05-May-14	13-Jun-14	-35	0																								
ARDD0328-4	Viaduct D - IC/SO Approval of Foundation DDA - DP14.01	0		0%	0	01-Aug-14		17-Jun-14	-33	0																								
ARDD0330	Viaduct D - Preparation of Substructure DDA - DP14.03	50	19-Feb-14 A	50%	25	25-Jul-14	25-Apr-14	30-May-14	-40	0																								
ARDD0331	Viaduct D - Preparation of Superstructure DDA - DP14.03	70	19-Feb-14 A	50%	35	08-Aug-14	26-May-14	11-Jul-14	-20	0																								
ARDD0332	Viaduct D - Submission of Sub & Superstructure DDA - DP14.03	0		0%	0	08-Aug-14		11-Jul-14	-20	0																								
ARDD0333-1	Viaduct D - Earliest IC Certificate for Sub & Superstructure DDA - DP14.03	0		0%	0	19-Sep-14		27-Aug-14	-17	3																								
ARDD0333-2	Viaduct D - IC/SO Approval Pilecap Precast Shells DDA - DP14.02	75	26-Apr-14 A	60%	30	01-Aug-14	07-Jul-14	15-Aug-14	10	0																								
ARDD0333-3	Viaduct D - IC/SO Approval of Sub & Superstructure DDA - DP14.03	75	11-Aug-14	0%	75	21-Nov-14	14-Jul-14	24-Oct-14	-20	0																								
ARDD0333-5	Viaduct D - IC/SO Approval Pilecap Precast Shells DDA - DP14.02	0		0%	0	01-Aug-14		15-Aug-14	10	50																								
Information to Contractor																																		
ARDD0341	Viaduct D - Typical Pilecap Reinforcement - Stainless Steel Rebar	0	23-Jun-14	0%	0		28-Apr-14		-40	0																								
ARDD0342	Viaduct D - Typical Pilecap Reinforcement - Regular Rebar	0		0%	0	23-Jun-14		25-Apr-14	-40	0																								
ARDD0343	Viaduct D - Final Pilecap Reinforcement	0	23-Jun-14	0%	0		15-Jul-14		16	0																								
ARDD0345	Viaduct D - Final Pier Shapes and Reinforcement	0		0%	0	25-Jul-14		24-Sep-14	42	0																								
ARDD0346	Viaduct D - Typical Segment Shapes for Moulds	0		0%	0	23-Jun-14		09-Jun-14	-9	0																								
ARDD0347	Viaduct D - Typical Segment Reinforcement	0		0%	0	23-Jun-14		09-Jun-14	-9	20																								
ARDD0348	Viaduct D - Final Segment Types and Reinforcement	0		0%	0	08-Aug-14		23-Sep-14	32	61																								
ARDD0349	Viaduct D - Typical Anchorage and Tendon Types	0		0%	0	23-Jun-14		12-May-14	-29	0																								
ARDD0350	Viaduct D - Final Anchorage and PT Requirements	0		0%	0	08-Aug-14		15-Sep-14	26	55																								
ARDD0351	Viaduct D - Provisional Bearing Schedule	0		0%	0	23-Jun-14		14-May-14	-27	0																								

Activity ID	Activity Name	Orig. Durn.	Act. Start / FC Early Start	Duration % Complete	Rem. Durn.	Act. Finish / FC Early Finish	Late Start	Late Finish	Total Float	Free Float	2014															
											June				July				August				September			
											19	26	02	09	16	23	30	07	14	21	28	04	11	18	25	01
ARDD0446	Viaduct A - Typical Pier Shapes for Formwork Planning	0		0%	0	04-Jul-14		29-Jan-15	149	26				◆												
ARDD0451	Viaduct A - Typical Anchorage and Tendon Types	0		0%	0	04-Jul-14		28-May-15	234	143				◆												
ARDD0453	Viaduct A - Provisional Bearing Schedule	0		0%	0	04-Jul-14		17-Oct-14	75	46				◆												
ARDD0455	Viaduct A - Provisional Movement Joint (MJ) Schedule	0		0%	0	04-Jul-14		23-Oct-14	79	26				◆												
Viaduct F1 & F3																										
Viaduct Design																										
ARDD0474	Viaduct F1 & F3 - Preparation of Sub & Superstructure Scheme	20	08-Apr-14 A	100%	0	30-May-14 A					◆															
ARDD0475	Viaduct F1 & F3 - Submission of Viaduct Fdns, Sub & Superstructure AIP - DP16.00	0		100%	0	30-May-14 A					◆															
ARDD0476	Viaduct F1 & F3 - IC/SO Approval of Viaduct AIP - DP16.00	68	03-Jun-14 A	0%	68	24-Sep-14	18-Aug-14	19-Nov-14	40	0		◆														
ARDD0477	Viaduct F1 & F3 - Receipt of Data for Final Analysis	0		0%	0	23-Jun-14		11-Jun-14	-7	0		◆														
ARDD0478	Viaduct F1 & F3 - Update Midas Model	10	23-Jun-14	0%	10	04-Jul-14	10-Jul-14	23-Jul-14	13	5			◆													
ARDD0479	Viaduct F1 & F3 - Final Pile Loads and Global Analysis	10	14-Jul-14	0%	10	25-Jul-14	24-Jul-14	06-Aug-14	8	15				◆												
ARDD0480	Viaduct F1 & F3 - Foundation DDA - DP16.01	40	23-Jun-14	0%	40	15-Aug-14	12-Jun-14	06-Aug-14	-7	0				◆												
ARDD0480-2	Viaduct F1 & F3 - Foundation DDA - DP16.07	40	23-Jun-14	0%	40	15-Aug-14	12-Jun-14	06-Aug-14	-7	0				◆												
ARDD0481	Viaduct F1 & F3 - IC/SO Approval of Foundation DDA - DP16.01	75	18-Aug-14	0%	75	28-Nov-14	07-Aug-14	19-Nov-14	-7	0				◆												
ARDD0481-2	Viaduct F1 & F3 - IC/SO Approval of Foundation DDA - DP16.07	75	18-Aug-14	0%	75	28-Nov-14	07-Aug-14	19-Nov-14	-7	0				◆												
ARDD0482	Viaduct F1 & F3 - Preparation of Substructure DDA - DP16.02	50	18-Aug-14	0%	50	24-Oct-14	17-Sep-14	25-Nov-14	22	0				◆												
ARDD0482-2	Viaduct F1 & F3 - Preparation of Substructure DDA - DP16.08	50	18-Aug-14	0%	50	24-Oct-14	17-Sep-14	25-Nov-14	22	0				◆												
ARDD0483	Viaduct F1 & F3 - Preparation of Superstructure DDA - DP16.03	70	20-Aug-14	0%	70	25-Nov-14	20-Aug-14	25-Nov-14	0	0				◆												
ARDD0483-2	Viaduct F1 & F3 - Preparation of Superstructure DDA - DP16.09	70	20-Aug-14	0%	70	25-Nov-14	20-Aug-14	25-Nov-14	0	0				◆												
Information to Contractor																										
ARDD0487	Viaduct F1 & F3 - Provisional Segment Types and Weights	0		100%	0	30-May-14 A					◆															
ARDD0488	Viaduct F1 & F3 - Pile Spacing and Diameter for Temp Platform Design	0		100%	0	30-May-14 A					◆															
ARDD0489	Viaduct F1 & F3 - Typical Pile Reinforcement - Stainless Rebar	0	11-Jul-14	0%	0		23-Jul-14		8	2			◆													
ARDD0490	Viaduct F1 & F3 - Final Pile Reinforcement and Socket H Pile Details	0		0%	0	15-Aug-14		25-Aug-14	6	0				◆												
ARDD0491	Viaduct F1 & F3 - Typical Pilecap Shapes for Formwork	0		100%	0	30-May-14 A					◆															
ARDD0492	Viaduct F1 & F3 - Typical Pilecap Reinforcement - Stainless Steel Rebar	0	19-Sep-14	0%	0		04-Nov-14		32	2				◆												
ARDD0493	Viaduct F1 & F3 - Typical Pilecap Reinforcement - Regular Rebar	0		0%	0	12-Sep-14		03-Nov-14	36	6				◆												
ARDD0495	Viaduct F1 & F3 - Typical Pier Shapes for Formwork Planning	0		100%	0	30-May-14 A					◆															
ARDD0497	Viaduct F1 & F3 - Typical Segment Shapes for Moulds	0		0%	0	16-Sep-14		27-Nov-14	52	0				◆												
ARDD0500	Viaduct F1 & F3 - Typical Anchorage and Tendon Types	0		0%	0	23-Jun-14		27-Nov-14	114	144			◆													
ARDD0502	Viaduct F1 & F3 - Provisional Bearing Schedule	0		0%	0	23-Jun-14		08-Aug-14	35	12			◆													
ARDD0503	Viaduct F1 & F3 - Final Bearing Schedule	0		0%	0	16-Sep-14		17-Oct-14	23	50				◆												
ARDD0504	Viaduct F1 & F3 - Provisional Movement Joint (MJ) Schedule	0		0%	0	23-Jun-14		04-Dec-14	119	12				◆												
Viaduct F2, F4 and F5																										
Viaduct Design																										
ARDD0518	Viaduct F2, F4 & F5 - Preparation of Sustructure and Superstructure Scheme	20	08-Apr-14 A	100%	0	30-May-14 A					◆															
ARDD0519	Viaduct F2, F4 & F5 - Submssion of Viaduct AIP - DP16.00 Update	0		100%	0	30-May-14 A					◆															
ARDD0520	Viaduct F2, F4 & F5 - IC/SO Approval of Viaduct AIP - DP16.00	68	03-Jun-14 A	0%	68	24-Sep-14	01-Sep-14	03-Dec-14	50	0		◆														
ARDD0521	Viaduct F2, F4 & F5 - Receipt of Data for Final Analysis	0		0%	0	23-Jun-14		25-Jun-14	3	0		◆														
ARDD0522	Viaduct F2, F4 & F5 - Update Midas Model	10	23-Jun-14	0%	10	04-Jul-14	24-Jul-14	06-Aug-14	23	5			◆													
ARDD0523	Viaduct F2, F4 & F5 - Final Pile Loads and Global Analysis	10	14-Jul-14	0%	10	25-Jul-14	07-Aug-14	20-Aug-14	18	15				◆												
ARDD0524	Viaduct F2, F4 & F5 - Foundation DDA - DP16.04	40	23-Jun-14	0%	40	15-Aug-14	26-Jun-14	20-Aug-14	3	0				◆												
ARDD0524-2	Viaduct F2, F4 & F5 - Foundation DDA - DP16.10	40	23-Jun-14	0%	40	15-Aug-14	26-Jun-14	20-Aug-14	3	0				◆												
ARDD0524-4	Viaduct F2, F4 & F5 - Foundation DDA - DP16.13	40	23-Jun-14	0%	40	15-Aug-14	26-Jun-14	20-Aug-14	3	0				◆												
ARDD0525-2	Viaduct F2, F4 & F5 - IC/SO Approval of Foundation DDA - DP16.04	75	18-Aug-14	0%	75	28-Nov-14	21-Aug-14	03-Dec-14	3	0				◆												
ARDD0525-4	Viaduct F2, F4 & F5 - IC/SO Approval of Foundation DDA - DP16.10	75	18-Aug-14	0%	75	28-Nov-14	21-Aug-14	03-Dec-14	3	0				◆												
ARDD0525-6	Viaduct F2, F4 & F5 - IC/SO Approval of Foundation DDA - DP16.13	75	18-Aug-14	0%	75	28-Nov-14	21-Aug-14	03-Dec-14	3	0				◆												

		Project ID: J3518DWPrD1-M13 Layout: J3518-DWP-3MRP submission - M13 Filter: TASK filters: 3-Month Lookahead, No Level of Effort.	Tuen Mun - Chek Lap Kok Link - Southern Connection 3-Month Rolling Programme (Page 9 of 27 Pages) (Progress as of 21-Jun-14)			Date	Revision	Checked	Approved	DWG. No.: J3518/GCL/PGM/3MRP-M13	
						28-Jun-14		FZ			

Activity ID	Activity Name	Orig. Durn.	Act. Start / FC Early Start	Duration % Complete	Rem. Durn.	Act. Finish / FC Early Finish	Late Start	Late Finish	Total Float	Free Float	2014																																					
											June			July			August			September																												
											19	26	02	09	16	23	30	07	14	21	28	04	11	18	25	01	08	15																				
Waterworks, Drainage & Utility Diversions																																																
ARDD0622	IC/SO Approval of Waterworks, Drainage & Utility AIP - BP20.00	68	03-Jan-14 A	40%	41	18-Aug-14	03-Feb-17	31-Mar-17	684	0																																						
ARDD0622-1	IC/SO Approval of Waterworks, Drainage & Utility AIP - BP20.00	0		0%	0	18-Aug-14		31-Mar-17	684	0																																						
ARDD0624	Preparation of Waterworks, Drainage & Utility DDA - BP20.01	40	06-Mar-14 A	70%	12	08-Jul-14	15-May-14	30-May-14	-27	0																																						
ARDD0628	Submission of Waterworks, Drainage & Utility DDA - BP20.01	0		0%	0	08-Jul-14		30-May-14	-27	0																																						
ARDD0629	IC/SO Approval of Waterworks, Drainage & Utility DDA - BP20.01	75	09-Jul-14	0%	75	21-Oct-14	02-Jun-14	12-Sep-14	-27	0																																						
ARDD0630	Gov't Approval of Submissions for Waterworks, Drainage & Utility Diversions	75	09-Jul-14	0%	75	21-Oct-14	02-Jun-14	12-Sep-14	-27	0																																						
Viaduct Approach Ramp Retaining Walls																																																
Approach Ramp D																																																
ARDD0649	Approach D - Preparation of Approach Ramp D AIP Submission - DP21.00	55	29-Oct-13 A	85%	8	03-Jul-14	20-Jan-14	30-Jan-14	-109	0																																						
ARDD0650	Approach D - IC/SO Approval of Approach Ramp D AIP - DP21.00	68	03-Jul-14	0%	68	07-Oct-14	31-Jan-14	06-May-14	-109	0																																						
ARDD0651	Approach D - Preparation of Approach Ramp D DDA Submission - DP20.01	30	14-Aug-14	0%	30	25-Sep-14	14-Mar-14	24-Apr-14	-109	0																																						
Approach Ramp C																																																
ARDD0655	Approach C - Preparation of Approach Ramp C AIP Submission -DP20.00 Update	30	11-Apr-14 A	100%	0	17-Jun-14 A																																										
ARDD0656	Approach C - IC/SO Approval of Approach Ramp C AIP -DP20.00	68	18-Jun-14 A	0%	68	24-Sep-14	05-Sep-14	09-Dec-14	54	0																																						
ARDD0657	Approach C - Preparation of Approach Ramp C DDA Submission - DP20.01	30	30-Jul-14	0%	30	09-Sep-14	14-Oct-14	24-Nov-14	54	0																																						
ARDD0658	Approach C - IC/SO Approval of Approach Ramp C DDA -DP20.01	75	10-Sep-14	0%	75	23-Dec-14	25-Nov-14	09-Mar-15	54	0																																						
Approach Ramp B																																																
ARDD0661	Approach B - Preparation of Approach Ramp B AIP Submission - DP21.00 Update	55	29-Oct-13 A	80%	11	07-Jul-14	10-Jan-14	24-Jan-14	-116	0																																						
ARDD0662	Approach B - IC/SO Approval of Approach Ramp BAIP -DP21.00	68	08-Jul-14	0%	68	09-Oct-14	27-Jan-14	30-Apr-14	-116	0																																						
ARDD0663	Approach B - Preparation of Approach Ramp B DDA Submission -DP21.01	30	19-Aug-14	0%	30	29-Sep-14	10-Mar-14	18-Apr-14	-116	0																																						
Approach A																																																
ARDD0667	Approach A - Preparation of Approach Ramp A AIP Submission -DP20.00 Update	30	11-Apr-14 A	100%	0	17-Jun-14 A																																										
ARDD0668	Approach A - IC/SO Approval of Approach Ramp AAIP -DP20.00	68	18-Jun-14 A	0%	68	24-Sep-14	21-Jul-14	22-Oct-14	20	0																																						
ARDD0669	Approach A - Preparation of Approach Ramp A DDA Submission -DP20.01	30	30-Jul-14	0%	30	09-Sep-14	27-Aug-14	07-Oct-14	20	0																																						
ARDD0670	Approach A - IC/SO Approval of Approach Ramp A DDA - DP20.01	75	10-Sep-14	0%	75	23-Dec-14	08-Oct-14	20-Jan-15	20	0																																						
Viaduct Pavement																																																
ARDD865	Viaduct Pavement - Preparation of AIP Submission - BP02.00	20	10-Mar-14 A	90%	2	24-Jun-14	17-Apr-14	18-Apr-14	-47	0																																						
ARDD867	Viaduct Pavement - IC/SO Approval of AIP - BP02.00	68	25-Jun-14	0%	68	26-Sep-14	21-Apr-14	23-Jul-14	-47	0																																						
Signs, Markings and Street Furniture																																																
ARDD0683	IC/SO Approval of Signs, Markings & Street Furniture AIP - BP03.00	68	01-Mar-14 A	20%	54	05-Sep-14	16-Jan-17	31-Mar-17	671	0																																						
ARDD0683-1	IC/SO Approval of Signs, Markings & Street Furniture AIP - BP03.00	0		0%	0	05-Sep-14		31-Mar-17	671	0																																						
ARDD0684	Confirmation of all Cast - In Requirements To Deck Segments	0		100%	0	03-Jun-14 A																																										
ARDD0685	Preparation of Final Signs and Markings Plans	30	04-Jun-14 A	0%	30	01-Aug-14	19-Sep-14	30-Oct-14	64	0																																						
ARDD0686	Preparation of Detail Sign Gantry Structures	50	04-Aug-14	0%	50	10-Oct-14	31-Oct-14	08-Jan-15	64	0																																						
Landscape																																																
ARDD0696	IC/SO Approval of AIP for landscape works - BP22.00	68	14-May-14 A	40%	41	18-Aug-14	29-May-15	24-Jul-15	244	0																																						
ARDD0696-1	IC/SO Approval of AIP for landscape works - BP22.00	0		0%	0	18-Aug-14		24-Jul-15	244	0																																						
ARDD0697	Prepare Final Planting Plans and Schedules	20	18-Aug-14	0%	20	15-Sep-14	27-Jul-15	21-Aug-15	244	0																																						
ARDD0698	Prepare Irrigation Plans	20	18-Aug-14	0%	20	15-Sep-14	27-Jul-15	21-Aug-15	244	0																																						
ARDD0699	Preparation of DDA Submission for landscape works - BP22.01	20	15-Sep-14	0%	20	13-Oct-14	24-Aug-15	18-Sep-15	244	0																																						
Remaining Works																																																
ARDD0704	Preparation of Remaining Works AIP - ZP01.00	30	25-Jun-14	0%	30	05-Aug-14	20-Jun-14	31-Jul-14	-3	0																																						
ARDD0705	IC/SO Approval of Remaining Works AIP - ZP01.00	40	06-Aug-14	0%	40	30-Sep-14	01-Aug-14	25-Sep-14	-3	0																																						
Segment Target Geometry And Erection Engineering																																																
Viaduct B																																																
ARDD0711	Viaduct B - Confirmation of Erection Sequence from Freyssinet	0		100%	0	21-May-14 A																																										
ARDD0712	Viaduct B - Erection Sequence Analysis	20	09-Jan-14 A	90%	2	24-Jun-14	25-Apr-14	28-Apr-14	-41	0																																						

<ul style="list-style-type: none"> Actual Work Planned Bar Critical Bar Milestone 	Project ID: J3518DWPrD1-M13 Layout: J3518-DWP-3MRP submission - M13 Filter: TASK filters: 3-Month Lookahead, No Level of Effort.	Tuen Mun - Chek Lap Kok Link - Southern Connection 3-Month Rolling Programme (Page 11 of 27 Pages) (Progress as of 21-Jun-14)	Date 28-Jun-14	Revision	Checked FZ	Approved	DWG. No.: J3518/GCL/PGM/3MRP-M13
---	--	--	-------------------	----------	---------------	----------	---

Activity ID	Activity Name	Orig. Durn.	Act. Start / FC Early Start	Duration % Complete	Rem. Durn.	Act. Finish / FC Early Finish	Late Start	Late Finish	Total Float	Free Float	2014												
											June			July			August			September			
											19	26	02	09	16	23	30	07	14	21	28	04	11
ARDD0713	Viaduct B - Target Geometry Analysis	20	06-Feb-14 A	90%	2	24-Jun-14	25-Apr-14	28-Apr-14	-41	0													
ARDD0714	Viaduct B - Segment Geometry Schedules	10	06-Mar-14 A	90%	1	23-Jun-14	28-Apr-14	28-Apr-14	-40	1													
ARDD0714-1	Viaduct B - Final Erection Geometry (Bridge B3)	0		0%	0	24-Jun-14		28-Apr-14	-41	0													
ARDD0714-2	Viaduct B - Final Erection Geometry (Bridge B2 & B1)	0		0%	0	05-Aug-14		09-Jun-14	-41	0													
Viaduct D																							
ARDD0726	Viaduct D - Confirmation of Erection Sequence from Freyssinet	0		0%	0	23-Jun-14		02-Jun-14	-14	0													
ARDD0727	Viaduct D - Erection Sequence Analysis	20	23-Jun-14	0%	20	18-Jul-14	03-Jun-14	30-Jun-14	-14	0													
ARDD0728	Viaduct D - Target Geometry Analysis	20	21-Jul-14	0%	20	15-Aug-14	01-Jul-14	28-Jul-14	-14	0													
ARDD0729	Viaduct D - Segment Geometry Schedules	10	18-Aug-14	0%	10	29-Aug-14	29-Jul-14	11-Aug-14	-14	0													
ARDD0729-1	Viaduct D - Final Erection Geometry (Bridge D3)	0		0%	0	29-Aug-14		11-Aug-14	-14	0													
Viaduct E5 and E6																							
ARDD0731	Viaduct E5 & E6 - Confirmation of Erection Sequence from Freyssinet	0		0%	0	23-Jun-14		09-Jun-14	-9	23													
ARDD0732	Viaduct E5 & E6 - Erection Sequence Analysis	30	24-Dec-13 A	25%	23	23-Jul-14	08-May-14	09-Jun-14	-32	0													
ARDD0733	Viaduct E5 & E6 - Target Geometry Analysis	30	04-Feb-14 A	25%	23	23-Jul-14	08-May-14	09-Jun-14	-32	0													
ARDD0734	Viaduct E5 & E6 - Segment Geometry Schedules	10	18-Mar-14 A	25%	8	02-Jul-14	29-May-14	09-Jun-14	-17	15													
ARDD0734-1	Viaduct E5 & E6 - Final Erection Geometry	0		0%	0	23-Jul-14		09-Jun-14	-32	25													
Viaduct E7 & E8																							
ARDD0736	Viaduct E7 & E8 - Confirmation of Erection Sequence from Freyssinet	0		0%	0	23-Jun-14		30-May-14	-15	23													
ARDD0737	Viaduct E7 & E8 - Erection Sequence Analysis	30	24-Dec-13 A	25%	23	23-Jul-14	30-Apr-14	30-May-14	-38	0													
ARDD0738	Viaduct E7 & E8 - Target Geometry Analysis	30	04-Feb-14 A	25%	23	23-Jul-14	30-Apr-14	30-May-14	-38	0													
ARDD0739	Viaduct E7 & E8 - Segment Geometry Schedules	10	18-Mar-14 A	25%	8	02-Jul-14	21-May-14	30-May-14	-23	15													
ARDD0739-1	Viaduct E7 & E8 - Final Erection Geometry	0		0%	0	23-Jul-14		30-May-14	-38	25													
Viaduct E1																							
ARDD0741	Viaduct E1 - Confirmation of Erection Sequence from Freyssinet	0		0%	0	23-Jun-14		17-Apr-14	-46	0													
ARDD0742	Viaduct E1 - Erection Sequence Analysis	30	23-Jun-14	0%	30	01-Aug-14	18-Apr-14	29-May-14	-46	0													
ARDD0743	Viaduct E1 - Target Geometry Analysis	30	04-Aug-14	0%	30	12-Sep-14	30-May-14	10-Jul-14	-46	0													
ARDD0744	Viaduct E1 - Segment Geometry Schedules	10	15-Sep-14	0%	10	26-Sep-14	11-Jul-14	24-Jul-14	-46	0													
Viaduct E2																							
ARDD0746	Viaduct E2 - Confirmation of Erection Sequence from Freyssinet	0		0%	0	23-Jun-14		15-May-14	-26	23													
ARDD0747	Viaduct E2 - Erection Sequence Analysis	30	24-Dec-13 A	25%	23	23-Jul-14	15-Apr-14	15-May-14	-49	0													
ARDD0748	Viaduct E2 - Target Geometry Analysis	30	04-Feb-14 A	25%	23	23-Jul-14	15-Apr-14	15-May-14	-49	0													
ARDD0749	Viaduct E2 - Segment Geometry Schedules	10	18-Mar-14 A	25%	8	23-Jul-14	06-May-14	15-May-14	-49	0													
ARDD0749-1	Viaduct E2 - Final Erection Geometry	0		0%	0	23-Jul-14		15-May-14	-49	21													
Reprovisioning Works																							
Chung Tung Road Realignment Viaduct B																							
ARDD0804	Viaduct B - IC/SO Approval of AIP of CTR Reprovisioning Works AIP - BP33.00	68	31-Dec-13 A	40%	41	18-Aug-14	19-Dec-13	13-Feb-14	-132	0													
ARDD0804-1	Viaduct B - IC/SO Approval of AIP of CTR Reprovisioning Works AIP - BP33.00	0		0%	0	18-Aug-14		13-Feb-14	-132	0													
ARDD0805	Viaduct B - Preparation of CTR Reprovisioning Works DDA - BP33.01	30	25-Nov-13 A	100%	0	09-Jun-14 A																	
ARDD0806	Viaduct B - Submission of CTR Reprovisioning Works DDA - BP33.01	0		100%	0	10-Jun-14 A																	
ARDD0807	Viaduct B - IC/SO Approval of CTR Reprovisioning Works DDA - BP33.01	75	11-Jun-14 A	0%	75	03-Oct-14	27-Jan-14	09-May-14	-105	26													
Chung Tung Road Realignment Viaduct C																							
ARDD0881	Viaduct C - IC/SO Approval of AIP of CTR Reprovisioning Works AIP - BP34.00	68	04-Apr-14 A	20%	54	05-Sep-14	30-Dec-13	14-Mar-14	-124	0													
ARDD0881-1	Viaduct C - IC/SO Approval of AIP of CTR Reprovisioning Works AIP - BP34.00	0		0%	0	05-Sep-14		14-Mar-14	-124	0													
ARDD0883	Viaduct C - Preparation of CTR Reprovisioning Works DDA - BP34.01	30	06-Mar-14 A	100%	0	19-Jun-14 A																	
ARDD0885	Viaduct C - Submission of CTR Reprovisioning Works DDA - BP34.01	0		100%	0	19-Jun-14 A																	
ARDD0887	Viaduct C - IC/SO Approval of CTR Reprovisioning Works DDA - BP34.01	75	20-Jun-14 A	0%	75	03-Oct-14	24-Feb-14	06-Jun-14	-85	39													
Remaining Reprovisioning Works (Viaduct A&D)																							
ARDD0813	Viaduct A&D - IC/SO Approval of AIP for Remaining Reprovisioning Works V-A&D BP35.00	68	30-Apr-14 A	20%	54	05-Sep-14	28-Apr-15	13-Jul-15	222	0													

<ul style="list-style-type: none"> ■ Actual Work ■ Planned Bar ■ Critical Bar ◆ Milestone 	Project ID: J3518DWPrD1-M13 Layout: J3518-DWP-3MRP submission - M13 Filter: TASK filters: 3-Month Lookahead, No Level of Effort.	Tuen Mun - Chek Lap Kok Link - Southern Connection 3-Month Rolling Programme (Page 12 of 27 Pages) (Progress as of 21-Jun-14)	<table border="1"> <tr><td>Date</td><td>Revision</td><td>Checked</td><td>Approved</td></tr> <tr><td>28-Jun-14</td><td></td><td>FZ</td><td></td></tr> </table>	Date	Revision	Checked	Approved	28-Jun-14		FZ		DWG. No.: J3518/GCL/PGM/3MRP-M13
Date	Revision	Checked	Approved									
28-Jun-14		FZ										

Activity ID	Activity Name	Orig. Durn.	Act. Start / FC Early Start	Duration % Complete	Rem. Durn.	Act. Finish / FC Early Finish	Late Start	Late Finish	Total Float	Free Float	2014																			
											June					July					August					September				
											19	26	02	09	16	23	30	07	14	21	28	04	11	18	25	01	08	15		
PR69100	Unloading Frame Type 1 Design	50	05-May-14 A	40%	30	28-Jul-14	10-Oct-14	13-Nov-14	90	17	[Gantt Bar: Green, June 19-26]																			
PR69110	Unloading Frame Type 1 Fabrication	95	23-Jun-14	0%	95	15-Oct-14	10-Oct-14	31-Jan-15	90	0	[Gantt Bar: Green, June 26-30]																			
Type 2																														
PR69170	Unloading Frame Type 2 Design	50	05-May-14 A	40%	30	28-Jul-14	18-May-15	23-Jun-15	267	17	[Gantt Bar: Green, July 07-14]																			
PR69180	Unloading Frame Type 2 Fabrication	95	23-Jun-14	0%	95	15-Oct-14	18-May-15	08-Sep-15	267	0	[Gantt Bar: Green, July 14-21]																			
Type 3																														
PR69220	Unloading Frame Type 3 Design	50	05-May-14 A	40%	30	28-Jul-14	17-Apr-14	27-May-14	-51	17	[Gantt Bar: Red, June 19-26]																			
PR69230	Unloading Frame Type 3 (Lantau) Fabrication	95	23-Jun-14	0%	95	15-Oct-14	17-Apr-14	13-Aug-14	-51	0	[Gantt Bar: Red, June 26-30]																			
Type 4																														
PR69250	Unloading Frame Type 4 Design	50	05-May-14 A	40%	30	28-Jul-14	29-Oct-14	02-Dec-14	106	17	[Gantt Bar: Green, July 07-14]																			
PR69260	Unloading Frame Type 4 (BCF) Fabrication	95	23-Jun-14	0%	95	15-Oct-14	29-Oct-14	23-Feb-15	106	0	[Gantt Bar: Green, July 14-21]																			
Deck Segments & Precast Pile Cap Shells																														
Preliminaries																														
MBBC0014	Pile Cap Shell Mould Fabrication & Erection (M1 & M2)	50	07-Apr-14 A	95%	3	25-Jun-14	16-Jun-14	18-Jun-14	-6	85	[Gantt Bar: Blue, June 19-26]																			
MBBE0010	Set Up Precast Segment Casting Yard & Beds etc	176	15-Oct-13 A	80%	35	04-Aug-14	19-Jun-14	31-Jul-14	-2	91	[Gantt Bar: Red, July 07-14]																			
MBBE0012	Precast Segment Mould Design (Viaduct B)	42	15-Oct-13 A	30%	29	28-Jul-14	25-Feb-14	31-Mar-14	-93	0	[Gantt Bar: Red, July 14-21]																			
MBBE0014	Precast Segment Mould Fabrication & Assembly (Viaduct B)	52	28-Jul-14	0%	52	27-Sep-14	01-Apr-14	07-Jun-14	-93	0	[Gantt Bar: Red, July 21-28]																			
MBBE0018	Precast Segment Mould Design (Viaduct E5, E6, E7 & E8)	42	15-Oct-13 A	60%	17	12-Jul-14	19-Jun-14	09-Jul-14	-3	0	[Gantt Bar: Red, July 28-Aug 04]																			
MBBE0020	Precast Segment Mould Fabrication & Assembly (Viaduct E5, E6, E7 & E8)	52	12-Jul-14	0%	52	12-Sep-14	10-Jul-14	08-Sep-14	-3	63	[Gantt Bar: Red, August 04-11]																			
MBBE0024	Precast Segment Mould Design (Viaduct E2)	42	15-Oct-13 A	60%	17	12-Jul-14	26-May-14	14-Jun-14	-23	0	[Gantt Bar: Red, August 11-18]																			
MBBE0026	Precast Segment Mould Fabrication & Assembly (Viaduct E2)	52	12-Jul-14	0%	52	12-Sep-14	16-Jun-14	15-Aug-14	-23	58	[Gantt Bar: Red, August 18-25]																			
MBBE0030	Precast Segment Mould Design (Viaduct E1)	42	23-Jun-14	0%	42	11-Aug-14	09-Jul-14	26-Aug-14	13	0	[Gantt Bar: Green, August 25-31]																			
MBBE0032	Precast Segment Mould Fabrication & Assembly (Viaduct E1)	52	12-Aug-14	0%	52	14-Oct-14	27-Aug-14	29-Oct-14	13	32	[Gantt Bar: Green, September 01-08]																			
MBBE0036	Precast Segment Mould Design (Viaduct D)	42	23-Jun-14	0%	42	11-Aug-14	07-Jul-14	23-Aug-14	11	0	[Gantt Bar: Green, September 08-15]																			
MBBE0038	Precast Segment Mould Fabrication & Assembly (Viaduct D)	52	12-Aug-14	0%	52	14-Oct-14	25-Aug-14	27-Oct-14	11	45	[Gantt Bar: Green, September 15-22]																			
MBBE0042	Precast Segment Mould Design (Viaduct C)	42	30-Aug-14	0%	42	21-Oct-14	06-Dec-14	27-Jan-15	81	0	[Gantt Bar: Green, September 22-29]																			
MBBE0054	Precast Segment Mould Design (Viaduct F1 to F5)	42	17-Sep-14	0%	42	06-Nov-14	16-Jan-15	09-Mar-15	99	0	[Gantt Bar: Green, September 29-30]																			
Viaduct B																														
Precast Pile Caps																														
MBBC0120	B: Commence Pile Cap Shell Casting on Approval of DDA	0	10-Jun-14 A	100%	0						[Milestone: Diamond, June 19]																			
MBBC0130	B: Commence Pile Cap Shell Delivery	0	06-Aug-14	0%	0		10-Jun-14		-48	1	[Milestone: Diamond, June 26]																			
MBBC0130-1	B: Progressive Pile Cap Shell Manufacture & Delivery remaining shells (7 Nr)	81	06-Aug-14	0%	81	11-Nov-14	06-Jun-14	10-Sep-14	-51	0	[Gantt Bar: Red, July 28-Aug 04]																			
PP7050	Production of initial Viaduct B Marine Precast Pile Cap Shells	55	10-Jun-14 A	100%	0	21-Jun-14 A					[Gantt Bar: Blue, June 19-26]																			
Materials																														
H-Piles																														
PP7390	Procurement of Viaduct D Socketted H-Piles	70	21-Feb-14 A	60%	28	25-Jul-14	15-May-14	17-Jun-14	-32	6	[Gantt Bar: Red, July 07-14]																			
PP7470	Procurement of Viaduct C Socketted H-Piles	70	13-Aug-14	0%	70	05-Nov-14	09-Jul-14	29-Sep-14	-30	17	[Gantt Bar: Red, August 11-18]																			
Reinforcement																														
Bored Piles																														
PP7020	Rebar - Cut, Bend & Fabricate Pile Cage for Viaduct B Piles	24	28-Feb-14 A	28%	17	14-Jul-14	21-May-14	11-Jun-14	-26	0	[Gantt Bar: Red, July 07-14]																			
PP7100	Rebar - Cut, Bend & Fabricate Pile Cage for Viaduct E5 & E6 Piles	185	28-Jul-14	0%	185	11-Mar-15	19-Feb-14	04-Oct-14	-128	0	[Gantt Bar: Red, August 11-18]																			
PP7170	Rebar - Cut, Bend & Fabricate Pile Cage for Viaduct E7 & E8 Piles	185	28-Jul-14	0%	185	11-Mar-15	17-Mar-14	30-Oct-14	-106	0	[Gantt Bar: Red, August 18-25]																			
PP7240	Rebar - Cut, Bend & Fabricate Pile Cage for Viaduct E2 Piles	106	15-Apr-14 A	20%	85	03-Oct-14	30-Apr-14	11-Aug-14	-43	138	[Gantt Bar: Red, August 25-31]																			
PP7310	Rebar - Cut, Bend & Fabricate Pile Cage for Viaduct E1 Piles	36	23-Jun-14	0%	36	04-Aug-14	25-Apr-14	10-Jun-14	-47	0	[Gantt Bar: Red, September 01-08]																			
PP7380	Rebar - Cut, Bend & Fabricate Pile Cage for Viaduct D Piles	25	23-Jun-14	0%	25	22-Jul-14	19-May-14	17-Jun-14	-29	2	[Gantt Bar: Red, September 08-15]																			
PP7460	Rebar - Cut, Bend & Fabricate Pile Cage for Viaduct C Piles	35	16-Sep-14	0%	35	28-Oct-14	25-Aug-14	07-Oct-14	-18	14	[Gantt Bar: Red, September 15-22]																			
PP7620	Rebar - Cut, Bend & Fabricate Pile Cage for Viaduct F1 & F3 Piles	61	19-Sep-14	0%	61	01-Dec-14	27-Sep-14	09-Dec-14	7	0	[Gantt Bar: Red, September 22-29]																			
PP7690	Rebar - Cut, Bend & Fabricate Pile Cage for Viaduct F2, F4 & F5 Piles	73	19-Sep-14	0%	73	15-Dec-14	04-Dec-14	06-Mar-15	63	0	[Gantt Bar: Red, September 29-30]																			

<ul style="list-style-type: none"> █ Actual Work █ Planned Bar █ Critical Bar ◆ Milestone 	Project ID: J3518DWPPrD1-M13 Layout: J3518-DWP-3MRP submission - M13 Filter: TASK filters: 3-Month Lookahead, No Level of Effort.	Tuen Mun - Chek Lap Kok Link - Southern Connection 3-Month Rolling Programme (Page 14 of 27 Pages) (Progress as of 21-Jun-14)				Date	Revision	Checked	Approved	DWG. No.: J3518/GCL/PGM/3MRP-M13
		28-Jun-14		FZ						

Activity ID	Activity Name	Orig. Durn.	Act. Start / FC Early Start	Duration % Complete	Rem. Durn.	Act. Finish / FC Early Finish	Late Start	Late Finish	Total Float	Free Float	2014																																						
											June				July				August				September																										
												19	26	02	09	16	23	30	07	14	21	28	04	11	18	25	01	08	15																				
Marine Pile Caps																																																	
PP7040	Rebar - Cut, Bend & Fabricate for Viaduct B Marine Pile Caps	36	14-Jul-14	0%	36	25-Aug-14	12-Jun-14	24-Jul-14	-26	16																																							
PP7110	Rebar - Cut, Bend & Fabricate for Viaduct E5 & E6 Pile Caps	245	25-Aug-14	0%	245	25-Jun-15	19-Mar-14	14-Jan-15	-128	0																																							
PP7180	Rebar - Cut, Bend & Fabricate for Viaduct E7 & E8 Pile Caps	102	25-Aug-14	0%	102	27-Dec-14	28-May-14	26-Sep-14	-74	0																																							
PP7250	Rebar - Cut, Bend & Fabricate for Viaduct E2 Pile Caps	185	07-Aug-14	0%	185	20-Mar-15	30-Apr-14	09-Dec-14	-81	0																																							
PP7320	Rebar - Cut, Bend & Fabricate for Viaduct E1 Pile Caps	67	12-Aug-14	0%	67	01-Nov-14	11-Sep-14	01-Dec-14	25	0																																							
PP7400	Rebar - Cut, Bend & Fabricate for Viaduct D Marine Pile Caps	47	25-Jul-14	0%	47	18-Sep-14	29-Aug-14	25-Oct-14	30	53																																							
Marine Piers - Viaduct E																																																	
PP7270	Rebar - Cut, Bend & Fabricate for Viaduct E2 Piers	180	04-Sep-14	0%	180	16-Apr-15	30-May-14	03-Jan-15	-81	2																																							
Land Pile Caps																																																	
PP7752	Rebar - Cut, Bend & Fabricate for Viaduct B Land Pile Caps	26	14-Jul-14	0%	26	13-Aug-14	02-Aug-14	01-Sep-14	17	0																																							
PP7754	Rebar - Cut, Bend & Fabricate for Viaduct D Land Pile Caps	29	25-Jul-14	0%	29	27-Aug-14	20-Sep-14	25-Oct-14	48	1																																							
Land / Marine Piers - Viaduct A, B, C, D & F																																																	
PP7060	Bending of Rebar for Viaduct B Piers	64	13-Aug-14	0%	64	30-Oct-14	02-Sep-14	18-Nov-14	17	61																																							
PP7420	Bending of Rebar for Viaduct D Piers	71	29-Aug-14	0%	71	22-Nov-14	14-Mar-15	11-Jun-15	160	197																																							
In-Situ Formworks / Falseworks																																																	
PP7070	On-Site Preparation & Assembly of Pier Formwork for Viaduct B Piers	70	02-Sep-14	0%	70	25-Nov-14	30-Aug-14	22-Nov-14	-2	20																																							
PP7140	On-Site Preparation & Assembly of Pier Formwork for Viaduct E5 & E6 Piers	90	02-Sep-14	0%	90	18-Dec-14	15-Sep-14	02-Jan-15	10	136																																							
PP7280	On-Site Preparation & Assembly of Pier Formwork for Viaduct E2 Piers	90	02-Sep-14	0%	90	18-Dec-14	27-Jun-14	14-Oct-14	-56	0																																							
PP7430	On-Site Preparation & Assembly of Pier Formwork for Viaduct D Piers	90	02-Sep-14	0%	90	18-Dec-14	20-Oct-14	05-Feb-15	38	0																																							
PPPF02	Design & Fabrication of Falsework / Formwork & Delivery	120	20-Feb-14 A	50%	60	01-Sep-14	11-Apr-14	26-Jun-14	-56	0																																							
Bearings																																																	
Viaduct B																																																	
PPBRB3	Bearing design and submission - Viaduct B	12	07-Feb-14 A	85%	2	24-Jun-14	07-May-14	08-May-14	-39	0																																							
PPBRB4	Design check by ICE - Viaduct B	24	24-Jun-14	0%	24	23-Jul-14	09-May-14	06-Jun-14	-39	0																																							
PPBRB5	SO review & comment on design submission - Viaduct B	36	23-Jul-14	0%	36	03-Sep-14	07-Jun-14	19-Jul-14	-39	0																																							
PPBRB6	Bearing Design Amendment & re-issue - Viaduct B	12	03-Sep-14	0%	12	18-Sep-14	28-Jul-14	09-Aug-14	-33	6																																							
PPBRB7	Manufacture of Bearing - Viaduct B	54	23-Jul-14	0%	54	25-Sep-14	07-Jun-14	09-Aug-14	-39	0																																							
Viaduct D																																																	
PPBRD1	Preliminary Design of Bearings - Viaduct D	50	16-Aug-14	0%	50	16-Oct-14	10-Jul-14	05-Sep-14	-32	0																																							
Viaduct E																																																	
PPBRE2	Confirmation of bearing assumption - Viaduct E (E1, E2, E5, E6, E7 & E8)	0		0%	0	21-Jun-14		31-Jul-14	33	4																																							
PPBRE3	Bearing design and submission - Viaduct E (E1, E2, E5, E6, E7 & E8)	12	06-Jan-14 A	70%	4	26-Jun-14	28-Jul-14	31-Jul-14	29	0																																							
PPBRE4	Design check by ICE - Viaduct E (E1, E2, E5, E6, E7 & E8)	24	26-Jun-14	0%	24	25-Jul-14	01-Aug-14	28-Aug-14	29	0																																							
PPBRE5	SO review & comment on design submission - Viaduct E (E1, E2, E5, E6, E7 & E8)	36	25-Jul-14	0%	36	05-Sep-14	29-Aug-14	13-Oct-14	29	0																																							
PPBRE6	Bearing Design Amendment & re-issue - Viaduct E (E1, E2, E5, E6, E7 & E8)	12	05-Sep-14	0%	12	20-Sep-14	21-Oct-14	03-Nov-14	35	6																																							
PPBRE7	Manufacture of Bearing - Viaduct E (E1, E2, E5, E6, E7 & E8)	54	25-Jul-14	0%	54	27-Sep-14	29-Aug-14	03-Nov-14	29	0																																							
Movement Joints																																																	
PPMJ01	Design & Submission of MJ	138	08-Feb-14 A	30%	97	15-Dec-14	30-Oct-14	26-Feb-15	57	58																																							
Other Sub-Contract Procurement																																																	
Structural Health Monitoring System (SHMS)																																																	
PP7770	Procure SHMS Sub-Contractor	42	11-Nov-13 A	67%	14	09-Jul-14	19-Feb-14	06-Mar-14	-99	0																																							
PP7772	SHMS - Prepare & Submit Preliminary System Proposal	30	09-Jul-14	0%	30	13-Aug-14	07-Mar-14	11-Apr-14	-99	0																																							
PP7774	SHMS - So approval of Preliminary System Proposal	30	13-Aug-14	0%	30	18-Sep-14	09-May-14	13-Jun-14	-81	18																																							
PP7776	SHMS - Prepare & Submit Final System Proposal	48	13-Aug-14	0%	48	11-Oct-14	12-Apr-14	13-Jun-14	-99	0																																							
PP7780	SHMS - Prepare Civil Work Provision	90	13-Aug-14	0%	90	29-Nov-14	14-May-14	28-Aug-14	-77	0																																							
PP7782	SHMS - Submit Precast Pile Cap Shell SHMS details for E5-E6-E7-E8	0	11-Sep-14	0%	0		25-Jun-14		-66	46																																							
Site Preparation / Mobilisations																																																	

- █ Actual Work
- █ Planned Bar
- █ Critical Bar
- ◆ Milestone

Project ID: J3518DWPPrD1-M13
Layout: J3518-DWP-3MRP submission - M13
Filter: TASK filters: 3-Month Lookahead, No Level of Effort.

Tuen Mun - Chek Lap Kok Link - Southern Connection
3-Month Rolling Programme (Page 15 of 27 Pages)
(Progress as of 21-Jun-14)

Date	Revision	Checked	Approved
28-Jun-14		FZ	

DWG. No.: **J3518/GCL/PGM/3MRP-M13**

Activity ID	Activity Name	Orig. Durn.	Act. Start / FC Early Start	Duration % Complete	Rem. Durn.	Act. Finish / FC Early Finish	Late Start	Late Finish	Total Float	Free Float	2014																					
											June					July					August					September						
											19	26	02	09	16	23	30	07	14	21	28	04	11	18	25	01	08	15				
Bridge A1																																
Pier A8 (A1d)																																
Preliminary Works for Land Piling																																
PA080020	A08 (A1d) - Erect MTR protective fence / Remove existing fence	12	13-Sep-14	0%	12	26-Sep-14	19-Sep-14	04-Oct-14	5	0																						
PA080030	A08 (A1d) - Install Geo. Instru. & Baseline Monitoring	36	13-Sep-14	0%	36	27-Oct-14	19-Sep-14	01-Nov-14	5	0																						
Pier A9 (A1c)																																
Preliminary Works for Land Piling																																
PA090010	A09 (A1c) - Implement TTMS along north side of NLH E/B	2	13-Sep-14	0%	2	15-Sep-14	24-Oct-14	25-Oct-14	31	0																						
PA090020	A09 (A1c) - Erect boundary fence, site clearance & set up site ingress	4	16-Sep-14	0%	4	19-Sep-14	27-Oct-14	30-Oct-14	31	6																						
Pier A10 (A1b)																																
Preliminary Works for Land Piling																																
PA100010	A10 (A1b) - Implement TTMS along north side of NLH E/B	2	13-Sep-14	0%	2	15-Sep-14	05-Nov-14	06-Nov-14	41	0																						
Pier A11 (A1a) & Abutment A																																
Preliminary Works for Land Piling																																
PA110010	A11 (A1a) to Abutment A - Implement TTMS along north side of NLH E/B	2	13-Sep-14	0%	2	15-Sep-14	05-Nov-14	06-Nov-14	41	0																						
PA110020	A11 (A1a) to Approach Ramp A - Erect boundary fence / water filled barrier & set up site ingress	14	16-Sep-14	0%	14	03-Oct-14	07-Nov-14	22-Nov-14	41	0																						
Viaduct B																																
Milestones - Marine Foundation																																
GFXX152-1	B7 (B2f) - Start date for piling	0	17-Jul-14	0%	0		26-May-14		-43	0																						
GFXX157-1	B6 (B3a) - Start date for piling	0	23-Jun-14	0%	0		22-May-14		-26	0																						
GFXX162-1	B5 (B3b) - Start date for piling	0	21-May-14 A	100%	0																											
GFXX165-1	B5 (B3b) - Completion of piling works	0		0%	0	26-Jul-14		01-Sep-14	31	10																						
GFXX170-1	B4 (B3c) - Completion of piling works	0		0%	0	29-Jul-14		01-Sep-14	30	57																						
GFXX175-1	B3 (B3d) - Completion of piling works	0		0%	0	11-Sep-14		15-Aug-14	-22	8																						
GFXX180-1	B2 (B3e) - Completion of piling works	0		0%	0	26-Jun-14		05-Jun-14	-18	12																						
GFXX185-1	B1 (B3f) - Completion of piling works	0		0%	0	26-Jun-14		17-Jun-14	-8	12																						
Milestones - Land Foundation																																
ZB00100	B14 (B1f) - Start date for piling	0	23-Jun-14	0%	0		29-Jul-14		30	0																						
ZB00101	B14 (B1f) - Completion of piling works	0		0%	0	22-Aug-14		27-Sep-14	30	0																						
ZB00110	B13 (B1g) - Start date for piling	0	23-Jun-14	0%	0		13-Sep-14		69	0																						
ZB00111	B13 (B1g) - Completion of piling works	0		0%	0	22-Aug-14		14-Nov-14	69	0																						
ZB00121	B12 (B2a) - Completion of piling works	0		0%	0	11-Jul-14		22-Aug-14	36	0																						
ZB00131	B11 (B2b) - Completion of piling works	0		0%	0	14-Jul-14		03-Nov-14	94	0																						
ZB00150	B9 (B2d) - Start date for piling	0	03-Jul-14	0%	0		23-Jul-14		17	0																						
ZB00160	B8 (B2e) - Start date for piling	0	30-Jun-14	0%	0		15-May-14		-38	1																						
ZB00161	B8 (B2e) - Completion of piling works	0		0%	0	08-Sep-14		25-Jul-14	-38	1																						
ZB15011	B15 (B1e) - Completion of piling works	0		0%	0	21-Jun-14		18-Nov-14	124	1																						
ZB16011	B16 (B1d) - Completion of piling works	0		0%	0	21-Jun-14		27-Nov-14	131	7																						
Bridge B3																																
Pier B1 (B3f)																																
Foundation Works																																
GFXX185	B1 (B3f) - Dismantle removable panels of temp. platform	4	23-Jun-14	0%	4	26-Jun-14	27-May-14	30-May-14	-22	0																						
Pile Cap Works																																
SB3F0070	B1 (B3f) - Marine Pile Cap M2 - Inst.Floating Seal & Casing Head Steelwork	7	28-Jun-14	0%	7	11-Jul-14	31-May-14	17-Jun-14	-11	16																						
SB3F0080	B1 (B3f) - Marine Pile Cap M2 - Install precast shell in position	1	07-Aug-14	0%	1	07-Aug-14	19-Jun-14	19-Jun-14	-27	0																						
SB3F0090	B1 (B3f) - Marine Pile Cap M2 - Inst.Access & make Watertight	3	08-Aug-14	0%	3	12-Aug-14	21-Jun-14	26-Jun-14	-27	0																						
SB3F0100	B1 (B3f) - Marine Pile Cap M2 - Weld Fin plates/Plug Rebar & Concrete	9	14-Aug-14	0%	9	26-Aug-14	28-Jun-14	15-Jul-14	-27	0																						
SB3F0110	B1 (B3f) - Marine Pile Cap M2 - Dewater precast shell / Remove Lifting Frame	2	28-Aug-14	0%	2	29-Aug-14	17-Jul-14	18-Jul-14	-27	0																						

<ul style="list-style-type: none"> ■ Actual Work ■ Planned Bar ■ Critical Bar ◆ Milestone 	Project ID: J3518DWPrD1-M13 Layout: J3518-DWP-3MRP submission - M13 Filter: TASK filters: 3-Month Lookahead, No Level of Effort.	Tuen Mun - Chek Lap Kok Link - Southern Connection 3-Month Rolling Programme (Page 17 of 27 Pages) (Progress as of 21-Jun-14)	Date 28-Jun-14	Revision	Checked FZ	Approved	DWG. No.: J3518/GCL/PGM/3MRP-M13
---	--	--	-------------------	----------	---------------	----------	---

Activity ID	Activity Name	Orig. Durn.	Act. Start / FC Early Start	Duration % Complete	Rem. Durn.	Act. Finish / FC Early Finish	Late Start	Late Finish	Total Float	Free Float	2014															
											June				July				August				September			
											19	26	02	09	16	23	30	07	14	21	28	04	11	18	25	01
SB3F0120	B1 (B3f) - Marine Pile Cap M2 - Pile cut down	12	30-Aug-14	0%	12	16-Sep-14	19-Jul-14	05-Aug-14	-27	0																
SB3F0130	B1 (B3f) - Marine Pile Cap M2 - Rebar fixing, inst.inserts etc	12	18-Sep-14	0%	12	04-Oct-14	07-Aug-14	25-Aug-14	-27	0																
Pier B2 (B3e)																										
Foundation Works																										
GFXX179	B2 (B3e) - Sonic & Interface Coring	12	19-May-14 A	100%	0	21-May-14 A																				
GFXX180	B2 (B3e) - Dismantle removable panels of temp. platform	4	23-Jun-14	0%	4	26-Jun-14	21-May-14	24-May-14	-27	0																
Pile Cap Works																										
SB3E0070	B2 (B3e) - Marine Pile Cap M1 - Inst.Floating Seal & Casing Head Steelwork	7	28-Jun-14	0%	7	11-Jul-14	26-May-14	05-Jun-14	-15	16																
SB3E0080	B2 (B3e) - Marine Pile Cap M1 - Install precast shell in position	1	07-Aug-14	0%	1	07-Aug-14	10-Jun-14	10-Jun-14	-31	0																
SB3E0090	B2 (B3e) - Marine Pile Cap M1 - Inst.Access & make Watertight	3	08-Aug-14	0%	3	12-Aug-14	12-Jun-14	17-Jun-14	-31	0																
SB3E0100	B2 (B3e) - Marine Pile Cap M1 - Weld Fin plates/Plug Rebar & Concrete	9	14-Aug-14	0%	9	26-Aug-14	19-Jun-14	08-Jul-14	-31	0																
SB3E0120	B2 (B3e) - Marine Pile Cap M1 - Dewater precast shell / Remove Lifting Frame	2	28-Aug-14	0%	2	29-Aug-14	10-Jul-14	11-Jul-14	-31	0																
SB3E0130	B2 (B3e) - Marine Pile Cap M1 - Pile cut down	8	30-Aug-14	0%	8	11-Sep-14	12-Jul-14	24-Jul-14	-31	1																
SB3E0140	B2 (B3e) - Marine Pile Cap M1 - Rebar fixing, inst.inserts etc	12	13-Sep-14	0%	12	29-Sep-14	25-Jul-14	12-Aug-14	-32	0																
Pier B3 (B3d)																										
Foundation Works																										
GFXX172-2	B3 (B3d) - Confirm Rockhead Levels	8	16-Apr-14 A	100%	0	23-May-14 A																				
GFXX173	B3 (B3d) - Bored Piles (2.20m dia. x 2 nos)	56	10-Apr-14 A	72%	16	11-Jul-14	12-Apr-14	05-May-14	-55	0																
GFXX174	B3 (B3d) - Sonic & Interface Coring	12	11-Jul-14	0%	12	25-Jul-14	18-Jun-14	02-Jul-14	-20	12																
GFXX174-1	B3 (B3d) - Selection of bored pile for Full Depth Coring	24	11-Jul-14	0%	24	08-Aug-14	04-Jun-14	02-Jul-14	-32	0																
GFXX174-2	B3 (B3d) - Bored Pile Full Depth Coring & Testing	24	08-Aug-14	0%	24	05-Sep-14	03-Jul-14	30-Jul-14	-32	0																
GFXX175	B3 (B3d) - Dismantle removable panels of temp. platform	4	05-Sep-14	0%	4	11-Sep-14	31-Jul-14	04-Aug-14	-32	0																
Pile Cap Works																										
SB3D0070	B3 (B3d) - Marine Pile Cap M1 - Inst.Floating Seal & Casing Head Steelwork	7	11-Sep-14	0%	7	20-Sep-14	05-Aug-14	15-Aug-14	-24	0																
SB3D0080	B3 (B3d) - Marine Pile Cap M1 - Install precast shell in position	1	20-Sep-14	0%	1	22-Sep-14	16-Aug-14	16-Aug-14	-24	0																
Pier B4 (B3c)																										
Foundation Works																										
GFXX167-2	B4 (B3c) - Confirm Rockhead Levels	8	29-Apr-14 A	90%	1	23-Jun-14	30-May-14	30-May-14	-19	14																
GFXX168	B4 (B3c) - Bored Piles (2.20m dia. x 2 nos)	72	13-May-14 A	80%	14	10-Jul-14	14-May-14	30-May-14	-32	0																
GFXX169	B4 (B3c) - Sonic & Interface Coring	12	10-Jul-14	0%	12	24-Jul-14	05-Aug-14	18-Aug-14	22	0																
GFXX170	B4 (B3c) - Dismantle removable panels of temp. platform	4	24-Jul-14	0%	4	29-Jul-14	19-Aug-14	22-Aug-14	22	0																
Pier B5 (B3b)																										
Foundation Works																										
GFXX162-2	B5 (B3b) - Confirm Rockhead Levels	8	10-May-14 A	100%	0	17-Jun-14 A																				
GFXX163	B5 (B3b) - Bored Piles (2.20m dia. x 2 nos)	72	21-May-14 A	83%	12	08-Jul-14	26-May-14	10-Jun-14	-22	0																
GFXX164	B5 (B3b) - Sonic & Interface Coring	12	08-Jul-14	0%	12	22-Jul-14	04-Aug-14	18-Aug-14	23	0																
GFXX165	B5 (B3b) - Dismantle removable panels of temp. platform	4	22-Jul-14	0%	4	26-Jul-14	18-Aug-14	22-Aug-14	23	0																
Pile Cap Works																										
SB3B0070	B5 (B3b) - Marine Pile Cap M1 - Inst.Floating Seal & Casing Head Steelwork	7	26-Jul-14	0%	7	07-Aug-14	22-Aug-14	01-Sep-14	16	0																
SB3B0080	B5 (B3b) - Marine Pile Cap M1 - Install precast shell in position	1	07-Aug-14	0%	1	08-Aug-14	01-Sep-14	02-Sep-14	16	0																
SB3B0090	B5 (B3b) - Marine Pile Cap M1 - Inst.Access & make Watertight	3	08-Aug-14	0%	3	14-Aug-14	02-Sep-14	08-Sep-14	17	0																
SB3B0100	B5 (B3b) - Marine Pile Cap M1 - Weld Fin plates/Plug Rebar & Concrete	9	14-Aug-14	0%	9	28-Aug-14	08-Sep-14	22-Sep-14	17	0																
SB3B0120	B5 (B3b) - Marine Pile Cap M1 - Dewater precast shell / Remove Lifting Frame	2	28-Aug-14	0%	2	30-Aug-14	22-Sep-14	25-Sep-14	17	0																
SB3B0130	B5 (B3b) - Marine Pile Cap M1 - Pile cut down	8	30-Aug-14	0%	8	12-Sep-14	25-Sep-14	07-Oct-14	17	1																
SB3B0140	B5 (B3b) - Marine Pile Cap M1 - Rebar fixing, inst.inserts etc	12	13-Sep-14	0%	12	29-Sep-14	07-Oct-14	23-Oct-14	16	0																
Pier B6 (B3a)																										
Foundation Works																										
GFXX156	B6 (B3a) - Inst.Temp.Working Platform	6	30-Apr-14 A	100%	0	10-Jun-14 A																				

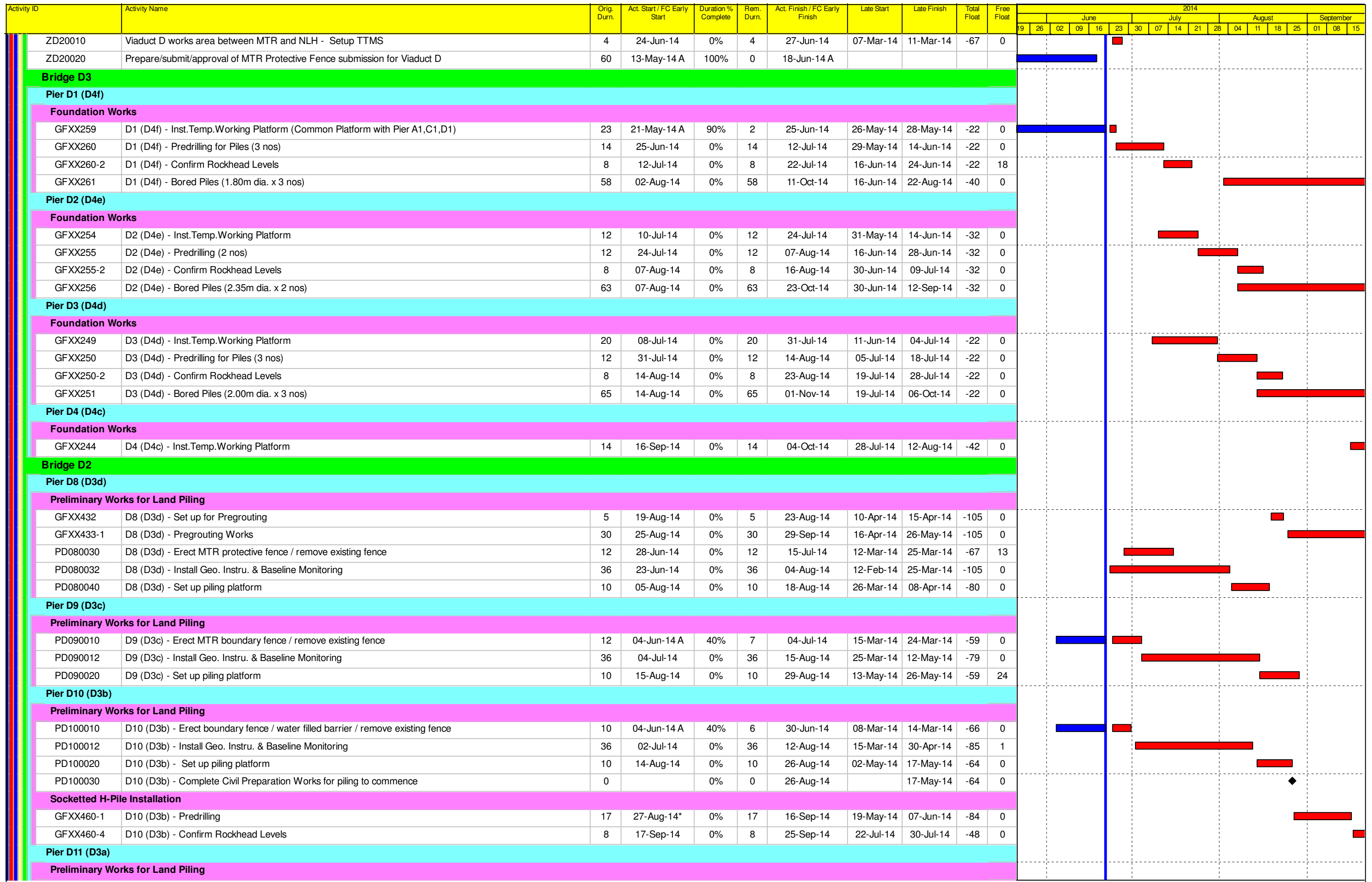
Activity ID	Activity Name	Orig. Durn.	Act. Start / FC Early Start	Duration % Complete	Rem. Durn.	Act. Finish / FC Early Finish	Late Start	Late Finish	Total Float	Free Float	2014															
											June				July				August				September			
											19	26	02	09	16	23	30	07	14	21	28	04	11	18	25	01
GFXX157	B6 (B3a) - Predrilling for Piles (3 nos)	12	11-Jun-14 A	67%	4	26-Jun-14	07-May-14	10-May-14	-39	3																
GFXX157-2	B6 (B3a) - Confirm Rockhead Levels	8	21-Jun-14 A	12.5%	7	30-Jun-14	02-May-14	10-May-14	-42	0																
GFXX158	B6 (B3a) - Bored Piles (1.80m dia. x 3 nos)	72	21-Jun-14 A	1%	71	16-Sep-14	30-Apr-14	26-Jul-14	-42	0																
GFXX159	B6 (B3a) - Sonic & Interface Coring	12	17-Sep-14	0%	12	30-Sep-14	16-Aug-14	29-Aug-14	-26	0																
Bridge B2																										
Pier B7 (B2f)																										
Foundation Works																										
GFXX151	B7 (B2f) - Inst.Temp.Working Platform	6	29-May-14 A	100%	0	20-Jun-14 A																				
GFXX152	B7 (B2f) - Predrilling (2 nos)	12	23-Jun-14	0%	12	07-Jul-14	08-Apr-14	24-Apr-14	-59	0																
GFXX152-2	B7 (B2f) - Confirm Rockhead Levels	8	08-Jul-14	0%	8	16-Jul-14	25-Apr-14	05-May-14	-59	0																
GFXX153	B7 (B2f) - Bored Piles (2.20m dia. x 2 nos)	66	17-Jul-14	0%	66	04-Oct-14	07-May-14	24-Jul-14	-59	0																
Pier B8 (B2e)																										
Preliminary Works for Land Piling																										
GFXX310-2	B8 (B2e) - Pre-grouting Works	12	28-May-14 A	100%	0	21-Jun-14 A																				
PB080030	B8 (B2e) - Install Geo. Instru. & Baseline Monitoring	36	23-Jun-14	0%	36	04-Aug-14	27-Mar-14	14-May-14	-68	0																
PB080040	B8 (B2e) - Set up piling platform	10	05-May-14 A	100%	0	18-Jun-14 A																				
PB080050	B8 (B2e) - Complete Civil Preparation Works for Piling	0		100%	0	21-Jun-14 A																				
Socketted H-Pile Installation																										
GFXX352-1	B8 (B2e) - Confirm Rockhead Levels	8	08-Mar-14 A	100%	0	17-Jun-14 A																				
GFXX353	B8 (B2e) - Install SH Pile (14 nr)	60	30-Jun-14	0%	60	08-Sep-14	03-Apr-14	19-Jun-14	-68	0																
Pile Cap Works																										
SB2E0088	B8 (B2e) - Pile cap - Pipe Pile Wall for ELS	24	11-Sep-14	0%	24	11-Oct-14	26-Jul-14	30-Aug-14	-30	0																
Pier B9 (B2d)																										
Preliminary Works for Land Piling																										
PB090050	B9 (B2d) - Set up concrete blocks / piling platform	36	22-Mar-14 A	91.67%	3	26-Jun-14	15-Aug-14	18-Aug-14	36	0																
PB090070	B9 (B2d) - Install Geo. Instru. & Baseline Monitoring	36	27-Jun-14	0%	36	08-Aug-14	19-Aug-14	30-Sep-14	44	0																
PB090120	B9 (B2d) - Erect platform for pregrouting	6	24-Jun-14	0%	6	30-Jun-14	24-Sep-14	30-Sep-14	65	26																
PB090150	B9 (B2d) - Pre-grouting Works B9	12	09-Aug-14	0%	12	22-Aug-14	03-Oct-14	16-Oct-14	44	0																
PB090190	B9 (B2d) - Complete civil preparation works	0		0%	0	22-Aug-14		16-Oct-14	39	24																
Socketted H-Pile Installation																										
GFXX347	B9 (B2d) - Predrilling	16	31-May-14 A	100%	0	06-Jun-14 A																				
GFXX347-1	B9 (B2d) - Confirm Rockhead Levels	8	07-Jun-14 A	0%	8	02-Jul-14	17-May-14	26-May-14	-30	0																
GFXX348	B9 (B2d) - Install SH Pile (14 nr)	71	03-Jul-14	0%	71	24-Sep-14	27-May-14	19-Aug-14	-30	0																
Pier B10 (B2c)																										
Preliminary Works for Land Piling																										
PB100020	B10 (B2c) - Trial trench	14	24-Jun-14	0%	14	12-Jul-14	19-Feb-14	06-Mar-14	-81	24																
PB100022	B10 (B2c) - Install Geo. Instru. & Baseline Monitoring	36	04-Apr-14 A	100%	0	22-May-14 A																				
PB100040	B10 (B2c) - TTM Review/Approval new Emergency Access Gates G8 & G9	36	24-Jun-14	0%	36	14-Aug-14	18-Jan-14	04-Mar-14	-105	0																
PB100050	B10 (B2c) - Implement TTM for constructing new Emergency Access Gates G8 & G9	2	15-Aug-14	0%	2	16-Aug-14	05-Mar-14	06-Mar-14	-105	0																
PB100060	B10 (B2c) - Construct fencing / roadside beam barriers between new Gates G8 & G9	20	18-Aug-14	0%	20	15-Sep-14	07-Mar-14	29-Mar-14	-105	0																
PB100070	B10 (B2c) - Construct new Gate G8	20	16-Sep-14	0%	20	11-Oct-14	31-Mar-14	03-May-14	-105	0																
PB100080	B10 (B2c) - Construct new Gate G9	20	16-Sep-14	0%	20	11-Oct-14	31-Mar-14	03-May-14	-105	0																
Pier B11 (B2b)																										
Socketted H-Pile Installation																										
GFXX334-1	B11 (B2b) - Install SH Pile (12 nr)	52	22-Apr-14 A	67%	17	14-Jul-14	14-Oct-14	03-Nov-14	94	0																
Pile Cap Works																										
SB2B0090	B11 (B2b) - Utility diversion & Cut Slope	36	14-Jul-14	0%	36	04-Sep-14	04-Nov-14	15-Dec-14	82	0																
SB2B0091	B11 (B2b) - Pile cap Excavation / ELS	24	04-Sep-14	0%	24	07-Oct-14	16-Dec-14	15-Jan-15	82	0																

	Project ID: J3518DWPPrD1-M13 Layout: J3518-DWP-3MRP submission - M13 Filter: TASK filters: 3-Month Lookahead, No Level of Effort.	Tuen Mun - Chek Lap Kok Link - Southern Connection 3-Month Rolling Programme (Page 19 of 27 Pages) (Progress as of 21-Jun-14)	Date: 28-Jun-14 Revision: Checked: FZ Approved:	DWG. No.: J3518/GCL/PGM/3MRP-M13
--	---	--	--	---

Activity ID	Activity Name	Orig. Durn.	Act. Start / FC Early Start	Duration % Complete	Rem. Durn.	Act. Finish / FC Early Finish	Late Start	Late Finish	Total Float	Free Float	2014																			
											June					July					August					September				
											19	26	02	09	16	23	30	07	14	21	28	04	11	18	25	01	08	15		
Pier B12 (B2a)																														
Socketted H-Pile Installation																														
GFXX334-2	B12 (B2a) - Install SH Pile (10 nr)	52	08-May-14 A	70%	16	11-Jul-14	05-Aug-14	22-Aug-14	36	0																				
GFXX354-5	B12 (B2a) - Selection of pile for loading test	24	11-Jul-14	0%	24	08-Aug-14	23-Aug-14	20-Sep-14	36	0																				
GFXX354-7	B12 (B2a) - Loading Test for pre-bored H-pile	36	08-Aug-14	0%	36	20-Sep-14	22-Sep-14	04-Nov-14	36	0																				
Pile Cap Works																														
SB2A0090	B12 (B2a) - Utility diversion & Cut Slope	36	20-Sep-14	0%	36	06-Nov-14	05-Nov-14	16-Dec-14	34	0																				
Bridge B1																														
Pier B13 (B1g)																														
Socketted H-Pile Installation																														
GFXX334-3	B13 (B1g) - Install SH Pile (13 nr)	52	23-Jun-14	0%	52	22-Aug-14	13-Sep-14	14-Nov-14	69	0																				
Pile Cap Works																														
SB1G0090	B13 (B1g) - Utility diversion & Cut slope	36	23-Aug-14	0%	36	11-Oct-14	15-Nov-14	29-Dec-14	64	0																				
Pier B14 (B1f)																														
Socketted H-Pile Installation																														
GFXX334-4	B14 (B1f) - Install SH Pile (13 nr)	52	23-Jun-14	0%	52	22-Aug-14	29-Jul-14	27-Sep-14	30	0																				
Pile Cap Works																														
SB1F0090	B14 (B1f) - Utility diversion & Cut slope	36	23-Aug-14	0%	36	11-Oct-14	29-Sep-14	13-Nov-14	27	0																				
Pier B15 (B1e)																														
Pile Cap Works																														
SB1E0094	B15 (B1e) - Utility diversion & cut slope	36	24-Jun-14	0%	36	14-Aug-14	19-Nov-14	02-Jan-15	109	0																				
SB1E0095	B15 (B1e) - Pile cap Excavation / ELS (incl. sheet piling)	24	15-Aug-14	0%	24	17-Sep-14	03-Jan-15	30-Jan-15	109	0																				
SB1E0096	B15 (B1e) - Pile Breakdown to cut-off etc.	4	18-Sep-14	0%	4	22-Sep-14	31-Jan-15	04-Feb-15	109	0																				
Pier B16 (B1d)																														
Socketted H-Pile Installation																														
GFXX317-4	B16 (B1d) - Confirm Rockhead Levels	8	15-Feb-14 A	100%	0	14-Jun-14 A																								
GFXX318-2	B16 (B1d) - Install SH Pile (10 nr)	35	20-May-14 A	100%	0	14-Jun-14 A																								
GFXX326-2	B16 (B1d) - Selection of pile for loading test	24	02-Jul-14	0%	24	29-Jul-14	27-Nov-14	27-Dec-14	124	0																				
GFXX326-4	B16 (B1d) - Loading Test for pre-bored H-pile	36	30-Jul-14	0%	36	10-Sep-14	27-Dec-14	09-Feb-15	124	0																				
Pile Cap Works																														
SB1D0090	B16 (B1d) - Pile cap Excavation / ELS (incl. sheet piling)	24	11-Sep-14	0%	24	11-Oct-14	09-Feb-15	12-Mar-15	122	0																				
Pier B18 (B1b) & Abutment B																														
Preliminary Works for Land Piling																														
PB180030	B18 (B1b) - Install Geo. Instru. & Baseline Monitoring	36	23-Jun-14	0%	36	04-Aug-14	03-Nov-15	14-Dec-15	406	569																				
Viaduct C																														
Milestones - Marine Foundation																														
GFXX192	Viaduct C - ARUP issues Pile Spacing & Diameter for Temporary Platform Design	0		0%	0	21-Jun-14		31-Oct-14	109	109																				
General - Preliminary Works for Land Piling																														
ZC80040	Prepare/submit/approval of MTR Protective Fence submission for Viaduct C	60	13-May-14 A	100%	0	18-Jun-14 A																								
ZC80050	Implement TTMS for C9 to C20 for land piling preliminary works	12	21-Jul-14	0%	12	07-Aug-14	05-Sep-14	20-Sep-14	32	0																				
Bridge C4																														
Pier C1 (C4e)																														
Foundation Works																														
GFXX218	C1 (C4e) - Inst.Temp.Working Platform (Common Platform with Pier A1,C1,D1)	23	21-May-14 A	90%	2	25-Jun-14	10-Sep-14	12-Sep-14	67	0																				
GFXX219	C1 (C4e) - Predrilling (3 nos)	14	25-Jun-14	0%	14	12-Jul-14	13-Sep-14	29-Sep-14	67	0																				
GFXX219-2	C1 (C4e) - Confirm Rockhead Levels	8	12-Jul-14	0%	8	22-Jul-14	02-Jan-15	10-Jan-15	143	190																				
Bridge C3																														
Pier C7 (C3e)																														

	Project ID: J3518DWPrD1-M13 Layout: J3518-DWP-3MRP submission - M13 Filter: TASK filters: 3-Month Lookahead, No Level of Effort.	Tuen Mun - Chek Lap Kok Link - Southern Connection 3-Month Rolling Programme (Page 20 of 27 Pages) (Progress as of 21-Jun-14)				Date	Revision	Checked	Approved	DWG. No.: J3518/GCL/PGM/3MRP-M13
		28-Jun-14		FZ						

Activity ID	Activity Name	Orig. Durn.	Act. Start / FC Early Start	Duration % Complete	Rem. Durn.	Act. Finish / FC Early Finish	Late Start	Late Finish	Total Float	Free Float	2014																																							
											June				July				August				September																											
											19	26	02	09	16	23	30	07	14	21	28	04	11	18	25	01	08	15																						
Preliminary Works for Land Piling																																																		
PC070020	C7 (C3e) - CEDD Access Track Temp. Re-alignment	24	28-Jul-14	0%	24	01-Sep-14	30-Jun-14	02-Aug-14	-19	0																																								
PC070030	C7 (C3e) - Erect MTR protective fence / Remove existing fence	12	01-Sep-14	0%	12	18-Sep-14	05-Aug-14	21-Aug-14	-19	0																																								
PC070040	C7 (C3e) - Install Geo. Instru. & Baseline Monitoring	36	18-Sep-14	0%	36	01-Nov-14	22-Aug-14	06-Oct-14	-22	0																																								
Pier C8 (C3d)																																																		
Preliminary Works for Land Piling																																																		
GFXX361-3	C8 (C3d) - Pre-grouting Works	30	06-Sep-14	0%	30	15-Oct-14	04-Dec-14	10-Jan-15	73	1																																								
PC080010	C8 (C3d) - Implement TTMS	2	30-May-14 A	100%	0	31-May-14 A																																												
PC080020	C8 (C3d) - Set up site ingress	4	04-Jul-14	0%	4	10-Jul-14	11-Oct-14	16-Oct-14	70	0																																								
PC080030	C8 (C3d) - General site clearance	5	10-Jul-14	0%	5	17-Jul-14	17-Oct-14	22-Oct-14	70	0																																								
PC080040	C8 (C3d) - Erect boundary fence / water filled barrier	12	04-Jun-14 A	40%	7	04-Jul-14	29-Sep-14	10-Oct-14	70	0																																								
PC080050	C8 (C3d) - Install Geo. Instru. & Baseline Monitoring	36	23-Jun-14	0%	36	04-Aug-14	23-Oct-14	03-Dec-14	101	28																																								
PC080060	C8 (C3d) - Set up piling platform	36	17-Jul-14	0%	36	06-Sep-14	23-Oct-14	03-Dec-14	70	0																																								
Pier C9 (C3c)																																																		
Preliminary Works for Land Piling																																																		
PC090010	C9 (C3c) - Install Geo. Instru. & Baseline Monitoring	36	08-Aug-14	0%	36	19-Sep-14	22-Sep-14	04-Nov-14	37	0																																								
Pier C10 (C3b)																																																		
Preliminary Works for Land Piling																																																		
PC100010	C10 (C3c) - Install Geo. Instru. & Baseline Monitoring	36	08-Aug-14	0%	36	19-Sep-14	31-Oct-14	11-Dec-14	69	0																																								
Pier C11 (C3a)																																																		
Preliminary Works for Land Piling																																																		
PC110010	C11 (C3a) - Install Geo. Instru. & Baseline Monitoring	36	12-Aug-14	0%	36	23-Sep-14	26-Nov-14	09-Jan-15	88	0																																								
Bridge C2																																																		
Pier C12 (C2f)																																																		
Preliminary Works for Land Piling																																																		
PC120010	C12 (C2f) - Install Geo. Instru. & Baseline Monitoring	36	19-Aug-14	0%	36	30-Sep-14	17-Jan-15	03-Mar-15	124	0																																								
Pier C16 (C2b)																																																		
Preliminary Works for Land Piling																																																		
PC160010	C16 (C2b) - Install Geo. Instru. & Baseline Monitoring	36	08-Aug-14	0%	36	19-Sep-14	09-Oct-14	19-Nov-14	50	0																																								
Bridge C1																																																		
Pier C17 (C2a)																																																		
Preliminary Works for Land Piling																																																		
PC170010	C17 (C2a) - Install Geo. Instru. & Baseline Monitoring	36	15-Aug-14	0%	36	26-Sep-14	16-Oct-14	26-Nov-14	50	0																																								
Pier C18 (C3d) Portal																																																		
Preliminary Works for Land Piling																																																		
PC180010	C18 (C1e) - Install Geo. Instru. & Baseline Monitoring	36	22-Aug-14	0%	36	06-Oct-14	23-Oct-14	03-Dec-14	50	0																																								
Viaduct D																																																		
Milestones - Marine Foundation																																																		
GFXX228	Viaduct D - ARUP issues Pile Spacing & Diameter for Temporary Platform Design	0		0%	0	21-Jun-14		30-May-14	-18	12																																								
GFXX250-1	Pier D3 (D4d) - Start date for piling	0	14-Aug-14	0%	0		19-Jul-14		-22	0																																								
GFXX255-1	Pier D2 (D4e) - Start date for piling	0	07-Aug-14	0%	0		20-May-15		231	0																																								
GFXX260-1	Pier D1 (D4f) - Start date for piling	0	02-Aug-14	0%	0		24-Oct-14		68	0																																								
ZD00010	Viaduct D - Approval of Foundation DDA	0		0%	0	01-Aug-14		06-Nov-14	69	21																																								
Milestones - Land Foundation																																																		
GFXX438-4	D18 (D1c) - Start date for piling	0	02-Sep-14	0%	0		07-Nov-14		54	0																																								
GFXX438-5	D19 (D1b) - Start date for piling	0	12-Sep-14	0%	0		18-Nov-14		55	26																																								
GFXX446A1	D14 (D2c) - Start date for piling	0	05-Aug-14	0%	0		17-Jul-14		-16	0																																								
General - Preliminary Works for Land Piling																																																		



Activity ID	Activity Name	Orig. Durn.	Act. Start / FC Early Start	Duration % Complete	Rem. Durn.	Act. Finish / FC Early Finish	Late Start	Late Finish	Total Float	Free Float	2014															
											June				July				August				September			
											19	26	02	09	16	23	30	07	14	21	28	04	11	18	25	01
PD110010	D11 (D3a) - Erect boundary fence / water filled barrier / remove existing fence	10	04-Jun-14 A	40%	6	30-Jun-14	08-Mar-14	14-Mar-14	-66	0																
PD110012	D11 (D3a) - Install Geo. Instru. & Baseline Monitoring	36	02-Jul-14	0%	36	12-Aug-14	15-Mar-14	30-Apr-14	-85	1																
PD110020	D11 (D3a) - Set up piling platform	10	14-Aug-14	0%	10	26-Aug-14	02-May-14	17-May-14	-64	0																
PD110030	D11(D3a) - Complete Civil Preparation Works for piling to commence	0		0%	0	26-Aug-14		17-May-14	-64	0																
Socketted H-Pile Installation																										
GFXX460-2	D11 (D3a) - Predrilling	17	27-Aug-14	0%	17	16-Sep-14	19-May-14	07-Jun-14	-84	0																
GFXX460-5	D11 (D3a) - Confirm Rockhead Levels	8	17-Sep-14	0%	8	25-Sep-14	09-Jun-14	17-Jun-14	-84	0																
Pier D12 (D2e)																										
Preliminary Works for Land Piling																										
PD120010	D12 (D2e) - Erect boundary fence / water filled barrier / remove existing fence	10	04-Jun-14 A	40%	6	30-Jun-14	05-Jun-14	17-Jun-14	-8	0																
PD120012	D12 (D2e) - Install Geo. Instru. & Baseline Monitoring	36	02-Jul-14	0%	36	12-Aug-14	19-Jun-14	31-Jul-14	-10	1																
PD120020	D12 (D2e) - Set up piling platform	10	14-Aug-14	0%	10	26-Aug-14	01-Aug-14	15-Aug-14	-8	0																
PD120030	D12 (D2e) - Complete Civil Preparation Works for piling to commence	0		0%	0	26-Aug-14		15-Aug-14	-8	0																
Socketted H-Pile Installation																										
GFXX460-3	D12 (D2e) - Predrilling	17	27-Aug-14	0%	17	16-Sep-14	16-Aug-14	04-Sep-14	-9	0																
GFXX460-6	D12 (D2e) - Confirm Rockhead Levels	8	17-Sep-14	0%	8	25-Sep-14	05-Sep-14	15-Sep-14	-9	0																
Pier D13 (D2d)																										
Preliminary Works for Land Piling																										
PD130010	D13 (D2d) - Erect boundary fence / water filled barrier	10	28-Aug-14	0%	10	11-Sep-14	05-Nov-14	15-Nov-14	52	0																
PD130012	D13 (D2d) - Install Geo. Instru. & Baseline Monitoring	36	12-Sep-14	0%	36	25-Oct-14	17-Nov-14	30-Dec-14	54	0																
Bridge D1																										
Pier D14 (D2c)																										
Preliminary Works for Land Piling																										
PD140012	D14 (D2c) - Install Geo. Instru. & Baseline Monitoring	36	23-Jun-14	0%	36	04-Aug-14	04-Jun-14	16-Jul-14	-16	0																
Socketted H-Pile Installation																										
GFXX445-1A	D14 (D2c) - Predrilling	18	11-Jun-14 A	100%	0	16-Jun-14 A																				
GFXX445-1A1	D14 (D2c) - Confirm Rockhead Levels	8	17-Jun-14 A	0%	8	02-Jul-14	08-Jul-14	16-Jul-14	12	28																
GFXX446-1A	D14 (D2c) - Installation of SH Pile (10 nr)	121	05-Aug-14	0%	121	29-Dec-14	17-Jul-14	08-Dec-14	-16	0																
Pier D15 (D2b)																										
Preliminary Works for Land Piling																										
PD150010	D15 (D2b) - Erect boundary fence / water filled barrier / remove existing fence	12	24-Apr-14 A	100%	0	29-May-14 A																				
PD150012	D15 (D2b) - Install Geo. Instru. & Baseline Monitoring	36	23-Jun-14	0%	36	04-Aug-14	21-Feb-14	03-Apr-14	-97	0																
PD150020	D15 (D2b) - Set up piling platform	20	05-Aug-14	0%	20	01-Sep-14	04-Apr-14	10-May-14	-73	0																
PD150030	D15 (D2b) - Complete Civil Preparation Works for piling to commence	0		0%	0	01-Sep-14		12-Jun-14	-53	0																
Socketted H-Pile Installation																										
GFXX445-2	D15 (D2b) - Predrilling	18	02-Sep-14	0%	18	23-Sep-14	13-Jun-14	04-Jul-14	-68	0																
Pier D16 (D2a)																										
Preliminary Works for Land Piling																										
PD160010	D16 (D2a) - Erect boundary fence / water filled barrier / remove existing fence	12	24-Apr-14 A	100%	0	29-May-14 A																				
PD160012	D16 (D2a) - Install Geo. Instru. & Baseline Monitoring	36	23-Jun-14	0%	36	04-Aug-14	24-Mar-14	10-May-14	-71	24																
PD160020	D16 (D2a) - Set up piling platform	20	02-Sep-14	0%	20	27-Sep-14	12-May-14	12-Jun-14	-73	0																
Pier D17 (D1d)																										
Preliminary Works for Land Piling																										
PD170010	D17 (D1d) - Erect boundary fence / water filled barrier / remove existing fence	12	24-Apr-14 A	100%	0	29-May-14 A																				
PD170012	D17 (D1d) - Install Geo. Instru. & Baseline Monitoring	36	23-Jun-14	0%	36	04-Aug-14	18-Sep-14	31-Oct-14	73	0																
PD170020	D17 (D1d) - Set up piling platform	20	05-Aug-14	0%	20	01-Sep-14	01-Nov-14	24-Nov-14	65	0																
PD170030	D17 (D1d) - Complete Civil Preparation Works for piling to commence	0		0%	0	01-Sep-14		24-Nov-14	65	43																
Pier D18 (D1c)																										

	Project ID: J3518DWPPrD1-M13 Layout: J3518-DWP-3MRP submission - M13 Filter: TASK filters: 3-Month Lookahead, No Level of Effort.	Tuen Mun - Chek Lap Kok Link - Southern Connection 3-Month Rolling Programme (Page 23 of 27 Pages) (Progress as of 21-Jun-14)				Date	Revision	Checked	Approved	DWG. No.: J3518/GCL/PGM/3MRP-M13
		28-Jun-14		FZ						

Activity ID	Activity Name	Orig. Durn.	Act. Start / FC Early Start	Duration % Complete	Rem. Durn.	Act. Finish / FC Early Finish	Late Start	Late Finish	Total Float	Free Float	2014																							
											June					July					August					September								
											19	26	02	09	16	23	30	07	14	21	28	04	11	18	25	01	08	15						
Preliminary Works for Land Piling																																		
PD180010	D18 (D1c) - Erect boundary fence / water filled barrier / remove existing fence	12	24-Apr-14 A	100%	0	29-May-14 A																												
PD180012	D18 (D1c) - Install Geo. Instru. & Baseline Monitoring	36	23-Jun-14	0%	36	04-Aug-14	29-Aug-14	13-Oct-14	57	0																								
PD180020	D18 (D1c) - Set up piling platform	20	05-Aug-14	0%	20	01-Sep-14	14-Oct-14	06-Nov-14	50	0																								
PD180030	D18 (D1c) - Complete Civil Preparation Works for piling to commence	0		0%	0	01-Sep-14		06-Nov-14	50	0																								
Socketted H-Pile Installation																																		
GFXX438-2	D18 (D1c) - Predrilling	17	17-Jun-14 A	29.41%	12	07-Jul-14	15-Oct-14	28-Oct-14	94	0																								
GFXX438-7	D18 (D1c) - Confirm Rockhead Levels	8	08-Jul-14	0%	8	16-Jul-14	29-Oct-14	06-Nov-14	94	40																								
GFXX439-2	D18 (D1c) - Installation of SH Pile (10 nr)	70	02-Sep-14	0%	70	25-Nov-14	07-Nov-14	30-Jan-15	54	0																								
Pier D19 (D1b) & Abutment D																																		
Preliminary Works for Land Piling																																		
PD190010	D19 (D1b) & Abut D- Erect MTR boundary fence / water filled barrier / remove existing fence	12	24-Apr-14 A	100%	0	29-May-14 A																												
PD190012	D19 (D1b) - Install Geo. Instru. & Baseline Monitoring	36	23-Jun-14	0%	36	04-Aug-14	01-Sep-14	15-Oct-14	59	0																								
PD190020	D19 (D1b) - Set up piling platform	20	05-Aug-14	0%	20	01-Sep-14	16-Oct-14	07-Nov-14	51	0																								
PD190030	D19 (D1b) - Complete Civil Preparation Works for piling to commence	0		0%	0	01-Sep-14		07-Nov-14	51	0																								
Socketted H-Pile Installation																																		
GFXX438-3	D19 (D1b) - Predrilling	19	11-Aug-14	0%	19	01-Sep-14	17-Oct-14	07-Nov-14	55	0																								
GFXX438-8	D19 (D1b) - Confirm Rockhead Levels	8	02-Sep-14	0%	8	11-Sep-14	08-Nov-14	17-Nov-14	55	0																								
GFXX439-3	D19 (D1b) - Installation of SH Pile (6 nr)	70	12-Sep-14	0%	70	04-Dec-14	18-Nov-14	10-Feb-15	55	0																								
Viaduct E																																		
Viaduct E1																																		
Bridge E1 - Piling & Substructure																																		
Milestones																																		
GFXX023A-1	E1D (E1a1) - Start date for piling	0	03-Sep-14	0%	0		10-Jun-14		-72	0																								
GFXX023A-2	E1C (E1a2) - Start date for piling	0	03-Sep-14	0%	0		10-Jun-14		-72	0																								
GFXX023A-3	E1B (E1a3) - Start date for piling	0	03-Sep-14	0%	0		10-Jun-14		-72	0																								
GFXX023A-4	E1A (E1a4) - Start date for piling	0	03-Sep-14	0%	0		10-Jun-14		-72	0																								
GFXX028A-1	E2C/E2D (E1b2/E1b1) - Start date for piling	0	27-Aug-14	0%	0		17-Jul-14		-35	0																								
GFXX028A-2	E2B (E1b3) - Start date for piling	0	27-Aug-14	0%	0		17-Jul-14		-35	0																								
GFXX028A-3	E2A (E1b4) - Start date for piling	0	27-Aug-14	0%	0		17-Jul-14		-35	0																								
E1A, E1B, E1C & E1D (E1a1-2-3-4)																																		
Foundation Works E1A, E1B, E1C & E1D																																		
Foundation Works																																		
GFXX021	E1A/E1B/E1C/E1D (E1a4/3/2/1) - Inst.Temp.Working Platforms (Heavy & Light)	38	21-May-14 A	4%	36	05-Aug-14	19-Mar-14	07-May-14	-74	0																								
GFXX022-1	E1A/E1B/E1C/E1D (E1a4/3/2/1) - Predrilling (8 nos)	17	05-Aug-14	0%	17	25-Aug-14	08-May-14	27-May-14	-74	0																								
GFXX022-2	E1A/E1B/E1C/E1D (E1a4/3/2/1) - Confirm Rockhead levels	8	25-Aug-14	0%	8	03-Sep-14	28-May-14	06-Jun-14	-74	0																								
GFXX023-1	E1A/E1B/E1C/E1D (E1a4/3/2/1) - Bored Piles (2.00m dia. x 8 nos)	125	03-Sep-14	0%	125	03-Feb-15	07-Jun-14	04-Nov-14	-74	0																								
E2A, E2B, E2C & E2D (E1b1-2-3-4)																																		
Foundation Works - E2A, E2B, E2C & E2D																																		
Foundation Works																																		
GFXX026-1	E2A/E2B/E2C/E2D (E1b4/3/2/1) - Inst.Temp.Working Platforms (Heavy & Light)	34	23-Jun-14	0%	34	01-Aug-14	12-May-14	20-Jun-14	-35	0																								
GFXX027-1	E2A/E2B/E2C/E2D (E1b4/3/2/1) - Predrilling (7 nos)	21	02-Aug-14	0%	21	26-Aug-14	21-Jun-14	16-Jul-14	-35	0																								
GFXX027-4	E2A/E2B/E2C/E2D (E1b4/3/2/1) - Confirm Rockhead levels	8	27-Aug-14	0%	8	04-Sep-14	22-Oct-14	30-Oct-14	45	80																								
GFXX028-1	E2A/E2B/E2C/E2D (E1b4/3/2/1) - Bored Piles (2.00m dia. x 7 nr)	88	27-Aug-14	0%	88	10-Dec-14	17-Jul-14	30-Oct-14	-35	0																								
Viaduct E2																																		
Bridge E2 - Piling & Substructure																																		
Milestones																																		
GFXX042-1	E4 (E2b) - Start date for piling	0	19-Jun-14 A	100%	0																													

Activity ID	Activity Name	Orig. Durn.	Act. Start / FC Early Start	Duration % Complete	Rem. Durn.	Act. Finish / FC Early Finish	Late Start	Late Finish	Total Float	Free Float	2014															
											June				July				August				September			
											19	26	02	09	16	23	30	07	14	21	28	04	11	18	25	01
E3A, E3B, E3C & E3D (E2a - 1/2/3/4)																										
Foundation Works - E3A, E3B, E3C & E3D																										
Foundation Works																										
GFXX036-1	E3 (E2a) - Confirm Rockhead levels	8	24-Apr-14 A	50%	4	26-Jun-14	12-Jul-14	16-Jul-14	16	10																
GFXX037	E3 (E2a) - Bored Piles (2.00m dia. x 6 nos)	90	15-Apr-14 A	84%	14	10-Jul-14	28-Jun-14	16-Jul-14	6	0																
GFXX038	E3 (E2a) - Sonic & Interface Coring x6no.	20	06-Aug-14	0%	20	28-Aug-14	04-Sep-14	27-Sep-14	25	0																
GFXX038-1	E3 (E2a) - Selection of bored pile for Full Depth Coring	24	01-Aug-14	0%	24	28-Aug-14	30-Aug-14	27-Sep-14	25	0																
GFXX038-2	E3 (E2a) - Bored Pile Full Depth Coring & Testing	24	29-Aug-14	0%	24	26-Sep-14	29-Sep-14	28-Oct-14	25	0																
E4A & E4B (E2b - 1/2)																										
Foundation Works - E4A & E4B																										
Foundation Works																										
GFXX040-1	E4 (E2b) - Inst.Temp.Working Platform (Light)	18	23-May-14 A	100%	0	04-Jun-14 A																				
GFXX041	E4 (E2b) - Predrilling (4 nos)	13	07-Jun-14 A	100%	0	18-Jun-14 A																				
GFXX041-1	E4 (E2b) - Confirm Rockhead levels	8	19-Jun-14 A	10%	7	02-Jul-14	13-Jun-14	21-Jun-14	-8	63																
GFXX042	E4 (E2b) - Bored Piles (2.20m dia. x 4 nos)	90	19-Jun-14 A	22%	70	15-Sep-14	24-Mar-14	21-Jun-14	-71	0																
GFXX043	E4 (E2b) - Sonic & Interface Coring x 4no.	12	15-Sep-14	0%	12	29-Sep-14	11-Jul-14	25-Jul-14	-54	0																
E5A & E5B (E2c - 1/2)																										
Foundation Works - E5A & E5B																										
Foundation Works																										
GFXX045-1	E5 (E2c) - Inst.Temp.Working Platform (Light)	7	23-Jun-14	0%	7	30-Jun-14	15-Apr-14	25-Apr-14	-53	0																
GFXX046	E5 (E2c) - Predrilling (4 nos)	22	02-Jul-14	0%	22	26-Jul-14	13-Oct-14	06-Nov-14	85	0																
GFXX046-1	E5 (E2c) - Confirm Rockhead levels	8	28-Jul-14	0%	8	05-Aug-14	07-Nov-14	15-Nov-14	85	120																
E6A & E6B (E2d - 1/2)																										
Foundation Works - E6A & E6B																										
Foundation Works																										
GFXX050	E6 (E2d) - Inst.Temp.Working Platform (Heavy)	18	23-Jun-14	0%	18	14-Jul-14	01-Apr-14	25-Apr-14	-64	0																
GFXX050-1	E6 (E2d) - Inst.Temp.Working Platform (Light)	7	15-Jul-14	0%	7	22-Jul-14	26-Apr-14	05-May-14	-64	0																
GFXX051	E6 (E2d) - Predrilling (4 nos)	18	23-Jul-14	0%	18	12-Aug-14	27-Nov-14	17-Dec-14	106	0																
GFXX051-1	E6 (E2d) - Confirm Rockhead levels	8	13-Aug-14	0%	8	21-Aug-14	18-Dec-14	29-Dec-14	106	217																
E7A & E7B (E2e - 1/2)																										
Foundation Works - E7A & E7B																										
Foundation Works																										
GFXX055	E7 (E2e) - Inst.Temp.Working Platforms (Heavy)	19	23-Jul-14	0%	19	13-Aug-14	07-May-14	28-May-14	-64	0																
GFXX055-1	E7 (E2e) - Inst.Temp.Working Platforms (Light)	7	14-Aug-14	0%	7	21-Aug-14	29-May-14	06-Jun-14	-64	0																
GFXX056	E7 (E2e) - Predrilling (5 nos)	26	22-Aug-14	0%	26	22-Sep-14	18-Oct-14	17-Nov-14	46	0																
E8A & E8B (E2f - 1/2)																										
Foundation Works - E8A & E8B																										
Foundation Works																										
GFXX060	E8 (E2f) - Inst.Temp.Working Platforms (Heavy)	32	22-Aug-14	0%	32	29-Sep-14	07-Jun-14	15-Jul-14	-64	0																
E9A & E9B (E2g - 1/2)																										
Foundation Works - E9A & E9B																										
Foundation Works																										
GFXX066	E9 (E2g) - Predrilling (6 nos)	22	12-Mar-14 A	100%	0	05-Jun-14 A																				
GFXX066-1	E9 (E2g) - Confirm Rockhead levels	8	06-Jun-14 A	50%	4	26-Jun-14	28-Feb-15	04-Mar-15	205	67																
GFXX067	E9 (E2g) - Bored Piles (2.00m dia. x 6 nr)	105	17-May-14 A	32%	71	16-Sep-14	04-Dec-14	04-Mar-15	138	0																
GFXX068	E9 (E2g) - Sonic & Interface Coring	12	16-Sep-14	0%	12	30-Sep-14	05-Mar-15	18-Mar-15	138	0																
E10A & E10B (E2h - 1/2)																										
Foundation Works - E10A & E10B																										

