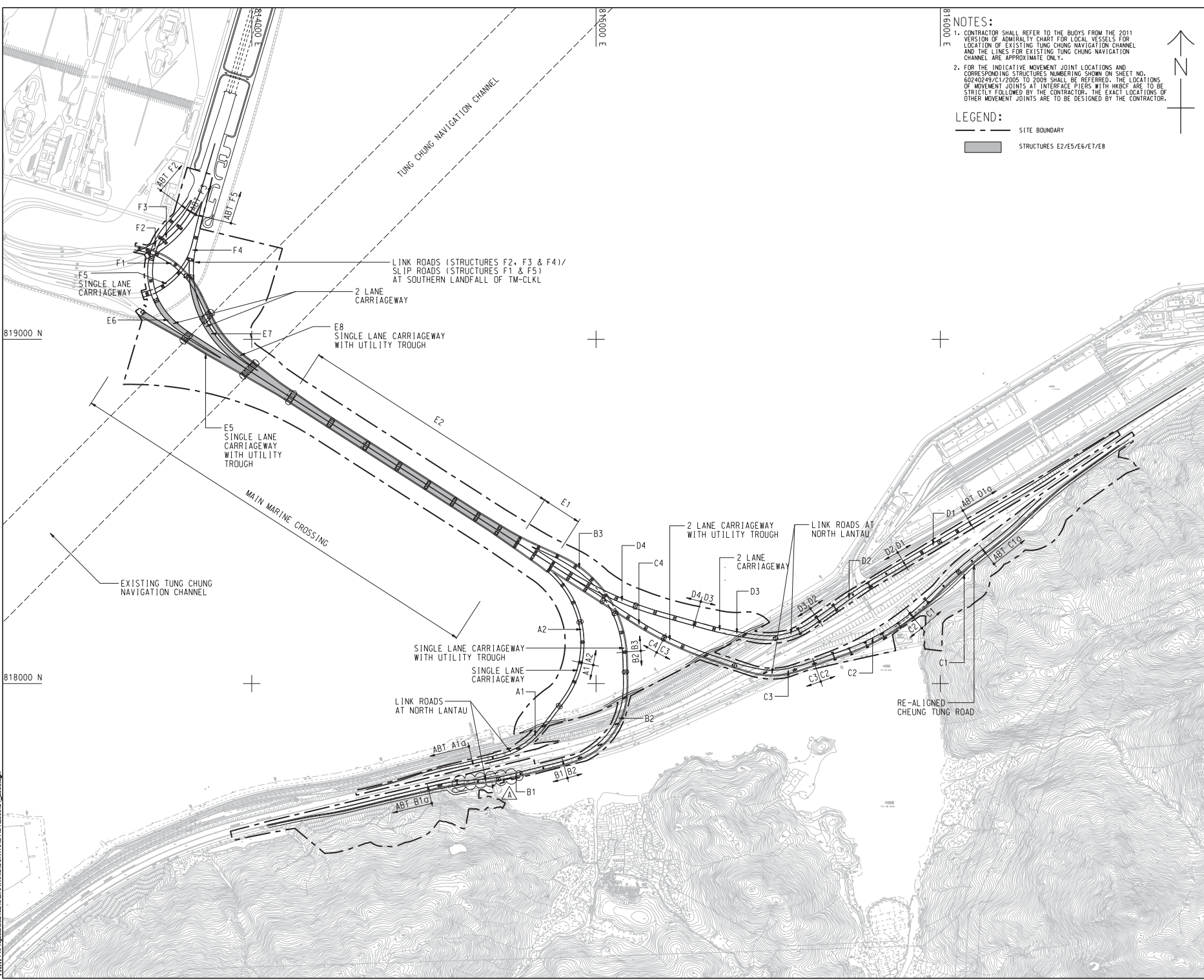


Proj File by: H:\AECOM\2012\02\240249\C1\2000.dgn  
 Path: P:\Projects\2012\02\240249\C1\2000.dgn  
 Project Management: Hinkley  
 Designer: LHM/BS  
 Checker: SLYT  
 Approver: CWN  
 ISO AT 50mm x 61mm  
 Only



**NOTES:**

- CONTRACTOR SHALL REFER TO THE BUOYS FROM THE 2011 VERSION OF ADMIRALTY CHART FOR LOCAL VESSELS FOR LOCATION OF EXISTING TUNG CHUNG NAVIGATION CHANNEL AND THE LINES FOR EXISTING TUNG CHUNG NAVIGATION CHANNEL ARE APPROXIMATE ONLY.
- FOR THE INDICATIVE MOVEMENT JOINT LOCATIONS AND CORRESPONDING STRUCTURES NUMBERING SHOWN ON SHEET NO. 60240249/C1/2005 TO 2009 SHALL BE REFERRED. THE LOCATIONS OF MOVEMENT JOINTS AT INTERFACE PIERS WITH HKBCF ARE TO BE STRICTLY FOLLOWED BY THE CONTRACTOR. THE EXACT LOCATIONS OF OTHER MOVEMENT JOINTS ARE TO BE DESIGNED BY THE CONTRACTOR.

**LEGEND:**

— SITE BOUNDARY

▬ STRUCTURES E2/E5/E6/E7/E8

**AECOM**

**PROJECT**  
TUEN MUN - CHEK LAP KOK LINK

**CONTRACT TITLE**  
TUEN MUN - CHEK LAP KOK LINK - SOUTHERN CONNECTION VIADUCT SECTION

**CLIENT**  
路政署  
HIGHWAYS DEPARTMENT  
港務局  
Hong Kong - Zhuhai - Hainan Bridge  
Hong Kong Project Management Office

**CONSULTANT**  
AECOM Asia Company Ltd.  
www.aecom.com

**SUB-CONSULTANTS**

# Figure 1.2a

**ISSUE/REVISION**

NO.	DATE	DESCRIPTION	CHK.

**STATUS**

SCALE	DIMENSION UNIT
A1 : 6000	METRES

**KEY PLAN**

**PROJECT NO.**  
60240249

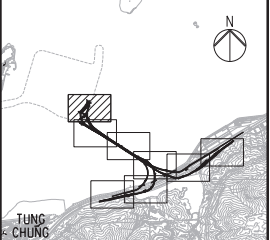
**CONTRACT NO.**  
HY/2012/07

**SHEET TITLE**  
SOUTHERN CONNECTION  
GENERAL LAYOUT PLAN

**SHEET NUMBER**  
60240249/C1/2000A

This drawing has been prepared for the use of AECOM's client. It may not be used, modified, reproduced or related parts by third parties, except as approved by AECOM. AECOM accepts no responsibility for any errors or omissions in this drawing or for any consequences arising therefrom. All measurements must be obtained from the latest drawings.

DO NOT SCALE DRAWING. CHECK ALL DIMENSIONS ON SITE.



**KEY PLAN**

**NOTES**  
 1. THIS DRAWING SHALL BE READ IN CONJUNCTION WITH DRAWING NO. J3518/P/OAP/04/1000 AND OTHER RELEVANT DRAWINGS.

- LEGEND**
- SITE BOUNDARY
  - GF1 FAULT
  - EXISTING G.I.-STATIONS :
    - ⊕ BOREHOLE BY GIU DATA EXCLUDING VC
    - ⊕ BOREHOLE BY GCL CONTRACT HY/2012/04
    - ⊕ BOREHOLE BY GCL CONTRACT NL8/97
    - ⊕ BOREHOLE BY GCL CONTRACT HY/2009/23
    - ⊕ TRIAL PIT BY GCL CONTRACT HY/2012/04
  - SLOPE STRIPPING BY GCL CONTRACT HY/2012/04
  - PROPOSED G.I.-STATIONS :
    - ⊕ PBH01 PROPOSED BOREHOLE
    - ⊕ TP01 PROPOSED TRIAL PIT
    - ⊕ CH01 PROPOSED COREHOLE
    - SS01 SS02 PROPOSED SLOPE STRIPPING

MATCH LINE  
 FOR CONTINUATION  
 SEE DRG. J3518/P/OAP/04/01101



Printed by : 12/09/2013  
 File name : E:\3518\99\REC\DRG\_20130927\Ground Investigation Plan\CAD\231498\_P\_OAP\_04\_01000.dwg

Rev	Description	By	Date	Rev	Description	By	Date
A	SUBMISSION	RC	07/13				
B	SUBMISSION	RC	07/13				
C	SUBMISSION	RC	09/13				

Drawn	Date	Client
RL	07/13	HONG KONG HIGHWAYS DEPARTMENT
Checked	Approved	
DS	DOP	
Scale	1:1000 @ A1 / 1:2000 @ A3	

Supervising Officer: **AECOM**

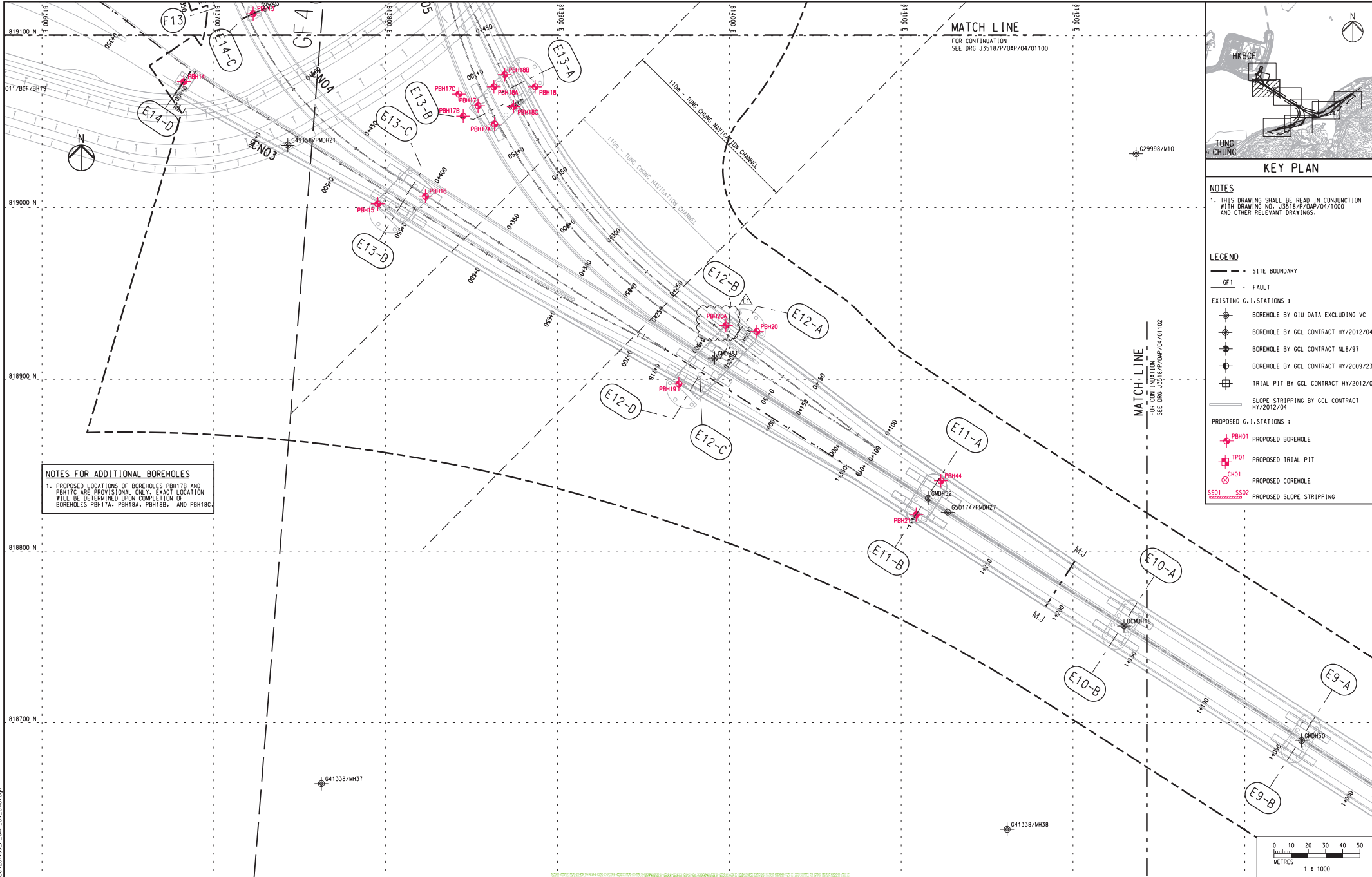
Contractor: **GAMMON**

Project Title  
 Contract No. HY/2012/07  
 Tuen Mun - Chek Lap Kok Link  
 Southern Connection Viaduct Section

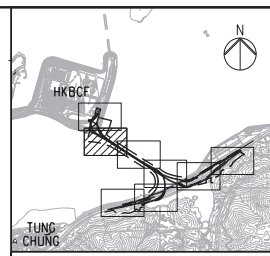
Drawing title  
**Figure 1.2b**

Drawing no. J3518/P/OAP/04/01100 Rev. C

DO NOT SCALE DRAWING. CHECK ALL DIMENSIONS ON SITE.



MATCH LINE  
FOR CONTINUATION  
SEE DRG J3518/P/OAP/04/01100

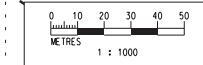


KEY PLAN

NOTES  
1. THIS DRAWING SHALL BE READ IN CONJUNCTION WITH DRAWING NO. J3518/P/OAP/04/1000 AND OTHER RELEVANT DRAWINGS.

- LEGEND
- SITE BOUNDARY
  - GF1 FAULT
  - EXISTING G.I. STATIONS:
    - ⊕ BOREHOLE BY GIU DATA EXCLUDING VC
    - ⊕ BOREHOLE BY GCL CONTRACT HY/2012/04
    - ⊕ BOREHOLE BY GCL CONTRACT NL8/97
    - ⊕ BOREHOLE BY GCL CONTRACT HY/2009/23
    - ⊕ TRIAL PIT BY GCL CONTRACT HY/2012/04
  - SLOPE STRIPPING BY GCL CONTRACT HY/2012/04
  - PROPOSED G.I. STATIONS:
    - ⊕ PBH01 PROPOSED BOREHOLE
    - ⊕ TP01 PROPOSED TRIAL PIT
    - ⊕ CH01 PROPOSED COREHOLE
    - SS01 SS02 PROPOSED SLOPE STRIPPING

NOTES FOR ADDITIONAL BOREHOLES  
1. PROPOSED LOCATIONS OF BOREHOLES PBH17B AND PBH17C ARE PROVISIONAL ONLY. EXACT LOCATION WILL BE DETERMINED UPON COMPLETION OF BOREHOLES PBH17A, PBH18A, PBH18B, AND PBH18C.



Printed by : 05.11.13  
Filename : E:\23499\_VAP\GEO\23499\_P\_OAP\_04\_01100.dgn

Rev	Description	By	Date	Rev	Description	By	Date
A	SUBMISSION	RC	07/13				
B	SUBMISSION	RC	07/13				
C	SUBMISSION	RC	09/13				
D	SUBMISSION	RC	10/13				
E1	FOR INTERNAL REVIEW	RC	11/13				

Drawn	RL	Date	07/13
Checked	DS	Approved	DOP
Scale	1:1000 @ A1; 1:2000 @ A3		

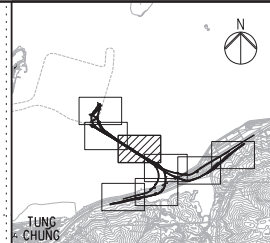
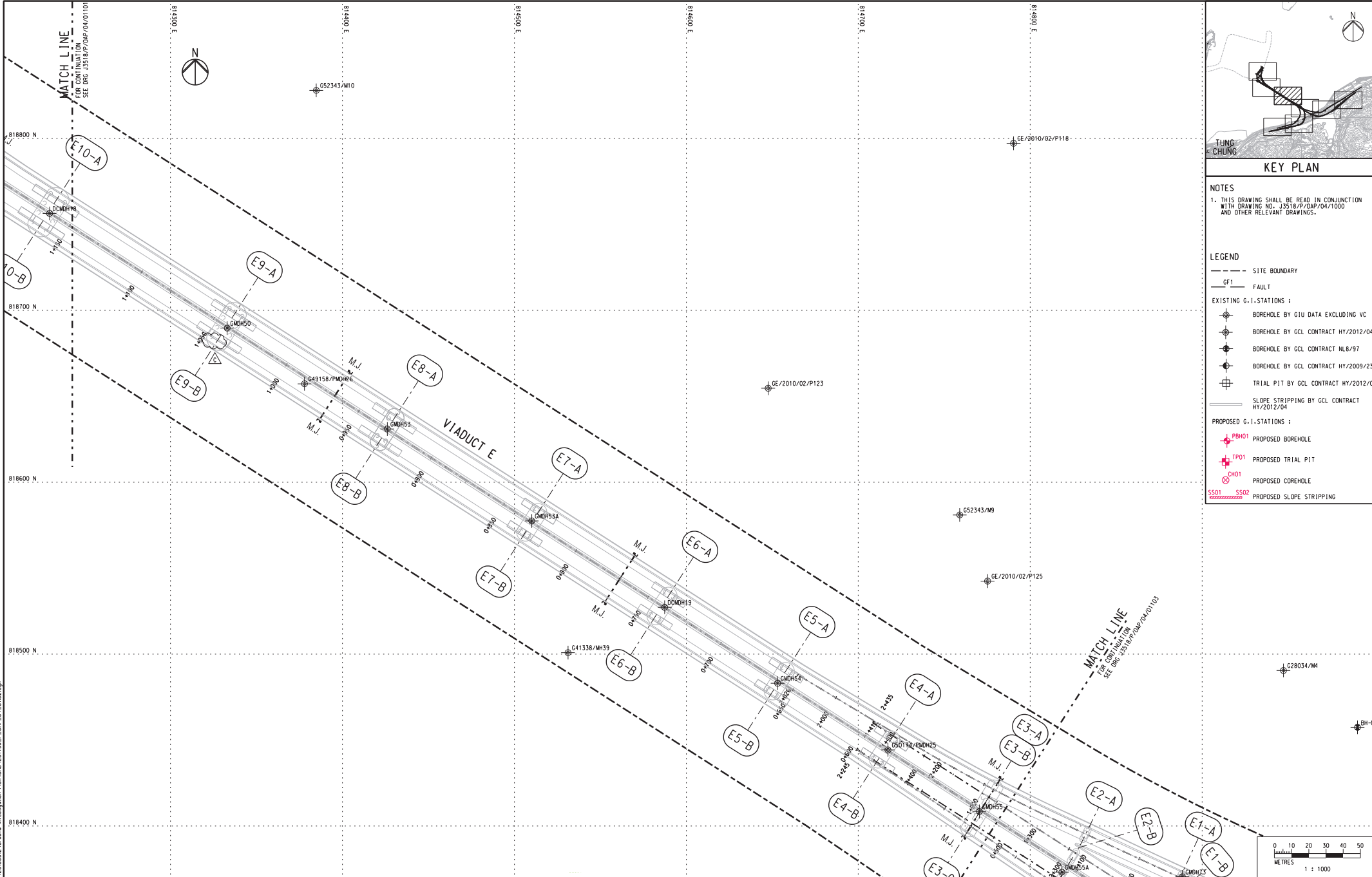
  

Client	路政署 HIGHWAYS DEPARTMENT 香港渠務及港務工程處 Hong Kong - Zhuhai - Macao Bridge Hong Kong Project Management Office
Supervising Officer	AECOM
Contractor	Gammon
Originator	ARUP

Project Title	Contract No. HY/2012/07 Tuen Mun - Chek Lap Kok Link Southern Connection Viaduct Section
Drawing title	<b>Figure 1.2c</b>
Drawing no.	J3518/P/OAP/04/01101
Rev.	E1

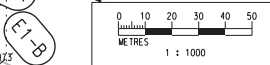
DO NOT SCALE DRAWING. CHECK ALL DIMENSIONS ON SITE.



**KEY PLAN**

**NOTES**  
 1. THIS DRAWING SHALL BE READ IN CONJUNCTION WITH DRAWING NO. J3518/P/OAP/04/1000 AND OTHER RELEVANT DRAWINGS.

- LEGEND**
- SITE BOUNDARY
  - GF1 FAULT
  - EXISTING G.I.-STATIONS :
    - ⊕ BOREHOLE BY GIU DATA EXCLUDING VC
    - ⊕ BOREHOLE BY GCL CONTRACT HY/2012/04
    - ⊕ BOREHOLE BY GCL CONTRACT NL8/97
    - ⊕ BOREHOLE BY GCL CONTRACT HY/2009/23
    - ⊕ TRIAL PIT BY GCL CONTRACT HY/2012/04
  - PROPOSED G.I.-STATIONS :
    - ⊕ PBH01 PROPOSED BOREHOLE
    - ⊕ TP01 PROPOSED TRIAL PIT
    - ⊕ CH01 PROPOSED COREHOLE
    - SS01 SS02 PROPOSED SLOPE STRIPPING



Printed by : 12/09/2013  
 File name : J:\3518\99\REC\000\2013092\Ground Investigation\Plan\CAD\23498\_P\_OAP\_04\_01102.dgn

Rev	Description	By	Date	Rev	Description	By	Date
A	SUBMISSION	RC	07/13				
B	SUBMISSION	RC	07/13				
C	SUBMISSION	RC	09/13				

Drawn	Date	Checked	Approved
RL	07/13		
DS		DOP	

Scale
1:1000 @ A1 / 1:2000 @ A3

Client

Supervising Officer

Contract No. HY/2012/07  
 Tuen Mun - Chek Lap Kok Link  
 Southern Connection Viaduct Section

Contractor

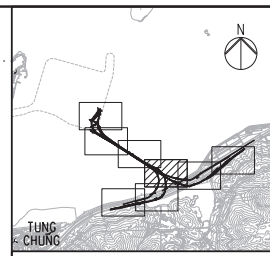
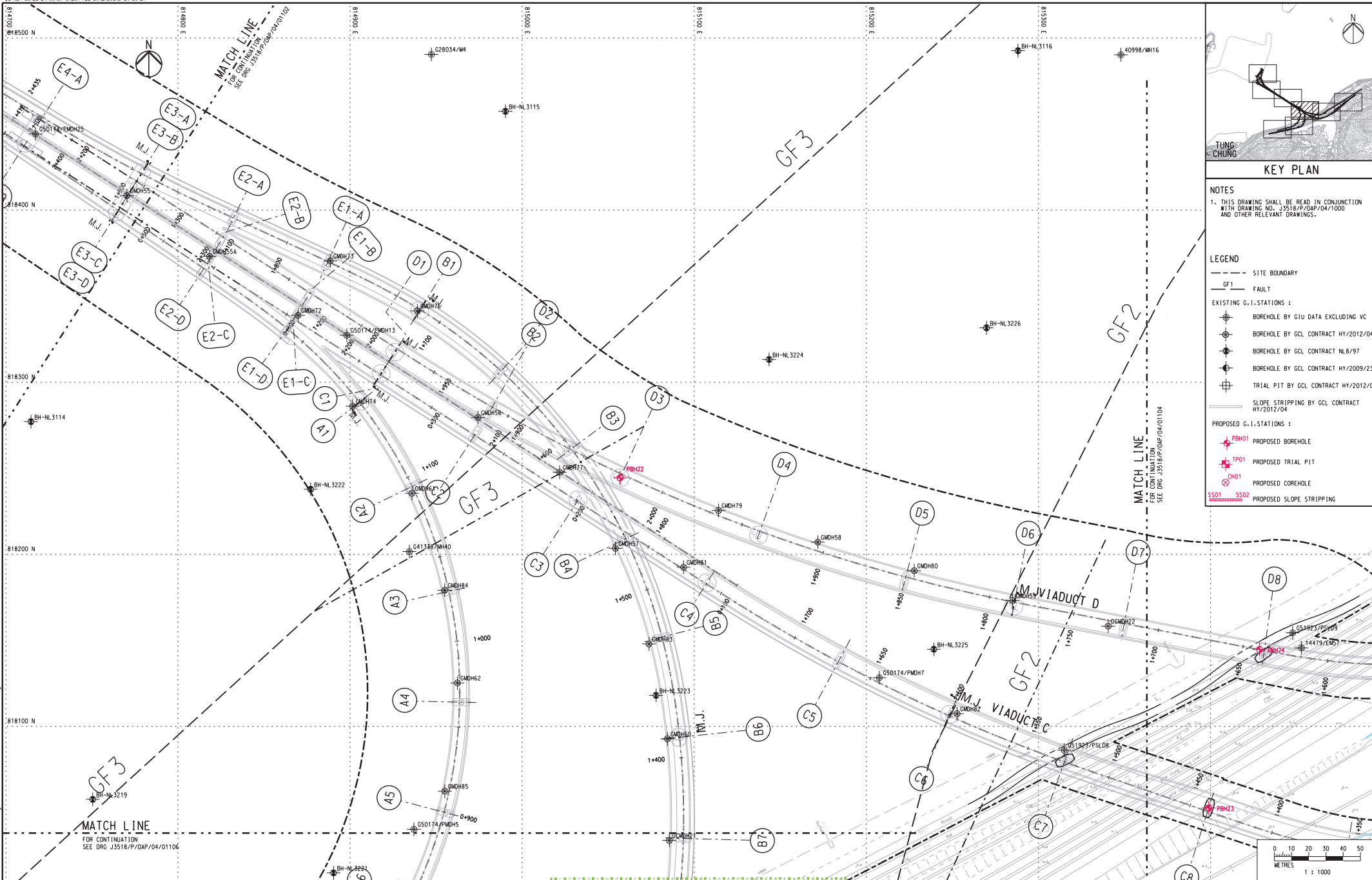
Originator

Drawing title

# Figure 1.2d

Drawing no. J3518/P/OAP/04/01102 Rev. C

DO NOT SCALE DRAWING. CHECK ALL DIMENSIONS ON SITE.



**KEY PLAN**

**NOTES**  
 1. THIS DRAWING SHALL BE READ IN CONJUNCTION WITH DRAWING NO. J3518/P/OAP/04/1000 AND OTHER RELEVANT DRAWINGS.

**LEGEND**

- SITE BOUNDARY
- - - FAULT
- EXISTING G.I.-STATIONS :
  - ⊕ BOREHOLE BY GIU DATA EXCLUDING VC
  - ⊕ BOREHOLE BY GCL CONTRACT HY/2012/04
  - ⊕ BOREHOLE BY GCL CONTRACT NL8/97
  - ⊕ BOREHOLE BY GCL CONTRACT HY/2009/23
  - ⊕ TRIAL PIT BY GCL CONTRACT HY/2012/04
- PROPOSED G.I.-STATIONS :
  - ⊕ PBH01 PROPOSED BOREHOLE
  - ⊕ TP01 PROPOSED TRIAL PIT
  - ⊕ CH01 PROPOSED COREHOLE
  - SS01 SS02 PROPOSED SLOPE STRIPPING



Printed by : 13/9/2013  
 File name : J3518/P/OAP/04/1000.dwg  
 Record : 20130927 Ground Investigation Plan CAD\23498\_P\_OAP\_04\_0103.dwg

Rev	Description	By	Date	Rev	Description	By	Date
A	SUBMISSION	RC	07/13				
B	SUBMISSION	RC	07/13				
C	SUBMISSION	RC	09/13				

Checked	Approved
DS	DOP

Scale
1:1000 @ A1 / 1:2000 @ A3

Client  
 路政署  
 HIGHWAYS DEPARTMENT  
 港珠澳大桥香港工程管理局  
 Hong Kong - Zhuhai - Macao Bridge  
 Hong Kong Project Management Office

Supervising Officer  
**AECOM**

Project Title  
 Contract No. HY/2012/07  
 Tuen Mun - Chek Lap Kok Link  
 Southern Connection Viaduct Section

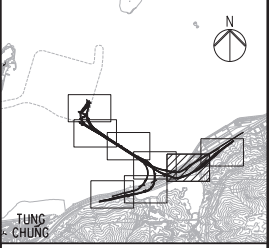
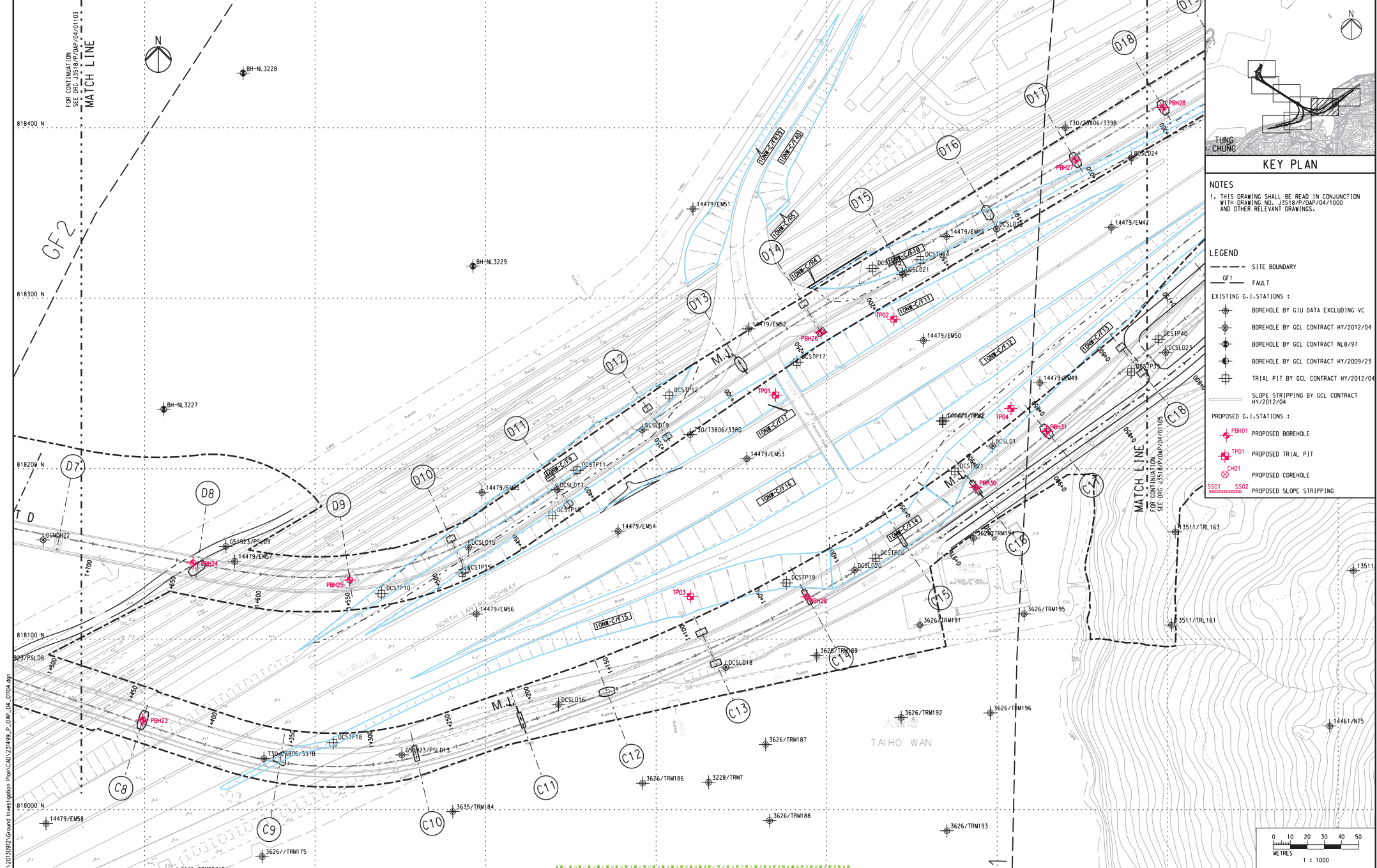
Contractor  
**Gammon**

Originator  
**ARUP**

Drawing title  
**Figure 1.2e**

Drawing no. J3518/P/OAP/04/01103 Rev. C

DO NOT SCALE DRAWING. CHECK ALL DIMENSIONS ON SITE.



**NOTES**  
 1. THIS DRAWING SHALL BE READ IN CONJUNCTION WITH DRAWING NO. J3518/P/OAP/04/1000 AND OTHER RELEVANT DRAWINGS.

- LEGEND**
- SITE BOUNDARY
  - GF1- FAULT
  - EXISTING G.I. STATIONS :
    - ⊕ BOREHOLE BY GIU DATA EXCLUDING VC
    - ⊕ BOREHOLE BY GCL CONTRACT HY/2012/04
    - ⊕ BOREHOLE BY GCL CONTRACT NL6/97
    - ⊕ BOREHOLE BY GCL CONTRACT HY/2009/23
    - ⊕ TRIAL PIT BY GCL CONTRACT HY/2012/04
  - PROPOSED G.I. STATIONS :
    - ⊕ PBH01 PROPOSED BOREHOLE
    - ⊕ TP01 PROPOSED TRIAL PIT
    - ⊕ CH01 PROPOSED COREHOLE
    - SS01 SS02 PROPOSED SLOPE STRIPPING



Rev	Description	By	Date	Rev	Description	By	Date	Drawn	Date
A	SUBMISSION	RC	07/13					RL	07/13
B	SUBMISSION	RC	07/13					Checked	Approved
C	SUBMISSION	RC	09/13					DS	DOP
Scale		1:1000 @ A1 / 1:2000 @ A3							

Client  
 路政署  
 HIGHWAYS DEPARTMENT  
 香港港大橋香港工程總處  
 Hong Kong - Zhuhai - Macao Bridge  
 Hong Kong Project Management Office

Supervising Officer  
 AECOM

Project Title  
 Contract No. HY/2012/07  
 Tuen Mun - Chek Lap Kok Link  
 Southern Connection Viaduct Section

Contractor  
 Gammon

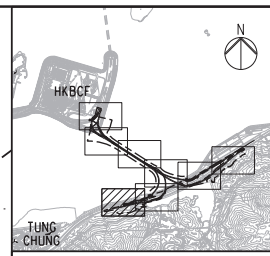
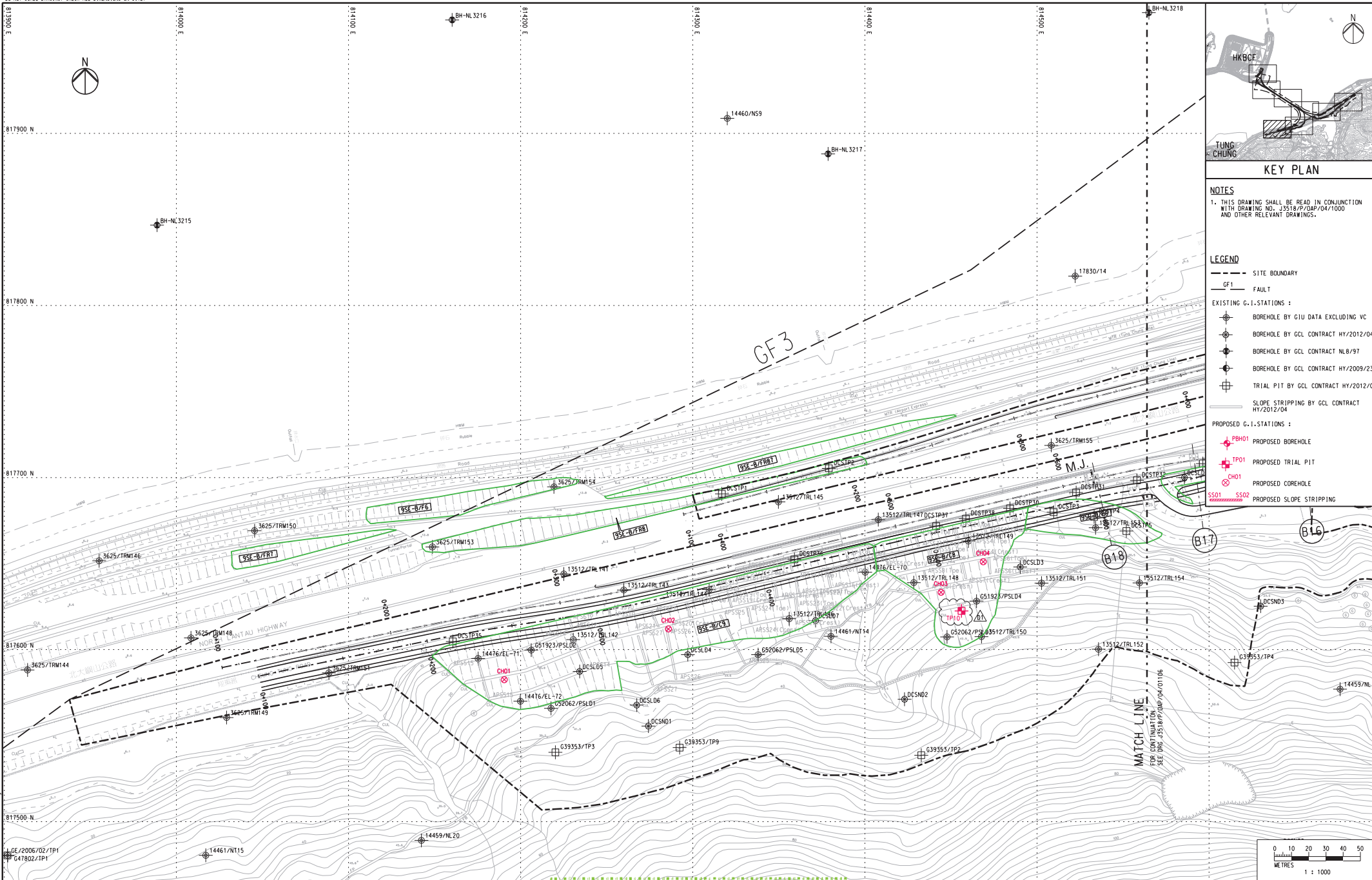
Originator  
 ARUP

Drawing title  
**Figure 1.2f**

Drawing no. J3518/P/OAP/04/01104 Rev. C

Printed by : 12/09/2013  
 File name : J:\3518\99\REC\000\20120927\Ground Investigation Plan\CAD\231498\_P\_OAP\_04\_01104.dwg

DO NOT SCALE DRAWING. CHECK ALL DIMENSIONS ON SITE.



**KEY PLAN**

**NOTES**  
 1. THIS DRAWING SHALL BE READ IN CONJUNCTION WITH DRAWING NO. J3518/P/OAP/04/1000 AND OTHER RELEVANT DRAWINGS.

- LEGEND**
- SITE BOUNDARY
  - GF1 FAULT
  - EXISTING G.I. STATIONS :
    - ⊕ BOREHOLE BY GIU DATA EXCLUDING VC
    - ⊕ BOREHOLE BY GCL CONTRACT HY/2012/04
    - ⊕ BOREHOLE BY GCL CONTRACT NL6/97
    - ⊕ BOREHOLE BY GCL CONTRACT HY/2009/23
    - ⊕ TRIAL PIT BY GCL CONTRACT HY/2012/04
  - SLOPE STRIPPING BY GCL CONTRACT HY/2012/04
  - PROPOSED G.I. STATIONS :
    - ⊕ PBH01 PROPOSED BOREHOLE
    - ⊕ TP01 PROPOSED TRIAL PIT
    - ⊕ CH01 PROPOSED COREHOLE
    - SS01 SS02 PROPOSED SLOPE STRIPPING

Printed by : 07/11/2013  
 File name : J:\3518\p\oap\04\1000\dwg

1. 2006/02/1P1  
 2. 2006/02/1P1

Rev	Description	By	Date	Rev	Description	By	Date	Drawn	Date	Client
A	SUBMISSION	RC	07/13					RL	07/13	路政署 HIGHWAYS DEPARTMENT 港珠澳大桥香港工程管理局 Hong Kong - Zhuhai - Macao Bridge Hong Kong Project Management Office
B	SUBMISSION	RC	07/13					Checked	Approved	
C	SUBMISSION	RC	09/13					DS	DOP	
D1	FOR INTERNAL REVIEW	RC	11/13					Scale	1:1000 @ A1 / 1:2000 @ A3	

**路政署**  
**HIGHWAYS DEPARTMENT**  
 港珠澳大桥香港工程管理局  
 Hong Kong - Zhuhai - Macao Bridge  
 Hong Kong Project Management Office

Project Title  
**Contract No. HY/2012/07**  
**Tuen Mun - Chek Lap Kok Link**  
**Southern Connection Viaduct Section**

Drawing title  
**Figure 1.2g**

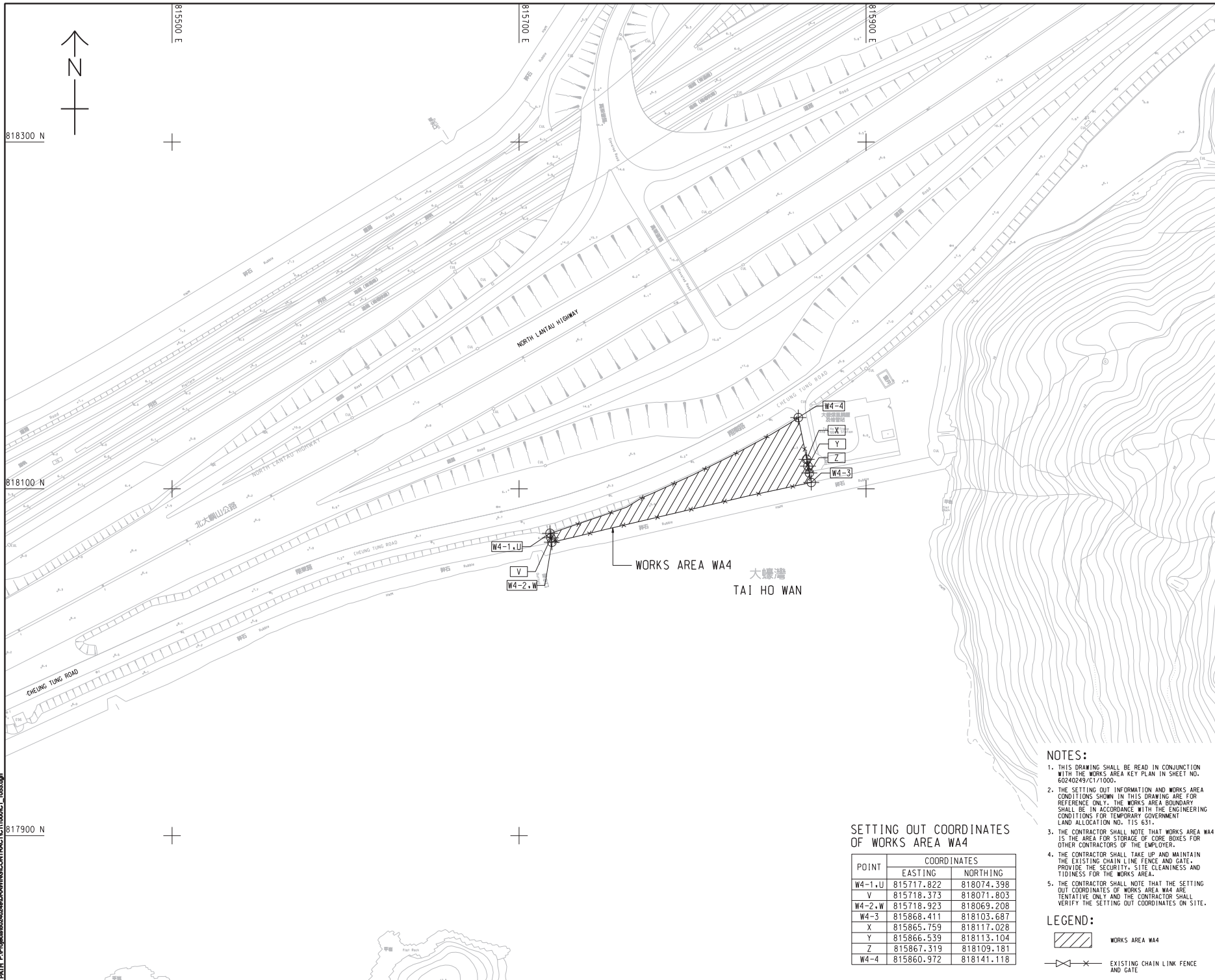
Drawing no. **J3518/P/OAP/04/01107** Rev. **D1**

Supervising Officer: **AECOM**  
 Contractor: **Gammon**  
 Originator: **ARUP**









SETTING OUT COORDINATES OF WORKS AREA WA4

POINT	COORDINATES	
	EASTING	NORTHING
W4-1,U	815717.822	818074.398
V	815718.373	818071.803
W4-2,W	815718.923	818069.208
W4-3	815868.411	818103.687
X	815865.759	818117.028
Y	815866.539	818113.104
Z	815867.319	818109.181
W4-4	815860.972	818141.118

- NOTES:**
- THIS DRAWING SHALL BE READ IN CONJUNCTION WITH THE WORKS AREA KEY PLAN IN SHEET NO. 60240249/C1/100.
  - THE SETTING OUT INFORMATION AND WORKS AREA CONDITIONS SHOWN IN THIS DRAWING ARE FOR REFERENCE ONLY. THE WORKS AREA BOUNDARY SHALL BE IN ACCORDANCE WITH THE ENGINEERING CONDITIONS FOR TEMPORARY GOVERNMENT LAND ALLOCATION NO. T15 631.
  - THE CONTRACTOR SHALL NOTE THAT WORKS AREA WA4 IS THE AREA FOR STORAGE OF CORE BOXES FOR OTHER CONTRACTORS OF THE EMPLOYER.
  - THE CONTRACTOR SHALL TAKE UP AND MAINTAIN THE EXISTING CHAIN LINK FENCE AND GATE. PROVIDE THE SECURITY, SITE CLEANLINESS AND TIDINESS FOR THE WORKS AREA.
  - THE CONTRACTOR SHALL NOTE THAT THE SETTING OUT COORDINATES OF WORKS AREA WA4 ARE TENTATIVE ONLY AND THE CONTRACTOR SHALL VERIFY THE SETTING OUT COORDINATES ON SITE.

**LEGEND:**

WORKS AREA WA4

EXISTING CHAIN LINK FENCE AND GATE

**AECOM**

**PROJECT**  
 TUEN MUN - CHEK LAP KOK LINK

**CONTRACT TITLE**  
 TUEN MUN - CHEK LAP KOK LINK - SOUTHERN CONNECTION VIADUCT SECTION

**CLIENT**  
 路政署 DEPARTMENT OF HIGHWAYS  
 港務局 港務工程管理局  
 Hong Kong + Zhuhai + Hainan Bridge  
 Hong Kong Project Management Office

**CONSULTANT**  
 AECOM Asia Company Ltd.  
 www.aecom.com

**SUB-CONSULTANTS**

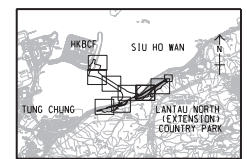
# Figure 1.2j

**ISSUE/REVISION**

NO.	DATE	DESCRIPTION	CHK.
1	NOV. 12	TENDER ADDENDUM NO. 1	C/W

**SCALE**  
 A1 : 1000

**DIMENSION UNIT**  
 METRES



**PROJECT NO.**  
 60240249

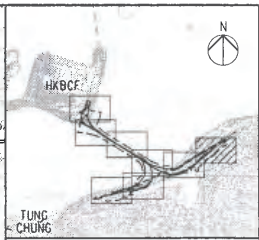
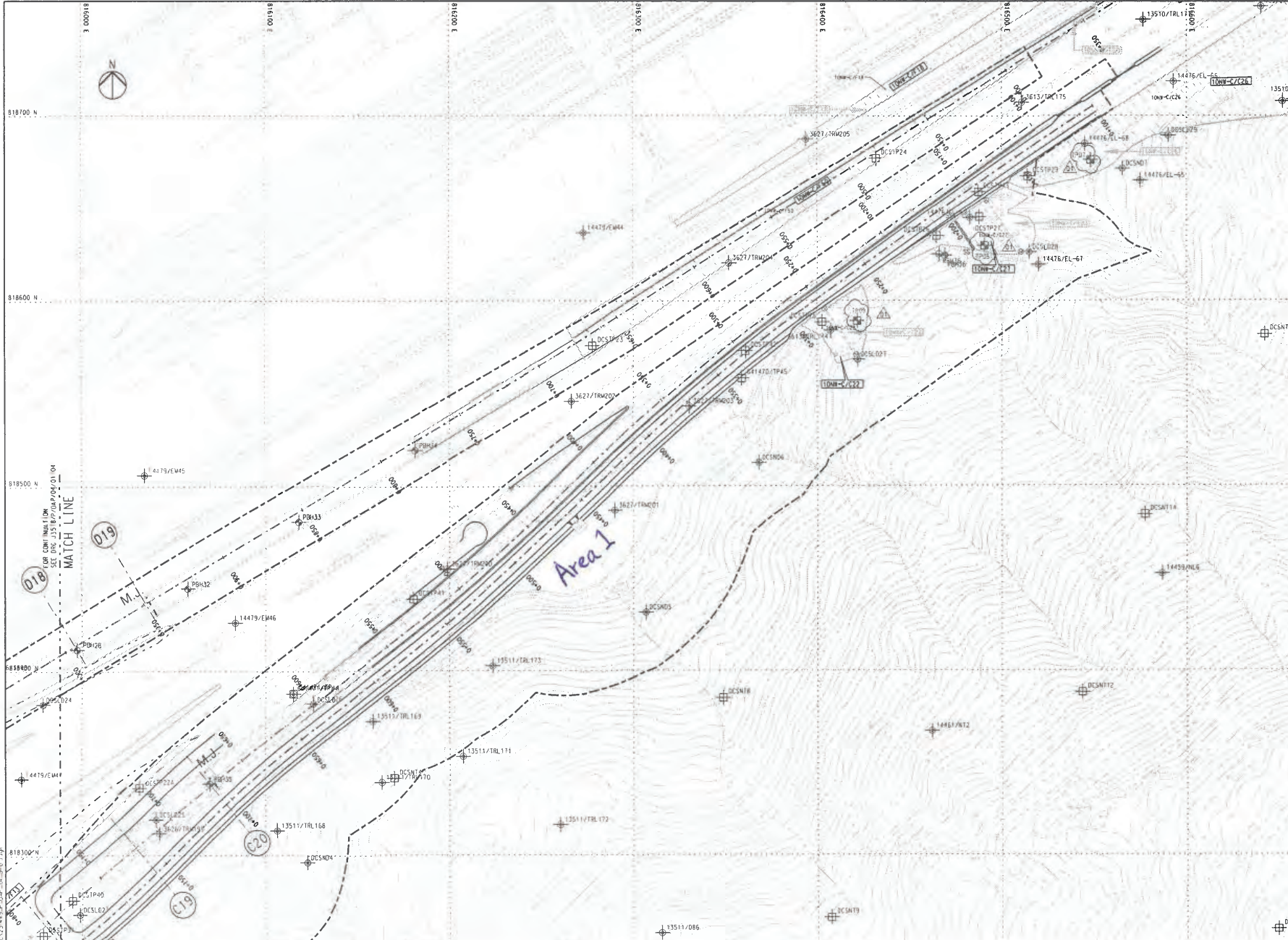
**CONTRACT NO.**  
 HY/2012/07

**SHEET TITLE**  
 WORKS AREA WA4

**SHEET NUMBER**  
 60240249/C1/1053

This drawing has been prepared for the use of AECOM, except as may be otherwise approved by AECOM, and shall not be used for any other purpose without the written consent of AECOM. Do not scale this drawing. All measurements must be taken from the actual dimensions.

DO NOT SCALE DRAWING. CHECK ALL DIMENSIONS ON SITE.



**NOTES**  
 THIS DRAWING SHALL BE READ IN CONJUNCTION WITH DRAWING NO. J3518/P/OAP/04/1000 AND OTHER RELEVANT DRAWINGS.

- LEGEND**
- SITE BOUNDARY
  - GF1 FAULT
- EXISTING G.L. STATIONS :**
- ⊕ BOREHOLE BY GIU DATA EXCLUDING VC
  - ⊕ BOREHOLE BY GCL CONTRACT HY/2012/04
  - ⊕ BOREHOLE BY GCL CONTRACT N6.8/97
  - ⊕ BOREHOLE BY GCL CONTRACT HY/2009/23
  - ⊕ TRIAL PIT BY GCL CONTRACT HY/2012/04
  - ⊕ SLOPE STRIPPING BY GCL CONTRACT HY/2012/04
- PROPOSED G.L. STATIONS :**
- ⊕ P6-0 PROPOSED BOREHOLE
  - ⊕ T-01 PROPOSED TRIAL PIT
  - ⊕ C-01 PROPOSED COREHOLE
  - ⊕ S502 PROPOSED SLOPE STRIPPING

Rev	Description	By	Date	Rev	Description	By	Date
01	ISSUE FOR CONSTRUCTION	RL	31/03				
02	ISSUE FOR CONSTRUCTION	RL	07/13				
03	ISSUE FOR CONSTRUCTION	RL	29/13				
04	ISSUE FOR CONSTRUCTION	RL	19/12				

Drawn	Date	Client
RL	07/13	路政署 HIGHWAYS DEPARTMENT
Checked <td>Approved</td> <td>港珠澳大桥香港工程管理有限公司 Hong Kong - Zhuhai - Macao Bridge Hong Kong Project Management Office</td>	Approved	港珠澳大桥香港工程管理有限公司 Hong Kong - Zhuhai - Macao Bridge Hong Kong Project Management Office
DS	DOP	Supervising Officer

Scale	Contractor	Originator
1:1000 @ A1 / 1:2000 @ A3	<b>AZCOM</b>	<b>Gammon</b>
		<b>ARUP</b>

**Client**  
 路政署 HIGHWAYS DEPARTMENT  
 港珠澳大桥香港工程管理有限公司  
 Hong Kong - Zhuhai - Macao Bridge  
 Hong Kong Project Management Office

**Project Title**  
 Contract No. HY/2012/07  
 Tuen Mun - Chek Lap Kok Link  
 Southern Connection Viaduct Section

**Supervising Officer**  
**AZCOM**

**Contractor**  
**Gammon**

**Originator**  
**ARUP**

**Drawing title**  
**Figure 1.2k**

**Drawing no.** J3518/P/OAP/04/01105 **Rev.** D1

1:1000 @ A1 / 1:2000 @ A3  
 07/13/2013  
 J3518/P/OAP/04/01105

