

Activity ID	Activity Name	Orig. Durn.	Act. Start / FC Early Start	Duration% Complete	Rem. Durn.	Act. Finish / FC Early Finish	Late Start	Late Finish	Total Float	Free Float	Physical % Complete	2014															
												September				October				November				December			
												25	01	08	15	22	29	06	13	20	27	03	10	17	24	01	08

## HY/2012/07 - TM-CLK Link-SC [DWP rD1] - Status Update 21-09-2014

### Contract Key Dates

#### Possession Dates / Access Period

POS02	Portion A (Commencement of Works+499 days)	0.00	03-Nov-14*	0%	0.00		03-Nov-14		0.00	0.00	0%
-------	--	------	------------	----	------	--	-----------	--	------	------	----

#### IPS Milestones

##### Cost Centre IPS Milestones

##### CC 2 - Design and Design Checking of the Works

MS2.006	Accept construction traffic impact assessment by the Supervising Officer	0.00		100%	0.00	25-Aug-14 A					100%
MS2.008	Accept ground investigation reports by the Supervising Officer	0.00		0%	0.00	12-Dec-14		02-Apr-17	842.00	308.00	0%
MS2.014	Approve AIP for Structure F1, excl Structure F1 between Pier F1c and Pier F1d, by the S.O.	0.00		100%	0.00	01-Sep-14 A					100%
MS2.015	Submit DDA for Structure F1, excluding Structure F1 between Pier F1c and Pier F1d	0.00		0%	0.00	18-Nov-14		02-Apr-17	866.00	156.00	0%
MS2.018	Approve AIP for Structure F1 between Pier F1c and Pier F1d by the Supervising Officer	0.00		100%	0.00	01-Sep-14 A					100%
MS2.019	Submit DDA for Structure F1 between Pier F1c and Pier F1d	0.00		0%	0.00	18-Nov-14		02-Apr-17	866.00	156.00	0%
MS2.030	Approve AIP for Structure F3 betw Pier F3c and Pier F3d by Supervising Officer	0.00		100%	0.00	01-Sep-14 A					100%
MS2.031	Submit DDA for Structure F3 between Pier F3c and Pier F3d	0.00		0%	0.00	18-Nov-14		02-Apr-17	866.00	156.00	0%
MS2.038	Approve AIP for Structure F5, excl Structure F5 betw Pier F5c & Pier F5d, by S.O.	0.00		100%	0.00	01-Sep-14 A					100%
MS2.039	Submit DDA for Structure F5, excluding Structure F5 between Pier F5c and Pier F5d	0.00		0%	0.00	18-Nov-14		02-Apr-17	866.00	142.00	0%
MS2.042	Approve AIP for Structure F5 betw Pier F5c and Pier F5d by the Supervising Officer	0.00		100%	0.00	01-Sep-14 A					100%
MS2.043	Submit DDA for Structure F5 between Pier F5c and Pier F5d	0.00		0%	0.00	18-Nov-14		02-Apr-17	866.00	142.00	0%
MS2.052	Approve DDA for Structure E2 by the Supervising Officer	0.00		0%	0.00	17-Dec-14		02-Apr-17	837.00	303.00	0%
MS2.056	Approve DDA for Structure E5, excl Structure E5 betw Pier E5c & Pier E5d, by S.O.	0.00		0%	0.00	12-Dec-14		02-Apr-17	842.00	308.00	0%
MS2.060	Approve DDA for Structure E5 betw Pier E5c & Pier E5d by Supervising Officer	0.00		0%	0.00	12-Dec-14		02-Apr-17	842.00	308.00	0%
MS2.064	Approve DDA for Structure E6 by the Supervising Officer	0.00		0%	0.00	12-Dec-14		02-Apr-17	842.00	308.00	0%
MS2.068	Approve DDA for Structure E7 by the Supervising Officer	0.00		0%	0.00	12-Dec-14		02-Apr-17	842.00	308.00	0%
MS2.072	Approve DDA for Structure E8 by the Supervising Officer	0.00		0%	0.00	12-Dec-14		02-Apr-17	842.00	308.00	0%
MS2.074	Approve AIP for Structure A by the Supervising Officer	0.00		0%	0.00	28-Oct-14		02-Apr-17	887.00	162.00	0%
MS2.075	Submit DDA for Structure A	0.00		0%	0.00	17-Dec-14		02-Apr-17	837.00	112.00	0%
MS2.080	Approve DDA for Structure B by the Supervising Officer	0.00		0%	0.00	03-Oct-14		02-Apr-17	912.00	378.00	0%
MS2.083	Submit DDA for Structure C	0.00		0%	0.00	29-Oct-14		02-Apr-17	886.00	120.00	0%
MS2.087	Submit DDA for Structure D	0.00		100%	0.00	01-Sep-14 A					100%
MS2.090	Approve AIP for At grade Roadworks and Other Works along NLH by the S.O.	0.00		100%	0.00	27-Aug-14 A					100%
MS2.091	Submit DDA for At grade Roadworks and Other Works along NLH	0.00		0%	0.00	17-Oct-14		02-Apr-17	898.00	105.00	0%
MS2.094	Approve AIP for At grade Roadworks & Other Works along Cheung Tung Road by S.O.	0.00		100%	0.00	27-Aug-14 A					100%
MS2.095	Submit DDA for At grade Roadworks and Other Works along Cheung Tung Road	0.00		0%	0.00	17-Oct-14		02-Apr-17	898.00	105.00	0%
MS2.097	Submit AIP for At grade Roadworks and Other Works at Southern Landfall	0.00		0%	0.00	21-Sep-14		02-Apr-17	924.00	0.00	0%
MS2.098	Approve AIP for At grade Roadwrks & Other Wrks at Southern Landfall by S.O.	0.00		0%	0.00	21-Sep-14		02-Apr-17	924.00	82.00	0%
MS2.099	Submit DDA for At grade Roadworks and Other Works at Southern Landfall	0.00		0%	0.00	21-Sep-14		02-Apr-17	924.00	82.00	0%
MS2.100	Approve DDA for At grade Roadwrks & Other Wrks at Southern Landfall by S.O.	0.00		0%	0.00	12-Dec-14		02-Apr-17	842.00	308.00	0%
MS2.102	Approve AIP for Watermains & All Assoc Wrks frm Tung Chung to South Landfall by S.O.	0.00		100%	0.00	27-Aug-14 A					100%
MS2.104	Approve DDA for Watermains & All Assoc Wrks frm Tung Chung to South Landfall by S.O.	0.00		0%	0.00	12-Dec-14		02-Apr-17	842.00	308.00	0%
MS2.107	Submit DDA for Irrigation System for Soft Landscape Works	0.00		0%	0.00	06-Nov-14		02-Apr-17	878.00	105.00	0%
MS2.108-3	Submit DDA for Fac Prov for TCSS Wrks for At grade Rds at Southern Landfall	0.00		0%	0.00	24-Sep-14		02-Apr-17	921.00	105.00	0%
MS2.111	Submit DDA for Facilities Provision for TCSS Works for Viaducts	0.00		0%	0.00	24-Sep-14		02-Apr-17	921.00	105.00	0%
MS2.115	Submit DDA for Fac Prov for TCSS Wrks for At grade Rds along NLH	0.00		0%	0.00	24-Sep-14		21-Mar-17	909.00	105.00	0%
MS2.120	Approve DDA for Facilities Provision for E&M Works by the Supervising Officer	0.00		0%	0.00	31-Oct-14		02-Apr-17	884.00	350.00	0%
MS2.121	Submit AIP for remaining works	0.00		0%	0.00	31-Oct-14		02-Apr-17	884.00	56.00	0%

##### CC 4.1 - Structure E2 and All Associated Works

MS4.1.10	Complete piles of 50% of total pile length for Structure E2	0.00		100%	0.00	21-Aug-14 A					100%
----------	---	------	--	------	------	-------------	--	--	--	--	------

■ Actual Work  
■ Planned Bar  
■ Critical Bar  
◆ Milestone

Project ID: J3518DWP rD1-M16  
 Layout: J3518-DWP-3MRP Submission - M16  
 Filter: TASK filters: 3-Month Lookahead, No Level of Effort.

**Tuen Mun - Chek Lap Kok Link - Southern Connection**  
**3-Month Rolling Programme (Page 1 of 35 Pages)**  
**(Progress as of 21-Sep-14)**

Date	Revision	Checked	Approved
29-Jul-14		FZ	
29-Aug-14		FZ	
07-Oct-14			

**DWG. No.:**  
**J3518/GCL/PGM/3MRP-M16**

Activity ID	Activity Name	Orig. Durn.	Act. Start / FC Early Start	Duration % Complete	Rem. Durn.	Act. Finish / FC Early Finish	Late Start	Late Finish	Total Float	Free Float	Physical % Complete	2014																
												September				October				November				December				
												25	01	08	15	22	29	06	13	20	27	03	10	17	24	01	08	15
MS4.1.11	Complete piles of 55% of total pile length for Structure E2	0.00		0%	0.00	30-Sep-14*		02-Apr-17	916.00	141.00	0%																	
<b>CC 4.2 - Structure E5, excl structure E5 betw Pier E5c &amp; Pier E5d, &amp; All Assoc Works</b>																												
MS4.2.03	Compl piles of 15% of total pile length for part of structure E5 under this CC No.	0.00		100%	0.00	23-Aug-14 A					100%																	
MS4.2.04	Compl piles of 20% of total pile length for part of structure E5 under this CC No.	0.00		100%	0.00	28-Aug-14 A					100%																	
MS4.2.05	Compl piles of 25% of total pile length for part of structure E5 under this CC No.	0.00		100%	0.00	02-Sep-14 A					100%																	
MS4.2.06	Compl piles of 30% of total pile length for part of structure E5 under this CC No.	0.00		100%	0.00	08-Sep-14 A					100%																	
MS4.2.07	Compl piles of 35% of total pile length for part of structure E5 under this CC No.	0.00		100%	0.00	13-Sep-14 A					100%																	
MS4.2.08	Compl piles of 40% of total pile length for part of structure E5 under this CC No.	0.00		100%	0.00	19-Sep-14 A					100%																	
MS4.2.09	Compl piles of 45% of total pile length for part of structure E5 under this CC No.	0.00		0%	0.00	26-Sep-14*		02-Apr-17	920.00	13.00	0%																	
MS4.2.10	Compl piles of 50% of total pile length for part of structure E5 under this CC No.	0.00		0%	0.00	09-Oct-14*		02-Apr-17	907.00	12.00	0%																	
MS4.2.11	Compl piles of 55% of total pile length for part of structure E5 under this CC No.	0.00		0%	0.00	21-Oct-14*		02-Apr-17	895.00	10.00	0%																	
MS4.2.12	Compl piles of 60% of total pile length for part of structure E5 under this CC No.	0.00		0%	0.00	31-Oct-14*		02-Apr-17	885.00	11.00	0%																	
MS4.2.13	Compl piles of 65% of total pile length for part of structure E5 under this CC No.	0.00		0%	0.00	11-Nov-14*		02-Apr-17	874.00	10.00	0%																	
MS4.2.14	Compl piles of 70% of total pile length for part of structure E5 under this CC No.	0.00		0%	0.00	21-Nov-14*		02-Apr-17	864.00	15.00	0%																	
MS4.2.15	Compl piles of 75% of total pile length for part of structure E5 under this CC No.	0.00		0%	0.00	06-Dec-14*		02-Apr-17	849.00	18.00	0%																	
<b>CC 4.2A - Structure E5 between Pier E5c &amp; Pier E5d, &amp; All Assoc Works</b>																												
MS4.2A.01	Compl piles of 5% of total pile length for part of structure E5 under this CC No.	0.00		100%	0.00	17-Sep-14 A					100%																	
MS4.2A.02	Compl piles of 10% of total pile length for part of structure E5 under this CC No.	0.00		0%	0.00	03-Oct-14*		02-Apr-17	913.00	13.00	0%																	
MS4.2A.03	Compl piles of 15% of total pile length for part of structure E5 under this CC No.	0.00		0%	0.00	16-Oct-14*		02-Apr-17	900.00	12.00	0%																	
MS4.2A.04	Compl piles of 20% of total pile length for part of structure E5 under this CC No.	0.00		0%	0.00	28-Oct-14*		02-Apr-17	888.00	11.00	0%																	
MS4.2A.05	Compl piles of 25% of total pile length for part of structure E5 under this CC No.	0.00		0%	0.00	08-Nov-14*		02-Apr-17	877.00	12.00	0%																	
MS4.2A.06	Compl piles of 30% of total pile length for part of structure E5 under this CC No.	0.00		0%	0.00	20-Nov-14*		02-Apr-17	865.00	12.00	0%																	
MS4.2A.07	Compl piles of 35% of total pile length for part of structure E5 under this CC No.	0.00		0%	0.00	02-Dec-14*		02-Apr-17	853.00	11.00	0%																	
MS4.2A.08	Compl piles of 40% of total pile length for part of structure E5 under this CC No.	0.00		0%	0.00	13-Dec-14*		02-Apr-17	842.00	14.00	0%																	
<b>CC 4.3 - Structure E6 and All Associated Works</b>																												
MS4.3.02	Complete piles of 10% of total pile length for Structure E6	0.00		100%	0.00	22-Aug-14 A					100%																	
MS4.3.03	Complete piles of 15% of total pile length for Structure E6	0.00		100%	0.00	01-Sep-14 A					100%																	
MS4.3.04	Complete piles of 20% of total pile length for Structure E6	0.00		100%	0.00	12-Sep-14 A					100%																	
MS4.3.05	Complete piles of 25% of total pile length for Structure E6	0.00		0%	0.00	23-Sep-14*		02-Apr-17	923.00	14.00	0%																	
MS4.3.06	Complete piles of 30% of total pile length for Structure E6	0.00		0%	0.00	07-Oct-14*		02-Apr-17	909.00	11.00	0%																	
MS4.3.07	Complete piles of 35% of total pile length for Structure E6	0.00		0%	0.00	18-Oct-14*		02-Apr-17	898.00	12.00	0%																	
MS4.3.08	Complete piles of 40% of total pile length for Structure E6	0.00		0%	0.00	30-Oct-14*		02-Apr-17	886.00	12.00	0%																	
MS4.3.09	Complete piles of 45% of total pile length for Structure E6	0.00		0%	0.00	11-Nov-14*		02-Apr-17	874.00	10.00	0%																	
MS4.3.10	Complete piles of 50% of total pile length for Structure E6	0.00		0%	0.00	21-Nov-14*		02-Apr-17	864.00	18.00	0%																	
MS4.3.11	Complete piles of 55% of total pile length for Structure E6	0.00		0%	0.00	09-Dec-14*		02-Apr-17	846.00	20.00	0%																	
<b>CC 4.4 - Structure E7 and All Associated Works</b>																												
MS4.4.02	Complete piles of 10% of total pile length for Structure E7	0.00		100%	0.00	25-Aug-14 A					100%																	
MS4.4.03	Complete piles of 15% of total pile length for Structure E7	0.00		100%	0.00	05-Sep-14 A					100%																	
MS4.4.04	Complete piles of 20% of total pile length for Structure E7	0.00		100%	0.00	19-Sep-14 A					100%																	
MS4.4.05	Complete piles of 25% of total pile length for Structure E7	0.00		0%	0.00	11-Oct-14*		02-Apr-17	905.00	23.00	0%																	
MS4.4.06	Complete piles of 30% of total pile length for Structure E7	0.00		0%	0.00	03-Nov-14*		02-Apr-17	882.00	21.00	0%																	
MS4.4.07	Complete piles of 35% of total pile length for Structure E7	0.00		0%	0.00	24-Nov-14*		02-Apr-17	861.00	52.00	0%																	
<b>CC 4.5 - Structure E8 and All Associated Works</b>																												
MS4.5.02	Complete piles of 10% of total pile length for Structure E8	0.00		100%	0.00	30-Aug-14 A					100%																	
MS4.5.03	Complete piles of 15% of total pile length for Structure E8	0.00		100%	0.00	12-Sep-14 A					100%																	
MS4.5.04	Complete piles of 20% of total pile length for Structure E8	0.00		0%	0.00	26-Sep-14*		02-Apr-17	920.00	26.00	0%																	
MS4.5.05	Complete piles of 25% of total pile length for Structure E8	0.00		0%	0.00	22-Oct-14*		02-Apr-17	894.00	24.00	0%																	
MS4.5.06	Complete piles of 30% of total pile length for Structure E8	0.00		0%	0.00	15-Nov-14*		02-Apr-17	870.00	34.00	0%																	

■ Actual Work  
■ Planned Bar  
■ Critical Bar  
◆ Milestone

Project ID: J3518DWPPrD1-M16  
 Layout: J3518-DWP-3MRP Submission - M16  
 Filter: TASK filters: 3-Month Lookahead, No Level of Effort.

**Tuen Mun - Chek Lap Kok Link - Southern Connection**  
**3-Month Rolling Programme (Page 2 of 35 Pages)**  
**(Progress as of 21-Sep-14)**

Date	Revision	Checked	Approved
29-Jul-14		FZ	
29-Aug-14		FZ	
07-Oct-14			

**DWG. No.:**  
**J3518/GCL/PGM/3MRP-M16**



Activity ID	Activity Name	Orig. Durn.	Act. Start / FC Early Start	Duration% Complete	Rem. Durn.	Act. Finish / FC Early Finish	Late Start	Late Finish	Total Float	Free Float	Physical % Complete	2014													
												September					October				November			December	
												25	01	08	15	22	29	06	13	20	27	03	10	17	24
MS9.07	Complete piles of 35% of total pile length for Structure D	0.00		0%	0.00	22-Nov-14*		02-Apr-17	863.00	9.00	0%														
MS9.08	Complete piles of 40% of total pile length for Structure D	0.00		0%	0.00	01-Dec-14*		02-Apr-17	854.00	10.00	0%														
MS9.09	Complete piles of 45% of total pile length for Structure D	0.00		0%	0.00	11-Dec-14*		02-Apr-17	844.00	11.00	0%														
MS9.21	Complete 10% of number of pile caps for Structure D	0.00		0%	0.00	06-Oct-14*		12-Mar-17	888.00	11.00	0%														
MS9.22	Complete 20% of number of pile caps for Structure D	0.00		0%	0.00	07-Nov-14*		02-Apr-17	877.00	17.00	0%														
MS9.23	Complete 30% of number of pile caps for Structure D	0.00		0%	0.00	24-Nov-14*		02-Apr-17	860.00	28.00	0%														
MS9.31	Complete 10% of number of bridge piers for Structure D	0.00		0%	0.00	27-Nov-14*		02-Apr-17	857.00	25.00	0%														
<b>CC 11 - At grade Roadworks and Other Works along Cheung Tung Road</b>																									
MS11.13	Compl drainage instrn 25% of total length (measured on plan) of drainage pipes	0.00		0%	0.00	09-Dec-14*		13-Mar-17	825.00	59.00	0%														
MS11.18	Complete watermains instrn of 25% of total length (measured on plan) of watermains	0.00		0%	0.00	05-Dec-14*		13-Mar-17	829.00	45.00	0%														
<b>General Submissions</b>																									
<b>General Requirements</b>																									
<b>Temporary Works Design</b>																									
PR00130	Unloading Jetty at HKBCF - Working Platform design and approval	90.00	02-Jun-14 A	10%	81.00	29-Dec-14	13-May-14	16-Aug-14	-110.00	0.00	10%														
<b>Land Works</b>																									
PR00160	Propose/submit/approval of a performance review for piled frnds in accordance w/ ETWB TC	101.00	26-May-14 A	49.5%	51.00	21-Nov-14	02-Dec-15	02-Feb-16	355.00	30.00	50%														
<b>Land GI Works</b>																									
PR02190	Proposed Early Access date at Portion A	0.00	22-Sep-14*	0%	0.00			05-Jun-18	094.00	39.00	0%														
PR02200	14No possible Boreholes for Pier E14 & Viaduct F - possible early access ahead of possessic	72.00	08-Nov-14	0%	72.00	03-Feb-15	05-Jun-18	29-Aug-18	055.00	1055.00	0%														
PR02204	SQR Sampling & Testing and Approval	195.00	14-Aug-14 A	7.69%	180.00	04-May-15	08-May-14	09-Dec-14	-114.00	0.00	7%														
PR03110	Trial Pits along Cheung Tung Road	20.00	17-Feb-14 A	75%	5.00	26-Sep-14	24-Aug-18	29-Aug-18	161.00	1161.00	75%														
<b>Additional Land GI</b>																									
PR03200	Boreholes PBH25, 29, 30, 31 (Piers D9, C14, C16, C17)	33.00	11-Jan-14 A	75.76%	8.00	30-Sep-14	21-Aug-18	29-Aug-18	158.00	1158.00	75%														
PR03210	Boreholes PBH38 & PBH45 (AR-A), PBH39 (A11), PBH40 (A10), PBH41(A9)	30.00	09-Aug-14 A	80%	6.00	27-Sep-14	12-Jul-18	18-Jul-18	124.00	27.00	80%														
<b>Design Submissions</b>																									
<b>Detailed Design (v17)</b>																									
<b>Ground Investigation</b>																									
ARDD0009	Consultation with GEO	20.00	13-Aug-13 A	85%	3.00	24-Sep-14	29-Mar-17	31-Mar-17	657.00	57.00	85%														
ARDD0010	IC/SO Approval of Ground Investigation Interpretative Report - AP03.00	75.00	13-Aug-13 A	20%	60.00	12-Dec-14	09-Jan-17	31-Mar-17	600.00	0.00	20%														
ARDD0010-1	IC/SO Approval of Ground Investigation Interpretative Report - AP03.00	0.00		0%	0.00	12-Dec-14		31-Mar-17	600.00	0.00	0%														
ARDD0013-1	Additional GI Fieldwork, Lab Testing and Permitting E5-E8	45.00	16-Jul-13 A	88.89%	5.00	26-Sep-14	23-Aug-18	29-Aug-18	023.00	55.00	90%														
ARDD0013-2	Additional GI Fieldwork, Lab Testing and Permitting - Other areas	60.00	16-Jul-13 A	80%	12.00	07-Oct-14	14-Aug-18	29-Aug-18	016.00	48.00	80%														
ARDD0015-1	E5-E8 Interpretation	15.00	17-Sep-13 A	86.67%	2.00	23-Sep-14	02-Jul-14	03-Jul-14	-58.00	58.00	85%														
ARDD0015-2	Additional GI Interpretative Report - AP03.00	15.00	08-Oct-13 A	73.33%	4.00	25-Sep-14	13-Jul-18	18-Jul-18	994.00	0.00	75%														
ARDD0017-1	Earliest IC certificate for DDA-AP03.00	0.00		0%	0.00	06-Nov-14		29-Aug-18	994.00	26.00	0%														
ARDD0017-2	IC/SO Approval of Additional GI Interpretative Report - AP03.00	75.00	29-Jan-14 A	20%	60.00	12-Dec-14	07-Jun-18	29-Aug-18	968.00	0.00	20%														
ARDD0017-4	IC/SO Approval of Additional GI Interpretative Report - AP03.00	0.00		0%	0.00	12-Dec-14		29-Aug-18	968.00	968.00	0%														
<b>General Submissions</b>																									
ARDD0037-1	Preparation of Seismic Performance Report - AP12.00	20.00	15-Dec-14	0%	20.00	09-Jan-15	23-Sep-15	20-Oct-15	202.00	0.00	0%														
ARDD0039	IC/SO Approval of Maintenance Matrix - AP07.00	75.00	08-May-14 A	40%	45.00	21-Nov-14	08-Jul-15	08-Sep-15	207.00	0.00	40%														
ARDD0039-1	IC/SO Approval of Maintenance Matrix - AP07.00	0.00		0%	0.00	21-Nov-14		08-Sep-15	207.00	130.00	0%														
ARDD0041-2	IC/SO Approval of O&M Facility Provisions AIP - BP11.00	75.00	23-Jun-14 A	20%	60.00	12-Dec-14	07-Jan-15	31-Mar-15	77.00	0.00	20%														
ARDD0041-4	IC/SO Approval of O&M Facility Provisions AIP - BP11.00	0.00		0%	0.00	12-Dec-14		31-Mar-15	77.00	0.00	0%														
ARDD0042-1	Preparation of O&M Facility Provisions DDA - BP11.01	40.00	15-Dec-14	0%	40.00	06-Feb-15	01-Apr-15	26-May-15	77.00	0.00	0%														
<b>Gazette and Alignment (assume no gazette change)</b>																									
ARDD0071	IC/SO Approval of Alignment DDA - BP01.01	75.00	24-Jan-14 A	97.33%	2.00	23-Sep-14	02-Jul-14	03-Jul-14	-58.00	0.00	90%														
ARDD0071-1	Earliest IC Cert for Alignment DDA - BP01.01	0.00		0%	0.00	22-Sep-14		03-Jul-14	-56.00	2.00	0%														
ARDD0071-2	IC/SO Approval of Alignment DDA - BP01.01	0.00		0%	0.00	23-Sep-14		03-Jul-14	-58.00	8.00	0%														

	Project ID: J3518DWPd1-M16 Layout: J3518-DWP-3MRP Submission - M16 Filter: TASK filters: 3-Month Lookahead, No Level of Effort.	<b>Tuen Mun - Chek Lap Kok Link - Southern Connection</b> <b>3-Month Rolling Programme (Page 4 of 35 Pages)</b> <b>(Progress as of 21-Sep-14)</b>	<table border="1"> <tr><th>Date</th><th>Revision</th><th>Checked</th><th>Approved</th></tr> <tr><td>29-Jul-14</td><td></td><td>FZ</td><td></td></tr> <tr><td>29-Aug-14</td><td></td><td>FZ</td><td></td></tr> <tr><td>07-Oct-14</td><td></td><td></td><td></td></tr> </table>	Date	Revision	Checked	Approved	29-Jul-14		FZ		29-Aug-14		FZ		07-Oct-14				<b>DWG. No.:</b> <b>J3518/GCL/PGM/3MRP-M16</b>
Date	Revision	Checked	Approved																	
29-Jul-14		FZ																		
29-Aug-14		FZ																		
07-Oct-14																				

Activity ID	Activity Name	Orig. Durn.	Act. Start / FC Early Start	Duration % Complete	Rem. Durn.	Act. Finish / FC Early Finish	Late Start	Late Finish	Total Float	Free Float	Physical % Complete	2014																			
												September					October					November					December				
												25	01	08	15	22	29	06	13	20	27	03	10	17	24	01	08	15			
<b>General Viaduct Submission</b>																															
ARDD0078	IC/SO Approval of Viaduct E&M Works DDA BP21.01	75.00	17-Jun-14 A	60%	30.00	31-Oct-14	17-Jun-15	28-Jul-15	192.00	0.00	60%																				
ARDD0078-1	IC/SO Approval of Viaduct E&M Works DDA BP21.01	0.00		0%	0.00	31-Oct-14		28-Jul-15	192.00	115.00	0%																				
<b>Viaduct B</b>																															
<b>Viaduct Design</b>																															
ARDD0099-1	Viaduct B - Earliest IC Certificate for DP12.03	0.00		0%	0.00	22-Sep-14		31-Jul-14	-36.00	10.00	0%																				
ARDD0099-3	Viaduct B - IC/SO Approval of Sub & Superstructure DDA - DP12.03	75.00	04-Mar-14 A	96%	3.00	03-Oct-14	29-Jul-14	31-Jul-14	-46.00	0.00	60%																				
ARDD0099-5	Viaduct B - IC/SO Approval of Sub & Superstructure DDA - DP12.03	0.00		0%	0.00	03-Oct-14		31-Jul-14	-46.00	0.00	0%																				
<b>Associated Construction Milestones</b>																															
ARDD0129	Viaduct B - DDA approval ready for Initial Segment Casting	0.00	16-Sep-14 A	100%	0.00						100%																				
<b>Viaduct E5 and E6</b>																															
<b>Viaduct Design</b>																															
ARDD0150-1	Viaduct E5 & E6 - Earliest IC certificate for DDA for Viaduct E5 & E6 - DP15.09	0.00		0%	0.00	22-Sep-14		22-May-14	-86.00	30.00	0%																				
ARDD0150-3	Viaduct E5 & E6 - IC/SO Approval of Pile Cap Precast Shells DDA DP15.05	75.00	15-Apr-14 A	40%	45.00	21-Nov-14	02-May-14	03-Jul-14	101.00	0.00	40%																				
ARDD0150-4	Viaduct E5 & E6 - IC/SO Approval (late) of Sub & Superstructure DDA DP15.09	75.00	09-Jul-14 A	20%	60.00	12-Dec-14	11-Apr-14	03-Jul-14	-116.00	0.00	20%																				
ARDD0150-6	Viaduct E5 & E6 - IC/SO Approval of Pile Cap Precast Shells DDA DP15.05	0.00		0%	0.00	21-Nov-14		03-Jul-14	101.00	15.00	0%																				
ARDD0150-8	Viaduct E5 & E6 - IC/SO Approval (late) of Sub & Superstructure DDA DP15.09	0.00		0%	0.00	12-Dec-14		03-Jul-14	-116.00	0.00	0%																				
<b>Associated Construction Milestones</b>																															
ARDD0175	Viaduct E5 & E6 - DDA approval ready for Initial Segment Casting	0.00	13-Dec-14	0%	0.00		09-Sep-14		-95.00	40.00	0%																				
<b>Viaduct E7 &amp; E8</b>																															
<b>Viaduct Design</b>																															
ARDD0195-1	Viaduct E7 & E8 - Earliest IC certificate for Pilecap Precast Shells DDA - DP15.08	0.00		0%	0.00	22-Sep-14		06-May-14	-98.00	18.00	0%																				
ARDD0195-3	Viaduct E7 & E8 - IC/SO Approval of Pilecap Precast Shells DDA - DP15.08	75.00	15-Apr-14 A	40%	45.00	21-Nov-14	02-May-14	03-Jul-14	101.00	0.00	40%																				
ARDD0195-4	Viaduct E7 & E8 - IC/SO Approval of Sub & Superstructure DDA - DP15.09	75.00	09-Jul-14 A	20%	60.00	12-Dec-14	11-Apr-14	03-Jul-14	-116.00	0.00	20%																				
ARDD0195-5	Viaduct E7 & E8 - IC/SO Approval of Sub & Superstructure DDA - DP15.09	0.00		0%	0.00	12-Dec-14		03-Jul-14	-116.00	0.00	0%																				
ARDD0195-6	Viaduct E7 & E8 - IC/SO Approval of Pilecap Precast Shells DDA - DP15.08	0.00		0%	0.00	21-Nov-14		03-Jul-14	101.00	15.00	0%																				
<b>Associated Construction Milestones</b>																															
ARDD0220	Viaduct E7 & E8 - DDA approval ready for Initial Segment Casting	0.00	13-Dec-14	0%	0.00		10-Sep-14		-94.00	41.00	0%																				
<b>Viaduct E2</b>																															
<b>Viaduct Design</b>																															
ARDD0241-1	Viaduct E2 - Earliest IC certificate for Pilecap Precast Shells DDA - DP15.05	0.00		0%	0.00	22-Sep-14		17-Jun-14	-68.00	21.00	0%																				
ARDD0241-3	Viaduct E2 - IC/SO Approval (Late) of Sub & Superstructure DDA - DP15.06	75.00	04-Jul-14 A	20%	60.00	17-Dec-14	23-May-14	14-Aug-14	-89.00	0.00	20%																				
ARDD0241-4	Viaduct E2 - IC/SO Approval Pilecap Precast Shells DDA - DP15.05	75.00	15-Apr-14 A	90.67%	7.00	30-Sep-14	15-May-14	23-May-14	-92.00	0.00	90%																				
ARDD0241-5	Viaduct E2 - IC/SO Approval Pilecap Precast Shells DDA - DP15.05	0.00		0%	0.00	30-Sep-14		23-May-14	-92.00	0.00	0%																				
ARDD0241-6	Viaduct E2 - IC/SO Approval (Late) of Sub & Superstructure DDA - DP15.06	0.00		0%	0.00	17-Dec-14		14-Aug-14	-89.00	0.00	0%																				
<b>Associated Construction Milestones</b>																															
ARDD0265	Viaduct E2 - DDA approval ready for Commencement of Pilecaps	0.00	14-Dec-14	0%	0.00		31-Jul-14		135.13	1.00	0%																				
ARDD0266	Viaduct E2 - DDA approval ready for Initial Segment Casting	0.00	18-Dec-14	0%	0.00		15-Aug-14		125.00	35.00	0%																				
ARDD0266-1	Viaduct E2 - DDA approval ready for Pile Cap Shell Casting	0.00	01-Oct-14	0%	0.00		25-May-14		128.13	0.00	0%																				
<b>Viaduct E1</b>																															
<b>Viaduct Design</b>																															
ARDD0287-1	Viaduct E1 - Earliest IC Certificate for DDA - DP15.02	0.00		0%	0.00	22-Sep-14		05-Aug-14	-33.00	10.00	0%																				
ARDD0287-3	Viaduct E1 - IC/SO Approval (Late) of Sub & Superstructure DDA DP15.03	75.00	30-Jul-14 A	20%	60.00	26-Dec-14	06-Aug-14	28-Oct-14	-43.00	0.00	20%																				
ARDD0287-5	Viaduct E1 - IC/SO Approval of Pilecap Precast Shells DDA DP15.02	75.00	20-May-14 A	60%	30.00	31-Oct-14	17-Jun-14	28-Jul-14	-69.00	0.00	60%																				
ARDD0287-6	Viaduct E1 - IC/SO Approval of Pilecap Precast Shells DDA DP15.02	0.00		0%	0.00	31-Oct-14		28-Jul-14	-69.00	0.00	0%																				
<b>Associated Construction Milestones</b>																															
ARDD0311	Viaduct E1 - DDA approval ready for Commencement of Pilecaps	0.00	01-Nov-14	0%	0.00		30-Aug-14		-62.88	13.00	0%																				
<b>Viaduct D</b>																															

<ul style="list-style-type: none"> <li><span style="color: blue;">█</span> Actual Work</li> <li><span style="color: green;">█</span> Planned Bar</li> <li><span style="color: red;">█</span> Critical Bar</li> <li>◆ Milestone</li> </ul>	Project ID: J3518DWPPrD1-M16 Layout: J3518-DWP-3MRP Submission - M16 Filter: TASK filters: 3-Month Lookahead, No Level of Effort.	<b>Tuen Mun - Chek Lap Kok Link - Southern Connection</b> <b>3-Month Rolling Programme (Page 5 of 35 Pages)</b> <b>(Progress as of 21-Sep-14)</b>				Date	Revision	Checked	Approved	DWG. No.:  <b>J3518/GCL/PGM/3MRP-M16</b>
		29-Jul-14		FZ						
		29-Aug-14		FZ						
		07-Oct-14								

Activity ID	Activity Name	Orig. Durn.	Act. Start / FC Early Start	Duration% Complete	Rem. Durn.	Act. Finish / FC Early Finish	Late Start	Late Finish	Total Float	Free Float	Physical % Complete	2014																			
												September					October					November					December				
												25	01	08	15	22	29	06	13	20	27	03	10	17	24	01	08	15			
<b>Viaduct Design</b>																															
ARDD0330	Viaduct D - Preparation of Substructure DDA - DP14.03	50.00	19-Feb-14 A	100%	0.00	01-Sep-14 A					100%																				
ARDD0331	Viaduct D - Preparation of Superstructure DDA - DP14.03	70.00	19-Feb-14 A	100%	0.00	01-Sep-14 A					100%																				
ARDD0332	Viaduct D - Submission of Sub & Superstructure DDA - DP14.03	0.00		100%	0.00	01-Sep-14 A					100%																				
ARDD0333-1	Viaduct D - Earliest IC Certificate for Sub & Superstructure DDA - DP14.03	0.00		0%	0.00	13-Oct-14		27-Aug-14	-33.00	12.00	0%																				
ARDD0333-3	Viaduct D - IC/SO Approval of Sub & Superstructure DDA - DP14.03	75.00	02-Sep-14 A	20%	60.00	26-Dec-14	04-Aug-14	24-Oct-14	-45.00	0.00	20%																				
<b>Information to Contractor</b>																															
ARDD0343	Viaduct D - Final Pilecap Reinforcement	0.00	01-Sep-14 A	100%	0.00						100%																				
ARDD0345	Viaduct D - Final Pier Shapes and Reinforcement	0.00		100%	0.00	01-Sep-14 A					100%																				
ARDD0346	Viaduct D - Typical Segment Shapes for Moulds	0.00		100%	0.00	01-Sep-14 A					100%																				
ARDD0347	Viaduct D - Typical Segment Reinforcement	0.00		100%	0.00	01-Sep-14 A					100%																				
ARDD0348	Viaduct D - Final Segment Types and Reinforcement	0.00		0%	0.00	22-Sep-14		23-Sep-14	2.00	76.00	0%																				
ARDD0349	Viaduct D - Typical Anchorage and Tendon Types	0.00		100%	0.00	01-Sep-14 A					100%																				
ARDD0350	Viaduct D - Final Anchorage and PT Requirements	0.00		0%	0.00	22-Sep-14		15-Sep-14	-4.00	70.00	0%																				
ARDD0351	Viaduct D - Provisional Bearing Schedule	0.00		100%	0.00	01-Sep-14 A					100%																				
ARDD0352	Viaduct D - Final Bearing Schedule	0.00		0%	0.00	27-Oct-14		09-Jul-14	-78.00	0.00	0%																				
ARDD0353	Viaduct D - Provisional Movement Joint (MJ) Schedule	0.00		100%	0.00	01-Sep-14 A					100%																				
ARDD0354	Viaduct D - Final Movement Joint (MJ) Schedule	0.00		0%	0.00	24-Nov-14		26-Feb-15	68.00	47.00	0%																				
<b>Viaduct C</b>																															
<b>Viaduct Design</b>																															
ARDD0379-1	Viaduct C - Earliest IC Certificate for Foundation DDA - DP13.01	0.00		0%	0.00	22-Sep-14		05-Sep-14	-10.00	28.00	0%																				
ARDD0379-2	Viaduct C - IC/SO Approval of Foundation DDA - DP13.01	75.00	22-Jul-14 A	60%	30.00	31-Oct-14	30-Sep-14	10-Nov-14	6.00	0.00	60%																				
ARDD0379-4	Viaduct C - IC/SO Approval of Foundation DDA - DP13.01	0.00		0%	0.00	31-Oct-14		10-Nov-14	6.00	0.00	0%																				
ARDD0381	Viaduct C - Preparation of Substructure DDA-DP13.03	50.00	04-Aug-14 A	60%	20.00	17-Oct-14	11-Aug-14	05-Sep-14	-30.00	0.00	60%																				
ARDD0382	Viaduct C - Preparation of Superstructure DDA-DP13.03	70.00	04-Aug-14 A	60%	28.00	29-Oct-14	30-Jul-14	05-Sep-14	-38.00	0.00	60%																				
ARDD0383	Viaduct C - Submission of Sub & Superstructure DDA - DP13.03	0.00		0%	0.00	29-Oct-14		05-Sep-14	-38.00	0.00	0%																				
ARDD0384-1	Viaduct C - Earliest IC Certificate for Sub & Superstructure DDA - DP13.03	0.00		0%	0.00	10-Dec-14		09-Mar-15	63.00	56.00	0%																				
ARDD0384-2	Viaduct C - IC/SO Approval Pilecap Precast Shells DDA - DP13.02	75.00	06-Aug-14 A	100%	0.00	27-Aug-14 A					100%																				
ARDD0384-3	Viaduct C - IC/SO Approval of Sub & Superstructure DDA - DP13.03	75.00	30-Oct-14	0%	75.00	11-Feb-15	25-Nov-14	09-Mar-15	18.00	11.00	0%																				
ARDD0384-4	Viaduct C - IC/SO Approval Pilecap Precast Shells DDA - DP13.02	0.00		100%	0.00	27-Aug-14 A					100%																				
<b>Information to Contractor</b>																															
ARDD0392	Viaduct C - Typical Pilecap Reinforcement - Stainless Steel Rebar	0.00	21-Aug-14 A	100%	0.00						100%																				
ARDD0393	Viaduct C - Typical Pilecap Reinforcement - Regular Rebar	0.00		100%	0.00	21-Aug-14 A					100%																				
ARDD0394	Viaduct C - Final Pilecap Reinforcement	0.00		0%	0.00	17-Oct-14		12-Dec-14	40.00	0.00	0%																				
ARDD0396	Viaduct C - Final Pier Shapes and Reinforcement	0.00		0%	0.00	17-Oct-14		26-Feb-15	94.00	31.00	0%																				
ARDD0397	Viaduct C - Typical Segment Shapes for Moulds	0.00		0%	0.00	22-Sep-14		15-Oct-14	18.00	0.00	0%																				
ARDD0398	Viaduct C - Typical Segment Reinforcement	0.00		0%	0.00	26-Sep-14		04-Dec-14	49.00	0.00	0%																				
ARDD0399	Viaduct C - Final Segment Types and Reinforcement	0.00		0%	0.00	30-Oct-14		07-Jan-15	49.00	31.00	0%																				
ARDD0400	Viaduct C - Typical Anchorage and Tendon Types	0.00		0%	0.00	29-Oct-14		01-Apr-15	110.00	92.00	0%																				
ARDD0401	Viaduct C - Final Anchorage and PT Requirements	0.00		0%	0.00	29-Oct-14		07-Jan-15	50.00	32.00	0%																				
ARDD0402	Viaduct C - Provisional Bearing Schedule	0.00		0%	0.00	29-Oct-14		05-Sep-14	-38.00	0.00	0%																				
ARDD0403	Viaduct C - Final Bearing Schedule	0.00		0%	0.00	29-Oct-14		05-Sep-14	-38.00	42.00	0%																				
ARDD0404	Viaduct C - Provisional Movement Joint (MJ) Schedule	0.00		0%	0.00	29-Oct-14		26-Feb-15	86.00	0.00	0%																				
ARDD0405	Viaduct C - Final Movement Joint (MJ) Schedule	0.00		0%	0.00	29-Oct-14		26-Feb-15	86.00	65.00	0%																				
<b>Associated Construction Milestones</b>																															
ARDD0412	Viaduct C - DDA approval ready for Commencement of Piling	0.00	01-Nov-14	0%	0.00		10-Dec-14		39.00	0.00	0%																				
<b>Viaduct A</b>																															
<b>Viaduct Design</b>																															

■ Actual Work  
■ Planned Bar  
■ Critical Bar  
◆ Milestone

Project ID: J3518DWPPrD1-M16  
 Layout: J3518-DWP-3MRP Submission - M16  
 Filter: TASK filters: 3-Month Lookahead, No Level of Effort.

**Tuen Mun - Chek Lap Kok Link - Southern Connection**  
**3-Month Rolling Programme (Page 6 of 35 Pages)**  
**(Progress as of 21-Sep-14)**

Date	Revision	Checked	Approved
29-Jul-14		FZ	
29-Aug-14		FZ	
07-Oct-14			

**DWG. No.:**  
**J3518/GCL/PGM/3MRP-M16**

Activity ID	Activity Name	Orig. Durn.	Act. Start / FC Early Start	Duration % Complete	Rem. Durn.	Act. Finish / FC Early Finish	Late Start	Late Finish	Total Float	Free Float	Physical % Complete	2014															
												September				October				November				December			
												25	01	08	15	22	29	06	13	20	27	03	10	17	24	01	08
ARDD0425	Viaduct A - IC/SO Approval of Viaduct AIP - DP11.00	68.00	19-Jul-14 A	60.29%	27.00	28-Oct-14	11-Sep-14	17-Oct-14	-7.00	0.00	60%																
ARDD0425-1	Viaduct A - IC/SO Approval of Viaduct AIP - DP11.00	0.00		0%	0.00	28-Oct-14		17-Oct-14	-7.00	0.00	0%																
ARDD0428	Viaduct A - Final Pile Loads and Global Analysis	15.00	18-Jul-14 A	100%	0.00	28-Aug-14 A					100%																
ARDD0429	Viaduct A - Foundation DDA - DP11.01	45.00	18-Jul-14 A	84.44%	7.00	30-Sep-14	09-Dec-14	17-Dec-14	56.00	0.00	85%																
ARDD0430-1	Viaduct A - Earliest IC Certificate for Foundation DDA DP11.01	0.00		0%	0.00	28-Oct-14		04-Mar-15	91.00	35.00	0%																
ARDD0430-2	Viaduct A - IC/SO Approval of Foundation DDA - DP11.01	55.00	01-Oct-14	0%	55.00	16-Dec-14	18-Dec-14	04-Mar-15	56.00	0.00	0%																
ARDD0430-4	Viaduct A - IC/SO Approval of Foundation DDA - DP11.01	0.00		0%	0.00	16-Dec-14		04-Mar-15	56.00	0.00	0%																
ARDD0431	Viaduct A - Preparation of Pilecap Precast Shells DDA - DP11.02	40.00	19-Sep-14 A	90%	4.00	28-Oct-14	14-Oct-14	17-Oct-14	-7.00	0.00	90%																
ARDD0432	Viaduct A - Preparation of Substructure DDA - DP11.03	50.00	19-Sep-14 A	10%	45.00	21-Nov-14	30-Oct-14	31-Dec-14	28.00	0.00	10%																
ARDD0433	Viaduct A - Preparation of Superstructure DDA-DP11.03	70.00	19-Sep-14 A	10%	63.00	17-Dec-14	23-Jul-14	17-Oct-14	-43.00	0.00	10%																
ARDD0434-1	Viaduct A - Submission of DDA - DP11.02	0.00		0%	0.00	21-Nov-14		04-Mar-15	73.00	17.00	0%																
ARDD0434-2	Viaduct A - Submission of DDA - DP11.03	0.00		0%	0.00	17-Dec-14		17-Oct-14	-43.00	0.00	0%																
ARDD0435-2	Viaduct A - IC/SO Approval of DDA DP11.02	75.00	17-Dec-14	0%	75.00	31-Mar-15	05-Mar-15	17-Jun-15	56.00	0.00	0%																
<b>Information to Contractor</b>																											
ARDD0439	Viaduct A - Typical Pile Reinforcement - Stainless Rebar	0.00	22-Sep-14	0%	0.00		08-Jan-15		78.00	0.00	0%																
ARDD0440	Viaduct A - Final Pile Reinforcement and Socket H Pile Details	0.00		0%	0.00	23-Oct-14		10-Feb-15	78.00	0.00	0%																
ARDD0441	Viaduct A - Precast Pilecap Shell Shape and Reinforcement	0.00		0%	0.00	28-Oct-14		28-Jan-15	66.00	38.00	0%																
ARDD0443	Viaduct A - Typical Pilecap Reinforcement - Stainless Steel Rebar	0.00	23-Oct-14	0%	0.00		01-Jan-15		50.00	22.00	0%																
ARDD0444	Viaduct A - Typical Pilecap Reinforcement - Regular Rebar	0.00		0%	0.00	16-Oct-14		31-Dec-14	54.00	26.00	0%																
ARDD0445	Viaduct A - Final Pilecap Reinforcement	0.00		0%	0.00	21-Nov-14		31-Dec-14	28.00	0.00	0%																
ARDD0447	Viaduct A - Final Pier Shapes and Reinforcement	0.00		0%	0.00	21-Nov-14		21-May-15	129.00	11.00	0%																
ARDD0448	Viaduct A - Typical Segment Shapes for Moulds	0.00		0%	0.00	16-Oct-14		28-May-15	160.00	0.00	0%																
ARDD0449	Viaduct A - Typical Segment Reinforcement	0.00		0%	0.00	13-Nov-14		28-May-15	140.00	24.00	0%																
ARDD0450	Viaduct A - Final Segment Types and Reinforcement	0.00		0%	0.00	17-Dec-14		09-Jul-15	146.00	30.00	0%																
ARDD0451	Viaduct A - Typical Anchorage and Tendon Types	0.00		0%	0.00	17-Dec-14		28-May-15	116.00	0.00	0%																
ARDD0452	Viaduct A - Final Anchorage and PT Requirements	0.00		0%	0.00	17-Dec-14		09-Jul-15	146.00	30.00	0%																
ARDD0453	Viaduct A - Provisional Bearing Schedule	0.00		0%	0.00	17-Dec-14		17-Oct-14	-43.00	0.00	0%																
ARDD0454	Viaduct A - Final Bearing Schedule	0.00		0%	0.00	17-Dec-14		06-Jul-15	143.00	50.00	0%																
ARDD0455	Viaduct A - Provisional Movement Joint (MJ) Schedule	0.00		0%	0.00	17-Dec-14		15-Jan-15	21.00	0.00	0%																
ARDD0456	Viaduct A - Final Movement Joint (MJ) Schedule	0.00		0%	0.00	17-Dec-14		15-Jan-15	21.00	0.00	0%																
<b>Viaduct F1 &amp; F3</b>																											
<b>Viaduct Design</b>																											
ARDD0476	Viaduct F1 & F3 - IC/SO Approval of Viaduct AIP - DP16.00	68.00	03-Jun-14 A	100%	0.00	01-Sep-14 A					100%																
ARDD0476-1	Viaduct F1 & F3 - IC/SO Approval of Viaduct AIP - DP16.00	0.00		100%	0.00	01-Sep-14 A					100%																
ARDD0477	Viaduct F1 & F3 - Receipt of Data for Final Analysis	0.00		0%	0.00	22-Sep-14		29-Aug-18	028.00	1028.00	0%																
ARDD0481	Viaduct F1 & F3 - IC/SO Approval of Foundation DDA - DP16.01	75.00	16-Aug-14 A	20%	60.00	12-Dec-14	28-Aug-14	19-Nov-14	-17.00	0.00	20%																
ARDD0481-1	Viaduct F1 & F3 - Earliest IC Certificate for DDA - DP16.01 DP16.07	0.00		0%	0.00	26-Sep-14		19-Nov-14	38.00	55.00	0%																
ARDD0481-2	Viaduct F1 & F3 - IC/SO Approval of Foundation DDA - DP16.07	75.00	16-Aug-14 A	20%	60.00	12-Dec-14	28-Aug-14	19-Nov-14	-17.00	0.00	20%																
ARDD0481-3	Viaduct F1 & F3 - IC/SO Approval of Foundation DDA - DP16.07	0.00		0%	0.00	12-Dec-14		19-Nov-14	-17.00	0.00	0%																
ARDD0481-4	Viaduct F1 & F3 - IC/SO Approval of Foundation DDA - DP16.01	0.00		0%	0.00	12-Dec-14		19-Nov-14	-17.00	0.00	0%																
ARDD0482	Viaduct F1 & F3 - Preparation of Substructure DDA - DP16.02	50.00	15-Aug-14 A	40%	30.00	31-Oct-14	08-Sep-14	17-Oct-14	-10.00	0.00	40%																
ARDD0482-2	Viaduct F1 & F3 - Preparation of Substructure DDA - DP16.08	50.00	15-Aug-14 A	40%	30.00	31-Oct-14	08-Sep-14	17-Oct-14	-10.00	0.00	40%																
ARDD0483	Viaduct F1 & F3 - Preparation of Superstructure DDA - DP16.03	70.00	15-Aug-14 A	40%	42.00	18-Nov-14	21-Aug-14	17-Oct-14	-22.00	0.00	40%																
ARDD0483-2	Viaduct F1 & F3 - Preparation of Superstructure DDA - DP16.09	70.00	15-Aug-14 A	40%	42.00	18-Nov-14	21-Aug-14	17-Oct-14	-22.00	0.00	40%																
ARDD0484-1	Viaduct F1 & F3 - Submission of DDA - DP16.02	0.00		0%	0.00	31-Oct-14		17-Oct-14	-10.00	9.00	0%																
ARDD0484-2	Viaduct F1 & F3 - Submission of DDA - DP16.03	0.00		0%	0.00	18-Nov-14		17-Oct-14	-22.00	0.00	0%																
ARDD0484-3	Viaduct F1 & F3 - Submission of DDA - DP16.08	0.00		0%	0.00	31-Oct-14		17-Oct-14	-10.00	9.00	0%																
ARDD0484-4	Viaduct F1 & F3 - Submission of DDA - DP16.09	0.00		0%	0.00	18-Nov-14		17-Oct-14	-22.00	0.00	0%																

Actual Work  
 Planned Bar  
 Critical Bar  
 Milestone

Project ID: J3518DWPPrD1-M16  
 Layout: J3518-DWP-3MRP Submission - M16  
 Filter: TASK filters: 3-Month Lookahead, No Level of Effort.

**Tuen Mun - Chek Lap Kok Link - Southern Connection**  
**3-Month Rolling Programme (Page 7 of 35 Pages)**  
**(Progress as of 21-Sep-14)**

Date	Revision	Checked	Approved
29-Jul-14		FZ	
29-Aug-14		FZ	
07-Oct-14			

**DWG. No.:**  
**J3518/GCL/PGM/3MRP-M16**

Activity ID	Activity Name	Orig. Durn.	Act. Start / FC Early Start	Duration% Complete	Rem. Durn.	Act. Finish / FC Early Finish	Late Start	Late Finish	Total Float	Free Float	Physical % Complete	2014																
												September			October			November			December							
												25	01	08	15	22	29	06	13	20	27	03	10	17	24	01	08	15
ARDD0485-2	Viaduct F1 & F3 - IC/SO Approval of DDA - DP16.02	75.00	14-Nov-14	0%	75.00	26-Feb-15	26-Nov-14	10-Mar-15	8.00	40.00	0%																	
ARDD0485-4	Viaduct F1 & F3 - IC/SO Approval of DDA - DP16.03	75.00	19-Nov-14	0%	75.00	03-Mar-15	26-Nov-14	10-Mar-15	5.00	0.00	0%																	
ARDD0485-6	Viaduct F1 & F3 - IC/SO Approval of DDA - DP16.08	75.00	14-Nov-14	0%	75.00	26-Feb-15	26-Nov-14	10-Mar-15	8.00	40.00	0%																	
ARDD0485-8	Viaduct F1 & F3 - IC/SO Approval of DDA - DP16.09	75.00	19-Nov-14	0%	75.00	03-Mar-15	26-Nov-14	10-Mar-15	5.00	0.00	0%																	
<b>Information to Contractor</b>																												
ARDD0492	Viaduct F1 & F3 - Typical Pilecap Reinforcement - Stainless Steel Rebar	0.00	22-Sep-14	0%	0.00		04-Nov-14		31.00	6.00	0%																	
ARDD0493	Viaduct F1 & F3 - Typical Pilecap Reinforcement - Regular Rebar	0.00		0%	0.00	22-Sep-14		03-Nov-14	31.00	6.00	0%																	
ARDD0494	Viaduct F1 & F3 - Final Pilecap Reinforcement	0.00		0%	0.00	31-Oct-14		05-Dec-14	25.00	0.00	0%																	
ARDD0496	Viaduct F1 & F3 - Final Pier Shapes and Reinforcement	0.00		0%	0.00	31-Oct-14		08-Jan-15	49.00	41.00	0%																	
ARDD0497	Viaduct F1 & F3 - Typical Segment Shapes for Moulds	0.00		0%	0.00	22-Sep-14		27-Nov-14	49.00	0.00	0%																	
ARDD0498	Viaduct F1 & F3 - Typical Segment Reinforcement	0.00		0%	0.00	09-Oct-14		27-Nov-14	35.00	28.00	0%																	
ARDD0499	Viaduct F1 & F3 - Final Segment Types and Reinforcement	0.00		0%	0.00	18-Nov-14		19-Feb-15	67.00	60.00	0%																	
ARDD0500	Viaduct F1 & F3 - Typical Anchorage and Tendon Types	0.00		0%	0.00	18-Nov-14		27-Nov-14	7.00	0.00	0%																	
ARDD0501	Viaduct F1 & F3 - Final Anchorage and PT Requirements	0.00		0%	0.00	18-Nov-14		08-Jan-15	37.00	30.00	0%																	
ARDD0502	Viaduct F1 & F3 - Provisional Bearing Schedule	0.00		0%	0.00	18-Nov-14		17-Oct-14	-22.00	0.00	0%																	
ARDD0503	Viaduct F1 & F3 - Final Bearing Schedule	0.00		0%	0.00	18-Nov-14		17-Oct-14	-22.00	57.00	0%																	
ARDD0504	Viaduct F1 & F3 - Provisional Movement Joint (MJ) Schedule	0.00		0%	0.00	18-Nov-14		26-Feb-15	72.00	0.00	0%																	
ARDD0505	Viaduct F1 & F3 - Final Movement Joint (MJ) Schedule	0.00		0%	0.00	18-Nov-14		26-Feb-15	72.00	43.00	0%																	
<b>Associated Construction Milestones</b>																												
ARDD0507	Viaduct F1 & F3 - DDA approval ready for Commencement of Piling	0.00	13-Dec-14	0%	0.00		10-Dec-14		-3.00	143.00	0%																	
<b>Viaduct F2, F4 and F5</b>																												
<b>Viaduct Design</b>																												
ARDD0520	Viaduct F2, F4 & F5 - IC/SO Approval of Viaduct AIP - DP16.00	68.00	03-Jun-14 A	100%	0.00	01-Sep-14 A					100%																	
ARDD0520-1	Viaduct F2, F4 & F5 - IC/SO Approval of Viaduct AIP - DP16.00	0.00		100%	0.00	01-Sep-14 A					100%																	
ARDD0521	Viaduct F2, F4 & F5 - Receipt of Data for Final Analysis	0.00		0%	0.00	22-Sep-14		29-Aug-18	028.00	1028.00	0%																	
ARDD0525-1	Viaduct F2, F4 & F5 - Earliest IC certificate for DDA - DP16.04, 10, 13	0.00	26-Sep-14	0%	0.00		19-Dec-14		60.00	35.00	0%																	
ARDD0525-10	Viaduct F2, F4 & F5 - IC/SO Approval of Foundation DDA - DP16.13	0.00		0%	0.00	12-Dec-14		03-Dec-14	-7.00	0.00	0%																	
ARDD0525-2	Viaduct F2, F4 & F5 - IC/SO Approval of Foundation DDA - DP16.04	75.00	16-Aug-14 A	20%	60.00	12-Dec-14	11-Sep-14	03-Dec-14	-7.00	0.00	20%																	
ARDD0525-4	Viaduct F2, F4 & F5 - IC/SO Approval of Foundation DDA - DP16.10	75.00	16-Aug-14 A	20%	60.00	12-Dec-14	11-Sep-14	03-Dec-14	-7.00	0.00	20%																	
ARDD0525-6	Viaduct F2, F4 & F5 - IC/SO Approval of Foundation DDA - DP16.13	75.00	16-Aug-14 A	20%	60.00	12-Dec-14	11-Sep-14	03-Dec-14	-7.00	0.00	20%																	
ARDD0525-7	Viaduct F2, F4 & F5 - IC/SO Approval of Foundation DDA - DP16.10	0.00		0%	0.00	12-Dec-14		03-Dec-14	-7.00	0.00	0%																	
ARDD0525-8	Viaduct F2, F4 & F5 - IC/SO Approval of Foundation DDA - DP16.04	0.00		0%	0.00	12-Dec-14		03-Dec-14	-7.00	0.00	0%																	
ARDD0526	Viaduct F2, F4 & F5 - Preparation of Substructure DDA - DP16.05	50.00	15-Aug-14 A	40%	30.00	31-Oct-14	08-Sep-14	17-Oct-14	-10.00	0.00	40%																	
ARDD0526-4	Viaduct F2, F4 & F5 - Preparation of Substructure DDA - DP16.11	50.00	15-Aug-14 A	40%	30.00	31-Oct-14	08-Sep-14	17-Oct-14	-10.00	0.00	40%																	
ARDD0526-6	Viaduct F2, F4 & F5 - Preparation of Substructure DDA - DP16.14	50.00	15-Aug-14 A	40%	30.00	31-Oct-14	08-Sep-14	17-Oct-14	-10.00	0.00	40%																	
ARDD0527	Viaduct F2, F4 & F5 - Preparation of Superstructure DDA - DP16.06	70.00	15-Aug-14 A	40%	42.00	18-Nov-14	21-Aug-14	17-Oct-14	-22.00	0.00	40%																	
ARDD0527-4	Viaduct F2, F4 & F5 - Preparation of Superstructure DDA - DP16.12	70.00	15-Aug-14 A	40%	42.00	18-Nov-14	21-Aug-14	17-Oct-14	-22.00	0.00	40%																	
ARDD0527-6	Viaduct F2, F4 & F5 - Preparation of Superstructure DDA - DP16.15	70.00	15-Aug-14 A	40%	42.00	18-Nov-14	21-Aug-14	17-Oct-14	-22.00	0.00	40%																	
ARDD0528-1	Viaduct F2, F4 & F5 - Submission of DDA -DP16.05	0.00		0%	0.00	18-Nov-14		17-Oct-14	-22.00	0.00	0%																	
ARDD0528-2	Viaduct F2, F4 & F5 - Submission of DDA -DP16.06	0.00		0%	0.00	18-Nov-14		17-Oct-14	-22.00	0.00	0%																	
ARDD0528-3	Viaduct F2, F4 & F5 - Submission of DDA -DP16.11	0.00		0%	0.00	18-Nov-14		17-Oct-14	-22.00	0.00	0%																	
ARDD0528-4	Viaduct F2, F4 & F5 - Submission of DDA -DP16.12	0.00		0%	0.00	18-Nov-14		17-Oct-14	-22.00	0.00	0%																	
ARDD0528-5	Viaduct F2, F4 & F5 - Submission of DDA -DP16.14	0.00		0%	0.00	18-Nov-14		17-Oct-14	-22.00	0.00	0%																	
ARDD0528-6	Viaduct F2, F4 & F5 - Submission of DDA -DP16.15	0.00		0%	0.00	18-Nov-14		17-Oct-14	-22.00	0.00	0%																	
<b>Information to Contractor</b>																												
ARDD0536	Viaduct F2, F4 & F5 - Typical Pilecap Reinforcement - Stainless Steel Rebar	0.00	22-Sep-14	0%	0.00		25-Feb-15		112.13	6.00	0%																	
ARDD0537	Viaduct F2, F4 & F5 - Typical Pilecap Reinforcement - Regular Rebar	0.00		0%	0.00	22-Sep-14		25-Feb-15	112.13	6.00	0%																	
ARDD0538	Viaduct F2, F4 & F5 - Final Pilecap Reinforcement	0.00		0%	0.00	31-Oct-14		31-Mar-15	106.13	9.00	0%																	

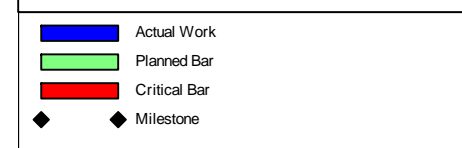
	Project ID: J3518DWPd1-M16 Layout: J3518-DWP-3MRP Submission - M16 Filter: TASK filters: 3-Month Lookahead, No Level of Effort.	<b>Tuen Mun - Chek Lap Kok Link - Southern Connection</b> <b>3-Month Rolling Programme (Page 8 of 35 Pages)</b> <b>(Progress as of 21-Sep-14)</b>	<table border="1"> <tr> <th>Date</th> <th>Revision</th> <th>Checked</th> <th>Approved</th> </tr> <tr> <td>29-Jul-14</td> <td></td> <td>FZ</td> <td></td> </tr> <tr> <td>29-Aug-14</td> <td></td> <td>FZ</td> <td></td> </tr> <tr> <td>07-Oct-14</td> <td></td> <td></td> <td></td> </tr> </table>	Date	Revision	Checked	Approved	29-Jul-14		FZ		29-Aug-14		FZ		07-Oct-14				<b>DWG. No.:</b> <b>J3518/GCL/PGM/3MRP-M16</b>
Date	Revision	Checked	Approved																	
29-Jul-14		FZ																		
29-Aug-14		FZ																		
07-Oct-14																				







Activity ID	Activity Name	Orig. Durn.	Act. Start / FC Early Start	Duration % Complete	Rem. Durn.	Act. Finish / FC Early Finish	Late Start	Late Finish	Total Float	Free Float	Physical % Complete	2014																	
												September					October					November				December			
													25	01	08	15	22	29	06	13	20	27	03	10	17	24	01	08	15
ARDD0722	Viaduct C - Erection Sequence Analysis	20.00	29-Sep-14	0%	20.00	24-Oct-14	04-Nov-14	01-Dec-14	26.00	0.00	0%																		
ARDD0723	Viaduct C - Target Geometry Analysis	20.00	27-Oct-14	0%	20.00	21-Nov-14	02-Dec-14	29-Dec-14	26.00	0.00	0%																		
ARDD0724	Viaduct C - Segment Geometry Schedules	10.00	24-Nov-14	0%	10.00	05-Dec-14	30-Dec-14	12-Jan-15	26.00	0.00	0%																		
ARDD0724-1	Viaduct C - Final Erection Geometry (Bridge C4 & C3)	0.00		0%	0.00	05-Dec-14		12-Jan-15	26.00	0.00	0%																		
<b>Viaduct D</b>																													
ARDD0727	Viaduct D - Erection Sequence Analysis	20.00	22-Sep-14	0%	20.00	17-Oct-14	10-Jun-14	07-Jul-14	-74.00	0.00	0%																		
ARDD0728	Viaduct D - Target Geometry Analysis	20.00	20-Oct-14	0%	20.00	14-Nov-14	08-Jul-14	04-Aug-14	-74.00	0.00	0%																		
ARDD0729	Viaduct D - Segment Geometry Schedules	10.00	17-Nov-14	0%	10.00	28-Nov-14	05-Aug-14	18-Aug-14	-74.00	0.00	0%																		
ARDD0729-1	Viaduct D - Final Erection Geometry (Bridge D3)	0.00		0%	0.00	28-Nov-14		18-Aug-14	-74.00	0.00	0%																		
<b>Viaduct E5 and E6</b>																													
ARDD0732	Viaduct E5 & E6 - Erection Sequence Analysis	30.00	24-Dec-13 A	23.33%	23.00	22-Oct-14	08-May-14	09-Jun-14	-97.00	0.00	25%																		
ARDD0733	Viaduct E5 & E6 - Target Geometry Analysis	30.00	04-Feb-14 A	23.33%	23.00	22-Oct-14	08-May-14	09-Jun-14	-97.00	0.00	25%																		
ARDD0734	Viaduct E5 & E6 - Segment Geometry Schedules	10.00	18-Mar-14 A	20%	8.00	01-Oct-14	29-May-14	09-Jun-14	-82.00	15.00	25%																		
ARDD0734-1	Viaduct E5 & E6 - Final Erection Geometry	0.00		0%	0.00	22-Oct-14		09-Jun-14	-97.00	0.00	0%																		
<b>Viaduct E7 &amp; E8</b>																													
ARDD0737	Viaduct E7 & E8 - Erection Sequence Analysis	30.00	24-Dec-13 A	23.33%	23.00	22-Oct-14	30-Apr-14	30-May-14	103.00	0.00	25%																		
ARDD0738	Viaduct E7 & E8 - Target Geometry Analysis	30.00	04-Feb-14 A	23.33%	23.00	22-Oct-14	30-Apr-14	30-May-14	103.00	0.00	25%																		
ARDD0739	Viaduct E7 & E8 - Segment Geometry Schedules	10.00	18-Mar-14 A	20%	8.00	01-Oct-14	21-May-14	30-May-14	-88.00	15.00	25%																		
ARDD0739-1	Viaduct E7 & E8 - Final Erection Geometry	0.00		0%	0.00	22-Oct-14		30-May-14	103.00	0.00	0%																		
<b>Viaduct E1</b>																													
ARDD0742	Viaduct E1 - Erection Sequence Analysis	30.00	22-Sep-14	0%	30.00	31-Oct-14	20-Jun-14	31-Jul-14	-66.00	0.00	0%																		
ARDD0743	Viaduct E1 - Target Geometry Analysis	30.00	03-Nov-14	0%	30.00	12-Dec-14	01-Aug-14	11-Sep-14	-66.00	0.00	0%																		
ARDD0744	Viaduct E1 - Segment Geometry Schedules	10.00	15-Dec-14	0%	10.00	26-Dec-14	12-Sep-14	25-Sep-14	-66.00	0.00	0%																		
<b>Viaduct E2</b>																													
ARDD0747	Viaduct E2 - Erection Sequence Analysis	30.00	24-Dec-13 A	23.33%	23.00	22-Oct-14	15-Apr-14	15-May-14	-114.00	0.00	25%																		
ARDD0748	Viaduct E2 - Target Geometry Analysis	30.00	04-Feb-14 A	23.33%	23.00	22-Oct-14	15-Apr-14	15-May-14	-114.00	0.00	25%																		
ARDD0749	Viaduct E2 - Segment Geometry Schedules	10.00	18-Mar-14 A	20%	8.00	01-Oct-14	06-May-14	15-May-14	-99.00	15.00	25%																		
ARDD0749-1	Viaduct E2 - Final Erection Geometry	0.00		0%	0.00	22-Oct-14		15-May-14	-114.00	0.00	0%																		
<b>Viaduct F</b>																													
ARDD0751	Viaduct F - Confirmation of Erection Sequence from Freyssinet	0.00		0%	0.00	09-Oct-14		20-Oct-14	7.00	0.00	0%																		
ARDD0752	Viaduct F - Erection Sequence Analysis	30.00	10-Oct-14	0%	30.00	20-Nov-14	21-Oct-14	01-Dec-14	7.00	0.00	0%																		
ARDD0753	Viaduct F - Target Geometry Analysis	30.00	21-Nov-14	0%	30.00	01-Jan-15	02-Dec-14	12-Jan-15	7.00	0.00	0%																		
<b>Reprovisioning Works</b>																													
<b>Chung Tung Road Realignment Viaduct B</b>																													
ARDD0807	Viaduct B - IC/SO Approval of CTR Reprovisioning Works DDA - BP33.01	75.00	11-Jun-14 A	60%	30.00	31-Oct-14	15-Sep-14	24-Oct-14	-5.00	0.00	60%																		
ARDD0807-1	Viaduct B - IC/SO Approval of CTR Reprovisioning Works DDA - BP33.01	0.00		0%	0.00	31-Oct-14		24-Oct-14	-5.00	65.00	0%																		
<b>Chung Tung Road Realignment Viaduct C</b>																													
ARDD0881	Viaduct C - IC/SO Approval of AIP of CTR Reprovisioning Works AIP - BP34.00	68.00	04-Apr-14 A	100%	0.00	26-Aug-14 A					100%																		
ARDD0881-1	Viaduct C - IC/SO Approval of AIP of CTR Reprovisioning Works AIP - BP34.00	0.00		100%	0.00	26-Aug-14 A					100%																		
ARDD0887	Viaduct C - IC/SO Approval of CTR Reprovisioning Works DDA - BP34.01	75.00	20-Jun-14 A	60%	30.00	31-Oct-14	26-May-14	04-Jul-14	-85.00	0.00	60%																		
ARDD0887-1	Viaduct C - IC/SO Approval of CTR Reprovisioning Works DDA - BP34.01	0.00		0%	0.00	31-Oct-14		04-Jul-14	-85.00	30.00	0%																		
<b>Remaining Reprovisioning Works (Viaduct A&amp;D)</b>																													
ARDD0815	Viaduct A&D - IC/SO Approval of DDA of Remaining Reprovisioning Works BP35.01	75.00	26-Jun-14 A	20%	60.00	12-Dec-14	30-Jun-15	21-Sep-15	201.00	0.00	20%																		
ARDD0815-1	Viaduct A&D - IC/SO Approval of DDA of Remaining Reprovisioning Works BP35.01	0.00		0%	0.00	12-Dec-14		21-Sep-15	201.00	35.00	0%																		
<b>CEDD Access Track</b>																													
ARDD0808	Preparation of Combined AIP/DDA for CEDD Access Track - BP32.01	30.00	09-Sep-13 A	80%	6.00	29-Sep-14	19-Feb-16	26-Feb-16	369.00	0.00	80%																		
ARDD0809	IC/SO Approval of Combined AIP/DDA for CEDD Access Track - BP32.01	75.00	30-Sep-14	0%	75.00	12-Jan-15	29-Feb-16	10-Jun-16	369.00	0.00	0%																		
<b>Construction Traffic Impact Assessment</b>																													



Project ID: J3518DWPPrD1-M16  
Layout: J3518-DWP-3MRP Submission - M16  
Filter: TASK filters: 3-Month Lookahead, No Level of Effort.

**Tuen Mun - Chek Lap Kok Link - Southern Connection**  
**3-Month Rolling Programme (Page 11 of 35 Pages)**  
**(Progress as of 21-Sep-14)**

Date	Revision	Checked	Approved
29-Jul-14		FZ	
29-Aug-14		FZ	
07-Oct-14			

**DWG. No.:**  
**J3518/GCL/PGM/3MRP-M16**

Activity ID	Activity Name	Orig. Durn.	Act. Start / FC Early Start	Duration% Complete	Rem. Durn.	Act. Finish / FC Early Finish	Late Start	Late Finish	Total Float	Free Float	Physical % Complete	2014																
												September			October			November			December							
												25	01	08	15	22	29	06	13	20	27	03	10	17	24	01	08	15
ARDD0811	IC/SO Approval of CTIA - AP05.00	75.00	25-Feb-14 A	100%	0.00	25-Aug-14 A					100%	[Gantt bar: 25-Feb-14 to 25-Aug-14]																
ARDD0816	IC/SO Approval of CTIA - AP05.00	0.00		100%	0.00	25-Aug-14 A					100%	[Gantt bar: 25-Aug-14 to 25-Aug-14]																
<b>Other Design</b>																												
<b>Marine Permanent Navigation Aids</b>																												
BMT0135	Preparation of MPNA DDA - BP36.01	46.00	11-Jun-14 A	10.87%	41.00	17-Nov-14	20-Feb-15	17-Apr-15	109.00	0.00	10%	[Gantt bar: 11-Jun-14 to 17-Nov-14]																
BMT0140	IC/SO Approval of MPNA DDA BP36.01	75.00	18-Nov-14	0%	75.00	02-Mar-15	20-Apr-15	31-Jul-15	109.00	0.00	0%	[Gantt bar: 18-Nov-14 to 31-Jul-15]																
<b>Major Procurement</b>																												
<b>Marine Permanent Navigaion Aids</b>																												
PR65011	Design & Approvals for Marine Navigation Aids	150.00	16-Dec-13 A	52%	72.00	02-Mar-15	06-May-15	31-Jul-15	122.00	0.00	52%	[Gantt bar: 16-Dec-13 to 31-Jul-15]																
<b>Tower Cranes</b>																												
PR66010	Procure Tower Crane Supplier	96.00	23-Jun-14 A	79.17%	20.00	16-Oct-14	06-Sep-14	30-Sep-14	-12.00	0.00	0%	[Gantt bar: 23-Jun-14 to 30-Sep-14]																
PR66011	Procure & Deliver Tower Cranes	325.00	17-Oct-14	0%	325.00	19-Nov-15	03-Oct-14	05-Nov-15	-12.00	1.00	0%	[Gantt bar: 17-Oct-14 to 05-Nov-15]																
PR66012	Erect & Commission Tower Crane @ E3	24.00	18-Oct-14	0%	24.00	14-Nov-14	18-Dec-14	17-Jan-15	52.00	116.00	0%	[Gantt bar: 18-Oct-14 to 17-Jan-15]																
PR66013	Erect & Commission Tower Crane @ E4	24.00	18-Oct-14	0%	24.00	14-Nov-14	03-Oct-14	01-Nov-14	-11.00	89.00	0%	[Gantt bar: 18-Oct-14 to 01-Nov-14]																
PR66018	Erect & Commission Tower Crane @ E9	24.00	29-Oct-14	0%	24.00	25-Nov-14	10-Jun-15	27-Jul-15	166.00	82.00	0%	[Gantt bar: 29-Oct-14 to 27-Jul-15]																
PR66019	Erect & Commission Tower Crane @ E10	24.00	10-Nov-14	0%	24.00	06-Dec-14	16-Jan-15	12-Feb-15	55.00	70.00	0%	[Gantt bar: 10-Nov-14 to 12-Feb-15]																
PR66020	Erect & Commission Tower Crane @ E11	24.00	16-Dec-14	0%	24.00	15-Jan-15	17-Nov-14	13-Dec-14	-25.00	122.00	0%	[Gantt bar: 16-Dec-14 to 13-Dec-14]																
<b>Equipment Platforms for Tower Cranes</b>																												
PR66025	Inst.Temp.Eqpt.Platform (piles & deck) @ E3	18.00	22-Sep-14	0%	18.00	17-Oct-14	27-Nov-14	17-Dec-14	52.00	0.00	0%	[Gantt bar: 22-Sep-14 to 17-Dec-14]																
PR66026	Inst.Temp.Eqpt.Platform (piles & deck) @ E4	18.00	22-Sep-14	0%	18.00	17-Oct-14	05-Sep-14	30-Sep-14	-11.00	0.00	0%	[Gantt bar: 22-Sep-14 to 30-Sep-14]																
PR66031	Inst.Temp.Eqpt.Platform (piles & deck) @ E9	18.00	06-Oct-14	0%	18.00	28-Oct-14	11-May-15	08-Jun-15	166.00	0.00	0%	[Gantt bar: 06-Oct-14 to 08-Jun-15]																
PR66032	Inst.Temp.Eqpt.Platform (piles & deck) @ E10	18.00	20-Oct-14	0%	18.00	08-Nov-14	23-Dec-14	15-Jan-15	55.00	0.00	0%	[Gantt bar: 20-Oct-14 to 15-Jan-15]																
PR66033	Inst.Temp.Eqpt.Platform (piles & deck) @ E11	18.00	25-Nov-14	0%	18.00	15-Dec-14	27-Oct-14	15-Nov-14	-25.00	0.00	0%	[Gantt bar: 25-Nov-14 to 15-Nov-14]																
<b>Deck Segment Installation Equipment</b>																												
<b>Launching Gantry 1</b>																												
PR67040	Launching Gantry Design	95.00	05-Feb-14 A	94.74%	5.00	26-Sep-14	08-Nov-14	13-Nov-14	39.00	31.00	95%	[Gantt bar: 05-Feb-14 to 13-Nov-14]																
PR67041	Launching Gantry 1 Fabrication	95.00	15-May-14 A	94.74%	5.00	26-Sep-14	24-Aug-18	29-Aug-18	161.00	1161.00	95%	[Gantt bar: 15-May-14 to 29-Aug-18]																
PR67042	Launching Gantry 1 Delivery	20.00	28-Aug-14 A	30%	14.00	09-Oct-14	13-Sep-14	29-Sep-14	-7.00	79.00	30%	[Gantt bar: 28-Aug-14 to 29-Sep-14]																
<b>Launching Gantry 2</b>																												
PR67043	Launching Gantry 2 Fabrication	105.00	16-Jun-14 A	20%	84.00	02-Jan-15	03-Oct-14	12-Jan-15	8.00	56.00	20%	[Gantt bar: 16-Jun-14 to 12-Jan-15]																
<b>Lifting Frames</b>																												
<b>Lifting Frames 1 &amp; 2</b>																												
PR68011	Lifting Frame 1&2 Design	70.00	02-Jun-14 A	50%	35.00	03-Nov-14	13-Aug-14	23-Sep-14	-33.00	0.00	50%	[Gantt bar: 02-Jun-14 to 23-Sep-14]																
PR68012	Lifting Frame 1&2 Approval	60.00	27-Sep-14	0%	60.00	08-Dec-14	05-Sep-14	17-Nov-14	-18.00	15.00	0%	[Gantt bar: 27-Sep-14 to 17-Nov-14]																
PR68013	Lifting Frame 1&2 Fabrication	140.00	22-Sep-14	0%	140.00	12-Mar-15	13-Aug-14	29-Jan-15	-33.00	0.00	0%	[Gantt bar: 22-Sep-14 to 29-Jan-15]																
<b>Lifting Frames 3 &amp; 4</b>																												
PR68015	Lifting Frame 3&4 Design	70.00	02-Jun-14 A	60%	28.00	25-Oct-14	26-Jul-14	27-Aug-14	-48.00	2.00	60%	[Gantt bar: 02-Jun-14 to 27-Aug-14]																
PR68016	Lifting Frame 3&4 Approval	60.00	22-Sep-14	0%	60.00	02-Dec-14	19-Aug-14	30-Oct-14	-28.00	20.00	0%	[Gantt bar: 22-Sep-14 to 30-Oct-14]																
PR68017	Lifting Frame 3&4 Fabrication	140.00	22-Sep-14	0%	140.00	12-Mar-15	26-Jul-14	12-Jan-15	-48.00	0.00	0%	[Gantt bar: 22-Sep-14 to 12-Jan-15]																
<b>Lifting Frames 5 &amp; 6</b>																												
PR68019	Lifting Frame 5&6 Design	70.00	22-Sep-14	0%	70.00	13-Dec-14	08-Nov-14	31-Jan-15	39.00	0.00	0%	[Gantt bar: 22-Sep-14 to 31-Jan-15]																
PR68020	Lifting Frame 5&6 Approval	60.00	03-Dec-14	0%	60.00	13-Feb-15	13-Feb-15	02-May-15	59.00	20.00	0%	[Gantt bar: 03-Dec-14 to 02-May-15]																
PR68021	Lifting Frame 5&6 Fabrication	140.00	03-Dec-14	0%	140.00	28-May-15	21-Jan-15	15-Jul-15	39.00	0.00	0%	[Gantt bar: 03-Dec-14 to 15-Jul-15]																
<b>Unloading Frames</b>																												
<b>Type 1</b>																												
PR69100	Unloading Frame Type 1 Design	50.00	05-May-14 A	40%	30.00	28-Oct-14	10-Oct-14	13-Nov-14	14.00	17.00	40%	[Gantt bar: 05-May-14 to 13-Nov-14]																
PR69110	Unloading Frame Type 1 Fabrication	95.00	22-Sep-14	0%	95.00	15-Jan-15	10-Oct-14	31-Jan-15	14.00	0.00	0%	[Gantt bar: 22-Sep-14 to 31-Jan-15]																
<b>Type 2</b>																												

<ul style="list-style-type: none"> <li><span style="color: blue;">■</span> Actual Work</li> <li><span style="color: green;">■</span> Planned Bar</li> <li><span style="color: red;">■</span> Critical Bar</li> <li>◆ Milestone</li> </ul>	Project ID: J3518DWPPrD1-M16 Layout: J3518-DWP-3MRP Submission - M16 Filter: TASK filters: 3-Month Lookahead, No Level of Effort.	<b>Tuen Mun - Chek Lap Kok Link - Southern Connection</b> <b>3-Month Rolling Programme (Page 12 of 35 Pages)</b> <b>(Progress as of 21-Sep-14)</b>	<table border="1"> <tr> <th>Date</th> <th>Revision</th> <th>Checked</th> <th>Approved</th> </tr> <tr> <td>29-Jul-14</td> <td></td> <td>FZ</td> <td></td> </tr> <tr> <td>29-Aug-14</td> <td></td> <td>FZ</td> <td></td> </tr> <tr> <td>07-Oct-14</td> <td></td> <td></td> <td></td> </tr> </table>	Date	Revision	Checked	Approved	29-Jul-14		FZ		29-Aug-14		FZ		07-Oct-14				<b>DWG. No.:</b> <b>J3518/GCL/PGM/3MRP-M16</b>
Date	Revision	Checked	Approved																	
29-Jul-14		FZ																		
29-Aug-14		FZ																		
07-Oct-14																				

Activity ID	Activity Name	Orig. Durn.	Act. Start / FC Early Start	Duration % Complete	Rem. Durn.	Act. Finish / FC Early Finish	Late Start	Late Finish	Total Float	Free Float	Physical % Complete	2014															
												September				October				November				December			
												25	01	08	15	22	29	06	13	20	27	03	10	17	24	01	08
PR69170	Unloading Frame Type 2 Design	50.00	05-May-14 A	40%	30.00	28-Oct-14	18-May-15	23-Jun-15	191.00	17.00	40%	[Gantt Bar]															
PR69180	Unloading Frame Type 2 Fabrication	95.00	22-Sep-14	0%	95.00	15-Jan-15	18-May-15	08-Sep-15	191.00	0.00	0%	[Gantt Bar]															
<b>Type 3</b>																											
PR69230	Unloading Frame Type 3 (Lantau) Fabrication	95.00	16-Jun-14 A	75.79%	23.00	20-Oct-14	18-Jul-14	13-Aug-14	-55.00	0.00	75%	[Gantt Bar]															
PR69240	Unloading Frame Type 3 Delivery	24.00	21-Oct-14	0%	24.00	17-Nov-14	14-Aug-14	11-Sep-14	-55.00	0.00	0%	[Gantt Bar]															
<b>Type 4</b>																											
PR69250	Unloading Frame Type 4 Design	50.00	05-May-14 A	40%	30.00	28-Oct-14	29-Oct-14	02-Dec-14	30.00	17.00	40%	[Gantt Bar]															
PR69260	Unloading Frame Type 4 (BCF) Fabrication	95.00	22-Sep-14	0%	95.00	15-Jan-15	29-Oct-14	23-Feb-15	30.00	0.00	0%	[Gantt Bar]															
<b>Deck Segments &amp; Precast Pile Cap Shells</b>																											
<b>Preliminaries</b>																											
MBBE0012	Precast Segment Mould Design (Viaduct B)	42.00	15-Oct-13 A	90.48%	4.00	25-Sep-14	04-Jun-14	07-Jun-14	-92.00	6.00	90%	[Gantt Bar]															
MBBE0014	Precast Segment Mould Fabrication & Assembly (Viaduct B)	52.00	04-Mar-14 A	80.77%	10.00	04-Oct-14	27-May-14	07-Jun-14	-98.00	0.00	80%	[Gantt Bar]															
MBBE0016	Trial Precast Segments (in pair) and Approval	45.00	06-Oct-14	0%	45.00	26-Nov-14	09-Jun-14	31-Jul-14	-98.00	0.00	0%	[Gantt Bar]															
MBBE0018	Precast Segment Mould Design (Viaduct E5, E6, E7 & E8)	42.00	15-Oct-13 A	59.52%	17.00	13-Oct-14	19-Jun-14	09-Jul-14	-79.00	0.00	60%	[Gantt Bar]															
MBBE0020	Precast Segment Mould Fabrication & Assembly (Viaduct E5, E6, E7 & E8)	52.00	14-Oct-14	0%	52.00	12-Dec-14	10-Jul-14	08-Sep-14	-79.00	32.00	0%	[Gantt Bar]															
MBBE0024	Precast Segment Mould Design (Viaduct E2)	42.00	15-Oct-13 A	59.52%	17.00	13-Oct-14	26-May-14	14-Jun-14	-99.00	0.00	60%	[Gantt Bar]															
MBBE0026	Precast Segment Mould Fabrication & Assembly (Viaduct E2)	52.00	14-Oct-14	0%	52.00	12-Dec-14	16-Jun-14	15-Aug-14	-99.00	32.00	0%	[Gantt Bar]															
MBBE0030	Precast Segment Mould Design (Viaduct E1)	42.00	30-Jul-14 A	0%	42.00	11-Nov-14	09-Jul-14	26-Aug-14	-63.00	0.00	0%	[Gantt Bar]															
MBBE0032	Precast Segment Mould Fabrication & Assembly (Viaduct E1)	52.00	12-Nov-14	0%	52.00	14-Jan-15	27-Aug-14	29-Oct-14	-63.00	13.00	0%	[Gantt Bar]															
MBBE0036	Precast Segment Mould Design (Viaduct D)	42.00	22-Sep-14	0%	42.00	11-Nov-14	07-Jul-14	23-Aug-14	-65.00	0.00	0%	[Gantt Bar]															
MBBE0038	Precast Segment Mould Fabrication & Assembly (Viaduct D)	52.00	12-Nov-14	0%	52.00	14-Jan-15	25-Aug-14	27-Oct-14	-65.00	20.00	0%	[Gantt Bar]															
MBBE0042	Precast Segment Mould Design (Viaduct C)	42.00	22-Sep-14	0%	42.00	11-Nov-14	06-Dec-14	27-Jan-15	63.00	0.00	0%	[Gantt Bar]															
MBBE0044	Precast Segment Mould Fabrication & Assembly (Viaduct C)	52.00	12-Nov-14	0%	52.00	14-Jan-15	28-Jan-15	01-Apr-15	63.00	41.00	0%	[Gantt Bar]															
MBBE0048	Precast Segment Mould Design (Viaduct A)	42.00	17-Oct-14	0%	42.00	04-Dec-14	23-Jul-15	09-Sep-15	225.00	0.00	0%	[Gantt Bar]															
MBBE0050	Precast Segment Mould Fabrication & Erection (Viaduct A)	52.00	05-Dec-14	0%	52.00	06-Feb-15	10-Sep-15	12-Nov-15	225.00	91.00	0%	[Gantt Bar]															
MBBE0054	Precast Segment Mould Design (Viaduct F1 to F5)	42.00	22-Sep-14	0%	42.00	11-Nov-14	16-Jan-15	09-Mar-15	95.00	0.00	0%	[Gantt Bar]															
MBBE0056	Precast Segment Mould Fabrication & Erection (Viaduct F1 to F5)	52.00	12-Nov-14	0%	52.00	14-Jan-15	10-Mar-15	14-May-15	95.00	87.00	0%	[Gantt Bar]															
<b>Viaduct B</b>																											
<b>Precast Pile Caps</b>																											
MBBC0130-1	B: Progressive Pile Cap Shell Manufacture & Delivery remaining shells (6/7 Nr in total)	81.00	05-Jul-14 A	50.62%	40.00	08-Nov-14	15-Aug-14	04-Oct-14	-30.88	1126.00	20%	[Gantt Bar]															
<b>Precast Deck Segments</b>																											
MBBE0120	B: Commence Segment Casting on Approval of DDA	0.00	27-Nov-14	0%	0.00		01-Aug-14		-98.00	0.00	0%	[Gantt Bar]															
PP1032-1	Viaduct B - Pier Head Segment Casting	0.00	27-Nov-14	0%	0.00		01-Aug-14		-98.00	0.00	0%	[Gantt Bar]															
<b>Viaduct E</b>																											
<b>Precast Pile Caps</b>																											
<b>Viaduct E1</b>																											
MBEC0120-1	E1: Commence Pile Cap Shell Casting on Approval of DDA	0.00	05-Dec-14	0%	0.00		30-Aug-14		-79.88	0.00	0%	[Gantt Bar]															
PP7330	Production of Viaduct E1 Marine Precast Pile Cap Shells	80.00	05-Dec-14	0%	80.00	14-Mar-15	30-Aug-14	05-Dec-14	-79.88	0.00	0%	[Gantt Bar]															
<b>Viaduct E2</b>																											
MBEC0120-3	E2: Commence Pile Cap Shell Casting on Approval of DDA	0.00	25-Oct-14	0%	0.00		18-Jun-14		106.13	0.00	0%	[Gantt Bar]															
MBEC0130-4	E2: Commence Pile Cap Shell Delivery	0.00	20-Dec-14	0%	0.00		14-Aug-14		106.13	3.00	0%	[Gantt Bar]															
PP7260	Production of Viaduct E2 Marine Precast Pile Cap Shells	80.00	25-Oct-14	0%	80.00	29-Jan-15	08-Aug-14	12-Nov-14	-64.00	0.00	0%	[Gantt Bar]															
<b>Precast Deck Segments</b>																											
MBE00014	Viaduct E2 - Pier Head Segment Casting	0.00	18-Dec-14	0%	0.00		16-Aug-14		103.00	28.00	0%	[Gantt Bar]															
<b>Viaduct D</b>																											
<b>Precast Pile Caps</b>																											
MBDC0120	D: Commence Pile Cap Shell Casting on Approval of DDA	0.00	22-Sep-14	0%	0.00		16-Aug-14		-30.00	0.00	0%	[Gantt Bar]															
MBDC0130	D: Commence Pile Cap Shell Delivery	0.00	04-Nov-14	0%	0.00		27-Sep-14		-30.00	0.00	0%	[Gantt Bar]															

■ Actual Work  
■ Planned Bar  
■ Critical Bar  
◆ Milestone

Project ID: J3518DWPPrD1-M16  
 Layout: J3518-DWP-3MRP Submission - M16  
 Filter: TASK filters: 3-Month Lookahead, No Level of Effort.

**Tuen Mun - Chek Lap Kok Link - Southern Connection**  
**3-Month Rolling Programme (Page 13 of 35 Pages)**  
**(Progress as of 21-Sep-14)**

Date	Revision	Checked	Approved
29-Jul-14		FZ	
29-Aug-14		FZ	
07-Oct-14			

**DWG. No.:**  
**J3518/GCL/PGM/3MRP-M16**

Activity ID	Activity Name	Orig. Durn.	Act. Start / FC Early Start	Duration % Complete	Rem. Durn.	Act. Finish / FC Early Finish	Late Start	Late Finish	Total Float	Free Float	Physical % Complete	2014															
												September				October				November				December			
												25	01	08	15	22	29	06	13	20	27	03	10	17	24	01	08
MBDC0130-8	D: Progressive Pile Cap Shell Manufacture & Delivery remaining shells	90.00	04-Nov-14	0%	90.00	23-Feb-15	27-Sep-14	15-Jan-15	-30.00	25.00	0%																
PP7410	Production of initial Viaduct D Marine Precast Pile Cap Shells	35.00	22-Sep-14	0%	35.00	03-Nov-14	16-Aug-14	26-Sep-14	-30.00	0.00	0%																
<b>Viaduct C</b>																											
<b>Precast Pile Caps</b>																											
MBCC0120	C: Commence Pile Cap Shell Casting on Approval of DDA	0.00	14-Nov-14	0%	0.00		27-Nov-14		11.00	101.00	0%																
<b>Parapets</b>																											
PP6010	Procure Sub-Contractor for Precast Parapets/Barriers	40.00	08-Nov-14	0%	40.00	24-Dec-14	07-Oct-14	21-Nov-14	-28.00	9.00	0%																
<b>Materials</b>																											
<b>H-Piles</b>																											
PP7470	Procurement of Viaduct C Socketted H-Piles	70.00	21-Jul-14 A	75.71%	17.00	13-Oct-14	22-Oct-14	10-Nov-14	24.00	16.00	40%																
PP7550	Procurement of Viaduct A Socketted H-Piles	70.00	24-Oct-14	0%	70.00	16-Jan-15	11-Feb-15	12-May-15	91.00	0.00	0%																
<b>Reinforcement</b>																											
<b>Bored Piles</b>																											
PP7100	Rebar - Cut, Bend & Fabricate Pile Cage for Viaduct E5 & E6 Piles	185.00	24-Oct-14	0%	185.00	10-Jun-15	19-Feb-14	04-Oct-14	201.00	0.00	0%																
PP7170	Rebar - Cut, Bend & Fabricate Pile Cage for Viaduct E7 & E8 Piles	185.00	24-Oct-14	0%	185.00	10-Jun-15	28-Apr-14	06-Dec-14	147.00	0.00	0%																
PP7240	Rebar - Cut, Bend & Fabricate Pile Cage for Viaduct E2 Piles	106.00	15-Apr-14 A	19.81%	85.00	03-Jan-15	30-Apr-14	11-Aug-14	-119.00	100.00	20%																
PP7310	Rebar - Cut, Bend & Fabricate Pile Cage for Viaduct E1 Piles	36.00	09-Jul-14 A	77.78%	8.00	30-Sep-14	30-Sep-14	10-Oct-14	7.00	0.00	0%																
PP7380	Rebar - Cut, Bend & Fabricate Pile Cage for Viaduct D Piles	25.00	08-Aug-14 A	4%	24.00	21-Oct-14	01-Aug-14	28-Aug-14	-43.00	0.00	0%																
PP7460	Rebar - Cut, Bend & Fabricate Pile Cage for Viaduct C Piles	35.00	18-Aug-14 A	5.71%	33.00	31-Oct-14	01-Nov-14	09-Dec-14	33.00	0.00	0%																
PP7540	Rebar - Cut, Bend & Fabricate Pile Cage for Viaduct A Piles	21.00	12-Aug-14 A	4.76%	20.00	16-Oct-14	18-Apr-15	12-May-15	167.00	59.00	0%																
PP7620	Rebar - Cut, Bend & Fabricate Pile Cage for Viaduct F1 & F3 Piles	61.00	22-Sep-14	0%	61.00	03-Dec-14	27-Sep-14	09-Dec-14	5.00	1.00	0%																
PP7690	Rebar - Cut, Bend & Fabricate Pile Cage for Viaduct F2, F4 & F5 Piles	73.00	22-Sep-14	0%	73.00	17-Dec-14	04-Dec-14	06-Mar-15	61.13	0.00	0%																
<b>Marine Pile Caps</b>																											
PP7110	Rebar - Cut, Bend & Fabricate for Viaduct E5 & E6 Pile Caps	245.00	21-Nov-14	0%	245.00	18-Sep-15	19-Mar-14	14-Jan-15	201.00	0.00	0%																
PP7180	Rebar - Cut, Bend & Fabricate for Viaduct E7 & E8 Pile Caps	102.00	21-Nov-14	0%	102.00	26-Mar-15	28-May-14	26-Sep-14	147.00	0.00	0%																
PP7250	Rebar - Cut, Bend & Fabricate for Viaduct E2 Pile Caps	185.00	22-Sep-14	0%	185.00	09-May-15	30-Apr-14	09-Dec-14	-119.00	0.00	0%																
PP7320	Rebar - Cut, Bend & Fabricate for Viaduct E1 Pile Caps	67.00	03-Oct-14	0%	67.00	19-Dec-14	11-Oct-14	30-Dec-14	7.00	0.00	0%																
PP7400	Rebar - Cut, Bend & Fabricate for Viaduct D Marine Pile Caps	47.00	22-Oct-14	0%	47.00	15-Dec-14	29-Aug-14	25-Oct-14	-43.00	8.00	0%																
PP7480	Rebar - Cut, Bend & Fabricate for Viaduct C Marine Pile Caps	42.00	21-Nov-14	0%	42.00	12-Jan-15	16-Jan-15	09-Mar-15	45.00	101.00	0%																
<b>Marine Piers - Viaduct E</b>																											
PP7270	Rebar - Cut, Bend & Fabricate for Viaduct E2 Piers	180.00	22-Oct-14	0%	180.00	02-Jun-15	30-May-14	03-Jan-15	-119.00	0.00	0%																
PP7340	Rebar - Cut, Bend & Fabricate for Viaduct E1 Piers	31.00	20-Dec-14	0%	31.00	28-Jan-15	31-Dec-14	05-Feb-15	7.00	89.00	0%																
<b>Land Pile Caps</b>																											
PP7630	Rebar - Cut, Bend & Fabricate for Viaduct F1 & F3 Pile Caps	47.00	05-Dec-14	0%	47.00	31-Jan-15	09-Jan-15	07-Mar-15	27.00	0.00	0%																
PP7700	Rebar - Cut, Bend & Fabricate for Viaduct F2, F4 & F5 Pile Caps	24.00	18-Dec-14	0%	24.00	17-Jan-15	04-May-15	02-Jun-15	106.13	0.00	0%																
PP7752	Rebar - Cut, Bend & Fabricate for Viaduct B Land Pile Caps	26.00	16-Jul-14 A	11.54%	23.00	20-Oct-14	06-Aug-14	01-Sep-14	-39.00	0.00	10%																
PP7754	Rebar - Cut, Bend & Fabricate for Viaduct D Land Pile Caps	29.00	22-Oct-14	0%	29.00	24-Nov-14	20-Sep-14	25-Oct-14	-25.00	0.00	0%																
PP7756	Rebar - Cut, Bend & Fabricate for Viaduct C Land Pile Caps	34.00	21-Nov-14	0%	34.00	02-Jan-15	26-Jan-15	09-Mar-15	53.00	0.00	0%																
<b>Land / Marine Piers - Viaduct A, B, C, D &amp; F</b>																											
PP7060	Bending of Rebar for Viaduct B Piers	64.00	21-Oct-14	0%	64.00	06-Jan-15	02-Sep-14	18-Nov-14	-39.00	0.00	0%																
PP7420	Bending of Rebar for Viaduct D Piers	71.00	25-Nov-14	0%	71.00	18-Feb-15	14-Mar-15	11-Jun-15	88.00	136.50	0%																
<b>In-Situ Formworks / Falseworks</b>																											
PP7070	On-Site Preparation & Assembly of Pier Formwork for Viaduct B Piers	70.00	03-Dec-14	0%	70.00	28-Feb-15	30-Aug-14	22-Nov-14	-78.00	0.00	0%																
PP7140	On-Site Preparation & Assembly of Pier Formwork for Viaduct E5 & E6 Piers	90.00	03-Dec-14	0%	90.00	24-Mar-15	15-Sep-14	02-Jan-15	-66.00	96.00	0%																
PP7280	On-Site Preparation & Assembly of Pier Formwork for Viaduct E2 Piers	90.00	03-Dec-14	0%	90.00	24-Mar-15	27-Jun-14	14-Oct-14	132.00	0.00	0%																
PP7430	On-Site Preparation & Assembly of Pier Formwork for Viaduct D Piers	90.00	03-Dec-14	0%	90.00	24-Mar-15	20-Oct-14	05-Feb-15	-37.88	0.00	0%																
PP7510	On-Site Preparation & Assembly of Pier Formwork for Viaduct C Piers	90.00	03-Dec-14	0%	90.00	24-Mar-15	26-Mar-15	17-Jul-15	91.00	135.00	0%																
PPPF02	Design & Fabrication of Falsework / Formwork & Delivery	120.00	20-Feb-14 A	50%	60.00	02-Dec-14	11-Apr-14	26-Jun-14	132.00	0.00	50%																

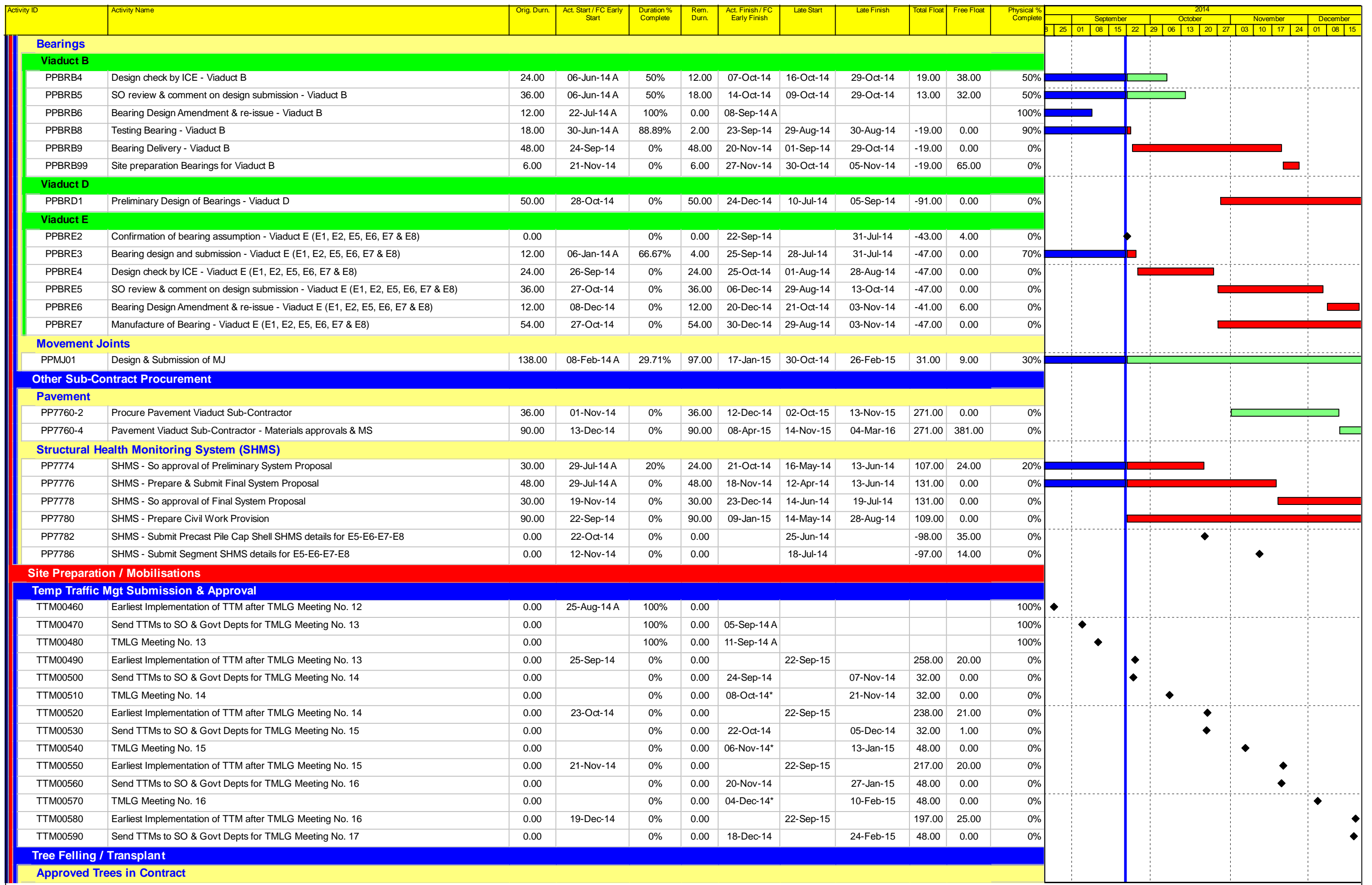
Actual Work  
 Planned Bar  
 Critical Bar  
 Milestone

Project ID: J3518DWPPrD1-M16  
 Layout: J3518-DWP-3MRP Submission - M16  
 Filter: TASK filters: 3-Month Lookahead, No Level of Effort.

**Tuen Mun - Chek Lap Kok Link - Southern Connection**  
**3-Month Rolling Programme (Page 14 of 35 Pages)**  
**(Progress as of 21-Sep-14)**

Date	Revision	Checked	Approved
29-Jul-14		FZ	
29-Aug-14		FZ	
07-Oct-14			

**DWG. No.:**  
**J3518/GCL/PGM/3MRP-M16**



- Actual Work
- Planned Bar
- Critical Bar
- ◆ Milestone

Project ID: J3518DWPPrD1-M16  
 Layout: J3518-DWP-3MRP Submission - M16  
 Filter: TASK filters: 3-Month Lookahead, No Level of Effort.

**Tuen Mun - Chek Lap Kok Link - Southern Connection**  
**3-Month Rolling Programme (Page 15 of 35 Pages)**  
**(Progress as of 21-Sep-14)**

Date	Revision	Checked	Approved
29-Jul-14		FZ	
29-Aug-14		FZ	
07-Oct-14			

**DWG. No.:**  
**J3518/GCL/PGM/3MRP-M16**

Activity ID	Activity Name	Orig. Durn.	Act. Start / FC Early Start	Duration % Complete	Rem. Durn.	Act. Finish / FC Early Finish	Late Start	Late Finish	Total Float	Free Float	Physical % Complete	2014															
												September				October				November				December			
												25	01	08	15	22	29	06	13	20	27	03	10	17	24	01	08
TR00140	SO Approval of Base Tree Survey Report	30.00	14-Oct-13 A	90%	3.00	24-Sep-14	27-Aug-18	29-Aug-18	025.00	1025.00	90%																
TR00200	Tree transplant for Viaduct B - affecting Piers B11 to B17	90.00	17-Feb-14 A	97.78%	2.00	23-Sep-14	15-Feb-16	16-Feb-16	379.00	1050.00	98%																
TR00220	Tree transplant for Viaduct B - affecting Pier B18 & Abutment B	90.00	17-Feb-14 A	97.78%	2.00	23-Sep-14	01-Nov-14	03-Nov-14	31.00	16.00	98%																
TR00240	Tree transplant for Viaduct B - affecting realigned CTR	90.00	17-Feb-14 A	97.78%	2.00	23-Sep-14	24-Oct-14	25-Oct-14	24.00	65.00	98%																
TR00250	Tree felling for Viaduct B - affecting Slopes 9SE-B/F9, C8 & C9	48.00	05-May-14 A	77.08%	11.00	06-Oct-14	05-Jul-14	19-Jul-14	-55.00	1.00	13%																
TR00260	Tree felling for Viaduct C - affecting Piers C9 to Abutment C	24.00	30-Jan-14 A	83.33%	4.00	25-Sep-14	31-Oct-14	04-Nov-14	30.00	64.00	35%																
TR00270	Tree transplant for Viaduct C - affecting Piers C9 to Abutment C	90.00	17-Feb-14 A	24.44%	68.00	13-Dec-14	05-Aug-14	04-Nov-14	-34.00	0.00	20%																
TR00280	Tree felling for Viaduct C - affecting realigned CTR	30.00	30-Jan-14 A	56.67%	13.00	09-Oct-14	14-Jun-14	05-Jul-14	-67.00	55.00	35%																
TR00290	Tree transplant for Viaduct C - affecting realigned CTR	90.00	17-Feb-14 A	24.44%	68.00	13-Dec-14	17-Mar-14	05-Jul-14	122.00	0.00	20%																
<b>Additional Trees</b>																											
TR01010	Additional tree felling for Viaduct B along CTR	48.00	19-May-14 A	77.08%	11.00	06-Oct-14	13-Oct-14	25-Oct-14	15.00	56.00	42%																
<b>Site Set Up for Works Area 3 and Site Offices along CEDD Access Road</b>																											
PR30030	Works Area 3-A1/3-A2 - Construct 1.5m steel access bridge	30.00	22-Sep-14	0%	30.00	30-Oct-14	24-Jul-18	29-Aug-18	022.00	1022.00	0%																
<b>Temporary Working Platform at North Lantau</b>																											
PR08020	Temp. Working Platform at N.Lantau - Install boundary fence	22.00	22-Sep-14	0%	22.00	21-Oct-14	11-Aug-14	11-Sep-14	-30.00	23.00	0%																
PR08030	Temp. Working Platform at N.Lantau - Modify top of existing seawall	24.00	25-Nov-13 A	70.83%	7.00	29-Sep-14	24-Jan-14	04-Feb-14	163.00	5.00	71%																
PR08050	Temp. Working Platform at N.Lantau - Temp. rockfill & paving between existing & Temp.Seav	42.00	17-Feb-13 A	71.43%	12.00	07-Oct-14	18-Jan-14	04-Feb-14	168.00	0.00	71%																
PR08070	Temp. Working Platform at N.Lantau - Construct steel deck / bollards / fenders	24.00	02-May-14 A	29.17%	17.00	23-Oct-14	27-Jan-14	18-Feb-14	168.00	0.00	30%																
PR08080	Inst.Unloading Frame incl. T&C for seg.lift (incl. Load Test)	15.00	18-Nov-14	0%	15.00	04-Dec-14	12-Sep-14	29-Sep-14	-53.00	31.00	0%																
<b>CONSTRUCTION</b>																											
<b>PILING AND SUBSTRUCTURE</b>																											
<b>Viaduct A</b>																											
<b>General</b>																											
ZA00010	Viaduct A - Approval of Foundation DDA DP11.01	0.00		0%	0.00	16-Dec-14		12-May-15	105.00	51.00	0%																
ZA00060	Prepare/submit/approval of MTR Protective Fence submission for Viaduct A	60.00	22-Sep-14	0%	60.00	12-Dec-14	27-Jun-14	18-Sep-14	-61.00	0.00	0%																
<b>Bridge A2</b>																											
<b>Pier A1 (A2e)</b>																											
<b>Foundation Works</b>																											
GFXX144	A1 (A2e) - Bored Piles (1.80m dia. x 3 nos)	88.00	12-Aug-14 A	5.68%	83.00	31-Dec-14	24-Apr-15	03-Aug-15	172.00	0.00	6%																
<b>Bridge A1</b>																											
<b>Pier A8 (A1d)</b>																											
<b>Preliminary Works for Land Piling</b>																											
PA080020	A08 (A1d) - Erect MTR protective fence / Remove existing fence	12.00	13-Dec-14	0%	12.00	29-Dec-14	19-Sep-14	04-Oct-14	-69.00	0.00	0%																
PA080030	A8 (A1d) - Install Geo. Instru. & Baseline Monitoring	36.00	13-Dec-14	0%	36.00	27-Jan-15	19-Sep-14	01-Nov-14	-71.00	0.00	0%																
<b>Pier A9 (A1c)</b>																											
<b>Preliminary Works for Land Piling</b>																											
PA090010	A9 (A1c) - Implement TTMS along north side of NLH E/B	2.00	13-Dec-14	0%	2.00	15-Dec-14	24-Oct-14	25-Oct-14	-43.00	0.00	0%																
PA090020	A9 (A1c) - Erect boundary fence, site clearance & set up site ingress	4.00	16-Dec-14	0%	4.00	19-Dec-14	27-Oct-14	30-Oct-14	-43.00	6.00	0%																
<b>Pier A10 (A1b)</b>																											
<b>Preliminary Works for Land Piling</b>																											
PA100010	A10 (A1b) - Implement TTMS along north side of NLH E/B	2.00	13-Dec-14	0%	2.00	15-Dec-14	05-Nov-14	06-Nov-14	-33.00	0.00	0%																
<b>Pier A11 (A1a) &amp; Abutment A</b>																											
<b>Preliminary Works for Land Piling</b>																											
PA110010	A11 (A1a) to Abutment A - Implement TTMS along north side of NLH E/B	2.00	13-Dec-14	0%	2.00	15-Dec-14	05-Nov-14	06-Nov-14	-33.00	0.00	0%																
PA110020	A11 (A1a) to Approach Ramp A - Erect boundary fence / water filled barrier & set up site ingr	14.00	16-Dec-14	0%	14.00	03-Jan-15	07-Nov-14	22-Nov-14	-33.00	0.00	0%																
<b>Viaduct B</b>																											
<b>Milestones - Marine Foundation</b>																											
GFXX155-1	B7 (B2f) - Completion of piling works	0.00		0%	0.00	22-Sep-14		08-Sep-14	-10.00	7.00	0%																

<ul style="list-style-type: none"> <li> Actual Work</li> <li> Planned Bar</li> <li> Critical Bar</li> <li> Milestone</li> </ul>	Project ID: J3518DWPPrD1-M16 Layout: J3518-DWP-3MRP Submission - M16 Filter: TASK filters: 3-Month Lookahead, No Level of Effort.	<b>Tuen Mun - Chek Lap Kok Link - Southern Connection</b> <b>3-Month Rolling Programme (Page 16 of 35 Pages)</b> <b>(Progress as of 21-Sep-14)</b>				Date	Revision	Checked	Approved	<b>DWG. No.:</b>  <b>J3518/GCL/PGM/3MRP-M16</b>
		29-Jul-14		FZ						
		29-Aug-14		FZ						
		07-Oct-14								



Activity ID	Activity Name	Orig. Durn.	Act. Start / FC Early Start	Duration% Complete	Rem. Durn.	Act. Finish / FC Early Finish	Late Start	Late Finish	Total Float	Free Float	Physical % Complete	2014															
												September				October				November				December			
												25	01	08	15	22	29	06	13	20	27	03	10	17	24	01	08
GFXX160-1	B6 (B3a) - Completion of piling works	0.00		0%	0.00	22-Sep-14		13-Sep-14	-6.00	8.00	0%																
GFXX170-1	B4 (B3c) - Completion of piling works	0.00		0%	0.00	22-Sep-14		01-Sep-14	-16.00	8.00	0%																
GFXX175-1	B3 (B3d) - Completion of piling works	0.00		0%	0.00	22-Nov-14		02-Sep-14	-67.00	7.00	0%																
<b>Milestones - Land Foundation</b>																											
ZB00101	B14 (B1f) - Completion of piling works	0.00		0%	0.00	22-Sep-14		27-Sep-14	6.00	0.00	0%																
ZB00111	B13 (B1g) - Completion of piling works	0.00		0%	0.00	22-Sep-14		29-Aug-18	166.00	1166.00	0%																
ZB00140	B10 (B2c) - Start date for piling	0.00	10-Nov-14	0%	0.00		26-Sep-14		-36.00	0.00	0%																
ZB00141	B10 (B2c) - Completion of piling works	0.00		0%	0.00	20-Dec-14		08-Nov-14	-36.00	0.00	0%																
ZB00151	B9 (B2d) - Completion of piling works	0.00		0%	0.00	26-Sep-14		16-Oct-14	15.00	0.00	0%																
ZB00161	B8 (B2e) - Completion of piling works	0.00		0%	0.00	23-Sep-14		25-Jul-14	-50.00	0.00	0%																
<b>Bridge B3</b>																											
<b>Pier B1 (B3f)</b>																											
<b>Pile Cap Works</b>																											
SB3F0100	B1 (B3f) - Marine Pile Cap M2 - Weld Fin plates/Plug Rebar & Concrete	9.00	15-Aug-14 A	100%	0.00	21-Aug-14 A					100%																
SB3F0110	B1 (B3f) - Marine Pile Cap M2 - Dewater precast shell / Remove Lifting Frame	2.00	22-Aug-14 A	100%	0.00	08-Sep-14 A					100%																
SB3F0120	B1 (B3f) - Marine Pile Cap M2 - Pile cut down	12.00	03-Sep-14 A	100%	0.00	17-Sep-14 A					100%																
SB3F0130	B1 (B3f) - Marine Pile Cap M2 - Rebar fixing, inst.inserts etc	12.00	18-Sep-14 A	50%	6.00	29-Sep-14	16-Aug-14	25-Aug-14	-24.00	0.00	0%																
SB3F0140	B1 (B3f) - Marine Pile Cap M2 - Concreting	1.00	30-Sep-14	0%	1.00	30-Sep-14	26-Aug-14	26-Aug-14	-24.00	0.00	0%																
SB3F0164	B1 (B3f) - Marine Pile Cap M2 - Curing incl. CJ preparation	6.00	03-Oct-14	0%	6.00	10-Oct-14	28-Aug-14	04-Sep-14	-24.00	0.00	0%																
<b>Pier Works</b>																											
SB3F0170	B1 (B3f) - Type 4B-MJ Pier Temp. Support Platform	6.00	03-Oct-14	0%	6.00	10-Oct-14	28-Aug-14	04-Sep-14	-24.00	0.00	0%																
SB3F0172	B1 (B3f) - Type 4B-MJ Pier Scaffolding (1st Lift)	4.00	11-Oct-14	0%	4.00	16-Oct-14	05-Sep-14	11-Sep-14	-24.00	0.00	0%																
SB3F0180	B1 (B3f) - Type 4B-MJ Pier Rebarwork (1st Lift)	4.00	17-Oct-14	0%	4.00	21-Oct-14	12-Sep-14	16-Sep-14	-24.00	0.00	0%																
SB3F0190	B1 (B3f) - Type 4B-MJ Pier Formwork & Prep for Concreting (1st Lift)	4.00	22-Oct-14	0%	4.00	25-Oct-14	18-Sep-14	22-Sep-14	-24.00	0.00	0%																
SB3F0200	B1 (B3f) - Type 4B-MJ Pier Concreting (1st Lift)	1.00	27-Oct-14	0%	1.00	27-Oct-14	23-Sep-14	23-Sep-14	-24.00	0.00	0%																
SB3F0202	B1 (B3f) - Type 4B-MJ Pier Curing & Striking of Forms incl. CJ prep (1st Lift)	2.00	28-Oct-14	0%	2.00	29-Oct-14	25-Sep-14	26-Sep-14	-24.00	0.00	0%																
SB3F0300	B1 (B3f) - Type 4B-MJ Pier Head Scaffolding	4.00	30-Oct-14	0%	4.00	03-Nov-14	27-Sep-14	04-Oct-14	-23.00	0.00	0%																
SB3F0310	B1 (B3f) - Type 4B-MJ Pier Head Rebarwork	5.00	04-Nov-14	0%	5.00	08-Nov-14	06-Oct-14	11-Oct-14	-23.00	0.00	0%																
SB3F0320	B1 (B3f) - Type 4B-MJ Pier Head Formwork & Prep for Concreting	7.00	10-Nov-14	0%	7.00	17-Nov-14	13-Oct-14	21-Oct-14	-23.00	0.00	0%																
SB3F0330	B1 (B3f) - Type 4B-MJ Pier Head Concreting	1.00	18-Nov-14	0%	1.00	18-Nov-14	22-Oct-14	22-Oct-14	-23.00	0.00	0%																
SB3F0340	B1 (B3f) - Type 4B-MJ Pier Head Curing/Striking of Forms/Remove Scaffolding	6.00	19-Nov-14	0%	6.00	25-Nov-14	23-Oct-14	29-Oct-14	-23.00	0.00	0%																
<b>Pier B2 (B3e)</b>																											
<b>Pile Cap Works</b>																											
SB3E0120	B2 (B3e) - Marine Pile Cap M1 - Dewater precast shell / Remove Lifting Frame	2.00	21-Aug-14 A	100%	0.00	27-Aug-14 A					100%																
SB3E0130	B2 (B3e) - Marine Pile Cap M1 - Pile cut down	8.00	28-Aug-14 A	100%	0.00	13-Sep-14 A					100%																
SB3E0140	B2 (B3e) - Marine Pile Cap M1 - Rebar fixing, inst.inserts etc	12.00	15-Sep-14 A	16.67%	10.00	06-Oct-14	28-Jul-14	12-Aug-14	-36.00	0.00	0%																
SB3E0150	B2 (B3e) - Marine Pile Cap M1 - Concreting	1.00	07-Oct-14	0%	1.00	07-Oct-14	14-Aug-14	14-Aug-14	-36.00	0.00	0%																
SB3E0160	B2 (B3e) - Marine Pile Cap M1 - Curing incl. CJ Preparation	6.00	09-Oct-14	0%	6.00	16-Oct-14	15-Aug-14	23-Aug-14	-36.00	0.00	0%																
<b>Pier Works</b>																											
SB3E0170	B2 (B3e) - Type 4B Pier Temp. Support Platform	6.00	09-Oct-14	0%	6.00	16-Oct-14	15-Aug-14	23-Aug-14	-36.00	0.00	0%																
SB3E0172	B2 (B3e) - Type 4B Pier Scaffolding (1st Lift)	4.00	17-Oct-14	0%	4.00	21-Oct-14	25-Aug-14	29-Aug-14	-36.00	0.00	0%																
SB3E0180	B2 (B3e) - Type 4B Pier Rebarwork (1st Lift)	4.00	22-Oct-14	0%	4.00	25-Oct-14	30-Aug-14	04-Sep-14	-36.00	0.00	0%																
SB3E0190	B2 (B3e) - Type 4B Pier Formwork & Prep for Concreting (1st Lift)	4.00	27-Oct-14	0%	4.00	30-Oct-14	05-Sep-14	11-Sep-14	-36.00	0.00	0%																
SB3E0200	B2 (B3e) - Type 4B Pier Concreting (1st Lift)	1.00	31-Oct-14	0%	1.00	31-Oct-14	12-Sep-14	12-Sep-14	-36.00	0.00	0%																
SB3E0202	B2 (B3e) - Type 4B Pier Curing & Striking of Forms incl. CJ prep (1st Lift)	2.00	01-Nov-14	0%	2.00	03-Nov-14	13-Sep-14	15-Sep-14	-36.00	0.00	0%																
SB3E0300	B2 (B3e) - Type 4B Pier Head Scaffolding	4.00	04-Nov-14	0%	4.00	07-Nov-14	16-Sep-14	20-Sep-14	-36.00	0.00	0%																
SB3E0310	B2 (B3e) - Type 4B Pier Head Rebarwork	5.00	08-Nov-14	0%	5.00	13-Nov-14	22-Sep-14	27-Sep-14	-36.00	0.00	0%																
SB3E0320	B2 (B3e) - Type 4B Pier Head Formwork & Prep for Concreting	7.00	14-Nov-14	0%	7.00	21-Nov-14	29-Sep-14	09-Oct-14	-36.00	0.00	0%																

■ Actual Work  
■ Planned Bar  
■ Critical Bar  
◆ Milestone

Project ID: J3518DWPPrD1-M16  
 Layout: J3518-DWP-3MRP Submission - M16  
 Filter: TASK filters: 3-Month Lookahead, No Level of Effort.

**Tuen Mun - Chek Lap Kok Link - Southern Connection**  
**3-Month Rolling Programme (Page 17 of 35 Pages)**  
**(Progress as of 21-Sep-14)**

Date	Revision	Checked	Approved
29-Jul-14		FZ	
29-Aug-14		FZ	
07-Oct-14			

**DWG. No.:**  
**J3518/GCL/PGM/3MRP-M16**













Activity ID	Activity Name	Orig. Durn.	Act. Start / FC Early Start	Duration % Complete	Rem. Durn.	Act. Finish / FC Early Finish	Late Start	Late Finish	Total Float	Free Float	Physical % Complete	2014															
												September				October				November				December			
												25	01	08	15	22	29	06	13	20	27	03	10	17	24	01	08
GFXX214	C2 (C4d) - Predrilling (2 nos)	12.00	10-Sep-14 A	91.67%	1.00	23-Sep-14	29-Nov-14	29-Nov-14	57.00	0.00	91.67%																
GFXX214-2	C2 (C4d) - Confirm Rockhead Levels	8.00	23-Sep-14	0%	8.00	03-Oct-14	14-Feb-15	26-Feb-15	119.00	94.00	0%																
GFXX215	C2 (C4d) - Bored Piles (2.20m dia. x 2 nos)	70.00	01-Nov-14	0%	70.00	24-Jan-15	01-Dec-14	26-Feb-15	25.00	0.00	0%																
<b>Pier C4 (C4b)</b>																											
<b>Foundation Works</b>																											
GFXX203	C4 (C4b) - Inst.Temp.Working Platform	12.00	08-Sep-14 A	33.33%	8.00	30-Sep-14	03-Dec-14	11-Dec-14	60.00	0.00	40%																
GFXX204	C4 (C4b) - Predrilling (3 nos)	12.00	03-Oct-14	0%	12.00	16-Oct-14	12-Dec-14	27-Dec-14	60.00	0.00	0%																
GFXX204-2	C4 (C4b) - Confirm Rockhead Levels	8.00	17-Oct-14	0%	8.00	25-Oct-14	03-Jan-15	12-Jan-15	64.00	17.00	0%																
GFXX205	C4 (C4b) - Bored Piles (2.00m dia. x 3 nos)	76.00	01-Nov-14	0%	76.00	31-Jan-15	29-Dec-14	31-Mar-15	47.00	0.00	0%																
<b>Pier C5 (C4a)</b>																											
<b>Foundation Works</b>																											
GFXX198	C5 (C4a) - Inst.Temp.Working Platform	12.00	18-Dec-14	0%	12.00	03-Jan-15	19-Nov-14	02-Dec-14	-25.00	0.00	0%																
<b>Bridge C3</b>																											
<b>Pier C7 (C3e)</b>																											
<b>Preliminary Works for Land Piling</b>																											
GFXX360	C7 (C3e) - Set up for Pregrouting	5.00	28-Nov-14	0%	5.00	03-Dec-14	21-Oct-14	25-Oct-14	-33.00	0.00	0%																
GFXX361-1	C7 (C3e) - Pre-grouting Works	30.00	04-Dec-14	0%	30.00	10-Jan-15	27-Oct-14	29-Nov-14	-33.00	0.00	0%																
PC070030	C7 (C3e) - Erect MTR protective fence / Remove existing fence	12.00	07-Aug-14 A	16.67%	10.00	04-Oct-14	08-Aug-14	21-Aug-14	-32.00	0.00	0%																
PC070040	C7 (C3e) - Install Geo. Instru. & Baseline Monitoring	36.00	06-Oct-14	0%	36.00	15-Nov-14	22-Aug-14	06-Oct-14	-35.00	0.00	0%																
PC070050	C7 (C3e) - Set up piling platform	10.00	17-Nov-14	0%	10.00	27-Nov-14	07-Oct-14	20-Oct-14	-33.00	0.00	0%																
<b>Socketted H-Pile Installation</b>																											
GFXX397	C7 (C3e) - Predrilling	17.00	19-Dec-14*	0%	17.00	10-Jan-15	11-Nov-14	29-Nov-14	-33.00	0.00	0%																
<b>Pier C8 (C3d)</b>																											
<b>Preliminary Works for Land Piling</b>																											
GFXX361-3	C8 (C3d) - Pre-grouting Works	30.00	07-Nov-14	0%	30.00	11-Dec-14	26-Jul-18	29-Aug-18	098.00	0.00	0%																
PC080040	C8 (C3d) - Erect boundary fence / water filled barrier	12.00	21-Jul-14 A	41.67%	7.00	29-Sep-14	12-Jun-18	22-Jun-18	994.00	1045.00	40%																
PC080050	C8 (C3d) - Install Geo. Instru. & Baseline Monitoring	36.00	22-Sep-14	0%	36.00	04-Nov-14	12-Jun-18	25-Jul-18	100.00	2.00	0%																
PC080060	C8 (C3d) - Set up piling platform	36.00	22-Sep-14	0%	36.00	06-Nov-14	02-Jun-18	25-Jul-18	988.00	0.00	0%																
PC080070	C8 (C3d) - Complete Civil Preparation Works for piling to commence	0.00		0%	0.00	11-Dec-14		29-Aug-18	986.00	986.00	0%																
<b>Socketted H-Pile Installation</b>																											
GFXX392-1	C8 (C3d) - Confirm Rockhead Levels	8.00	20-Aug-14 A	0%	8.00	30-Sep-14	31-Jan-15	09-Feb-15	108.00	25.00	0%																
GFXX393	C8 (C3d) - Install SH Pile (16 no.)	108.00	01-Nov-14	0%	108.00	13-Mar-15	10-Feb-15	26-Jun-15	83.00	0.00	0%																
<b>Pier C9 (C3c)</b>																											
<b>Preliminary Works for Land Piling</b>																											
PC090010	C9 (C3c) - Install Geo. Instru. & Baseline Monitoring	36.00	08-Oct-14	0%	36.00	18-Nov-14	22-Sep-14	04-Nov-14	-12.00	0.00	0%																
PC090020	C9 (C3c) - Erect fencing, site clearance & form piling platform	12.00	15-Dec-14	0%	12.00	30-Dec-14	05-Nov-14	18-Nov-14	-34.00	0.00	0%																
<b>Pier C10 (C3b)</b>																											
<b>Preliminary Works for Land Piling</b>																											
PC100010	C10 (C3c) - Install Geo. Instru. & Baseline Monitoring	36.00	08-Oct-14	0%	36.00	18-Nov-14	16-Feb-15	01-Apr-15	109.00	0.00	0%																
PC100020	C10 (C3c) - Erect fencing, site clearance & form piling platform	8.00	15-Dec-14	0%	8.00	23-Dec-14	20-Aug-18	29-Aug-18	976.00	0.00	0%																
<b>Foundation Works</b>																											
GFXX414-2	C10 (C3b) - Predrilling (2 nos)	13.00	05-Sep-14 A	61.54%	5.00	26-Sep-14	03-Jan-15	08-Jan-15	84.00	0.00	67%																
GFXX414-5	C10 (C3b) - Confirm Rockhead Levels	8.00	27-Sep-14	0%	8.00	08-Oct-14	09-Jan-15	17-Jan-15	84.00	20.00	0%																
GFXX418	C10 (C3b) - Bored Pile (2.20m dia. x 2 nos)	110.00	01-Nov-14	0%	110.00	16-Mar-15	19-Jan-15	05-Jun-15	64.00	0.00	0%																
<b>Pier C11 (C3a)</b>																											
<b>Preliminary Works for Land Piling</b>																											
PC110010	C11 (C3a) - Install Geo. Instru. & Baseline Monitoring	36.00	11-Oct-14	0%	36.00	21-Nov-14	23-Feb-15	09-Apr-15	109.00	0.00	0%																
PC110020	C11 (C3a) - Erect fencing, site clearance & form piling platform	8.00	15-Dec-14	0%	8.00	23-Dec-14	20-Aug-18	29-Aug-18	976.00	0.00	0%																

■ Actual Work  
■ Planned Bar  
■ Critical Bar  
◆ Milestone

Project ID: J3518DWPPrD1-M16  
 Layout: J3518-DWP-3MRP Submission - M16  
 Filter: TASK filters: 3-Month Lookahead, No Level of Effort.

**Tuen Mun - Chek Lap Kok Link - Southern Connection**  
**3-Month Rolling Programme (Page 24 of 35 Pages)**  
**(Progress as of 21-Sep-14)**

Date	Revision	Checked	Approved
29-Jul-14		FZ	
29-Aug-14		FZ	
07-Oct-14			

**DWG. No.:**  
**J3518/GCL/PGM/3MRP-M16**



Activity ID	Activity Name	Orig. Durn.	Act. Start / FC Early Start	Duration % Complete	Rem. Durn.	Act. Finish / FC Early Finish	Late Start	Late Finish	Total Float	Free Float	Physical % Complete	2014																					
												September				October				November				December									
												25	01	08	15	22	29	06	13	20	27	03	10	17	24	01	08	15					
<b>Foundation Works</b>																																	
GFXX414-3	C11 (C3a) - Predrilling (2 nos)	13.00	22-Aug-14 A	100%	0.00	03-Sep-14 A					100%																						
GFXX414-6	C11 (C3a) - Confirm Rockhead Levels	8.00	22-Sep-14	0%	8.00	30-Sep-14	04-Feb-15	12-Feb-15	111.00	25.00	0%																						
GFXX416	C11 (C3a) - Bored Pile (2.00m dia. x 2 nos)	110.00	01-Nov-14	0%	110.00	16-Mar-15	13-Feb-15	03-Jul-15	86.00	0.00	0%																						
<b>Bridge C2</b>																																	
<b>Pier C12 (C2f)</b>																																	
<b>Preliminary Works for Land Piling</b>																																	
PC120010	C12 (C2f) - Install Geo. Instru. & Baseline Monitoring	36.00	18-Oct-14	0%	36.00	28-Nov-14	02-Mar-15	16-Apr-15	109.00	0.00	0%																						
<b>Foundation Works</b>																																	
GFXX410	C12 (C2f) - Predrilling (2 nos)	13.00	19-Aug-14 A	100%	0.00	28-Aug-14 A					100%																						
GFXX411	C12 (C2f) - Confirm Rockhead Levels	8.00	22-Sep-14	0%	8.00	30-Sep-14	17-Apr-15	25-Apr-15	166.00	118.00	0%																						
<b>Pier C13 (C2e) Portal</b>																																	
<b>Preliminary Works for Land Piling</b>																																	
PC130010	C13 (C2e) - Install Geo. Instru. & Baseline Monitoring	36.00	29-Nov-14	0%	36.00	13-Jan-15	17-Apr-15	30-May-15	109.00	0.00	0%																						
<b>Socketted H-Pile Installation</b>																																	
GFXX387	C13 (C2e) - Predrilling (2 Nr)	14.00	11-Aug-14 A	50%	7.00	29-Sep-14	27-Apr-15	05-May-15	174.00	0.00	50%																						
GFXX387-1	C13 (C2e) - Confirm Rockhead Levels	8.00	30-Sep-14	0%	8.00	10-Oct-14	06-May-15	14-May-15	174.00	64.00	0%																						
<b>Pier C15 (C2c)</b>																																	
<b>Preliminary Works for Land Piling</b>																																	
PC150010	C15 (C2c) - Install Geo. Instru. & Baseline Monitoring	36.00	16-Aug-14 A	0%	36.00	04-Nov-14	23-Jun-15	04-Aug-15	220.00	34.00	0%																						
PC150020	C15 (C2c) - Erect fencing & site clearance	5.00	15-Dec-14	0%	5.00	19-Dec-14	05-Aug-15	11-Aug-15	162.00	74.00	0%																						
<b>Pier C16 (C2b)</b>																																	
<b>Preliminary Works for Land Piling</b>																																	
PC160010	C16 (C2b) - Install Geo. Instru. & Baseline Monitoring	36.00	08-Oct-14	0%	36.00	18-Nov-14	22-Jan-15	07-Mar-15	88.00	0.00	0%																						
PC160020	C16 (C2b) - Erect fencing & site clearance	5.00	15-Dec-14	0%	5.00	19-Dec-14	20-Apr-15	25-Apr-15	95.00	0.00	0%																						
PC160030	C16(C2b) - Set up piling platform	15.00	20-Dec-14	0%	15.00	09-Jan-15	27-Apr-15	19-May-15	95.00	0.00	0%																						
<b>Bridge C1</b>																																	
<b>Pier C17 (C2a)</b>																																	
<b>Preliminary Works for Land Piling</b>																																	
PC170010	C17 (C2a) - Install Geo. Instru. & Baseline Monitoring	36.00	15-Oct-14	0%	36.00	25-Nov-14	29-Jan-15	14-Mar-15	88.00	0.00	0%																						
PC170020	C17 (C2a) - Erect fencing & site clearance	5.00	15-Dec-14	0%	5.00	19-Dec-14	16-Mar-15	20-Mar-15	72.00	0.00	0%																						
PC170030	C17(C2a) - Set up piling platform	15.00	20-Dec-14	0%	15.00	09-Jan-15	21-Mar-15	14-Apr-15	72.00	0.00	0%																						
<b>Pier C18 (C3d) Portal</b>																																	
<b>Preliminary Works for Land Piling</b>																																	
PC180010	C18 (C1e) - Install Geo. Instru. & Baseline Monitoring	36.00	22-Oct-14	0%	36.00	02-Dec-14	29-May-18	11-Jul-18	064.00	0.00	0%																						
<b>Socketted H-Pile Installation</b>																																	
GFXX368-1	C18 (C1e) - Predrilling (2 Nr)	18.00	07-Aug-14 A	50%	9.00	03-Oct-14	27-Mar-15	10-Apr-15	152.00	0.00	50%																						
GFXX368-4	C18 (C1e) - Confirm Rockhead Levels	8.00	04-Oct-14	0%	8.00	13-Oct-14	11-Apr-15	20-Apr-15	152.00	31.00	0%																						
GFXX374	C18 (C1e) - Install SH Pile (10 nr)	56.00	19-Nov-14	0%	56.00	26-Jan-15	21-Apr-15	27-Jun-15	121.00	0.00	0%																						
<b>Pier C19 (C1d)</b>																																	
<b>Preliminary Works for Land Piling</b>																																	
PC190010	C19 (C1d) - Install Geo. Instru. & Baseline Monitoring	36.00	03-Dec-14	0%	36.00	16-Jan-15	12-Jul-18	22-Aug-18	064.00	0.00	0%																						
<b>Socketted H-Pile Installation</b>																																	
GFXX368-5	C19 (C1d) - Confirm Rockhead Levels	8.00	08-Aug-14 A	0%	8.00	30-Sep-14	16-Apr-15	24-Apr-15	165.00	40.00	0%																						
GFXX369-2	C19 (C1d) - Install SH Pile (9 nr)	56.00	19-Nov-14	0%	56.00	26-Jan-15	25-Apr-15	03-Jul-15	125.00	0.00	0%																						
<b>Pier C20 (C1c) &amp; Abutment C</b>																																	
<b>Preliminary Works for Land Piling</b>																																	
PC200010	C20 (C1c) - Install Geo. Instru. & Baseline Monitoring	36.00	10-Dec-14	0%	36.00	23-Jan-15	19-Jul-18	29-Aug-18	064.00	1064.00	0%																						

■ Actual Work  
■ Planned Bar  
■ Critical Bar  
◆ Milestone

Project ID: J3518DWPPrD1-M16  
 Layout: J3518-DWP-3MRP Submission - M16  
 Filter: TASK filters: 3-Month Lookahead, No Level of Effort.

**Tuen Mun - Chek Lap Kok Link - Southern Connection**  
**3-Month Rolling Programme (Page 25 of 35 Pages)**  
**(Progress as of 21-Sep-14)**

Date	Revision	Checked	Approved
29-Jul-14		FZ	
29-Aug-14		FZ	
07-Oct-14			

**DWG. No.:**  
**J3518/GCL/PGM/3MRP-M16**

Activity ID	Activity Name	Orig. Durn.	Act. Start / FC Early Start	Duration % Complete	Rem. Durn.	Act. Finish / FC Early Finish	Late Start	Late Finish	Total Float	Free Float	Physical % Complete	2014																			
												September					October					November					December				
												25	01	08	15	22	29	06	13	20	27	03	10	17	24	01	08	15			
<b>Socketted H-Pile Installation</b>																															
GFXX368-6	C20 (C1c) - Confirm Rockhead Levels	8.00	14-Aug-14 A	0%	8.00	30-Sep-14	28-Feb-15	09-Mar-15	129.00	25.00	0%																				
GFXX369-3	C20 (C1c) - Install SH Pile (6 nr)	56.00	01-Nov-14	0%	56.00	08-Jan-15	10-Mar-15	19-May-15	104.00	0.00	0%																				
<b>Viaduct D</b>																															
<b>Milestones - Marine Foundation</b>																															
GFXX228	Viaduct D - ARUP issues Pile Spacing & Diameter for Temporary Platform Design	0.00		0%	0.00	22-Sep-14		26-Jul-14	-47.00	0.00	0%																				
GFXX230-1	Pier D7 (D3e) - Start date for piling	0.00	08-Dec-14	0%	0.00		11-Oct-14		-49.00	0.00	0%																				
GFXX235-1	Pier D6 (D4a) - Start date for piling	0.00	27-Oct-14	0%	0.00		08-Oct-14		-16.00	0.00	0%																				
GFXX240-1	Pier D5 (D4b) - Start date for piling	0.00	25-Oct-14	0%	0.00		13-Sep-14		-34.00	0.00	0%																				
GFXX245-1	Pier D4 (D4c) - Start date for piling	0.00	23-Oct-14	0%	0.00		26-Aug-14		-47.00	0.00	0%																				
GFXX250-1	Pier D3 (D4d) - Start date for piling	0.00	13-Oct-14	0%	0.00		19-Jul-14		-70.00	0.00	0%																				
GFXX255-1	Pier D2 (D4e) - Start date for piling	0.00	22-Sep-14	0%	0.00		20-May-15		193.00	0.00	0%																				
GFXX263-1	Pier D1 (D4f) - Completion of Piling Works	0.00		0%	0.00	06-Nov-14		22-Jan-15	63.00	41.00	0%																				
ZD00010	Viaduct D - Approval of Foundation DDA	0.00		0%	0.00	22-Sep-14		11-Feb-15	103.00	9.00	0%																				
<b>Milestones - Land Foundation</b>																															
GFXX438-4	D18 (D1c) - Start date for piling	0.00	22-Sep-14	0%	0.00		07-Nov-14		38.00	0.00	0%																				
GFXX438-4A	D18 (D1c) - Completion of piling works	0.00		0%	0.00	18-Nov-14		30-Jan-15	60.00	22.00	0%																				
GFXX438-5	D19 (D1b) - Start date for piling	0.00	22-Sep-14	0%	0.00		18-Nov-14		47.00	29.00	0%																				
GFXX438-5A	D19 (D1b) - Completion of piling works	0.00		0%	0.00	08-Nov-14		10-Feb-15	77.00	59.00	0%																				
GFXX439A	D17 (D1d) - Start date for piling	0.00	22-Sep-14	0%	0.00		04-Dec-14		61.00	9.00	0%																				
GFXX439A1	D17 (D1d) - Completion of piling works	0.00		0%	0.00	01-Dec-14		02-Mar-15	73.00	21.00	0%																				
GFXX446A1	D14 (D2c) - Start date for piling	0.00	03-Oct-14	0%	0.00		17-Jul-14		-64.00	0.00	0%																				
GFXX446C	D16 (D2a) - Start date for piling	0.00	22-Sep-14	0%	0.00		15-Jul-14		-58.00	0.00	0%																				
GFXX454A	D13 (D2d) - Start date for piling	0.00	03-Oct-14	0%	0.00		23-Mar-15		140.00	0.00	0%																				
GFXX461A	D10 (D3b) - Start date for piling	0.00	13-Oct-14	0%	0.00		31-Jul-14		-60.50	0.00	0%																				
GFXX461B	D11 (D3a) - Start date for piling	0.00	04-Nov-14	0%	0.00		18-Jun-14		-115.00	1.00	0%																				
GFXX461C	D12 (D2e) - Start date for piling	0.00	04-Nov-14	0%	0.00		16-Sep-14		-40.00	97.00	0%																				
GFXX471-1	D8 (D3d) - Start date for piling	0.00	14-Oct-14	0%	0.00		20-Aug-14		-44.00	0.00	0%																				
<b>General - Preliminary Works for Land Piling</b>																															
ZD20010	Viaduct D works area between MTR and NLH - Setup TTMS	4.00	22-Sep-14	0%	4.00	25-Sep-14	10-Aug-18	14-Aug-18	036.00	0.00	0%																				
<b>Bridge D3</b>																															
<b>Pier D1 (D4f)</b>																															
<b>Foundation Works</b>																															
GFXX261	D1 (D4f) - Bored Piles (1.80m dia. x 3 nos)	58.00	08-Aug-14 A	86.21%	8.00	30-Sep-14	14-Aug-14	22-Aug-14	-32.00	0.00	86.58%																				
GFXX262	D1 (D4f) - Sonic & Interface Coring	12.00	18-Oct-14	0%	12.00	31-Oct-14	03-Jan-15	16-Jan-15	63.00	0.00	0%																				
GFXX263	D1 (D4f) - Dismantle removable panels of temp. platform	5.00	01-Nov-14	0%	5.00	06-Nov-14	17-Jan-15	22-Jan-15	63.00	0.00	0%																				
<b>Pier D2 (D4e)</b>																															
<b>Foundation Works</b>																															
GFXX255	D2 (D4e) - Predrilling (2 nos)	12.00	27-Aug-14 A	100%	0.00	10-Sep-14 A					100%																				
GFXX255-2	D2 (D4e) - Confirm Rockhead Levels	8.00	11-Sep-14 A	100%	0.00	18-Sep-14 A					100%																				
GFXX256	D2 (D4e) - Bored Piles (2.35m dia. x 2 nos)	63.00	19-Sep-14 A	33.33%	42.00	11-Nov-14	25-Jul-14	12-Sep-14	-49.00	0.00	34.25%																				
GFXX257	D2 (D4e) - Sonic & Interface Coring	12.00	06-Dec-14	0%	12.00	19-Dec-14	05-Aug-15	18-Aug-15	193.00	0.00	0%																				
GFXX258	D2 (D4e) - Dismantle removable panels of temp. platform	5.00	20-Dec-14	0%	5.00	27-Dec-14	19-Aug-15	24-Aug-15	193.00	0.00	0%																				
<b>Pier D3 (D4d)</b>																															
<b>Foundation Works</b>																															
GFXX249	D3 (D4d) - Inst.Temp.Working Platform	20.00	21-Aug-14 A	80%	4.00	25-Sep-14	30-Jun-14	04-Jul-14	-70.00	0.00	80%																				
GFXX250	D3 (D4d) - Predrilling for Piles (3 nos)	12.00	26-Sep-14	0%	12.00	11-Oct-14	05-Jul-14	18-Jul-14	-70.00	0.00	0%																				
GFXX250-2	D3 (D4d) - Confirm Rockhead Levels	8.00	13-Oct-14	0%	8.00	21-Oct-14	19-Jul-14	28-Jul-14	-70.00	0.00	0%																				

	Project ID: J3518DWPPrD1-M16 Layout: J3518-DWP-3MRP Submission - M16 Filter: TASK filters: 3-Month Lookahead, No Level of Effort.	<b>Tuen Mun - Chek Lap Kok Link - Southern Connection</b> <b>3-Month Rolling Programme (Page 26 of 35 Pages)</b> <b>(Progress as of 21-Sep-14)</b>	<table border="1"> <tr> <th>Date</th> <th>Revision</th> <th>Checked</th> <th>Approved</th> </tr> <tr> <td>29-Jul-14</td> <td></td> <td>FZ</td> <td></td> </tr> <tr> <td>29-Aug-14</td> <td></td> <td>FZ</td> <td></td> </tr> <tr> <td>07-Oct-14</td> <td></td> <td></td> <td></td> </tr> </table>	Date	Revision	Checked	Approved	29-Jul-14		FZ		29-Aug-14		FZ		07-Oct-14				<b>DWG. No.:</b> <b>J3518/GCL/PGM/3MRP-M16</b>
Date	Revision	Checked	Approved																	
29-Jul-14		FZ																		
29-Aug-14		FZ																		
07-Oct-14																				

Activity ID	Activity Name	Orig. Durn.	Act. Start / FC Early Start	Duration % Complete	Rem. Durn.	Act. Finish / FC Early Finish	Late Start	Late Finish	Total Float	Free Float	Physical % Complete	2014															
												September				October				November				December			
												25	01	08	15	22	29	06	13	20	27	03	10	17	24	01	08
GFXX251	D3 (D4d) - Bored Piles (2.00m dia. x 3 nos)	65.00	13-Oct-14	0%	65.00	29-Dec-14	19-Jul-14	06-Oct-14	-70.00	0.00	0%																
<b>Pier D4 (D4c)</b>																											
<b>Foundation Works</b>																											
GFXX244	D4 (D4c) - Inst.Temp.Working Platform	14.00	22-Sep-14	0%	14.00	09-Oct-14	28-Jul-14	12-Aug-14	-47.00	0.00	0%																
GFXX245	D4 (D4c) - Predrilling (3 nos)	11.00	10-Oct-14	0%	11.00	22-Oct-14	13-Aug-14	25-Aug-14	-47.00	0.00	0%																
GFXX245-2	D4 (D4c) - Confirm Rockhead Levels	8.00	23-Oct-14	0%	8.00	31-Oct-14	26-Aug-14	03-Sep-14	-47.00	0.00	0%																
GFXX246	D4 (D4c) - Bored Piles (2.00m dia. x 3 nos)	70.00	23-Oct-14	0%	70.00	15-Jan-15	26-Aug-14	18-Nov-14	-47.00	0.00	0%																
<b>Pier D5 (D4b)</b>																											
<b>Foundation Works</b>																											
GFXX239	D5 (D4b) - Inst.Temp.Working Platform	15.00	22-Sep-14	0%	15.00	10-Oct-14	12-Aug-14	28-Aug-14	-34.00	0.00	0%																
GFXX240	D5 (D4b) - Predrilling (2 nos)	12.00	11-Oct-14	0%	12.00	24-Oct-14	29-Aug-14	12-Sep-14	-34.00	0.00	0%																
GFXX240-2	D5 (D4b) - Confirm Rockhead Levels	8.00	25-Oct-14	0%	8.00	03-Nov-14	13-Sep-14	22-Sep-14	-34.00	0.00	0%																
GFXX241	D5 (D4b) - Bored Piles (2.35m dia. x 2 nos)	78.00	25-Oct-14	0%	78.00	27-Jan-15	13-Sep-14	15-Dec-14	-34.00	0.00	0%																
<b>Pier D6 (D4a)</b>																											
<b>Foundation Works</b>																											
GFXX234	D6 (D4a) - Inst.Temp.Working Platform	10.00	03-Oct-14	0%	10.00	14-Oct-14	23-Aug-14	03-Sep-14	-32.00	0.00	0%																
GFXX235	D6 (D4a) - Predrilling (3 nos)	10.00	15-Oct-14	0%	10.00	25-Oct-14	04-Sep-14	16-Sep-14	-32.00	0.00	0%																
GFXX235-2	D6 (D4a) - Confirm Rockhead Levels	8.00	27-Oct-14	0%	8.00	04-Nov-14	17-Sep-14	25-Sep-14	-32.00	0.00	0%																
GFXX236	D6 (D4a) - Bored Piles (2.00m dia. x 3 nos)	62.00	27-Oct-14	0%	62.00	09-Jan-15	17-Sep-14	29-Nov-14	-32.00	0.00	0%																
<b>Bridge D2</b>																											
<b>Pier D7 (D3e)</b>																											
<b>Foundation Works</b>																											
GFXX229	D7 (D3e) - Inst.Temp.Working Platform	10.00	12-Nov-14	0%	10.00	22-Nov-14	13-Sep-14	24-Sep-14	-49.00	0.00	0%																
GFXX230	D7 (D3e) - Predrilling (2 nos)	12.00	24-Nov-14	0%	12.00	06-Dec-14	25-Sep-14	10-Oct-14	-49.00	0.00	0%																
GFXX230-2	D7 (D3e) - Confirm Rockhead Levels	8.00	08-Dec-14	0%	8.00	16-Dec-14	11-Oct-14	20-Oct-14	-49.00	0.00	0%																
GFXX231	D7 (D3e) - Bored Piles (2.35m dia. x 2 nos)	67.00	08-Dec-14	0%	67.00	02-Mar-15	11-Oct-14	30-Dec-14	-49.00	0.00	0%																
<b>Pier D8 (D3d)</b>																											
<b>Preliminary Works for Land Piling</b>																											
GFXX432	D8 (D3d) - Set up for Pregrouting	5.00	22-Aug-14 A	100%	0.00	28-Aug-14 A					100%																
GFXX433-1	D8 (D3d) - Pregrouting Works	30.00	29-Aug-14 A	0%	30.00	28-Oct-14	26-Jul-18	29-Aug-18	136.00	16.00	0%																
PD080030	D8 (D3d) - Erect MTR protective fence / remove existing fence	12.00	07-Aug-14 A	100%	0.00	21-Aug-14 A					100%																
PD080032	D8 (D3d) - Install Geo. Instru. & Baseline Monitoring	36.00	22-Sep-14	0%	36.00	04-Nov-14	06-Jul-18	16-Aug-18	119.00	0.00	0%																
PD080040	D8 (D3d) - Set up piling platform	10.00	05-Nov-14	0%	10.00	15-Nov-14	17-Aug-18	29-Aug-18	008.00	0.00	0%																
PD080050	D8 (D3d) - Complete Civil Preparation Works for piling to commence	0.00		0%	0.00	15-Nov-14		29-Aug-18	008.00	1008.00	0%																
<b>Socketted H-Pile Installation</b>																											
GFXX470	D8 (D3d) - Predrilling (2 Nr)	17.00	25-Jul-14 A	47.06%	9.00	03-Oct-14	31-Jul-14	09-Aug-14	-44.00	0.00	50%																
GFXX470-1	D8 (D3d) - Confirm Rockhead Levels	8.00	04-Oct-14	0%	8.00	13-Oct-14	11-Aug-14	19-Aug-14	-44.00	0.00	0%																
GFXX471	D8 (D3d) - Installation of SH Pile (16 nr)	122.00	14-Oct-14	0%	122.00	11-Mar-15	20-Aug-14	15-Jan-15	-44.00	0.00	0%																
<b>Pier D9 (D3c)</b>																											
<b>Preliminary Works for Land Piling</b>																											
PD090010	D9 (D3c) - Erect MTR boundary fence / remove existing fence	12.00	26-Sep-14	0%	12.00	13-Oct-14	15-Aug-18	29-Aug-18	036.00	1036.00	0%																
<b>Socketted H-Pile Installation</b>																											
GFXX465-1	D9 (D3c) - Confirm Rockhead Levels	8.00	22-Sep-14	0%	8.00	30-Sep-14	24-Jul-14	01-Aug-14	-50.00	68.00	0%																
<b>Pier D10 (D3b)</b>																											
<b>Preliminary Works for Land Piling</b>																											
PD100020	D10 (D3b) - Set up piling platform	10.00	23-Jul-14 A	0%	10.00	04-Oct-14	17-Aug-18	29-Aug-18	042.00	0.00	0%																
PD100030	D10 (D3b) - Complete Civil Preparation Works for piling to commence	0.00		0%	0.00	04-Oct-14		29-Aug-18	042.00	1042.00	0%																
<b>Socketted H-Pile Installation</b>																											

	Project ID: J3518DWPPrD1-M16 Layout: J3518-DWP-3MRP Submission - M16 Filter: TASK filters: 3-Month Lookahead, No Level of Effort.	<b>Tuen Mun - Chek Lap Kok Link - Southern Connection</b> <b>3-Month Rolling Programme (Page 27 of 35 Pages)</b> <b>(Progress as of 21-Sep-14)</b>	<table border="1"> <tr> <th>Date</th> <th>Revision</th> <th>Checked</th> <th>Approved</th> </tr> <tr> <td>29-Jul-14</td> <td></td> <td>FZ</td> <td></td> </tr> <tr> <td>29-Aug-14</td> <td></td> <td>FZ</td> <td></td> </tr> <tr> <td>07-Oct-14</td> <td></td> <td></td> <td></td> </tr> </table>	Date	Revision	Checked	Approved	29-Jul-14		FZ		29-Aug-14		FZ		07-Oct-14				<b>DWG. No.:</b> <b>J3518/GCL/PGM/3MRP-M16</b>
Date	Revision	Checked	Approved																	
29-Jul-14		FZ																		
29-Aug-14		FZ																		
07-Oct-14																				

Activity ID	Activity Name	Orig. Durn.	Act. Start / FC Early Start	Duration % Complete	Rem. Durn.	Act. Finish / FC Early Finish	Late Start	Late Finish	Total Float	Free Float	Physical % Complete	2014															
												September				October				November				December			
												25	01	08	15	22	29	06	13	20	27	03	10	17	24	01	08
GFXX460-1	D10 (D3b) - Predrilling (2 Nr)	17.00	14-Aug-14 A	50%	8.50	03-Oct-14	19-May-14	28-May-14	105.00	0.00	50%	[Gantt bar: 14-Aug-14 to 28-May-14]															
GFXX460-4	D10 (D3b) - Confirm Rockhead Levels	8.00	03-Oct-14	0%	8.00	13-Oct-14	22-Jul-14	30-Jul-14	-60.50	0.00	0%	[Gantt bar: 22-Jul-14 to 30-Jul-14]															
GFXX461-1	D10 (D3b) - Installation of SH Pile (12 nr)	153.00	13-Oct-14	0%	153.00	21-Apr-15	31-Jul-14	31-Jan-15	-60.50	0.00	0%	[Gantt bar: 31-Jul-14 to 31-Jan-15]															
<b>Pier D11 (D3a)</b>																											
<b>Preliminary Works for Land Piling</b>																											
PD110020	D11 (D3a) - Set up piling platform	10.00	23-Jul-14 A	0%	10.00	04-Oct-14	02-May-14	17-May-14	-92.00	0.00	0%	[Gantt bar: 02-May-14 to 17-May-14]															
PD110030	D11(D3a) - Complete Civil Preparation Works for piling to commence	0.00		0%	0.00	04-Oct-14		17-May-14	-92.00	0.00	0%	[Milestone: 04-Oct-14]															
<b>Socketted H-Pile Installation</b>																											
GFXX460-2	D11 (D3a) - Predrilling	17.00	06-Oct-14	0%	17.00	24-Oct-14	19-May-14	07-Jun-14	-115.00	0.00	0%	[Gantt bar: 19-May-14 to 07-Jun-14]															
GFXX460-5	D11 (D3a) - Confirm Rockhead Levels	8.00	25-Oct-14	0%	8.00	03-Nov-14	09-Jun-14	17-Jun-14	-115.00	0.00	0%	[Gantt bar: 09-Jun-14 to 17-Jun-14]															
GFXX461-2	D11 (D3a) - Installation of SH Pile (14 nr)	153.00	04-Nov-14	0%	153.00	13-May-15	18-Jun-14	17-Dec-14	-115.00	0.00	0%	[Gantt bar: 18-Jun-14 to 17-Dec-14]															
<b>Pier D12 (D2e)</b>																											
<b>Preliminary Works for Land Piling</b>																											
PD120012	D12 (D2e) - Install Geo. Instru. & Baseline Monitoring	36.00	22-Sep-14	0%	36.00	04-Nov-14	19-Jul-18	29-Aug-18	130.00	1130.00	0%	[Gantt bar: 19-Jul-18 to 29-Aug-18]															
PD120030	D12 (D2e) - Complete Civil Preparation Works for piling to commence	0.00		0%	0.00	22-Sep-14		15-Aug-14	-26.00	10.00	0%	[Milestone: 22-Sep-14]															
<b>Socketted H-Pile Installation</b>																											
GFXX460-3	D12 (D2e) - Predrilling	17.00	06-Oct-14	0%	17.00	24-Oct-14	16-Aug-14	04-Sep-14	-40.00	0.00	0%	[Gantt bar: 16-Aug-14 to 04-Sep-14]															
GFXX460-6	D12 (D2e) - Confirm Rockhead Levels	8.00	25-Oct-14	0%	8.00	03-Nov-14	05-Sep-14	15-Sep-14	-40.00	0.00	0%	[Gantt bar: 05-Sep-14 to 15-Sep-14]															
GFXX461-3	D12 (D2e) - Installation of SH Pile (16 nr)	153.00	04-Nov-14	0%	153.00	13-May-15	16-Sep-14	21-Mar-15	-40.00	0.00	0%	[Gantt bar: 16-Sep-14 to 21-Mar-15]															
<b>Pier D13 (D2d)</b>																											
<b>Socketted H-Pile Installation</b>																											
GFXX452-8	D13 (D2d) - Confirm Rockhead Levels	8.00	31-May-14 A	0%	8.00	30-Sep-14	03-Feb-15	11-Feb-15	110.00	0.00	0%	[Gantt bar: 03-Feb-15 to 11-Feb-15]															
GFXX454	D13 (D2d) - Installation of SH Pile (16 nos)	71.00	03-Oct-14	0%	71.00	24-Dec-14	12-Feb-15	14-May-15	110.00	0.00	0%	[Gantt bar: 12-Feb-15 to 14-May-15]															
<b>Bridge D1</b>																											
<b>Pier D14 (D2c)</b>																											
<b>Socketted H-Pile Installation</b>																											
GFXX445-	D14 (D2c) - Confirm Rockhead Levels	8.00	17-Jun-14 A	0%	8.00	30-Sep-14	08-Jul-14	16-Jul-14	-64.00	0.00	0%	[Gantt bar: 08-Jul-14 to 16-Jul-14]															
GFXX446-	D14 (D2c) - Installation of SH Pile (10 nr)	121.00	03-Oct-14	0%	121.00	27-Feb-15	17-Jul-14	08-Dec-14	-64.00	0.00	0%	[Gantt bar: 17-Jul-14 to 08-Dec-14]															
<b>Pier D15 (D2b)</b>																											
<b>Preliminary Works for Land Piling</b>																											
PD150012	D15 (D2b) - Install Geo. Instru. & Baseline Monitoring	36.00	26-Jul-14 A	0%	36.00	04-Nov-14	14-Apr-14	30-May-14	130.00	0.00	0%	[Gantt bar: 14-Apr-14 to 30-May-14]															
PD150020	D15 (D2b) - Set up piling platform	20.00	05-Nov-14	0%	20.00	27-Nov-14	31-May-14	07-Jul-14	107.00	0.00	0%	[Gantt bar: 31-May-14 to 07-Jul-14]															
PD150030	D15 (D2b) - Complete Civil Preparation Works for piling to commence	0.00		0%	0.00	27-Nov-14		07-Jul-14	107.00	0.00	0%	[Milestone: 27-Nov-14]															
<b>Socketted H-Pile Installation</b>																											
GFXX445-2	D15 (D2b) - Predrilling	18.00	28-Nov-14	0%	18.00	18-Dec-14	08-Jul-14	28-Jul-14	120.00	0.00	0%	[Gantt bar: 08-Jul-14 to 28-Jul-14]															
GFXX445-4	D15 (D2b) - Confirm Rockhead Levels	8.00	19-Dec-14	0%	8.00	30-Dec-14	29-Jul-14	06-Aug-14	120.00	0.00	0%	[Gantt bar: 29-Jul-14 to 06-Aug-14]															
<b>Pier D16 (D2a)</b>																											
<b>Preliminary Works for Land Piling</b>																											
PD160012	D16 (D2a) - Install Geo. Instru. & Baseline Monitoring	36.00	26-Jul-14 A	0%	36.00	04-Nov-14	22-Jun-18	03-Aug-18	108.00	20.00	0%	[Gantt bar: 22-Jun-18 to 03-Aug-18]															
PD160020	D16 (D2a) - Set up piling platform	20.00	28-Nov-14	0%	20.00	20-Dec-14	04-Aug-18	29-Aug-18	978.00	978.00	0%	[Gantt bar: 04-Aug-18 to 29-Aug-18]															
<b>Socketted H-Pile Installation</b>																											
GFXX445-5	D16 (D2a) - Confirm Rockhead Levels	8.00	23-Jul-14 A	100%	0.00	01-Sep-14 A					100%	[Gantt bar: 01-Sep-14 to 01-Sep-14]															
GFXX446-3	D16 (D2a) - Installation of SH Pile (13 nr)	121.00	02-Sep-14 A	6.61%	113.00	06-Feb-15	15-Jul-14	27-Nov-14	-58.00	0.00	6.61%	[Gantt bar: 15-Jul-14 to 27-Nov-14]															
<b>Pier D17 (D1d)</b>																											
<b>Socketted H-Pile Installation</b>																											
GFXX439-1	D17 (D1d) - Installation of SH Pile (10 nr)	70.00	14-Aug-14 A	17.14%	58.00	01-Dec-14	04-Dec-14	13-Feb-15	61.00	0.00	17.14%	[Gantt bar: 04-Dec-14 to 13-Feb-15]															
<b>Pier D18 (D1c)</b>																											
<b>Socketted H-Pile Installation</b>																											

■ Actual Work  
■ Planned Bar  
■ Critical Bar  
◆ Milestone

Project ID: J3518DWPPrD1-M16  
 Layout: J3518-DWP-3MRP Submission - M16  
 Filter: TASK filters: 3-Month Lookahead, No Level of Effort.

**Tuen Mun - Chek Lap Kok Link - Southern Connection**  
**3-Month Rolling Programme (Page 28 of 35 Pages)**  
**(Progress as of 21-Sep-14)**

Date	Revision	Checked	Approved
29-Jul-14		FZ	
29-Aug-14		FZ	
07-Oct-14			

**DWG. No.:**  
**J3518/GCL/PGM/3MRP-M16**

Activity ID	Activity Name	Orig. Durn.	Act. Start / FC Early Start	Duration % Complete	Rem. Durn.	Act. Finish / FC Early Finish	Late Start	Late Finish	Total Float	Free Float	Physical % Complete	2014																
												September				October				November				December				
												25	01	08	15	22	29	06	13	20	27	03	10	17	24	01	08	15
GFXX439-2	D18 (D1c) - Installation of SH Pile (10 nr)	70.00	09-Aug-14 A	31.43%	48.00	18-Nov-14	07-Nov-14	05-Jan-15	38.00	0.00	32.28%	[Gantt bar: 09-Aug-14 to 05-Jan-15]																
GFXX439-5	D18 (D1c) - Selction of pile for Loading test	24.00	15-Dec-14	0%	24.00	14-Jan-15	31-Jan-15	03-Mar-15	38.00	0.00	0%	[Gantt bar: 14-Jan-15 to 03-Mar-15]																
<b>Pier D19 (D1b) &amp; Abutment D</b>																												
<b>Socketted H-Pile Installation</b>																												
GFXX439-3	D19 (D1b) - Installation of SH Pile (6 nr)	70.00	29-Jul-14 A	42.86%	40.00	08-Nov-14	18-Nov-14	06-Jan-15	47.00	0.00	44.13%	[Gantt bar: 29-Jul-14 to 06-Jan-15]																
<b>Viaduct E</b>																												
<b>Viaduct E1</b>																												
<b>Bridge E1 - Piling &amp; Substructure</b>																												
<b>Milestones</b>																												
GFXX023A	E1D (E1a1) - Start date for piling	0.00	22-Sep-14	0%	0.00		10-Oct-14		14.13	0.00	0%	[Milestone diamond: 22-Sep-14]																
GFXX023A	E1C (E1a2) - Start date for piling	0.00	22-Sep-14	0%	0.00		10-Oct-14		14.13	0.00	0%	[Milestone diamond: 22-Sep-14]																
GFXX023A	E1B (E1a3) - Start date for piling	0.00	22-Sep-14	0%	0.00		10-Oct-14		14.13	0.00	0%	[Milestone diamond: 22-Sep-14]																
GFXX023A	E1A (E1a4) - Start date for piling	0.00	22-Sep-14	0%	0.00		10-Oct-14		14.13	0.00	0%	[Milestone diamond: 22-Sep-14]																
GFXX028A	E2C/E2D (E1b2/E1b1) - Start date for piling	0.00	22-Sep-14	0%	0.00		17-Jul-14		-56.00	0.00	0%	[Milestone diamond: 22-Sep-14]																
GFXX028A	E2B (E1b3) - Start date for piling	0.00	22-Sep-14	0%	0.00		17-Jul-14		-56.00	0.00	0%	[Milestone diamond: 22-Sep-14]																
GFXX028A	E2A (E1b4) - Start date for piling	0.00	22-Sep-14	0%	0.00		17-Jul-14		-56.00	0.00	0%	[Milestone diamond: 22-Sep-14]																
GFXX031-1	E1D (E1a1) - Piling Works Completion	0.00		0%	0.00	13-Nov-14		20-Jan-16	350.75	257.00	0%	[Milestone diamond: 13-Nov-14]																
GFXX031-2	E1C (E1a2) - Piling Works Completion	0.00		0%	0.00	13-Nov-14		17-Mar-15	99.88	118.00	0%	[Milestone diamond: 13-Nov-14]																
GFXX031-3	E1B (E1a3) - Piling Works Completion	0.00		0%	0.00	13-Nov-14		09-Jan-15	46.00	105.00	0%	[Milestone diamond: 13-Nov-14]																
GFXX031-4	E1A (E1a4) - Piling Works Completion	0.00		0%	0.00	13-Nov-14		01-Dec-14	14.13	0.00	0%	[Milestone diamond: 13-Nov-14]																
<b>E1A, E1B, E1C &amp; E1D (E1a1-2-3-4)</b>																												
<b>Foundation Works E1A, E1B, E1C &amp; E1D</b>																												
<b>Foundation Works</b>																												
GFXX02	E1A/E1B/E1C/E1D (E1a4/3/2/1) - Confirm Rockhead levels	8.00	05-Jul-14 A	75%	2.00	23-Sep-14	28-Aug-18	29-Aug-18	164.00	1164.00	79%	[Gantt bar: 05-Jul-14 to 29-Aug-18]																
GFXX02	E1A/E1B/E1C/E1D (E1a4/3/2/1) - Bored Piles (2.00m dia. x 8 nos)	125.00	09-Jul-14 A	91.2%	11.00	06-Oct-14	10-Oct-14	23-Oct-14	14.13	0.00	90.99%	[Gantt bar: 09-Jul-14 to 23-Oct-14]																
GFXX02	E1A/E1B/E1C/E1D (E1a4/3/2/1) - Sonic & Interface Coring	44.00	22-Sep-14	0%	44.00	13-Nov-14	10-Oct-14	01-Dec-14	14.13	0.00	0%	[Gantt bar: 22-Sep-14 to 01-Dec-14]																
GFXX02	E1A/E1B/E1C/E1D (E1a4/3/2/1) - Dismantle Temporary Piling Platform in Pier E1	7.00	06-Nov-14	0%	7.00	13-Nov-14	22-Nov-14	01-Dec-14	14.13	0.00	0%	[Gantt bar: 06-Nov-14 to 01-Dec-14]																
<b>Pile Cap Works - E1A, E1B, E1C &amp; E1D</b>																												
<b>Pile Cap Works - E1A (E1a4)</b>																												
SE1A4070	E1A (E1a4) - Marine Pile Cap - Inst.prefab.collar frame to perm.casing of Bored pile	4.00	14-Nov-14	0%	4.00	18-Nov-14	01-Dec-14	05-Dec-14	14.13	94.00	0%	[Gantt bar: 14-Nov-14 to 05-Dec-14]																
<b>E2A, E2B, E2C &amp; E2D (E1b1-2-3-4)</b>																												
<b>Foundation Works - E2A, E2B, E2C &amp; E2D</b>																												
<b>Foundation Works</b>																												
GFXX02	E2A/E2B/E2C/E2D (E1b4/3/2/1) - Inst.Temp.Working Platforms (Heavy & Light)	34.00	28-Jun-14 A	100%	0.00	12-Sep-14 A					100%	[Gantt bar: 28-Jun-14 to 12-Sep-14]																
GFXX02	E2A/E2B/E2C/E2D (E1b4/3/2/1) - Predrilling (7 nos)	21.00	25-Aug-14 A	71.42%	6.00	29-Sep-14	25-Mar-17	01-Apr-17	744.00	79.00	71.42%	[Gantt bar: 25-Aug-14 to 01-Apr-17]																
GFXX02	E2A/E2B/E2C/E2D (E1b4/3/2/1) - Confirm Rockhead levels	8.00	28-Aug-14 A	12.5%	7.00	29-Sep-14	20-Oct-14	27-Oct-14	22.00	78.00	12%	[Gantt bar: 28-Aug-14 to 27-Oct-14]																
GFXX02	E2A/E2B/E2C/E2D (E1b4/3/2/1) - Bored Piles (2.00m dia. x 7 nr)	88.00	05-Sep-14 A	3.41%	85.00	03-Jan-15	17-Jul-14	27-Oct-14	-56.00	0.00	4.25%	[Gantt bar: 05-Sep-14 to 27-Oct-14]																
GFXX02	E2A/E2B/E2C/E2D (E1b4/3/2/1) - Sonic & Interface Coring	34.00	20-Dec-14	0%	34.00	31-Jan-15	16-Oct-14	24-Nov-14	-56.00	0.00	0%	[Gantt bar: 20-Dec-14 to 24-Nov-14]																
<b>Viaduct E2</b>																												
<b>Bridge E2 - Piling &amp; Substructure</b>																												
<b>Milestones</b>																												
GFXX075	E3 (E2a) - Completion of piling works	0.00		0%	0.00	18-Nov-14		03-Nov-14	-13.00	22.00	0%	[Milestone diamond: 18-Nov-14]																
GFXX076	E4 (E2b) - Completion of piling works	0.00		0%	0.00	26-Sep-14		14-Aug-14	-36.13	73.00	0%	[Milestone diamond: 26-Sep-14]																
GFXX077-5	E9 (E2g) - Completion of piling works	0.00		0%	0.00	27-Oct-14		26-Mar-15	123.00	41.00	0%	[Milestone diamond: 27-Oct-14]																
GFXX078	E10 (E2h) - Completion of piling works	0.00		0%	0.00	12-Nov-14		26-Nov-14	12.00	27.00	0%	[Milestone diamond: 12-Nov-14]																
<b>E3A, E3B, E3C &amp; E3D (E2a - 1/2/3/4)</b>																												
<b>Foundation Works - E3A, E3B, E3C &amp; E3D</b>																												
<b>Foundation Works</b>																												

<ul style="list-style-type: none"> <li><span style="color: blue;">█</span> Actual Work</li> <li><span style="color: green;">█</span> Planned Bar</li> <li><span style="color: red;">█</span> Critical Bar</li> <li>◆ Milestone</li> </ul>	Project ID: J3518DWPPrD1-M16 Layout: J3518-DWP-3MRP Submission - M16 Filter: TASK filters: 3-Month Lookahead, No Level of Effort.	<b>Tuen Mun - Chek Lap Kok Link - Southern Connection</b> <b>3-Month Rolling Programme (Page 29 of 35 Pages)</b> <b>(Progress as of 21-Sep-14)</b>				Date	Revision	Checked	Approved	<b>DWG. No.:</b>  <b>J3518/GCL/PGM/3MRP-M16</b>
						29-Jul-14		FZ		
						29-Aug-14		FZ		
						07-Oct-14				

Activity ID	Activity Name	Orig. Durn.	Act. Start / FC Early Start	Duration % Complete	Rem. Durn.	Act. Finish / FC Early Finish	Late Start	Late Finish	Total Float	Free Float	Physical % Complete	2014															
												September				October				November				December			
												25	01	08	15	22	29	06	13	20	27	03	10	17	24	01	08
GFXX038	E3 (E2a) - Sonic & Interface Coring x6no.	20.00	03-Aug-14 A	100%	0.00	30-Aug-14 A					100%	[Gantt bar: 03-Aug-14 to 30-Aug-14, 100% complete]															
GFXX03	E3 (E2a) - Selection of bored pile for Full Depth Coring	24.00	22-Sep-14	0%	24.00	21-Oct-14	05-Sep-14	06-Oct-14	-13.00	0.00	0%	[Gantt bar: 05-Sep-14 to 06-Oct-14, 0% complete]															
GFXX03	E3 (E2a) - Bored Pile Full Depth Coring & Testing	24.00	22-Oct-14	0%	24.00	18-Nov-14	07-Oct-14	03-Nov-14	-13.00	0.00	0%	[Gantt bar: 07-Oct-14 to 03-Nov-14, 0% complete]															
GFXX039	E3 (E2a) - Dismantle Temporary Removable Piling Platform	5.00	10-Sep-14 A	100%	0.00	13-Sep-14 A					100%	[Gantt bar: 10-Sep-14 to 13-Sep-14, 100% complete]															
<b>Pile Cap Works - E3A, E3B, E3C &amp; E3D</b>																											
<b>Pile Cap Works</b>																											
SE2A1070	E3 (E2a1/2/3/4)- Marine Pile Cap - Inst.Floating Seal & Casing Head Steelwork	8.00	15-Dec-14	0%	8.00	23-Dec-14	04-Nov-14	12-Nov-14	-35.00	29.00	0%	[Gantt bar: 04-Nov-14 to 12-Nov-14, 0% complete]															
<b>E4A &amp; E4B (E2b - 1/2)</b>																											
<b>Foundation Works - E4A &amp; E4B</b>																											
<b>Foundation Works</b>																											
GFXX042	E4 (E2b) - Bored Piles (2.20m dia. x 4 nos)	90.00	19-Jun-14 A	100%	0.00	23-Aug-14 A					100%	[Gantt bar: 19-Jun-14 to 23-Aug-14, 100% complete]															
GFXX043	E4 (E2b) - Sonic & Interface Coring x 4no.	12.00	30-Aug-14 A	100%	0.00	11-Sep-14 A					100%	[Gantt bar: 30-Aug-14 to 11-Sep-14, 100% complete]															
GFXX044	E4 (E2b) - Dismantle Temporary Removable Piling Platform	5.00	22-Sep-14	0%	5.00	26-Sep-14	25-Jul-14	31-Jul-14	-48.13	0.00	0%	[Gantt bar: 25-Jul-14 to 31-Jul-14, 0% complete]															
<b>Pile Cap Works - E4A &amp; E4B</b>																											
<b>Pile Cap Works</b>																											
SE2B0070	E4 (E2b1/2) - Marine Pile Cap - Inst.Floating Seal & Casing Head Steelwork	8.00	15-Dec-14	0%	8.00	23-Dec-14	31-Jul-14	14-Aug-14	100.13	0.00	0%	[Gantt bar: 31-Jul-14 to 14-Aug-14, 0% complete]															
<b>E5A &amp; E5B (E2c - 1/2)</b>																											
<b>Foundation Works - E5A &amp; E5B</b>																											
<b>Foundation Works</b>																											
GFXX04	E5 (E2c) - Inst.Temp.Working Platform (Light)	7.00	22-Sep-14	0%	7.00	29-Sep-14	17-Jul-14	24-Jul-14	-56.00	0.00	0%	[Gantt bar: 17-Jul-14 to 24-Jul-14, 0% complete]															
GFXX046	E5 (E2c) - Predrilling (4 nos)	22.00	30-Sep-14	0%	22.00	27-Oct-14	13-Oct-14	06-Nov-14	9.00	0.00	0%	[Gantt bar: 13-Oct-14 to 06-Nov-14, 0% complete]															
GFXX04	E5 (E2c) - Confirm Rockhead levels	8.00	28-Oct-14	0%	8.00	05-Nov-14	07-Nov-14	15-Nov-14	9.00	65.00	0%	[Gantt bar: 07-Nov-14 to 15-Nov-14, 0% complete]															
<b>E6A &amp; E6B (E2d - 1/2)</b>																											
<b>Foundation Works - E6A &amp; E6B</b>																											
<b>Foundation Works</b>																											
GFXX050	E6 (E2d) - Inst.Temp.Working Platform (Heavy)	18.00	22-Sep-14	0%	18.00	14-Oct-14	04-Jul-14	24-Jul-14	-67.00	0.00	0%	[Gantt bar: 04-Jul-14 to 24-Jul-14, 0% complete]															
GFXX05	E6 (E2d) - Inst.Temp.Working Platform (Light)	7.00	15-Oct-14	0%	7.00	22-Oct-14	25-Jul-14	01-Aug-14	-67.00	0.00	0%	[Gantt bar: 25-Jul-14 to 01-Aug-14, 0% complete]															
GFXX051	E6 (E2d) - Predrilling (4 nos)	18.00	23-Oct-14	0%	18.00	12-Nov-14	27-Nov-14	17-Dec-14	30.00	0.00	0%	[Gantt bar: 27-Nov-14 to 17-Dec-14, 0% complete]															
GFXX05	E6 (E2d) - Confirm Rockhead levels	8.00	13-Nov-14	0%	8.00	21-Nov-14	18-Dec-14	29-Dec-14	30.00	183.00	0%	[Gantt bar: 18-Dec-14 to 29-Dec-14, 0% complete]															
<b>E7A &amp; E7B (E2e - 1/2)</b>																											
<b>Foundation Works - E7A &amp; E7B</b>																											
<b>Foundation Works</b>																											
GFXX055	E7 (E2e) - Inst.Temp.Working Platforms (Heavy)	19.00	23-Oct-14	0%	19.00	13-Nov-14	02-Aug-14	23-Aug-14	-67.00	0.00	0%	[Gantt bar: 02-Aug-14 to 23-Aug-14, 0% complete]															
GFXX05	E7 (E2e) - Inst.Temp.Working Platforms (Light)	7.00	14-Nov-14	0%	7.00	21-Nov-14	25-Aug-14	01-Sep-14	-67.00	0.00	0%	[Gantt bar: 25-Aug-14 to 01-Sep-14, 0% complete]															
GFXX056	E7 (E2e) - Predrilling (5 nos)	26.00	22-Nov-14	0%	26.00	22-Dec-14	18-Oct-14	17-Nov-14	-30.00	0.00	0%	[Gantt bar: 18-Oct-14 to 17-Nov-14, 0% complete]															
<b>E8A &amp; E8B (E2f - 1/2)</b>																											
<b>Foundation Works - E8A &amp; E8B</b>																											
<b>Foundation Works</b>																											
GFXX060	E8 (E2f) - Inst.Temp.Working Platforms (Heavy)	32.00	22-Nov-14	0%	32.00	31-Dec-14	02-Sep-14	11-Oct-14	-67.00	0.00	0%	[Gantt bar: 02-Sep-14 to 11-Oct-14, 0% complete]															
GFXX06	E8 (E2f) - Relocation & Install Temporary Removable Platform from E3, Plant & Equipment fr	7.00	14-Oct-14	0%	7.00	21-Oct-14	12-Nov-14	19-Nov-14	25.00	92.00	0%	[Gantt bar: 12-Nov-14 to 19-Nov-14, 0% complete]															
<b>E9A &amp; E9B (E2g - 1/2)</b>																											
<b>Foundation Works - E9A &amp; E9B</b>																											
<b>Foundation Works</b>																											
GFXX067	E9 (E2g) - Bored Piles (2.00m dia. x 6 nr)	105.00	17-May-14 A	90.48%	10.00	04-Oct-14	18-Feb-15	04-Mar-15	123.00	0.00	91.01%	[Gantt bar: 18-Feb-15 to 04-Mar-15, 91.01% complete]															
GFXX068	E9 (E2g) - Sonic & Interface Coring	12.00	06-Oct-14	0%	12.00	18-Oct-14	05-Mar-15	18-Mar-15	123.00	0.00	0%	[Gantt bar: 05-Mar-15 to 18-Mar-15, 0% complete]															
GFXX069	E9 (E2g) - Dismantle temp. removable piling platform	7.00	20-Oct-14	0%	7.00	27-Oct-14	19-Mar-15	26-Mar-15	123.00	0.00	0%	[Gantt bar: 19-Mar-15 to 26-Mar-15, 0% complete]															
<b>Pile Cap Works - E9A &amp; E9B</b>																											
<b>Pile Cap Works</b>																											

- Actual Work
- Planned Bar
- Critical Bar
- ◆ Milestone

Project ID: J3518DWPPrD1-M16  
Layout: J3518-DWP-3MRP Submission - M16  
Filter: TASK filters: 3-Month Lookahead, No Level of Effort.

**Tuen Mun - Chek Lap Kok Link - Southern Connection**  
**3-Month Rolling Programme (Page 30 of 35 Pages)**  
**(Progress as of 21-Sep-14)**

Date	Revision	Checked	Approved
29-Jul-14		FZ	
29-Aug-14		FZ	
07-Oct-14			

**DWG. No.:**  
**J3518/GCL/PGM/3MRP-M16**

Activity ID	Activity Name	Orig. Durn.	Act. Start / FC Early Start	Duration % Complete	Rem. Durn.	Act. Finish / FC Early Finish	Late Start	Late Finish	Total Float	Free Float	Physical % Complete	2014															
												September				October				November				December			
												25	01	08	15	22	29	06	13	20	27	03	10	17	24	01	08
SE2G00	E9 (E2g1/2) - Marine Pile Cap - Inst.Floating Seal & Casing Head Steelwork	8.00	15-Dec-14	0%	8.00	23-Dec-14	27-Mar-15	11-Apr-15	82.00	0.00	0%																
<b>E10A &amp; E10B (E2h - 1/2)</b>																											
<b>Foundation Works - E10A &amp; E10B</b>																											
<b>Foundation Works</b>																											
GFX072	E10 (E2h) - Bored Piles (2.20m dia. x 6 nr)	132.00	15-May-14 A	83.33%	22.00	18-Oct-14	10-Oct-14	04-Nov-14	14.00	0.00	83.81%																
GFX073	E10 (E2h) - Sonic & Interface Coring	12.00	22-Oct-14	0%	12.00	04-Nov-14	05-Nov-14	18-Nov-14	12.00	0.00	0%																
GFX074	E10 (E2h) - Dismantle temp. removable piling platform	7.00	05-Nov-14	0%	7.00	12-Nov-14	19-Nov-14	26-Nov-14	12.00	0.00	0%																
<b>Pile Cap Works - E10A &amp; E10B</b>																											
<b>Pile Cap Works</b>																											
SE2H00	E10 (E2h1/2) - Marine Pile Cap - Inst.Floating Seal & Casing Head Steelwork	8.00	15-Dec-14	0%	8.00	23-Dec-14	27-Nov-14	05-Dec-14	-15.00	0.00	0%																
<b>Viaduct E5, E6, E7 &amp; E8</b>																											
<b>Milestones - Marine Foundation</b>																											
GFX084-1	E11 (E5E6a/E7E8a) - Start date for piling	0.00	22-Sep-14	0%	0.00		21-Mar-14		149.00	0.00	0%																
GFX089-1	E12 (E5b/E6b/E7b/E8b + Dolphins) - Start date for piling	0.00	22-Sep-14	0%	0.00		17-Mar-14		153.00	0.00	0%																
GFX095-1	E13C/D (E6c/E5c+ dolphin) - Start date for piling	0.00	22-Sep-14	0%	0.00		10-Apr-14		133.00	0.00	0%																
<b>Milestones - Land Foundation</b>																											
GFX012	Land Access to BCF (Available in Month 17)	0.00	03-Nov-14	0%	0.00		05-Nov-14		2.00	0.00	0%																
<b>E11A &amp; E11B (E5E6a/E7E8a)</b>																											
<b>Foundation Works - E11A &amp; E11B</b>																											
<b>Foundation Works</b>																											
GFX083	E11 (E5E6a/E7E8a) - Confirm Rockhead levels	8.00	12-Jun-14 A	75%	2.00	23-Sep-14	28-Aug-18	29-Aug-18	164.00	1164.00	80%																
GFX084	E11 (E5E6a/E7E8a) - Bored Piles (2.35m dia. x 7 nr)	130.00	10-Jul-14 A	59.23%	53.00	24-Nov-14	21-Mar-14	28-May-14	149.00	0.00	59%																
GFX084	E11 (E5E6a/E7E8a) - Bored Piles (2.35m dia. x 2 nr (Total 7 Nr))	130.00	10-Jul-14 A	59.23%	53.00	24-Nov-14	21-Mar-14	28-May-14	149.00	0.00	59%																
GFX084	E11 (E5E6a/E7E8a) - Bored Piles (2.35m dia. x 2 nr (Total 7 Nr))	130.00	10-Jul-14 A	59.23%	53.00	24-Nov-14	21-Mar-14	28-May-14	149.00	0.00	59%																
GFX084	E11 (E5E6a/E7E8a) - Bored Piles (2.35m dia. x 2 nr (Total 7 Nr))	130.00	10-Jul-14 A	59.23%	53.00	24-Nov-14	21-Mar-14	28-May-14	149.00	0.00	59%																
GFX084	E11 (E5E6a/E7E8a) - Bored Piles (2.35m dia. x 1 nr (Total 7 Nr))	130.00	10-Jul-14 A	59.23%	53.00	24-Nov-14	21-Mar-14	28-May-14	149.00	0.00	59%																
<b>E12A, E12B, E12C &amp; E12D (E8b/E7b/E6b/E5b)</b>																											
<b>Foundation Works - E12</b>																											
<b>Foundation Works</b>																											
GFX088	E12 (E5b/E6b, E7b/E8b + Dolphins) - Confirm Rockhead levels	8.00	21-Jun-14 A	0%	8.00	30-Sep-14	21-Aug-18	29-Aug-18	158.00	1158.00	0%																
GFX089	E12 (E5b/E6b/E7b/E8b + Dolphins) - Bored Piles (2.35m dia. x 14 nr ; 2.00m dia x 6 nr)	216.00	11-Jul-14 A	35.19%	140.00	12-Mar-15	17-Mar-14	04-Sep-14	153.00	0.00	35%																
GFX089	E12D (E5b+ Dolphins) - Bored Piles (2.35m dia. x 4 nr (total 14) ; 2.00m dia x 3 nr (total 6))	216.00	11-Jul-14 A	35.19%	140.00	12-Mar-15	17-Mar-14	04-Sep-14	153.00	0.00	35%																
GFX089	E12C (E6b) - Bored Piles (2.35m dia. x 3 nr)	216.00	11-Jul-14 A	35.19%	140.00	12-Mar-15	17-Mar-14	04-Sep-14	153.00	0.00	35%																
GFX089	E12B (E7b) - Bored Piles (2.35m dia. x 3 nr)	216.00	11-Jul-14 A	35.19%	140.00	12-Mar-15	17-Mar-14	04-Sep-14	153.00	0.00	35%																
GFX089	E12A (E8b + Dolphins) - Bored Piles (2.35m dia. x 4 nr (total 14) ; 2.00m dia x 3 nr (total 6))	216.00	11-Jul-14 A	35.19%	140.00	12-Mar-15	17-Mar-14	04-Sep-14	153.00	0.00	35%																
<b>E13A, E13B, E13C &amp; E13D (E8c/E7c/E6c/E5c)</b>																											
<b>Foundation Works - E13</b>																											
<b>Foundation Works - E13A (E8c) &amp; E13B (E7c)</b>																											
GFX099	E13A/B (E8c/E7c) Inst.Temp.Working Platform (Heavy)	39.00	10-Jul-14 A	74.36%	10.00	04-Oct-14	27-Aug-14	06-Sep-14	-21.00	0.00	75%																
GFX100	E13A/B (E8c/E7c & Dolphin) - Predrilling	26.00	06-Oct-14	0%	26.00	04-Nov-14	08-Sep-14	10-Oct-14	-21.00	0.00	0%																
GFX100	E13A/B (E8c/E7c & Dolphin) - Confirm Rockhead levels	8.00	05-Nov-14	0%	8.00	13-Nov-14	11-Oct-14	20-Oct-14	-21.00	108.00	0%																
<b>Foundation Works - E13C (E6c) &amp; E13D (E5c)</b>																											
GFX094	E13C/D (E6c/E5c + Dolphin) - Confirm Rockhead levels	8.00	21-Jul-14 A	12.5%	7.00	29-Sep-14	22-Aug-18	29-Aug-18	159.00	1159.00	8%																
GFX095	E13C/D (E6c/E5c + Dolphin) - Bored Piles (2.20m dia. x 8 nr; 2.00m dia x 3nr)	128.00	14-Aug-14 A	8.59%	117.00	10-Feb-15	10-Apr-14	01-Sep-14	133.00	0.00	8%																
GFX095	E13D (E5c + Dolphin) - Bored Piles (2.20m dia. x 4 nr; 2.00m dia x 3nr)	128.00	14-Aug-14 A	8.59%	117.00	10-Feb-15	10-Apr-14	01-Sep-14	133.00	0.00	8%																
GFX615	E13C (E6c) - Bored Piles (2.20m dia. x 4 nr)	128.00	14-Aug-14 A	8.59%	117.00	10-Feb-15	10-Apr-14	01-Sep-14	133.00	0.00	8%																
<b>E14A, E14B, E14C &amp; E14D (E8d/E7d/E6d/E5d)</b>																											
<b>Foundation Works - E14</b>																											

■ Actual Work  
■ Planned Bar  
■ Critical Bar  
◆ Milestone

Project ID: J3518DWPPrD1-M16  
 Layout: J3518-DWP-3MRP Submission - M16  
 Filter: TASK filters: 3-Month Lookahead, No Level of Effort.

**Tuen Mun - Chek Lap Kok Link - Southern Connection**  
**3-Month Rolling Programme (Page 31 of 35 Pages)**  
**(Progress as of 21-Sep-14)**

Date	Revision	Checked	Approved
29-Jul-14		FZ	
29-Aug-14		FZ	
07-Oct-14			

**DWG. No.:**  
**J3518/GCL/PGM/3MRP-M16**

Activity ID	Activity Name	Orig. Durn.	Act. Start / FC Early Start	Duration% Complete	Rem. Durn.	Act. Finish / FC Early Finish	Late Start	Late Finish	Total Float	Free Float	Physical % Complete	2014															
												September					October					November				December	
												25	01	08	15	22	29	06	13	20	27	03	10	17	24	01	08
GFX545	Mobilization & Assembling Bored Pile Plant & Equipment for Viaducts in HKBCF	5.00	03-Nov-14	0%	5.00	07-Nov-14	05-Nov-14	10-Nov-14	2.00	0.00	0%																
<b>Foundation Works - E14A (E8d)</b>																											
GFX544	E14A (E8d) - Pre-drilling for Piles (4 nos)	24.00	13-Dec-14	0%	24.00	13-Jan-15	26-Nov-14	23-Dec-14	-15.00	0.00	0%																
<b>Foundation Works - E14B (E7d)</b>																											
GFX544	E14B (E7d) - Pre-drilling for Piles (3 nos)	24.00	13-Dec-14	0%	24.00	13-Jan-15	05-Nov-14	02-Dec-14	-33.00	0.00	0%																
<b>Viaduct F</b>																											
<b>Viaduct F1</b>																											
<b>General F1</b>																											
<b>Milestones</b>																											
F10010	Viaduct F1 - Approval of Foundation DDA	0.00		0%	0.00	12-Dec-14		19-Nov-14	-17.00	0.00	0%															◆	
<b>F1 (F1b)</b>																											
<b>Foundation Works</b>																											
GFX553-1	F1 (F1b) - Pre-drilling for Piles (2 nos)	19.00	08-Nov-14	0%	19.00	29-Nov-14	18-Nov-14	09-Dec-14	8.00	0.00	0%																
GFX553-4	F1 (F1b) - Confirm Rockhead Levels	8.00	01-Dec-14	0%	8.00	09-Dec-14	10-Dec-14	18-Dec-14	8.00	122.00	0%																
<b>F2 (F1c)</b>																											
<b>Foundation Works</b>																											
GFX553-2	F2 (F1c) - Pre-drilling for Piles (2 nos)	19.00	13-Dec-14	0%	19.00	07-Jan-15	20-Nov-14	11-Dec-14	-20.00	0.00	0%																
<b>F3 (F1d)</b>																											
<b>Foundation Works</b>																											
GFX553-3	F3 (F1d) - Pre-drilling for Piles (2 nos)	19.00	13-Dec-14	0%	19.00	07-Jan-15	20-Nov-14	12-Dec-14	-19.88	0.00	0%																
<b>Viaduct F2</b>																											
<b>General F2</b>																											
<b>Milestones</b>																											
F20010	Viaduct F2 - Approval of Foundation DDA	0.00		0%	0.00	12-Dec-14		03-Dec-14	-7.00	0.00	0%															◆	
<b>F5 (F2c)</b>																											
<b>Foundation Works</b>																											
GFX561-2	F5 (F2c) - Pre-drilling for Piles (2 nos)	19.00	13-Dec-14	0%	19.00	07-Jan-15	17-Mar-15	11-Apr-15	74.00	0.00	0%																
<b>F6 (F2d)</b>																											
<b>Foundation Works</b>																											
GFX561-3	F6 (F2d) - Pre-drilling for Piles (2 nos)	19.00	13-Dec-14	0%	19.00	07-Jan-15	04-Dec-14	27-Dec-14	-8.00	0.00	0%																
<b>Viaduct F3</b>																											
<b>General F3</b>																											
<b>Milestones</b>																											
F30010	Viaduct F3 - Approval of Foundation DDA	0.00		0%	0.00	12-Dec-14		30-Jan-15	35.00	18.00	0%															◆	
<b>Viaduct F5</b>																											
<b>General F5</b>																											
<b>Milestones</b>																											
F50010	Viaduct F5 - Approval of foundation DDA	0.00		0%	0.00	12-Dec-14		06-Jul-15	146.00	56.00	0%															◆	
<b>Viaduct F4</b>																											
<b>General F4</b>																											
F40010	Viaduct F4 - Approval of foundation DDA	0.00		0%	0.00	12-Dec-14		26-Jun-15	140.00	0.00	0%															◆	
GFX579-8	F17 (F4b) - Start date for piling	0.00	18-Dec-14	0%	0.00		29-Jun-15		152.00	0.00	0%															◆	
<b>F17 (F4b)</b>																											
<b>Foundation Works</b>																											
GFX579-2	F17 (F4b) - Pre-drilling for Piles (2 nos)	12.00	03-Nov-14	0%	12.00	15-Nov-14	04-Jun-15	17-Jun-15	171.00	0.00	0%																
GFX579-6	F17 (F4b) - Confirm Rockhead Levels	8.00	17-Nov-14	0%	8.00	25-Nov-14	18-Jun-15	27-Jun-15	171.00	15.00	0%																
GFX581	F17 (F4b) - Bored Piles (2.20m dia. x 2 nos)	70.00	13-Dec-14	0%	70.00	11-Mar-15	29-Jun-15	18-Sep-15	156.00	4.00	0%																
<b>F18 (F4c) &amp; Abutment</b>																											

- Actual Work
- Planned Bar
- Critical Bar
- Milestone

Project ID: J3518DWPPrD1-M16  
 Layout: J3518-DWP-3MRP Submission - M16  
 Filter: TASK filters: 3-Month Lookahead, No Level of Effort.





**Tuen Mun - Chek Lap Kok Link - Southern Connection**  
**3-Month Rolling Programme (Page 32 of 35 Pages)**  
**(Progress as of 21-Sep-14)**

Date	Revision	Checked	Approved
29-Jul-14		FZ	
29-Aug-14		FZ	
07-Oct-14			

**DWG. No.:**  
**J3518/GCL/PGM/3MRP-M16**



Activity ID	Activity Name	Orig. Durn.	Act. Start / FC Early Start	Duration% Complete	Rem. Durn.	Act. Finish / FC Early Finish	Late Start	Late Finish	Total Float	Free Float	Physical % Complete	2014																
												September			October			November			December							
												25	01	08	15	22	29	06	13	20	27	03	10	17	24	01	08	15
<b>Foundation Works</b>																												
GFXX579-3	F18 (F4c) - Pre-drilling for Piles (2 nos)	12.00	17-Nov-14	0%	12.00	29-Nov-14	10-Sep-15	23-Sep-15	241.00	0.00	0%																	
GFXX579-7	F18 (F4c) - Confirm Rockhead Levels	8.00	01-Dec-14	0%	8.00	09-Dec-14	24-Sep-15	05-Oct-15	241.00	89.00	0%																	
<b>Approach Ramp F</b>																												
<b>Approach Ramp Land Foundation - HKBCF</b>																												
<b>Approach Ramp F Piling</b>																												
GFXX593	AR-F - Pre-drilling for Piles (28 nos)	24.00	03-Nov-14	0%	24.00	29-Nov-14	13-Dec-14	13-Jan-15	35.00	0.00	0%																	
GFXX594	AR-F - Confirm Rockhead Levels	8.00	01-Dec-14	0%	8.00	09-Dec-14	14-Jan-15	22-Jan-15	35.00	106.00	0%																	
<b>SUPERSTRUCTURE</b>																												
<b>Viaduct B Superstructure</b>																												
<b>Bridge B3 Superstructure</b>																												
<b>Milestones</b>																												
<b>Milestones Ready for PH Segment Erection</b>																												
B300050-1	Pier B2 (B3e) ready for Viaduct B3 PH segment erection	0.00		0%	0.00	29-Nov-14		18-Oct-14	-36.00	57.00	0%																	
B300060-1	Pier B1 (B3f) ready for Viaduct B3 PH segment erection	0.00		0%	0.00	25-Nov-14		29-Oct-14	-23.00	61.00	0%																	
<b>Bridge B1 Superstructure</b>																												
<b>Milestones</b>																												
<b>Milestones Ready for PH Segment Erection</b>																												
B100030-1	Pier B16 (B1d) ready for Viaduct B1 PH segment erection	0.00		0%	0.00	25-Oct-14		10-Jun-15	182.13	0.00	0%																	
B100040-1	Pier B15 (B1e) ready for Viaduct B1 PH segment erection	0.00		0%	0.00	10-Dec-14		11-May-15	119.00	0.00	0%																	
<b>Viaduct E</b>																												
<b>Bridge E1 Superstructure</b>																												
<b>Milestones</b>																												
<b>Milestones Ready for PH Segment Erection</b>																												
E100040-1	Pier B1 (B3f) ready for Viaduct E1 PH segment erection	0.00		0%	0.00	25-Nov-14		29-Oct-14	-23.00	61.00	0%																	
<b>At-Grade Roadworks &amp; Other Works along NLH</b>																												
<b>Viaduct D Slope Works</b>																												
<b>Slope 10NW-C/F10</b>																												
M201215	10NW-C/F10 - Install Geo. Instru. & Baseline Monitoring	30.00	26-Jul-14 A	0%	30.00	30-Oct-14	28-Jul-16	08-Sep-16	489.00	418.00	0%																	
<b>At-Grade Roadworks and Other Works along Cheung Tung Road</b>																												
<b>Re-alignment of Cheung Tung Road adjacent to Viaduct B</b>																												
RP00020	Construct new ESS adjacent to Viaduct B	60.00	15-Sep-14 A	16.67%	50.00	22-Nov-14	12-Mar-14	26-May-14	126.00	0.00	15%																	
RP00030	Inst. new equip. & testing / commissioning of new ESS	60.00	24-Nov-14	0%	60.00	04-Feb-15	27-May-14	29-Aug-14	126.00	0.00	0%																	
<b>Box Culvert Extension</b>																												
BCE0010	Excavate to expose existing culvert / cascade	18.00	13-Dec-14*	0%	18.00	06-Jan-15	26-Nov-14	16-Dec-14	-15.00	0.00	0%																	
BCE0020	Construct temporary drainage diversion	18.00	13-Dec-14	0%	18.00	06-Jan-15	26-Nov-14	16-Dec-14	-15.00	0.00	0%																	
<b>Viaduct B Slope Works</b>																												
<b>Slope 9SE-B/C9</b>																												
<b>Zone A</b>																												
SWVB1090	9SE-B/C9 Zone A - Excav. to +21.00	5.00	04-Aug-14 A	80%	1.00	22-Sep-14	01-Apr-17	01-Apr-17	682.00	169.00	80%																	
SWVB1110	9SE-B/C9 Zone A - Excav. to +19.00 Zone A/B	5.00	04-Aug-14 A	100%	0.00	29-Aug-14 A					100%																	
SWVB1120	9SE-B/C9 Zone A - Soil nail 32 nr. @ +20.5	11.00	01-Sep-14 A	90.91%	1.00	22-Sep-14	29-Aug-18	29-Aug-18	051.00	1051.00	90%																	
SWVB1140	9SE-B/C9 Zone A - Soil nail 37 nr. @ +18.5	12.00	01-Aug-14 A	66.67%	4.00	25-Sep-14	25-Aug-18	29-Aug-18	048.00	1048.00	66%																	
SWVB1160	9SE-B/C9 Zone A - Soil nail 29 nr. @ +16.5	11.00	18-Aug-14 A	27.27%	8.00	30-Sep-14	13-Oct-14	22-Oct-14	15.00	0.00	30%																	
SWVB1170	9SE-B/C9 Zone A - Inst. 300UC @ +15.0	10.00	03-Oct-14	0%	10.00	16-Oct-14	23-Oct-14	03-Nov-14	15.00	0.00	0%																	
SWVB1180	9SE-B/C9 Zone A - Excav. to +14.5	5.00	17-Oct-14	0%	5.00	22-Oct-14	04-Nov-14	08-Nov-14	15.00	0.00	0%																	
SWVB1190	9SE-B/C9 Zone A - Raking Drain 14 nr @ +16.0	5.00	23-Oct-14	0%	5.00	28-Oct-14	10-Nov-14	14-Nov-14	15.00	0.00	0%																	
SWVB1200	9SE-B/C9 Zone A - Excav. to +11.5	5.00	29-Oct-14	0%	5.00	03-Nov-14	15-Nov-14	20-Nov-14	15.00	0.00	0%																	

 Actual Work  
 Planned Bar  
 Critical Bar  
 Milestone

Project ID: J3518DWPPrD1-M16  
 Layout: J3518-DWP-3MRP Submission - M16  
 Filter: TASK filters: 3-Month Lookahead, No Level of Effort.

**Tuen Mun - Chek Lap Kok Link - Southern Connection**  
**3-Month Rolling Programme (Page 33 of 35 Pages)**  
**(Progress as of 21-Sep-14)**

Date	Revision	Checked	Approved
29-Jul-14		FZ	
29-Aug-14		FZ	
07-Oct-14			

**DWG. No.:**  
**J3518/GCL/PGM/3MRP-M16**



Activity ID	Activity Name	Orig. Durn.	Act. Start / FC Early Start	Duration% Complete	Rem. Durn.	Act. Finish / FC Early Finish	Late Start	Late Finish	Total Float	Free Float	Physical % Complete	2014																
												September				October				November				December				
												25	01	08	15	22	29	06	13	20	27	03	10	17	24	01	08	15
RP10020	Construct new ESS-C Sub.Stn. adjacent to Viaduct C	48.00	13-Aug-14 A	20.83%	38.00	08-Nov-14	22-Sep-14	08-Nov-14	0.00	0.00	20%																	
RP10030	Inst.Eqpt. & Testing / commissioning of new ESS	60.00	10-Nov-14	0%	60.00	21-Jan-15	10-Nov-14	21-Jan-15	0.00	0.00	0%																	
<b>Viaduct C Slope Works</b>																												
<b>Slope 10NW-C/C22</b>																												
SWVC1000	10NW-C/C22 - Slope works	18.00	15-Dec-14	0%	18.00	07-Jan-15	27-Oct-14	15-Nov-14	-42.00	0.00	0%																	
<b>Natural Terrain Hazard Mitigation Works</b>																												
<b>NTHM Works - West Portion</b>																												
NTW0010	DDA Approval for Natural Terrain Hazard Mitigation Measures	0.00		0%	0.00	21-Nov-14		20-Mar-15	85.00	0.00	0%																	
<b>Check Dam no. 1 (CD1)</b>																												
GFXX497	Predrilling Works for Check Dams	25.00	22-Nov-14	0%	25.00	20-Dec-14	23-Mar-15	29-Apr-15	97.00	0.00	0%																	
GFXX499	CD1 - Mobilization of rig for MiniPile	6.00	15-Dec-14	0%	6.00	20-Dec-14	22-Apr-15	29-Apr-15	97.00	0.00	0%																	
<b>Watermains &amp; All Assoc Works from Tung Chung to Southern Landfall</b>																												
WM00100	Prepare / submit TTMS for watermain laying along realigned CTR	72.00	22-Sep-14	0%	72.00	18-Dec-14	08-Sep-14	06-Dec-14	-10.00	0.00	0%																	
WM00110	TTMS approval for watermain laying along realigned CTR	48.00	19-Dec-14	0%	48.00	16-Feb-15	08-Dec-14	04-Feb-15	-10.00	0.00	0%																	

<ul style="list-style-type: none"> <li> Actual Work</li> <li> Planned Bar</li> <li> Critical Bar</li> <li> Milestone</li> </ul>	Project ID: J3518DWPrD1-M16 Layout: J3518-DWP-3MRP Submission - M16 Filter: TASK filters: 3-Month Lookahead, No Level of Effort.	<b>Tuen Mun - Chek Lap Kok Link - Southern Connection</b> <b>3-Month Rolling Programme (Page 35 of 35 Pages)</b> <b>(Progress as of 21-Sep-14)</b>	Date	Revision	Checked	Approved	<b>DWG. No.:</b>  <b>J3518/GCL/PGM/3MRP-M16</b>
			29-Jul-14		FZ		
			29-Aug-14		FZ		
			07-Oct-14				