

Activity ID	Activity Name	Orig. Durn.	Act. Start / FC Early Start	Duration% Complete	Rem. Durn.	Act. Finish / FC Early Finish	Late Start	Late Finish	Total Float	Free Float	Physical % Complete	2015																								
												March				April				May				June												
												23	02	09	16	23	30	06	13	20	27	04	11	18	25	01	08	15								
HY/2012/07 - TM-CLK Link-SC [DWP rE] - Status Update 21-03-2015																																				
Contract Key Dates																																				
Possession Dates / Access Period																																				
POS02	Portion A (Commencement of Works+499 days)	0	21-Mar-15*	0%	0		01-Nov-14		-139	0	0%																									
POS03	Portion B (Commencement of Works+619 days)	0	21-Mar-15*	0%	0		03-Mar-15		-18	307	0%																									
General Submissions																																				
General Requirements																																				
Temporary Works Design																																				
PR00130	Unloading Jetty at HKBCF - Working Platform design and approval	90	02-Jun-14 A	10%	81	02-Jul-15	12-Nov-14	17-Feb-15	-105	15	10%																									
Land Works																																				
PR00160	Propose/submit a performance review for piled fnds in accordance w/ ETWB TCW No. 4/20(101	26-May-14 A	80.2%	20	17-Apr-15	11-Jan-16	02-Feb-16	239	353	80%																									
Land GI Works																																				
PR02204	SQR Sampling & Testing and Approval	110	14-Aug-14 A	68.18%	35	06-May-15	27-Nov-14	09-Jan-15	-92	2	68%																									
PR03110	Trial Pits along Cheung Tung Road	20	21-Oct-13 A	85%	3	24-Mar-15	27-Apr-18	30-Apr-18	917	5	85%																									
Additional Land GI																																				
PR03200	PBH25, 29, 30, 31 (Piers D9, C14, C16, C17)	33	11-Jan-14 A	75.76%	8	30-Mar-15	21-Apr-18	30-Apr-18	912	912	75%																									
Design Submissions																																				
Detailed Design (v18.8 18-08-14)																																				
Ground Investigation																																				
ARDD0009	Consultation with GEO	20	13-Aug-13 A	85%	3	25-Mar-15	14-Apr-15	16-Apr-15	16	42	85%																									
ARDD0010	IC/SO Approval of Ground Investigation Interpretative Report - AP03.00	75	13-Aug-13 A	40%	45	22-May-15	30-Jan-17	31-Mar-17	485	0	50%																									
ARDD0010-1	IC/SO Approval of Ground Investigation Interpretative Report - AP03.00	0		0%	0	22-May-15		31-Mar-17	485	0	0%																									
ARDD0013-2	Additional GI Fieldwork, Lab Testing and Permitting - Other areas	60	16-Jul-13 A	80%	12	07-Apr-15	13-Apr-18	30-Apr-18	799	799	90%																									
ARDD0017-2	IC/SO Approval of Additional GI Interpretative Report - AP03.00	75	29-Jan-14 A	40%	45	22-May-15	13-Feb-15	16-Apr-15	-26	0	30%																									
ARDD0017-4	IC/SO Approval of Additional GI Interpretative Report - AP03.00	0		0%	0	22-May-15		16-Apr-15	-26	0	0%																									
General Submissions																																				
ARDD0037-1	Preparation of Seismic Performance Report Viaduct A,B,C,D - AP12.01	20	09-Apr-15	0%	20	06-May-15	23-Sep-15	20-Oct-15	119	0	0%																									
ARDD0037-2	IC/SO Approval of Seismic Performance Report Viaduct A,B,C,D - AP12.01	75	07-May-15	0%	75	19-Aug-15	21-Oct-15	02-Feb-16	119	222	0%																									
ARDD0037-4	Preparation of Seismic Performance Report Viaduct E - AP12.02	20	25-May-15	0%	20	19-Jun-15	23-Sep-15	20-Oct-15	87	0	0%																									
ARDD0037-7	Preparation of Seismic Performance Report Viaduct F - AP12.03	20	23-Mar-15	0%	20	17-Apr-15	23-Sep-15	20-Oct-15	132	0	0%																									
ARDD0037-8	IC/SO Approval of Seismic Performance Report Viaduct F - AP12.03	75	20-Apr-15	0%	75	31-Jul-15	21-Oct-15	02-Feb-16	132	0	0%																									
ARDD0042-2	IC/SO Approval of O&M Facility Provisions DDA - BP11.01	75	14-Jan-15 A	40%	45	22-May-15	19-Aug-15	20-Oct-15	107	0	50%																									
ARDD0042-4	IC/SO Approval of O&M Facility Provisions DDA - BP11.01	0		0%	0	22-May-15		20-Oct-15	107	65	0%																									
Viaduct E5 and E6																																				
Viaduct Design																																				
Viaduct E5 E6 Superstructure Optimisation																																				
TGP0540	Viaduct E5 & E6 - Preparation of Optimised Bearing Schedule	15	23-Mar-15	0%	15	10-Apr-15	27-Mar-18	16-Apr-18	786	17	0%																									
TGP0550	Viaduct E5 & E6 - Preparation of Optimised Movement Joint Schedule	15	23-Mar-15	0%	15	10-Apr-15	10-Apr-18	30-Apr-18	796	796	0%																									
Associated Construction Milestones																																				
ARDD0175	Viaduct E5 & E6 - DDA approval ready for Initial Segment Casting	0	18-Apr-15	0%	0		21-Apr-15		4	82	0%																									
Viaduct E7 & E8																																				
Viaduct Design																																				
Viaduct E7 E8 Superstructure Optimisation																																				
TGP0740	Viaduct E7 & E8 - Preparation of Optimised Bearing Schedule	15	23-Mar-15	0%	15	10-Apr-15	27-Mar-18	16-Apr-18	786	17	0%																									
TGP0750	Viaduct E7 & E8 - Preparation of Optimised Movement Joint Schedule	15	23-Mar-15	0%	15	10-Apr-15	10-Apr-18	30-Apr-18	796	796	0%																									
Associated Construction Milestones																																				
ARDD0220	Viaduct E7 & E8 - DDA approval ready for Initial Segment Casting	0	21-Mar-15	0%	0		22-Apr-15		33	111	0%																									
Viaduct E2																																				

<ul style="list-style-type: none"> ■ Actual Work ■ Planned Bar ■ Critical Bar ◆ Milestone 	Project ID: J3518DWPRe-M22 Layout: J3518-DWP-3MRP Submission - M22_ Filter: TASK filters: 3-Month Lookahead, No CC Milestones, No Level of Effort.	Tuen Mun - Chek Lap Kok Link - Southern Connection 3-Month Rolling Programme (Page 1 of 41 Pages) (Progress as of 21-Mar-15)	<table border="1"> <tr> <th>Date</th> <th>Revision</th> <th>Checked</th> <th>Approved</th> </tr> <tr> <td>09-Mar-15</td> <td></td> <td>DB</td> <td></td> </tr> <tr> <td>31-Mar-15</td> <td></td> <td>WY</td> <td></td> </tr> </table>	Date	Revision	Checked	Approved	09-Mar-15		DB		31-Mar-15		WY		DWG. No.: J3518/GCL/PGM/3MRP-M22
Date	Revision	Checked	Approved													
09-Mar-15		DB														
31-Mar-15		WY														

Activity ID	Activity Name	Orig. Durn.	Act. Start / FC Early Start	Duration % Complete	Rem. Durn.	Act. Finish / FC Early Finish	Late Start	Late Finish	Total Float	Free Float	Physical % Complete	2015																			
												March					April					May					June				
												23	02	09	16	23	30	06	13	20	27	04	11	18	25	01	08	15			
Viaduct Design																															
Viaduct E2 Superstructure Optimisation																															
TGP0240	Viaduct E2 - Preparation of Optimised Bearing Schedule	15	23-Mar-15	0%	15	10-Apr-15	27-Mar-18	16-Apr-18	786	17	0%																				
TGP0250	Viaduct E2 - Preparation of Optimised Movement Joint Schedule	15	23-Mar-15	0%	15	10-Apr-15	10-Apr-18	30-Apr-18	796	796	0%																				
Associated Construction Milestones																															
ARDD0266	Viaduct E2 - DDA approval ready for Initial Segment Casting	0	18-Apr-15	0%	0		06-Feb-15		-71	0	0%																				
Viaduct E1																															
Viaduct Design																															
ARDD0287-3	Viaduct E1 - Coordination and Further Issue of Construction Method and Temporary Works I	60	30-Jul-14 A	98.33%	1	23-Mar-15	30-Apr-18	30-Apr-18	810	0	98%																				
ARDD0287-4	Viaduct E1 - Preparation of Draft Working Drawing Set	60	30-Jul-14 A	98.33%	1	23-Mar-15	30-Apr-18	30-Apr-18	810	0	98%																				
ARDD0287-5	Viaduct E1 - GCL/FRE Final Coordinated Construction Method/Temporary Work Details	0		0%	0	23-Mar-15		30-Apr-18	810	810	0%																				
ARDD0287-8	Viaduct E1 - IC/SO Consent of Supplemental Working Drawings Viaduct E1	10	23-Mar-15	0%	10	03-Apr-15	24-Dec-14	07-Jan-15	-63	0	0%																				
ARDD0287-9	Viaduct E1 - IC/SO Consent of Supplemental Working Drawings Viaduct E1	0		0%	0	03-Apr-15		07-Jan-15	-63	10	0%																				
Viaduct D																															
Viaduct Design																															
ARDD0333-5	Viaduct D - GCL/FRE Final Coordinated Construction Method/Temporary Work Details	0		0%	0	23-Mar-15		30-Apr-18	811	811	0%																				
ARDD0333-6	Viaduct D - Preparation and Coordination of Working Drawing Set	10	17-Feb-15 A	100%	0	16-Mar-15 A					100%																				
ARDD0333-7	Viaduct D - Issue of Revised DDA Submission - DP14.03	0		100%	0	16-Mar-15 A					100%																				
ARDD0333-8	Viaduct D - IC/SO Consent of Supplemental Working Drawings Viaduct D	10	23-Mar-15	0%	10	03-Apr-15	07-Jan-15	20-Jan-15	-53	0	0%																				
ARDD0333-9	Viaduct D - IC/SO Consent of Supplemental Working Drawings Viaduct D	0		0%	0	03-Apr-15		20-Jan-15	-53	18	0%																				
Information to Contractor																															
ARDD0348	Viaduct D - Final Segment Types and Reinforcement	0		0%	0	03-Apr-15		20-Jan-15	-53	18	0%																				
ARDD0350	Viaduct D - Final Anchorage and PT Requirements	0		0%	0	03-Apr-15		20-Jan-15	-53	18	0%																				
ARDD0352	Viaduct D - Final Bearing Schedule	0		0%	0	03-Apr-15		30-Apr-18	801	801	0%																				
ARDD0354	Viaduct D - Final Movement Joint (MJ) Schedule	0		0%	0	03-Apr-15		20-Oct-15	142	49	0%																				
Viaduct C																															
Viaduct Design																															
ARDD0384	Viaduct C - IC/SO Approval of Sub & Superstructure DDA - DP13.03	75	22-Dec-14 A	40%	45	22-May-15	06-Jan-15	10-Mar-15	-54	0	50%																				
ARDD0384-1	Viaduct C - IC/SO Approval of Sub & Superstructure DDA - DP13.03	0		0%	0	22-May-15		10-Mar-15	-54	0	0%																				
ARDD0384-3	Viaduct C - Coordination and Further Issue of Construction Method and Temporary Works D	60	02-Mar-15 A	25%	45	22-May-15	16-Dec-14	17-Feb-15	-69	0	25%																				
ARDD0384-4	Viaduct C - Preparation of Draft DDA Working Drawing Set	60	02-Mar-15 A	25%	45	22-May-15	16-Dec-14	17-Feb-15	-69	0	25%																				
ARDD0384-5	Viaduct C - GCL/FRE Final Coordinated Construction Method/Temporary Work Details	0		0%	0	22-May-15		17-Feb-15	-69	0	0%																				
ARDD0384-6	Viaduct C - Preparation and Coordination of Working Drawing Set	10	25-May-15	0%	10	05-Jun-15	17-Feb-15	03-Mar-15	-69	0	0%																				
ARDD0384-7	Viaduct C - Submission of Working DDA Drawings for Viaduct C DP13.03	0		0%	0	05-Jun-15		03-Mar-15	-69	0	0%																				
ARDD0384-8	Viaduct C - IC/SO Consent of Supplemental Working Drawings Viaduct C	10	08-Jun-15	0%	10	19-Jun-15	03-Mar-15	17-Mar-15	-69	0	0%																				
ARDD0384-9	Viaduct C - IC/SO Consent of Supplemental Working Drawings Viaduct C	0		0%	0	19-Jun-15		17-Mar-15	-69	0	0%																				
Associated Construction Milestones																															
ARDD0413	Viaduct C - DDA approval ready for Commencement of Pilecaps C1-C17	0	23-May-15	0%	0		10-Mar-15		-74	0	0%																				
ARDD0414	Viaduct C - DDA approval ready for Initial Segment Casting	0	08-Jun-15	0%	0		16-Mar-15		-84	13	0%																				
Viaduct A																															
Viaduct Design																															
ARDD0430-2	Viaduct A - IC/SO Approval of Foundation DDA - DP11.01	75	04-Oct-14 A	40%	45	22-May-15	16-Apr-15	17-Jun-15	18	0	50%																				
ARDD0430-4	Viaduct A - IC/SO Approval of Foundation DDA - DP11.01	0		0%	0	22-May-15		17-Jun-15	18	0	0%																				
ARDD0433-1	Viaduct A - GCL Review of Draft DDA Rev A1 - DP11.03	5	19-Feb-15 A	40%	3	25-Mar-15	23-Dec-14	25-Dec-14	-64	0	0%																				
ARDD0433-2	Viaduct A - Update to Incorporate GCL Comments	10	26-Mar-15	0%	10	08-Apr-15	26-Dec-14	08-Jan-15	-64	0	0%																				
ARDD0434	Viaduct A - Submission of DDA - DP11.03	0		0%	0	08-Apr-15		08-Jan-15	-64	0	0%																				
ARDD0434-1	Viaduct A - Earliest IC Certificate for DDA DP11.02, DP11.03	0		0%	0	20-May-15		24-Aug-15	68	8	0%																				
ARDD0435	Viaduct A - IC/SO Approval of DDA DP11.03	75	25-May-15	0%	75	04-Sep-15	09-Jul-15	21-Oct-15	33	0	0%																				

<ul style="list-style-type: none"> █ Actual Work █ Planned Bar █ Critical Bar ◆ Milestone 	Project ID: J3518DWPrE-M22 Layout: J3518-DWP-3MRP Submission - M22_ Filter: TASK filters: 3-Month Lookahead, No CC Milestones, No Level of Effort.	Tuen Mun - Chek Lap Kok Link - Southern Connection 3-Month Rolling Programme (Page 2 of 41 Pages) (Progress as of 21-Mar-15)	<table border="1"> <thead> <tr> <th>Date</th> <th>Revision</th> <th>Checked</th> <th>Approved</th> </tr> </thead> <tbody> <tr> <td>09-Mar-15</td> <td></td> <td>DB</td> <td></td> </tr> <tr> <td>31-Mar-15</td> <td></td> <td>WY</td> <td></td> </tr> </tbody> </table>	Date	Revision	Checked	Approved	09-Mar-15		DB		31-Mar-15		WY		DWG. No.: J3518/GCL/PGM/3MRP-M22
Date	Revision	Checked	Approved													
09-Mar-15		DB														
31-Mar-15		WY														

Activity ID	Activity Name	Orig. Durn.	Act. Start / FC Early Start	Duration % Complete	Rem. Durn.	Act. Finish / FC Early Finish	Late Start	Late Finish	Total Float	Free Float	Physical % Complete	2015																
												March			April			May			June							
												23	02	09	16	23	30	06	13	20	27	04	11	18	25	01	08	15
ARDD0604-2	IC/SO Approval of Slope Combined AIP/DDA - CP14.02	75	20-Apr-15	0%	75	31-Jul-15	26-Jun-15	08-Oct-15	49	0	0%																	
Waterworks, Drainage & Utility Diversions																												
ARDD0629	IC/SO Approval of Waterworks, Drainage & Utility DDA - BP20.01	75	22-Jul-14 A	90.67%	7	31-Mar-15	12-May-15	20-May-15	36	0	90%																	
ARDD0629-1	IC/SO Approval of Waterworks, Drainage & Utility DDA - BP20.01	0		0%	0	31-Mar-15		20-May-15	36	0	0%																	
ARDD0629-2	Gov't Approval of Submissions for Waterworks, Drainage & Utility Diversions	75	02-Jan-14 A	90.67%	7	31-Mar-15	13-Feb-15	23-Feb-15	-26	0	90%																	
ARDD0630-3	IC/SO Approval of Deck Drainage DDA - BP20.02	75	30-Jun-14 A	90.67%	7	31-Mar-15	23-Mar-17	31-Mar-17	523	0	90%																	
ARDD0630-4	IC/SO Approval of Deck Drainage DDA - BP20.02	0		0%	0	31-Mar-15		31-Mar-17	523	0	0%																	
Viaduct Approach Ramp Retaining Walls																												
Approach Ramp D																												
ARDD0652	Approach D - IC/SO Approval of Approach Ramp D DDA - DP23.01	75	25-Sep-14 A	89.33%	8	22-May-15	07-Apr-15	16-Apr-15	-26	0	90%																	
ARDD0652-1	Approach D - IC/SO Approval of Approach Ramp D DDA - DP23.01	0		0%	0	22-May-15		16-Apr-15	-26	0	0%																	
Approach Ramp C																												
ARDD0658	Approach C - IC/SO Approval of Approach Ramp C DDA - DP20.01	75	03-Oct-14 A	80%	15	10-Apr-15	24-Feb-15	17-Mar-15	-19	0	80%																	
ARDD0658-1	Approach C - IC/SO Approval of Approach Ramp C DDA - DP20.01	0		0%	0	10-Apr-15		17-Mar-15	-19	0	0%																	
Approach Ramp B																												
ARDD0664	Approach B - IC/SO Approval of Approach Ramp B DDA - DP21.01	75	14-Oct-14 A	89.33%	8	01-Apr-15	30-Dec-15	08-Jan-16	202	0	90%																	
ARDD0664-1	Approach B - IC/SO Approval of Approach Ramp B DDA - DP21.01	0		0%	0	01-Apr-15		08-Jan-16	202	230	0%																	
Approach A																												
ARDD0670	Approach A - IC/SO Approval of Approach Ramp A DDA - DP20.01	75	03-Oct-14 A	80%	15	10-Apr-15	21-Jul-15	10-Aug-15	86	0	80%																	
ARDD0670-1	Approach A - IC/SO Approval of Approach Ramp A DDA - DP20.01	0		0%	0	10-Apr-15		10-Aug-15	86	69	0%																	
Approach F																												
ARDD0676	Approach F - IC/SO Approval of Approach Ramp F DDA - DP24.01	75	23-Dec-14 A	49.33%	38	13-May-15	31-Mar-15	21-May-15	6	0	50%																	
ARDD0676-1	Approach F - IC/SO Approval of Approach Ramp F DDA - DP24.01	0		0%	0	13-May-15		08-Dec-15	149	32	0%																	
Viaduct Pavement																												
ARDD871	Viaduct Pavement - IC/SO Approval of AIP/DDA - BP02.01	75	27-Jun-14 A	100%	0	09-Mar-15 A					100%																	
ARDD871-1	Viaduct Pavement - IC/SO Approval of AIP/DDA - BP02.01	0		100%	0	09-Mar-15 A					100%																	
Signs, Markings and Street Furniture																												
ARDD0688	IC/SO Approval of Signs, Markings & Street Furniture DDA - BP03.01	75	16-Oct-14 A	100%	0	26-Feb-15 A					100%																	
ARDD0688-1	IC/SO Approval of Signs, Markings & Street Furniture DDA - BP03.01	0		100%	0	26-Feb-15 A					100%																	
Landscape																												
ARDD0700	IC/SO Approval of DDA for landscape works - BP22.01	75	15-Oct-14 A	60%	30	01-May-15	23-Nov-15	01-Jan-16	175	0	60%																	
ARDD0700-1	IC/SO Approval of DDA for landscape works - BP22.01	0		0%	0	01-May-15		01-Jan-16	175	0	0%																	
ARDD0701	Water Supply Application to WSD	0		0%	0	01-May-15		01-Jan-16	175	0	0%																	
ARDD0702	Gov't Approval of LVIA	40	04-May-15	0%	40	26-Jun-15	04-Jan-16	26-Feb-16	175	168	0%																	
Remaining Works																												
ARDD0704	Preparation of Remaining Works AIP - ZP01.00	30	23-Mar-15	0%	30	01-May-15	29-Aug-16	07-Oct-16	375	0	0%																	
ARDD0705	IC/SO Approval of Remaining Works AIP - ZP01.00	40	04-May-15	0%	40	26-Jun-15	10-Oct-16	02-Dec-16	375	0	0%																	
Segment Target Geometry And Erection Engineering																												
Viaduct A																												
ARDD0716	Viaduct A - Confirmation of Erection Sequence from Freyssinet	0		0%	0	23-Mar-15		05-Feb-15	-31	0	0%																	
ARDD0717	Viaduct A - Erection Sequence Analysis	20	23-Mar-15	0%	20	17-Apr-15	06-Feb-15	05-Mar-15	-31	0	0%																	
ARDD0718	Viaduct A - Target Geometry Analysis	20	20-Apr-15	0%	20	15-May-15	06-Mar-15	02-Apr-15	-31	0	0%																	
ARDD0719	Viaduct A - Segment Geometry Schedules	10	18-May-15	0%	10	29-May-15	03-Apr-15	16-Apr-15	-31	33	0%																	
Viaduct C																												
ARDD0721	Viaduct C - Confirmation of Erection Sequence from Freyssinet	0		0%	0	23-Mar-15		05-Jan-15	-55	0	0%																	
ARDD0722	Viaduct C - Erection Sequence Analysis	20	23-Mar-15	0%	20	17-Apr-15	05-Jan-15	02-Feb-15	-55	0	0%																	
ARDD0723	Viaduct C - Target Geometry Analysis	20	20-Apr-15	0%	20	15-May-15	02-Feb-15	02-Mar-15	-55	0	0%																	
ARDD0724	Viaduct C - Segment Geometry Schedules	10	18-May-15	0%	10	29-May-15	02-Mar-15	16-Mar-15	-55	5	0%																	

<ul style="list-style-type: none"> ■ Actual Work ■ Planned Bar ■ Critical Bar ◆ Milestone 	Project ID: J3518DWPrE-M22 Layout: J3518-DWP-3MRP Submission - M22_ Filter: TASK filters: 3-Month Lookahead, No CC Milestones, No Level of Effort.	Tuen Mun - Chek Lap Kok Link - Southern Connection 3-Month Rolling Programme (Page 4 of 41 Pages) (Progress as of 21-Mar-15)	<table border="1"> <tr> <th>Date</th> <th>Revision</th> <th>Checked</th> <th>Approved</th> </tr> <tr> <td>09-Mar-15</td> <td></td> <td>DB</td> <td></td> </tr> <tr> <td>31-Mar-15</td> <td></td> <td>WY</td> <td></td> </tr> </table>	Date	Revision	Checked	Approved	09-Mar-15		DB		31-Mar-15		WY		DWG. No.: J3518/GCL/PGM/3MRP-M22
Date	Revision	Checked	Approved													
09-Mar-15		DB														
31-Mar-15		WY														

Activity ID	Activity Name	Orig. Durn.	Act. Start / FC Early Start	Duration % Complete	Rem. Durn.	Act. Finish / FC Early Finish	Late Start	Late Finish	Total Float	Free Float	Physical % Complete	2015																
												March				April				May				June				
												23	02	09	16	23	30	06	13	20	27	04	11	18	25	01	08	15
ARDD0724-1	Viaduct C - Issue of Pierhead Segments Bridge C1, C2, C3, C4	0		0%	0	05-Jun-15		16-Mar-15	-60	0	0%																	
ARDD0724-3	Viaduct C - Issue of Casting Data and Segment Catalogue Bridge C4, C3 (Final)	0		0%	0	05-Jun-15		16-Mar-15	-60	0	0%																	
ARDD0724-4	Viaduct C - Issue of Casting Data and Segment Catalogue Bridge C2, C1 (Final)	0		0%	0	19-Jun-15		17-Mar-15	-69	0	0%																	
Viaduct D																												
ARDD0728	Viaduct D - Target Geometry Analysis	20	11-Dec-14 A	30%	14	09-Apr-15	11-Apr-18	30-Apr-18	797	797	30%																	
ARDD0729	Viaduct D - Segment Geometry Schedules	10	11-Dec-14 A	30%	7	31-Mar-15	12-Jan-15	20-Jan-15	-50	0	30%																	
ARDD0729-1	Viaduct D - Issue of Pierhead Segments Bridge D1, D2, D3	0		0%	0	31-Mar-15		20-Jan-15	-50	3	0%																	
ARDD0729-3	Viaduct D - Issue of Casting Data and Segment Catalogue Bridge D2, D3 (Final)	0		0%	0	31-Mar-15		20-Jan-15	-50	3	0%																	
ARDD0729-4	Viaduct D - Issue of Casting Data and Segment Catalogue Bridge D1 (Final)	0		0%	0	31-Mar-15		20-Jan-15	-50	0	0%																	
ARDD0729-5	Viaduct D - Issue Erection Manual	30	01-Apr-15	0%	30	12-May-15	13-May-15	23-Jun-15	30	0	0%																	
Viaduct E5 and E6																												
ARDD0734	Viaduct E5 & E6 - Segment Geometry Schedules	10	05-May-14 A	20%	8	01-Apr-15	28-Oct-14	07-Nov-14	-103	0	20%																	
TGP0560	Viaduct E5 & E6 - Issue of Optimised Casting Data and Segment Catalogue Bridge E5	20	23-Mar-15	0%	20	17-Apr-15	16-Dec-14	13-Jan-15	-69	0	0%																	
TGP0570	Viaduct E5 & E6 - Issue of Optimised Casting Data and Segment Catalogue Bridge E6	40	20-Apr-15	0%	40	12-Jun-15	13-Jan-15	10-Mar-15	-69	0	0%																	
TGP0590	Viaduct E5 & E6 - Issue Erection Manual	10	15-Jun-15	0%	10	26-Jun-15	02-Jun-15	16-Jun-15	-9	100	0%																	
Viaduct E7 & E8																												
ARDD0739	Viaduct E7 & E8 - Segment Geometry Schedules	10	05-May-14 A	20%	8	01-Apr-15	21-May-15	02-Jun-15	44	112	20%																	
TGP0760	Viaduct E7 & E8 - Issue of Optimised Casting Data and Segment Catalogue Bridge E7	40	15-Jun-15	0%	40	07-Aug-15	10-Mar-15	05-May-15	-69	0	0%																	
Viaduct E1																												
ARDD0744-3	Viaduct E1 - Issue Erection Manual	30	11-Dec-14 A	0%	30	01-May-15	19-Jan-15	02-Mar-15	-45	1	0%																	
Viaduct E2																												
ARDD0749	Viaduct E2 - Segment Geometry Schedules	10	24-Mar-14 A	20%	8	01-Apr-15	23-Feb-15	04-Mar-15	-20	12	20%																	
TGP0260	Viaduct E2 - Issue of Optimised Casting Data and Segment Catalogue Bridge E2	20	23-Mar-15	0%	20	17-Apr-15	09-Jan-15	05-Feb-15	-51	0	0%																	
TGP0290	Viaduct E2 - Issue of Erection Manual	10	20-Apr-15	0%	10	01-May-15	05-Mar-15	18-Mar-15	-32	44	0%																	
Viaduct F																												
ARDD0751	Viaduct F - Confirmation of Erection Sequence from Freyssinet	0		0%	0	23-Mar-15		23-Jan-15	-40	0	0%																	
ARDD0752	Viaduct F - Erection Sequence Analysis	30	23-Mar-15	0%	30	01-May-15	26-Jan-15	06-Mar-15	-40	0	0%																	
ARDD0753	Viaduct F - Target Geometry Analysis	30	04-May-15	0%	30	12-Jun-15	09-Mar-15	17-Apr-15	-40	0	0%																	
ARDD0754	Viaduct F - Segment Geometry Schedules	10	15-Jun-15	0%	10	26-Jun-15	20-Apr-15	01-May-15	-40	0	0%																	
Other Design																												
Marine Permanent Navigation Aids																												
BMT0135	Preparation of MPNA DDA - BP36.01	46	11-Jun-14 A	19.57%	37	12-May-15	09-Mar-15	28-Apr-15	-10	0	20%																	
BMT0140	IC/SO Approval of MPNA DDA BP36.01	75	13-May-15	0%	75	25-Aug-15	29-Apr-15	11-Aug-15	-10	0	0%																	
Major Procurement																												
Marine Permanent Navigation Aids																												
PR65011	Design & Approvals for Marine Navigation Aids	150	23-Oct-13 A	54.67%	68	15-Jun-15	21-May-15	11-Aug-15	47	59	55%																	
Tower Cranes																												
PR66011	Procure & Deliver Tower Cranes	325	01-Oct-14 A	53.85%	150	21-Sep-15	19-Jan-15	25-Jul-15	-50	770	50%																	
PR66013	Erect & Commission Tower Crane @ E4	12	25-Apr-15	0%	12	09-May-15	19-Jan-15	02-Feb-15	-74	0	0%																	
PR66013-1	Dismantle Tower Crane @ E4	12	21-Mar-15	0%	12	08-Apr-15	14-Apr-18	30-Apr-18	851	851	0%																	
PR66014	Erect & Commission Tower Crane @ E5	12	09-May-15	0%	12	27-May-15	08-Jun-15	29-Jun-15	21	47	0%																	
PR66014-1	Dismantle Tower Crane @ E5	12	21-Mar-15	0%	12	08-Apr-15	14-Apr-18	30-Apr-18	851	851	0%																	
PR66015	Erect & Commission Tower Crane @ E6	12	19-May-15	0%	12	05-Jun-15	12-Aug-15	27-Aug-15	60	97	0%																	
PR66015-1	Dismantle Tower Crane @ E6	12	21-Mar-15	0%	12	08-Apr-15	14-Apr-18	30-Apr-18	851	851	0%																	
PR66016-1	Dismantle Tower Crane @ E7	12	21-Mar-15	0%	12	08-Apr-15	14-Apr-18	30-Apr-18	851	851	0%																	
PR66017	Erect & Commission Tower Crane @ E8	12	02-May-15	0%	12	18-May-15	08-Aug-15	25-Aug-15	71	132	0%																	
PR66017-1	Dismantle Tower Crane @ E8	12	21-Mar-15	0%	12	08-Apr-15	14-Apr-18	30-Apr-18	851	851	0%																	
PR66018	Erect & Commission Tower Crane @ E9	12	25-Apr-15	0%	12	09-May-15	22-Jan-15	05-Feb-15	-70	2	0%																	

■ Actual Work
■ Planned Bar
■ Critical Bar
◆ Milestone

Project ID: J3518DWPrE-M22
 Layout: J3518-DWP-3MRP Submission - M22_
 Filter: TASK filters: 3-Month Lookahead, No CC
 Milestones, No Level of Effort.

Tuen Mun - Chek Lap Kok Link - Southern Connection
3-Month Rolling Programme (Page 5 of 41 Pages)
(Progress as of 21-Mar-15)

Date	Revision	Checked	Approved
09-Mar-15		DB	
31-Mar-15		WY	

DWG. No.:
J3518/GCL/PGM/3MRP-M22

Activity ID	Activity Name	Orig. Durn.	Act. Start / FC Early Start	Duration% Complete	Rem. Durn.	Act. Finish / FC Early Finish	Late Start	Late Finish	Total Float	Free Float	Physical % Complete	2015																
												March			April			May			June							
												23	02	09	16	23	30	06	13	20	27	04	11	18	25	01	08	15
PR66018-1	Dismantle Tower Crane @ E9	12	21-Mar-15	0%	12	08-Apr-15	14-Apr-18	30-Apr-18	851	851	0%																	
PR66019	Erect & Commission Tower Crane @ E10	12	25-Apr-15	0%	12	09-May-15	11-May-15	28-May-15	13	18	0%																	
PR66019-1	Dismantle Tower Crane @ E10	12	21-Mar-15	0%	12	08-Apr-15	14-Apr-18	30-Apr-18	851	851	0%																	
PR66020	Erect & Commission Tower Crane @ E11	12	16-May-15	0%	12	02-Jun-15	17-Feb-15	06-Mar-15	-65	61	0%																	
PR66020-1	Dismantle Tower Crane @ E11	12	21-Mar-15	0%	12	08-Apr-15	14-Apr-18	30-Apr-18	851	851	0%																	
PR66021	Erect & Commission Tower Crane @ E12A	12	02-Jun-15	0%	12	19-Jun-15	08-Sep-15	24-Sep-15	73	110	0%																	
PR66021-1	Dismantle Tower Crane @ E12A	12	21-Mar-15	0%	12	08-Apr-15	14-Apr-18	30-Apr-18	851	851	0%																	
PR66022	Erect & Commission Tower Crane @ E12B	12	02-Jun-15	0%	12	19-Jun-15	06-Aug-15	22-Aug-15	47	91	0%																	
PR66022-1	Dismantle Tower Crane @ E12B	12	21-Mar-15	0%	12	08-Apr-15	14-Apr-18	30-Apr-18	851	851	0%																	
PR66023-1	Dismantle Tower Crane @ E13-Sth	12	21-Mar-15	0%	12	08-Apr-15	14-Apr-18	30-Apr-18	851	851	0%																	
PR66024-1	Dismantle Tower Crane @ E13-Nth	12	21-Mar-15	0%	12	08-Apr-15	14-Apr-18	30-Apr-18	851	851	0%																	
Equipment Platforms for Tower Cranes																												
PR66026	Inst.Temp.Eqpt.Platform (piles & deck) @ E4	24	21-Mar-15	0%	24	24-Apr-15	18-Dec-14	19-Jan-15	-74	0	0%																	
PR66027	Inst.Temp.Eqpt.Platform (piles & deck) @ E5	24	08-Apr-15	0%	24	09-May-15	06-May-15	08-Jun-15	21	0	0%																	
PR66028	Inst.Temp.Eqpt.Platform (piles & deck) @ E6	24	17-Apr-15	0%	24	19-May-15	11-Jul-15	12-Aug-15	60	0	0%																	
PR66030	Inst.Temp.Eqpt.Platform (piles & deck) @ E8	24	27-Mar-15	0%	24	02-May-15	09-Jul-15	08-Aug-15	71	0	0%																	
PR66031	Inst.Temp.Eqpt.Platform (piles & deck) @ E9	24	21-Mar-15	0%	24	24-Apr-15	22-Dec-14	22-Jan-15	-70	0	0%																	
PR66032	Inst.Temp.Eqpt.Platform (piles & deck) @ E10	24	21-Mar-15	0%	24	24-Apr-15	09-Apr-15	11-May-15	13	0	0%																	
PR66033	Inst.Temp.Eqpt.Platform (piles & deck) @ E11	24	14-Apr-15	0%	24	16-May-15	20-Jan-15	17-Feb-15	-65	0	0%																	
PR66034	Re-arrange temp.platform @ E12	24	30-Apr-15	0%	24	01-Jun-15	07-Jul-15	06-Aug-15	47	0	0%																	
Deck Segment Installation Equipment																												
Launching Gantry 1																												
PR67040	Launching Gantry Design	130	05-Feb-14 A	100%	0	23-Feb-15 A					100%																	
PR67041	Launching Gantry 1 Fabrication	130	10-Mar-14 A	100%	0	23-Feb-15 A					100%																	
PR67042	Launching Gantry 1 Delivery	24	25-Aug-14 A	100%	0	26-Feb-15 A					100%																	
Launching Gantry 2																												
PR67043	Launching Gantry 2 Fabrication	142	16-Jun-14 A	78.17%	31	30-Apr-15	27-Nov-14	05-Jan-15	-92	0	60%																	
PR67044	Launching Gantry 2 Delivery	12	02-May-15	0%	12	15-May-15	06-Jan-15	19-Jan-15	-92	0	0%																	
Lifting Frames																												
Lifting Frames 1 & 2																												
PR68011	Lifting Frame 1&2 Design	86	02-Jun-14 A	100%	0	16-Mar-15 A					100%																	
PR68012	Lifting Frame 1&2 Approval	24	28-Feb-15 A	75%	6	28-Mar-15	29-Dec-14	06-Jan-15	-68	0	80%																	
PR68013	Lifting Frame 1&2 Fabrication	24	30-Mar-15	0%	24	30-Apr-15	06-Jan-15	03-Feb-15	-68	0	0%																	
PR68014	Lifting Frame 1&2 Delivery	12	02-May-15	0%	12	15-May-15	03-Feb-15	17-Feb-15	-68	11	0%																	
Lifting Frames 3 & 4																												
PR68015	Lifting Frame 3&4 Design	70	02-Jun-14 A	100%	0	16-Mar-15 A					100%																	
PR68016	Lifting Frame 3&4 Approval	24	28-Feb-15 A	70.83%	7	28-Mar-15	05-Feb-15	13-Feb-15	-35	0	80%																	
PR68017	Lifting Frame 3&4 Fabrication	24	30-Mar-15	0%	24	30-Apr-15	13-Feb-15	17-Mar-15	-35	0	0%																	
PR68018	Lifting Frame 3&4 Delivery	12	02-May-15	0%	12	15-May-15	17-Mar-15	31-Mar-15	-35	24	0%																	
Lifting Frames 5 & 6																												
PR68019	Lifting Frame 5&6 Design	70	22-Dec-14 A	51.43%	34	05-May-15	08-Jun-15	18-Jul-15	61	0	15%																	
PR68020	Lifting Frame 5&6 Approval	60	26-Mar-15	0%	60	10-Jun-15	12-Jun-15	22-Aug-15	61	4	0%																	
PR68021	Lifting Frame 5&6 Fabrication	85	30-Mar-15	0%	85	15-Jul-15	11-Jun-15	19-Sep-15	57	0	0%																	
Unloading Frames																												
Type 1 (at B6 and D6)																												
PR69100	Unloading Frame Type 1 Design	50	05-May-14 A	86%	7	28-Mar-15	10-Jan-15	17-Jan-15	-57	0	40%																	
PR69110	Unloading Frame Type 1 Fabrication	80	16-Mar-15 A	31.25%	55	30-May-15	06-Jan-18	14-Mar-18	829	0	0%																	
PR69120	Unloading Frame Type 1 Delivery	24	01-Jun-15	0%	24	29-Jun-15	15-Mar-18	16-Apr-18	829	24	0%																	

■ Actual Work
■ Planned Bar
■ Critical Bar
◆ Milestone

Project ID: J3518DWPrE-M22
Layout: J3518-DWP-3MRP Submission - M22_
Filter: TASK filters: 3-Month Lookahead, No CC
Milestones, No Level of Effort.

Tuen Mun - Chek Lap Kok Link - Southern Connection
3-Month Rolling Programme (Page 6 of 41 Pages)
(Progress as of 21-Mar-15)

Date	Revision	Checked	Approved
09-Mar-15		DB	
31-Mar-15		WY	

DWG. No.:
J3518/GCL/PGM/3MRP-M22

Activity ID	Activity Name	Orig. Durn.	Act. Start / FC Early Start	Duration% Complete	Rem. Durn.	Act. Finish / FC Early Finish	Late Start	Late Finish	Total Float	Free Float	Physical % Complete	2015																			
												March					April					May					June				
												23	02	09	16	23	30	06	13	20	27	04	11	18	25	01	08	15			
Type 2 (at Bridge E1)																															
PR69170	Unloading Frame Type 2 Design	50	21-Mar-15	0%	50	23-May-15	10-Jan-15	12-Mar-15	-57	0	0%																				
PR69180	Unloading Frame Type 2 Fabrication	80	30-Apr-15	0%	80	05-Aug-15	07-Dec-17	16-Mar-18	776	0	0%																				
Type 4 (at HKBCF)																															
PR69250	Unloading Frame Type 4 Design	50	21-Mar-15	0%	50	23-May-15	10-Jan-15	12-Mar-15	-57	0	0%																				
PR69260	Unloading Frame Type 4 (BCF) Fabrication	80	30-Apr-15	0%	80	05-Aug-15	14-Feb-15	28-May-15	-57	0	0%																				
Deck Segments & Precast Pile Cap Shells																															
Preliminaries																															
MBBE0018	Precast Segment Mould Design (Viaduct E5, E6, E7 & E8)	42	05-Jul-14 A	59.52%	17	14-Apr-15	25-Mar-15	18-Apr-15	4	903	60%																				
MBBE0020	Precast Segment Mould Fabrication & Assembly (Viaduct E5, E6, E7 & E8)	52	21-Mar-15	0%	52	27-May-15	25-Mar-15	01-Jun-15	4	67	0%																				
MBBE0024	Precast Segment Mould Design (Viaduct E2)	42	28-Jun-14 A	59.52%	17	14-Apr-15	14-Jan-15	02-Feb-15	-54	903	60%																				
MBBE0026	Precast Segment Mould Fabrication & Assembly (Viaduct E2)	52	21-Mar-15	0%	52	27-May-15	14-Jan-15	18-Mar-15	-54	0	0%																				
MBBE0030	Precast Segment Mould Design (Viaduct E1)	42	30-Jul-14 A	59.52%	17	14-Apr-15	11-Dec-14	02-Feb-15	-80	878	40%																				
MBBE0032	Precast Segment Mould Fabrication & Assembly (Viaduct E1)	52	21-Mar-15	0%	52	27-May-15	11-Dec-14	13-Feb-15	-80	0	0%																				
MBBE0036	Precast Segment Mould Design (Viaduct D)	42	21-Mar-15	0%	42	14-May-15	13-Dec-14	03-Feb-15	-78	0	0%																				
MBBE0038	Precast Segment Mould Fabrication & Assembly (Viaduct D)	52	02-Apr-15	0%	52	08-Jun-15	27-Dec-14	02-Mar-15	-78	0	0%																				
MBBE0042	Precast Segment Mould Design (Viaduct C)	42	21-Mar-15	0%	42	14-May-15	06-Feb-15	31-Mar-15	-34	0	0%																				
MBBE0044	Precast Segment Mould Fabrication & Assembly (Viaduct C)	52	02-Apr-15	0%	52	08-Jun-15	18-Feb-15	28-Apr-15	-34	42	0%																				
MBBE0048	Precast Segment Mould Design (Viaduct A)	42	09-Apr-15	0%	42	29-May-15	17-Dec-15	06-Feb-16	209	0	0%																				
MBBE0050	Precast Segment Mould Fabrication & Erection (Viaduct A)	52	21-Apr-15	0%	52	23-Jun-15	31-Dec-15	04-Mar-16	209	95	0%																				
MBBE0054	Precast Segment Mould Design (Viaduct F1 to F5)	42	21-Mar-15	0%	42	14-May-15	15-Jun-15	04-Aug-15	67	0	0%																				
MBBE0056	Precast Segment Mould Fabrication & Erection (Viaduct F1 to F5)	52	02-Apr-15	0%	52	08-Jun-15	27-Jun-15	27-Aug-15	67	58	0%																				
Viaduct B																															
Precast Deck Segments																															
MBBE0130-1	B: Progressive Pier Head Segment Manufacture & Delivery remaining segments	54	02-Dec-14 A	0%	157	30-Sep-15	07-Mar-15	04-May-15	-12	875	16.7%																				
MBBE130	B: Commence Match Cast Segment Delivery	0	21-Mar-15	0%	0		30-Apr-18		920	920	0%																				
MBBE130-1	B: Progressive Match Cast Segment Manufacture & Delivery remaining segments (334 Nr)	96	24-Oct-14 A	10.42%	86	08-Jul-15	19-Nov-14	05-Mar-15	-99	0	10.48%																				
Viaduct E																															
Precast Pile Caps																															
Viaduct E1																															
PP7330	Production of Viaduct E1 Marine Precast Pile Cap Shells	80	17-Oct-14 A	50%	40	12-May-15	10-Mar-18	30-Apr-18	880	880	50%																				
Viaduct E2																															
PP7260	Production of Viaduct E2 Marine Precast Pile Cap Shells	80	27-Oct-14 A	33.75%	53	28-May-15	29-Jan-15	09-Apr-15	-41	0	33%																				
Viaduct E5, E6, E7 & E8																															
MBEC0120-5	E5-6-7-8: Commence Pile Cap Shell Casting on Approval of DDA	0	06-Jun-15	0%	0		15-Dec-14		-137	0	0%																				
PP7120	Production of Viaduct E5 & E6 Marine Precast Pile Cap Shells	60	06-Jun-15	0%	60	17-Aug-15	15-Dec-14	02-Mar-15	-137	0	0%																				
PP7190	Production of Viaduct E7 & E8 Marine Precast Pile Cap Shells	60	06-Jun-15	0%	60	17-Aug-15	15-Dec-14	02-Mar-15	-137	0	0%																				
Precast Deck Segments																															
MBE00014	Viaduct E2 - Pier Head Segment Casting	0	18-Apr-15	0%	0		06-Feb-15		-54	0	0%																				
Viaduct E1																															
MBEE0120-3	E1: Commence Segment Casting on Approval of DDA	0	18-Apr-15	0%	0		07-Jan-15		-80	0	0%																				
MBEE0130-3	E1: Commence Segment Delivery	0	26-May-15	0%	0		04-Mar-15		-65	15	0%																				
MBEE0130-5	E1: Progressive Segment Manufacture & Delivery remaining segments (189 Nr)	120	12-Jun-15	0%	120	04-Nov-15	04-Mar-15	31-Jul-15	-80	0	0%																				
Viaduct E2																															
MBEE0120-2	E2: Commence Segment Casting on Approval of DDA	0	18-Apr-15	0%	0		06-Feb-15		-54	0	0%																				
MBEE0130-2	E2: Commence Segment Delivery	0	02-Jun-15	0%	0		24-Mar-15		-54	0	0%																				
MBEE0130-7	E2: Progressive Segment Manufacture & Delivery remaining segments (358 Nr)	120	02-Jun-15	0%	120	24-Oct-15	24-Mar-15	19-Aug-15	-54	35	0%																				
Viaduct D																															

■ Actual Work
■ Planned Bar
■ Critical Bar
◆ Milestone

Project ID: J3518DWPRe-M22
 Layout: J3518-DWP-3MRP Submission - M22_
 Filter: TASK filters: 3-Month Lookahead, No CC
 Milestones, No Level of Effort.

Tuen Mun - Chek Lap Kok Link - Southern Connection
3-Month Rolling Programme (Page 7 of 41 Pages)
(Progress as of 21-Mar-15)

Date	Revision	Checked	Approved
09-Mar-15		DB	
31-Mar-15		WY	

DWG. No.:
J3518/GCL/PGM/3MRP-M22

Activity ID	Activity Name	Orig. Durn.	Act. Start / FC Early Start	Duration % Complete	Rem. Durn.	Act. Finish / FC Early Finish	Late Start	Late Finish	Total Float	Free Float	Physical % Complete	2015																			
												March					April					May					June				
												23	02	09	16	23	30	06	13	20	27	04	11	18	25	01	08	15			
Precast Pile Caps																															
MBDC0130-8	D: Progressive Pile Cap Shell Manufacture & Delivery remaining shells	90	07-Dec-14 A	42.22%	52	27-May-15	09-Feb-15	17-Apr-15	-32	868	42.8%																				
Precast Deck Segments																															
MBDE0120	D: Commence Segment Casting on Approval of DDA	0	30-Apr-15	0%	0		21-Jan-15		-78	0	0%																				
MBDE0130-1	D: Commence Pier Head Segment Delivery	0	06-Jun-15	0%	0		03-Jul-15		21	0	0%																				
MBDE0130-5	D: Progressive Pier Head Segment Manufacture & Delivery	107	06-Jun-15	0%	107	13-Oct-15	03-Jul-15	07-Nov-15	21	23	0%																				
Viaduct C																															
Precast Pile Caps																															
MBCC0120	C: Commence Pile Cap Shell Casting on Approval of DDA	0	21-Mar-15	0%	0		17-Jan-15		-51	0	0%																				
MBCC0130	C: Commence Pile Cap Shell Delivery	0	22-May-15	0%	0		18-Mar-15		-51	0	0%																				
MBCC0130-1	C: Progressive Pile Cap Shell Manufacture & Delivery remaining shells	80	22-May-15	0%	80	26-Aug-15	18-Mar-15	27-Jun-15	-51	0	0%																				
PP7490	Production of initial Viaduct C Marine Precast Pile Cap Shells	38	21-Mar-15	0%	38	09-May-15	21-Jan-15	10-Mar-15	-48	0	0%																				
Viaduct A																															
Precast Pile Caps																															
MBAC0120	A: Commence Pile Cap Shell Casting on Approval of DDA	0	21-Mar-15	0%	0		02-Sep-15		133	0	0%																				
MBAC0130	A: Commence Pile Cap Shell Delivery	0	22-May-15	0%	0		11-Dec-15		168	30	0%																				
PP7570	Production of initial Viaduct A Marine Precast Pile Cap Shells	40	11-May-15	0%	40	27-Jun-15	02-Sep-15	20-Oct-15	95	0	0%																				
Parapets																															
MBEE0090	Approval of DDA to start Precast Parapets/Barriers Casting	0	01-Apr-15	0%	0		16-Oct-15		160	31	0%																				
PP6010	Procure Sub-Contractor for Precast Parapets/Barriers	40	21-Mar-15	0%	40	12-May-15	28-Aug-15	15-Oct-15	129	0	0%																				
PP6011	Precast Parapets/Barriers Detail Design & Procure Moulds	120	13-May-15	0%	120	05-Oct-15	16-Oct-15	11-Mar-16	129	0	0%																				
PP6011-02	Viaduct B - Precast Parapets/Barriers Production & Delivery	120	13-May-15	0%	120	05-Oct-15	12-Feb-16	09-Jul-16	224	62	0%																				
PP6011-03	Viaduct C - Precast Parapets/Barriers Production & Delivery	120	13-May-15	0%	120	05-Oct-15	16-Dec-15	17-May-16	180	0	0%																				
PP6011-04	Viaduct D - Precast Parapets/Barriers Production & Delivery	120	13-May-15	0%	120	05-Oct-15	10-Dec-15	10-May-16	175	0	0%																				
PP6011-05	Viaduct E - Precast Parapets/Barriers Production & Delivery	180	13-May-15	0%	180	15-Dec-15	16-Oct-15	27-May-16	129	173	0%																				
PP6011-06	Viaduct F - Precast Parapets/Barriers Production & Delivery	120	13-May-15	0%	120	05-Oct-15	28-Jan-16	27-Jun-16	214	275	0%																				
Materials																															
PP7010	Procure Sub-contractor for Signs & Street Furniture	90	21-Mar-15	0%	90	13-Jul-15	24-Jul-15	09-Nov-15	99	0	0%																				
H-Piles																															
PP7550	Procurement of Viaduct A Socketted H-Piles	70	21-Mar-15	0%	70	17-Jun-15	29-Jul-15	20-Oct-15	103	0	0%																				
Reinforcement																															
Bored Piles																															
PP7100	Rebar - Cut, Bend & Fabricate Pile Cage for Viaduct E5 & E6 Piles	185	07-Jul-14 A	40.54%	110	05-Aug-15	16-Oct-14	28-Feb-15	-128	810	40%																				
PP7170	Rebar - Cut, Bend & Fabricate Pile Cage for Viaduct E7 & E8 Piles	185	07-Jul-14 A	40.54%	110	05-Aug-15	15-Dec-14	05-May-15	-77	810	40%																				
PP7240	Rebar - Cut, Bend & Fabricate Pile Cage for Viaduct E2 Piles	106	15-Apr-14 A	50.94%	52	27-May-15	06-Dec-14	09-Feb-15	-84	133	50%																				
PP7380	Rebar - Cut, Bend & Fabricate Pile Cage for Viaduct D Piles	25	28-Jul-14 A	68%	8	30-Mar-15	08-Jun-15	16-Jun-15	61	6	68%																				
PP7460	Rebar - Cut, Bend & Fabricate Pile Cage for Viaduct C Piles	35	18-Aug-14 A	28.57%	25	23-Apr-15	10-Feb-15	14-Mar-15	-31	0	28%																				
PP7540	Rebar - Cut, Bend & Fabricate Pile Cage for Viaduct A Piles	21	12-Aug-14 A	14.29%	18	15-Apr-15	04-Feb-15	28-Feb-15	-35	6	14%																				
PP7620	Rebar - Cut, Bend & Fabricate Pile Cage for Viaduct F1 & F3 Piles	61	21-Mar-15	0%	61	06-Jun-15	17-Dec-14	04-Mar-15	-75	0	0%																				
PP7690	Rebar - Cut, Bend & Fabricate Pile Cage for Viaduct F2, F4 & F5 Piles	73	21-Mar-15	0%	73	22-Jun-15	14-Jan-15	16-Apr-15	-54	0	0%																				
Marine Pile Caps																															
PP7110	Rebar - Cut, Bend & Fabricate for Viaduct E5 & E6 Pile Caps	245	21-Mar-15	0%	245	16-Jan-16	16-Oct-14	14-Aug-15	-128	0	0%																				
PP7180	Rebar - Cut, Bend & Fabricate for Viaduct E7 & E8 Pile Caps	102	21-Mar-15	0%	102	27-Jul-15	15-Dec-14	24-Apr-15	-77	0	0%																				
PP7250	Rebar - Cut, Bend & Fabricate for Viaduct E2 Pile Caps	185	21-Mar-15	0%	185	04-Nov-15	06-Dec-14	27-Jul-15	-84	0	0%																				
PP7320	Rebar - Cut, Bend & Fabricate for Viaduct E1 Pile Caps	67	11-Dec-14 A	7.46%	62	08-Jun-15	26-Nov-14	09-Feb-15	-93	0	7%																				
PP7400	Rebar - Cut, Bend & Fabricate for Viaduct D Marine Pile Caps	47	18-Dec-14 A	6.38%	44	16-May-15	06-Mar-18	30-Apr-18	876	876	6%																				
PP7480	Rebar - Cut, Bend & Fabricate for Viaduct C Marine Pile Caps	42	10-Apr-15	0%	42	30-May-15	08-Mar-18	30-Apr-18	865	865	0%																				
PP7560	Rebar - Cut, Bend & Fabricate for Viaduct A Marine Pile Caps	36	23-Apr-15	0%	36	05-Jun-15	07-Sep-15	20-Oct-15	113	76	0%																				

■ Actual Work
■ Planned Bar
■ Critical Bar
◆ Milestone

Project ID: J3518DWPRe-M22
 Layout: J3518-DWP-3MRP Submission - M22_
 Filter: TASK filters: 3-Month Lookahead, No CC
 Milestones, No Level of Effort.

Tuen Mun - Chek Lap Kok Link - Southern Connection
3-Month Rolling Programme (Page 8 of 41 Pages)
(Progress as of 21-Mar-15)

Date	Revision	Checked	Approved
09-Mar-15		DB	
31-Mar-15		WY	

DWG. No.:
J3518/GCL/PGM/3MRP-M22

Activity ID	Activity Name	Orig. Durn.	Act. Start / FC Early Start	Duration % Complete	Rem. Durn.	Act. Finish / FC Early Finish	Late Start	Late Finish	Total Float	Free Float	Physical % Complete	2015																			
												March					April					May					June				
												23	02	09	16	23	30	06	13	20	27	04	11	18	25	01	08	15			
Pier A4 (A2b)																															
Foundation Works																															
GFXX127	A4 (A2b) - Inst.Temp.Working Platform	12	26-Feb-15 A	100%	0	20-Mar-15 A					100%	[Gantt bar: 26-Feb-15 to 20-Mar-15, 100% complete]																			
GFXX128	A4 (A2b) - Pre-drilling (2 nos)	13	21-Mar-15	0%	13	09-Apr-15	17-Jun-15	03-Jul-15	69	0	0%	[Gantt bar: 21-Mar-15 to 03-Jul-15, 0% complete]																			
GFXX128-2	A4 (A2b) - Confirm Rockhead Levels	8	10-Apr-15	0%	8	18-Apr-15	04-Jul-15	13-Jul-15	69	28	0%	[Gantt bar: 10-Apr-15 to 13-Jul-15, 0% complete]																			
GFXX129	A4 (A2b) - Bored Piles (2.20m dia. x 2 nos)	90	23-May-15	0%	90	08-Sep-15	14-Jul-15	29-Oct-15	41	0	0%	[Gantt bar: 23-May-15 to 29-Oct-15, 0% complete]																			
Pier A5 (A2a)																															
Foundation Works																															
GFXX122	A5 (A2a) - Inst.Temp.Working Platform	13	06-Mar-15 A	27%	9	01-Apr-15	22-Jun-15	03-Jul-15	73	0	50%	[Gantt bar: 06-Mar-15 to 03-Jul-15, 50% complete]																			
GFXX123	A5 (A2a) - Pre-drilling (2 nos)	12	01-Apr-15	0%	12	20-Apr-15	04-Jul-15	17-Jul-15	73	0	0%	[Gantt bar: 01-Apr-15 to 17-Jul-15, 0% complete]																			
GFXX123-2	A5 (A2a) - Confirm Rockhead Levels	8	20-Apr-15	0%	8	29-Apr-15	18-Jul-15	27-Jul-15	73	32	0%	[Gantt bar: 20-Apr-15 to 27-Jul-15, 0% complete]																			
GFXX124	A5 (A2a) - Bored Piles (2.20m dia. x 2 nos)	90	08-Jun-15	0%	90	22-Sep-15	28-Jul-15	12-Nov-15	41	0	0%	[Gantt bar: 08-Jun-15 to 12-Nov-15, 0% complete]																			
Pier A6 (A1f)																															
Foundation Works																															
GFXX118	A6 (A1f) - Pre-drilling (3 nos)	12	03-Mar-15 A	100%	0	11-Mar-15 A					100%	[Gantt bar: 03-Mar-15 to 11-Mar-15, 100% complete]																			
GFXX118-2	A6 (A1f) - Confirm Rockhead Levels	8	21-Mar-15	0%	8	30-Mar-15	06-Jul-15	14-Jul-15	83	41	0%	[Gantt bar: 21-Mar-15 to 14-Jul-15, 0% complete]																			
GFXX119	A6 (A1f) - Bored Piles (1.80m dia. x 3 nos)	90	23-May-15	0%	90	08-Sep-15	15-Jul-15	30-Oct-15	42	0	0%	[Gantt bar: 23-May-15 to 30-Oct-15, 0% complete]																			
Bridge A1																															
Pier A7 (A1e)																															
Foundation Works																															
GFXX113	A7 (A1e) - Pre-drilling (2 nos)	12	12-Feb-15 A	100%	0	25-Feb-15 A					100%	[Gantt bar: 12-Feb-15 to 25-Feb-15, 100% complete]																			
GFXX113-2	A7 (A1e) - Confirm Rockhead Levels	8	26-Feb-15 A	100%	0	06-Mar-15 A					100%	[Gantt bar: 26-Feb-15 to 06-Mar-15, 100% complete]																			
GFXX114	A7 (A1e) - Bored Piles (2.20m dia. x 2 nos)	90	26-Feb-15 A	22.22%	70	17-Jun-15	19-Sep-15	12-Dec-15	148	0	20%	[Gantt bar: 26-Feb-15 to 12-Dec-15, 20% complete]																			
GFXX115	A7 (A1e) - Sonic & Interface Coring	12	18-Jun-15	0%	12	03-Jul-15	14-Dec-15	29-Dec-15	148	0	0%	[Gantt bar: 18-Jun-15 to 29-Dec-15, 0% complete]																			
Pier A8 (A1d)																															
Preliminary Works for Land Piling																															
GFXX281	A8 (A1d) - Mobilise & Set up grouting equipment	24	12-Mar-15 A	100%	0	13-Mar-15 A					100%	[Gantt bar: 12-Mar-15 to 13-Mar-15, 100% complete]																			
GFXX281-1	A8 (A1d) - Pre-grouting Works	24	13-Mar-15 A	50%	12	08-Apr-15	17-Apr-18	30-Apr-18	908	0	50%	[Gantt bar: 13-Mar-15 to 30-Apr-18, 50% complete]																			
PA080020	A8 (A1d) - Erect MTR protective fence / Remove existing fence	12	26-Feb-15 A	100%	0	10-Mar-15 A					100%	[Gantt bar: 26-Feb-15 to 10-Mar-15, 100% complete]																			
PA080050	A8 (A1d) - Complete Civil Preparation Works for piling to commence	0		0%	0	08-Apr-15		30-Apr-18	851	851	0%	[Milestone: 08-Apr-15]																			
Socketted H-Pile installation																															
GFXX297-1	A8 (A1d) - Confirm Rockhead Levels	8	21-Mar-15	0%	8	30-Mar-15	10-Jul-15	18-Jul-15	87	87	0%	[Gantt bar: 21-Mar-15 to 18-Jul-15, 0% complete]																			
Pier A9 (A1c)																															
Preliminary Works for Land Piling																															
GFXX281-2	A9 (A1c) - Pre-grouting Works	24	21-Mar-15 A	0%	24	22-Apr-15	29-Mar-18	30-Apr-18	896	0	0%	[Gantt bar: 21-Mar-15 to 30-Apr-18, 0% complete]																			
PA090030	A09 (A1c) - Erect MTR protective fence	12	16-Mar-15 A	100%	0	19-Mar-15 A					100%	[Gantt bar: 16-Mar-15 to 19-Mar-15, 100% complete]																			
PA090050	A9 (A1c) - Set up piling platform	24	29-Jan-15 A	100%	0	04-Mar-15 A					100%	[Gantt bar: 29-Jan-15 to 04-Mar-15, 100% complete]																			
PA090060	A9 (A1c) - Complete civil preparation works for piling to commence	0		0%	0	22-Apr-15		30-Apr-18	840	840	0%	[Milestone: 22-Apr-15]																			
Socketted H-Pile installation																															
GFXX293	A9 (A1c) - Install SH Pile (11 no.)	120	30-May-15	0%	120	22-Oct-15	15-Sep-15	12-Feb-16	90	0	0%	[Gantt bar: 30-May-15 to 12-Feb-16, 0% complete]																			
Pier A10 (A1b)																															
Preliminary Works for Land Piling																															
GFXX281-3	A10 (A1b) - Pregroutings Works	24	21-Feb-15 A	100%	0	21-Feb-15 A					100%	[Gantt bar: 21-Feb-15 to 21-Feb-15, 100% complete]																			
PA100040	A10 (A1b) - Install Geo. Instru. & Baseline Monitoring	36	09-Feb-15 A	100%	0	21-Feb-15 A					100%	[Gantt bar: 09-Feb-15 to 21-Feb-15, 100% complete]																			
PA100050	A10 (A1b) - Set up piling platform	24	09-Feb-15 A	100%	0	21-Feb-15 A					100%	[Gantt bar: 09-Feb-15 to 21-Feb-15, 100% complete]																			
PA100060	A10 (A1b) - Complete civil preparation works for piling to commence	0		0%	0	21-Mar-15		30-Apr-18	863	863	0%	[Milestone: 21-Mar-15]																			
Socketted H-Pile installation																															
GFXX286-3	A10 (A1b) - Confirm Rockhead Levels	8	21-Mar-15	0%	8	30-Mar-15	21-Apr-18	30-Apr-18	912	912	0%	[Gantt bar: 21-Mar-15 to 30-Apr-18, 0% complete]																			

<ul style="list-style-type: none"> ■ Actual Work ■ Planned Bar ■ Critical Bar ◆ Milestone 	Project ID: J3518DWPRe-M22 Layout: J3518-DWP-3MRP Submission - M22_ Filter: TASK filters: 3-Month Lookahead, No CC Milestones, No Level of Effort.	Tuen Mun - Chek Lap Kok Link - Southern Connection 3-Month Rolling Programme (Page 12 of 41 Pages) (Progress as of 21-Mar-15)	<table border="1"> <tr> <th>Date</th> <th>Revision</th> <th>Checked</th> <th>Approved</th> </tr> <tr> <td>09-Mar-15</td> <td></td> <td>DB</td> <td></td> </tr> <tr> <td>31-Mar-15</td> <td></td> <td>WY</td> <td></td> </tr> </table>	Date	Revision	Checked	Approved	09-Mar-15		DB		31-Mar-15		WY		DWG. No.: J3518/GCL/PGM/3MRP-M22
Date	Revision	Checked	Approved													
09-Mar-15		DB														
31-Mar-15		WY														

Activity ID	Activity Name	Orig. Durn.	Act. Start / FC Early Start	Duration % Complete	Rem. Durn.	Act. Finish / FC Early Finish	Late Start	Late Finish	Total Float	Free Float	Physical % Complete	2015																			
												March					April					May					June				
												23	02	09	16	23	30	06	13	20	27	04	11	18	25	01	08	15			
GFX288	A10 (A1b) - Install SH Pile (8 no.)	120	11-Mar-15 A	15%	102	27-Jul-15	19-Jun-15	20-Oct-15	71	0	15%																				
Pier A11 (A1a) & Abutment A																															
Preliminary Works for Land Piling																															
GFX281-4	A11 (A1a) - Pregrouting Works	24	22-Feb-15 A	100%	0	22-Feb-15 A					100%																				
PA110050	A11 (A1a) - Set up piling platform	24	09-Feb-15 A	100%	0	27-Feb-15 A					100%																				
PA110060	A11 (A1a) - Completion of civil preparation works for piling to commence	0		0%	0	21-Mar-15		28-Apr-15	27	0	0%																				
Socketted H-Pile installation																															
GFX286-4	A11 (A1a) - Confirm Rockhead Levels	8	21-Mar-15	0%	8	30-Mar-15	09-Jun-15	17-Jun-15	62	41	0%																				
GFX287	A11 (A1a) - Install SH Pile (6 no.)	149	23-May-15	0%	149	19-Nov-15	18-Jun-15	14-Dec-15	21	0	0%																				
Viaduct B																															
Bridge B3																															
Pier B2 (B3e)																															
Pier Head Segments																															
SB3E0380	B2 (B3e) - Pier Head Segment Diaphragm - Curing & Striking of Forms	6	19-Feb-15 A	100%	0	28-Feb-15 A					100%																				
Pier B3 (B3d)																															
Pier Head Segments																															
SB3D0372	B3 (B3d) - Pier Head Segment Lift & Fix (1 seg)	2	25-Feb-15 A	100%	0	25-Feb-15 A					100%																				
SB3D0374	B3 (B3d) - Pier Head Segment Diaphragm - Rebar	13	09-Mar-15 A	100%	0	13-Mar-15 A					100%																				
SB3D0376	B3 (B3d) - Pier Head Segment Diaphragm - Formwork & Prep for Concreting	8	11-Mar-15 A	100%	0	13-Mar-15 A					100%																				
SB3D0378	B3 (B3d) - Pier Head Segment Diaphragm - Concreting	2	13-Mar-15 A	100%	0	13-Mar-15 A					100%																				
SB3D0380	B3 (B3d) - Pier Head Segment Diaphragm - Curing & Striking of Forms	6	14-Mar-15 A	100%	0	20-Mar-15 A					100%																				
Pier B4 (B3c)																															
Pier Works																															
SB3C0340	B4 (B3c) - Type 4B Pier Head Curing/Striking of Forms/Remove Scaffolding	6	18-Feb-15 A	100%	0	02-Mar-15 A					100%																				
Pier Head Segments																															
SB3C0370	B4 (B3c) - Pier Head Segment - Temporary Platform	6	06-Mar-15 A	100%	0	10-Mar-15 A					100%																				
SB3C0372	B4 (B3c) - Pier Head Segment Lift & Fix (1 seg)	2	20-Mar-15 A	100%	0	20-Mar-15 A					100%																				
SB3C0374	B4 (B3c) - Pier Head Segment Diaphragm - Rebar	12	21-Mar-15	0%	12	08-Apr-15	02-Mar-15	16-Mar-15	-17	0	0%																				
SB3C0376	B4 (B3c) - Pier Head Segment Diaphragm - Formwork & Prep for Concreting	8	09-Apr-15	0%	8	18-Apr-15	16-Mar-15	25-Mar-15	-17	0	0%																				
SB3C0378	B4 (B3c) - Pier Head Segment Diaphragm - Concreting	2	20-Apr-15	0%	2	21-Apr-15	25-Mar-15	27-Mar-15	-17	0	0%																				
SB3C0380	B4 (B3c) - Pier Head Segment Diaphragm - Curing & Striking of Forms	6	22-Apr-15	0%	6	29-Apr-15	08-Apr-15	16-Apr-15	-11	0	0%																				
Pier B5 (B3b)																															
Pier Works																															
SB3B0340	B5 (B3b) - Type 4B Pier Head Curing/Striking of Forms/Remove Scaffolding	6	13-Feb-15 A	100%	0	25-Feb-15 A					100%																				
Pier Head Segments																															
SB3B0370	B5 (B3b) - Pier Head Segment - Temporary Platform	6	02-Mar-15 A	100%	0	09-Mar-15 A					100%																				
SB3B0372	B5 (B3b) - Pier Head Segment Lift & Fix (1 seg)	2	18-Mar-15 A	100%	0	18-Mar-15 A					100%																				
SB3B0374	B5 (B3b) - Pier Head Segment Diaphragm - Rebar	12	21-Mar-15	0%	12	08-Apr-15	23-Mar-15	10-Apr-15	2	0	0%																				
SB3B0376	B5 (B3b) - Pier Head Segment Diaphragm - Formwork & Prep for Concreting	8	09-Apr-15	0%	8	18-Apr-15	10-Apr-15	21-Apr-15	2	0	0%																				
SB3B0378	B5 (B3b) - Pier Head Segment Diaphragm - Concreting	2	20-Apr-15	0%	2	21-Apr-15	21-Apr-15	24-Apr-15	2	0	0%																				
SB3B0380	B5 (B3b) - Pier Head Segment Diaphragm - Curing & Striking of Forms	6	22-Apr-15	0%	6	29-Apr-15	02-May-15	09-May-15	8	0	0%																				
Pier B6 (B3a)																															
Pier Works																															
SB3A0310	B6 (B3a) - Type 4B-MJ Pier Head Rebarwork	5	23-Feb-15 A	100%	0	12-Mar-15 A					100%																				
SB3A0320	B6 (B3a) - Type 4B-MJ Pier Head Formwork & Prep for Concreting	5	13-Mar-15 A	50%	3	24-Mar-15	13-Feb-15	16-Feb-15	-28	0	70%																				
SB3A0330	B6 (B3a) - Type 4B-MJ Pier Head Concreting	1	24-Mar-15	0%	1	25-Mar-15	17-Feb-15	17-Feb-15	-28	0	0%																				
SB3A0340	B6 (B3a) - Type 4B-MJ Pier Head Curing/Striking of Forms/Remove Scaffolding	6	25-Mar-15	0%	6	01-Apr-15	18-Feb-15	27-Feb-15	-28	0	0%																				
SB3A0350	B6 (B3a) - Type 4B-Bearing Plinth	6	25-Mar-15	0%	6	01-Apr-15	18-Feb-15	27-Feb-15	-28	0	0%																				

<ul style="list-style-type: none"> ■ Actual Work ■ Planned Bar ■ Critical Bar ◆ Milestone 	Project ID: J3518DWPPrE-M22 Layout: J3518-DWP-3MRP Submission - M22_ Filter: TASK filters: 3-Month Lookahead, No CC Milestones, No Level of Effort.	Tuen Mun - Chek Lap Kok Link - Southern Connection 3-Month Rolling Programme (Page 13 of 41 Pages) (Progress as of 21-Mar-15)	<table border="1"> <tr> <th>Date</th> <th>Revision</th> <th>Checked</th> <th>Approved</th> </tr> <tr> <td>09-Mar-15</td> <td></td> <td>DB</td> <td></td> </tr> <tr> <td>31-Mar-15</td> <td></td> <td>WY</td> <td></td> </tr> </table>	Date	Revision	Checked	Approved	09-Mar-15		DB		31-Mar-15		WY		DWG. No.: J3518/GCL/PGM/3MRP-M22
Date	Revision	Checked	Approved													
09-Mar-15		DB														
31-Mar-15		WY														

Activity ID	Activity Name	Orig. Durn.	Act. Start / FC Early Start	Duration % Complete	Rem. Durn.	Act. Finish / FC Early Finish	Late Start	Late Finish	Total Float	Free Float	Physical % Complete	2015											
												23	02	09	16	23	30	06	13	20	27	04	11
SB1E0378	B15 (B1e) - Pier Head Segment Diaphragm - Concreting	2	08-May-15	0%	2	09-May-15	27-Aug-15	28-Aug-15	80	0	0%												
SB1E0380	B15 (B1e) - Pier Head Segment Diaphragm - Curing & Striking of Forms	6	11-May-15	0%	6	18-May-15	04-Sep-15	12-Sep-15	86	0	0%												
Pier B16 (B1d)																							
Pier Works																							
SB1D0280	B16 (B1d) - Type 5B Pier Backfilling Works	4	21-Mar-15	0%	4	25-Mar-15	01-Mar-17	04-Mar-17	539	24	0%												
Pier Head Segments																							
SB1D0370	B16 (B1d) - Pier Head Segment - Temporary Platform	6	28-Feb-15 A	100%	0	05-Mar-15 A					100%												
SB1D0372	B16 (B1d) - Pier Head Segment Lift & Fix (1 seg)	2	06-Mar-15 A	100%	0	06-Mar-15 A					100%												
SB1D0374	B16 (B1d) - Pier Head Segment Diaphragm - Rebar	12	21-Mar-15	0%	12	08-Apr-15	19-Jan-17	07-Feb-17	509	0	0%												
SB1D0376	B16 (B1d) - Pier Head Segment Diaphragm - Formwork & Prep for Concreting	8	09-Apr-15	0%	8	18-Apr-15	08-Feb-17	16-Feb-17	509	0	0%												
SB1D0378	B16 (B1d) - Pier Head Segment Diaphragm - Concreting	2	20-Apr-15	0%	2	21-Apr-15	17-Feb-17	18-Feb-17	509	0	0%												
SB1D0380	B16 (B1d) - Pier Head Segment Diaphragm - Curing & Striking of Forms	6	22-Apr-15	0%	6	29-Apr-15	27-Feb-17	04-Mar-17	515	0	0%												
Pier B18 (B1b) & Abutment B																							
Preliminary Works for Land Piling																							
PB180030	B18 (B1b) - Install Geo. Instru. & Baseline Monitoring	36	21-Mar-15	0%	36	07-May-15	18-Nov-15	31-Dec-15	196	227	0%												
Viaduct C																							
Milestones - Marine Foundation																							
GFX197-1	C6 (C3f) - Completion of piling works	0		0%	0	08-May-15		21-Apr-15	-14	19	0%												
GFX202-1	C5 (C4a) - Completion of piling works	0		0%	0	14-May-15		18-Mar-15	-44	15	0%												
GFX207-1	C4 (C4b) - Completion of piling works	0		0%	0	21-Mar-15		23-Mar-15	2	56	0%												
GFX212-1	C3 (C4c) - Completion of piling works	0		0%	0	26-Mar-15		17-Jul-15	89	99	0%												
Milestones - Land Foundation																							
ZC00050	C17 (C2a) - Start date for piling	0	09-Apr-15	0%	0		10-Nov-15		176	52	0%												
ZC00060	C16 (C2b) - Start date for piling	0	13-May-15	0%	0		03-Nov-15		142	52	0%												
ZC00071	C15 (C2c) - Completion of piling works	0		0%	0	21-Mar-15		07-Jan-16	237	160	0%												
ZC00081	C14 (C2d) - Completion of piling works	0		0%	0	21-Mar-15		22-Dec-15	226	83	0%												
ZC00091-1	C12 (C2f) - Completion of piling works	0		0%	0	15-Jun-15		04-Dec-15	144	45	0%												
ZC00092-1	C11 (C3a) - Completion of piling works	0		0%	0	31-Mar-15		10-Sep-15	133	85	0%												
ZC00093-1	C10 (C3b) - Completion of piling works	0		0%	0	19-Jun-15		18-Aug-15	49	0	0%												
ZC00095-1	C8 (C3d) - Completion of piling works	0		0%	0	21-Mar-15		30-Apr-18	920	920	0%												
ZC00096	C7 (C3e) - Start date for piling	0	21-Mar-15	0%	0		30-Apr-18		920	920	0%												
ZC00096-1	C7 (C3e) - Completion of piling works	0		0%	0	29-May-15		30-Apr-18	866	866	0%												
Bridge C4																							
Pier C1 (C4e)																							
Pile Cap Works																							
SC4E0120	C1 (C4e) - Marine Pile Cap M2 - Pile cut down	12	09-Mar-15 A	100%	0	21-Mar-15 A					100%												
SC4E0130	C1 (C4e) - Marine Pile Cap M2 - Rebar fixing, inst.inserts etc	12	23-May-15	0%	12	08-Jun-15	29-Aug-15	15-Sep-15	73	0	0%												
SC4E0140	C1 (C4e) - Marine Pile Cap M2 - Concreting	1	10-Jun-15	0%	1	10-Jun-15	16-Sep-15	16-Sep-15	73	0	0%												
SC4E0164	C1 (C4e) - Marine Pile Cap M2 - Curing incl. CJ preparation	6	12-Jun-15	0%	6	19-Jun-15	18-Sep-15	24-Sep-15	73	0	0%												
Pier Works																							
SC4E0170	C1 (C4e) - Type 4B-MJ Pier Temp. Support Platform	6	12-Jun-15	0%	6	19-Jun-15	18-Sep-15	24-Sep-15	73	0	0%												
Pier C2 (C4d)																							
Pile Cap Works																							
SC4D0070	C2 (C4d) - Marine Pile Cap M2b - Inst.Floating Seal & Casing Head Steelwork	7	18-Mar-15 A	0%	7	28-Mar-15	30-Apr-15	08-May-15	28	37	10%												
SC4D0080	C2 (C4d) - Marine Pile Cap M2b - Install precast shell in position	1	22-May-15	0%	1	22-May-15	09-May-15	09-May-15	-9	0	0%												
SC4D0090	C2 (C4d) - Marine Pile Cap M2b - Inst.Access & make Watertight	3	23-May-15	0%	3	27-May-15	11-May-15	14-May-15	-9	0	0%												
SC4D0100	C2 (C4d) - Marine Pile Cap M2b - Weld Fin plates/Plug Rebar & Concrete	10	28-May-15	0%	10	10-Jun-15	15-May-15	28-May-15	-9	0	0%												
SC4D0120	C2 (C4d) - Marine Pile Cap M2b - Dewater precast shell / Remove Lifting Frame	2	12-Jun-15	0%	2	13-Jun-15	29-May-15	30-May-15	-9	0	0%												

	Project ID: J3518DWPRe-M22 Layout: J3518-DWP-3MRP Submission - M22_ Filter: TASK filters: 3-Month Lookahead, No CC Milestones, No Level of Effort.	Tuen Mun - Chek Lap Kok Link - Southern Connection 3-Month Rolling Programme (Page 17 of 41 Pages) (Progress as of 21-Mar-15)	<table border="1"> <tr><td>Date</td><td>Revision</td><td>Checked</td><td>Approved</td></tr> <tr><td>09-Mar-15</td><td></td><td>DB</td><td></td></tr> <tr><td>31-Mar-15</td><td></td><td>WY</td><td></td></tr> </table>	Date	Revision	Checked	Approved	09-Mar-15		DB		31-Mar-15		WY		DWG. No.: J3518/GCL/PGM/3MRP-M22
Date	Revision	Checked	Approved													
09-Mar-15		DB														
31-Mar-15		WY														

Activity ID	Activity Name	Orig. Durn.	Act. Start / FC Early Start	Duration % Complete	Rem. Durn.	Act. Finish / FC Early Finish	Late Start	Late Finish	Total Float	Free Float	Physical % Complete	2015												
												March			April			May			June			
												23	02	09	16	23	30	06	13	20	27	04	11	18
SC4D0130	C2 (C4d) - Marine Pile Cap M2b - Pile cut down	8	15-Jun-15	0%	8	27-Jun-15	01-Jun-15	12-Jun-15	-9	0	0%													
Pier C3 (C4c)																								
Foundation Works																								
GFXX211	C3 (C4c) - Sonic & Interface Coring	12	18-Feb-15 A	100%	0	06-Mar-15 A					100%													
GFXX212	C3 (C4c) - Dismantle removable panels of temp. platform	5	21-Mar-15	0%	5	26-Mar-15	03-Jul-15	08-Jul-15	81	0	0%													
Pier C4 (C4b)																								
Foundation Works																								
GFXX206	C4 (C4b) - Sonic & Interface Coring	12	09-Feb-15 A	100%	0	25-Feb-15 A					100%													
GFXX207	C4 (C4b) - Dismantle removable panels of temp. platform	5	05-Mar-15 A	100%	0	10-Mar-15 A					100%													
Pile Cap Works																								
SC4B0070	C4 (C4b) - Marine Pile Cap M2b - Inst.Floating Seal & Casing Head Steelwork	7	23-May-15	0%	7	01-Jun-15	16-Mar-15	23-Mar-15	-50	0	0%													
SC4B0080	C4 (C4b) - Marine Pile Cap M2b - Install precast shell in position	1	02-Jun-15	0%	1	02-Jun-15	24-Mar-15	24-Mar-15	-50	0	0%													
SC4B0090	C4 (C4b) - Marine Pile Cap M2b - Inst.Access & make Watertight	3	04-Jun-15	0%	3	06-Jun-15	25-Mar-15	27-Mar-15	-50	0	0%													
SC4B0100	C4 (C4b) - Marine Pile Cap M2b - Weld Fin plates/Plug Rebar & Concrete	6	08-Jun-15	0%	6	16-Jun-15	28-Mar-15	08-Apr-15	-50	0	0%													
SC4B0120	C4 (C4b) - Marine Pile Cap M2b - Dewater precast shell / Remove Lifting Frame	2	18-Jun-15	0%	2	19-Jun-15	09-Apr-15	10-Apr-15	-50	0	0%													
Pier C5 (C4a)																								
Foundation Works																								
GFXX200	C5 (C4a) - Bored Piles (2.35m dia. x 2 nos)	84	05-Dec-14 A	71%	24	23-Apr-15	16-Jan-15	14-Feb-15	-51	0	75%													
GFXX201	C5 (C4a) - Sonic & Interface Coring	12	23-Apr-15	0%	12	08-May-15	14-Feb-15	04-Mar-15	-51	0	0%													
GFXX202	C5 (C4a) - Dismantle removable panels of temp. platform	5	08-May-15	0%	5	14-May-15	04-Mar-15	10-Mar-15	-51	0	0%													
Pile Cap Works																								
SC4A0070	C5 (C4a) - Marine Pile Cap M2b - Inst.Floating Seal & Casing Head Steelwork	7	23-May-15	0%	7	01-Jun-15	10-Mar-15	18-Mar-15	-55	0	0%													
SC4A0080	C5 (C4a) - Marine Pile Cap M2b - Install precast shell in position	1	02-Jun-15	0%	1	02-Jun-15	18-Mar-15	19-Mar-15	-55	0	0%													
SC4A0090	C5 (C4a) - Marine Pile Cap M2b - Inst.Access & make Watertight	3	04-Jun-15	0%	3	06-Jun-15	19-Mar-15	23-Mar-15	-55	0	0%													
SC4A0100	C5 (C4a) - Marine Pile Cap M2b - Weld Fin plates/Plug Rebar & Concrete	6	08-Jun-15	0%	6	16-Jun-15	23-Mar-15	30-Mar-15	-55	0	0%													
SC4A0120	C5 (C4a) - Marine Pile Cap M2b - Dewater precast shell / Remove Lifting Frame	2	18-Jun-15	0%	2	19-Jun-15	30-Mar-15	01-Apr-15	-55	0	0%													
Pier C6 (C3f)																								
Foundation Works																								
GFXX195	C6 (C3f) - Bored Piles (2.00m dia. x 3 nos)	60	10-Feb-15 A	62%	23	21-Apr-15	24-Feb-15	21-Mar-15	-22	0	80%													
GFXX196	C6 (C3f) - Sonic & Interface Coring	10	21-Apr-15	0%	10	04-May-15	23-Mar-15	02-Apr-15	-22	0	0%													
GFXX197	C6 (C3f) - Dismantle removable panels of temp. platform	4	04-May-15	0%	4	08-May-15	08-Apr-15	11-Apr-15	-22	0	0%													
Pile Cap Works																								
SC3F0070	C6 (C3f) - Marine Pile Cap M2b - Inst.Floating Seal & Casing Head Steelwork	7	23-May-15	0%	7	01-Jun-15	13-Apr-15	21-Apr-15	-30	0	0%													
SC3F0080	C6 (C3f) - Marine Pile Cap M2b - Install precast shell in position	1	02-Jun-15	0%	1	02-Jun-15	22-Apr-15	22-Apr-15	-30	0	0%													
SC3F0090	C6 (C3f) - Marine Pile Cap M2b - Inst.Access & make Watertight	3	04-Jun-15	0%	3	06-Jun-15	24-Apr-15	27-Apr-15	-30	0	0%													
SC3F0100	C6 (C3f) - Marine Pile Cap M2b - Weld Fin plates/Plug Rebar & Concrete	8	08-Jun-15	0%	8	19-Jun-15	28-Apr-15	07-May-15	-30	0	0%													
Bridge C3																								
Pier C7 (C3e)																								
Socketted H-Pile Installation																								
GFXX398	C7 (C3e) - Install SH Pile (16 no.)	120	27-Jan-15 A	55%	54	29-May-15	14-Jul-15	15-Sep-15	90	0	55%													
Pile Cap Works																								
SC3E0090	C7 (C3e) - Pile cap Excavation / ELS	20	21-Mar-15	0%	20	18-Apr-15	08-Aug-15	02-Sep-15	100	0	0%													
SC3E0092	C7 (C3e) - Pile cap Pile breakdown to cut-off etc.	4	20-Apr-15	0%	4	24-Apr-15	03-Sep-15	07-Sep-15	100	21	0%													
SC3E0100	C7 (C3e) - Pile cap Blinding	1	23-May-15	0%	1	23-May-15	08-Sep-15	08-Sep-15	79	0	0%													
SC3E0110	C7 (C3e) - Pile cap Formwork	3	30-May-15	0%	3	02-Jun-15	15-Sep-15	18-Sep-15	79	0	0%													
SC3E0120	C7 (C3e) - Pile cap Rebarwork	4	26-May-15	0%	4	29-May-15	10-Sep-15	14-Sep-15	79	0	0%													
SC3E0122	C7 (C3e) - Pile cap Kicker Formwork	2	05-Jun-15	0%	2	06-Jun-15	25-Sep-15	26-Sep-15	83	4	0%													
SC3E0130	C7 (C3e) - Pile cap Concreting	1	04-Jun-15	0%	1	04-Jun-15	19-Sep-15	19-Sep-15	79	0	0%													

- Actual Work
- Planned Bar
- Critical Bar
- Milestone

Project ID: J3518DWPrE-M22
Layout: J3518-DWP-3MRP Submission - M22_
Filter: TASK filters: 3-Month Lookahead, No CC
Milestones, No Level of Effort.

Tuen Mun - Chek Lap Kok Link - Southern Connection
3-Month Rolling Programme (Page 18 of 41 Pages)
(Progress as of 21-Mar-15)

Date	Revision	Checked	Approved
09-Mar-15		DB	
31-Mar-15		WY	

DWG. No.:
J3518/GCL/PGM/3MRP-M22

Activity ID	Activity Name	Orig. Durn.	Act. Start / FC Early Start	Duration% Complete	Rem. Durn.	Act. Finish / FC Early Finish	Late Start	Late Finish	Total Float	Free Float	Physical % Complete	2015																
												March					April					May					June	
												23	02	09	16	23	30	06	13	20	27	04	11	18	25	01	08	15
SC3E0140	C7 (C3e) - Pile cap Curing & Striking of Forms incl. CJ prep	6	05-Jun-15	0%	6	13-Jun-15	21-Sep-15	26-Sep-15	79	0	0%																	
Pier Works																												
SC3E0150	C7 (C3e) - Type 5B Pier Scaffolding (1st Lift)	2	15-Jun-15	0%	2	16-Jun-15	29-Sep-15	30-Sep-15	79	7	0%																	
Pier C8 (C3d)																												
Pile Cap Works																												
SC3D0090	C8 (C3d) - Pile cap Excavation / ELS (incl. sheet piling)	36	08-Feb-15 A	60%	14	11-Apr-15	18-Sep-15	07-Oct-15	132	0	60%																	
SC3D0092	C8 (C3d) - Pile cap Pile breakdown to cut-off etc.	4	11-Apr-15	0%	4	17-Apr-15	08-Oct-15	12-Oct-15	132	27	0%																	
SC3D0100	C8 (C3d) - Pile cap Blinding	1	23-May-15	0%	1	23-May-15	13-Oct-15	13-Oct-15	105	0	0%																	
SC3D0110	C8 (C3d) - Pile cap Formwork	3	30-May-15	0%	3	02-Jun-15	20-Oct-15	23-Oct-15	105	0	0%																	
SC3D0120	C8 (C3d) - Pile cap Rebarwork	4	26-May-15	0%	4	29-May-15	15-Oct-15	19-Oct-15	105	0	0%																	
SC3D0122	C8 (C3d) - Pile cap Kicker Formwork	2	05-Jun-15	0%	2	06-Jun-15	31-Oct-15	02-Nov-15	109	4	0%																	
SC3D0130	C8 (C3d) - Pile cap Concreting	1	04-Jun-15	0%	1	04-Jun-15	24-Oct-15	24-Oct-15	105	0	0%																	
SC3D0140	C8 (C3d) - Pile cap Curing & Striking of Forms incl. CJ prep	6	05-Jun-15	0%	6	13-Jun-15	26-Oct-15	02-Nov-15	105	0	0%																	
Pier Works																												
SC3D0150	C8 (C3d) - Type 5B Pier Scaffolding (1st Lift)	2	15-Jun-15	0%	2	16-Jun-15	03-Nov-15	04-Nov-15	105	0	0%																	
SC3D0160	C8 (C3d) - Type 5B Pier Rebarwork (1st Lift)	3	18-Jun-15	0%	3	22-Jun-15	05-Nov-15	07-Nov-15	105	0	0%																	
Pier C9 (C3c)																												
Pile Cap Works																												
SC3C0090	C9 (C3c) - Pile cap Excavation / ELS (incl. sheet piling)	18	28-Feb-15 A	100%	0	07-Mar-15 A					100%																	
SC3C0092	C9 (C3c) - Pile cap Pile breakdown to cut-off etc.	4	09-Mar-15 A	100%	0	21-Mar-15 A					100%																	
SC3C0100	C9 (C3c) - Pile cap Blinding	1	21-Mar-15 A	100%	0	21-Mar-15 A					100%																	
SC3C0110	C9 (C3c) - Pile cap Formwork	3	26-Mar-15	0%	3	28-Mar-15	18-Nov-15	20-Nov-15	174	0	0%																	
SC3C0120	C9 (C3c) - Pile cap Rebarwork	4	21-Mar-15	0%	4	25-Mar-15	13-Nov-15	17-Nov-15	174	0	0%																	
SC3C0122	C9 (C3c) - Pile cap Kicker Formwork	2	31-Mar-15	0%	2	01-Apr-15	27-Nov-15	28-Nov-15	178	4	0%																	
SC3C0130	C9 (C3c) - Pile cap Concreting	1	30-Mar-15	0%	1	30-Mar-15	21-Nov-15	21-Nov-15	174	0	0%																	
SC3C0140	C9 (C3c) - Pile cap Curing & Striking of Forms incl. CJ prep	6	31-Mar-15	0%	6	10-Apr-15	23-Nov-15	28-Nov-15	174	0	0%																	
Pier Works																												
SC3C0150	C9 (C3c) - Type 5B Pier Scaffolding (1st Lift)	2	11-Apr-15	0%	2	13-Apr-15	30-Nov-15	01-Dec-15	174	0	0%																	
SC3C0160	C9 (C3c) - Type 5B Pier Rebarwork (1st Lift)	3	14-Apr-15	0%	3	17-Apr-15	02-Dec-15	04-Dec-15	174	0	0%																	
SC3C0170	C9 (C3c) - Type 5B Pier Formwork & Prep for Concreting (1st Lift)	2	18-Apr-15	0%	2	20-Apr-15	05-Dec-15	07-Dec-15	174	0	0%																	
SC3C0180	C9 (C3c) - Type 5B Pier Concreting (1st Lift)	1	21-Apr-15	0%	1	21-Apr-15	08-Dec-15	08-Dec-15	174	0	0%																	
SC3C0182	C9 (C3c) - Type 5B Pier Curing & Striking of Forms incl. CJ prep (1st Lift)	2	22-Apr-15	0%	2	24-Apr-15	09-Dec-15	12-Dec-15	176	0	0%																	
SC3C0190	C9 (C3c) - Type 5B Pier Scaffolding (2nd Lift)	2	25-Apr-15	0%	2	27-Apr-15	14-Dec-15	15-Dec-15	176	0	0%																	
SC3C0200	C9 (C3c) - Type 5B Pier Rebarwork (2nd Lift)	3	28-Apr-15	0%	3	30-Apr-15	16-Dec-15	18-Dec-15	176	0	0%																	
SC3C0210	C9 (C3c) - Type 5B Pier Formwork & Prep for Concreting (2nd Lift)	3	02-May-15	0%	3	05-May-15	19-Dec-15	22-Dec-15	176	0	0%																	
SC3C0220	C9 (C3c) - Type 5B Pier Concreting (2nd Lift)	1	06-May-15	0%	1	06-May-15	23-Dec-15	23-Dec-15	176	0	0%																	
SC3C0222	C9 (C3c) - Type 5B Pier Curing & Striking of Forms incl. CJ prep (2nd Lift)	2	07-May-15	0%	2	08-May-15	24-Dec-15	29-Dec-15	177	0	0%																	
SC3C0230	C9 (C3c) - Type 5B Pier Scaffolding (3rd Lift)	2	09-May-15	0%	2	11-May-15	30-Dec-15	31-Dec-15	177	0	0%																	
SC3C0240	C9 (C3c) - Type 5B Pier Rebarwork (3rd Lift)	2	13-May-15	0%	2	14-May-15	02-Jan-16	04-Jan-16	177	0	0%																	
SC3C0250	C9 (C3c) - Type 5B Pier Formwork & Prep for Concreting (3rd Lift)	2	15-May-15	0%	2	16-May-15	05-Jan-16	06-Jan-16	177	0	0%																	
SC3C0260	C9 (C3c) - Type 5B Pier Concreting (3rd Lift)	1	18-May-15	0%	1	18-May-15	07-Jan-16	07-Jan-16	177	0	0%																	
SC3C0262	C9 (C3c) - Type 5B Pier Curing & Striking of Forms incl. CJ prep (3rd Lift)	2	19-May-15	0%	2	20-May-15	08-Jan-16	09-Jan-16	177	0	0%																	
SC3C0270	C9 (C3c) - Type 5B Pier Head Scaffolding	3	22-May-15	0%	3	26-May-15	11-Jan-16	13-Jan-16	177	0	0%																	
SC3C0280	C9 (C3c) - Type 5B Pier Head Rebarwork	4	27-May-15	0%	4	30-May-15	14-Jan-16	18-Jan-16	177	0	0%																	
SC3C0290	C9 (C3c) - Type 5B Pier Head Formwork & Prep for Concreting	4	01-Jun-15	0%	4	05-Jun-15	19-Jan-16	22-Jan-16	177	0	0%																	
SC3C0300	C9 (C3c) - Type 5B Pier Head Concreting	1	06-Jun-15	0%	1	06-Jun-15	23-Jan-16	23-Jan-16	177	0	0%																	
SC3C0310	C9 (C3c) - Type 5B Pier Head Curing/Striking of Forms/Remove Scaffolding	6	08-Jun-15	0%	6	16-Jun-15	25-Jan-16	30-Jan-16	177	0	0%																	
SC3C0320	C9 (C3c) - Type 5B Pier Backfilling Works	4	18-Jun-15	0%	4	24-Jun-15	01-Feb-16	04-Feb-16	177	0	0%																	

Activity ID	Activity Name	Orig. Durn.	Act. Start / FC Early Start	Duration % Complete	Rem. Durn.	Act. Finish / FC Early Finish	Late Start	Late Finish	Total Float	Free Float	Physical % Complete	2015												
												March			April			May			June			
												23	02	09	16	23	30	06	13	20	27	04	11	18
Pier C10 (C3b)																								
Foundation Works																								
GFXX418	C10 (C3b) - Bored Pile (2.20m dia. x 2 nos)	51	19-Jan-15 A	75%	13	09-Apr-15	29-Jun-15	14-Jul-15	78	0	75%													
GFXX421-2	C10 (C3b) - Sonic & Interface Coring Tests	12	06-Jun-15	0%	12	19-Jun-15	05-Aug-15	18-Aug-15	49	0	0%													
Pier C11 (C3a)																								
Foundation Works																								
GFXX416	C11 (C3a) - Bored Pile (2.00m dia. x 2 nos)	45	24-Jan-15 A	95%	2	24-Mar-15	30-Mar-17	01-Apr-17	602	91	95%													
GFXX421-3	C11 (C3a) - Sonic & Interface Coring Tests	12	12-Mar-15 A	30%	8	31-Mar-15	01-Sep-15	10-Sep-15	133	0	30%													
Bridge C2																								
Pier C12 (C2f)																								
Foundation Works																								
GFXX412	C12 (C2f) - Bored Pile (2.00m dia. x 2 nos)	66	21-Jan-15 A	71%	19	17-Apr-15	14-Sep-15	08-Oct-15	144	0	71%													
GFXX413	C12 (C2f) - Sonic & Interface Coring Tests	12	17-Apr-15	0%	12	02-May-15	24-Oct-15	06-Nov-15	156	12	0%													
GFXX422-4	C12 (C2f) - Selection of bored pile for Full Depth Coring	24	17-Apr-15	0%	24	16-May-15	09-Oct-15	06-Nov-15	144	0	0%													
GFXX422-8	C12 (C2f) - Bored Pile Full Depth Coring & Testing	24	16-May-15	0%	24	15-Jun-15	07-Nov-15	04-Dec-15	144	0	0%													
Pier C13 (C2e) Portal																								
Socketted H-Pile Installation																								
GFXX399-4	C13 (C2e) - Selction of pile for Loading Test	24	21-Mar-15	0%	24	22-Apr-15	22-Aug-15	18-Sep-15	124	0	0%													
GFXX399-6	C13 (C2e) - Loading Test for pre-bored H-pile	36	23-Apr-15	0%	36	05-Jun-15	19-Sep-15	03-Nov-15	124	0	0%													
Pile Cap Works																								
SC2ER090	C13B (C2e-R) - Pile cap Excavation / ELS	18	06-Jun-15	0%	18	04-Jul-15	04-Nov-15	24-Nov-15	111	0	0%													
Pier C14 (C2d)																								
Socketted H-Pile Installation																								
GFXX381-2	C14 (C2d) - Install SH Pile (12 nr)	60	07-Jan-15 A	100%	0	28-Feb-15 A					100%													
Pier C15 (C2c)																								
Socketted H-Pile Installation																								
GFXX381-3	C15 (C2c) - Install SH Pile (13 nr)	60	19-Jan-15 A	100%	0	21-Mar-15 A					100%													
Pier C16 (C2b)																								
Foundation Works																								
GFXX408	C16 (C2b) - Bored Pile (2.00m dia. x 2 nos)	52	13-May-15	0%	52	16-Jul-15	17-Aug-15	17-Oct-15	78	0	0%													
Bridge C1																								
Pier C17 (C2a)																								
Foundation Works																								
GFXX406	C17 (C2a) - Bored Pile (2.00m dia. x 2 nos)	52	09-Apr-15	0%	52	11-Jun-15	15-Jul-15	12-Sep-15	78	0	0%													
GFXX409-2	C17 (C2a) - Sonic & Interface Coring Tests	12	11-Jun-15	0%	12	26-Jun-15	10-Nov-15	23-Nov-15	124	0	0%													
Pier C18 (C3d) Portal																								
Pile Cap Works																								
SC1ER090	C18B (C1e-R) - Pile cap Excavation / ELS	18	09-Mar-15 A	80%	4	25-Mar-15	04-May-16	09-May-16	310	0	80%													
SC1ER092	C18B (C1e-R)- Pile cap Pile breakdown to cut-off etc	4	25-Mar-15	0%	4	30-Mar-15	09-May-16	13-May-16	310	37	0%													
SC1ER100	C18B (C1e-R)- Pile cap Blinding	1	23-May-15	0%	1	23-May-15	13-May-16	16-May-16	272	0	0%													
SC1ER110	C18B (C1e-R)- Pile cap Formwork	3	30-May-15	0%	3	02-Jun-15	21-May-16	25-May-16	272	0	0%													
SC1ER120	C18B (C1e-R)- Pile cap Rebarwork	4	26-May-15	0%	4	29-May-15	16-May-16	21-May-16	272	0	0%													
SC1ER122	C18B (C1e-R)- Pile cap Kicker Formwork	2	05-Jun-15	0%	2	06-Jun-15	01-Jun-16	06-Jun-16	277	4	0%													
SC1ER130	C18B (C1e-R)- Pile cap Concreting	1	04-Jun-15	0%	1	04-Jun-15	25-May-16	27-May-16	272	0	0%													
SC1ER140	C18B (C1e-R) - Pile cap Curing & Striking of Forms incl. CJ prep	6	05-Jun-15	0%	6	13-Jun-15	27-May-16	06-Jun-16	273	0	0%													
Pier Works																								
SC1EL150	C18A (C1e-L) - Pier Scaffolding (1st Lift)	3	21-Mar-15	0%	3	24-Mar-15	31-May-16	03-Jun-16	329	0	0%													
SC1EL160	C18A (C1e-L) - Pier Rebarwork (1st Lift)	3	25-Mar-15	0%	3	27-Mar-15	04-Jun-16	08-Jun-16	329	0	0%													

	Project ID: J3518DWPRe-M22 Layout: J3518-DWP-3MRP Submission - M22_ Filter: TASK filters: 3-Month Lookahead, No CC Milestones, No Level of Effort.	Tuen Mun - Chek Lap Kok Link - Southern Connection 3-Month Rolling Programme (Page 20 of 41 Pages) (Progress as of 21-Mar-15)	<table border="1"> <thead> <tr> <th>Date</th> <th>Revision</th> <th>Checked</th> <th>Approved</th> </tr> </thead> <tbody> <tr> <td>09-Mar-15</td> <td></td> <td>DB</td> <td></td> </tr> <tr> <td>31-Mar-15</td> <td></td> <td>WY</td> <td></td> </tr> </tbody> </table>	Date	Revision	Checked	Approved	09-Mar-15		DB		31-Mar-15		WY		DWG. No.: J3518/GCL/PGM/3MRP-M22
Date	Revision	Checked	Approved													
09-Mar-15		DB														
31-Mar-15		WY														

Activity ID	Activity Name	Orig. Durn.	Act. Start / FC Early Start	Duration% Complete	Rem. Durn.	Act. Finish / FC Early Finish	Late Start	Late Finish	Total Float	Free Float	Physical % Complete	2015																
												March				April				May				June				
												23	02	09	16	23	30	06	13	20	27	04	11	18	25	01	08	15
SC1EL170	C18A (C1e-L) - Pier Formwork & Prep for Concreting (1st Lift)	4	28-Mar-15	0%	4	01-Apr-15	10-Jun-16	14-Jun-16	329	0	0%																	
SC1EL180	C18A (C1e-L) - Pier Concreting (1st Lift)	1	02-Apr-15	0%	1	02-Apr-15	16-Jun-16	16-Jun-16	329	0	0%																	
SC1EL182	C18A (C1e-L) - Pier Curing & Striking of Forms incl. CJ prep (1st Lift)	2	08-Apr-15	0%	2	09-Apr-15	25-Jun-16	27-Jun-16	334	60	0%																	
SC1ER150	C18B (C1e-R) - Pier Scaffolding (1st Lift)	3	15-Jun-15	0%	3	18-Jun-15	06-Jun-16	11-Jun-16	273	0	0%																	
SC1ER160	C18B (C1e-R) - Pier Rebarwork (1st Lift)	3	19-Jun-15	0%	3	24-Jun-15	11-Jun-16	16-Jun-16	274	0	0%																	
Pier C19 (C1d)																												
Pier Works																												
SC1D0150	C19 (C1d) - Type 5B-B Pier/Pier Head Scaffolding	4	21-Mar-15	0%	4	25-Mar-15	07-Nov-16	10-Nov-16	447	0	0%																	
SC1D0160	C19 (C1d) - Type 5B-B Pier/Pier Head Head Rebarwork	4	26-Mar-15	0%	4	30-Mar-15	11-Nov-16	15-Nov-16	447	0	0%																	
SC1D0170	C19 (C1d) - Type 5B-B Pier/Pier Head Formwork & Prep for Concreting	4	31-Mar-15	0%	4	08-Apr-15	16-Nov-16	19-Nov-16	447	0	0%																	
SC1D0180	C19 (C1d) - Type 5B-B Pier/Pier Head Concreting	1	09-Apr-15	0%	1	09-Apr-15	21-Nov-16	21-Nov-16	447	0	0%																	
SC1D0190	C19 (C1d) - Type 5B-B Pier/Pier Head Curing/Striking of Forms/Remove Scaffolding	6	10-Apr-15	0%	6	17-Apr-15	22-Nov-16	28-Nov-16	447	0	0%																	
SC1D0195	C19 (C1d) - Type 5B-B Pier/Pier Head Backfilling Works	4	18-Apr-15	0%	4	22-Apr-15	29-Nov-16	02-Dec-16	447	152	0%																	
Pier C20 (C1c) & Abutment C																												
Pier Works																												
SC1C0150	C20 (C1c) - Pier/Pier Head Scaffolding	4	21-Mar-15	0%	4	25-Mar-15	14-Oct-16	19-Oct-16	429	0	0%																	
SC1C0160	C20 (C1c) - Pier/Pier Head Rebarwork	6	26-Mar-15	0%	6	01-Apr-15	19-Oct-16	28-Oct-16	429	0	0%																	
SC1C0170	C20 (C1c) - Pier/Pier Head Formwork	8	02-Apr-15	0%	8	16-Apr-15	28-Oct-16	08-Nov-16	431	0	0%																	
SC1C0180	C20 (C1c) - Pier/Pier Head Concreting	1	17-Apr-15	0%	1	17-Apr-15	09-Nov-16	09-Nov-16	431	0	0%																	
SC1C0190	C20 (C1c) - Pier/Pier Head Curing & Striking of Forms incl. CJ prep	6	18-Apr-15	0%	6	25-Apr-15	10-Nov-16	16-Nov-16	431	0	0%																	
Pier Head Segments																												
SC1C0370	C20 (C1c) - Pier Head Segment - Temporary Platform	6	27-Apr-15	0%	6	04-May-15	17-Nov-16	23-Nov-16	431	137	0%																	
Abutment & Approach Ramp C																												
SC1C0200	Abutment C - Walls & Staircase	48	21-Mar-15	0%	48	27-May-15	15-Jul-15	14-Sep-15	81	14	0%																	
SC1C0250	AR-C - RE Walls - Erect fencing, Excavation/formation/ drainage filter & bottom layer to grd l	12	11-Apr-15	0%	12	27-Apr-15	15-Jul-15	30-Jul-15	67	0	0%																	
SC1C0251	AR-C - RE Walls - Upper layers with backfill in stages	48	28-Apr-15	0%	48	06-Jul-15	31-Jul-15	30-Sep-15	67	0	0%																	
SC1C0252	AR-C - RE Walls - Base Slabs of top RC Walls	48	18-Jun-15	0%	48	21-Aug-15	15-Sep-15	18-Nov-15	69	0	0%																	
Viaduct D																												
Milestones - Marine Foundation																												
GFXX228	Viaduct D - ARUP issues Pile Spacing & Diameter for Temporary Platform Design	0		0%	0	21-Mar-15		30-Apr-18	920	920	0%																	
GFXX233-1	Pier D7 (D3e) - Completion of Piling Works	0		0%	0	21-Mar-15		01-Apr-17	604	180	0%																	
GFXX238-2	Pier D6 (D4a) - Completion of Piling Works	0		0%	0	21-Mar-15		28-Apr-15	29	54	0%																	
GFXX243-3	Pier D5 (D4b) - Completion of Piling Works	0		0%	0	21-Mar-15		18-Feb-15	-23	0	0%																	
GFXX248-1	Pier D4 (D4c) - Completion of Piling Works	0		0%	0	21-Mar-15		30-Jan-15	-39	0	0%																	
GFXX253-1	Pier D3 (D4d) - Completion of Piling Works	0		0%	0	21-Mar-15		01-Apr-17	604	180	0%																	
GFXX258-2	Pier D2 (D4e) - Completion of Piling Works	0		0%	0	21-Mar-15		01-Apr-17	604	180	0%																	
Milestones - Land Foundation																												
GFXX446B1	D15 (D2b) - Completion of piling works	0		0%	0	18-Apr-15		19-May-15	25	0	0%																	
GFXX454A1	D13 (D2d) - Completion of piling works	0		0%	0	28-Apr-15		17-Aug-15	92	0	0%																	
GFXX461C	D12 (D2e) - Start date for piling	0	13-Mar-15 A	100%	0						100%																	
GFXX466-2	D9 (D3c) - Completion of piling works	0		100%	0	06-Mar-15 A					100%																	
Bridge D3																												
Pier D1 (D4f)																												
Pile Cap Works																												
SD4F0164	D1 (D4f) - Marine Pile Cap M2 - Curing incl. CJ preparation	6	18-Feb-15 A	100%	0	27-Feb-15 A					100%																	
Pier Works																												
SD4F0170	D1 (D4f) - Type 4B-MJ Pier Temp. Support Platform	6	22-Feb-15 A	100%	0	28-Feb-15 A					100%																	
SD4F0172	D1 (D4f) - Type 4B-MJ Pier Scaffolding (1st Lift)	1	03-Mar-15 A	100%	0	10-Mar-15 A					100%																	

■ Actual Work
■ Planned Bar
■ Critical Bar
◆ Milestone

Project ID: J3518DWP-RE-M22
 Layout: J3518-DWP-3MRP Submission - M22_
 Filter: TASK filters: 3-Month Lookahead, No CC
 Milestones, No Level of Effort.

Tuen Mun - Chek Lap Kok Link - Southern Connection
3-Month Rolling Programme (Page 21 of 41 Pages)
(Progress as of 21-Mar-15)

Date	Revision	Checked	Approved
09-Mar-15		DB	
31-Mar-15		WY	

DWG. No.:
J3518/GCL/PGM/3MRP-M22

Activity ID	Activity Name	Orig. Durn.	Act. Start / FC Early Start	Duration % Complete	Rem. Durn.	Act. Finish / FC Early Finish	Late Start	Late Finish	Total Float	Free Float	Physical % Complete	2015																			
												March					April					May					June				
												23	02	09	16	23	30	06	13	20	27	04	11	18	25	01	08	15			
GFXX242	D5 (D4b) - Sonic & Interface Coring	12	17-Feb-15 A	100%	0	28-Feb-15 A					100%																				
GFXX243	D5 (D4b) - Dismantle removable panels of temp. platform	5	04-Mar-15 A	100%	0	09-Mar-15 A					100%																				
Pile Cap Works																															
SD4B0070	D5 (D4b) - Marine Pile Cap M2b - Inst.Floating Seal & Casing Head Steelwork	7	21-Mar-15	0%	7	28-Mar-15	23-Feb-15	02-Mar-15	-23	1	0%																				
SD4B0080	D5 (D4b) - Marine Pile Cap M2b - Install precast shell in position	1	31-Mar-15	0%	1	31-Mar-15	03-Mar-15	03-Mar-15	-24	0	0%																				
SD4B0090	D5 (D4b) - Marine Pile Cap M2b - Inst.Access & make Watertight	3	01-Apr-15	0%	3	08-Apr-15	04-Mar-15	06-Mar-15	-24	0	0%																				
SD4B0100	D5 (D4b) - Marine Pile Cap M2b - Weld Fin plates/Plug Rebar & Concrete	9	09-Apr-15	0%	9	20-Apr-15	07-Mar-15	17-Mar-15	-24	0	0%																				
SD4B0120	D5 (D4b) - Marine Pile Cap M2b - Dewater precast shell / Remove Lifting Frame	2	21-Apr-15	0%	2	22-Apr-15	18-Mar-15	19-Mar-15	-24	0	0%																				
SD4B0130	D5 (D4b) - Marine Pile Cap M2b - Pile cut down	8	24-Apr-15	0%	8	04-May-15	20-Mar-15	28-Mar-15	-24	0	0%																				
SD4B0140	D5 (D4b) - Marine Pile Cap M2b - Rebar fixing, inst.inserts etc	12	05-May-15	0%	12	19-May-15	30-Mar-15	17-Apr-15	-24	0	0%																				
SD4B0150	D5 (D4b) - Marine Pile Cap M2b - Concreting	1	20-May-15	0%	1	20-May-15	18-Apr-15	18-Apr-15	-24	0	0%																				
SD4B0160	D5 (D4b) - Marine Pile Cap M2b - Curing incl. CJ Preparation	6	22-May-15	0%	6	29-May-15	20-Apr-15	27-Apr-15	-24	0	0%																				
Pier Works																															
SD4B0170	D5 (D4b) - Type 4B Pier Temp. Support Platform	6	22-May-15	0%	6	29-May-15	20-Apr-15	27-Apr-15	-24	0	0%																				
SD4B0172	D5 (D4b) - Type 4B Pier Scaffolding (1st Lift)	1	30-May-15	0%	1	30-May-15	28-Apr-15	28-Apr-15	-24	0	0%																				
SD4B0180	D5 (D4b) - Type 4B Pier Rebarwork (1st Lift)	3	01-Jun-15	0%	3	04-Jun-15	29-Apr-15	02-May-15	-24	0	0%																				
SD4B0190	D5 (D4b) - Type 4B Pier Formwork & Prep for Concreting (1st Lift)	2	05-Jun-15	0%	2	06-Jun-15	04-May-15	05-May-15	-24	0	0%																				
SD4B0200	D5 (D4b) - Type 4B Pier Concreting (1st Lift)	1	08-Jun-15	0%	1	08-Jun-15	06-May-15	06-May-15	-24	0	0%																				
SD4B0202	D5 (D4b) - Type 4B Pier Curing & Striking of Forms incl. CJ prep (1st Lift)	2	10-Jun-15	0%	2	12-Jun-15	07-May-15	08-May-15	-24	0	0%																				
SD4B0210	D5 (D4b) - Type 4B Pier Scaffolding (2nd Lift)	2	13-Jun-15	0%	2	15-Jun-15	09-May-15	11-May-15	-24	0	0%																				
SD4B0220	D5 (D4b) - Type 4B Pier Rebarwork (2nd Lift)	2	16-Jun-15	0%	2	18-Jun-15	13-May-15	14-May-15	-24	0	0%																				
SD4B0230	D5 (D4b) - Type 4B Pier Formwork & Prep for Concreting (2nd Lift)	2	19-Jun-15	0%	2	22-Jun-15	15-May-15	16-May-15	-24	0	0%																				
Pier D6 (D4a)																															
Foundation Works																															
GFXX237	D6 (D4a) - Sonic & Interface Coring	12	30-Jan-15 A	100%	0	26-Feb-15 A					100%																				
GFXX237-1	D6 (D4a) - Selection of bored pile for Full Depth Coring	6	26-Feb-15 A	100%	0	26-Feb-15 A					100%																				
GFXX237-2	D6 (D4a) - Bored Pile Full Depth Coring & Testing	24	26-Feb-15 A	100%	0	26-Feb-15 A					100%																				
GFXX238	D6 (D4a) - Dismantle removable panels of temp. platform	5	26-Feb-15 A	100%	0	03-Mar-15 A					100%																				
Pile Cap Works																															
SD4A0070	D6 (D4a) - Marine Pile Cap M2 - Inst.Floating Seal & Casing Head Steelwork	7	30-May-15	0%	7	08-Jun-15	29-Apr-15	07-May-15	-23	0	0%																				
SD4A0080	D6 (D4a) - Marine Pile Cap M2 - Install precast shell in position	1	10-Jun-15	0%	1	10-Jun-15	08-May-15	08-May-15	-23	0	0%																				
SD4A0090	D6 (D4a) - Marine Pile Cap M2 - Inst.Access & make Watertight	3	12-Jun-15	0%	3	15-Jun-15	09-May-15	13-May-15	-23	0	0%																				
SD4A0100	D6 (D4a) - Marine Pile Cap M2 - Weld Fin plates/Plug Rebar & Concrete	9	16-Jun-15	0%	9	30-Jun-15	14-May-15	26-May-15	-23	0	0%																				
Bridge D2																															
Pier D7 (D3e)																															
Pile Cap Works																															
SD3E0080	D7 (D3e) - Marine Pile Cap M2b - Install precast shell in position	1	21-Mar-15	0%	1	21-Mar-15	25-Mar-15	25-Mar-15	3	0	0%																				
SD3E0090	D7 (D3e) - Marine Pile Cap M2b - Inst.Access & make Watertight	3	23-Mar-15	0%	3	25-Mar-15	26-Mar-15	28-Mar-15	3	0	0%																				
SD3E0100	D7 (D3e) - Marine Pile Cap M2b - Weld Fin plates/Plug Rebar & Concrete	9	26-Mar-15	0%	9	09-Apr-15	30-Mar-15	13-Apr-15	3	0	0%																				
SD3E0120	D7 (D3e) - Marine Pile Cap M2b - Dewater precast shell / Remove Lifting Frame	2	10-Apr-15	0%	2	11-Apr-15	14-Apr-15	16-Apr-15	3	0	0%																				
SD3E0130	D7 (D3e) - Marine Pile Cap M2b - Pile cut down	8	13-Apr-15	0%	8	22-Apr-15	17-Apr-15	27-Apr-15	3	0	0%																				
SD3E0140	D7 (D3e) - Marine Pile Cap M2b - Rebar fixing, inst.inserts etc	12	24-Apr-15	0%	12	08-May-15	28-Apr-15	13-May-15	3	0	0%																				
SD3E0150	D7 (D3e) - Marine Pile Cap M2b - Concreting	1	09-May-15	0%	1	09-May-15	14-May-15	14-May-15	3	0	0%																				
SD3E0160	D7 (D3e) - Marine Pile Cap M2b - Curing incl. CJ Preparation	6	11-May-15	0%	6	18-May-15	15-May-15	22-May-15	3	0	0%																				
Pier Works																															
SD3E0170	D7 (D3e) - Type 4B Pier Temp. Support Platform	6	11-May-15	0%	6	18-May-15	15-May-15	22-May-15	3	0	0%																				
SD3E0172	D7 (D3e) - Type 4B Pier Scaffolding (1st Lift)	1	19-May-15	0%	1	19-May-15	23-May-15	23-May-15	3	0	0%																				
SD3E0180	D7 (D3e) - Type 4B Pier Rebarwork (1st Lift)	3	20-May-15	0%	3	23-May-15	26-May-15	28-May-15	3	0	0%																				

■ Actual Work
■ Planned Bar
■ Critical Bar
◆ Milestone

Project ID: J3518DWPPrE-M22
Layout: J3518-DWP-3MRP Submission - M22_
Filter: TASK filters: 3-Month Lookahead, No CC
Milestones, No Level of Effort.

Tuen Mun - Chek Lap Kok Link - Southern Connection
3-Month Rolling Programme (Page 24 of 41 Pages)
(Progress as of 21-Mar-15)

Date	Revision	Checked	Approved
09-Mar-15		DB	
31-Mar-15		WY	

DWG. No.:
J3518/GCL/PGM/3MRP-M22

Activity ID	Activity Name	Orig. Durn.	Act. Start / FC Early Start	Duration % Complete	Rem. Durn.	Act. Finish / FC Early Finish	Late Start	Late Finish	Total Float	Free Float	Physical % Complete	2015																
												March				April				May				June				
												23	02	09	16	23	30	06	13	20	27	04	11	18	25	01	08	15
SD2CR140	D14B (D2c-R) - Pile cap Curing & Striking of Forms incl. CJ prep	6	19-Mar-15 A	100%	0	21-Mar-15 A					100%	[Gantt bar: Mar 21 - Mar 27]																
Pier Works																												
SD2CL150	D14A (D2c-L) - Pier Scaffolding (1st Lift)	1	23-Feb-15 A	100%	0	23-Feb-15 A					100%	[Gantt bar: Feb 23 - Feb 23]																
SD2CL160	D14A (D2c-L) - Pier Rebarwork (1st Lift)	2	21-Mar-15 A	0%	2	23-Mar-15	07-Oct-15	08-Oct-15	145	0	0%	[Gantt bar: Mar 21 - Mar 23]																
SD2CL170	D14A (D2c-L) - Pier Formwork & Prep for Concreting (1st Lift)	1	24-Mar-15	0%	1	24-Mar-15	09-Oct-15	09-Oct-15	145	0	0%	[Gantt bar: Mar 24 - Mar 24]																
SD2CL180	D14A (D2c-L) - Pier Concreting (1st Lift)	1	25-Mar-15	0%	1	25-Mar-15	10-Oct-15	10-Oct-15	145	0	0%	[Gantt bar: Mar 25 - Mar 25]																
SD2CL182	D14A (D2c-L) - Pier Curing & Striking of Forms incl. CJ prep (1st Lift)	2	26-Mar-15	0%	2	27-Mar-15	12-Oct-15	13-Oct-15	145	0	0%	[Gantt bar: Mar 26 - Mar 27]																
SD2CL190	D14A (D2c-L) - Pier Scaffolding (2nd Lift)	2	28-Mar-15	0%	2	30-Mar-15	15-Oct-15	16-Oct-15	145	0	0%	[Gantt bar: Mar 28 - Mar 29]																
SD2CL200	D14A (D2c-L) - Pier Rebarwork (2nd Lift)	3	31-Mar-15	0%	3	02-Apr-15	17-Oct-15	20-Oct-15	145	0	0%	[Gantt bar: Mar 31 - Apr 02]																
SD2CL210	D14A (D2c-L) - Pier Formwork & Prep for Concreting (2nd Lift)	3	08-Apr-15	0%	3	10-Apr-15	22-Oct-15	24-Oct-15	145	0	0%	[Gantt bar: Apr 08 - Apr 10]																
SD2CL220	D14A (D2c-L) - Pier Concreting (2nd Lift)	1	11-Apr-15	0%	1	11-Apr-15	26-Oct-15	26-Oct-15	145	0	0%	[Gantt bar: Apr 11 - Apr 11]																
SD2CL222	D14A (D2c-L) - Pier Curing & Striking of Forms incl. CJ prep (2nd Lift)	2	13-Apr-15	0%	2	14-Apr-15	27-Oct-15	28-Oct-15	145	20	0%	[Gantt bar: Apr 13 - Apr 14]																
SD2CR150	D14B (D2c-R) - Pier Scaffolding (1st Lift)	2	26-Mar-15	0%	2	27-Mar-15	17-Oct-15	19-Oct-15	149	0	0%	[Gantt bar: Mar 26 - Mar 27]																
SD2CR160	D14B (D2c-R) - Pier Rebarwork (1st Lift)	2	28-Mar-15	0%	2	30-Mar-15	20-Oct-15	22-Oct-15	149	0	0%	[Gantt bar: Mar 28 - Mar 29]																
SD2CR170	D14B (D2c-R) - Pier Formwork & Prep for Concreting (1st Lift)	2	31-Mar-15	0%	2	01-Apr-15	23-Oct-15	24-Oct-15	149	0	0%	[Gantt bar: Mar 31 - Apr 01]																
SD2CR180	D14B (D2c-R) - Pier Concreting (1st Lift)	1	02-Apr-15	0%	1	02-Apr-15	26-Oct-15	26-Oct-15	149	0	0%	[Gantt bar: Apr 02 - Apr 02]																
SD2CR182	D14B (D2c-R) - Pier Curing & Striking of Forms incl. CJ prep (1st Lift)	2	08-Apr-15	0%	2	09-Apr-15	27-Oct-15	28-Oct-15	149	24	0%	[Gantt bar: Apr 08 - Apr 09]																
Portal																												
SD2CR280	D14 (D2c) - Portal Beam Scaffolding	12	13-May-15	0%	12	28-May-15	30-Oct-15	12-Nov-15	125	0	0%	[Gantt bar: May 13 - May 25]																
SD2CR290	D14 (D2c) - Portal Beam Soffit Formwork	12	29-May-15	0%	12	15-Jun-15	13-Nov-15	26-Nov-15	125	0	0%	[Gantt bar: May 29 - Jun 10]																
SD2CR300	D14 (D2c) - Portal Beam Rebarwork & Inserts	16	16-Jun-15	0%	16	09-Jul-15	27-Nov-15	15-Dec-15	125	0	0%	[Gantt bar: Jun 16 - Jun 28]																
Pier D15 (D2b)																												
Socketted H-Pile Installation																												
GFXX446-2	D15 (D2b) - Installation of SH Pile (13 nr)	90	20-Jan-15 A	77%	21	18-Apr-15	24-Apr-15	19-May-15	25	0	30%	[Gantt bar: Jan 20 - Apr 18]																
Pile Cap Works																												
SD2B0090	D15 (D2b) - Pile cap Excavation / ELS (incl. sheet piling)	45	18-Apr-15	0%	45	22-Jun-15	20-May-15	23-Jul-15	23	0	0%	[Gantt bar: Apr 18 - Jun 22]																
Pier D16 (D2a)																												
Pile Cap Works																												
SD2A0090	D16 (D2a) - Pile cap Excavation / ELS (incl. sheet piling)	22	21-Mar-15	0%	22	21-Apr-15	28-Apr-15	27-May-15	26	0	0%	[Gantt bar: Mar 21 - Apr 21]																
SD2A0092	D16 (D2a) - Pile cap Pile breakdown to cut-off etc.	4	22-Apr-15	0%	4	27-Apr-15	28-May-15	01-Jun-15	26	0	0%	[Gantt bar: Apr 22 - Apr 26]																
SD2A0100	D16 (D2a) - Pile cap Blinding	1	28-Apr-15	0%	1	28-Apr-15	02-Jun-15	02-Jun-15	26	0	0%	[Gantt bar: Apr 28 - Apr 28]																
SD2A0110	D16 (D2a) - Pile cap Formwork	3	05-May-15	0%	3	07-May-15	10-Jun-15	13-Jun-15	26	0	0%	[Gantt bar: May 05 - May 07]																
SD2A0120	D16 (D2a) - Pile cap Rebarwork	4	29-Apr-15	0%	4	04-May-15	04-Jun-15	08-Jun-15	26	0	0%	[Gantt bar: Apr 29 - May 04]																
SD2A0122	D16 (D2a) - Pile cap Kicker Formwork	2	09-May-15	0%	2	11-May-15	24-Jun-15	26-Jun-15	30	4	0%	[Gantt bar: May 09 - May 11]																
SD2A0130	D16 (D2a) - Pile cap Concreting	1	08-May-15	0%	1	08-May-15	15-Jun-15	15-Jun-15	26	0	0%	[Gantt bar: May 08 - May 08]																
SD2A0140	D16 (D2a) - Pile cap Curing & Striking of Forms incl. CJ prep	6	09-May-15	0%	6	16-May-15	16-Jun-15	26-Jun-15	26	0	0%	[Gantt bar: May 09 - May 15]																
Pier Works																												
SD2A0150	D16 (D2a) - Type 5B Pier Scaffolding (1st Lift)	2	18-May-15	0%	2	19-May-15	27-Jun-15	29-Jun-15	26	0	0%	[Gantt bar: May 18 - May 19]																
SD2A0160	D16 (D2a) - Type 5B Pier Rebarwork (1st Lift)	3	20-May-15	0%	3	23-May-15	30-Jun-15	03-Jul-15	26	0	0%	[Gantt bar: May 20 - May 23]																
SD2A0170	D16 (D2a) - Type 5B Pier Formwork & Prep for Concreting (1st Lift)	2	26-May-15	0%	2	27-May-15	04-Jul-15	06-Jul-15	26	0	0%	[Gantt bar: May 26 - May 27]																
SD2A0180	D16 (D2a) - Type 5B Pier Concreting (1st Lift)	1	28-May-15	0%	1	28-May-15	07-Jul-15	07-Jul-15	26	0	0%	[Gantt bar: May 28 - May 28]																
SD2A0182	D16 (D2a) - Type 5B Pier Curing & Striking of Forms incl. CJ prep (1st Lift)	2	29-May-15	0%	2	30-May-15	08-Jul-15	09-Jul-15	26	0	0%	[Gantt bar: May 29 - May 30]																
SD2A0190	D16 (D2a) - Type 5B Pier Scaffolding (2nd Lift)	2	01-Jun-15	0%	2	02-Jun-15	10-Jul-15	11-Jul-15	26	0	0%	[Gantt bar: Jun 01 - Jun 02]																
SD2A0200	D16 (D2a) - Type 5B Pier Rebarwork (2nd Lift)	3	04-Jun-15	0%	3	06-Jun-15	13-Jul-15	15-Jul-15	26	0	0%	[Gantt bar: Jun 04 - Jun 06]																
SD2A0210	D16 (D2a) - Type 5B Pier Formwork & Prep for Concreting (2nd Lift)	3	08-Jun-15	0%	3	12-Jun-15	17-Jul-15	20-Jul-15	26	0	0%	[Gantt bar: Jun 08 - Jun 12]																
SD2A0220	D16 (D2a) - Type 5B Pier Concreting (2nd Lift)	1	13-Jun-15	0%	1	13-Jun-15	21-Jul-15	21-Jul-15	26	0	0%	[Gantt bar: Jun 13 - Jun 13]																
SD2A0222	D16 (D2a) - Type 5B Pier Curing & Striking of Forms incl. CJ prep (2nd Lift)	2	15-Jun-15	0%	2	16-Jun-15	22-Jul-15	23-Jul-15	26	0	0%	[Gantt bar: Jun 15 - Jun 16]																
SD2A0230	D16 (D2a) - Type 5B Pier Head Scaffolding	3	18-Jun-15	0%	3	22-Jun-15	24-Jul-15	27-Jul-15	26	0	0%	[Gantt bar: Jun 18 - Jun 22]																

■ Actual Work
■ Planned Bar
■ Critical Bar
◆ Milestone

Project ID: J3518DWPPrE-M22
 Layout: J3518-DWP-3MRP Submission - M22_...
 Filter: TASK filters: 3-Month Lookahead, No CC Milestones, No Level of Effort.

Tuen Mun - Chek Lap Kok Link - Southern Connection
3-Month Rolling Programme (Page 27 of 41 Pages)
(Progress as of 21-Mar-15)

Date	Revision	Checked	Approved
09-Mar-15		DB	
31-Mar-15		WY	

DWG. No.:
J3518/GCL/PGM/3MRP-M22

Activity ID	Activity Name	Orig. Durn.	Act. Start / FC Early Start	Duration% Complete	Rem. Durn.	Act. Finish / FC Early Finish	Late Start	Late Finish	Total Float	Free Float	Physical % Complete	2015																			
												March					April					May					June				
												23	02	09	16	23	30	06	13	20	27	04	11	18	25	01	08	15			
Pier D17 (D1d)																															
Pile Cap Works																															
SD1D0092	D17 (D1d) - Pile cap Pile breakdown to cut-off etc.	4	14-Feb-15 A	100%	0	11-Mar-15 A					100%																				
SD1D0110	D17 (D1d) - Pile cap Formwork	3	12-Mar-15 A	100%	0	13-Mar-15 A					100%																				
SD1D0120	D17 (D1d) - Pile cap Rebarwork	4	20-Mar-15 A	0%	4	25-Mar-15	25-Apr-18	30-Apr-18	859	859	0%																				
SD1D0122	D17 (D1d) - Pile cap Kicker Formwork	2	23-Mar-15	0%	2	24-Mar-15	31-Mar-17	01-Apr-17	564	130	0%																				
SD1D0130	D17 (D1d) - Pile cap Concreting	1	21-Mar-15	0%	1	21-Mar-15	11-Mar-17	11-Mar-17	548	0	0%																				
SD1D0140	D17 (D1d) - Pile cap Curing & Striking of Forms incl. CJ prep	6	23-Mar-15	0%	6	28-Mar-15	23-Apr-18	30-Apr-18	856	856	0%																				
Pier Works																															
SD1D0150	D17 (D1d) - Type 5B-B Pier Scaffolding (1st Lift)	2	11-Mar-15 A	100%	0	13-Mar-15 A					100%																				
SD1D0160	D17 (D1d) - Type 5B-B Pier Rebarwork (1st Lift)	3	21-Mar-15	0%	3	24-Mar-15	13-Aug-15	15-Aug-15	103	0	0%																				
SD1D0170	D17 (D1d) - Type 5B-B Pier Formwork & Prep for Concreting (1st Lift)	3	25-Mar-15	0%	3	27-Mar-15	17-Aug-15	19-Aug-15	103	0	0%																				
SD1D0180	D17 (D1d) - Type 5B-B Pier Concreting (1st Lift)	1	28-Mar-15	0%	1	28-Mar-15	21-Aug-15	21-Aug-15	103	0	0%																				
SD1D0182	D17 (D1d) - Type 5B-B Pier Curing & Striking of Forms incl. CJ prep (1st Lift)	2	30-Mar-15	0%	2	31-Mar-15	22-Aug-15	24-Aug-15	103	0	0%																				
SD1D0190	D17 (D1d) - Type 5B-B Pier Head Scaffolding	3	01-Apr-15	0%	3	08-Apr-15	25-Aug-15	27-Aug-15	103	0	0%																				
SD1D0200	D17 (D1d) - Type 5B-B Pier Head Rebarwork	4	09-Apr-15	0%	4	13-Apr-15	28-Aug-15	01-Sep-15	103	0	0%																				
SD1D0210	D17 (D1d) - Type 5B-B Pier Head Formwork & Prep for Concreting	4	14-Apr-15	0%	4	18-Apr-15	02-Sep-15	05-Sep-15	103	0	0%																				
SD1D0220	D17 (D1d) - Type 5B-B Pier Head Concreting	1	20-Apr-15	0%	1	20-Apr-15	07-Sep-15	07-Sep-15	103	0	0%																				
SD1D0310	D17 (D1d) - Type 5B-B Pier Head Curing/Striking of Forms/Remove Scaffolding	6	21-Apr-15	0%	6	28-Apr-15	08-Sep-15	15-Sep-15	103	0	0%																				
SD1D0320	D17 (D1d) - Type 5B-B Pier Backfilling Works	4	29-Apr-15	0%	4	04-May-15	16-Sep-15	21-Sep-15	103	6	0%																				
Pier Head Segments																															
SD1D0370	D17 (D1d) - Pier Head Segment - Temporary Platform	6	13-May-15	0%	6	19-May-15	22-Sep-15	29-Sep-15	97	88	0%																				
Pier D18 (D1c)																															
Pier Works																															
SD1C0150	D18 (D1c) - Type 5B-B Pier Scaffolding (1st Lift)	2	11-Mar-15 A	100%	0	13-Mar-15 A					100%																				
SD1C0160	D18 (D1c) - Type 5B-B Pier Rebarwork (1st Lift)	3	17-Mar-15 A	100%	0	20-Mar-15 A					100%																				
SD1C0170	D18 (D1c) - Type 5B-B Pier Formwork & Prep for Concreting (1st Lift)	3	20-Mar-15 A	65%	1	23-Mar-15	14-Sep-15	15-Sep-15	129	0	0%																				
SD1C0180	D18 (D1c) - Type 5B-B Pier Concreting (1st Lift)	1	23-Mar-15	0%	1	24-Mar-15	16-Sep-15	16-Sep-15	129	0	0%																				
SD1C0182	D18 (D1c) - Type 5B-B Pier Curing & Striking of Forms incl. CJ prep (1st Lift)	2	24-Mar-15	0%	2	26-Mar-15	18-Sep-15	19-Sep-15	129	0	0%																				
SD1C0190	D18 (D1c) - Type 5B-B Pier Head Scaffolding	3	26-Mar-15	0%	3	30-Mar-15	21-Sep-15	23-Sep-15	129	0	0%																				
SD1C0200	D18 (D1c) - Type 5B-B Pier Head Rebarwork	4	30-Mar-15	0%	4	08-Apr-15	24-Sep-15	29-Sep-15	129	0	0%																				
SD1C0210	D18 (D1c) - Type 5B-B Pier Head Formwork & Prep for Concreting	4	08-Apr-15	0%	4	13-Apr-15	30-Sep-15	05-Oct-15	129	0	0%																				
SD1C0220	D18 (D1c) - Type 5B-B Pier Head Concreting	1	13-Apr-15	0%	1	14-Apr-15	06-Oct-15	06-Oct-15	129	0	0%																				
SD1C0310	D18 (D1c) - Type 5B-B Pier Head Curing/Striking of Forms/Remove Scaffolding	6	14-Apr-15	0%	6	22-Apr-15	07-Oct-15	13-Oct-15	129	0	0%																				
SD1C0320	D18 (D1c) - Type 5B-B Pier Backfilling Works	4	22-Apr-15	0%	4	28-Apr-15	15-Oct-15	19-Oct-15	129	11	0%																				
Pier Head Segments																															
SD1C0370	D18 (D1c) - Pier Head Segment - Temporary Platform	6	13-May-15	0%	6	19-May-15	20-Oct-15	27-Oct-15	118	88	0%																				
Pier D19 (D1b) & Abutment D																															
Pile Cap Works																															
SD1B0092	D19 (D1b) - Pile Breakdown to cut-off etc.	7	02-Mar-15 A	100%	0	05-Mar-15 A					100%																				
SD1B0110	D19 (D1b) - Pile cap Formwork	3	07-Mar-15 A	100%	0	10-Mar-15 A					100%																				
SD1B0120	D19 (D1b) - Pile cap Rebarwork	7	17-Mar-15 A	100%	0	19-Mar-15 A					100%																				
SD1B0122	D19 (D1b) - Pile cap Kicker Formwork	3	23-Mar-15	0%	3	25-Mar-15	19-Dec-15	22-Dec-15	204	3	0%																				
SD1B0130	D19 (D1b) - Pile cap Concreting	1	21-Mar-15	0%	1	21-Mar-15	15-Dec-15	15-Dec-15	201	0	0%																				
SD1B0140	D19 (D1b) - Pile cap Curing & Striking of Forms incl. CJ prep	6	23-Mar-15	0%	6	28-Mar-15	16-Dec-15	22-Dec-15	201	0	0%																				
Pier Works																															
SD1B0150	D19 (D1b) - Pier/Pier Head Scaffolding	4	30-Mar-15	0%	4	02-Apr-15	23-Dec-15	29-Dec-15	201	0	0%																				
SD1B0160	D19 (D1b) - Pier/Pier Head Rebarwork	6	08-Apr-15	0%	6	14-Apr-15	30-Dec-15	06-Jan-16	201	0	0%																				

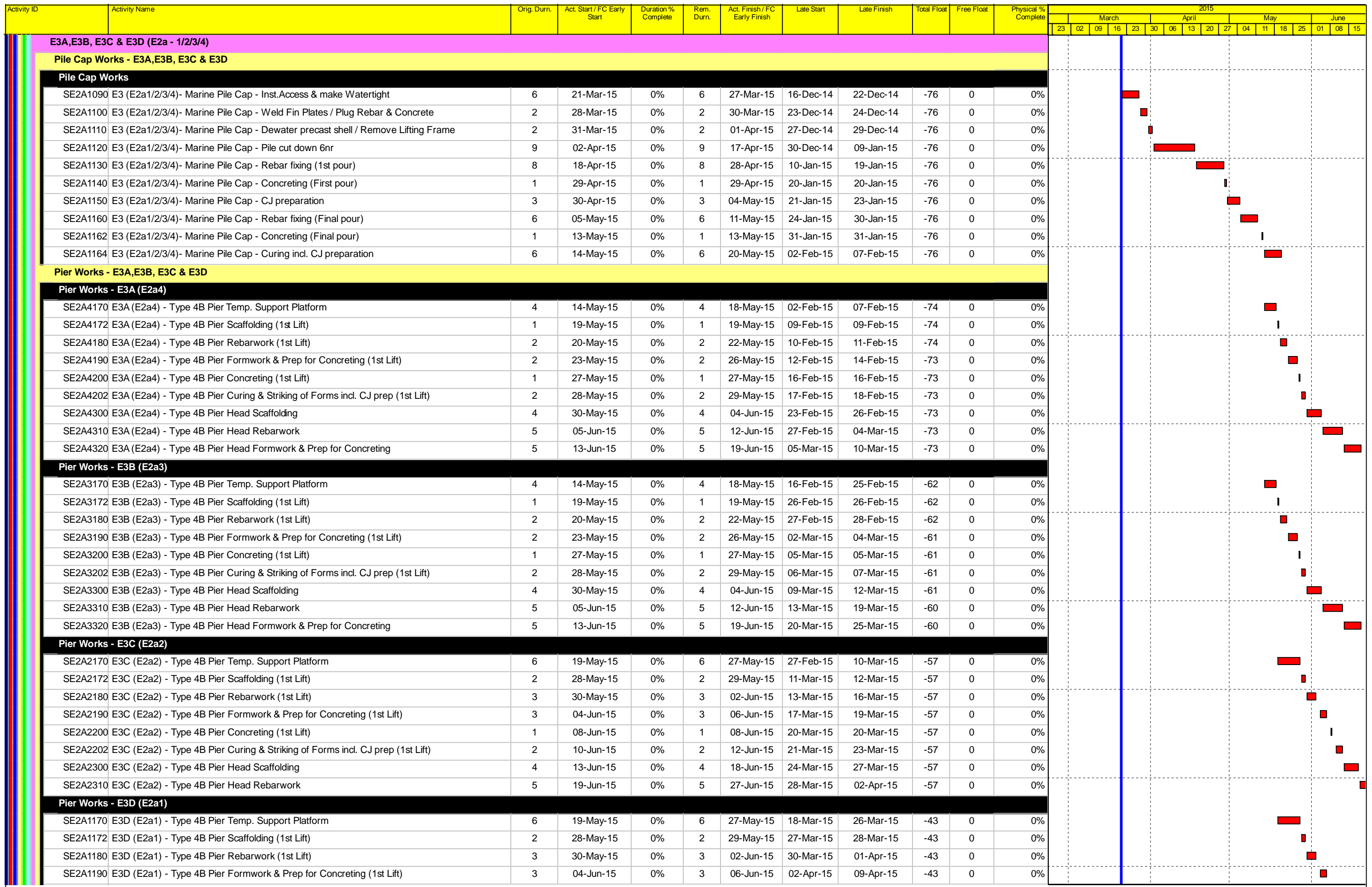
■ Actual Work
■ Planned Bar
■ Critical Bar
◆ Milestone

Project ID: J3518DWPrE-M22
 Layout: J3518-DWP-3MRP Submission - M22_...
 Filter: TASK filters: 3-Month Lookahead, No CC
 Milestones, No Level of Effort.

Tuen Mun - Chek Lap Kok Link - Southern Connection
3-Month Rolling Programme (Page 28 of 41 Pages)
(Progress as of 21-Mar-15)

Date	Revision	Checked	Approved
09-Mar-15		DB	
31-Mar-15		WY	

DWG. No.:
J3518/GCL/PGM/3MRP-M22



<ul style="list-style-type: none"> Actual Work Planned Bar Critical Bar Milestone 	Project ID: J3518DWPPrE-M22 Layout: J3518-DWP-3MRP Submission - M22_ Filter: TASK filters: 3-Month Lookahead, No CC Milestones, No Level of Effort.	Tuen Mun - Chek Lap Kok Link - Southern Connection 3-Month Rolling Programme (Page 32 of 41 Pages) (Progress as of 21-Mar-15)	Date	Revision	Checked	Approved	DWG. No.: J3518/GCL/PGM/3MRP-M22
			09-Mar-15		DB		
			31-Mar-15		WY		

Activity ID	Activity Name	Orig. Durn.	Act. Start / FC Early Start	Duration % Complete	Rem. Durn.	Act. Finish / FC Early Finish	Late Start	Late Finish	Total Float	Free Float	Physical % Complete	2015																	
												March				April				May				June					
												23	02	09	16	23	30	06	13	20	27	04	11	18	25	01	08	15	
Foundation Works																													
GFXX05	E7 (E2e) - Relocation & Install, Temporary Removable Platform from E11 to E7	6	18-Feb-15 A	100%	0	27-Feb-15 A					100%																		
GFXX057	E7 (E2e) - Bored Piles (2.50m dia. x 4 nr)	78	10-Feb-15 A	5%	74	24-Jun-15	29-Nov-14	03-Mar-15	-90	0	0%																		
E8A & E8B (E2f - 1/2)																													
Foundation Works - E8A & E8B																													
Foundation Works																													
GFXX062	E8 (E2f) - Bored Piles (2.50m dia. x 4 nr)	102	24-Dec-14 A	95%	5	27-Mar-15	14-May-15	20-May-15	41	0	40%																		
GFXX063	E8 (E2f) - Sonic & Interface Coring	12	27-Mar-15	0%	12	15-Apr-15	20-May-15	04-Jun-15	41	0	0%																		
GFXX064	E8 (E2f) - Dismantle Temporary Removable Piling Platform	7	15-Apr-15	0%	7	23-Apr-15	04-Jun-15	12-Jun-15	41	0	0%																		
E9A & E9B (E2g - 1/2)																													
Pile Cap Works - E9A & E9B																													
Pile Cap Works																													
SE2G00	E9 (E2g1/2) - Marine Pile Cap - Inst.Floating Seal & Casing Head Steelwork	6	12-Feb-15 A	100%	0	02-Mar-15 A					100%																		
SE2G00	E9 (E2g1/2) - Marine Pile Cap - Install precast shell in position (3 units)	4	03-Mar-15 A	100%	0	21-Mar-15 A					100%																		
SE2G00	E9 (E2g1/2) - Marine Pile Cap - Inst.Access & make Watertight	6	21-Mar-15	0%	6	27-Mar-15	19-Dec-14	29-Dec-14	-72	0	0%																		
SE2G01	E9 (E2g1/2) - Marine Pile Cap - Weld Fin Plates / Plug Rebar & Concrete	2	28-Mar-15	0%	2	30-Mar-15	29-Dec-14	31-Dec-14	-72	0	0%																		
SE2G01	E9 (E2g1/2) - Marine Pile Cap - Dewater precast shell / Remove Lifting Frame	2	31-Mar-15	0%	2	01-Apr-15	31-Dec-14	03-Jan-15	-72	0	0%																		
SE2G01	E9 (E2g1/2) - Marine Pile Cap - Pile cut down 6nr	9	02-Apr-15	0%	9	17-Apr-15	03-Jan-15	14-Jan-15	-72	0	0%																		
SE2G01	E9 (E2g1/2) - Marine Pile Cap - Rebar fixing (1st pour)	8	18-Apr-15	0%	8	28-Apr-15	14-Jan-15	23-Jan-15	-72	0	0%																		
SE2G01	E9 (E2g1/2) - Marine Pile Cap - Concreting (First pour)	1	29-Apr-15	0%	1	29-Apr-15	23-Jan-15	24-Jan-15	-72	0	0%																		
SE2G01	E9 (E2g1/2) - Marine Pile Cap - CJ preparation	3	30-Apr-15	0%	3	04-May-15	24-Jan-15	28-Jan-15	-72	0	0%																		
SE2G01	E9 (E2g1/2) - Marine Pile Cap - Rebar fixing (Final pour)	6	05-May-15	0%	6	11-May-15	28-Jan-15	04-Feb-15	-72	0	0%																		
SE2G01	E9 (E2g1/2) - Marine Pile Cap - Concreting (Final pour)	1	13-May-15	0%	1	13-May-15	04-Feb-15	05-Feb-15	-72	0	0%																		
SE2G01	E9 (E2g1/2) - Marine Pile Cap - Curing incl. CJ preparation	6	14-May-15	0%	6	20-May-15	05-Feb-15	12-Feb-15	-72	0	0%																		
Pier Works - E9A & E9B																													
Pier Works - E9A (E2g2)																													
SE2G20	E9A (E2g2) - Seagull Pier Falsework & Scaffolding (1st wall pour)	2	10-Jun-15	0%	2	12-Jun-15	11-May-15	14-May-15	-20	0	0%																		
SE2G20	E9A (E2g2) - Seagull Pier Rebar Fixing (1st wall pour)	3	13-Jun-15	0%	3	16-Jun-15	14-May-15	18-May-15	-20	0	0%																		
SE2G20	E9A (E2g2) - Seagull Pier Formwork & Prep. for concreting (1st wall pour)	2	18-Jun-15	0%	2	19-Jun-15	18-May-15	20-May-15	-20	0	0%																		
Pier Works - E9B (E2g1)																													
SE2G10	E9B (E2g1) - Seagull Pier Falsework & Scaffolding (1st wall pour)	2	14-May-15	0%	2	15-May-15	05-Feb-15	07-Feb-15	-72	0	0%																		
SE2G10	E9B (E2g1) - Seagull Pier Rebar Fixing (1st wall pour)	3	16-May-15	0%	3	19-May-15	07-Feb-15	11-Feb-15	-72	0	0%																		
SE2G10	E9B (E2g1) - Seagull Pier Formwork & Prep. for concreting (1st wall pour)	2	20-May-15	0%	2	22-May-15	11-Feb-15	13-Feb-15	-72	0	0%																		
SE2G10	E9B (E2g1) - Seagull Pier Concreting (1st wall pour)	1	23-May-15	0%	1	23-May-15	13-Feb-15	14-Feb-15	-72	0	0%																		
SE2G10	E9B (E2g1) - Seagull Pier Curing & Striking of Forms incl. CJ Prep. (1st wall pour)	2	26-May-15	0%	2	27-May-15	14-Feb-15	17-Feb-15	-72	0	0%																		
SE2G10	E9B (E2g1) - Seagull Pier Falsework & Scaffolding (2nd wall pour)	2	28-May-15	0%	2	29-May-15	17-Feb-15	23-Feb-15	-72	0	0%																		
SE2G10	E9B (E2g1) - Seagull Pier Rebar Fixing (2nd wall pour)	4	30-May-15	0%	4	04-Jun-15	23-Feb-15	27-Feb-15	-72	0	0%																		
SE2G10	E9B (E2g1) - Seagull Pier Formwork & Prep. for concreting (2nd wall pour)	2	05-Jun-15	0%	2	06-Jun-15	27-Feb-15	02-Mar-15	-72	0	0%																		
SE2G11	E9B (E2g1) - Seagull Pier Concreting (2nd wall pour)	1	08-Jun-15	0%	1	08-Jun-15	02-Mar-15	03-Mar-15	-72	0	0%																		
SE2G11	E9B (E2g1) - Seagull Pier Curing & Striking of Forms incl. CJ Prep. (2nd wall pour)	2	10-Jun-15	0%	2	12-Jun-15	03-Mar-15	05-Mar-15	-72	0	0%																		
SE2G11	E9B (E2g1) - Seagull Pier Falsework & Scaffolding (diaphragm slab, 3rd pour)	2	13-Jun-15	0%	2	15-Jun-15	05-Mar-15	07-Mar-15	-72	0	0%																		
SE2G11	E9B (E2g1) - Seagull Pier Soffit Formwork (diaphragm slab, 3rd pour)	2	16-Jun-15	0%	2	18-Jun-15	07-Mar-15	10-Mar-15	-72	0	0%																		
SE2G11	E9B (E2g1) - Seagull Pier Rebar Fixing (diaphragm slab, 3rd pour)	3	19-Jun-15	0%	3	24-Jun-15	10-Mar-15	13-Mar-15	-72	0	0%																		
E10A & E10B (E2h - 1/2)																													
Pile Cap Works - E10A & E10B																													
Pile Cap Works																													
SE2H00	E10 (E2h1/2) - Marine Pile Cap - Inst.Floating Seal & Casing Head Steelwork	6	11-Mar-15 A	0%	6	27-Mar-15	14-Mar-15	21-Mar-15	-6	0	0%																		
SE2H00	E10 (E2h1/2) - Marine Pile Cap - Install precast shell in position (3 units)	4	28-Mar-15	0%	4	01-Apr-15	21-Mar-15	26-Mar-15	-6	0	0%																		

■ Actual Work
■ Planned Bar
■ Critical Bar
◆ Milestone

Project ID: J3518DWPPrE-M22
 Layout: J3518-DWP-3MRP Submission - M22_
 Filter: TASK filters: 3-Month Lookahead, No CC
 Milestones, No Level of Effort.

Tuen Mun - Chek Lap Kok Link - Southern Connection
3-Month Rolling Programme (Page 34 of 41 Pages)
(Progress as of 21-Mar-15)

Date	Revision	Checked	Approved
09-Mar-15		DB	
31-Mar-15		WY	

DWG. No.:
J3518/GCL/PGM/3MRP-M22

Activity ID	Activity Name	Orig. Durn.	Act. Start / FC Early Start	Duration % Complete	Rem. Durn.	Act. Finish / FC Early Finish	Late Start	Late Finish	Total Float	Free Float	Physical % Complete	2015													
												March					April				May			June	
												23	02	09	16	23	30	06	13	20	27	04	11	18	25
GFXX089	E12 (E5b/E6b/E7b/E8b) - Bored Piles (2.5m dia. x 14 nr) 25% in total	151	09-Jul-14 A	80.13%	30	29-Apr-15	10-Apr-15	16-May-15	14	0	90%	[Gantt bar: 10-Apr-15 to 16-May-15]													
GFXX091	E12 (E5b/E6b/E7b/E8b) - Sonic & Interface Coring	12	30-Apr-15	0%	12	14-May-15	16-May-15	01-Jun-15	14	0	0%	[Gantt bar: 16-May-15 to 01-Jun-15]													
GFXX091	E12 (E5b/E6b/E7b/E8b Dolphins only) - Sonic & Interface Coring	12	06-Jun-15	0%	12	19-Jun-15	09-Feb-17	22-Feb-17	499	0	0%	[Gantt bar: 09-Feb-17 to 22-Feb-17]													
GFXX092	E12 (E5b/E6b/E7b/E8b) - Dismantle Removable Piling Platform in Pier E12	6	15-May-15	0%	6	21-May-15	01-Jun-15	08-Jun-15	14	0	0%	[Gantt bar: 01-Jun-15 to 08-Jun-15]													
E13A, E13B, E13C & E13D (E8c/E7c/E6c/E5c)																									
Foundation Works - E13																									
Foundation Works - E13A (E8c) & E13B (E7c)																									
GFXX101	E13A/B (E8c/E7c) - Bored Piles (2.5m dia. x 10 nr)	172	27-Dec-14 A	27.91%	124	21-Aug-15	16-Jun-15	13-Nov-15	69	0	20%	[Gantt bar: 16-Jun-15 to 13-Nov-15]													
GFXX101	E13A/B (E8c/E7c) - Bored Piles (2.5m dia. x 10 nr) 50% in total	172	27-Dec-14 A	27.91%	124	21-Aug-15	16-Jun-15	13-Nov-15	69	0	20%	[Gantt bar: 16-Jun-15 to 13-Nov-15]													
GFXX101	E13A/B (E8c/E7c) - Bored Piles (2.5m dia. x 10 nr) 50% in total	172	27-Dec-14 A	27.91%	124	21-Aug-15	16-Jun-15	13-Nov-15	69	0	20%	[Gantt bar: 16-Jun-15 to 13-Nov-15]													
Foundation Works - E13C (E6c) & E13D (E5c)																									
GFXX095	E13C/D (E6c/E5c) - Bored Piles (2.50m dia. x 10 nr)	128	23-Aug-14 A	39.06%	78	27-Jun-15	24-Dec-14	01-Apr-15	-68	0	40%	[Gantt bar: 24-Dec-14 to 01-Apr-15]													
GFXX095	E13C/D (E6c/E5c) - Bored Piles (2.50m dia. x 10 nr) 50% in total	128	23-Aug-14 A	39.06%	78	27-Jun-15	24-Dec-14	01-Apr-15	-68	0	40%	[Gantt bar: 24-Dec-14 to 01-Apr-15]													
GFXX095	E13C/D (E6c/E5c) - Bored Piles (2.50m dia. x 10 nr) 50% in total	128	23-Aug-14 A	39.06%	78	27-Jun-15	24-Dec-14	01-Apr-15	-68	0	40%	[Gantt bar: 24-Dec-14 to 01-Apr-15]													
E14A, E14B, E14C & E14D (E8d/E7d/E6d/E5d)																									
Foundation Works - E14																									
GFXX545	Mobilization & Assembling Bored Pile Plant & Equipment for Viaducts in HKBCF	5	21-Mar-15	0%	5	26-Mar-15	01-Nov-14	07-Nov-14	-113	0	0%	[Gantt bar: 01-Nov-14 to 07-Nov-14]													
Foundation Works - E14A (E8d)																									
GFXX544	E14A (E8d) - Pre-drilling for Piles (4 nos)	24	29-May-15	0%	24	26-Jun-15	02-Apr-15	05-May-15	-43	0	0%	[Gantt bar: 02-Apr-15 to 05-May-15]													
Foundation Works - E14B (E7d)																									
GFXX544	E14B (E7d) - Pre-drilling for Piles (3 nos)	24	29-May-15	0%	24	26-Jun-15	19-Mar-15	20-Apr-15	-55	0	0%	[Gantt bar: 19-Mar-15 to 20-Apr-15]													
Foundation Works - E14C (E6d)																									
GFXX544	E14C (E6d) - Pre-drilling for Piles (3 nos)	30	02-Apr-15	0%	30	12-May-15	17-Nov-14	20-Dec-14	-111	0	0%	[Gantt bar: 17-Nov-14 to 20-Dec-14]													
GFXX544	E14C (E6d) - Confirm Rockhead levels	8	13-May-15	0%	8	21-May-15	22-Dec-14	02-Jan-15	-111	0	0%	[Gantt bar: 22-Dec-14 to 02-Jan-15]													
GFXX547	E14C (E6d) - Bored Piles (2.20m dia. x 3 nos)	93	22-May-15	0%	93	10-Sep-15	03-Jan-15	29-Apr-15	-111	0	0%	[Gantt bar: 03-Jan-15 to 29-Apr-15]													
Foundation Works - E14D (E5d)																									
GFXX544	E14D (E5d) - Pre-drilling for Piles (4 nos)	30	02-Apr-15	0%	30	12-May-15	07-Nov-14	12-Dec-14	-118	0	0%	[Gantt bar: 07-Nov-14 to 12-Dec-14]													
GFXX544	E14D (E5d) - Confirm Rockhead levels	8	13-May-15	0%	8	21-May-15	12-Dec-14	22-Dec-14	-118	0	0%	[Gantt bar: 12-Dec-14 to 22-Dec-14]													
GFXX546	E14D (E5d) - Bored Piles (2.20m dia. x 4 nos)	102	22-May-15	0%	102	21-Sep-15	22-Dec-14	02-May-15	-118	0	0%	[Gantt bar: 22-Dec-14 to 02-May-15]													
Viaduct F																									
Viaduct F1																									
General F1																									
Milestones																									
GFXX553-8	F2 (F1c) - Start date for piling	0	09-May-15	0%	0		17-Apr-15		-18	72	0%	[Milestone diamond at 17-Apr-15]													
GFXX553-9	F3 (F1d) - Start date for piling	0	09-May-15	0%	0		12-Sep-15		105	84	0%	[Milestone diamond at 12-Sep-15]													
F1 (F1b)																									
Foundation Works																									
GFXX553-1	F1 (F1b) - Pre-drilling for Piles (2 nos)	24	29-Apr-15	0%	24	28-May-15	16-Feb-15	18-Mar-15	-55	0	0%	[Gantt bar: 16-Feb-15 to 18-Mar-15]													
GFXX553-4	F1 (F1b) - Confirm Rockhead Levels	8	29-May-15	0%	8	06-Jun-15	24-Apr-15	04-May-15	-28	60	0%	[Gantt bar: 24-Apr-15 to 04-May-15]													
F2 (F1c)																									
Foundation Works																									
GFXX553-2	F2 (F1c) - Pre-drilling for Piles (2 nos)	24	27-Mar-15	0%	24	28-Apr-15	05-Dec-14	05-Jan-15	-90	0	0%	[Gantt bar: 05-Dec-14 to 05-Jan-15]													
GFXX553-5	F2 (F1c) - Confirm Rockhead Levels	8	29-Apr-15	0%	8	08-May-15	06-Jan-15	14-Jan-15	-90	0	0%	[Gantt bar: 06-Jan-15 to 14-Jan-15]													
GFXX556	F2 (F1c) - Bored Piles (2.20m dia. x 2 nos)	72	09-May-15	0%	72	04-Aug-15	15-Jan-15	16-Apr-15	-90	0	0%	[Gantt bar: 15-Jan-15 to 16-Apr-15]													
F3 (F1d)																									
Foundation Works																									
GFXX553-3	F3 (F1d) - Pre-drilling for Piles (2 nos)	24	27-Mar-15	0%	24	28-Apr-15	08-Dec-14	07-Jan-15	-88	0	0%	[Gantt bar: 08-Dec-14 to 07-Jan-15]													
GFXX553-6	F3 (F1d) - Confirm Rockhead Levels	8	29-Apr-15	0%	8	08-May-15	08-Jan-15	16-Jan-15	-88	0	0%	[Gantt bar: 08-Jan-15 to 16-Jan-15]													

■ Actual Work
■ Planned Bar
■ Critical Bar
◆ Milestone

Project ID: J3518DWP-Pre-M22
 Layout: J3518-DWP-3MRP Submission - M22_
 Filter: TASK filters: 3-Month Lookahead, No CC
 Milestones, No Level of Effort.

Tuen Mun - Chek Lap Kok Link - Southern Connection
3-Month Rolling Programme (Page 36 of 41 Pages)
(Progress as of 21-Mar-15)

Date	Revision	Checked	Approved
09-Mar-15		DB	
31-Mar-15		WY	

DWG. No.:
J3518/GCL/PGM/3MRP-M22

Activity ID	Activity Name	Orig. Durn.	Act. Start / FC Early Start	Duration % Complete	Rem. Durn.	Act. Finish / FC Early Finish	Late Start	Late Finish	Total Float	Free Float	Physical % Complete	2015																																						
												March					April					May					June																							
												23	02	09	16	23	30	06	13	20	27	04	11	18	25	01	08	15																						
Milestones Ready for PH Segment Erection																																																		
B200010-1	Pier B12 (B2a) ready for Viaduct B2 PH segment erection	0		0%	0	20-Apr-15		04-Jul-15	52	4	0%																																							
B200020-1	Pier B11 (B2b) ready for Viaduct B2 PH segment erection	0		0%	0	09-Apr-15		06-May-15	21	0	0%																																							
B200030-1	Pier B10 (B2c) ready for Viaduct B2 PH segment erection	0		0%	0	28-Apr-15		09-Apr-15	-13	1	0%																																							
B200040-1	Pier B9 (B2d) ready for Viaduct B2 PH segment erection	0		0%	0	11-Apr-15		06-Mar-15	-27	1	0%																																							
B200050-1	Pier B8 (B2e) ready for Viaduct B2 PH segment erection	0		0%	0	02-Apr-15		02-Feb-15	-48	1	0%																																							
B200060-1	Pier B7 (B2f) ready for Viaduct B2 PH segment erection	0		0%	0	31-Mar-15		12-Jan-15	-64	0	0%																																							
B200070-1	Pier B6 (B3a) ready for Viaduct B2 PH segment erection	0		0%	0	01-Apr-15		27-Feb-15	-28	0	0%																																							
Milestones Ready for Deck Segment Erection																																																		
B200010	Pier B12 (B2a) ready for Viaduct B2 deck segment erection	0		0%	0	19-May-15		23-Jul-15	45	134	0%																																							
B200020	Pier B11 (B2b) ready for Viaduct B2 deck segment erection	0		0%	0	28-May-15		07-Jul-15	27	116	0%																																							
B200060	Pier B7 (B2f) ready for Viaduct B2 deck segment erection	0		0%	0	22-May-15		05-Mar-15	-58	31	0%																																							
B200070	Pier B6 (B3a) ready for Viaduct B2 deck segment erection	0		0%	0	25-Apr-15		17-Mar-15	-28	62	0%																																							
Bridge B1 Superstructure																																																		
Milestones																																																		
Milestones Ready for PH Segment Erection																																																		
B100050-1	Pier B14 (B1f) ready for Viaduct B1 PH segment erection	0		0%	0	02-Apr-15		24-Jun-15	55	0	0%																																							
B100060-1	Pier B13 (B1g) ready for Viaduct B1 PH segment erection	0		0%	0	16-Apr-15		26-May-15	29	0	0%																																							
B100070-1	Pier B12 (B2a) ready for Viaduct B1 PH segment erection	0		0%	0	20-Apr-15		29-Jun-15	48	0	0%																																							
Milestones Ready for Deck Segment Erection																																																		
B100030	Pier B16 (B1d) ready for Viaduct B1 deck segment erection	0		0%	0	29-Apr-15		04-Mar-17	515	449	0%																																							
B100040	Pier B15 (B1e) ready for Viaduct B1 deck segment erection	0		0%	0	18-May-15		12-Sep-15	86	175	0%																																							
B100050	Pier B14 (B1f) ready for Viaduct B1 deck segment erection	0		0%	0	30-May-15		24-Aug-15	61	150	0%																																							
B100060	Pier B13 (B1g) ready for Viaduct B1 deck segment erection	0		0%	0	10-Jun-15		30-Jul-15	35	124	0%																																							
B100070	Pier B12 (B2a) ready for Viaduct B1 deck segment erection	0		0%	0	19-May-15		15-Aug-15	63	152	0%																																							
Viaduct C Superstructure																																																		
Bridge C3 Superstructure																																																		
Milestones																																																		
Milestones Ready for PH Segment Erection																																																		
C300030-1	Pier C9 (C3c) ready for Viaduct C3 PH segment erection	0		0%	0	16-Jun-15		30-Jan-16	177	0	0%																																							
Bridge C1 Superstructure																																																		
Milestones																																																		
Milestones Ready for PH Segment Erection																																																		
C100010-1	Pier C20 (C1c) ready for Viaduct C1 PH segment erection	0		0%	0	25-Apr-15		16-Nov-16	431	0	0%																																							
C100020-1	Pier C19 (C1d) ready for Viaduct C1 PH segment erection	0		0%	0	17-Apr-15		28-Nov-16	447	0	0%																																							
Viaduct D Superstructure																																																		
Bridge D3 Superstructure																																																		
Milestones																																																		
Milestones Ready for PH Segment Erection																																																		
D300060-1	Pier D1 (D4f) ready for Viaduct D3 PH segment erection	0		0%	0	11-May-15		24-Jul-15	52	0	0%																																							
Bridge D2 Superstructure																																																		
Milestones																																																		
Milestones Ready for PH Segment Erection																																																		
D200050-1	Pier D9 (D3c) ready for Viaduct D2 PH segment erection	0		0%	0	18-Jun-15		08-Sep-15	62	0	0%																																							
Bridge D1 Superstructure																																																		
Milestones																																																		
Milestones Ready for PH Segment Erection																																																		
D100010-1	Pier D19 (D1b) ready for Viaduct D1 PH segment erection	0		0%	0	05-May-15		23-Jan-16	201	5	0%																																							

<ul style="list-style-type: none"> ■ Actual Work ■ Planned Bar ■ Critical Bar ◆ Milestone 	Project ID: J3518DWPRe-M22 Layout: J3518-DWP-3MRP Submission - M22_ Filter: TASK filters: 3-Month Lookahead, No CC Milestones, No Level of Effort.	Tuen Mun - Chek Lap Kok Link - Southern Connection 3-Month Rolling Programme (Page 39 of 41 Pages) (Progress as of 21-Mar-15)	<table border="1"> <tr> <th>Date</th> <th>Revision</th> <th>Checked</th> <th>Approved</th> </tr> <tr> <td>09-Mar-15</td> <td></td> <td>DB</td> <td></td> </tr> <tr> <td>31-Mar-15</td> <td></td> <td>WY</td> <td></td> </tr> </table>	Date	Revision	Checked	Approved	09-Mar-15		DB		31-Mar-15		WY		DWG. No.: J3518/GCL/PGM/3MRP-M22
Date	Revision	Checked	Approved													
09-Mar-15		DB														
31-Mar-15		WY														

Activity ID	Activity Name	Orig. Durn.	Act. Start / FC Early Start	Duration % Complete	Rem. Durn.	Act. Finish / FC Early Finish	Late Start	Late Finish	Total Float	Free Float	Physical % Complete	2015																			
												March					April					May					June				
												23	02	09	16	23	30	06	13	20	27	04	11	18	25	01	08	15			
SWVB3110	9SE-B/F9 - Install Geo. Instru. & Baseline Monitoring	30	22-Jan-15 A	0%	30	02-May-15	20-Mar-18	30-Apr-18	833	833	50%	[Gantt bar: 22-Jan-15 to 30-Apr-18]																			
SWVB3120A	Rockfall Fence Construction	57	20-Jan-15 A	45.61%	31	04-May-15	25-Feb-17	01-Apr-17	536	527	70%	[Gantt bar: 20-Jan-15 to 01-Apr-17]																			
Slope 9SE-B/F85																															
SWVB4020	9SE-B/F85 - Filling & forming slope	18	28-Mar-15	0%	18	24-Apr-15	01-Aug-15	24-Aug-15	88	0	0%	[Gantt bar: 24-Apr-15 to 24-Aug-15]																			
SWVB4030	9SE-B/F85 - Form UC	12	25-Apr-15	0%	12	09-May-15	19-Oct-15	03-Nov-15	130	0	0%	[Gantt bar: 09-May-15 to 03-Nov-15]																			
SWVB4035	9SE-B/F85 - Install Geo. Instru. & Baseline Monitoring	30	11-May-15	0%	30	24-Jun-15	04-Nov-15	08-Dec-15	130	0	0%	[Gantt bar: 24-Jun-15 to 08-Dec-15]																			
Re-alignment of Cheung Tung Road adjacent to Viaduct C																															
West Portion																															
RW61000	Realign CTR (West of Abut. C) - Site Clearance	42	03-Sep-14 A	76.19%	10	01-Apr-15	15-Jan-15	26-Jan-15	-53	32	75%	[Gantt bar: 01-Apr-15 to 26-Jan-15]																			
RW61010	Realign CTR (West of Abut. C) - Road drainage works	60	15-Jan-15 A	38.33%	37	24-Jun-15	09-Mar-15	27-Apr-15	-40	18	40%	[Gantt bar: 24-Jun-15 to 27-Apr-15]																			
RW61020	Realign CTR (West of Abut. C) - Utility diversion	90	19-May-15	0%	90	18-Sep-15	09-Mar-15	11-Jul-15	-53	0	0%	[Gantt bar: 18-Sep-15 to 11-Jul-15]																			
RW61082	Realign CTR (West of Abut. C) - Road formation	48	20-Nov-14 A	31.25%	33	18-May-15	16-Dec-14	26-Jan-15	-85	0	30%	[Gantt bar: 18-May-15 to 26-Jan-15]																			
RW61084	Realign CTR (West of Abut. C) - Retaining Wall C1	48	13-Oct-14 A	75%	12	08-Apr-15	05-Dec-14	18-Dec-14	-85	0	75%	[Gantt bar: 08-Apr-15 to 18-Dec-14]																			
East Portion																															
RW60000	Realign CTR (East of Abut. C) - Site Clearance	54	01-Dec-14 A	18.52%	44	20-May-15	03-Dec-14	26-Jan-15	-87	0	18%	[Gantt bar: 20-May-15 to 26-Jan-15]																			
RW60005	Realign CTR (East of Abut. C) - Road formation	66	22-May-15	0%	66	21-Aug-15	27-Jan-15	22-Apr-15	-87	0	0%	[Gantt bar: 21-Aug-15 to 22-Apr-15]																			
Emergency Gates G6 & G7																															
RP10070	Construct Expressway Fence /Beam Barriers betw new Gates G6 & G7	24	30-Oct-14 A	25%	18	16-Apr-15	07-Apr-18	30-Apr-18	845	845	25%	[Gantt bar: 16-Apr-15 to 30-Apr-18]																			
ESS Sub-Station																															
RP10020	Construct new ESS-C Sub.Stn. adjacent to Viaduct C	48	30-Jun-14 A	85.42%	7	28-Mar-15	21-Apr-18	30-Apr-18	856	856	85%	[Gantt bar: 28-Mar-15 to 30-Apr-18]																			
RP10030	Inst.Eqpt. & Testing / commissioning of new ESS	60	16-Mar-15 A	50%	30	02-May-15	27-Jan-15	05-Mar-15	-43	0	0%	[Gantt bar: 02-May-15 to 05-Mar-15]																			
RP10040	Removal of equipment in existing ESS	30	04-May-15	0%	30	13-Jun-15	06-Mar-15	14-Apr-15	-43	0	0%	[Gantt bar: 13-Jun-15 to 14-Apr-15]																			
RP10050	Demolish the existing ESS	6	15-Jun-15	0%	6	24-Jun-15	16-Apr-15	22-Apr-15	-43	44	0%	[Gantt bar: 24-Jun-15 to 22-Apr-15]																			
Natural Terrain Hazard Mitigation Works																															
NTHM Works - West Portion																															
Check Dam no. 1 (CD1)																															
GFXX497	Predrilling Works for Check Dams	25	21-Mar-15	0%	25	25-Apr-15	04-May-15	05-Jun-15	30	0	0%	[Gantt bar: 25-Apr-15 to 05-Jun-15]																			
GFXX499	CD1 - Mobilization of rig for MiniPile	6	18-Apr-15	0%	6	25-Apr-15	29-May-15	05-Jun-15	30	0	0%	[Gantt bar: 25-Apr-15 to 05-Jun-15]																			
GFXX500	CD1 - Installation of MiniPile (13nos.)	52	27-Apr-15	0%	52	09-Jul-15	06-Jun-15	17-Aug-15	30	0	0%	[Gantt bar: 09-Jul-15 to 17-Aug-15]																			
Watermains & All Assoc Works from Tung Chung to Southern Landfall																															
WM00030	Trial trench works for watermains along existing CTR	157	26-May-14 A	75.16%	39	14-May-15	14-Mar-16	05-May-16	272	66	75%	[Gantt bar: 14-May-15 to 05-May-16]																			
WM00120	Lay DN450 Fresh Water Main along re-aligned CTR (app. 500 m at 12m/day)	48	10-Jun-15	0%	48	14-Aug-15	18-Jun-15	21-Aug-15	5	0	0%	[Gantt bar: 14-Aug-15 to 21-Aug-15]																			

<ul style="list-style-type: none"> █ Actual Work █ Planned Bar █ Critical Bar ◆ Milestone 	Project ID: J3518DWPrE-M22 Layout: J3518-DWP-3MRP Submission - M22_ Filter: TASK filters: 3-Month Lookahead, No CC Milestones, No Level of Effort.	Tuen Mun - Chek Lap Kok Link - Southern Connection 3-Month Rolling Programme (Page 41 of 41 Pages) (Progress as of 21-Mar-15)	Date	Revision	Checked	Approved	DWG. No.: J3518/GCL/PGM/3MRP-M22
			09-Mar-15		DB		
			31-Mar-15		WY		