

Activity ID	Activity Name	Orig. Durn.	Act. Start / FC Early Start	Duration % Complete	Rem. Durn.	Act. Finish / FC Early Finish	Late Start	Late Finish	Total Float	Free Float	Physical % Complete	2015															
												September				October				November				December			
												24	31	07	14	21	28	05	12	19	26	02	09	16	23	30	07
<b>HY/2012/07 - TM-CLK Link-SC [DWP rE1] - Status Update 21-09-2015 yet</b>																											
<b>Contract Key Dates</b>																											
<b>Possession Dates / Access Period</b>																											
POS02	Portion A (Commencement of Works+499 days)	0	21-Sep-15*	0%	0		03-Jun-15		-110	0	0%																
POS03	Portion B (Commencement of Works+619 days)	0	21-Sep-15*	0%	0		03-Jun-15		-110	0	0%																
<b>Section Completion Dates</b>																											
<b>Vacate Works Area</b>																											
VAC05	Vacate Works Area WA5 (Zone 5C) (Commencement of Works+758 days)	0		0%	0	21-Sep-15*		19-Jul-15	-63	1230	0%																
<b>General Submissions</b>																											
<b>General Requirements</b>																											
<b>Temporary Works Design</b>																											
PR00130	Unloading Jetty at HKBCF - Working Platform design and approval	90	02-Jun-14 A	60%	36	04-Nov-15	25-Jul-15	04-Sep-15	-49	963	10%																
<b>Land Works</b>																											
PR00160	Propose/submit a performance review for piled fnds in accordance w/ ETW	101	26-May-14 A	80.2%	20	15-Oct-15	08-Mar-16	02-Apr-16	136	363	80%																
<b>Land GI Works</b>																											
PR02204	SQR Sampling & Testing and Approval	110	14-Aug-14 A	68.18%	35	03-Nov-15	27-Nov-14	09-Jan-15	-241	0	68%																
PR03110	Trial Pits along Cheung Tung Road	20	21-Oct-13 A	90%	2	22-Sep-15	08-Jan-15	09-Jan-15	-208	33	85%																
<b>Design Submissions</b>																											
<b>Detailed Design (v18.8 18-08-14)</b>																											
<b>General Submissions</b>																											
ARDD0037-1	Preparation of Seismic Performance Report Viaduct A,B,C,D - AP12.01	20	21-Sep-15	0%	20	16-Oct-15	24-Nov-15	21-Dec-15	46	0	0%																
ARDD0037-2	IC/SO Approval of Seismic Performance Report Viaduct A,B,C,D - AP12.01	75	19-Oct-15	0%	75	29-Jan-16	22-Dec-15	04-Apr-16	46	244	0%																
ARDD0037-4	Preparation of Seismic Performance Report Viaduct E - AP12.02	20	21-Sep-15	0%	20	16-Oct-15	24-Nov-15	21-Dec-15	46	0	0%																
ARDD0037-5	IC/SO Approval of Seismic Performance Report Viaduct E - AP12.02	75	19-Oct-15	0%	75	29-Jan-16	22-Dec-15	04-Apr-16	46	0	0%																
ARDD0037-7	Preparation of Seismic Performance Report Viaduct F - AP12.03	20	21-Sep-15	0%	20	16-Oct-15	24-Nov-15	21-Dec-15	46	0	0%																
ARDD0037-8	IC/SO Approval of Seismic Performance Report Viaduct F - AP12.03	75	19-Oct-15	0%	75	29-Jan-16	22-Dec-15	04-Apr-16	46	0	0%																
ARDD0042-2	IC/SO Approval of O&M Facility Provisions DDA - BP11.01	75	14-Jan-15 A	50%	38	11-Nov-15	29-Oct-15	21-Dec-15	29	0	50%																
ARDD0042-4	IC/SO Approval of O&M Facility Provisions DDA - BP11.01	0		0%	0	11-Nov-15		21-Dec-15	29	73	0%																
<b>Viaduct E5 and E6</b>																											
<b>Viaduct Design</b>																											
<b>Viaduct E5 E6 Superstructure Optimisation</b>																											
TGP0550	Viaduct E5 & E6 - Preparation of Optimised Movement Joint Schedule	15	03-Feb-15 A	80%	3	23-Sep-15	25-Jan-16	27-Jan-16	90	83	80%																
<b>Viaduct E7 &amp; E8</b>																											
<b>Viaduct Design</b>																											
<b>Viaduct E7 E8 Superstructure Optimisation</b>																											
TGP0750	Viaduct E7 & E8 - Preparation of Optimised Movement Joint Schedule	15	03-Feb-15 A	80%	3	23-Sep-15	25-Jan-16	27-Jan-16	90	83	80%																
<b>Viaduct C</b>																											
<b>Viaduct Design</b>																											
ARDD0384-3	Viaduct C - Coordination and Further Issue of Construction Method and Te	60	02-Mar-15 A	40%	36	09-Nov-15	14-Dec-18	01-Feb-19	844	0	40%																
ARDD0384-5	Viaduct C - GCL/FRE Final Coordinated Construction Method/Temporary \	0		0%	0	09-Nov-15		01-Feb-19	844	844	0%																
<b>Viaduct A</b>																											
<b>Viaduct Design</b>																											
ARDD0435	Viaduct A - IC/SO Approval of DDA DP11.03	75	23-Feb-15 A	100%	0	17-Sep-15 A					100%																
ARDD0435-1	Viaduct A - IC/SO Approval of DDA DP11.03	0		100%	0	17-Sep-15 A					100%																
ARDD0435-2	Viaduct A - GCL/FRE Issue of Construction Method/Temporary Work Data	0		0%	0	21-Sep-15		01-Feb-19	880	880	0%																
ARDD0435-3	Viaduct A - Coordination and Further Issue of Construction Method and Ter	60	01-Jun-15 A	50%	30	30-Oct-15	31-Dec-15	10-Feb-16	73	18	50%																
ARDD0435-4	Viaduct A - Preparation of Draft DDA Working Drawing Set	60	01-Jun-15 A	20%	48	25-Nov-15	07-Dec-15	10-Feb-16	55	0	20%																
ARDD0435-5	Viaduct A - GCL/FRE Final Coordinated Construction Method/Temporary V	0		0%	0	25-Nov-15		10-Feb-16	55	0	0%																
ARDD0435-6	Viaduct A - Preparation and Coordination of Working Drawing Set	10	26-Nov-15	0%	10	09-Dec-15	11-Feb-16	24-Feb-16	55	0	0%																
ARDD0435-7	Viaduct A - Submission of Working Drawings for Viaduct A DP11.03	0		0%	0	09-Dec-15		13-Apr-16	90	0	0%																
ARDD0435-8	Viaduct A - IC/SO Consent of Supplemental Working Drawings Viaduct A	10	10-Dec-15	0%	10	23-Dec-15	14-Apr-16	27-Apr-16	90	0	0%																
<b>Viaduct F1 &amp; F3</b>																											
<b>Viaduct Design</b>																											
ARDD0486-2	Viaduct F1 & F3 - Coordination and Further Issue of Construction Method ;	60	02-Mar-15 A	10%	54	03-Dec-15	29-Jan-15	14-Apr-15	-167	0	10%																
ARDD0486-3	Viaduct F1 & F3 - Preparation of Draft Working Drawing Set	60	02-Mar-15 A	10%	54	03-Dec-15	29-Jan-15	14-Apr-15	-167	0	10%																
ARDD0486-4	Viaduct F1 & F3 - GCL/FRE Final Coordinated Construction Method/Temp	0		0%	0	03-Dec-15		14-Apr-15	-167	0	0%																
ARDD0486-5	Viaduct F1 & F3 - Preparation and Coordination of DDA/Working Drawing	10	04-Dec-15	0%	10	17-Dec-15	15-Apr-15	28-Apr-15	-167	0	0%																

<ul style="list-style-type: none"> <li><span style="color: blue;">■</span> Actual Work</li> <li><span style="color: green;">■</span> Planned Bar</li> <li><span style="color: red;">■</span> Critical Bar</li> <li>◆ Milestone</li> </ul>	Project ID: J3518DWP rE1-M28 Layout: J3518-DWP-3MRP Submission - M28 Filter: TASK filters: 3-Month Lookahead, No CC Milestones, No Level of Effort.	<b>Tuen Mun - Chek Lap Kok Link - Southern Connection</b> <b>3-Month Rolling Programme (Page 1 of 32 Pages)</b> <b>(Progress as of 21-Sep -15)</b>	<table border="1"> <thead> <tr> <th>Date</th> <th>Revision</th> <th>Checked</th> <th>Approved</th> </tr> </thead> <tbody> <tr> <td>28-Jul-15</td> <td></td> <td>PKN</td> <td>KWY</td> </tr> <tr> <td>01-Sep-15</td> <td></td> <td>PKN</td> <td>KWY</td> </tr> <tr> <td>30-Sep-15</td> <td></td> <td>PKN</td> <td>KWY</td> </tr> </tbody> </table>	Date	Revision	Checked	Approved	28-Jul-15		PKN	KWY	01-Sep-15		PKN	KWY	30-Sep-15		PKN	KWY	<b>DWG. No.:</b> <b>J3518/GCL/PGM/3MRP-M28</b>
Date	Revision	Checked	Approved																	
28-Jul-15		PKN	KWY																	
01-Sep-15		PKN	KWY																	
30-Sep-15		PKN	KWY																	





Activity ID	Activity Name	Orig. Durn.	Act. Start / FC Early Start	Duration % Complete	Rem. Durn.	Act. Finish / FC Early Finish	Late Start	Late Finish	Total Float	Free Float	Physical % Complete	2015															
												September				October				November				December			
												24	31	07	14	21	28	05	12	19	26	02	09	16	23	30	07
<b>Preliminaries</b>																											
MBBE0050	Precast Segment Mould Fabrication & Erection (Viaduct A)	52	24-Dec-14 A	98.08%	1	21-Sep-15	03-Mar-16	03-Mar-16	132	0	100%																
MBBE0054	Precast Segment Mould Design (Viaduct F1 to F5)	42	21-Sep-15	0%	42	11-Nov-15	27-Aug-15	16-Oct-15	-21	0	0%																
MBBE0056	Precast Segment Mould Fabrication & Erection (Viaduct F1 to F5)	52	05-Oct-15	0%	52	04-Dec-15	08-Sep-15	10-Nov-15	-21	59	0%																
<b>Viaduct B</b>																											
<b>Precast Deck Segments</b>																											
MBBE130-1	B: Progressive Match Cast Segment Manufacture & Delivery remaining seg	598	24-Oct-14 A	23.91%	455	01-Apr-17	24-Nov-14	10-Jun-16	-244	0	10.48%																
<b>Viaduct E</b>																											
<b>Precast Pile Caps</b>																											
<b>Viaduct E2</b>																											
PP7260	Production of Viaduct E2 Marine Precast Pile Cap Shells	80	12-Nov-14 A	0%	85	04-Jan-16	21-Aug-15	01-Dec-15	-26	914	33%																
<b>Viaduct E5, E6, E7 &amp; E8</b>																											
PP7120	Production of Viaduct E5 & E6 Marine Precast Pile Cap Shells	151	13-Apr-15 A	59.6%	61	03-Dec-15	25-Apr-15	09-Jul-15	-123	938	0%																
PP7190	Production of Viaduct E7 & E8 Marine Precast Pile Cap Shells	151	13-Apr-15 A	45.7%	82	30-Dec-15	18-Jul-15	24-Oct-15	-55	917	0%																
<b>Precast Deck Segments</b>																											
MBE00014	Viaduct E2 - Pier Head Segment Casting	0	25-Sep-15	0%	0		17-Dec-14		-228	0	0%																
<b>Viaduct E1</b>																											
MBEE0130-5	E1: Progressive Segment Manufacture & Delivery remaining segments (18	457	08-Apr-15 A	2.41%	446	22-Mar-17	27-Jan-15	01-Aug-16	-192	553	0%																
<b>Viaduct E2</b>																											
MBEE0120-2	E2: Commence Segment Casting on Approval of DDA	0	25-Sep-15	0%	0		17-Dec-14		-228	0	0%																
MBEE0130-7	E2: Progressive Segment Manufacture & Delivery remaining segments (41	376	09-Oct-15	0%	376	13-Jan-17	31-Dec-14	11-Apr-16	-228	24	0%																
<b>Viaduct D</b>																											
<b>Precast Pile Caps</b>																											
MBDC0130-8	D: Progressive Pile Cap Shell Manufacture & Delivery remaining shells	143	29-Sep-14 A	85.31%	21	16-Oct-15	09-Jan-19	01-Feb-19	978	978	42.8%																
<b>Precast Deck Segments</b>																											
MBDE0120	D: Commence Segment Casting on Approval of DDA	0	21-Sep-15	0%	0		11-Dec-14		-229	0	0%																
MBDE0130-7	D: Progressive Match Cast Segment Manufacture & Delivery (311 Nr)	315	19-Nov-15	0%	315	09-Dec-16	09-Feb-15	04-Mar-16	-229	0	0%																
<b>Viaduct C</b>																											
<b>Precast Pile Caps</b>																											
MBCC0130-1	C: Progressive Pile Cap Shell Manufacture & Delivery remaining shells	117	01-Dec-14 A	96.58%	4	24-Sep-15	29-Jan-19	01-Feb-19	995	995	0%																
<b>Precast Deck Segments</b>																											
MBCE0120	C: Commence Segment Casting on Approval of DDA	0	21-Sep-15	0%	0		08-May-15		-113	0	0%																
MBCE0130-1	C: Progressive Segment Manufacture & Delivery remaining segments (38E	265	21-Sep-15	0%	265	13-Aug-16	08-May-15	30-Mar-16	-113	1	0%																
<b>Viaduct A</b>																											
<b>Precast Pile Caps</b>																											
MBAC0130-1	A: Progressive Pile Cap Shell Manufacture & Delivery remaining shells	274	22-Sep-15	0%	274	25-Aug-16	04-Mar-16	04-Feb-17	132	6	0%																
<b>Parapets</b>																											
MBEE0090	Approval of DDA to start Precast Parapets/Barriers Casting	0	30-Sep-15	0%	0		30-Apr-15		-127	33	0%																
PP6010	Procure Sub-Contractor for Precast Parapets/Barriers	40	21-Sep-15	0%	40	09-Nov-15	10-Mar-15	29-Apr-15	-159	0	0%																
PP6011	Precast Parapets/Barriers Detail Design & Procure Moulds	120	10-Nov-15	0%	120	08-Apr-16	30-Apr-15	21-Sep-15	-159	0	0%																
<b>Materials</b>																											
PP7010	Procure Sub-contractor for Signs & Street Furniture	90	21-Sep-15	0%	90	09-Jan-16	31-Aug-15	16-Dec-15	-18	0	0%																
<b>In-Situ Formworks / Falseworks</b>																											
PPPF02	Design & Fabrication of Falsework / Formwork & Delivery	120	20-Feb-14 A	75%	30	28-Oct-15	26-Jul-16	29-Aug-16	248	417	75%																
<b>Bearings</b>																											
<b>Viaduct A</b>																											
PPBRA1	Preliminary Design of Bearings - Viaduct A	50	12-Oct-15	0%	50	09-Dec-15	06-Oct-15	03-Dec-15	-5	0	0%																
PPBRA2	Confirmation of bearing assumption - Viaduct A	0		0%	0	09-Dec-15		03-Dec-15	-5	0	0%																
PPBRA3	Bearing design and submission - Viaduct A	12	10-Dec-15	0%	12	23-Dec-15	04-Dec-15	17-Dec-15	-5	0	0%																
<b>Viaduct C</b>																											
PPBRC1	Preliminary Design of Bearings - Viaduct C	50	22-Dec-14 A	64%	18	13-Oct-15	26-Sep-14	18-Oct-14	-292	0	65%																
PPBRC2	Confirmation of bearing assumption - Viaduct C	0		0%	0	13-Oct-15		18-Oct-14	-292	0	0%																
PPBRC3	Bearing design and submission - Viaduct C	12	14-Oct-15	0%	12	28-Oct-15	20-Oct-14	01-Nov-14	-292	0	0%																
PPBRC4	Design check by ICE - Viaduct C	24	29-Oct-15	0%	24	25-Nov-15	03-Nov-14	29-Nov-14	-292	0	0%																
PPBRC5	SO review & comment on design submission - Viaduct C	36	26-Nov-15	0%	36	09-Jan-16	01-Dec-14	14-Jan-15	-292	0	0%																
PPBRC7	Manufacture of Bearing - Viaduct C	54	26-Nov-15	0%	54	30-Jan-16	01-Dec-14	04-Feb-15	-292	0	0%																
<b>Viaduct D</b>																											
PPBRD4	Design check by ICE - Viaduct D	24	20-Dec-14 A	20.83%	19	14-Oct-15	26-Nov-14	17-Dec-14	-242	0	20%																

- Actual Work
- Planned Bar
- Critical Bar
- Milestone

Project ID: J3518DWPPrE1-M28  
 Layout: J3518-DWP-3MRP Submission - M28  
 Filter: TASK filters: 3-Month Lookahead, No CC  
 Milestones, No Level of Effort.

**Tuen Mun - Chek Lap Kok Link - Southern Connection**  
**3-Month Rolling Programme (Page 4 of 32 Pages)**  
**(Progress as of 21-Sep -15)**

Date	Revision	Checked	Approved
28-Jul-15		PKN	KWY
01-Sep-15		PKN	KWY
30-Sep-15		PKN	KWY

**DWG. No.:**  
**J3518/GCL/PGM/3MRP-M28**



Activity ID	Activity Name	Orig. Durn.	Act. Start / FC Early Start	Duration % Complete	Rem. Durn.	Act. Finish / FC Early Finish	Late Start	Late Finish	Total Float	Free Float	Physical % Complete	2015															
												September				October				November				December			
												24	31	07	14	21	28	05	12	19	26	02	09	16	23	30	07
<b>General</b>																											
ZA00010	Viaduct A - Approval of Foundation DDA DP11.01	0		0%	0	21-Sep-15		01-Feb-19	880	880	0%																
<b>Bridge A2</b>																											
<b>Pier A1 (A2e)</b>																											
<b>Pier Works</b>																											
SA2E0180	A1 (A2e) - Type 4B-MJ Pier Rebarwork, Formwork & Prep (1st Lift)	5	20-Aug-15 A	100%	0	27-Aug-15 A					100%																
SA2E0200	A1 (A2e) - Type 4B-MJ Pier Concreting, Curing & Striking, CJ prep (1st Lift)	3	28-Aug-15 A	100%	0	04-Sep-15 A					100%																
SA2E0210	A1 (A2e) - Type 4B-MJ Pier Scaffolding (2nd Lift)	2	05-Sep-15 A	100%	0	15-Sep-15 A					100%																
SA2E0220	A1 (A2e) - Type 4B-MJ Pier Rebarwork, Formwork & Prep (2nd Lift)	6	16-Sep-15 A	50%	3	23-Sep-15	08-Apr-16	11-Apr-16	157	0	50%																
SA2E0240	A1 (A2e) - Type 4B-MJ Pier Concreting, Curing & Striking, CJ prep (2nd Lil)	3	24-Sep-15	0%	3	26-Sep-15	12-Apr-16	15-Apr-16	157	0	0%																
SA2E0300	A1 (A2e) - Type 4B-MJ Pier Head Scaffolding	4	29-Sep-15	0%	4	03-Oct-15	16-Apr-16	21-Apr-16	157	0	0%																
SA2E0310	A1 (A2e) - Type 4B-MJ Pier Head Rebarwork, Formwork & Prep	10	05-Oct-15	0%	10	16-Oct-15	22-Apr-16	04-May-16	157	0	0%																
SA2E0330	A1 (A2e) - Type 4B-MJ Pier Head Concreting	1	17-Oct-15	0%	1	17-Oct-15	05-May-16	05-May-16	157	0	0%																
SA2E0340	A1 (A2e) - Type 4B-MJ Pier Head Curing/Striking of Forms/Remove Scaff	6	19-Oct-15	0%	6	26-Oct-15	06-May-16	12-May-16	157	0	0%																
SA2E0350	A1 (A2e) - Type 4B- Bearing Plinth	6	19-Oct-15	0%	6	26-Oct-15	06-May-16	12-May-16	157	0	0%																
<b>Pier Head Segments</b>																											
SA2E0380	A1 (A2e) - Pier Head Segment - Temporary Platform	6	27-Oct-15	0%	6	03-Nov-15	13-May-16	21-May-16	157	0	0%																
SA2E0381	A1 (A2e) - Pier Head Segment Bearings	2	04-Nov-15	0%	2	05-Nov-15	23-May-16	24-May-16	157	0	0%																
SA2E0382	A1 (A2e) - Pier Head Segment Lift & Temp Support (2 seg)	7	06-Nov-15	0%	7	13-Nov-15	25-May-16	03-Jun-16	157	0	0%																
<b>Pier A2 (A2d)</b>																											
<b>Foundation Works</b>																											
GFXX139	A2 (A2d) - Bored Piles (2.20m dia. x 3 nos)	120	20-May-15 A	100%	0	07-Sep-15 A					100%																
GFXX140	A2 (A2d) - Sonic & Interface Coring	12	21-Sep-15	0%	12	06-Oct-15	02-Feb-16	18-Feb-16	109	0	0%																
GFXX141	A2 (A2d) - Dismantle removable panels of temp. platform	5	07-Oct-15	0%	5	12-Oct-15	19-Feb-16	24-Feb-16	109	0	0%																
<b>Pile Cap Works</b>																											
SA2D0070	A2 (A2d) - Marine Pile Cap M2b - Inst.Floating Seal & Casing Head Steelw	7	27-Oct-15	0%	7	05-Nov-15	25-Feb-16	03-Mar-16	96	0	0%																
SA2D0080	A2 (A2d) - Marine Pile Cap M2b - Install precast shell in position	1	05-Nov-15	0%	1	06-Nov-15	04-Mar-16	04-Mar-16	96	0	0%																
SA2D0090	A2 (A2d) - Marine Pile Cap M2b - Inst.Access & make Watertight	3	06-Nov-15	0%	3	10-Nov-15	05-Mar-16	08-Mar-16	96	0	0%																
SA2D0100	A2 (A2d) - Marine Pile Cap M2b - Weld Fin plates/Plug Rebar & Concrete	9	10-Nov-15	0%	9	20-Nov-15	09-Mar-16	18-Mar-16	96	0	0%																
SA2D0120	A2 (A2d) - Marine Pile Cap M2b - Dewater precast shell / Remove Lifting F	2	20-Nov-15	0%	2	23-Nov-15	19-Mar-16	21-Mar-16	96	0	0%																
SA2D0130	A2 (A2d) - Marine Pile Cap M2b - Pile cut down	8	23-Nov-15	0%	8	02-Dec-15	22-Mar-16	02-Apr-16	96	0	0%																
SA2D0140	A2 (A2d) - Marine Pile Cap M2b - Rebar fixing, inst.inserts etc	12	02-Dec-15	0%	12	16-Dec-15	05-Apr-16	19-Apr-16	96	0	0%																
SA2D0150	A2 (A2d) - Marine Pile Cap M2b - Concreting	1	16-Dec-15	0%	1	17-Dec-15	21-Apr-16	21-Apr-16	96	0	0%																
SA2D0160	A2 (A2d) - Marine Pile Cap M2b - Curing incl. CJ Preparation	6	17-Dec-15	0%	6	24-Dec-15	22-Apr-16	28-Apr-16	96	0	0%																
<b>Pier Works</b>																											
SA2D0170	A2 (A2d) - Type 4B Pier Temp. Support Platform & Scaffold (1st Lift)	6	17-Dec-15	0%	6	24-Dec-15	22-Apr-16	28-Apr-16	96	0	0%																
<b>Pier A3 (A2c)</b>																											
<b>Pile Cap Works</b>																											
SA2C0070	A3 (A2c) - Marine Pile Cap M2b - Inst.Floating Seal & Casing Head Steelw	7	21-Aug-15 A	100%	0	06-Sep-15 A					100%																
SA2C0080	A3 (A2c) - Marine Pile Cap M2b -Install precast shell in position	1	07-Sep-15 A	100%	0	07-Sep-15 A					100%																
SA2C0090	A3 (A2c) - Marine Pile Cap M2b - Inst.Access & make Watertight	3	08-Sep-15 A	30%	2	23-Sep-15	21-Mar-16	23-Mar-16	146	0	30%																
SA2C0100	A3 (A2c) - Marine Pile Cap M2b - Weld Fin plates/Plug Rebar & Concrete	9	23-Sep-15	0%	9	06-Oct-15	23-Mar-16	07-Apr-16	146	0	0%																
SA2C0120	A3 (A2c) - Marine Pile Cap M2b - Dewater precast shell / Remove Lifting F	2	06-Oct-15	0%	2	08-Oct-15	07-Apr-16	09-Apr-16	146	0	0%																
SA2C0130	A3 (A2c) - Marine Pile Cap M2b - Pile cut down	8	08-Oct-15	0%	8	19-Oct-15	09-Apr-16	21-Apr-16	146	0	0%																
SA2C0140	A3 (A2c) - Marine Pile Cap M2b - Rebar fixing, inst.inserts etc	12	19-Oct-15	0%	12	04-Nov-15	21-Apr-16	06-May-16	146	0	0%																
SA2C0150	A3 (A2c) - Marine Pile Cap M2b - Concreting	1	04-Nov-15	0%	1	05-Nov-15	06-May-16	07-May-16	146	0	0%																
SA2C0160	A3 (A2c) - Marine Pile Cap M2b - Curing incl. CJ Preparation	6	05-Nov-15	0%	6	12-Nov-15	07-May-16	16-May-16	146	0	0%																
<b>Pier Works</b>																											
SA2C0170	A3 (A2c) - Type 4B Pier Temp. Support Platform & Scaffold (1st Lift)	6	05-Nov-15	0%	6	12-Nov-15	07-May-16	16-May-16	146	0	0%																
SA2C0180	A3 (A2c) - Type 4B Pier Rebarwork, Formwork & Prep (1st Lift)	5	12-Nov-15	0%	5	18-Nov-15	16-May-16	23-May-16	146	0	0%																
SA2C0200	A3 (A2c) - Type 4B Pier Concreting, Curing & Striking, CJ prep (1st Lift)	3	18-Nov-15	0%	3	21-Nov-15	23-May-16	27-May-16	146	0	0%																
SA2C0210	A3 (A2c) - Type 4B Pier Scaffolding (2nd Lift)	2	21-Nov-15	0%	2	24-Nov-15	27-May-16	30-May-16	146	0	0%																
SA2C0220	A3 (A2c) - Type 4B Pier Rebarwork, Formwork & Prep (2nd Lift)	6	24-Nov-15	0%	6	01-Dec-15	30-May-16	08-Jun-16	146	0	0%																
SA2C0240	A3 (A2c) - Type 4B Pier Concreting, Curing & Striking, CJ prep (2nd Lift)	3	01-Dec-15	0%	3	04-Dec-15	08-Jun-16	13-Jun-16	146	0	0%																
SA2C0300	A3 (A2c) - Type 4B Pier Head Scaffolding	4	04-Dec-15	0%	4	09-Dec-15	13-Jun-16	20-Jun-16	146	0	0%																
SA2C0310	A3 (A2c) - Type 4B Pier Head Rebarwork, Formwork & Prep	10	09-Dec-15	0%	10	21-Dec-15	20-Jun-16	05-Jul-16	146	0	0%																
<b>Pier A4 (A2b)</b>																											
<b>Foundation Works</b>																											
GFXX131	A4 (A2b) - Dismantle removable panels of temp. platform	5	15-Aug-15 A	100%	0	21-Aug-15 A					100%																
<b>Pile Cap Works</b>																											
SA2B0070	A4 (A2b) - Marine Pile Cap M2b - Inst.Floating Seal & Casing Head Steelw	7	21-Sep-15	0%	7	29-Sep-15	29-Mar-16	07-Apr-16	150	0	0%																
SA2B0080	A4 (A2b) - Marine Pile Cap M2b - Install precast shell in position	1	30-Sep-15	0%	1	30-Sep-15	07-Apr-16	08-Apr-16	150	0	0%																
SA2B0090	A4 (A2b) - Marine Pile Cap M2b - Inst.Access & make Watertight	3	02-Oct-15	0%	3	05-Oct-15	08-Apr-16	12-Apr-16	150	0	0%																

■ Actual Work  
■ Planned Bar  
■ Critical Bar  
◆ Milestone

Project ID: J3518DWPPrE1-M28  
 Layout: J3518-DWP-3MRP Submission - M28  
 Filter: TASK filters: 3-Month Lookahead, No CC  
 Milestones, No Level of Effort.

**Tuen Mun - Chek Lap Kok Link - Southern Connection**  
**3-Month Rolling Programme (Page 6 of 32 Pages)**  
**(Progress as of 21-Sep -15)**

Date	Revision	Checked	Approved
28-Jul-15		PKN	KWY
01-Sep-15		PKN	KWY
30-Sep-15		PKN	KWY

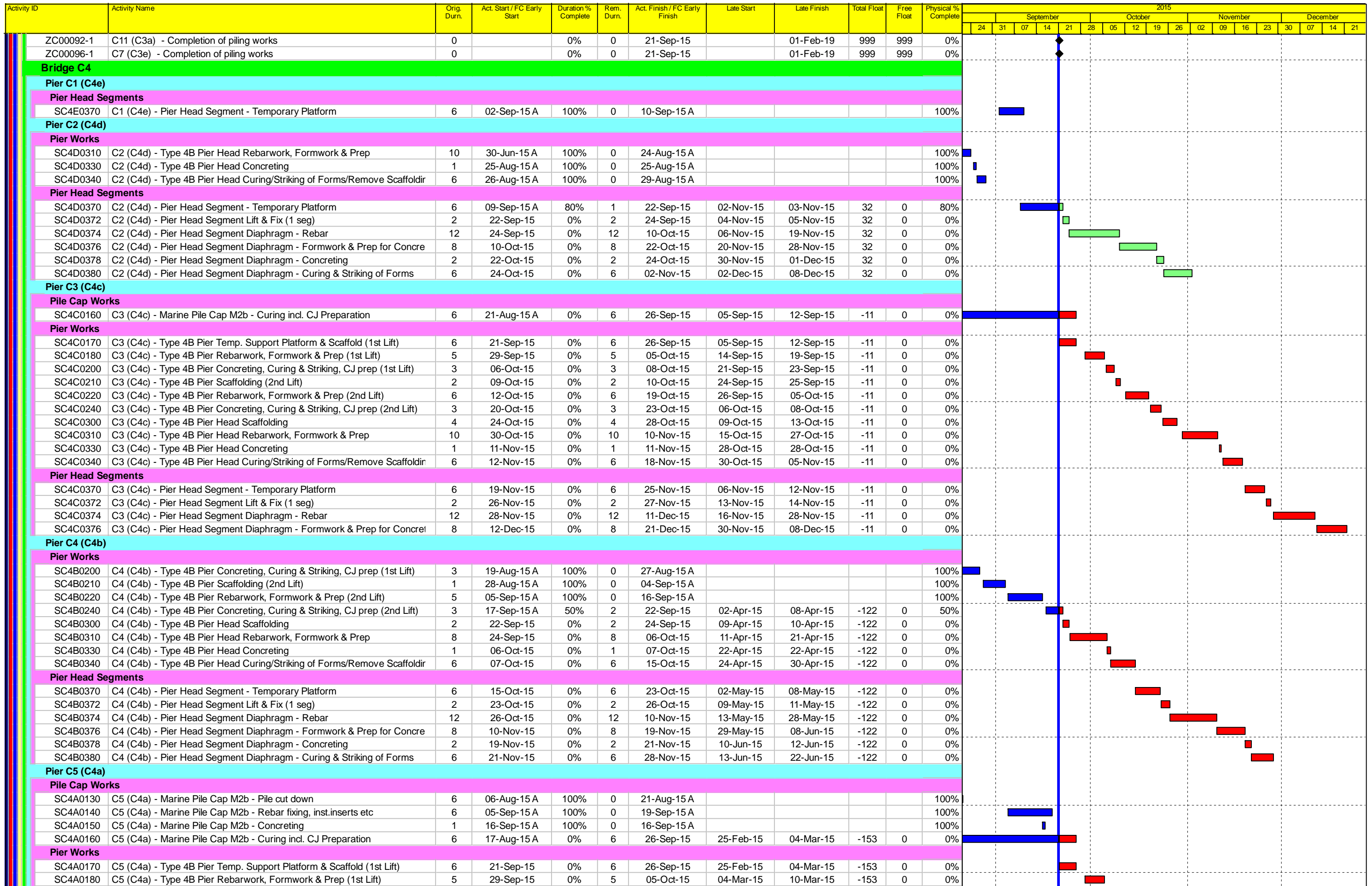
**DWG. No.:**  
**J3518/GCL/PGM/3MRP-M28**











- Actual Work
- Planned Bar
- Critical Bar
- ◆ Milestone

Project ID: J3518DWP1E1-M28  
 Layout: J3518-DWP-3MRP Submission - M28  
 Filter: TASK filters: 3-Month Lookahead, No CC  
 Milestones, No Level of Effort.

**Tuen Mun - Chek Lap Kok Link - Southern Connection**  
**3-Month Rolling Programme (Page 10 of 32 Pages)**  
**(Progress as of 21-Sep -15)**

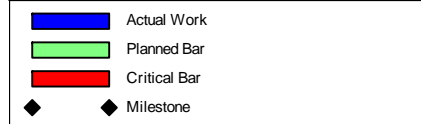
Date	Revision	Checked	Approved
28-Jul-15		PKN	KWY
01-Sep-15		PKN	KWY
30-Sep-15		PKN	KWY

**DWG. No.:**  
**J3518/GCL/PGM/3MRP-M28**





Activity ID	Activity Name	Orig. Durn.	Act. Start/ FC Early Start	Duration % Complete	Rem. Durn.	Act. Finish/ FC Early Finish	Late Start	Late Finish	Total Float	Free Float	Physical % Complete	2015															
												September				October				November				December			
												24	31	07	14	21	28	05	12	19	26	02	09	16	23	30	07
SC3A0370	C11 (C3a) - Pier Head Segment - Temporary Platform	6	06-Nov-15	0%	6	12-Nov-15	18-Apr-16	25-Apr-16	129	135	0%																
<b>Bridge C2</b>																											
<b>Pier C12 (C2f)</b>																											
<b>Pier Works</b>																											
SC2F0190	C12 (C2f) - Pier Scaffolding (2nd Lift)	2	21-Sep-15	0%	2	22-Sep-15	05-Feb-16	06-Feb-16	110	0	0%																
SC2F0200	C12 (C2f) - Pier Rebarwork (2nd Lift)	3	23-Sep-15	0%	3	25-Sep-15	11-Feb-16	13-Feb-16	110	0	0%																
SC2F0210	C12 (C2f) - Pier Formwork & Prep for Concreting (2nd Lift)	3	26-Sep-15	0%	3	30-Sep-15	15-Feb-16	17-Feb-16	110	0	0%																
SC2F0220	C12 (C2f) - Pier Concreting (2nd Lift)	1	02-Oct-15	0%	1	02-Oct-15	18-Feb-16	18-Feb-16	110	0	0%																
SC2F0222	C12 (C2f) - Pier Curing & Striking of Forms incl. CJ prep (2nd Lift)	2	03-Oct-15	0%	2	05-Oct-15	19-Feb-16	20-Feb-16	110	0	0%																
SC2F0230	C12 (C2f) - Pier Head Scaffolding	4	06-Oct-15	0%	4	09-Oct-15	22-Feb-16	25-Feb-16	110	0	0%																
SC2F0240	C12 (C2f) - Pier Head Rebarwork	5	10-Oct-15	0%	5	16-Oct-15	26-Feb-16	02-Mar-16	110	0	0%																
SC2F0250	C12 (C2f) - Pier Head Formwork & Prep for Concreting	5	17-Oct-15	0%	5	23-Oct-15	03-Mar-16	08-Mar-16	110	0	0%																
SC2F0260	C12 (C2f) - Pier Head Concreting	1	24-Oct-15	0%	1	24-Oct-15	09-Mar-16	09-Mar-16	110	0	0%																
SC2F0270	C12 (C2f) - Pier Head Curing/Striking of Forms/Remove Scaffolding	6	26-Oct-15	0%	6	02-Nov-15	10-Mar-16	16-Mar-16	110	0	0%																
SC2F0275	C12 (C2f) - Pier Backfilling Works	4	03-Nov-15	0%	4	06-Nov-15	17-Mar-16	21-Mar-16	110	0	0%																
<b>Pier Head Segments</b>																											
SC2F0370	C12 (C2f) - Pier Head Segment - Temporary Platform	6	07-Nov-15	0%	6	13-Nov-15	22-Mar-16	31-Mar-16	110	0	0%																
SC2F0372	C12 (C2f) - Pier Head Segment Lift & Fix (1 seg)	2	14-Nov-15	0%	2	16-Nov-15	01-Apr-16	02-Apr-16	110	0	0%																
SC2F0374	C12 (C2f) - Pier Head Segment Diaphragm - Rebar	12	17-Nov-15	0%	12	30-Nov-15	05-Apr-16	19-Apr-16	110	0	0%																
SC2F0376	C12 (C2f) - Pier Head Segment Diaphragm - Formwork	8	01-Dec-15	0%	8	09-Dec-15	21-Apr-16	29-Apr-16	110	0	0%																
SC2F0378	C12 (C2f) - Pier Head Segment Diaphragm - Concreting	2	10-Dec-15	0%	2	11-Dec-15	30-Apr-16	03-May-16	110	0	0%																
SC2F0380	C12 (C2f) - Pier Head Segment Diaphragm - Curing & Striking of Forms	6	12-Dec-15	0%	6	18-Dec-15	04-May-16	10-May-16	110	0	0%																
<b>Pier C13 (C2e) Portal</b>																											
<b>Pier Works</b>																											
SC2EL210	C13A (C2e-L) - Pier Formwork & Prep for Concreting (2nd Lift)	3	21-Aug-15 A	100%	0	24-Aug-15 A					100%																
SC2EL220	C13A (C2e-L) - Pier Concreting (2nd Lift)	1	24-Aug-15 A	100%	0	24-Aug-15 A					100%																
SC2EL222	C13A (C2e-L) - Pier Curing & Striking of Forms incl. CJ prep (2nd Lift)	2	25-Aug-15 A	100%	0	27-Aug-15 A					100%																
SC2EL230	C13A (C2e-L) - Pier Scaffolding (3rd Lift)	2	28-Aug-15 A	100%	0	29-Aug-15 A					100%																
SC2EL240	C13A (C2e-L) - Pier Rebarwork (3rd Lift)	3	31-Aug-15 A	100%	0	02-Sep-15 A					100%																
SC2EL250	C13A (C2e-L) - Pier Formwork & Prep for Concreting (3rd Lift)	3	03-Sep-15 A	100%	0	05-Sep-15 A					100%																
SC2EL260	C13A (C2e-L) - Pier Concreting (3rd Lift)	1	05-Sep-15 A	100%	0	05-Sep-15 A					100%																
SC2EL262	C13A (C2e-L) - Pier Curing & Striking of Forms incl. CJ prep (3rd Lift)	2	06-Sep-15 A	100%	0	12-Sep-15 A					100%																
<b>Portal</b>																											
SC2ER280	C13 (C2e) - Portal Beam Scaffolding	12	21-Sep-15	0%	12	06-Oct-15	18-Feb-16	02-Mar-16	118	0	0%																
SC2ER290	C13 (C2e) - Portal Beam Soffit Formwork	12	07-Oct-15	0%	12	22-Oct-15	03-Mar-16	16-Mar-16	118	0	0%																
SC2ER300	C13 (C2e) - Portal Beam Rebarwork & Inserts	16	23-Oct-15	0%	16	11-Nov-15	17-Mar-16	08-Apr-16	118	0	0%																
SC2ER302	C13 (C2e) - Portal Beam Side Formwork & Prep for Concreting	16	12-Nov-15	0%	16	30-Nov-15	09-Apr-16	29-Apr-16	118	0	0%																
SC2ER310	C13 (C2e) - Portal Beam Concreting	1	01-Dec-15	0%	1	01-Dec-15	30-Apr-16	30-Apr-16	118	0	0%																
SC2ER320	C13 (C2e) - Pier Head Curing/Striking of Forms/Remove Scaffolding	14	02-Dec-15	0%	14	17-Dec-15	03-May-16	20-May-16	118	0	0%																
SC2ER325	C13 (C2e) - Pier Backfilling Works	4	15-Dec-15	0%	4	18-Dec-15	23-Aug-16	26-Aug-16	190	0	0%																
<b>Pier C14 (C2d)</b>																											
<b>Pier Works</b>																											
SC2D0190	C14 (C2d) - Type 5B Pier Scaffolding (2nd Lift)	2	31-Jul-15 A	100%	0	04-Sep-15 A					100%																
SC2D0200	C14 (C2d) - Type 5B Pier Rebarwork (2nd Lift)	3	05-Sep-15 A	100%	0	17-Sep-15 A					100%																
SC2D0210	C14 (C2d) - Type 5B Pier Formwork & Prep for Concreting (2nd Lift)	3	18-Sep-15 A	100%	0	21-Sep-15	08-Mar-16	08-Mar-16	135	0	100%																
SC2D0220	C14 (C2d) - Type 5B Pier Concreting (2nd Lift)	1	21-Sep-15	0%	1	21-Sep-15	09-Mar-16	09-Mar-16	135	0	0%																
SC2D0222	C14 (C2d) - Type 5B Pier Curing & Striking of Forms incl. CJ prep (2nd Lift)	2	22-Sep-15	0%	2	23-Sep-15	10-Mar-16	11-Mar-16	135	0	0%																
SC2D0230	C14 (C2d) - Type 5B Pier Head Scaffolding	3	24-Sep-15	0%	3	26-Sep-15	12-Mar-16	15-Mar-16	135	0	0%																
SC2D0240	C14 (C2d) - Type 5B Pier Head Rebarwork	4	29-Sep-15	0%	4	03-Oct-15	16-Mar-16	19-Mar-16	135	0	0%																
SC2D0250	C14 (C2d) - Type 5B Pier Head Formwork & Prep for Concreting	4	05-Oct-15	0%	4	08-Oct-15	21-Mar-16	24-Mar-16	135	0	0%																
SC2D0260	C14 (C2d) - Type 5B Pier Head Concreting	1	09-Oct-15	0%	1	09-Oct-15	29-Mar-16	29-Mar-16	135	0	0%																
SC2D0270	C14 (C2d) - Type 5B Pier Head Curing & Striking of Forms & Remove Sca	6	10-Oct-15	0%	6	17-Oct-15	30-Mar-16	06-Apr-16	135	0	0%																
SC2D0280	C14 (C2d) - Type 5B Pier Backfilling Works	4	19-Oct-15	0%	4	23-Oct-15	07-Apr-16	11-Apr-16	135	0	0%																
<b>Pier Head Segments</b>																											
SC2D0370	C14 (C2d) - Pier Head Segment - Temporary Platform	6	24-Oct-15	0%	6	31-Oct-15	12-Apr-16	19-Apr-16	135	0	0%																
SC2D0372	C14 (C2d) - Pier Head Segment Lift & Fix (1 seg)	2	02-Nov-15	0%	2	03-Nov-15	21-Apr-16	22-Apr-16	135	0	0%																
SC2D0374	C14 (C2d) - Pier Head Segment Diaphragm - Rebar	12	04-Nov-15	0%	12	17-Nov-15	23-Apr-16	07-May-16	135	0	0%																
SC2D0376	C14 (C2d) - Pier Head Segment Diaphragm - Formwork & Prep for Concr	8	18-Nov-15	0%	8	26-Nov-15	09-May-16	19-May-16	135	0	0%																
SC2D0378	C14 (C2d) - Pier Head Segment Diaphragm - Concreting	2	27-Nov-15	0%	2	28-Nov-15	20-May-16	21-May-16	135	0	0%																
SC2D0380	C14 (C2d) - Pier Head Segment Diaphragm - Curing & Striking of Forms	6	30-Nov-15	0%	6	05-Dec-15	23-May-16	30-May-16	135	0	0%																
<b>Pier C15 (C2c)</b>																											
<b>Pier Works</b>																											
SC2C0280	C15 (C2c) - Type 5B Pier Backfilling Works	4	21-Sep-15	0%	4	24-Sep-15	15-Apr-16	19-Apr-16	162	0	0%																



Project ID: J3518DWPPrE1-M28  
 Layout: J3518-DWP-3MRP Submission - M28  
 Filter: TASK filters: 3-Month Lookahead, No CC  
 Milestones, No Level of Effort.

**Tuen Mun - Chek Lap Kok Link - Southern Connection**  
**3-Month Rolling Programme (Page 13 of 32 Pages)**  
 (Progress as of 21-Sep -15)

Date	Revision	Checked	Approved
28-Jul-15		PKN	KWY
01-Sep-15		PKN	KWY
30-Sep-15		PKN	KWY

**DWG. No.:**  
**J3518/GCL/PGM/3MRP-M28**

Activity ID	Activity Name	Orig. Durn.	Act. Start / FC Early Start	Duration % Complete	Rem. Durn.	Act. Finish / FC Early Finish	Late Start	Late Finish	Total Float	Free Float	Physical % Complete	2015																												
												September							October							November							December							
												24	31	07	14	21	28	05	12	19	26	02	09	16	23	30	07	14	21	28	05	12	19	26	02	09	16	23	30	07
<b>Pier Head Segments</b>																																								
SC2C0370	C15 (C2c) - Pier Head Segment - Temporary Platform	6	25-Sep-15	0%	6	03-Oct-15	21-Apr-16	27-Apr-16	162	0	0%																													
SC2C0372	C15 (C2c) - Pier Head Segment Lift & Fix (1 seg)	2	05-Oct-15	0%	2	06-Oct-15	28-Apr-16	29-Apr-16	162	0	0%																													
SC2C0374	C15 (C2c) - Pier Head Segment Diaphragm - Rebar	12	07-Oct-15	0%	12	22-Oct-15	30-Apr-16	16-May-16	162	0	0%																													
SC2C0376	C15 (C2c) - Pier Head Segment Diaphragm - Formwork & Prep for Concr	8	23-Oct-15	0%	8	02-Nov-15	18-May-16	27-May-16	162	0	0%																													
SC2C0378	C15 (C2c) - Pier Head Segment Diaphragm - Concreting	2	03-Nov-15	0%	2	04-Nov-15	28-May-16	30-May-16	162	0	0%																													
SC2C0380	C15 (C2c) - Pier Head Segment Diaphragm - Curing & Striking of Forms	6	05-Nov-15	0%	6	11-Nov-15	31-May-16	08-Jun-16	162	0	0%																													
<b>Pier C16 (C2b)</b>																																								
<b>Pier Works</b>																																								
SC2B0160	C16 (C2b) - Type 5B-MJ Pier Rebarwork (1st Lift)	3	20-Aug-15 A	100%	0	21-Aug-15 A					100%																													
SC2B0170	C16 (C2b) - Type 5B-MJ Pier Formwork & Prep for Concreting (1st Lift)	2	21-Aug-15 A	100%	0	22-Aug-15 A					100%																													
SC2B0180	C16 (C2b) - Type 5B-MJ Pier Concreting (1st Lift)	1	24-Aug-15 A	100%	0	24-Aug-15 A					100%																													
SC2B0182	C16 (C2b) - Type 5B-MJ Pier Curing & Striking of Forms incl. CJ prep (1st	2	25-Aug-15 A	100%	0	31-Aug-15 A					100%																													
SC2B0300	C16 (C2b) - Type 5B-MJ Pier Head Scaffolding	3	21-Sep-15	0%	3	23-Sep-15	23-Apr-16	26-Apr-16	168	0	0%																													
SC2B0310	C16 (C2b) - Type 5B-MJ Pier Head Rebarwork	5	24-Sep-15	0%	5	30-Sep-15	27-Apr-16	03-May-16	168	0	0%																													
SC2B0320	C16 (C2b) - Type 5B-MJ Pier Head Formwork & Prep for Concreting	5	02-Oct-15	0%	5	07-Oct-15	04-May-16	09-May-16	168	0	0%																													
SC2B0330	C16 (C2b) - Type 5B-MJ Pier Head Concreting	1	08-Oct-15	0%	1	08-Oct-15	10-May-16	10-May-16	168	0	0%																													
SC2B0340	C16 (C2b) - Type 5B-MJ Pier Head Curing/Striking of Forms/Remove Scal	6	09-Oct-15	0%	6	16-Oct-15	11-May-16	19-May-16	168	0	0%																													
SC2B0360	C16 (C2b) - Type 5B-MJ Pier Backfilling Works	4	17-Oct-15	0%	4	22-Oct-15	20-May-16	24-May-16	168	0	0%																													
SC2B0380	C16 (C2b) - Type 5B-Bearing Plinth	6	09-Oct-15	0%	6	16-Oct-15	11-May-16	19-May-16	168	0	0%																													
SC2B0370	C16 (C2b) - Pier Head Segment - Temporary Platform	6	23-Oct-15	0%	6	30-Oct-15	25-May-16	01-Jun-16	168	146	0%																													
<b>Bridge C1</b>																																								
<b>Pier C17 (C2a)</b>																																								
<b>Pier Works</b>																																								
SC2A0180	C17 (C2a) - Type 5B Pier Concreting (1st Lift)	1	21-Aug-15 A	100%	0	21-Aug-15 A					100%																													
SC2A0182	C17 (C2a) - Type 5B Pier Curing & Striking of Forms incl. CJ prep (1st Lift)	2	22-Aug-15 A	100%	0	27-Aug-15 A					100%																													
SC2A0230	C17 (C2a) - Type 5B Pier Head Scaffolding	4	21-Sep-15	0%	4	24-Sep-15	29-Feb-16	03-Mar-16	127	0	0%																													
SC2A0240	C17 (C2a) - Type 5B Pier Head Rebarwork	5	25-Sep-15	0%	5	02-Oct-15	04-Mar-16	09-Mar-16	127	0	0%																													
SC2A0250	C17 (C2a) - Type 5B Pier Head Formwork & Prep for Concreting	5	03-Oct-15	0%	5	08-Oct-15	10-Mar-16	15-Mar-16	127	0	0%																													
SC2A0260	C17 (C2a) - Type 5B Pier Head Concreting	1	09-Oct-15	0%	1	09-Oct-15	16-Mar-16	16-Mar-16	127	0	0%																													
SC2A0270	C17 (C2a) - Type 5B Pier Head Curing/Striking of Forms/Remove Scaffok	6	10-Oct-15	0%	6	17-Oct-15	17-Mar-16	23-Mar-16	127	0	0%																													
SC2A0275	C17 (C2a) - Type 5B Pier Backfilling Works	4	19-Oct-15	0%	4	23-Oct-15	24-Mar-16	31-Mar-16	127	0	0%																													
<b>Pier Head Segments</b>																																								
SC2A0370	C17 (C2a) - Pier Head Segment - Temporary Platform	6	24-Oct-15	0%	6	31-Oct-15	01-Apr-16	08-Apr-16	127	0	0%																													
SC2A0372	C17 (C2a) - Pier Head Segment Lift & Fix (1 seg)	2	02-Nov-15	0%	2	03-Nov-15	09-Apr-16	12-Apr-16	128	0	0%																													
SC2A0374	C17 (C2a) - Pier Head Segment Diaphragm - Rebar	13	04-Nov-15	0%	13	18-Nov-15	13-Apr-16	29-Apr-16	128	0	0%																													
SC2A0376	C17 (C2a) - Pier Head Segment Diaphragm - Formwork	8	19-Nov-15	0%	8	27-Nov-15	30-Apr-16	11-May-16	129	0	0%																													
SC2A0378	C17 (C2a) - Pier Head Segment Diaphragm - Concreting	2	28-Nov-15	0%	2	30-Nov-15	12-May-16	13-May-16	129	0	0%																													
SC2A0380	C17 (C2a) - Pier Head Segment Diaphragm - Curing & Striking of Forms	6	01-Dec-15	0%	6	07-Dec-15	16-May-16	23-May-16	129	0	0%																													
<b>Pier C18 (C3d) Portal</b>																																								
<b>Pier Works</b>																																								
SC1ER182	C18B (C1e-R) - Pier Curing & Striking of Forms incl. CJ prep (1st Lift)	2	21-Sep-15	0%	2	22-Sep-15	14-Jan-16	15-Jan-16	91	0	0%																													
<b>Portal</b>																																								
SC1ER280	C18 (C1e) - Portal Beam Scaffolding	12	23-Sep-15	0%	12	08-Oct-15	16-Jan-16	29-Jan-16	91	0	0%																													
SC1ER290	C18 (C1e) - Portal Beam Soffit Formwork	12	09-Oct-15	0%	12	24-Oct-15	30-Jan-16	16-Feb-16	91	0	0%																													
SC1ER300	C18 (C1e) - Portal Beam Rebarwork & Inserts	16	26-Oct-15	0%	16	13-Nov-15	17-Feb-16	05-Mar-16	91	0	0%																													
SC1ER302	C18 (C1e) - Portal Beam Side Formwork & Prep for Concreting	16	14-Nov-15	0%	16	02-Dec-15	07-Mar-16	29-Mar-16	92	0	0%																													
SC1ER310	C18 (C1e) - Portal Beam Concreting	1	03-Dec-15	0%	1	03-Dec-15	30-Mar-16	30-Mar-16	92	0	0%																													
SC1ER320	C18 (C1e) - Pier Head Curing/Striking of Forms/Remove Scaffolding	14	04-Dec-15	0%	14	19-Dec-15	31-Mar-16	18-Apr-16	92	0	0%																													
<b>Pier C19 (C1d)</b>																																								
<b>Pier Works</b>																																								
SC1D0190	C19 (C1d) - Type 5B-B Pier/Pier Head Curing/Striking of Forms/Remove S	6	21-Sep-15	0%	6	26-Sep-15	08-Jan-16	14-Jan-16	86	0	0%																													
SC1D0195	C19 (C1d) - Type 5B-B Pier/Pier Head Backfilling Works	4	29-Sep-15	0%	4	03-Oct-15	15-Jan-16	19-Jan-16	86	0	0%																													
<b>Pier Head Segments</b>																																								
SC1D0370	C19 (C1d) - Pier Head Segment - Temporary Platform	6	05-Oct-15	0%	6	10-Oct-15	20-Jan-16	26-Jan-16	86	0	0%																													
SC1D0372	C19 (C1d) - Pier Head Segment Lift & Fix (1 seg)	2	12-Oct-15	0%	2	13-Oct-15	27-Jan-16	29-Jan-16	87	0	0%																													
SC1D0374	C19 (C1d) - Pier Head Segment Diaphragm - Rebar	13	15-Oct-15	0%	13	31-Oct-15	30-Jan-16	17-Feb-16	87	0	0%																													
SC1D0376	C19 (C1d) - Pier Head Segment Diaphragm - Formwork	8	02-Nov-15	0%	8	10-Nov-15	18-Feb-16	26-Feb-16	87	0	0%																													
SC1D0378	C19 (C1d) - Pier Head Segment Diaphragm - Concreting	2	11-Nov-15	0%	2	12-Nov-15	27-Feb-16	29-Feb-16	87	0	0%																													
SC1D0380	C19 (C1d) - Pier Head Segment Diaphragm - Curing & Striking of Forms	6	13-Nov-15	0%	6	19-Nov-15	01-Mar-16	07-Mar-16	87	15	0%																													
<b>Pier C20 (C1c) &amp; Abutment C</b>																																								
<b>Pier Head Segments</b>																																								

■ Actual Work  
■ Planned Bar  
■ Critical Bar  
◆ Milestone

Project ID: J3518DWPrE1-M28  
 Layout: J3518-DWP-3MRP Submission - M28  
 Filter: TASK filters: 3-Month Lookahead, No CC  
 Milestones, No Level of Effort.

**Tuen Mun - Chek Lap Kok Link - Southern Connection**  
**3-Month Rolling Programme (Page 14 of 32 Pages)**  
**(Progress as of 21-Sep -15)**

Date	Revision	Checked	Approved
28-Jul-15		PKN	KWY
01-Sep-15		PKN	KWY
30-Sep-15		PKN	KWY

**DWG. No.:**  
**J3518/GCL/PGM/3MRP-M28**



Activity ID	Activity Name	Orig. Durn.	Act. Start / FC Early Start	Duration % Complete	Rem. Durn.	Act. Finish / FC Early Finish	Late Start	Late Finish	Total Float	Free Float	Physical % Complete	2015															
												September				October				November				December			
												24	31	07	14	21	28	05	12	19	26	02	09	16	23	30	07
SD4B0376	D5 (D4b) - Pier Head Segment Diaphragm - Formwork & Prep for Concre	8	05-Dec-15	0%	8	14-Dec-15	01-Jun-15	12-Jun-15	-141	0	0%																
SD4B0378	D5 (D4b) - Pier Head Segment Diaphragm - Concreting	2	15-Dec-15	0%	2	16-Dec-15	13-Jun-15	15-Jun-15	-141	0	0%																
SD4B0380	D5 (D4b) - Pier Head Segment Diaphragm - Curing & Striking of Forms	6	17-Dec-15	0%	6	23-Dec-15	16-Jun-15	26-Jun-15	-141	0	0%																
<b>Pier D6 (D4a)</b>																											
<b>Pier Works</b>																											
SD4A0200	D6 (D4a) - Type 4B MJ Pier Concreting, Curing & Striking, CJ prep (1st Lift)	3	14-Aug-15 A	100%	0	23-Aug-15 A					100%																
SD4A0210	D6 (D4a) - Type 4B-MJ Pier Scaffolding (2nd Lift)	1	24-Aug-15 A	100%	0	31-Aug-15 A					100%																
SD4A0220	D6 (D4a) - Type 4B-MJ Pier Rebarwork, Formwork & Prep (2nd Lift)	5	01-Sep-15 A	100%	0	09-Sep-15 A					100%																
SD4A0240	D6 (D4a) - Type 4B MJ Pier Concreting, Curing & Striking, CJ prep (2nd Li	3	21-Sep-15 A	0%	3	23-Sep-15	22-May-15	26-May-15	-88	0	0%																
SD4A0250	D6 (D4a) - Type 4B-MJ Pier Scaffolding (3rd Lift)	2	24-Sep-15	0%	2	25-Sep-15	27-May-15	28-May-15	-88	0	0%																
SD4A0260	D6 (D4a) - Type 4B-MJ Pier Rebarwork, Formwork & Prep (3rd Lift)	5	26-Sep-15	0%	5	03-Oct-15	29-May-15	04-Jun-15	-88	0	0%																
SD4A0280	D6 (D4a) - Type 4B MJ Pier Concreting, Curing & Striking, CJ prep (3rd Lif	3	05-Oct-15	0%	3	07-Oct-15	05-Jun-15	08-Jun-15	-88	0	0%																
SD4A0300	D6 (D4a) - Type 4B-MJ Pier Head Scaffolding	4	08-Oct-15	0%	4	12-Oct-15	10-Jun-15	15-Jun-15	-88	0	0%																
SD4A0310	D6 (D4a) - Type 4B-MJ Pier Head Rebarwork, Formwork & Prep	9	13-Oct-15	0%	9	24-Oct-15	16-Jun-15	30-Jun-15	-88	0	0%																
SD4A0330	D6 (D4a) - Type 4B-MJ Pier Head Concreting	1	26-Oct-15	0%	1	26-Oct-15	02-Jul-15	02-Jul-15	-88	0	0%																
SD4A0340	D6 (D4a) - Type 4B-MJ Pier Head Curing/Striking of Forms/Remove Scaffi	6	27-Oct-15	0%	6	03-Nov-15	03-Jul-15	09-Jul-15	-88	0	0%																
SD4A372	D6 (D4a) - Type 4B-Bearing Plinth	6	27-Oct-15	0%	6	03-Nov-15	03-Jul-15	09-Jul-15	-88	0	0%																
<b>Pier Head Segments</b>																											
SD4A0370	D6 (D4a) - Pier Head Segment - Temporary Platform	6	04-Nov-15	0%	6	10-Nov-15	10-Jul-15	17-Jul-15	-88	104	0%																
<b>Bridge D2</b>																											
<b>Pier D7 (D3e)</b>																											
<b>Pier Works</b>																											
SD3E0180	D7 (D3e) - Type 4B Pier Rebarwork, Formwork & Prep (1st Lift)	5	17-Aug-15 A	100%	0	31-Aug-15 A					100%																
SD3E0200	D7 (D3e) - Type 4B Pier Concreting, Curing & Striking, CJ prep (1st Lift)	3	01-Sep-15 A	100%	0	07-Sep-15 A					100%																
SD3E0210	D7 (D3e) - Type 4B Pier Scaffolding (2nd Lift)	1	08-Sep-15 A	100%	0	11-Sep-15 A					100%																
SD3E0220	D7 (D3e) - Type 4B Pier Rebarwork, Formwork & Prep (2nd Lift)	5	12-Sep-15 A	40%	3	23-Sep-15	10-Apr-15	13-Apr-15	-119	0	40%																
SD3E0240	D7 (D3e) - Type 4B Pier Concreting, Curing & Striking, CJ prep (2nd Lift)	3	24-Sep-15	0%	3	26-Sep-15	14-Apr-15	17-Apr-15	-119	0	0%																
SD3E0250	D7 (D3e) - Type 4B Pier Scaffolding (3rd Lift)	2	29-Sep-15	0%	2	30-Sep-15	18-Apr-15	20-Apr-15	-119	0	0%																
SD3E0260	D7 (D3e) - Type 4B Pier Rebarwork, Formwork & Prep (3rd Lift)	5	02-Oct-15	0%	5	07-Oct-15	21-Apr-15	27-Apr-15	-119	0	0%																
SD3E0280	D7 (D3e) - Type 4B Pier Concreting, Curing & Striking, CJ prep (3rd Lift)	3	08-Oct-15	0%	3	10-Oct-15	28-Apr-15	30-Apr-15	-119	0	0%																
SD3E0300	D7 (D3e) - Type 4B Pier Head Scaffolding	4	12-Oct-15	0%	4	16-Oct-15	02-May-15	06-May-15	-119	0	0%																
SD3E0310	D7 (D3e) - Type 4B Pier Head Rebarwork, Formwork & Prep	9	17-Oct-15	0%	9	28-Oct-15	07-May-15	18-May-15	-119	0	0%																
SD3E0330	D7 (D3e) - Type 4B Pier Head Concreting	1	30-Oct-15	0%	1	30-Oct-15	19-May-15	19-May-15	-119	0	0%																
SD3E0340	D7 (D3e) - Type 4B Pier Head Curing/Striking of Forms/Remove Scaffoldir	6	31-Oct-15	0%	6	06-Nov-15	20-May-15	28-May-15	-119	0	0%																
<b>Pier Head Segments</b>																											
SD3E0370	D7 (D3e) - Pier Head Segment - Temporary Platform	6	07-Nov-15	0%	6	13-Nov-15	29-May-15	05-Jun-15	-119	4	0%																
SD3E0372	D7 (D3e) - Pier Head Segment Lift & Fix (1 seg)	2	19-Nov-15	0%	2	20-Nov-15	06-Jun-15	08-Jun-15	-123	0	0%																
SD3E0374	D7 (D3e) - Pier Head Segment Diaphragm - Rebar	12	21-Nov-15	0%	12	04-Dec-15	10-Jun-15	29-Jun-15	-123	0	0%																
SD3E0376	D7 (D3e) - Pier Head Segment Diaphragm - Formwork & Prep for Concre	8	05-Dec-15	0%	8	14-Dec-15	30-Jun-15	09-Jul-15	-123	0	0%																
SD3E0378	D7 (D3e) - Pier Head Segment Diaphragm - Concreting	2	15-Dec-15	0%	2	16-Dec-15	10-Jul-15	11-Jul-15	-123	0	0%																
SD3E0380	D7 (D3e) - Pier Head Segment Diaphragm - Curing & Striking of Forms	6	17-Dec-15	0%	6	23-Dec-15	13-Jul-15	20-Jul-15	-123	0	0%																
<b>Pier D8 (D3d)</b>																											
<b>Pier Works</b>																											
SD3D0240	D8 (D3d) - Type 5B Pier Rebarwork (3rd Lift)	3	20-Aug-15 A	100%	0	21-Sep-15	06-May-15	06-May-15	-99	0	100%																
SD3D0250	D8 (D3d) - Type 5B Pier Formwork & Prep for Concreting (3rd Lift)	3	21-Sep-15	0%	3	23-Sep-15	07-May-15	09-May-15	-99	0	0%																
SD3D0260	D8 (D3d) - Type 5B Pier Concreting (3rd Lift)	1	24-Sep-15	0%	1	24-Sep-15	11-May-15	11-May-15	-99	0	0%																
SD3D0262	D8 (D3d) - Type 5B Pier Curing & Striking of Forms incl. CJ prep (3rd Lift)	2	25-Sep-15	0%	2	26-Sep-15	13-May-15	14-May-15	-99	0	0%																
SD3D0270	D8 (D3d) - Type 5B Pier Head Scaffolding	3	29-Sep-15	0%	3	02-Oct-15	15-May-15	18-May-15	-99	0	0%																
SD3D0280	D8 (D3d) - Type 5B Pier Head Rebarwork	4	03-Oct-15	0%	4	07-Oct-15	19-May-15	23-May-15	-99	0	0%																
SD3D0290	D8 (D3d) - Type 5B Pier Head Formwork & Prep for Concreting	4	08-Oct-15	0%	4	12-Oct-15	26-May-15	29-May-15	-99	0	0%																
SD3D0300	D8 (D3d) - Type 5B Pier Head Concreting	1	13-Oct-15	0%	1	13-Oct-15	30-May-15	30-May-15	-99	0	0%																
SD3D0310	D8 (D3d) - Type 5B Pier Head Curing/Striking of Forms/Remove Scaffoldir	6	15-Oct-15	0%	6	22-Oct-15	01-Jun-15	08-Jun-15	-99	0	0%																
SD3D0320	D8 (D3d) - Type 5B Pier Backfilling Works	4	23-Oct-15	0%	4	27-Oct-15	10-Jun-15	15-Jun-15	-99	0	0%																
<b>Pier Head Segments</b>																											
SD3D0370	D8 (D3d) - Pier Head Segment - Temporary Platform	6	28-Oct-15	0%	6	04-Nov-15	16-Jun-15	26-Jun-15	-99	12	0%																
SD3D0372	D8 (D3d) - Pier Head Segment Lift & Fix (1 seg)	2	19-Nov-15	0%	2	20-Nov-15	27-Jun-15	29-Jun-15	-111	0	0%																
SD3D0374	D8 (D3d) - Pier Head Segment Diaphragm - Rebar	13	21-Nov-15	0%	13	05-Dec-15	30-Jun-15	15-Jul-15	-111	0	0%																
SD3D0376	D8 (D3d) - Pier Head Segment Diaphragm - Formwork	8	07-Dec-15	0%	8	15-Dec-15	17-Jul-15	25-Jul-15	-111	0	0%																
SD3D0378	D8 (D3d) - Pier Head Segment Diaphragm - Concreting	2	16-Dec-15	0%	2	17-Dec-15	27-Jul-15	28-Jul-15	-111	0	0%																
SD3D0380	D8 (D3d) - Pier Head Segment Diaphragm - Curing & Striking of Forms	6	18-Dec-15	0%	6	24-Dec-15	30-Jul-15	05-Aug-15	-111	0	0%																
<b>Pier D9 (D3c)</b>																											
<b>Pier Works</b>																											
SD3C0210	D9 (D3c) - Type 5B Pier Formwork & Prep for Concreting (2nd Lift)	3	22-Aug-15 A	100%	0	24-Aug-15 A					100%																

- Actual Work
- Planned Bar
- Critical Bar
- Milestone

Project ID: J3518DWPrE1-M28  
Layout: J3518-DWP-3MRP Submission - M28  
Filter: TASK filters: 3-Month Lookahead, No CC  
Milestones, No Level of Effort.

**Tuen Mun - Chek Lap Kok Link - Southern Connection**  
**3-Month Rolling Programme (Page 16 of 32 Pages)**  
(Progress as of 21-Sep -15)

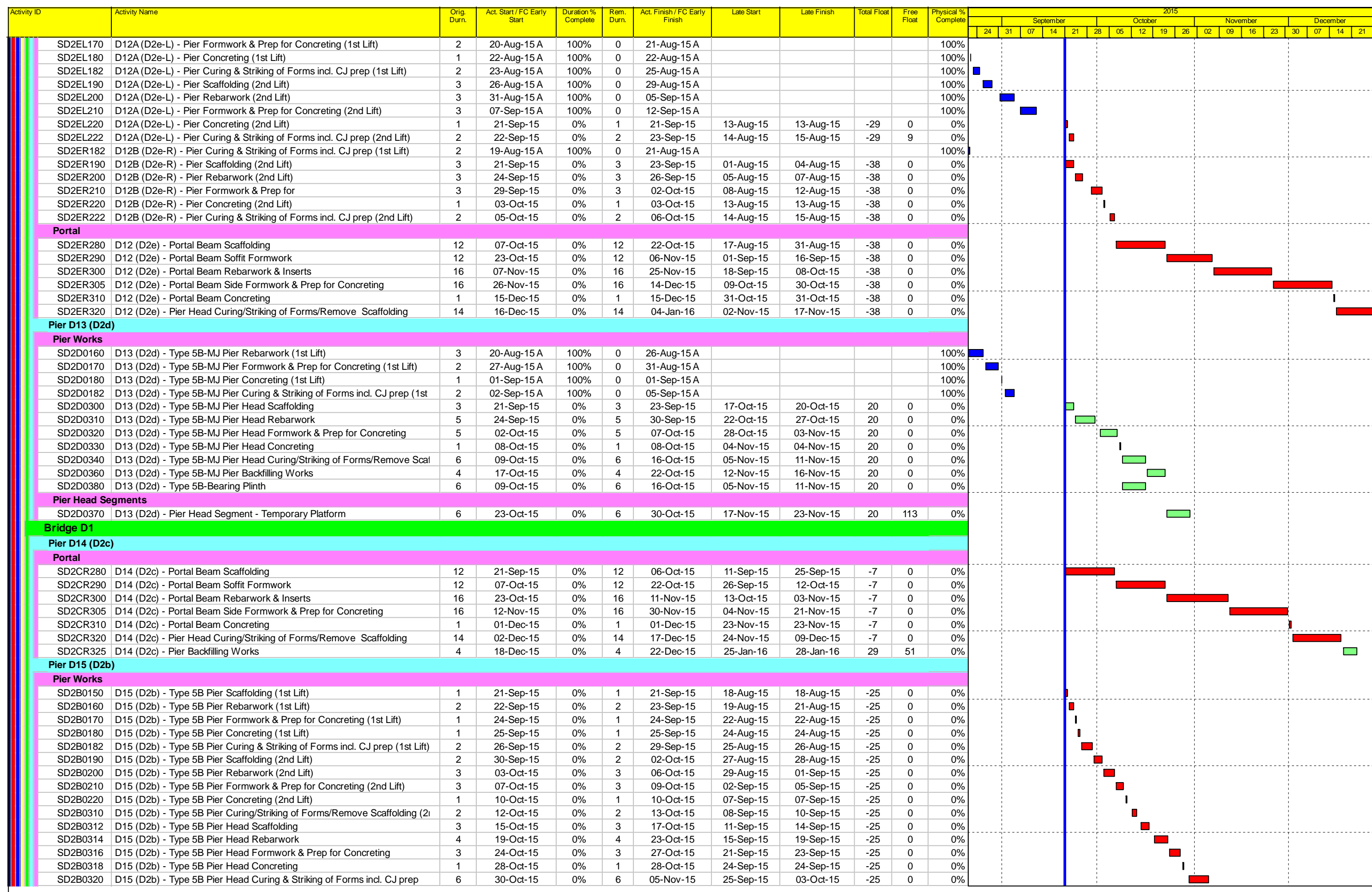
Date	Revision	Checked	Approved
28-Jul-15		PKN	KWY
01-Sep-15		PKN	KWY
30-Sep-15		PKN	KWY

**DWG. No.:**  
**J3518/GCL/PGM/3MRP-M28**



Activity ID	Activity Name	Orig. Durn.	Act. Start / FC Early Start	Duration % Complete	Rem. Durn.	Act. Finish / FC Early Finish	Late Start	Late Finish	Total Float	Free Float	Physical % Complete	2015																				
												September					October				November			December								
												24	31	07	14	21	28	05	12	19	26	02	09	16	23	30	07	14	21			
SD3C0220	D9 (D3c) - Type 5B Pier Concreting (2nd Lift)	1	25-Aug-15 A	100%	0	25-Aug-15 A					100%																					
SD3C0222	D9 (D3c) - Type 5B Pier Curing & Striking of Forms incl. CJ prep (2nd Lift)	2	26-Aug-15 A	100%	0	08-Sep-15 A					100%																					
SD3C0230	D9 (D3c) - Type 5B Pier head Scaffolding	3	09-Sep-15 A	100%	0	15-Sep-15 A					100%																					
SD3C0240	D9 (D3c) - Type 5B Pier Head Rebarwork	4	18-Sep-15 A	70%	1	22-Sep-15	06-Jul-15	07-Jul-15	-58	0	70%																					
SD3C0250	D9 (D3c) - Type 5B Pier Head Formwork & Prep for Concreting	4	22-Sep-15	0%	4	26-Sep-15	08-Jul-15	11-Jul-15	-58	0	0%																					
SD3C0260	D9 (D3c) - Type 5B Pier Head Concreting	1	26-Sep-15	0%	1	29-Sep-15	13-Jul-15	13-Jul-15	-58	0	0%																					
SD3C0262	D9 (D3c) - Type 5B Pier Head Curing & Striking of Forms incl. CJ prep	2	29-Sep-15	0%	2	02-Oct-15	14-Jul-15	15-Jul-15	-58	0	0%																					
<b>Pier Head Segments</b>																																
SD3C0370	D9 (D3c) - Pier Head Segment - Temporary Platform	6	02-Oct-15	0%	6	09-Oct-15	17-Jul-15	23-Jul-15	-58	32	0%																					
SD3C0372	D9 (D3c) - Pier Head Segment Lift & Fix (1 seg)	2	19-Nov-15	0%	2	20-Nov-15	24-Jul-15	25-Jul-15	-90	0	0%																					
SD3C0374	D9 (D3c) - Pier Head Segment Diaphragm - Rebar	12	21-Nov-15	0%	12	04-Dec-15	27-Jul-15	10-Aug-15	-90	0	0%																					
SD3C0376	D9 (D3c) - Pier Head Segment Diaphragm - Formwork	8	05-Dec-15	0%	8	14-Dec-15	12-Aug-15	21-Aug-15	-90	0	0%																					
SD3C0378	D9 (D3c) - Pier Head Segment Diaphragm - Concreting	2	15-Dec-15	0%	2	16-Dec-15	22-Aug-15	24-Aug-15	-90	0	0%																					
SD3C0380	D9 (D3c) - Pier Head Segment Diaphragm - Curing & Striking of Forms	6	17-Dec-15	0%	6	23-Dec-15	25-Aug-15	31-Aug-15	-90	0	0%																					
<b>Pier D10 (D3b)</b>																																
<b>Pile Cap Works</b>																																
SD3BR090	D10B (D3b-R) - Pile cap Excavation / ELS (incl. sheet piling)	12	21-Sep-15	0%	12	06-Oct-15	16-Jan-19	29-Jan-19	951	0	0%																					
SD3BR092	D10B (D3b-R) - Pile cap Pile breakdown to cut-off etc	3	07-Oct-15	0%	3	09-Oct-15	30-Jan-19	01-Feb-19	951	951	0%																					
<b>Pier Works</b>																																
SD3BR182	D10B (D3b-R) - Pier Curing & Striking of Forms incl. CJ prep (1st Lift)	2	21-Aug-15 A	100%	0	22-Aug-15 A					100%																					
SD3BR190	D10B (D3b-R) - Pier Scaffolding (2nd Lift)	2	19-Sep-15 A	100%	0	21-Sep-15 A					100%																					
SD3BR200	D10B (D3b-R) - Pier Rebarwork (2nd Lift)	3	22-Sep-15 A	100%	0	25-Sep-15 A					100%																					
SD3BR210	D10B (D3b-R) - Pier Formwork & Prep for Concreting (2nd Lift)	2	21-Sep-15	0%	2	22-Sep-15	24-Jun-15	26-Jun-15	-67	0	0%																					
SD3BR220	D10B (D3b-R) - Pier Concreting (2nd Lift)	1	23-Sep-15	0%	1	23-Sep-15	27-Jun-15	27-Jun-15	-67	0	0%																					
SD3BR222	D10B (D3b-R) - Pier Curing & Striking of Forms incl. CJ prep (2nd Lift)	2	24-Sep-15	0%	2	25-Sep-15	29-Jun-15	02-Jul-15	-66	0	0%																					
SD3BR230	D10B (D3b-R) - Pier Scaffolding (3rd Lift)	3	26-Sep-15	0%	3	30-Sep-15	03-Jul-15	06-Jul-15	-66	0	0%																					
SD3BR240	D10B (D3b-R) - Pier Rebarwork (3rd Lift)	3	02-Oct-15	0%	3	05-Oct-15	07-Jul-15	09-Jul-15	-66	0	0%																					
SD3BR250	D10B (D3b-R) - Pier Formwork & Prep for Concreting (3rd Lift)	3	06-Oct-15	0%	3	08-Oct-15	10-Jul-15	13-Jul-15	-66	0	0%																					
SD3BR260	D10B (D3b-R) - Pier Concreting (3rd Lift)	1	09-Oct-15	0%	1	09-Oct-15	14-Jul-15	14-Jul-15	-66	0	0%																					
SD3BR262	D10B (D3b-R) - Pier Curing & Striking of Forms incl. CJ prep (3rd Lift)	2	10-Oct-15	0%	2	12-Oct-15	15-Jul-15	17-Jul-15	-66	0	0%																					
<b>Portal</b>																																
SD3BR280	D10 (D3b) - Portal Beam Scaffolding	12	13-Oct-15	0%	12	28-Oct-15	18-Jul-15	01-Aug-15	-66	0	0%																					
SD3BR290	D10 (D3b) - Portal Beam Soffit Formwork	12	30-Oct-15	0%	12	12-Nov-15	03-Aug-15	17-Aug-15	-66	0	0%																					
SD3BR300	D10 (D3b) - Portal Beam Rebarwork & Inserts	16	13-Nov-15	0%	16	01-Dec-15	18-Aug-15	07-Sep-15	-66	0	0%																					
SD3BR305	D10 (D3b) - Portal Beam Side Formwork & Prep for Concreting	16	02-Dec-15	0%	16	19-Dec-15	08-Sep-15	29-Sep-15	-66	0	0%																					
<b>Pier D11 (D3a)</b>																																
<b>Socketted H-Pile Installation - D11 (D3a)</b>																																
GFXX461-7	D11B (D3a) - Installation of SH Pile (8 nr)	90	09-Apr-15 A	100%	0	27-Aug-15 A					100%																					
<b>Pile Cap Works</b>																																
SD3AR090	D11B (D3a-R) - Pile cap Excavation / ELS (incl. sheet piling)	18	21-Sep-15	0%	18	13-Oct-15	08-May-15	02-Jun-15	-98	0	0%																					
SD3AR092	D11B (D3a-R) - Pile cap Pile breakdown to cut-off etc	4	15-Oct-15	0%	4	19-Oct-15	02-Jun-15	08-Jun-15	-98	0	0%																					
SD3AR100	D11B (D3a-R) - Pile cap Blinding	1	20-Oct-15	0%	1	20-Oct-15	08-Jun-15	10-Jun-15	-98	0	0%																					
SD3AR110	D11B (D3a-R) - Pile cap Formwork	3	27-Oct-15	0%	3	30-Oct-15	16-Jun-15	22-Jun-15	-98	0	0%																					
SD3AR120	D11B (D3a-R) - Pile cap Rebarwork	4	22-Oct-15	0%	4	26-Oct-15	10-Jun-15	16-Jun-15	-98	0	0%																					
SD3AR122	D11B (D3a-R) - Pile cap Kicker Formwork	2	02-Nov-15	0%	2	03-Nov-15	02-Jul-15	04-Jul-15	-93	4	0%																					
SD3AR130	D11B (D3a-R) - Pile cap Concreting	1	31-Oct-15	0%	1	31-Oct-15	22-Jun-15	24-Jun-15	-98	0	0%																					
SD3AR140	D11B (D3a-R) - Pile cap Curing & Striking of Forms incl. CJ prep	6	02-Nov-15	0%	6	07-Nov-15	24-Jun-15	04-Jul-15	-97	0	0%																					
<b>Pier Works</b>																																
SD3AR150	D11B (D3a-R) - Pier Scaffolding (1st Lift)	2	09-Nov-15	0%	2	10-Nov-15	04-Jul-15	07-Jul-15	-97	0	0%																					
SD3AR160	D11B (D3a-R) - Pier Rebarwork (1st Lift)	3	11-Nov-15	0%	3	13-Nov-15	07-Jul-15	10-Jul-15	-97	0	0%																					
SD3AR170	D11B (D3a-R) - Pier Formwork & Prep for Concreting (1st Lift)	2	14-Nov-15	0%	2	16-Nov-15	10-Jul-15	13-Jul-15	-97	0	0%																					
SD3AR180	D11B (D3a-R) - Pier Concreting (1st Lift)	1	17-Nov-15	0%	1	17-Nov-15	13-Jul-15	14-Jul-15	-97	0	0%																					
SD3AR182	D11B (D3a-R) - Pier Curing & Striking of Forms incl. CJ prep (1st Lift)	2	18-Nov-15	0%	2	19-Nov-15	14-Jul-15	17-Jul-15	-97	0	0%																					
SD3AR190	D11B (D3a-R) - Pier Scaffolding (2nd Lift)	2	20-Nov-15	0%	2	21-Nov-15	17-Jul-15	20-Jul-15	-97	0	0%																					
SD3AR200	D11B (D3a-R) - Pier Rebarwork (2nd Lift)	3	23-Nov-15	0%	3	25-Nov-15	20-Jul-15	23-Jul-15	-97	0	0%																					
SD3AR210	D11B (D3a-R) - Pier Formwork & Prep for Concreting (2nd Lift)	3	26-Nov-15	0%	3	28-Nov-15	23-Jul-15	27-Jul-15	-97	0	0%																					
SD3AR220	D11B (D3a-R) - Pier Concreting (2nd Lift)	1	30-Nov-15	0%	1	30-Nov-15	27-Jul-15	28-Jul-15	-97	0	0%																					
SD3AR222	D11B (D3a-R) - Pier Curing & Striking of Forms incl. CJ prep (2nd Lift)	2	01-Dec-15	0%	2	02-Dec-15	28-Jul-15	01-Aug-15	-95	0	0%																					
<b>Portal</b>																																
SD3AR280	D11 (D3a) - Portal Beam Scaffolding	12	03-Dec-15	0%	12	16-Dec-15	03-Aug-15	17-Aug-15	-95	0	0%																					
SD3AR290	D11 (D3a) - Portal Beam Soffit Formwork	12	17-Dec-15	0%	12	02-Jan-16	18-Aug-15	01-Sep-15	-95	0	0%																					
<b>Pier D12 (D2e)</b>																																
<b>Pier Works</b>																																

	Project ID: J3518DWPrE1-M28 Layout: J3518-DWP-3MRP Submission - M28 Filter: TASK filters: 3-Month Lookahead, No CC Milestones, No Level of Effort.	<b>Tuen Mun - Chek Lap Kok Link - Southern Connection</b> <b>3-Month Rolling Programme (Page 17 of 32 Pages)</b> <b>(Progress as of 21-Sep -15)</b>	<table border="1"> <tr> <th>Date</th> <th>Revision</th> <th>Checked</th> <th>Approved</th> </tr> <tr> <td>28-Jul-15</td> <td></td> <td>PKN</td> <td>KWY</td> </tr> <tr> <td>01-Sep-15</td> <td></td> <td>PKN</td> <td>KWY</td> </tr> <tr> <td>30-Sep-15</td> <td></td> <td>PKN</td> <td>KWY</td> </tr> </table>	Date	Revision	Checked	Approved	28-Jul-15		PKN	KWY	01-Sep-15		PKN	KWY	30-Sep-15		PKN	KWY
Date	Revision	Checked	Approved																
28-Jul-15		PKN	KWY																
01-Sep-15		PKN	KWY																
30-Sep-15		PKN	KWY																



<ul style="list-style-type: none"> <li>Actual Work</li> <li>Planned Bar</li> <li>Critical Bar</li> <li>Milestone</li> </ul>	<p>Project ID: J3518DWP-1-M28          Layout: J3518-DWP-3MRP Submission - M28          Filter: TASK filters: 3-Month Lookahead, No CC          Milestones, No Level of Effort.</p> <p style="text-align: center;"><b>Tuen Mun - Chek Lap Kok Link - Southern Connection</b>  <b>3-Month Rolling Programme (Page 18 of 32 Pages)</b>  <b>(Progress as of 21-Sep -15)</b></p>	<table border="1"> <tr><th>Date</th><th>Revision</th><th>Checked</th><th>Approved</th></tr> <tr><td>28-Jul-15</td><td></td><td>PKN</td><td>KWY</td></tr> <tr><td>01-Sep-15</td><td></td><td>PKN</td><td>KWY</td></tr> <tr><td>30-Sep-15</td><td></td><td>PKN</td><td>KWY</td></tr> </table>	Date	Revision	Checked	Approved	28-Jul-15		PKN	KWY	01-Sep-15		PKN	KWY	30-Sep-15		PKN	KWY	<p><b>DWG. No.:</b>  <b>J3518/GCL/PGM/3MRP-M28</b></p>
Date	Revision	Checked	Approved																
28-Jul-15		PKN	KWY																
01-Sep-15		PKN	KWY																
30-Sep-15		PKN	KWY																

Activity ID	Activity Name	Orig. Durn.	Act. Start / FC Early Start	Duration % Complete	Rem. Durn.	Act. Finish / FC Early Finish	Late Start	Late Finish	Total Float	Free Float	Physical % Complete	2015															
												September				October				November				December			
												24	31	07	14	21	28	05	12	19	26	02	09	16	23	30	07
SD2B0322	D15 (D2b) - Type 5B Pier Backfilling Works	4	06-Nov-15	0%	4	10-Nov-15	05-Oct-15	08-Oct-15	-25	0	0%																
<b>Pier Head Segments</b>																											
SD2B0370	D15 (D2b) - Pier Head Segment - Temporary Platform	6	11-Nov-15	0%	6	17-Nov-15	17-Nov-15	23-Nov-15	5	1	0%																
SD2B0372	D15 (D2b) - Pier Head Segment Lift & Fix (1 seg)	2	19-Nov-15	0%	2	20-Nov-15	24-Nov-15	25-Nov-15	4	0	0%																
SD2B0374	D15 (D2b) - Pier Head Segment Diaphragm - Rebar	12	21-Nov-15	0%	12	04-Dec-15	26-Nov-15	09-Dec-15	4	0	0%																
SD2B0376	D15 (D2b) - Pier Head Segment Diaphragm - Formwork	8	05-Dec-15	0%	8	14-Dec-15	10-Dec-15	18-Dec-15	4	0	0%																
SD2B0378	D15 (D2b) - Pier Head Segment Diaphragm - Concreting	2	15-Dec-15	0%	2	16-Dec-15	19-Dec-15	21-Dec-15	4	0	0%																
SD2B0380	D15 (D2b) - Pier Head Segment Diaphragm - Curing & Striking of Forms	6	17-Dec-15	0%	6	23-Dec-15	22-Dec-15	30-Dec-15	4	0	0%																
<b>Pier D16 (D2a)</b>																											
<b>Pier Works</b>																											
SD2A0160	D16 (D2a) - Type 5B Pier Rebarwork (1st Lift)	3	21-Aug-15 A	100%	0	21-Aug-15 A					100%																
SD2A0170	D16 (D2a) - Type 5B Pier Formwork & Prep for Concreting (1st Lift)	2	21-Sep-15	0%	2	22-Sep-15	03-Jul-15	04-Jul-15	-61	0	0%																
SD2A0180	D16 (D2a) - Type 5B Pier Concreting (1st Lift)	1	23-Sep-15	0%	1	23-Sep-15	06-Jul-15	06-Jul-15	-61	0	0%																
SD2A0182	D16 (D2a) - Type 5B Pier Curing & Striking of Forms incl. CJ prep (1st Lift)	2	24-Sep-15	0%	2	25-Sep-15	07-Jul-15	08-Jul-15	-61	0	0%																
SD2A0190	D16 (D2a) - Type 5B Pier Scaffolding (2nd Lift)	2	26-Sep-15	0%	2	29-Sep-15	09-Jul-15	10-Jul-15	-61	0	0%																
SD2A0200	D16 (D2a) - Type 5B Pier Rebarwork (2nd Lift)	3	30-Sep-15	0%	3	03-Oct-15	11-Jul-15	14-Jul-15	-61	0	0%																
SD2A0210	D16 (D2a) - Type 5B Pier Formwork & Prep for Concreting (2nd Lift)	3	05-Oct-15	0%	3	07-Oct-15	15-Jul-15	18-Jul-15	-61	0	0%																
SD2A0220	D16 (D2a) - Type 5B Pier Concreting (2nd Lift)	1	08-Oct-15	0%	1	08-Oct-15	20-Jul-15	20-Jul-15	-61	0	0%																
SD2A0222	D16 (D2a) - Type 5B Pier Curing & Striking of Forms incl. CJ prep (2nd Lift)	2	09-Oct-15	0%	2	10-Oct-15	21-Jul-15	22-Jul-15	-61	0	0%																
SD2A0230	D16 (D2a) - Type 5B Pier Head Scaffolding	3	12-Oct-15	0%	3	15-Oct-15	23-Jul-15	25-Jul-15	-61	0	0%																
SD2A0240	D16 (D2a) - Type 5B Pier Head Rebarwork	4	16-Oct-15	0%	4	20-Oct-15	27-Jul-15	31-Jul-15	-61	0	0%																
SD2A0250	D16 (D2a) - Type 5B Pier Head Formwork & Prep for Concreting	4	22-Oct-15	0%	4	26-Oct-15	01-Aug-15	05-Aug-15	-61	0	0%																
SD2A0260	D16 (D2a) - Type 5B Pier Head Concreting	1	27-Oct-15	0%	1	27-Oct-15	06-Aug-15	06-Aug-15	-61	0	0%																
SD2A0310	D16 (D2a) - Type 5B Pier Head Curing/Striking of Forms/Remove Scaffold	6	28-Oct-15	0%	6	04-Nov-15	07-Aug-15	14-Aug-15	-61	0	0%																
SD2A0320	D16 (D2a) - Type 5B Pier Backfilling Works	4	05-Nov-15	0%	4	09-Nov-15	15-Aug-15	19-Aug-15	-61	0	0%																
<b>Pier Head Segments</b>																											
SD2A0370	D16 (D2a) - Pier Head Segment - Temporary Platform	6	10-Nov-15	0%	6	16-Nov-15	21-Aug-15	27-Aug-15	-61	2	0%																
SD2A0372	D16 (D2a) - Pier Head Segment Lift & Fix (1 seg)	2	19-Nov-15	0%	2	20-Nov-15	28-Aug-15	29-Aug-15	-63	0	0%																
SD2A0374	D16 (D2a) - Pier Head Segment Diaphragm - Rebar	13	21-Nov-15	0%	13	05-Dec-15	31-Aug-15	16-Sep-15	-63	0	0%																
SD2A0376	D16 (D2a) - Pier Head Segment Diaphragm - Formwork	8	07-Dec-15	0%	8	15-Dec-15	18-Sep-15	26-Sep-15	-63	0	0%																
SD2A0378	D16 (D2a) - Pier Head Segment Diaphragm - Concreting	2	16-Dec-15	0%	2	17-Dec-15	29-Sep-15	30-Sep-15	-63	0	0%																
SD2A0380	D16 (D2a) - Pier Head Segment Diaphragm - Curing & Striking of Forms	6	18-Dec-15	0%	6	24-Dec-15	02-Oct-15	08-Oct-15	-63	0	0%																
<b>Pier D17 (D1d)</b>																											
<b>Pier Head Segments</b>																											
SD1D0370	D17 (D1d) - Pier Head Segment - Temporary Platform	6	22-Aug-15 A	100%	0	29-Aug-15 A					100%																
SD1D0372	D17 (D1d) - Pier Head Segment Lift & Fix (1 seg)	2	31-Aug-15 A	100%	0	31-Aug-15 A					100%																
SD1D0374	D17 (D1d) - Pier Head Segment Diaphragm - Rebar	13	21-Sep-15	0%	13	07-Oct-15	31-Aug-15	16-Sep-15	-15	0	0%																
SD1D0376	D17 (D1d) - Pier Head Segment Diaphragm - Formwork	8	08-Oct-15	0%	8	17-Oct-15	18-Sep-15	26-Sep-15	-15	0	0%																
SD1D0378	D17 (D1d) - Pier Head Segment Diaphragm - Concreting	2	19-Oct-15	0%	2	20-Oct-15	29-Sep-15	30-Sep-15	-15	0	0%																
SD1D0380	D17 (D1d) - Pier Head Segment Diaphragm - Curing & Striking of Forms	6	22-Oct-15	0%	6	28-Oct-15	02-Oct-15	08-Oct-15	-15	0	0%																
<b>Pier D18 (D1c)</b>																											
<b>Pier Works</b>																											
SD1C0320	D18 (D1c) - Type 5B-B Pier Backfilling Works	4	21-Sep-15	0%	4	24-Sep-15	21-Nov-15	25-Nov-15	48	0	0%																
<b>Pier Head Segments</b>																											
SD1C0370	D18 (D1c) - Pier Head Segment - Temporary Platform	6	25-Sep-15	0%	6	03-Oct-15	26-Nov-15	02-Dec-15	48	36	0%																
SD1C0372	D18 (D1c) - Pier Head Segment Lift & Fix (1 seg)	2	19-Nov-15	0%	2	20-Nov-15	03-Dec-15	04-Dec-15	12	0	0%																
SD1C0374	D18 (D1c) - Pier Head Segment Diaphragm - Rebar	13	21-Nov-15	0%	13	05-Dec-15	05-Dec-15	19-Dec-15	12	0	0%																
SD1C0376	D18 (D1c) - Pier Head Segment Diaphragm - Formwork	8	07-Dec-15	0%	8	15-Dec-15	21-Dec-15	31-Dec-15	12	0	0%																
SD1C0378	D18 (D1c) - Pier Head Segment Diaphragm - Concreting	2	16-Dec-15	0%	2	17-Dec-15	02-Jan-16	04-Jan-16	12	0	0%																
SD1C0380	D18 (D1c) - Pier Head Segment Diaphragm - Curing & Striking of Forms	6	18-Dec-15	0%	6	24-Dec-15	05-Jan-16	11-Jan-16	12	0	0%																
<b>Pier D19 (D1b) &amp; Abutment D</b>																											
<b>Pier Head Segments</b>																											
SD1B0370	D19 (D1b) - Pier Head Segment - Temporary Platform	6	21-Sep-15	0%	6	26-Sep-15	28-Oct-15	04-Nov-15	28	137	0%																
<b>Abutment &amp; Approach Ramp D</b>																											
SD1B0200	Abutment D - Walls & Staircase	48	21-Sep-15	0%	48	20-Nov-15	25-Apr-15	04-Jul-15	-108	0	0%																
SD1B0250	AR-D - RE Walls - Erect MTR boundary fence, Excavation/formation/drain:	24	21-Sep-15	0%	24	22-Oct-15	25-Apr-15	28-May-15	-108	0	0%																
SD1B0260	AR-D - RE Walls - Upper layers with backfill in stages	48	23-Oct-15	0%	48	18-Dec-15	28-May-15	04-Aug-15	-108	0	0%																
SD1B0280	AR-D - RC Walls - Side Walls	48	19-Dec-15	0%	48	19-Feb-16	10-Aug-15	12-Oct-15	-103	0	0%																
<b>Viaduct E</b>																											
<b>Viaduct E1</b>																											
<b>Bridge E1 - Piling &amp; Substructure</b>																											
<b>E1A, E1B, E1C &amp; E1D (E1a1-2-3-4)</b>																											

- Actual Work
- Planned Bar
- Critical Bar
- ◆ Milestone

Project ID: J3518DWPrE1-M28  
 Layout: J3518-DWP-3MRP Submission - M28  
 Filter: TASK filters: 3-Month Lookahead, No CC  
 Milestones, No Level of Effort.

**Tuen Mun - Chek Lap Kok Link - Southern Connection**  
**3-Month Rolling Programme (Page 19 of 32 Pages)**  
**(Progress as of 21-Sep -15)**

Date	Revision	Checked	Approved
28-Jul-15		PKN	KWY
01-Sep-15		PKN	KWY
30-Sep-15		PKN	KWY

**DWG. No.:**  
**J3518/GCL/PGM/3MRP-M28**

Activity ID	Activity Name	Orig. Durn.	Act. Start / FC Early Start	Duration % Complete	Rem. Durn.	Act. Finish / FC Early Finish	Late Start	Late Finish	Total Float	Free Float	Physical % Complete	2015																	
												September				October				November				December					
												24	31	07	14	21	28	05	12	19	26	02	09	16	23	30	07	14	21
<b>Pier Works - E1A, E1B, E1C &amp; E1D</b>																													
<b>Pier Works - E1C (E1a2)</b>																													
SE1A2210	E1C (E1a2) - Type 4B Pier Scaffolding (2nd Lift)	2	24-Aug-15 A	100%	0	28-Aug-15 A					100%																		
SE1A2220	E1C (E1a2) - Type 4B Pier Rebarwork, Formwork & Prep (2nd Lift)	5	29-Aug-15 A	100%	0	11-Sep-15 A					100%																		
SE1A2240	E1C (E1a2) - Type 4B Pier Concreting, Curing & Striking, CJ prep (2nd Lift)	3	12-Sep-15 A	100%	0	15-Sep-15 A					100%																		
SE1A2300	E1C (E1a2) - Type 4B Pier Head Scaffolding	4	16-Sep-15 A	100%	0	19-Sep-15 A					100%																		
SE1A2310	E1C (E1a2) - Type 4B Pier Head Rebarwork, Formwork & Prep	10	21-Sep-15 A	0%	10	03-Oct-15	05-Mar-15	17-Mar-15	-146	0	0%																		
SE1A2330	E1C (E1a2) - Type 4B Pier Head Concreting	1	05-Oct-15	0%	1	05-Oct-15	17-Mar-15	18-Mar-15	-146	0	0%																		
SE1A2340	E1C (E1a2) - Type 4B Pier Head Curing/Striking of Forms/Remove Scaffol	6	06-Oct-15	0%	6	12-Oct-15	18-Mar-15	25-Mar-15	-146	0	0%																		
<b>Pier Works - E1D (E1a1)</b>																													
SE1A1210	E1D (E1a1) - Type 4B Pier Scaffolding (2nd Lift)	2	28-Aug-15 A	100%	0	02-Sep-15 A					100%																		
SE1A1220	E1D (E1a1) - Type 4B Pier Rebarwork, Formwork & Prep (2nd Lift)	5	03-Sep-15 A	100%	0	17-Sep-15 A					100%																		
SE1A1240	E1D (E1a1) - Type 4B Pier Concreting, Curing & Striking, CJ prep (2nd Lift)	3	18-Sep-15 A	50%	2	22-Sep-15	09-Mar-16	11-Mar-16	136	0	50%																		
SE1A1300	E1D (E1a1) - Type 4B Pier Head Scaffolding	4	22-Sep-15	0%	4	26-Sep-15	11-Mar-16	16-Mar-16	136	0	0%																		
SE1A1310	E1D (E1a1) - Type 4B Pier Head Rebarwork, Formwork & Prep	10	26-Sep-15	0%	10	10-Oct-15	16-Mar-16	31-Mar-16	136	0	0%																		
SE1A1330	E1D (E1a1) - Type 4B Pier Head Concreting	1	10-Oct-15	0%	1	12-Oct-15	31-Mar-16	01-Apr-16	136	0	0%																		
SE1A1340	E1D (E1a1) - Type 4B Pier Head Curing/Striking of Forms/Remove Scaffol	6	12-Oct-15	0%	6	20-Oct-15	01-Apr-16	09-Apr-16	136	0	0%																		
<b>Pier Head Segments - E1A, E1B, E1C &amp; E1D</b>																													
<b>Pier Head Segments - E1A (E1a4)</b>																													
SE1A4374	E1A (E1a4) - Pier Head Segment Diaphragm - Rebar	13	29-Jul-15 A	100%	0	12-Sep-15 A					100%																		
SE1A4376	E1A (E1a4) - Pier Head Segment Diaphragm - Formwork & Prep for Conc	8	05-Aug-15 A	75%	2	22-Sep-15	31-Jan-19	01-Feb-19	964	964	75%																		
SE1A4378	E1A (E1a4) - Pier Head Segment Diaphragm - Concreting	2	10-Aug-15 A	50%	1	21-Sep-15	26-Jan-15	26-Jan-15	-176	2	50%																		
SE1A4380	E1A (E1a4) - Pier Head Segment Diaphragm - Curing & Striking of Forms	6	11-Aug-15 A	50%	3	23-Sep-15	23-Jan-15	26-Jan-15	-178	0	50%																		
<b>Pier Head Segments - E1B (E1a3)</b>																													
SE1A3374	E1B (E1a3) - Pier Head Segment Diaphragm - Rebar	12	10-Aug-15 A	50%	6	26-Sep-15	26-Jan-19	01-Feb-19	960	960	50%																		
SE1A3376	E1B (E1a3) - Pier Head Segment Diaphragm - Formwork & Prep for Conc	8	21-Aug-15 A	50%	4	24-Sep-15	14-May-15	19-May-15	-94	0	50%																		
SE1A3378	E1B (E1a3) - Pier Head Segment Diaphragm - Concreting	3	25-Sep-15	0%	3	29-Sep-15	19-May-15	22-May-15	-94	0	0%																		
SE1A3380	E1B (E1a3) - Pier Head Segment Diaphragm - Curing & Striking of Forms	6	29-Sep-15	0%	6	07-Oct-15	23-May-15	30-May-15	-94	0	0%																		
<b>Pier Head Segments - E1C (E1a2)</b>																													
SE1A2370	E1C (E1a2) - Pier Head Segment - Temporary Platform	2	13-Oct-15	0%	2	15-Oct-15	25-Mar-15	27-Mar-15	-146	0	0%																		
SE1A2372	E1C (E1a2) - Pier Head Segment Lift & Fix (1 seg)	2	16-Oct-15	0%	2	17-Oct-15	27-Mar-15	30-Mar-15	-146	0	0%																		
SE1A2374	E1C (E1a2) - Pier Head Segment Diaphragm - Rebar	12	19-Oct-15	0%	12	03-Nov-15	30-Mar-15	18-Apr-15	-146	0	0%																		
SE1A2376	E1C (E1a2) - Pier Head Segment Diaphragm - Formwork & Prep for Conc	8	04-Nov-15	0%	8	12-Nov-15	18-Apr-15	29-Apr-15	-145	0	0%																		
SE1A2378	E1C (E1a2) - Pier Head Segment Diaphragm - Concreting	2	13-Nov-15	0%	2	14-Nov-15	30-Apr-15	02-May-15	-145	0	0%																		
SE1A2380	E1C (E1a2) - Pier Head Segment Diaphragm - Curing & Striking of Forms	6	16-Nov-15	0%	6	21-Nov-15	04-May-15	09-May-15	-145	0	0%																		
<b>Pier Head Segments - E1D (E1a1)</b>																													
SE1A1370	E1D (E1a1) - Pier Head Segment - Temporary Platform	2	20-Oct-15	0%	2	23-Oct-15	09-Apr-16	12-Apr-16	136	0	0%																		
SE1A1372	E1D (E1a1) - Pier Head Segment Lift & Fix (1 seg)	2	23-Oct-15	0%	2	26-Oct-15	12-Apr-16	15-Apr-16	136	0	0%																		
SE1A1374	E1D (E1a1) - Pier Head Segment Diaphragm - Rebar	15	26-Oct-15	0%	15	13-Nov-15	15-Apr-16	04-May-16	136	0	0%																		
SE1A1376	E1D (E1a1) - Pier Head Segment Diaphragm - Formwork & Prep for Conc	8	13-Nov-15	0%	8	23-Nov-15	05-May-16	13-May-16	136	0	0%																		
SE1A1378	E1D (E1a1) - Pier Head Segment Diaphragm - Concreting	2	23-Nov-15	0%	2	25-Nov-15	16-May-16	18-May-16	136	0	0%																		
SE1A1380	E1D (E1a1) - Pier Head Segment Diaphragm - Curing & Striking of Forms	6	25-Nov-15	0%	6	02-Dec-15	19-May-16	25-May-16	136	0	0%																		
<b>E2A, E2B, E2C &amp; E2D (E1b1-2-3-4)</b>																													
<b>Pier Works - E2A, E2B, E2C &amp; E2D</b>																													
<b>Pier Works - E2B (E1b3)</b>																													
SE1B3210	E2B (E1b3) - Type 4B Pier Scaffolding (2nd Lift)	1	21-Aug-15 A	100%	0	24-Aug-15 A					100%																		
SE1B3220	E2B (E1b3) - Type 4B Pier Rebarwork, Formwork & Prep (2nd Lift)	4	25-Aug-15 A	100%	0	04-Sep-15 A					100%																		
SE1B3240	E2B (E1b3) - Type 4B Pier Concreting, Curing & Striking, CJ prep (2nd Lift)	3	05-Sep-15 A	100%	0	09-Sep-15 A					100%																		
SE1B3300	E2B (E1b3) - Type 4B Pier Head Scaffolding	3	10-Sep-15 A	100%	0	13-Sep-15 A					100%																		
SE1B3310	E2B (E1b3) - Type 4B Pier Head Rebarwork, Formwork & Prep	10	14-Sep-15 A	40%	6	26-Sep-15	16-Jan-15	23-Jan-15	-184	0	40%																		
SE1B3330	E2B (E1b3) - Type 4B Pier Head Concreting	1	29-Sep-15	0%	1	29-Sep-15	23-Jan-15	24-Jan-15	-184	0	0%																		
SE1B3340	E2B (E1b3) - Type 4B Pier Head Curing/Striking of Forms/Remove Scaffol	6	30-Sep-15	0%	6	07-Oct-15	24-Jan-15	31-Jan-15	-184	0	0%																		
<b>Pier Works - E2C (E1b1)</b>																													
SE1B1212	E2C (E1b1) - Type 4B Pier Scaffolding (2nd Lift)	1	21-Aug-15 A	100%	0	24-Aug-15 A					100%																		
SE1B1220	E2C (E1b1) - Type 4B Pier Rebarwork, Formwork & Prep (2nd Lift)	4	27-Aug-15 A	100%	0	10-Sep-15 A					100%																		
SE1B1240	E2C (E1b1) - Type 4B Pier Concreting, Curing & Striking, CJ prep (2nd Lift)	3	11-Sep-15 A	100%	0	16-Sep-15 A					100%																		
SE1B1300	E2C (E1b1) - Type 4B Pier Head Scaffolding	3	21-Sep-15 A	70%	1	21-Sep-15	04-Feb-15	04-Feb-15	-168	0	70%																		
SE1B1310	E2C (E1b1) - Type 4B Pier Head Rebarwork, Formwork & Prep	10	21-Sep-15	0%	10	05-Oct-15	05-Feb-15	16-Feb-15	-168	0	0%																		
SE1B1330	E2C (E1b1) - Type 4B Pier Head Concreting	1	05-Oct-15	0%	1	06-Oct-15	17-Feb-15	17-Feb-15	-168	0	0%																		
SE1B1340	E2C (E1b1) - Type 4B Pier Head Curing/Striking of Forms/Remove Scaffol	6	06-Oct-15	0%	6	13-Oct-15	18-Feb-15	27-Feb-15	-168	0	0%																		
<b>Pier Works - E2D (E1b2)</b>																													
SE1B2300	E2D (E1b2) - Type 4B Pier Head Scaffolding	4	21-Sep-15	0%	4	24-Sep-15	16-Mar-15	19-Mar-15	-137	0	0%																		
SE1B2310	E2D (E1b2) - Type 4B Pier Head Rebarwork, Formwork & Prep	10	25-Sep-15	0%	10	08-Oct-15	20-Mar-15	31-Mar-15	-137	0	0%																		

Actual Work
   
 Planned Bar
   
 Critical Bar
   
 Milestone

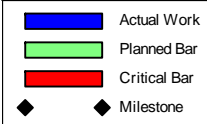
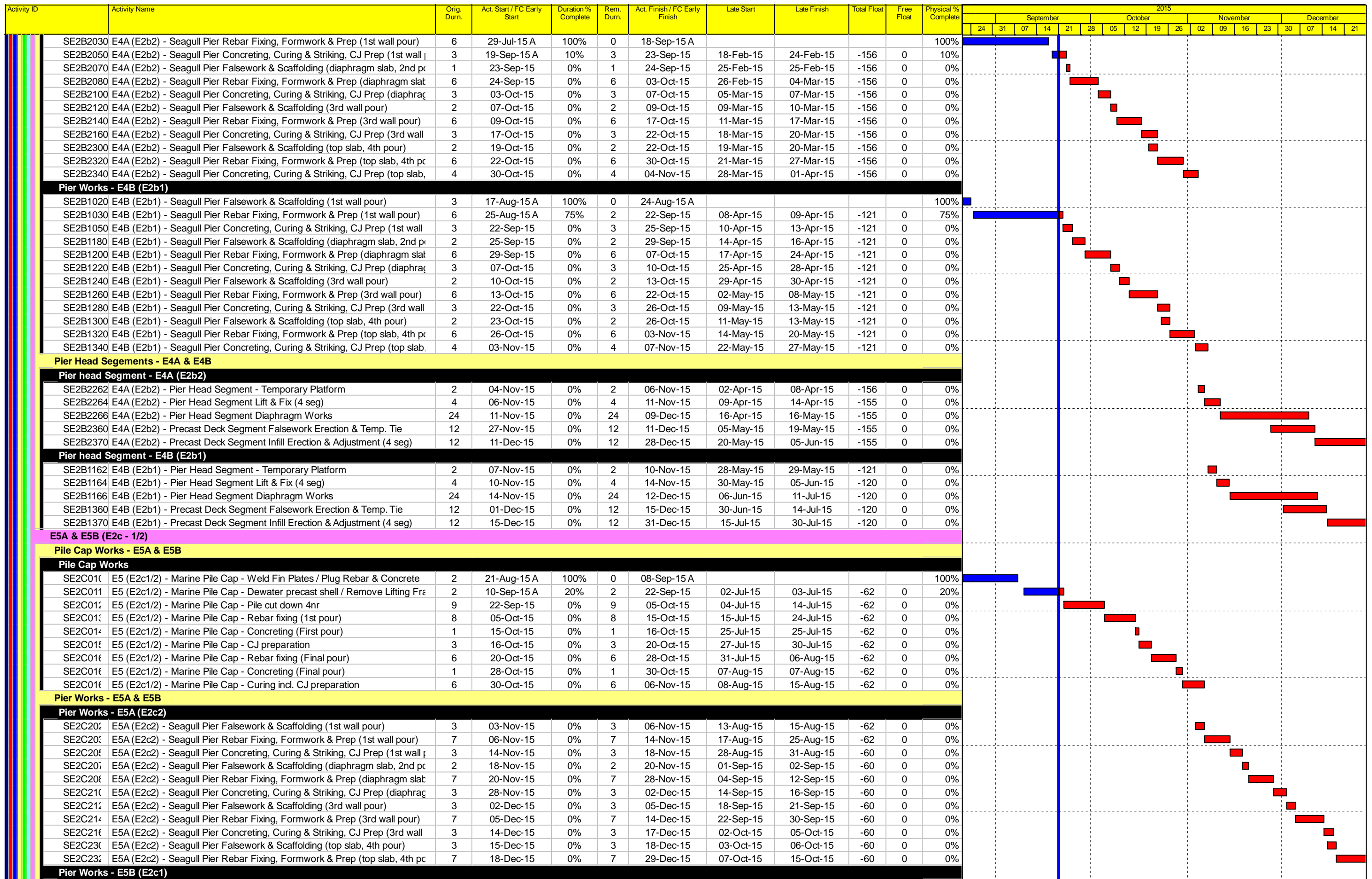
Project ID: J3518DWP-E1-M28
   
 Layout: J3518-DWP-3MRP Submission - M28
   
 Filter: TASK filters: 3-Month Lookahead, No CC
   
 Milestones, No Level of Effort.

**Tuen Mun - Chek Lap Kok Link - Southern Connection**  
**3-Month Rolling Programme (Page 20 of 32 Pages)**  
**(Progress as of 21-Sep -15)**

Date	Revision	Checked	Approved
28-Jul-15		PKN	KWY
01-Sep-15		PKN	KWY
30-Sep-15		PKN	KWY

DWG. No.: **J3518/GCL/PGM/3MRP-M28**





Project ID: J3518DWP-1-M28  
Layout: J3518-DWP-3MRP Submission - M28  
Filter: TASK filters: 3-Month Lookahead, No CC  
Milestones, No Level of Effort.

**Tuen Mun - Chek Lap Kok Link - Southern Connection**  
**3-Month Rolling Programme (Page 22 of 32 Pages)**  
**(Progress as of 21-Sep -15)**

Date	Revision	Checked	Approved
28-Jul-15		PKN	KWY
01-Sep-15		PKN	KWY
30-Sep-15		PKN	KWY

**DWG. No.:**  
**J3518/GCL/PGM/3MRP-M28**

Activity ID	Activity Name	Orig. Durn.	Act. Start / FC Early Start	Duration % Complete	Rem. Durn.	Act. Finish / FC Early Finish	Late Start	Late Finish	Total Float	Free Float	Physical % Complete	2015																				
												September					October					November					December					
												24	31	07	14	21	28	05	12	19	26	02	09	16	23	30	07	14	21			
SE2C102	E5B (E2c1) - Seagull Pier Falsework & Scaffolding (1st wall pour)	3	14-Nov-15	0%	3	18-Nov-15	26-Aug-15	28-Aug-15	-62	0	0%																					
SE2C103	E5B (E2c1) - Seagull Pier Rebar Fixing, Formwork & Prep (1st wall pour)	7	18-Nov-15	0%	7	26-Nov-15	29-Aug-15	07-Sep-15	-62	0	0%																					
SE2C105	E5B (E2c1) - Seagull Pier Concreting, Curing & Striking, CJ Prep (1st wall pour)	3	26-Nov-15	0%	3	30-Nov-15	08-Sep-15	11-Sep-15	-62	0	0%																					
SE2C107	E5B (E2c1) - Seagull Pier Falsework & Scaffolding (diaphragm slab, 2nd pour)	2	30-Nov-15	0%	2	02-Dec-15	12-Sep-15	14-Sep-15	-62	0	0%																					
SE2C108	E5B (E2c1) - Seagull Pier Rebar Fixing, Formwork & Prep (diaphragm slab)	7	02-Dec-15	0%	7	10-Dec-15	15-Sep-15	23-Sep-15	-62	0	0%																					
SE2C110	E5B (E2c1) - Seagull Pier Concreting, Curing & Striking, CJ Prep (diaphragm slab)	3	10-Dec-15	0%	3	14-Dec-15	24-Sep-15	26-Sep-15	-62	0	0%																					
SE2C112	E5B (E2c1) - Seagull Pier Falsework & Scaffolding (3rd wall pour)	3	14-Dec-15	0%	3	17-Dec-15	29-Sep-15	02-Oct-15	-62	0	0%																					
SE2C114	E5B (E2c1) - Seagull Pier Rebar Fixing, Formwork & Prep (3rd wall pour)	7	17-Dec-15	0%	7	28-Dec-15	03-Oct-15	10-Oct-15	-62	0	0%																					
<b>E6A &amp; E6B (E2d - 1/2)</b>																																
<b>Pile Cap Works - E6A &amp; E6B</b>																																
<b>Pile Cap Works</b>																																
SE2D006	E6 (E2d1/2) - Marine Pile Cap - Install precast shell in position (3 units)	4	11-Aug-15 A	100%	0	07-Sep-15 A					100%																					
SE2D006	E6 (E2d1/2) - Marine Pile Cap - Inst. Access & make Watertight	6	08-Sep-15 A	30%	4	25-Sep-15	15-Sep-15	21-Sep-15	-3	0	30%																					
SE2D010	E6 (E2d1/2) - Marine Pile Cap - Weld Fin Plates / Plug Rebar & Concrete	2	25-Sep-15	0%	2	29-Sep-15	22-Sep-15	23-Sep-15	-3	0	0%																					
SE2D011	E6 (E2d1/2) - Marine Pile Cap - Dewater precast shell / Remove Lifting Frame	2	29-Sep-15	0%	2	02-Oct-15	24-Sep-15	25-Sep-15	-3	0	0%																					
SE2D012	E6 (E2d1/2) - Marine Pile Cap - Pile cut down 4nr	9	02-Oct-15	0%	9	13-Oct-15	26-Sep-15	08-Oct-15	-3	0	0%																					
SE2D013	E6 (E2d1/2) - Marine Pile Cap - Rebar fixing (1st pour)	8	13-Oct-15	0%	8	24-Oct-15	09-Oct-15	19-Oct-15	-3	0	0%																					
SE2D014	E6 (E2d1/2) - Marine Pile Cap - Concreting (First pour)	1	24-Oct-15	0%	1	26-Oct-15	20-Oct-15	20-Oct-15	-3	0	0%																					
SE2D015	E6 (E2d1/2) - Marine Pile Cap - CJ preparation	3	26-Oct-15	0%	3	30-Oct-15	22-Oct-15	24-Oct-15	-3	0	0%																					
SE2D016	E6 (E2d1/2) - Marine Pile Cap - Rebar fixing (Final pour)	6	30-Oct-15	0%	6	06-Nov-15	26-Oct-15	02-Nov-15	-3	0	0%																					
SE2D016	E6 (E2d1/2) - Marine Pile Cap - Concreting (Final pour)	1	06-Nov-15	0%	1	07-Nov-15	03-Nov-15	03-Nov-15	-3	0	0%																					
SE2D016	E6 (E2d1/2) - Marine Pile Cap - Curing incl. CJ preparation	6	07-Nov-15	0%	6	14-Nov-15	04-Nov-15	10-Nov-15	-3	0	0%																					
<b>Pier Works - E6A &amp; E6B</b>																																
<b>Pier Works - E6A (E2d2)</b>																																
SE2D201	E6A (E2d2) - Seagull Pier Temp. Support Platform	6	14-Nov-15	0%	6	21-Nov-15	11-Nov-15	17-Nov-15	-3	0	0%																					
SE2D202	E6A (E2d2) - Seagull Pier Falsework & Scaffolding (1st wall pour)	4	21-Nov-15	0%	4	26-Nov-15	18-Nov-15	21-Nov-15	-3	0	0%																					
SE2D203	E6A (E2d2) - Seagull Pier Rebar Fixing, Formwork & Prep (1st wall pour)	7	26-Nov-15	0%	7	04-Dec-15	23-Nov-15	30-Nov-15	-3	0	0%																					
SE2D203	E6A (E2d2) - Seagull Pier Concreting, Curing & Striking, CJ Prep (1st wall pour)	3	04-Dec-15	0%	3	08-Dec-15	01-Dec-15	03-Dec-15	-3	0	0%																					
SE2D207	E6A (E2d2) - Seagull Pier Falsework & Scaffolding (diaphragm slab, 2nd pour)	3	08-Dec-15	0%	3	11-Dec-15	15-Dec-15	17-Dec-15	6	0	0%																					
SE2D208	E6A (E2d2) - Seagull Pier Rebar Fixing, Formwork & Prep (diaphragm slab)	7	11-Dec-15	0%	7	19-Dec-15	18-Dec-15	28-Dec-15	6	0	0%																					
SE2D210	E6A (E2d2) - Seagull Pier Concreting, Curing & Striking, CJ Prep (diaphragm slab)	3	19-Dec-15	0%	3	23-Dec-15	29-Dec-15	31-Dec-15	6	0	0%																					
<b>Pier Works - E6B (E2d1)</b>																																
SE2D102	E6B (E2d1) - Seagull Pier Falsework & Scaffolding (1st wall pour)	4	04-Dec-15	0%	4	09-Dec-15	01-Dec-15	04-Dec-15	-3	0	0%																					
SE2D103	E6B (E2d1) - Seagull Pier Rebar Fixing, Formwork & Prep (1st wall pour)	7	09-Dec-15	0%	7	17-Dec-15	05-Dec-15	12-Dec-15	-3	0	0%																					
SE2D105	E6B (E2d1) - Seagull Pier Concreting, Curing & Striking, CJ Prep (1st wall pour)	3	17-Dec-15	0%	3	21-Dec-15	14-Dec-15	16-Dec-15	-3	0	0%																					
<b>E7A &amp; E7B (E2e - 1/2)</b>																																
<b>Foundation Works - E7A &amp; E7B</b>																																
<b>Foundation Works</b>																																
GFXX058	E7 (E2e) - Sonic & Interface Coring	12	10-Jun-15 A	100%	0	31-Aug-15 A					100%																					
GFXX059	E7 (E2e) - Dismantle Temporary Removable Piling Platform	6	01-Sep-15 A	100%	0	07-Sep-15 A					100%																					
<b>Pile Cap Works - E7A &amp; E7B</b>																																
<b>Pile Cap Works</b>																																
SE2E0070	E7 (E2e1/2) - Marine Pile Cap - Inst. Floating Seal & Casing Head Steelwork	6	21-Sep-15	0%	6	26-Sep-15	13-Aug-15	19-Aug-15	-29	0	0%																					
SE2E0080	E7 (E2e1/2) - Marine Pile Cap - Install precast shell in position (3 units)	4	29-Sep-15	0%	4	03-Oct-15	21-Aug-15	25-Aug-15	-29	0	0%																					
SE2E0090	E7 (E2e1/2) - Marine Pile Cap - Inst. Access & make Watertight	6	05-Oct-15	0%	6	10-Oct-15	26-Aug-15	01-Sep-15	-29	0	0%																					
SE2E0100	E7 (E2e1/2) - Marine Pile Cap - Weld Fin Plates / Plug Rebar & Concrete	2	12-Oct-15	0%	2	13-Oct-15	02-Sep-15	04-Sep-15	-29	0	0%																					
SE2E0110	E7 (E2e1/2) - Marine Pile Cap - Dewater precast shell / Remove Lifting Frame	2	15-Oct-15	0%	2	16-Oct-15	05-Sep-15	07-Sep-15	-29	0	0%																					
SE2E0120	E7 (E2e1/2) - Marine Pile Cap - Pile cut down 4nr	8	17-Oct-15	0%	8	27-Oct-15	08-Sep-15	18-Sep-15	-29	0	0%																					
SE2E0130	E7 (E2e1/2) - Marine Pile Cap - Rebar fixing (1st pour)	8	28-Oct-15	0%	8	06-Nov-15	19-Sep-15	29-Sep-15	-29	0	0%																					
SE2E0140	E7 (E2e1/2) - Marine Pile Cap - Concreting (First pour)	1	07-Nov-15	0%	1	07-Nov-15	30-Sep-15	30-Sep-15	-29	0	0%																					
SE2E0150	E7 (E2e1/2) - Marine Pile Cap - CJ preparation	3	09-Nov-15	0%	3	11-Nov-15	02-Oct-15	05-Oct-15	-29	0	0%																					
SE2E0160	E7 (E2e1/2) - Marine Pile Cap - Rebar fixing (Final pour)	6	12-Nov-15	0%	6	18-Nov-15	06-Oct-15	12-Oct-15	-29	0	0%																					
SE2E0162	E7 (E2e1/2) - Marine Pile Cap - Concreting (Final pour)	1	19-Nov-15	0%	1	19-Nov-15	13-Oct-15	13-Oct-15	-29	0	0%																					
SE2E0164	E7 (E2e1/2) - Marine Pile Cap - Curing incl. CJ preparation	6	20-Nov-15	0%	6	26-Nov-15	15-Oct-15	22-Oct-15	-29	0	0%																					
<b>Pier Works - E7A &amp; E7B</b>																																
<b>Pier Works - E7A (E2e2)</b>																																
SE2E2020	E7A (E2e2) - Seagull Pier Falsework & Scaffolding (1st wall pour)	2	27-Nov-15	0%	2	28-Nov-15	23-Oct-15	24-Oct-15	-29	0	0%																					
SE2E2030	E7A (E2e2) - Seagull Pier Rebar Fixing, Formwork & Prep (1st wall pour)	6	30-Nov-15	0%	6	05-Dec-15	26-Oct-15	02-Nov-15	-29	0	0%																					
SE2E2050	E7A (E2e2) - Seagull Pier Concreting, Curing & Striking, CJ Prep (1st wall pour)	3	07-Dec-15	0%	3	09-Dec-15	03-Nov-15	05-Nov-15	-29	0	0%																					
SE2E2070	E7A (E2e2) - Seagull Pier Falsework & Scaffolding (diaphragm slab, 2nd pour)	1	10-Dec-15	0%	1	10-Dec-15	06-Nov-15	06-Nov-15	-29	0	0%																					
SE2E2080	E7A (E2e2) - Seagull Pier Rebar Fixing, Formwork & Prep (diaphragm slab)	6	11-Dec-15	0%	6	17-Dec-15	07-Nov-15	13-Nov-15	-29	0	0%																					
SE2E2100	E7A (E2e2) - Seagull Pier Concreting, Curing & Striking, CJ Prep (diaphragm slab)	3	18-Dec-15	0%	3	21-Dec-15	14-Nov-15	17-Nov-15	-29	0	0%																					
<b>Pier Works - E7B (E2e1)</b>																																

█ Actual Work

█ Planned Bar

█ Critical Bar

◆ Milestone

Project ID: J3518DWPrE1-M28  
 Layout: J3518-DWP-3MRP Submission - M28  
 Filter: TASK filters: 3-Month Lookahead, No CC  
 Milestones, No Level of Effort.

**Tuen Mun - Chek Lap Kok Link - Southern Connection**  
**3-Month Rolling Programme (Page 23 of 32 Pages)**  
**(Progress as of 21-Sep -15)**

Date	Revision	Checked	Approved
28-Jul-15		PKN	KWY
01-Sep-15		PKN	KWY
30-Sep-15		PKN	KWY

**DWG. No.:**  
J3518/GCL/PGM/3MRP-M28













Activity ID	Activity Name	Orig. Durn.	Act. Start / FC Early Start	Duration % Complete	Rem. Durn.	Act. Finish / FC Early Finish	Late Start	Late Finish	Total Float	Free Float	Physical % Complete	2015															
												September				October				November				December			
												24	31	07	14	21	28	05	12	19	26	02	09	16	23	30	07
<b>Viaduct A Superstructure</b>																											
<b>Bridge A2 Superstructure</b>																											
<b>Milestones</b>																											
<b>Milestones Ready for PH Segment Erection</b>																											
A200010-1	Pier A6 (A1f) ready for Viaduct A2 PH segment erection	0		0%	0	09-Dec-15		16-Jun-16	143	45	0%																
A200060-1	Pier A1 (A2e) ready for Viaduct A2 PH segment erection	0		0%	0	26-Oct-15		12-May-16	157	0	0%																
<b>Milestones Ready for Deck Segment Erection</b>																											
A200060	Pier A1 (A2e) ready for Viaduct A2 deck segment erection	0		0%	0	13-Nov-15		03-Jun-16	157	416	0%																
<b>Bridge A1 Superstructure</b>																											
<b>Milestones</b>																											
<b>Milestones Ready for PH Segment Erection</b>																											
A100020-1	Pier A10 (A1b) ready for Viaduct A1 PH segment erection	0		0%	0	16-Dec-15		03-Aug-16	172	0	0%																
A100030-1	Pier A9 (A1c) ready for Viaduct A1 PH segment erection	0		0%	0	04-Dec-15		31-May-16	137	0	0%																
A100040-1	Pier A8 (A1d) ready for Viaduct A1 PH segment erection	0		0%	0	23-Nov-15		20-May-16	139	0	0%																
A100050-1	Pier A7 (A1e) ready for Viaduct A1 PH segment erection	0		0%	0	12-Dec-15		19-Apr-16	99	42	0%																
A100060-1	Pier A6 (A1f) ready for Viaduct A1 PH segment erection	0		0%	0	09-Dec-15		16-Jun-16	143	45	0%																
<b>Viaduct B Superstructure</b>																											
<b>Bridge B3 Superstructure</b>																											
<b>Milestones</b>																											
<b>Milestones Ready for Deck Segment Erection</b>																											
B300010	Pier B6 (B3a) ready for Viaduct B3 deck segment erection	0		0%	0	21-Sep-15		12-Mar-15	-140	28	0%																
B300020	Pier B5 (B3b) ready for Viaduct B3 deck segment erection	0		0%	0	21-Sep-15		01-Feb-19	942	942	0%																
B300030	Pier B4 (B3c) ready for Viaduct B3 deck segment erection	0		0%	0	21-Sep-15		30-Jun-16	216	76	0%																
<b>Deck installation</b>																											
FR000025	Viaduct B3 - End Span at Pier B1 (B3f) (up) (7 seg) - LG1	5	22-Sep-15	0%	5	26-Sep-15	24-Nov-14	28-Nov-14	-228	0	0%																
FR001156	Viaduct B3 - Cantilever at Pier B5 (B3b) (12 seg) ALF 1/2	8	20-May-15 A	100%	0	21-Sep-15	27-Jul-15	27-Jul-15	-41	0	100%																
<b>Bridge B2 Superstructure</b>																											
<b>Milestones</b>																											
<b>Milestones Ready for PH Segment Erection</b>																											
B200010-1	Pier B12 (B2a) ready for Viaduct B2 PH segment erection	0		0%	0	21-Sep-15		01-Feb-19	942	942	0%																
B200030-1	Pier B10 (B2c) ready for Viaduct B2 PH segment erection	0		0%	0	21-Sep-15		01-Feb-19	942	942	0%																
B200040-1	Pier B9 (B2d) ready for Viaduct B2 PH segment erection	0		0%	0	21-Sep-15		01-Feb-19	942	942	0%																
<b>Milestones Ready for Deck Segment Erection</b>																											
B200010	Pier B12 (B2a) ready for Viaduct B2 deck segment erection	0		0%	0	21-Sep-15		01-Jun-15	-81	87	0%																
B200020	Pier B11 (B2b) ready for Viaduct B2 deck segment erection	0		0%	0	21-Sep-15		18-May-15	-91	77	0%																
B200030	Pier B10 (B2c) ready for Viaduct B2 deck segment erection	0		0%	0	10-Oct-15		24-Apr-15	-125	43	0%																
B200040	Pier B9 (B2d) ready for Viaduct B2 deck segment erection	0		0%	0	21-Sep-15		24-Mar-15	-130	38	0%																
B200050	Pier B8 (B2e) ready for Viaduct B2 deck segment erection	0		0%	0	21-Sep-15		14-Feb-15	-159	9	0%																
B200060	Pier B7 (B2f) ready for Viaduct B2 deck segment erection	0		0%	0	21-Sep-15		01-Feb-19	942	942	0%																
B200070	Pier B6 (B3a) ready for Viaduct B2 deck segment erection	0		0%	0	21-Sep-15		12-Mar-15	-140	28	0%																
<b>Deck installation</b>																											
FR000008	Viaduct B2 - Cantilever at Pier B7 (B2f) (16 seg) - LG1	9	09-Jun-15 A	12.5%	8	30-Sep-15	05-Feb-15	13-Feb-15	-167	0	12.5%																
FR000010	Viaduct B2 - End Span at Pier B6 (B3a) (up) (6 seg) - LG1	6	27-Oct-15	0%	6	04-Nov-15	13-Mar-15	19-Mar-15	-167	0	0%																
FR000011	Viaduct B2 - Cantilever at Pier B8 (B2e) (20 seg) - MTR Crossing - LG1	18	02-Oct-15	0%	18	26-Oct-15	16-Feb-15	11-Mar-15	-167	0	0%																
FR000012	Viaduct B2 - Cantilever at Pier B9 (B2d) (20 seg) - MTR Crossing - LG1	17	09-Nov-15	0%	17	28-Nov-15	25-Mar-15	18-Apr-15	-167	0	0%																
FR000013	Viaduct B2 - Cantilever at Pier B10 (B2c) (18 seg) - HWay Crossing - LG1	15	03-Dec-15	0%	15	21-Dec-15	25-Apr-15	14-May-15	-167	0	0%																
<b>Bridge B1 Superstructure</b>																											
<b>Milestones</b>																											
<b>Milestones Ready for PH Segment Erection</b>																											
B100060-1	Pier B13 (B1g) ready for Viaduct B1 PH segment erection	0		0%	0	21-Sep-15		01-Feb-19	942	942	0%																
B100070-1	Pier B12 (B2a) ready for Viaduct B1 PH segment erection	0		0%	0	21-Sep-15		01-Feb-19	942	942	0%																
<b>Milestones Ready for Deck Segment Erection</b>																											
B100030	Pier B16 (B1d) ready for Viaduct B1 deck segment erection	0		0%	0	21-Sep-15		17-Sep-16	277	434	0%																
B100040	Pier B15 (B1e) ready for Viaduct B1 deck segment erection	0		0%	0	27-Oct-15		08-Aug-15	-60	108	0%																
B100050	Pier B14 (B1f) ready for Viaduct B1 deck segment erection	0		0%	0	27-Oct-15		18-Jul-15	-77	91	0%																
B100060	Pier B13 (B1g) ready for Viaduct B1 deck segment erection	0		0%	0	21-Sep-15		13-Jun-15	-73	95	0%																
B100070	Pier B12 (B2a) ready for Viaduct B1 deck segment erection	0		0%	0	21-Sep-15		07-Jul-15	-58	110	0%																
<b>Viaduct C Superstructure</b>																											
<b>Bridge C4 Superstructure</b>																											
<b>Milestones</b>																											
<b>Milestones Ready for PH Segment Erection</b>																											

■ Actual Work  
■ Planned Bar  
■ Critical Bar  
◆ Milestone

Project ID: J3518DWPPrE1-M28  
 Layout: J3518-DWP-3MRP Submission - M28  
 Filter: TASK filters: 3-Month Lookahead, No CC  
 Milestones, No Level of Effort.

**Tuen Mun - Chek Lap Kok Link - Southern Connection**  
**3-Month Rolling Programme (Page 29 of 32 Pages)**  
**(Progress as of 21-Sep -15)**

Date	Revision	Checked	Approved
28-Jul-15		PKN	KWY
01-Sep-15		PKN	KWY
30-Sep-15		PKN	KWY

**DWG. No.:**  
**J3518/GCL/PGM/3MRP-M28**





Activity ID	Activity Name	Orig. Durn.	Act. Start / FC Early Start	Duration % Complete	Rem. Durn.	Act. Finish / FC Early Finish	Late Start	Late Finish	Total Float	Free Float	Physical % Complete	2015															
												September				October				November				December			
												24	31	07	14	21	28	05	12	19	26	02	09	16	23	30	07
<b>At-Grade Roadworks along NLH Westbound</b>																											
RW10003	NLH W/B (Viaduct C) - Gantry Footing (GT326, GT327, GT328) - Verge (	54	05-May-15 A	100%	0	18-Sep-15 A					100%																
RW10005	NLH W/B (Viaduct C) - Implement TTM - Verge for Gantry Footings (GT32	2	21-Sep-15*	0%	2	22-Sep-15	10-Aug-15	12-Aug-15	-31	0	0%																
RW10007	NLH W/B (Viaduct C) - Gantry Footing (GT324, GT325) - Verge (KD3)	35	23-Sep-15	0%	35	07-Nov-15	13-Aug-15	26-Sep-15	-31	0	0%																
RW10009	NLH W/B (Viaduct C) - Implement TTM - Median for Gantry Footings (GT:	2	09-Nov-15	0%	2	10-Nov-15	29-Sep-15	30-Sep-15	-31	0	0%																
RW10009A	NLH W/B (Viaduct C) - Gantry Footing (GT326, GT327, GT328) - Median	72	11-Nov-15	0%	72	05-Feb-16	02-Oct-15	30-Dec-15	-31	0	0%																
<b>At-Grade Roadworks along NLH Eastbound</b>																											
RW21000	NLH E/B (Viaduct A) - Implement TTM - Verge for Slope Works & Gantry F	2	19-Nov-15	0%	2	20-Nov-15	12-Mar-16	14-Mar-16	92	0	0%																
RW21001	NLH E/B (Viaduct A) - Gantry Footing (GT319, GT320) - Verge (KD5)	36	21-Nov-15	0%	36	05-Jan-16	15-Mar-16	03-May-16	92	0	0%																
<b>At-Grade Roadworks and Other Works along Cheung Tung Road</b>																											
<b>Re-alignment of Cheung Tung Road adjacent to Viaduct B</b>																											
RW50020	CTR Re-alignment adj. to Via.B - Diversion of utilities (Gas, DN1000, powe	177	12-Jan-15 A	40.11%	106	30-Jan-16	27-Apr-15	18-Sep-15	-107	0	70%																
RW50020A	CTR Re-alignment adj. to Via.B - Additional(gas, DN1000, telecom) utilities	114	05-Sep-15 A	10%	103	30-Jan-16	02-Jun-15	20-Oct-15	-83	24	10%																
<b>Viaduct B Slope Works</b>																											
<b>Slope 9SE-B/F85</b>																											
SWVB4030	9SE-B/F85 - Form UC	12	21-Sep-15	0%	12	06-Oct-15	26-Sep-15	12-Oct-15	5	0	0%																
SWVB4035	9SE-B/F85 - Install Geo. Instru. & Baseline Monitoring	30	07-Oct-15	0%	30	13-Nov-15	13-Oct-15	19-Nov-15	5	0	0%																
SWVB4040	9SE-B/F85 - Hydroseeding	12	14-Nov-15	0%	12	27-Nov-15	20-Nov-15	03-Dec-15	5	112	0%																
<b>Re-alignment of Cheung Tung Road adjacent to Viaduct C</b>																											
<b>West Portion</b>																											
RW61000	Realign CTR (West of Abut. C) - Site Clearance	42	03-Sep-14 A	76.19%	10	03-Oct-15	11-Apr-15	24-Apr-15	-118	9	100%																
RW61010	Realign CTR (West of Abut. C) - Road drainage works	60	15-Jan-15 A	80%	12	14-Nov-15	27-Aug-15	11-Sep-15	-49	0	80%																
RW61020	Realign CTR (West of Abut. C) - Utility diversion	90	24-Mar-15 A	30%	63	13-Jan-16	12-Sep-15	01-Dec-15	-34	887	30%																
RW61030	Realign CTR (West of Abut. C) - Sub-base work	48	16-Nov-15	0%	48	13-Jan-16	12-Sep-15	13-Nov-15	-49	0	0%																
RW61082	Realign CTR (West of Abut. C) - Road formation	48	20-Nov-14 A	60.42%	19	15-Oct-15	27-Mar-15	24-Apr-15	-127	0	30%																
<b>East Portion</b>																											
RW60000	Realign CTR (East of Abut. C) - Site Clearance	48	23-Feb-15 A	91.67%	4	24-Sep-15	20-Apr-15	24-Apr-15	-112	15	0%																
RW60005	Realign CTR (East of Abut. C) - Road formation	66	16-Oct-15	0%	66	06-Jan-16	25-Apr-15	25-Jul-15	-127	0	0%																
RW60010	Realign CTR (East of Abut. C) - Road drainage works	60	23-Nov-15	0%	60	03-Feb-16	05-Jun-15	26-Aug-15	-127	0	0%																
<b>Viaduct C Slope Works</b>																											
<b>Slope 10NW-C/F15</b>																											
SWVC6000	10NW-C/F15 - Slope works	24	19-Dec-15	0%	24	19-Jan-16	27-Aug-16	26-Sep-16	188	0	0%																
<b>Natural Terrain Hazard Mitigation Works</b>																											
<b>NTHM Works - West Portion</b>																											
<b>Check Dam no. 2 (CD2)</b>																											
GFXX510	CD2 - Selection of load test	12	21-Sep-15	0%	12	06-Oct-15	09-Dec-15	22-Dec-15	63	0	0%																
GFXX511	CD2 - Loading Test	12	07-Oct-15	0%	12	22-Oct-15	23-Dec-15	08-Jan-16	63	0	0%																
<b>Check Dam no. 3 (CD3)</b>																											
GFXX515	CD3 - Mobilization of rig for Tie Back	5	21-Sep-15	0%	5	25-Sep-15	04-Jan-16	08-Jan-16	82	19	0%																
GFXX516	CD3 - Installation of Tie Back (30nos.)	67	23-Oct-15	0%	67	13-Jan-16	09-Jan-16	02-Apr-16	63	0	0%																
<b>At grade Roadworks and Other Works at Southern Landfall</b>																											
RW30005	South Landfall - Initial record survey	12	21-Sep-15	0%	12	06-Oct-15	18-Sep-15	03-Oct-15	-2	28	0%																
RW30010	South Landfall - Mobilisation for Portion B Works	24	11-Nov-15	0%	24	09-Dec-15	05-Oct-15	04-Nov-15	-30	0	0%																
RW30014	South Landfall - DN300 Fresh water main works installation & connection (l	60	09-Dec-15	0%	60	24-Feb-16	24-Mar-16	18-Jun-16	85	0	0%																
<b>Watermains &amp; All Assoc Works from Tung Chung to Southern Landfall</b>																											
WM00120	Lay DN450 Fresh Water Main along re-aligned CTR (app. 500 m at 12m/c	48	22-Apr-15 A	20%	38	10-Nov-15	25-May-16	20-Jul-16	193	0	20%																
WM00150	Lay DN450 watermain from Tung Chung to realigned CTR (1st 500m - 2 w	50	10-Nov-15	0%	50	11-Jan-16	22-Jul-16	22-Sep-16	193	0	0%																
<b>Pressure Testing</b>																											
TC00010	Pressure Test DN450 Fresh Water Main along re-aligned CTR (app. 520 n	12	10-Nov-15	0%	12	24-Nov-15	18-Mar-17	31-Mar-17	383	630	0%																

■ Actual Work  
■ Planned Bar  
■ Critical Bar  
◆ Milestone

Project ID: J3518DWPRe1-M28  
 Layout: J3518-DWP-3MRP Submission - M28  
 Filter: TASK filters: 3-Month Lookahead, No CC  
 Milestones, No Level of Effort.

**Tuen Mun - Chek Lap Kok Link - Southern Connection**  
**3-Month Rolling Programme (Page 32 of 32 Pages)**  
**(Progress as of 21-Sep -15)**

Date	Revision	Checked	Approved
28-Jul-15		PKN	KWY
01-Sep-15		PKN	KWY
30-Sep-15		PKN	KWY

**DWG. No.:**  
**J3518/GCL/PGM/3MRP-M28**