

Activity ID	Activity Name	Orig. Durn.	Act. Start / FC Early Start	Rem. Durn.	Act. Finish / FC Early Finish	Late Start	Late Finish	Total Float	Physical % Complete	2017																		
										March			April			May			June									
											20	27	06	13	20	27	03	10	17	24	01	08	15	22	29	05	12	19
<b>Contract Milestones</b>																												
<b>Key Dates for Completion</b>																												
<b>Stage of the Works</b>																												
<b>Completion Date</b>																												
<b>General</b>																												
KD03	KD3 - Stage 3: TCSS Along NLH Near Viaduct C, D (EoT 6-Apr-16)		0		0	21-Mar-17*		06-Apr-16	-348	0%																		
<b>Portion Handover Dates</b>																												
<b>Possession of the Works Area</b>																												
<b>Access Dates</b>																												
<b>General</b>																												
POS02-6B	Portion A - Area 6B (To be confirmed)		0	31-Mar-17*	0		16-Dec-15		-471	0%																		
<b>Design</b>																												
<b>Detailed Design</b>																												
<b>General Submissions</b>																												
<b>Reports &amp; Manuals</b>																												
<b>General</b>																												
ARDD0037-7	Preparation of Seismic Performance Report Viaduct F - AP12.03		160	21-Aug-15 A	16	08-Apr-17	17-Mar-16	08-Apr-16	-299	90%																		
ARDD0037-8	IC/SO Approval of Seismic Performance Report Viaduct F - AP12.03		75	10-Apr-17	75	13-Jul-17	09-Apr-16	09-Jul-16	-299	0%																		
ARDD0040-2	IC/SO Approval of Operation and Maintenance Manual - AP08.00		75	20-Oct-15 A	16	08-Apr-17	21-Jun-16	09-Jul-16	-224	75%																		
ARDD0042-2	IC/SO Approval of O&M Facility Provisions DDA - BP11.01		75	14-Jan-15 A	16	08-Apr-17	21-Jun-16	09-Jul-16	-224	75%																		
<b>Slope Works Near Viaduct A</b>																												
<b>Feature 9SE-B/FR8, B/R1, B/R2</b>																												
<b>Slope Works Design</b>																												
ARDD0596	Preparation of remaining portion of Slope FR8 Combined AIP/DDA - CP11.		35	21-Mar-17	35	06-May-17	19-Mar-16	04-May-16	-297	0%																		
ARDD0596-1	IC/SO Approval of Slope Combined AIP/DDA - CP11.01		60	08-May-17	60	18-Jul-17	05-May-16	16-Jul-16	-297	0%																		
<b>Slope Works Near Viaduct C</b>																												
<b>Feature 10NW-C/C22, C/C26, C/C27, C/F13, C/F14, C/F15</b>																												
<b>Slope Works Design</b>																												
ARDD0589-1	Preparation of Slope Combined AIP/DDA - CP13.01		60	21-Mar-17	60	06-Jun-17	03-May-16	14-Jul-16	-264	0%																		
ARDD0589-2	IC/SO Approval of Combined AIP/DDA - CP13.01		28	07-Jun-17	28	10-Jul-17	15-Jul-16	16-Aug-16	-264	0%																		
ARDD0590	Newfill slopes PF1 & PF2 Preparation of Combined AIP/DDA - CP13.01		60	21-Mar-17	60	06-Jun-17	08-Apr-16	20-Jun-16	-284	0%																		
ARDD0590-1	New fill slopes PF1 & PF2 IC/SO Approval of combined AIP/DDA - CP13.0		28	07-Jun-17	28	10-Jul-17	21-Jun-16	23-Jul-16	-284	0%																		
<b>Slope Works Near Viaduct D</b>																												
<b>Feature 10NW-C/R4, C/F9, C/F10, C/F11, C/F17, C/F50</b>																												
<b>Slope Works Design</b>																												
ARDD0603	IC/SO Approval of Slope Combined AIP/DDA -CP14.01		75	16-Dec-14 A	7	28-Mar-17	05-Apr-16	12-Apr-16	-287	75%																		
ARDD0603-1	IC/SO Approval of Slope Combined AIP/DDA -CP14.01		0		0	28-Mar-17		12-Apr-16	-287	0%																		
<b>Watermain, Drainage &amp; Utility Diversions</b>																												
<b>General</b>																												
<b>Design</b>																												
ARDD0629	IC/SO Approval of Waterworks, Drainage & Utility DDA - BP20.01		75	22-Jul-14 A	22	19-Apr-17	01-Mar-16	29-Mar-16	-313	70%																		
ARDD0629-1	IC/SO Approval of Waterworks, Drainage & Utility DDA - BP20.01		0		0	19-Apr-17		29-Mar-16	-313	0%																		
ARDD0629-2	Gov't Approval of Submissions for Waterworks, Drainage & Utility Diversior		75	02-Jan-14 A	22	19-Apr-17	01-Mar-16	29-Mar-16	-313	70%																		
<b>Viaduct Approach Ramp Retaining Walls</b>																												
<b>Abutment &amp; Approach Ramp B</b>																												
<b>Design</b>																												
ARDD0664	Approach B - IC/SO Approval of Approach Ramp B DDA -DP21.01		75	14-Oct-14 A	4	24-Mar-17	20-Jan-16	23-Jan-16	-345	95%																		
ARDD0664-1	Approach B - IC/SO Approval of Approach Ramp B DDA -DP21.01		0		0	24-Mar-17		23-Jan-16	-345	0%																		
<b>Abutment &amp; Approach Ramp F</b>																												
<b>Design</b>																												
ARDD0676	Approach F - IC/SO Approval of Approach Ramp F DDA -DP24.01		75	23-Dec-14 A	34	05-May-17	19-Apr-16	30-May-16	-275	50%																		
ARDD0676-1	Approach F - IC/SO Approval of Approach Ramp F DDA -DP24.01		0		0	05-May-17		30-May-16	-275	0%																		
<b>Segment Target Geometry &amp; Erection Engineering</b>																												
<b>Viaduct A</b>																												

■ Actual Work  
■ Planned Bar  
■ Critical Bar  
◆ Milestone

Project ID: TMCLK-DWPI-M46  
 Layout: J3518-DWP-3MRP Submission - M46  
 Filter: TASK filters: 3-Month Lookahead, No CC  
 Milestones, No Level of Effort.

**Tuen Mun - Chek Lap Kok Link - Southern Connection**  
**3-Month Rolling Programme (Page 1 of 13 Pages)**  
**(Progress as of 21-Mar-17)**

Date	Revision	Checked	Approved
31-Oct-16		PKN	GL
30-Nov-...		PKN	GL
31-Mar-17		PKN	GL

**DWG. No.:**  
**J3518/GCL/PGM/3MRP-M46**

Activity ID	Activity Name	Orig. Durn.	Act. Start / FC Early Start	Rem. Durn.	Act. Finish / FC Early Finish	Late Start	Late Finish	Total Float	Physical % Complete	2017																		
										March					April				May				June					
											20	27	06	13	20	27	03	10	17	24	01	08	15	22	29	05	12	19
<b>Design</b>																												
ARDD0718	Viaduct A - Target Geometry Analysis	20	21-Mar-17	20	13-Apr-17	31-Mar-16	23-Apr-16	-290	0%																			
ARDD0719-5	Viaduct A - Issue Erection Manual	20	21-Mar-17	20	13-Apr-17	31-Mar-16	23-Apr-16	-290	0%																			
<b>Viaduct E5 &amp; E6</b>																												
<b>Design</b>																												
ARDD0734	Viaduct E5 & E6 - Segment Geometry Schedules	10	05-May-14 A	34	05-May-17	25-Jul-15	02-Sep-15	-491	75%																			
TGP0570	Viaduct E5 & E6 - Issue of Optimised Casting Data and Segment Catalogue	40	30-Apr-15 A	34	05-May-17	25-Jul-15	02-Sep-15	-491	75%																			
TGP0590	Viaduct E5 & E6 - Issue Erection Manual	10	06-May-17	10	17-May-17	04-Sep-15	15-Sep-15	-491	0%																			
<b>Viaduct E7 &amp; E8</b>																												
<b>Design</b>																												
ARDD0739	Viaduct E7 & E8 - Segment Geometry Schedules	10	05-May-14 A	34	05-May-17	25-Jul-15	02-Sep-15	-491	75%																			
TGP0760	Viaduct E7 & E8 - Issue of Optimised Casting Data and Segment Catalogue	40	31-Jul-15 A	34	05-May-17	25-Jul-15	02-Sep-15	-491	75%																			
TGP0790	Viaduct E7 & E8 - Issue Erection Manual	10	06-May-17	10	17-May-17	04-Sep-15	15-Sep-15	-491	0%																			
<b>Viaduct F</b>																												
<b>Design</b>																												
ARDD0752	Viaduct F - Erection Sequence Analysis	13	21-Mar-17	13	05-Apr-17	11-Jul-15	25-Jul-15	-503	0%																			
ARDD0753	Viaduct F - Target Geometry Analysis	30	06-Apr-17	30	16-May-17	27-Jul-15	29-Aug-15	-503	0%																			
ARDD0754	Viaduct F - Segment Geometry Schedules	10	17-May-17	10	27-May-17	31-Aug-15	11-Sep-15	-503	0%																			
ARDD0754-1	Viaduct F - Issue of Pierhead Segments Bridge F1, F2, F3, F4 & F5	0		0	27-May-17		30-Jun-20	916	0%																			
ARDD0754-3	Viaduct F - Issue of Casting Data and Segment Catalogue Bridge F1, F3 (f	0		0	27-May-17		30-Jun-20	916	0%																			
ARDD0754-4	Viaduct F - Issue of Casting Data and Segment Catalogue Bridge F2, F4, F	0		0	27-May-17		11-Sep-15	-503	0%																			
ARDD0754-5	Viaduct F - Issue Erection Manual	30	29-May-17	30	04-Jul-17	12-Sep-15	19-Oct-15	-503	0%																			
<b>Procurement</b>																												
<b>Deck Segment Installation Equipment</b>																												
<b>Traveling Hanging Beams</b>																												
<b>Viaduct A to F</b>																												
<b>Equipment Delivery</b>																												
PR67065	Steelworks for THB 3.0 - Batch 3	0		0	15-Mar-17 A				100%																			
<b>K-Frames</b>																												
<b>Viaduct A to F</b>																												
<b>Equipment Delivery</b>																												
PR67130	Hydraulic for K-Frame	0		0	28-Feb-17 A				100%																			
<b>Strand Jacks</b>																												
<b>Viaduct A to F</b>																												
<b>Equipment Delivery</b>																												
PR67140	Steelworks for 294T Strand Jack module	0		0	27-Feb-17 A				100%																			
PR67150	Hydraulic for 294T Strand Jack	0		0	28-Feb-17 A				100%																			
<b>Crab</b>																												
<b>Viaduct A to F</b>																												
<b>Equipment Delivery</b>																												
PR67170	Steelworks for 294T Crab - Batch 2	0		0	28-Feb-17 A				100%																			
<b>Travelling Hanging Beams (Self-Launch)</b>																												
<b>Viaduct A to F</b>																												
<b>Equipment Delivery</b>																												
PR67070	Steelworks for Self-Launching System - Batch 1	0		0	28-Feb-17 A				100%																			
PR67080	Steelworks for Self-Launching System - Batch 2	0		0	31-Mar-17*		25-Feb-16	-325	0%																			
PR67090	Steelworks for Self-Launching System - Batch 3	0		0	18-Apr-17*		25-Feb-16	-336	0%																			
PR67100	2 nos. Hydraulic Cylinder & Associated Accessories for Spare	0		0	18-Apr-17*		25-Feb-16	-336	0%																			
PR67110	Power Pack for Hydraulic System for Self-Launching System	0		0	18-Apr-17*		25-Feb-16	-336	0%																			
<b>Precast Deck Segments</b>																												
<b>Preliminaries</b>																												
<b>Viaduct F</b>																												
<b>General</b>																												
MBBE0054	Precast Segment Mould Design (Viaduct F1 to F5)	42	01-Sep-16 A	16	08-Apr-17	11-Feb-16	29-Feb-16	-329	60%																			
MBBE0056	Precast Segment Mould Fabrication & Erection (Viaduct F1 to F5)	52	25-Mar-17	52	01-Jun-17	16-Feb-16	20-Apr-16	-329	0%																			

■ Actual Work  
■ Planned Bar  
■ Critical Bar  
◆ Milestone

Project ID: TMCLK-DWPI-M46  
 Layout: J3518-DWP-3MRP Submission - M46  
 Filter: TASK filters: 3-Month Lookahead, No CC  
 Milestones, No Level of Effort.

**Tuen Mun - Chek Lap Kok Link - Southern Connection**  
**3-Month Rolling Programme (Page 2 of 13 Pages)**  
**(Progress as of 21-Mar-17)**

Date	Revision	Checked	Approved
31-Oct-16		PKN	GL
30-Nov-...		PKN	GL
31-Mar-17		PKN	GL

**DWG. No.:**  
**J3518/GCL/PGM/3MRP-M46**

Activity ID	Activity Name	Orig. Durn.	Act. Start / FC Early Start	Rem. Durn.	Act. Finish / FC Early Finish	Late Start	Late Finish	Total Float	Physical % Complete	2017																		
										March			April			May			June									
											20	27	06	13	20	27	03	10	17	24	01	08	15	22	29	05	12	19
<b>Viaduct A - Bridge A2-A1</b>																												
<b>Segment Manufacture</b>																												
<b>General</b>																												
MBAE0130-1	A: Progressive Segment Manufacture (179 Nr)	180	13-Jun-16 A	54	29-May-17	06-Feb-16	16-Apr-16	-330	60%																			
<b>Viaduct E - Bridge E2</b>																												
<b>Segment Manufacture</b>																												
<b>General</b>																												
MBEE0130-7	E2: Progressive Segment Manufacture (404 Nr)	376	06-May-15 A	51	25-May-17	19-Jun-15	19-Aug-15	-520	90%																			
<b>Viaduct E - Bridge E5, E6, E7, E8</b>																												
<b>Segment Manufacture</b>																												
<b>General</b>																												
MBEE0130-9	E5-6-7-8: Progressive Segment Manufacture (544Nr)	360	06-May-15 A	143	12-Sep-17	28-Aug-15	22-Feb-16	-462	45%																			
<b>Viaduct F - Bridge F1-F5</b>																												
<b>Segment Manufacture</b>																												
<b>General</b>																												
MBFE0130-1	F: Progressive Segment Manufacture (300 Nr)	252	27-Oct-16 A	169	14-Oct-17	12-Jan-16	08-Aug-16	-352	20%																			
<b>Precast Parapets &amp; Barriers</b>																												
<b>Viaduct A to F</b>																												
<b>Precast Parapet Manufacture</b>																												
<b>General</b>																												
PP6011-01	Viaduct A - Precast Parapets/Barriers Production	90	01-Sep-16 A	106	31-Jul-17	06-May-16	09-Sep-16	-261	20%																			
PP6011-02	Viaduct B - Precast Parapets/Barriers Production	120	03-May-16 A	55	31-May-17	08-Jul-16	09-Sep-16	-210	50%																			
PP6011-03	Viaduct C - Precast Parapets/Barriers Production	120	01-Apr-16 A	31	29-Apr-17	07-Apr-16	13-May-16	-285	60%																			
PP6011-04	Viaduct D - Precast Parapets/Barriers Production	120	01-Mar-16 A	31	29-Apr-17	07-Apr-16	13-May-16	-285	60%																			
PP6011-05	Viaduct E - Precast Parapets/Barriers Production	180	02-Jul-16 A	159	30-Sep-17	12-Apr-16	21-Oct-16	-281	30%																			
<b>Bearings</b>																												
<b>Viaduct A</b>																												
<b>Bearing Design &amp; Manufacture</b>																												
<b>General</b>																												
PPBRA5	SO review & comment on design submission - Viaduct A	36	21-Oct-16 A	5	25-Mar-17	06-Jul-16	11-Jul-16	-212	70%																			
PPBRA6	Bearing Design Amendment & re-issue - Viaduct A	12	27-Mar-17	12	10-Apr-17	12-Jul-16	25-Jul-16	-212	0%																			
PPBRA7	Manufacture of Bearing - Viaduct A	54	21-Oct-16 A	23	20-Apr-17	28-Jun-16	25-Jul-16	-218	50%																			
PPBRA8	Testing Bearing - Viaduct A	18	21-Apr-17	18	13-May-17	26-Jul-16	15-Aug-16	-218	0%																			
PPBRA9	Bearing Delivery - Viaduct A	48	15-May-17	48	11-Jul-17	16-Aug-16	13-Oct-16	-218	0%																			
<b>Viaduct C</b>																												
<b>Bearing Design &amp; Manufacture</b>																												
<b>General</b>																												
PPBRC6	Bearing Design Ammdment & re-issue - Viaduct C	11	21-Mar-17	11	01-Apr-17	11-Feb-16	23-Feb-16	-329	0%																			
PPBRC99	Site preparation Bearings for Viaduct C	6	03-Apr-17	6	10-Apr-17	24-Feb-16	01-Mar-16	-329	0%																			
<b>Viaduct D</b>																												
<b>Bearing Design &amp; Manufacture</b>																												
<b>General</b>																												
PPBRD99	Site preparation Bearings for Viaduct D	38	21-Mar-17	38	10-May-17	16-May-20	30-Jun-20	931	0%																			
<b>Viaduct E</b>																												
<b>Bearing Design &amp; Manufacture</b>																												
<b>General</b>																												
PP7290	Site preparation Bearings for Viaduct E2	18	27-Apr-16 A	13	05-Apr-17	02-Nov-15	16-Nov-15	-410	85%																			
PP7360	Site preparation Bearings for Viaduct E1	18	10-Feb-15 A	3	23-Mar-17	03-Aug-15	05-Aug-15	-484	90%																			
PPBRE3	Bearing design and submission - Viaduct E (E1, E2, E5, E6, E7 & E8)	12	28-Nov-13 A	3	23-Mar-17	03-Aug-15	05-Aug-15	-484	90%																			
PPBRE4	Design check by ICE - Viaduct E (E1, E2, E5, E6, E7 & E8)	24	04-Apr-14 A	3	07-Apr-17	17-Aug-15	19-Aug-15	-484	85%																			
PPBRE5	SO review & comment on design submission - Viaduct E (E1, E2, E5, E6, E7 & E8)	36	26-Sep-14 A	0	25-Apr-17	02-Sep-15	02-Sep-15	-484	80%																			
PPBRE6	Bearing Design Amendment & re-issue - Viaduct E (E1, E2, E5, E6, E7 & E8)	12	26-Apr-17	12	11-May-17	04-Sep-15	17-Sep-15	-484	0%																			
PPBRE7	Manufacture of Bearing - Viaduct E (E1, E2, E5, E6, E7 & E8)	54	02-Jun-14 A	13	11-May-17	02-Sep-15	17-Sep-15	-484	70%																			
PPBRE8	Testing Bearing - Viaduct E (E1, E2, E5, E6, E7 & E8)	24	03-Aug-15 A	1	25-May-17	03-Oct-15	03-Oct-15	-484	60%																			
PPBRE9	Bearing Delivery - Viaduct E (E1, E2, E5, E6, E7 & E8)	48	19-Nov-14 A	59	08-Jul-17	05-Sep-15	16-Nov-15	-484	50%																			

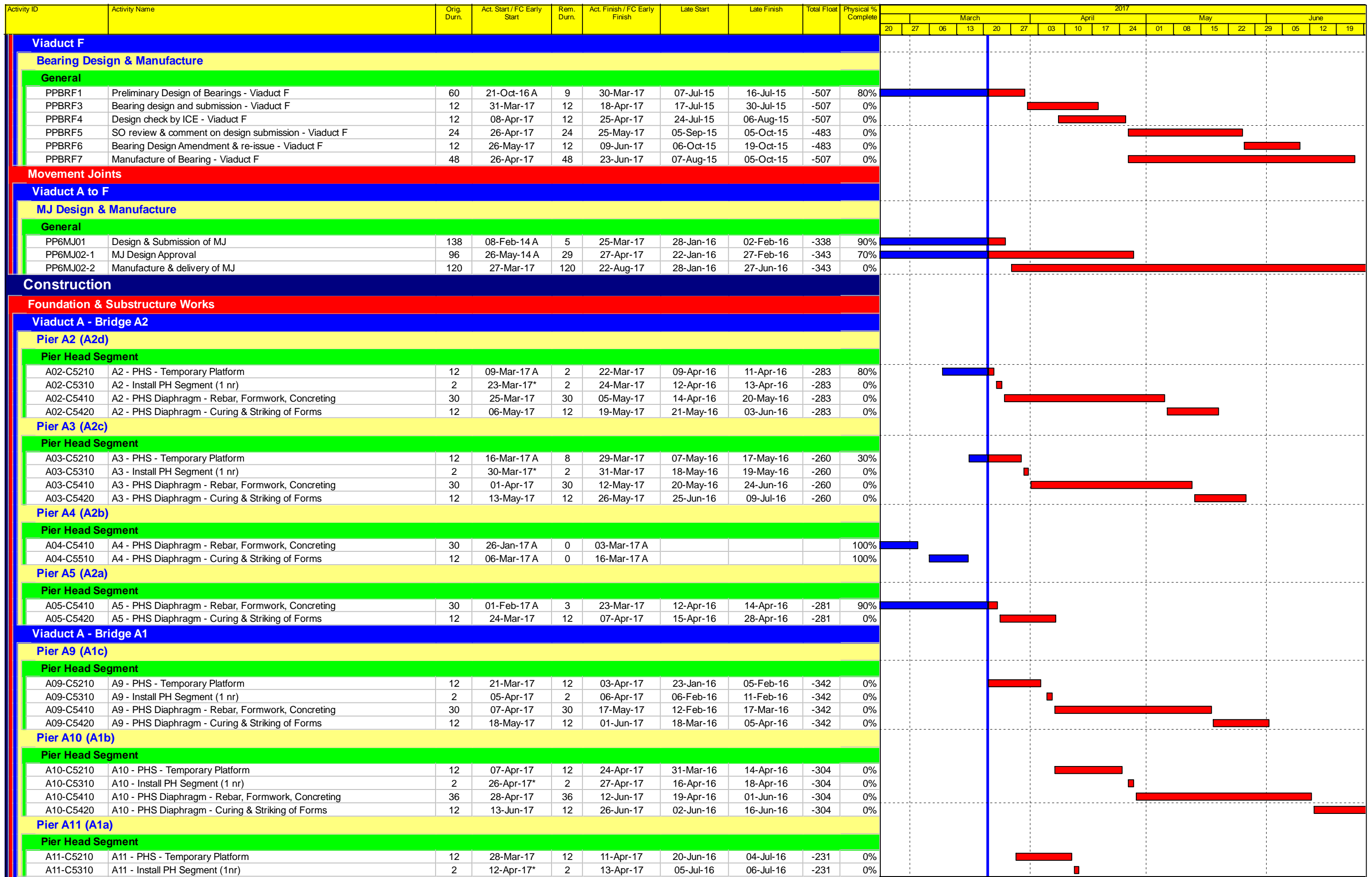
Actual Work  
 Planned Bar  
 Critical Bar  
 Milestone

Project ID: TMCLK-DWPI-M46  
 Layout: J3518-DWP-3MRP Submission - M46  
 Filter: TASK filters: 3-Month Lookahead, No CC  
 Milestones, No Level of Effort.

**Tuen Mun - Chek Lap Kok Link - Southern Connection**  
**3-Month Rolling Programme (Page 3 of 13 Pages)**  
**(Progress as of 21-Mar-17)**

Date	Revision	Checked	Approved
31-Oct-16		PKN	GL
30-Nov-...		PKN	GL
31-Mar-17		PKN	GL

**DWG. No.:**  
**J3518/GCL/PGM/3MRP-M46**



■ Actual Work  
■ Planned Bar  
■ Critical Bar  
◆ Milestone

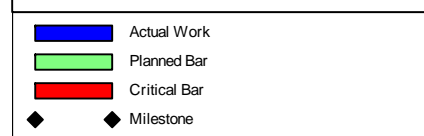
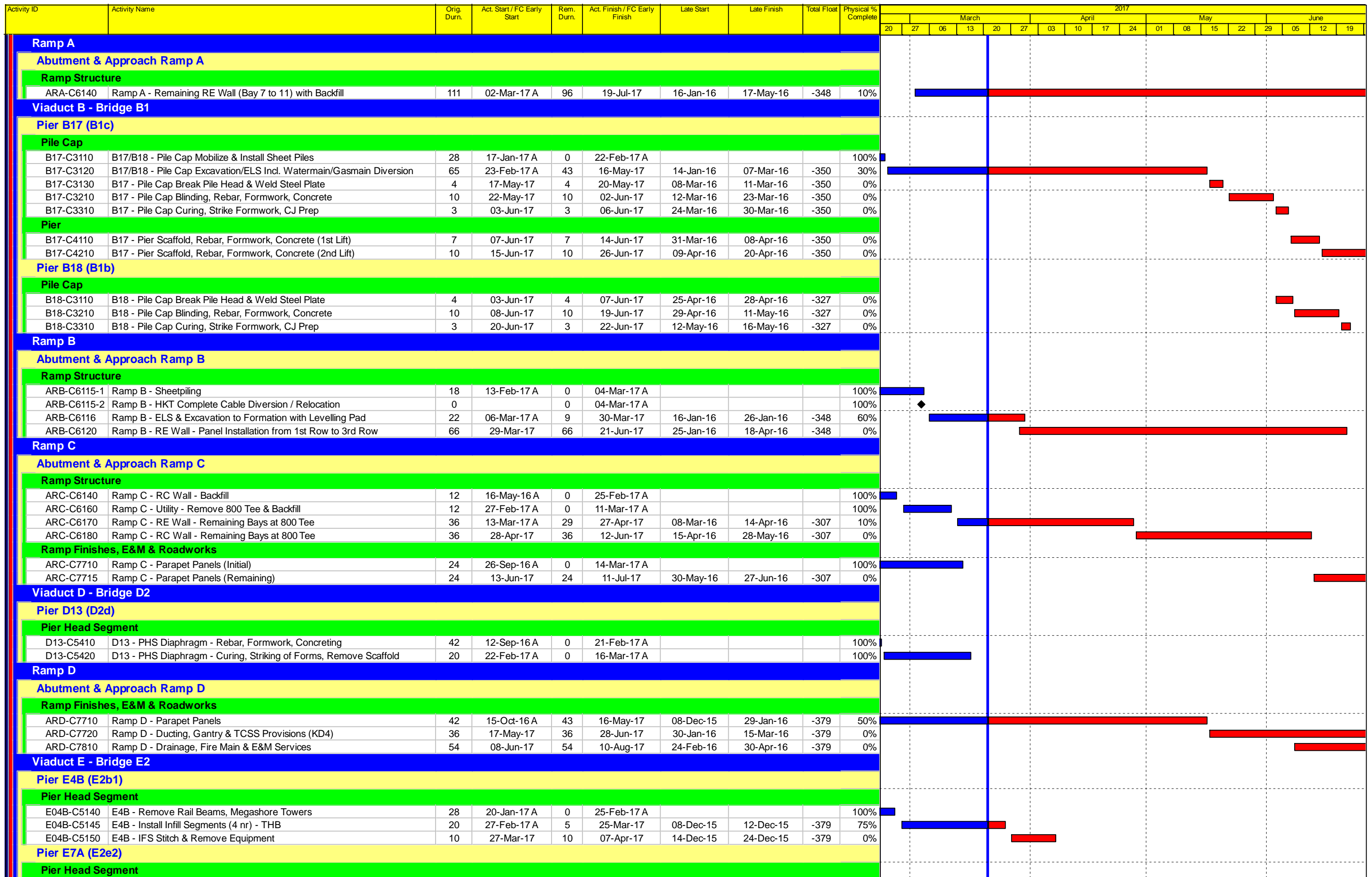
Project ID: TMCLK-DWPI-M46  
 Layout: J3518-DWP-3MRP Submission - M46  
 Filter: TASK filters: 3-Month Lookahead, No CC  
 Milestones, No Level of Effort.

**Tuen Mun - Chek Lap Kok Link - Southern Connection**  
**3-Month Rolling Programme (Page 4 of 13 Pages)**  
**(Progress as of 21-Mar-17)**

Date	Revision	Checked	Approved
31-Oct-16		PKN	GL
30-Nov-...		PKN	GL
31-Mar-17		PKN	GL

**DWG. No.:**  
**J3518/GCL/PGM/3MRP-M46**





Project ID: TMCLK-DWPI-M46  
 Layout: J3518-DWP-3MRP Submission - M46  
 Filter: TASK filters: 3-Month Lookahead, No CC  
 Milestones, No Level of Effort.

**Tuen Mun - Chek Lap Kok Link - Southern Connection**  
**3-Month Rolling Programme (Page 5 of 13 Pages)**  
**(Progress as of 21-Mar-17)**

Date	Revision	Checked	Approved
31-Oct-16		PKN	GL
30-Nov-...		PKN	GL
31-Mar-17		PKN	GL

**DWG. No.:**  
**J3518/GCL/PGM/3MRP-M46**

Activity ID	Activity Name	Orig. Durn.	Act. Start / FC Early Start	Rem. Durn.	Act. Finish / FC Early Finish	Late Start	Late Finish	Total Float	Physical % Complete	2017																								
										March				April				May				June												
											20	27	06	13	20	27	03	10	17	24	01	08	15	22	29	05	12	19						
E07A-C5145	E7A - Install Infill Segments (4 nr) - THB	18	07-Jan-17 A	0	24-Feb-17 A				100%	[Gantt bar: 07-Jan-17 to 24-Feb-17, 100% complete]																								
E07A-C5150	E7A - IFS Stitch & Remove Equipment	12	25-Feb-17 A	0	10-Mar-17 A				100%	[Gantt bar: 25-Feb-17 to 10-Mar-17, 100% complete]																								
<b>Pier E7B (E2e1)</b>																																		
<b>Pier Head Segment</b>																																		
E07B-C5145	E7B - Install Infill Segments (4 nr) - THB	24	18-Feb-17 A	2	22-Mar-17	15-Jun-15	16-Jun-15	-524	75%	[Gantt bar: 18-Feb-17 to 22-Mar-17, 75% complete]																								
E07B-C5150	E7B - IFS Stitch & Remove Equipment	12	23-Mar-17	12	06-Apr-17	17-Jun-15	02-Jul-15	-524	0%	[Gantt bar: 23-Mar-17 to 06-Apr-17, 0% complete]																								
<b>Pier E8A (E2f2)</b>																																		
<b>Pier Head Segment</b>																																		
E08A-C5145	E8A - Install Infill Segments (4 nr) - THB	18	18-Jan-17 A	0	28-Feb-17 A				100%	[Gantt bar: 18-Jan-17 to 28-Feb-17, 100% complete]																								
E08A-C5150	E8A - IFS Stitch & Remove Equipment	10	01-Mar-17 A	0	15-Mar-17 A				100%	[Gantt bar: 01-Mar-17 to 15-Mar-17, 100% complete]																								
<b>Pier E8B (E2f1)</b>																																		
<b>Pier Head Segment</b>																																		
E08B-C5145	E8B - Install Infill Segments (4 nr) - THB	24	26-Jan-17 A	0	18-Mar-17 A				100%	[Gantt bar: 26-Jan-17 to 18-Mar-17, 100% complete]																								
E08B-C5150	E8B - IFS Stitch & Remove Equipment	12	20-Mar-17 A	11	01-Apr-17	25-May-16	06-Jun-16	-246	5%	[Gantt bar: 20-Mar-17 to 01-Apr-17, 5% complete]																								
<b>Pier E9A (E2g2)</b>																																		
<b>Pier Head Segment</b>																																		
E09A-C5145	E9A - Install Infill Segments (4 nr) - THB	28	03-Feb-17 A	0	11-Mar-17 A				100%	[Gantt bar: 03-Feb-17 to 11-Mar-17, 100% complete]																								
E09A-C5150	E9A - IFS Stitch & Remove Equipment	12	13-Mar-17 A	6	27-Mar-17	22-Mar-16	31-Mar-16	-295	0%	[Gantt bar: 13-Mar-17 to 27-Mar-17, 0% complete]																								
<b>Pier E9B (E2g1)</b>																																		
<b>Pier Head Segment</b>																																		
E09B-C5145	E9B - Install Infill Segments (4 nr) - THB	22	21-Mar-17*	22	19-Apr-17	24-Mar-16	22-Apr-16	-293	0%	[Gantt bar: 21-Mar-17 to 19-Apr-17, 0% complete]																								
E09B-C5150	E9B - IFS Stitch & Remove Equipment	12	20-Apr-17	12	05-May-17	23-Apr-16	07-May-16	-293	0%	[Gantt bar: 20-Apr-17 to 05-May-17, 0% complete]																								
<b>Pier E10A (E2h2)</b>																																		
<b>Pier Head Segment</b>																																		
E10A-C5145	E10A - Install Infill Segments (4 nr) - THB	28	16-Mar-17 A	13	05-Apr-17	08-Jun-16	23-Jun-16	-234	25%	[Gantt bar: 16-Mar-17 to 05-Apr-17, 25% complete]																								
E10A-C5150	E10A - IFS Stitch & Remove Equipment	12	06-Apr-17	12	22-Apr-17	24-Jun-16	08-Jul-16	-234	0%	[Gantt bar: 06-Apr-17 to 22-Apr-17, 0% complete]																								
<b>Pier E10B (E2h1)</b>																																		
<b>Pier Head Segment</b>																																		
E10B-C5140	E10B - Remove Rail Beams	18	03-Feb-17 A	0	23-Feb-17 A				100%	[Gantt bar: 03-Feb-17 to 23-Feb-17, 100% complete]																								
E10B-C5145	E10B - Install Infill Segments (4 nr) - THB	23	21-Mar-17	23	20-Apr-17	25-May-16	21-Jun-16	-246	0%	[Gantt bar: 21-Mar-17 to 20-Apr-17, 0% complete]																								
E10B-C5150	E10B - IFS Stitch & Remove Equipment	12	21-Apr-17	12	06-May-17	22-Jun-16	06-Jul-16	-246	0%	[Gantt bar: 21-Apr-17 to 06-May-17, 0% complete]																								
<b>Viaduct E - Bridge E5, E6, E7, E8</b>																																		
<b>Pier E11A (E7E8a)</b>																																		
<b>Pier Head Segment</b>																																		
E11A-C5130	E11A - Diaphragm of PHS - Formwork, Rebar, Concreting	80	10-Dec-16 A	11	01-Apr-17	12-May-15	23-May-15	-552	85%	[Gantt bar: 10-Dec-16 to 01-Apr-17, 85% complete]																								
E11A-C5140	E11A - Remove Rail Beams, Spreader Beams, Crane	18	03-Apr-17	18	27-Apr-17	26-May-15	15-Jun-15	-552	0%	[Gantt bar: 03-Apr-17 to 27-Apr-17, 0% complete]																								
E11A-C5145	E11A - Install Infill Segments (6 nr) - THB	42	28-Apr-17	42	19-Jun-17	16-Jun-15	05-Aug-15	-552	0%	[Gantt bar: 28-Apr-17 to 19-Jun-17, 0% complete]																								
E11A-C5150	E11A - IFS Stitch & Remove Equipment	12	20-Jun-17	12	04-Jul-17	06-Aug-15	19-Aug-15	-552	0%	[Gantt bar: 20-Jun-17 to 04-Jul-17, 0% complete]																								
<b>Pier E11B (E5e6a)</b>																																		
<b>Pier Head Segment</b>																																		
E11B-C5130	E11B - Diaphragm of PHS - Formwork, Rebar, Concreting	81	19-Dec-16 A	11	01-Apr-17	07-Jul-15	18-Jul-15	-507	85%	[Gantt bar: 19-Dec-16 to 01-Apr-17, 85% complete]																								
E11B-C5140	E11B - Remove Rail Beams, Spreader Beams, etc	18	03-Apr-17	18	27-Apr-17	20-Jul-15	08-Aug-15	-507	0%	[Gantt bar: 03-Apr-17 to 27-Apr-17, 0% complete]																								
E11B-C5145	E11B - Install Infill Segments (6 nr) - THB	42	28-Apr-17	42	19-Jun-17	10-Aug-15	29-Sep-15	-507	0%	[Gantt bar: 28-Apr-17 to 19-Jun-17, 0% complete]																								
E11B-C5150	E11B - IFS Stitch & Remove Equipment	12	20-Jun-17	12	04-Jul-17	30-Sep-15	14-Oct-15	-507	0%	[Gantt bar: 20-Jun-17 to 04-Jul-17, 0% complete]																								
<b>Pier E12A (E8b)</b>																																		
<b>Pile Cap Dolphin</b>																																		
E12A-C3130	E12A - Dolphin - Marine Pile Cap - Fixings, Dewatering & Trim Pile	11	02-May-17*	11	15-May-17	08-Nov-16	19-Nov-16	-139	0%	[Gantt bar: 02-May-17 to 15-May-17, 0% complete]																								
E12A-C3150	E12A - Dolphin - Marine Pile Cap - Rebar, Concreting	5	16-May-17	5	20-May-17	21-Nov-16	25-Nov-16	-139	0%	[Gantt bar: 16-May-17 to 20-May-17, 0% complete]																								
E12A-C3160	E12A - Dolphin - Marine Pile Cap - CJ preparation & Curing	3	22-May-17	3	24-May-17	26-Nov-16	29-Nov-16	-139	0%	[Gantt bar: 22-May-17 to 24-May-17, 0% complete]																								
<b>Pier Head Segment / Infill Segment</b>																																		
E12A-C5120	E12A - Install PH Segment (4 nr)	10	16-Feb-17 A	0	27-Feb-17 A				100%	[Gantt bar: 16-Feb-17 to 27-Feb-17, 100% complete]																								
E12A-C5130	E12A - Diaphragm of PHS - Formwork, Rebar, Concreting	74	28-Feb-17 A	56	01-Jun-17	01-Jun-15	06-Aug-15	-536	20%	[Gantt bar: 28-Feb-17 to 01-Jun-17, 20% complete]																								
E12A-C5140	E12A - Remove Rail Beams, Spreader Beams, Brackets	15	02-Jun-17	15	19-Jun-17	07-Aug-15	24-Aug-15	-536	0%	[Gantt bar: 02-Jun-17 to 19-Jun-17, 0% complete]																								
E12A-C5145	E12A - Install Infill Segments (6 nr) - THB	36	19-Jun-17	36	31-Jul-17	24-Aug-15	07-Oct-15	-536	0%	[Gantt bar: 19-Jun-17 to 31-Jul-17, 0% complete]																								
<b>Pier E12B (E7b)</b>																																		
<b>Pier Head Segment / Infill Segment</b>																																		
E12B-C5130	E12B - Diaphragm of PHS - Formwork, Rebar, Concreting	76	10-Feb-17 A	43	16-May-17	31-Oct-15	19-Dec-15	-411	40%	[Gantt bar: 10-Feb-17 to 16-May-17, 40% complete]																								
E12B-C5140	E12B - Remove Rail Beams, Spreader Beams, Brackets	15	17-May-17	15	03-Jun-17	21-Dec-15	09-Jan-16	-411	0%	[Gantt bar: 17-May-17 to 03-Jun-17, 0% complete]																								

■ Actual Work  
■ Planned Bar  
■ Critical Bar  
◆ Milestone

Project ID: TMCLK-DWPI-M46  
 Layout: J3518-DWP-3MRP Submission - M46  
 Filter: TASK filters: 3-Month Lookahead, No CC  
 Milestones, No Level of Effort.

**Tuen Mun - Chek Lap Kok Link - Southern Connection**  
**3-Month Rolling Programme (Page 6 of 13 Pages)**  
**(Progress as of 21-Mar-17)**

Date	Revision	Checked	Approved
31-Oct-16		PKN	GL
30-Nov-...		PKN	GL
31-Mar-17		PKN	GL

**DWG. No.:**  
**J3518/GCL/PGM/3MRP-M46**

Activity ID	Activity Name	Orig. Durn.	Act. Start / FC Early Start	Rem. Durn.	Act. Finish / FC Early Finish	Late Start	Late Finish	Total Float	Physical % Complete	2017																		
										March					April				May				June					
										20	27	06	13	20	27	03	10	17	24	01	08	15	22	29	05	12	19	
E12B-C5145	E12B - Install Infill Segments (6 nr) - THB	48	05-Jun-17	48	31-Jul-17	11-Jan-16	09-Mar-16	-411	0%																			
<b>Pier E12C (E6b)</b>																												
<b>Pier Head Segment / Infill Segment</b>																												
E12C-C5130	E12C - Diaphragm of PHS - Formwork, Rebar, Concreting	76	24-Jan-17 A	33	04-May-17	12-Jan-16	22-Feb-16	-352	40%																			
E12C-C5140	E12C - Remove Rail Beams, Spreader Beams, Brackets, Crane	15	05-May-17	15	22-May-17	23-Feb-16	10-Mar-16	-352	0%																			
E12C-C5145	E12C - Install Infill Segments (6 nr) - THB	46	23-May-17	46	17-Jul-17	11-Mar-16	09-May-16	-352	0%																			
<b>Pier E12D (E5b)</b>																												
<b>Pile Cap Dolphin</b>																												
E12D-C3070	E12D Dolphin - Marine Pile Cap - Collar frame to perm. casing of pile	3	01-Jun-17*	3	03-Jun-17	30-Nov-16	02-Dec-16	-144	0%																			
E12D-C3080	E12D Dolphin - Marine Pile Cap - Install precast shell in position	24	05-Jun-17	24	03-Jul-17	03-Dec-16	03-Jan-17	-144	0%																			
<b>Pier Head Segment / Infill Segment</b>																												
E12D-C5110	E12D - Temp. Work, Grillages, Megashore Towers, Rail Beams	28	28-Jan-17 A	0	25-Feb-17 A				100%																			
E12D-C5120	E12D - Install PH Segment (4 nr)	9	01-Mar-17 A	0	06-Mar-17 A				100%																			
E12D-C5130	E12D - Diaphragm of PHS - Formwork, Rebar, Concreting	76	07-Mar-17 A	66	13-Jun-17	15-Jul-15	02-Oct-15	-500	10%																			
E12D-C5140	E12D - Remove Rail Beams, Spreader Beams, Brackets	15	14-Jun-17	15	30-Jun-17	03-Oct-15	20-Oct-15	-500	0%																			
<b>Pier E13A (E8c)</b>																												
<b>Pier Head Segment / Infill Segment</b>																												
E13A-C5110	E13A - Temp. Work, Grillages, Megashore Towers, Rail Beams	28	14-Jan-17 A	0	02-Mar-17 A				100%																			
E13A-C5120	E13A - Install PH Segment (4 nr)	9	21-Mar-17	9	30-Mar-17	10-Nov-15	19-Nov-15	-403	0%																			
E13A-C5130	E13A - Diaphragm of PHS - Formwork, Rebar, Concreting	73	31-Mar-17	73	03-Jul-17	20-Nov-15	19-Feb-16	-403	0%																			
<b>Pier E13B (E7c)</b>																												
<b>Pier Head Segment / Infill Segment</b>																												
E13B-C5110	E13B - Temp. Work, Grillages, Megashore Towers, Rail Beams	28	18-Jan-17 A	0	14-Mar-17 A				100%																			
E13B-C5120	E13B - Install PH Segment (4 nr)	9	15-Mar-17 A	0	20-Mar-17 A				100%																			
E13B-C5130	E13B - Diaphragm of PHS - Formwork, Rebar, Concreting	76	21-Mar-17	76	24-Jun-17	04-Jun-15	02-Sep-15	-533	0%																			
<b>Pier E13C (E6c)</b>																												
<b>Pier Head Segment / Infill Segment</b>																												
E13C-C5110	E13C - Temp. Work, Grillages, Megashore Towers, Rail Beams	30	27-Jan-17 A	0	18-Mar-17 A				100%																			
E13C-C5120	E13C - Install PH Segment (4 nr)	9	20-Mar-17 A	6	27-Mar-17	23-Jun-15	29-Jun-15	-518	50%																			
E13C-C5130	E13C - Diaphragm of PHS - Formwork, Rebar, Concreting	76	28-Mar-17	76	03-Jul-17	30-Jun-15	29-Sep-15	-518	0%																			
<b>Pier E13D (E5c)</b>																												
<b>Pier Head Segment / Infill Segment</b>																												
E13D-C5110	E13D - Temp. Work, Grillages, Megashore Towers, Rail Beams	30	03-Feb-17 A	0	08-Mar-17 A				100%																			
E13D-C5120	E13D - Install PH Segment (4 nr)	9	09-Mar-17 A	1	21-Mar-17	17-Jul-15	17-Jul-15	-498	50%																			
E13D-C5130	E13D - Diaphragm of PHS - Formwork, Rebar, Concreting	75	22-Mar-17	75	24-Jun-17	18-Jul-15	16-Oct-15	-498	0%																			
<b>Pier E14A (E8d)</b>																												
<b>Pile Cap</b>																												
E14A-C3110	E14A Pile Cap - Excavate, Break Pile Head	15	13-Feb-17 A	0	17-Mar-17 A				100%																			
E14A-C3210	E14A Pile Cap - Blinding, Formwork, Rebar, Concrete	19	18-Mar-17 A	13	05-Apr-17	29-Apr-15	14-May-15	-562	10%																			
E14A-C3310	E14A Pile Cap - Curing, Remove Formwork, Backfill	12	06-Apr-17	12	22-Apr-17	15-May-15	29-May-15	-562	0%																			
<b>Pier</b>																												
E14A-C4110	E14A Pier - Scaffold, Rebar, Formwork, Concrete (1st Lift)	13	24-Apr-17	13	10-May-17	30-May-15	13-Jun-15	-562	0%																			
E14A-C4210	E14A Pier - Scaffold, Rebar, Formwork, Concrete (2nd Lift)	18	11-May-17	18	01-Jun-17	15-Jun-15	07-Jul-15	-562	0%																			
E14A-C4310	E14A Pier - Scaffold, Rebar, Formwork, Concrete (3rd Lift)	18	02-Jun-17	18	22-Jun-17	08-Jul-15	28-Jul-15	-562	0%																			
<b>Pier E14B (E7d)</b>																												
<b>Pile Cap</b>																												
E14B-C3110	E14B Pile Cap - Excavate, Break Pile Head	15	16-Feb-17 A	0	17-Mar-17 A				100%																			
E14B-C3210	E14B Pile Cap - Blinding, Formwork, Rebar, Concrete	19	18-Mar-17 A	19	12-Apr-17	16-Jun-15	09-Jul-15	-523	10%																			
E14B-C3310	E14B Pile Cap - Curing, Remove Formwork, Backfill	12	13-Apr-17	12	29-Apr-17	10-Jul-15	23-Jul-15	-523	0%																			
<b>Pier</b>																												
E14B-C4110	E14B Pier - Scaffold, Rebar, Formwork, Concrete (1st Lift)	13	02-May-17	13	17-May-17	24-Jul-15	07-Aug-15	-523	0%																			
E14B-C4210	E14B Pier - Scaffold, Rebar, Formwork, Concrete (2nd Lift)	18	18-May-17	18	08-Jun-17	08-Aug-15	28-Aug-15	-523	0%																			
E14B-C4310	E14B Pier - Scaffold, Rebar, Formwork, Concrete (3rd Lift)	18	09-Jun-17	18	29-Jun-17	29-Aug-15	19-Sep-15	-523	0%																			
<b>Pier E14C (E6d)</b>																												
<b>Pile Cap</b>																												
E14C-C3110	E14C Pile Cap - Excavate, Break Pile Head	15	11-Feb-17 A	0	04-Mar-17 A				100%																			
E14C-C3210	E14C Pile Cap - Blinding, Formwork, Rebar, Concrete	19	06-Mar-17 A	2	22-Mar-17	16-Jul-15	17-Jul-15	-499	85%																			
E14C-C3310	E14C Pile Cap - Curing, Remove Formwork, Backfill	12	23-Mar-17	12	06-Apr-17	18-Jul-15	31-Jul-15	-499	0%																			

■ Actual Work  
■ Planned Bar  
■ Critical Bar  
◆ Milestone

Project ID: TMCLK-DWPI-M46  
 Layout: J3518-DWP-3MRP Submission - M46  
 Filter: TASK filters: 3-Month Lookahead, No CC  
 Milestones, No Level of Effort.

**Tuen Mun - Chek Lap Kok Link - Southern Connection**  
**3-Month Rolling Programme (Page 7 of 13 Pages)**  
**(Progress as of 21-Mar-17)**

Date	Revision	Checked	Approved
31-Oct-16		PKN	GL
30-Nov-...		PKN	GL
31-Mar-17		PKN	GL

**DWG. No.:**  
**J3518/GCL/PGM/3MRP-M46**

Activity ID	Activity Name	Orig. Durn.	Act. Start / FC Early Start	Rem. Durn.	Act. Finish / FC Early Finish	Late Start	Late Finish	Total Float	Physical % Complete	2017																		
										March					April				May				June					
											20	27	06	13	20	27	03	10	17	24	01	08	15	22	29	05	12	19
<b>Pier</b>																												
E14C-C4110	E14C Pier - Scaffold, Rebar, Formwork, Concrete (1st Lift)	13	07-Apr-17	13	25-Apr-17	18-Dec-15	05-Jan-16	-384	0%																			
E14C-C4210	E14C Pier - Scaffold, Rebar, Formwork, Concrete (2nd Lift)	18	26-Apr-17	18	18-May-17	06-Jan-16	26-Jan-16	-384	0%																			
E14C-C4310	E14C Pier - Scaffold, Rebar, Formwork, Concrete (3rd Lift)	18	19-May-17	18	09-Jun-17	27-Jan-16	19-Feb-16	-384	0%																			
E14C-C4410	E14C Pier - Scaffold, Rebar, Formwork, Concrete (4th Lift)	18	10-Jun-17	18	30-Jun-17	20-Feb-16	11-Mar-16	-384	0%																			
<b>Pier E14D (E5d)</b>																												
<b>Foundation - Bored Piles</b>																												
E14D-C2150	E14D EB Pile - Sleeve, Casing, Excavate, Rebar, Concrete (4th) P3	18	24-Jan-17 A	0	06-Mar-17 A				100%																			
E14D-C2210	E14D EB Pile - Curing & Sonic Test	18	29-Nov-16 A	2	22-Mar-17	06-May-15	07-May-15	-557	90%																			
<b>Pile Cap</b>																												
E14D-C3110	E14D Pile Cap - Excavate, Break Pile Head	15	23-Mar-17	15	10-Apr-17	08-May-15	26-May-15	-557	0%																			
E14D-C3210	E14D Pile Cap - Blinding, Formwork, Rebar, Concrete	19	11-Apr-17	19	08-May-17	27-May-15	17-Jun-15	-557	0%																			
E14D-C3310	E14D Pile Cap - Curing, Remove Formwork, Backfill	12	09-May-17	12	22-May-17	18-Jun-15	03-Jul-15	-557	0%																			
<b>Pier</b>																												
E14D-C4110	E14D Pier - Scaffold, Rebar, Formwork, Concrete (1st Lift)	13	23-May-17	13	07-Jun-17	04-Jul-15	18-Jul-15	-557	0%																			
E14D-C4210	E14D Pier - Scaffold, Rebar, Formwork, Concrete (2nd Lift)	18	08-Jun-17	18	28-Jun-17	20-Jul-15	08-Aug-15	-557	0%																			
<b>Temporary Tower Between Pier E14D &amp; E13D</b>																												
E14D-C5710	E14D-E13D Temp Tower - Remove Rock Armour	18	23-May-17	18	13-Jun-17	13-Jul-15	01-Aug-15	-550	0%																			
E14D-C5720	E14D-E13D Temp Tower - Install Pipe Piles (8 nr)	45	14-Jun-17	45	05-Aug-17	03-Aug-15	24-Sep-15	-550	0%																			
<b>Viaduct F - Bridge F1</b>																												
<b>Pier F1 (F1b)</b>																												
<b>Pile Cap</b>																												
F01-C3110	F1 Pile Cap - Excavate, Break Pile Head	15	17-Feb-17 A	0	10-Mar-17 A				100%																			
F01-C3210	F1 Pile Cap - Blinding, Formwork, Rebar, Concrete	19	11-Mar-17 A	7	28-Mar-17	09-Jun-15	16-Jun-15	-529	50%																			
F01-C3310	F1 Pile Cap - Curing, Remove Formwork, Backfill	12	29-Mar-17	12	12-Apr-17	17-Jun-15	02-Jul-15	-529	0%																			
<b>Pier</b>																												
F01-C4110	F1 Pier - Scaffold, Rebar, Formwork, Concrete (1st Lift)	13	13-Apr-17	13	02-May-17	03-Jul-15	17-Jul-15	-529	0%																			
F01-C4210	F1 Pier - Scaffold, Rebar, Formwork, Concrete (2nd Lift)	18	04-May-17	18	24-May-17	18-Jul-15	07-Aug-15	-529	0%																			
F01-C4310	F1 Pier - Scaffold, Rebar, Formwork, Concrete (3rd Lift)	18	25-May-17	18	15-Jun-17	08-Aug-15	28-Aug-15	-529	0%																			
F01-C4410	F1 Pier - Scaffold, Rebar, Formwork, Concrete (4th Lift)	18	16-Jun-17	18	07-Jul-17	29-Aug-15	19-Sep-15	-529	0%																			
<b>Pier F2 (F1c)</b>																												
<b>Foundation - Bored Piles</b>																												
F02-C2120	F2 Fr Pile - Sleeve, Casing, Excavate, Rebar, Concrete (1st) P2	16	07-Feb-17 A	0	25-Feb-17 A				100%																			
F02-C2130	F2 Fr Pile - Sleeve, Casing, Excavate, Rebar, Concrete (2nd) P1	16	28-Feb-17 A	3	23-Mar-17	04-May-15	06-May-15	-559	80%																			
F02-C2140	F2 Fr Pile - Sleeve, Casing, Excavate, Rebar, Concrete (3rd) P2	15	24-Mar-17*	15	11-Apr-17	07-May-15	23-May-15	-559	0%																			
F02-C2210	F2 Fr Pile - Curing & Sonic Test	18	12-Apr-17	18	08-May-17	26-May-15	15-Jun-15	-559	0%																			
F02-C2220	F2 Fr Pile - Full Depth Core & Test	12	09-May-17	12	22-May-17	16-Jun-15	30-Jun-15	-559	0%																			
<b>Pile Cap</b>																												
F02-C3110	F2 Pile Cap - Excavate, Break Pile Head	15	23-May-17	15	09-Jun-17	02-Jul-15	18-Jul-15	-559	0%																			
F02-C3210	F2 Pile Cap - Blinding, Formwork, Rebar, Concrete	19	10-Jun-17	19	03-Jul-17	20-Jul-15	10-Aug-15	-559	0%																			
<b>Pier F3 (F1d)</b>																												
<b>Foundation - Bored Piles</b>																												
F03-C2130	F3 Fr Pile - Sleeve, Casing, Excavate, Rebar, Concrete (2nd) P2	15	13-Feb-17 A	0	08-Mar-17 A				100%																			
F03-C2180	F3 Fr Pile - Sleeve, Casing, Excavate, Rebar, Concrete (1st) P3	15	16-Mar-17 A	12	03-Apr-17	16-Jul-15	29-Jul-15	-499	20%																			
F03-C2190	F3 Fr Pile - Sleeve, Casing, Excavate, Rebar, Concrete (3rd) P1 -Replace	18	05-Apr-17*	18	28-Apr-17	30-Jul-15	19-Aug-15	-499	0%																			
F03-C2210	F3 Fr Pile - Curing & Sonic Test	18	29-Apr-17	18	22-May-17	20-Aug-15	10-Sep-15	-499	0%																			
F03-C2220	F3 Fr Pile - Full Depth Core & Test	12	23-May-17	12	06-Jun-17	11-Sep-15	24-Sep-15	-499	0%																			
<b>Pile Cap</b>																												
F03-C3110	F3 Pile Cap - Excavate, Break Pile Head	15	07-Jun-17	15	23-Jun-17	25-Sep-15	14-Oct-15	-499	0%																			
<b>Viaduct F - Bridge F2</b>																												
<b>Pier F4 (F2b)</b>																												
<b>Foundation - Bored Piles</b>																												
F04-C2120	F4 Fr Pile - Sleeve, Casing, Excavate, Rebar, Concrete (1st) P3	16	01-Feb-17 A	0	02-Mar-17 A				100%																			
F04-C2130	F4 Fr Pile - Sleeve, Casing, Excavate, Rebar, Concrete (2nd) P1	16	17-Mar-17 A	16	08-Apr-17	21-Jan-16	11-Feb-16	-344	10%																			
F04-C2140	F4 Fr Pile - Sleeve, Casing, Excavate, Rebar, Concrete (3rd) P2	16	28-Apr-17*	16	18-May-17	12-Feb-16	01-Mar-16	-357	0%																			
F04-C2210	F4 Fr Pile - Curing & Sonic Test	18	19-May-17	18	09-Jun-17	02-Mar-16	22-Mar-16	-357	0%																			
F04-C2220	F4 Fr Pile - Full Depth Core & Test	12	10-Jun-17	12	23-Jun-17	23-Mar-16	09-Apr-16	-357	0%																			
<b>Pier F5 (F2c)</b>																												
<b>Foundation - Bored Piles</b>																												

■ Actual Work  
■ Planned Bar  
■ Critical Bar  
◆ Milestone

Project ID: TMCLK-DWPI-M46  
 Layout: J3518-DWP-3MRP Submission - M46  
 Filter: TASK filters: 3-Month Lookahead, No CC  
 Milestones, No Level of Effort.

**Tuen Mun - Chek Lap Kok Link - Southern Connection**  
**3-Month Rolling Programme (Page 8 of 13 Pages)**  
**(Progress as of 21-Mar-17)**

Date	Revision	Checked	Approved
31-Oct-16		PKN	GL
30-Nov-...		PKN	GL
31-Mar-17		PKN	GL

**DWG. No.:**  
**J3518/GCL/PGM/3MRP-M46**







Activity ID	Activity Name	Orig. Durn.	Act. Start / FC Early Start	Rem. Durn.	Act. Finish / FC Early Finish	Late Start	Late Finish	Total Float	Physical % Complete	2017																		
										March			April			May			June									
											20	27	06	13	20	27	03	10	17	24	01	08	15	22	29	05	12	19
VB3-C7710	Viaduct B3 - Parapet Panels	48	16-Dec-16 A	13	05-Apr-17	29-Jul-16	12-Aug-16	-192	95%																			
<b>Bridge B2</b>																												
<b>Deck Span Segment</b>																												
B12-C6410	B12 - Falsework for End Span to B11	27	29-Mar-17	27	05-May-17	03-Jun-16	06-Jul-16	-245	0%																			
B12-C6510	B12 - End Span to B11 (5 nr) - Crane	14	06-May-17	14	22-May-17	07-Jul-16	22-Jul-16	-245	0%																			
VB2-C6510	Viaduct B2 - Final Stitch & Stressing to Span	24	23-May-17	24	20-Jun-17	23-Jul-16	19-Aug-16	-245	0%																			
<b>Bridge B1</b>																												
<b>Deck Span Segment</b>																												
B12-C6210	B12 - Falsework for End Span to B13	24	14-Feb-17 A	7	28-Mar-17	10-Mar-16	17-Mar-16	-305	60%																			
B12-C6310	B12 - End Span to B13 (7 nr) - Crane	18	29-Mar-17	18	22-Apr-17	18-Mar-16	12-Apr-16	-305	0%																			
B15-C6310	B15 - Cantilever Span (Initial 13 nr) - Crane	20	06-Dec-16 A	0	05-Mar-17 A				100%																			
B15-C6320	B15 - Cantilever Span (Remaining 13 nr) - Crane & THB	32	24-Apr-17	32	02-Jun-17	13-Apr-16	21-May-16	-305	0%																			
B16-C6320	B16 - Cantilever Span (Remaining 3 nr) - Crane	8	03-Jun-17	8	12-Jun-17	23-May-16	31-May-16	-305	0%																			
<b>Viaduct C</b>																												
<b>Bridge C4</b>																												
<b>Deck Span Segment</b>																												
C06-C6410	C6 - Launch LG2 from C9 to C6, C5 (NLH/MTR)	27	18-May-17*	27	19-Jun-17	27-Jan-16	01-Mar-16	-383	0%																			
C06-C6510	C6 - End Span to C5 (7 nr) - LG2	9	20-Jun-17	9	29-Jun-17	02-Mar-16	11-Mar-16	-383	0%																			
<b>Bridge C3</b>																												
<b>Deck Span Segment</b>																												
C08-C6310	C8 - Cantilever Span (24 nr) (MTR/NLH) - LG2	58	09-Jan-17 A	0	24-Feb-17 A				100%																			
C09-C6410	C9 - Launch LG2 from C8 to C9 (NLH)	11	27-Feb-17 A	0	11-Mar-17 A				100%																			
C09-C6510	C9 - Cantilever Span (Remaining 10 nr) (NLH) - LG2 & Crane	19	13-Mar-17 A	10	31-Mar-17	15-Jan-16	26-Jan-16	-349	60%																			
C10-C6320	C10 - Cantilever Span (Remaining 13 nr) - THB	22	18-May-17*	22	13-Jun-17	30-Jan-16	27-Feb-16	-380	0%																			
C11-C6410	C11 - Falsework for End Span to C10	24	14-Jun-17	24	12-Jul-17	29-Feb-16	30-Mar-16	-380	0%																			
<b>Bridge C2</b>																												
<b>Deck Span Segment</b>																												
C11-C6210	C11 - Falsework for End Span to C12	24	14-Mar-17 A	22	19-Apr-17	19-Jan-16	16-Feb-16	-346	5%																			
C11-C6310	C11 - End Span to C12 (4 nr) - Crane	10	20-Apr-17	10	02-May-17	17-Feb-16	27-Feb-16	-346	0%																			
C16-C6410	C16 - Falsework for End Span to C15	24	18-Jan-17 A	0	06-Mar-17 A				100%																			
C16-C6510	C16 - End Span to C15 (4 nr) - Crane	10	07-Mar-17 A	0	11-Mar-17 A				100%																			
VC2-C6510	Viaduct C2 - Final Stitch & Stressing to Span	24	04-May-17	24	01-Jun-17	15-Apr-16	13-May-16	-310	0%																			
<b>Deck Finishes, E&amp;M and Roadworks</b>																												
VC2-C7710	Viaduct C2 - Parapet Panels	48	02-Jun-17	48	28-Jul-17	16-May-16	12-Jul-16	-310	0%																			
<b>Bridge C1</b>																												
<b>Deck Span Segment</b>																												
C16-C6210	C16 - Falsework for End Span to C17	24	18-Mar-17 A	26	24-Apr-17	26-Feb-16	30-Mar-16	-316	5%																			
C16-C6310	C16 - End Span to C17 (9 nr) - Crane	12	25-Apr-17	12	10-May-17	31-Mar-16	14-Apr-16	-316	0%																			
VC1-C6510	Viaduct C1 - Final Stitch & Stressing to Span	24	11-May-17	24	08-Jun-17	15-Apr-16	13-May-16	-316	0%																			
<b>Deck Finishes, E&amp;M and Roadworks</b>																												
VC1-C7710	Viaduct C1 - Parapet Panels	48	09-Jun-17	48	04-Aug-17	16-May-16	12-Jul-16	-316	0%																			
<b>Viaduct D</b>																												
<b>Bridge D2</b>																												
<b>Deck Span Segment</b>																												
D06-C6210	D6 - Launch LG1 from D7 to D6	3	13-Mar-17 A	0	18-Mar-17 A				100%																			
D06-C6310	D6 - End Span to D7 (8 nr) - LG1	9	20-Mar-17 A	8	29-Mar-17	30-Nov-15	08-Dec-15	-386	50%																			
D07-C6410	D7 - Launch LG1 from D8 to D7	2	09-Mar-17 A	0	10-Mar-17 A				100%																			
D07-C6510	D7 - Cantilever Span (Remaining 4 nr) - LG1	6	10-Mar-17 A	0	12-Mar-17 A				100%																			
D08-C6310	D8 - Cantilever Span (26 nr) (MTR) - LG1	26	03-Feb-17 A	0	09-Mar-17 A				100%																			
D09-C6210	D9 - Launch LG1 from D7 to D8 (MTR/NLH)	4	05-Apr-17*	4	08-Apr-17	09-Dec-15	12-Dec-15	-390	0%																			
D09-C6215	D9 - Launch LG1 from D8 to D9 (MTR/NLH)	9	24-Apr-17*	9	05-May-17	14-Dec-15	23-Dec-15	-399	0%																			
D09-C6310	D9 - Cantilever Span (Remaining 14 nr) (MTR/NLH) - LG1	28	06-May-17	28	08-Jun-17	24-Dec-15	28-Jan-16	-399	0%																			
D09-C6410	D9 - Drop in Segments D8-D9 (3 nr) (MTR) - LG1	23	09-Jun-17	23	06-Jul-17	29-Jan-16	27-Feb-16	-399	0%																			
D10-C6310	D10 - Cantilever Span (Remaining 12 nr) - Crane & THB	18	17-Feb-17 A	0	10-Mar-17 A				100%																			
D12-C6310	D12 - Cantilever Span (Remaining 18 nr) - Crane & THB	38	13-Mar-17 A	29	27-Apr-17	25-Jan-16	01-Mar-16	-341	25%																			
D13-C6610	D13 - Falsework for End Span to D12	24	28-Apr-17	24	27-May-17	02-Mar-16	01-Apr-16	-341	0%																			
D13-C6710	D13 - End Span to D12 (4 nr) - Crane	10	29-May-17	10	09-Jun-17	02-Apr-16	14-Apr-16	-341	0%																			
<b>Bridge D1</b>																												
<b>Deck Span Segment</b>																												

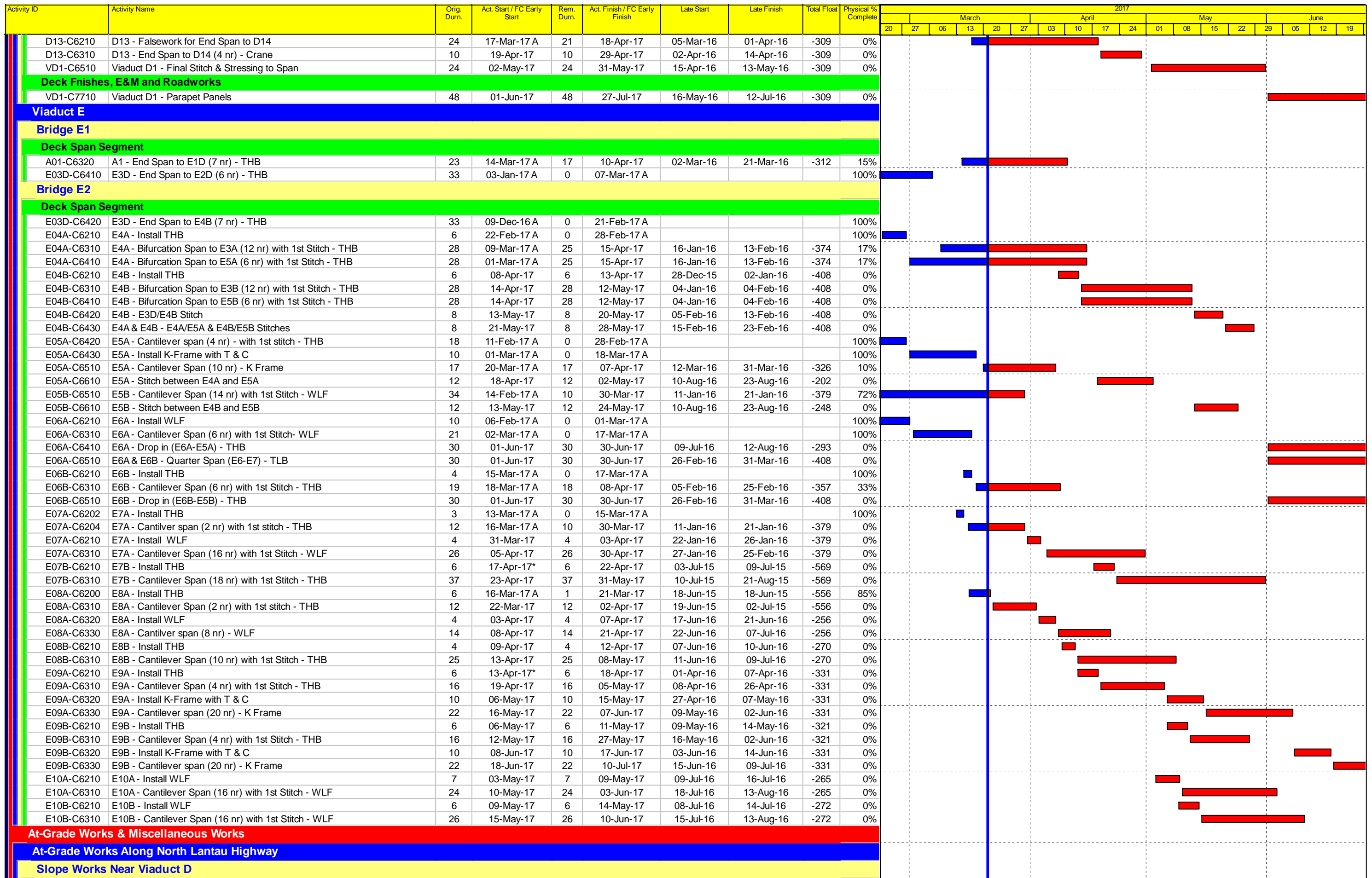
Actual Work  
 Planned Bar  
 Critical Bar  
 Milestone

Project ID: TMCLK-DWPI-M46  
 Layout: J3518-DWP-3MRP Submission - M46  
 Filter: TASK filters: 3-Month Lookahead, No CC  
 Milestones, No Level of Effort.

**Tuen Mun - Chek Lap Kok Link - Southern Connection**  
**3-Month Rolling Programme (Page 11 of 13 Pages)**  
**(Progress as of 21-Mar-17)**

Date	Revision	Checked	Approved
31-Oct-16		PKN	GL
30-Nov-...		PKN	GL
31-Mar-17		PKN	GL

**DWG. No.:**  
**J3518/GCL/PGM/3MRP-M46**



■ Actual Work  
■ Planned Bar  
■ Critical Bar  
◆ Milestone

Project ID: TMCLK-DWPI-M46  
 Layout: J3518-DWP-3MRP Submission - M46  
 Filter: TASK filters: 3-Month Lookahead, No CC  
 Milestones, No Level of Effort.

**Tuen Mun - Chek Lap Kok Link - Southern Connection**  
**3-Month Rolling Programme (Page 12 of 13 Pages)**  
**(Progress as of 21-Mar-17)**

Date	Revision	Checked	Approved
31-Oct-16		PKN	GL
30-Nov-...		PKN	GL
31-Mar-17		PKN	GL

**DWG. No.:**  
**J3518/GCL/PGM/3MRP-M46**



Activity ID	Activity Name	Orig. Durn.	Act. Start / FC Early Start	Rem. Durn.	Act. Finish / FC Early Finish	Late Start	Late Finish	Total Float	Physical % Complete	2017																		
										March					April				May				June					
											20	27	06	13	20	27	03	10	17	24	01	08	15	22	29	05	12	19
<b>Slope 10NW-C/F9</b>																												
M201200	10NW-C/F9 - Slope works (incl. L-Shape Ret. Walls)	110	09-Jun-17	110	18-Oct-17	17-Sep-16	01-Feb-17	-212	0%																			
<b>Slope 10NW-C/F10</b>																												
M201160	10NW-C/F10 - Slope works (incl. L-Shape Ret. Walls)	110	01-Apr-17*	110	16-Aug-17	30-Jun-16	09-Nov-16	-226	0%																			
<b>Slope 10NW-C/R4</b>																												
M201170	10NW-C/R4 - Slope works	80	01-Apr-17	80	12-Jul-17	05-Aug-16	09-Nov-16	-196	0%																			
<b>Slope 10NW-C/F50</b>																												
M201150	10NW-C/F50 - Slope works	165	11-Jan-17 A	156	27-Sep-17	05-May-16	09-Nov-16	-262	5%																			
<b>Road Works Along NLH Westbound</b>																												
<b>General</b>																												
RW10020	NLH W/B (Viaduct C) - Road Drainage Works for tie-in	104	01-Apr-17	104	09-Aug-17	29-Nov-16	06-Apr-17	-100	0%																			
<b>Road Works Along NLH Eastbound</b>																												
<b>General</b>																												
RW20080-1	Ch650 - 800 Portion 4 (viaduct D area): Roadwork	81	11-Jan-17 A	72	20-Jun-17	09-Jan-17	06-Apr-17	-58	10%																			
RW20080-2	Ch475 - 650 Portion 5 (viaduct D area): Roadwork	81	11-Jan-17 A	72	20-Jun-17	09-Jan-17	06-Apr-17	-58	10%																			
RW20080-3	Ch275 - 475 Portion 6 (viaduct D area): Roadwork	162	11-Jan-17 A	153	23-Sep-17	30-Sep-16	06-Apr-17	-139	5%																			
RW20080-4	Ch157 - 275 Portion 7 (Viaduct D area): Roadwork	98	11-Jan-17 A	89	11-Jul-17	16-Dec-16	06-Apr-17	-75	10%																			
RW20084	NLH E/B Viaduct A - Ch200-388 Roadwork (SL & HS) & Reinstate NLH	127	17-Dec-16 A	100	24-Jul-17	03-Dec-16	06-Apr-17	-86	10%																			
<b>At-Grade Works Along Cheung Tung Road</b>																												
<b>Re-alignment of CTR Along Viaduct B</b>																												
<b>General</b>																												
RP00064	Ch620-750: Telecom, 11KV & 132KV Ducting	20	20-Aug-15 A	56	01-Jun-17	09-May-16	15-Jul-16	-259	70%																			
RP00069-1	Initial DN1000 Watermain Connection	0	24-Apr-17*	0		23-Jun-16		-246	0%																			
RP00069-2	Final DN1000 Watermain Connection	0		0	24-Apr-17*		23-Jun-16	-246	0%																			
RP00071	Ch620-750: towngas(DN250+DN400) connection	18	24-Apr-17	18	16-May-17	24-Jun-16	15-Jul-16	-246	0%																			
RP00073	Ch100-300: Gas Main Connection	0		0	16-May-17*		15-Jul-16	-246	0%																			
RP00074	Ch100-300: Backfill & Reinstae CTR	17	02-Jun-17	17	21-Jun-17	16-Jul-16	04-Aug-16	-259	0%																			
RP00079	Ch100-300: Watermain (DN450+DN1000)	142	29-Apr-15 A	31	29-Apr-17	01-Jun-16	08-Jul-16	-240	80%																			
RP00081-3	Ch100-300: Watermain DN1000 Remaining Pipework & Connection	54	23-Dec-16 A	37	09-May-17	25-May-16	08-Jul-16	-246	50%																			
<b>Re-alignment of CTR Along Viaduct C</b>																												
<b>West Portion</b>																												
RW61080	CTR tie out : Drainage, Ducting & Roadwork	134	01-Nov-16 A	67	14-Jun-17	14-Dec-16	08-Mar-17	-77	50%																			
<b>East Portion</b>																												
RW60040	CTR East (stage 1) TTA 090-4 : Roadwork	90	03-Jan-17 A	74	22-Jun-17	10-May-16	06-Aug-16	-258	10%																			
RW60080	CTR Tie in Works	116	01-Apr-17	116	23-Aug-17	15-Nov-16	06-Apr-17	-112	0%																			
<b>At-Grade Works at Southern Landfall</b>																												
<b>HKBCF Area</b>																												
<b>General</b>																												
RW30028-1	Construction Sewer Outfall and Pipe Work to FMH2050	108	15-May-17	108	19-Sep-17	16-Dec-15	30-Apr-16	-413	0%																			
<b>Watermain from Tung Chung to Southern Landfall</b>																												
<b>Watermain Works</b>																												
<b>General</b>																												
WM00120	Lay DN450 Fresh Water Main at Re-aligned CTR (approx. 500m)	48	22-Apr-15 A	124	21-Aug-17	28-May-16	25-Oct-16	-243	40%																			
WM00170	Lay DN450 Watermain Tung Chung to Re-aligned CTR (3rd 500m)	50	01-Jun-16 A	84	05-Jul-17	16-Jul-16	25-Oct-16	-203	50%																			
WM00180	Lay DN450 Watermain from Tung Chung to Re-aligned CTR (last 400m)	76	21-Oct-16 A	50	24-May-17	25-Aug-16	25-Oct-16	-169	80%																			

■ Actual Work  
■ Planned Bar  
■ Critical Bar  
◆ Milestone

Project ID: TMCLK-DWPI-M46  
 Layout: J3518-DWP-3MRP Submission - M46  
 Filter: TASK filters: 3-Month Lookahead, No CC  
 Milestones, No Level of Effort.

**Tuen Mun - Chek Lap Kok Link - Southern Connection**  
**3-Month Rolling Programme (Page 13 of 13 Pages)**  
**(Progress as of 21-Mar-17)**

Date	Revision	Checked	Approved
31-Oct-16		PKN	GL
30-Nov-...		PKN	GL
31-Mar-17		PKN	GL

**DWG. No.:**  
**J3518/GCL/PGM/3MRP-M46**