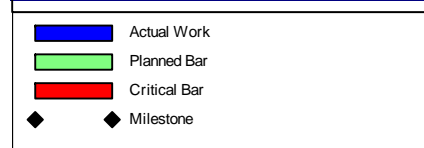
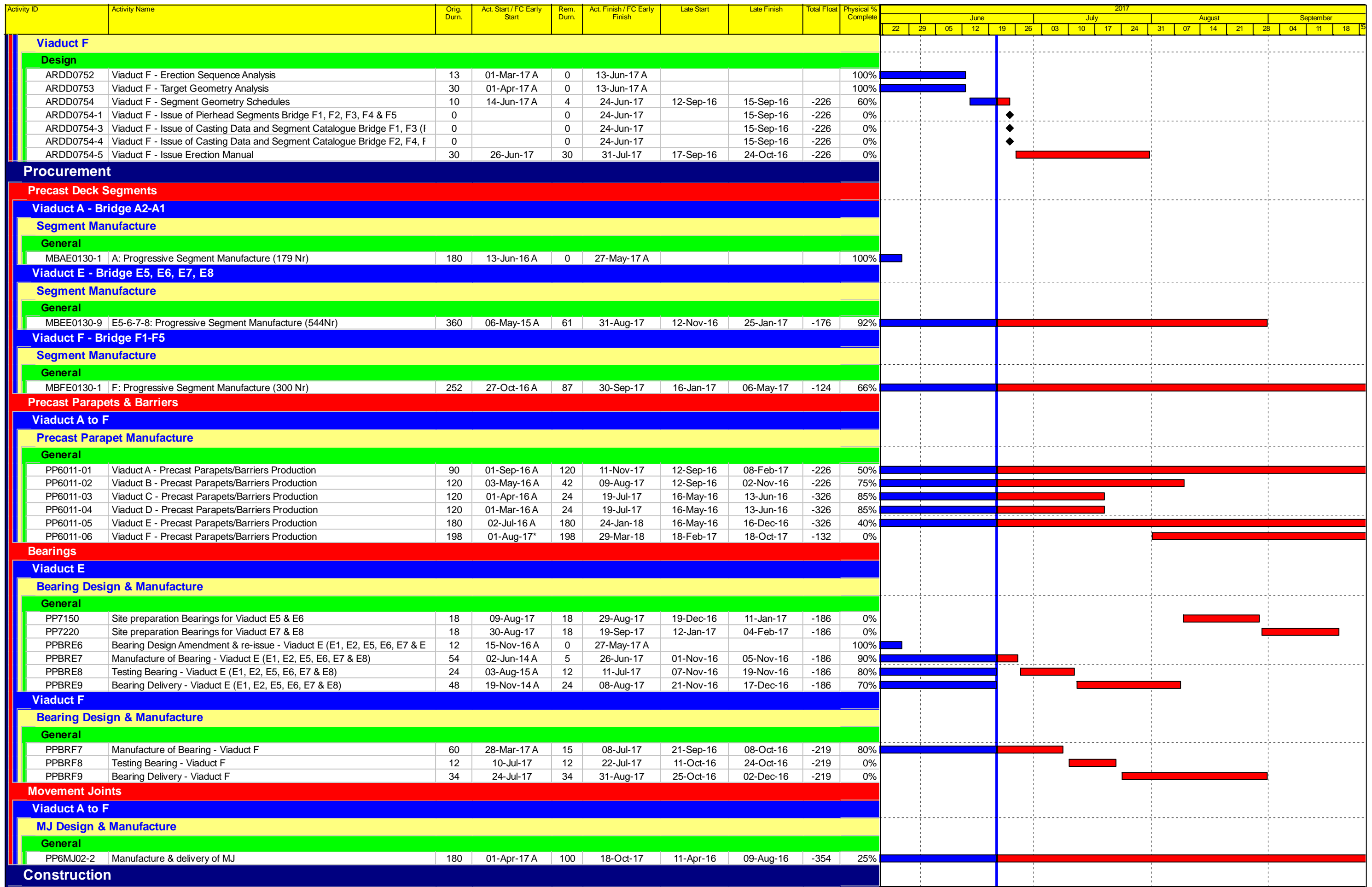


Activity ID	Activity Name	Orig. Durn.	Act. Start / FC Early Start	Rem. Durn.	Act. Finish / FC Early Finish	Late Start	Late Finish	Total Float	Physical % Complete	2017																			
										June					July					August					September				
											22	29	05	12	19	26	03	10	17	24	31	07	14	21	28	04	11	18	25
Contract Milestones																													
Key Dates for Completion																													
Stage of the Works																													
Completion Date																													
General																													
KD03	KD3 - Stage 3: TCSS Along NLH Near Viaduct C, D (EoT 8-Apr-16)		0		0	21-Jun-17*	08-Apr-16	-438	0%											◆									
Portion Handover Dates																													
Possession of the Works Area																													
Access Dates																													
General																													
Design																													
Detailed Design																													
General Submissions																													
Reports & Manuals																													
General																													
ARDD0040-2	IC/SO Approval of Operation and Maintenance Manual - AP08.00		75	20-Oct-15 A	0	02-Jun-17 A			100%											■									
ARDD0042-2	IC/SO Approval of O&M Facility Provisions DDA - BP11.01		75	14-Jan-15 A	0	02-Jun-17 A			100%											■									
Slope Works Near Viaduct A																													
Feature 9SE-B/FR8, B/R1, B/R2																													
Slope Works Design																													
ARDD0596	Preparation of remaining portion of Slope FR8 Combined AIP/DDA - CP11.		35	01-Apr-17 A	0	12-Jun-17 A			100%											■									
ARDD0596-1	IC/SO Approval of Slope Combined AIP/DDA - CP11.01		60	13-Jun-17 A	53	22-Aug-17	16-May-16	18-Jul-16	-326	10%											■								
Slope Works Near Viaduct C																													
Feature 10NW-C/C22, C/C26, C/C27, C/F13, C/F14, C/F15																													
Slope Works Design																													
ARDD0589-1	Preparation of Slope Combined AIP/DDA - CP13.01		60	21-Jan-17 A	0	31-May-17 A			100%											■									
ARDD0589-2	IC/SO Approval of Combined AIP/DDA - CP13.01		28	01-Jun-17 A	9	30-Jun-17	08-Aug-16	17-Aug-16	-256	70%											■								
ARDD0590-1	New fill slopes PF1 & PF2 IC/SO Approval of combined AIP/DDA - CP13.0		28	06-Apr-17 A	0	31-May-17 A			100%											■									
Watermain, Drainage & Utility Diversions																													
General																													
Design																													
ARDD0629	IC/SO Approval of Waterworks, Drainage & Utility DDA - BP20.01		75	22-Jul-14 A	0	08-Jun-17 A			100%											■									
ARDD0629-1	IC/SO Approval of Waterworks, Drainage & Utility DDA - BP20.01		0		0	08-Jun-17 A			100%											◆									
ARDD0629-2	Gov't Approval of Submissions for Waterworks, Drainage & Utility Diversior		75	02-Jan-14 A	0	08-Jun-17 A			100%											■									
Viaduct Approach Ramp Retaining Walls																													
Abutment & Approach Ramp B																													
Design																													
ARDD0664	Approach B - IC/SO Approval of Approach Ramp B DDA -DP21.01		75	14-Oct-14 A	0	27-May-17 A			100%											■									
ARDD0664-1	Approach B - IC/SO Approval of Approach Ramp B DDA -DP21.01		0		0	27-May-17 A			100%											◆									
Abutment & Approach Ramp F																													
Design																													
ARDD0676	Approach F - IC/SO Approval of Approach Ramp F DDA -DP24.01		75	23-Dec-14 A	0	19-Jun-17 A			100%											■									
ARDD0676-1	Approach F - IC/SO Approval of Approach Ramp F DDA -DP24.01		0		0	19-Jun-17 A			100%											◆									
Segment Target Geometry & Erection Engineering																													
Viaduct E5 & E6																													
Design																													
ARDD0734	Viaduct E5 & E6 - Segment Geometry Schedules		10	05-May-14 A	0	02-Jun-17 A			100%											■									
TGP0570	Viaduct E5 & E6 - Issue of Optimised Casting Data and Segment Catalogu		40	30-Apr-15 A	0	02-Jun-17 A			100%											■									
TGP0590	Viaduct E5 & E6 - Issue Erection Manual		10	03-Jun-17 A	0	14-Jun-17 A			100%											■									
Viaduct E7 & E8																													
Design																													
ARDD0739	Viaduct E7 & E8 - Segment Geometry Schedules		10	05-May-14 A	0	02-Jun-17 A			100%											■									
TGP0760	Viaduct E7 & E8 - Issue of Optimised Casting Data and Segment Catalogu		40	31-Jul-15 A	0	02-Jun-17 A			100%											■									
TGP0790	Viaduct E7 & E8 - Issue Erection Manual		10	03-Jun-17 A	0	14-Jun-17 A			100%											■									

<ul style="list-style-type: none"> Actual Work Planned Bar Critical Bar Milestone 	Project ID: TMCLK-DWPI-1-M49 Layout: J3518-DWP-3MRP Submission - M49 Filter: TASK filters: 3-Month Lookahead, No CC Milestones, No Level of Effort.	Tuen Mun - Chek Lap Kok Link - Southern Connection 3-Month Rolling Programme (Page 1 of 12 Pages) (Progress as of 21-Jun-17)	<table border="1"> <thead> <tr> <th>Date</th> <th>Revision</th> <th>Checked</th> <th>Approved</th> </tr> </thead> <tbody> <tr> <td>28-Apr-17</td> <td></td> <td>PKN</td> <td>GL</td> </tr> <tr> <td>31-May-...</td> <td></td> <td>PKN</td> <td>GL</td> </tr> <tr> <td>04-Jul-17</td> <td></td> <td>PKN</td> <td>GL</td> </tr> </tbody> </table>	Date	Revision	Checked	Approved	28-Apr-17		PKN	GL	31-May-...		PKN	GL	04-Jul-17		PKN	GL	DWG. No.: J3518/GCL/PGM/3MRP-M49
Date	Revision	Checked	Approved																	
28-Apr-17		PKN	GL																	
31-May-...		PKN	GL																	
04-Jul-17		PKN	GL																	

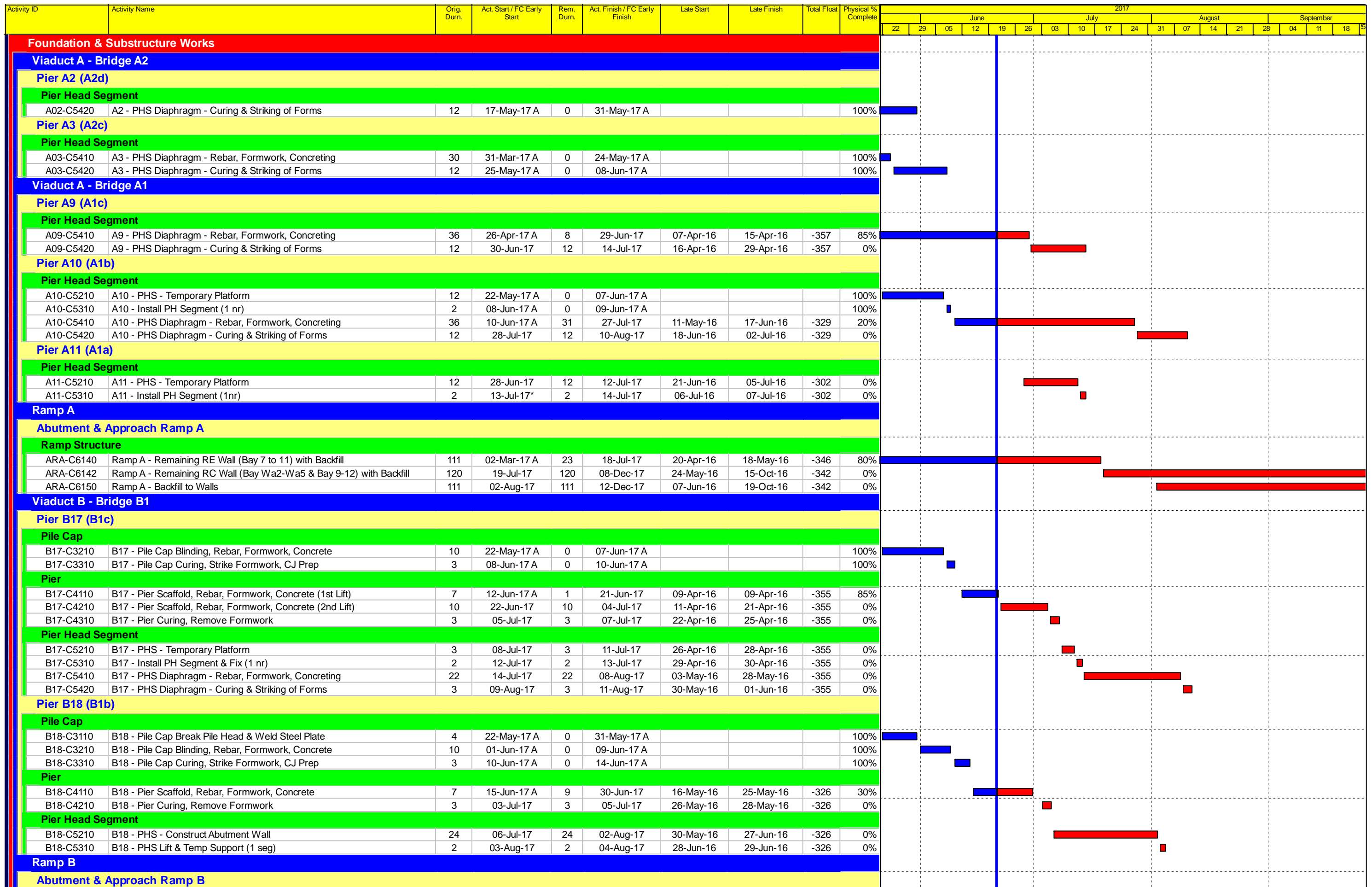


Project ID: TMCLK-DWPI-1-M49
 Layout: J3518-DWP-3MRP Submission - M49
 Filter: TASK filters: 3-Month Lookahead, No CC
 Milestones, No Level of Effort.

Tuen Mun - Chek Lap Kok Link - Southern Connection
3-Month Rolling Programme (Page 2 of 12 Pages)
(Progress as of 21-Jun-17)

Date	Revision	Checked	Approved
28-Apr-17		PKN	GL
31-May-...		PKN	GL
04-Jul-17		PKN	GL

DWG. No.:
J3518/GCL/PGM/3MRP-M49



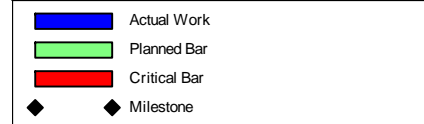
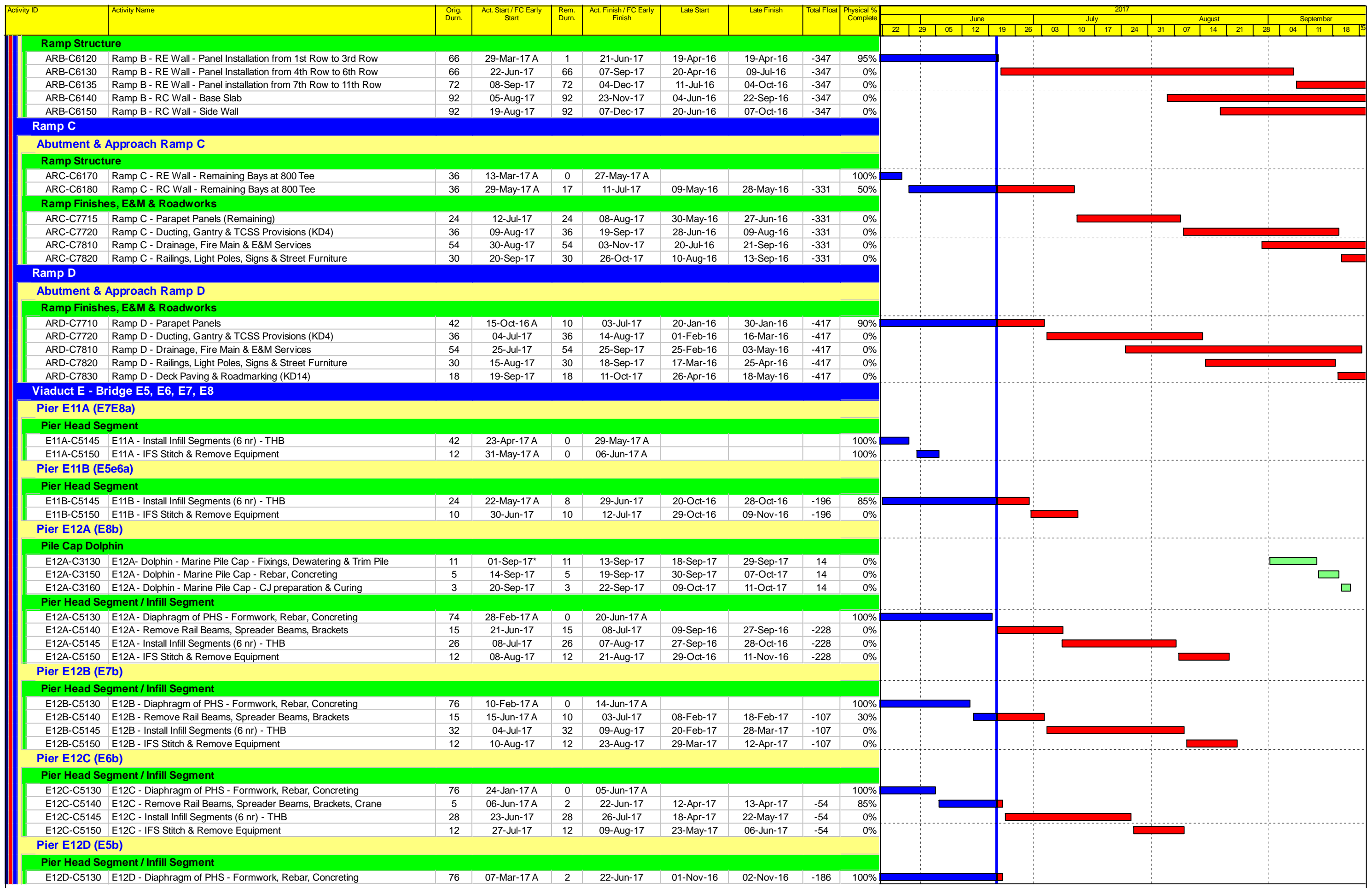
■ Actual Work
■ Planned Bar
■ Critical Bar
◆ Milestone

Project ID: TMCLK-DWPI-1-M49
 Layout: J3518-DWP-3MRP Submission - M49
 Filter: TASK filters: 3-Month Lookahead, No CC
 Milestones, No Level of Effort.

Tuen Mun - Chek Lap Kok Link - Southern Connection
3-Month Rolling Programme (Page 3 of 12 Pages)
(Progress as of 21-Jun-17)

Date	Revision	Checked	Approved
28-Apr-17		PKN	GL
31-May-...		PKN	GL
04-Jul-17		PKN	GL

DWG. No.:
J3518/GCL/PGM/3MRP-M49

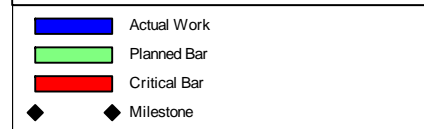
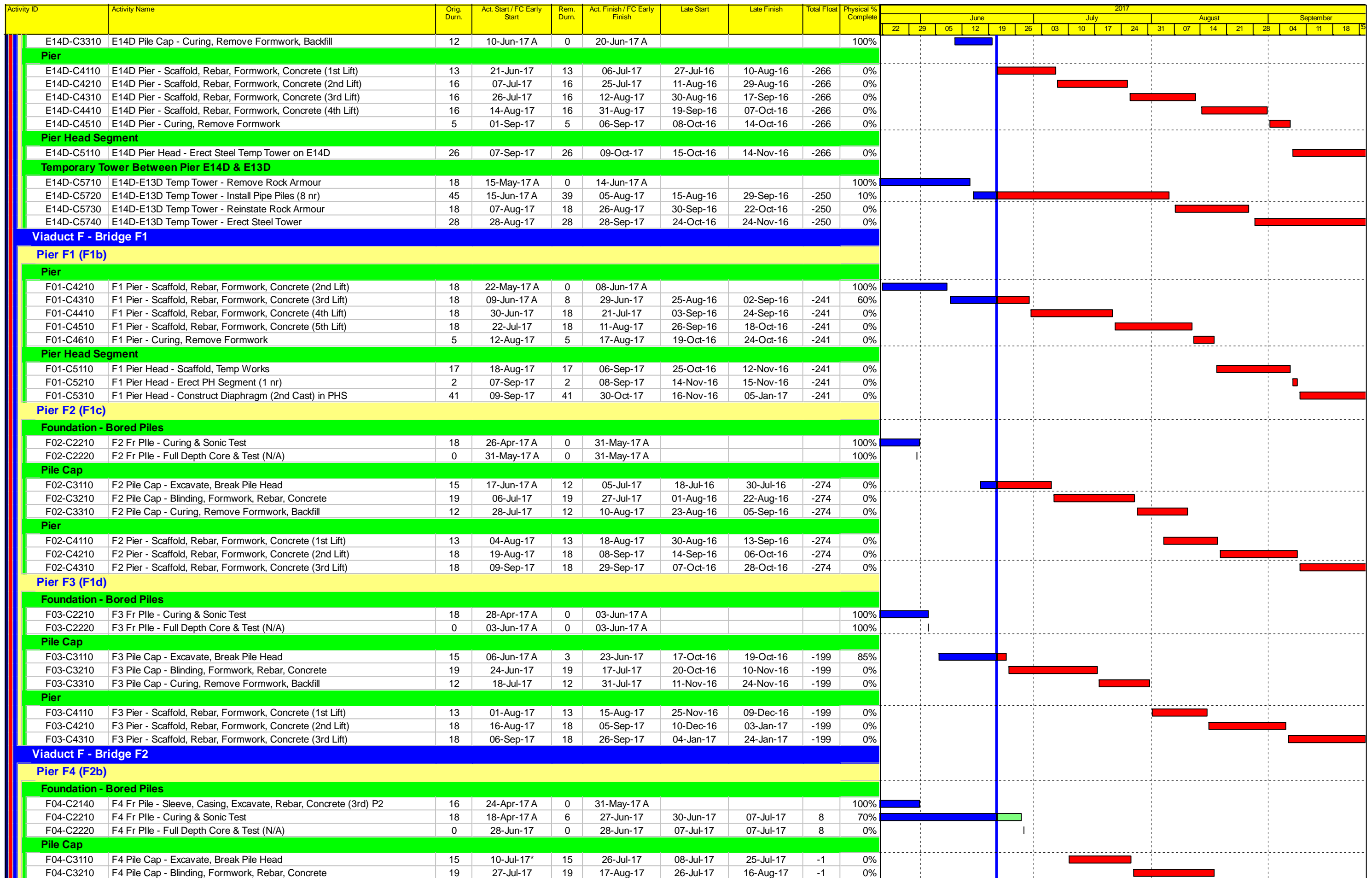


Project ID: TMCLK-DWPI-1-M49
 Layout: J3518-DWP-3MRP Submission - M49
 Filter: TASK filters: 3-Month Lookahead, No CC
 Milestones, No Level of Effort.

Tuen Mun - Chek Lap Kok Link - Southern Connection
3-Month Rolling Programme (Page 4 of 12 Pages)
(Progress as of 21-Jun-17)

Date	Revision	Checked	Approved
28-Apr-17		PKN	GL
31-May-...		PKN	GL
04-Jul-17		PKN	GL

DWG. No.:
J3518/GCL/PGM/3MRP-M49



Project ID: TMCLK-DWPI-1-M49
Layout: J3518-DWP-3MRP Submission - M49
Filter: TASK filters: 3-Month Lookahead, No CC
Milestones, No Level of Effort.

Tuen Mun - Chek Lap Kok Link - Southern Connection
3-Month Rolling Programme (Page 6 of 12 Pages)
(Progress as of 21-Jun-17)

Date	Revision	Checked	Approved
28-Apr-17		PKN	GL
31-May-...		PKN	GL
04-Jul-17		PKN	GL

DWG. No.:
J3518/GCL/PGM/3MRP-M49

Activity ID	Activity Name	Orig. Durn.	Act. Start / FC Early Start	Rem. Durn.	Act. Finish / FC Early Finish	Late Start	Late Finish	Total Float	Physical % Complete	2017															
										June				July				August				September			
										22	29	05	12	19	26	03	10	17	24	31	07	14	21	28	04
F04-C3310	F4 Pile Cap - Curing, Remove Formwork, Backfill	12	18-Aug-17	12	31-Aug-17	17-Aug-17	30-Aug-17	-1	0%																
Pier																									
F04-C4110	F4 Pier - Scaffold, Rebar, Formwork, Concrete (1st Lift)	13	11-Sep-17*	13	25-Sep-17	09-Sep-17	23-Sep-17	-1	0%																
Pier F5 (F2c)																									
Pile Cap																									
F05-C3110	F5 Pile Cap - Excavate, Break Pile Head	15	15-May-17 A	0	03-Jun-17 A				100%																
F05-C3210	F5 Pile Cap - Blinding, Formwork, Rebar, Concrete	19	05-Jun-17 A	5	26-Jun-17	02-Aug-16	06-Aug-16	-261	70%																
F05-C3310	F5 Pile Cap - Curing, Remove Formwork, Backfill	12	27-Jun-17	12	11-Jul-17	08-Aug-16	20-Aug-16	-261	0%																
Pier																									
F05-C4110	F5 Pier - Scaffold, Rebar, Formwork, Concrete (1st Lift)	13	10-Jul-17	13	24-Jul-17	19-Aug-16	02-Sep-16	-261	0%																
F05-C4210	F5 Pier - Scaffold, Rebar, Formwork, Concrete (2nd Lift)	18	25-Jul-17	18	14-Aug-17	03-Sep-16	24-Sep-16	-261	0%																
F05-C4310	F5 Pier - Scaffold, Rebar, Formwork, Concrete (3rd Lift)	18	15-Aug-17	18	04-Sep-17	26-Sep-16	18-Oct-16	-261	0%																
F05-C4410	F5 Pier - Curing, Remove Formwork	5	05-Sep-17	5	09-Sep-17	19-Oct-16	24-Oct-16	-261	0%																
Pier Head Segment																									
F05-C5110	F5 Pier Head - Scaffold, Temp Works	17	11-Sep-17	17	29-Sep-17	25-Oct-16	12-Nov-16	-261	0%																
Pier F6 (F2d)																									
Pile Cap																									
F06-C3310	F6 Pile Cap - Curing, Remove Formwork, Backfill	12	06-May-17 A	0	20-Jun-17 A				100%																
Pier																									
F06-C4110	F6 Pier - Scaffold, Rebar, Formwork, Concrete (1st Lift)	13	21-Jun-17	13	06-Jul-17	04-May-17	18-May-17	-40	0%																
F06-C4210	F6 Pier - Scaffold, Rebar, Formwork, Concrete (2nd Lift)	18	07-Jul-17	18	27-Jul-17	19-May-17	09-Jun-17	-40	0%																
F06-C4310	F6 Pier - Curing, Remove Formwork	5	28-Jul-17	5	02-Aug-17	10-Jun-17	15-Jun-17	-40	0%																
Pier F7 (F2e)																									
Pier																									
F07-C4210	F7 Pier - Scaffold, Rebar, Formwork, Concrete (2nd Lift)	18	18-May-17 A	9	30-Jun-17	31-Oct-17	09-Nov-17	109	75%																
F07-C4310	F7 Pier - Curing, Remove Formwork	5	03-Jul-17	5	07-Jul-17	10-Nov-17	15-Nov-17	109	0%																
Pier F8 (F2f)																									
Foundation - Bored Piles																									
F08-C2130	F8 Fr Pile - Sleeve, Casing, Excavate, Rebar, Concrete (2nd) P1	18	29-May-17 A	0	16-Jun-17 A				100%																
F08-C2140	F8 Fr Pile - Sleeve, Casing, Excavate, Rebar, Concrete (3rd) P3	18	30-Jun-17*	18	21-Jul-17	21-Jun-17	12-Jul-17	-8	0%																
F08-C2150	F8 Fr Pile - Sleeve, Casing, Excavate, Rebar, Concrete (3rd) P4	18	26-Jul-17*	18	15-Aug-17	13-Jul-17	02-Aug-17	-11	0%																
F08-C2210	F8 Fr Pile - Curing & Sonic Test	18	16-Aug-17	18	05-Sep-17	03-Aug-17	23-Aug-17	-11	0%																
Pile Cap																									
F08-C3110	F8 Pile Cap - Excavate, Break Pile Head	15	06-Sep-17*	15	22-Sep-17	24-Aug-17	09-Sep-17	-11	0%																
Viaduct F - Bridge F3																									
Pier F9 (F3d)																									
Foundation - Bored Piles																									
F09-C2210	F9 Fr Pile - Curing & Sonic Test	18	18-Apr-17 A	0	01-Jun-17 A				100%																
F09-C2220	F9 Fr Pile - Full Depth Core & Test (N/A)	0	01-Jun-17 A	0	01-Jun-17 A				100%																
Pile Cap																									
F09-C3110	F9 Pile Cap - Excavate, Break Pile Head	24	18-Jul-17*	24	14-Aug-17	29-May-17	26-Jun-17	-41	0%																
F09-C3210	F9 Pile Cap - Blinding, Formwork, Rebar, Concrete	22	15-Aug-17	22	08-Sep-17	27-Jun-17	22-Jul-17	-41	0%																
F09-C3310	F9 Pile Cap - Curing, Remove Formwork, Backfill	14	09-Sep-17	14	25-Sep-17	24-Jul-17	08-Aug-17	-41	0%																
Pier F10 (F3c)																									
Pile Cap																									
F10-C3310	F10 Pile Cap - Curing, Remove Formwork, Backfill	14	20-May-17 A	0	15-Jun-17 A				100%																
Pier																									
F10-C4110	F10 Pier - Scaffold, Rebar, Formwork, Concrete (Pier A)	13	16-Jun-17 A	9	30-Jun-17	14-Aug-17	23-Aug-17	45	30%																
F10-C4210	F10 Pier - Curing, Remove Formwork (Pier A)	5	03-Jul-17	5	07-Jul-17	24-Aug-17	29-Aug-17	45	0%																
F10-C4310	F10 Pier - Scaffold, Rebar, Formwork, Concrete (Pier B)	13	08-Jul-17	13	22-Jul-17	30-Aug-17	13-Sep-17	45	0%																
F10-C4410	F10 Pier - Curing, Remove Formwork (Pier B)	5	24-Jul-17	5	28-Jul-17	14-Sep-17	19-Sep-17	45	0%																
Pier Head Segment																									
F10-C5110	F10 Pier Head - Scaffold, Temp Works	17	18-Aug-17*	17	06-Sep-17	20-Sep-17	11-Oct-17	28	0%																
F10-C5210	F10 Pier Head - Erect PH Segment (2 nr)	2	07-Sep-17	2	08-Sep-17	12-Oct-17	13-Oct-17	28	0%																
F10-C5310	F10 Pier Head - Construct Diaphragm (2nd Cast) in PHS	41	09-Sep-17	41	30-Oct-17	14-Oct-17	01-Dec-17	28	0%																
Pier F11 (F3b)																									
Pile Cap																									
F11-C3210	F11 Pile Cap - Blinding, Formwork, Rebar, Concrete	22	18-May-17 A	0	12-Jun-17 A				100%																

■ Actual Work
■ Planned Bar
■ Critical Bar
◆ Milestone

Project ID: TMCLK-DWPI-1-M49
 Layout: J3518-DWP-3MRP Submission - M49
 Filter: TASK filters: 3-Month Lookahead, No CC
 Milestones, No Level of Effort.

Tuen Mun - Chek Lap Kok Link - Southern Connection
3-Month Rolling Programme (Page 7 of 12 Pages)
(Progress as of 21-Jun-17)

Date	Revision	Checked	Approved
28-Apr-17		PKN	GL
31-May-...		PKN	GL
04-Jul-17		PKN	GL

DWG. No.:
J3518/GCL/PGM/3MRP-M49

Activity ID	Activity Name	Orig. Durn.	Act. Start / FC Early Start	Rem. Durn.	Act. Finish / FC Early Finish	Late Start	Late Finish	Total Float	Physical % Complete	2017																			
										June					July					August					September				
										22	29	05	12	19	26	03	10	17	24	31	07	14	21	28	04	11	18	25	
Pier F15 (F5b)																													
Foundation - Bored Piles																													
F15-C2130	F15 Fr Pile - Sleeve, Casing, Excavate, Rebar, Concrete (2nd) P1	17	31-Mar-17 A	0	24-May-17 A				100%	[Gantt bar: 31-Mar-17 to 24-May-17]																			
F15-C2140	F15 Fr Pile - Sleeve, Casing, Excavate, Rebar, Concrete (3rd) P2	16	26-May-17 A	7	28-Jun-17	02-Aug-17	09-Aug-17	35	60%	[Gantt bar: 26-May-17 to 09-Aug-17]																			
F15-C2210	F15 Fr Pile - Curing & Sonic Test	18	29-Jun-17	18	20-Jul-17	10-Aug-17	30-Aug-17	35	0%	[Gantt bar: 29-Jun-17 to 30-Aug-17]																			
Pile Cap																													
F15-C3110	F15 Pile Cap - Excavate, Break Pile Head	15	07-Aug-17*	15	23-Aug-17	31-Aug-17	16-Sep-17	21	0%	[Gantt bar: 07-Aug-17 to 16-Sep-17]																			
F15-C3210	F15 Pile Cap - Blinding, Formwork, Rebar, Concrete	19	24-Aug-17	19	14-Sep-17	18-Sep-17	11-Oct-17	21	0%	[Gantt bar: 24-Aug-17 to 11-Oct-17]																			
F15-C3310	F15 Pile Cap - Curing, Remove Formwork, Backfill	12	15-Sep-17	12	28-Sep-17	12-Oct-17	25-Oct-17	21	0%	[Gantt bar: 15-Sep-17 to 25-Oct-17]																			
Ramp F																													
Abutment & Approach Ramp F																													
Foundation - Bored Piles																													
ARF-C2120	Ramp F Fr Pile - Sleeve, Casing, Excavate, Rebar, Concrete (20 nr)	126	19-May-17 A	103	21-Oct-17	29-Dec-16	09-May-17	-138	10%	[Gantt bar: 19-May-17 to 09-May-17]																			
Superstructure & Associated Works																													
Viaduct A																													
Bridge A2																													
Deck Span Segment																													
A02-C6210	A2 - Install (*Launch LG2 from E3C)	3	06-Jun-17 A	0	20-Jun-17 A				100%	[Gantt bar: 06-Jun-17 to 20-Jun-17]																			
A02-C6310	A2 - Cantilever Span (16 nr) - *LG2	26	21-Jun-17	26	21-Jul-17	10-Jun-16	11-Jul-16	-305	0%	[Gantt bar: 21-Jun-17 to 11-Jul-16]																			
A03-C6210	A3 - Install (*Launch LG2 from A2)	3	22-Jul-17	3	25-Jul-17	12-Jul-16	14-Jul-16	-305	0%	[Gantt bar: 22-Jul-17 to 14-Jul-16]																			
A03-C6310	A3 - Cantilever Span (16 nr) - *LG2	26	26-Jul-17	26	24-Aug-17	15-Jul-16	13-Aug-16	-305	0%	[Gantt bar: 26-Jul-17 to 13-Aug-16]																			
A05-C6310	A5 - Cantilever Span at A5 (16 nr) - THB	26	22-Apr-17 A	0	09-Jun-17 A				100%	[Gantt bar: 22-Apr-17 to 09-Jun-17]																			
VA2-C6510	Viaduct A2 - Final Stitch & Stressing to Span	24	25-Aug-17	24	21-Sep-17	15-Aug-16	10-Sep-16	-305	0%	[Gantt bar: 25-Aug-17 to 10-Sep-16]																			
Bridge A1																													
Deck Span Segment																													
A06-C6320	A6 - End Span to A7 (8 nr) - THB	34	24-Feb-17 A	10	03-Jul-17	03-Aug-16	13-Aug-16	-260	75%	[Gantt bar: 24-Feb-17 to 13-Aug-16]																			
A08-C6310	A8 - Cantilever Span (Initial 5 nr) - Crane	6	07-May-17 A	14	07-Jul-17	29-Feb-16	15-Mar-16	-386	40%	[Gantt bar: 07-May-17 to 15-Mar-16]																			
A08-C6410	A8 - Install KF (MTR)	6	05-Jul-17	6	11-Jul-17	12-Mar-16	18-Mar-16	-386	0%	[Gantt bar: 05-Jul-17 to 18-Mar-16]																			
A08-C6510	A8 - Cantilever Span (Remaining 21 nr) (MTR) - KF	32	12-Jul-17	32	17-Aug-17	19-Mar-16	29-Apr-16	-386	0%	[Gantt bar: 12-Jul-17 to 29-Apr-16]																			
A09-C6310	A9 - Cantilever Span (Initial 5 nr) - Crane	10	18-Aug-17	10	29-Aug-17	30-Apr-16	12-May-16	-386	0%	[Gantt bar: 18-Aug-17 to 12-May-16]																			
A09-C6410	A9 - Relocate & Install KF (MTR)	24	18-Aug-17	24	14-Sep-17	30-Apr-16	30-May-16	-386	0%	[Gantt bar: 18-Aug-17 to 30-May-16]																			
A09-C6510	A9 - Cantilever Span (Remaining 20 nr) (MTR) - KF	32	15-Sep-17	32	24-Oct-17	31-May-16	08-Jul-16	-386	0%	[Gantt bar: 15-Sep-17 to 08-Jul-16]																			
Viaduct B																													
Bridge B3																													
Deck Finishes, E&M and Roadworks																													
VB3-C7710	Viaduct B3 - Parapet Panels	48	16-Dec-16 A	12	05-Jul-17	13-Oct-16	26-Oct-16	-202	95%	[Gantt bar: 16-Dec-16 to 26-Oct-16]																			
VB3-C7720	Viaduct B3 - Gantry & TCSS Provisions (KD5)	36	06-Jul-17*	36	16-Aug-17	27-Oct-16	07-Dec-16	-202	0%	[Gantt bar: 06-Jul-17 to 07-Dec-16]																			
VB3-C7810	Viaduct B3 - Drainage, Fire Main & E&M Services	60	20-Jul-17	60	27-Sep-17	10-Jan-17	23-Mar-17	-153	0%	[Gantt bar: 20-Jul-17 to 23-Mar-17]																			
VB3-C7820	Viaduct B3 - Railings, Light Poles, Signs & Street Furniture	30	17-Aug-17	30	20-Sep-17	10-Feb-17	16-Mar-17	-153	0%	[Gantt bar: 17-Aug-17 to 16-Mar-17]																			
Bridge B2																													
Deck Span Segment																													
B12-C6410	B12 - Falsework for End Span to B11	24	19-Apr-17 A	0	22-May-17 A				100%	[Gantt bar: 19-Apr-17 to 22-May-17]																			
B12-C6510	B12 - End Span to B11 (5 nr) - Crane	8	23-May-17 A	0	10-Jun-17 A				100%	[Gantt bar: 23-May-17 to 10-Jun-17]																			
VB2-C6510	Viaduct B2 - Final Stitch & Stressing to Span	24	12-Jun-17 A	16	10-Jul-17	24-Aug-16	10-Sep-16	-242	30%	[Gantt bar: 12-Jun-17 to 10-Sep-16]																			
Deck Finishes, E&M and Roadworks																													
VB2-C7710	Viaduct B2 - Parapet Panels	60	11-Jul-17	60	18-Sep-17	12-Sep-16	23-Nov-16	-242	0%	[Gantt bar: 11-Jul-17 to 23-Nov-16]																			
VB2-C7720	Viaduct B2 - Gantry & TCSS Provisions (KD5)	36	22-Aug-17	36	03-Oct-17	27-Oct-16	07-Dec-16	-242	0%	[Gantt bar: 22-Aug-17 to 07-Dec-16]																			
VB2-C7810	Viaduct B2 - Drainage, Fire Main & E&M Services	48	19-Sep-17	48	16-Nov-17	24-Jan-17	23-Mar-17	-193	0%	[Gantt bar: 19-Sep-17 to 23-Mar-17]																			
Bridge B1																													
Deck Span Segment																													
B15-C6320	B15 - Cantilever Span (Remaining 11 nr) - Crane & THB	24	15-May-17 A	0	01-Jun-17 A				100%	[Gantt bar: 15-May-17 to 01-Jun-17]																			
B16-C6320	B16 - Cantilever Span (Remaining 3 nr) - Crane	6	10-Jun-17 A	0	14-Jun-17 A				100%	[Gantt bar: 10-Jun-17 to 14-Jun-17]																			
B17-C6310	B17 - Cantilever Span (26 nr) - Crane	35	12-Aug-17	35	21-Sep-17	02-Jun-16	14-Jul-16	-355	0%	[Gantt bar: 12-Aug-17 to 14-Jul-16]																			
B18-C6210	B18 - Falsework for End Span to B11	24	08-Sep-17	24	07-Oct-17	30-Jun-16	28-Jul-16	-355	0%	[Gantt bar: 08-Sep-17 to 28-Jul-16]																			
Viaduct C																													
Bridge C4																													
Deck Span Segment																													
VC4-C6510	Viaduct C4 - Final Stitch & Stressing to Span	24	08-May-17 A	0	10-Jun-17 A				100%	[Gantt bar: 08-May-17 to 10-Jun-17]																			

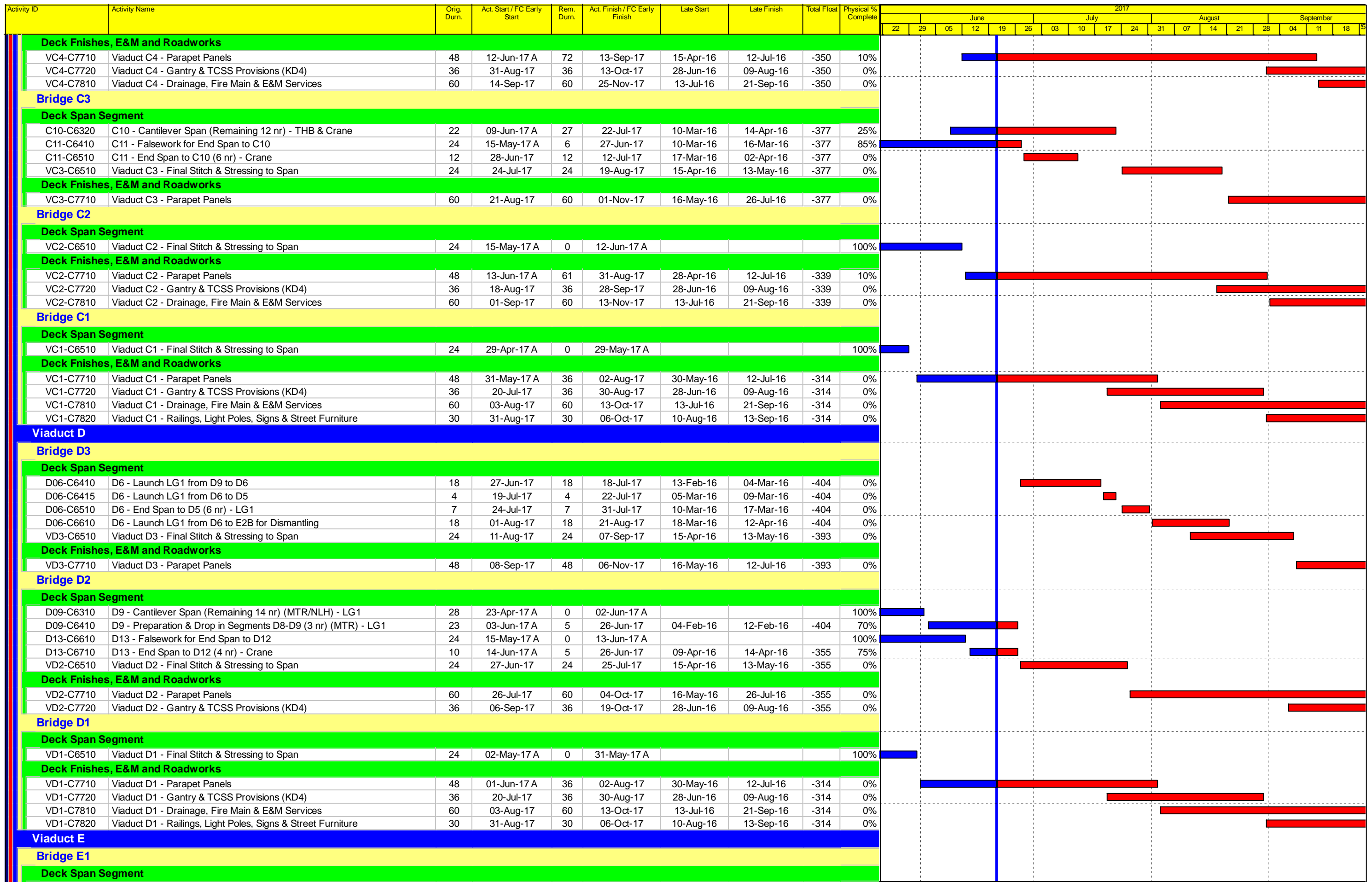
- █ Actual Work
- █ Planned Bar
- █ Critical Bar
- ◆ Milestone

Project ID: TMCLK-DWPI-1-M49
 Layout: J3518-DWP-3MRP Submission - M49
 Filter: TASK filters: 3-Month Lookahead, No CC
 Milestones, No Level of Effort.

Tuen Mun - Chek Lap Kok Link - Southern Connection
3-Month Rolling Programme (Page 9 of 12 Pages)
(Progress as of 21-Jun-17)

Date	Revision	Checked	Approved
28-Apr-17		PKN	GL
31-May-...		PKN	GL
04-Jul-17		PKN	GL

DWG. No.:
J3518/GCL/PGM/3MRP-M49



■ Actual Work
■ Planned Bar
■ Critical Bar
◆ Milestone

Project ID: TMCLK-DWPI-1-M49
 Layout: J3518-DWP-3MRP Submission - M49
 Filter: TASK filters: 3-Month Lookahead, No CC
 Milestones, No Level of Effort.

Tuen Mun - Chek Lap Kok Link - Southern Connection
3-Month Rolling Programme (Page 10 of 12 Pages)
(Progress as of 21-Jun-17)

Date	Revision	Checked	Approved
28-Apr-17		PKN	GL
31-May-...		PKN	GL
04-Jul-17		PKN	GL

DWG. No.:
J3518/GCL/PGM/3MRP-M49

Activity ID	Activity Name	Orig. Durn.	Act. Start / FC Early Start	Rem. Durn.	Act. Finish / FC Early Finish	Late Start	Late Finish	Total Float	Physical % Complete	2017																			
										June					July					August					September				
										22	29	05	12	19	26	03	10	17	24	31	07	14	21	28	04	11	18	25	
At-Grade Works Along North Lantau Highway																													
Slope Works Near Viaduct D																													
Slope 10NW-C/F9																													
M201200	10NW-C/F9 - Slope works (incl. L-Shape Ret. Walls)	110	21-Jun-17	110	31-Oct-17	19-Sep-16	02-Feb-17	-221	0%	[Gantt bar: 19-Sep-16 to 02-Feb-17]																			
Slope 10NW-C/F10																													
M201160	10NW-C/F10 - Slope works (incl. L-Shape Ret. Walls)	110	21-Jun-17	110	31-Oct-17	02-Jul-16	10-Nov-16	-287	0%	[Gantt bar: 02-Jul-16 to 10-Nov-16]																			
Slope 10NW-C/R4																													
M201170	10NW-C/R4 - Slope works	80	21-Jun-17	80	22-Sep-17	06-Aug-16	10-Nov-16	-257	0%	[Gantt bar: 06-Aug-16 to 10-Nov-16]																			
Slope 10NW-C/F50																													
M201150	10NW-C/F50 - Slope works	165	11-Jan-17 A	62	01-Sep-17	27-Aug-16	10-Nov-16	-239	5%	[Gantt bar: 27-Aug-16 to 10-Nov-16]																			
Road Works Along NLH Westbound																													
General																													
RW10020	NLH W/B (Viaduct C) - Road Drainage Works for tie-in	104	18-May-17 A	101	19-Oct-17	03-Dec-16	07-Apr-17	-158	1%	[Gantt bar: 03-Dec-16 to 07-Apr-17]																			
Road Works Along NLH Eastbound																													
General																													
RW20080-1	Ch650 - 800 Portion 4 (viaduct D area) : Roadwork	81	11-Jan-17 A	12	05-Jul-17	24-Mar-17	07-Apr-17	-69	85%	[Gantt bar: 24-Mar-17 to 07-Apr-17]																			
RW20080-2	Ch475 - 650 Portion 5 (viaduct D area) : Roadwork	81	11-Jan-17 A	12	05-Jul-17	24-Mar-17	07-Apr-17	-69	85%	[Gantt bar: 24-Mar-17 to 07-Apr-17]																			
RW20080-3	Ch275 - 475 Portion 6 (viaduct D area) : Roadwork	162	11-Jan-17 A	59	29-Aug-17	25-Jan-17	07-Apr-17	-116	70%	[Gantt bar: 25-Jan-17 to 07-Apr-17]																			
RW20080-4	Ch157 - 275 Portion 7 (Viaduct D area) : Roadwork	98	11-Jan-17 A	24	19-Jul-17	10-Mar-17	07-Apr-17	-81	75%	[Gantt bar: 10-Mar-17 to 07-Apr-17]																			
RW20084	NLH E/B Viaduct A - Ch200-388 Roadwork (SL & HS) & Reinstate NLH	127	17-Dec-16 A	24	19-Jul-17	10-Mar-17	07-Apr-17	-81	75%	[Gantt bar: 10-Mar-17 to 07-Apr-17]																			
At-Grade Works Along Cheung Tung Road																													
Slope Works Near Viaduct C																													
Slope 10NW-C/C26																													
SWVC1995	TTA for closure of NLH HS	2	13-Jul-17	2	14-Jul-17	16-Aug-16	17-Aug-16	-267	0%	[Gantt bar: 16-Aug-16 to 17-Aug-16]																			
SWVC2000	10NW-C/C26 - Slope works	166	15-Jul-17	166	31-Jan-18	18-Aug-16	09-Mar-17	-267	0%	[Gantt bar: 18-Aug-16 to 09-Mar-17]																			
Slope PF1 & PF2																													
SWVC7000	PF1 & PF2 slope works	18	21-Jun-17	18	12-Jul-17	26-Jul-16	15-Aug-16	-267	0%	[Gantt bar: 26-Jul-16 to 15-Aug-16]																			
Slope 10NW-C/F13																													
SWVC4000	10NW-C/F13 - Slope works	100	27-Jul-17*	100	23-Nov-17	14-Jul-16	10-Nov-16	-307	0%	[Gantt bar: 14-Jul-16 to 10-Nov-16]																			
Slope 10NW-C/F14																													
SWVC5000	10NW-C/F14 - Slope works	100	27-Jul-17*	100	23-Nov-17	07-Jun-16	05-Oct-16	-337	0%	[Gantt bar: 07-Jun-16 to 05-Oct-16]																			
Slope 10NW-C/F15																													
SWVC6000	10NW-C/F15 - Slope works	108	27-Jul-17*	108	02-Dec-17	28-May-16	05-Oct-16	-345	0%	[Gantt bar: 28-May-16 to 05-Oct-16]																			
Re-alignment of CTR Along Viaduct B																													
General																													
RP00064	Ch620-750: Telecom, 11KV & 132KV Ducting	20	20-Aug-15 A	0	31-May-17 A				100%	[Gantt bar: 31-May-17 A]																			
RP00074-3	Ch100-300: Road Drainage	38	06-May-17 A	7	28-Jun-17	21-Sep-16	28-Sep-16	-219	85%	[Gantt bar: 21-Sep-16 to 28-Sep-16]																			
RP00075	Ch100-300: Duct Laying for 11KV	18	29-Jun-17	18	20-Jul-17	29-Sep-16	21-Oct-16	-219	0%	[Gantt bar: 29-Sep-16 to 21-Oct-16]																			
RP00076	Ch100-300: Lay Telecom Cable	10	29-Jun-17	10	11-Jul-17	29-Sep-16	12-Oct-16	-219	0%	[Gantt bar: 29-Sep-16 to 12-Oct-16]																			
RP00077	Ch100-300: Street Lighting & Draw Pit	13	29-Jun-17	13	14-Jul-17	29-Sep-16	15-Oct-16	-219	0%	[Gantt bar: 29-Sep-16 to 15-Oct-16]																			
RP00078	Ch100-300: Relocation of Vent Pipe	18	29-Jun-17	18	20-Jul-17	29-Sep-16	21-Oct-16	-219	0%	[Gantt bar: 29-Sep-16 to 21-Oct-16]																			
RP00083	Ch100-300: Drainage & Roadwork for New CTR	52	21-Jul-17	52	19-Sep-17	22-Oct-16	21-Dec-16	-219	0%	[Gantt bar: 22-Oct-16 to 21-Dec-16]																			
RP00084	Ch100-300: TTA to New CTR	1	20-Sep-17	1	20-Sep-17	22-Dec-16	22-Dec-16	-219	0%	[Gantt bar: 22-Dec-16]																			
Re-alignment of CTR Along Viaduct C																													
East Portion																													
RW60050	CTR East (stage 2) TTA 090-5 : Roadwork	77	26-Apr-17 A	32	28-Jul-17	03-Oct-16	09-Nov-16	-210	60%	[Gantt bar: 03-Oct-16 to 09-Nov-16]																			
RW60060	CTR East (stage 3) TTA 090-6 : Roadwork	66	29-Jul-17	66	16-Oct-17	10-Nov-16	01-Feb-17	-210	0%	[Gantt bar: 10-Nov-16 to 01-Feb-17]																			
RW60080	CTR Tie in Works	116	18-May-17 A	88	03-Oct-17	19-Dec-16	07-Apr-17	-145	20%	[Gantt bar: 19-Dec-16 to 07-Apr-17]																			
At-Grade Works at Southern Landfall																													
HKBCF Area																													
General																													
RW30028-2	Construct FMH2046 and Lay Pipe Work	14	20-Sep-17*	14	07-Oct-17	09-May-17	24-May-17	-113	0%	[Gantt bar: 09-May-17 to 24-May-17]																			
Watermain from Tung Chung to Southern Landfall																													
Watermain Works																													
General																													
WM00120	Lay DN450 Fresh Water Main at Re-aligned CTR (approx. 500m)	48	22-Apr-15 A	12	05-Jul-17	29-Nov-17	12-Dec-17	134	90%	[Gantt bar: 05-Jul-17 to 12-Dec-17]																			

■ Actual Work
■ Planned Bar
■ Critical Bar
◆ Milestone

Project ID: TMCLK-DWPI-1-M49
 Layout: J3518-DWP-3MRP Submission - M49
 Filter: TASK filters: 3-Month Lookahead, No CC
 Milestones, No Level of Effort.

Tuen Mun - Chek Lap Kok Link - Southern Connection
3-Month Rolling Programme (Page 12 of 12 Pages)
(Progress as of 21-Jun-17)

Date	Revision	Checked	Approved
28-Apr-17		PKN	GL
31-May-...		PKN	GL
04-Jul-17		PKN	GL

DWG. No.:
J3518/GCL/PGM/3MRP-M49