

Activity ID	Activity Name	Orig. Durn.	Act. Start / FC Early Start	Rem. Durn.	Act. Finish / FC Early Finish	Late Start	Late Finish	Total Float	Physical % Complete	2017																			
										September				October				November				December							
											21	28	04	11	18	25	02	09	16	23	30	06	13	20	27	04	11	18	25
Contract Milestones																													
Key Dates for Completion																													
Stage of the Works																													
Completion Date																													
General																													
KD03	KD3 - Stage 3: TCSS Along NLH Near Viaduct C, D (EoT 8-Apr-16)		0		0	21-Sep-17*	08-Apr-16	-530	0%											◆									
Portion Handover Dates																													
Possession of the Works Area																													
Access Dates																													
General																													
POS02-6B	Portion A - Area 6B (To be confirmed)		0		0	21-Sep-17*	08-Jul-20	1022	0%											◆									
Design																													
Detailed Design																													
Slope Works Near Viaduct A																													
Feature 9SE-B/FR8, B/R1, B/R2																													
Slope Works Design																													
ARDD0596-1	IC/SO Approval of Slope Combined AIP/DDA - CP11.01		60	13-Jun-17 A	40	09-Nov-17	31-May-16	18-Jul-16	-391	50%											█								
Slope Works Near Viaduct C																													
Feature 10NW-C/G22, C/G26, C/G27, C/F13, C/F14, C/F15																													
Slope Works Design																													
ARDD0589-2	IC/SO Approval of Combined AIP/DDA - CP13.01		28	01-Jun-17 A	20	16-Oct-17	26-Jul-16	17-Aug-16	-345	90%											█								
Segment Target Geometry & Erection Engineering																													
Viaduct F																													
Design																													
ARDD0754-5	Viaduct F - Issue Erection Manual		30	26-Jun-17 A	30	27-Oct-17	11-Nov-16	15-Dec-16	-255	80%											█								
Procurement																													
Precast Deck Segments																													
Viaduct F - Bridge F1-F5																													
Segment Manufacture																													
General																													
MBFE0130-1	F: Progressive Segment Manufacture (300 Nr)		252	27-Oct-16 A	20	16-Oct-17	16-Jan-17	10-Feb-17	-202	95%											█								
Precast Parapets & Barriers																													
Viaduct A to F																													
Precast Parapet Manufacture																													
General																													
PP6011-01	Viaduct A - Precast Parapets/Barriers Production		90	01-Sep-16 A	90	10-Jan-18	12-Sep-16	30-Dec-16	-304	55%											█								
PP6011-02	Viaduct B - Precast Parapets/Barriers Production		120	03-May-16 A	30	27-Oct-17	20-Sep-16	26-Oct-16	-298	80%											█								
PP6011-03	Viaduct C - Precast Parapets/Barriers Production		120	01-Apr-16 A	24	20-Oct-17	09-Jun-20	08-Jul-20	801	90%											█								
PP6011-04	Viaduct D - Precast Parapets/Barriers Production		120	01-Mar-16 A	20	16-Oct-17	13-Jun-20	08-Jul-20	805	90%											█								
PP6011-05	Viaduct E - Precast Parapets/Barriers Production		180	02-Jul-16 A	156	04-Apr-18	16-May-16	18-Nov-16	-404	40%											█								
PP6011-06	Viaduct F - Precast Parapets/Barriers Production		198	21-Sep-17*	198	26-May-18	18-Feb-17	18-Oct-17	-176	0%											█								
Bearings																													
Viaduct F																													
Bearing Design & Manufacture																													
General																													
PPBRF9	Bearing Delivery - Viaduct F		34	18-Jul-17 A	66	09-Dec-17	16-Mar-17	08-Jun-17	-154	30%											█								
Movement Joints																													
Viaduct A to F																													
MJ Design & Manufacture																													
General																													
PP6MJ02-2	Manufacture & delivery of MJ		180	01-Apr-17 A	126	24-Feb-18	21-Mar-16	23-Aug-16	-446	80%											█								

█ Actual Work
█ Planned Bar
█ Critical Bar
◆ Milestone

Project ID: TMCLK-DWPI-1-M52
 Layout: J3518-DWP-3MRP Submission - M52
 Filter: TASK filters: 3-Month Lookahead, No CC
 Milestones, No Level of Effort.

Tuen Mun - Chek Lap Kok Link - Southern Connection
3-Month Rolling Programme (Page 1 of 10 Pages)
(Progress as of 21-Sep-17)

Date	Revision	Checked	Approved
01-Aug-17		PKN	HF
29-Aug-17		PKN	HF
29-Sep-17		PKN	HF

DWG. No.:
J3518/GCL/PGM/3MRP-M52

Activity ID	Activity Name	Orig. Durn.	Act. Start / FC Early Start	Rem. Durn.	Act. Finish / FC Early Finish	Late Start	Late Finish	Total Float	Physical % Complete	2017															
										September					October				November				December		
										21	28	04	11	18	25	02	09	16	23	30	06	13	20	27	04
Construction																									
Foundation & Substructure Works																									
Ramp A																									
Abutment & Approach Ramp A																									
Ramp Structure																									
ARA-C6142	Ramp A - Remaining RC Wall (Bay Wa2-Wa5 & Bay 9-12) with Backfill	120	21-Sep-17	120	14-Feb-18	24-May-16	15-Oct-16	-397	0%								[Red Bar]								
ARA-C6150	Ramp A - Backfill to Walls	111	07-Oct-17	111	21-Feb-18	07-Jun-16	19-Oct-16	-397	0%								[Red Bar]								
Viaduct B - Bridge B1																									
Pier B17 (B1c)																									
Pier Head Segment																									
B17-C5410	B17 - PHS Diaphragm - Rebar, Formwork, Concreting	22	21-Aug-17 A	0	16-Sep-17 A				100%	[Blue Bar]															
B17-C5420	B17 - PHS Diaphragm - Curing & Striking of Forms	3	18-Sep-17 A	1	21-Sep-17	08-Jun-16	08-Jun-16	-384	0%								[Red Bar]								
Pier B18 (B1b)																									
Pier																									
B18-C4210	B18 - Pier Curing, Remove Formwork	3	21-Aug-17 A	0	25-Aug-17 A				100%	[Blue Bar]															
Pier Head Segment																									
B18-C5310	B18 - PHS Lift & Temp Support (1 seg)	2	26-Sep-17 A	0	26-Sep-17 A				100%	[Blue Bar]															
Ramp B																									
Abutment & Approach Ramp B																									
Ramp Structure																									
ARB-C6120	Ramp B - RE Wall - Panel Installation from 1st Row to 2nd Row	66	12-Jun-17 A	0	29-Aug-17 A				100%	[Blue Bar]															
ARB-C6130	Ramp B - RE Wall - Panel Installation from 3rd Row to 6th Row	66	30-Aug-17 A	52	23-Nov-17	07-May-16	09-Jul-16	-410	0%	[Blue Bar]							[Red Bar]								
ARB-C6135	Ramp B - RE Wall - Panel installation from 7th Row to 11th Row	72	24-Nov-17	72	22-Feb-18	11-Jul-16	04-Oct-16	-410	0%								[Red Bar]								
ARB-C6140	Ramp B - RC Wall - Base Slab	92	20-Oct-17	92	08-Feb-18	04-Jun-16	22-Sep-16	-410	0%								[Red Bar]								
ARB-C6150	Ramp B - RC Wall - Side Wall	92	04-Nov-17	92	26-Feb-18	20-Jun-16	07-Oct-16	-410	0%								[Red Bar]								
Ramp C																									
Abutment & Approach Ramp C																									
Ramp Finishes, E&M & Roadworks																									
ARC-C7715	Ramp C - Parapet Panels (Remaining)	24	25-Apr-17 A	48	18-Nov-17	07-May-16	05-Jul-16	-410	85%	[Blue Bar]							[Red Bar]								
ARC-C7720	Ramp C - Ducting, Gantry & TCSS Provisions (KD4)	36	20-Nov-17	36	03-Jan-18	06-Jul-16	16-Aug-16	-410	0%								[Red Bar]								
ARC-C7810	Ramp C - Drainage, Fire Main & E&M Services	54	11-Dec-17	54	14-Feb-18	27-Jul-16	28-Sep-16	-410	0%								[Red Bar]								
Ramp D																									
Abutment & Approach Ramp D																									
Ramp Finishes, E&M & Roadworks																									
ARD-C7710	Ramp D - Parapet Panels	42	15-Oct-16 A	0	20-Sep-17 A				100%	[Blue Bar]															
ARD-C7720	Ramp D - Ducting, Gantry & TCSS Provisions (KD4)	36	21-Sep-17	36	04-Nov-17	02-Feb-16	17-Mar-16	-484	0%	[Blue Bar]							[Red Bar]								
ARD-C7810	Ramp D - Drainage, Fire Main & E&M Services	54	14-Oct-17	54	16-Dec-17	26-Feb-16	04-May-16	-484	0%								[Red Bar]								
ARD-C7820	Ramp D - Railings, Light Poles, Signs & Street Furniture	30	06-Nov-17	30	09-Dec-17	18-Mar-16	26-Apr-16	-484	0%								[Red Bar]								
ARD-C7830	Ramp D - Deck Paving & Roadmarking (KD14)	18	11-Dec-17	18	03-Jan-18	27-Apr-16	19-May-16	-484	0%								[Red Bar]								
Viaduct E - Bridge E5, E6, E7, E8																									
Pier E12A (E8b)																									
Pile Cap Dolphin																									
E12A-C3130	E12A - Dolphin - Marine Pile Cap - Fixings, Dewatering & Trim Pile	11	21-Sep-17*	11	04-Oct-17	18-Sep-17	29-Sep-17	-3	0%								[Red Bar]								
E12A-C3150	E12A - Dolphin - Marine Pile Cap - Rebar, Concreting	5	06-Oct-17	5	11-Oct-17	30-Sep-17	07-Oct-17	-3	0%								[Red Bar]								
E12A-C3160	E12A - Dolphin - Marine Pile Cap - CJ preparation & Curing	3	12-Oct-17	3	14-Oct-17	09-Oct-17	11-Oct-17	-3	0%								[Red Bar]								
Pier Head Segment / Infill Segment																									
E12A-C5145	E12A - Install Infill Segments (6 nr) - THB	26	07-Jul-17 A	0	28-Aug-17 A				100%	[Blue Bar]															
E12A-C5150	E12A - IFS Stitch & Remove Equipment	12	04-Sep-17 A	0	12-Sep-17 A				100%	[Blue Bar]															
Pier E12B (E7b)																									
Pier Head Segment / Infill Segment																									
E12B-C5150	E12B - IFS Stitch & Remove Equipment	12	14-Aug-17 A	0	26-Aug-17 A				100%	[Blue Bar]															
Pier E12C (E6b)																									
Pier Head Segment / Infill Segment																									
E12C-C5150	E12C - IFS Stitch & Remove Equipment	12	22-Aug-17 A	0	29-Aug-17 A				100%	[Blue Bar]															
Pier E12D (E5b)																									

■ Actual Work
■ Planned Bar
■ Critical Bar
◆ Milestone

Project ID: TMCLK-DWPI-1-M52
 Layout: J3518-DWP-3MRP Submission - M52
 Filter: TASK filters: 3-Month Lookahead, No CC
 Milestones, No Level of Effort.

Tuen Mun - Chek Lap Kok Link - Southern Connection
3-Month Rolling Programme (Page 2 of 10 Pages)
(Progress as of 21-Sep-17)

Date	Revision	Checked	Approved
01-Aug-17		PKN	HF
29-Aug-17		PKN	HF
29-Sep-17		PKN	HF

DWG. No.:
J3518/GCL/PGM/3MRP-M52

Activity ID	Activity Name	Orig. Durn.	Act. Start / FC Early Start	Rem. Durn.	Act. Finish / FC Early Finish	Late Start	Late Finish	Total Float	Physical % Complete	2017																			
										September				October				November				December							
											21	28	04	11	18	25	02	09	16	23	30	06	13	20	27	04	11	18	25
Pile Cap Dolphin																													
E12D-C3070	E12D Dolphin - Marine Pile Cap - Collar frame to perm. casing of pile	3	16-Oct-17*	3	18-Oct-17	12-Oct-17	14-Oct-17	-3	0%																				
E12D-C3080	E12D Dolphin - Marine Pile Cap - Install precast shell in position	24	19-Oct-17	24	16-Nov-17	16-Oct-17	13-Nov-17	-3	0%																				
E12D-C3130	E12D Dolphin - Marine Pile Cap - Fixings, Dewatering & Trim Pile	11	17-Nov-17	11	29-Nov-17	14-Nov-17	25-Nov-17	-3	0%																				
E12D-C3150	E12D Dolphin - Marine Pile Cap - Rebar, Concreting	5	30-Nov-17	5	05-Dec-17	27-Nov-17	01-Dec-17	-3	0%																				
E12D-C3160	E12D Dolphin - Marine Pile Cap - CJ preparation & Curing	3	06-Dec-17	3	08-Dec-17	02-Dec-17	05-Dec-17	-3	0%																				
Pier Head Segment / Infill Segment																													
E12D-C5145	E12D - Install Infill Segments (6 nr) - THB	28	21-Aug-17 A	2	22-Sep-17	20-Dec-16	21-Dec-16	-222	0%																				
E12D-C5150	E12D - IFS Stitch & Remove Equipment	12	23-Sep-17	12	09-Oct-17	22-Dec-16	07-Jan-17	-222	0%																				
Pier E13A (E8c)																													
Pile Cap Dolphin																													
E13A-C3070	E13A Dolphin - Marine Pile Cap - Floating Seal & Casing Head Steelwork	3	09-Dec-17	3	12-Dec-17	06-Dec-17	08-Dec-17	-3	0%																				
E13A-C3080	E13A Dolphin - Marine Pile Cap - Install precast shell in position	24	13-Dec-17	24	12-Jan-18	09-Dec-17	09-Jan-18	-3	0%																				
Pier Head Segment / Infill Segment																													
E13A-C5140	E13A - Remove Rail Beams, Spreader Beams, Brackets, Crane	30	14-Aug-17 A	3	23-Sep-17	02-May-17	05-May-17	-119	0%																				
E13A-C5145	E13A - Install Infill Segments (6 nr) - THB	28	25-Sep-17	28	30-Oct-17	06-May-17	08-Jun-17	-119	0%																				
E13A-C5150	E13A - IFS Stitch & Remove Equipment	12	31-Oct-17	12	13-Nov-17	09-Jun-17	22-Jun-17	-119	0%																				
Pier E13B (E7c)																													
Pier Head Segment / Infill Segment																													
E13B-C5140	E13B - Remove Rail Beams, Spreader Beams, Brackets	16	28-Jul-17 A	0	02-Sep-17 A				100%																				
E13B-C5145	E13B - Install Infill Segments (6 nr) - THB	42	06-Sep-17 A	10	03-Oct-17	15-Dec-16	28-Dec-16	-226	0%																				
E13B-C5150	E13B - IFS Stitch & Remove Equipment	12	04-Oct-17	12	18-Oct-17	29-Dec-16	12-Jan-17	-226	0%																				
Pier E13C (E6c)																													
Pier Head Segment / Infill Segment																													
E13C-C5140	E13C - Remove Rail Beams, Spreader Beams, Brackets	16	08-Aug-17 A	0	09-Sep-17 A				100%																				
E13C-C5145	E13C - Install Infill Segments (6 nr) - THB	42	09-Sep-17 A	18	13-Oct-17	28-Dec-16	18-Jan-17	-217	0%																				
E13C-C5150	E13C - IFS Stitch & Remove Equipment	12	14-Oct-17	12	27-Oct-17	19-Jan-17	04-Feb-17	-217	0%																				
Pier E13D (E5c)																													
Pier Head Segment / Infill Segment																													
E13D-C5140	E13D - Remove Rail Beams, Spreader Beams, Brackets, Crane	16	12-Aug-17 A	0	20-Sep-17 A				100%																				
E13D-C5145	E13D - Install Infill Segments (6 nr) - THB	28	21-Sep-17	28	25-Oct-17	19-Dec-16	23-Jan-17	-223	0%																				
E13D-C5150	E13D - IFS Stitch & Remove Equipment	12	26-Oct-17	12	09-Nov-17	24-Jan-17	09-Feb-17	-223	0%																				
Pier E14A (E8d)																													
Pier																													
E14A-C4510	E14A Pier - Scaffold, Rebar, Formwork, Concrete (5th Lift)	16	24-Jul-17 A	0	08-Sep-17 A				100%																				
E14A-C4610	E14A Pier - Curing, Remove Formwork	5	09-Sep-17 A	0	15-Sep-17 A				100%																				
Pier Head Segment																													
E14A-C5110	E14A Pier Head - Scaffold, Temp Works	17	16-Sep-17 A	6	27-Sep-17	13-Oct-16	19-Oct-16	-280	40%																				
E14A-C5210	E14A Pier Head - Erect PH Segment (2 nr)	4	28-Sep-17	4	03-Oct-17	20-Oct-16	24-Oct-16	-280	0%																				
E14A-C5310	E14A Pier Head - Construct Diaphragm (2nd Cast) in PHS	65	04-Oct-17	65	20-Dec-17	25-Oct-16	11-Jan-17	-280	0%																				
Pier E14B (E7d)																													
Pier Head Segment																													
E14B-C5110	E14B Pier Head - Scaffold, Temp Works	17	09-Aug-17 A	6	27-Sep-17	24-Oct-16	29-Oct-16	-271	0%																				
E14B-C5210	E14B Pier Head - Erect PH Segment (2 nr)	4	28-Sep-17	4	03-Oct-17	31-Oct-16	03-Nov-16	-271	0%																				
E14B-C5310	E14B Pier Head - Construct Diaphragm (2nd Cast) in PHS	65	04-Oct-17	65	20-Dec-17	04-Nov-16	21-Jan-17	-271	0%																				
Pier E14C (E6d)																													
Pier																													
E14C-C4410	E14C Pier - Scaffold, Rebar, Formwork, Concrete (4th Lift)	18	27-Jun-17 A	11	04-Oct-17	25-Feb-17	09-Mar-17	-170	85%																				
E14C-C4510	E14C Pier - Curing, Remove Formwork	5	06-Oct-17	5	11-Oct-17	10-Mar-17	15-Mar-17	-170	0%																				
Pier Head Segment																													
E14C-C5110	E14C Pier Head - Scaffold, Temp Works	17	12-Oct-17	17	01-Nov-17	16-Mar-17	05-Apr-17	-170	0%																				
E14C-C5210	E14C Pier Head - Erect PH Segment (2 nr)	4	02-Nov-17	4	06-Nov-17	06-Apr-17	10-Apr-17	-170	0%																				
E14C-C5310	E14C Pier Head - Construct Diaphragm (2nd Cast) in PHS	65	07-Nov-17	65	24-Jan-18	11-Apr-17	03-Jul-17	-170	0%																				
Pier E14D (E5d)																													
Pier																													
E14D-C4310	E14D Pier - Scaffold, Rebar, Formwork, Concrete (3rd Lift)	16	18-Jul-17 A	2	22-Sep-17	15-Sep-16	17-Sep-16	-301	95%																				
E14D-C4410	E14D Pier - Scaffold, Rebar, Formwork, Concrete (4th Lift)	16	23-Sep-17	16	13-Oct-17	19-Sep-16	07-Oct-16	-301	0%																				
E14D-C4510	E14D Pier - Curing, Remove Formwork	5	14-Oct-17	5	19-Oct-17	08-Oct-16	14-Oct-16	-301	0%																				
Pier Head Segment																													

■ Actual Work
■ Planned Bar
■ Critical Bar
◆ Milestone

Project ID: TMCLK-DWPI-1-M52
 Layout: J3518-DWP-3MRP Submission - M52
 Filter: TASK filters: 3-Month Lookahead, No CC
 Milestones, No Level of Effort.

Tuen Mun - Chek Lap Kok Link - Southern Connection
3-Month Rolling Programme (Page 3 of 10 Pages)
(Progress as of 21-Sep-17)

Date	Revision	Checked	Approved
01-Aug-17		PKN	HF
29-Aug-17		PKN	HF
29-Sep-17		PKN	HF

DWG. No.:
J3518/GCL/PGM/3MRP-M52

Activity ID	Activity Name	Orig. Durn.	Act. Start / FC Early Start	Rem. Durn.	Act. Finish / FC Early Finish	Late Start	Late Finish	Total Float	Physical % Complete	2017															
										September				October				November				December			
										21	28	04	11	18	25	02	09	16	23	30	06	13	20	27	04
E14D-C5110	E14D Pier Head - Erect Steel Temp Tower on E14D	26	20-Oct-17	26	20-Nov-17	15-Oct-16	14-Nov-16	-301	0%	[Gantt bar: 15-Oct-16 to 14-Nov-16]															
Temporary Tower Between Pier E14D & E13D																									
E14D-C5730	E14D-E13D Temp Tower - Reinstate Rock Armour	18	03-Aug-17 A	0	21-Aug-17 A				100%	[Gantt bar: 03-Aug-17 to 21-Aug-17]															
E14D-C5740	E14D-E13D Temp Tower - Erect Steel Tower	28	22-Aug-17 A	6	27-Sep-17	18-Nov-16	24-Nov-16	-249	90%	[Gantt bar: 18-Nov-16 to 24-Nov-16]															
Viaduct F - Bridge F1																									
Pier F1 (F1b)																									
Pier Head Segment																									
F01-C5110	F1 Pier Head - Scaffold, Temp Works	17	21-Aug-17 A	0	12-Sep-17 A				100%	[Gantt bar: 21-Aug-17 to 12-Sep-17]															
F01-C5210	F1 Pier Head - Erect PH Segment (1 nr)	2	13-Sep-17 A	0	13-Sep-17 A				100%	[Gantt bar: 13-Sep-17 to 13-Sep-17]															
F01-C5310	F1 Pier Head - Construct Diaphragm (2nd Cast) in PHS	41	21-Sep-17	41	10-Nov-17	16-Nov-16	05-Jan-17	-251	0%	[Gantt bar: 16-Nov-16 to 05-Jan-17]															
F01-C5410	F1 Pier Head - Curing, Remove Temp Works	5	11-Nov-17	5	16-Nov-17	06-Jan-17	11-Jan-17	-251	0%	[Gantt bar: 06-Jan-17 to 11-Jan-17]															
Pier F2 (F1c)																									
Pier																									
F02-C4210	F2 Pier - Scaffold, Rebar, Formwork, Concrete (2nd Lift)	18	16-Aug-17 A	0	26-Aug-17 A				100%	[Gantt bar: 16-Aug-17 to 26-Aug-17]															
F02-C4310	F2 Pier - Scaffold, Rebar, Formwork, Concrete (3rd Lift)	18	28-Aug-17 A	0	13-Sep-17 A				100%	[Gantt bar: 28-Aug-17 to 13-Sep-17]															
F02-C4410	F2 Pier - Scaffold, Rebar, Formwork, Concrete (4th Lift)	18	14-Sep-17 A	6	27-Sep-17	12-Nov-16	18-Nov-16	-254	75%	[Gantt bar: 12-Nov-16 to 18-Nov-16]															
F02-C4510	F2 Pier - Scaffold, Rebar, Formwork, Concrete (5th Lift)	18	28-Sep-17	18	20-Oct-17	19-Nov-16	09-Dec-16	-254	0%	[Gantt bar: 19-Nov-16 to 09-Dec-16]															
F02-C4610	F2 Pier - Curing, Remove Formwork	5	21-Oct-17	5	26-Oct-17	10-Dec-16	15-Dec-16	-254	0%	[Gantt bar: 10-Dec-16 to 15-Dec-16]															
Pier Head Segment																									
F02-C5110	F2 Pier Head - Scaffold, Temp Works	17	30-Oct-17	17	17-Nov-17	16-Dec-16	07-Jan-17	-255	0%	[Gantt bar: 16-Dec-16 to 07-Jan-17]															
F02-C5210	F2 Pier Head - Erect PH Segment (1 nr)	2	18-Nov-17	2	20-Nov-17	09-Jan-17	10-Jan-17	-255	0%	[Gantt bar: 09-Jan-17 to 10-Jan-17]															
F02-C5310	F2 Pier Head - Construct Diaphragm (2nd Cast) in PHS	41	21-Nov-17	41	10-Jan-18	11-Jan-17	02-Mar-17	-255	0%	[Gantt bar: 11-Jan-17 to 02-Mar-17]															
Pier F3 (F1d)																									
Pier																									
F03-C4310	F3 Pier - Scaffold, Rebar, Formwork, Concrete (3rd Lift)	18	19-Aug-17 A	0	04-Sep-17 A				100%	[Gantt bar: 19-Aug-17 to 04-Sep-17]															
F03-C4410	F3 Pier - Scaffold, Rebar, Formwork, Concrete (4th Lift)	18	05-Sep-17 A	9	30-Sep-17	08-Feb-17	17-Feb-17	-185	55%	[Gantt bar: 08-Feb-17 to 17-Feb-17]															
F03-C4510	F3 Pier - Curing, Remove Formwork	5	03-Oct-17	5	09-Oct-17	18-Feb-17	23-Feb-17	-185	0%	[Gantt bar: 18-Feb-17 to 23-Feb-17]															
Pier Head Segment																									
F03-C5110	F3 Pier Head - Scaffold, Temp Works	17	30-Oct-17	17	17-Nov-17	24-Feb-17	15-Mar-17	-201	0%	[Gantt bar: 24-Feb-17 to 15-Mar-17]															
F03-C5210	F3 Pier Head - Erect PH Segment (1 nr)	2	18-Nov-17	2	20-Nov-17	16-Mar-17	17-Mar-17	-201	0%	[Gantt bar: 16-Mar-17 to 17-Mar-17]															
F03-C5310	F3 Pier Head - Construct Diaphragm (2nd Cast) in PHS	41	21-Nov-17	41	10-Jan-18	18-Mar-17	11-May-17	-201	0%	[Gantt bar: 18-Mar-17 to 11-May-17]															
Viaduct F - Bridge F2																									
Pier F4 (F2b)																									
Pile Cap																									
F04-C3210	F4 Pile Cap - Blinding, Formwork, Rebar, Concrete	19	12-Sep-17 A	0	07-Oct-17 A				100%	[Gantt bar: 12-Sep-17 to 07-Oct-17]															
F04-C3310	F4 Pile Cap - Curing, Remove Formwork, Backfill	12	13-Sep-17 A	5	26-Sep-17	25-Aug-17	30-Aug-17	-23	40%	[Gantt bar: 25-Aug-17 to 30-Aug-17]															
Pier																									
F04-C4110	F4 Pier - Scaffold, Rebar, Formwork, Concrete (1st Lift)	13	09-Oct-17*	13	23-Oct-17	09-Sep-17	23-Sep-17	-23	0%	[Gantt bar: 09-Sep-17 to 23-Sep-17]															
F04-C4210	F4 Pier - Scaffold, Rebar, Formwork, Concrete (2nd Lift)	18	24-Oct-17	18	14-Nov-17	25-Sep-17	17-Oct-17	-23	0%	[Gantt bar: 25-Sep-17 to 17-Oct-17]															
F04-C4310	F4 Pier - Scaffold, Rebar, Formwork, Concrete (3rd Lift)	18	15-Nov-17	18	05-Dec-17	18-Oct-17	08-Nov-17	-23	0%	[Gantt bar: 18-Oct-17 to 08-Nov-17]															
F04-C4410	F4 Pier - Scaffold, Rebar, Formwork, Concrete (4th Lift)	18	06-Dec-17	18	28-Dec-17	09-Nov-17	29-Nov-17	-23	0%	[Gantt bar: 09-Nov-17 to 29-Nov-17]															
Pier F5 (F2c)																									
Pier																									
F05-C4310	F5 Pier - Scaffold, Rebar, Formwork, Concrete (3rd Lift)	18	29-Jul-17 A	0	07-Sep-17 A				100%	[Gantt bar: 29-Jul-17 to 07-Sep-17]															
F05-C4410	F5 Pier - Curing, Remove Formwork	5	08-Sep-17 A	0	13-Sep-17 A				100%	[Gantt bar: 08-Sep-17 to 13-Sep-17]															
Pier Head Segment																									
F05-C5110	F5 Pier Head - Scaffold, Temp Works	17	14-Sep-17 A	14	09-Oct-17	28-Oct-16	12-Nov-16	-267	20%	[Gantt bar: 28-Oct-16 to 12-Nov-16]															
F05-C5210	F5 Pier Head - Erect PH Segment (1 nr)	2	10-Oct-17	2	11-Oct-17	14-Nov-16	15-Nov-16	-267	0%	[Gantt bar: 14-Nov-16 to 15-Nov-16]															
F05-C5310	F5 Pier Head - Construct Diaphragm (2nd Cast) in PHS	41	12-Oct-17	41	29-Nov-17	16-Nov-16	05-Jan-17	-267	0%	[Gantt bar: 16-Nov-16 to 05-Jan-17]															
F05-C5410	F5 Pier Head - Curing, Remove Temp Works	5	30-Nov-17	5	05-Dec-17	06-Jan-17	11-Jan-17	-267	0%	[Gantt bar: 06-Jan-17 to 11-Jan-17]															
Pier F6 (F2d)																									
Pier																									
F06-C4210	F6 Pier - Scaffold, Rebar, Formwork, Concrete (2nd Lift)	18	06-Jul-17 A	6	27-Sep-17	03-Jun-17	09-Jun-17	-93	60%	[Gantt bar: 03-Jun-17 to 09-Jun-17]															
F06-C4310	F6 Pier - Curing, Remove Formwork	5	28-Sep-17	5	04-Oct-17	10-Jun-17	15-Jun-17	-93	0%	[Gantt bar: 10-Jun-17 to 15-Jun-17]															
Pier Head Segment																									
F06-C5110	F6 Pier Head - Scaffold, Temp Works	17	30-Oct-17*	17	17-Nov-17	16-Jun-17	06-Jul-17	-112	0%	[Gantt bar: 16-Jun-17 to 06-Jul-17]															
F06-C5210	F6 Pier Head - Erect PH Segment (1 nr)	2	18-Nov-17	2	20-Nov-17	07-Jul-17	08-Jul-17	-112	0%	[Gantt bar: 07-Jul-17 to 08-Jul-17]															
F06-C5310	F6 Pier Head - Construct Diaphragm (2nd Cast) in PHS	41	21-Nov-17	41	10-Jan-18	10-Jul-17	25-Aug-17	-112	0%	[Gantt bar: 10-Jul-17 to 25-Aug-17]															
Pier F7 (F2e)																									

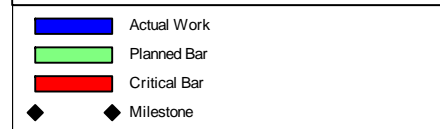
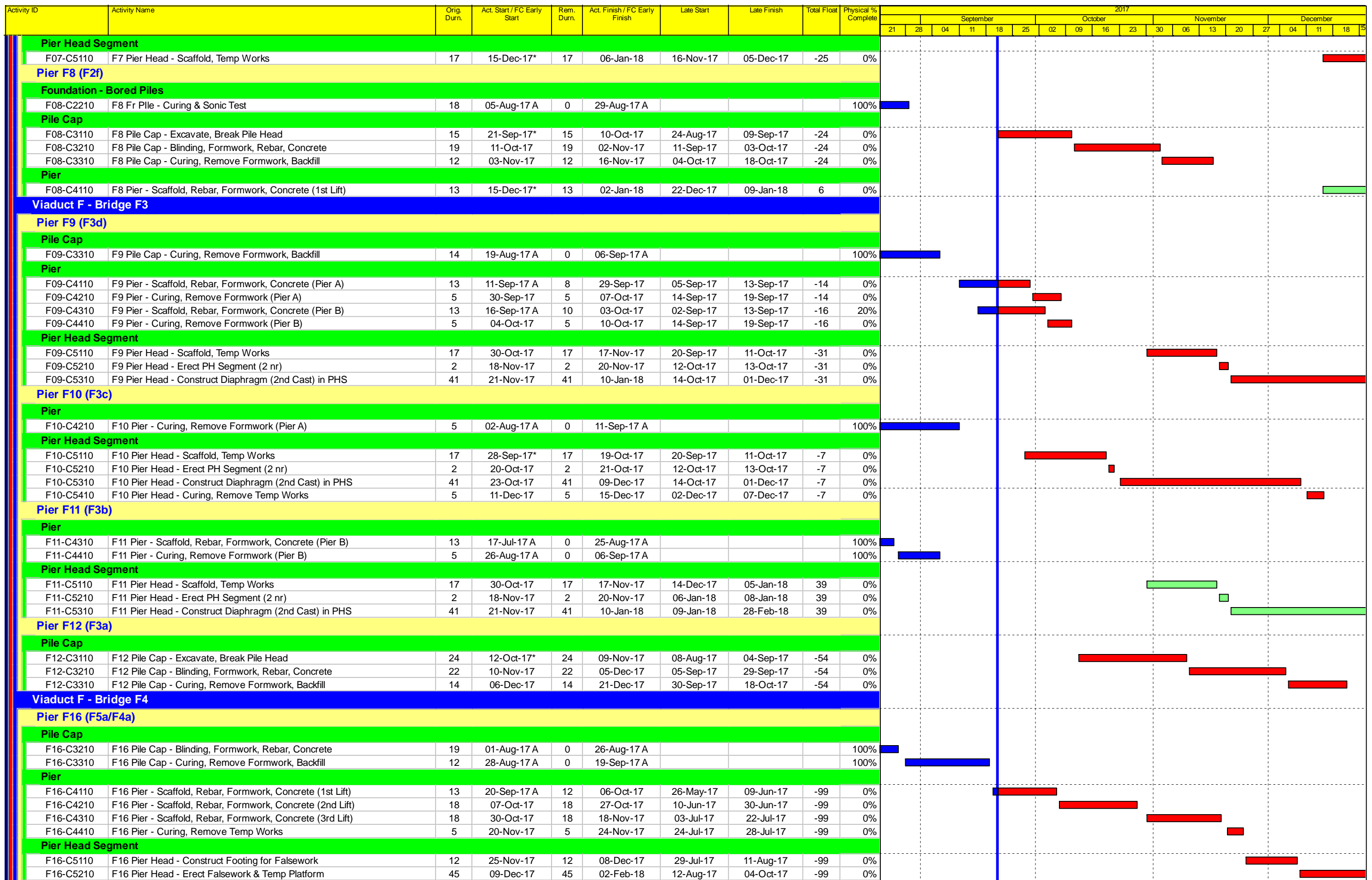
- Actual Work
- Planned Bar
- Critical Bar
- ◆ Milestone

Project ID: TMCLK-DWPI-1-M52
Layout: J3518-DWP-3MRP Submission - M52
Filter: TASK filters: 3-Month Lookahead, No CC
Milestones, No Level of Effort.

Tuen Mun - Chek Lap Kok Link - Southern Connection
3-Month Rolling Programme (Page 4 of 10 Pages)
(Progress as of 21-Sep-17)

Date	Revision	Checked	Approved
01-Aug-17		PKN	HF
29-Aug-17		PKN	HF
29-Sep-17		PKN	HF

DWG. No.:
J3518/GCL/PGM/3MRP-M52



Project ID: TMCLK-DWPI-1-M52
 Layout: J3518-DWP-3MRP Submission - M52
 Filter: TASK filters: 3-Month Lookahead, No CC
 Milestones, No Level of Effort.

Tuen Mun - Chek Lap Kok Link - Southern Connection
3-Month Rolling Programme (Page 5 of 10 Pages)
(Progress as of 21-Sep-17)

Date	Revision	Checked	Approved
01-Aug-17		PKN	HF
29-Aug-17		PKN	HF
29-Sep-17		PKN	HF

DWG. No.:
J3518/GCL/PGM/3MRP-M52

Activity ID	Activity Name	Orig. Durn.	Act. Start / FC Early Start	Rem. Durn.	Act. Finish / FC Early Finish	Late Start	Late Finish	Total Float	Physical % Complete	2017																			
										September				October				November				December							
											21	28	04	11	18	25	02	09	16	23	30	06	13	20	27	04	11	18	25
Pier F17 (F4b)																													
Pile Cap																													
F17-C3110	F17 Pile Cap - Excavate, Break Pile Head	15	09-Aug-17 A	0	01-Sep-17 A				100%	[Actual Work Bar]																			
F17-C3210	F17 Pile Cap - Blinding, Formwork, Rebar, Concrete	19	02-Sep-17 A	0	20-Sep-17 A				100%	[Planned Bar]																			
F17-C3310	F17 Pile Cap - Curing, Remove Formwork, Backfill	12	21-Sep-17	12	06-Oct-17	27-May-17	10-Jun-17	-98	0%	[Critical Bar]																			
Pier																													
F17-C4110	F17 Pier - Scaffold, Rebar, Formwork, Concrete (1st Lift)	13	04-Nov-17*	13	18-Nov-17	15-Nov-17	29-Nov-17	9	0%	[Planned Bar]																			
F17-C4210	F17 Pier - Scaffold, Rebar, Formwork, Concrete (2nd Lift)	18	20-Nov-17	18	09-Dec-17	30-Nov-17	20-Dec-17	9	0%	[Planned Bar]																			
F17-C4310	F17 Pier - Curing, Remove Temp Works	5	11-Dec-17	5	15-Dec-17	21-Dec-17	28-Dec-17	9	0%	[Planned Bar]																			
Pier Head Segment																													
F17-C5110	F17 Pier Head - Scaffold, Temp Works	17	16-Dec-17	17	08-Jan-18	29-Dec-17	18-Jan-18	9	0%	[Planned Bar]																			
Pier F18 (F4c)																													
Foundation - Bored Piles																													
F18-C2210	F18 Fr Pile - Curing & Sonic Test	18	19-Jul-17 A	0	13-Sep-17 A				100%	[Actual Work Bar]																			
Pile Cap																													
F18-C3110	F18 Pile Cap - Excavate, Break Pile Head	15	16-Sep-17 A	8	29-Sep-17	01-Sep-17	09-Sep-17	-17	50%	[Actual Work Bar]																			
F18-C3210	F18 Pile Cap - Blinding, Formwork, Rebar, Concrete	19	30-Sep-17	19	24-Oct-17	11-Sep-17	03-Oct-17	-17	0%	[Critical Bar]																			
F18-C3310	F18 Pile Cap - Curing, Remove Formwork, Backfill	12	25-Oct-17	12	08-Nov-17	04-Oct-17	18-Oct-17	-17	0%	[Critical Bar]																			
Pier																													
F18-C4110	F18 Pier - Scaffold, Rebar, Formwork, Concrete (1st Lift)	13	19-Dec-17*	13	05-Jan-18	29-Dec-17	13-Jan-18	7	0%	[Planned Bar]																			
Viaduct F - Bridge F5																													
Pier F13 (F5d)																													
Pier																													
F13-C4210	F13 Pier - Scaffold, Rebar, Formwork, Concrete (2nd Lift)	18	10-Aug-17 A	6	27-Sep-17	03-Mar-17	09-Mar-17	-165	50%	[Actual Work Bar]																			
F13-C4310	F13 Pier - Curing, Remove Formwork	5	28-Sep-17	5	04-Oct-17	10-Mar-17	15-Mar-17	-165	0%	[Critical Bar]																			
Pier Head Segment																													
F13-C5110	F13 Pier Head - Scaffold, Temp Works	17	06-Oct-17	17	25-Oct-17	16-Mar-17	05-Apr-17	-165	0%	[Critical Bar]																			
F13-C5210	F13 Pier Head - Erect PH Segment (1 nr)	2	26-Oct-17	2	27-Oct-17	06-Apr-17	07-Apr-17	-165	0%	[Critical Bar]																			
F13-C5310	F13 Pier Head - Construct Diaphragm (2nd Cast) in PHS	41	30-Oct-17	41	15-Dec-17	08-Apr-17	01-Jun-17	-165	0%	[Critical Bar]																			
F13-C5410	F13 Pier Head - Curing, Remove Temp Works	5	16-Dec-17	5	21-Dec-17	02-Jun-17	07-Jun-17	-165	0%	[Critical Bar]																			
Pier F14 (F5c)																													
Pile Cap																													
F14-C3310	F14 Pile Cap - Curing, Remove Formwork, Backfill	12	10-Aug-17 A	0	21-Aug-17 A				100%	[Actual Work Bar]																			
Pier																													
F14-C4110	F14 Pier - Scaffold, Rebar, Formwork, Concrete (1st Lift)	13	22-Aug-17 A	0	31-Aug-17 A				100%	[Actual Work Bar]																			
F14-C4210	F14 Pier - Scaffold, Rebar, Formwork, Concrete (2nd Lift)	18	01-Sep-17 A	12	06-Oct-17	18-Oct-17	01-Nov-17	21	65%	[Planned Bar]																			
F14-C4310	F14 Pier - Scaffold, Rebar, Formwork, Concrete (3rd Lift)	18	07-Oct-17	18	27-Oct-17	02-Nov-17	22-Nov-17	21	0%	[Planned Bar]																			
F14-C4410	F14 Pier - Curing, Remove Formwork	5	30-Oct-17	5	03-Nov-17	23-Nov-17	28-Nov-17	21	0%	[Planned Bar]																			
Pier Head Segment																													
F14-C5110	F14 Pier Head - Scaffold, Temp Works	17	04-Nov-17	17	23-Nov-17	29-Nov-17	18-Dec-17	21	0%	[Planned Bar]																			
F14-C5210	F14 Pier Head - Erect PH Segment (1 nr)	2	24-Nov-17	2	25-Nov-17	19-Dec-17	20-Dec-17	21	0%	[Planned Bar]																			
F14-C5310	F14 Pier Head - Construct Diaphragm (2nd Cast) in PHS	41	27-Nov-17	41	16-Jan-18	21-Dec-17	09-Feb-18	21	0%	[Planned Bar]																			
Pier F15 (F5b)																													
Pile Cap																													
F15-C3110	F15 Pile Cap - Excavate, Break Pile Head	15	21-Sep-17*	15	10-Oct-17	31-Aug-17	16-Sep-17	-18	0%	[Critical Bar]																			
F15-C3210	F15 Pile Cap - Blinding, Formwork, Rebar, Concrete	19	11-Oct-17	19	02-Nov-17	18-Sep-17	11-Oct-17	-18	0%	[Critical Bar]																			
F15-C3310	F15 Pile Cap - Curing, Remove Formwork, Backfill	12	03-Nov-17	12	16-Nov-17	12-Oct-17	25-Oct-17	-18	0%	[Critical Bar]																			
Pier																													
F15-C4110	F15 Pier - Scaffold, Rebar, Formwork, Concrete (1st Lift)	13	17-Nov-17*	13	01-Dec-17	26-Oct-17	10-Nov-17	-18	0%	[Critical Bar]																			
F15-C4210	F15 Pier - Scaffold, Rebar, Formwork, Concrete (2nd Lift)	18	02-Dec-17	18	22-Dec-17	11-Nov-17	01-Dec-17	-18	0%	[Critical Bar]																			
Ramp F																													
Abutment & Approach Ramp F																													
Foundation - Bored Piles																													
ARF-C2120	Ramp F Fr Pile - Sleeve, Casing, Excavate, Rebar, Concrete (20 nr)	126	19-May-17 A	36	04-Nov-17	22-Mar-17	09-May-17	-149	55%	[Actual Work Bar]																			
ARF-C2210	Ramp F Fr Pile - Curing & Sonic Test	18	06-Nov-17	18	25-Nov-17	10-May-17	31-May-17	-149	0%	[Critical Bar]																			
Ramp Structure																													
ARF-C6110	Ramp F - Strip Beams	24	27-Nov-17	24	23-Dec-17	01-Jun-17	28-Jun-17	-149	0%	[Critical Bar]																			

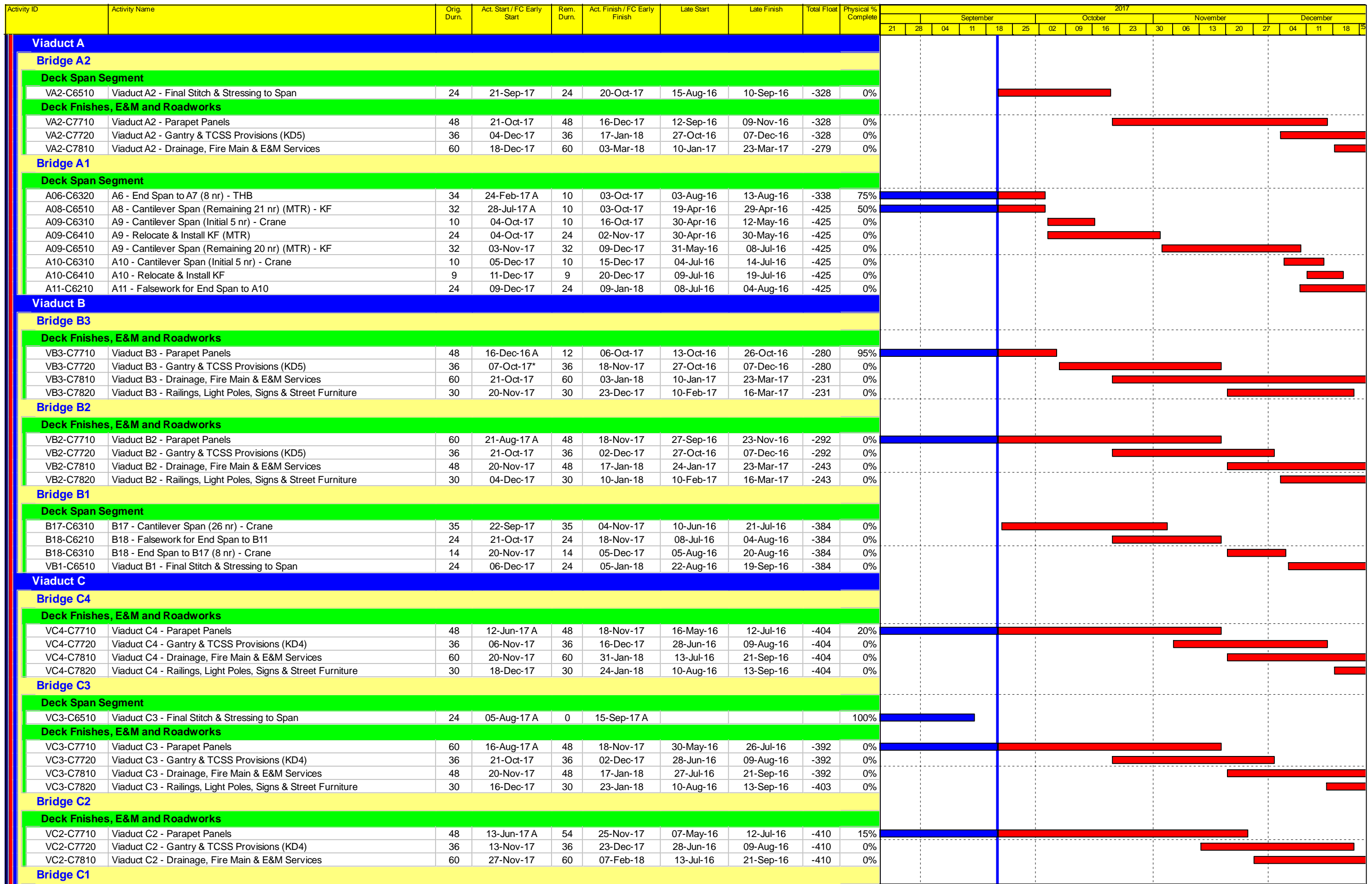
■ Actual Work
■ Planned Bar
■ Critical Bar
◆ Milestone

Project ID: TMCLK-DWPI-1-M52
 Layout: J3518-DWP-3MRP Submission - M52
 Filter: TASK filters: 3-Month Lookahead, No CC
 Milestones, No Level of Effort.

Tuen Mun - Chek Lap Kok Link - Southern Connection
3-Month Rolling Programme (Page 6 of 10 Pages)
(Progress as of 21-Sep-17)

Date	Revision	Checked	Approved
01-Aug-17		PKN	HF
29-Aug-17		PKN	HF
29-Sep-17		PKN	HF

DWG. No.:
J3518/GCL/PGM/3MRP-M52



- Actual Work
- Planned Bar
- Critical Bar
- Milestone

Project ID: TMCLK-DWPI-1-M52
 Layout: J3518-DWP-3MRP Submission - M52
 Filter: TASK filters: 3-Month Lookahead, No CC
 Milestones, No Level of Effort.

Tuen Mun - Chek Lap Kok Link - Southern Connection
3-Month Rolling Programme (Page 7 of 10 Pages)
(Progress as of 21-Sep-17)

Date	Revision	Checked	Approved
01-Aug-17		PKN	HF
29-Aug-17		PKN	HF
29-Sep-17		PKN	HF

DWG. No.:
J3518/GCL/PGM/3MRP-M52

Activity ID	Activity Name	Orig. Durn.	Act. Start / FC Early Start	Rem. Durn.	Act. Finish / FC Early Finish	Late Start	Late Finish	Total Float	Physical % Complete	2017																			
										September				October				November				December							
											21	28	04	11	18	25	02	09	16	23	30	06	13	20	27	04	11	18	25
Deck Finales, E&M and Roadworks																													
VC1-C7710	Viaduct C1 - Parapet Panels	48	31-May-17 A	26	23-Oct-17	11-Jun-16	12-Jul-16	-382	0%																				
VC1-C7720	Viaduct C1 - Gantry & TCSS Provisions (KD4)	36	10-Oct-17	36	21-Nov-17	28-Jun-16	09-Aug-16	-382	0%																				
VC1-C7810	Viaduct C1 - Drainage, Fire Main & E&M Services	60	24-Oct-17	60	05-Jan-18	13-Jul-16	21-Sep-16	-382	0%																				
VC1-C7820	Viaduct C1 - Railings, Light Poles, Signs & Street Furniture	30	22-Nov-17	30	28-Dec-17	10-Aug-16	13-Sep-16	-382	0%																				
Viaduct D																													
Bridge D3																													
Deck Span Segment																													
D06-C6610	D6 - Launch LG1 from D6 to E2B for Dismantling	18	07-Aug-17 A	13	07-Oct-17	24-Mar-16	12-Apr-16	-443	100%																				
VD3-C6510	Viaduct D3 - Final Stitch & Stressing to Span	24	09-Aug-17 A	0	05-Sep-17 A				100%																				
Deck Finales, E&M and Roadworks																													
VD3-C7710	Viaduct D3 - Parapet Panels	48	18-Sep-17 A	40	09-Nov-17	25-May-16	12-Jul-16	-396	0%																				
VD3-C7720	Viaduct D3 - Gantry & TCSS Provisions (KD4)	36	26-Oct-17	36	07-Dec-17	28-Jun-16	09-Aug-16	-396	0%																				
VD3-C7810	Viaduct D3 - Drainage, Fire Main & E&M Services	60	10-Nov-17	60	22-Jan-18	13-Jul-16	21-Sep-16	-396	0%																				
Bridge D2																													
Deck Finales, E&M and Roadworks																													
VD2-C7710	Viaduct D2 - Parapet Panels	60	01-Sep-17 A	51	22-Nov-17	26-May-16	26-Jul-16	-395	0%																				
VD2-C7720	Viaduct D2 - Gantry & TCSS Provisions (KD4)	36	25-Oct-17	36	06-Dec-17	28-Jun-16	09-Aug-16	-395	0%																				
VD2-C7810	Viaduct D2 - Drainage, Fire Main & E&M Services	48	23-Nov-17	48	20-Jan-18	27-Jul-16	21-Sep-16	-395	0%																				
VD2-C7820	Viaduct D2 - Railings, Light Poles, Signs & Street Furniture	30	07-Dec-17	30	13-Jan-18	10-Aug-16	13-Sep-16	-395	0%																				
Bridge D1																													
Deck Finales, E&M and Roadworks																													
VD1-C7710	Viaduct D1 - Parapet Panels	48	01-Jun-17 A	12	06-Oct-17	28-Jun-16	12-Jul-16	-368	0%																				
VD1-C7720	Viaduct D1 - Gantry & TCSS Provisions (KD4)	36	21-Sep-17	36	04-Nov-17	28-Jun-16	09-Aug-16	-368	0%																				
VD1-C7810	Viaduct D1 - Drainage, Fire Main & E&M Services	60	07-Oct-17	60	16-Dec-17	13-Jul-16	21-Sep-16	-368	0%																				
VD1-C7820	Viaduct D1 - Railings, Light Poles, Signs & Street Furniture	30	06-Nov-17	30	09-Dec-17	10-Aug-16	13-Sep-16	-368	0%																				
VD1-C7830	Viaduct D1 - Deck Paving & Roadmarking (KD14)	18	11-Dec-17	18	03-Jan-18	14-Sep-16	06-Oct-16	-368	0%																				
Viaduct E																													
Bridge E1																													
Deck Span Segment																													
VE1-C6510	Viaduct E1 - E3A/E4A, E3B/E4A & E3C/E4B Stitches	12	11-Nov-17	12	24-Nov-17	29-Apr-16	13-May-16	-457	0%																				
Deck Finales, E&M and Roadworks																													
VE1AB-C7710	Viaduct E1A/B - Parapet Panels	48	25-Nov-17	48	23-Jan-18	16-May-16	12-Jul-16	-457	0%																				
VE1CD-C7710	Viaduct E1C/D - Parapet Panels	48	25-Nov-17	48	23-Jan-18	16-May-16	12-Jul-16	-457	0%																				
Bridge E2																													
Deck Span Segment																													
E03A-C6410	E3A - Launch LG1 from E3B to E3A - *LG1	3	20-Oct-17	3	23-Oct-17	25-Apr-16	27-Apr-16	-443	0%																				
E03A-C6510	E3A - End Span to E4A (7 nr) - *LG1	7	24-Oct-17	7	01-Nov-17	28-Apr-16	06-May-16	-443	0%																				
E03A-C6610	E3A/B - Stitch between E3A/B and E4A	12	02-Nov-17	12	15-Nov-17	08-Aug-17	21-Aug-17	-71	0%																				
E03A-C6710	E3A - Launch LG1 from E3A to E4/E5 for Dismantling	6	02-Nov-17	6	08-Nov-17	07-May-16	13-May-16	-443	0%																				
E03B-C6410	E3B - Launch LG1 from E2B to E3B - *LG1	3	09-Oct-17*	3	11-Oct-17	13-Apr-16	15-Apr-16	-443	0%																				
E03B-C6510	E3B - End Span to E4A (7 nr) - *LG1	7	12-Oct-17	7	19-Oct-17	16-Apr-16	23-Apr-16	-443	0%																				
E03C-C6610	E3C/B - Stitch between E3C/D and E4B	12	26-Aug-17 A	0	02-Sep-17 A				100%																				
E04B-C6420	E4B - E3D/E4B Stitch	8	26-Aug-17 A	0	02-Sep-17 A				100%																				
E04B-C6430	E4A & E4B - E4A/E5A & E4B/E5B Stitches	8	11-Sep-17 A	0	15-Sep-17 A				100%																				
E05A-C6610	E5A - Stitch between E4A and E5A	12	11-Sep-17 A	0	15-Sep-17 A				100%																				
E05B-C6610	E5B - Stitch between E4B and E5B	12	11-Sep-17 A	0	15-Sep-17 A				100%																				
E06A-C6410	E6A - Drop in (E6A-E5A) - THB	30	13-Jul-17 A	14	07-Oct-17	23-Mar-16	07-Apr-16	-497	50%																				
E06A-C6510	E6A & E6B - Quarter Span (E6-E7) - TLB	30	04-Jul-17 A	22	15-Oct-17	05-Mar-16	30-Mar-16	-512	50%																				
E06A-C6520	E6A & E6B - E5A/E6A & E5B/E6B Stitches	8	23-Oct-17	8	31-Oct-17	08-Apr-16	16-Apr-16	-512	0%																				
E06A-C6530	E7A & E7B - E6A/E7A & E6B/E7B Stitches	8	03-Nov-17	8	10-Nov-17	20-Apr-16	28-Apr-16	-512	0%																				
E06A-C6610	E6A/E7A: Install Bearing & Stress Continuity Tendons	12	11-Nov-17	12	24-Nov-17	08-Aug-17	21-Aug-17	-79	0%																				
E06A-C6620	E6B/E7B: Install Bearing & Stress Continuity Tendons	12	11-Nov-17	12	24-Nov-17	08-Aug-17	21-Aug-17	-79	0%																				
E06B-C6510	E6B - Drop in (E6B-E5B) - THB	30	21-Sep-17	30	23-Oct-17	05-Mar-16	08-Apr-16	-512	0%																				
E08A-C6410	E8A - Drop in (E8A-E7A) - THB	30	16-Oct-17	30	15-Nov-17	17-Aug-17	15-Sep-17	-57	0%																				
E08A-C6510	E8A & E8B - Quarter Span (E8-E9) - TLB	30	16-Oct-17	30	15-Nov-17	18-Jul-17	16-Aug-17	-87	0%																				
E08A-C6520	E8A & E8B - E7A/E8A & E7B/E8B Stitches	8	24-Nov-17	8	01-Dec-17	15-Sep-17	22-Sep-17	-66	0%																				
E08A-C6530	E9A & E9B - E8A/E9A & E8B/E9B Stitches	8	05-Dec-17	8	12-Dec-17	26-Sep-17	06-Oct-17	-66	0%																				
E08A-C6610	E8A/E9A: Install Bearing & Stress Continuity Tendons	12	13-Dec-17	12	24-Dec-17	07-Oct-17	18-Oct-17	-66	0%																				
E08A-C6620	E8B/E9B: Install Bearing & Stress Continuity Tendons	12	13-Dec-17	12	24-Dec-17	07-Oct-17	18-Oct-17	-66	0%																				

■ Actual Work
■ Planned Bar
■ Critical Bar
◆ Milestone

Project ID: TMCLK-DWPI-1-M52
 Layout: J3518-DWP-3MRP Submission - M52
 Filter: TASK filters: 3-Month Lookahead, No CC
 Milestones, No Level of Effort.

Tuen Mun - Chek Lap Kok Link - Southern Connection
3-Month Rolling Programme (Page 8 of 10 Pages)
(Progress as of 21-Sep-17)

Date	Revision	Checked	Approved
01-Aug-17		PKN	HF
29-Aug-17		PKN	HF
29-Sep-17		PKN	HF

DWG. No.:
J3518/GCL/PGM/3MRP-M52

Activity ID	Activity Name	Orig. Durn.	Act. Start / FC Early Start	Rem. Durn.	Act. Finish / FC Early Finish	Late Start	Late Finish	Total Float	Physical % Complete	2017															
										September				October				November				December			
										21	28	04	11	18	25	02	09	16	23	30	06	13	20	27	04
E08B-C6510	E8B - Drop in (E8B-E7B) - THB	30	24-Oct-17	30	23-Nov-17	16-Aug-17	14-Sep-17	-66	0%																
E11A-C6410	E11A - Bifurcation Span to E10A (12 nr) with 1st Stitch - THB	48	08-Jun-17 A	0	09-Sep-17 A				100%																
E11B-C6410	E11B - Bifurcation Span to E10B (12 nr) with 1st Stitch - THB	48	24-Jul-17 A	11	03-Oct-17	27-Apr-17	08-May-17	-144	0%																
VE2-C6610	Viaduct E2 - Dismantle LG1	48	09-Nov-17	48	06-Jan-18	11-Jul-17	04-Sep-17	-101	0%																
VE2-C6620	Viaduct E2 - Dismantle LG2	48	21-Sep-17	48	18-Nov-17	26-Jun-17	21-Aug-17	-74	0%																
Bridge E5																									
Deck Span Segment																									
E11B-C6310	E11B Deck - Bifurcation Span to E12B (18 nr) with 1st Stitch - THB	48	27-Jul-17 A	3	23-Sep-17	05-Jan-17	07-Jan-17	-251	0%																
E12D-C6110	E12D Deck - Install THB	8	10-Oct-17	8	17-Oct-17	08-Jan-17	15-Jan-17	-264	0%																
E12D-C6210	E12D Deck - Cantilever Span (16 seg) with 2 stitches - THB	45	18-Oct-17	45	02-Dec-17	16-Jan-17	05-Mar-17	-264	0%																
E12D-C6220	E12D Deck - Install WLF	7	03-Dec-17	7	09-Dec-17	06-Mar-17	12-Mar-17	-264	0%																
E12D-C6230	E12D Deck - Cantelever span (26 seg) with 1 stitch - WLF	53	12-Dec-17	53	04-Feb-18	15-Mar-17	08-May-17	-264	0%																
E13D-C6110	E13D Deck - Install KF and THB	6	10-Nov-17	6	15-Nov-17	10-Feb-17	15-Feb-17	-265	0%																
E13D-C6210	E13D Deck - Cantilever Span (22 seg) with 2 stitches - KF and THB	49	16-Nov-17	49	05-Jan-18	16-Feb-17	06-Apr-17	-265	0%																
E14D-C6110	E14D Deck - Preparation Works & Deliver Underslung Truss to Site	18	10-Nov-17	18	30-Nov-17	04-Nov-16	24-Nov-16	-301	0%																
E14D-C6115	E14D Deck - Install Truss/Fixings & Initial ICE Check	15	01-Dec-17	15	18-Dec-17	25-Nov-16	12-Dec-16	-301	0%																
E14D-C6120	E14D Deck - Install Sliding System, T&C & Final ICE Check	15	19-Dec-17	15	08-Jan-18	13-Dec-16	31-Dec-16	-301	0%																
Bridge E6																									
Deck Span Segment																									
E12C-C6110	E12C Deck - Install WLF	8	02-Sep-17 A	0	09-Sep-17 A				100%																
E12C-C6210	E12C Deck - Cantilever Span (42 seg) with 2 stitches - THB	67	10-Sep-17 A	67	30-Nov-17	15-Jun-17	21-Aug-17	-97	5%																
E13C-C6110	E13C Deck - Install KF and THB	6	29-Oct-17*	6	03-Nov-17	06-Feb-17	11-Feb-17	-257	0%																
E13C-C6210	E13C Deck - Cantilever Span (18 seg) with 1 stitch - KF and THB	36	04-Nov-17	36	09-Dec-17	12-Feb-17	19-Mar-17	-257	0%																
E13C-C6220	E13C Deck - Install TLB with T&C	19	08-Dec-17	19	27-Dec-17	18-Mar-17	06-Apr-17	-257	0%																
Bridge E7																									
Deck Span Segment																									
E12B-C6110	E12B Deck - Install WLF	8	27-Aug-17 A	0	03-Sep-17 A				100%																
E12B-C6210	E12B Deck - Cantilever Span (40 seg) with 3 stitches - WLF	66	04-Sep-17 A	66	29-Nov-17	21-Apr-17	27-Jun-17	-150	5%																
E13B-C6110	E13B Deck - Install KF	7	17-Nov-17*	7	23-Nov-17	13-Jan-17	19-Jan-17	-296	0%																
E13B-C6210	E13B Deck - Cantilever Span (44 seg) with 3 stitches - KF	82	24-Nov-17	82	15-Feb-18	20-Jan-17	16-Apr-17	-296	0%																
Bridge E8																									
Deck Span Segment																									
E11A-C6310	E11A Deck - Bifurcation Span to E12A (18 nr) w/ 1st Stitch - THB	48	09-Jun-17 A	0	30-Aug-17 A				100%																
E12A-C6210	E12A Deck - Install THB	8	21-Sep-17	8	28-Sep-17	12-Nov-16	21-Nov-16	-296	0%																
E12A-C6410	E12A Deck - Cantilever Span (22 nr) with 1st stitch - THB	45	29-Sep-17	45	16-Nov-17	22-Nov-16	12-Jan-17	-296	0%																
E12A-C6420	E12A Deck - Install WLF & install (18nr) - WLF	52	02-Dec-17	52	24-Jan-18	30-Jun-17	21-Aug-17	-150	0%																
E13A-C6210	E13A Deck - Install KF	7	03-Dec-17	7	09-Dec-17	23-Jun-17	29-Jun-17	-158	0%																
E13A-C6410	E13A Deck - Cantilever Span(32 nr) with 3 stitches - KF	72	10-Dec-17	72	25-Feb-18	30-Jun-17	10-Sep-17	-158	0%																
Viaduct F																									
Bridge F1																									
Deck Span Segment																									
F01-C6210	F1 Deck - Install THB	3	17-Nov-17	3	20-Nov-17	12-Jan-17	14-Jan-17	-251	0%																
F01-C6310	F1 Deck - Cantilever Span (10 nr) - THB (Props at 5th Pair)	42	21-Nov-17	42	11-Jan-18	16-Jan-17	08-Mar-17	-251	0%																
Bridge F2																									
Deck Span Segment																									
F05-C6210	F5 Deck - Install THB	3	06-Dec-17	3	08-Dec-17	12-Jan-17	14-Jan-17	-267	0%																
F05-C6220	F5 Deck - Cantilever Span (10 nr) - THB (Props at 5th Pair)	42	09-Dec-17	42	30-Jan-18	16-Jan-17	08-Mar-17	-267	0%																
At-Grade Works & Miscellaneous Works																									
At-Grade Works Along North Lantau Highway																									
Slope Works Near Viaduct D																									
Slope 10NW-C/F9																									
M201200	10NW-C/F9 - Slope works (incl. L-Shape Ret. Walls)	110	21-Sep-17	110	02-Feb-18	19-Sep-16	02-Feb-17	-299	0%																
Slope 10NW-C/F10																									
M201160	10NW-C/F10 - Slope works (incl. L-Shape Ret. Walls)	110	09-Sep-17 A	100	22-Jan-18	14-Jul-16	10-Nov-16	-355	10%																
Slope 10NW-C/R4																									
M201170	10NW-C/R4 - Slope works	80	21-Sep-17	80	28-Dec-17	06-Aug-16	10-Nov-16	-335	0%																
Slope 10NW-C/F50																									
M201150	10NW-C/F50 - Slope works	165	11-Jan-17 A	62	05-Dec-17	27-Aug-16	10-Nov-16	-317	5%																

■ Actual Work
■ Planned Bar
■ Critical Bar
◆ Milestone

Project ID: TMCLK-DWPI-1-M52
 Layout: J3518-DWP-3MRP Submission - M52
 Filter: TASK filters: 3-Month Lookahead, No CC
 Milestones, No Level of Effort.

Tuen Mun - Chek Lap Kok Link - Southern Connection
3-Month Rolling Programme (Page 9 of 10 Pages)
(Progress as of 21-Sep-17)

Date	Revision	Checked	Approved
01-Aug-17		PKN	HF
29-Aug-17		PKN	HF
29-Sep-17		PKN	HF

DWG. No.:
J3518/GCL/PGM/3MRP-M52

Activity ID	Activity Name	Orig. Durn.	Act. Start / FC Early Start	Rem. Durn.	Act. Finish / FC Early Finish	Late Start	Late Finish	Total Float	Physical % Complete	2017																			
										September				October				November				December							
											21	28	04	11	18	25	02	09	16	23	30	06	13	20	27	04	11	18	25
Road Works Along NLH Westbound																													
General																													
RW10020	NLH W/B (Viaduct C) - Road Drainage Works for tie-in	104	26-Jun-17 A	102	24-Jan-18	02-Dec-16	07-Apr-17	-237	15%																				
Road Works Along NLH Eastbound																													
General																													
RW20080-1	Ch650 - 800 Portion 4 (viaduct D area) : Roadwork	81	11-Jan-17 A	12	06-Oct-17	24-Mar-17	07-Apr-17	-147	90%																				
RW20080-2	Ch475 - 650 Portion 5 (viaduct D area) : Roadwork	81	11-Jan-17 A	12	06-Oct-17	24-Mar-17	07-Apr-17	-147	87%																				
RW20080-3	Ch275 - 475 Portion 6 (viaduct D area) : Roadwork	162	11-Jan-17 A	59	01-Dec-17	25-Jan-17	07-Apr-17	-194	75%																				
RW20080-4	Ch157 - 275 Portion 7 (Viaduct D area) : Roadwork	98	11-Jan-17 A	24	20-Oct-17	10-Mar-17	07-Apr-17	-159	77%																				
RW20084	NLH E/B Viaduct A - Ch200-388 Roadwork (SL & HS) & Reinstale NLH	127	17-Dec-16 A	24	20-Oct-17	10-Mar-17	07-Apr-17	-159	75%																				
At-Grade Works Along Cheung Tung Road																													
Slope Works Near Viaduct C																													
Slope 10NW-C/C26																													
SWVC1995	TTA for closure of NLH HS	2	14-Oct-17	2	16-Oct-17	16-Aug-16	17-Aug-16	-345	0%																				
SWVC2000	10NW-C/C26 - Slope works	166	17-Oct-17	166	11-May-18	18-Aug-16	09-Mar-17	-345	0%																				
Slope PF1 & PF2																													
SWVC7000	PF1 & PF2 slope works	18	21-Sep-17	18	13-Oct-17	26-Jul-16	15-Aug-16	-345	0%																				
Slope 10NW-C/F13																													
SWVC4000	10NW-C/F13 - Slope works	100	01-Sep-17 A	86	05-Jan-18	30-Jul-16	10-Nov-16	-341	0%																				
Slope 10NW-C/F14																													
SWVC5000	10NW-C/F14 - Slope works	100	01-Sep-17 A	95	16-Jan-18	14-Jun-16	05-Oct-16	-380	0%																				
Slope 10NW-C/F15																													
SWVC6000	10NW-C/F15 - Slope works	108	01-Sep-17 A	100	22-Jan-18	07-Jun-16	05-Oct-16	-385	0%																				
Re-alignment of CTR Along Viaduct B																													
General																													
RP00074-3	Ch100-300: Road Drainage	38	06-May-17 A	7	28-Sep-17	30-Jun-20	08-Jul-20	818	85%																				
RP00076	Ch100-300: Lay Telecom Cable	10	22-May-17 A	120	14-Feb-18	11-Feb-20	08-Jul-20	705	85%																				
RP00077	Ch100-300: Street Lighting & Draw Pit	13	27-Jun-17 A	120	14-Feb-18	11-Feb-20	08-Jul-20	705	25%																				
RP00078	Ch100-300: Relocation of Vent Pipe	18	13-May-17 A	120	14-Feb-18	11-Feb-20	08-Jul-20	705	55%																				
RP00083	Ch100-300: Drainage & Roadwork for New CTR	52	13-May-17 A	52	23-Nov-17	22-Oct-16	21-Dec-16	-272	30%																				
RP00084	Ch100-300: TTA to New CTR	1	24-Nov-17	1	24-Nov-17	22-Dec-16	22-Dec-16	-272	0%																				
Re-alignment of CTR Along Viaduct C																													
East Portion																													
RW60050	CTR East (stage 2) TTA 090-5 : Roadwork	77	26-Apr-17 A	32	31-Oct-17	03-Oct-16	09-Nov-16	-288	65%																				
RW60060	CTR East (stage 3) TTA 090-6 : Roadwork	66	01-Nov-17	66	19-Jan-18	10-Nov-16	01-Feb-17	-288	0%																				
RW60080	CTR Tie in Works	116	18-May-17 A	88	08-Jan-18	19-Dec-16	07-Apr-17	-223	20%																				
Emergency Gates G6 & G7																													
RP10100	Open re-aligned CTR & activate new gates G6 & G7	0	06-Dec-17	0		10-Mar-17		-221	0%																				
RP10110	Remove old gates G6 & G7 and reprovision Expressway Fence	24	06-Dec-17	24	05-Jan-18	10-Mar-17	07-Apr-17	-221	0%																				
At-Grade Works at Southern Landfall																													
HKBCF Area																													
General																													
RW30028-2	Construct FMH2046 and Lay Pipe Work	14	27-Jun-17 A	10	03-Oct-17	26-Jun-20	08-Jul-20	815	85%																				
RW30028-3	Construct FMH2047 and Lay Pipe Work	14	27-Jun-17 A	10	03-Oct-17	31-May-17	10-Jun-17	-96	90%																				
RW30028-4	Construct FMH2048 and Lay Pipe Work	14	07-Oct-17	14	23-Oct-17	12-Jun-17	27-Jun-17	-98	0%																				
RW30028-5	Construct FMH2049 and Lay Pipe Work	14	24-Oct-17	14	09-Nov-17	28-Jun-17	14-Jul-17	-98	0%																				
Watermain from Tung Chung to Southern Landfall																													
Watermain Works																													
General																													
WM00120	Lay DN450 Fresh Water Main at Re-aligned CTR (approx. 500m)	48	22-Apr-15 A	12	06-Oct-17	29-Nov-17	12-Dec-17	56	90%																				

Actual Work
 Planned Bar
 Critical Bar
 Milestone

Project ID: TMCLK-DWPI-1-M52
 Layout: J3518-DWP-3MRP Submission - M52
 Filter: TASK filters: 3-Month Lookahead, No CC
 Milestones, No Level of Effort.

Tuen Mun - Chek Lap Kok Link - Southern Connection
3-Month Rolling Programme (Page 10 of 10 Pages)
(Progress as of 21-Sep-17)

Date	Revision	Checked	Approved
01-Aug-17		PKN	HF
29-Aug-17		PKN	HF
29-Sep-17		PKN	HF

DWG. No.:
J3518/GCL/PGM/3MRP-M52