

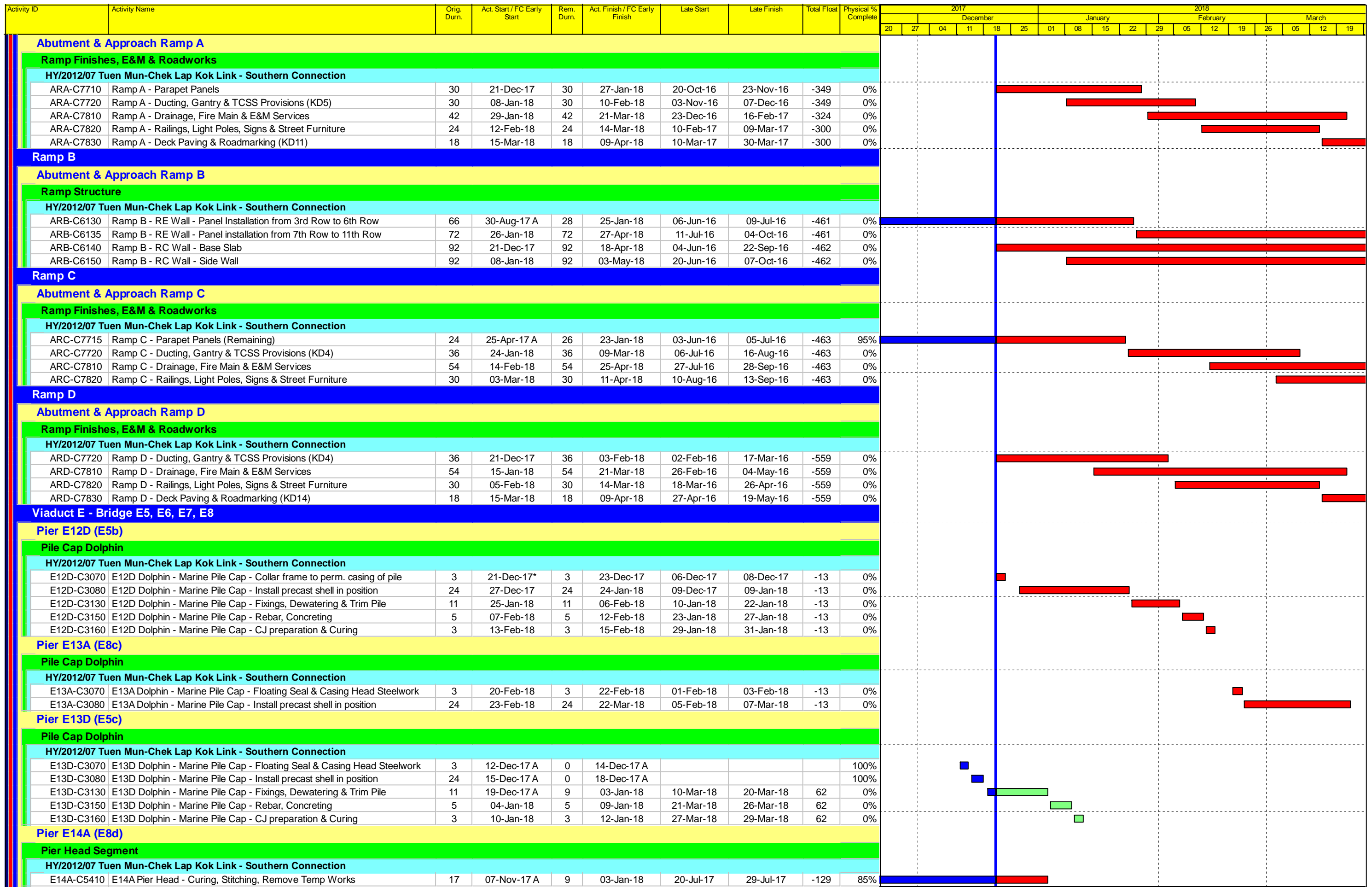
■ Actual Work
■ Planned Bar
■ Critical Bar
◆ Milestone

Project ID: TMCLK-DWPI-1-M55
 Layout: J3518-DWP-3MRP Submission - M55
 Filter: TASK filters: 3-Month Lookahead, No CC Milestones, No Level of Effort.

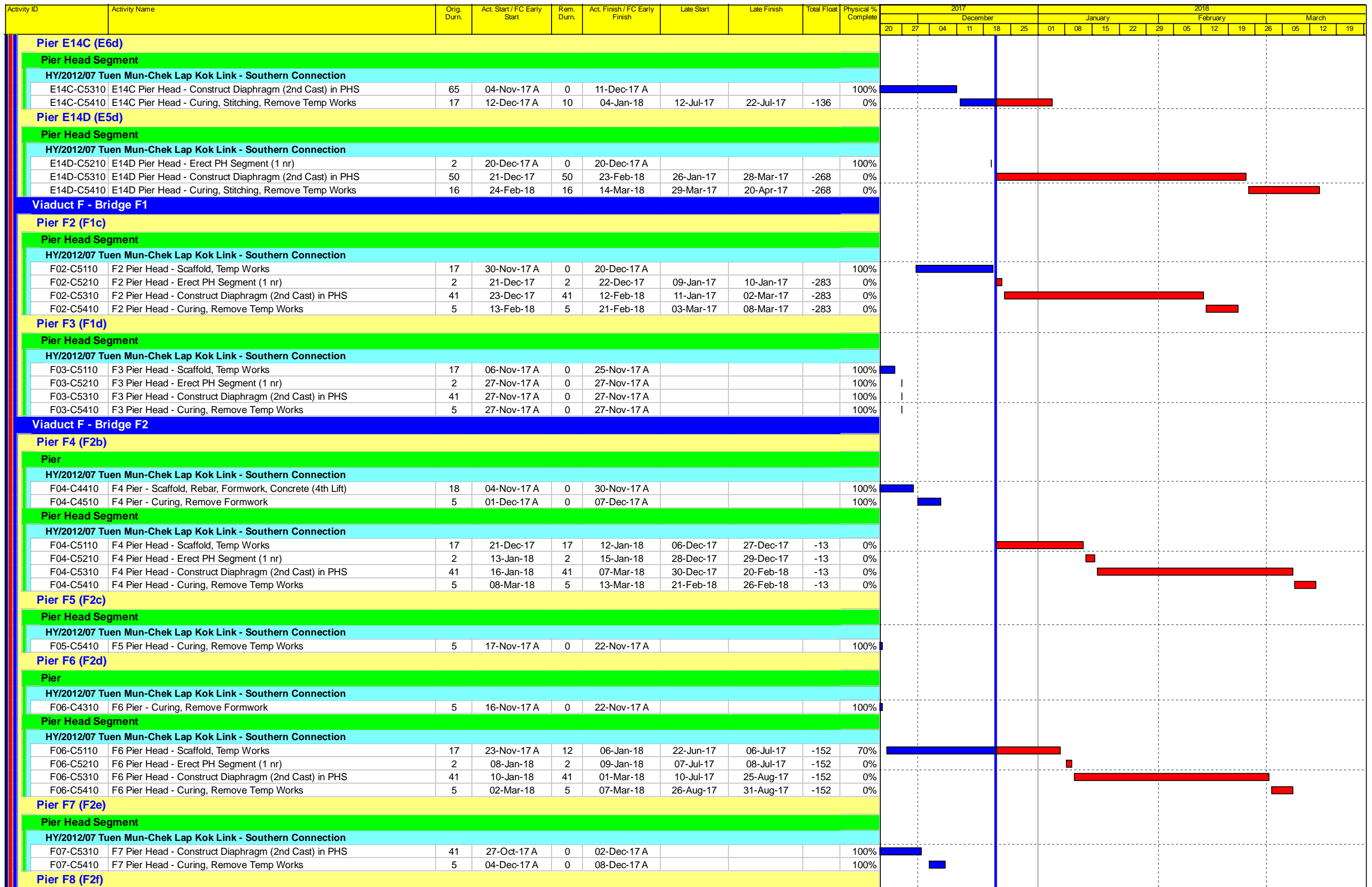
Tuen Mun - Chek Lap Kok Link - Southern Connection
3-Month Rolling Programme (Page 1 of 11 Pages)
(Progress as of 21-Dec-17)

Date	Revision	Checked	Approved
30-Oct-17		PKN	HF
28-Nov-...		PKN	HF
03-Jan-18		PKN	HF

DWG. No.:
J3518/GCL/PGM/3MRP-M55



<ul style="list-style-type: none"> █ Actual Work █ Planned Bar █ Critical Bar ◆ Milestone 	Project ID: TMCLK-DWPI-1-M55 Layout: J3518-DWP-3MRP Submission - M55 Filter: TASK filters: 3-Month Lookahead, No CC Milestones, No Level of Effort.	Tuen Mun - Chek Lap Kok Link - Southern Connection 3-Month Rolling Programme (Page 2 of 11 Pages) (Progress as of 21-Dec-17)				Date	Revision	Checked	Approved	DWG. No.: J3518/GCL/PGM/3MRP-M55
		30-Oct-17		PKN	HF					
		28-Nov-...		PKN	HF					
		03-Jan-18		PKN	HF					



■ Actual Work
■ Planned Bar
■ Critical Bar
◆ Milestone

Project ID: TMCLK-DWPI-1-M55
 Layout: J3518-DWP-3MRP Submission - M55
 Filter: TASK filters: 3-Month Lookahead, No CC
 Milestones, No Level of Effort.

Tuen Mun - Chek Lap Kok Link - Southern Connection
3-Month Rolling Programme (Page 3 of 11 Pages)
(Progress as of 21-Dec-17)

Date	Revision	Checked	Approved
30-Oct-17		PKN	HF
28-Nov-...		PKN	HF
03-Jan-18		PKN	HF

DWG. No.:
J3518/GCL/PGM/3MRP-M55

Activity ID	Activity Name	Orig. Durn.	Act. Start / FC Early Start	Rem. Durn.	Act. Finish / FC Early Finish	Late Start	Late Finish	Total Float	Physical % Complete	2017					2018									
										December					January				February			March		
										20	27	04	11	18	25	01	08	15	22	29	05	12	19	26
Pile Cap																								
HY/2012/07 Tuen Mun-Chek Lap Kok Link - Southern Connection																								
F08-C3110	F8 Pile Cap - Excavate, Break Pile Head	15	15-Nov-17 A	0	08-Dec-17 A				100%	[Actual Work Bar]														
F08-C3210	F8 Pile Cap - Blinding, Formwork, Rebar, Concrete	19	09-Dec-17 A	10	04-Jan-18	21-Sep-17	03-Oct-17	-75	90%	[Planned Bar]														
F08-C3310	F8 Pile Cap - Curing, Remove Formwork, Backfill	12	05-Jan-18	12	18-Jan-18	04-Oct-17	18-Oct-17	-75	0%	[Critical Bar]														
Pier																								
HY/2012/07 Tuen Mun-Chek Lap Kok Link - Southern Connection																								
F08-C4110	F8 Pier - Scaffold, Rebar, Formwork, Concrete (1st Lift)	13	19-Jan-18*	13	02-Feb-18	22-Dec-17	09-Jan-18	-21	0%	[Critical Bar]														
F08-C4210	F8 Pier - Curing, Remove Formwork	5	03-Feb-18	5	08-Feb-18	10-Jan-18	15-Jan-18	-21	0%	[Critical Bar]														
Pier Head Segment																								
HY/2012/07 Tuen Mun-Chek Lap Kok Link - Southern Connection																								
F08-C5110	F8 Pier Head - Scaffold, Temp Works	17	09-Feb-18	17	03-Mar-18	16-Jan-18	03-Feb-18	-21	0%	[Critical Bar]														
F08-C5210	F8 Pier Head - Erect PH Segment (1 nr)	2	05-Mar-18	2	06-Mar-18	05-Feb-18	06-Feb-18	-21	0%	[Critical Bar]														
F08-C5310	F8 Pier Head - Construct Diaphragm (2nd Cast) in PHS	41	07-Mar-18	41	27-Apr-18	07-Feb-18	29-Mar-18	-21	0%	[Critical Bar]														
Viaduct F - Bridge F3																								
Pier F9 (F3d)																								
Pier Head Segment																								
HY/2012/07 Tuen Mun-Chek Lap Kok Link - Southern Connection																								
F09-C5110	F9 Pier Head - Scaffold, Temp Works	17	14-Nov-17 A	0	04-Dec-17 A				100%	[Actual Work Bar]														
F09-C5210	F9 Pier Head - Erect PH Segment (2 nr)	2	28-Nov-17 A	0	05-Dec-17 A				100%	[Actual Work Bar]														
F09-C5310	F9 Pier Head - Construct Diaphragm (2nd Cast) in PHS	41	05-Dec-17 A	0	05-Dec-17 A				100%	[Actual Work Bar]														
F09-C5410	F9 Pier Head - Curing, Remove Temp Works	5	05-Dec-17 A	0	05-Dec-17 A				100%	[Actual Work Bar]														
Pier F10 (F3c)																								
Pier Head Segment																								
HY/2012/07 Tuen Mun-Chek Lap Kok Link - Southern Connection																								
F10-C5110	F10 Pier Head - Scaffold, Temp Works	17	21-Dec-17*	17	12-Jan-18	20-Sep-17	11-Oct-17	-76	0%	[Critical Bar]														
F10-C5210	F10 Pier Head - Erect PH Segment (2 nr)	2	13-Jan-18	2	15-Jan-18	12-Oct-17	13-Oct-17	-76	0%	[Critical Bar]														
F10-C5310	F10 Pier Head - Construct Diaphragm (2nd Cast) in PHS	41	16-Jan-18	41	07-Mar-18	14-Oct-17	01-Dec-17	-76	0%	[Critical Bar]														
F10-C5410	F10 Pier Head - Curing, Remove Temp Works	5	08-Mar-18	5	13-Mar-18	02-Dec-17	07-Dec-17	-76	0%	[Critical Bar]														
Pier F11 (F3b)																								
Pier Head Segment																								
HY/2012/07 Tuen Mun-Chek Lap Kok Link - Southern Connection																								
F11-C5110	F11 Pier Head - Scaffold, Temp Works	17	21-Dec-17	17	12-Jan-18	14-Dec-17	05-Jan-18	-6	0%	[Critical Bar]														
F11-C5210	F11 Pier Head - Erect PH Segment (2 nr)	2	13-Jan-18	2	15-Jan-18	06-Jan-18	08-Jan-18	-6	0%	[Critical Bar]														
F11-C5310	F11 Pier Head - Construct Diaphragm (2nd Cast) in PHS	41	16-Jan-18	41	07-Mar-18	09-Jan-18	28-Feb-18	-6	0%	[Critical Bar]														
F11-C5410	F11 Pier Head - Curing, Remove Temp Works	5	08-Mar-18	5	13-Mar-18	01-Mar-18	06-Mar-18	-6	0%	[Critical Bar]														
Pier F12 (F3a)																								
Pile Cap																								
HY/2012/07 Tuen Mun-Chek Lap Kok Link - Southern Connection																								
F12-C3310	F12 Pile Cap - Curing, Remove Formwork, Backfill	14	14-Nov-17 A	0	29-Nov-17 A				100%	[Actual Work Bar]														
Pier																								
HY/2012/07 Tuen Mun-Chek Lap Kok Link - Southern Connection																								
F12-C4110	F12 Pier - Scaffold, Rebar, Formwork, Concrete (Pier A)	13	17-Nov-17 A	0	19-Dec-17 A				100%	[Actual Work Bar]														
F12-C4210	F12 Pier - Curing, Remove Formwork (Pier A)	5	20-Dec-17 A	5	28-Dec-17	27-Jul-20	31-Jul-20	765	0%	[Planned Bar]														
F12-C4230	F12 Pier - Scaffold, Rebar, Formwork, Concrete (Pier B)	13	17-Nov-17 A	0	19-Dec-17 A				100%	[Actual Work Bar]														
F12-C4410	F12 Pier - Curing, Remove Formwork (Pier B)	5	20-Dec-17 A	5	28-Dec-17	09-Feb-18	14-Feb-18	40	0%	[Planned Bar]														
Pier Head Segment																								
HY/2012/07 Tuen Mun-Chek Lap Kok Link - Southern Connection																								
F12-C5110	F12 Pier Head - Scaffold, Temp Works	17	29-Dec-17	17	18-Jan-18	15-Feb-18	09-Mar-18	40	0%	[Planned Bar]														
F12-C5210	F12 Pier Head - Erect PH Segment (2 nr)	2	19-Jan-18	2	20-Jan-18	10-Mar-18	12-Mar-18	40	0%	[Planned Bar]														
F12-C5310	F12 Pier Head - Construct Diaphragm (2nd Cast) in PHS	41	22-Jan-18	41	13-Mar-18	13-Mar-18	04-May-18	40	0%	[Planned Bar]														
F12-C5410	F12 Pier Head - Curing, Remove Temp Works	5	14-Mar-18	5	19-Mar-18	05-May-18	10-May-18	40	0%	[Planned Bar]														
Viaduct F - Bridge F4																								
Pier F16 (F5a/F4a)																								
Pier																								
HY/2012/07 Tuen Mun-Chek Lap Kok Link - Southern Connection																								
F16-C4210	F16 Pier - Scaffold, Rebar, Formwork, Concrete (2nd Lift)	18	12-Oct-17 A	0	23-Nov-17 A				100%	[Actual Work Bar]														
F16-C4310	F16 Pier - Scaffold, Rebar, Formwork, Concrete (3rd Lift)	18	23-Nov-17 A	0	23-Nov-17 A				100%	[Actual Work Bar]														
F16-C4410	F16 Pier - Curing, Remove Temp Works	5	23-Nov-17 A	0	23-Nov-17 A				100%	[Actual Work Bar]														

■ Actual Work
■ Planned Bar
■ Critical Bar
◆ Milestone

Project ID: TMCLK-DWPI-1-M55
 Layout: J3518-DWP-3MRP Submission - M55
 Filter: TASK filters: 3-Month Lookahead, No CC
 Milestones, No Level of Effort.

Tuen Mun - Chek Lap Kok Link - Southern Connection
3-Month Rolling Programme (Page 4 of 11 Pages)
(Progress as of 21-Dec-17)

Date	Revision	Checked	Approved
30-Oct-17		PKN	HF
28-Nov-...		PKN	HF
03-Jan-18		PKN	HF

DWG. No.:
J3518/GCL/PGM/3MRP-M55

Activity ID	Activity Name	Orig. Durn.	Act. Start / FC Early Start	Rem. Durn.	Act. Finish / FC Early Finish	Late Start	Late Finish	Total Float	Physical % Complete	2017					2018														
										December					January					February					March				
										20	27	04	11	18	25	01	08	15	22	29	05	12	19	26	02	09	16	23	30
Pier Head Segment																													
HY/2012/07 Tuen Mun-Chek Lap Kok Link - Southern Connection																													
F16-C5110	F16 Pier Head - Construct Footing for Falsework	12	20-Nov-17 A	0	08-Dec-17 A				100%																				
F16-C5210	F16 Pier Head - Erect Falsework & Temp Platform	45	09-Dec-17 A	30	27-Jan-18	30-Aug-17	04-Oct-17	-94	0%																				
F16-C5310	F16 Pier Head - Construct In-Situ PH Segment & Span Segments	60	29-Jan-18	60	16-Apr-18	06-Oct-17	15-Dec-17	-94	0%																				
Pier F17 (F4b)																													
Pier																													
HY/2012/07 Tuen Mun-Chek Lap Kok Link - Southern Connection																													
F17-C4210	F17 Pier - Scaffold, Rebar, Formwork, Concrete (2nd Lift)	18	19-Oct-17 A	0	12-Dec-17 A				100%																				
F17-C4310	F17 Pier - Curing, Remove Temp Works	5	13-Dec-17 A	0	19-Dec-17 A				100%																				
Pier Head Segment																													
HY/2012/07 Tuen Mun-Chek Lap Kok Link - Southern Connection																													
F17-C5110	F17 Pier Head - Scaffold, Temp Works	17	21-Dec-17	17	12-Jan-18	29-Dec-17	18-Jan-18	5	0%																				
F17-C5210	F17 Pier Head - Erect PH Segment (1 nr)	2	13-Jan-18	2	15-Jan-18	19-Jan-18	20-Jan-18	5	0%																				
F17-C5310	F17 Pier Head - Construct Diaphragm (2nd Cast) in PHS	41	16-Jan-18	41	07-Mar-18	22-Jan-18	13-Mar-18	5	0%																				
F17-C5410	F17 Pier Head - Curing, Remove Temp Works	5	08-Mar-18	5	13-Mar-18	14-Mar-18	19-Mar-18	5	0%																				
Pier F18 (F4c)																													
Pier																													
HY/2012/07 Tuen Mun-Chek Lap Kok Link - Southern Connection																													
F18-C4110	F18 Pier - Scaffold, Rebar, Formwork, Concrete (1st Lift)	13	11-Nov-17 A	0	07-Dec-17 A				100%																				
F18-C4210	F18 Pier - Scaffold, Rebar, Formwork, Concrete (2nd Lift)	18	07-Dec-17 A	0	07-Dec-17 A				100%																				
F18-C4310	F18 Pier - Curing, Remove Temp Works	5	07-Dec-17 A	0	07-Dec-17 A				100%																				
Pier Head Segment																													
HY/2012/07 Tuen Mun-Chek Lap Kok Link - Southern Connection																													
F18-C5110	F18 Pier Head - Scaffold, Temp Works	17	21-Dec-17	17	12-Jan-18	10-Feb-18	05-Mar-18	41	0%																				
F18-C5210	F18 Pier Head - Erect PH Segment (1 nr)	2	13-Jan-18	2	15-Jan-18	06-Mar-18	07-Mar-18	41	0%																				
F18-C5310	F18 Pier Head - Construct Diaphragm (2nd Cast) in PHS	41	16-Jan-18	41	07-Mar-18	08-Mar-18	28-Apr-18	41	0%																				
F18-C5410	F18 Pier Head - Curing, Remove Temp Works	5	08-Mar-18	5	13-Mar-18	30-Apr-18	05-May-18	41	0%																				
Viaduct F - Bridge F5																													
Pier F13 (F5d)																													
Pier Head Segment																													
HY/2012/07 Tuen Mun-Chek Lap Kok Link - Southern Connection																													
F13-C5110	F13 Pier Head - Scaffold, Temp Works	17	08-Nov-17 A	0	06-Dec-17 A				100%																				
F13-C5210	F13 Pier Head - Erect PH Segment (1 nr)	2	07-Dec-17 A	0	07-Dec-17 A				100%																				
F13-C5310	F13 Pier Head - Construct Diaphragm (2nd Cast) in PHS	41	08-Dec-17 A	30	27-Jan-18	25-Apr-17	01-Jun-17	-199	0%																				
F13-C5410	F13 Pier Head - Curing, Remove Temp Works	5	29-Jan-18	5	02-Feb-18	02-Jun-17	07-Jun-17	-199	0%																				
Pier F14 (F5c)																													
Pier Head Segment																													
HY/2012/07 Tuen Mun-Chek Lap Kok Link - Southern Connection																													
F14-C5110	F14 Pier Head - Scaffold, Temp Works	17	21-Dec-17	17	12-Jan-18	29-Nov-17	18-Dec-17	-19	0%																				
F14-C5210	F14 Pier Head - Erect PH Segment (1 nr)	2	13-Jan-18	2	15-Jan-18	19-Dec-17	20-Dec-17	-19	0%																				
F14-C5310	F14 Pier Head - Construct Diaphragm (2nd Cast) in PHS	41	16-Jan-18	41	07-Mar-18	21-Dec-17	09-Feb-18	-19	0%																				
F14-C5410	F14 Pier Head - Curing, Remove Temp Works	5	08-Mar-18	5	13-Mar-18	10-Feb-18	15-Feb-18	-19	0%																				
Pier F15 (F5b)																													
Pile Cap																													
HY/2012/07 Tuen Mun-Chek Lap Kok Link - Southern Connection																													
F15-C3210	F15 Pile Cap - Blinding, Formwork, Rebar, Concrete	19	20-Nov-17 A	0	04-Dec-17 A				100%																				
F15-C3310	F15 Pile Cap - Curing, Remove Formwork, Backfill	12	05-Dec-17 A	0	08-Dec-17 A				100%																				
Pier																													
HY/2012/07 Tuen Mun-Chek Lap Kok Link - Southern Connection																													
F15-C4110	F15 Pier - Scaffold, Rebar, Formwork, Concrete (1st Lift)	13	09-Dec-17 A	0	15-Dec-17 A				100%																				
F15-C4210	F15 Pier - Scaffold, Rebar, Formwork, Concrete (2nd Lift)	18	16-Dec-17 A	12	06-Jan-18	18-Nov-17	01-Dec-17	-28	0%																				
F15-C4310	F15 Pier - Scaffold, Rebar, Formwork, Concrete (3rd Lift)	18	08-Jan-18	18	27-Jan-18	02-Dec-17	22-Dec-17	-28	0%																				
F15-C4410	F15 Pier - Curing, Remove Temp Works	5	29-Jan-18	5	02-Feb-18	23-Dec-17	30-Dec-17	-28	0%																				
Pier Head Segment																													
HY/2012/07 Tuen Mun-Chek Lap Kok Link - Southern Connection																													
F15-C5110	F15 Pier Head - Scaffold, Temp Works	17	03-Feb-18	17	26-Feb-18	02-Jan-18	20-Jan-18	-28	0%																				
F15-C5210	F15 Pier Head - Erect PH Segment (2 nr)	2	27-Feb-18	2	28-Feb-18	22-Jan-18	23-Jan-18	-28	0%																				
F15-C5310	F15 Pier Head - Construct Diaphragm (2nd Cast) in PHS	41	01-Mar-18	41	21-Apr-18	24-Jan-18	15-Mar-18	-28	0%																				

■ Actual Work
■ Planned Bar
■ Critical Bar
◆ Milestone

Project ID: TMCLK-DWPI-1-M55
 Layout: J3518-DWP-3MRP Submission - M55
 Filter: TASK filters: 3-Month Lookahead, No CC
 Milestones, No Level of Effort.

Tuen Mun - Chek Lap Kok Link - Southern Connection
3-Month Rolling Programme (Page 5 of 11 Pages)
(Progress as of 21-Dec-17)

Date	Revision	Checked	Approved
30-Oct-17		PKN	HF
28-Nov-...		PKN	HF
03-Jan-18		PKN	HF

DWG. No.:
J3518/GCL/PGM/3MRP-M55

Activity ID	Activity Name	Orig. Durn.	Act. Start / FC Early Start	Rem. Durn.	Act. Finish / FC Early Finish	Late Start	Late Finish	Total Float	Physical % Complete	2017					2018														
										December					January					February					March				
										20	27	04	11	18	25	01	08	15	22	29	05	12	19	26	02	09	16	23	30
Ramp F																													
Abutment & Approach Ramp F																													
Ramp Structure																													
HY/2012/07 Tuen Mun-Chek Lap Kok Link - Southern Connection																													
ARF-C6110	Ramp F - Strip Beams	24	21-Dec-17	24	20-Jan-18	01-Jun-17	28-Jun-17	-170	0%																				
ARF-C6120	Ramp F - Ground Beams	54	22-Jan-18	54	28-Mar-18	29-Jun-17	31-Aug-17	-170	0%																				
ARF-C6130	Ramp F - RC Columns	54	08-Mar-18	54	15-May-18	11-Aug-17	14-Oct-17	-170	0%																				
Superstructure & Associated Works																													
Viaduct A																													
Bridge A2																													
Deck Fnishes, E&M and Roadworks																													
HY/2012/07 Tuen Mun-Chek Lap Kok Link - Southern Connection																													
VA2-C7710	Viaduct A2 - Parapet Panels	48	21-Dec-17	48	21-Feb-18	12-Sep-16	09-Nov-16	-379	0%																				
VA2-C7720	Viaduct A2 - Gantry & TCSS Provisions (KD5)	36	05-Feb-18	36	21-Mar-18	27-Oct-16	07-Dec-16	-379	0%																				
VA2-C7810	Viaduct A2 - Drainage, Fire Main & E&M Services	60	22-Feb-18	60	08-May-18	10-Jan-17	23-Mar-17	-330	0%																				
Bridge A1																													
Deck Span Segment																													
HY/2012/07 Tuen Mun-Chek Lap Kok Link - Southern Connection																													
A10-C6510	A10 - Cantilever Span (Remaining 7 nr) - KF	14	01-Nov-17 A	0	21-Nov-17 A				100%																				
A11-C6210	A11 - Falsework for End Span to A10	24	24-Oct-17 A	0	22-Nov-17 A				100%																				
A11-C6310	A11 - End Span to A10 (4 nr) - Crane	8	23-Nov-17 A	0	29-Nov-17 A				100%																				
VA1-C6510	Viaduct A1 - Final Stitch & Stressing to Span	24	21-Dec-17	24	20-Jan-18	15-Aug-16	10-Sep-16	-403	0%																				
Deck Fnishes, E&M and Roadworks																													
HY/2012/07 Tuen Mun-Chek Lap Kok Link - Southern Connection																													
VA1-C7710	Viaduct A1 - Parapet Panels	60	22-Jan-18	60	09-Apr-18	12-Sep-16	23-Nov-16	-403	0%																				
VA1-C7720	Viaduct A1 - Gantry & TCSS Provisions (KD5)	36	08-Mar-18	36	23-Apr-18	27-Oct-16	07-Dec-16	-403	0%																				
Viaduct B																													
Bridge B3																													
Deck Fnishes, E&M and Roadworks																													
HY/2012/07 Tuen Mun-Chek Lap Kok Link - Southern Connection																													
VB3-C7720	Viaduct B3 - Gantry & TCSS Provisions (KD5)	36	21-Dec-17*	36	03-Feb-18	27-Oct-16	07-Dec-16	-343	0%																				
VB3-C7810	Viaduct B3 - Drainage, Fire Main & E&M Services	60	08-Jan-18	60	21-Mar-18	10-Jan-17	23-Mar-17	-294	0%																				
VB3-C7820	Viaduct B3 - Railings, Light Poles, Signs & Street Furniture	30	05-Feb-18	30	14-Mar-18	10-Feb-17	16-Mar-17	-294	0%																				
VB3-C7830	Viaduct B3 - Deck Paving & Roadmarking (KD12)	18	15-Mar-18	18	09-Apr-18	17-Mar-17	07-Apr-17	-294	0%																				
Bridge B2																													
Deck Fnishes, E&M and Roadworks																													
HY/2012/07 Tuen Mun-Chek Lap Kok Link - Southern Connection																													
VB2-C7710	Viaduct B2 - Parapet Panels	60	21-Aug-17 A	42	10-Feb-18	05-Oct-16	23-Nov-16	-361	50%																				
VB2-C7720	Viaduct B2 - Gantry & TCSS Provisions (KD5)	36	15-Jan-18	36	28-Feb-18	27-Oct-16	07-Dec-16	-361	0%																				
VB2-C7810	Viaduct B2 - Drainage, Fire Main & E&M Services	48	12-Feb-18	48	16-Apr-18	24-Jan-17	23-Mar-17	-312	0%																				
VB2-C7820	Viaduct B2 - Railings, Light Poles, Signs & Street Furniture	30	01-Mar-18	30	09-Apr-18	10-Feb-17	16-Mar-17	-312	0%																				
Bridge B1																													
Deck Span Segment																													
HY/2012/07 Tuen Mun-Chek Lap Kok Link - Southern Connection																													
B17-C6310	B17 - Cantilever Span (26 nr) - Crane	35	22-Sep-17 A	0	26-Nov-17 A				100%																				
B18-C6310	B18 - End Span to B17 (8 nr) - Crane	14	28-Sep-17 A	0	30-Nov-17 A				100%																				
VB1-C6510	Viaduct B1 - Final Stitch & Stressing to Span	24	13-Dec-17 A	18	13-Jan-18	29-Aug-16	19-Sep-16	-391	0%																				
Deck Fnishes, E&M and Roadworks																													
HY/2012/07 Tuen Mun-Chek Lap Kok Link - Southern Connection																													
VB1-C7710	Viaduct B1 - Parapet Panels	48	15-Jan-18	48	14-Mar-18	20-Sep-16	16-Nov-16	-391	0%																				
VB1-C7720	Viaduct B1 - Gantry & TCSS Provisions (KD5)	36	22-Feb-18	36	09-Apr-18	27-Oct-16	07-Dec-16	-391	0%																				
VB1-C7810	Viaduct B1 - Drainage, Fire Main & E&M Services	60	01-Mar-18	60	15-May-18	10-Jan-17	23-Mar-17	-336	0%																				
Viaduct C																													
Bridge C4																													
Deck Fnishes, E&M and Roadworks																													
HY/2012/07 Tuen Mun-Chek Lap Kok Link - Southern Connection																													
VC4-C7710	Viaduct C4 - Parapet Panels	48	12-Jun-17 A	4	27-Dec-17	08-Jul-16	12-Jul-16	-435	99%																				
VC4-C7720	Viaduct C4 - Gantry & TCSS Provisions (KD4)	36	21-Dec-17	36	03-Feb-18	28-Jun-16	09-Aug-16	-443	0%																				

<ul style="list-style-type: none"> ■ Actual Work ■ Planned Bar ■ Critical Bar ◆ Milestone 	Project ID: TMCLK-DWPI-1-M55 Layout: J3518-DWP-3MRP Submission - M55 Filter: TASK filters: 3-Month Lookahead, No CC Milestones, No Level of Effort.	Tuen Mun - Chek Lap Kok Link - Southern Connection 3-Month Rolling Programme (Page 6 of 11 Pages) (Progress as of 21-Dec-17)	<table border="1"> <tr> <th>Date</th> <th>Revision</th> <th>Checked</th> <th>Approved</th> </tr> <tr> <td>30-Oct-17</td> <td></td> <td>PKN</td> <td>HF</td> </tr> <tr> <td>28-Nov-...</td> <td></td> <td>PKN</td> <td>HF</td> </tr> <tr> <td>03-Jan-18</td> <td></td> <td>PKN</td> <td>HF</td> </tr> </table>	Date	Revision	Checked	Approved	30-Oct-17		PKN	HF	28-Nov-...		PKN	HF	03-Jan-18		PKN	HF	DWG. No.: J3518/GCL/PGM/3MRP-M55
Date	Revision	Checked	Approved																	
30-Oct-17		PKN	HF																	
28-Nov-...		PKN	HF																	
03-Jan-18		PKN	HF																	

Activity ID	Activity Name	Orig. Durn.	Act. Start / FC Early Start	Rem. Durn.	Act. Finish / FC Early Finish	Late Start	Late Finish	Total Float	Physical % Complete	2017					2018								
										December					January			February		March			
										20	27	04	11	18	25	01	08	15	22	29	05	12	19
VC4-C7810	Viaduct C4 - Drainage, Fire Main & E&M Services	60	08-Jan-18	60	21-Mar-18	13-Jul-16	21-Sep-16	-443	0%														
VC4-C7820	Viaduct C4 - Railings, Light Poles, Signs & Street Furniture	30	05-Feb-18	30	14-Mar-18	10-Aug-16	13-Sep-16	-443	0%														
VC4-C7830	Viaduct C4 - Deck Paving & Roadmarking (KD13)	18	15-Mar-18	18	09-Apr-18	14-Sep-16	06-Oct-16	-443	0%														
Bridge C3																							
Deck Fnishes, E&M and Roadworks																							
HY/2012/07 Tuen Mun-Chek Lap Kok Link - Southern Connection																							
VC3-C7710	Viaduct C3 - Parapet Panels	60	16-Aug-17 A	48	21-Feb-18	30-May-16	26-Jul-16	-467	0%														
VC3-C7720	Viaduct C3 - Gantry & TCSS Provisions (KD4)	36	22-Jan-18	36	07-Mar-18	28-Jun-16	09-Aug-16	-467	0%														
VC3-C7810	Viaduct C3 - Drainage, Fire Main & E&M Services	48	22-Feb-18	48	23-Apr-18	27-Jul-16	21-Sep-16	-467	0%														
VC3-C7820	Viaduct C3 - Railings, Light Poles, Signs & Street Furniture	30	08-Mar-18	30	16-Apr-18	10-Aug-16	13-Sep-16	-467	0%														
Bridge C2																							
Deck Fnishes, E&M and Roadworks																							
HY/2012/07 Tuen Mun-Chek Lap Kok Link - Southern Connection																							
VC2-C7710	Viaduct C2 - Parapet Panels	48	13-Jun-17 A	54	28-Feb-18	07-May-16	12-Jul-16	-485	95%														
VC2-C7720	Viaduct C2 - Gantry & TCSS Provisions (KD4)	36	12-Feb-18	36	28-Mar-18	28-Jun-16	09-Aug-16	-485	0%														
VC2-C7810	Viaduct C2 - Drainage, Fire Main & E&M Services	60	01-Mar-18	60	15-May-18	13-Jul-16	21-Sep-16	-485	0%														
Bridge C1																							
Deck Fnishes, E&M and Roadworks																							
HY/2012/07 Tuen Mun-Chek Lap Kok Link - Southern Connection																							
VC1-C7710	Viaduct C1 - Parapet Panels	48	31-May-17 A	4	27-Dec-17	08-Jul-16	12-Jul-16	-435	0%														
VC1-C7720	Viaduct C1 - Gantry & TCSS Provisions (KD4)	36	21-Dec-17	36	03-Feb-18	28-Jun-16	09-Aug-16	-443	0%														
VC1-C7810	Viaduct C1 - Drainage, Fire Main & E&M Services	60	08-Jan-18	60	21-Mar-18	13-Jul-16	21-Sep-16	-443	0%														
VC1-C7820	Viaduct C1 - Railings, Light Poles, Signs & Street Furniture	30	05-Feb-18	30	14-Mar-18	10-Aug-16	13-Sep-16	-443	0%														
VC1-C7830	Viaduct C1 - Deck Paving & Roadmarking (KD13)	18	15-Mar-18	18	09-Apr-18	14-Sep-16	06-Oct-16	-443	0%														
Viaduct D																							
Bridge D3																							
Deck Span Segment																							
HY/2012/07 Tuen Mun-Chek Lap Kok Link - Southern Connection																							
D06-C6610	D6 - Launch LG1 from D6 to E2B for Dismantling	18	07-Aug-17 A	0	25-Nov-17 A				100%														
Deck Fnishes, E&M and Roadworks																							
HY/2012/07 Tuen Mun-Chek Lap Kok Link - Southern Connection																							
VD3-C7720	Viaduct D3 - Gantry & TCSS Provisions (KD4)	36	21-Dec-17	36	03-Feb-18	28-Jun-16	09-Aug-16	-443	0%														
VD3-C7810	Viaduct D3 - Drainage, Fire Main & E&M Services	60	08-Jan-18	60	21-Mar-18	13-Jul-16	21-Sep-16	-443	0%														
VD3-C7820	Viaduct D3 - Railings, Light Poles, Signs & Street Furniture	30	22-Feb-18	30	28-Mar-18	10-Aug-16	13-Sep-16	-455	0%														
Bridge D2																							
Deck Fnishes, E&M and Roadworks																							
HY/2012/07 Tuen Mun-Chek Lap Kok Link - Southern Connection																							
VD2-C7710	Viaduct D2 - Parapet Panels	60	01-Sep-17 A	51	24-Feb-18	26-May-16	26-Jul-16	-470	0%														
VD2-C7720	Viaduct D2 - Gantry & TCSS Provisions (KD4)	36	25-Jan-18	36	10-Mar-18	28-Jun-16	09-Aug-16	-470	0%														
VD2-C7810	Viaduct D2 - Drainage, Fire Main & E&M Services	48	26-Feb-18	48	26-Apr-18	27-Jul-16	21-Sep-16	-470	0%														
VD2-C7820	Viaduct D2 - Railings, Light Poles, Signs & Street Furniture	30	12-Mar-18	30	19-Apr-18	10-Aug-16	13-Sep-16	-470	0%														
Bridge D1																							
Deck Fnishes, E&M and Roadworks																							
HY/2012/07 Tuen Mun-Chek Lap Kok Link - Southern Connection																							
VD1-C7710	Viaduct D1 - Parapet Panels	48	01-Jun-17 A	12	06-Jan-18	28-Jun-16	12-Jul-16	-443	0%														
VD1-C7720	Viaduct D1 - Gantry & TCSS Provisions (KD4)	36	21-Dec-17	36	03-Feb-18	28-Jun-16	09-Aug-16	-443	0%														
VD1-C7810	Viaduct D1 - Drainage, Fire Main & E&M Services	60	08-Jan-18	60	21-Mar-18	13-Jul-16	21-Sep-16	-443	0%														
VD1-C7820	Viaduct D1 - Railings, Light Poles, Signs & Street Furniture	30	05-Feb-18	30	14-Mar-18	10-Aug-16	13-Sep-16	-443	0%														
VD1-C7830	Viaduct D1 - Deck Paving & Roadmarking (KD14)	18	15-Mar-18	18	09-Apr-18	14-Sep-16	06-Oct-16	-443	0%														
Viaduct E																							
Bridge E1																							
Deck Fnishes, E&M and Roadworks																							
HY/2012/07 Tuen Mun-Chek Lap Kok Link - Southern Connection																							
VE1AB-C77	Viaduct E1A/B - Parapet Panels	48	05-Sep-17 A	24	20-Jan-18	14-Jun-16	12-Jul-16	-455	0%														
VE1AB-C77	Viaduct E1A/B - Gantry & TCSS Provisions (KD4)	36	08-Jan-18	36	21-Feb-18	28-Jun-16	09-Aug-16	-455	0%														
VE1AB-C78	Viaduct E1A/B - Drainage, Fire Main & E&M Services	60	22-Jan-18	60	09-Apr-18	13-Jul-16	21-Sep-16	-455	0%														
VE1AB-C78	Viaduct E1A/B - Railings, Light Poles, Signs & Street Furniture	30	22-Feb-18	30	28-Mar-18	10-Aug-16	13-Sep-16	-455	0%														
VE1CD-C77	Viaduct E1C/D - Parapet Panels	48	21-Dec-17	48	21-Feb-18	16-May-16	12-Jul-16	-479	0%														
VE1CD-C77	Viaduct E1C/D - Gantry & TCSS Provisions (KD4)	36	05-Feb-18	36	21-Mar-18	28-Jun-16	09-Aug-16	-479	0%														

■ Actual Work
■ Planned Bar
■ Critical Bar
◆ Milestone


Project ID: TMCLK-DWPI-1-M55
 Layout: J3518-DWP-3MRP Submission - M55
 Filter: TASK filters: 3-Month Lookahead, No CC Milestones, No Level of Effort.

Tuen Mun - Chek Lap Kok Link - Southern Connection
3-Month Rolling Programme (Page 7 of 11 Pages)
(Progress as of 21-Dec-17)

Date	Revision	Checked	Approved
30-Oct-17		PKN	HF
28-Nov-...		PKN	HF
03-Jan-18		PKN	HF

DWG. No.:
J3518/GCL/PGM/3MRP-M55

Activity ID	Activity Name	Orig. Durn.	Act. Start / FC Early Start	Rem. Durn.	Act. Finish / FC Early Finish	Late Start	Late Finish	Total Float	Physical % Complete	2017						2018								
										December						January			February			March		
										20	27	04	11	18	25	01	08	15	22	29	05	12	19	26
VE1CD-C7E	Viaduct E1C/D - Drainage, Fire Main & E&M Services	60	22-Feb-18	60	08-May-18	13-Jul-16	21-Sep-16	-479	0%															
Bridge E2																								
Deck Span Segment																								
HY/2012/07 Tuen Mun-Chek Lap Kok Link - Southern Connection																								
E06A-C6510	E6A & E6B - Quarter Span (E6-E7) - TLB	30	04-Jul-17 A	9	30-Dec-17	30-Jul-17	07-Aug-17	-140	80%															
E06A-C6520	E6A & E6B - E5A/E6A & E5B/E6B Stitches	8	27-Oct-17 A	8	29-Dec-17	31-Jul-17	07-Aug-17	-139	50%															
E06A-C6530	E7A & E7B - E6A/E7A & E6B/E7B Stitches	8	15-Dec-17 A	8	29-Dec-17	31-Jul-17	07-Aug-17	-139	0%															
E06A-C6610	E6A/E7A: Install Bearing & Stress Continuity Tendons	12	02-Jan-18	12	15-Jan-18	08-Aug-17	21-Aug-17	-120	0%															
E06A-C6620	E6B/E7B: Install Bearing & Stress Continuity Tendons	12	02-Jan-18	12	15-Jan-18	08-Aug-17	21-Aug-17	-120	0%															
E08A-C6410	E8A - Drop in (E8A-E7A) - THB	30	30-Sep-17 A	0	02-Dec-17 A				100%															
E08A-C6510	E8A & E8B - Quarter Span (E8-E9) - TLB	30	16-Sep-17 A	15	06-Jan-18	31-Aug-17	14-Sep-17	-108	0%															
E08A-C6520	E8A & E8B - E7A/E8A & E7B/E8B Stitches	8	07-Jan-18	8	14-Jan-18	15-Sep-17	22-Sep-17	-108	0%															
E08A-C6530	E9A & E9B - E8A/E9A & E8B/E9B Stitches	8	18-Jan-18	8	25-Jan-18	26-Sep-17	06-Oct-17	-108	0%															
E08A-C6610	E8A/E9A: Install Bearing & Stress Continuity Tendons	12	26-Jan-18	12	06-Feb-18	07-Oct-17	18-Oct-17	-108	0%															
E08A-C6620	E8B/E9B: Install Bearing & Stress Continuity Tendons	12	26-Jan-18	12	06-Feb-18	07-Oct-17	18-Oct-17	-108	0%															
E08B-C6510	E8B - Drop in (E8B-E7B) - THB	30	11-Oct-17 A	0	08-Dec-17 A				100%															
E10A-C6410	E10A - Drop in (E10A-E9A) - THB	30	09-Sep-17 A	77	13-Mar-18	31-Jul-17	18-Oct-17	-139	33%															
E10B-C6510	E10B - Drop in (E10B - E9B) - THB	30	04-Mar-18	30	02-Apr-18	16-Sep-17	18-Oct-17	-159	0%															
E11B-C6510	E10A & E10B - Quarter span (E10-E11) - TLB	30	30-Aug-17 A	154	31-May-18	12-Apr-17	15-Sep-17	-246	0%															
VE2-C6610	Viaduct E2 - Dismantle LG1	48	27-Nov-17 A	33	31-Jan-18	28-Jul-17	04-Sep-17	-122	0%															
VE2-C6620	Viaduct E2 - Dismantle LG2	48	21-Dec-17	48	21-Feb-18	26-Jun-17	21-Aug-17	-149	0%															
Deck Finishes, E&M and Roadworks																								
HY/2012/07 Tuen Mun-Chek Lap Kok Link - Southern Connection																								
VE21-C7710	Viaduct E2-1 (E3-E6) - Parapet Panels	48	22-Feb-18	48	23-Apr-18	22-Aug-17	18-Oct-17	-149	0%															
Bridge E5																								
Deck Span Segment																								
HY/2012/07 Tuen Mun-Chek Lap Kok Link - Southern Connection																								
E12D-C6210	E12D Deck - Cantilever Span (16 seg) with 2 stitches - THB	45	05-Oct-17 A	0	24-Nov-17 A				100%															
E12D-C6220	E12D Deck - Install WLF	7	24-Nov-17 A	0	27-Nov-17 A				100%															
E12D-C6230	E12D Deck - Cantilever span (26 seg) with 1 stitch - WLF	53	28-Nov-17 A	25	16-Jan-18	13-Apr-17	08-May-17	-245	0%															
E12D-C6310	E12D Deck - Stitch between E12D and E11B	12	04-Mar-18	12	15-Mar-18	09-May-17	20-May-17	-287	0%															
E13D-C6210	E13D Deck - Cantilever Span (22 seg) with 2 stitches - KF and THB	26	30-Oct-17 A	10	31-Dec-17	27-Mar-17	06-Apr-17	-261	0%															
E13D-C6220	E13D Deck - Cantilever span (20 seg) with 1 stitch - KF and THB	43	15-Jan-18	43	02-Mar-18	07-Apr-17	20-May-17	-274	0%															
E13D-C6310	E13D Deck - Stitch between E12D and E13D	8	16-Mar-18	8	23-Mar-18	21-May-17	28-May-17	-287	0%															
E14D-C6120	E14D Deck - Install Sliding System, T&C & Final ICE Check	15	09-Dec-17 A	0	12-Dec-17 A				100%															
E14D-C6210	E14D Deck - End Span to E13D Segment '7' to '2' (6 nr) - Crane	18	12-Dec-17 A	0	20-Dec-17 A				100%															
E14D-C6220	E14D Deck - Adjust Alignment of Installed Segments '1' to '7'	6	15-Mar-18	6	21-Mar-18	21-Apr-17	27-Apr-17	-268	0%															
Bridge E6																								
Deck Span Segment																								
HY/2012/07 Tuen Mun-Chek Lap Kok Link - Southern Connection																								
E12C-C6210	E12C Deck - Cantilever Span (42 seg) with 2 stitches - THB	67	10-Sep-17 A	10	31-Dec-17	12-Aug-17	21-Aug-17	-127	5%															
E12C-C6310	E12C Deck - Stitch between E12C and E11B	12	04-Mar-18	12	15-Mar-18	22-Aug-17	02-Sep-17	-184	0%															
E13C-C6210	E13C Deck - Cantilever Span (18 seg) with 1 stitch - KF and THB	36	27-Nov-17 A	6	27-Dec-17	14-Mar-17	19-Mar-17	-274	0%															
E13C-C6220	E13C Deck - Install TLB with T&C	19	26-Dec-17	19	14-Jan-18	18-Mar-17	06-Apr-17	-274	0%															
E13C-C6230	E13C Deck - Cantilever span (26 seg) with 1 stitch - KF and THB	51	15-Jan-18	51	10-Mar-18	14-Jul-17	02-Sep-17	-179	0%															
E13C-C6310	E13C Deck - Stitch between E12C and E13C	8	16-Mar-18	8	23-Mar-18	03-Sep-17	10-Sep-17	-184	0%															
Bridge E7																								
Deck Span Segment																								
HY/2012/07 Tuen Mun-Chek Lap Kok Link - Southern Connection																								
E12B-C6210	E12B Deck - Cantilever Span (40 seg) with 3 stitches - WLF	66	04-Sep-17 A	0	17-Dec-17 A				100%															
E12B-C6310	E12B Deck - Stitch between E12B and E11A	12	04-Mar-18	12	15-Mar-18	22-Aug-17	02-Sep-17	-184	0%															
E13B-C6210	E13B Deck - Cantilever Span (44 seg) with 3 stitches - KF	82	16-Oct-17 A	46	06-Feb-18	01-Mar-17	16-Apr-17	-287	0%															
E13B-C6310	E13B Deck - Stitch between E12B and E13B	8	16-Mar-18	8	23-Mar-18	03-Sep-17	10-Sep-17	-184	0%															
E14B-C6540	E14B Deck - End Span to E13B (Remaining 4 nr) - Crane	15	20-Nov-17 A	0	18-Dec-17 A				100%															
Bridge E8																								
Deck Span Segment																								
HY/2012/07 Tuen Mun-Chek Lap Kok Link - Southern Connection																								
E12A-C6410	E12A Deck - Cantilever Span (22 nr) with 1st stitch - THB	45	01-Oct-17 A	0	04-Dec-17 A				100%															
E12A-C6420	E12A deck - Install WLF & install (18nr) - WLF	52	05-Dec-17 A	22	13-Jan-18	31-Jul-17	21-Aug-17	-139	0%															
E12A-C6510	E12A Deck - Stitch between E12A and E11A	12	04-Mar-18	12	15-Mar-18	22-Aug-17	02-Sep-17	-184	0%															
E13A-C6410	E13A Deck - Cantilever Span(32 nr) with 3 stitches - KF	72	10-Nov-17 A	49	09-Feb-18	24-Jul-17	10-Sep-17	-146	0%															



Project ID: TMCLK-DWPI-1-M55
 Layout: J3518-DWP-3MRP Submission - M55
 Filter: TASK filters: 3-Month Lookahead, No CC Milestones, No Level of Effort.

Tuen Mun - Chek Lap Kok Link - Southern Connection
3-Month Rolling Programme (Page 8 of 11 Pages)
(Progress as of 21-Dec-17)

Date	Revision	Checked	Approved
30-Oct-17		PKN	HF
28-Nov-...		PKN	HF
03-Jan-18		PKN	HF

DWG. No.:
J3518/GCL/PGM/3MRP-M55

Activity ID	Activity Name	Orig. Durn.	Act. Start / FC Early Start	Rem. Durn.	Act. Finish / FC Early Finish	Late Start	Late Finish	Total Float	Physical % Complete	2017					2018														
										December					January					February					March				
										20	27	04	11	18	25	01	08	15	22	29	05	12	19	26	02	09	16	23	30
HY/2012/07 Tuen Mun-Chek Lap Kok Link - Southern Connection																													
M201170	10NW-C/R4 - Slope works	80	21-Dec-17	80	03-Apr-18	06-Aug-16	10-Nov-16	-410	0%																				
Slope 10NW-C/F50																													
HY/2012/07 Tuen Mun-Chek Lap Kok Link - Southern Connection																													
M201150	10NW-C/F50 - Slope works	165	11-Jan-17 A	62	09-Mar-18	27-Aug-16	10-Nov-16	-392	5%																				
Road Works Along NLH Westbound																													
General																													
HY/2012/07 Tuen Mun-Chek Lap Kok Link - Southern Connection																													
RW10020	NLH W/B (Viaduct C) - Road Drainage Works for tie-in	104	26-Jun-17 A	24	20-Jan-18	10-Mar-17	07-Apr-17	-234	25%																				
Road Works Along NLH Eastbound																													
General																													
HY/2012/07 Tuen Mun-Chek Lap Kok Link - Southern Connection																													
RW20080-2	Ch475 - 650 Portion 5 (viaduct D area) : Roadwork	81	11-Jan-17 A	0	25-Nov-17 A				100%																				
RW20080-4	Ch157 - 275 Portion 7 (Viaduct D area) : Roadwork	98	11-Jan-17 A	10	04-Jan-18	27-Mar-17	07-Apr-17	-220	82%																				
RW20084	NLH E/B Viaduct A - Ch200-388 Roadwork (SL & HS) & Reinstate NLH	127	17-Dec-16 A	10	04-Jan-18	27-Mar-17	07-Apr-17	-220	80%																				
At-Grade Works Along Cheung Tung Road																													
Slope Works Near Viaduct B																													
Slope 9SE-B/F85																													
HY/2012/07 Tuen Mun-Chek Lap Kok Link - Southern Connection																													
SWVB4020	9SE-B/F85 - Filling & forming slope	36	15-Jan-18	36	28-Feb-18	16-Aug-18	27-Sep-18	172	0%																				
SWVB4030	9SE-B/F85 - Form UC	12	01-Mar-18	12	14-Mar-18	28-Sep-18	12-Oct-18	172	0%																				
SWVB4035	9SE-B/F85 - Install Geo. Instru. & Baseline Monitoring	30	15-Mar-18	30	23-Apr-18	13-Oct-18	17-Nov-18	172	0%																				
Slope Works Near Viaduct C																													
Slope 10NW-C/C26																													
HY/2012/07 Tuen Mun-Chek Lap Kok Link - Southern Connection																													
SWVC1995	TTA for closure of NLH HS	2	15-Jan-18	2	16-Jan-18	16-Aug-16	17-Aug-16	-420	0%																				
SWVC2000	10NW-C/C26 - Slope works	166	17-Jan-18	166	10-Aug-18	18-Aug-16	09-Mar-17	-420	0%																				
Slope PF1 & PF2																													
HY/2012/07 Tuen Mun-Chek Lap Kok Link - Southern Connection																													
SWVC7000	PF1 & PF2 slope works	18	21-Dec-17	18	13-Jan-18	26-Jul-16	15-Aug-16	-420	0%																				
Slope 10NW-C/F13																													
HY/2012/07 Tuen Mun-Chek Lap Kok Link - Southern Connection																													
SWVC4000	10NW-C/F13 - Slope works	100	01-Sep-17 A	86	11-Apr-18	30-Jul-16	10-Nov-16	-416	0%																				
Slope 10NW-C/F14																													
HY/2012/07 Tuen Mun-Chek Lap Kok Link - Southern Connection																													
SWVC5000	10NW-C/F14 - Slope works	100	01-Sep-17 A	95	21-Apr-18	14-Jun-16	05-Oct-16	-455	0%																				
Slope 10NW-C/F15																													
HY/2012/07 Tuen Mun-Chek Lap Kok Link - Southern Connection																													
SWVC6000	10NW-C/F15 - Slope works	108	01-Sep-17 A	78	28-Mar-18	05-Jul-16	05-Oct-16	-438	0%																				
Re-alignment of CTR Along Viaduct B																													
General																													
HY/2012/07 Tuen Mun-Chek Lap Kok Link - Southern Connection																													
RP00076	Ch100-300: Lay Telecom Cable	10	22-May-17 A	60	07-Mar-18	21-May-20	31-Jul-20	710	88%																				
RP00077	Ch100-300: Street Lighting & Draw Pit	13	27-Jun-17 A	60	07-Mar-18	21-May-20	31-Jul-20	710	30%																				
RP00078	Ch100-300: Relocation of Vent Pipe	18	13-May-17 A	60	07-Mar-18	21-May-20	31-Jul-20	710	60%																				
RP00083	Ch100-300: Drainage & Roadwork for New CTR	52	13-May-17 A	52	26-Feb-18	22-Oct-16	21-Dec-16	-347	40%																				
RP00084	Ch100-300: TTA to New CTR	1	27-Feb-18	1	27-Feb-18	22-Dec-16	22-Dec-16	-347	0%																				
Re-alignment of CTR Along Viaduct C																													
East Portion																													
HY/2012/07 Tuen Mun-Chek Lap Kok Link - Southern Connection																													
RW60060	CTR East (stage 3) TTA 090-6 : Roadwork	66	14-Jul-17 A	48	21-Feb-18	04-Jun-20	31-Jul-20	722	50%																				
RW60070	CTR East (stage 4) : Roadwork	55	28-Oct-17 A	48	21-Feb-18	10-Feb-17	07-Apr-17	-258	30%																				
RW60080	CTR Tie in Works	116	18-May-17 A	48	21-Feb-18	10-Feb-17	07-Apr-17	-258	30%																				
Emergency Gates G6 & G7																													
HY/2012/07 Tuen Mun-Chek Lap Kok Link - Southern Connection																													
RP10100	Open re-aligned CTR & activate new gates G6 & G7	0	21-Dec-17	0		10-Mar-17		-234	0%																				
RP10110	Remove old gates G6 & G7 and reprovision Expressway Fence	24	21-Dec-17	24	20-Jan-18	10-Mar-17	07-Apr-17	-234	0%																				
At-Grade Works at Southern Landfall																													

■ Actual Work
■ Planned Bar
■ Critical Bar
◆ Milestone

Project ID: TMCLK-DWPI-1-M55
 Layout: J3518-DWP-3MRP Submission - M55
 Filter: TASK filters: 3-Month Lookahead, No CC
 Milestones, No Level of Effort.

Tuen Mun - Chek Lap Kok Link - Southern Connection
3-Month Rolling Programme (Page 10 of 11 Pages)
(Progress as of 21-Dec-17)

Date	Revision	Checked	Approved
30-Oct-17		PKN	HF
28-Nov-...		PKN	HF
03-Jan-18		PKN	HF

DWG. No.:
J3518/GCL/PGM/3MRP-M55

Activity ID	Activity Name	Orig. Durn.	Act. Start / FC Early Start	Rem. Durn.	Act. Finish / FC Early Finish	Late Start	Late Finish	Total Float	Physical % Complete	2017					2018												
										December					January			February		March							
										20	27	04	11	18	25	01	08	15	22	29	05	12	19	26	05	12	19
HKBCF Area																											
General																											
HY/2012/07 Tuen Mun-Chek Lap Kok Link - Southern Connection																											
RW30005	South Landfall - Initial record survey	12	19-Jan-18	12	01-Feb-18	19-Oct-17	02-Nov-17	-75	0%																		
RW30010	South Landfall - Mobilisation for Portion B Works	24	02-Feb-18	24	05-Mar-18	03-Nov-17	30-Nov-17	-75	0%																		
RW30014	South Landfall - DN300 Fresh water main works installation & connection (l	60	06-Mar-18	60	19-May-18	01-Dec-17	12-Feb-18	-75	0%																		
RW30030	South Landfall - Stormwater drainage works	60	06-Mar-18	60	19-May-18	12-Jul-18	19-Sep-18	102	0%																		
Watermain from Tung Chung to Southern Landfall																											
Watermain Works																											
General																											
HY/2012/07 Tuen Mun-Chek Lap Kok Link - Southern Connection																											
WM00120	Lay DN450 Fresh Water Main at Re-aligned CTR (approx. 500m)	48	22-Apr-15 A	12	06-Jan-18	29-Nov-17	12-Dec-17	-19	90%																		
No TMCLK1 Work Phase																											
At-Grade Works & Miscellaneous Works																											
At-Grade Works Along Cheung Tung Road																											
Re-alignment of CTR Along Viaduct B																											
General																											
HY/2012/07 Tuen Mun-Chek Lap Kok Link - Southern Connection																											
RP00074-3	Ch100-300: Road Drainage	38	06-May-17 A	7	30-Dec-17	24-Jul-20	31-Jul-20	763	88%																		

- Actual Work
- Planned Bar
- Critical Bar
- Milestone

Project ID: TMCLK-DWPI-1-M55
 Layout: J3518-DWP-3MRP Submission - M55
 Filter: TASK filters: 3-Month Lookahead, No CC
 Milestones, No Level of Effort.

Tuen Mun - Chek Lap Kok Link - Southern Connection
3-Month Rolling Programme (Page 11 of 11 Pages)
(Progress as of 21-Dec-17)

Date	Revision	Checked	Approved
30-Oct-17		PKN	HF
28-Nov-...		PKN	HF
03-Jan-18		PKN	HF

DWG. No.:
J3518/GCL/PGM/3MRP-M55