

| Activity ID | Activity Name | Orig. Durn. | Act. Start / FC Early Start | Rem. Durn. | Act. Finish / FC Early Finish | Late Start | Late Finish | Total Float | Physical % Complete | 2018 | | | | | | | | | | | | | | | | | | | |
|--|---|-------------|-----------------------------|-------------|-------------------------------|------------|-------------|-------------|---------------------|-------|----|----|----|----|-------|----|----|----|-----|----|----|----|------|----|----|----|----|----|----|
| | | | | | | | | | | March | | | | | April | | | | May | | | | June | | | | | | |
| | | | | | | | | | | | 19 | 26 | 05 | 12 | 19 | 26 | 02 | 09 | 16 | 23 | 30 | 07 | 14 | 21 | 28 | 04 | 11 | 18 | 25 |
| HY/2012/07 Tuen Mun-Chek Lap Kok Link - Southern Connection | | | | | | | | | | | | | | | | | | | | | | | | | | | | | |
| Contract Milestones | | | | | | | | | | | | | | | | | | | | | | | | | | | | | |
| Key Dates for Completion | | | | | | | | | | | | | | | | | | | | | | | | | | | | | |
| Stage of the Works | | | | | | | | | | | | | | | | | | | | | | | | | | | | | |
| Completion Date | | | | | | | | | | | | | | | | | | | | | | | | | | | | | |
| General | | | | | | | | | | | | | | | | | | | | | | | | | | | | | |
| KD03 | KD3 - Stage 3: TCSS Along NLH Near Viaduct C, D (EoT 8-Apr-16) | | 0 | | 0 | 29-Mar-18* | | 08-Apr-16 | -720 | 0% | | | | | | | | | | | | | | | | | | | |
| Section of the Works | | | | | | | | | | | | | | | | | | | | | | | | | | | | | |
| Completion Date | | | | | | | | | | | | | | | | | | | | | | | | | | | | | |
| General | | | | | | | | | | | | | | | | | | | | | | | | | | | | | |
| KD20 | KD20 - Section 14: Preserve & Protect Existing Trees (EoT 7-Apr-17) | | 0 | | 0 | 21-Mar-18* | | 07-Apr-17 | -347 | 0% | | | | | | | | | | | | | | | | | | | |
| Portion Handover Dates | | | | | | | | | | | | | | | | | | | | | | | | | | | | | |
| Possession of the Works Area | | | | | | | | | | | | | | | | | | | | | | | | | | | | | |
| Access Dates | | | | | | | | | | | | | | | | | | | | | | | | | | | | | |
| General | | | | | | | | | | | | | | | | | | | | | | | | | | | | | |
| POS02-6B | Portion A - Area 6B (To be confirmed) | | 0 | | 0 | 21-Mar-18* | | 15-Aug-20 | 879 | 0% | | | | | | | | | | | | | | | | | | | |
| Design | | | | | | | | | | | | | | | | | | | | | | | | | | | | | |
| Detailed Design | | | | | | | | | | | | | | | | | | | | | | | | | | | | | |
| Slope Works Near Viaduct A | | | | | | | | | | | | | | | | | | | | | | | | | | | | | |
| Feature 9SE-B/FR8, B/R1, B/R2 | | | | | | | | | | | | | | | | | | | | | | | | | | | | | |
| Slope Works Design | | | | | | | | | | | | | | | | | | | | | | | | | | | | | |
| ARDD0596-1 | IC/SO Approval of Slope Combined AIP/DDA - CP11.01 | | 60 | 13-Jun-17 A | 30 | 28-Apr-18 | 13-Jul-20 | 15-Aug-20 | 682 | 90% | | | | | | | | | | | | | | | | | | | |
| Procurement | | | | | | | | | | | | | | | | | | | | | | | | | | | | | |
| Precast Parapets & Barriers | | | | | | | | | | | | | | | | | | | | | | | | | | | | | |
| Viaduct A to F | | | | | | | | | | | | | | | | | | | | | | | | | | | | | |
| Precast Parapet Manufacture | | | | | | | | | | | | | | | | | | | | | | | | | | | | | |
| General | | | | | | | | | | | | | | | | | | | | | | | | | | | | | |
| PP6011-01 | Viaduct A - Precast Parapets/Barriers Production | | 90 | 01-Sep-16 A | 36 | 07-May-18 | 06-Jul-20 | 15-Aug-20 | 676 | 95% | | | | | | | | | | | | | | | | | | | |
| PP6011-02 | Viaduct B - Precast Parapets/Barriers Production | | 120 | 03-May-16 A | 15 | 11-Apr-18 | 31-Oct-16 | 16-Nov-16 | -411 | 90% | | | | | | | | | | | | | | | | | | | |
| PP6011-05 | Viaduct E - Precast Parapets/Barriers Production | | 180 | 02-Jul-16 A | 90 | 12-Jul-18 | 23-Aug-17 | 08-Dec-17 | -171 | 70% | | | | | | | | | | | | | | | | | | | |
| PP6011-06 | Viaduct F - Precast Parapets/Barriers Production | | 198 | 05-Mar-18 A | 150 | 20-Sep-18 | 12-Jul-17 | 09-Jan-18 | -207 | 10% | | | | | | | | | | | | | | | | | | | |
| Bearings | | | | | | | | | | | | | | | | | | | | | | | | | | | | | |
| Viaduct F | | | | | | | | | | | | | | | | | | | | | | | | | | | | | |
| Bearing Design & Manufacture | | | | | | | | | | | | | | | | | | | | | | | | | | | | | |
| General | | | | | | | | | | | | | | | | | | | | | | | | | | | | | |
| PPBRF9 | Bearing Delivery - Viaduct F | | 34 | 18-Jul-17 A | 78 | 27-Jun-18 | 15-Mar-18 | 21-Jun-18 | -5 | 95% | | | | | | | | | | | | | | | | | | | |
| Movement Joints | | | | | | | | | | | | | | | | | | | | | | | | | | | | | |
| Viaduct A to F | | | | | | | | | | | | | | | | | | | | | | | | | | | | | |
| MJ Design & Manufacture | | | | | | | | | | | | | | | | | | | | | | | | | | | | | |
| General | | | | | | | | | | | | | | | | | | | | | | | | | | | | | |
| PP7090 | Site preparation of MJ for Viaduct B | | 12 | 28-May-18 | 12 | 09-Jun-18 | 04-Feb-17 | 17-Feb-17 | -386 | 0% | | | | | | | | | | | | | | | | | | | |
| PP7370 | Site preparation of MJ for Viaduct E1 | | 12 | 19-May-18 | 12 | 02-Jun-18 | 01-Sep-16 | 14-Sep-16 | -505 | 0% | | | | | | | | | | | | | | | | | | | |
| PP7530 | Site preparation of MJ for Viaduct C | | 12 | 18-Apr-18 | 12 | 02-May-18 | 07-Sep-16 | 21-Sep-16 | -474 | 0% | | | | | | | | | | | | | | | | | | | |
| Construction | | | | | | | | | | | | | | | | | | | | | | | | | | | | | |
| Foundation & Substructure Works | | | | | | | | | | | | | | | | | | | | | | | | | | | | | |
| Ramp A | | | | | | | | | | | | | | | | | | | | | | | | | | | | | |
| Abutment & Approach Ramp A | | | | | | | | | | | | | | | | | | | | | | | | | | | | | |
| Ramp Finishes, E&M & Roadworks | | | | | | | | | | | | | | | | | | | | | | | | | | | | | |
| ARA-C7710 | Ramp A - Parapet Panels | | 66 | 21-Mar-18 | 66 | 12-Jun-18 | 05-Sep-16 | 23-Nov-16 | -456 | 0% | | | | | | | | | | | | | | | | | | | |
| ARA-C7720 | Ramp A - Ducting, Gantry & TCSS Provisions (KD5) | | 30 | 23-May-18 | 30 | 27-Jun-18 | 03-Nov-16 | 07-Dec-16 | -456 | 0% | | | | | | | | | | | | | | | | | | | |
| ARA-C7810 | Ramp A - Drainage, Fire Main & E&M Services | | 42 | 13-Jun-18 | 42 | 02-Aug-18 | 24-Jan-17 | 16-Mar-17 | -407 | 0% | | | | | | | | | | | | | | | | | | | |
| Ramp B | | | | | | | | | | | | | | | | | | | | | | | | | | | | | |
| Abutment & Approach Ramp B | | | | | | | | | | | | | | | | | | | | | | | | | | | | | |
| Ramp Structure | | | | | | | | | | | | | | | | | | | | | | | | | | | | | |

■ Actual Work
■ Planned Bar
■ Critical Bar
◆ Milestone

Project ID: TMCLK-DWPK-M58
 Layout: J3518-DWP-3MRP Submission - M58
 Filter: TASK filters: 3-Month Lookahead, No CC Milestones, No Level of Effort.

Tuen Mun - Chek Lap Kok Link - Southern Connection
3-Month Rolling Programme (Page 1 of 7 Pages)
(Progress as of 21-Mar-18)

| Date | Revision | Checked | Approved |
|-----------|----------|---------|----------|
| 31-Jan-18 | | PKN | HF |
| 27-Feb-18 | | PKN | HF |
| 03-Apr-18 | | PKN | HF |

DWG. No.:
J3518/GCL/PGM/3MRP-M58

| Activity ID | Activity Name | Orig. Durn. | Act. Start / FC Early Start | Rem. Durn. | Act. Finish / FC Early Finish | Late Start | Late Finish | Total Float | Physical % Complete | 2018 | | | | | | | | | | | | | | | | | | | | | | | | |
|---|--|-------------|-----------------------------|------------|-------------------------------|------------|-------------|-------------|---------------------|-------------------------------------|----|----|----|-------|----|----|----|-----|----|----|----|------|----|----|----|----|----|----|--|--|--|--|--|--|
| | | | | | | | | | | March | | | | April | | | | May | | | | June | | | | | | | | | | | | |
| | | | | | | | | | | | 19 | 26 | 05 | 12 | 19 | 26 | 02 | 09 | 16 | 23 | 30 | 07 | 14 | 21 | 28 | 04 | 11 | 18 | | | | | | |
| ARB-C6130 | Ramp B - RE Wall - Panel Installation from 3rd Row up) | 73 | 30-Aug-17 A | 0 | 13-Mar-18 A | | | | 100% | [Gantt Bar: 30-Aug-17 to 13-Mar-18] | | | | | | | | | | | | | | | | | | | | | | | | |
| ARB-C6140 | Ramp B - RC Wall - Base Slab | 92 | 25-Oct-17 A | 0 | 20-Mar-18 A | | | | 100% | [Gantt Bar: 25-Oct-17 to 20-Mar-18] | | | | | | | | | | | | | | | | | | | | | | | | |
| ARB-C6150 | Ramp B - RC Wall - Side Wall | 92 | 06-Nov-17 A | 14 | 10-Apr-18 | 09-May-16 | 25-May-16 | -555 | 85% | [Gantt Bar: 06-Nov-17 to 10-Apr-18] | | | | | | | | | | | | | | | | | | | | | | | | |
| ARB-C6160 | Ramp B - RC Wall - Backfill | 18 | 27-Mar-18 | 18 | 20-Apr-18 | 16-May-16 | 04-Jun-16 | -555 | 0% | [Gantt Bar: 27-Mar-18 to 20-Apr-18] | | | | | | | | | | | | | | | | | | | | | | | | |
| Ramp C | | | | | | | | | | | | | | | | | | | | | | | | | | | | | | | | | | |
| Abutment & Approach Ramp C | | | | | | | | | | | | | | | | | | | | | | | | | | | | | | | | | | |
| Ramp Finishes, E&M & Roadworks | | | | | | | | | | | | | | | | | | | | | | | | | | | | | | | | | | |
| ARC-C7720 | Ramp C - Ducting, Gantry & TCSS Provisions (KD4) | 36 | 18-Sep-17 A | 8 | 29-Mar-18 | 30-Mar-16 | 08-Apr-16 | -587 | 95% | [Gantt Bar: 18-Sep-17 to 29-Mar-18] | | | | | | | | | | | | | | | | | | | | | | | | |
| ARC-C7810 | Ramp C - Drainage, Fire Main & E&M Services | 54 | 15-Jan-18 A | 36 | 07-May-18 | 10-Aug-16 | 21-Sep-16 | -478 | 50% | [Gantt Bar: 15-Jan-18 to 07-May-18] | | | | | | | | | | | | | | | | | | | | | | | | |
| ARC-C7820 | Ramp C - Railings, Light Poles, Signs & Street Furniture | 30 | 03-Apr-18 | 30 | 09-May-18 | 10-Aug-16 | 13-Sep-16 | -486 | 0% | [Gantt Bar: 03-Apr-18 to 09-May-18] | | | | | | | | | | | | | | | | | | | | | | | | |
| ARC-C7830 | Ramp C - Deck Paving & Roadmarking (KD13) | 18 | 10-May-18 | 18 | 31-May-18 | 14-Sep-16 | 06-Oct-16 | -486 | 0% | [Gantt Bar: 10-May-18 to 31-May-18] | | | | | | | | | | | | | | | | | | | | | | | | |
| Ramp D | | | | | | | | | | | | | | | | | | | | | | | | | | | | | | | | | | |
| Abutment & Approach Ramp D | | | | | | | | | | | | | | | | | | | | | | | | | | | | | | | | | | |
| Ramp Finishes, E&M & Roadworks | | | | | | | | | | | | | | | | | | | | | | | | | | | | | | | | | | |
| ARD-C7810 | Ramp D - Drainage, Fire Main & E&M Services | 54 | 15-Jan-18 A | 0 | 20-Mar-18 A | | | | 100% | [Gantt Bar: 15-Jan-18 to 20-Mar-18] | | | | | | | | | | | | | | | | | | | | | | | | |
| ARD-C7820 | Ramp D - Railings, Light Poles, Signs & Street Furniture | 30 | 21-Mar-18 | 30 | 28-Apr-18 | 27-Jul-16 | 30-Aug-16 | -490 | 0% | [Gantt Bar: 21-Mar-18 to 28-Apr-18] | | | | | | | | | | | | | | | | | | | | | | | | |
| ARD-C7830 | Ramp D - Deck Paving & Roadmarking (KD14) | 18 | 30-Apr-18 | 18 | 21-May-18 | 31-Aug-16 | 21-Sep-16 | -490 | 0% | [Gantt Bar: 30-Apr-18 to 21-May-18] | | | | | | | | | | | | | | | | | | | | | | | | |
| Viaduct E - Bridge E5, E6, E7, E8 | | | | | | | | | | | | | | | | | | | | | | | | | | | | | | | | | | |
| Pier E12D (E5b) | | | | | | | | | | | | | | | | | | | | | | | | | | | | | | | | | | |
| Pile Cap Dolphin | | | | | | | | | | | | | | | | | | | | | | | | | | | | | | | | | | |
| E12D-C3130 | E12D Dolphin - Marine Pile Cap - Fixings, Dewatering & Trim Pile | 11 | 17-Nov-17 A | 11 | 06-Apr-18 | 08-Mar-18 | 20-Mar-18 | -11 | 95% | [Gantt Bar: 17-Nov-17 to 06-Apr-18] | | | | | | | | | | | | | | | | | | | | | | | | |
| E12D-C3150 | E12D Dolphin - Marine Pile Cap - Rebar, Concreting | 5 | 07-Apr-18 | 5 | 12-Apr-18 | 21-Mar-18 | 26-Mar-18 | -11 | 0% | [Gantt Bar: 07-Apr-18 to 12-Apr-18] | | | | | | | | | | | | | | | | | | | | | | | | |
| E12D-C3160 | E12D Dolphin - Marine Pile Cap - CJ preparation & Curing | 3 | 13-Apr-18 | 3 | 16-Apr-18 | 27-Mar-18 | 29-Mar-18 | -11 | 0% | [Gantt Bar: 13-Apr-18 to 16-Apr-18] | | | | | | | | | | | | | | | | | | | | | | | | |
| Pier E13A (E8c) | | | | | | | | | | | | | | | | | | | | | | | | | | | | | | | | | | |
| Pile Cap Dolphin | | | | | | | | | | | | | | | | | | | | | | | | | | | | | | | | | | |
| E13A-C3070 | E13A Dolphin - Marine Pile Cap - Floating Seal & Casing Head Steelwork | 3 | 09-Dec-17 A | 0 | 23-Feb-18 A | | | | 100% | [Gantt Bar: 09-Dec-17 to 23-Feb-18] | | | | | | | | | | | | | | | | | | | | | | | | |
| E13A-C3080 | E13A Dolphin - Marine Pile Cap - Install precast shell in position | 24 | 24-Feb-18 A | 0 | 17-Mar-18 A | | | | 100% | [Gantt Bar: 24-Feb-18 to 17-Mar-18] | | | | | | | | | | | | | | | | | | | | | | | | |
| E13A-C3130 | E13A Dolphin - Marine Pile Cap - Fixings, Dewatering & Trim Pile | 11 | 19-Mar-18 A | 42 | 14-May-18 | 27-Jan-18 | 20-Mar-18 | -42 | 20% | [Gantt Bar: 19-Mar-18 to 14-May-18] | | | | | | | | | | | | | | | | | | | | | | | | |
| E13A-C3150 | E13A Dolphin - Marine Pile Cap - Rebar, Concreting | 5 | 15-May-18 | 5 | 19-May-18 | 21-Mar-18 | 26-Mar-18 | -42 | 0% | [Gantt Bar: 15-May-18 to 19-May-18] | | | | | | | | | | | | | | | | | | | | | | | | |
| E13A-C3160 | E13A Dolphin - Marine Pile Cap - CJ preparation & Curing | 3 | 21-May-18 | 3 | 24-May-18 | 27-Mar-18 | 29-Mar-18 | -42 | 0% | [Gantt Bar: 21-May-18 to 24-May-18] | | | | | | | | | | | | | | | | | | | | | | | | |
| Pier E13D (E5c) | | | | | | | | | | | | | | | | | | | | | | | | | | | | | | | | | | |
| Pile Cap Dolphin | | | | | | | | | | | | | | | | | | | | | | | | | | | | | | | | | | |
| E13D-C3130 | E13D Dolphin - Marine Pile Cap - Fixings, Dewatering & Trim Pile | 11 | 19-Dec-17 A | 36 | 07-May-18 | 03-Feb-18 | 20-Mar-18 | -36 | 70% | [Gantt Bar: 19-Dec-17 to 07-May-18] | | | | | | | | | | | | | | | | | | | | | | | | |
| E13D-C3150 | E13D Dolphin - Marine Pile Cap - Rebar, Concreting | 5 | 08-May-18 | 5 | 12-May-18 | 21-Mar-18 | 26-Mar-18 | -36 | 0% | [Gantt Bar: 08-May-18 to 12-May-18] | | | | | | | | | | | | | | | | | | | | | | | | |
| E13D-C3160 | E13D Dolphin - Marine Pile Cap - CJ preparation & Curing | 3 | 14-May-18 | 3 | 16-May-18 | 27-Mar-18 | 29-Mar-18 | -36 | 0% | [Gantt Bar: 14-May-18 to 16-May-18] | | | | | | | | | | | | | | | | | | | | | | | | |
| Viaduct F - Bridge F2 | | | | | | | | | | | | | | | | | | | | | | | | | | | | | | | | | | |
| Pier F8 (F2f) | | | | | | | | | | | | | | | | | | | | | | | | | | | | | | | | | | |
| Pier Head Segment | | | | | | | | | | | | | | | | | | | | | | | | | | | | | | | | | | |
| F08-C5110 | F8 Pier Head - Scaffold, Temp Works | 18 | 03-Mar-18 A | 3 | 23-Mar-18 | 19-Oct-17 | 21-Oct-17 | -124 | 85% | [Gantt Bar: 03-Mar-18 to 23-Mar-18] | | | | | | | | | | | | | | | | | | | | | | | | |
| F08-C5210 | F8 Pier Head - Erect PH Segment (1 nr) | 2 | 24-Mar-18 | 2 | 26-Mar-18 | 23-Oct-17 | 24-Oct-17 | -124 | 0% | [Gantt Bar: 24-Mar-18 to 26-Mar-18] | | | | | | | | | | | | | | | | | | | | | | | | |
| F08-C5310 | F8 Pier Head - Construct Diaphragm (2nd Cast) in PHS | 36 | 27-Mar-18 | 36 | 12-May-18 | 25-Oct-17 | 06-Dec-17 | -124 | 0% | [Gantt Bar: 27-Mar-18 to 12-May-18] | | | | | | | | | | | | | | | | | | | | | | | | |
| F08-C5410 | F8 Pier Head - Curing, Remove Temp Works | 5 | 14-May-18 | 5 | 18-May-18 | 07-Dec-17 | 12-Dec-17 | -124 | 0% | [Gantt Bar: 14-May-18 to 18-May-18] | | | | | | | | | | | | | | | | | | | | | | | | |
| Viaduct F - Bridge F3 | | | | | | | | | | | | | | | | | | | | | | | | | | | | | | | | | | |
| Pier F10 (F3c) | | | | | | | | | | | | | | | | | | | | | | | | | | | | | | | | | | |
| Pier Head Segment | | | | | | | | | | | | | | | | | | | | | | | | | | | | | | | | | | |
| F10-C5110 | F10 Pier Head - Scaffold, Temp Works | 30 | 12-Sep-17 A | 28 | 26-Apr-18 | 06-Sep-17 | 10-Oct-17 | -159 | 50% | [Gantt Bar: 12-Sep-17 to 26-Apr-18] | | | | | | | | | | | | | | | | | | | | | | | | |
| F10-C5210 | F10 Pier Head - Erect PH Segment (2 nr) | 2 | 05-May-18 | 2 | 07-May-18 | 18-Oct-17 | 19-Oct-17 | -159 | 0% | [Gantt Bar: 05-May-18 to 07-May-18] | | | | | | | | | | | | | | | | | | | | | | | | |
| F10-C5310 | F10 Pier Head - Construct Diaphragm (2nd Cast) in PHS | 56 | 08-May-18 | 56 | 14-Jul-18 | 20-Oct-17 | 27-Dec-17 | -159 | 0% | [Gantt Bar: 08-May-18 to 14-Jul-18] | | | | | | | | | | | | | | | | | | | | | | | | |
| Pier F11 (F3b) | | | | | | | | | | | | | | | | | | | | | | | | | | | | | | | | | | |
| Pier Head Segment | | | | | | | | | | | | | | | | | | | | | | | | | | | | | | | | | | |
| F11-C5110 | F11 Pier Head - Scaffold, Temp Works | 33 | 15-Mar-18 A | 28 | 26-Apr-18 | 04-Dec-17 | 08-Jan-18 | -86 | 50% | [Gantt Bar: 15-Mar-18 to 26-Apr-18] | | | | | | | | | | | | | | | | | | | | | | | | |
| F11-C5210 | F11 Pier Head - Erect PH Segment (2 nr) | 2 | 08-May-18 | 2 | 09-May-18 | 09-Jan-18 | 10-Jan-18 | -94 | 0% | [Gantt Bar: 08-May-18 to 09-May-18] | | | | | | | | | | | | | | | | | | | | | | | | |
| F11-C5310 | F11 Pier Head - Construct Diaphragm (2nd Cast) in PHS | 48 | 10-May-18 | 48 | 07-Jul-18 | 11-Jan-18 | 10-Mar-18 | -94 | 0% | [Gantt Bar: 10-May-18 to 07-Jul-18] | | | | | | | | | | | | | | | | | | | | | | | | |
| Pier F12 (F3a) | | | | | | | | | | | | | | | | | | | | | | | | | | | | | | | | | | |
| Pier Head Segment | | | | | | | | | | | | | | | | | | | | | | | | | | | | | | | | | | |
| F12-C5110 | F12 Pier Head - Scaffold, Temp Works | 17 | 20-Feb-18 A | 0 | 10-Mar-18 A | | | | 100% | [Gantt Bar: 20-Feb-18 to 10-Mar-18] | | | | | | | | | | | | | | | | | | | | | | | | |
| F12-C5210 | F12 Pier Head - Erect PH Segment (2 nr) | 2 | 12-Mar-18 A | 0 | 14-Mar-18 A | | | | 100% | [Gantt Bar: 12-Mar-18 to 14-Mar-18] | | | | | | | | | | | | | | | | | | | | | | | | |
| F12-C5310 | F12 Pier Head - Construct Diaphragm (2nd Cast) in PHS | 41 | 21-Mar-18 | 41 | 12-May-18 | 05-Feb-18 | 27-Mar-18 | -35 | 0% | [Gantt Bar: 21-Mar-18 to 12-May-18] | | | | | | | | | | | | | | | | | | | | | | | | |
| F12-C5410 | F12 Pier Head - Curing, Remove Temp Works | 5 | 14-May-18 | 5 | 18-May-18 | 28-Mar-18 | 06-Apr-18 | -35 | 0% | [Gantt Bar: 14-May-18 to 18-May-18] | | | | | | | | | | | | | | | | | | | | | | | | |

■ Actual Work
■ Planned Bar
■ Critical Bar
◆ Milestone

Project ID: TMCLK-DWPK-M58
 Layout: J3518-DWP-3MRP Submission - M58
 Filter: TASK filters: 3-Month Lookahead, No CC
 Milestones, No Level of Effort.

Tuen Mun - Chek Lap Kok Link - Southern Connection
3-Month Rolling Programme (Page 2 of 7 Pages)
(Progress as of 21-Mar-18)

| Date | Revision | Checked | Approved |
|-----------|----------|---------|----------|
| 31-Jan-18 | | PKN | HF |
| 27-Feb-18 | | PKN | HF |
| 03-Apr-18 | | PKN | HF |

DWG. No.:
J3518/GCL/PGM/3MRP-M58

| Activity ID | Activity Name | Orig. Durn. | Act. Start / FC Early Start | Rem. Durn. | Act. Finish / FC Early Finish | Late Start | Late Finish | Total Float | Physical % Complete | 2018 | | | | | | | | | | | | | | | | | | | |
|--|--|-------------|-----------------------------|------------|-------------------------------|------------|-------------|-------------|---------------------|-------------------|----|----|----|-------|----|----|----|-----|----|----|----|------|----|----|----|----|----|----|----|
| | | | | | | | | | | March | | | | April | | | | May | | | | June | | | | | | | |
| | | | | | | | | | | | 19 | 26 | 05 | 12 | 19 | 26 | 02 | 09 | 16 | 23 | 30 | 07 | 14 | 21 | 28 | 04 | 11 | 18 | 25 |
| Pier F16 (F5a/F4a) | | | | | | | | | | | | | | | | | | | | | | | | | | | | | |
| Pier Head Segment | | | | | | | | | | | | | | | | | | | | | | | | | | | | | |
| F16-C5310 | F16 Pier Head - Construct In-Situ PH Segment & Span Segments | 32 | 27-Dec-17 A | 0 | 20-Mar-18 A | | | | 100% | [Actual Work Bar] | | | | | | | | | | | | | | | | | | | |
| F16-C5410 | F16 Pier Head - Curing, Remove Formwork | 18 | 21-Mar-18 | 18 | 14-Apr-18 | 08-Nov-17 | 28-Nov-17 | -108 | 0% | [Critical Bar] | | | | | | | | | | | | | | | | | | | |
| Pier F17 (F4b) | | | | | | | | | | | | | | | | | | | | | | | | | | | | | |
| Pier Head Segment | | | | | | | | | | | | | | | | | | | | | | | | | | | | | |
| F17-C5110 | F17 Pier Head - Scaffold, Temp Works | 17 | 08-Feb-18 A | 0 | 02-Mar-18 A | | | | 100% | [Actual Work Bar] | | | | | | | | | | | | | | | | | | | |
| F17-C5210 | F17 Pier Head - Erect PH Segment (1 nr) | 2 | 03-Mar-18 A | 0 | 03-Mar-18 A | | | | 100% | [Actual Work Bar] | | | | | | | | | | | | | | | | | | | |
| F17-C5310 | F17 Pier Head - Construct Diaphragm (2nd Cast) in PHS | 20 | 21-Mar-18 | 20 | 17-Apr-18 | 20-Jan-18 | 12-Feb-18 | -48 | 0% | [Critical Bar] | | | | | | | | | | | | | | | | | | | |
| F17-C5410 | F17 Pier Head - Curing, Remove Temp Works | 5 | 18-Apr-18 | 5 | 23-Apr-18 | 13-Feb-18 | 21-Feb-18 | -48 | 0% | [Critical Bar] | | | | | | | | | | | | | | | | | | | |
| Pier F18 (F4c) | | | | | | | | | | | | | | | | | | | | | | | | | | | | | |
| Pier Head Segment | | | | | | | | | | | | | | | | | | | | | | | | | | | | | |
| F18-C5110 | F18 Pier Head - Scaffold, Temp Works | 20 | 21-Feb-18 A | 1 | 21-Mar-18 | 16-Jan-18 | 16-Jan-18 | -52 | 99% | [Actual Work Bar] | | | | | | | | | | | | | | | | | | | |
| F18-C5210 | F18 Pier Head - Erect PH Segment (1 nr) | 2 | 22-Mar-18 | 2 | 23-Mar-18 | 17-Jan-18 | 18-Jan-18 | -52 | 0% | [Critical Bar] | | | | | | | | | | | | | | | | | | | |
| F18-C5310 | F18 Pier Head - Construct Diaphragm (2nd Cast) in PHS | 20 | 24-Mar-18 | 20 | 20-Apr-18 | 19-Jan-18 | 10-Feb-18 | -52 | 0% | [Critical Bar] | | | | | | | | | | | | | | | | | | | |
| F18-C5410 | F18 Pier Head - Curing, Remove Temp Works | 5 | 21-Apr-18 | 5 | 26-Apr-18 | 12-Feb-18 | 20-Feb-18 | -52 | 0% | [Critical Bar] | | | | | | | | | | | | | | | | | | | |
| Viaduct F - Bridge F5 | | | | | | | | | | | | | | | | | | | | | | | | | | | | | |
| Pier F14 (F5c) | | | | | | | | | | | | | | | | | | | | | | | | | | | | | |
| Pier Head Segment | | | | | | | | | | | | | | | | | | | | | | | | | | | | | |
| F14-C5410 | F14 Pier Head - Curing, Remove Temp Works | 5 | 18-Jan-18 A | 5 | 26-Mar-18 | 13-Mar-18 | 17-Mar-18 | -7 | 90% | [Actual Work Bar] | | | | | | | | | | | | | | | | | | | |
| Pier F15 (F5b) | | | | | | | | | | | | | | | | | | | | | | | | | | | | | |
| Pier Head Segment | | | | | | | | | | | | | | | | | | | | | | | | | | | | | |
| F15-C5110 | F15 Pier Head - Scaffold, Temp Works | 20 | 10-Feb-18 A | 0 | 08-Mar-18 A | | | | 100% | [Actual Work Bar] | | | | | | | | | | | | | | | | | | | |
| F15-C5210 | F15 Pier Head - Erect PH Segment (2 nr) | 2 | 09-Mar-18 A | 0 | 09-Mar-18 A | | | | 100% | [Actual Work Bar] | | | | | | | | | | | | | | | | | | | |
| F15-C5310 | F15 Pier Head - Construct Diaphragm (2nd Cast) in PHS | 20 | 09-Mar-18 A | 0 | 09-Mar-18 A | | | | 100% | [Actual Work Bar] | | | | | | | | | | | | | | | | | | | |
| F15-C5410 | F15 Pier Head - Curing, Remove Temp Works | 5 | 09-Mar-18 A | 0 | 09-Mar-18 A | | | | 100% | [Actual Work Bar] | | | | | | | | | | | | | | | | | | | |
| Ramp F | | | | | | | | | | | | | | | | | | | | | | | | | | | | | |
| Abutment & Approach Ramp F | | | | | | | | | | | | | | | | | | | | | | | | | | | | | |
| Ramp Structure | | | | | | | | | | | | | | | | | | | | | | | | | | | | | |
| ARF-C6110 | Ramp F - Strip Beams | 24 | 31-Oct-17 A | 24 | 21-Apr-18 | 18-Aug-17 | 14-Sep-17 | -175 | 75% | [Actual Work Bar] | | | | | | | | | | | | | | | | | | | |
| ARF-C6120 | Ramp F - Ground Beams | 54 | 31-Oct-17 A | 32 | 02-May-18 | 09-Aug-17 | 14-Sep-17 | -183 | 80% | [Actual Work Bar] | | | | | | | | | | | | | | | | | | | |
| ARF-C6130 | Ramp F - RC Columns | 54 | 21-Mar-18 | 54 | 29-May-18 | 09-Aug-17 | 12-Oct-17 | -183 | 0% | [Critical Bar] | | | | | | | | | | | | | | | | | | | |
| ARF-C6140 | Ramp F - RC Beams | 54 | 10-May-18 | 54 | 14-Jul-18 | 22-Sep-17 | 27-Nov-17 | -183 | 0% | [Critical Bar] | | | | | | | | | | | | | | | | | | | |
| Superstructure & Associated Works | | | | | | | | | | | | | | | | | | | | | | | | | | | | | |
| Viaduct A | | | | | | | | | | | | | | | | | | | | | | | | | | | | | |
| Bridge A2 | | | | | | | | | | | | | | | | | | | | | | | | | | | | | |
| Deck Finishes, E&M and Roadworks | | | | | | | | | | | | | | | | | | | | | | | | | | | | | |
| VA2-C7710 | Viaduct A2 - Parapet Panels | 118 | 13-Feb-18 A | 80 | 29-Jun-18 | 05-Aug-16 | 09-Nov-16 | -482 | 7% | [Actual Work Bar] | | | | | | | | | | | | | | | | | | | |
| VA2-C7720 | Viaduct A2 - Gantry & TCSS Provisions (KD5) | 36 | 15-Jun-18 | 36 | 28-Jul-18 | 27-Oct-16 | 07-Dec-16 | -482 | 0% | [Critical Bar] | | | | | | | | | | | | | | | | | | | |
| Bridge A1 | | | | | | | | | | | | | | | | | | | | | | | | | | | | | |
| Deck Span Segment | | | | | | | | | | | | | | | | | | | | | | | | | | | | | |
| VA1-C6510 | Viaduct A1 - Final Stitch & Stressing to Span | 14 | 14-Mar-18 A | 8 | 29-Mar-18 | 07-Aug-20 | 15-Aug-20 | 704 | 10% | [Planned Bar] | | | | | | | | | | | | | | | | | | | |
| Deck Finishes, E&M and Roadworks | | | | | | | | | | | | | | | | | | | | | | | | | | | | | |
| VA1-C7710 | Viaduct A1 - Parapet Panels | 220 | 10-Feb-18 A | 155 | 27-Sep-18 | 21-May-16 | 23-Nov-16 | -545 | 40% | [Actual Work Bar] | | | | | | | | | | | | | | | | | | | |
| Viaduct B | | | | | | | | | | | | | | | | | | | | | | | | | | | | | |
| Bridge B3 | | | | | | | | | | | | | | | | | | | | | | | | | | | | | |
| Deck Finishes, E&M and Roadworks | | | | | | | | | | | | | | | | | | | | | | | | | | | | | |
| VB3-C7720 | Viaduct B3 - Gantry & TCSS Provisions (KD5) | 36 | 21-Mar-18 | 36 | 07-May-18 | 27-Oct-16 | 07-Dec-16 | -414 | 0% | [Critical Bar] | | | | | | | | | | | | | | | | | | | |
| Bridge B2 | | | | | | | | | | | | | | | | | | | | | | | | | | | | | |
| Deck Finishes, E&M and Roadworks | | | | | | | | | | | | | | | | | | | | | | | | | | | | | |
| VB2-C7710 | Viaduct B2 - Parapet Panels | 60 | 15-Aug-17 A | 110 | 04-Aug-18 | 15-Jul-16 | 23-Nov-16 | -500 | 70% | [Actual Work Bar] | | | | | | | | | | | | | | | | | | | |
| VB2-C7715 | Viaduct B2 - Parapet Panels (with MTR access) | 52 | 10-May-18 | 52 | 12-Jul-18 | 23-Jul-16 | 22-Sep-16 | -531 | 0% | [Critical Bar] | | | | | | | | | | | | | | | | | | | |
| Bridge B1 | | | | | | | | | | | | | | | | | | | | | | | | | | | | | |
| Deck Finishes, E&M and Roadworks | | | | | | | | | | | | | | | | | | | | | | | | | | | | | |
| VB1-C7710 | Viaduct B1 - Parapet Panels | 83 | 06-Nov-17 A | 40 | 11-May-18 | 29-Sep-16 | 16-Nov-16 | -436 | 60% | [Actual Work Bar] | | | | | | | | | | | | | | | | | | | |
| VB1-C7720 | Viaduct B1 - Gantry & TCSS Provisions (KD5) | 36 | 20-Apr-18 | 36 | 02-Jun-18 | 27-Oct-16 | 07-Dec-16 | -436 | 0% | [Critical Bar] | | | | | | | | | | | | | | | | | | | |
| VB1-C7810 | Viaduct B1 - Drainage, Fire Main & E&M Services | 60 | 27-Apr-18 | 60 | 10-Jul-18 | 11-Jan-17 | 24-Mar-17 | -380 | 0% | [Critical Bar] | | | | | | | | | | | | | | | | | | | |
| VB1-C7820 | Viaduct B1 - Railings, Light Poles, Signs & Street Furniture | 30 | 04-Jun-18 | 30 | 10-Jul-18 | 11-Feb-17 | 17-Mar-17 | -386 | 0% | [Critical Bar] | | | | | | | | | | | | | | | | | | | |
| Viaduct C | | | | | | | | | | | | | | | | | | | | | | | | | | | | | |

■ Actual Work
■ Planned Bar
■ Critical Bar
◆ Milestone

Project ID: TMCLK-DWPK-M58
 Layout: J3518-DWP-3MRP Submission - M58
 Filter: TASK filters: 3-Month Lookahead, No CC
 Milestones, No Level of Effort.

Tuen Mun - Chek Lap Kok Link - Southern Connection
3-Month Rolling Programme (Page 3 of 7 Pages)
(Progress as of 21-Mar-18)

| Date | Revision | Checked | Approved |
|-----------|----------|---------|----------|
| 31-Jan-18 | | PKN | HF |
| 27-Feb-18 | | PKN | HF |
| 03-Apr-18 | | PKN | HF |

DWG. No.:
J3518/GCL/PGM/3MRP-M58

| Activity ID | Activity Name | Orig. Durn. | Act. Start / FC Early Start | Rem. Durn. | Act. Finish / FC Early Finish | Late Start | Late Finish | Total Float | Physical % Complete | 2018 | | | | | | | | | | | | | | | | | | |
|---|---|-------------|-----------------------------|------------|-------------------------------|------------|-------------|-------------|---------------------|--|----|----|----|-------|----|----|----|-----|----|----|----|------|----|----|----|----|----|----|
| | | | | | | | | | | March | | | | April | | | | May | | | | June | | | | | | |
| | | | | | | | | | | | 19 | 26 | 05 | 12 | 19 | 26 | 02 | 09 | 16 | 23 | 30 | 07 | 14 | 21 | 28 | 04 | 11 | 18 |
| Bridge C4 | | | | | | | | | | | | | | | | | | | | | | | | | | | | |
| Deck Finishes, E&M and Roadworks | | | | | | | | | | | | | | | | | | | | | | | | | | | | |
| VC4-C7720 | Viaduct C4 - Gantry & TCSS Provisions (KD4) | 36 | 01-Feb-18 A | 3 | 23-Mar-18 | 06-Aug-16 | 09-Aug-16 | -481 | 100% | [Gantt bar: 01-Feb-18 to 23-Mar-18, 100% complete] | | | | | | | | | | | | | | | | | | |
| VC4-C7810 | Viaduct C4 - Drainage, Fire Main & E&M Services | 60 | 21-Mar-18 | 60 | 05-Jun-18 | 13-Jul-16 | 21-Sep-16 | -502 | 0% | [Gantt bar: 21-Mar-18 to 21-Sep-16, 0% complete] | | | | | | | | | | | | | | | | | | |
| VC4-C7820 | Viaduct C4 - Railings, Light Poles, Signs & Street Furniture | 30 | 24-Mar-18 | 30 | 03-May-18 | 10-Aug-16 | 13-Sep-16 | -481 | 0% | [Gantt bar: 24-Mar-18 to 13-Sep-16, 0% complete] | | | | | | | | | | | | | | | | | | |
| VC4-C7830 | Viaduct C4 - Deck Paving & Roadmarking (KD13) | 18 | 30-May-18 | 18 | 20-Jun-18 | 14-Sep-16 | 06-Oct-16 | -502 | 0% | [Gantt bar: 30-May-18 to 06-Oct-16, 0% complete] | | | | | | | | | | | | | | | | | | |
| Bridge C3 | | | | | | | | | | | | | | | | | | | | | | | | | | | | |
| Deck Finishes, E&M and Roadworks | | | | | | | | | | | | | | | | | | | | | | | | | | | | |
| VC3-C7710 | Viaduct C3 - Parapet Panels (with MTR access) | 60 | 01-Sep-17 A | 20 | 17-Apr-18 | 04-Jul-16 | 26-Jul-16 | -510 | 75% | [Gantt bar: 01-Sep-17 to 26-Jul-16, 75% complete] | | | | | | | | | | | | | | | | | | |
| VC3-C7720 | Viaduct C3 - Gantry & TCSS Provisions (KD4) | 36 | 21-Mar-18 | 36 | 07-May-18 | 28-Jun-16 | 09-Aug-16 | -514 | 0% | [Gantt bar: 21-Mar-18 to 09-Aug-16, 0% complete] | | | | | | | | | | | | | | | | | | |
| VC3-C7810 | Viaduct C3 - Drainage, Fire Main & E&M Services | 48 | 23-Apr-18 | 48 | 20-Jun-18 | 27-Jul-16 | 21-Sep-16 | -514 | 0% | [Gantt bar: 23-Apr-18 to 21-Sep-16, 0% complete] | | | | | | | | | | | | | | | | | | |
| VC3-C7820 | Viaduct C3 - Railings, Light Poles, Signs & Street Furniture | 30 | 08-May-18 | 30 | 12-Jun-18 | 10-Aug-16 | 13-Sep-16 | -514 | 0% | [Gantt bar: 08-May-18 to 13-Sep-16, 0% complete] | | | | | | | | | | | | | | | | | | |
| VC3-C7830 | Viaduct C3 - Deck Paving & Roadmarking (KD13) | 18 | 13-Jun-18 | 18 | 05-Jul-18 | 14-Sep-16 | 06-Oct-16 | -514 | 0% | [Gantt bar: 13-Jun-18 to 06-Oct-16, 0% complete] | | | | | | | | | | | | | | | | | | |
| Bridge C2 | | | | | | | | | | | | | | | | | | | | | | | | | | | | |
| Deck Finishes, E&M and Roadworks | | | | | | | | | | | | | | | | | | | | | | | | | | | | |
| VC2-C7710 | Viaduct C2 - Parapet Panels | 48 | 13-Jun-17 A | 7 | 28-Mar-18 | 02-Aug-16 | 09-Aug-16 | -485 | 95% | [Gantt bar: 13-Jun-17 to 09-Aug-16, 95% complete] | | | | | | | | | | | | | | | | | | |
| VC2-C7720 | Viaduct C2 - Gantry & TCSS Provisions (KD4) | 36 | 10-Feb-18 A | 20 | 17-Apr-18 | 18-Jul-16 | 09-Aug-16 | -498 | 0% | [Gantt bar: 10-Feb-18 to 09-Aug-16, 0% complete] | | | | | | | | | | | | | | | | | | |
| VC2-C7810 | Viaduct C2 - Drainage, Fire Main & E&M Services | 60 | 22-Jan-18 A | 45 | 17-May-18 | 30-Jul-16 | 21-Sep-16 | -487 | 20% | [Gantt bar: 22-Jan-18 to 21-Sep-16, 20% complete] | | | | | | | | | | | | | | | | | | |
| VC2-C7820 | Viaduct C2 - Railings, Light Poles, Signs & Street Furniture | 30 | 18-Apr-18 | 30 | 24-May-18 | 10-Aug-16 | 13-Sep-16 | -498 | 0% | [Gantt bar: 18-Apr-18 to 13-Sep-16, 0% complete] | | | | | | | | | | | | | | | | | | |
| VC2-C7830 | Viaduct C2 - Deck Paving & Roadmarking (KD13) | 18 | 25-May-18 | 18 | 14-Jun-18 | 14-Sep-16 | 06-Oct-16 | -498 | 0% | [Gantt bar: 25-May-18 to 06-Oct-16, 0% complete] | | | | | | | | | | | | | | | | | | |
| Bridge C1 | | | | | | | | | | | | | | | | | | | | | | | | | | | | |
| Deck Finishes, E&M and Roadworks | | | | | | | | | | | | | | | | | | | | | | | | | | | | |
| VC1-C7810 | Viaduct C1 - Drainage, Fire Main & E&M Services | 60 | 22-Jan-18 A | 45 | 17-May-18 | 30-Jul-16 | 21-Sep-16 | -487 | 30% | [Gantt bar: 22-Jan-18 to 21-Sep-16, 30% complete] | | | | | | | | | | | | | | | | | | |
| VC1-C7820 | Viaduct C1 - Railings, Light Poles, Signs & Street Furniture | 30 | 01-Mar-18 A | 20 | 17-Apr-18 | 22-Aug-16 | 13-Sep-16 | -468 | 0% | [Gantt bar: 01-Mar-18 to 13-Sep-16, 0% complete] | | | | | | | | | | | | | | | | | | |
| VC1-C7830 | Viaduct C1 - Deck Paving & Roadmarking (KD13) | 18 | 11-May-18 | 18 | 01-Jun-18 | 14-Sep-16 | 06-Oct-16 | -487 | 0% | [Gantt bar: 11-May-18 to 06-Oct-16, 0% complete] | | | | | | | | | | | | | | | | | | |
| Viaduct D | | | | | | | | | | | | | | | | | | | | | | | | | | | | |
| Bridge D3 | | | | | | | | | | | | | | | | | | | | | | | | | | | | |
| Deck Finishes, E&M and Roadworks | | | | | | | | | | | | | | | | | | | | | | | | | | | | |
| VD3-C7810 | Viaduct D3 - Drainage, Fire Main & E&M Services | 60 | 21-Mar-18 | 60 | 05-Jun-18 | 13-Jul-16 | 21-Sep-16 | -502 | 0% | [Gantt bar: 21-Mar-18 to 21-Sep-16, 0% complete] | | | | | | | | | | | | | | | | | | |
| VD3-C7820 | Viaduct D3 - Railings, Light Poles, Signs & Street Furniture | 30 | 01-Mar-18 A | 20 | 17-Apr-18 | 22-Aug-16 | 13-Sep-16 | -468 | 15% | [Gantt bar: 01-Mar-18 to 13-Sep-16, 15% complete] | | | | | | | | | | | | | | | | | | |
| VD3-C7830 | Viaduct D3 - Deck Paving & Roadmarking (KD14) | 18 | 30-May-18 | 18 | 20-Jun-18 | 14-Sep-16 | 06-Oct-16 | -502 | 0% | [Gantt bar: 30-May-18 to 06-Oct-16, 0% complete] | | | | | | | | | | | | | | | | | | |
| Bridge D2 | | | | | | | | | | | | | | | | | | | | | | | | | | | | |
| Deck Finishes, E&M and Roadworks | | | | | | | | | | | | | | | | | | | | | | | | | | | | |
| VD2-C7715 | Viaduct D2 - Parapet Panels (with MTR access) | 74 | 21-Feb-18 A | 38 | 09-May-18 | 07-Jun-16 | 22-Jul-16 | -531 | 90% | [Gantt bar: 21-Feb-18 to 22-Jul-16, 90% complete] | | | | | | | | | | | | | | | | | | |
| VD2-C7720 | Viaduct D2 - Gantry & TCSS Provisions (KD4) | 36 | 12-Feb-18 A | 36 | 09-May-18 | 28-Jun-16 | 09-Aug-16 | -516 | 50% | [Gantt bar: 12-Feb-18 to 09-Aug-16, 50% complete] | | | | | | | | | | | | | | | | | | |
| VD2-C7810 | Viaduct D2 - Drainage, Fire Main & E&M Services | 48 | 22-Jan-18 A | 36 | 24-May-18 | 10-Aug-16 | 21-Sep-16 | -492 | 40% | [Gantt bar: 22-Jan-18 to 21-Sep-16, 40% complete] | | | | | | | | | | | | | | | | | | |
| VD2-C7820 | Viaduct D2 - Railings, Light Poles, Signs & Street Furniture | 30 | 10-May-18 | 30 | 14-Jun-18 | 10-Aug-16 | 13-Sep-16 | -516 | 0% | [Gantt bar: 10-May-18 to 13-Sep-16, 0% complete] | | | | | | | | | | | | | | | | | | |
| VD2-C7830 | Viaduct D2 - Deck Paving & Roadmarking (KD14) | 18 | 15-Jun-18 | 18 | 07-Jul-18 | 14-Sep-16 | 06-Oct-16 | -516 | 0% | [Gantt bar: 15-Jun-18 to 06-Oct-16, 0% complete] | | | | | | | | | | | | | | | | | | |
| Bridge D1 | | | | | | | | | | | | | | | | | | | | | | | | | | | | |
| Deck Finishes, E&M and Roadworks | | | | | | | | | | | | | | | | | | | | | | | | | | | | |
| VD1-C7720 | Viaduct D1 - Gantry & TCSS Provisions (KD4) | 36 | 13-Nov-17 A | 12 | 07-Apr-18 | 27-Jul-16 | 09-Aug-16 | -490 | 70% | [Gantt bar: 13-Nov-17 to 09-Aug-16, 70% complete] | | | | | | | | | | | | | | | | | | |
| VD1-C7810 | Viaduct D1 - Drainage, Fire Main & E&M Services | 60 | 22-Jan-18 A | 36 | 07-May-18 | 10-Aug-16 | 21-Sep-16 | -478 | 30% | [Gantt bar: 22-Jan-18 to 21-Sep-16, 30% complete] | | | | | | | | | | | | | | | | | | |
| VD1-C7820 | Viaduct D1 - Railings, Light Poles, Signs & Street Furniture | 30 | 09-Apr-18 | 30 | 14-May-18 | 10-Aug-16 | 13-Sep-16 | -490 | 0% | [Gantt bar: 09-Apr-18 to 13-Sep-16, 0% complete] | | | | | | | | | | | | | | | | | | |
| VD1-C7830 | Viaduct D1 - Deck Paving & Roadmarking (KD14) | 18 | 15-May-18 | 18 | 05-Jun-18 | 14-Sep-16 | 06-Oct-16 | -490 | 0% | [Gantt bar: 15-May-18 to 06-Oct-16, 0% complete] | | | | | | | | | | | | | | | | | | |
| Viaduct E | | | | | | | | | | | | | | | | | | | | | | | | | | | | |
| Bridge E1 | | | | | | | | | | | | | | | | | | | | | | | | | | | | |
| Deck Finishes, E&M and Roadworks | | | | | | | | | | | | | | | | | | | | | | | | | | | | |
| VE1AB-C77 | Viaduct E1A/B - Parapet Panels | 48 | 27-Nov-17 A | 40 | 11-May-18 | 26-May-16 | 13-Jul-16 | -541 | 90% | [Gantt bar: 27-Nov-17 to 13-Jul-16, 90% complete] | | | | | | | | | | | | | | | | | | |
| VE1AB-C77 | Viaduct E1A/B - Gantry & TCSS Provisions (KD4) | 36 | 27-Apr-18 | 36 | 09-Jun-18 | 29-Jun-16 | 10-Aug-16 | -541 | 0% | [Gantt bar: 27-Apr-18 to 10-Aug-16, 0% complete] | | | | | | | | | | | | | | | | | | |
| VE1AB-C78 | Viaduct E1A/B - Drainage, Fire Main & E&M Services | 60 | 12-May-18 | 60 | 24-Jul-18 | 14-Jul-16 | 22-Sep-16 | -541 | 0% | [Gantt bar: 12-May-18 to 22-Sep-16, 0% complete] | | | | | | | | | | | | | | | | | | |
| VE1AB-C78 | Viaduct E1A/B - Railings, Light Poles, Signs & Street Furniture | 30 | 11-Jun-18 | 30 | 17-Jul-18 | 11-Aug-16 | 14-Sep-16 | -541 | 0% | [Gantt bar: 11-Jun-18 to 14-Sep-16, 0% complete] | | | | | | | | | | | | | | | | | | |
| VE1CD-C77 | Viaduct E1C/D - Parapet Panels | 56 | 21-Dec-17 A | 40 | 11-May-18 | 24-Jun-16 | 10-Aug-16 | -517 | 0% | [Gantt bar: 21-Dec-17 to 10-Aug-16, 0% complete] | | | | | | | | | | | | | | | | | | |
| VE1CD-C77 | Viaduct E1C/D - Gantry & TCSS Provisions (KD4) | 36 | 27-Apr-18 | 36 | 09-Jun-18 | 28-Jul-16 | 07-Sep-16 | -517 | 0% | [Gantt bar: 27-Apr-18 to 07-Sep-16, 0% complete] | | | | | | | | | | | | | | | | | | |
| VE1CD-C78 | Viaduct E1C/D - Drainage, Fire Main & E&M Services | 42 | 23-May-18 | 42 | 12-Jul-18 | 01-Sep-16 | 22-Oct-16 | -507 | 0% | [Gantt bar: 23-May-18 to 22-Oct-16, 0% complete] | | | | | | | | | | | | | | | | | | |
| VE1CD-C78 | Viaduct E1C/D - Railings, Light Poles, Signs & Street Furniture | 30 | 19-May-18 | 30 | 25-Jun-18 | 18-Aug-16 | 22-Sep-16 | -517 | 0% | [Gantt bar: 19-May-18 to 22-Sep-16, 0% complete] | | | | | | | | | | | | | | | | | | |
| VE1CD-C78 | Viaduct E1C/D - Deck Paving & Roadmarking (KD10) | 18 | 19-Jun-18 | 18 | 10-Jul-18 | 15-Sep-16 | 07-Oct-16 | -517 | 0% | [Gantt bar: 19-Jun-18 to 07-Oct-16, 0% complete] | | | | | | | | | | | | | | | | | | |
| Bridge E2 | | | | | | | | | | | | | | | | | | | | | | | | | | | | |
| Deck Span Segment | | | | | | | | | | | | | | | | | | | | | | | | | | | | |
| E08A-C6530 | E8A - Quarter Span (1 nr) with stitch - TLB | 10 | 09-Feb-18 A | 0 | 23-Feb-18 A | | | | 100% | [Gantt bar: 09-Feb-18 to 23-Feb-18, 100% complete] | | | | | | | | | | | | | | | | | | |
| E08A-C6610 | E8A-E9A: Install Bearing & Stress Continuity Tendons | 20 | 23-Feb-18 A | 0 | 03-Mar-18 A | | | | 100% | [Gantt bar: 23-Feb-18 to 03-Mar-18, 100% complete] | | | | | | | | | | | | | | | | | | |
| E08A-C6620 | E8B-E9B: Install Bearing & Stress Continuity Tendons | 20 | 01-Mar-18 A | 0 | 12-Mar-18 A | | | | 100% | [Gantt bar: 01-Mar-18 to 12-Mar-18, 100% complete] | | | | | | | | | | | | | | | | | | |

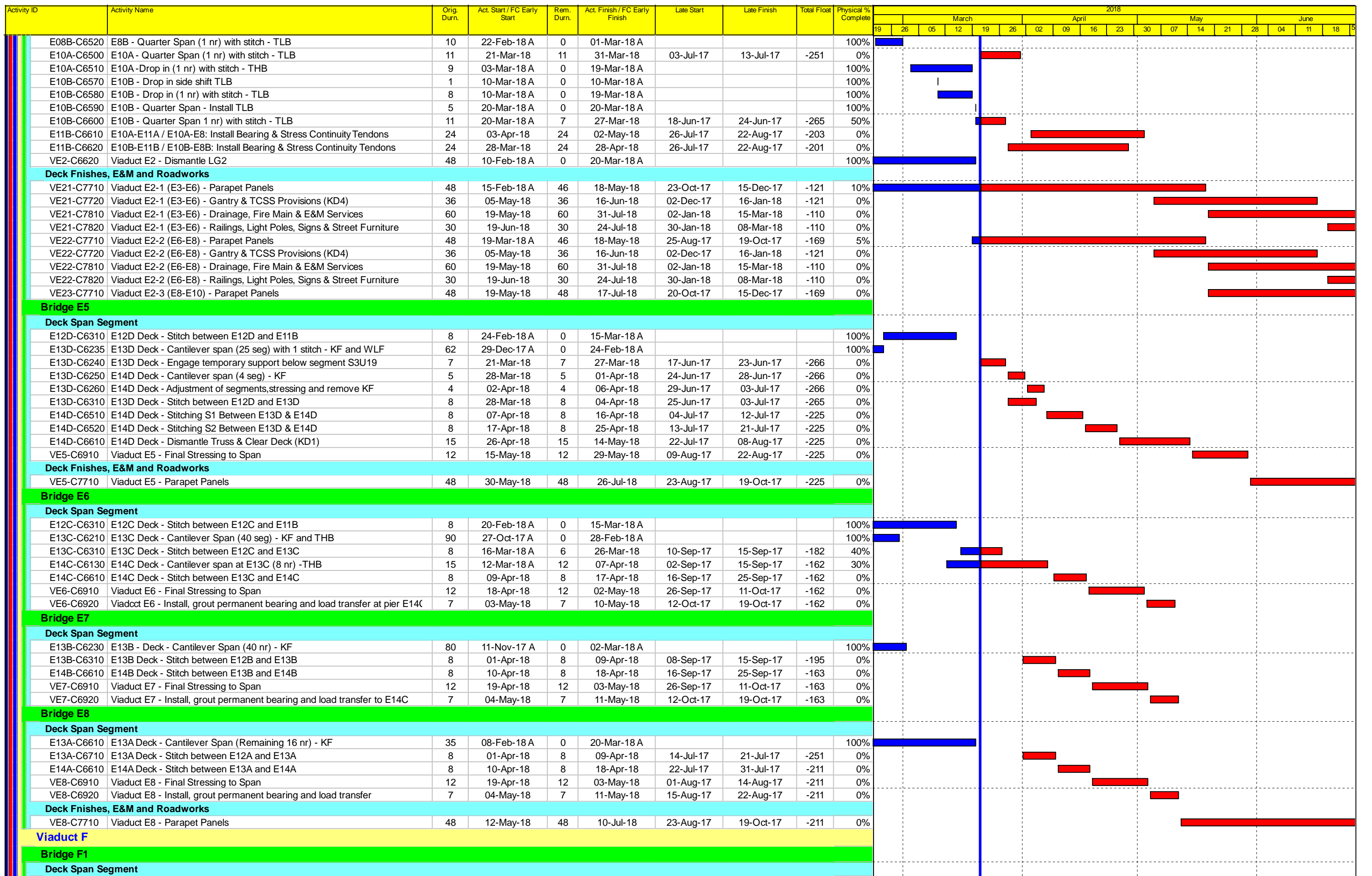
■ Actual Work
■ Planned Bar
■ Critical Bar
◆ Milestone

Project ID: TMCLK-DWPK-M58
 Layout: J3518-DWP-3MRP Submission - M58
 Filter: TASK filters: 3-Month Lookahead, No CC
 Milestones, No Level of Effort.

Tuen Mun - Chek Lap Kok Link - Southern Connection
3-Month Rolling Programme (Page 4 of 7 Pages)
(Progress as of 21-Mar-18)

| Date | Revision | Checked | Approved |
|-----------|----------|---------|----------|
| 31-Jan-18 | | PKN | HF |
| 27-Feb-18 | | PKN | HF |
| 03-Apr-18 | | PKN | HF |

DWG. No.:
J3518/GCL/PGM/3MRP-M58



| <ul style="list-style-type: none"> Actual Work Planned Bar Critical Bar Milestone | <p>Project ID: TMCLK-DWPK-M58 Layout: J3518-DWP-3MRP Submission - M58 Filter: TASK filters: 3-Month Lookahead, No CC Milestones, No Level of Effort.</p> | <p>Tuen Mun - Chek Lap Kok Link - Southern Connection 3-Month Rolling Programme (Page 5 of 7 Pages) (Progress as of 21-Mar-18)</p> | <table border="1"> <thead> <tr> <th>Date</th> <th>Revision</th> <th>Checked</th> <th>Approved</th> </tr> </thead> <tbody> <tr> <td>31-Jan-18</td> <td></td> <td>PKN</td> <td>HF</td> </tr> <tr> <td>27-Feb-18</td> <td></td> <td>PKN</td> <td>HF</td> </tr> <tr> <td>03-Apr-18</td> <td></td> <td>PKN</td> <td>HF</td> </tr> </tbody> </table> | Date | Revision | Checked | Approved | 31-Jan-18 | | PKN | HF | 27-Feb-18 | | PKN | HF | 03-Apr-18 | | PKN | HF | <p>DWG. No.: J3518/GCL/PGM/3MRP-M58</p> |
|---|---|--|--|------|----------|---------|----------|-----------|--|-----|----|-----------|--|-----|----|-----------|--|-----|----|--|
| Date | Revision | Checked | Approved | | | | | | | | | | | | | | | | | |
| 31-Jan-18 | | PKN | HF | | | | | | | | | | | | | | | | | |
| 27-Feb-18 | | PKN | HF | | | | | | | | | | | | | | | | | |
| 03-Apr-18 | | PKN | HF | | | | | | | | | | | | | | | | | |

| Activity ID | Activity Name | Orig. Durn. | Act. Start / FC Early Start | Rem. Durn. | Act. Finish / FC Early Finish | Late Start | Late Finish | Total Float | Physical % Complete | 2018 | | | | | | | | | | | | | | | | | | | | | | | |
|--|---|-------------|-----------------------------|------------|-------------------------------|------------|-------------|-------------|---------------------|-------|----|----|----|-------|----|----|----|-----|----|----|----|------|----|----|----|----|----|--|--|--|--|--|--|
| | | | | | | | | | | March | | | | April | | | | May | | | | June | | | | | | | | | | | |
| | | | | | | | | | | 19 | 26 | 05 | 12 | 19 | 26 | 02 | 09 | 16 | 23 | 30 | 07 | 14 | 21 | 28 | 04 | 11 | 18 | | | | | | |
| E14A-C6410 | E14A Deck - Stitching to E14A-F1,release U tendon, stress bar breakup stit | 21 | 19-Apr-18 | 21 | 14-May-18 | 14-Aug-17 | 06-Sep-17 | -200 | 0% | | | | | | | | | | | | | | | | | | | | | | | | |
| F02-C6320 | F2 Deck - Cantilever Span (4 nr) - crane | 14 | 13-Feb-18 A | 0 | 26-Feb-18 A | | | | 100% | | | | | | | | | | | | | | | | | | | | | | | | |
| F02-C6410 | F2 Deck - Stitching to F1-F2 | 12 | 26-Feb-18 A | 0 | 10-Mar-18 A | | | | 100% | | | | | | | | | | | | | | | | | | | | | | | | |
| F02-C6420 | F1 Deck - Install, grout permanent bearing and load transfer at pier F1 | 7 | 12-Mar-18 A | 0 | 19-Mar-18 A | | | | 100% | | | | | | | | | | | | | | | | | | | | | | | | |
| F03-C6210 | F3 Deck - Falsework for End Span to F2 | 30 | 15-Jan-18 A | 0 | 23-Feb-18 A | | | | 100% | | | | | | | | | | | | | | | | | | | | | | | | |
| F03-C6310 | F3 Deck - End Span to F2 (6 nr) - Crane | 14 | 23-Feb-18 A | 0 | 08-Mar-18 A | | | | 100% | | | | | | | | | | | | | | | | | | | | | | | | |
| F03-C6410 | F3 Deck - Stitching to F2-F3 & Clear Deck (KD1) | 35 | 20-Mar-18 A | 34 | 04-May-18 | 01-Aug-17 | 08-Sep-17 | -190 | 10% | | | | | | | | | | | | | | | | | | | | | | | | |
| VF1-C6910 | Viaduct F1 - Final Stressing | 28 | 15-May-18 | 28 | 16-Jun-18 | 07-Sep-17 | 11-Oct-17 | -200 | 0% | | | | | | | | | | | | | | | | | | | | | | | | |
| VF1-C6920 | Viaduct F1 - Install, grout permanent bearing and load transfer at piers F3 | 7 | 19-Jun-18 | 7 | 26-Jun-18 | 12-Oct-17 | 19-Oct-17 | -200 | 0% | | | | | | | | | | | | | | | | | | | | | | | | |
| Bridge F2 | | | | | | | | | | | | | | | | | | | | | | | | | | | | | | | | | |
| Deck Span Segment | | | | | | | | | | | | | | | | | | | | | | | | | | | | | | | | | |
| E14C-C6330 | E14 C Deck - Cantilever Span to F4 (7 nr) - THB | 15 | 12-Mar-18 A | 12 | 07-Apr-18 | 17-Jan-18 | 30-Jan-18 | -51 | 60% | | | | | | | | | | | | | | | | | | | | | | | | |
| F04-C6330 | F4 deck - Cantilever Span (4 nr) - THB | 5 | 12-Mar-18 A | 10 | 04-Apr-18 | 26-Feb-18 | 08-Mar-18 | -20 | 50% | | | | | | | | | | | | | | | | | | | | | | | | |
| F04-C6340 | F4 deck - Cantilever Span (2 nr) - crane | 6 | 06-Apr-18 | 6 | 12-Apr-18 | 09-Mar-18 | 15-Mar-18 | -20 | 0% | | | | | | | | | | | | | | | | | | | | | | | | |
| F04-C6350 | F4 deck - Cantilever Span (4 nr) - THB | 5 | 13-Apr-18 | 5 | 18-Apr-18 | 16-Mar-18 | 21-Mar-18 | -20 | 0% | | | | | | | | | | | | | | | | | | | | | | | | |
| F05-C6320 | F5 Deck - Cantilever span (4 nr) - crane | 9 | 09-Jan-18 A | 7 | 28-Mar-18 | 16-Jan-18 | 23-Jan-18 | -52 | 25% | | | | | | | | | | | | | | | | | | | | | | | | |
| F06-C6230 | F6 Deck - Cantilever Span (6 nr) - THB/crane | 12 | 08-Mar-18 A | 7 | 28-Mar-18 | 15-Jan-18 | 22-Jan-18 | -53 | 70% | | | | | | | | | | | | | | | | | | | | | | | | |
| F06-C6240 | F6 Deck - Install, grout permanent bearing and load transfer at pier F6 | 7 | 29-Mar-18 | 7 | 10-Apr-18 | 23-Jan-18 | 30-Jan-18 | -53 | 0% | | | | | | | | | | | | | | | | | | | | | | | | |
| F06-C6310 | F6 Deck - Cantilever Span (6 nr) - THB / crane | 12 | 16-Jun-18 | 12 | 30-Jun-18 | 31-Jan-18 | 13-Feb-18 | -108 | 0% | | | | | | | | | | | | | | | | | | | | | | | | |
| F08-C6210 | F8 Deck - Falsework for End Span to F7 | 30 | 19-May-18 | 30 | 25-Jun-18 | 13-Dec-17 | 19-Jan-18 | -124 | 0% | | | | | | | | | | | | | | | | | | | | | | | | |
| Bridge F4 | | | | | | | | | | | | | | | | | | | | | | | | | | | | | | | | | |
| Deck Span Segment | | | | | | | | | | | | | | | | | | | | | | | | | | | | | | | | | |
| F16-C6210 | F16 Deck - Cantilever Span (2 nr) & stitches towards E14B & F15 - crane | 19 | 16-Apr-18 | 19 | 08-May-18 | 29-Nov-17 | 20-Dec-17 | -108 | 0% | | | | | | | | | | | | | | | | | | | | | | | | |
| F16-C6310 | F16 Deck - Cantilever Span (5 nr) & stitches - crane | 19 | 09-May-18 | 19 | 31-May-18 | 21-Dec-17 | 15-Jan-18 | -108 | 0% | | | | | | | | | | | | | | | | | | | | | | | | |
| F16-C6320 | F16 Deck - Construct props with footing | 24 | 16-May-18 | 24 | 08-Jun-18 | 30-Dec-17 | 23-Jan-18 | -130 | 0% | | | | | | | | | | | | | | | | | | | | | | | | |
| F16-C6330 | F16 Deck - Cantilever Span (12 nr) - THB / crane | 30 | 09-Jun-18 | 30 | 16-Jul-18 | 24-Jan-18 | 02-Mar-18 | -108 | 0% | | | | | | | | | | | | | | | | | | | | | | | | |
| F17-C6310 | F17 Deck - Cantilever Span (4 nr) - crane (Props at 5th Pair) | 7 | 17-May-18 | 7 | 25-May-18 | 22-Feb-18 | 01-Mar-18 | -67 | 0% | | | | | | | | | | | | | | | | | | | | | | | | |
| F17-C6320 | F17 Deck - Cantilever Span (8 nr) - THB | 16 | 16-Jun-18 | 16 | 06-Jul-18 | 09-Mar-18 | 27-Mar-18 | -79 | 0% | | | | | | | | | | | | | | | | | | | | | | | | |
| F18-C6210 | F18 Deck - Falsework for End Span to F17 | 24 | 11-May-18 | 24 | 08-Jun-18 | 06-Mar-18 | 06-Apr-18 | -52 | 0% | | | | | | | | | | | | | | | | | | | | | | | | |
| Bridge F5 | | | | | | | | | | | | | | | | | | | | | | | | | | | | | | | | | |
| Deck Span Segment | | | | | | | | | | | | | | | | | | | | | | | | | | | | | | | | | |
| F13-C6210 | F13 Deck - Falsework for End Span to F14 | 24 | 07-Apr-18 | 24 | 05-May-18 | 30-Jan-18 | 01-Mar-18 | -51 | 0% | | | | | | | | | | | | | | | | | | | | | | | | |
| F13-C6310 | F13 Deck - End Span to F14 (7 nr) - Crane | 14 | 26-May-18 | 14 | 11-Jun-18 | 02-Mar-18 | 17-Mar-18 | -67 | 0% | | | | | | | | | | | | | | | | | | | | | | | | |
| F14-C6310 | F14 Deck - Cantilever Span (4 nr) - crane (Props at 5th Pair) | 9 | 12-Jun-18 | 9 | 21-Jun-18 | 19-Mar-18 | 27-Mar-18 | -83 | 0% | | | | | | | | | | | | | | | | | | | | | | | | |
| F15-C6510 | F15 - Falsework for End Span to F16 | 24 | 27-Mar-18 | 24 | 27-Apr-18 | 06-Apr-18 | 04-May-18 | 5 | 0% | | | | | | | | | | | | | | | | | | | | | | | | |
| At-Grade Works & Miscellaneous Works | | | | | | | | | | | | | | | | | | | | | | | | | | | | | | | | | |
| At-Grade Works Along North Lantau Highway | | | | | | | | | | | | | | | | | | | | | | | | | | | | | | | | | |
| Slope Works Near Viaduct A | | | | | | | | | | | | | | | | | | | | | | | | | | | | | | | | | |
| Slope 9SE-B/FR8 | | | | | | | | | | | | | | | | | | | | | | | | | | | | | | | | | |
| GFXX511 | 9SE-B/FR8 - Blackout period (CYN) | 17 | 09-Feb-18 A | 0 | 25-Feb-18 A | | | | 100% | | | | | | | | | | | | | | | | | | | | | | | | |
| GFXX521 | 9SE-B/FR8 - Construct New Wall Stem - Phase 1 | 22 | 26-Feb-18 A | 2 | 22-Mar-18 | 29-Nov-16 | 30-Nov-16 | -386 | 80% | | | | | | | | | | | | | | | | | | | | | | | | |
| GFXX531 | 9SE-B/FR8 - Blackout period (Easter) | 17 | 23-Mar-18 | 17 | 16-Apr-18 | 01-Dec-16 | 20-Dec-16 | -386 | 0% | | | | | | | | | | | | | | | | | | | | | | | | |
| Slope Works Near Viaduct B | | | | | | | | | | | | | | | | | | | | | | | | | | | | | | | | | |
| Slope 10SW-A/F52 | | | | | | | | | | | | | | | | | | | | | | | | | | | | | | | | | |
| GFXX515 | 10SW-A/F52 - Slope work - Phase 1 | 22 | 26-Feb-18 A | 2 | 22-Mar-18 | 29-Nov-16 | 30-Nov-16 | -386 | 0% | | | | | | | | | | | | | | | | | | | | | | | | |
| GFXX525 | 10SW-A/F52 - Slope work - Phase 2 | 17 | 23-Mar-18 | 17 | 16-Apr-18 | 01-Dec-16 | 20-Dec-16 | -386 | 0% | | | | | | | | | | | | | | | | | | | | | | | | |
| Slope Works Near Viaduct D | | | | | | | | | | | | | | | | | | | | | | | | | | | | | | | | | |
| Slope 10NW-C/F9 | | | | | | | | | | | | | | | | | | | | | | | | | | | | | | | | | |
| M201200 | 10NW-C/F9 - Site clearance and excavation to formation | 48 | 16-Oct-17 A | 30 | 28-Apr-18 | 31-Oct-16 | 03-Dec-16 | -411 | 50% | | | | | | | | | | | | | | | | | | | | | | | | |
| M201205 | 10NW-C/F9 - Fill and compact filled material | 70 | 30-Apr-18 | 70 | 24-Jul-18 | 05-Dec-16 | 02-Mar-17 | -411 | 0% | | | | | | | | | | | | | | | | | | | | | | | | |
| Slope 10NW-C/F10 | | | | | | | | | | | | | | | | | | | | | | | | | | | | | | | | | |
| M201230 | 10NW-C/F10 - Fill and compact filled material | 160 | 16-Oct-17 A | 64 | 09-Jun-18 | 19-Jan-17 | 07-Apr-17 | -345 | 50% | | | | | | | | | | | | | | | | | | | | | | | | |
| Slope 10NW-C/F11 | | | | | | | | | | | | | | | | | | | | | | | | | | | | | | | | | |
| M201260 | 10NW-C/F11 - Blackout period (CNY) | 17 | 09-Feb-18 A | 0 | 25-Feb-18 A | | | | 100% | | | | | | | | | | | | | | | | | | | | | | | | |
| M201270 | 10NW-C/F11 - Fill and compact filled material - Phase 1 | 22 | 26-Feb-18 A | 2 | 22-Mar-18 | 02-Dec-16 | 03-Dec-16 | -383 | 50% | | | | | | | | | | | | | | | | | | | | | | | | |
| M201280 | 10NW-C/F11 - Blackout period (Easter) | 17 | 23-Mar-18 | 17 | 08-Apr-18 | 04-Dec-16 | 20-Dec-16 | -474 | 0% | | | | | | | | | | | | | | | | | | | | | | | | |
| Slope 10NW-C/F17 | | | | | | | | | | | | | | | | | | | | | | | | | | | | | | | | | |
| M201194 | 10NW-C/F17 - Blackout period (CNY) | 17 | 10-Feb-18 A | 0 | 25-Feb-18 A | | | | 100% | | | | | | | | | | | | | | | | | | | | | | | | |
| M201195 | 10NW-C/F17 - Slope filling, U channel & Resume POP construction - Phas | 22 | 01-Mar-18 A | 52 | 26-May-18 | 06-Jul-16 | 03-Sep-16 | -508 | 60% | | | | | | | | | | | | | | | | | | | | | | | | |
| M201196 | 10NW-C/F17 - Blackout period (Easter) | 17 | 27-May-18 | 17 | 12-Jun-18 | 05-Sep-16 | 21-Sep-16 | -629 | 0% | | | | | | | | | | | | | | | | | | | | | | | | |

- Actual Work
- Planned Bar
- Critical Bar
- Milestone

Project ID: TMCLK-DWPK-M58
Layout: J3518-DWP-3MRP Submission - M58
Filter: TASK filters: 3-Month Lookahead, No CC
Milestones, No Level of Effort.

Tuen Mun - Chek Lap Kok Link - Southern Connection
3-Month Rolling Programme (Page 6 of 7 Pages)
(Progress as of 21-Mar-18)

| Date | Revision | Checked | Approved |
|-----------|----------|---------|----------|
| 31-Jan-18 | | PKN | HF |
| 27-Feb-18 | | PKN | HF |
| 03-Apr-18 | | PKN | HF |

DWG. No.:
J3518/GCL/PGM/3MRP-M58

| Activity ID | Activity Name | Orig. Durn. | Act. Start / FC Early Start | Rem. Durn. | Act. Finish / FC Early Finish | Late Start | Late Finish | Total Float | Physical % Complete | 2018 | | | | | | | | | | | | | | | | | | | | | | | | |
|---|--|-------------|-----------------------------|------------|-------------------------------|------------|-------------|-------------|---------------------|----------------------------|----|----|----|-------|----|----|----|-----|----|----|----|------|----|----|----|----|----|----|----|--|--|--|--|--|
| | | | | | | | | | | March | | | | April | | | | May | | | | June | | | | | | | | | | | | |
| | | | | | | | | | | | 19 | 26 | 05 | 12 | 19 | 26 | 02 | 09 | 16 | 23 | 30 | 07 | 14 | 21 | 28 | 04 | 11 | 18 | 25 | | | | | |
| M201146 | 10NW-C/F50 - Construct T wall with light post footings | 95 | 14-Oct-17 A | 0 | 20-Mar-18 A | | | | 100% | [Gantt bar: 100% complete] | | | | | | | | | | | | | | | | | | | | | | | | |
| M201148 | 10NW-C/F50 - Fill and compact filled material | 18 | 21-Mar-18 | 18 | 14-Apr-18 | 17-Mar-17 | 07-Apr-17 | -299 | 0% | [Gantt bar: 0% complete] | | | | | | | | | | | | | | | | | | | | | | | | |
| Road Works Along NLH Westbound | | | | | | | | | | | | | | | | | | | | | | | | | | | | | | | | | | |
| General | | | | | | | | | | | | | | | | | | | | | | | | | | | | | | | | | | |
| RW10020 | NLH W/B (Viaduct C) - Road Drainage Works for tie-in | 104 | 26-Jun-17 A | 36 | 07-May-18 | 24-Feb-17 | 07-Apr-17 | -317 | 60% | [Gantt bar: 60% complete] | | | | | | | | | | | | | | | | | | | | | | | | |
| RW11010 | NLH W/B (Viaduct B) - Drainage for ramp B tie out | 48 | 15-Dec-17 A | 68 | 14-Jun-18 | 30-Dec-16 | 23-Mar-17 | -361 | 20% | [Gantt bar: 20% complete] | | | | | | | | | | | | | | | | | | | | | | | | |
| RW11020 | NLH W/B (Viaduct B) - Profile Barrier and roadwork | 36 | 17-May-18 | 36 | 29-Jun-18 | 24-Feb-17 | 07-Apr-17 | -361 | 0% | [Gantt bar: 0% complete] | | | | | | | | | | | | | | | | | | | | | | | | |
| Road Works Along NLH Eastbound | | | | | | | | | | | | | | | | | | | | | | | | | | | | | | | | | | |
| General | | | | | | | | | | | | | | | | | | | | | | | | | | | | | | | | | | |
| RW20084 | NLH E/B Viaduct A - Ch200-388 Roadwork (SL & HS) & Reinstate NLH | 127 | 17-Dec-16 A | 36 | 07-May-18 | 24-Feb-17 | 07-Apr-17 | -317 | 80% | [Gantt bar: 80% complete] | | | | | | | | | | | | | | | | | | | | | | | | |
| RW20095 | NLH E/B (Gantries 319 - 322) - Implement TTA for NLH (Central Reserve) | 3 | 13-Jun-18* | 3 | 15-Jun-18 | 22-Sep-16 | 24-Sep-16 | -508 | 0% | [Gantt bar: 0% complete] | | | | | | | | | | | | | | | | | | | | | | | | |
| RW2096 | NLH E/B (Gantries 319 - 322) - Footing & A-Frame at NLH (Central Reser | 55 | 16-Jun-18 | 55 | 21-Aug-18 | 26-Sep-16 | 30-Nov-16 | -508 | 0% | [Gantt bar: 0% complete] | | | | | | | | | | | | | | | | | | | | | | | | |
| RW2098-3 | NLH E/B (Gantries 319 - 322) - blackout period (CNY) | 17 | 10-Feb-18 A | 0 | 25-Mar-18 A | | | | 100% | [Gantt bar: 100% complete] | | | | | | | | | | | | | | | | | | | | | | | | |
| RW2098-4 | NLH E/B (Gantries 319 - 322) - Footing & A-Frame at NLH (verge) | 22 | 26-Mar-18 A | 2 | 22-Mar-18 | 20-Sep-16 | 21-Sep-16 | -444 | 80% | [Gantt bar: 80% complete] | | | | | | | | | | | | | | | | | | | | | | | | |
| RW21010-3 | NLH E/B (Viaduct A) - blackout period (CNY) | 17 | 10-Feb-18 A | 0 | 25-Feb-18 A | | | | 100% | [Gantt bar: 100% complete] | | | | | | | | | | | | | | | | | | | | | | | | |
| RW21010-4 | NLH E/B (Viaduct A) - Connect Exist. Ductings/Drawpits - Hard shoulder | 22 | 26-Feb-18 A | 2 | 22-Mar-18 | 06-Dec-16 | 07-Dec-16 | -380 | 80% | [Gantt bar: 80% complete] | | | | | | | | | | | | | | | | | | | | | | | | |
| At-Grade Works Along Cheung Tung Road | | | | | | | | | | | | | | | | | | | | | | | | | | | | | | | | | | |
| Slope Works Near Viaduct B | | | | | | | | | | | | | | | | | | | | | | | | | | | | | | | | | | |
| Slope 9SE-B/F85 | | | | | | | | | | | | | | | | | | | | | | | | | | | | | | | | | | |
| SWVB4020 | 9SE-B/F85 - Fill and compact filled material | 60 | 16-Jan-18 A | 54 | 29-May-18 | 09-Aug-18 | 12-Oct-18 | 113 | 30% | [Gantt bar: 30% complete] | | | | | | | | | | | | | | | | | | | | | | | | |
| SWVB4035 | 9SE-B/F85 - Install Geo. Instru. & Baseline Monitoring | 30 | 30-May-18 | 30 | 05-Jul-18 | 13-Oct-18 | 17-Nov-18 | 113 | 0% | [Gantt bar: 0% complete] | | | | | | | | | | | | | | | | | | | | | | | | |
| Slope Works Near Viaduct C | | | | | | | | | | | | | | | | | | | | | | | | | | | | | | | | | | |
| Slope PF1 & PF2 | | | | | | | | | | | | | | | | | | | | | | | | | | | | | | | | | | |
| SWVC6990 | 10NW-PF1 & PF2 complete site site clearance | 0 | 21-Mar-18* | 0 | | 21-Dec-17 | | -90 | 0% | [Milestone] | | | | | | | | | | | | | | | | | | | | | | | | |
| SWVC7000 | 10NW - PF2 slope works | 48 | 21-Mar-18 | 48 | 21-May-18 | 21-Dec-17 | 21-Feb-18 | -71 | 0% | [Gantt bar: 0% complete] | | | | | | | | | | | | | | | | | | | | | | | | |
| SWVC7010 | 10NW - PF2 slope works | 52 | 23-May-18* | 52 | 24-Jul-18 | 22-Feb-18 | 27-Apr-18 | -71 | 0% | [Gantt bar: 0% complete] | | | | | | | | | | | | | | | | | | | | | | | | |
| Slope 10NW-C/F13 | | | | | | | | | | | | | | | | | | | | | | | | | | | | | | | | | | |
| SWVC3995 | Complete reinstatement of firemain | 0 | 21-Mar-18* | 0 | | 21-Dec-17 | | -90 | 0% | [Milestone] | | | | | | | | | | | | | | | | | | | | | | | | |
| SWVC4000 | 10NW-C/F13 - Slope works | 100 | 21-Mar-18 | 100 | 24-Jul-18 | 21-Dec-17 | 27-Apr-18 | -71 | 0% | [Gantt bar: 0% complete] | | | | | | | | | | | | | | | | | | | | | | | | |
| Slope 10NW-C/F14 | | | | | | | | | | | | | | | | | | | | | | | | | | | | | | | | | | |
| SWVC5000 | 10NW-C/F14 - Slope works | 100 | 01-Mar-18 A | 52 | 26-May-18 | 15-Jan-18 | 19-Mar-18 | -53 | 50% | [Gantt bar: 50% complete] | | | | | | | | | | | | | | | | | | | | | | | | |
| SWVC6010 | 10NW-C/F14 - Install Geo. Instru. & Baseline Monitoring | 30 | 28-May-18 | 30 | 03-Jul-18 | 20-Mar-18 | 27-Apr-18 | -53 | 0% | [Gantt bar: 0% complete] | | | | | | | | | | | | | | | | | | | | | | | | |
| Slope 10NW-C/F15 | | | | | | | | | | | | | | | | | | | | | | | | | | | | | | | | | | |
| SWVC6000 | 10NW-C/F15 - Slope works | 114 | 18-Sep-17 A | 36 | 07-May-18 | 02-Feb-18 | 19-Mar-18 | -37 | 80% | [Gantt bar: 80% complete] | | | | | | | | | | | | | | | | | | | | | | | | |
| SWVC6005 | 10NW-C/F15 - Install Geo. Instru. & Baseline Monitoring | 30 | 08-May-18* | 30 | 12-Jun-18 | 20-Mar-18 | 27-Apr-18 | -37 | 0% | [Gantt bar: 0% complete] | | | | | | | | | | | | | | | | | | | | | | | | |
| Re-alignment of CTR Along Viaduct B | | | | | | | | | | | | | | | | | | | | | | | | | | | | | | | | | | |
| General | | | | | | | | | | | | | | | | | | | | | | | | | | | | | | | | | | |
| RP00074-6 | Ch100-300: CTR Stage 6 Road drainage and street furniture | 41 | 08-Dec-17 A | 0 | 20-Mar-18 A | | | | 100% | [Gantt bar: 100% complete] | | | | | | | | | | | | | | | | | | | | | | | | |
| RP00077-1 | Ch100-300: Street Lighting & Draw Pit - remaining | 48 | 08-Dec-17 A | 56 | 31-May-18 | 10-Jun-20 | 15-Aug-20 | 656 | 50% | [Gantt bar: 50% complete] | | | | | | | | | | | | | | | | | | | | | | | | |
| RP00082 | Ch100-300: TCSS pillar box | 24 | 07-Mar-18 A | 24 | 21-Apr-18 | 16-Dec-17 | 16-Jan-18 | -75 | 50% | [Gantt bar: 50% complete] | | | | | | | | | | | | | | | | | | | | | | | | |
| Re-alignment of CTR Along Viaduct C | | | | | | | | | | | | | | | | | | | | | | | | | | | | | | | | | | |
| East Portion | | | | | | | | | | | | | | | | | | | | | | | | | | | | | | | | | | |
| RW60080 | CTR Tie in Works | 116 | 18-May-17 A | 56 | 31-May-18 | 01-Feb-17 | 07-Apr-17 | -337 | 20% | [Gantt bar: 20% complete] | | | | | | | | | | | | | | | | | | | | | | | | |
| At-Grade Works at Southern Landfall | | | | | | | | | | | | | | | | | | | | | | | | | | | | | | | | | | |
| HKBCF Area | | | | | | | | | | | | | | | | | | | | | | | | | | | | | | | | | | |
| General | | | | | | | | | | | | | | | | | | | | | | | | | | | | | | | | | | |
| RW30010 | South Landfall - Mobilisation for Portion B Works | 24 | 21-Mar-18 | 24 | 21-Apr-18 | 03-Nov-17 | 30-Nov-17 | -112 | 0% | [Gantt bar: 0% complete] | | | | | | | | | | | | | | | | | | | | | | | | |
| RW30014 | South Landfall - DN300 Fresh water main works installation & connection (I | 60 | 23-Apr-18 | 60 | 05-Jul-18 | 01-Dec-17 | 12-Feb-18 | -112 | 0% | [Gantt bar: 0% complete] | | | | | | | | | | | | | | | | | | | | | | | | |
| RW30030 | South Landfall - Stormwater drainage works | 60 | 23-Apr-18 | 60 | 05-Jul-18 | 12-Jul-18 | 19-Sep-18 | 65 | 0% | [Gantt bar: 0% complete] | | | | | | | | | | | | | | | | | | | | | | | | |
| RW30032 | South Landfall - Fire mains | 60 | 30-May-18 | 60 | 09-Aug-18 | 16-Aug-18 | 27-Oct-18 | 65 | 0% | [Gantt bar: 0% complete] | | | | | | | | | | | | | | | | | | | | | | | | |
| Watermain from Tung Chung to Southern Landfall | | | | | | | | | | | | | | | | | | | | | | | | | | | | | | | | | | |
| Watermain Works | | | | | | | | | | | | | | | | | | | | | | | | | | | | | | | | | | |
| General | | | | | | | | | | | | | | | | | | | | | | | | | | | | | | | | | | |
| WM00190 | Viaduct B1 - Lay DN450 Fresh Water Main | 42 | 04-Jun-18 | 42 | 24-Jul-18 | 13-Dec-17 | 02-Feb-18 | -136 | 0% | [Gantt bar: 0% complete] | | | | | | | | | | | | | | | | | | | | | | | | |

■ Actual Work
■ Planned Bar
■ Critical Bar
◆ Milestone

Project ID: TMCLK-DWPK-M58
 Layout: J3518-DWP-3MRP Submission - M58
 Filter: TASK filters: 3-Month Lookahead, No CC
 Milestones, No Level of Effort.

Tuen Mun - Chek Lap Kok Link - Southern Connection
3-Month Rolling Programme (Page 7 of 7 Pages)
(Progress as of 21-Mar-18)

| Date | Revision | Checked | Approved |
|-----------|----------|---------|----------|
| 31-Jan-18 | | PKN | HF |
| 27-Feb-18 | | PKN | HF |
| 03-Apr-18 | | PKN | HF |

DWG. No.:
J3518/GCL/PGM/3MRP-M58