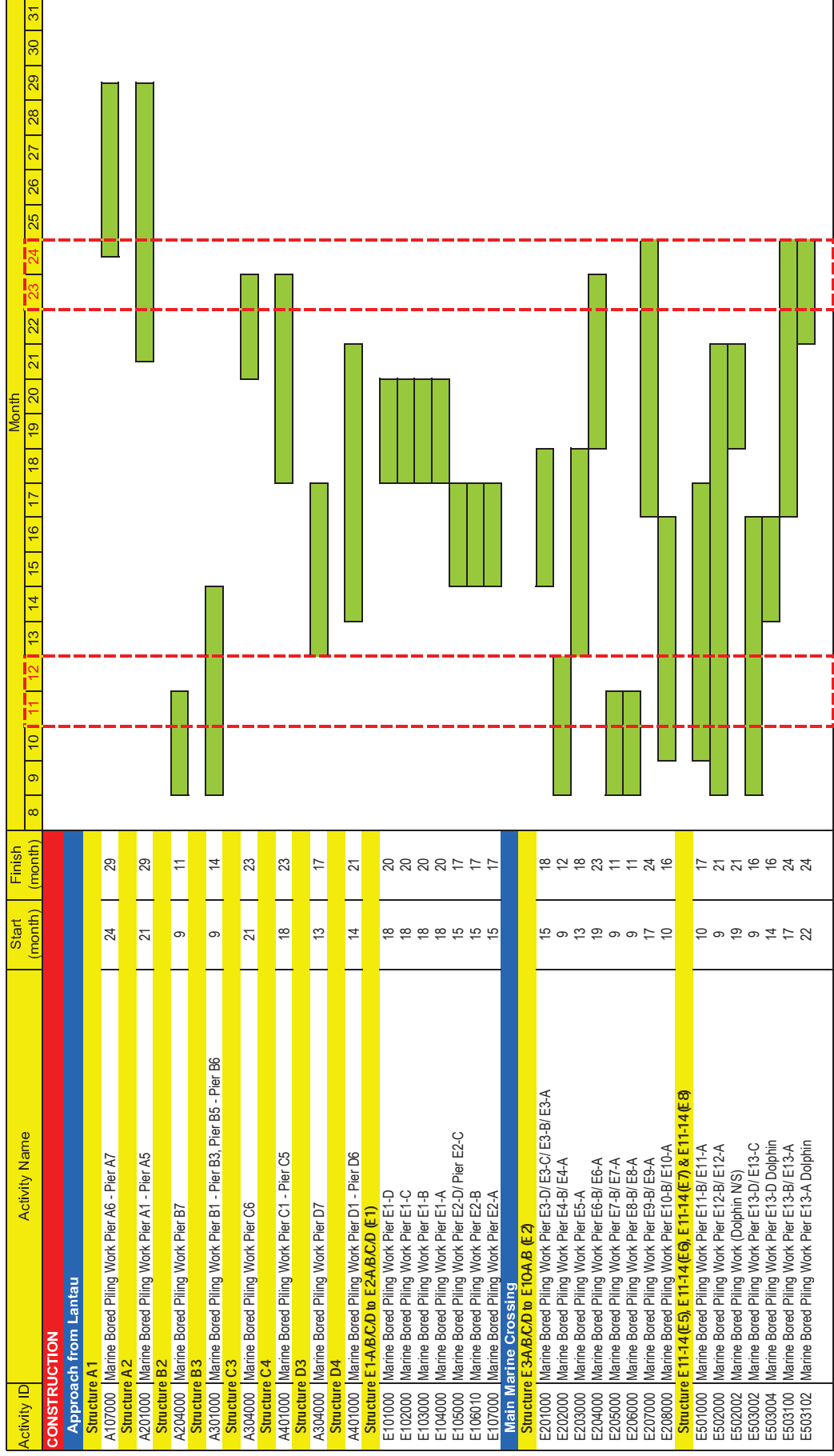
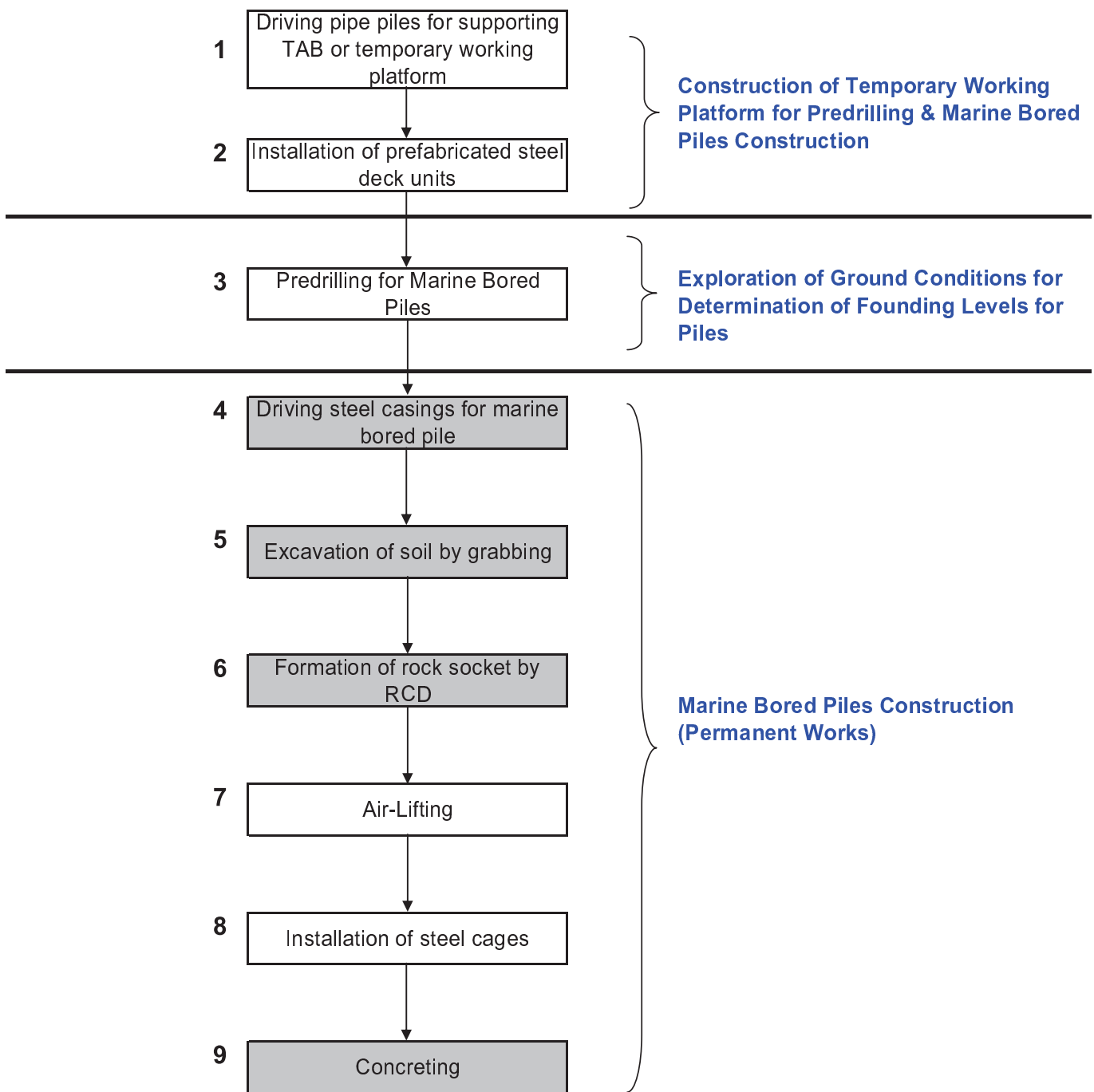


Appendix I. Tentative Marine Bored Piling Programme for HY/2012/07 - TMCLK Link Southern Connection Viaduct Section



Note
 "Month" no. started from the commencement date of the works under the contract, which was 22 June 2013. For example, "Month 9" represents March 2014, while "Month 14" represents August 2014
 Peak calving season of Chinese White Dolphin when no formation of rock sockets will be carried out

Appendix II. Working Sequences for Marine Piling Works



LEGEND

Activities of Underwater Acoustic Concern