

Figure 1. Transect Line Layout in Northwest and Northeast Lantau Survey Areas (from HKLR03 project)

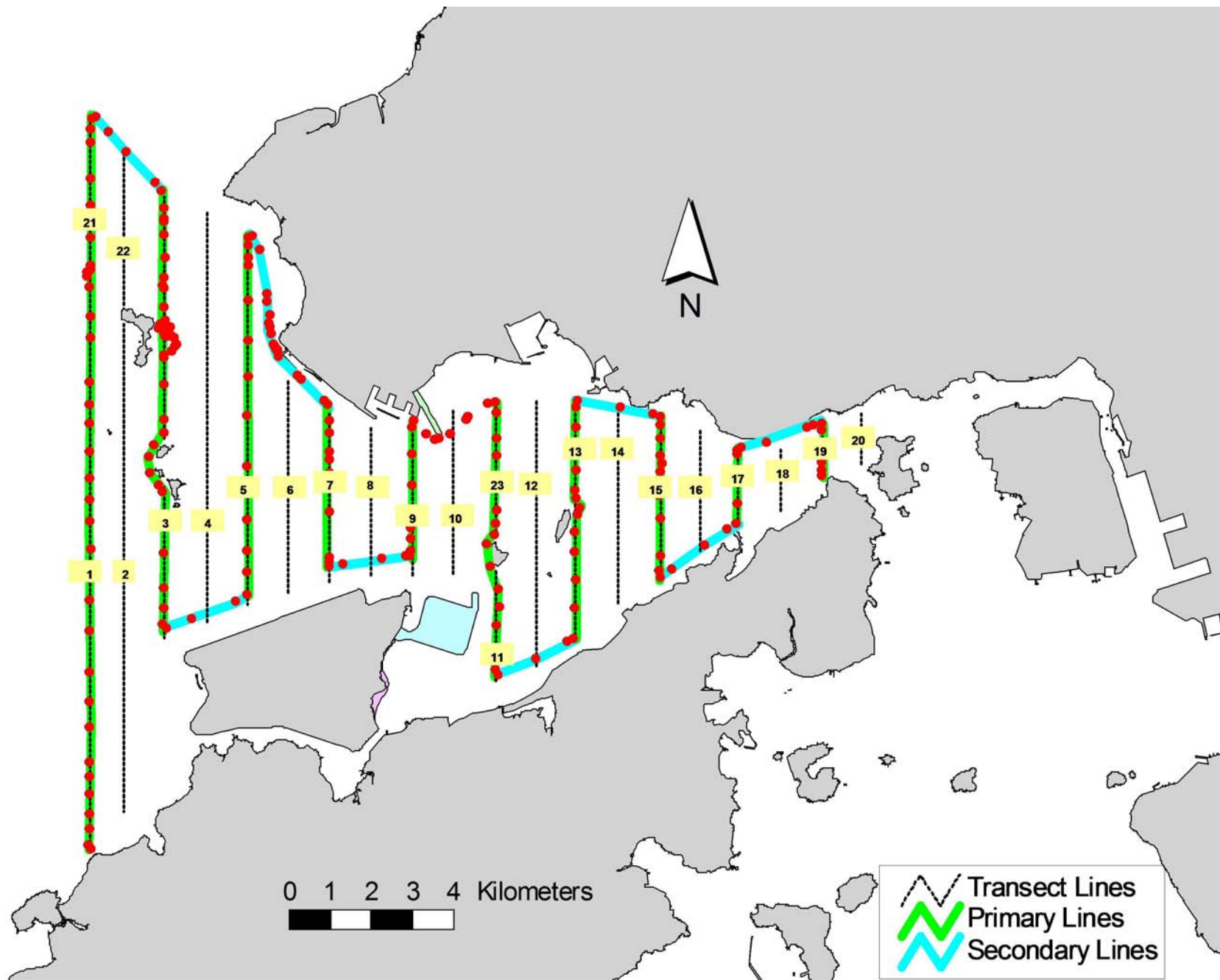


Figure 2. Survey Route on August 5<sup>th</sup>, 2014 (from HKLR03 project)

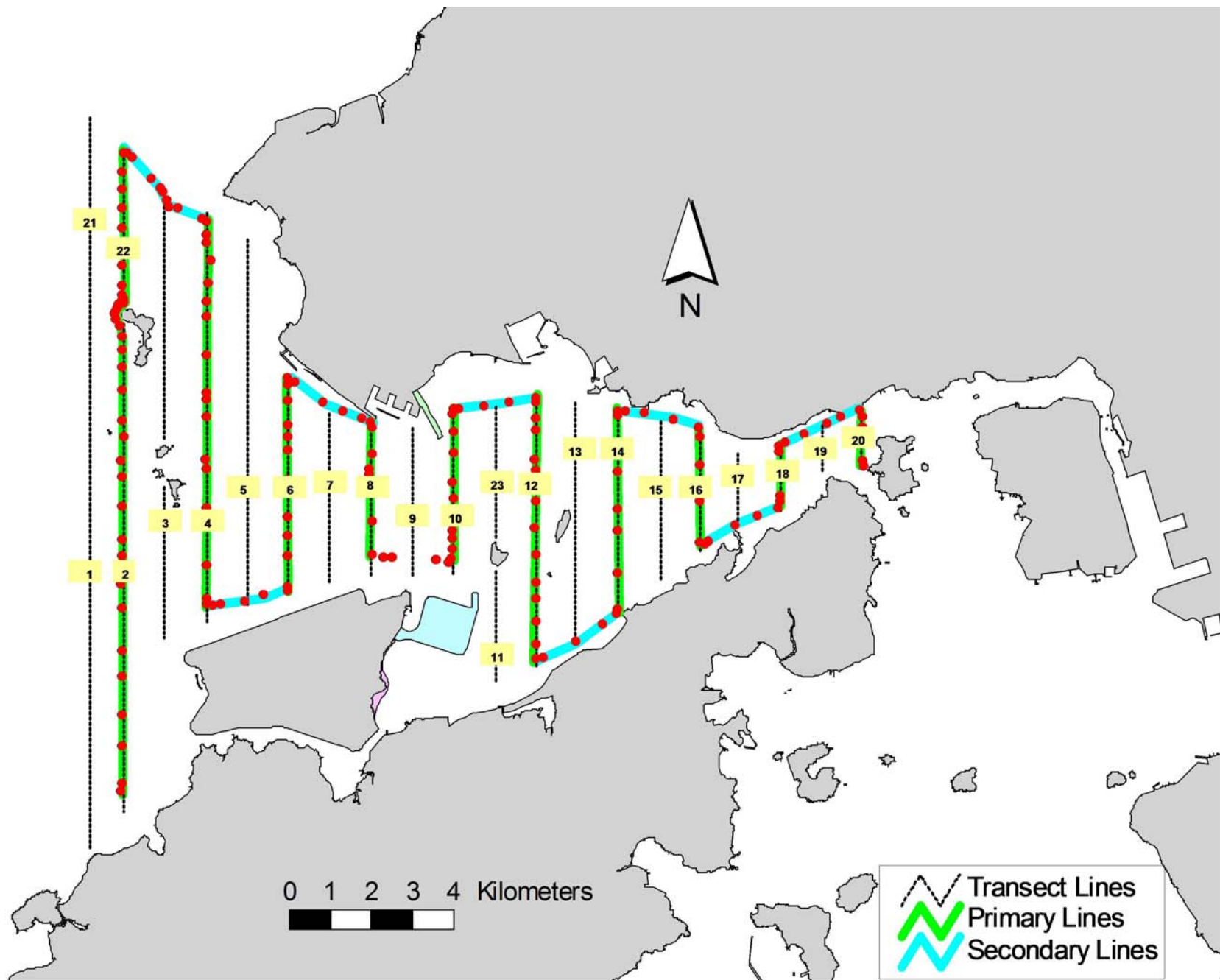


Figure 3. Survey Route on August 6<sup>th</sup>, 2014 (from HKLR03 project)

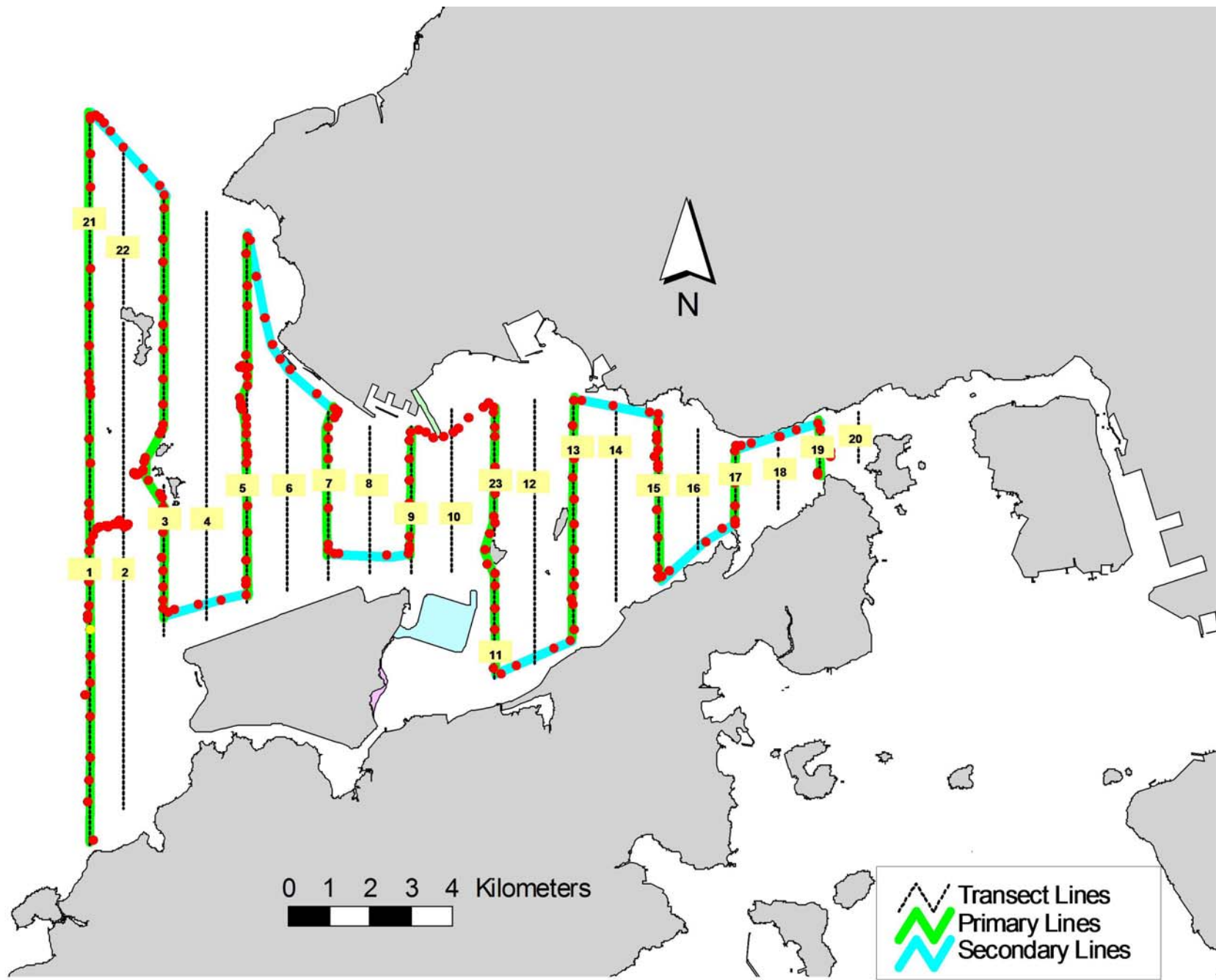


Figure 4. Survey Route on August 15<sup>th</sup>, 2014 (from HKLR03 project)

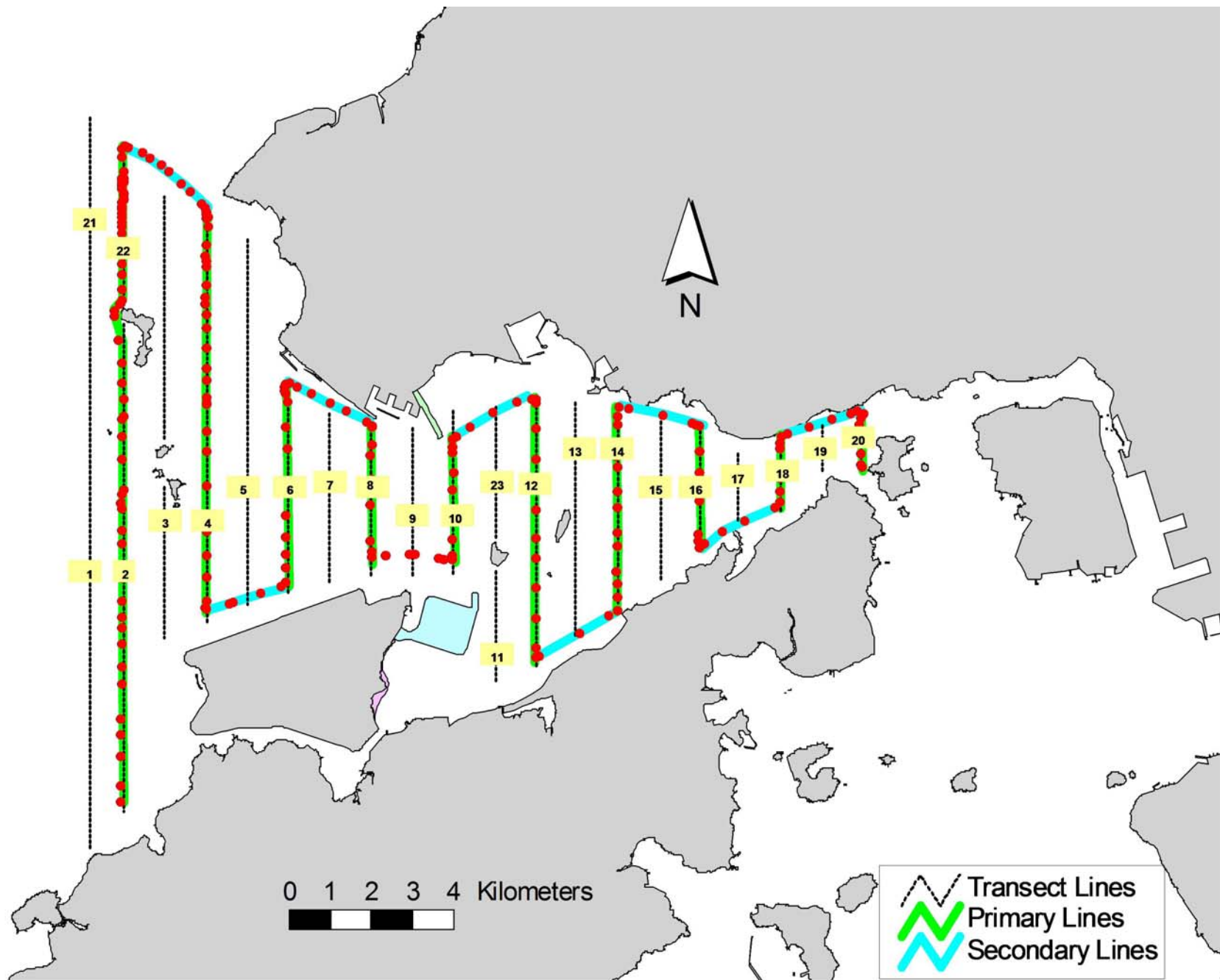


Figure 5. Survey Route on August 19<sup>th</sup>, 2014 (from HKLR03 project)



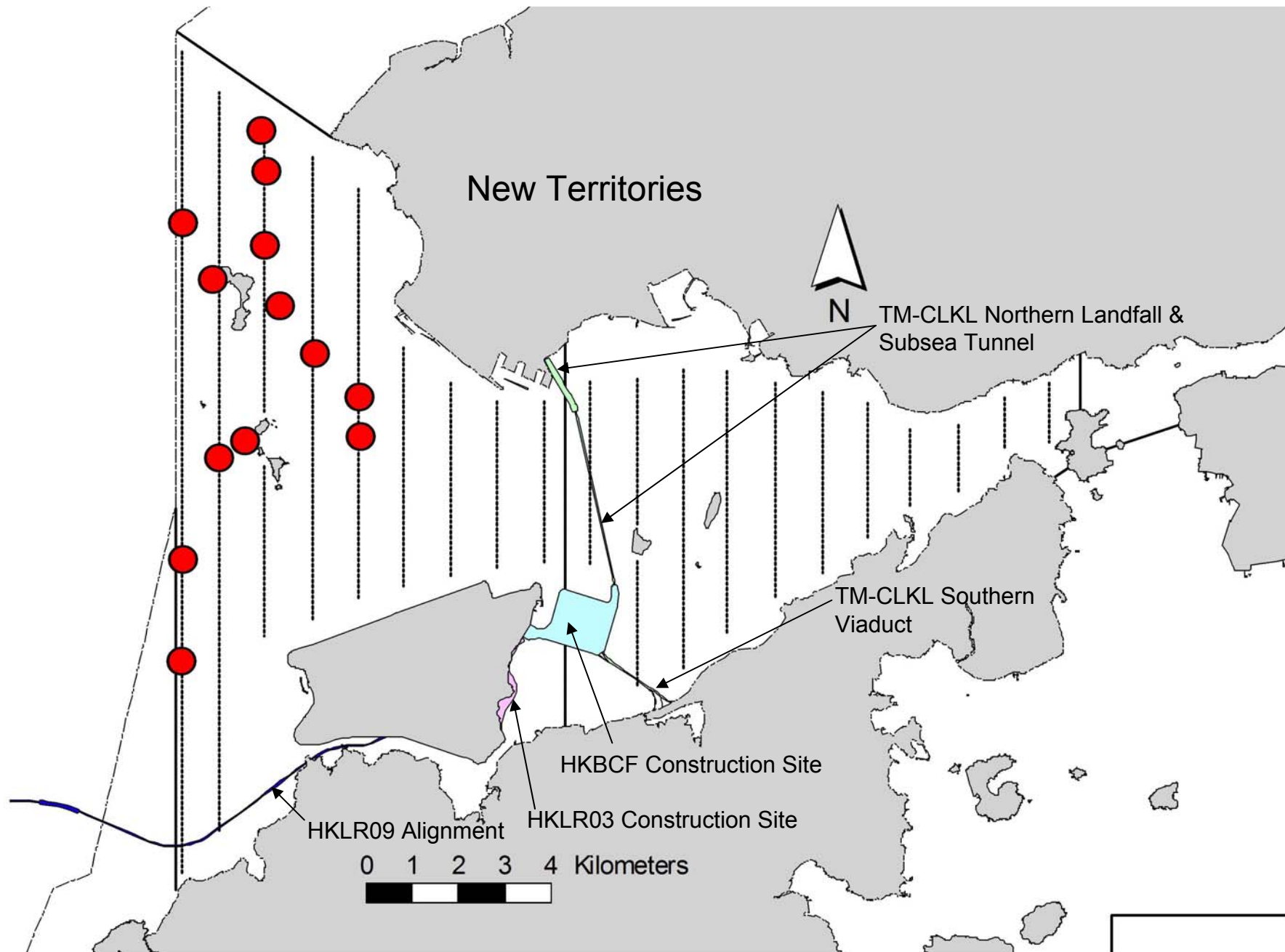


Figure 6. Distribution of Chinese White Dolphin Sightings During August 2014 HKLR03 Monitoring Surveys

## Appendix I. HKLR03 Survey Effort Database (August 2014)

(Abbreviations: BEAU = Beaufort Sea State; P = Primary Line Effort; S = Secondary Line Effort)

DATE	AREA	BEAU	EFFORT	SEASON	VESSEL	TYPE	P/S
5-Aug-14	NE LANTAU	1	8.40	SUMMER	STANDARD31516	HKLR	P
5-Aug-14	NE LANTAU	2	5.80	SUMMER	STANDARD31516	HKLR	P
5-Aug-14	NE LANTAU	3	2.10	SUMMER	STANDARD31516	HKLR	P
5-Aug-14	NE LANTAU	1	6.20	SUMMER	STANDARD31516	HKLR	S
5-Aug-14	NE LANTAU	2	4.80	SUMMER	STANDARD31516	HKLR	S
5-Aug-14	NW LANTAU	1	8.00	SUMMER	STANDARD31516	HKLR	P
5-Aug-14	NW LANTAU	2	30.30	SUMMER	STANDARD31516	HKLR	P
5-Aug-14	NW LANTAU	3	1.70	SUMMER	STANDARD31516	HKLR	P
5-Aug-14	NW LANTAU	1	1.50	SUMMER	STANDARD31516	HKLR	S
5-Aug-14	NW LANTAU	2	9.90	SUMMER	STANDARD31516	HKLR	S
6-Aug-14	NW LANTAU	1	4.30	SUMMER	STANDARD31516	HKLR	P
6-Aug-14	NW LANTAU	2	21.55	SUMMER	STANDARD31516	HKLR	P
6-Aug-14	NW LANTAU	3	5.21	SUMMER	STANDARD31516	HKLR	P
6-Aug-14	NW LANTAU	1	2.30	SUMMER	STANDARD31516	HKLR	S
6-Aug-14	NW LANTAU	2	4.05	SUMMER	STANDARD31516	HKLR	S
6-Aug-14	NW LANTAU	3	0.30	SUMMER	STANDARD31516	HKLR	S
6-Aug-14	NE LANTAU	1	17.62	SUMMER	STANDARD31516	HKLR	P
6-Aug-14	NE LANTAU	2	2.26	SUMMER	STANDARD31516	HKLR	P
6-Aug-14	NE LANTAU	1	10.52	SUMMER	STANDARD31516	HKLR	S
15-Aug-14	NW LANTAU	2	7.71	SUMMER	STANDARD31516	HKLR	P
15-Aug-14	NW LANTAU	3	29.93	SUMMER	STANDARD31516	HKLR	P
15-Aug-14	NW LANTAU	3	9.92	SUMMER	STANDARD31516	HKLR	S
15-Aug-14	NW LANTAU	4	2.64	SUMMER	STANDARD31516	HKLR	S
15-Aug-14	NE LANTAU	2	17.22	SUMMER	STANDARD31516	HKLR	P
15-Aug-14	NE LANTAU	3	0.58	SUMMER	STANDARD31516	HKLR	P
15-Aug-14	NE LANTAU	2	8.54	SUMMER	STANDARD31516	HKLR	S
15-Aug-14	NE LANTAU	3	1.26	SUMMER	STANDARD31516	HKLR	S
19-Aug-14	NE LANTAU	1	1.46	SUMMER	STANDARD31516	HKLR	P
19-Aug-14	NE LANTAU	2	11.20	SUMMER	STANDARD31516	HKLR	P
19-Aug-14	NE LANTAU	3	5.91	SUMMER	STANDARD31516	HKLR	P
19-Aug-14	NE LANTAU	4	0.80	SUMMER	STANDARD31516	HKLR	P
19-Aug-14	NE LANTAU	2	4.35	SUMMER	STANDARD31516	HKLR	S
19-Aug-14	NE LANTAU	3	6.48	SUMMER	STANDARD31516	HKLR	S
19-Aug-14	NW LANTAU	2	1.16	SUMMER	STANDARD31516	HKLR	P
19-Aug-14	NW LANTAU	3	23.08	SUMMER	STANDARD31516	HKLR	P
19-Aug-14	NW LANTAU	4	3.24	SUMMER	STANDARD31516	HKLR	P
19-Aug-14	NW LANTAU	5	3.69	SUMMER	STANDARD31516	HKLR	P
19-Aug-14	NW LANTAU	3	4.32	SUMMER	STANDARD31516	HKLR	S
19-Aug-14	NW LANTAU	4	7.12	SUMMER	STANDARD31516	HKLR	S

## Appendix II. HKLR03 Chinese White Dolphin Sighting Database (August 2014)

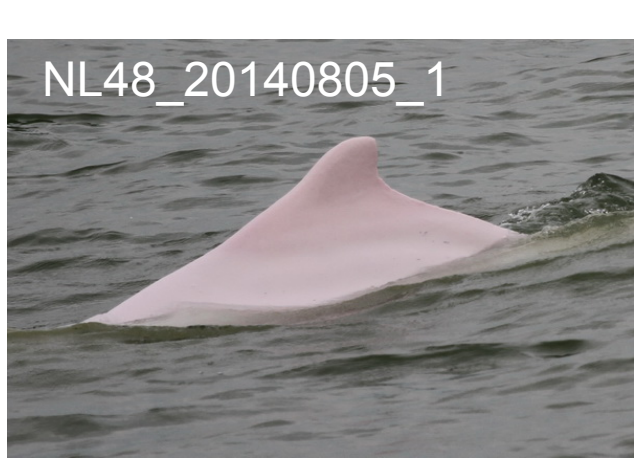
(Abbreviations: STG# = Sighting Number; HRD SZ = Dolphin Herd Size; BEAU = Beaufort Sea State; PSD = Perpendicular Distance; BOAT ASSOC. = Fishing Boat Association; P/S: Sighting Made on Primary/Secondary Line)

DATE	STG #	TIME	HRD SZ	AREA	BEAU	PSD	EFFORT	TYPE	NORTHING	EASTING	SEASON	BOAT ASSOC.	P/S
05-Aug-14	1	1413	8	NW LANTAU	2	428	ON	HKLR	826185	806764	SUMMER	NONE	P
05-Aug-14	2	1435	4	NW LANTAU	2	0	ON	HKLR	827426	806458	SUMMER	NONE	P
05-Aug-14	3	1444	2	NW LANTAU	2	990	ON	HKLR	828943	806461	SUMMER	NONE	P
05-Aug-14	4	1515	2	NW LANTAU	2	452	ON	HKLR	827872	804667	SUMMER	NONE	P
06-Aug-14	1	1110	3	NW LANTAU	3	10	ON	HKLR	826730	805323	SUMMER	NONE	S
06-Aug-14	2	1151	1	NW LANTAU	2	17	ON	HKLR	829773	806359	SUMMER	NONE	S
15-Aug-14	1	1029	5	NW LANTAU	3	393	ON	HKLR	818936	804648	SUMMER	NONE	P
15-Aug-14	2	1041	7	NW LANTAU	3	15	ON	HKLR	821006	804652	SUMMER	NONE	P
15-Aug-14	3	1218	3	NW LANTAU	3	0	ON	HKLR	823429	806027	SUMMER	NONE	S
15-Aug-14	4	1305	2	NW LANTAU	2	749	ON	HKLR	823524	808510	SUMMER	NONE	P
15-Aug-14	5	1310	6	NW LANTAU	3	83	ON	HKLR	824321	808501	SUMMER	NONE	P
19-Aug-14	1	1338	2	NW LANTAU	3	105	ON	HKLR	825220	807514	SUMMER	NONE	P
19-Aug-14	2	1536	3	NW LANTAU	2	113	ON	HKLR	823076	805450	SUMMER	NONE	P



**Appendix III. Individual dolphins identified during HKLR03 monitoring surveys in August 2014**

<b>ID#</b>	<b>DATE</b>	<b>STG#</b>	<b>AREA</b>
NL46	05/08/14	2	NW LANTAU
NL48	05/08/14	1	NW LANTAU
	19/08/14	1	NW LANTAU
NL93	05/08/14	1	NW LANTAU
NL104	05/08/14	1	NW LANTAU
NL123	15/08/14	5	NW LANTAU
NL202	19/08/14	1	NW LANTAU
	19/08/14	2	NW LANTAU
NL242	05/08/14	1	NW LANTAU
NL247	15/08/14	2	NW LANTAU
NL261	05/08/14	1	NW LANTAU
NL272	15/08/14	5	NW LANTAU
NL278	15/08/14	2	NW LANTAU
NL284	15/08/14	5	NW LANTAU
NL285	15/08/14	5	NW LANTAU
NL286	15/08/14	5	NW LANTAU
	19/08/14	2	NW LANTAU
NL287	15/08/14	5	NW LANTAU
NL305	15/08/14	2	NW LANTAU
NL307	15/08/14	5	NW LANTAU
WL46	15/08/14	2	NW LANTAU
WL80	15/08/14	2	NW LANTAU
WL124	15/08/14	2	NW LANTAU
WL188	06/08/14	1	NW LANTAU
WL214	15/08/14	2	NW LANTAU



NL48\_20140805\_1



NL93\_20140805\_1



NL104\_20140805\_1



NL242\_20140805\_1



NL261\_20140805\_1



NL46\_20140805\_2



WL188\_20140806\_1



NL247\_20140815\_2



NL278\_20140815\_2

Appendix IV. Photographs of Identified Individual Dolphins in August 2014 (HKLR03)



WL28\_20140815\_2



WL46\_20140815\_2



WL124\_20140815\_2



WL188\_20140815\_2



WL214\_20140815\_2



NL123\_20140815\_5



NL272\_20140815\_5



NL284\_20140815\_5



NL285\_20140815\_5





NL286\_20140815\_5



NL287\_20140815\_5



NL307\_20140815\_5



NL48\_20140819\_1



NL202\_20140819\_1



NL202\_20140819\_2



NL286\_20140819\_2

