

Activity ID	Activity Name	Orig Dur	Planned Start	Planned Finish	Current Start	Current Finish	14W47 % Comp	2014					2015				
								Jul	Aug	Sep	Oct	Nov	Dec	Jan	Feb	Mar	Apr

**TMCLK - Northern Connection Sub-Sea Tunnel Section**

**Contract Dates**

<b>Handover Date</b>	HD010	Portions: WA18C	0	06-Jan-15	06-Jan-15*	0%
----------------------	-------	-----------------	---	-----------	------------	----

**General Submissions**

<b>Programme</b>	SCC0277	Detailed Works Programme - SCC27.2 - Approval by SO	30	11-Feb-14	12-Mar-14	29-Aug-14A	18-Nov-14	93%
------------------	---------	---	----	-----------	-----------	------------	-----------	-----

**Environmental**

**Environmental Permit Submissions**

<b>Supplementary WMP of C&amp;C Tunnel at Sth.Landfall</b>	EP2110	Supplementary WMP of C&C Tunnel at Sth.Landfall	0	28-Jun-14	17-Nov-14	0%
--	--------	---	---	-----------	-----------	----

**General Design Submissions**

**(A19) DDA for Roadworks & Project Alignment**

DD68310	IPs/ SO's Advance Comments/ ICE Comments	28	26-Jul-14	22-Aug-14	08-Sep-14A	13-Nov-14A	100%
DD68320	Comments Received	0		22-Aug-14		13-Nov-14A	100%
DD68330	Designer to Reply RTC + Update Submission	21	23-Aug-14	17-Sep-14	14-Nov-14A	04-Dec-14	38%
DD68340	Submit Updated DDA to SO/ ICE/ IPs	0	18-Sep-14		05-Dec-14		0%
DD68350	ICE Approval & Issue Check Cert	12	18-Sep-14	03-Oct-14	03-Sep-14A	06-Dec-14	83%
DD68360	Submit ICE Check Cert to SO	6	04-Oct-14	10-Oct-14	08-Dec-14	13-Dec-14	0%
DD68370	SO's Review	35	18-Sep-14	22-Oct-14	05-Dec-14	08-Jan-15	0%
DD68380	SO Approval with Condition R received	0		22-Oct-14		08-Jan-15	0%

**(G6) IFA for Tunnel GBP**

DD70750	SO's Review	35	29-Apr-14	02-Jun-14	09-Aug-14A	18-Nov-14	94%
DD70760	SO Approval with Condition R received	0		03-Jun-14		18-Nov-14	0%

**GEO TGN No. 25 - Geotechnical Risk Register and Risk Mitigation Plan**

GEO1030	1st Submission to GEO - GEO TGN No. 25 - Geotechnical Risk Register and Risk Mitigation Plan	0		27-Aug-14		16-Feb-15	0%
GEO1035	1st Submission GEO Review	28	28-Aug-14	24-Sep-14	17-Feb-15	16-Mar-15	0%
GEO1040	Received GEO Comment	0		24-Sep-14		16-Mar-15	0%
GEO1045	Prepare Response to Comment	12	25-Sep-14	10-Oct-14	17-Mar-15	30-Mar-15	0%
GEO1050	2nd Submission to GEO	0		10-Oct-14		30-Mar-15	0%
GEO1055	2nd GEO Review	28	11-Oct-14	07-Nov-14	31-Mar-15	27-Apr-15	0%

**ETWB TCW No.15/2005 - Geotechnical Risk Assessment for North C&C, TBM Tunnels and CPs**

GEO1060	1st Submission to GEO - ETWB TCW No. 15/2005 - Geotechnical Risk for North C&C, TBM Tunnels and CPs	0		27-Aug-14		16-Feb-15	0%
GEO1065	1st Submission GEO Review	28	28-Aug-14	24-Sep-14	17-Feb-15	16-Mar-15	0%
GEO1070	Received GEO Comment	0		24-Sep-14		16-Mar-15	0%
GEO1075	Prepare Response to Comment	12	25-Sep-14	10-Oct-14	17-Mar-15	30-Mar-15	0%
GEO1080	2nd Submission to GEO	0		10-Oct-14		30-Mar-15	0%
GEO1085	2nd GEO Review	28	11-Oct-14	07-Nov-14	31-Mar-15	27-Apr-15	0%

**Construction Supervision Plan**

GEO1115	2nd GEO Review	28	29-Mar-14	25-Apr-14	29-Mar-14A	18-Nov-14	93%
---------	----------------	----	-----------	-----------	------------	-----------	-----

**Self contained Cat I/II supervising monthly report**

GEO1420	1st Submission to GEO - Self contained Cat I/II supervising monthly report	0		30-May-14		15-Oct-14A	100%
GEO1425	1st Submission GEO Review	28	31-May-14	27-Jun-14	15-Oct-14A	21-Nov-14A	100%
GEO1430	Received GEO Comment	0		27-Jun-14		21-Nov-14A	100%
GEO1435	Prepare Response to Comment	12	28-Jun-14	12-Jul-14	21-Nov-14A	21-Nov-14A	100%
GEO1440	2nd Submission to GEO	0		12-Jul-14		21-Nov-14A	100%
GEO1445	2nd GEO Review	28	13-Jul-14	09-Aug-14	21-Nov-14A	21-Nov-14A	100%

**Construction**

**Northern Landfall**

**North Reclamation (Phase 1)**

**Design Submission**

**(B4) DDA Construction Risk Assessment - Impact on North Landfall**

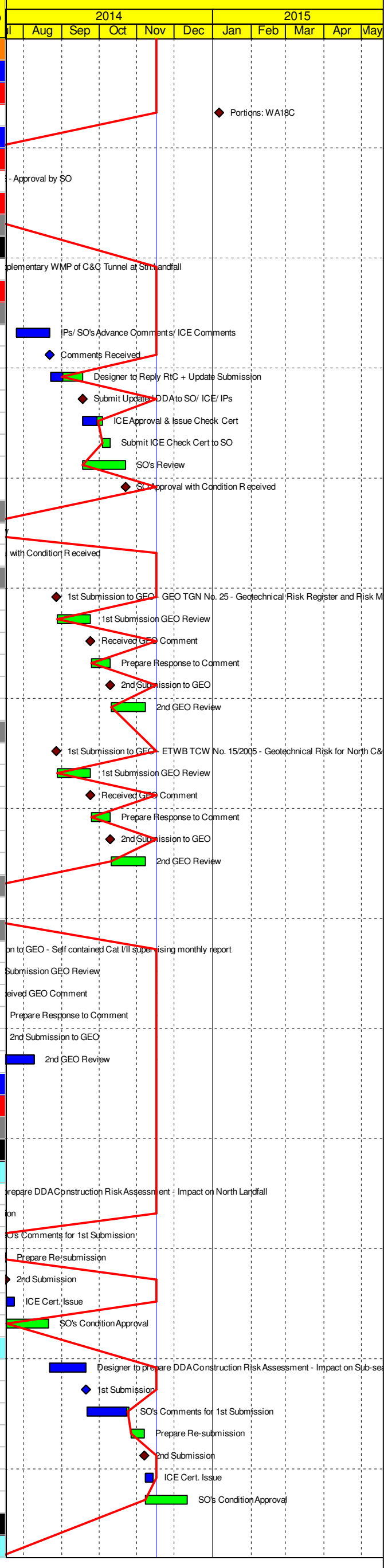
DD68390	Designer to prepare DDA Construction Risk Assessment - Impact on North Landfall	25	02-May-14	31-May-14	25-Jun-14A	26-Sep-14A	100%
DD68400	1st Submission	0		31-May-14		26-Sep-14A	100%
DD68410	SO's Comments for 1st Submission	35	01-Jun-14	05-Jul-14	27-Sep-14A	18-Nov-14	94%
DD68420	Prepare Re-submission	10	07-Jul-14	17-Jul-14	19-Nov-14	29-Nov-14	0%
DD68430	2nd Submission	0		17-Jul-14		29-Nov-14	0%
DD68440	ICE Cert. Issue	6	18-Jul-14	24-Jul-14	16-Oct-14A	22-Oct-14A	100%
DD68490	SO's Condition Approval	35	18-Jul-14	21-Aug-14	30-Nov-14	03-Jan-15	0%

**(B4) DDA Construction Risk Assessment - Impact on Sub-sea Tunnel**

DD71385	Designer to prepare DDA Construction Risk Assessment - Impact on Sub-sea Tunnel	25	22-Aug-14	20-Sep-14	01-Aug-14A	26-Sep-14A	100%
DD71395	1st Submission	0		20-Sep-14		26-Sep-14A	100%
DD71405	SO's Comments for 1st Submission	35	21-Sep-14	25-Oct-14	27-Sep-14A	05-Jan-15	94%
DD71415	Prepare Re-submission	10	27-Oct-14	06-Nov-14	06-Jan-15	16-Jan-15	0%
DD71420	2nd Submission	0		06-Nov-14		16-Jan-15	0%
DD71425	ICE Cert. Issue	6	07-Nov-14	13-Nov-14	16-Oct-14A	22-Oct-14A	100%
DD71435	SO's Condition Approval	35	07-Nov-14	11-Dec-14	17-Jan-15	20-Feb-15	0%

**Method Statement Submission**

**Method Statement of Construction Methodology of Culvert Extension**



	Planned Bar
	Planned Bar
	Planned Milestone
	Progress bar
	Progress Milestone



Activity ID	Activity Name	Orig Dur	Planned Start	Planned Finish	Current Start	Current Finish	14W47 % Comp	2014					2015						
								Jul	Aug	Sep	Oct	Nov	Dec	Jan	Feb	Mar	Apr	May	
MS1800	Preparation Method Statement for Culvert Extension	25	24-Jun-14	23-Jul-14	17-Nov-14	15-Dec-14	0%												
MS1810	Submit Method Statement to SO	0		23-Jul-14		15-Dec-14	0%												
MS1820	SO Reviews & Comments	28	24-Jul-14	20-Aug-14	16-Dec-14	12-Jan-15	0%												
MS1830	Re-submission	18	21-Aug-14	11-Sep-14	13-Jan-15	02-Feb-15	0%												
MS1840	SO's Review	28	12-Sep-14	09-Oct-14	03-Feb-15	02-Mar-15	0%												
MS1850	SO's Approval	0		09-Oct-14		02-Mar-15	0%												
<b>Construction</b>																			
<b>Milestones</b>																			
NRC13160	Completion of Zone D1 Reclamation up to +14.5mPD	0		18-Oct-14		31-Oct-14A	100%												
NRC13180	Completion of Zone D2 Reclamation up to +14.5mPD	0		11-Nov-14		19-Nov-14A	100%												
NRC13200	Completion of Zone C1 Reclamation up to +10mPD	0		14-Oct-14		23-Oct-14A	100%												
NRC13210	Completion of Zone C2 Reclamation up to +10mPD	0		17-Sep-14		06-Jan-15A	100%												
NRC13230	Completion of Zone B Reclamation up to +6mPD	0		01-Aug-14		26-Sep-14A	100%												
NRC13240	Completion of Zone A1 Reclamation up to +10mPD	0		21-Oct-14		23-Jan-15	0%												
NRC13250	Completion of Zone A2 Reclamation up to +10mPD (TBC)	0		10-Nov-14		12-Feb-15	0%												
<b>Zone E</b>																			
<b>Vertical Seawall</b>																			
NRC10480	VS - Mass Concrete Coping - Zone E - (CH0 to 50)	8	02-May-14	12-May-14	21-Jul-14A	14-Nov-14A	100%												
NRC10490	VS - Mass Concrete Coping - Zone E - (CH50 to 100)	8	13-May-14	21-May-14	23-Jul-14A	03-Nov-14A	100%												
NRC10500	VS - Mass Concrete Coping - Zone E - (CH100 to 150)	8	22-May-14	30-May-14	09-Jul-14A	12-Nov-14A	100%												
NRC10510	VS - Mass Concrete Coping - Zone E - (CH150 to 205)	11	31-May-14	13-Jun-14	16-Jul-14A	20-Nov-14	80%												
<b>Zone D1</b>																			
<b>Vertical Seawall</b>																			
NRC11720	VS - Mass Concrete Coping - Zone D1 - (CH205 to 255)	15	02-May-14	20-May-14	17-Nov-14*	03-Dec-14	0%												
NRC11790	VS - Mass Concrete Coping - Zone D1 - (CH255 to 305)	8	21-May-14	29-May-14	04-Dec-14	12-Dec-14	0%												
NRC11860	VS - Mass Concrete Coping - Zone D1 - (CH305 to 355)	8	30-May-14	09-Jun-14	13-Dec-14	22-Dec-14	0%												
<b>Sloping Seawall</b>																			
NRC120208	VS - Berm Stone - Zone D1 - RTT	2	20-Jun-14	21-Jun-14	17-Nov-14	18-Nov-14	0%												
NRC120209	VS - Mass Concrete Coping - Zone D1 - RTT	4	26-Apr-14	02-May-14	12-Aug-14A	17-Nov-14	80%												
NRC14070	SS - Armour Rock - Zone D1 - (CH255 to 305)	4	03-Jan-14	07-Jan-14	17-Nov-14	20-Nov-14	0%												
NRC14080	SS - Armour Rock - Zone D1 - (CH305 to 355)	4	08-Jan-14	11-Jan-14	21-Nov-14	25-Nov-14	0%												
NRC14120	SS - Mass Concrete Coping - Zone D1 - (CH255 to 305)	7	02-May-14	10-May-14	12-Sep-14A	23-Sep-14A	100%												
NRC14130	SS - Mass Concrete Coping - Zone D1 - (CH305 to 355)	7	12-May-14	19-May-14	24-Sep-14A	03-Oct-14A	100%												
<b>Reclamation</b>																			
NRC13460	Public Fill - Zone D1 - (CH205 to 255) to +14.5mPD	12	06-Sep-14	20-Sep-14	02-Oct-14A	16-Oct-14A	100%												
NRC13470	Public Fill - Zone D1 - (CH255 to 305) to +14.5mPD	11	22-Sep-14	06-Oct-14	04-Oct-14A	17-Oct-14A	100%												
NRC13480	Public Fill - Zone D1 - (CH305 to 355) to +14.5mPD	11	07-Oct-14	18-Oct-14	19-Oct-14A	31-Oct-14A	100%												
NRC15150	Surcharge Period - Zone D1 - (CH205 to 255)	180	21-Sep-14	19-Mar-15	17-Oct-14A	11-Apr-15	21%												
NRC15170	Surcharge Period - Zone D1 - (CH255 to 305)	180	07-Oct-14	04-Apr-15	18-Oct-14A	11-Apr-15	21%												
NRC15190	Surcharge Period - Zone D1 - (CH305 to 355)	180	19-Oct-14	16-Apr-15	01-Nov-14A	21-Apr-15	16%												
<b>Zone D2</b>																			
<b>Vertical Seawall</b>																			
NRC11930	VS - Mass Concrete Coping - Zone D2 - (CH355 to 405)	8	12-May-14	21-May-14	17-Nov-14	25-Nov-14	0%												
NRC11980	VS - Mass Concrete Coping - Zone D2 - (CH405 to 443)	8	23-May-14	03-Jun-14	26-Nov-14	04-Dec-14	0%												
<b>Sloping Seawall</b>																			
NRC14090	SS - Armour Rock - Zone D2 - (CH355 to 405)	4	13-Jan-14	16-Jan-14	26-Nov-14	29-Nov-14	0%												
NRC14100	SS - Armour Rock - Zone D2 - (CH405 to 443)	4	17-Jan-14	21-Jan-14	01-Dec-14	04-Dec-14	0%												
NRC14140	SS - Mass Concrete Coping - Zone D2 - (CH355 to 405)	7	20-May-14	27-May-14	18-Oct-14A	20-Oct-14A	100%												
NRC14150	SS - Mass Concrete Coping - Zone D2 - (CH405 to 443)	7	28-May-14	05-Jun-14	20-Oct-14A	23-Oct-14A	100%												
<b>Reclamation</b>																			
NRC13630	Public Fill - Zone D2 - (CH355 to 405) to +14.5mPD	11	20-Oct-14	31-Oct-14	02-Nov-14A	08-Nov-14A	100%												
NRC13640	Public Fill - Zone D2 - (CH405 to 443) to +14.5mPD	9	01-Nov-14	11-Nov-14	10-Nov-14A	19-Nov-14A	100%												
NRC15210	Surcharge Period - Zone D2 - (CH355 to 405)	180	01-Nov-14	29-Apr-15	09-Nov-14A	05-May-15	8%												
NRC15230	Surcharge Period - Zone D2 - (CH405 to 443)	180	12-Nov-14	10-May-15	19-Nov-14A	16-May-15	2%												
<b>Zone C1</b>																			
<b>Vertical Seawall</b>																			
NRC14680	VS - Berm Stone - Zone C1 - (CH493 to 543)	3	16-Jul-14	18-Jul-14	04-Sep-14A	17-Sep-14A	100%												
NRC14700	VS - Mass Concrete Coping - Zone C1 - (CH443 to 493)	8	10-Jun-14	18-Jun-14	14-Nov-14A	31-Dec-14	25%												
NRC14710	VS - Mass Concrete Coping - Zone C1 - (CH493 to 543)	8	19-Jun-14	27-Jun-14	14-Nov-14A	09-Jan-15	15%												
<b>Sloping Seawall</b>																			
NRC14830	SS - Armour Rock Underlayer - Zone C1 - (CH493 to 543)	5	12-Feb-14	17-Feb-14	17-Nov-14	21-Nov-14	0%												
NRC14850	SS - Armour Rock - Zone C1 - (CH443 to 493)	4	27-Feb-14	03-Mar-14	05-Dec-14	09-Dec-14	0%												
NRC14860	SS - Armour Rock - Zone C1 - (CH493 to 543)	4	04-Mar-14	07-Mar-14	10-Dec-14	13-Dec-14	0%												
NRC14880	SS - Mass Concrete Coping - Zone C1 - (CH443 to 493)	7	10-Jun-14	18-Jun-14	28-Nov-14	05-Dec-14	0%												
NRC14890	SS - Mass Concrete Coping - Zone C1 - (CH493 to 543)	7	18-Jun-14	25-Jun-14	06-Dec-14	13-Dec-14	0%												
<b>Reclamation</b>																			
NRC14050	Public Fill - Zone C1 - (CH443 to 493) to +10.0mPD	6	08-Oct-14	14-Oct-14	29-Sep-14A	23-Oct-14A	100%												
NRC14060	Public Fill - Zone C1 - (CH493 to 543) to +10.0mPD	6	29-Sep-14	07-Oct-14	29-Sep-14A	24-Oct-14A	100%												
NRC15250	Surcharge Period - Zone C1 - (CH443 to 493)	180	15-Oct-14	12-Apr-15	24-Nov-14A	17-Jun-15	16%												

■ Planned Bar  
■ Planned Bar  
■ Progress bar  
◆ Progress Milestone  
◆ Planned Milestone



Date	Revision	Checked	Approved
21-Feb-14	TMCLK/DBJ/GEN/PR...	SPa	WYu



Activity ID	Activity Name	Orig Dur	Planned Start	Planned Finish	Current Start	Current Finish	14W47 % Comp	2014					2015							
								Aug	Sep	Oct	Nov	Dec	Jan	Feb	Mar	Apr	May			
NRC12580	VS - Berm Stone - Zone A2 - (CH843 to 893)	3	09-Aug-14	12-Aug-14	24-Nov-14	26-Nov-14	0%													
NRC12590	VS - Berm Stone - Zone A2 - (CH893 to 956)	7	13-Aug-14	20-Aug-14	27-Nov-14	04-Dec-14	0%													
NRC12600	VS - Mass Concrete Coping - Zone A2 - (CH793 to 843)	8	07-Aug-14	15-Aug-14	29-Dec-14	07-Jan-15	0%													
NRC12610	VS - Mass Concrete Coping - Zone A2 - (CH843 to 893)	8	16-Aug-14	25-Aug-14	08-Jan-15	16-Jan-15	0%													
NRC12620	VS - Mass Concrete Coping - Zone A2 - (CH893 to 956)	18	26-Aug-14	16-Sep-14	17-Jan-15	06-Feb-15	0%													
<b>Sloping Seawall</b>																				
NRC12670	SS - Rock Grade 400 - Zone A2 - (CH843 to 893) to +2.5mPD (4k/d)	6	09-Apr-14	15-Apr-14	01-Aug-14A	25-Sep-14A	100%													
NRC12680	SS - Rock Grade 400 - Zone A2 - (CH893 to 956) to +2.5mPD (4k/d)	7	16-Apr-14	26-Apr-14	01-Sep-14A	19-Nov-14A	100%													
NRC12720	SS - Armour Rock Underlayer - Zone A2 - (CH793 to 843)	5	09-Apr-14	14-Apr-14	12-Dec-14	17-Dec-14	0%													
NRC12730	SS - Armour Rock Underlayer - Zone A2 - (CH843 to 893)	5	16-Apr-14	24-Apr-14	18-Dec-14	23-Dec-14	0%													
NRC12740	SS - Armour Rock Underlayer - Zone A2 - (CH893 to 956)	5	28-Apr-14	03-May-14	24-Dec-14	31-Dec-14	0%													
NRC12750	SS - Armour Rock - Zone A2 - (CH793 to 843)	4	05-May-14	09-May-14	10-Jan-15	14-Jan-15	0%													
NRC12760	SS - Armour Rock - Zone A2 - (CH843 to 893)	4	10-May-14	14-May-14	15-Jan-15	19-Jan-15	0%													
NRC12770	SS - Armour Rock - Zone A2 - (CH893 to 956)	4	15-May-14	19-May-14	20-Jan-15	23-Jan-15	0%													
NRC12780	SS - Mass Concrete Coping - Zone A2 - (CH793 to 843)	7	07-Aug-14	14-Aug-14	19-Jan-15	26-Jan-15	0%													
NRC12790	SS - Mass Concrete Coping - Zone A2 - (CH843 to 893)	7	15-Aug-14	22-Aug-14	27-Jan-15	03-Feb-15	0%													
NRC12800	SS - Mass Concrete Coping - Zone A2 - (CH893 to 956)	7	23-Aug-14	30-Aug-14	04-Feb-15	11-Feb-15	0%													
NRC12810	Sloping - Rockfill Type A - Zone A2 - (CH793 to 843)	1	09-Apr-14	09-Apr-14	20-Sep-14A	22-Sep-14A	100%													
NRC12820	Sloping - Rockfill Type A - Zone A2 - (CH843 to 893)	1	16-Apr-14	16-Apr-14	08-Nov-14A	13-Nov-14A	100%													
NRC12830	Sloping - Rockfill Type A - Zone A2 - (CH893 to 956)	1	28-Apr-14	28-Apr-14	21-Nov-14A	21-Nov-14A	100%													
NRC12850	Sloping - Geotextile - Zone A2 - (CH793 to 843)	2	10-Apr-14	11-Apr-14	11-Oct-14 A	11-Oct-14 A	100%													
NRC12860	Sloping - Geotextile - Zone A2 - (CH843 to 893)	2	17-Apr-14	22-Apr-14	11-Oct-14 A	13-Oct-14 A	100%													
NRC12870	Sloping - Geotextile - Zone A2 - (CH893 to 956)	2	29-Apr-14	30-Apr-14	21-Nov-14A	21-Nov-14A	100%													
NRC12880	Sloping - Granular Filter - Zone A2 - (CH793 to 843)	3	12-Apr-14	15-Apr-14	29-Oct-14A	31-Oct-14A	100%													
NRC12890	Sloping - Granular Filter - Zone A2 - (CH843 to 893)	3	23-Apr-14	25-Apr-14	24-Oct-14A	13-Nov-14A	100%													
NRC12900	Sloping - Granular Filter - Zone A2 - (CH893 to 956)	3	02-May-14	05-May-14	22-Nov-14A	22-Nov-14A	100%													
<b>Reclamation</b>																				
NRC12910	Reclamation - Geotextile - Zone A2 - (CH793 to 843) ( deleted )	4	14-May-14	17-May-14	29-Sep-14A	29-Sep-14A	100%													
NRC12920	Reclamation - Geotextile - Zone A2 - (CH843 to 893)	4	19-May-14	22-May-14	29-Sep-14A	29-Sep-14A	100%													
NRC12930	Reclamation - Geotextile - Zone A2 - (CH893 to 956)	3	23-May-14	26-May-14	29-Sep-14A	29-Sep-14A	100%													
NRC12940	Reclamation - Sand Blanket - Zone A2 - (CH793 to 843) ( deleted )	2	19-May-14	20-May-14	29-Sep-14A	29-Sep-14A	100%													
NRC12960	Reclamation - Sand Blanket - Zone A2 - (CH843 to 893)	3	23-May-14	26-May-14	29-Sep-14A	29-Sep-14A	100%													
NRC12970	Reclamation - Sand Blanket - Zone A2 - (CH893 to 956)	5	27-May-14	31-May-14	29-Sep-14A	29-Sep-14A	100%													
NRC12980	Reclamation - Band Drain - Zone A2 - (CH793 to 843) ( deleted )	4	22-May-14	26-May-14	29-Sep-14A	29-Sep-14A	100%													
NRC12990	Reclamation - Band Drain - Zone A2 - (CH843 to 893)	4	27-May-14	30-May-14	04-Oct-14A	06-Oct-14A	100%													
NRC13000	Reclamation - Band Drain - Zone A2 - (CH893 to 956)	5	03-Jun-14	07-Jun-14	04-Oct-14A	06-Oct-14A	100%													
NRC13010	Public Fill - Zone A2 - (CH793 to 843) to -2.5mPD	6	04-Jul-14	10-Jul-14	24-Sep-14A	05-Oct-14A	100%													
NRC13020	Public Fill - Zone A2 - (CH843 to 893) to -2.5mPD	6	11-Jul-14	17-Jul-14	03-Oct-14A	04-Nov-14A	100%													
NRC13030	Public Fill - Zone A2 - (CH893 to 956) to -2.5mPD	4	18-Jul-14	22-Jul-14	03-Nov-14A	17-Nov-14	80%													
NRC13040	Public Fill - Zone A2 - (CH793 to 843) to +2.5mPD	7	02-Aug-14	09-Aug-14	26-Sep-14A	23-Oct-14A	100%													
NRC13050	Public Fill - Zone A2 - (CH843 to 893) to +2.5mPD	7	11-Aug-14	18-Aug-14	24-Oct-14A	14-Nov-14A	100%													
NRC13070	Public Fill - Zone A2 - (CH893 to 956) to +2.5mPD	6	19-Aug-14	25-Aug-14	13-Nov-14A	19-Nov-14	70%													
NRC13080	Public Fill - Zone A2 - (CH793 to 843) to +6.0mPD	7	11-Aug-14	18-Aug-14	18-Oct-14A	31-Oct-14A	100%													
NRC13090	Public Fill - Zone A2 - (CH843 to 893) to +6.0mPD	7	19-Aug-14	26-Aug-14	02-Nov-14A	20-Nov-14	55%													
NRC13100	Public Fill - Zone A2 - (CH893 to 956) to +6.0mPD	6	27-Aug-14	02-Sep-14	21-Nov-14	27-Nov-14	0%													
NRC13110	Public Fill - Zone A2 - (CH793 to 843) to +10mPD	6	22-Oct-14	28-Oct-14	24-Jan-15	30-Jan-15	0%													
NRC13120	Public Fill - Zone A2 - (CH843 to 893) to +10mPD	7	29-Oct-14	05-Nov-14	31-Jan-15	07-Feb-15	0%													
NRC13130	Public Fill - Zone A2 - (CH893 to 956) to +10mPD	4	06-Nov-14	10-Nov-14	09-Feb-15	12-Feb-15	0%													
NRC15390	Surcharge Period - Zone A2 - (CH793 to 843)	180	11-Nov-14	09-May-15	13-Feb-15	11-Aug-15	0%													
NRC16960	NewActivity	0			17-Nov-14	18-Nov-14	0%													
<b>Zone F</b>																				
<b>CH137 to CH184</b>																				
A6416115	F - Backfilling up to +0.5mPD & T3 Installation - CH137 to CH184	6	22-Jan-14	27-Jan-14	15-Sep-14A	06-Oct-14A	100%													
A6416118	F - Backfilling up to +3.0mPD - CH137 to CH184	2	28-Jan-14	29-Jan-14	07-Oct-14A	10-Oct-14A	100%													
A6416120	F - Backfilling up to +4.0mPD - CH137 to CH184	2	30-Jan-14	31-Jan-14	10-Oct-14A	12-Oct-14A	100%													
A6416320	F - Anchor Wall Installation - CH160 to CH184	2	07-Mar-14	08-Mar-14	10-Oct-14A	11-Oct-14A	100%													
<b>CH184 to CH231</b>																				
A6416070	F - Backfilling up to -4.5mPD - CH184 to CH231	2	27-Jan-14	28-Jan-14	27-Aug-14A	08-Oct-14A	100%													
A6416080	F - Backfilling up to +0.5mPD & T3 Installation - CH184 to CH231	6	29-Jan-14	03-Feb-14	22-Sep-14A	20-Oct-14A	100%													
A6416085	F - Backfilling up to +3.0mPD - CH184 to CH231	2	04-Feb-14	05-Feb-14	18-Oct-14A	05-Nov-14A	100%													
A6416090	F - Backfilling up to +6.0mPD - CH184 to CH231	2	06-Feb-14	07-Feb-14	06-Nov-14A	08-Nov-14A	100%													
A6416230	F - Anchor wall Installation - CH184 to CH231	4	10-Mar-14	13-Mar-14	17-Nov-14	20-Nov-14	0%													
A6416290	F - Backfilling up to 0.0mPD & G2 Installation to Anchor Wall - CH184 to CH231	3	14-Mar-14	16-Mar-14	21-Nov-14	23-Nov-14	0%													
A6416295	F - Backfilling up to +3.0mPD & G1 Installation to Anchor Wall - CH184 to CH231	2	17-Mar-14	18-Mar-14	24-Nov-14	25-Nov-14	0%													
A6416300	F - Backfilling up to +6.0mPD to Anchor Wall - CH184 to CH231	2	19-Mar-14	20-Mar-14	26-Nov-14	27-Nov-14	0%													
A6416400	F - Backfilling to +6.0mPD to Existing Seawall - CH184 to CH231	1	21-Mar-14	21-Mar-14	28-Nov-14	28-Nov-14	0%													
<b>CH231 to CH278</b>																				
A6416260	F - Backfilling up to -7.5mPD & T1 Installation - CH231 to CH278	4	22-Mar-14	25-Mar-14	03-Nov-14A	23-Nov-14	75%													
A6416270	F - Backfilling up to -4.5mPD - CH231 to CH278	2	26-Mar-14	27-Mar-14	29-Nov-14	30-Nov-14	0%													

- Planned Bar
- Planned Bar
- ◆ Planned Milestone
- Progress bar
- ◆ Progress Milestone



Date	Revision	Checked	Approved
21-Feb-14	TMCLK/DBJ/GEN/PR...	SPa	WYu

Activity ID	Activity Name	Orig Dur	Planned Start	Planned Finish	Current Start	Current Finish	14W47 % Comp	2014					2015								
								Jul	Aug	Sep	Oct	Nov	Dec	Jan	Feb	Mar	Apr	May			
A6416273	F - Backfilling up to +0.5mPD & T3 Installation - CH231 to CH278	6	28-Mar-14	02-Apr-14	03-Dec-14	08-Dec-14	0%														
A6416278	F - Backfilling up to +3.0mPD - CH231 to CH278	2	03-Apr-14	04-Apr-14	09-Dec-14	10-Dec-14	0%														
A6416280	F - Backfilling up to +6.0mPD - CH231 to CH278	2	05-Apr-14	06-Apr-14	11-Dec-14	12-Dec-14	0%														
A6416310	F - Anchor wall Installation - CH231 to CH278	4	07-Apr-14	10-Apr-14	13-Dec-14	17-Dec-14	0%														
A6416480	F - Backfilling up to 0.0mPD & G2 Installation to Anchor Wall - CH231 to CH278	3	11-Apr-14	13-Apr-14	18-Dec-14	20-Dec-14	0%														
A6416490	F - Backfilling up to +3.0mPD & G1 Installation to Anchor Wall - CH231 to CH278	2	14-Apr-14	15-Apr-14	21-Dec-14	22-Dec-14	0%														
A6416500	F - Backfilling up to +6.0mPD to Anchor Wall - CH231 to CH278	2	16-Apr-14	17-Apr-14	23-Dec-14	24-Dec-14	0%														
A6416510	F - Backfilling to +6.0mPD to Existing Seawall - CH231 to CH278	1	18-Apr-14	18-Apr-14	25-Dec-14	25-Dec-14	0%														
<b>CH278 to CH327</b>																					
A6416190	F - Marine Sheet Piling (H1) - CH278 to CH327	5	25-Feb-14	01-Mar-14	29-Sep-14A	09-Oct-14A	100%														
A6416195	F - Marine Sheet Piling (H2) - CH278 to CH327	5	12-Mar-14	17-Mar-14	28-Oct-14A	05-Nov-14A	100%														
A6416200	F - Backfilling up to -3.5mPD & T2 Installation - CH278 to CH327	5	18-Mar-14	22-Mar-14	24-Nov-14	28-Nov-14	0%														
A6416210	F - Backfilling up to +0.5mPD - CH278 to CH327	4	23-Mar-14	26-Mar-14	29-Nov-14	02-Dec-14	0%														
A6416215	F - Backfilling up to +3.0mPD & T4 Installation - CH278 to CH327	5	27-Mar-14	31-Mar-14	03-Dec-14	07-Dec-14	0%														
A6416220	F - Backfilling up to +6.0mPD - CH278 to CH327	2	01-Apr-14	02-Apr-14	08-Dec-14	09-Dec-14	0%														
A6416340	F - Anchor wall Installation - CH278 to CH327	4	11-Apr-14	15-Apr-14	18-Dec-14	22-Dec-14	0%														
A6416520	F - Backfilling up to 0.0mPD & G2 Installation to Anchor Wall - CH278 to CH327	3	16-Apr-14	18-Apr-14	23-Dec-14	25-Dec-14	0%														
A6416530	F - Backfilling up to +3.0mPD & G1 Installation to Anchor Wall - CH278 to CH327	3	19-Apr-14	21-Apr-14	26-Dec-14	28-Dec-14	0%														
A6416540	F - Backfilling up to +6.0mPD to Anchor Wall - CH278 to CH327	3	22-Apr-14	24-Apr-14	29-Dec-14	31-Dec-14	0%														
A6416550	F - Backfilling to +6.0mPD to Existing Seawall - CH278 to CH327	1	25-Apr-14	25-Apr-14	01-Jan-15	01-Jan-15	0%														
<b>CH327 to CH381</b>																					
A6416140	F - Marine Sheet Piling (H1) - CH327 to CH381	4	03-Mar-14	06-Mar-14	30-Aug-14A	23-Oct-14A	100%														
A6416145	F - Marine Sheet Piling (H2) - CH327 to CH381	4	07-Mar-14	11-Mar-14	15-Sep-14A	23-Oct-14A	100%														
A6416150	F - Backfilling up to -3.5mPD & T2 Installation - CH327 to CH381	4	12-Mar-14	15-Mar-14	08-Nov-14A	23-Nov-14	85%														
A6416155	F - Backfilling up to +0.5mPD - CH327 to CH381	3	16-Mar-14	18-Mar-14	24-Nov-14	26-Nov-14	0%														
A6416160	F - Backfilling up to +3.0mPD & T4 Installation - CH327 to CH381	5	19-Mar-14	23-Mar-14	27-Nov-14	01-Dec-14	0%														
A6416170	F - Backfilling up to +6.0mPD - CH327 to CH381	3	24-Mar-14	26-Mar-14	02-Dec-14	04-Dec-14	0%														
A6416370	F - Anchor wall Installation - CH327 to CH381	3	16-Apr-14	22-Apr-14	23-Dec-14	27-Dec-14	0%														
A6416560	F - Backfilling up to 0.0mPD & G2 Installation to Anchor Wall - CH327 to CH381	3	23-Apr-14	25-Apr-14	28-Dec-14	30-Dec-14	0%														
A6416570	F - Backfilling up to +3.0mPD & G1 Installation to Anchor Wall - CH327 to CH381	3	26-Apr-14	28-Apr-14	31-Dec-14	02-Jan-15	0%														
A6416580	F - Backfilling up to +6.0mPD to Anchor Wall - CH327 to CH381	2	29-Apr-14	30-Apr-14	03-Jan-15	04-Jan-15	0%														
A6416590	F - Backfilling to +6.0mPD to Existing Seawall - CH327 to CH381	1	01-May-14	01-May-14	05-Jan-15	05-Jan-15	0%														
<b>Box Culvert Extension</b>																					
<b>Design Submission</b>																					
<b>(D10) IFA Temp.works - Extension of Existing Culvert adjacent to RTT</b>																					
DD04360	SO's Review	35	20-May-14	23-Jun-14	18-Jul-14A	04-Oct-14A	100%														
DD04370	SO Approval with Condition Received	0		23-Jun-14		04-Oct-14A	100%														
DD04960	Works Commencement - Temporary ELS for Box Culvert (Stage 3)	0	02-Jul-14			04-Oct-14A	100%														
<b>Construction</b>																					
<b>CH000 to CH137</b>																					
A6416670	Bored Pile Construction - A43 to A62 (4 Rigs) & Land Sheet Piling	96	31-May-14	23-Sep-14	21-Jul-14A	14-Nov-14A	100%														
A6416680	Backfilling for Surcharge	18	24-Sep-14	16-Oct-14	17-Nov-14	06-Dec-14	0%														
A6416690	Surcharge Period	180	17-Oct-14	14-Apr-15	07-Dec-14	04-Jun-15	0%														
<b>CH137 to CH184</b>																					
A6416610	Predrilling - CH137 to CH184	24	07-Feb-14	06-Mar-14	16-Oct-14A	07-Nov-14A	100%														
A6416720	Bored Pile Construction - A42 to A35	160	07-Mar-14	19-Sep-14	14-Jul-14A	19-Nov-14A	100%														
A6416770	Backfilling for Surcharge	12	20-Sep-14	06-Oct-14	17-Nov-14	29-Nov-14	0%														
A6416780	Surcharge Period	180	07-Oct-14	04-Apr-15	30-Nov-14	28-May-15	0%														
<b>CH184 to CH231</b>																					
A6416620	Predrilling - CH184 to CH231	24	22-Mar-14	23-Apr-14	08-Nov-14A	17-Dec-14	33%														
A6416730	Bored Pile Construction - A34 to A27	156	22-Mar-14	30-Sep-14	30-Oct-14A	13-May-15	18%														
A6416790	Backfilling for Surcharge	12	03-Oct-14	16-Oct-14	14-May-15	28-May-15	0%														
A6416860	Surcharge Period	105	17-Oct-14	26-Feb-15	29-May-15	02-Oct-15	0%														
A6417160	Surcharge Removal - CH184 to CH231	6	27-Feb-15	05-Mar-15	03-Oct-15	09-Oct-15	0%														
<b>CH231 to CH278</b>																					
A6416630	Predrilling - CH231 to CH278	24	22-Apr-14	21-May-14	27-Dec-14	24-Jan-15	0%														
A6416740	Bored Pile Construction - A26 to A19	143	22-Apr-14	13-Oct-14	27-Dec-14	27-Jun-15	0%														
A6416800	Backfilling for Surcharge	12	14-Oct-14	27-Oct-14	29-Jun-15	13-Jul-15	0%														
A6416830	Surcharge Period	105	28-Oct-14	09-Feb-15	14-Jul-15	26-Oct-15	0%														
A6417200	Surcharge Removal - CH231 to CH278	6	10-Feb-15	16-Feb-15	27-Oct-15	02-Nov-15	0%														
A6417210	Excavation down to S1 level - CH231 to CH278	8	17-Feb-15	04-Mar-15	03-Nov-15	11-Nov-15	0%														
<b>CH278 to CH327</b>																					
A6416640	Predrilling - CH278 to CH327	24	26-Apr-14	26-May-14	02-Jan-15	29-Jan-15	0%														
A6416750	Bored Pile Construction - A18 to A11	117	27-May-14	15-Oct-14	30-Jan-15	30-Jun-15	0%														
A6416810	Backfilling for Surcharge	12	16-Oct-14	29-Oct-14	02-Jul-15	15-Jul-15	0%														
A6416840	Surcharge Period	105	30-Oct-14	11-Feb-15	16-Jul-15	28-Oct-15	0%														
A6417240	Surcharge Removal - CH278 to CH327	6	12-Feb-15	18-Feb-15	29-Oct-15	04-Nov-15	0%														
A6417250	Excavation down to S1 level - CH278 to CH327	8	26-Feb-15	06-Mar-15	05-Nov-15	13-Nov-15	0%														
<b>CH327 to CH381</b>																					

■ Planned Bar  
■ Planned Bar  
◆ Planned Milestone  
■ Progress bar  
◆ Progress Milestone



Date	Revision	Checked	Approved
21-Feb-14	TMCLK/DBJ/GEN/PR...	SPa	WYu

Activity ID	Activity Name	Orig Dur	Planned Start	Planned Finish	Current Start	Current Finish	14W47 % Comp	2014					2015								
								Jul	Aug	Sep	Oct	Nov	Dec	Jan	Feb	Mar	Apr	May			
A6416650	Predrilling - CH327 to CH381	24	02-May-14	30-May-14	06-Jan-15	02-Feb-15	0%														
A6416760	Bored Pile Construction - A10 to A03	86	31-May-14	11-Sep-14	03-Feb-15	27-May-15	0%														
A6416850	Surcharge Period	105	26-Sep-14	08-Jan-15	11-Jun-15	23-Sep-15	0%														
A6417280	Surcharge Removal - CH327 to CH381	6	09-Jan-15	15-Jan-15	24-Sep-15	02-Oct-15	0%														
A6417290	Excavation down to S1 level - CH327 to CH381	9	16-Jan-15	26-Jan-15	03-Oct-15	13-Oct-15	0%														
A6417300	S1 Installation - CH327 to CH381	9	27-Jan-15	05-Feb-15	14-Oct-15	24-Oct-15	0%														
A6417310	Excavation down to Formation level - CH327 to CH381	6	06-Feb-15	12-Feb-15	26-Oct-15	31-Oct-15	0%														
A6417320	Box Culvert Construction - CH327 to CH381	142	13-Feb-15	13-Aug-15	02-Nov-15	29-Apr-16	0%														
<b>CH381 to CH399 (Box Culvert Connection)</b>																					
A6416660	F - Prebored H-piles for CKS Temporary Land Access	6	18-Feb-14	24-Feb-14	17-Nov-14	22-Nov-14	0%														
A6417000	F - Steel Bridge Installation for Land Access to Zone E	52	25-Feb-14	30-Apr-14	24-Nov-14	26-Jan-15	0%														
A6417010	F - Available of Land Access to Zone E	0	02-May-14		27-Jan-15		0%														
<b>North Shafts Construction &amp; Tunnel Structure</b>																					
<b>Design Submission</b>																					
<b>(A18) DDA Instrumentation &amp; Monitoring Plan &amp; AAA Values for North and South Landfalls</b>																					
DD71350	SO's Review	35	10-May-14	14-Jun-14	12-Sep-14A	22-Sep-14A	100%														
DD71360	SO Approval with Condition R received	0		14-Jun-14		22-Sep-14A	100%														
DD71375	Works Commencement - North temp ELS works - 01Aug14	0	01-Aug-14		22-Sep-14A		100%														
<b>(C1) DDA for North C&amp;C Tunnel Permanent Structure</b>																					
DD00315	IPs/SO's Advance comments / ICE comments	28	12-Mar-14	15-Apr-14	29-Aug-14A	22-Oct-14A	100%														
DD00330	IPs/ SO's Advance Comments/ ICE Comments	28	15-Apr-14	13-May-14	22-Oct-14A	22-Oct-14A	100%														
DD00340	Comments Received	0		13-May-14		22-Oct-14A	100%														
DD00350	Designer to Reply RTC + Update Submission	15	13-May-14	30-May-14	23-Oct-14A	21-Nov-14A	100%														
DD00360	Submit Updated DDA to SO/ ICE/ IPs	0	30-May-14		21-Nov-14A		100%														
DD00370	ICE Approval & Issue Check Cert	18	30-May-14	21-Jun-14	17-Nov-14	06-Dec-14	0%														
DD00380	Submit ICE Check Cert to SO	0		21-Jun-14		06-Dec-14	0%														
DD00390	IPs Review	28	30-May-14	27-Jun-14	21-Nov-14A	13-Dec-14	4%														
DD00400	IPs No Objection Received	0		27-Jun-14		13-Dec-14	0%														
DD00440	SO's Review	35	30-May-14	04-Jul-14	21-Nov-14A	20-Dec-14	2%														
DD00450	SO Approval with Condition R received	0		04-Jul-14		20-Dec-14	0%														
DD00670	Works Commencement - North C&C Tunnel Permanent Barette	0	07-Jul-14		17-Nov-14*		0%														
<b>(C1) DDA for North Approach Ramp Permanent Structure</b>																					
DD70770	Preparation DDANorth Approach Ramp Permanent Structure	18	04-Jul-14	25-Jul-14	22-Dec-14	14-Jan-15	0%														
DD70780	Review & Comment by JV	12	25-Jul-14	08-Aug-14	15-Jan-15	28-Jan-15	0%														
DD70785	Designer prepare DDA	6	08-Aug-14	15-Aug-14	29-Jan-15	04-Feb-15	0%														
DD70790	Formal Submission of DDA to ICE/ IPs	0		15-Aug-14		04-Feb-15	0%														
DD70792	Advanced Submission to SO	0		15-Aug-14		04-Feb-15	0%														
DD70794	IPs/SO's Advance comments / ICE comments	28	16-Aug-14	19-Sep-14	05-Feb-15	11-Mar-15	0%														
DD70800	IPs/ SO's Advance Comments/ ICE Comments	28	19-Sep-14	17-Oct-14	11-Mar-15	08-Apr-15	0%														
DD70805	Comments Received	0		17-Oct-14		08-Apr-15	0%														
DD70810	Designer to Reply RTC + Update Submission	15	17-Oct-14	04-Nov-14	08-Apr-15	25-Apr-15	0%														
DD70820	Submit Updated DDA to SO/ ICE/ IPs	0	04-Nov-14		25-Apr-15		0%														
DD70830	ICE Approval & Issue Check Cert	18	04-Nov-14	25-Nov-14	25-Apr-15	18-May-15	0%														
DD70840	Submit ICE Check Cert to SO	0		25-Nov-14		18-May-15	0%														
DD70850	IPs Review	28	04-Nov-14	02-Dec-14	25-Apr-15	23-May-15	0%														
DD70860	IPs No Objection Received	0		02-Dec-14		23-May-15	0%														
DD70870	SO's Review	35	04-Nov-14	09-Dec-14	25-Apr-15	30-May-15	0%														
DD70880	SO Approval with Condition R received	0		09-Dec-14		30-May-15	0%														
<b>(D2) DDA Temp.works - North Ventilation Shaft ELS</b>																					
DD03350	Designer prepare DDA	10	27-Mar-14	08-Apr-14	07-May-14A	30-Sep-14A	100%														
DD03360	Formal Submission of DDA to ICE/ IPs	0		08-Apr-14		30-Sep-14A	100%														
DD03370	Advanced Submission to SO	0		08-Apr-14		30-Sep-14A	100%														
DD03380	IPs/ SO's Advance Comments/ ICE Comments	28	09-Apr-14	06-May-14	03-Oct-14A	29-Oct-14A	100%														
DD03390	Comments Received	0		07-May-14		29-Oct-14A	100%														
DD03400	Designer to Reply RTC + Update Submission	21	07-May-14	30-May-14	29-Oct-14A	18-Nov-14A	100%														
DD03410	Submit Updated DDA to SO/ ICE/ IPs	0	31-May-14		18-Nov-14A		100%														
DD03420	ICE Approval & Issue Check Cert	12	31-May-14	14-Jun-14	29-Sep-14A	14-Nov-14A	100%														
DD03430	Submit ICE Check Cert to SO	6	16-Jun-14	21-Jun-14	15-Nov-14A	18-Nov-14A	100%														
DD03440	IPs Review	28	31-May-14	27-Jun-14	18-Nov-14A	10-Dec-14	14%														
DD03450	IPs No Objection Received	0		27-Jun-14		10-Dec-14	0%														
DD03490	SO's Review	35	31-May-14	04-Jul-14	18-Nov-14A	17-Dec-14	11%														
DD03495	SO Approval with Condition R received	0		04-Jul-14		17-Dec-14	0%														
DD03515	Works Commencement - TBM Change Diameter Shaft - 04Aug14	0	04-Aug-14		18-Dec-14*		0%														
<b>ETWB TCW No 15/2005 - ELS Design for Ventilation Shaft at Northern Landfall</b>																					
GEO1170	2nd Submission to GEO	0		23-Sep-14		02-May-14A	100%														
GEO1175	2nd GEO Review	28	24-Sep-14	21-Oct-14	02-May-14A	02-May-14A	100%														
<b>Construction</b>																					
<b>North Launching Shaft ELS Foundation &amp; Capping Beam (Cell 1 to 3)</b>																					
NSH1340	E - Cell 1-3 - Diaphragm Wall & Toe Grouting - Shaft ELS	54	02-May-14	07-Jul-14	07-Jul-14A	19-Oct-14A	100%														

■ Planned Bar  
■ Planned Bar  
◆ Planned Milestone  
■ Progress bar  
◆ Progress Milestone

TMCLK - Northern Connection Sub-Sea Tunnel Section  
 Detailed Works Programme  
 Progress as of 17-Nov-14



Date	Revision	Checked	Approved
21-Feb-14	TMCLK/DBJ/GEN/PR...	SPa	WYu

Activity ID	Activity Name	Orig Dur	Planned Start	Planned Finish	Current Start	Current Finish	14W47 % Comp	2014					2015								
								Jul	Aug	Sep	Oct	Nov	Dec	Jan	Feb	Mar	Apr	May			
NSH1350	E - Cell 1-3 - Diaphragm Wall & Toe Grouting - Perm Barette	26	08-Jul-14	06-Aug-14	23-Aug-14A	19-Oct-14A	100%														
NSH1360	E - Cell 1-3 - Capping beam Installation	18	08-Jul-14	28-Jul-14	25-Aug-14A	14-Nov-14A	100%														
NSH1370	E - Cell 1-3 - Instrumentation & Pump well Installation	6	31-Jul-14	06-Aug-14	23-Aug-14A	15-Nov-14A	100%														
NSH1430	E - Pumping Test for TBM Launching Shaft ELS - Cell 1-3	5	07-Aug-14	11-Aug-14	03-Nov-14A	12-Nov-14A	100%														
<b>North Launching Shaft Excavation (Cell 1 to 3)</b>																					
NSH1440	E - Cell 1 to 3 - Shaft Excavation	77	12-Aug-14	12-Nov-14	06-Oct-14A	22-Dec-14	60%														
<b>North Launching Shaft ELS Foundation &amp; Capping Beam</b>																					
NSH1190	E - Cell 4 to 6 - Diaphragm Wall & Toe Grouting - Shaft ELS ( deleted )	49	08-Jul-14	02-Sep-14	29-Sep-14A	29-Sep-14A	100%														
NSH1200	E - Cell 4 to 6 - Diaphragm Wall & Toe Grouting - Perm Barette ( deleted )	4	03-Sep-14	06-Sep-14	29-Sep-14A	29-Sep-14A	100%														
NSH1210	E - Cell 4 to 6 - Prebored H-piles - Perm ( deleted )	21	02-May-14	27-May-14	28-Sep-14A	29-Sep-14A	100%														
NSH1220	E - Cell 4 to 6 - Capping beam Installation( deleted )	18	03-Sep-14	24-Sep-14	29-Sep-14A	29-Sep-14A	100%														
NSH1230	E - Cell 4 to 6 - Instrumentation & Pump well Installation ( deleted )	4	20-Sep-14	24-Sep-14	29-Sep-14A	29-Sep-14A	100%														
NSH1380	E - Pumping Test for TBM Launching Shaft ELS - Cell 4 to 6 ( deleted )	6	25-Sep-14	30-Sep-14	29-Sep-14A	29-Sep-14A	100%														
<b>North Launching Shaft Excavation</b>																					
NSH1400	E - Cell 4 to 6 - Shaft Excavation ( deleted )	31	03-Oct-14	07-Nov-14	29-Sep-14A	29-Sep-14A	100%														
<b>North Launching Shaft Base Slab for TBM Launching</b>																					
NSH1455	E - Tympanum construction for TBM break-in	12	20-Nov-14	03-Dec-14	02-Jan-15	15-Jan-15	0%														
NSH1460	E - Cell 1 to 2 - Base Slab construction	22	13-Nov-14	08-Dec-14	23-Dec-14	20-Jan-15	0%														
NSH1465	E - Cell 3 to 4 - Excavation to ML03 formation level	6	09-Dec-14	15-Dec-14	21-Jan-15	27-Jan-15	0%														
NSH1470	E - Cell 3 to 4 - ML3 Base Slab construction	12	16-Dec-14	31-Dec-14	28-Jan-15	10-Feb-15	0%														
NSH1480	E - Cell 5 - Temporary backfilling for ML03 logistic	6	02-Jan-15	08-Jan-15	11-Feb-15	17-Feb-15	0%														
NSH1490	E - Cell 3 to 4 - Excavation to ML02 formation level	6	02-Jan-15	08-Jan-15	11-Feb-15	17-Feb-15	0%														
NSH1500	E - Cell 3 to 4 - ML02 Base Slab construction	18	09-Jan-15	29-Jan-15	18-Feb-15	17-Mar-15	0%														
NSH1510	E - Cell 5 - Temporary backfilling for ML02 logistic	6	30-Jan-15	05-Feb-15	18-Mar-15	24-Mar-15	0%														
<b>North Ventilation Shaft ELS Foundation &amp; Capping Beam</b>																					
A6415775	B - Setup for Shaft ELS Foundation	20	02-Aug-14	25-Aug-14	27-Oct-14A	31-Oct-14A	100%														
A6415780	B - Diaphragm Wall - Shaft ELS	81	26-Aug-14	01-Dec-14	01-Nov-14A	26-Feb-15	3%														
A6415790	B - Instrumentation & Pump well Installation	6	02-Dec-14	08-Dec-14	27-Feb-15	05-Mar-15	0%														
A6415795	B - Pumping Test for Excavation	7	09-Dec-14	15-Dec-14	06-Mar-15	12-Mar-15	0%														
<b>North Ventilation Shaft Excavation &amp; Base Slab</b>																					
A6415800	B - Vent Shaft Excavation (+6.0 to +4.0mPD) - Reclaimed Fill	5	02-Dec-14	06-Dec-14	27-Feb-15	04-Mar-15	0%														
A6415810	B - Capping Beam Installation (+6.0mPD)	12	08-Dec-14	20-Dec-14	05-Mar-15	18-Mar-15	0%														
A6415820	B - Vent Shaft Excavation (+4.0 to -8.0mPD) - Reclaimed Fill	19	22-Dec-14	15-Jan-15	19-Mar-15	14-Apr-15	0%														
A6415830	B - Ring Beam Installation (-5.5mPD)	6	16-Jan-15	22-Jan-15	15-Apr-15	21-Apr-15	0%														
A6415840	B - Vent Shaft Excavation (-8.0 to -20.0mPD) - Fill/MD/ALLUVIUM	27	23-Jan-15	02-Mar-15	22-Apr-15	23-May-15	0%														
<b>CLP Temporary Substation</b>																					
<b>Construction</b>																					
DDP12800	1st Batch - CLP Installation & Commissioning	108	02-Jul-14	07-Nov-14	02-Jul-14A	21-Nov-14	95%														
DDP12810	11kV Equipment / Switch Room installation by JV	48	20-Aug-14	18-Oct-14	20-Aug-14A	31-Oct-14A	100%														
DDP12820	FS Installation by JV	24	11-Oct-14	08-Nov-14	11-Oct-14A	25-Oct-14A	100%														
DDP12830	1st batch - Noise Measurement (deleted)	12	08-Nov-14	21-Nov-14	21-Nov-14A	21-Nov-14A	100%														
DDP12840	Final FS Installation by JV	6	08-Nov-14	14-Nov-14	22-Nov-14	28-Nov-14	0%														
DDP12850	FSD inspection for 1st Transformer Energization	12	15-Nov-14	28-Nov-14	29-Nov-14	12-Dec-14	0%														
DDP12860	1st Batch - Commissioning & Energization	0		28-Nov-14		12-Dec-14*	0%														
DDP12870	2nd Batch - CLP Installation & Commissioning	95	15-Oct-14	05-Feb-15	02-Jul-14A	21-Nov-14	95%														
DDP12880	FS Installation by JV	24	09-Jan-15	06-Feb-15	20-Sep-14A	15-Oct-14A	100%														
DDP12890	2nd Batch - Noise Measurement (to be clarified)	6	06-Feb-15	12-Feb-15	21-Nov-14A	21-Nov-14A	100%														
DDP12900	Final FS Installation by JV	6	06-Feb-15	12-Feb-15	22-Nov-14	28-Nov-14	0%														
DDP12910	FSD inspection for 2nd Transformer Energization	6	13-Feb-15	18-Feb-15	29-Nov-14	04-Dec-14	0%														
DDP12920	2nd Batch - Commissioning & Energization	0		18-Feb-15		04-Dec-14*	0%														
<b>North Surface works for TBM Tunnelling</b>																					
<b>Design Submission</b>																					
<b>(D1) IFA for Temp. Access to Portion N8A, N8B &amp; N8C incl. Temp. Lighting</b>																					
AP01500	Preparation of AIP Temporary Access Road to N8	33	02-Jan-14	15-Feb-14	02-Jan-14A	18-Nov-14	94%														
AP01505	Review & Comment by JV	12	17-Feb-14	01-Mar-14	19-Nov-14	02-Dec-14	0%														
AP01510	Designer Prepare IFA	6	03-Mar-14	08-Mar-14	03-Dec-14	09-Dec-14	0%														
AP01515	Formal Submission of IFA to ICE/IPs	0		08-Mar-14		09-Dec-14	0%														
AP01520	Advanced Submission of IFA to SO	0		08-Mar-14		09-Dec-14	0%														
AP01525	Review & Comment by SO/ICE/IPs	28	09-Mar-14	05-Apr-14	10-Dec-14	06-Jan-15	0%														
AP01530	Advance Comments from SO/ Comments from ICE/ IPs Received	0		07-Apr-14		06-Jan-15	0%														
AP01535	Designer to Prepare RTC & Updated AIP	18	07-Apr-14	30-Apr-14	07-Jan-15	27-Jan-15	0%														
AP01540	Submission of AIP to SO/ ICE together with Reply To Comment (RTC)	0		30-Apr-14		27-Jan-15	0%														
AP01545	Reply to IPs Comments in RTC	0		30-Apr-14		27-Jan-15	0%														
AP01550	ICE Approval & Issue of Design Check Cert.	18	02-May-14	23-May-14	28-Jan-15	17-Feb-15	0%														
AP01555	Check Cert to SO	0		23-May-14		17-Feb-15	0%														
AP01560	No Objection or Further Minor Comments from IPs Received	0		23-May-14		17-Feb-15	0%														
AP01565	SO Review (35 Days)	35	02-May-14	05-Jun-14	01-Feb-15	07-Mar-15	0%														
<b>Method Statement Submission</b>																					
<b>Method Statement of Cross Passage Construction Methodology of Ground Improvement</b>																					

- Planned Bar
- Planned Bar
- ◆ Planned Milestone
- Progress bar
- ◆ Progress Milestone



Date	Revision	Checked	Approved
21-Feb-14	TMCLK/DBJ/GEN/PR...	SPA	WYu

Activity ID	Activity Name	Orig Dur	Planned Start	Planned Finish	Current Start	Current Finish	14W47 % Comp	2014					2015							
								Aug	Sep	Oct	Nov	Dec	Jan	Feb	Mar	Apr	May			
MS1240	ICE Approval & Issue Check Cert.	18	17-Sep-14	09-Oct-14	01-Aug-14A	20-Aug-14A	100%													
MS1250	SO's Review	28	17-Sep-14	14-Oct-14	01-Aug-14A	31-Aug-14A	100%													
MS1260	SO's Approval	0		14-Oct-14		31-Aug-14A	100%													
<b>Construction</b>																				
<b>Zone E</b>																				
A6416440	Zone E - Break-in Plug - CSM	38	18-Sep-14	03-Nov-14	01-Sep-14A	18-Nov-14	95%													
A6416450	Zone E - Jet grouting	60	04-Nov-14	15-Jan-15	03-Sep-14A	24-Jan-15	9%													
<b>Zone D1</b>																				
NRC13950	Zone D1 - Vibro-compaction (CH255 to 305)	60	13-May-14	11-Jul-14	25-Aug-14A	19-Sep-14A	100%													
NRC13960	Zone D1 - Vibro-compaction (CH305 to 355)	60	17-May-14	15-Jul-14	20-Aug-14A	27-Sep-14A	100%													
NRC14000	Zone D1 - Compacted Sand Excavation down to +2.0mPD	6	07-Jul-14	12-Jul-14	18-Sep-14A	25-Oct-14A	100%													
NRC14010	Zone D1 - Unreinforced Separation D-wall (1st 55m) ( deleted )	16	14-Jul-14	31-Jul-14	29-Sep-14A	29-Sep-14A	100%													
NRC14012	Zone D1 - Unreinforced Separation D-wall (Remaining) ( deleted )	19	01-Aug-14	22-Aug-14	29-Sep-14A	29-Sep-14A	100%													
NRC14015	Zone D1 - Ground Treatment at TBM Tunnel Crown	61	22-Sep-14	03-Dec-14	27-Oct-14A	27-Oct-14A	100%													
NRC14020	Zone D1 - Ground Treatment for CP54	20	14-Jul-14	05-Aug-14	02-Sep-14A	20-Nov-14	59%													
NRC14030	Zone D1 - Granular Material for B/Cement Base	6	23-Aug-14	29-Aug-14	18-Oct-14A	21-Oct-14A	100%													
NRC14040	Zone D1 - Compacted Granular Material to +6.0mPD	6	30-Aug-14	05-Sep-14	22-Oct-14A	24-Oct-14A	100%													
<b>Zone D2</b>																				
NRC13970	Zone D2 - Vibro-compaction (CH355 to 405)	60	25-May-14	23-Jul-14	18-Sep-14A	18-Oct-14A	100%													
NRC13980	Zone D2 - Vibro-compaction (CH405 to 443)	60	07-Jun-14	05-Aug-14	15-Oct-14A	28-Oct-14A	100%													
NRC13990	Zone D2 - Unreinforced Separation D-wall ( deleted )	21	23-Aug-14	17-Sep-14	29-Sep-14A	29-Sep-14A	100%													
NRC14110	Zone D2 - B/C Slurry Substitution for CP53	22	06-Aug-14	30-Aug-14	21-Nov-14	16-Dec-14	0%													
<b>Zone C1</b>																				
NRC1202100	Zone C1 - Vibro-compaction (CH355 to 405) ( deleted )	60	22-Jun-14	20-Aug-14	28-Sep-14A	29-Sep-14A	100%													
NRC1202110	Zone C1 - Vibro-compaction (CH405 to 443) ( deleted )	60	28-Jun-14	26-Aug-14	28-Sep-14A	29-Sep-14A	100%													
NRC1202120	Zone C1 - Unreinforced Separation D-wall ( deleted )	27	27-Aug-14	27-Sep-14	29-Sep-14A	29-Sep-14A	100%													
NRC1202130	Zone C1 - B/C Slurry Substitution for CP52	26	27-Aug-14	26-Sep-14	17-Nov-14	16-Dec-14	0%													
<b>Zone C2</b>																				
NRC1202140	Zone C2 - Unreinforced Separation D-wall ( deleted )	15	09-Aug-14	26-Aug-14	29-Sep-14A	29-Sep-14A	100%													
NRC1202150	Zone C2 - Drilling for Rock Fissure Grouting for CP51	21	03-Jul-14	26-Jul-14	06-Nov-14A	08-Dec-14	11%													
NRC1202155	Zone C2 - Rock Fissure Grouting for CP51	44	14-Jul-14	02-Sep-14	17-Nov-14	09-Jan-15	0%													
NRC1202160	Zone C2 - Jet Grouting for CP51	18	20-Aug-14	10-Sep-14	24-Dec-14	16-Jan-15	0%													
<b>Zone B</b>																				
A6415895	Zone B - Unreinforced Separation D-wall	13	27-Aug-14	11-Sep-14	02-Dec-14	16-Dec-14	0%													
A6415897	Zone B - Unreinforced Separation D-wall	13	25-Jul-14	08-Aug-14	17-Nov-14	01-Dec-14	0%													
A6415900	Zone B - Slurry Wall for TBM Break-out Plug	34	02-Dec-14	13-Jan-15	27-Feb-15	11-Apr-15	0%													
A6415910	Zone B - Slurry Wall - Toe Grouting	24	14-Jan-15	10-Feb-15	13-Apr-15	11-May-15	0%													
A6415920	Zone B - Ground Treatment for TBM Break-out Plug	58	11-Feb-15	30-Apr-15	12-May-15	21-Jul-15	0%													
<b>Ground Treatment</b>																				
A6417430	Zone A - B/C Slurry Substitution for CP49	30	22-Oct-14	25-Nov-14	24-Jan-15	06-Mar-15	0%													
A6417440	Zone A - Drilling for Rock Fissure Grouting for CP48	65	11-Nov-14	28-Jan-15	13-Feb-15	12-May-15	0%													
A6417450	Zone A - Rock Fissure Grouting for CP48	90	25-Nov-14	19-Mar-15	06-Mar-15	26-Jun-15	0%													
A6417460	Zone A - Jet Grouting for CP48	72	29-Jan-15	05-May-15	13-May-15	07-Aug-15	0%													
<b>North Approach TBM Tunnelling &amp; Cross Passage</b>																				
<b>Major Procurement</b>																				
<b>TBM at Northern Landfall</b>																				
PO103080	S880 - 17.6m dia - TBM - Manufacturing - Cutterhead	198	25-Jan-14	30-Sep-14	25-Jan-14A	09-Dec-14	90%													
PO103150	S880 - 17.6m dia - TBM - Workshop Assembly	138	07-May-14	20-Oct-14	04-Jun-14A	09-Dec-14	93%													
PO103160	S880 - 17.6m dia - TBM - Workshop Acceptance Test	0		20-Oct-14		30-Oct-14A	100%													
PO103170	S880 - 17.6m dia - TBM - Disassembly and Packing for Transport	32	21-Oct-14	26-Nov-14	01-Nov-14A	19-Dec-14	72%													
PO103180	S880 - 17.6m dia - TBM - Delivery	10	27-Nov-14	08-Dec-14	20-Dec-14	03-Jan-15	0%													
PO103190	S880 - 17.6m dia - TBM - Arrival to site	0		08-Dec-14		03-Jan-15	0%													
PO103220	S882 - 13.6m dia - TBM - Manufacturing - Cutterhead	198	01-Mar-14	30-Oct-14	01-Mar-14A	20-Nov-14	98%													
PO103290	S882 - 13.6m dia - TBM - Workshop Assembly	150	16-Jun-14	11-Dec-14	16-Jun-14A	11-Dec-14	85%													
PO103300	S882 - 13.6m dia - TBM - Workshop Acceptance Test	0		11-Dec-14		11-Dec-14	0%													
PO103310	S882 - 13.6m dia - TBM - Disassembly and Packing for Transport	28	12-Dec-14	16-Jan-15	12-Dec-14	16-Jan-15	0%													
PO103320	S882 - 13.6m dia - TBM - Delivery	17	17-Jan-15	02-Feb-15	17-Jan-15	02-Feb-15	0%													
PO103330	S882 - 13.6m dia - TBM - Arrival to site	0		02-Feb-15		02-Feb-15	0%													
<b>Precast Segment</b>																				
<b>QSPSC Accreditation for Batching plant</b>																				
A6417790	2nd Batching Plant - QSPSC Approval	0		30-Aug-14		29-Sep-14A	100%													
<b>Precast Segment Mould Fabrication</b>																				
A6417900	ID12.40 Segment Mould - Mould Assembling	30	23-Jun-14	26-Jul-14	19-Jun-14A	25-Oct-14A	100%													
A6417910	ID12.40 Segment Mould - Painting & Commissioning	4	28-Jul-14	31-Jul-14	24-Jun-14A	28-Oct-14A	100%													
<b>Precast Segment ID15.60 - Production for NB North TBM Tunnel</b>																				
A6417950	ID15.60 TBM Segment Ring Fabrication - 1 ring per week	18	02-Sep-14	22-Sep-14	06-Sep-14A	23-Sep-14A	100%													
A6417960	ID15.60 TBM Segment Ring Fabrication - 1 ring per day	6	23-Sep-14	29-Sep-14	23-Sep-14A	25-Sep-14A	100%													
A6417970	ID15.60 TBM Segment Ring Fabrication - 2 rings per day	148	30-Sep-14	25-Apr-15	25-Sep-14A	27-Apr-15	23%													
<b>Precast Segment ID12.40 - Production for SB North TBM Tunnel</b>																				

- Planned Bar
- Planned Bar
- ◆ Planned Milestone
- Progress bar
- ◆ Progress Milestone



Date	Revision	Checked	Approved
21-Feb-14	TMCLK/DBJ/GEN/PR...	SPA	WYu





Activity ID	Activity Name	Orig Dur	Planned Start	Planned Finish	Current Start	Current Finish	14W47 % Comp	2014					2015				
								Aug	Sep	Oct	Nov	Dec	Jan	Feb	Mar	Apr	May
DD6390	SO Approval with Condition R received	0		20-Aug-14		18-Dec-14	0%										
DD6420	Works Commencement - Precast mould Shop Drawing start	0	01-Sep-14		17-Nov-14*		0%										
<b>ETWB TCW No 15/2005 - TBM Tunnel Works</b>																	
GEO1210	1st Submission to GEO - ETWB TCW No 15/2005 - TBM Tunnel Works	0		17-Sep-14		09-Mar-15	0%										
GEO1215	1st Submission GEO Review	28	18-Sep-14	15-Oct-14	10-Mar-15	06-Apr-15	0%										
GEO1220	Received GEO Comment	0		15-Oct-14		08-Apr-15	0%										
GEO1225	Prepare Response to Comment	12	16-Oct-14	29-Oct-14	08-Apr-15	21-Apr-15	0%										
GEO1230	2nd Submission to GEO	0		29-Oct-14		21-Apr-15	0%										
GEO1235	2nd GEO Review	28	30-Oct-14	26-Nov-14	22-Apr-15	19-May-15	0%										
<b>(G5) DDA for Cross Passage - Permanent works - incl. Detailed Geotechnical Assessment - North</b>																	
AN1100	Early DDANorth Cross Passage Lining	108	16-Jun-14	23-Oct-14	03-Jul-14A	22-Oct-14A	100%										
AN1110	Early DDANorth TBM Tunnel Design at CP opening	108	16-Jun-14	23-Oct-14	03-Jul-14A	22-Oct-14A	100%										
DD67438	Preparation of DDACross Passage incl. Detailed Geotechnical Assessment	0	24-Oct-14	24-Oct-14	22-Oct-14A	22-Oct-14A	100%										
DD67448	Review & Comment by JV	6	24-Oct-14	30-Oct-14	22-Oct-14A	29-Oct-14A	100%										
DD67450	Designer prepare DDA	12	31-Oct-14	13-Nov-14	30-Oct-14A	21-Nov-14	75%										
DD67458	Formal Submission of DDA to ICE/ IPs	0		13-Nov-14		21-Nov-14	0%										
DD67460	Advanced Submission to SO	0		13-Nov-14		21-Nov-14	0%										
DD67468	IPs/ SO's Advance Comments/ ICE Comments	28	14-Nov-14	11-Dec-14	22-Nov-14	19-Dec-14	0%										
DD67470	Comments Received	0		11-Dec-14		19-Dec-14	0%										
DD67478	Designer to Reply RTC + Update Submission	21	12-Dec-14	08-Jan-15	20-Dec-14	16-Jan-15	0%										
DD67488	Submit Updated DDA to SO/ ICE/ IPs	0	09-Jan-15		17-Jan-15		0%										
DD67498	ICE Approval & Issue Check Cert	12	09-Jan-15	22-Jan-15	17-Jan-15	30-Jan-15	0%										
DD67508	Submit ICE Check Cert to SO	6	23-Jan-15	29-Jan-15	31-Jan-15	06-Feb-15	0%										
DD67518	IPs Review	28	09-Jan-15	05-Feb-15	17-Jan-15	13-Feb-15	0%										
DD67528	IPs No Objection Received	0		05-Feb-15		13-Feb-15	0%										
DD67609*	SO's Review	35	09-Jan-15	12-Feb-15	17-Jan-15	20-Feb-15	0%										
DD67610	SO Approval with Condition R received	0		12-Feb-15		26-Feb-15	0%										
<b>(H2) DDA Temp.works for Cross Passages - North</b>																	
DD06050	ICE Approval & Issue Check Cert	12	04-Aug-14	16-Aug-14	11-Sep-14A	25-Sep-14A	100%										
DD06060	Submit ICE Check Cert to SO	6	18-Aug-14	23-Aug-14	26-Sep-14A	03-Oct-14A	100%										
DD06070	IPs Review	28	03-Aug-14	30-Aug-14	29-Aug-14A	10-Oct-14A	100%										
DD06080	IPs No Objection Received	0		30-Aug-14		10-Oct-14A	100%										
DD06120	SO's Review	35	02-Aug-14	05-Sep-14	29-Aug-14A	18-Nov-14	94%										
DD06130	SO Approval with Condition R received	0		05-Sep-14		18-Nov-14	0%										
<b>ETWB TCW No 15/2005 - Cross Passage Ground Treatment for TBM Tunnels in North Landfall</b>																	
GEO1236	Review Meeting with GEO - after AIP Approval	0	01-Apr-14		17-Nov-14		0%										
GEO1240	1st Submission to GEO - ETWB TCW No 15/2005 - Cross Passage Ground Treatment for TBM Tunnels in North Landfall	0		04-Aug-14		17-Nov-14	0%										
GEO1245	1st Submission GEO Review	28	04-Aug-14	31-Aug-14	17-Nov-14	14-Dec-14	0%										
GEO1250	Received GEO Comment	0		01-Sep-14		15-Dec-14	0%										
GEO1255	Prepare Response to Comment	12	01-Sep-14	15-Sep-14	15-Dec-14	30-Dec-14	0%										
GEO1260	2nd Submission to GEO	0		15-Sep-14		30-Dec-14	0%										
GEO1265	2nd GEO Review	28	16-Sep-14	13-Oct-14	31-Dec-14	27-Jan-15	0%										
GEO1455	Received 2nd GEO Comment	0		13-Oct-14		27-Jan-15	0%										
GEO1465	Prepare Respond to 2nd Comment	12	14-Oct-14	27-Oct-14	28-Jan-15	10-Feb-15	0%										
GEO1475	3rd Submission to GEO	0		27-Oct-14		10-Feb-15	0%										
GEO1485	3rd GEO Review	28	28-Oct-14	24-Nov-14	11-Feb-15	10-Mar-15	0%										
<b>Method Statement Submission</b>																	
<b>Method Statement of Construction Methodology of Cross Passage Excavation</b>																	
MS1400	Preparation Method Statement for CP Excavation	25	03-Jan-15	31-Jan-15	03-Mar-15	31-Mar-15	0%										
MS1410	Submit Method Statement to SO	0		31-Jan-15		31-Mar-15	0%										
MS1420	SO Reviews & Comments	28	01-Feb-15	28-Feb-15	01-Apr-15	28-Apr-15	0%										
<b>Construction</b>																	
<b>Northern Landfall Surface Setup for TBM operation</b>																	
A6415930	Gantry Setup at North TBM Launching Shaft	48	29-Jul-14	23-Sep-14	23-Jan-15	26-Mar-15	0%										
A6415937	Slurry Treatment Plant Foundation	25	15-Oct-14	12-Nov-14	17-Jan-15	14-Feb-15	0%										
A6415940	Slurry Treatment Plant Setup at Northern Landfall	64	13-Nov-14	29-Jan-15	16-Feb-15	13-May-15	0%										
A6415950	Slurry Treatment Plant Commissioning	24	30-Jan-15	05-Mar-15	14-May-15	11-Jun-15	0%										
<b>S880 TBM Assembly at North TBM Launching Shaft</b>																	
NSH1900	S880 - TBM Launching - Front Shield Assembly	3	09-Dec-14	11-Dec-14	27-Mar-15	29-Mar-15	0%										
NSH1910	S880 - TBM Launching - Cutterhead Assembly	3	12-Dec-14	14-Dec-14	30-Mar-15	01-Apr-15	0%										
NSH1920	S880 - TBM Launching - Erector Assembly	3	15-Dec-14	17-Dec-14	02-Apr-15	07-Apr-15	0%										
NSH1930	S880 - TBM Launching - Tail Skin Assembly	3	18-Dec-14	20-Dec-14	08-Apr-15	10-Apr-15	0%										
NSH1940	S880 - TBM Launching - Main Drive Connection	2	21-Dec-14	22-Dec-14	11-Apr-15	12-Apr-15	0%										
NSH1950	S880 - TBM Launching - Main Drive Shifting	2	23-Dec-14	24-Dec-14	13-Apr-15	14-Apr-15	0%										
NSH1960	S880 - TBM Launching - Main Drive Thrust Frame Installation	14	25-Dec-14	07-Jan-15	15-Apr-15	28-Apr-15	0%										
NSH1965	S880 - TBM Launching - Gantry 2 Assembly	3	25-Dec-14	27-Dec-14	15-Apr-15	17-Apr-15	0%										
NSH1970	S880 - TBM Launching - Gantry 1 Assembly	3	28-Dec-14	30-Dec-14	18-Apr-15	20-Apr-15	0%										
NSH1980	S880 - TBM Launching - Gantry 1 & Main Drive connection	3	08-Jan-15	10-Jan-15	29-Apr-15	01-May-15	0%										
NSH1990	S880 - TBM Launching - Gantry 2 & Gantry 1 connection	3	11-Jan-15	13-Jan-15	02-May-15	04-May-15	0%										

■ Planned Bar  
■ Planned Bar  
◆ Planned Milestone  
■ Progress bar  
◆ Progress Milestone



Date	Revision	Checked	Approved
21-Feb-14	TMCLK/DBJ/GEN/PR...	SPA	WYu



Activity ID	Activity Name	Orig Dur	Planned Start	Planned Finish	Current Start	Current Finish	14W47 % Comp	2014					2015				
								Aug	Sep	Oct	Nov	Dec	Jan	Feb	Mar	Apr	May
DD01380	SO's Review	35	03-Dec-14	06-Jan-15	25-Mar-15	28-Apr-15	0%										
DD01385	SO Approval with Condition R received	0		06-Jan-15		28-Apr-15	0%										
<b>(I2) DDA for North Vent.Bldgs.Structural Design incl.Vent.Connections</b>																	
DD68008	Preparation of DDANth VB Structural Design incl Vent conn	18	05-Sep-14	26-Sep-14	29-Dec-14	19-Jan-15	0%										
DD68018	Review & Comment by JV	18	27-Sep-14	20-Oct-14	20-Jan-15	09-Feb-15	0%										
DD68020	Designer prepare DDA	10	21-Oct-14	31-Oct-14	10-Feb-15	27-Feb-15	0%										
DD68028	Formal Submission of DDA to ICE/ IPs	0		31-Oct-14		27-Feb-15	0%										
DD68030	Advanced Submission to SO	0		31-Oct-14		27-Feb-15	0%										
DD68038	IPs/ SO's Advance Comments/ ICE Comments	28	01-Nov-14	28-Nov-14	28-Feb-15	27-Mar-15	0%										
DD68040	Comments Received	0		28-Nov-14		27-Mar-15	0%										
DD68048	Designer to Reply RTC + Update Submission	21	29-Nov-14	23-Dec-14	28-Mar-15	25-Apr-15	0%										
DD68058	Submit Updated DDA to SO/ ICE/ IPs	0	24-Dec-14		27-Apr-15		0%										
DD68068	ICE Approval & Issue Check Cert	12	24-Dec-14	09-Jan-15	27-Apr-15	11-May-15	0%										
DD68078	Submit ICE Check Cert to SO	6	10-Jan-15	16-Jan-15	12-May-15	18-May-15	0%										
DD68088	IPs Review	28	24-Dec-14	20-Jan-15	27-Apr-15	24-May-15	0%										
DD68098	IP's No Objection Received	0		20-Jan-15		24-May-15	0%										
DD68210	SO's Review	35	24-Dec-14	27-Jan-15	27-Apr-15	31-May-15	0%										
DD68220	SO Approval with Condition R received	0		27-Jan-15		01-Jun-15	0%										
<b>(I3) DDA for North &amp; South Vent.Bldgs. Service and E&amp;M Provision</b>																	
DD01600	Preparation of DDANth VB Service and E&MS Provision	18	12-Sep-14	04-Oct-14	22-Aug-14A	18-Nov-14	89%										
DD01605	Review & Comment by JV	24	06-Oct-14	01-Nov-14	19-Nov-14	16-Dec-14	0%										
DD01610	Designer prepare DDA	15	03-Nov-14	19-Nov-14	17-Dec-14	06-Jan-15	0%										
DD01615	Formal Submission of DDA to ICE/ IPs	0		19-Nov-14		06-Jan-15	0%										
DD01620	Advanced Submission to SO	0		19-Nov-14		06-Jan-15	0%										
DD01625	IPs/ SO's Advance Comments/ ICE Comments	28	20-Nov-14	17-Dec-14	07-Jan-15	03-Feb-15	0%										
DD01630	Comments Received	0		17-Dec-14		03-Feb-15	0%										
DD01635	Designer to Reply RTC + Update Submission	21	18-Dec-14	14-Jan-15	04-Feb-15	06-Mar-15	0%										
DD01640	Submit Updated DDA to SO/ ICE/ IPs	0	15-Jan-15		07-Mar-15		0%										
DD01645	ICE Approval & Issue Check Cert	12	15-Jan-15	28-Jan-15	07-Mar-15	20-Mar-15	0%										
DD01650	Submit ICE Check Cert to SO	6	29-Jan-15	04-Feb-15	21-Mar-15	27-Mar-15	0%										
DD01655	IPs Review	28	15-Jan-15	11-Feb-15	07-Mar-15	03-Apr-15	0%										
DD01660	IP's No Objection Received	0		11-Feb-15		03-Apr-15	0%										
DD01665	SO's Review	35	15-Jan-15	18-Feb-15	07-Mar-15	10-Apr-15	0%										
DD01670	SO Approval with Condition R received	0		18-Feb-15		10-Apr-15	0%										
<b>(J1) AIP Temp.works for Construction of Nth.Vent.Bldg.</b>																	
AP01805	Review & Comment by JV	12	06-Jun-14	19-Jun-14	03-Jul-14A	22-Sep-14A	100%										
AP01810	Designer Prepare AIP	6	20-Jun-14	26-Jun-14	23-Sep-14A	26-Sep-14A	100%										
AP01815	Formal Submission of AIP to ICE/IPs	0		26-Jun-14		26-Sep-14A	100%										
AP01820	Advanced Submission of AIP to SO	0		26-Jun-14		26-Sep-14A	100%										
AP01825	Review & Comment by SO/ ICE/ IPs	28	27-Jun-14	24-Jul-14	27-Sep-14A	18-Nov-14	93%										
AP01830	Advance Comments from SO/ Comments from ICE/ IPs Received	0		24-Jul-14		18-Nov-14	0%										
AP01835	Designer to Prepare RTC & Updated AIP	18	25-Jul-14	14-Aug-14	19-Nov-14	09-Dec-14	0%										
AP01840	Submission of AIP to SO/ ICE together with Reply To Comment (RTC)	0		14-Aug-14		09-Dec-14	0%										
AP01845	Reply to IPs Comments in RTC	0		14-Aug-14		09-Dec-14	0%										
AP01850	ICE Approval & Issue of Design Check Cert.	18	15-Aug-14	04-Sep-14	10-Dec-14	02-Jan-15	0%										
AP01855	Check Cert to SO	0		04-Sep-14		02-Jan-15	0%										
AP01860	No Objection or Further Minor Comments from IPs Received	0		04-Sep-14		02-Jan-15	0%										
AP01880	SO Review (35 Days)	35	15-Aug-14	18-Sep-14	11-Dec-14	14-Jan-15	0%										
AP01885	SO Approval with Condition R received	0		18-Sep-14		14-Jan-15	0%										
<b>(J1) DDA Temp.works for Construction of Nth.Vent.Bldg.</b>																	
DD04380	Preparation of DDANth VB & Trench ELS	18	19-Sep-14	11-Oct-14	15-Jan-15	04-Feb-15	0%										
DD04390	Review & Comment by JV	18	13-Oct-14	01-Nov-14	05-Feb-15	04-Mar-15	0%										
DD04400	Designer prepare DDA	10	03-Nov-14	13-Nov-14	05-Mar-15	16-Mar-15	0%										
DD04410	Formal Submission of DDA to ICE/ IPs	0		13-Nov-14		16-Mar-15	0%										
DD04420	Advanced Submission to SO	0		13-Nov-14		16-Mar-15	0%										
DD04430	IPs/ SO's Advance Comments/ ICE Comments	28	14-Nov-14	11-Dec-14	17-Mar-15	13-Apr-15	0%										
DD04440	Comments Received	0		11-Dec-14		13-Apr-15	0%										
DD04450	Designer to Reply RTC + Update Submission	21	12-Dec-14	08-Jan-15	14-Apr-15	08-May-15	0%										
DD04460	Submit Updated DDA to SO/ ICE/ IPs	0	09-Jan-15		09-May-15		0%										
DD04470	ICE Approval & Issue Check Cert	12	09-Jan-15	22-Jan-15	09-May-15	22-May-15	0%										
DD04480	Submit ICE Check Cert to SO	6	23-Jan-15	29-Jan-15	23-May-15	30-May-15	0%										
DD04490	IPs Review	28	09-Jan-15	05-Feb-15	09-May-15	05-Jun-15	0%										
DD04500	IP's No Objection Received	0		05-Feb-15		05-Jun-15	0%										
DD04540	SO's Review	35	09-Jan-15	12-Feb-15	09-May-15	12-Jun-15	0%										
DD04550	SO Approval with Condition R received	0		12-Feb-15		12-Jun-15	0%										
<b>(C3) DDA for North Vent Shaft &amp; Duct Permanent Structure</b>																	
DD67268	Preparation of DDANth North Vent Shaft & Duct Perm Structure	18	07-Aug-14	27-Aug-14	31-Jul-14A	18-Nov-14	83%										
DD67278	Review & Comment by JV	18	28-Aug-14	18-Sep-14	19-Nov-14	09-Dec-14	0%										
DD67280	Designer prepare DDA	10	19-Sep-14	30-Sep-14	10-Dec-14	20-Dec-14	0%										

- Planned Bar
- Planned Bar
- ◆ Planned Milestone
- Progress bar
- ◆ Progress Milestone



Date	Revision	Checked	Approved
21-Feb-14	TMCLK/DBJ/GEN/PR...	SPa	WYu



Activity ID	Activity Name	Orig Dur	Planned Start	Planned Finish	Current Start	Current Finish	14W47 % Comp	2014						2015						
								Jul	Aug	Sep	Oct	Nov	Dec	Jan	Feb	Mar	Apr	May		
GS00980	SO's Comments for 1st Submission	35	24-Jun-14	28-Jul-14	19-Nov-14	23-Dec-14	0%													
GS00990	Prepare Re-submission	10	29-Jul-14	08-Aug-14	24-Dec-14	07-Jan-15	0%													
GS00992	*2nd Submission	0		08-Aug-14		07-Jan-15	0%													
GS00994	SO's Condition Approval	35	09-Aug-14	12-Sep-14	08-Jan-15	11-Feb-15	0%													
<b>(A17) Instrumentation &amp; Monitoring Plan for CLPP Submarine Cable</b>																				
GS01900	Preparation of Instrumentation and Monitoring Plan for CLPP Submarine Cable	20	02-May-14	26-May-14	09-Jun-14A	16-Oct-14A	100%													
GS01905	1st Submission	0		26-May-14		16-Oct-14A	100%													
GS01910	CLPS Comment	28	27-May-14	23-Jun-14	16-Oct-14A	16-Oct-14A	100%													
GS01915	CLP Comment Received	0		23-Jun-14		16-Oct-14A	100%													
GS01920	SO's Comments for 1st Submission	35	27-May-14	30-Jun-14	16-Oct-14A	16-Oct-14A	100%													
GS01925	Prepare Re-submission	6	02-Jul-14	08-Jul-14	16-Oct-14A	16-Oct-14A	100%													
GS01930	2nd Submission	0		08-Jul-14		16-Oct-14A	100%													
GS01935	ICE Cert. Issue	6	09-Jul-14	15-Jul-14	16-Oct-14A	16-Oct-14A	100%													
GS01957	CLPS Comment	28	09-Jul-14	05-Aug-14	16-Oct-14A	16-Oct-14A	100%													
GS01958	CLP Comment Received	0		05-Aug-14		16-Oct-14A	100%													
GS01960	SO's Condition Approval	35	09-Jul-14	12-Aug-14	16-Oct-14A	16-Oct-14A	100%													
<b>(B6) Risk Assessment of Submarine Cable - Tunnelling Works</b>																				
GS01400	Preparation of Risk Assessment of Submarine cables - Tunnelling Works	24	12-Dec-14	12-Jan-15	26-Feb-15	25-Mar-15	0%													
GS01405	1st Submission	0		12-Jan-15		25-Mar-15	0%													
GS01410	SO's Comments for 1st Submission	35	13-Jan-15	16-Feb-15	26-Mar-15	29-Apr-15	0%													
GS01420	CLP Review (4 weeks)	28	16-Jan-15	12-Feb-15	29-Mar-15	25-Apr-15	0%													
GS01425	CLP Comment Received	0		12-Feb-15		25-Apr-15	0%													
GS01430	Prepare Re-submission	12	17-Feb-15	09-Mar-15	30-Apr-15	14-May-15	0%													
<b>(G1) IFA for Structural Health Monitoring System for TBM Tunnel</b>																				
DD71000	IPs/ SO's Advance Comments/ ICE Comments	28	08-Apr-14	05-May-14	14-Jun-14A	18-Nov-14	93%													
DD71010	Designer to Reply RTC + Update Submission	21	07-May-14	30-May-14	19-Nov-14	08-Dec-14	0%													
DD71020	Submit Updated IFA to SO/ ICE/ IPs	0	31-May-14		09-Dec-14		0%													
DD71030	ICE Approval & Issue Check Cert	12	31-May-14	14-Jun-14	13-Jun-14A	10-Dec-14	80%													
DD71040	Submit ICE Check Cert to SO	6	16-Jun-14	21-Jun-14	11-Dec-14	17-Dec-14	0%													
DD71050	IPs Review	28	31-May-14	27-Jun-14	09-Dec-14	05-Jan-15	0%													
DD71060	IPs No Objection Received	0		27-Jun-14		05-Jan-15	0%													
DD71070	SO's Review	35	31-May-14	04-Jul-14	09-Dec-14	12-Jan-15	0%													
DD71080	SO Approval with Condition R received	0		04-Jul-14		12-Jan-15	0%													
DD71200	TBM Segment Mould Acceptance & Trial	0	11-Jul-14		13-Jan-15		0%													
<b>(G1) DDA for TBM Tunnel Lining Structural Design - Sub-sea tunnel</b>																				
DD6520	IPs/ SO's Advance Comments/ ICE Comments	28	23-Apr-14	20-May-14	16-Aug-14A	13-Oct-14A	100%													
DD6525	Comments Received	0		20-May-14		13-Oct-14A	100%													
DD6530	Designer to Reply RTC + Update Submission	50	03-Jun-14	31-Jul-14	13-Oct-14A	17-Oct-14A	100%													
DD6540	Submit Updated DDA to SO/ ICE/ IPs (incorporate CPOpening details)	0	01-Aug-14		17-Oct-14A		100%													
DD6550	ICE Approval & Issue Check Cert	12	01-Aug-14	14-Aug-14	11-Aug-14A	18-Sep-14A	100%													
DD6560	Submit ICE Check Cert to SO	6	15-Aug-14	21-Aug-14	19-Sep-14A	30-Sep-14A	100%													
DD6570	IPs Review	28	01-Aug-14	28-Aug-14	17-Oct-14A	11-Nov-14A	100%													
DD6580	IPs No Objection Received	0		28-Aug-14		11-Nov-14A	100%													
DD6630	SO's Review	35	01-Aug-14	04-Sep-14	17-Oct-14A	11-Nov-14A	100%													
DD6640	SO Approval with Condition R received	0		04-Sep-14		11-Nov-14A	100%													
DD6660	Sub-sea TBM Tunnel Segment - Precast Mould Fabrication	24	05-Sep-14	06-Oct-14	12-Nov-14A	03-Dec-14	38%													
DD6670	Sub-sea TBM Tunnel Segment - Fabrication	265	07-Oct-14	31-Aug-15	04-Dec-14	31-Oct-15	0%													
<b>(G1) DDA for TBM Tunnel Lining Settlement Analysis &amp; Confinement Pressure - Sub-sea tunnel</b>																				
AN1150	DDA Settlement Analysis & Confinement Pressure for Sub-sea Tunnel	246	21-Nov-13	24-Sep-14	21-Nov-13A	20-Nov-14	98%													
DD6690	Preparation of DDATBM Confinement - Sub-sea tunnel	0	25-Sep-14	25-Sep-14	21-Nov-14	21-Nov-14	0%													
DD6700	Review & Comment by JV	12	25-Sep-14	10-Oct-14	21-Nov-14	04-Dec-14	0%													
DD6705	Designer prepare DDA	12	11-Oct-14	24-Oct-14	05-Dec-14	18-Dec-14	0%													
DD6710	Formal Submission of DDA to ICE/ IPs	0		24-Oct-14		18-Dec-14	0%													
DD6715	Advanced Submission to SO	0		24-Oct-14		18-Dec-14	0%													
DD6720	IPs/ SO's Advance Comments/ ICE Comments	28	25-Oct-14	21-Nov-14	19-Dec-14	15-Jan-15	0%													
DD67258	Comments Received	0		21-Nov-14		15-Jan-15	0%													
DD6730	Designer to Reply RTC + Update Submission	21	22-Nov-14	16-Dec-14	16-Jan-15	09-Feb-15	0%													
DD6740	Submit Updated DDA to SO/ ICE/ IPs	0	17-Dec-14		10-Feb-15		0%													
DD6750	ICE Approval & Issue Check Cert	12	17-Dec-14	02-Jan-15	10-Feb-15	02-Mar-15	0%													
DD6760	Submit ICE Check Cert to SO	6	03-Jan-15	09-Jan-15	03-Mar-15	09-Mar-15	0%													
DD6770	IPs Review	28	17-Dec-14	13-Jan-15	10-Feb-15	09-Mar-15	0%													
DD6780	IPs No Objection Received	0		13-Jan-15		09-Mar-15	0%													
DD6830	SO's Review	35	17-Dec-14	20-Jan-15	10-Feb-15	16-Mar-15	0%													
DD6840	SO Approval with Condition R received	0		20-Jan-15		16-Mar-15	0%													
<b>(G3) DDA for TBM Tunnel Internal Structures (Sub-sea)</b>																				
DD00905	Review & Comment by JV	14	25-Aug-14	10-Sep-14	28-Aug-14A	15-Nov-14A	100%													
DD00910	Designer prepare DDA	12	11-Sep-14	24-Sep-14	15-Nov-14A	21-Nov-14A	100%													
DD00915	Formal Submission of DDA to ICE/ IPs	0		24-Sep-14		21-Nov-14A	100%													
DD00920	Advanced Submission to SO	0		24-Sep-14		21-Nov-14A	100%													

Planned Bar  
 Planned Bar  
 Planned Milestone  
 Progress bar  
 Progress Milestone



Date	Revision	Checked	Approved
21-Feb-14	TMCLK/DBJ/GEN/PR...	SPa	WYu

Activity ID	Activity Name	Orig Dur	Planned Start	Planned Finish	Current Start	Current Finish	14W47 % Comp	2014					2015							
								Aug	Sep	Oct	Nov	Dec	Jan	Feb	Mar	Apr	May			
DD00925	IPs/ SO's Advance Comments/ ICE Comments	28	25-Sep-14	22-Oct-14	21-Nov-14A	13-Dec-14	4%													
DD00930	Comments Received	0		22-Oct-14		13-Dec-14	0%													
DD00935	Designer to Reply RTC + Update Submission	21	23-Oct-14	15-Nov-14	15-Dec-14	10-Jan-15	0%													
DD00940	Submit Updated DDA to SO/ ICE/ IPs	0	17-Nov-14			12-Jan-15	0%													
DD00945	ICE Approval & Issue Check Cert	12	17-Nov-14	29-Nov-14	12-Jan-15	24-Jan-15	0%													
DD00950	Submit ICE Check Cert to SO	6	01-Dec-14	06-Dec-14	26-Jan-15	31-Jan-15	0%													
DD00955	IPs Review	28	17-Nov-14	14-Dec-14	12-Jan-15	08-Feb-15	0%													
DD00960	IPs No Objection Received	0		14-Dec-14		08-Feb-15	0%													
DD00980	SO's Review	35	17-Nov-14	21-Dec-14	12-Jan-15	15-Feb-15	0%													
DD00985	SO Approval with Condition R received	0		22-Dec-14		16-Feb-15	0%													
DD00995	Sub-sea Internal Structure - Precast Gallery Mould Design & Fabrication	24	22-Dec-14	21-Jan-15	16-Feb-15	21-Mar-15	0%													
DD01015	Sub-sea Tunnel - Precast Gallery Fabrication	244	22-Jan-15	21-Nov-15	23-Mar-15	16-Jan-16	0%													

**Sub-sea Tunnel Cross Passage & Internal Structure**

**Design Submission**

**(G4) AIP - Cross Passage - Permanent works - Sub-sea tunnel**

AP00485	SO Approval with Condition R received	0		22-Sep-14		02-Jul-14A	100%
---------	---------------------------------------	---	--	-----------	--	------------	------

**(G4) DDA for Cross Passage - Permanent works - incl. Geotechnical Assessment - Sub-sea tunnel**

AN1175	Lab Test Result from Phase 2 GI	0		01-Dec-14		01-Dec-14*	0%
AN1180	Early DDASub-sea Cross Passage Lining & CP Opening	151	03-Jun-14	29-Nov-14	03-Jun-14A	29-Nov-14	92%
DD01100	Preparation of DDACross Passage incl. Detailed Geotechnical Assessment	0	01-Dec-14	01-Dec-14	01-Dec-14	01-Dec-14	0%
DD01105	Review & Comment by JV	6	01-Dec-14	06-Dec-14	01-Dec-14	06-Dec-14	0%
DD01110	Designer prepare DDA	12	08-Dec-14	20-Dec-14	08-Dec-14	20-Dec-14	0%
DD01115	Formal Submission of DDA to ICE/ IPs	0		20-Dec-14		20-Dec-14	0%
DD01120	Advanced Submission to SO	0		20-Dec-14		20-Dec-14	0%
DD01125	IPs/ SO's Advance Comments/ ICE Comments	28	21-Dec-14	17-Jan-15	21-Dec-14	17-Jan-15	0%
DD01130	Comments Received	0		17-Jan-15		17-Jan-15	0%
DD01135	Designer to Reply RTC + Update Submission	21	19-Jan-15	11-Feb-15	19-Jan-15	11-Feb-15	0%
DD01140	Submit Updated DDA to SO/ ICE/ IPs	0	12-Feb-15			12-Feb-15	0%
DD01145	ICE Approval & Issue Check Cert	12	12-Feb-15	04-Mar-15	12-Feb-15	04-Mar-15	0%
DD01155	IPs Review	28	12-Feb-15	11-Mar-15	12-Feb-15	11-Mar-15	0%
DD01180	SO's Review	35	12-Feb-15	18-Mar-15	12-Feb-15	18-Mar-15	0%

**(H1) DDA Temp.works for Cross Passages - Sub-sea tunnel (Type A)**

AN1210	DDACP Freezing design (Structural & thermal analysis of the ice ring)	176	25-Jul-14	28-Feb-15	18-Jun-14A	27-Dec-14	81%
DD05000	Preparation of DDACross Passages Ground Freezing (Type A)	18	02-Mar-15	21-Mar-15	29-Dec-14	19-Jan-15	0%
DD05010	Review & Comment by JV	18	23-Mar-15	16-Apr-15	20-Jan-15	09-Feb-15	0%
DD05020	Designer prepare DDA	10	17-Apr-15	28-Apr-15	10-Feb-15	27-Feb-15	0%
DD05030	Formal Submission of DDA to ICE/ IPs	0		28-Apr-15		27-Feb-15	0%
DD05040	Advanced Submission to SO	0		28-Apr-15		27-Feb-15	0%

**Method Statement Submission**

**Method Statement of Cross Passage Ground Freezing**

MS1300	Preparation Method Statement for CP Ground Freezing	25	17-Sep-14	17-Oct-14	17-Nov-14	15-Dec-14	0%
MS1310	Submit Method Statement to SO/ ICE	0		17-Oct-14		15-Dec-14	0%
MS1320	SO Reviews & Comments/ ICE Comments	28	18-Oct-14	14-Nov-14	16-Dec-14	12-Jan-15	0%
MS1330	Re-submission	18	15-Nov-14	05-Dec-14	13-Jan-15	02-Feb-15	0%
MS1340	ICE Approval & Issue Check Cert.	18	06-Dec-14	29-Dec-14	03-Feb-15	02-Mar-15	0%
MS1350	SO's Review	28	06-Dec-14	02-Jan-15	03-Feb-15	02-Mar-15	0%
MS1360	SO's Approval	0		02-Jan-15		02-Mar-15	0%

**Southern Landfall**

**South Retrieval Shaft**

**Design Submission**

**(A4) Additional Ground Investigation Plan - Phase 3 - Southen Landfall**

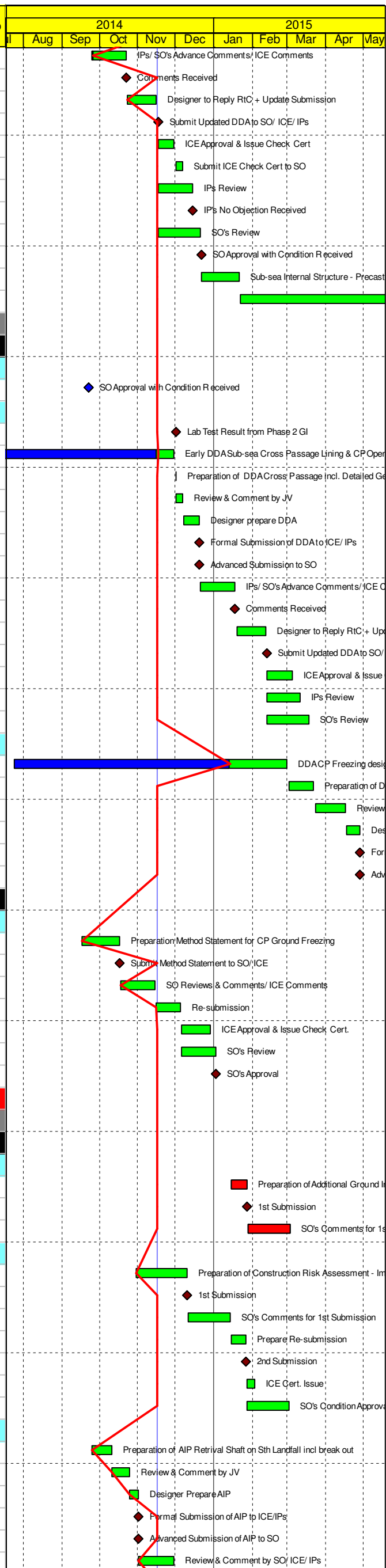
GS2870	Preparation of Additional Ground Investigation (Phase 3)	11	15-Jan-15	27-Jan-15	15-Jan-15*	27-Jan-15	0%
GS2880	1st Submission	0		27-Jan-15		27-Jan-15	0%
GS2905	SO's Comments for 1st Submission	35	28-Jan-15	03-Mar-15	28-Jan-15	03-Mar-15	0%

**(B5) AIP Construction Risk Assessment - Impact on South Landfall**

GS01200	Preparation of Construction Risk Assessment - Impact on South Landfall	36	30-Oct-14	10-Dec-14	13-Jun-15	27-Jul-15	0%
GS01205	1st Submission	0		10-Dec-14		27-Jul-15	0%
GS01210	SO's Comments for 1st Submission	35	11-Dec-14	14-Jan-15	28-Jul-15	31-Aug-15	0%
GS01215	Prepare Re-submission	10	15-Jan-15	26-Jan-15	01-Sep-15	11-Sep-15	0%
GS01220	2nd Submission	0		26-Jan-15		11-Sep-15	0%
GS01225	ICE Cert. Issue	6	27-Jan-15	02-Feb-15	12-Sep-15	18-Sep-15	0%
GS01250	SO's Condition Approval	35	27-Jan-15	02-Mar-15	12-Sep-15	16-Oct-15	0%

**(F1) AIP Temp.works - Retrieval Shaft on Southern Landfall incl. break-out**

AP01600	Preparation of AIP Retrieval Shaft on Sth Landfall incl break out	12	25-Sep-14	11-Oct-14	18-Mar-15	01-Apr-15	0%
AP01605	Review & Comment by JV	12	11-Oct-14	25-Oct-14	01-Apr-15	20-Apr-15	0%
AP01610	Designer Prepare AIP	6	25-Oct-14	01-Nov-14	20-Apr-15	27-Apr-15	0%
AP01615	Formal Submission of AIP to ICE/IPs	0		01-Nov-14		27-Apr-15	0%
AP01620	Advanced Submission of AIP to SO	0		01-Nov-14		27-Apr-15	0%
AP01625	Review & Comment by SO/ ICE/ IPs	28	01-Nov-14	29-Nov-14	27-Apr-15	25-May-15	0%



- Planned Bar
- Planned Bar
- ◆ Planned Milestone
- Progress bar
- ◆ Progress Milestone



Date	Revision	Checked	Approved
21-Feb-14	TMCLK/DBJ/GEN/PR...	SPA	WYu





