

Figure 1. Transect Line Layout in Northwest and Northeast Lantau Survey Areas

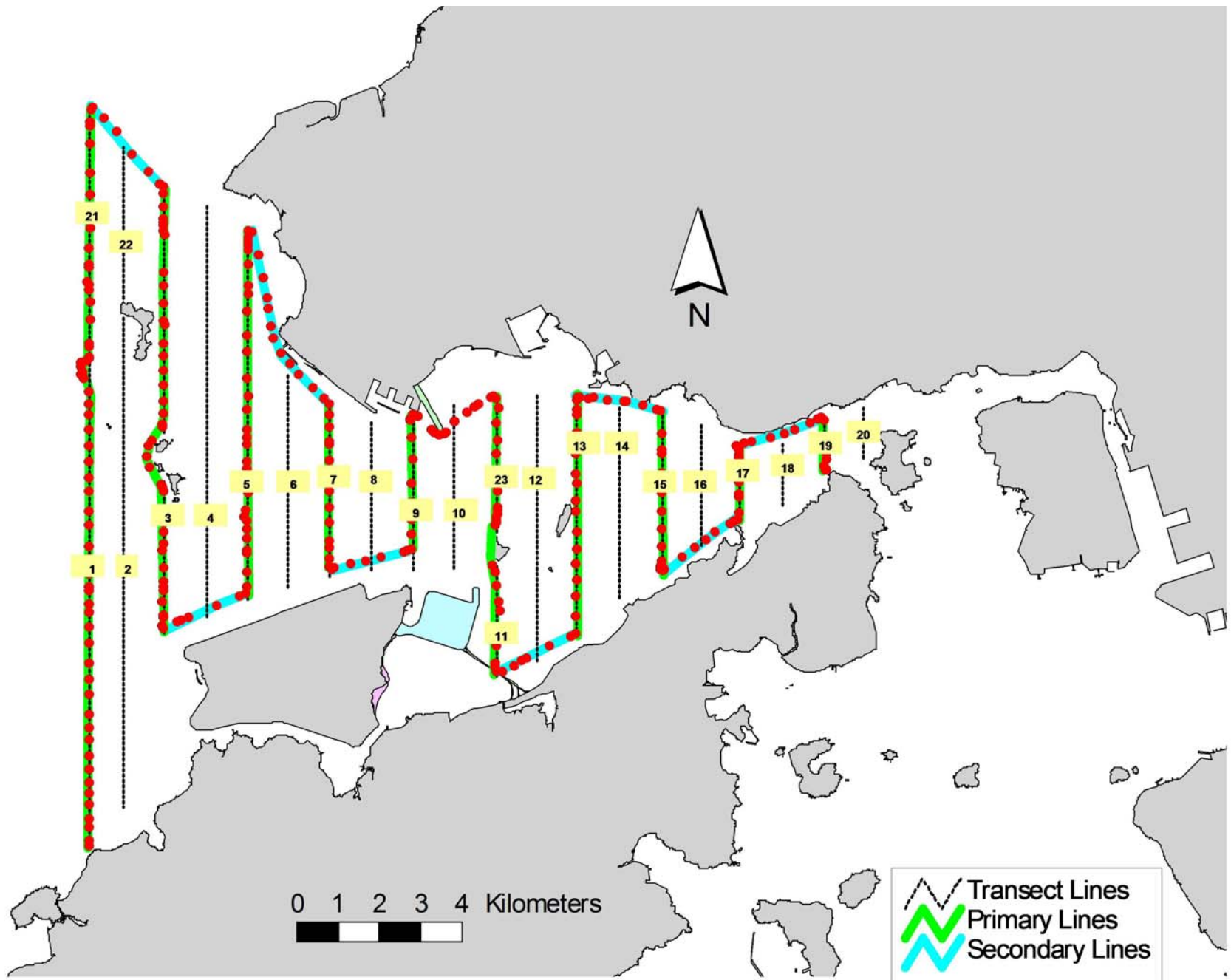


Figure 2. Survey Route on November 4th, 2014 (from HKLR03 project)

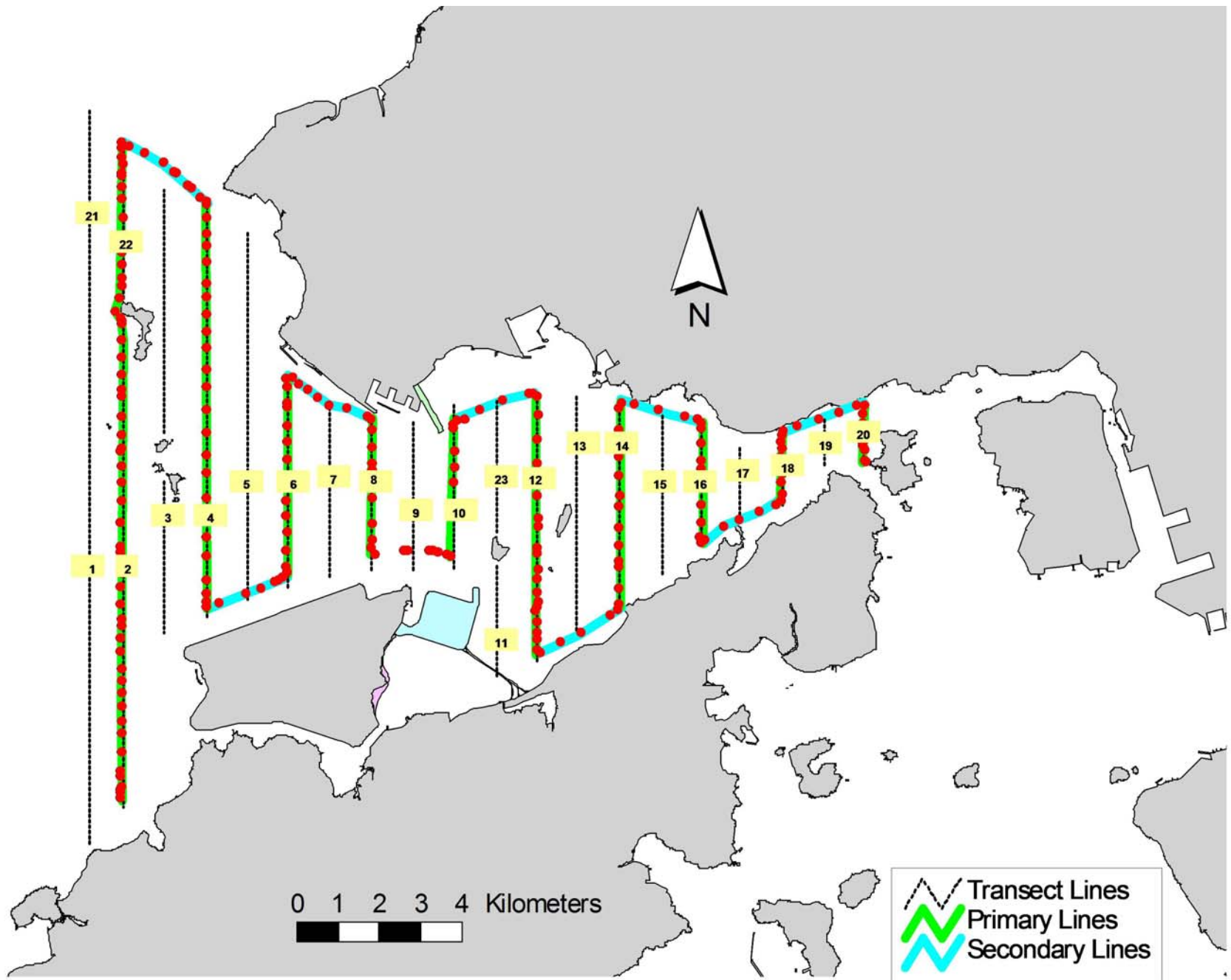


Figure 3. Survey Route on November 10th, 2014 (from HKLR03 project)

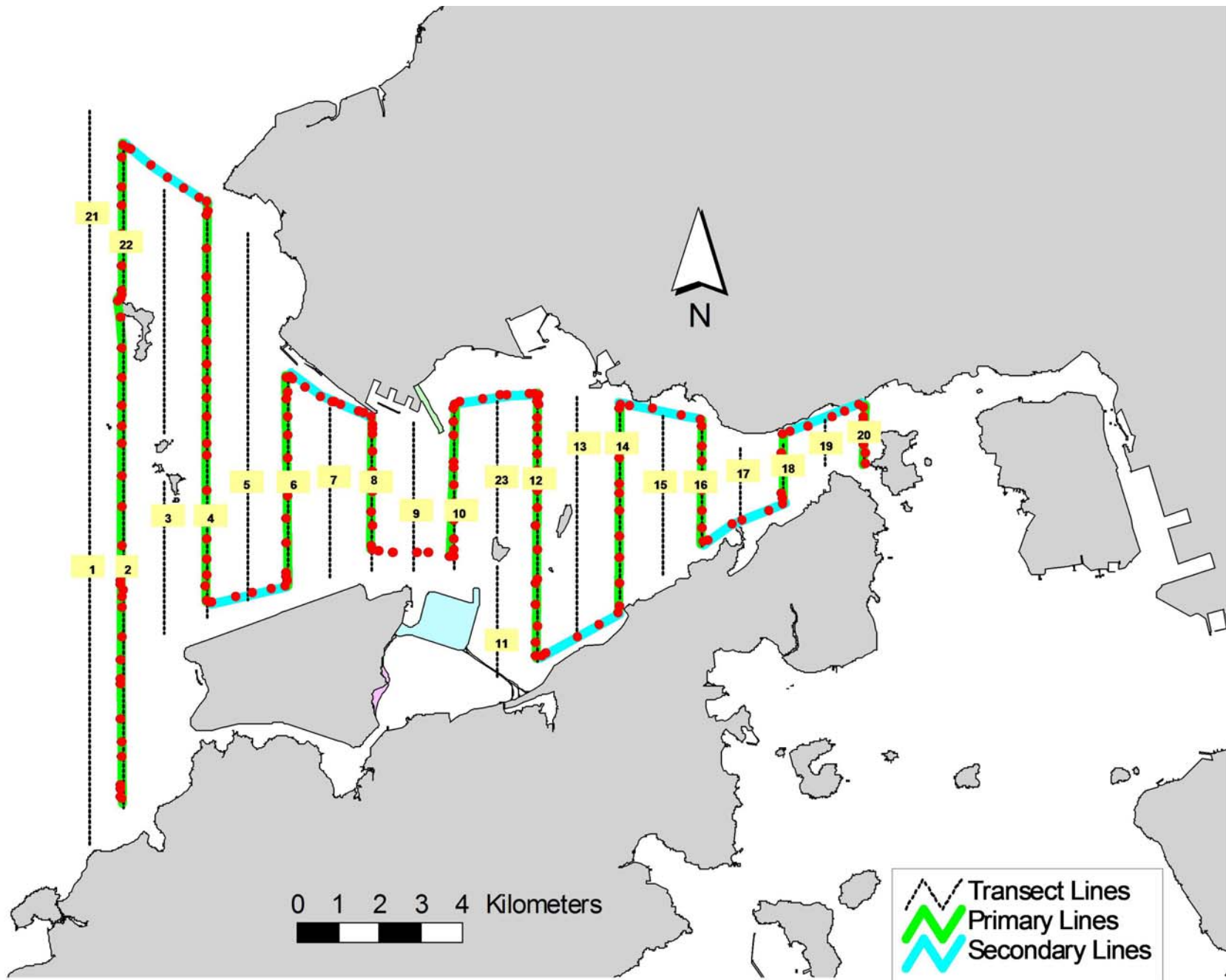


Figure 4. Survey Route on November 12th, 2014 (from HKLR03 project)

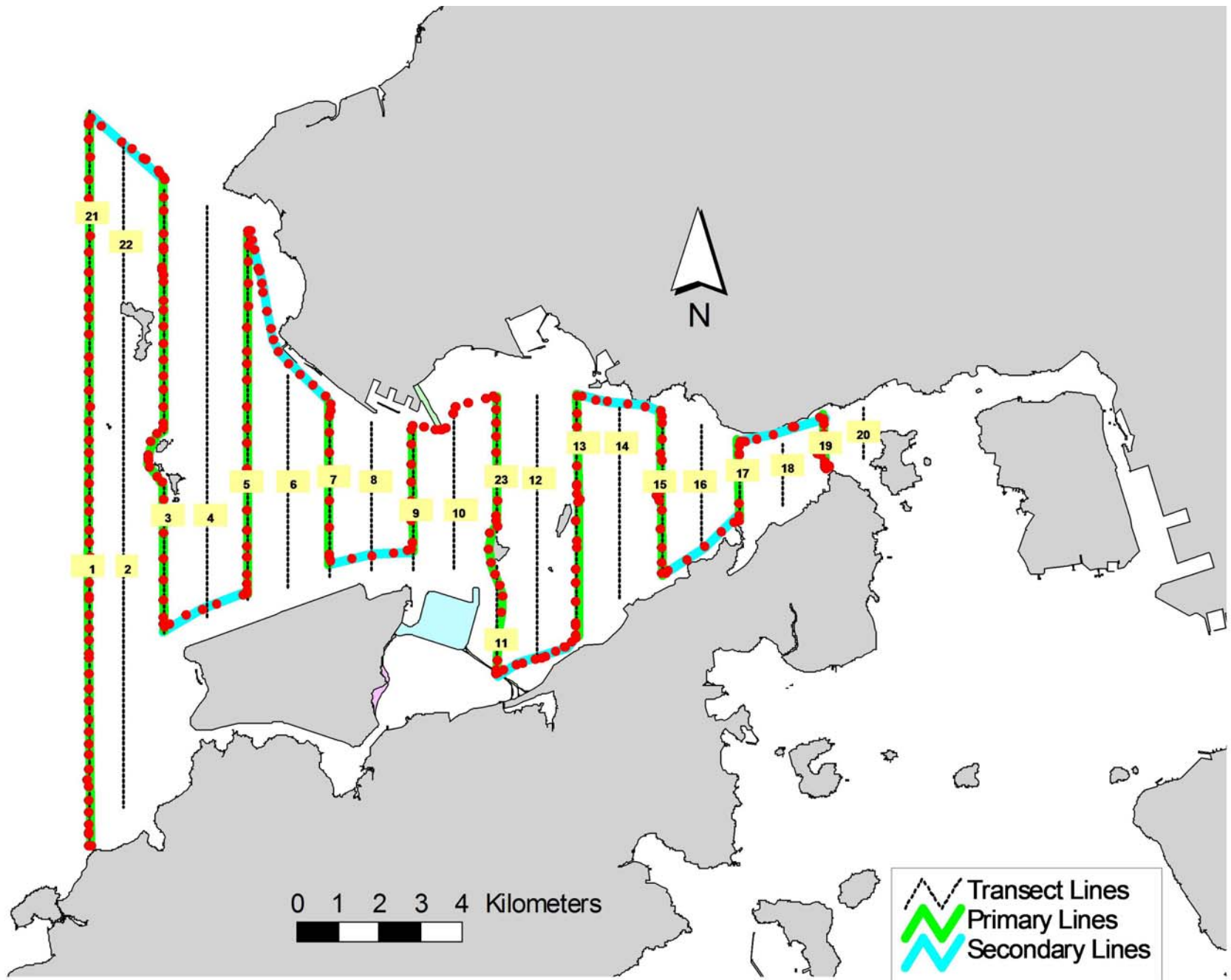


Figure 5. Survey Route on November 18th, 2014 (from HKLR03 project)

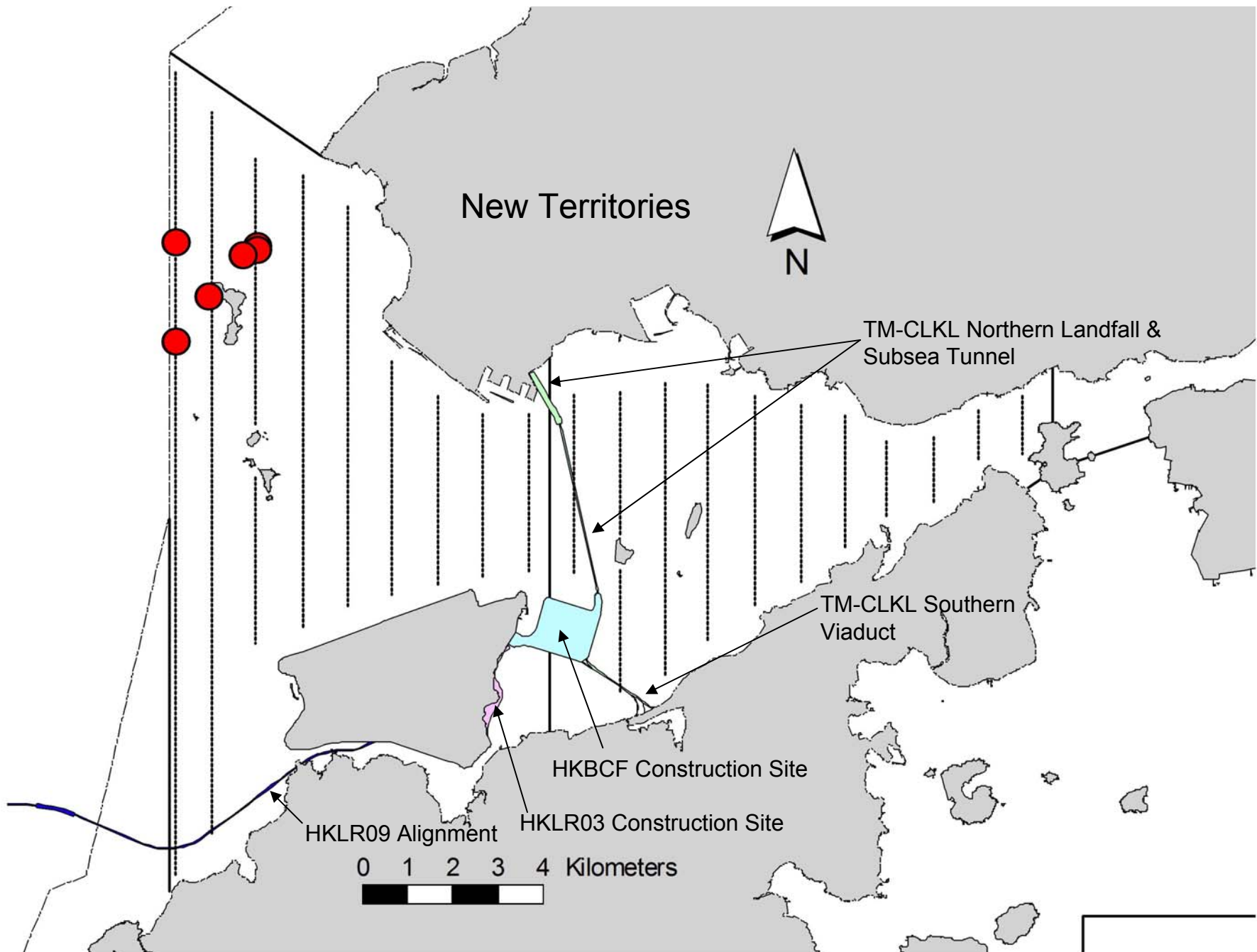


Figure 6. Distribution of Chinese White Dolphin Sightings During November 2014 HKLR03 Monitoring Surveys

Appendix I. HKLR03 Survey Effort Database (November 2014)

(Abbreviations: BEAU = Beaufort Sea State; P = Primary Line Effort; S = Secondary Line Effort)

DATE	AREA	BEAU	EFFORT	SEASON	VESSEL	TYPE	P/S
4-Nov-14	NE LANTAU	2	7.47	AUTUMN	STANDARD31516	HKLR	P
4-Nov-14	NE LANTAU	3	9.93	AUTUMN	STANDARD31516	HKLR	P
4-Nov-14	NE LANTAU	2	7.41	AUTUMN	STANDARD31516	HKLR	S
4-Nov-14	NE LANTAU	3	1.59	AUTUMN	STANDARD31516	HKLR	S
4-Nov-14	NW LANTAU	1	1.50	AUTUMN	STANDARD31516	HKLR	P
4-Nov-14	NW LANTAU	2	25.21	AUTUMN	STANDARD31516	HKLR	P
4-Nov-14	NW LANTAU	3	12.20	AUTUMN	STANDARD31516	HKLR	P
4-Nov-14	NW LANTAU	2	12.82	AUTUMN	STANDARD31516	HKLR	S
4-Nov-14	NW LANTAU	3	0.60	AUTUMN	STANDARD31516	HKLR	S
10-Nov-14	NE LANTAU	2	8.28	AUTUMN	STANDARD31516	HKLR	P
10-Nov-14	NE LANTAU	3	9.93	AUTUMN	STANDARD31516	HKLR	P
10-Nov-14	NE LANTAU	2	9.49	AUTUMN	STANDARD31516	HKLR	S
10-Nov-14	NE LANTAU	3	1.00	AUTUMN	STANDARD31516	HKLR	S
10-Nov-14	NW LANTAU	3	26.28	AUTUMN	STANDARD31516	HKLR	P
10-Nov-14	NW LANTAU	4	6.12	AUTUMN	STANDARD31516	HKLR	P
10-Nov-14	NW LANTAU	3	4.40	AUTUMN	STANDARD31516	HKLR	S
10-Nov-14	NW LANTAU	4	1.20	AUTUMN	STANDARD31516	HKLR	S
10-Nov-14	NW LANTAU	5	1.10	AUTUMN	STANDARD31516	HKLR	S
12-Nov-14	NW LANTAU	2	1.30	AUTUMN	STANDARD31516	HKLR	P
12-Nov-14	NW LANTAU	3	30.29	AUTUMN	STANDARD31516	HKLR	P
12-Nov-14	NW LANTAU	2	0.60	AUTUMN	STANDARD31516	HKLR	S
12-Nov-14	NW LANTAU	3	5.98	AUTUMN	STANDARD31516	HKLR	S
12-Nov-14	NW LANTAU	4	0.63	AUTUMN	STANDARD31516	HKLR	S
12-Nov-14	NE LANTAU	2	8.30	AUTUMN	STANDARD31516	HKLR	P
12-Nov-14	NE LANTAU	3	9.41	AUTUMN	STANDARD31516	HKLR	P
12-Nov-14	NE LANTAU	4	2.40	AUTUMN	STANDARD31516	HKLR	P
12-Nov-14	NE LANTAU	2	7.11	AUTUMN	STANDARD31516	HKLR	S
12-Nov-14	NE LANTAU	3	3.48	AUTUMN	STANDARD31516	HKLR	S
18-Nov-14	NW LANTAU	2	13.70	AUTUMN	STANDARD31516	HKLR	P
18-Nov-14	NW LANTAU	3	25.02	AUTUMN	STANDARD31516	HKLR	P
18-Nov-14	NW LANTAU	4	1.76	AUTUMN	STANDARD31516	HKLR	P
18-Nov-14	NW LANTAU	2	2.19	AUTUMN	STANDARD31516	HKLR	S
18-Nov-14	NW LANTAU	3	10.43	AUTUMN	STANDARD31516	HKLR	S
18-Nov-14	NE LANTAU	1	1.78	AUTUMN	STANDARD31516	HKLR	P
18-Nov-14	NE LANTAU	2	14.94	AUTUMN	STANDARD31516	HKLR	P
18-Nov-14	NE LANTAU	3	2.00	AUTUMN	STANDARD31516	HKLR	P
18-Nov-14	NE LANTAU	1	1.20	AUTUMN	STANDARD31516	HKLR	S
18-Nov-14	NE LANTAU	2	7.09	AUTUMN	STANDARD31516	HKLR	S

Appendix II. HKLR03 Chinese White Dolphin Sighting Database (November 2014)

(Abbreviations: STG# = Sighting Number; HRD SZ = Dolphin Herd Size; BEAU = Beaufort Sea State; PSD = Perpendicular Distance; BOAT ASSOC. = Fishing Boat Association; P/S: Sighting Made on Primary/Secondary Line)

DATE	STG #	TIME	HRD SZ	AREA	BEAU	PSD	EFFORT	TYPE	NORTHING	EASTING	SEASON	BOAT ASSOC.	P/S
4-Nov-14	1	1435	13	NW LANTAU	1	73	ON	HKLR	827747	806468	AUTUMN	NONE	P
4-Nov-14	2	1539	1	NW LANTAU	2	0	ON	HKLR	827839	804666	AUTUMN	NONE	P
4-Nov-14	3	1558	2	NW LANTAU	2	118	ON	HKLR	825757	804662	AUTUMN	NONE	P
12-Nov-14	1	1050	4	NW LANTAU	3	105	ON	HKLR	826686	805385	AUTUMN	NONE	P
18-Nov-14	1	1255	2	NW LANTAU	2	334	ON	HKLR	827669	806479	AUTUMN	NONE	P
18-Nov-14	2	1307	7	NW LANTAU	3	ND	OFF	HKLR	827559	806149	AUTUMN	NONE	N/A

Appendix III. Individual dolphins identified during HKLR03 monitoring surveys in November 2014

ID#	DATE	STG#	AREA
CH34	18/11/14	2	NW LANTAU
NL46	04/11/14	1	NW LANTAU
NL48	04/11/14	1	NW LANTAU
	18/11/14	2	NW LANTAU
NL104	04/11/14	1	NW LANTAU
NL182	18/11/14	2	NW LANTAU
NL202	12/11/14	1	NW LANTAU
	18/11/14	1	NW LANTAU
	18/11/14	2	NW LANTAU
NL210	12/11/14	1	NW LANTAU
NL256	04/11/14	1	NW LANTAU
NL259	04/11/14	1	NW LANTAU
NL272	12/11/14	1	NW LANTAU
NL286	04/11/14	1	NW LANTAU
	18/11/14	1	NW LANTAU
	18/11/14	2	NW LANTAU
WL05	04/11/14	1	NW LANTAU
	04/11/14	3	NW LANTAU
	12/11/14	1	NW LANTAU
WL97	12/11/14	1	NW LANTAU

NL46_20141104_1



NL48_20141104_1



NL104_20141104_1



NL256_20141104_1



NL259_20141104_1



NL286_20141104_1



WL05_20141104_1



WL05_20141104_3

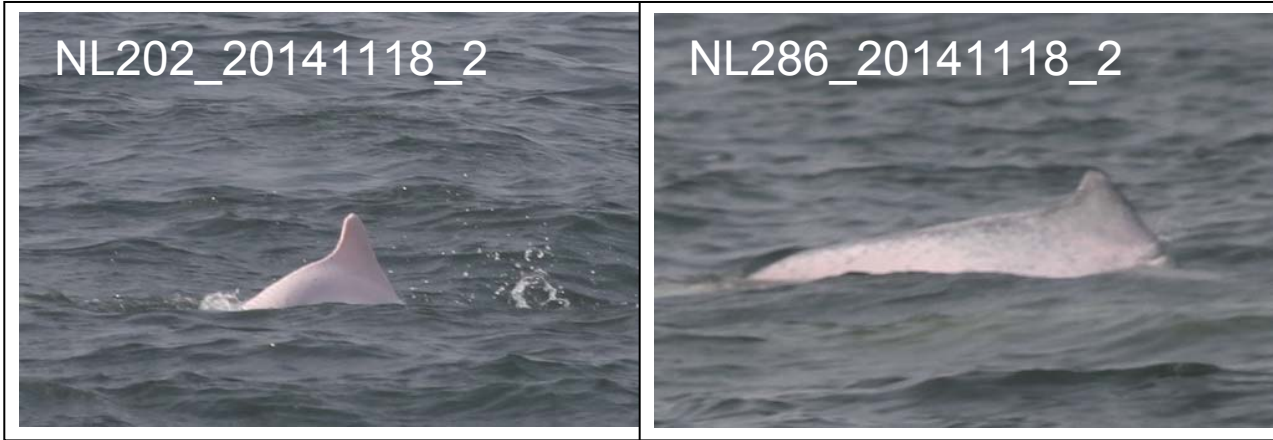


NL202_20141112_1





Appendix IV. (cont'd)



Appendix IV. (cont'd)