

Activity ID	Activity Name	Orig Dur	Planned Start	Planned Finish	Current Start	Current Finish	14W51 % Comp	2014				2015			
								Sep	Oct	Nov	Dec	Jan	Feb	Mar	Apr
TMCLK - Northern Connection Sub-Sea Tunnel Section															
Contract Dates															
Handover Date															
HD010	Portions: WA18C	0		06-Jan-15		06-Jan-15*	0%								◆ Portions: WA18C
General Submissions															
Programme															
SCC0277	Detailed Works Programme - SCC27.2 - Approval by SO	30	11-Feb-14	12-Mar-14	29-Aug-14A	13-Nov-14A	100%								
General Design Submissions															
(A19) DDA for Roadworks & Project Alignment															
DD68310	IPs/ SO's Advance Comments/ ICE Comments	28	26-Jul-14	22-Aug-14	08-Sep-14A	13-Nov-14A	100%								IPs/ SO's Advance Comments/ ICE Comments
DD68320	Comments Received	0		22-Aug-14		13-Nov-14A	100%								Comments Received
DD68330	Designer to Reply RIC + Update Submission	21	23-Aug-14	17-Sep-14	14-Nov-14A	22-Dec-14A	100%								Designer to Reply RIC + Update Submission
DD68340	Submit Updated DDA to SO/ ICE/ IPs	0	18-Sep-14		22-Dec-14A		100%								◆ Submit Updated DDA to SO/ ICE/ IPs
DD68350	ICE Approval & Issue Check Cert	12	18-Sep-14	03-Oct-14	03-Sep-14A	02-Jan-15	83%								ICE Approval & Issue Check Cert
DD68360	Submit ICE Check Cert to SO	6	04-Oct-14	10-Oct-14	03-Jan-15	09-Jan-15	0%								Submit ICE Check Cert to SO
DD68370	SO's Review	35	18-Sep-14	22-Oct-14	31-Dec-14	03-Feb-15	0%								SO's Review
DD68380	SO Approval with Condition R received	0		22-Oct-14		03-Feb-15	0%								◆ SO Approval with Condition R received
(G6) IFA for Tunnel GBP															
DD70750	SO's Review	35	29-Apr-14	02-Jun-14	09-Aug-14A	30-Dec-14	94%								Review
DD70760	SO Approval with Condition R received	0		03-Jun-14		30-Dec-14	0%								Approval Received
Construction Supervision Plan															
GEO1115	2nd GEO Review	28	29-Mar-14	25-Apr-14	29-Mar-14A	30-Dec-14	93%								Review
Self contained Cat I/II supervising monthly report															
GEO1425	1st Submission GEO Review	28	31-May-14	27-Jun-14	15-Oct-14A	21-Nov-14A	100%								GEO Review
GEO1430	Received GEO Comment	0		27-Jun-14		21-Nov-14A	100%								Comment
GEO1435	Prepare Response to Comment	12	28-Jun-14	12-Jul-14	21-Nov-14A	21-Nov-14A	100%								Response to Comment
GEO1440	2nd Submission to GEO	0		12-Jul-14		21-Nov-14A	100%								Submission to GEO
GEO1445	2nd GEO Review	28	13-Jul-14	09-Aug-14	21-Nov-14A	21-Nov-14A	100%								GEO Review
Construction															
Northern Landfall															
North Reclamation (Phase 1)															
Design Submission															
(B4) DDA Construction Risk Assessment - Impact on North Landfall + Sub-sea Tunnel															
DD68410	SO's Comments for 1st Submission	35	01-Jun-14	05-Jul-14	27-Sep-14A	30-Dec-14	94%								Comments for 1st Submission
DD68420	Prepare Re-submission	10	07-Jul-14	17-Jul-14	31-Dec-14	12-Jan-15	0%								Re-submission
DD68430	2nd Submission	0		17-Jul-14		12-Jan-15	0%								Submission
DD68490	SO's Condition Approval	35	18-Jul-14	21-Aug-14	13-Jan-15	16-Feb-15	0%								SO's Condition Approval
Method Statement Submission															
Method Statement of Construction Methodology of Culvert Extension															
MS1800	Preparation Method Statement for Culvert Extension	25	24-Jun-14	23-Jul-14	29-Dec-14	27-Jan-15	0%								Preparation Method Statement for Culvert Extension
MS1810	Submit Method Statement to SO	0		23-Jul-14		27-Jan-15	0%								Method Statement to SO
MS1820	SO Reviews & Comments	28	24-Jul-14	20-Aug-14	28-Jan-15	24-Feb-15	0%								SO Reviews & Comments
MS1830	Re-submission	18	21-Aug-14	11-Sep-14	26-Feb-15	18-Mar-15	0%								Re-submission
Construction															
Milestones															
NRC13160	Completion of Zone D1 Reclamation up to +14.5mPD	0		18-Oct-14		31-Oct-14A	100%								◆ Completion of Zone D1 Reclamation up to +14.5mPD
NRC13180	Completion of Zone D2 Reclamation up to +14.5mPD	0		11-Nov-14		19-Nov-14A	100%								◆ Completion of Zone D2 Reclamation up to +14.5mPD
NRC13210	Completion of Zone C2 Reclamation up to +10mPD	0		17-Sep-14		06-Jan-15A	100%								◆ Completion of Zone C2 Reclamation up to +10mPD
NRC13240	Completion of Zone A1 Reclamation up to +10mPD	0		21-Oct-14		03-Feb-15	0%								◆ Completion of Zone A1 Reclamation up to +10mPD
NRC13250	Completion of Zone A2 Reclamation up to +10mPD (TBC)	0		10-Nov-14		12-Feb-15	0%								◆ Completion of Zone A2 Reclamation up to +10mPD (TBC)
Zone E															
Vertical Seawall															
NRC10480	VS - Mass Concrete Coping - Zone E - (CH0 to 50)	8	02-May-14	12-May-14	21-Jul-14A	14-Nov-14A	100%								Coping - Zone E - (CH0 to 50)
NRC10490	VS - Mass Concrete Coping - Zone E - (CH50 to 100)	8	13-May-14	21-May-14	23-Jul-14A	03-Nov-14A	100%								Coping - Zone E - (CH50 to 100)
NRC10500	VS - Mass Concrete Coping - Zone E - (CH100 to 150)	8	22-May-14	30-May-14	09-Jul-14A	12-Nov-14A	100%								Coping - Zone E - (CH100 to 150)
NRC10510	VS - Mass Concrete Coping - Zone E - (CH150 to 205)	11	31-May-14	13-Jun-14	16-Jul-14A	20-Nov-14A	100%								Coping - Zone E - (CH150 to 205)
Zone D1															
Vertical Seawall															
NRC11720	VS - Mass Concrete Coping - Zone D1 - (CH205 to 255)	15	02-May-14	20-May-14	22-Dec-14A	10-Jan-15	25%								Coping - Zone D1 - (CH205 to 255)
NRC11790	VS - Mass Concrete Coping - Zone D1 - (CH255 to 305)	8	21-May-14	29-May-14	12-Jan-15	20-Jan-15	0%								Coping - Zone D1 - (CH255 to 305)
NRC11860	VS - Mass Concrete Coping - Zone D1 - (CH305 to 355)	8	30-May-14	09-Jun-14	21-Jan-15	29-Jan-15	0%								Coping - Zone D1 - (CH305 to 355)
Sloping Seawall															
NRC120208	VS - Berm Stone - Zone D1 - RTT	2	20-Jun-14	21-Jun-14	01-Dec-14A	29-Dec-14	50%								Zone D1 - RTT
NRC120209	VS - Mass Concrete Coping - Zone D1 - RTT	4	26-Apr-14	02-May-14	12-Aug-14A	29-Dec-14	80%								Zone D1 - RTT
NRC14070	SS - Armour Rock - Zone D1 - (CH255 to 305)	4	03-Jan-14	07-Jan-14	02-Dec-14A	02-Dec-14A	100%								
NRC14080	SS - Armour Rock - Zone D1 - (CH305 to 355)	4	08-Jan-14	11-Jan-14	09-Dec-14A	12-Jan-15A	100%								

■ Planned Bar
■ Planned Bar
◆ Planned Milestone
■ Progress bar
◆ Progress Milestone

TMCLK - Northern Connection Sub-Sea Tunnel Section
 Detailed Works Programme - Three months rolling programme



Date	Revision	Checked	Approved
21-Feb-14	TMCLK/DBJ/GEN/PR...	SPa	WYu

Activity ID	Activity Name	Orig Dur	Planned Start	Planned Finish	Current Start	Current Finish	14W51 % Comp	2014				2015							
								Sep	Oct	Nov	Dec	Jan	Feb	Mar	Apr	May	Jun		
Reclamation																			
NRC13480	Public Fill - Zone D1 - (CH305 to 355) to +14.5mPD	11	07-Oct-14	18-Oct-14	19-Oct-14A	31-Oct-14A	100%												
NRC15190	Surcharge Period - Zone D1 - (CH305 to 355)	180	19-Oct-14	16-Apr-15	01-Nov-14A	03-May-15	33%												
Zone D2																			
Vertical Seawall																			
NRC11930	VS - Mass Concrete Coping - Zone D2 - (CH355 to 405)	8	12-May-14	21-May-14	29-Dec-14	07-Jan-15	0%												
NRC11980	VS - Mass Concrete Coping - Zone D2 - (CH405 to 443)	8	23-May-14	03-Jun-14	08-Jan-15	16-Jan-15	0%												
Sloping Seawall																			
NRC14090	SS - Armour Rock - Zone D2 - (CH355 to 405)	4	13-Jan-14	16-Jan-14	12-Dec-14A	15-Dec-14A	100%												
NRC14100	SS - Armour Rock - Zone D2 - (CH405 to 443)	4	17-Jan-14	21-Jan-14	15-Dec-14A	30-Dec-14	39%												
Reclamation																			
NRC13630	Public Fill - Zone D2 - (CH355 to 405) to +14.5mPD	11	20-Oct-14	31-Oct-14	02-Nov-14A	08-Nov-14A	100%												
NRC13640	Public Fill - Zone D2 - (CH405 to 443) to +14.5mPD	9	01-Nov-14	11-Nov-14	10-Nov-14A	19-Nov-14A	100%												
NRC15210	Surcharge Period - Zone D2 - (CH355 to 405)	180	01-Nov-14	29-Apr-15	09-Nov-14A	11-May-15	28%												
NRC15230	Surcharge Period - Zone D2 - (CH405 to 443)	180	12-Nov-14	10-May-15	19-Nov-14A	21-May-15	23%												
Zone C1																			
Vertical Seawall																			
NRC14700	VS - Mass Concrete Coping - Zone C1 - (CH443 to 493)	8	10-Jun-14	18-Jun-14	14-Nov-14A	24-Dec-14A	100%												
NRC14710	VS - Mass Concrete Coping - Zone C1 - (CH493 to 543)	8	19-Jun-14	27-Jun-14	14-Nov-14A	03-Feb-15	50%												
Sloping Seawall																			
NRC14830	SS - Armour Rock Underlayer - Zone C1 - (CH493 to 543)	5	12-Feb-14	17-Feb-14	12-Dec-14A	13-Dec-14A	100%												
NRC14850	SS - Armour Rock - Zone C1 - (CH443 to 493)	4	27-Feb-14	03-Mar-14	31-Dec-14	05-Jan-15	0%												
NRC14860	SS - Armour Rock - Zone C1 - (CH493 to 543)	4	04-Mar-14	07-Mar-14	06-Jan-15	09-Jan-15	0%												
NRC14880	SS - Mass Concrete Coping - Zone C1 - (CH443 to 493)	7	10-Jun-14	18-Jun-14	15-Dec-14A	20-Dec-14A	100%												
NRC14890	SS - Mass Concrete Coping - Zone C1 - (CH493 to 543)	7	18-Jun-14	25-Jun-14	20-Dec-14A	24-Dec-14A	100%												
Zone C2																			
Vertical Seawall																			
NRC14690	VS - Berm Stone - Zone C2 - (CH543 to 598)	3	19-Jul-14	22-Jul-14	03-Nov-14A	03-Nov-14A	100%												
NRC14720	VS - Mass Concrete Coping - Zone C2 - (CH543 to 598)	8	20-Jun-14	30-Jun-14	01-Nov-14A	02-Jan-15	50%												
Sloping Seawall																			
NRC14840	SS - Armour Rock Underlayer - Zone C2 - (CH543 to 598)	5	21-Feb-14	26-Feb-14	15-Dec-14A	15-Dec-14A	100%												
NRC14870	SS - Armour Rock - Zone C2 - (CH543 to 598)	4	08-Mar-14	12-Mar-14	10-Jan-15	14-Jan-15	0%												
NRC14900	SS - Mass Concrete Coping - Zone C2 - (CH543 to 598)	7	26-Jun-14	04-Jul-14	08-Dec-14A	09-Dec-14A	100%												
Zone B																			
Vertical Seawall																			
NRC11360	VS - Berm Stone - Zone B - (CH598 to 648)	3	23-Jul-14	25-Jul-14	05-Nov-14A	13-Nov-14A	100%												
NRC11370	VS - Berm Stone - Zone B - (CH648 to 698)	3	26-Jul-14	29-Jul-14	14-Nov-14A	20-Nov-14A	100%												
NRC11380	VS - Berm Stone - Zone B - (CH698 to 738)	3	30-Jul-14	01-Aug-14	19-Nov-14A	22-Nov-14A	100%												
NRC11400	VS - Mass Concrete Coping - Zone B - (CH598 to 648)	8	30-Jun-14	09-Jul-14	21-Oct-14A	07-Jan-15	50%												
NRC11410	VS - Mass Concrete Coping - Zone B - (CH648 to 698)	8	10-Jul-14	18-Jul-14	20-Nov-14A	12-Jan-15	33%												
NRC11420	VS - Mass Concrete Coping - Zone B - (CH698 to 738)	8	19-Jul-14	28-Jul-14	02-Dec-14A	17-Jan-15	33%												
Sloping Seawall																			
NRC11540	SS - Armour Rock Underlayer - Zone B - (CH598 to 648)	5	04-Mar-14	08-Mar-14	15-Oct-14A	03-Nov-14A	100%												
NRC11550	SS - Armour Rock Underlayer - Zone B - (CH648 to 698)	5	14-Mar-14	19-Mar-14	04-Nov-14A	16-Dec-14A	100%												
NRC11560	SS - Armour Rock Underlayer - Zone B - (CH698 to 738)	5	26-Mar-14	31-Mar-14	16-Dec-14A	18-Dec-14A	100%												
NRC11580	SS - Armour Rock - Zone B - (CH598 to 648)	4	01-Apr-14	04-Apr-14	15-Jan-15	19-Jan-15	0%												
NRC11590	SS - Armour Rock - Zone B - (CH648 to 698)	4	07-Apr-14	10-Apr-14	20-Jan-15	23-Jan-15	0%												
NRC11600	SS - Armour Rock - Zone B - (CH698 to 738)	4	11-Apr-14	15-Apr-14	24-Jan-15	28-Jan-15	0%												
NRC11620	SS - Mass Concrete Coping - Zone B - (CH648 to 698)	7	14-Jul-14	21-Jul-14	22-Oct-14A	05-Nov-14A	100%												
NRC11630	SS - Mass Concrete Coping - Zone B - (CH698 to 738)	7	22-Jul-14	29-Jul-14	06-Nov-14A	11-Nov-14A	100%												
Reclamation																			
NRC15360	Surcharge Removal - Zone B - (CH698 to 738)	10	12-Feb-15	02-Mar-15	18-May-15	29-May-15	0%												
Zone A1																			
Vertical Seawall																			
NRC12120	VS - Berm Stone - Zone A1 - (CH738 to 793)	3	02-Aug-14	05-Aug-14	22-Dec-14A	24-Dec-14A	100%												
NRC12130	VS - Mass Concrete Coping - Zone A1 - (CH738 to 793)	8	29-Jul-14	06-Aug-14	19-Dec-14A	23-Jan-15	33%												
Sloping Seawall																			
NRC12180	SS - Armour Rock Underlayer - Zone A1 - (CH738 to 793)	5	01-Apr-14	07-Apr-14	22-Dec-14A	31-Dec-14	40%												
NRC12190	SS - Armour Rock - Zone A1 - (CH738 to 793)	4	16-Apr-14	23-Apr-14	29-Jan-15	02-Feb-15	0%												
NRC12210	SS - Mass Concrete Coping - Zone A1 - (CH738 to 793)	7	30-Jul-14	06-Aug-14	06-Dec-14A	10-Dec-14A	100%												
Reclamation																			
NRC12340	Public Fill - Zone A1 - (CH738 to 793) to +10mPD	6	15-Oct-14	21-Oct-14	17-Nov-14A	24-Nov-14A	100%												
NRC15370	Surcharge Period - Zone A1 - (CH738 to 793)	180	22-Oct-14	19-Apr-15	25-Nov-14A	28-Jun-15	0%												
Zone A2																			
Vertical Seawall																			
NRC12490	VS - Rockfill Type A - Zone A2 - (CH843 to 893)	3	06-Jun-14	09-Jun-14	11-Oct-14A	05-Nov-14A	100%												

- Planned Bar
- Planned Bar
- ◆ Planned Milestone
- Progress bar
- ◆ Progress Milestone

TMCLK - Northern Connection Sub-Sea Tunnel Section
Detailed Works Programme - Three months rolling programme



Date	Revision	Checked	Approved
21-Feb-14	TMCLK/DBJ/GEN/PR...	SPa	WYu

Activity ID	Activity Name	Orig Dur	Planned Start	Planned Finish	Current Start	Current Finish	14W51 % Comp	2014				2015							
								Sep	Oct	Nov	Dec	Jan	Feb	Mar	Apr	May	Jun		
NRC12500	VS - Rockfill Type A - Zone A2 - (CH893 to 956)	7	10-Jun-14	17-Jun-14	11-Nov-14 A	23-Nov-14 A	100%	Zone A2 - (CH893 to 956)											
NRC12520	VS - Geotextile - Zone A2 - (CH843 to 893)	2	12-Jun-14	13-Jun-14	11-Oct-14 A	10-Nov-14 A	100%	A2 - (CH843 to 893)											
NRC12530	VS - Geotextile - Zone A2 - (CH893 to 956)	5	14-Jun-14	19-Jun-14	12-Nov-14 A	23-Nov-14 A	100%	e A2 - (CH893 to 956)											
NRC12550	VS - Granular Filter - Zone A2 - (CH843 to 893)	4	19-Jun-14	23-Jun-14	03-Nov-14 A	05-Nov-14 A	100%	- Zone A2 - (CH843 to 893)											
NRC12560	VS - Granular Filter - Zone A2 - (CH893 to 956)	10	24-Jun-14	05-Jul-14	05-Nov-14 A	23-Nov-14 A	100%	filter - Zone A2 - (CH893 to 956)											
NRC12570	VS - Berm Stone - Zone A2 - (CH793 to 843)	3	06-Aug-14	08-Aug-14	01-Dec-14 A	07-Dec-14 A	100%	Berm Stone - Zone A2 - (CH793 to 843)											
NRC12580	VS - Berm Stone - Zone A2 - (CH843 to 893)	3	09-Aug-14	12-Aug-14	08-Dec-14 A	10-Dec-14 A	100%	- Berm Stone - Zone A2 - (CH843 to 893)											
NRC12590	VS - Berm Stone - Zone A2 - (CH893 to 956)	7	13-Aug-14	20-Aug-14	11-Dec-14 A	14-Dec-14 A	100%	VS - Berm Stone - Zone A2 - (CH893 to 956)											
NRC12600	VS - Mass Concrete Coping - Zone A2 - (CH793 to 843)	8	07-Aug-14	15-Aug-14	31-Jan-15 A	31-Jan-15	18%	s - Mass Concrete Coping - Zone A2 - (CH793 to 843)											
NRC12610	VS - Mass Concrete Coping - Zone A2 - (CH843 to 893)	8	16-Aug-14	25-Aug-14	02-Feb-15	10-Feb-15	0%	VS - Mass Concrete Coping - Zone A2 - (CH843 to 893)											
NRC12620	VS - Mass Concrete Coping - Zone A2 - (CH893 to 956)	18	26-Aug-14	16-Sep-14	11-Feb-15	10-Mar-15	0%	VS - Mass Concrete Coping - Zone A2 - (CH893 to 956)											
Sloping Seawall																			
NRC12680	SS - Rock Grade 400 - Zone A2 - (CH893 to 956) to +2.5mPD (4k/d)	7	16-Apr-14	26-Apr-14	01-Sep-14 A	19-Nov-14 A	100%	93 to 956) to +2.5mPD (4k/d)											
NRC12720	SS - Armour Rock Underlayer - Zone A2 - (CH793 to 843)	5	09-Apr-14	14-Apr-14	02-Jan-15	07-Jan-15	0%	(CH793 to 843)											
NRC12730	SS - Armour Rock Underlayer - Zone A2 - (CH843 to 893)	5	16-Apr-14	24-Apr-14	08-Jan-15	13-Jan-15	0%	2 - (CH843 to 893)											
NRC12740	SS - Armour Rock Underlayer - Zone A2 - (CH893 to 956)	5	28-Apr-14	03-May-14	14-Jan-15	19-Jan-15	0%	e A2 - (CH893 to 956)											
NRC12750	SS - Armour Rock - Zone A2 - (CH793 to 843)	4	05-May-14	09-May-14	03-Feb-15	06-Feb-15	0%	793 to 843)											
NRC12760	SS - Armour Rock - Zone A2 - (CH843 to 893)	4	10-May-14	14-May-14	07-Feb-15	11-Feb-15	0%	H843 to 893)											
NRC12770	SS - Armour Rock - Zone A2 - (CH893 to 956)	4	15-May-14	19-May-14	12-Feb-15	16-Feb-15	0%	(CH893 to 956)											
NRC12780	SS - Mass Concrete Coping - Zone A2 - (CH793 to 843)	7	07-Aug-14	14-Aug-14	13-Dec-14 A	19-Dec-14 A	100%	s - Mass Concrete Coping - Zone A2 - (CH793 to 843)											
NRC12790	SS - Mass Concrete Coping - Zone A2 - (CH843 to 893)	7	15-Aug-14	22-Aug-14	20-Dec-14 A	06-Feb-15	44%	SS - Mass Concrete Coping - Zone A2 - (CH843 to 893)											
NRC12800	SS - Mass Concrete Coping - Zone A2 - (CH893 to 956)	7	23-Aug-14	30-Aug-14	07-Feb-15	14-Feb-15	0%	SS - Mass Concrete Coping - Zone A2 - (CH893 to 956)											
NRC12820	Sloping - Rockfill Type A - Zone A2 - (CH843 to 893)	1	16-Apr-14	16-Apr-14	08-Nov-14 A	13-Nov-14 A	100%	43 to 893)											
NRC12830	Sloping - Rockfill Type A - Zone A2 - (CH893 to 956)	1	28-Apr-14	28-Apr-14	21-Nov-14 A	21-Nov-14 A	100%	CH893 to 956)											
NRC12870	Sloping - Geotextile - Zone A2 - (CH893 to 956)	2	29-Apr-14	30-Apr-14	21-Nov-14 A	21-Nov-14 A	100%	93 to 956)											
NRC12880	Sloping - Granular Filter - Zone A2 - (CH793 to 843)	3	12-Apr-14	15-Apr-14	29-Oct-14 A	31-Oct-14 A	100%	93 to 843)											
NRC12890	Sloping - Granular Filter - Zone A2 - (CH843 to 893)	3	23-Apr-14	25-Apr-14	24-Oct-14 A	13-Nov-14 A	100%	H843 to 893)											
NRC12900	Sloping - Granular Filter - Zone A2 - (CH893 to 956)	3	02-May-14	05-May-14	22-Nov-14 A	22-Nov-14 A	100%	(CH893 to 956)											
Reclamation																			
NRC13020	Public Fill - Zone A2 - (CH843 to 893) to -2.5mPD	6	11-Jul-14	17-Jul-14	03-Oct-14 A	04-Nov-14 A	100%	Zone A2 - (CH843 to 893) to -2.5mPD											
NRC13030	Public Fill - Zone A2 - (CH893 to 956) to -2.5mPD	4	18-Jul-14	22-Jul-14	03-Nov-14 A	06-Dec-14 A	100%	- Zone A2 - (CH893 to 956) to -2.5mPD											
NRC13050	Public Fill - Zone A2 - (CH843 to 893) to +2.5mPD	7	11-Aug-14	18-Aug-14	24-Oct-14 A	14-Nov-14 A	100%	Public Fill - Zone A2 - (CH843 to 893) to +2.5mPD											
NRC13070	Public Fill - Zone A2 - (CH893 to 956) to +2.5mPD	6	19-Aug-14	25-Aug-14	13-Nov-14 A	10-Dec-14 A	100%	Public Fill - Zone A2 - (CH893 to 956) to +2.5mPD											
NRC13080	Public Fill - Zone A2 - (CH793 to 843) to +6.0mPD	7	11-Aug-14	18-Aug-14	18-Oct-14 A	31-Oct-14 A	100%	Public Fill - Zone A2 - (CH793 to 843) to +6.0mPD											
NRC13090	Public Fill - Zone A2 - (CH843 to 893) to +6.0mPD	7	19-Aug-14	26-Aug-14	02-Nov-14 A	13-Dec-14 A	100%	Public Fill - Zone A2 - (CH843 to 893) to +6.0mPD											
NRC13100	Public Fill - Zone A2 - (CH893 to 956) to +6.0mPD	6	27-Aug-14	02-Sep-14	02-Dec-14 A	09-Dec-14 A	100%	Public Fill - Zone A2 - (CH893 to 956) to +6.0mPD											
NRC13110	Public Fill - Zone A2 - (CH793 to 843) to +10mPD	6	22-Oct-14	28-Oct-14	13-Dec-14 A	15-Dec-14 A	100%	Public Fill - Zone A2 - (CH793 to 843) to +10mPD											
NRC13120	Public Fill - Zone A2 - (CH843 to 893) to +10mPD	7	29-Oct-14	05-Nov-14	20-Dec-14 A	07-Feb-15	43%	Public Fill - Zone A2 - (CH843 to 893) to +10mPD											
NRC13130	Public Fill - Zone A2 - (CH893 to 956) to +10mPD	4	06-Nov-14	10-Nov-14	09-Feb-15	12-Feb-15	0%	Public Fill - Zone A2 - (CH893 to 956) to +10mPD											
NRC15390	Surcharge Period - Zone A2 - (CH793 to 843)	180	11-Nov-14	09-May-15	13-Feb-15	11-Aug-15	0%	Surcharge Per											
NRC16960	NewActivity	0			29-Dec-14	30-Dec-14	0%												
Zone F																			
CH184 to CH231																			
A6416230	F - Anchor wall Installation - CH184 to CH231	4	10-Mar-14	13-Mar-14	29-Dec-14	02-Jan-15	0%												
A6416290	F - Backfilling up to 0.0mPD & G2 Installation to Anchor Wall - CH184 to CH231	3	14-Mar-14	16-Mar-14	03-Jan-15	05-Jan-15	0%	or Wall - CH184 to CH231											
A6416295	F - Backfilling up to +3.0mPD & G1 Installation to Anchor Wall - CH184 to CH231	2	17-Mar-14	18-Mar-14	06-Jan-15	07-Jan-15	0%	chor Wall - CH184 to CH231											
A6416300	F - Backfilling up to +6.0mPD to Anchor Wall - CH184 to CH231	2	19-Mar-14	20-Mar-14	08-Jan-15	09-Jan-15	0%	84 to CH231											
A6416400	F - Backfilling up to +6.0mPD to Existing Seawall - CH184 to CH231	1	21-Mar-14	21-Mar-14	10-Jan-15	10-Jan-15	0%	184 to CH231											
CH231 to CH278																			
A6416273	F - Backfilling up to +0.5mPD & T3 Installation - CH231 to CH278	6	28-Mar-14	02-Apr-14	13-Jan-15	18-Jan-15	0%	CH231 to CH278											
A6416278	F - Backfilling up to +3.0mPD - CH231 to CH278	2	03-Apr-14	04-Apr-14	19-Jan-15	20-Jan-15	0%	78											
A6416280	F - Backfilling up to +6.0mPD - CH231 to CH278	2	05-Apr-14	06-Apr-14	21-Jan-15	22-Jan-15	0%	278											
A6416310	F - Anchor wall Installation - CH231 to CH278	4	07-Apr-14	10-Apr-14	23-Jan-15	27-Jan-15	0%	8											
A6416480	F - Backfilling up to 0.0mPD & G2 Installation to Anchor Wall - CH231 to CH278	3	11-Apr-14	13-Apr-14	28-Jan-15	30-Jan-15	0%	on to Anchor Wall - CH231 to CH278											
A6416490	F - Backfilling up to +3.0mPD & G1 Installation to Anchor Wall - CH231 to CH278	2	14-Apr-14	15-Apr-14	31-Jan-15	01-Feb-15	0%	ation to Anchor Wall - CH231 to CH278											
A6416500	F - Backfilling up to +6.0mPD to Anchor Wall - CH231 to CH278	2	16-Apr-14	17-Apr-14	02-Feb-15	03-Feb-15	0%	all - CH231 to CH278											
A6416510	F - Backfilling up to +6.0mPD to Existing Seawall - CH231 to CH278	1	18-Apr-14	18-Apr-14	04-Feb-15	04-Feb-15	0%	wall - CH231 to CH278											
CH278 to CH327																			
A6416195	F - Marine Sheet Piling (H2) - CH278 to CH327	5	12-Mar-14	17-Mar-14	28-Oct-14 A	05-Nov-14 A	100%	h278 to CH327											
A6416200	F - Backfilling up to -3.5mPD & T2 Installation - CH278 to CH327	5	18-Mar-14	22-Mar-14	15-Dec-14 A	24-Dec-14 A	100%	h278 to CH327											
A6416210	F - Backfilling up to +0.5mPD - CH278 to CH327	4	23-Mar-14	26-Mar-14	09-Jan-15	12-Jan-15	0%												
A6416215	F - Backfilling up to +3.0mPD & T4 Installation - CH278 to CH327	5	27-Mar-14	31-Mar-14	14-Jan-15	18-Jan-15	0%	CH278 to CH327											
A6416220	F - Backfilling up to +6.0mPD - CH278 to CH327	2	01-Apr-14	02-Apr-14	19-Jan-15	20-Jan-15	0%	27											
A6416340	F - Anchor wall Installation - CH278 to CH327	4	11-Apr-14	15-Apr-14	28-Jan-15	31-Jan-15	0%	327											
A6416520	F - Backfilling up to 0.0mPD & G2 Installation to Anchor Wall - CH278 to CH327	3	16-Apr-14	18-Apr-14	01-Feb-15	03-Feb-15	0%	ion to Anchor Wall - CH278 to CH327											
A6416530	F - Backfilling up to +3.0mPD & G1 Installation to Anchor Wall - CH278 to CH327	3	19-Apr-14	21-Apr-14	04-Feb-15	06-Feb-15	0%	llation to Anchor Wall - CH278 to CH327											

- Planned Bar
- Planned Bar
- ◆ Planned Milestone
- Progress bar
- ◆ Progress Milestone

TMCLK - Northern Connection Sub-Sea Tunnel Section
Detailed Works Programme - Three months rolling programme



Date	Revision	Checked	Approved
21-Feb-14	TMCLK/DBJ/GEN/PR...	SPa	WYu

Activity ID	Activity Name	Orig Dur	Planned Start	Planned Finish	Current Start	Current Finish	14W51 % Comp	2014				2015							
								Sep	Oct	Nov	Dec	Jan	Feb	Mar	Apr	May	Jun		
A6416540	F - Backfilling up to +6.0mPD to Anchor Wall - CH278 to CH327	3	22-Apr-14	24-Apr-14	07-Feb-15	09-Feb-15	0%	Wall - CH278 to CH327											
A6416550	F - Backfilling up to +6.0mPD to Existing Seawall - CH278 to CH327	1	25-Apr-14	25-Apr-14	10-Feb-15	10-Feb-15	0%	Seawall - CH278 to CH327											
CH327 to CH381																			
A6416150	F - Backfilling up to -3.5mPD & T2 Installation - CH327 to CH381	4	12-Mar-14	15-Mar-14	08-Nov-14A	13-Dec-14A	100%	CH327 to CH381											
A6416155	F - Backfilling up to +0.5mPD - CH327 to CH381	3	16-Mar-14	18-Mar-14	06-Jan-15	08-Jan-15	0%												
A6416160	F - Backfilling up to +3.0mPD & T4 Installation - CH327 to CH381	5	19-Mar-14	23-Mar-14	09-Jan-15	13-Jan-15	0%	CH327 to CH381											
A6416170	F - Backfilling up to +6.0mPD - CH327 to CH381	3	24-Mar-14	26-Mar-14	14-Jan-15	16-Jan-15	0%												
A6416370	F - Anchor wall Installation - CH327 to CH381	3	16-Apr-14	22-Apr-14	02-Feb-15	04-Feb-15	0%	CH381											
A6416560	F - Backfilling up to 0.0mPD & G2 Installation to Anchor Wall - CH327 to CH381	3	23-Apr-14	25-Apr-14	05-Feb-15	07-Feb-15	0%	Installation to Anchor Wall - CH327 to CH381											
A6416570	F - Backfilling up to +3.0mPD & G1 Installation to Anchor Wall - CH327 to CH381	3	26-Apr-14	28-Apr-14	08-Feb-15	10-Feb-15	0%	Installation to Anchor Wall - CH327 to CH381											
A6416580	F - Backfilling up to +6.0mPD to Anchor Wall - CH327 to CH381	2	29-Apr-14	30-Apr-14	11-Feb-15	12-Feb-15	0%	Anchor Wall - CH327 to CH381											
A6416590	F - Backfilling up to +6.0mPD to Existing Seawall - CH327 to CH381	1	01-May-14	01-May-14	13-Feb-15	13-Feb-15	0%	Seawall - CH327 to CH381											
Box Culvert Extension																			
Construction																			
CH000 to CH137																			
A6416670	Bored Pile Construction - A43 to A62 (4 Rigs) & Land Sheet Piling	96	31-May-14	23-Sep-14	21-Jul-14A	14-Nov-14A	100%	Bored Pile Construction - A43 to A62 (4 Rigs) & Land Sheet Piling											
A6416680	Backfilling for Surcharge	18	24-Sep-14	16-Oct-14	29-Dec-14	19-Jan-15	0%	Backfilling for Surcharge											
A6416690	Surcharge Period	180	17-Oct-14	14-Apr-15	20-Jan-15	18-Jul-15	0%	Surcharge Period											
CH137 to CH184																			
A6416610	Predrilling - CH137 to CH184	24	07-Feb-14	06-Mar-14	16-Oct-14A	07-Nov-14A	100%												
A6416720	Bored Pile Construction - A42 to A35	160	07-Mar-14	19-Sep-14	14-Jul-14A	19-Nov-14A	100%	Bored Pile Construction - A42 to A35											
A6416770	Backfilling for Surcharge	12	20-Sep-14	06-Oct-14	29-Dec-14	12-Jan-15	0%	Backfilling for Surcharge											
A6416780	Surcharge Period	180	07-Oct-14	04-Apr-15	13-Jan-15	11-Jul-15	0%	Surcharge Period											
CH184 to CH231																			
A6416620	Predrilling - CH184 to CH231	24	22-Mar-14	23-Apr-14	08-Nov-14A	29-Jan-15	33%												
A6416730	Bored Pile Construction - A34 to A27	156	22-Mar-14	30-Sep-14	30-Oct-14A	10-Jun-15	25%	Bored Pile Construction - A34 to A27											
A6417160	Surcharge Removal - CH184 to CH231	6	27-Feb-15	05-Mar-15	31-Oct-15	06-Nov-15	0%	Surcharge Removal - CH184 to CH231											
CH231 to CH278																			
A6416630	Predrilling - CH231 to CH278	24	22-Apr-14	21-May-14	05-Feb-15	11-Mar-15	0%												
A6416740	Bored Pile Construction - A26 to A19	143	22-Apr-14	13-Oct-14	05-Feb-15	06-Aug-15	0%	Bored Pile Construction - A26 to A19											
A6417200	Surcharge Removal - CH231 to CH278	6	10-Feb-15	16-Feb-15	04-Dec-15	10-Dec-15	0%	Surcharge Removal - CH231 to CH278											
A6417210	Excavation down to S1 level - CH231 to CH278	8	17-Feb-15	04-Mar-15	11-Dec-15	19-Dec-15	0%	Excavation down to S1 level - CH231 to CH278											
CH278 to CH327																			
A6416640	Predrilling - CH278 to CH327	24	26-Apr-14	26-May-14	11-Feb-15	17-Mar-15	0%												
A6416840	Surcharge Period	105	30-Oct-14	11-Feb-15	25-Aug-15	07-Dec-15	0%	Surcharge Period											
A6417240	Surcharge Removal - CH278 to CH327	6	12-Feb-15	18-Feb-15	08-Dec-15	14-Dec-15	0%	Surcharge Removal - CH278 to CH327											
A6417250	Excavation down to S1 level - CH278 to CH327	8	26-Feb-15	06-Mar-15	15-Dec-15	23-Dec-15	0%	Excavation down to S1 level - CH278 to CH327											
CH327 to CH381																			
A6416650	Predrilling - CH327 to CH381	24	02-May-14	30-May-14	14-Feb-15	20-Mar-15	0%	CH381											
A6417280	Surcharge Removal - CH327 to CH381	6	09-Jan-15	15-Jan-15	05-Nov-15	11-Nov-15	0%	Surcharge Removal - CH327 to CH381											
A6417290	Excavation down to S1 level - CH327 to CH381	9	16-Jan-15	26-Jan-15	12-Nov-15	21-Nov-15	0%	Excavation down to S1 level - CH327 to CH381											
A6417300	S1 Installation - CH327 to CH381	9	27-Jan-15	05-Feb-15	23-Nov-15	02-Dec-15	0%	S1 Installation - CH327 to CH381											
A6417310	Excavation down to Formation level - CH327 to CH381	6	06-Feb-15	12-Feb-15	03-Dec-15	09-Dec-15	0%	Excavation down to Formation level - CH327 to CH381											
A6417320	Box Culvert Construction - CH327 to CH381	142	13-Feb-15	13-Aug-15	10-Dec-15	10-Jun-16	0%												
CH381 to CH399 (Box Culvert Connection)																			
A6416660	F - Prebored H-piles for CKS Temporary Land Access	6	18-Feb-14	24-Feb-14	29-Dec-14	05-Jan-15	0%	Access to Zone E											
A6417000	F - Steel Bridge Installation for Land Access to Zone E	52	25-Feb-14	30-Apr-14	06-Jan-15	13-Mar-15	0%	Access to Zone E											
North Shafts Construction & Tunnel Structure																			
Design Submission																			
(C1) DDA for North C&C Tunnel Permanent Structure - NLS Base Slab																			
DD00350	Designer to Reply RIC + Update Submission	15	13-May-14	30-May-14	23-Oct-14A	21-Nov-14A	100%	Update Submission											
DD00360	Submit Updated DDA to SO/ ICE/ IPs	0	30-May-14		21-Nov-14A		100%	ICE/ IPs											
DD00370	ICE Approval & Issue Check Cert	18	30-May-14	21-Jun-14	28-Aug-14A	26-Nov-14A	100%	ICE Check Cert											
DD00380	Submit ICE Check Cert to SO	0		21-Jun-14		26-Nov-14A	100%	Cert to SO											
DD00390	IPs Review	28	30-May-14	27-Jun-14	21-Nov-14A	12-Dec-14A	100%	Received											
DD00400	IPs No Objection Received	0		27-Jun-14		12-Dec-14A	100%	Received											
DD00440	SO's Review	35	30-May-14	04-Jul-14	21-Nov-14A	12-Dec-14A	100%	Received											
DD00450	SO Approval with Condition Received	0		04-Jul-14		12-Dec-14A	100%	Condition Received											
DD00670	Works Commencement - North C&C Tunnel Permanent Barette	0	07-Jul-14		12-Dec-14A		100%	Commencement - North C&C Tunnel Permanent Barette											
(C1) DDA for North Approach Ramp Permanent Structure																			
DD70770	Preparation DDANorth Approach Ramp Permanent Structure	18	04-Jul-14	25-Jul-14	13-Dec-14A	16-Feb-15	12%	Preparation DDANorth Approach Ramp Permanent Structure											
DD70780	Review & Comment by JV	12	25-Jul-14	08-Aug-14	17-Feb-15	09-Mar-15	0%	Review & Comment by JV											
DD70820	Submit Updated DDA to SO/ ICE/ IPs	0	04-Nov-14		05-Jun-15		0%	Submit Updated DDA to SO/ ICE/ IPs											
DD70830	ICE Approval & Issue Check Cert	18	04-Nov-14	25-Nov-14	05-Jun-15	27-Jun-15	0%	ICE Approval & Issue Check Cert											
DD70840	Submit ICE Check Cert to SO	0		25-Nov-14		27-Jun-15	0%	Submit ICE Check Cert to SO											
DD70850	IPs Review	28	04-Nov-14	02-Dec-14	05-Jun-15	03-Jul-15	0%	IPs Review											

Planned Bar
 Planned Bar
 Planned Milestone
 Progress bar
 Progress Milestone

TMCLK - Northern Connection Sub-Sea Tunnel Section
 Detailed Works Programme - Three months rolling programme



Date	Revision	Checked	Approved
21-Feb-14	TMCLK/DBJ/GEN/PR...	SPa	WYu

Activity ID	Activity Name	Orig Dur	Planned Start	Planned Finish	Current Start	Current Finish	14W51 % Comp	2014				2015								
								Sep	Oct	Nov	Dec	Jan	Feb	Mar	Apr	May	Jun			
DD70860	IPs No Objection Received	0		02-Dec-14		03-Jul-15	0%													
DD70870	SO's Review	35	04-Nov-14	09-Dec-14	05-Jun-15	10-Jul-15	0%													
DD70880	SO Approval with Condition Received	0		09-Dec-14		10-Jul-15	0%													
(D2) DDA Temp.works - North Ventilation Shaft ELS																				
DD03380	IPs/ SO's Advance Comments/ ICE Comments	28	09-Apr-14	06-May-14	03-Oct-14A	29-Oct-14A	100%													
DD03390	Comments Received	0		07-May-14		29-Oct-14A	100%													
DD03400	Designer to Reply RTC + Update Submission	21	07-May-14	30-May-14	29-Oct-14A	18-Nov-14A	100%													
DD03410	Submit Updated DDA to SO/ ICE/ IPs	0	31-May-14		18-Nov-14A		100%													
DD03420	ICE Approval & Issue Check Cert	12	31-May-14	14-Jun-14	29-Sep-14A	14-Nov-14A	100%													
DD03430	Submit ICE Check Cert to SO	6	16-Jun-14	21-Jun-14	15-Nov-14A	18-Nov-14A	100%													
DD03440	IPs Review	28	31-May-14	27-Jun-14	18-Nov-14A	10-Dec-14A	100%													
DD03450	IPs No Objection Received	0		27-Jun-14		10-Dec-14A	100%													
DD03490	SO's Review	35	31-May-14	04-Jul-14	18-Nov-14A	12-Dec-14A	100%													
DD03495	SO Approval with Condition Received	0		04-Jul-14		12-Dec-14A	100%													
DD03515	Works Commencement - TBM Change Diameter Shaft - 04Aug14	0	04-Aug-14		24-Nov-14A		100%													
Construction																				
North Launching Shaft ELS Foundation & Capping Beam (Cell 1 to 3)																				
NSH1360	E - Cell 1-3 - Capping beam Installation	18	08-Jul-14	28-Jul-14	25-Aug-14A	14-Nov-14A	100%													
NSH1370	E - Cell 1-3 - Instrumentation & Pump well Installation	6	31-Jul-14	06-Aug-14	23-Aug-14A	15-Nov-14A	100%													
NSH1430	E - Pumping Test for TBM Launching Shaft ELS - Cell 1-3	5	07-Aug-14	11-Aug-14	03-Nov-14A	12-Nov-14A	100%													
North Launching Shaft Excavation (Cell 1 to 3)																				
NSH1440	E - Cell 1 to 3 - Shaft Excavation	77	12-Aug-14	12-Nov-14	06-Oct-14A	06-Dec-14A	100%													
North Launching Shaft Base Slab for TBM Launching																				
NSH1455	E - Tympanum construction for TBM break-in	12	20-Nov-14	03-Dec-14	29-Dec-14	12-Jan-15	0%													
NSH1460	E - Cell 1 to 2 - Base Slab construction	22	13-Nov-14	08-Dec-14	01-Dec-14A	12-Jan-15	46%													
NSH1465	E - Cell 3 to 4 - Excavation to ML03 formation level	6	09-Dec-14	15-Dec-14	22-Dec-14A	22-Dec-14A	100%													
NSH1470	E - Cell 3 to 4 - ML3 Base Slab construction	12	16-Dec-14	31-Dec-14	22-Dec-14A	22-Dec-14A	100%													
NSH1480	E - Cell 5 - Temporary backfilling for ML03 logistic	6	02-Jan-15	08-Jan-15	22-Dec-14A	22-Dec-14A	100%													
NSH1490	E - Cell 3 to 4 - Excavation to ML02 formation level	6	02-Jan-15	08-Jan-15	22-Dec-14A	22-Dec-14A	100%													
NSH1500	E - Cell 3 to 4 - ML02 Base Slab construction	18	09-Jan-15	29-Jan-15	22-Dec-14A	22-Dec-14A	100%													
NSH1510	E - Cell 5 - Temporary backfilling for ML02 logistic	6	30-Jan-15	05-Feb-15	22-Dec-14A	22-Dec-14A	100%													
North Ventilation Shaft ELS Foundation & Capping Beam																				
A6415775	B - Setup for Shaft ELS Foundation	20	02-Aug-14	25-Aug-14	27-Oct-14A	31-Oct-14A	100%													
A6415780	B - Diaphragm Wall - Shaft ELS	81	26-Aug-14	01-Dec-14	01-Nov-14A	23-Mar-15	18%													
A6415790	B - Instrumentation & Pump well Installation	6	02-Dec-14	08-Dec-14	24-Mar-15	30-Mar-15	0%													
A6415795	B - Pumping Test for Excavation	7	09-Dec-14	15-Dec-14	31-Mar-15	06-Apr-15	0%													
North Ventilation Shaft Excavation & Base Slab																				
A6415800	B - Vent Shaft Excavation (+6.0 to +4.0mPD) - Reclaimed Fill	5	02-Dec-14	06-Dec-14	24-Mar-15	28-Mar-15	0%													
A6415810	B - Capping Beam Installation (+6.0mPD)	12	08-Dec-14	20-Dec-14	30-Mar-15	16-Apr-15	0%													
A6415820	B - Vent Shaft Excavation (+4.0 to -8.0mPD) - Reclaimed Fill	19	22-Dec-14	15-Jan-15	17-Apr-15	09-May-15	0%													
A6415830	B - Ring Beam Installation (-5.5mPD)	6	16-Jan-15	22-Jan-15	11-May-15	16-May-15	0%													
A6415840	B - Vent Shaft Excavation (-8.0 to -20.0mPD) - Fill/MD/ALLUVIUM	27	23-Jan-15	02-Mar-15	18-May-15	18-Jun-15	0%													
CLP Temporary Substation																				
Construction																				
DDP12800	1st Batch - CLP Installation & Commissioning	108	02-Jul-14	07-Nov-14	02-Jul-14A	03-Jan-15	95%													
DDP12810	11kV Equipment / Switch Room installation by JV	48	20-Aug-14	18-Oct-14	20-Aug-14A	31-Oct-14A	100%													
DDP12830	1st batch - Noise Measurement (deleted)	12	08-Nov-14	21-Nov-14	21-Nov-14A	21-Nov-14A	100%													
DDP12840	Final FS Installation by JV	6	08-Nov-14	14-Nov-14	05-Jan-15	10-Jan-15	0%													
DDP12850	FSD inspection for 1st Transformer Energization	12	15-Nov-14	28-Nov-14	12-Jan-15	24-Jan-15	0%													
DDP12860	1st Batch - Commissioning & Energization	0		28-Nov-14		24-Jan-15*	0%													
DDP12870	2nd Batch - CLP Installation & Commissioning	95	15-Oct-14	05-Feb-15	02-Jul-14A	03-Jan-15	95%													
DDP12880	FS Installation by JV	24	09-Jan-15	06-Feb-15	20-Sep-14A	15-Oct-14A	100%													
DDP12890	2nd Batch - Noise Measurement (to be clarified)	6	06-Feb-15	12-Feb-15	21-Nov-14A	21-Nov-14A	100%													
DDP12900	Final FS Installation by JV	6	06-Feb-15	12-Feb-15	05-Jan-15	10-Jan-15	0%													
DDP12910	FSD inspection for 2nd Transformer Energization	6	13-Feb-15	18-Feb-15	11-Jan-15	16-Jan-15	0%													
DDP12920	2nd Batch - Commissioning & Energization	0		18-Feb-15		16-Jan-15*	0%													
North Surface works for TBM Tunnelling																				
Design Submission																				
(D1) IFA for Temp. Access to Portion N8A, N8B & N8C incl. Temp. Lighting																				
AP01500	Preparation of AIP Temporary Access Road to N8	33	02-Jan-14	15-Feb-14	02-Jan-14A	30-Dec-14	94%													
AP01505	Review & Comment by JV	12	17-Feb-14	01-Mar-14	31-Dec-14	14-Jan-15	0%													
AP01510	Designer Prepare IFA	6	03-Mar-14	08-Mar-14	15-Jan-15	21-Jan-15	0%													
AP01515	Formal Submission of IFA to ICE/IPs	0		08-Mar-14		21-Jan-15	0%													
AP01520	Advanced Submission of IFA to SO	0		08-Mar-14		21-Jan-15	0%													
AP01525	Review & Comment by SO/ ICE/ IPs	28	09-Mar-14	05-Apr-14	22-Jan-15	18-Feb-15	0%													
AP01530	Advance Comments from SO/ Comments from ICE/ IPs Received	0		07-Apr-14		18-Feb-15	0%													

- Planned Bar
- Planned Bar
- ◆ Planned Milestone
- Progress bar
- ◆ Progress Milestone

TMCLK - Northern Connection Sub-Sea Tunnel Section
Detailed Works Programme - Three months rolling programme



Date	Revision	Checked	Approved
21-Feb-14	TMCLK/DBJ/GEN/PR...	SPa	WYu

Activity ID	Activity Name	Orig Dur	Planned Start	Planned Finish	Current Start	Current Finish	14W51 % Comp	2014				2015					
								Sep	Oct	Nov	Dec	Jan	Feb	Mar	Apr	May	Jun
AP01535	Designer to Prepare RfC & Updated AIP	18	07-Apr-14	30-Apr-14	26-Feb-15	18-Mar-15	0%										
Construction																	
Zone E																	
A6416440	Zone E - Break-in Plug - CSM	38	18-Sep-14	03-Nov-14	01-Sep-14A	25-Nov-14A	100%										
A6416450	Zone E - Jet grouting	60	04-Nov-14	15-Jan-15	03-Sep-14A	16-Feb-15	30%										
Zone D1																	
NRC14020	Zone D1 - Ground Treatment for CP54	20	14-Jul-14	05-Aug-14	02-Sep-14A	02-Jan-15	60%										
Zone D2																	
NRC14110	Zone D2 - B/C Slurry Substitution for CP53	22	06-Aug-14	30-Aug-14	03-Jan-15	28-Jan-15	0%										
Zone C1																	
NRC1202130	Zone C1 - B/C Slurry Substitution for CP52	26	27-Aug-14	26-Sep-14	29-Dec-14	28-Jan-15	0%										
Zone C2																	
NRC1202150	Zone C2 - Drilling for Rock Fissure Grouting for CP51	21	03-Jul-14	26-Jul-14	06-Nov-14A	09-Jan-15	52%										
NRC1202155	Zone C2 - Rock Fissure Grouting for CP51	44	14-Jul-14	02-Sep-14	19-Nov-14A	27-Jan-15	43%										
NRC1202160	Zone C2 - Jet Grouting for CP51	18	20-Aug-14	10-Sep-14	14-Jan-15	03-Feb-15	0%										
Zone B																	
A6415895	Zone B - Unreinforced Separation D-wall	13	27-Aug-14	11-Sep-14	08-Jan-15	22-Jan-15	0%										
A6415897	Zone B - Unreinforced Separation D-wall	13	25-Jul-14	08-Aug-14	19-Nov-14A	07-Jan-15	40%										
A6415900	Zone B - Slurry Wall for TBM Break-out Plug	34	02-Dec-14	13-Jan-15	24-Mar-15	07-May-15	0%										
A6415910	Zone B - Slurry Wall - Toe Grouting	24	14-Jan-15	10-Feb-15	08-May-15	05-Jun-15	0%										
A6415920	Zone B - Ground Treatment for TBM Break-out Plug	58	11-Feb-15	30-Apr-15	06-Jun-15	14-Aug-15	0%										
Ground Treatment																	
A6417430	Zone A - B/C Slurry Substitution for CP49	30	22-Oct-14	25-Nov-14	04-Feb-15	17-Mar-15	0%										
A6417440	Zone A - Drilling for Rock Fissure Grouting for CP48	65	11-Nov-14	28-Jan-15	13-Feb-15	12-May-15	0%										
A6417450	Zone A - Rock Fissure Grouting for CP48	90	25-Nov-14	19-Mar-15	06-Mar-15	26-Jun-15	0%										
A6417460	Zone A - Jet Grouting for CP48	72	29-Jan-15	05-May-15	13-May-15	07-Aug-15	0%										
North Approach TBM Tunnelling & Cross Passage																	
Major Procurement																	
TBM at Northern Landfall																	
PO103080	S880 - 17.6m dia - TBM - Manufacturing - Cutterhead	198	25-Jan-14	30-Sep-14	25-Jan-14A	25-Nov-14A	100%										
PO103150	S880 - 17.6m dia - TBM - Workshop Assembly	138	07-May-14	20-Oct-14	04-Jun-14A	10-Dec-14A	100%										
PO103160	S880 - 17.6m dia - TBM - Workshop Acceptance Test	0		20-Oct-14		30-Oct-14A	100%										
PO103170	S880 - 17.6m dia - TBM - Disassembly and Packing for Transport	32	21-Oct-14	26-Nov-14	01-Nov-14A	10-Dec-14A	100%										
PO103180	S880 - 17.6m dia - TBM - Delivery	10	27-Nov-14	08-Dec-14	10-Dec-14A	18-Dec-14A	100%										
PO103190	S880 - 17.6m dia - TBM - Arrival to site	0		08-Dec-14		18-Dec-14A	100%										
PO103220	S882 - 13.6m dia - TBM - Manufacturing - Cutterhead	198	01-Mar-14	30-Oct-14	01-Mar-14A	10-Dec-14A	100%										
PO103290	S882 - 13.6m dia - TBM - Workshop Assembly	150	16-Jun-14	11-Dec-14	16-Jun-14A	18-Dec-14A	100%										
PO103300	S882 - 13.6m dia - TBM - Workshop Acceptance Test	0		11-Dec-14		18-Dec-14A	100%										
PO103310	S882 - 13.6m dia - TBM - Disassembly and Packing for Transport	28	12-Dec-14	16-Jan-15	12-Dec-14A	15-Jan-15	46%										
PO103320	S882 - 13.6m dia - TBM - Delivery	17	17-Jan-15	02-Feb-15	16-Jan-15	01-Feb-15	0%										
PO103330	S882 - 13.6m dia - TBM - Arrival to site	0		02-Feb-15		01-Feb-15	0%										
Precast Segment																	
Precast Segment ID12.40 - Production for SB North TBM Tunnel																	
A6418020	ID12.40 TBM Segment Ring Fabrication - 6 ring per day	6	29-Oct-14	04-Nov-14	11-Sep-14A	10-Oct-14A	100%										
A6418030	ID12.40 TBM Segment Ring Fabrication - 12 rings per day	15	05-Nov-14	21-Nov-14	11-Oct-14A	27-Dec-14A	100%										
Slurry Treatment Plant																	
A6415400	STP - Factory Testing and Commissioning	6	24-Sep-14	30-Sep-14	24-Sep-14A	20-Nov-14A	100%										
A6415440	STP - Dismantling, Packaging & Transport	4	03-Oct-14	07-Oct-14	20-Nov-14A	24-Nov-14A	100%										
A6415450	STP - Shipment to Hong Kong	20	08-Oct-14	30-Oct-14	24-Sep-14A	28-Nov-14A	100%										
Hyperbaric & Saturation																	
A6415140	Shuttle for Hyperbaric Saturation - Fabrication	128	07-May-14	08-Oct-14	21-Jun-14A	29-Nov-14A	100%										
A6415150	Shuttle for Hyperbaric Saturation - Delivery to TBM Factory	6	09-Oct-14	15-Oct-14	01-Dec-14A	10-Dec-14A	100%										
Design Submission																	
(D7) IFA Gantry Crane Supports/Foundation																	
DD69010	Review & Comment by JV	18	05-Mar-14	25-Mar-14	25-Jul-14A	30-Oct-14A	100%										
DD69020	Designer prepare IFA	10	26-Mar-14	07-Apr-14	31-Oct-14A	31-Oct-14A	100%										
DD69030	Formal Submission of IFA to ICE/ IPs	0		07-Apr-14		31-Oct-14A	100%										
DD69040	Advanced Submission to SO	0		07-Apr-14		31-Oct-14A	100%										
DD69050	IPs/ SO's Advance Comments/ ICE Comments	28	08-Apr-14	05-May-14	01-Nov-14A	03-Dec-14A	100%										
DD69060	Comments Received	0		05-May-14		03-Dec-14A	100%										
DD69070	Designer to Reply RfC + Update Submission	21	07-May-14	30-May-14	04-Dec-14A	30-Dec-14	90%										
DD69080	Submit Updated IFA to SO/ ICE/ IPs	0		31-May-14		23-Jan-15	0%										
DD69090	ICE Approval & Issue Check Cert	12	31-May-14	14-Jun-14	23-Jan-15	05-Feb-15	0%										
DD69100	IPs Review	28	31-May-14	27-Jun-14	23-Jan-15	19-Feb-15	0%										
DD69110	IPs No Objection Received	0		27-Jun-14		19-Feb-15	0%										
DD69120	SO's Review	35	31-May-14	04-Jul-14	23-Jan-15	26-Feb-15	0%										

■ Planned Bar
■ Planned Bar
◆ Planned Milestone
■ Progress bar
◆ Progress Milestone



Date	Revision	Checked	Approved
21-Feb-14	TMCLK/DBJ/GEN/PR...	SPa	WYu

Activity ID	Activity Name	Orig Dur	Planned Start	Planned Finish	Current Start	Current Finish	14W51 % Comp	2014				2015						
								Sep	Oct	Nov	Dec	Jan	Feb	Mar	Apr	May	Jun	
DD69130	SO Approval with Condition Received	0		04-Jul-14		26-Feb-15	0%											
(D8) IFA Thrust Frame for TBM Launching																		
DD69160	Designer prepare IFA	10	12-May-14	22-May-14	25-Oct-14A	31-Oct-14A	100%											
DD69170	Formal Submission of IFA to ICE/ IPs	0		22-May-14		31-Oct-14A	100%											
DD69180	Advanced Submission to SO	0		22-May-14		31-Oct-14A	100%											
DD69190	IPs/ SO's Advance Comments/ ICE Comments	28	23-May-14	19-Jun-14	01-Nov-14A	30-Dec-14	93%											
DD69200	Comments Received	0		19-Jun-14		30-Dec-14	0%											
DD69210	Designer to Reply RTC + Update Submission	21	20-Jun-14	15-Jul-14	31-Dec-14	24-Jan-15	0%											
DD69220	Submit Updated IFA to SO/ ICE/ IPs	0	16-Jul-14		26-Jan-15		0%											
DD69230	ICE Approval & Issue Check Cert	12	16-Jul-14	29-Jul-14	26-Jan-15	07-Feb-15	0%											
DD69240	IPs Review	28	16-Jul-14	12-Aug-14	26-Jan-15	22-Feb-15	0%											
DD69250	IPs No Objection Received	0		12-Aug-14		22-Feb-15	0%											
DD69260	SO's Review	35	16-Jul-14	19-Aug-14	26-Jan-15	01-Mar-15	0%											
DD69580	Works Commencement - TBM Launching Thrust Frame Installation	0	12-Dec-14		29-Dec-14*		0%											
(G2) DDA for TBM Tunnel Lining Settlement Analysis & Confinement Pressure - North Approach																		
AN1070	DDANorth TBM Tunnel Lining Settlement Analysis & Confinement Pressure	142	22-Nov-13	23-May-14	22-Nov-13A	20-Nov-14A	100%											
DD00805	Review & Comment by JV	12	24-May-14	07-Jun-14	21-Nov-14A	30-Dec-14	83%											
DD00810	Designer prepare DDA	12	09-Jun-14	21-Jun-14	31-Dec-14	14-Jan-15	0%											
DD00815	Formal Submission of DDA to ICE/ IPs	0		21-Jun-14		14-Jan-15	0%											
DD00820	Advanced Submission to SO	0		21-Jun-14		14-Jan-15	0%											
DD00825	IPs/ SO's Advance Comments/ ICE Comments	28	22-Jun-14	19-Jul-14	15-Jan-15	11-Feb-15	0%											
DD00830	Comments Received	0		19-Jul-14		11-Feb-15	0%											
DD00835	Designer to Reply RTC + Update Submission	21	21-Jul-14	13-Aug-14	12-Feb-15	14-Mar-15	0%											
(G3) DDA for TBM Tunnel Internal Structures - North																		
DD6320	Designer to Reply RTC + Update Submission	21	21-Jun-14	16-Jul-14	09-Aug-14A	19-Nov-14A	100%											
DD6330	Submit Updated DDA to SO/ ICE/ IPs	0	17-Jul-14		19-Nov-14A		100%											
DD6360	IPs Review	28	17-Jul-14	13-Aug-14	19-Nov-14A	19-Dec-14A	100%											
DD6370	IPs No Objection Received	0		13-Aug-14		19-Dec-14A	100%											
DD6380	SO's Review	35	17-Jul-14	20-Aug-14	19-Nov-14A	19-Dec-14A	100%											
DD6390	SO Approval with Condition Received	0		20-Aug-14		19-Dec-14A	100%											
DD6420	Works Commencement - Precast mould Shop Drawing start	0	01-Sep-14		19-Dec-14A		100%											
ETWB TCW No 15/2005 - TBM Tunnel Works																		
GEO1230	2nd Submission to GEO	0		29-Oct-14		01-Jun-15	0%											
GEO1235	2nd GEO Review	28	30-Oct-14	26-Nov-14	02-Jun-15	29-Jun-15	0%											
(G5) DDA for Cross Passage - Permanent works - incl. Detailed Geotechnical Assessment - North																		
DD67448	Review & Comment by JV	6	24-Oct-14	30-Oct-14	22-Oct-14A	29-Oct-14A	100%											
DD67450	Designer prepare DDA	12	31-Oct-14	13-Nov-14	30-Oct-14A	05-Dec-14A	100%											
DD67458	Formal Submission of DDA to ICE/ IPs	0		13-Nov-14		05-Dec-14A	100%											
DD67460	Advanced Submission to SO	0		13-Nov-14		05-Dec-14A	100%											
DD67468	IPs/ SO's Advance Comments/ ICE Comments	28	14-Nov-14	11-Dec-14	05-Dec-14A	06-Jan-15	75%											
DD67470	Comments Received	0		11-Dec-14		13-Jan-15	0%											
DD67478	Designer to Reply RTC + Update Submission	21	12-Dec-14	08-Jan-15	14-Jan-15	06-Feb-15	0%											
DD67488	Submit Updated DDA to SO/ ICE/ IPs	0	09-Jan-15		07-Feb-15		0%											
DD67498	ICE Approval & Issue Check Cert	12	09-Jan-15	22-Jan-15	07-Feb-15	27-Feb-15	0%											
DD67508	Submit ICE Check Cert to SO	6	23-Jan-15	29-Jan-15	28-Feb-15	06-Mar-15	0%											
DD67518	IPs Review	28	09-Jan-15	05-Feb-15	07-Feb-15	06-Mar-15	0%											
DD67528	IPs No Objection Received	0		05-Feb-15		06-Mar-15	0%											
DD67609*	SO's Review	35	09-Jan-15	12-Feb-15	07-Feb-15	13-Mar-15	0%											
DD67610	SO Approval with Condition Received	0		12-Feb-15		13-Mar-15	0%											
(H2) DDA Temp. works for Cross Passages - North																		
DD06120	SO's Review	35	02-Aug-14	05-Sep-14	29-Aug-14A	30-Dec-14	94%											
DD06130	SO Approval with Condition Received	0		05-Sep-14		30-Dec-14	0%											
ETWB TCW No 15/2005 - Cross Passage Ground Treatment for TBM Tunnels in North Landfall																		
GEO1240	1st Submission to GEO - ETWB TCW No 15/2005 - Cross Passage Ground Treatment for TBM Tunnels in North Landfall	0		04-Aug-14		29-Dec-14	0%											
GEO1245	1st Submission GEO Review	28	04-Aug-14	31-Aug-14	29-Dec-14	25-Jan-15	0%											
GEO1250	Received GEO Comment	0		01-Sep-14		26-Jan-15	0%											
GEO1255	Prepare Response to Comment	12	01-Sep-14	15-Sep-14	26-Jan-15	07-Feb-15	0%											
GEO1260	2nd Submission to GEO	0		15-Sep-14		07-Feb-15	0%											
GEO1265	2nd GEO Review	28	16-Sep-14	13-Oct-14	08-Feb-15	07-Mar-15	0%											
Method Statement Submission																		
Method Statement of Construction Methodology of Cross Passage Excavation																		
MS1400	Preparation Method Statement for CP Excavation	25	03-Jan-15	31-Jan-15	16-Apr-15	15-May-15	0%											
MS1410	Submit Method Statement to SO	0		31-Jan-15		15-May-15	0%											
MS1420	SO Reviews & Comments	28	01-Feb-15	28-Feb-15	16-May-15	12-Jun-15	0%											
Construction																		
Northern Landfall Surface Setup for TBM operation																		

■ Planned Bar
■ Planned Bar
◆ Planned Milestone
■ Progress bar
◆ Progress Milestone



Date	Revision	Checked	Approved
21-Feb-14	TMCLK/DBJ/GEN/PR...	SPa	WYu

Activity ID	Activity Name	Orig Dur	Planned Start	Planned Finish	Current Start	Current Finish	14W51 % Comp	2014				2015							
								Sep	Oct	Nov	Dec	Jan	Feb	Mar	Apr	May	Jun		
								Gantt Chart											
A6415930	Gantry Setup at North TBM Launching Shaft	48	29-Jul-14	23-Sep-14	27-Feb-15	28-Apr-15	0%	Gantry Setup at North TBM Launching Shaft											
A6415937	Slurry Treatment Plant Foundation	25	15-Oct-14	12-Nov-14	20-Oct-14A	13-Feb-15	64%	Slurry Treatment Plant Foundation											
A6415940	Slurry Treatment Plant Setup at Northern Landfall	64	13-Nov-14	29-Jan-15	20-Nov-14A	16-Apr-15	33%	Slurry Treatment Plant Setup at Northern Landfall											
A6415950	Slurry Treatment Plant Commissioning	24	30-Jan-15	05-Mar-15	17-Apr-15	15-May-15	0%	Slurry Treatment Plant Commissioning											
S880 TBM Assembly at North TBM Launching Shaft																			
NSH1900	S880 - TBM Launching - Front Shield Assembly	3	09-Dec-14	11-Dec-14	29-Apr-15	01-May-15	0%	S880 - TBM Launching - Front Shield Assembly											
NSH1910	S880 - TBM Launching - Cutterhead Assembly	3	12-Dec-14	14-Dec-14	02-May-15	04-May-15	0%	S880 - TBM Launching - Cutterhead Assembly											
NSH1920	S880 - TBM Launching - Erector Assembly	3	15-Dec-14	17-Dec-14	05-May-15	07-May-15	0%	S880 - TBM Launching - Erector Assembly											
NSH1930	S880 - TBM Launching - Tail Skin Assembly	3	18-Dec-14	20-Dec-14	08-May-15	10-May-15	0%	S880 - TBM Launching - Tail Skin Assembly											
NSH1940	S880 - TBM Launching - Main Drive Connection	2	21-Dec-14	22-Dec-14	11-May-15	12-May-15	0%	S880 - TBM Launching - Main Drive Connection											
NSH1950	S880 - TBM Launching - Main Drive Shifting	2	23-Dec-14	24-Dec-14	13-May-15	14-May-15	0%	S880 - TBM Launching - Main Drive Shifting											
NSH1960	S880 - TBM Launching - Main Drive Thrust Frame Installation	14	25-Dec-14	07-Jan-15	16-May-15	29-May-15	0%	S880 - TBM Launching - Main Drive Thrust Frame Installation											
NSH1965	S880 - TBM Launching - Gantry 2 Assembly	3	25-Dec-14	27-Dec-14	16-May-15	18-May-15	0%	S880 - TBM Launching - Gantry 2 Assembly											
NSH1970	S880 - TBM Launching - Gantry 1 Assembly	3	28-Dec-14	30-Dec-14	19-May-15	21-May-15	0%	S880 - TBM Launching - Gantry 1 Assembly											
NSH1980	S880 - TBM Launching - Gantry 1 & Main Drive connection	3	08-Jan-15	10-Jan-15	30-May-15	01-Jun-15	0%	S880 - TBM Launching - Gantry 1 & Main Drive connection											
NSH1990	S880 - TBM Launching - Gantry 2 & Gantry 1 connection	3	11-Jan-15	13-Jan-15	02-Jun-15	04-Jun-15	0%	S880 - TBM Launching - Gantry 2 & Gantry 1 connection											
NSH2000	S880 - TBM Launching - Gantry 3 assembly	3	09-Jan-15	11-Jan-15	13-Jan-15	15-Jan-15	0%	S880 - TBM Launching - Gantry 3 assembly											
NSH2010	S880 - TBM Launching - Gantry 4 assembly	3	12-Jan-15	14-Jan-15	16-Jan-15	18-Jan-15	0%	S880 - TBM Launching - Gantry 4 assembly											
NSH2020	S880 - TBM Launching - Gantry 3 & Gantry 2 connection	3	14-Jan-15	16-Jan-15	05-Jun-15	07-Jun-15	0%	S880 - TBM Launching - Gantry 3 & Gantry 2 connection											
NSH2030	S880 - TBM Launching - Gantry 4 & Gantry 3 connection	3	17-Jan-15	19-Jan-15	08-Jun-15	10-Jun-15	0%	S880 - TBM Launching - Gantry 4 & Gantry 3 connection											
NSH2040	S880 - TBM Launching - Testing & Commissioning	24	20-Jan-15	12-Feb-15	11-Jun-15	05-Jul-15	0%	S880 - TBM Launching - Testing & Commissioning											
NSH2050	S880 - TBM Launching - Segment Ring Installation for Break-in	8	13-Feb-15	23-Feb-15	06-Jul-15	13-Jul-15	0%	S880 - TBM Launching - Segment Ring											
NSH2060	S880 - TBM Launching - Final commissioning & Break-in	10	24-Feb-15	05-Mar-15	14-Jul-15	24-Jul-15	0%	S880 - TBM Launching - Final commissioning											
S882 TBM Assembly at North TBM Launching Shaft																			
NSH206010	S882 - TBM Launching - Front Shield Assembly	3	13-Feb-15	15-Feb-15	06-Jul-15	08-Jul-15	0%	S882 - TBM Launching - Front Shield Assembly											
NSH206020	S882 - TBM Launching - Cutterhead Assembly	3	16-Feb-15	18-Feb-15	09-Jul-15	11-Jul-15	0%	S882 - TBM Launching - Cutterhead Assembly											
NSH206030	S882 - TBM Launching - Erector Assembly	3	22-Feb-15	24-Feb-15	12-Jul-15	14-Jul-15	0%	S882 - TBM Launching - Erector Assembly											
NSH206040	S882 - TBM Launching - Tail Skin Assembly	3	25-Feb-15	27-Feb-15	16-Jul-15	18-Jul-15	0%	S882 - TBM Launching - Tail Skin Assembly											
North Ventilation Building																			
Design Submission																			
(A1) Submissions to Design Advisory Panel of ArchSD																			
GS01730	Prepare Re-submission	18	19-May-14	09-Jun-14	22-Jul-14A	30-Dec-14	89%	Prepare Re-submission											
GS01740	ArchSD's comment	30	10-Jun-14	09-Jul-14	31-Dec-14	29-Jan-15	0%	ArchSD's comment											
(I1) DDA for North Vent. Bldgs. GBP & Arch. Submission																			
DD01200	Preparation of DDANth VB GBP & Arch Submission	18	17-Apr-14	13-May-14	04-Sep-14A	01-Dec-14A	100%	Preparation of DDANth VB GBP & Arch Submission											
DD01205	Review & Comment by JV	24	14-May-14	11-Jun-14	02-Dec-14A	03-Dec-14A	100%	Review & Comment by JV											
DD01210	Designer prepare DDA	15	12-Jun-14	28-Jun-14	04-Dec-14A	09-Dec-14A	100%	Designer prepare DDA											
DD01215	Formal Submission of DDA to ICE/ IPs	0		28-Jun-14		09-Dec-14A	100%	Formal Submission of DDA to ICE/ IPs											
DD01220	Advanced Submission to SO	0		28-Jun-14		09-Dec-14A	100%	Advanced Submission to SO											
DD01225	IPs/ SO's Advance Comments/ ICE Comments	28	29-Jun-14	26-Jul-14	10-Dec-14A	10-Jan-15	54%	IPs/ SO's Advance Comments/ ICE Comments											
DD01230	Comments Received	0		26-Jul-14		17-Jan-15	0%	Comments Received											
DD01235	Designer to Reply RTC + Update Submission	21	28-Jul-14	20-Aug-14	19-Jan-15	11-Feb-15	0%	Designer to Reply RTC + Update Submission											
DD01240	Submit Updated DDA to SO/ ICE/ IPs	0	21-Aug-14		12-Feb-15		0%	Submit Updated DDA to SO/ ICE/ IPs											
DD01245	ICE Approval & Issue Check Cert	12	21-Aug-14	03-Sep-14	12-Feb-15	04-Mar-15	0%	ICE Approval & Issue Check Cert											
DD01255	IPs Review	28	21-Aug-14	17-Sep-14	12-Feb-15	11-Mar-15	0%	IPs Review											
DD01265	SO's Review	35	21-Aug-14	24-Sep-14	12-Feb-15	18-Mar-15	0%	SO's Review											
(I1) DDA for North & South Vent. Bldg. ABWF works																			
DD67650	Designer prepare DDA	15	15-Nov-14	02-Dec-14	13-May-15	30-May-15	0%	Designer prepare DDA											
DD67658	Formal Submission of DDA to ICE/ IPs	0		02-Dec-14		30-May-15	0%	Formal Submission of DDA to ICE/ IPs											
DD67660	Advanced Submission to SO	0		02-Dec-14		30-May-15	0%	Advanced Submission to SO											
DD67668	IPs/ SO's Advance Comments/ ICE Comments	28	03-Dec-14	30-Dec-14	31-May-15	27-Jun-15	0%	IPs/ SO's Advance Comments/ ICE Comments											
DD67670	Comments Received	0		30-Dec-14		27-Jun-15	0%	Comments Received											
DD67678	Designer to Reply RTC + Update Submission	21	31-Dec-14	24-Jan-15	29-Jun-15	23-Jul-15	0%	Designer to Reply RTC + Update Submission											
DD67688	Submit Updated DDA to SO/ ICE/ IPs	0	26-Jan-15		24-Jul-15		0%	Submit Updated DDA to SO/ ICE/ IPs											
DD67698	ICE Approval & Issue Check Cert	18	26-Jan-15	14-Feb-15	24-Jul-15	13-Aug-15	0%	ICE Approval & Issue Check Cert											
DD67708	Submit ICE Check Cert to SO	6	16-Feb-15	28-Feb-15	14-Aug-15	20-Aug-15	0%	Submit ICE Check Cert to SO											
DD67718	IPs Review	28	26-Jan-15	22-Feb-15	24-Jul-15	20-Aug-15	0%	IPs Review											
DD67728	IPs No Objection Received	0		22-Feb-15		20-Aug-15	0%	IPs No Objection Received											
DD67738	SO's Review	35	26-Jan-15	01-Mar-15	24-Jul-15	27-Aug-15	0%	SO's Review											
(I2) AIP - North & South Ventilation Buildings - Foundation/Structural Design																			
AP00635	Designer to Prepare RTC & Updated AIP	18	19-Jun-14	10-Jul-14	06-Oct-14A	03-Nov-14A	100%	Designer to Prepare RTC & Updated AIP											
AP00640	Submission of AIP to SO/ ICE together with Reply To Comment (RTC)	0		10-Jul-14		03-Nov-14A	100%	Submission of AIP to SO/ ICE together with Reply To Comment (RTC)											
AP00645	Reply to IPs Comments in RTC	0		10-Jul-14		03-Nov-14A	100%	Reply to IPs Comments in RTC											
AP00660	No Objection or Further Minor Comments from IPs Received	0		31-Jul-14		28-Nov-14A	100%	No Objection or Further Minor Comments from IPs Received											
AP00680	SO Review (35 Days)	35	11-Jul-14	14-Aug-14	03-Nov-14A	02-Dec-14A	100%	SO Review (35 Days)											
AP00685	SO Approval with Condition Received	0		14-Aug-14		02-Dec-14A	100%	SO Approval with Condition Received											

■ Planned Bar
■ Planned Bar
◆ Planned Milestone
■ Progress bar
◆ Progress Milestone



Date	Revision	Checked	Approved
21-Feb-14	TMCLK/DBJ/GEN/PR...	SPa	WYu

Activity ID	Activity Name	Orig Dur	Planned Start	Planned Finish	Current Start	Current Finish	14W51 % Comp	2014				2015									
								Sep	Oct	Nov	Dec	Jan	Feb	Mar	Apr	May	Jun				
(I2) DDA for North Vent.Bldgs.Foundation Design																					
DD01300	Preparation of DDANth VB Foundation design	18	15-Aug-14	04-Sep-14	03-Dec-14A	24-Dec-14A	100%	Preparation of DDANth VB Foundation design													
DD01305	Review & Comment by JV	18	05-Sep-14	26-Sep-14	26-Dec-14A	19-Jan-15	11%	Review & Comment by JV													
DD01310	Designer prepare DDA	10	27-Sep-14	10-Oct-14	22-Jan-15	02-Feb-15	0%	Designer prepare DDA													
DD01315	Formal Submission of DDA to ICE/ IPs	0		10-Oct-14		02-Feb-15	0%	Formal Submission of DDA to ICE/ IPs													
DD01320	Advanced Submission to SO	0		10-Oct-14		02-Feb-15	0%	Advanced Submission to SO													
DD01325	IPs/ SO's Advance Comments/ ICE Comments	28	11-Oct-14	07-Nov-14	03-Feb-15	02-Mar-15	0%	IPs/ SO's Advance Comments/ ICE Comments													
DD01330	Comments Received	0		07-Nov-14		02-Mar-15	0%	Comments Received													
DD01335	Designer to Reply RTC + Update Submission	21	08-Nov-14	02-Dec-14	03-Mar-15	26-Mar-15	0%	Designer to Reply RTC + Update Submission													
DD01340	Submit Updated DDA to SO/ ICE/ IPs	0	03-Dec-14		27-Mar-15		0%	Submit Updated DDA to SO/ ICE/ IPs													
DD01345	ICE Approval & Issue Check Cert	12	03-Dec-14	16-Dec-14	27-Mar-15	14-Apr-15	0%	ICE Approval & Issue Check Cert													
DD01350	Submit ICE Check Cert to SO	6	17-Dec-14	23-Dec-14	15-Apr-15	21-Apr-15	0%	Submit ICE Check Cert to SO													
DD01355	IPs Review	28	03-Dec-14	30-Dec-14	27-Mar-15	23-Apr-15	0%	IPs Review													
DD01360	IPs No Objection Received	0		30-Dec-14		23-Apr-15	0%	IPs No Objection Received													
DD01380	SO's Review	35	03-Dec-14	06-Jan-15	27-Mar-15	30-Apr-15	0%	SO's Review													
DD01385	SO Approval with Condition Received	0		06-Jan-15		30-Apr-15	0%	SO Approval with Condition Received													
(I2) DDA for North Vent.Bldgs.Structural Design incl.Vent.Connections																					
DD68008	Preparation of DDANth VB Structural Design incl Vent conn	18	05-Sep-14	26-Sep-14	31-Dec-14	21-Jan-15	0%	Preparation of DDANth VB Structural Design incl Vent conn													
DD68018	Review & Comment by JV	18	27-Sep-14	20-Oct-14	22-Jan-15	11-Feb-15	0%	Review & Comment by JV													
DD68020	Designer prepare DDA	10	21-Oct-14	31-Oct-14	12-Feb-15	02-Mar-15	0%	Designer prepare DDA													
DD68028	Formal Submission of DDA to ICE/ IPs	0		31-Oct-14		02-Mar-15	0%	Formal Submission of DDA to ICE/ IPs													
DD68030	Advanced Submission to SO	0		31-Oct-14		02-Mar-15	0%	Advanced Submission to SO													
DD68038	IPs/ SO's Advance Comments/ ICE Comments	28	01-Nov-14	28-Nov-14	03-Mar-15	30-Mar-15	0%	IPs/ SO's Advance Comments/ ICE Comments													
DD68040	Comments Received	0		28-Nov-14		30-Mar-15	0%	Comments Received													
DD68048	Designer to Reply RTC + Update Submission	21	29-Nov-14	23-Dec-14	31-Mar-15	28-Apr-15	0%	Designer to Reply RTC + Update Submission													
DD68058	Submit Updated DDA to SO/ ICE/ IPs	0	24-Dec-14		29-Apr-15		0%	Submit Updated DDA to SO/ ICE/ IPs													
DD68068	ICE Approval & Issue Check Cert	12	24-Dec-14	09-Jan-15	29-Apr-15	13-May-15	0%	ICE Approval & Issue Check Cert													
DD68078	Submit ICE Check Cert to SO	6	10-Jan-15	16-Jan-15	14-May-15	20-May-15	0%	Submit ICE Check Cert to SO													
DD68088	IPs Review	28	24-Dec-14	20-Jan-15	29-Apr-15	26-May-15	0%	IPs Review													
DD68098	IPs No Objection Received	0		20-Jan-15		26-May-15	0%	IPs No Objection Received													
DD68210	SO's Review	35	24-Dec-14	27-Jan-15	29-Apr-15	02-Jun-15	0%	SO's Review													
DD68220	SO Approval with Condition Received	0		27-Jan-15		02-Jun-15	0%	SO Approval with Condition Received													
(I3) DDA for North & South Vent.Bldgs. Service and E&M Provision																					
DD01600	Preparation of DDANth VB Service and E&MS Provision	18	12-Sep-14	04-Oct-14	22-Aug-14A	30-Dec-14	89%	Preparation of DDANth VB Service and E&MS Provision													
DD01605	Review & Comment by JV	24	06-Oct-14	01-Nov-14	31-Dec-14	28-Jan-15	0%	Review & Comment by JV													
DD01610	Designer prepare DDA	15	03-Nov-14	19-Nov-14	29-Jan-15	14-Feb-15	0%	Designer prepare DDA													
DD01615	Formal Submission of DDA to ICE/ IPs	0		19-Nov-14		14-Feb-15	0%	Formal Submission of DDA to ICE/ IPs													
DD01620	Advanced Submission to SO	0		19-Nov-14		14-Feb-15	0%	Advanced Submission to SO													
DD01625	IPs/ SO's Advance Comments/ ICE Comments	28	20-Nov-14	17-Dec-14	15-Feb-15	14-Mar-15	0%	IPs/ SO's Advance Comments/ ICE Comments													
DD01630	Comments Received	0		17-Dec-14		14-Mar-15	0%	Comments Received													
DD01635	Designer to Reply RTC + Update Submission	21	18-Dec-14	14-Jan-15	16-Mar-15	13-Apr-15	0%	Designer to Reply RTC + Update Submission													
DD01640	Submit Updated DDA to SO/ ICE/ IPs	0	15-Jan-15		14-Apr-15		0%	Submit Updated DDA to SO/ ICE/ IPs													
DD01645	ICE Approval & Issue Check Cert	12	15-Jan-15	28-Jan-15	14-Apr-15	27-Apr-15	0%	ICE Approval & Issue Check Cert													
DD01650	Submit ICE Check Cert to SO	6	29-Jan-15	04-Feb-15	28-Apr-15	05-May-15	0%	Submit ICE Check Cert to SO													
DD01655	IPs Review	28	15-Jan-15	11-Feb-15	14-Apr-15	11-May-15	0%	IPs Review													
DD01660	IPs No Objection Received	0		11-Feb-15		11-May-15	0%	IPs No Objection Received													
DD01665	SO's Review	35	15-Jan-15	18-Feb-15	14-Apr-15	18-May-15	0%	SO's Review													
DD01670	SO Approval with Condition Received	0		18-Feb-15		18-May-15	0%	SO Approval with Condition Received													
(J1) AIP Temp.works for Construction of Nth.Vent.Bldg.																					
AP01825	Review & Comment by SO/ ICE/ IPs	28	27-Jun-14	24-Jul-14	27-Sep-14A	03-Dec-14A	100%	Review & Comment by SO/ ICE/ IPs													
AP01830	Advance Comments from SO/ Comments from ICE/ IPs Received	0		24-Jul-14		03-Dec-14A	100%	Advance Comments from SO/ Comments from ICE/ IPs Received													
AP01835	Designer to Prepare RTC & Updated AIP	18	25-Jul-14	14-Aug-14	04-Dec-14A	10-Dec-14A	100%	Designer to Prepare RTC & Updated AIP													
AP01840	Submission of AIP to SO/ ICE together with Reply To Comment (RTC)	0		14-Aug-14		10-Dec-14A	100%	Submission of AIP to SO/ ICE together with Reply To Comment (RTC)													
AP01845	Reply to IPs Comments in RTC	0		14-Aug-14		10-Dec-14A	100%	Reply to IPs Comments in RTC													
AP01850	ICE Approval & Issue of Design Check Cert.	18	15-Aug-14	04-Sep-14	21-Oct-14A	03-Dec-14A	100%	ICE Approval & Issue of Design Check Cert.													
AP01855	Check Cert to SO	0		04-Sep-14		03-Dec-14A	100%	Check Cert to SO													
AP01860	No Objection or Further Minor Comments from IPs Received	0		04-Sep-14		03-Dec-14A	100%	No Objection or Further Minor Comments from IPs Received													
AP01880	SO Review (35 Days)	35	15-Aug-14	18-Sep-14	10-Dec-14A	17-Jan-15	43%	SO Review (35 Days)													
AP01885	SO Approval with Condition Received	0		18-Sep-14		23-Jan-15	0%	SO Approval with Condition Received													
(J1) DDA Temp.works for Construction of Nth.Vent.Bldg.																					
DD04380	Preparation of DDANth VB & Trench ELS	18	19-Sep-14	11-Oct-14	24-Jan-15	13-Feb-15	0%	Preparation of DDANth VB & Trench ELS													
DD04390	Review & Comment by JV	18	13-Oct-14	01-Nov-14	14-Feb-15	13-Mar-15	0%	Review & Comment by JV													
DD04400	Designer prepare DDA	10	03-Nov-14	13-Nov-14	14-Mar-15	25-Mar-15	0%	Designer prepare DDA													
DD04410	Formal Submission of DDA to ICE/ IPs	0		13-Nov-14		25-Mar-15	0%	Formal Submission of DDA to ICE/ IPs													
DD04420	Advanced Submission to SO	0		13-Nov-14		25-Mar-15	0%	Advanced Submission to SO													
DD04430	IPs/ SO's Advance Comments/ ICE Comments	28	14-Nov-14	11-Dec-14	26-Mar-15	22-Apr-15	0%	IPs/ SO's Advance Comments/ ICE Comments													

■ Planned Bar
■ Planned Bar
◆ Planned Milestone
■ Progress bar
◆ Progress Milestone



Date	Revision	Checked	Approved
21-Feb-14	TMCLK/DBJ/GEN/PR...	SPa	WYu

Activity ID	Activity Name	Orig Dur	Planned Start	Planned Finish	Current Start	Current Finish	14W51 % Comp	2014				2015				
								Sep	Oct	Nov	Dec	Jan	Feb	Mar	Apr	May
DD04440	Comments Received	0		11-Dec-14		22-Apr-15	0%									
DD04450	Designer to Reply RTC + Update Submission	21	12-Dec-14	08-Jan-15	23-Apr-15	18-May-15	0%									
DD04460	Submit Updated DDA to SO/ ICE/ IPs	0	09-Jan-15		19-May-15		0%									
DD04470	ICE Approval & Issue Check Cert	12	09-Jan-15	22-Jan-15	19-May-15	02-Jun-15	0%									
DD04480	Submit ICE Check Cert to SO	6	23-Jan-15	29-Jan-15	03-Jun-15	09-Jun-15	0%									
DD04490	IPs Review	28	09-Jan-15	05-Feb-15	19-May-15	15-Jun-15	0%									
DD04500	IPs No Objection Received	0		05-Feb-15		15-Jun-15	0%									
DD04540	SO's Review	35	09-Jan-15	12-Feb-15	19-May-15	22-Jun-15	0%									
DD04550	SO Approval with Condition R received	0		12-Feb-15		22-Jun-15	0%									

(C3) DDA for North Vent Shaft & Duct Permanent Structure

DD67268	Preparation of DDANorth Vent Shaft & Duct Perm Structure	18	07-Aug-14	27-Aug-14	31-Jul-14A	30-Dec-14	83%
DD67278	Review & Comment by JV	18	28-Aug-14	18-Sep-14	31-Dec-14	21-Jan-15	0%
DD67280	Designer prepare DDA	10	19-Sep-14	30-Sep-14	22-Jan-15	02-Feb-15	0%
DD67288	Formal Submission of DDA to ICE/ IPs	0		30-Sep-14		02-Feb-15	0%
DD67290	Advanced Submission to SO	0		30-Sep-14		02-Feb-15	0%
DD67298	IPs/ SO's Advance Comments/ ICE Comments	28	01-Oct-14	28-Oct-14	03-Feb-15	02-Mar-15	0%
DD67308	Designer to Reply RTC + Update Submission	21	29-Oct-14	21-Nov-14	03-Mar-15	26-Mar-15	0%
DD67318	Submit Updated DDA to SO/ ICE/ IPs	0	22-Nov-14		27-Mar-15		0%
DD67328	ICE Approval & Issue Check Cert	12	22-Nov-14	05-Dec-14	27-Mar-15	14-Apr-15	0%
DD67338	Submit ICE Check Cert to SO	6	06-Dec-14	12-Dec-14	15-Apr-15	21-Apr-15	0%
DD67348	IPs Review	28	22-Nov-14	19-Dec-14	27-Mar-15	23-Apr-15	0%
DD67358	IPs No Objection Received	0		19-Dec-14		23-Apr-15	0%
DD67368	SO's Review	35	22-Nov-14	26-Dec-14	27-Mar-15	30-Apr-15	0%
DD67378	SO Approval with Condition R received	0		27-Dec-14		30-Apr-15	0%

(D6) IFA Misc.Temp.Support for Excavation >2m depth

DD05180	Preparation of IFA Misc Temp Support for Excavation >2m depth	18	13-Dec-14	06-Jan-15	19-Mar-15	13-Apr-15	0%
DD05190	Review & Comment by JV	18	07-Jan-15	27-Jan-15	14-Apr-15	05-May-15	0%
DD05200	Designer prepare IFA	10	28-Jan-15	07-Feb-15	06-May-15	16-May-15	0%
DD05210	Formal Submission of IFA to ICE/ IPs	0		07-Feb-15		16-May-15	0%
DD05220	Advanced Submission to SO	0		07-Feb-15		16-May-15	0%
DD05230	IPs/ SO's Advance Comments/ ICE Comments	28	08-Feb-15	07-Mar-15	17-May-15	13-Jun-15	0%

(D9) AIP Temporary support and dewatering measures for Vent Duct ELS design for Northern Landfall

DD69280	Prepare AIP Temp Support & Dewatering measures for Vent Duct ELS at Northern Landfall	18	09-Dec-14	31-Dec-14	23-Jul-15	12-Aug-15	0%
DD69290	Review & Comment by JV	18	02-Jan-15	22-Jan-15	13-Aug-15	02-Sep-15	0%
DD69300	Designer prepare AIP	10	23-Jan-15	03-Feb-15	03-Sep-15	14-Sep-15	0%
DD69310	Formal Submission of DDA to ICE/ IPs	0		03-Feb-15		14-Sep-15	0%
DD69320	Advanced Submission to SO	0		03-Feb-15		14-Sep-15	0%
DD69330	IPs/ SO's Advance Comments/ ICE Comments	28	04-Feb-15	03-Mar-15	15-Sep-15	12-Oct-15	0%

North Surface Roadworks, Utility & Drainage works

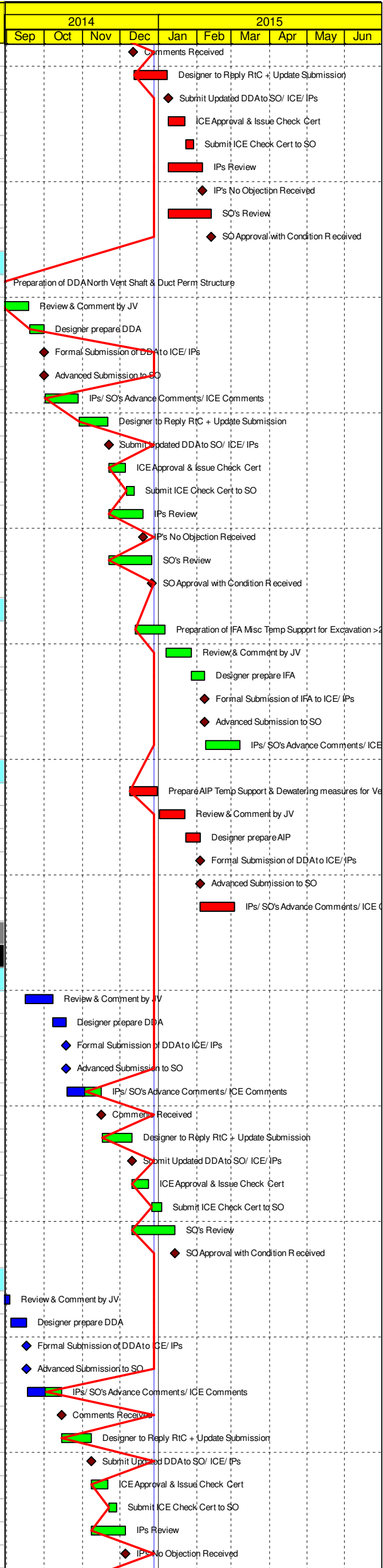
Design Submission

(A20) DDA for Traffic Sign, Road Marking, Street Furnitures, Sign Gantry & etc

DD01705	Review & Comment by JV	18	15-Sep-14	07-Oct-14	17-Oct-14A	28-Nov-14A	100%
DD01710	Designer prepare DDA	10	08-Oct-14	18-Oct-14	29-Nov-14A	12-Dec-14A	100%
DD01715	Formal Submission of DDA to ICE/ IPs	0		18-Oct-14		12-Dec-14A	100%
DD01720	Advanced Submission to SO	0		18-Oct-14		12-Dec-14A	100%
DD01725	IPs/ SO's Advance Comments/ ICE Comments	28	19-Oct-14	15-Nov-14	12-Dec-14A	10-Jan-15	54%
DD01730	Comments Received	0		15-Nov-14		17-Jan-15	0%
DD01735	Designer to Reply RTC + Update Submission	21	17-Nov-14	10-Dec-14	19-Jan-15	11-Feb-15	0%
DD01740	Submit Updated DDA to SO/ ICE/ IPs	0	11-Dec-14		12-Feb-15		0%
DD01745	ICE Approval & Issue Check Cert	12	11-Dec-14	24-Dec-14	12-Feb-15	04-Mar-15	0%
DD01750	Submit ICE Check Cert to SO	6	27-Dec-14	03-Jan-15	05-Mar-15	11-Mar-15	0%
DD01755	SO's Review	35	11-Dec-14	14-Jan-15	12-Feb-15	18-Mar-15	0%
DD01760	SO Approval with Condition R received	0		14-Jan-15		18-Mar-15	0%

(C2) DDA for Sewerage, Drainage, Waterworks & Utility works for North Landfall

DD02105	Review & Comment by JV	18	14-Aug-14	03-Sep-14	10-Oct-14A	28-Nov-14A	100%
DD02110	Designer prepare DDA	10	04-Sep-14	16-Sep-14	29-Nov-14A	12-Dec-14A	100%
DD02115	Formal Submission of DDA to ICE/ IPs	0		16-Sep-14		12-Dec-14A	100%
DD02120	Advanced Submission to SO	0		16-Sep-14		12-Dec-14A	100%
DD02125	IPs/ SO's Advance Comments/ ICE Comments	28	17-Sep-14	14-Oct-14	12-Dec-14A	10-Jan-15	54%
DD02130	Comments Received	0		14-Oct-14		17-Jan-15	0%
DD02135	Designer to Reply RTC + Update Submission	21	15-Oct-14	07-Nov-14	19-Jan-15	11-Feb-15	0%
DD02140	Submit Updated DDA to SO/ ICE/ IPs	0	08-Nov-14		12-Feb-15		0%
DD02145	ICE Approval & Issue Check Cert	12	08-Nov-14	21-Nov-14	12-Feb-15	04-Mar-15	0%
DD02150	Submit ICE Check Cert to SO	6	22-Nov-14	28-Nov-14	05-Mar-15	11-Mar-15	0%
DD02155	IPs Review	28	08-Nov-14	05-Dec-14	12-Feb-15	11-Mar-15	0%
DD02160	IPs No Objection Received	0		05-Dec-14		11-Mar-15	0%



Activity ID	Activity Name	Orig Dur	Planned Start	Planned Finish	Current Start	Current Finish	14W51 % Comp	2014				2015					
								Sep	Oct	Nov	Dec	Jan	Feb	Mar	Apr	May	Jun
								DD00935	Designer to Reply RTC + Update Submission	21	23-Oct-14	15-Nov-14	31-Dec-14	24-Jan-15	0%		
DD00940	Submit Updated DDA to SO/ ICE/ IPs	0	17-Nov-14			26-Jan-15	0%										
DD00945	ICE Approval & Issue Check Cert	12	17-Nov-14	29-Nov-14	26-Jan-15	07-Feb-15	0%										
DD00950	Submit ICE Check Cert to SO	6	01-Dec-14	06-Dec-14	09-Feb-15	14-Feb-15	0%										
DD00955	IPs Review	28	17-Nov-14	14-Dec-14	26-Jan-15	22-Feb-15	0%										
DD00960	IPs No Objection Received	0		14-Dec-14		22-Feb-15	0%										
DD00980	SO's Review	35	17-Nov-14	21-Dec-14	26-Jan-15	01-Mar-15	0%										
DD00985	SO Approval with Condition Received	0		22-Dec-14		02-Mar-15	0%										
DD00995	Sub-sea Internal Structure - Precast Gallery Mould Design & Fabrication	24	22-Dec-14	21-Jan-15	02-Mar-15	28-Mar-15	0%										
DD01015	Sub-sea Tunnel - Precast Gallery Fabrication	244	22-Jan-15	21-Nov-15	30-Mar-15	23-Jan-16	0%										

Sub-sea Tunnel Cross Passage & Internal Structure

Design Submission

(G4) DDA for Cross Passage - Permanent works - incl. Geotechnical Assessment - Sub-sea tunnel

AN1175	Lab Test Result from Phase 2 GI	0		01-Dec-14		30-Nov-14A	100%
AN1180	Early DDA Sub-sea Cross Passage Lining & CPOpening	151	03-Jun-14	29-Nov-14	03-Jun-14A	30-Dec-14	99%
DD01100	Preparation of DDACross Passage incl. Detailed Geotechnical Assessment	0	01-Dec-14	01-Dec-14	31-Dec-14	31-Dec-14	0%
DD01105	Review & Comment by JV	6	01-Dec-14	06-Dec-14	31-Dec-14	07-Jan-15	0%
DD01110	Designer prepare DDA	12	08-Dec-14	20-Dec-14	08-Jan-15	21-Jan-15	0%
DD01115	Formal Submission of DDA to ICE/ IPs	0		20-Dec-14		21-Jan-15	0%
DD01120	Advanced Submission to SO	0		20-Dec-14		21-Jan-15	0%
DD01125	IPs/ SO's Advance Comments/ ICE Comments	28	21-Dec-14	17-Jan-15	22-Jan-15	18-Feb-15	0%
DD01130	Comments Received	0		17-Jan-15		18-Feb-15	0%
DD01135	Designer to Reply RTC + Update Submission	21	19-Jan-15	11-Feb-15	26-Feb-15	21-Mar-15	0%
DD01140	Submit Updated DDA to SO/ ICE/ IPs	0	12-Feb-15			23-Mar-15	0%
DD01145	ICE Approval & Issue Check Cert	12	12-Feb-15	04-Mar-15	23-Mar-15	09-Apr-15	0%
DD01155	IPs Review	28	12-Feb-15	11-Mar-15	23-Mar-15	19-Apr-15	0%
DD01180	SO's Review	35	12-Feb-15	18-Mar-15	23-Mar-15	26-Apr-15	0%

(H1) DDA Temp.works for Cross Passages - Sub-sea tunnel (Type A)

AN1210	DDACP Freezing design (Structural & thermal analysis of the ice ring)	176	25-Jul-14	28-Feb-15	18-Jun-14A	30-Dec-14	99%
DD05000	Preparation of DDACross Passages Ground Freezing (Type A)	18	02-Mar-15	21-Mar-15	31-Dec-14	21-Jan-15	0%
DD05010	Review & Comment by JV	18	23-Mar-15	16-Apr-15	22-Jan-15	11-Feb-15	0%
DD05020	Designer prepare DDA	10	17-Apr-15	28-Apr-15	12-Feb-15	02-Mar-15	0%

Method Statement Submission

Method Statement of Cross Passage Ground Freezing

MS1300	Preparation Method Statement for CP Ground Freezing	25	17-Sep-14	17-Oct-14	29-Dec-14	27-Jan-15	0%
MS1310	Submit Method Statement to SO/ ICE	0		17-Oct-14		27-Jan-15	0%
MS1320	SO Reviews & Comments/ ICE Comments	28	18-Oct-14	14-Nov-14	28-Jan-15	24-Feb-15	0%
MS1330	Re-submission	18	15-Nov-14	05-Dec-14	26-Feb-15	18-Mar-15	0%
MS1340	ICE Approval & Issue Check Cert.	18	06-Dec-14	29-Dec-14	19-Mar-15	13-Apr-15	0%
MS1350	SO's Review	28	06-Dec-14	02-Jan-15	19-Mar-15	15-Apr-15	0%
MS1360	SO's Approval	0		02-Jan-15		15-Apr-15	0%

Southern Landfall

South Retrieval Shaft

Design Submission

(A4) Additional Ground Investigation Plan - Phase 3 - Southern Landfall

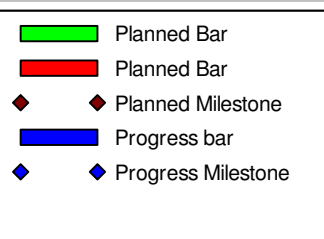
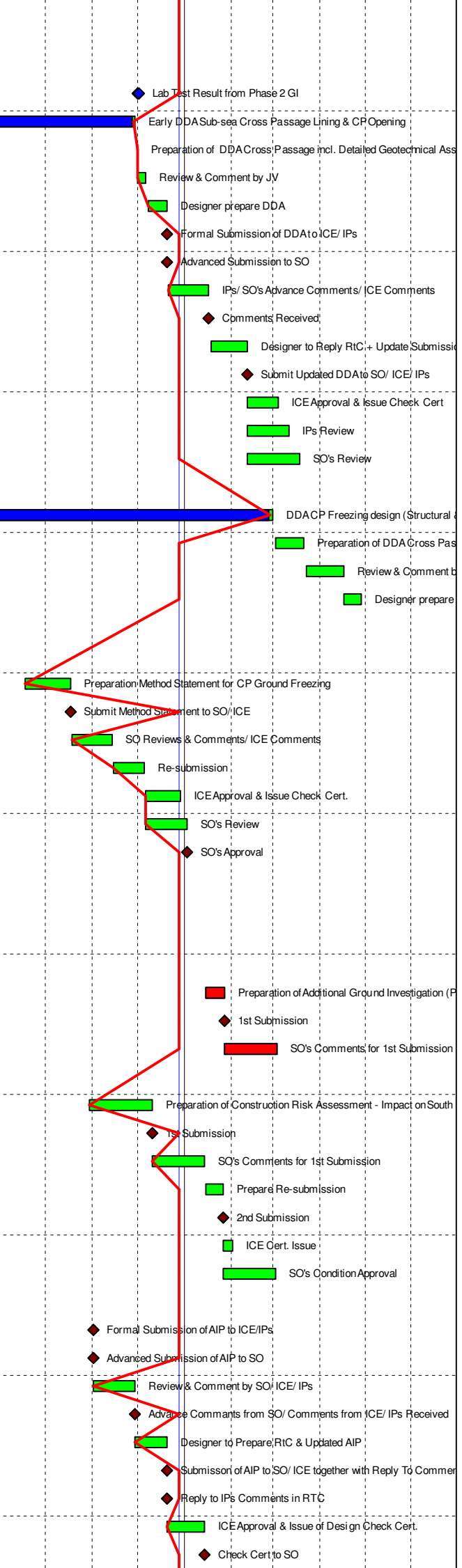
GS2870	Preparation of Additional Ground Investigation (Phase 3)	11	15-Jan-15	27-Jan-15	15-Jan-15*	27-Jan-15	0%
GS2880	1st Submission	0		27-Jan-15		27-Jan-15	0%
GS2905	SO's Comments for 1st Submission	35	28-Jan-15	03-Mar-15	28-Jan-15	03-Mar-15	0%

(B5) AIP Construction Risk Assessment - Impact on South Landfall

GS01200	Preparation of Construction Risk Assessment - Impact on South Landfall	36	30-Oct-14	10-Dec-14	13-Jun-15	27-Jul-15	0%
GS01205	1st Submission	0		10-Dec-14		27-Jul-15	0%
GS01210	SO's Comments for 1st Submission	35	11-Dec-14	14-Jan-15	28-Jul-15	31-Aug-15	0%
GS01215	Prepare Re-submission	10	15-Jan-15	26-Jan-15	01-Sep-15	11-Sep-15	0%
GS01220	2nd Submission	0		26-Jan-15		11-Sep-15	0%
GS01225	ICE Cert. Issue	6	27-Jan-15	02-Feb-15	12-Sep-15	18-Sep-15	0%
GS01250	SO's Condition Approval	35	27-Jan-15	02-Mar-15	12-Sep-15	16-Oct-15	0%

(F1) AIP Temp.works - Retrieval Shaft on Southern Landfall inc. break-out

AP01615	Formal Submission of AIP to ICE/IPs	0		01-Nov-14		16-Apr-15	0%
AP01620	Advanced Submission of AIP to SO	0		01-Nov-14		16-Apr-15	0%
AP01625	Review & Comment by SO/ ICE/ IPs	28	01-Nov-14	29-Nov-14	17-Apr-15	14-May-15	0%
AP01630	Advance Comments from SO/ Comments from ICE/ IPs Received	0		29-Nov-14		14-May-15	0%
AP01635	Designer to Prepare RTC & Updated AIP	18	29-Nov-14	20-Dec-14	15-May-15	05-Jun-15	0%
AP01640	Submission of AIP to SO/ ICE together with Reply To Comment (RTC)	0		20-Dec-14		05-Jun-15	0%
AP01645	Reply to IPs Comments in RTC	0		20-Dec-14		05-Jun-15	0%
AP01650	ICE Approval & Issue of Design Check Cert.	18	20-Dec-14	14-Jan-15	06-Jun-15	27-Jun-15	0%
AP01655	Check Cert to SO	0		14-Jan-15		27-Jun-15	0%



Date	Revision	Checked	Approved
21-Feb-14	TMCLK/DBJ/GEN/PR...	SPa	WYu

Activity ID	Activity Name	Orig Dur	Planned Start	Planned Finish	Current Start	Current Finish	14W51 % Comp	2014				2015					
								Sep	Oct	Nov	Dec	Jan	Feb	Mar	Apr	May	Jun
								DD01465	SO's Review	35	22-Dec-14	25-Jan-15	24-Jun-15	28-Jul-15	0%		
DD01470	SO Approval with Condition R received	0		26-Jan-15		28-Jul-15	0%										
(I2) DDA for South Vent.Bldg.Structural Design incl.Vent.Connections																	
DD67808	Preparation of DDA Sth VB Structural Design incl. Vent Conn	18	28-Jan-15	17-Feb-15	29-Jul-15	18-Aug-15	0%										
DD67818	Review & Comment by JV	18	18-Feb-15	17-Mar-15	19-Aug-15	08-Sep-15	0%										
South Surface Roadworks, Utility & Drainage works																	
Design Submission																	
(E3) DDA for Sewerage, Drainage, Waterworks & Utility works for South Landfall																	
DD05810	Preparation of DDA Sewerage & Drainage works for Sth Landfall	18	08-Nov-14	28-Nov-14	12-Feb-15	11-Mar-15	0%										
DD05820	Review & Comment by JV	18	29-Nov-14	19-Dec-14	12-Mar-15	01-Apr-15	0%										
DD05830	Designer prepare DDA	10	20-Dec-14	03-Jan-15	02-Apr-15	17-Apr-15	0%										
DD05840	Advanced Submission to SO	0		03-Jan-15		17-Apr-15	0%										
DD05850	Formal Submission of DDA to ICE/ IPs	0		03-Jan-15		17-Apr-15	0%										
DD05860	IPs/ SO's Advance Comments/ ICE Comments	28	04-Jan-15	31-Jan-15	18-Apr-15	15-May-15	0%										
DD05870	Comments Received	0		31-Jan-15		15-May-15	0%										
DD05880	Designer to Reply RtC + Update Submission	21	02-Feb-15	04-Mar-15	16-May-15	10-Jun-15	0%										

- Planned Bar
- Planned Bar
- ◆ Planned Milestone
- Progress bar
- ◆ Progress Milestone

TMCLK - Northern Connection Sub-Sea Tunnel Section
Detailed Works Programme - Three months rolling programme



Date	Revision	Checked	Approved
21-Feb-14	TMCLK/DBJ/GEN/PR...	SPa	WYu