

Table L1 *Cumulative Statistics on Exceedances*

Parameters	Level of Exceedance	Total No. recorded in this reporting month	Total No. recorded since project commencement
1-hr TSP	Action	2	30
	Limit	0	2
24-hr TSP	Action	0	5
	Limit	0	1
Water Quality	Action	0	6
	Limit	0	1
Impact Dolphin Monitoring	Action	0	7
	Limit	0	0

Table L2 *Cumulative Statistics on Complaints, Notifications of Summons and Successful Prosecutions*

Reporting Period	Cumulative Statistics		
	Complaints	Notifications of Summons	Successful Prosecutions
This Reporting Month (December 2014)	0	0	0
Total No. received since project commencement	4	0	0

Email
message

**Environmental
Resources
Management**

To ENVIRON - Hong Kong, Limited (ENPO)

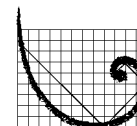
From ERM- Hong Kong, Limited

Ref/Project number Contract No. HY/2012/08 Tuen Mun-Chek Lap
Kok Link-Northern Connection Sub-sea Tunnel
Section

Subject Notification of Exceedance for Air Quality
Impact Monitoring

Date 12 December 2014

16/F Berkshire House,
25 Westlands Road
Quarry Bay, Hong Kong
Telephone: (852) 2271 3113
Facsimile: (852) 2723 5660
E-mail: jovy.tam@erm.com



ERM

Dear Sir or Madam,

Please find attached the Notification of Exceedance (NOE) of the following
Log no.:

0212330_2December2014_1hrTSP_Station ASR5

A total of one Action Level Exceedance was recorded on 2 December 2014.

Regards,

A handwritten signature in black ink, appearing to be 'Jovy Tam'.

Mr Jovy Tam
Environmental Team Leader

CONFIDENTIALITY NOTICE

This facsimile transmission is intended only for the use of the addressee and is confidential. If you are not the addressee it may be unlawful for you to read, copy, distribute, disclose or otherwise use the information in this facsimile. If you are not the intended recipient, please telephone or fax us.



ERM-Hong Kong, Limited

CONTRACT NO. HY/2012/08
 TUEN MUN – CHEK LAP KOK LINK –
 NORTHERN CONNECTION SUB-SEA TUNNEL SECTION

Air Quality Impact Monitoring
 Notification of Exceedance

Log No.	0212330_2December2014_1hrTSP_Station ASR5 [Total No. of Exceedances = 1]	
Date	2 December 2014 (Measured) 11 December 2014 (Laboratory results received by ERM)	
Monitoring Station	ASR1, ASR5, ASR6, ASR10 and AQMS1	
Parameter(s) with Exceedance(s)	1-hr TSP	
Action Levels	1-hr TSP ($\mu\text{g}/\text{m}^3$)	ASR5 = 340
	24-hr TSP ($\mu\text{g}/\text{m}^3$)	ASR5 = 238
Limit Levels	1-hr TSP ($\mu\text{g}/\text{m}^3$)	500
	24-hr TSP ($\mu\text{g}/\text{m}^3$)	260
Measured Levels	Action Level Exceedance for 1-hr TSP is observed at ASR5 ($346 \mu\text{g}/\text{m}^3$) during 1510 - 1610 hrs.	
Works Undertaken (at the time of monitoring event)	On 2 December 2014, Excavation Works for launching shaft were carried out at Reclamation Works Area Portion N-A; Land Bored Piling Works at Reclamation Works Area Portion N-A and Surcharge Set Up at Reclamation Works Area Portions N-B and N-C.	

Possible Reason for Action or Limit Level Exceedance(s)	<p>The exceedance(s) are unlikely to be due to the Project, in view of the following:</p> <ul style="list-style-type: none"> • Considering the relatively higher levels of 1-hour TSP between 1500 and 1700 hrs at most monitoring stations, it is probably unlikely that the level of land-based construction works under this Contract can cause increase in 1-hour TSP of this magnitude and scale. It is considered that the observed exceedances for 1-hour TSP at ASR5 may represent sporadic event associated with traffic emissions and anthropogenic activities during afternoon rush hour at River Trade Terminal. • According to the construction information provided by the Contractor, the majority of construction works on 2 December 2014 were Excavation Works for launching shaft at Reclamation Works Area Portion N-A; Land Bored Piling Works at Reclamation Works Area Portion N-A and Surcharge Set Up at Reclamation Works Area Portions N-B and N-C. During the period of the land-based construction works, the Contractor has implemented the required mitigation measures as per the EP, approved EIA and Updated EM&A Manual (e.g. water spraying by water trucks on exposed soil within the Project site and associated work areas; use of wheel washing facilities; hydro-seeding of area where works have been completed). • Whilst exceedances of Action Level were observed at ASR5, the 24-hr TSP level at the monitoring station (ASR1 = 127 µg/m³) on 2 December 2014 were in compliance with the Action and Limit Levels. • Same level and extent of construction works were carried out at the same works area on 29th November and 5th December whilst no exceedance was recorded. • With reference to the recorded wind direction (ranged between 34° and 65°, blowing from a North-Easterly direction) during the period of the observed 1-hr TSP exceedances, Station ASR5 is located upstream to the land-based construction activities at the Reclamation Works Area, thus the observed exceedance should not be affected by the dust, if any, generated by the construction activities under this Contract. • As stated in the EIA report (Section 4.2.3), the background TSP level of Tuen Mun is higher than the other region of Hong Kong, thus the exceedances may be also contributed cumulatively by the other construction works / traffic within the Tuen Mun Area rather than causing by the construction works of the Project.
Actions Taken / To Be Taken	<p>Based on the record of subsequent weekly site inspection on 3 December 2014, no dust nuisance was recorded at the Reclamation Works Area and activities conducted in this Contract's work has strictly followed the requirements stated in the EP (EP-354/2009/B) (see photo records on <i>Annex A</i>). In addition, the Contractor has implemented the required mitigation measures as per the EP, approved EIA and Updated EM&A Manual (e.g. watering at least 12 times per day on all exposed soil within the Project site and associated work areas; use of wheel washing facilities; hydro-seeding of area where works have been completed) throughout the construction period, no additional mitigation is deemed necessary. The Enhanced TSP Monitoring has commenced on 24 October 2014, the ET will monitor for future trends in exceedances.</p>
Remarks	<p>The monitoring results and the locations of air quality monitoring stations are attached.</p>

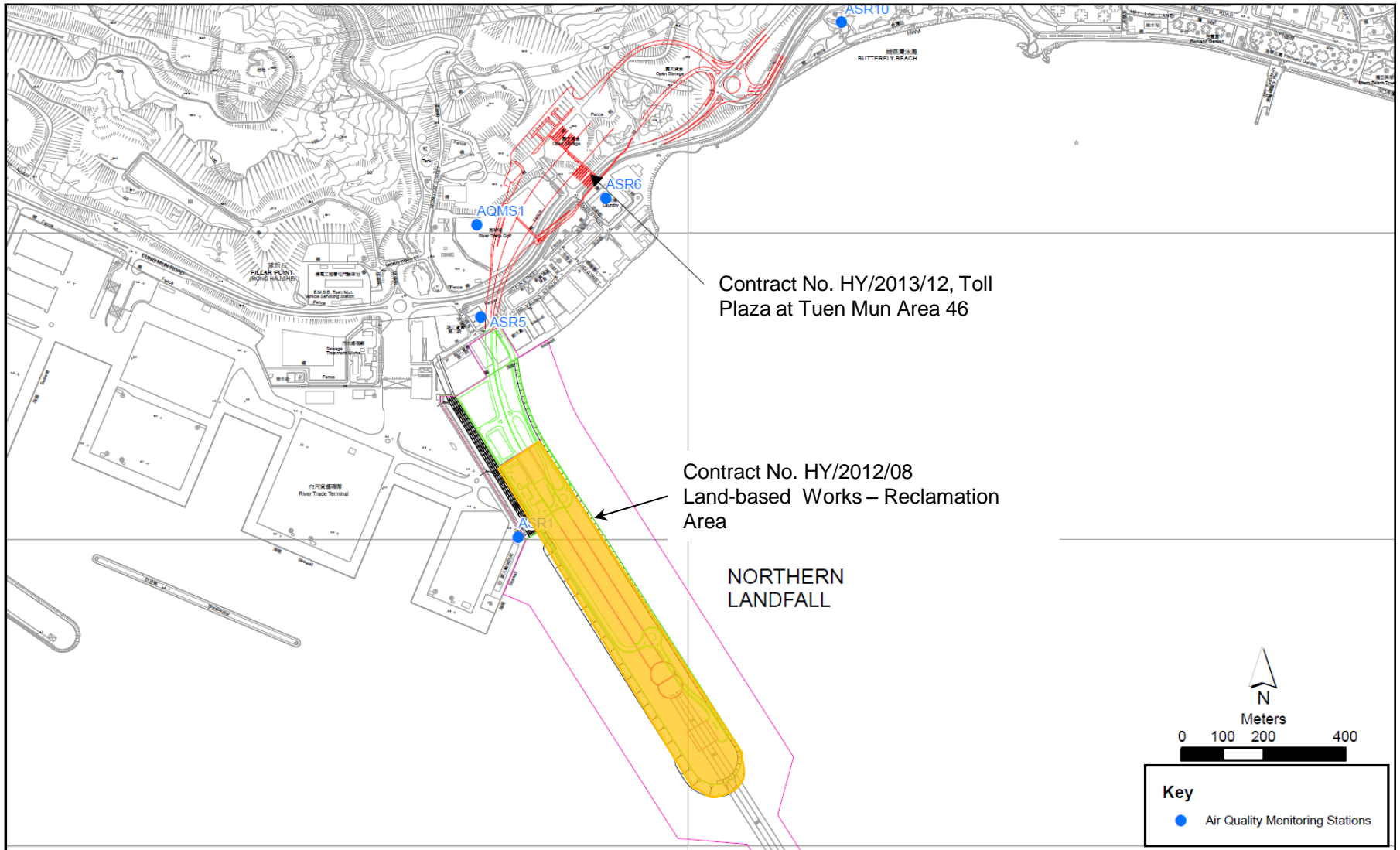


Figure 1

Indicative Construction Works Area on 2 December 2014



Annex A Photo Records taken during Weekly Site Inspection

*Note: Photos taken on 3/12/2014



Hydro-seeding of area where works have been completed. (Reclamation Works Area)

Email
message

Environmental
Resources
Management

To ENVIRON - Hong Kong, Limited (ENPO)

From ERM- Hong Kong, Limited

Ref/Project number Contract No. HY/2012/08 Tuen Mun-Chek Lap
Kok Link-Northern Connection Sub-sea Tunnel
Section

Subject Notification of Exceedance for Air Quality
Impact Monitoring

Date 29 December 2014

16/F Berkshire House,
25 Westlands Road
Quarry Bay, Hong Kong
Telephone: (852) 2271 3113
Facsimile: (852) 2723 5660
E-mail: jovy.tam@erm.com



ERM

Dear Sir or Madam,

Please find attached the Notification of Exceedance (NOE) of the following
Log no.:

0212330_17December2014_1hrTSP_Station AQMS1

A total of one Action Level Exceedance was recorded on 17 December 2014.

Regards,

A handwritten signature in black ink, appearing to be 'Jovy Tam'.

Mr Jovy Tam
Environmental Team Leader

CONFIDENTIALITY NOTICE

This facsimile transmission is intended only for the use of the addressee and is confidential. If you are not the addressee it may be unlawful for you to read, copy, distribute, disclose or otherwise use the information in this facsimile. If you are not the intended recipient, please telephone or fax us.



ERM-Hong Kong, Limited

**CONTRACT NO. HY/2012/08
TUEN MUN – CHEK LAP KOK LINK –
NORTHERN CONNECTION SUB-SEA TUNNEL SECTION**

**Air Quality Impact Monitoring
Notification of Exceedance**

Log No.	0212330_17December2014_1hrTSP_Station AQMS1 [Total No. of Exceedances = 1]	
Date	17 December 2014 (Measured) 24 December 2014 (Laboratory results received by ERM)	
Monitoring Station	ASR1, ASR5, ASR6, ASR10 and AQMS1	
Parameter(s) with Exceedance(s)	1-hr TSP	
Action Levels	1-hr TSP ($\mu\text{g}/\text{m}^3$)	AQMS1 = 335
	24-hr TSP ($\mu\text{g}/\text{m}^3$)	AQMS1 = 213
Limit Levels	1-hr TSP ($\mu\text{g}/\text{m}^3$)	500
	24-hr TSP ($\mu\text{g}/\text{m}^3$)	260
Measured Levels	Action Level Exceedance for 1-hr TSP is observed at AQMS1 ($348 \mu\text{g}/\text{m}^3$) during 1444 - 1544 hrs.	
Works Undertaken (at the time of monitoring event)	On 17 December 2014, Land Bored Piling Works were carried out at Reclamation Works Area Portion N-A and Surcharge Set Up at Reclamation Works Area Portions N-B and N-C.	
Possible Reason for Action or Limit Level Exceedance(s)	<p>The exceedance(s) are unlikely to be due to the Project, in view of the following:</p> <ul style="list-style-type: none"> • According to the construction information provided by the Contractor, the majority of construction works on 17 December 2014 were Land Bored Piling Works at Reclamation Works Area Portion N-A and Surcharge Set Up at Reclamation Works Area Portions N-B and N-C. During the period of the land-based construction works, the Contractor has implemented the required mitigation measures as per the EP, approved EIA and Updated EM&A Manual (e.g. water spraying by water trucks on exposed soil within the Project site and associated work areas; use of wheel washing facilities; hydro-seeding of area where works have been completed). • Whilst exceedances of Action Level were observed at AQMS1, the 24-hr TSP level at the monitoring station (AQMS1 = $155 \mu\text{g}/\text{m}^3$) on 17 December 2014 were in compliance with the Action and Limit Levels. • Same level and extent of construction works were carried out at the same works area on 14th December and 20th December whilst no exceedance was recorded. It is thus considered that the observed exceedances for 1-hour TSP at AQMS1 may represent sporadic event associated with traffic emissions and anthropogenic activities during afternoon rush hour at Lung Mun Road. • With reference to the recorded wind direction (ranged between 44° and 60°, blowing from a North-Easterly direction) and wind speed (ranged from 2.7 to 5.4 m/s) during the period of the observed 1-hr TSP exceedances, Station AQMS1 is located upstream to the land-based construction activities at the Reclamation Works Area, thus the observed exceedance should not be affected by the dust, if any, generated by the construction activities under this Contract. • As stated in the EIA report (Section 4.2.3), the background TSP level of Tuen Mun is higher than the other region of Hong Kong, thus the exceedances may be also contributed cumulatively by the other construction works / traffic within the Tuen Mun Area rather than causing by the construction works of the Project. 	

Actions Taken/ To Be Taken	Based on the record of weekly site inspection on 17 December 2014, no dust nuisance was recorded at the Reclamation Works Area and activities conducted in this Contract's work has strictly followed the requirements stated in the EP (EP-354/2009/C) (see photo records on <i>Annex A</i>). In addition, the Contractor has implemented the required mitigation measures as per the EP, approved EIA and Updated EM&A Manual (e.g. use of water truck on exposed soil within the Project site and associated work areas; use of wheel washing facilities; hydro-seeding of area where works have been completed) throughout the construction period, no additional mitigation is deemed necessary. The Enhanced TSP Monitoring has commenced on 24 October 2014, the ET will monitor for future trends in exceedances.
Remarks	The monitoring results and the locations of air quality monitoring stations are attached.

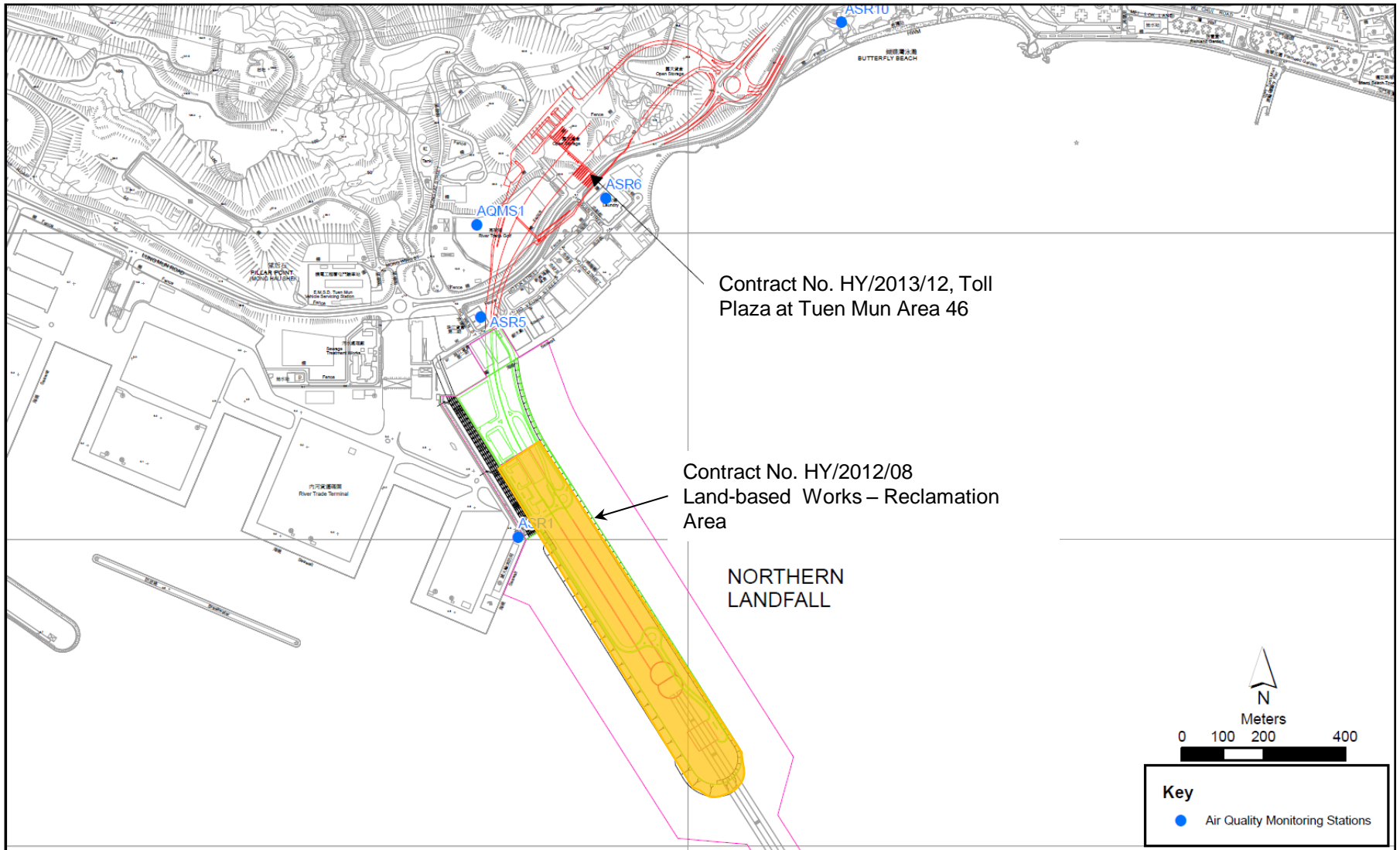


Figure 1

Indicative Construction Works Area on 17 December 2014



Annex A Photo Records taken during Weekly Site Inspection

*Note: Photos taken on 17/12/2014



Hydro-seeding of area where works have been completed. (Reclamation Works Area)



Use of water truck on exposed soil within the Project site and associated work areas. (Reclamation Works Area)