

Figure 1. Transect Line Layout in Northwest and Northeast Lantau Survey Areas

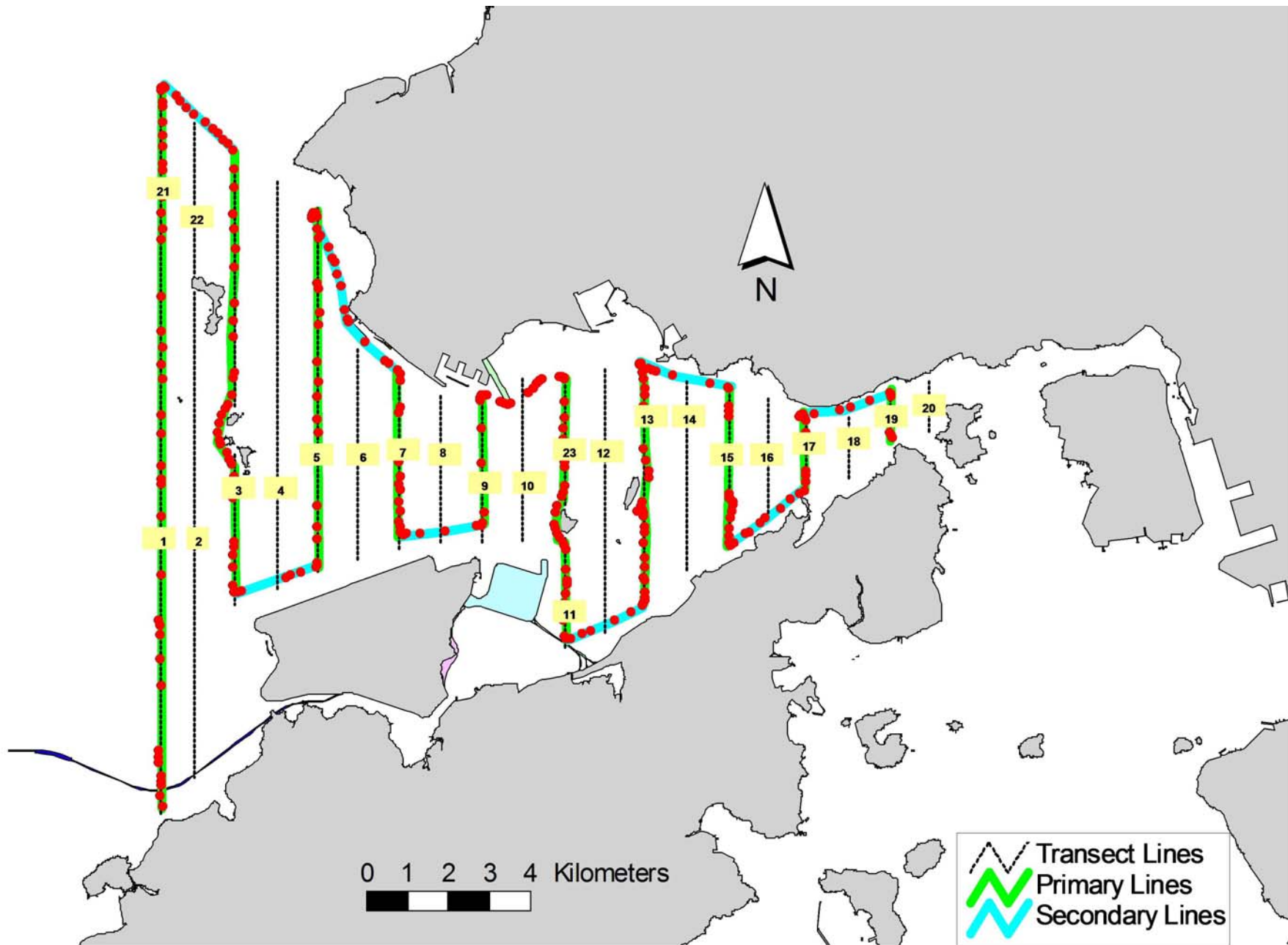


Figure 2. Survey Route on March 4th, 2015 (from HKLR03 project)

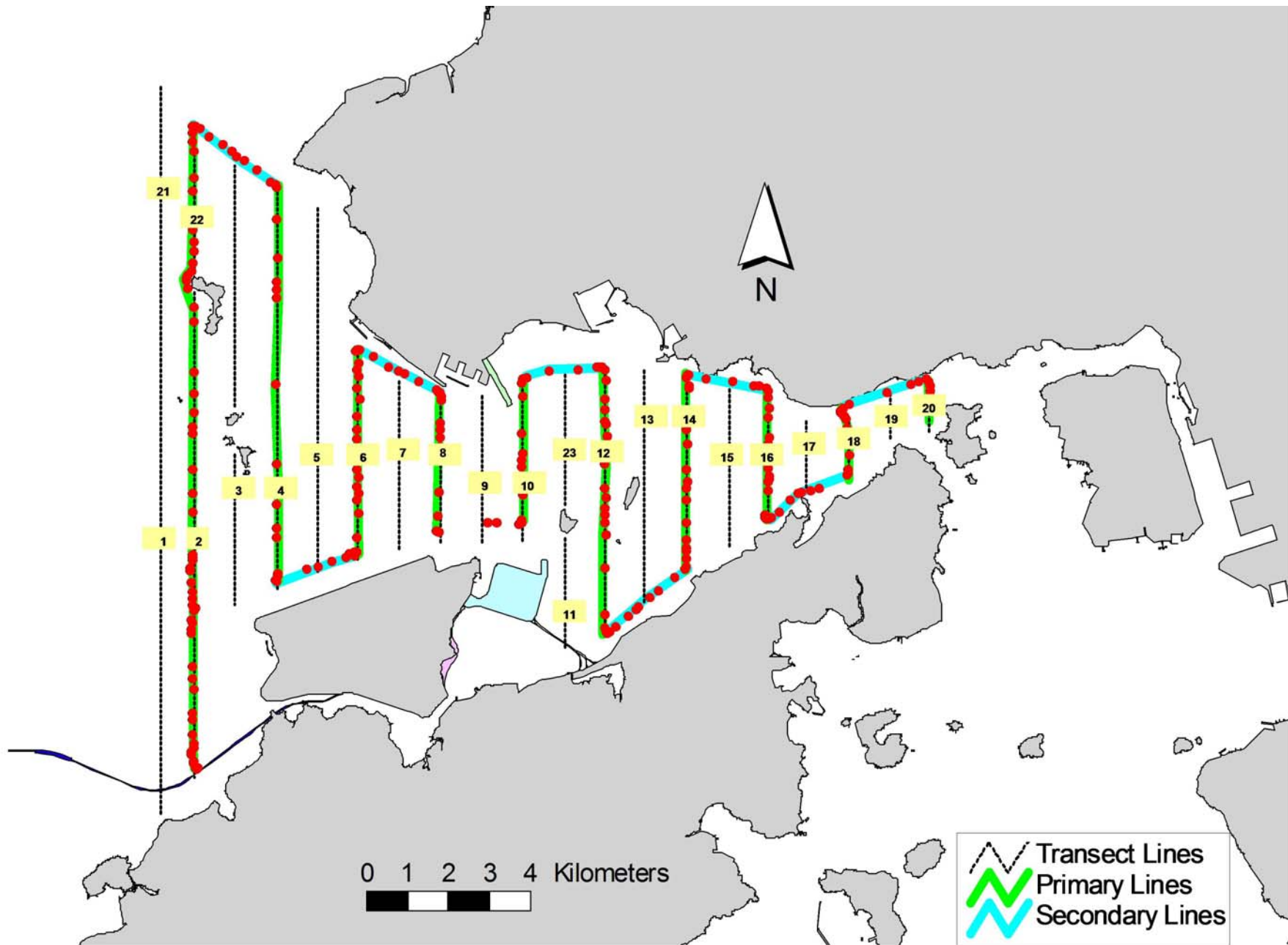


Figure 3. Survey Route on March 11th, 2015 (from HKLR03 project)

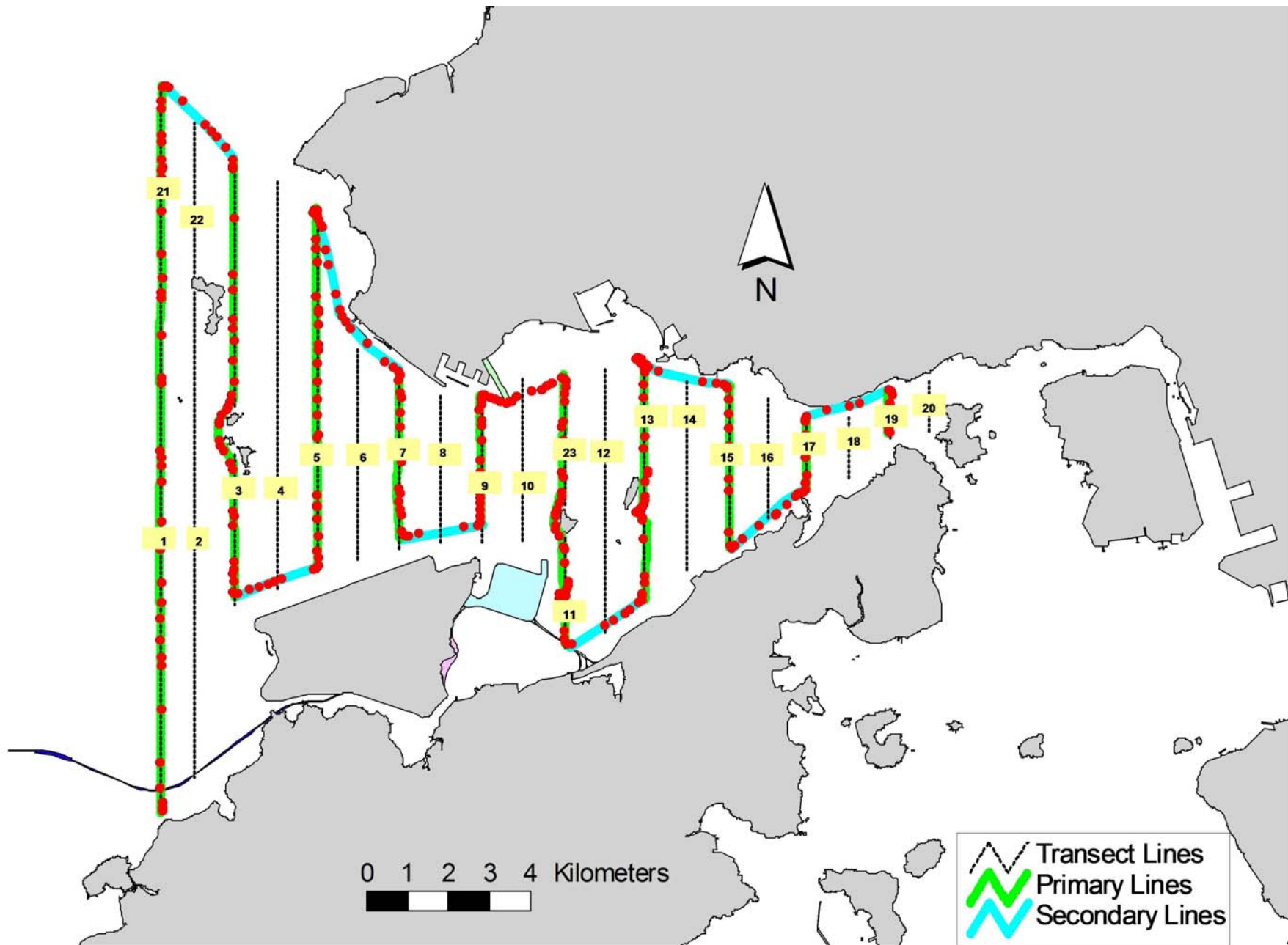


Figure 4. Survey Route on March 17th, 2015 (from HKLR03 project)

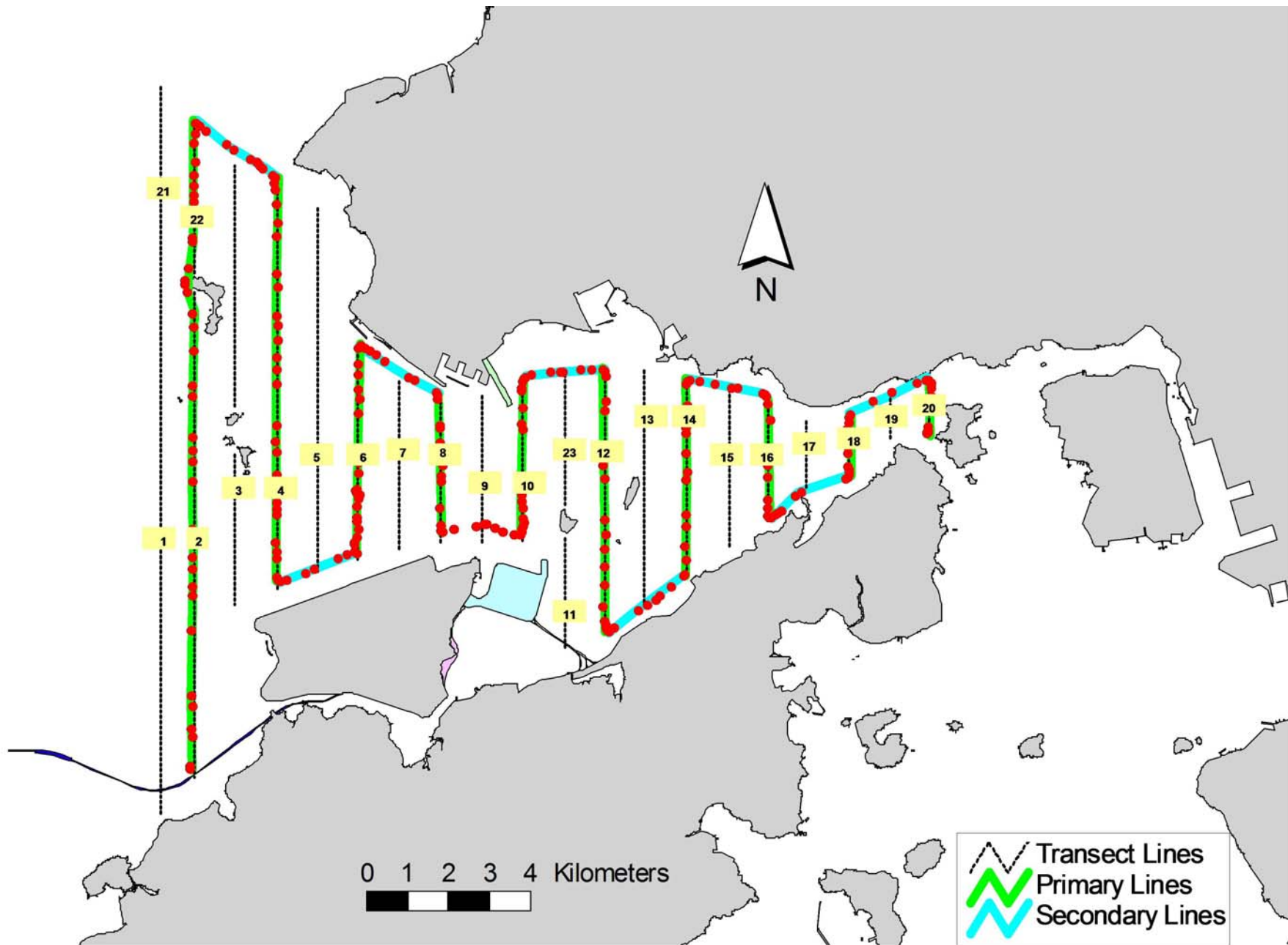


Figure 5. Survey Route on March 26th, 2015 (from HKLR03 project)

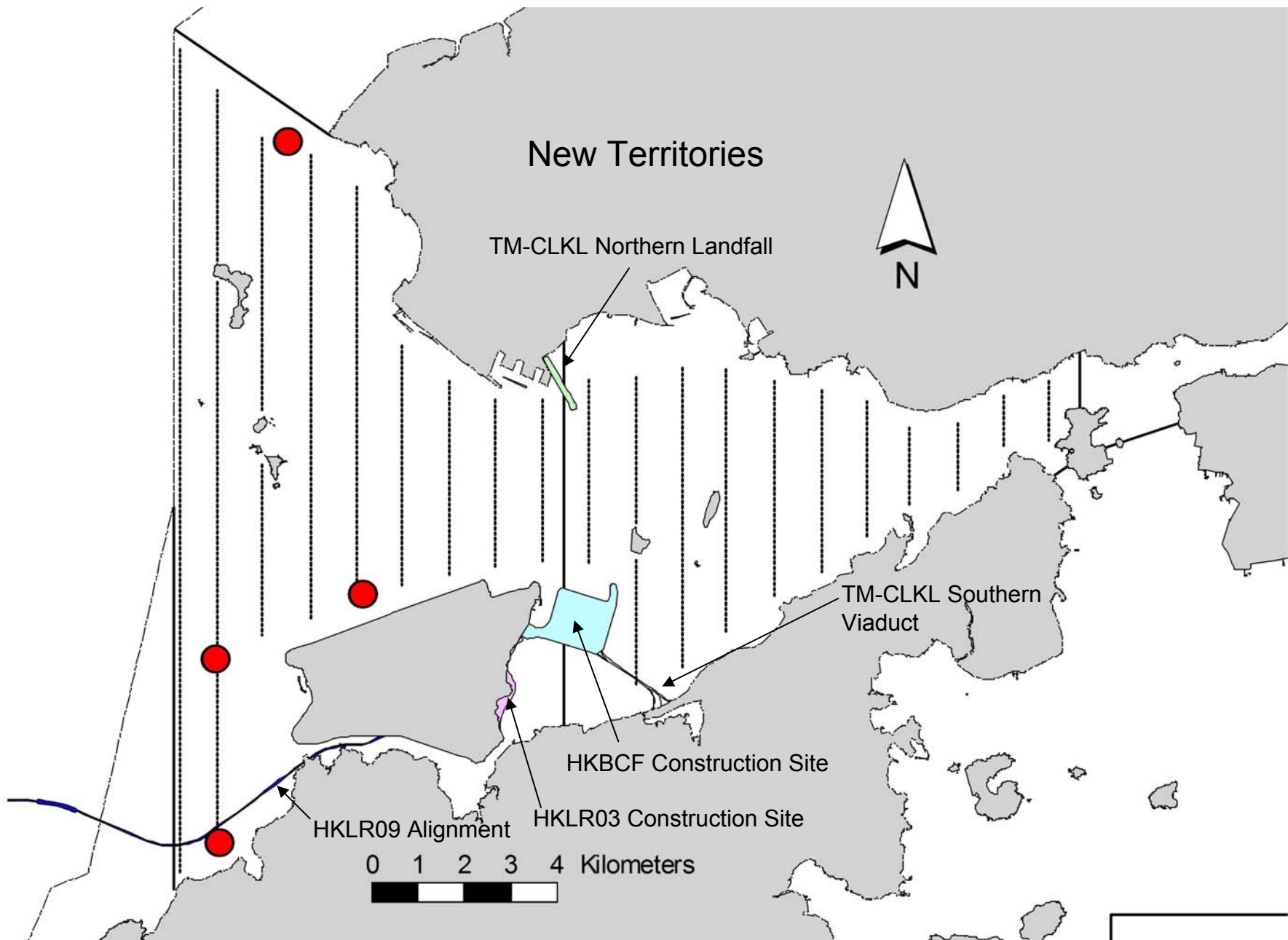


Figure 6. Distribution of Chinese White Dolphin Sightings During March 2015 HKLR03 Monitoring Surveys

Appendix I. HKLR03 Survey Effort Database (March 2015)

(Abbreviations: BEAU = Beaufort Sea State; P = Primary Line Effort; S = Secondary Line Effort)

DATE	AREA	BEAU	EFFORT	SEASON	VESSEL	TYPE	P/S
4-Mar-15	NW LANTAU	1	1.07	SPRING	STANDARD31516	HKLR	P
4-Mar-15	NW LANTAU	2	12.71	SPRING	STANDARD31516	HKLR	P
4-Mar-15	NW LANTAU	3	25.62	SPRING	STANDARD31516	HKLR	P
4-Mar-15	NW LANTAU	4	1.40	SPRING	STANDARD31516	HKLR	P
4-Mar-15	NW LANTAU	2	8.00	SPRING	STANDARD31516	HKLR	S
4-Mar-15	NW LANTAU	3	3.30	SPRING	STANDARD31516	HKLR	S
4-Mar-15	NW LANTAU	4	1.00	SPRING	STANDARD31516	HKLR	S
4-Mar-15	NE LANTAU	2	5.38	SPRING	STANDARD31516	HKLR	P
4-Mar-15	NE LANTAU	3	12.87	SPRING	STANDARD31516	HKLR	P
4-Mar-15	NE LANTAU	2	3.40	SPRING	STANDARD31516	HKLR	S
4-Mar-15	NE LANTAU	3	5.39	SPRING	STANDARD31516	HKLR	S
11-Mar-15	NW LANTAU	2	25.99	SPRING	STANDARD31516	HKLR	P
11-Mar-15	NW LANTAU	3	5.09	SPRING	STANDARD31516	HKLR	P
11-Mar-15	NW LANTAU	2	7.53	SPRING	STANDARD31516	HKLR	S
11-Mar-15	NE LANTAU	2	20.05	SPRING	STANDARD31516	HKLR	P
11-Mar-15	NE LANTAU	2	10.95	SPRING	STANDARD31516	HKLR	S
17-Mar-15	NW LANTAU	2	3.26	SPRING	STANDARD31516	HKLR	P
17-Mar-15	NW LANTAU	3	36.14	SPRING	STANDARD31516	HKLR	P
17-Mar-15	NW LANTAU	4	0.80	SPRING	STANDARD31516	HKLR	P
17-Mar-15	NW LANTAU	2	2.20	SPRING	STANDARD31516	HKLR	S
17-Mar-15	NW LANTAU	3	10.40	SPRING	STANDARD31516	HKLR	S
17-Mar-15	NE LANTAU	2	14.63	SPRING	STANDARD31516	HKLR	P
17-Mar-15	NE LANTAU	3	1.97	SPRING	STANDARD31516	HKLR	P
17-Mar-15	NE LANTAU	1	1.94	SPRING	STANDARD31516	HKLR	S
17-Mar-15	NE LANTAU	2	7.69	SPRING	STANDARD31516	HKLR	S
17-Mar-15	NE LANTAU	3	0.68	SPRING	STANDARD31516	HKLR	S
26-Mar-15	NW LANTAU	1	20.26	SPRING	STANDARD31516	HKLR	P
26-Mar-15	NW LANTAU	2	10.63	SPRING	STANDARD31516	HKLR	P
26-Mar-15	NW LANTAU	2	6.76	SPRING	STANDARD31516	HKLR	S
26-Mar-15	NE LANTAU	1	11.38	SPRING	STANDARD31516	HKLR	P
26-Mar-15	NE LANTAU	2	8.40	SPRING	STANDARD31516	HKLR	P
26-Mar-15	NE LANTAU	1	4.32	SPRING	STANDARD31516	HKLR	S
26-Mar-15	NE LANTAU	2	6.20	SPRING	STANDARD31516	HKLR	S

Appendix II. HKLR03 Chinese White Dolphin Sighting Database (March 2015)

(Abberviations: STG# = Sighting Number; HRD SZ = Dolphin Herd Size; BEAU = Beaufort Sea State; PSD = Perpendicular Distance; BOAT ASSOC. = Fishing Boat Association; P/S: Sighting Made on Primary/Secondary Line)

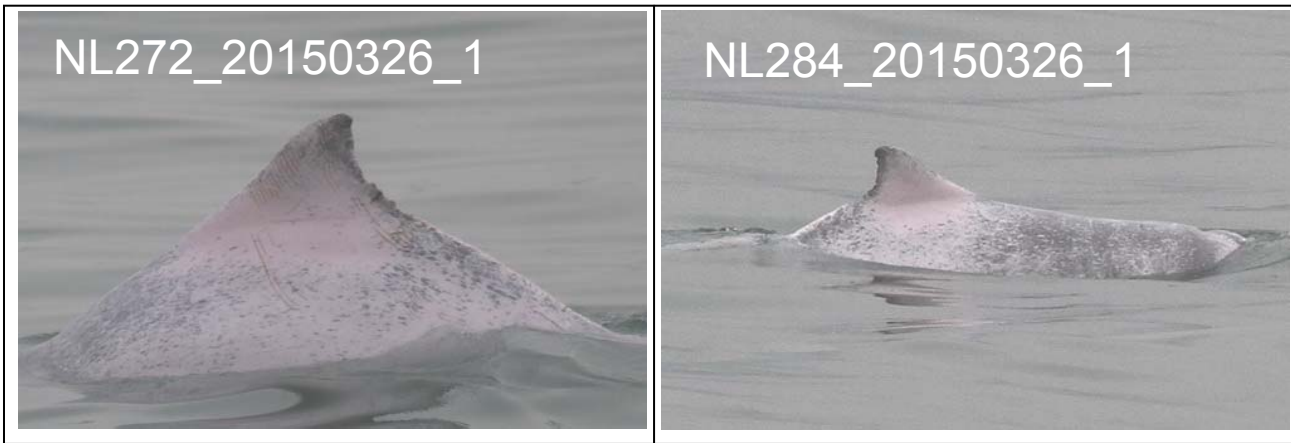
DATE	STG #	TIME	HRD SZ	AREA	BEAU	PSD	EFFORT	TYPE	NORTHING	EASTING	SEASON	BOAT ASSOC.	P/S
04-Mar-15	1	1009	1	NW LANTAU	2	ND	OFF	HKLR	815213	805485	SPRING	NONE	N/A
11-Mar-15	1	1347	1	NW LANTAU	2	ND	OFF	HKLR	829495	806976	SPRING	NONE	N/A
11-Mar-15	2	1519	7	NW LANTAU	2	258	ON	HKLR	818956	805421	SPRING	NONE	P
26-Mar-15	1	1201	3	NW LANTAU	2	21	ON	HKLR	820290	808597	SPRING	NONE	S

Appendix III. Individual dolphins identified during HKLR03 monitoring surveys in March 2015

ID#	DATE	STG#	AREA
CH34	11/03/15	1	NW LANTAU
NL49	11/03/15	2	NW LANTAU
NL123	11/03/15	2	NW LANTAU
NL136	11/03/15	2	NW LANTAU
NL165	11/03/15	2	NW LANTAU
NL261	26/03/15	1	NW LANTAU
NL272	26/03/15	1	NW LANTAU
NL284	11/03/15	2	NW LANTAU
	26/03/15	1	NW LANTAU
NL285	11/03/15	2	NW LANTAU
WL178	04/03/15	1	NW LANTAU



Appendix IV. Photographs of Identified Individual Dolphins in March 2015 (HKLR03)



Appendix IV. (cont'd)