

Activity ID	Activity Name	Orig Dur	Planned Start	Planned Finish	Current Start	Current Finish	2015																				
							Mar	Apr	May	Jun	Jul	Aug	Sep	Oct	Nov	Dec											
TMCLK - Northern Connection Sub-Sea Tunnel Section																											
Contract Dates																											
Site Possession Date																											
AD040	Portions: X1,(N10,11,13 & 14) - Sth Landfall	0	06-Aug-15		06-Aug-15*																						
Handover Date																											
HD010	Portions: WA18C	0		06-Jan-15		21-Jun-15*																					
General Submissions																											
Environmental																											
Environmental Permit Submissions																											
Supplementary WMP of C&C Tunnel at Sth.Landfall																											
EP2110	Supplementary WMP of C&C Tunnel at Sth.Landfall	0		28-Jun-14		22-Jun-15																					
Sediment Quality Report/Dumping Permit																											
Southern Landfall																											
Sediment Sampling & Testing Plan (SSTP) - if required																											
A6010030	Complete SSTP and Obtain EPD's approval	24	17-Feb-15	23-Mar-15	09-Feb-15A	06-Jul-15																					
A6010040	SSTP - EPD's approval for Shaft & C&C Tunnel Excavation	0		23-Sep-14		23-Mar-15A																					
A6010050	SSTP - Clarified with EPD for exemption for Shaft & C&C Tunnel Dwall	0		23-Sep-14		23-Mar-15A																					
Sediment Quality Report (SQR) - if required																											
A6418050	Liaise with HKBCF for advance GI	96	21-Nov-14	23-Mar-15	15-Dec-14A	10-Feb-15A																					
A6418055	Advance Possession to Southern Landfall for G.I. Sampling	0		23-Mar-15		10-Feb-15A																					
A6418060	Advance Ground Investigation works for Sediment sampling	24	24-Mar-15	24-Apr-15	10-Feb-15A	09-Jul-15																					
A6418070	Sediment Sample Testing & Report preparation	120	25-Apr-15	16-Sep-15	10-Jul-15	30-Nov-15																					
A6418080	Update SQR - Submission & EPD Approval	48	17-Sep-15	14-Nov-15	01-Dec-15	28-Jan-16																					
Dumping Permit for Load Dumping (Loading Permit) - if required																											
A6418082	Submit draft application document for Loading Permit to EPD for comment - for Dwall	96	24-Sep-14	19-Jan-15	22-Jun-15	14-Oct-15																					
A6418086	Notify the results and issue Loading Permit for Local & Cross Boundary Crossing - for Dwall	24	17-Feb-15	23-Mar-15	13-Nov-15	10-Dec-15																					
A6418090	Submit draft application document for Loading Permit to EPD for comment - for Excavation	96	23-Jul-15	14-Nov-15	05-Oct-15	28-Jan-16																					
General Design Submissions																											
(A19) DDA for Roadworks & Project Alignment																											
DD68370	SO's Review	35	18-Sep-14	22-Oct-14	22-Dec-14A	15-Jul-15A																					
(G6) IFA for Tunnel GBP																											
DD70750	SO's Review	35	29-Apr-14	02-Jun-14	09-Aug-14A	23-Jun-15																					
DD70760	SO Approval with Condition Received	0		03-Jun-14		23-Jun-15																					
Construction Supervision Plan																											
GEO1115	2nd GEO Review	28	29-Mar-14	25-Apr-14	01-Feb-14A	11-Jun-15A																					
PAYMENT MILESTONE																											
Design and Design Checking of the Works																											
PM1115	MS 2.9 Submit AIP for ground treatment at Southern Landfall	0		29-Oct-14		29-May-15A																					
PM1120	MS 2.10 Approve AIP for ground treatment at Southern Landfall by the Supervising Officer	0		22-Jan-15		29-May-15A																					
PM1125	MS 2.11 Submit DDA for ground treatment at Southern Landfall	0		26-May-15		05-Aug-15																					
PM1130	MS 2.12 Approve DDA for ground treatment at Southern Landfall by the Supervising Officer	0		24-Aug-15		02-Nov-15																					
PM1140	MS 2.14 Approve Risk Assessment of CLPP submarine cables - Tunnelling Works	0		15-Apr-15		05-Dec-14A																					
PM116520	MS 2.19.3 Submit DDA for Cross Passages	0		20-Dec-14		18-Jul-15																					
PM117010	MS 2.20.2 Approve DDA for TBM Sub-sea Tunnel - Internal Structure by the Supervising Officer	0		22-Dec-14		25-Jun-15																					
PM1180	MS 2.22 Approve AIP for Cut-and-cover Tunnel and Cross Passages at Southern Landfall by the Supervising Officer	0		17-Nov-14		27-May-15A																					
PM1185	MS 2.23 Submit DDA for Cut-and-cover Tunnel and Cross Passages at Southern Landfall	0		13-Jan-15		14-Aug-15																					
PM1190	MS 2.24 Approve DDA for Cut-and-cover Tunnel and Cross Passages at Southern Landfall by the Supervising Officer	0		17-Apr-15		12-Nov-15																					
PM1210	MS 2.28 Approve DDA for Cut-and-cover Tunnel and Cross Passages at Northern Landfall by the Supervising Officer	0		12-Feb-15		27-Jun-15																					
PM1225	MS 2.31 Submit DDA for Approach Ramp Structures to Cut-and-cover Tunnels	0		13-Jan-15		14-Aug-15																					
PM1230	MS 2.32 Approve DDA for Approach Ramp Structures to Cut-and-cover Tunnels by the Supervising Officer	0		17-Apr-15		12-Nov-15																					
PM1285	MS 2.43 Submit DDA for South Ventilation Building	0		28-Mar-15		15-Dec-15																					
PM1290	MS 2.44 Approve DDA for South Ventilation Building by the Supervising Officer	0		25-Jun-15		11-Mar-16																					
PM1305	MS 2.47 Submit DDA for North Ventilation Building	0		31-Oct-14		27-Jul-15																					
PM1325	MS 2.51 Submit DDA for Facilities Provision for TCSS	0		19-Nov-14		27-Aug-15																					
PM1345	MS 2.55 Submit DDA for Drainage, Sewerage, Waterworks and Utilities at Southern Landfall	0		03-Jan-15		27-Mar-15A																					
PM1350	MS 2.56 Approve DDA for Drainage, Sewerage, Waterworks and Utilities at Southern Landfall by the Supervising Officer	0		08-Apr-15		24-Aug-15																					
PM1370	MS 2.60 Approve DDA for Drainage, Sewerage, Waterworks and Utilities at Northern Landfall by the Supervising Officer	0		12-Dec-14		27-Jun-15																					
Tunnel Boring Machine (TBM) and Back-up Equipment for TBM Tunnel																											
PM1455	MS 3.1.4 Delivery to Site of remaining parts of TBM and back-up equipment for Southbound Tunnel	0		30-Mar-15		06-Mar-15A																					
PM1460	MS 3.1.4 Complete site assembly, testing and commissioning of TBM for Southbound Tunnel	0		13-May-15		03-Jul-15																					
PM1480	MS 3.1.8 Delivery to Site of cutter head of TBM for Northbound Tunnel	0		02-Sep-15		15-Dec-14A																					
PM1510	MS 3.1.14 Delivery to Site of hyperbaric intervention equipments and facilities, including but not limited to equipment	0		04-May-15		22-Jun-15																					
PM1515	MS 3.1.15 Complete site assembly, testing and commissioning of hyperbaric intervention equipment and facilities, includ	0		15-Jul-15		14-Jul-15																					
PM1530	MS 3.1.18 Delivery to Site of hyperbaric intervention equipments and facilities, including but not limited to equipment	0		04-May-15		22-Jun-15																					
PM1535	MS 3.1.19 Complete site assembly, testing and commissioning of hyperbaric intervention equipment and facilities, includ	0		15-Jul-15		14-Jul-15																					
PM1555	MS 3.1.23 Complete site assembly, testing and commissioning of Slurry Treatment Plant	0		05-Mar-15		25-Apr-15A																					
Cut-and-cover Tunnel at Northern Landfall																											
PM2450	MS 4.2.4 Delivery to Site of remaining parts of TBM and back-up equipment for Northbound Northern Landfall TBM Tunnel	0		19-Jan-15		14-May-15A																					
PM2455	MS 4.2.5 Complete site assembly, testing and commissioning of TBM for Northbound Northern Landfall TBM Tunnel	0		05-Mar-15		25-Apr-15A																					
PM2495	MS 4.2.13 Complete 100% of ground treatment for excavation of all Northern Landfall TBM Tunnels	0		30-Apr-15		11-Apr-15A																					
PM2500	MS 4.2.14 Completion of Permanent Lining for 25% of NB Northern Landfall TBM Tunnel	0		17-Apr-15		14-Sep-15																					
PM2505	MS 4.2.15 Completion of Permanent Lining for 50% of NB Northern Landfall TBM Tunnel	0		08-May-15		07-Oct-15																					
PM2510	MS 4.2.16 Completion of Permanent Lining for 75% of NB Northern Landfall TBM Tunnel	0		25-Jun-15		23-Nov-15																					

■ Planned Bar
■ Planned Bar - Critical
◆ Planned Milestone
■ Progress bar
◆ Progress Milestone

TMCLK - Northern Connection Sub-Sea Tunnel Section
Detailed Works Programme (Rev. C) - Three months rolling programme
Progress as of 21-Jul-15



Date	Revision	Checked	Approved
12-Feb-14	TMCLKDBJGEN.PRG.98507	WYu	SPo
08-Apr-14	TMCLKDBJGEN.PRG.98507 Rev.B	SPa	WYu
28-Aug-14	TMCLKDBJGEN.PRG.98507 Rev.C	CLa	WYu

Activity ID	Activity Name	Orig Dur	Planned Start	Planned Finish	Current Start	Current Finish	2015																
							Mar	Apr	May	Jun	Jul	Aug	Sep	Oct	Nov	Dec							
A6416500	F - Backfilling up to +6.0mPD to Anchor Wall - CH231 to CH278	2	16-Apr-14	17-Apr-14	06-Jul-15	07-Jul-15																	
A6416510	F - Backfilling up to +6.0mPD to Existing Seawall - CH231 to CH278	1	18-Apr-14	18-Apr-14	08-Jul-15	08-Jul-15																	
CH278 to CH327																							
A6416210	F - Backfilling up to +0.5mPD - CH278 to CH327	4	23-Mar-14	26-Mar-14	10-Apr-15A	13-Apr-15A																	
A6416215	F - Backfilling up to +3.0mPD & T4 Installation - CH278 to CH327	5	27-Mar-14	31-Mar-14	13-Apr-15A	20-May-15A																	
A6416220	F - Backfilling up to +6.0mPD - CH278 to CH327	2	01-Apr-14	02-Apr-14	25-Jun-15	26-Jun-15																	
A6416340	F - Anchor wall Installation - CH278 to CH327	4	11-Apr-14	15-Apr-14	04-Jul-15	08-Jul-15																	
A6416520	F - Backfilling up to 0.0mPD & G2 Installation to Anchor Wall - CH278 to CH327	3	16-Apr-14	18-Apr-14	03-Mar-15A	09-Jul-15																	
A6416530	F - Backfilling up to +3.0mPD & G1 Installation to Anchor Wall - CH278 to CH327	3	19-Apr-14	21-Apr-14	10-Mar-15A	10-Jul-15																	
A6416540	F - Backfilling up to +6.0mPD to Anchor Wall - CH278 to CH327	3	22-Apr-14	24-Apr-14	11-Jul-15	13-Jul-15																	
A6416550	F - Backfilling up to +6.0mPD to Existing Seawall - CH278 to CH327	1	25-Apr-14	25-Apr-14	14-Jul-15	14-Jul-15																	
CH327 to CH381																							
A6416155	F - Backfilling up to +0.5mPD - CH327 to CH381	3	16-Mar-14	18-Mar-14	15-Apr-15A	08-May-15A																	
A6416160	F - Backfilling up to +3.0mPD & T4 Installation - CH327 to CH381	5	19-Mar-14	23-Mar-14	02-May-15A	10-May-15A																	
A6416170	F - Backfilling up to +6.0mPD - CH327 to CH381	3	24-Mar-14	26-Mar-14	22-Jun-15	24-Jun-15																	
A6416370	F - Anchor wall Installation - CH327 to CH381	3	16-Apr-14	22-Apr-14	09-Jul-15	11-Jul-15																	
A6416560	F - Backfilling up to 0.0mPD & G2 Installation to Anchor Wall - CH327 to CH381	3	23-Apr-14	25-Apr-14	03-Mar-15A	12-Jul-15																	
A6416570	F - Backfilling up to +3.0mPD & G1 Installation to Anchor Wall - CH327 to CH381	3	26-Apr-14	28-Apr-14	10-Mar-15A	13-Jul-15																	
A6416580	F - Backfilling up to +6.0mPD to Anchor Wall - CH327 to CH381	2	29-Apr-14	30-Apr-14	14-Jul-15	15-Jul-15																	
A6416590	F - Backfilling up to +6.0mPD to Existing Seawall - CH327 to CH381	1	01-May-14	01-May-14	16-Jul-15	16-Jul-15																	
Box Culvert Extension																							
Construction																							
CH000 to CH137																							
A6416680	Backfilling for Surcharge	18	24-Sep-14	16-Oct-14	25-May-15A	25-May-15A																	
A6416690	Surcharge Period	180	17-Oct-14	14-Apr-15	25-May-15A	25-May-15A																	
A6417040	Surcharge Removal - CH27 to CH75	6	15-Apr-15	21-Apr-15	25-May-15A	25-May-15A																	
A6417050	Excavation down to S1 level - CH27 to CH75	8	22-Apr-15	30-Apr-15	17-Apr-15A	25-Jun-15																	
A6417060	S1 Installation - CH27 to CH75	9	02-May-15	12-May-15	23-Apr-15A	04-Jul-15																	
A6417070	Excavation down to Formation level - CH27 to CH75	5	13-May-15	18-May-15	06-Jul-15	10-Jul-15																	
A6417075	Box Culvert Structure - CH27 to CH75	124	19-May-15	15-Oct-15	11-Jul-15	05-Dec-15																	
A6417080	Surcharge Removal - CH75 to CH123	6	22-Apr-15	28-Apr-15	25-May-15A	25-May-15A																	
A6417090	Excavation down to S1 level - CH75 to CH123	8	29-Apr-15	08-May-15	29-Apr-15A	25-Jun-15																	
A6417100	S1 Installation - CH75 to CH123	9	09-May-15	19-May-15	02-May-15A	08-May-15A																	
A6417110	Excavation down to Formation level - CH75 to CH123	5	20-May-15	26-May-15	09-May-15A	29-Jun-15																	
A6417115	Box Culvert Structure - CH75 to CH123	124	27-May-15	23-Oct-15	30-Jun-15	25-Nov-15																	
CH137 to CH184																							
A6416770	Backfilling for Surcharge	12	20-Sep-14	06-Oct-14	25-May-15A	25-May-15A																	
A6416780	Surcharge Period	180	07-Oct-14	04-Apr-15	25-May-15A	25-May-15A																	
A6417120	Surcharge Removal - CH123 to CH184	7	08-Apr-15	15-Apr-15	25-May-15A	25-May-15A																	
A6417130	Excavation down to S1 level - CH123 to CH184	8	16-Apr-15	24-Apr-15	22-Jun-15	30-Jun-15																	
A6417140	S1 Installation - CH123 to CH184	10	25-Apr-15	07-May-15	02-Jul-15	13-Jul-15																	
A6417150	Excavation down to Formation level - CH123 to CH184	6	08-May-15	14-May-15	14-Jul-15	20-Jul-15																	
A6417155	Box Culvert Structure - CH123 to CH184	140	15-May-15	31-Oct-15	21-Jul-15	06-Jan-16																	
CH184 to CH231																							
A6416620	Predrilling - CH184 to CH231 (8 nos)	24	22-Mar-14	23-Apr-14	08-Nov-14A	30-May-15A																	
A6416730	Bored Pile Construction - A34 to A27 - Summary	156	22-Mar-14	30-Sep-14	30-Oct-14A	18-Nov-15																	
A6416790	Backfilling for Surcharge	12	03-Oct-14	16-Oct-14	25-May-15A	25-May-15A																	
A6416860	Surcharge Period	105	17-Oct-14	26-Feb-15	25-May-15A	25-May-15A																	
A6416950	Bored Pile Construction - A34 to A27 - 4 out of 8 piles	39	14-May-14	28-Jun-14	30-Oct-14A	04-Aug-15																	
A6416960	Bored Pile Construction - A34 to A27 - 6 out of 8 piles	39	30-Jun-14	14-Aug-14	05-Aug-15	18-Sep-15																	
A6416970	Bored Pile Construction - A34 to A27 - 8 out of 8 piles	39	15-Aug-14	30-Sep-14	19-Sep-15	06-Nov-15																	
A6417160	Surcharge Removal - CH184 to CH231	6	27-Feb-15	05-Mar-15	25-May-15A	25-May-15A																	
A6417180	S1 Installation - CH184 to CH231	9	16-Mar-15	25-Mar-15	28-Nov-15	08-Dec-15																	
A6417190	Excavation down to Formation level - CH184 to CH231	5	26-Mar-15	31-Mar-15	09-Dec-15	14-Dec-15																	
A6417350	Box Culvert Construction - CH184 to CH231	124	01-Apr-15	01-Sep-15	15-Dec-15	24-May-16																	
A6417390	Backfilling to +6.0mPD - CH231 to CH278	12	02-Sep-15	15-Sep-15	25-May-16	07-Jun-16																	
CH231 to CH278																							
A6416630	Predrilling - CH231 to CH278 (12 nos)	24	22-Apr-14	21-May-14	20-May-15A	02-Jun-15A																	
A6416740	Bored Pile Construction - A26 to A19 - Summary	143	22-Apr-14	13-Oct-14	09-Jul-15	28-Dec-15																	
A6416800	Backfilling for Surcharge	12	14-Oct-14	27-Oct-14	25-May-15A	25-May-15A																	
A6416830	Surcharge Period	105	28-Oct-14	09-Feb-15	25-May-15A	25-May-15A																	
A6417200	Surcharge Removal - CH231 to CH278	6	10-Feb-15	16-Feb-15	25-May-15A	25-May-15A																	
A6417340	Box Culvert Construction - CH231 to CH278	124	21-Mar-15	21-Aug-15	25-Jan-16	02-Jul-16																	
A6417380	Backfilling to +6.0mPD - CH231 to CH278	12	22-Aug-15	04-Sep-15	04-Jul-16	16-Jul-16																	
A6417470	Bored Pile Construction - A26 to A19 - 2 out of 8 piles	36	22-Apr-14	05-Jun-14	09-Jul-15	19-Aug-15																	
A6417500	Bored Pile Construction - A26 to A19 - 4 out of 8 piles	36	06-Jun-14	18-Jul-14	20-Aug-15	02-Oct-15																	
CH278 to CH327																							
A6416640	Predrilling - CH278 to CH327 (9 nos)	24	26-Apr-14	26-May-14	16-May-15A	05-Jun-15A																	
A6416750	Bored Pile Construction - A18 to A11 - Summary	117	27-May-14	15-Oct-14	15-Jul-15	01-Dec-15																	
A6416810	Backfilling for Surcharge	12	16-Oct-14	29-Oct-14	25-May-15A	25-May-15A																	
A6416840	Surcharge Period	105	30-Oct-14	11-Feb-15	25-May-15A	25-May-15A																	
A6417240	Surcharge Removal - CH278 to CH327	6	12-Feb-15	18-Feb-15	25-May-15A	25-May-15A																	
A6417270	Excavation down to Formation level - CH278 to CH327	5	18-Mar-15	23-Mar-15	22-Dec-15	29-Dec-15																	

■ Planned Bar
■ Planned Bar - Critical
◆ Planned Milestone
■ Progress bar
◆ Progress Milestone

TMCLK - Northern Connection Sub-Sea Tunnel Section
Detailed Works Programme (Rev. C) - Three months rolling programme
 Progress as of 21-Jul-15



Date	Revision	Checked	Approved
12-Feb-14	TMCLKDBJGEN.PRG.98507	WYu	SPa
08-Apr-14	TMCLKDBJGEN.PRG.98507 Rev.B	SPa	WYu
28-Aug-14	TMCLKDBJGEN.PRG.98507 Rev.C	CLa	WYu

Activity ID	Activity Name	Orig Dur	Planned Start	Planned Finish	Current Start	Current Finish	2015																	
							Mar	Apr	May	Jun	Jul	Aug	Sep	Oct	Nov	Dec								
A6417330	Box Culvert Construction - CH278 to CH327	124	24-Mar-15	24-Aug-15	30-Dec-15	06-Jun-16																		
A6417370	Backfilling to +6.0mPD - CH278 to CH327	12	25-Aug-15	07-Sep-15	07-Jun-16	21-Jun-16																		
A6417530	Bored Pile Construction - A18 to A11 - 2 out of 8 piles	30	27-May-14	02-Jul-14	15-Jul-15	18-Aug-15																		
A6417540	Bored Pile Construction - A18 to A11 - 4 out of 8 piles	30	03-Jul-14	06-Aug-14	19-Aug-15	22-Sep-15																		
CH327 to CH381																								
A6416650	Predrilling - CH327 to CH381	24	02-May-14	30-May-14	20-May-15A	24-Jul-15																		
A6416760	Bored Pile Construction - A10 to A03	86	31-May-14	11-Sep-14	25-Jul-15	05-Nov-15																		
A6416820	Backfilling for Surcharge	12	12-Sep-14	25-Sep-14	25-May-15A	25-May-15A																		
A6416850	Surcharge Period	105	26-Sep-14	08-Jan-15	25-May-15A	25-May-15A																		
A6417280	Surcharge Removal - CH327 to CH381	6	09-Jan-15	15-Jan-15	25-May-15A	25-May-15A																		
A6417320	Box Culvert Construction - CH327 to CH381	142	13-Feb-15	13-Aug-15	04-Dec-15	03-Jun-16																		
A6417360	Backfilling to +6.0mPD - CH327 to CH381	12	14-Aug-15	27-Aug-15	04-Jun-16	18-Jun-16																		
A6417570	Bored Pile Construction - A10 to A03 - 2 out of 8 piles	22	31-May-14	26-Jun-14	25-Jul-15	19-Aug-15																		
A6417580	Bored Pile Construction - A10 to A03 - 4 out of 8 piles	21	27-Jun-14	22-Jul-14	20-Aug-15	12-Sep-15																		
A6417590	Bored Pile Construction - A10 to A03 - 6 out of 8 piles	21	23-Jul-14	15-Aug-14	14-Sep-15	09-Oct-15																		
CH381 to CH399 (Box Culvert Connection)																								
A6417000	F - Steel Bridge Installation for Land Access to Zone E	52	25-Feb-14	30-Apr-14	16-Mar-15A	22-Mar-15A																		
A6417010	F - Available of Land Access to Zone E	0	02-May-14		22-Mar-15A																			
A6417030	Sheet Piling & Land Access Re-route	24	16-Sep-15	15-Oct-15	18-Jul-16	13-Aug-16																		
North Shafts Construction & Tunnel Structure																								
Design Submission																								
(C1) DDA for North C&C Tunnel Permanent Structure - False Tunnel																								
DD71495	IPs/SO's Advance comments / ICE comments	0			04-Mar-15A	26-Mar-15A																		
DD71515	Comments Received	0				26-Mar-15A																		
DD71525	Designer to Reply RIC + Update Submission	0			27-Mar-15A	27-May-15A																		
DD71535	Submit Updated DDA to SO/ ICE/ IPs	0			27-May-15A																			
DD71545	ICE Approval & Issue Check Cert	0			22-Jun-15	13-Jul-15																		
DD71555	Submit ICE Check Cert to SO	0				13-Jul-15																		
DD71565	IPs Review	0			27-May-15A	19-Jul-15																		
DD71575	IPs No Objection Received	0				19-Jul-15																		
DD71585	SO's Review	0			27-May-15A	26-Jul-15																		
DD71595	SO Approval with Condition Received	0				27-Jul-15																		
(C1) DDA for North Approach Ramp Permanent Structure																								
DD70780	Review & Comment by JV	12	21-Jul-14	02-Aug-14	13-Jan-15A	21-Mar-15A																		
DD70785	Designer prepare DDA	6	04-Aug-14	09-Aug-14	21-Mar-15A	27-Mar-15A																		
DD70790	Formal Submission of DDA to ICE/ IPs	0			09-Aug-14	27-Mar-15A																		
DD70792	Advanced Submission to SO	0			09-Aug-14	27-Mar-15A																		
DD70794	IPs/SO's Advance comments / ICE comments	28	10-Aug-14	06-Sep-14	27-Mar-15A	28-May-15A																		
DD70800	IPs/ SO's Advance Comments/ ICE Comments	28	07-Sep-14	04-Oct-14	28-May-15A	28-May-15A																		
DD70805	Comments Received	0			04-Oct-14	28-May-15A																		
DD70810	Designer to Reply RIC + Update Submission	15	06-Oct-14	22-Oct-14	28-May-15A	28-Jul-15																		
DD70820	Submit Updated DDA to SO/ ICE/ IPs	0	23-Oct-14		29-Jul-15																			
DD70830	ICE Approval & Issue Check Cert	18	23-Oct-14	12-Nov-14	29-Jul-15	18-Aug-15																		
DD70840	Submit ICE Check Cert to SO	0		12-Nov-14		18-Aug-15																		
DD70850	IPs Review	28	23-Oct-14	19-Nov-14	29-Jul-15	25-Aug-15																		
DD70860	IPs No Objection Received	0		19-Nov-14		25-Aug-15																		
DD70870	SO's Review	35	23-Oct-14	26-Nov-14	29-Jul-15	01-Sep-15																		
DD70880	SO Approval with Condition Received	0		26-Nov-14		01-Sep-15																		
IFA North Approach Ramp ELS Stage 1 (Access Ramp Extension)																								
DD71655	IPs/SO's Advance comments / ICE comments	0			12-Feb-15A	30-Mar-15A																		
DD71665	Comments Received	0				30-Mar-15A																		
DD71675	Designer to Reply RIC + Update Submission	0			30-Mar-15A	08-May-15A																		
DD71685	Submit Updated DDA to SO/ ICE/ IPs	0			08-May-15A																			
DD71695	ICE Approval & Issue Check Cert	0			08-May-15A	08-May-15A																		
DD71705	Submit ICE Check Cert to SO	0				08-May-15A																		
DD71715	IPs Review	0			08-May-15A	08-May-15A																		
DD71725	IPs No Objection Received	0				08-May-15A																		
DD71735	SO's Review	0			08-May-15A	08-May-15A																		
DD71745	SO Approval with Condition Received	0				08-May-15A																		
IFA North Approach Ramp ELS																								
DD71765	Review & Comment by JV	0			13-Mar-15A	05-May-15A																		
DD71775	Designer prepare DDA	0			05-May-15A	08-May-15A																		
DD71785	Formal Submission of DDA to ICE/ IPs	0				08-May-15A																		
DD71795	Advanced Submission to SO	0				08-May-15A																		
DD71805	IPs/SO's Advance comments / ICE comments	0			08-May-15A	17-Jun-15A																		
DD71815	Comments Received	0				17-Jun-15A																		
DD71825	Designer to Reply RIC + Update Submission	0			17-Jun-15A	07-Jul-15																		
DD71835	Submit Updated DDA to SO/ ICE/ IPs	0			08-Jul-15																			
DD71845	ICE Approval & Issue Check Cert	0			08-Jul-15	28-Jul-15																		
DD71855	Submit ICE Check Cert to SO	0				28-Jul-15																		
DD71865	IPs Review	0			08-Jul-15	04-Aug-15																		
DD71875	IPs No Objection Received	0				04-Aug-15																		
DD71885	SO's Review	0			08-Jul-15	11-Aug-15																		

- Planned Bar
- Planned Bar - Critical
- ◆ Planned Milestone
- ◆ Progress bar
- ◆ Progress Milestone

TMCLK - Northern Connection Sub-Sea Tunnel Section
Detailed Works Programme (Rev. C) - Three months rolling programme
Progress as of 21-Jul-15



Date	Revision	Checked	Approved
12-Feb-14	TMCLKDBJGEN/PRG/98507	WYu	SPa
08-Apr-14	TMCLKDBJGEN/PRG/98507 Rev B	SPa	WYu
28-Aug-14	TMCLKDBJGEN/PRG/98507 Rev C	CLa	WYu

Activity ID	Activity Name	Orig Dur	Planned Start	Planned Finish	Current Start	Current Finish	2015															
							Mar	Apr	May	Jun	Jul	Aug	Sep	Oct	Nov	Dec						
DD71895	SO Approval with Condition Received	0				11-Aug-15																
Construction																						
North Launching Shaft Base Slab for TBM Launching																						
NSH1455	E - Tympanum construction for TBM break-in	12	20-Nov-14	03-Dec-14	29-Jan-15A	02-Apr-15A																
North C&C Tunnel Structure																						
NSH1240	E - NB Tunnel Structure - Perimeter Wall	108	18-Jul-15	24-Nov-15	13-Nov-15	01-Apr-16																
North Ventilation Shaft ELS Foundation & Capping Beam																						
A6415780	B - Diaphragm Wall - Shaft ELS	81	26-Aug-14	01-Dec-14	24-Nov-14A	28-Mar-15A																
A6415790	B - Instrumentation & Pump well Installation	6	02-Dec-14	08-Dec-14	06-Mar-15A	18-Apr-15A																
A6415795	B - Pumping Test for Excavation	7	09-Dec-14	15-Dec-14	21-Apr-15A	05-May-15A																
North Ventilation Shaft Excavation & Base Slab																						
A6415800	B - Vent Shaft Excavation (+6.0 to +4.0mPD) - Reclaimed Fill	5	02-Dec-14	06-Dec-14	02-May-15A	03-May-15A																
A6415810	B - Capping Beam Installation (+6.0mPD)	12	08-Dec-14	20-Dec-14	04-May-15A	23-Jun-15																
A6415820	B - Vent Shaft Excavation (+4.0 to -8.0mPD) - Reclaimed Fill	19	22-Dec-14	15-Jan-15	04-May-15A	15-May-15A																
A6415830	B - Ring Beam Installation (-5.5mPD)	6	16-Jan-15	22-Jan-15	15-May-15A	23-May-15A																
A6415840	B - Vent Shaft Excavation (-8.0 to -20.0mPD) - Fill/MD/ALLUVIUM	27	23-Jan-15	02-Mar-15	08-May-15A	10-Jun-15A																
A6415850	B - Ring Beam Installation (-18.0mPD)	6	03-Mar-15	09-Mar-15	10-Jun-15A	10-Jun-15A																
A6415860	B - Vent Shaft Excavation (-20.0 to -32.0mPD) - CDG	27	10-Mar-15	14-Apr-15	10-Jun-15A	29-Jun-15																
A6415870	B - Ring Beam Installation (-32.0mPD)	9	15-Apr-15	24-Apr-15	30-Jun-15	10-Jul-15																
A6415880	B - Vent Shaft Excavation (-32.0mPD to -38.8mPD) - Rock	69	25-Apr-15	18-Jul-15	11-Jul-15	30-Sep-15																
A6415890	B - Vent Shaft Bottom Base Slab for TBM Re-launching	36	20-Jul-15	29-Aug-15	02-Oct-15	13-Nov-15																
A6415990	B - Tympanum construction for TBM break-in/out	24	27-Jul-15	22-Aug-15	09-Oct-15	06-Nov-15																
North Surface works for TBM Tunnelling																						
Design Submission																						
(D1) IFA for Temp. Access to Portion N8A, N8B & N8C incl. Temp. Lighting																						
AP01525	Review & Comment by SO/ ICE/ IPs	28	09-Mar-14	05-Apr-14	20-Mar-14A	15-May-15A																
AP01530	Advance Comments from SO/ Comments from ICE/ IPs Received	0		07-Apr-14		15-May-15A																
AP01535	Designer to Prepare RTC & Updated AIP	18	07-Apr-14	30-Apr-14	16-May-15A	23-Jun-15																
AP01540	Submission of AIP to SO/ ICE together with Reply To Comment (RTC)	0		30-Apr-14		23-Jun-15																
AP01545	Reply to IPs Comments in RTC	0		30-Apr-14		23-Jun-15																
AP01550	ICE Approval & Issue of Design Check Cert.	18	02-May-14	23-May-14	24-Jun-15	15-Jul-15																
AP01555	Check Cert to SO	0		23-May-14		15-Jul-15																
AP01560	No Objection or Further Minor Comments from IPs Received	0		23-May-14		15-Jul-15																
AP01565	SO Review (35 Days)	35	02-May-14	05-Jun-14	24-Jun-15	28-Jul-15																
AP01570	SO Approval with Condition Received	0		05-Jun-14		28-Jul-15																
Construction																						
Zone B																						
A6415895	Zone B - Unreinforced Separation D-wall	13	27-Aug-14	11-Sep-14	11-Feb-15A	02-Apr-15A																
A6415900	Zone B - Slurry Wall for TBM Break-out Plug	34	02-Dec-14	13-Jan-15	23-Mar-15A	23-Mar-15A																
A6415910	Zone B - Slurry Wall - Toe Grouting	24	14-Jan-15	10-Feb-15	23-Mar-15A	23-Mar-15A																
A6415920	Zone B - Ground Treatment for TBM Break-out Plug	58	11-Feb-15	30-Apr-15	18-Mar-15A	11-Apr-15A																
Ground Treatment																						
A6417430	Zone A - B/C Slurry Substitution for CP49	30	22-Oct-14	25-Nov-14	30-May-15A	30-May-15A																
A6417440	Zone A - Drilling for Rock Fissure Grouting for CP48	65	11-Nov-14	28-Jan-15	30-May-15A	30-May-15A																
A6417450	Zone A - Rock Fissure Grouting for CP48	90	25-Nov-14	19-Mar-15	30-May-15A	30-May-15A																
A6417460	Zone A - Jet Grouting for CP48	72	29-Jan-15	05-May-15	30-May-15A	30-May-15A																
North Approach TBM Tunnelling & Cross Passage																						
Major Procurement																						
Precast Segment																						
Precast Segment ID15.60 - Production for NB North TBM Tunnel																						
A6417970	ID15.60 TBM Segment Ring Fabrication - 2 rings per day	148	30-Sep-14	25-Apr-15	25-Sep-14A	07-Aug-15																
Hyperbaric & Saturation																						
A6415160	Hyperbaric Equipment - Place Order, Fabrication & on sitesetup	244	04-Jul-14	04-May-15	21-Jun-14A	04-May-15A																
A6415170	Hyperbaric Equipment - Delivery to Site for final commissioning	0		04-May-15		04-May-15A																
Design Submission																						
(D8) IFA Thrust Frame for TBM Launching																						
DD69240	IPs Review	28	16-Jul-14	12-Aug-14	06-Mar-15A	26-Mar-15A																
DD69250	IPs No Objection Received	0		12-Aug-14		26-Mar-15A																
DD69260	SO's Review	35	16-Jul-14	19-Aug-14	06-Mar-15A	26-Mar-15A																
DD69270	SO Approval with Condition Received	0		19-Aug-14		26-Mar-15A																
(G2) DDA for TBM Tunnel Lining Structural Design - North Approach																						
DD01055	Northern TBM Segment Ring Manufacturing	173	01-Aug-14	04-Mar-15	25-Aug-14A	12-Aug-15																
DD01065	Northern TBM Tunnel Break-in	0		06-Mar-15		25-Apr-15A																
(G2) DDA for TBM Tunnel Lining Settlement Analysis & Confinement Pressure - North Approach																						
DD00825	IPs/ SO's Advance Comments/ ICE Comments	28	22-Jun-14	19-Jul-14	10-Jan-15A	21-Mar-15A																
DD00830	Comments Received	0		19-Jul-14		21-Mar-15A																
DD00835	Designer to Reply RTC + Update Submission	21	21-Jul-14	13-Aug-14	21-Mar-15A	25-Mar-15A																
DD00840	Submit Updated DDA to SO/ ICE/ IPs	0		14-Aug-14		25-Mar-15A																
DD00855	IPs Review	28	14-Aug-14	10-Sep-14	25-Mar-15A	23-Apr-15A																
DD00860	IPs No Objection Received	0		10-Sep-14		23-Apr-15A																
DD00880	SO's Review	35	14-Aug-14	17-Sep-14	25-Mar-15A	23-Apr-15A																
DD00885	SO Approval with Condition Received	0		17-Sep-14		23-Apr-15A																
(G5) DDA for Cross Passage - Permanent works - incl. Detailed Geotechnical Assessment - North																						

- Planned Bar
- Planned Bar - Critical
- ◆ Planned Milestone
- Progress bar
- ◆ Progress Milestone

TMCLK - Northern Connection Sub-Sea Tunnel Section
Detailed Works Programme (Rev. C) - Three months rolling programme
Progress as of 21-Jul-15



Date	Revision	Checked	Approved
12-Feb-14	TMCLKDBJGEN.PRG.98507	WYu	SPa
08-Apr-14	TMCLKDBJGEN.PRG.98507 Rev.B	SPa	WYu
28-Aug-14	TMCLKDBJGEN.PRG.98507 Rev.C	CLa	WYu

Activity ID	Activity Name	Orig Dur	Planned Start	Planned Finish	Current Start	Current Finish	2015															
							Mar	Apr	May	Jun	Jul	Aug	Sep	Oct	Nov	Dec						
DD67518	IPs Review	28	09-Jan-15	05-Feb-15	11-Mar-15 A	24-Jun-15																
DD67528	IPs No Objection Received	0		05-Feb-15		24-Jun-15																
DD67609*	SO's Review	35	09-Jan-15	12-Feb-15	11-Mar-15 A	27-Jun-15																
DD67610	SO Approval with Condition Received	0		12-Feb-15		27-Jun-15																
Method Statement Submission																						
Method Statement of Construction Methodology of Cross Passage Excavation																						
MS1400	Preparation Method Statement for CP Excavation	25	03-Jan-15	31-Jan-15	22-Jun-15	21-Jul-15																
MS1410	Submit Method Statement to SO	0		31-Jan-15		21-Jul-15																
MS1420	SO Reviews & Comments	28	01-Feb-15	28-Feb-15	22-Jul-15	18-Aug-15																
MS1430	Re-submission	18	02-Mar-15	21-Mar-15	19-Aug-15	08-Sep-15																
MS1440	SO's Review	28	22-Mar-15	18-Apr-15	09-Sep-15	06-Oct-15																
MS1450	SO's Approval	0		18-Apr-15		06-Oct-15																
Construction																						
Northern Landfall Surface Setup for TBM operation																						
A6415937	Slurry Treatment Plant Foundation	25	15-Oct-14	12-Nov-14	20-Oct-14A	27-Apr-15A																
A6415940	Slurry Treatment Plant 1 Setup at Northern Landfall	64	13-Nov-14	29-Jan-15	20-Nov-14A	24-Mar-15A																
A6415950	Slurry Treatment Plant 1 Commissioning	24	30-Jan-15	05-Mar-15	25-Mar-15A	25-Apr-15A																
A6415955	Slurry Treatment Plant 2 Setup at Northern Landfall	54	30-Jan-15	14-Apr-15	09-Feb-15A	30-Apr-15A																
A6415957	Slurry Treatment Plant 2 Commissioning	24	15-Apr-15	13-May-15	02-May-15A	05-Jun-15A																
A6415970	Gantry Setup at North Ventilation Shaft	48	20-Jul-15	12-Sep-15	02-Oct-15	27-Nov-15																
A6416000	Hyperbaric Equipment Installation, Commissioning & Operation	59	05-May-15	15-Jul-15	04-May-15A	14-Jul-15																
S880 TBM Assembly at North TBM Launching Shaft																						
NSH1960	S880 - TBM Launching - Main Drive Thrust Frame Installation	14	25-Dec-14	07-Jan-15	30-Mar-15A	01-Apr-15A																
NSH2030	S880 - TBM Launching - Gantry 4 & Gantry 3 connection	3	17-Jan-15	19-Jan-15	20-Mar-15A	22-Mar-15A																
NSH2040	S880 - TBM Launching - Testing & Commissioning	24	20-Jan-15	12-Feb-15	23-Mar-15A	11-Apr-15A																
NSH2050	S880 - TBM Launching - Segment Ring Installation for Break-in	8	13-Feb-15	23-Feb-15	11-Apr-15 A	18-Apr-15A																
NSH2060	S880 - TBM Launching - Final commissioning & Break-in	10	24-Feb-15	05-Mar-15	19-Apr-15A	25-Apr-15A																
S882 TBM Assembly at North TBM Launching Shaft																						
NSH206020	S882 - TBM Launching - Cutterhead Assembly	3	16-Feb-15	18-Feb-15	22-Mar-15A	22-Mar-15A																
NSH206030	S882 - TBM Launching - Erector Assembly	3	22-Feb-15	24-Feb-15	24-Mar-15A	26-Mar-15A																
NSH206040	S882 - TBM Launching - Tail Skin Assembly	3	25-Feb-15	27-Feb-15	28-Mar-15A	31-Mar-15A																
NSH2130	S882 - TBM Launching - Main Drive Connection	2	28-Feb-15	01-Mar-15	01-Apr-15A	21-Apr-15A																
NSH2140	S882 - TBM Launching - Main Drive Shifting	2	02-Mar-15	03-Mar-15	17-Apr-15A	22-Apr-15A																
NSH2150	S882 - TBM Launching - Main Drive Thrust Frame Installation	14	04-Mar-15	17-Mar-15	06-May-15A	16-May-15A																
NSH215010	S882 - TBM Launching - Gantry 2 Assembly	3	04-Mar-15	06-Mar-15	23-Apr-15A	24-Apr-15A																
NSH215020	S882 - TBM Launching - Gantry 1 Assembly	3	07-Mar-15	09-Mar-15	27-Apr-15A	28-Apr-15A																
NSH2160	S882 - TBM Launching - Gantry 1 & Main Drive connection	3	18-Mar-15	20-Mar-15	28-Apr-15A	04-May-15A																
NSH2170	S882 - TBM Launching - Gantry 2 & Gantry 1 connection	3	21-Mar-15	23-Mar-15	05-May-15A	08-May-15A																
NSH2180	S882 - TBM Launching - Gantry 3 assembly	3	10-Mar-15	12-Mar-15	22-Jun-15	24-Jun-15																
NSH2190	S882 - TBM Launching - Gantry 4 assembly	3	13-Mar-15	15-Mar-15	25-Jun-15	27-Jun-15																
NSH2200	S882 - TBM Launching - Gantry 3 & Gantry 2 connection	3	24-Mar-15	26-Mar-15	22-Jun-15	24-Jun-15																
NSH2210	S882 - TBM Launching - Gantry 4 & Gantry 3 connection	3	27-Mar-15	29-Mar-15	28-Jun-15	30-Jun-15																
NSH2220	S882 - TBM Launching - Testing & Commissioning	24	30-Mar-15	25-Apr-15	20-May-15A	02-Jun-15A																
NSH2230	S882 - TBM Launching - Segment Ring Installation for Break-in	8	26-Apr-15	03-May-15	02-Jun-15A	03-Jun-15A																
NSH2240	S882 - TBM Launching - Final commissioning & Break-in	10	04-May-15	13-May-15	03-Jun-15A	03-Jul-15																
North Approach TBM Tunnel - NB ID15.60m - S880																						
TBM10010	NB - North TBM Tunnel - CDG+Boulder with Trimix (Ch7175 to 7155 - 20m)	14	06-Mar-15	19-Mar-15	26-Apr-15A	16-Jul-15A																
TBM10020	NB - North TBM Tunnel - CDG with Trimix (Ch7155 to 7105 - 50m)	14	20-Mar-15	02-Apr-15	17-May-15A	11-Jun-15A																
TBM10030	NB - North TBM Tunnel - CDG with Trimix (Ch7105 to 7000 - 105m)	24	05-Apr-15	29-Apr-15	12-Jun-15A	28-Sep-15																
TBM10040	NB - North TBM Tunnel - CDG with Trimix (Ch7000 to 6870 - 130m)	18	30-Apr-15	18-May-15	28-Sep-15	16-Oct-15																
TBM10050	NB - North TBM Tunnel - CDG+Boulder with Saturation (Ch6870 to 6840 - 30m)	20	19-May-15	07-Jun-15	16-Oct-15	05-Nov-15																
TBM10060	NB - North TBM Tunnel - Transition with Saturation (Ch6840 to 6708 - 132m)	75	08-Jun-15	24-Aug-15	05-Nov-15	19-Jan-16																
TBM10070	NB - North TBM Tunnel - Transition with Saturation (Ch6708 to 6688 - 20m)	6	25-Aug-15	30-Aug-15	19-Jan-16	25-Jan-16																
TBM11020	NB - North TBM Tunnel - Thrust Frame Removal	12	19-May-15	02-Jun-15	16-Oct-15	31-Oct-15																
North Approach TBM Tunnel - SB ID12.40m - S882																						
TBM10490	SB - North TBM Tunnel - CDG+Boulder with Trimix (Ch7196 to 7176 - 20m)	10	14-May-15	24-May-15	11-Sep-15	21-Sep-15																
TBM10500	SB - North TBM Tunnel - CDG with Trimix (Ch7176 to 7126 - 50m)	10	25-May-15	03-Jun-15	21-Sep-15	01-Oct-15																
TBM10510	SB - North TBM Tunnel - CDG with Trimix (Ch7126 to 7021 - 105m)	17	04-Jun-15	21-Jun-15	01-Oct-15	18-Oct-15																
TBM10520	SB - North TBM Tunnel - CDG with Trimix (Ch7021 to 6891 - 130m)	12	22-Jun-15	03-Jul-15	18-Oct-15	30-Oct-15																
TBM10530	SB - North TBM Tunnel - CDG+Boulder with Saturation (Ch6891 to 6861 - 30m)	9	04-Jul-15	12-Jul-15	30-Oct-15	08-Nov-15																
TBM10540	SB - North TBM Tunnel - Transition with Saturation (Ch6861 to 6729 - 132m)	63	13-Jul-15	15-Sep-15	08-Nov-15	10-Jan-16																
TBM10550	SB - North TBM Tunnel - Transition with Saturation (Ch6729 to 6709 - 20m)	5	16-Sep-15	20-Sep-15	10-Jan-16	15-Jan-16																
TBM11030	SB - North TBM Tunnel - Thrust Frame Removal	12	04-Jul-15	17-Jul-15	30-Oct-15	13-Nov-15																
North Approach Tunnel Internal Structure - NB																						
ISIG1000	NB - North TBM Tunnel - Invert Backfilling (Ch7175 to 6870 - 305m) Stage 1	87	03-Jun-15	31-Aug-15	31-Oct-15	26-Jan-16																
ISIG1015	NB - North TBM Tunnel - Invert Backfilling (Ch6870 to 6688 - 182m) Stage 1	77	01-Sep-15	16-Nov-15	26-Jan-16	18-Apr-16																
ISIG1020	NB - North TBM Tunnel - ISIG Assembly	14	03-Jun-15	17-Jun-15	31-Oct-15	14-Nov-15																
ISIG1030	NB - North TBM Tunnel - Invert Precast Gallery Installation (Ch7175 to 6870 - 305m)	87	18-Jun-15	14-Sep-15	14-Nov-15	12-Feb-16																
ISIG1040	NB - North TBM Tunnel - Invert Precast Gallery Installation (Ch6870 to 6688 - 182m)	77	15-Sep-15	30-Nov-15	12-Feb-16	02-May-16																
ISIG1050	NB - North TBM Tunnel - Invert Backfilling (Ch7175 to 7125 - 50m) Stage 2	15	30-Jun-15	14-Jul-15	26-Nov-15	11-Dec-15																
ISIG1060	NB - North TBM Tunnel - Invert Backfilling (Ch7125 to 7075 - 50m) Stage 2	15	16-Jul-15	30-Jul-15	11-Dec-15	26-Dec-15																
ISIG1070	NB - North TBM Tunnel - Invert Backfilling (Ch7075 to 7025 - 50m) Stage 2	15	31-Jul-15	14-Aug-15	26-Dec-15	10-Jan-16																
ISIG1080	NB - North TBM Tunnel - Invert Backfilling (Ch7025 to 6975 - 50m) Stage 2	14	16-Aug-15	29-Aug-15	10-Jan-16	24-Jan-16																

■ Planned Bar
■ Planned Bar - Critical
◆ Planned Milestone
■ Progress bar
◆ Progress Milestone

TMCLK - Northern Connection Sub-Sea Tunnel Section
 Detailed Works Programme (Rev. C) - Three months rolling programme
 Progress as of 21-Jul-15



Date	Revision	Checked	Approved
12-Feb-14	TMCLKDBJGEN.PRG.98507	WYu	SPa
08-Apr-14	TMCLKDBJGEN.PRG.98507 Rev.B	SPa	WYu
28-Aug-14	TMCLKDBJGEN.PRG.98507 Rev.C	CLa	WYu

Activity ID	Activity Name	Orig Dur	Planned Start	Planned Finish	Current Start	Current Finish	2015															
							Mar	Apr	May	Jun	Jul	Aug	Sep	Oct	Nov	Dec						
ISIG1090	NB - North TBM Tunnel - Invert Backfilling (Ch6975 to 6925 - 50m) Stage 2	14	30-Aug-15	12-Sep-15	24-Jan-16	07-Feb-16																
ISIG1100	NB - North TBM Tunnel - Invert Backfilling (Ch6925 to 6870 - 55m) Stage 2	14	13-Sep-15	26-Sep-15	07-Feb-16	24-Feb-16																
North Approach Tunnel Internal Structure - SB																						
ISIG1120	SB - North TBM Tunnel - Invert Backfilling (Ch7175 to 7125 - 50m)	13	18-Jul-15	30-Jul-15	13-Nov-15	26-Nov-15																
ISIG1130	SB - North TBM Tunnel - Invert Backfilling (Ch7125 to 7075 - 50m)	13	31-Jul-15	12-Aug-15	26-Nov-15	09-Dec-15																
ISIG1140	SB - North TBM Tunnel - Invert Backfilling (Ch7075 to 7025 - 50m)	13	13-Aug-15	26-Aug-15	09-Dec-15	22-Dec-15																
ISIG1150	SB - North TBM Tunnel - Invert Backfilling (Ch7025 to 6975 - 50m)	12	27-Aug-15	07-Sep-15	22-Dec-15	03-Jan-16																
ISIG1160	SB - North TBM Tunnel - Invert Backfilling (Ch6975 to 6925 - 50m)	12	08-Sep-15	19-Sep-15	03-Jan-16	15-Jan-16																
ISIG1170	SB - North TBM Tunnel - Invert Backfilling (Ch6925 to 6870 - 55m)	12	20-Sep-15	01-Oct-15	15-Jan-16	27-Jan-16																
North Ventilation Building																						
Design Submission																						
(A10) ACABAS Submissions																						
GS01650	ACABAS Approval	28	16-Mar-14	12-Apr-14	31-Jan-15A	25-Jul-15																
(A11) Submissions to Design Advisory Panel of ArchSD																						
GS01730	Prepare Re-submission	18	19-May-14	09-Jun-14	22-Jul-14A	23-Jun-15																
GS01740	ArchSD's comment	30	10-Jun-14	09-Jul-14	24-Jun-15	23-Jul-15																
(I1) DDA for North Vent. Bldgs. GBP & Arch. Submission																						
DD01225	IPs/ SO's Advance Comments/ ICE Comments	28	29-Jun-14	26-Jul-14	10-Dec-14A	02-May-15A																
DD01230	Comments Received	0		26-Jul-14		02-May-15A																
DD01235	Designer to Reply RiC + Update Submission	21	28-Jul-14	20-Aug-14	02-May-15A	23-Jul-15																
DD01240	Submit Updated DDA to SO/ ICE/ IPs	0	21-Aug-14		24-Jul-15																	
DD01245	ICE Approval & Issue Check Cert	12	21-Aug-14	03-Sep-14	24-Jul-15	06-Aug-15																
DD01250	Submit ICE Check Cert to SO	6	04-Sep-14	11-Sep-14	07-Aug-15	13-Aug-15																
DD01255	IPs Review	28	21-Aug-14	17-Sep-14	24-Jul-15	20-Aug-15																
DD01260	IP's No Objection Received	0		17-Sep-14		20-Aug-15																
DD01265	SO's Review	35	21-Aug-14	24-Sep-14	24-Jul-15	27-Aug-15																
DD01270	SO Approval with Condition Received	0		24-Sep-14		27-Aug-15																
(I1) DDA for North & South Vent. Bldg. ABWF works																						
DD67638	Preparation of DDA North & South ABWF	18	25-Sep-14	17-Oct-14	28-Aug-15	17-Sep-15																
DD67648	Review & Comment by JV	24	18-Oct-14	14-Nov-14	18-Sep-15	17-Oct-15																
(I2) DDA for North Vent. Bldgs. Foundation Design																						
DD01355	IPs Review	28	03-Dec-14	30-Dec-14	30-Jan-15A	17-Jun-15A																
DD01360	IP's No Objection Received	0		30-Dec-14		17-Jun-15A																
DD01380	SO's Review	35	03-Dec-14	06-Jan-15	30-Jan-15A	17-Jun-15A																
DD01385	SO Approval with Condition Received	0		06-Jan-15		17-Jun-15A																
(I2) DDA for North Vent. Bldgs. Structural Design incl. Vent. Connections																						
DD68008	Preparation of DDANth VB Structural Design incl. Vent conn	18	05-Sep-14	26-Sep-14	24-Jan-15A	23-Jun-15																
DD68018	Review & Comment by JV	18	27-Sep-14	20-Oct-14	24-Jun-15	15-Jul-15																
DD68020	Designer prepare DDA	10	21-Oct-14	31-Oct-14	16-Jul-15	27-Jul-15																
DD68028	Formal Submission of DDA to ICE/ IPs	0		31-Oct-14		27-Jul-15																
DD68030	Advanced Submission to SO	0		31-Oct-14		27-Jul-15																
DD68038	IPs/ SO's Advance Comments/ ICE Comments	28	01-Nov-14	28-Nov-14	28-Jul-15	24-Aug-15																
DD68040	Comments Received	0		28-Nov-14		24-Aug-15																
DD68048	Designer to Reply RiC + Update Submission	21	29-Nov-14	23-Dec-14	25-Aug-15	17-Sep-15																
DD68058	Submit Updated DDA to SO/ ICE/ IPs	0	24-Dec-14		18-Sep-15																	
DD68068	ICE Approval & Issue Check Cert	12	24-Dec-14	09-Jan-15	18-Sep-15	03-Oct-15																
DD68088	IPs Review	28	24-Dec-14	20-Jan-15	18-Sep-15	15-Oct-15																
DD68210	SO's Review	35	24-Dec-14	27-Jan-15	18-Sep-15	22-Oct-15																
(I3) DDA for North & South Vent. Bldgs. Service and E&M Provision																						
DD01600	Preparation of DDANth VB Service and E&M Provision	18	12-Sep-14	04-Oct-14	22-Jun-15	13-Jul-15																
DD01605	Review & Comment by JV	24	06-Oct-14	01-Nov-14	14-Jul-15	10-Aug-15																
DD01610	Designer prepare DDA	15	03-Nov-14	19-Nov-14	11-Aug-15	27-Aug-15																
DD01615	Formal Submission of DDA to ICE/ IPs	0		19-Nov-14		27-Aug-15																
DD01620	Advanced Submission to SO	0		19-Nov-14		27-Aug-15																
DD01625	IPs/ SO's Advance Comments/ ICE Comments	28	20-Nov-14	17-Dec-14	28-Aug-15	24-Sep-15																
(J1) DDA Temp. works for Construction of Sth. Vent. Bldg.																						
DD04380	Preparation of DDANth VB & Trench ELS	18	19-Sep-14	11-Oct-14	24-Apr-15A	08-May-15A																
DD04390	Review & Comment by JV	18	13-Oct-14	01-Nov-14	08-May-15A	23-Jun-15																
DD04400	Designer prepare DDA	10	03-Nov-14	13-Nov-14	24-Jun-15	06-Jul-15																
DD04410	Formal Submission of DDA to ICE/ IPs	0		13-Nov-14		06-Jul-15																
DD04420	Advanced Submission to SO	0		13-Nov-14		06-Jul-15																
DD04430	IPs/ SO's Advance Comments/ ICE Comments	28	14-Nov-14	11-Dec-14	07-Jul-15	03-Aug-15																
DD04440	Comments Received	0		11-Dec-14		03-Aug-15																
DD04450	Designer to Reply RiC + Update Submission	21	12-Dec-14	08-Jan-15	04-Aug-15	27-Aug-15																
DD04460	Submit Updated DDA to SO/ ICE/ IPs	0	09-Jan-15		28-Aug-15																	
DD04470	ICE Approval & Issue Check Cert	12	09-Jan-15	22-Jan-15	28-Aug-15	10-Sep-15																
DD04480	Submit ICE Check Cert to SO	6	23-Jan-15	29-Jan-15	11-Sep-15	17-Sep-15																
DD04490	IPs Review	28	09-Jan-15	05-Feb-15	28-Aug-15	24-Sep-15																
DD04540	SO's Review	35	09-Jan-15	12-Feb-15	28-Aug-15	01-Oct-15																
(J2) Tower Crane Foundation for Ventilation Building																						
DD70480	Preparation of DDA Tower Crane Foundation for Vent Bldg Construction	18	01-Jun-15	22-Jun-15	15-Oct-15	05-Nov-15																
DD70490	Review & Comment by JV	18	23-Jun-15	14-Jul-15	06-Nov-15	26-Nov-15																
DD70500	Designer prepare DDA	10	15-Jul-15	25-Jul-15	27-Nov-15	08-Dec-15																

- Planned Bar
- Planned Bar - Critical
- Planned Milestone
- Progress bar
- Progress Milestone



Date	Revision	Checked	Approved
12-Feb-14	TMCLKDBJGEN.PRG.98507	WYu	SPa
08-Apr-14	TMCLKDBJGEN.PRG.98507 Rev.B	SPa	WYu
28-Aug-14	TMCLKDBJGEN.PRG.98507 Rev.C	CLa	WYu

Activity ID	Activity Name	Orig Dur	Planned Start	Planned Finish	Current Start	Current Finish	2015																		
							Mar	Apr	May	Jun	Jul	Aug	Sep	Oct	Nov	Dec									
DD71060	IPs No Objection Received	0		27-Jun-14		22-Jun-15																			
DD71070	SO's Review	35	31-May-14	04-Jul-14	23-Dec-14A	24-Jun-15																			
DD71080	SO Approval with Condition Received	0		04-Jul-14		24-Jun-15																			
DD71200	TBM Segment Mould Acceptance & Trial	0	11-Jul-14			24-Jun-15																			
(G1) DDA for TBM Tunnel Lining Structural Design - Sub-sea tunnel																									
DD6670	Sub-sea TBM Tunnel Segment - Fabrication	265	06-Oct-14	29-Aug-15	03-Jan-15A	18-Mar-16															Sub-sea TBM Tunnel Segment - Fab				
(G1) DDA for TBM Tunnel Lining Settlement Analysis & Confinement Pressure - Sub-sea tunnel																									
AN1150	DDA Settlement Analysis & Confinement Pressure for Sub-sea Tunnel	246	21-Nov-13	24-Sep-14	21-Nov-13A	13-Apr-15A															Pre for Sub-sea Tunnel				
DD6690	Preparation of DDATBM Confinement - Sub-sea tunnel	0	25-Sep-14	25-Sep-14	13-Apr-15A	13-Apr-15A															Preparation of DDATBM Confinement - Sub-sea				
DD6700	Review & Comment by JV	12	25-Sep-14	10-Oct-14	13-Apr-15A	09-May-15A																			
DD6705	Designer prepare DDA	12	11-Oct-14	24-Oct-14	09-May-15A	10-May-15A																			
DD6710	Formal Submission of DDA to ICE/ IPs	0		24-Oct-14		10-May-15A																			
DD6715	Advanced Submission to SO	0		24-Oct-14		10-May-15A																			
DD6720	IPs/ SO's Advance Comments/ ICE Comments	28	25-Oct-14	21-Nov-14	10-May-15A	23-Jun-15															Comments/ ICE Comments				
DD67258	Comments Received	0		21-Nov-14		23-Jun-15																			
DD6730	Designer to Reply RIC + Update Submission	21	22-Nov-14	16-Dec-14	24-Jun-15	18-Jul-15															RIC + Update Submission				
DD6740	Submit Updated DDA to SO/ ICE/ IPs	0	17-Dec-14		20-Jul-15																DDA to SO/ ICE/ IPs				
DD6750	ICE Approval & Issue Check Cert	12	17-Dec-14	02-Jan-15	20-Jul-15	01-Aug-15															ICE Approval & Issue Check Cert				
DD6760	Submit ICE Check Cert to SO	6	03-Jan-15	09-Jan-15	03-Aug-15	08-Aug-15															Check Cert to SO				
DD6770	IPs Review	28	17-Dec-14	13-Jan-15	20-Jul-15	16-Aug-15															IPs Review				
DD6780	IPs No Objection Received	0		13-Jan-15		16-Aug-15															No Objection Received				
DD6830	SO's Review	35	17-Dec-14	20-Jan-15	20-Jul-15	23-Aug-15															SO's Review				
DD6840	SO Approval with Condition Received	0		20-Jan-15		24-Aug-15															SO Approval with Condition Received				
GEO Submission - Highway Tunnel Permanent Works for Sub-sea Section within the CLPP Influence Zone																									
DD72355	1st Submission to GEO	0				21-Jun-15																			
DD72365	1st Submission GEO Review	0			22-Jun-15	19-Jul-15																			
DD72375	Received GEO Comment	0				19-Jul-15																			
DD72385	Prepare Response to Comment	0			20-Jul-15	31-Jul-15																			
DD72395	2nd Submission to GEO	0				31-Jul-15																			
DD72405	2nd GEO Review	0			01-Aug-15	28-Aug-15																			
DD72415	Received 2nd GEO Comment	0				28-Aug-15																			
DD72425	Prepare Respond to 2nd Comment	0			29-Aug-15	11-Sep-15																			
DD72435	3rd Submission to GEO	0				11-Sep-15																			
DD72445	3rd GEO Review	0			12-Sep-15	16-Sep-15																			
(G3) DDA for TBM Tunnel Internal Structures (Sub-sea)																									
DD00935	Designer to Reply RIC + Update Submission	21	23-Oct-14	15-Nov-14	21-Jan-15A	05-May-15A															Designer Submission				
DD00940	Submit Updated DDA to SO/ ICE/ IPs	0	17-Nov-14		05-May-15A																DDA to SO/ ICE/ IPs				
DD00945	ICE Approval & Issue Check Cert	12	17-Nov-14	29-Nov-14	05-May-15A	15-May-15A															Check Cert				
DD00950	Submit ICE Check Cert to SO	6	01-Dec-14	06-Dec-14	15-May-15A	20-May-15A															Check Cert to SO				
DD00955	IPs Review	28	17-Nov-14	14-Dec-14	05-May-15A	23-Jun-15															IPs Review				
DD00960	IPs No Objection Received	0		14-Dec-14		23-Jun-15															No Objection Received				
DD00980	SO's Review	35	17-Nov-14	21-Dec-14	05-May-15A	25-Jun-15															SO's Review				
DD00985	SO Approval with Condition Received	0		22-Dec-14		25-Jun-15															Condition Received				
DD00995	Sub-sea Internal Structure - Precast Gallery Mould Design & Fabrication	24	22-Dec-14	21-Jan-15	26-Jun-15	24-Jul-15															Sub-sea Internal Structure - Precast Gallery Mould Design & Fabrication				
DD01015	Sub-sea Tunnel - Precast Gallery Fabrication	244	22-Jan-15	21-Nov-15	25-Jul-15	25-May-16															Sub-sea				
Construction																									
Sub-sea TBM Tunnel - NB ID12.2m - S881																									
TBM10080	NB TBM Change diameter at North Ventilation Shaft	87	31-Aug-15	25-Nov-15	25-Jan-16	27-Apr-16																NB TBM			
Sub-sea Tunnel Cross Passage & Internal Structure																									
Design Submission																									
(G4) DDA for Cross Passage - Permanent works - incl. Geotechnical Assessment - Sub-sea tunnel																									
AN1180	Early DDA Sub-sea Cross Passage Lining & CP Opening	151	03-Jun-14	29-Nov-14	03-Jun-14A	26-Jun-15																Cross Passage Lining & CP Opening			
DD01100	Preparation of DDACross Passage incl. Detailed Geotechnical Assessment	0	01-Dec-14	01-Dec-14	27-Jun-15	27-Jun-15																Cross Passage incl. Detailed Geotechnical Assessment			
DD01105	Review & Comment by JV	6	01-Dec-14	06-Dec-14	27-Jun-15	04-Jul-15																JV			
DD01110	Designer prepare DDA	12	08-Dec-14	20-Dec-14	06-Jul-15	18-Jul-15																DDA			
DD01115	Formal Submission of DDA to ICE/ IPs	0		20-Dec-14		18-Jul-15																Submission of DDA to ICE/ IPs			
DD01120	Advanced Submission to SO	0		20-Dec-14		18-Jul-15																Submission to SO			
DD01125	IPs/ SO's Advance Comments/ ICE Comments	28	21-Dec-14	17-Jan-15	19-Jul-15	15-Aug-15																Advance Comments/ ICE Comments			
DD01130	Comments Received	0		17-Jan-15		15-Aug-15																Comments Received			
DD01135	Designer to Reply RIC + Update Submission	21	19-Jan-15	11-Feb-15	17-Aug-15	09-Sep-15																Designer to Reply RIC + Update Submission			
DD01140	Submit Updated DDA to SO/ ICE/ IPs	0	12-Feb-15		10-Sep-15																	Submit Updated DDA to SO/ ICE/ IPs			
DD01145	ICE Approval & Issue Check Cert	12	12-Feb-15	04-Mar-15	10-Sep-15	23-Sep-15																ICE Approval & Issue Check Cert			
DD01155	IPs Review	28	12-Feb-15	11-Mar-15	10-Sep-15	07-Oct-15																IPs Review			
DD01180	SO's Review	35	12-Feb-15	18-Mar-15	10-Sep-15	14-Oct-15																SO's Review			
Method Statement Submission																									
Method Statement of Cross Passage Formwork																									
MS2600	Preparation Method Statement for CP Formwork	25	19-Mar-15	21-Apr-15	15-Oct-15	13-Nov-15																Preparation Method Statement for CP Formwork			
MS2610	Submit Method Statement to SO	0		21-Apr-15		13-Nov-15																Submit Method Statement to SO			
MS2620	SO Reviews & Comments	28	22-Apr-15	19-May-15	14-Nov-15	11-Dec-15																SO Reviews & Comments			
MS2630	Re-submission	18	20-May-15	10-Jun-15	12-Dec-15	05-Jan-16																Re-submission			
MS2640	SO's Review	28	11-Jun-15	08-Jul-15	06-Jan-16	02-Feb-16																SO's Review			
MS2650	SO's Approval	0		08-Jul-15		02-Feb-16																SO's Approval			
Method Statement of Cross Passage Ground Freezing																									

- Planned Bar
- Planned Bar - Critical
- ◆ Planned Milestone
- Progress bar
- ◆ Progress Milestone

TMCLK - Northern Connection Sub-Sea Tunnel Section
Detailed Works Programme (Rev. C) - Three months rolling programme
Progress as of 21-Jul-15



Date	Revision	Checked	Approved
12-Feb-14	TMCLKDBJGEN/PRG/98507	WYu	SPa
08-Apr-14	TMCLKDBJGEN/PRG/98507 Rev B	SPa	WYu
28-Aug-14	TMCLKDBJGEN/PRG/98507 Rev C	CLa	WYu

Activity ID	Activity Name	Orig Dur	Planned Start	Planned Finish	Current Start	Current Finish	2015											
							Mar	Apr	May	Jun	Jul	Aug	Sep	Oct	Nov	Dec		
MS1300	Preparation Method Statement for CP Ground Freezing	25	17-Sep-14	17-Oct-14	08-Apr-15A	12-Apr-15A												
MS1310	Submit Method Statement to SO/ ICE	0		17-Oct-14		12-Apr-15A												
MS1320	SO Reviews & Comments/ ICE Comments	28	18-Oct-14	14-Nov-14	12-Apr-15A	26-Apr-15A												
MS1330	Re-submission	18	15-Nov-14	05-Dec-14	26-Apr-15A	05-May-15A												
MS1340	ICE Approval & Issue Check Cert.	18	06-Dec-14	29-Dec-14	05-May-15A	20-May-15A												
MS1350	SO's Review	28	06-Dec-14	02-Jan-15	05-May-15A	18-May-15A												
MS1360	SO's Approval	0		02-Jan-15		18-May-15A												

Southern Landfall

South Cut & Cover Tunnel

Design Submission

(E2) AIP for South C&C Box & Ramp Structure

AP3210	SO Review (35 Days)	35	14-Oct-14	17-Nov-14	03-Dec-14A	27-May-15A												
AP3220	SO Approval with Condition Received	0		17-Nov-14		27-May-15A												

(E2) DDA for South C&C Box & Ramp Structure

DD00460	Preparation DDA Sth C&C Box and Approach Ramp	18	18-Nov-14	08-Dec-14	22-Jun-15	13-Jul-15												
DD00470	Review & Comment by JV	18	09-Dec-14	31-Dec-14	14-Jul-15	03-Aug-15												
DD00480	Designer prepare DDA	10	02-Jan-15	13-Jan-15	04-Aug-15	14-Aug-15												
DD00490	Formal Submission of DDA to ICE/ IPs	0		13-Jan-15		14-Aug-15												
DD00500	Advanced Submission to SO	0		13-Jan-15		14-Aug-15												
DD00510	IPs/ SO's Advance Comments/ ICE Comments	28	14-Jan-15	10-Feb-15	15-Aug-15	11-Sep-15												
DD00520	Comments Received	0		10-Feb-15		11-Sep-15												
DD00530	Designer to Reply RIC + Update Submission	21	11-Feb-15	13-Mar-15	12-Sep-15	08-Oct-15												
DD00550	ICE Approval & Issue Check Cert	18	14-Mar-15	08-Apr-15	09-Oct-15	30-Oct-15												
DD00560	Submit ICE Check Cert to SO	6	09-Apr-15	15-Apr-15	31-Oct-15	06-Nov-15												
DD00570	IPs Review	28	14-Mar-15	10-Apr-15	09-Oct-15	05-Nov-15												
DD00580	IPs No Objection Received	0		10-Apr-15		05-Nov-15												
DD00620	SO's Review	35	14-Mar-15	17-Apr-15	09-Oct-15	12-Nov-15												
DD00630	SO Approval with Condition Received	0		17-Apr-15		12-Nov-15												

ETWB TCW No. 15/2005 - Geotechnical Risk Assessment C&C Tunnels at Southern Landfall

GEO1300	1st Submission to GEO - ETWB TCW No. 15/2005 - Geotechnical Risk Assessment C&C Tunnels at Southern Landfall	0		11-Jun-15		13-Oct-15												
GEO1305	1st Submission GEO Review	28	12-Jun-15	09-Jul-15	14-Oct-15	10-Nov-15												
GEO1310	Received GEO Comment	0		09-Jul-15		10-Nov-15												
GEO1315	Prepare Response to Comment	12	10-Jul-15	23-Jul-15	11-Nov-15	24-Nov-15												
GEO1320	2nd Submission to GEO	0		23-Jul-15		24-Nov-15												
GEO1325	2nd GEO Review	28	24-Jul-15	20-Aug-15	25-Nov-15	22-Dec-15												

(F3) AIP Temp. Support for South C&C, Portal & ELS

DD69600	Review & Comment by JV	18	14-Oct-14	03-Nov-14	20-Mar-15A	26-Mar-15A												
DD69610	Designer prepare AIP	10	04-Nov-14	14-Nov-14	26-Mar-15A	02-Apr-15A												
DD69620	Formal Submission of AIP to ICE/ IPs	0		14-Nov-14		02-Apr-15A												
DD69630	Advanced Submission to SO	0		14-Nov-14		02-Apr-15A												
DD69640	IPs/ SO's Advance Comments/ ICE Comments	28	15-Nov-14	12-Dec-14	02-Apr-15A	23-Jun-15												
DD69650	Comments Received	0		12-Dec-14		23-Jun-15												
DD69660	Designer to Reply RIC + Update Submission	21	13-Dec-14	09-Jan-15	24-Jun-15	18-Jul-15												
DD69670	Submit Updated AIP to SO/ ICE/ IPs	0	10-Jan-15		20-Jul-15													
DD69680	ICE Approval & Issue Check Cert	12	10-Jan-15	23-Jan-15	20-Jul-15	01-Aug-15												
DD69690	IPs Review	28	10-Jan-15	06-Feb-15	20-Jul-15	16-Aug-15												
DD69700	IPs No Objection Received	0		06-Feb-15		16-Aug-15												
DD69710	SO's Review	35	10-Jan-15	13-Feb-15	20-Jul-15	23-Aug-15												
DD69720	SO Approval with Condition Received	0		13-Feb-15		24-Aug-15												

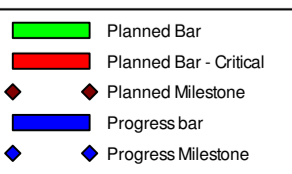
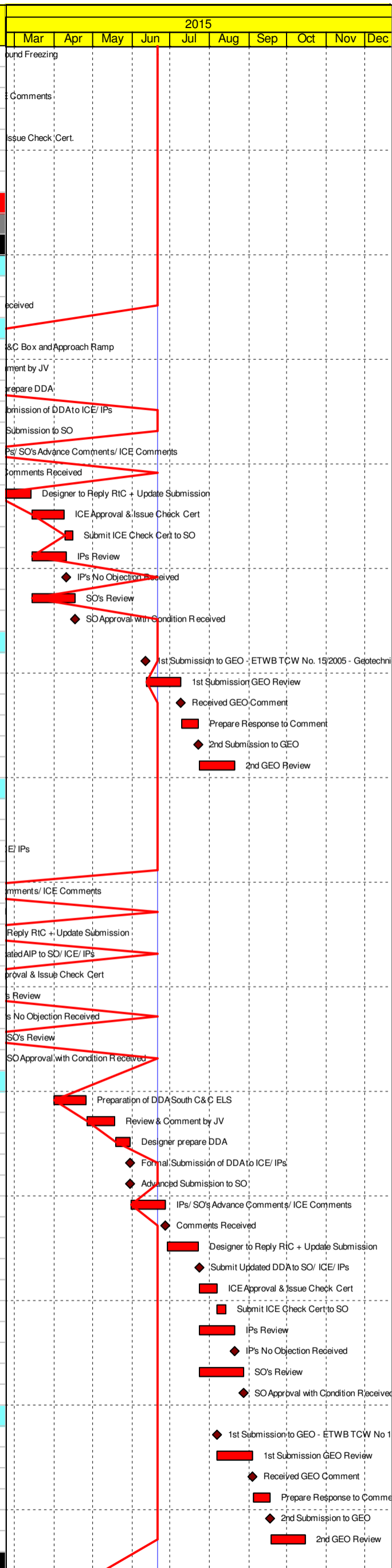
(F3) DDA Temp. Support for South C&C, Portal & ELS

DD04000	Preparation of DDA South C&C ELS	18	01-Apr-15	25-Apr-15	24-Aug-15	12-Sep-15												
DD04010	Review & Comment by JV	18	27-Apr-15	18-May-15	14-Sep-15	06-Oct-15												
DD04020	Designer prepare DDA	10	19-May-15	30-May-15	07-Oct-15	17-Oct-15												
DD04030	Formal Submission of DDA to ICE/ IPs	0		30-May-15		17-Oct-15												
DD04040	Advanced Submission to SO	0		30-May-15		17-Oct-15												
DD04050	IPs/ SO's Advance Comments/ ICE Comments	28	31-May-15	27-Jun-15	18-Oct-15	14-Nov-15												
DD04060	Comments Received	0		27-Jun-15		14-Nov-15												
DD04070	Designer to Reply RIC + Update Submission	21	29-Jun-15	23-Jul-15	16-Nov-15	09-Dec-15												
DD04080	Submit Updated DDA to SO/ ICE/ IPs	0	24-Jul-15		10-Dec-15													
DD04090	ICE Approval & Issue Check Cert	12	24-Jul-15	06-Aug-15	10-Dec-15	23-Dec-15												
DD04100	Submit ICE Check Cert to SO	6	07-Aug-15	13-Aug-15	24-Dec-15	02-Jan-16												
DD04110	IPs Review	28	24-Jul-15	20-Aug-15	10-Dec-15	06-Jan-16												
DD04120	IPs No Objection Received	0		20-Aug-15		06-Jan-16												
DD04160	SO's Review	35	24-Jul-15	27-Aug-15	10-Dec-15	13-Jan-16												
DD04170	SO Approval with Condition Received	0		27-Aug-15		13-Jan-16												

ETWB TCW No 15/2005 - ELS Design for C&C Tunnel at Southern Landfall

GEO1390	1st Submission to GEO - ETWB TCW No 15/2005 - ELS Design for C&C Tunnel at Southern Landfall	0		06-Aug-15		23-Dec-15												
GEO1395	1st Submission GEO Review	28	07-Aug-15	03-Sep-15	24-Dec-15	20-Jan-16												
GEO1400	Received GEO Comment	0		03-Sep-15		20-Jan-16												
GEO1405	Prepare Response to Comment	12	04-Sep-15	17-Sep-15	21-Jan-16	03-Feb-16												
GEO1410	2nd Submission to GEO	0		17-Sep-15		03-Feb-16												
GEO1415	2nd GEO Review	28	18-Sep-15	15-Oct-15	04-Feb-16	02-Mar-16												

Method Statement Submission



Date	Revision	Checked	Approved
12-Feb-14	TMCLKDBJGEN.PRG.98507	WYu	SPa
08-Apr-14	TMCLKDBJGEN.PRG.98507 Rev.B	SPa	WYu
28-Aug-14	TMCLKDBJGEN.PRG.98507 Rev.C	CLa	WYu

Activity ID	Activity Name	Orig Dur	Planned Start	Planned Finish	Current Start	Current Finish	2015																		
							Mar	Apr	May	Jun	Jul	Aug	Sep	Oct	Nov	Dec									
Method Statement of Construction Methodology of C&C Tunnels																									
MS1700	Preparation Method Statement for C&C Tunnels	25	28-Mar-15	30-Apr-15	22-Jun-15	21-Jul-15																			
MS1710	Submit Method Statement to SO	0		30-Apr-15		21-Jul-15																			
MS1720	SO Reviews & Comments	28	01-May-15	28-May-15	22-Jul-15	18-Aug-15																			
MS1730	Re-submission	18	29-May-15	18-Jun-15	19-Aug-15	08-Sep-15																			
MS1740	SO's Review	28	19-Jun-15	16-Jul-15	09-Sep-15	06-Oct-15																			
MS1750	SO's Approval	0		16-Jul-15		06-Oct-15																			
South Retrieval Shaft																									
Design Submission																									
(A4) Additional Ground Investigation Plan - Phase 3 - Southern Landfall																									
GS2905	SO's Comments for 1st Submission	35	28-Jan-15	03-Mar-15	02-Mar-15A	27-Jun-15																			
GS2910	SO's Condition Approval	0		03-Mar-15		27-Jun-15																			
(A5) Ground Investigation Report - Phase 3 - Southern Landfall																									
GS2960	Preparation of Ground Investigation Report - Phase 3 - Southern Landfall	36	01-Apr-15	18-May-15	28-Jul-15	07-Sep-15																			
GS2970	*1st Submission	0		18-May-15		07-Sep-15																			
GS2980	SO's Comments for 1st Submission	35	19-May-15	22-Jun-15	08-Sep-15	12-Oct-15																			
GS2990	Prepare Re-submission	10	23-Jun-15	04-Jul-15	13-Oct-15	24-Oct-15																			
GS3020	*2nd Submission	0		04-Jul-15		24-Oct-15																			
GS3040	SO's Condition Approval	35	05-Jul-15	08-Aug-15	25-Oct-15	28-Nov-15																			
(B5) AIP Construction Risk Assessment - Impact on South Landfall																									
GS01200	Preparation of Construction Risk Assessment - Impact on South Landfall	36	30-Oct-14	10-Dec-14	02-Feb-15A	02-Apr-15A																			
GS01205	1st Submission	0		10-Dec-14		02-Apr-15A																			
GS01210	SO's Comments for 1st Submission	35	11-Dec-14	14-Jan-15	02-Apr-15A	11-May-15A																			
GS01215	Prepare Re-submission	10	15-Jan-15	26-Jan-15	11-May-15A	03-Jun-15A																			
GS01220	2nd Submission	0		26-Jan-15		03-Jun-15A																			
GS01225	ICE Cert. Issue	6	27-Jan-15	02-Feb-15	03-Jun-15A	10-Jun-15A																			
GS01250	SO's Condition Approval	35	27-Jan-15	02-Mar-15	03-Jun-15A	07-Jul-15																			
(B5) DDA Construction Risk Assessment - Impact on South Landfall																									
DD68500	Preparation of Construction Risk Assessment - Impact on South Landfall	36	03-Mar-15	17-Apr-15	08-Jul-15	18-Aug-15																			
DD68510	1st Submission	0		17-Apr-15		18-Aug-15																			
DD68520	SO's Comments for 1st Submission	35	18-Apr-15	22-May-15	19-Aug-15	22-Sep-15																			
DD68530	Prepare Re-submission	10	23-May-15	04-Jun-15	23-Sep-15	06-Oct-15																			
DD68540	2nd Submission	0		04-Jun-15		06-Oct-15																			
DD68550	ICE Cert. Issue	6	05-Jun-15	11-Jun-15	07-Oct-15	13-Oct-15																			
DD68600	SO's Condition Approval	35	05-Jun-15	09-Jul-15	07-Oct-15	10-Nov-15																			
(F1) AIP Temp. works - Retrieval Shaft on Southern Landfall inc. break-out																									
AP01605	Review & Comment by JV	12	07-Oct-14	20-Oct-14	13-Mar-15A	26-Mar-15A																			
AP01610	Designer Prepare AIP	6	21-Oct-14	27-Oct-14	26-Mar-15A	02-Apr-15A																			
AP01615	Formal Submission of AIP to ICE/IPs	0		27-Oct-14		02-Apr-15A																			
AP01620	Advanced Submission of AIP to SO	0		27-Oct-14		02-Apr-15A																			
AP01625	Review & Comment by SO/ ICE/ IPs	28	28-Oct-14	24-Nov-14	02-Apr-15A	27-Apr-15A																			
AP01630	Advance Comments from SO/ Comments from ICE/ IPs Received	0		24-Nov-14		27-Apr-15A																			
AP01635	Designer to Prepare RIC & Updated AIP	18	25-Nov-14	15-Dec-14	28-Apr-15A	18-May-15A																			
AP01640	Submission of AIP to SO/ ICE together with Reply To Comment (RTC)	0		15-Dec-14		18-May-15A																			
AP01645	Reply to IPs Comments in RTC	0		15-Dec-14		18-May-15A																			
AP01650	ICE Approval & Issue of Design Check Cert.	18	16-Dec-14	08-Jan-15	18-May-15A	29-May-15A																			
AP01655	Check Cert to SO	0		08-Jan-15		29-May-15A																			
AP01660	No Objection or Further Minor Comments from IPs Received	0		08-Jan-15		29-May-15A																			
AP01680	SO Review (35 Days)	35	17-Dec-14	20-Jan-15	18-May-15A	23-Jun-15																			
AP01685	SO Approval with Condition Received	0		20-Jan-15		23-Jun-15																			
(F1) DDA Temp. works - Retrieval Shaft on Southern Landfall inc. break-out																									
DD03510	Preparation of DDA Temp Support for Sth Retrieval Shaft	18	01-Apr-15	25-Apr-15	28-Jul-15	17-Aug-15																			
DD03520	Review & Comment by JV	18	27-Apr-15	18-May-15	18-Aug-15	07-Sep-15																			
DD03530	Designer prepare DDA	6	19-May-15	26-May-15	08-Sep-15	14-Sep-15																			
DD03540	Formal Submission of DDA to ICE/ IPs	0		26-May-15		14-Sep-15																			
DD03550	Advanced Submission to SO	0		26-May-15		14-Sep-15																			
DD03560	IPs/ SO's Advance Comments/ ICE Comments	28	27-May-15	23-Jun-15	15-Sep-15	12-Oct-15																			
DD03570	Comments Received	0		23-Jun-15		12-Oct-15																			
DD03580	Designer to Reply RTC + Update Submission	21	24-Jun-15	18-Jul-15	13-Oct-15	06-Nov-15																			
DD03590	Submit Updated DDA to SO/ ICE/ IPs	0		20-Jul-15		07-Nov-15																			
DD03600	ICE Approval & Issue Check Cert	12	20-Jul-15	01-Aug-15	07-Nov-15	20-Nov-15																			
DD03610	Submit ICE Check Cert to SO	6	03-Aug-15	08-Aug-15	21-Nov-15	27-Nov-15																			
DD03620	IPs Review	28	20-Jul-15	16-Aug-15	07-Nov-15	04-Dec-15																			
DD03630	IPs No Objection Received	0		16-Aug-15		04-Dec-15																			
DD03670	SO's Review	35	20-Jul-15	23-Aug-15	07-Nov-15	11-Dec-15																			
DD03680	SO Approval with Condition Received	0		24-Aug-15		11-Dec-15																			
ETWB TCW No 15/2005 - ELS Design for TBM Retrieval Shaft at Southern Landfall																									
GEO1330	1st Submission to GEO - ETWB TCW No 15/2005 - ELS Design for TBM Retrieval Shaft at Southern Landfall	0		24-Aug-15		11-Dec-15																			
GEO1335	1st Submission GEO Review	28	24-Aug-15	20-Sep-15	12-Dec-15	08-Jan-16																			
(F2) AIP Temp works of Ground Treatment for TBMs passing under Southern Landfall																									
AP01900	Preparation of AIP Ground Improvement works in Sth Landfall Seawall	18	01-Sep-14	22-Sep-14	27-Mar-15A	15-Apr-15A																			
AP01905	Review & Comment by JV	18	23-Sep-14	15-Oct-14	16-Apr-15A	29-May-15A																			
AP01910	Designer Prepare AIP	12	16-Oct-14	29-Oct-14	29-May-15A	29-May-15A																			

■ Planned Bar
■ Planned Bar - Critical
◆ Planned Milestone
■ Progress bar
◆ Progress Milestone



Date	Revision	Checked	Approved
12-Feb-14	TMCLKDBJGEN.PRG.98507	WYu	SPa
08-Apr-14	TMCLKDBJGEN.PRG.98507 Rev B	SPa	WYu
28-Aug-14	TMCLKDBJGEN.PRG.98507 Rev C	CLa	WYu

Activity ID	Activity Name	Orig Dur	Planned Start	Planned Finish	Current Start	Current Finish	2015																	
							Mar	Apr	May	Jun	Jul	Aug	Sep	Oct	Nov	Dec								
AP01915	Formal Submission of AIP to ICE/IPs	0		29-Oct-14		29-May-15A																		
AP01920	Advanced Submission of AIP to SO	0		29-Oct-14		29-May-15A																		
AP01925	Review & Comment by SO/ ICE/ IPs	28	30-Oct-14	26-Nov-14	29-May-15A	29-May-15A																		
AP01930	Advance Commants from SO/ Comments from ICE/ IPs Received	0		26-Nov-14		29-May-15A																		
AP01935	Designer to Prepare RiC & Updated AIP	18	27-Nov-14	17-Dec-14	29-May-15A	29-May-15A																		
AP01940	Submission of AIP to SO/ ICE together with Reply To Comment (RTC)	0		17-Dec-14		29-May-15A																		
AP01945	Reply to IPs Comments in RTC	0		17-Dec-14		29-May-15A																		
AP01950	ICE Approval & Issue of Design Check Cert.	18	18-Dec-14	10-Jan-15	29-May-15A	29-May-15A																		
AP01955	Check Cert to SO	0		10-Jan-15		29-May-15A																		
AP01960	No Objection or Further Minor Comments from IPs Received	0		10-Jan-15		29-May-15A																		
AP01980	SO Review (35 Days)	35	19-Dec-14	22-Jan-15	29-May-15A	29-May-15A																		
AP01985	SO Approval with Condition Received	0		22-Jan-15		29-May-15A																		
(F2) IFA Temp works of Ground Treatment for TBMs passing under Southern Landfall																								
DD04740	Preparation of DDA Ground Improvement in Southern Landfall Seawall	18	01-Apr-15	25-Apr-15	01-Apr-15A	15-Apr-15A																		
DD04750	Review & Comment by JV	18	27-Apr-15	18-May-15	15-Apr-15A	29-Jul-15																		
DD04760	Designer prepare DDA	6	19-May-15	26-May-15	30-Jul-15	05-Aug-15																		
DD04770	Formal Submission of DDA to ICE/ IPs	0		26-May-15		05-Aug-15																		
DD04780	Advanced Submission to SO	0		26-May-15		05-Aug-15																		
DD04790	IPs/ SO's Advance Comments/ ICE Comments	28	27-May-15	23-Jun-15	06-Aug-15	02-Sep-15																		
DD04800	Comments Received	0		23-Jun-15		02-Sep-15																		
DD04810	Designer to Reply RiC + Update Submission	21	24-Jun-15	18-Jul-15	03-Sep-15	26-Sep-15																		
DD04820	Submit Updated DDA to SO/ ICE/ IPs	0		20-Jul-15		29-Sep-15																		
DD04830	ICE Approval & Issue Check Cert	12	20-Jul-15	01-Aug-15	29-Sep-15	13-Oct-15																		
DD04840	Submit ICE Check Cert to SO	6	03-Aug-15	08-Aug-15	14-Oct-15	20-Oct-15																		
DD04850	IPs Review	28	20-Jul-15	16-Aug-15	29-Sep-15	26-Oct-15																		
DD04860	IPs No Objection Received	0		16-Aug-15		26-Oct-15																		
DD04900	SO's Review	35	20-Jul-15	23-Aug-15	29-Sep-15	02-Nov-15																		
DD04910	SO Approval with Condition Received	0		24-Aug-15		02-Nov-15																		
ETWB TCW No 15/2005 - ELS Design for Temporary Measures for Ground Improvement																								
GEO1360	1st Submission to GEO - ETWB TCW No. 15/2005 - ELS Design for Gourned Improvement at Southern Landfall	0		24-Aug-15		02-Nov-15																		
GEO1365	1st Submission GEO Review	28	24-Aug-15	20-Sep-15	03-Nov-15	30-Nov-15																		
(F4) Gantry Crane Support/Foundations in Southern Landfall																								
DD69730	Preparation of IFA Gantry Crane / Foundation	18	27-Jul-15	15-Aug-15	09-Dec-15	31-Dec-15																		
DD69740	Review & Comment by JV	18	17-Aug-15	05-Sep-15	02-Jan-16	22-Jan-16																		
DD69750	Designer prepare IFA	10	07-Sep-15	17-Sep-15	23-Jan-16	03-Feb-16																		
DD69760	Formal Submission of IFA to ICE/ IPs	0		17-Sep-15		03-Feb-16																		
DD69770	Advanced Submission to SO	0		17-Sep-15		03-Feb-16																		
DD69780	IPs/ SO's Advance Comments/ ICE Comments	28	18-Sep-15	15-Oct-15	04-Feb-16	02-Mar-16																		
Method Statement Submission																								
Method Statement of Construction Methodology of Retrieval Shaft																								
MS1600	Preparation Method Statement for Retrieval Shaft	25	24-Aug-15	21-Sep-15	12-Dec-15	13-Jan-16																		
Construction																								
DDP11430	South Landfall GI Works/DW Setting Up	48	06-Aug-15	02-Oct-15	11-Nov-15	08-Jan-16																		
South Ventilation Building																								
Design Submission																								
(I1) DDA for South Vent.Bldg. GBP & Arch.Submission																								
DD01425	IPs/ SO's Advance Comments/ ICE Comments	28	30-Oct-14	26-Nov-14	25-Feb-15A	26-Jul-15																		
DD01430	Comments Received	0		26-Nov-14		27-Jul-15																		
DD01435	Designer to Reply RiC + Update Submission	21	27-Nov-14	20-Dec-14	27-Jul-15	19-Aug-15																		
DD01440	Submit Updated DDA to SO/ ICE/ IPs	0		22-Dec-14		20-Aug-15																		
DD01445	ICE Approval & Issue Check Cert	18	22-Dec-14	14-Jan-15	20-Aug-15	09-Sep-15																		
DD01450	Submit ICE Check Cert to SO	6	15-Jan-15	21-Jan-15	10-Sep-15	16-Sep-15																		
DD01455	IPs Review	28	22-Dec-14	18-Jan-15	20-Aug-15	16-Sep-15																		
DD01460	IPs No Objection Received	0		18-Jan-15		16-Sep-15																		
DD01465	SO's Review	35	22-Dec-14	25-Jan-15	20-Aug-15	23-Sep-15																		
(I2) DDA for South Vent.Bldg. Foundation Design																								
DD01500	Preparation of DDA Sth VB Foundation	18	01-Apr-15	25-Apr-15	20-Aug-15	09-Sep-15																		
DD01505	Review & Comment by JV	18	27-Apr-15	18-May-15	10-Sep-15	02-Oct-15																		
DD01510	Designer prepare DDA	10	19-May-15	30-May-15	03-Oct-15	14-Oct-15																		
DD01515	Formal Submission of DDA to ICE/ IPs	0		30-May-15		14-Oct-15																		
DD01520	Advanced Submission to SO	0		30-May-15		14-Oct-15																		
DD01525	IPs/ SO's Advance Comments/ ICE Comments	28	31-May-15	27-Jun-15	15-Oct-15	11-Nov-15																		
DD01530	Comments Received	0		27-Jun-15		11-Nov-15																		
DD01535	Designer to Reply RiC + Update Submission	21	29-Jun-15	23-Jul-15	12-Nov-15	05-Dec-15																		
DD01540	Submit Updated DDA to SO/ ICE/ IPs	0		24-Jul-15		07-Dec-15																		
DD01545	ICE Approval & Issue Check Cert	18	24-Jul-15	13-Aug-15	07-Dec-15	29-Dec-15																		
DD01550	Submit ICE Check Cert to SO	6	14-Aug-15	20-Aug-15	30-Dec-15	06-Jan-16																		
DD01555	IPs Review	28	24-Jul-15	20-Aug-15	07-Dec-15	03-Jan-16																		
DD01560	IPs No Objection Received	0		20-Aug-15		03-Jan-16																		
DD01580	SO's Review	35	24-Jul-15	27-Aug-15	07-Dec-15	10-Jan-16																		
DD01585	SO Approval with Condition Received	0		27-Aug-15		11-Jan-16																		
(I2) DDA for South Vent.Bldg.Structural Design incl.Vent.Connections																								
DD67820	Designer prepare DDA	10	18-Mar-15	28-Mar-15	04-Dec-15	15-Dec-15																		

■ Planned Bar
■ Planned Bar - Critical
◆ Planned Milestone
■ Progress bar
◆ Progress Milestone



Date	Revision	Checked	Approved
12-Feb-14	TMCLKDBJGEN/PRG/98507	WYu	SPa
08-Apr-14	TMCLKDBJGEN/PRG/98507 Rev B	SPa	WYu
28-Aug-14	TMCLKDBJGEN/PRG/98507 Rev C	CLa	WYu

Activity ID	Activity Name	Orig Dur	Planned Start	Planned Finish	Current Start	Current Finish	2015																
							Mar	Apr	May	Jun	Jul	Aug	Sep	Oct	Nov	Dec							
DD67828	Formal Submission of DDA to ICE/ IPs	0		28-Mar-15		15-Dec-15																	
DD67830	Advanced Submission to SO	0		28-Mar-15		15-Dec-15																	
DD67838	IPs/ SO's Advance Comments/ ICE Comments	28	29-Mar-15	25-Apr-15	16-Dec-15	12-Jan-16																	
DD67840	Comments Received	0		25-Apr-15		12-Jan-16																	
DD67848	Designer to Reply RIC + Update Submission	21	27-Apr-15	21-May-15	13-Jan-16	05-Feb-16																	
DD67858	Submit Updated DDA to SO/ ICE/ IPs	0	22-May-15		06-Feb-16																		
DD67868	ICE Approval & Issue Check Cert	18	22-May-15	12-Jun-15	06-Feb-16	04-Mar-16																	
DD67878	Submit ICE Check Cert to SO	6	13-Jun-15	19-Jun-15	05-Mar-16	11-Mar-16																	
DD67888	IPs Review	28	22-May-15	18-Jun-15	06-Feb-16	04-Mar-16																	
DD67898	IPs No Objection Received	0		18-Jun-15		04-Mar-16																	
DD67940	SO's Review	35	22-May-15	25-Jun-15	06-Feb-16	11-Mar-16																	
DD67950	SO Approval with Condition Received	0		25-Jun-15		11-Mar-16																	
(J1) DDA Temp. works for Construction of Sth.Vent.Bldg.																							
DD04560	Preparation of DDA South VB ELS	18	01-Jun-15	22-Jun-15	15-Oct-15	05-Nov-15																	
DD04570	Review & Comment by JV	18	23-Jun-15	14-Jul-15	06-Nov-15	26-Nov-15																	
DD04580	Designer prepare DDA	10	15-Jul-15	25-Jul-15	27-Nov-15	08-Dec-15																	
DD04590	Formal Submission of DDA to ICE/ IPs	0		25-Jul-15		08-Dec-15																	
DD04600	Advanced Submission to SO	0		25-Jul-15		08-Dec-15																	
DD04610	IPs/ SO's Advance Comments/ ICE Comments	28	26-Jul-15	22-Aug-15	09-Dec-15	05-Jan-16																	
DD04620	Comments Received	0		22-Aug-15		05-Jan-16																	
DD04630	Designer to Reply RIC + Update Submission	21	24-Aug-15	16-Sep-15	06-Jan-16	29-Jan-16																	
DD04640	Submit Updated DDA to SO/ ICE/ IPs	0	17-Sep-15		30-Jan-16																		
DD04650	ICE Approval & Issue Check Cert	12	17-Sep-15	02-Oct-15	30-Jan-16	19-Feb-16																	
DD04670	IPs Review	28	17-Sep-15	14-Oct-15	30-Jan-16	26-Feb-16																	
DD04720	SO's Review	35	17-Sep-15	21-Oct-15	30-Jan-16	04-Mar-16																	
Construction																							
DDP11930	Mobilization & Setting Up Piling Rigs	64	06-Aug-15	22-Oct-15	06-Aug-15	22-Oct-15																	
South Surface Roadworks, Utility & Drainage works																							
Design Submission																							
(E3) DDA for Sewerage, Drainage, Waterworks & Utility works for South Landfall																							
DD05820	Review & Comment by JV	18	29-Nov-14	19-Dec-14	16-Mar-15A	25-Mar-15A																	
DD05830	Designer prepare DDA	10	20-Dec-14	03-Jan-15	25-Mar-15A	27-Mar-15A																	
DD05840	Advanced Submission to SO	0		03-Jan-15		27-Mar-15A																	
DD05850	Formal Submission of DDA to ICE/ IPs	0		03-Jan-15		27-Mar-15A																	
DD05860	IPs/ SO's Advance Comments/ ICE Comments	28	04-Jan-15	31-Jan-15	27-Mar-15A	23-Jun-15																	
DD05870	Comments Received	0		31-Jan-15		23-Jun-15																	
DD05880	Designer to Reply RIC + Update Submission	21	02-Feb-15	04-Mar-15	24-Jun-15	18-Jul-15																	
DD05890	Submit Updated DDA to SO/ ICE/ IPs	0	05-Mar-15		20-Jul-15																		
DD05900	ICE Approval & Issue Check Cert	12	05-Mar-15	18-Mar-15	20-Jul-15	01-Aug-15																	
DD05910	Submit ICE Check Cert to SO	6	19-Mar-15	25-Mar-15	03-Aug-15	08-Aug-15																	
DD05920	IPs Review	28	05-Mar-15	01-Apr-15	20-Jul-15	16-Aug-15																	
DD05930	IPs No Objection Received	0		01-Apr-15		16-Aug-15																	
DD05940	SO's Review	35	05-Mar-15	08-Apr-15	20-Jul-15	23-Aug-15																	
DD05950	SO Approval with Condition Received	0		08-Apr-15		24-Aug-15																	
Method Statement Submission																							
Method Statement of Ground Treatment for TBMs Passing under Southern Landfall Seawall																							
MS2700	Preparation Method Statement for Ground Improvement in South Landfall	9	20-Jul-15	29-Jul-15	29-Sep-15	09-Oct-15																	
MS2710	Submit Method Statement to SO	0		29-Jul-15		09-Oct-15																	
MS2720	SO Reviews & Comments	28	30-Jul-15	26-Aug-15	10-Oct-15	06-Nov-15																	
MS2730	Re-submission	6	27-Aug-15	02-Sep-15	07-Nov-15	13-Nov-15																	
MS2740	SO's Review	28	03-Sep-15	30-Sep-15	14-Nov-15	11-Dec-15																	
Construction																							
DDP11435	Temporary Platform for Ground Treatment for TBM passing under Southern Seawall	48	06-Aug-15	02-Oct-15	06-Aug-15	02-Oct-15																	

Planned Bar
 Planned Bar - Critical
 Planned Milestone
 Progress bar
 Progress Milestone

TMCLK - Northern Connection Sub-Sea Tunnel Section
 Detailed Works Programme (Rev. C) - Three months rolling programme
 Progress as of 21-Jul-15



Date	Revision	Checked	Approved
12-Feb-14	TMCLKDBJGEN.PRG.98507	WYu	SPa
08-Apr-14	TMCLKDBJGEN.PRG.98507 Rev.B	SPa	WYu
28-Aug-14	TMCLKDBJGEN.PRG.98507 Rev.C	CLa	WYu