

Activity ID	Activity Name	Orig Dur	Planned Start	Planned Finish	Current Start	Current Finish	2015								2016
							May	Jun	Jul	Aug	Sep	Oct	Nov	Dec	Jan
<b>TMCLK - Northern Connection Sub-Sea Tunnel Section</b>															
<b>General Submissions</b>															
<b>General Design Submissions</b>															
<b>(A19) DDA for Roadworks &amp; Project Alignment</b>															
DD68370	SO's Review	35	18-Sep-14	22-Oct-14	22-Dec-14A	15-Jul-15A									
<b>(G6) IFA for Tunnel GBP</b>															
DD70750	SO's Review	35	29-Apr-14	02-Jun-14	03-Jul-14A	30-Aug-15									
DD70760	SO Approval with Condition R received	0		03-Jun-14		31-Aug-15									
<b>Construction Supervision Plan</b>															
GEO1115	2nd GEO Review	28	29-Mar-14	25-Apr-14	01-Feb-14A	11-Jun-15 A									
<b>Construction</b>															
<b>Northern Landfall</b>															
<b>North Reclamation (Phase 1)</b>															
<b>Construction</b>															
<b>Zone D1</b>															
<b>Reclamation</b>															
NRC15160	Surcharge Removal - Zone D1 - (CH205 to 255) to +6mPD	8	09-Nov-15	17-Nov-15	17-Dec-15	19-Dec-15									
NRC15180	Surcharge Removal - Zone D1 - (CH255 to 305) to +6mPD	7	24-Nov-15	01-Dec-15	19-Dec-15A	07-Jan-16									
NRC15190	Surcharge Period - Zone D1 - (CH305 to 355)	180	19-Nov-14	17-May-15	03-Jun-15A	06-Jul-15A									
NRC15200	Surcharge Removal - Zone D1 - (CH305 to 355)	7	18-May-15	26-May-15	03-Jun-15A	06-Jul-15A									
<b>Zone D2</b>															
<b>Reclamation</b>															
NRC15210	Surcharge Period - Zone D2 - (CH355 to 405)	180	02-Dec-14	30-May-15	17-Nov-14A	15-May-15A									
NRC15220	Surcharge Removal - Zone D2 - (CH355 to 405)	9	01-Jun-15	10-Jun-15	15-Jun-15A	08-Jul-15A									
NRC15230	Surcharge Period - Zone D2 - (CH405 to 443)	180	12-Dec-14	09-Jun-15	21-Nov-14A	19-May-15A									
NRC15240	Surcharge Removal - Zone D2 - (CH405 to 443)	9	11-Jun-15	22-Jun-15	15-Jun-15A	10-Jul-15A									
<b>Zone C1</b>															
<b>Reclamation</b>															
NRC15260	Surcharge Removal - Zone C1 - (CH443 to 493)	10	06-May-17	17-May-17	27-Jun-15A	07-Aug-15A									
NRC15270	Surcharge Period - Zone C1 - (CH493 to 543)	180	13-Nov-14	12-May-15	31-Dec-14A	28-Jun-15A									
NRC15280	Surcharge Removal - Zone C1 - (CH493 to 543)	10	06-May-17	17-May-17	22-Jul-15A	14-Aug-15A									
<b>Zone C2</b>															
<b>Reclamation</b>															
NRC15290	Surcharge Period - Zone C2 - (CH543 to 598)	180	05-Nov-14	03-May-15	31-Dec-14A	28-Jun-15A									
<b>Zone B</b>															
<b>Vertical Seawall</b>															
NRC11400	VS - Mass Concrete Coping - Zone B - (CH598 to 648)	8	01-Sep-14	10-Sep-14	21-Oct-14A	16-Jul-15A									
NRC11410	VS - Mass Concrete Coping - Zone B - (CH648 to 698)	8	11-Sep-14	19-Sep-14	20-Nov-14A	16-Jul-15A									
NRC11420	VS - Mass Concrete Coping - Zone B - (CH698 to 738)	8	20-Sep-14	29-Sep-14	02-Dec-14A	16-Jul-15A									
<b>Reclamation</b>															
NRC11990	Public Fill - Zone B - (CH598 to 648) to +10mPD	6	29-Aug-15	04-Sep-15	20-Sep-14A	22-Sep-14A									
NRC15310	Surcharge Period - Zone B - (CH598 to 648)	180	05-Sep-15	02-Mar-16	22-Sep-14A	20-Mar-15A									
NRC15320	Surcharge Removal - Zone B - (CH598 to 648)	10	03-Mar-16	14-Mar-16	29-Aug-15	09-Sep-15									
NRC15360	Surcharge Removal - Zone B - (CH698 to 738)	10	25-Mar-15	10-Apr-15	29-Aug-15	09-Sep-15									
<b>Zone A1</b>															
<b>Reclamation</b>															
NRC15380	Surcharge Removal - Zone A1 - (CH738 to 793)	10	26-May-15	06-Jun-15	16-Jul-15A	16-Jul-15A									
<b>Zone A2</b>															
<b>Sloping Seawall</b>															
NRC12760	SS - Armour Rock - Zone A2 - (CH843 to 893)	4	14-Jun-14	19-Jun-14	16-Apr-15A	29-Aug-15									
NRC12770	SS - Armour Rock - Zone A2 - (CH893 to 956)	4	19-Jun-14	24-Jun-14	16-Apr-15A	31-Aug-15									
<b>Reclamation</b>															
NRC15390	Surcharge Period - Zone A2 - (CH793 to 843)	180	10-Dec-14	08-Jun-15	11-Nov-14 A	09-May-15A									
NRC15400	Surcharge Removal - Zone A2 - (CH738 to 956)	10	08-Jun-15	19-Jun-15	08-Jun-15A	02-Sep-15									
<b>Zone F</b>															
<b>CH184 to CH231</b>															
A6416230	F - Anchor wall Installation - CH184 to CH231	4	10-Feb-14	13-Feb-14	29-Aug-15	02-Sep-15									
A6416290	F - Backfilling up to 0.0mPD & G2 Installation to Anchor Wall - CH184 to CH231	3	14-Feb-14	16-Feb-14	16-Mar-15A	04-Sep-15									
A6416295	F - Backfilling up to +3.0mPD & G1 Installation to Anchor Wall - CH184 to CH231	2	17-Feb-14	18-Feb-14	16-Mar-15A	05-Sep-15									
A6416300	F - Backfilling up to +6.0mPD to Anchor Wall - CH184 to CH231	2	19-Feb-14	20-Feb-14	06-Sep-15	07-Sep-15									
A6416400	F - Backfilling up to +6.0mPD to Existing Seawall - CH184 to CH231	1	21-Feb-14	21-Feb-14	08-Sep-15	08-Sep-15									
<b>CH231 to CH278</b>															
A6416280	F - Backfilling up to +6.0mPD - CH231 to CH278	2	17-Apr-14	18-Apr-14	03-Sep-15	04-Sep-15									
A6416310	F - Anchor wall Installation - CH231 to CH278	4	22-Apr-14	25-Apr-14	05-Sep-15	09-Sep-15									
A6416480	F - Backfilling up to 0.0mPD & G2 Installation to Anchor Wall - CH231 to CH278	3	26-Apr-14	28-Apr-14	03-Mar-15A	10-Sep-15									
A6416490	F - Backfilling up to +3.0mPD & G1 Installation to Anchor Wall - CH231 to CH278	2	29-Apr-14	30-Apr-14	10-Mar-15A	11-Sep-15									
A6416500	F - Backfilling up to +6.0mPD to Anchor Wall - CH231 to CH278	2	01-May-14	02-May-14	12-Sep-15	13-Sep-15									
A6416510	F - Backfilling up to +6.0mPD to Existing Seawall - CH231 to CH278	1	03-May-14	03-May-14	14-Sep-15	14-Sep-15									
<b>CH278 to CH327</b>															
A6416220	F - Backfilling up to +6.0mPD - CH278 to CH327	2	12-Apr-14	13-Apr-14	01-Sep-15	02-Sep-15									
A6416340	F - Anchor wall Installation - CH278 to CH327	4	26-Apr-14	30-Apr-14	10-Sep-15	14-Sep-15									
A6416520	F - Backfilling up to 0.0mPD & G2 Installation to Anchor Wall - CH278 to CH327	3	01-May-14	03-May-14	03-Mar-15A	15-Sep-15									
A6416530	F - Backfilling up to +3.0mPD & G1 Installation to Anchor Wall - CH278 to CH327	3	04-May-14	06-May-14	10-Mar-15A	16-Sep-15									

■ Planned Bar  
■ Planned Bar - Critical  
■ Progress bar  
◆ Planned Milestone  
◆ Progress Milestone

**TMCLK - Northern Connection Sub-Sea Tunnel Section**  
**Detailed Works Programme (Rev. F) - Three Months**  
**Rolling Programme**  
 Progress as of 28-Aug-15



Date	Revision	Checked	Approved
12-Feb-14	TMCLKDBJGENPRG98507	WYu	SPu
08-Apr-14	TMCLKDBJGENPRG98507 Rev.B	SPu	WYu
28-Aug-14	TMCLKDBJGENPRG98507 Rev.C	CLa	WYu
10-Jun-15	TMCLKDBJGENPRG98507 Rev.F	WYu	

Activity ID	Activity Name	Orig Dur	Planned Start	Planned Finish	Current Start	Current Finish	2015												2016	
							May	Jun	Jul	Aug	Sep	Oct	Nov	Dec	Jan					
A6416540	F - Backfilling up to +6.0mPD to Anchor Wall - CH278 to CH327	3	07-May-14	09-May-14	17-Sep-15	19-Sep-15														
A6416550	F - Backfilling to +6.0mPD to Existing Seawall - CH278 to CH327	1	10-May-14	10-May-14	20-Sep-15	20-Sep-15														
<b>CH327 to CH381</b>																				
A6416170	F - Backfilling up to +6.0mPD - CH327 to CH381	3	04-Apr-14	06-Apr-14	29-Aug-15	31-Aug-15														
A6416370	F - Anchor wall Installation - CH327 to CH381	3	02-May-14	05-May-14	15-Sep-15	17-Sep-15														
A6416560	F - Backfilling up to 0.0mPD & G2 Installation to Anchor Wall - CH327 to CH381	3	06-May-14	08-May-14	03-Mar-15A	18-Sep-15														
A6416570	F - Backfilling up to +3.0mPD & G1 Installation to Anchor Wall - CH327 to CH381	3	09-May-14	11-May-14	10-Mar-15A	19-Sep-15														
A6416580	F - Backfilling up to +6.0mPD to Anchor Wall - CH327 to CH381	2	12-May-14	13-May-14	20-Sep-15	21-Sep-15														
A6416590	F - Backfilling to +6.0mPD to Existing Seawall - CH327 to CH381	1	14-May-14	14-May-14	22-Sep-15	22-Sep-15														

**Box Culvert Extension**

**Construction**

**Ch000-010 Culvert Outfall**

Activity ID	Activity Name	Orig Dur	Planned Start	Planned Finish	Current Start	Current Finish
A1000	Installation of temporary bulk head	26	10-Aug-15	08-Sep-15	28-Nov-15	30-Dec-15
A1010	Removal of public fill at outfall area	4	09-Sep-15	12-Sep-15	31-Dec-15	05-Jan-16
A1020	Cut sheet pile wall below water level by diver	18	14-Sep-15	06-Oct-15	06-Jan-16	26-Jan-16
A1030	Removal of temporary seawall block	3	07-Oct-15	09-Oct-15	27-Jan-16	29-Jan-16
A1040	Preparation & pour blinding concrete base of box culvert outfall	8	10-Oct-15	19-Oct-15	30-Jan-16	15-Feb-16
A1050	Install precast culvert element by barge (5 nos.)	21	20-Oct-15	13-Nov-15	16-Feb-16	10-Mar-16
A1060	Concreting in-situ Top Slab and stich joint	12	14-Nov-15	27-Nov-15	11-Mar-16	24-Mar-16

**CH000-150 Land Section**

**ELS Foundation**

Activity ID	Activity Name	Orig Dur	Planned Start	Planned Finish	Current Start	Current Finish
A6416891	Bored Pile Construction - A33 to A54 (3 Rigs) - 22 out of 22 piles	11	11-Nov-14	22-Nov-14	27-Jul-15A	07-Aug-15A
A6416891 EOT	Inclement Weather - Bored Pile Construction - A33 to A54 (3 Rigs) - 22 out of 22 piles	5	24-Nov-14	28-Nov-14	08-Aug-15A	13-Aug-15A
A6418180	Ch010-100 - Pump test for Excavation	24	12-Feb-15	18-Mar-15	27-Jul-15A	22-Aug-15A
A6418190	Ch010-100 - Toe Grouting (if required)	24	19-Mar-15	20-Apr-15	24-Aug-15A	19-Sep-15A

**ELS & Structure**

**Pile A43/A41 CJ to Pile A41/A39 CJ**

<b>ELS</b>						
Activity ID	Activity Name	Orig Dur	Planned Start	Planned Finish	Current Start	Current Finish
A1610	Installation of strut S1	5	08-May-15	13-May-15	20-Aug-15A	01-Sep-15
A1620	Excavation to FEL	5	14-May-15	19-May-15	02-Sep-15	07-Sep-15

**Box Culvert Structure**

Activity ID	Activity Name	Orig Dur	Planned Start	Planned Finish	Current Start	Current Finish
A1630	Pile cap construction	10	27-May-15	06-Jun-15	14-Sep-15	24-Sep-15
A1640	Base slab construction including kicker	6	19-Jun-15	26-Jun-15	09-Oct-15	15-Oct-15
A1641	Removal of strut S1	4	27-Jun-15	02-Jul-15	16-Oct-15	20-Oct-15
A1642	System formworks delivery & setup	14	03-Jul-15	18-Jul-15	22-Oct-15	06-Nov-15
A1650	Walls & top slab construction	6	20-Jul-15	25-Jul-15	07-Nov-15	13-Nov-15
A1660	Removal of strut S2 & Backfilling up to required level	6	03-Aug-15	08-Aug-15	21-Nov-15	27-Nov-15

**Pile A45/A43 CJ to Pile A43/A41 CJ**

<b>ELS</b>						
Activity ID	Activity Name	Orig Dur	Planned Start	Planned Finish	Current Start	Current Finish
A1510	Excavation to 0.5m below strut S1	5	08-May-15	13-May-15	07-Aug-15A	18-Aug-15A
A1520	Installation of strut S1	5	14-May-15	19-May-15	18-Aug-15A	04-Sep-15
A1530	Excavation to FEL	5	20-May-15	26-May-15	08-Sep-15	12-Sep-15

**Box Culvert Structure**

Activity ID	Activity Name	Orig Dur	Planned Start	Planned Finish	Current Start	Current Finish
A1540	Pile cap construction	10	08-Jun-15	18-Jun-15	25-Sep-15	08-Oct-15
A1550	Base slab construction including kicker	6	27-Jun-15	04-Jul-15	16-Oct-15	23-Oct-15
A1551	Removal of strut S1	4	06-Jul-15	09-Jul-15	24-Oct-15	28-Oct-15
A1560	Walls & top slab construction	6	27-Jul-15	01-Aug-15	14-Nov-15	20-Nov-15
A1570	Removal of strut S2 & Backfilling up to required level	6	10-Aug-15	15-Aug-15	28-Nov-15	04-Dec-15

**Pile A47/A45 CJ to Pile A45/A43 CJ**

<b>ELS</b>						
Activity ID	Activity Name	Orig Dur	Planned Start	Planned Finish	Current Start	Current Finish
A1400	Excavation to 0.5m below strut S2	4	30-Apr-15	05-May-15	21-Jul-15A	25-Jul-15A
A1410	Installation of strut S2	5	06-May-15	11-May-15	22-Jul-15A	28-Jul-15A
A1420	Excavation to 0.5m below strut S1	5	14-May-15	19-May-15	29-Aug-15	03-Sep-15
A1430	Installation of strut S1	5	20-May-15	26-May-15	05-Sep-15	10-Sep-15
A1440	Excavation to FEL	5	27-May-15	01-Jun-15	14-Sep-15	18-Sep-15

**Box Culvert Structure**

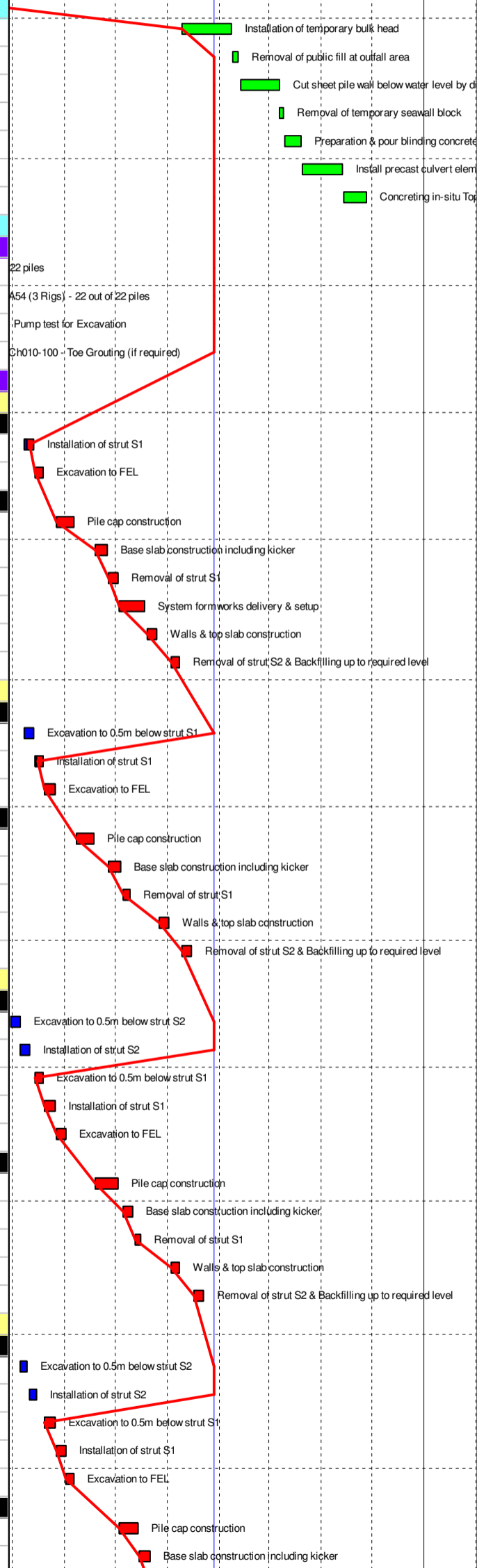
Activity ID	Activity Name	Orig Dur	Planned Start	Planned Finish	Current Start	Current Finish
A1450	Pile cap construction	10	19-Jun-15	02-Jul-15	09-Oct-15	20-Oct-15
A1460	Base slab construction including kicker	6	06-Jul-15	11-Jul-15	24-Oct-15	30-Oct-15
A1461	Removal of strut S1	4	13-Jul-15	16-Jul-15	31-Oct-15	04-Nov-15
A1470	Walls & top slab construction	6	03-Aug-15	08-Aug-15	21-Nov-15	27-Nov-15
A1480	Removal of strut S2 & Backfilling up to required level	6	17-Aug-15	22-Aug-15	05-Dec-15	11-Dec-15

**Pile A49/A47 CJ to Pile A47/A45 CJ**

<b>ELS</b>						
Activity ID	Activity Name	Orig Dur	Planned Start	Planned Finish	Current Start	Current Finish
A1310	Excavation to 0.5m below strut S2	4	06-May-15	09-May-15	18-Jul-15A	25-Jul-15A
A1320	Installation of strut S2	5	11-May-15	15-May-15	21-Jul-15A	21-Jul-15A
A1330	Excavation to 0.5m below strut S1	5	20-May-15	26-May-15	04-Sep-15	09-Sep-15
A1340	Installation of strut S1	5	27-May-15	01-Jun-15	11-Sep-15	16-Sep-15
A1350	Excavation to FEL	5	02-Jun-15	06-Jun-15	19-Sep-15	24-Sep-15

**Box Culvert Structure**

Activity ID	Activity Name	Orig Dur	Planned Start	Planned Finish	Current Start	Current Finish
A1360	Pile cap construction	10	03-Jul-15	14-Jul-15	22-Oct-15	02-Nov-15
A1370	Base slab construction including kicker	6	15-Jul-15	21-Jul-15	03-Nov-15	09-Nov-15



■ Planned Bar  
■ Planned Bar - Critical  
■ Progress bar  
◆ Progress Milestone

TMCLK - Northern Connection Sub-Sea Tunnel Section  
 Detailed Works Programme (Rev. F) - Three Months  
 Rolling Programme  
 Progress as of 28-Aug-15



Date	Revision	Checked	Approved
12-Feb-14	TMCLKDBJGENPRG98507	WYu	SPu
08-Apr-14	TMCLKDBJGENPRG98507 Rev.B	SPu	WYu
28-Aug-14	TMCLKDBJGENPRG98507 Rev.C	CLa	WYu
10-Jun-15	TMCLKDBJGENPRG98507 Rev.F	WYu	

Activity ID	Activity Name	Orig Dur	Planned Start	Planned Finish	Current Start	Current Finish	2015																	
							May	Jun	Jul	Aug	Sep	Oct	Nov	Dec	2016	Jan								
A1371	Removal of strut S1	4	22-Jul-15	25-Jul-15	10-Nov-15	13-Nov-15																		
A1380	Walls & top slab construction	6	10-Aug-15	15-Aug-15	28-Nov-15	04-Dec-15																		
A1390	Removal of strut S2 & Backfilling up to required level	6	24-Aug-15	29-Aug-15	12-Dec-15	18-Dec-15																		
<b>Pile A52/A49 CJ to Pile A49/A47 CJ</b>																								
<b>ELS</b>																								
A1220	Excavation to 0.5m below strut S2	4	11-May-15	14-May-15	16-Jul-15A	18-Jul-15A																		
A1230	Installation of strut S2	5	15-May-15	20-May-15	17-Jul-15A	25-Jul-15A																		
A1240	Excavation to 0.5m below strut S1	5	27-May-15	01-Jun-15	10-Sep-15	15-Sep-15																		
A1250	Installation of strut S1	5	02-Jun-15	06-Jun-15	17-Sep-15	22-Sep-15																		
A1260	Excavation to FEL	5	08-Jun-15	12-Jun-15	25-Sep-15	02-Oct-15																		
<b>Box Culvert Structure</b>																								
A1270	Pile cap construction	10	22-Jul-15	01-Aug-15	10-Nov-15	20-Nov-15																		
A1280	Base slab construction including kicker	6	03-Aug-15	08-Aug-15	21-Nov-15	27-Nov-15																		
A1281	Removal of strut S1	4	10-Aug-15	13-Aug-15	28-Nov-15	02-Dec-15																		
A1290	Walls & top slab construction	6	17-Aug-15	22-Aug-15	05-Dec-15	11-Dec-15																		
A1300	Removal of strut S2 & Backfilling up to required level	6	31-Aug-15	05-Sep-15	19-Dec-15	28-Dec-15																		
A1670	Preparation for Temp Access Road for N8 handover	24	07-Sep-15	06-Oct-15	29-Dec-15	26-Jan-16																		
<b>Ch150-250 Marine Section</b>																								
<b>Foundation</b>																								
A1295	Pre-bore Rig Mobilization	0	18-May-15		20-Jun-15A																			
A1296	Preboring - 16 nos (P105 - P120) - Rig 1	40	18-May-15	06-Jul-15	02-Jul-15A	11-Aug-15A																		
A1297	H-beam installation & Concreting - 16 nos (P105 - P120)	40	21-May-15	09-Jul-15	29-Aug-15	03-Sep-15																		
A1445	Preboring - 20 nos (P65 - P84) - Rig 3	50	07-Jul-15	02-Sep-15	03-Aug-15A	06-Oct-15																		
A1455	H-beam installation & Concreting - 20 nos (P65 - P84)	50	10-Jul-15	05-Sep-15	04-Sep-15	04-Nov-15																		
A1456	Preboring - 8 nos	15	13-May-15	30-May-15	13-May-15A	30-May-15A																		
A4200	Preboring - 20 nos (P85 - P104) - Rig 1	50	07-Jul-15	02-Sep-15	10-Aug-15A	05-Oct-15																		
A4210	H-beam installation & Concreting - 20 nos (P85 - P104)	50	10-Jul-15	05-Sep-15	29-Aug-15	29-Oct-15																		
<b>ELS &amp; Structure</b>																								
A4201	Cofferdam closing of Ch100-250	28	01-Jun-15	04-Jul-15	29-Aug-15	02-Oct-15																		
A4202	Dewatering well installation Ch180-250	12	19-Jun-15	04-Jul-15	17-Sep-15	02-Oct-15																		
A4203	Dewatering well installation Ch100-180	12	06-Jul-15	18-Jul-15	03-Oct-15	16-Oct-15																		
A4204	1st Pumping test	18	20-Jul-15	08-Aug-15	17-Oct-15	07-Nov-15																		
A4211	Toe grouting Ch100-250	95	07-Sep-15	31-Dec-15	09-Nov-15	08-Mar-16																		
<b>Ch250-380 Marine Section</b>																								
A4251	Installation of Dewatering & Observation Well Ch 250-380	23	04-Nov-15	30-Nov-15	05-Dec-15	04-Jan-16																		
<b>Ch250-320 Prebored H-piles</b>																								
A1301	Preboring - 12 nos	35	04-May-15	13-Jun-15	04-May-15A	13-Jun-15A																		
A1302	Preboring - 16 nos (P49 - P64) - Rig 1	40	03-Sep-15	22-Oct-15	06-Oct-15	21-Nov-15																		
A1304	H-beam installation & Concreting - 16 nos (P49 - P64)	40	07-Sep-15	26-Oct-15	09-Oct-15	25-Nov-15																		
A1306	Rig 1 Demobilization	0	23-Oct-15		23-Nov-15																			
A4230	Preboring - 20 nos (P29 - P48) - Rig 3	50	03-Sep-15	03-Nov-15	07-Oct-15	04-Dec-15																		
A4240	H-beam installation & Concreting - 20 nos (P29 - P48)	50	07-Sep-15	06-Nov-15	10-Oct-15	08-Dec-15																		
A4250	Rig 2 Demobilization	0	04-Nov-15		05-Dec-15																			
<b>Ch320-360 Prebored H-piles</b>																								
A1307	Preboring - 6 nos	18	15-Jun-15	07-Jul-15	15-Jun-15A	07-Jul-15A																		
A1308	Current Steel Bridge location available	0		02-Sep-15		26-Oct-15																		
A1309	Preboring - 3 nos	9	03-Sep-15	12-Sep-15	27-Oct-15	05-Nov-15																		
A1312	Preboring - 14 nos (C13-C28) - Rig 2	35	14-Sep-15	27-Oct-15	04-Nov-15	14-Dec-15																		
A1314	H-beam installation & Concreting - 14 nos (C13-C28)	35	17-Sep-15	30-Oct-15	07-Nov-15	17-Dec-15																		
A1315	Preboring - 6 piles (P9-12, P15-16) - Rig 2	18	28-Oct-15	17-Nov-15	15-Dec-15	07-Jan-16																		
A1316	H-beam Installation & Concreting - 6 piles (P9-12, P15-16)	18	31-Oct-15	20-Nov-15	18-Dec-15	11-Jan-16																		
<b>Ch360-380 Prebored H-piles</b>																								
A1025	Pre-bore Rig Mobilization	0	15-May-15		20-Jun-15A																			
A1034	Preboring - 10 piles (P1-P4B, P5-P6, P7-P8B) - Rig 3	36	15-May-15	27-Jun-15	22-Jul-15A	12-Aug-15A																		
A1035	H-beam Installation & Concreting - 10 piles (P1-P4B, P5,P6,P7-P8B)	36	19-May-15	02-Jul-15	15-Aug-15A	21-Aug-15A																		
A1065	Steel Bridge Landing Platform Construction	18	03-Jul-15	23-Jul-15	25-Aug-15A	14-Sep-15																		
<b>Ch380-399 Connection Section</b>																								
<b>Foundation &amp; ELS</b>																								
<b>Stage 1</b>																								
A1088	Relocate concrete block & backfill (step 3)	12	15-May-15	29-May-15	15-May-15A	29-May-15A																		
A1090	Pre-bore Rig Mobilization	0	30-May-15		07-Sep-15A																			
A1100	Preboring - 9 nos (C1-7,C9-10) - Rig 2	27	30-May-15	02-Jul-15	30-May-15A	01-Sep-15																		
A1105	H-beam installation & Concreting - 9 nos (C1-7,C9-10)	29	03-Jun-15	08-Jul-15	11-Aug-15A	07-Sep-15																		
A1120	Link bridge HB loading beam installation (step 8)	9	09-Jul-15	18-Jul-15	15-Aug-15A	20-Aug-15A																		
A4320	Preboring & sheet piling (middle row 50%) - Rig 2	17	03-Jul-15	22-Jul-15	02-Sep-15	21-Sep-15																		
A4330	Preboring & sheet piling (west row south 50%) - Rig 2	24	10-Aug-15	05-Sep-15	26-Sep-15	27-Oct-15																		
<b>Stage 2</b>																								
A4340	Working platform installation	9	20-Jul-15	29-Jul-15	20-Aug-15A	24-Aug-15A																		
A4350	Preboring - 4 nos (C8,11,12 & C17) - Rig 2	9	30-Jul-15	08-Aug-15	24-Aug-15A	25-Sep-15																		
A4351	H-beam installation & Concreting - 4 nos (C8,11,12 & C17)	9	03-Aug-15	12-Aug-15	22-Sep-15	03-Oct-15																		

	Planned Bar
	Planned Bar - Critical
	Planned Milestone
	Progress bar
	Progress Milestone

TMCLK - Northern Connection Sub-Sea Tunnel Section  
Detailed Works Programme (Rev. F) - Three Months  
Rolling Programme  
Progress as of 28-Aug-15



Date	Revision	Checked	Approved
12-Feb-14	TMCLKDBJGENPRG98507	WYu	SPu
08-Apr-14	TMCLKDBJGENPRG98507 Rev.B	SPu	WYu
28-Aug-14	TMCLKDBJGENPRG98507 Rev.C	CLa	WYu
10-Jun-15	TMCLKDBJGENPRG98507 Rev.F	WYu	



Activity ID	Activity Name	Orig Dur	Planned Start	Planned Finish	Current Start	Current Finish	2015											
							May	Jun	Jul	Aug	Sep	Oct	Nov	Dec	2016	Jan		

**North Surface works for TBM Tunnelling**

**Design Submission**

<b>(D1) IFA for Temp. Access to Portion N8A, N8B &amp; N8C incl. Temp. Lighting</b>						
AP01535	Designer to Prepare RTC & Updated AIP	18	07-Apr-14	30-Apr-14	16-May-15A	22-Aug-15A
AP01540	Submission of AIP to SO/ ICE together with Reply To Comment (RTC)	0		30-Apr-14		22-Aug-15A
AP01545	Reply to IPs Comments in RTC	0		30-Apr-14		22-Aug-15A
AP01550	ICE Approval & Issue of Design Check Cert.	18	02-May-14	23-May-14	22-Aug-15A	11-Sep-15
AP01555	Check Cert to SO	0		23-May-14		11-Sep-15
AP01560	No Objection or Further Minor Comments from IPs Received	0		23-May-14		11-Sep-15
AP01565	SO Review (35 Days)	35	02-May-14	05-Jun-14	22-Aug-15A	26-Sep-15
AP01570	SO Approval with Condition R received	0		05-Jun-14		26-Sep-15

**Construction**

<b>Zone E</b>						
A6416450 EOT	Inclement Weather - Zone E - Jet Grouting	2	16-Feb-15	17-Feb-15	30-Jul-15A	01-Aug-15A
<b>Zone D1</b>						
NRC13960 EOT	Inclement Weather - Zone D1 - Vibro-compaction (CH305 to 355)	4	28-Aug-14	31-Aug-14	27-Jul-15A	30-Jul-15A
NRC14020 EOT	Inclement Weather - Zone D1 - Ground Treatment for CP54	2	05-Sep-14	06-Sep-14	27-Jul-15A	28-Jul-15A
<b>Zone D2</b>						
NRC14110 EOT	Inclement Weather - Zone D2 - Ground Treatment for CP53	2	14-Oct-14	16-Oct-14	29-Jul-15A	30-Jul-15A
<b>Zone C2</b>						
NRC1202155 EOT	Inclement Weather - Zone C2 - Rock Fissure Grouting for CP51	2	20-Oct-14	21-Oct-14	27-Jul-15A	28-Jul-15A
<b>Zone B</b>						
A6415910	Zone B - Slurry Wall - Toe Grouting	24	22-May-15	19-Jun-15	23-Mar-15A	23-Mar-15A
A6415920	Zone B - Ground Treatment for TBM Break-out Plug	58	22-Jun-15	28-Aug-15	18-Mar-15A	11-Apr-15A
<b>Zone A</b>						
A6417430	Zone A - B/C Slurry Substitution for CP49	30	27-Nov-14	05-Jan-15	30-May-15A	30-May-15A
A6417440	Zone A - Drilling for Rock Fissure Grouting for CP48	65	10-Dec-14	06-Mar-15	30-May-15A	30-May-15A
A6417450	Zone A - Rock Fissure Grouting for CP48	90	24-Dec-14	23-Apr-15	30-May-15A	30-May-15A
A6417460	Zone A - Jet Grouting for CP48	72	06-Mar-15	05-Jun-15	30-May-15A	30-May-15A

**North Approach TBM Tunnelling & Cross Passage**

**Major Procurement**

**Precast Segment**

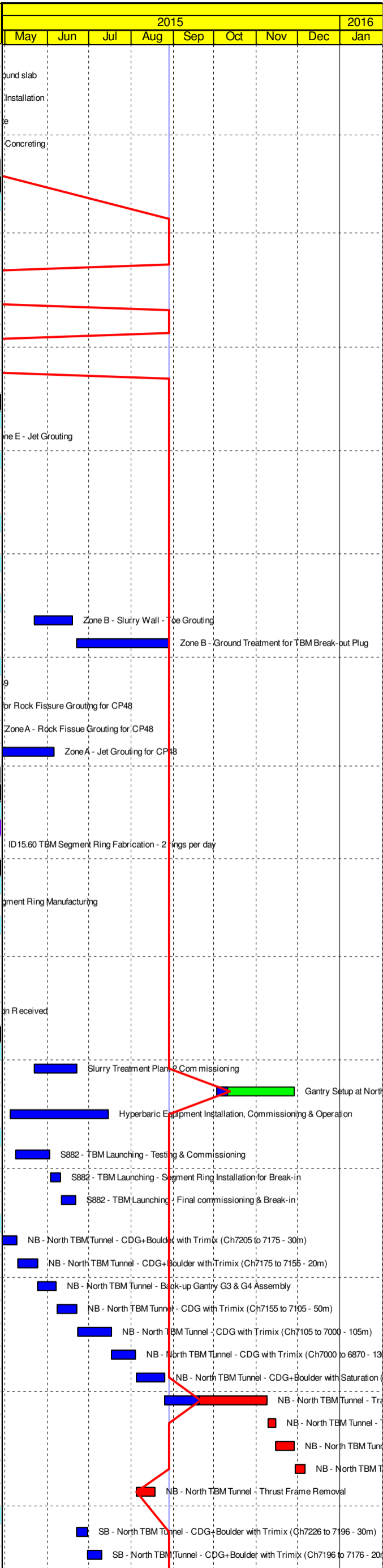
<b>Precast Segment ID15.60 - Production for NB North TBM Tunnel</b>						
A6417970	ID15.60 TBM Segment Ring Fabrication - 2 rings per day	148	30-Sep-14	25-Apr-15	25-Sep-14A	18-Jul-15A

**Design Submission**

<b>(G2) DDA for TBM Tunnel Lining Structural Design - North Approach</b>						
DD01055	Northern TBM Segment Ring Manufacturing	173	01-Aug-14	04-Mar-15	25-Aug-14A	18-Jul-15A
<b>(G5) DDA for Cross Passage - Permanent works - incl. Detailed Geotechnical Assessment - North</b>						
DD67518	IPs Review	28	09-Jan-15	05-Feb-15	11-Mar-15A	02-Jul-15A
DD67528	IPs No Objection Received	0		05-Feb-15		02-Jul-15A
DD67609*	SO's Review	35	09-Jan-15	12-Feb-15	11-Mar-15A	02-Jul-15A
DD67610	SO Approval with Condition R received	0		12-Feb-15		02-Jul-15A

**Construction**

<b>Northern Landfall Surface Setup for TBM operation</b>						
A6415957	Slurry Treatment Plant 2 Com missioning	24	22-May-15	22-Jun-15	02-May-15A	05-Jun-15A
A6415970	Gantry Setup at North Ventilation Shaft	48	03-Oct-15	28-Nov-15	21-Aug-15A	17-Oct-15
A6416000	Hyperbaric Equipment Installation, Commissioning & Operation	59	05-May-15	15-Jul-15	04-May-15A	17-Aug-15A
<b>S882 TBM Assembly at North TBM Launching Shaft</b>						
NSH2220	S882 - TBM Launching - Testing & Commissioning	24	09-May-15	02-Jun-15	20-May-15A	02-Jun-15A
NSH2230	S882 - TBM Launching - Segment Ring Installation for Break-in	8	03-Jun-15	10-Jun-15	02-Jun-15A	03-Jun-15A
NSH2240	S882 - TBM Launching - Final commissioning & Break-in	10	11-Jun-15	21-Jun-15	03-Jun-15A	03-Jun-15A
<b>North Approach TBM Tunnel - NB ID15.60m - S880</b>						
TBM10005	NB - North TBM Tunnel - CDG+Boulder with Trimix (Ch7205 to 7175 - 30m)	12	28-Apr-15	09-May-15	26-Apr-15A	16-Jul-15A
TBM10010	NB - North TBM Tunnel - CDG+Boulder with Trimix (Ch7175 to 7155 - 20m)	14	10-May-15	24-May-15	17-May-15A	11-Jun-15A
TBM10015	NB - North TBM Tunnel - Back-up Gantry G3 & G4 Assembly	14	25-May-15	07-Jun-15	12-Jun-15A	06-Jul-15A
TBM10020	NB - North TBM Tunnel - CDG with Trimix (Ch7155 to 7105 - 50m)	14	08-Jun-15	22-Jun-15	06-Jul-15A	10-Jul-15A
TBM10030	NB - North TBM Tunnel - CDG with Trimix (Ch7105 to 7000 - 105m)	24	23-Jun-15	17-Jul-15	10-Jul-15A	20-Jul-15A
TBM10040	NB - North TBM Tunnel - CDG with Trimix (Ch7000 to 6870 - 130m)	18	18-Jul-15	04-Aug-15	20-Jul-15A	07-Aug-15A
TBM10050	NB - North TBM Tunnel - CDG+Boulder with Saturation (Ch6870 to 6840 - 30m)	20	05-Aug-15	25-Aug-15	07-Aug-15A	15-Aug-15A
TBM10060	NB - North TBM Tunnel - Transition with Saturation (Ch6840 to 6708 - 132m)	75	26-Aug-15	08-Nov-15	15-Aug-15A	30-Oct-15
TBM10070	NB - North TBM Tunnel - Transition with Saturation (Ch6708 to 6688 - 20m)	6	09-Nov-15	14-Nov-15	31-Oct-15	05-Nov-15
TBM10072	NB - North TBM Tunnel - Transition with Saturation (Ch6688 to 6640 - 48m)	14	15-Nov-15	28-Nov-15	06-Nov-15	19-Nov-15
TBM10074	NB - North TBM Tunnel - CDG+Boulder with Saturation (Ch6640 to 6600 - 40m)	8	29-Nov-15	06-Dec-15	20-Nov-15	27-Nov-15
TBM11020	NB - North TBM Tunnel - Thrust Frame Removal	12	05-Aug-15	18-Aug-15	12-Sep-15	25-Sep-15
<b>North Approach TBM Tunnel - SB ID12.40m - S882</b>						
TBM10485	SB - North TBM Tunnel - CDG+Boulder with Trimix (Ch7226 to 7196 - 30m)	8	22-Jun-15	30-Jun-15	22-Jun-15A	30-Jun-15A
TBM10490	SB - North TBM Tunnel - CDG+Boulder with Trimix (Ch7196 to 7176 - 20m)	10	30-Jun-15	10-Jul-15	30-Jun-15A	10-Jul-15A



■ Planned Bar  
■ Planned Bar - Critical  
■ Progress bar  
◆ Progress Milestone

TMCLK - Northern Connection Sub-Sea Tunnel Section  
 Detailed Works Programme (Rev. F) - Three Months  
 Rolling Programme  
 Progress as of 28-Aug-15



Date	Revision	Checked	Approved
12-Feb-14	TMCLKDBJGENPRG98507	WYu	SPu
08-Apr-14	TMCLKDBJGENPRG98507 Rev.B	SPu	WYu
28-Aug-14	TMCLKDBJGENPRG98507 Rev.C	CLa	WYu
10-Jun-15	TMCLKDBJGENPRG98507 Rev.F	WYu	

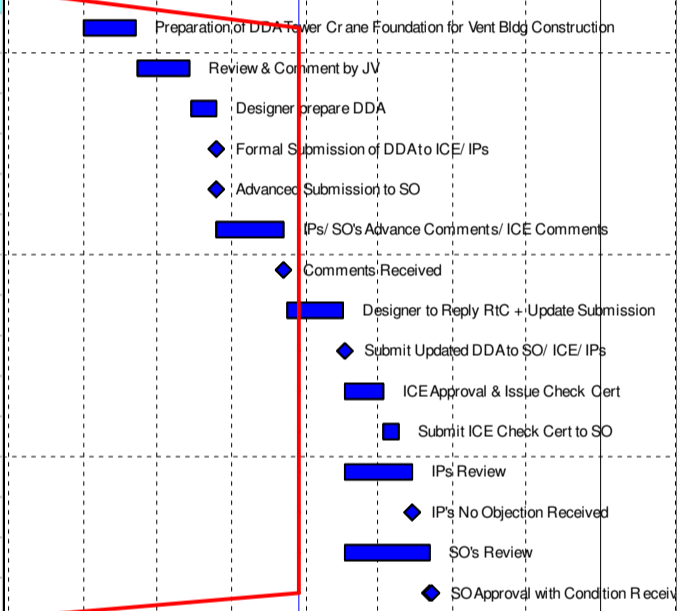
Activity ID	Activity Name	Orig Dur	Planned Start	Planned Finish	Current Start	Current Finish	2015												2016
							May	Jun	Jul	Aug	Sep	Oct	Nov	Dec	Jan				
TBM10495	SB - North TBM Tunnel - Back-up Gnatry G3 & G4 Assembly	15	10-Jul-15	26-Jul-15	25-Oct-15A	08-Nov-15A													
TBM10500	SB - North TBM Tunnel - CDG with Trimix (Ch7176 to 7126 - 50m)	10	26-Jul-15	05-Aug-15	15-Jun-15A	22-Jul-15A													
TBM10510	SB - North TBM Tunnel - CDG with Trimix (Ch7126 to 7021 - 105m)	17	05-Aug-15	23-Aug-15	23-Jul-15A	16-Aug-15A													
TBM10520	SB - North TBM Tunnel - CDG with Trimix (Ch7021 to 6891 - 130m)	12	23-Aug-15	04-Sep-15	17-Aug-15A	05-Sep-15													
TBM10530	SB - North TBM Tunnel - CDG+Boulder with Saturation (Ch6891 to 6861 - 30m)	9	04-Sep-15	13-Sep-15	06-Sep-15	14-Sep-15													
TBM10540	SB - North TBM Tunnel - Transition with Saturation (Ch6861 to 6729 - 132m)	63	13-Sep-15	15-Nov-15	15-Sep-15	16-Nov-15													
TBM10550	SB - North TBM Tunnel - Transition with Saturation (Ch6729 to 6709 - 20m)	5	15-Nov-15	20-Nov-15	17-Nov-15	21-Nov-15													
TBM11030	SB - North TBM Tunnel - Thrust Frame Removal	12	04-Sep-15	18-Sep-15	07-Sep-15	19-Sep-15													
TBM11040	SB - North TBM Tunnel - Transition with Saturation (Ch6709 to 6661 - 48m)	11	20-Nov-15	01-Dec-15	22-Nov-15	02-Dec-15													
<b>North Approach Tunnel Internal Structure - NB</b>																			
ISIG0990	NB - North TBM Tunnel - Invert Backfilling (Ch7205 to 7175 - 30m) Stage 1	8	19-Aug-15	26-Aug-15	26-Sep-15	03-Oct-15													
ISIG1000	NB - North TBM Tunnel - Invert Backfilling (Ch7175 to 6870 - 305m) Stage 1	87	27-Aug-15	21-Nov-15	04-Oct-15	29-Dec-15													
ISIG1015	NB - North TBM Tunnel - Invert Backfilling (Ch6870 to 6688 - 182m) Stage 1	77	22-Nov-15	06-Feb-16	30-Dec-15	18-Mar-16													
ISIG1020	NB - North TBM Tunnel - Preparation for Invert Gallery Installation	14	27-Aug-15	09-Sep-15	04-Oct-15	17-Oct-15													
ISIG1030	NB - North TBM Tunnel - Invert Precast Gallery Installation (Ch7205 to 6870 - 335m)	96	10-Sep-15	14-Dec-15	18-Oct-15	21-Jan-16													
ISIG1045	NB - North TBM Tunnel - Invert Backfilling (Ch7205 to 7175 - 30m) Stage 2	9	01-Oct-15	09-Oct-15	08-Nov-15	16-Nov-15													
ISIG1050	NB - North TBM Tunnel - Invert Backfilling (Ch7175 to 7125 - 50m) Stage 2	15	10-Oct-15	24-Oct-15	17-Nov-15	01-Dec-15													
ISIG1060	NB - North TBM Tunnel - Invert Backfilling (Ch7125 to 7075 - 50m) Stage 2	15	25-Oct-15	08-Nov-15	02-Dec-15	16-Dec-15													
ISIG1070	NB - North TBM Tunnel - Invert Backfilling (Ch7075 to 7025 - 50m) Stage 2	15	09-Nov-15	23-Nov-15	17-Dec-15	31-Dec-15													
ISIG1080	NB - North TBM Tunnel - Invert Backfilling (Ch7025 to 6975 - 50m) Stage 2	14	24-Nov-15	07-Dec-15	01-Jan-16	14-Jan-16													
<b>North Approach Tunnel Internal Structure - SB</b>																			
ISIG1115	SB - North TBM Tunnel - Invert Backfilling (Ch7205 to 7175 - 30m)	8	18-Sep-15	26-Sep-15	20-Sep-15	27-Sep-15													
ISIG1120	SB - North TBM Tunnel - Invert Backfilling (Ch7175 to 7125 - 50m)	13	26-Sep-15	09-Oct-15	28-Sep-15	10-Oct-15													
ISIG1130	SB - North TBM Tunnel - Invert Backfilling (Ch7125 to 7075 - 50m)	13	09-Oct-15	22-Oct-15	11-Oct-15	23-Oct-15													
ISIG1140	SB - North TBM Tunnel - Invert Backfilling (Ch7075 to 7025 - 50m)	13	22-Oct-15	04-Nov-15	24-Oct-15	05-Nov-15													
ISIG1150	SB - North TBM Tunnel - Invert Backfilling (Ch7025 to 6975 - 50m)	12	04-Nov-15	16-Nov-15	06-Nov-15	17-Nov-15													
ISIG1160	SB - North TBM Tunnel - Invert Backfilling (Ch6975 to 6925 - 50m)	12	16-Nov-15	28-Nov-15	18-Nov-15	29-Nov-15													
<b>North Approach Cross Passage</b>																			
<b>CP55 - Traditional Method</b>																			
A6418390	CP55 Platform Available from ML03 North Approach Tunnel Backfilling	0	10-Oct-15		17-Nov-15														
A6418440	CP55 Platform Available from ML02 North Approach Tunnel Backfilling	0	09-Oct-15		12-Oct-15														
<b>CP54 - Traditional Method</b>																			
A6418380	CP54 Platform Available from ML03 North Approach Tunnel Backfilling	0	24-Nov-15		02-Jan-16														
A6418450	CP54 Platform Available from ML02 North Approach Tunnel Backfilling	0	04-Nov-15		06-Nov-15														
<b>North Ventilation Building</b>																			
<b>Design Submission</b>																			
<b>(A10) ACABAS Submissions</b>																			
GS01650	ACABAS Approval	28	16-Mar-14	12-Apr-14	27-Aug-15A	23-Sep-15													
<b>(A11) Submissions to Design Advisory Panel of ArchSD</b>																			
GS01730	Prepare Re-submission	18	19-May-14	09-Jun-14	22-Jul-14 A	31-Aug-15													
GS01740	ArchSD's comment	30	10-Jun-14	09-Jul-14	01-Sep-15	30-Sep-15													
<b>(I1) DDA for North Vent.Bldgs. GBP &amp; Arch.Submission</b>																			
DD01235	Designer to Reply RIC + Update Submission	21	28-Jul-14	20-Aug-14	02-May-15A	30-Sep-15													
DD01240	Submit Updated DDA to SO/ ICE/ IPs	0	21-Aug-14		02-Oct-15														
DD01245	ICE Approval & Issue Check Cert	12	21-Aug-14	03-Sep-14	02-Oct-15	15-Oct-15													
DD01250	Submit ICE Check Cert to SO	6	04-Sep-14	11-Sep-14	16-Oct-15	23-Oct-15													
DD01255	IPs Review	28	21-Aug-14	17-Sep-14	02-Oct-15	29-Oct-15													
DD01260	IPs No Objection Received	0		17-Sep-14		29-Oct-15													
DD01265	SO's Review	35	21-Aug-14	24-Sep-14	02-Oct-15	05-Nov-15													
DD01270	SO Approval with Condition Received	0		24-Sep-14		05-Nov-15													
<b>(I1) DDA for North &amp; South Vent.Bldg. ABWF works</b>																			
DD67638	Preparation of DDANorth & SouthABWF	18	25-Sep-14	17-Oct-14	06-Nov-15	26-Nov-15													
DD67648	Review & Comment by JV	24	18-Oct-14	14-Nov-14	27-Nov-15	24-Dec-15													
<b>(I2) DDA for North Vent.Bldgs.Foundation Design</b>																			
DD01355	IPs Review	28	03-Dec-14	30-Dec-14	30-Jan-15A	17-Jun-15A													
DD01360	IPs No Objection Received	0		30-Dec-14		17-Jun-15A													
DD01380	SO's Review	35	03-Dec-14	06-Jan-15	30-Jan-15A	17-Jun-15A													
DD01385	SO Approval with Condition Received	0		06-Jan-15		17-Jun-15A													
<b>(I2) DDA for North Vent.Bldgs.Structural Design incl.Vent.Connections</b>																			
DD68018	Review & Comment by JV	18	27-Sep-14	20-Oct-14	02-Apr-15A	03-Aug-15A													
DD68020	Designer prepare DDA	10	21-Oct-14	31-Oct-14	04-Aug-15A	10-Aug-15A													
DD68028	Formal Submission of DDA to ICE/ IPs	0		31-Oct-14		10-Aug-15A													
DD68030	Advanced Submission to SO	0		31-Oct-14		10-Aug-15A													
DD68038	IPs/ SO's Advance Comments/ ICE Comments	28	01-Nov-14	28-Nov-14	10-Aug-15A	07-Sep-15													
DD68040	Comments Received	0		28-Nov-14		07-Sep-15													
DD68048	Designer to Reply RIC + Update Submission	21	29-Nov-14	23-Dec-14	08-Sep-15	03-Oct-15													
DD68058	Submit Updated DDA to SO/ ICE/ IPs	0	24-Dec-14		05-Oct-15														
DD68068	ICE Approval & Issue Check Cert	12	24-Dec-14	09-Jan-15	05-Oct-15	17-Oct-15													
DD68078	Submit ICE Check Cert to SO	6	10-Jan-15	16-Jan-15	19-Oct-15	26-Oct-15													

█ Planned Bar  
█ Planned Bar - Critical  
◆ Planned Milestone  
▬ Progress bar  
◆ Progress Milestone



Date	Revision	Checked	Approved
12-Feb-14	TMCLKDBJGENPRG98507	WYu	SPu
08-Apr-14	TMCLKDBJGENPRG98507 Rev.B	SPu	WYu
28-Aug-14	TMCLKDBJGENPRG98507 Rev.C	CLa	WYu
10-Jun-15	TMCLKDBJGENPRG98507 Rev.F	WYu	

Activity ID	Activity Name	Orig Dur	Planned Start	Planned Finish	Current Start	Current Finish	2015												2016
							May	Jun	Jul	Aug	Sep	Oct	Nov	Dec	Jan				
DD68088	IPs Review	28	24-Dec-14	20-Jan-15	05-Oct-15	01-Nov-15													
DD68098	IPs No Objection Received	0		20-Jan-15		01-Nov-15													
DD68210	SO's Review	35	24-Dec-14	27-Jan-15	05-Oct-15	08-Nov-15													
DD68220	SO Approval with Condition R received	0		27-Jan-15		09-Nov-15													
<b>(I3) DDA for North &amp; South Vent. Bldgs. Service and E&amp;M Provision</b>																			
DD01600	Preparation of DDANth VB Service and E&MS Provision	18	12-Sep-14	04-Oct-14	01-Jul-15A	31-Aug-15													
DD01605	Review & Comment by JV	24	06-Oct-14	01-Nov-14	01-Sep-15	29-Sep-15													
DD01610	Designer prepare DDA	15	03-Nov-14	19-Nov-14	30-Sep-15	17-Oct-15													
DD01615	Formal Submission of DDA to ICE/ IPs	0		19-Nov-14		17-Oct-15													
DD01620	Advanced Submission to SO	0		19-Nov-14		17-Oct-15													
DD01625	IPs/ SO's Advance Comments/ ICE Comments	28	20-Nov-14	17-Dec-14	18-Oct-15	14-Nov-15													
DD01630	Comments Received	0		17-Dec-14		14-Nov-15													
DD01635	Designer to Reply RTC + Update Submission	21	18-Dec-14	14-Jan-15	16-Nov-15	09-Dec-15													
<b>(J1) DDA Temp.works for Construction of Nth.Vent.Bldg.</b>																			
DD04390	Review & Comment by JV	18	13-Oct-14	01-Nov-14	08-May-15A	31-Aug-15													
DD04400	Designer prepare DDA	10	03-Nov-14	13-Nov-14	01-Sep-15	11-Sep-15													
DD04410	Formal Submission of DDA to ICE/ IPs	0		13-Nov-14		11-Sep-15													
DD04420	Advanced Submission to SO	0		13-Nov-14		11-Sep-15													
DD04430	IPs/ SO's Advance Comments/ ICE Comments	28	14-Nov-14	11-Dec-14	12-Sep-15	09-Oct-15													
DD04440	Comments Received	0		11-Dec-14		09-Oct-15													
DD04450	Designer to Reply RTC + Update Submission	21	12-Dec-14	08-Jan-15	10-Oct-15	04-Nov-15													
DD04460	Submit Updated DDA to SO/ ICE/ IPs	0	09-Jan-15		05-Nov-15														
DD04470	ICE Approval & Issue Check Cert	12	09-Jan-15	22-Jan-15	05-Nov-15	18-Nov-15													
DD04480	Submit ICE Check Cert to SO	6	23-Jan-15	29-Jan-15	19-Nov-15	25-Nov-15													
DD04490	IPs Review	28	09-Jan-15	05-Feb-15	05-Nov-15	02-Dec-15													
DD04540	SO's Review	35	09-Jan-15	12-Feb-15	05-Nov-15	09-Dec-15													
<b>(J2) Tower Crane Foundation for Ventilation Building</b>																			
DD70480	Preparation of DDA Tower Crane Foundation for Vent Bldg Construction	18	01-Jun-15	22-Jun-15	01-Jul-15A	06-Jul-15A													
DD70490	Review & Comment by JV	18	23-Jun-15	14-Jul-15	06-Jul-15A	09-Jul-15A													
DD70500	Designer prepare DDA	10	15-Jul-15	25-Jul-15	09-Jul-15A	09-Jul-15A													
DD70510	Formal Submission of DDA to ICE/ IPs	0		25-Jul-15		09-Jul-15A													
DD70520	Advanced Submission to SO	0		25-Jul-15		09-Jul-15A													
DD70530	IPs/ SO's Advance Comments/ ICE Comments	28	26-Jul-15	22-Aug-15	09-Jul-15A	22-Jul-15A													
DD70540	Comments Received	0		22-Aug-15		22-Jul-15A													
DD70550	Designer to Reply RTC + Update Submission	21	24-Aug-15	16-Sep-15	22-Jul-15A	22-Jul-15A													
DD70560	Submit Updated DDA to SO/ ICE/ IPs	0	17-Sep-15		22-Jul-15A														
DD70570	ICE Approval & Issue Check Cert	12	17-Sep-15	02-Oct-15	22-Jul-15A	22-Jul-15A													
DD70580	Submit ICE Check Cert to SO	6	03-Oct-15	09-Oct-15	22-Jul-15A	22-Jul-15A													
DD70590	IPs Review	28	17-Sep-15	14-Oct-15	22-Jul-15A	22-Jul-15A													
DD70600	IPs No Objection Received	0		14-Oct-15		22-Jul-15A													
DD70640	SO's Review	35	17-Sep-15	21-Oct-15	22-Jul-15A	22-Jul-15A													
DD70650	SO Approval with Condition R received	0		22-Oct-15		22-Jul-15A													
<b>(C3) DDA for North Vent Shaft &amp; Duct Permanent Structure</b>																			
DD67278	Review & Comment by JV	18	28-Aug-14	18-Sep-14	08-Apr-15A	31-Aug-15													
DD67280	Designer prepare DDA	10	19-Sep-14	30-Sep-14	01-Sep-15	11-Sep-15													
DD67288	Formal Submission of DDA to ICE/ IPs	0		30-Sep-14		11-Sep-15													
DD67290	Advanced Submission to SO	0		30-Sep-14		11-Sep-15													
DD67298	IPs/ SO's Advance Comments/ ICE Comments	28	01-Oct-14	28-Oct-14	12-Sep-15	09-Oct-15													
DD67300	Comments Received	0		28-Oct-14		09-Oct-15													
DD67308	Designer to Reply RTC + Update Submission	21	29-Oct-14	21-Nov-14	10-Oct-15	04-Nov-15													
DD67318	Submit Updated DDA to SO/ ICE/ IPs	0	22-Nov-14		05-Nov-15														
DD67328	ICE Approval & Issue Check Cert	12	22-Nov-14	05-Dec-14	05-Nov-15	18-Nov-15													
DD67338	Submit ICE Check Cert to SO	6	06-Dec-14	12-Dec-14	19-Nov-15	25-Nov-15													
DD67348	IPs Review	28	22-Nov-14	19-Dec-14	05-Nov-15	02-Dec-15													
DD67368	SO's Review	35	22-Nov-14	26-Dec-14	05-Nov-15	09-Dec-15													
<b>North Surface Roadworks, Utility &amp; Drainage works</b>																			
<b>Design Submission</b>																			
<b>(A20) DDA for Traffic Sign, Road Marking, Street Furnitures, Sign Gantry &amp; etc</b>																			
DD01755	SO's Review	35	11-Dec-14	14-Jan-15	10-Apr-15A	31-Aug-15													
DD01760	SO Approval with Condition R received	0		14-Jan-15		31-Aug-15													
<b>(C2) DDA for Sewerage, Drainage, Waterworks &amp; Utility works for North Landfall</b>																			
DD02135	Designer to Reply RTC + Update Submission	21	15-Oct-14	07-Nov-14	09-Feb-15A	31-Aug-15													
DD02140	Submit Updated DDA to SO/ ICE/ IPs	0	08-Nov-14		01-Sep-15														
DD02145	ICE Approval & Issue Check Cert	12	08-Nov-14	21-Nov-14	01-Sep-15	14-Sep-15													
DD02150	Submit ICE Check Cert to SO	6	22-Nov-14	28-Nov-14	15-Sep-15	21-Sep-15													
DD02155	IPs Review	28	08-Nov-14	05-Dec-14	01-Sep-15	28-Sep-15													
DD02160	IPs No Objection Received	0		05-Dec-14		28-Sep-15													
DD02165	SO's Review	35	08-Nov-14	12-Dec-14	01-Sep-15	05-Oct-15													



■ Planned Bar  
■ Planned Bar - Critical  
◆ Planned Milestone  
■ Progress bar  
◆ Progress Milestone

TMCLK - Northern Connection Sub-Sea Tunnel Section  
 Detailed Works Programme (Rev. F) - Three Months  
 Rolling Programme  
 Progress as of 28-Aug-15



Date	Revision	Checked	Approved
12-Feb-14	TMCLKDBJGENPRG98507	WYu	SPu
08-Apr-14	TMCLKDBJGENPRG98507 Rev.B	SPu	WYu
28-Aug-14	TMCLKDBJGENPRG98507 Rev.C	CLa	WYu
10-Jun-15	TMCLKDBJGENPRG98507 Rev.F	WYu	

Activity ID	Activity Name	Orig Dur	Planned Start	Planned Finish	Current Start	Current Finish	2015												2016
							May	Jun	Jul	Aug	Sep	Oct	Nov	Dec	Jan				
DD02170	SO Approval with Condition Received	0		12-Dec-14		05-Oct-15													
<b>Sub-sea Tunnel</b>																			
<b>Sub-sea TBM Tunnelling</b>																			
<b>Major Procurement</b>																			
<b>S881 -</b>																			
PO103360	S881 - 13.6m dia - TBM - Manufacturing - Cutterhead	257	18-Jul-14	03-Jun-15	18-Jul-14A	12-Sep-15													
PO103430	S881 - 13.6m dia - TBM - Workshop Assembly	70	02-Feb-15	06-May-15	10-Mar-15A	03-Sep-15													
PO103440	S881 - 13.6m dia - TBM - Workshop Acceptance Test	0		06-May-15		03-Sep-15													
PO103450	S881 - 13.6m dia - TBM - Disassembly and Packing for Transport	16	07-May-15	26-May-15	10-Jul-15A	12-Sep-15													
PO103460	S881 - 13.6m dia - TBM - Delivery	20	27-May-15	15-Jun-15	13-Sep-15	02-Oct-15													
PO103470	S881 - 13.6m dia - TBM - Arrival to site	0		15-Jun-15		02-Oct-15													
<b>Design Submission</b>																			
<b>(B6) Risk Assessment of Submarine Cable - Tunnelling Works</b>																			
GS01460	CLP Review (4 weeks)	28	17-Mar-15	13-Apr-15	08-May-15A	30-Aug-15													
GS01465	CLP Comment Received	0		13-Apr-15		31-Aug-15													
GS01467	SO's Condition Approval	35	12-Mar-15	15-Apr-15	08-May-15A	01-Sep-15													
<b>(G1) IFA for Structural Health Monitoring System for TBM Tunnel</b>																			
DD71050	IPs Review	28	31-May-14	27-Jun-14	23-Dec-14A	22-Jun-15A													
DD71060	IPs No Objection Received	0		27-Jun-14		22-Jun-15A													
DD71070	SO's Review	35	31-May-14	04-Jul-14	23-Dec-14A	22-Jun-15A													
DD71080	SO Approval with Condition Received	0		04-Jul-14		22-Jun-15A													
DD71200	TBM Segment Mould Acceptance & Trial	0	11-Jul-14			22-Jun-15A													
<b>(G1) DDA for TBM Tunnel Lining Structural Design - Sub-sea tunnel</b>																			
DD6670	Sub-sea TBM Tunnel Segment - Fabrication	265	06-Oct-14	29-Aug-15	29-Nov-14A	23-Apr-16													
<b>(G1) DDA for TBM Tunnel Lining Settlement Analysis &amp; Confinement Pressure - Sub-sea tunnel</b>																			
DD6720	IPs/ SO's Advance Comments/ ICE Comments	28	25-Oct-14	21-Nov-14	10-May-15A	23-Jul-15A													
DD67258	Comments Received	0		21-Nov-14		23-Jul-15A													
DD6730	Designer to Reply RIC + Update Submission	21	22-Nov-14	16-Dec-14	23-Jul-15A	28-Jul-15A													
DD6740	Submit Updated DDA to SO/ ICE/ IPs	0	17-Dec-14			28-Jul-15A													
DD6750	ICE Approval & Issue Check Cert	12	17-Dec-14	02-Jan-15	28-Jul-15A	28-Jul-15A													
DD6760	Submit ICE Check Cert to SO	6	03-Jan-15	09-Jan-15	28-Jul-15A	28-Jul-15A													
DD6770	IPs Review	28	17-Dec-14	13-Jan-15	28-Jul-15A	30-Aug-15													
DD6780	IPs No Objection Received	0		13-Jan-15		30-Aug-15													
DD6830	SO's Review	35	17-Dec-14	20-Jan-15	28-Jul-15A	05-Sep-15													
DD6840	SO Approval with Condition Received	0		20-Jan-15		05-Sep-15													
<b>(G3) DDA for TBM Tunnel Internal Structures (Sub-sea)</b>																			
DD00955	IPs Review	28	17-Nov-14	14-Dec-14	05-May-15A	26-Jun-15A													
DD00960	IPs No Objection Received	0		14-Dec-14		26-Jun-15A													
DD00980	SO's Review	35	17-Nov-14	21-Dec-14	05-May-15A	26-Jun-15A													
DD00985	SO Approval with Condition Received	0		22-Dec-14		26-Jun-15A													
<b>Sub-sea Tunnel Cross Passage &amp; Internal Structure</b>																			
<b>Design Submission</b>																			
<b>(G4) DDA for Cross Passage - Permanent works - incl. Geotechnical Assessment - Sub-sea tunnel</b>																			
AN1180	Early DDASub-sea Cross Passage Lining & CPOpening	151	03-Jun-14	29-Nov-14	03-Jun-14A	13-Jul-15A													
DD01100	Preparation of DDACross Passage incl. Detailed Geotechnical Assessment	0	01-Dec-14	01-Dec-14	13-Jul-15A	13-Jul-15A													
DD01105	Review & Comment by JV	6	01-Dec-14	06-Dec-14	13-Jul-15A	29-Aug-15													
DD01110	Designer prepare DDA	12	08-Dec-14	20-Dec-14	31-Aug-15	12-Sep-15													
DD01115	Formal Submission of DDA to ICE/ IPs	0		20-Dec-14		12-Sep-15													
DD01120	Advanced Submission to SO	0		20-Dec-14		12-Sep-15													
DD01125	IPs/ SO's Advance Comments/ ICE Comments	28	21-Dec-14	17-Jan-15	13-Sep-15	10-Oct-15													
DD01130	Comments Received	0		17-Jan-15		10-Oct-15													
DD01135	Designer to Reply RIC + Update Submission	21	19-Jan-15	11-Feb-15	12-Oct-15	05-Nov-15													
DD01140	Submit Updated DDA to SO/ ICE/ IPs	0	12-Feb-15			06-Nov-15													
DD01145	ICE Approval & Issue Check Cert	12	12-Feb-15	04-Mar-15	06-Nov-15	19-Nov-15													
DD01150	Submit ICE Check Cert to SO	6	05-Mar-15	11-Mar-15	20-Nov-15	26-Nov-15													
DD01155	IPs Review	28	12-Feb-15	11-Mar-15	06-Nov-15	03-Dec-15													
DD01180	SO's Review	35	12-Feb-15	18-Mar-15	06-Nov-15	10-Dec-15													
<b>ETWB TCW No 15/2005 - Cross Passage Ground Treatment for Sub-sea TBM Tunnel</b>																			
GEO1270	1st Submission to GEO - ETWB TCW No 15/2005 - Cross Passage Ground Treatment for Sub-sea TBM Tunnel	0		13-Jul-15		28-Aug-15													
GEO1275	1st Submission GEO Review	28	14-Jul-15	10-Aug-15	29-Aug-15	25-Sep-15													
GEO1280	Received GEO Comment	0		10-Aug-15		25-Sep-15													
GEO1285	Prepare Response to Comment	12	11-Aug-15	24-Aug-15	26-Sep-15	12-Oct-15													
GEO1290	2nd Submission to GEO	0		24-Aug-15		12-Oct-15													
GEO1295	2nd GEO Review	28	25-Aug-15	21-Sep-15	13-Oct-15	09-Nov-15													
GEO1490	Received 2nd GEO Comment	0		21-Sep-15		09-Nov-15													
GEO1495	Prepare Respond to 2nd Comment	12	22-Sep-15	07-Oct-15	10-Nov-15	23-Nov-15													
GEO1500	3rd Submission to GEO	0		07-Oct-15		23-Nov-15													
GEO1505	3rd GEO Review	28	08-Oct-15	04-Nov-15	24-Nov-15	21-Dec-15													
<b>Method Statement Submission</b>																			
<b>Method Statement of Cross Passage Formwork</b>																			

- Planned Bar
- Planned Bar - Critical
- Planned Milestone
- Progress bar
- Progress Milestone



Date	Revision	Checked	Approved
12-Feb-14	TMCLKDBJGENPRG98507	WYu	SPa
08-Apr-14	TMCLKDBJGENPRG98507 Rev.B	SPa	WYu
28-Aug-14	TMCLKDBJGENPRG98507 Rev.C	CLa	WYu
10-Jun-15	TMCLKDBJGENPRG98507 Rev.F	WYu	





Activity ID	Activity Name	Orig Dur	Planned Start	Planned Finish	Current Start	Current Finish	2015							2016
							May	Jun	Jul	Aug	Sep	Oct	Nov	Dec

Design Submission						
<b>(B5) AIP Construction Risk Assessment - Impact on South Landfall</b>						
GS01215	Prepare Re-submission	10	15-Jan-15	26-Jan-15	11-May-15 A	03-Jun-15A
GS01220	2nd Submission	0		26-Jan-15		03-Jun-15A
GS01225	ICE Cert. Issue	6	27-Jan-15	02-Feb-15	03-Jun-15A	10-Jun-15A
GS01250	SO's Condition Approval	35	27-Jan-15	02-Mar-15	03-Jun-15A	30-Aug-15

<b>(B5) DDA Construction Risk Assessment - Impact on South Landfall</b>						
DD68500	Preparation of Construction Risk Assessment - Impact on South Landfall	36	03-Mar-15	17-Apr-15	31-Aug-15	13-Oct-15
DD68510	1st Submission	0		17-Apr-15		13-Oct-15
DD68520	SO's Comments for 1st Submission	35	18-Apr-15	22-May-15	14-Oct-15	17-Nov-15
DD68530	Prepare Re-submission	10	23-May-15	04-Jun-15	18-Nov-15	28-Nov-15
DD68540	2nd Submission	0		04-Jun-15		28-Nov-15
DD68550	ICE Cert. Issue	6	05-Jun-15	11-Jun-15	30-Nov-15	05-Dec-15
DD68600	SO's Condition Approval	35	05-Jun-15	09-Jul-15	29-Nov-15	02-Jan-16

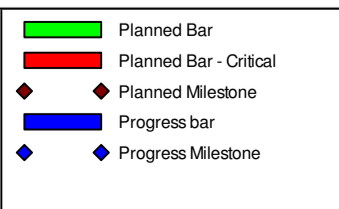
<b>(F1) AIP Temp. works - Retrieval Shaft on Southern Landfall inc. break-out</b>						
AP01635	Designer to Prepare RTC & Updated AIP	18	25-Nov-14	15-Dec-14	28-Apr-15A	31-Aug-15
AP01640	Submission of AIP to SO/ ICE together with Reply To Comment (RTC)	0		15-Dec-14		31-Aug-15
AP01645	Reply to IPs Comments in RTC	0		15-Dec-14		31-Aug-15
AP01650	ICE Approval & Issue of Design Check Cert.	18	16-Dec-14	08-Jan-15	01-Sep-15	21-Sep-15
AP01655	Check Cert to SO	0		08-Jan-15		21-Sep-15
AP01660	No Objection or Further Minor Comments from IPs Received	0		08-Jan-15		21-Sep-15
AP01680	SO Review (35 Days)	35	17-Dec-14	20-Jan-15	03-Sep-15	05-Oct-15
AP01685	SO Approval with Condition Received	0		20-Jan-15		05-Oct-15

<b>(F1) DDA Temp. works - Retrieval Shaft on Southern Landfall inc. break-out</b>						
DD03510	Preparation of DDA Temp Support for Sth Retrieval Shaft	18	01-Apr-15	25-Apr-15	06-Oct-15	27-Oct-15
DD03520	Review & Comment by JV	18	27-Apr-15	18-May-15	28-Oct-15	17-Nov-15
DD03530	Designer prepare DDA	6	19-May-15	26-May-15	18-Nov-15	24-Nov-15
DD03540	Formal Submission of DDA to ICE/ IPs	0		26-May-15		24-Nov-15
DD03550	Advanced Submission to SO	0		26-May-15		24-Nov-15
DD03560	IPs/ SO's Advance Comments/ ICE Comments	28	27-May-15	23-Jun-15	25-Nov-15	22-Dec-15
DD03570	Comments Received	0		23-Jun-15		22-Dec-15
DD03580	Designer to Reply RTC + Update Submission	21	24-Jun-15	18-Jul-15	23-Dec-15	19-Jan-16
DD03590	Submit Updated DDA to SO/ ICE/ IPs	0		20-Jul-15		20-Jan-16
DD03600	ICE Approval & Issue Check Cert	12	20-Jul-15	01-Aug-15	20-Jan-16	02-Feb-16
DD03610	Submit ICE Check Cert to SO	6	03-Aug-15	08-Aug-15	03-Feb-16	16-Feb-16
DD03620	IPs Review	28	20-Jul-15	16-Aug-15	20-Jan-16	16-Feb-16
DD03630	IPs No Objection Received	0		16-Aug-15		16-Feb-16
DD03670	SO's Review	35	20-Jul-15	23-Aug-15	20-Jan-16	23-Feb-16
DD03680	SO Approval with Condition Received	0		24-Aug-15		23-Feb-16

<b>ETWB TCW No 15/2005 - ELS Design for TBM Retrieval Shaft at Southern Landfall</b>						
GEO1330	1st Submission to GEO - ETWB TCW No 15/2005 - ELS Design for TBM Retrieval Shaft at Southern Landfall	0		24-Aug-15		23-Feb-16
GEO1335	1st Submission GEO Review	28	24-Aug-15	20-Sep-15	24-Feb-16	22-Mar-16
GEO1340	Received GEO Comment	0		21-Sep-15		22-Mar-16
GEO1345	Prepare Response to Comment	12	21-Sep-15	06-Oct-15	23-Mar-16	09-Apr-16
GEO1350	2nd Submission to GEO	0		06-Oct-15		09-Apr-16
GEO1355	2nd GEO Review	28	07-Oct-15	03-Nov-15	10-Apr-16	07-May-16

<b>(F2) AIP Temp works of Ground Treatment for TBMs passing under Southern Landfall</b>						
AP01905	Review & Comment by JV	18	23-Sep-14	15-Oct-14	29-Aug-15	18-Sep-15
AP01910	Designer Prepare AIP	12	16-Oct-14	29-Oct-14	19-Sep-15	05-Oct-15
AP01915	Formal Submission of AIP to ICE/IPs	0		29-Oct-14		05-Oct-15
AP01920	Advanced Submission of AIP to SO	0		29-Oct-14		05-Oct-15
AP01925	Review & Comment by SO/ ICE/ IPs	28	30-Oct-14	26-Nov-14	06-Oct-15	02-Nov-15
AP01930	Advance Comments from SO/ Comments from ICE/ IPs Received	0		26-Nov-14		02-Nov-15
AP01935	Designer to Prepare RTC & Updated AIP	18	27-Nov-14	17-Dec-14	03-Nov-15	23-Nov-15
AP01940	Submission of AIP to SO/ ICE together with Reply To Comment (RTC)	0		17-Dec-14		23-Nov-15
AP01945	Reply to IPs Comments in RTC	0		17-Dec-14		23-Nov-15
AP01950	ICE Approval & Issue of Design Check Cert.	18	18-Dec-14	10-Jan-15	24-Nov-15	14-Dec-15
AP01980	SO Review (35 Days)	35	19-Dec-14	22-Jan-15	24-Nov-15	28-Dec-15

<b>(F2) DDA Temp works of Ground Treatment for TBMs passing under Southern Landfall</b>						
DD04750	Review & Comment by JV	18	27-Apr-15	18-May-15	15-Apr-15A	30-Dec-15
DD04790	IPs/ SO's Advance Comments/ ICE Comments	28	27-May-15	23-Jun-15	08-Jan-16	04-Feb-16
DD04800	Comments Received	0		23-Jun-15		04-Feb-16
DD04810	Designer to Reply RTC + Update Submission	21	24-Jun-15	18-Jul-15	05-Feb-16	07-Mar-16
DD04820	Submit Updated DDA to SO/ ICE/ IPs	0		20-Jul-15		08-Mar-16
DD04830	ICE Approval & Issue Check Cert	12	20-Jul-15	01-Aug-15	08-Mar-16	21-Mar-16
DD04840	Submit ICE Check Cert to SO	6	03-Aug-15	08-Aug-15	22-Mar-16	31-Mar-16
DD04850	IPs Review	28	20-Jul-15	16-Aug-15	08-Mar-16	04-Apr-16
DD04860	IPs No Objection Received	0		16-Aug-15		04-Apr-16



Date	Revision	Checked	Approved
12-Feb-14	TMCLKDJBGENPRG98507	WYu	SPu
08-Apr-14	TMCLKDJBGENPRG98507 Rev.B	SPu	WYu
28-Aug-14	TMCLKDJBGENPRG98507 Rev.C	CLa	WYu
10-Jun-15	TMCLKDJBGENPRG98507 Rev.F	WYu	



Activity ID	Activity Name	Orig Dur	Planned Start	Planned Finish	Current Start	Current Finish	2015												2016	
							May	Jun	Jul	Aug	Sep	Oct	Nov	Dec	Jan	Feb	Mar	Apr		
DD67888	IPs Review	28	22-May-15	18-Jun-15	05-Mar-16	01-Apr-16														
DD67898	IPs No Objection Received	0		18-Jun-15		01-Apr-16														
DD67940	SO's Review	35	22-May-15	25-Jun-15	05-Mar-16	08-Apr-16														
DD67950	SOApproval with Condition R received	0		25-Jun-15		08-Apr-16														
<b>(J1) DDA Temp.works for Construction of Sth.Vent.Bldg.</b>																				
DD04560	Preparation of DDASouth VB ELS	18	01-Jun-15	22-Jun-15	10-Dec-15	02-Jan-16														
DD04570	Review & Comment by JV	18	23-Jun-15	14-Jul-15	04-Jan-16	23-Jan-16														
DD04580	Designer prepare DDA	10	15-Jul-15	25-Jul-15	25-Jan-16	04-Feb-16														
DD04590	Formal Submission of DDATO ICE/ IPs	0		25-Jul-15		04-Feb-16														
DD04600	Advanced Submission to SO	0		25-Jul-15		04-Feb-16														
DD04610	IPs/ SO's Advance Comments/ ICE Comments	28	26-Jul-15	22-Aug-15	05-Feb-16	03-Mar-16														
DD04620	Comments Received	0		22-Aug-15		03-Mar-16														
DD04630	Designer to Reply RTC + Update Submission	21	24-Aug-15	16-Sep-15	04-Mar-16	31-Mar-16														
DD04640	Submit Updated DDATO SO/ ICE/ IPs	0		17-Sep-15		01-Apr-16														
DD04650	ICEApproval & Issue Check Cert	12	17-Sep-15	02-Oct-15	01-Apr-16	15-Apr-16														
DD04660	Submit ICE Check Cert to SO	6	03-Oct-15	09-Oct-15	16-Apr-16	22-Apr-16														
DD04670	IPs Review	28	17-Sep-15	14-Oct-15	01-Apr-16	28-Apr-16														
DD04680	IP's No Objection Received	0		14-Oct-15		28-Apr-16														
DD04720	SO's Review	35	17-Sep-15	21-Oct-15	01-Apr-16	05-May-16														
DD04730	SOApproval with Condition R received	0		22-Oct-15		05-May-16														
<b>Construction</b>																				
DDP11930	Mobilization & Setting Up Piling Rigs	64	06-Aug-15	22-Oct-15	29-Aug-15	14-Nov-15														
DDP11940	S - Piling (Socket H-piles)	132	23-Oct-15	08-Apr-16	06-May-16	13-Oct-16														
DDP11960	S - Sheet Piling	48	23-Oct-15	17-Dec-15	16-Nov-15	13-Jan-16														
<b>South Surface Roadworks, Utility &amp; Drainage works</b>																				
<b>Design Submission</b>																				
<b>(E1) AIP - Southern Landfall Seawall Modification</b>																				
AP00900	Designer Prepare AIP - Southern Landfall Seawall Modification	36	08-Nov-16	19-Dec-16	08-Jun-15A	08-Jul-15A														
AP00905	Review & Comment by JV	12	20-Dec-16	05-Jan-17	08-Jul-15A	13-Jul-15A														
AP00910	Designer prepare AIP	6	06-Jan-17	12-Jan-17	13-Jul-15A	16-Jul-15A														
AP00915	Formal Submission of AIP to ICE/IPs	0		12-Jan-17		16-Jul-15A														
AP00920	Advanced Submission of AIP to SO	0		12-Jan-17		16-Jul-15A														
AP00925	Review & Comment by SO/ ICE/ IPs	28	13-Jan-17	09-Feb-17	16-Jul-15A	30-Aug-15														
AP00930	Advance Commants from SO/ Comments from ICE/ IPs Received	0		09-Feb-17		31-Aug-15														
AP00935	Designer to Prepare RTC & Updated AIP	18	10-Feb-17	02-Mar-17	31-Aug-15	19-Sep-15														
AP00940	Submission of AIP to SO/ ICE together with Reply To Comment (RTC)	0		02-Mar-17		19-Sep-15														
AP00945	Reply to IPs Comments in RTC	0		02-Mar-17		19-Sep-15														
AP00950	ICEApproval & Issue of Design Check Cert.	18	03-Mar-17	23-Mar-17	21-Sep-15	13-Oct-15														
AP00955	Check Cert to SO	0		23-Mar-17		13-Oct-15														
AP00960	No Objection or Further Minor Comments from IPs Received	0		23-Mar-17		13-Oct-15														
AP00980	SO Review (35 Days)	35	03-Mar-17	06-Apr-17	22-Sep-15	26-Oct-15														
AP00985	SOApproval with Condition R received	0		06-Apr-17		26-Oct-15														
<b>(E1) DDA - Southern Landfall Seawall Modification</b>																				
DD01900	Preparation of DDAModification of Seawall at Sth Landfall	18	07-Apr-17	02-May-17	27-Oct-15	16-Nov-15														
DD01905	Review & Comment by JV	18	04-May-17	24-May-17	17-Nov-15	07-Dec-15														
<b>(E3) DDA for Sewerage, Drainage, Waterworks &amp; Utility works for South Landfall</b>																				
DD05860	IPs/ SO's Advance Comments/ ICE Comments	28	04-Jan-15	31-Jan-15	27-Mar-15A	02-Sep-15														
DD05870	Comments Received	0		31-Jan-15		02-Sep-15														
DD05880	Designer to Reply RTC + Update Submission	21	02-Feb-15	04-Mar-15	03-Sep-15	26-Sep-15														
DD05890	Submit Updated DDATO SO/ ICE/ IPs	0		05-Mar-15		29-Sep-15														
DD05900	ICEApproval & Issue Check Cert	12	05-Mar-15	18-Mar-15	29-Sep-15	13-Oct-15														
DD05910	Submit ICE Check Cert to SO	6	19-Mar-15	25-Mar-15	14-Oct-15	20-Oct-15														
DD05920	IPs Review	28	05-Mar-15	01-Apr-15	29-Sep-15	26-Oct-15														
DD05930	IP's No Objection Received	0		01-Apr-15		26-Oct-15														
DD05940	SO's Review	35	05-Mar-15	08-Apr-15	29-Sep-15	02-Nov-15														
DD05950	SOApproval with Condition R received	0		08-Apr-15		02-Nov-15														
<b>Method Statement Submission</b>																				
<b>Method Statement of Ground Treatment for TBMs Passing under Southern Landfall Seawall</b>																				
MS2700	Preparation Method Statement for Ground Improvement in South Landfall	9	20-Jul-15	29-Jul-15	08-Mar-16	17-Mar-16														
MS2710	Submit Method Statement to SO	0		29-Jul-15		17-Mar-16														
MS2720	SO Reviews & Comments	28	30-Jul-15	26-Aug-15	18-Mar-16	14-Apr-16														
MS2730	Re-submission	6	27-Aug-15	02-Sep-15	15-Apr-16	21-Apr-16														
MS2740	SO's Review	28	03-Sep-15	30-Sep-15	22-Apr-16	19-May-16														
MS2750	SO's Approval	0		30-Sep-15		19-May-16														
<b>Construction</b>																				
DDP11435	Temporary Platform for Ground Treatment for TBM passing under Southern Seawall	48	06-Aug-15	02-Oct-15	29-Aug-15	27-Oct-15														
DDP11440	Grouting Treatment for TBM passing under Southern Seawall	339	03-Oct-15	25-Nov-16	20-May-16	14-Jul-17														

