

Figure 1. Transect Line Layout in Northwest and Northeast Lantau Survey Areas

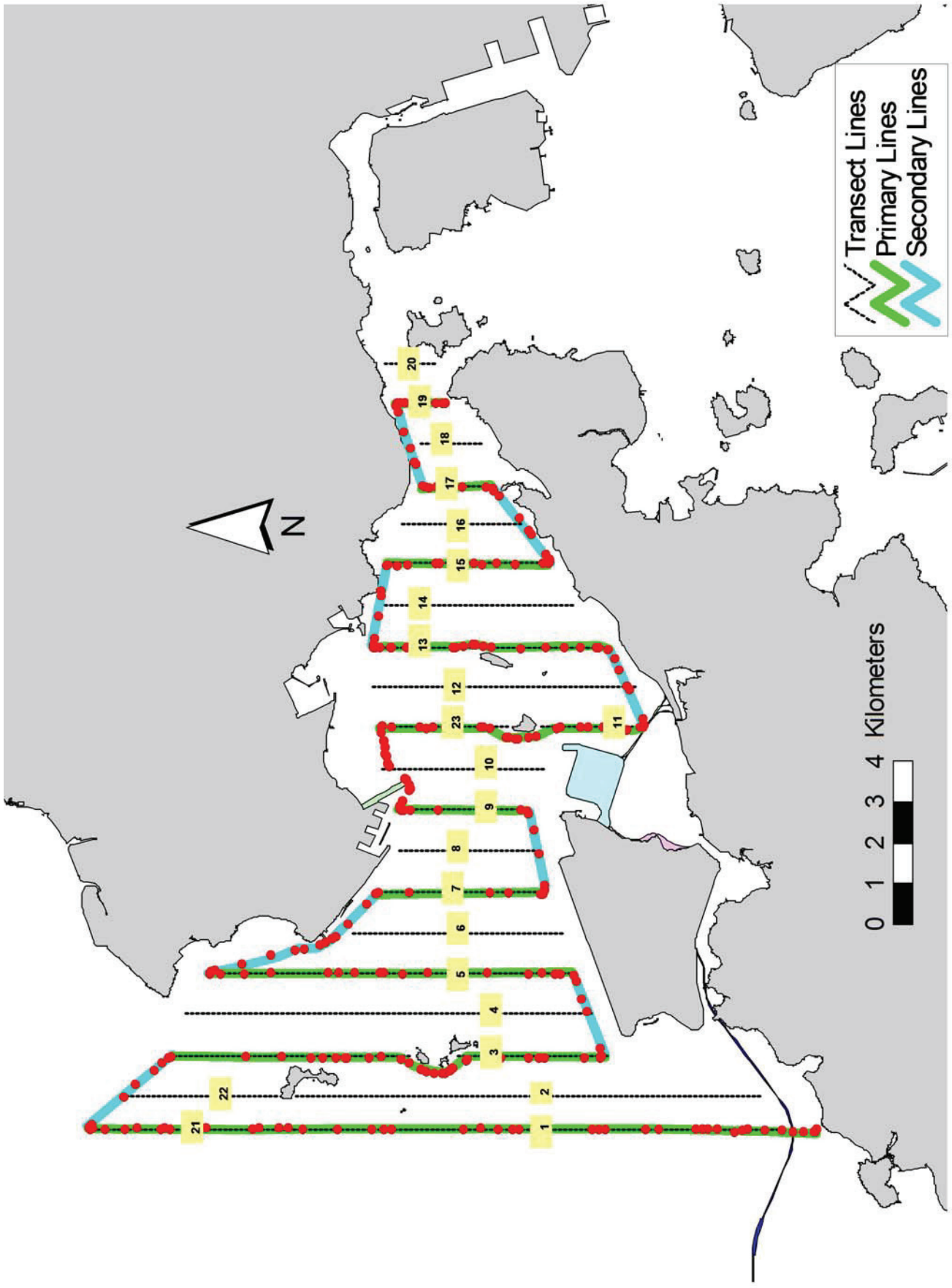


Figure 2. Survey Route on August 10<sup>th</sup>, 2015 (from HKLR03 project)

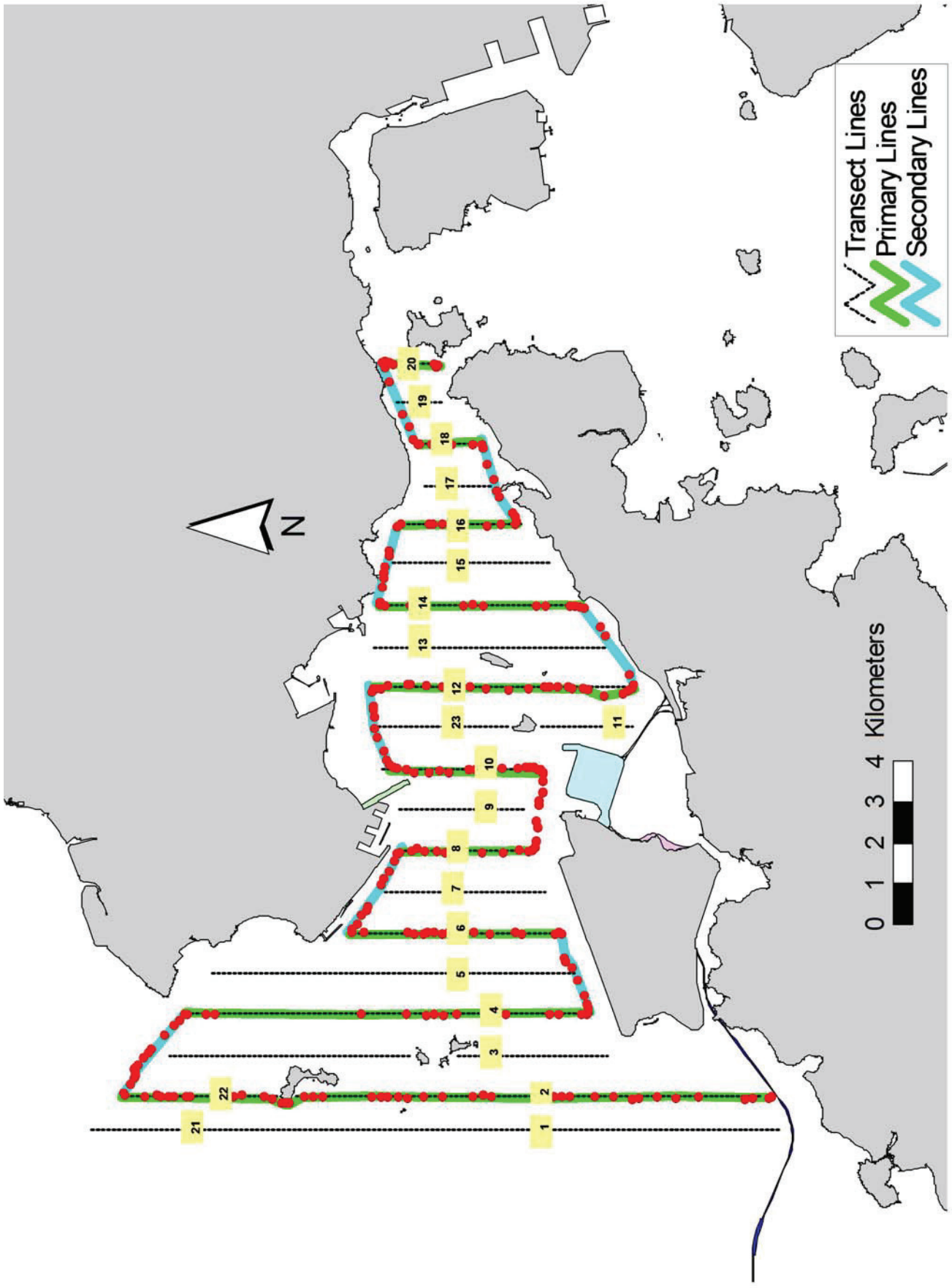


Figure 3. Survey Route on August 14<sup>th</sup>, 2015 (from HKLR03 project)

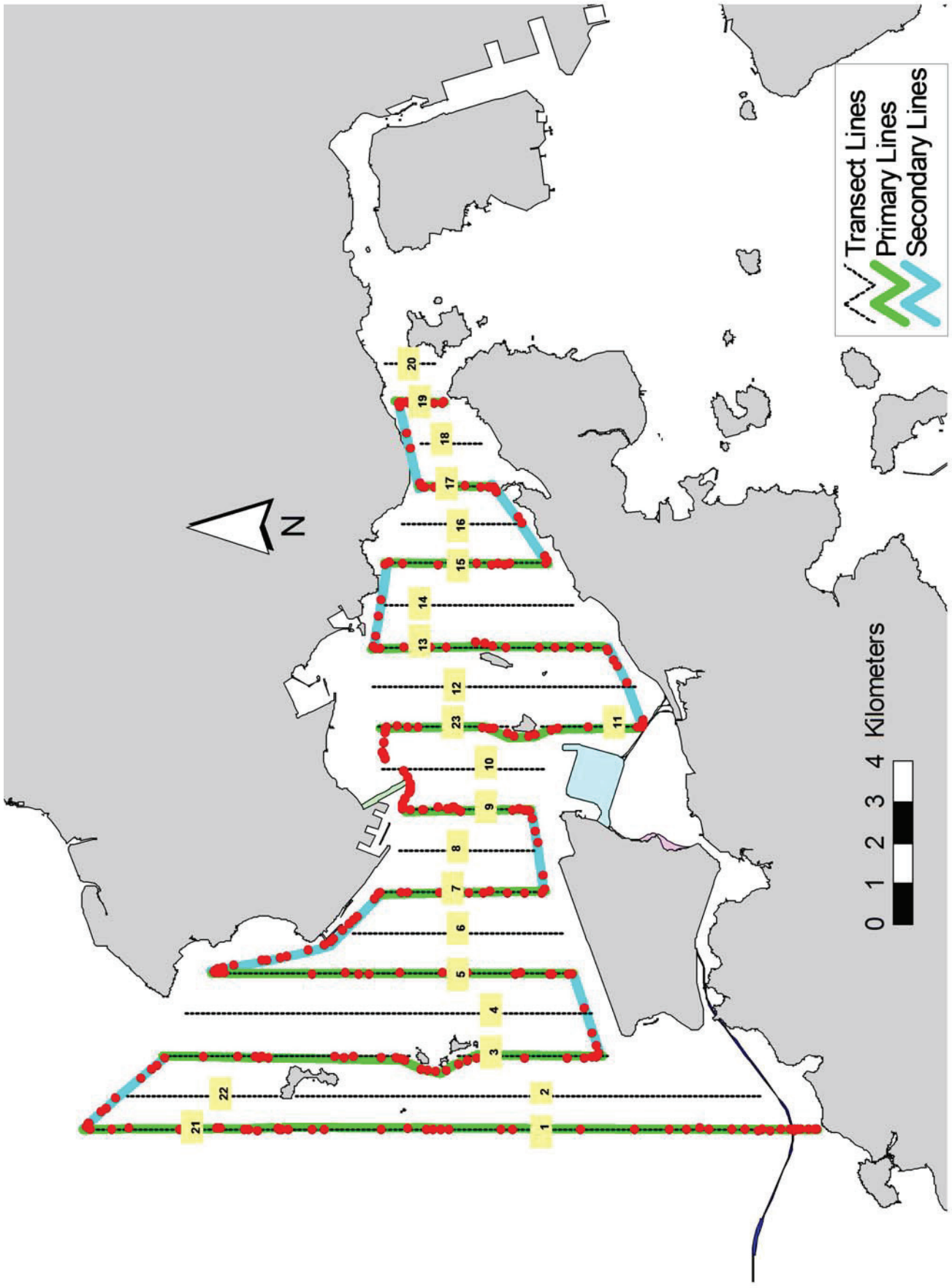


Figure 4. Survey Route on August 19<sup>th</sup>, 2015 (from HKLR03 project)



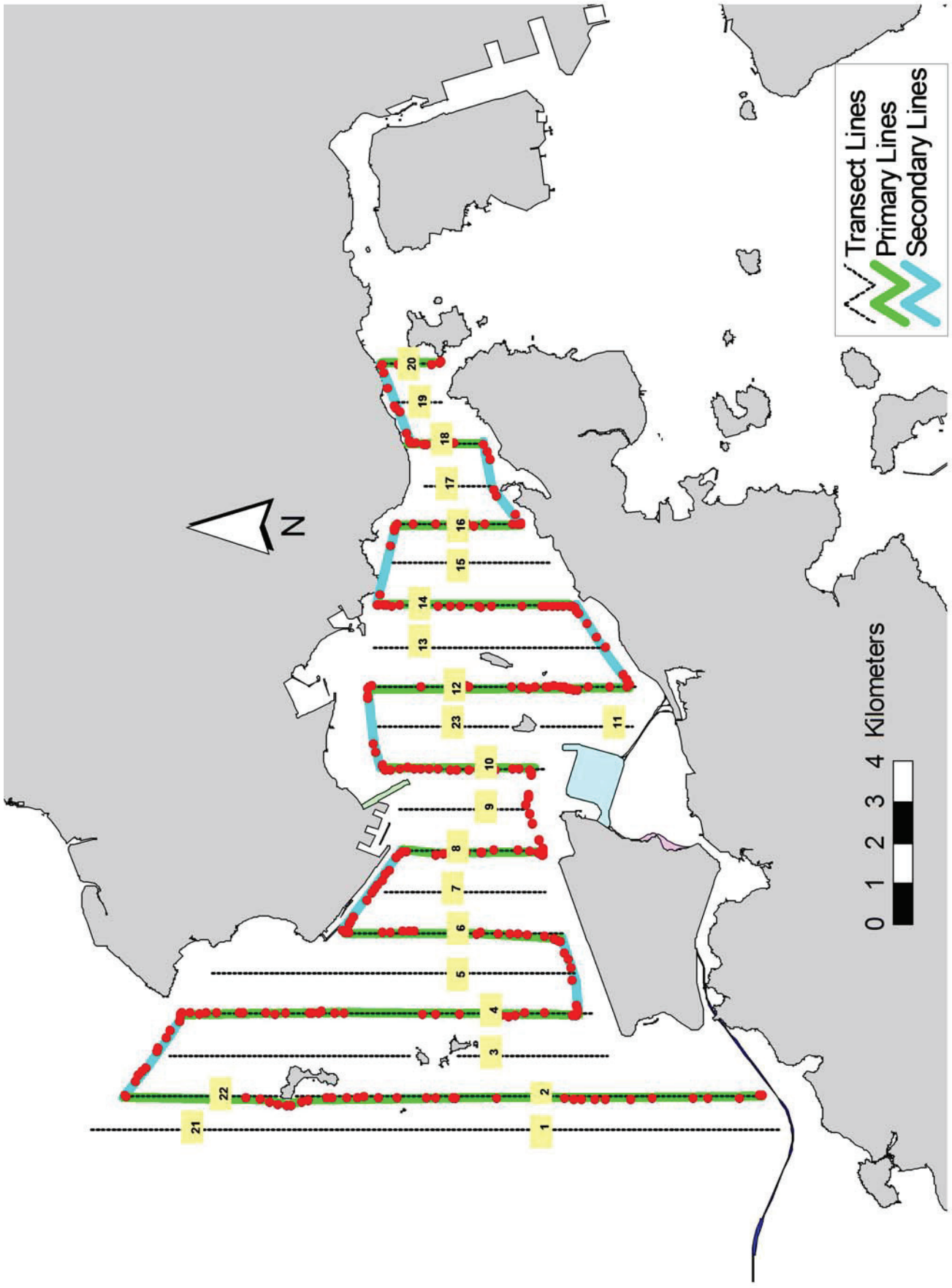


Figure 5. Survey Route on August 28<sup>th</sup>, 2015 (from HKLR03 project)

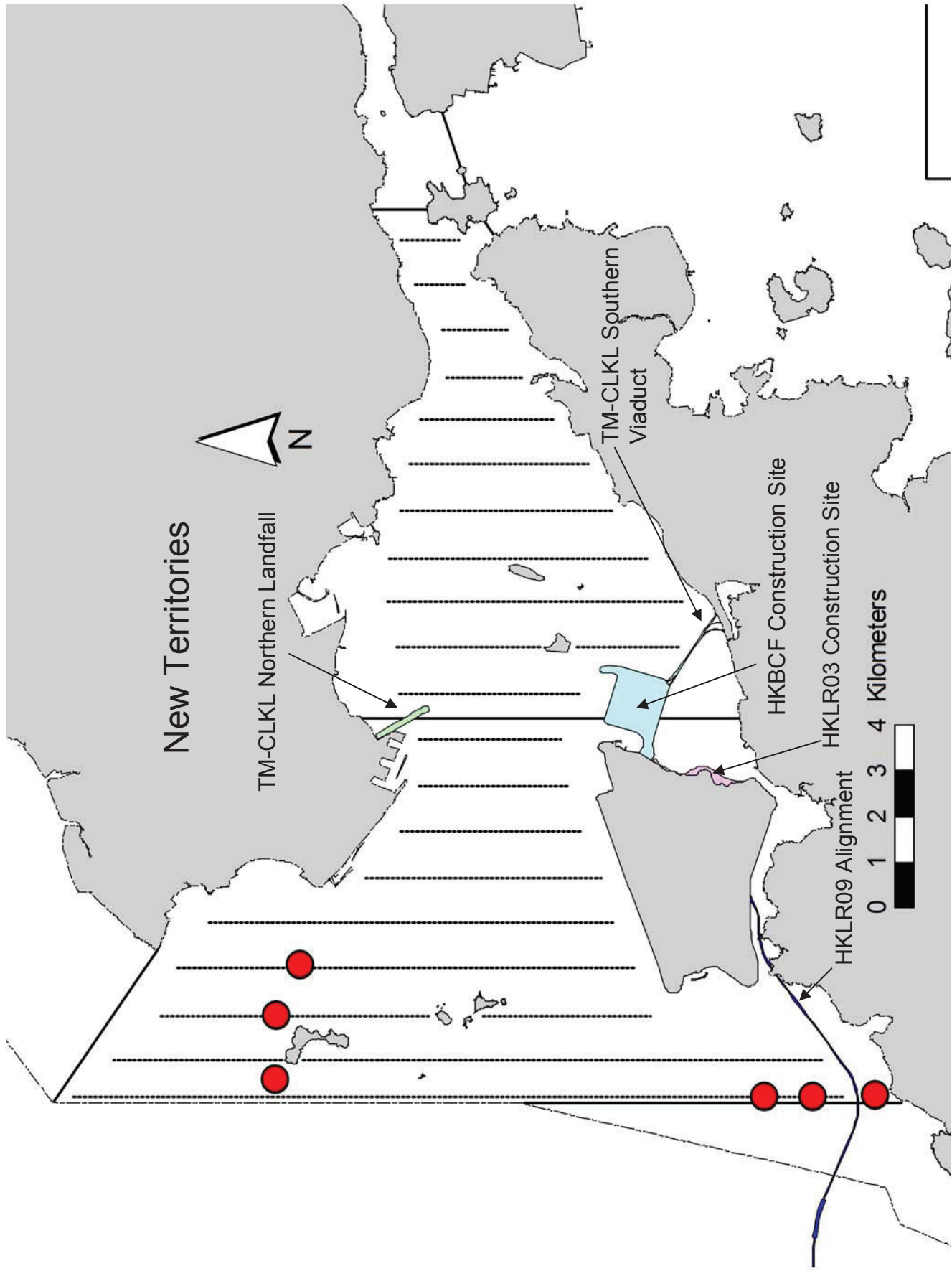


Figure 6. Distribution of Chinese White Dolphin Sightings During August 2015 HKLR03 Monitoring Surveys

## Appendix I. HKLR03 Survey Effort Database (August 2015)

(Abbreviations: BEAU = Beaufort Sea State; P = Primary Line Effort; S = Secondary Line Effort)

DATE	AREA	BEAU	EFFORT	SEASON	VESSEL	TYPE	P/S
10-Aug-15	NW LANTAU	2	19.11	SUMMER	STANDARD31516	HKLR	P
10-Aug-15	NW LANTAU	3	21.29	SUMMER	STANDARD31516	HKLR	P
10-Aug-15	NW LANTAU	2	7.50	SUMMER	STANDARD31516	HKLR	S
10-Aug-15	NW LANTAU	3	5.90	SUMMER	STANDARD31516	HKLR	S
10-Aug-15	NE LANTAU	2	11.97	SUMMER	STANDARD31516	HKLR	P
10-Aug-15	NE LANTAU	3	4.50	SUMMER	STANDARD31516	HKLR	P
10-Aug-15	NE LANTAU	2	8.13	SUMMER	STANDARD31516	HKLR	S
10-Aug-15	NE LANTAU	3	2.10	SUMMER	STANDARD31516	HKLR	S
14-Aug-15	NW LANTAU	1	3.92	SUMMER	STANDARD31516	HKLR	P
14-Aug-15	NW LANTAU	2	20.74	SUMMER	STANDARD31516	HKLR	P
14-Aug-15	NW LANTAU	3	7.02	SUMMER	STANDARD31516	HKLR	P
14-Aug-15	NW LANTAU	2	3.00	SUMMER	STANDARD31516	HKLR	S
14-Aug-15	NW LANTAU	3	4.52	SUMMER	STANDARD31516	HKLR	S
14-Aug-15	NE LANTAU	2	18.24	SUMMER	STANDARD31516	HKLR	P
14-Aug-15	NE LANTAU	3	1.90	SUMMER	STANDARD31516	HKLR	P
14-Aug-15	NE LANTAU	2	8.36	SUMMER	STANDARD31516	HKLR	S
14-Aug-15	NE LANTAU	3	2.10	SUMMER	STANDARD31516	HKLR	S
19-Aug-15	NW LANTAU	2	26.22	SUMMER	STANDARD31516	HKLR	P
19-Aug-15	NW LANTAU	3	12.61	SUMMER	STANDARD31516	HKLR	P
19-Aug-15	NW LANTAU	2	8.42	SUMMER	STANDARD31516	HKLR	S
19-Aug-15	NW LANTAU	3	4.39	SUMMER	STANDARD31516	HKLR	S
19-Aug-15	NE LANTAU	2	16.55	SUMMER	STANDARD31516	HKLR	P
19-Aug-15	NE LANTAU	2	9.95	SUMMER	STANDARD31516	HKLR	S
28-Aug-15	NE LANTAU	1	1.65	SUMMER	STANDARD31523	HKLR	P
28-Aug-15	NE LANTAU	2	17.34	SUMMER	STANDARD31524	HKLR	P
28-Aug-15	NE LANTAU	1	3.09	SUMMER	STANDARD31525	HKLR	S
28-Aug-15	NE LANTAU	2	7.70	SUMMER	STANDARD31526	HKLR	S
28-Aug-15	NW LANTAU	2	16.74	SUMMER	STANDARD31527	HKLR	P
28-Aug-15	NW LANTAU	3	14.81	SUMMER	STANDARD31528	HKLR	P
28-Aug-15	NW LANTAU	4	1.30	SUMMER	STANDARD31529	HKLR	P
28-Aug-15	NW LANTAU	2	6.65	SUMMER	STANDARD31530	HKLR	S

### Appendix II. HKLR03 Chinese White Dolphin Sighting Database (August 2015)

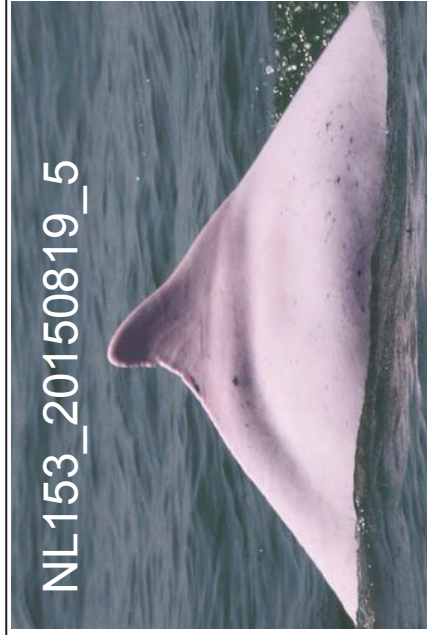
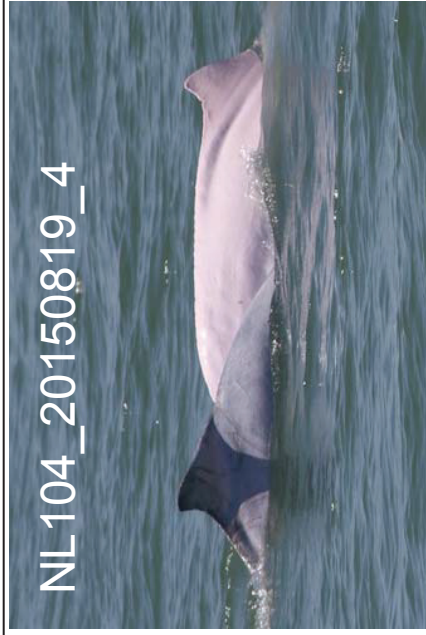
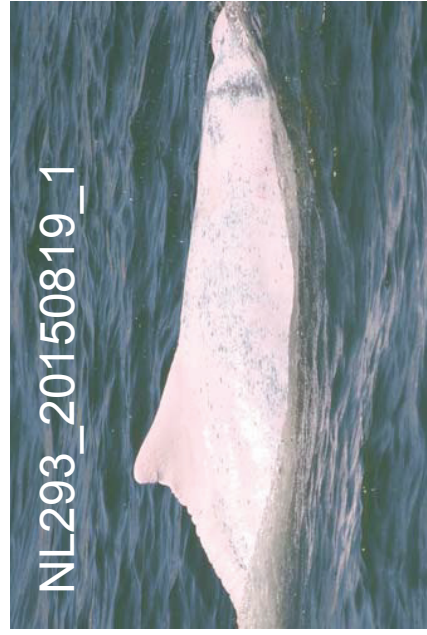
(Abbreviations: STG# = Sighting Number; HRD SZ = Dolphin Herd Size; BEAU = Beaufort Sea State; PSD = Perpendicular Distance; BOAT ASSOC. = Fishing Boat Association P/S: Sighting Made on Primary/Secondary Line§)

DATE	STG #	TIME	HRD SZ	AREA	BEAU	PSD	EFFORT	TYPE	NORTHING	EASTING	SEASON	BOAT ASSOC.	P/S
19-Aug-15	1	1019	1	NW LANTAU	2	45	ON	HKLR	814805	804681	SUMMER	NONE	P
19-Aug-15	2	1031	4	NW LANTAU	2	502	ON	HKLR	816101	804673	SUMMER	NONE	P
19-Aug-15	3	1036	1	NW LANTAU	2	285	ON	HKLR	817097	804675	SUMMER	NONE	P
19-Aug-15	4	1125	5	NW LANTAU	2	733	ON	HKLR	827218	805036	SUMMER	NONE	P
19-Aug-15	5	1221	5	NW LANTAU	2	98	ON	HKLR	827182	806436	SUMMER	NONE	P
28-Aug-15	1	1417	5	NW LANTAU	3	344	ON	HKLR	826693	807538	SUMMER	NONE	P



**Appendix III. Individual dolphins identified during HKLR03 monitoring surveys in August 2015**

<b>ID#</b>	<b>DATE</b>	<b>STG#</b>	<b>AREA</b>
CH34	28/08/15	1	NW LANTAU
NL46	19/08/15	4	NW LANTAU
NL104	19/08/15	4	NW LANTAU
	28/08/15	1	NW LANTAU
NL136	28/08/15	1	NW LANTAU
NL153	19/08/15	5	NW LANTAU
NL202	19/08/15	5	NW LANTAU
NL214	28/08/15	1	NW LANTAU
NL220	28/08/15	1	NW LANTAU
NL286	19/08/15	5	NW LANTAU
NL293	19/08/15	1	NW LANTAU
NL310	19/08/15	4	NW LANTAU
WL17	19/08/15	4	NW LANTAU
WL124	19/08/15	3	NW LANTAU



Appendix IV. Photographs of Identified Individual Dolphins in August 2015 (HKLR03)





Appendix IV. (cont'd)