

Activity ID	Activity Name	Orig Dur	Planned Start	Planned Finish	Current Start	Current Finish	2015							2016
							Jun	Jul	Aug	Sep	Oct	Nov	Dec	Jan
TMCLK - Northern Connection Sub-Sea Tunnel Section														
Contract Dates														
Commencement and Completion Dates														
KD060	KD06 - Completion of Section 1B - Portion N8	0		08-Dec-15		02-Mar-16*								◆ KD06 - Completion
Handover Date														
HD020	Portions: N8A, N8B(above +3), N8C	0		08-Dec-15		02-Mar-16*								◆ Portions: N8A, N8B
General Submissions														
General Design Submissions														
(A19) DDA for Roadworks & Project Alignment														
DD68370	SO's Review	35	18-Sep-14	22-Oct-14	22-Dec-14A	15-Jul-15A								
(G6) IFA for Tunnel GBP														
DD70750	SO's Review	35	29-Apr-14	02-Jun-14	03-Jul-14A	29-Sep-15								
DD70760	SO Approval with Condition Received	0		03-Jun-14		29-Sep-15								
Construction														
Northern Landfall														
North Reclamation (Phase 1)														
Construction														
Zone D1														
Reclamation														
NRC15160	Surcharge Removal - Zone D1 - (CH205 to 255) to +6mPD	8	09-Nov-15	17-Nov-15	01-Sep-15A	12-Dec-15								■ Surcharge Removal - Zone D1 - (CH205 to 255) to +6mPD
NRC15180	Surcharge Removal - Zone D1 - (CH255 to 305) to +6mPD	7	24-Nov-15	01-Dec-15	19-Dec-15A	24-Dec-15								■ Surcharge Removal - Zone D1 - (CH255 to 305) to +6mPD
NRC15190	Surcharge Period - Zone D1 - (CH305 to 355)	180	19-Nov-14	17-May-15	03-Jun-15A	06-Jul-15A								■ Surcharge Period - Zone D1 - (CH305 to 355)
NRC15200	Surcharge Removal - Zone D1 - (CH305 to 355)	7	18-May-15	26-May-15	03-Jun-15A	06-Jul-15A								■ Surcharge Removal - Zone D1 - (CH305 to 355)
NRC15201	Preparation for Portion N8 Handover	6	02-Dec-15	08-Dec-15	28-Dec-15	04-Jan-16								■ Preparation for Portion N8 Handover
NRC15245	Portion N8 Handover	0		08-Dec-15		04-Jan-16								◆ Portion N8 Handover
Zone D2														
Reclamation														
NRC15220	Surcharge Removal - Zone D2 - (CH355 to 405)	9	01-Jun-15	10-Jun-15	15-Jun-15A	08-Jul-15A								■ Surcharge Removal - Zone D2 - (CH355 to 405)
NRC15240	Surcharge Removal - Zone D2 - (CH405 to 443)	9	11-Jun-15	22-Jun-15	15-Jun-15A	10-Jul-15A								■ Surcharge Removal - Zone D2 - (CH405 to 443)
Zone C1														
Reclamation														
NRC15260	Surcharge Removal - Zone C1 - (CH443 to 493)	10	06-May-17	17-May-17	27-Jun-15A	07-Aug-15A								■ Surcharge Removal - Zone C1 - (CH443 to 493)
NRC15270	Surcharge Period - Zone C1 - (CH493 to 543)	180	13-Nov-14	12-May-15	31-Dec-14A	28-Jun-15A								■ Surcharge Period - Zone C1 - (CH493 to 543)
NRC15280	Surcharge Removal - Zone C1 - (CH493 to 543)	10	06-May-17	17-May-17	22-Jul-15A	14-Aug-15A								■ Surcharge Removal - Zone C1 - (CH493 to 543)
Zone C2														
Reclamation														
NRC15290	Surcharge Period - Zone C2 - (CH543 to 598)	180	05-Nov-14	03-May-15	31-Dec-14A	28-Jun-15A								■ Surcharge Period - Zone C2 - (CH543 to 598)
Zone B														
Vertical Seawall														
NRC11400	VS - Mass Concrete Coping - Zone B - (CH598 to 648)	8	01-Sep-14	10-Sep-14	21-Oct-14A	16-Jul-15A								■ VS - Mass Concrete Coping - Zone B - (CH598 to 648)
NRC11410	VS - Mass Concrete Coping - Zone B - (CH648 to 698)	8	11-Sep-14	19-Sep-14	20-Nov-14A	16-Jul-15A								■ VS - Mass Concrete Coping - Zone B - (CH648 to 698)
NRC11420	VS - Mass Concrete Coping - Zone B - (CH698 to 738)	8	20-Sep-14	29-Sep-14	02-Dec-14A	16-Jul-15A								■ VS - Mass Concrete Coping - Zone B - (CH698 to 738)
Reclamation														
NRC11990	Public Fill - Zone B - (CH598 to 648) to +10mPD	6	29-Aug-15	04-Sep-15	20-Sep-14A	22-Sep-14A								■ Public Fill - Zone B - (CH598 to 648) to +10mPD
NRC15310	Surcharge Period - Zone B - (CH598 to 648)	180	05-Sep-15	02-Mar-16	22-Sep-14A	20-Mar-15A								■ Surcharge Period - Zone B - (CH598 to 648)
NRC15320	Surcharge Removal - Zone B - (CH598 to 648)	10	03-Mar-16	14-Mar-16	29-Sep-15	10-Oct-15								■ Surcharge Removal - Zone B - (CH598 to 648)
Zone A1														
Reclamation														
NRC15380	Surcharge Removal - Zone A1 - (CH738 to 793)	10	26-May-15	06-Jun-15	16-Jul-15A	16-Jul-15A								■ Surcharge Removal - Zone A1 - (CH738 to 793)
Zone A2														
Sloping Seawall														
NRC12760	SS - Armour Rock - Zone A2 - (CH843 to 893)	4	14-Jun-14	19-Jun-14	16-Apr-15A	29-Sep-15								■ SS - Armour Rock - Zone A2 - (CH843 to 893)
NRC12770	SS - Armour Rock - Zone A2 - (CH893 to 956)	4	19-Jun-14	24-Jun-14	16-Apr-15A	30-Sep-15								■ SS - Armour Rock - Zone A2 - (CH893 to 956)
Reclamation														
NRC15400	Surcharge Removal - Zone A2 - (CH738 to 956)	10	08-Jun-15	19-Jun-15	08-Jun-15A	02-Sep-15A								■ Surcharge Removal - Zone A2 - (CH738 to 956)
Zone F														
CH184 to CH231														
A6416230	F - Anchor wall Installation - CH184 to CH231	4	10-Feb-14	13-Feb-14	29-Sep-15	03-Oct-15								■ F - Anchor wall Installation - CH184 to CH231
A6416290	F - Backfilling up to 0.0mPD & G2 Installation to Anchor Wall - CH184 to CH231	3	14-Feb-14	16-Feb-14	16-Mar-15A	05-Oct-15								■ F - Backfilling up to 0.0mPD & G2 Installation to Anchor Wall - CH184 to CH231
A6416295	F - Backfilling up to +3.0mPD & G1 Installation to Anchor Wall - CH184 to CH231	2	17-Feb-14	18-Feb-14	16-Mar-15A	06-Oct-15								■ F - Backfilling up to +3.0mPD & G1 Installation to Anchor Wall - CH184 to CH231
A6416300	F - Backfilling up to +6.0mPD to Anchor Wall - CH184 to CH231	2	19-Feb-14	20-Feb-14	07-Oct-15	08-Oct-15								■ F - Backfilling up to +6.0mPD to Anchor Wall - CH184 to CH231
A6416400	F - Backfilling to +6.0mPD to Existing Seawall - CH184 to CH231	1	21-Feb-14	21-Feb-14	09-Oct-15	09-Oct-15								■ F - Backfilling to +6.0mPD to Existing Seawall - CH184 to CH231
CH231 to CH278														
A6416280	F - Backfilling up to +6.0mPD - CH231 to CH278	2	17-Apr-14	18-Apr-14	03-Oct-15	04-Oct-15								■ F - Backfilling up to +6.0mPD - CH231 to CH278
A6416310	F - Anchor wall Installation - CH231 to CH278	4	22-Apr-14	25-Apr-14	05-Oct-15	08-Oct-15								■ F - Anchor wall Installation - CH231 to CH278
A6416480	F - Backfilling up to 0.0mPD & G2 Installation to Anchor Wall - CH231 to CH278	3	26-Apr-14	28-Apr-14	03-Mar-15A	09-Oct-15								■ F - Backfilling up to 0.0mPD & G2 Installation to Anchor Wall - CH231 to CH278
A6416490	F - Backfilling up to +3.0mPD & G1 Installation to Anchor Wall - CH231 to CH278	2	29-Apr-14	30-Apr-14	10-Mar-15A	10-Oct-15								■ F - Backfilling up to +3.0mPD & G1 Installation to Anchor Wall - CH231 to CH278
A6416500	F - Backfilling up to +6.0mPD to Anchor Wall - CH231 to CH278	2	01-May-14	02-May-14	11-Oct-15	12-Oct-15								■ F - Backfilling up to +6.0mPD to Anchor Wall - CH231 to CH278
A6416510	F - Backfilling to +6.0mPD to Existing Seawall - CH231 to CH278	1	03-May-14	03-May-14	13-Oct-15	13-Oct-15								■ F - Backfilling to +6.0mPD to Existing Seawall - CH231 to CH278
CH278 to CH327														
A6416220	F - Backfilling up to +6.0mPD - CH278 to CH327	2	12-Apr-14	13-Apr-14	01-Oct-15	02-Oct-15								■ F - Backfilling up to +6.0mPD - CH278 to CH327
A6416340	F - Anchor wall Installation - CH278 to CH327	4	26-Apr-14	30-Apr-14	09-Oct-15	13-Oct-15								■ F - Anchor wall Installation - CH278 to CH327
A6416520	F - Backfilling up to 0.0mPD & G2 Installation to Anchor Wall - CH278 to CH327	3	01-May-14	03-May-14	03-Mar-15A	14-Oct-15								■ F - Backfilling up to 0.0mPD & G2 Installation to Anchor Wall - CH278 to CH327

- Planned Bar
- Planned Bar - Critical
- ◆ Planned Milestone
- Progress bar
- ◆ Progress Milestone

TMCLK - Northern Connection Sub-Sea Tunnel Section
Detailed Works Programme (Rev. F) - Three Months
Rolling Programme
Progress as of 27-Sep-15



Date	Revision	Checked	Approved
12-Feb-14	TMCLKDBJGEN-PRG-98507	WYu	SPo
08-Apr-14	TMCLKDBJGEN-PRG-98507 Rev B	SPa	WYu
28-Aug-14	TMCLKDBJGEN-PRG-98507 Rev C	CLa	WYu
10-Jun-15	TMCLKDBJGEN-PRG-98507 Rev F	WYu	

Activity ID	Activity Name	Orig Dur	Planned Start	Planned Finish	Current Start	Current Finish	2015							2016	
							Jun	Jul	Aug	Sep	Oct	Nov	Dec	Jan	
A6416530	F - Backfilling up to +3.0mPD & G1 Installation to Anchor Wall - CH278 to CH327	3	04-May-14	06-May-14	10-Mar-15A	15-Oct-15									
A6416540	F - Backfilling up to +6.0mPD to Anchor Wall - CH278 to CH327	3	07-May-14	09-May-14	16-Oct-15	18-Oct-15									
A6416550	F - Backfilling to +6.0mPD to Existing Seawall - CH278 to CH327	1	10-May-14	10-May-14	19-Oct-15	19-Oct-15									
CH327 to CH381															
A6416170	F - Backfilling up to +6.0mPD - CH327 to CH381	3	04-Apr-14	06-Apr-14	28-Sep-15	30-Sep-15									
A6416370	F - Anchor wall Installation - CH327 to CH381	3	02-May-14	05-May-14	14-Oct-15	16-Oct-15									
A6416560	F - Backfilling up to 0.0mPD & G2 Installation to Anchor Wall - CH327 to CH381	3	06-May-14	08-May-14	03-Mar-15A	17-Oct-15									
A6416570	F - Backfilling up to +3.0mPD & G1 Installation to Anchor Wall - CH327 to CH381	3	09-May-14	11-May-14	10-Mar-15A	18-Oct-15									
A6416580	F - Backfilling up to +6.0mPD to Anchor Wall - CH327 to CH381	2	12-May-14	13-May-14	19-Oct-15	20-Oct-15									
A6416590	F - Backfilling to +6.0mPD to Existing Seawall - CH327 to CH381	1	14-May-14	14-May-14	21-Oct-15	21-Oct-15									

Box Culvert Extension

Construction

Ch000-010 Culvert Outfall

A1000	Installation of temporary bulk head	26	10-Aug-15	08-Sep-15	30-Dec-15	29-Jan-16
A1010	Removal of public fill at outfall area	4	09-Sep-15	12-Sep-15	30-Jan-16	03-Feb-16
A1020	Cut sheet pile wall below water level by diver	18	14-Sep-15	06-Oct-15	04-Feb-16	02-Mar-16
A1030	Removal of temporary seawall block	3	07-Oct-15	09-Oct-15	03-Mar-16	05-Mar-16
A1040	Preparation & pour blinding concrete base of box culvert outfall	8	10-Oct-15	19-Oct-15	07-Mar-16	15-Mar-16
A1050	Install precast culvert element by barge (5 nos.)	21	20-Oct-15	13-Nov-15	16-Mar-16	13-Apr-16
A1060	Concreting in-situ Top Slab and stich joint	12	14-Nov-15	27-Nov-15	14-Apr-16	27-Apr-16
A1070	Removal of temporary bulk head	18	28-Nov-15	18-Dec-15	28-Apr-16	20-May-16

CH000-150 Land Section

ELS Foundation

A6416890	Bored Pile Construction - A33 to A54 (3 Rigs) - 20 out of 22 piles	21	17-Oct-14	10-Nov-14	03-Oct-14A	30-Nov-15A
A6416891	Bored Pile Construction - A33 to A54 (3 Rigs) - 22 out of 22 piles	11	11-Nov-14	22-Nov-14	27-Jul-15A	07-Aug-15A
A6416891 EOT	Inclement Weather - Bored Pile Construction - A33 to A54 (3 Rigs) - 22 out of 22 piles	5	24-Nov-14	28-Nov-14	08-Aug-15A	13-Aug-15A
A6418180	Ch010-100 - Pump test for Excavation	24	12-Feb-15	18-Mar-15	27-Jul-15A	22-Aug-15A
A6418190	Ch010-100 - Toe Grouting (if required)	24	19-Mar-15	20-Apr-15	24-Aug-15A	19-Sep-15A

ELS & Structure

Pile A43/A41 CJ to Pile A41/A39 CJ

ELS						
A1610	Installation of strut S1	5	08-May-15	13-May-15	20-Aug-15A	02-Oct-15
A1620	Excavation to FEL	5	14-May-15	19-May-15	03-Oct-15	08-Oct-15

Box Culvert Structure

A1630	Pile cap construction	10	27-May-15	06-Jun-15	15-Oct-15	27-Oct-15
A1640	Base slab construction including kicker	6	19-Jun-15	26-Jun-15	09-Nov-15	14-Nov-15
A1641	Removal of strut S1	4	27-Jun-15	02-Jul-15	16-Nov-15	19-Nov-15
A1642	System formworks delivery & setup	14	03-Jul-15	18-Jul-15	20-Nov-15	05-Dec-15
A1650	Walls & top slab construction	6	20-Jul-15	25-Jul-15	07-Dec-15	12-Dec-15
A1660	Removal of strut S2 & Backfilling up to required level	6	03-Aug-15	08-Aug-15	21-Dec-15	29-Dec-15

Pile A45/A43 CJ to Pile A43/A41 CJ

ELS						
A1510	Excavation to 0.5m below strut S1	5	08-May-15	13-May-15	07-Aug-15A	18-Aug-15A
A1520	Installation of strut S1	5	14-May-15	19-May-15	18-Aug-15A	06-Oct-15
A1530	Excavation to FEL	5	20-May-15	26-May-15	09-Oct-15	14-Oct-15

Box Culvert Structure

A1540	Pile cap construction	10	08-Jun-15	18-Jun-15	28-Oct-15	07-Nov-15
A1550	Base slab construction including kicker	6	27-Jun-15	04-Jul-15	16-Nov-15	21-Nov-15
A1551	Removal of strut S1	4	06-Jul-15	09-Jul-15	23-Nov-15	26-Nov-15
A1560	Walls & top slab construction	6	27-Jul-15	01-Aug-15	14-Dec-15	19-Dec-15
A1570	Removal of strut S2 & Backfilling up to required level	6	10-Aug-15	15-Aug-15	30-Dec-15	06-Jan-16

Pile A47/A45 CJ to Pile A45/A43 CJ

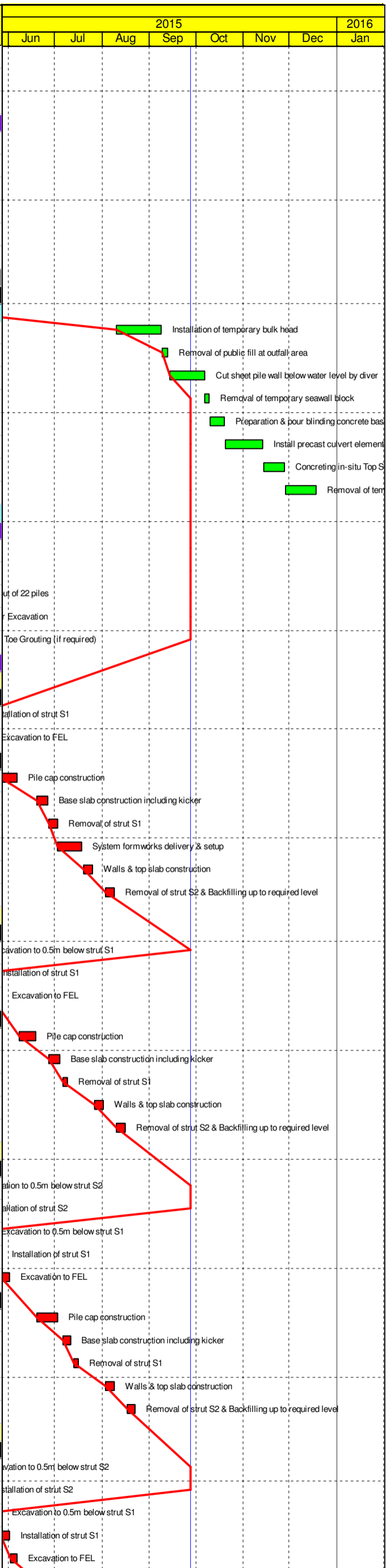
ELS						
A1400	Excavation to 0.5m below strut S2	4	30-Apr-15	05-May-15	21-Jul-15A	25-Jul-15A
A1410	Installation of strut S2	5	06-May-15	11-May-15	22-Jul-15A	28-Jul-15A
A1420	Excavation to 0.5m below strut S1	5	14-May-15	19-May-15	29-Sep-15	05-Oct-15
A1430	Installation of strut S1	5	20-May-15	26-May-15	07-Oct-15	12-Oct-15
A1440	Excavation to FEL	5	27-May-15	01-Jun-15	15-Oct-15	20-Oct-15

Box Culvert Structure

A1450	Pile cap construction	10	19-Jun-15	02-Jul-15	09-Nov-15	19-Nov-15
A1460	Base slab construction including kicker	6	06-Jul-15	11-Jul-15	23-Nov-15	28-Nov-15
A1461	Removal of strut S1	4	13-Jul-15	16-Jul-15	30-Nov-15	03-Dec-15
A1470	Walls & top slab construction	6	03-Aug-15	08-Aug-15	21-Dec-15	29-Dec-15
A1480	Removal of strut S2 & Backfilling up to required level	6	17-Aug-15	22-Aug-15	07-Jan-16	13-Jan-16

Pile A49/A47 CJ to Pile A47/A45 CJ

ELS						
A1310	Excavation to 0.5m below strut S2	4	06-May-15	09-May-15	18-Jul-15A	25-Jul-15A
A1320	Installation of strut S2	5	11-May-15	15-May-15	21-Jul-15A	21-Jul-15A
A1330	Excavation to 0.5m below strut S1	5	20-May-15	26-May-15	06-Oct-15	10-Oct-15
A1340	Installation of strut S1	5	27-May-15	01-Jun-15	13-Oct-15	17-Oct-15
A1350	Excavation to FEL	5	02-Jun-15	06-Jun-15	22-Oct-15	27-Oct-15



- Planned Bar
- Planned Bar - Critical
- Progress bar
- ◆ Planned Milestone
- ◆ Progress Milestone

Dragages - Bouygues Joint Venture 寶嘉 - 布依格聯營

Date	Revision	Checked	Approved
12-Feb-14	TMCLKDBJGEN-PRG-98507	WYu	SPo
08-Apr-14	TMCLKDBJGEN-PRG-98507 Rev B	SPa	WYu
28-Aug-14	TMCLKDBJGEN-PRG-98507 Rev C	CLa	WYu
10-Jun-15	TMCLKDBJGEN-PRG-98507 Rev F	WYu	

Activity ID	Activity Name	Orig Dur	Planned Start	Planned Finish	Current Start	Current Finish	2015												2016						
							Jun	Jul	Aug	Sep	Oct	Nov	Dec	Jan											
Box Culvert Structure																									
A1360	Pile cap construction	10	03-Jul-15	14-Jul-15	20-Nov-15	01-Dec-15																			
A1370	Base slab construction including kicker	6	15-Jul-15	21-Jul-15	02-Dec-15	08-Dec-15																			
A1371	Removal of strut S1	4	22-Jul-15	25-Jul-15	09-Dec-15	12-Dec-15																			
A1380	Walls & top slab construction	6	10-Aug-15	15-Aug-15	30-Dec-15	06-Jan-16																			
A1390	Removal of strut S2 & Backfilling up to required level	6	24-Aug-15	29-Aug-15	14-Jan-16	20-Jan-16																			
Pile A52/A49 CJ to Pile A49/A47 CJ																									
ELS																									
A1220	Excavation to 0.5m below strut S2	4	11-May-15	14-May-15	16-Jul-15A	18-Jul-15A																			
A1230	Installation of strut S2	5	15-May-15	20-May-15	17-Jul-15A	25-Jul-15A																			
A1240	Excavation to 0.5m below strut S1	5	27-May-15	01-Jun-15	12-Oct-15	16-Oct-15																			
A1250	Installation of strut S1	5	02-Jun-15	06-Jun-15	19-Oct-15	24-Oct-15																			
A1260	Excavation to FEL	5	08-Jun-15	12-Jun-15	28-Oct-15	02-Nov-15																			
Box Culvert Structure																									
A1270	Pile cap construction	10	22-Jul-15	01-Aug-15	09-Dec-15	19-Dec-15																			
A1280	Base slab construction including kicker	6	03-Aug-15	08-Aug-15	21-Dec-15	29-Dec-15																			
A1281	Removal of strut S1	4	10-Aug-15	13-Aug-15	30-Dec-15	04-Jan-16																			
A1290	Walls & top slab construction	6	17-Aug-15	22-Aug-15	07-Jan-16	13-Jan-16																			
A1300	Removal of strut S2 & Backfilling up to required level	6	31-Aug-15	05-Sep-15	21-Jan-16	27-Jan-16																			
A1670	Preparation for Temp Access Road for N8 handvoer	24	07-Sep-15	06-Oct-15	28-Jan-16	02-Mar-16																			
Ch150-250 Marine Section																									
Foundation																									
A1296	Preboring - 16 nos (P105 - P120) - Rig 1	40	18-May-15	06-Jul-15	02-Jul-15A	11-Aug-15 A																			
A1297	H-beam installation & Concreting - 16 nos (P105 - P120)	40	21-May-15	09-Jul-15	21-Sep-15A	23-Oct-15																			
A1445	Preboring - 20 nos (P65 - P84) - Rig 3	50	07-Jul-15	02-Sep-15	03-Aug-15A	05-Nov-15																			
A1455	H-beam installation & Concreting - 20 nos (P65 - P84)	50	10-Jul-15	05-Sep-15	23-Sep-15A	15-Dec-15																			
A4200	Preboring - 20 nos (P85 - P104) - Rig 1	50	07-Jul-15	02-Sep-15	10-Aug-15A	04-Nov-15																			
A4210	H-beam installation & Concreting - 20 nos (P85 - P104)	50	10-Jul-15	05-Sep-15	21-Sep-15A	07-Nov-15																			
ELS & Structure																									
A4201	Cofferdam closing of Ch100-250	28	01-Jun-15	04-Jul-15	29-Sep-15	02-Nov-15																			
A4202	Dewatering well installation Ch180-250	12	19-Jun-15	04-Jul-15	19-Oct-15	02-Nov-15																			
A4203	Dewatering well installation Ch100-180	12	06-Jul-15	18-Jul-15	03-Nov-15	16-Nov-15																			
A4204	1st Pumping test	18	20-Jul-15	08-Aug-15	17-Nov-15	07-Dec-15																			
A4211	Toe grouting Ch100-250	95	07-Sep-15	31-Dec-15	16-Dec-15	19-Apr-16																			
Ch250-380 Marine Section																									
A4251	Installation of Dewatering & Observation Well Ch 250-380	23	04-Nov-15	30-Nov-15	24-Nov-15	19-Dec-15																			
A4450	1st Pumping Test & Analysis	17	01-Dec-15	19-Dec-15	21-Dec-15	12-Jan-16																			
A4451	Toe Grouting	106	21-Dec-15	07-May-16	13-Jan-16	28-May-16																			
Ch250-320 Prebored H-piles																									
A1302	Preboring - 16 nos (P49 - P64) - Rig 1	40	03-Sep-15	22-Oct-15	20-Aug-15A	16-Nov-15																			
A1304	H-beam installation & Concreting - 16 nos (P49 - P64)	40	07-Sep-15	26-Oct-15	05-Nov-15	21-Dec-15																			
A1306	Rig 1 Demobilization	0	23-Oct-15		17-Nov-15																				
A4230	Preboring - 20 nos (P29 - P48) - Rig 3	50	03-Sep-15	03-Nov-15	06-Nov-15A	23-Nov-15																			
A4240	H-beam installation & Concreting - 20 nos (P29 - P48)	50	07-Sep-15	06-Nov-15	10-Nov-15	09-Jan-16																			
A4250	Rig 2 Demobilization	0	04-Nov-15		24-Nov-15																				
Ch320-360 Prebored H-piles																									
A1307	Predrilling - 6 nos	18	15-Jun-15	07-Jul-15	15-Jun-15A	07-Jul-15A																			
A1308	Current Steel Bridge location available	0		02-Sep-15		26-Sep-15A																			
A1309	Predrilling - 3 nos	9	03-Sep-15	12-Sep-15	12-Oct-15	22-Oct-15																			
A1312	Preboring - 14 nos (C13-C28) - Rig 2	35	14-Sep-15	27-Oct-15	14-Nov-15	24-Dec-15																			
A1314	H-beam installation & Concreting - 14 nos (C13-C28)	35	17-Sep-15	30-Oct-15	18-Nov-15	30-Dec-15																			
A1315	Preboring - 6 piles (P9-12, P15-16) - Rig 2	18	28-Oct-15	17-Nov-15	28-Dec-15	18-Jan-16																			
A1316	H-beam Installation & Concreting - 6 piles (P9-12, P15-16)	18	31-Oct-15	20-Nov-15	31-Dec-15	21-Jan-16																			
Ch360-380 Prebored H-piles																									
A1034	Preboring - 10 piles (P1-P4B, P5-P6, P7-P8B) - Rig 3	36	15-May-15	27-Jun-15	22-Jul-15A	12-Aug-15A																			
A1035	H-beam Installation & Concreting - 10 piles (P1-P4B, P5-P6, P7-P8B)	36	19-May-15	02-Jul-15	15-Aug-15A	21-Aug-15A																			
A1065	Steel Bridge Landing Platform Construction	18	03-Jul-15	23-Jul-15	25-Aug-15A	25-Sep-15A																			
Ch380-399 Connection Section																									
Foundation & ELS																									
Stage 1																									
A1090	Pre-bore Rig Mobilization	0	30-May-15		07-Sep-15A																				
A1100	Preboring - 9 nos (C1-7,C9-10) - Rig 2	27	30-May-15	02-Jul-15	30-May-15A	02-Oct-15																			
A1105	H-beam installation & Concreting - 9 nos (C1-7,C9-10)	29	03-Jun-15	08-Jul-15	11-Aug-15 A	08-Oct-15																			
A1120	Link bridge HB loading beam installation (step 8)	9	09-Jul-15	18-Jul-15	15-Aug-15A	20-Aug-15A																			
A4320	Preboring & sheet piling (middle row 50%) - Rig 2	17	03-Jul-15	22-Jul-15	14-Sep-15A	19-Sep-15A																			
A4330	Preboring & sheet piling (west row south 50%) - Rig 2	24	10-Aug-15	05-Sep-15	09-Oct-15	06-Nov-15																			
Stage 2																									
A4340	Working platform installation	9	20-Jul-15	29-Jul-15	20-Aug-15A	24-Aug-15A																			
A4350	Preboring - 4 nos (C8,11,12 & C17) - Rig 2	9	30-Jul-15	08-Aug-15	24-Aug-15A	28-Aug-15A																			
A4351	H-beam installation & Concreting - 4 nos (C8,11,12 & C17)	9	03-Aug-15	12-Aug-15	26-Aug-15A	31-Aug-15A																			

- Planned Bar
- Planned Bar - Critical
- ◆ Planned Milestone
- Progress bar
- ◆ Progress Milestone

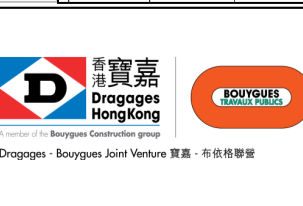
TMCLK - Northern Connection Sub-Sea Tunnel Section
 Detailed Works Programme (Rev. F) - Three Months
 Rolling Programme
 Progress as of 27-Sep-15



Date	Revision	Checked	Approved
12-Feb-14	TMCLKDBJGENPRG98507	WYu	SPo
08-Apr-14	TMCLKDBJGENPRG98507 Rev B	SPa	WYu
28-Aug-14	TMCLKDBJGENPRG98507 Rev C	CLa	WYu
10-Jun-15	TMCLKDBJGENPRG98507 Rev F	WYu	

Activity ID	Activity Name	Orig Dur	Planned Start	Planned Finish	Current Start	Current Finish	2015						2016	
							Jun	Jul	Aug	Sep	Oct	Nov	Dec	Jan
A4360	1st Relocation of working platform	6	13-Aug-15	19-Aug-15	01-Sep-15A	01-Sep-15A								
A4361	2015/16 Dry Season	0	01-Nov-15		01-Nov-15*									
A4370	Install concrete blocks to support working platform	6	02-Nov-15	07-Nov-15	02-Nov-15	07-Nov-15								
A4380	2nd Relocation of working platform	6	09-Nov-15	14-Nov-15	09-Nov-15	14-Nov-15								
A4390	Preboring - 4 nos (C13-C16) - Rig 2	12	16-Nov-15	28-Nov-15	05-Jan-16	18-Jan-16								
A4400	H-beam installation & Concreting - 4 nos (C13-C16)	12	19-Nov-15	02-Dec-15	08-Jan-16	21-Jan-16								
A4410	Preboring for sheet piling (middle row north 50%) - Rig 2	18	03-Dec-15	23-Dec-15	22-Jan-16	18-Feb-16								
A4411	Preboring for sheet piling (west row north 50%) - Rig 2	24	24-Dec-15	23-Jan-16	19-Feb-16	17-Mar-16								
Land Access route for CKS														
A1185	Steel Bridge - Preparation for dismantling	24	23-Jul-15	19-Aug-15	14-Sep-15A	25-Sep-15A								
A4420	Available for steel bridge relocation	0	20-Aug-15		26-Sep-15A									
A4430	Steel bridge relocation	12	20-Aug-15	02-Sep-15	26-Sep-15A	10-Oct-15								
A4431	Make good for Landside Roadworks	24	03-Sep-15	02-Oct-15	18-Sep-15A	23-Sep-15A								
Miscellaneous works														
Inspection Manhole (IM)														
A6418270	Inspection Manhole IM-01 to IM-04 & backfilling to +6.0mPD	12	29-Sep-15	13-Oct-15	25-Feb-16	09-Mar-16								
Stop Log Opening (SLO)														
A6418370	SLO-01 to SLO-05 & backfilling to +6.0mPD	24	14-Oct-15	11-Nov-15	10-Mar-16	11-Apr-16								
Balance Hole (BH)														
A6418330	BH-01 to BH-03 & backfilling to +6.0mPD	18	07-Sep-15	26-Sep-15	28-Jan-16	24-Feb-16								
North Launching Shaft														
Design Submission														
(C1) DDA for North Approach Ramp Permanent Structure														
DD70810	Designer to Reply RIC + Update Submission	15	06-Oct-14	22-Oct-14	28-May-15A	27-Aug-15A								
DD70820	Submit Updated DDA to SO/ ICE/ IPs	0	23-Oct-14		27-Aug-15A									
DD70830	ICE Approval & Issue Check Cert	18	23-Oct-14	12-Nov-14	20-Aug-15A	27-Aug-15A								
DD70840	Submit ICE Check Cert to SO	0		12-Nov-14		27-Aug-15A								
DD70850	IPs Review	28	23-Oct-14	19-Nov-14	27-Aug-15A	01-Oct-15								
DD70860	IPs No Objection Received	0		19-Nov-14		01-Oct-15								
DD70870	SO's Review	35	23-Oct-14	26-Nov-14	27-Aug-15A	03-Oct-15								
DD70880	SO Approval with Condition Received	0		26-Nov-14		03-Oct-15								
North Ventilation Shaft														
Construction														
North Ventilation Shaft Excavation & Base Slab														
A6415810	A - Capping Beam Installation (+6.0mPD)	0	15-Apr-15	15-Apr-15	04-May-15A	02-Jul-15A								
A6415855	A - Vent Shaft Excavation (-12.5 to -20.0mPD) - Fill/MD/ALLUVIUM	17	15-Jun-15	06-Jul-15	15-Jun-15A	06-Jul-15A								
A6415860	A - Vent Shaft Excavation (-20.0 to -32.0mPD) - CDG	27	07-Jul-15	06-Aug-15	10-Jun-15A	20-Jun-15A								
A6415870	A - Ring Beam Installation (-32.0mPD)	0	07-Aug-15	07-Aug-15	21-Jun-15A	24-Jun-15A								
A6415875	A - Vent Shaft Excavation (-32.0 to -40.0mPD) - CDG	18	07-Aug-15	27-Aug-15	18-Aug-15A	07-Sep-15A								
A6415880	A - Vent Shaft Excavation (-40.0mPD to -42.0mPD) - Rock	29	28-Aug-15	02-Oct-15	24-Jun-15A	17-Jul-15A								
A6415890	A - Vent Shaft Bottom Base Slab for TBM Re-launching	48	03-Oct-15	28-Nov-15	17-Jul-15A	14-Oct-15								
A6415990	A - Tympanum construction for TBM break-in/out	36	10-Oct-15	21-Nov-15	14-Jul-15A	17-Oct-15								
A6416345	North Ventilation Shaft - Steel Bell Installation	37	10-Oct-15	23-Nov-15	08-Sep-15A	31-Oct-15								
A6416350	North Ventilation Shaft - Steel Bell Backfilling for S882 Crossing	10	24-Nov-15	04-Dec-15	02-Nov-15	12-Nov-15								
A6416360	North Ventilation Shaft - Shaft Flooding for S880 Arrival	6	05-Dec-15	11-Dec-15	13-Nov-15	19-Nov-15								
TMCLK VO-008 - Construction of Viaduct Foundations at Portion N6A														
TMCLK-N6-101	Variation Order V-008 - Issued from SOR	0		29-Apr-14		27-Jul-15A								
Viaduct Bored Pile Construction														
Method Statement														
TMCLK-N6-85	Final Method Statement	4	08-May-14	12-May-14	03-Aug-15A	06-Aug-15A								
TMCLK-N6-86	Method Statement - Submission for SOR Approval	0		12-May-14		06-Aug-15A								
Bored Pile Construction														
G1b-7														
TMCLK-N60	Pile 7 - Excavation	3	20-May-14	22-May-14	14-Aug-15A	17-Aug-15A								
TMCLK-N61	Pile 7 - RCD Installation	2	23-May-14	24-May-14	18-Aug-15A	19-Aug-15A								
H1b-13														
TMCLK-N72	Pile 13 - RCD Socket Drilling	4	31-May-14	05-Jun-14	26-Aug-15A	29-Aug-15A								
G1c-6														
TMCLK-N655	Pile 6 - RCD Socket Drilling	14	14-Jul-14	29-Jul-14	08-Oct-15A	24-Oct-15A								
TMCLK-N657	Pile 6 - Concreting	1	01-Aug-14	01-Aug-14	01-Aug-14A	29-Jul-15A								
Viaduct Pile Cap														
Construction														
Pier G1c														
TMCLK-N636	Pile Cap G1c - Preparation for ELS	6	24-Oct-14	30-Oct-14	29-Sep-15	06-Oct-15								
TMCLK-N637	Pile Cap G1c - Removal of Existing ground slab	6	31-Oct-14	06-Nov-14	07-Oct-15	13-Oct-15								
TMCLK-N638	Pile Cap G1c - Excavation & ELS Installation	12	07-Nov-14	20-Nov-14	14-Oct-15	28-Oct-15								
TMCLK-N639	Pile Cap G1c - Blinding Concrete	3	21-Nov-14	24-Nov-14	29-Oct-15	31-Oct-15								
TMCLK-N640	Pile Cap G1c - Rebar & Concreting	18	25-Nov-14	15-Dec-14	02-Nov-15	21-Nov-15								
TMCLK-N641	Pile Cap G1c - Backfilling & Temp Reinstatement	6	16-Dec-14	22-Dec-14	23-Nov-15	28-Nov-15								
Pier H1c														
TMCLK-N642	Pile Cap H1c - Preparation for ELS	6	23-Dec-14	31-Dec-14	30-Nov-15	05-Dec-15								
TMCLK-N643	Pile Cap H1c - Removal of Existing ground slab	6	02-Jan-15	08-Jan-15	07-Dec-15	12-Dec-15								

- Planned Bar
- Planned Bar - Critical
- ◆ Planned Milestone
- Progress bar
- ◆ Progress Milestone



Date	Revision	Checked	Approved
12-Feb-14	TMCLKDBJGEN-PRG-98507	WYu	SPo
08-Apr-14	TMCLKDBJGEN-PRG-98507 Rev B	SPa	WYu
28-Aug-14	TMCLKDBJGEN-PRG-98507 Rev C	CLa	WYu
10-Jun-15	TMCLKDBJGEN-PRG-98507 Rev F	WYu	

Activity ID	Activity Name	Orig Dur	Planned Start	Planned Finish	Current Start	Current Finish	2015							2016	
							Jun	Jul	Aug	Sep	Oct	Nov	Dec	Jan	
TMCLK-N644	Pile Cap H1c - Excavation & ELS Installation	12	09-Jan-15	22-Jan-15	14-Dec-15	29-Dec-15									
North Surface works for TBM Tunnelling															
Design Submission															
(D1) IFA for Temp. Access to Portion N8A, N8B & N8C incl. Temp. Lighting															
AP01535	Designer to Prepare RTC & Updated AIP	18	07-Apr-14	30-Apr-14	16-May-15A	22-Aug-15A									
AP01540	Submission of AIP to SO/ ICE together with Reply To Comment (RTC)	0		30-Apr-14		22-Aug-15A									
AP01545	Reply to IPs Comments in RTC	0		30-Apr-14		22-Aug-15A									
AP01550	ICE Approval & Issue of Design Check Cert.	18	02-May-14	23-May-14	22-Aug-15A	10-Sep-15A									
AP01555	Check Cert to SO	0		23-May-14		10-Sep-15A									
AP01560	No Objection or Further Minor Comments from IPs Received	0		23-May-14		10-Sep-15A									
AP01565	SO Review (35 Days)	35	02-May-14	05-Jun-14	22-Aug-15A	29-Sep-15									
AP01570	SO Approval with Condition Received	0		05-Jun-14		29-Sep-15									
Construction															
Zone E															
A6416450 EOT	Inclement Weather - Zone E - Jet Grouting	2	16-Feb-15	17-Feb-15	30-Jul-15A	01-Aug-15A									
Zone D1															
NRC13960 EOT	Inclement Weather - Zone D1 - Vibro-compaction (CH305 to 355)	4	28-Aug-14	31-Aug-14	27-Jul-15A	30-Jul-15A									
NRC14020 EOT	Inclement Weather - Zone D1 - Ground Treatment for CP54	2	05-Sep-14	06-Sep-14	27-Jul-15A	28-Jul-15A									
Zone D2															
NRC14110 EOT	Inclement Weather - Zone D2 - Ground Treatment for CP53	2	14-Oct-14	16-Oct-14	29-Jul-15A	30-Jul-15A									
Zone C2															
NRC1202155 EOT	Inclement Weather - Zone C2 - Rock Fissure Grouting for CP51	2	20-Oct-14	21-Oct-14	27-Jul-15A	28-Jul-15A									
Zone B															
A6415920	Zone B - Ground Treatment for TBM Break-out Plug	58	22-Jun-15	28-Aug-15	18-Mar-15A	11-Apr-15A									
North Approach TBM Tunnelling & Cross Passage															
Major Procurement															
Precast Segment															
Precast Segment ID15.60 - Production for NB North TBM Tunnel															
A6417970	ID15.60 TBM Segment Ring Fabrication - 2 rings per day	148	30-Sep-14	25-Apr-15	25-Sep-14A	18-Jul-15A									
Design Submission															
(G2) DDA for TBM Tunnel Lining Structural Design - North Approach															
DD01055	Northern TBM Segment Ring Manufacturing	173	01-Aug-14	04-Mar-15	25-Aug-14A	18-Jul-15A									
(G5) DDA for Cross Passage - Permanent works - incl. Detailed Geotechnical Assessment - North															
DD67518	IPs Review	28	09-Jan-15	05-Feb-15	11-Mar-15A	02-Jul-15A									
DD67528	IPs No Objection Received	0		05-Feb-15		02-Jul-15A									
DD67609*	SO's Review	35	09-Jan-15	12-Feb-15	11-Mar-15A	02-Jul-15A									
DD67610	SO Approval with Condition Received	0		12-Feb-15		02-Jul-15A									
Construction															
Northern Landfall Surface Setup for TBM operation															
A6415970	Gantry Setup at North Ventilation Shaft	48	03-Oct-15	28-Nov-15	21-Aug-15A	09-Nov-15									
A6416000	Hyperbaric Equipment Installation, Commissioning & Operation	59	05-May-15	15-Jul-15	04-May-15A	17-Aug-15A									
North Approach TBM Tunnel - NB ID15.60m - S880															
TBM10005	NB - North TBM Tunnel - CDG+Boulder with Trimix (Ch7205 to 7175 - 30m)	12	28-Apr-15	09-May-15	26-Apr-15A	16-Jul-15A									
TBM10015	NB - North TBM Tunnel - Back-up Gantry G3 & G4 Assembly	14	25-May-15	07-Jun-15	12-Jun-15A	06-Jul-15A									
TBM10020	NB - North TBM Tunnel - CDG with Trimix (Ch7155 to 7105 - 50m)	14	08-Jun-15	22-Jun-15	06-Jul-15A	10-Jul-15A									
TBM10030	NB - North TBM Tunnel - CDG with Trimix (Ch7105 to 7000 - 105m)	24	23-Jun-15	17-Jul-15	10-Jul-15A	20-Jul-15A									
TBM10040	NB - North TBM Tunnel - CDG with Trimix (Ch7000 to 6870 - 130m)	18	18-Jul-15	04-Aug-15	20-Jul-15A	07-Aug-15A									
TBM10050	NB - North TBM Tunnel - CDG+Boulder with Saturation (Ch6870 to 6840 - 30m)	20	05-Aug-15	25-Aug-15	07-Aug-15A	15-Aug-15A									
TBM10060	NB - North TBM Tunnel - Transition with Saturation (Ch6840 to 6708 - 132m)	75	26-Aug-15	08-Nov-15	15-Aug-15A	25-Sep-15A									
TBM10070	NB - North TBM Tunnel - Transition with Saturation (Ch6708 to 6688 - 20m)	6	09-Nov-15	14-Nov-15	26-Sep-15A	18-Oct-15									
TBM10072	NB - North TBM Tunnel - Transition with Saturation (Ch6688 to 6640 - 48m)	14	15-Nov-15	28-Nov-15	19-Oct-15	01-Nov-15									
TBM10074	NB - North TBM Tunnel - CDG+Boulder with Saturation (Ch6640 to 6600 - 40m)	8	29-Nov-15	06-Dec-15	02-Nov-15	09-Nov-15									
TBM10076	NB - North TBM Tunnel - CDG with Saturation (Ch6600 to 6560 - 40m)	5	07-Dec-15	11-Dec-15	10-Nov-15	14-Nov-15									
TBM11020	NB - North TBM Tunnel - Thrust Frame Removal	12	05-Aug-15	18-Aug-15	14-Oct-15	28-Oct-15									
North Approach TBM Tunnel - SB ID12.40m - S882															
TBM10485	SB - North TBM Tunnel - CDG+Boulder with Trimix (Ch7226 to 7196 - 30m)	8	22-Jun-15	30-Jun-15	22-Jun-15A	30-Jun-15A									
TBM10490	SB - North TBM Tunnel - CDG+Boulder with Trimix (Ch7196 to 7176 - 20m)	10	30-Jun-15	10-Jul-15	30-Jun-15A	10-Jul-15A									
TBM10495	SB - North TBM Tunnel - Back-up Gantry G3 & G4 Assembly	15	10-Jul-15	26-Jul-15	25-Oct-15A	08-Nov-15A									
TBM10500	SB - North TBM Tunnel - CDG with Trimix (Ch7176 to 7126 - 50m)	10	26-Jul-15	05-Aug-15	15-Jun-15A	22-Jul-15A									
TBM10510	SB - North TBM Tunnel - CDG with Trimix (Ch7126 to 7021 - 105m)	17	05-Aug-15	23-Aug-15	23-Jul-15A	16-Aug-15A									
TBM10520	SB - North TBM Tunnel - CDG with Trimix (Ch7021 to 6891 - 130m)	12	23-Aug-15	04-Sep-15	17-Aug-15A	28-Aug-15A									
TBM10530	SB - North TBM Tunnel - CDG+Boulder with Saturation (Ch6891 to 6861 - 30m)	9	04-Sep-15	13-Sep-15	29-Aug-15A	07-Sep-15A									
TBM10540	SB - North TBM Tunnel - Transition with Saturation (Ch6861 to 6729 - 132m)	63	13-Sep-15	15-Nov-15	07-Sep-15A	23-Oct-15									
TBM10550	SB - North TBM Tunnel - Transition with Saturation (Ch6729 to 6709 - 20m)	5	15-Nov-15	20-Nov-15	24-Oct-15	28-Oct-15									
TBM11030	SB - North TBM Tunnel - Thrust Frame Removal	12	04-Sep-15	18-Sep-15	30-Sep-15	14-Oct-15									
TBM11040	SB - North TBM Tunnel - Transition with Saturation (Ch6709 to 6661 - 48m)	11	20-Nov-15	01-Dec-15	29-Oct-15	08-Nov-15									
TBM11050	SB - North TBM Tunnel - Transition with Saturation (Ch6661 to 6621 - 40m)	6	01-Dec-15	07-Dec-15	09-Nov-15	14-Nov-15									
TBM11060	SB - North TBM Tunnel - Transition with Saturation (Ch6621 to 6581 - 40m)	4	07-Dec-15	11-Dec-15	15-Nov-15	18-Nov-15									
North Approach Tunnel Internal Structure - NB															
ISIG0990	NB - North TBM Tunnel - Invert Backfilling (Ch7205 to 7175 - 30m) Stage 1	8	19-Aug-15	26-Aug-15	07-Sep-15A	10-Sep-15A									
ISIG1000	NB - North TBM Tunnel - Invert Backfilling (Ch7175 to 6870 - 305m) Stage 1	87	27-Aug-15	21-Nov-15	07-Sep-15A	20-Dec-15									

- Planned Bar
- Planned Bar - Critical
- ◆ Planned Milestone
- Progress bar
- ◆ Progress Milestone

TMCLK - Northern Connection Sub-Sea Tunnel Section
Detailed Works Programme (Rev. F) - Three Months
Rolling Programme
Progress as of 27-Sep-15



Date	Revision	Checked	Approved
12-Feb-14	TMCLKDBJGEN-PRG-98507	WYu	SPo
08-Apr-14	TMCLKDBJGEN-PRG-98507 Rev B	SPa	WYu
28-Aug-14	TMCLKDBJGEN-PRG-98507 Rev C	CLa	WYu
10-Jun-15	TMCLKDBJGEN-PRG-98507 Rev F	WYu	

Activity ID	Activity Name	Orig Dur	Planned Start	Planned Finish	Current Start	Current Finish	2015						2016		
							Jun	Jul	Aug	Sep	Oct	Nov	Dec	Jan	
ISIG1015	NB - North TBM Tunnel - Invert Backfilling (Ch6870 to 6688 - 182m) Stage 1	77	22-Nov-15	06-Feb-16	21-Dec-15	09-Mar-16									
ISIG1020	NB - North TBM Tunnel - Preparation for Invert Gallery Installation	14	27-Aug-15	09-Sep-15	21-Sep-15A	25-Sep-15A									
ISIG1030	NB - North TBM Tunnel - Invert Precast Gallery Installation (Ch7205 to 6870 - 335m)	96	10-Sep-15	14-Dec-15	01-Sep-15A	22-Jan-16									
ISIG1040	NB - North TBM Tunnel - Invert Precast Gallery Installation (Ch6870 to 6688 - 182m)	77	15-Dec-15	03-Mar-16	23-Jan-16	14-Apr-16									
ISIG1045	NB - North TBM Tunnel - Invert Backfilling (Ch7205 to 7175 - 30m) Stage 2	9	01-Oct-15	09-Oct-15	29-Oct-15	06-Nov-15									
ISIG1050	NB - North TBM Tunnel - Invert Backfilling (Ch7175 to 7125 - 50m) Stage 2	15	10-Oct-15	24-Oct-15	07-Nov-15	21-Nov-15									
ISIG1060	NB - North TBM Tunnel - Invert Backfilling (Ch7125 to 7075 - 50m) Stage 2	15	25-Oct-15	08-Nov-15	22-Nov-15	06-Dec-15									
ISIG1070	NB - North TBM Tunnel - Invert Backfilling (Ch7075 to 7025 - 50m) Stage 2	15	09-Nov-15	23-Nov-15	07-Dec-15	21-Dec-15									
ISIG1080	NB - North TBM Tunnel - Invert Backfilling (Ch7025 to 6975 - 50m) Stage 2	14	24-Nov-15	07-Dec-15	22-Dec-15	04-Jan-16									
ISIG1090	NB - North TBM Tunnel - Invert Backfilling (Ch6975 to 6925 - 50m) Stage 2	14	08-Dec-15	21-Dec-15	05-Jan-16	18-Jan-16									
ISIG1100	NB - North TBM Tunnel - Invert Backfilling (Ch6925 to 6870 - 55m) Stage 2	14	22-Dec-15	04-Jan-16	19-Jan-16	01-Feb-16									
North Approach Tunnel Internal Structure - SB															
ISIG1115	SB - North TBM Tunnel - Invert Backfilling (Ch7205 to 7175 - 30m)	8	18-Sep-15	26-Sep-15	14-Sep-15A	16-Oct-15									
ISIG1120	SB - North TBM Tunnel - Invert Backfilling (Ch7175 to 7125 - 50m)	13	26-Sep-15	09-Oct-15	16-Sep-15A	19-Oct-15									
ISIG1130	SB - North TBM Tunnel - Invert Backfilling (Ch7125 to 7075 - 50m)	13	09-Oct-15	22-Oct-15	18-Sep-15A	22-Oct-15									
ISIG1140	SB - North TBM Tunnel - Invert Backfilling (Ch7075 to 7025 - 50m)	13	22-Oct-15	04-Nov-15	20-Sep-15A	25-Oct-15									
ISIG1150	SB - North TBM Tunnel - Invert Backfilling (Ch7025 to 6975 - 50m)	12	04-Nov-15	16-Nov-15	26-Oct-15	06-Nov-15									
ISIG1160	SB - North TBM Tunnel - Invert Backfilling (Ch6975 to 6925 - 50m)	12	16-Nov-15	28-Nov-15	07-Nov-15	18-Nov-15									
ISIG1170	SB - North TBM Tunnel - Invert Backfilling (Ch6925 to 6870 - 55m)	12	28-Nov-15	10-Dec-15	19-Nov-15	30-Nov-15									
ISIG1180	SB - North TBM Tunnel - Invert Backfilling (Ch6870 to 6688 - 182m)	77	10-Dec-15	28-Feb-16	01-Dec-15	18-Feb-16									
North Approach Cross Passage															
CP55 - Traditional Method															
A6418390	CP55 Platform Available from ML03 North Approach Tunnel Backfilling	0	10-Oct-15		07-Nov-15										
A6418440	CP55 Platform Available from ML02 North Approach Tunnel Backfilling	0	09-Oct-15		20-Oct-15										
CP54 - Traditional Method															
A6418380	CP54 Platform Available from ML03 North Approach Tunnel Backfilling	0	24-Nov-15		22-Dec-15										
A6418450	CP54 Platform Available from ML02 North Approach Tunnel Backfilling	0	04-Nov-15		26-Oct-15										
CP53 - Pipe Jacking Method															
A6418400	CP53 Platform Available from ML03 North Approach Tunnel Backfilling	0	22-Dec-15		19-Jan-16										
A6418460	CP53 Platform Available from ML02 North Approach Tunnel Backfilling	0	28-Nov-15		19-Nov-15										
CP10100	CP - Pipe Jacking TBM - Delivery, Assembly & Setup	23	22-Dec-15	20-Jan-16	19-Jan-16	20-Feb-16									
CP52 - Pipe Jacking Method															
A6418470	CP52 Platform Available from ML02 North Approach Tunnel Backfilling	0	21-Dec-15		12-Dec-15										
North Ventilation Building															
Design Submission															
(A10) ACABAS Submissions															
GS01650	ACABAS Approval	28	16-Mar-14	12-Apr-14	27-Aug-15A	29-Sep-15									
(A11) Submissions to Design Advisory Panel of ArchSD															
GS01730	Prepare Re-submission	18	19-May-14	09-Jun-14	22-Jul-14A	18-Sep-15A									
GS01740	ArchSD's comment	30	10-Jun-14	09-Jul-14	18-Sep-15A	17-Oct-15									
(I1) DDA for North Vent.Bldgs. GBP & Arch.Submission															
DD01235	Designer to Reply RIC + Update Submission	21	28-Jul-14	20-Aug-14	02-May-15A	17-Oct-15									
DD01240	Submit Updated DDA to SO/ ICE/ IPs	0	21-Aug-14		19-Oct-15										
DD01245	ICE Approval & Issue Check Cert	12	21-Aug-14	03-Sep-14	19-Oct-15	02-Nov-15									
DD01250	Submit ICE Check Cert to SO	6	04-Sep-14	11-Sep-14	03-Nov-15	09-Nov-15									
DD01255	IPs Review	28	21-Aug-14	17-Sep-14	19-Oct-15	15-Nov-15									
DD01260	IPs No Objection Received	0		17-Sep-14		15-Nov-15									
DD01265	SO's Review	35	21-Aug-14	24-Sep-14	19-Oct-15	22-Nov-15									
DD01270	SO Approval with Condition Received	0		24-Sep-14		23-Nov-15									
(I1) DDA for North & South Vent.Bldg. ABWF works															
DD67638	Preparation of DDANorth & South ABWF	18	25-Sep-14	17-Oct-14	23-Nov-15	12-Dec-15									
DD67648	Review & Comment by JV	24	18-Oct-14	14-Nov-14	14-Dec-15	13-Jan-16									
(I2) DDA for North Vent.Bldgs.Structural Design incl.Vent.Connections															
DD68018	Review & Comment by JV	18	27-Sep-14	20-Oct-14	02-Apr-15A	03-Aug-15A									
DD68020	Designer prepare DDA	10	21-Oct-14	31-Oct-14	04-Aug-15A	10-Aug-15A									
DD68028	Formal Submission of DDA to ICE/ IPs	0		31-Oct-14		10-Aug-15A									
DD68030	Advanced Submission to SO	0		31-Oct-14		10-Aug-15A									
DD68038	IPs/ SO's Advance Comments/ ICE Comments	28	01-Nov-14	28-Nov-14	10-Aug-15A	10-Sep-15A									
DD68040	Comments Received	0		28-Nov-14		10-Sep-15A									
DD68048	Designer to Reply RIC + Update Submission	21	29-Nov-14	23-Dec-14	10-Sep-15A	06-Oct-15									
DD68058	Submit Updated DDA to SO/ ICE/ IPs	0	24-Dec-14		07-Oct-15										
DD68068	ICE Approval & Issue Check Cert	12	24-Dec-14	09-Jan-15	07-Oct-15	20-Oct-15									
DD68078	Submit ICE Check Cert to SO	6	10-Jan-15	16-Jan-15	22-Oct-15	28-Oct-15									
DD68088	IPs Review	28	24-Dec-14	20-Jan-15	07-Oct-15	03-Nov-15									
DD68098	IPs No Objection Received	0		20-Jan-15		03-Nov-15									
DD68210	SO's Review	35	24-Dec-14	27-Jan-15	07-Oct-15	10-Nov-15									
DD68220	SO Approval with Condition Received	0		27-Jan-15		10-Nov-15									
(I3) DDA for North & South Vent.Bldgs. Service and E&M Provision															
DD01600	Preparation of DDANth VB Service and E&M Provision	18	12-Sep-14	04-Oct-14	01-Jul-15A	30-Sep-15									
DD01605	Review & Comment by JV	24	06-Oct-14	01-Nov-14	02-Oct-15	30-Oct-15									

■ Planned Bar
■ Planned Bar - Critical
◆ Planned Milestone
■ Progress bar
◆ Progress Milestone

TMCLK - Northern Connection Sub-Sea Tunnel Section
Detailed Works Programme (Rev. F) - Three Months
Rolling Programme
Progress as of 27-Sep-15



Date	Revision	Checked	Approved
12-Feb-14	TMCLKDBJGEN-PRG-98507	WYu	SPo
08-Apr-14	TMCLKDBJGEN-PRG-98507 Rev B	SPo	WYu
28-Aug-14	TMCLKDBJGEN-PRG-98507 Rev C	CLa	WYu
10-Jun-15	TMCLKDBJGEN-PRG-98507 Rev F	WYu	

Activity ID	Activity Name	Orig Dur	Planned Start	Planned Finish	Current Start	Current Finish	2015							2016
							Jun	Jul	Aug	Sep	Oct	Nov	Dec	Jan
DD01610	Designer prepare DDA	15	03-Nov-14	19-Nov-14	31-Oct-15	17-Nov-15								
DD01615	Formal Submission of DDA to ICE/ IPs	0		19-Nov-14		17-Nov-15								
DD01620	Advanced Submission to SO	0		19-Nov-14		17-Nov-15								
DD01625	IPs/ SO's Advance Comments/ ICE Comments	28	20-Nov-14	17-Dec-14	18-Nov-15	15-Dec-15								
DD01630	Comments Received	0		17-Dec-14		15-Dec-15								
DD01635	Designer to Reply RiC + Update Submission	21	18-Dec-14	14-Jan-15	16-Dec-15	12-Jan-16								
(J1) DDA Temp.works for Construction of Nth.Vent.Bldg.														
DD04470	ICE Approval & Issue Check Cert	12	09-Jan-15	22-Jan-15	29-Sep-15	13-Oct-15								
DD04480	Submit ICE Check Cert to SO	6	23-Jan-15	29-Jan-15	14-Oct-15	20-Oct-15								
DD04490	IPs Review	28	09-Jan-15	05-Feb-15	28-Sep-15	25-Oct-15								
DD04500	IPs No Objection Received	0		05-Feb-15		25-Oct-15								
DD04550	SO Approval with Condition R received	0		12-Feb-15		27-Oct-15								
(J2) Tower Crane Foundation for Ventilation Building														
DD70480	Preparation of DDA Tower Crane Foundation for Vent Bldg Construction	18	01-Jun-15	22-Jun-15	01-Jul-15A	06-Jul-15A								
DD70490	Review & Comment by JV	18	23-Jun-15	14-Jul-15	06-Jul-15A	09-Jul-15A								
DD70500	Designer prepare DDA	10	15-Jul-15	25-Jul-15	09-Jul-15A	09-Jul-15A								
DD70510	Formal Submission of DDA to ICE/ IPs	0		25-Jul-15		09-Jul-15A								
DD70520	Advanced Submission to SO	0		25-Jul-15		09-Jul-15A								
DD70530	IPs/ SO's Advance Comments/ ICE Comments	28	26-Jul-15	22-Aug-15	09-Jul-15A	22-Jul-15A								
DD70540	Comments Received	0		22-Aug-15		22-Jul-15A								
DD70550	Designer to Reply RiC + Update Submission	21	24-Aug-15	16-Sep-15	22-Jul-15A	22-Jul-15A								
DD70560	Submit Updated DDA to SO/ ICE/ IPs	0	17-Sep-15		22-Jul-15A									
DD70570	ICE Approval & Issue Check Cert	12	17-Sep-15	02-Oct-15	22-Jul-15A	22-Jul-15A								
DD70580	Submit ICE Check Cert to SO	6	03-Oct-15	09-Oct-15	22-Jul-15A	22-Jul-15A								
DD70590	IPs Review	28	17-Sep-15	14-Oct-15	22-Jul-15A	22-Jul-15A								
DD70600	IPs No Objection Received	0		14-Oct-15		22-Jul-15A								
DD70640	SO's Review	35	17-Sep-15	21-Oct-15	22-Jul-15A	22-Jul-15A								
DD70650	SO Approval with Condition R received	0		22-Oct-15		22-Jul-15A								
(C3) DDA for North Vent Shaft & Duct Permanent Structure														
DD67278	Review & Comment by JV	18	28-Aug-14	18-Sep-14	08-Apr-15A	30-Sep-15								
DD67280	Designer prepare DDA	10	19-Sep-14	30-Sep-14	02-Oct-15	13-Oct-15								
DD67288	Formal Submission of DDA to ICE/ IPs	0		30-Sep-14		13-Oct-15								
DD67290	Advanced Submission to SO	0		30-Sep-14		13-Oct-15								
DD67298	IPs/ SO's Advance Comments/ ICE Comments	28	01-Oct-14	28-Oct-14	14-Oct-15	10-Nov-15								
DD67300	Comments Received	0		28-Oct-14		10-Nov-15								
DD67308	Designer to Reply RiC + Update Submission	21	29-Oct-14	21-Nov-14	11-Nov-15	04-Dec-15								
DD67318	Submit Updated DDA to SO/ ICE/ IPs	0	22-Nov-14		05-Dec-15									
DD67328	ICE Approval & Issue Check Cert	12	22-Nov-14	05-Dec-14	05-Dec-15	18-Dec-15								
DD67338	Submit ICE Check Cert to SO	6	06-Dec-14	12-Dec-14	19-Dec-15	28-Dec-15								
DD67348	IPs Review	28	22-Nov-14	19-Dec-14	05-Dec-15	01-Jan-16								
DD67368	SO's Review	35	22-Nov-14	26-Dec-14	05-Dec-15	08-Jan-16								
North Surface Roadworks, Utility & Drainage works														
Design Submission														
(A20) DDA for Traffic Sign, Road Marking, Street Furnitures, Sign Gantry & etc														
DD01755	SO's Review	35	11-Dec-14	14-Jan-15	10-Apr-15A	30-Sep-15								
DD01760	SO Approval with Condition R received	0		14-Jan-15		30-Sep-15								
(C2) DDA for Sewerage, Drainage, Waterworks & Utility works for North Landfall														
DD02135	Designer to Reply RiC + Update Submission	21	15-Oct-14	07-Nov-14	09-Feb-15A	30-Sep-15								
DD02140	Submit Updated DDA to SO/ ICE/ IPs	0	08-Nov-14		02-Oct-15									
DD02145	ICE Approval & Issue Check Cert	12	08-Nov-14	21-Nov-14	02-Oct-15	15-Oct-15								
DD02150	Submit ICE Check Cert to SO	6	22-Nov-14	28-Nov-14	16-Oct-15	23-Oct-15								
DD02155	IPs Review	28	08-Nov-14	05-Dec-14	02-Oct-15	29-Oct-15								
DD02160	IPs No Objection Received	0		05-Dec-14		29-Oct-15								
DD02165	SO's Review	35	08-Nov-14	12-Dec-14	02-Oct-15	05-Nov-15								
DD02170	SO Approval with Condition R received	0		12-Dec-14		05-Nov-15								
Sub-sea Tunnel														
Sub-sea TBM Tunnelling														
Major Procurement														
S881 -														
PO103360	S881 - 13.6m dia - TBM - Manufacturing - Cutterhead	257	18-Jul-14	03-Jun-15	18-Jul-14A	14-Oct-15								
PO103430	S881 - 13.6m dia - TBM - Workshop Assembly	70	02-Feb-15	06-May-15	10-Mar-15A	05-Oct-15								
PO103440	S881 - 13.6m dia - TBM - Workshop Acceptance Test	0		06-May-15		05-Oct-15								
PO103450	S881 - 13.6m dia - TBM - Disassembly and Packing for Transport	16	07-May-15	26-May-15	10-Jul-15A	14-Oct-15								
PO103460	S881 - 13.6m dia - TBM - Delivery	20	27-May-15	15-Jun-15	15-Oct-15	03-Nov-15								
PO103470	S881 - 13.6m dia - TBM - Arrival to site	0		15-Jun-15		03-Nov-15								
Design Submission														
(B6) Risk Assessment of Submarine Cable - Tunnelling Works														
GS01460	CLP Review (4 weeks)	28	17-Mar-15	13-Apr-15	08-May-15A	29-Sep-15								
GS01465	CLP Comment Received	0		13-Apr-15		29-Sep-15								

- Planned Bar
- Planned Bar - Critical
- ◆ Planned Milestone
- Progress bar
- ◆ Progress Milestone



Date	Revision	Checked	Approved
12-Feb-14	TMCLKDBJGEN-PRG-98507	WYu	SPo
08-Apr-14	TMCLKDBJGEN-PRG-98507 Rev B	SPa	WYu
28-Aug-14	TMCLKDBJGEN-PRG-98507 Rev C	CLa	WYu
10-Jun-15	TMCLKDBJGEN-PRG-98507 Rev F	WYu	

Activity ID	Activity Name	Orig Dur	Planned Start	Planned Finish	Current Start	Current Finish	2015						2016	
							Jun	Jul	Aug	Sep	Oct	Nov	Dec	Jan
GS01467	SO's Condition Approval	35	12-Mar-15	15-Apr-15	08-May-15A	02-Oct-15								
(G1) DDA for TBM Tunnel Lining Structural Design - Sub-sea tunnel														
DD6670	Sub-sea TBM Tunnel Segment - Fabrication	265	06-Oct-14	29-Aug-15	29-Nov-14A	25-May-16								
(G1) DDA for TBM Tunnel Lining Settlement Analysis & Confinement Pressure - Sub-sea tunnel														
DD6720	IPs/ SO's Advance Comments/ ICE Comments	28	25-Oct-14	21-Nov-14	10-May-15A	23-Jul-15A								
DD67258	Comments Received	0		21-Nov-14		23-Jul-15A								
DD6730	Designer to Reply RIC + Update Submission	21	22-Nov-14	16-Dec-14	23-Jul-15A	28-Jul-15A								
DD6740	Submit Updated DDA to SO/ ICE/ IPs	0	17-Dec-14		28-Jul-15A									
DD6750	ICE Approval & Issue Check Cert	12	17-Dec-14	02-Jan-15	28-Jul-15A	28-Jul-15A								
DD6760	Submit ICE Check Cert to SO	6	03-Jan-15	09-Jan-15	28-Jul-15A	28-Jul-15A								
DD6770	IPs Review	28	17-Dec-14	13-Jan-15	28-Jul-15A	10-Sep-15A								
DD6780	IPs No Objection Received	0		13-Jan-15		10-Sep-15A								
DD6830	SO's Review	35	17-Dec-14	20-Jan-15	28-Jul-15A	10-Sep-15A								
DD6840	SO Approval with Condition R received	0		20-Jan-15		10-Sep-15A								
Construction														
Sub-sea TBM Tunnel - NB ID12.2m - S881														
TBM10080	NB TBM Change diameter at North Ventilation Shaft	87	12-Dec-15	10-Mar-16	20-Nov-15	17-Feb-16								
Sub-sea TBM Tunnel - SB ID12.2m - S882														
TBM10560	SB - S882 TBM Crossing within NVS Steel bell	7	12-Dec-15	18-Dec-15	20-Nov-15	26-Nov-15								
TBM10600	SB - Sub-sea TBM Tunnel - Transition with Saturation (Ch6543 to 6521 - 22m)	5	19-Dec-15	23-Dec-15	27-Nov-15	01-Dec-15								
TBM10610	SB - Sub-sea TBM Tunnel - Transition with Saturation (Ch6521 to 6451 - 70m)	15	24-Dec-15	07-Jan-16	02-Dec-15	16-Dec-15								
TBM10620	SB - Sub-sea TBM Tunnel - Transition with Saturation (Ch6451 to 6371 - 80m)	17	08-Jan-16	24-Jan-16	17-Dec-15	02-Jan-16								
Sub-sea TBM Tunnel - SB - Precast Invert Gallery														
ISIG1605	SB - ISIG Assembly for Sub-sea TBM Tunnel	7	24-Dec-15	30-Dec-15	02-Dec-15	08-Dec-15								
Sub-sea Tunnel Cross Passage & Internal Structure														
Design Submission														
(G4) DDA for Cross Passage - Permanent works - incl. Geotechnical Assessment - Sub-sea tunnel														
AN1180	Early DDA Sub-sea Cross Passage Lining & CPOpening	151	03-Jun-14	29-Nov-14	03-Jun-14A	13-Jul-15A								
DD01100	Preparation of DDA Cross Passage incl. Detailed Geotechnical Assessment	0	01-Dec-14	01-Dec-14	13-Jul-15A	13-Jul-15A								
DD01105	Review & Comment by JV	6	01-Dec-14	06-Dec-14	13-Jul-15A	29-Sep-15								
DD01110	Designer prepare DDA	12	08-Dec-14	20-Dec-14	30-Sep-15	14-Oct-15								
DD01115	Formal Submission of DDA to ICE/ IPs	0		20-Dec-14		14-Oct-15								
DD01120	Advanced Submission to SO	0		20-Dec-14		14-Oct-15								
DD01125	IPs/ SO's Advance Comments/ ICE Comments	28	21-Dec-14	17-Jan-15	15-Oct-15	11-Nov-15								
DD01130	Comments Received	0		17-Jan-15		11-Nov-15								
DD01135	Designer to Reply RIC + Update Submission	21	19-Jan-15	11-Feb-15	12-Nov-15	05-Dec-15								
DD01140	Submit Updated DDA to SO/ ICE/ IPs	0	12-Feb-15		07-Dec-15									
DD01145	ICE Approval & Issue Check Cert	12	12-Feb-15	04-Mar-15	07-Dec-15	19-Dec-15								
DD01150	Submit ICE Check Cert to SO	6	05-Mar-15	11-Mar-15	21-Dec-15	29-Dec-15								
DD01155	IPs Review	28	12-Feb-15	11-Mar-15	07-Dec-15	03-Jan-16								
DD01180	SO's Review	35	12-Feb-15	18-Mar-15	07-Dec-15	10-Jan-16								
ETWB TCW No 15/2005 - Cross Passage Ground Treatment for Sub-sea TBM Tunnel														
GEO1270	1st Submission to GEO - ETWB TCW No 15/2005 - Cross Passage Ground Treatment for Sub-sea TBM Tunnel	0		13-Jul-15		29-Sep-15								
GEO1275	1st Submission GEO Review	28	14-Jul-15	10-Aug-15	29-Sep-15	26-Oct-15								
GEO1280	Received GEO Comment	0		10-Aug-15		26-Oct-15								
GEO1285	Prepare Response to Comment	12	11-Aug-15	24-Aug-15	27-Oct-15	09-Nov-15								
GEO1290	2nd Submission to GEO	0		24-Aug-15		09-Nov-15								
GEO1295	2nd GEO Review	28	25-Aug-15	21-Sep-15	10-Nov-15	07-Dec-15								
GEO1490	Received 2nd GEO Comment	0		21-Sep-15		07-Dec-15								
GEO1495	Prepare Respond to 2nd Comment	12	22-Sep-15	07-Oct-15	08-Dec-15	21-Dec-15								
GEO1500	3rd Submission to GEO	0		07-Oct-15		21-Dec-15								
GEO1505	3rd GEO Review	28	08-Oct-15	04-Nov-15	22-Dec-15	18-Jan-16								
Method Statement Submission														
Method Statement of Cross Passage Formwork														
MS2640	SO's Review	28	11-Jun-15	08-Jul-15	09-Apr-16	06-May-16								
MS2650	SO's Approval	0		08-Jul-15		06-May-16								
Southern Landfall														
South Cut & Cover Tunnel														
Design Submission														
(E2) DDA for South C&C Box & Approach Ramp														
DD00460	Preparation DDA Sth C&C Box and Approach Ramp	18	18-Nov-14	08-Dec-14	02-Jul-15A	31-Jul-15A								
DD00470	Review & Comment by JV	18	09-Dec-14	31-Dec-14	31-Jul-15A	30-Sep-15								
DD00480	Designer prepare DDA	10	02-Jan-15	13-Jan-15	02-Oct-15	13-Oct-15								
DD00490	Formal Submission of DDA to ICE/ IPs	0		13-Jan-15		13-Oct-15								
DD00500	Advanced Submission to SO	0		13-Jan-15		13-Oct-15								
DD00510	IPs/ SO's Advance Comments/ ICE Comments	28	14-Jan-15	10-Feb-15	14-Oct-15	10-Nov-15								
DD00520	Comments Received	0		10-Feb-15		10-Nov-15								
DD00530	Designer to Reply RIC + Update Submission	21	11-Feb-15	13-Mar-15	11-Nov-15	04-Dec-15								
DD00540	Submit Updated DDA to SO/ ICE/ IPs	0	14-Mar-15		05-Dec-15									
DD00550	ICE Approval & Issue Check Cert	18	14-Mar-15	08-Apr-15	05-Dec-15	28-Dec-15								

- Planned Bar
- Planned Bar - Critical
- ◆ Planned Milestone
- Progress bar
- ◆ Progress Milestone

TMCLK - Northern Connection Sub-Sea Tunnel Section
Detailed Works Programme (Rev. F) - Three Months
Rolling Programme
Progress as of 27-Sep-15



Date	Revision	Checked	Approved
12-Feb-14	TMCLKDBJGEN-PRG-98507	WYu	SPo
08-Apr-14	TMCLKDBJGEN-PRG-98507 Rev B	SPa	WYu
28-Aug-14	TMCLKDBJGEN-PRG-98507 Rev C	CLa	WYu
10-Jun-15	TMCLKDBJGEN-PRG-98507 Rev F	WYu	

Activity ID	Activity Name	Orig Dur	Planned Start	Planned Finish	Current Start	Current Finish	2015							2016
							Jun	Jul	Aug	Sep	Oct	Nov	Dec	Jan
DD00570	IPs Review	28	14-Mar-15	10-Apr-15	05-Dec-15	01-Jan-16								
DD00620	SO's Review	35	14-Mar-15	17-Apr-15	05-Dec-15	08-Jan-16								
ETWB TCW No. 15/2005 - Geotechnical Risk Assessment C&C Tunnels at Southern Landfall														
GEO1300	1st Submission to GEO - ETWB TCW No. 15/2005 - Geotechnical Risk Assessment C&C Tunnels at Southern Landfall	0		11-Jun-15		18-Nov-15								
GEO1305	1st Submission GEO Review	28	12-Jun-15	09-Jul-15	19-Nov-15	16-Dec-15								
GEO1310	Received GEO Comment	0		09-Jul-15		16-Dec-15								
GEO1315	Prepare Response to Comment	12	10-Jul-15	23-Jul-15	17-Dec-15	02-Jan-16								
GEO1320	2nd Submission to GEO	0		23-Jul-15		02-Jan-16								
GEO1325	2nd GEO Review	28	24-Jul-15	20-Aug-15	03-Jan-16	30-Jan-16								
(F3) AIP Temp.Support for South.C&C, Portal & ELS														
DD69690	IPs Review	28	10-Jan-15	06-Feb-15	04-Jun-15A	29-Sep-15								
DD69700	IPs No Objection Received	0		06-Feb-15		29-Sep-15								
DD69710	SO's Review	35	10-Jan-15	13-Feb-15	04-Jun-15A	01-Oct-15								
DD69720	SO Approval with Condition R received	0		13-Feb-15		02-Oct-15								
(F3) DDA Temp.Support for South.C&C, Portal & ELS														
DD04000	Preparation of DDA South C&C ELS	18	01-Apr-15	25-Apr-15	02-Oct-15	23-Oct-15								
DD04010	Review & Comment by JV	18	27-Apr-15	18-May-15	24-Oct-15	13-Nov-15								
DD04020	Designer prepare DDA	10	19-May-15	30-May-15	14-Nov-15	25-Nov-15								
DD04030	Formal Submission of DDA to ICE/ IPs	0		30-May-15		25-Nov-15								
DD04040	Advanced Submission to SO	0		30-May-15		25-Nov-15								
DD04050	IPs/ SO's Advance Comments/ ICE Comments	28	31-May-15	27-Jun-15	26-Nov-15	23-Dec-15								
DD04060	Comments Received	0		27-Jun-15		23-Dec-15								
DD04070	Designer to Reply RIC + Update Submission	21	29-Jun-15	23-Jul-15	24-Dec-15	20-Jan-16								
DD04080	Submit Updated DDA to SO/ ICE/ IPs	0	24-Jul-15		21-Jan-16									
DD04090	ICE Approval & Issue Check Cert	12	24-Jul-15	06-Aug-15	21-Jan-16	03-Feb-16								
DD04100	Submit ICE Check Cert to SO	6	07-Aug-15	13-Aug-15	04-Feb-16	17-Feb-16								
DD04110	IPs Review	28	24-Jul-15	20-Aug-15	21-Jan-16	17-Feb-16								
DD04120	IPs No Objection Received	0		20-Aug-15		17-Feb-16								
DD04160	SO's Review	35	24-Jul-15	27-Aug-15	21-Jan-16	24-Feb-16								
DD04170	SO Approval with Condition R received	0		27-Aug-15		24-Feb-16								
ETWB TCW No 15/2005 - ELS Design for C&C Tunnel at Southern Landfall														
GEO1390	1st Submission to GEO - ETWB TCW No 15/2005 - ELS Design for C&C Tunnel at Southern Landfall	0		06-Aug-15		03-Feb-16								
GEO1395	1st Submission GEO Review	28	07-Aug-15	03-Sep-15	04-Feb-16	02-Mar-16								
GEO1400	Received GEO Comment	0		03-Sep-15		02-Mar-16								
GEO1405	Prepare Response to Comment	12	04-Sep-15	17-Sep-15	03-Mar-16	16-Mar-16								
GEO1410	2nd Submission to GEO	0		17-Sep-15		16-Mar-16								
GEO1415	2nd GEO Review	28	18-Sep-15	15-Oct-15	17-Mar-16	13-Apr-16								
Method Statement Submission														
Method Statement of Construction Methodology of C&C Tunnels														
MS1700	Preparation Method Statement for C&C Tunnels	25	28-Mar-15	30-Apr-15	29-Sep-15	29-Oct-15								
MS1710	Submit Method Statement to SO	0		30-Apr-15		29-Oct-15								
MS1720	SO Reviews & Comments	28	01-May-15	28-May-15	30-Oct-15	26-Nov-15								
MS1730	Re-submission	18	29-May-15	18-Jun-15	27-Nov-15	17-Dec-15								
MS1740	SO's Review	28	19-Jun-15	16-Jul-15	18-Dec-15	14-Jan-16								
MS1750	SO's Approval	0		16-Jul-15		14-Jan-16								
Construction														
DDP11520	South C&C Tunnel - Diaphragm Wall	120	03-Oct-15	02-Mar-16	25-Feb-16	22-Jul-16								
South Retrieval Shaft														
Design Submission														
(B5) AIP Construction Risk Assessment - Impact on South Landfall														
GS01250	SO's Condition Approval	35	27-Jan-15	02-Mar-15	03-Jun-15A	29-Sep-15								
(B5) DDA Construction Risk Assessment - Impact on South Landfall														
DD68500	Preparation of Construction Risk Assessment - Impact on South Landfall	36	03-Mar-15	17-Apr-15	01-Sep-15A	24-Sep-15A								
DD68510	1st Submission	0		17-Apr-15		24-Sep-15A								
DD68520	SO's Comments for 1st Submission	35	18-Apr-15	22-May-15	24-Sep-15A	30-Oct-15								
DD68530	Prepare Re-submission	10	23-May-15	04-Jun-15	31-Oct-15	11-Nov-15								
DD68540	2nd Submission	0		04-Jun-15		11-Nov-15								
DD68550	ICE Cert. Issue	6	05-Jun-15	11-Jun-15	12-Nov-15	18-Nov-15								
DD68600	SO's Condition Approval	35	05-Jun-15	09-Jul-15	12-Nov-15	16-Dec-15								
(F1) AIP Temp.works - Retrieval Shaft on Southern Landfall inc. break-out														
AP01635	Designer to Prepare RIC & Updated AIP	18	25-Nov-14	15-Dec-14	28-Apr-15A	30-Jun-15A								
AP01640	Submission of AIP to SO/ ICE together with Reply To Comment (RTC)	0		15-Dec-14		30-Jun-15A								
AP01645	Reply to IPs Comments in RTC	0		15-Dec-14		30-Jun-15A								
AP01650	ICE Approval & Issue of Design Check Cert.	18	16-Dec-14	08-Jan-15	20-Jun-15A	30-Jun-15A								
AP01655	Check Cert to SO	0		08-Jan-15		30-Jun-15A								
AP01660	No Objection or Further Minor Comments from IPs Received	0		08-Jan-15		30-Jun-15A								
AP01680	SO Review (35 Days)	35	17-Dec-14	20-Jan-15	30-Jun-15A	30-Sep-15								
AP01685	SO Approval with Condition R received	0		20-Jan-15		30-Sep-15								
(F1) DDA Temp.works - Retrieval Shaft on Southern Landfall inc. break-out														

- Planned Bar
- Planned Bar - Critical
- ◆ Planned Milestone
- Progress bar
- ◆ Progress Milestone



Date	Revision	Checked	Approved
12-Feb-14	TMCLKDBJGEN-PRG-98507	WYu	SPo
08-Apr-14	TMCLKDBJGEN-PRG-98507 Rev B	SPa	WYu
28-Aug-14	TMCLKDBJGEN-PRG-98507 Rev C	CLa	WYu
10-Jun-15	TMCLKDBJGEN-PRG-98507 Rev F	WYu	

Activity ID	Activity Name	Orig Dur	Planned Start	Planned Finish	Current Start	Current Finish	2015						2016	
							Jun	Jul	Aug	Sep	Oct	Nov	Dec	Jan
DD03510	Preparation of DDA Temp Support for Sth Retrieval Shaft	18	01-Apr-15	25-Apr-15	02-Oct-15	23-Oct-15								
DD03520	Review & Comment by JV	18	27-Apr-15	18-May-15	24-Oct-15	13-Nov-15								
DD03530	Designer prepare DDA	6	19-May-15	26-May-15	14-Nov-15	20-Nov-15								
DD03540	Formal Submission of DDA to ICE/ IPs	0		26-May-15		20-Nov-15								
DD03550	Advanced Submission to SO	0		26-May-15		20-Nov-15								
DD03560	IPs/ SO's Advance Comments/ ICE Comments	28	27-May-15	23-Jun-15	21-Nov-15	18-Dec-15								
DD03570	Comments Received	0		23-Jun-15		18-Dec-15								
DD03580	Designer to Reply RtC + Update Submission	21	24-Jun-15	18-Jul-15	19-Dec-15	15-Jan-16								
DD03590	Submit Updated DDA to SO/ ICE/ IPs	0	20-Jul-15			16-Jan-16								
DD03600	ICE Approval & Issue Check Cert	12	20-Jul-15	01-Aug-15	16-Jan-16	29-Jan-16								
DD03610	Submit ICE Check Cert to SO	6	03-Aug-15	08-Aug-15	30-Jan-16	05-Feb-16								
DD03620	IPs Review	28	20-Jul-15	16-Aug-15	16-Jan-16	12-Feb-16								
DD03630	IPs No Objection Received	0		16-Aug-15		12-Feb-16								
DD03670	SO's Review	35	20-Jul-15	23-Aug-15	16-Jan-16	19-Feb-16								
DD03680	SO Approval with Condition Received	0		24-Aug-15		19-Feb-16								

ETWB TCW No 15/2005 - ELS Design for TBM Retrieval Shaft at Southern Landfall

GEO1330	1st Submission to GEO - ETWB TCW No 15/2005 - ELS Design for TBM Retrieval Shaft at Southern Landfall	0		24-Aug-15		19-Feb-16								
GEO1335	1st Submission GEO Review	28	24-Aug-15	20-Sep-15	20-Feb-16	18-Mar-16								
GEO1340	Received GEO Comment	0		21-Sep-15		18-Mar-16								
GEO1345	Prepare Response to Comment	12	21-Sep-15	06-Oct-15	19-Mar-16	06-Apr-16								
GEO1350	2nd Submission to GEO	0		06-Oct-15		06-Apr-16								
GEO1355	2nd GEO Review	28	07-Oct-15	03-Nov-15	07-Apr-16	04-May-16								

(F2) AIP Temp works of Ground Treatment for TBMs passing under Southern Landfall

AP01905	Review & Comment by JV	18	23-Sep-14	15-Oct-14	15-Apr-15A	02-Oct-15								
AP01910	Designer Prepare AIP	12	16-Oct-14	29-Oct-14	03-Oct-15	16-Oct-15								
AP01915	Formal Submission of AIP to ICE/IPs	0		29-Oct-14		16-Oct-15								
AP01920	Advanced Submission of AIP to SO	0		29-Oct-14		16-Oct-15								
AP01925	Review & Comment by SO/ ICE/ IPs	28	30-Oct-14	26-Nov-14	17-Oct-15	13-Nov-15								
AP01930	Advance Comments from SO/ Comments from ICE/ IPs Received	0		26-Nov-14		13-Nov-15								
AP01935	Designer to Prepare RtC & Updated AIP	18	27-Nov-14	17-Dec-14	14-Nov-15	04-Dec-15								
AP01940	Submission of AIP to SO/ ICE together with Reply To Comment (RTC)	0		17-Dec-14		04-Dec-15								
AP01945	Reply to IPs Comments in RTC	0		17-Dec-14		04-Dec-15								
AP01950	ICE Approval & Issue of Design Check Cert.	18	18-Dec-14	10-Jan-15	05-Dec-15	28-Dec-15								
AP01980	SO Review (35 Days)	35	19-Dec-14	22-Jan-15	06-Dec-15	09-Jan-16								

(F2) DDA Temp works of Ground Treatment for TBMs passing under Southern Landfall

DD04750	Review & Comment by JV	18	27-Apr-15	18-May-15	15-Apr-15A	12-Jan-16								
DD04810	Designer to Reply RtC + Update Submission	21	24-Jun-15	18-Jul-15	17-Feb-16	11-Mar-16								
DD04820	Submit Updated DDA to SO/ ICE/ IPs	0	20-Jul-15			12-Mar-16								
DD04830	ICE Approval & Issue Check Cert	12	20-Jul-15	01-Aug-15	12-Mar-16	29-Mar-16								
DD04840	Submit ICE Check Cert to SO	6	03-Aug-15	08-Aug-15	30-Mar-16	06-Apr-16								
DD04850	IPs Review	28	20-Jul-15	16-Aug-15	12-Mar-16	08-Apr-16								
DD04860	IPs No Objection Received	0		16-Aug-15		08-Apr-16								
DD04900	SO's Review	35	20-Jul-15	23-Aug-15	12-Mar-16	15-Apr-16								
DD04910	SO Approval with Condition Received	0		24-Aug-15		15-Apr-16								

ETWB TCW No 15/2005 - ELS Design for Temporary Measures for Ground Improvement

GEO1360	1st Submission to GEO - ETWB TCW No. 15/2005 - ELS Design for Ground Improvement at Southern Landfall	0		24-Aug-15		15-Apr-16								
GEO1365	1st Submission GEO Review	28	24-Aug-15	20-Sep-15	16-Apr-16	13-May-16								
GEO1370	Received GEO Comment	0		21-Sep-15		13-May-16								
GEO1375	Prepare Response to Comment	12	21-Sep-15	06-Oct-15	16-May-16	28-May-16								
GEO1380	2nd Submission to GEO	0		06-Oct-15		28-May-16								
GEO1385	2nd GEO Review	28	07-Oct-15	03-Nov-15	29-May-16	25-Jun-16								

(F4) Gantry Crane Support/Foundations in Southern Landfall

DD69730	Preparation of IFA Gantry Crane / Foundation	18	27-Jul-15	15-Aug-15	18-Feb-16	09-Mar-16								
DD69740	Review & Comment by JV	18	17-Aug-15	05-Sep-15	10-Mar-16	02-Apr-16								
DD69750	Designer prepare IFA	10	07-Sep-15	17-Sep-15	05-Apr-16	15-Apr-16								
DD69760	Formal Submission of IFA to ICE/ IPs	0		17-Sep-15		15-Apr-16								
DD69770	Advanced Submission to SO	0		17-Sep-15		15-Apr-16								
DD69780	IPs/ SO's Advance Comments/ ICE Comments	28	18-Sep-15	15-Oct-15	16-Apr-16	13-May-16								
DD69790	Comments Received	0		15-Oct-15		13-May-16								
DD69800	Designer to Reply RtC + Update Submission	21	16-Oct-15	10-Nov-15	16-May-16	08-Jun-16								
DD69810	Submit Updated IFA to SO/ ICE/ IPs	0	11-Nov-15			10-Jun-16								
DD69820	ICE Approval & Issue Check Cert	12	11-Nov-15	24-Nov-15	10-Jun-16	23-Jun-16								
DD69830	IPs Review	28	11-Nov-15	08-Dec-15	10-Jun-16	07-Jul-16								
DD69840	IPs No Objection Received	0		08-Dec-15		07-Jul-16								
DD69850	SO's Review	35	11-Nov-15	15-Dec-15	10-Jun-16	14-Jul-16								
DD69860	SO Approval with Condition Received	0		15-Dec-15		14-Jul-16								

Method Statement Submission

Method Statement of Construction Methodology of Retrieval Shaft

■ Planned Bar
■ Planned Bar - Critical
◆ Planned Milestone
■ Progress bar
◆ Progress Milestone



Date	Revision	Checked	Approved
12-Feb-14	TMCLKDBJGEN-PRG-98507	WYu	SPa
08-Apr-14	TMCLKDBJGEN-PRG-98507 Rev B	SPa	WYu
28-Aug-14	TMCLKDBJGEN-PRG-98507 Rev C	CLa	WYu
10-Jun-15	TMCLKDBJGEN-PRG-98507 Rev F	WYu	

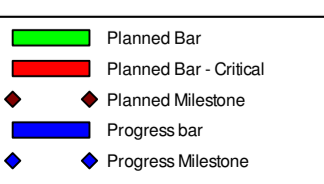
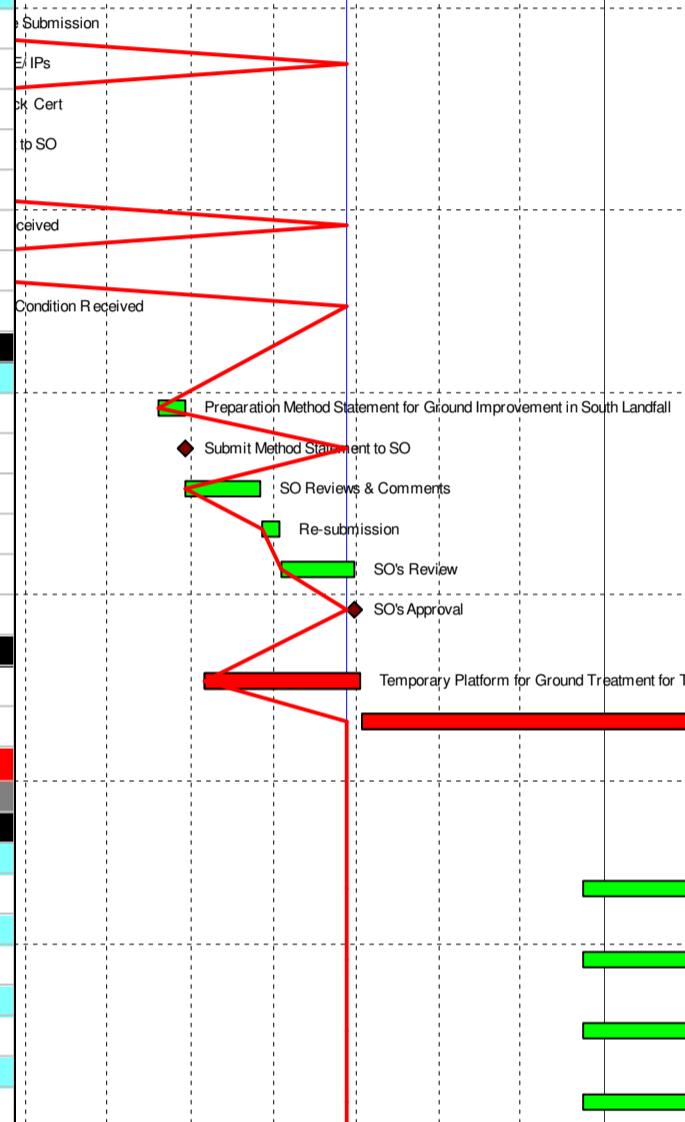
Activity ID	Activity Name	Orig Dur	Planned Start	Planned Finish	Current Start	Current Finish	2015					2016		
							Jun	Jul	Aug	Sep	Oct	Nov	Dec	Jan
MS1600	Preparation Method Statement for Retrieval Shaft	25	24-Aug-15	21-Sep-15	20-Feb-16	19-Mar-16								
MS1610	Submit Method Statement to SO	0		21-Sep-15		19-Mar-16								
MS1620	SO Reviews & Comments	28	22-Sep-15	19-Oct-15	20-Mar-16	16-Apr-16								
MS1630	Re-submission	18	20-Oct-15	10-Nov-15	18-Apr-16	09-May-16								
MS1640	SO's Review	28	11-Nov-15	08-Dec-15	10-May-16	06-Jun-16								
MS1650	SO's Approval	0		08-Dec-15		06-Jun-16								
Construction														
DDP11430	South Landfall GI Works/DW Setting Up	48	06-Aug-15	02-Oct-15	17-Dec-15	20-Feb-16								
DDP11450	South Retrieval Shaft - Diaphragm Wall	98	03-Oct-15	29-Jan-16	14-Mar-16	14-Jul-16								
South Approach Ramp														
Construction														
DDP11840	Approach Ramp (CH1580-1850) - Pipe Pile/Sheet Piles Wall	126	03-Oct-15	09-Mar-16	22-Feb-16	26-Jul-16								
DDP11850	Approach Ramp (CH1580-1850) - Tension Piles	103	03-Oct-15	04-Feb-16	22-Feb-16	28-Jun-16								
South Ventilation Building														
Design Submission														
(I1) DDA for South Vent.Bldg. GBP & Arch.Submission														
DD01425	IPs/ SO's Advance Comments/ ICE Comments	28	30-Oct-14	26-Nov-14	25-Feb-15A	30-Jun-15A								
DD01430	Comments Received	0		26-Nov-14		30-Jun-15A								
DD01435	Designer to Reply RIC + Update Submission	21	27-Nov-14	20-Dec-14	30-Jun-15A	22-Oct-15								
DD01440	Submit Updated DDA to SO/ ICE/ IPs	0	22-Dec-14		23-Oct-15									
DD01445	ICE Approval & Issue Check Cert	18	22-Dec-14	14-Jan-15	23-Oct-15	12-Nov-15								
DD01450	Submit ICE Check Cert to SO	6	15-Jan-15	21-Jan-15	13-Nov-15	19-Nov-15								
DD01455	IPs Review	28	22-Dec-14	18-Jan-15	23-Oct-15	19-Nov-15								
DD01460	IPs No Objection Received	0		18-Jan-15		19-Nov-15								
DD01465	SO's Review	35	22-Dec-14	25-Jan-15	23-Oct-15	26-Nov-15								
DD01470	SO Approval with Condition R received	0		26-Jan-15		26-Nov-15								
(I2) DDA for South Vent.Bldg. Foundation Design														
DD01500	Preparation of DDA Sth VB Foundation	18	01-Apr-15	25-Apr-15	23-Oct-15	12-Nov-15								
DD01505	Review & Comment by JV	18	27-Apr-15	18-May-15	13-Nov-15	03-Dec-15								
DD01510	Designer prepare DDA	10	19-May-15	30-May-15	04-Dec-15	15-Dec-15								
DD01515	Formal Submission of DDA to ICE/ IPs	0		30-May-15		15-Dec-15								
DD01520	Advanced Submission to SO	0		30-May-15		15-Dec-15								
DD01525	IPs/ SO's Advance Comments/ ICE Comments	28	31-May-15	27-Jun-15	16-Dec-15	12-Jan-16								
DD01530	Comments Received	0		27-Jun-15		12-Jan-16								
DD01535	Designer to Reply RIC + Update Submission	21	29-Jun-15	23-Jul-15	13-Jan-16	05-Feb-16								
DD01540	Submit Updated DDA to SO/ ICE/ IPs	0	24-Jul-15		06-Feb-16									
DD01545	ICE Approval & Issue Check Cert	18	24-Jul-15	13-Aug-15	06-Feb-16	04-Mar-16								
DD01550	Submit ICE Check Cert to SO	6	14-Aug-15	20-Aug-15	05-Mar-16	11-Mar-16								
DD01555	IPs Review	28	24-Jul-15	20-Aug-15	06-Feb-16	04-Mar-16								
DD01560	IPs No Objection Received	0		20-Aug-15		04-Mar-16								
DD01580	SO's Review	35	24-Jul-15	27-Aug-15	06-Feb-16	11-Mar-16								
DD01585	SO Approval with Condition R received	0		27-Aug-15		11-Mar-16								
(I2) DDA for South Vent.Bldg.Structural Design incl.Vent.Connections														
DD67808	Preparation of DDA Sth VB Structural Design incl. Vent Conn	18	28-Jan-15	17-Feb-15	27-Nov-15	17-Dec-15								
DD67818	Review & Comment by JV	18	18-Feb-15	17-Mar-15	18-Dec-15	11-Jan-16								
(J1) DDA Temp.works for Construction of Sth.Vent.Bldg.														
DD04560	Preparation of DDA South VB ELS	18	01-Jun-15	22-Jun-15	16-Dec-15	08-Jan-16								
DD04570	Review & Comment by JV	18	23-Jun-15	14-Jul-15	09-Jan-16	29-Jan-16								
DD04580	Designer prepare DDA	10	15-Jul-15	25-Jul-15	30-Jan-16	17-Feb-16								
DD04590	Formal Submission of DDA to ICE/ IPs	0		25-Jul-15		17-Feb-16								
DD04600	Advanced Submission to SO	0		25-Jul-15		17-Feb-16								
DD04610	IPs/ SO's Advance Comments/ ICE Comments	28	26-Jul-15	22-Aug-15	18-Feb-16	16-Mar-16								
DD04620	Comments Received	0		22-Aug-15		16-Mar-16								
DD04630	Designer to Reply RIC + Update Submission	21	24-Aug-15	16-Sep-15	17-Mar-16	14-Apr-16								
DD04640	Submit Updated DDA to SO/ ICE/ IPs	0	17-Sep-15		15-Apr-16									
DD04650	ICE Approval & Issue Check Cert	12	17-Sep-15	02-Oct-15	15-Apr-16	28-Apr-16								
DD04660	Submit ICE Check Cert to SO	6	03-Oct-15	09-Oct-15	29-Apr-16	06-May-16								
DD04670	IPs Review	28	17-Sep-15	14-Oct-15	15-Apr-16	12-May-16								
DD04680	IPs No Objection Received	0		14-Oct-15		12-May-16								
DD04720	SO's Review	35	17-Sep-15	21-Oct-15	15-Apr-16	19-May-16								
DD04730	SO Approval with Condition R received	0		22-Oct-15		19-May-16								
Construction														
DDP11930	Mobilization & Setting Up Piling Rigs	64	06-Aug-15	22-Oct-15	29-Sep-15	14-Dec-15								
DDP11940	S - Piling (Socket H-piles)	132	23-Oct-15	08-Apr-16	20-May-16	26-Oct-16								
DDP11960	S - Sheet Piling	48	23-Oct-15	17-Dec-15	15-Dec-15	18-Feb-16								
South Surface Roadworks, Utility & Drainage works														
Design Submission														
(E1) AIP - Southern Landfall Seawall Modification														
AP00900	Designer Prepare AIP - Southern Landfall Seawall Modification	36	08-Nov-16	19-Dec-16	08-Jun-15A	08-Jul-15A								

- Planned Bar
- Planned Bar - Critical
- ◆ Planned Milestone
- Progress bar
- ◆ Progress Milestone



Date	Revision	Checked	Approved
12-Feb-14	TMCLKDBJGENPRG98507	WYu	SPo
08-Apr-14	TMCLKDBJGENPRG98507 Rev B	SPa	WYu
28-Aug-14	TMCLKDBJGENPRG98507 Rev C	CLa	WYu
10-Jun-15	TMCLKDBJGENPRG98507 Rev F	WYu	

Activity ID	Activity Name	Orig Dur	Planned Start	Planned Finish	Current Start	Current Finish	2015							2016			
							Jun	Jul	Aug	Sep	Oct	Nov	Dec	Jan			
AP00905	Review & Comment by JV	12	20-Dec-16	05-Jan-17	08-Jul-15A	13-Jul-15A											
AP00910	Designer prepare AIP	6	06-Jan-17	12-Jan-17	13-Jul-15A	16-Jul-15A											
AP00915	Formal Submission of AIP to ICE/IPs	0		12-Jan-17		16-Jul-15A											
AP00920	Advanced Submission of AIP to SO	0		12-Jan-17		16-Jul-15A											
AP00925	Review & Comment by SO/ ICE/ IPs	28	13-Jan-17	09-Feb-17	16-Jul-15A	30-Sep-15											
AP00930	Advance Comments from SO/ Comments from ICE/ IPs Received	0		09-Feb-17		30-Sep-15											
AP00935	Designer to Prepare RtC & Updated AIP	18	10-Feb-17	02-Mar-17	02-Oct-15	23-Oct-15											
AP00940	Submission of AIP to SO/ ICE together with Reply To Comment (RTC)	0		02-Mar-17		23-Oct-15											
AP00945	Reply to IPs Comments in RTC	0		02-Mar-17		23-Oct-15											
AP00950	ICE Approval & Issue of Design Check Cert.	18	03-Mar-17	23-Mar-17	24-Oct-15	13-Nov-15											
AP00955	Check Cert to SO	0		23-Mar-17		13-Nov-15											
AP00960	No Objection or Further Minor Comments from IPs Received	0		23-Mar-17		13-Nov-15											
AP00980	SO Review (35 Days)	35	03-Mar-17	06-Apr-17	24-Oct-15	27-Nov-15											
AP00985	SO Approval with Condition R received	0		06-Apr-17		27-Nov-15											
(E1) DDA - Southern Landfall Seawall Modification																	
DD01900	Preparation of DDA Modification of Seawall at Sth Landfall	18	07-Apr-17	02-May-17	28-Nov-15	18-Dec-15											
DD01905	Review & Comment by JV	18	04-May-17	24-May-17	19-Dec-15	12-Jan-16											
(E3) DDA for Sewerage, Drainage, Waterworks & Utility works for South Landfall																	
DD05880	Designer to Reply RtC + Update Submission	21	02-Feb-15	04-Mar-15	19-Jun-15A	03-Oct-15											
DD05890	Submit Updated DDA to SO/ ICE/ IPs	0	05-Mar-15		05-Oct-15												
DD05900	ICE Approval & Issue Check Cert	12	05-Mar-15	18-Mar-15	05-Oct-15	17-Oct-15											
DD05910	Submit ICE Check Cert to SO	6	19-Mar-15	25-Mar-15	19-Oct-15	26-Oct-15											
DD05920	IPs Review	28	05-Mar-15	01-Apr-15	05-Oct-15	01-Nov-15											
DD05930	IPs No Objection Received	0		01-Apr-15		01-Nov-15											
DD05940	SO's Review	35	05-Mar-15	08-Apr-15	05-Oct-15	08-Nov-15											
DD05950	SO Approval with Condition R received	0		08-Apr-15		09-Nov-15											
Method Statement Submission																	
Method Statement of Ground Treatment for TBMs Passing under Southern Landfall Seawall																	
MS2700	Preparation Method Statement for Ground Improvement in South Landfall	9	20-Jul-15	29-Jul-15	12-Mar-16	22-Mar-16											
MS2710	Submit Method Statement to SO	0		29-Jul-15		22-Mar-16											
MS2720	SO Reviews & Comments	28	30-Jul-15	26-Aug-15	23-Mar-16	19-Apr-16											
MS2730	Re-submission	6	27-Aug-15	02-Sep-15	20-Apr-16	26-Apr-16											
MS2740	SO's Review	28	03-Sep-15	30-Sep-15	27-Apr-16	24-May-16											
MS2750	SO's Approval	0		30-Sep-15		24-May-16											
Construction																	
DDP11435	Temporary Platform for Ground Treatment for TBM passing under Southern Seawall	48	06-Aug-15	02-Oct-15	29-Sep-15	25-Nov-15											
DDP11440	Grouting Treatment for TBM passing under Southern Seawall	339	03-Oct-15	25-Nov-16	26-Nov-15	20-Jan-17											
Testing & Commissioning/Inspection & Handover																	
Final Inspection & Handover																	
Design Submission																	
(A12) Maintenance Matrix																	
GS02000	Preparation of Maintenance Matrix	35	24-Dec-15	05-Feb-16	24-Dec-15	05-Feb-16											
(A13) Operation & Maintenance Manual																	
GS02100	Preparation of Operation and Maintenance Manual	48	24-Dec-15	27-Feb-16	24-Dec-15	27-Feb-16											
(A14) As-built & As-fabricated Drawings																	
GS02200	Preparation of As-built and As-fabricated Drawings	48	24-Dec-15	27-Feb-16	24-Dec-15	27-Feb-16											
(A15) Health & Safety File incl. As-built Dwg's & Records, Maintenance Schedules, O&M Manual																	
GS02310	Preparation of Health and Safety File including as-built drawings and records, maintenance schedules, operation and mai	48	24-Dec-15	27-Feb-16	24-Dec-15	27-Feb-16											



Date	Revision	Checked	Approved
12-Feb-14	TMCLKDBJGEN-PRG-98507	WYu	SPo
08-Apr-14	TMCLKDBJGEN-PRG-98507 Rev B	SPa	WYu
28-Aug-14	TMCLKDBJGEN-PRG-98507 Rev C	CLa	WYu
10-Jun-15	TMCLKDBJGEN-PRG-98507 Rev F	WYu	