

Figure G.1 Impact Monitoring – 1-hour Total Suspended Particulates (µg/m³) at AQMS1 between 1 September 2015 and 31 December 2015 during impact monitoring period. The weather conditions during the monitoring period varied from sunny to cloudy. Major land-based construction activities included: Construction of capping beam and base slab for Ventilation Shaft at Works Area – Portion N-C (1/9/2015 – 31/12/2015) and Box Culvert Extension (1/9/2015 – 31/12/2015). Ref: 0212330_Impact AQM graphs_ December 2015_REV a.xlsx



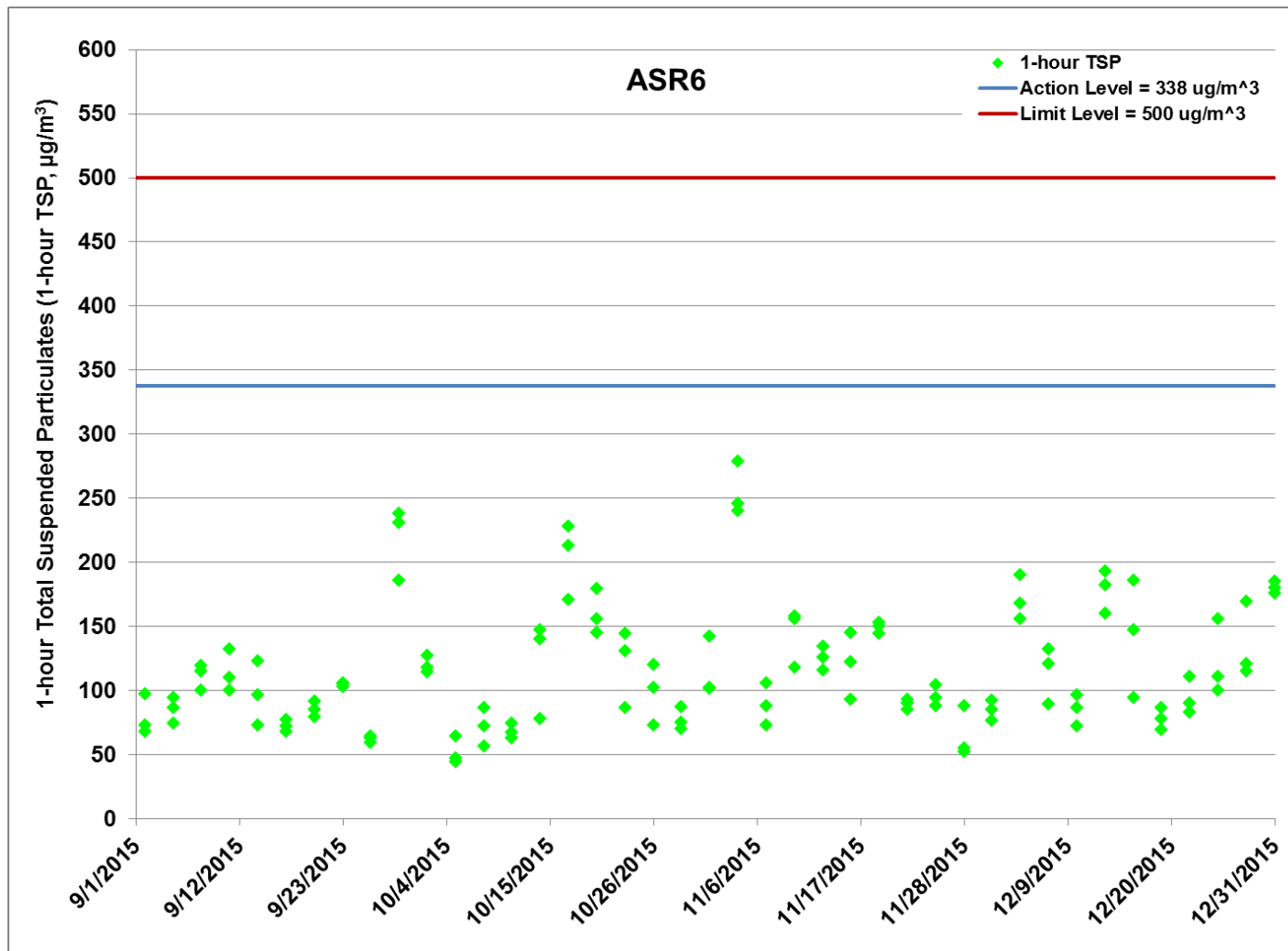


Figure G.2 Impact Monitoring - 1-hour Total Suspended Particulates ($\mu\text{g}/\text{m}^3$) at ASR6 between 1 September 2015 and 31 December 2015 during impact monitoring period. The weather conditions during the monitoring period varied from sunny to cloudy. Major land-based construction activities included: Construction of capping beam and base slab for Ventilation Shaft at Works Area - Portion N-C (1/9/2015 - 31/12/2015) and Box Culvert Extension (1/9/2015 - 31/12/2015). Ref: 0212330_Impact AQM graphs_ December 2015_REV a.xlsx



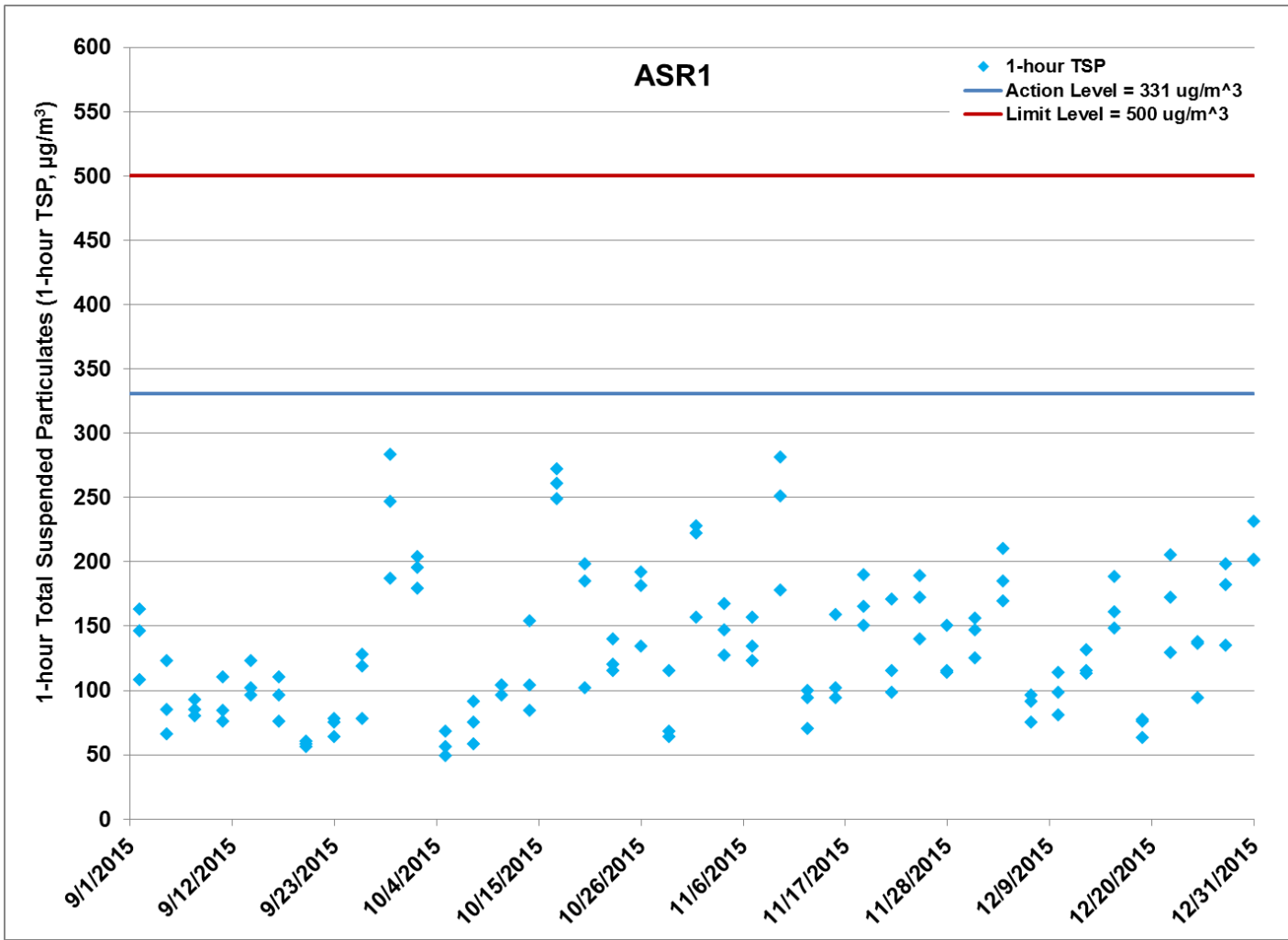


Figure G.3 Impact Monitoring - 1-hour Total Suspended Particulates ($\mu\text{g}/\text{m}^3$) at ASR1 between 1 September 2015 and 31 December 2015 during impact monitoring period. The weather conditions during the monitoring period varied from sunny to cloudy. Major land-based construction activities included: Construction of capping beam and base slab for Ventilation Shaft at Works Area - Portion N-C (1/9/2015 - 31/12/2015) and Box Culvert Extension (1/9/2015 - 31/12/2015). Ref: 0212330_Impact AQM graphs_ December 2015_REV a.xlsx



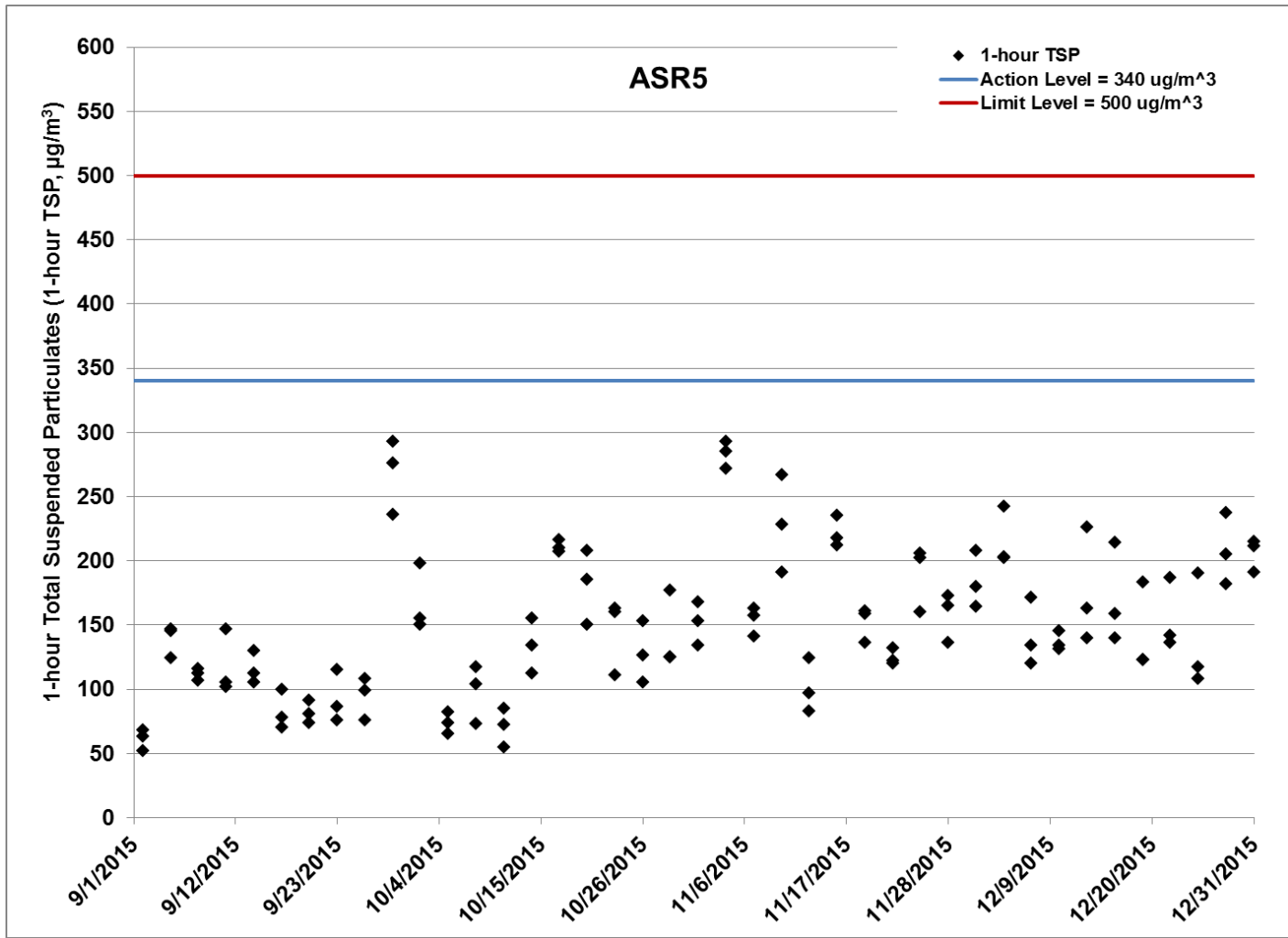


Figure G.4 Impact Monitoring – 1-hour Total Suspended Particulates ($\mu\text{g}/\text{m}^3$) at ASR5 between 1 September 2015 and 31 December 2015 during impact monitoring period. The weather conditions during the monitoring period varied from sunny to cloudy. Major land-based construction activities included: Construction of capping beam and base slab for Ventilation Shaft at Works Area – Portion N-C (1/9/2015 – 31/12/2015) and Box Culvert Extension (1/9/2015 – 31/12/2015). Ref: 0212330_Impact AQM graphs_ December 2015_REV a.xlsx



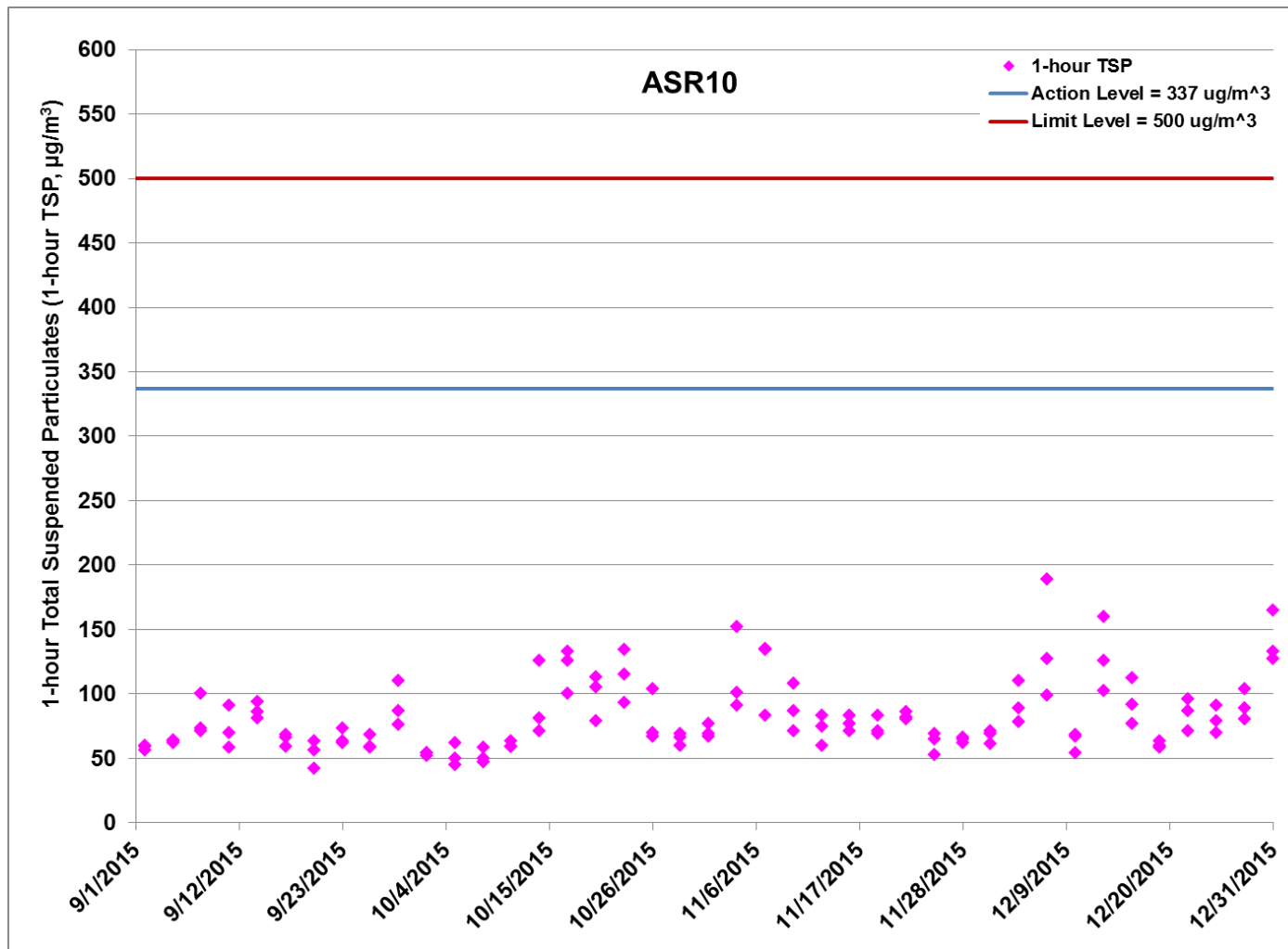


Figure G.5 Impact Monitoring – 1-hour Total Suspended Particulates ($\mu\text{g}/\text{m}^3$) at ASR10 between 1 September 2015 and 31 December 2015 during impact monitoring period. The weather conditions during the monitoring period varied from sunny to cloudy. Major land-based construction activities included: Construction of capping beam and base slab for Ventilation Shaft at Works Area – Portion N-C (1/9/2015 – 31/12/2015) and Box Culvert Extension (1/9/2015 – 31/12/2015). Ref: 0212330_Impact AQM graphs_ December 2015_REV a.xlsx



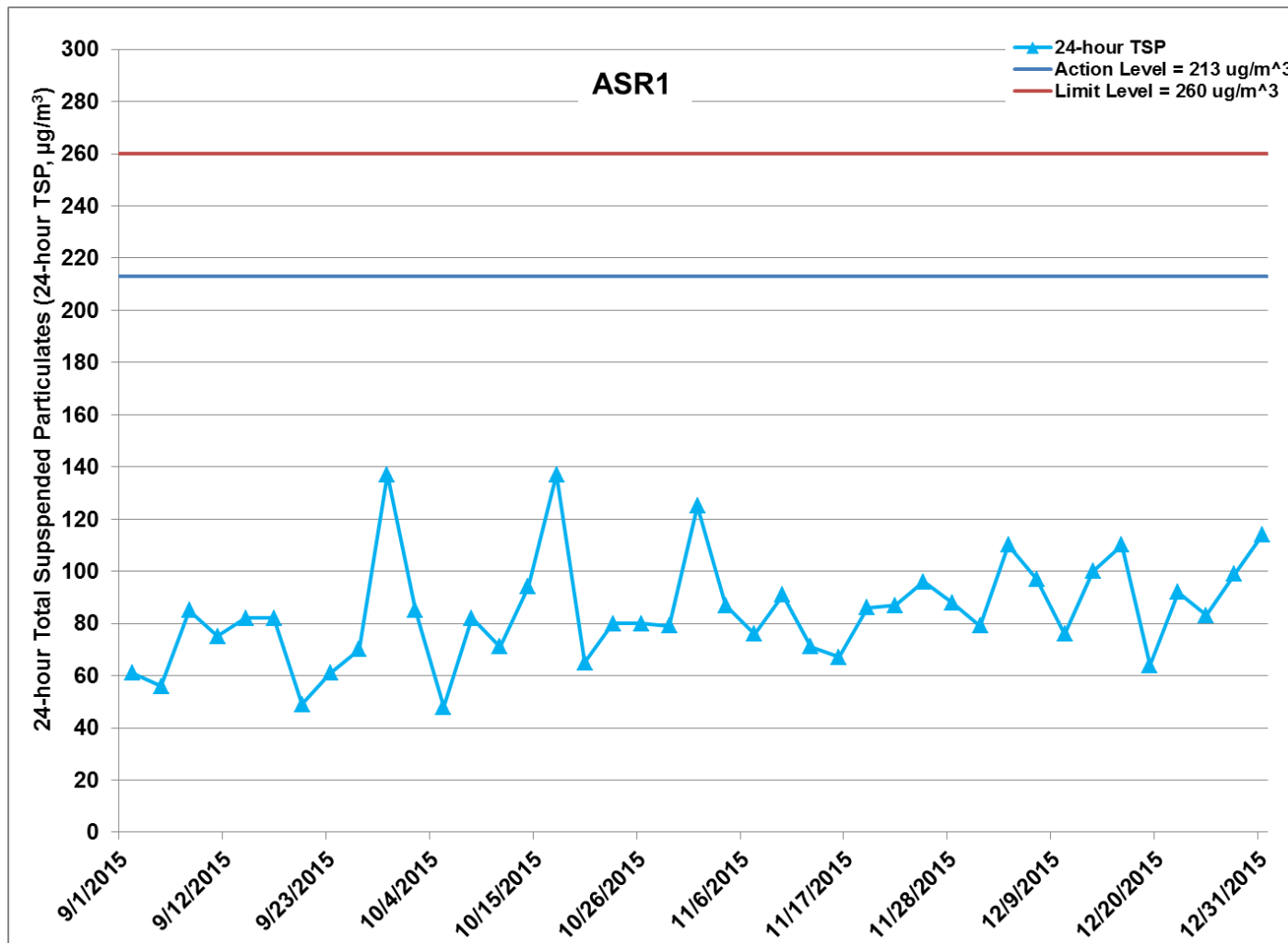


Figure G.6 Impact Monitoring - 24-hour Total Suspended Particulates ($\mu\text{g}/\text{m}^3$) at ASR1 between 1 September 2015 and 31 December 2015 during impact monitoring period. The weather conditions during the monitoring period varied from sunny to cloudy. Major land-based construction activities included: Construction of capping beam and base slab for Ventilation Shaft at Works Area - Portion N-C (1/9/2015 - 31/12/2015) and Box Culvert Extension (1/9/2015 - 31/12/2015). Ref: 0212330_Impact AQM graphs_ December 2015_REV a.xlsx



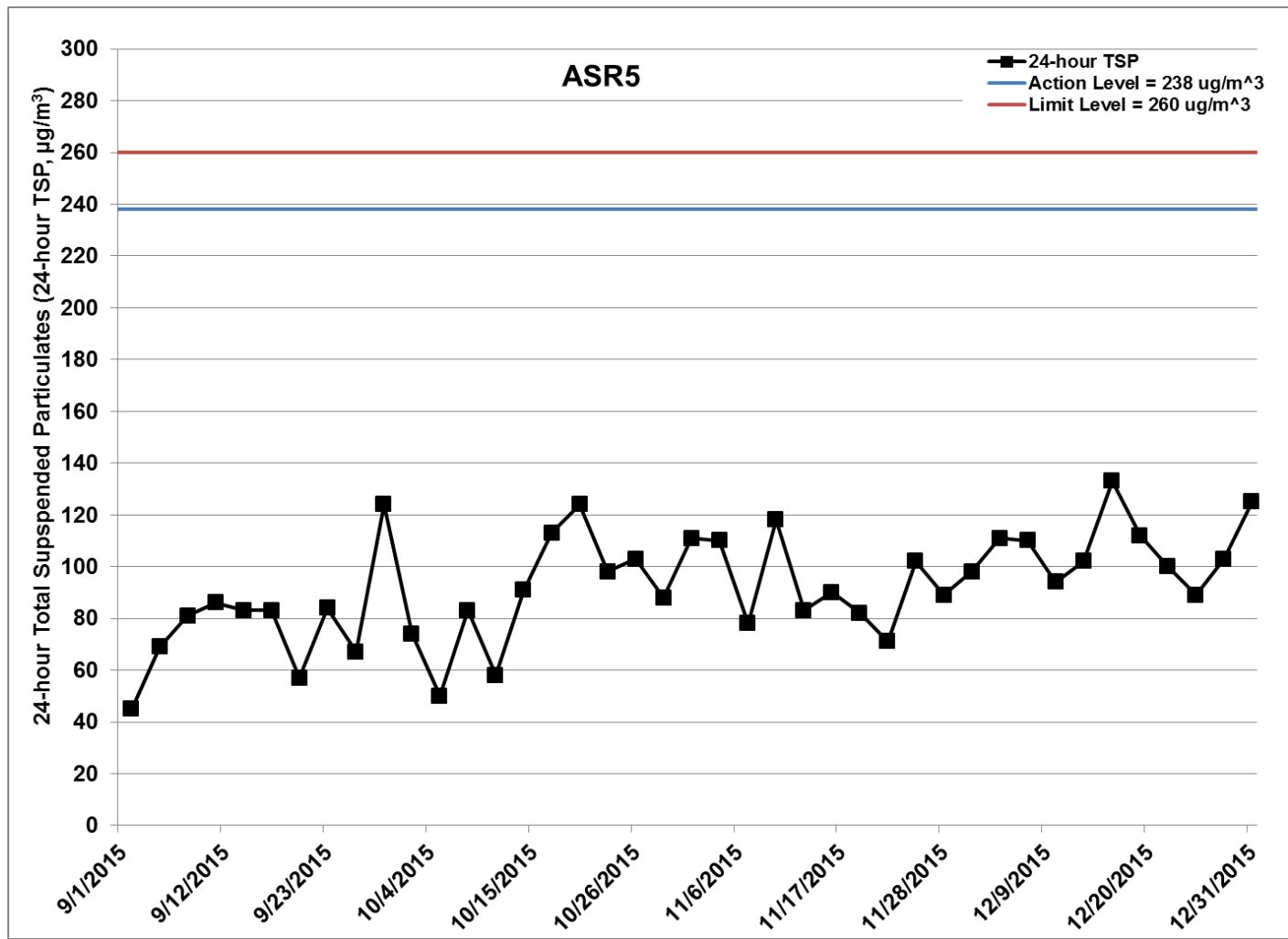


Figure G.7 Impact Monitoring - 24-hour Total Suspended Particulates ($\mu\text{g}/\text{m}^3$) at ASR5 between 1 September 2015 and 31 December 2015 during impact monitoring period. The weather conditions during the monitoring period varied from sunny to cloudy. Major land-based construction activities included: Construction of capping beam and base slab for Ventilation Shaft at Works Area - Portion N-C (1/9/2015 - 31/12/2015) and Box Culvert Extension (1/9/2015 - 31/12/2015). Ref: 0212330_Impact AQM graphs_ December 2015_REV a.xlsx



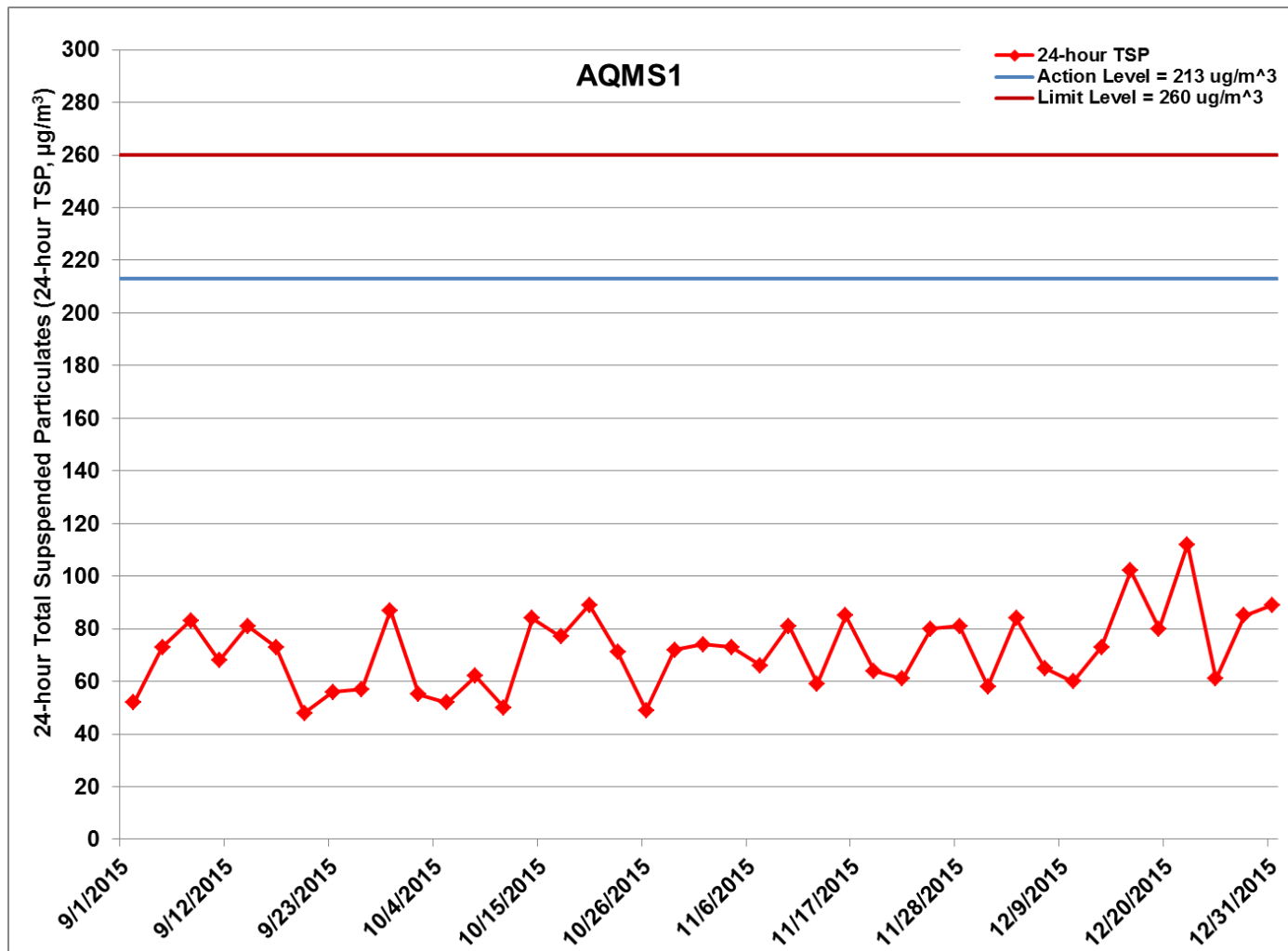


Figure G.8 Impact Monitoring - 24-hour Total Suspended Particulates ($\mu\text{g}/\text{m}^3$) at AQMS1 between 1 September 2015 and 31 December 2015 during impact monitoring period. The weather conditions during the monitoring period varied from sunny to cloudy. Major land-based construction activities included: Construction of capping beam and base slab for Ventilation Shaft at Works Area - Portion N-C (1/9/2015 - 31/12/2015) and Box Culvert Extension (1/9/2015 - 31/12/2015). Ref: 0212330_Impact AQM graphs_ December 2015_REV a.xlsx



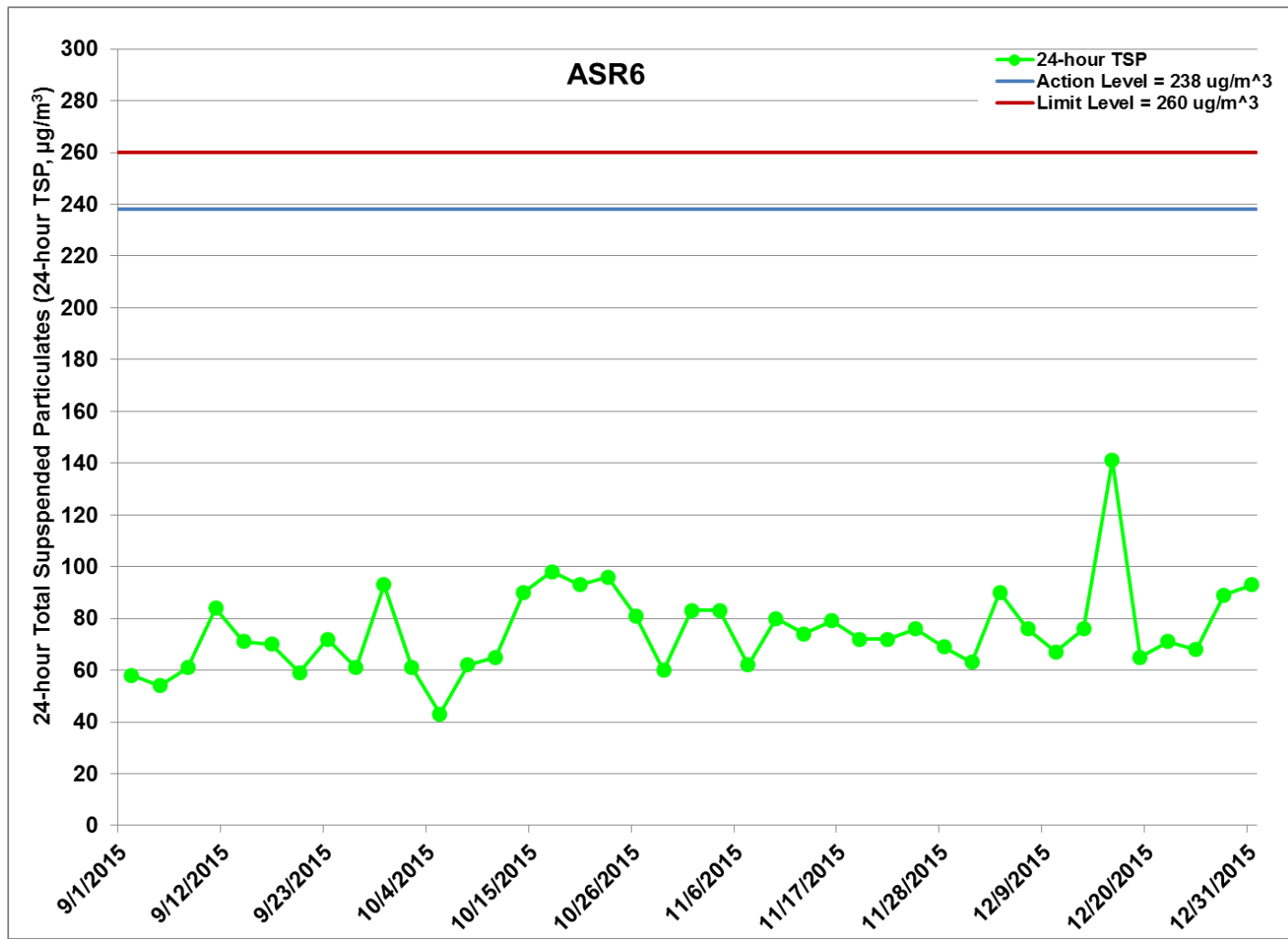


Figure G.9 Impact Monitoring - 24-hour Total Suspended Particulates ($\mu\text{g}/\text{m}^3$) at ASR6 between 1 September 2015 and 31 December 2015 during impact monitoring period. The weather conditions during the monitoring period varied from sunny to cloudy. Major land-based construction activities included: Construction of capping beam and base slab for Ventilation Shaft at Works Area - Portion N-C (1/9/2015 - 31/12/2015) and Box Culvert Extension (1/9/2015 - 31/12/2015). Ref: 0212330_Impact AQM graphs_ December 2015_REV a.xlsx



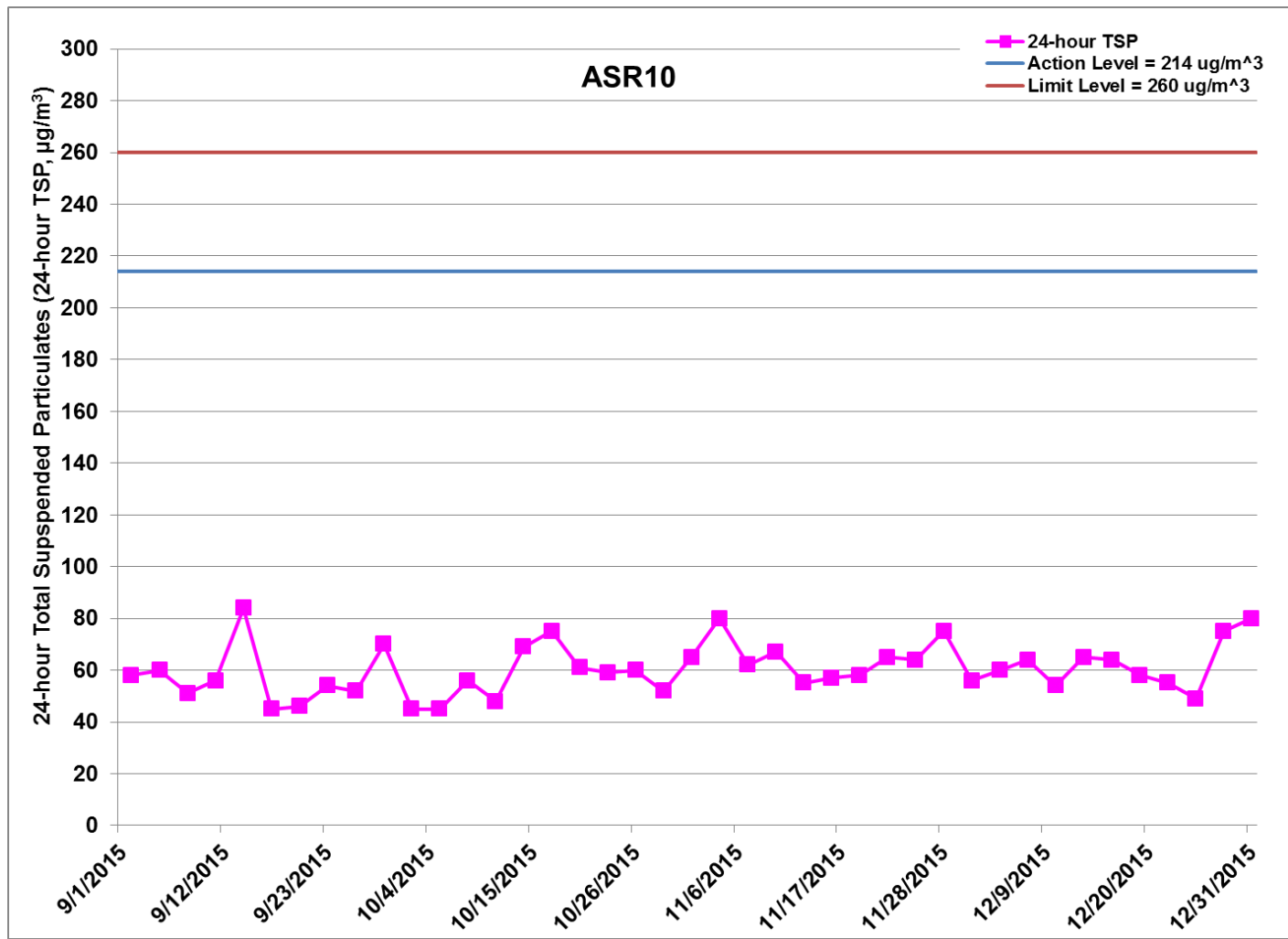


Figure G.10 Impact Monitoring - 24-hour Total Suspended Particulates ($\mu\text{g}/\text{m}^3$) at ASR10 between 1 September 2015 and 31 December 2015 during impact monitoring period. The weather conditions during the monitoring period varied from sunny to cloudy. Major land-based construction activities included: Construction of capping beam and base slab for Ventilation Shaft at Works Area - Portion N-C (1/9/2015 - 31/12/2015) and Box Culvert Extension (1/9/2015 - 31/12/2015). Ref: 0212330_Impact AQM graphs_ December 2015_REV a.xlsx



Project	Works	Date	Station	Weather	Start time	Parameters	Results	units
TMCLKL	HY/2012/08	2015-12-01	AQMS1	Sunny	13:25	1-hour TSP	140	ug/m3
TMCLKL	HY/2012/08	2015-12-01	AQMS1	Sunny	14:27	1-hour TSP	89	ug/m3
TMCLKL	HY/2012/08	2015-12-01	AQMS1	Sunny	15:29	1-hour TSP	74	ug/m3
TMCLKL	HY/2012/08	2015-12-01	ASR1	Sunny	13:14	1-hour TSP	156	ug/m3
TMCLKL	HY/2012/08	2015-12-01	ASR1	Sunny	14:16	1-hour TSP	147	ug/m3
TMCLKL	HY/2012/08	2015-12-01	ASR1	Sunny	15:18	1-hour TSP	125	ug/m3
TMCLKL	HY/2012/08	2015-12-01	ASR10	Sunny	12:42	1-hour TSP	71	ug/m3
TMCLKL	HY/2012/08	2015-12-01	ASR10	Sunny	13:44	1-hour TSP	61	ug/m3
TMCLKL	HY/2012/08	2015-12-01	ASR10	Sunny	14:46	1-hour TSP	69	ug/m3
TMCLKL	HY/2012/08	2015-12-01	ASR5	Sunny	13:03	1-hour TSP	208	ug/m3
TMCLKL	HY/2012/08	2015-12-01	ASR5	Sunny	14:05	1-hour TSP	180	ug/m3
TMCLKL	HY/2012/08	2015-12-01	ASR5	Sunny	15:07	1-hour TSP	164	ug/m3
TMCLKL	HY/2012/08	2015-12-01	ASR6	Sunny	12:53	1-hour TSP	92	ug/m3
TMCLKL	HY/2012/08	2015-12-01	ASR6	Sunny	13:55	1-hour TSP	85	ug/m3
TMCLKL	HY/2012/08	2015-12-01	ASR6	Sunny	14:57	1-hour TSP	76	ug/m3
TMCLKL	HY/2012/08	2015-12-04	AQMS1	Sunny	09:04	1-hour TSP	111	ug/m3
TMCLKL	HY/2012/08	2015-12-04	AQMS1	Sunny	10:06	1-hour TSP	98	ug/m3
TMCLKL	HY/2012/08	2015-12-04	AQMS1	Sunny	11:08	1-hour TSP	120	ug/m3
TMCLKL	HY/2012/08	2015-12-04	ASR1	Sunny	08:53	1-hour TSP	210	ug/m3
TMCLKL	HY/2012/08	2015-12-04	ASR1	Sunny	09:55	1-hour TSP	169	ug/m3
TMCLKL	HY/2012/08	2015-12-04	ASR1	Sunny	10:57	1-hour TSP	185	ug/m3
TMCLKL	HY/2012/08	2015-12-04	ASR10	Sunny	08:20	1-hour TSP	78	ug/m3
TMCLKL	HY/2012/08	2015-12-04	ASR10	Sunny	09:22	1-hour TSP	89	ug/m3
TMCLKL	HY/2012/08	2015-12-04	ASR10	Sunny	10:24	1-hour TSP	110	ug/m3
TMCLKL	HY/2012/08	2015-12-04	ASR5	Sunny	08:42	1-hour TSP	242	ug/m3
TMCLKL	HY/2012/08	2015-12-04	ASR5	Sunny	09:44	1-hour TSP	203	ug/m3
TMCLKL	HY/2012/08	2015-12-04	ASR5	Sunny	10:46	1-hour TSP	202	ug/m3
TMCLKL	HY/2012/08	2015-12-04	ASR6	Sunny	08:30	1-hour TSP	190	ug/m3
TMCLKL	HY/2012/08	2015-12-04	ASR6	Sunny	09:32	1-hour TSP	156	ug/m3
TMCLKL	HY/2012/08	2015-12-04	ASR6	Sunny	10:34	1-hour TSP	168	ug/m3

Project	Works	Date	Station	Weather	Start time	Parameters	Results	units
TMCLKL	HY/2012/08	2015-12-07	AQMS1	Cloudy	14:20	1-hour TSP	95	ug/m3
TMCLKL	HY/2012/08	2015-12-07	AQMS1	Cloudy	15:22	1-hour TSP	70	ug/m3
TMCLKL	HY/2012/08	2015-12-07	AQMS1	Cloudy	16:24	1-hour TSP	78	ug/m3
TMCLKL	HY/2012/08	2015-12-07	ASR1	Cloudy	14:08	1-hour TSP	96	ug/m3
TMCLKL	HY/2012/08	2015-12-07	ASR1	Cloudy	15:10	1-hour TSP	75	ug/m3
TMCLKL	HY/2012/08	2015-12-07	ASR1	Cloudy	16:12	1-hour TSP	91	ug/m3
TMCLKL	HY/2012/08	2015-12-07	ASR10	Cloudy	13:36	1-hour TSP	189	ug/m3
TMCLKL	HY/2012/08	2015-12-07	ASR10	Cloudy	14:38	1-hour TSP	127	ug/m3
TMCLKL	HY/2012/08	2015-12-07	ASR10	Cloudy	15:40	1-hour TSP	99	ug/m3
TMCLKL	HY/2012/08	2015-12-07	ASR5	Cloudy	13:57	1-hour TSP	134	ug/m3
TMCLKL	HY/2012/08	2015-12-07	ASR5	Cloudy	14:59	1-hour TSP	120	ug/m3
TMCLKL	HY/2012/08	2015-12-07	ASR5	Cloudy	16:01	1-hour TSP	171	ug/m3
TMCLKL	HY/2012/08	2015-12-07	ASR6	Cloudy	13:47	1-hour TSP	121	ug/m3
TMCLKL	HY/2012/08	2015-12-07	ASR6	Cloudy	14:49	1-hour TSP	89	ug/m3
TMCLKL	HY/2012/08	2015-12-07	ASR6	Cloudy	15:51	1-hour TSP	132	ug/m3
TMCLKL	HY/2012/08	2015-12-10	AQMS1	Sunny	14:25	1-hour TSP	83	ug/m3
TMCLKL	HY/2012/08	2015-12-10	AQMS1	Sunny	15:27	1-hour TSP	87	ug/m3
TMCLKL	HY/2012/08	2015-12-10	AQMS1	Sunny	16:29	1-hour TSP	89	ug/m3
TMCLKL	HY/2012/08	2015-12-10	ASR1	Sunny	14:14	1-hour TSP	114	ug/m3
TMCLKL	HY/2012/08	2015-12-10	ASR1	Sunny	15:16	1-hour TSP	98	ug/m3
TMCLKL	HY/2012/08	2015-12-10	ASR1	Sunny	16:18	1-hour TSP	81	ug/m3
TMCLKL	HY/2012/08	2015-12-10	ASR10	Sunny	13:43	1-hour TSP	54	ug/m3
TMCLKL	HY/2012/08	2015-12-10	ASR10	Sunny	14:45	1-hour TSP	68	ug/m3
TMCLKL	HY/2012/08	2015-12-10	ASR10	Sunny	15:47	1-hour TSP	67	ug/m3
TMCLKL	HY/2012/08	2015-12-10	ASR5	Sunny	14:04	1-hour TSP	131	ug/m3
TMCLKL	HY/2012/08	2015-12-10	ASR5	Sunny	15:06	1-hour TSP	145	ug/m3
TMCLKL	HY/2012/08	2015-12-10	ASR5	Sunny	16:08	1-hour TSP	134	ug/m3
TMCLKL	HY/2012/08	2015-12-10	ASR6	Sunny	13:53	1-hour TSP	96	ug/m3
TMCLKL	HY/2012/08	2015-12-10	ASR6	Sunny	14:55	1-hour TSP	72	ug/m3
TMCLKL	HY/2012/08	2015-12-10	ASR6	Sunny	15:57	1-hour TSP	86	ug/m3

Project	Works	Date	Station	Weather	Start time	Parameters	Results	units
TMCLKL	HY/2012/08	2015-12-13	AQMS1	Sunny	13:45	1-hour TSP	122	ug/m3
TMCLKL	HY/2012/08	2015-12-13	AQMS1	Sunny	14:47	1-hour TSP	164	ug/m3
TMCLKL	HY/2012/08	2015-12-13	AQMS1	Sunny	15:49	1-hour TSP	175	ug/m3
TMCLKL	HY/2012/08	2015-12-13	ASR1	Sunny	13:33	1-hour TSP	115	ug/m3
TMCLKL	HY/2012/08	2015-12-13	ASR1	Sunny	14:35	1-hour TSP	113	ug/m3
TMCLKL	HY/2012/08	2015-12-13	ASR1	Sunny	15:37	1-hour TSP	131	ug/m3
TMCLKL	HY/2012/08	2015-12-13	ASR10	Sunny	13:00	1-hour TSP	102	ug/m3
TMCLKL	HY/2012/08	2015-12-13	ASR10	Sunny	14:02	1-hour TSP	160	ug/m3
TMCLKL	HY/2012/08	2015-12-13	ASR10	Sunny	15:04	1-hour TSP	126	ug/m3
TMCLKL	HY/2012/08	2015-12-13	ASR5	Sunny	13:22	1-hour TSP	140	ug/m3
TMCLKL	HY/2012/08	2015-12-13	ASR5	Sunny	14:24	1-hour TSP	226	ug/m3
TMCLKL	HY/2012/08	2015-12-13	ASR5	Sunny	15:26	1-hour TSP	163	ug/m3
TMCLKL	HY/2012/08	2015-12-13	ASR6	Sunny	13:12	1-hour TSP	160	ug/m3
TMCLKL	HY/2012/08	2015-12-13	ASR6	Sunny	14:14	1-hour TSP	182	ug/m3
TMCLKL	HY/2012/08	2015-12-13	ASR6	Sunny	15:16	1-hour TSP	193	ug/m3
TMCLKL	HY/2012/08	2015-12-16	AQMS1	Sunny	13:53	1-hour TSP	169	ug/m3
TMCLKL	HY/2012/08	2015-12-16	AQMS1	Sunny	14:55	1-hour TSP	136	ug/m3
TMCLKL	HY/2012/08	2015-12-16	AQMS1	Sunny	15:57	1-hour TSP	115	ug/m3
TMCLKL	HY/2012/08	2015-12-16	ASR1	Sunny	13:42	1-hour TSP	188	ug/m3
TMCLKL	HY/2012/08	2015-12-16	ASR1	Sunny	14:44	1-hour TSP	148	ug/m3
TMCLKL	HY/2012/08	2015-12-16	ASR1	Sunny	15:46	1-hour TSP	161	ug/m3
TMCLKL	HY/2012/08	2015-12-16	ASR10	Sunny	13:19	1-hour TSP	112	ug/m3
TMCLKL	HY/2012/08	2015-12-16	ASR10	Sunny	14:21	1-hour TSP	92	ug/m3
TMCLKL	HY/2012/08	2015-12-16	ASR10	Sunny	15:23	1-hour TSP	77	ug/m3
TMCLKL	HY/2012/08	2015-12-16	ASR5	Sunny	13:30	1-hour TSP	159	ug/m3
TMCLKL	HY/2012/08	2015-12-16	ASR5	Sunny	14:32	1-hour TSP	214	ug/m3
TMCLKL	HY/2012/08	2015-12-16	ASR5	Sunny	15:34	1-hour TSP	140	ug/m3
TMCLKL	HY/2012/08	2015-12-16	ASR6	Sunny	13:29	1-hour TSP	186	ug/m3
TMCLKL	HY/2012/08	2015-12-16	ASR6	Sunny	14:31	1-hour TSP	147	ug/m3
TMCLKL	HY/2012/08	2015-12-16	ASR6	Sunny	15:33	1-hour TSP	94	ug/m3

Project	Works	Date	Station	Weather	Start time	Parameters	Results	units
TMCLKL	HY/2012/08	2015-12-19	AQMS1	Sunny	14:10	1-hour TSP	85	ug/m3
TMCLKL	HY/2012/08	2015-12-19	AQMS1	Sunny	15:12	1-hour TSP	100	ug/m3
TMCLKL	HY/2012/08	2015-12-19	AQMS1	Sunny	16:14	1-hour TSP	98	ug/m3
TMCLKL	HY/2012/08	2015-12-19	ASR1	Sunny	13:59	1-hour TSP	77	ug/m3
TMCLKL	HY/2012/08	2015-12-19	ASR1	Sunny	15:01	1-hour TSP	63	ug/m3
TMCLKL	HY/2012/08	2015-12-19	ASR1	Sunny	16:03	1-hour TSP	76	ug/m3
TMCLKL	HY/2012/08	2015-12-19	ASR10	Sunny	13:26	1-hour TSP	63	ug/m3
TMCLKL	HY/2012/08	2015-12-19	ASR10	Sunny	14:28	1-hour TSP	60	ug/m3
TMCLKL	HY/2012/08	2015-12-19	ASR10	Sunny	15:30	1-hour TSP	58	ug/m3
TMCLKL	HY/2012/08	2015-12-19	ASR5	Sunny	13:47	1-hour TSP	123	ug/m3
TMCLKL	HY/2012/08	2015-12-19	ASR5	Sunny	14:49	1-hour TSP	123	ug/m3
TMCLKL	HY/2012/08	2015-12-19	ASR5	Sunny	15:51	1-hour TSP	183	ug/m3
TMCLKL	HY/2012/08	2015-12-19	ASR6	Sunny	13:37	1-hour TSP	78	ug/m3
TMCLKL	HY/2012/08	2015-12-19	ASR6	Sunny	14:39	1-hour TSP	86	ug/m3
TMCLKL	HY/2012/08	2015-12-19	ASR6	Sunny	15:41	1-hour TSP	69	ug/m3
TMCLKL	HY/2012/08	2015-12-22	AQMS1	Sunny	14:00	1-hour TSP	68	ug/m3
TMCLKL	HY/2012/08	2015-12-22	AQMS1	Sunny	15:02	1-hour TSP	73	ug/m3
TMCLKL	HY/2012/08	2015-12-22	AQMS1	Sunny	16:04	1-hour TSP	65	ug/m3
TMCLKL	HY/2012/08	2015-12-22	ASR1	Sunny	13:49	1-hour TSP	205	ug/m3
TMCLKL	HY/2012/08	2015-12-22	ASR1	Sunny	14:51	1-hour TSP	172	ug/m3
TMCLKL	HY/2012/08	2015-12-22	ASR1	Sunny	15:53	1-hour TSP	129	ug/m3
TMCLKL	HY/2012/08	2015-12-22	ASR10	Sunny	13:16	1-hour TSP	96	ug/m3
TMCLKL	HY/2012/08	2015-12-22	ASR10	Sunny	14:18	1-hour TSP	87	ug/m3
TMCLKL	HY/2012/08	2015-12-22	ASR10	Sunny	15:20	1-hour TSP	71	ug/m3
TMCLKL	HY/2012/08	2015-12-22	ASR5	Sunny	13:38	1-hour TSP	136	ug/m3
TMCLKL	HY/2012/08	2015-12-22	ASR5	Sunny	14:40	1-hour TSP	187	ug/m3
TMCLKL	HY/2012/08	2015-12-22	ASR5	Sunny	15:42	1-hour TSP	142	ug/m3
TMCLKL	HY/2012/08	2015-12-22	ASR6	Sunny	13:27	1-hour TSP	111	ug/m3
TMCLKL	HY/2012/08	2015-12-22	ASR6	Sunny	14:29	1-hour TSP	90	ug/m3
TMCLKL	HY/2012/08	2015-12-22	ASR6	Sunny	15:31	1-hour TSP	83	ug/m3

Project	Works	Date	Station	Weather	Start time	Parameters	Results	units
TMCLKL	HY/2012/08	2015-12-25	AQMS1	Cloudy	14:01	1-hour TSP	145	ug/m3
TMCLKL	HY/2012/08	2015-12-25	AQMS1	Cloudy	15:03	1-hour TSP	115	ug/m3
TMCLKL	HY/2012/08	2015-12-25	AQMS1	Cloudy	16:05	1-hour TSP	141	ug/m3
TMCLKL	HY/2012/08	2015-12-25	ASR1	Cloudy	13:49	1-hour TSP	138	ug/m3
TMCLKL	HY/2012/08	2015-12-25	ASR1	Cloudy	14:51	1-hour TSP	94	ug/m3
TMCLKL	HY/2012/08	2015-12-25	ASR1	Cloudy	15:53	1-hour TSP	136	ug/m3
TMCLKL	HY/2012/08	2015-12-25	ASR10	Cloudy	13:17	1-hour TSP	79	ug/m3
TMCLKL	HY/2012/08	2015-12-25	ASR10	Cloudy	14:19	1-hour TSP	70	ug/m3
TMCLKL	HY/2012/08	2015-12-25	ASR10	Cloudy	15:21	1-hour TSP	91	ug/m3
TMCLKL	HY/2012/08	2015-12-25	ASR5	Cloudy	13:38	1-hour TSP	117	ug/m3
TMCLKL	HY/2012/08	2015-12-25	ASR5	Cloudy	14:40	1-hour TSP	108	ug/m3
TMCLKL	HY/2012/08	2015-12-25	ASR5	Cloudy	15:42	1-hour TSP	190	ug/m3
TMCLKL	HY/2012/08	2015-12-25	ASR6	Cloudy	13:27	1-hour TSP	100	ug/m3
TMCLKL	HY/2012/08	2015-12-25	ASR6	Cloudy	14:29	1-hour TSP	111	ug/m3
TMCLKL	HY/2012/08	2015-12-25	ASR6	Cloudy	15:31	1-hour TSP	156	ug/m3
TMCLKL	HY/2012/08	2015-12-28	AQMS1	Cloudy	14:27	1-hour TSP	104	ug/m3
TMCLKL	HY/2012/08	2015-12-28	AQMS1	Cloudy	15:29	1-hour TSP	121	ug/m3
TMCLKL	HY/2012/08	2015-12-28	AQMS1	Cloudy	16:31	1-hour TSP	107	ug/m3
TMCLKL	HY/2012/08	2015-12-28	ASR1	Cloudy	14:16	1-hour TSP	198	ug/m3
TMCLKL	HY/2012/08	2015-12-28	ASR1	Cloudy	15:18	1-hour TSP	182	ug/m3
TMCLKL	HY/2012/08	2015-12-28	ASR1	Cloudy	16:20	1-hour TSP	135	ug/m3
TMCLKL	HY/2012/08	2015-12-28	ASR10	Cloudy	13:43	1-hour TSP	104	ug/m3
TMCLKL	HY/2012/08	2015-12-28	ASR10	Cloudy	14:45	1-hour TSP	80	ug/m3
TMCLKL	HY/2012/08	2015-12-28	ASR10	Cloudy	15:47	1-hour TSP	89	ug/m3
TMCLKL	HY/2012/08	2015-12-28	ASR5	Cloudy	14:06	1-hour TSP	237	ug/m3
TMCLKL	HY/2012/08	2015-12-28	ASR5	Cloudy	15:08	1-hour TSP	205	ug/m3
TMCLKL	HY/2012/08	2015-12-28	ASR5	Cloudy	16:10	1-hour TSP	182	ug/m3
TMCLKL	HY/2012/08	2015-12-28	ASR6	Cloudy	13:55	1-hour TSP	169	ug/m3
TMCLKL	HY/2012/08	2015-12-28	ASR6	Cloudy	14:57	1-hour TSP	121	ug/m3
TMCLKL	HY/2012/08	2015-12-28	ASR6	Cloudy	15:59	1-hour TSP	115	ug/m3

Project	Works	Date	Station	Weather	Start time	Parameters	Results	units
TMCLKL	HY/2012/08	2015-12-31	AQMS1	Sunny	13:55	1-hour TSP	171	ug/m3
TMCLKL	HY/2012/08	2015-12-31	AQMS1	Sunny	14:57	1-hour TSP	168	ug/m3
TMCLKL	HY/2012/08	2015-12-31	AQMS1	Sunny	15:59	1-hour TSP	175	ug/m3
TMCLKL	HY/2012/08	2015-12-31	ASR1	Sunny	13:45	1-hour TSP	231	ug/m3
TMCLKL	HY/2012/08	2015-12-31	ASR1	Sunny	14:47	1-hour TSP	201	ug/m3
TMCLKL	HY/2012/08	2015-12-31	ASR1	Sunny	15:49	1-hour TSP	202	ug/m3
TMCLKL	HY/2012/08	2015-12-31	ASR10	Sunny	13:11	1-hour TSP	133	ug/m3
TMCLKL	HY/2012/08	2015-12-31	ASR10	Sunny	14:13	1-hour TSP	165	ug/m3
TMCLKL	HY/2012/08	2015-12-31	ASR10	Sunny	15:15	1-hour TSP	127	ug/m3
TMCLKL	HY/2012/08	2015-12-31	ASR5	Sunny	13:33	1-hour TSP	211	ug/m3
TMCLKL	HY/2012/08	2015-12-31	ASR5	Sunny	14:35	1-hour TSP	191	ug/m3
TMCLKL	HY/2012/08	2015-12-31	ASR5	Sunny	15:37	1-hour TSP	215	ug/m3
TMCLKL	HY/2012/08	2015-12-31	ASR6	Sunny	13:22	1-hour TSP	185	ug/m3
TMCLKL	HY/2012/08	2015-12-31	ASR6	Sunny	14:24	1-hour TSP	176	ug/m3
TMCLKL	HY/2012/08	2015-12-31	ASR6	Sunny	15:26	1-hour TSP	180	ug/m3
TMCLKL	HY/2012/08	2015-12-01	AQMS1	Sunny	16:31	24-hour TSP	58	ug/m3
TMCLKL	HY/2012/08	2015-12-01	ASR1	Sunny	16:20	24-hour TSP	79	ug/m3
TMCLKL	HY/2012/08	2015-12-01	ASR10	Sunny	15:48	24-hour TSP	56	ug/m3
TMCLKL	HY/2012/08	2015-12-01	ASR5	Sunny	16:09	24-hour TSP	98	ug/m3
TMCLKL	HY/2012/08	2015-12-01	ASR6	Sunny	15:59	24-hour TSP	63	ug/m3
TMCLKL	HY/2012/08	2015-12-04	AQMS1	Sunny	12:10	24-hour TSP	84	ug/m3
TMCLKL	HY/2012/08	2015-12-04	ASR1	Sunny	11:59	24-hour TSP	110	ug/m3
TMCLKL	HY/2012/08	2015-12-04	ASR10	Sunny	11:26	24-hour TSP	60	ug/m3
TMCLKL	HY/2012/08	2015-12-04	ASR5	Sunny	11:48	24-hour TSP	111	ug/m3
TMCLKL	HY/2012/08	2015-12-04	ASR6	Sunny	11:36	24-hour TSP	90	ug/m3
TMCLKL	HY/2012/08	2015-12-07	AQMS1	Sunny	17:26	24-hour TSP	65	ug/m3
TMCLKL	HY/2012/08	2015-12-07	ASR1	Sunny	17:14	24-hour TSP	97	ug/m3
TMCLKL	HY/2012/08	2015-12-07	ASR10	Sunny	16:42	24-hour TSP	64	ug/m3
TMCLKL	HY/2012/08	2015-12-07	ASR5	Sunny	17:03	24-hour TSP	110	ug/m3
TMCLKL	HY/2012/08	2015-12-07	ASR6	Sunny	16:53	24-hour TSP	76	ug/m3

Project	Works	Date	Station	Weather	Start time	Parameters	Results	units
TMCLKL	HY/2012/08	2015-12-10	AQMS1	Sunny	17:31	24-hour TSP	60	ug/m3
TMCLKL	HY/2012/08	2015-12-10	ASR1	Sunny	17:20	24-hour TSP	76	ug/m3
TMCLKL	HY/2012/08	2015-12-10	ASR10	Sunny	16:49	24-hour TSP	54	ug/m3
TMCLKL	HY/2012/08	2015-12-10	ASR5	Sunny	17:10	24-hour TSP	94	ug/m3
TMCLKL	HY/2012/08	2015-12-10	ASR6	Sunny	16:59	24-hour TSP	67	ug/m3
TMCLKL	HY/2012/08	2015-12-13	AQMS1	Sunny	16:51	24-hour TSP	73	ug/m3
TMCLKL	HY/2012/08	2015-12-13	ASR1	Sunny	16:39	24-hour TSP	100	ug/m3
TMCLKL	HY/2012/08	2015-12-13	ASR10	Sunny	16:06	24-hour TSP	65	ug/m3
TMCLKL	HY/2012/08	2015-12-13	ASR5	Sunny	16:28	24-hour TSP	102	ug/m3
TMCLKL	HY/2012/08	2015-12-13	ASR6	Sunny	16:18	24-hour TSP	76	ug/m3
TMCLKL	HY/2012/08	2015-12-16	AQMS1	Sunny	16:59	24-hour TSP	102	ug/m3
TMCLKL	HY/2012/08	2015-12-16	ASR1	Sunny	16:48	24-hour TSP	110	ug/m3
TMCLKL	HY/2012/08	2015-12-16	ASR10	Sunny	16:25	24-hour TSP	64	ug/m3
TMCLKL	HY/2012/08	2015-12-16	ASR5	Sunny	16:36	24-hour TSP	133	ug/m3
TMCLKL	HY/2012/08	2015-12-16	ASR6	Sunny	16:35	24-hour TSP	141	ug/m3
TMCLKL	HY/2012/08	2015-12-19	AQMS1	Sunny	17:16	24-hour TSP	80	ug/m3
TMCLKL	HY/2012/08	2015-12-19	ASR1	Sunny	17:05	24-hour TSP	64	ug/m3
TMCLKL	HY/2012/08	2015-12-19	ASR10	Sunny	16:32	24-hour TSP	58	ug/m3
TMCLKL	HY/2012/08	2015-12-19	ASR5	Sunny	16:53	24-hour TSP	112	ug/m3
TMCLKL	HY/2012/08	2015-12-19	ASR6	Sunny	16:43	24-hour TSP	65	ug/m3
TMCLKL	HY/2012/08	2015-12-22	AQMS1	Sunny	17:06	24-hour TSP	112	ug/m3
TMCLKL	HY/2012/08	2015-12-22	ASR1	Sunny	16:35	24-hour TSP	92	ug/m3
TMCLKL	HY/2012/08	2015-12-22	ASR10	Sunny	16:22	24-hour TSP	55	ug/m3
TMCLKL	HY/2012/08	2015-12-22	ASR5	Sunny	16:44	24-hour TSP	100	ug/m3
TMCLKL	HY/2012/08	2015-12-22	ASR6	Sunny	16:33	24-hour TSP	71	ug/m3
TMCLKL	HY/2012/08	2015-12-25	AQMS1	Cloudy	17:07	24-hour TSP	61	ug/m3
TMCLKL	HY/2012/08	2015-12-25	ASR1	Cloudy	16:55	24-hour TSP	83	ug/m3
TMCLKL	HY/2012/08	2015-12-25	ASR10	Cloudy	16:23	24-hour TSP	49	ug/m3
TMCLKL	HY/2012/08	2015-12-25	ASR5	Cloudy	16:44	24-hour TSP	89	ug/m3
TMCLKL	HY/2012/08	2015-12-25	ASR6	Cloudy	16:33	24-hour TSP	68	ug/m3

Project	Works	Date	Station	Weather	Start time	Parameters	Results	units
TMCLKL	HY/2012/08	2015-12-28	AQMS1	Cloudy	17:33	24-hour TSP	85	ug/m3
TMCLKL	HY/2012/08	2015-12-28	ASR1	Cloudy	17:22	24-hour TSP	99	ug/m3
TMCLKL	HY/2012/08	2015-12-28	ASR10	Cloudy	16:49	24-hour TSP	75	ug/m3
TMCLKL	HY/2012/08	2015-12-28	ASR5	Cloudy	17:12	24-hour TSP	103	ug/m3
TMCLKL	HY/2012/08	2015-12-28	ASR6	Cloudy	17:01	24-hour TSP	89	ug/m3
TMCLKL	HY/2012/08	2015-12-31	AQMS1	Sunny	17:01	24-hour TSP	89	ug/m3
TMCLKL	HY/2012/08	2015-12-31	ASR1	Sunny	16:51	24-hour TSP	114	ug/m3
TMCLKL	HY/2012/08	2015-12-31	ASR10	Sunny	16:17	24-hour TSP	80	ug/m3
TMCLKL	HY/2012/08	2015-12-31	ASR5	Sunny	16:39	24-hour TSP	125	ug/m3
TMCLKL	HY/2012/08	2015-12-31	ASR6	Sunny	16:28	24-hour TSP	93	ug/m3