

Activity Name	Orig Dur	DWPF Start	DWPF Finish	2015		2016						
				Nov	Dec	Jan	Feb	Mar	Apr	May	Jun	
<b>TMCLK - Northern Connection Sub-Sea Tunnel Section</b>												
<b>Contract Dates</b>												
<b>Commencement and Completion Dates</b>												
KD06 - Completion of Section 1B - Portion N8				0		03-Dec-15	◆ KD06 - Completion of Section 1B - Portion N8					
<b>Site Possession Date</b>												
Portions: X1,(N10,11,13 & 14) - Sth Landfall				0	06-Aug-15		◆					
<b>Handover Date</b>												
Portions: N8A, N8B(above +3), N8C				0		03-Dec-15	◆ Portions: N8A, N8B(above +3), N8C					
<b>General Submissions</b>												
<b>Environmental</b>												
<b>Environmental Permit Submissions</b>												
<b>Supplementary WMP of C&amp;C Tunnel at Sth.Landfall</b>												
Supplementary WMP of C&C Tunnel at Sth.Landfall				0		28-Jun-14	◆					
<b>Sediment Quality Report/Dumping Permit</b>												
<b>Southern Landfall</b>												
Southern landfall - Commencement of Shaft & C&C Tunnel Dwall				0	03-Oct-15		◆ Southern landfall - Commencement of Shaft & C&C Tunnel Dwall					
Southern Landfall - Commencement of Retrieval Shaft Excavation				0	30-Jan-16		◆ Southern Landfall - Commencement of Retrieval Shaft Excavation					
Southern Landfall - Retrieval Shaft Excavation to tentative MD layer				0	15-Apr-16		◆ Southern Landfall - Retrieval Shaft Excavation to tentative MD layer					
Southern Landfall - Commencement of C&C Tunnel Excavation				0	03-Mar-16		◆ Southern Landfall - Commencement of C&C Tunnel Excavation					
Southern Landfall - Commencement of C&C Tunnel to tentative MD layer				0	02-Apr-16		◆ Southern Landfall - Commencement of C&C Tunnel to tentative MD layer					
<b>Sediment Sampling &amp; Testing Plan (SSTP) - if required</b>												
Complete SSTP and Obtain EPD's approval				24	17-Feb-15	23-Mar-15	◆					
<b>Sediment Quality Report (SQR) - if required</b>												
Advance Ground Investigation works for Sediment sampling				24	24-Mar-15	24-Apr-15	◆					
Sediment Sample Testing & Report preparation				120	25-Apr-15	16-Sep-15	Testing & Report preparation					
Update SQR - Submission & EPD Approval				48	17-Sep-15	14-Nov-15	Update SQR - Submission & EPD Approval					
<b>Dumping Permit for Load Dumping (Loading Permit) - if required</b>												
Finalize the application document and submit to EPD - for Dwall				24	20-Jan-15	16-Feb-15	◆					
Notify the results and issue Loading Permit for Local & Cross Boundary Crossing - for Dwall				24	17-Feb-15	23-Mar-15	◆					
Submit draft application document for Loading Permit to EPD for comment - for Excavation				96	23-Jul-15	14-Nov-15	Submit draft application document for Loading Permit to EPD for comment - for Excavation					
Finalize the application document and submit to EPD - for Excavation				24	16-Nov-15	12-Dec-15	Finalize the application document and submit to EPD - for Excavation					
Notify the results and issue Loading Permit for Local & Cross Boundary Crossing - for Excavation				24	14-Dec-15	13-Jan-16	◆ Notify the results and issue Loading Permit for Local & Cross Boundary Crossing - for Excavation					
<b>Dumping at Sea Ordinance (DASO)</b>												
Submit application for local dumping				24	16-Nov-15	12-Dec-15	Submit application for local dumping					
Approval for Dumping at Sea Ordinance				24	14-Dec-15	13-Jan-16	Approval for Dumping at Sea Ordinance					
<b>Cross Boundary Dumping Permit</b>												
Apply for Cross Boundary Dumping Permit				24	14-Jan-16	17-Feb-16	Apply for Cross Boundary Dumping Permit					
Cross Boundary Dumping Approval				24	18-Feb-16	16-Mar-16	Cross Boundary Dumping Approval					
Issuance of PRC Permit for Cat L, Mp				0		16-Mar-16	◆ Issuance of PRC Permit for Cat L, Mp					
<b>General Design Submissions</b>												
<b>(G6) IFA for Tunnel GBP</b>												
SO's Review				35	29-Apr-14	02-Jun-14	◆					
SO Approval with Condition Received				0		03-Jun-14	◆					
<b>PAYMENT MILESTONE</b>												
<b>Design and Design Checking of the Works</b>												
MS 2.12 Approve DDA for ground treatment at Southern Landfall by the Supervising Officer				0		31-Aug-15	◆ MS 2.12 Approve DDA for ground treatment at Southern Landfall by the Supervising Officer					
MS 2.20.3 Approve DDA for Cross Passages by the Supervising Officer by the Supervising Officer				0		31-Mar-15	◆ MS 2.20.3 Approve DDA for Cross Passages by the Supervising Officer by the Supervising Officer					
MS 2.23 Submit DDA for Cut-and-cover Tunnel and Cross Passages at Southern Landfall				0		31-Jan-15	◆ MS 2.23 Submit DDA for Cut-and-cover Tunnel and Cross Passages at Southern Landfall					
MS 2.24 Approve DDA for Cut-and-cover Tunnel and Cross Passages at Southern Landfall by the Supervising Officer				0		30-Apr-15	◆ MS 2.24 Approve DDA for Cut-and-cover Tunnel and Cross Passages at Southern Landfall by the Supervising Officer					
MS 2.32 Approve DDA for Approach Ramp Structures to Cut-and-cover Tunnels by the Supervising Officer				0		30-Apr-15	◆ MS 2.32 Approve DDA for Approach Ramp Structures to Cut-and-cover Tunnels by the Supervising Officer					
MS 2.44 Approve DDA for South Ventilation Building by the Supervising Officer				0		30-Jun-15	◆ MS 2.44 Approve DDA for South Ventilation Building by the Supervising Officer					
MS 2.48 Approve DDA for North Ventilation Building by the Supervising Officer				0		31-Jan-15	◆ MS 2.48 Approve DDA for North Ventilation Building by the Supervising Officer					
MS 2.51 Submit DDA for Facilities Provision for TCSS				0		29-Nov-14	◆ MS 2.51 Submit DDA for Facilities Provision for TCSS					
MS 2.52 Approve DDA for Facilities Provision for TCSS by the Supervising Officer				0		28-Feb-15	◆ MS 2.52 Approve DDA for Facilities Provision for TCSS by the Supervising Officer					
MS 2.56 Approve DDA for Drainage, Sewerage, Waterworks and Utilities at Southern Landfall by the Supervising Officer				0		30-Apr-15	◆ MS 2.56 Approve DDA for Drainage, Sewerage, Waterworks and Utilities at Southern Landfall by the Supervising Officer					
MS 2.60 Approve DDA for Drainage, Sewerage, Waterworks and Utilities at Northern Landfall by the Supervising Officer				0		31-Dec-14	◆ MS 2.60 Approve DDA for Drainage, Sewerage, Waterworks and Utilities at Northern Landfall by the Supervising Officer					
MS 2.69 Submit draft Operation and Maintenance Manual for all Tunnels and Cross Passages				0		29-Feb-16	◆ MS 2.69 Submit draft Operation and Maintenance Manual for all Tunnels and Cross Passages					
MS 2.71 Submit draft Operation and Maintenance Manual for all works except Tunnels and Cross Passages				0		29-Feb-16	◆ MS 2.71 Submit draft Operation and Maintenance Manual for all works except Tunnels and Cross Passages					
<b>Tunnel Boring Machine (TBM) and Back-up Equipment for TBM Tunnel</b>												
MS 3.1.9 Delivery to Site of remaining parts of TBM and back-up equipment for Northbound Tunnel				0		31-Dec-15	◆ MS 3.1.9 Delivery to Site of remaining parts of TBM and back-up equipment for Northbound Tunnel					
MS 3.1.10 Complete site assembly, testing and commissioning of TBM for Northbound Tunnel				0		30-Nov-15	◆ MS 3.1.10 Complete site assembly, testing and commissioning of TBM for Northbound Tunnel					
MS 3.1.25 Complete the whole of the activities under this Cost Centre Part to the satisfaction of the Supervising Office				0		31-Dec-15	◆ MS 3.1.25 Complete the whole of the activities under this Cost Centre Part to the satisfaction of the Supervising Office					
<b>TBM Tunnel</b>												
MS 3.3.4 Complete walls of retrieval shaft				0		30-Jan-16	◆ MS 3.3.4 Complete walls of retrieval shaft					
MS 3.3.7 Completion of excavation, support and permanent lining for 1% of the total length (measured on plan) of the Nor				0		31-Dec-15	◆ MS 3.3.7 Completion of excavation, support and permanent lining for 1% of the total length (measured on plan) of the Nor					
MS 3.3.8 Completion of excavation, support and permanent lining for 2% of the total length (measured on plan) of the Nor				0		31-Dec-15	◆ MS 3.3.8 Completion of excavation, support and permanent lining for 2% of the total length (measured on plan) of the Nor					

- Planned Bar
- Planned Bar - Critical
- ◆ Planned Milestone
- Progress bar
- ◆ Progress Milestone



Date	Revision	Checked	Approved
12-Feb-14	TMCLKDBJGEN.PRG.98507	WYu	SPb
08-Apr-14	TMCLKDBJGEN.PRG.98507 Rev.B	SPa	WYu
28-Aug-14	TMCLKDBJGEN.PRG.98507 Rev.C	CLa	WYu
10-Jun-15	TMCLKDBJGEN.PRG.98507 Rev.F	WYu	

Activity Name	Orig Dur	DWP Start	DWP Finish	2015						2016									
				Nov		Dec		Jan		Feb		Mar		Apr		May		Jun	
MS 3.3.9 Completion of excavation, support and permanent lining for 3% of the total length (measured on plan) of the Nor	0		31-Dec-15																
MS 3.3.10 Completion of excavation, support and permanent lining for 4% of the total length (measured on plan) of the No	0		30-Jan-16																
MS 3.3.11 Completion of excavation, support and permanent lining for 5% of the total length (measured on plan) of the No	0		30-Jan-16																
MS 3.3.12 Completion of excavation, support and permanent lining for 6% of the total length (measured on plan) of the No	0		30-Jan-16																
MS 3.3.13 Completion of excavation, support and permanent lining for 7% of the total length (measured on plan) of the No	0		30-Jan-16																
MS 3.3.14 Completion of excavation, support and permanent lining for 8% of the total length (measured on plan) of the No	0		29-Feb-16																
MS 3.3.15 Completion of excavation, support and permanent lining for 9% of the total length (measured on plan) of the No	0		29-Feb-16																
MS 3.3.16 Completion of excavation, support and permanent lining for 10% of the total length (measured on plan) of the N	0		29-Feb-16																
MS 3.3.17 Completion of excavation, support and permanent lining for 11% of the total length (measured on plan) of the N	0		29-Feb-16																
MS 3.3.18 Completion of excavation, support and permanent lining for 12% of the total length (measured on plan) of the N	0		31-Mar-16																
MS 3.3.19 Completion of excavation, support and permanent lining for 13% of the total length (measured on plan) of the N	0		31-Mar-16																
MS 3.3.20 Completion of excavation, support and permanent lining for 14% of the total length (measured on plan) of the N	0		31-Mar-16																
MS 3.3.21 Completion of excavation, support and permanent lining for 15% of the total length (measured on plan) of the N	0		31-Mar-16																
MS 3.3.22 Completion of excavation, support and permanent lining for 16% of the total length (measured on plan) of the N	0		31-Mar-16																
MS 3.3.62 Completion of excavation, support and permanent lining for 1% of the total length (measured on plan) of the So	0		30-Nov-15																
MS 3.3.63 Completion of excavation, support and permanent lining for 2% of the total length (measured on plan) of the So	0		30-Nov-15																
MS 3.3.64 Completion of excavation, support and permanent lining for 3% of the total length (measured on plan) of the So	0		30-Nov-15																
MS 3.3.65 Completion of excavation, support and permanent lining for 4% of the total length (measured on plan) of the So	0		31-Dec-15																
MS 3.3.66 Completion of excavation, support and permanent lining for 5% of the total length (measured on plan) of the So	0		31-Dec-15																
MS 3.3.67 Completion of excavation, support and permanent lining for 6% of the total length (measured on plan) of the So	0		31-Dec-15																
MS 3.3.68 Completion of excavation, support and permanent lining for 7% of the total length (measured on plan) of the So	0		30-Jan-16																
MS 3.3.69 Completion of excavation, support and permanent lining for 8% of the total length (measured on plan) of the So	0		30-Jan-16																
MS 3.3.70 Completion of excavation, support and permanent lining for 9% of the total length (measured on plan) of the So	0		30-Jan-16																
MS 3.3.71 Completion of excavation, support and permanent lining for 10% of the total length (measured on plan) of the S	0		29-Feb-16																
MS 3.3.72 Completion of excavation, support and permanent lining for 11% of the total length (measured on plan) of the S	0		29-Feb-16																
MS 3.3.73 Completion of excavation, support and permanent lining for 12% of the total length (measured on plan) of the S	0		29-Feb-16																
MS 3.3.74 Completion of excavation, support and permanent lining for 13% of the total length (measured on plan) of the S	0		29-Feb-16																
MS 3.3.75 Completion of excavation, support and permanent lining for 14% of the total length (measured on plan) of the S	0		29-Feb-16																
MS 3.3.76 Completion of excavation, support and permanent lining for 15% of the total length (measured on plan) of the S	0		31-Mar-16																
MS 3.3.77 Completion of excavation, support and permanent lining for 16% of the total length (measured on plan) of the S	0		31-Mar-16																
MS 3.3.78 Completion of excavation, support and permanent lining for 17% of the total length (measured on plan) of the S	0		31-Mar-16																
MS 3.3.79 Completion of excavation, support and permanent lining for 18% of the total length (measured on plan) of the S	0		31-Mar-16																
MS 3.3.80 Completion of excavation, support and permanent lining for 19% of the total length (measured on plan) of the S	0		31-Mar-16																
MS 3.3.81 Completion of excavation, support and permanent lining for 20% of the total length (measured on plan) of the S	0		31-Mar-16																
MS 3.3.82 Completion of excavation, support and permanent lining for 21% of the total length (measured on plan) of the S	0		31-Mar-16																
<b>Cut-and-cover Tunnels at Southern Landfalls</b>																			
MS 4.1.1 Complete 10% of total length (measured on plan) of temporary retaining walls for excavation of Cut-and-cover tu	0		31-Oct-15																
MS 4.1.2 Complete 20% of total length (measured on plan) of temporary retaining walls for excavation of Cut-and-cover tun	0		31-Oct-15																
MS 4.1.3 Complete 30% of total length (measured on plan) of temporary retaining walls for excavation of Cut-and-cover tu	0		30-Nov-15																
MS 4.1.4 Complete 40% of total length (measured on plan) of temporary retaining walls for excavation of Cut-and-cover tu	0		30-Nov-15																
MS 4.1.5 Complete 50% of total length (measured on plan) of temporary retaining walls for excavation of Cut-and-cover tu	0		31-Dec-15																
MS 4.1.6 Complete 60% of total length (measured on plan) of temporary retaining walls for excavation of Cut-and-cover tu	0		31-Dec-15																
MS 4.1.7 Complete 70% of total length (measured on plan) of temporary retaining walls for excavation of Cut-and-cover tu	0		30-Jan-16																
MS 4.1.8 Complete 80% of total length (measured on plan) of temporary retaining walls for excavation of Cut-and-cover tu	0		30-Jan-16																
MS 4.1.9 Complete 90% of total length (measured on plan) of temporary retaining walls for excavation of Cut-and-cover tu	0		29-Feb-16																
MS 4.1.10 Complete 100% of total length (measured on plan) of temporary retaining walls for excavation of Cut-and-cover	0		31-Mar-16																
MS 4.1.26 Complete excavation for 50% of total length (measured on plan) of all Cross Passages	0		31-Dec-15																
MS 4.1.27 Complete excavation for 100% of total length (measured on plan) of all Cross Passages	0		31-Mar-16																
<b>Cut-and-cover Tunnel at Northern Landfall</b>																			
MS 4.2.6 Removal of TBM for NB Northern Landfall Tunnel from Site after completion of Northern Landfall TBM Tunnel	0		30-Sep-15																
MS 4.2.17 Completion of Permanent Lining for 100% of NB Northern Landfall TBM Tunnel	0		31-Aug-15																
MS 4.2.21 Completion of Permanent Lining for 100% of SB Northern Landfall TBM Tunnel	0		30-Sep-15																
<b>Approach Ramp Structures to Cut-and-cover Tunnel at Southern Landfall</b>																			
MS 5.1.1 Complete 20% of excavation for approach ramp structures	0		31-Mar-16																
MS 5.1.2 Complete 40% of excavation for approach ramp structures	0		31-Mar-16																
MS 5.1.3 Complete 60% of excavation for approach ramp structures	0		31-Mar-16																
MS 5.1.6 Complete retaining wall foundation for 10% of the total length (measured on plan) of approach ramp structure	0		31-Oct-15																
MS 5.1.7 Complete retaining wall foundation for 20% of the total length (measured on plan) of approach ramp structure	0		30-Nov-15																
MS 5.1.8 Complete retaining wall foundation for 30% of the total length (measured on plan) of approach ramp structure	0		30-Nov-15																
MS 5.1.9 Complete retaining wall foundation for 40% of the total length (measured on plan) of approach ramp structure	0		31-Dec-15																
MS 5.1.10 Complete retaining wall foundation for 50% of the total length (measured on plan) of approach ramp structure	0		31-Dec-15																

■ Planned Bar  
■ Planned Bar - Critical  
◆ Planned Milestone  
■ Progress bar  
◆ Progress Milestone



Date	Revision	Checked	Approved
12-Feb-14	TMCLKDJEN.PRG.98507	WYu	SPa
08-Apr-14	TMCLKDJEN.PRG.98507 Rev.B	SPa	WYu
28-Aug-14	TMCLKDJEN.PRG.98507 Rev.C	CLa	WYu
10-Jun-15	TMCLKDJEN.PRG.98507 Rev.F	WYu	

Activity Name	Orig Dur	DWPf Start	DWPf Finish	2015		2016					
				Nov	Dec	Jan	Feb	Mar	Apr	May	Jun
				MS 5.1.11 Complete retaining wall foundation for 60% of the total length (measured on plan) of approach ramp structure	0		30-Jan-16			◆	MS 5.1.11 Complete retaining wall foundation for 60% of the total length (measured on plan) of approach ramp structure
MS 5.1.12 Complete retaining wall foundation for 70% of the total length (measured on plan) of approach ramp structure	0		30-Jan-16			◆	MS 5.1.12 Complete retaining wall foundation for 70% of the total length (measured on plan) of approach ramp structure				
MS 5.1.13 Complete retaining wall foundation for 80% of the total length (measured on plan) of approach ramp structure	0		29-Feb-16				◆	MS 5.1.13 Complete retaining wall foundation for 80% of the total length (measured on plan) of approach ramp structure			
MS 5.1.14 Complete retaining wall foundation for 90% of the total length (measured on plan) of approach ramp structure	0		29-Feb-16				◆	MS 5.1.14 Complete retaining wall foundation for 90% of the total length (measured on plan) of approach ramp structure			
MS 5.1.15 Complete retaining wall foundation for 100% of the total length (measured on plan) of approach ramp structure	0		31-Mar-16					◆	MS 5.1.15 Complete retaining wall foundation for 100% of the total length (measured on plan) of approach ramp structure		
<b>North Ventilation Buildings</b>											
MS 7.2.3 Complete 100% of foundation for the ventilation building	0		30-Nov-15			◆	MS 7.2.3 Complete 100% of foundation for the ventilation building				
<b>Construction</b>											
<b>Northern Landfall</b>											
<b>North Reclamation (Phase 1)</b>											
<b>Construction</b>											
<b>Zone D1</b>											
<b>Reclamation</b>											
Surcharge Removal - Zone D1 - (CH205 to 255) to +6mPD	6	13-Nov-15	20-Nov-15								
Surcharge Removal - Zone D1 - (CH255 to 305) to +6mPD	6	24-Nov-15	01-Dec-15								
Preparation for Portion N8 Handover	2	01-Dec-15	03-Dec-15								
Portion N8 Handover	0		03-Dec-15								
<b>Zone A2</b>											
<b>Sloping Seawall</b>											
SS - Armour Rock - Zone A2 - (CH843 to 893)	4	14-Jun-14	19-Jun-14								
SS - Armour Rock - Zone A2 - (CH893 to 956)	4	19-Jun-14	24-Jun-14								
<b>Box Culvert Extension</b>											
<b>Construction</b>											
<b>Ch000-010 Culvert Outfall</b>											
Install precast culvert element by barge (5 nos.)	21	20-Oct-15	13-Nov-15								
Concreting in-situ Top Slab and stich joint	12	14-Nov-15	27-Nov-15								
Removal of temporary bulk head	18	28-Nov-15	18-Dec-15								
<b>CH000-150 Land Section</b>											
<b>ELS &amp; Structure</b>											
<b>Pile A43/A41 CJ to Pile A41/A39 CJ</b>											
<b>ELS</b>											
Excavation to FEL	5	14-May-15	19-May-15								
<b>Box Culvert Structure</b>											
Pile cap construction	10	27-May-15	06-Jun-15								
Base slab construction including kicker	6	19-Jun-15	26-Jun-15								
Removal of strut S1	4	27-Jun-15	02-Jul-15								
System formworks delivery & setup	14	03-Jul-15	18-Jul-15								
Walls & top slab construction	6	20-Jul-15	25-Jul-15								
Removal of strut S2 & Backfilling up to required level	6	03-Aug-15	08-Aug-15								
<b>Pile A45/A43 CJ to Pile A43/A41 CJ</b>											
<b>ELS</b>											
Excavation to FEL	5	20-May-15	26-May-15								
<b>Box Culvert Structure</b>											
Pile cap construction	10	08-Jun-15	18-Jun-15								
Base slab construction including kicker	6	27-Jun-15	04-Jul-15								
Removal of strut S1	4	06-Jul-15	09-Jul-15								
Walls & top slab construction	6	27-Jul-15	01-Aug-15								
<b>Pile A47/A45 CJ to Pile A45/A43 CJ</b>											
<b>ELS</b>											
Excavation to 0.5m below strut S1	5	14-May-15	19-May-15								
Installation of strut S1	5	20-May-15	26-May-15								
Excavation to FEL	5	27-May-15	01-Jun-15								
<b>Box Culvert Structure</b>											
Pile cap construction	10	19-Jun-15	02-Jul-15								
Base slab construction including kicker	6	06-Jul-15	11-Jul-15								
Removal of strut S1	4	13-Jul-15	16-Jul-15								
Walls & top slab construction	6	03-Aug-15	08-Aug-15								
<b>Pile A49/A47 CJ to Pile A47/A45 CJ</b>											
<b>ELS</b>											
Excavation to 0.5m below strut S1	5	20-May-15	26-May-15								
Installation of strut S1	5	27-May-15	01-Jun-15								
Excavation to FEL	5	02-Jun-15	06-Jun-15								
<b>Box Culvert Structure</b>											
Pile cap construction	10	03-Jul-15	14-Jul-15								
Base slab construction including kicker	6	15-Jul-15	21-Jul-15								
Removal of strut S1	4	22-Jul-15	25-Jul-15								
<b>Pile A52/A49 CJ to Pile A49/A47 CJ</b>											
<b>ELS</b>											
Excavation to 0.5m below strut S1	5	27-May-15	01-Jun-15								

- Planned Bar
- Planned Bar - Critical
- ◆ Planned Milestone
- Progress bar
- ◆ Progress Milestone

TMCLK - Northern Connection Sub-Sea Tunnel Section  
 Detailed Works Programme (Rev. F)  
 Three Months Rolling Programme  
 Progress as of 24-Jan-16



Date	Revision	Checked	Approved
12-Feb-14	TMCLK/DWPF3/PRG/98507	WYu	SPa
08-Apr-14	TMCLK/DWPF3/PRG/98507 Rev.B	SPa	WYu
28-Aug-14	TMCLK/DWPF3/PRG/98507 Rev.C	CLa	WYu
10-Jun-15	TMCLK/DWPF3/PRG/98507 Rev.F	WYu	

Activity Name	Orig Dur	DWPf Start	DWPf Finish	2015		2016						
				Nov	Dec	Jan	Feb	Mar	Apr	May	Jun	
Installation of strut S1	5	02-Jun-15	06-Jun-15									
Excavation to FEL	5	08-Jun-15	12-Jun-15									
<b>Box Culvert Structure</b>												
Pile cap construction	10	22-Jul-15	01-Aug-15									
Base slab construction including kicker	6	03-Aug-15	08-Aug-15									
<b>Ch150-250 Marine Section</b>												
<b>Foundation</b>												
H-beam installation & Concreting - 20 nos (P85 - P104)	50	10-Jul-15	05-Sep-15									
<b>ELS &amp; Structure</b>												
Cofferdam closing of Ch100-250	28	01-Jun-15	04-Jul-15									
Dewatering well installation Ch180-250	12	19-Jun-15	04-Jul-15									
Dewatering well installation Ch100-180	12	06-Jul-15	18-Jul-15									
1st Pumping test	18	20-Jul-15	08-Aug-15									
Toe grouting Ch100-250	95	07-Sep-15	31-Dec-15									
2nd Pumping test Ch100-250	29	02-Jan-16	04-Feb-16									
<b>Pile A41/A39 CJ to Pile A39/A37 CJ</b>												
<b>ELS</b>												
Excavation to 0.5m below strut S2	4	05-Feb-16	16-Feb-16									
Installation of strut S2	6	17-Feb-16	23-Feb-16									
Excavation to 0.5m below strut S1	5	24-Feb-16	29-Feb-16									
Installation of strut S1	5	01-Mar-16	05-Mar-16									
Excavation to FEL	5	07-Mar-16	11-Mar-16									
<b>Box Culvert Structure</b>												
Pile cap construction	10	18-Mar-16	01-Apr-16									
Base slab construction including kicker	6	15-Apr-16	21-Apr-16									
Removal of strut S1	4	22-Apr-16	26-Apr-16									
<b>Pile A39/A37 CJ to Pile A37/A35 CJ</b>												
<b>ELS</b>												
Excavation to 0.5m below strut S2	4	17-Feb-16	20-Feb-16									
Installation of strut S2	6	22-Feb-16	27-Feb-16									
Excavation to 0.5m below strut S1	5	01-Mar-16	05-Mar-16									
Installation of strut S1	5	07-Mar-16	11-Mar-16									
Excavation to FEL	5	12-Mar-16	17-Mar-16									
<b>Box Culvert Structure</b>												
Pile cap construction	10	02-Apr-16	14-Apr-16									
Base slab construction including kicker	6	22-Apr-16	28-Apr-16									
<b>Pile A37/A35 CJ to Pile A35/A33 CJ</b>												
<b>ELS</b>												
Excavation to 0.5m below strut S2	4	22-Feb-16	25-Feb-16									
Installation of strut S2	6	26-Feb-16	03-Mar-16									
Excavation to 0.5m below strut S1	5	07-Mar-16	11-Mar-16									
Installation of strut S1	5	12-Mar-16	17-Mar-16									
Excavation to FEL	5	18-Mar-16	23-Mar-16									
<b>Box Culvert Structure</b>												
Pile cap construction	10	15-Apr-16	26-Apr-16									
<b>Pile A35/A33 CJ to Pile A33/P117 CJ</b>												
<b>ELS</b>												
Excavation to 0.5m below strut S2	4	26-Feb-16	01-Mar-16									
Installation of strut S2	6	02-Mar-16	08-Mar-16									
Excavation to 0.5m below strut S1	5	12-Mar-16	17-Mar-16									
Installation of strut S1	5	18-Mar-16	23-Mar-16									
Excavation to FEL	5	24-Mar-16	01-Apr-16									
<b>Pile A33/P117 CJ to Pile P113/P109 CJ</b>												
<b>ELS</b>												
Excavation to 0.5m below strut S1	9	09-Mar-16	18-Mar-16									
Installation of strut S1	5	19-Mar-16	24-Mar-16									
Excavation to FEL	5	02-Apr-16	08-Apr-16									
<b>Pile P113/P109 CJ to Pile P105/P101 CJ</b>												
<b>ELS</b>												
Excavation to 0.5m below strut S1	9	17-Mar-16	30-Mar-16									
Installation of strut S1	5	31-Mar-16	06-Apr-16									
Excavation to FEL	5	09-Apr-16	14-Apr-16									
<b>Pile P105/P101 CJ to Pile P97/P93 CJ</b>												
<b>ELS</b>												
Excavation to 0.5m below strut S1	9	29-Mar-16	08-Apr-16									
Installation of strut S1	5	09-Apr-16	14-Apr-16									
Excavation to FEL	5	15-Apr-16	20-Apr-16									

- Planned Bar
- Planned Bar - Critical
- ◆ Planned Milestone
- Progress bar
- ◆ Progress Milestone



Date	Revision	Checked	Approved
12-Feb-14	TMCLK/DUGEN/PRG/98507	WYu	SPb
08-Apr-14	TMCLK/DUGEN/PRG/98507 Rev.B	SPa	WYu
28-Aug-14	TMCLK/DUGEN/PRG/98507 Rev.C	CLa	WYu
10-Jun-15	TMCLK/DUGEN/PRG/98507 Rev.F	WYu	

Activity Name	Orig Dur	DWP Start	DWP Finish	2015						2016					
				Nov	Dec	Jan	Feb	Mar	Apr	May	Jun				
<b>Pile P97/P93 CJ to Pile P89/P85 CJ</b>															
<b>ELS</b>															
Excavation to 0.5m below strut S1	9	07-Apr-16	16-Apr-16												Excavation to 0.5m below strut S1
Installation of strut S1	5	18-Apr-16	22-Apr-16												Installation of strut S1
Excavation to FEL	5	23-Apr-16	28-Apr-16												Excavation to FEL
<b>Pile P89/P85 CJ to Pile P81/P77 CJ</b>															
<b>ELS</b>															
Excavation to 0.5m below strut S1	9	15-Apr-16	25-Apr-16												Excavation to 0.5m below strut S1
<b>Pile P81/P77 CJ to Pile P73/P69 CJ</b>															
<b>ELS</b>															
Excavation to 0.5m below strut S1	9	23-Apr-16	04-May-16												Excavation to 0.5m below strut S1
<b>Ch250-380 Marine Section</b>															
Installation of Dewatering & Observation Well Ch 250-380	23	04-Nov-15	30-Nov-15												Installation of Dewatering & Observation Well Ch 250-380
1st Pumping Test & Analysis	17	01-Dec-15	19-Dec-15												1st Pumping Test & Analysis
Toe Grouting	106	21-Dec-15	07-May-16												Toe Grouting
2nd Pumping test & Analysis	25	08-Apr-16	07-May-16												2nd Pumping test & Analysis
<b>Ch250-320 Prebored H-piles</b>															
Preboring - 16 nos (P49 - P64) - Rig 1	40	03-Sep-15	22-Oct-15												Preboring - 16 nos (P49 - P64) - Rig 1
H-beam installation & Concreting - 16 nos (P49 - P64)	40	07-Sep-15	26-Oct-15												H-beam installation & Concreting - 16 nos (P49 - P64)
Rig 1 Demobilization	0	23-Oct-15													Rig 1 Demobilization
Preboring - 20 nos (P29 - P48) - Rig 3	50	03-Sep-15	03-Nov-15												Preboring - 20 nos (P29 - P48) - Rig 3
H-beam installation & Concreting - 20 nos (P29 - P48)	50	07-Sep-15	06-Nov-15												H-beam installation & Concreting - 20 nos (P29 - P48)
Rig 2 Demobilization	0	04-Nov-15													Rig 2 Demobilization
<b>Ch320-360 Prebored H-piles</b>															
Preboring - 14 nos (C13-C28) - Rig 2	35	14-Sep-15	27-Oct-15												Preboring - 14 nos (C13-C28) - Rig 2
H-beam installation & Concreting - 14 nos (C13-C28)	35	17-Sep-15	30-Oct-15												H-beam installation & Concreting - 14 nos (C13-C28)
Preboring - 6 piles (P9-12, P15-16) - Rig 2	18	28-Oct-15	17-Nov-15												Preboring - 6 piles (P9-12, P15-16) - Rig 2
H-beam Installation & Concreting - 6 piles (P9-12, P15-16)	18	31-Oct-15	20-Nov-15												H-beam Installation & Concreting - 6 piles (P9-12, P15-16)
<b>Ch380-399 Connection Section</b>															
<b>Foundation &amp; ELS</b>															
<b>Stage 1</b>															
Preboring - 9 nos (C1-7,C9-10) - Rig 2	27	30-May-15	02-Jul-15												Preboring - 9 nos (C1-7,C9-10) - Rig 2
H-beam installation & Concreting - 9 nos (C1-7,C9-10)	29	03-Jun-15	08-Jul-15												H-beam installation & Concreting - 9 nos (C1-7,C9-10)
Preboring & sheet piling (west row south 50%) - Rig 2	24	10-Aug-15	05-Sep-15												Preboring & sheet piling (west row south 50%) - Rig 2
<b>Stage 2</b>															
2015/16 Dry Season	0	01-Nov-15													2015/16 Dry Season
Install concrete blocks to support working platform	6	02-Nov-15	07-Nov-15												Install concrete blocks to support working platform
2nd Relocation of working platform	6	09-Nov-15	14-Nov-15												2nd Relocation of working platform
Preboring - 4 nos (C13-C16) - Rig 2	12	16-Nov-15	28-Nov-15												Preboring - 4 nos (C13-C16) - Rig 2
H-beam installation & Concreting - 4 nos (C13-C16)	12	19-Nov-15	02-Dec-15												H-beam installation & Concreting - 4 nos (C13-C16)
Preboring for sheet piling (middle row north 50%) - Rig 2	18	03-Dec-15	23-Dec-15												Preboring for sheet piling (middle row north 50%) - Rig 2
Preboring for sheet piling (west row north 50%) - Rig 2	24	24-Dec-15	23-Jan-16												Preboring for sheet piling (west row north 50%) - Rig 2
Rig 3 Demobilization	0	25-Jan-16													Rig 3 Demobilization
<b>Miscellaneous works</b>															
<b>Stop Log Opening (SLO)</b>															
SLO-01 to SLO-05 & backfilling to +6.0mPD	24	14-Oct-15	11-Nov-15												SLO-01 to SLO-05 & backfilling to +6.0mPD
<b>North Launching Shaft</b>															
<b>Design Submission</b>															
<b>(C1) DDA for North Approach Ramp Permanent Structure</b>															
IPs Review	28	23-Oct-14	19-Nov-14												IPs Review
IPs No Objection Received	0		19-Nov-14												IPs No Objection Received
SO's Review	35	23-Oct-14	26-Nov-14												SO's Review
SO Approval with Condition Received	0		26-Nov-14												SO Approval with Condition Received
<b>North Ventilation Shaft</b>															
<b>Construction</b>															
<b>North Ventilation Shaft Excavation &amp; Base Slab</b>															
A- Vent Shaft Bottom Base Slab for TBM Re-launching	48	08-Oct-15	04-Dec-15												A- Vent Shaft Bottom Base Slab for TBM Re-launching
A- Tympanum construction for TBM break-in/out	36	15-Oct-15	27-Nov-15												A- Tympanum construction for TBM break-in/out
North Ventilation Shaft - Steel Bell Installation	40	15-Oct-15	02-Dec-15												North Ventilation Shaft - Steel Bell Installation
North Ventilation Shaft - Steel Bell Backfilling for S882 Crossing	12	02-Dec-15	16-Dec-15												North Ventilation Shaft - Steel Bell Backfilling for S882 Crossing
North Ventilation Shaft - Shaft Flooding for S880 Arrival	10	16-Dec-15	30-Dec-15												North Ventilation Shaft - Shaft Flooding for S880 Arrival
<b>North Ventilation Shaft Structure</b>															
NVS - ML02 Tunnel Structure	44	05-Apr-16	27-May-16												NVS - ML02
<b>TMCLK VO-008 - Construction of Viaduct Foundations at Portion N6A</b>															
<b>Viaduct Bored Pile Construction</b>															
<b>Bored Pile Construction</b>															
<b>G1c-6</b>															
Pile 6 - RCD Socket Drilling	14	14-Jul-14	29-Jul-14												Pile 6 - RCD Socket Drilling
<b>Viaduct Pile Cap</b>															

■ Planned Bar  
■ Planned Bar - Critical  
◆ Planned Milestone  
■ Progress bar  
◆ Progress Milestone



Date	Revision	Checked	Approved
12-Feb-14	TMCLK/DUGEN/PRG/98507	WYu	SPa
08-Apr-14	TMCLK/DUGEN/PRG/98507 Rev.B	SPa	WYu
28-Aug-14	TMCLK/DUGEN/PRG/98507 Rev.C	CLa	WYu
10-Jun-15	TMCLK/DUGEN/PRG/98507 Rev.F	WYu	

Activity Name	Orig Dur	DWP Start	DWP Finish	2015		2016				
				Nov	Dec	Jan	Feb	Mar	Apr	May
<b>Construction</b>										
<b>Pier G1c</b>										
Pile Cap G1c - Preparation for ELS	6	24-Oct-14	30-Oct-14							
Pile Cap G1c - Removal of Existing ground slab	6	31-Oct-14	06-Nov-14							
Pile Cap G1c - Excavation & ELS Installation	12	07-Nov-14	20-Nov-14							
Pile Cap G1c - Blinding Concrete	3	21-Nov-14	24-Nov-14							
Pile Cap G1c - Rebar & Concreting	18	25-Nov-14	15-Dec-14							
Pile Cap G1c - Backfilling & Temp Reinstatement	6	16-Dec-14	22-Dec-14							
<b>Pier H1c</b>										
Pile Cap H1c - Preparation for ELS	6	02-Nov-15	07-Nov-15							
Pile Cap H1c - Removal of Existing ground slab	6	09-Nov-15	14-Nov-15							
Pile Cap H1c - Excavation & ELS Installation	12	16-Nov-15	28-Nov-15							
Pile Cap H1c - Blinding Concrete	3	30-Nov-15	02-Dec-15							
Pile Cap H1c - Rebar & Concreting	18	03-Dec-15	23-Dec-15							
Pile Cap H1c - Backfilling & Temp Reinstatement	6	24-Dec-15	02-Jan-16							
<b>North Surface works for TBM Tunnelling</b>										
<b>Design Submission</b>										
<b>(D1) IFA for Temp. Access to Portion N8A, N8B &amp; N8C incl. Temp. Lighting</b>										
ICE Approval & Issue of Design Check Cert.	18	02-May-14	23-May-14							
Check Cert to SO	0		23-May-14							
No Objection or Further Minor Comments from IPs Received	0		23-May-14							
SO Review (35 Days)	35	02-May-14	05-Jun-14							
SO Approval with Condition R received	0		05-Jun-14							
<b>North Approach TBM Tunnelling &amp; Cross Passage</b>										
<b>Design Submission</b>										
<b>ETWB TCW No 15/2005 - Cross Passage Ground Treatment for TBM Tunnels in North Landfall</b>										
Review Meeting with GEO - after AIP Approval	0	01-Apr-14								
1st Submission to GEO - ETWB TCW No 15/2005 - Cross Passage Ground Treatment for TBM Tunnels in North Landfall	0		04-Aug-14							
1st Submission GEO Review	28	04-Aug-14	31-Aug-14							
Received GEO Comment	0		01-Sep-14							
Prepare Response to Comment	12	01-Sep-14	15-Sep-14							
2nd Submission to GEO	0		15-Sep-14							
2nd GEO Review	28	16-Sep-14	13-Oct-14							
Received 2nd GEO Comment	0		13-Oct-14							
Prepare Respond to 2nd Comment	12	14-Oct-14	27-Oct-14							
3rd Submission to GEO	0		27-Oct-14							
3rd GEO Review	28	28-Oct-14	24-Nov-14							
<b>Construction</b>										
<b>Northern Landfall Surface Setup for TBM operation</b>										
Gantry Setup at North Ventilation Shaft	48	08-Oct-15	04-Dec-15							
Gantry Removal at North Ventilation Shaft	24	02-Jan-16	29-Jan-16							
<b>North Approach TBM Tunnel - NB ID15.60m - S880</b>										
NB - North TBM Tunnel - Transition with Saturation (Ch6840 to 6708 - 132m)	75	08-Sep-15	22-Nov-15							
NB - North TBM Tunnel - Transition with Saturation (Ch6708 to 6688 - 20m)	6	22-Nov-15	28-Nov-15							
NB - North TBM Tunnel - Transition with Saturation (Ch6688 to 6640 - 48m)	14	28-Nov-15	12-Dec-15							
NB - North TBM Tunnel - CDG+Boulder with Saturation (Ch6640 to 6600 - 40m)	8	12-Dec-15	20-Dec-15							
NB - North TBM Tunnel - CDG with Saturation (Ch6600 to 6560 - 40m)	5	20-Dec-15	25-Dec-15							
NB - North TBM Tunnel - Thrust Frame Removal	12	19-Aug-15	02-Sep-15							
<b>North Approach TBM Tunnel - SB ID12.40m - S882</b>										
SB - North TBM Tunnel - Back-up Gnatry G3 & G4 Assembly	17	29-Jul-15	16-Aug-15							
SB - North TBM Tunnel - Transition with Saturation (Ch6861 to 6729 - 132m)	63	03-Oct-15	05-Dec-15							
SB - North TBM Tunnel - Transition with Saturation (Ch6729 to 6709 - 20m)	5	05-Dec-15	10-Dec-15							
SB - North TBM Tunnel - Thrust Frame Removal	12	24-Sep-15	10-Oct-15							
SB - North TBM Tunnel - Transition with Saturation (Ch6709 to 6661 - 48m)	11	10-Dec-15	21-Dec-15							
SB - North TBM Tunnel - Transition with Saturation (Ch6661 to 6621 - 40m)	8	21-Dec-15	29-Dec-15							
SB - North TBM Tunnel - Transition with Saturation (Ch6621 to 6581 - 40m)	5	29-Dec-15	03-Jan-16							
<b>North Approach Tunnel Internal Structure - NB</b>										
NB - North TBM Tunnel - Invert Backfilling (Ch7175 to 6870 - 305m) Stage 1	87	10-Sep-15	06-Dec-15							
NB - North TBM Tunnel - Invert Backfilling (Ch6870 to 6688 - 182m) Stage 1	77	06-Dec-15	24-Feb-16							
NB - North TBM Tunnel - Invert Backfilling (Ch6688 to 6560 - 128m) Stage 1	54	01-Apr-16	26-May-16							
NB - North TBM Tunnel - Invert Precast Gallery Installation (Ch7205 to 6870 - 335m)	96	24-Sep-15	29-Dec-15							
NB - North TBM Tunnel - Invert Precast Gallery Installation (Ch6870 to 6688 - 182m)	77	29-Dec-15	18-Mar-16							
NB - North TBM Tunnel - Invert Precast Gallery Installation (Ch6688 to 6560 - 128m)	54	13-Apr-16	07-Jun-16							
NB - North TBM Tunnel - Invert Backfilling (Ch7205 to 7175 - 30m) Stage 2	9	15-Oct-15	24-Oct-15							
NB - North TBM Tunnel - Invert Backfilling (Ch7175 to 7125 - 50m) Stage 2	15	24-Oct-15	08-Nov-15							

- Planned Bar
- Planned Bar - Critical
- Progress bar
- ◆ Planned Milestone
- ◆ Progress Milestone



Date	Revision	Checked	Approved
12-Feb-14	TMCLK/DUGEN/PRG/98507	WYu	SPa
08-Apr-14	TMCLK/DUGEN/PRG/98507 Rev.B	SPa	WYu
28-Aug-14	TMCLK/DUGEN/PRG/98507 Rev.C	CLa	WYu
10-Jun-15	TMCLK/DUGEN/PRG/98507 Rev.F	WYu	

Activity Name	Orig Dur	DWPf Start	DWPf Finish	2015		2016					
				Nov	Dec	Jan	Feb	Mar	Apr	May	Jun
				NB - North TBM Tunnel - Invert Backfilling (Ch7125 to 7075 - 50m) Stage 2	15	08-Nov-15	23-Nov-15				
NB - North TBM Tunnel - Invert Backfilling (Ch7075 to 7025 - 50m) Stage 2	15	23-Nov-15	08-Dec-15								
NB - North TBM Tunnel - Invert Backfilling (Ch7025 to 6975 - 50m) Stage 2	14	08-Dec-15	22-Dec-15								
NB - North TBM Tunnel - Invert Backfilling (Ch6975 to 6925 - 50m) Stage 2	14	22-Dec-15	05-Jan-16								
NB - North TBM Tunnel - Invert Backfilling (Ch6925 to 6870 - 55m) Stage 2	14	05-Jan-16	19-Jan-16								
NB - North TBM Tunnel - Invert Backfilling (Ch6870 to 6688 - 182m) Stage 2	77	19-Jan-16	11-Apr-16								
CP53 - Excavation & Lining completion	0		16-Mar-16								
CP52 - Excavation & Lining completion	0		22-Apr-16								
<b>North Approach Tunnel Internal Structure - SB</b>											
SB - North TBM Tunnel - Invert Backfilling (Ch7175 to 7125 - 50m)	13	18-Oct-15	31-Oct-15								
SB - North TBM Tunnel - Invert Backfilling (Ch7125 to 7075 - 50m)	13	31-Oct-15	13-Nov-15								
SB - North TBM Tunnel - Invert Backfilling (Ch7075 to 7025 - 50m)	13	13-Nov-15	26-Nov-15								
SB - North TBM Tunnel - Invert Backfilling (Ch7025 to 6975 - 50m)	12	26-Nov-15	08-Dec-15								
SB - North TBM Tunnel - Invert Backfilling (Ch6975 to 6925 - 50m)	12	08-Dec-15	20-Dec-15								
SB - North TBM Tunnel - Invert Backfilling (Ch6925 to 6870 - 55m)	12	20-Dec-15	01-Jan-16								
SB - North TBM Tunnel - Invert Backfilling (Ch6870 to 6688 - 182m)	77	01-Jan-16	21-Mar-16								
SB - North TBM Tunnel - Invert Backfilling (Ch6688 to 6560 - 182m)	54	21-Mar-16	18-May-16								
<b>North Approach Cross Passage</b>											
<b>CP55 - Traditional Method</b>											
CP55 Platform Available from ML03 North Approach Tunnel Backfilling	0	24-Oct-15									
CP55 Platform Available from ML02 North Approach Tunnel Backfilling	0	31-Oct-15									
CP Setup	6	21-Mar-16	31-Mar-16								
1st Segment Opening	7	31-Mar-16	09-Apr-16								
CP Excavation	14	09-Apr-16	26-Apr-16								
<b>CP54 - Traditional Method</b>											
CP54 Platform Available from ML03 North Approach Tunnel Backfilling	0	08-Dec-15									
CP54 Platform Available from ML02 North Approach Tunnel Backfilling	0	26-Nov-15									
<b>CP53 - Pipe Jacking Method</b>											
CP53 Platform Available from ML03 North Approach Tunnel Backfilling	0	05-Jan-16									
CP53 Platform Available from ML02 North Approach Tunnel Backfilling	0	21-Dec-15									
CP - Pipe Jacking TBM - Delivery, Assembly & Setup	23	05-Jan-16	01-Feb-16								
CP - Pipe Jacking Method - Break-in, Excavation & Lining Installation	9	01-Feb-16	10-Feb-16								
CP - Pipe Jacking Method - Break out & Pipe Jacking TBM Removal	10	10-Feb-16	20-Feb-16								
CP - Waterproofing, Finishing	21	20-Feb-16	16-Mar-16								
<b>CP52 - Pipe Jacking Method</b>											
CP52 Platform Available from ML03 North Approach Tunnel Backfilling	0	30-Jan-16									
CP52 Platform Available from ML02 North Approach Tunnel Backfilling	0	12-Jan-16									
CP - Pipe Jacking TBM - Delivery, Assembly & Setup	23	01-Feb-16	05-Mar-16								
CP - Pipe Jacking Method - Break-in, Excavation & Lining Installation	9	05-Mar-16	14-Mar-16								
CP - Pipe Jacking Method - Break out & Pipe Jacking TBM Removal	10	14-Mar-16	24-Mar-16								
CP Finishing & Demobilization	21	24-Mar-16	22-Apr-16								
<b>CP51 - Traditional Method</b>											
CP51 Platform Available from ML03 North Approach Tunnel Backfilling	0	31-Mar-16									
CP51 Platform Available from ML02 North Approach Tunnel Backfilling	0	10-Mar-16									
<b>CP50 - Pipe Jacking Method</b>											
CP50 Platform Available from ML02 North Approach Tunnel Backfilling	0	09-Apr-16									
<b>North Ventilation Building</b>											
<b>Design Submission</b>											
<b>(A11) Submissions to Design Advisory Panel of ArchSD</b>											
ArchSD's comment	30	10-Jun-14	09-Jul-14								
<b>(I1) DDA for North Vent.Bldgs. GBP &amp; Arch.Submission</b>											
Designer to Reply RTC + Update Submission	21	28-Jul-14	20-Aug-14								
Submit Updated DDA to SO/ ICE/ IPs	0	21-Aug-14									
ICE Approval & Issue Check Cert	12	21-Aug-14	03-Sep-14								
Submit ICE Check Cert to SO	6	04-Sep-14	11-Sep-14								
IPs Review	28	21-Aug-14	17-Sep-14								
IPs No Objection Received	0		17-Sep-14								
SO's Review	35	21-Aug-14	24-Sep-14								
SO Approval with Condition Received	0		24-Sep-14								
<b>(I1) DDA for North &amp; South Vent.Bldg. ABWF works</b>											
Preparation of DDANorth & South ABWF	18	25-Sep-14	17-Oct-14								
Review & Comment by JV	24	18-Oct-14	14-Nov-14								
Designer prepare DDA	15	15-Nov-14	02-Dec-14								
Formal Submission of DDA to ICE/ IPs	0		02-Dec-14								

- Planned Bar
- Planned Bar - Critical
- ◆ Planned Milestone
- Progress bar
- ◆ Progress Milestone



Date	Revision	Checked	Approved
12-Feb-14	TMCLK/DUGEN/PRG/98507	WYu	SPa
08-Apr-14	TMCLK/DUGEN/PRG/98507 Rev.B	SPa	WYu
28-Aug-14	TMCLK/DUGEN/PRG/98507 Rev.C	CLa	WYu
10-Jun-15	TMCLK/DUGEN/PRG/98507 Rev.F	WYu	

Activity Name	Orig Dur	DWPF Start	DWPF Finish	2015		2016						
				Nov	Dec	Jan	Feb	Mar	Apr	May	Jun	
Advanced Submission to SO	0		02-Dec-14									
IPs/ SO's Advance Comments/ ICE Comments	28	03-Dec-14	30-Dec-14									
<b>(I2) DDA for North Vent.Bldgs.Structural Design incl.Vent.Connections</b>												
Designer to Reply RiC + Update Submission	21	29-Nov-14	23-Dec-14									
Submit Updated DDA to SO/ ICE/ IPs	0	24-Dec-14										
ICE Approval & Issue Check Cert	12	24-Dec-14	09-Jan-15									
Submit ICE Check Cert to SO	6	10-Jan-15	16-Jan-15									
IPs Review	28	24-Dec-14	20-Jan-15									
IPs No Objection Received	0		20-Jan-15									
SO's Review	35	24-Dec-14	27-Jan-15									
SO Approval with Condition Received	0		27-Jan-15									
<b>(I3) DDA for North &amp; South Vent.Bldgs. Service and E&amp;M Provision</b>												
Preparation of DDANth VB Service and E&MS Provision	18	12-Sep-14	04-Oct-14									
Review & Comment by JV	24	06-Oct-14	01-Nov-14									
Designer prepare DDA	15	03-Nov-14	19-Nov-14									
Formal Submission of DDA to ICE/ IPs	0		19-Nov-14									
Advanced Submission to SO	0		19-Nov-14									
IPs/ SO's Advance Comments/ ICE Comments	28	20-Nov-14	17-Dec-14									
Comments Received	0		17-Dec-14									
Designer to Reply RiC + Update Submission	21	18-Dec-14	14-Jan-15									
Submit Updated DDA to SO/ ICE/ IPs	0	15-Jan-15										
ICE Approval & Issue Check Cert	12	15-Jan-15	28-Jan-15									
Submit ICE Check Cert to SO	6	29-Jan-15	04-Feb-15									
IPs Review	28	15-Jan-15	11-Feb-15									
IPs No Objection Received	0		11-Feb-15									
SO's Review	35	15-Jan-15	18-Feb-15									
SO Approval with Condition Received	0		18-Feb-15									
<b>(C3) DDA for North Vent Shaft &amp; Duct Permanent Structure</b>												
IPs/ SO's Advance Comments/ ICE Comments	28	01-Oct-14	28-Oct-14									
Comments Received	0		28-Oct-14									
Designer to Reply RiC + Update Submission	21	29-Oct-14	21-Nov-14									
Submit Updated DDA to SO/ ICE/ IPs	0	22-Nov-14										
ICE Approval & Issue Check Cert	12	22-Nov-14	05-Dec-14									
Submit ICE Check Cert to SO	6	06-Dec-14	12-Dec-14									
IPs Review	28	22-Nov-14	19-Dec-14									
IPs No Objection Received	0		19-Dec-14									
SO's Review	35	22-Nov-14	26-Dec-14									
SO Approval with Condition Received	0		27-Dec-14									
<b>ETWB TCW No 15/2005 - ELS design of ventilation duct and its connections with building and tunnel</b>												
2nd GEO Review	28	15-Oct-15	11-Nov-15									
<b>North Surface Roadworks, Utility &amp; Drainage works</b>												
<b>Design Submission</b>												
<b>(A20) DDA for Traffic Sign, Road Marking, Street Furnitures, Sign Gantry &amp; etc</b>												
SO's Review	35	11-Dec-14	14-Jan-15									
SO Approval with Condition Received	0		14-Jan-15									
<b>(C2) DDA for Sewerage, Drainage, Waterworks &amp; Utility works for North Landfall</b>												
IPs Review	28	08-Nov-14	05-Dec-14									
IPs No Objection Received	0		05-Dec-14									
SO's Review	35	08-Nov-14	12-Dec-14									
SO Approval with Condition Received	0		12-Dec-14									
<b>Sub-sea Tunnel</b>												
<b>Sub-sea TBM Tunnelling</b>												
<b>Major Procurement</b>												
<b>Precast Segment ID12.40 - Production for Sub-sea TBM Tunnel</b>												
ID12.40 TBM Segment Ring Fabrication - 12 rings per day	300	22-Nov-14	19-Dec-15									
<b>Design Submission</b>												
<b>(B6) Risk Assessment of Submarine Cable - Tunnelling Works</b>												
CLP Review (4 weeks)	28	17-Mar-15	13-Apr-15									
CLP Comment Received	0		13-Apr-15									
SO's Condition Approval	35	12-Mar-15	15-Apr-15									
<b>(G1) DDA for TBM Tunnel Lining Structural Design - Sub-sea tunnel</b>												
Sub-sea TBM Tunnel Segment - Fabrication	265	06-Oct-14	29-Aug-15									
<b>(G3) DDA for TBM Tunnel Internal Structures (Sub-sea)</b>												
Sub-sea Tunnel - Precast Gallery Fabrication	244	22-Jan-15	21-Nov-15									
<b>Construction</b>												
<b>Sub-sea TBM Tunnel - NB ID12.2m - S881</b>												

- Planned Bar
- Planned Bar - Critical
- ◆ Planned Milestone
- Progress bar
- ◆ Progress Milestone



Date	Revision	Checked	Approved
12-Feb-14	TMCLKDBJGEN.PRG.98507	WYu	SPb
08-Apr-14	TMCLKDBJGEN.PRG.98507 Rev.B	SPb	WYu
28-Aug-14	TMCLKDBJGEN.PRG.98507 Rev.C	CLa	WYu
10-Jun-15	TMCLKDBJGEN.PRG.98507 Rev.F	WYu	





Activity Name	Orig Dur	DWPF Start	DWPF Finish	2015		2016					
				Nov	Dec	Jan	Feb	Mar	Apr	May	Jun
				SOApproval with Condition R eceived	0		13-Feb-15				
<b>(F3) DDA Temp.Support for South.C&amp;C, Portal &amp; ELS</b>											
Preparation of DDASouth C&C ELS	18	01-Apr-15	25-Apr-15								
Review & Comment by JV	18	27-Apr-15	18-May-15								
Designer prepare DDA	10	19-May-15	30-May-15								
Formal Submission of DDAto ICE/ IPs	0		30-May-15								
Advanced Submission to SO	0		30-May-15								
IPs/ SO's Advance Comments/ ICE Comments	28	31-May-15	27-Jun-15								
Comments Received	0		27-Jun-15								
Designer to Reply RtC + Update Submission	21	29-Jun-15	23-Jul-15								
Submit Updated DDAto SO/ ICE/ IPs	0	24-Jul-15									
ICEApproval & Issue Check Cert	12	24-Jul-15	06-Aug-15								
Submit ICE Check Cert to SO	6	07-Aug-15	13-Aug-15								
IPs Review	28	24-Jul-15	20-Aug-15								
IP's No Objection Received	0		20-Aug-15								
SO's Review	35	24-Jul-15	27-Aug-15								
SOApproval with Condition R eceived	0		27-Aug-15								
<b>Method Statement Submission</b>											
<b>Method Statement of Construction Methodology of C&amp;C Tunnels</b>											
Preparation Method Statement for C&C Tunnels	25	28-Mar-15	30-Apr-15								
Submit Method Statement to SO	0		30-Apr-15								
SO Reviews & Comments	28	01-May-15	28-May-15								
Re-submission	18	29-May-15	18-Jun-15								
SO's Review	28	19-Jun-15	16-Jul-15								
<b>Construction</b>											
South C&C Tunnel - Diaphragm Wall	120	03-Oct-15	02-Mar-16								
C&C Tunnel - 1st 85m - Excavation by ramp	23	03-Mar-16	01-Apr-16								
C&C Tunnel - 1st 85m - Excavation by vertical mean	11	02-Apr-16	15-Apr-16								
C&C Tunnel - 1st 85m - Tunnel Structure	95	16-Apr-16	09-Aug-16								
<b>South Retrieval Shaft</b>											
<b>Design Submission</b>											
<b>(A5) Ground Investigation Report - Phase 3 - Southern Landfall</b>											
Prepare Re-submission	10	23-Jun-15	04-Jul-15								
*2nd Submission	0		04-Jul-15								
SO's Condition Approval	35	05-Jul-15	08-Aug-15								
<b>(B5) AIP Construction Risk Assessment - Impact on South Landfall</b>											
SO's Condition Approval	35	27-Jan-15	02-Mar-15								
<b>(B5) DDA Construction Risk Assessment - Impact on South Landfall</b>											
SO's Comments for 1st Submission	35	18-Apr-15	22-May-15								
Prepare Re-submission	10	23-May-15	04-Jun-15								
2nd Submission	0		04-Jun-15								
ICE Cert. Issue	6	05-Jun-15	11-Jun-15								
SO's Condition Approval	35	05-Jun-15	09-Jul-15								
<b>(F1) AIP Temp.works - Retrieval Shaft on Southern Landfall inc. break-out</b>											
SO Review (35 Days)	35	17-Dec-14	20-Jan-15								
SOApproval with Condition R eceived	0		20-Jan-15								
<b>(F1) DDA Temp.works - Retrieval Shaft on Southern Landfall inc. break-out</b>											
Preparation of DDA Temp Support for Sth Retrieval Shaft	18	01-Apr-15	25-Apr-15								
Review & Comment by JV	18	27-Apr-15	18-May-15								
Designer prepare DDA	6	19-May-15	26-May-15								
Formal Submission of DDAto ICE/ IPs	0		26-May-15								
Advanced Submission to SO	0		26-May-15								
IPs/ SO's Advance Comments/ ICE Comments	28	27-May-15	23-Jun-15								
Comments Received	0		23-Jun-15								
Designer to Reply RtC + Update Submission	21	24-Jun-15	18-Jul-15								
Submit Updated DDAto SO/ ICE/ IPs	0	20-Jul-15									
ICEApproval & Issue Check Cert	12	20-Jul-15	01-Aug-15								
Submit ICE Check Cert to SO	6	03-Aug-15	08-Aug-15								
IPs Review	28	20-Jul-15	16-Aug-15								
IP's No Objection Received	0		16-Aug-15								
SO's Review	35	20-Jul-15	23-Aug-15								
SOApproval with Condition R eceived	0		24-Aug-15								
<b>(F2) AIP Temp works of Ground Treatment for TBMs passing under Southern Landfall</b>											
Review & Comment by JV	18	23-Sep-14	15-Oct-14								

- Planned Bar
- Planned Bar - Critical
- ◆ Planned Milestone
- Progress bar
- ◆ Progress Milestone



Date	Revision	Checked	Approved
12-Feb-14	TMCLKDBJGENPRG98507	WYu	SPb
08-Apr-14	TMCLKDBJGENPRG98507 Rev.B	SPb	WYu
28-Aug-14	TMCLKDBJGENPRG98507 Rev.C	CLa	WYu
10-Jun-15	TMCLKDBJGENPRG98507 Rev.F	WYu	

Activity Name	Orig Dur	DWPf Start	DWPf Finish	2015		2016					
				Nov	Dec	Jan	Feb	Mar	Apr	May	Jun
				Designer Prepare AIP	12	16-Oct-14	29-Oct-14				
Formal Submission of AIP to ICE/IPs	0		29-Oct-14								
Advanced Submission of AIP to SO	0		29-Oct-14								
Review & Comment by SO/ ICE/ IPs	28	30-Oct-14	26-Nov-14								
Advance Comments from SO/ Comments from ICE/ IPs Received	0		26-Nov-14								
Designer to Prepare RTC & Updated AIP	18	27-Nov-14	17-Dec-14								
Submission of AIP to SO/ ICE together with Reply To Comment (RTC)	0		17-Dec-14								
Reply to IPs Comments in RTC	0		17-Dec-14								
ICE Approval & Issue of Design Check Cert.	18	18-Dec-14	10-Jan-15								
Check Cert to SO	0		10-Jan-15								
No Objection or Further Minor Comments from IPs Received	0		10-Jan-15								
SO Review (35 Days)	35	19-Dec-14	22-Jan-15								
SO Approval with Condition Received	0		22-Jan-15								
<b>(F2) DDA Temp works of Ground Treatment for TBMs passing under Southern Landfall</b>											
Review & Comment by JV	18	27-Apr-15	18-May-15								
Designer prepare DDA	6	19-May-15	26-May-15								
Formal Submission of DDA to ICE/ IPs	0		26-May-15								
Advanced Submission to SO	0		26-May-15								
IPs/ SO's Advance Comments/ ICE Comments	28	27-May-15	23-Jun-15								
Comments Received	0		23-Jun-15								
Designer to Reply RTC + Update Submission	21	24-Jun-15	18-Jul-15								
Submit Updated DDA to SO/ ICE/ IPs	0	20-Jul-15									
ICE Approval & Issue Check Cert	12	20-Jul-15	01-Aug-15								
Submit ICE Check Cert to SO	6	03-Aug-15	08-Aug-15								
IPs Review	28	20-Jul-15	16-Aug-15								
IPs No Objection Received	0		16-Aug-15								
SO's Review	35	20-Jul-15	23-Aug-15								
SO Approval with Condition Received	0		24-Aug-15								
<b>(F4) Gantry Crane Support/Foundations in Southern Landfall</b>											
Preparation of IFA Gantry Crane / Foundation	18	27-Jul-15	15-Aug-15								
Review & Comment by JV	18	17-Aug-15	05-Sep-15								
Designer prepare IFA	10	07-Sep-15	17-Sep-15								
Formal Submission of IFA to ICE/ IPs	0		17-Sep-15								
Advanced Submission to SO	0		17-Sep-15								
IPs/ SO's Advance Comments/ ICE Comments	28	18-Sep-15	15-Oct-15								
Designer to Reply RTC + Update Submission	21	16-Oct-15	10-Nov-15								
Submit Updated IFA to SO/ ICE/ IPs	0	11-Nov-15									
ICE Approval & Issue Check Cert	12	11-Nov-15	24-Nov-15								
IPs Review	28	11-Nov-15	08-Dec-15								
IPs No Objection Received	0		08-Dec-15								
SO's Review	35	11-Nov-15	15-Dec-15								
SO Approval with Condition Received	0		15-Dec-15								
<b>Method Statement Submission</b>											
<b>Method Statement of Construction Methodology of Retrieval Shaft</b>											
Preparation Method Statement for Retrieval Shaft	25	24-Aug-15	21-Sep-15								
Submit Method Statement to SO	0		21-Sep-15								
SO Reviews & Comments	28	22-Sep-15	19-Oct-15								
Re-submission	18	20-Oct-15	10-Nov-15								
SO's Review	28	11-Nov-15	08-Dec-15								
SO's Approval	0		08-Dec-15								
<b>Construction</b>											
South Landfall GI Works/DW Setting Up	48	06-Aug-15	02-Oct-15								
South Retrieval Shaft - Diaphragm Wall	98	03-Oct-15	29-Jan-16								
Retrieval Shaft - Excavation - Soft by ramp	3	30-Jan-16	02-Feb-16								
Retrieval Shaft - Excavation - Soft by vertical mean (Fill material)	52	03-Feb-16	14-Apr-16								
Retrieval Shaft - Excavation - Soft (other than Fill)	140	15-Apr-16	30-Sep-16								
<b>South Approach Ramp</b>											
<b>Construction</b>											
Approach Ramp (CH1580-1850) - Pipe Pile/Sheet Piles Wall	126	03-Oct-15	09-Mar-16								
Approach Ramp (CH1580-1850) - Tension Piles	103	03-Oct-15	04-Feb-16								
Approach Ramp (CH1580-1850) - Pile Test	24	05-Feb-16	10-Mar-16								
<b>South Ventilation Building</b>											
<b>Design Submission</b>											
<b>(I1) DDA for South Vent. Bldg. GBP &amp; Arch. Submission</b>											

■ Planned Bar  
■ Planned Bar - Critical  
◆ Planned Milestone  
■ Progress bar  
◆ Progress Milestone



Date	Revision	Checked	Approved
12-Feb-14	TMCLK/DWPF3/PRG/98507	WYu	SPb
08-Apr-14	TMCLK/DWPF3/PRG/98507 Rev.B	SPa	WYu
28-Aug-14	TMCLK/DWPF3/PRG/98507 Rev.C	CLa	WYu
10-Jun-15	TMCLK/DWPF3/PRG/98507 Rev.F	WYu	

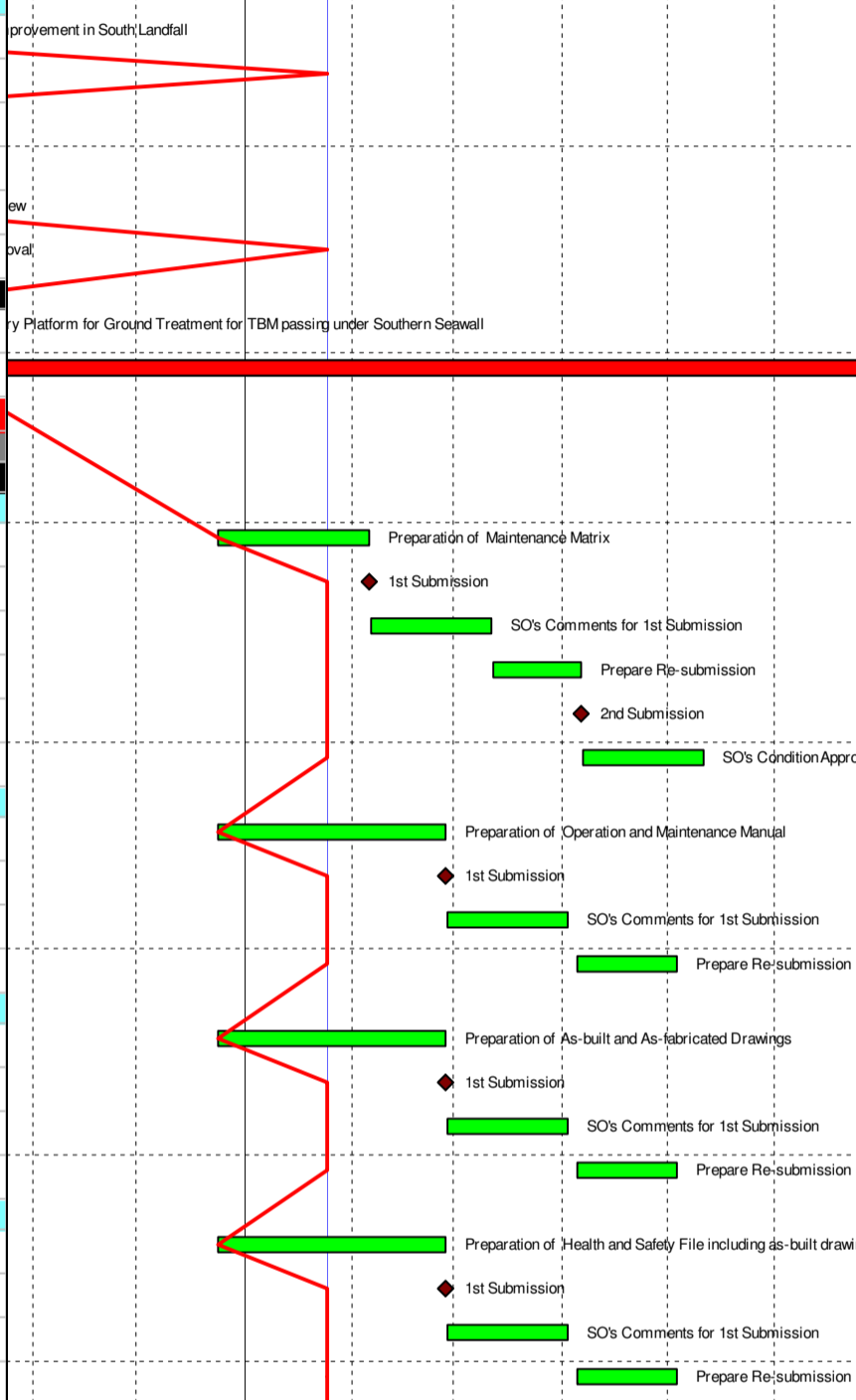
Activity Name	Orig Dur	DWPF Start	DWPF Finish	2015		2016						
				Nov	Dec	Jan	Feb	Mar	Apr	May	Jun	
Designer to Reply RTC + Update Submission	21	27-Nov-14	20-Dec-14									
Submit Updated DDA to SO/ ICE/ IPs	0	22-Dec-14										
ICE Approval & Issue Check Cert	18	22-Dec-14	14-Jan-15									
Submit ICE Check Cert to SO	6	15-Jan-15	21-Jan-15									
IPs Review	28	22-Dec-14	18-Jan-15									
IPs No Objection Received	0		18-Jan-15									
SOs Review	35	22-Dec-14	25-Jan-15									
SO Approval with Condition Received	0		26-Jan-15									
<b>(I2) DDA for South Vent.Bldg. Foundation Design</b>												
Review & Comment by JV	18	27-Apr-15	18-May-15									
Designer prepare DDA	10	19-May-15	30-May-15									
Formal Submission of DDA to ICE/ IPs	0		30-May-15									
Advanced Submission to SO	0		30-May-15									
IPs/ SOs Advance Comments/ ICE Comments	28	31-May-15	27-Jun-15									
Comments Received	0		27-Jun-15									
Designer to Reply RTC + Update Submission	21	29-Jun-15	23-Jul-15									
Submit Updated DDA to SO/ ICE/ IPs	0	24-Jul-15										
ICE Approval & Issue Check Cert	18	24-Jul-15	13-Aug-15									
IPs Review	28	24-Jul-15	20-Aug-15									
SOs Review	35	24-Jul-15	27-Aug-15									
<b>(I2) DDA for South Vent.Bldg. Structural Design incl.Vent.Connections</b>												
Review & Comment by JV	18	18-Feb-15	17-Mar-15									
Designer prepare DDA	10	18-Mar-15	28-Mar-15									
Formal Submission of DDA to ICE/ IPs	0		28-Mar-15									
Advanced Submission to SO	0		28-Mar-15									
IPs/ SOs Advance Comments/ ICE Comments	28	29-Mar-15	25-Apr-15									
Comments Received	0		25-Apr-15									
Designer to Reply RTC + Update Submission	21	27-Apr-15	21-May-15									
<b>(J1) DDA Temp.works for Construction of Sth.Vent.Bldg.</b>												
Designer to Reply RTC + Update Submission	21	24-Aug-15	16-Sep-15									
Submit Updated DDA to SO/ ICE/ IPs	0	17-Sep-15										
ICE Approval & Issue Check Cert	12	17-Sep-15	02-Oct-15									
Submit ICE Check Cert to SO	6	03-Oct-15	09-Oct-15									
IPs Review	28	17-Sep-15	14-Oct-15									
IPs No Objection Received	0		14-Oct-15									
SOs Review	35	17-Sep-15	21-Oct-15									
SO Approval with Condition Received	0		22-Oct-15									
<b>Construction</b>												
Mobilization & Setting Up Piling Rigs	64	06-Aug-15	22-Oct-15									
S - Piling (Socket H-piles)	132	23-Oct-15	08-Apr-16									
S - Pile Test	24	09-Apr-16	07-May-16									
S - Sheet Piling	48	23-Oct-15	17-Dec-15									
<b>South Surface Roadworks, Utility &amp; Drainage works</b>												
<b>Design Submission</b>												
<b>(E1) AIP - Southern Landfall Seawall Modification</b>												
Review & Comment by SO/ ICE/ IPs	28	13-Jan-17	09-Feb-17									
Advance Comments from SO/ Comments from ICE/ IPs Received	0		09-Feb-17									
Designer to Prepare RTC & Updated AIP	18	10-Feb-17	02-Mar-17									
Submission of AIP to SO/ ICE together with Reply To Comment (RTC)	0		02-Mar-17									
Reply to IPs Comments in RTC	0		02-Mar-17									
ICE Approval & Issue of Design Check Cert.	18	03-Mar-17	23-Mar-17									
Check Cert to SO	0		23-Mar-17									
No Objection or Further Minor Comments from IPs Received	0		23-Mar-17									
SO Review (35 Days)	35	03-Mar-17	06-Apr-17									
SO Approval with Condition Received	0		06-Apr-17									
<b>(E1) DDA - Southern Landfall Seawall Modification</b>												
Preparation of DDA Modification of Seawall at Sth Landfall	18	07-Apr-17	02-May-17									
Review & Comment by JV	18	04-May-17	24-May-17									
Designer prepare DDA	10	25-May-17	06-Jun-17									
Formal Submission of DDA to ICE/ IPs	0		06-Jun-17									
Advanced Submission to SO	0		06-Jun-17									
IPs/ SOs Advance Comments/ ICE Comments	28	07-Jun-17	04-Jul-17									
<b>(E3) DDA for Sewerage, Drainage, Waterworks &amp; Utility works for South Landfall</b>												

- Planned Bar
- Planned Bar - Critical
- ◆ Planned Milestone
- Progress bar
- ◆ Progress Milestone



Date	Revision	Checked	Approved
12-Feb-14	TMCLK/DWPF/PRG/98507	WYu	SPs
08-Apr-14	TMCLK/DWPF/PRG/98507 Rev.B	SPs	WYu
28-Aug-14	TMCLK/DWPF/PRG/98507 Rev.C	CLs	WYu
10-Jun-15	TMCLK/DWPF/PRG/98507 Rev.F	WYu	

Activity Name	Orig Dur	DWPF Start	DWPF Finish	2015		2016					
				Nov	Dec	Jan	Feb	Mar	Apr	May	Jun
				Designer to Reply RIC + Update Submission	21	02-Feb-15	04-Mar-15				
Submit Updated DDA to SO/ ICE/ IPs	0	05-Mar-15									
ICE Approval & Issue Check Cert	12	05-Mar-15	18-Mar-15								
Submit ICE Check Cert to SO	6	19-Mar-15	25-Mar-15								
IPs Review	28	05-Mar-15	01-Apr-15								
IPs No Objection Received	0		01-Apr-15								
SO's Review	35	05-Mar-15	08-Apr-15								
SO Approval with Condition R received	0		08-Apr-15								
<b>Method Statement Submission</b>											
<b>Method Statement of Ground Treatment for TBMs Passing under Southern Landfall Seawall</b>											
Preparation Method Statement for Ground Improvement in South Landfall	9	20-Jul-15	29-Jul-15								
Submit Method Statement to SO	0		29-Jul-15								
SO Reviews & Comments	28	30-Jul-15	26-Aug-15								
Re-submission	6	27-Aug-15	02-Sep-15								
SO's Review	28	03-Sep-15	30-Sep-15								
SO's Approval	0		30-Sep-15								
<b>Construction</b>											
Temporary Platform for Ground Treatment for TBM passing under Southern Seawall	48	06-Aug-15	02-Oct-15								
Grouting Treatment for TBM passing under Southern Seawall	339	03-Oct-15	25-Nov-16								
<b>Testing &amp; Commissioning/Inspection &amp; Handover</b>											
<b>Final Inspection &amp; Handover</b>											
<b>Design Submission</b>											
<b>(A12) Maintenance Matrix</b>											
Preparation of Maintenance Matrix	35	24-Dec-15	05-Feb-16								
1st Submission	0		05-Feb-16								
SO's Comments for 1st Submission	35	06-Feb-16	11-Mar-16								
Prepare Re-submission	18	12-Mar-16	06-Apr-16								
2nd Submission	0		06-Apr-16								
SO's Condition Approval	35	07-Apr-16	11-May-16								
<b>(A13) Operation &amp; Maintenance Manual</b>											
Preparation of Operation and Maintenance Manual	48	24-Dec-15	27-Feb-16								
1st Submission	0		27-Feb-16								
SO's Comments for 1st Submission	35	28-Feb-16	02-Apr-16								
Prepare Re-submission	24	05-Apr-16	03-May-16								
<b>(A14) As-built &amp; As-fabricated Drawings</b>											
Preparation of As-built and As-fabricated Drawings	48	24-Dec-15	27-Feb-16								
1st Submission	0		27-Feb-16								
SO's Comments for 1st Submission	35	28-Feb-16	02-Apr-16								
Prepare Re-submission	24	05-Apr-16	03-May-16								
<b>(A15) Health &amp; Safety File incl. As-built Dwgs &amp; Records, Maintenance Schedules, O&amp;M Manual</b>											
Preparation of Health and Safety File including as-built drawings and records, maintenance schedules, operation and mai	48	24-Dec-15	27-Feb-16								
1st Submission	0		27-Feb-16								
SO's Comments for 1st Submission	35	28-Feb-16	02-Apr-16								
Prepare Re-submission	24	05-Apr-16	03-May-16								



- Planned Bar
- Planned Bar - Critical
- ◆ Planned Milestone
- Progress bar
- ◆ Progress Milestone



Date	Revision	Checked	Approved
12-Feb-14	TMCLK/DJGEN/PRG/98507	WYu	SPb
08-Apr-14	TMCLK/DJGEN/PRG/98507 Rev.B	SPa	WYu
28-Aug-14	TMCLK/DJGEN/PRG/98507 Rev.C	CLa	WYu
10-Jun-15	TMCLK/DJGEN/PRG/98507 Rev.F	WYu	