

Activity Name	Orig Dur	DWPF Start	DWPF Finish	2016						
				Dec	Jan	Feb	Mar	Apr	May	Jun
TMCLK - Northern Connection Sub-Sea Tunnel Section										
Contract Dates										
Commencement and Completion Dates										
KD06 - Completion of Section 1B - Portion N8	0		03-Dec-15	◆ KD06 - Completion of Section 1B - Portion N8						
Site Possession Date										
Portions: X1,(N10,11,13 & 14) - Sth Landfall	0	06-Aug-15								
Handover Date										
Portions: N8A, N8B(above +3), N8C	0		03-Dec-15	◆ Portions: N8A, N8B(above +3), N8C						
General Submissions										
Environmental										
Environmental Permit Submissions										
Supplementary WMP of C&C Tunnel at Sth.Landfall										
Supplementary WMP of C&C Tunnel at Sth.Landfall	0		28-Jun-14							
Sediment Quality Report/Dumping Permit										
Southern Landfall										
Southern landfall - Commencement of Shaft & C&C Tunnel Dwall	0	03-Oct-15		◆ Southern Landfall - Commencement of Shaft & C&C Tunnel Dwall						
Southern Landfall - Commencement of Retrieval Shaft Excavation	0	30-Jan-16		◆ Southern Landfall - Commencement of Retrieval Shaft Excavation						
Southern Landfall - Retrieval Shaft Excavation to tentative MD layer	0	15-Apr-16		◆ Southern Landfall - Retrieval Shaft Excavation to tentative MD layer						
Southern Landfall - Commencement of C&C Tunnel Excavation	0	03-Mar-16		◆ Southern Landfall - Commencement of C&C Tunnel Excavation						
Southern Landfall - Commencement of C&C Tunnel to tentative MD layer	0	02-Apr-16		◆ Southern Landfall - Commencement of C&C Tunnel to tentative MD layer						
Sediment Sampling & Testing Plan (SSTP) - if required										
Complete SSTP and Obtain EPD's approval	24	17-Feb-15	23-Mar-15							
Sediment Quality Report (SQR) - if required										
Advance Ground Investigation works for Sediment sampling	24	24-Mar-15	24-Apr-15							
Sediment Sample Testing & Report preparation	120	25-Apr-15	16-Sep-15							
Dumping Permit for Load Dumping (Loading Permit) - if required										
Finalize the application document and submit to EPD - for Dwall	24	20-Jan-15	16-Feb-15							
Notify the results and issue Loading Permit for Local & Cross Boundary Crossing - for Dwall	24	17-Feb-15	23-Mar-15							
Finalize the application document and submit to EPD - for Excavation	24	16-Nov-15	12-Dec-15	◆ Finalize the application document and submit to EPD - for Excavation						
Notify the results and issue Loading Permit for Local & Cross Boundary Crossing - for Excavation	24	14-Dec-15	13-Jan-16	◆ Notify the results and issue Loading Permit for Local & Cross Boundary Crossing - for Excavation						
Dumping at Sea Ordinance (DASO)										
Submit application for local dumping	24	16-Nov-15	12-Dec-15	◆ Submit application for local dumping						
Approval for Dumping at Sea Ordinance	24	14-Dec-15	13-Jan-16	◆ Approval for Dumping at Sea Ordinance						
Cross Boundary Dumping Permit										
Apply for Cross Boundary Dumping Permit	24	14-Jan-16	17-Feb-16	◆ Apply for Cross Boundary Dumping Permit						
Cross Boundary Dumping Approval	24	18-Feb-16	16-Mar-16	◆ Cross Boundary Dumping Approval						
Issuance of PRC Permit for Cat L, Mp	0		16-Mar-16	◆ Issuance of PRC Permit for Cat L, Mp						
General Design Submissions										
(G6) IFA for Tunnel GBP										
SO's Review	35	29-Apr-14	02-Jun-14							
SO Approval with Condition Received	0		03-Jun-14							
PAYMENT MILESTONE										
Design and Design Checking of the Works										
MS 2.12 Approve DDA for ground treatment at Southern Landfall by the Supervising Officer	0		31-Aug-15	◆ MS 2.12 Approve DDA for ground treatment at Southern Landfall by the Supervising Officer						
MS 2.20.3 Approve DDA for Cross Passages by the Supervising Officer by the Supervising Officer	0		31-Mar-15	◆ MS 2.20.3 Approve DDA for Cross Passages by the Supervising Officer by the Supervising Officer						
MS 2.23 Submit DDA for Cut-and-cover Tunnel and Cross Passages at Southern Landfall	0		31-Jan-15	◆ MS 2.23 Submit DDA for Cut-and-cover Tunnel and Cross Passages at Southern Landfall						
MS 2.24 Approve DDA for Cut-and-cover Tunnel and Cross Passages at Southern Landfall by the Supervising Officer	0		30-Apr-15	◆ MS 2.24 Approve DDA for Cut-and-cover Tunnel and Cross Passages at Southern Landfall by the Supervising Officer						
MS 2.32 Approve DDA for Approach Ramp Structures to Cut-and-cover Tunnels by the Supervising Officer	0		30-Apr-15	◆ MS 2.32 Approve DDA for Approach Ramp Structures to Cut-and-cover Tunnels by the Supervising Officer						
MS 2.44 Approve DDA for South Ventilation Building by the Supervising Officer	0		30-Jun-15	◆ MS 2.44 Approve DDA for South Ventilation Building by the Supervising Officer						
MS 2.48 Approve DDA for North Ventilation Building by the Supervising Officer	0		31-Jan-15	◆ MS 2.48 Approve DDA for North Ventilation Building by the Supervising Officer						
MS 2.51 Submit DDA for Facilities Provision for TCSS	0		29-Nov-14	◆ MS 2.51 Submit DDA for Facilities Provision for TCSS						
MS 2.52 Approve DDA for Facilities Provision for TCSS by the Supervising Officer	0		28-Feb-15	◆ MS 2.52 Approve DDA for Facilities Provision for TCSS by the Supervising Officer						
MS 2.56 Approve DDA for Drainage, Sewerage, Waterworks and Utilities at Southern Landfall by the Supervising Officer	0		30-Apr-15	◆ MS 2.56 Approve DDA for Drainage, Sewerage, Waterworks and Utilities at Southern Landfall by the Supervising Officer						
MS 2.60 Approve DDA for Drainage, Sewerage, Waterworks and Utilities at Northern Landfall by the Supervising Officer	0		31-Dec-14	◆ MS 2.60 Approve DDA for Drainage, Sewerage, Waterworks and Utilities at Northern Landfall by the Supervising Officer						
MS 2.69 Submit draft Operation and Maintenance Manual for all Tunnels and Cross Passages	0		29-Feb-16	◆ MS 2.69 Submit draft Operation and Maintenance Manual for all Tunnels and Cross Passages						
MS 2.71 Submit draft Operation and Maintenance Manual for all works except Tunnels and Cross Passages	0		29-Feb-16	◆ MS 2.71 Submit draft Operation and Maintenance Manual for all works except Tunnels and Cross Passages						
Tunnel Boring Machine (TBM) and Back-up Equipment for TBM Tunnel										
MS 3.1.9 Delivery to Site of remaining parts of TBM and back-up equipment for Northbound Tunnel	0		31-Dec-15	◆ MS 3.1.9 Delivery to Site of remaining parts of TBM and back-up equipment for Northbound Tunnel						
MS 3.1.10 Complete site assembly, testing and commissioning of TBM for Northbound Tunnel	0		30-Nov-15	◆ MS 3.1.10 Complete site assembly, testing and commissioning of TBM for Northbound Tunnel						
MS 3.1.25 Complete the whole of the activities under this Cost Centre Part to the satisfaction of the Supervising Office	0		31-Dec-15	◆ MS 3.1.25 Complete the whole of the activities under this Cost Centre Part to the satisfaction of the Supervising Office						
TBM Tunnel										
MS 3.3.4 Complete walls of retrieval shaft	0		30-Jan-16	◆ MS 3.3.4 Complete walls of retrieval shaft						
MS 3.3.7 Completion of excavation, support and permanent lining for 1% of the total length (measured on plan) of the Nor	0		31-Dec-15	◆ MS 3.3.7 Completion of excavation, support and permanent lining for 1% of the total length (measured on plan) of the Nor						

■ Planned Bar
■ Planned Bar - Critical
◆ Planned Milestone
■ Progress bar
◆ Progress Milestone



Date	Revision	Checked	Approved
12-Feb-14	TMCLKDBJGENPRG98507	WYu	SPo
08-Apr-14	TMCLKDBJGENPRG98507 Rev.B	SPa	WYu
28-Aug-14	TMCLKDBJGENPRG98507 Rev.C	CLa	WYu
10-Jun-15	TMCLKDBJGENPRG98507 Rev.F	WYu	

Activity Name	Orig Dur	DWPF Start	DWPF Finish	2016								
				2015	2016							
				Dec	Jan	Feb	Mar	Apr	May	Jun	Jul	
MS 3.3.8 Completion of excavation, support and permanent lining for 2% of the total length (measured on plan) of the Nor	0		31-Dec-15		◆ MS 3.3.8							
MS 3.3.9 Completion of excavation, support and permanent lining for 3% of the total length (measured on plan) of the Nor	0		31-Dec-15		◆ MS 3.3.9							
MS 3.3.10 Completion of excavation, support and permanent lining for 4% of the total length (measured on plan) of the No	0		30-Jan-16			◆ MS 3.3.10						
MS 3.3.11 Completion of excavation, support and permanent lining for 5% of the total length (measured on plan) of the No	0		30-Jan-16			◆ MS 3.3.11						
MS 3.3.12 Completion of excavation, support and permanent lining for 6% of the total length (measured on plan) of the No	0		30-Jan-16			◆ MS 3.3.12						
MS 3.3.13 Completion of excavation, support and permanent lining for 7% of the total length (measured on plan) of the No	0		30-Jan-16			◆ MS 3.3.13						
MS 3.3.14 Completion of excavation, support and permanent lining for 8% of the total length (measured on plan) of the No	0		29-Feb-16				◆ MS 3.3.14					
MS 3.3.15 Completion of excavation, support and permanent lining for 9% of the total length (measured on plan) of the No	0		29-Feb-16				◆ MS 3.3.15					
MS 3.3.16 Completion of excavation, support and permanent lining for 10% of the total length (measured on plan) of the N	0		29-Feb-16				◆ MS 3.3.16					
MS 3.3.17 Completion of excavation, support and permanent lining for 11% of the total length (measured on plan) of the N	0		29-Feb-16				◆ MS 3.3.17					
MS 3.3.18 Completion of excavation, support and permanent lining for 12% of the total length (measured on plan) of the N	0		31-Mar-16					◆ MS 3.3.18				
MS 3.3.19 Completion of excavation, support and permanent lining for 13% of the total length (measured on plan) of the N	0		31-Mar-16					◆ MS 3.3.19				
MS 3.3.20 Completion of excavation, support and permanent lining for 14% of the total length (measured on plan) of the N	0		31-Mar-16					◆ MS 3.3.20				
MS 3.3.21 Completion of excavation, support and permanent lining for 15% of the total length (measured on plan) of the N	0		31-Mar-16					◆ MS 3.3.21				
MS 3.3.22 Completion of excavation, support and permanent lining for 16% of the total length (measured on plan) of the N	0		31-Mar-16					◆ MS 3.3.22				
MS 3.3.23 Completion of excavation, support and permanent lining for 17% of the total length (measured on plan) of the N	0		30-Apr-16						◆ MS 3.3.23			
MS 3.3.24 Completion of excavation, support and permanent lining for 18% of the total length (measured on plan) of the N	0		30-Apr-16						◆ MS 3.3.24			
MS 3.3.25 Completion of excavation, support and permanent lining for 19% of the total length (measured on plan) of the N	0		30-Apr-16						◆ MS 3.3.25			
MS 3.3.26 Completion of excavation, support and permanent lining for 20% of the total length (measured on plan) of the N	0		30-Apr-16						◆ MS 3.3.26			
MS 3.3.27 Completion of excavation, support and permanent lining for 21% of the total length (measured on plan) of the N	0		30-Apr-16						◆ MS 3.3.27			
MS 3.3.28 Completion of excavation, support and permanent lining for 22% of the total length (measured on plan) of the N	0		30-Apr-16						◆ MS 3.3.28			
MS 3.3.29 Completion of excavation, support and permanent lining for 23% of the total length (measured on plan) of the N	0		30-Apr-16						◆ MS 3.3.29			
MS 3.3.62 Completion of excavation, support and permanent lining for 1% of the total length (measured on plan) of the So	0		30-Nov-15	◆ MS 3.3.62								
MS 3.3.63 Completion of excavation, support and permanent lining for 2% of the total length (measured on plan) of the So	0		30-Nov-15	◆ MS 3.3.63								
MS 3.3.64 Completion of excavation, support and permanent lining for 3% of the total length (measured on plan) of the So	0		30-Nov-15	◆ MS 3.3.64								
MS 3.3.65 Completion of excavation, support and permanent lining for 4% of the total length (measured on plan) of the So	0		31-Dec-15	◆ MS 3.3.65								
MS 3.3.66 Completion of excavation, support and permanent lining for 5% of the total length (measured on plan) of the So	0		31-Dec-15	◆ MS 3.3.66								
MS 3.3.67 Completion of excavation, support and permanent lining for 6% of the total length (measured on plan) of the So	0		31-Dec-15	◆ MS 3.3.67								
MS 3.3.68 Completion of excavation, support and permanent lining for 7% of the total length (measured on plan) of the So	0		30-Jan-16		◆ MS 3.3.68							
MS 3.3.69 Completion of excavation, support and permanent lining for 8% of the total length (measured on plan) of the So	0		30-Jan-16		◆ MS 3.3.69							
MS 3.3.70 Completion of excavation, support and permanent lining for 9% of the total length (measured on plan) of the So	0		30-Jan-16		◆ MS 3.3.70							
MS 3.3.71 Completion of excavation, support and permanent lining for 10% of the total length (measured on plan) of the S	0		29-Feb-16			◆ MS 3.3.71						
MS 3.3.72 Completion of excavation, support and permanent lining for 11% of the total length (measured on plan) of the S	0		29-Feb-16			◆ MS 3.3.72						
MS 3.3.73 Completion of excavation, support and permanent lining for 12% of the total length (measured on plan) of the S	0		29-Feb-16			◆ MS 3.3.73						
MS 3.3.74 Completion of excavation, support and permanent lining for 13% of the total length (measured on plan) of the S	0		29-Feb-16			◆ MS 3.3.74						
MS 3.3.75 Completion of excavation, support and permanent lining for 14% of the total length (measured on plan) of the S	0		29-Feb-16			◆ MS 3.3.75						
MS 3.3.76 Completion of excavation, support and permanent lining for 15% of the total length (measured on plan) of the S	0		31-Mar-16				◆ MS 3.3.76					
MS 3.3.77 Completion of excavation, support and permanent lining for 16% of the total length (measured on plan) of the S	0		31-Mar-16				◆ MS 3.3.77					
MS 3.3.78 Completion of excavation, support and permanent lining for 17% of the total length (measured on plan) of the S	0		31-Mar-16				◆ MS 3.3.78					
MS 3.3.79 Completion of excavation, support and permanent lining for 18% of the total length (measured on plan) of the S	0		31-Mar-16				◆ MS 3.3.79					
MS 3.3.80 Completion of excavation, support and permanent lining for 19% of the total length (measured on plan) of the S	0		31-Mar-16				◆ MS 3.3.80					
MS 3.3.81 Completion of excavation, support and permanent lining for 20% of the total length (measured on plan) of the S	0		31-Mar-16				◆ MS 3.3.81					
MS 3.3.82 Completion of excavation, support and permanent lining for 21% of the total length (measured on plan) of the S	0		31-Mar-16				◆ MS 3.3.82					
MS 3.3.83 Completion of excavation, support and permanent lining for 22% of the total length (measured on plan) of the S	0		30-Apr-16					◆ MS 3.3.83				
MS 3.3.84 Completion of excavation, support and permanent lining for 23% of the total length (measured on plan) of the S	0		30-Apr-16					◆ MS 3.3.84				
MS 3.3.85 Completion of excavation, support and permanent lining for 24% of the total length (measured on plan) of the S	0		30-Apr-16					◆ MS 3.3.85				
MS 3.3.86 Completion of excavation, support and permanent lining for 25% of the total length (measured on plan) of the S	0		30-Apr-16					◆ MS 3.3.86				
MS 3.3.87 Completion of excavation, support and permanent lining for 27.5% of the total length (measured on plan) of the	0		30-Apr-16					◆ MS 3.3.87				
Cut-and-cover Tunnels at Southern Landfalls												
MS 4.1.1 Complete 10% of total length (measured on plan) of temporary retaining walls for excavation of Cut-and-cover tu	0		31-Oct-15		◆ MS 4.1.1							
MS 4.1.2 Complete 20% of total length (measured on plan) of temporary retaining walls for excavation of Cut-and-cover tun	0		31-Oct-15		◆ MS 4.1.2							
MS 4.1.3 Complete 30% of total length (measured on plan) of temporary retaining walls for excavation of Cut-and-cover tu	0		30-Nov-15	◆ MS 4.1.3								
MS 4.1.4 Complete 40% of total length (measured on plan) of temporary retaining walls for excavation of Cut-and-cover tu	0		30-Nov-15	◆ MS 4.1.4								
MS 4.1.5 Complete 50% of total length (measured on plan) of temporary retaining walls for excavation of Cut-and-cover tu	0		31-Dec-15		◆ MS 4.1.5							
MS 4.1.6 Complete 60% of total length (measured on plan) of temporary retaining walls for excavation of Cut-and-cover tu	0		31-Dec-15		◆ MS 4.1.6							
MS 4.1.7 Complete 70% of total length (measured on plan) of temporary retaining walls for excavation of Cut-and-cover tu	0		30-Jan-16			◆ MS 4.1.7						
MS 4.1.8 Complete 80% of total length (measured on plan) of temporary retaining walls for excavation of Cut-and-cover tu	0		30-Jan-16			◆ MS 4.1.8						
MS 4.1.9 Complete 90% of total length (measured on plan) of temporary retaining walls for excavation of Cut-and-cover tu	0		29-Feb-16			◆ MS 4.1.9						
MS 4.1.10 Complete 100% of total length (measured on plan) of temporary retaining walls for excavation of Cut-and-cover	0		31-Mar-16				◆ MS 4.1.10					
MS 4.1.26 Complete excavation for 50% of total length (measured on plan) of all Cross Passages	0		31-Dec-15		◆ MS 4.1.26							
MS 4.1.27 Complete excavation for 100% of total length (measured on plan) of all Cross Passages	0		31-Mar-16				◆ MS 4.1.27					
Cut-and-cover Tunnel at Northern Landfall												
MS 4.2.21 Completion of Permanent Lining for 100% of SB Northern Landfall TBM Tunnel	0		30-Sep-15									

■ Planned Bar
■ Planned Bar - Critical
◆ Planned Milestone
■ Progress bar
◆ Progress Milestone



Date	Revision	Checked	Approved
12-Feb-14	TMCLKDBJEN-PRG-98507	WYu	SPo
08-Apr-14	TMCLKDBJEN-PRG-98507 Rev.B	SPa	WYu
28-Aug-14	TMCLKDBJEN-PRG-98507 Rev.C	CLa	WYu
10-Jun-15	TMCLKDBJEN-PRG-98507 Rev.F	WYu	

Activity Name	Orig Dur	DWPF Start	DWPF Finish	2015							2016												
				Dec	Jan	Feb	Mar	Apr	May	Jun	Jul	Aug	Sep	Oct	Nov	Dec	Jan	Feb	Mar	Apr	May	Jun	Jul
				CH327 to CH381																			
F - Backfilling up to +6.0mPD - CH327 to CH381	3	04-Apr-14	06-Apr-14																				
F - Anchor wall Installation - CH327 to CH381	3	02-May-14	05-May-14																				
F - Backfilling up to 0.0mPD & G2 Installation to Anchor Wall - CH327 to CH381	3	06-May-14	08-May-14																				
F - Backfilling up to +3.0mPD & G1 Installation to Anchor Wall - CH327 to CH381	3	09-May-14	11-May-14																				
F - Backfilling up to +6.0mPD to Anchor Wall - CH327 to CH381	2	12-May-14	13-May-14																				
F - Backfilling to +6.0mPD to Existing Seawall - CH327 to CH381	1	14-May-14	14-May-14																				
Box Culvert Extension																							
Construction																							
Ch000-010 Culvert Outfall																							
Installation of temporary bulk head	26	10-Aug-15	08-Sep-15																				
Removal of temporary bulk head	18	28-Nov-15	18-Dec-15																				
CH000-150 Land Section																							
ELS & Structure																							
Pile A43/A41 CJ to Pile A41/A39 CJ																							
ELS																							
Excavation to FEL	5	14-May-15	19-May-15																				
Box Culvert Structure																							
Pile cap construction	10	27-May-15	06-Jun-15																				
Base slab construction including kicker	6	19-Jun-15	26-Jun-15																				
Removal of strut S1	4	27-Jun-15	02-Jul-15																				
System formworks delivery & setup	14	03-Jul-15	18-Jul-15																				
Walls & top slab construction	6	20-Jul-15	25-Jul-15																				
Removal of strut S2 & Backfilling up to required level	6	03-Aug-15	08-Aug-15																				
Pile A45/A43 CJ to Pile A43/A41 CJ																							
ELS																							
Excavation to FEL	5	20-May-15	26-May-15																				
Box Culvert Structure																							
Pile cap construction	10	08-Jun-15	18-Jun-15																				
Base slab construction including kicker	6	27-Jun-15	04-Jul-15																				
Removal of strut S1	4	06-Jul-15	09-Jul-15																				
Walls & top slab construction	6	27-Jul-15	01-Aug-15																				
Removal of strut S2 & Backfilling up to required level	6	10-Aug-15	15-Aug-15																				
Pile A47/A45 CJ to Pile A45/A43 CJ																							
ELS																							
Excavation to 0.5m below strut S1	5	14-May-15	19-May-15																				
Installation of strut S1	5	20-May-15	26-May-15																				
Excavation to FEL	5	27-May-15	01-Jun-15																				
Box Culvert Structure																							
Pile cap construction	10	19-Jun-15	02-Jul-15																				
Base slab construction including kicker	6	06-Jul-15	11-Jul-15																				
Removal of strut S1	4	13-Jul-15	16-Jul-15																				
Walls & top slab construction	6	03-Aug-15	08-Aug-15																				
Removal of strut S2 & Backfilling up to required level	6	17-Aug-15	22-Aug-15																				
Pile A49/A47 CJ to Pile A47/A45 CJ																							
ELS																							
Excavation to 0.5m below strut S1	5	20-May-15	26-May-15																				
Installation of strut S1	5	27-May-15	01-Jun-15																				
Excavation to FEL	5	02-Jun-15	06-Jun-15																				
Box Culvert Structure																							
Pile cap construction	10	03-Jul-15	14-Jul-15																				
Base slab construction including kicker	6	15-Jul-15	21-Jul-15																				
Removal of strut S1	4	22-Jul-15	25-Jul-15																				
Walls & top slab construction	6	10-Aug-15	15-Aug-15																				
Pile A52/A49 CJ to Pile A49/A47 CJ																							
ELS																							
Excavation to 0.5m below strut S1	5	27-May-15	01-Jun-15																				
Installation of strut S1	5	02-Jun-15	06-Jun-15																				
Excavation to FEL	5	08-Jun-15	12-Jun-15																				
Box Culvert Structure																							
Pile cap construction	10	22-Jul-15	01-Aug-15																				
Base slab construction including kicker	6	03-Aug-15	08-Aug-15																				
Removal of strut S1	4	10-Aug-15	13-Aug-15																				

- Planned Bar
- Planned Bar - Critical
- ◆ Planned Milestone
- Progress bar
- ◆ Progress Milestone



Date	Revision	Checked	Approved
12-Feb-14	TMCLKDBJEN.PRG.98507	WYu	SPo
08-Apr-14	TMCLKDBJEN.PRG.98507 Rev.B	SPa	WYu
28-Aug-14	TMCLKDBJEN.PRG.98507 Rev.C	CLa	WYu
10-Jun-15	TMCLKDBJEN.PRG.98507 Rev.F	WYu	

Activity Name	Orig Dur	DWPF Start	DWPF Finish	2016								
				2015	2016							
				Dec	Jan	Feb	Mar	Apr	May	Jun	Jul	
Walls & top slab construction	6	17-Aug-15	22-Aug-15									
Ch150-250 Marine Section												
ELS & Structure												
Cofferdam closing of Ch100-250	28	01-Jun-15	04-Jul-15									
Dewatering well installation Ch180-250	12	19-Jun-15	04-Jul-15									
Dewatering well installation Ch100-180	12	06-Jul-15	18-Jul-15									
1st Pumping test	18	20-Jul-15	08-Aug-15									
Toe grouting Ch100-250	95	07-Sep-15	31-Dec-15									
2nd Pumping test Ch100-250	29	02-Jan-16	04-Feb-16									
Pile A41/A39 CJ to Pile A39/A37 CJ												
ELS												
Excavation to 0.5m below strut S2	4	05-Feb-16	16-Feb-16									
Installation of strut S2	6	17-Feb-16	23-Feb-16									
Excavation to 0.5m below strut S1	5	24-Feb-16	29-Feb-16									
Installation of strut S1	5	01-Mar-16	05-Mar-16									
Excavation to FEL	5	07-Mar-16	11-Mar-16									
Box Culvert Structure												
Pile cap construction	10	18-Mar-16	01-Apr-16									
Base slab construction including kicker	6	15-Apr-16	21-Apr-16									
Removal of strut S1	4	22-Apr-16	26-Apr-16									
Sliding formworks 1st assembly	18	27-Apr-16	19-May-16									
Walls & top slab construction	6	20-May-16	26-May-16									
Pile A39/A37 CJ to Pile A37/A35 CJ												
ELS												
Excavation to 0.5m below strut S2	4	17-Feb-16	20-Feb-16									
Installation of strut S2	6	22-Feb-16	27-Feb-16									
Excavation to 0.5m below strut S1	5	01-Mar-16	05-Mar-16									
Installation of strut S1	5	07-Mar-16	11-Mar-16									
Excavation to FEL	5	12-Mar-16	17-Mar-16									
Box Culvert Structure												
Pile cap construction	10	02-Apr-16	14-Apr-16									
Base slab construction including kicker	6	22-Apr-16	28-Apr-16									
Removal of strut S1	4	29-Apr-16	04-May-16									
Walls & top slab construction	6	27-May-16	02-Jun-16									
Pile A37/A35 CJ to Pile A35/A33 CJ												
ELS												
Excavation to 0.5m below strut S2	4	22-Feb-16	25-Feb-16									
Installation of strut S2	6	26-Feb-16	03-Mar-16									
Excavation to 0.5m below strut S1	5	07-Mar-16	11-Mar-16									
Installation of strut S1	5	12-Mar-16	17-Mar-16									
Excavation to FEL	5	18-Mar-16	23-Mar-16									
Box Culvert Structure												
Pile cap construction	10	15-Apr-16	26-Apr-16									
Base slab construction including kicker	6	29-Apr-16	06-May-16									
Removal of strut S1	4	07-May-16	11-May-16									
Pile A35/A33 CJ to Pile A33/P117 CJ												
ELS												
Excavation to 0.5m below strut S2	4	26-Feb-16	01-Mar-16									
Installation of strut S2	6	02-Mar-16	08-Mar-16									
Excavation to 0.5m below strut S1	5	12-Mar-16	17-Mar-16									
Installation of strut S1	5	18-Mar-16	23-Mar-16									
Excavation to FEL	5	24-Mar-16	01-Apr-16									
Box Culvert Structure												
Pile cap construction	10	27-Apr-16	09-May-16									
Base slab construction including kicker	6	10-May-16	17-May-16									
Removal of strut S1	4	18-May-16	21-May-16									
Pile A33/P117 CJ to Pile P113/P109 CJ												
ELS												
Excavation to 0.5m below strut S1	9	09-Mar-16	18-Mar-16									
Installation of strut S1	5	19-Mar-16	24-Mar-16									
Excavation to FEL	5	02-Apr-16	08-Apr-16									
Box Culvert Structure												
Base slab construction including kicker	6	18-May-16	24-May-16									

- Planned Bar
- Planned Bar - Critical
- ◆ Planned Milestone
- Progress bar
- ◆ Progress Milestone



Date	Revision	Checked	Approved
12-Feb-14	TMCLKDBJGEN.PRG.98507	WYu	SPo
08-Apr-14	TMCLKDBJGEN.PRG.98507 Rev.B	SPa	WYu
28-Aug-14	TMCLKDBJGEN.PRG.98507 Rev.C	CLa	WYu
10-Jun-15	TMCLKDBJGEN.PRG.98507 Rev.F	WYu	

Activity Name	Orig Dur	DWPF Start	DWPF Finish	2015							2016						
				2015							2016						
				Dec	Jan	Feb	Mar	Apr	May	Jun	Jul	Dec	Jan	Feb	Mar	Apr	May
NB - North TBM Tunnel - Invert Backfilling (Ch7125 to 7075 - 50m) Stage 2	15	08-Nov-15	23-Nov-15	NB - North TBM Tunnel - Invert Backfilling (Ch7125 to 7075 - 50m) Stage 2													
NB - North TBM Tunnel - Invert Backfilling (Ch7075 to 7025 - 50m) Stage 2	15	23-Nov-15	08-Dec-15	NB - North TBM Tunnel - Invert Backfilling (Ch7075 to 7025 - 50m) Stage 2													
NB - North TBM Tunnel - Invert Backfilling (Ch7025 to 6975 - 50m) Stage 2	14	08-Dec-15	22-Dec-15	NB - North TBM Tunnel - Invert Backfilling (Ch7025 to 6975 - 50m) Stage 2													
NB - North TBM Tunnel - Invert Backfilling (Ch6975 to 6925 - 50m) Stage 2	14	22-Dec-15	05-Jan-16	NB - North TBM Tunnel - Invert Backfilling (Ch6975 to 6925 - 50m) Stage 2													
NB - North TBM Tunnel - Invert Backfilling (Ch6925 to 6870 - 55m) Stage 2	14	05-Jan-16	19-Jan-16	NB - North TBM Tunnel - Invert Backfilling (Ch6925 to 6870 - 55m) Stage 2													
NB - North TBM Tunnel - Invert Backfilling (Ch6870 to 6688 - 182m) Stage 2	77	19-Jan-16	11-Apr-16	NB - North TBM Tunnel - Invert Backfilling (Ch6870 to 6688 - 182m) Stage 2													
NB - North TBM Tunnel - Invert Backfilling (Ch6688 to 6560 - 128m) Stage 2	54	28-Apr-16	23-Jun-16	NB - North TBM Tunnel - Invert Backfilling (Ch6688 to 6560 - 128m) Stage 2													
CP53 - Excavation & Lining completion	0		16-Mar-16	CP53 - Excavation & Lining completion													
CP52 - Excavation & Lining completion	0		22-Apr-16	CP52 - Excavation & Lining completion													
North Approach Tunnel Internal Structure - SB																	
SB - North TBM Tunnel - Invert Backfilling (Ch7025 to 6975 - 50m)	12	26-Nov-15	08-Dec-15	SB - North TBM Tunnel - Invert Backfilling (Ch7025 to 6975 - 50m)													
SB - North TBM Tunnel - Invert Backfilling (Ch6975 to 6925 - 50m)	12	08-Dec-15	20-Dec-15	SB - North TBM Tunnel - Invert Backfilling (Ch6975 to 6925 - 50m)													
SB - North TBM Tunnel - Invert Backfilling (Ch6925 to 6870 - 55m)	12	20-Dec-15	01-Jan-16	SB - North TBM Tunnel - Invert Backfilling (Ch6925 to 6870 - 55m)													
SB - North TBM Tunnel - Invert Backfilling (Ch6870 to 6688 - 182m)	77	01-Jan-16	21-Mar-16	SB - North TBM Tunnel - Invert Backfilling (Ch6870 to 6688 - 182m)													
SB - North TBM Tunnel - Invert Backfilling (Ch6688 to 6560 - 128m)	54	21-Mar-16	18-May-16	SB - North TBM Tunnel - Invert Backfilling (Ch6688 to 6560 - 128m)													
North Approach Cross Passage																	
CP55 - Traditional Method																	
CP Setup	6	21-Mar-16	31-Mar-16	CP Setup													
1st Segment Opening	7	31-Mar-16	09-Apr-16	1st Segment Opening													
CP Excavation	14	09-Apr-16	26-Apr-16	CP Excavation													
CP Lining	14	26-Apr-16	13-May-16	CP Lining													
2nd Segment Opening	7	13-May-16	23-May-16	2nd Segment Opening													
CP Finishing & Demobilization	18	23-May-16	14-Jun-16	CP Finishing & Demobilization													
CP54 - Traditional Method																	
CP54 Platform Available from ML03 North Approach Tunnel Backfilling	0	08-Dec-15		CP54 Platform Available from ML03 North Approach Tunnel Backfilling													
CP Setup	6	14-Jun-16	21-Jun-16	CP Setup													
1st Segment Opening	7	21-Jun-16	29-Jun-16	1st Segment Opening													
CP Excavation	14	29-Jun-16	16-Jul-16	CP Excavation													
CP53 - Pipe Jacking Method																	
CP53 Platform Available from ML03 North Approach Tunnel Backfilling	0	05-Jan-16		CP53 Platform Available from ML03 North Approach Tunnel Backfilling													
CP53 Platform Available from ML02 North Approach Tunnel Backfilling	0	21-Dec-15		CP53 Platform Available from ML02 North Approach Tunnel Backfilling													
CP - Pipe Jacking TBM - Delivery, Assembly & Setup	23	05-Jan-16	01-Feb-16	CP - Pipe Jacking TBM - Delivery, Assembly & Setup													
CP - Pipe Jacking Method - Break-in, Excavation & Lining Installation	9	01-Feb-16	10-Feb-16	CP - Pipe Jacking Method - Break-in, Excavation & Lining Installation													
CP - Pipe Jacking Method - Break out & Pipe Jacking TBM Removal	10	10-Feb-16	20-Feb-16	CP - Pipe Jacking Method - Break out & Pipe Jacking TBM Removal													
CP - Waterproofing, Finishing	21	20-Feb-16	16-Mar-16	CP - Waterproofing, Finishing													
CP52 - Pipe Jacking Method																	
CP52 Platform Available from ML03 North Approach Tunnel Backfilling	0	30-Jan-16		CP52 Platform Available from ML03 North Approach Tunnel Backfilling													
CP52 Platform Available from ML02 North Approach Tunnel Backfilling	0	12-Jan-16		CP52 Platform Available from ML02 North Approach Tunnel Backfilling													
CP - Pipe Jacking TBM - Delivery, Assembly & Setup	23	01-Feb-16	05-Mar-16	CP - Pipe Jacking TBM - Delivery, Assembly & Setup													
CP - Pipe Jacking Method - Break-in, Excavation & Lining Installation	9	05-Mar-16	14-Mar-16	CP - Pipe Jacking Method - Break-in, Excavation & Lining Installation													
CP - Pipe Jacking Method - Break out & Pipe Jacking TBM Removal	10	14-Mar-16	24-Mar-16	CP - Pipe Jacking Method - Break out & Pipe Jacking TBM Removal													
CP Finishing & Demobilization	21	24-Mar-16	22-Apr-16	CP Finishing & Demobilization													
CP51 - Traditional Method																	
CP51 Platform Available from ML03 North Approach Tunnel Backfilling	0	31-Mar-16		CP51 Platform Available from ML03 North Approach Tunnel Backfilling													
CP51 Platform Available from ML02 North Approach Tunnel Backfilling	0	10-Mar-16		CP51 Platform Available from ML02 North Approach Tunnel Backfilling													
CP50 - Pipe Jacking Method																	
CP50 Platform Available from ML03 North Approach Tunnel Backfilling	0	16-May-16		CP50 Platform Available from ML03 North Approach Tunnel Backfilling													
CP50 Platform Available from ML02 North Approach Tunnel Backfilling	0	09-Apr-16		CP50 Platform Available from ML02 North Approach Tunnel Backfilling													
CP Setup	23	16-May-16	11-Jun-16	CP Setup													
CP - Pipe Jacking Method - Break-in, Excavation & Lining Installation	9	12-Jun-16	21-Jun-16	CP - Pipe Jacking Method - Break-in, Excavation & Lining Installation													
North Ventilation Building																	
Design Submission																	
(A11) Submissions to Design Advisory Panel of ArchSD																	
ArchSD's comment	30	10-Jun-14	09-Jul-14	ArchSD's comment													
(I1) DDA for North Vent. Bldgs. GBP & Arch. Submission																	
Designer to Reply RtC + Update Submission	21	28-Jul-14	20-Aug-14	Designer to Reply RtC + Update Submission													
Submit Updated DDA to SO/ ICE/ IPs	0	21-Aug-14		Submit Updated DDA to SO/ ICE/ IPs													
ICE Approval & Issue Check Cert	12	21-Aug-14	03-Sep-14	ICE Approval & Issue Check Cert													
Submit ICE Check Cert to SO	6	04-Sep-14	11-Sep-14	Submit ICE Check Cert to SO													
IPs Review	28	21-Aug-14	17-Sep-14	IPs Review													
IPs No Objection Received	0		17-Sep-14	IPs No Objection Received													
SO's Review	35	21-Aug-14	24-Sep-14	SO's Review													
SO Approval with Condition R received	0		24-Sep-14	SO Approval with Condition R received													

- Planned Bar
- Planned Bar - Critical
- ◆ Planned Milestone
- Progress bar
- ◆ Progress Milestone



Date	Revision	Checked	Approved
12-Feb-14	TMCLKDBJEN.PRG.98507	WYu	SPo
08-Apr-14	TMCLKDBJEN.PRG.98507 Rev.B	SPa	WYu
28-Aug-14	TMCLKDBJEN.PRG.98507 Rev.C	CLa	WYu
10-Jun-15	TMCLKDBJEN.PRG.98507 Rev.F	WYu	

Activity Name	Orig Dur	DWPF Start	DWPF Finish	2015							2016						
				2015							2016						
				Dec	Jan	Feb	Mar	Apr	May	Jun	Jul	Dec	Jan	Feb	Mar	Apr	May
Sub-sea Tunnel - Precast Gallery Fabrication	244	22-Jan-15	21-Nov-15	Sub-sea Tunnel - Precast Gallery Fabrication													
Construction																	
Sub-sea TBM Tunnel - NB ID12.2m - S881																	
NB TBM Change diameter at North Ventilation Shaft	87	30-Dec-15	01-Apr-16	NB TBM Change diameter at North Ventilation Shaft													
NB - Sub-sea TBM Tunnel - Transition with Saturation (Ch6522 to 6500 - 22m)	5	01-Apr-16	06-Apr-16	NB - Sub-sea TBM Tunnel - Transition with Saturation (Ch6522 to 6500 - 22m)													
NB - Sub-sea TBM Tunnel - Transition with Saturation (Ch6500 to 6430 - 70m)	15	06-Apr-16	21-Apr-16	NB - Sub-sea TBM Tunnel - Transition with Saturation (Ch6500 to 6430 - 70m)													
NB - Sub-sea TBM Tunnel - Transition with Saturation (Ch6430 to 6350 - 80m)	17	21-Apr-16	08-May-16	NB - Sub-sea TBM Tunnel - Transition with Saturation (Ch6430 to 6350 - 80m)													
NB - Sub-sea TBM Tunnel - Transition with Saturation (Ch6350 to 6300 - 50m)	10	08-May-16	19-May-16	NB - Sub-sea TBM Tunnel - Transition with Saturation (Ch6350 to 6300 - 50m)													
NB - Sub-sea TBM Tunnel - CDG+Boulder with Saturation (Ch6300 to 6260 - 40m)	5	19-May-16	24-May-16	NB - Sub-sea TBM Tunnel - CDG+Boulder with Saturation (Ch6300 to 6260 - 40m)													
NB - Sub-sea TBM Tunnel - CDG with Saturation (Ch6260 to 6240 - 20m)	2	24-May-16	26-May-16	NB - Sub-sea TBM Tunnel - CDG with Saturation (Ch6260 to 6240 - 20m)													
NB - Sub-sea TBM Tunnel - Transition with Saturation (Ch6240 to 6175 - 65m)	11	26-May-16	06-Jun-16	NB - Sub-sea TBM Tunnel - Transition with Saturation (Ch6240 to 6175 - 65m)													
Sub-sea TBM Tunnel - SB ID12.2m - S882																	
SB - S882 TBM Crossing within NVS Steel bell	7	03-Jan-16	10-Jan-16	SB - S882 TBM Crossing within NVS Steel bell													
SB - Sub-sea TBM Tunnel - Transition with Saturation (Ch6543 to 6521 - 22m)	5	10-Jan-16	15-Jan-16	SB - Sub-sea TBM Tunnel - Transition with Saturation (Ch6543 to 6521 - 22m)													
SB - Sub-sea TBM Tunnel - Transition with Saturation (Ch6521 to 6451 - 70m)	15	15-Jan-16	30-Jan-16	SB - Sub-sea TBM Tunnel - Transition with Saturation (Ch6521 to 6451 - 70m)													
SB - Sub-sea TBM Tunnel - Transition with Saturation (Ch6451 to 6371 - 80m)	17	30-Jan-16	19-Feb-16	SB - Sub-sea TBM Tunnel - Transition with Saturation (Ch6451 to 6371 - 80m)													
SB - Sub-sea TBM Tunnel - Transition with Saturation (Ch6371 to 6321 - 50m)	10	19-Feb-16	29-Feb-16	SB - Sub-sea TBM Tunnel - Transition with Saturation (Ch6371 to 6321 - 50m)													
SB - Sub-sea TBM Tunnel - CDG+Boulder with Saturation (Ch6321 to 6281 - 40m)	5	29-Feb-16	05-Mar-16	SB - Sub-sea TBM Tunnel - CDG+Boulder with Saturation (Ch6321 to 6281 - 40m)													
SB - Sub-sea TBM Tunnel - Steel Bell dismantling & Reconnect for NVS supply	27	05-Mar-16	04-Apr-16	SB - Sub-sea TBM Tunnel - Steel Bell dismantling & Reconnect for NVS supply													
SB - Sub-sea TBM Tunnel - CDG with Saturation (Ch6281 to 6261 - 20m)	2	04-Apr-16	06-Apr-16	SB - Sub-sea TBM Tunnel - CDG with Saturation (Ch6281 to 6261 - 20m)													
SB - Sub-sea TBM Tunnel - Transition with Saturation (Ch6261 to 6196 - 65m)	11	06-Apr-16	17-Apr-16	SB - Sub-sea TBM Tunnel - Transition with Saturation (Ch6261 to 6196 - 65m)													
SB - Sub-sea TBM Tunnel - CDG+Boulder with Saturation (Ch6196 to 6156 - 40m)	5	17-Apr-16	22-Apr-16	SB - Sub-sea TBM Tunnel - CDG+Boulder with Saturation (Ch6196 to 6156 - 40m)													
SB - Sub-sea TBM Tunnel - CDG with Saturation (Ch6156 to 6121 - 35m)	3	22-Apr-16	25-Apr-16	SB - Sub-sea TBM Tunnel - CDG with Saturation (Ch6156 to 6121 - 35m)													
SB - Sub-sea TBM Tunnel - Transition with Saturation (Ch6121 to 6071 - 50m)	9	25-Apr-16	04-May-16	SB - Sub-sea TBM Tunnel - Transition with Saturation (Ch6121 to 6071 - 50m)													
SB - Sub-sea TBM Tunnel - CDG+Boulder with Saturation (Ch6071 to 6031 - 40m)	5	04-May-16	09-May-16	SB - Sub-sea TBM Tunnel - CDG+Boulder with Saturation (Ch6071 to 6031 - 40m)													
SB - Sub-sea TBM Tunnel - CDG with Saturation (Ch6031 to 5851 - 180m)	14	09-May-16	24-May-16	SB - Sub-sea TBM Tunnel - CDG with Saturation (Ch6031 to 5851 - 180m)													
SB - Sub-sea TBM Tunnel - CDG+Boulder with Saturation (Ch5851 to 5831 - 20m)	2	24-May-16	26-May-16	SB - Sub-sea TBM Tunnel - CDG+Boulder with Saturation (Ch5851 to 5831 - 20m)													
SB - Sub-sea TBM Tunnel - Transition with Saturation (Ch5831 to 5761 - 70m)	12	26-May-16	07-Jun-16	SB - Sub-sea TBM Tunnel - Transition with Saturation (Ch5831 to 5761 - 70m)													
Sub-sea TBM Tunnel - NB - Precast Invert Gallery																	
NB - Sub-sea TBM Tunnel - Precast Invert Gallery - Completion to CP48	16	26-May-16	11-Jun-16	NB - Sub-sea TBM Tunnel - Precast Invert Gallery - Completion to CP48													
Sub-sea TBM Tunnel - SB - Precast Invert Gallery																	
SB - ISIG Assembly for Sub-sea TBM Tunnel	7	15-Jan-16	22-Jan-16	SB - ISIG Assembly for Sub-sea TBM Tunnel													
SB - Sub-sea TBM Tunnel - Precast Invert Gallery - Completion to CP48	14	04-Apr-16	18-Apr-16	SB - Sub-sea TBM Tunnel - Precast Invert Gallery - Completion to CP48													
SB - Sub-sea TBM Tunnel - Precast Invert Gallery - Completion to CP47	11	18-Apr-16	29-Apr-16	SB - Sub-sea TBM Tunnel - Precast Invert Gallery - Completion to CP47													
SB - Sub-sea TBM Tunnel - Precast Invert Gallery - Completion to CP46	11	29-Apr-16	10-May-16	SB - Sub-sea TBM Tunnel - Precast Invert Gallery - Completion to CP46													
SB - Sub-sea TBM Tunnel - Precast Invert Gallery - Completion to CP45	8	10-May-16	19-May-16	SB - Sub-sea TBM Tunnel - Precast Invert Gallery - Completion to CP45													
SB - Sub-sea TBM Tunnel - Precast Invert Gallery - Completion to CP44	8	19-May-16	27-May-16	SB - Sub-sea TBM Tunnel - Precast Invert Gallery - Completion to CP44													
SB - Sub-sea TBM Tunnel - Precast Invert Gallery - Completion to CP43	15	27-May-16	11-Jun-16	SB - Sub-sea TBM Tunnel - Precast Invert Gallery - Completion to CP43													
Sub-sea Tunnel Cross Passage & Internal Structure																	
Design Submission																	
(G4) DDA for Cross Passage - Permanent works - incl. Geotechnical Assessment - Sub-sea tunnel																	
Review & Comment by JV	6	01-Dec-14	06-Dec-14	Review & Comment by JV													
Designer prepare DDA	12	08-Dec-14	20-Dec-14	Designer prepare DDA													
Formal Submission of DDA to ICE/ IPs	0		20-Dec-14	Formal Submission of DDA to ICE/ IPs													
Advanced Submission to SO	0		20-Dec-14	Advanced Submission to SO													
IPs/ SO's Advance Comments/ ICE Comments	28	21-Dec-14	17-Jan-15	IPs/ SO's Advance Comments/ ICE Comments													
Comments Received	0		17-Jan-15	Comments Received													
Designer to Reply RtC + Update Submission	21	19-Jan-15	11-Feb-15	Designer to Reply RtC + Update Submission													
Submit Updated DDA to SO/ ICE/ IPs	0	12-Feb-15		Submit Updated DDA to SO/ ICE/ IPs													
ICE Approval & Issue Check Cert	12	12-Feb-15	04-Mar-15	ICE Approval & Issue Check Cert													
Submit ICE Check Cert to SO	6	05-Mar-15	11-Mar-15	Submit ICE Check Cert to SO													
IPs Review	28	12-Feb-15	11-Mar-15	IPs Review													
IPs No Objection Received	0		11-Mar-15	IPs No Objection Received													
SO's Review	35	12-Feb-15	18-Mar-15	SO's Review													
SO Approval with Condition Received	0		18-Mar-15	SO Approval with Condition Received													
(H1) DDA Temp.works for Cross Passages - Sub-sea tunnel (Type D)																	
Designer to Reply RtC + Update Submission	21	11-Nov-15	04-Dec-15	Designer to Reply RtC + Update Submission													
Submit Updated DDA to SO/ ICE/ IPs	0	05-Dec-15		Submit Updated DDA to SO/ ICE/ IPs													
ICE Approval & Issue Check Cert	12	05-Dec-15	18-Dec-15	ICE Approval & Issue Check Cert													
Submit ICE Check Cert to SO	6	19-Dec-15	28-Dec-15	Submit ICE Check Cert to SO													
IPs Review	28	05-Dec-15	01-Jan-16	IPs Review													
IPs No Objection Received	0		01-Jan-16	IPs No Objection Received													
SO's Review	35	05-Dec-15	08-Jan-16	SO's Review													

- Planned Bar
- Planned Bar - Critical
- Progress bar
- ◆ Planned Milestone
- ◆ Progress Milestone



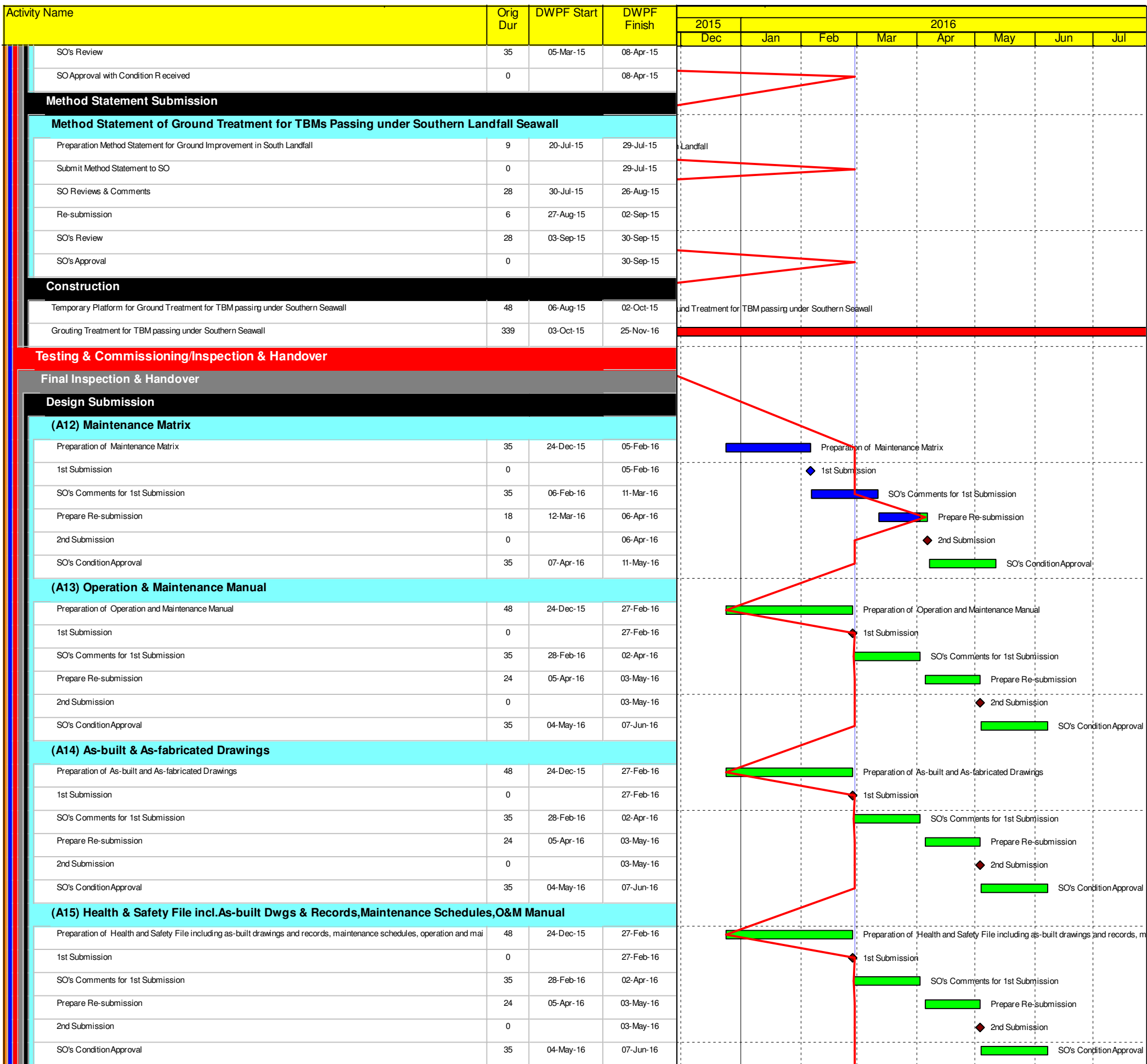
Date	Revision	Checked	Approved
12-Feb-14	TMCLKDBJEN.PRG.98507	WYu	SPo
08-Apr-14	TMCLKDBJEN.PRG.98507 Rev.B	SPa	WYu
28-Aug-14	TMCLKDBJEN.PRG.98507 Rev.C	CLa	WYu
10-Jun-15	TMCLKDBJEN.PRG.98507 Rev.F	WYu	

Activity Name	Orig Dur	DWPF Start	DWPF Finish	2015							2016						
				2015							2016						
				Dec	Jan	Feb	Mar	Apr	May	Jun	Jul	Dec	Jan	Feb	Mar	Apr	May
2nd Submission to GEO	0		17-Sep-15														
2nd GEO Review	28	18-Sep-15	15-Oct-15														
Method Statement Submission																	
Method Statement of Construction Methodology of C&C Tunnels																	
Preparation Method Statement for C&C Tunnels	25	28-Mar-15	30-Apr-15														
Submit Method Statement to SO	0		30-Apr-15														
SO Reviews & Comments	28	01-May-15	28-May-15														
Re-submission	18	29-May-15	18-Jun-15														
SO's Review	28	19-Jun-15	16-Jul-15														
Construction																	
South C&C Tunnel - Diaphragm Wall	120	03-Oct-15	02-Mar-16														
C&C Tunnel - 1st 85m - Excavation by ramp	23	03-Mar-16	01-Apr-16														
C&C Tunnel - 1st 85m - Excavation by vertical mean	11	02-Apr-16	15-Apr-16														
C&C Tunnel - 1st 85m - Tunnel Structure	95	16-Apr-16	09-Aug-16														
C&C Tunnel - 2nd 85m - Excavation by ramp	17	30-Apr-16	21-May-16														
C&C Tunnel - 2nd 85m - Excavation by vertical mean	18	23-May-16	13-Jun-16														
C&C Tunnel - 3rd 85m - Excavation by ramp	18	23-May-16	13-Jun-16														
South Retrieval Shaft																	
Design Submission																	
(B5) AIP Construction Risk Assessment - Impact on South Landfall																	
SO's Condition Approval	35	27-Jan-15	02-Mar-15														
(B5) DDA Construction Risk Assessment - Impact on South Landfall																	
Prepare Re-submission	10	23-May-15	04-Jun-15														
2nd Submission	0		04-Jun-15														
ICE Cert. Issue	6	05-Jun-15	11-Jun-15														
SO's Condition Approval	35	05-Jun-15	09-Jul-15														
(F1) AIP Temp. works - Retrieval Shaft on Southern Landfall inc. break-out																	
SO Review (35 Days)	35	17-Dec-14	20-Jan-15														
SO Approval with Condition R received	0		20-Jan-15														
(F1) DDA Temp. works - Retrieval Shaft on Southern Landfall inc. break-out																	
Preparation of DDA Temp Support for Sth Retrieval Shaft	18	01-Apr-15	25-Apr-15														
Review & Comment by JV	18	27-Apr-15	18-May-15														
Designer prepare DDA	6	19-May-15	26-May-15														
Formal Submission of DDA to ICE/ IPs	0		26-May-15														
Advanced Submission to SO	0		26-May-15														
IPs/ SO's Advance Comments/ ICE Comments	28	27-May-15	23-Jun-15														
Comments Received	0		23-Jun-15														
Designer to Reply RtC + Update Submission	21	24-Jun-15	18-Jul-15														
Submit Updated DDA to SO/ ICE/ IPs	0	20-Jul-15															
ICE Approval & Issue Check Cert	12	20-Jul-15	01-Aug-15														
Submit ICE Check Cert to SO	6	03-Aug-15	08-Aug-15														
IPs Review	28	20-Jul-15	16-Aug-15														
IPs No Objection Received	0		16-Aug-15														
SO's Review	35	20-Jul-15	23-Aug-15														
SO Approval with Condition R received	0		24-Aug-15														
ETWB TCW No 15/2005 - ELS Design for TBM Retrieval Shaft at Southern Landfall																	
1st Submission to GEO - ETWB TCW No 15/2005 - ELS Design for TBM Retrieval Shaft at Southern Landfall	0		24-Aug-15														
1st Submission GEO Review	28	24-Aug-15	20-Sep-15														
Received GEO Comment	0		21-Sep-15														
Prepare Response to Comment	12	21-Sep-15	06-Oct-15														
2nd Submission to GEO	0		06-Oct-15														
2nd GEO Review	28	07-Oct-15	03-Nov-15														
(F2) AIP Temp works of Ground Treatment for TBMs passing under Southern Landfall																	
Review & Comment by JV	18	23-Sep-14	15-Oct-14														
Designer Prepare AIP	12	16-Oct-14	29-Oct-14														
Formal Submission of AIP to ICE/IPs	0		29-Oct-14														
Advanced Submission of AIP to SO	0		29-Oct-14														
Review & Comment by SO/ ICE/ IPs	28	30-Oct-14	26-Nov-14														
Advance Comments from SO/ Comments from ICE/ IPs Received	0		26-Nov-14														
Designer to Prepare RtC & Updated AIP	18	27-Nov-14	17-Dec-14														
Submission of AIP to SO/ ICE together with Reply To Comment (RTC)	0		17-Dec-14														
Reply to IPs Comments in RTC	0		17-Dec-14														
ICE Approval & Issue of Design Check Cert.	18	18-Dec-14	10-Jan-15														

- Planned Bar
- Planned Bar - Critical
- ◆ Planned Milestone
- Progress bar
- ◆ Progress Milestone



Date	Revision	Checked	Approved
12-Feb-14	TMCLKDBJENPRG98507	WYu	SPo
08-Apr-14	TMCLKDBJENPRG98507 Rev.B	SPa	WYu
28-Aug-14	TMCLKDBJENPRG98507 Rev.C	CLa	WYu
10-Jun-15	TMCLKDBJENPRG98507 Rev.F	WYu	



- Planned Bar
- Planned Bar - Critical
- ◆ Planned Milestone
- Progress bar
- ◆ Progress Milestone



Date	Revision	Checked	Approved
12-Feb-14	TMCLKDBJGEN.PRG.98507	WYu	SPo
08-Apr-14	TMCLKDBJGEN.PRG.98507 Rev.B	SPa	WYu
28-Aug-14	TMCLKDBJGEN.PRG.98507 Rev.C	CLa	WYu
10-Jun-15	TMCLKDBJGEN.PRG.98507 Rev.F	WYu	