

Activity Name	Orig Dur	DWPF Start	DWPF Finish	2016							
				Jan	Feb	Mar	Apr	May	Jun	Jul	Aug
TMCLK - Northern Connection Sub-Sea Tunnel Section											
Contract Dates											
Commencement and Completion Dates											
KD06 - Completion of Section 1B - Portion N8	0		03-Dec-15	Completion of Section 1B - Portion N8							
Site Possession Date											
Portions: X1,(N10,11,13 & 14) - Sth Landfall	0	06-Aug-15									
General Submissions											
Environmental											
Environmental Permit Submissions											
Supplementary WMP of C&C Tunnel at Sth.Landfall											
Supplementary WMP of C&C Tunnel at Sth.Landfall	0		28-Jun-14								
Sediment Quality Report/Dumping Permit											
Southern Landfall											
Southern landfall - Commencement of Shaft & C&C Tunnel Dwall	0	03-Oct-15		Shaft & C&C Tunnel Dwall							
Southern Landfall - Commencement of Retrieval Shaft Excavation	0	30-Jan-16		◆ Southern Landfall - Commencement of Retrieval Shaft Excavation							
Southern Landfall - Retrieval Shaft Excavation to tentative MD layer	0	15-Apr-16		◆ Southern Landfall - Retrieval Shaft Excavation to tentative MD layer							
Southern Landfall - Commencement of C&C Tunnel Excavation	0	03-Mar-16		◆ Southern Landfall - Commencement of C&C Tunnel Excavation							
Southern Landfall - Commencement of C&C Tunnel to tentative MD layer	0	02-Apr-16		◆ Southern Landfall - Commencement of C&C Tunnel to tentative MD layer							
Sediment Sampling & Testing Plan (SSTP) - if required											
Complete SSTP and Obtain EPD's approval	24	17-Feb-15	23-Mar-15								
Sediment Quality Report (SQR) - if required											
Advance Ground Investigation works for Sediment sampling	24	24-Mar-15	24-Apr-15								
Sediment Sample Testing & Report preparation	120	25-Apr-15	16-Sep-15								
Dumping Permit for Load Dumping (Loading Permit) - if required											
Finalize the application document and submit to EPD - for Dwall	24	20-Jan-15	16-Feb-15								
Notify the results and issue Loading Permit for Local & Cross Boundary Crossing - for Dwall	24	17-Feb-15	23-Mar-15								
Notify the results and issue Loading Permit for Local & Cross Boundary Crossing - for Excavation	24	14-Dec-15	13-Jan-16	◆ Notify the results and issue Loading Permit for Local & Cross Boundary Crossing - for Excavation							
Dumping at Sea Ordinance (DASO)											
Approval for Dumping at Sea Ordinance	24	14-Dec-15	13-Jan-16	◆ Approval for Dumping at Sea Ordinance							
Cross Boundary Dumping Permit											
Apply for Cross Boundary Dumping Permit	24	14-Jan-16	17-Feb-16	◆ Apply for Cross Boundary Dumping Permit							
Cross Boundary Dumping Approval	24	18-Feb-16	16-Mar-16	◆ Cross Boundary Dumping Approval							
Issuance of PRC Permit for Cat L, Mp	0		16-Mar-16	◆ Issuance of PRC Permit for Cat L, Mp							
General Design Submissions											
(G6) IFA for Tunnel GBP											
SO's Review	35	29-Apr-14	02-Jun-14								
SO Approval with Condition Received	0		03-Jun-14								
PAYMENT MILESTONE											
Design and Design Checking of the Works											
MS 2.20.3 Approve DDA for Cross Passages by the Supervising Officer by the Supervising Officer	0		31-Mar-15								
MS 2.32 Approve DDA for Approach Ramp Structures to Cut-and-cover Tunnels by the Supervising Officer	0		30-Apr-15								
MS 2.44 Approve DDA for South Ventilation Building by the Supervising Officer	0		30-Jun-15								
MS 2.48 Approve DDA for North Ventilation Building by the Supervising Officer	0		31-Jan-15								
MS 2.51 Submit DDA for Facilities Provision for TCSS	0		29-Nov-14								
MS 2.52 Approve DDA for Facilities Provision for TCSS by the Supervising Officer	0		28-Feb-15								
MS 2.56 Approve DDA for Drainage, Sewerage, Waterworks and Utilities at Southern Landfall by the Supervising Officer	0		30-Apr-15								
MS 2.60 Approve DDA for Drainage, Sewerage, Waterworks and Utilities at Northern Landfall by the Supervising Officer	0		31-Dec-14								
MS 2.69 Submit draft Operation and Maintenance Manual for all Tunnels and Cross Passages	0		29-Feb-16	◆ MS 2.69 Submit draft Operation and Maintenance Manual for all Tunnels and Cross Passages							
MS 2.71 Submit draft Operation and Maintenance Manual for all works except Tunnels and Cross Passages	0		29-Feb-16	◆ MS 2.71 Submit draft Operation and Maintenance Manual for all works except Tunnels and Cross Passages							
Tunnel Boring Machine (TBM) and Back-up Equipment for TBM Tunnel											
MS 3.1.9 Delivery to Site of remaining parts of TBM and back-up equipment for Northbound Tunnel	0		31-Dec-15	◆ MS 3.1.9 Delivery to Site of remaining parts of TBM and back-up equipment for Northbound Tunnel							
MS 3.1.25 Complete the whole of the activities under this Cost Centre Part to the satisfaction of the Supervising Office	0		31-Dec-15	◆ MS 3.1.25 Complete the whole of the activities under this Cost Centre Part to the satisfaction of the Supervising Office							
TBM Tunnel											
MS 3.3.4 Complete walls of retrieval shaft	0		30-Jan-16	◆ MS 3.3.4 Complete walls of retrieval shaft							
MS 3.3.7 Completion of excavation, support and permanent lining for 1% of the total length (measured on plan) of the No	0		31-Dec-15	◆ MS 3.3.7 Completion of excavation, support and permanent lining for 1% of the total length (measured on plan) of the No							
MS 3.3.8 Completion of excavation, support and permanent lining for 2% of the total length (measured on plan) of the No	0		31-Dec-15	◆ MS 3.3.8 Completion of excavation, support and permanent lining for 2% of the total length (measured on plan) of the No							
MS 3.3.9 Completion of excavation, support and permanent lining for 3% of the total length (measured on plan) of the No	0		31-Dec-15	◆ MS 3.3.9 Completion of excavation, support and permanent lining for 3% of the total length (measured on plan) of the No							
MS 3.3.10 Completion of excavation, support and permanent lining for 4% of the total length (measured on plan) of the No	0		30-Jan-16	◆ MS 3.3.10 Completion of excavation, support and permanent lining for 4% of the total length (measured on plan) of the No							
MS 3.3.11 Completion of excavation, support and permanent lining for 5% of the total length (measured on plan) of the No	0		30-Jan-16	◆ MS 3.3.11 Completion of excavation, support and permanent lining for 5% of the total length (measured on plan) of the No							
MS 3.3.12 Completion of excavation, support and permanent lining for 6% of the total length (measured on plan) of the No	0		30-Jan-16	◆ MS 3.3.12 Completion of excavation, support and permanent lining for 6% of the total length (measured on plan) of the No							
MS 3.3.13 Completion of excavation, support and permanent lining for 7% of the total length (measured on plan) of the No	0		30-Jan-16	◆ MS 3.3.13 Completion of excavation, support and permanent lining for 7% of the total length (measured on plan) of the No							
MS 3.3.14 Completion of excavation, support and permanent lining for 8% of the total length (measured on plan) of the No	0		29-Feb-16	◆ MS 3.3.14 Completion of excavation, support and permanent lining for 8% of the total length (measured on plan) of the No							
MS 3.3.15 Completion of excavation, support and permanent lining for 9% of the total length (measured on plan) of the No	0		29-Feb-16	◆ MS 3.3.15 Completion of excavation, support and permanent lining for 9% of the total length (measured on plan) of the No							
MS 3.3.16 Completion of excavation, support and permanent lining for 10% of the total length (measured on plan) of the No	0		29-Feb-16	◆ MS 3.3.16 Completion of excavation, support and permanent lining for 10% of the total length (measured on plan) of the No							

■ Planned Bar
■ Planned Bar - Critical
◆ Planned Milestone
■ Progress bar
◆ Progress Milestone



Date	Revision	Checked	Approved
12-Feb-14	TMCLKDBJGEN-PRG-98507	WYu	SP
08-Apr-14	TMCLKDBJGEN-PRG-98507 Rev.B	SP	WYu
28-Aug-14	TMCLKDBJGEN-PRG-98507 Rev.C	CLa	WYu
10-Jun-15	TMCLKDBJGEN-PRG-98507 Rev.F	WYu	

Activity Name	Orig Dur	DWP Start	DWP Finish	2016											
				Jan	Feb	Mar	Apr	May	Jun	Jul	Aug				
MS 3.3.17 Completion of excavation, support and permanent lining for 11% of the total length (measured on plan) of the N	0		29-Feb-16			◆ MS 3.3.17									
MS 3.3.18 Completion of excavation, support and permanent lining for 12% of the total length (measured on plan) of the N	0		31-Mar-16			◆ MS 3.3.18									
MS 3.3.19 Completion of excavation, support and permanent lining for 13% of the total length (measured on plan) of the N	0		31-Mar-16			◆ MS 3.3.19									
MS 3.3.20 Completion of excavation, support and permanent lining for 14% of the total length (measured on plan) of the N	0		31-Mar-16			◆ MS 3.3.20									
MS 3.3.21 Completion of excavation, support and permanent lining for 15% of the total length (measured on plan) of the N	0		31-Mar-16			◆ MS 3.3.21									
MS 3.3.22 Completion of excavation, support and permanent lining for 16% of the total length (measured on plan) of the N	0		31-Mar-16			◆ MS 3.3.22									
MS 3.3.23 Completion of excavation, support and permanent lining for 17% of the total length (measured on plan) of the N	0		30-Apr-16				◆ MS 3.3.23								
MS 3.3.24 Completion of excavation, support and permanent lining for 18% of the total length (measured on plan) of the N	0		30-Apr-16				◆ MS 3.3.24								
MS 3.3.25 Completion of excavation, support and permanent lining for 19% of the total length (measured on plan) of the N	0		30-Apr-16				◆ MS 3.3.25								
MS 3.3.26 Completion of excavation, support and permanent lining for 20% of the total length (measured on plan) of the N	0		30-Apr-16				◆ MS 3.3.26								
MS 3.3.27 Completion of excavation, support and permanent lining for 21% of the total length (measured on plan) of the N	0		30-Apr-16				◆ MS 3.3.27								
MS 3.3.28 Completion of excavation, support and permanent lining for 22% of the total length (measured on plan) of the N	0		30-Apr-16				◆ MS 3.3.28								
MS 3.3.29 Completion of excavation, support and permanent lining for 23% of the total length (measured on plan) of the N	0		30-Apr-16				◆ MS 3.3.29								
MS 3.3.30 Completion of excavation, support and permanent lining for 24% of the total length (measured on plan) of the N	0		31-May-16					◆ MS 3.3.30							
MS 3.3.31 Completion of excavation, support and permanent lining for 25% of the total length (measured on plan) of the N	0		31-May-16					◆ MS 3.3.31							
MS 3.3.32 Completion of excavation, support and permanent lining for 27.5% of the total length (measured on plan) of the N	0		31-May-16					◆ MS 3.3.32							
MS 3.3.33 Completion of excavation, support and permanent lining for 30% of the total length (measured on plan) of the N	0		31-May-16					◆ MS 3.3.33							
MS 3.3.62 Completion of excavation, support and permanent lining for 1% of the total length (measured on plan) of the So	0		30-Nov-15			◆ MS 3.3.62									
MS 3.3.63 Completion of excavation, support and permanent lining for 2% of the total length (measured on plan) of the So	0		30-Nov-15			◆ MS 3.3.63									
MS 3.3.64 Completion of excavation, support and permanent lining for 3% of the total length (measured on plan) of the So	0		30-Nov-15			◆ MS 3.3.64									
MS 3.3.65 Completion of excavation, support and permanent lining for 4% of the total length (measured on plan) of the So	0		31-Dec-15			◆ MS 3.3.65									
MS 3.3.66 Completion of excavation, support and permanent lining for 5% of the total length (measured on plan) of the So	0		31-Dec-15			◆ MS 3.3.66									
MS 3.3.67 Completion of excavation, support and permanent lining for 6% of the total length (measured on plan) of the So	0		31-Dec-15			◆ MS 3.3.67									
MS 3.3.68 Completion of excavation, support and permanent lining for 7% of the total length (measured on plan) of the So	0		30-Jan-16			◆ MS 3.3.68									
MS 3.3.69 Completion of excavation, support and permanent lining for 8% of the total length (measured on plan) of the So	0		30-Jan-16			◆ MS 3.3.69									
MS 3.3.70 Completion of excavation, support and permanent lining for 9% of the total length (measured on plan) of the So	0		30-Jan-16			◆ MS 3.3.70									
MS 3.3.71 Completion of excavation, support and permanent lining for 10% of the total length (measured on plan) of the S	0		29-Feb-16			◆ MS 3.3.71									
MS 3.3.72 Completion of excavation, support and permanent lining for 11% of the total length (measured on plan) of the S	0		29-Feb-16			◆ MS 3.3.72									
MS 3.3.73 Completion of excavation, support and permanent lining for 12% of the total length (measured on plan) of the S	0		29-Feb-16			◆ MS 3.3.73									
MS 3.3.74 Completion of excavation, support and permanent lining for 13% of the total length (measured on plan) of the S	0		29-Feb-16			◆ MS 3.3.74									
MS 3.3.75 Completion of excavation, support and permanent lining for 14% of the total length (measured on plan) of the S	0		29-Feb-16			◆ MS 3.3.75									
MS 3.3.76 Completion of excavation, support and permanent lining for 15% of the total length (measured on plan) of the S	0		31-Mar-16			◆ MS 3.3.76									
MS 3.3.77 Completion of excavation, support and permanent lining for 16% of the total length (measured on plan) of the S	0		31-Mar-16			◆ MS 3.3.77									
MS 3.3.78 Completion of excavation, support and permanent lining for 17% of the total length (measured on plan) of the S	0		31-Mar-16			◆ MS 3.3.78									
MS 3.3.79 Completion of excavation, support and permanent lining for 18% of the total length (measured on plan) of the S	0		31-Mar-16			◆ MS 3.3.79									
MS 3.3.80 Completion of excavation, support and permanent lining for 19% of the total length (measured on plan) of the S	0		31-Mar-16			◆ MS 3.3.80									
MS 3.3.81 Completion of excavation, support and permanent lining for 20% of the total length (measured on plan) of the S	0		31-Mar-16			◆ MS 3.3.81									
MS 3.3.82 Completion of excavation, support and permanent lining for 21% of the total length (measured on plan) of the S	0		31-Mar-16			◆ MS 3.3.82									
MS 3.3.83 Completion of excavation, support and permanent lining for 22% of the total length (measured on plan) of the S	0		30-Apr-16				◆ MS 3.3.83								
MS 3.3.84 Completion of excavation, support and permanent lining for 23% of the total length (measured on plan) of the S	0		30-Apr-16				◆ MS 3.3.84								
MS 3.3.85 Completion of excavation, support and permanent lining for 24% of the total length (measured on plan) of the S	0		30-Apr-16				◆ MS 3.3.85								
MS 3.3.86 Completion of excavation, support and permanent lining for 25% of the total length (measured on plan) of the S	0		30-Apr-16				◆ MS 3.3.86								
MS 3.3.87 Completion of excavation, support and permanent lining for 27.5% of the total length (measured on plan) of the S	0		30-Apr-16				◆ MS 3.3.87								
MS 3.3.88 Completion of excavation, support and permanent lining for 30% of the total length (measured on plan) of the S	0		31-May-16				◆ MS 3.3.88								
MS 3.3.89 Completion of excavation, support and permanent lining for 32.5% of the total length (measured on plan) of the S	0		31-May-16				◆ MS 3.3.89								
MS 3.3.90 Completion of excavation, support and permanent lining for 35% of the total length (measured on plan) of the S	0		31-May-16				◆ MS 3.3.90								
Cut-and-cover Tunnels at Southern Landfalls															
MS 4.1.1 Complete 10% of total length (measured on plan) of temporary retaining walls for excavation of Cut-and-cover tu	0		31-Oct-15			◆ MS 4.1.1									
MS 4.1.2 Complete 20% of total length (measured on plan) of temporary retaining walls for excavation of Cut-and-cover tu	0		31-Oct-15			◆ MS 4.1.2									
MS 4.1.3 Complete 30% of total length (measured on plan) of temporary retaining walls for excavation of Cut-and-cover tu	0		30-Nov-15			◆ MS 4.1.3									
MS 4.1.4 Complete 40% of total length (measured on plan) of temporary retaining walls for excavation of Cut-and-cover tu	0		30-Nov-15			◆ MS 4.1.4									
MS 4.1.5 Complete 50% of total length (measured on plan) of temporary retaining walls for excavation of Cut-and-cover tu	0		31-Dec-15			◆ MS 4.1.5									
MS 4.1.6 Complete 60% of total length (measured on plan) of temporary retaining walls for excavation of Cut-and-cover tu	0		31-Dec-15			◆ MS 4.1.6									
MS 4.1.7 Complete 70% of total length (measured on plan) of temporary retaining walls for excavation of Cut-and-cover tu	0		30-Jan-16				◆ MS 4.1.7								
MS 4.1.8 Complete 80% of total length (measured on plan) of temporary retaining walls for excavation of Cut-and-cover tu	0		30-Jan-16				◆ MS 4.1.8								
MS 4.1.9 Complete 90% of total length (measured on plan) of temporary retaining walls for excavation of Cut-and-cover tu	0		29-Feb-16				◆ MS 4.1.9								
MS 4.1.10 Complete 100% of total length (measured on plan) of temporary retaining walls for excavation of Cut-and-cover	0		31-Mar-16				◆ MS 4.1.10								
MS 4.1.26 Complete excavation for 50% of total length (measured on plan) of all Cross Passages	0		31-Dec-15			◆ MS 4.1.26									

- Planned Bar
- Planned Bar - Critical
- Planned Milestone
- Progress bar
- Progress Milestone

TMCLK - Northern Connection Sub-Sea Tunnel Section
Detailed Works Programme (Rev. F)
Three Months Rolling Programme
Progress as of 27-Mar-16



Date	Revision	Checked	Approved
12-Feb-14	TMCLKDBJGEN-PRG-08507	WYu	SP
08-Apr-14	TMCLKDBJGEN-PRG-08507 Rev.B	SP	WYu
28-Aug-14	TMCLKDBJGEN-PRG-08507 Rev.C	CL	WYu
10-Jun-15	TMCLKDBJGEN-PRG-08507 Rev.F	WYu	

Activity Name	Orig Dur	DWPF Start	DWPF Finish	2016											
				Jan	Feb	Mar	Apr	May	Jun	Jul	Aug				
MS 4.1.27 Complete excavation for 100% of total length (measured on plan) of all Cross Passages	0		31-Mar-16				◆ MS 4.1.27 Complete excavation for 100% of total length (measured on plan)								
Approach Ramp Structures to Cut-and-cover Tunnel at Southern Landfall															
MS 5.1.1 Complete 20% of excavation for approach ramp structures	0		31-Mar-16				◆ MS 5.1.1 Complete 20% of excavation for approach ramp structures								
MS 5.1.2 Complete 40% of excavation for approach ramp structures	0		31-Mar-16				◆ MS 5.1.2 Complete 40% of excavation for approach ramp structures								
MS 5.1.3 Complete 60% of excavation for approach ramp structures	0		31-Mar-16				◆ MS 5.1.3 Complete 60% of excavation for approach ramp structures								
MS 5.1.4 Complete 80% of excavation for approach ramp structures	0		30-Apr-16				◆ MS 5.1.4 Complete 80% of excavation for approach ramp								
MS 5.1.5 Complete 100% of excavation for approach ramp structures	0		30-Apr-16				◆ MS 5.1.5 Complete 100% of excavation for approach ramp								
MS 5.1.6 Complete retaining wall foundation for 10% of the total length (measured on plan) of approach ramp structure	0		31-Oct-15				◆ MS 5.1.6 Complete retaining wall foundation for 10% of the total length (measured on plan) of approach ramp structure								
MS 5.1.7 Complete retaining wall foundation for 20% of the total length (measured on plan) of approach ramp structure	0		30-Nov-15				◆ MS 5.1.7 Complete retaining wall foundation for 20% of the total length (measured on plan) of approach ramp structure								
MS 5.1.8 Complete retaining wall foundation for 30% of the total length (measured on plan) of approach ramp structure	0		30-Nov-15				◆ MS 5.1.8 Complete retaining wall foundation for 30% of the total length (measured on plan) of approach ramp structure								
MS 5.1.9 Complete retaining wall foundation for 40% of the total length (measured on plan) of approach ramp structure	0		31-Dec-15				◆ MS 5.1.9 Complete retaining wall foundation for 40% of the total length (measured on plan) of approach ramp structure								
MS 5.1.10 Complete retaining wall foundation for 50% of the total length (measured on plan) of approach ramp structure	0		31-Dec-15				◆ MS 5.1.10 Complete retaining wall foundation for 50% of the total length (measured on plan) of approach ramp structure								
MS 5.1.11 Complete retaining wall foundation for 60% of the total length (measured on plan) of approach ramp structure	0		30-Jan-16				◆ MS 5.1.11 Complete retaining wall foundation for 60% of the total length (measured on plan) of approach								
MS 5.1.12 Complete retaining wall foundation for 70% of the total length (measured on plan) of approach ramp structure	0		30-Jan-16				◆ MS 5.1.12 Complete retaining wall foundation for 70% of the total length (measured on plan) of approach								
MS 5.1.13 Complete retaining wall foundation for 80% of the total length (measured on plan) of approach ramp structure	0		29-Feb-16				◆ MS 5.1.13 Complete retaining wall foundation for 80% of the total length (measured on plan)								
MS 5.1.14 Complete retaining wall foundation for 90% of the total length (measured on plan) of approach ramp structure	0		29-Feb-16				◆ MS 5.1.14 Complete retaining wall foundation for 90% of the total length (measured on plan)								
MS 5.1.15 Complete retaining wall foundation for 100% of the total length (measured on plan) of approach ramp structure	0		31-Mar-16				◆ MS 5.1.15 Complete retaining wall foundation for 100% of the total length								
South Ventilation Buildings															
MS 7.1.3 Complete 100% of foundation for the ventilation building	0		30-Apr-16				◆ MS 7.1.3 Complete 100% of foundation for the ventilation								
North Ventilation Buildings															
MS 7.2.1 Complete 100% of cofferdam for excavation	0		31-May-16				◆ MS 7.2.1 Complete 100% of cofferdam for								
MS 7.2.2 Complete 100% of excavation to the formation level	0		31-May-16				◆ MS 7.2.2 Complete 100% of excavation to								
Construction															
Northern Landfall															
North Reclamation (Phase 1)															
Construction															
Zone D1															
Reclamation															
Portion N8 Handover	0		03-Dec-15				◆ Portion N8 Handover								
Box Culvert Extension															
Construction															
Ch000-010 Culvert Outfall															
Installation of temporary bulk head	26	10-Aug-15	08-Sep-15												
CH000-150 Land Section															
ELS & Structure															
Pile A43/A41 CJ to Pile A41/A39 CJ															
ELS															
Excavation to FEL	5	14-May-15	19-May-15				◆ Excavation to FEL								
Box Culvert Structure															
Pile cap construction	10	27-May-15	06-Jun-15												
Base slab construction including kicker	6	19-Jun-15	26-Jun-15												
Removal of strut S1	4	27-Jun-15	02-Jul-15												
System formworks delivery & setup	14	03-Jul-15	18-Jul-15												
Walls & top slab construction	6	20-Jul-15	25-Jul-15												
Removal of strut S2 & Backfilling up to required level	6	03-Aug-15	08-Aug-15												
Pile A45/A43 CJ to Pile A43/A41 CJ															
ELS															
Excavation to FEL	5	20-May-15	26-May-15				◆ Excavation to FEL								
Box Culvert Structure															
Pile cap construction	10	08-Jun-15	18-Jun-15												
Base slab construction including kicker	6	27-Jun-15	04-Jul-15												
Removal of strut S1	4	06-Jul-15	09-Jul-15												
Walls & top slab construction	6	27-Jul-15	01-Aug-15												
Removal of strut S2 & Backfilling up to required level	6	10-Aug-15	15-Aug-15												
Pile A47/A45 CJ to Pile A45/A43 CJ															
ELS															
Excavation to 0.5m below strut S1	5	14-May-15	19-May-15				◆ Excavation to 0.5m below strut S1								
Installation of strut S1	5	20-May-15	26-May-15				◆ Installation of strut S1								
Excavation to FEL	5	27-May-15	01-Jun-15				◆ Excavation to FEL								
Box Culvert Structure															
Pile cap construction	10	19-Jun-15	02-Jul-15												
Base slab construction including kicker	6	06-Jul-15	11-Jul-15												
Removal of strut S1	4	13-Jul-15	16-Jul-15												
Walls & top slab construction	6	03-Aug-15	08-Aug-15												
Removal of strut S2 & Backfilling up to required level	6	17-Aug-15	22-Aug-15												
Pile A49/A47 CJ to Pile A47/A45 CJ															

- Planned Bar
- Planned Bar - Critical
- ◆ Planned Milestone
- Progress bar
- ◆ Progress Milestone



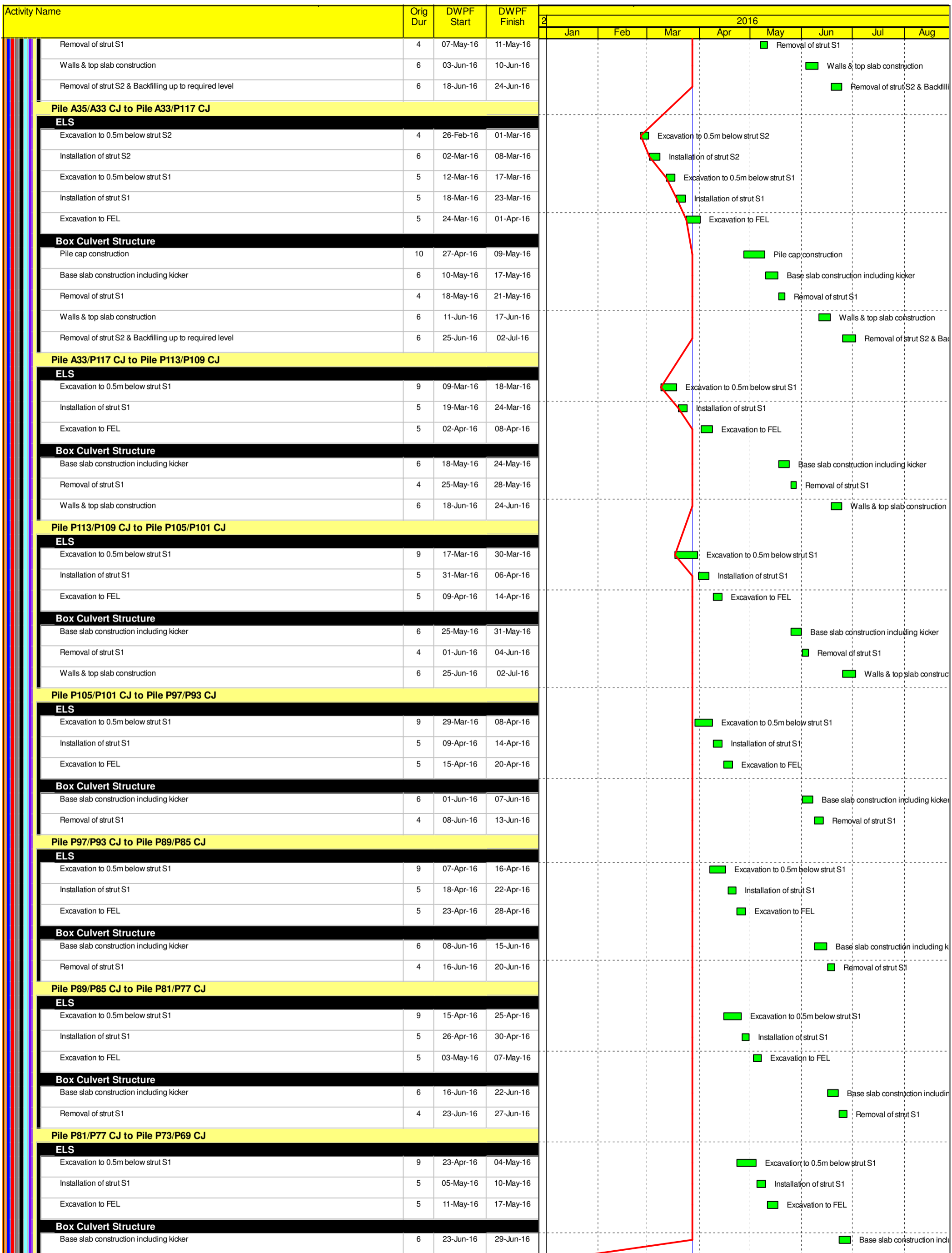
Date	Revision	Checked	Approved
12-Feb-14	TMCLKDBJGEN-PRG-08507	WYu	SRe
08-Apr-14	TMCLKDBJGEN-PRG-08507 Rev.B	SRe	WYu
28-Aug-14	TMCLKDBJGEN-PRG-08507 Rev.C	CLa	WYu
10-Jun-15	TMCLKDBJGEN-PRG-08507 Rev.F	WYu	

Activity Name	Orig Dur	DWPF Start	DWPF Finish	2016								
				Jan	Feb	Mar	Apr	May	Jun	Jul	Aug	
ELS												
Excavation to 0.5m below strut S1	5	20-May-15	26-May-15									
Installation of strut S1	5	27-May-15	01-Jun-15									
Excavation to FEL	5	02-Jun-15	06-Jun-15									
Box Culvert Structure												
Pile cap construction	10	03-Jul-15	14-Jul-15									
Base slab construction including kicker	6	15-Jul-15	21-Jul-15									
Removal of strut S1	4	22-Jul-15	25-Jul-15									
Walls & top slab construction	6	10-Aug-15	15-Aug-15									
Pile A52/A49 CJ to Pile A49/A47 CJ												
ELS												
Excavation to 0.5m below strut S1	5	27-May-15	01-Jun-15									
Installation of strut S1	5	02-Jun-15	06-Jun-15									
Excavation to FEL	5	08-Jun-15	12-Jun-15									
Box Culvert Structure												
Pile cap construction	10	22-Jul-15	01-Aug-15									
Base slab construction including kicker	6	03-Aug-15	08-Aug-15									
Removal of strut S1	4	10-Aug-15	13-Aug-15									
Walls & top slab construction	6	17-Aug-15	22-Aug-15									
Ch150-250 Marine Section												
ELS & Structure												
Dewatering well installation Ch180-250	12	19-Jun-15	04-Jul-15									
Dewatering well installation Ch100-180	12	06-Jul-15	18-Jul-15									
1st Pumping test	18	20-Jul-15	08-Aug-15									
Toe grouting Ch100-250	95	07-Sep-15	31-Dec-15									
2nd Pumping test Ch100-250	29	02-Jan-16	04-Feb-16									
Pile A41/A39 CJ to Pile A39/A37 CJ												
ELS												
Excavation to 0.5m below strut S2	4	05-Feb-16	16-Feb-16									
Installation of strut S2	6	17-Feb-16	23-Feb-16									
Excavation to 0.5m below strut S1	5	24-Feb-16	29-Feb-16									
Installation of strut S1	5	01-Mar-16	05-Mar-16									
Excavation to FEL	5	07-Mar-16	11-Mar-16									
Box Culvert Structure												
Pile cap construction	10	18-Mar-16	01-Apr-16									
Base slab construction including kicker	6	15-Apr-16	21-Apr-16									
Removal of strut S1	4	22-Apr-16	26-Apr-16									
Sliding formworks 1st assembly	18	27-Apr-16	19-May-16									
Walls & top slab construction	6	20-May-16	26-May-16									
Removal of strut S2 & Backfilling up to required level	6	03-Jun-16	10-Jun-16									
Pile A39/A37 CJ to Pile A37/A35 CJ												
ELS												
Excavation to 0.5m below strut S2	4	17-Feb-16	20-Feb-16									
Installation of strut S2	6	22-Feb-16	27-Feb-16									
Excavation to 0.5m below strut S1	5	01-Mar-16	05-Mar-16									
Installation of strut S1	5	07-Mar-16	11-Mar-16									
Excavation to FEL	5	12-Mar-16	17-Mar-16									
Box Culvert Structure												
Pile cap construction	10	02-Apr-16	14-Apr-16									
Base slab construction including kicker	6	22-Apr-16	28-Apr-16									
Removal of strut S1	4	29-Apr-16	04-May-16									
Walls & top slab construction	6	27-May-16	02-Jun-16									
Removal of strut S2 & Backfilling up to required level	6	11-Jun-16	17-Jun-16									
Pile A37/A35 CJ to Pile A35/A33 CJ												
ELS												
Excavation to 0.5m below strut S2	4	22-Feb-16	25-Feb-16									
Installation of strut S2	6	26-Feb-16	03-Mar-16									
Excavation to 0.5m below strut S1	5	07-Mar-16	11-Mar-16									
Installation of strut S1	5	12-Mar-16	17-Mar-16									
Excavation to FEL	5	18-Mar-16	23-Mar-16									
Box Culvert Structure												
Pile cap construction	10	15-Apr-16	26-Apr-16									
Base slab construction including kicker	6	29-Apr-16	06-May-16									

- Planned Bar
- Planned Bar - Critical
- ◆ Planned Milestone
- Progress bar
- ◆ Progress Milestone



Date	Revision	Checked	Approved
12-Feb-14	TMCLKDBJGEN-PRG098507	WYu	SPe
08-Apr-14	TMCLKDBJGEN-PRG098507 Rev.B	SPe	WYu
28-Aug-14	TMCLKDBJGEN-PRG098507 Rev.C	CLa	WYu
10-Jun-15	TMCLKDBJGEN-PRG098507 Rev.F	WYu	



- Planned Bar
- Planned Bar - Critical
- Planned Milestone
- Progress bar
- Progress Milestone

TMCLK - Northern Connection Sub-Sea Tunnel Section
 Detailed Works Programme (Rev. F)
 Three Months Rolling Programme
 Progress as of 27-Mar-16



Date	Revision	Checked	Approved
12-Feb-14	TMCLKDBJGEN-PRG-98507	WYu	SZe
08-Apr-14	TMCLKDBJGEN-PRG-98507 Rev.B	SZe	WYu
28-Aug-14	TMCLKDBJGEN-PRG-98507 Rev.C	CLa	WYu
10-Jun-15	TMCLKDBJGEN-PRG-98507 Rev.F	WYu	

Dragages - Bouygues Joint Venture 寶嘉 - 布依格聯營

Activity Name	Orig Dur	DWPF Start	DWPF Finish	2016								
				Jan	Feb	Mar	Apr	May	Jun	Jul	Aug	
Ch250-380 Marine Section												
Installation of Dewatering & Observation Well Ch 250-380	23	04-Nov-15	30-Nov-15									
1st Pumping Test & Analysis	17	01-Dec-15	19-Dec-15									
Toe Grouting	106	21-Dec-15	07-May-16									
2nd Pumping test & Analysis	25	08-Apr-16	07-May-16									
Remaining toe grouting Ch250-380	51	09-May-16	09-Jul-16									
Ch380-399 Connection Section												
Foundation & ELS												
Stage 2												
Preboring for sheet piling (west row north 50%) - Rig 2	24	24-Dec-15	23-Jan-16									
Rig 3 Demobilization	0	25-Jan-16										
North Launching Shaft												
Design Submission												
(C1) DDA for North Approach Ramp Permanent Structure												
IPs Review	28	23-Oct-14	19-Nov-14									
IP's No Objection Received	0		19-Nov-14									
SO's Review	35	23-Oct-14	26-Nov-14									
SO Approval with Condition Received	0		26-Nov-14									
North Ventilation Shaft												
Construction												
North Ventilation Shaft Excavation & Base Slab												
A - Vent Shaft Bottom Base Slab for TBM Re-launching	48	08-Oct-15	04-Dec-15									
A - Tympanum construction for TBM break-in/out	36	15-Oct-15	27-Nov-15									
North Ventilation Shaft - Shaft Flooding for S880 Arrival	10	16-Dec-15	30-Dec-15									
North Ventilation Shaft Structure												
NVS - ML03 Tunnel Structure	47	24-May-16	20-Jul-16									
NVS - ML02 Tunnel Structure	44	05-Apr-16	27-May-16									
TMCLK VO-008 - Construction of Viaduct Foundations at Portion N6A												
Viaduct Pile Cap												
Construction												
Pier G1c												
Pile Cap G1c - Preparation for ELS	6	24-Oct-14	30-Oct-14									
Pile Cap G1c - Removal of Existing ground slab	6	31-Oct-14	06-Nov-14									
Pile Cap G1c - Excavation & ELS Installation	12	07-Nov-14	20-Nov-14									
Pile Cap G1c - Blinding Concrete	3	21-Nov-14	24-Nov-14									
Pile Cap G1c - Rebar & Concreting	18	25-Nov-14	15-Dec-14									
Pile Cap G1c - Backfilling & Temp Reinstatement	6	16-Dec-14	22-Dec-14									
Pier H1c												
Pile Cap H1c - Preparation for ELS	6	02-Nov-15	07-Nov-15									
Pile Cap H1c - Removal of Existing ground slab	6	09-Nov-15	14-Nov-15									
Pile Cap H1c - Excavation & ELS Installation	12	16-Nov-15	28-Nov-15									
Pile Cap H1c - Backfilling & Temp Reinstatement	6	24-Dec-15	02-Jan-16									
North Surface works for TBM Tunnelling												
Design Submission												
(D1) IFA for Temp. Access to Portion N8A, N8B & N8C incl. Temp. Lighting												
SO Review (35 Days)	35	02-May-14	05-Jun-14									
SO Approval with Condition Received	0		05-Jun-14									
North Approach TBM Tunnelling & Cross Passage												
Construction												
Northern Landfall Surface Setup for TBM operation												
Gantry Removal at North Ventilation Shaft	24	02-Jan-16	29-Jan-16									
North Approach TBM Tunnel - SB ID12.40m - S882												
SB - North TBM Tunnel - Transition with Saturation (Ch6661 to 6621 - 40m)	8	21-Dec-15	29-Dec-15									
SB - North TBM Tunnel - Transition with Saturation (Ch6621 to 6581 - 40m)	5	29-Dec-15	03-Jan-16									
North Approach Tunnel Internal Structure - NB												
NB - North TBM Tunnel - Invert Backfilling (Ch6870 to 6688 - 182m) Stage 1	77	06-Dec-15	24-Feb-16									
NB - North TBM Tunnel - Invert Backfilling (Ch6688 to 6560 - 128m) Stage 1	54	01-Apr-16	26-May-16									
NB - North TBM Tunnel - Invert Precast Gallery Installation (Ch7205 to 6870 - 335m)	96	24-Sep-15	29-Dec-15									
NB - North TBM Tunnel - Invert Precast Gallery Installation (Ch6870 to 6688 - 182m)	77	29-Dec-15	18-Mar-16									
NB - North TBM Tunnel - Invert Precast Gallery Installation (Ch6688 to 6560 - 128m)	54	13-Apr-16	07-Jun-16									
NB - North TBM Tunnel - Invert Backfilling (Ch7025 to 6975 - 50m) Stage 2	14	08-Dec-15	22-Dec-15									
NB - North TBM Tunnel - Invert Backfilling (Ch6975 to 6925 - 50m) Stage 2	14	22-Dec-15	05-Jan-16									
NB - North TBM Tunnel - Invert Backfilling (Ch6925 to 6870 - 55m) Stage 2	14	05-Jan-16	19-Jan-16									
NB - North TBM Tunnel - Invert Backfilling (Ch6870 to 6688 - 182m) Stage 2	77	19-Jan-16	11-Apr-16									
NB - North TBM Tunnel - Invert Backfilling (Ch6688 to 6560 - 128m) Stage 2	54	28-Apr-16	23-Jun-16									
CP55 - Excavation & Lining completion	0		14-Jun-16									

- Planned Bar
- Planned Bar - Critical
- ◆ Planned Milestone
- Progress bar
- ◆ Progress Milestone



Date	Revision	Checked	Approved
12-Feb-14	TMCLKDBJGEN-PRG08507	WYu	SPe
08-Apr-14	TMCLKDBJGEN-PRG08507 Rev.B	SPe	WYu
28-Aug-14	TMCLKDBJGEN-PRG08507 Rev.C	CLa	WYu
10-Jun-15	TMCLKDBJGEN-PRG08507 Rev.F	WYu	

Activity Name	Orig Dur	DWPF Start	DWPF Finish	2016									
				Jan	Feb	Mar	Apr	May	Jun	Jul	Aug		
CP53 - Excavation & Lining completion	0		16-Mar-16			◆ CP53 - Excavation & Lining completion							
CP52 - Excavation & Lining completion	0		22-Apr-16				◆ CP52 - Excavation & Lining completion						
North Approach Tunnel Internal Structure - SB													
SB - North TBM Tunnel - Invert Backfilling (Ch6925 to 6870 - 55m)	12	20-Dec-15	01-Jan-16				SB - North TBM Tunnel - Invert Backfilling (Ch6925 to 6870 - 55m)						
SB - North TBM Tunnel - Invert Backfilling (Ch6870 to 6688 - 182m)	77	01-Jan-16	21-Mar-16				SB - North TBM Tunnel - Invert Backfilling (Ch6870 to 6688 - 182m)						
SB - North TBM Tunnel - Invert Backfilling (Ch6688 to 6560 - 128m)	54	21-Mar-16	18-May-16				SB - North TBM Tunnel - Invert Backfilling (Ch6688 to 6560 - 128m)						
North Approach Cross Passage													
CP55 - Traditional Method													
CP Setup	6	21-Mar-16	31-Mar-16				CP Setup						
1st Segment Opening	7	31-Mar-16	09-Apr-16				1st Segment Opening						
CP Excavation	14	09-Apr-16	26-Apr-16				CP Excavation						
CP Lining	14	26-Apr-16	13-May-16				CP Lining						
2nd Segment Opening	7	13-May-16	23-May-16				2nd Segment Opening						
CP Finishing & Demobilization	18	23-May-16	14-Jun-16				CP Finishing & Demobilization						
CP54 - Traditional Method													
CP Setup	6	14-Jun-16	21-Jun-16				CP Setup						
1st Segment Opening	7	21-Jun-16	29-Jun-16				1st Segment Opening						
CP Excavation	14	29-Jun-16	16-Jul-16				CP Excavation						
CP53 - Pipe Jacking Method													
CP53 Platform Available from ML03 North Approach Tunnel Backfilling	0	05-Jan-16					◆ CP53 Platform Available from ML03 North Approach Tunnel Backfilling						
CP - Pipe Jacking TBM - Delivery, Assembly & Setup	23	05-Jan-16	01-Feb-16				CP - Pipe Jacking TBM - Delivery, Assembly & Setup						
CP - Pipe Jacking Method - Break-in, Excavation & Lining Installation	9	01-Feb-16	10-Feb-16				CP - Pipe Jacking Method - Break-in, Excavation & Lining Installation						
CP - Pipe Jacking Method - Break out & Pipe Jacking TBM Removal	10	10-Feb-16	20-Feb-16				CP - Pipe Jacking Method - Break out & Pipe Jacking TBM Removal						
CP - Waterproofing, Finishing	21	20-Feb-16	16-Mar-16				CP - Waterproofing, Finishing						
CP52 - Pipe Jacking Method													
CP52 Platform Available from ML03 North Approach Tunnel Backfilling	0	30-Jan-16					◆ CP52 Platform Available from ML03 North Approach Tunnel Backfilling						
CP52 Platform Available from ML02 North Approach Tunnel Backfilling	0	12-Jan-16					◆ CP52 Platform Available from ML02 North Approach Tunnel Backfilling						
CP - Pipe Jacking TBM - Delivery, Assembly & Setup	23	01-Feb-16	05-Mar-16				CP - Pipe Jacking TBM - Delivery, Assembly & Setup						
CP - Pipe Jacking Method - Break-in, Excavation & Lining Installation	9	05-Mar-16	14-Mar-16				CP - Pipe Jacking Method - Break-in, Excavation & Lining Installation						
CP - Pipe Jacking Method - Break out & Pipe Jacking TBM Removal	10	14-Mar-16	24-Mar-16				CP - Pipe Jacking Method - Break out & Pipe Jacking TBM Removal						
CP Finishing & Demobilization	21	24-Mar-16	22-Apr-16				CP Finishing & Demobilization						
CP51 - Traditional Method													
CP51 Platform Available from ML03 North Approach Tunnel Backfilling	0	31-Mar-16					◆ CP51 Platform Available from ML03 North Approach Tunnel Backfilling						
CP51 Platform Available from ML02 North Approach Tunnel Backfilling	0	10-Mar-16					◆ CP51 Platform Available from ML02 North Approach Tunnel Backfilling						
CP Setup	6	31-Aug-16	07-Sep-16				CP Setup						
CP50 - Pipe Jacking Method													
CP50 Platform Available from ML03 North Approach Tunnel Backfilling	0	16-May-16					◆ CP50 Platform Available from ML03 North Approach Tunnel Backfilling						
CP50 Platform Available from ML02 North Approach Tunnel Backfilling	0	09-Apr-16					◆ CP50 Platform Available from ML02 North Approach Tunnel Backfilling						
CP Setup	23	16-May-16	11-Jun-16				CP Setup						
CP - Pipe Jacking Method - Break-in, Excavation & Lining Installation	9	12-Jun-16	21-Jun-16				CP - Pipe Jacking Method - Break-in, Excavation & Lining Installation						
CP - Pipe Jacking Method - Break out & Pipe Jacking TBM Removal	10	22-Jun-16	01-Jul-16				CP - Pipe Jacking Method - Break out & Pipe Jacking TBM Removal						
North Ventilation Building													
Design Submission													
(A11) Submissions to Design Advisory Panel of ArchSD													
ArchSD's comment	30	10-Jun-14	09-Jul-14										
(I1) DDA for North Vent. Bldgs. GBP & Arch. Submission													
IPs Review	28	21-Aug-14	17-Sep-14										
IP's No Objection Received	0		17-Sep-14										
SO's Review	35	21-Aug-14	24-Sep-14										
SO Approval with Condition Received	0		24-Sep-14										
(I1) DDA for North & South Vent. Bldg. ABWF works													
Preparation of DDA North & South ABWF	18	25-Sep-14	17-Oct-14										
Review & Comment by JV	24	18-Oct-14	14-Nov-14										
Designer prepare DDA	15	15-Nov-14	02-Dec-14										
Formal Submission of DDA to ICE/ IPs	0		02-Dec-14										
Advanced Submission to SO	0		02-Dec-14										
IPs/ SO's Advance Comments/ ICE Comments	28	03-Dec-14	30-Dec-14										
(I2) DDA for North Vent. Bldgs. Structural Design incl. Vent. Connections													
ICE Approval & Issue Check Cert	12	24-Dec-14	09-Jan-15										
Submit ICE Check Cert to SO	6	10-Jan-15	16-Jan-15										
IPs Review	28	24-Dec-14	20-Jan-15										
IP's No Objection Received	0		20-Jan-15										
SO's Review	35	24-Dec-14	27-Jan-15										

- Planned Bar
- Planned Bar - Critical
- ◆ Planned Milestone
- Progress bar
- ◆ Progress Milestone



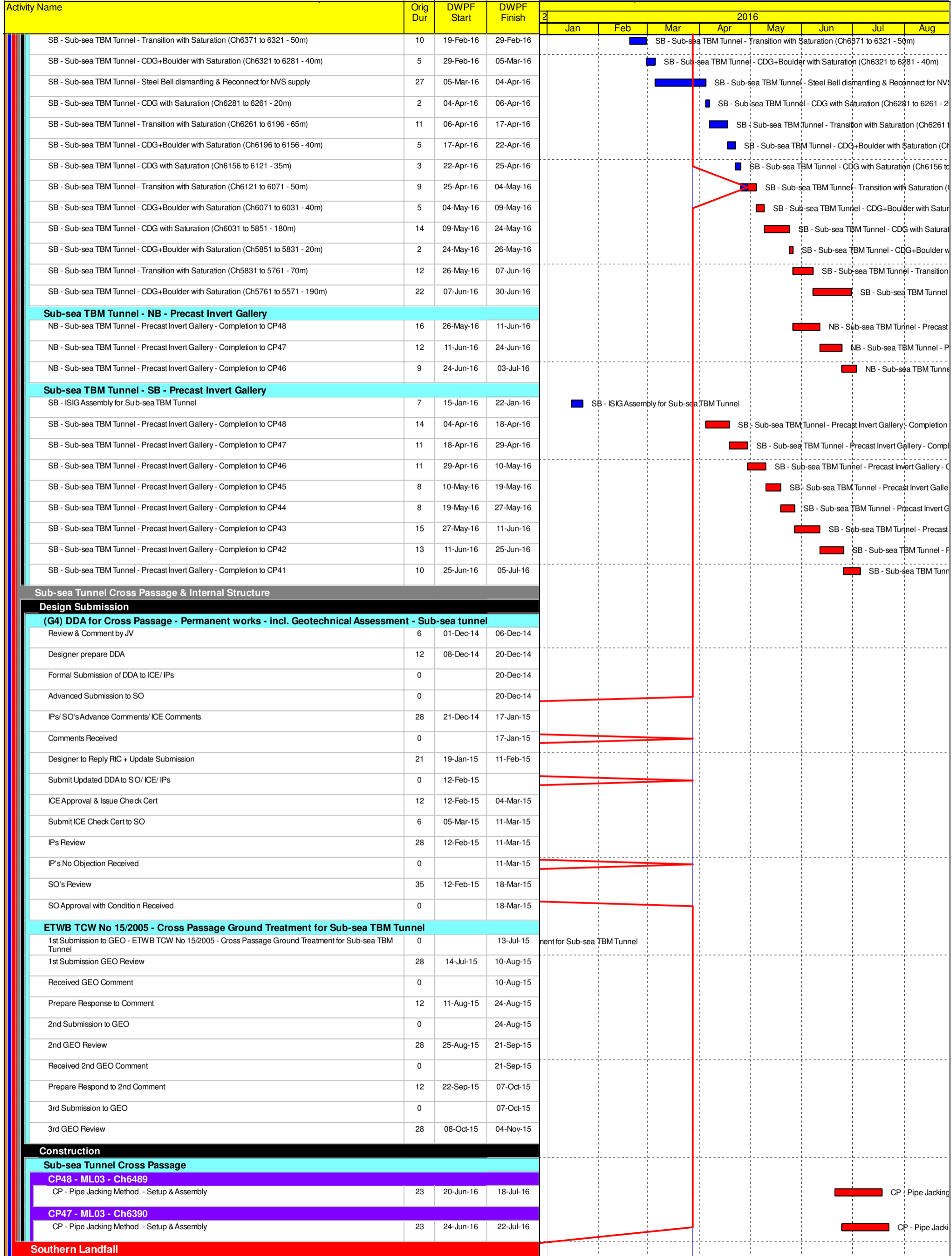
Date	Revision	Checked	Approved
12-Feb-14	TMCLKDBJGEN-PRG-98507	WYu	SPe
08-Apr-14	TMCLKDBJGEN-PRG-98507 Rev.B	SPe	WYu
28-Aug-14	TMCLKDBJGEN-PRG-98507 Rev.C	CLa	WYu
10-Jun-15	TMCLKDBJGEN-PRG-98507 Rev.F	WYu	

Activity Name	Orig Dur	DWPF Start	DWPF Finish	2016									
				Jan	Feb	Mar	Apr	May	Jun	Jul	Aug		
SO Approval with Condition Received	0		27-Jan-15										
(I3) DDA for North & South Vent. Bldgs. Service and E&M Provision													
IPs/ SO's Advance Comments/ ICE Comments	28	20-Nov-14	17-Dec-14										
Comments Received	0		17-Dec-14										
Designer to Reply RTC + Update Submission	21	18-Dec-14	14-Jan-15										
Submit Updated DDA to SO/ ICE/ IPs	0	15-Jan-15											
ICE Approval & Issue Check Cert	12	15-Jan-15	28-Jan-15										
Submit ICE Check Cert to SO	6	29-Jan-15	04-Feb-15										
IPs Review	28	15-Jan-15	11-Feb-15										
IP's No Objection Received	0		11-Feb-15										
SO's Review	35	15-Jan-15	18-Feb-15										
SO Approval with Condition Received	0		18-Feb-15										
(C3) DDA for North Vent Shaft & Duct Permanent Structure													
Designer to Reply RTC + Update Submission	21	29-Oct-14	21-Nov-14										
Submit Updated DDA to SO/ ICE/ IPs	0	22-Nov-14											
ICE Approval & Issue Check Cert	12	22-Nov-14	05-Dec-14										
Submit ICE Check Cert to SO	6	06-Dec-14	12-Dec-14										
IPs Review	28	22-Nov-14	19-Dec-14										
IP's No Objection Received	0		19-Dec-14										
SO's Review	35	22-Nov-14	26-Dec-14										
SO Approval with Condition Received	0		27-Dec-14										
North Surface Roadworks, Utility & Drainage works													
Design Submission													
(A20) DDA for Traffic Sign, Road Marking, Street Furnitures, Sign Gantry & etc													
SO's Review	35	11-Dec-14	14-Jan-15										
SO Approval with Condition Received	0		14-Jan-15										
(C2) DDA for Sewerage, Drainage, Waterworks & Utility works for North Landfall													
IPs Review	28	08-Nov-14	05-Dec-14										
IP's No Objection Received	0		05-Dec-14										
SO's Review	35	08-Nov-14	12-Dec-14										
SO Approval with Condition Received	0		12-Dec-14										
Sub-sea Tunnel													
Sub-sea TBM Tunnelling													
Major Procurement													
Precast Segment ID12.40 - Production for Sub-sea TBM Tunnel													
ID12.40 TBM Segment Ring Fabrication - 12 rings per day	300	22-Nov-14	19-Dec-15										
Design Submission													
(B6) Risk Assessment of Submarine Cable - Tunnelling Works													
CLP Review (4 weeks)	28	17-Mar-15	13-Apr-15										
CLP Comment Received	0		13-Apr-15										
SO's Condition Approval	35	12-Mar-15	15-Apr-15										
(G1) DDA for TBM Tunnel Lining Structural Design - Sub-sea tunnel													
Sub-sea TBM Tunnel Segment - Fabrication	265	06-Oct-14	29-Aug-15										
(G3) DDA for TBM Tunnel Internal Structures (Sub-sea)													
Sub-sea Tunnel - Precast Gallery Fabrication	244	22-Jan-15	21-Nov-15										
Construction													
Sub-sea TBM Tunnel - NB ID12.2m - S881													
NB TBM Change diameter at North Ventilation Shaft	87	30-Dec-15	01-Apr-16										
NB - Sub-sea TBM Tunnel - Transition with Saturation (Ch6522 to 6500 - 22m)	5	01-Apr-16	06-Apr-16										
NB - Sub-sea TBM Tunnel - Transition with Saturation (Ch6500 to 6430 - 70m)	15	06-Apr-16	21-Apr-16										
NB - Sub-sea TBM Tunnel - Transition with Saturation (Ch6430 to 6350 - 80m)	17	21-Apr-16	08-May-16										
NB - Sub-sea TBM Tunnel - Transition with Saturation (Ch6350 to 6300 - 50m)	10	08-May-16	19-May-16										
NB - Sub-sea TBM Tunnel - CDG+Boulder with Saturation (Ch6300 to 6260 - 40m)	5	19-May-16	24-May-16										
NB - Sub-sea TBM Tunnel - CDG with Saturation (Ch6260 to 6240 - 20m)	2	24-May-16	26-May-16										
NB - Sub-sea TBM Tunnel - Transition with Saturation (Ch6240 to 6175 - 65m)	11	26-May-16	06-Jun-16										
NB - Sub-sea TBM Tunnel - CDG+Boulder with Saturation (Ch6175 to 6135 - 40m)	5	06-Jun-16	11-Jun-16										
NB - Sub-sea TBM Tunnel - CDG with Saturation (Ch6135 to 6100 - 35m)	3	11-Jun-16	14-Jun-16										
NB - Sub-sea TBM Tunnel - Transition with Saturation (Ch6100 to 6050 - 50m)	9	14-Jun-16	24-Jun-16										
NB - Sub-sea TBM Tunnel - CDG+Boulder with Saturation (Ch6050 to 6010 - 40m)	5	24-Jun-16	29-Jun-16										
Sub-sea TBM Tunnel - SB ID12.2m - S882													
SB - S882 TBM Crossing within NVS Steel bell	7	03-Jan-16	10-Jan-16										
SB - Sub-sea TBM Tunnel - Transition with Saturation (Ch6543 to 6521 - 22m)	5	10-Jan-16	15-Jan-16										
SB - Sub-sea TBM Tunnel - Transition with Saturation (Ch6521 to 6451 - 70m)	15	15-Jan-16	30-Jan-16										
SB - Sub-sea TBM Tunnel - Transition with Saturation (Ch6451 to 6371 - 80m)	17	30-Jan-16	19-Feb-16										

■ Planned Bar
■ Planned Bar - Critical
■ Progress bar
◆ Planned Milestone
◆ Progress Milestone



Date	Revision	Checked	Approved
12-Feb-14	TMCLKDBJGEN-PRG-98507	WYu	SP
08-Apr-14	TMCLKDBJGEN-PRG-98507 Rev.B	SP	WYu
28-Aug-14	TMCLKDBJGEN-PRG-98507 Rev.C	CLa	WYu
10-Jun-15	TMCLKDBJGEN-PRG-98507 Rev.F	WYu	



	Planned Bar
	Planned Bar - Critical
	Planned Milestone
	Progress bar
	Progress Milestone



Date	Revision	Checked	Approved
12-Feb-14	TMCLKDBJGEN-PRG098507	WYu	SP
08-Apr-14	TMCLKDBJGEN-PRG098507 Rev.B	SP	WYu
28-Aug-14	TMCLKDBJGEN-PRG098507 Rev.C	CLa	WYu
10-Jun-15	TMCLKDBJGEN-PRG098507 Rev.F	WYu	

Activity Name	Orig Dur	DWPF Start	DWPF Finish	2016								
				Jan	Feb	Mar	Apr	May	Jun	Jul	Aug	
South Cut & Cover Tunnel												
Design Submission												
(E2) DDA for South C&C Box & Approach Ramp												
Review & Comment by JV	18	09-Dec-14	31-Dec-14									
Designer prepare DDA	10	02-Jan-15	13-Jan-15									
Formal Submission of DDA to ICE/IPs	0		13-Jan-15									
Advanced Submission to SO	0		13-Jan-15									
IPs/SO's Advance Comments/ ICE Comments	28	14-Jan-15	10-Feb-15									
Comments Received	0		10-Feb-15									
Designer to Reply RTC + Update Submission	21	11-Feb-15	13-Mar-15									
Submit Updated DDA to SO/ICE/IPs	0	14-Mar-15										
ICE Approval & Issue Check Cert	18	14-Mar-15	08-Apr-15									
IPs Review	28	14-Mar-15	10-Apr-15									
SO's Review	35	14-Mar-15	17-Apr-15									
Method Statement Submission												
Method Statement of Construction Methodology of C&C Tunnels												
Preparation Method Statement for C&C Tunnels	25	28-Mar-15	30-Apr-15									
Submit Method Statement to SO	0		30-Apr-15									
SO Reviews & Comments	28	01-May-15	28-May-15									
Re-submission	18	29-May-15	18-Jun-15									
SO's Review	28	19-Jun-15	16-Jul-15									
Construction												
South C&C Tunnel - Diaphragm Wall	120	03-Oct-15	02-Mar-16									
C&C Tunnel - 1st 85m - Excavation by ramp	23	03-Mar-16	01-Apr-16									
C&C Tunnel - 1st 85m - Excavation by vertical mean	11	02-Apr-16	15-Apr-16									
C&C Tunnel - 1st 85m - Tunnel Structure	95	16-Apr-16	09-Aug-16									
C&C Tunnel - 2nd 85m - Excavation by ramp	17	30-Apr-16	21-May-16									
C&C Tunnel - 2nd 85m - Excavation by vertical mean	18	23-May-16	13-Jun-16									
C&C Tunnel - 2nd 85m - Tunnel Structure	83	14-Jun-16	20-Sep-16									
C&C Tunnel - 3rd 85m - Excavation by ramp	18	23-May-16	13-Jun-16									
C&C Tunnel - 3rd 85m - Excavation by vertical mean	25	14-Jun-16	13-Jul-16									
South Retrieval Shaft												
Design Submission												
(F4) Gantry Crane Support/Foundations in Southern Landfall												
Preparation of IFA Gantry Crane / Foundation	18	27-Jul-15	15-Aug-15									
Review & Comment by JV	18	17-Aug-15	05-Sep-15									
Designer prepare IFA	10	07-Sep-15	17-Sep-15									
Formal Submission of IFA to ICE/IPs	0		17-Sep-15									
Advanced Submission to SO	0		17-Sep-15									
IPs/SO's Advance Comments/ ICE Comments	28	18-Sep-15	15-Oct-15									
Method Statement Submission												
Method Statement of Construction Methodology of Retrieval Shaft												
Preparation Method Statement for Retrieval Shaft	25	24-Aug-15	21-Sep-15									
Submit Method Statement to SO	0		21-Sep-15									
SO Reviews & Comments	28	22-Sep-15	19-Oct-15									
Re-submission	18	20-Oct-15	10-Nov-15									
SO's Review	28	11-Nov-15	08-Dec-15									
Construction												
South Landfall GI Works/DW Setting Up	48	06-Aug-15	02-Oct-15									
South Retrieval Shaft - Diaphragm Wall	98	03-Oct-15	29-Jan-16									
Retrieval Shaft - Excavation - Soft by ramp	3	30-Jan-16	02-Feb-16									
Retrieval Shaft - Excavation - Soft by vertical mean (Fill material)	52	03-Feb-16	14-Apr-16									
Retrieval Shaft - Excavation - Soft (other than Fill)	140	15-Apr-16	30-Sep-16									
South Approach Ramp												
Construction												
Approach Ramp (CH1580-1850) - Pipe Pile/Sheet Piles Wall	126	03-Oct-15	09-Mar-16									
Approach Ramp (CH1580-1850) - Tension Piles	103	03-Oct-15	04-Feb-16									
Approach Ramp (CH1580-1850) - Pile Test	24	05-Feb-16	10-Mar-16									
South Ventilation Building												
Design Submission												
(I1) DDA for South Vent. Bldg. GBP & Arch. Submission												
ICE Approval & Issue Check Cert	18	22-Dec-14	14-Jan-15									
Submit ICE Check Cert to SO	6	15-Jan-15	21-Jan-15									
IPs Review	28	22-Dec-14	18-Jan-15									

- Planned Bar
- Planned Bar - Critical
- ◆ Planned Milestone
- Progress bar
- ◆ Progress Milestone



Date	Revision	Checked	Approved
12-Feb-14	TMCLKDBJGEN-PRG-98507	WYu	SP
08-Apr-14	TMCLKDBJGEN-PRG-98507 Rev.B	SP	WYu
28-Aug-14	TMCLKDBJGEN-PRG-98507 Rev.C	CLa	WYu
10-Jun-15	TMCLKDBJGEN-PRG-98507 Rev.F	WYu	

Activity Name	Orig Dur	DWP Start	DWP Finish	2016											
				Jan	Feb	Mar	Apr	May	Jun	Jul	Aug				
IP's No Objection Received	0		18-Jan-15												
SO's Review	35	22-Dec-14	25-Jan-15												
SO Approval with Condition Received	0		26-Jan-15												
(I2) DDA for South Vent.Bldg. Foundation Design															
Review & Comment by JV	18	27-Apr-15	18-May-15												
Designer prepare DDA	10	19-May-15	30-May-15												
Formal Submission of DDA to ICE/ IPs	0		30-May-15												
Advanced Submission to SO	0		30-May-15												
IPs/ SO's Advance Comments/ ICE Comments	28	31-May-15	27-Jun-15												
Comments Received	0		27-Jun-15												
Designer to Reply RTC + Update Submission	21	29-Jun-15	23-Jul-15												
Submit Updated DDA to SO/ ICE/ IPs	0	24-Jul-15													
ICE Approval & Issue Check Cert	18	24-Jul-15	13-Aug-15												
IPs Review	28	24-Jul-15	20-Aug-15												
SO's Review	35	24-Jul-15	27-Aug-15												
(I2) DDA for South Vent.Bldg. Structural Design incl.Vent.Connections															
Review & Comment by JV	18	18-Feb-15	17-Mar-15												
Designer prepare DDA	10	18-Mar-15	28-Mar-15												
Formal Submission of DDA to ICE/ IPs	0		28-Mar-15												
Advanced Submission to SO	0		28-Mar-15												
IPs/ SO's Advance Comments/ ICE Comments	28	29-Mar-15	25-Apr-15												
Comments Received	0		25-Apr-15												
Designer to Reply RTC + Update Submission	21	27-Apr-15	21-May-15												
Submit Updated DDA to SO/ ICE/ IPs	0	22-May-15													
ICE Approval & Issue Check Cert	18	22-May-15	12-Jun-15												
IPs Review	28	22-May-15	18-Jun-15												
SO's Review	35	22-May-15	25-Jun-15												
(J1) DDA Temp.works for Construction of Sth.Vent.Bldg.															
Designer to Reply RTC + Update Submission	21	24-Aug-15	16-Sep-15												
Submit Updated DDA to SO/ ICE/ IPs	0	17-Sep-15													
ICE Approval & Issue Check Cert	12	17-Sep-15	02-Oct-15												
Submit ICE Check Cert to SO	6	03-Oct-15	09-Oct-15												
IPs Review	28	17-Sep-15	14-Oct-15												
IP's No Objection Received	0		14-Oct-15												
SO's Review	35	17-Sep-15	21-Oct-15												
SO Approval with Condition Received	0		22-Oct-15												
Construction															
Mobilization & Setting Up Piling Rigs	64	06-Aug-15	22-Oct-15												
S - Piling (Socket H-piles)	132	23-Oct-15	08-Apr-16												
S - Pile Test	24	09-Apr-16	07-May-16												
S - Sheet Piling	48	23-Oct-15	17-Dec-15												
S - Excavation	100	09-May-16	05-Sep-16												
South Surface Roadworks, Utility & Drainage works															
Design Submission															
(E1) AIP - Southern Landfall Seawall Modification															
SO Review (35 Days)	35	03-Mar-17	06-Apr-17												
SO Approval with Condition Received	0		06-Apr-17												
(E1) DDA - Southern Landfall Seawall Modification															
Preparation of DDA Modification of Seawall at Sth Landfall	18	07-Apr-17	02-May-17												
Review & Comment by JV	18	04-May-17	24-May-17												
Designer prepare DDA	10	25-May-17	06-Jun-17												
Formal Submission of DDA to ICE/ IPs	0		06-Jun-17												
Advanced Submission to SO	0		06-Jun-17												
IPs/ SO's Advance Comments/ ICE Comments	28	07-Jun-17	04-Jul-17												
Comments Received	0		04-Jul-17												
Designer to Reply RTC + Update Submission	21	05-Jul-17	28-Jul-17												
(E3) DDA for Sewerage, Drainage, Waterworks & Utility works for South Landfall															
Designer to Reply RTC + Update Submission	21	02-Feb-15	04-Mar-15												
Submit Updated DDA to SO/ ICE/ IPs	0	05-Mar-15													
ICE Approval & Issue Check Cert	12	05-Mar-15	18-Mar-15												
Submit ICE Check Cert to SO	6	19-Mar-15	25-Mar-15												

- Planned Bar
- Planned Bar - Critical
- ◆ Planned Milestone
- Progress bar
- ◆ Progress Milestone



Date	Revision	Checked	Approved
12-Feb-14	TMCLKDBJGEN-PRG08507	WYu	SP
08-Apr-14	TMCLKDBJGEN-PRG08507 Rev.B	SP	WYu
28-Aug-14	TMCLKDBJGEN-PRG08507 Rev.C	CL	WYu
10-Jun-15	TMCLKDBJGEN-PRG08507 Rev.F	WYu	

Activity Name	Orig Dur	DWPF Start	DWPF Finish	2016									
				Jan	Feb	Mar	Apr	May	Jun	Jul	Aug		
IPs Review	28	05-Mar-15	01-Apr-15										
IP's No Objection Received	0		01-Apr-15										
SO's Review	35	05-Mar-15	08-Apr-15										
SO Approval with Condition Received	0		08-Apr-15										
Method Statement Submission													
Method Statement of Ground Treatment for TBMs Passing under Southern Landfall Seawall													
Preparation Method Statement for Ground Improvement in South Landfall	9	20-Jul-15	29-Jul-15										
Submit Method Statement to SO	0		29-Jul-15										
SO Reviews & Comments	28	30-Jul-15	26-Aug-15										
Re-submission	6	27-Aug-15	02-Sep-15										
SO's Review	28	03-Sep-15	30-Sep-15										
SO's Approval	0		30-Sep-15										
Construction													
Temporary Platform for Ground Treatment for TBM passing under Southern Seawall	48	06-Aug-15	02-Oct-15										
Grouting Treatment for TBM passing under Southern Seawall	339	03-Oct-15	25-Nov-16										
Testing & Commissioning/Inspection & Handover													
Final Inspection & Handover													
Design Submission													
(A12) Maintenance Matrix													
Preparation of Maintenance Matrix	35	24-Dec-15	05-Feb-16										
1st Submission	0		05-Feb-16										
SO's Comments for 1st Submission	35	06-Feb-16	11-Mar-16										
Prepare Re-submission	18	12-Mar-16	06-Apr-16										
2nd Submission	0		06-Apr-16										
SO's Condition Approval	35	07-Apr-16	11-May-16										
(A13) Operation & Maintenance Manual													
Preparation of Operation and Maintenance Manual	48	24-Dec-15	27-Feb-16										
1st Submission	0		27-Feb-16										
SO's Comments for 1st Submission	35	28-Feb-16	02-Apr-16										
Prepare Re-submission	24	05-Apr-16	03-May-16										
2nd Submission	0		03-May-16										
SO's Condition Approval	35	04-May-16	07-Jun-16										
(A14) As-built & As-fabricated Drawings													
Preparation of As-built and As-fabricated Drawings	48	24-Dec-15	27-Feb-16										
1st Submission	0		27-Feb-16										
SO's Comments for 1st Submission	35	28-Feb-16	02-Apr-16										
Prepare Re-submission	24	05-Apr-16	03-May-16										
2nd Submission	0		03-May-16										
SO's Condition Approval	35	04-May-16	07-Jun-16										
(A15) Health & Safety File incl. As-built Dwgs & Records, Maintenance Schedules, O&M Manual													
Preparation of Health and Safety File including as-built drawings and records, maintenance schedules, operation and mai	48	24-Dec-15	27-Feb-16										
1st Submission	0		27-Feb-16										
SO's Comments for 1st Submission	35	28-Feb-16	02-Apr-16										
Prepare Re-submission	24	05-Apr-16	03-May-16										
2nd Submission	0		03-May-16										
SO's Condition Approval	35	04-May-16	07-Jun-16										

- Planned Bar
- Planned Bar - Critical
- Planned Milestone
- Progress bar
- Progress Milestone



Date	Revision	Checked	Approved
12-Feb-14	TMCLKDBJGEN-PRG-98507	WYu	SPe
08-Apr-14	TMCLKDBJGEN-PRG-98507 Rev.B	SPe	WYu
28-Aug-14	TMCLKDBJGEN-PRG-98507 Rev.C	CLa	WYu
10-Jun-15	TMCLKDBJGEN-PRG-98507 Rev.F	WYu	