

Table L1 *Cumulative Statistics on Exceedances*

| Parameters | Level of Exceedance | Total No. recorded in this reporting month | Total No. recorded since project commencement |
|---------------------------|----------------------------|---|--|
| 1-hr TSP | Action | 0 | 30 |
| | Limit | 0 | 2 |
| 24-hr TSP | Action | 0 | 5 |
| | Limit | 0 | 1 |
| Water Quality | Action | 0 | 6 |
| | Limit | 0 | 1 |
| Impact Dolphin Monitoring | Action | 0 | 9 |
| | Limit | 0 | 7 |

Table L2 *Cumulative Statistics on Complaints, Notifications of Summons and Successful Prosecutions*

| Reporting Period | Cumulative Statistics | | |
|---|------------------------------|---------------------------------|--------------------------------|
| | Complaints | Notifications of Summons | Successful Prosecutions |
| This Reporting Month (January 2017) | 2 | 0 | 0 |
| Total No. received since project commencement | 12 | 0 | 0 |

ENVIRONMENTAL COMPLAINT/ENQUIRY INVESTIGATION REPORT

Our Reference: 0212330_Complaint LOG_20170117_11

Basic Information of Complaint/Enquiry

| | |
|------------------------------------|---|
| Reference Number: | Not disclosed |
| Date of Complaint/Enquiry Received | 13 January 2017 |
| Location of Complaint/Enquiry | Brothers Marine Park |
| Nature of Complaint/Enquiry | Trespassing of construction vessels |
| Complaint/Enquiry Received by | Agriculture, Fisheries and Conservation Department (AFCD) |
| Via | Email |
| Complainant/Enquirer | Not disclosed |

Details of Complaint/Enquiry

On 13 January 2017, AFCD was informed by project team of BCF that the Northeaster section of HKBCF perimeter silt curtain was found within the BMP while construction vessels were anchored within the BMP during the inspection on 4 and 5 January 2017 (see Figure 1). The Contractor, the Environmental Team (ET) and SOR received the enquiry from IEC on 17 January 2017.

Investigation Report

Upon receiving the case notification from IEC on 17 January 2016, the Contractor had promptly checked the construction programme and the vessel operation record of January 2017.

According to the vessel operation record provided by the Contractor, there were no DBJV construction vessels operating within the BMP during the above period. None of the construction vessels in the list provided by AFCD were employed under this Contract. According to the construction programme, major marine works in this month were mainly dredging and construction of vertical seawall at Portion N-A. All Contract-related construction vessels were found working inside the project site boundary. Location map of site area and travel route of marine vessels and barges are provided (see Figure 2 and Figure 3).

In addition, silt curtain enclosing the HKBCF was not deployed under this Contract. Therefore, the observation on silt curtain found inside the BMP or in close vicinity of the boundary of BMP was considered not related to this Contract.

Based on the above, the case is considered to be not related to this Contract.

Mitigation Measures and Follow-Up Actions Recommended to/Undertaken by Contractor

The case is considered to be not related to this Contract and thus no further action is required. The ET will keep checking the operation of construction vessels.

Date of File Closed : 8 February 2017

Approved and Filed by:



(Jovy Tam, ET Leader)

Date: 8 February 2017

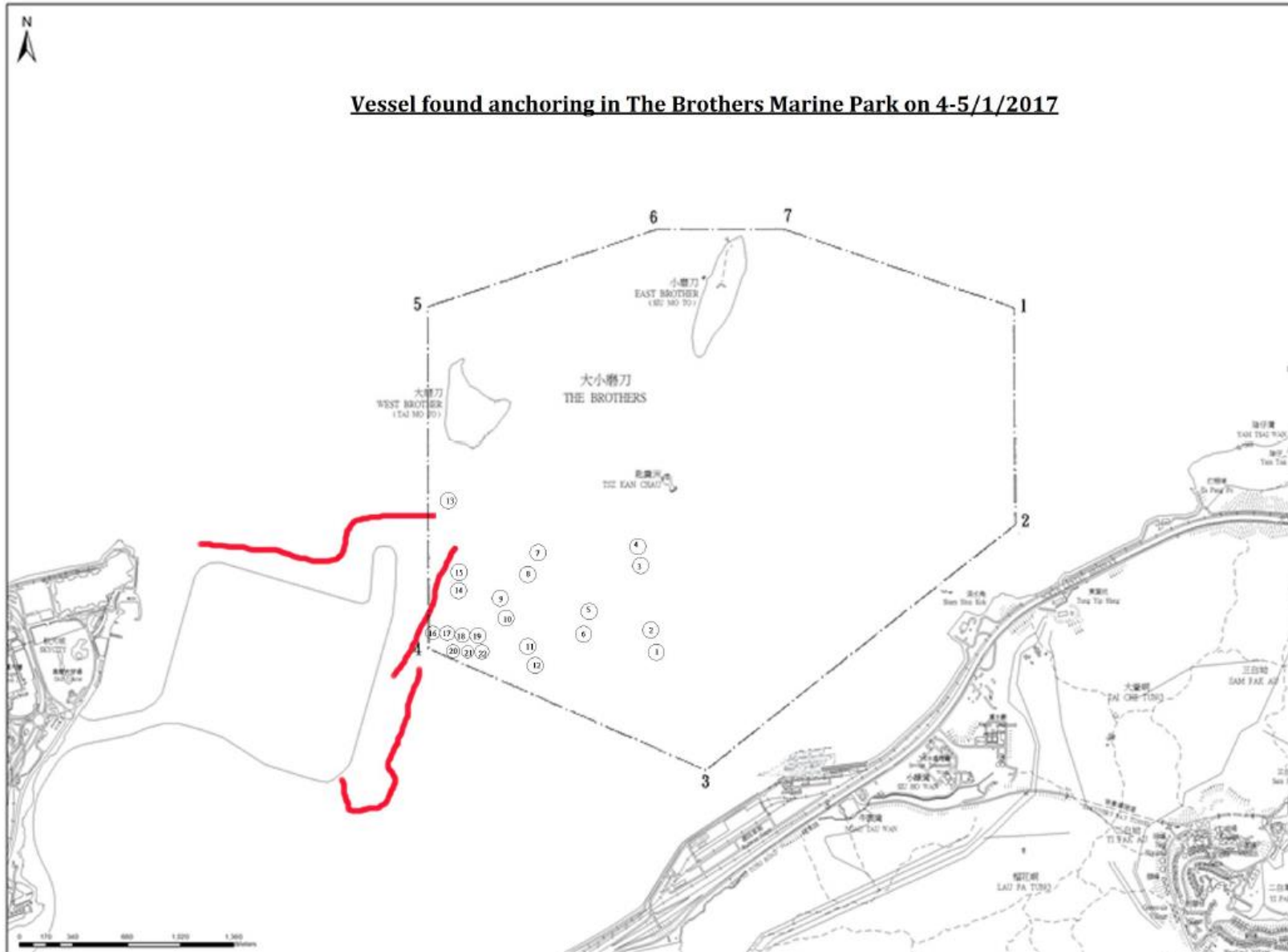


Figure 1

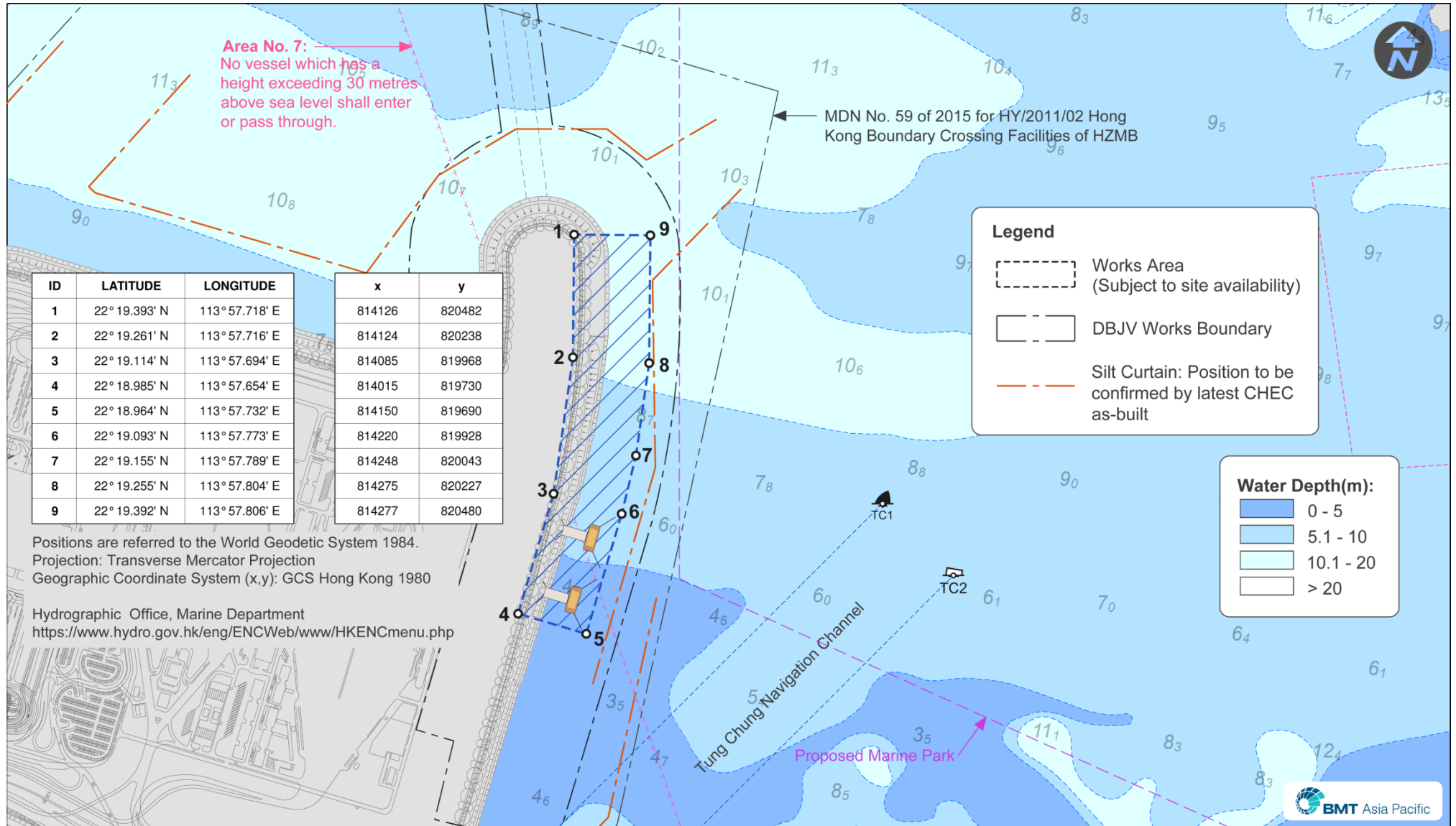


Figure 2
Location Map of site area

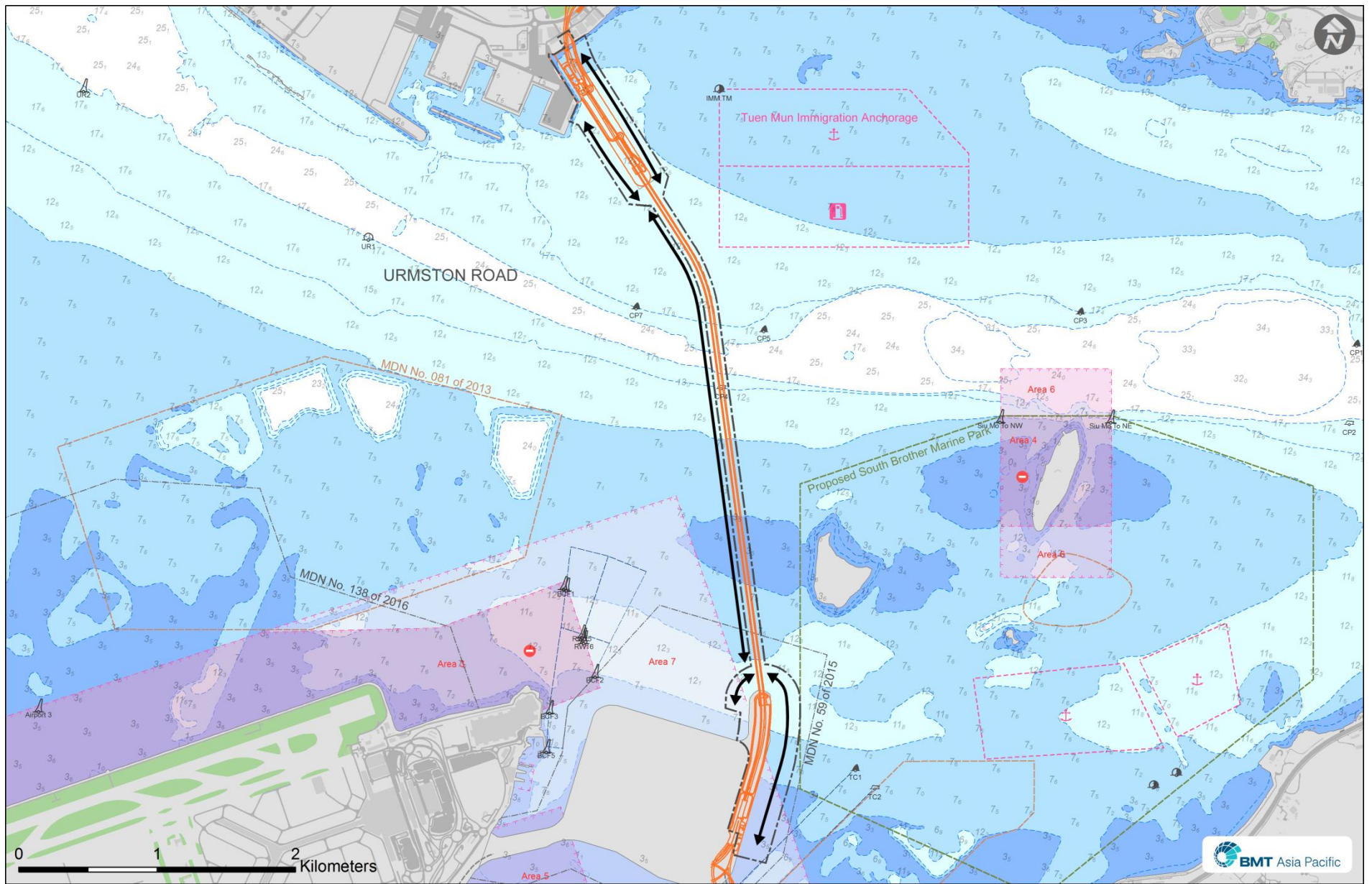


Figure 3(a)
Travel Route of marine vessels and barges

| Plant Type | Vessel Name | 船隻名稱 | License No. |
|------------------------|--------------|------|-------------|
| Dumb Lighter | TB201 | -- | B21598V |
| Dumb Lighter | TB212 | -- | B141450 |
| Dumb Lighter | TB223 | -- | B21576V |
| Dumb Lighter | TB225 | | B21667V |
| Dumb Lighter | TB233 | -- | B21683V |
| Dumb Lighter | TB236 | -- | B21725V |
| Dumb Lighter | Tuen Mun 2 | 屯門2 | B141646 |
| Dumb Lighter | Gold Sea 26 | -- | B21682V |
| | | | |
| Special Purpose Vessel | Kong Yeung 8 | 港洋8 | BM21463Y |
| | | | |
| Tug Boat | TB10 | -- | B2394 |
| | | | |

Figure 3(b)
Name of vessels and barges