

Activity Name	2016										2017									
											Dec	Jan	Feb	Mar	Apr	May	Jun	Jul	Aug	
<b>TMCLK - Northern Connection Sub-Sea Tunnel Section</b>																				
<b>Contract Dates</b>																				
<b>Commencement and Completion Dates</b>																				
KD01 - Achievement of Stage 1 - Nth TBM & C&C for E&MS/TCSS											◆ KD01 - Achievement of Stage 1 - Nth TBM & C&C for E&MS/TCSS									
<b>Site Possession Date</b>																				
Portions: X1,(N10,11,13 & 14) - Sth Landfall																				
Portions: N1 to N4 & N12											◆ Portions: N1 to N4 & N12									
<b>General Submissions</b>																				
<b>Environmental</b>																				
<b>Environmental Permit Submissions</b>																				
<b>Supplementary WMP of C&amp;C Tunnel at Sth.Landfall</b>																				
Supplementary WMP of C&C Tunnel at Sth.Landfall																				
<b>Sediment Quality Report/Dumping Permit</b>																				
<b>Southern Landfall</b>																				
Southern landfall - Commencement of Shaft & C&C Tunnel Dwall																				
Southern Landfall - Commencement of Retrieval Shaft Excavation																				
<b>Sediment Sampling &amp; Testing Plan (SSTP) - if required</b>																				
Complete SSTP and Obtain EPD's approval																				
<b>Sediment Quality Report (SQR) - if required</b>																				
Advance Ground Investigation works for Sediment sampling																				
Sediment Sample Testing & Report preparation																				
<b>Dumping Permit for Load Dumping (Loading Permit) - if required</b>																				
Finalize the application document and submit to EPD - for Dwall																				
Notify the results and issue Loading Permit for Local & Cross Boundary Crossing - for Dwall																				
<b>PAYMENT MILESTONE</b>																				
<b>Design and Design Checking of the Works</b>																				
MS 2.5 Submit AIP for seawall modification works at Southern Landfall											◆ MS 2.5 Submit AIP for seawall modification works at Southern Landfall									
MS 2.6 Approve AIP for seawall modification works at Southern Landfall by the Supervising Officer											◆ MS 2.6 Approve AIP for seawall modification works at Southern Landfall									
MS 2.44 Approve DDA for South Ventilation Building by the Supervising Officer																				
MS 2.52 Approve DDA for Facilities Provision for TCSS by the Supervising Officer																				
MS 2.60 Approve DDA for Drainage, Sewerage, Waterworks and Utilities at Northern Landfall by the Supervising Officer																				
MS 2.69 Submit draft Operation and Maintenance Manual for all Tunnels and Cross Passgases																				
MS 2.70 Accept Operation and Maintenance Manual for all Tunnels and Cross Passgases by the Supervising Officer																				
MS 2.71 Submit draft Operation and Maintenance Manual for all works except Tunnels and Cross Passgases																				
MS 2.72 Accept Operation and Maintenance Manual for all works except Tunnels and Cross Passgases by the Supervising Officer																				
<b>Tunnel Boring Machine (TBM) and Back-up Equipment for TBM Tunnel</b>																				
MS 3.1.6 Removal of TBM for Southbound Tunnel from Site after the completion of TBM Tunnel											◆ MS 3.1.6 Removal of TBM for Southbound Tunnel from Site after the completion of TBM Tunnel									
MS 3.1.12 Removal of TBM for Northbound Tunnel from Site after the completion of TBM Tunnel											◆ MS 3.1.12 Removal of TBM for Northbound Tunnel from Site after the completion of TBM Tunnel									
MS 3.1.25 Demolition of Slurry Treatment Plant on completion											◆ MS 3.1.25 Demolition of Slurry Treatment Plant on completion									
MS 3.1.26 Complete the whole of the activities under this Cost Centre Part to the satisfaction of the Supervising Officer																				
<b>TBM Tunnel</b>																				
MS 3.3.4 Complete walls of retrieval shaft																				
MS 3.3.5 Complete excavation to formation level for retrieval shaft and complete casting of base slab											◆ MS 3.3.5 Complete excavation to formation level for retrieval shaft and complete casting of base slab									
MS 3.3.6 Complete all necessary works of retrieval shaft to facilitate retrieval of TBM											◆ MS 3.3.6 Complete all necessary works of retrieval shaft to facilitate retrieval of TBM									
MS 3.3.43 Completion of excavation, support and permanent lining for 55% of the total length (measured on plan) of the Northbound TBM Tunnel											◆ MS 3.3.43 Completion of excavation, support and permanent lining for 55% of the total length (measured on plan) of the Northbound TBM Tunnel									
MS 3.3.44 Completion of excavation, support and permanent lining for 57.5% of the total length (measured on plan) of the Northbound TBM Tunnel											◆ MS 3.3.44 Completion of excavation, support and permanent lining for 57.5% of the total length (measured on plan) of the Northbound TBM Tunnel									
MS 3.3.45 Completion of excavation, support and permanent lining for 60% of the total length (measured on plan) of the Northbound TBM Tunnel											◆ MS 3.3.45 Completion of excavation, support and permanent lining for 60% of the total length (measured on plan) of the Northbound TBM Tunnel									
MS 3.3.46 Completion of excavation, support and permanent lining for 62.5% of the total length (measured on plan) of the Northbound TBM Tunnel											◆ MS 3.3.46 Completion of excavation, support and permanent lining for 62.5% of the total length (measured on plan) of the Northbound TBM Tunnel									
MS 3.3.47 Completion of excavation, support and permanent lining for 65% of the total length (measured on plan) of the Northbound TBM Tunnel											◆ MS 3.3.47 Completion of excavation, support and permanent lining for 65% of the total length (measured on plan) of the Northbound TBM Tunnel									
MS 3.3.48 Completion of excavation, support and permanent lining for 67.5% of the total length (measured on plan) of the Northbound TBM Tunnel											◆ MS 3.3.48 Completion of excavation, support and permanent lining for 67.5% of the total length (measured on plan) of the Northbound TBM Tunnel									
MS 3.3.49 Completion of excavation, support and permanent lining for 70% of the total length (measured on plan) of the Northbound TBM Tunnel											◆ MS 3.3.49 Completion of excavation, support and permanent lining for 70% of the total length (measured on plan) of the Northbound TBM Tunnel									
MS 3.3.50 Completion of excavation, support and permanent lining for 72.5% of the total length (measured on plan) of the Northbound TBM Tunnel											◆ MS 3.3.50 Completion of excavation, support and permanent lining for 72.5% of the total length (measured on plan) of the Northbound TBM Tunnel									
MS 3.3.51 Completion of excavation, support and permanent lining for 75% of the total length (measured on plan) of the Northbound TBM Tunnel											◆ MS 3.3.51 Completion of excavation, support and permanent lining for 75% of the total length (measured on plan) of the Northbound TBM Tunnel									
MS 3.3.52 Completion of excavation, support and permanent lining for 77.5% of the total length (measured on plan) of the Northbound TBM Tunnel											◆ MS 3.3.52 Completion of excavation, support and permanent lining for 77.5% of the total length (measured on plan) of the Northbound TBM Tunnel									
MS 3.3.53 Completion of excavation, support and permanent lining for 80% of the total length (measured on plan) of the Northbound TBM Tunnel											◆ MS 3.3.53 Completion of excavation, support and permanent lining for 80% of the total length (measured on plan) of the Northbound TBM Tunnel									
MS 3.3.54 Completion of excavation, support and permanent lining for 82.5% of the total length (measured on plan) of the Northbound TBM Tunnel											◆ MS 3.3.54 Completion of excavation, support and permanent lining for 82.5% of the total length (measured on plan) of the Northbound TBM Tunnel									
MS 3.3.55 Completion of excavation, support and permanent lining for 85% of the total length (measured on plan) of the Northbound TBM Tunnel											◆ MS 3.3.55 Completion of excavation, support and permanent lining for 85% of the total length (measured on plan) of the Northbound TBM Tunnel									
MS 3.3.56 Completion of excavation, support and permanent lining for 87.5% of the total length (measured on plan) of the Northbound TBM Tunnel											◆ MS 3.3.56 Completion of excavation, support and permanent lining for 87.5% of the total length (measured on plan) of the Northbound TBM Tunnel									
MS 3.3.57 Completion of excavation, support and permanent lining for 90% of the total length (measured on plan) of the Northbound TBM Tunnel											◆ MS 3.3.57 Completion of excavation, support and permanent lining for 90% of the total length (measured on plan) of the Northbound TBM Tunnel									
MS 3.3.58 Completion of excavation, support and permanent lining for 92.5% of the total length (measured on plan) of the Northbound TBM Tunnel											◆ MS 3.3.58 Completion of excavation, support and permanent lining for 92.5% of the total length (measured on plan) of the Northbound TBM Tunnel									
MS 3.3.59 Completion of excavation, support and permanent lining for 95% of the total length (measured on plan) of the Northbound TBM Tunnel											◆ MS 3.3.59 Completion of excavation, support and permanent lining for 95% of the total length (measured on plan) of the Northbound TBM Tunnel									
MS 3.3.60 Completion of excavation, support and permanent lining for 97.5% of the total length (measured on plan) of the Northbound TBM Tunnel											◆ MS 3.3.60 Completion of excavation, support and permanent lining for 97.5% of the total length (measured on plan) of the Northbound TBM Tunnel									
MS 3.3.61 Completion of excavation, support and permanent lining for 100% of the total length (measured on plan) of the Northbound TBM Tunnel											◆ MS 3.3.61 Completion of excavation, support and permanent lining for 100% of the total length (measured on plan) of the Northbound TBM Tunnel									
MS 3.3.107 Completion of excavation, support and permanent lining for 77.5% of the total length (measured on plan) of the Southbound TBM Tunnel											◆ MS 3.3.107 Completion of excavation, support and permanent lining for 77.5% of the total length (measured on plan) of the Southbound TBM Tunnel									
MS 3.3.108 Completion of excavation, support and permanent lining for 80% of the total length (measured on plan) of the Southbound TBM Tunnel											◆ MS 3.3.108 Completion of excavation, support and permanent lining for 80% of the total length (measured on plan) of the Southbound TBM Tunnel									
MS 3.3.109 Completion of excavation, support and permanent lining for 82.5% of the total length (measured on plan) of the Southbound TBM Tunnel											◆ MS 3.3.109 Completion of excavation, support and permanent lining for 82.5% of the total length (measured on plan) of the Southbound TBM Tunnel									
MS 3.3.110 Completion of excavation, support and permanent lining for 85% of the total length (measured on plan) of the Southbound TBM Tunnel											◆ MS 3.3.110 Completion of excavation, support and permanent lining for 85% of the total length (measured on plan) of the Southbound TBM Tunnel									
MS 3.3.111 Completion of excavation, support and permanent lining for 87.5% of the total length (measured on plan) of the Southbound TBM Tunnel											◆ MS 3.3.111 Completion of excavation, support and permanent lining for 87.5% of the total length (measured on plan) of the Southbound TBM Tunnel									
MS 3.3.112 Completion of excavation, support and permanent lining for 90% of the total length (measured on plan) of the Southbound TBM Tunnel											◆ MS 3.3.112 Completion of excavation, support and permanent lining for 90% of the total length (measured on plan) of the Southbound TBM Tunnel									
MS 3.3.113 Completion of excavation, support and permanent lining for 92.5% of the total length (measured on plan) of the Southbound TBM Tunnel											◆ MS 3.3.113 Completion of excavation, support and permanent lining for 92.5% of the total length (measured on plan) of the Southbound TBM Tunnel									
MS 3.3.114 Completion of excavation, support and permanent lining for 95% of the total length (measured on plan) of the Southbound TBM Tunnel											◆ MS 3.3.114 Completion of excavation, support and permanent lining for 95% of the total length (measured on plan) of the Southbound TBM Tunnel									
MS 3.3.115 Completion of excavation, support and permanent lining for 97.5% of the total length (measured on plan) of the Southbound TBM Tunnel											◆ MS 3.3.115 Completion of excavation, support and permanent lining for 97.5% of the total length (measured on plan) of the Southbound TBM Tunnel									
MS 3.3.116 Completion of excavation, support and permanent lining for 100% of the total length (measured on plan) of the Southbound TBM Tunnel											◆ MS 3.3.116 Completion of excavation, support and permanent lining for 100% of the total length (measured on plan) of the Southbound TBM Tunnel									
MS 3.3.118 Complete tunnel internal structures for 50% of total length (measured on plan) of the Northbound TBM Tunnel											◆ MS 3.3.118 Complete tunnel internal structures for 50% of total length (measured on plan) of the Northbound TBM Tunnel									
MS 3.3.119 Complete tunnel internal structures for 75% of total length (measured on plan) of the Northbound TBM Tunnel											◆ MS 3.3.119 Complete tunnel internal structures for 75% of total length (measured on plan) of the Northbound TBM Tunnel									
MS 3.3.121 Complete tunnel internal structures for 25% of total length (measured on plan) of the Southbound TBM Tunnel											◆ MS 3.3.121 Complete tunnel internal structures for 25% of total length (measured on plan) of the Southbound TBM Tunnel									
MS 3.3.122 Complete tunnel internal structures for 50% of total length (measured on plan) of the Southbound TBM Tunnel											◆ MS 3.3.122 Complete tunnel internal structures for 50% of total length (measured on plan) of the Southbound TBM Tunnel									
MS 3.3.123 Complete tunnel internal structures for 75% of total length (measured on plan) of the Southbound TBM Tunnel											◆ MS 3.3.123 Complete tunnel internal structures for 75% of total length (measured on plan) of the Southbound TBM Tunnel									
<b>Cross Passages for TBM Tunnel</b>																				
MS 3.3.1 Complete 50% of ground treatment for excavation of all Type 1 Cross Passages(Percentage to be certified for 50%)											◆ MS 3.3.1 Complete 50% of ground treatment for excavation of all Type 1 Cross Passages(Percentage to be certified for 50%)									
MS 3.3.3 Complete 50% of ground treatment for excavation of all Type 2 Cross Passages(Percentage to be certified for 50%)											◆ MS 3.3.3 Complete 50% of ground treatment for excavation of all Type 2 Cross Passages(Percentage to be certified for 50%)									
MS 3.3.4 Complete 100% of ground treatment for excavation of all Type 2 Cross Passages(Percentage to be certified for 100%)											◆ MS 3.3.4 Complete 100% of ground treatment for excavation of all Type 2 Cross Passages(Percentage to be certified for 100%)									
MS 3.3.5 Complete 50% of excavation and support for all Type 1 Cross Passages(Percentage to be certified for 50%)											◆ MS 3.3.5 Complete 50% of excavation and support for all Type 1 Cross Passages(Percentage to be certified for 50%)									
MS 3.3.7 Complete 50% of excavation and support for all Type 2 Cross Passages(Percentage to be certified for 50%)											◆ MS 3.3.7 Complete 50% of excavation and support for all Type 2 Cross Passages(Percentage to be certified for 50%)									
MS 3.3.9 Complete 50% of permanent lining and internal structures for all Type 1 Cross Passages(Percentage to be certified for 50%)											◆ MS 3.3.9 Complete 50% of permanent lining and internal structures for all Type 1 Cross Passages(Percentage to be certified for 50%)									
MS 3.3.11 Complete 50% of permanent lining and internal structures for all Type 2 Cross Passages(Percentage to be certified for 50%)											◆ MS 3.3.11 Complete 50% of permanent lining and internal structures for all Type 2 Cross Passages(Percentage to be certified for 50%)									

■ Planned Bar  
■ Planned Bar - Critical  
◆ Planned Milestone  
■ Progress bar  
◆ Progress Milestone



Date	Revision	Checked	Approved
12-Feb-14	TMCLKDUGEN-PRG98507	WYu	SPa
08-Apr-14	TMCLKDUGEN-PRG98507 Rev.B	SPa	WYu
28-Aug-14	TMCLKDUGEN-PRG98507 Rev.C	CLa	WYu
30-Oct-15	TMCLKDUGEN-PRG98507 Rev.F	WYu	

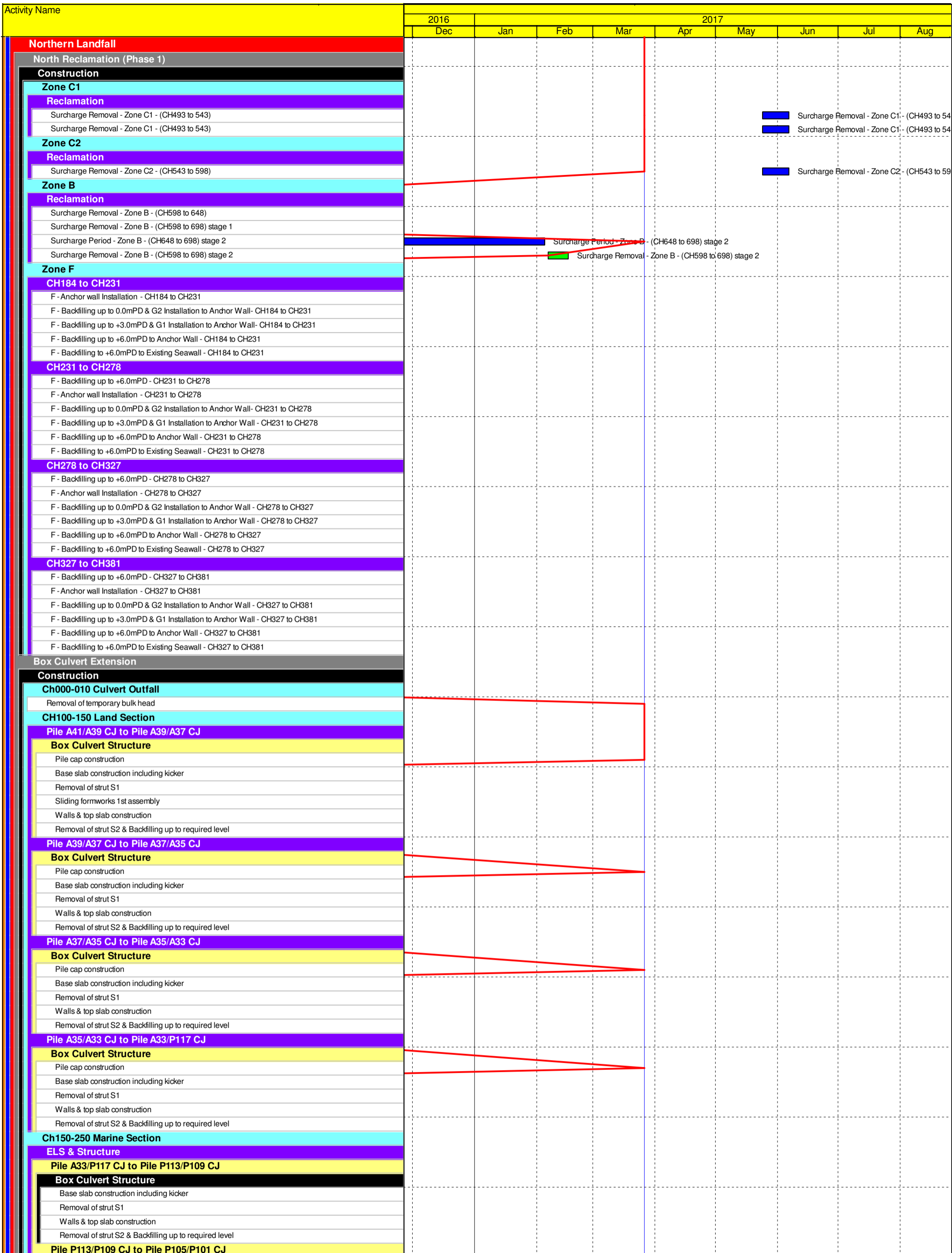
Activity Name	2017									
	Dec	Jan	Feb	Mar	Apr	May	Jun	Jul	Aug	
<b>Cut-and-cover Tunnels at Southern Landfalls</b>										
MS 4.1.1 Complete 10% of total length (measured on plan) of temporary retaining walls for excavation of Cut-										
MS 4.1.2 Complete 20% of total length (measured on plan) of temporary retaining walls for excavation of Cut-										
MS 4.1.3 Complete 30% of total length (measured on plan) of temporary retaining walls for excavation of Cut-										
MS 4.1.4 Complete 40% of total length (measured on plan) of temporary retaining walls for excavation of Cut-										
MS 4.1.5 Complete 50% of total length (measured on plan) of temporary retaining walls for excavation of Cut-										
MS 4.1.6 Complete 60% of total length (measured on plan) of temporary retaining walls for excavation of Cut-										
MS 4.1.7 Complete 70% of total length (measured on plan) of temporary retaining walls for excavation of Cut-										
MS 4.1.8 Complete 80% of total length (measured on plan) of temporary retaining walls for excavation of Cut-										
MS 4.1.9 Complete 90% of total length (measured on plan) of temporary retaining walls for excavation of Cut-										
MS 4.1.10 Complete 100% of total length (measured on plan) of temporary retaining walls for excavation of C										
MS 4.1.11										
MS 4.1.12 Complete 40% of excavation for Cut-and-cover tunnel										
MS 4.1.13 Complete 60% of excavation for Cut-and-cover tunnel										
MS 4.1.14 Complete 80% of excavation for Cut-and-cover tunnel										
MS 4.1.15 Complete 100% of excavation for Cut-and-cover tunnel										
MS 4.1.16 Complete permanent tunnel structure for 10% of the total length (measured on plan) of Cut-and-cc										
MS 4.1.17 Complete permanent tunnel structure for 20% of the total length (measured on plan) of Cut-and-cc										
MS 4.1.18 Complete permanent tunnel structure for 30% of the total length (measured on plan) of Cut-and-cc										
MS 4.1.19 Complete permanent tunnel structure for 40% of the total length (measured on plan) of Cut-and-cc										
MS 4.1.20 Complete permanent tunnel structure for 50% of the total length (measured on plan) of Cut-and-cc										
MS 4.1.21 Complete permanent tunnel structure for 60% of the total length (measured on plan) of Cut-and-cc										
MS 4.1.22 Complete permanent tunnel structure for 70% of the total length (measured on plan) of Cut-and-cc										
MS 4.1.23 Complete permanent tunnel structure for 80% of the total length (measured on plan) of Cut-and-cc										
MS 4.1.24 Complete permanent tunnel structure for 90% of the total length (measured on plan) of Cut-and-cc										
MS 4.1.26 Complete excavation for 50% of total length (measured on plan) of all Cross Passages										
MS 4.1.27 Complete excavation for 100% of total length (measured on plan) of all Cross Passages										
MS 4.1.29 Complete pavement for 50% of the total length (measured on plan) of Cut-and-cover Tunnel										
<b>Cut-and-cover Tunnel at Northern Landfall</b>										
MS 4.2.22 Complete tunnel internal structure for 50% of NB Northern Landfall TBM Tunnel										
MS 4.2.24 Complete tunnel internal structure for 50% of SB Northern Landfall TBM Tunnel										
MS 4.2.25 Complete tunnel internal structure for 100% of SB Northern Landfall TBM Tunnel										
MS 4.2.29 Complete 100% of permanent lining and internal structures for all Northern Landfall Cross Passag										
MS 4.2.30 Complete Permanent tunnel structure for 25% of Cut and Cover Tunnel										
MS 4.2.31 Complete Permanent tunnel structure for 50% of Cut and Cover Tunnel										
MS 4.2.32 Complete Permanent tunnel structure for 75% of Cut and Cover Tunnel										
MS 4.2.34 Complete Permanent junction structure at interface between Cut-and-cover and TBM Tunnel										
<b>Approach Ramp Structures to Cut-and-cover Tunnel at Southern Landfall</b>										
MS 5.1.2 Complete 40% of excavation for approach ramp structures										
MS 5.1.3 Complete 60% of excavation for approach ramp structures										
MS 5.1.4 Complete 80% of excavation for approach ramp structures										
MS 5.1.5 Complete 100% of excavation for approach ramp structures										
MS 5.1.6 Complete retaining wall foundation for 10% of the total length (measured on plan) of approach ramp										
MS 5.1.7 Complete retaining wall foundation for 20% of the total length (measured on plan) of approach ramp										
MS 5.1.8 Complete retaining wall foundation for 30% of the total length (measured on plan) of approach ramp										
MS 5.1.9 Complete retaining wall foundation for 40% of the total length (measured on plan) of approach ramp										
MS 5.1.10 Complete retaining wall foundation for 50% of the total length (measured on plan) of approach ramp										
MS 5.1.11 Complete retaining wall foundation for 60% of the total length (measured on plan) of approach ramp										
MS 5.1.12 Complete retaining wall foundation for 70% of the total length (measured on plan) of approach ramp										
MS 5.1.13 Complete retaining wall foundation for 80% of the total length (measured on plan) of approach ramp										
MS 5.1.14 Complete retaining wall foundation for 90% of the total length (measured on plan) of approach ramp										
MS 5.1.15 Complete retaining wall foundation for 100% of the total length (measured on plan) of approach ramp										
MS 5.1.16 Complete retaining wall structure for 10% of the total length (measured on plan) of approach ramp										
MS 5.1.17 Complete retaining wall structure for 20% of the total length (measured on plan) of approach ramp										
<b>At grade Roads at Northern Landfall</b>										
MS 6.2.13 Complete drainage installation of 20% length of total length (measured on plan) of drainage pipes										
MS 6.2.17 Complete sewerage installation of 20% length of total length (measured on plan) of sewerage pipes										
MS 6.2.21 Complete watermain installation of 20% length of total length (measured on plan) of watermain										
<b>South Ventilation Buildings</b>										
MS 7.1.1 Complete 100% of cofferdam for excavation										
MS 7.1.2 Complete 100% of excavation to the formation level										
MS 7.1.3 Complete 100% of foundation for the ventilation building										
MS 7.1.4 Complete concreting works of 25% area of the total construction floor area for the ventilation building										
MS 7.1.5 Complete concreting works of 50% area of the total construction floor area for the ventilation building										
MS 7.1.6 Complete concreting works of 75% area of the total construction floor area for the ventilation building										
MS 7.1.7 Complete concreting works of 100% area of the total construction floor area for the ventilation building										
<b>North Ventilation Buildings</b>										
MS 7.2.4 Complete concreting works of 25% area of the total construction floor area for the ventilation building										
MS 7.2.5 Complete concreting works of 50% area of the total construction floor area for the ventilation building										
MS 7.2.6 Complete concreting works of 75% area of the total construction floor area for the ventilation building										
MS 7.2.7 Complete concreting works of 100% area of the total construction floor area for the ventilation building										
<b>Facilities Provision for E&amp;M Works for TBM Tunnel, Cut &amp; Cover Tunnels and Cross Passages</b>										
MS 9.1.1 Complete 25% of bonding terminal, opening and accessories, etc.										
MS 9.1.2 Complete 25% of plinth, hoisting facilities and accessories, etc.										
MS 9.1.3 Complete 50% of bonding terminal, opening and accessories, etc.										
MS 9.1.4 Complete 50% of plinth, hoisting facilities and accessories, etc.										
MS 9.1.5 Complete 75% of bonding terminal, opening and accessories, etc.										
MS 9.1.6 Complete 75% of plinth, hoisting facilities and accessories, etc.										
<b>Facilities Provision for E&amp;M Works for South Ventilation Building</b>										
MS 9.4.1 Complete 25% of bonding terminal, main earth mat, clean earth mat, earth pit, lightning pit, conceal										
MS 9.4.2 Complete 25% of plinth, hoisting facilities, louver, wire mesh and accessories, etc.										
MS 9.4.3 Complete 25% of floor drain, water tank and accessories, etc.										
<b>Facilities Provision for E&amp;M Works for North Ventilation Building</b>										
MS 9.5.1 Complete 25% of bonding terminal, main earth mat, clean earth mat, earth pit, lightning pit, conceal										
MS 9.5.2 Complete 25% of plinth, hoisting facilities, louver, wire mesh and accessories, etc.										
MS 9.5.3 Complete 25% of floor drain, water tank and accessories, etc.										

- Planned Bar
- Planned Bar - Critical
- ◆ Planned Milestone
- Progress bar
- ◆ Progress Milestone

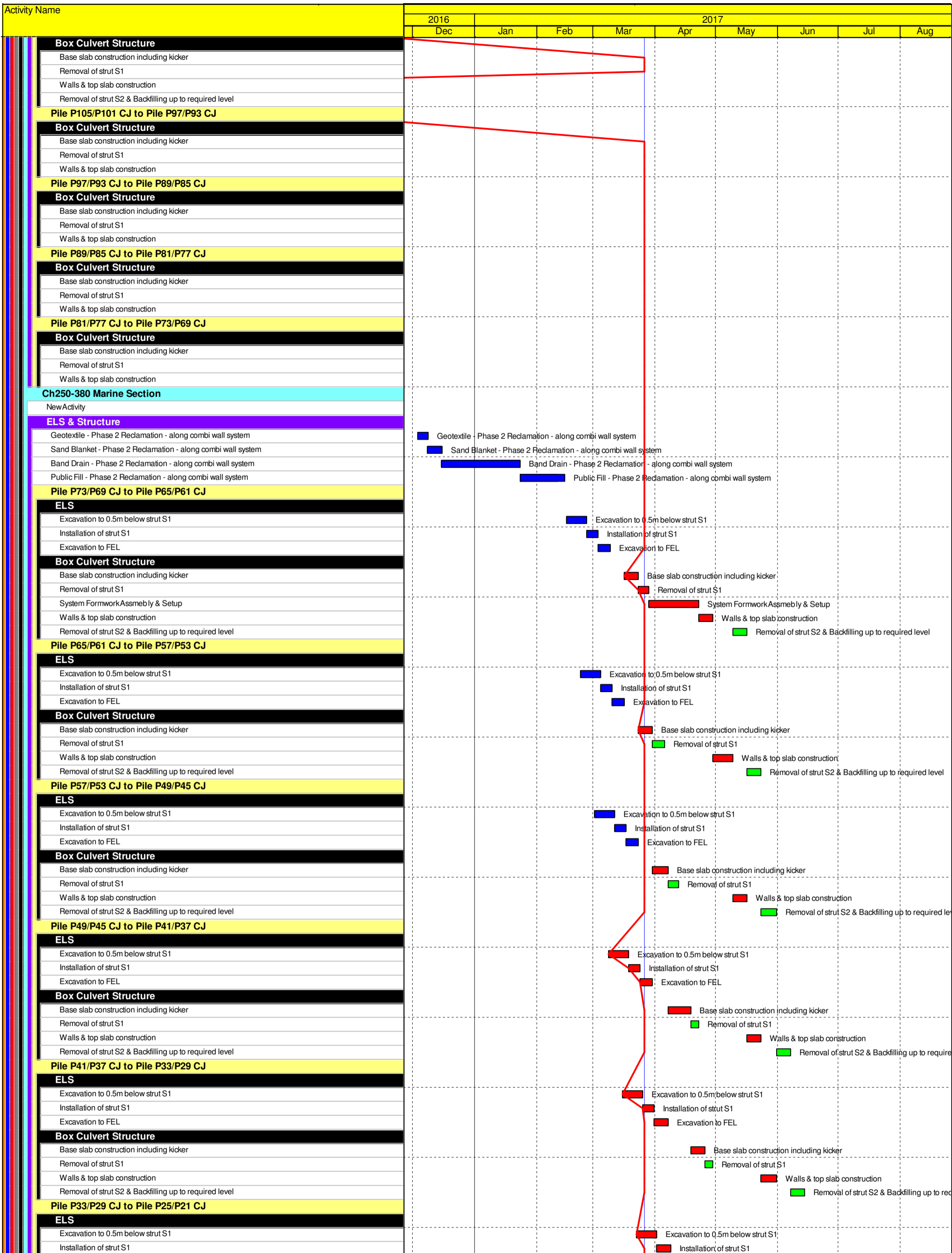
TMCLK - Northern Connection Sub-Sea Tunnel Section  
Detailed Works Programme (Rev. F)  
Three Months Rolling Programme  
Progress as of 26-Mar-17



Date	Revision	Checked	Approved
12-Feb-14	TMCLKDJGEN-PRG98507	WYu	SPo
08-Apr-14	TMCLKDJGEN-PRG98507 Rev.B	SPa	WYu
28-Aug-14	TMCLKDJGEN-PRG98507 Rev.C	CLa	WYu
30-Oct-15	TMCLKDJGEN-PRG98507 Rev.F	WYu	



Date	Revision	Checked	Approved
12-Feb-14	TMCLKDBJGEN-PRG98507	WYu	SPa
08-Apr-14	TMCLKDBJGEN-PRG98507 Rev.B	SPa	WYu
28-Aug-14	TMCLKDBJGEN-PRG98507 Rev.C	CLa	WYu
30-Oct-15	TMCLKDBJGEN-PRG98507 Rev.F	WYu	

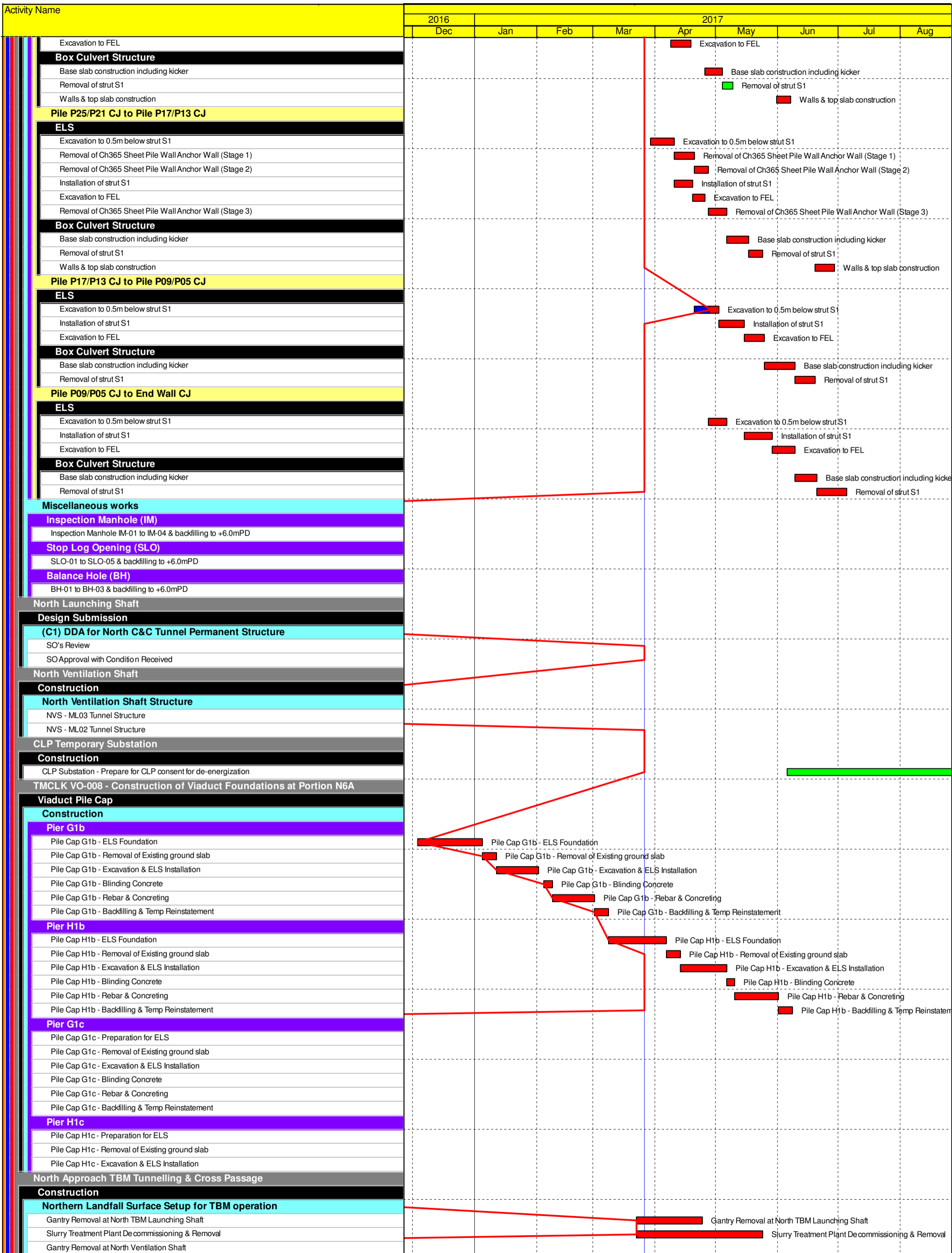


	Planned Bar
	Planned Bar - Critical
	Planned Milestone
	Progress bar
	Progress Milestone

TMCLK - Northern Connection Sub-Sea Tunnel Section  
 Detailed Works Programme (Rev. F)  
 Three Months Rolling Programme  
 Progress as of 26-Mar-17



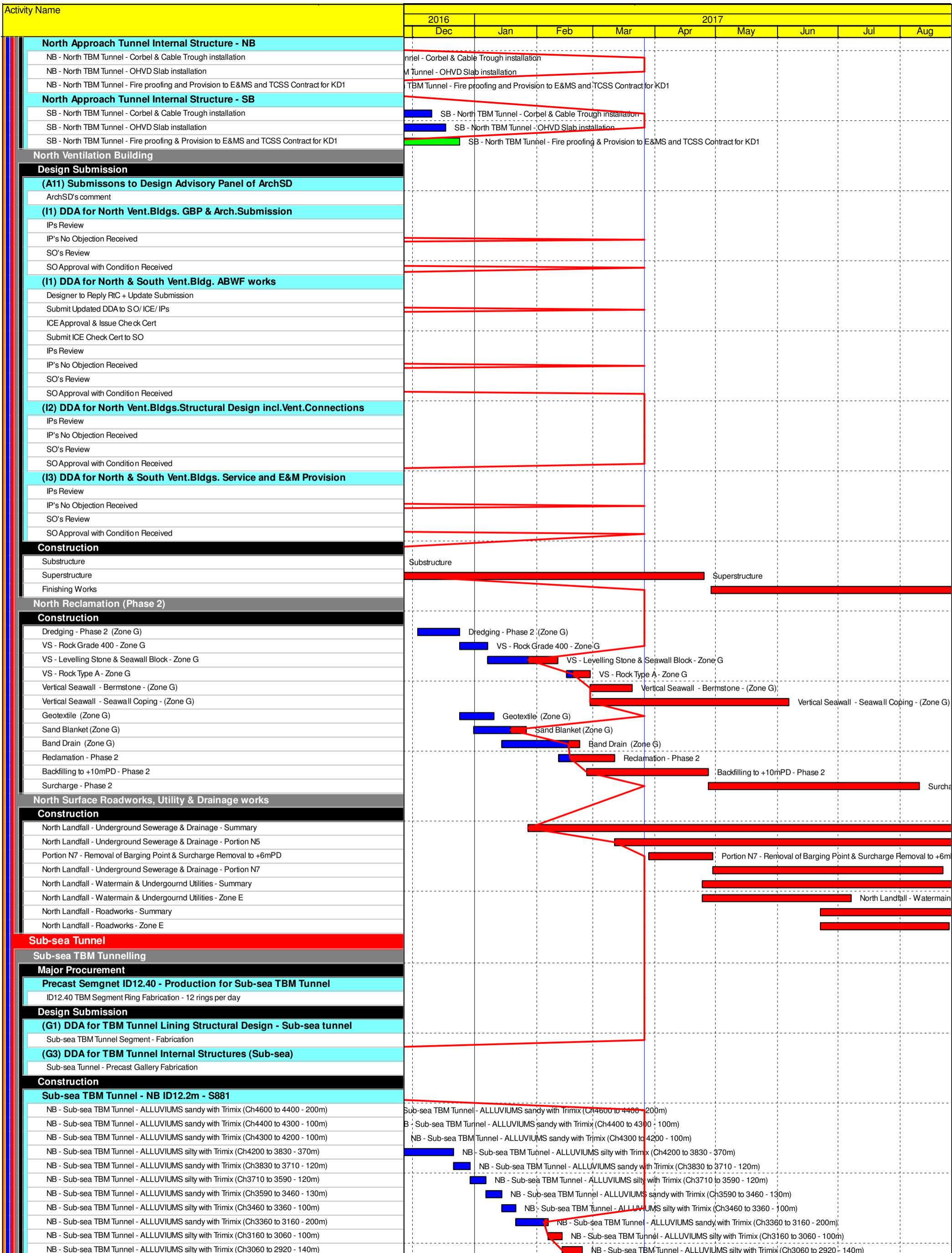
Date	Revision	Checked	Approved
12-Feb-14	TMCLKDJGEN-PRG98507	WYu	SPa
08-Apr-14	TMCLKDJGEN-PRG98507 Rev.B	SPa	WYu
28-Aug-14	TMCLKDJGEN-PRG98507 Rev.C	CLa	WYu
30-Oct-15	TMCLKDJGEN-PRG98507 Rev.F	WYu	



	Planned Bar
	Planned Bar - Critical
	Planned Milestone
	Progress bar
	Progress Milestone



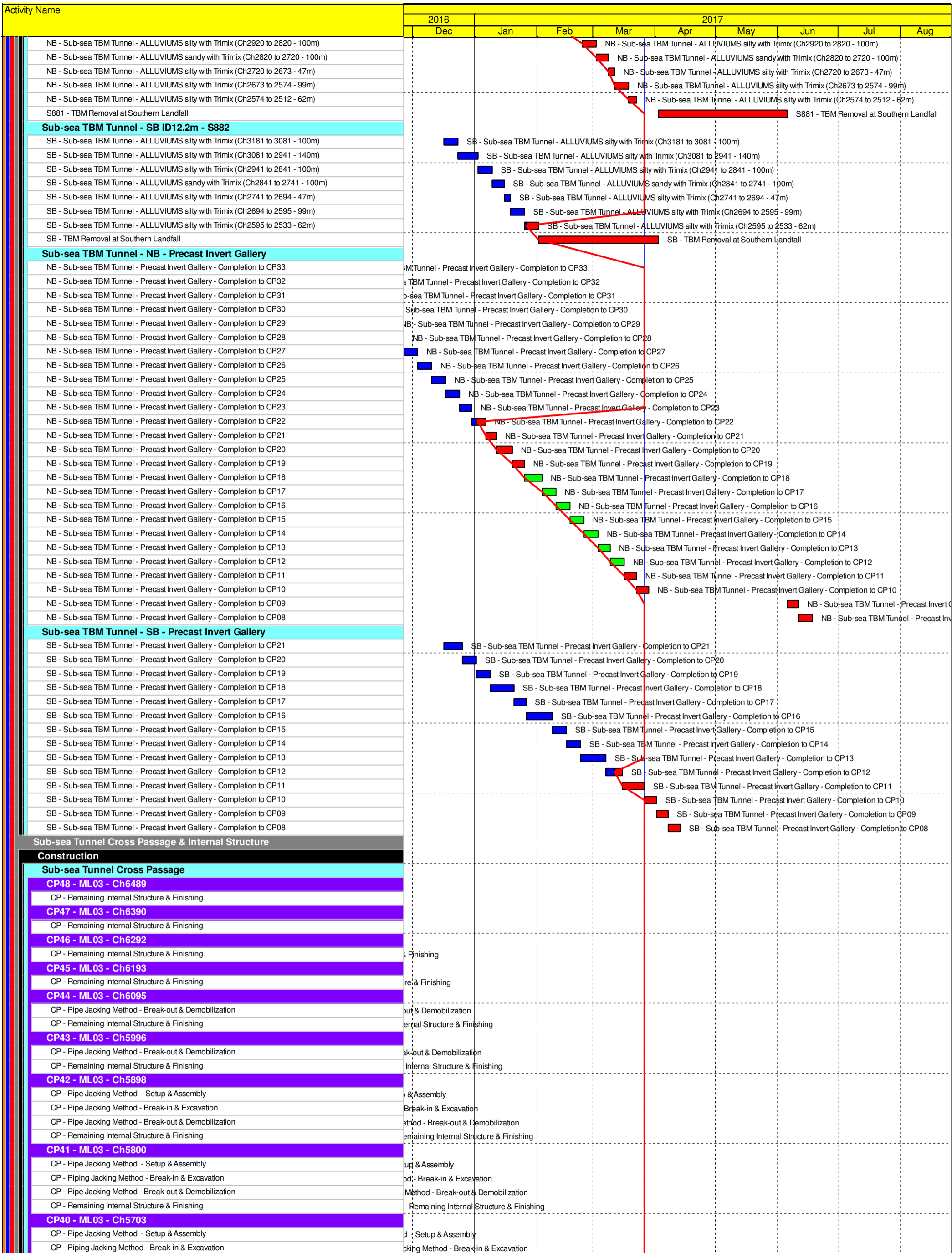
Date	Revision	Checked	Approved
12-Feb-14	TMCLKDJGEN-PRG98507	WYu	SPa
08-Apr-14	TMCLKDJGEN-PRG98507 Rev.B	SPa	WYu
28-Aug-14	TMCLKDJGEN-PRG98507 Rev.C	CLa	WYu
30-Oct-15	TMCLKDJGEN-PRG98507 Rev.F	WYu	



<span style="color: green;">■</span>	Planned Bar
<span style="color: red;">■</span>	Planned Bar - Critical
<span style="color: blue;">◆</span>	Planned Milestone
<span style="color: blue;">■</span>	Progress bar
<span style="color: blue;">◆</span>	Progress Milestone

Dragages - Bouygues Joint Venture 寶嘉 - 布依格聯營

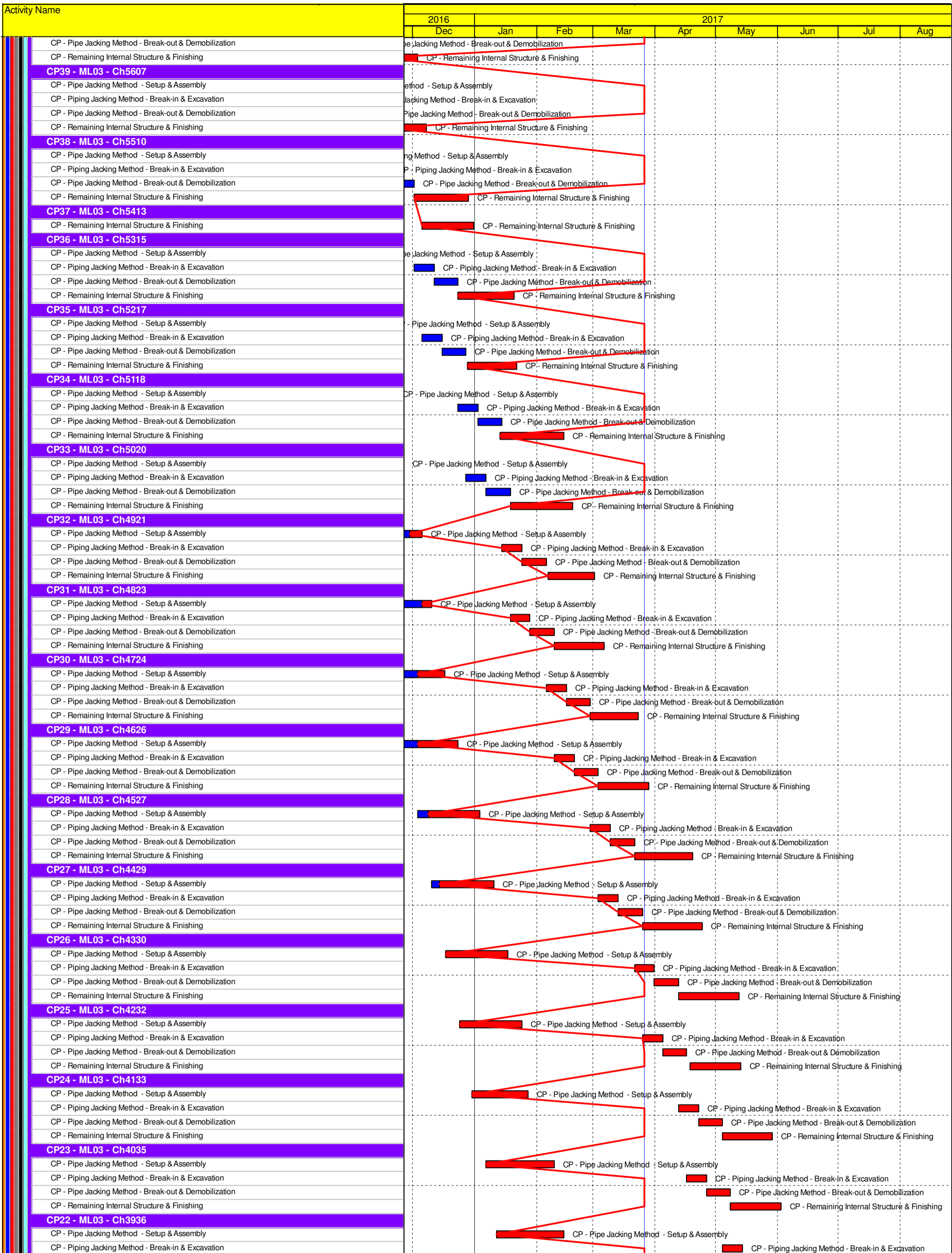
Date	Revision	Checked	Approved
12-Feb-14	TMCLKDBJGEN-PRG98507	WYu	SPo
08-Apr-14	TMCLKDBJGEN-PRG98507 Rev.B	SPa	WYu
28-Aug-14	TMCLKDBJGEN-PRG98507 Rev.C	CLa	WYu
30-Oct-15	TMCLKDBJGEN-PRG98507 Rev.F	WYu	



■ Planned Bar  
■ Planned Bar - Critical  
◆ Planned Milestone  
■ Progress bar  
◆ Progress Milestone



Date	Revision	Checked	Approved
12-Feb-14	TMCLKDBJGEN-PRG98507	WYu	SPo
08-Apr-14	TMCLKDBJGEN-PRG98507 Rev.B	SPa	WYu
28-Aug-14	TMCLKDBJGEN-PRG98507 Rev.C	CLa	WYu
30-Oct-15	TMCLKDBJGEN-PRG98507 Rev.F	WYu	



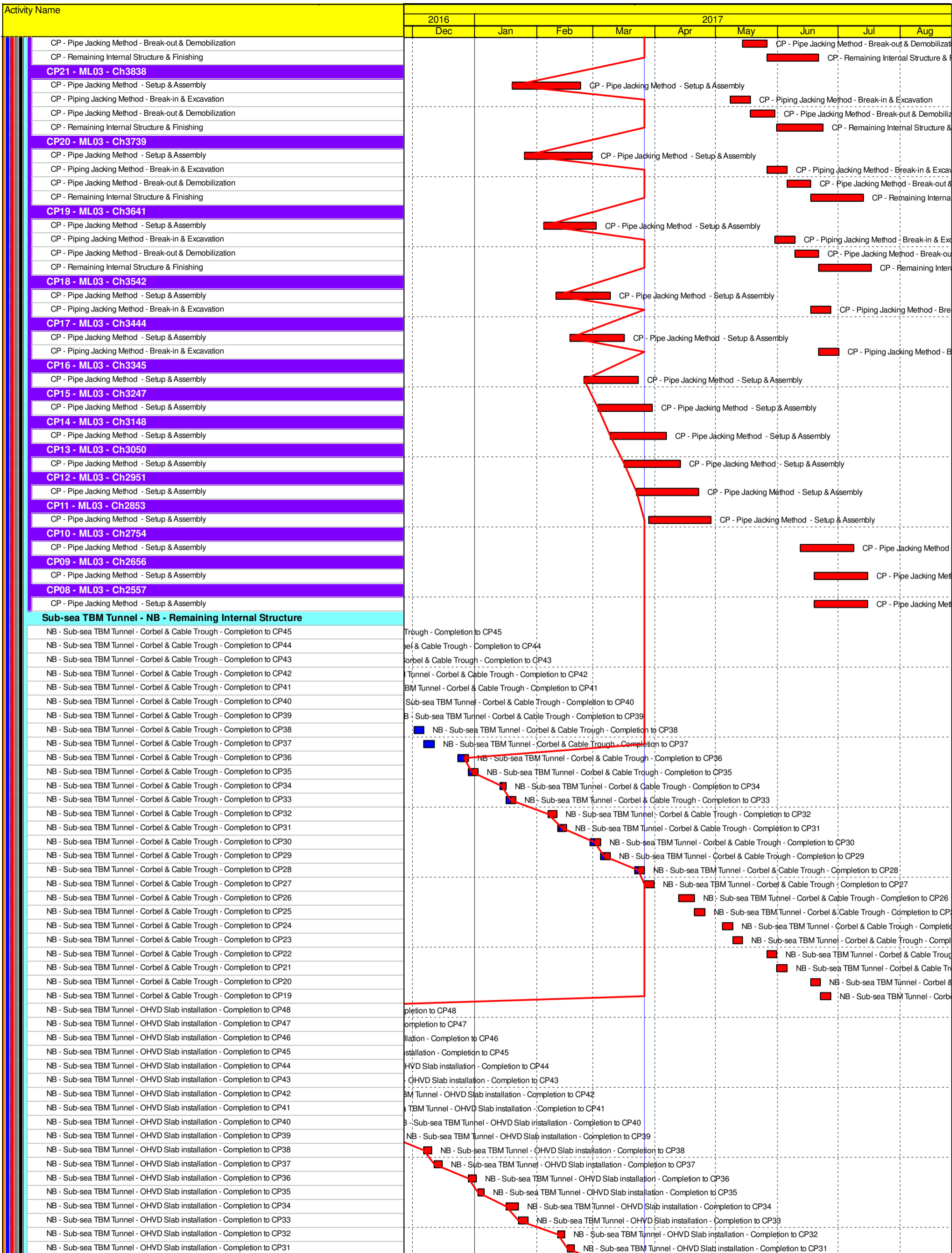
- Planned Bar
- Planned Bar - Critical
- Progress bar
- ◆ Planned Milestone
- ◆ Progress Milestone

**TMCLK - Northern Connection Sub-Sea Tunnel Section**  
 Detailed Works Programme (Rev. F)  
 Three Months Rolling Programme  
 Progress as of 26-Mar-17



Date	Revision	Checked	Approved
12-Feb-14	TMCLKDUGEN-PRG98507	WYu	SPo
08-Apr-14	TMCLKDUGEN-PRG98507 Rev.B	SPa	WYu
28-Aug-14	TMCLKDUGEN-PRG98507 Rev.C	CLa	WYu
30-Oct-15	TMCLKDUGEN-PRG98507 Rev.F	WYu	



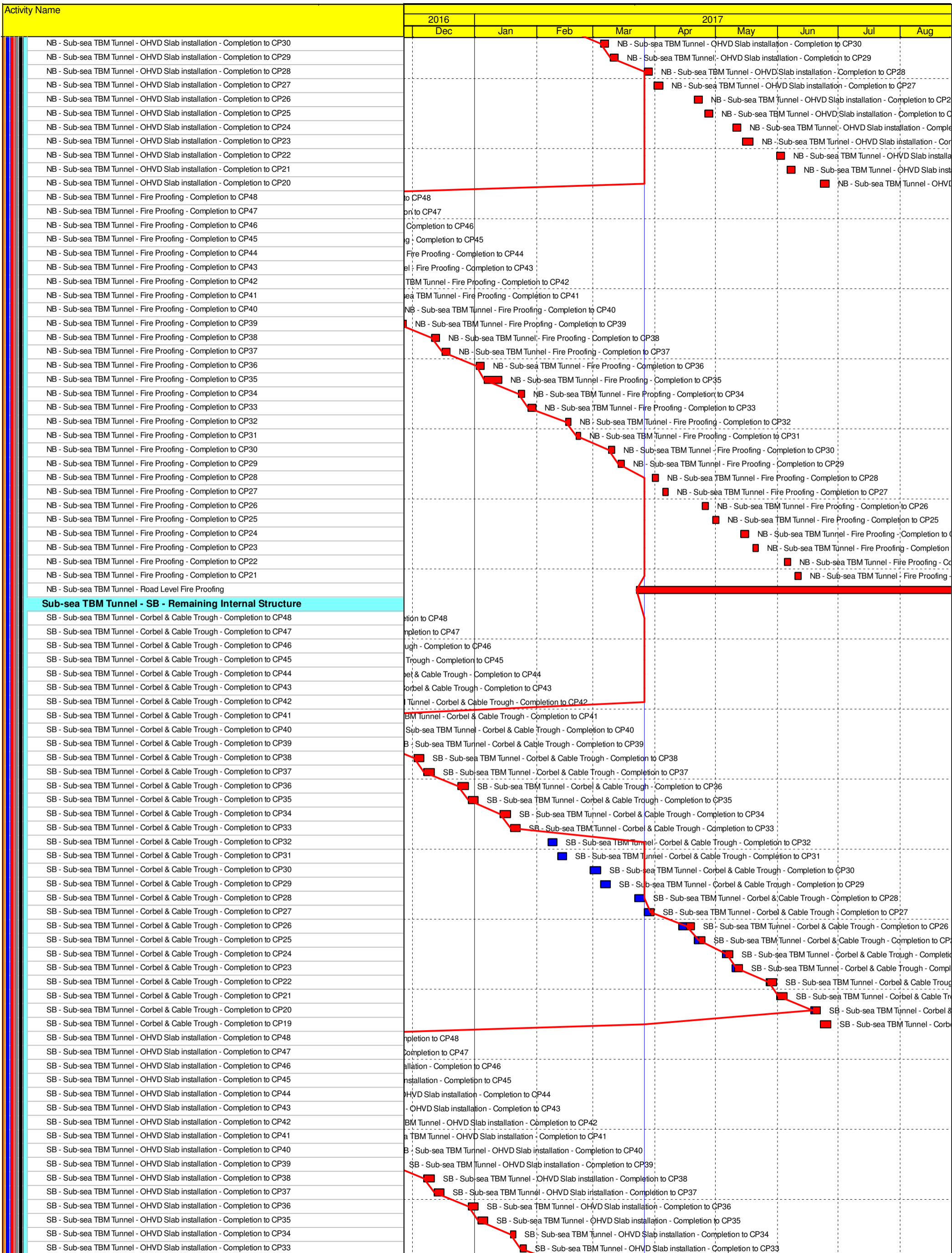


- Planned Bar
- Planned Bar - Critical
- ◆ Planned Milestone
- Progress bar
- ◆ Progress Milestone

TMCLK - Northern Connection Sub-Sea Tunnel Section  
 Detailed Works Programme (Rev. F)  
 Three Months Rolling Programme  
 Progress as of 26-Mar-17



Date	Revision	Checked	Approved
12-Feb-14	TMCLKDUGEN-PRG98507	WYu	SPo
08-Apr-14	TMCLKDUGEN-PRG98507 Rev.B	SPa	WYu
28-Aug-14	TMCLKDUGEN-PRG98507 Rev.C	CLa	WYu
30-Oct-15	TMCLKDUGEN-PRG98507 Rev.F	WYu	

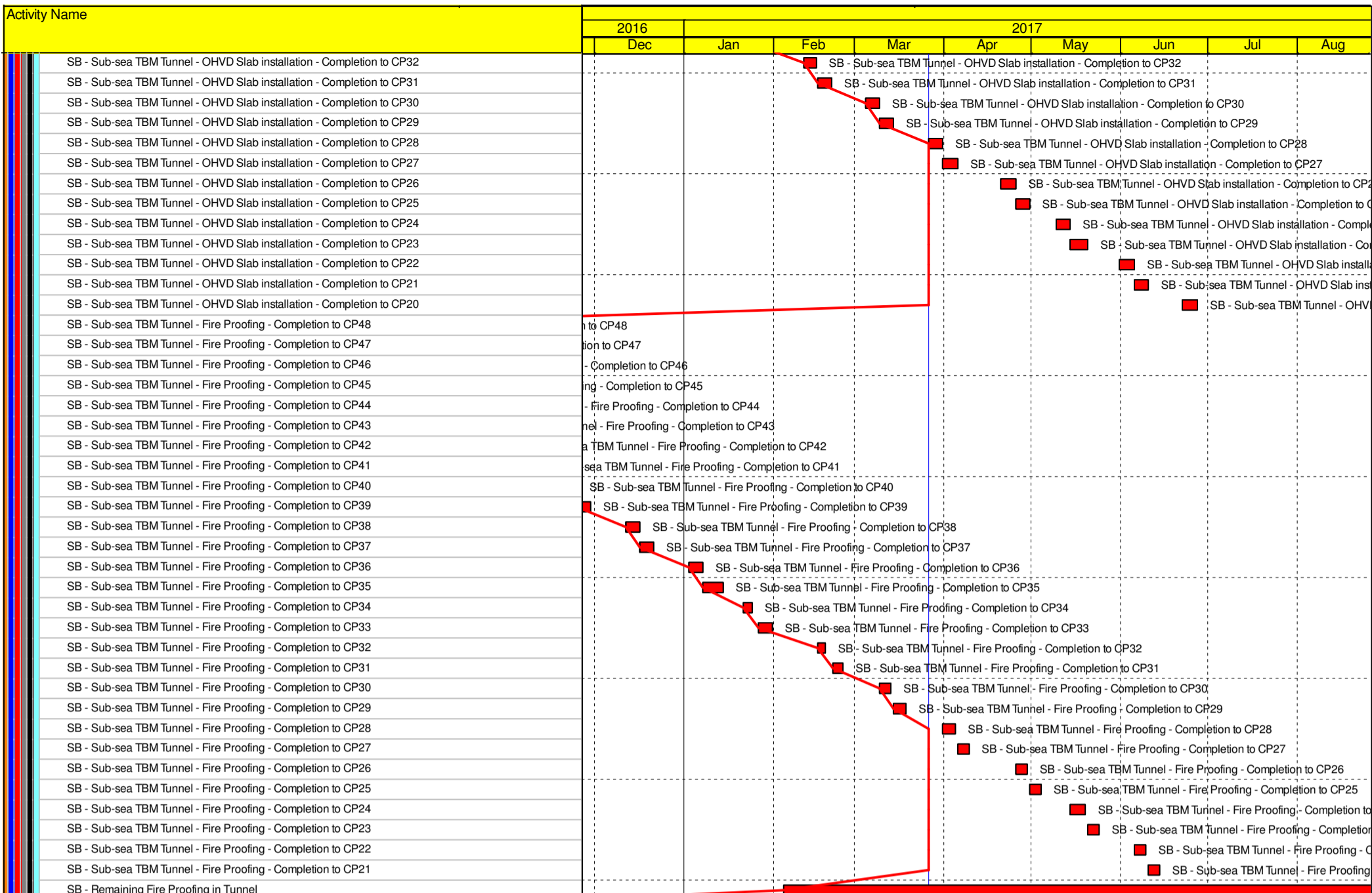


	Planned Bar
	Planned Bar - Critical
	Planned Milestone
	Progress bar
	Progress Milestone

TMCLK - Northern Connection Sub-Sea Tunnel Section  
 Detailed Works Programme (Rev. F)  
 Three Months Rolling Programme  
 Progress as of 26-Mar-17



Date	Revision	Checked	Approved
12-Feb-14	TMCLKDUGEN-PRG98507	WYu	SPa
08-Apr-14	TMCLKDUGEN-PRG98507 Rev.B	SPa	WYu
28-Aug-14	TMCLKDUGEN-PRG98507 Rev.C	CLa	WYu
30-Oct-15	TMCLKDUGEN-PRG98507 Rev.F	WYu	



**Southern Landfall**

**South Cut & Cover Tunnel**

**Design Submission**

**(E2) DDA for South C&C Box & Approach Ramp**

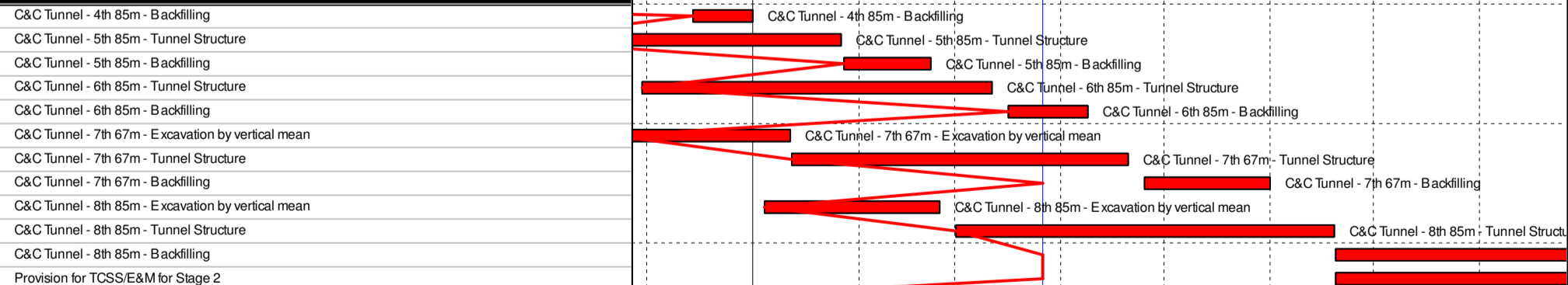
- Review & Comment by JV
- Designer prepare DDA
- Formal Submission of DDA to ICE/ IPs
- Advanced Submission to SO
- IPs/ SO's Advance Comments/ICE Comments
- Comments Received
- Designer to Reply RtC + Update Submission
- Submit Updated DDA to SO/ ICE/ IPs
- ICE Approval & Issue Check Cert
- Submit ICE Check Cert to SO
- IPs Review
- SO's Review

**Method Statement Submission**

**Method Statement of Construction Methodology of C&C Tunnels**

- Preparation Method Statement for C&C Tunnels
- Submit Method Statement to SO
- SO Reviews & Comments
- Re-submission
- SO's Review

**Construction**



**South Retrieval Shaft**

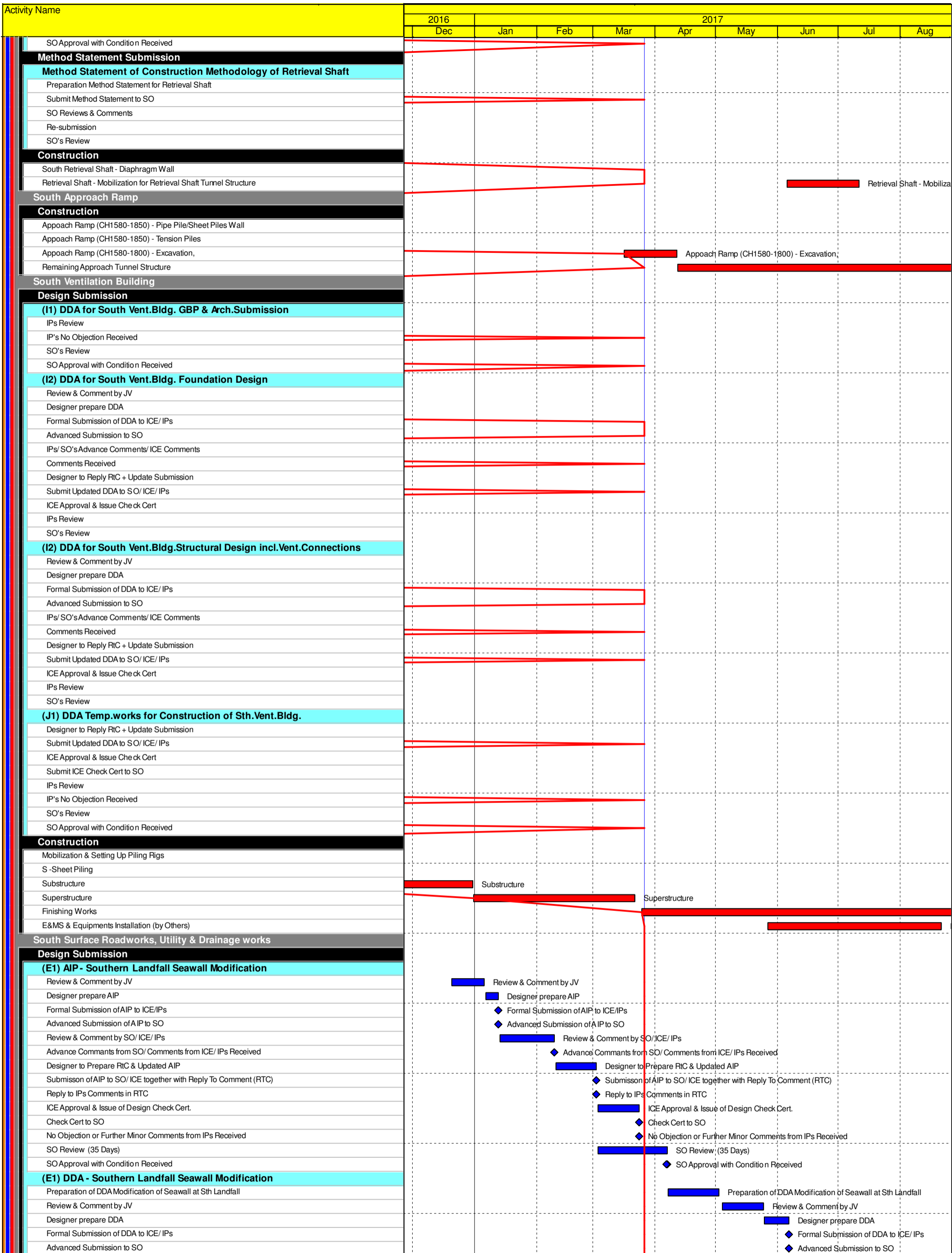
**Design Submission**

**(F4) Gantry Crane Support/Foundations in Southern Landfall**

- Designer to Reply RtC + Update Submission
- Submit Updated IFA to SO/ ICE/ IPs
- ICE Approval & Issue Check Cert
- IPs Review
- IP's No Objection Received
- SO's Review



Date	Revision	Checked	Approved
12-Feb-14	TMCLKDJGEN-PRG98507	WYu	SPa
08-Apr-14	TMCLKDJGEN-PRG98507 Rev.B	SPa	WYu
28-Aug-14	TMCLKDJGEN-PRG98507 Rev.C	CLa	WYu
30-Oct-15	TMCLKDJGEN-PRG98507 Rev.F	WYu	



Date	Revision	Checked	Approved
12-Feb-14	TMCLKDBJGEN-PRG98507	WYu	SPa
08-Apr-14	TMCLKDBJGEN-PRG98507 Rev. B	SPa	WYu
28-Aug-14	TMCLKDBJGEN-PRG98507 Rev. C	CLa	WYu
30-Oct-15	TMCLKDBJGEN-PRG98507 Rev. F	WYu	

Activity Name	2016		2017						
	Dec	Jan	Feb	Mar	Apr	May	Jun	Jul	Aug
IPs/ SO's Advance Comments/ ICE Comments									
IPs Review									
IP's No Objection Received									
SO's Review									
SO Approval with Condition Received									
<b>Method Statement Submission</b>									
<b>Method Statement of Ground Treatment for TBMs Passing under Southern La</b>									
Preparation Method Statement for Ground Improvement in South Landfall									
Submit Method Statement to SO									
SO Reviews & Comments									
Re-submission									
SO's Review									
SO's Approval									
<b>Construction</b>									
Temporary Platform for Ground Treatment for TBM passing under Southern Seawall									
Grouting Treatment for TBM passing under Southern Seawall									
South Landfall - Underground Sewerage & Drainage									
<b>Testing &amp; Commissioning/Inspection &amp; Handover</b>									
<b>Final Inspection &amp; Handover</b>									
<b>Design Submission</b>									
<b>(A12) Maintenance Matrix</b>									
Prepare Re-submission									
2nd Submission									
SO's Condition Approval									
<b>(A13) Operation &amp; Maintenance Manual</b>									
Preparation of Operation and Maintenance Manual									
1st Submission									
SO's Comments for 1st Submission									
Prepare Re-submission									
<b>(A14) As-built &amp; As-fabricated Drawings</b>									
Preparation of As-built and As-fabricated Drawings									
1st Submission									
SO's Comments for 1st Submission									
<b>(A15) Health &amp; Safety File incl. As-built Dwgs &amp; Records, Maintenance Schedules</b>									
Preparation of Health and Safety File including as-built drawings and records, maintenance schedules, etc.									
1st Submission									
SO's Comments for 1st Submission									

- Planned Bar
- Planned Bar - Critical
- Planned Milestone
- Progress bar
- Progress Milestone

TMCLK - Northern Connection Sub-Sea Tunnel Section

Detailed Works Programme (Rev. F)

Three Months Rolling Programme

Progress as of 26-Mar-17



Date	Revision	Checked	Approved
12-Feb-14	TMCLKDJGEN-PRG98507	WYu	SPo
08-Apr-14	TMCLKDJGEN-PRG98507 Rev.B	SPa	WYu
28-Aug-14	TMCLKDJGEN-PRG98507 Rev.C	CLa	WYu
30-Oct-15	TMCLKDJGEN-PRG98507 Rev.F	WYu	