

	Feb	Mar	Apr	May	Jun	Jul	Aug	Sep
TMCLK - Northern Connection Sub-Sea Tunnel Section								
Contract Dates								
Site Possession Date								
Portions: X1,(N10,11,13 & 14) - Sth Landfall								
General Submissions								
Environmental								
Environmental Permit Submissions								
Supplementary WMP of C&C Tunnel at Sth.Landfall								
Supplementary WMP of C&C Tunnel at Sth.Landfall								
Sediment Quality Report/Dumping Permit								
Southern Landfall								
Southern landfall - Commencement of Shaft & C&C Tunnel Dwall								
Southern Landfall - Commencement of Retrieval Shaft Excavation								
Sediment Sampling & Testing Plan (SSTP) - if required								
Complete SSTP and Obtain EPD's approval								
Sediment Quality Report (SQR) - if required								
Advance Ground Investigation works for Sediment sampling								
Sediment Sample Testing & Report preparation								
Dumping Permit for Load Dumping (Loading Permit) - if required								
Finalize the application document and submit to EPD - for Dwall								
Notify the results and issue Loading Permit for Local & Cross Boundary Crossing - for Dwall								
PAYMENT MILESTONE								
Design and Design Checking of the Works								
MS 2.5 Submit AIP for seawall modification works at Southern Landfall			◆					
MS 2.6 Approve AIP for seawall modification works at Southern Landfall by the Supervising Officer				◆				
MS 2.7 Submit DDA for seawall modification works at Southern Landfall							◆	
MS 2.44 Approve DDA for South Ventilation Building by the Supervising Officer								
MS 2.52 Approve DDA for Facilities Provision for TCSS by the Supervising Officer								
MS 2.60 Approve DDA for Drainage, Sewerage, Waterworks and Utilities at Northern Landfall by the Supervising Officer								
MS 2.69 Submit draft Operation and Maintenance Manual for all Tunnels and Cross Passgaes								
MS 2.70 Accept Operation and Maintenance Manual for all Tunnels and Cross Passgaes by the Supervising Officer								
MS 2.71 Submit draft Operation and Maintenance Manual for all works except Tunnels and Cross Passgaes								
MS 2.72 Accept Operation and Maintenance Manual for all works except Tunnels and Cross Passgaes by the Supervising Officer								
Tunnel Boring Machine (TBM) and Back-up Equipment for TBM Tunnel								
MS 3.1.6 Removal of TBM for Southbound Tunnel from Site after the completion of TBM Tunnel			◆					
MS 3.1.12 Removal of TBM for Northbound Tunnel from Site after the completion of TBM Tunnel				◆				
MS 3.1.25 Demolition of Slurry Treatment Plant on completion					◆			
MS 3.1.26 Complete the whole of the activities under this Cost Centre Part to the satisfaction of the Supervising Officer								
TBM Tunnel								
MS 3.3.4 Complete walls of retrieval shaft								
MS 3.3.5 Complete excavation to formation level for retrieval shaft and complete casting of base slab								
MS 3.3.6 Complete all necessary works of retrieval shaft to facilitate retrieval of TBM								
MS 3.3.45 Completion of excavation, support and permanent lining for 60% of the total length (measured on plan) of the Northbound TBM Tunnel								
MS 3.3.46 Completion of excavation, support and permanent lining for 62.5% of the total length (measured on plan) of the Northbound TBM Tunnel								
MS 3.3.47 Completion of excavation, support and permanent lining for 65% of the total length (measured on plan) of the Northbound TBM Tunnel								
MS 3.3.48 Completion of excavation, support and permanent lining for 67.5% of the total length (measured on plan) of the Northbound TBM Tunnel								
MS 3.3.49 Completion of excavation, support and permanent lining for 70% of the total length (measured on plan) of the Northbound TBM Tunnel								
MS 3.3.50 Completion of excavation, support and permanent lining for 72.5% of the total length (measured on plan) of the Northbound TBM Tunnel								
MS 3.3.51 Completion of excavation, support and permanent lining for 75% of the total length (measured on plan) of the Northbound TBM Tunnel								
MS 3.3.52 Completion of excavation, support and permanent lining for 77.5% of the total length (measured on plan) of the Northbound TBM Tunnel								
MS 3.3.53 Completion of excavation, support and permanent lining for 80% of the total length (measured on plan) of the Northbound TBM Tunnel								
MS 3.3.54 Completion of excavation, support and permanent lining for 82.5% of the total length (measured on plan) of the Northbound TBM Tunnel								
MS 3.3.55 Completion of excavation, support and permanent lining for 85% of the total length (measured on plan) of the Northbound TBM Tunnel								
MS 3.3.56 Completion of excavation, support and permanent lining for 87.5% of the total length (measured on plan) of the Northbound TBM Tunnel								
MS 3.3.57 Completion of excavation, support and permanent lining for 90% of the total length (measured on plan) of the Northbound TBM Tunnel								
MS 3.3.58 Completion of excavation, support and permanent lining for 92.5% of the total length (measured on plan) of the Northbound TBM Tunnel								
MS 3.3.59 Completion of excavation, support and permanent lining for 95% of the total length (measured on plan) of the Northbound TBM Tunnel								
MS 3.3.60 Completion of excavation, support and permanent lining for 97.5% of the total length (measured on plan) of the Northbound TBM Tunnel								
MS 3.3.61 Completion of excavation, support and permanent lining for 100% of the total length (measured on plan) of the Northbound TBM Tunnel								
MS 3.3.111 Completion of excavation, support and permanent lining for 87.5% of the total length (measured on plan) of the Southbound TBM Tunnel								
MS 3.3.112 Completion of excavation, support and permanent lining for 90% of the total length (measured on plan) of the Southbound TBM Tunnel								
MS 3.3.113 Completion of excavation, support and permanent lining for 92.5% of the total length (measured on plan) of the Southbound TBM Tunnel								
MS 3.3.114 Completion of excavation, support and permanent lining for 95% of the total length (measured on plan) of the Southbound TBM Tunnel								
MS 3.3.115 Completion of excavation, support and permanent lining for 97.5% of the total length (measured on plan) of the Southbound TBM Tunnel								
MS 3.3.116 Completion of excavation, support and permanent lining for 100% of the total length (measured on plan) of the Southbound TBM Tunnel								
MS 3.3.118 Complete tunnel internal structures for 50% of total length (measured on plan) of the Northbound TBM Tunnel				◆				
MS 3.3.119 Complete tunnel internal structures for 75% of total length (measured on plan) of the Northbound TBM Tunnel					◆			
MS 3.3.122 Complete tunnel internal structures for 50% of total length (measured on plan) of the Southbound TBM Tunnel				◆				
MS 3.3.123 Complete tunnel internal structures for 75% of total length (measured on plan) of the Southbound TBM Tunnel					◆			
Cross Passages for TBM Tunnel								
MS 3.3.1 Complete 50% of ground treatment for excavation of all Type 1 Cross Passages(Percentage to be certified for 50% completion)								
MS 3.3.2 Complete 100% of ground treatment for excavation of all Type 1 Cross Passages(Percentage to be certified for 100% completion)							◆	
MS 3.3.3 Complete 50% of ground treatment for excavation of all Type 2 Cross Passages(Percentage to be certified for 50% completion)								
MS 3.3.4 Complete 100% of ground treatment for excavation of all Type 2 Cross Passages(Percentage to be certified for 100% completion)							◆	
MS 3.3.5 Complete 50% of excavation and support for all Type 1 Cross Passages(Percentage to be certified for 50% completion)								
MS 3.3.6 Complete 100% of excavation and support for all Type 1 Cross Passages(Percentage to be certified for 100% completion)								◆
MS 3.3.7 Complete 50% of excavation and support for all Type 2 Cross Passages(Percentage to be certified for 50% completion)								
MS 3.3.9 Complete 50% of permanent lining and internal structures for all Type 1 Cross Passages(Percentage to be certified for 50% completion)				◆				
MS 3.3.11 Complete 50% of permanent lining and internal structures for all Type 2 Cross Passages(Percentage to be certified for 50% completion)					◆			
Cut-and-cover Tunnels at Southern Landfalls								
MS 4.1.1 Complete 10% of total length (measured on plan) of temporary retaining walls for excavation of Cut-and-cover Tunnels								
MS 4.1.2 Complete 20% of total length (measured on plan) of temporary retaining walls for excavation of Cut-and-cover Tunnels								
MS 4.1.3 Complete 30% of total length (measured on plan) of temporary retaining walls for excavation of Cut-and-cover Tunnels								
MS 4.1.4 Complete 40% of total length (measured on plan) of temporary retaining walls for excavation of Cut-and-cover Tunnels								
MS 4.1.5 Complete 50% of total length (measured on plan) of temporary retaining walls for excavation of Cut-and-cover Tunnels								
MS 4.1.6 Complete 60% of total length (measured on plan) of temporary retaining walls for excavation of Cut-and-cover Tunnels								

■ Planned Bar
■ Planned Bar - Critical
◆ Planned Milestone
■ Progress bar
◆ Progress Milestone



Date	Revision	Checked	Approved
12-Feb-14	TMCLKDBJGEN-PRG-98507	WYu	SPb
08-Apr-14	TMCLKDBJGEN-PRG-98507 Rev.B	SPa	WYu
28-Aug-14	TMCLKDBJGEN-PRG-98507 Rev.C	CLa	WYu
30-Oct-15	TMCLKDBJGEN-PRG-98507 Rev.F	WYu	

Activity Name	2017								
	Feb	Mar	Apr	May	Jun	Jul	Aug	Sep	
MS 4.1.7 Complete 70% of total length (measured on plan) of temporary retaining walls for excavation of Cut-									
MS 4.1.8 Complete 80% of total length (measured on plan) of temporary retaining walls for excavation of Cut-									
MS 4.1.9 Complete 90% of total length (measured on plan) of temporary retaining walls for excavation of Cut-									
MS 4.1.10 Complete 100% of total length (measured on plan) of temporary retaining walls for excavation of C									
MS 4.1.11									
MS 4.1.12 Complete 40% of excavation for Cut-and-cover tunnel									
MS 4.1.13 Complete 60% of excavation for Cut-and-cover tunnel									
MS 4.1.14 Complete 80% of excavation for Cut-and-cover tunnel									
MS 4.1.15 Complete 100% of excavation for Cut-and-cover tunnel									
MS 4.1.16 Complete permanent tunnel structure for 10% of the total length (measured on plan) of Cut-and-cc									
MS 4.1.17 Complete permanent tunnel structure for 20% of the total length (measured on plan) of Cut-and-cc									
MS 4.1.18 Complete permanent tunnel structure for 30% of the total length (measured on plan) of Cut-and-cc									
MS 4.1.19 Complete permanent tunnel structure for 40% of the total length (measured on plan) of Cut-and-cc									
MS 4.1.20 Complete permanent tunnel structure for 50% of the total length (measured on plan) of Cut-and-cc									
MS 4.1.21 Complete permanent tunnel structure for 60% of the total length (measured on plan) of Cut-and-cc									
MS 4.1.22 Complete permanent tunnel structure for 70% of the total length (measured on plan) of Cut-and-cc									
MS 4.1.23 Complete permanent tunnel structure for 80% of the total length (measured on plan) of Cut-and-cc									
MS 4.1.24 Complete permanent tunnel structure for 90% of the total length (measured on plan) of Cut-and-cc									
MS 4.1.25 Complete permanent tunnel structure for 100% of the total length (measured on plan) of Cut-and-cc									
MS 4.1.26 Complete excavation for 50% of total length (measured on plan) of all Cross Passages									
MS 4.1.27 Complete excavation for 100% of total length (measured on plan) of all Cross Passages									
MS 4.1.28 Complete permanent junction structure at interface between Cut-and-cover Tunnel and TBM Tunn									
MS 4.1.29 Complete pavement for 50% of the total length (measured on plan) of Cut-and-cover Tunnel									
MS 4.1.30 Complete pavement for 100% of the total length (measured on plan) of Cut-and-cover Tunnel									
MS 4.1.31 Complete the whole of the activities under this Cost Centre to the satisfaction of the Supervising Off									
Cut-and-cover Tunnel at Northern Landfall									
MS 4.2.22 Complete tunnel internal structure for 50% of NB Northern Landfall TBM Tunnel									
MS 4.2.23 Complete tunnel internal structure for 100% of NB Northern Landfall TBM Tunnel									
MS 4.2.25 Complete tunnel internal structure for 100% of SB Northern Landfall TBM Tunnel									
MS 4.2.29 Complete 100% of permanent lining and internal structures for all Northern Landfall Cross Passag									
MS 4.2.30 Complete Permanent tunnel structure for 25% of Cut and Cover Tunnel									
MS 4.2.31 Complete Permanent tunnel structure for 50% of Cut and Cover Tunnel									
MS 4.2.32 Complete Permanent tunnel structure for 75% of Cut and Cover Tunnel									
MS 4.2.34 Complete Permanent junction structure at interface between Cut-and-cover and TBM Tunnel									
Approach Ramp Structures to Cut-and-cover Tunnel at Southern Landfall									
MS 5.1.2 Complete 40% of excavation for approach ramp structures									
MS 5.1.3 Complete 60% of excavation for approach ramp structures									
MS 5.1.4 Complete 80% of excavation for approach ramp structures									
MS 5.1.5 Complete 100% of excavation for approach ramp structures									
MS 5.1.6 Complete retaining wall foundation for 10% of the total length (measured on plan) of approach ramp									
MS 5.1.7 Complete retaining wall foundation for 20% of the total length (measured on plan) of approach ramp									
MS 5.1.8 Complete retaining wall foundation for 30% of the total length (measured on plan) of approach ramp									
MS 5.1.9 Complete retaining wall foundation for 40% of the total length (measured on plan) of approach ramp									
MS 5.1.10 Complete retaining wall foundation for 50% of the total length (measured on plan) of approach ramp									
MS 5.1.11 Complete retaining wall foundation for 60% of the total length (measured on plan) of approach ramp									
MS 5.1.12 Complete retaining wall foundation for 70% of the total length (measured on plan) of approach ramp									
MS 5.1.13 Complete retaining wall foundation for 80% of the total length (measured on plan) of approach ramp									
MS 5.1.14 Complete retaining wall foundation for 90% of the total length (measured on plan) of approach ramp									
MS 5.1.15 Complete retaining wall foundation for 100% of the total length (measured on plan) of approach ramp									
MS 5.1.16 Complete retaining wall structure for 10% of the total length (measured on plan) of approach ramp									
MS 5.1.17 Complete retaining wall structure for 20% of the total length (measured on plan) of approach ramp									
MS 5.1.18 Complete retaining wall structure for 30% of the total length (measured on plan) of approach ramp									
MS 5.1.19 Complete retaining wall structure for 40% of the total length (measured on plan) of approach ramp									
At grade Roads at Southern Landfall									
MS 6.1.13 Complete drainage installation of 20% length of total length (measured on plan) of drainage pipes									
At grade Roads at Northern Landfall									
MS 6.2.1 Complete sub-base works of 20% of total area of at grade roads									
MS 6.2.13 Complete drainage installation of 20% length of total length (measured on plan) of drainage pipes									
MS 6.2.17 Complete sewerage installation of 20% length of total length (measured on plan) of sewerage pipes									
MS 6.2.21 Complete watermain installation of 20% length of total length (measured on plan) of watermain									
South Ventilation Buildings									
MS 7.1.1 Complete 100% of cofferdam for excavation									
MS 7.1.2 Complete 100% of excavation to the formation level									
MS 7.1.3 Complete 100% of foundation for the ventilation building									
MS 7.1.4 Complete concreting works of 25% area of the total construction floor area for the ventilation building									
MS 7.1.5 Complete concreting works of 50% area of the total construction floor area for the ventilation building									
MS 7.1.6 Complete concreting works of 75% area of the total construction floor area for the ventilation building									
MS 7.1.7 Complete concreting works of 100% area of the total construction floor area for the ventilation building									
North Ventilation Buildings									
MS 7.2.4 Complete concreting works of 25% area of the total construction floor area for the ventilation building									
MS 7.2.5 Complete concreting works of 50% area of the total construction floor area for the ventilation building									
MS 7.2.6 Complete concreting works of 75% area of the total construction floor area for the ventilation building									
MS 7.2.7 Complete concreting works of 100% area of the total construction floor area for the ventilation building									
Facilities Provision for TCSS for At Grade Roads at Northern Landfall									
MS 8.2.5 Complete 25% of support foundation, ductings, drawpits for at grade roads									
Facilities Provision for E&M Works for TBM Tunnel, Cut & Cover Tunnels and Ci									
MS 9.1.1 Complete 25% of bonding terminal, opening and accessories, etc.									
MS 9.1.2 Complete 25% of plinth, hoisting facilities and accessories, etc.									
MS 9.1.3 Complete 50% of bonding terminal, opening and accessories, etc.									
MS 9.1.4 Complete 50% of plinth, hoisting facilities and accessories, etc.									
MS 9.1.5 Complete 75% of bonding terminal, opening and accessories, etc.									
MS 9.1.6 Complete 75% of plinth, hoisting facilities and accessories, etc.									
Facilities Provision for E&M Works for South Ventilation Building									
MS 9.4.1 Complete 25% of bonding terminal, main earth mat, clean earth mat, earth pit, lightning pit, conceal									
MS 9.4.2 Complete 25% of plinth, hoisting facilities, louver, wire mesh and accessories, etc.									
MS 9.4.3 Complete 25% of floor drain, water tank and accessories, etc.									
Facilities Provision for E&M Works for North Ventilation Building									

- Planned Bar
- Planned Bar - Critical
- ◆ Planned Milestone
- Progress bar
- ◆ Progress Milestone

TMCLK - Northern Connection Sub-Sea Tunnel Section
Detailed Works Programme (Rev. F)
Three Months Rolling Programme
Progress as of 23-Apr-17



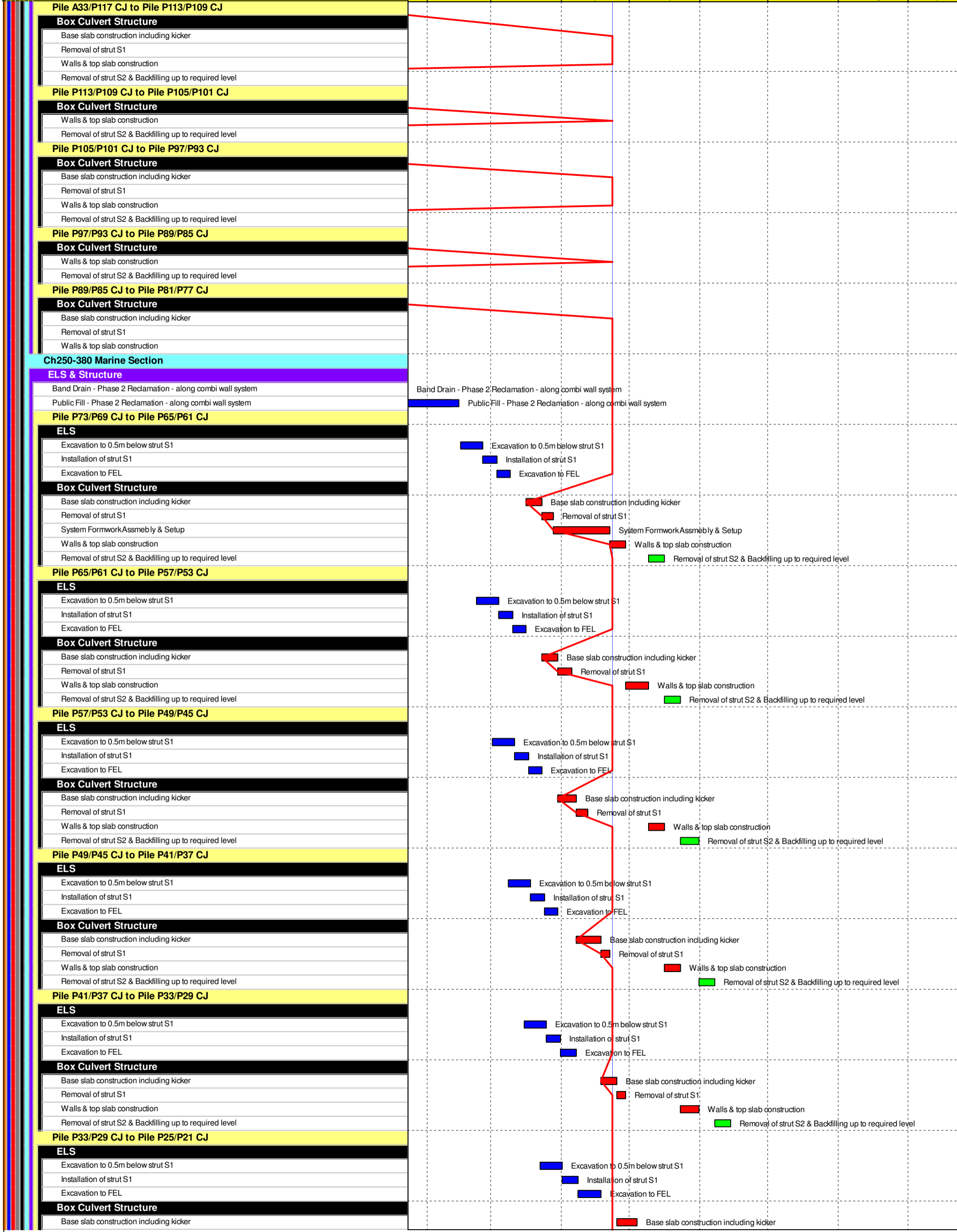
Date	Revision	Checked	Approved
12-Feb-14	TMCLKDBJGEN-PRG-98507	WYu	SPa
08-Apr-14	TMCLKDBJGEN-PRG-98507 Rev.B	SPa	WYu
28-Aug-14	TMCLKDBJGEN-PRG-98507 Rev.C	CLa	WYu
30-Oct-15	TMCLKDBJGEN-PRG-98507 Rev.F	WYu	

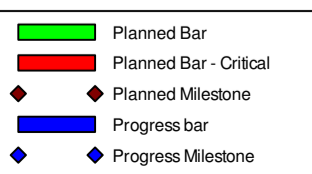
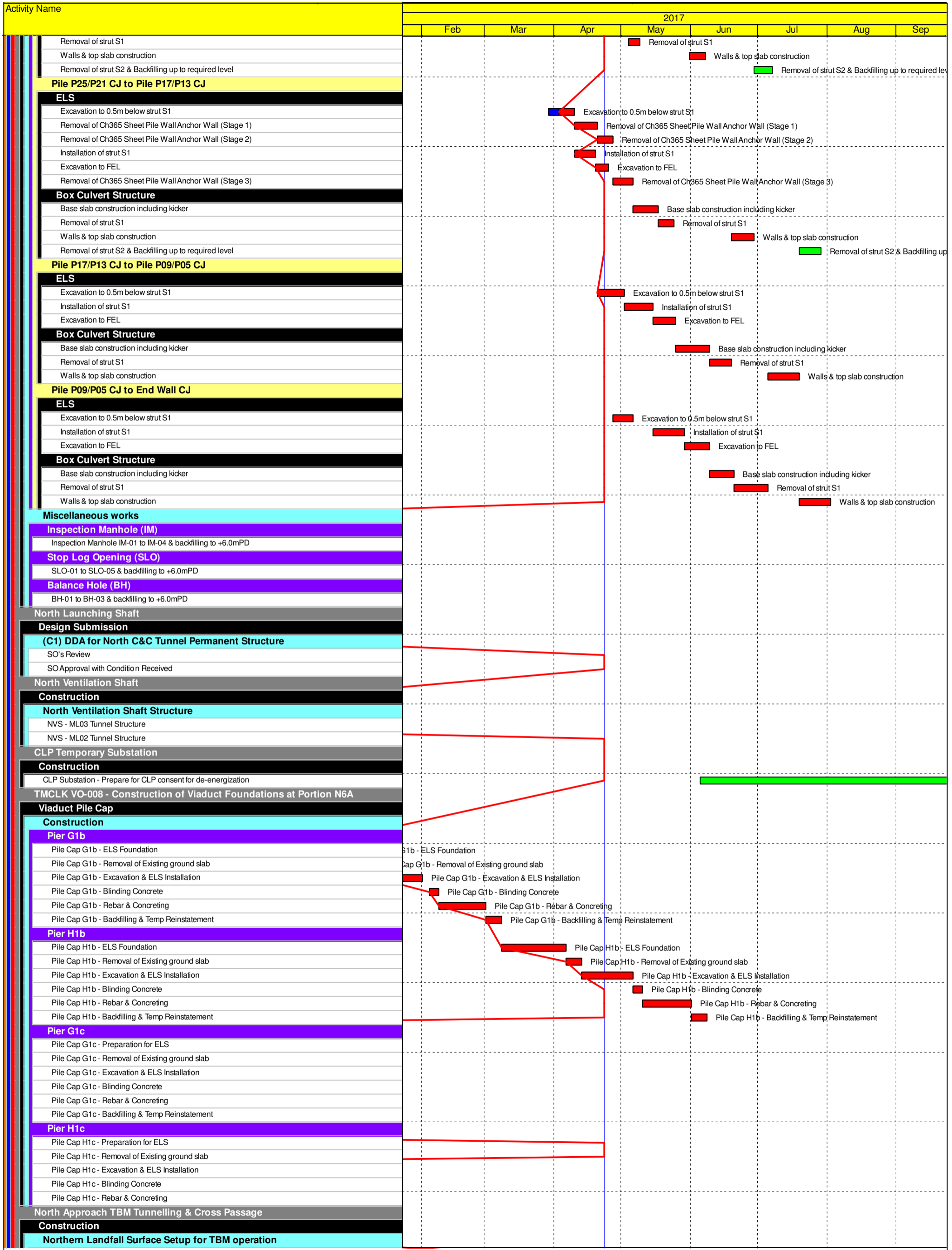
Activity Name	2017							
	Feb	Mar	Apr	May	Jun	Jul	Aug	Sep
MS 9.5.1 Complete 25% of bonding terminal, main earth mat, clean earth mat, earth pit, lightning pit, conceal				◆				
MS 9.5.2 Complete 25% of plinth, hoisting facilities, louver, wire mesh and accessories, etc.				◆				
MS 9.5.3 Complete 25% of floor drain, water tank and accessories, etc.				◆				
MS 9.5.4 Complete 50% of bonding terminal, main earth mat, clean earth mat, earth pit, lightning pit, conceal						◆		
MS 9.5.5 Complete 50% of plinth, hoisting facilities, louver, wire mesh and accessories, etc.						◆		
MS 9.5.6 Complete 50% of floor drain, water tank and accessories, etc.						◆		
Construction								
Northern Landfall								
North Reclamation (Phase 1)								
Construction								
Zone C1								
Reclamation								
Surcharge Removal - Zone C1 - (CH493 to 543)								
Surcharge Removal - Zone C1 - (CH493 to 543)								
Zone C2								
Reclamation								
Surcharge Removal - Zone C2 - (CH543 to 598)								
Zone B								
Reclamation								
Surcharge Removal - Zone B - (CH598 to 648)								
Surcharge Removal - Zone B - (CH598 to 698) stage 1								
Surcharge Period - Zone B - (CH648 to 698) stage 2								
Surcharge Removal - Zone B - (CH598 to 698) stage 2								
Zone F								
CH184 to CH231								
F - Anchor wall Installation - CH184 to CH231								
F - Backfilling up to 0.0mPD & G2 Installation to Anchor Wall- CH184 to CH231								
F - Backfilling up to +3.0mPD & G1 Installation to Anchor Wall- CH184 to CH231								
F - Backfilling up to +6.0mPD to Anchor Wall - CH184 to CH231								
F - Backfilling to +6.0mPD to Existing Seawall - CH184 to CH231								
CH231 to CH278								
F - Backfilling up to +6.0mPD - CH231 to CH278								
F - Anchor wall Installation - CH231 to CH278								
F - Backfilling up to 0.0mPD & G2 Installation to Anchor Wall- CH231 to CH278								
F - Backfilling up to +3.0mPD & G1 Installation to Anchor Wall - CH231 to CH278								
F - Backfilling up to +6.0mPD to Anchor Wall - CH231 to CH278								
F - Backfilling to +6.0mPD to Existing Seawall - CH231 to CH278								
CH278 to CH327								
F - Backfilling up to +6.0mPD - CH278 to CH327								
F - Anchor wall Installation - CH278 to CH327								
F - Backfilling up to 0.0mPD & G2 Installation to Anchor Wall - CH278 to CH327								
F - Backfilling up to +3.0mPD & G1 Installation to Anchor Wall - CH278 to CH327								
F - Backfilling up to +6.0mPD to Anchor Wall - CH278 to CH327								
F - Backfilling to +6.0mPD to Existing Seawall - CH278 to CH327								
CH327 to CH381								
F - Backfilling up to +6.0mPD - CH327 to CH381								
F - Anchor wall Installation - CH327 to CH381								
F - Backfilling up to 0.0mPD & G2 Installation to Anchor Wall - CH327 to CH381								
F - Backfilling up to +3.0mPD & G1 Installation to Anchor Wall - CH327 to CH381								
F - Backfilling up to +6.0mPD to Anchor Wall - CH327 to CH381								
F - Backfilling to +6.0mPD to Existing Seawall - CH327 to CH381								
Box Culvert Extension								
Construction								
Ch000-010 Culvert Outfall								
Removal of temporary bulk head								
CH100-150 Land Section								
Pile A41/A39 CJ to Pile A39/A37 CJ								
Box Culvert Structure								
Pile cap construction								
Base slab construction including kicker								
Removal of strut S1								
Sliding formworks 1st assembly								
Walls & top slab construction								
Removal of strut S2 & Backfilling up to required level								
Pile A39/A37 CJ to Pile A37/A35 CJ								
Box Culvert Structure								
Pile cap construction								
Base slab construction including kicker								
Removal of strut S1								
Walls & top slab construction								
Removal of strut S2 & Backfilling up to required level								
Pile A37/A35 CJ to Pile A35/A33 CJ								
Box Culvert Structure								
Pile cap construction								
Base slab construction including kicker								
Removal of strut S1								
Walls & top slab construction								
Removal of strut S2 & Backfilling up to required level								
Pile A35/A33 CJ to Pile A33/P117 CJ								
Box Culvert Structure								
Pile cap construction								
Base slab construction including kicker								
Removal of strut S1								
Walls & top slab construction								
Removal of strut S2 & Backfilling up to required level								
Ch150-250 Marine Section								
ELS & Structure								

- Planned Bar
- Planned Bar - Critical
- ◆ Planned Milestone
- Progress bar
- ◆ Progress Milestone

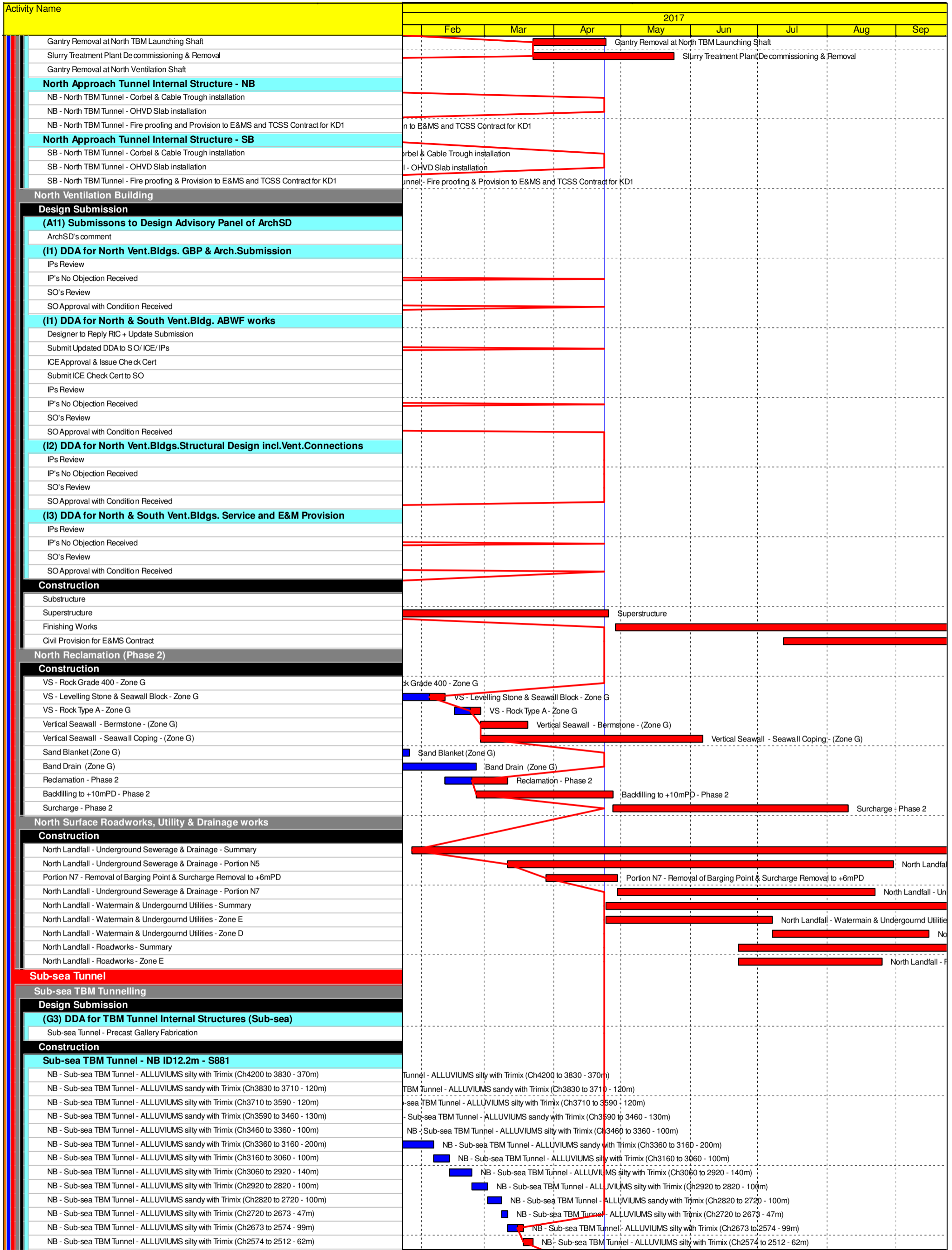


Date	Revision	Checked	Approved
12-Feb-14	TMCLKDBJGEN PRG.98507	WYu	SPo
08-Apr-14	TMCLKDBJGEN PRG.98507 Rev.B	SPa	WYu
28-Aug-14	TMCLKDBJGEN PRG.98507 Rev.C	CLa	WYu
30-Oct-15	TMCLKDBJGEN PRG.98507 Rev.F	WYu	



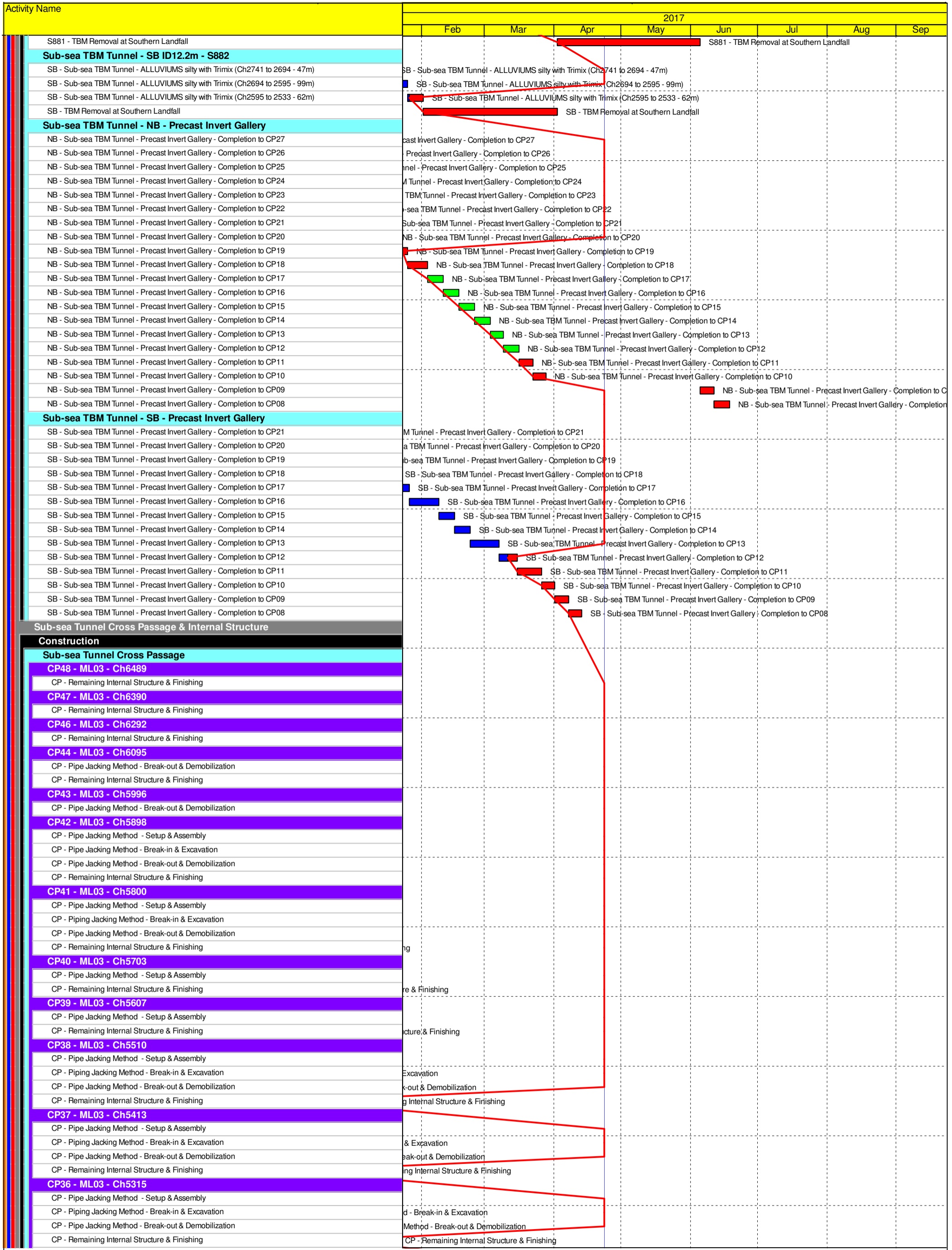







Date	Revision	Checked	Approved
12-Feb-14	TMCLKDBJGEN/PRG/98507	WYu	SPa
08-Apr-14	TMCLKDBJGEN/PRG/98507 Rev.B	SPa	WYu
28-Aug-14	TMCLKDBJGEN/PRG/98507 Rev.C	CLa	WYu
30-Oct-15	TMCLKDBJGEN/PRG/98507 Rev.F	WYu	



■ Planned Bar
■ Planned Bar - Critical
◆ Planned Milestone
■ Progress bar
◆ Progress Milestone

Date	Revision	Checked	Approved
12-Feb-14	TMCLKDBJGEN-PRG-98507	WYu	SPa
08-Apr-14	TMCLKDBJGEN-PRG-98507 Rev.B	SPa	WYu
28-Aug-14	TMCLKDBJGEN-PRG-98507 Rev.C	CLa	WYu
30-Oct-15	TMCLKDBJGEN-PRG-98507 Rev.F	WYu	



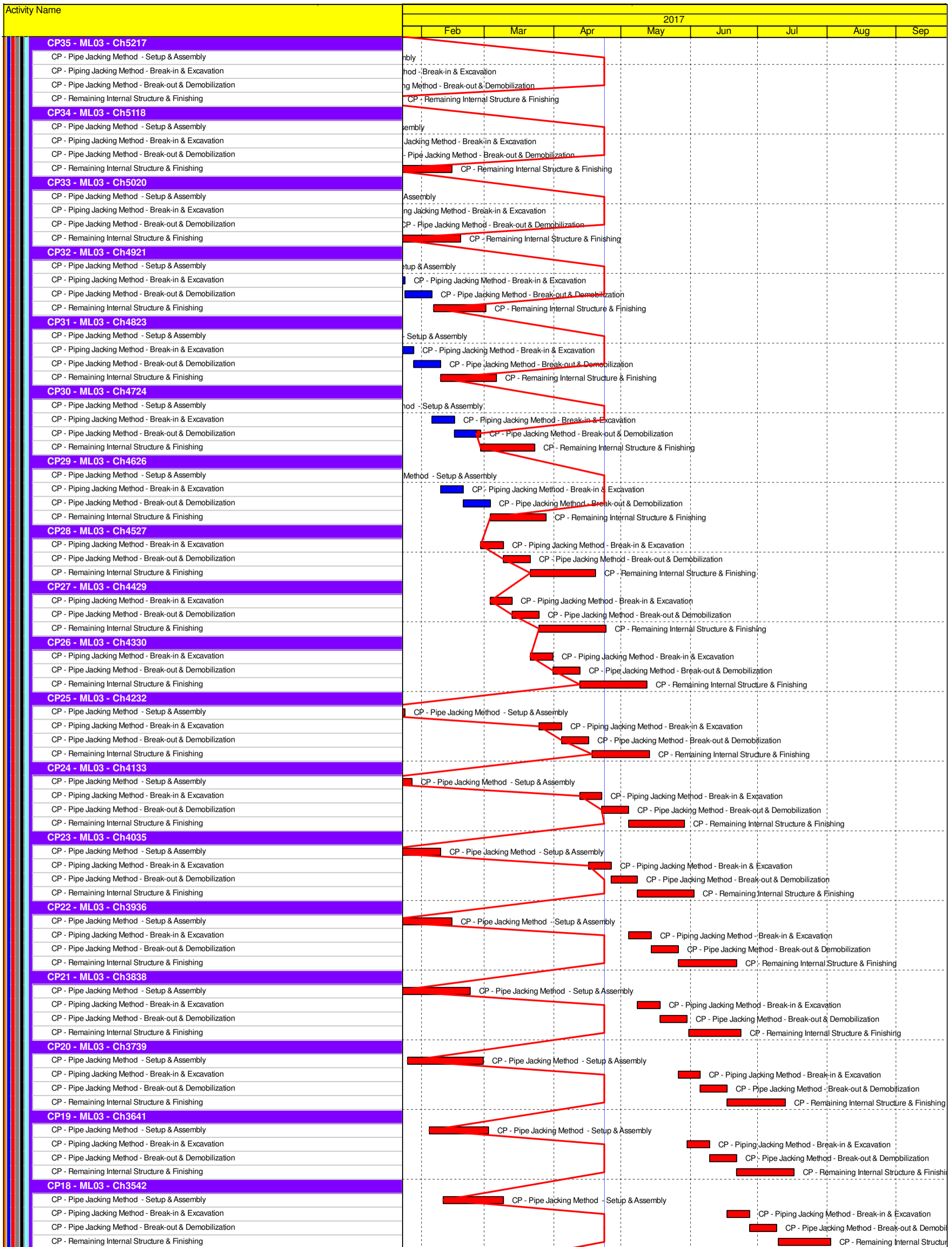
	Planned Bar
	Planned Bar - Critical
	Planned Milestone
	Progress bar
	Progress Milestone

TMCLK - Northern Connection Sub-Sea Tunnel Section
 Detailed Works Programme (Rev. F)
 Three Months Rolling Programme
 Progress as of 23-Apr-17



Dragages - Bouygues Joint Venture 寶嘉 - 布依格聯營

Date	Revision	Checked	Approved
12-Feb-14	TMCLKDBJGEN PRG.98507	WYu	SPa
08-Apr-14	TMCLKDBJGEN PRG.98507 Rev.B	SPa	WYu
28-Aug-14	TMCLKDBJGEN PRG.98507 Rev.C	CLa	WYu
30-Oct-15	TMCLKDBJGEN PRG.98507 Rev.F	WYu	

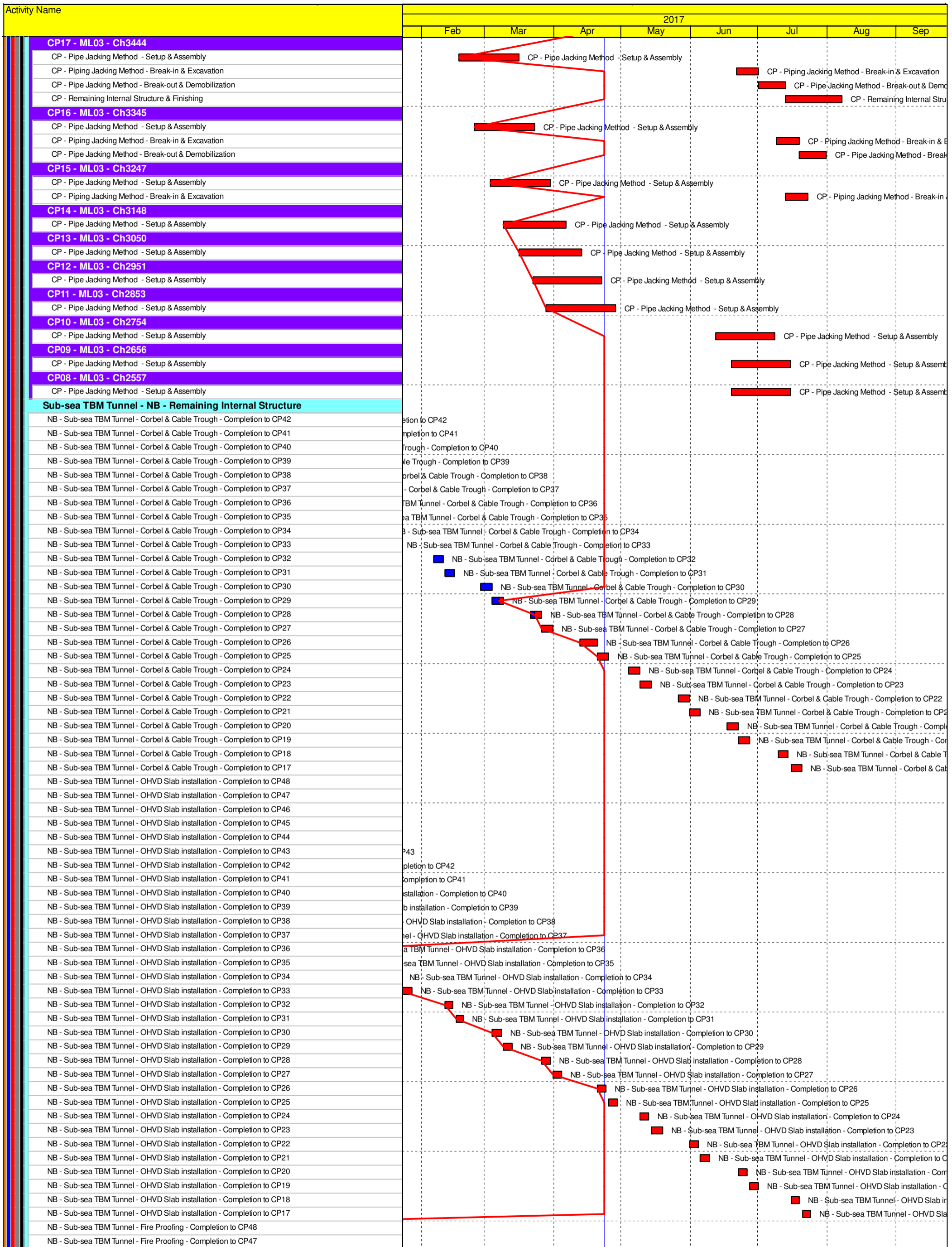


- Planned Bar
- Planned Bar - Critical
- ◆ Planned Milestone
- Progress bar
- ◆ Progress Milestone

TMCLK - Northern Connection Sub-Sea Tunnel Section
 Detailed Works Programme (Rev. F)
 Three Months Rolling Programme
 Progress as of 23-Apr-17



Date	Revision	Checked	Approved
12-Feb-14	TMCLKDBJGEN/PRG/98507	WYu	SPa
08-Apr-14	TMCLKDBJGEN/PRG/98507 Rev.B	SPa	WYu
28-Aug-14	TMCLKDBJGEN/PRG/98507 Rev.C	CLa	WYu
30-Oct-15	TMCLKDBJGEN/PRG/98507 Rev.F	WYu	

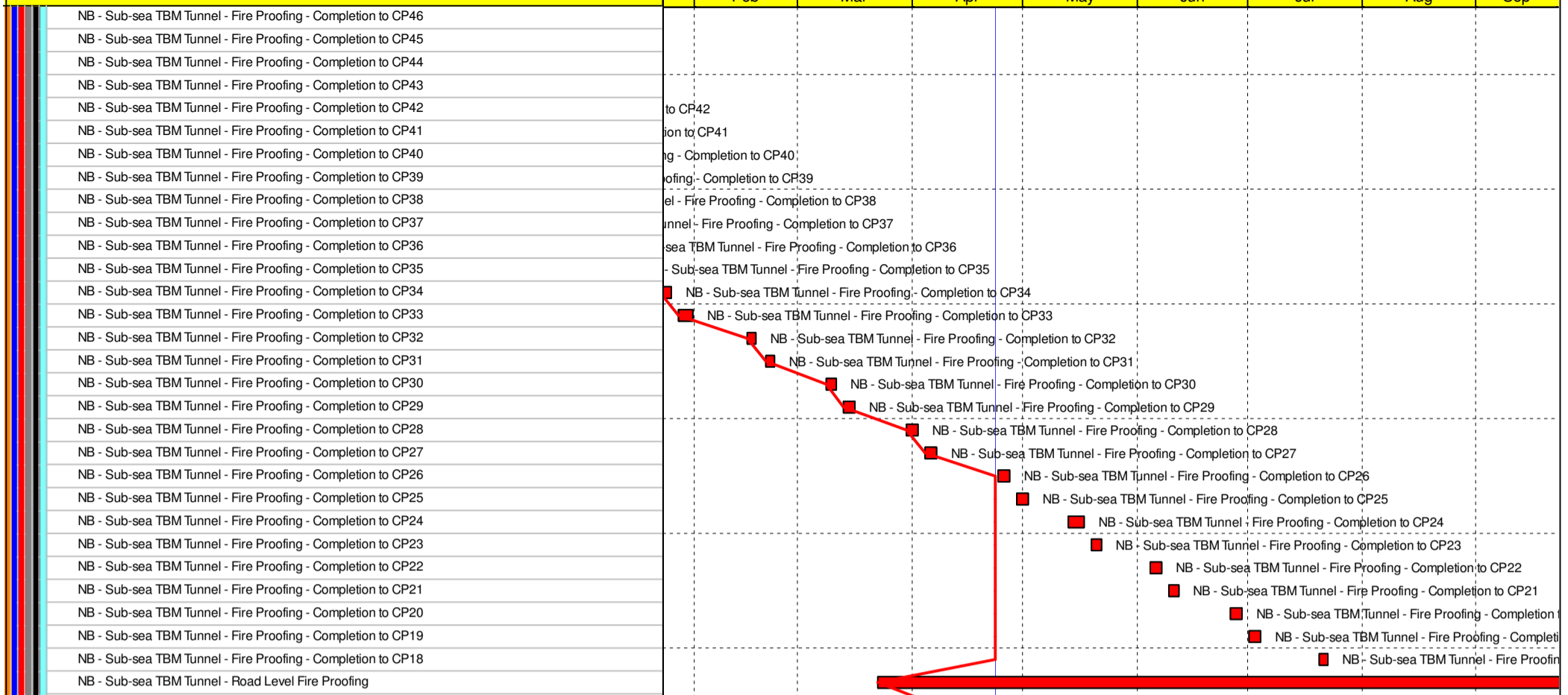


	Planned Bar
	Planned Bar - Critical
	Planned Milestone
	Progress bar
	Progress Milestone

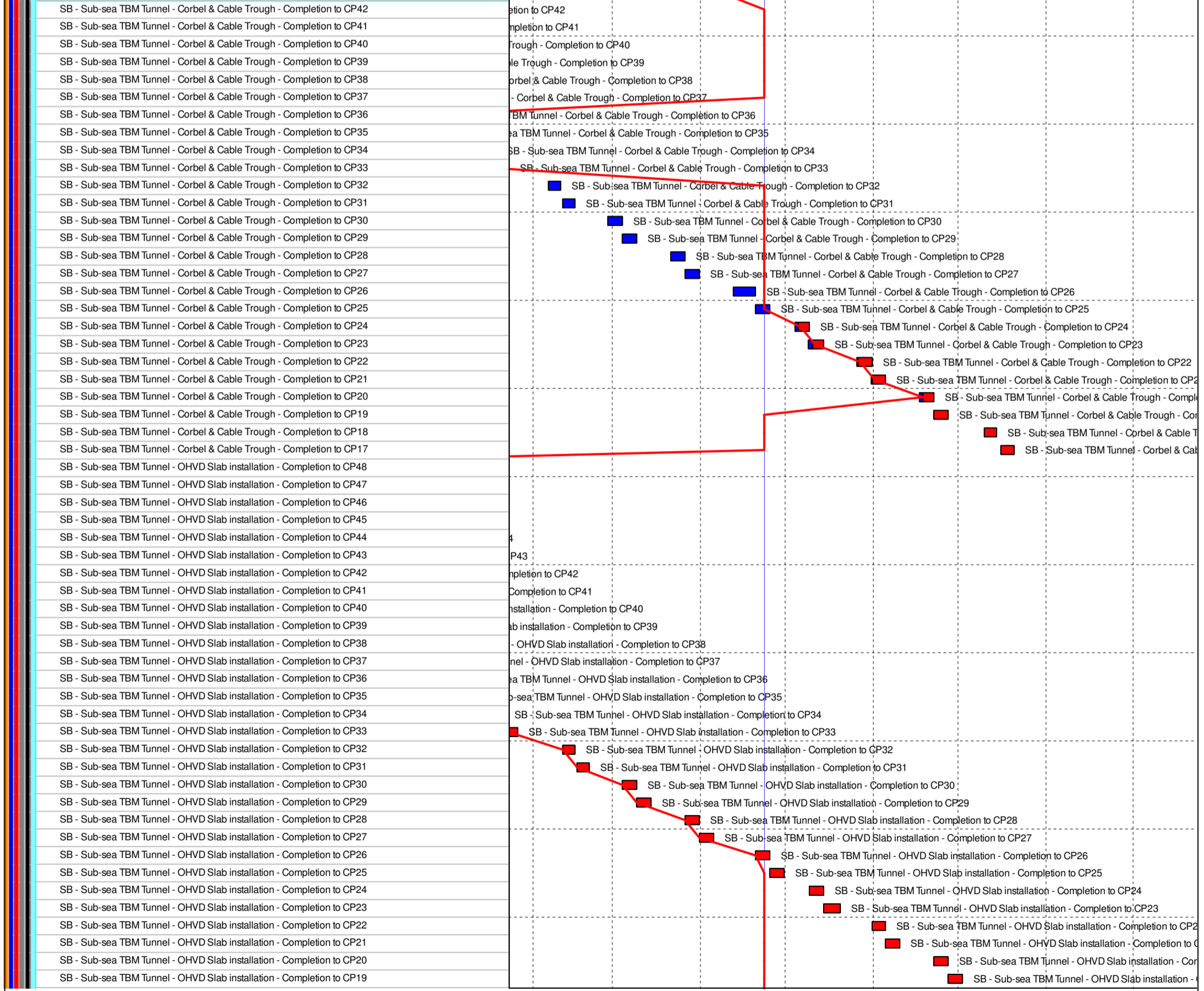
TMCLK - Northern Connection Sub-Sea Tunnel Section
 Detailed Works Programme (Rev. F)
 Three Months Rolling Programme
 Progress as of 23-Apr-17

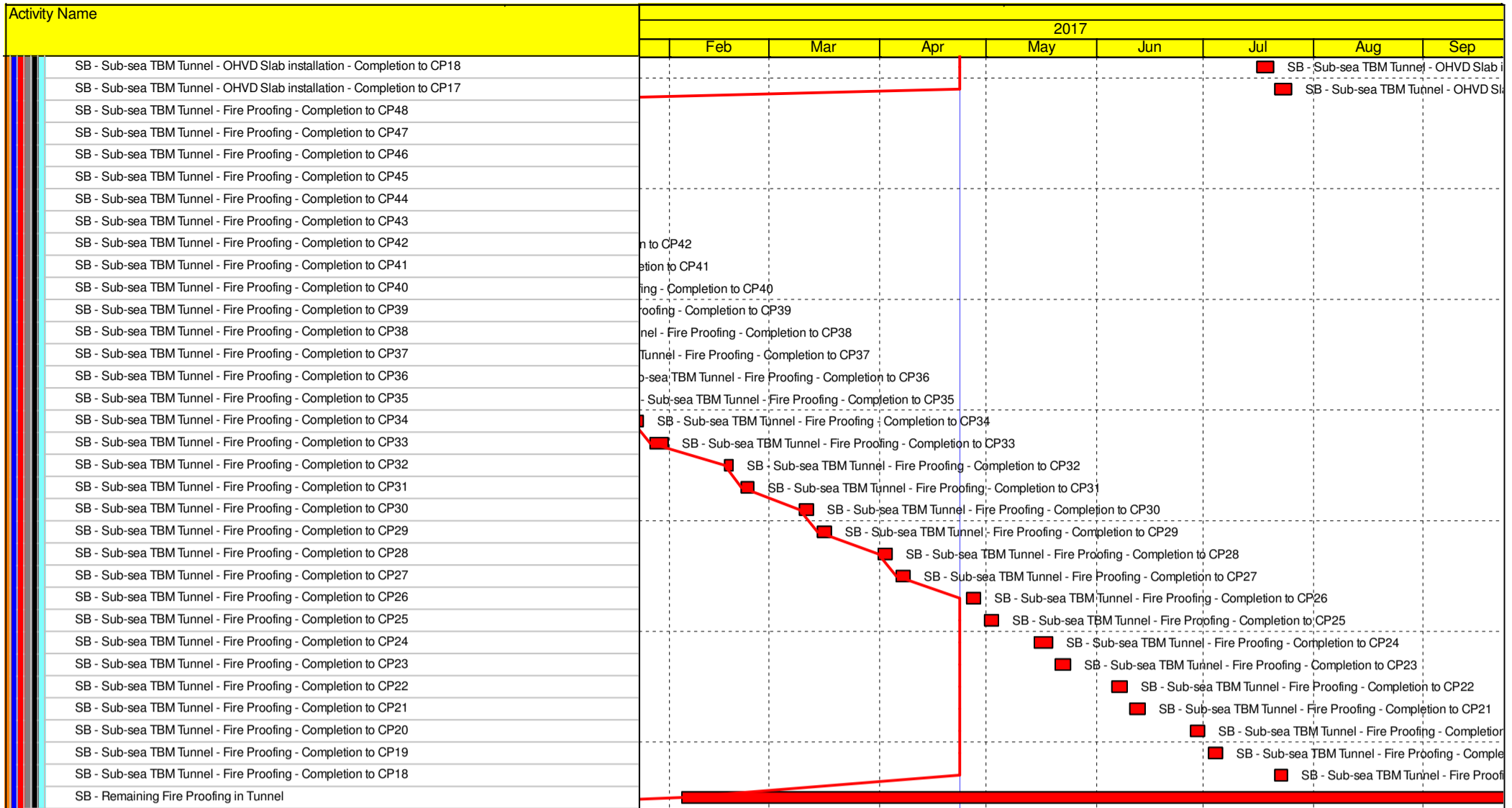


Date	Revision	Checked	Approved
12-Feb-14	TMCLKDBJGEN-PRG-98507	WYu	SPa
08-Apr-14	TMCLKDBJGEN-PRG-98507 Rev.B	SPa	WYu
28-Aug-14	TMCLKDBJGEN-PRG-98507 Rev.C	CLa	WYu
30-Oct-15	TMCLKDBJGEN-PRG-98507 Rev.F	WYu	



Sub-sea TBM Tunnel - SB - Remaining Internal Structure





Southern Landfall

South Cut & Cover Tunnel

Design Submission

(E2) DDA for South C&C Box & Approach Ramp

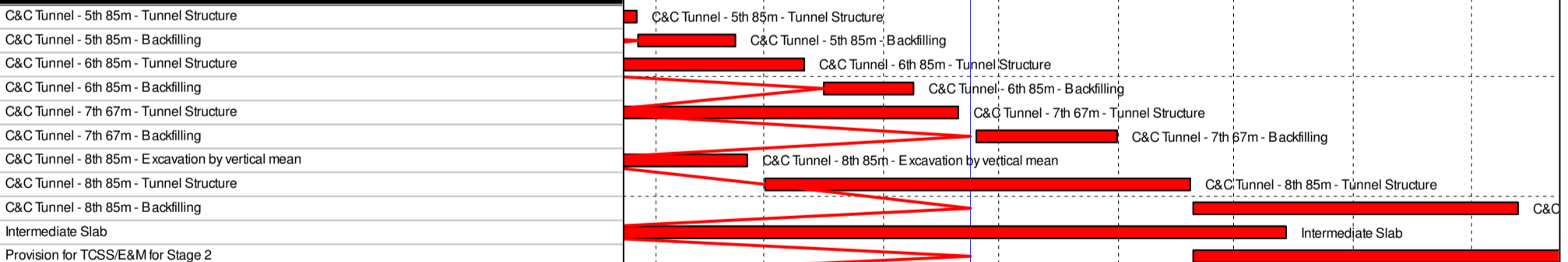
- Review & Comment by JV
- Designer prepare DDA
- Formal Submission of DDA to ICE/ IPs
- Advanced Submission to SO
- IPs/ SO's Advance Comments/ ICE Comments
- Comments Received
- Designer to Reply RiC + Update Submission
- Submit Updated DDA to SO/ICE/ IPs
- ICE Approval & Issue Check Cert
- Submit ICE Check Cert to SO
- IPs Review
- SO's Review

Method Statement Submission

Method Statement of Construction Methodology of C&C Tunnels

- Preparation Method Statement for C&C Tunnels
- Submit Method Statement to SO
- SO Reviews & Comments
- Re-submission
- SO's Review

Construction



South Retrieval Shaft

Design Submission

(F4) Gantry Crane Support/Foundations in Southern Landfall

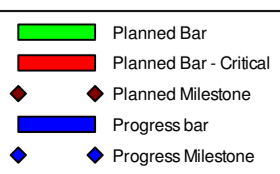
- Designer to Reply RiC + Update Submission
- Submit Updated IFA to SO/ ICE/ IPs
- ICE Approval & Issue Check Cert
- IPs Review
- IP's No Objection Received
- SO's Review
- SO Approval with Condition Received

Method Statement Submission

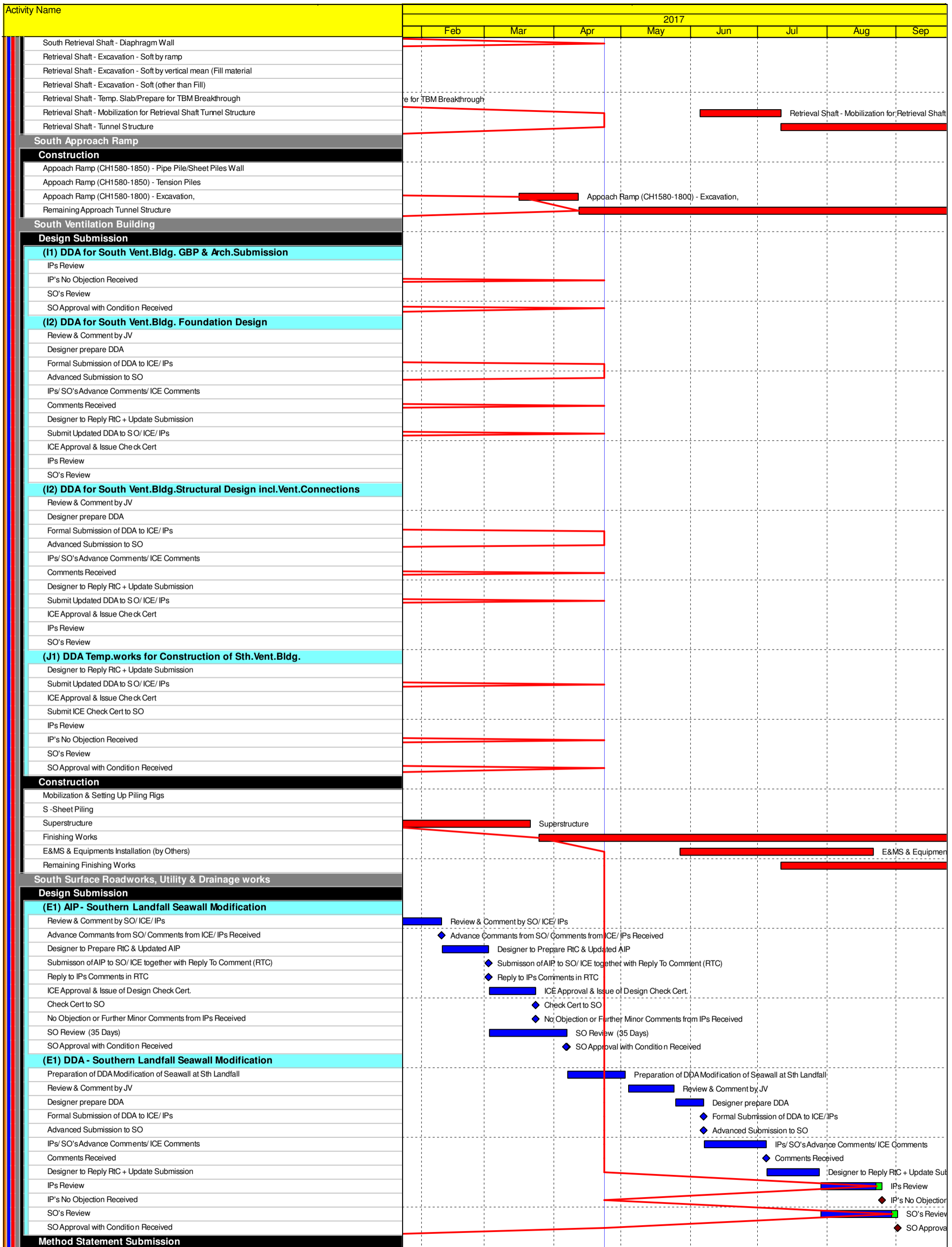
Method Statement of Construction Methodology of Retrieval Shaft

- Preparation Method Statement for Retrieval Shaft
- Submit Method Statement to SO
- SO Reviews & Comments
- Re-submission
- SO's Review

Construction



Date	Revision	Checked	Approved
12-Feb-14	TMCLKDBJGEN/PRG/98507	WYu	SPa
08-Apr-14	TMCLKDBJGEN/PRG/98507 Rev.B	SPa	WYu
28-Aug-14	TMCLKDBJGEN/PRG/98507 Rev.C	CLa	WYu
30-Oct-15	TMCLKDBJGEN/PRG/98507 Rev.F	WYu	



■ Planned Bar
■ Planned Bar - Critical
◆ Planned Milestone
■ Progress bar
◆ Progress Milestone



Date	Revision	Checked	Approved
12-Feb-14	TMCLKDBJGEN/PRG/98507	WYu	SPo
08-Apr-14	TMCLKDBJGEN/PRG/98507 Rev.B	SPa	WYu
28-Aug-14	TMCLKDBJGEN/PRG/98507 Rev.C	CLa	WYu
30-Oct-15	TMCLKDBJGEN/PRG/98507 Rev.F	WYu	

Activity Name	2017								
	Feb	Mar	Apr	May	Jun	Jul	Aug	Sep	
Method Statement of Ground Treatment for TBMs Passing under Southern La									
Preparation Method Statement for Ground Improvement in South Landfall									
Submit Method Statement to SO									
SO Reviews & Comments									
Re-submission									
SO's Review									
SO's Approval									
Construction									
Temporary Platform for Ground Treatment for TBM passing under Southern Seawall									
Grouting Treatment for TBM passing under Southern Seawall									
South Landfall - Underground Sewerage & Drainage									
Testing & Commissioning/Inspection & Handover									
Final Inspection & Handover									
Design Submission									
(A12) Maintenance Matrix									
Prepare Re-submission									
2nd Submission									
SO's Condition Approval									
(A13) Operation & Maintenance Manual									
Preparation of Operation and Maintenance Manual									
1st Submission									
SO's Comments for 1st Submission									
Prepare Re-submission									
(A14) As-built & As-fabricated Drawings									
Preparation of As-built and As-fabricated Drawings									
1st Submission									
SO's Comments for 1st Submission									
Prepare Re-submission									
(A15) Health & Safety File incl. As-built Dwgs & Records, Maintenance Schedules									
Preparation of Health and Safety File including as-built drawings and records, maintenance schedules, etc.									
1st Submission									
SO's Comments for 1st Submission									
Prepare Re-submission									

- Planned Bar
- Planned Bar - Critical
- Planned Milestone
- Progress bar
- Progress Milestone



Date	Revision	Checked	Approved
12-Feb-14	TMCLKDBJGEN PRG.98507	WYu	SPo
08-Apr-14	TMCLKDBJGEN PRG.98507 Rev.B	SPa	WYu
28-Aug-14	TMCLKDBJGEN PRG.98507 Rev.C	CLa	WYu
30-Oct-15	TMCLKDBJGEN PRG.98507 Rev.F	WYu	